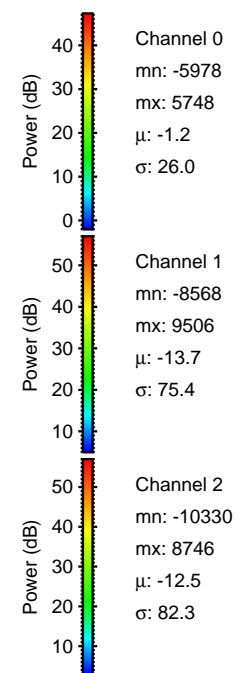
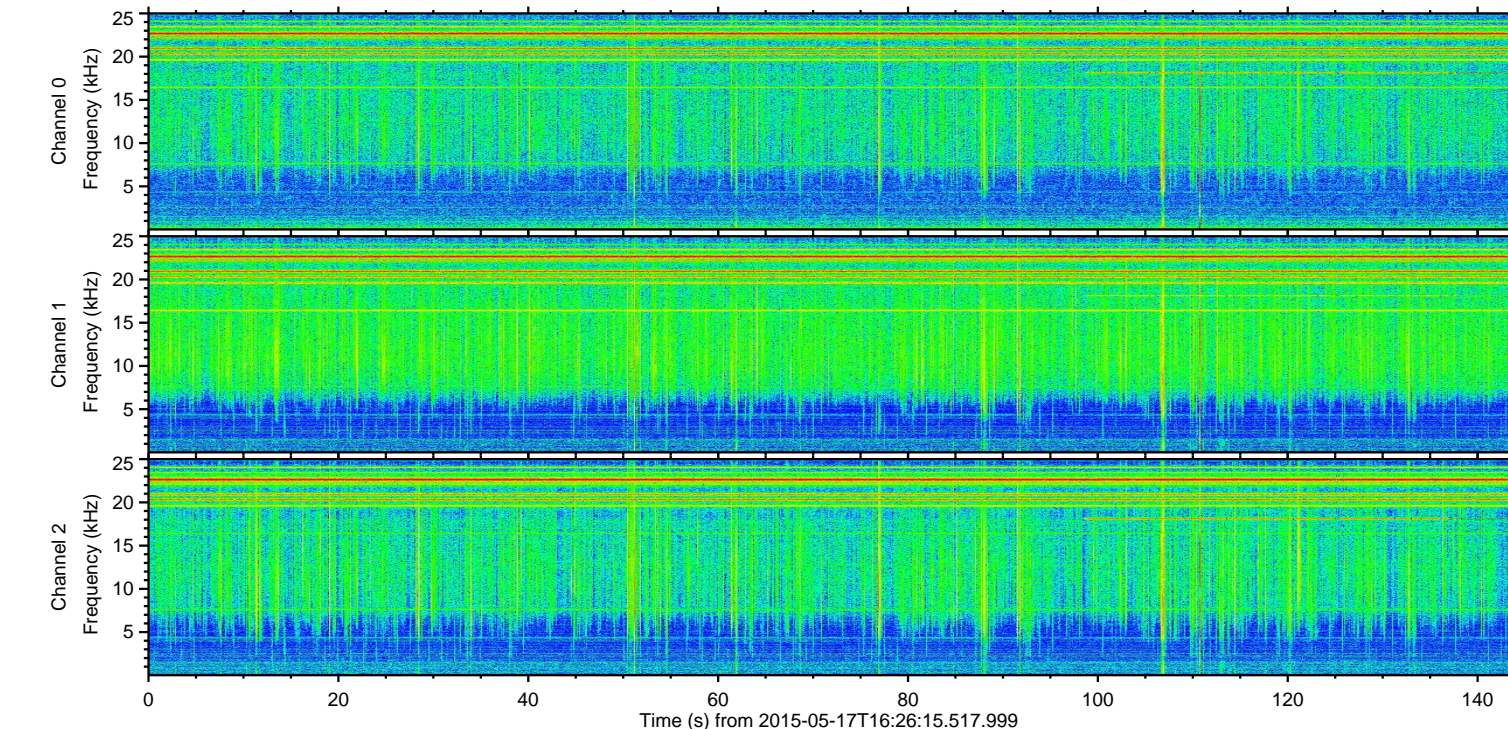
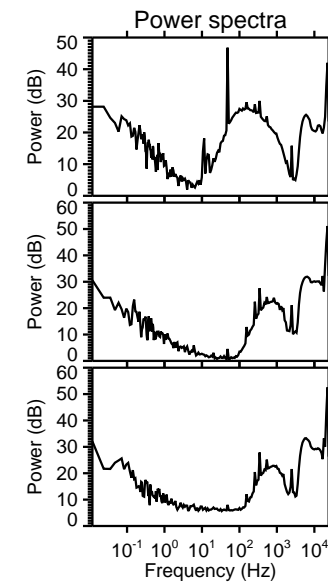
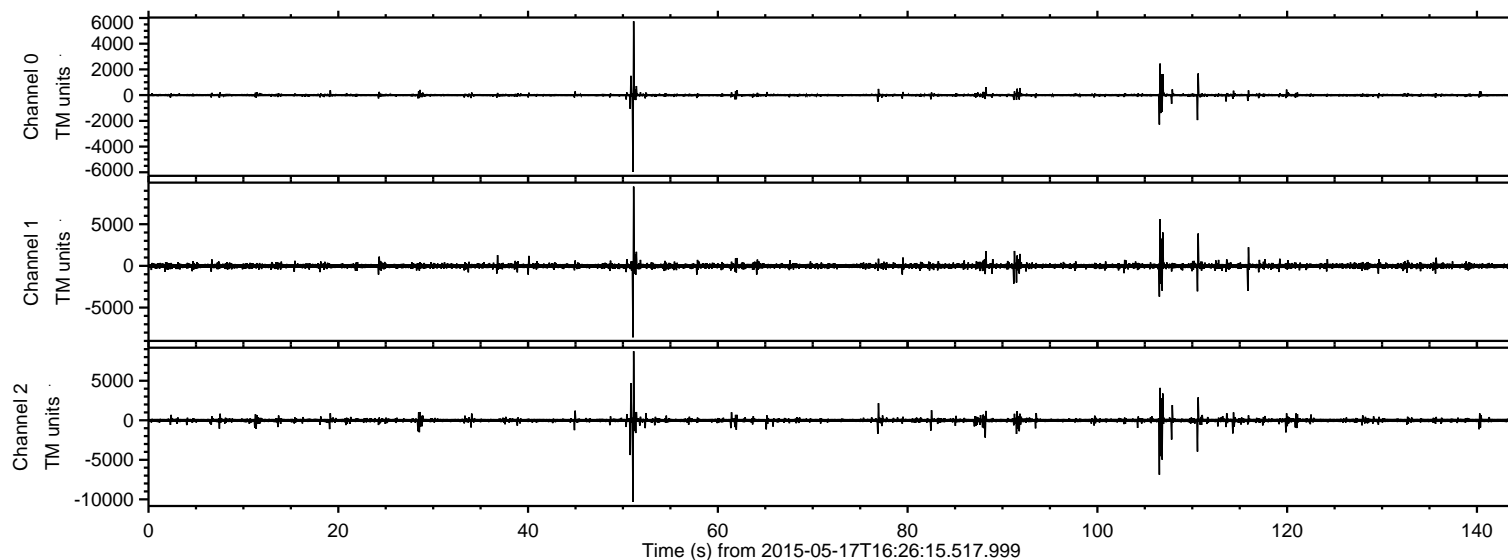
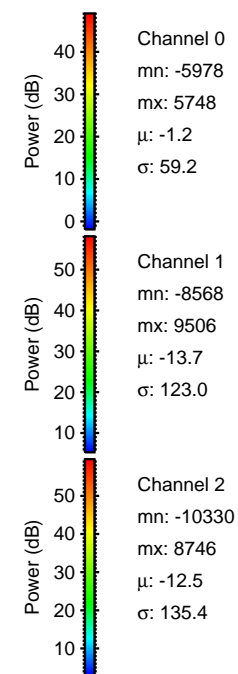
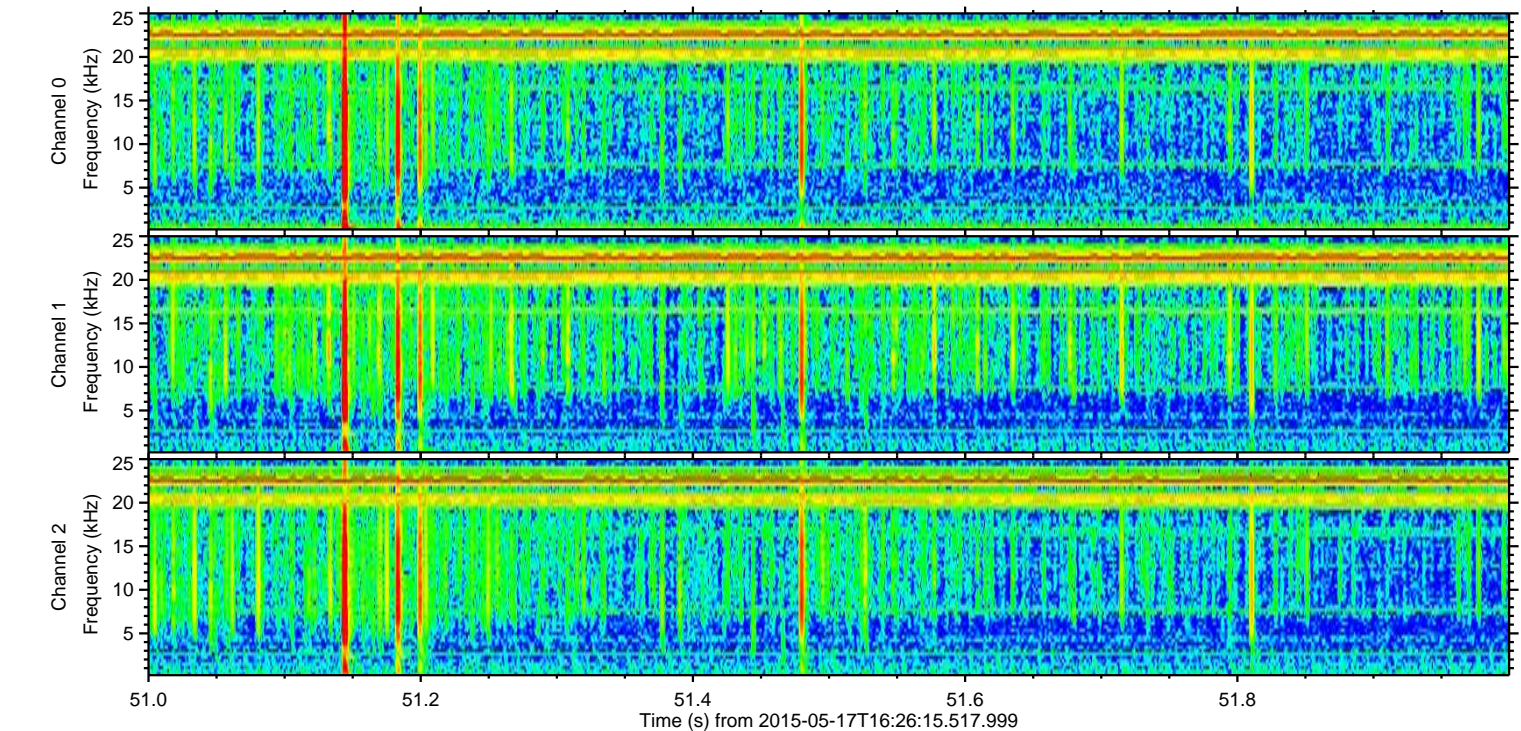
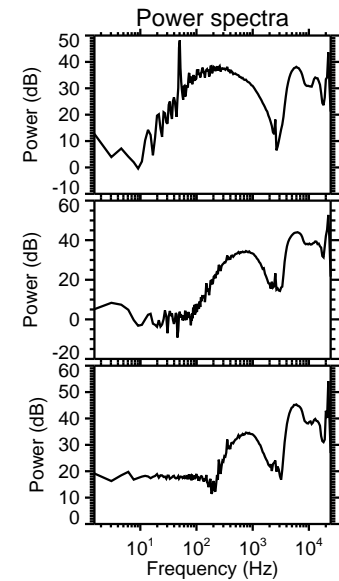
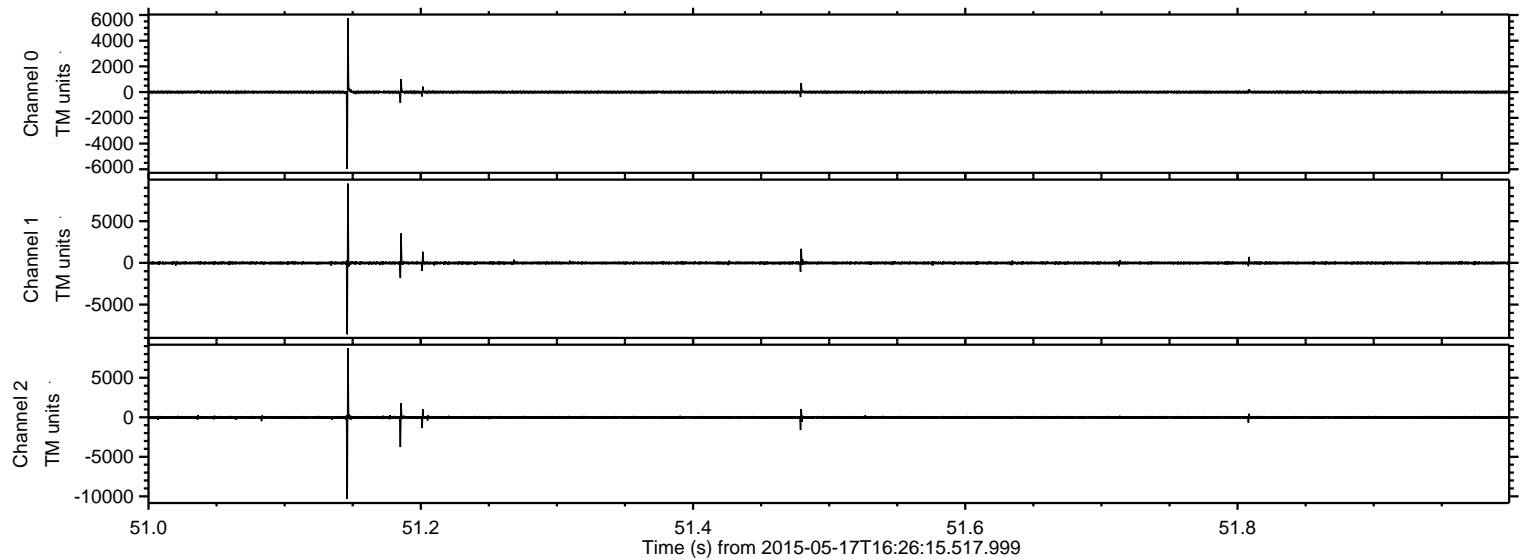


ELMAVAN 3D WAVEFORMS (Measured data sampled at 50 kHz) 49790 packets of 144 samples from 2015-05-17T16:26:15.517.999.

Processed Sun May 17 18:32:56 2015 by ELM ver.2012-10-06 from 001__elm20150517_162614__dat00.bin

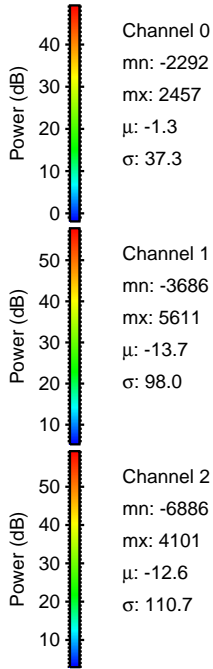
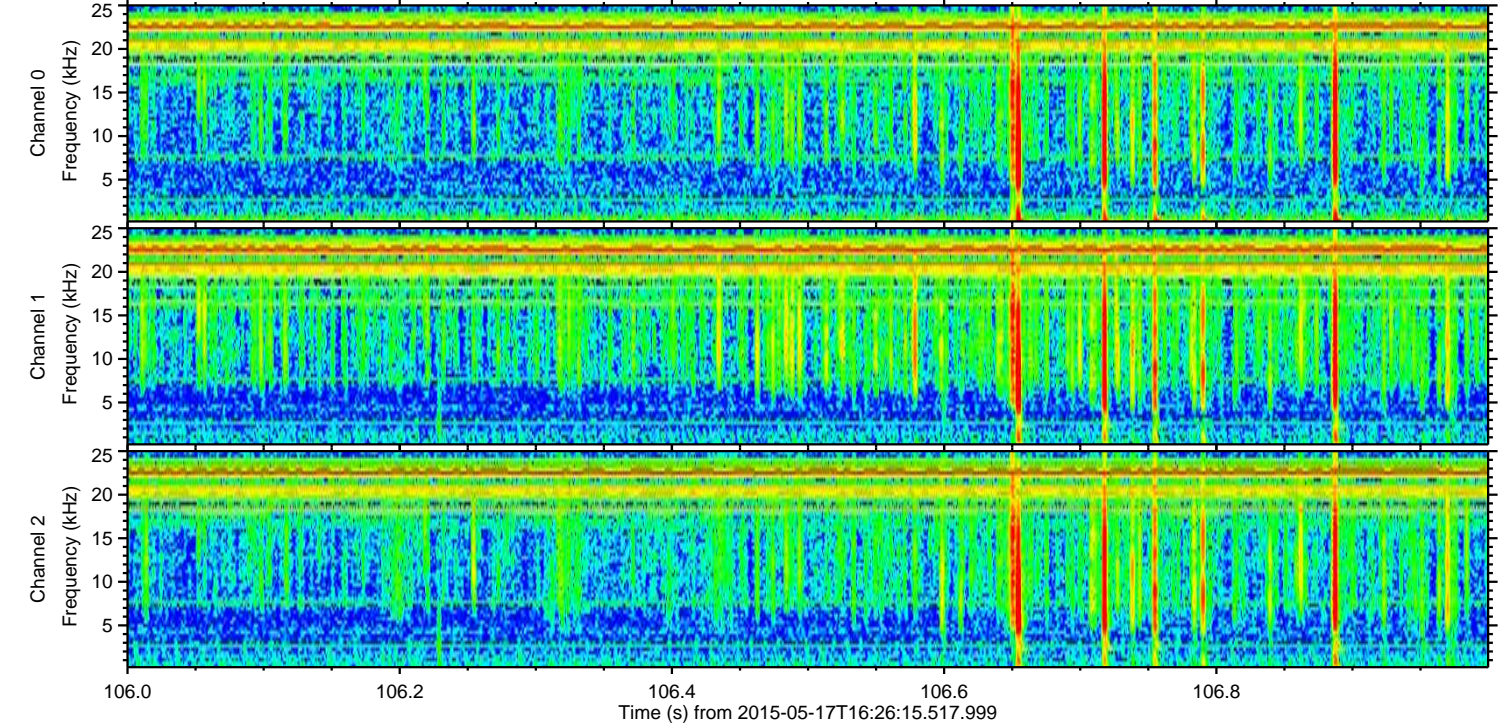
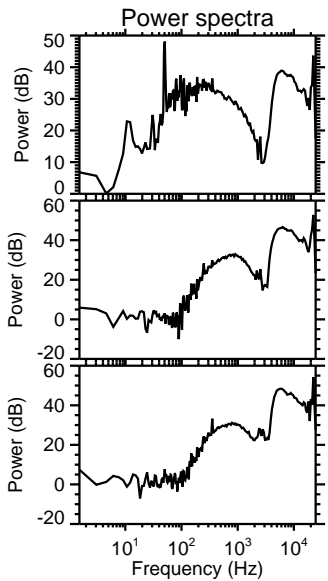
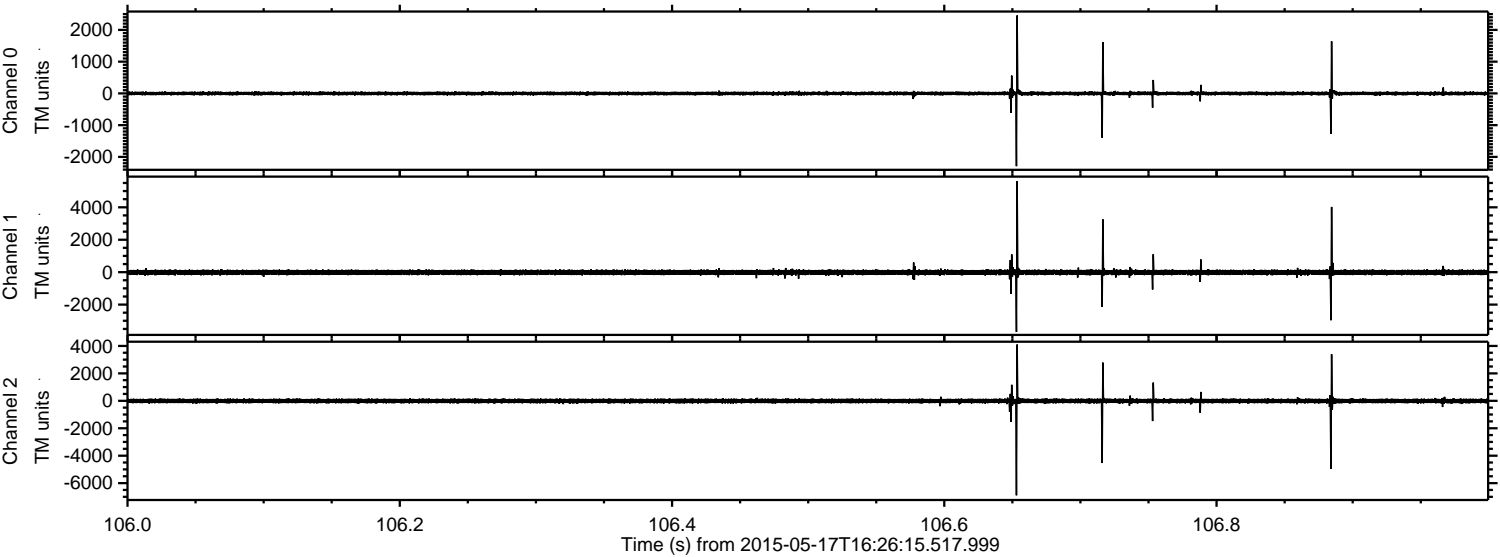


Processed Sun May 17 18:33:08 2015 by ELM ver.2012-10-06 from 001__elm20150517_162614__dat00.bin



ELMAVAN 3D WAVEFORMS (Measured data sampled at 50 kHz) 49790 packets of 144 samples from 2015-05-17T16:26:15.517.999. Part 107/144

Processed Sun May 17 18:33:08 2015 by ELM ver.2012-10-06 from 001__elm20150517_162614__dat00.bin

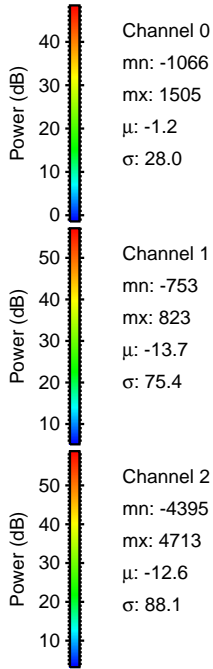
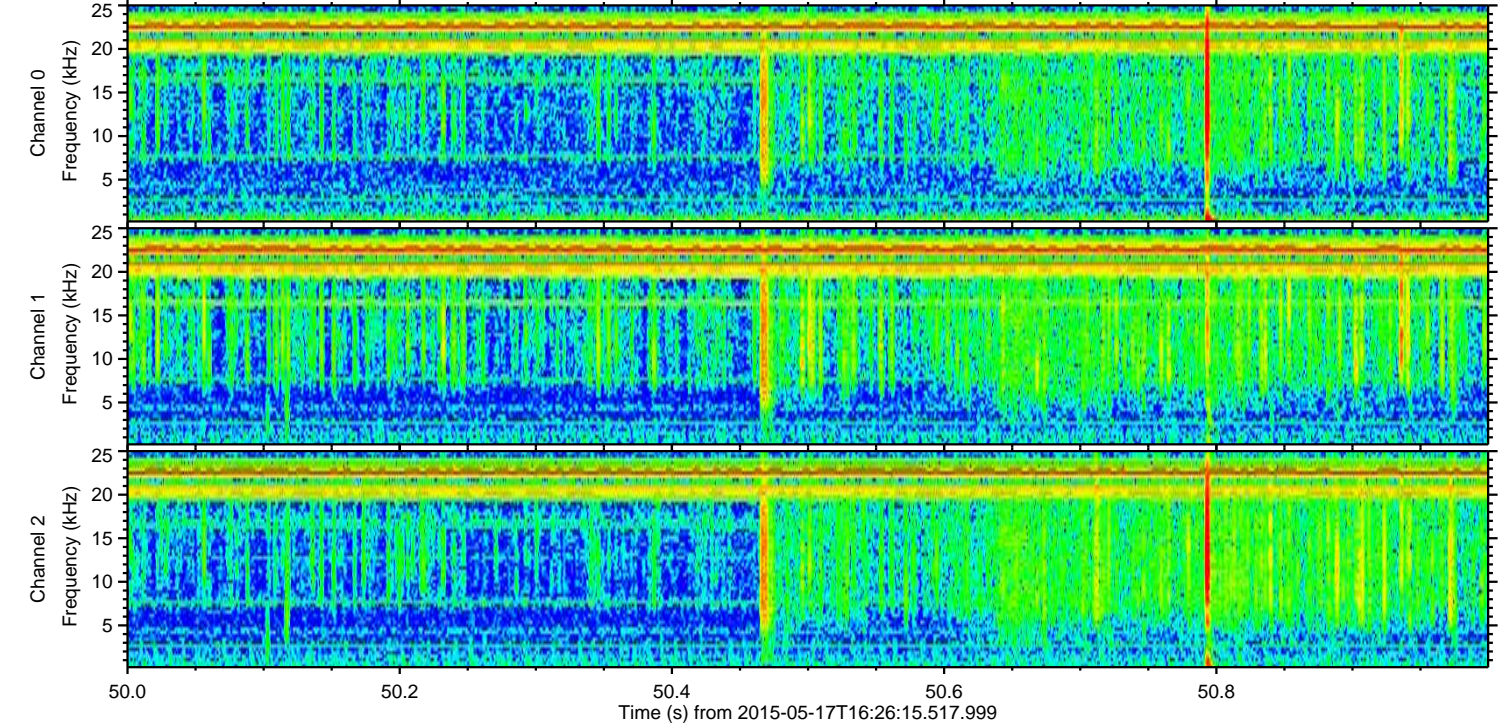
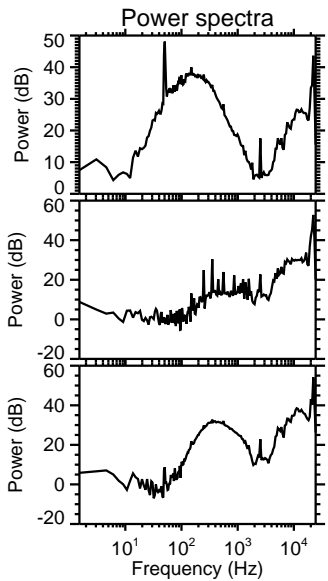
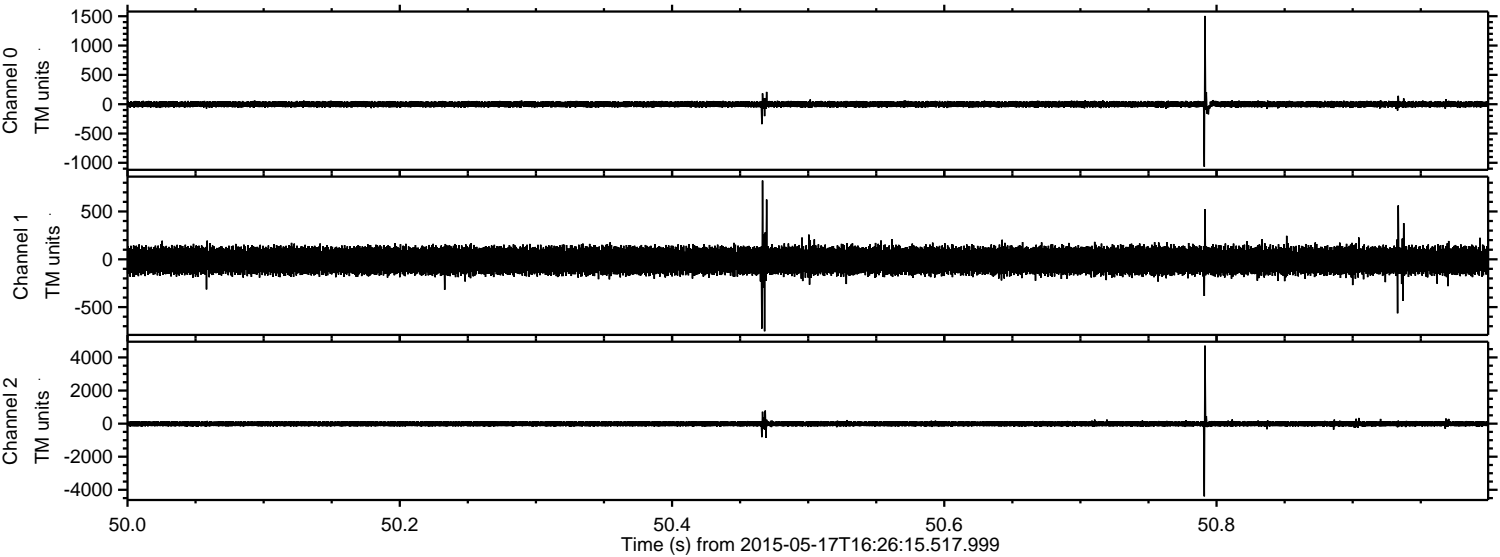


Channel 0
mn: -2292
mx: 2457
 μ : -1.3
 σ : 37.3

Channel 1
mn: -3686
mx: 5611
 μ : -13.7
 σ : 98.0

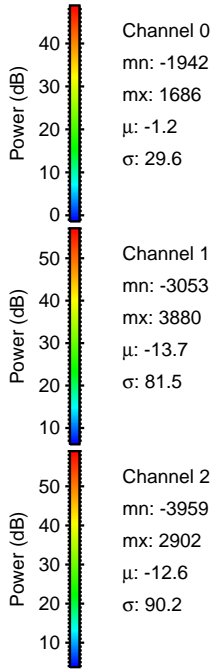
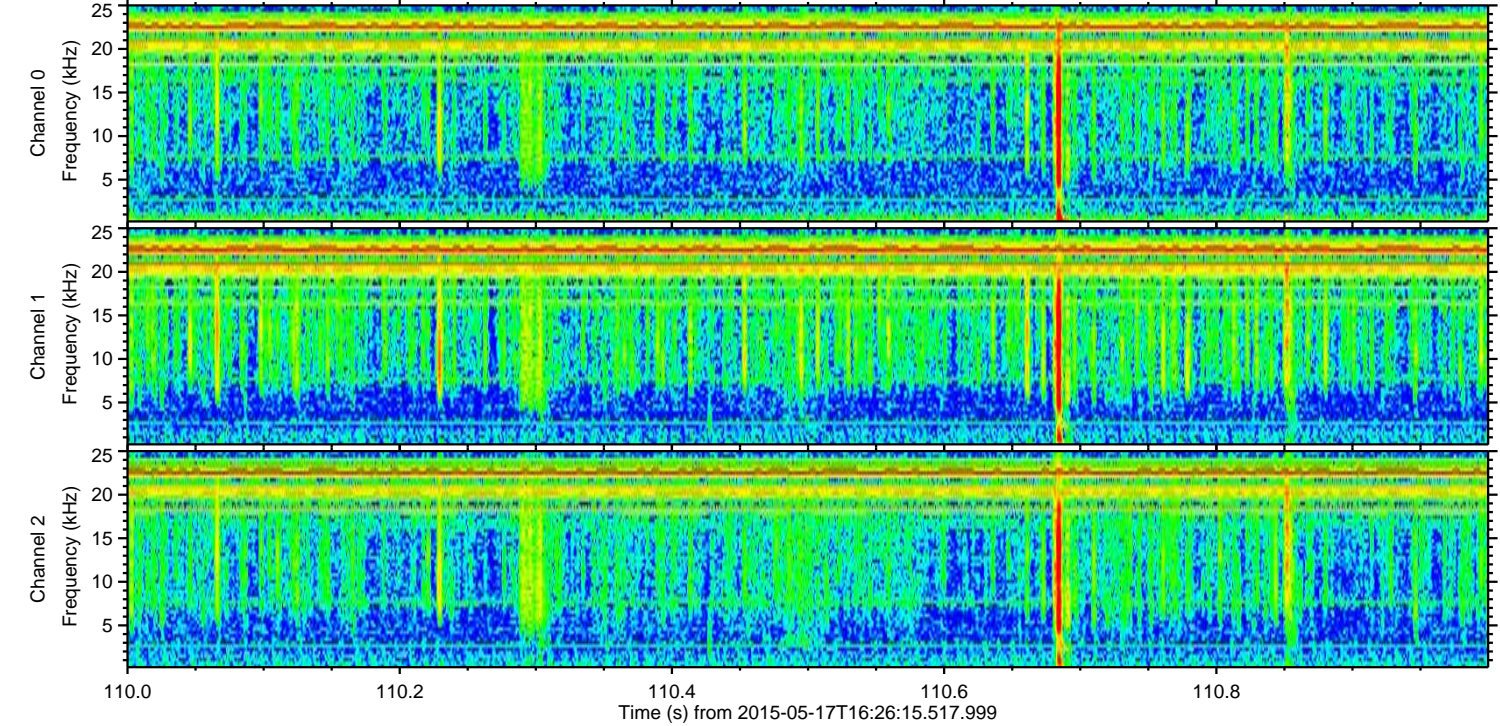
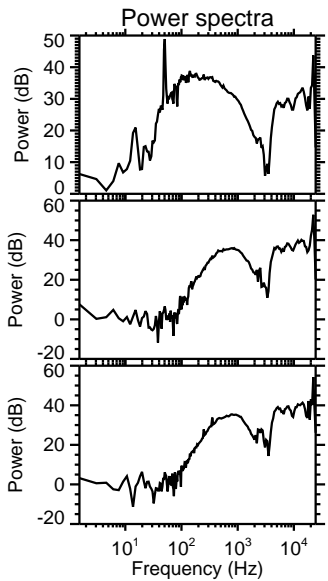
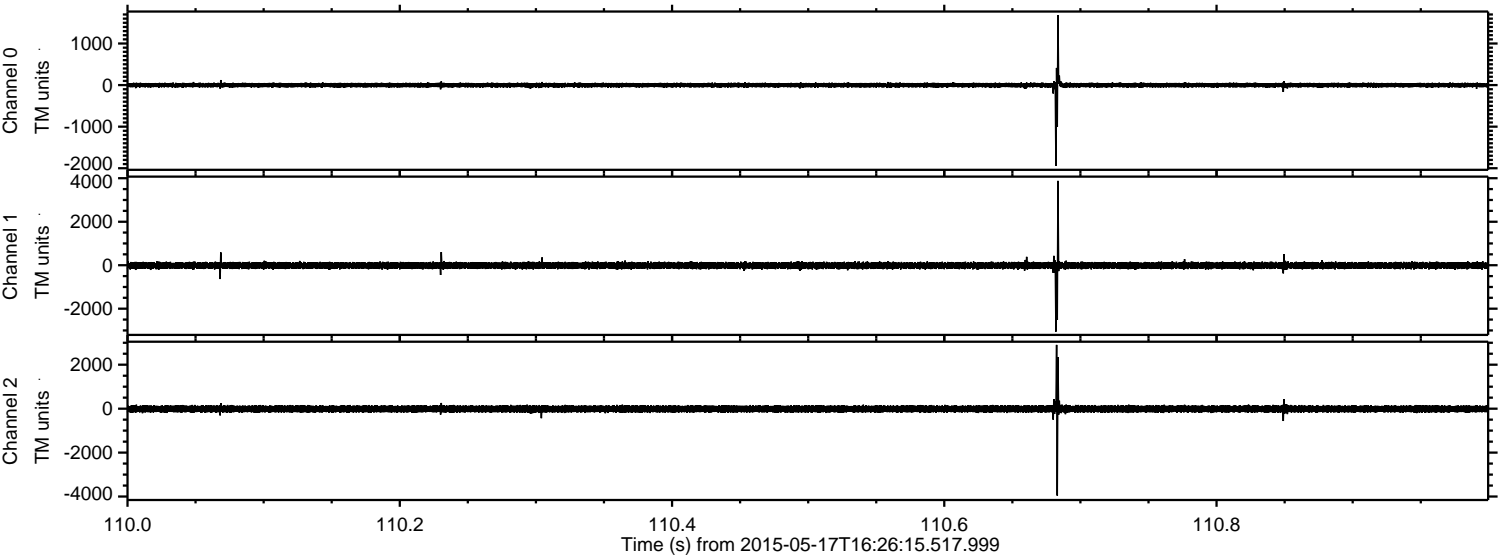
Channel 2
mn: -6886
mx: 4101
 μ : -12.6
 σ : 110.7

Processed Sun May 17 18:33:09 2015 by ELM ver.2012-10-06 from 001__elm20150517_162614__dat00.bin



ELMAVAN 3D WAVEFORMS (Measured data sampled at 50 kHz) 49790 packets of 144 samples from 2015-05-17T16:26:15.517.999. Part 111/144

Processed Sun May 17 18:33:10 2015 by ELM ver.2012-10-06 from 001__elm20150517_162614__dat00.bin



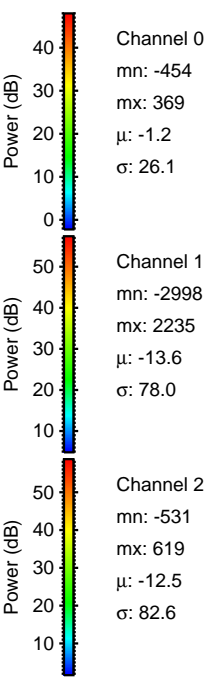
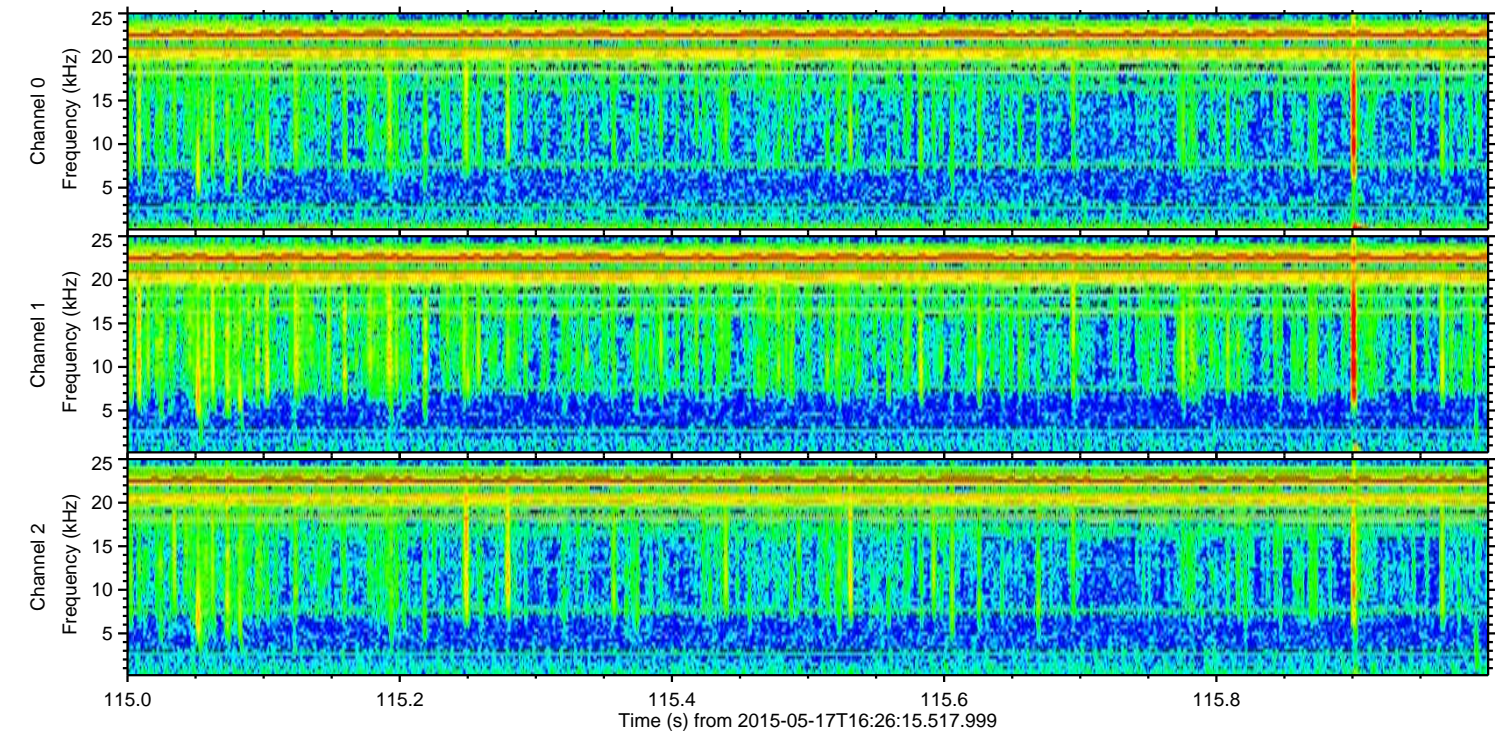
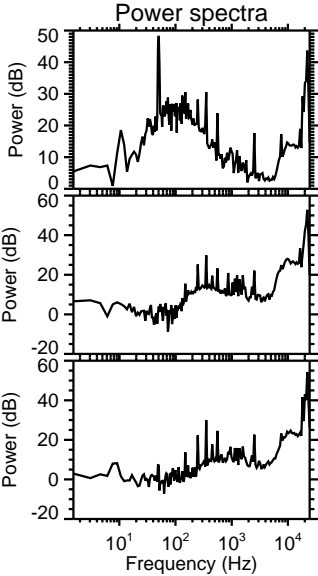
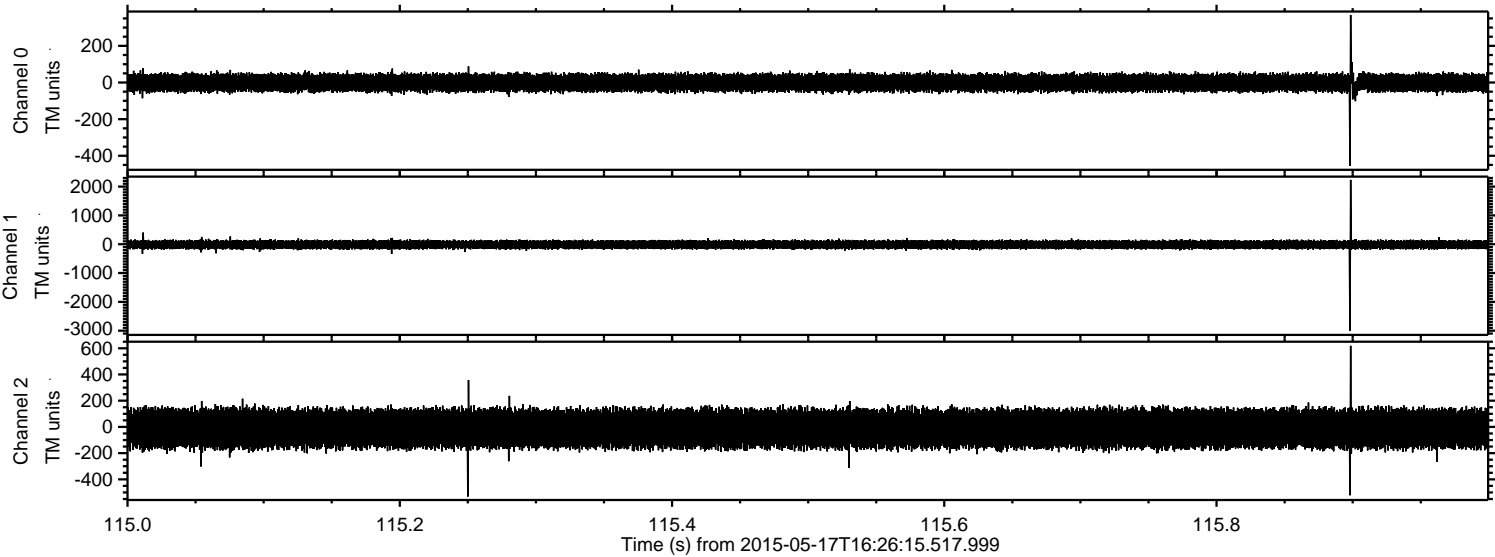
Channel 0
mn: -1942
mx: 1686
 μ : -1.2
 σ : 29.6

Channel 1
mn: -3053
mx: 3880
 μ : -13.7
 σ : 81.5

Channel 2
mn: -3959
mx: 2902
 μ : -12.6
 σ : 90.2

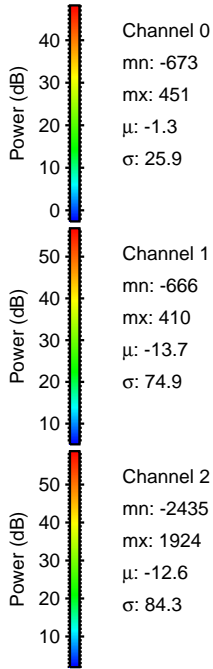
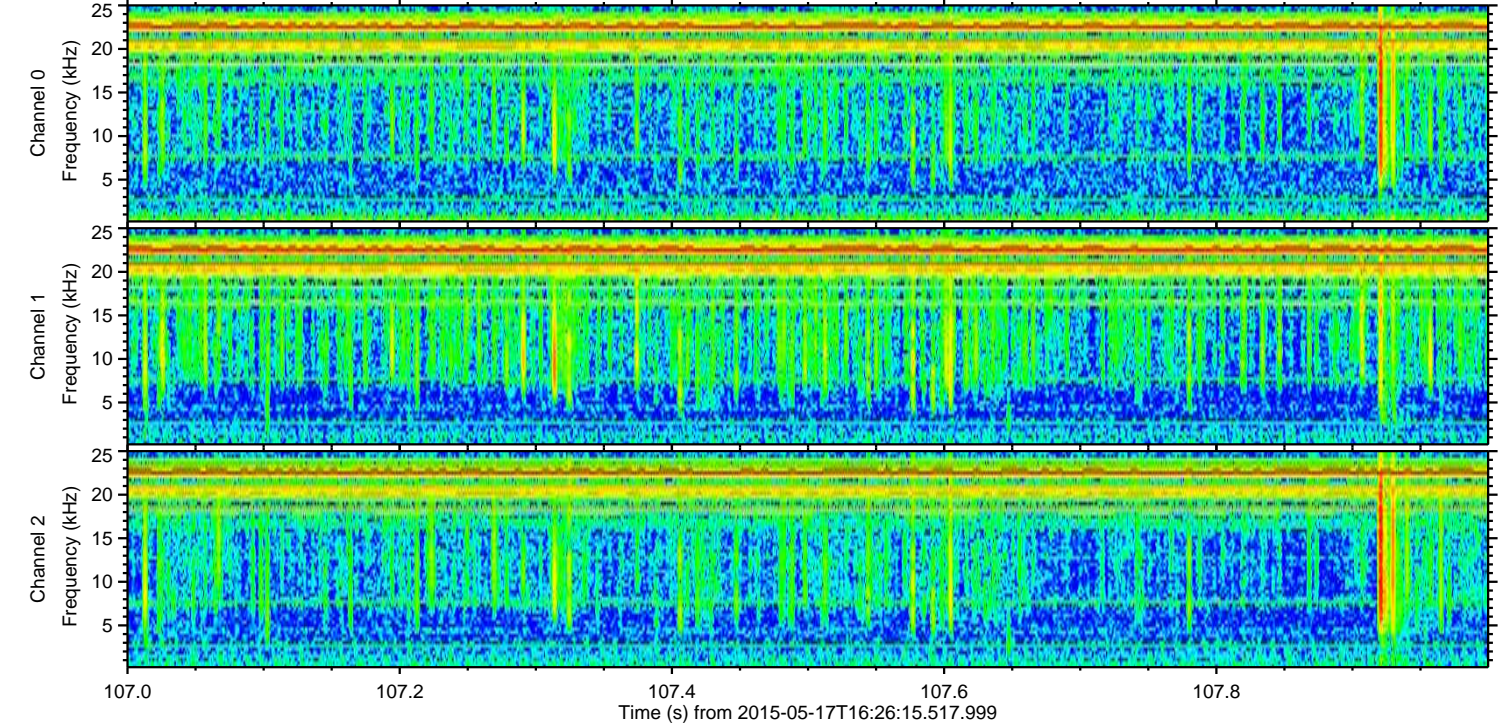
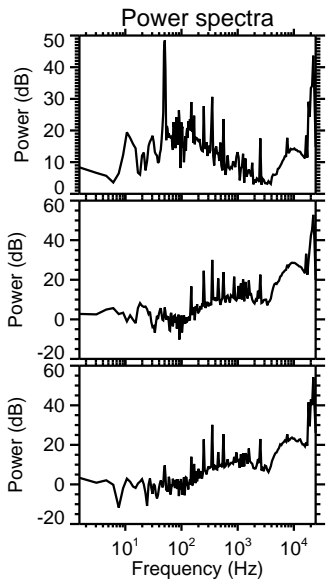
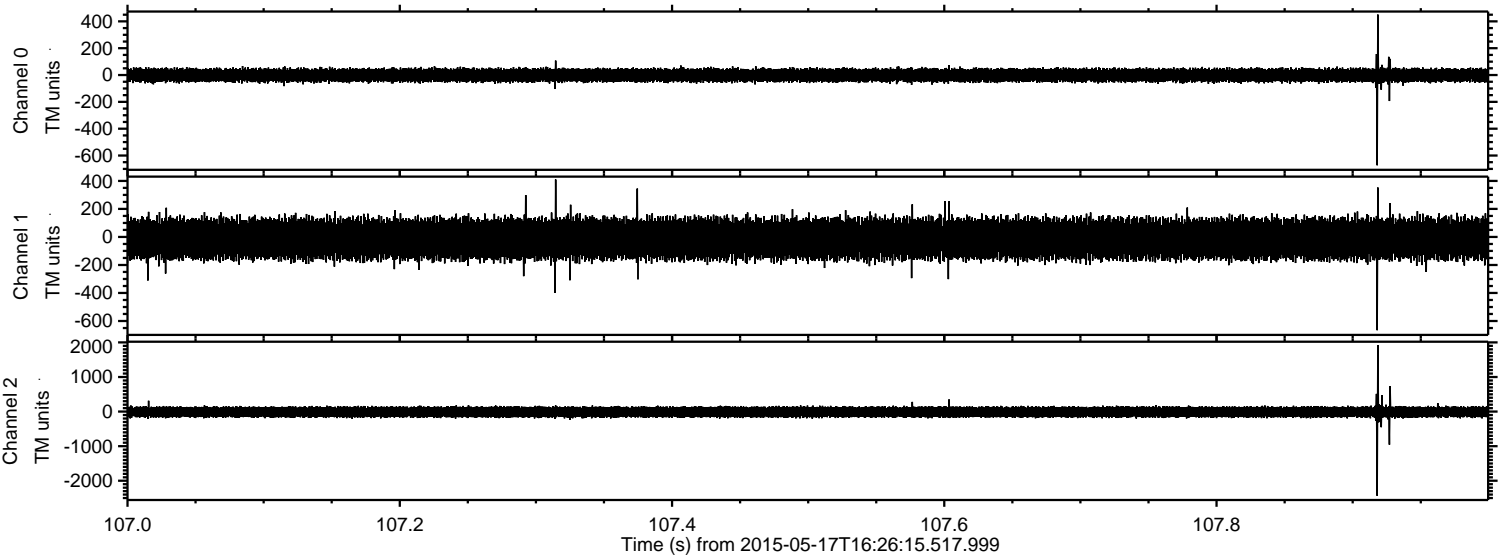
ELMAVAN 3D WAVEFORMS (Measured data sampled at 50 kHz) 49790 packets of 144 samples from 2015-05-17T16:26:15.517.999. Part 116/144

Processed Sun May 17 18:33:11 2015 by ELM ver.2012-10-06 from 001__elm20150517_162614__dat00.bin



ELMAVAN 3D WAVEFORMS (Measured data sampled at 50 kHz) 49790 packets of 144 samples from 2015-05-17T16:26:15.517.999. Part 108/144

Processed Sun May 17 18:33:12 2015 by ELM ver.2012-10-06 from 001__elm20150517_162614__dat00.bin

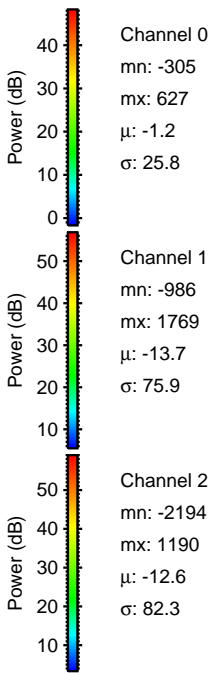
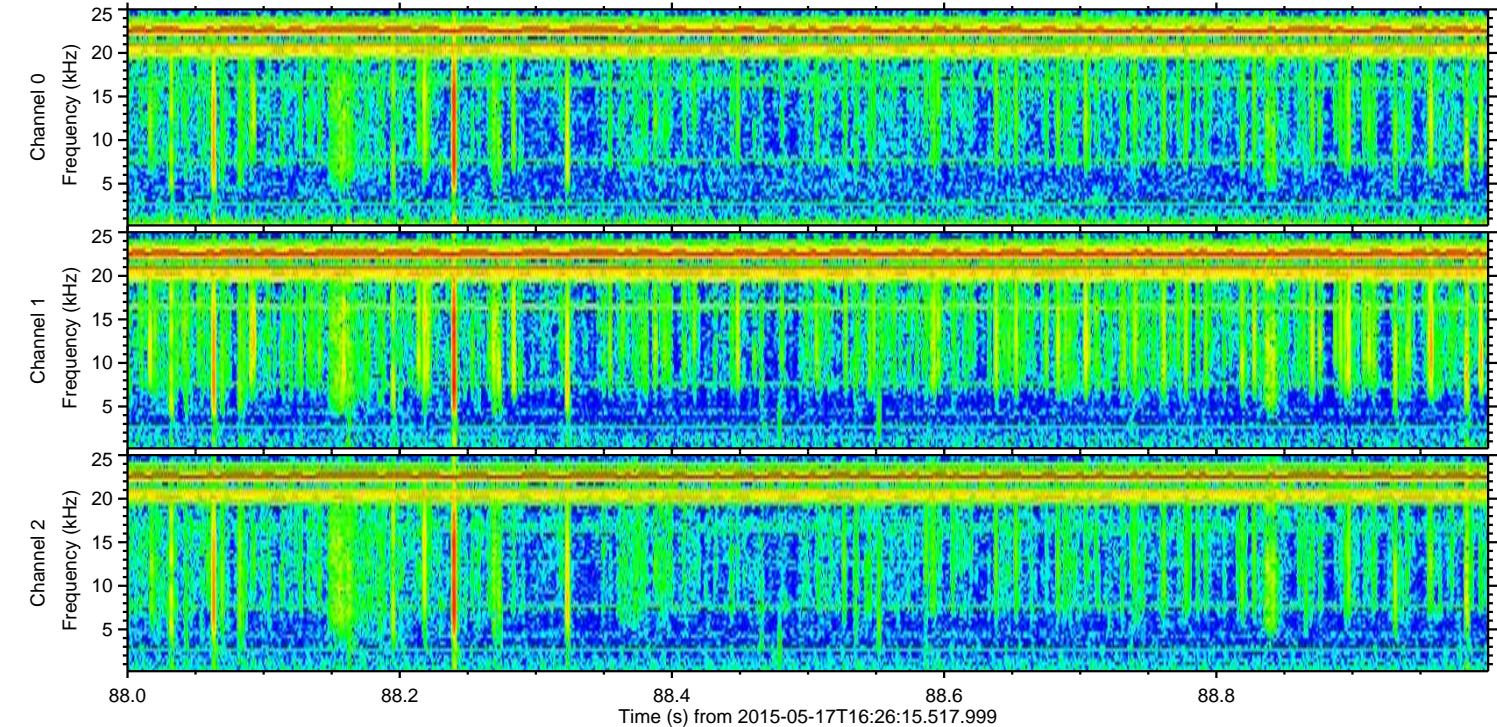
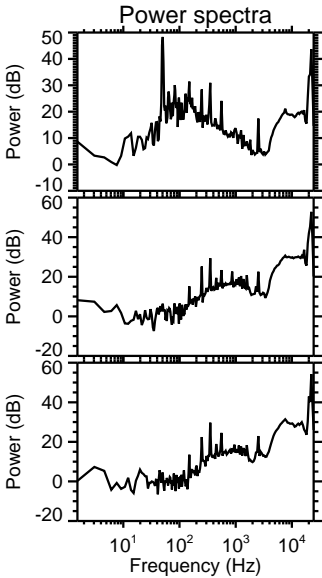
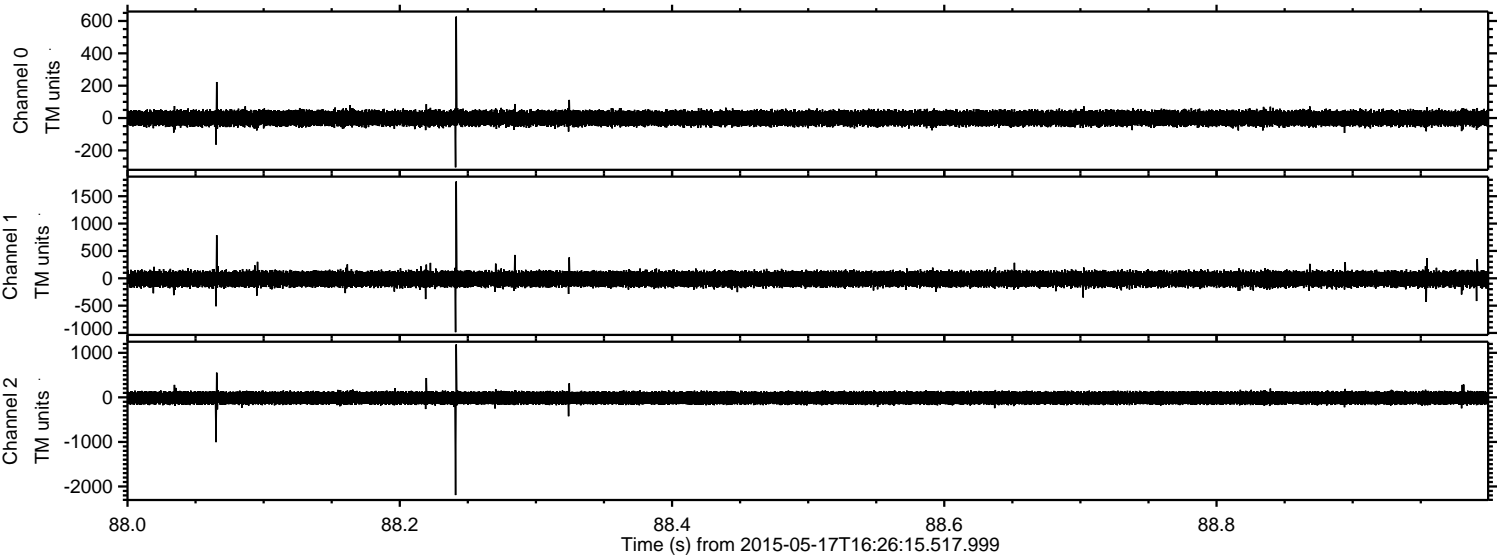


Channel 0
mn: -673
mx: 451
 μ : -1.3
 σ : 25.9

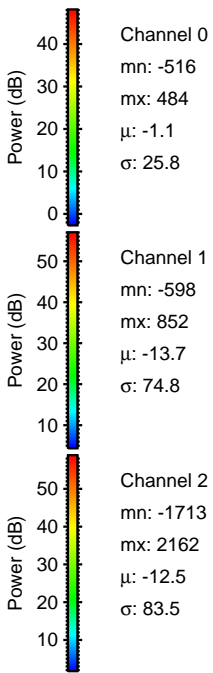
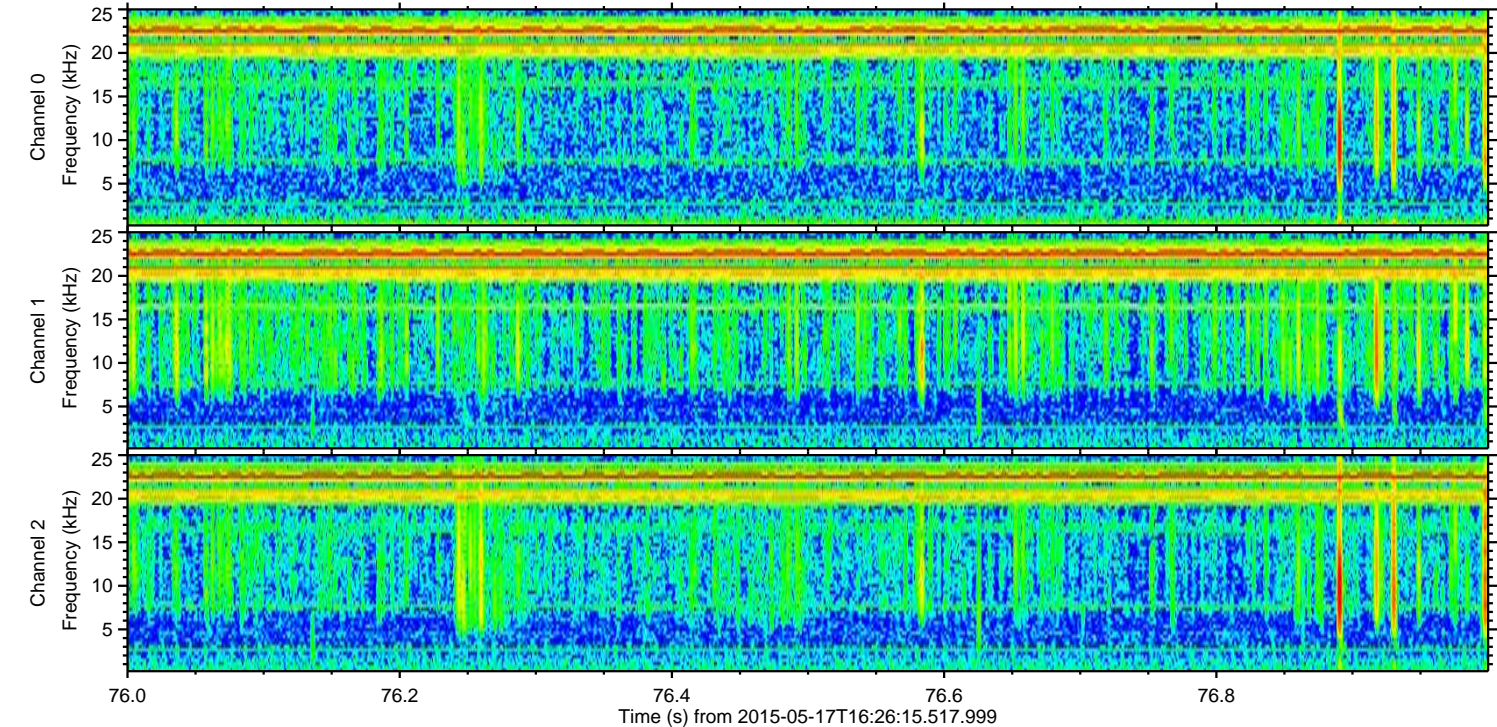
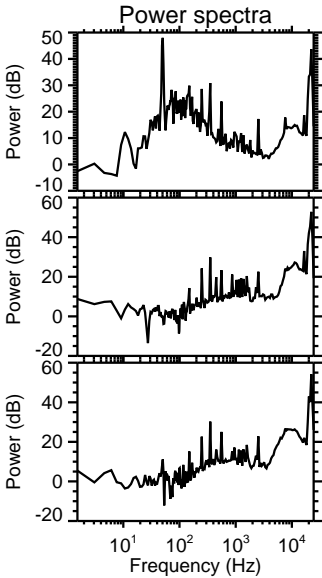
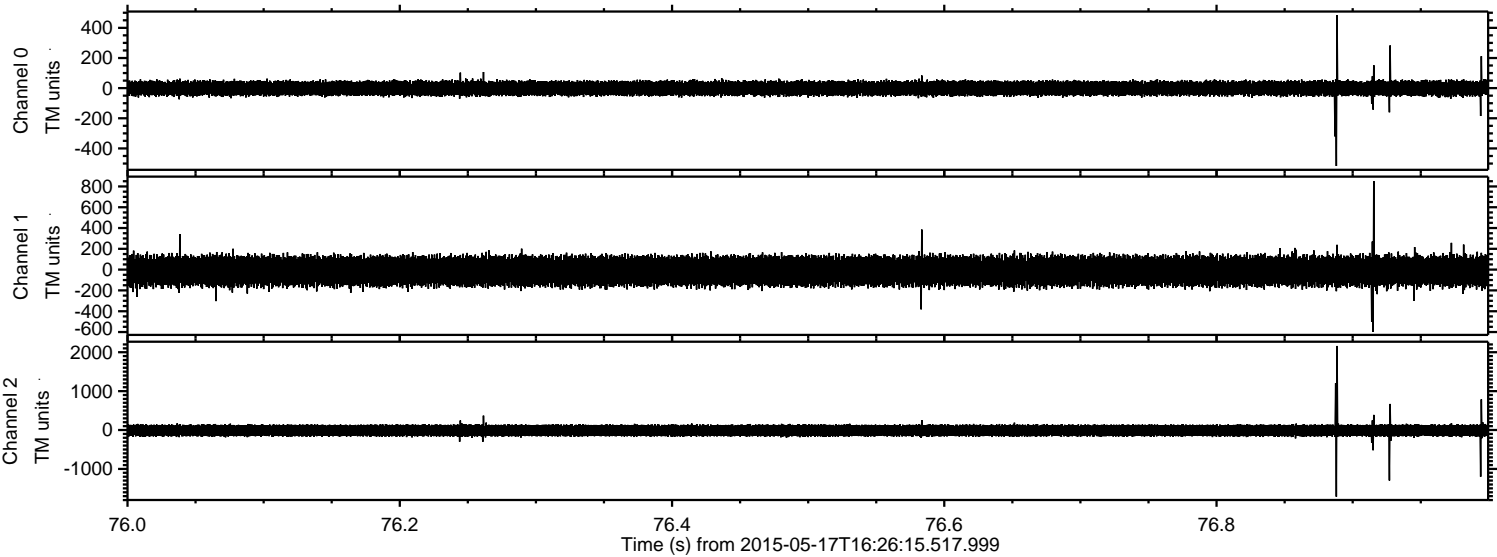
Channel 1
mn: -666
mx: 410
 μ : -13.7
 σ : 74.9

Channel 2
mn: -2435
mx: 1924
 μ : -12.6
 σ : 84.3

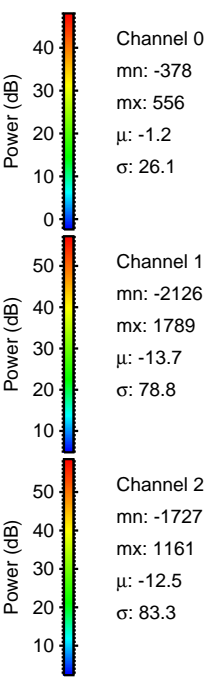
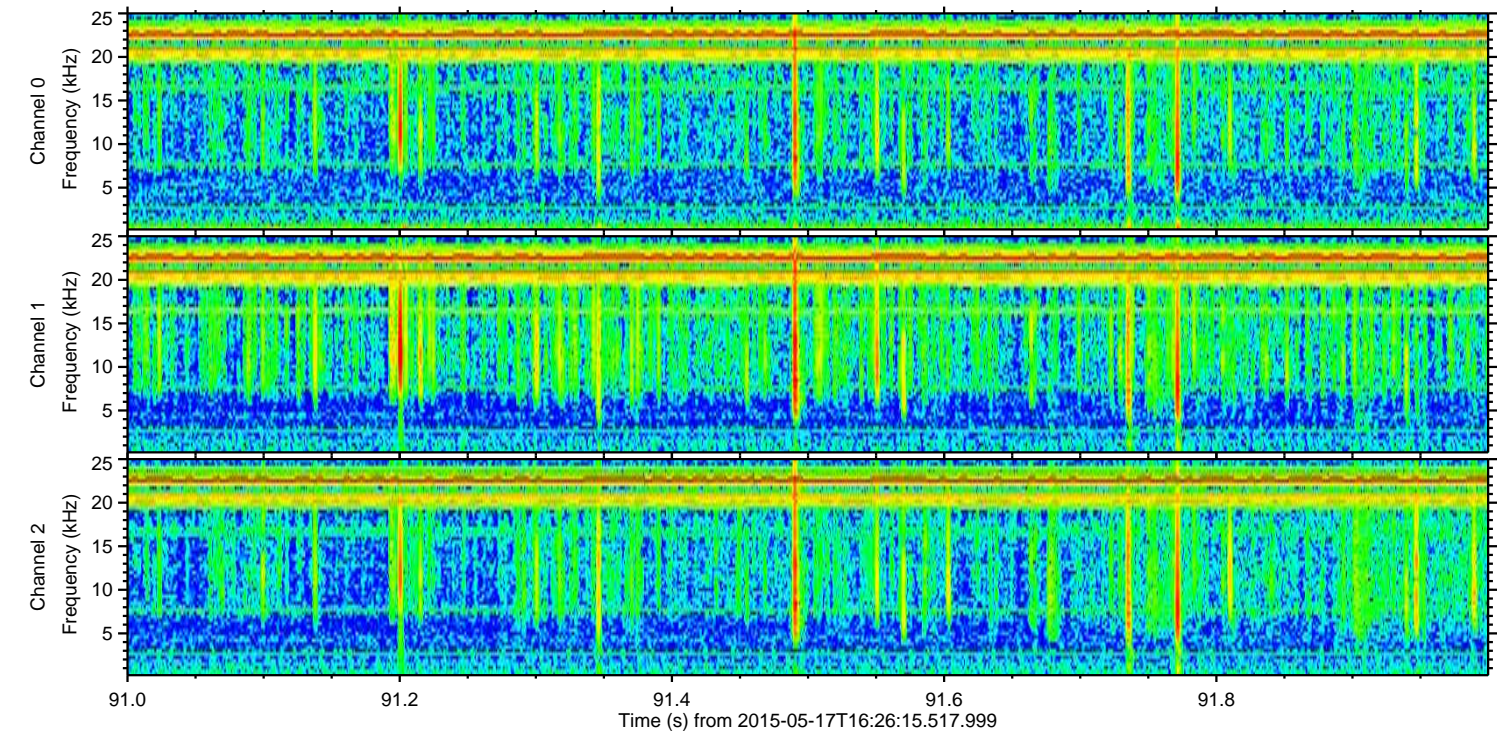
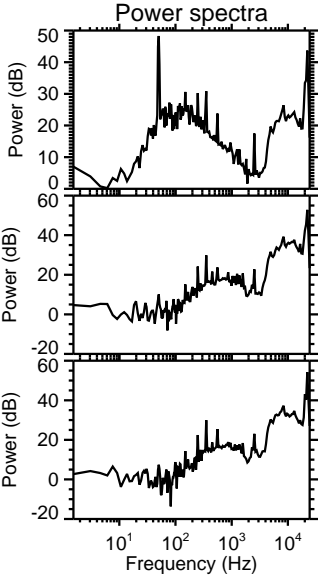
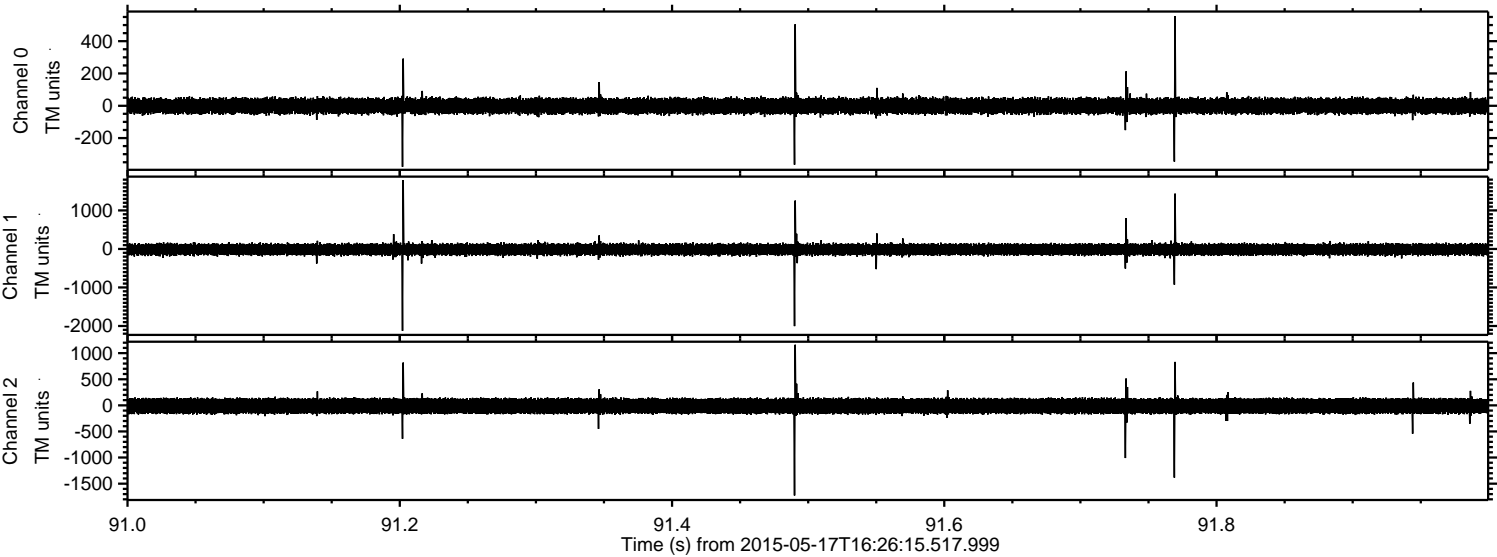
Processed Sun May 17 18:33:13 2015 by ELM ver.2012-10-06 from 001__elm20150517_162614__dat00.bin



Processed Sun May 17 18:33:14 2015 by ELM ver.2012-10-06 from 001__elm20150517_162614__dat00.bin



Processed Sun May 17 18:33:15 2015 by ELM ver.2012-10-06 from 001__elm20150517_162614__dat00.bin



Processed Sun May 17 18:33:16 2015 by ELM ver.2012-10-06 from 001__elm20150517_162614__dat00.bin

