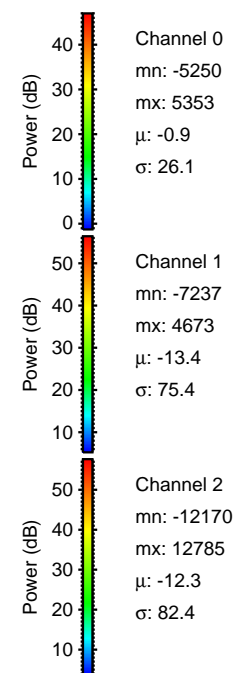
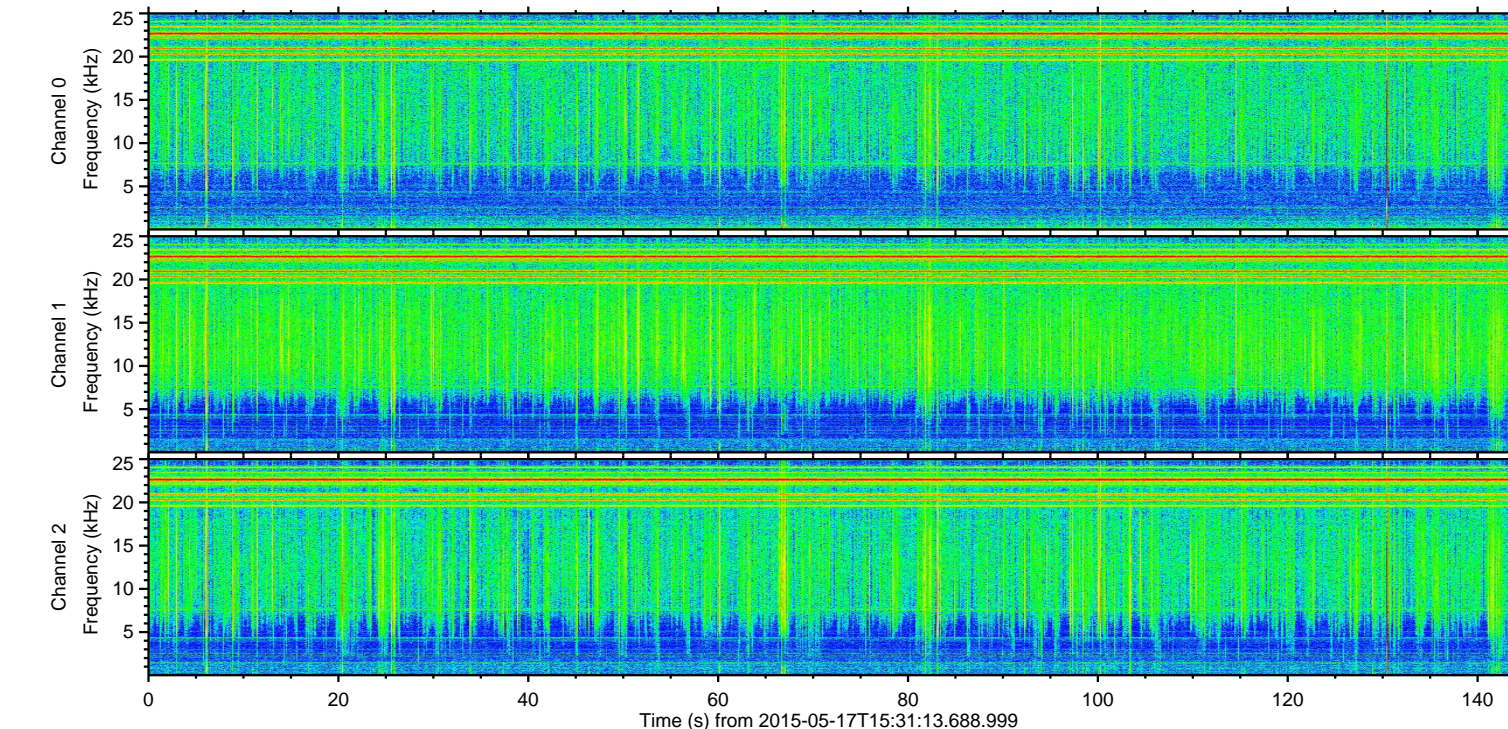
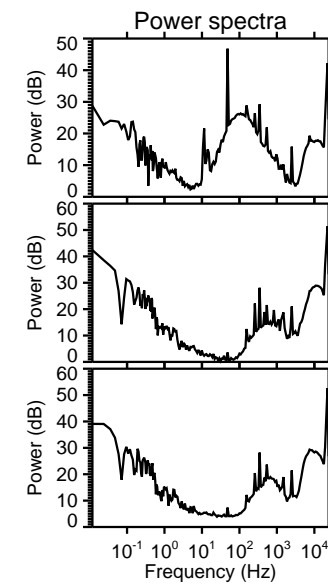
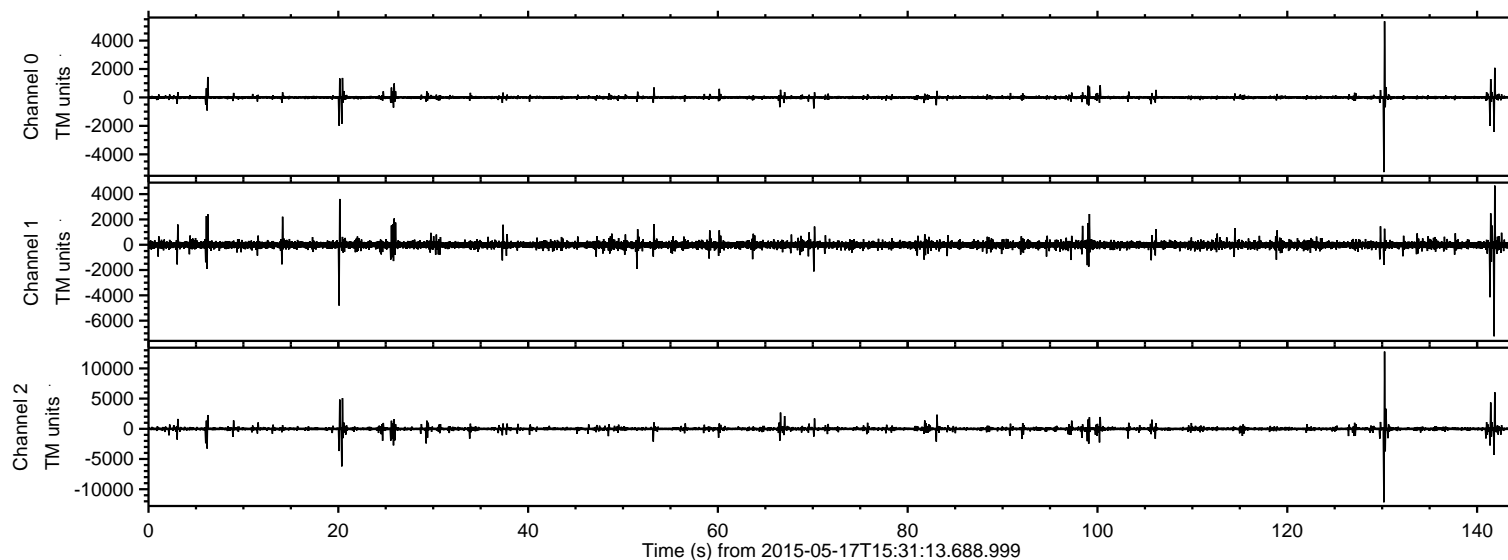


# ELMAVAN 3D WAVEFORMS (Measured data sampled at 50 kHz) 49785 packets of 144 samples from 2015-05-17T15:31:13.688.999.

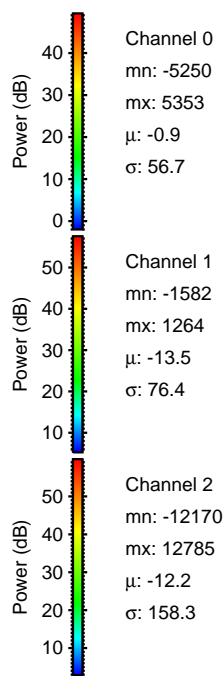
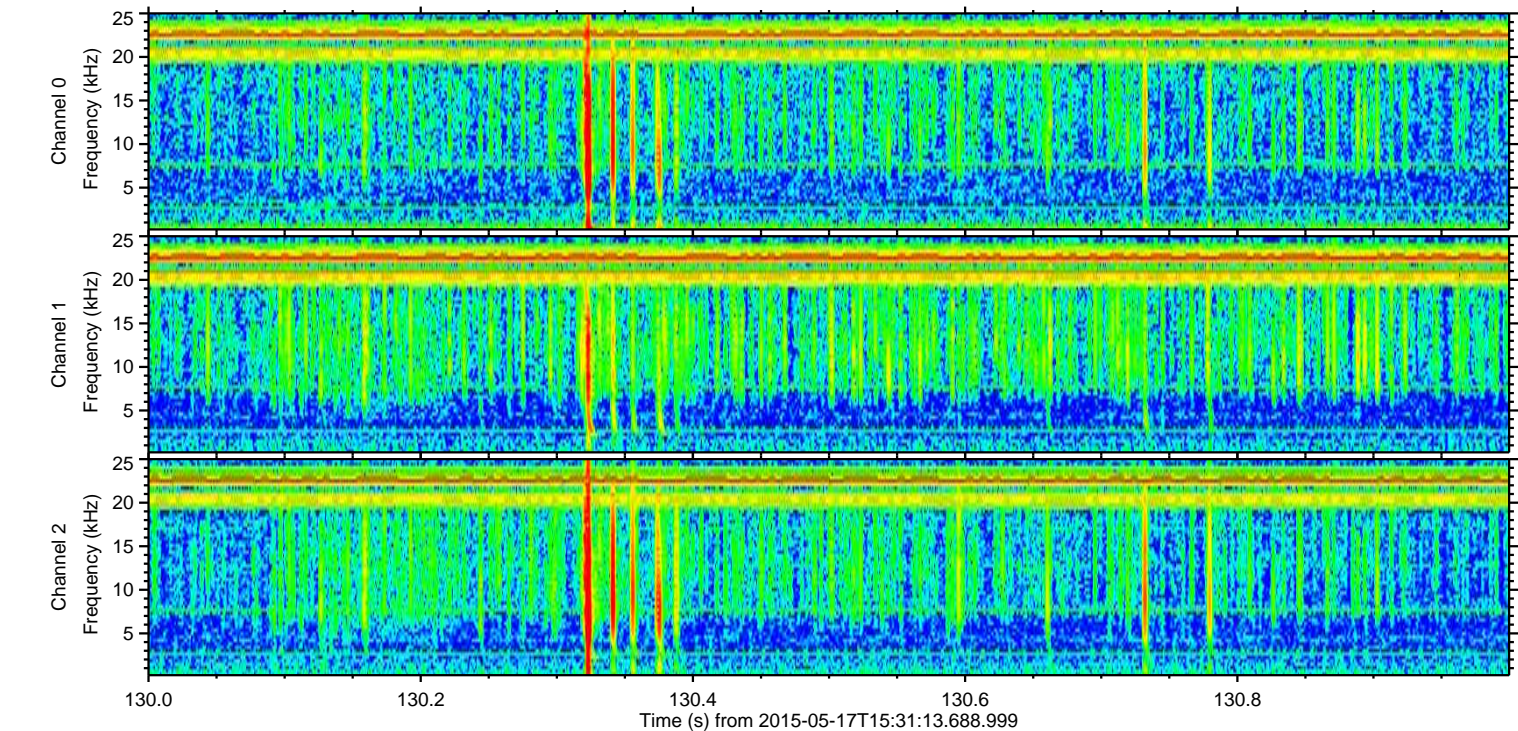
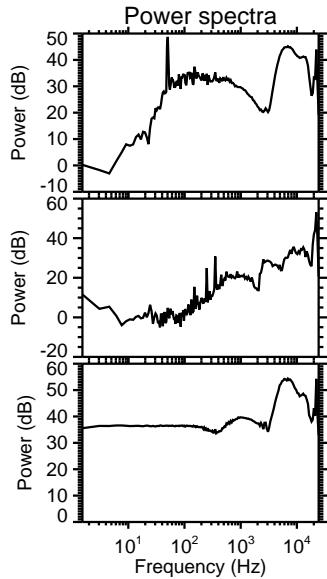
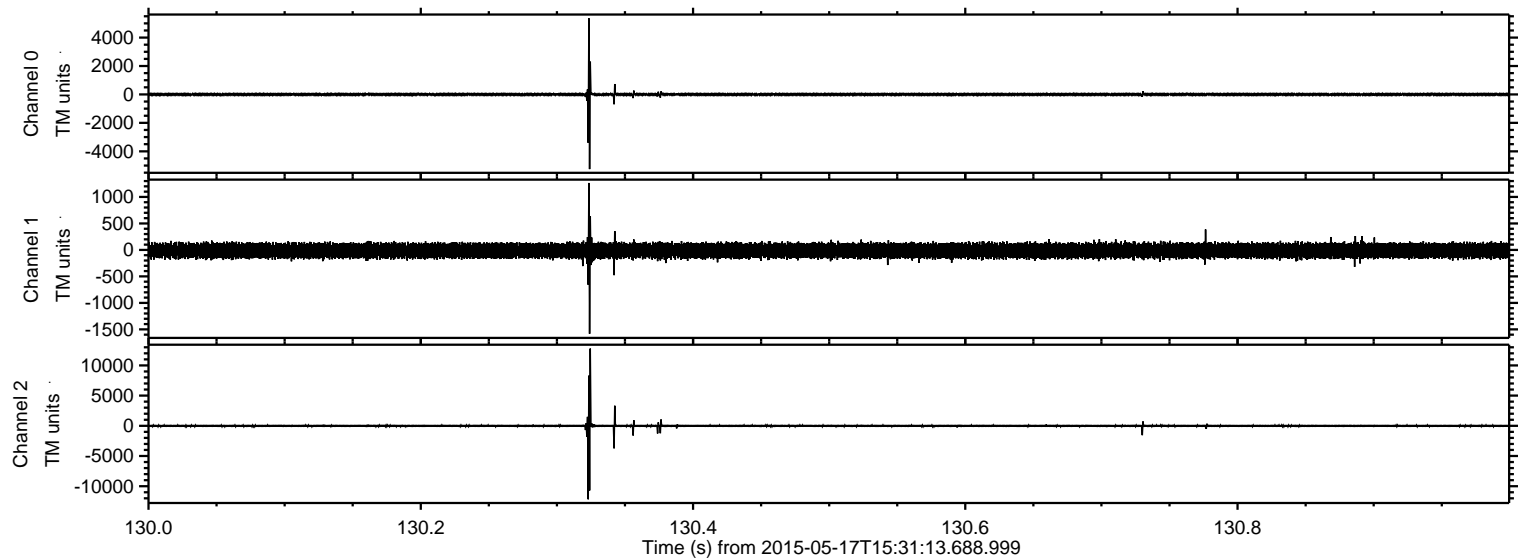
Processed Sun May 17 17:38:19 2015 by ELM ver.2012-10-06 from 001\_\_elm20150517\_153112\_\_dat00.bin





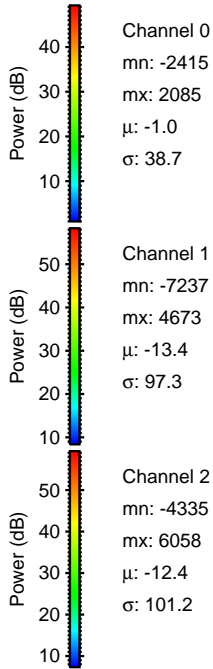
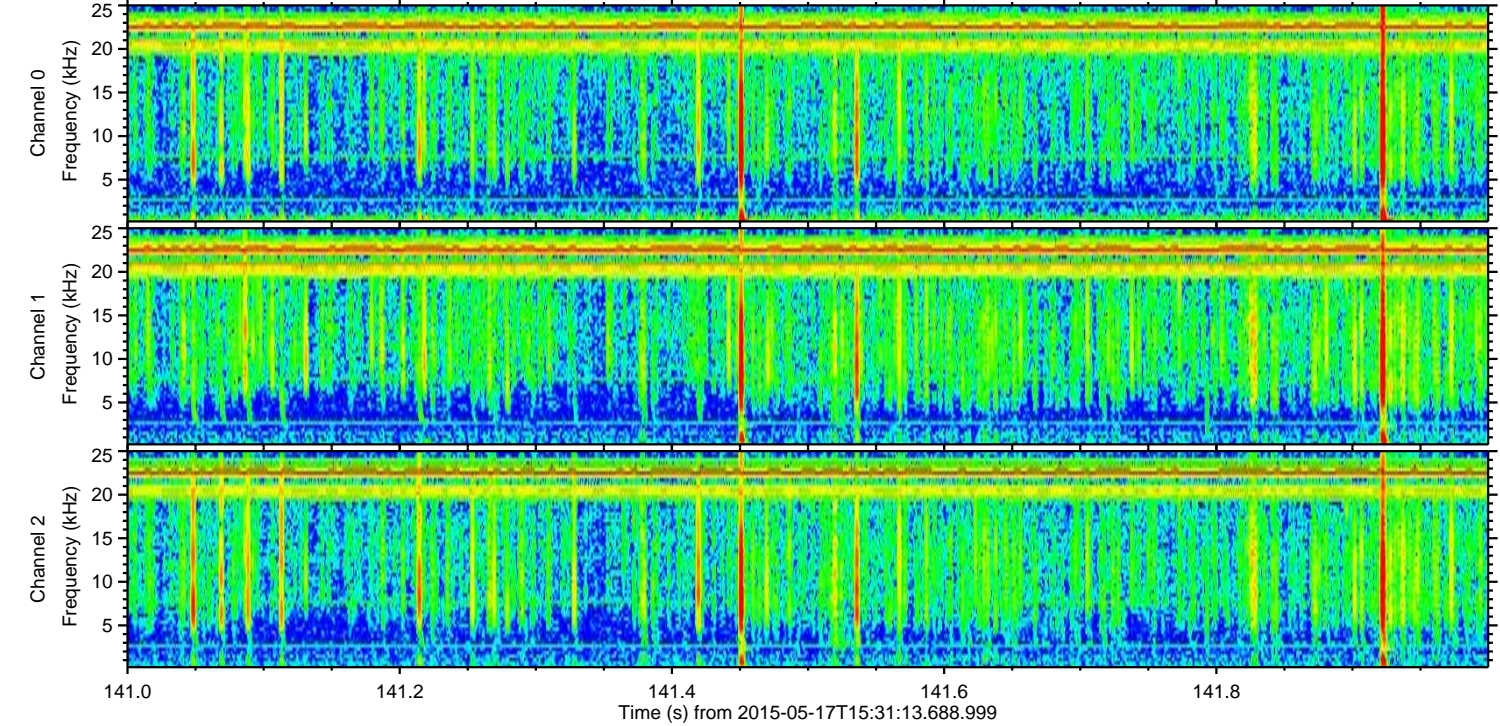
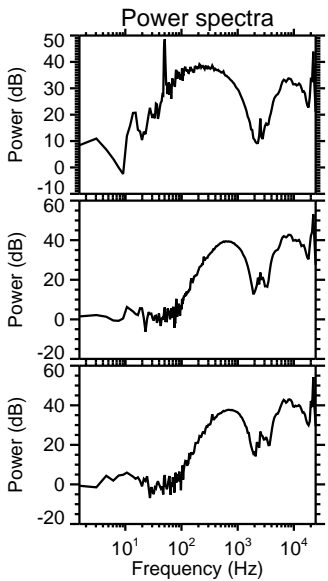
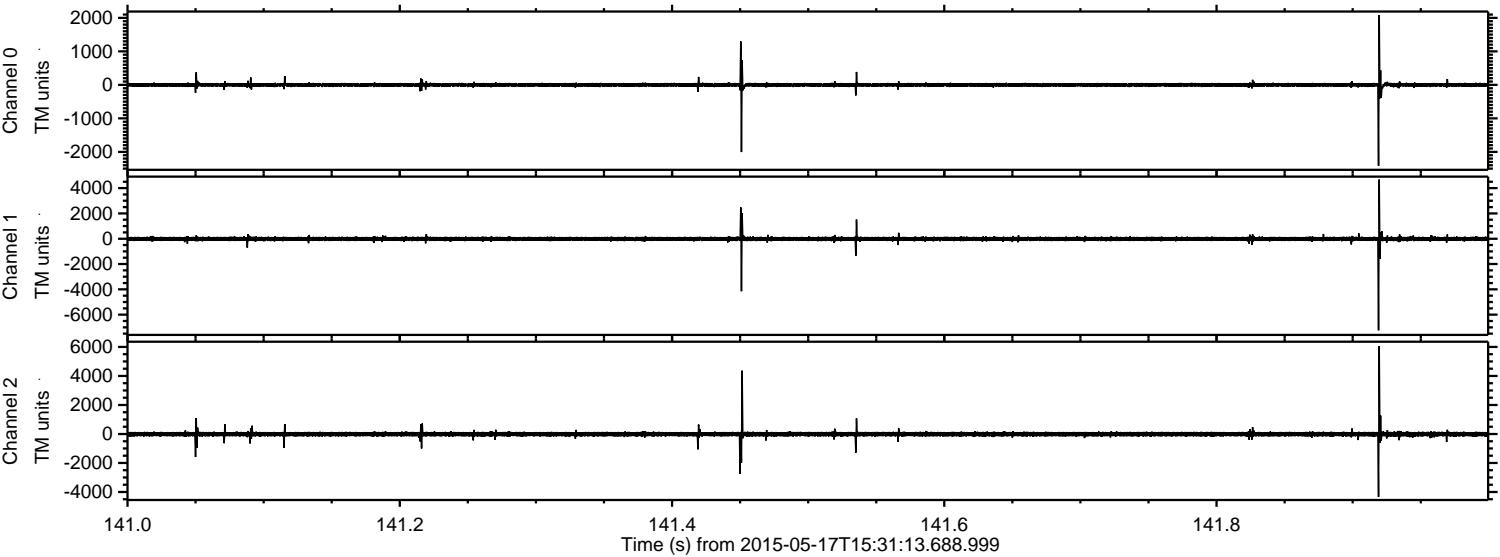
ELMAVAN 3D WAVEFORMS (Measured data sampled at 50 kHz) 49785 packets of 144 samples from 2015-05-17T15:31:13.688.999. Part 131/144

Processed Sun May 17 17:38:30 2015 by ELM ver.2012-10-06 from 001\_\_elm20150517\_153112\_\_dat00.bin



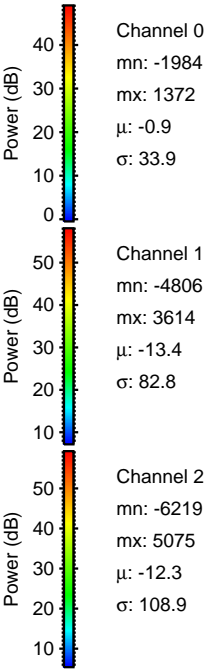
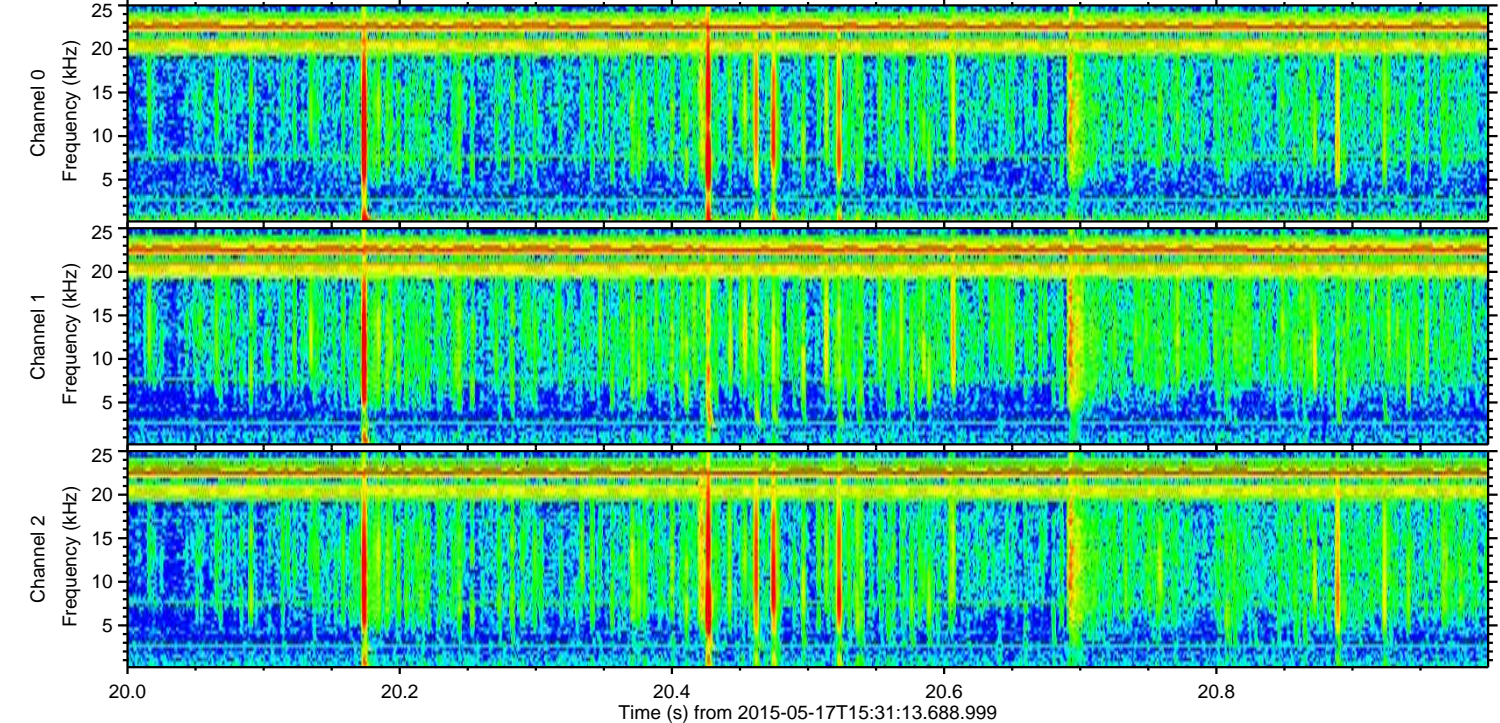
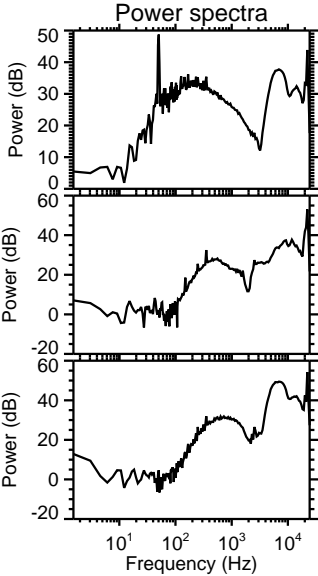
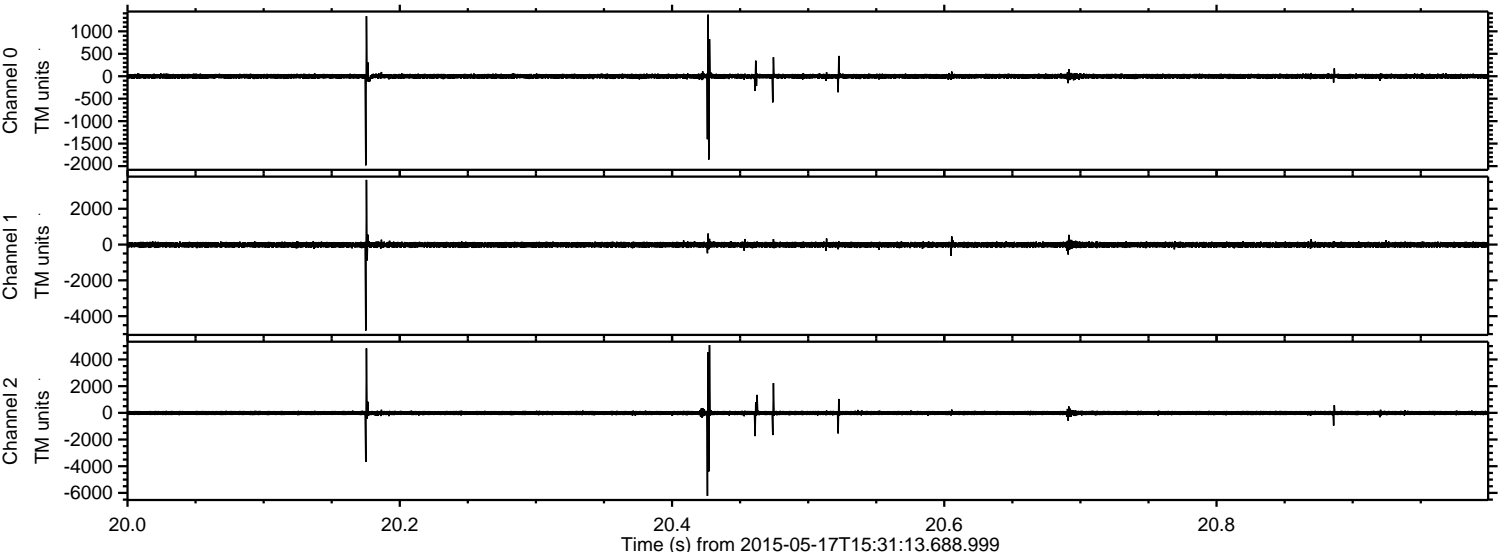
ELMAVAN 3D WAVEFORMS (Measured data sampled at 50 kHz) 49785 packets of 144 samples from 2015-05-17T15:31:13.688.999. Part 142/144

Processed Sun May 17 17:38:31 2015 by ELM ver.2012-10-06 from 001\_\_elm20150517\_153112\_\_dat00.bin



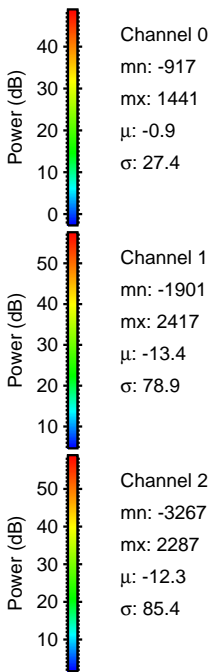
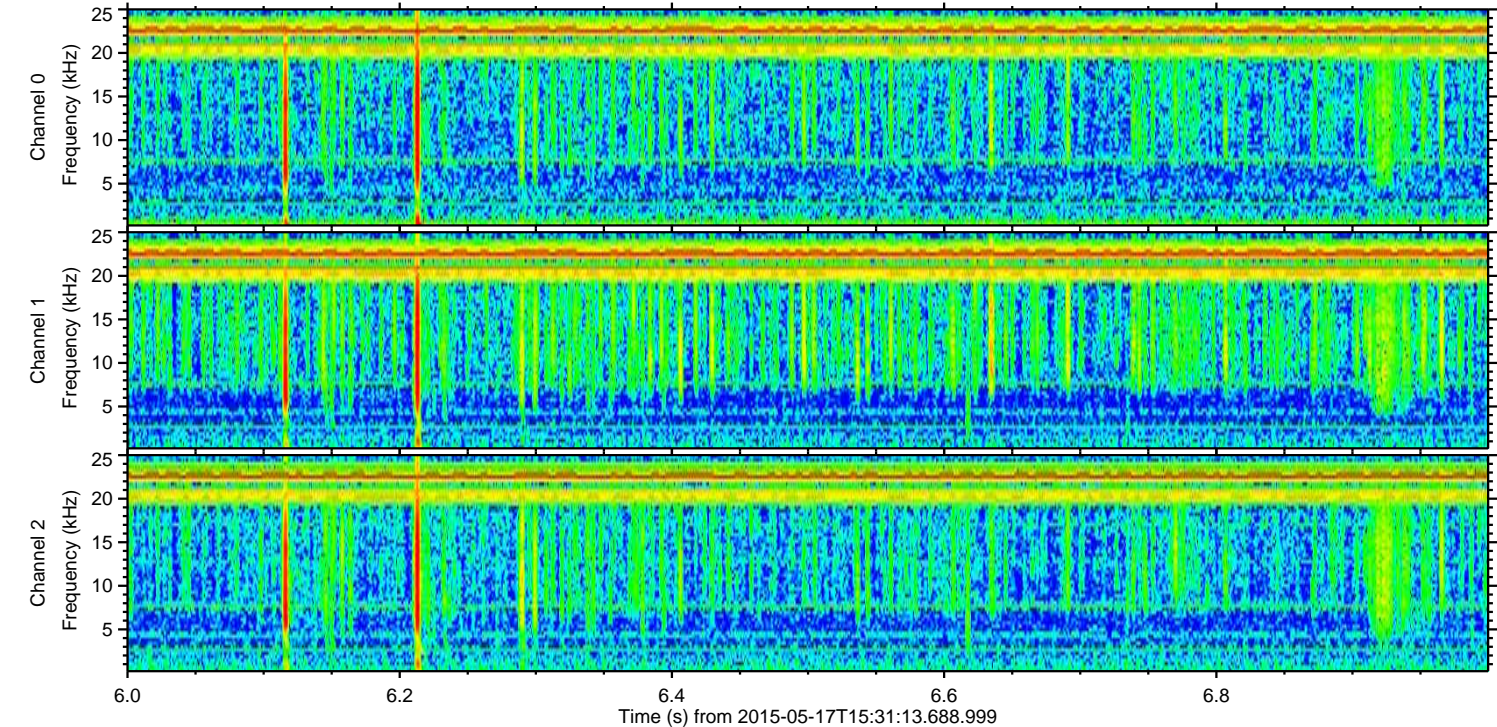
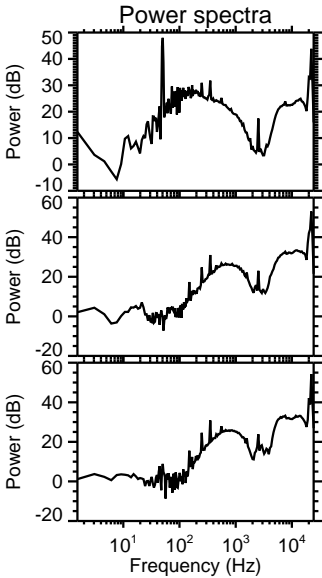
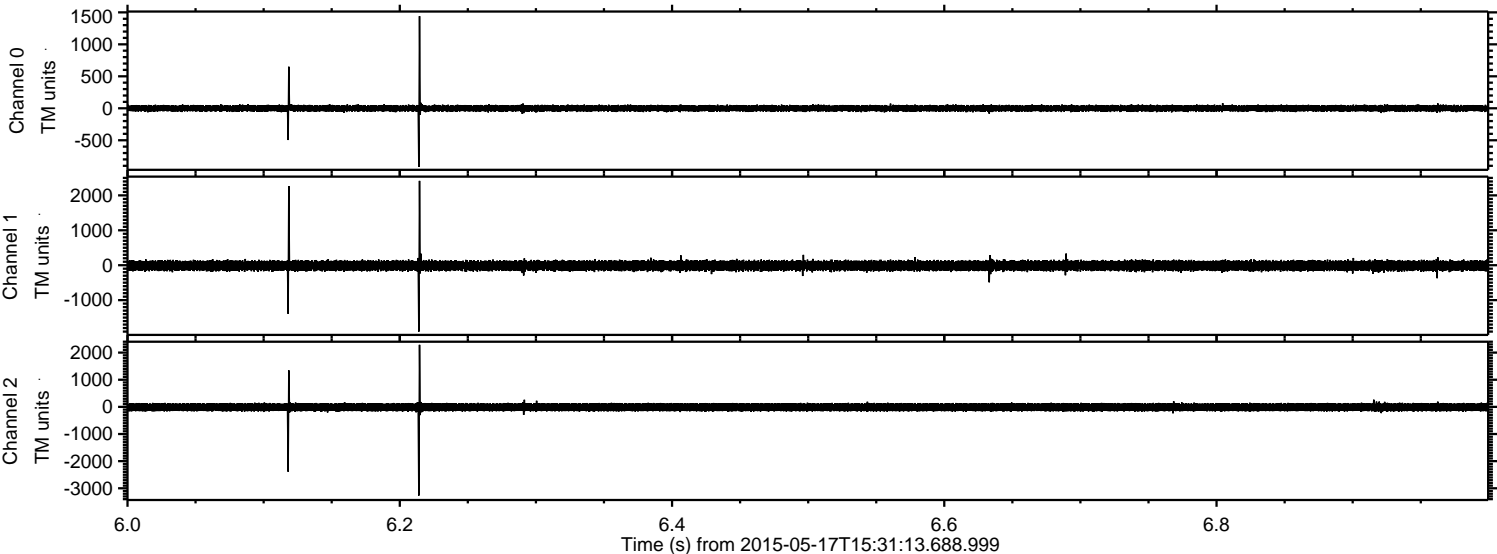


Processed Sun May 17 17:38:32 2015 by ELM ver.2012-10-06 from 001\_\_elm20150517\_153112\_\_dat00.bin



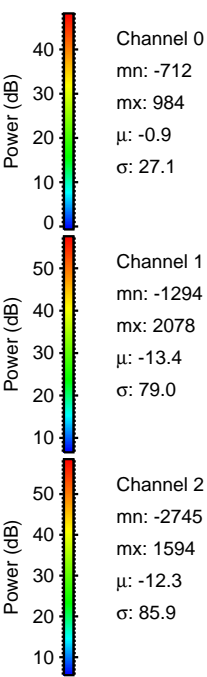
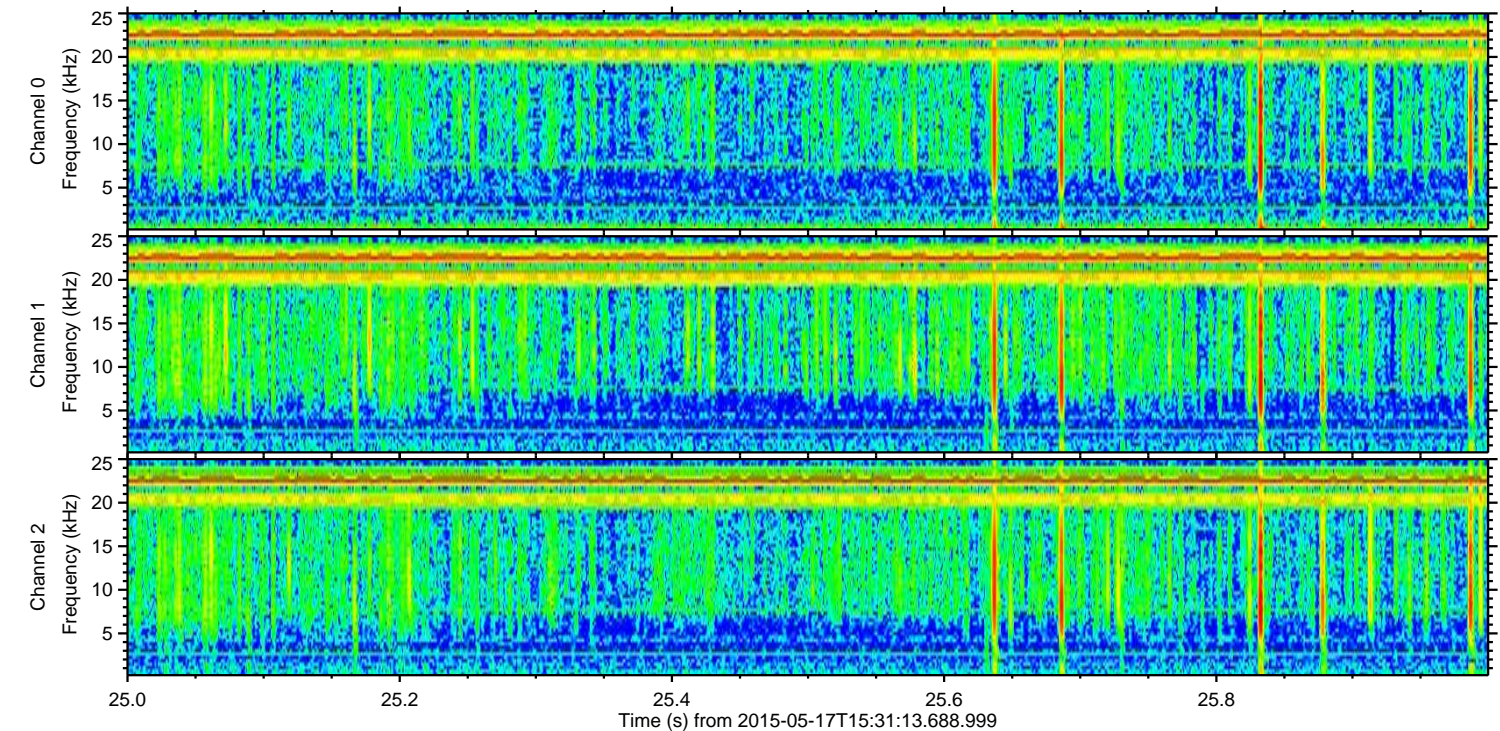
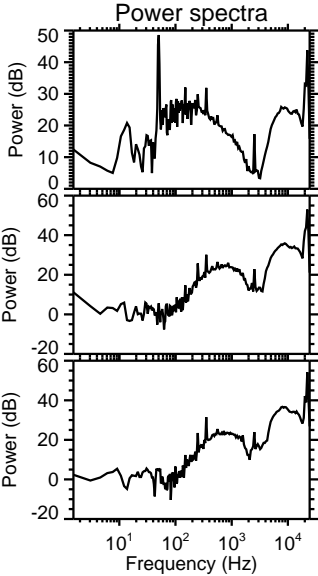
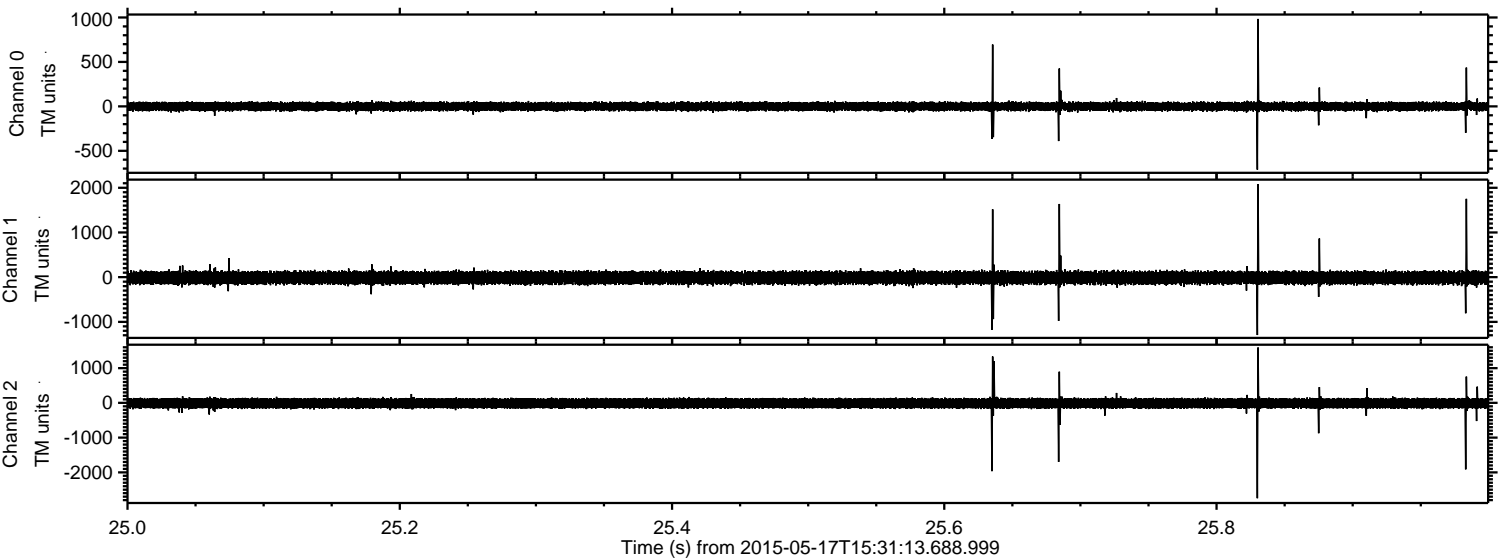
ELMAVAN 3D WAVEFORMS (Measured data sampled at 50 kHz) 49785 packets of 144 samples from 2015-05-17T15:31:13.688.999. Part 7/144

Processed Sun May 17 17:38:33 2015 by ELM ver.2012-10-06 from 001\_\_elm20150517\_153112\_\_dat00.bin





Processed Sun May 17 17:38:34 2015 by ELM ver.2012-10-06 from 001\_\_elm20150517\_153112\_\_dat00.bin

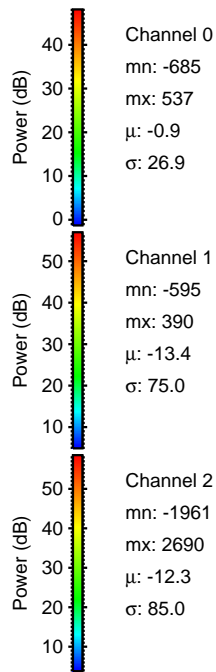
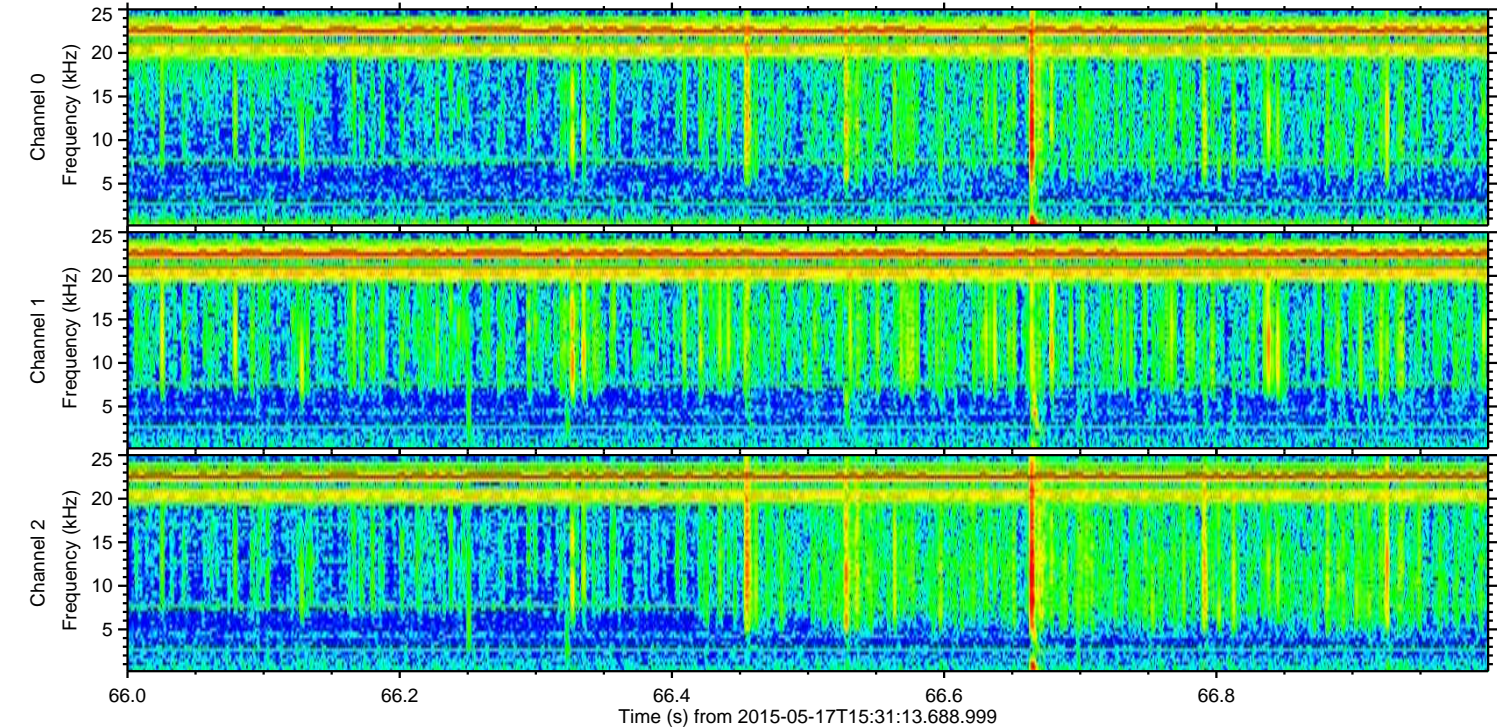
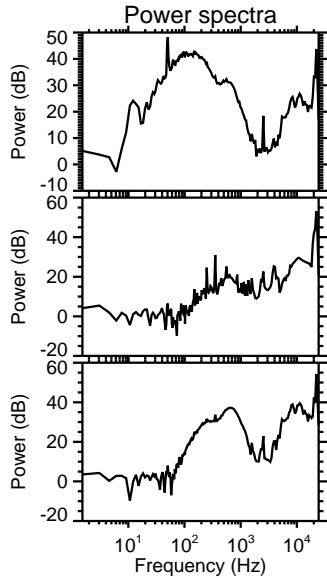
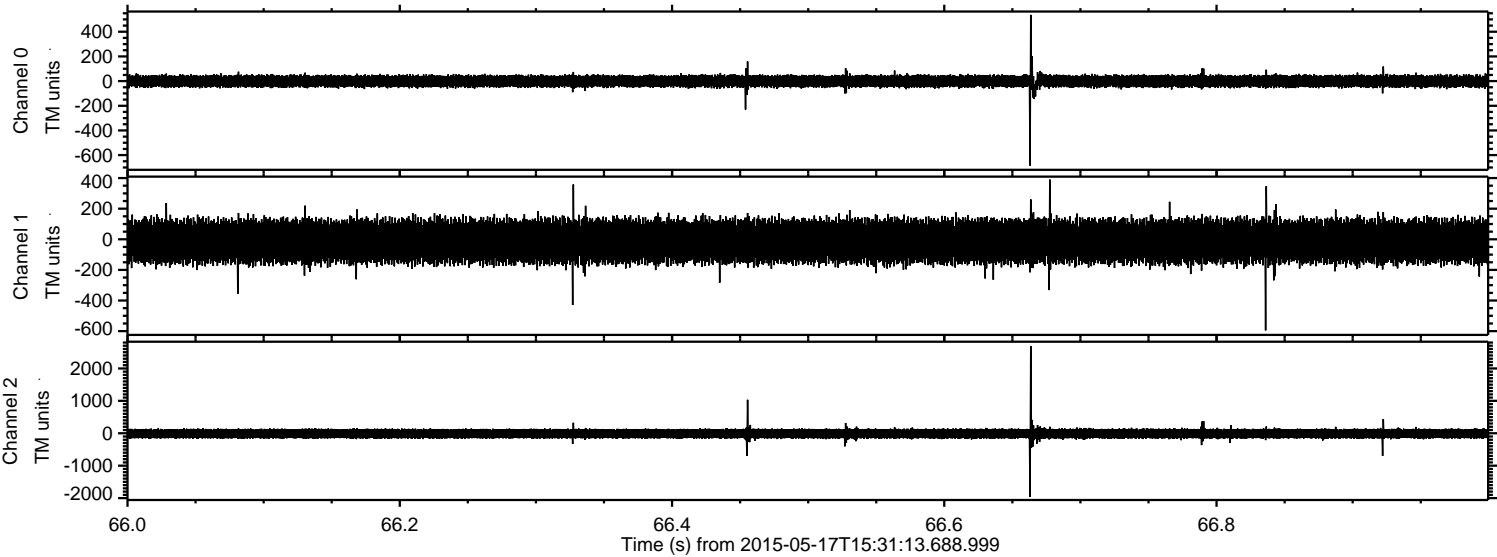


Channel 0  
mn: -712  
mx: 984  
 $\mu$ : -0.9  
 $\sigma$ : 27.1

Channel 1  
mn: -1294  
mx: 2078  
 $\mu$ : -13.4  
 $\sigma$ : 79.0

Channel 2  
mn: -2745  
mx: 1594  
 $\mu$ : -12.3  
 $\sigma$ : 85.9

Processed Sun May 17 17:38:35 2015 by ELM ver.2012-10-06 from 001\_\_elm20150517\_153112\_\_dat00.bin



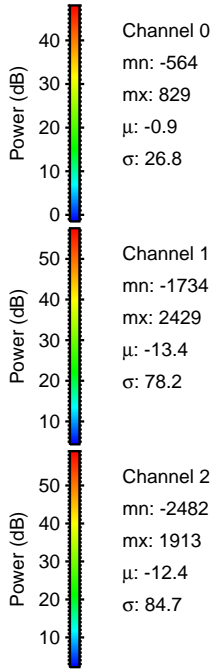
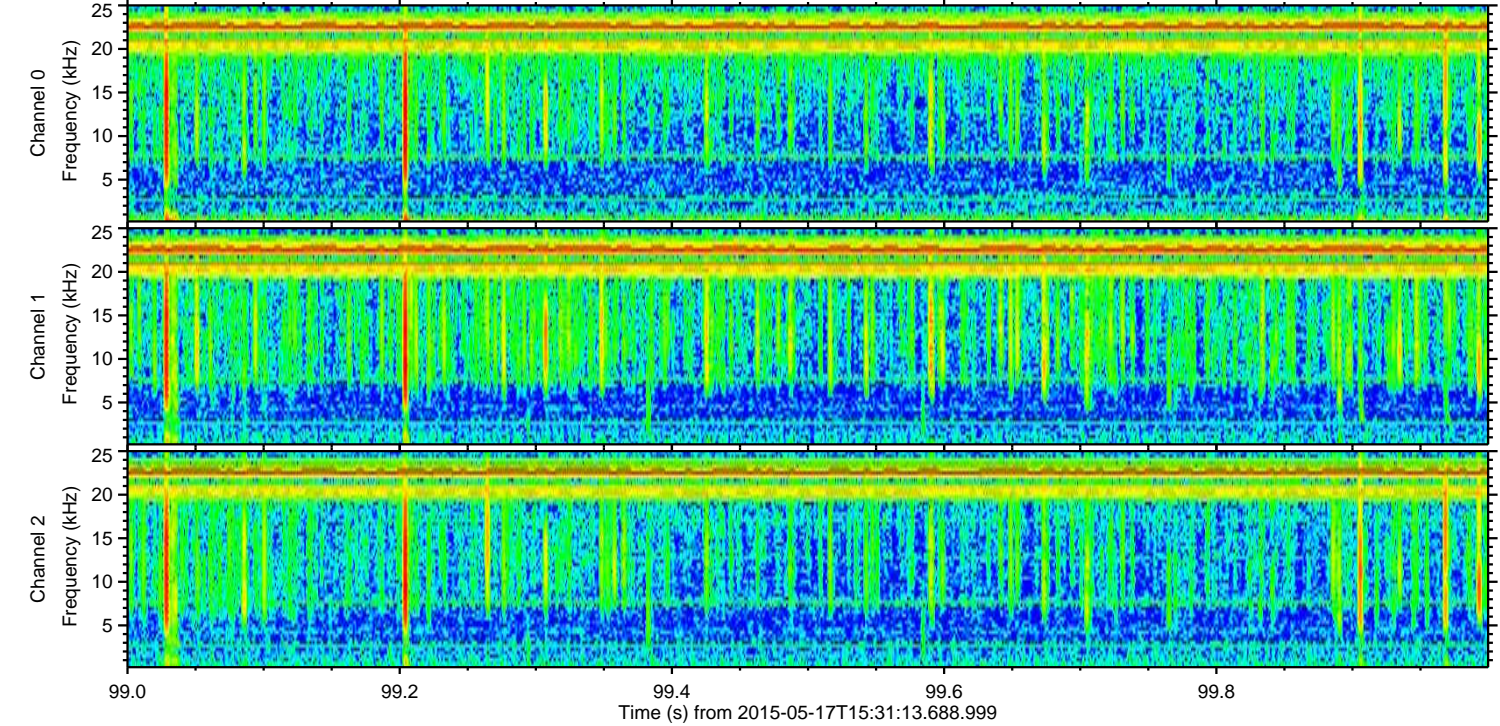
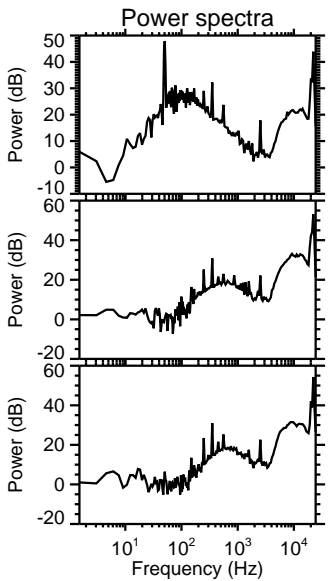
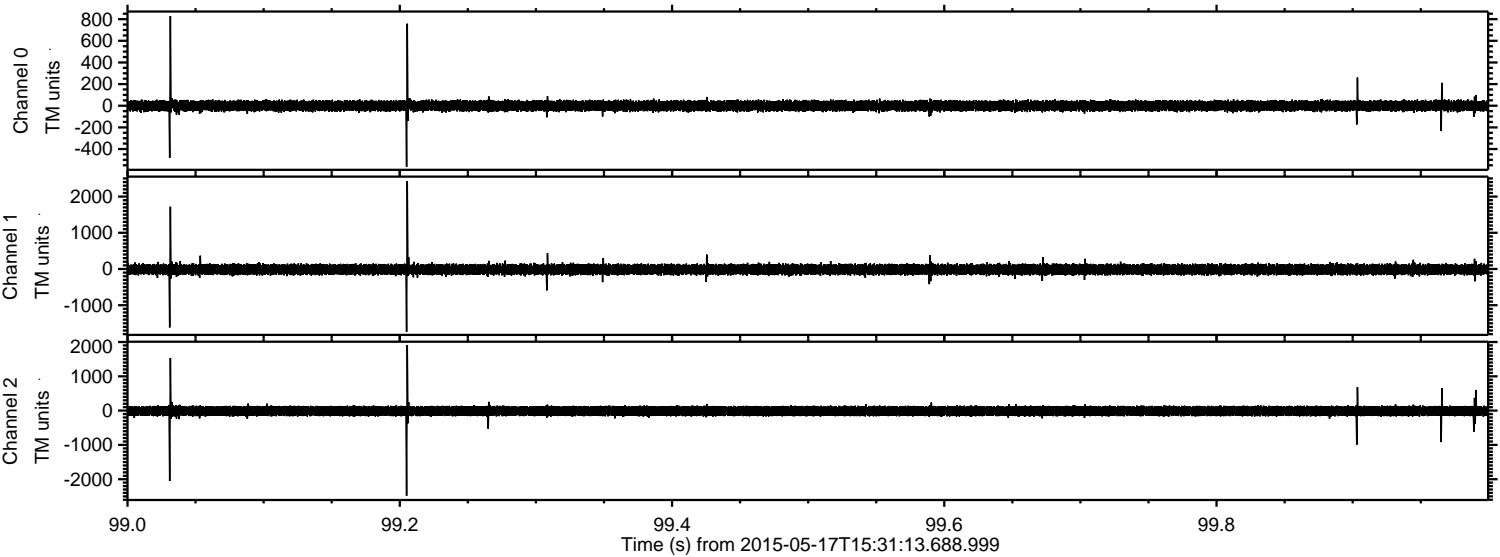
Channel 0  
mn: -685  
mx: 537  
 $\mu$ : -0.9  
 $\sigma$ : 26.9

Channel 1  
mn: -595  
mx: 390  
 $\mu$ : -13.4  
 $\sigma$ : 75.0

Channel 2  
mn: -1961  
mx: 2690  
 $\mu$ : -12.3  
 $\sigma$ : 85.0

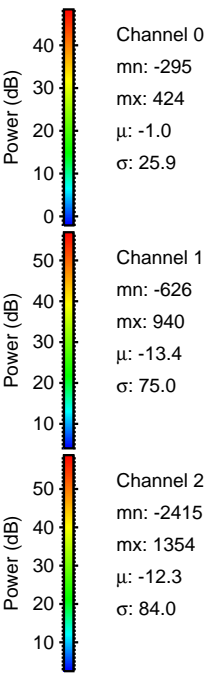
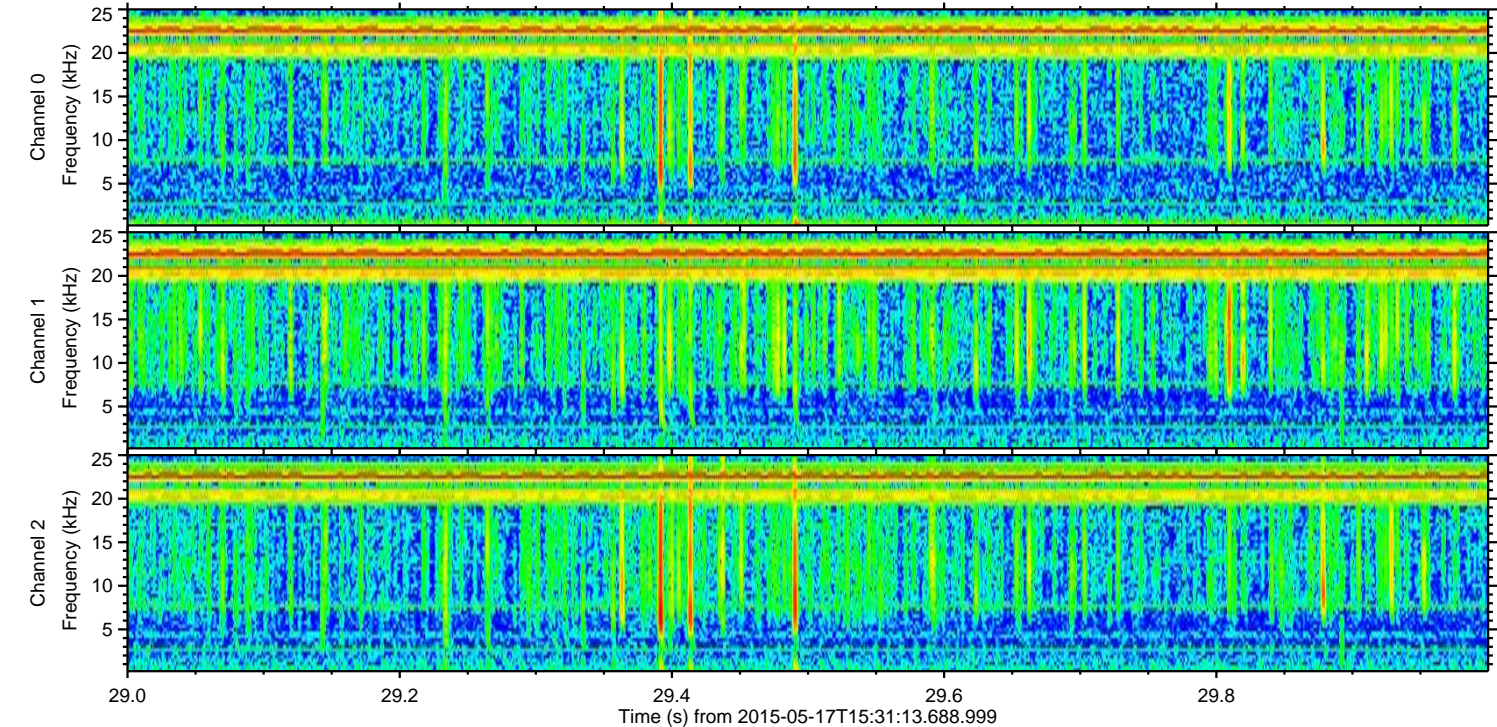
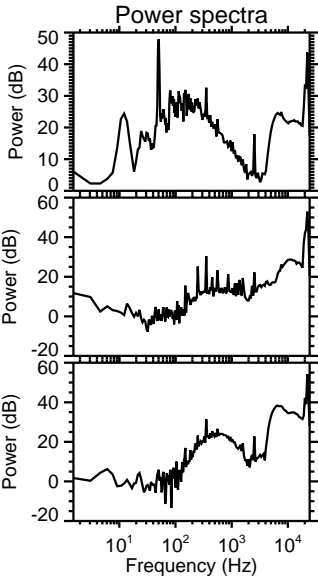
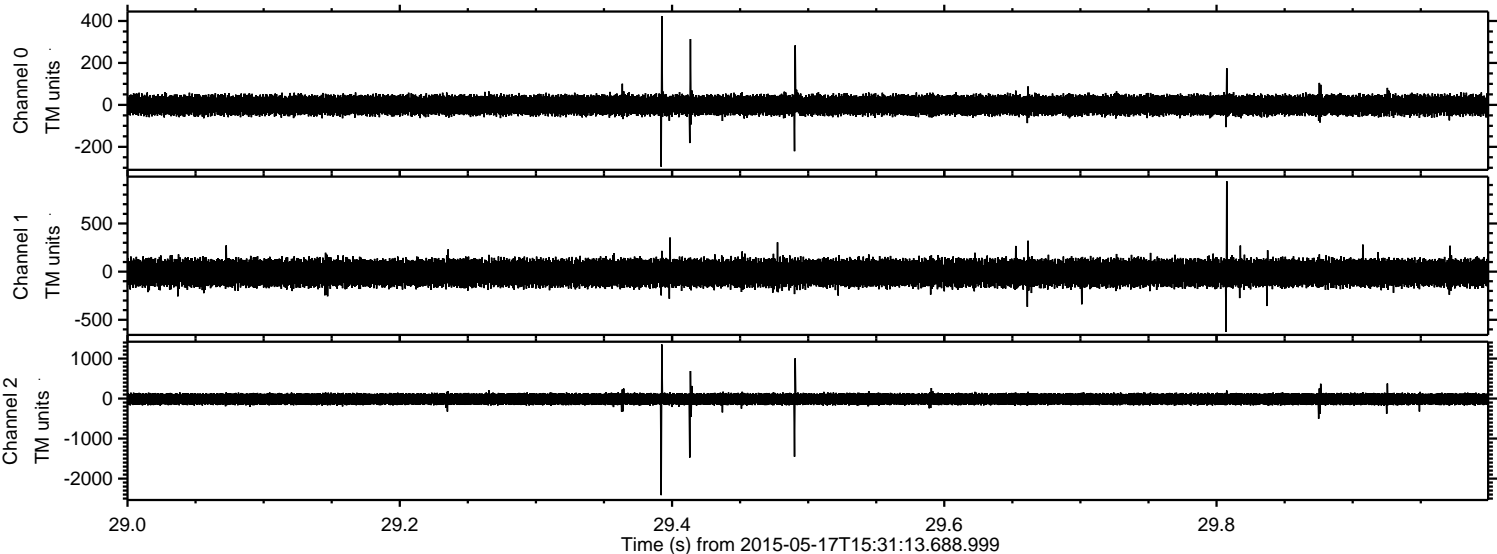


Processed Sun May 17 17:38:36 2015 by ELM ver.2012-10-06 from 001\_\_elm20150517\_153112\_\_dat00.bin



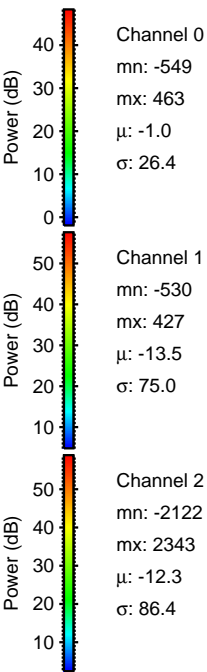
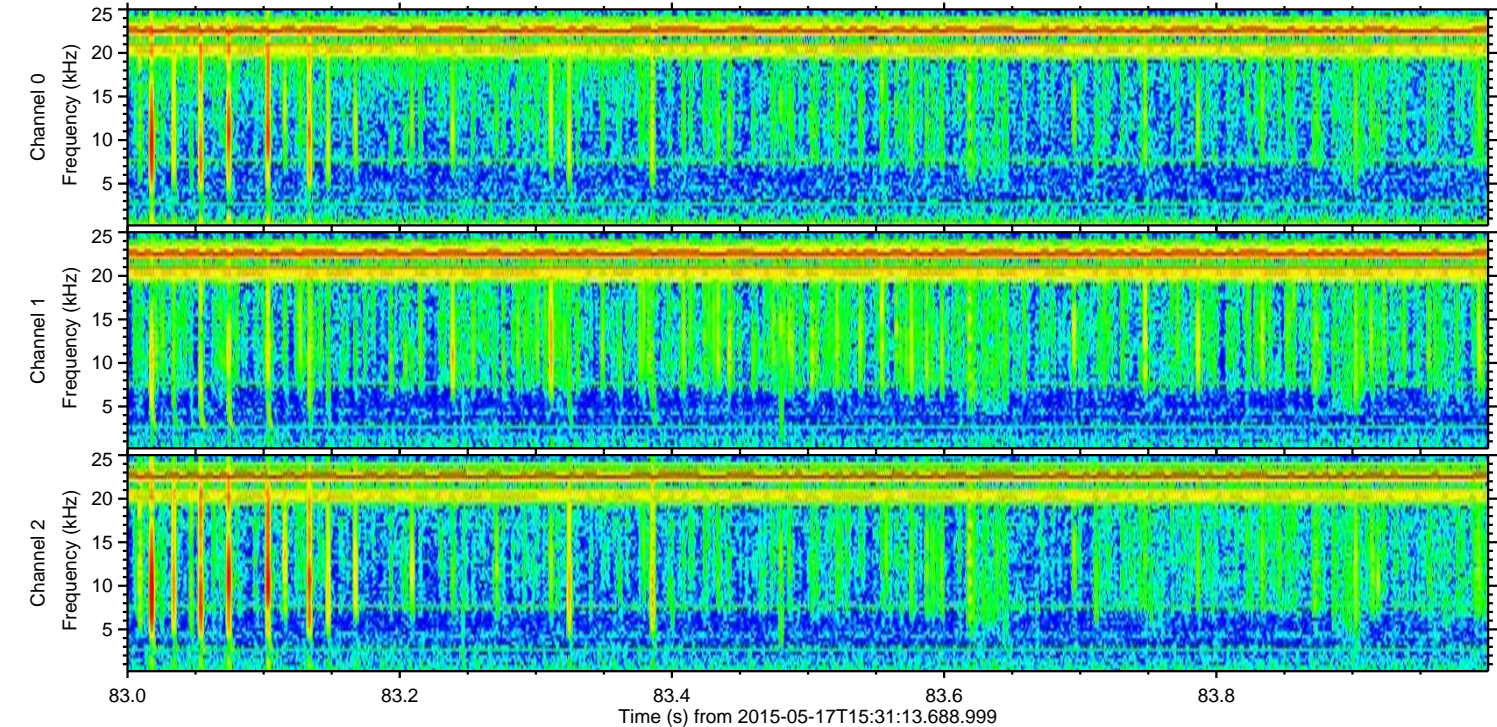
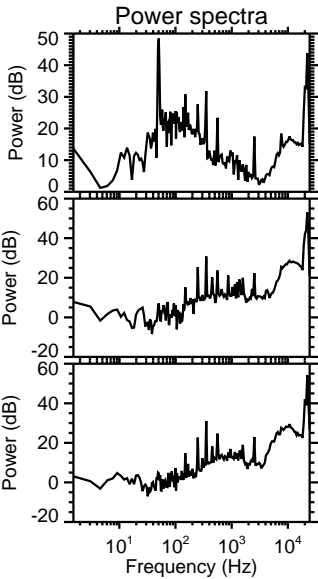
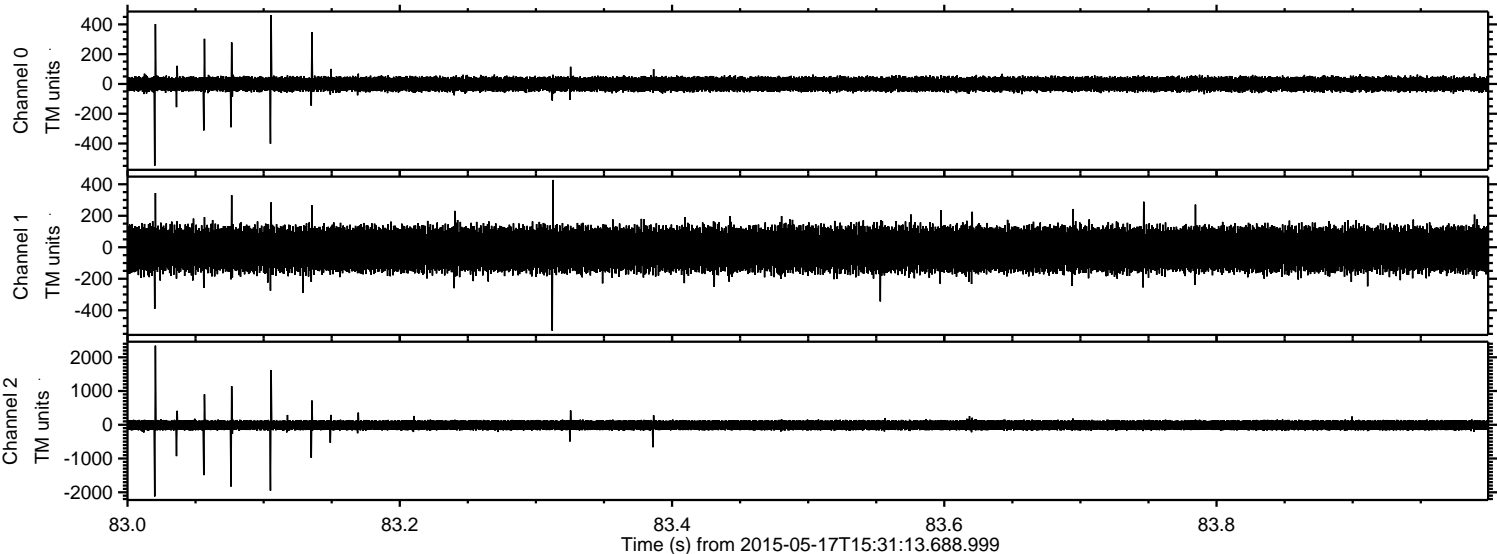


Processed Sun May 17 17:38:37 2015 by ELM ver.2012-10-06 from 001\_\_elm20150517\_153112\_\_dat00.bin





Processed Sun May 17 17:38:38 2015 by ELM ver.2012-10-06 from 001\_\_elm20150517\_153112\_\_dat00.bin





Processed Sun May 17 17:38:39 2015 by ELM ver.2012-10-06 from 001\_\_elm20150517\_153112\_\_dat00.bin

