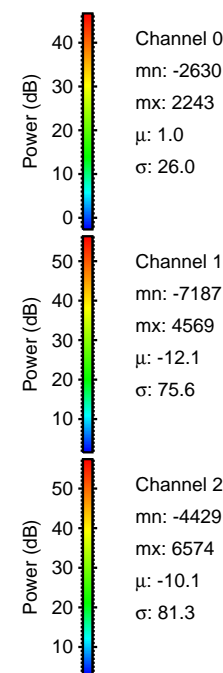
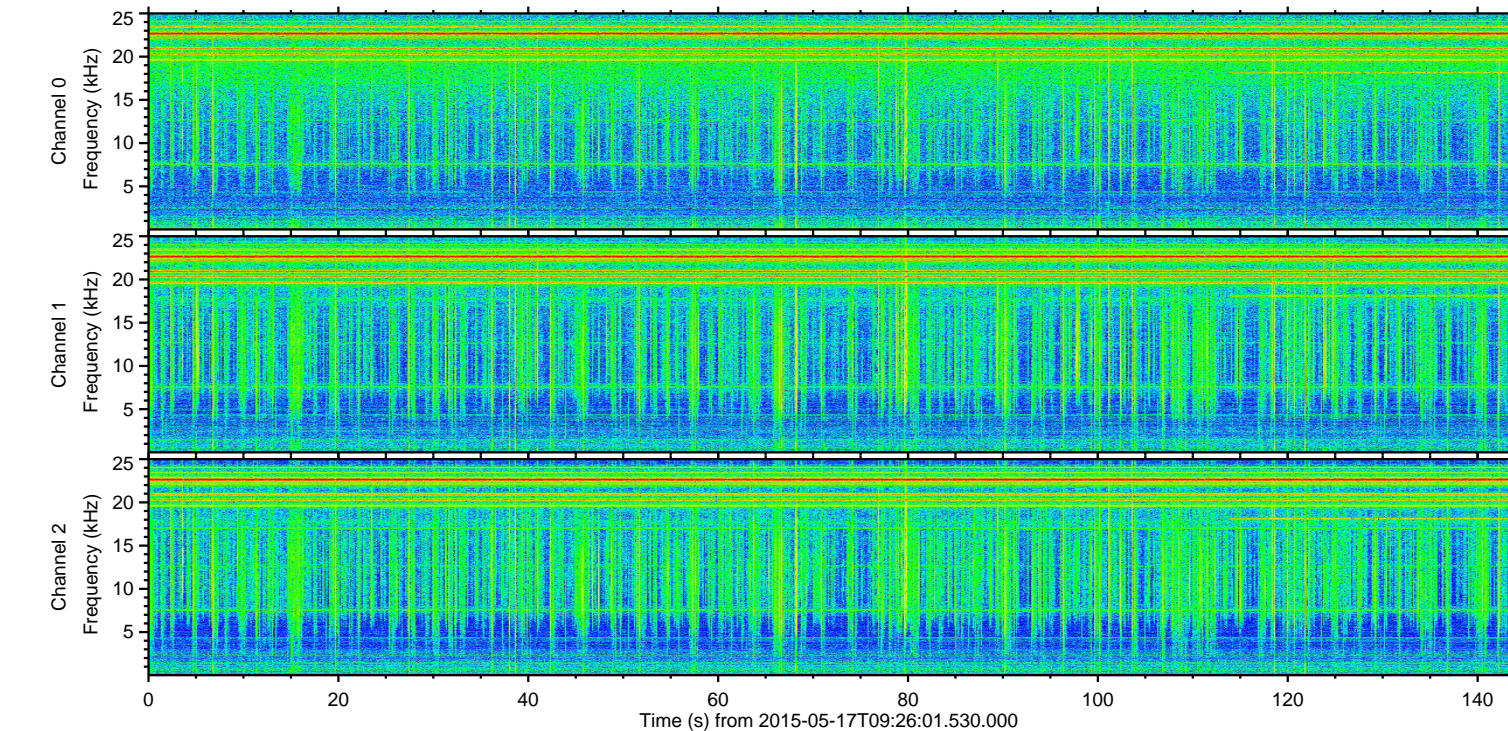
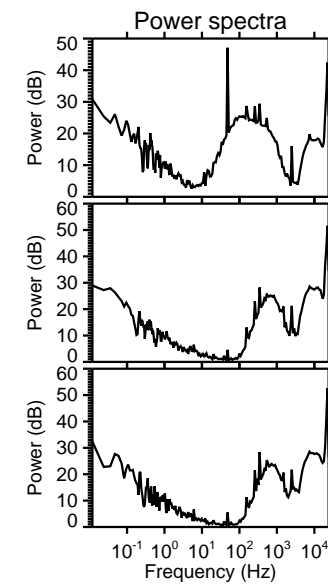
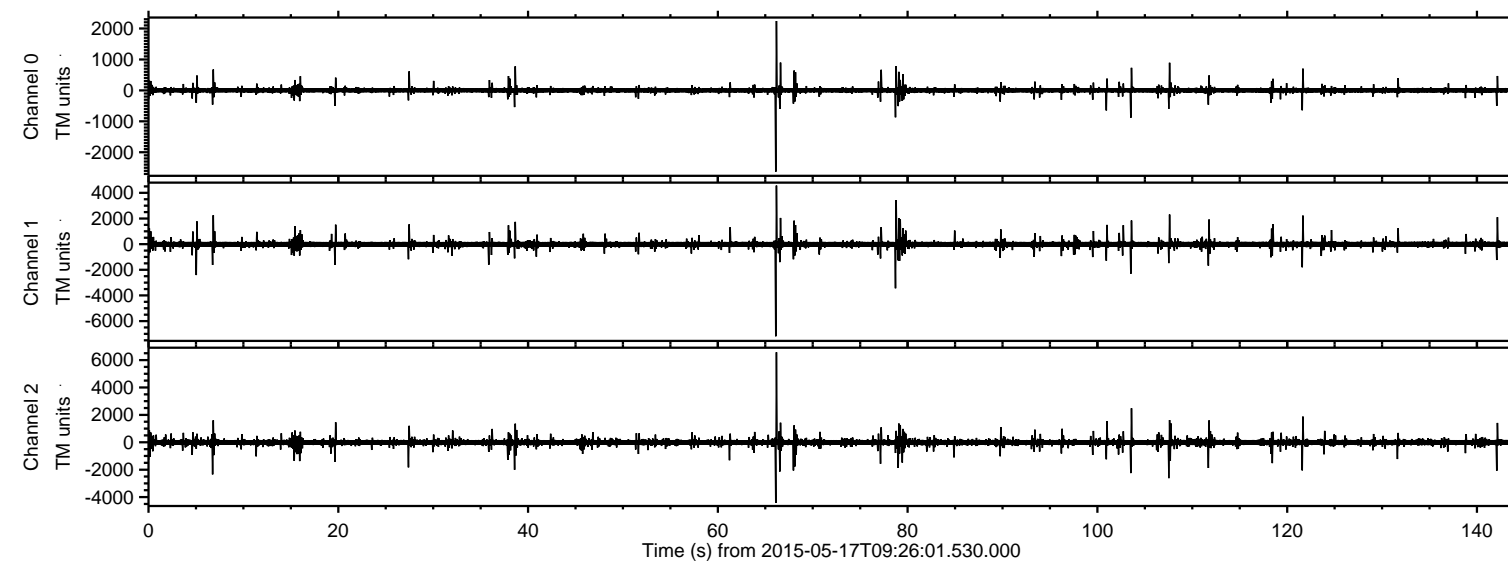
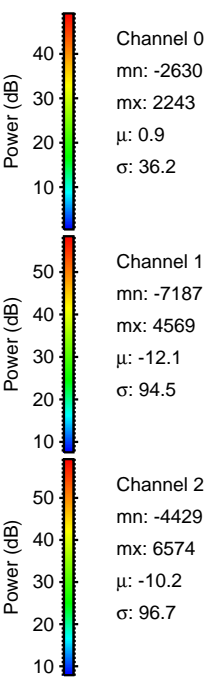
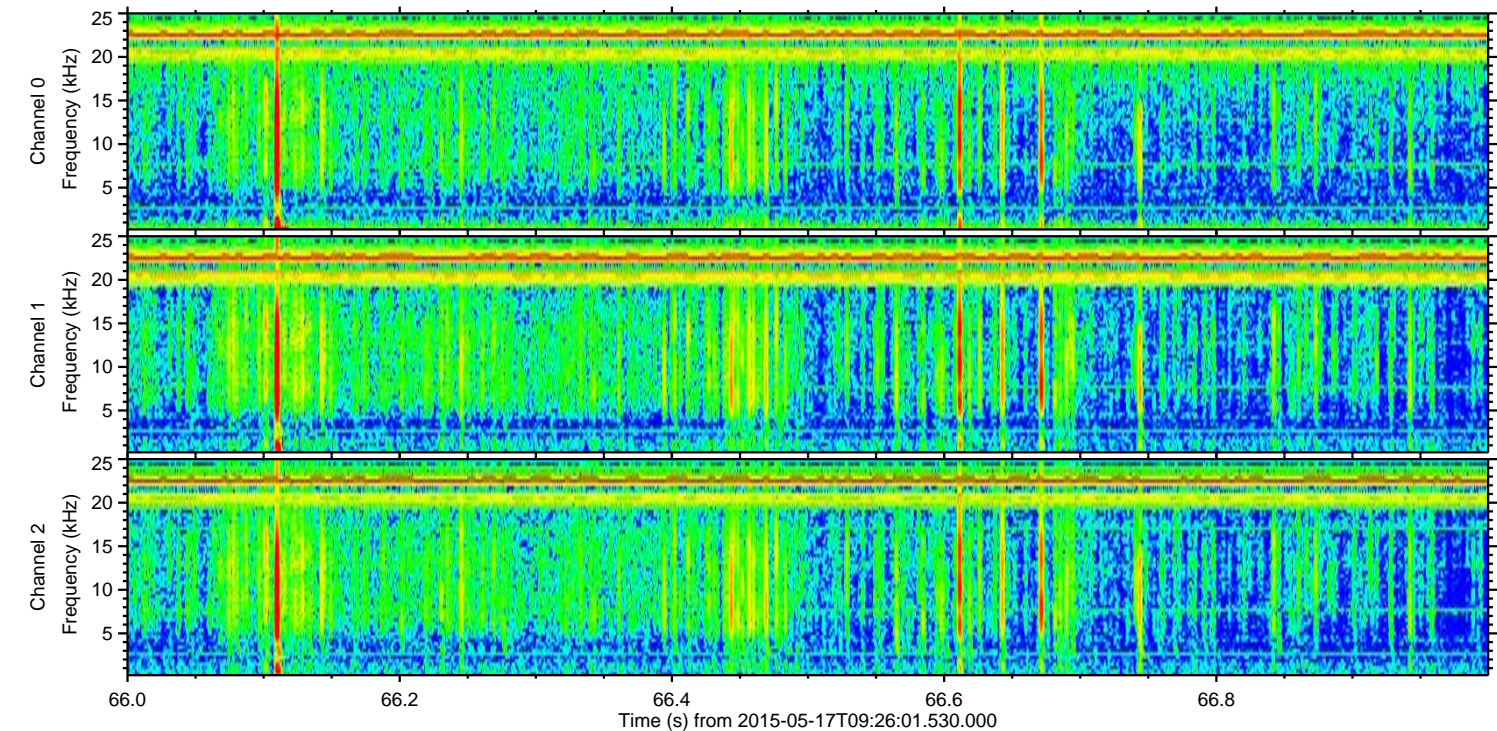
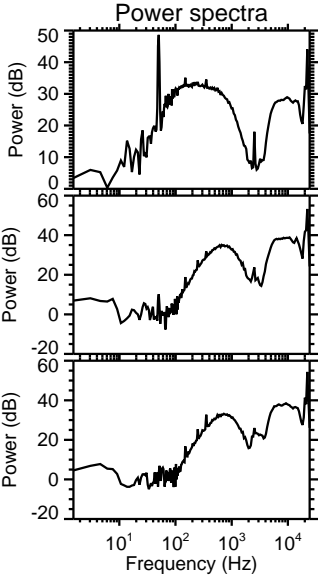
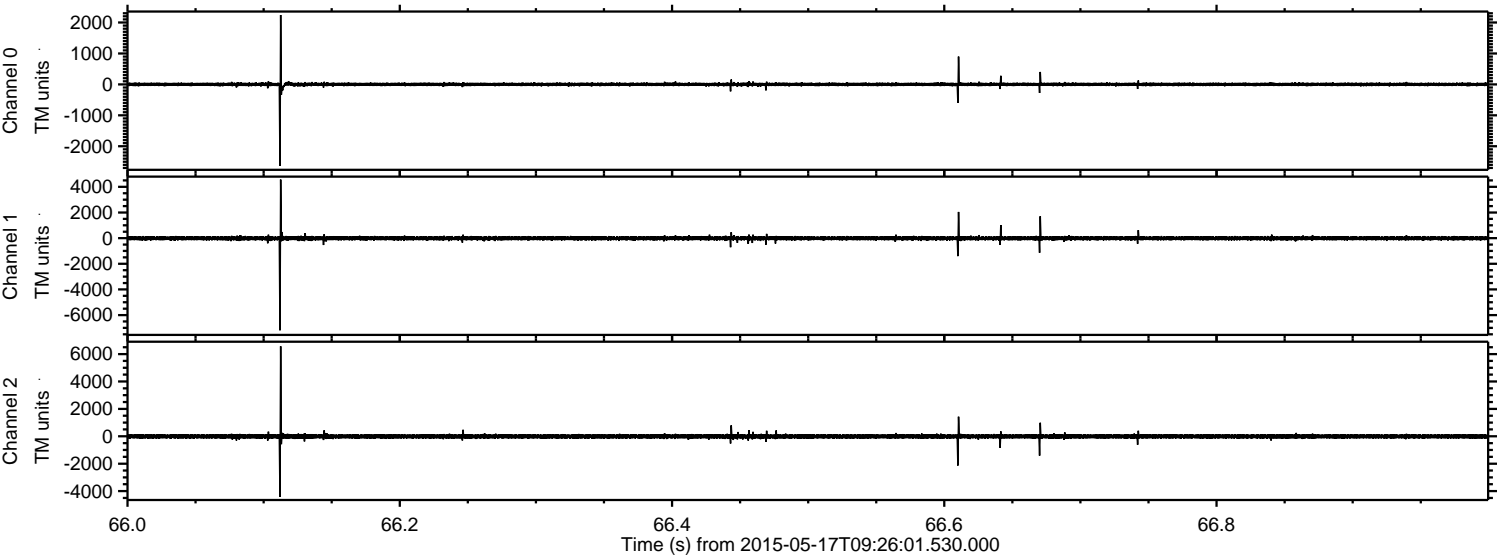


ELMAVAN 3D WAVEFORMS (Measured data sampled at 50 kHz) 49789 packets of 144 samples from 2015-05-17T09:26:01.530.000.

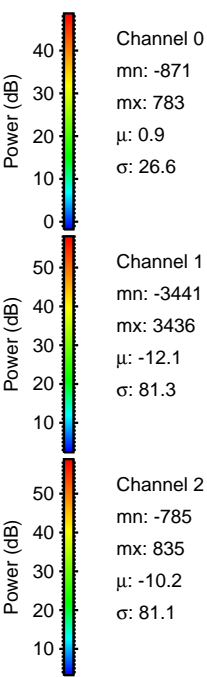
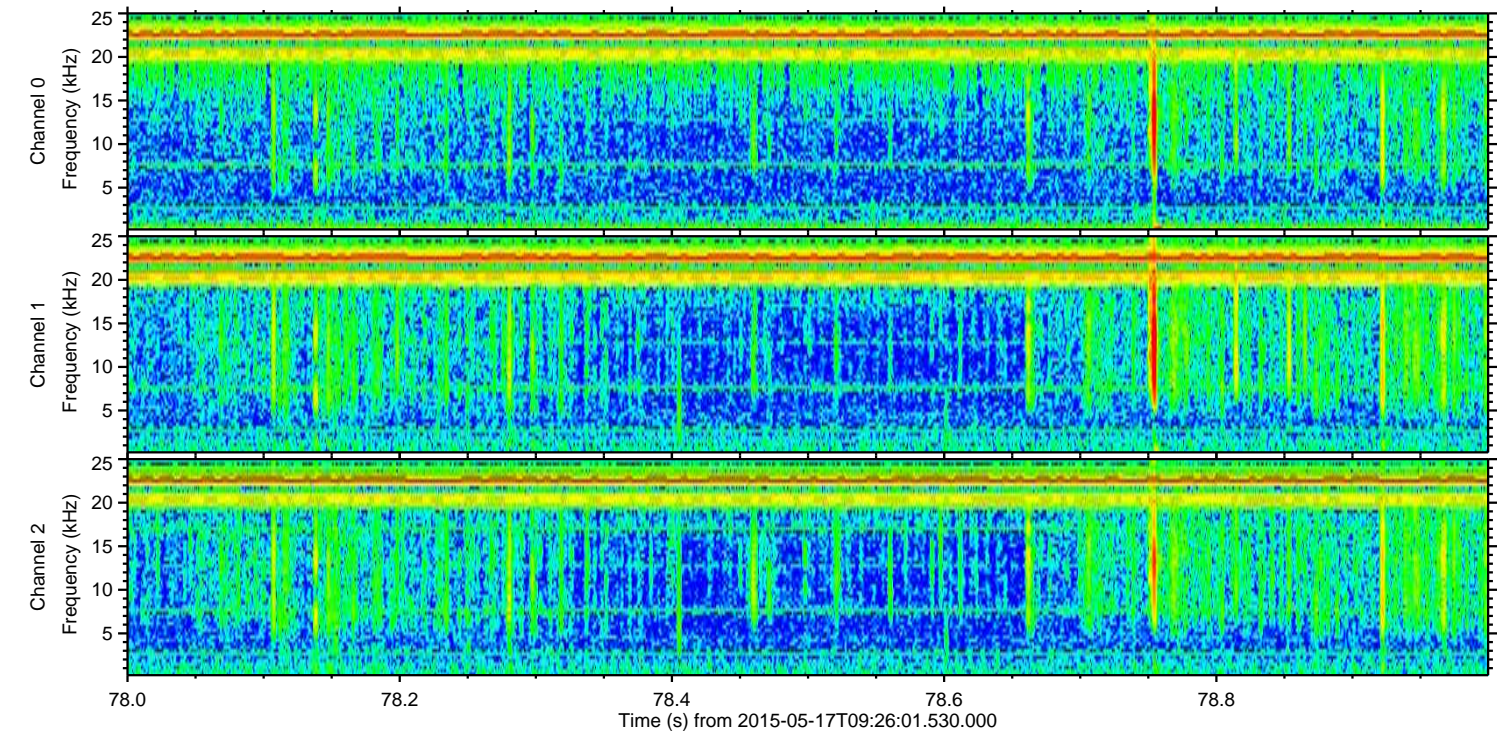
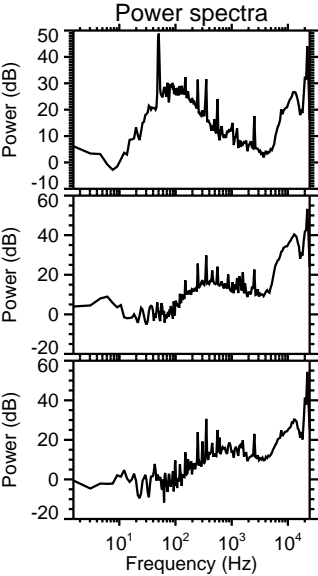
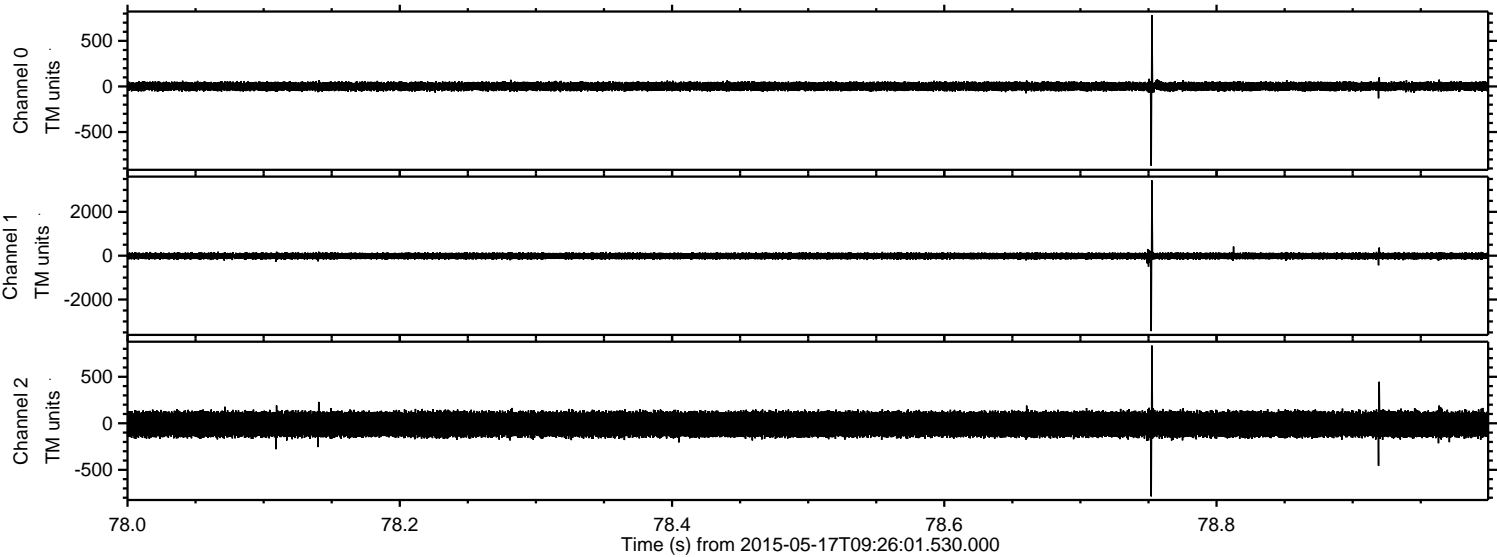
Processed Sun May 17 11:32:59 2015 by ELM ver.2012-10-06 from 001__elm20150517_092600__dat00.bin



Processed Sun May 17 11:33:10 2015 by ELM ver.2012-10-06 from 001__elm20150517_092600__dat00.bin

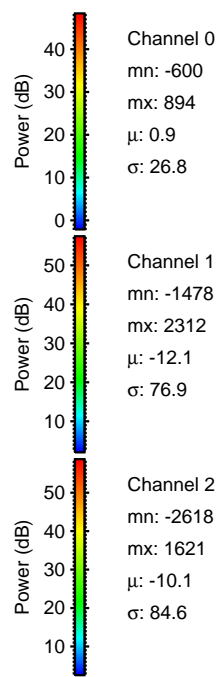
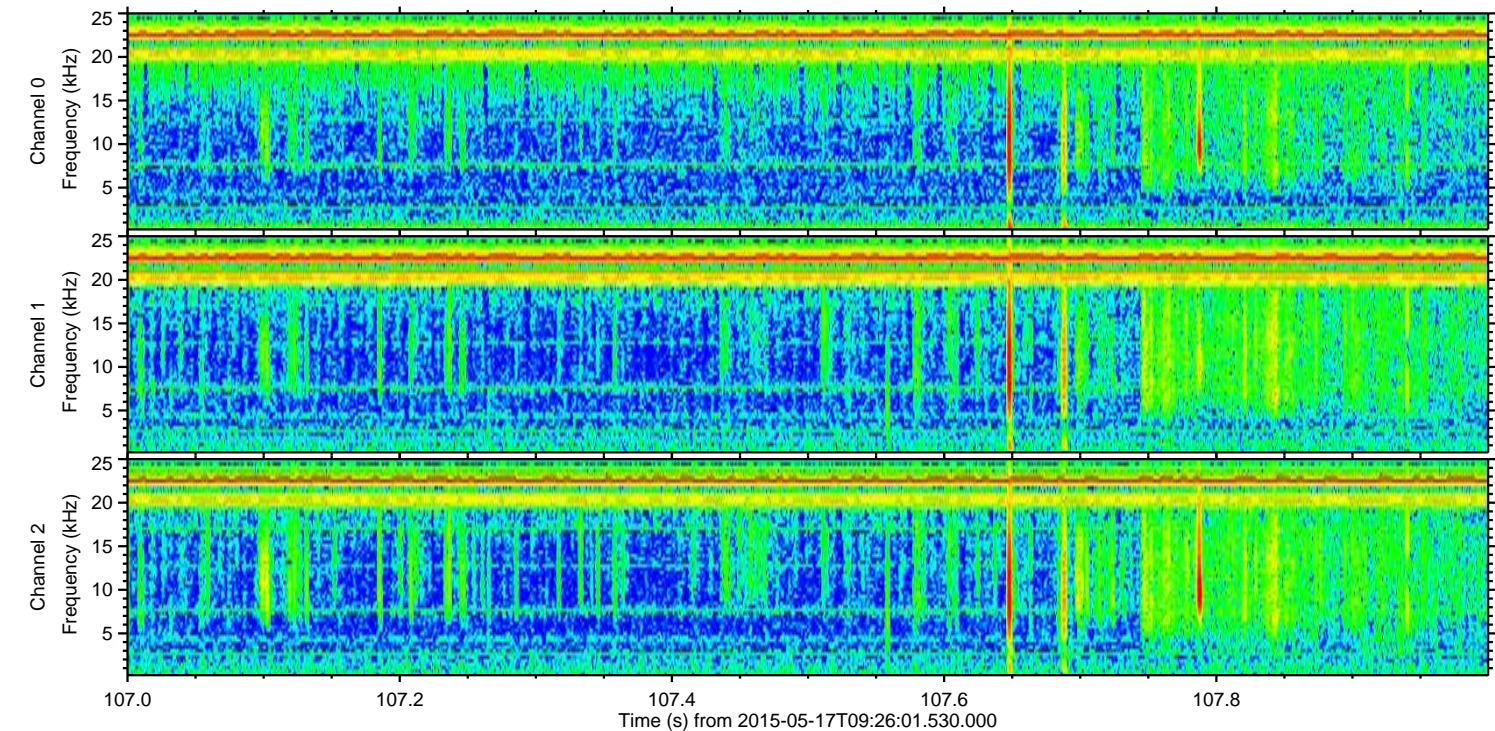
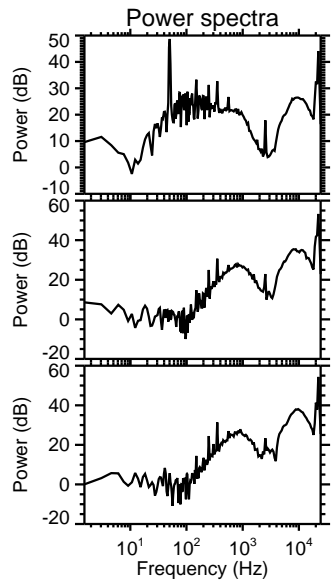
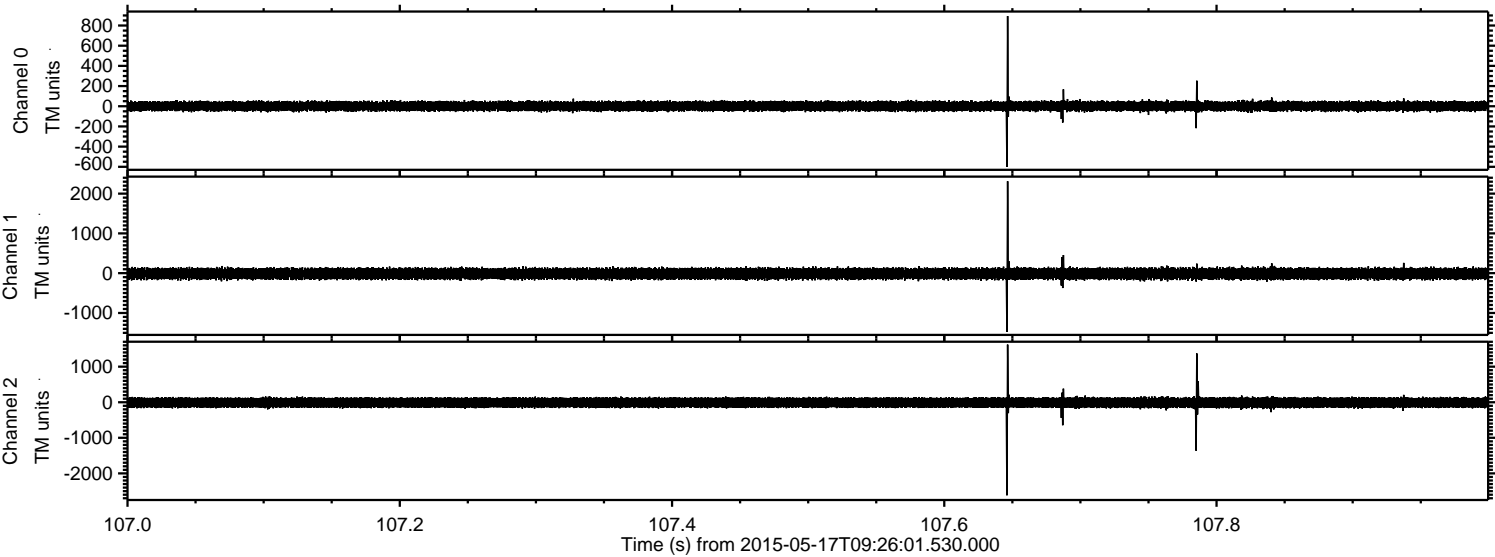


Processed Sun May 17 11:33:11 2015 by ELM ver.2012-10-06 from 001__elm20150517_092600__dat00.bin



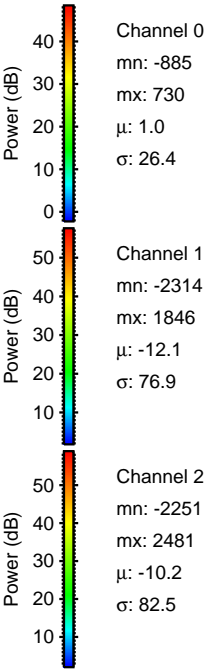
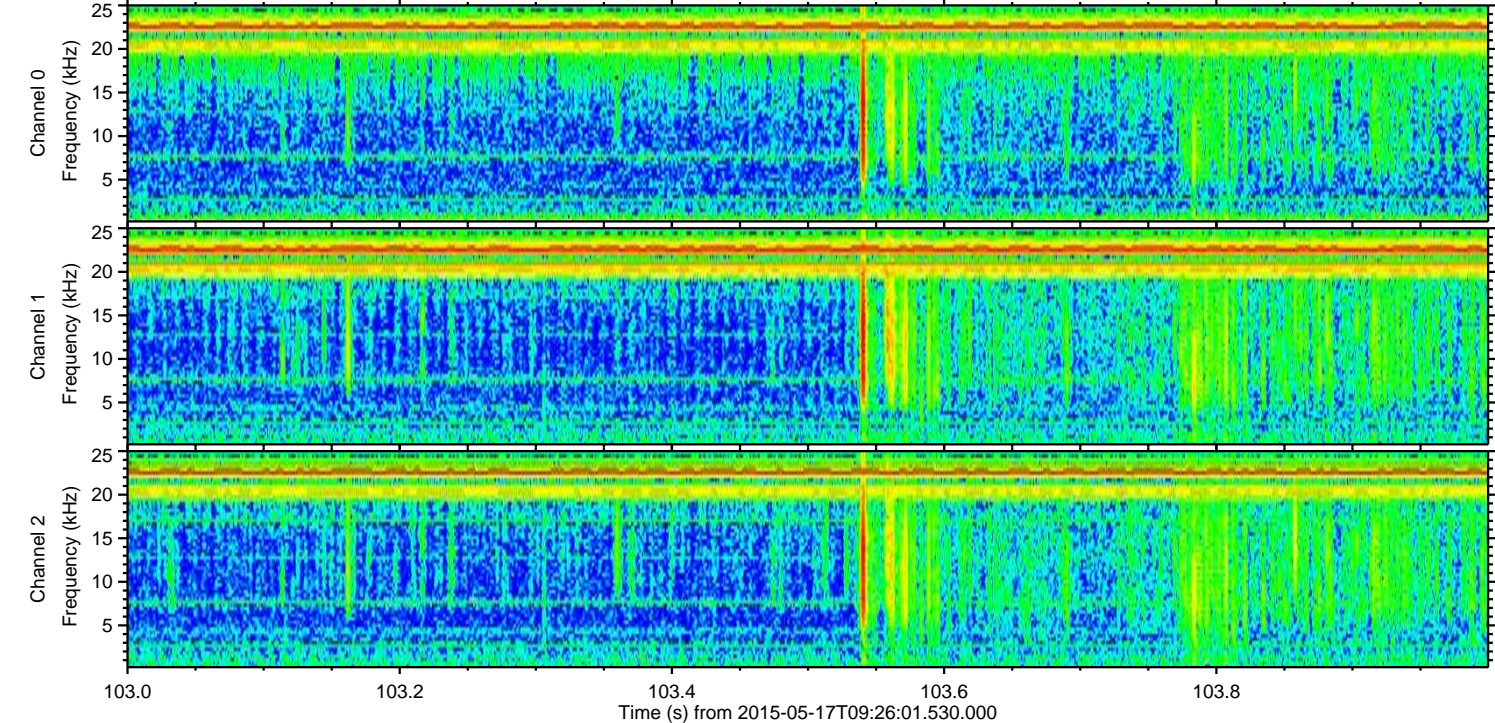
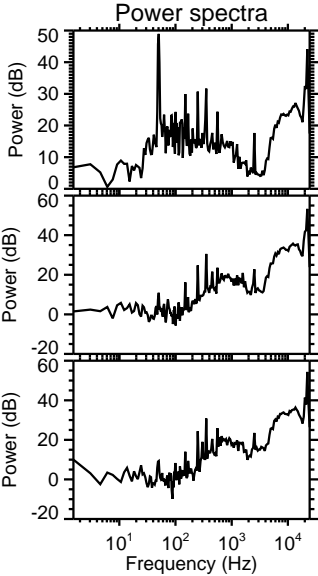
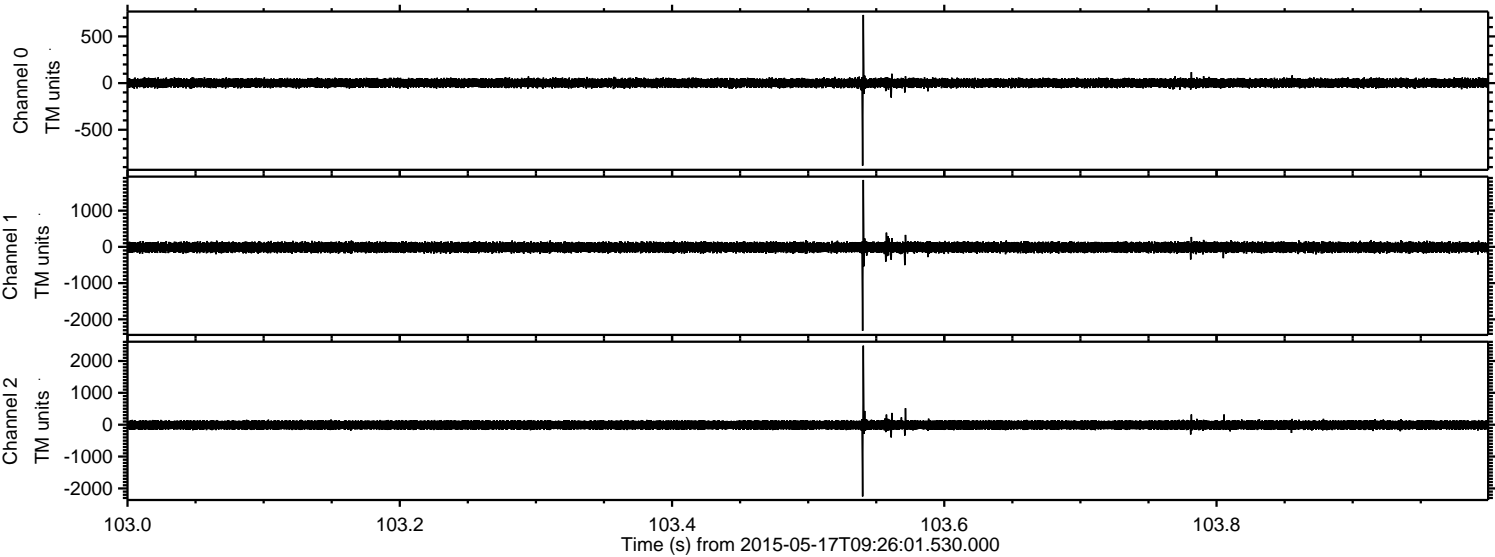
ELMAVAN 3D WAVEFORMS (Measured data sampled at 50 kHz) 49789 packets of 144 samples from 2015-05-17T09:26:01.530.000. Part 108/144

Processed Sun May 17 11:33:12 2015 by ELM ver.2012-10-06 from 001__elm20150517_092600__dat00.bin

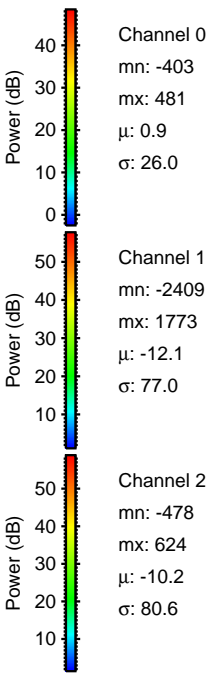
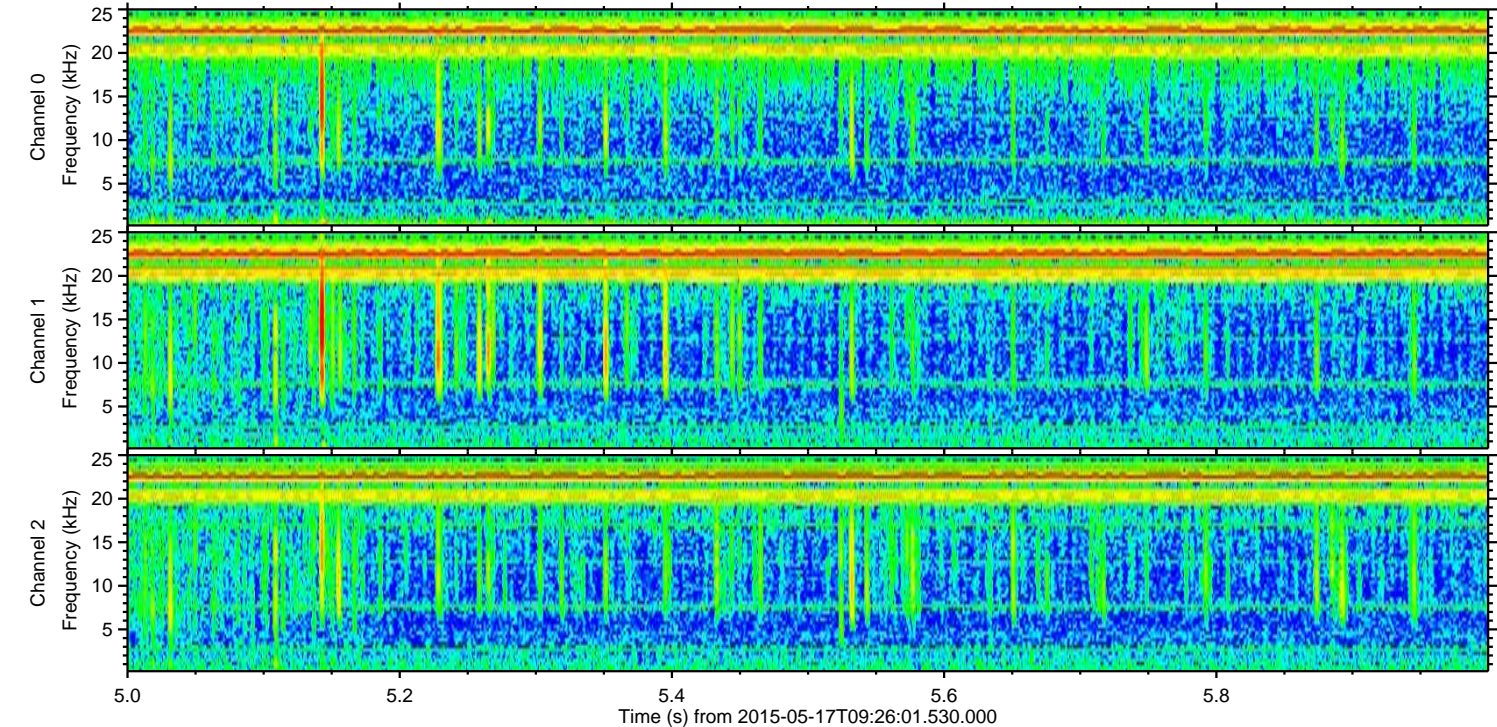
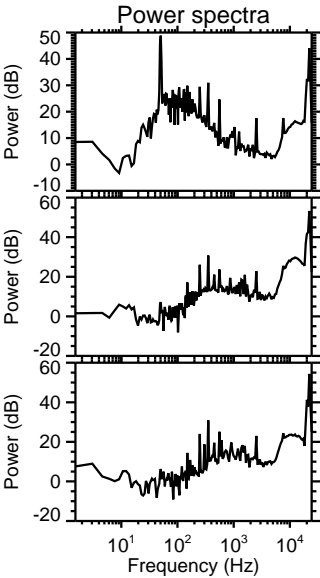
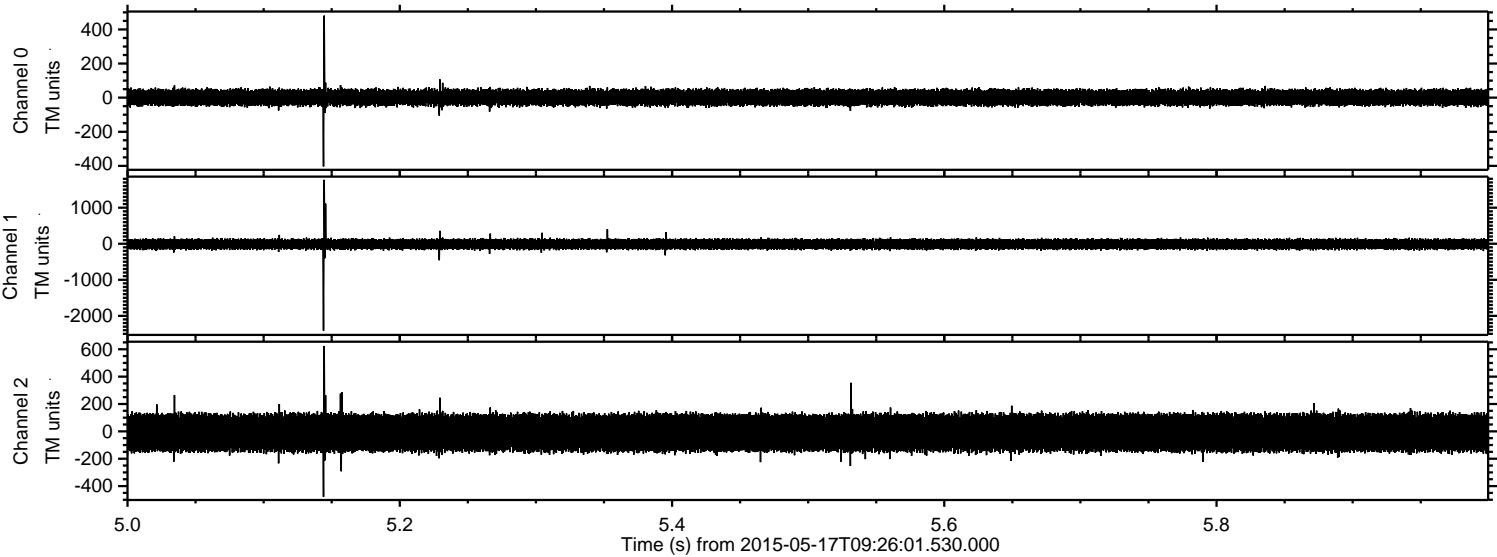


ELMAVAN 3D WAVEFORMS (Measured data sampled at 50 kHz) 49789 packets of 144 samples from 2015-05-17T09:26:01.530.000. Part 104/144

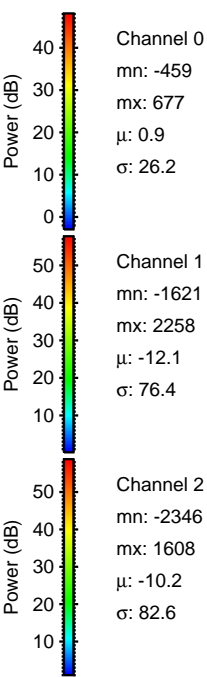
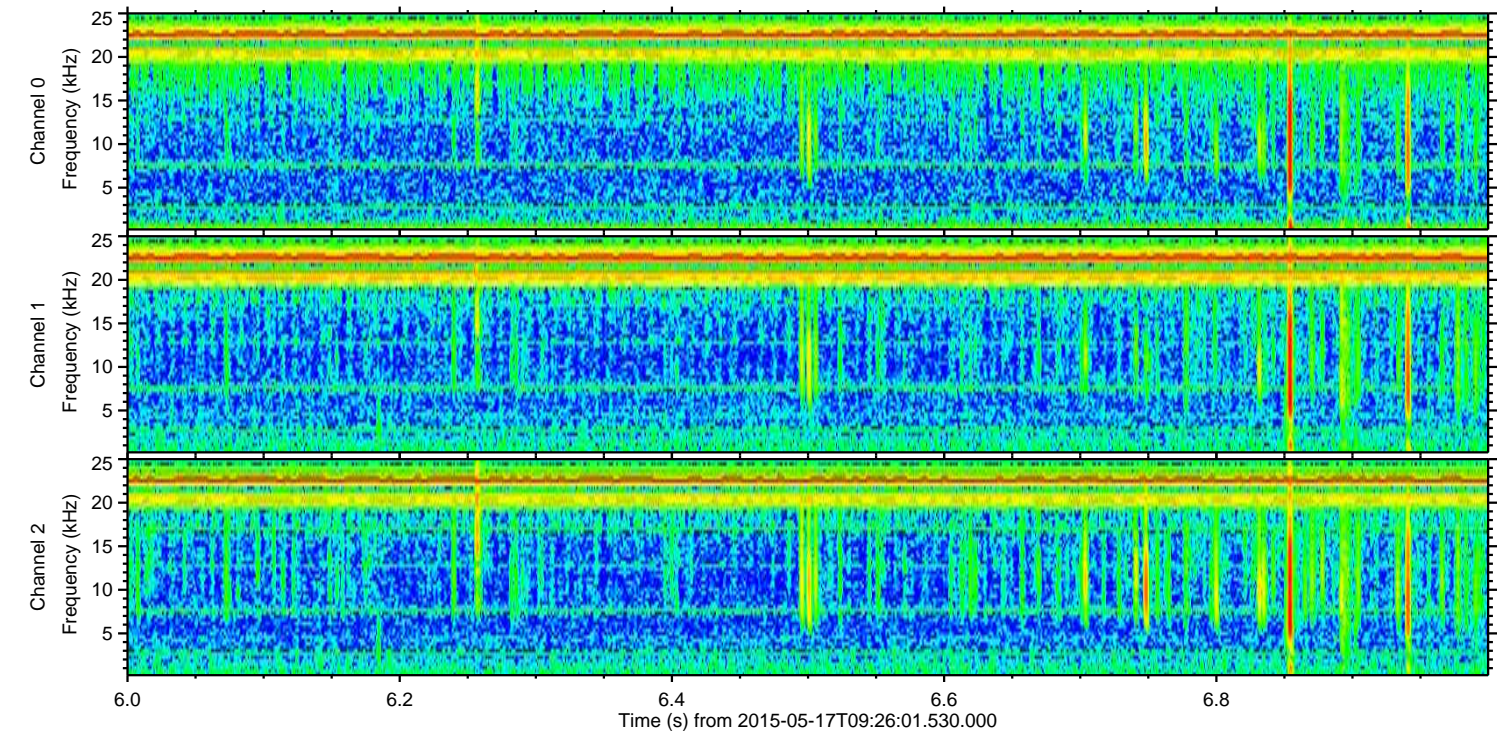
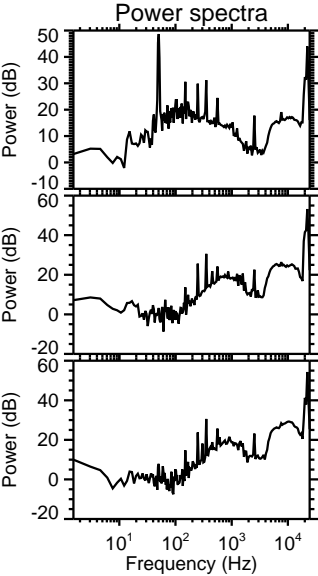
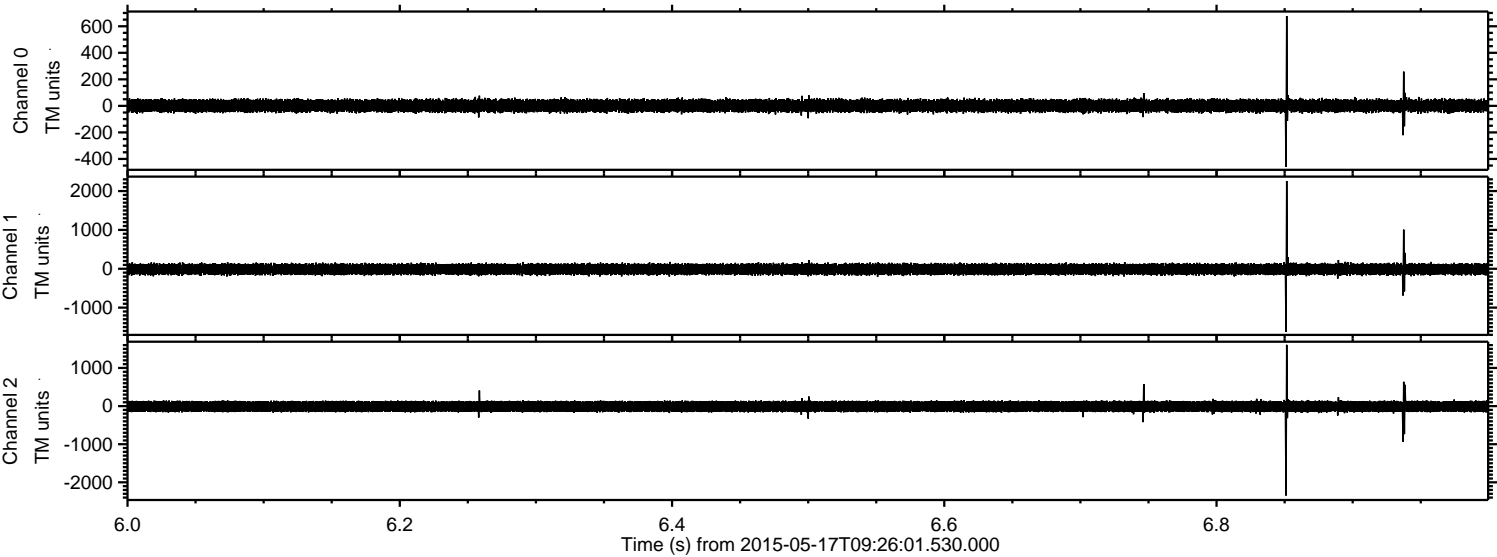
Processed Sun May 17 11:33:13 2015 by ELM ver.2012-10-06 from 001__elm20150517_092600__dat00.bin



Processed Sun May 17 11:33:14 2015 by ELM ver.2012-10-06 from 001__elm20150517_092600__dat00.bin

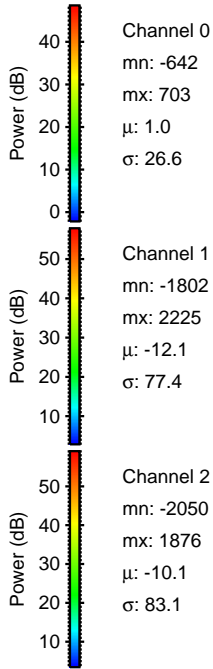
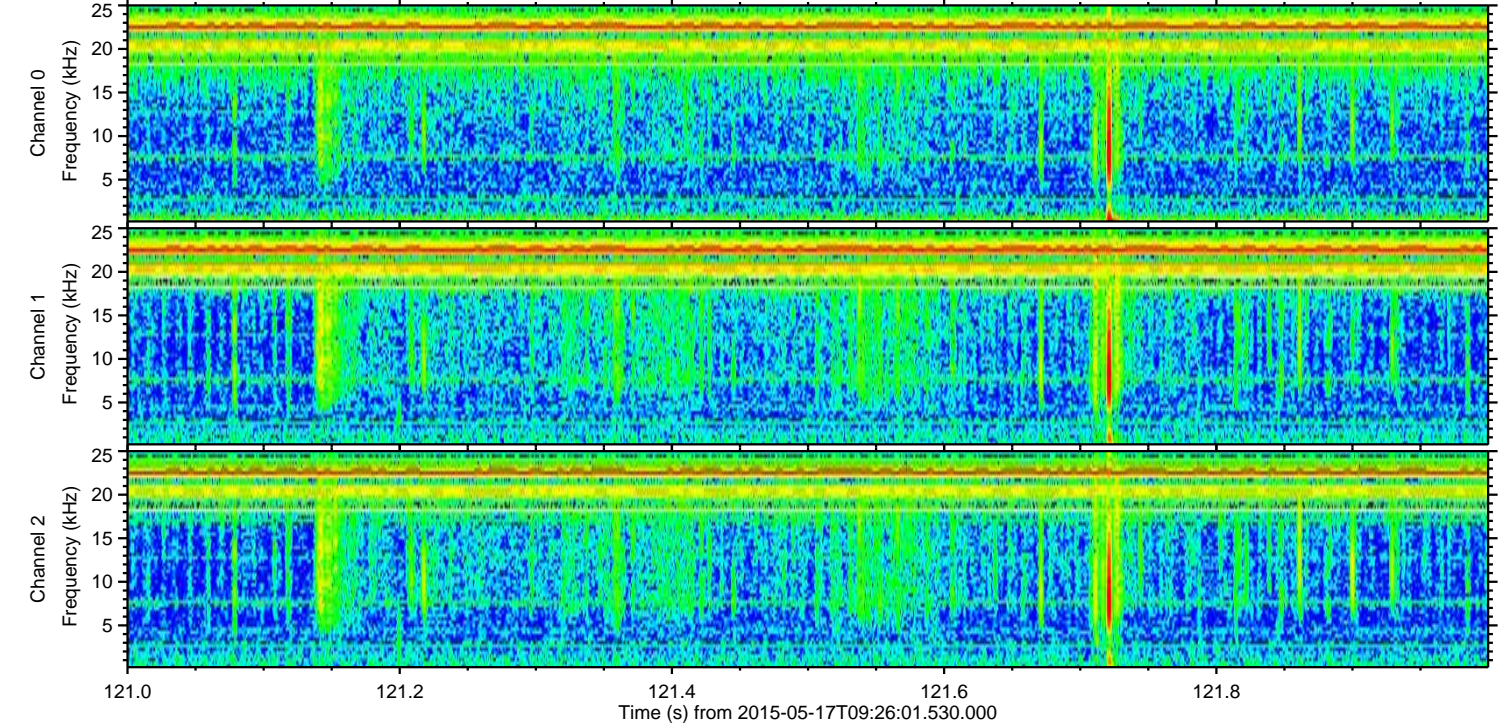
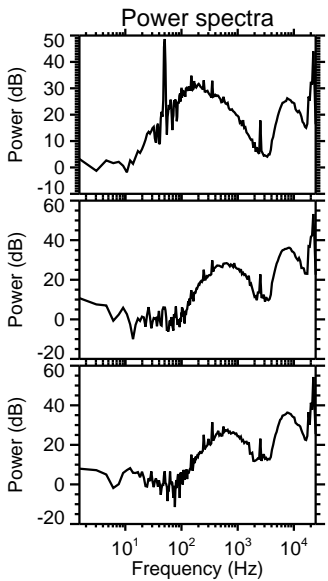
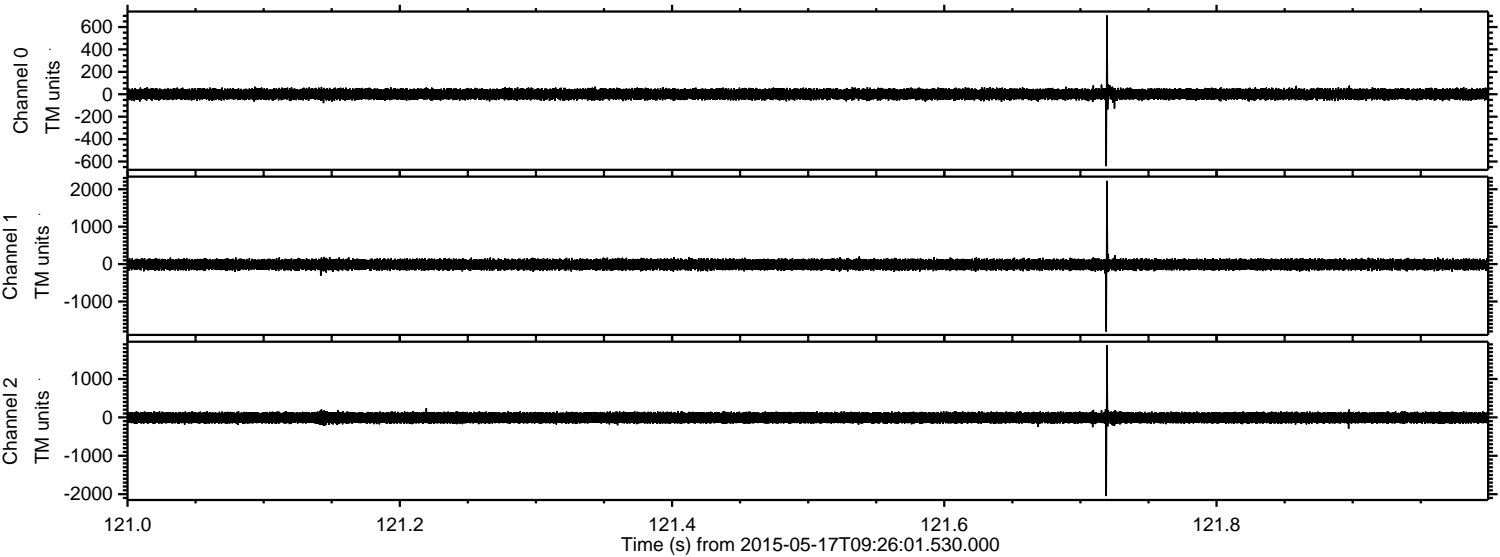


Processed Sun May 17 11:33:15 2015 by ELM ver.2012-10-06 from 001__elm20150517_092600__dat00.bin



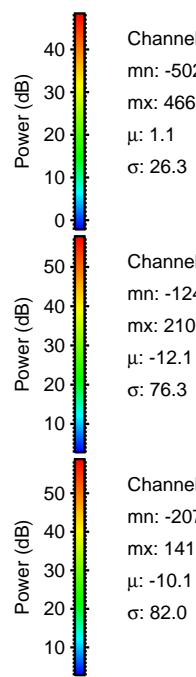
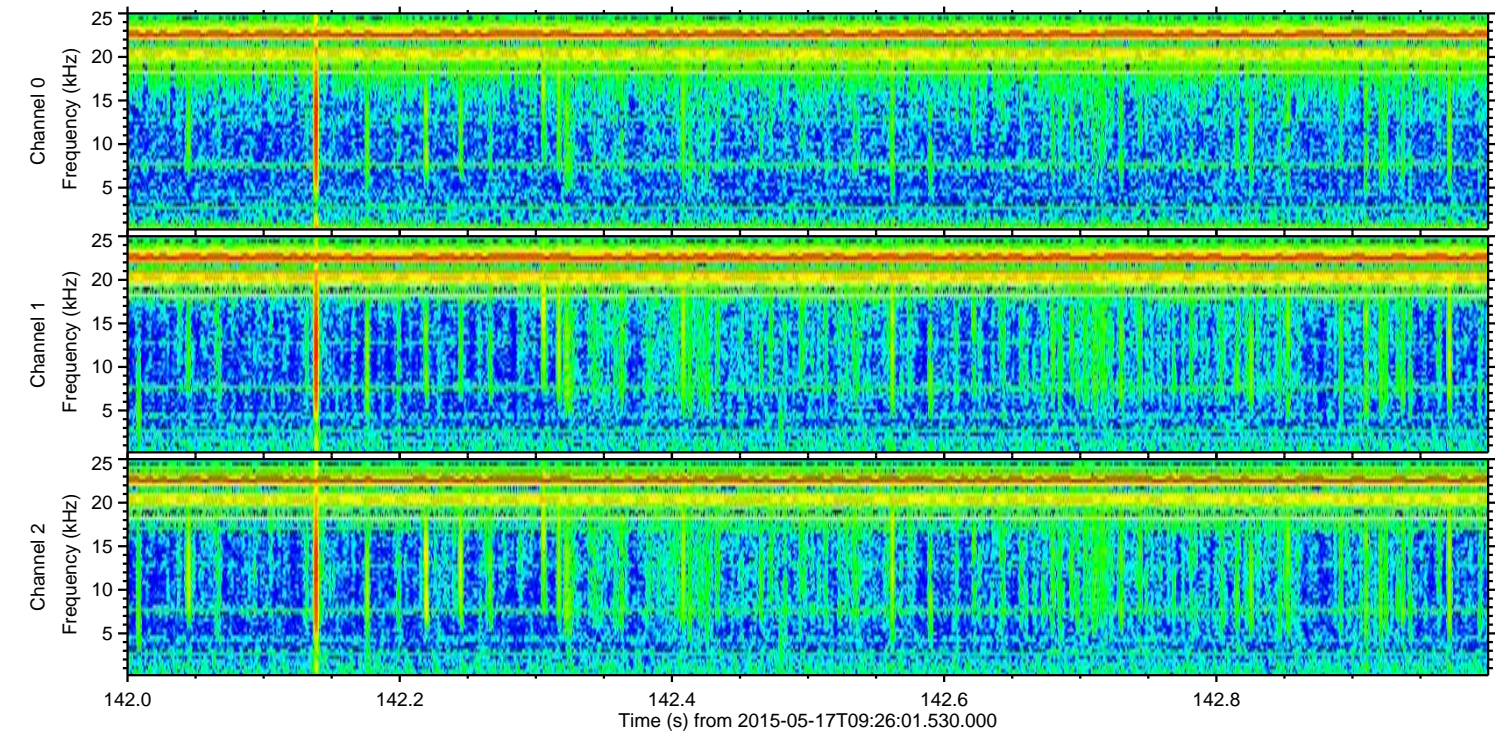
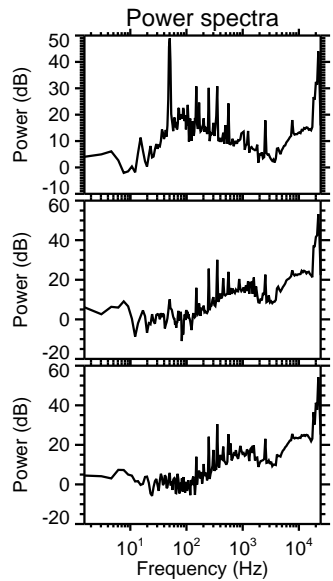
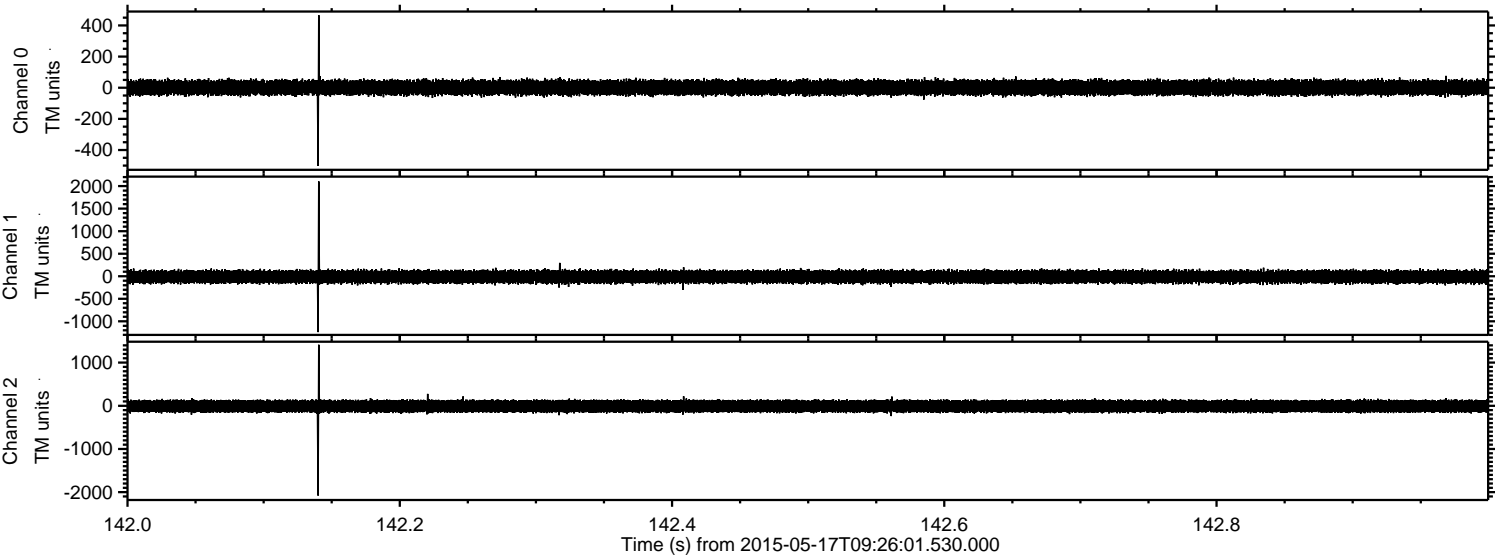
ELMAVAN 3D WAVEFORMS (Measured data sampled at 50 kHz) 49789 packets of 144 samples from 2015-05-17T09:26:01.530.000. Part 122/144

Processed Sun May 17 11:33:16 2015 by ELM ver.2012-10-06 from 001__elm20150517_092600__dat00.bin



ELMAVAN 3D WAVEFORMS (Measured data sampled at 50 kHz) 49789 packets of 144 samples from 2015-05-17T09:26:01.530.000. Part 143/144

Processed Sun May 17 11:33:17 2015 by ELM ver.2012-10-06 from 001__elm20150517_092600__dat00.bin



Channel 0
mn: -502
mx: 466
 μ : 1.1
 σ : 26.3

Channel 1
mn: -1240
mx: 2105
 μ : -12.1
 σ : 76.3

Channel 2
mn: -2078
mx: 1413
 μ : -10.1
 σ : 82.0

Processed Sun May 17 11:33:18 2015 by ELM ver.2012-10-06 from 001__elm20150517_092600__dat00.bin

