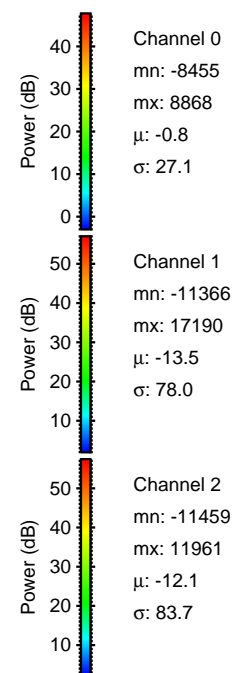
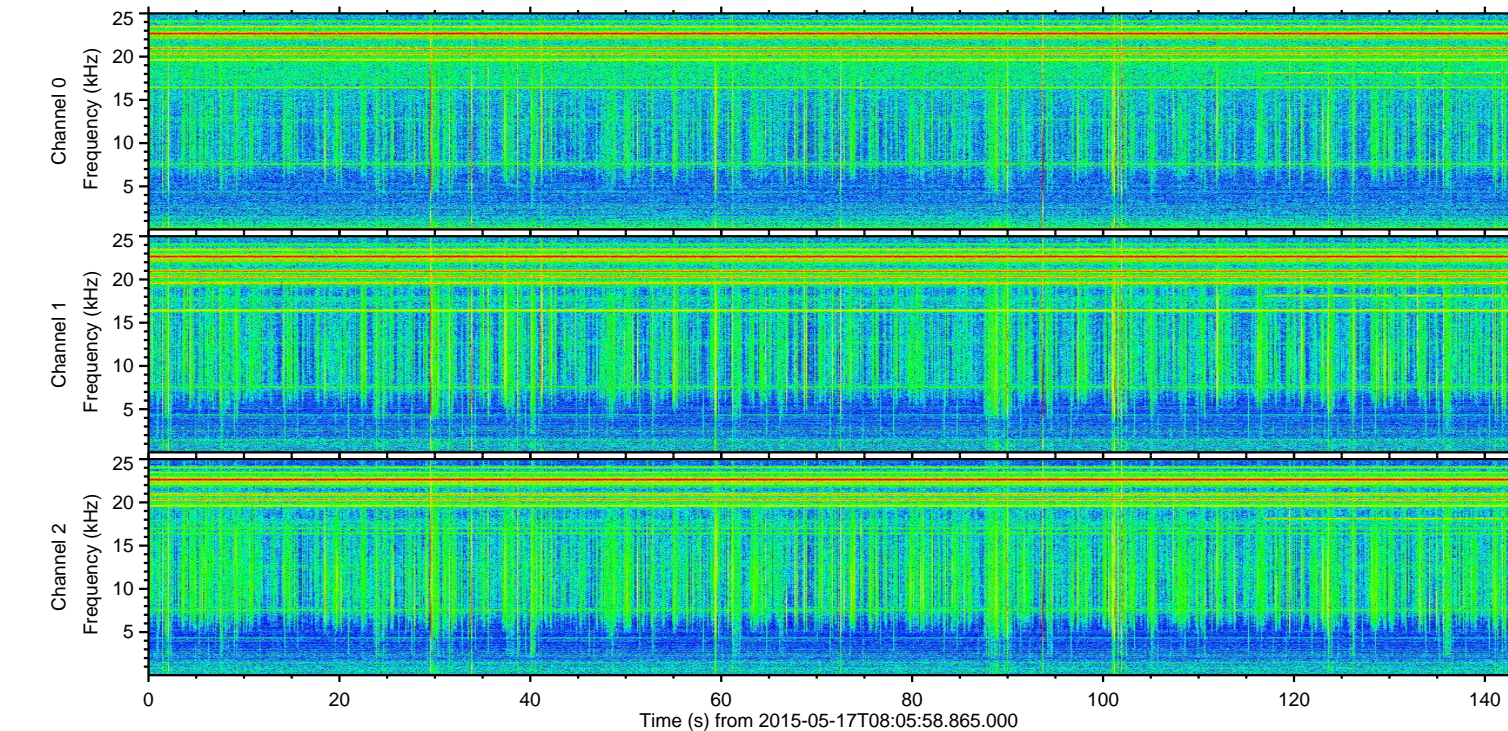
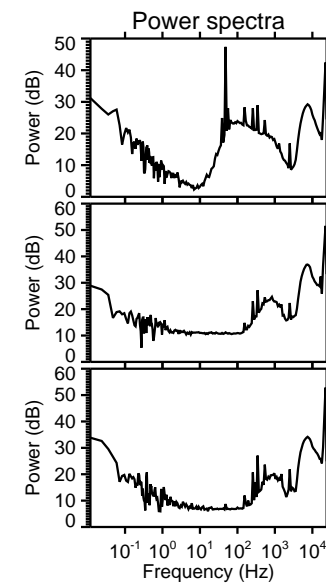
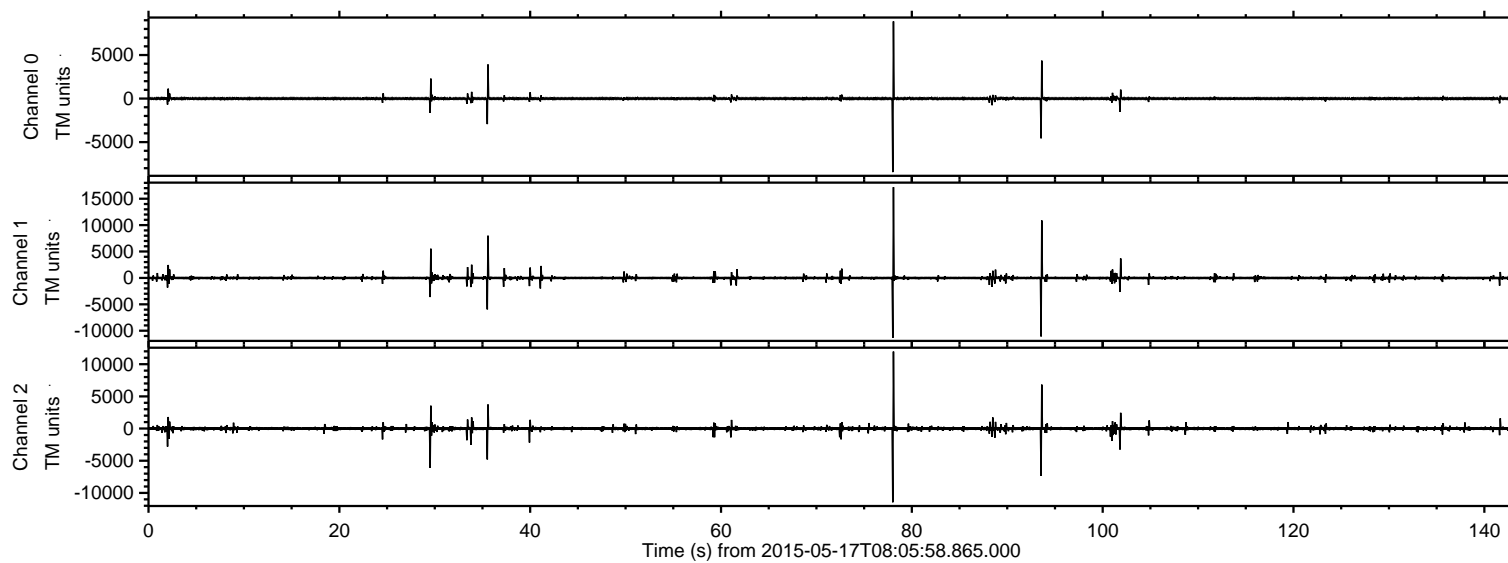
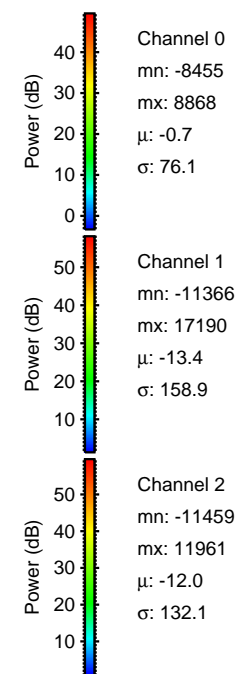
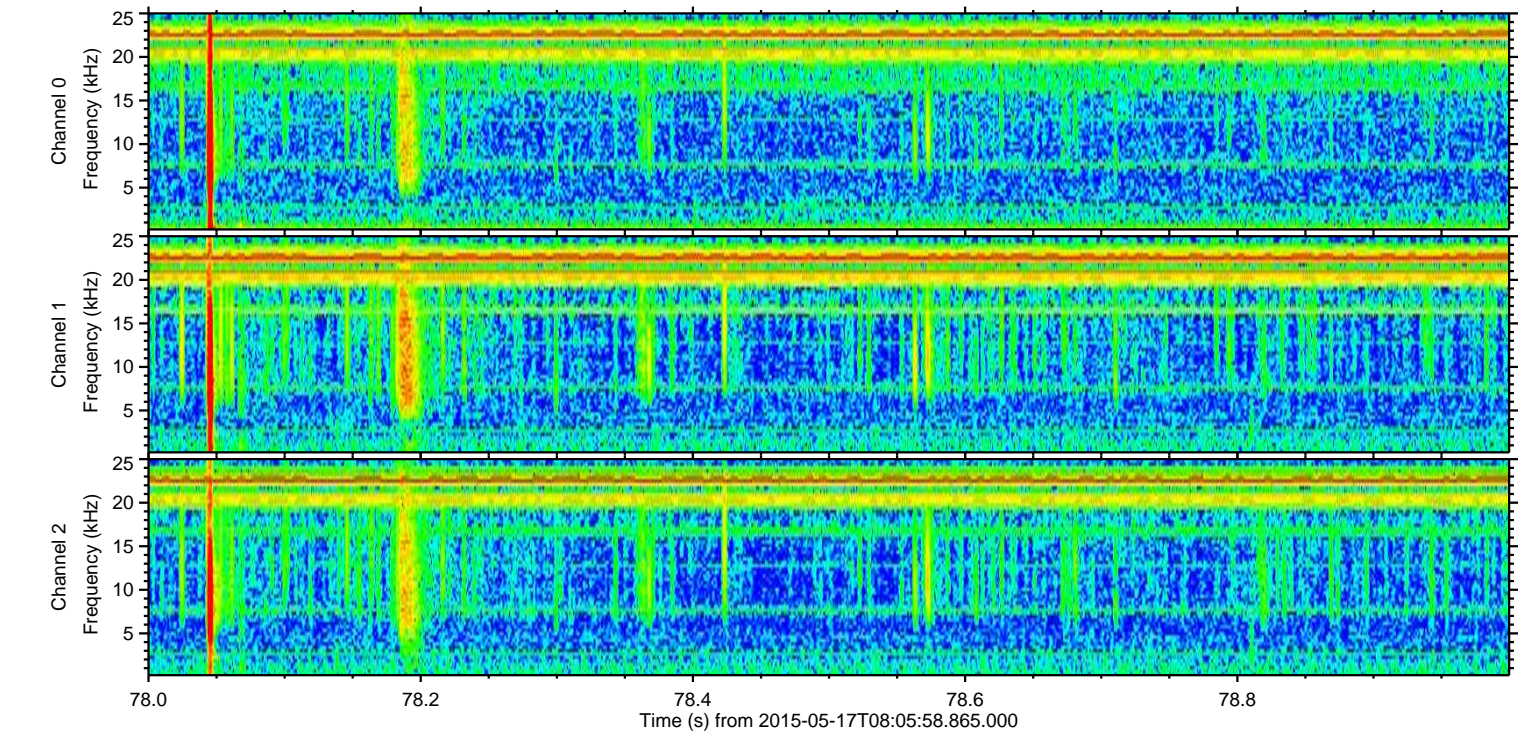
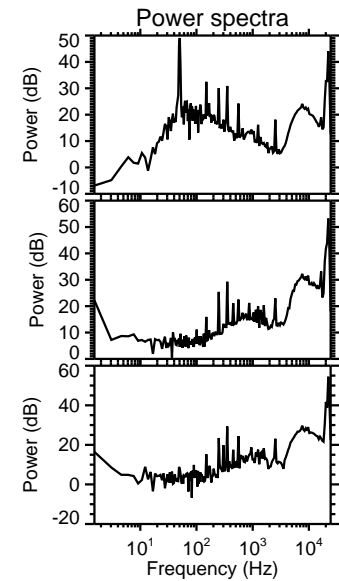
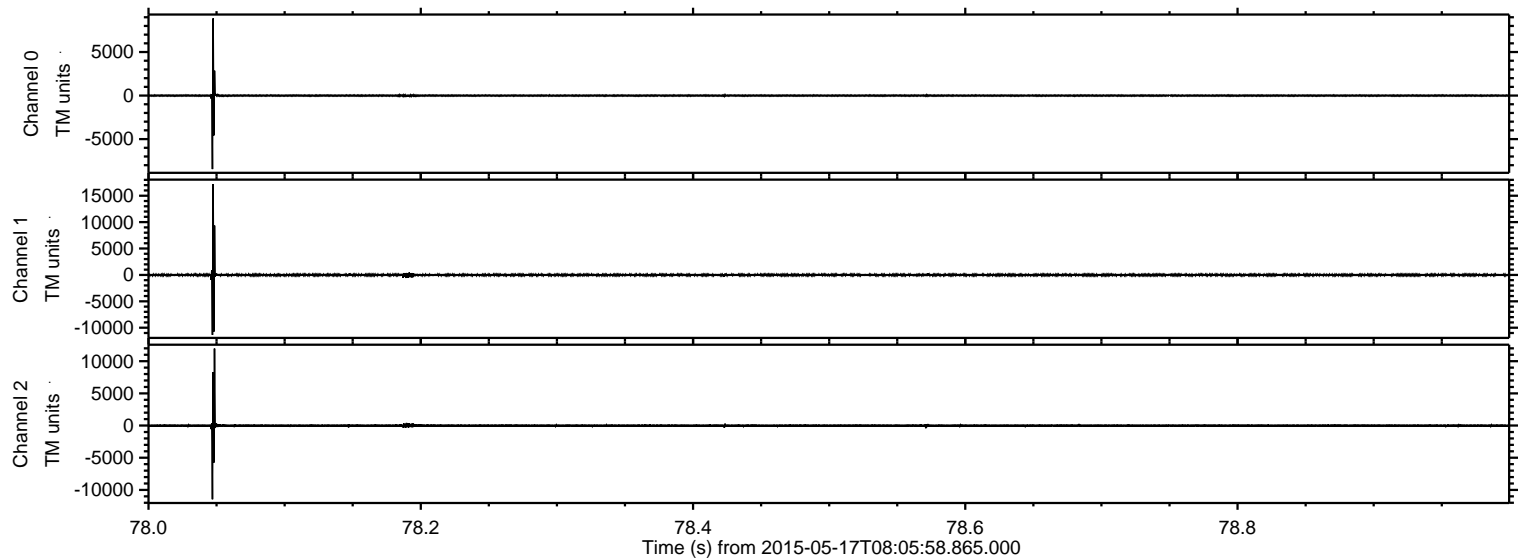


ELMAVAN 3D WAVEFORMS (Measured data sampled at 50 kHz) 49514 packets of 144 samples from 2015-05-17T08:05:58.865.000.

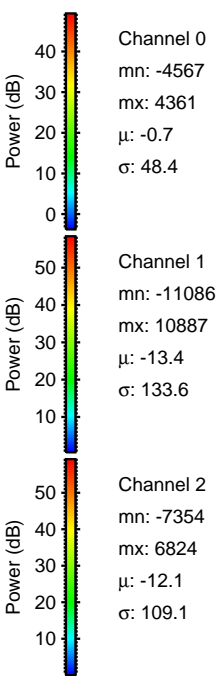
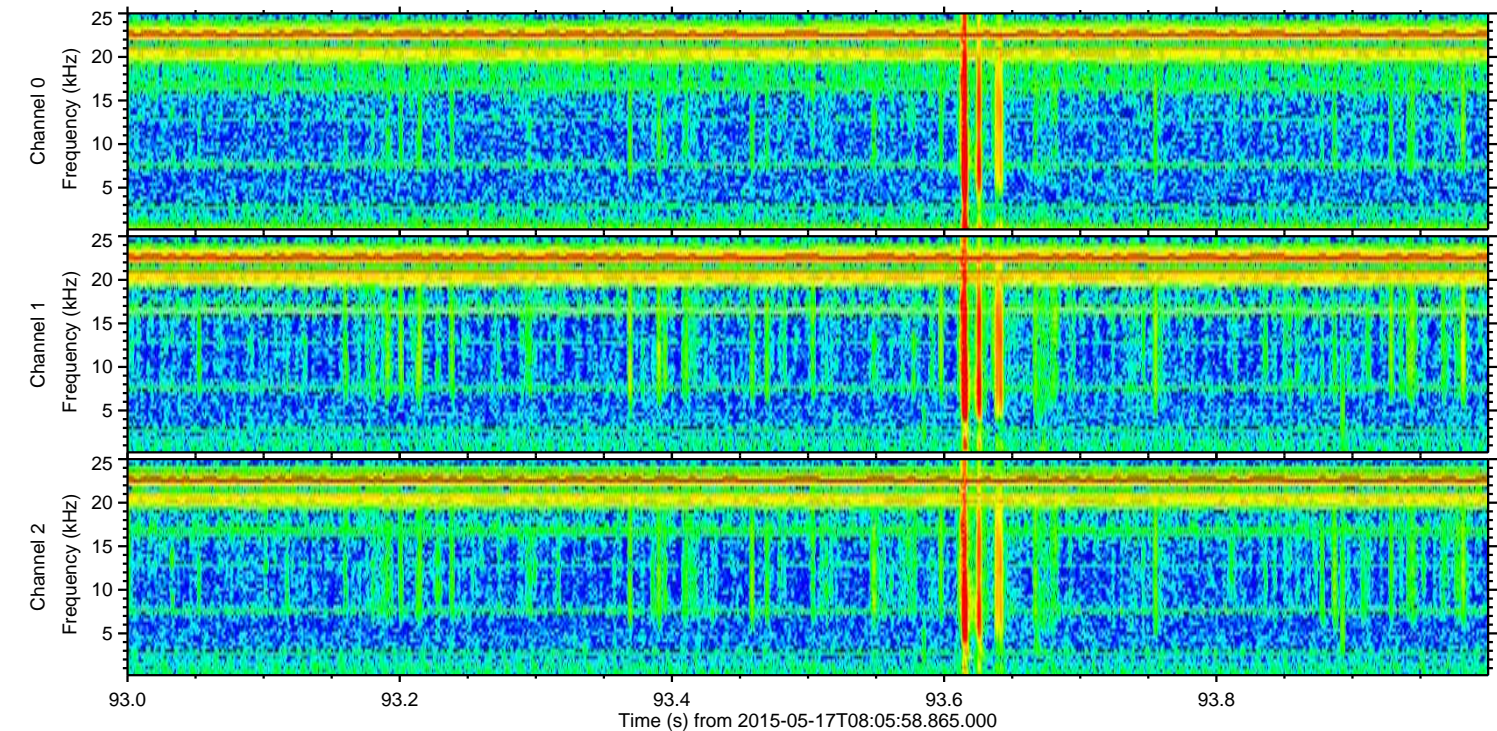
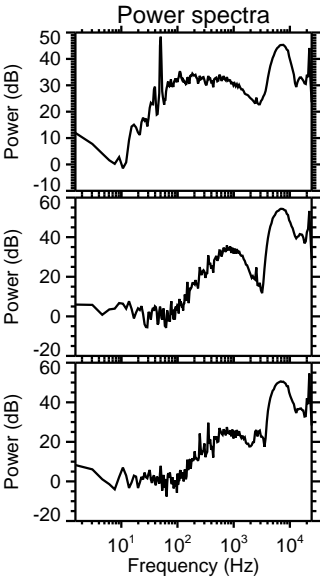
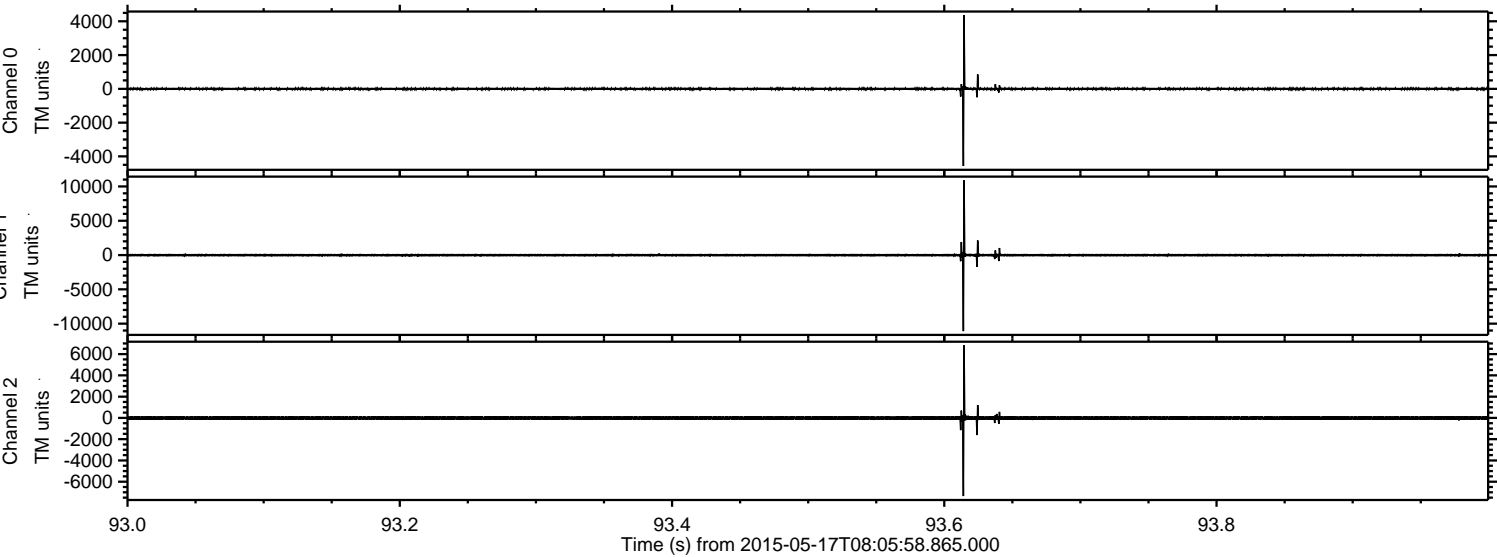
Processed Sun May 17 10:12:25 2015 by ELM ver.2012-10-06 from 001__elm20150517_080557__dat00.bin



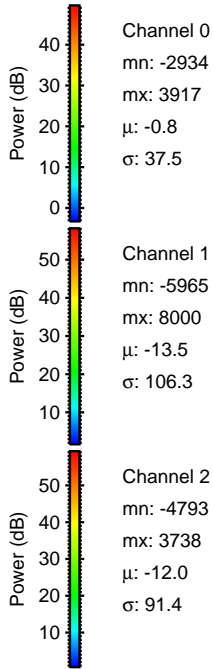
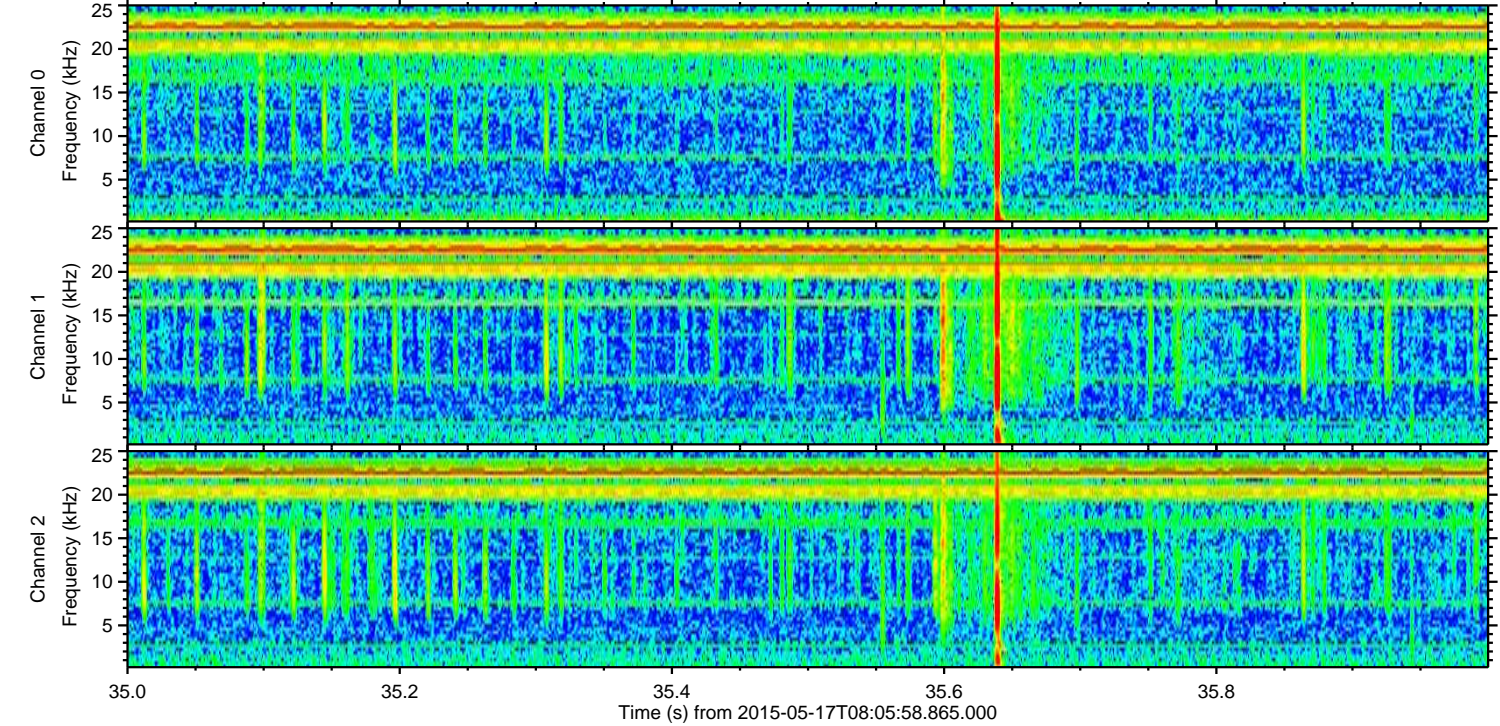
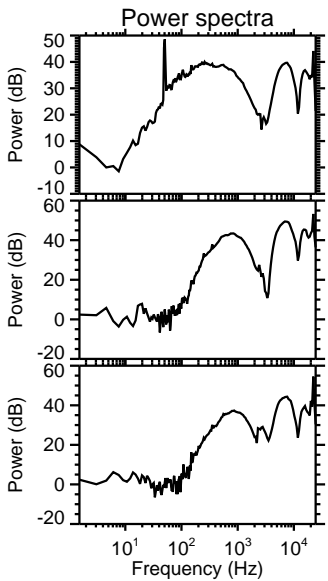
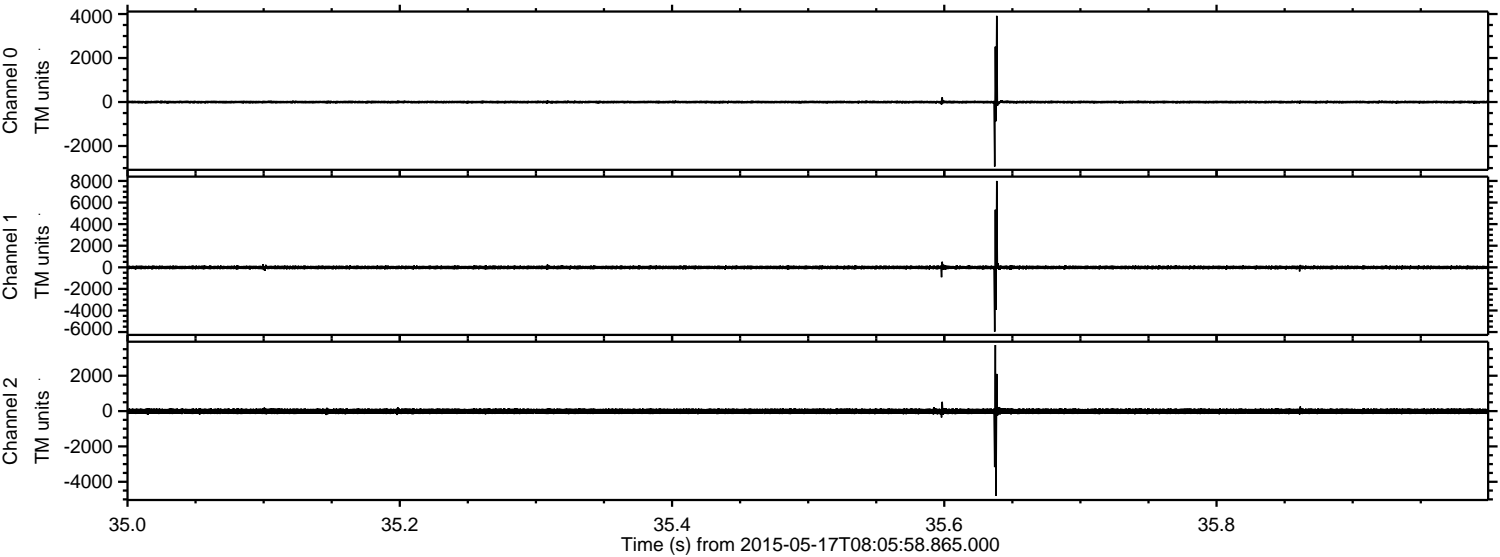
Processed Sun May 17 10:12:39 2015 by ELM ver.2012-10-06 from 001__elm20150517_080557__dat00.bin



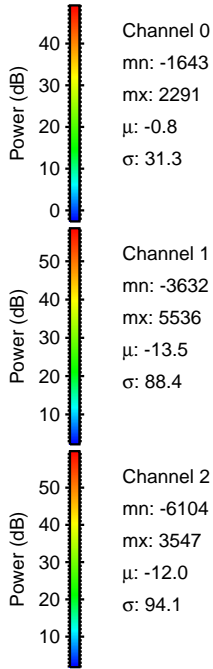
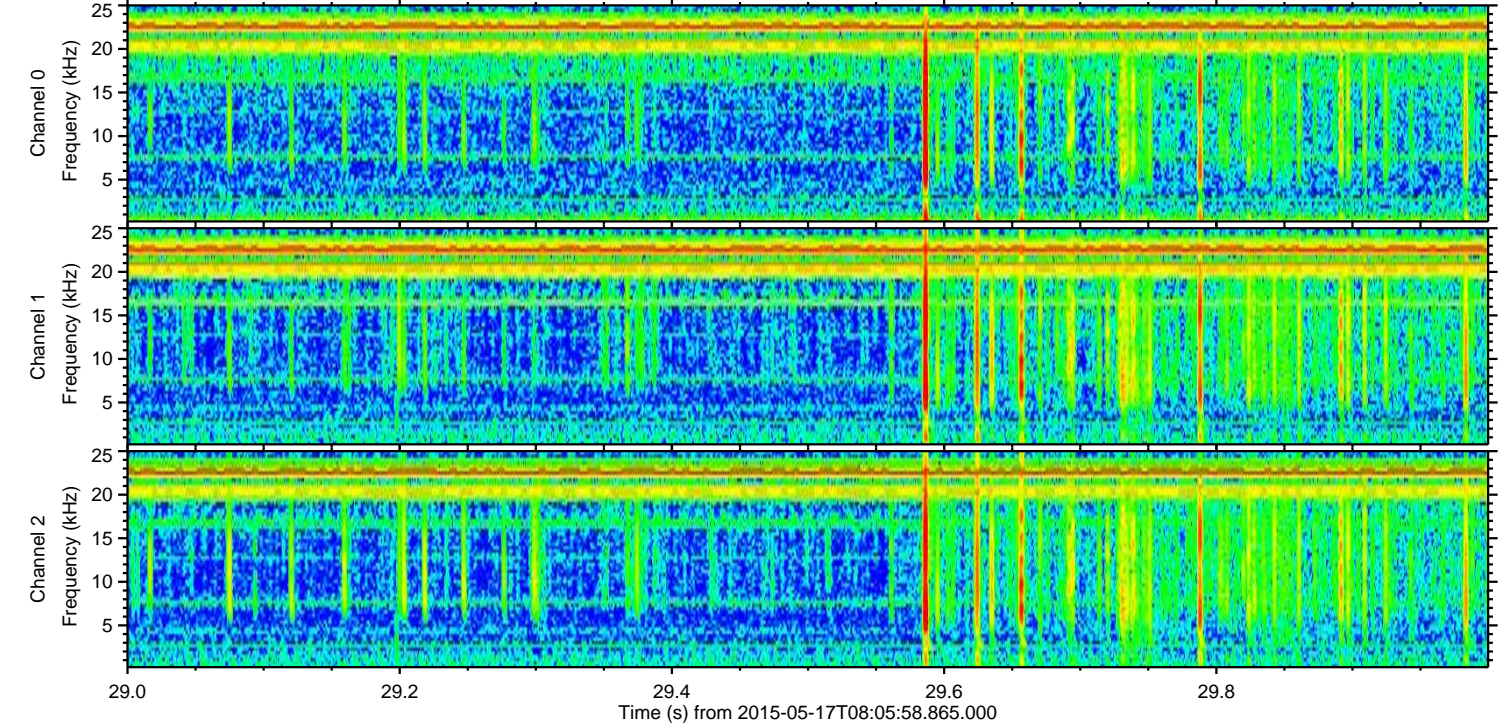
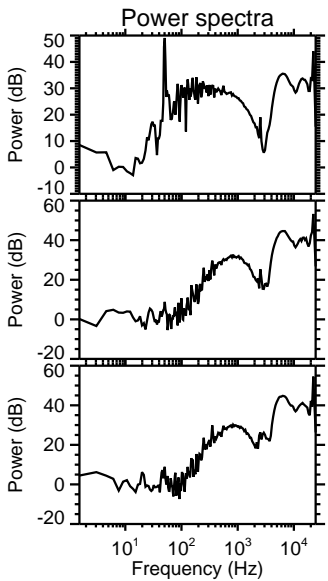
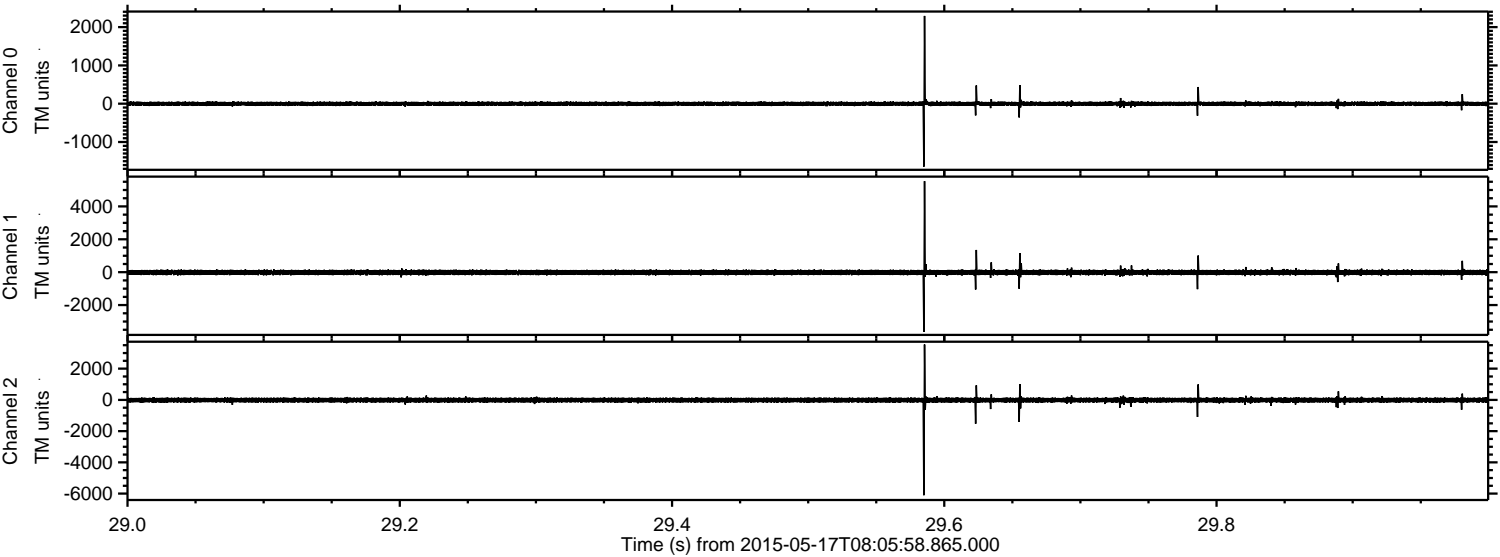
Processed Sun May 17 10:12:40 2015 by ELM ver.2012-10-06 from 001__elm20150517_080557__dat00.bin



Processed Sun May 17 10:12:41 2015 by ELM ver.2012-10-06 from 001__elm20150517_080557__dat00.bin

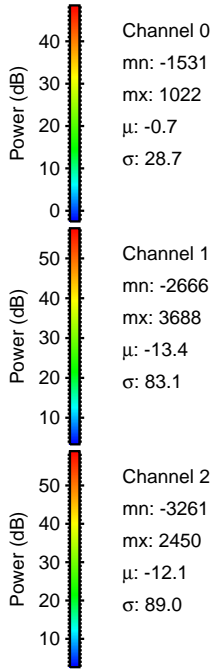
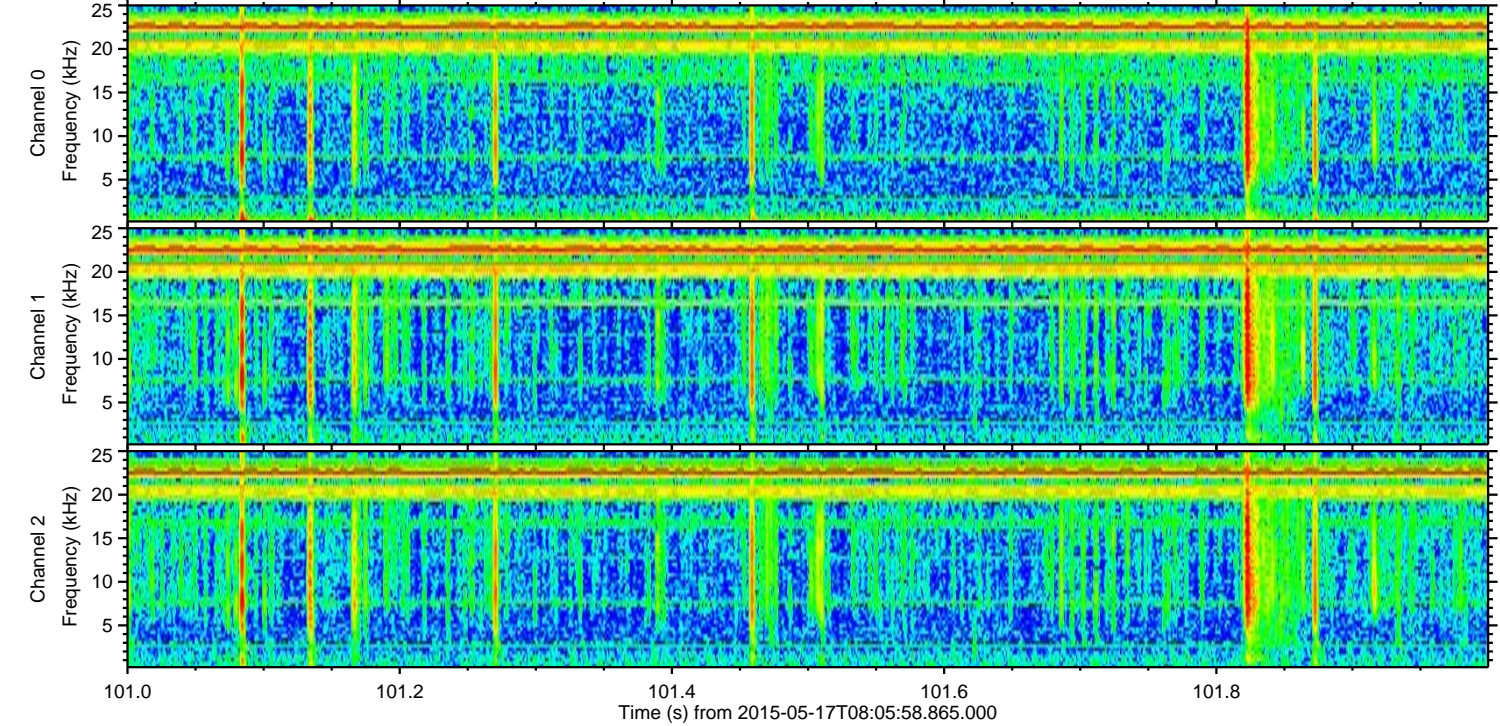
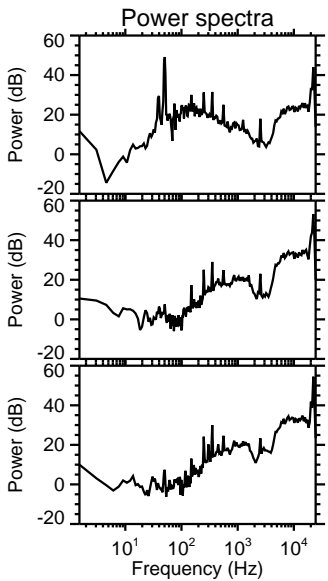
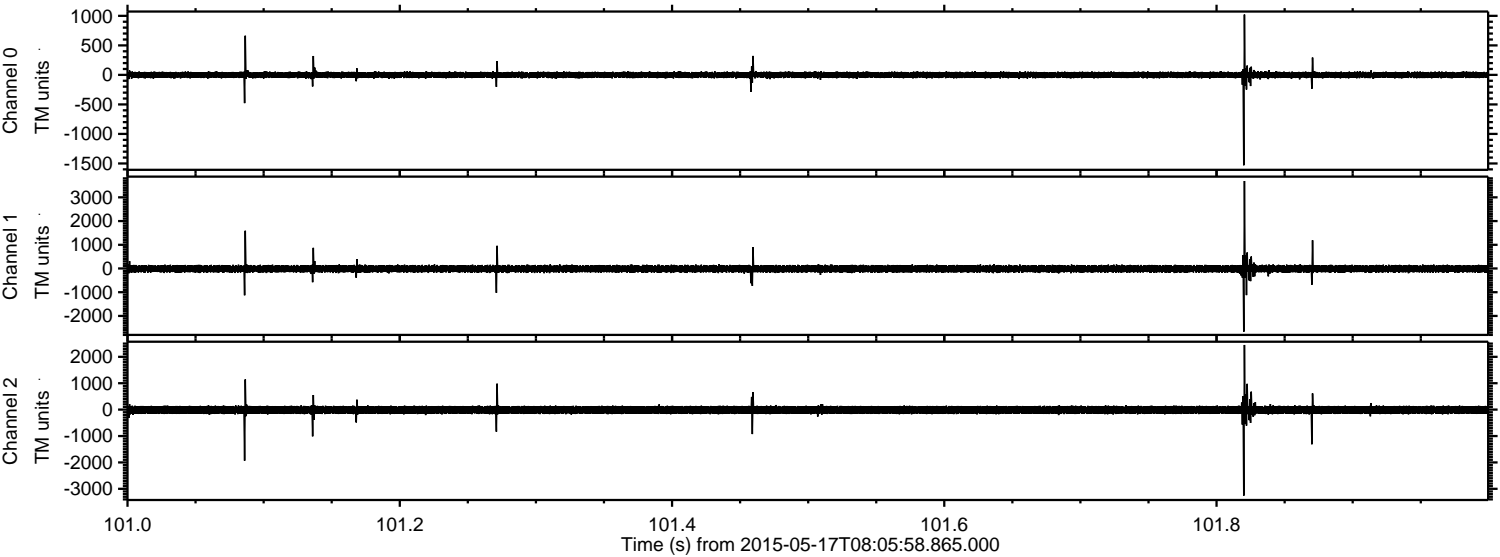


Processed Sun May 17 10:12:42 2015 by ELM ver.2012-10-06 from 001__elm20150517_080557__dat00.bin



ELMAVAN 3D WAVEFORMS (Measured data sampled at 50 kHz) 49514 packets of 144 samples from 2015-05-17T08:05:58.865.000. Part 102/143

Processed Sun May 17 10:12:43 2015 by ELM ver.2012-10-06 from 001__elm20150517_080557__dat00.bin



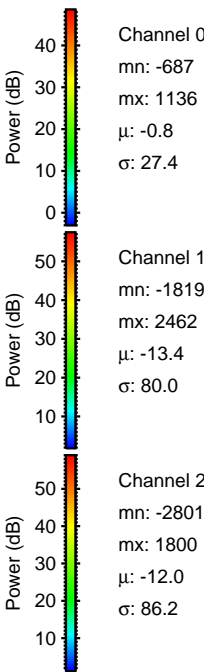
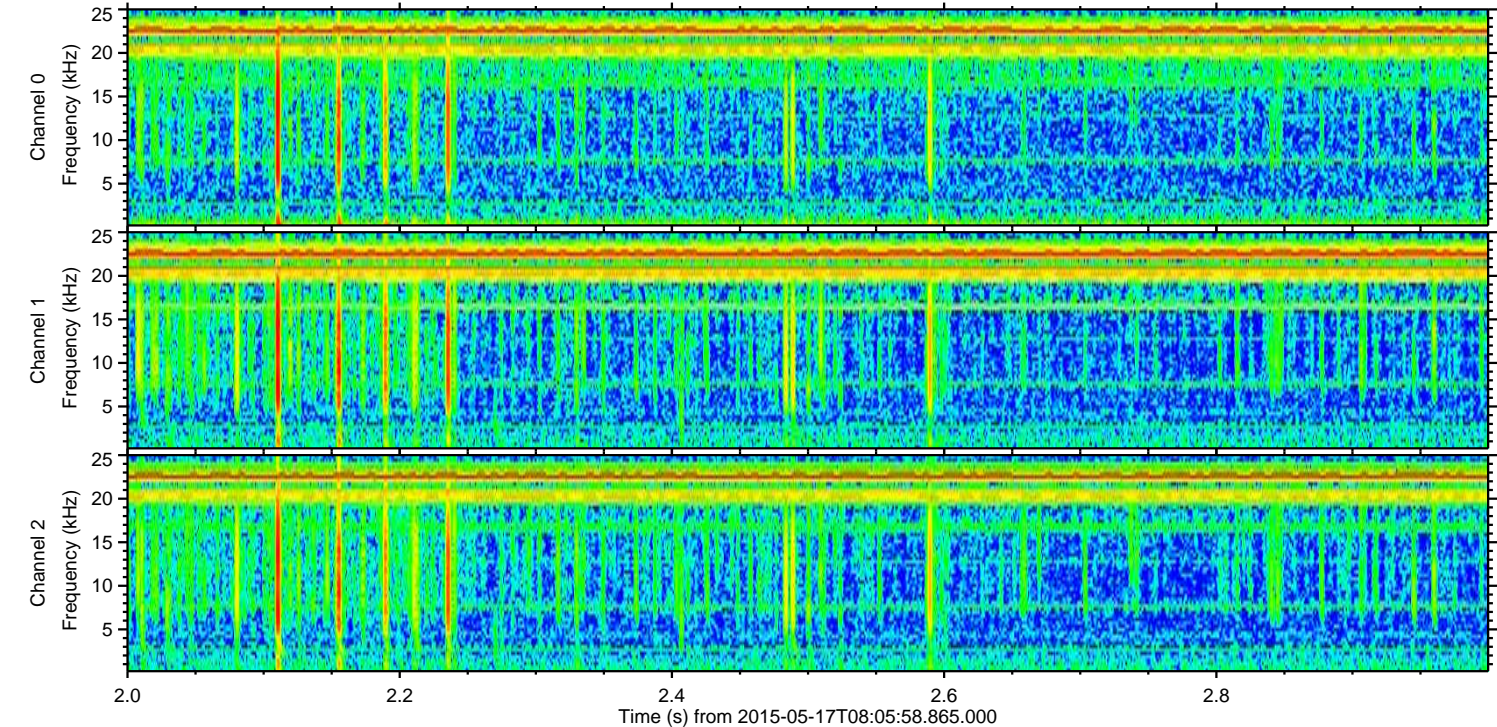
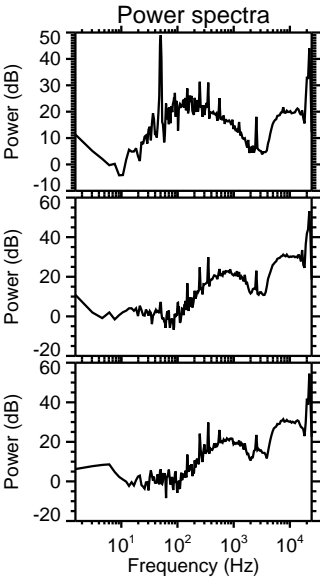
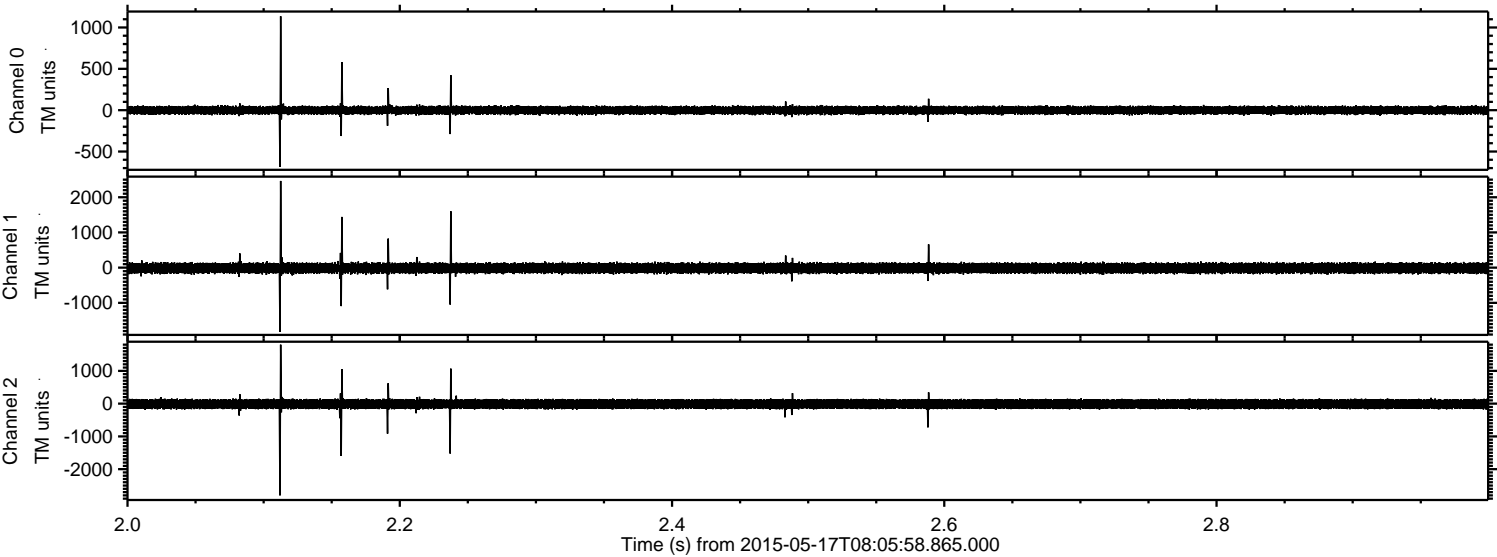
Channel 0
mn: -1531
mx: 1022
 μ : -0.7
 σ : 28.7

Channel 1
mn: -2666
mx: 3688
 μ : -13.4
 σ : 83.1

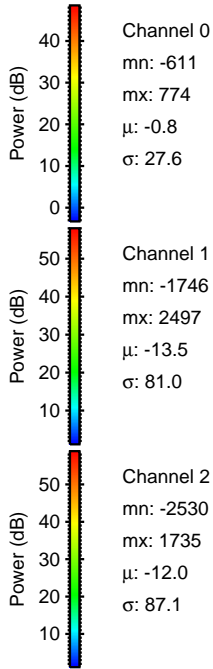
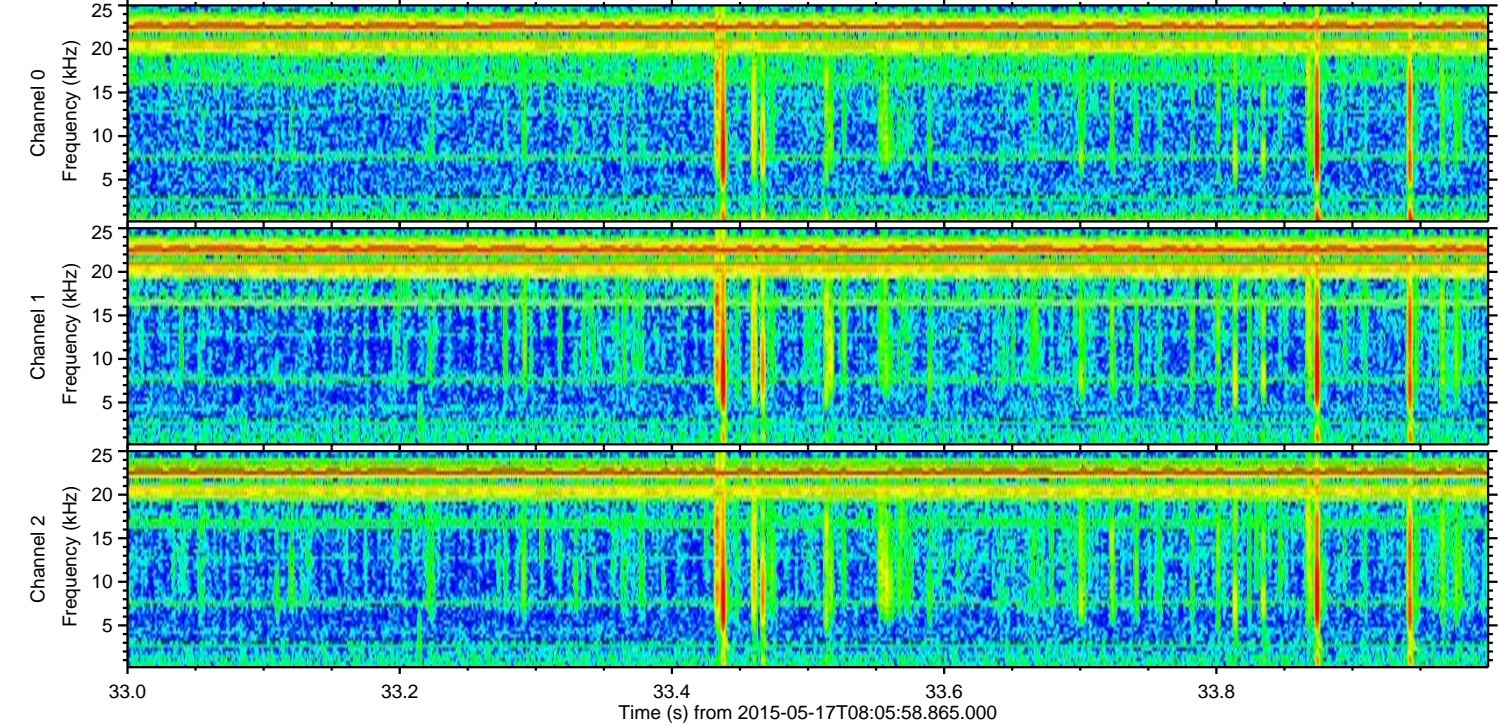
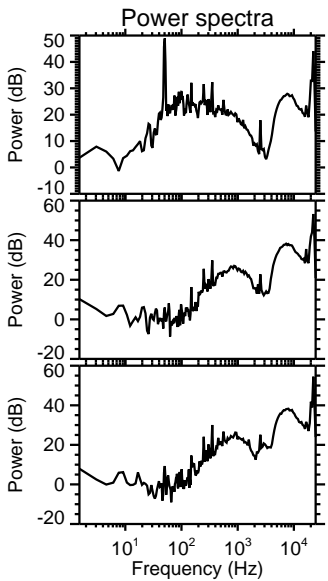
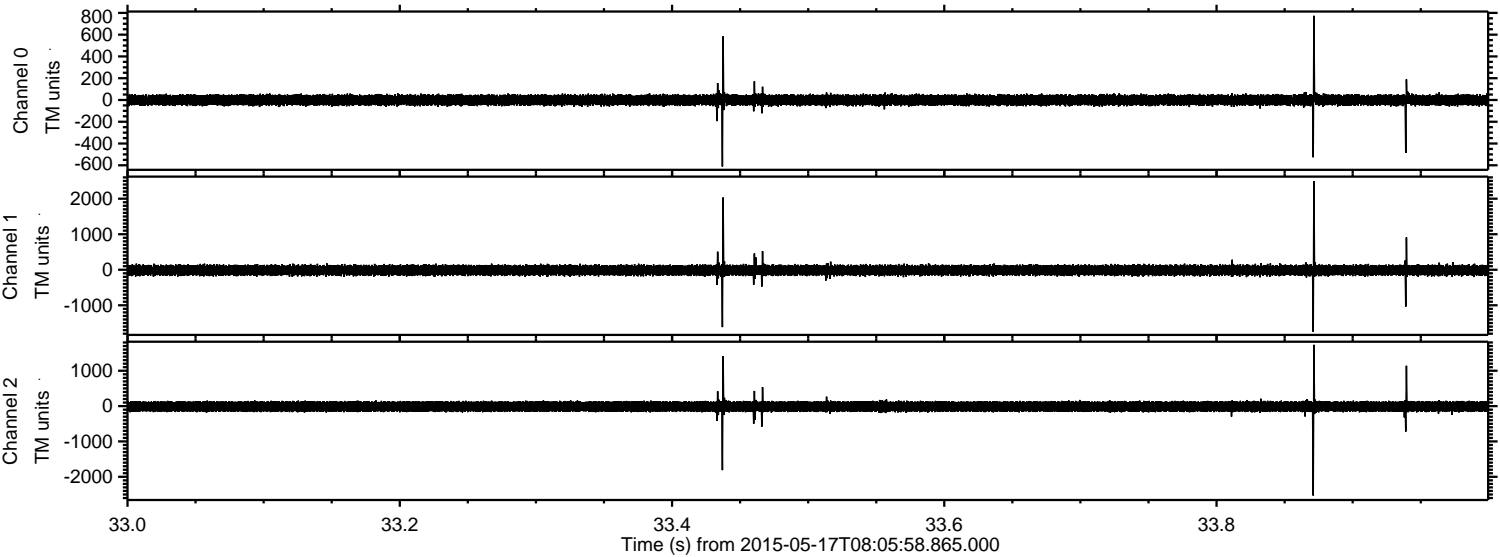
Channel 2
mn: -3261
mx: 2450
 μ : -12.1
 σ : 89.0

ELMAVAN 3D WAVEFORMS (Measured data sampled at 50 kHz) 49514 packets of 144 samples from 2015-05-17T08:05:58.865.000. Part 3/143

Processed Sun May 17 10:12:44 2015 by ELM ver.2012-10-06 from 001__elm20150517_080557__dat00.bin



Processed Sun May 17 10:12:45 2015 by ELM ver.2012-10-06 from 001__elm20150517_080557__dat00.bin

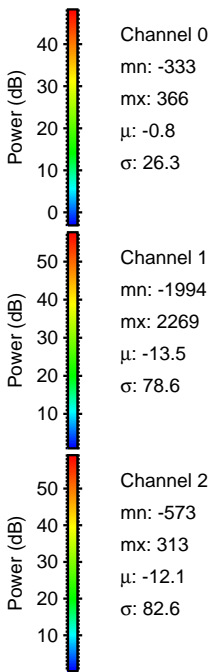
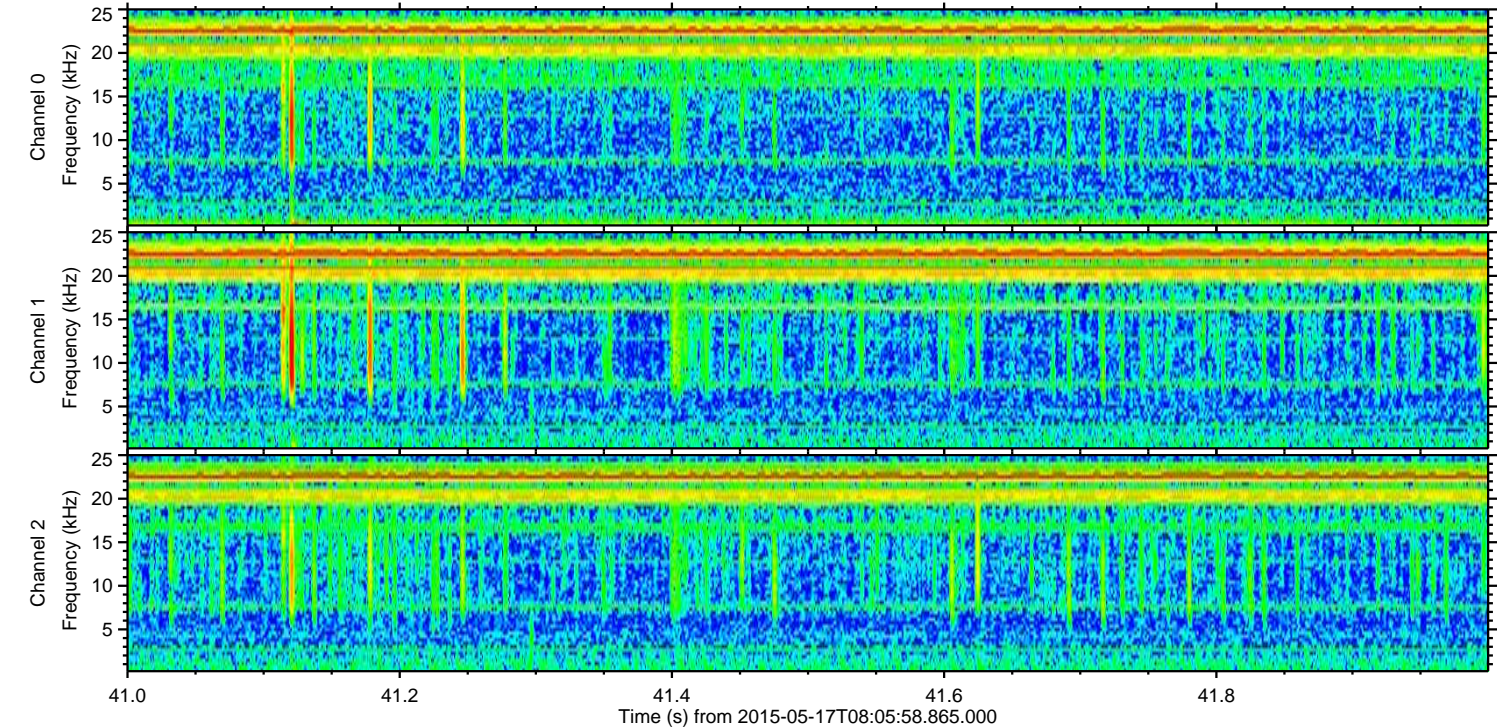
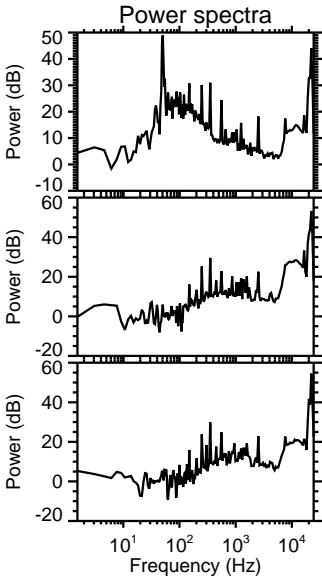
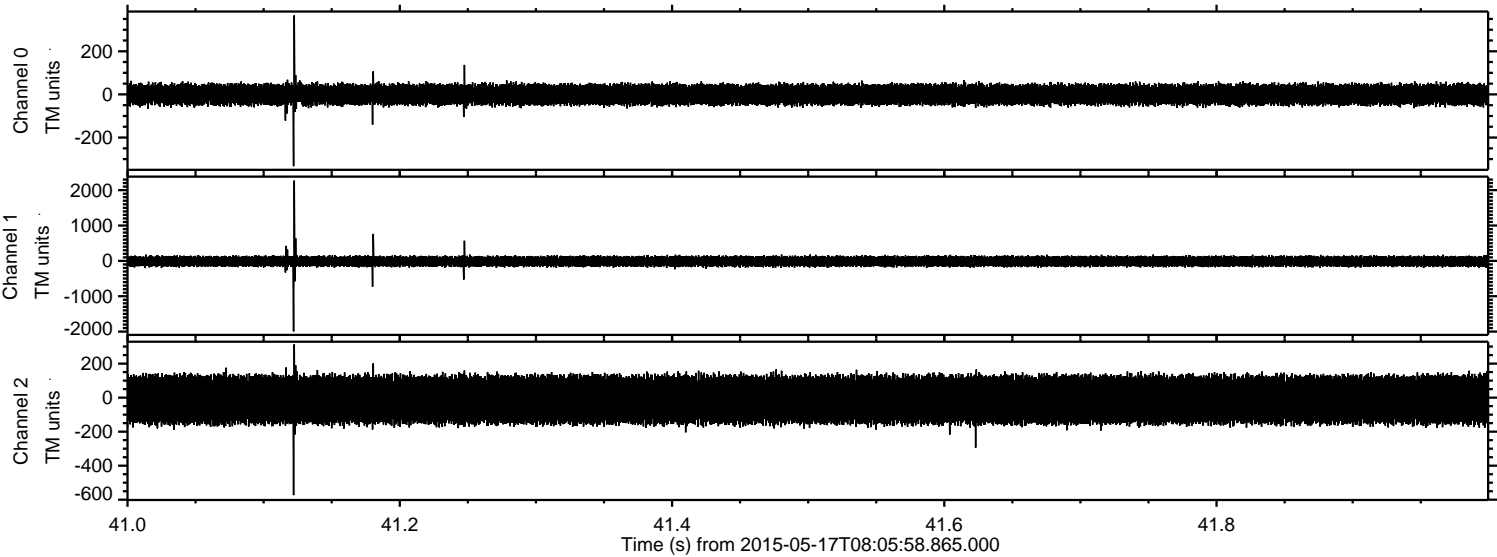


Channel 0
mn: -611
mx: 774
 μ : -0.8
 σ : 27.6

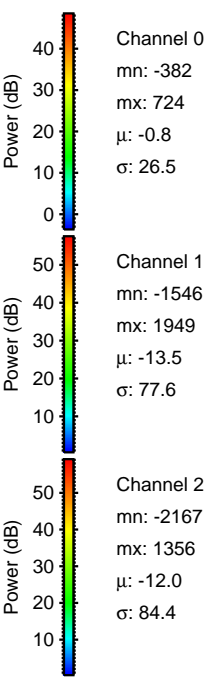
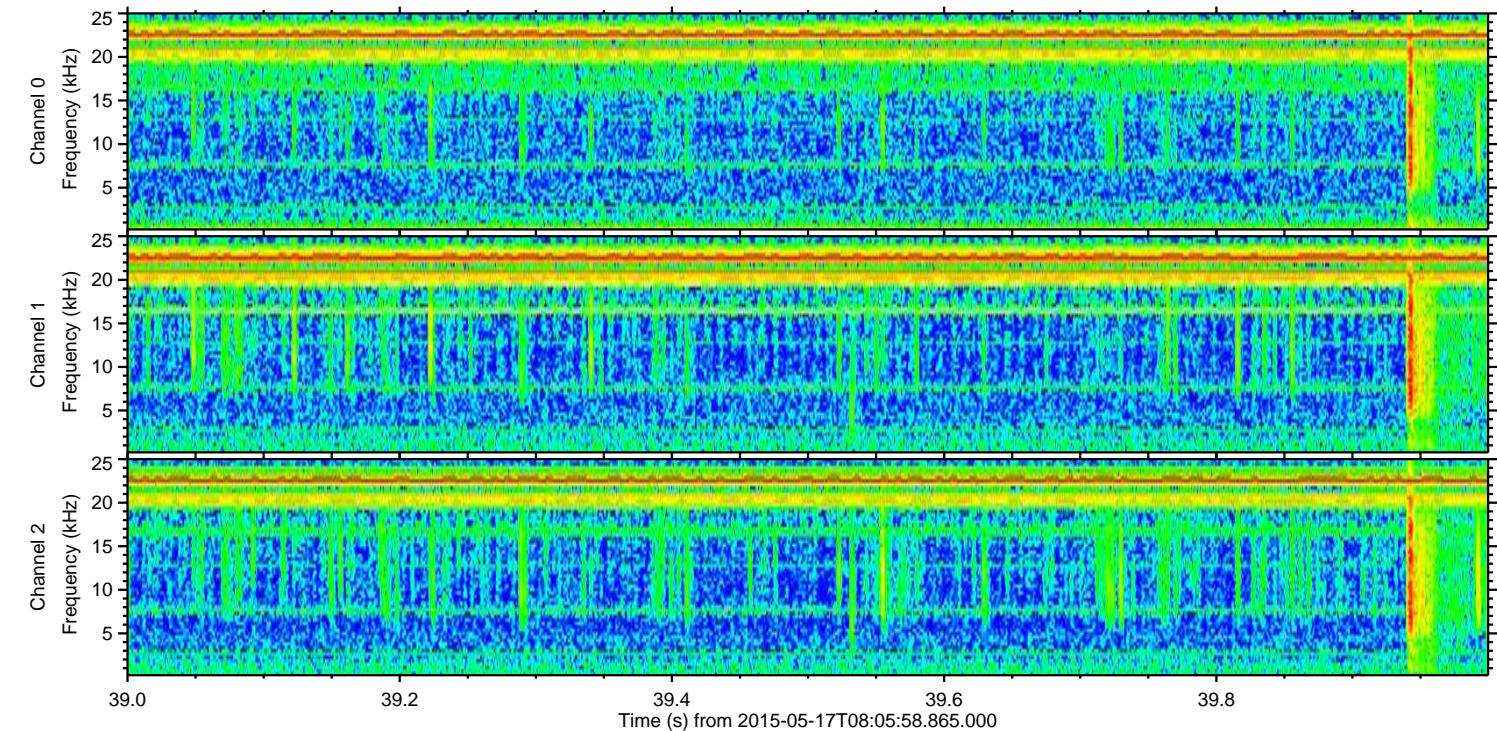
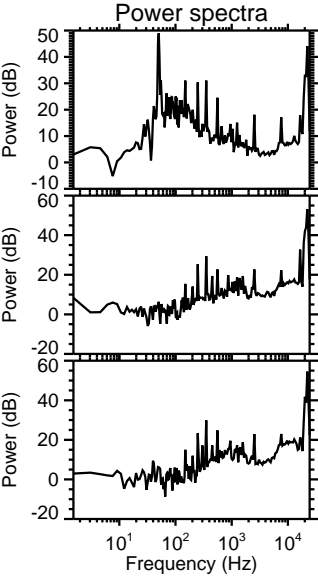
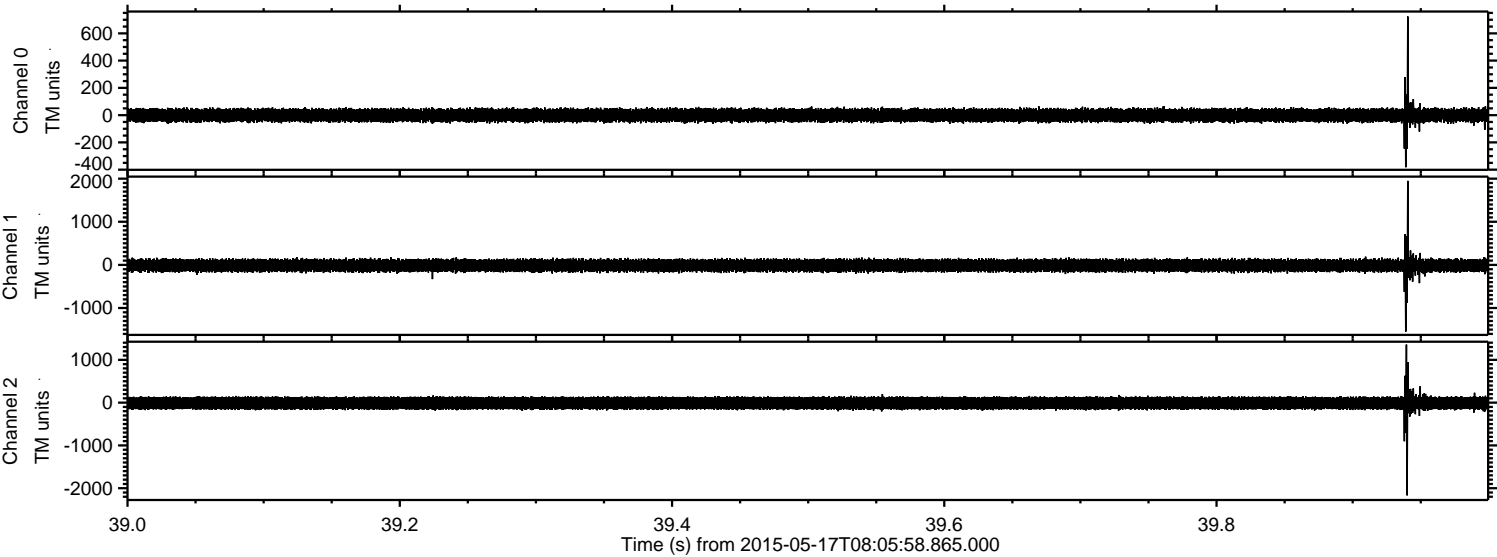
Channel 1
mn: -1746
mx: 2497
 μ : -13.5
 σ : 81.0

Channel 2
mn: -2530
mx: 1735
 μ : -12.0
 σ : 87.1

Processed Sun May 17 10:12:46 2015 by ELM ver.2012-10-06 from 001__elm20150517_080557__dat00.bin



Processed Sun May 17 10:12:47 2015 by ELM ver.2012-10-06 from 001__elm20150517_080557__dat00.bin



Processed Sun May 17 10:12:49 2015 by ELM ver.2012-10-06 from 001__elm20150517_080557__dat00.bin

