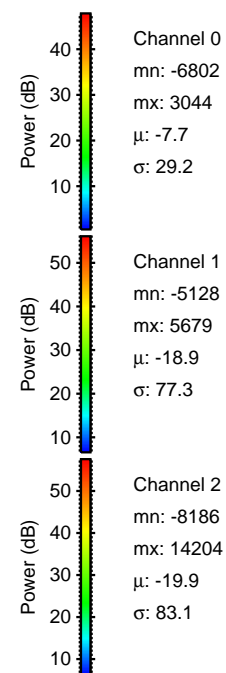
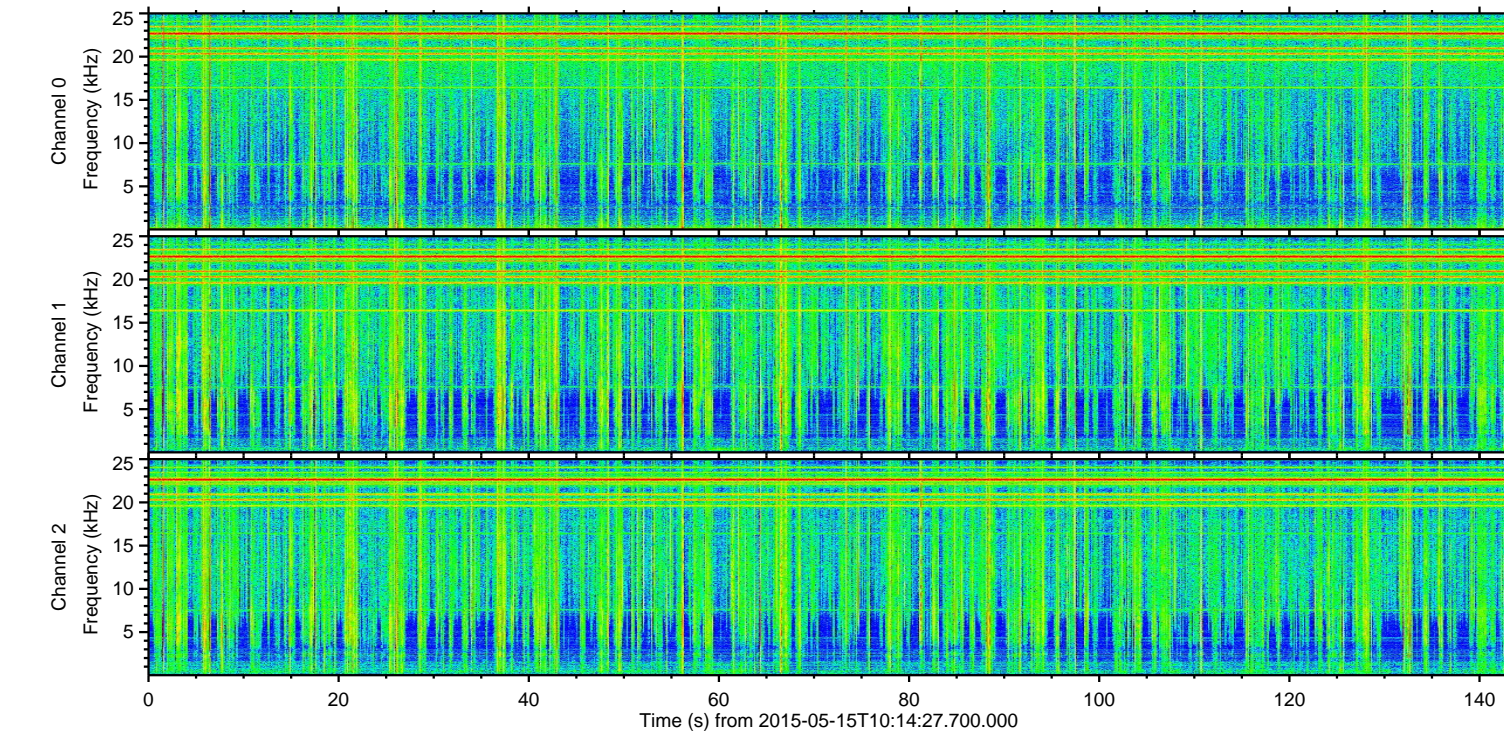
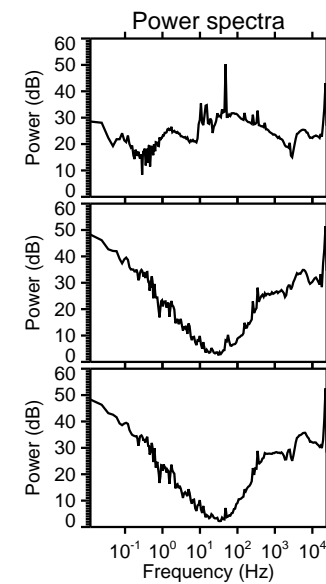
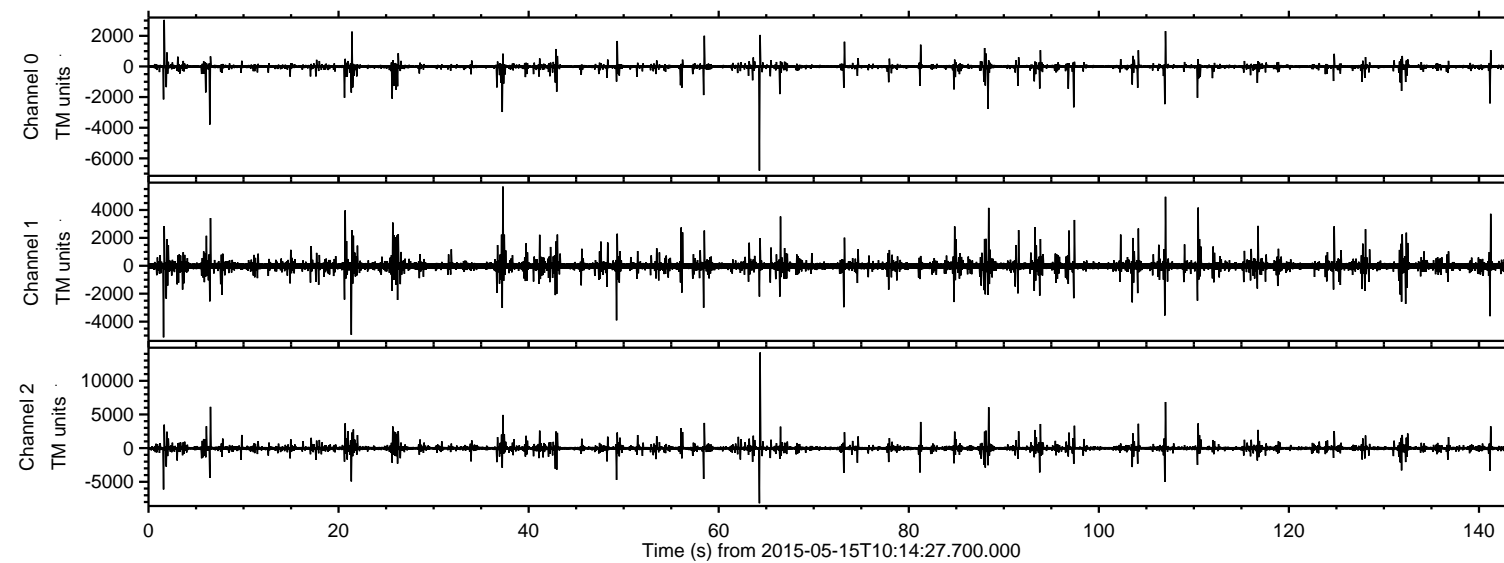
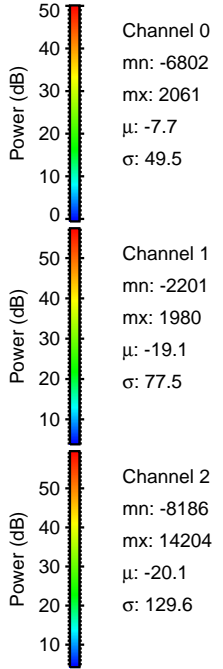
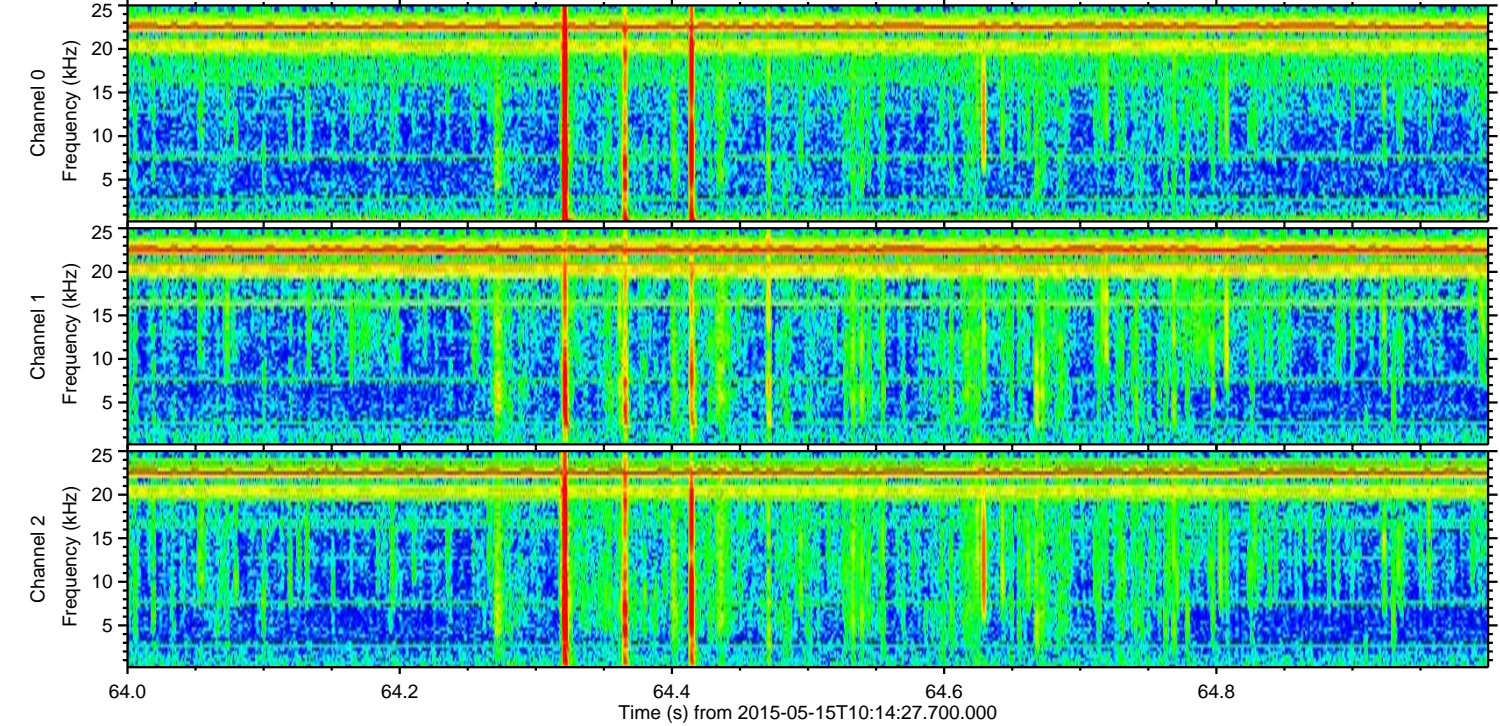
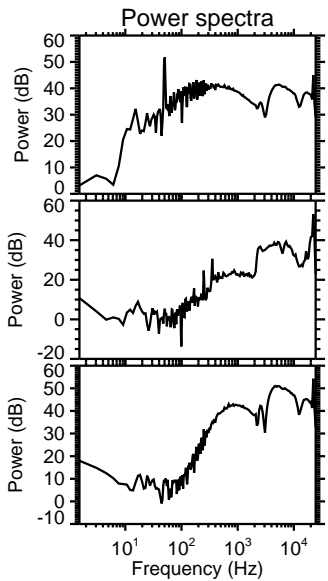
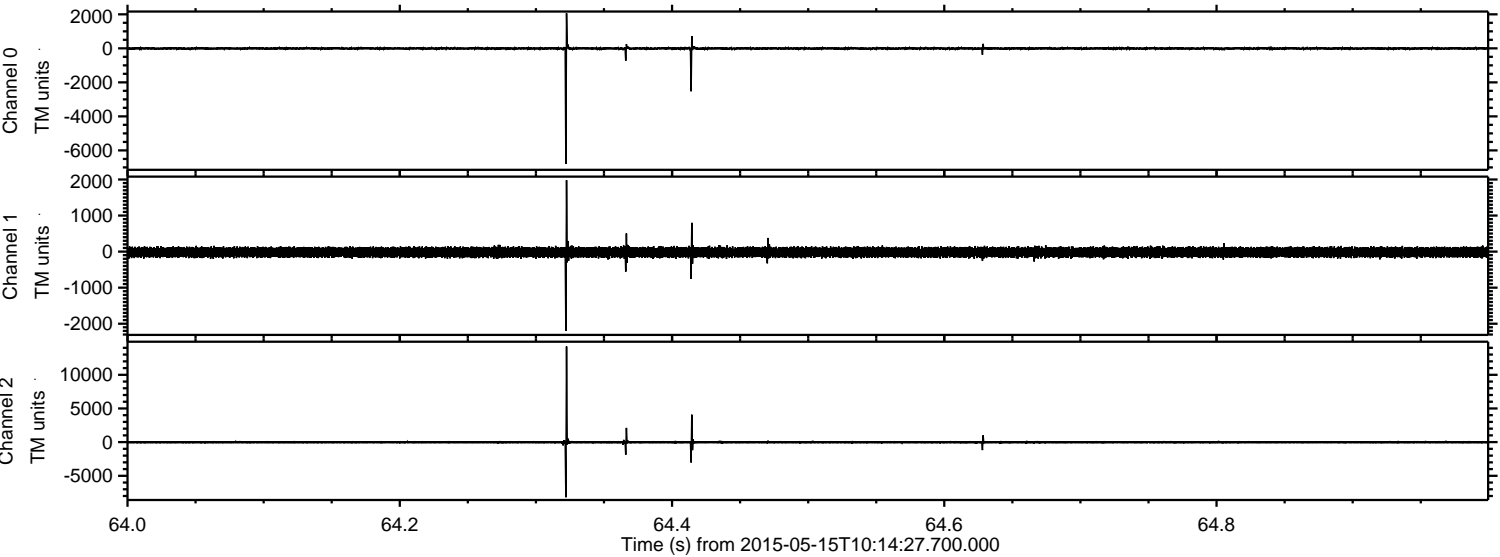


ELMAVAN 3D WAVEFORMS (Measured data sampled at 50 kHz) 49714 packets of 144 samples from 2015-05-15T10:14:27.700.000.

Processed Fri May 15 12:20:57 2015 by ELM ver.2012-10-06 from 001__elm20150515_101426__dat00.bin

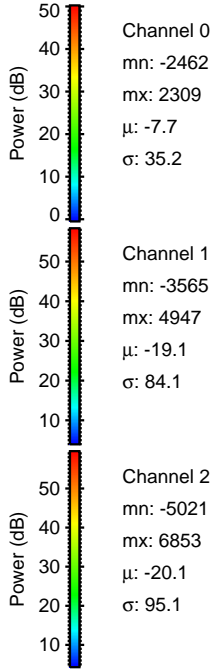
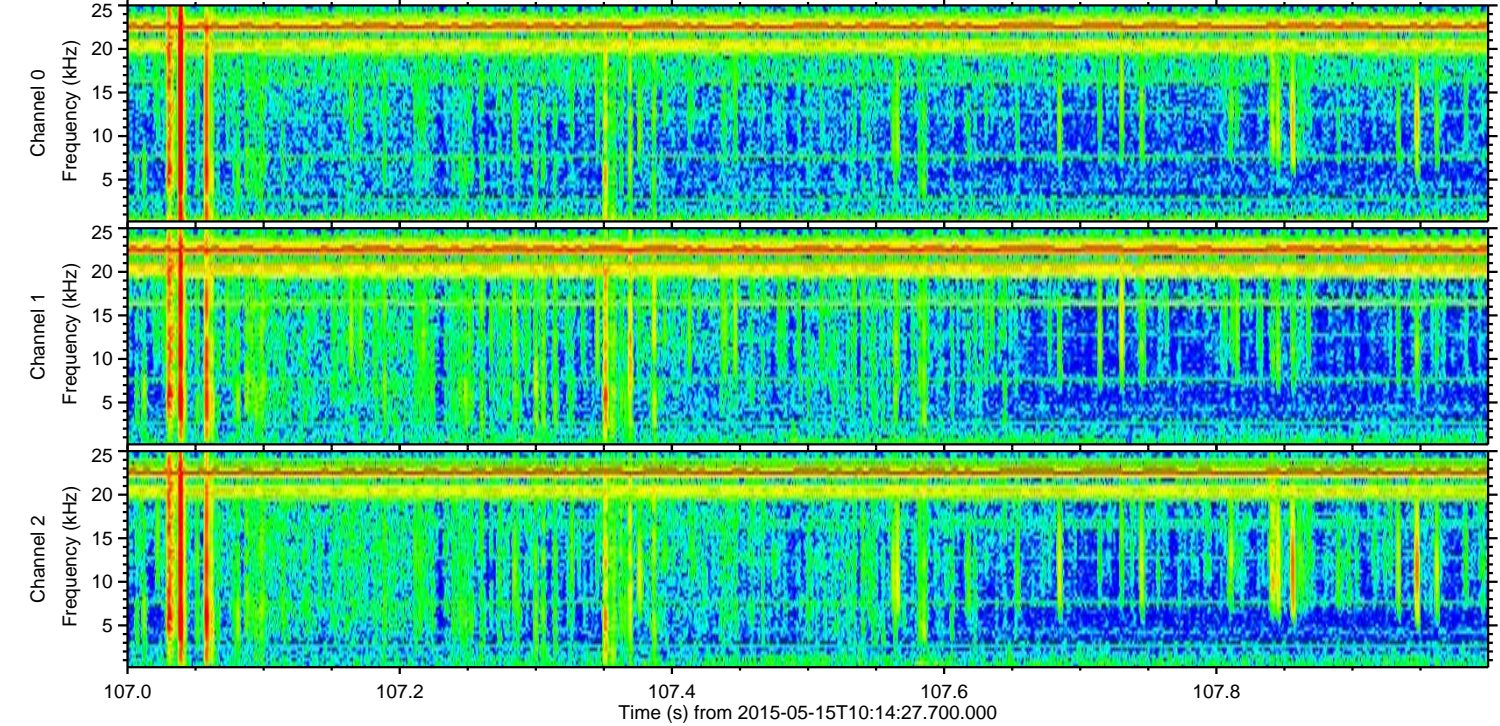
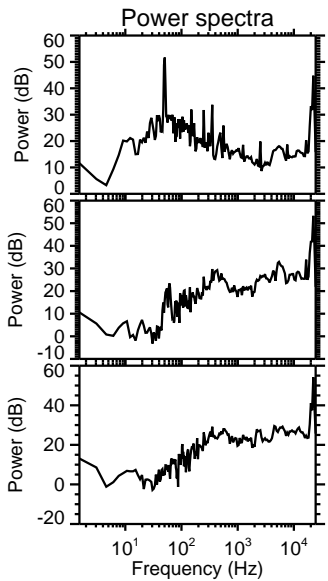
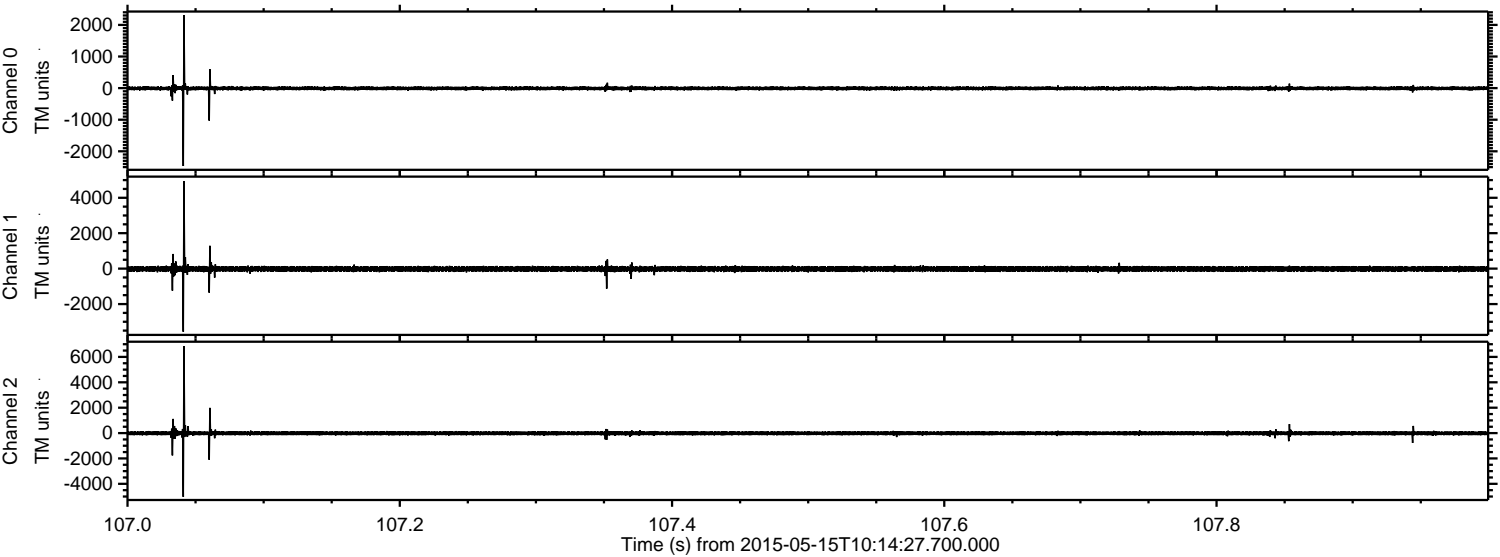


Processed Fri May 15 12:21:09 2015 by ELM ver.2012-10-06 from 001__elm20150515_101426__dat00.bin



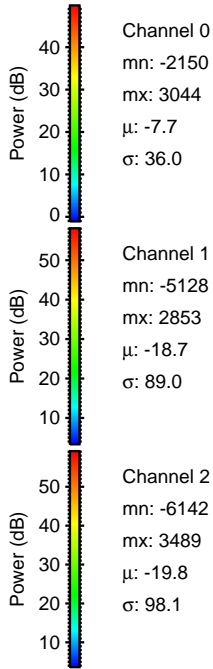
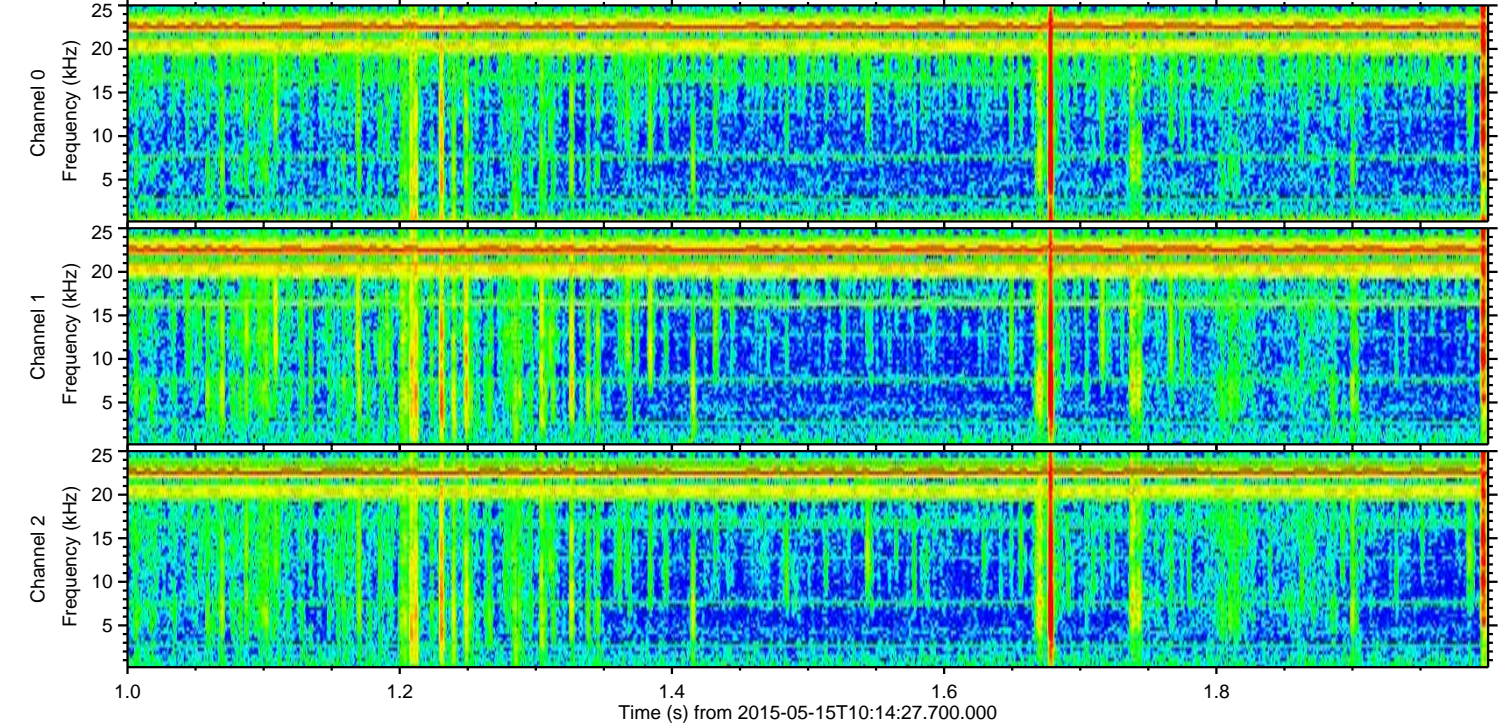
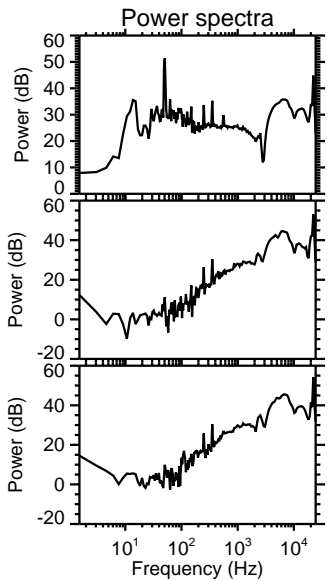
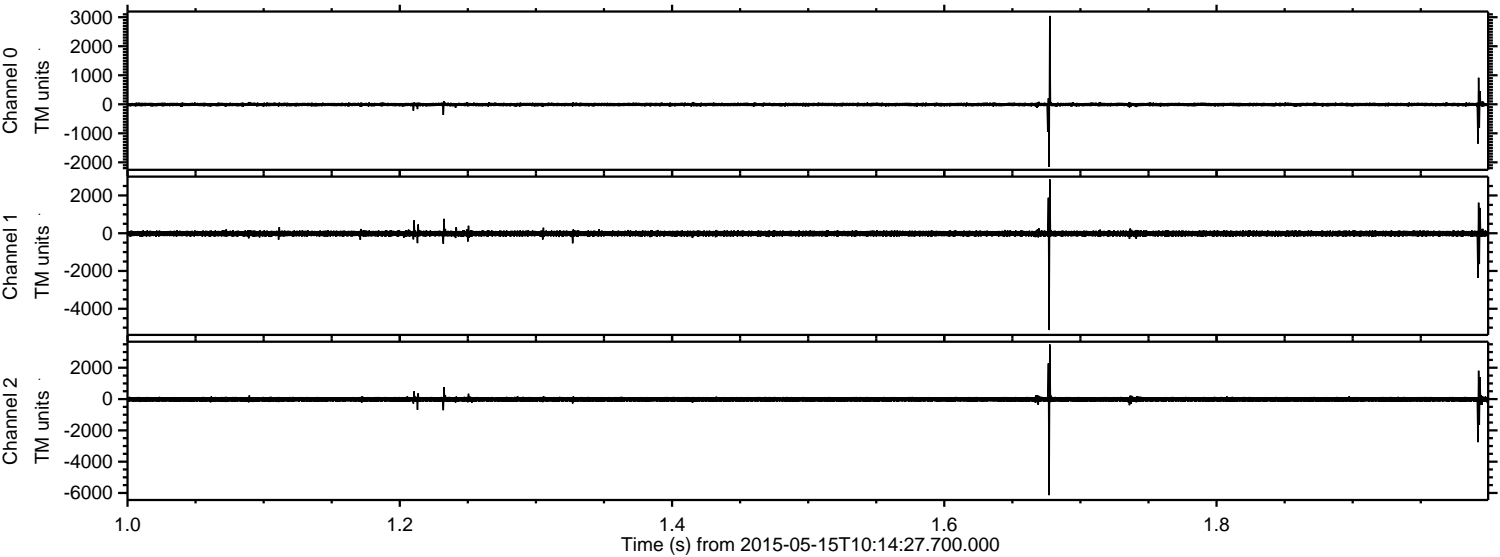
ELMAVAN 3D WAVEFORMS (Measured data sampled at 50 kHz) 49714 packets of 144 samples from 2015-05-15T10:14:27.700.000. Part 108/144

Processed Fri May 15 12:21:10 2015 by ELM ver.2012-10-06 from 001__elm20150515_101426__dat00.bin

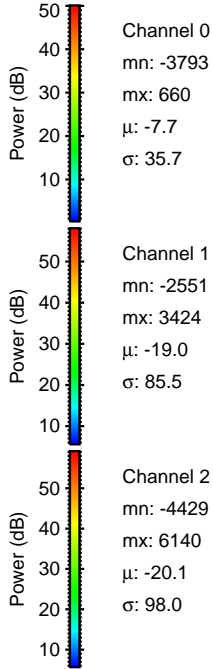
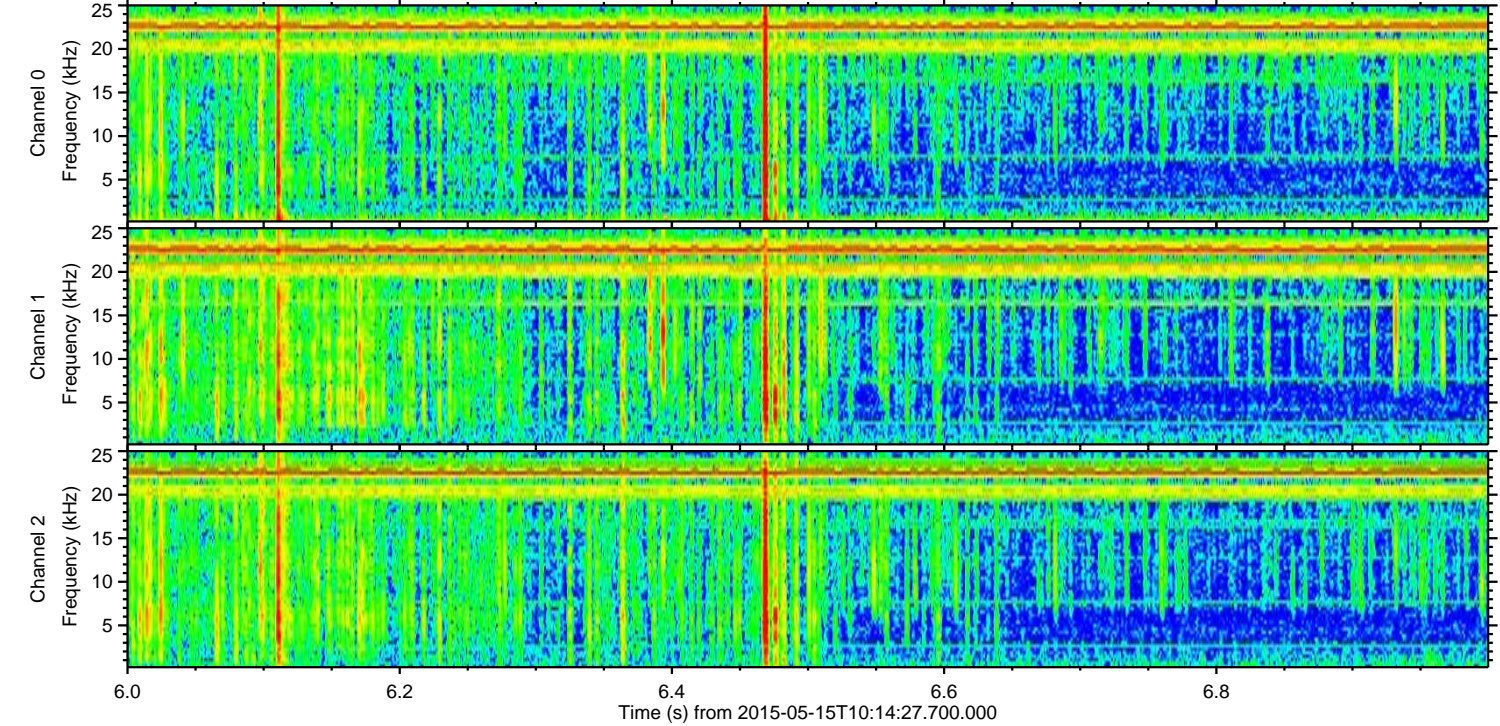
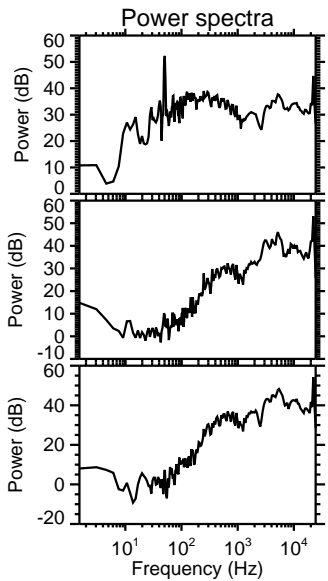
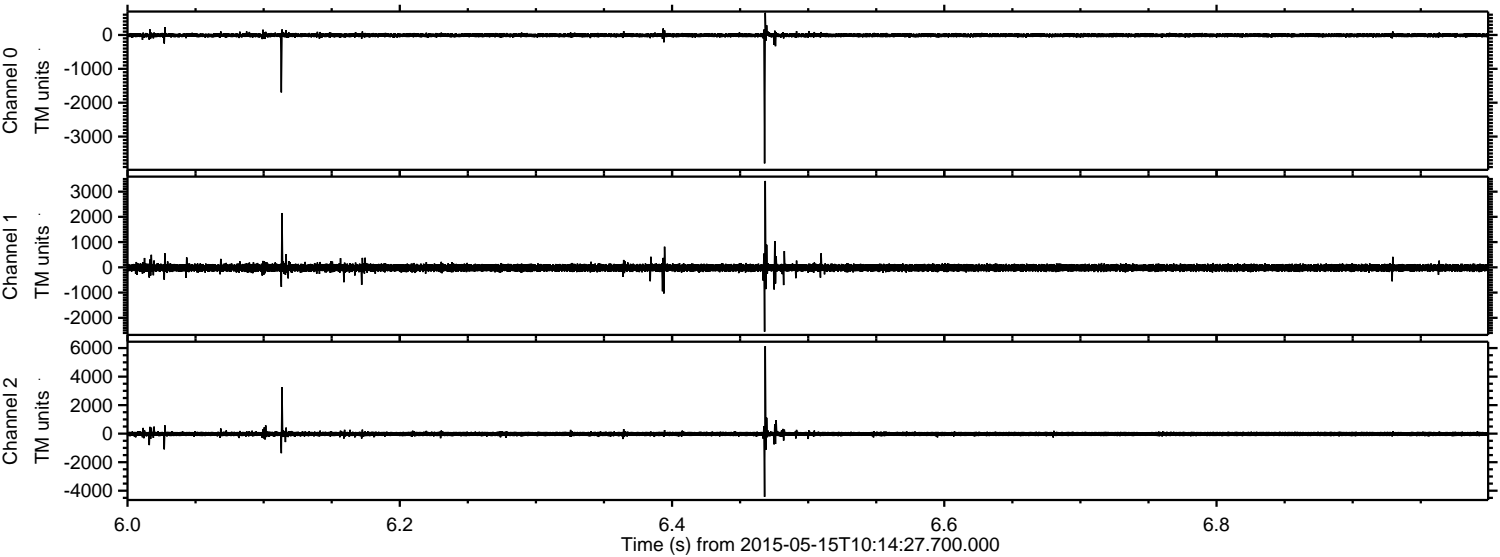


ELMAVAN 3D WAVEFORMS (Measured data sampled at 50 kHz) 49714 packets of 144 samples from 2015-05-15T10:14:27.700.000. Part 2/144

Processed Fri May 15 12:21:11 2015 by ELM ver.2012-10-06 from 001__elm20150515_101426__dat00.bin



Processed Fri May 15 12:21:12 2015 by ELM ver.2012-10-06 from 001__elm20150515_101426__dat00.bin

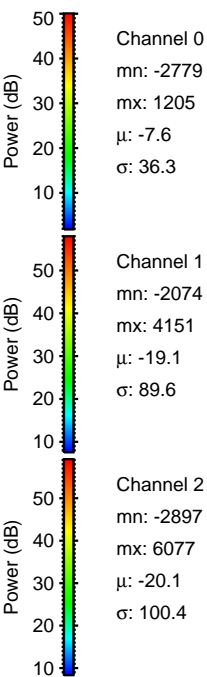
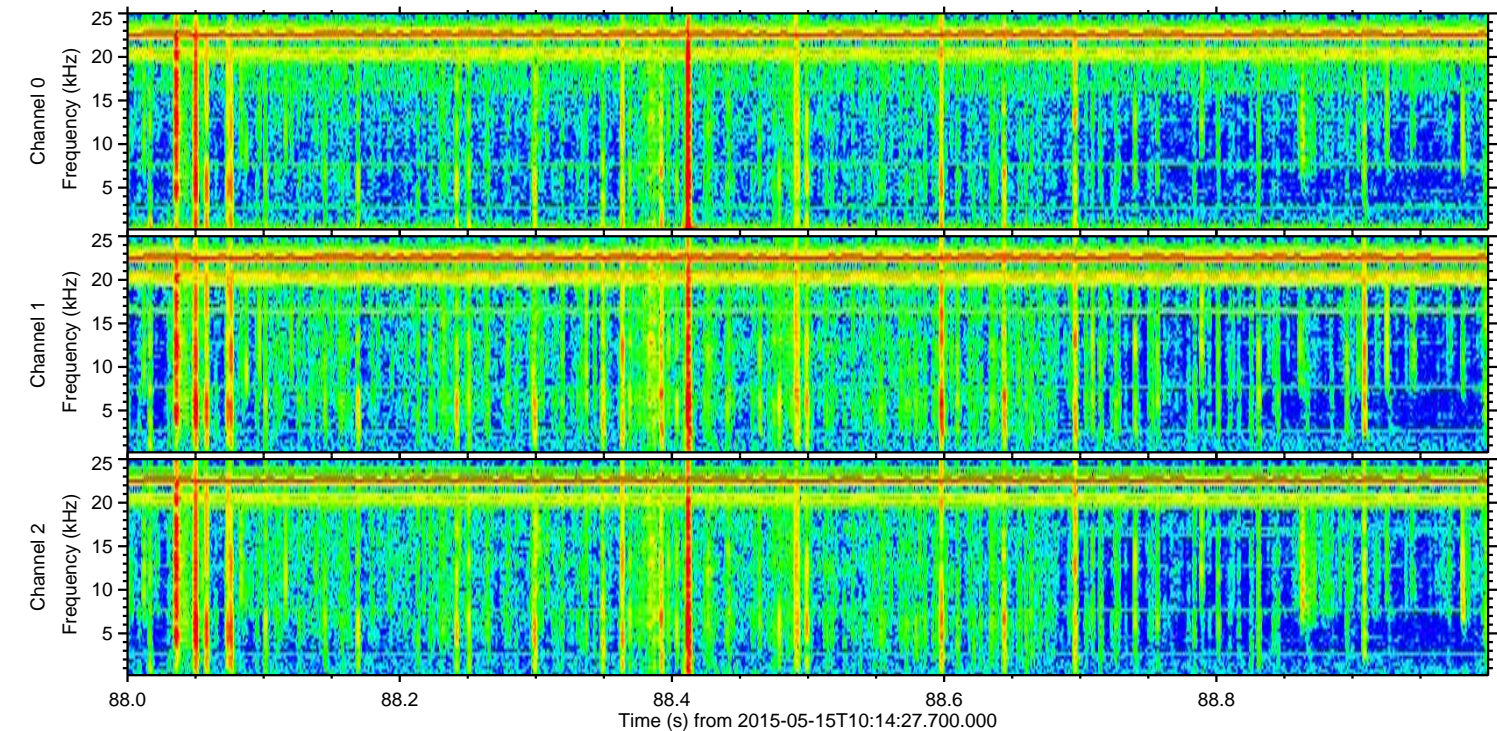
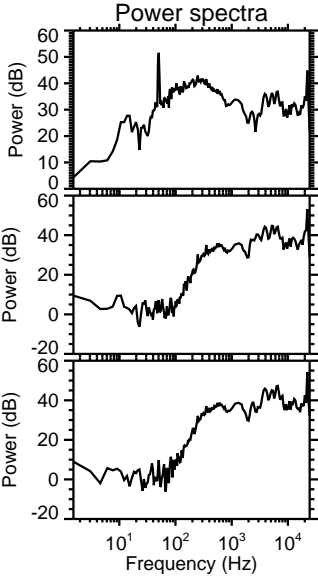
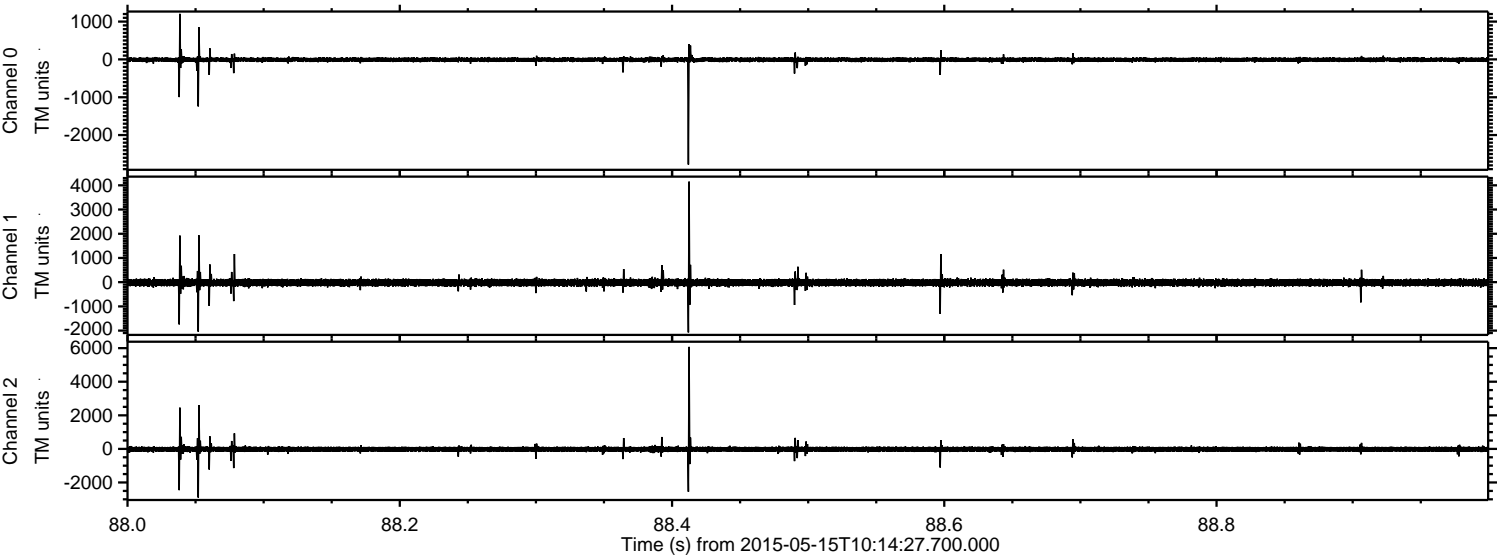


Channel 0
mn: -3793
mx: 660
 μ : -7.7
 σ : 35.7

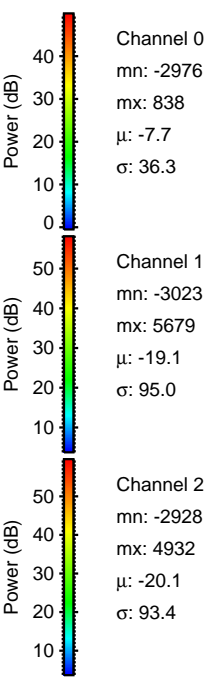
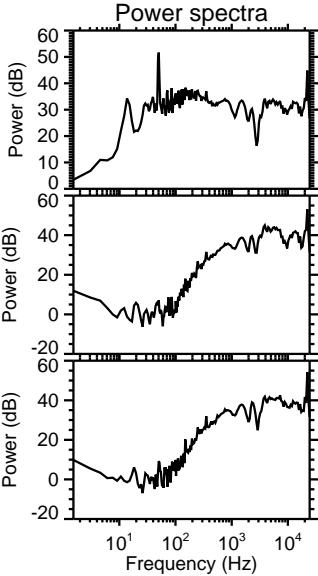
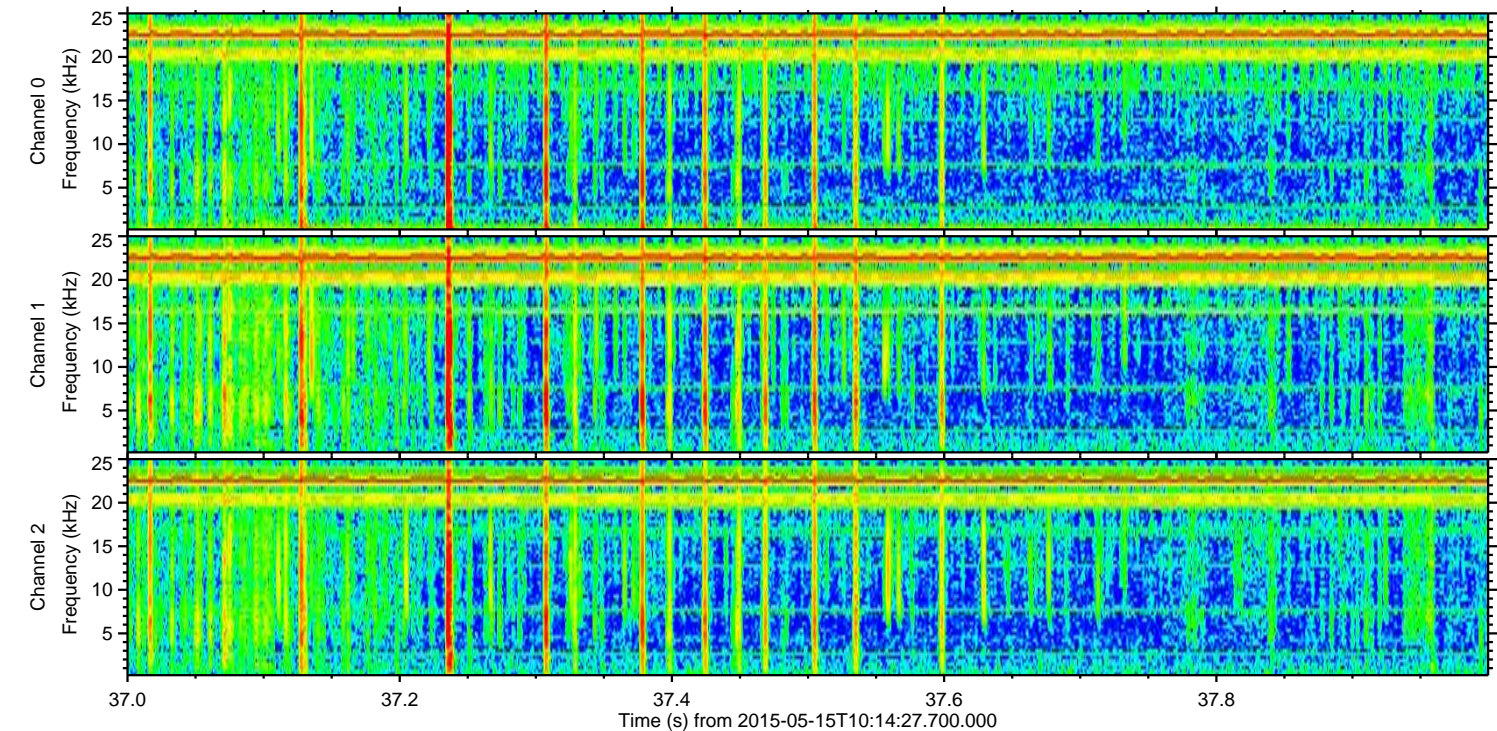
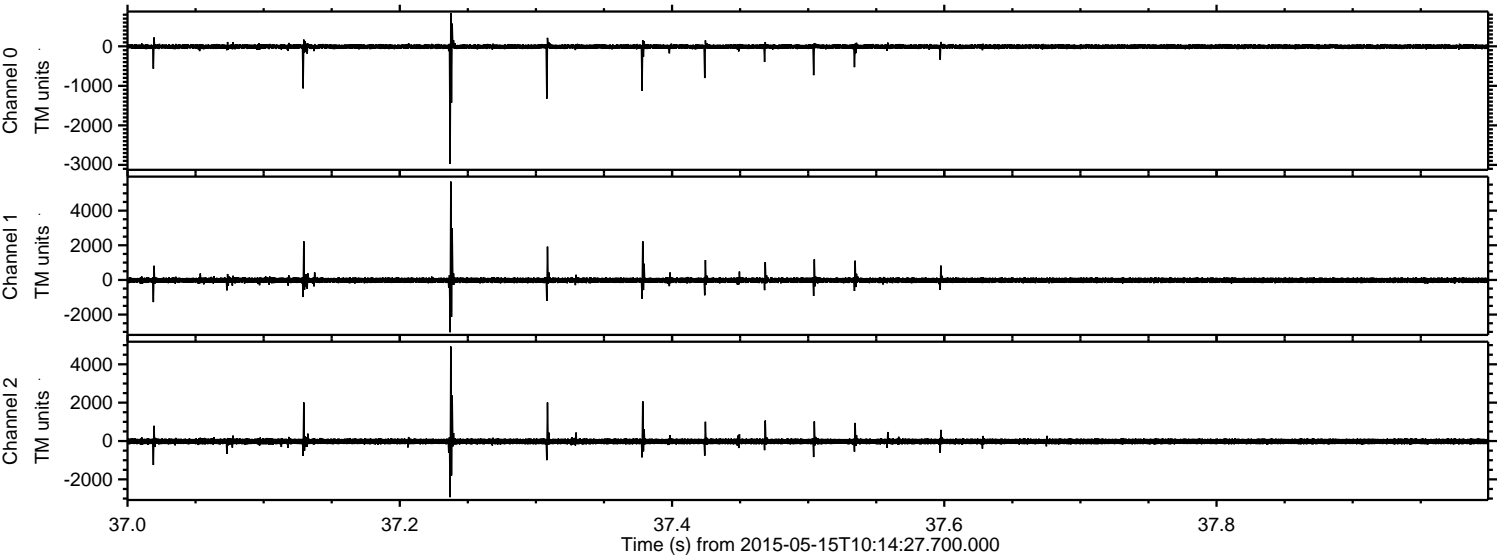
Channel 1
mn: -2551
mx: 3424
 μ : -19.0
 σ : 85.5

Channel 2
mn: -4429
mx: 6140
 μ : -20.1
 σ : 98.0

Processed Fri May 15 12:21:13 2015 by ELM ver.2012-10-06 from 001__elm20150515_101426__dat00.bin



Processed Fri May 15 12:21:14 2015 by ELM ver.2012-10-06 from 001__elm20150515_101426__dat00.bin

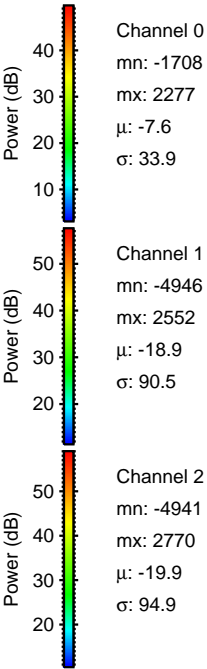
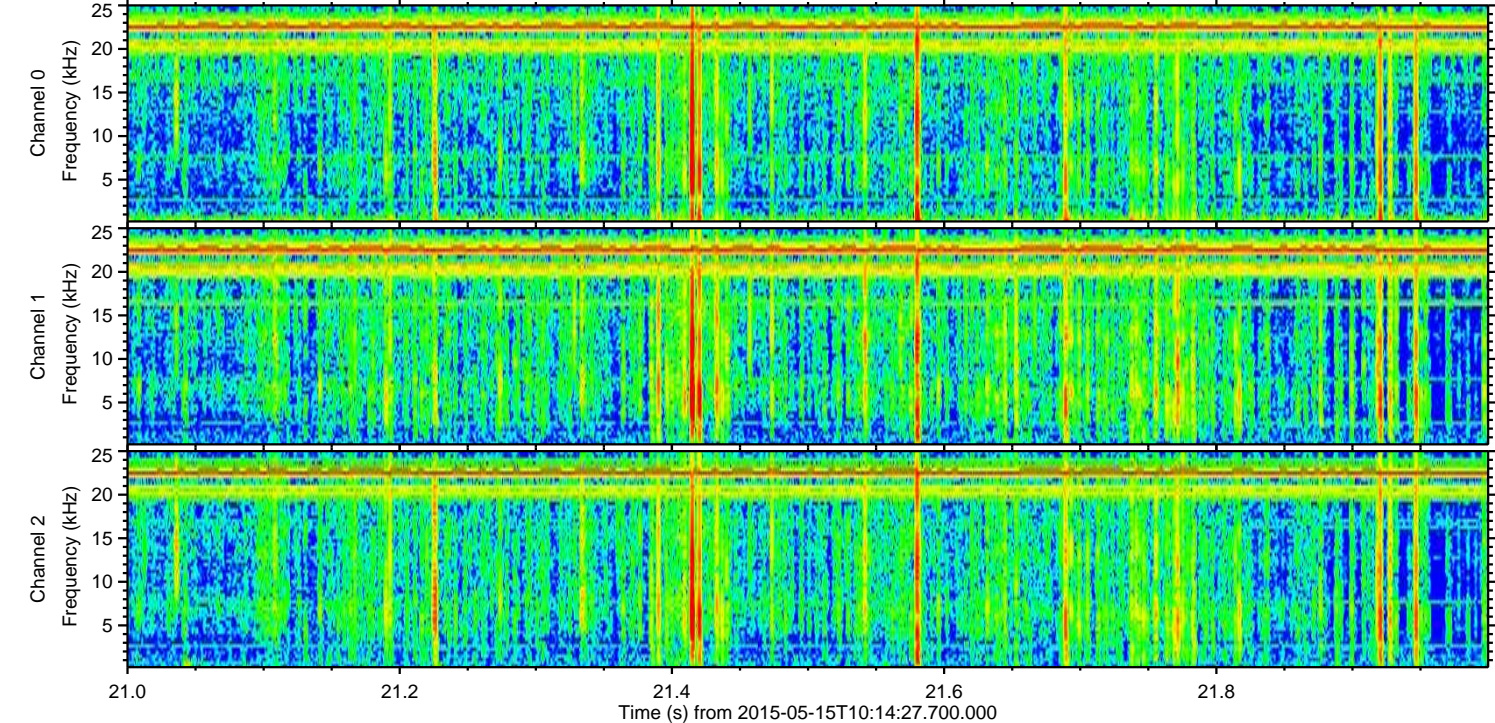
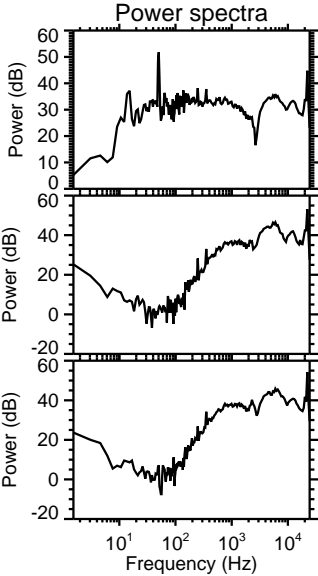
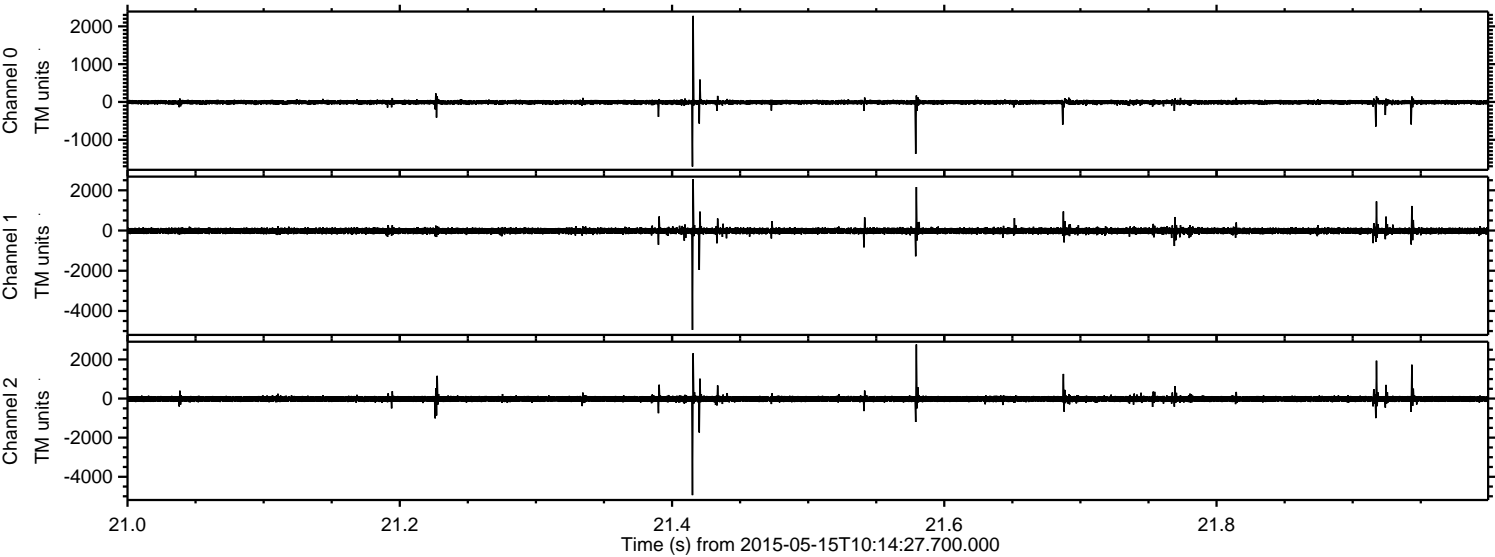


Channel 0
mn: -2976
mx: 838
 μ : -7.7
 σ : 36.3

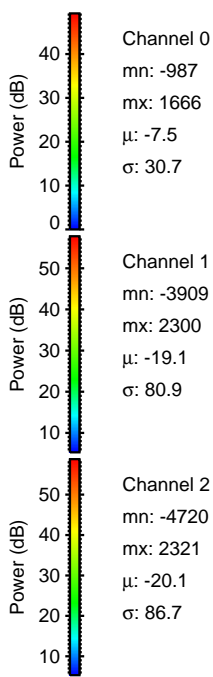
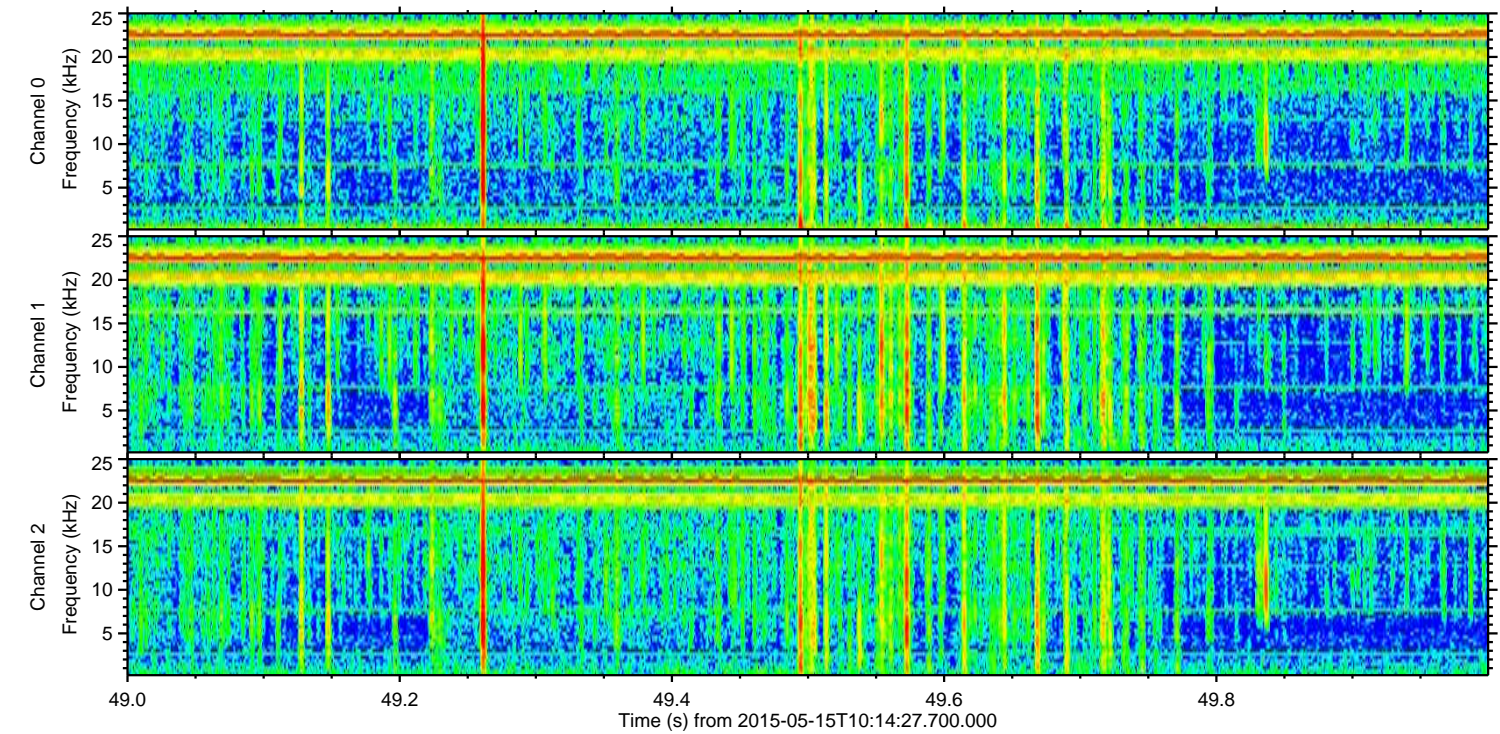
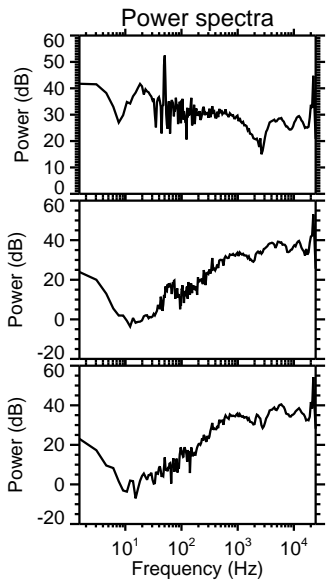
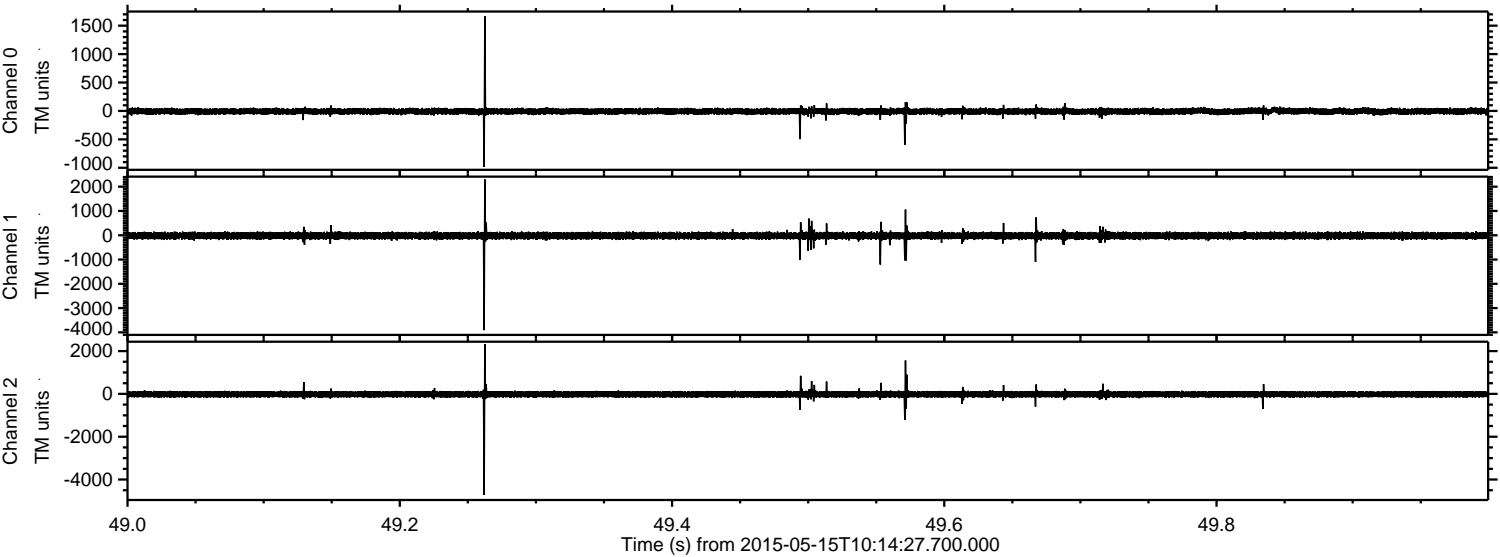
Channel 1
mn: -3023
mx: 5679
 μ : -19.1
 σ : 95.0

Channel 2
mn: -2928
mx: 4932
 μ : -20.1
 σ : 93.4

Processed Fri May 15 12:21:14 2015 by ELM ver.2012-10-06 from 001__elm20150515_101426__dat00.bin



Processed Fri May 15 12:21:15 2015 by ELM ver.2012-10-06 from 001__elm20150515_101426__dat00.bin



Channel 0
mn: -987
mx: 1666
 μ : -7.5
 σ : 30.7

Channel 1
mn: -3909
mx: 2300
 μ : -19.1
 σ : 80.9

Channel 2
mn: -4720
mx: 2321
 μ : -20.1
 σ : 86.7

Processed Fri May 15 12:21:16 2015 by ELM ver.2012-10-06 from 001__elm20150515_101426__dat00.bin

