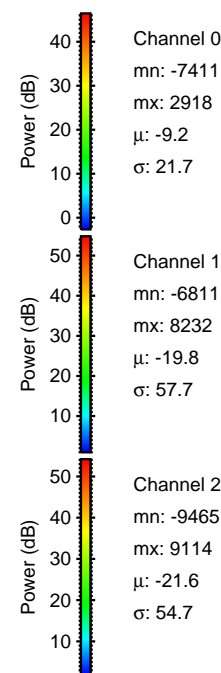
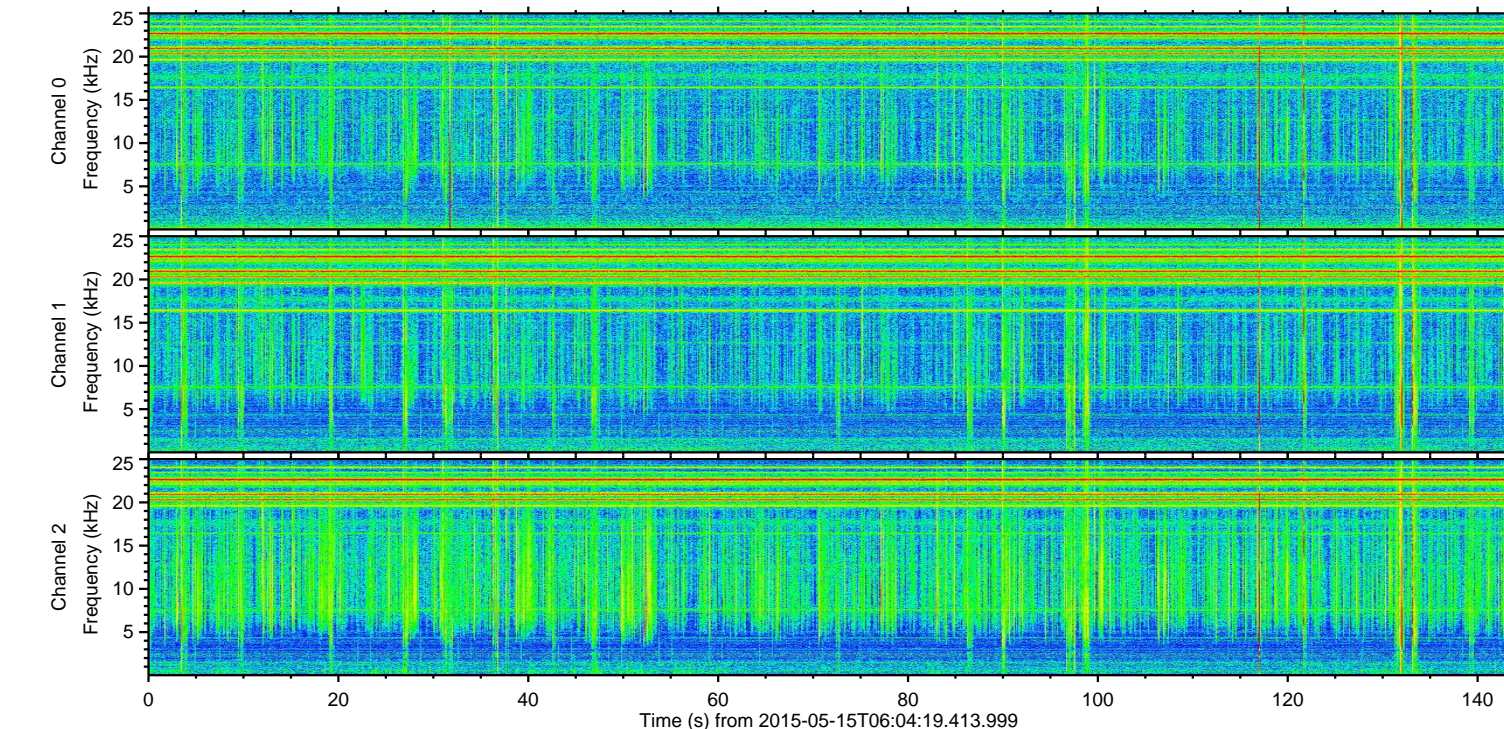
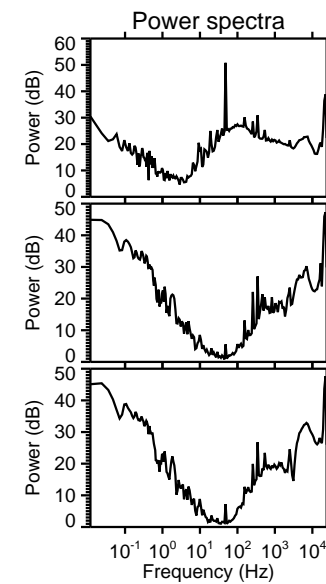
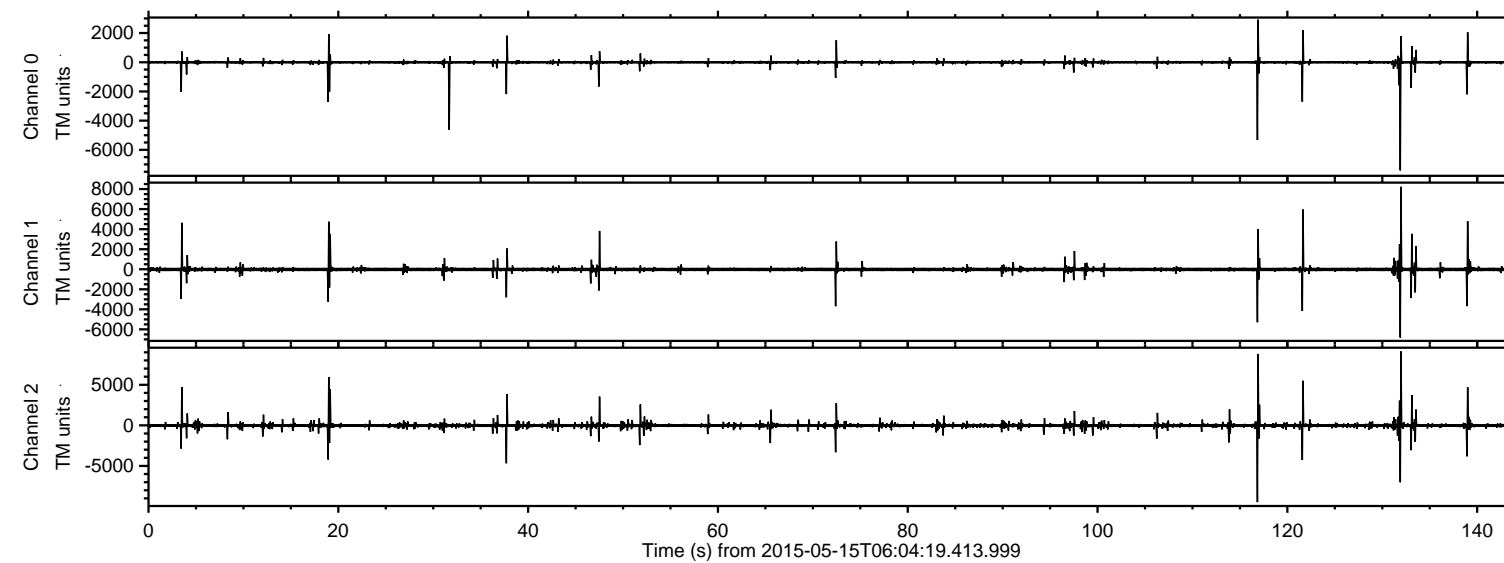


ELMAVAN 3D WAVEFORMS (Measured data sampled at 50 kHz) 49780 packets of 144 samples from 2015-05-15T06:04:19.413.999.

Processed Fri May 15 08:11:22 2015 by ELM ver.2012-10-06 from 001__elm20150515_060418__dat00.bin



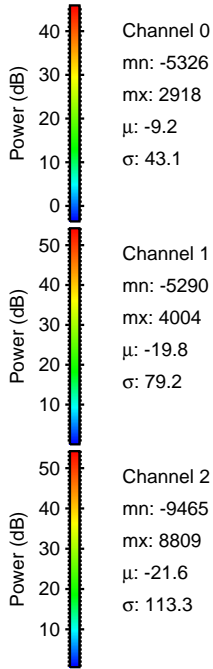
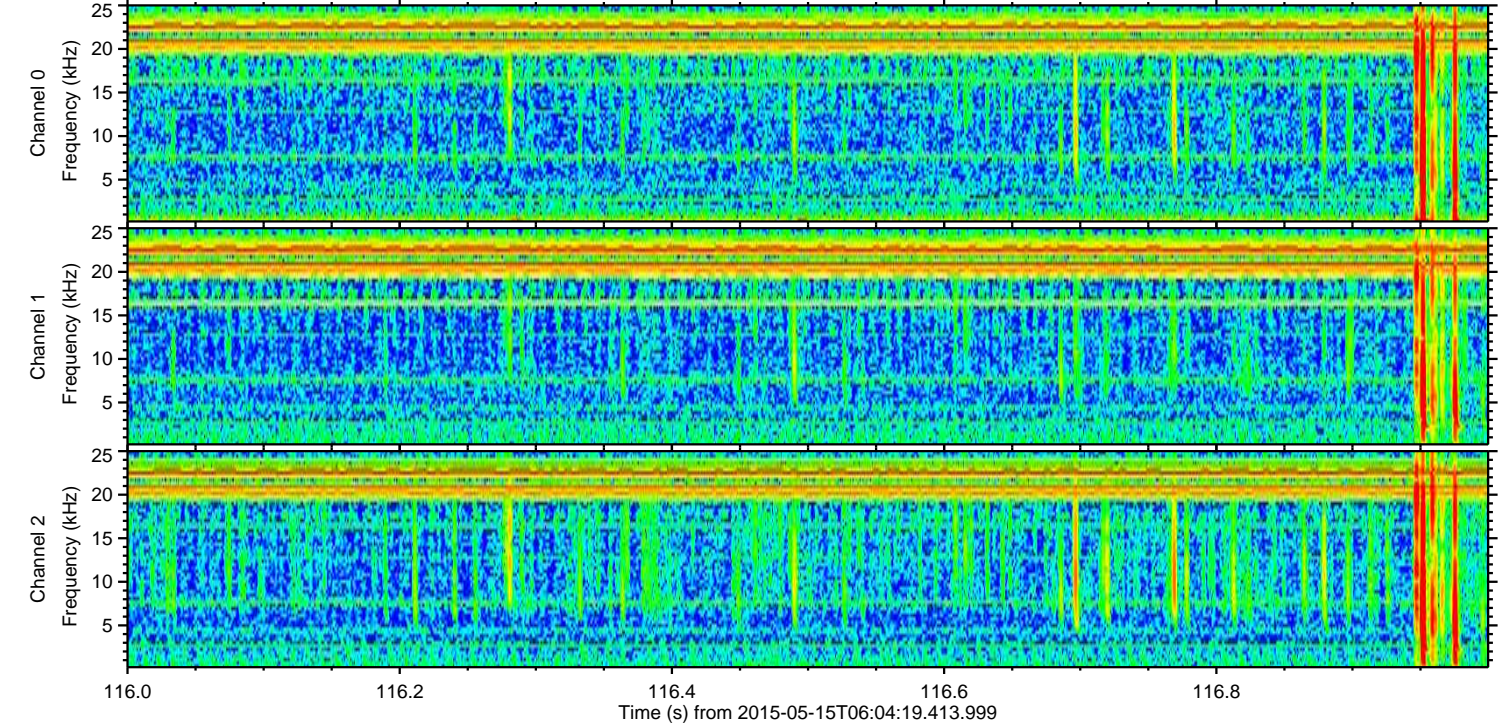
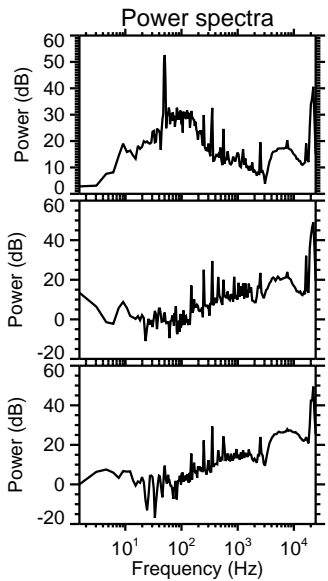
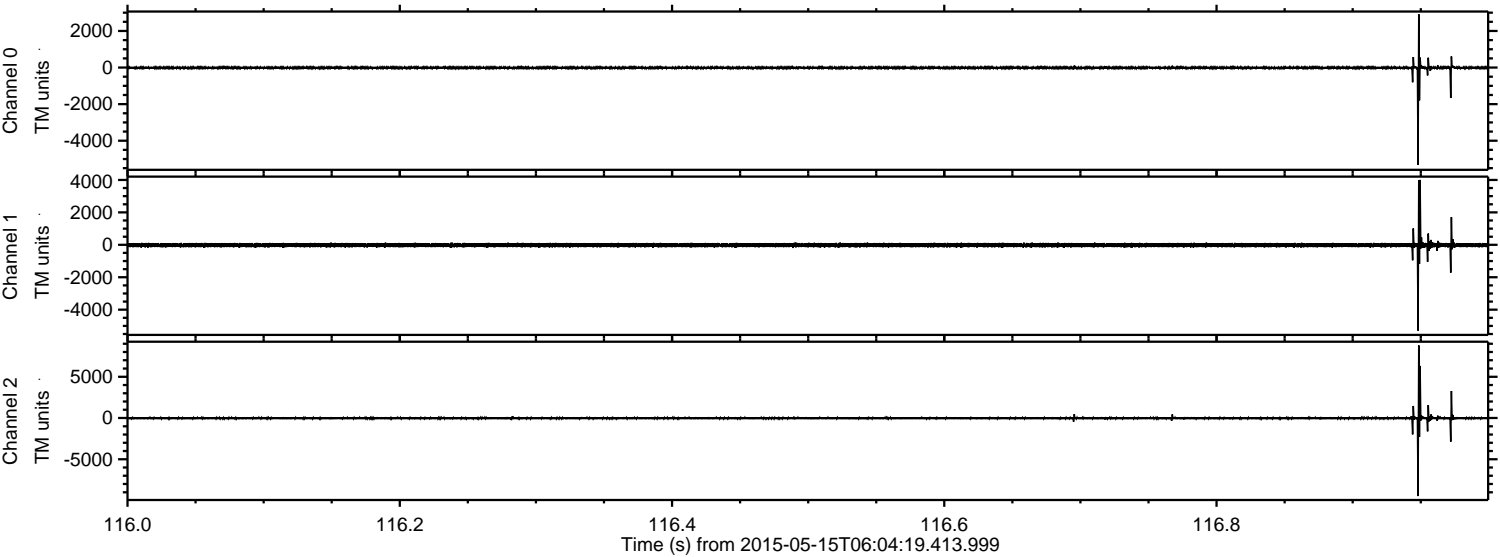
Channel 0
mn: -7411
mx: 2918
 μ : -9.2
 σ : 21.7

Channel 1
mn: -6811
mx: 8232
 μ : -19.8
 σ : 57.7

Channel 2
mn: -9465
mx: 9114
 μ : -21.6
 σ : 54.7

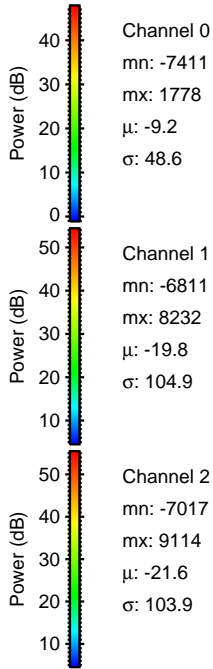
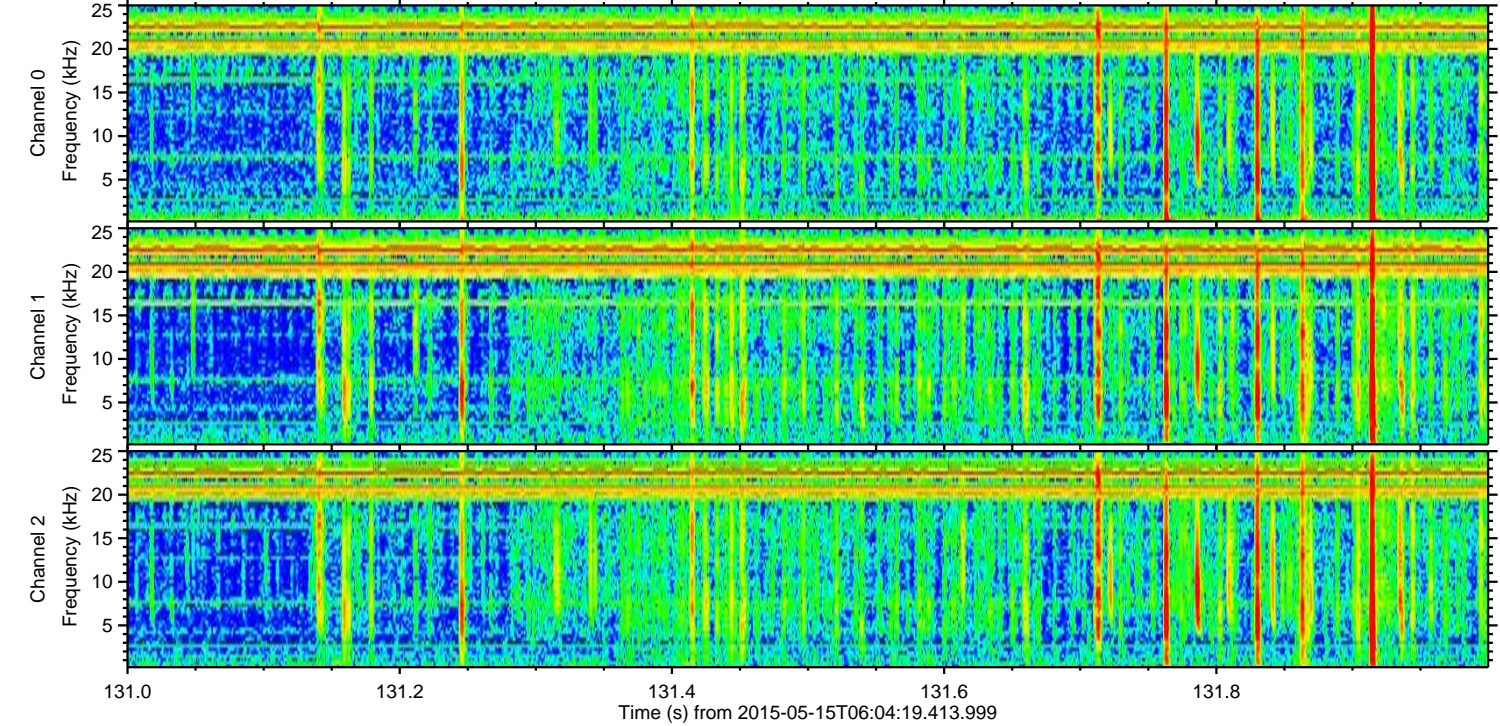
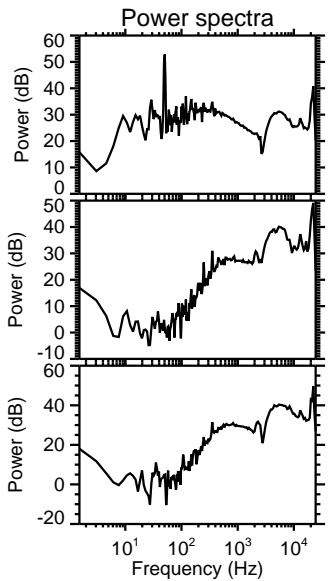
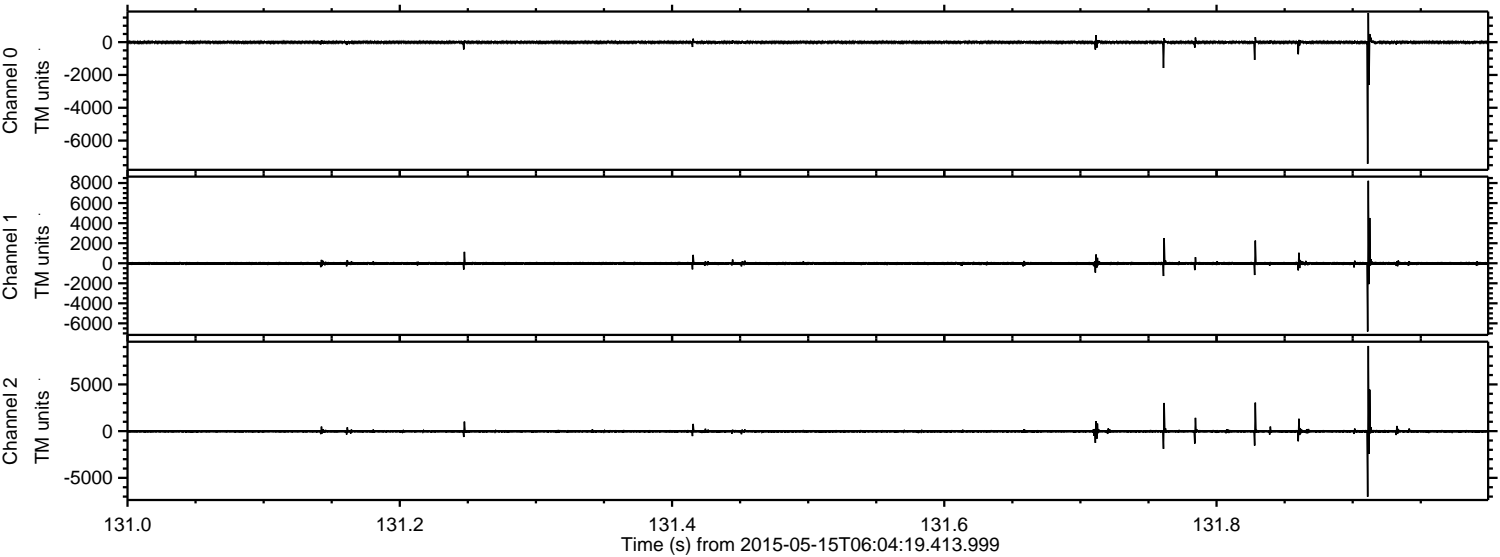
ELMAVAN 3D WAVEFORMS (Measured data sampled at 50 kHz) 49780 packets of 144 samples from 2015-05-15T06:04:19.413.999. Part 117/144

Processed Fri May 15 08:11:33 2015 by ELM ver.2012-10-06 from 001__elm20150515_060418__dat00.bin



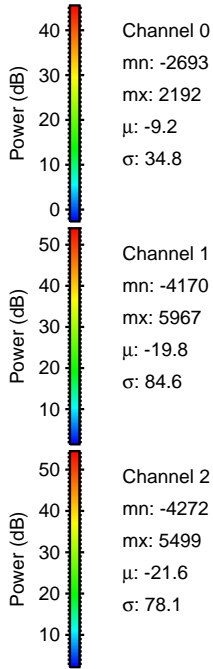
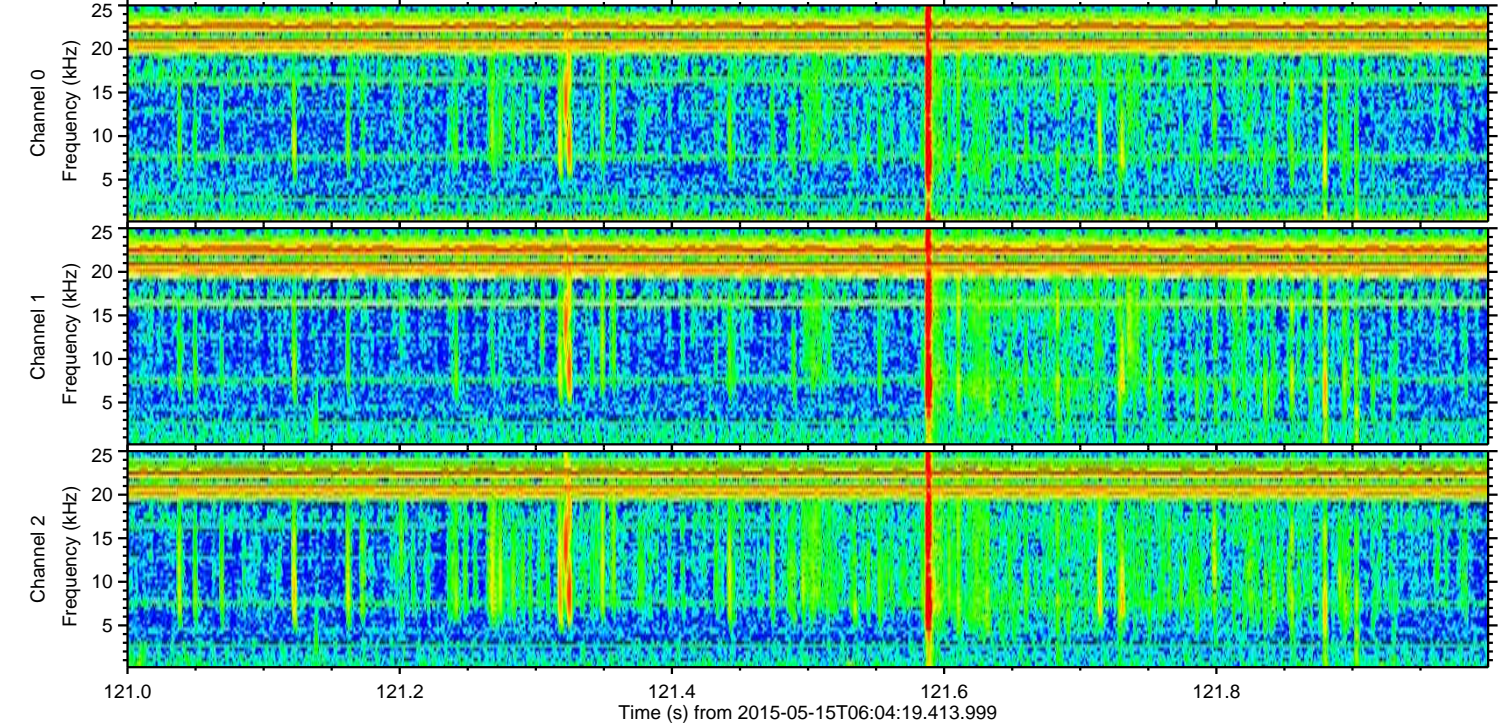
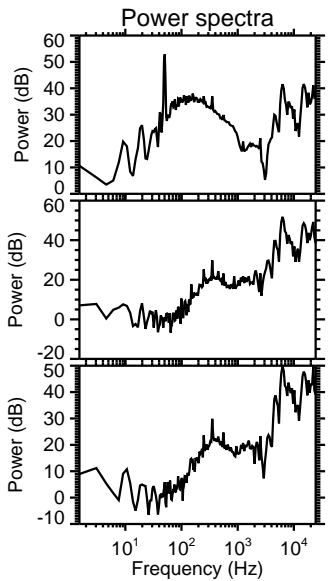
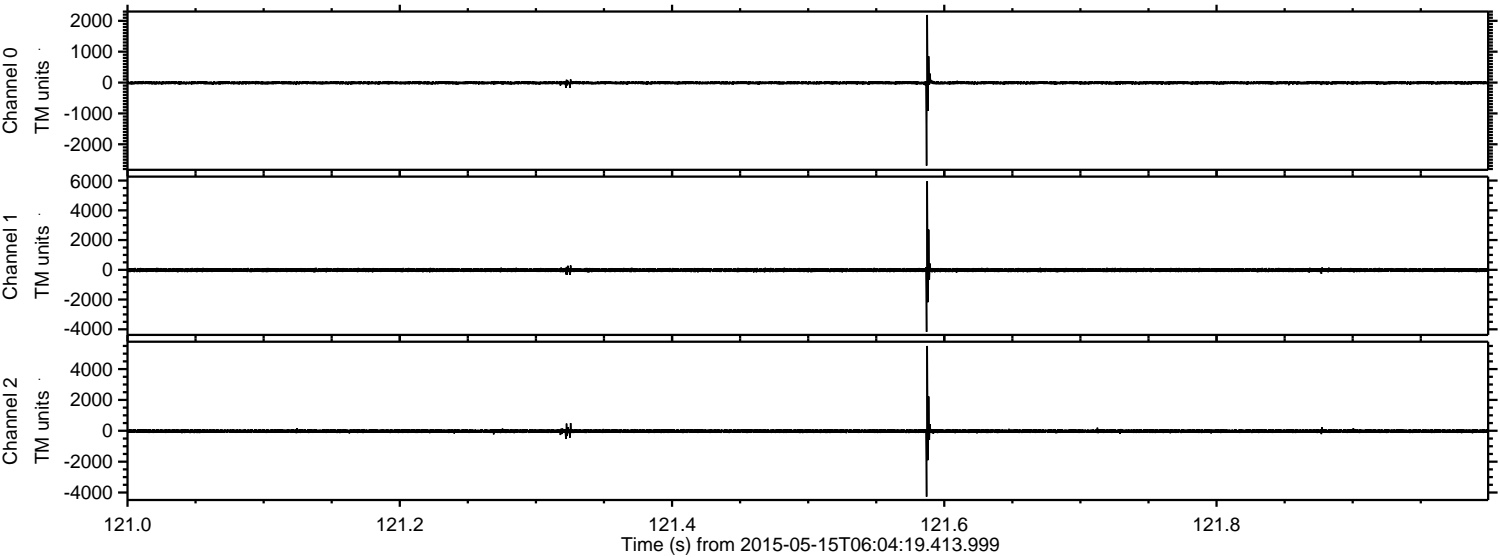
ELMAVAN 3D WAVEFORMS (Measured data sampled at 50 kHz) 49780 packets of 144 samples from 2015-05-15T06:04:19.413.999. Part 132/144

Processed Fri May 15 08:11:34 2015 by ELM ver.2012-10-06 from 001__elm20150515_060418__dat00.bin

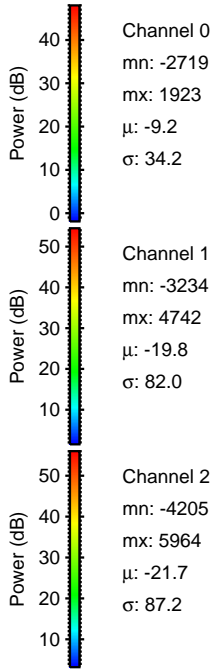
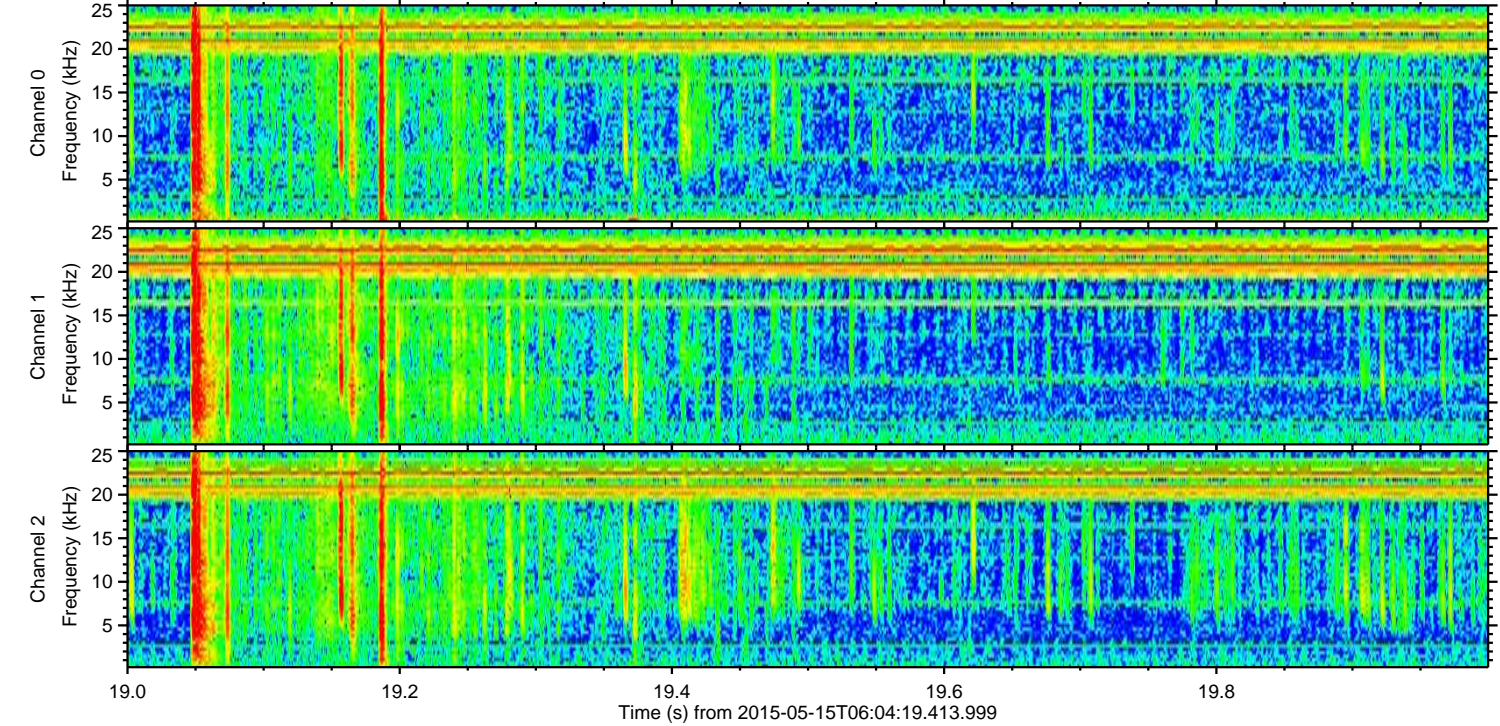
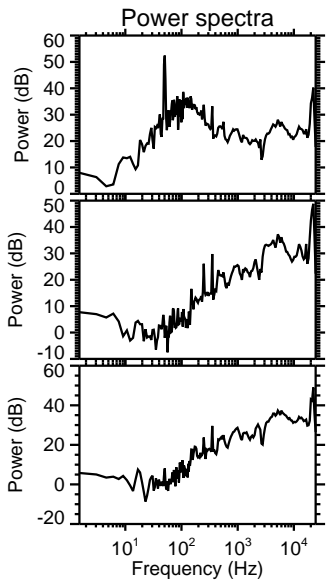
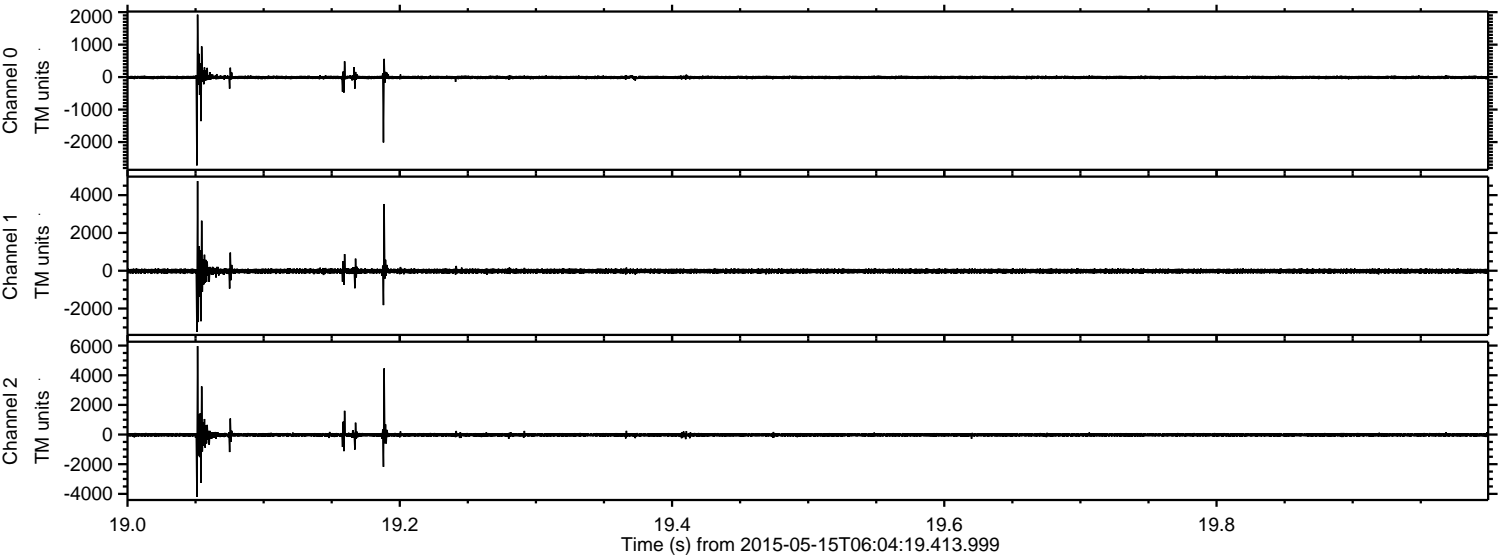


ELMAVAN 3D WAVEFORMS (Measured data sampled at 50 kHz) 49780 packets of 144 samples from 2015-05-15T06:04:19.413.999. Part 122/144

Processed Fri May 15 08:11:35 2015 by ELM ver.2012-10-06 from 001__elm20150515_060418__dat00.bin

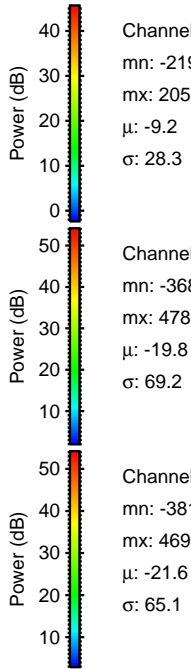
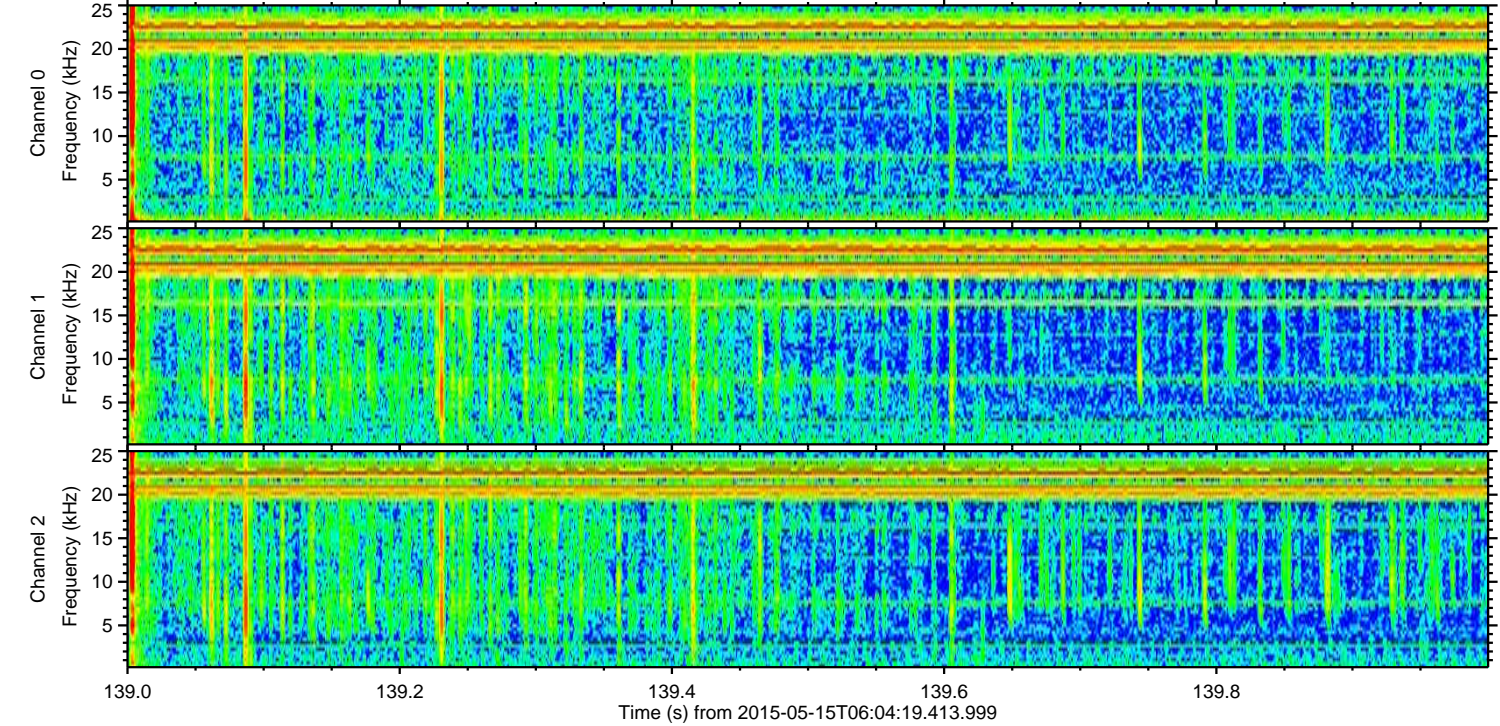
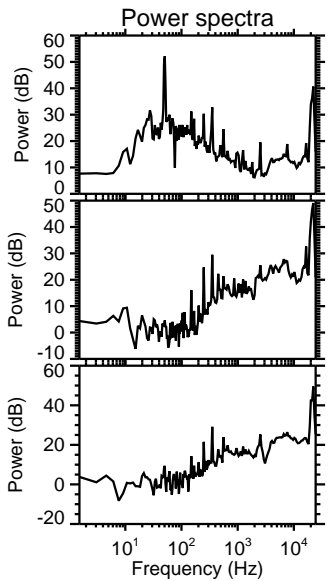
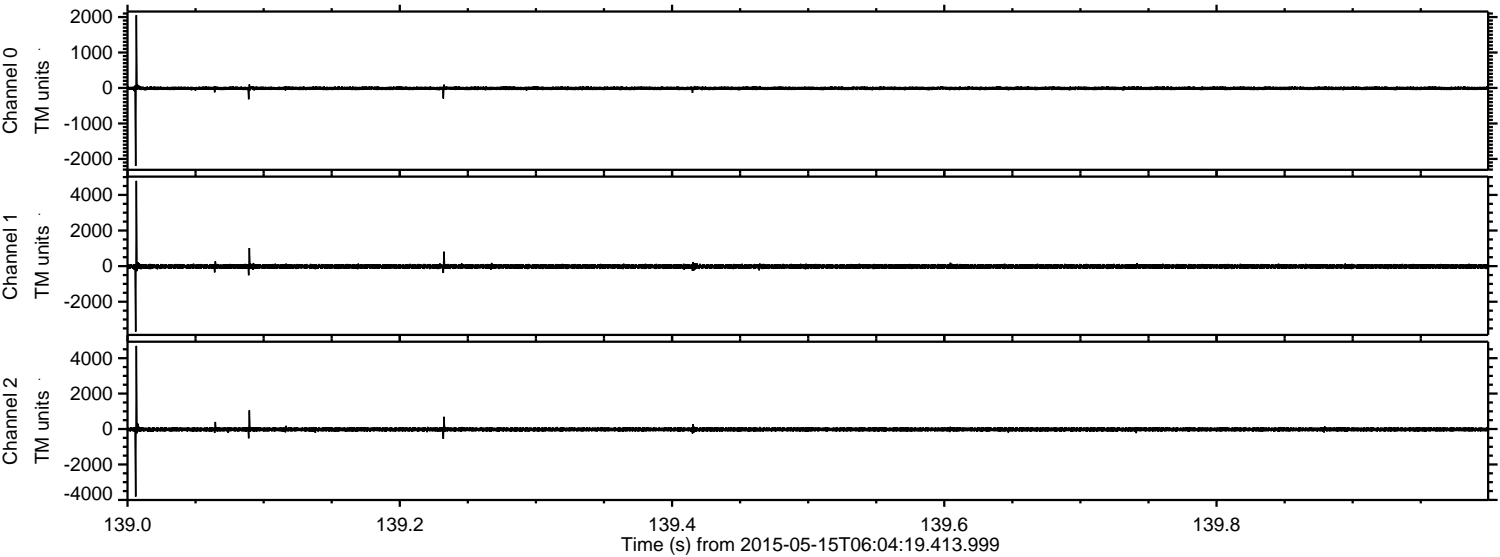


Processed Fri May 15 08:11:36 2015 by ELM ver.2012-10-06 from 001__elm20150515_060418__dat00.bin



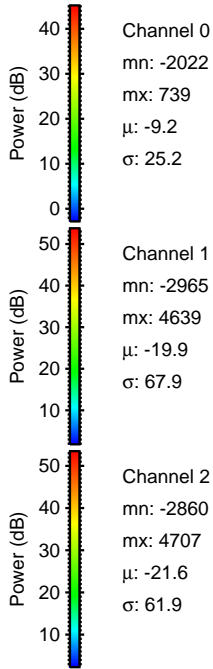
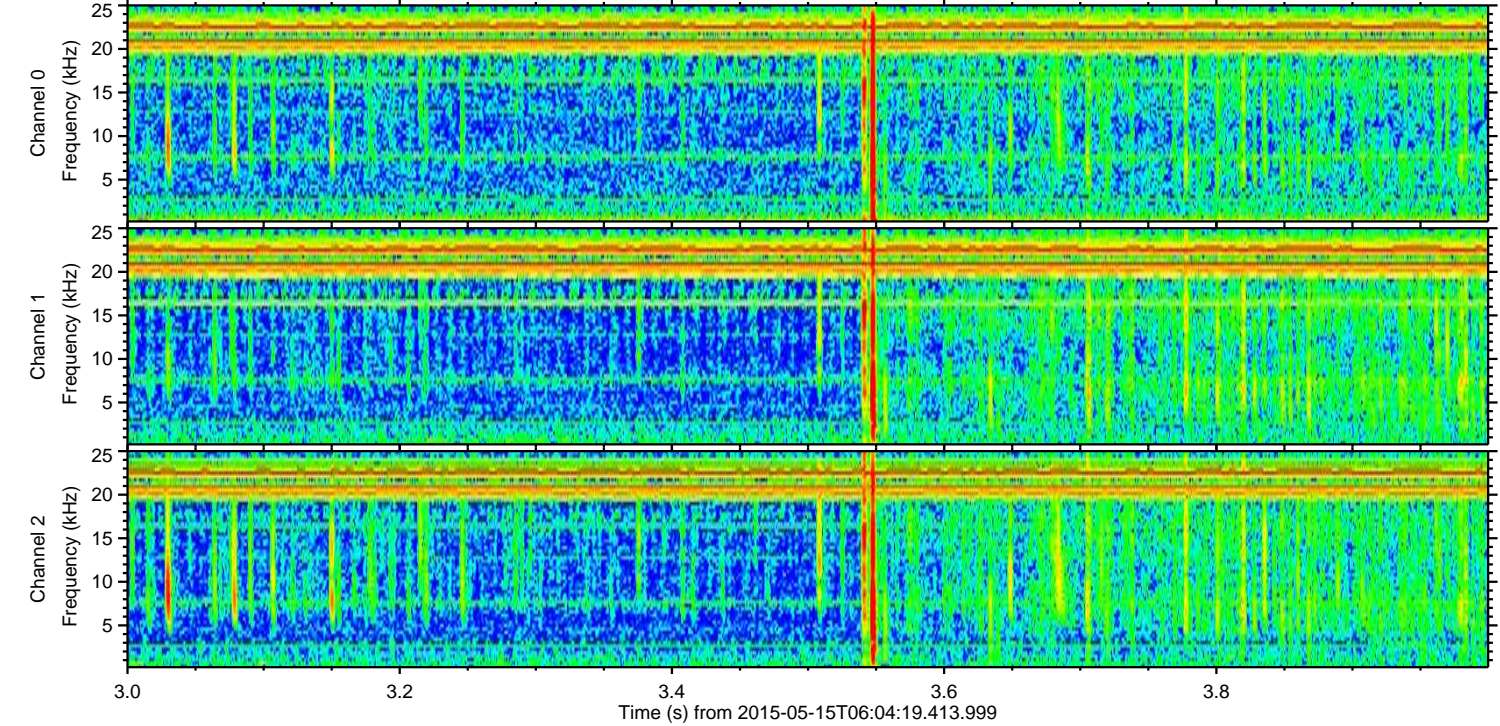
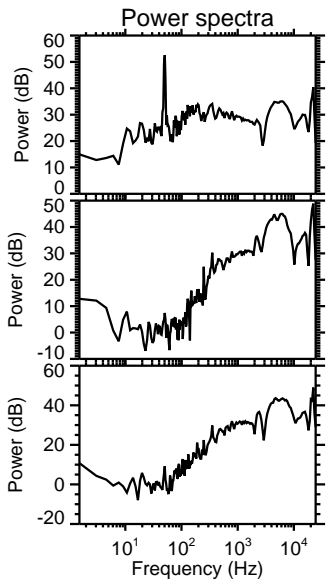
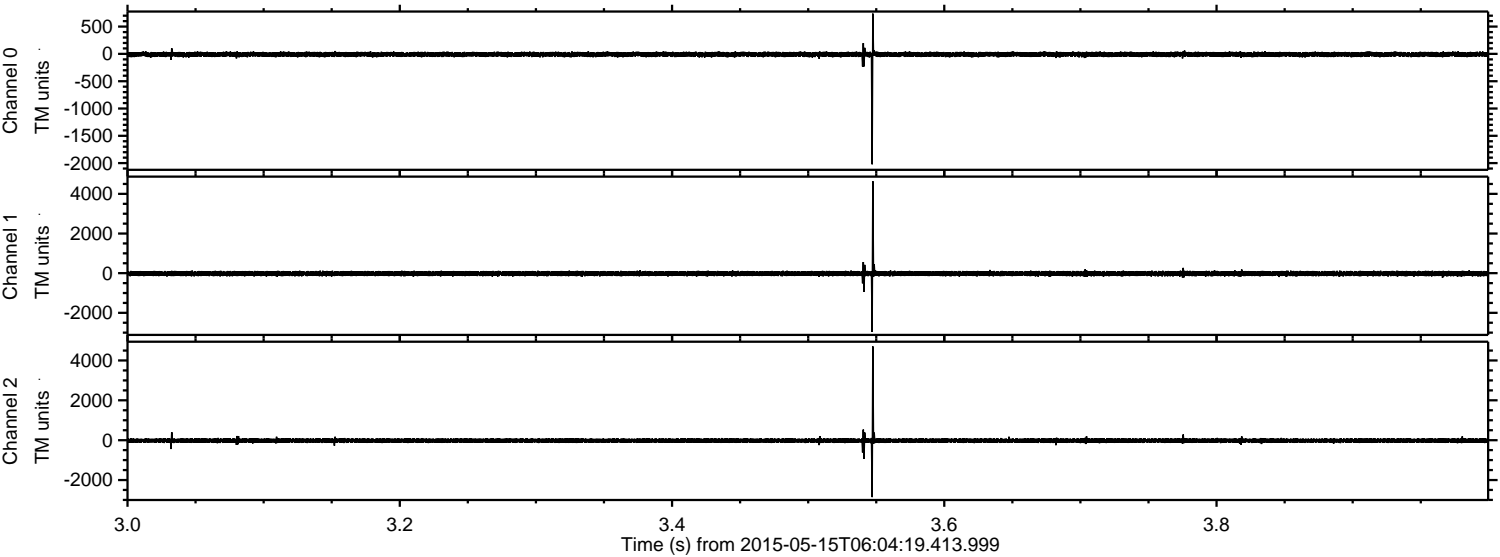
ELMAVAN 3D WAVEFORMS (Measured data sampled at 50 kHz) 49780 packets of 144 samples from 2015-05-15T06:04:19.413.999. Part 140/144

Processed Fri May 15 08:11:37 2015 by ELM ver.2012-10-06 from 001__elm20150515_060418__dat00.bin



ELMAVAN 3D WAVEFORMS (Measured data sampled at 50 kHz) 49780 packets of 144 samples from 2015-05-15T06:04:19.413.999. Part 4/144

Processed Fri May 15 08:11:38 2015 by ELM ver.2012-10-06 from 001__elm20150515_060418__dat00.bin

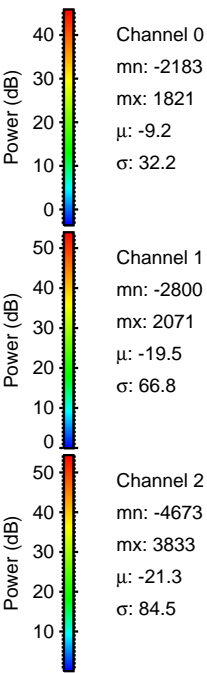
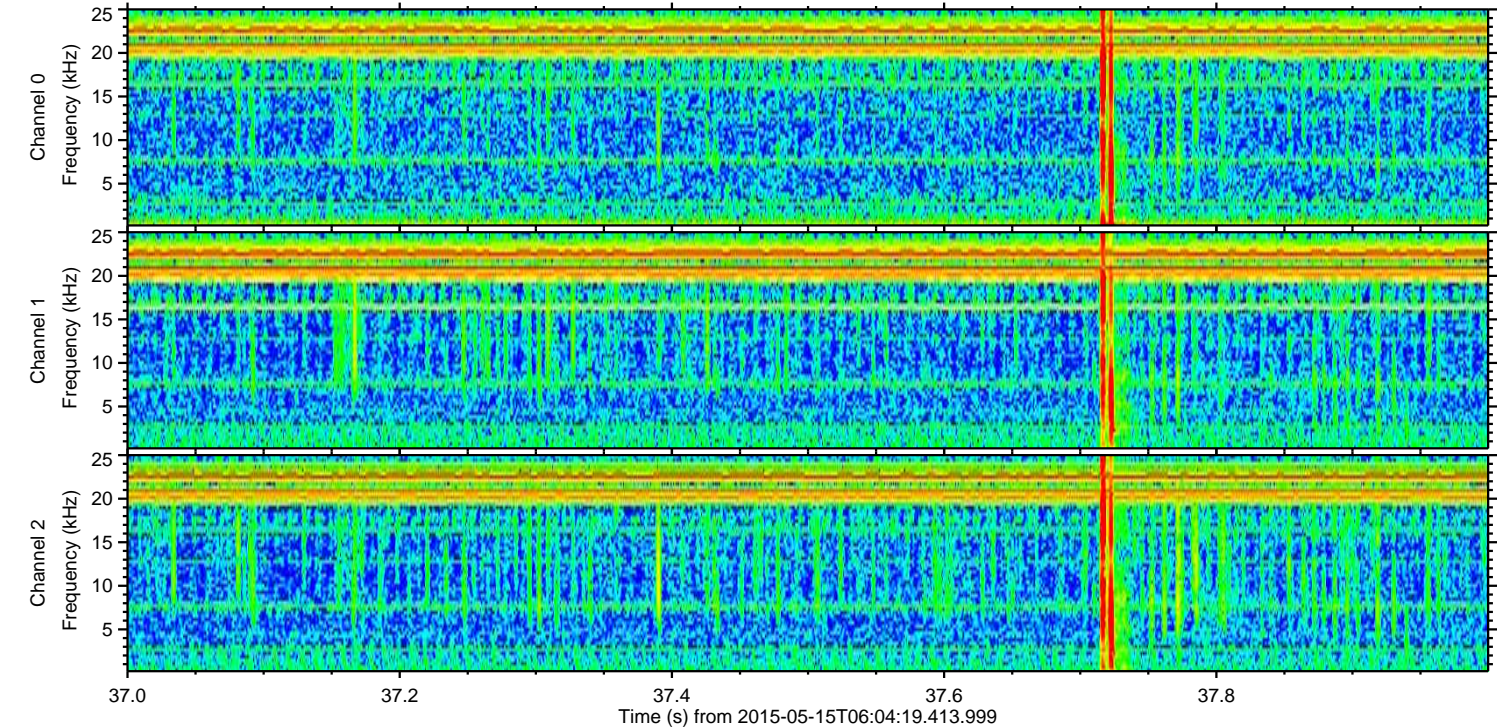
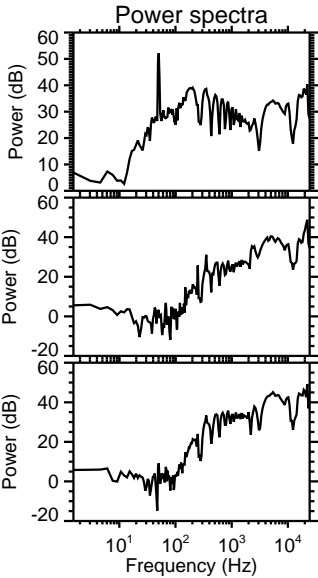
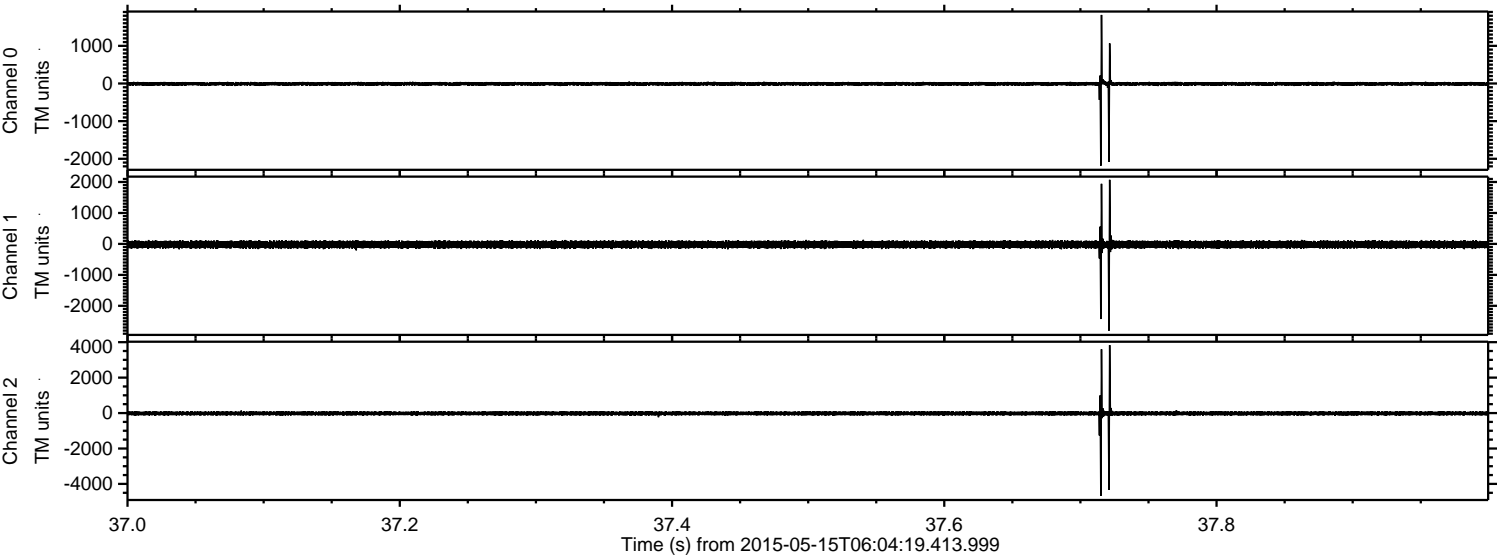


Channel 0
mn: -2022
mx: 739
 μ : -9.2
 σ : 25.2

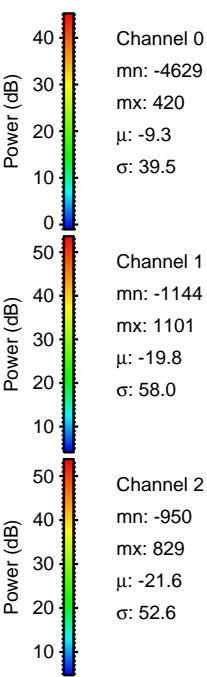
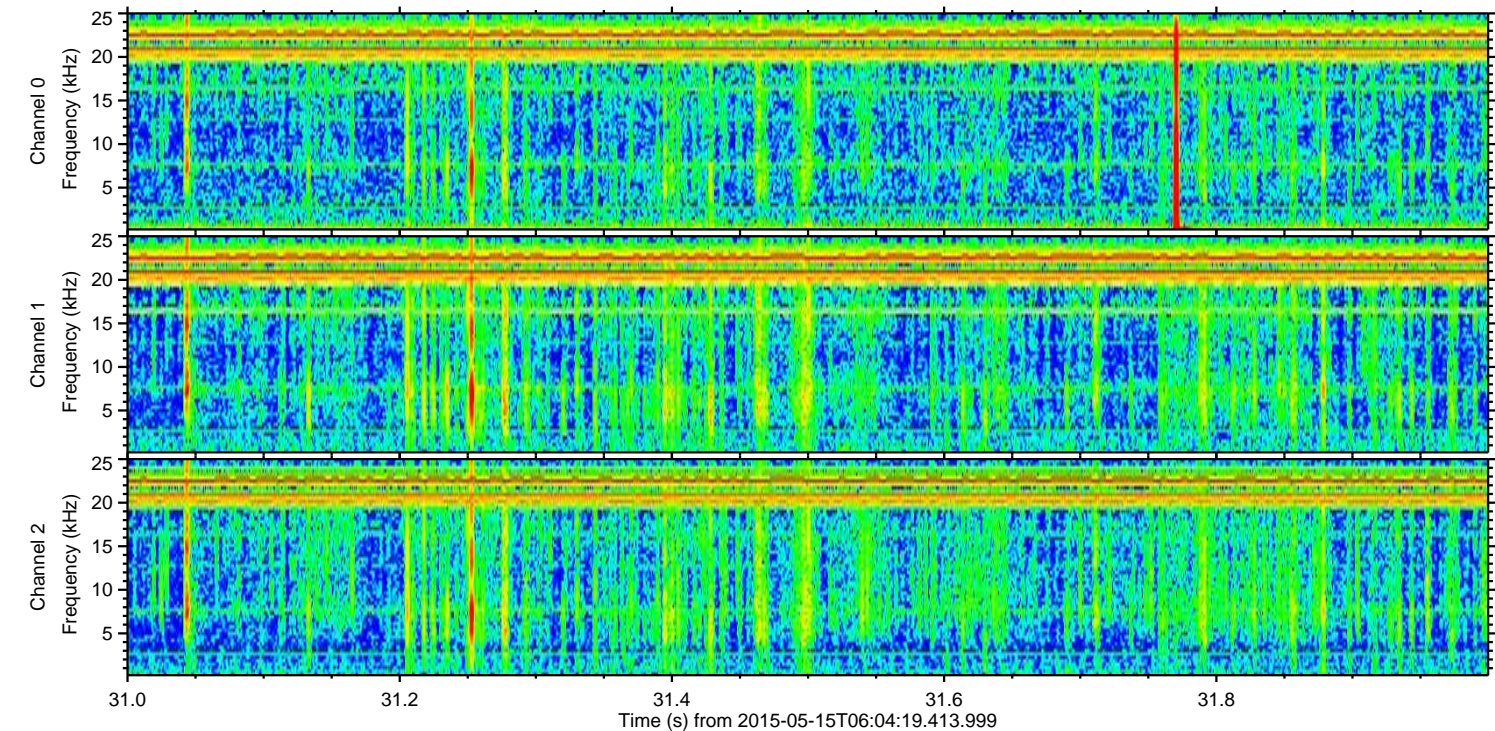
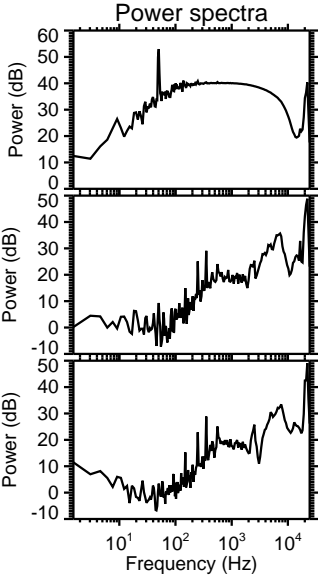
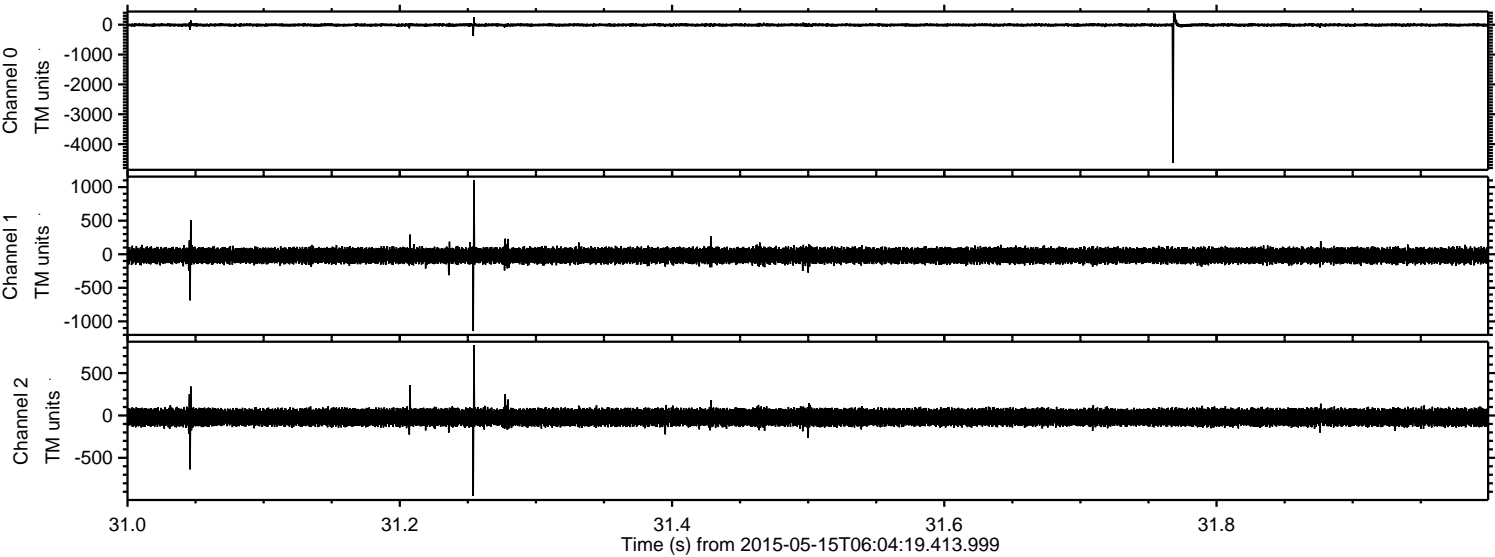
Channel 1
mn: -2965
mx: 4639
 μ : -19.9
 σ : 67.9

Channel 2
mn: -2860
mx: 4707
 μ : -21.6
 σ : 61.9

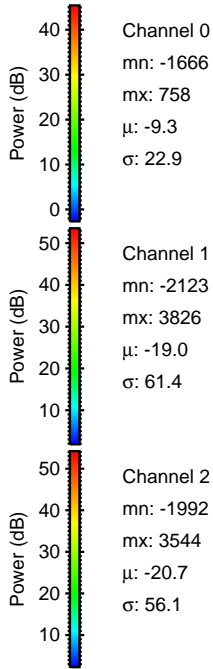
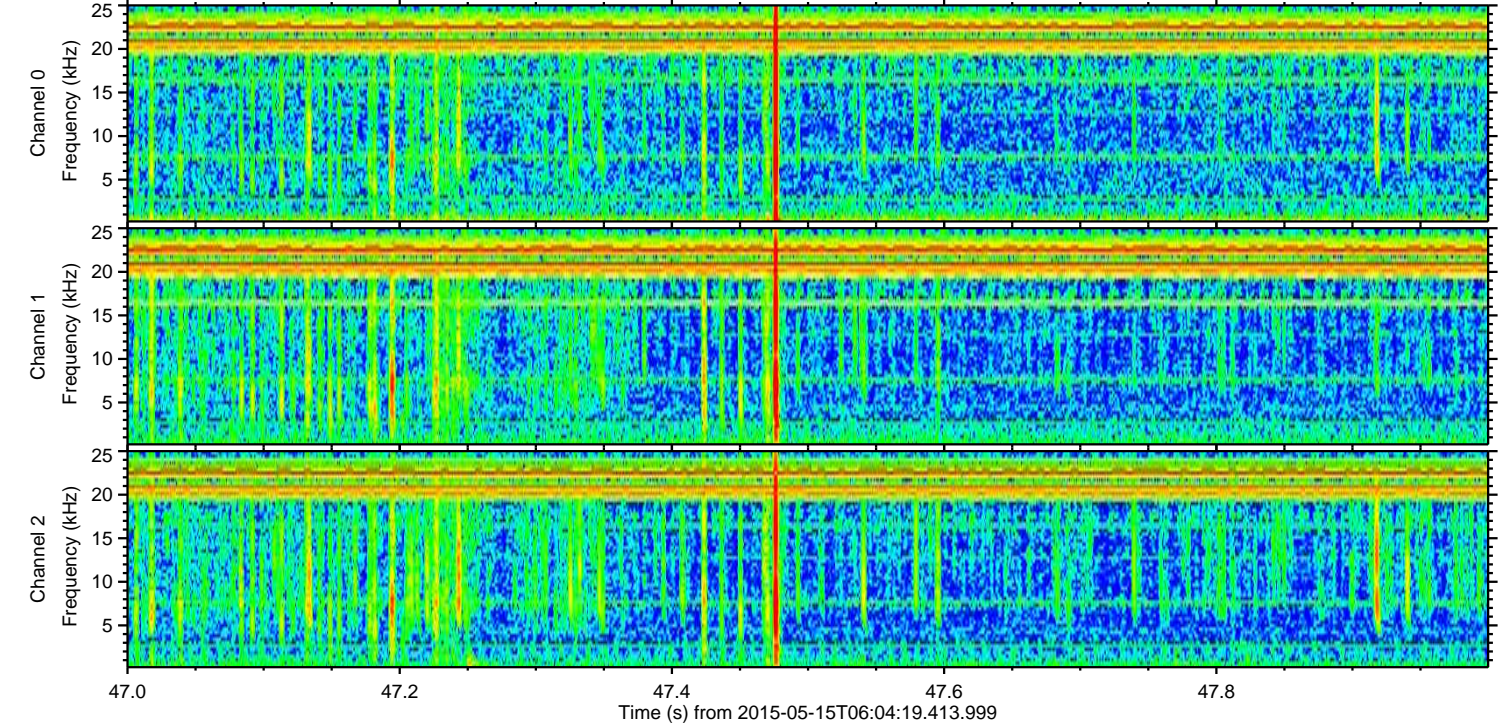
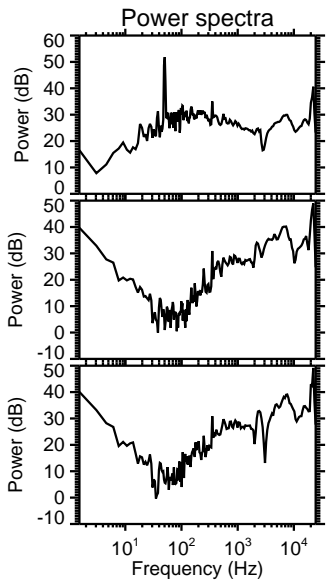
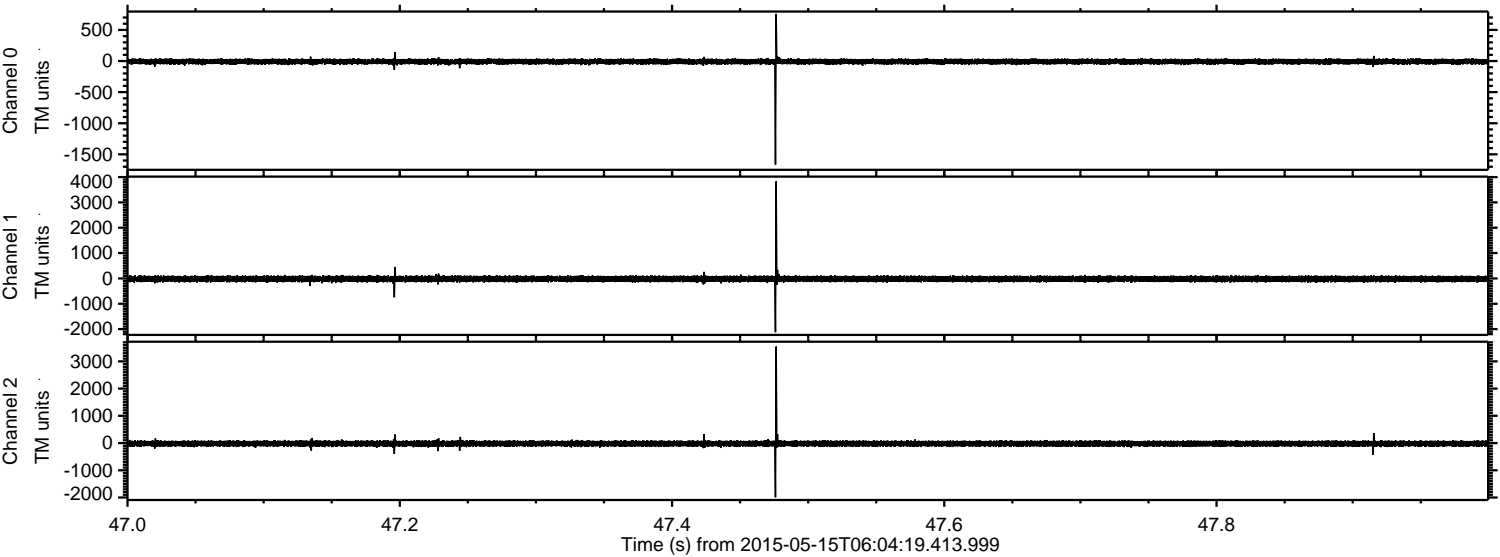
Processed Fri May 15 08:11:39 2015 by ELM ver.2012-10-06 from 001__elm20150515_060418__dat00.bin



Processed Fri May 15 08:11:40 2015 by ELM ver.2012-10-06 from 001__elm20150515_060418__dat00.bin



Processed Fri May 15 08:11:41 2015 by ELM ver.2012-10-06 from 001__elm20150515_060418__dat00.bin



Processed Fri May 15 08:11:42 2015 by ELM ver.2012-10-06 from 001__elm20150515_060418__dat00.bin

