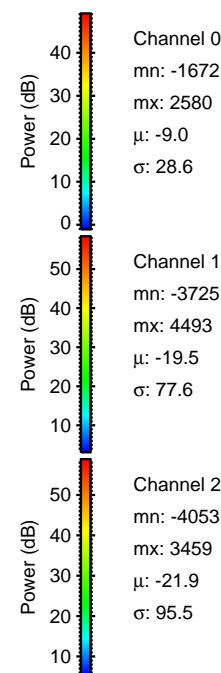
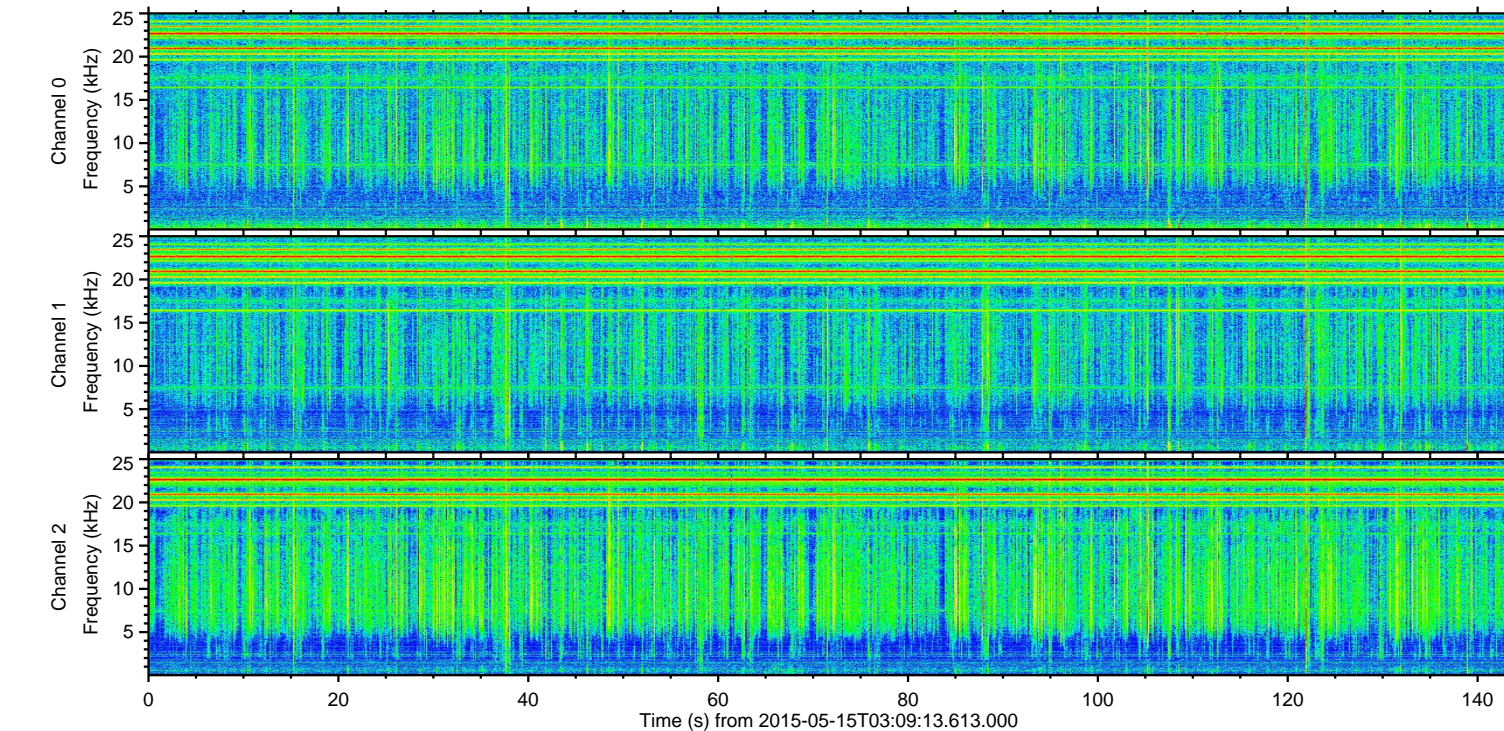
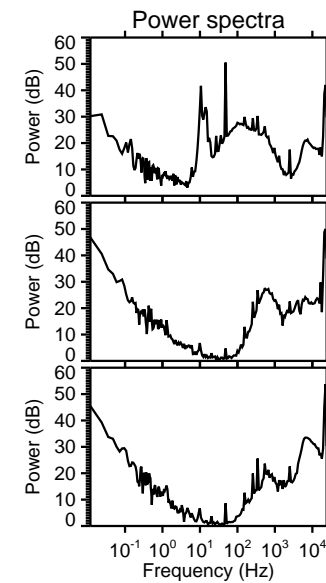
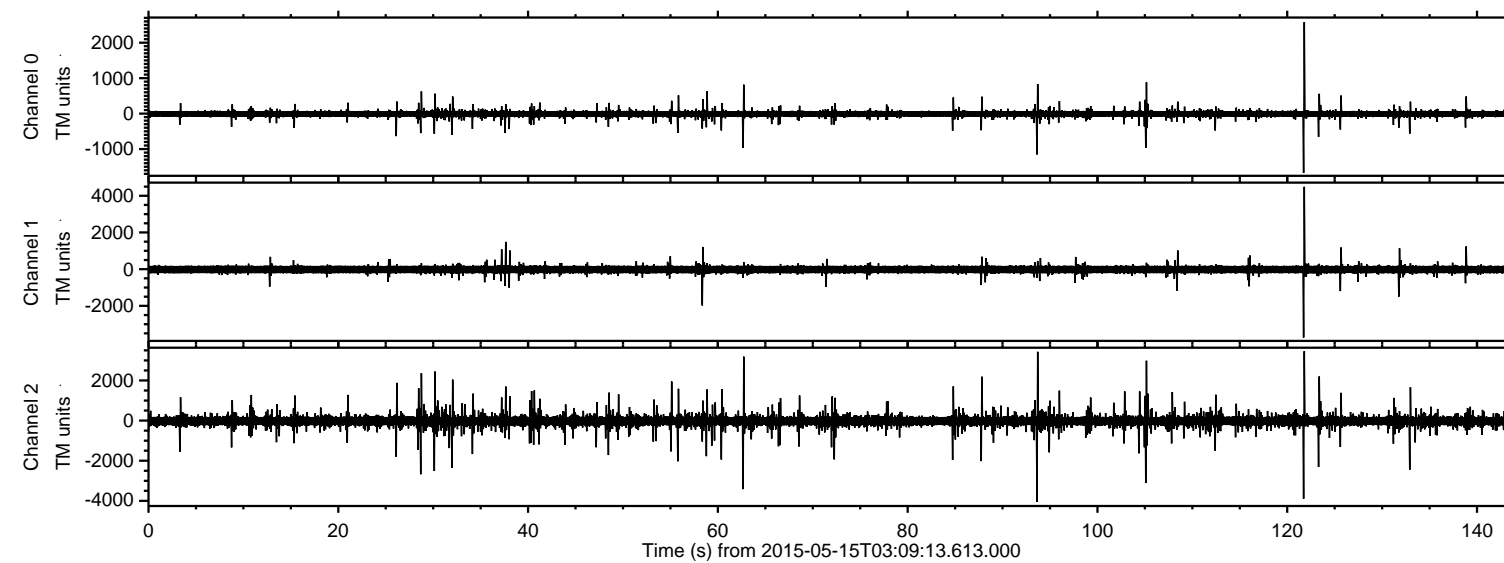


# ELMAVAN 3D WAVEFORMS (Measured data sampled at 50 kHz) 49786 packets of 144 samples from 2015-05-15T03:09:13.613.000.

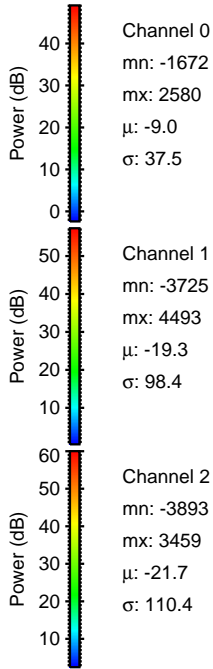
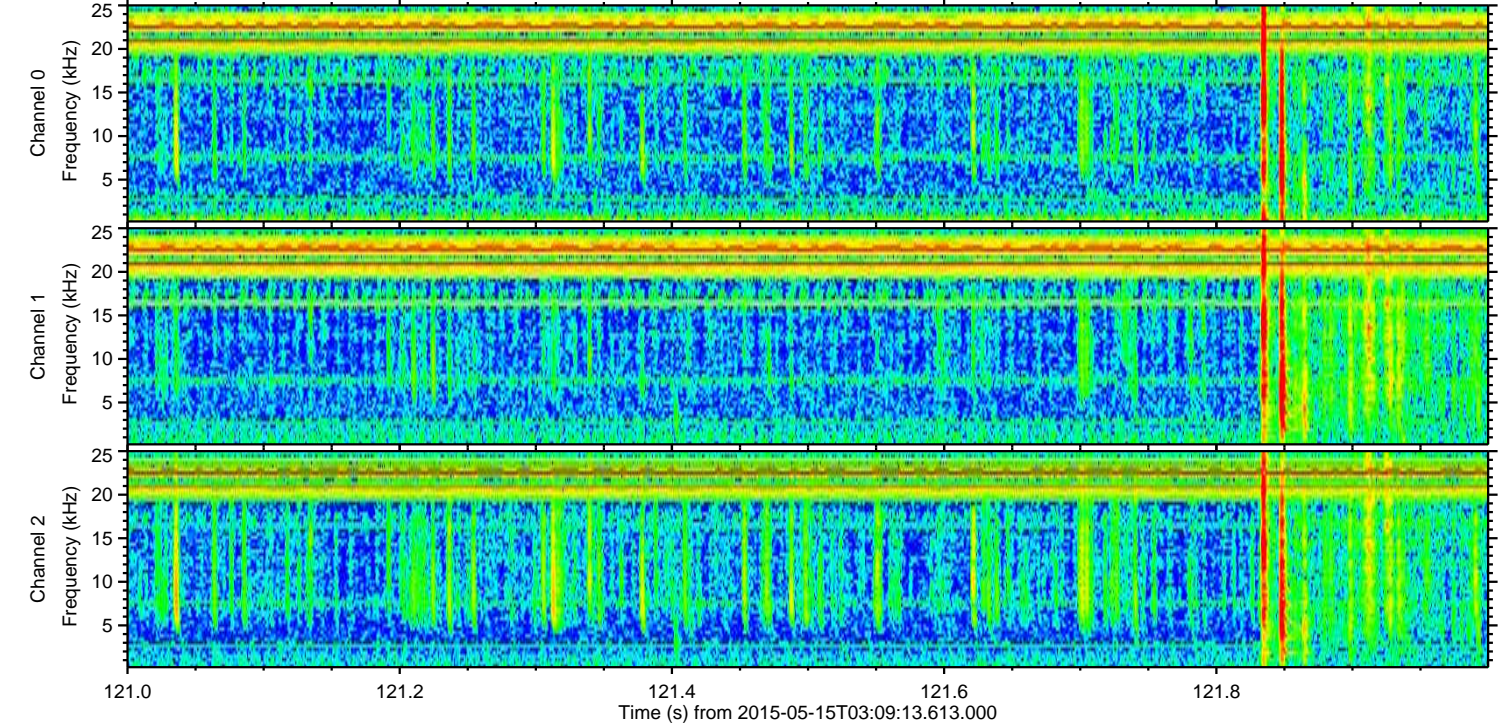
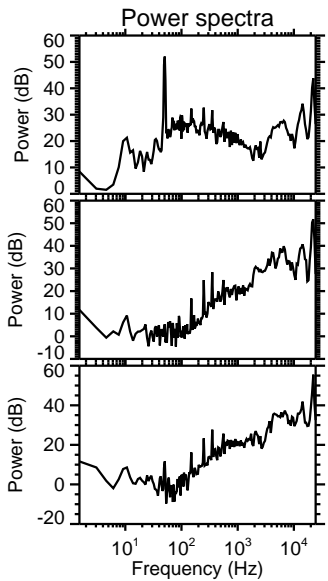
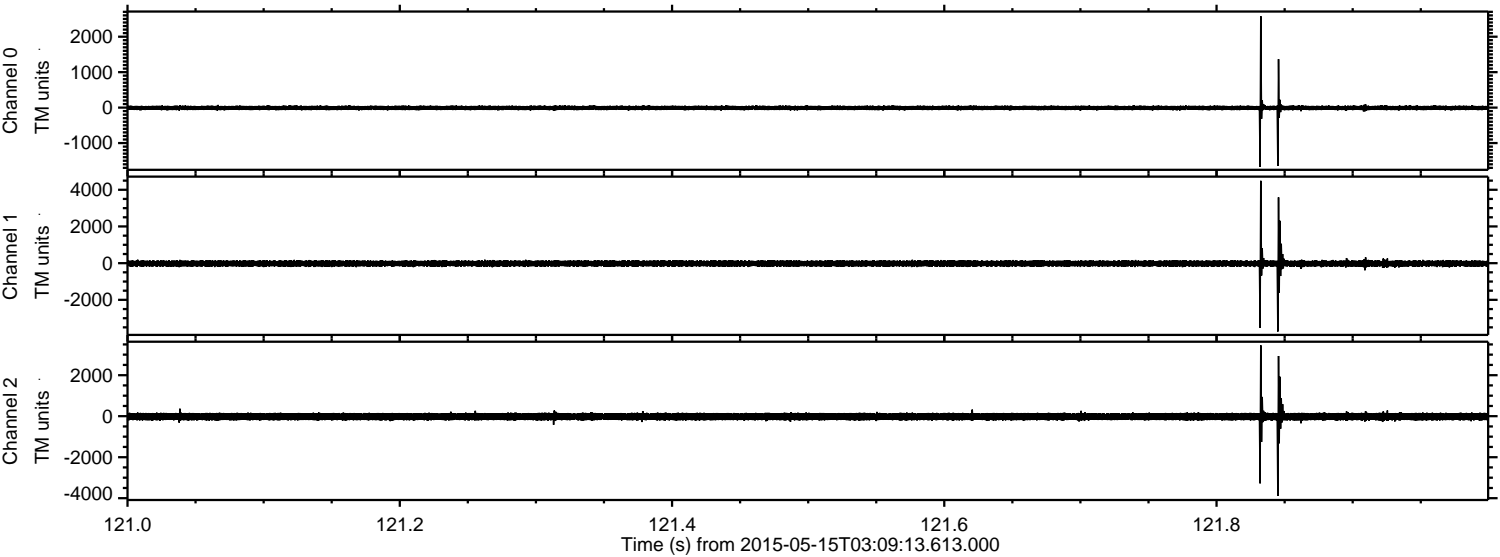
Processed Fri May 15 05:16:16 2015 by ELM ver.2012-10-06 from 001\_\_elm20150515\_030912\_\_dat00.bin





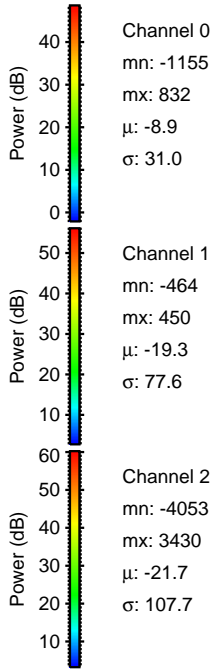
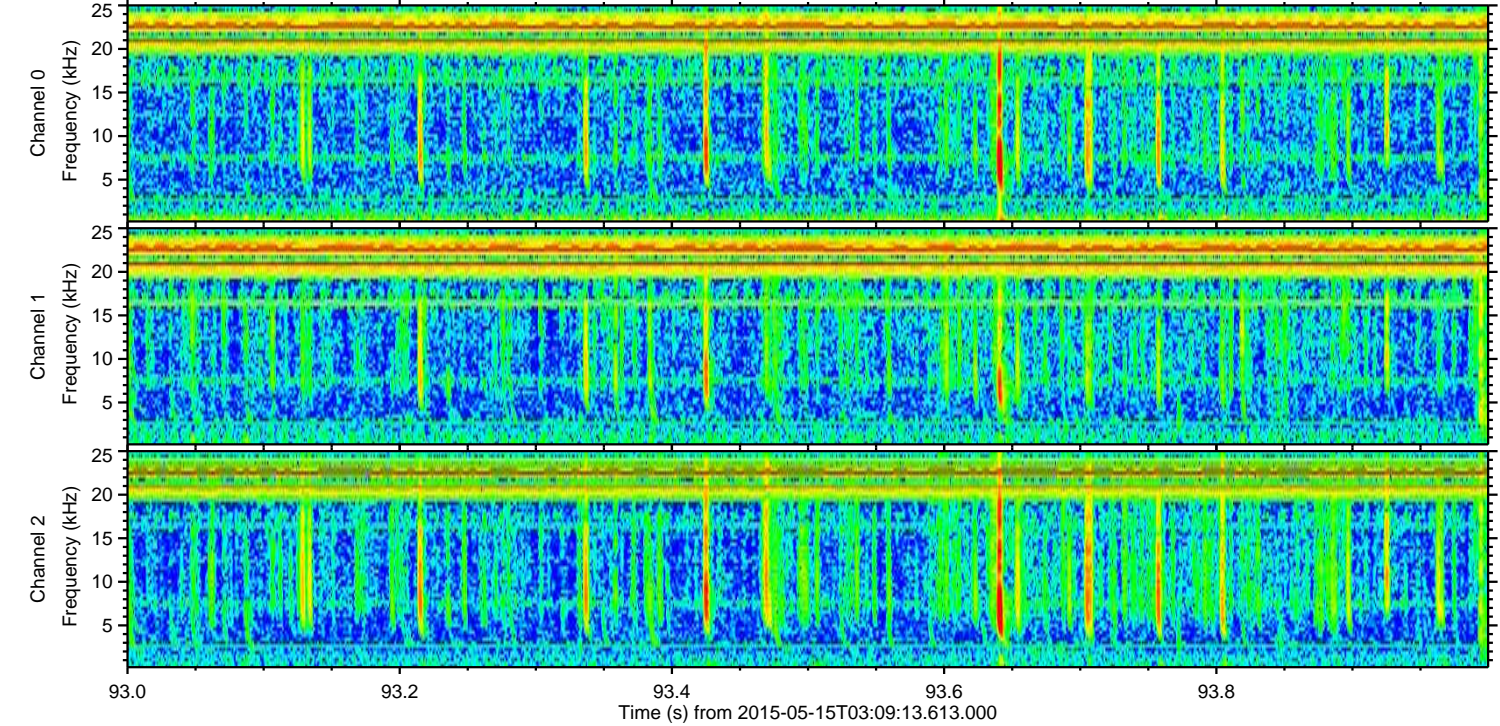
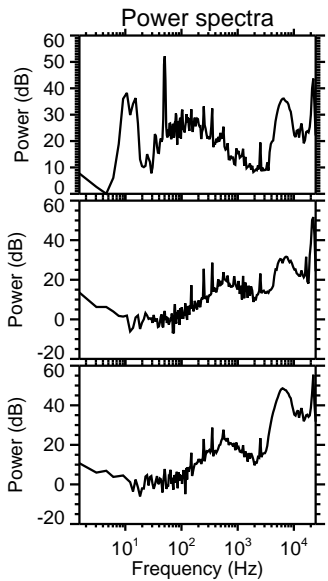
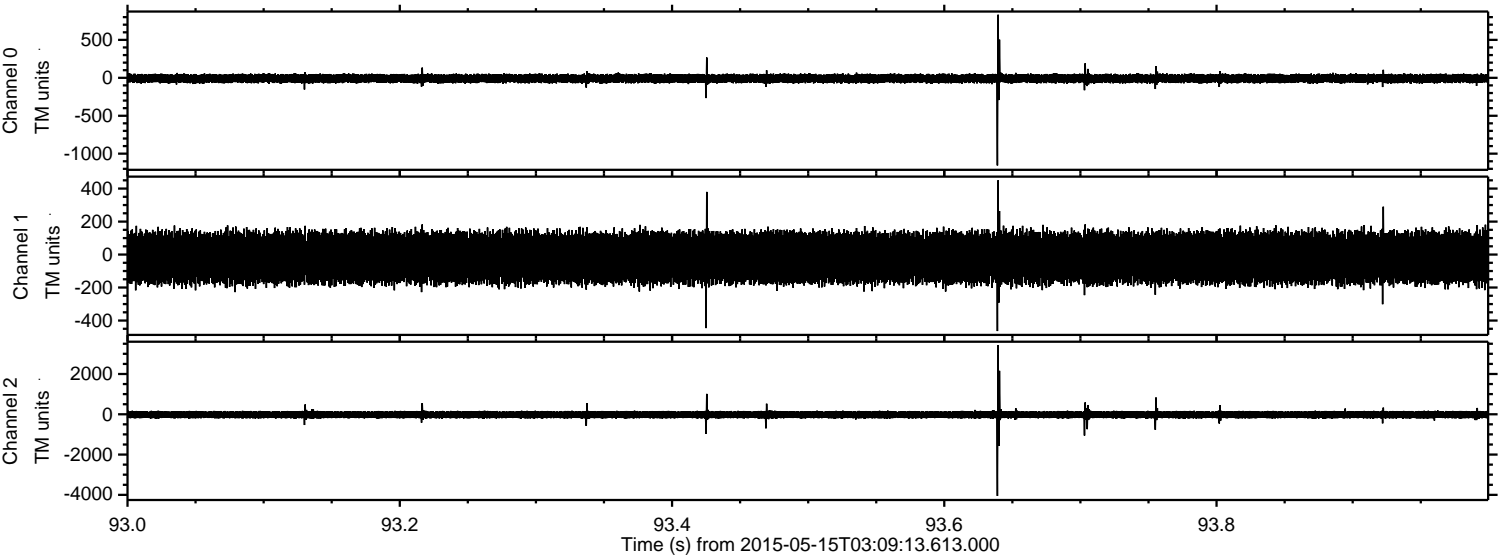
ELMAVAN 3D WAVEFORMS (Measured data sampled at 50 kHz) 49786 packets of 144 samples from 2015-05-15T03:09:13.613.000. Part 122/144

Processed Fri May 15 05:16:28 2015 by ELM ver.2012-10-06 from 001\_\_elm20150515\_030912\_\_dat00.bin





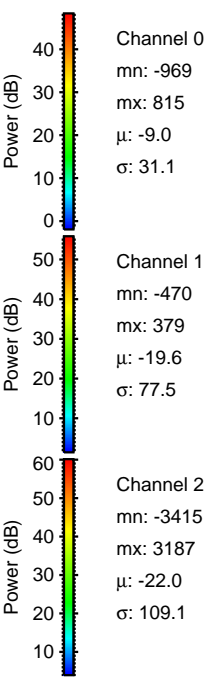
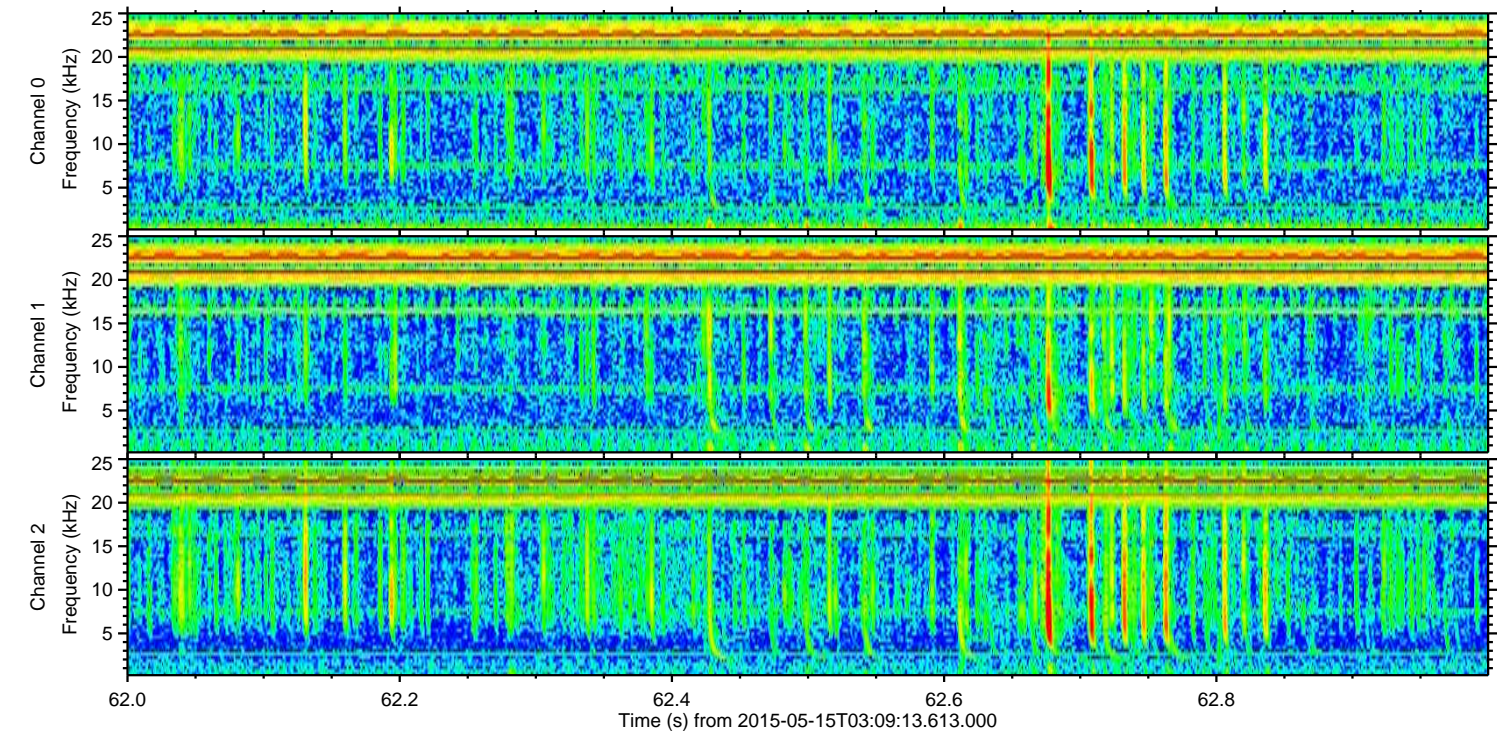
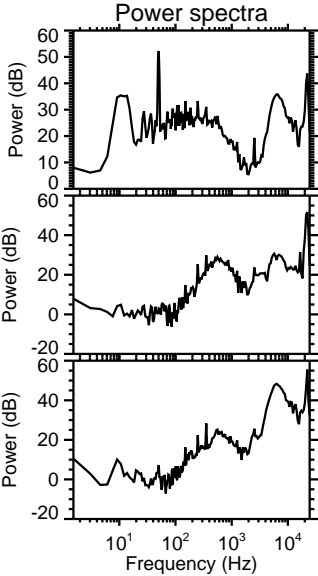
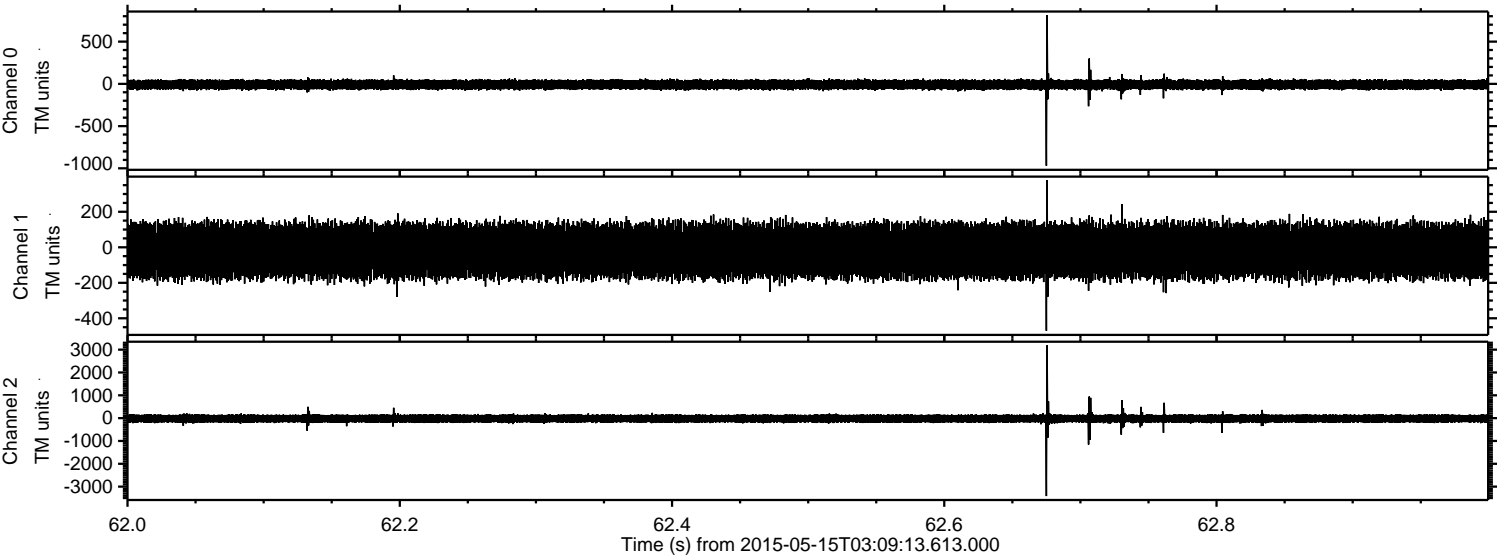
Processed Fri May 15 05:16:29 2015 by ELM ver.2012-10-06 from 001\_\_elm20150515\_030912\_\_dat00.bin





ELMAVAN 3D WAVEFORMS (Measured data sampled at 50 kHz) 49786 packets of 144 samples from 2015-05-15T03:09:13.613.000. Part 63/144

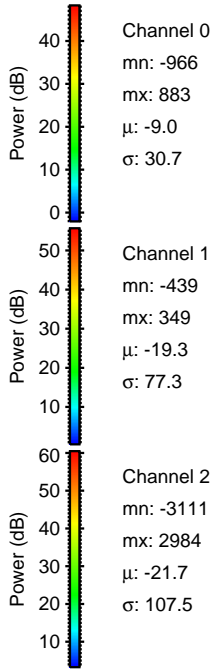
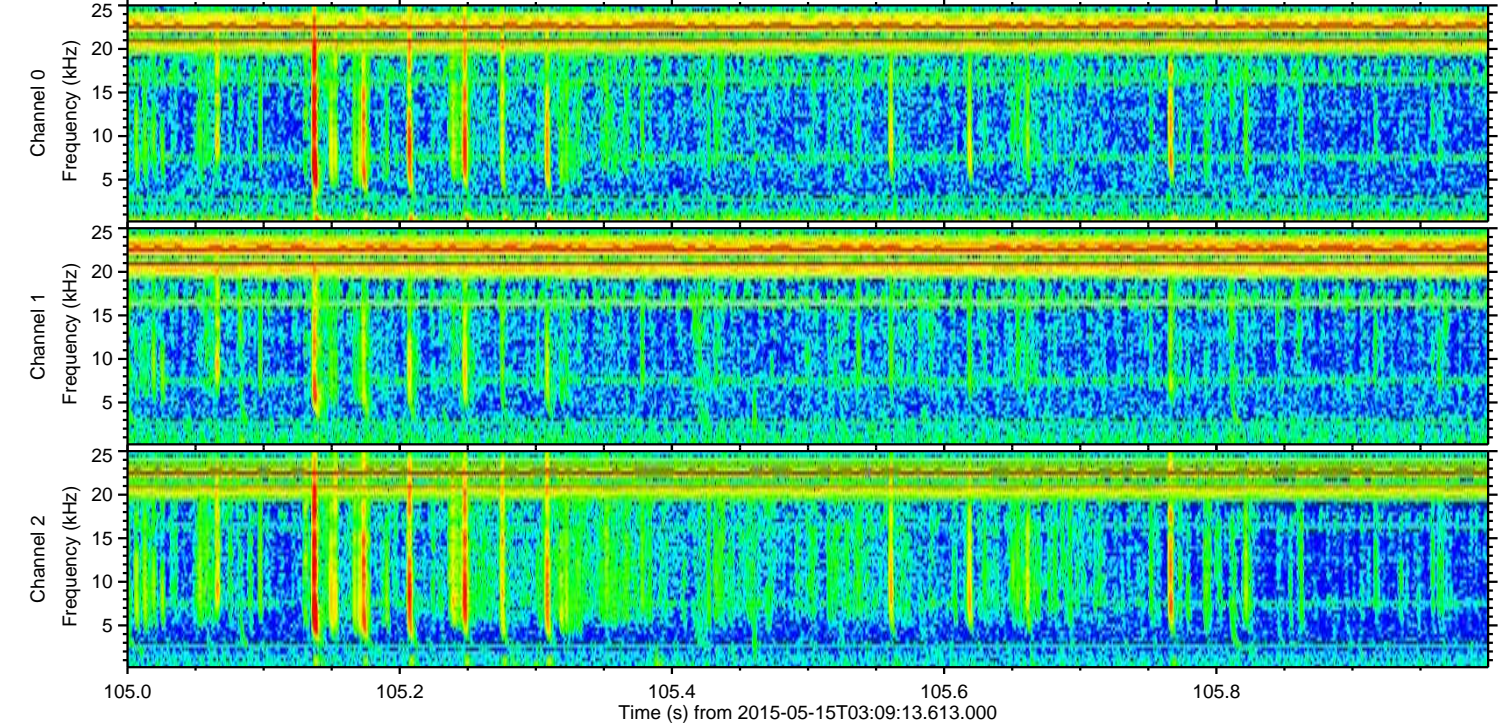
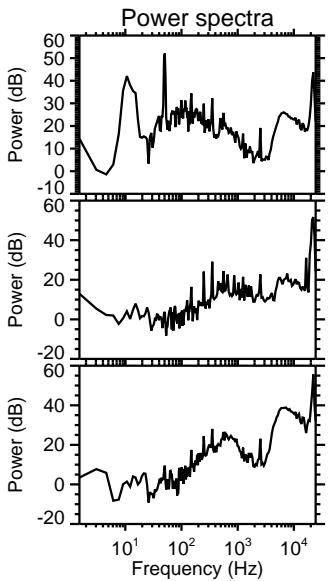
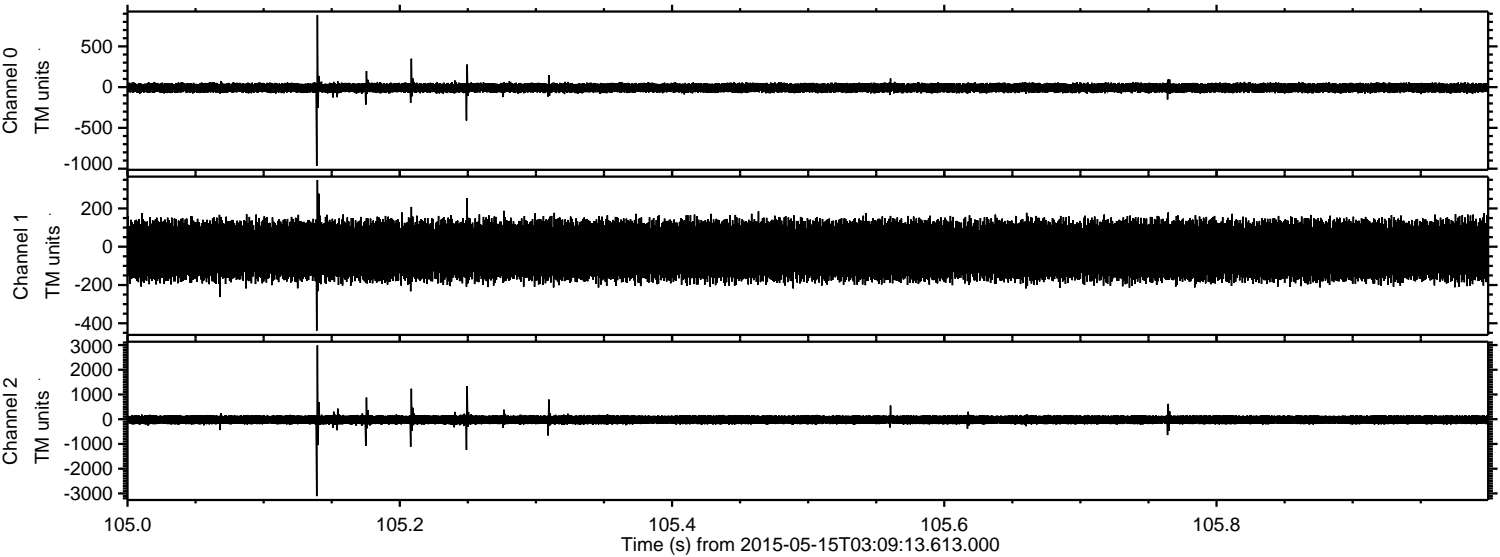
Processed Fri May 15 05:16:29 2015 by ELM ver.2012-10-06 from 001\_\_elm20150515\_030912\_\_dat00.bin





ELMAVAN 3D WAVEFORMS (Measured data sampled at 50 kHz) 49786 packets of 144 samples from 2015-05-15T03:09:13.613.000. Part 106/144

Processed Fri May 15 05:16:30 2015 by ELM ver.2012-10-06 from 001\_\_elm20150515\_030912\_\_dat00.bin



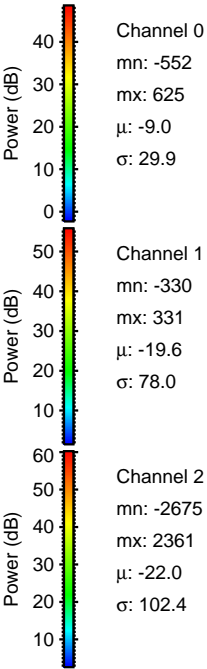
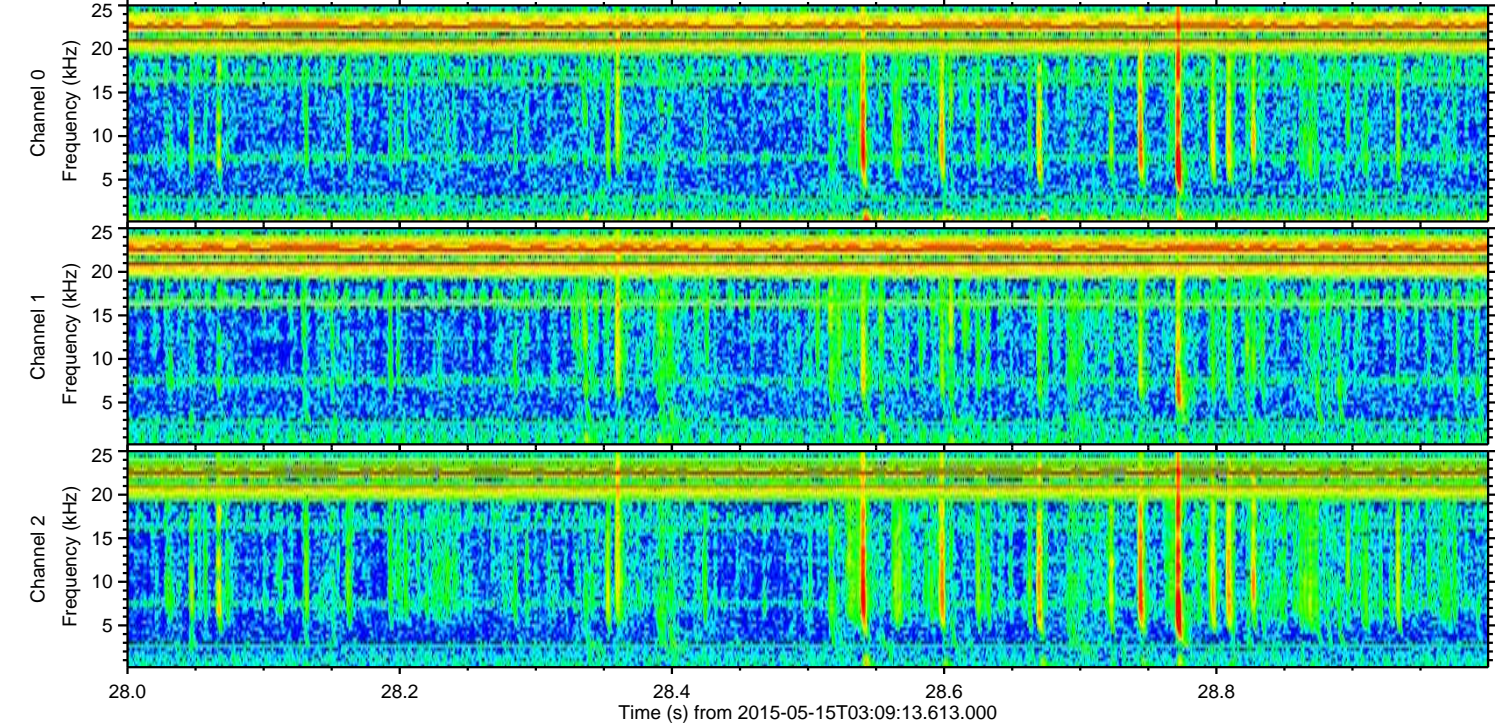
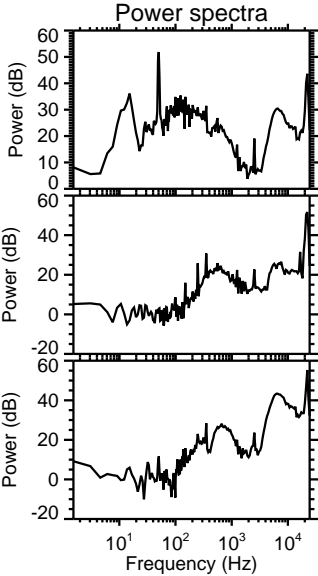
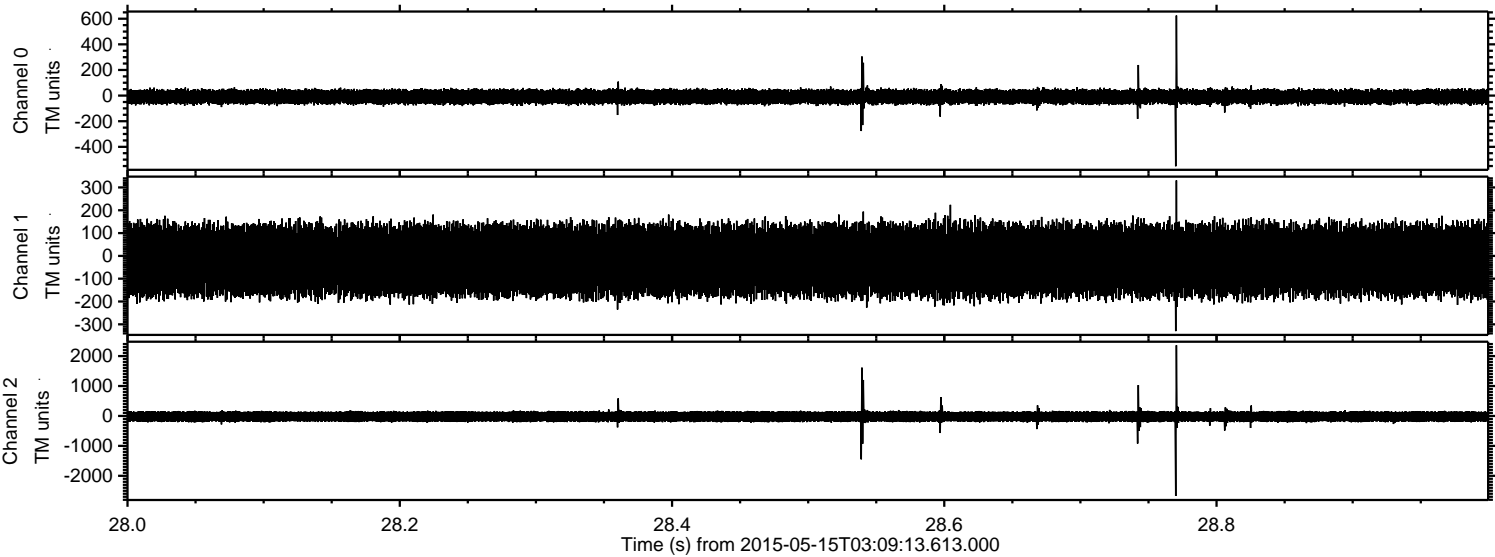
Channel 0  
mn: -966  
mx: 883  
 $\mu$ : -9.0  
 $\sigma$ : 30.7

Channel 1  
mn: -439  
mx: 349  
 $\mu$ : -19.3  
 $\sigma$ : 77.3

Channel 2  
mn: -3111  
mx: 2984  
 $\mu$ : -21.7  
 $\sigma$ : 107.5

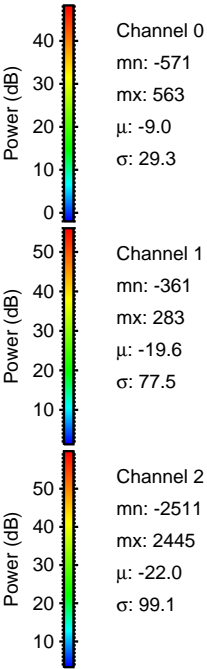
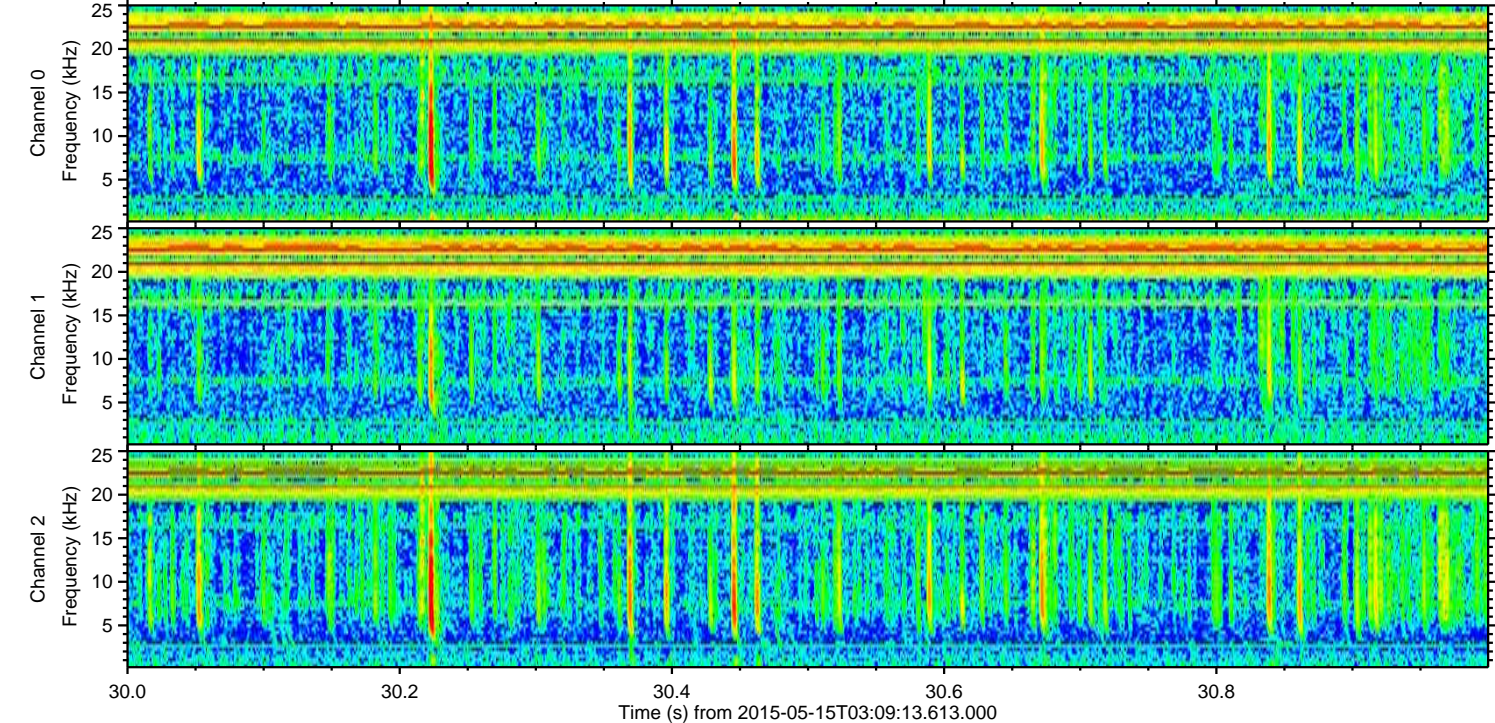
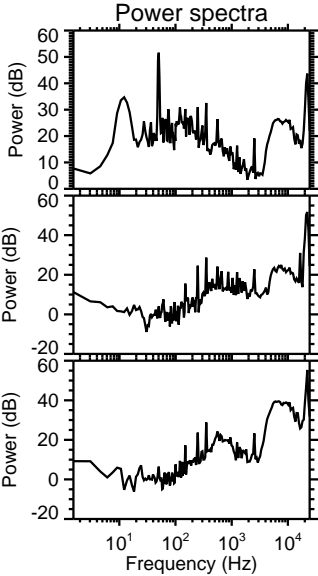
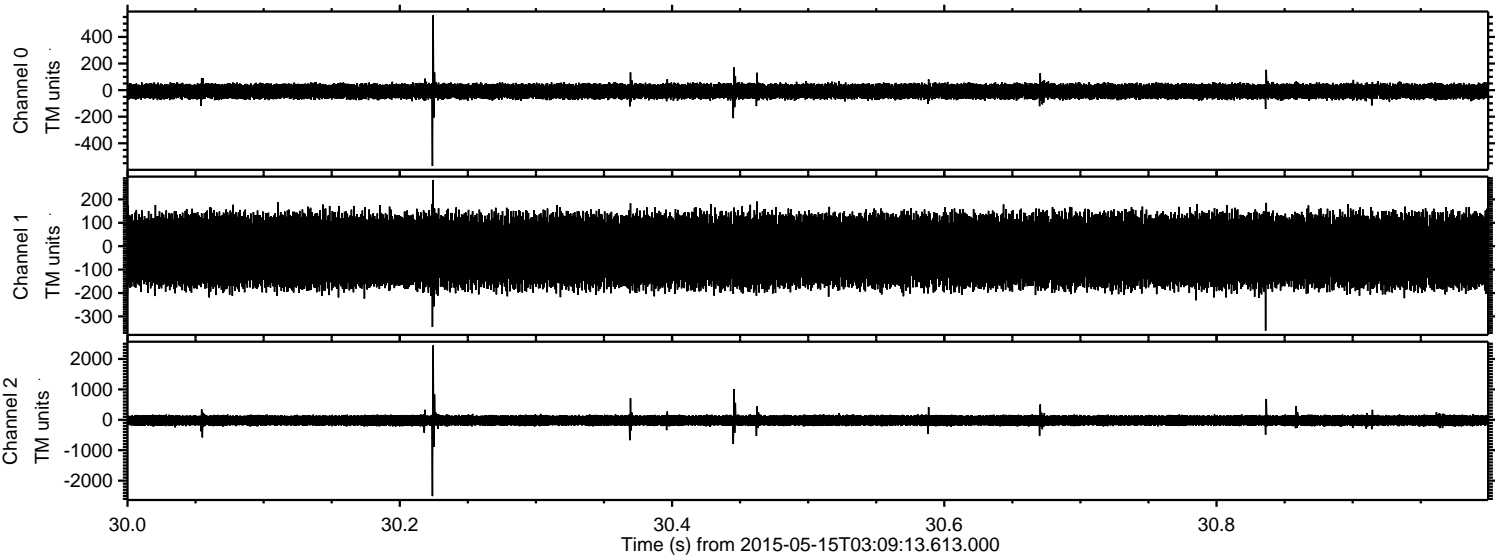


Processed Fri May 15 05:16:31 2015 by ELM ver.2012-10-06 from 001\_\_elm20150515\_030912\_\_dat00.bin





Processed Fri May 15 05:16:32 2015 by ELM ver.2012-10-06 from 001\_\_elm20150515\_030912\_\_dat00.bin



Channel 0  
mn: -571  
mx: 563  
 $\mu$ : -9.0  
 $\sigma$ : 29.3

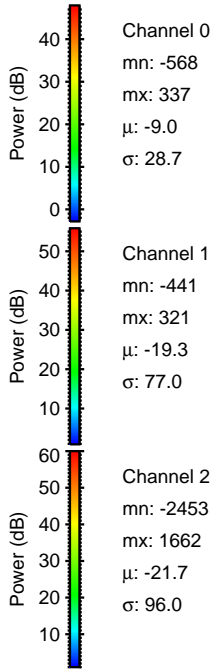
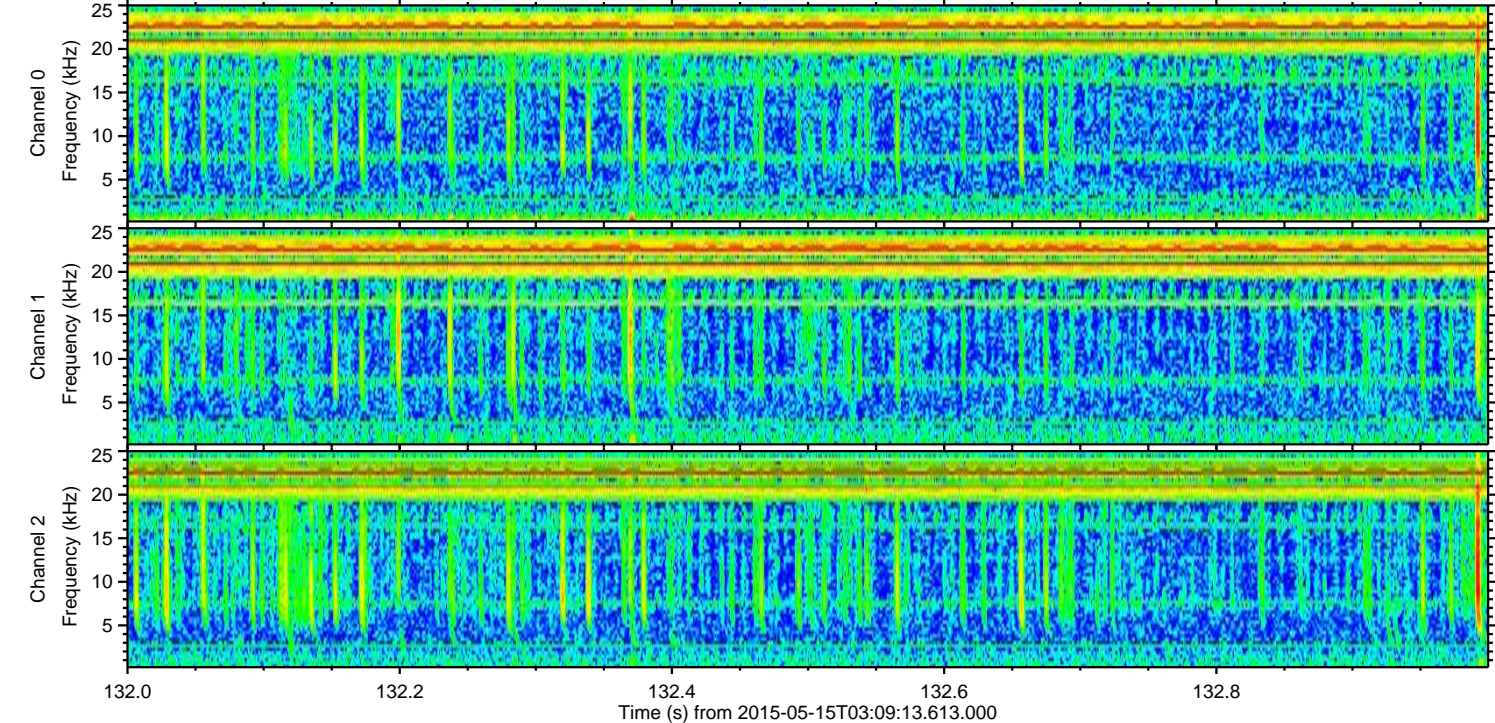
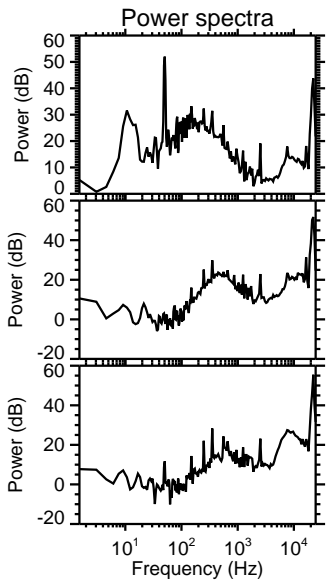
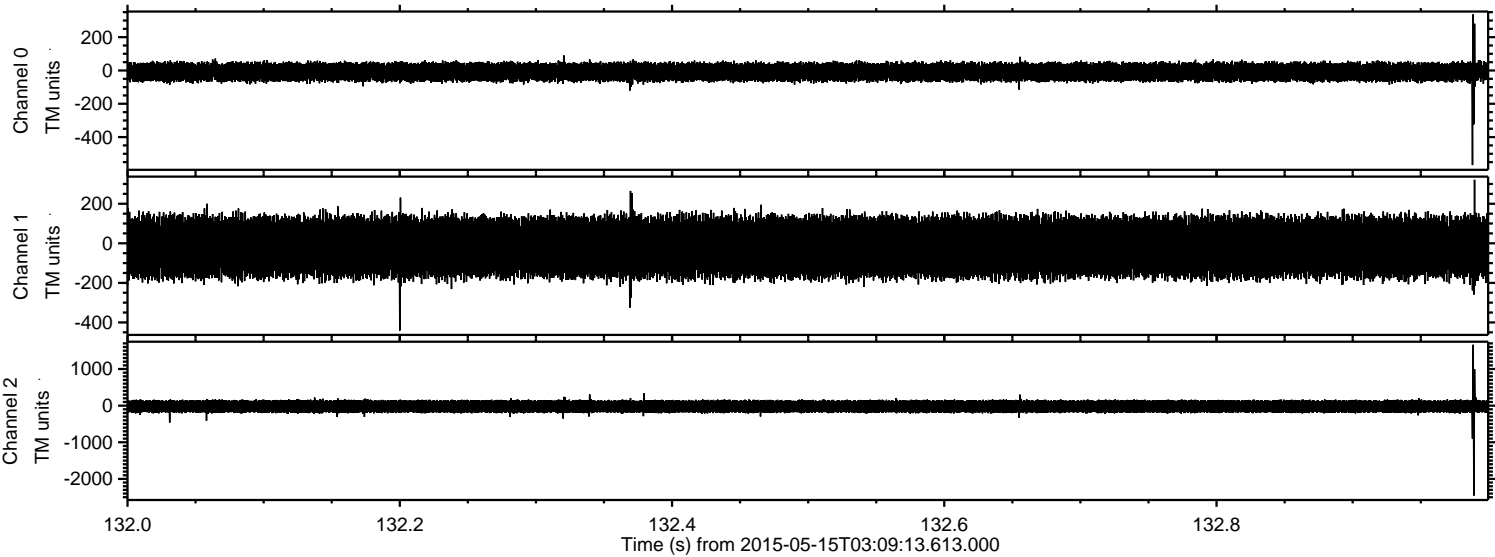
Channel 1  
mn: -361  
mx: 283  
 $\mu$ : -19.6  
 $\sigma$ : 77.5

Channel 2  
mn: -2511  
mx: 2445  
 $\mu$ : -22.0  
 $\sigma$ : 99.1



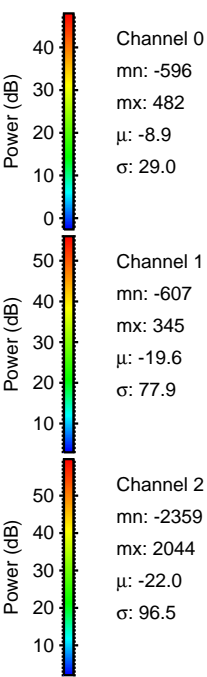
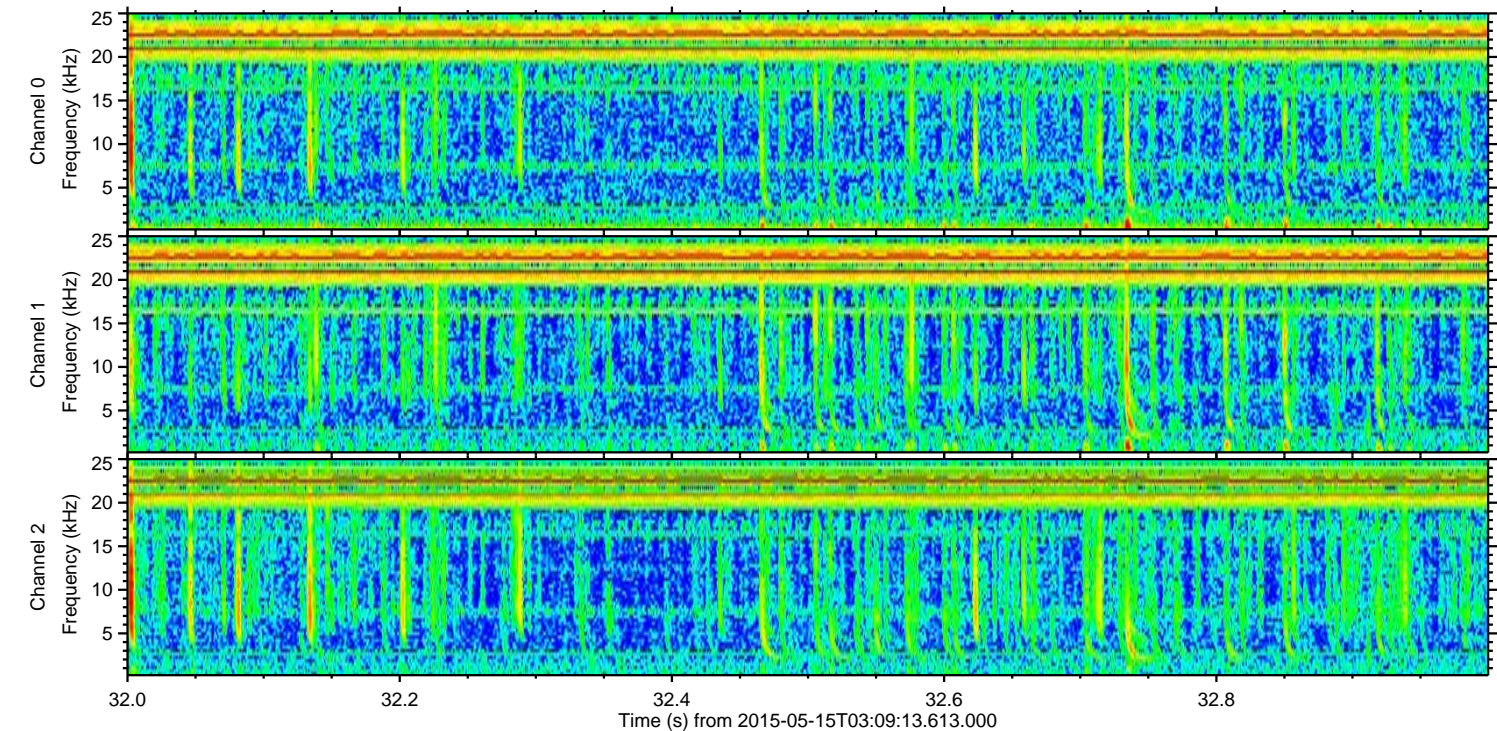
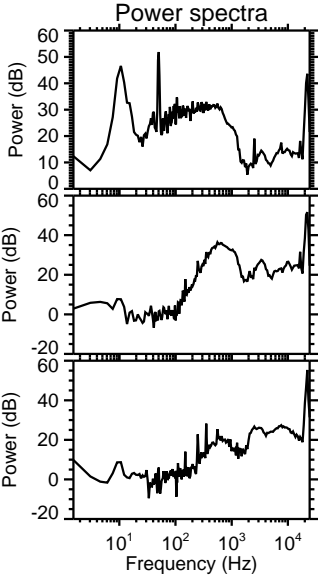
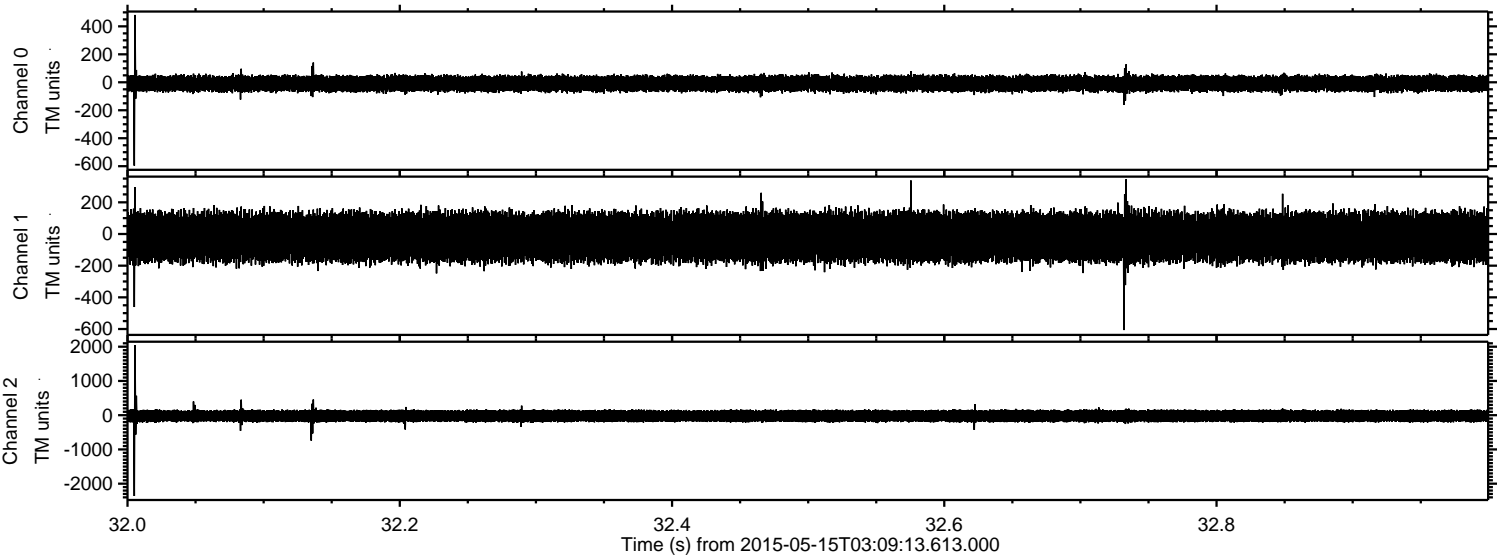
ELMAVAN 3D WAVEFORMS (Measured data sampled at 50 kHz) 49786 packets of 144 samples from 2015-05-15T03:09:13.613.000. Part 133/144

Processed Fri May 15 05:16:33 2015 by ELM ver.2012-10-06 from 001\_\_elm20150515\_030912\_\_dat00.bin





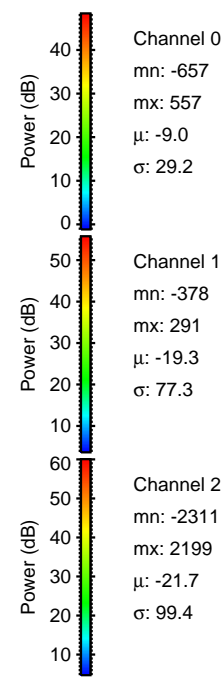
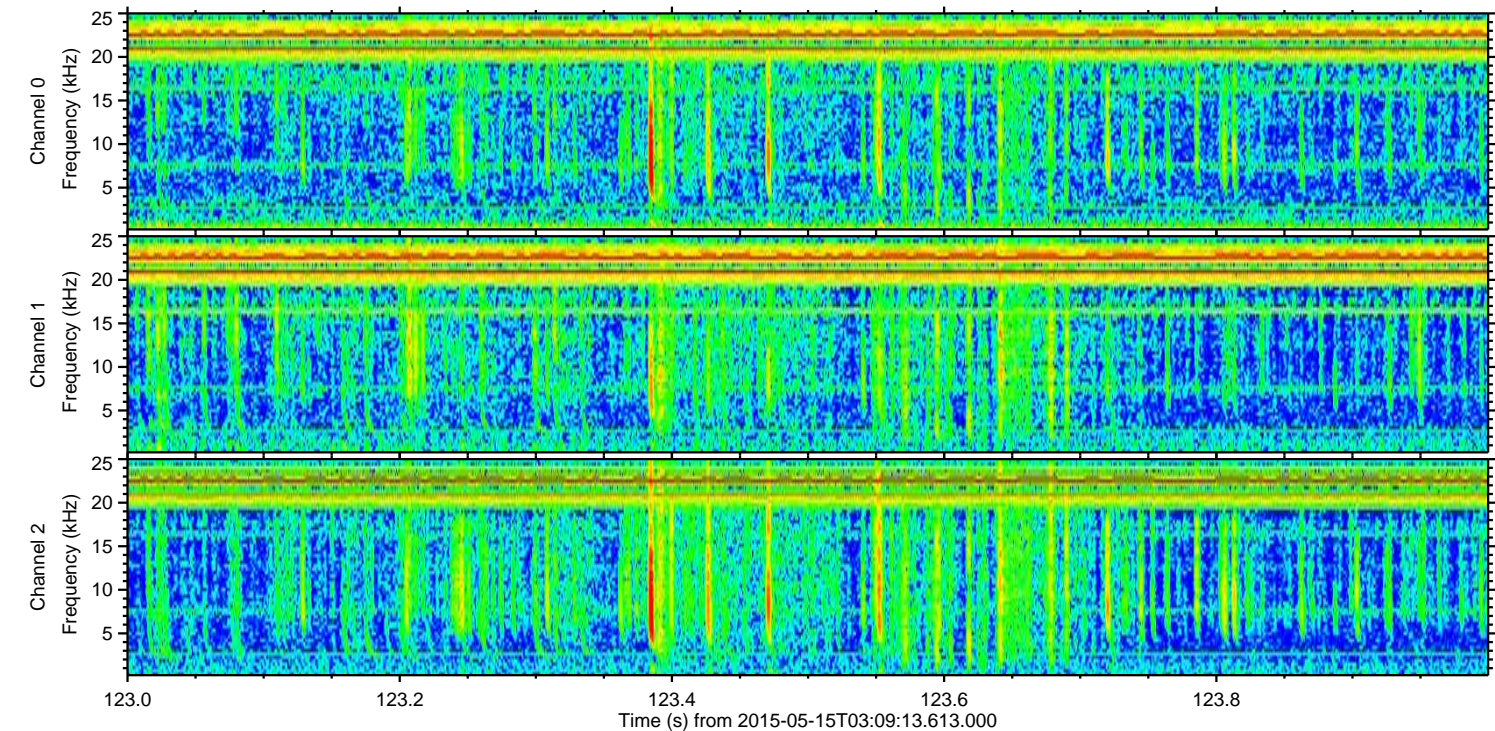
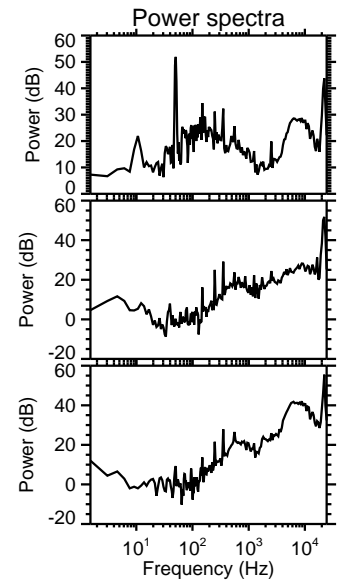
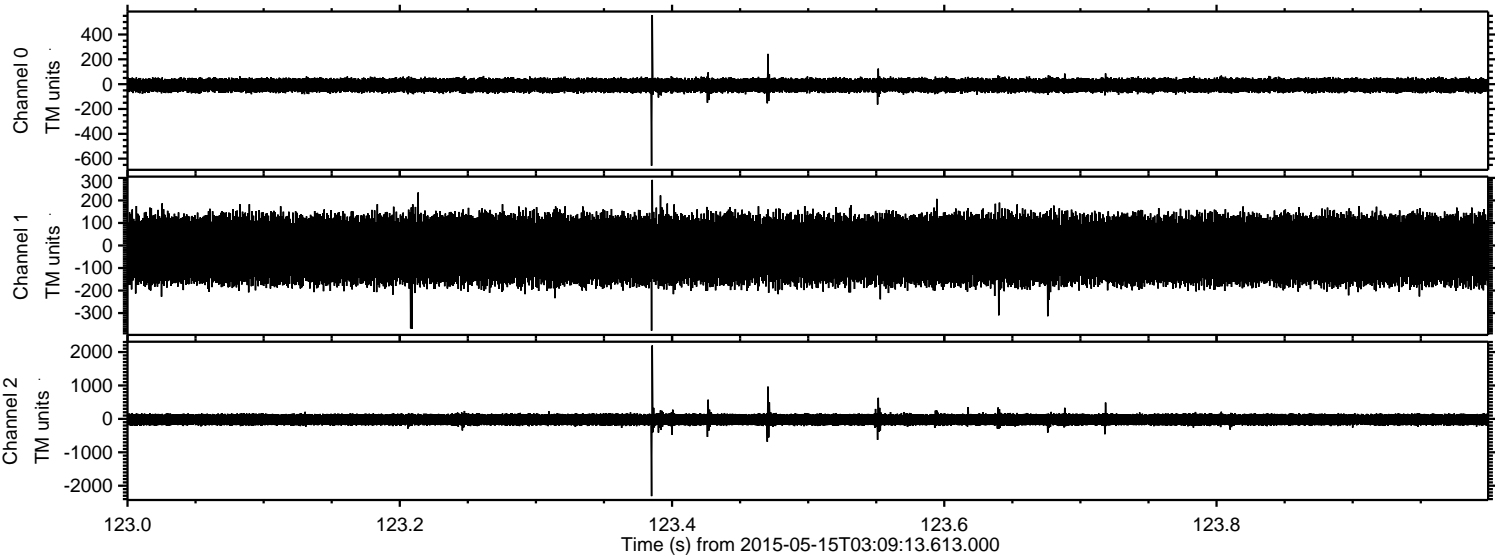
Processed Fri May 15 05:16:34 2015 by ELM ver.2012-10-06 from 001\_\_elm20150515\_030912\_\_dat00.bin





ELMAVAN 3D WAVEFORMS (Measured data sampled at 50 kHz) 49786 packets of 144 samples from 2015-05-15T03:09:13.613.000. Part 124/144

Processed Fri May 15 05:16:35 2015 by ELM ver.2012-10-06 from 001\_\_elm20150515\_030912\_\_dat00.bin



Channel 0  
mn: -657  
mx: 557  
 $\mu$ : -9.0  
 $\sigma$ : 29.2

Channel 1  
mn: -378  
mx: 291  
 $\mu$ : -19.3  
 $\sigma$ : 77.3

Channel 2  
mn: -2311  
mx: 2199  
 $\mu$ : -21.7  
 $\sigma$ : 99.4



