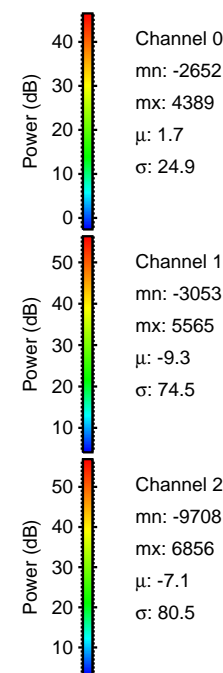
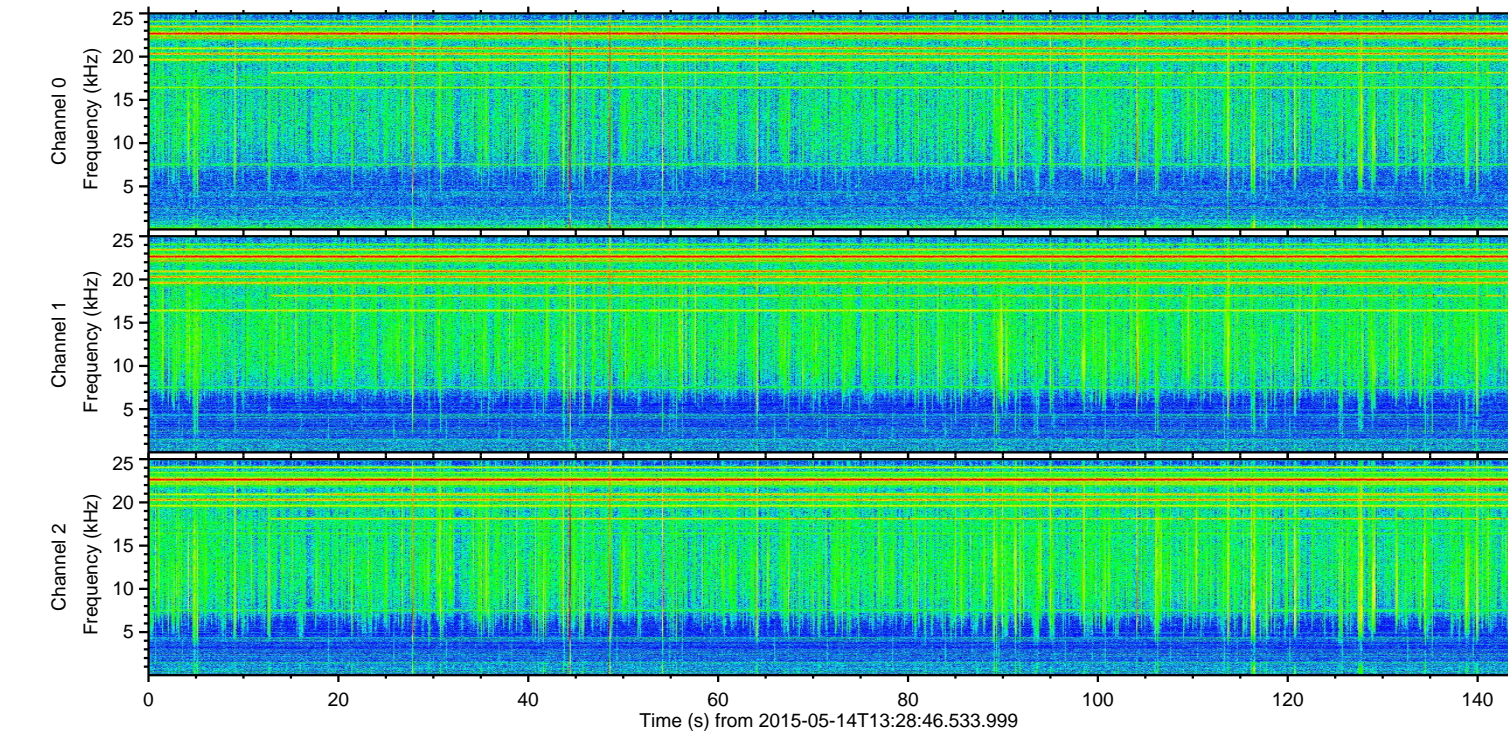
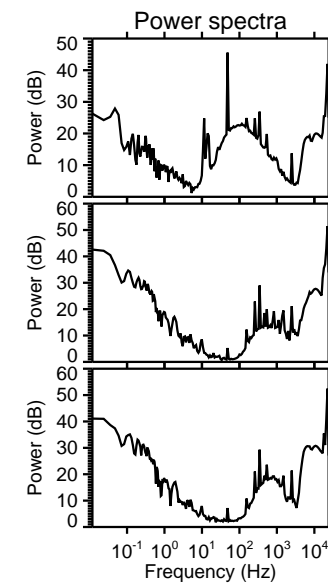
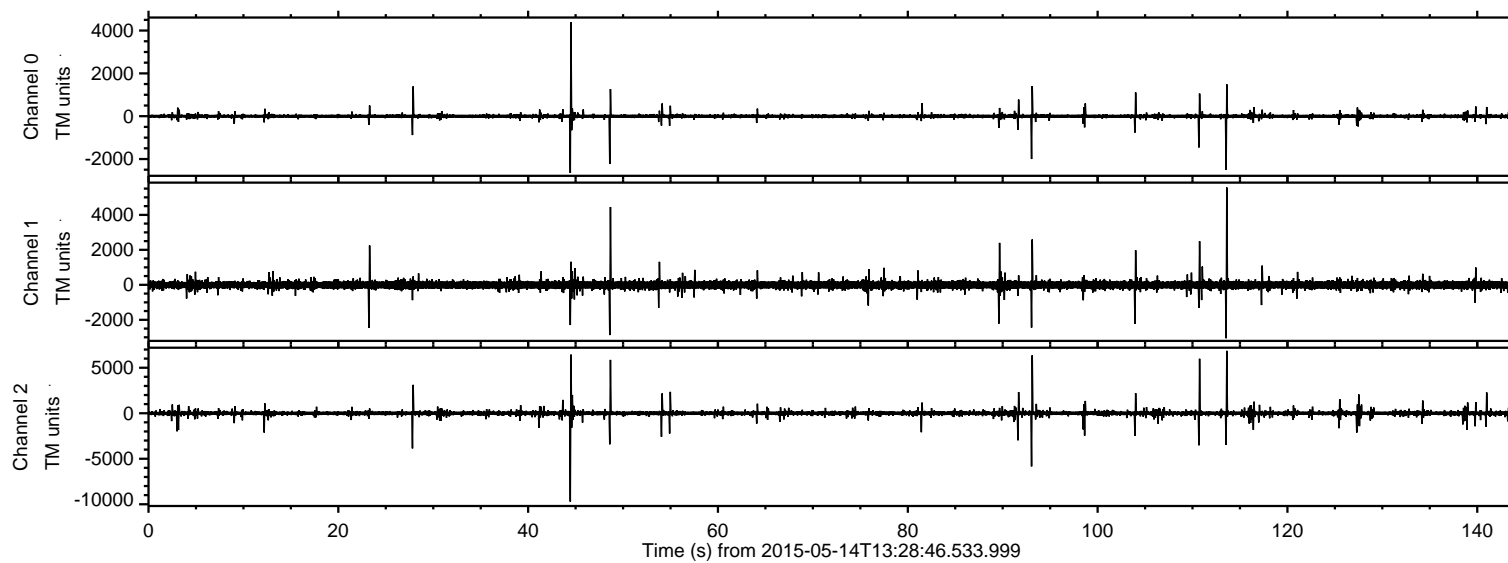


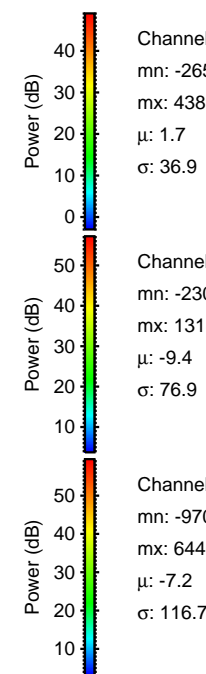
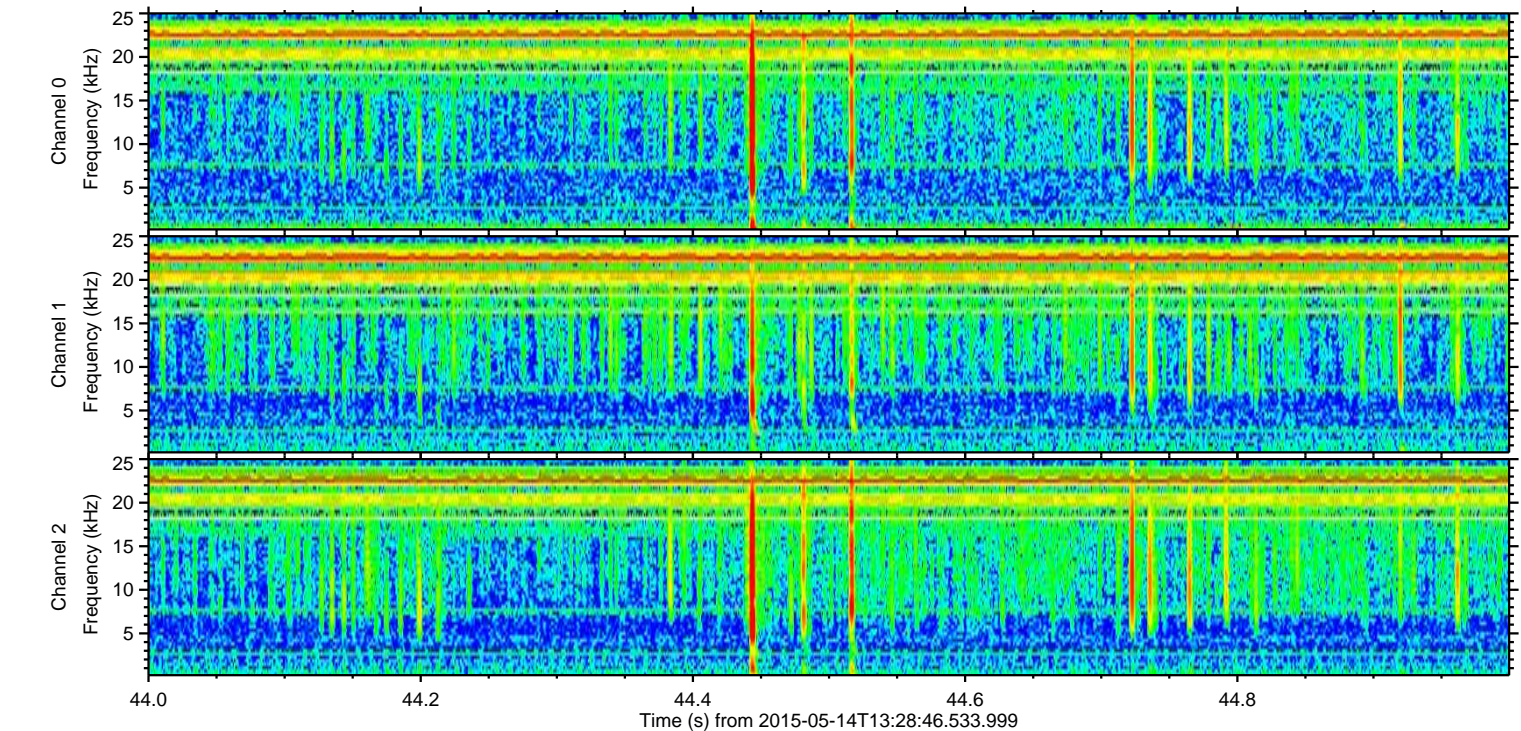
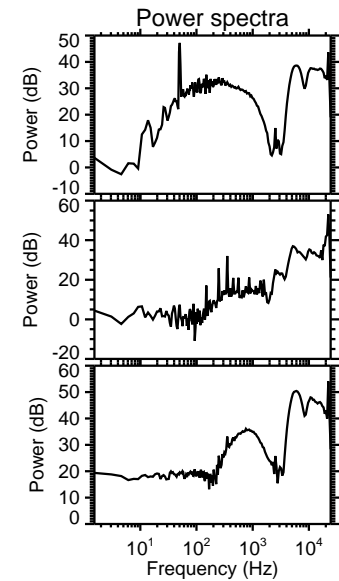
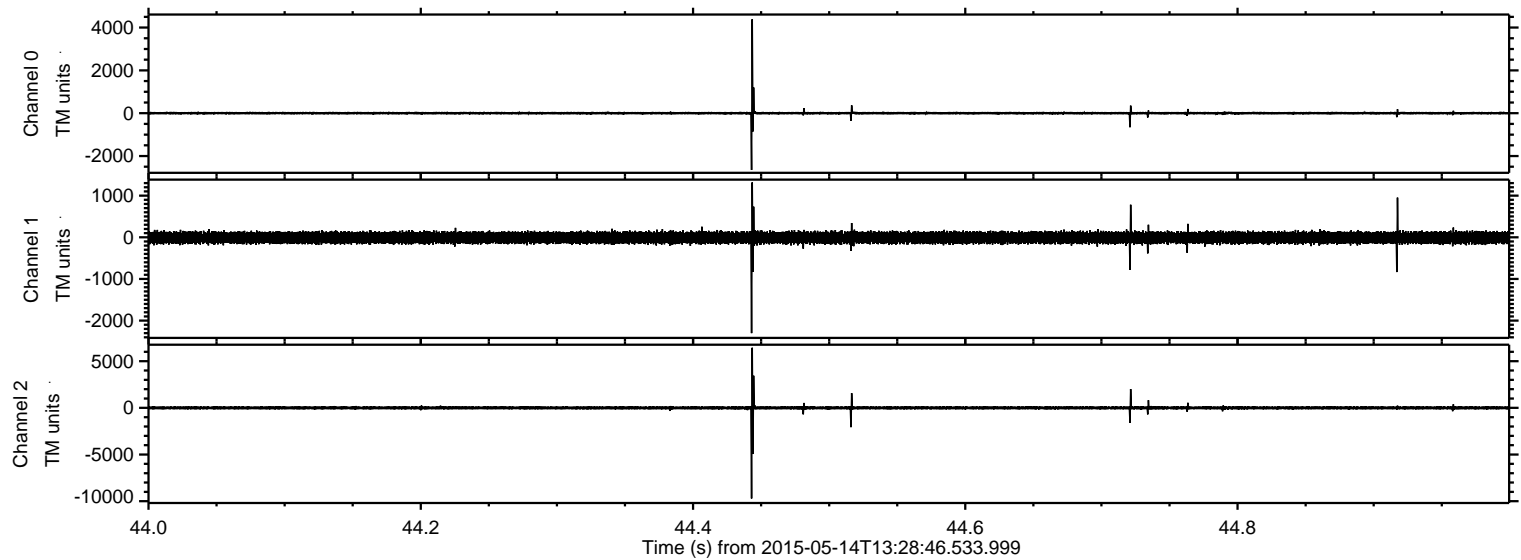
ELMAVAN 3D WAVEFORMS (Measured data sampled at 50 kHz) 49778 packets of 144 samples from 2015-05-14T13:28:46.533.999.

Processed Thu May 14 15:35:07 2015 by ELM ver.2012-10-06 from 001\_\_elm20150514\_132845\_\_dat00.bin





Processed Thu May 14 15:35:18 2015 by ELM ver.2012-10-06 from 001\_\_elm20150514\_132845\_\_dat00.bin



Channel 0  
mn: -2652  
mx: 4389  
 $\mu$ : 1.7  
 $\sigma$ : 36.9

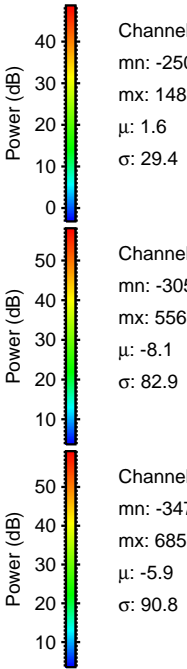
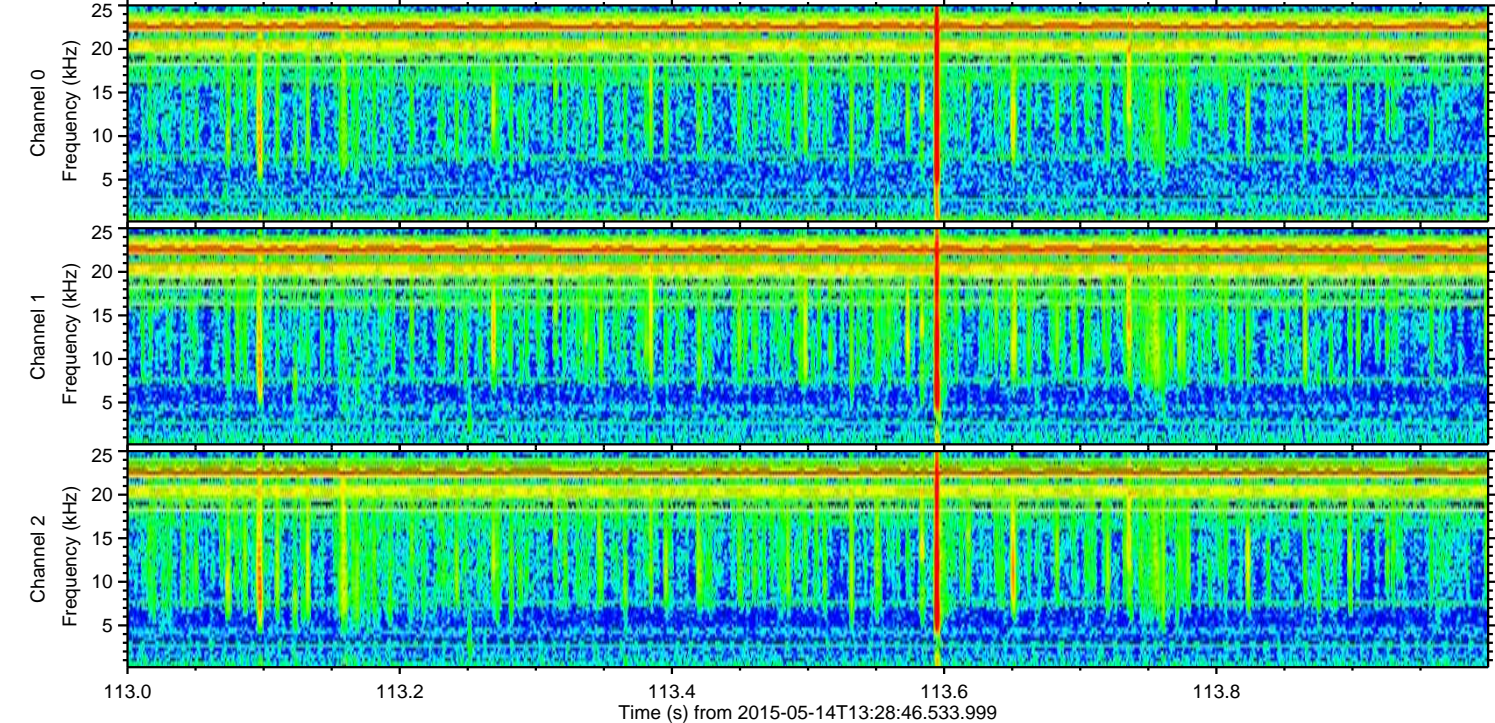
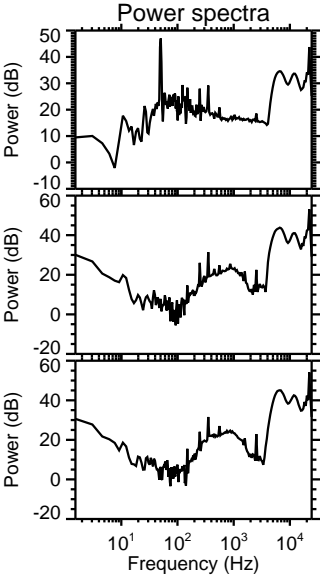
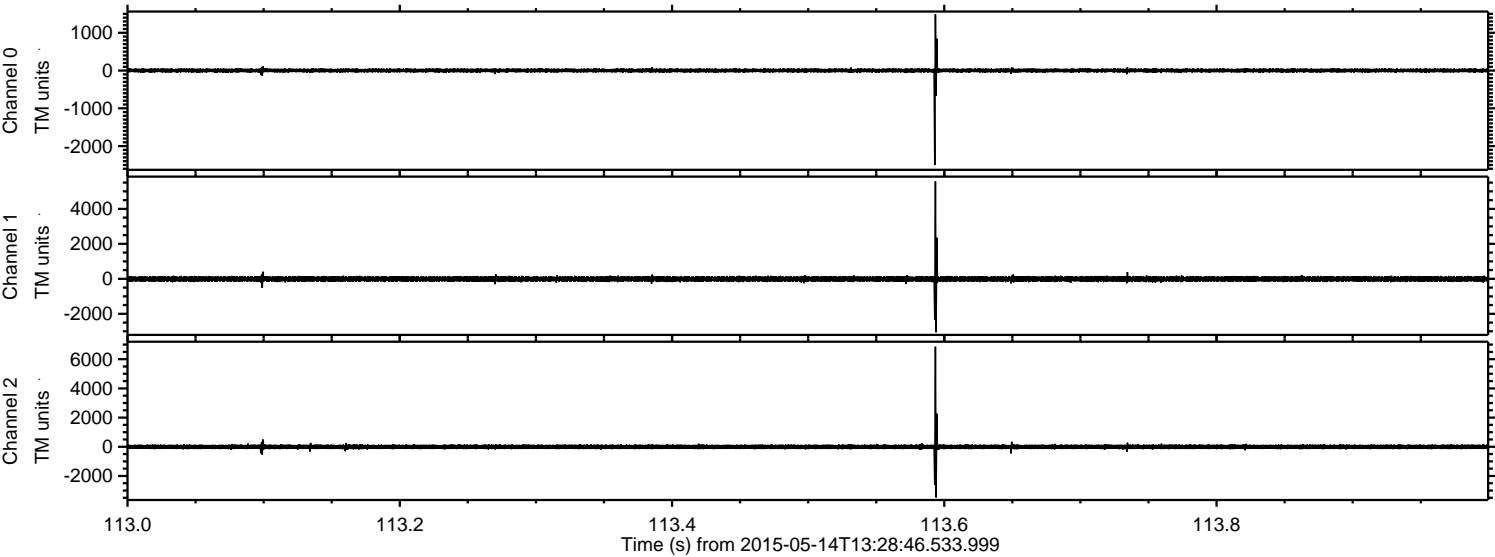
Channel 1  
mn: -2300  
mx: 1318  
 $\mu$ : -9.4  
 $\sigma$ : 76.9

Channel 2  
mn: -9708  
mx: 6440  
 $\mu$ : -7.2  
 $\sigma$ : 116.7



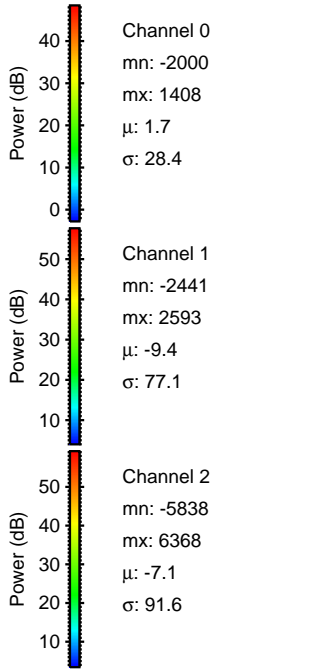
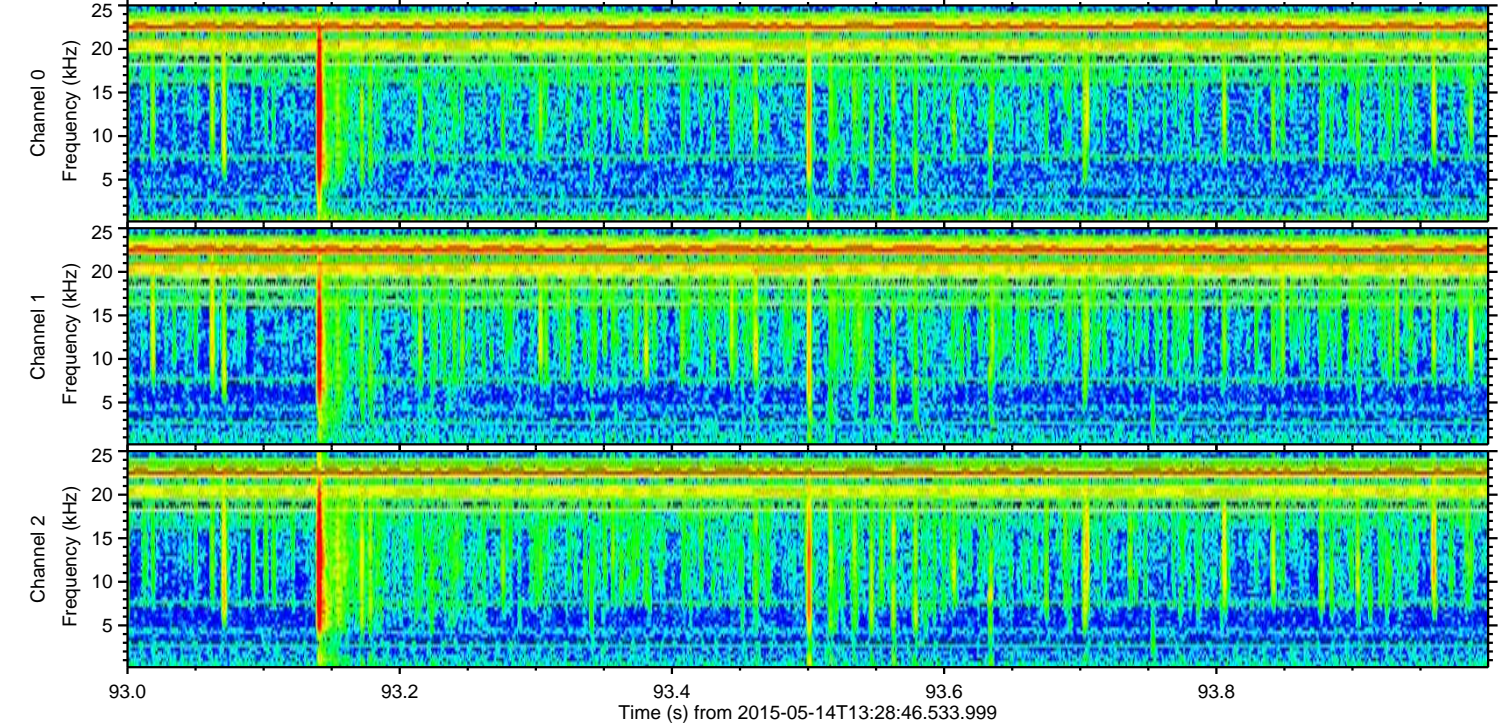
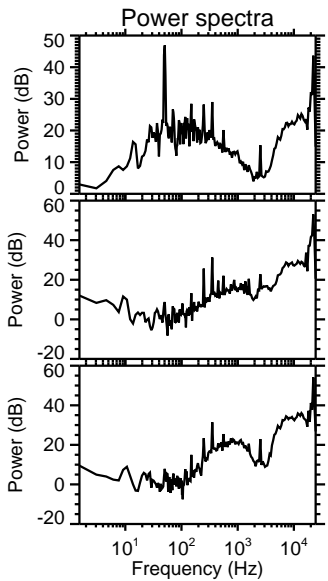
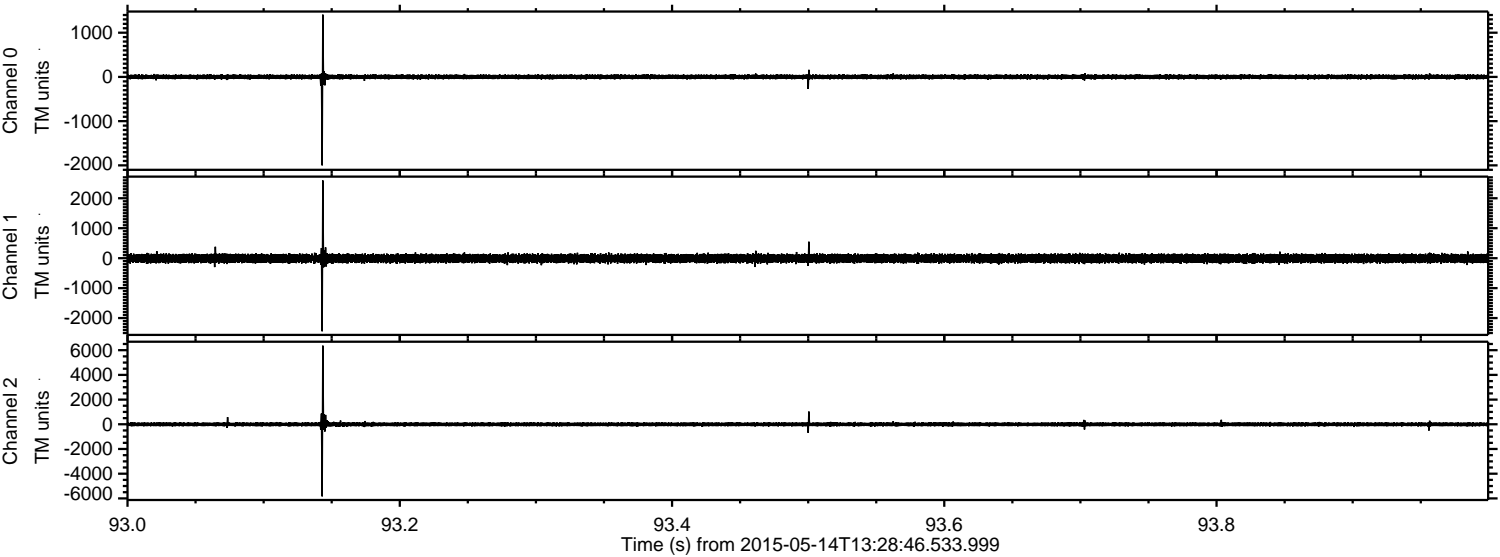
ELMAVAN 3D WAVEFORMS (Measured data sampled at 50 kHz) 49778 packets of 144 samples from 2015-05-14T13:28:46.533.999. Part 114/144

Processed Thu May 14 15:35:19 2015 by ELM ver.2012-10-06 from 001\_\_elm20150514\_132845\_\_dat00.bin





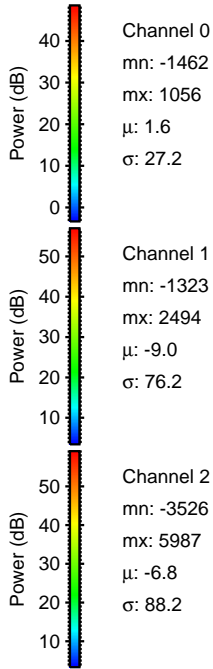
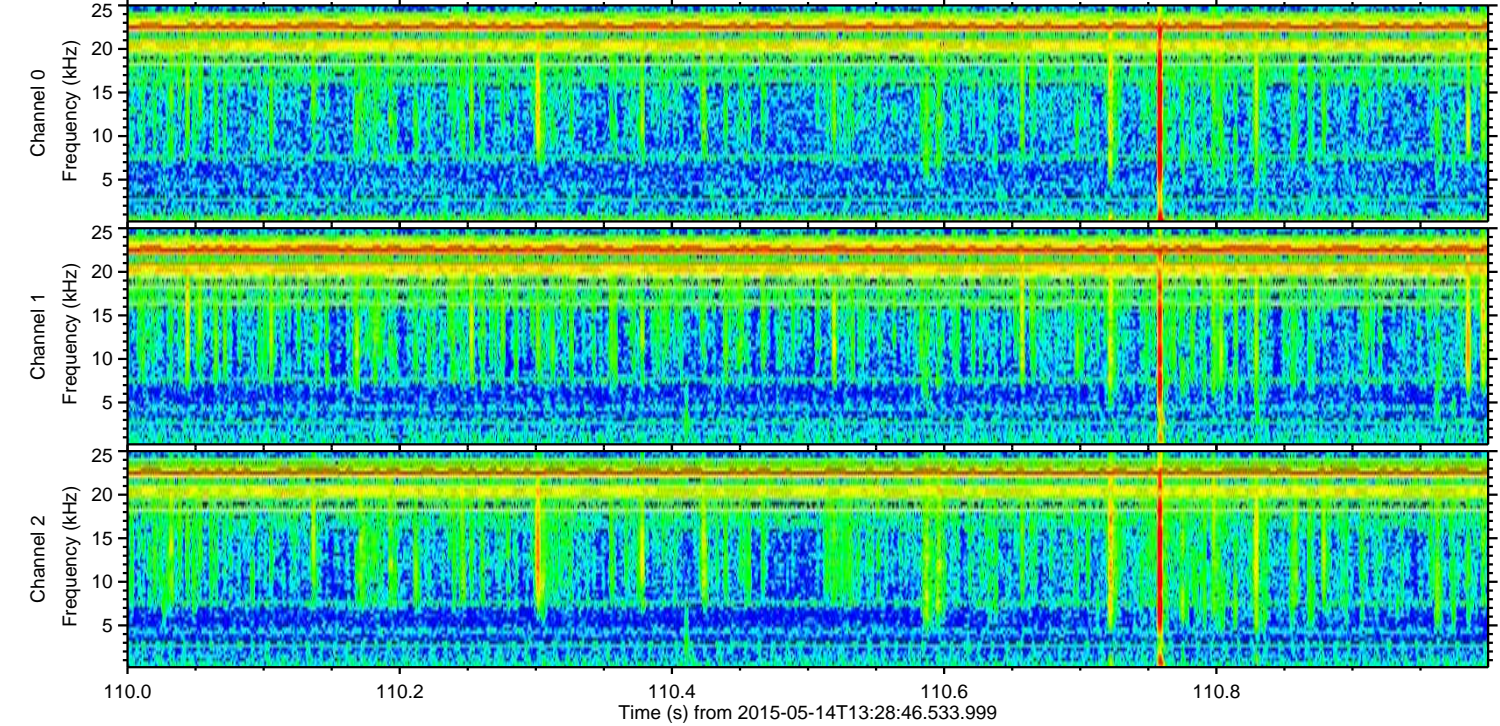
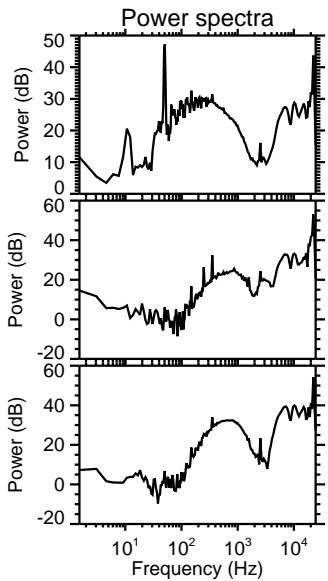
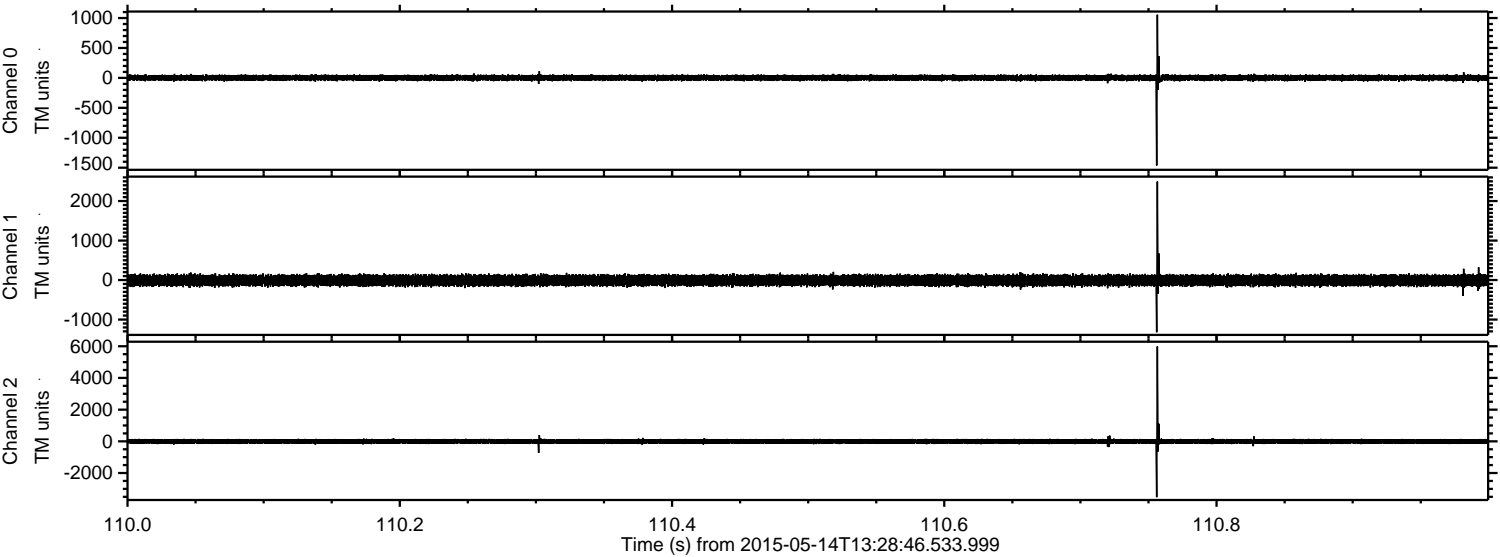
Processed Thu May 14 15:35:20 2015 by ELM ver.2012-10-06 from 001\_\_elm20150514\_132845\_\_dat00.bin





ELMAVAN 3D WAVEFORMS (Measured data sampled at 50 kHz) 49778 packets of 144 samples from 2015-05-14T13:28:46.533.999. Part 111/144

Processed Thu May 14 15:35:21 2015 by ELM ver.2012-10-06 from 001\_\_elm20150514\_132845\_\_dat00.bin



Channel 0  
mn: -1462  
mx: 1056  
 $\mu$ : 1.6  
 $\sigma$ : 27.2

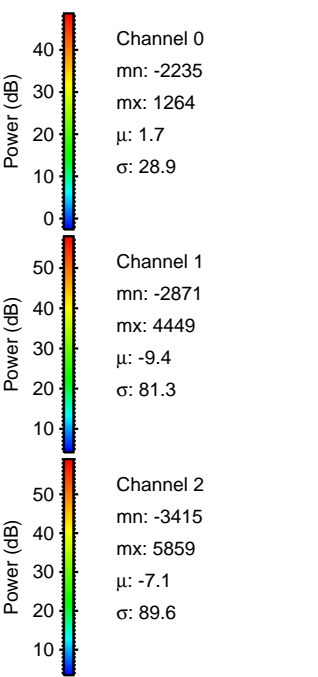
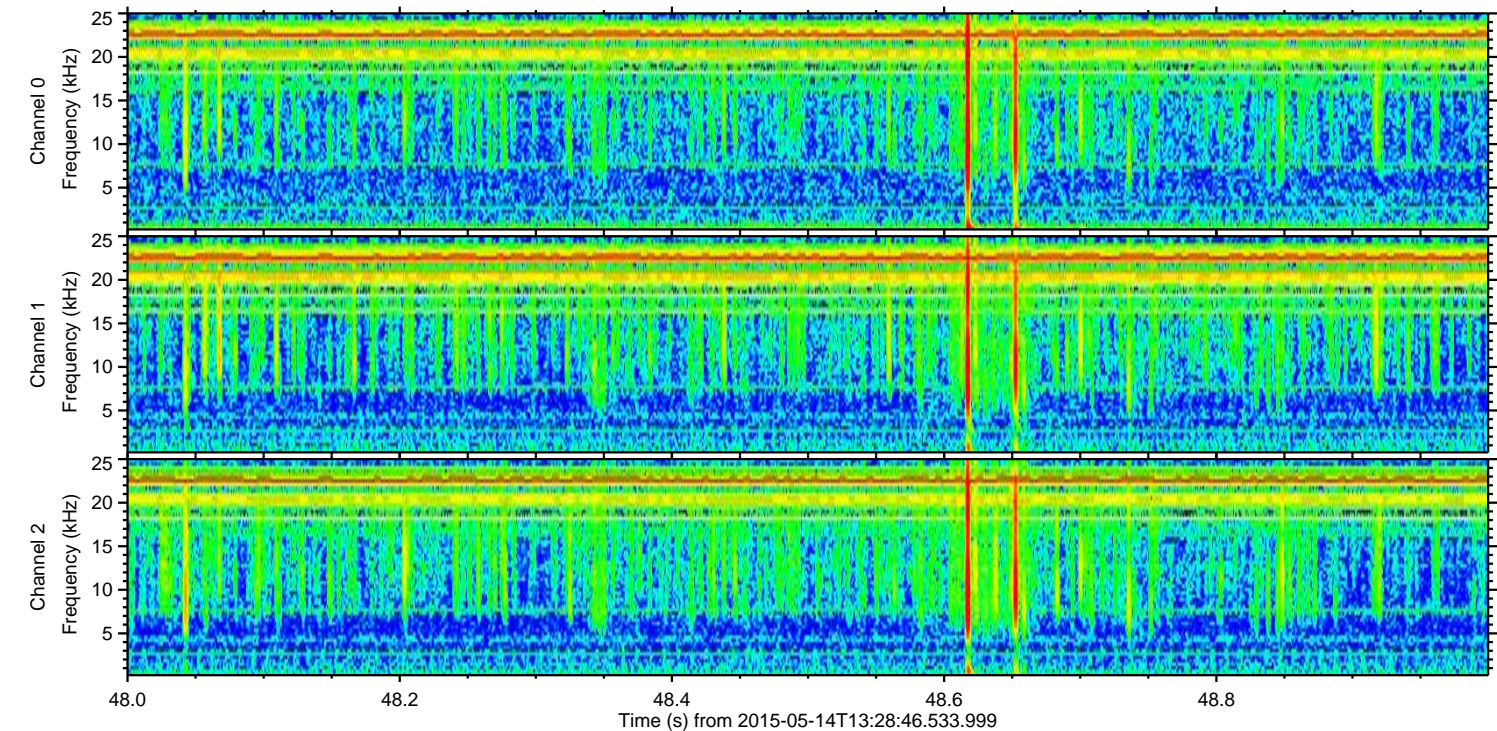
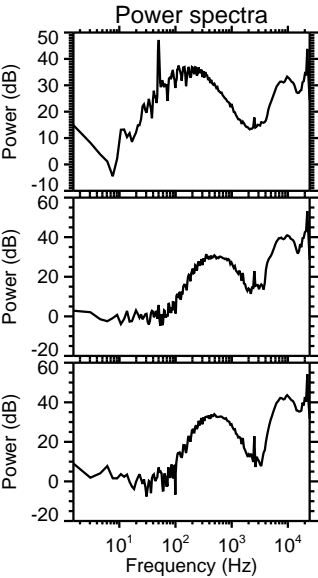
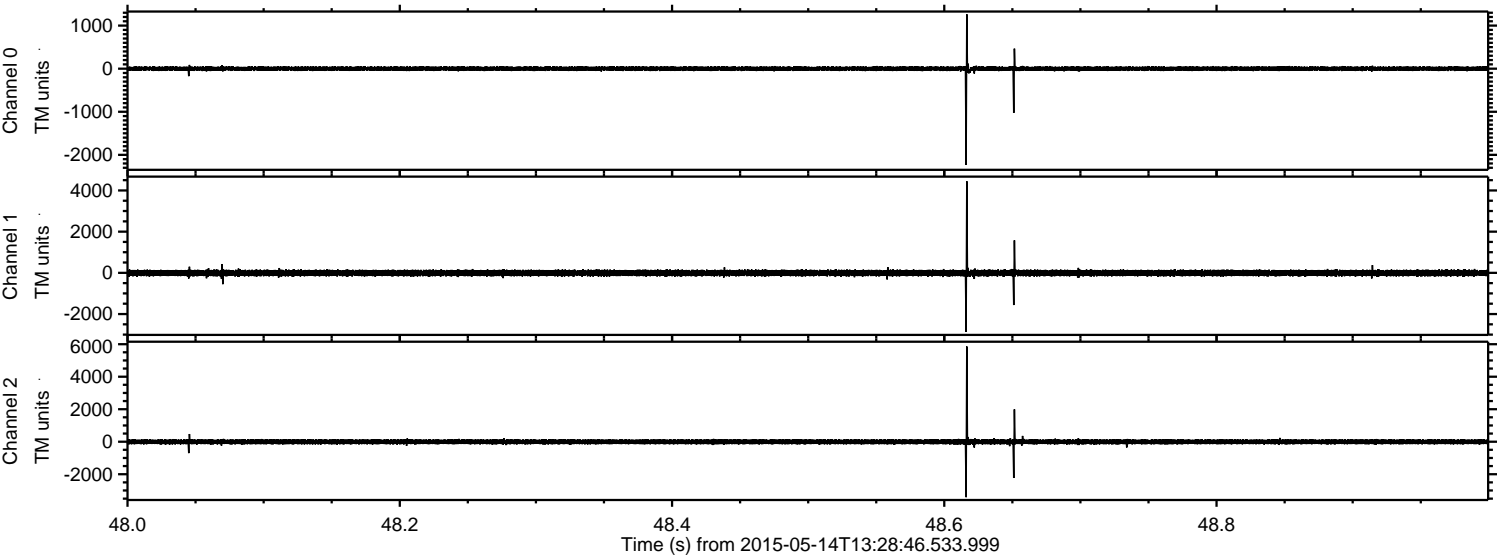
Channel 1  
mn: -1323  
mx: 2494  
 $\mu$ : -9.0  
 $\sigma$ : 76.2

Channel 2  
mn: -3526  
mx: 5987  
 $\mu$ : -6.8  
 $\sigma$ : 88.2



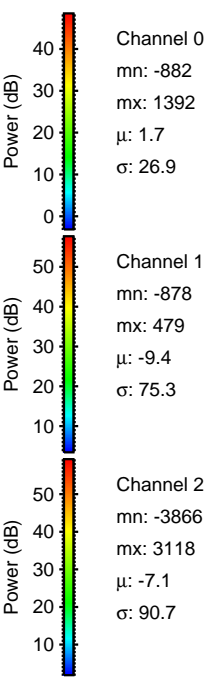
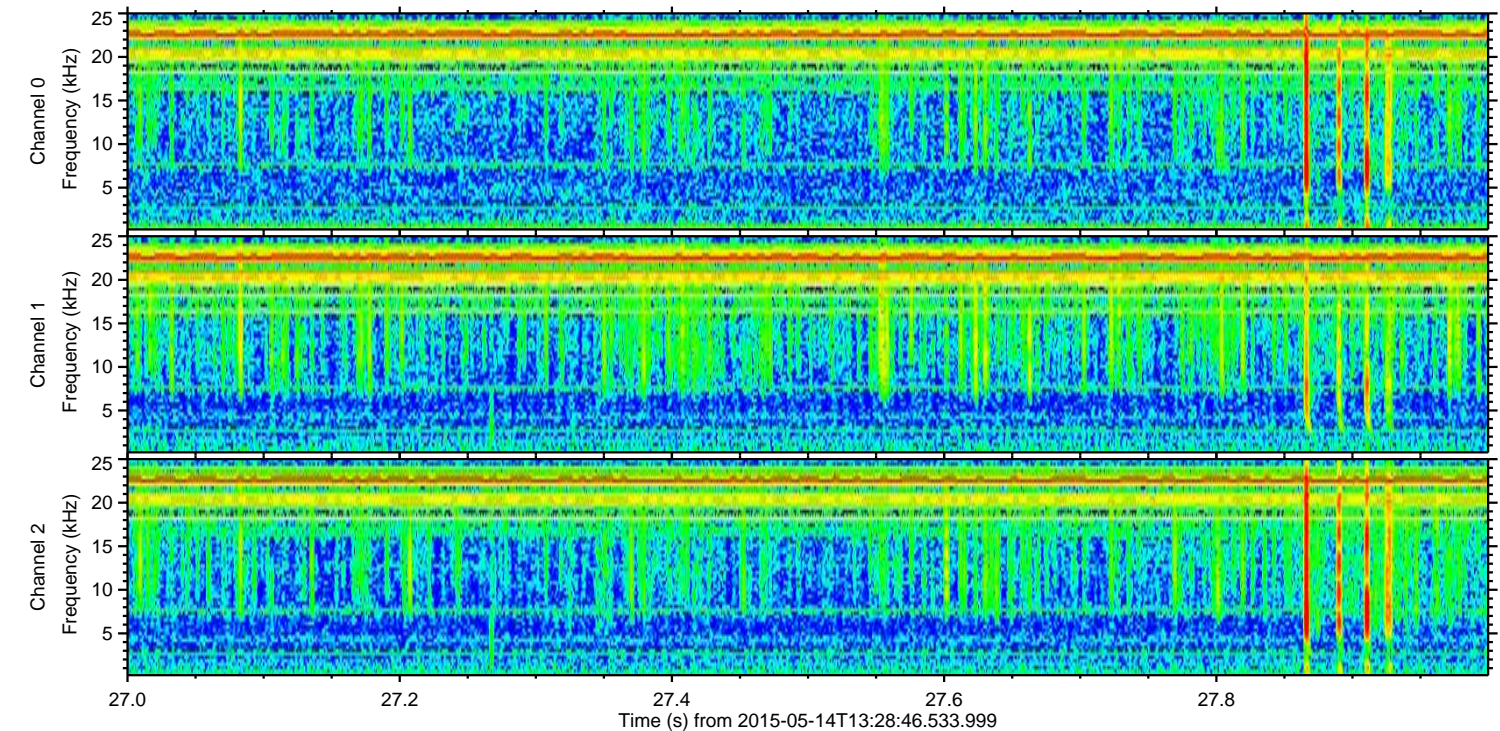
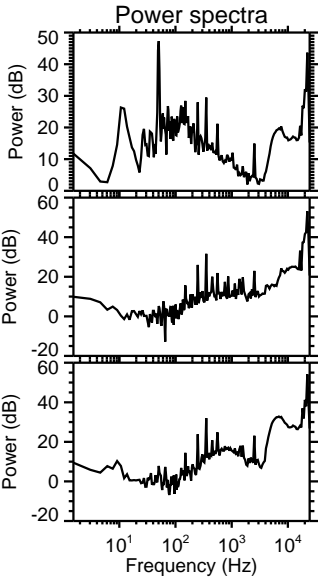
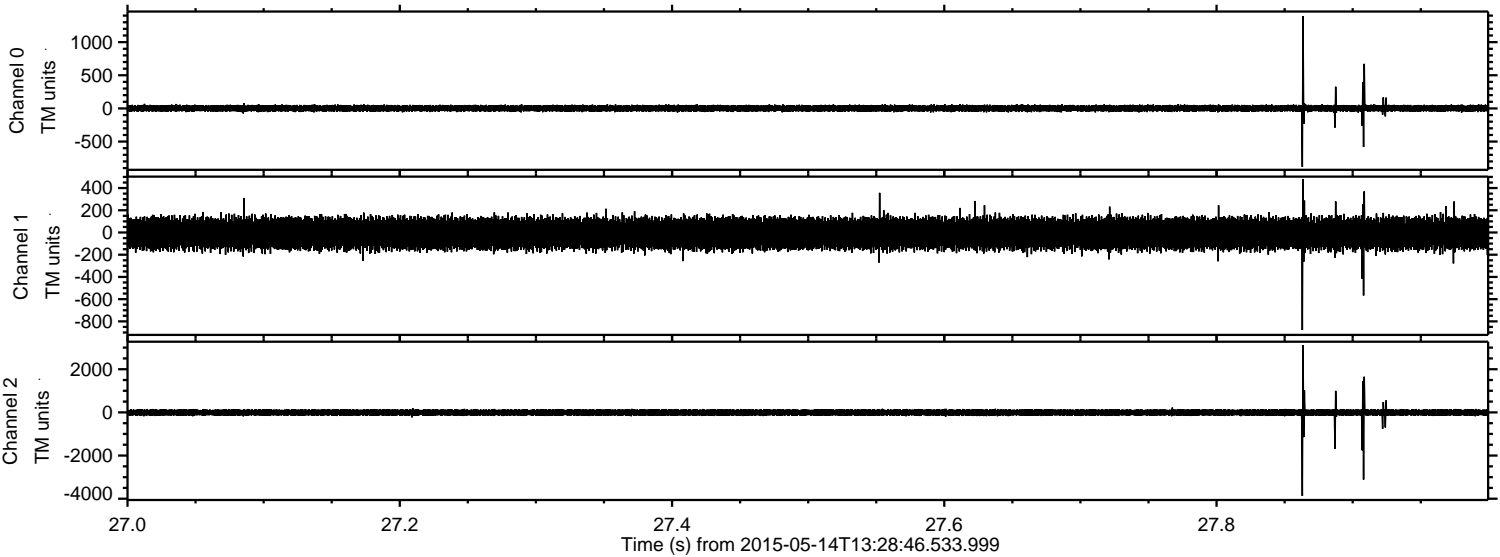
ELMAVAN 3D WAVEFORMS (Measured data sampled at 50 kHz) 49778 packets of 144 samples from 2015-05-14T13:28:46.533.999. Part 49/144

Processed Thu May 14 15:35:22 2015 by ELM ver.2012-10-06 from 001\_\_elm20150514\_132845\_\_dat00.bin



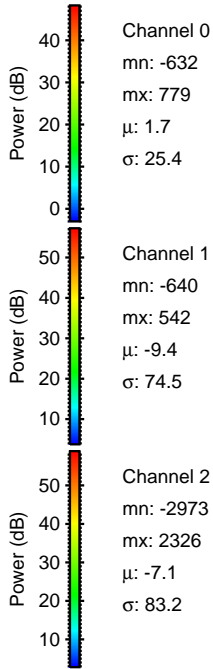
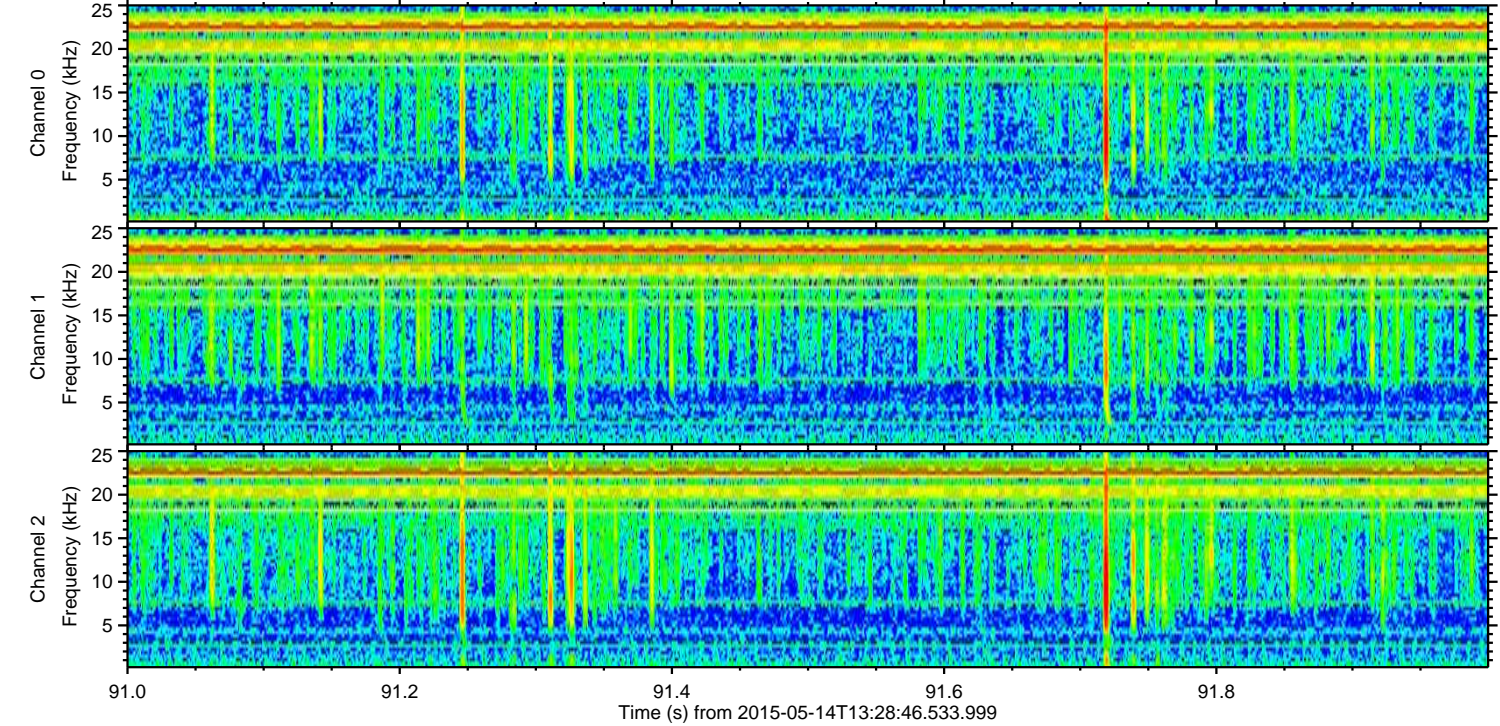
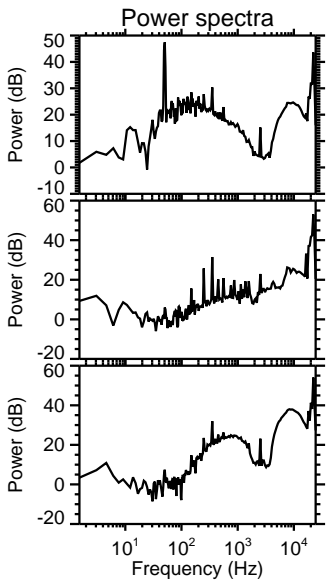
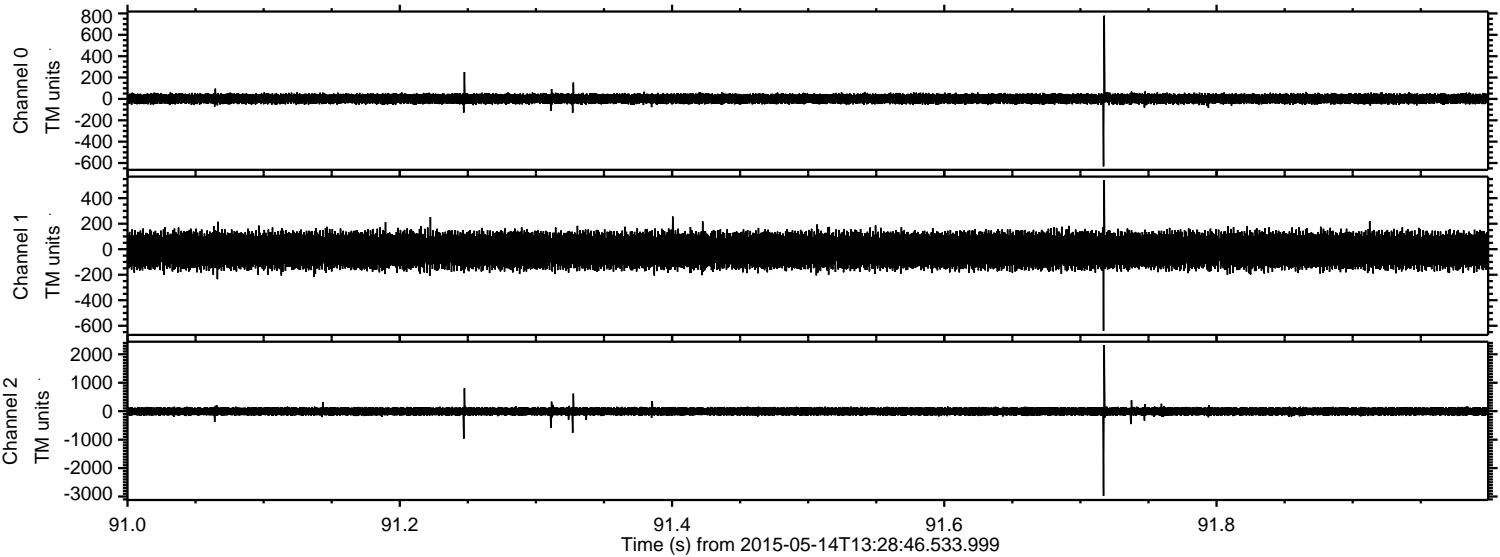


Processed Thu May 14 15:35:23 2015 by ELM ver.2012-10-06 from 001\_\_elm20150514\_132845\_\_dat00.bin





Processed Thu May 14 15:35:24 2015 by ELM ver.2012-10-06 from 001\_\_elm20150514\_132845\_\_dat00.bin



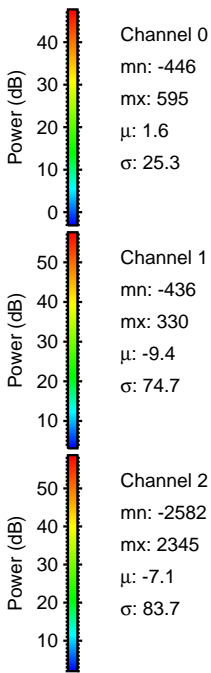
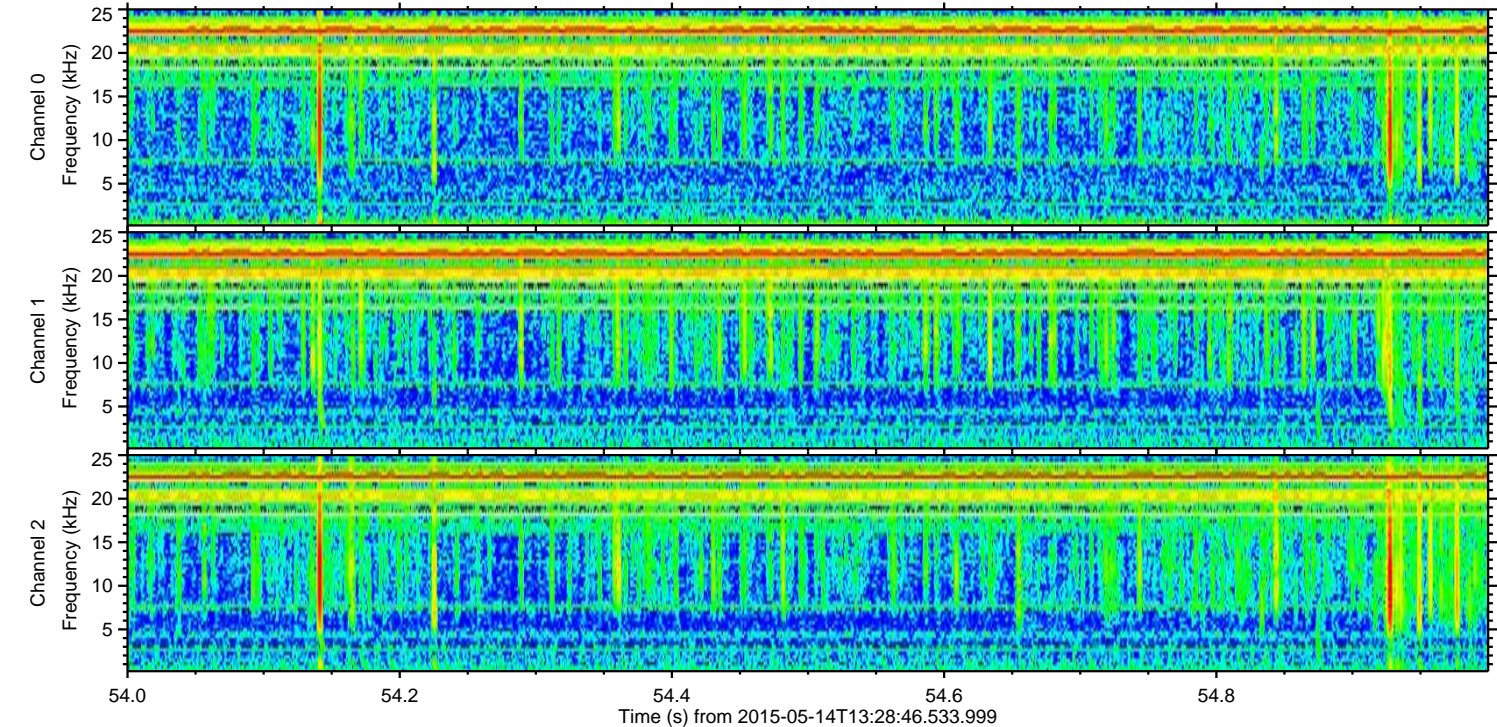
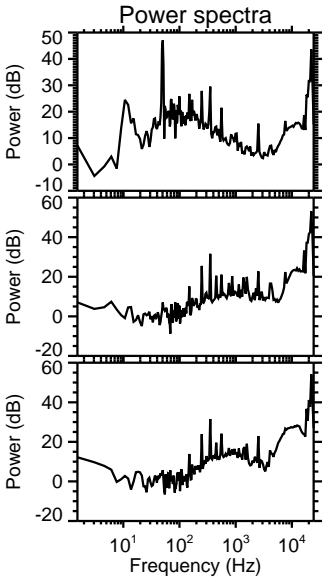
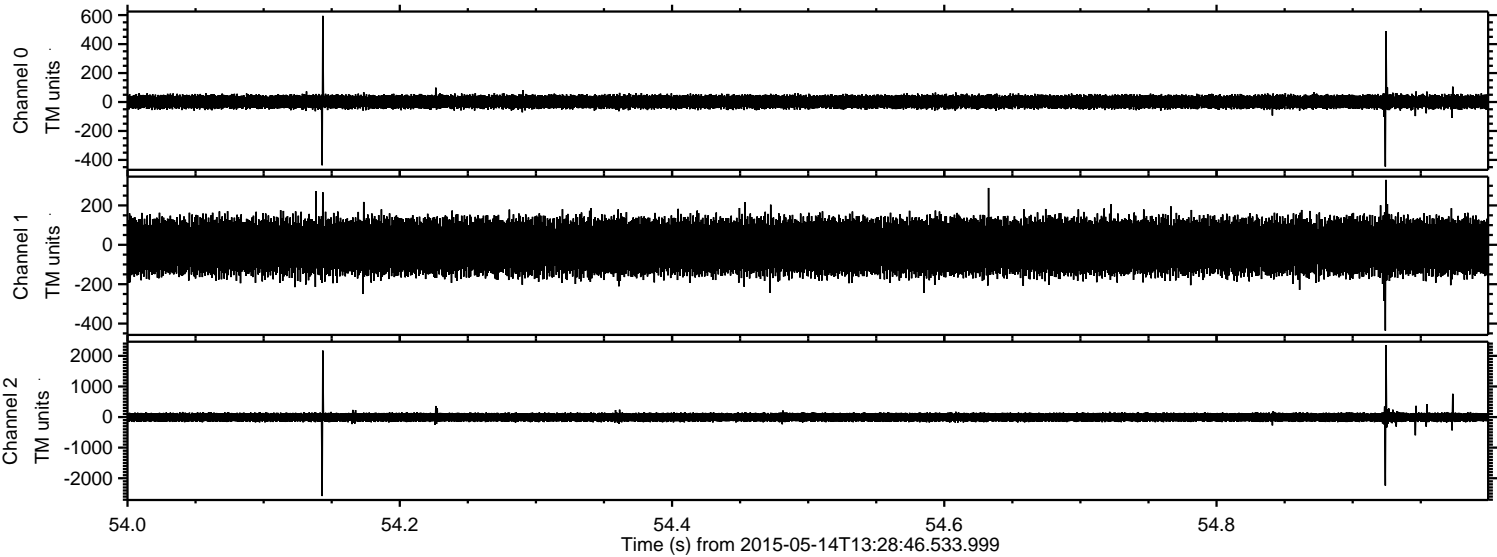
Channel 0  
mn: -632  
mx: 779  
 $\mu$ : 1.7  
 $\sigma$ : 25.4

Channel 1  
mn: -640  
mx: 542  
 $\mu$ : -9.4  
 $\sigma$ : 74.5

Channel 2  
mn: -2973  
mx: 2326  
 $\mu$ : -7.1  
 $\sigma$ : 83.2

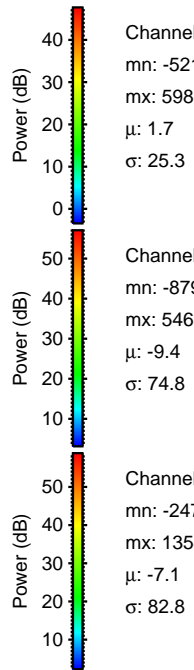
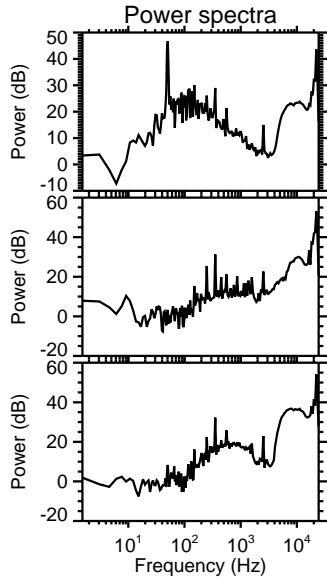
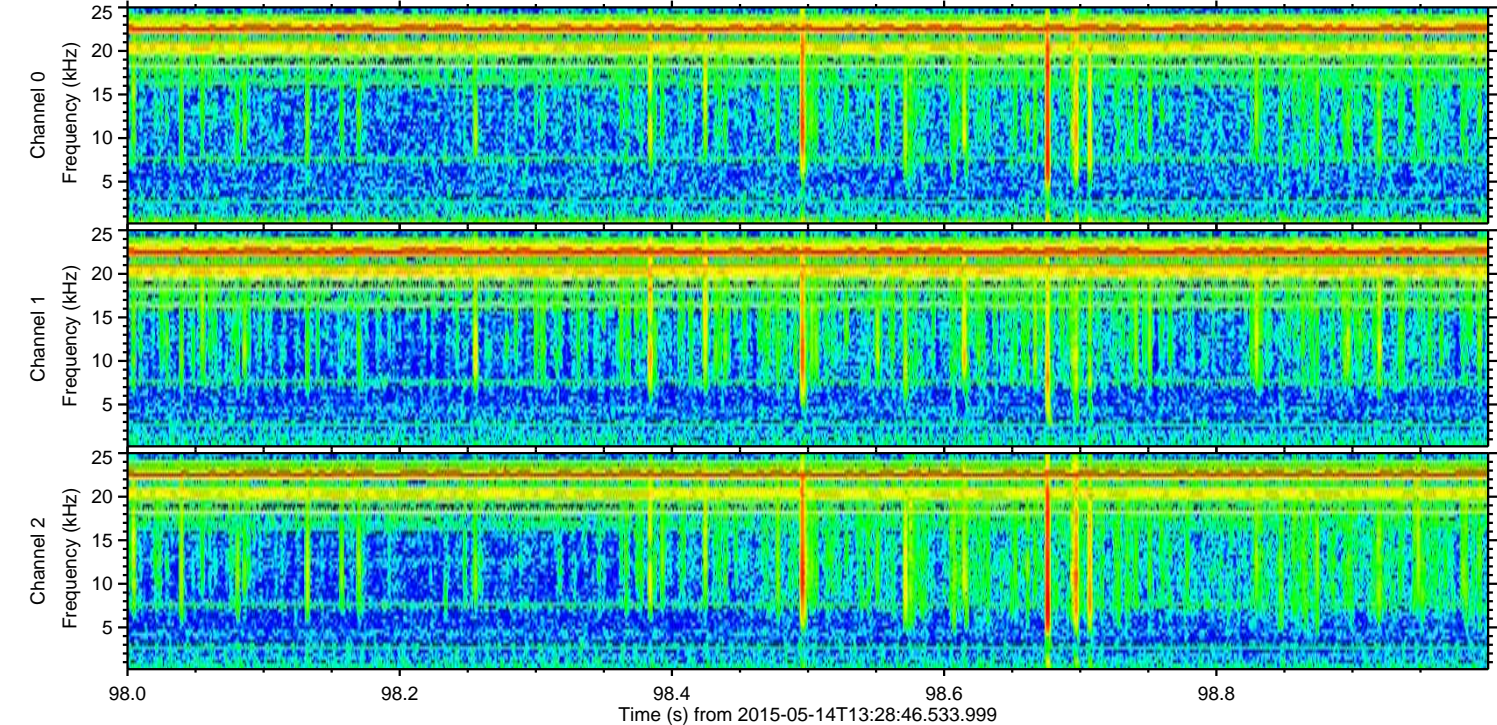
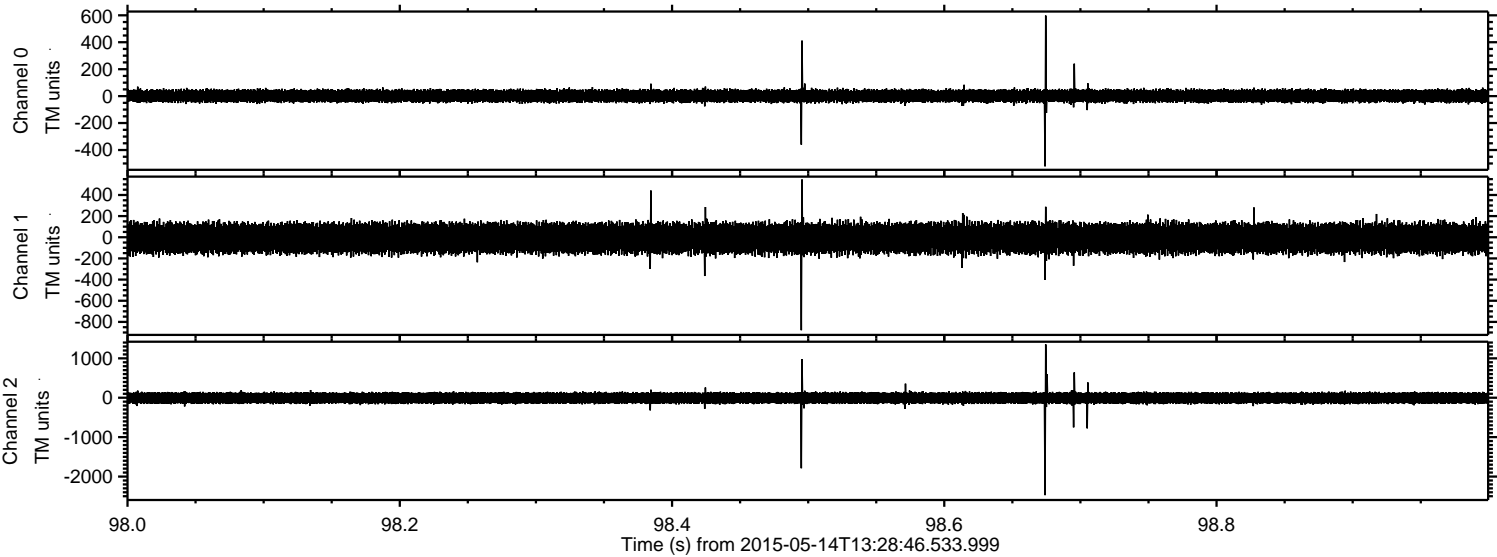


Processed Thu May 14 15:35:25 2015 by ELM ver.2012-10-06 from 001\_\_elm20150514\_132845\_\_dat00.bin





Processed Thu May 14 15:35:26 2015 by ELM ver.2012-10-06 from 001\_\_elm20150514\_132845\_\_dat00.bin



Channel 0  
mn: -521  
mx: 598  
 $\mu$ : 1.7  
 $\sigma$ : 25.3

Channel 1  
mn: -879  
mx: 546  
 $\mu$ : -9.4  
 $\sigma$ : 74.8

Channel 2  
mn: -2472  
mx: 1354  
 $\mu$ : -7.1  
 $\sigma$ : 82.8



Processed Thu May 14 15:35:27 2015 by ELM ver.2012-10-06 from 001\_\_elm20150514\_132845\_\_dat00.bin

