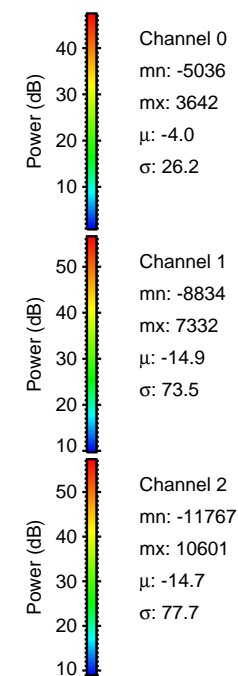
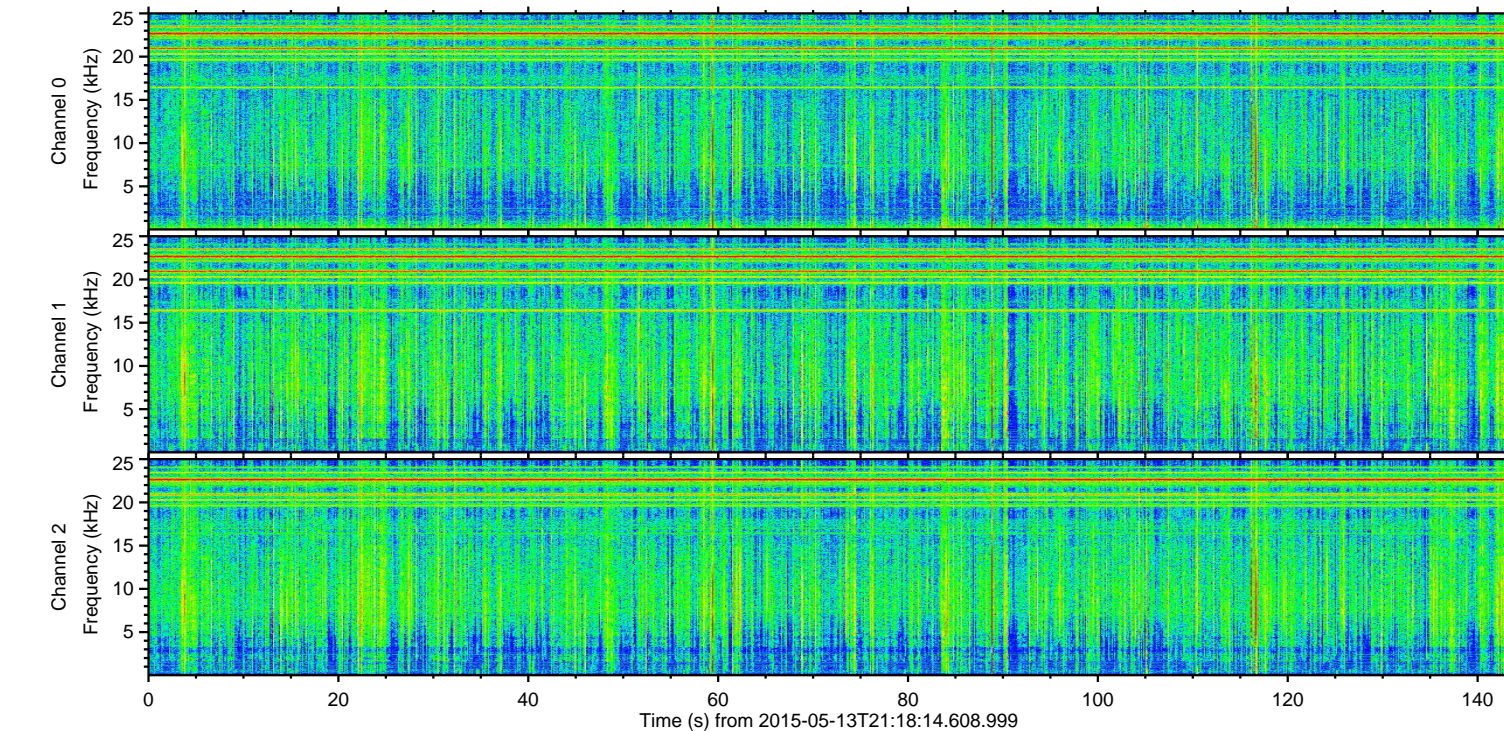
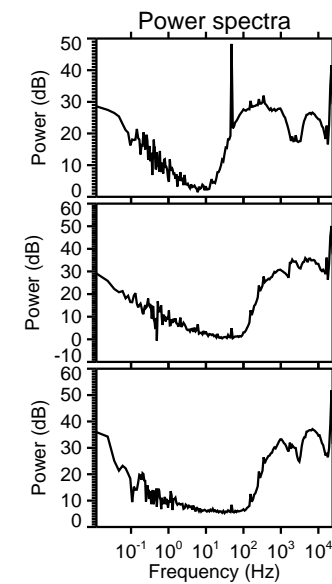
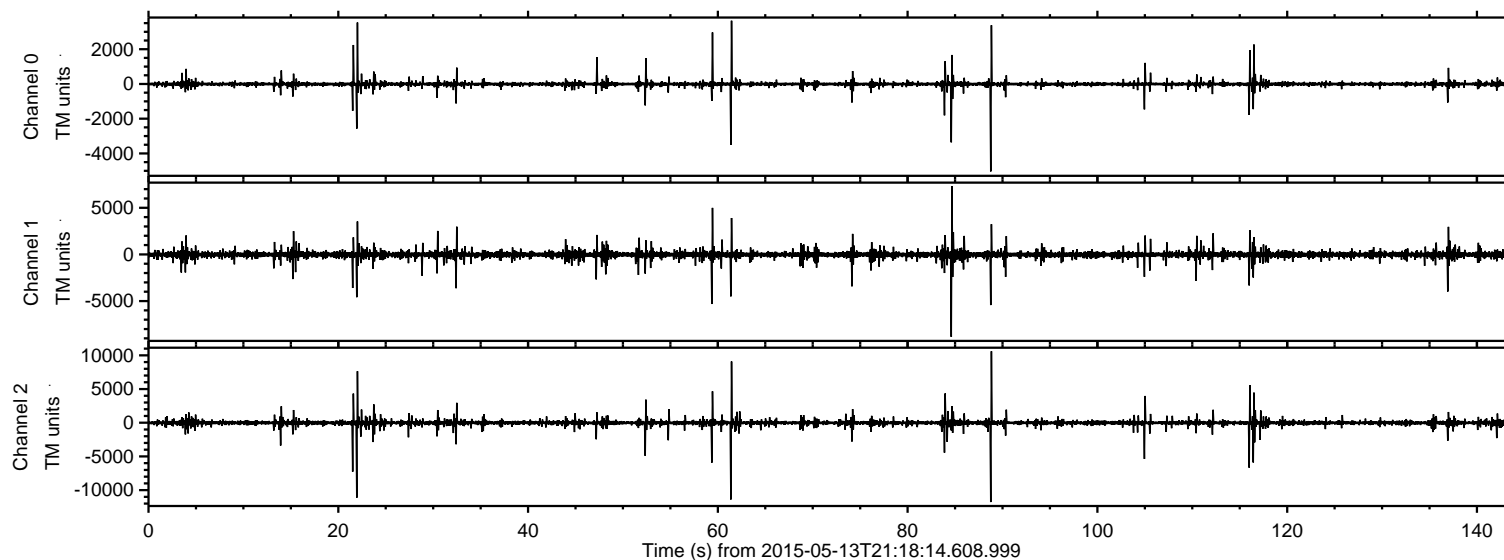
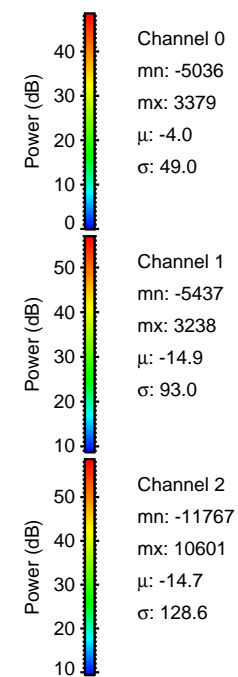
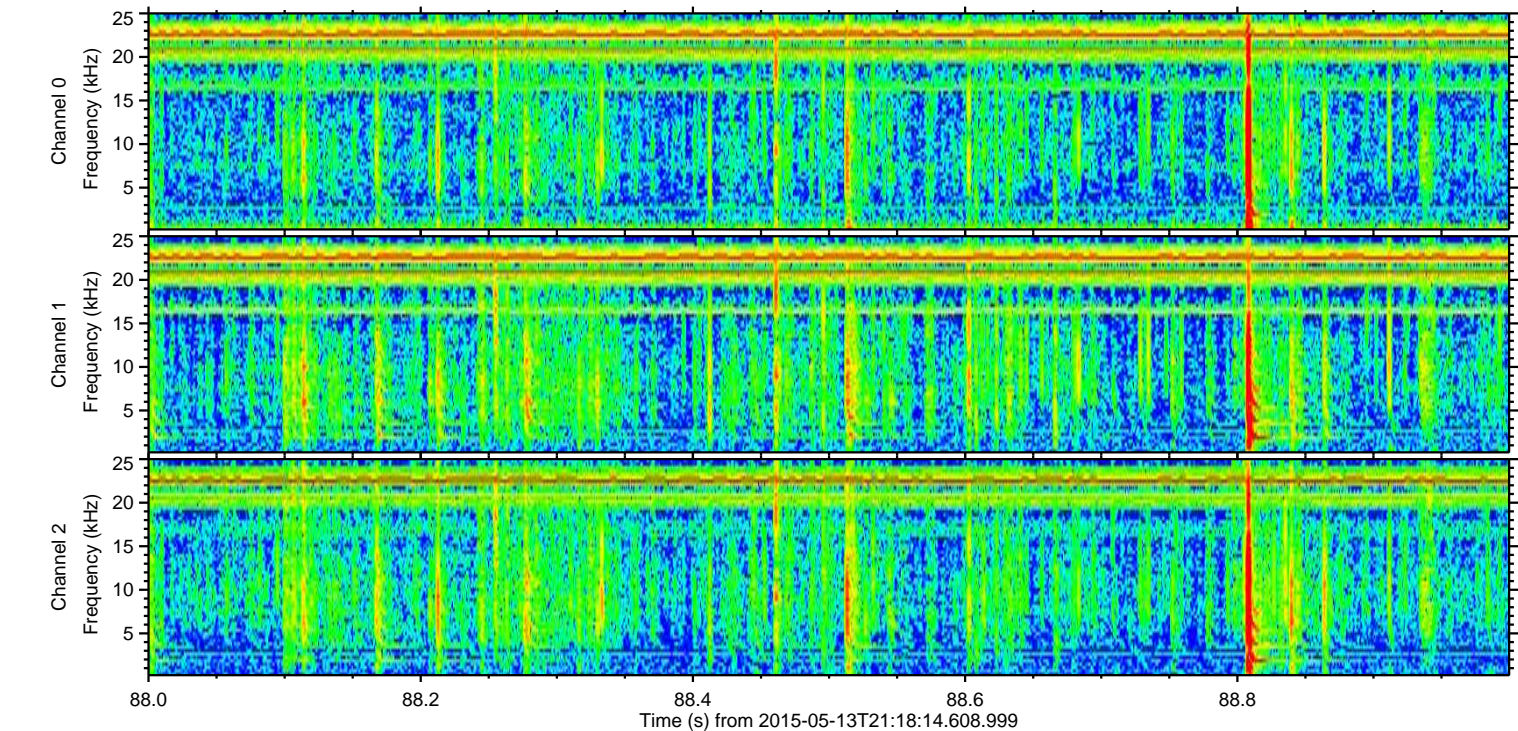
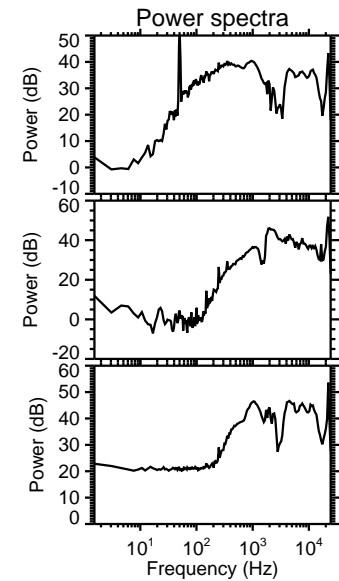
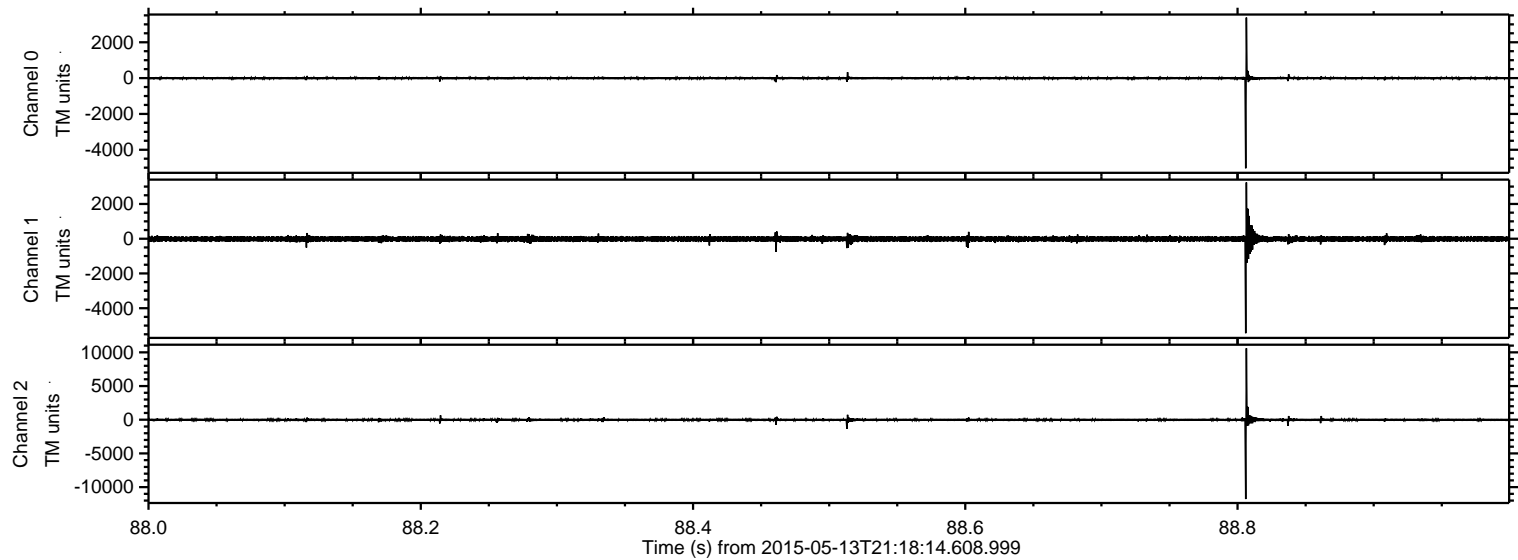


ELMAVAN 3D WAVEFORMS (Measured data sampled at 50 kHz) 49789 packets of 144 samples from 2015-05-13T21:18:14.608.999.

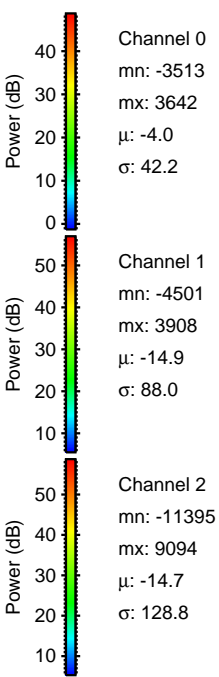
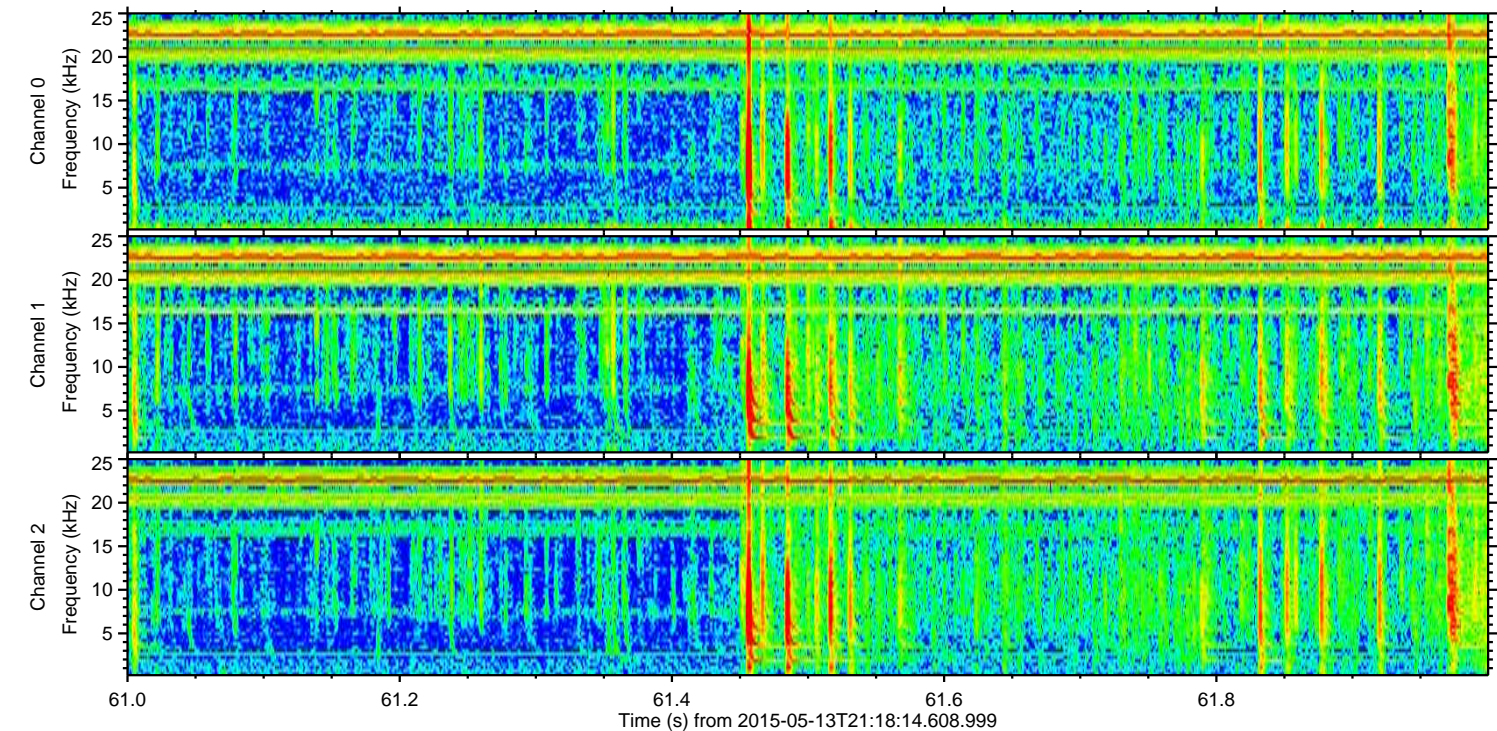
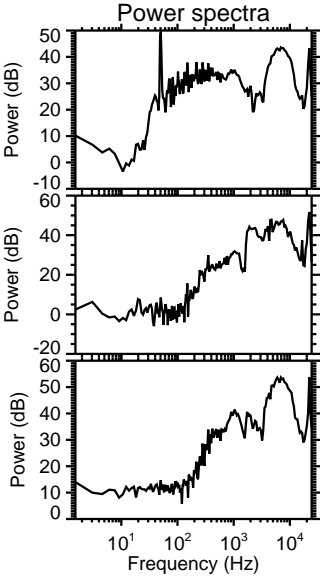
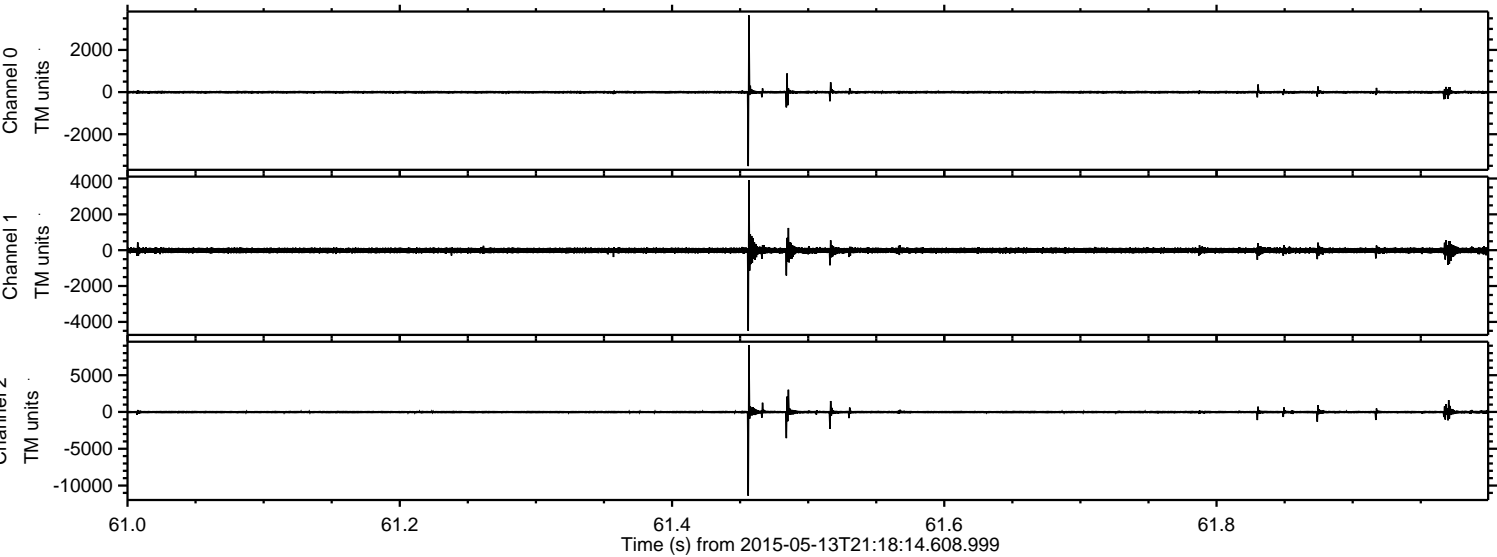
Processed Wed May 13 23:25:07 2015 by ELM ver.2012-10-06 from 001__elm20150513_211813__dat00.bin



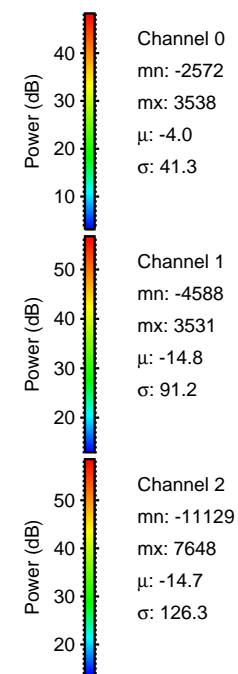
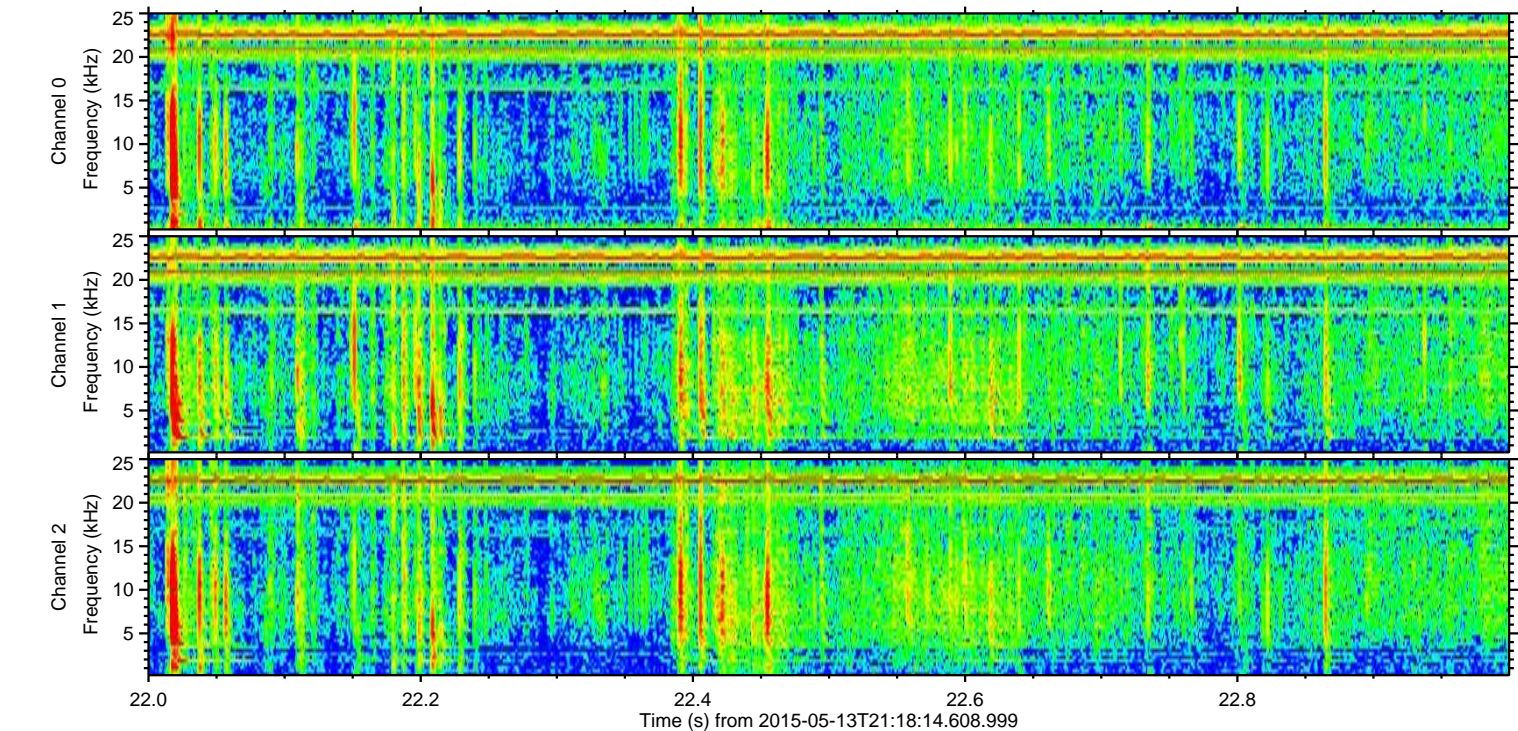
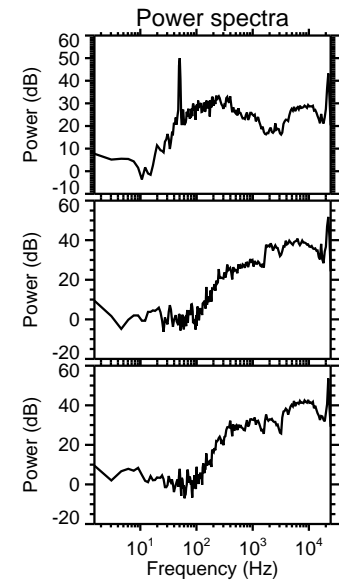
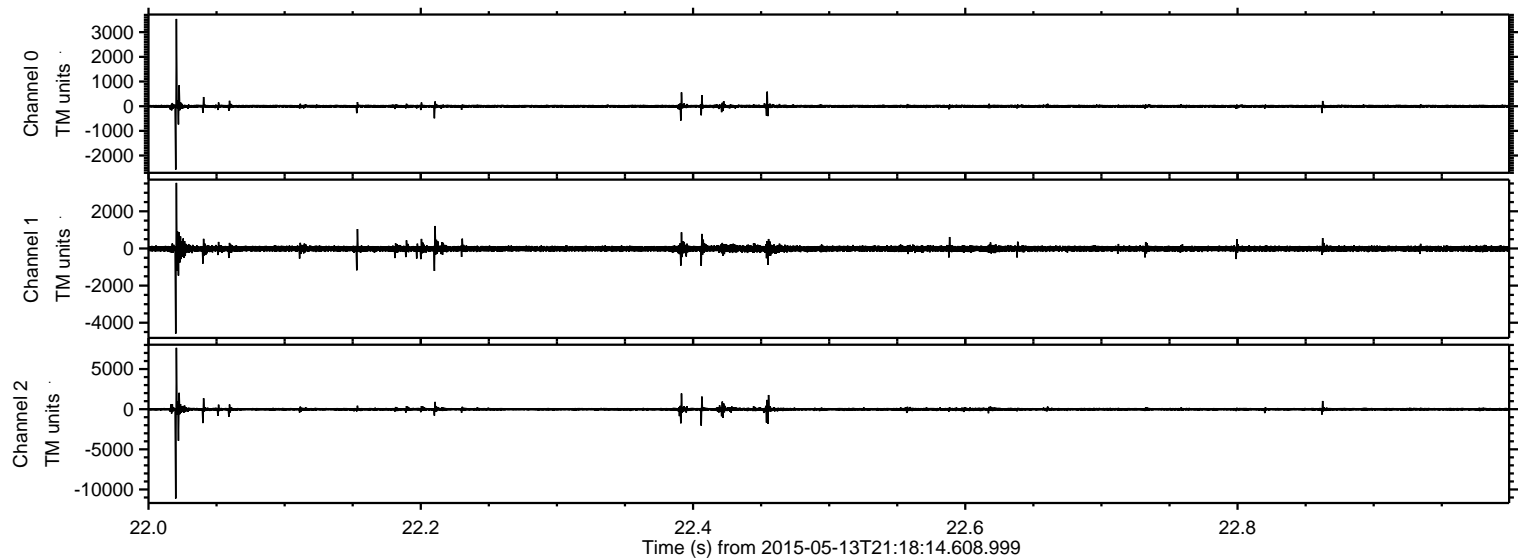
Processed Wed May 13 23:25:18 2015 by ELM ver.2012-10-06 from 001__elm20150513_211813__dat00.bin



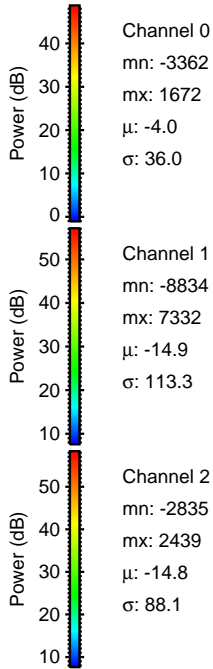
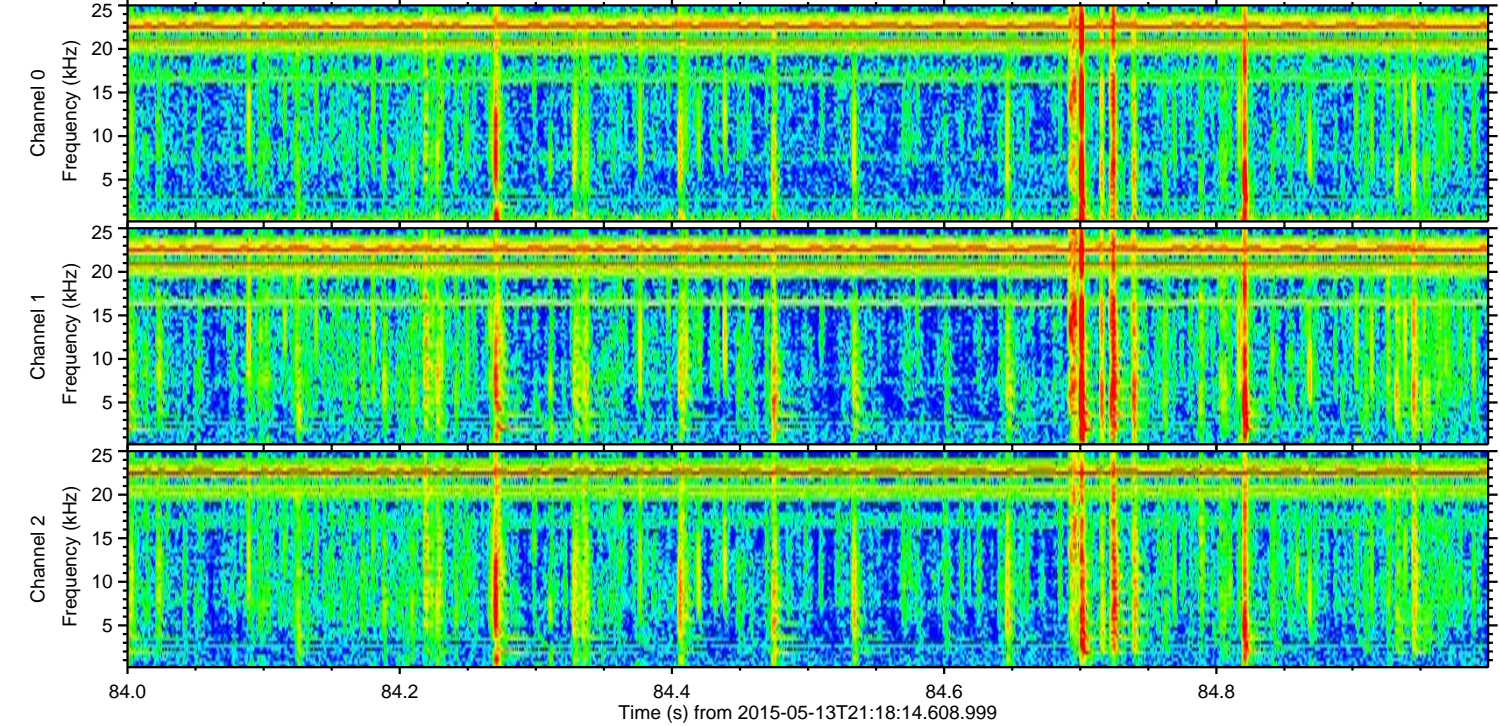
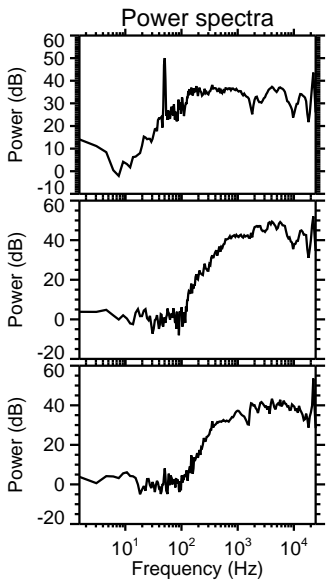
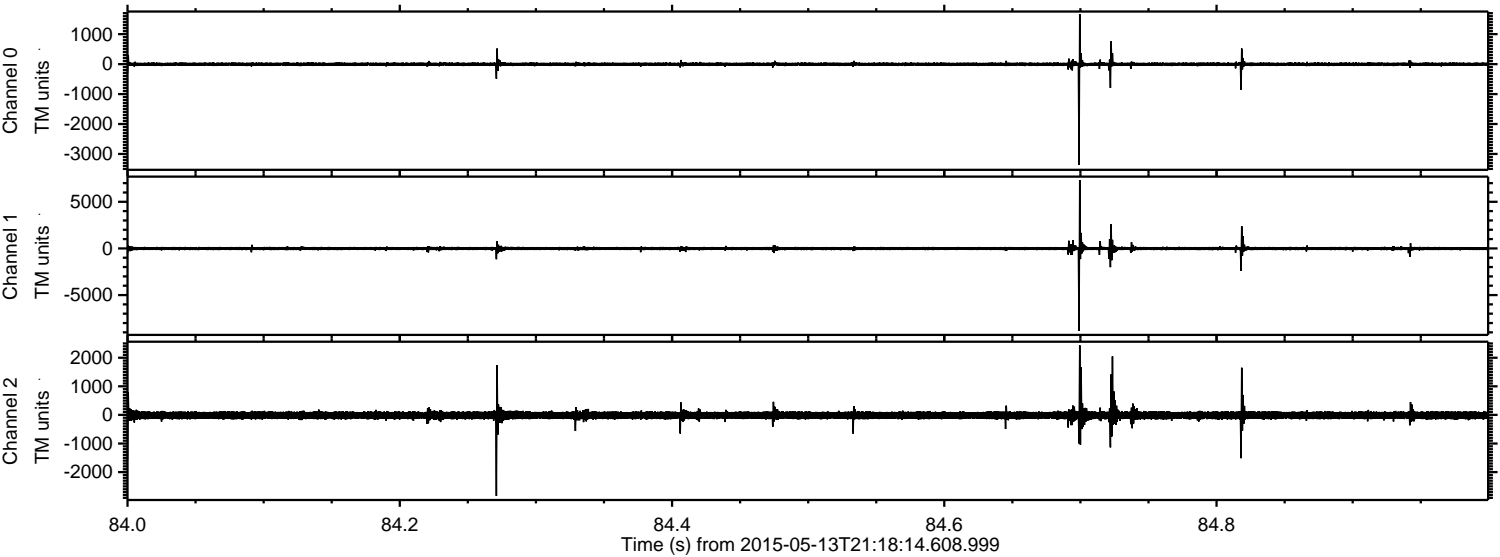
Processed Wed May 13 23:25:19 2015 by ELM ver.2012-10-06 from 001__elm20150513_211813__dat00.bin



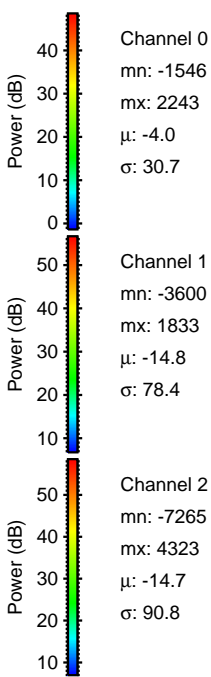
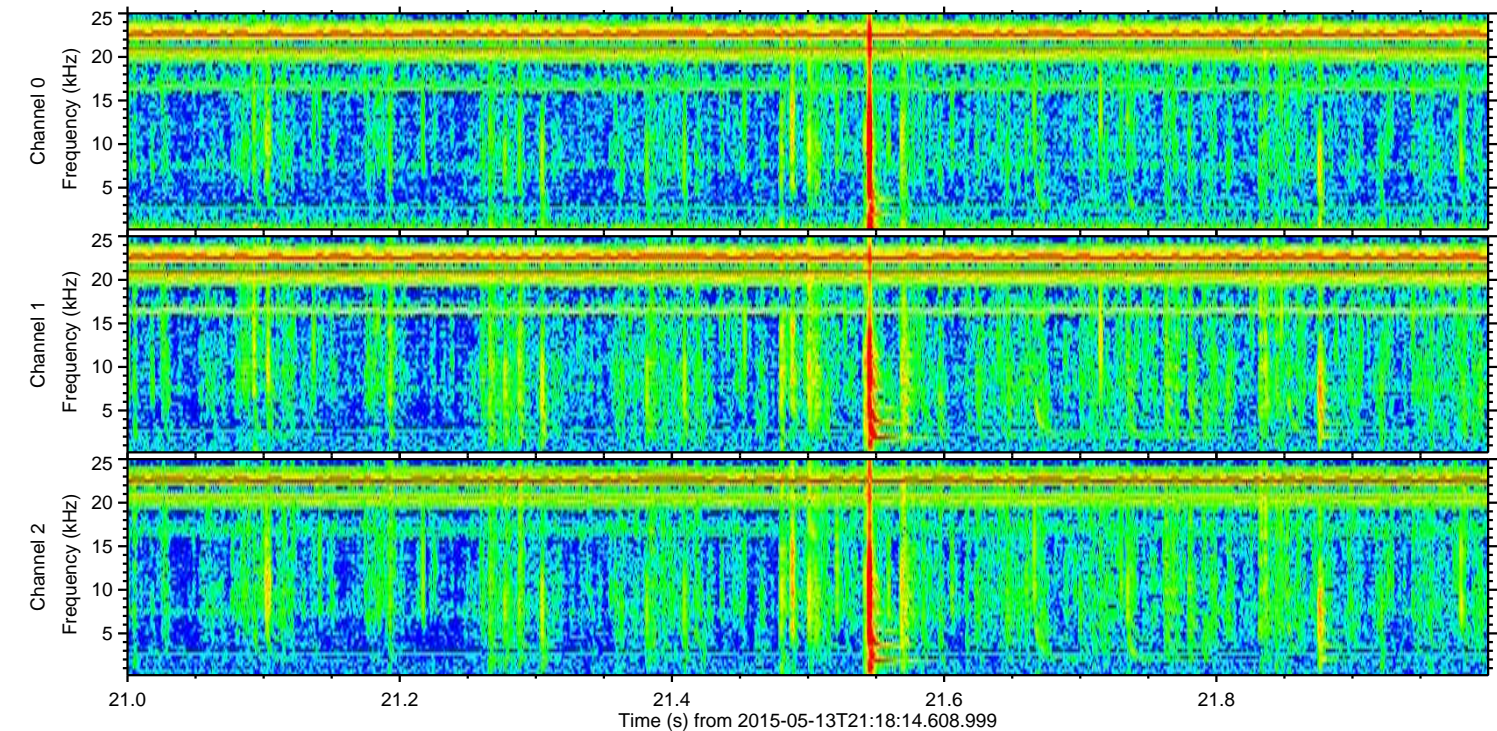
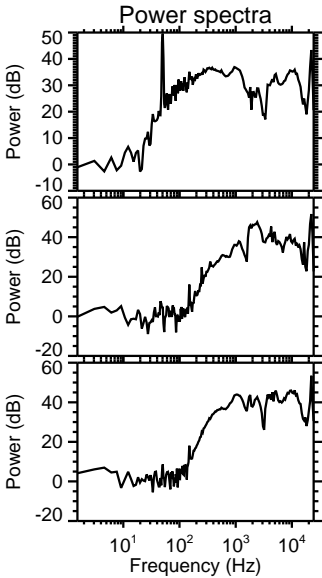
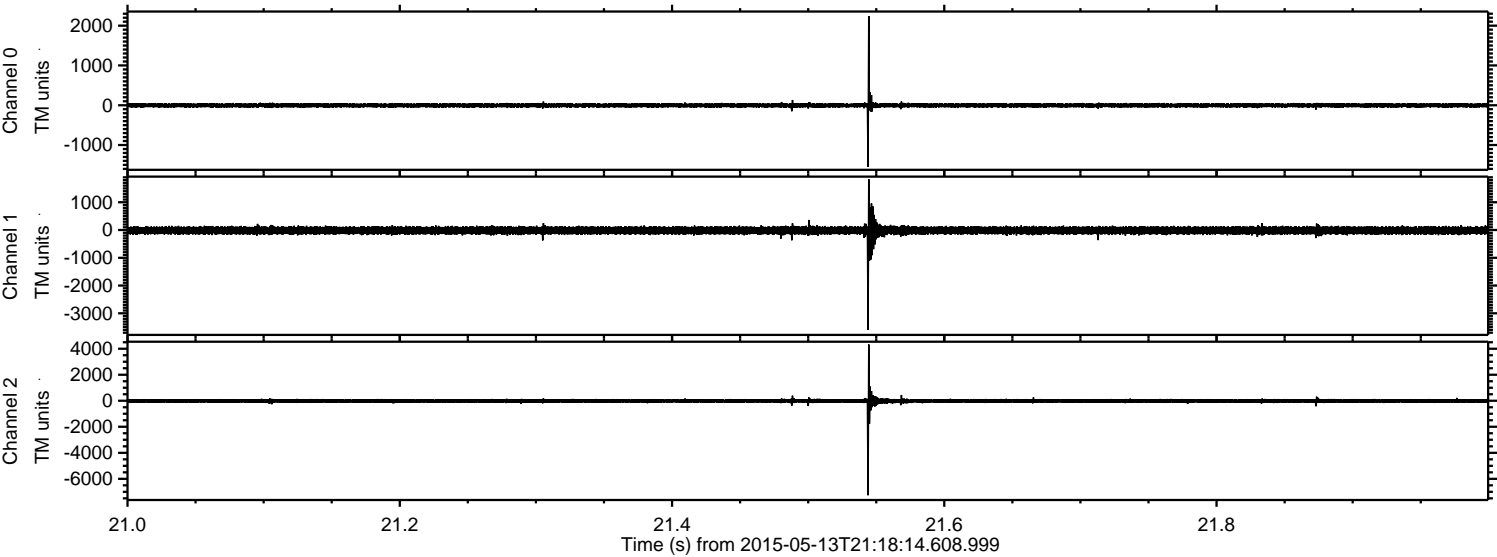
Processed Wed May 13 23:25:20 2015 by ELM ver.2012-10-06 from 001__elm20150513_211813__dat00.bin



Processed Wed May 13 23:25:21 2015 by ELM ver.2012-10-06 from 001__elm20150513_211813__dat00.bin

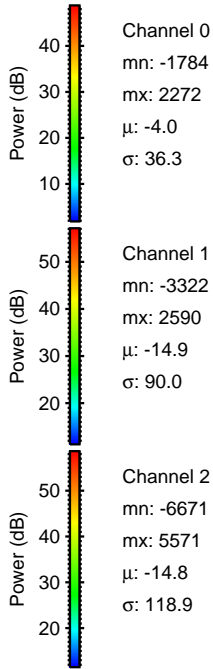
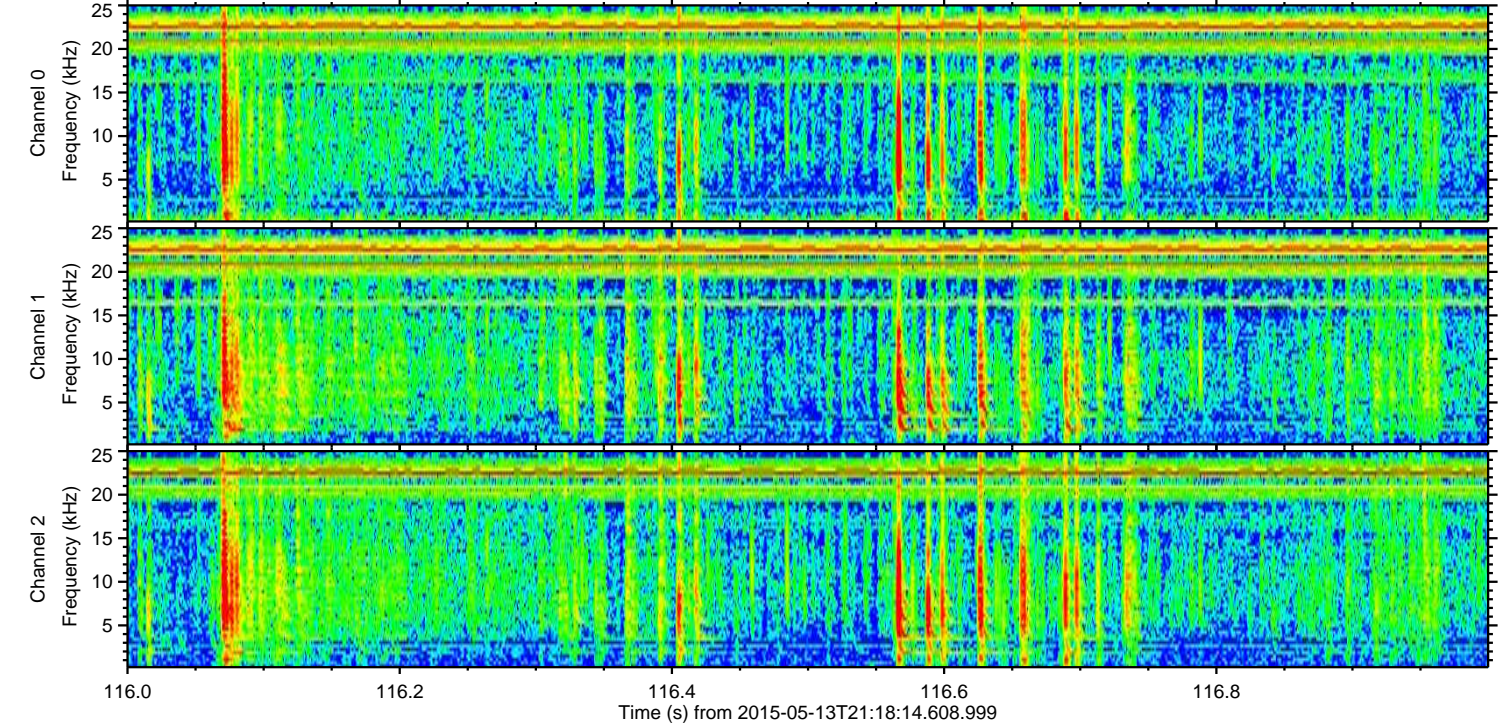
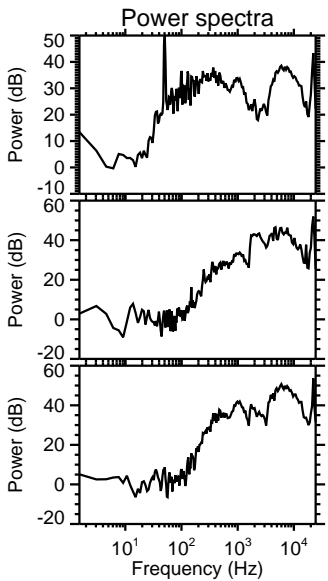
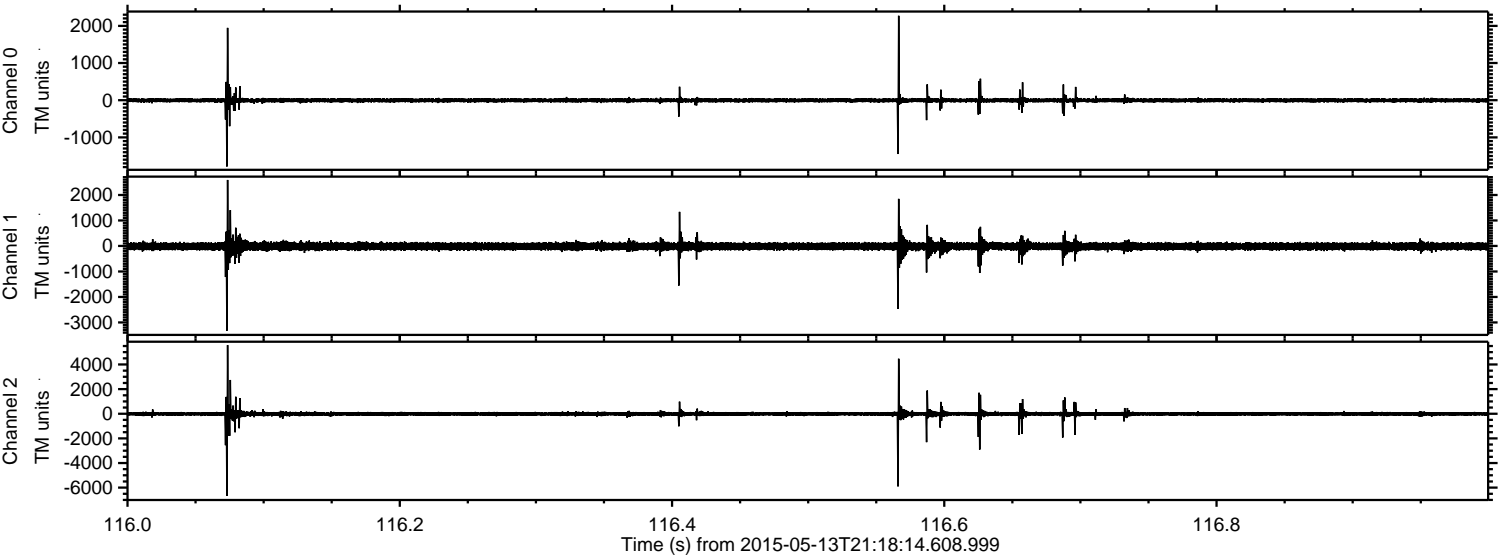


Processed Wed May 13 23:25:22 2015 by ELM ver.2012-10-06 from 001__elm20150513_211813__dat00.bin



ELMAVAN 3D WAVEFORMS (Measured data sampled at 50 kHz) 49789 packets of 144 samples from 2015-05-13T21:18:14.608.999. Part 117/144

Processed Wed May 13 23:25:23 2015 by ELM ver.2012-10-06 from 001__elm20150513_211813__dat00.bin

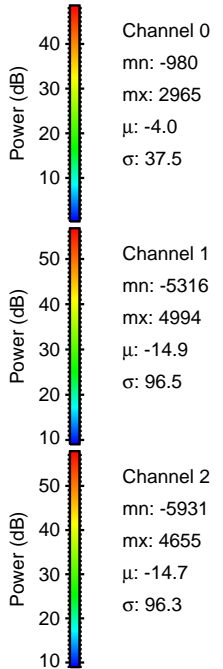
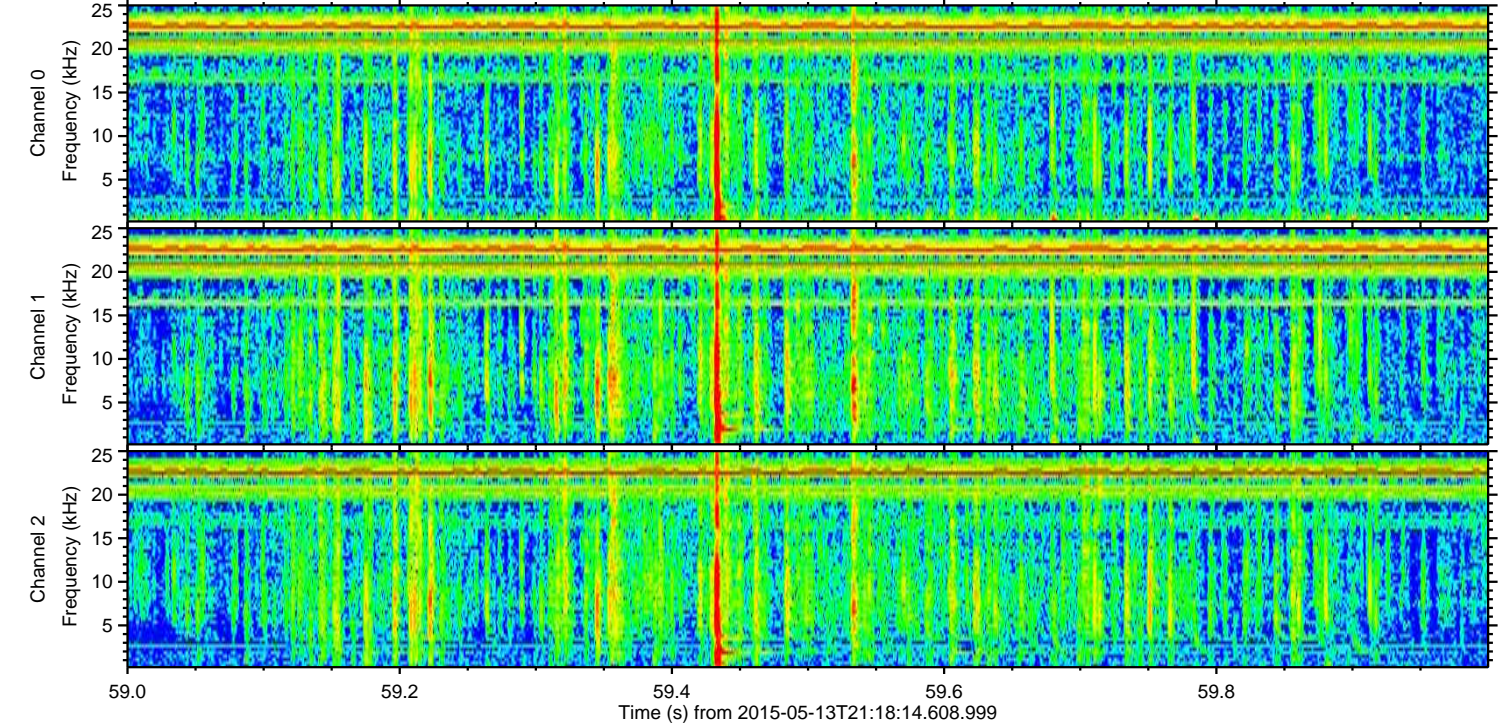
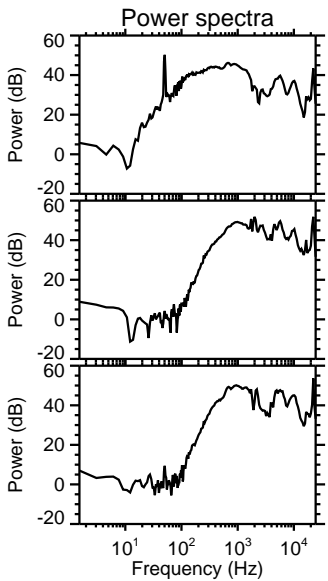
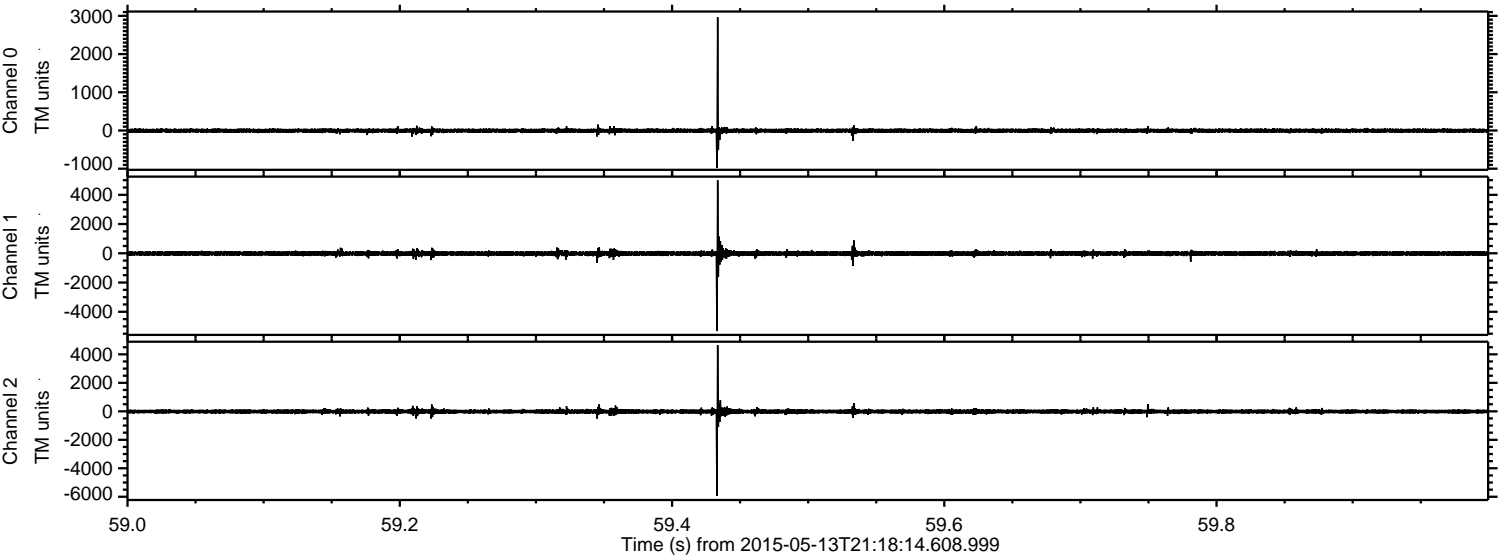


Channel 0
mn: -1784
mx: 2272
 μ : -4.0
 σ : 36.3

Channel 1
mn: -3322
mx: 2590
 μ : -14.9
 σ : 90.0

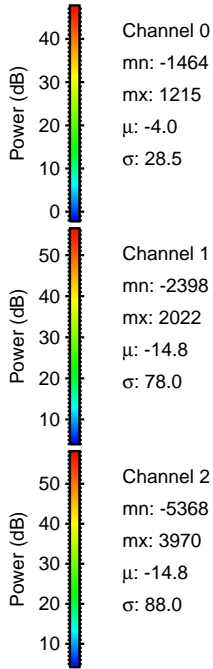
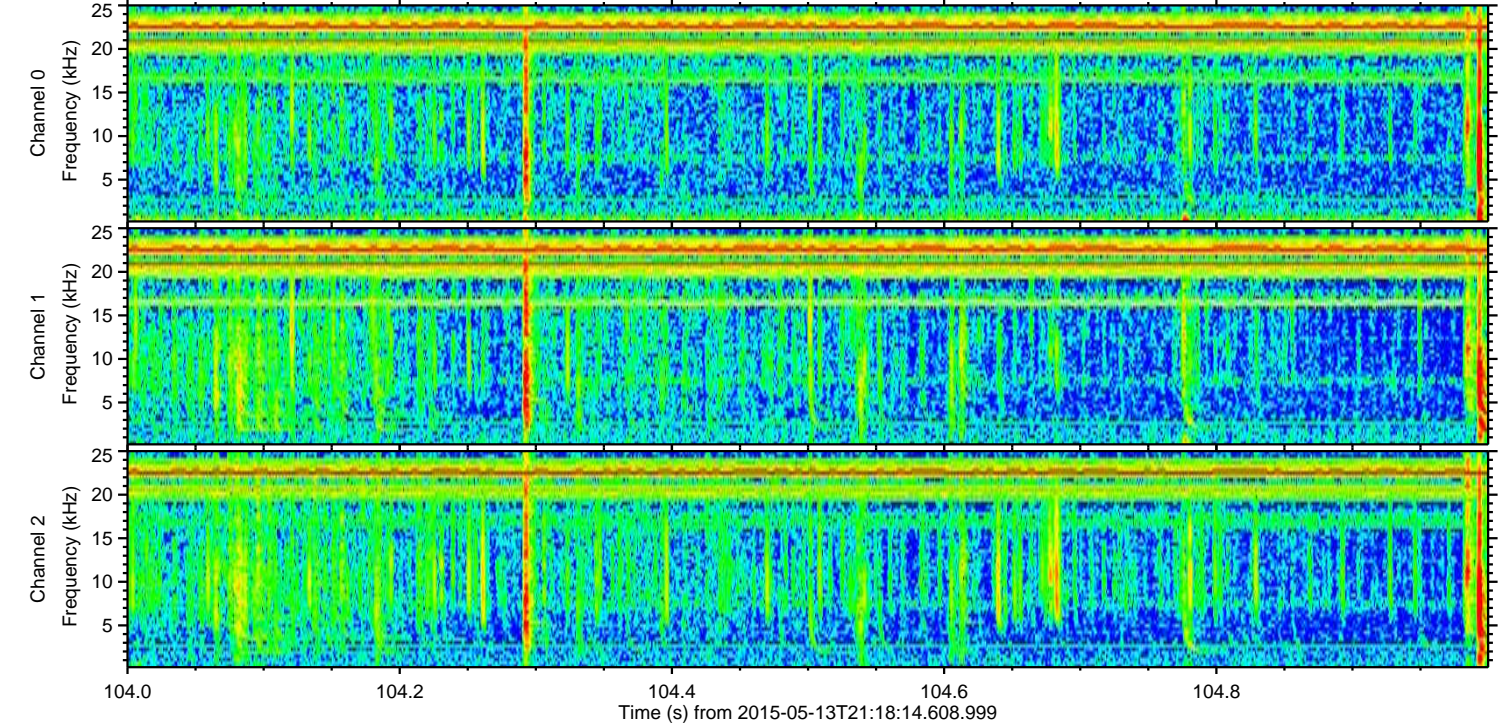
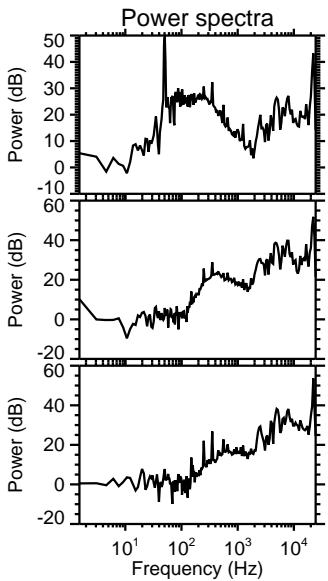
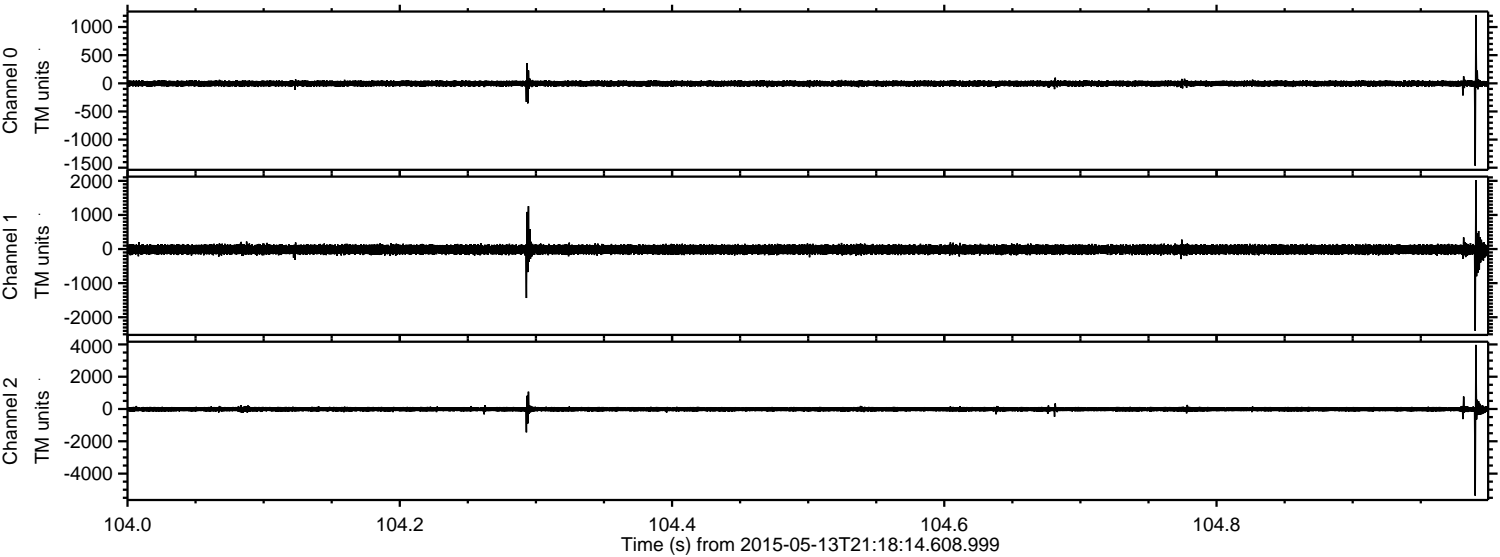
Channel 2
mn: -6671
mx: 5571
 μ : -14.8
 σ : 118.9

Processed Wed May 13 23:25:24 2015 by ELM ver.2012-10-06 from 001__elm20150513_211813__dat00.bin



ELMAVAN 3D WAVEFORMS (Measured data sampled at 50 kHz) 49789 packets of 144 samples from 2015-05-13T21:18:14.608.999. Part 105/144

Processed Wed May 13 23:25:25 2015 by ELM ver.2012-10-06 from 001__elm20150513_211813__dat00.bin



Channel 0
mn: -1464
mx: 1215
 μ : -4.0
 σ : 28.5

Channel 1
mn: -2398
mx: 2022
 μ : -14.8
 σ : 78.0

Channel 2
mn: -5368
mx: 3970
 μ : -14.8
 σ : 88.0

Processed Wed May 13 23:25:26 2015 by ELM ver.2012-10-06 from 001__elm20150513_211813__dat00.bin

