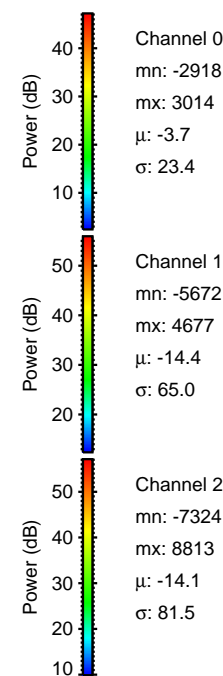
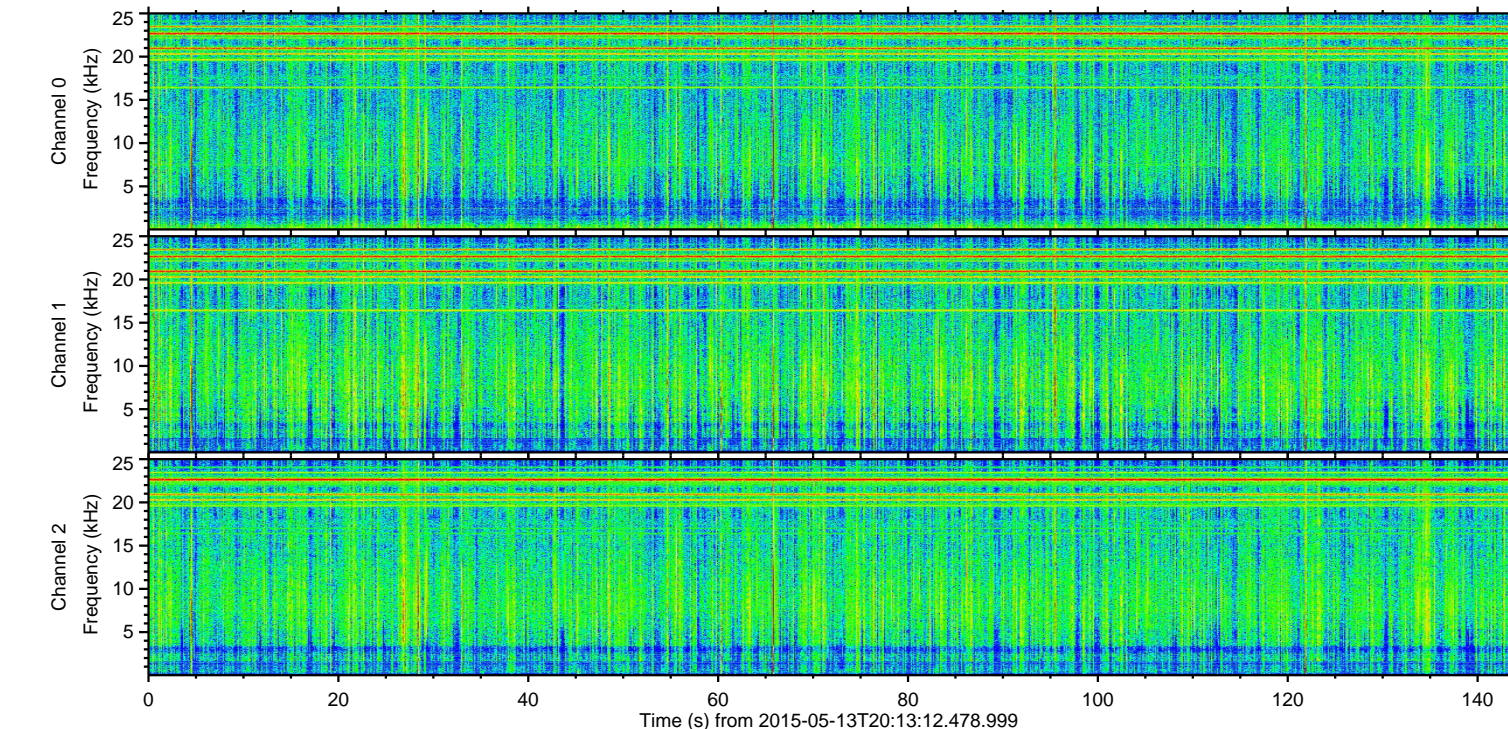
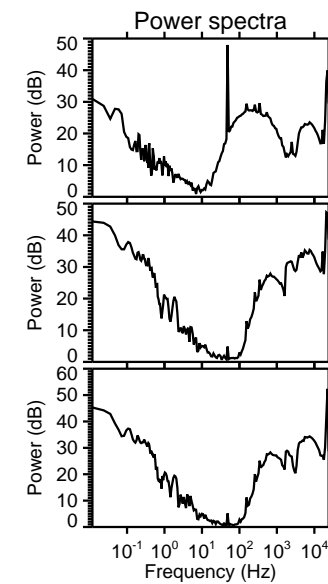
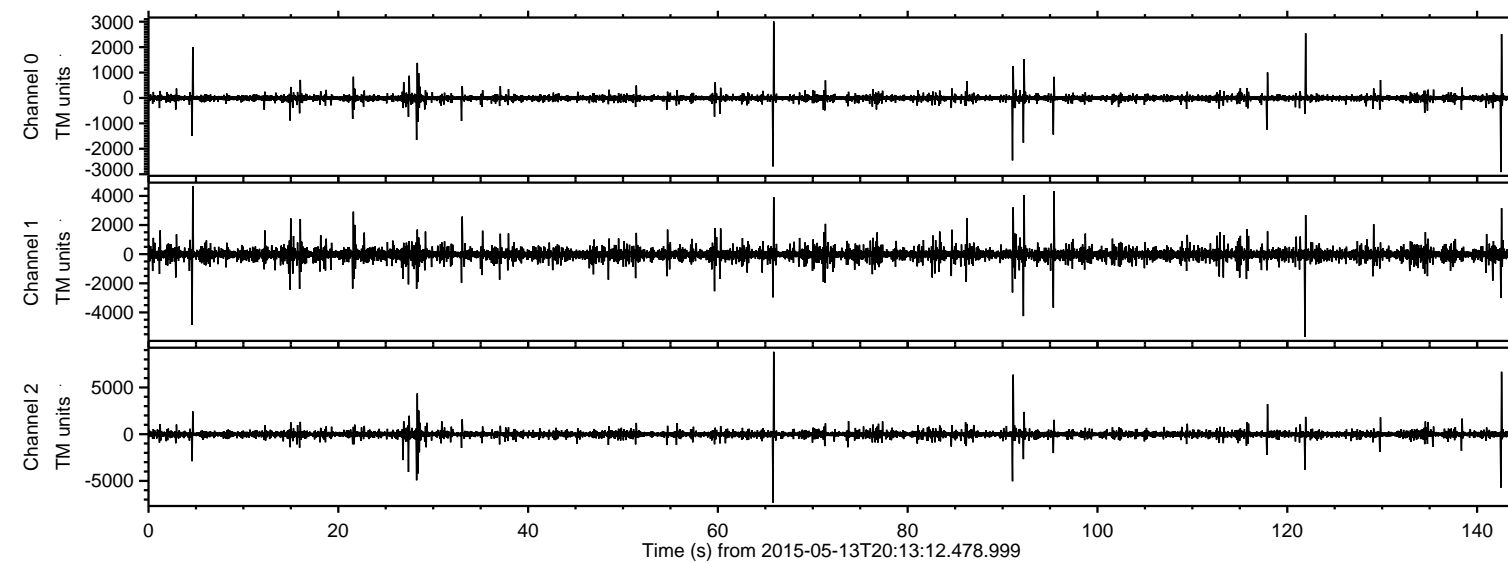
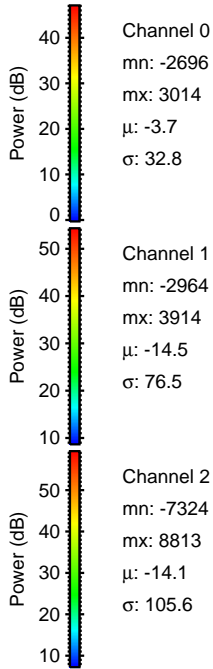
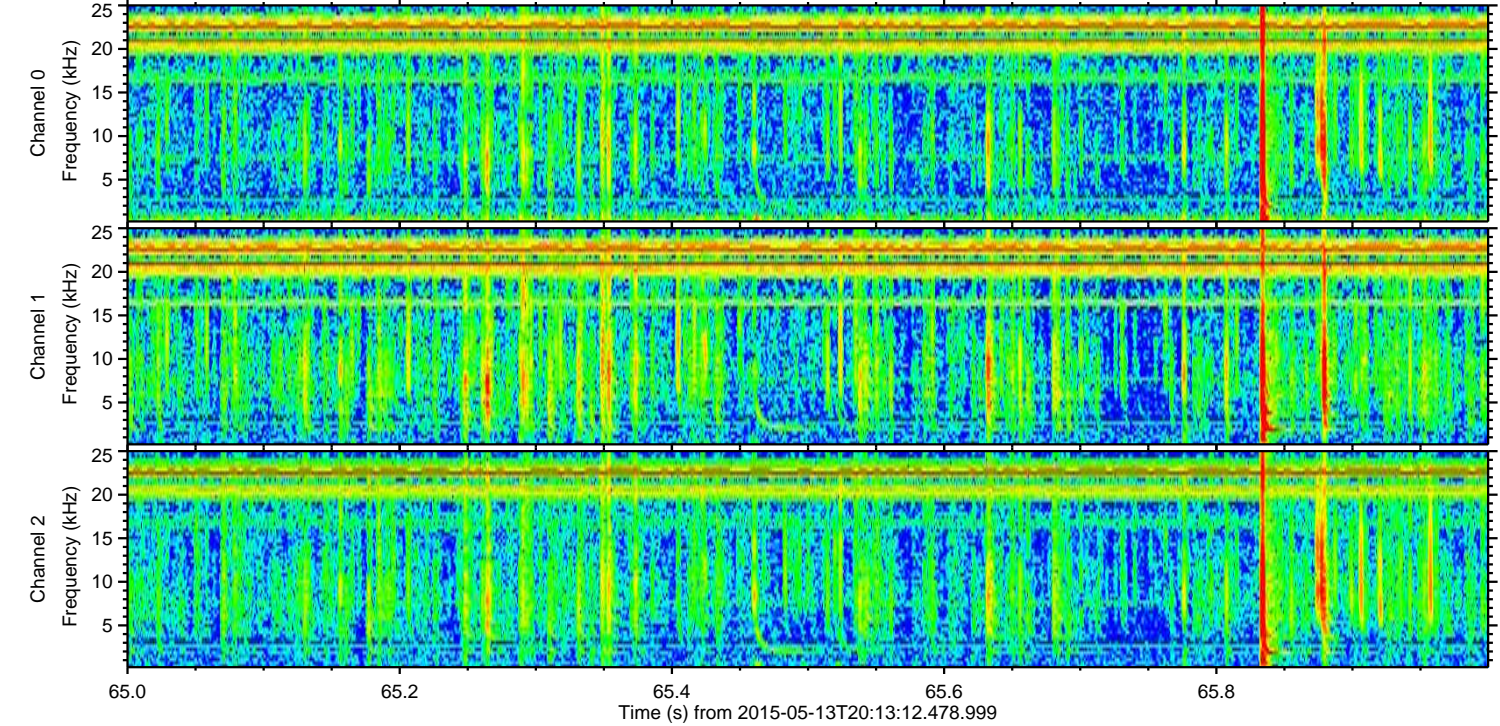
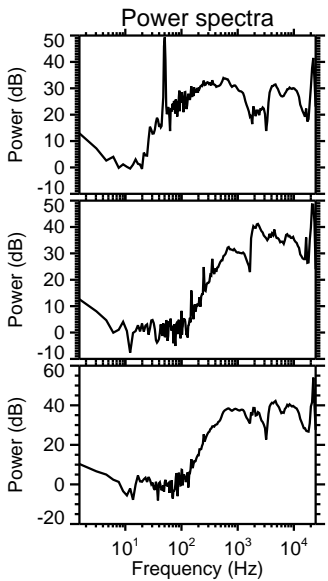
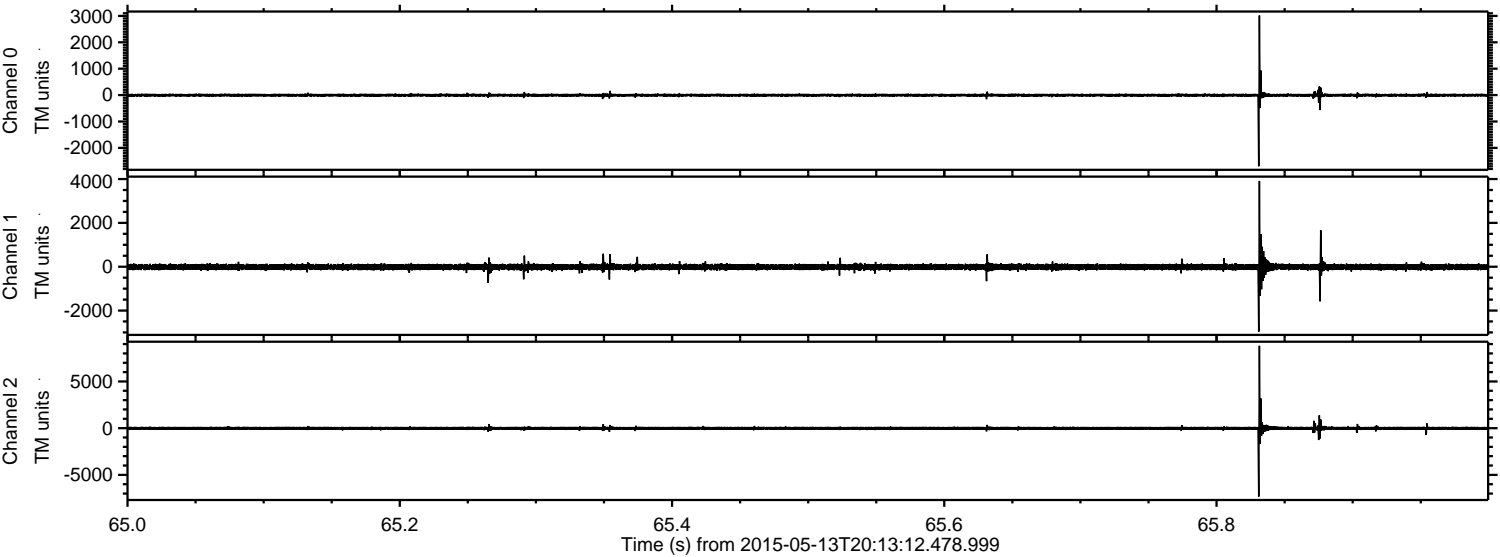


ELMAVAN 3D WAVEFORMS (Measured data sampled at 50 kHz) 49785 packets of 144 samples from 2015-05-13T20:13:12.478.999.

Processed Wed May 13 22:20:15 2015 by ELM ver.2012-10-06 from 001__elm20150513_201311__dat00.bin

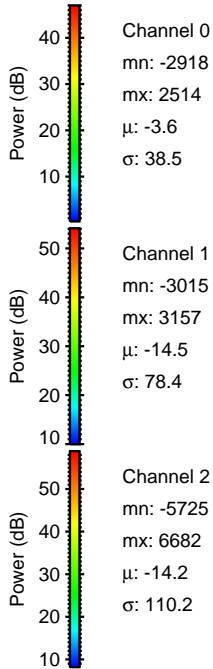
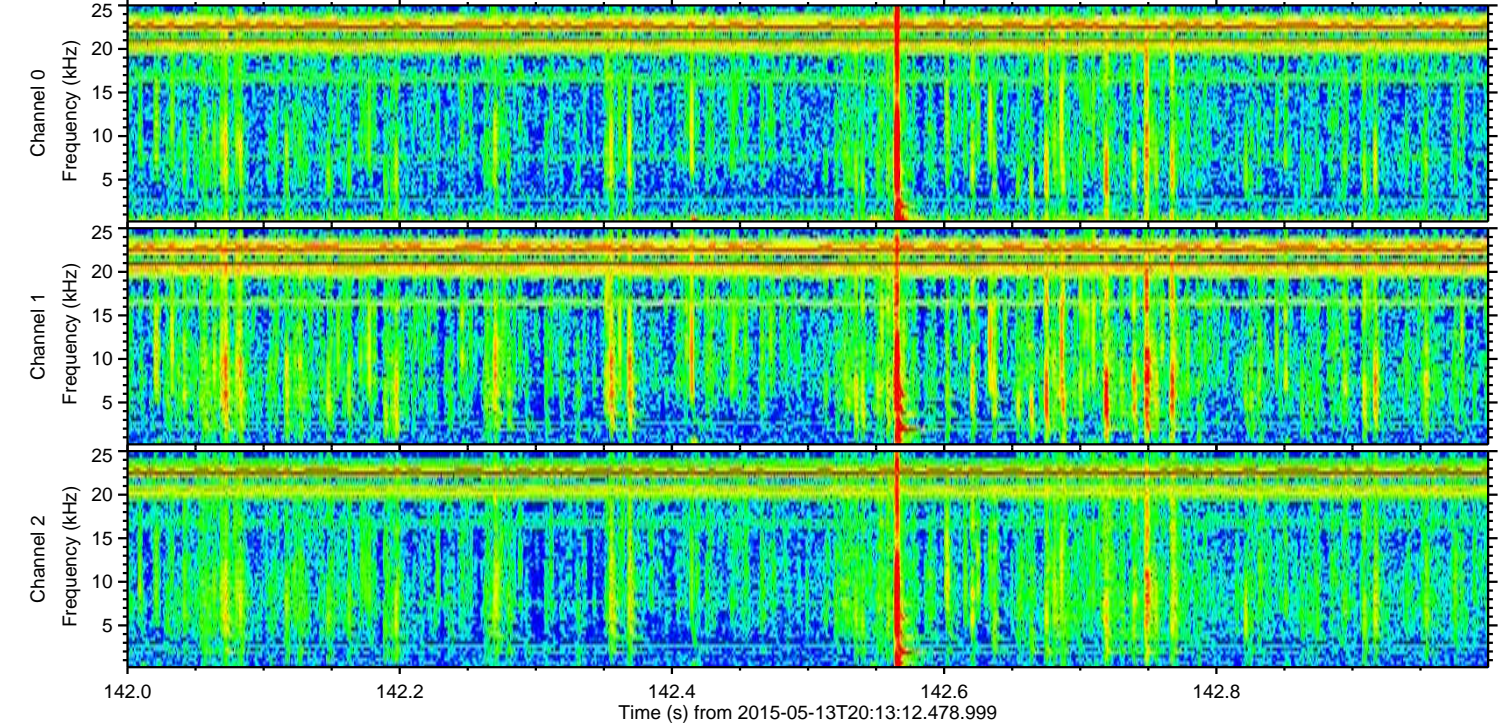
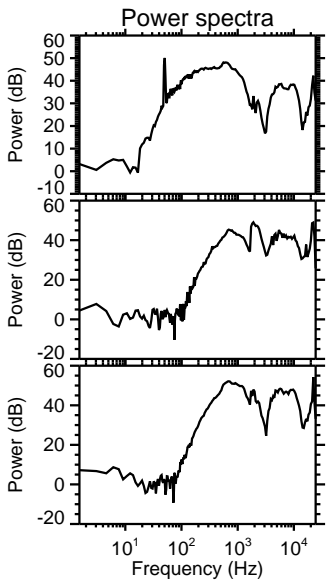
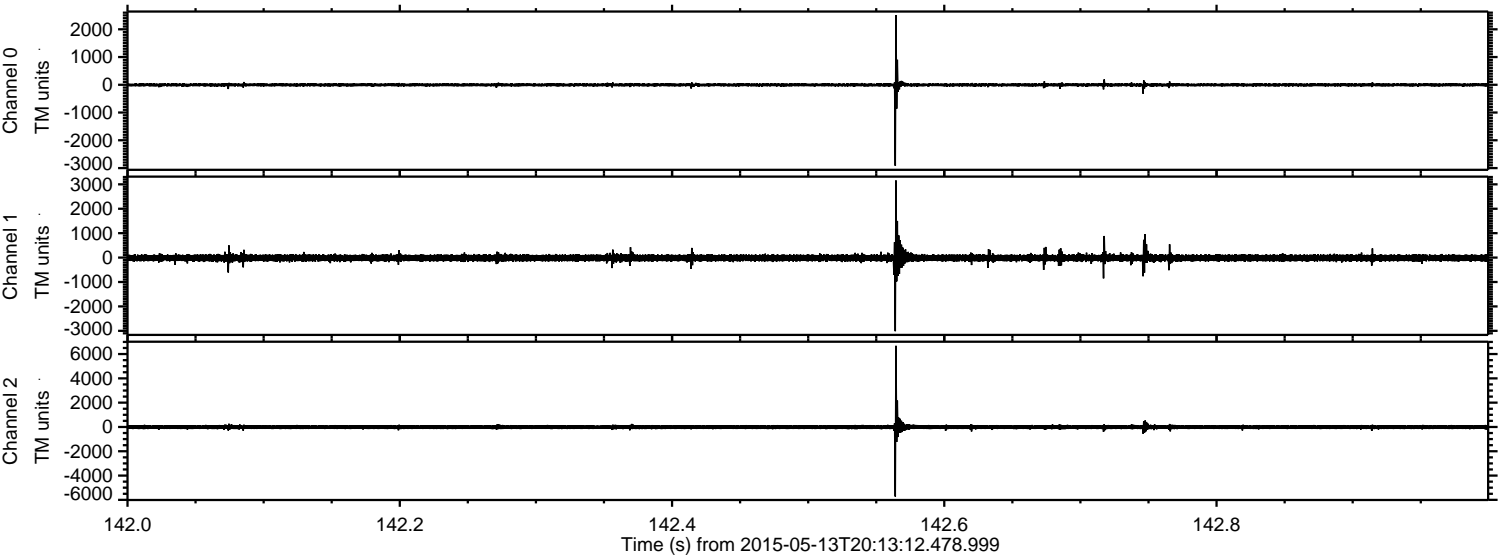


Processed Wed May 13 22:20:27 2015 by ELM ver.2012-10-06 from 001__elm20150513_201311__dat00.bin

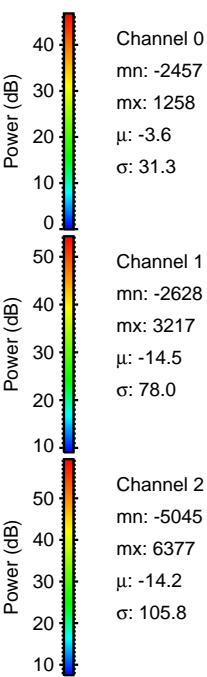
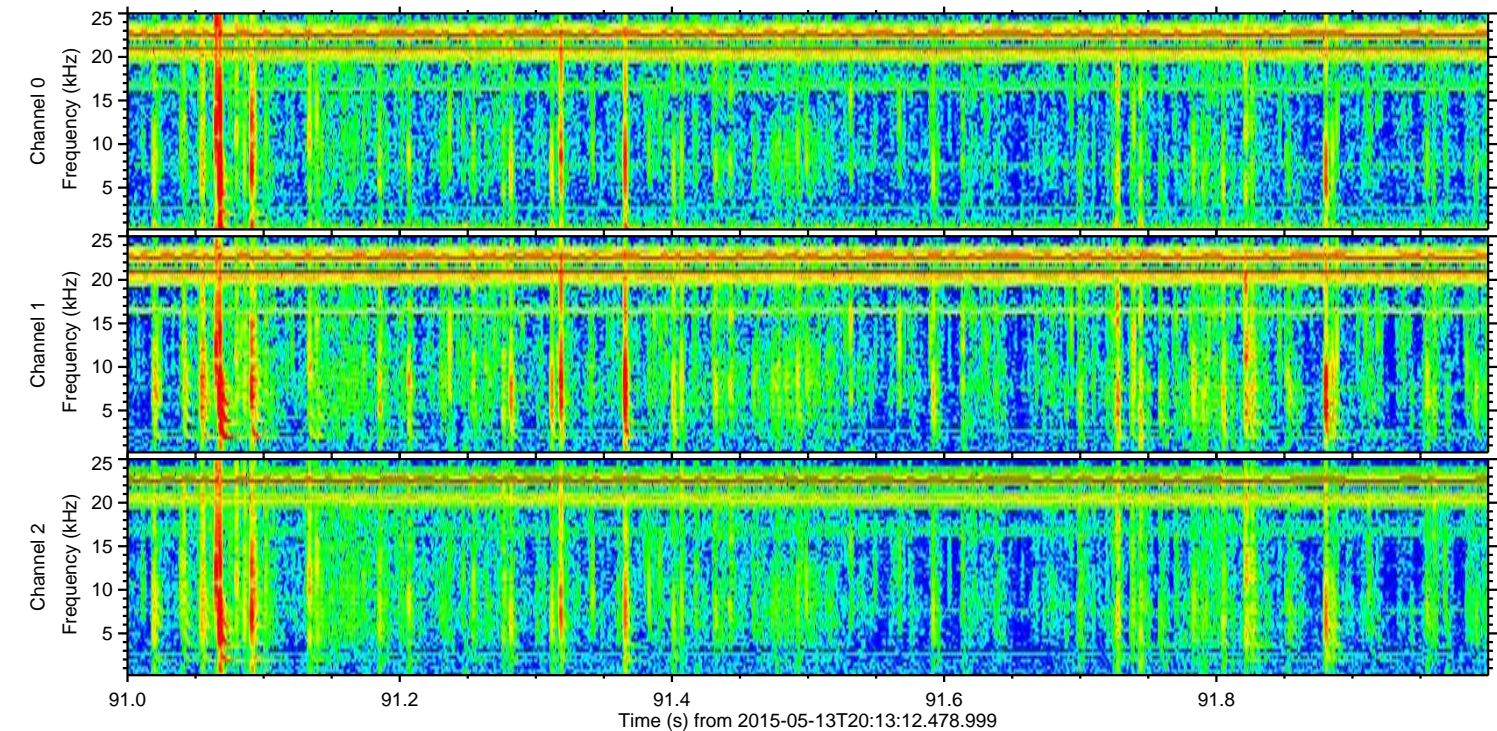
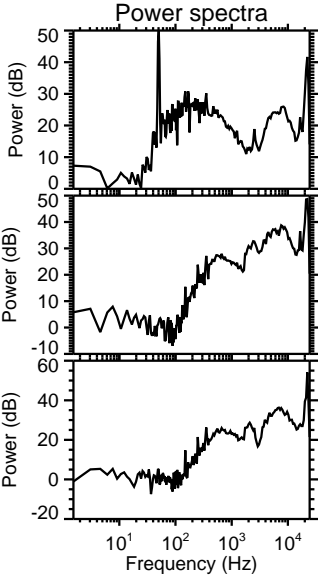
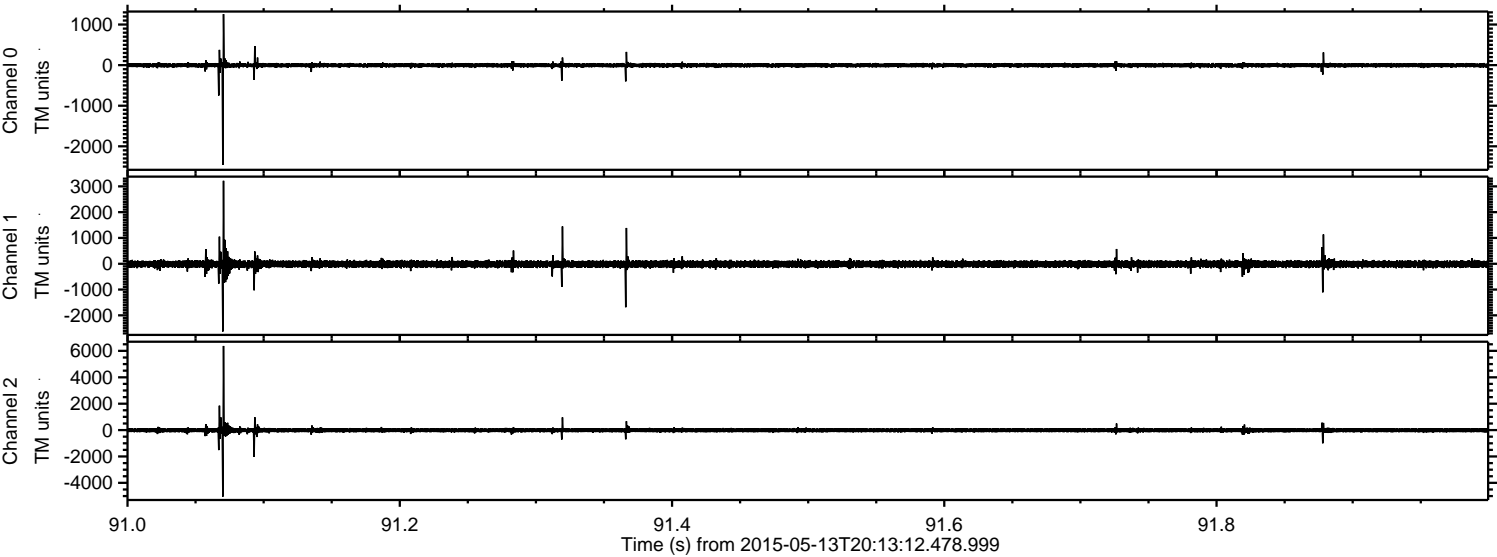


ELMAVAN 3D WAVEFORMS (Measured data sampled at 50 kHz) 49785 packets of 144 samples from 2015-05-13T20:13:12.478.999. Part 143/144

Processed Wed May 13 22:20:28 2015 by ELM ver.2012-10-06 from 001__elm20150513_201311__dat00.bin

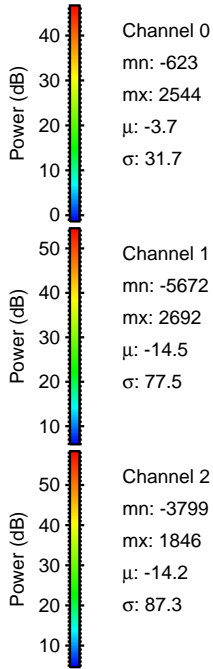
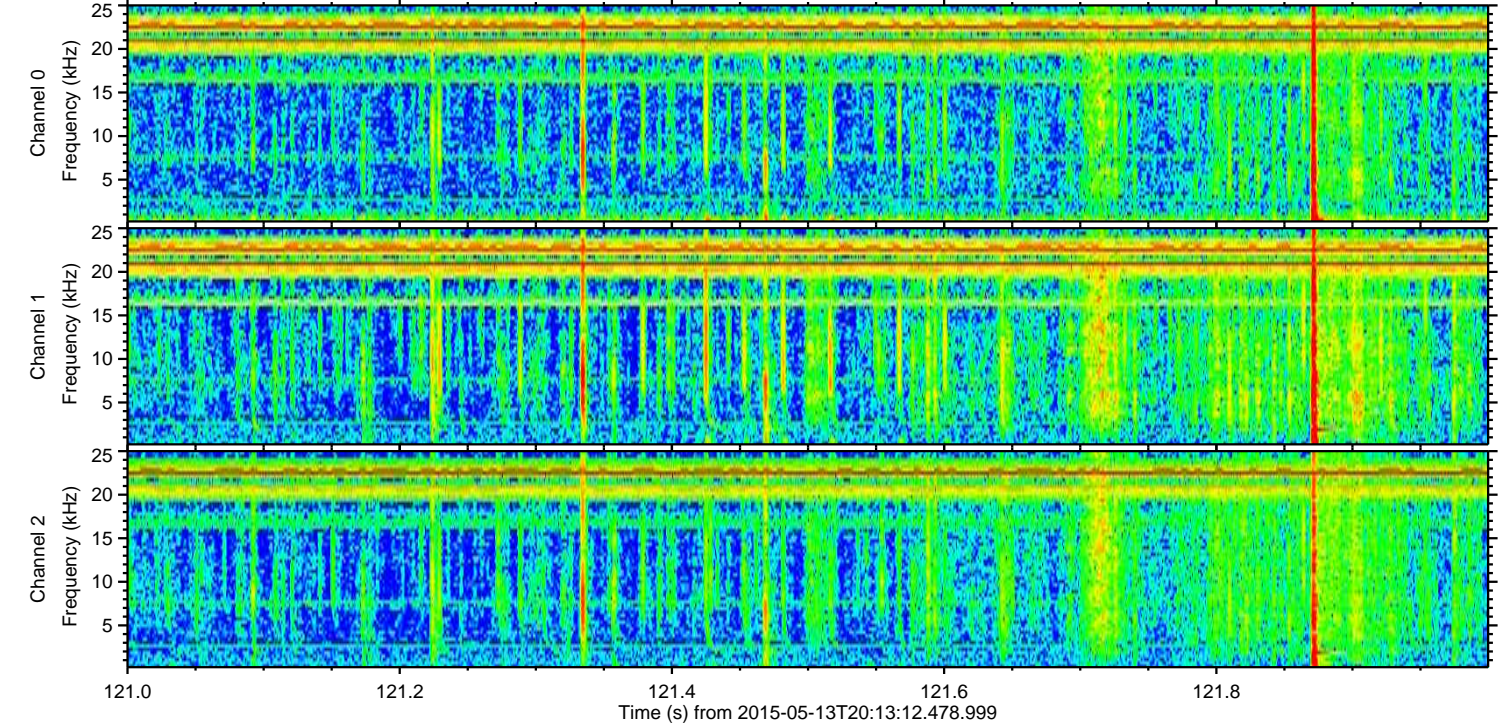
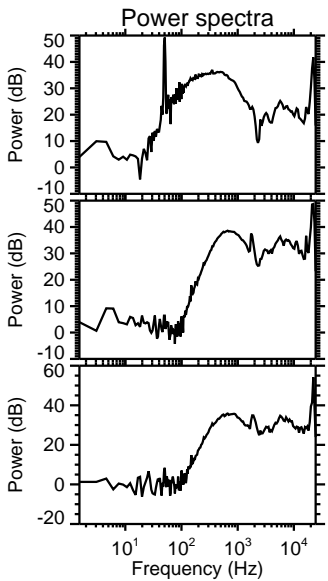
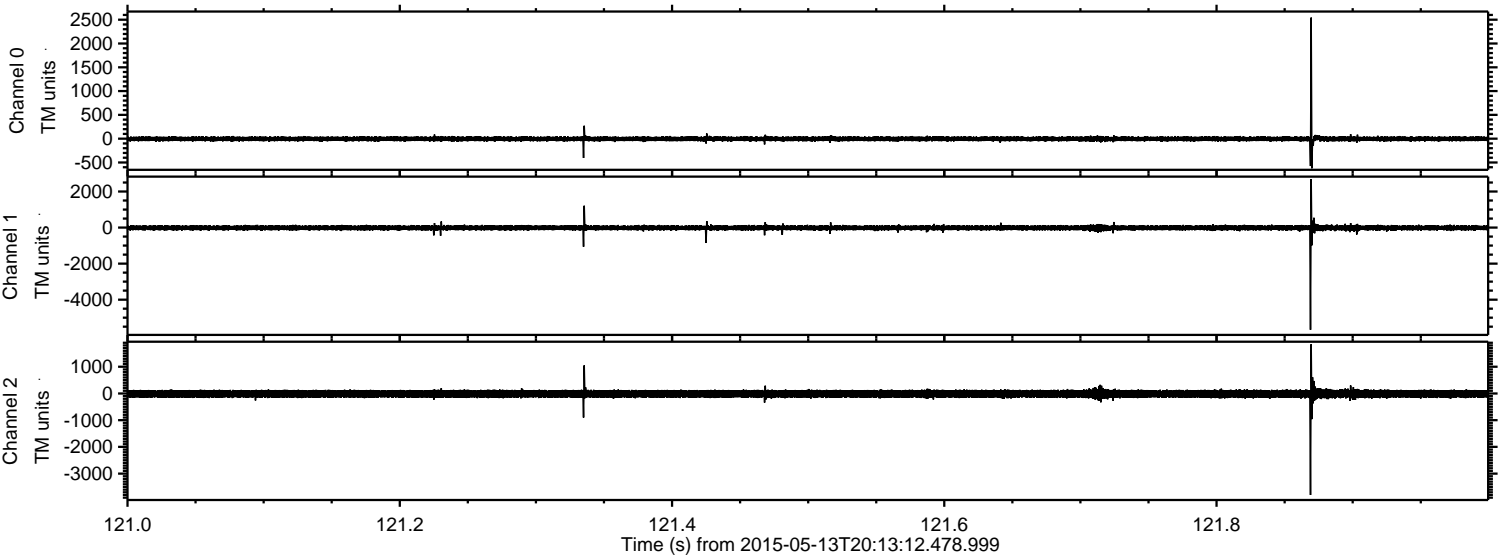


Processed Wed May 13 22:20:29 2015 by ELM ver.2012-10-06 from 001__elm20150513_201311__dat00.bin

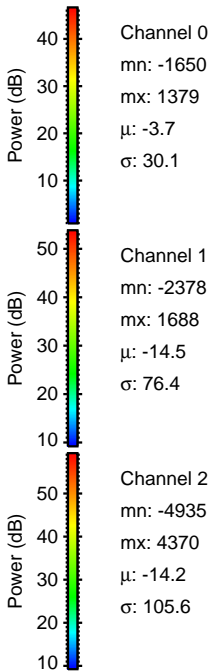
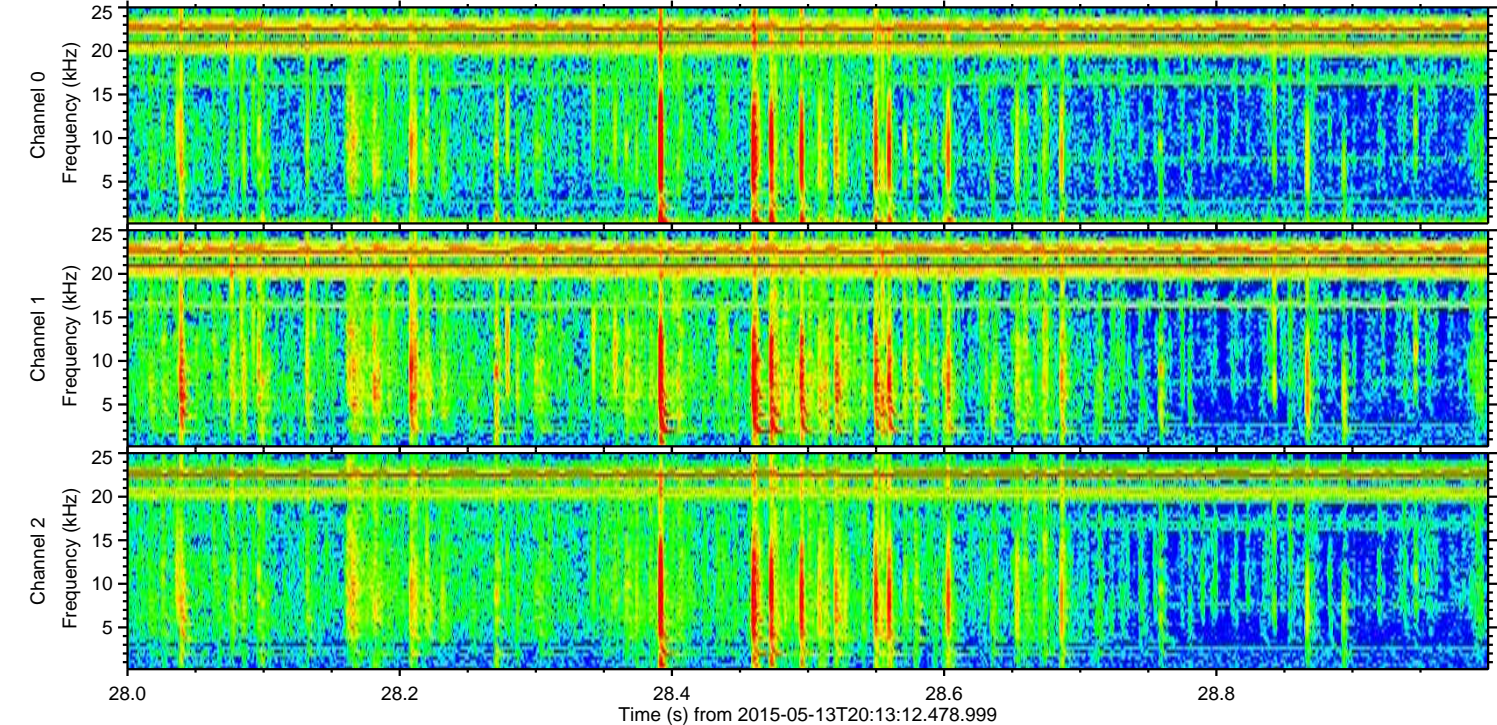
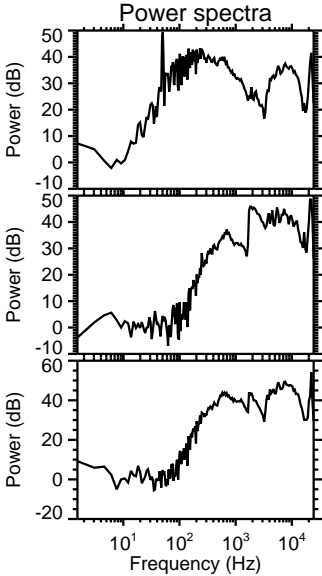
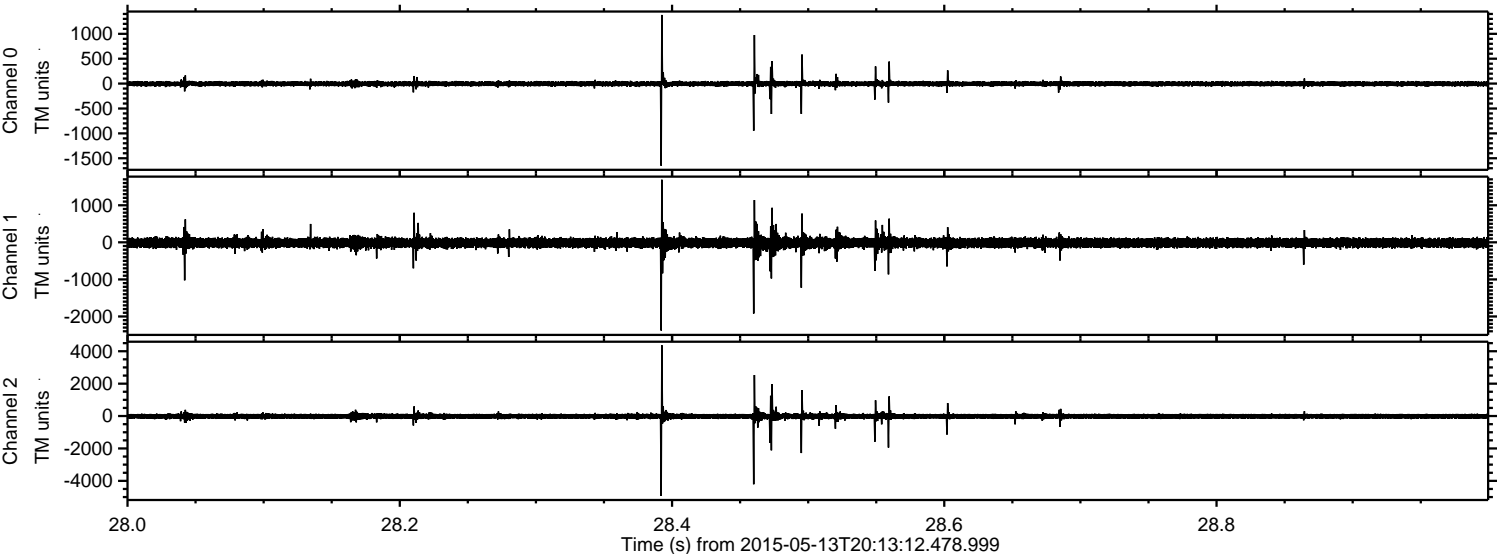


ELMAVAN 3D WAVEFORMS (Measured data sampled at 50 kHz) 49785 packets of 144 samples from 2015-05-13T20:13:12.478.999. Part 122/144

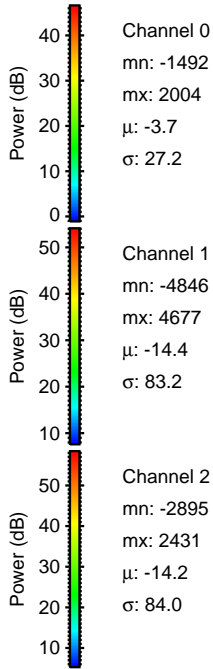
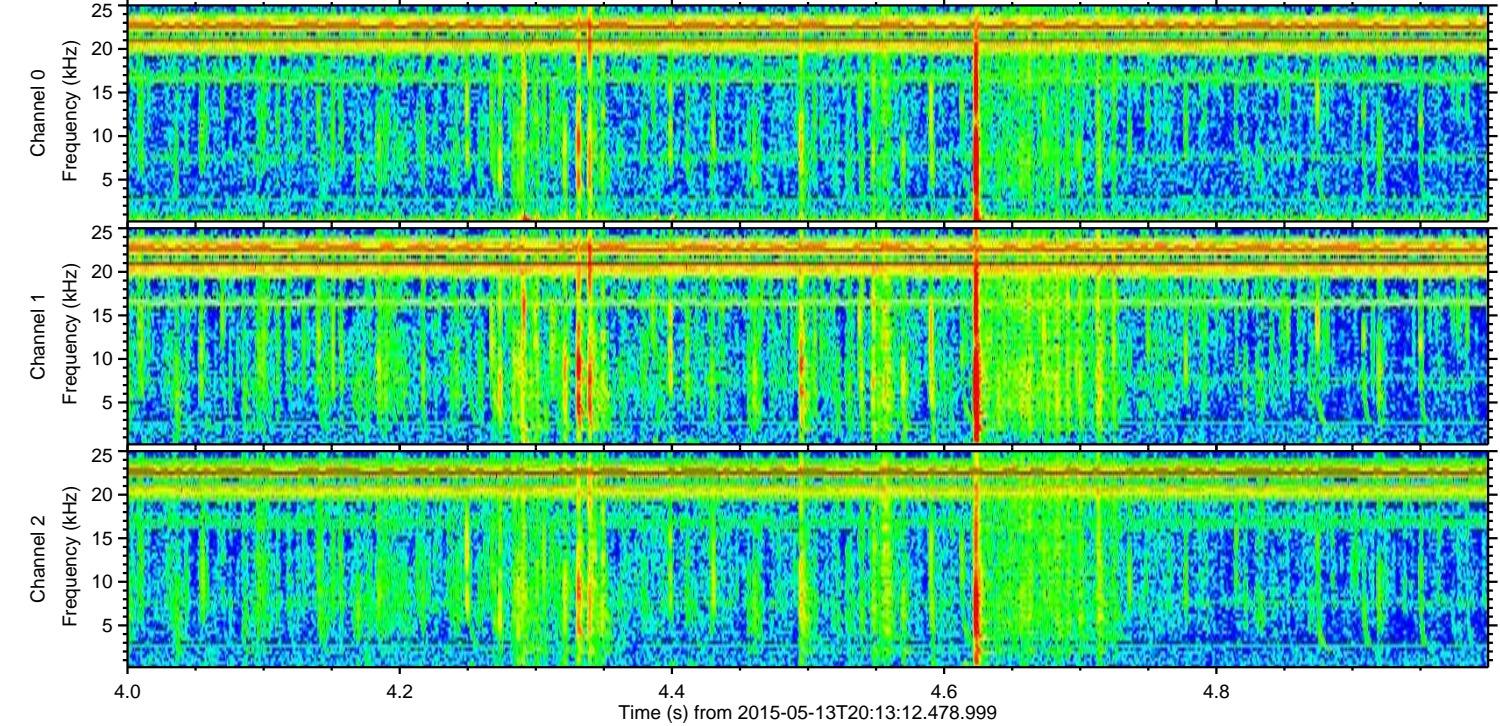
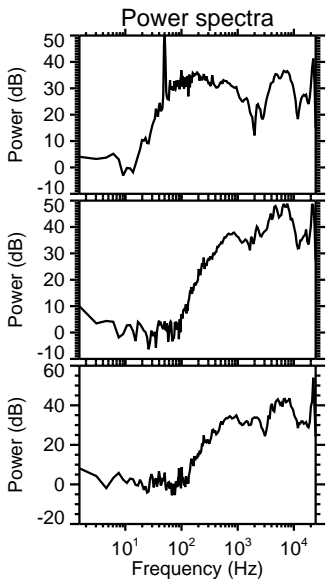
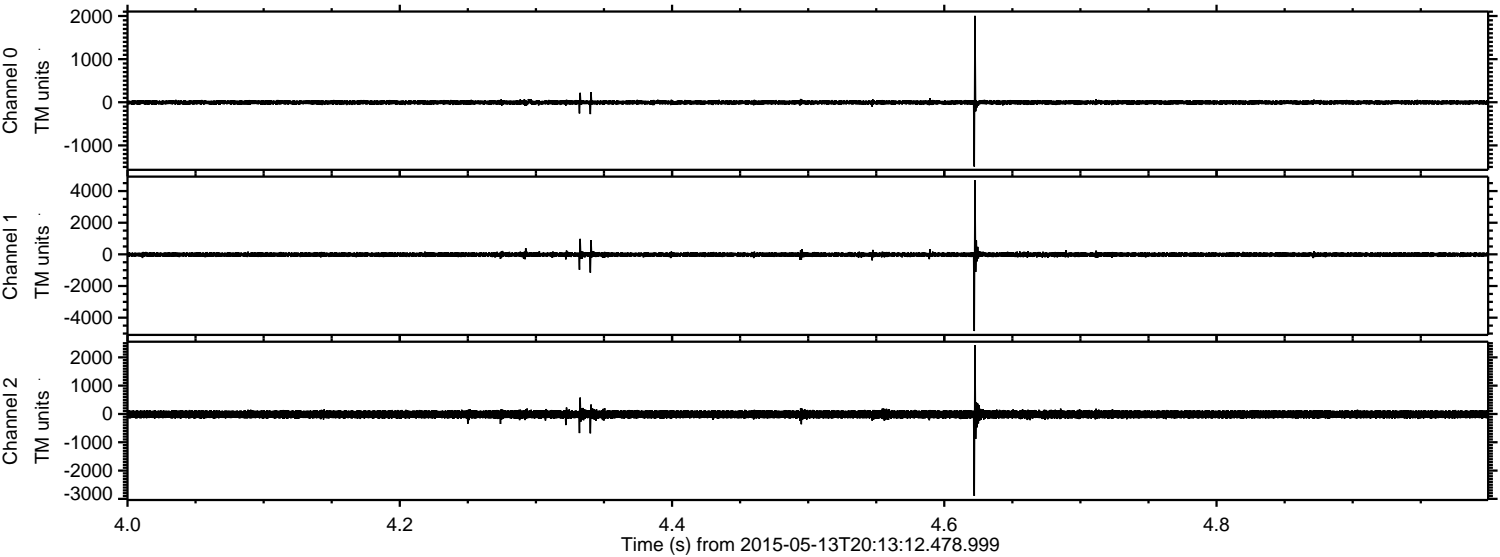
Processed Wed May 13 22:20:29 2015 by ELM ver.2012-10-06 from 001__elm20150513_201311__dat00.bin



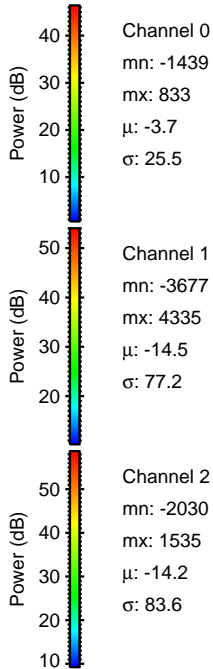
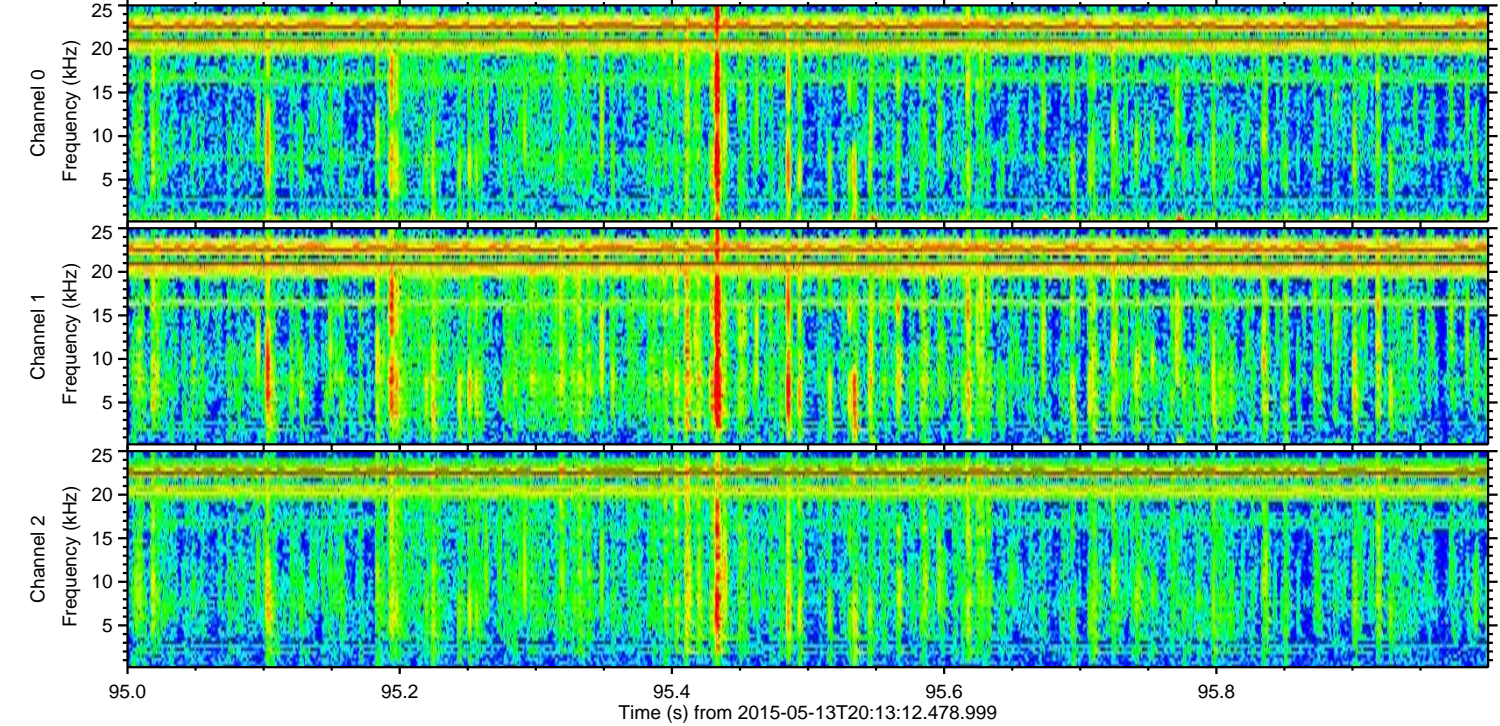
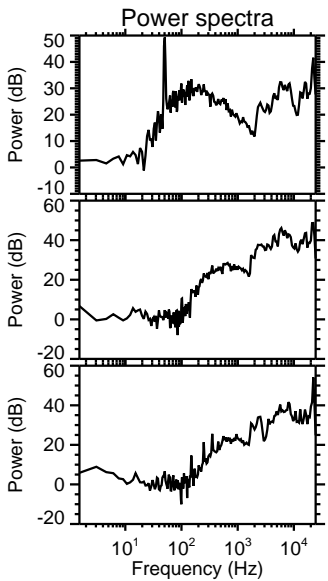
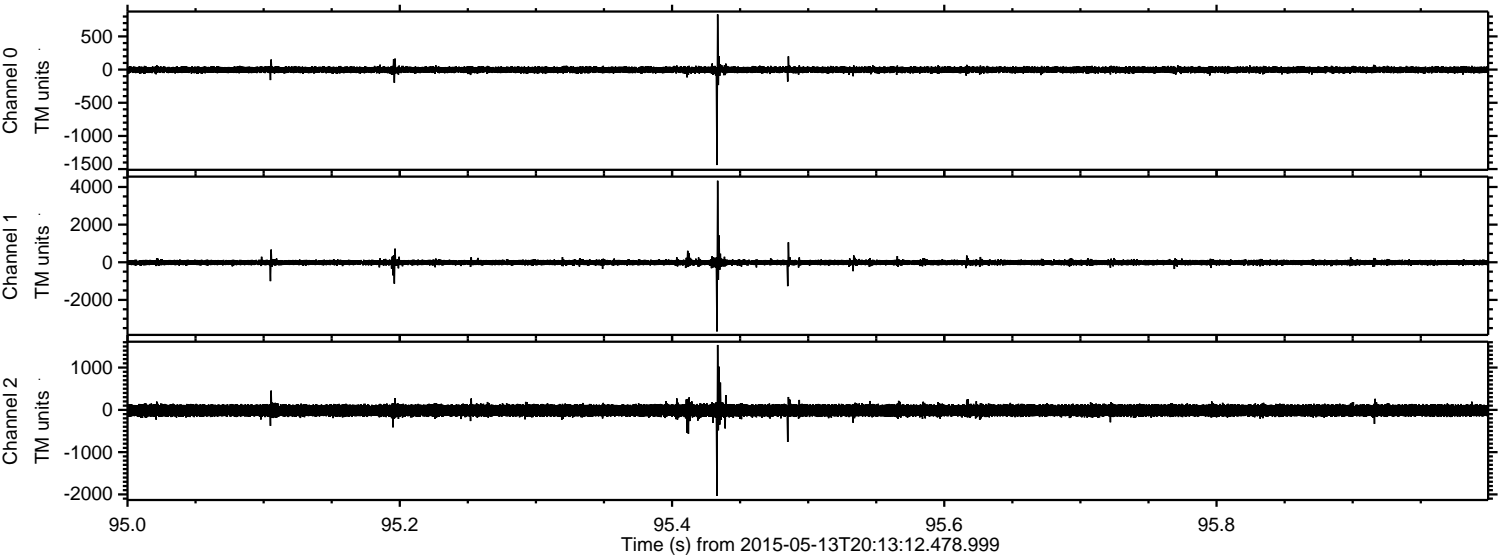
Processed Wed May 13 22:20:30 2015 by ELM ver.2012-10-06 from 001__elm20150513_201311__dat00.bin



Processed Wed May 13 22:20:31 2015 by ELM ver.2012-10-06 from 001__elm20150513_201311__dat00.bin



Processed Wed May 13 22:20:32 2015 by ELM ver.2012-10-06 from 001__elm20150513_201311__dat00.bin

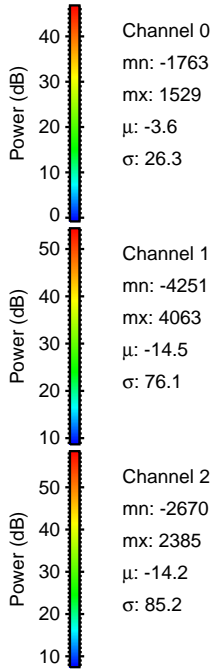
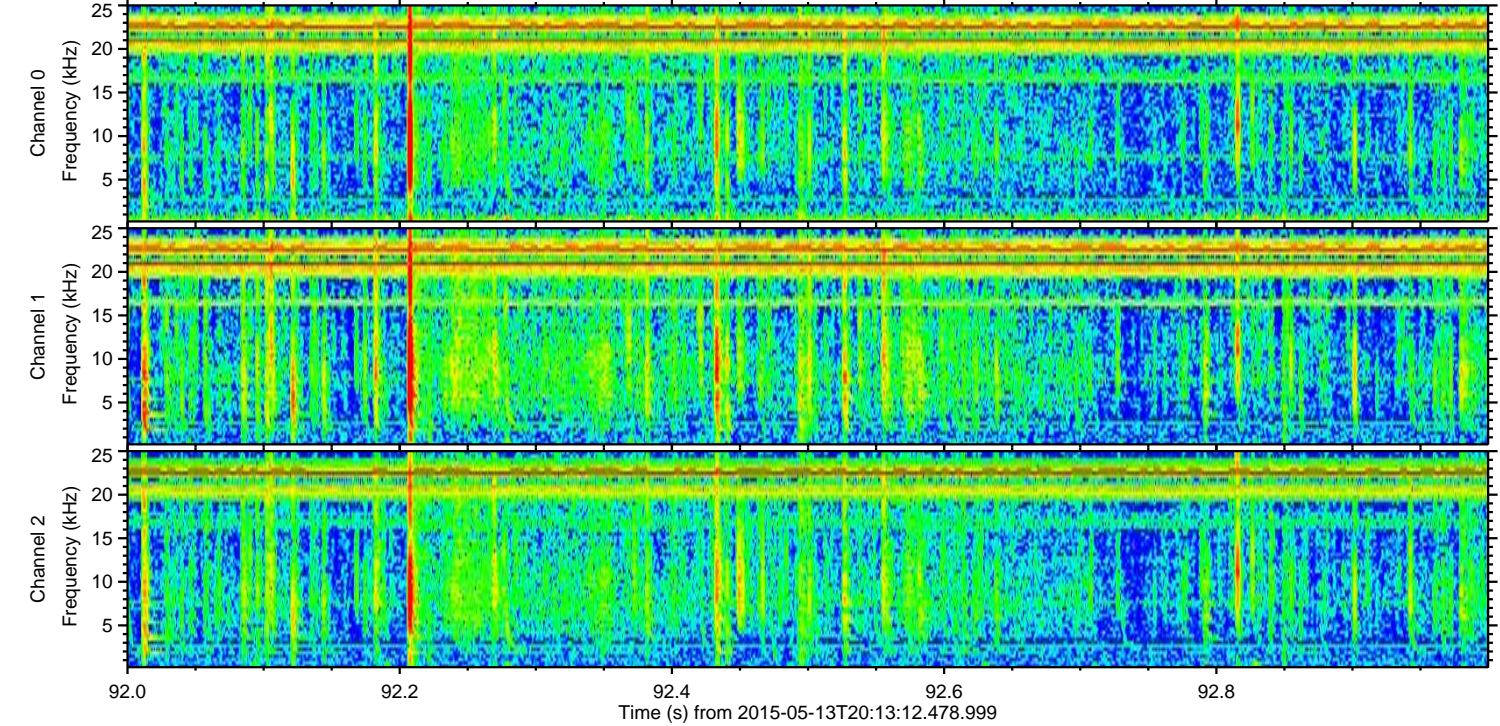
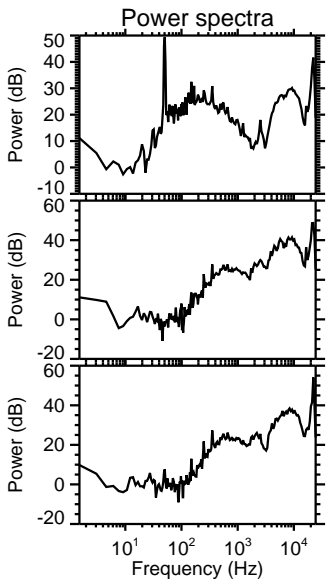
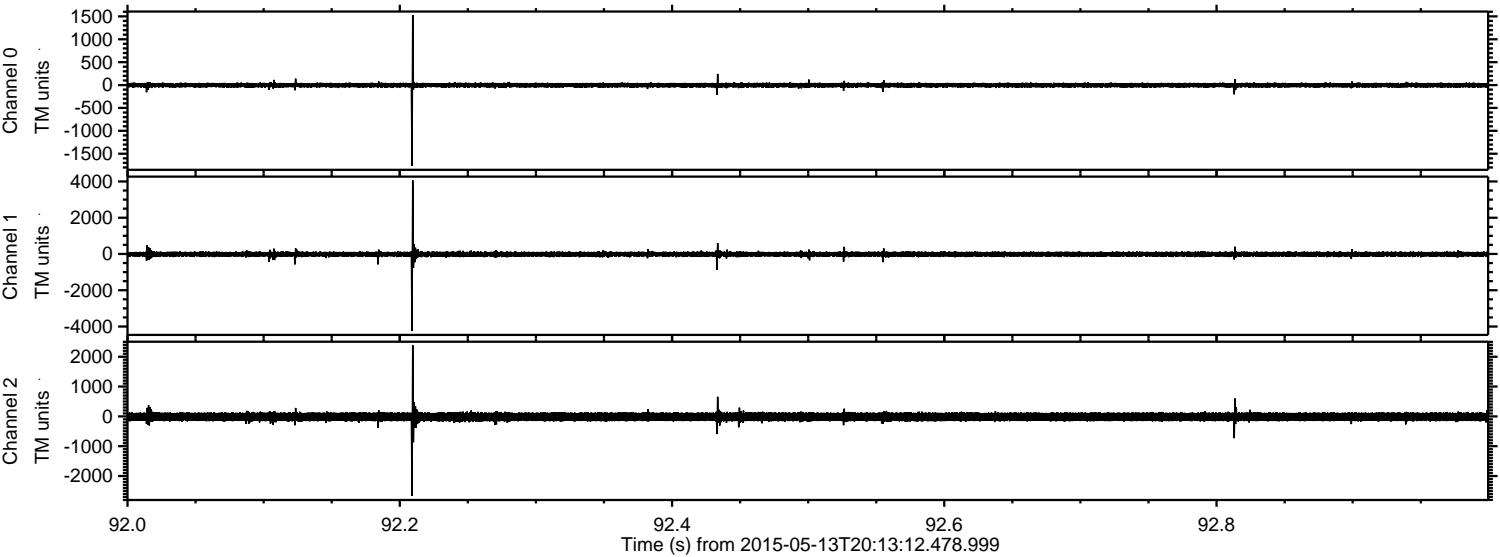


Channel 0
mn: -1439
mx: 833
 μ : -3.7
 σ : 25.5

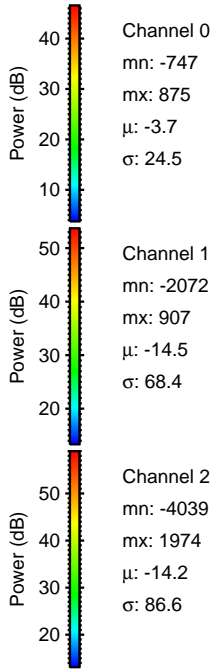
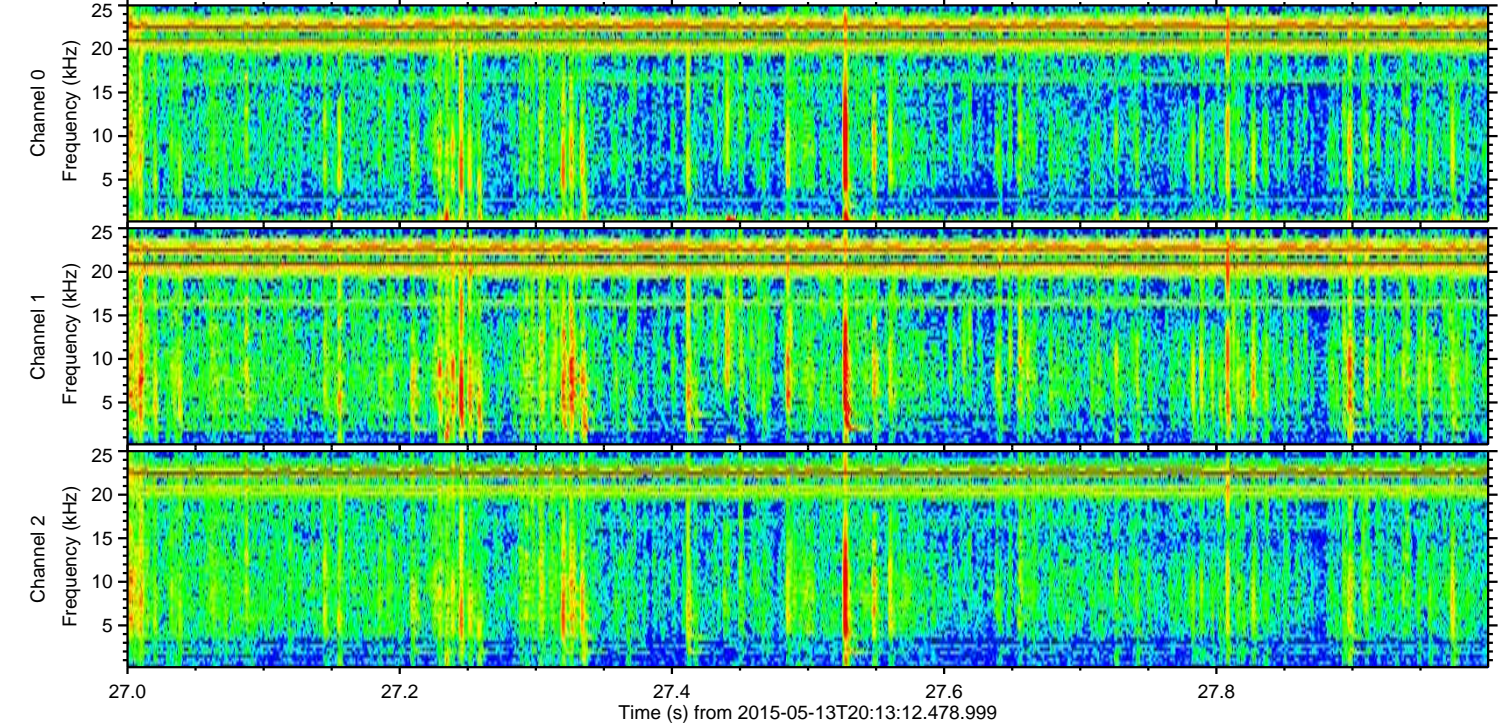
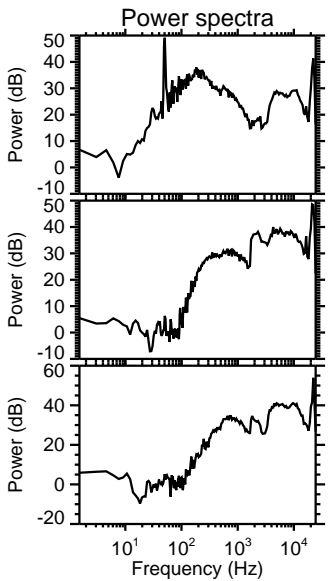
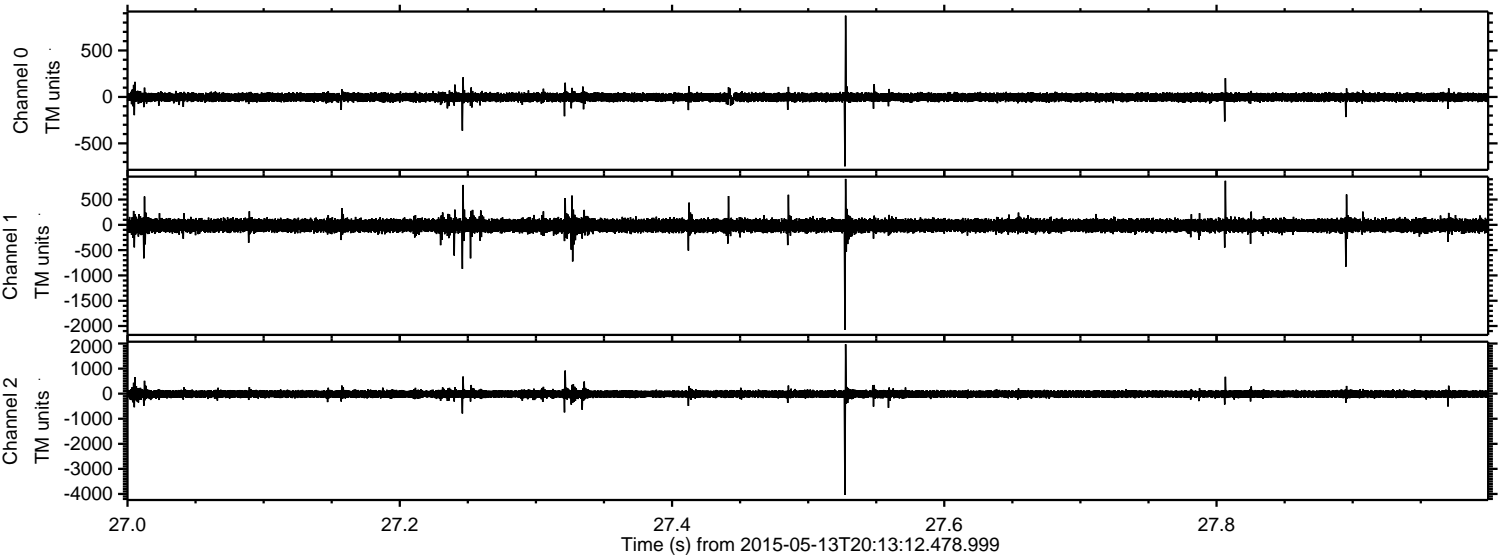
Channel 1
mn: -3677
mx: 4335
 μ : -14.5
 σ : 77.2

Channel 2
mn: -2030
mx: 1535
 μ : -14.2
 σ : 83.6

Processed Wed May 13 22:20:33 2015 by ELM ver.2012-10-06 from 001__elm20150513_201311__dat00.bin



Processed Wed May 13 22:20:34 2015 by ELM ver.2012-10-06 from 001__elm20150513_201311__dat00.bin



Channel 0
mn: -747
mx: 875
 μ : -3.7
 σ : 24.5

Channel 1
mn: -2072
mx: 907
 μ : -14.5
 σ : 68.4

Channel 2
mn: -4039
mx: 1974
 μ : -14.2
 σ : 86.6

