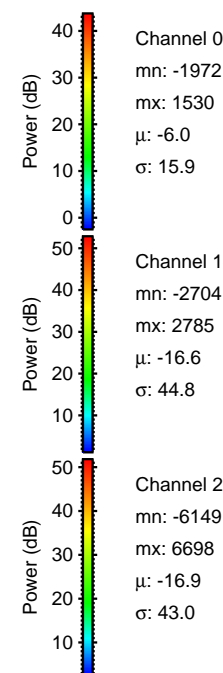
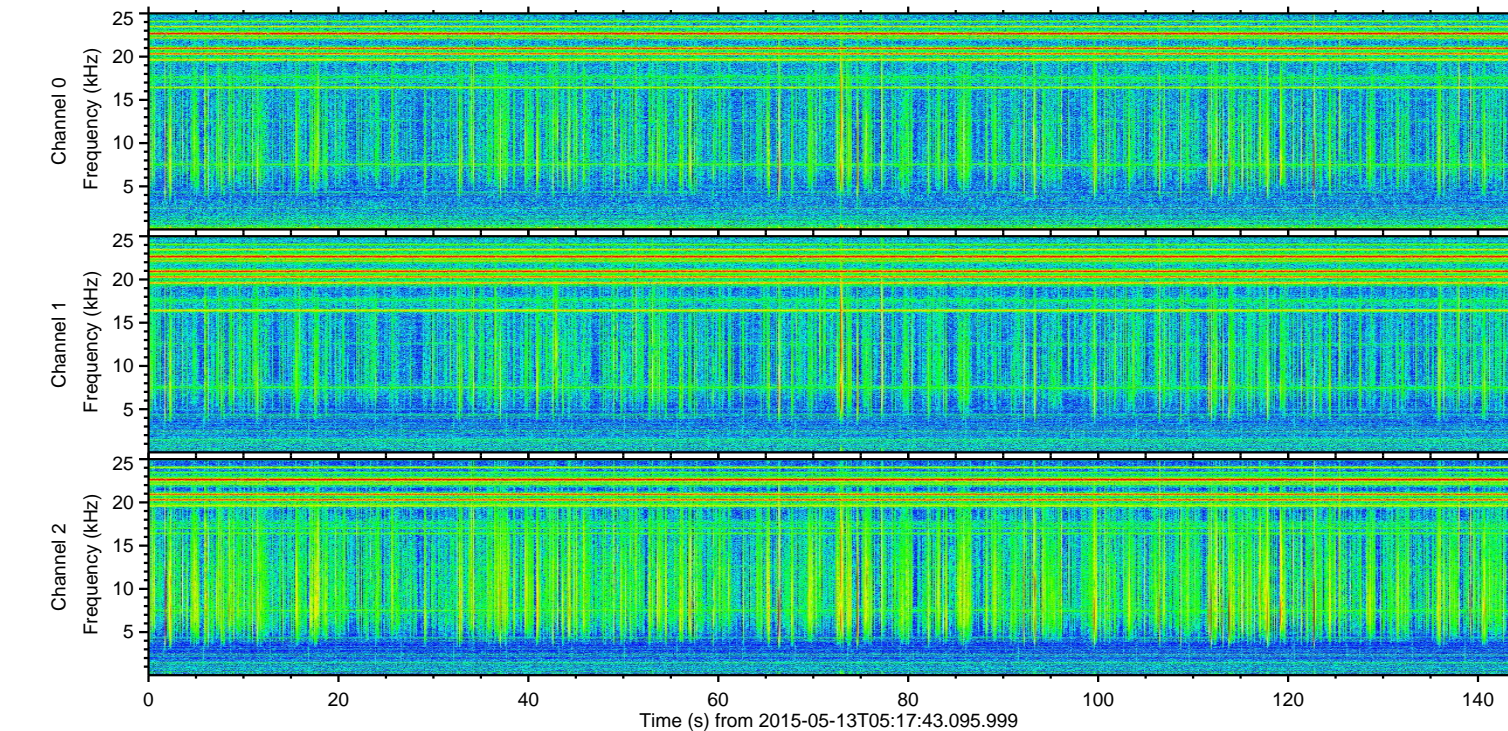
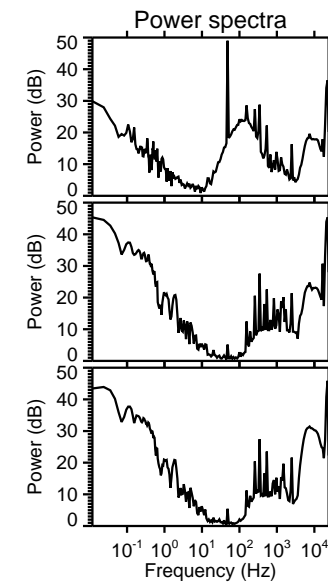
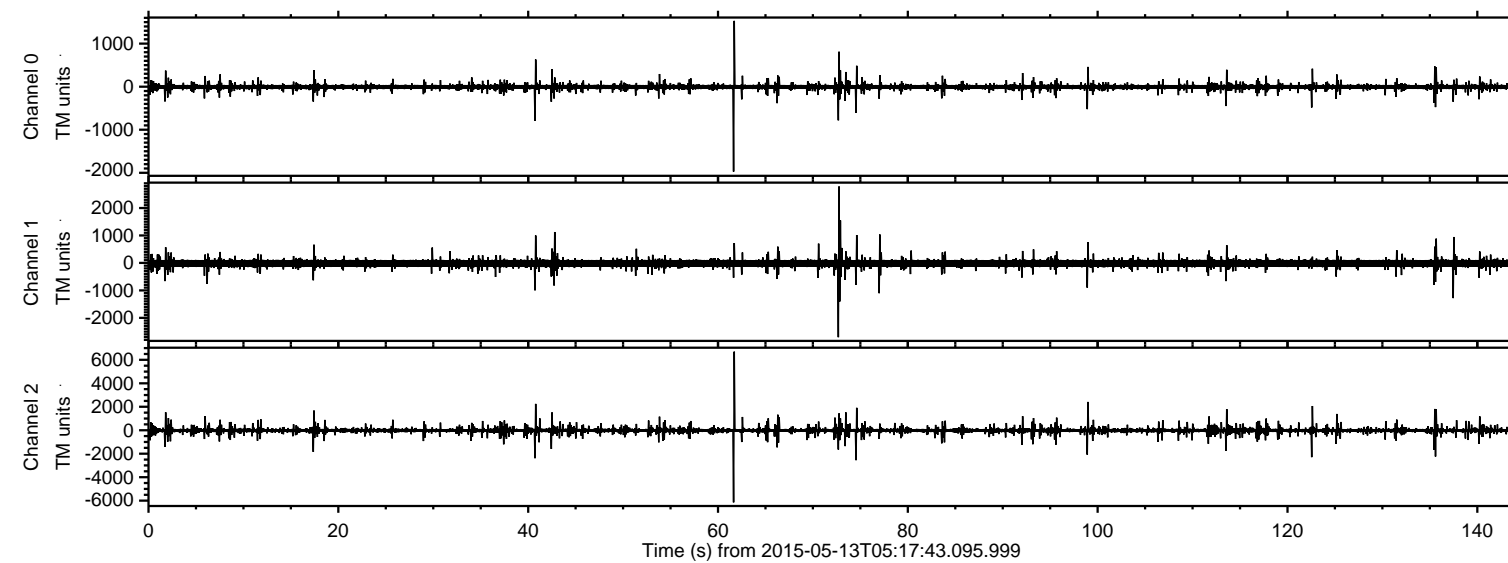
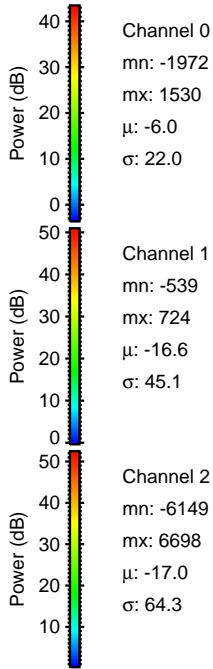
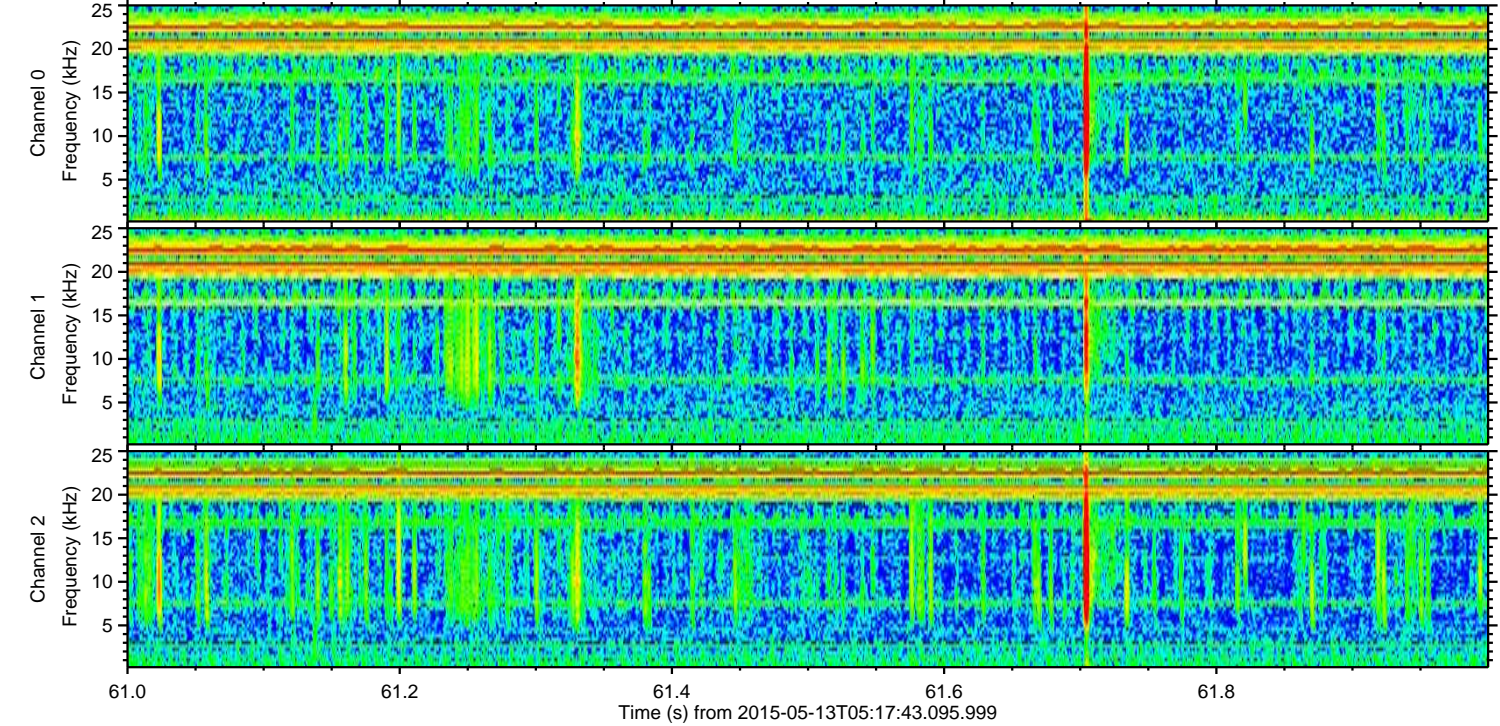
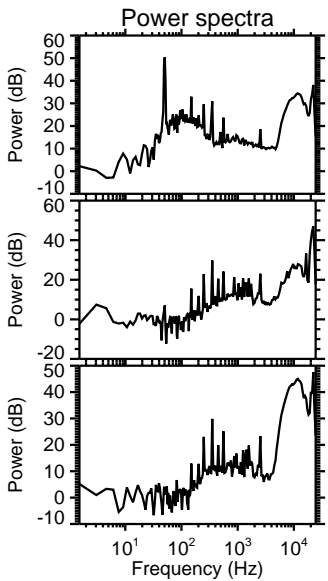
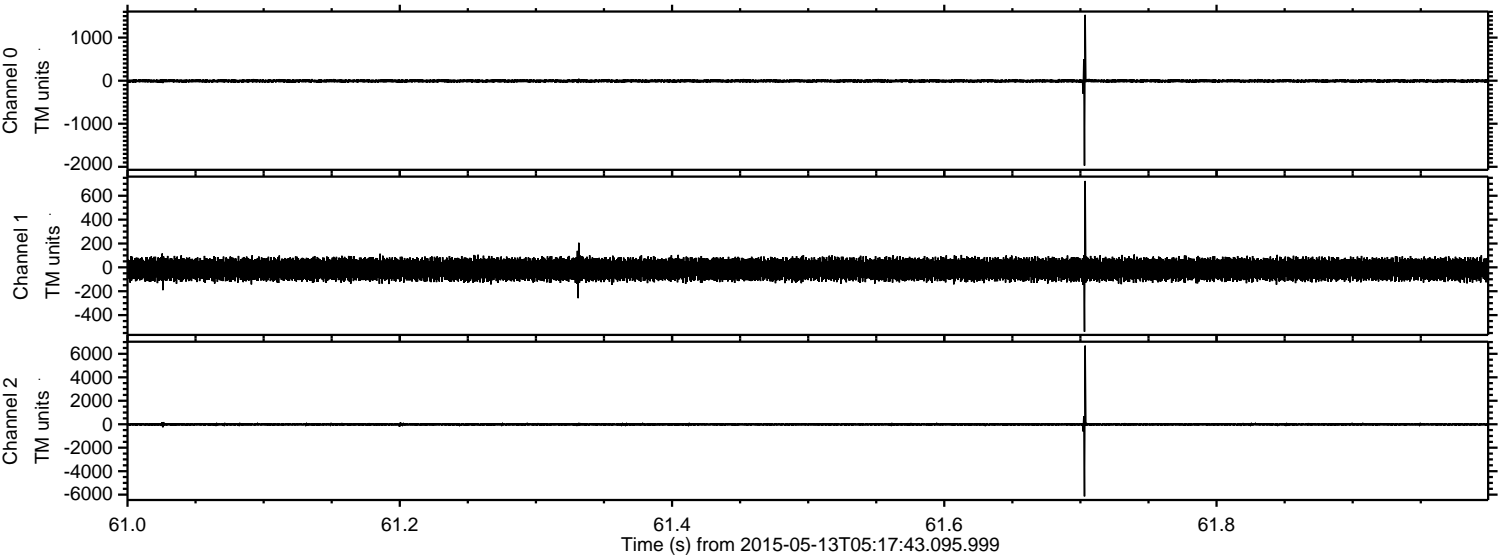


ELMAVAN 3D WAVEFORMS (Measured data sampled at 50 kHz) 49776 packets of 144 samples from 2015-05-13T05:17:43.095.999.

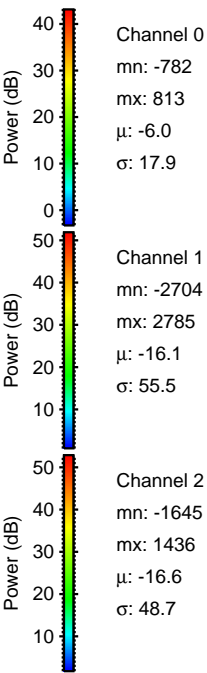
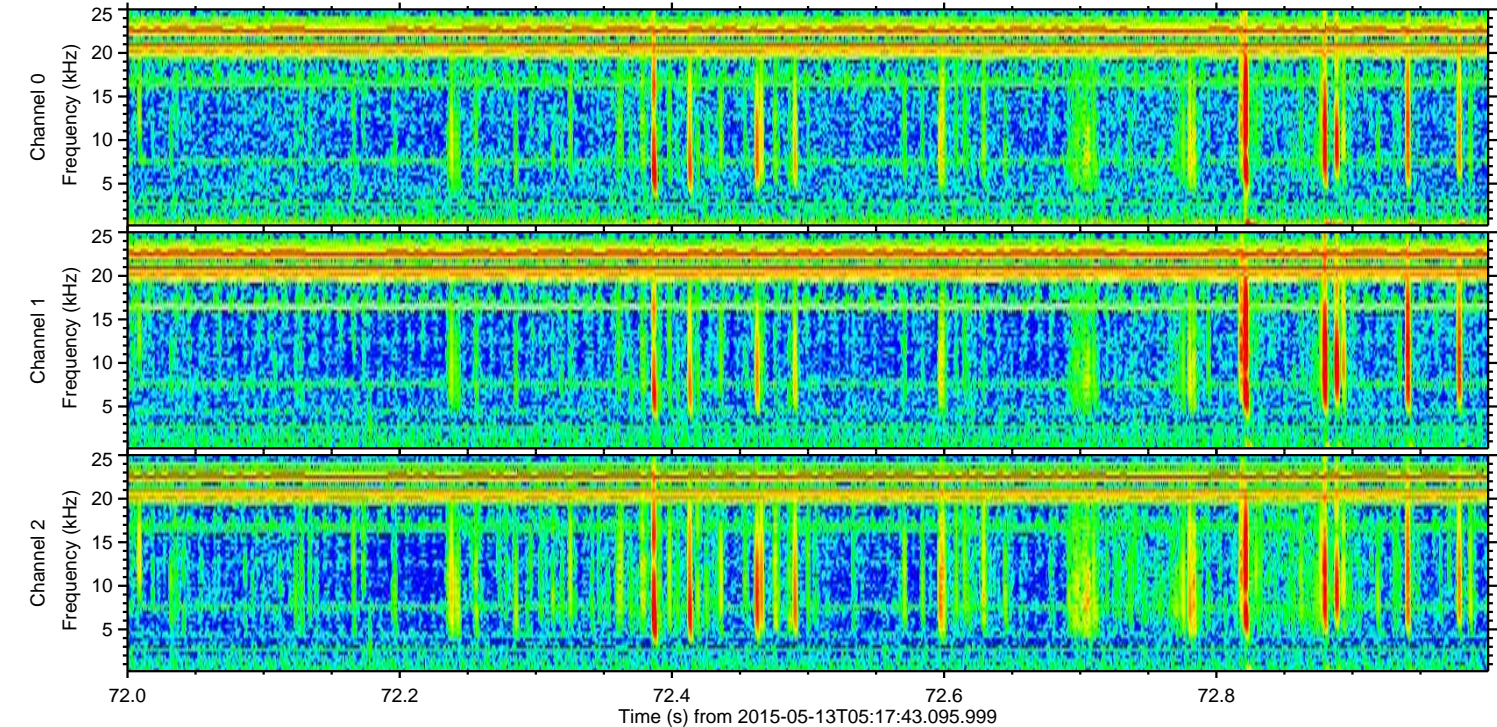
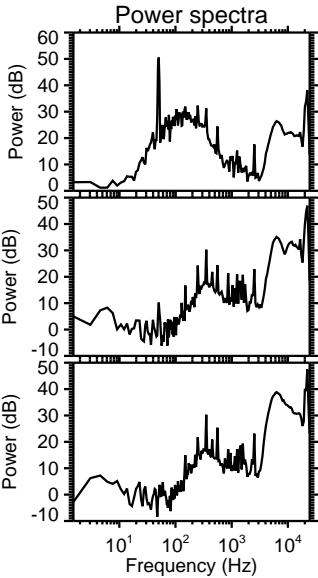
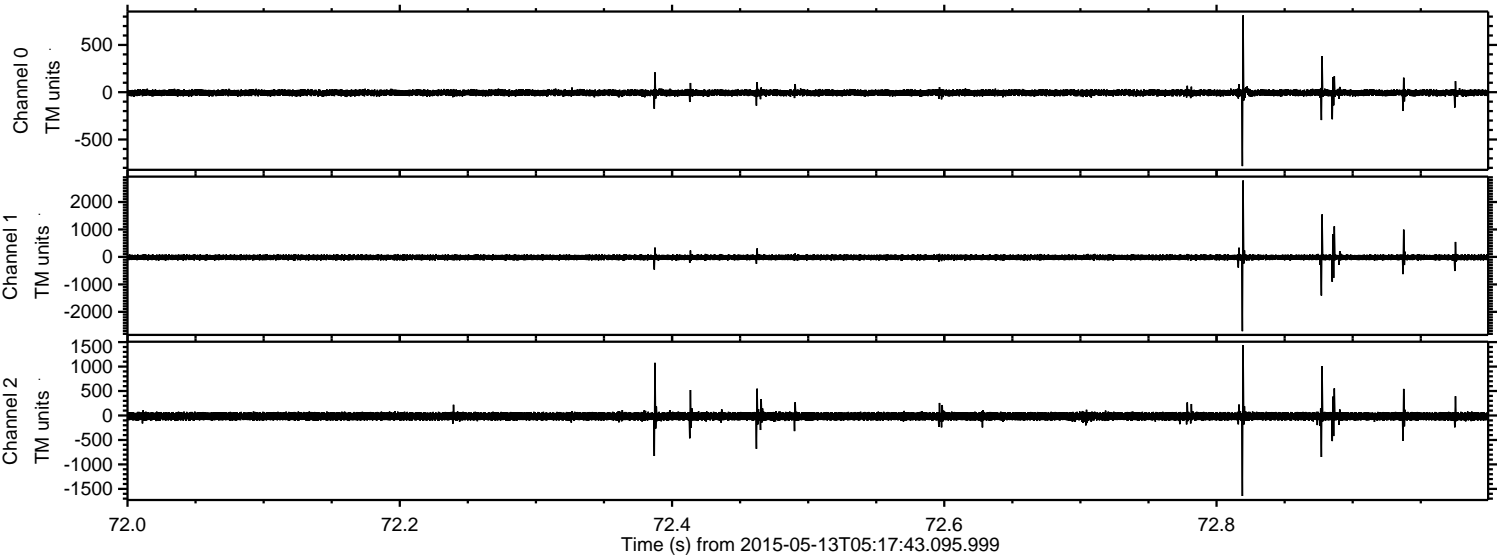
Processed Wed May 13 07:24:17 2015 by ELM ver.2012-10-06 from 001__elm20150513_051742__dat00.bin



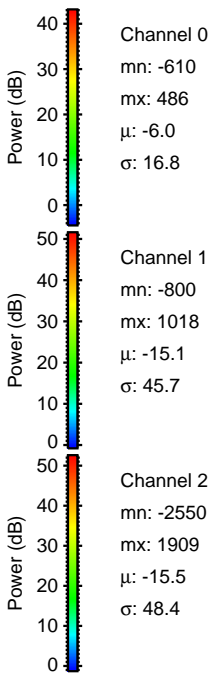
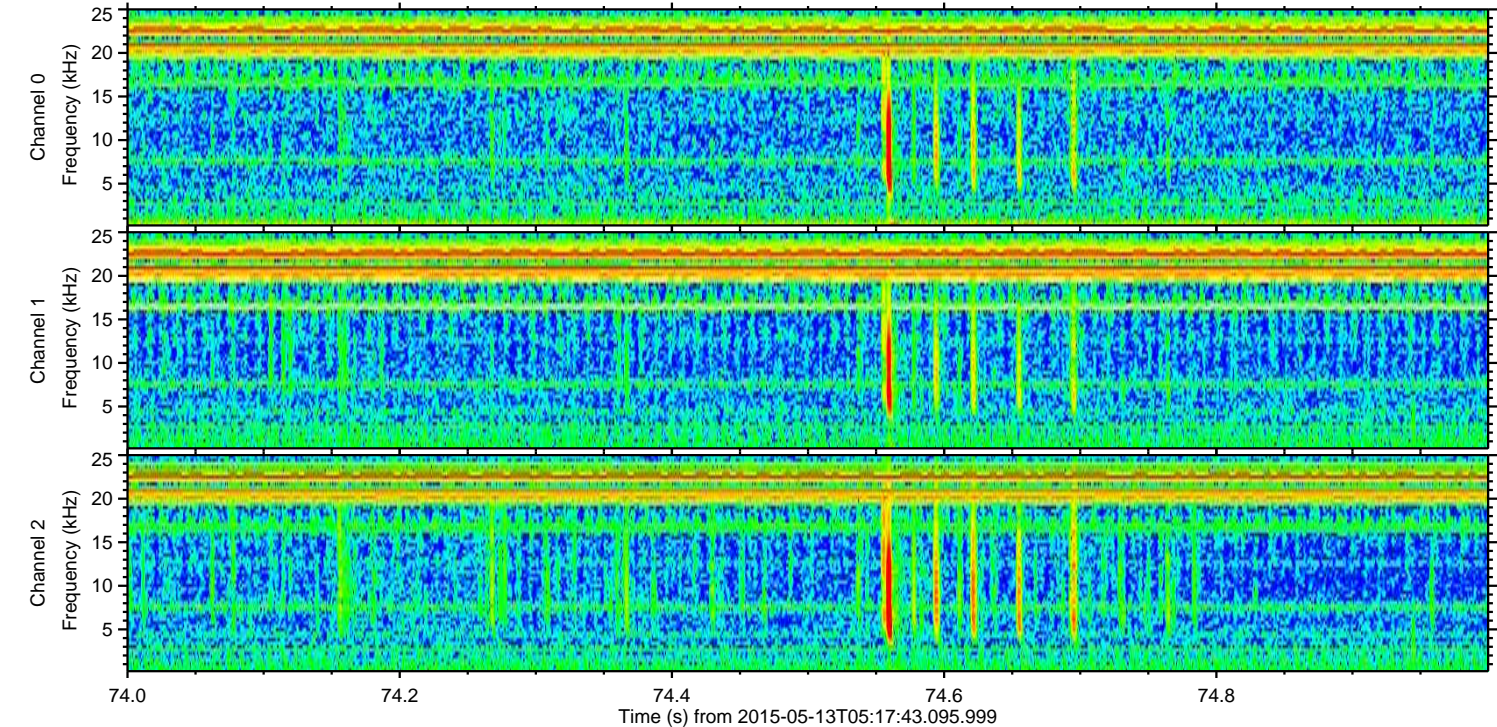
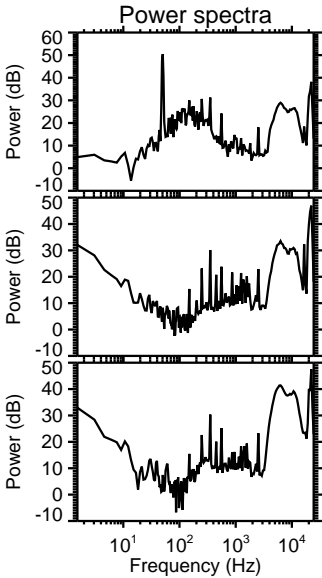
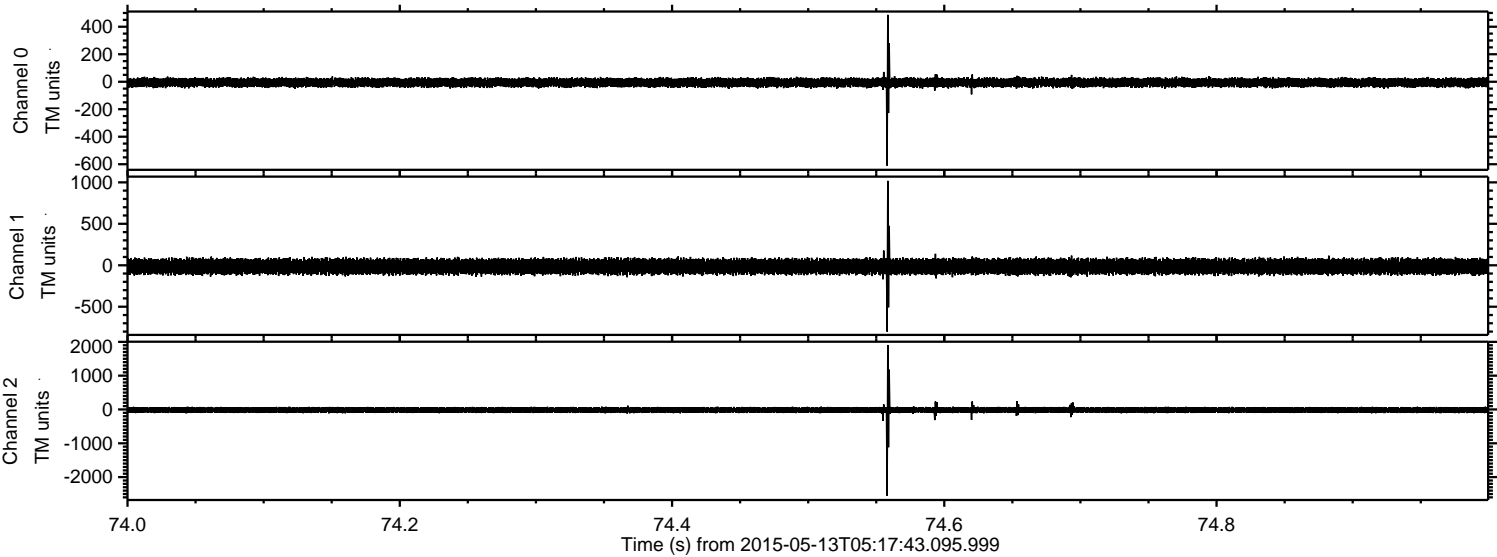
Processed Wed May 13 07:24:28 2015 by ELM ver.2012-10-06 from 001__elm20150513_051742__dat00.bin



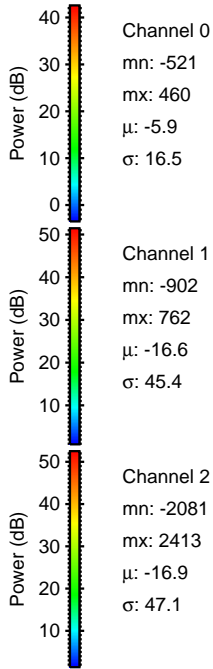
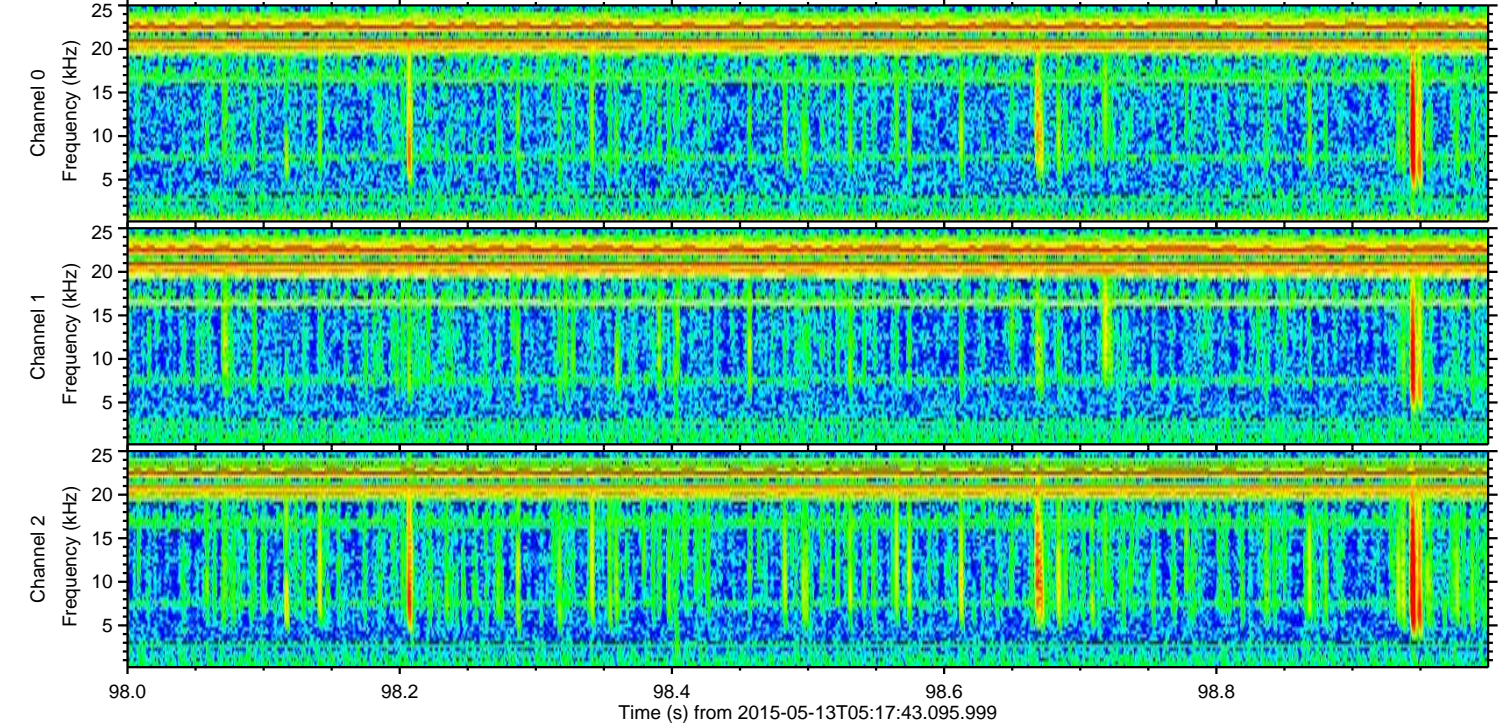
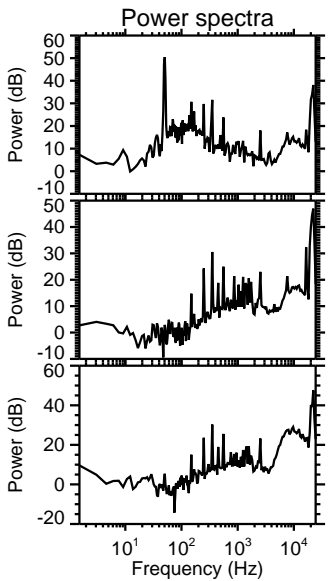
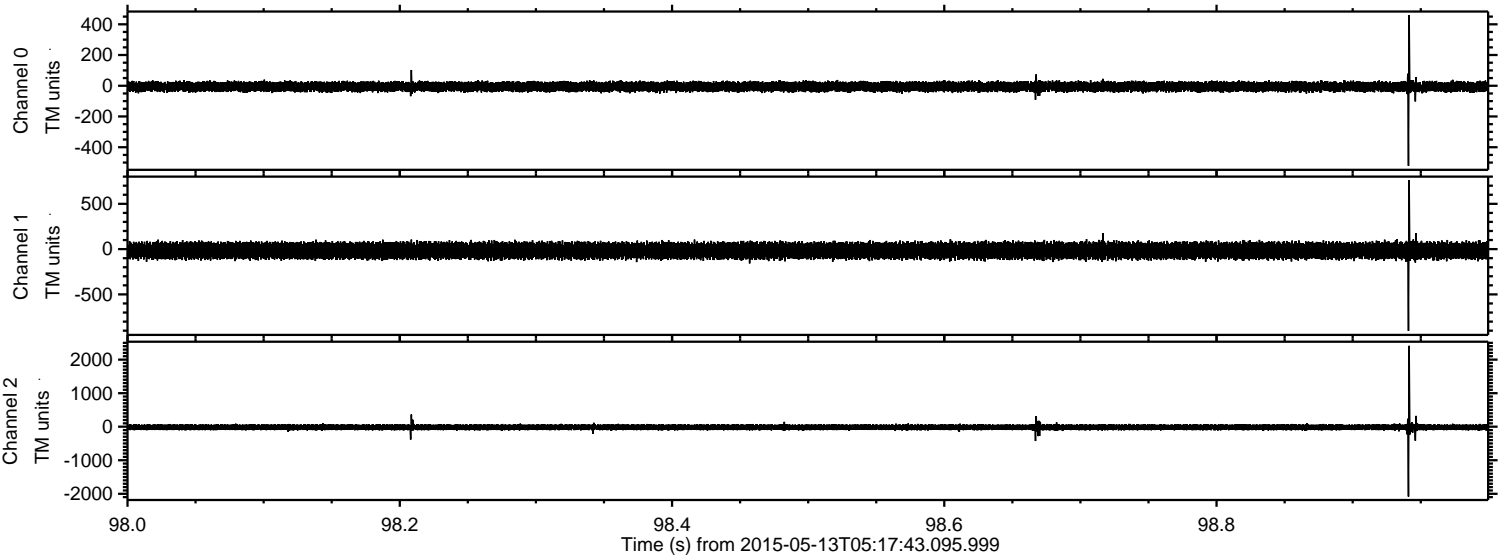
Processed Wed May 13 07:24:29 2015 by ELM ver.2012-10-06 from 001__elm20150513_051742__dat00.bin



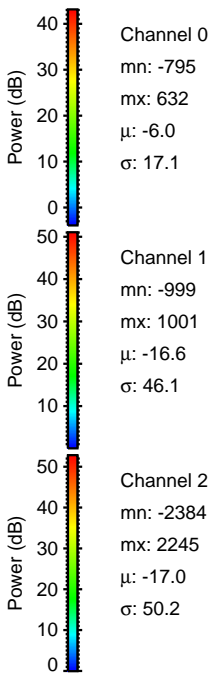
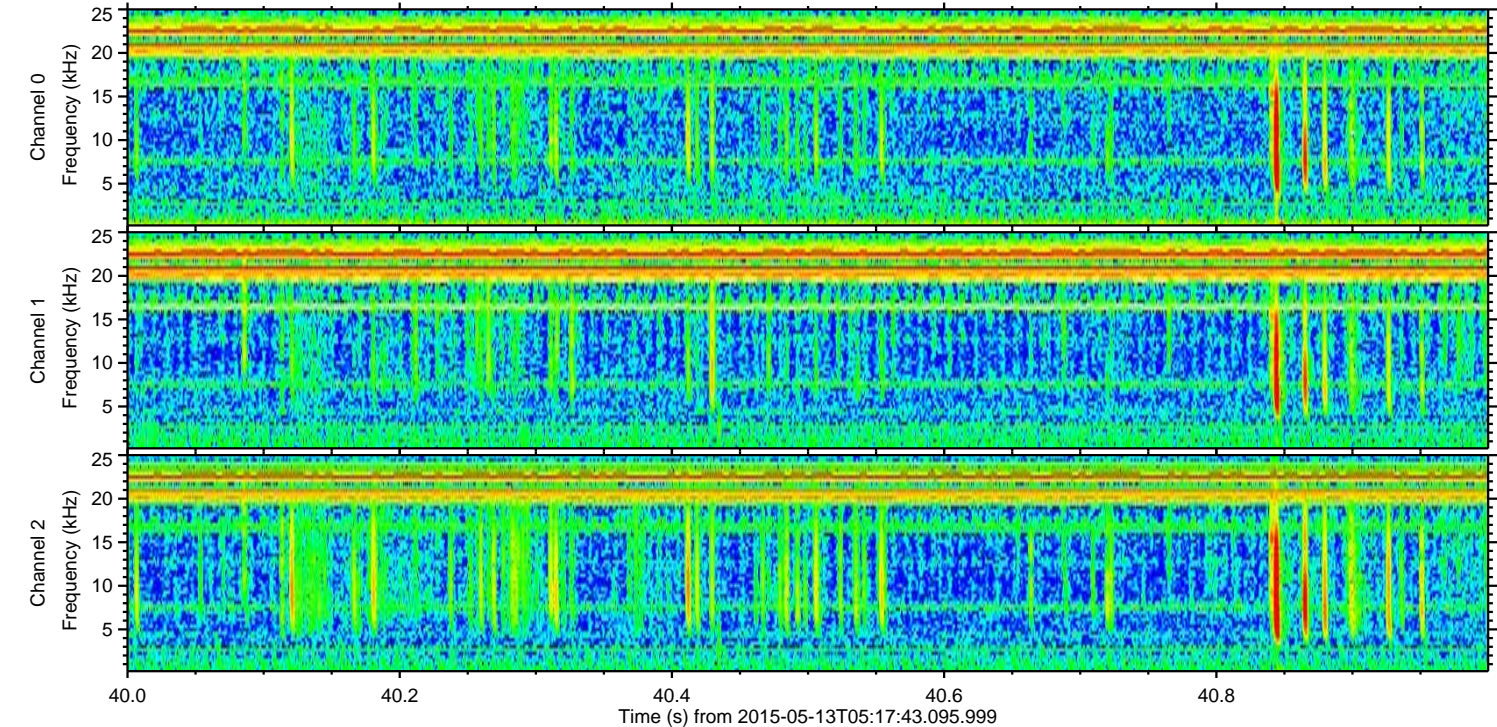
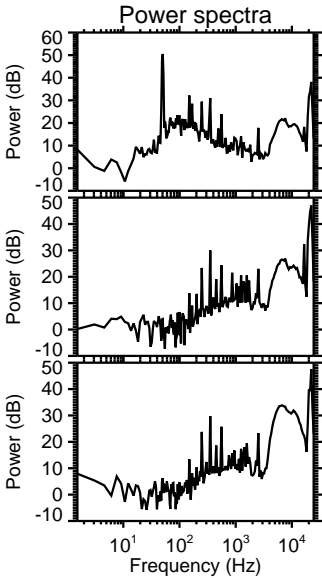
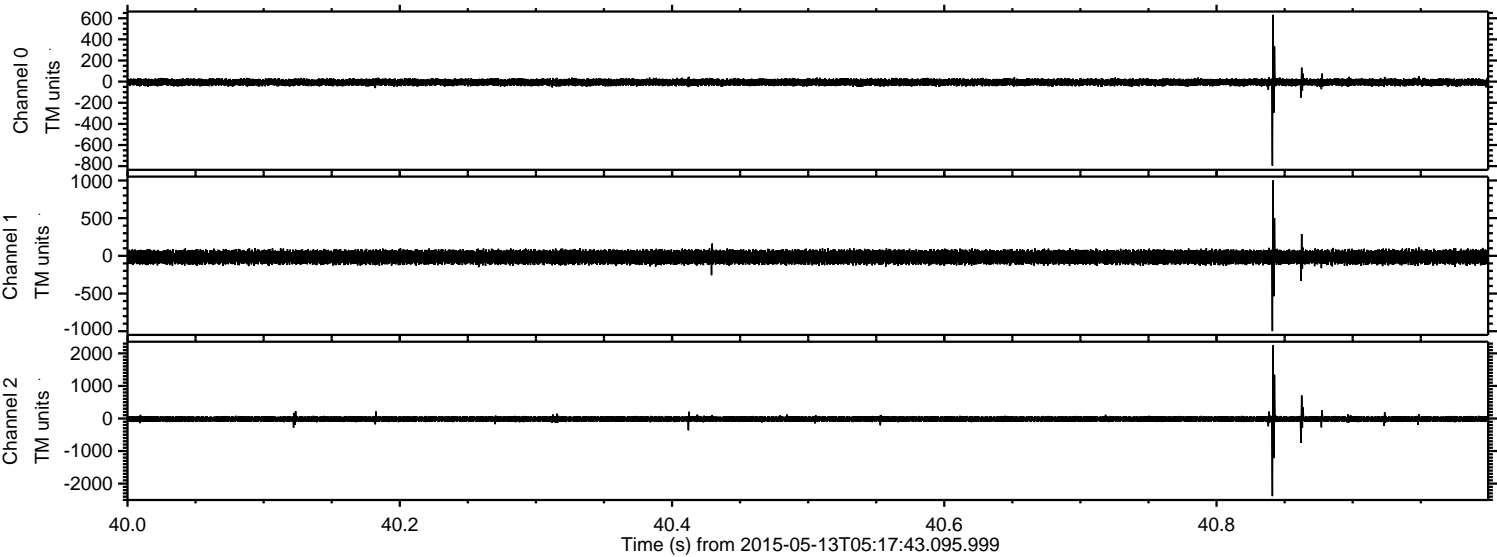
Processed Wed May 13 07:24:30 2015 by ELM ver.2012-10-06 from 001__elm20150513_051742__dat00.bin



Processed Wed May 13 07:24:31 2015 by ELM ver.2012-10-06 from 001__elm20150513_051742__dat00.bin

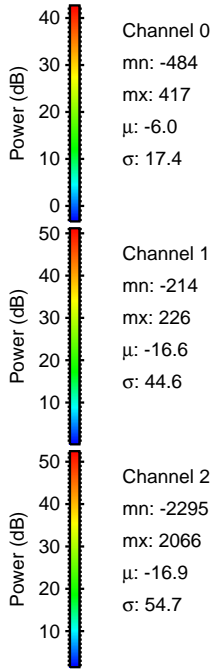
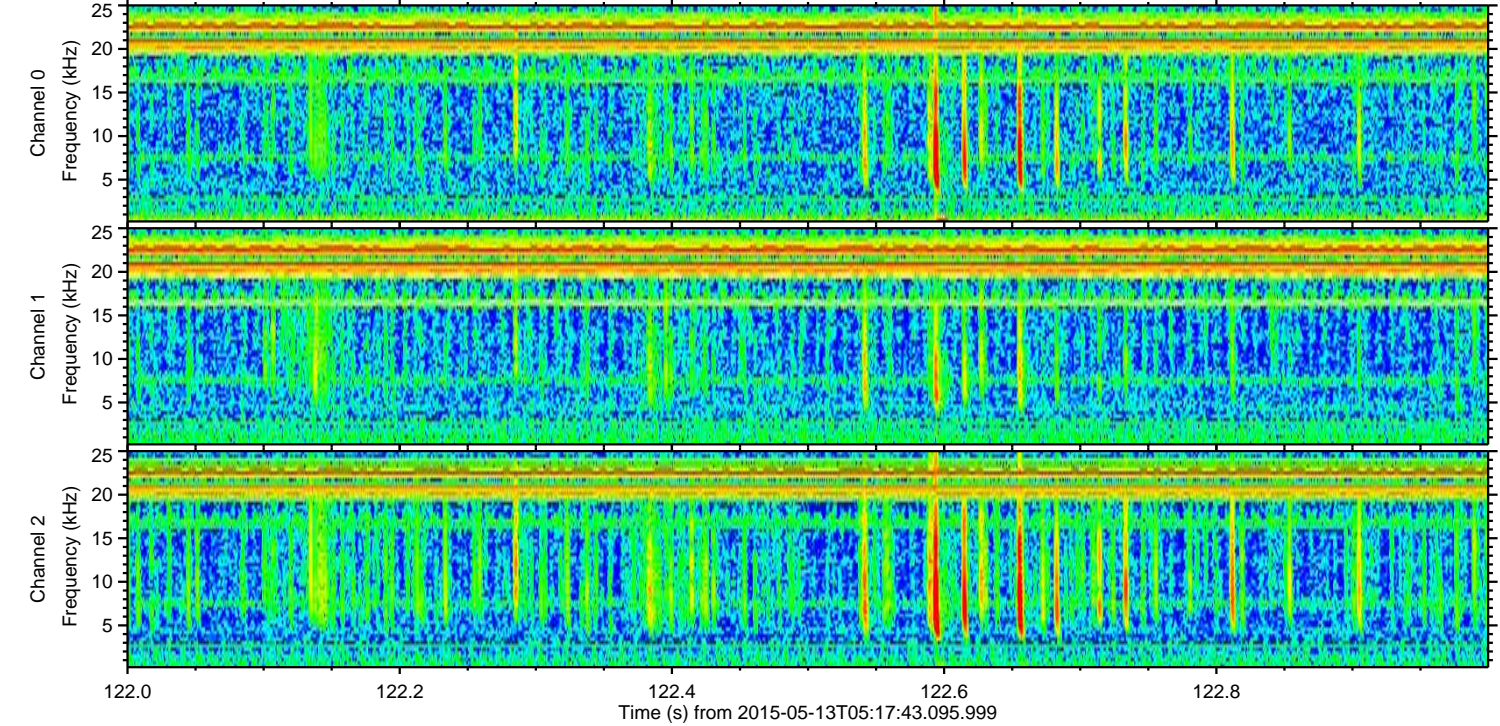
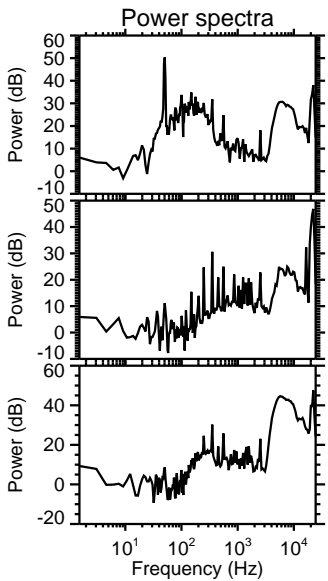
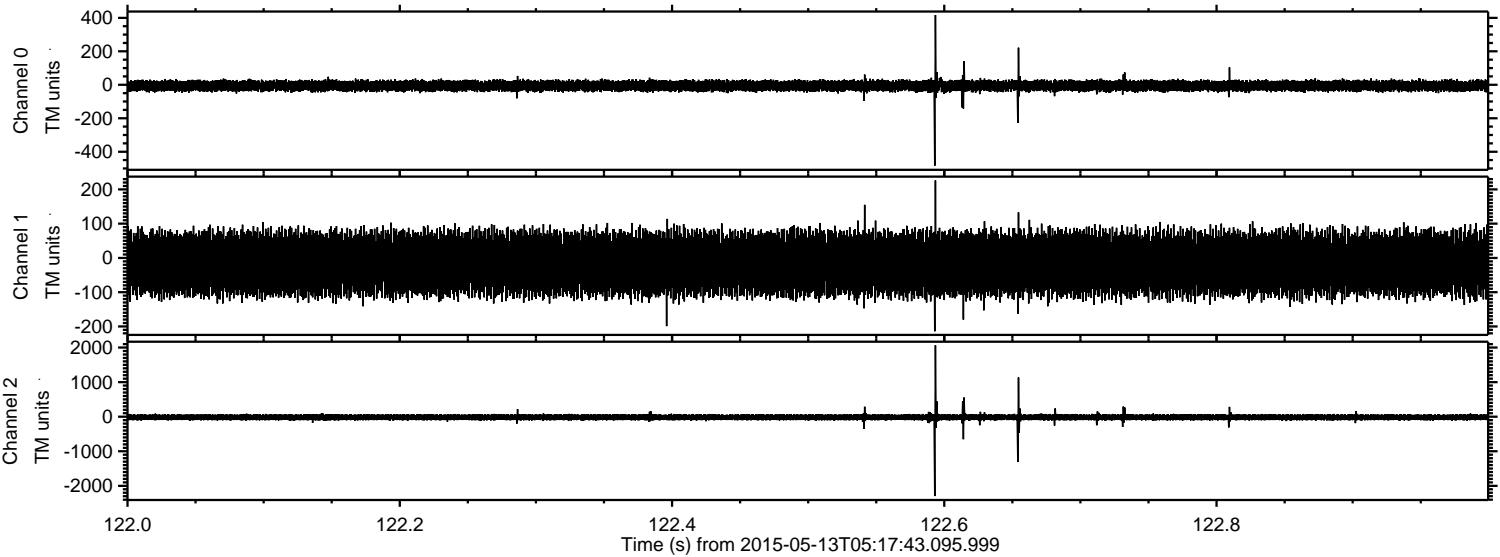


Processed Wed May 13 07:24:32 2015 by ELM ver.2012-10-06 from 001__elm20150513_051742__dat00.bin



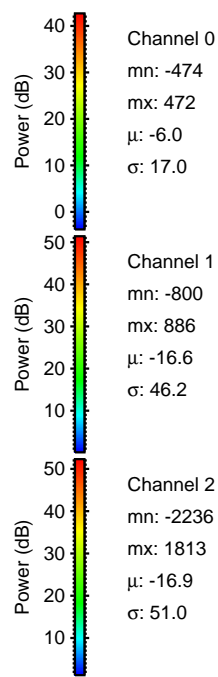
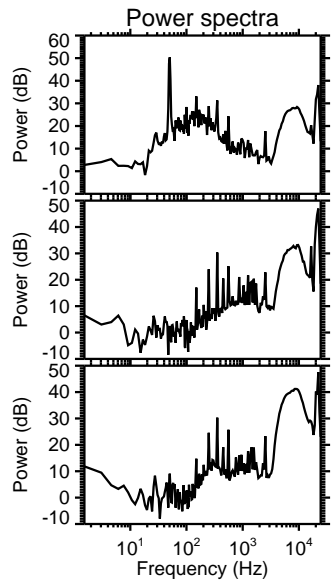
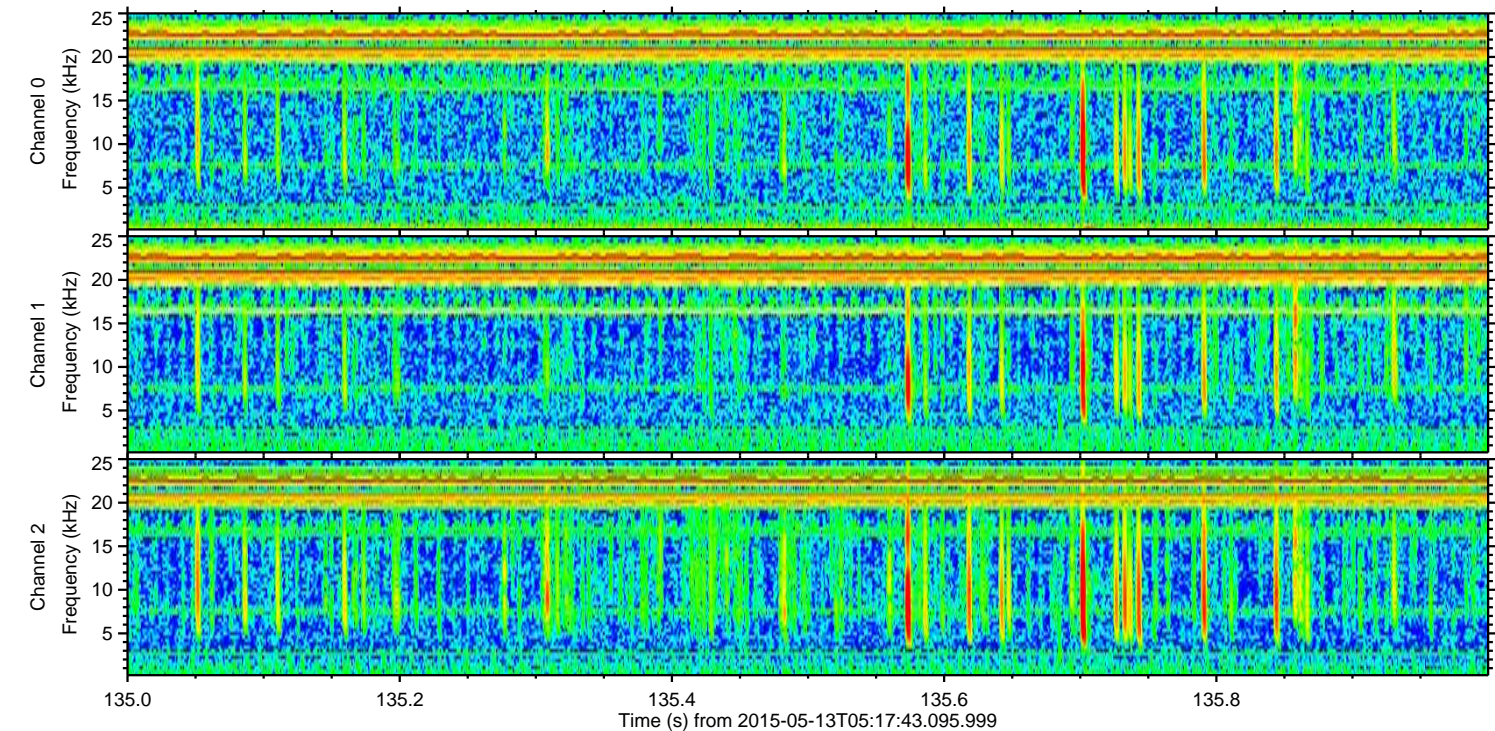
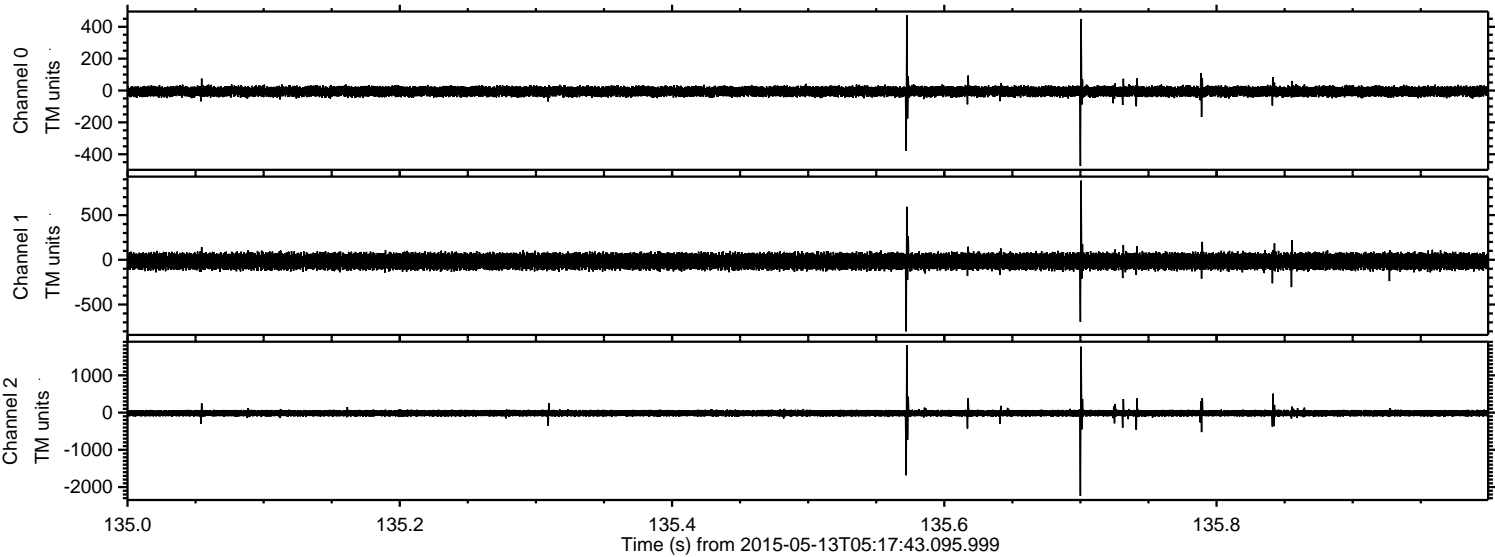
ELMAVAN 3D WAVEFORMS (Measured data sampled at 50 kHz) 49776 packets of 144 samples from 2015-05-13T05:17:43.095.999. Part 123/144

Processed Wed May 13 07:24:33 2015 by ELM ver.2012-10-06 from 001__elm20150513_051742__dat00.bin

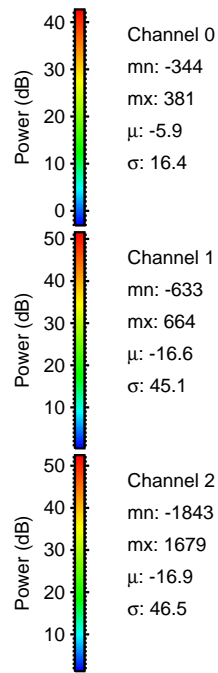
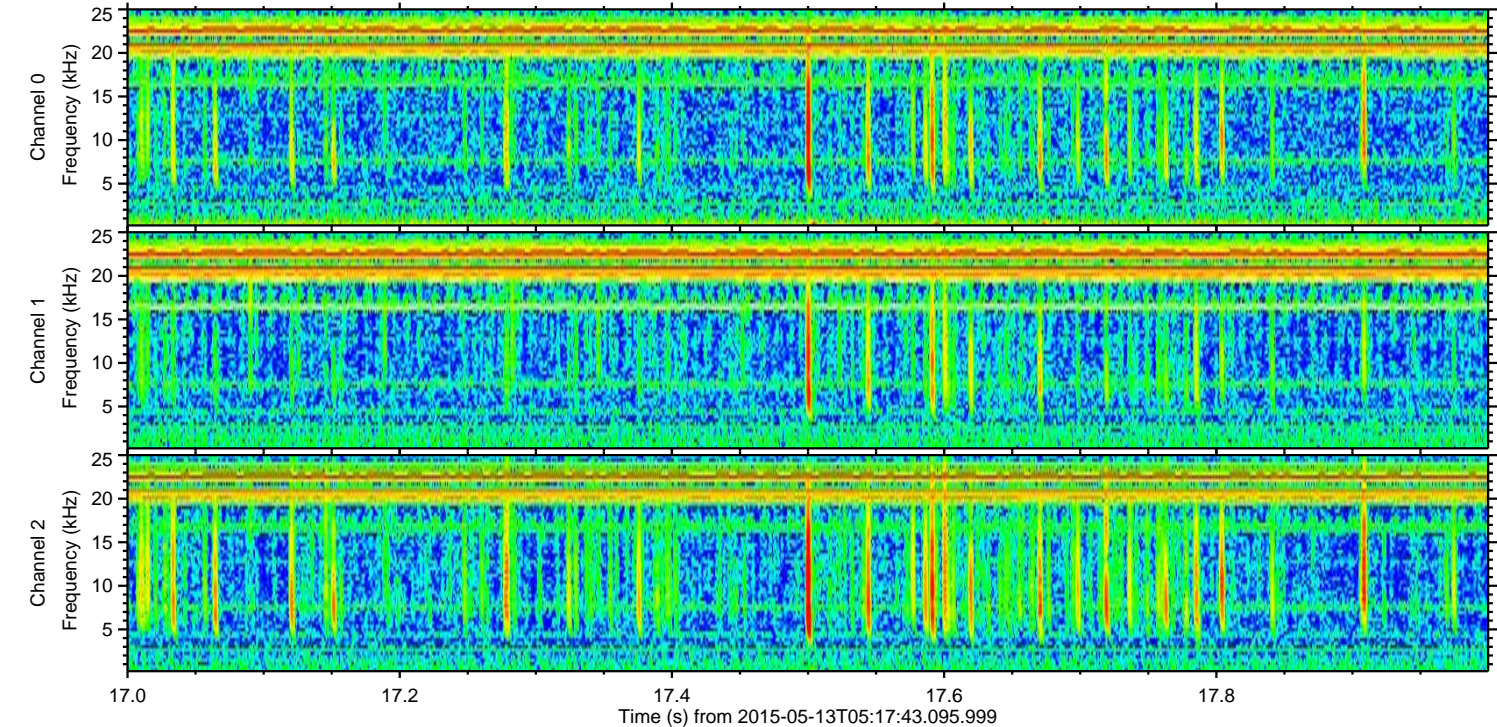
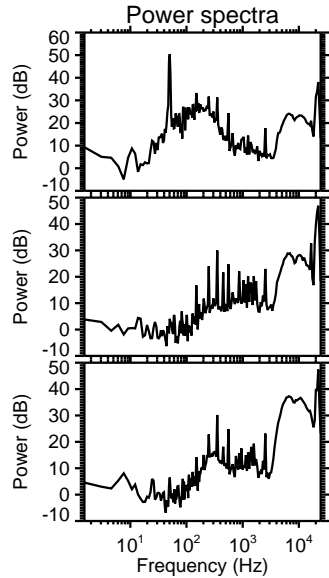
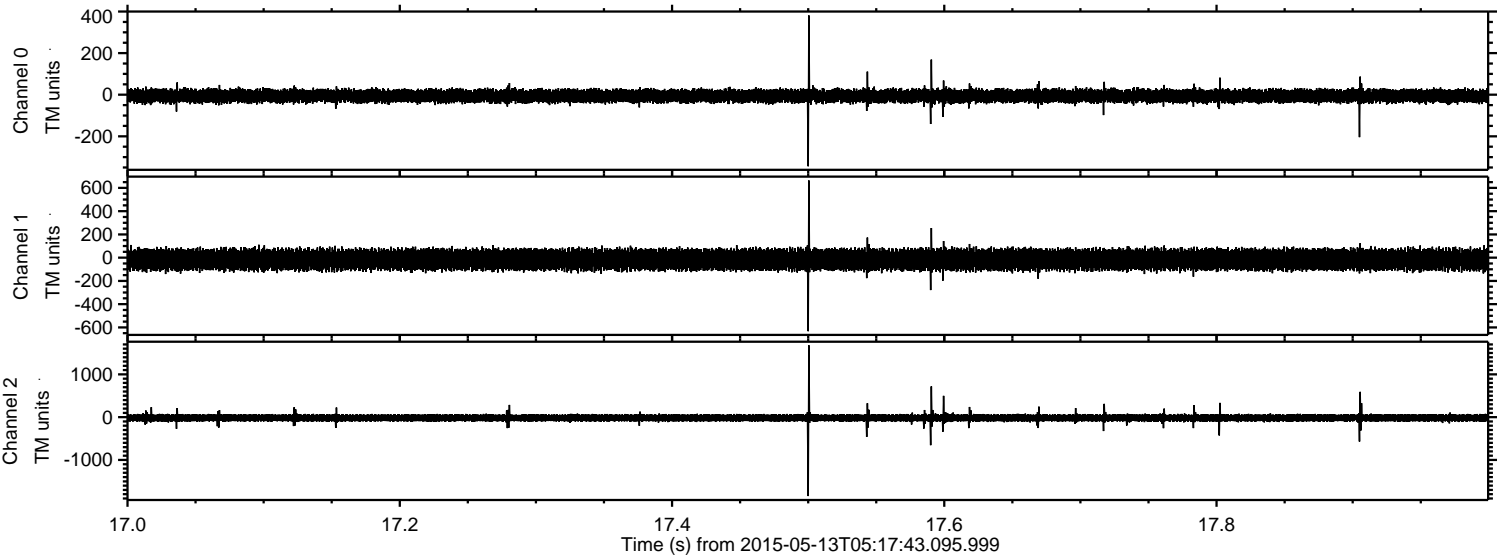


ELMAVAN 3D WAVEFORMS (Measured data sampled at 50 kHz) 49776 packets of 144 samples from 2015-05-13T05:17:43.095.999. Part 136/144

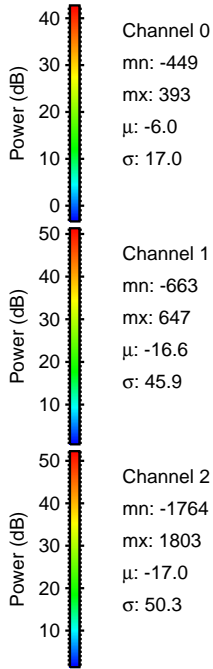
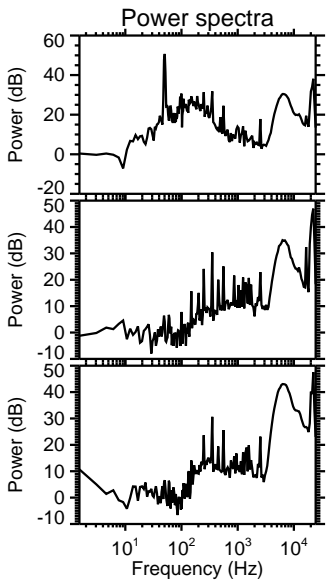
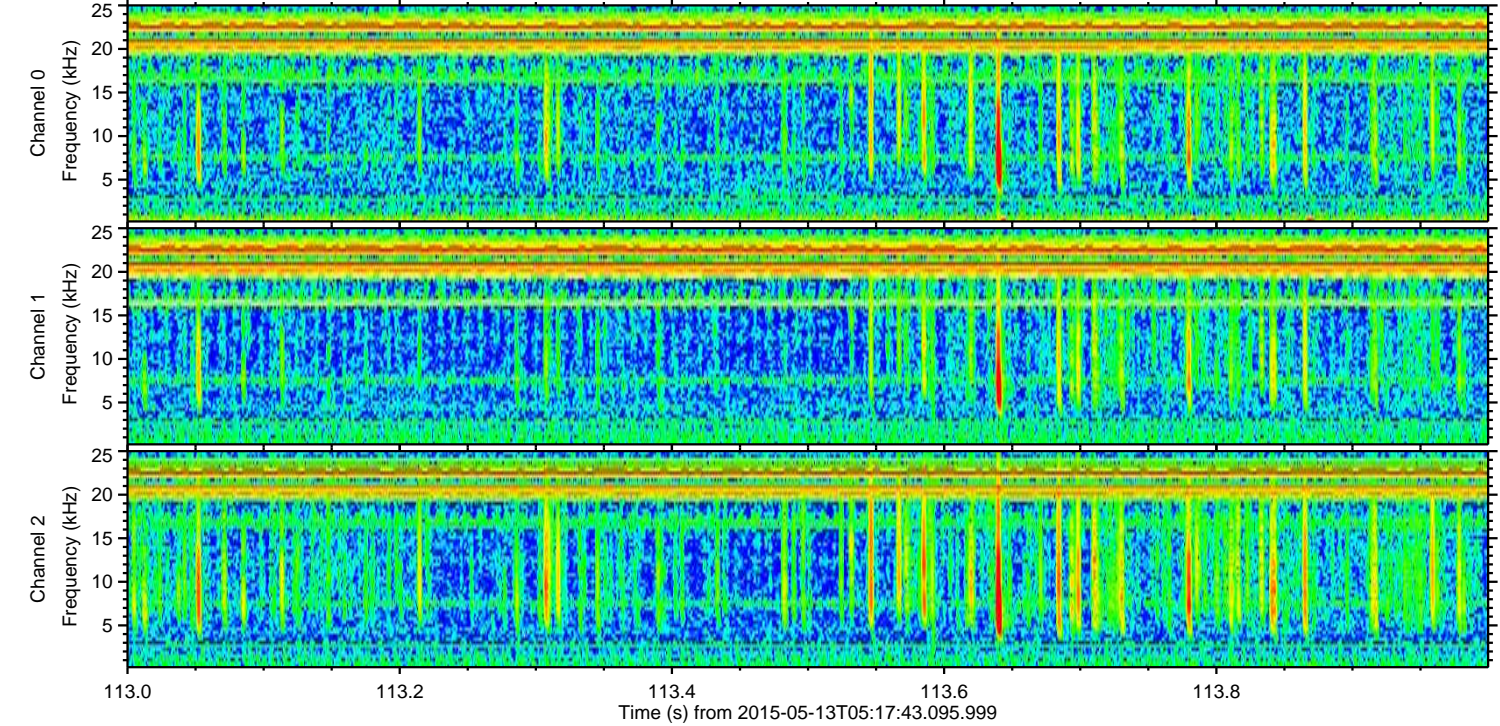
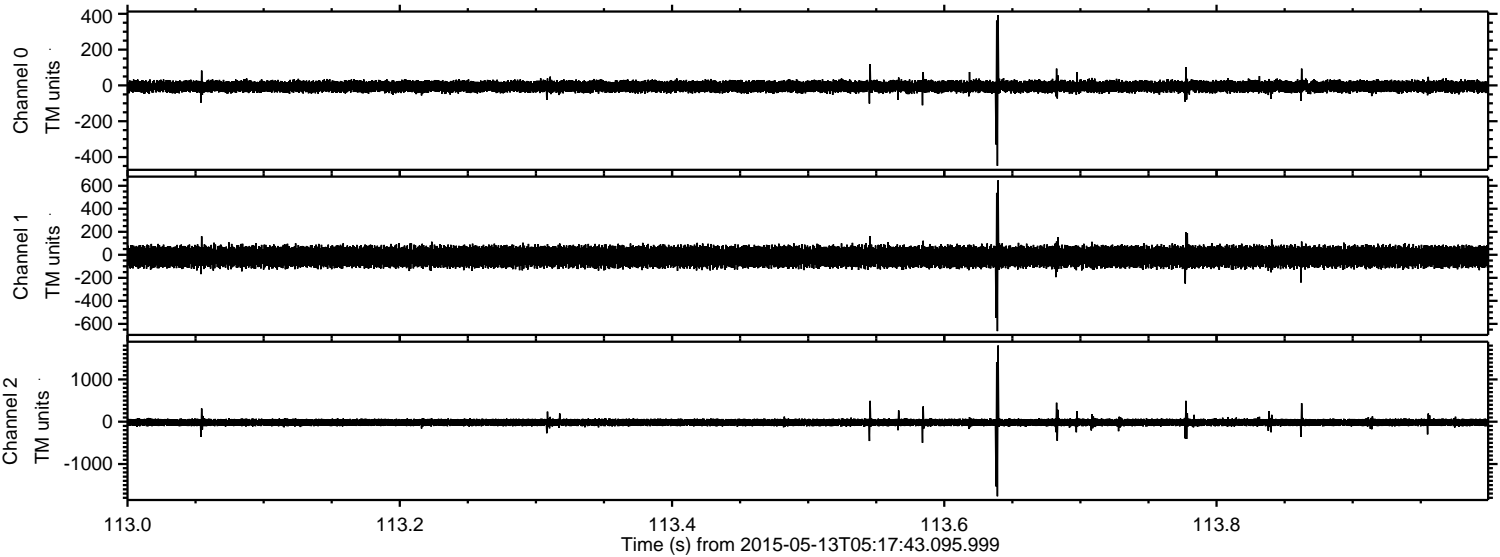
Processed Wed May 13 07:24:34 2015 by ELM ver.2012-10-06 from 001__elm20150513_051742__dat00.bin



Processed Wed May 13 07:24:35 2015 by ELM ver.2012-10-06 from 001__elm20150513_051742__dat00.bin



Processed Wed May 13 07:24:36 2015 by ELM ver.2012-10-06 from 001__elm20150513_051742__dat00.bin



Channel 0
mn: -449
mx: 393
 μ : -6.0
 σ : 17.0

Channel 1
mn: -663
mx: 647
 μ : -16.6
 σ : 45.9

Channel 2
mn: -1764
mx: 1803
 μ : -17.0
 σ : 50.3

Processed Wed May 13 07:24:37 2015 by ELM ver.2012-10-06 from 001__elm20150513_051742__dat00.bin

