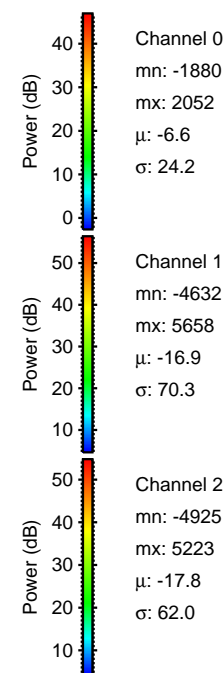
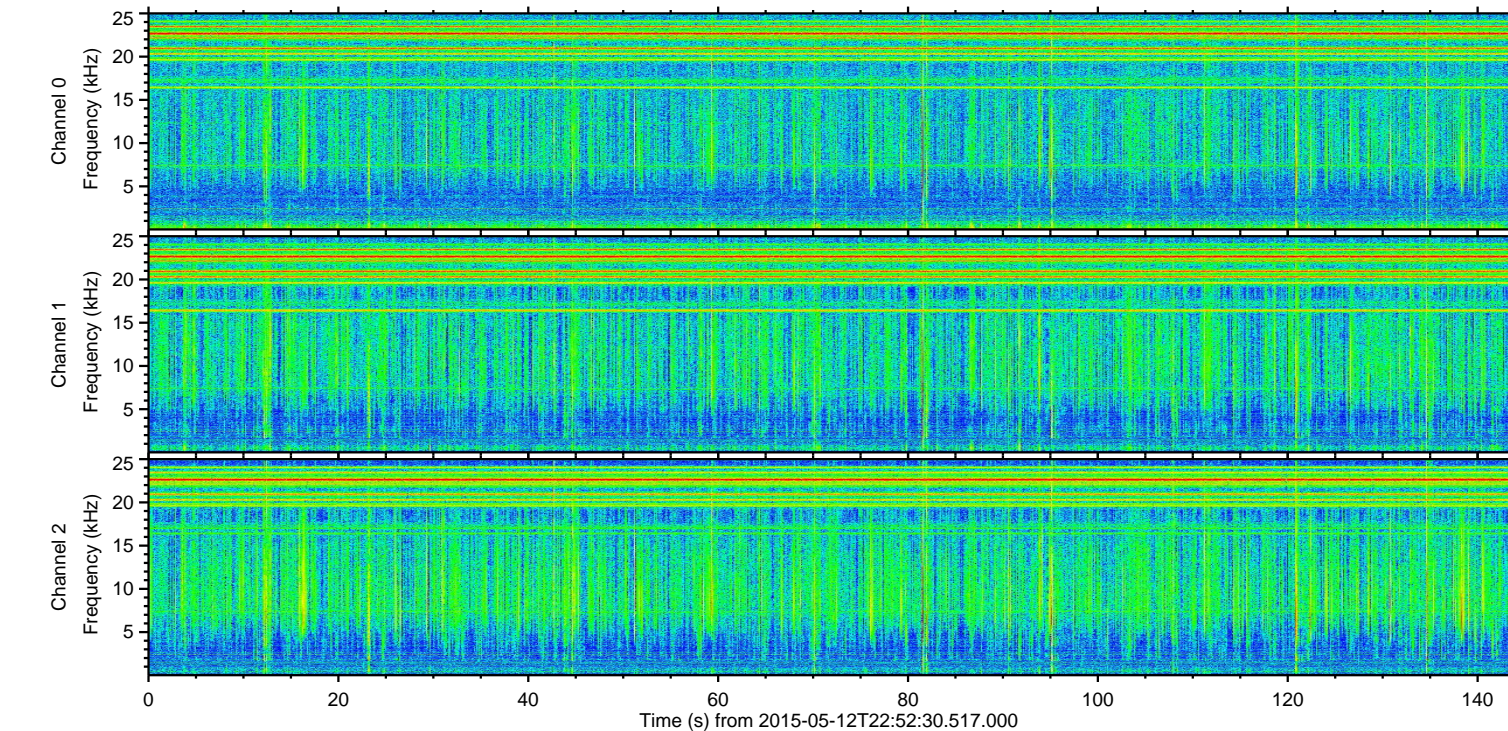
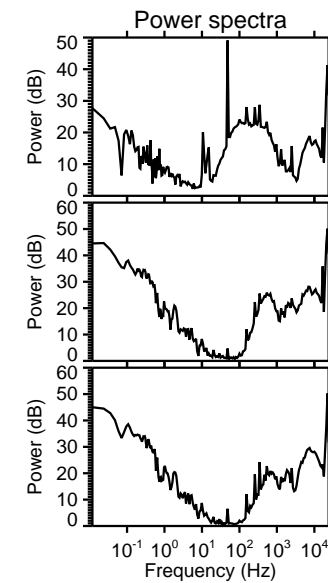
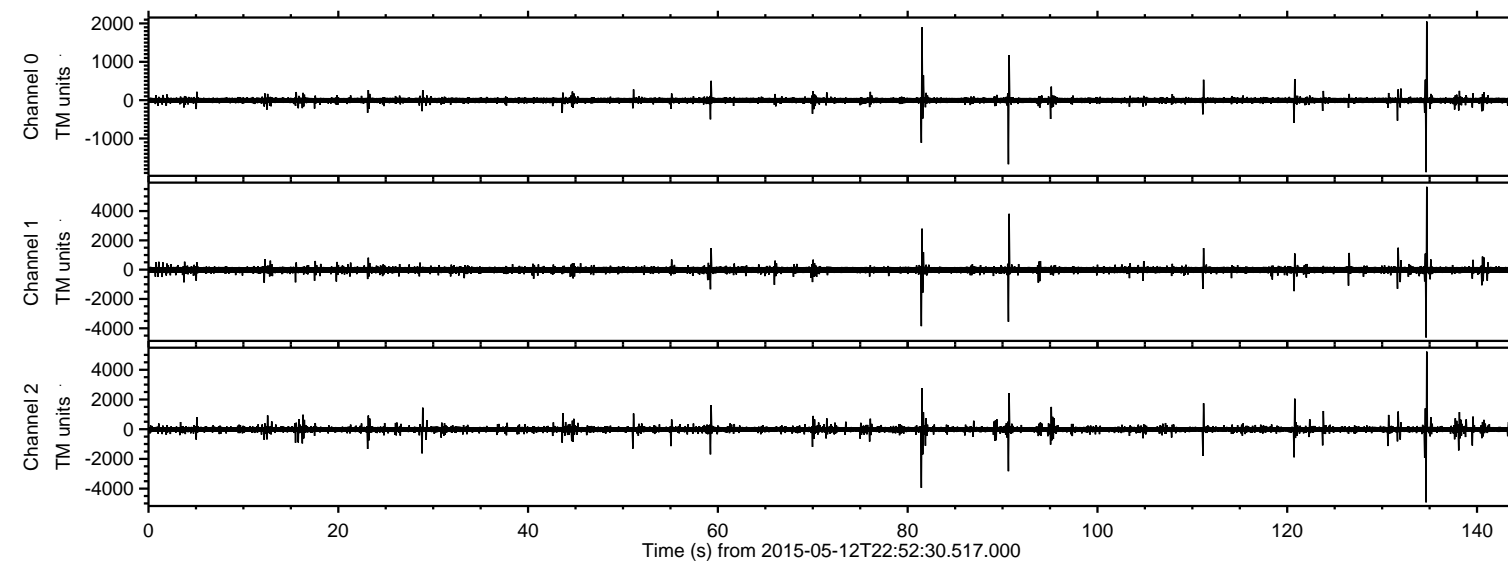
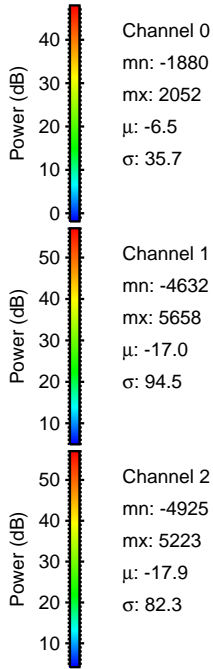
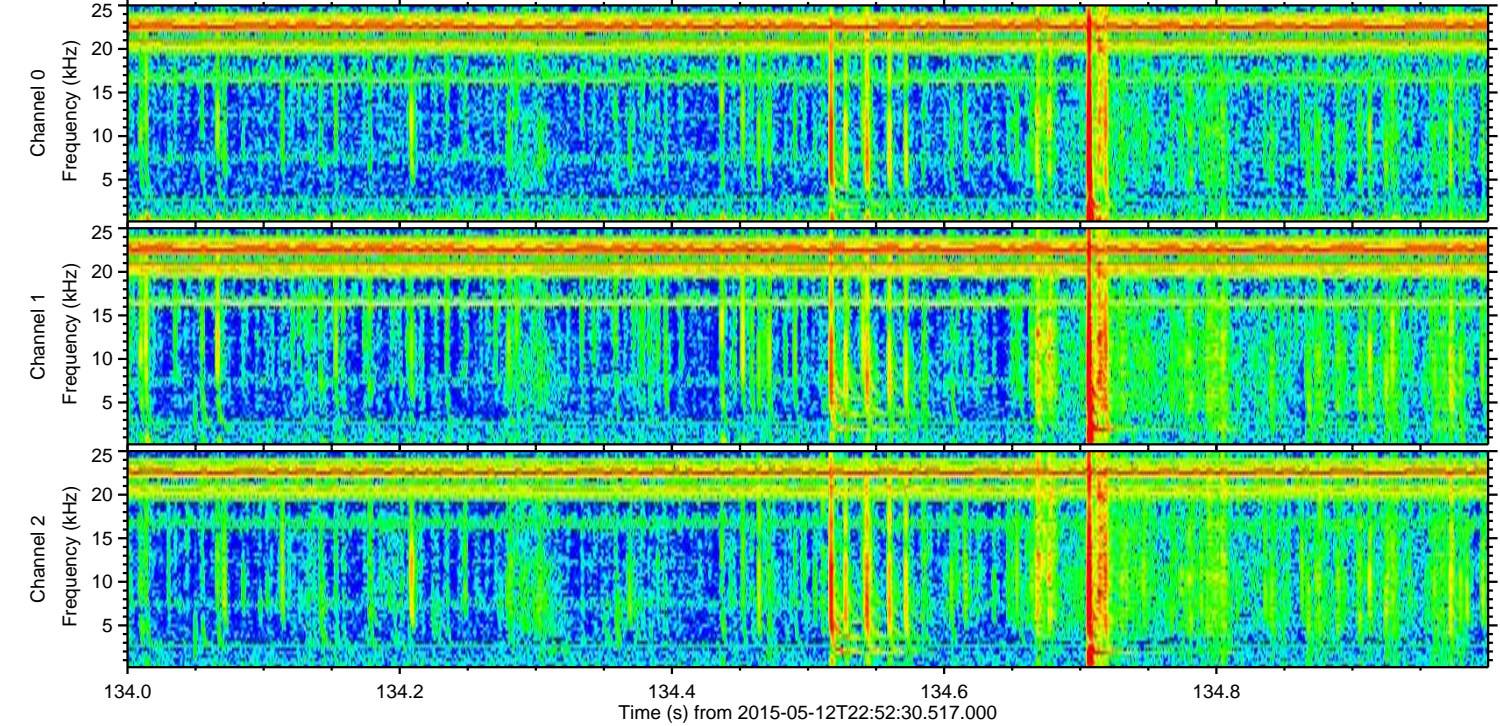
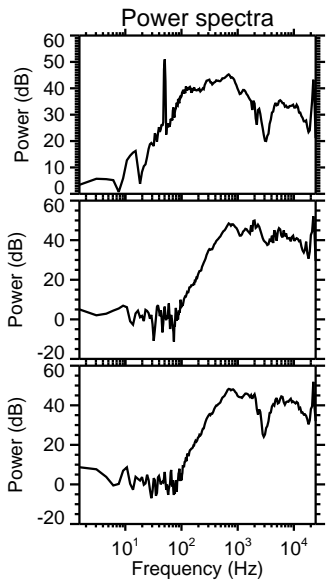
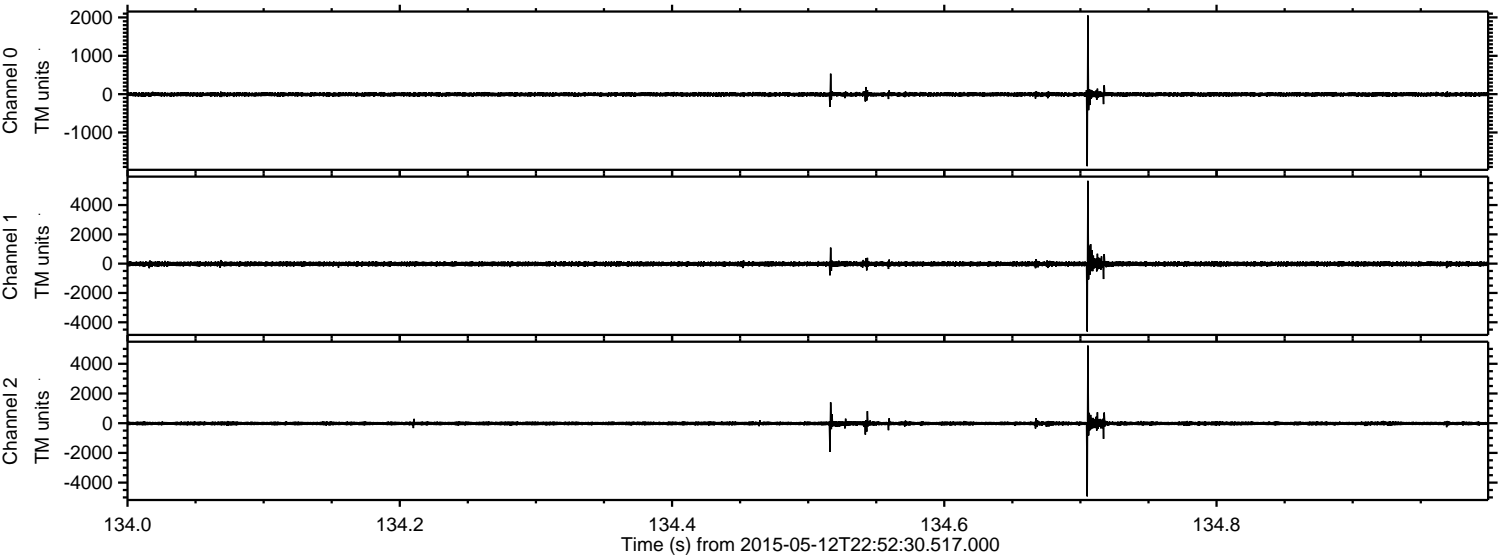


ELMAVAN 3D WAVEFORMS (Measured data sampled at 50 kHz) 49786 packets of 144 samples from 2015-05-12T22:52:30.517.000.

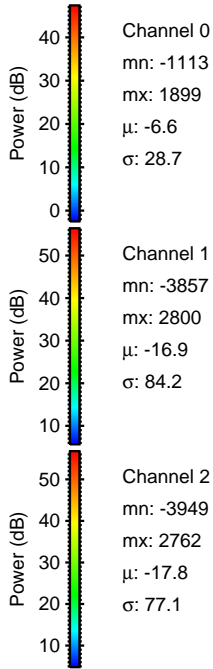
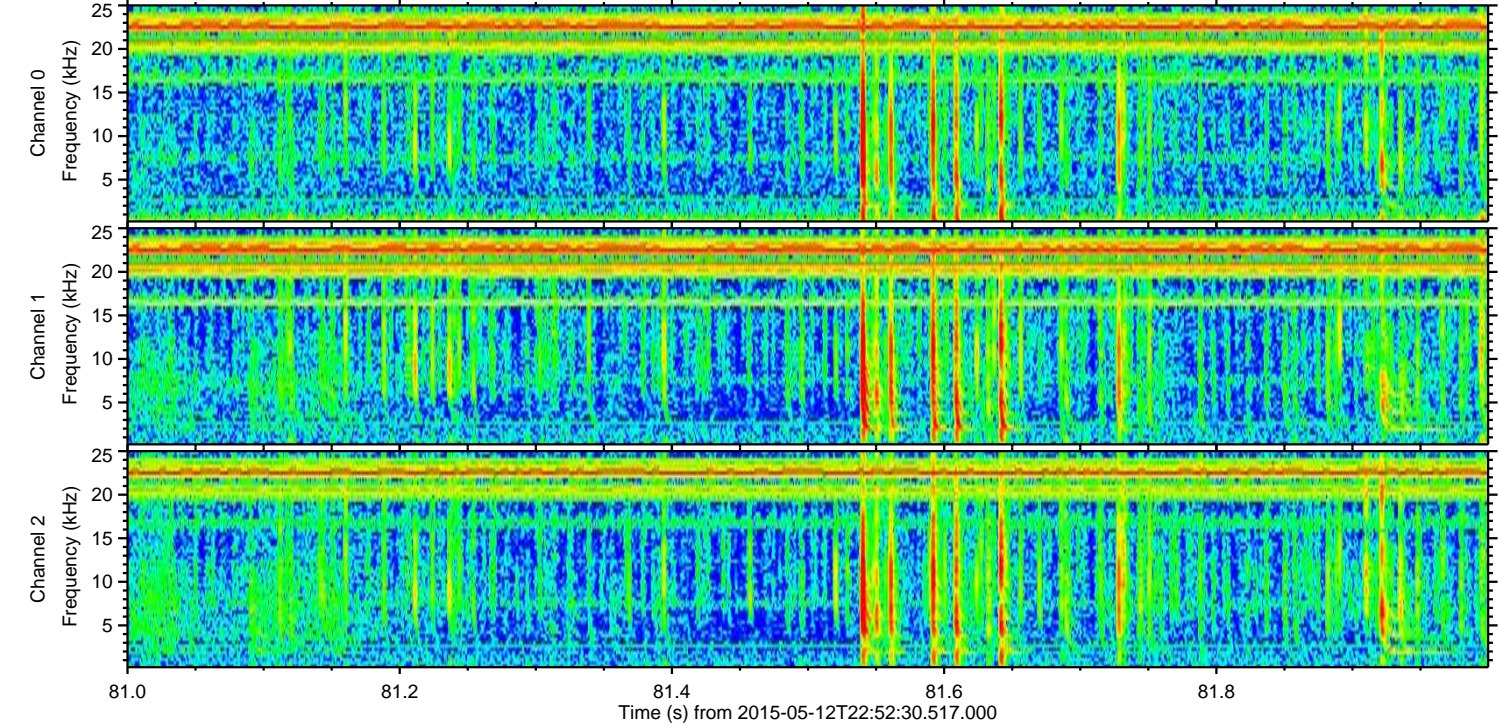
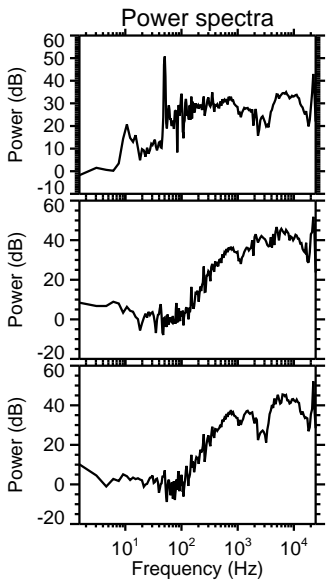
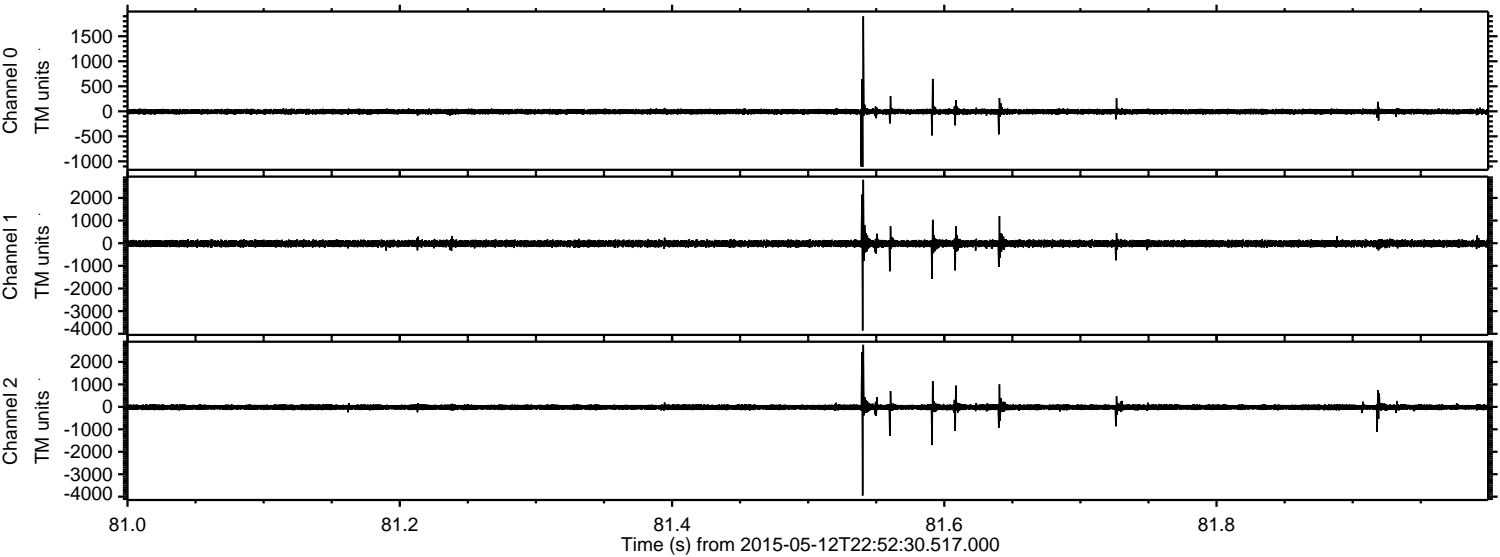
Processed Wed May 13 00:58:55 2015 by ELM ver.2012-10-06 from 001__elm20150512_225229__dat00.bin



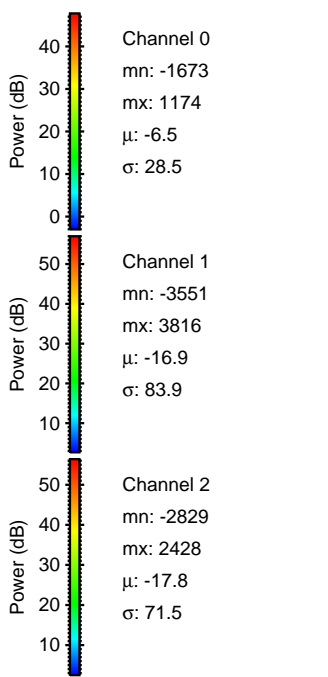
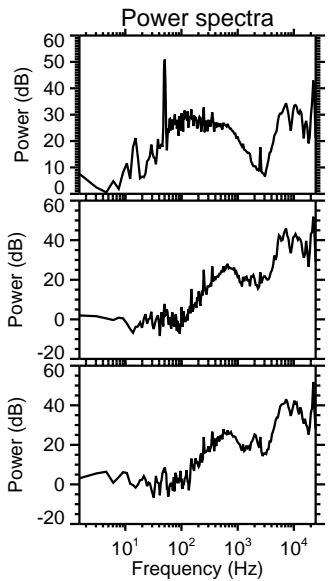
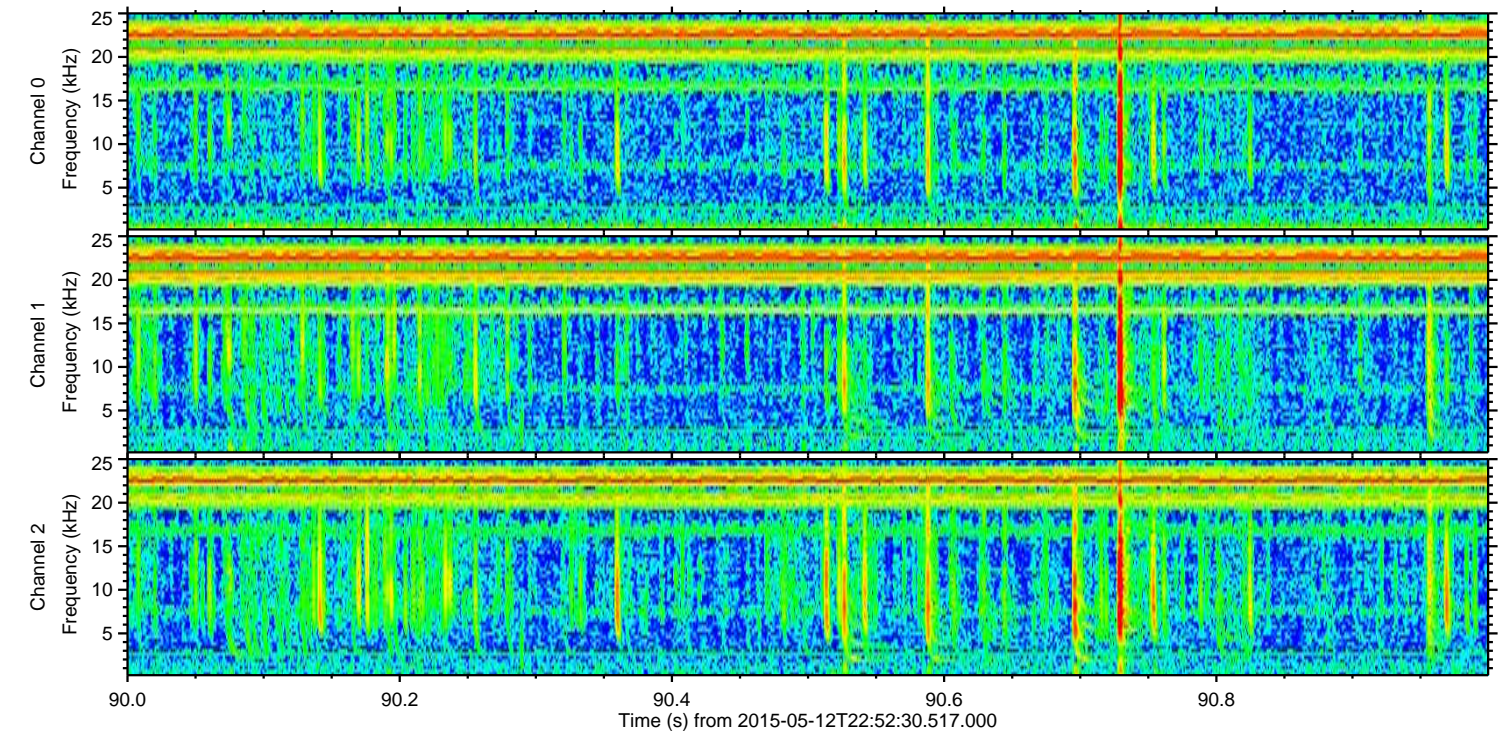
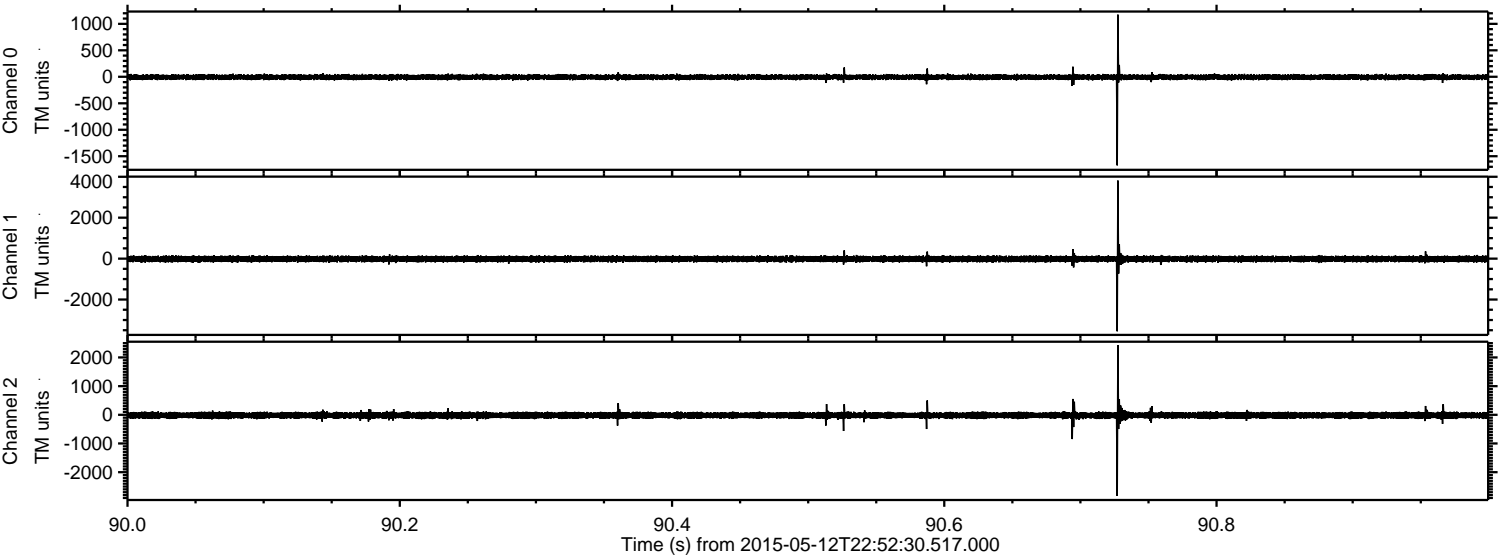
Processed Wed May 13 00:59:06 2015 by ELM ver.2012-10-06 from 001__elm20150512_225229__dat00.bin



Processed Wed May 13 00:59:07 2015 by ELM ver.2012-10-06 from 001__elm20150512_225229__dat00.bin

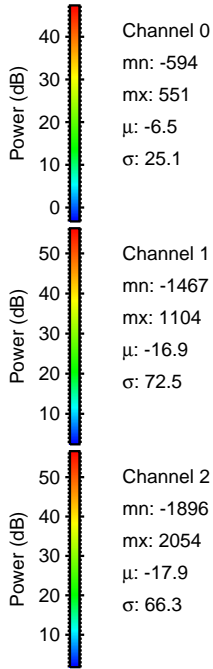
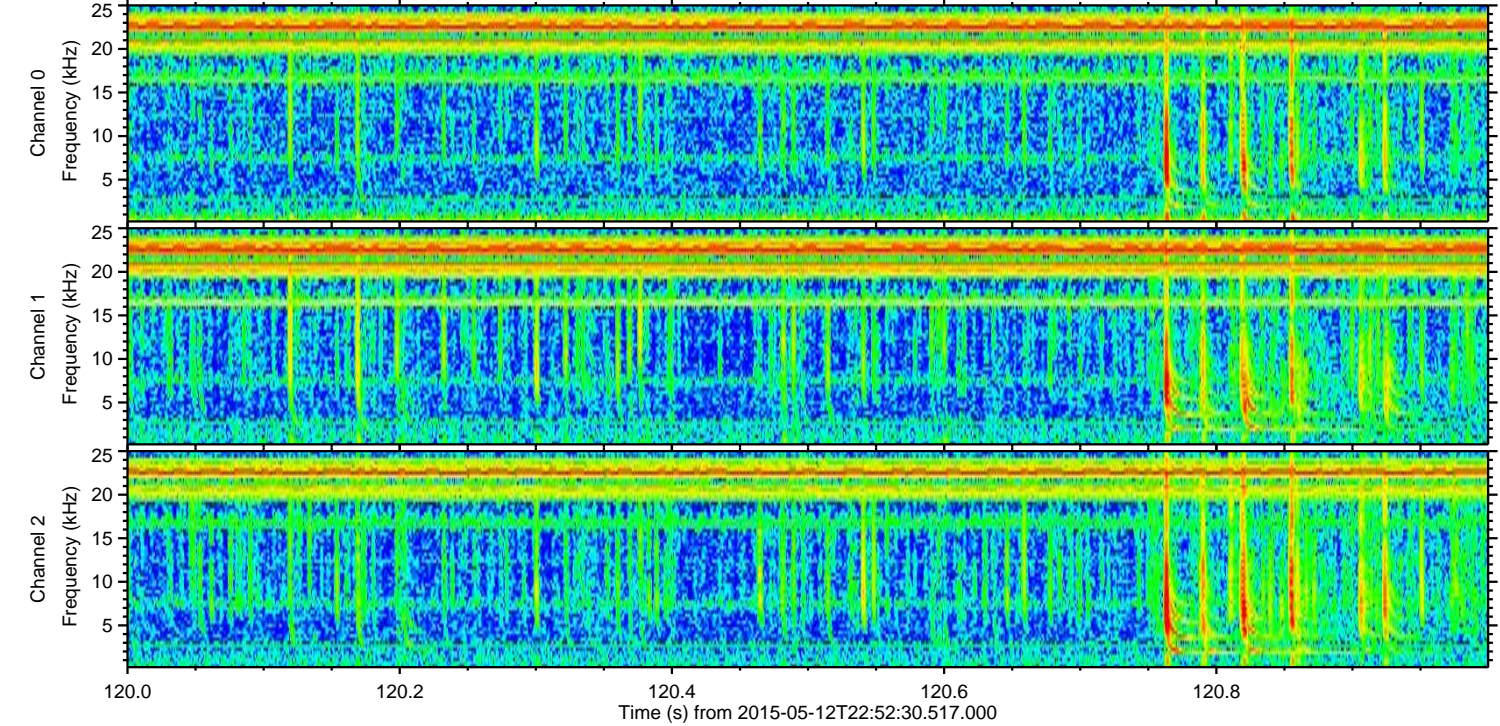
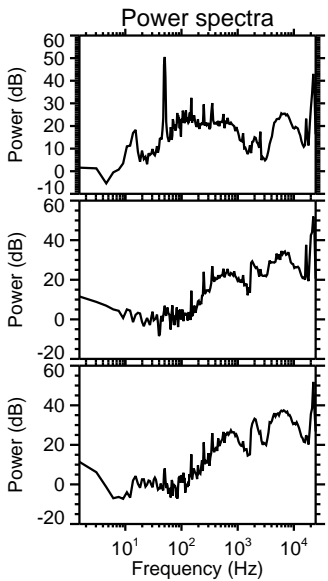
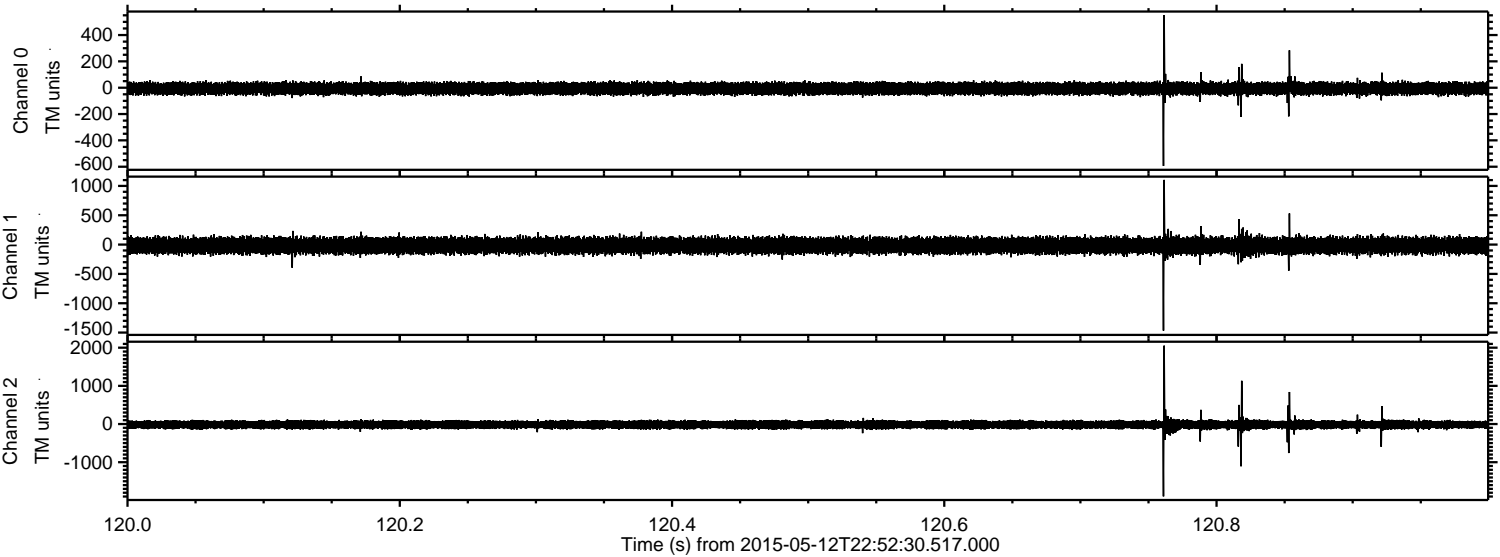


Processed Wed May 13 00:59:08 2015 by ELM ver.2012-10-06 from 001__elm20150512_225229__dat00.bin



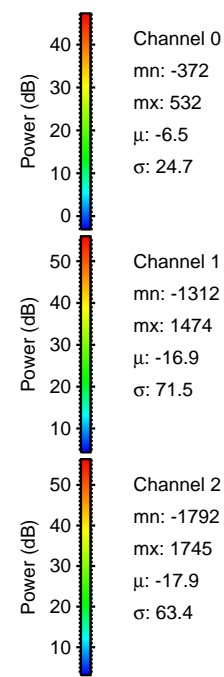
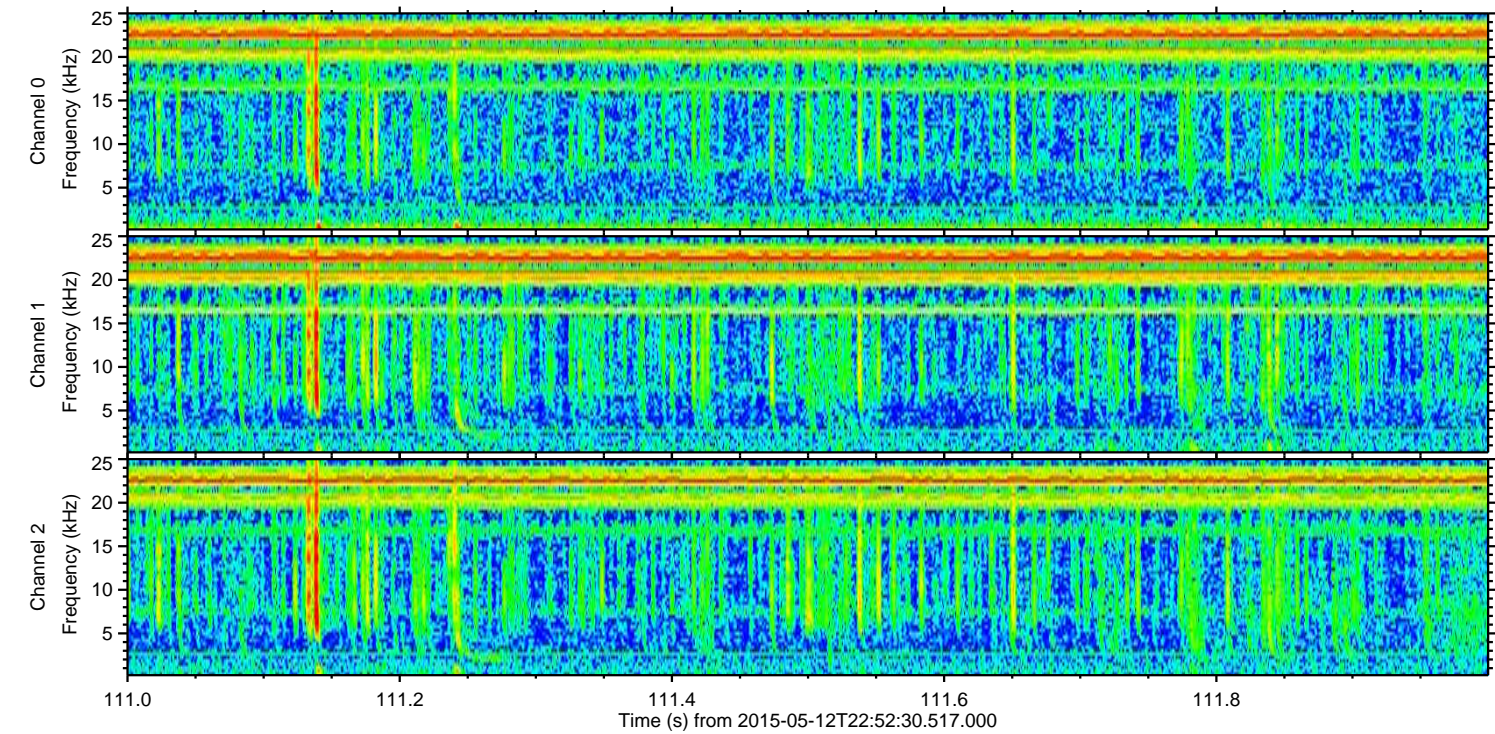
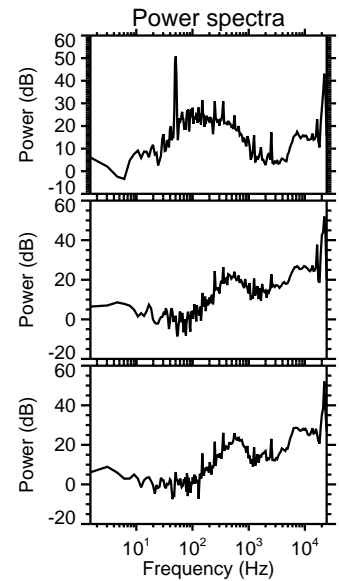
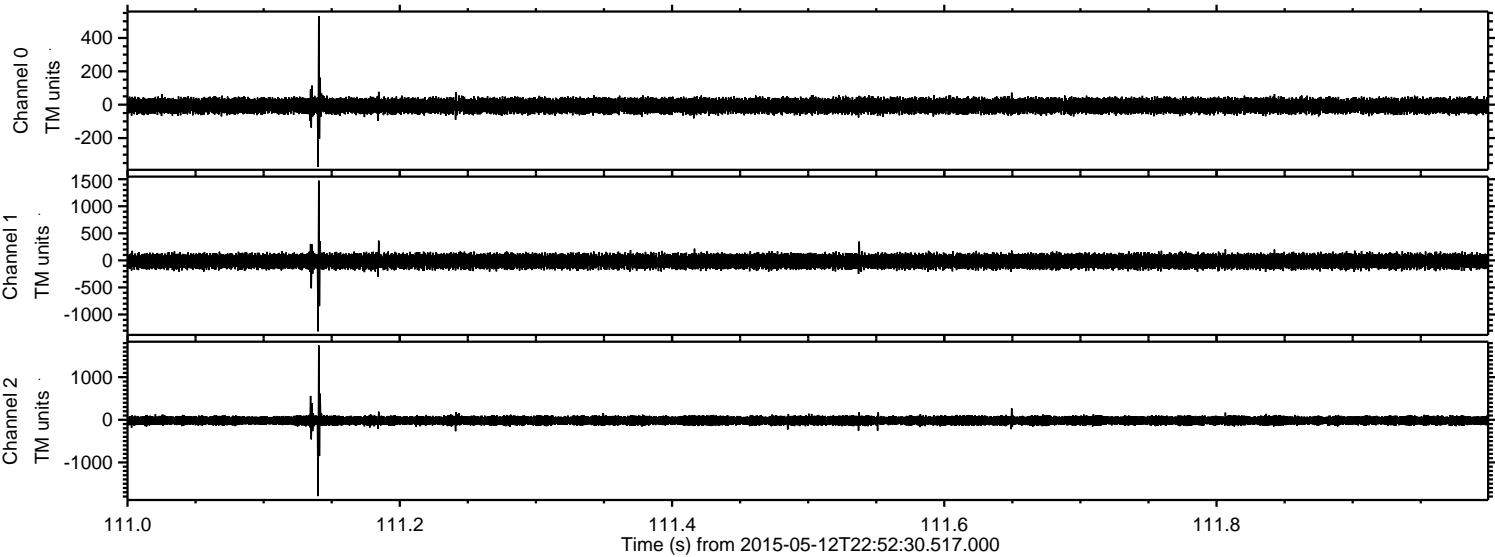
ELMAVAN 3D WAVEFORMS (Measured data sampled at 50 kHz) 49786 packets of 144 samples from 2015-05-12T22:52:30.517.000. Part 121/144

Processed Wed May 13 00:59:09 2015 by ELM ver.2012-10-06 from 001__elm20150512_225229__dat00.bin



ELMAVAN 3D WAVEFORMS (Measured data sampled at 50 kHz) 49786 packets of 144 samples from 2015-05-12T22:52:30.517.000. Part 112/144

Processed Wed May 13 00:59:10 2015 by ELM ver.2012-10-06 from 001__elm20150512_225229__dat00.bin

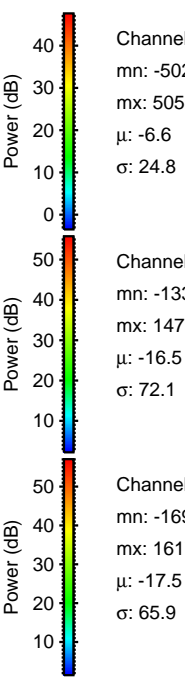
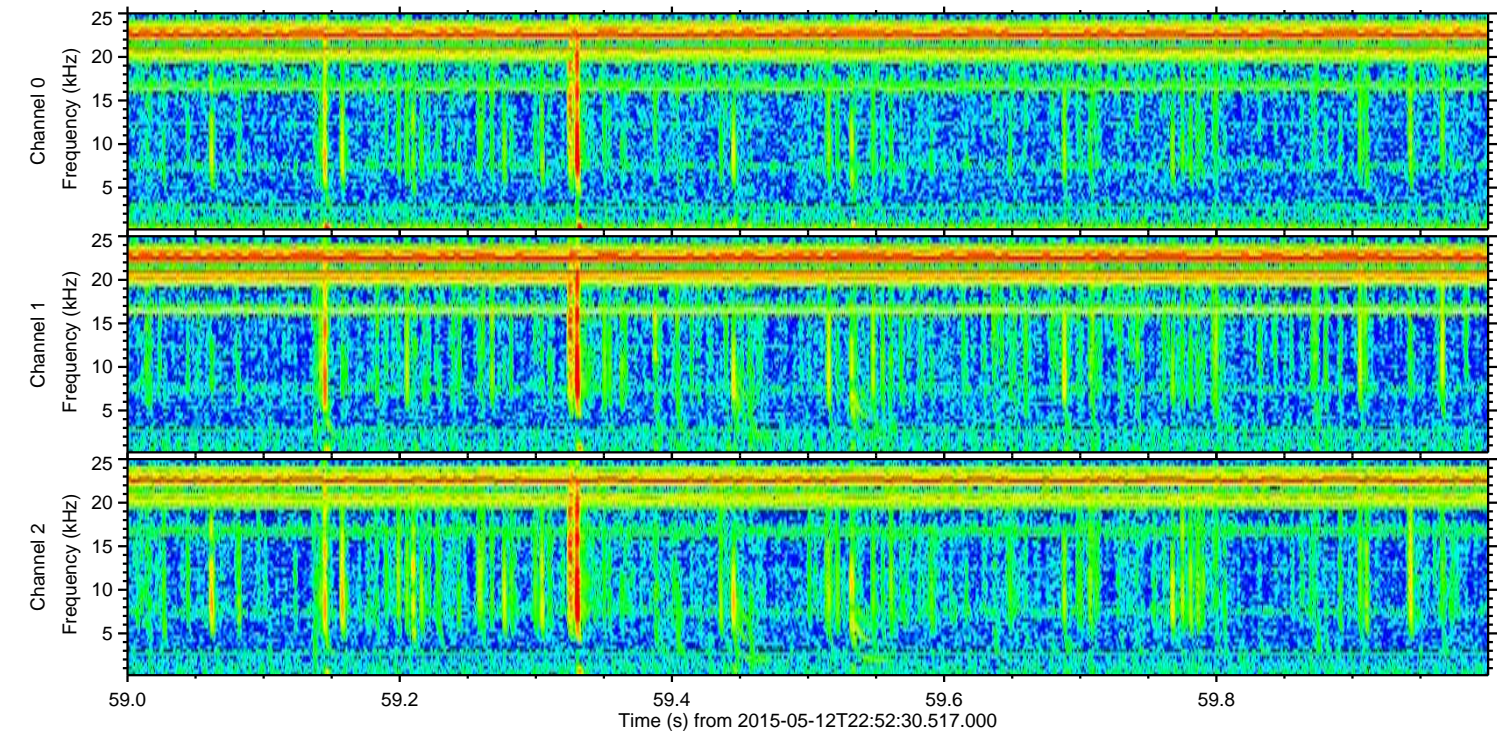
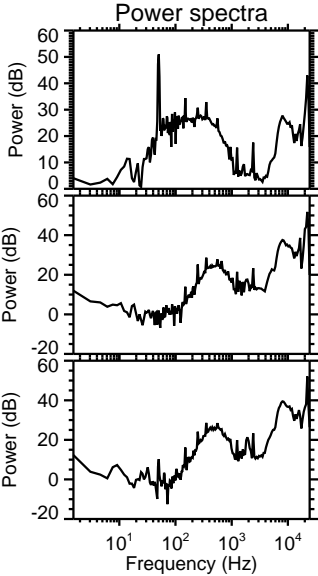
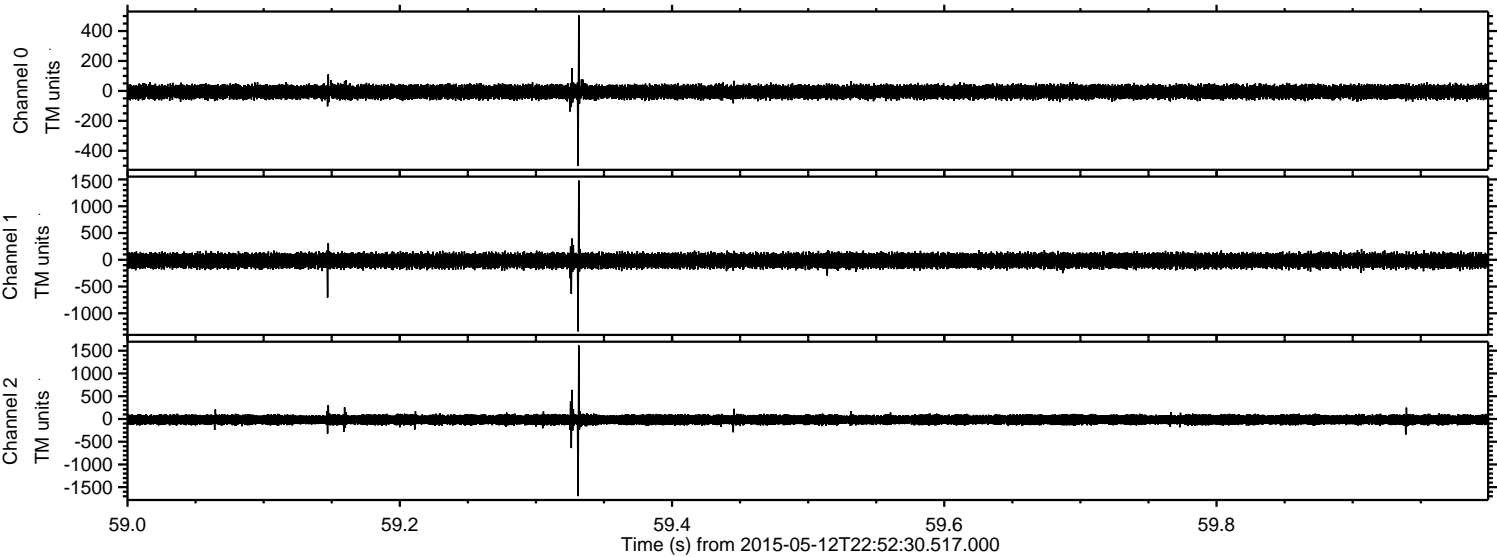


Channel 0
mn: -372
mx: 532
 μ : -6.5
 σ : 24.7

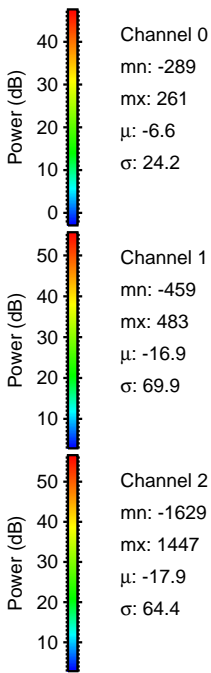
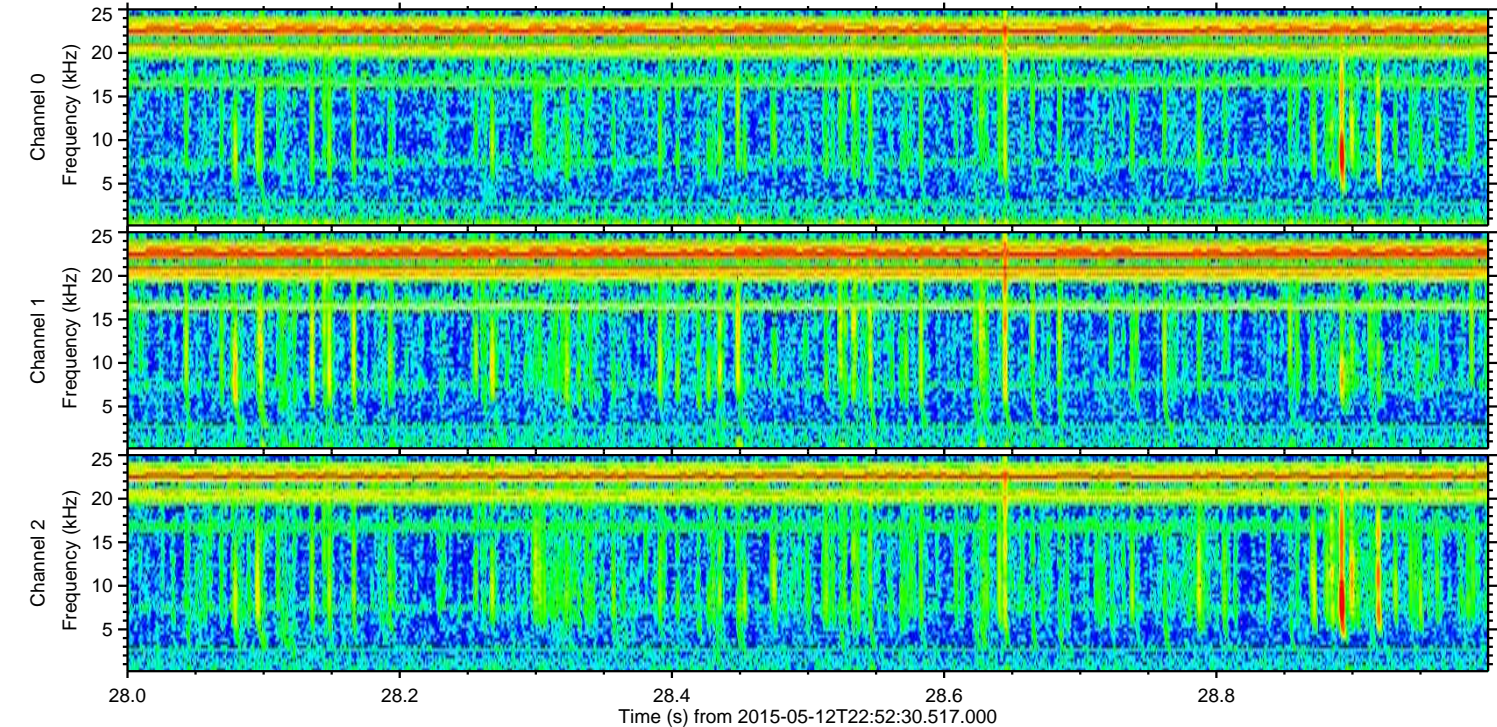
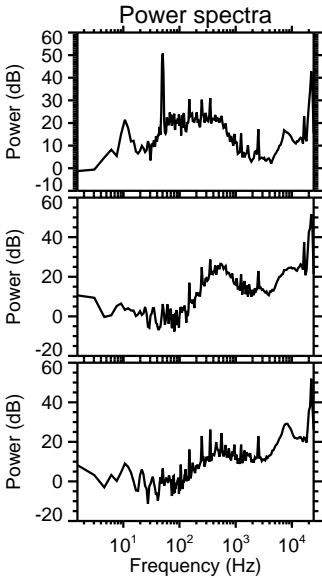
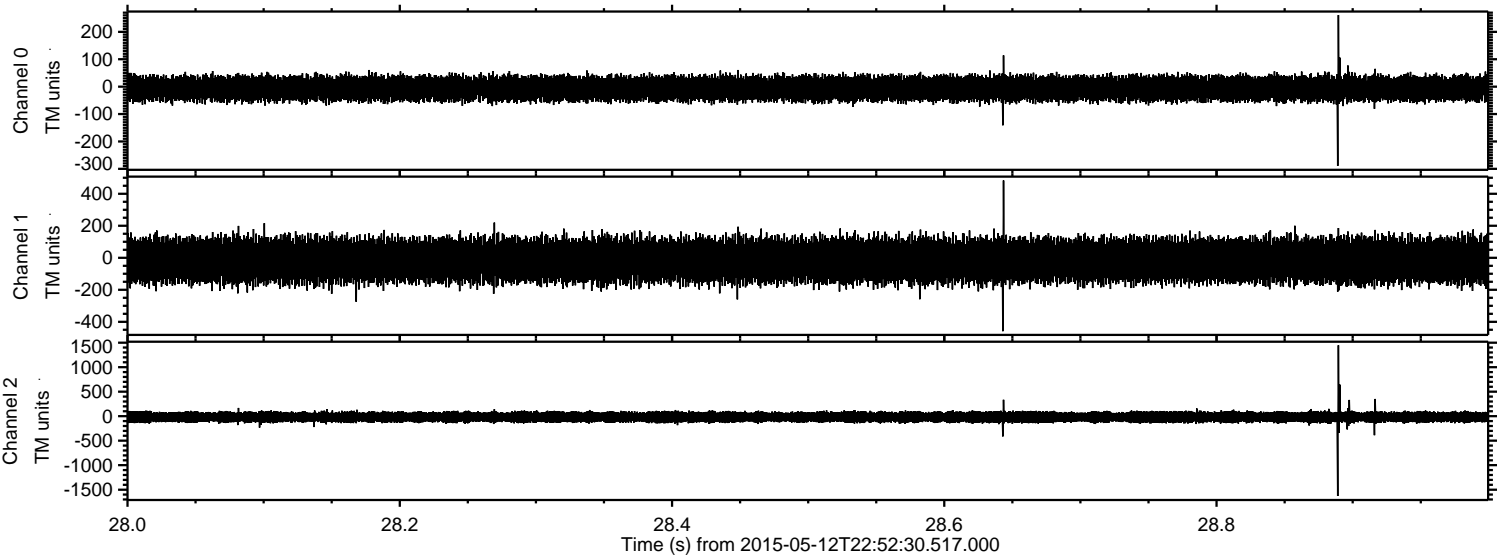
Channel 1
mn: -1312
mx: 1474
 μ : -16.9
 σ : 71.5

Channel 2
mn: -1792
mx: 1745
 μ : -17.9
 σ : 63.4

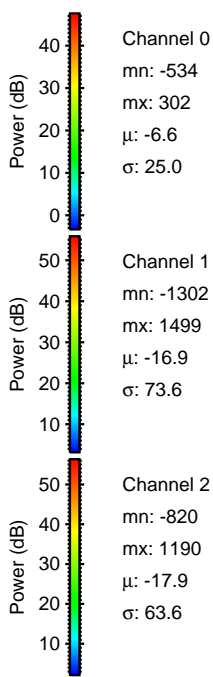
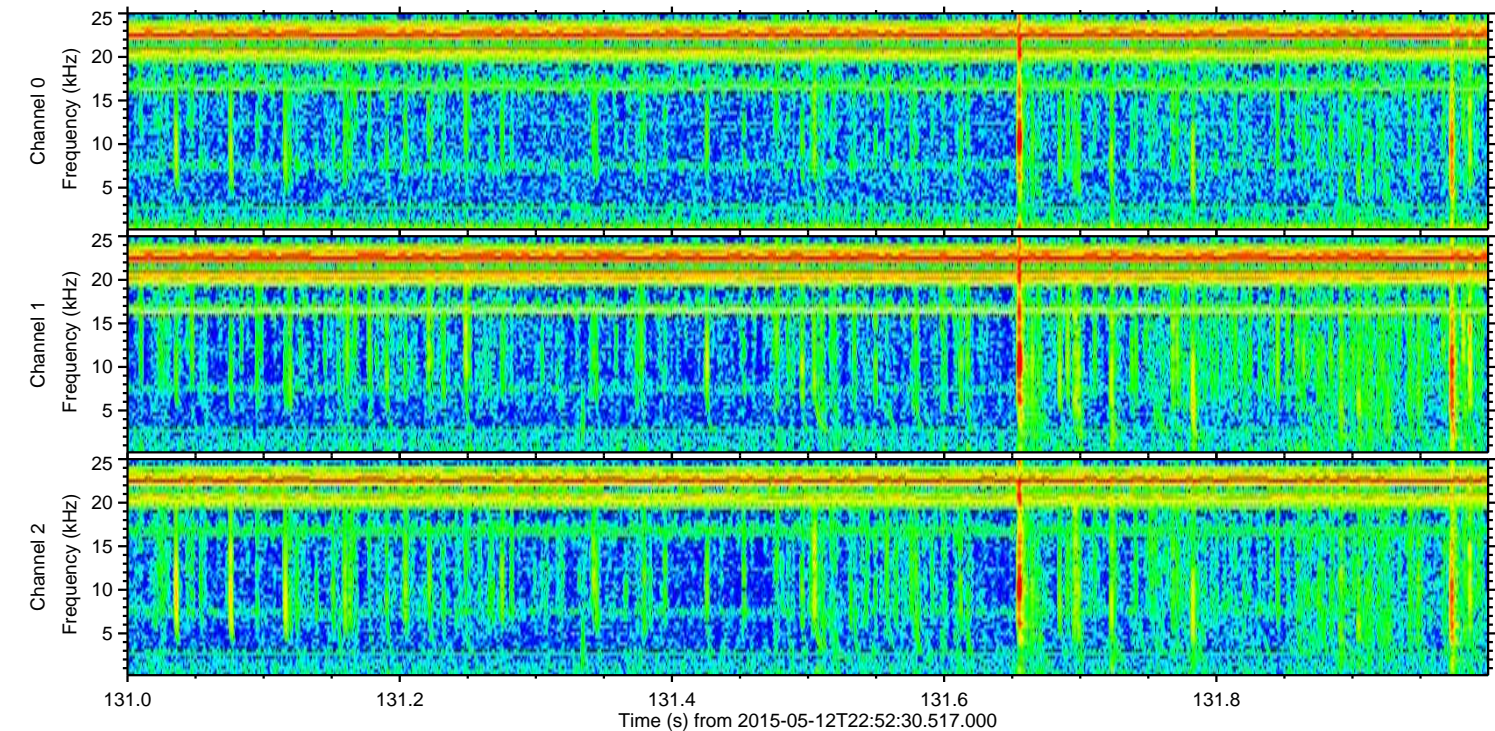
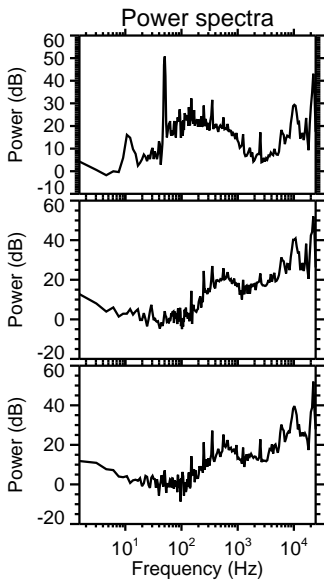
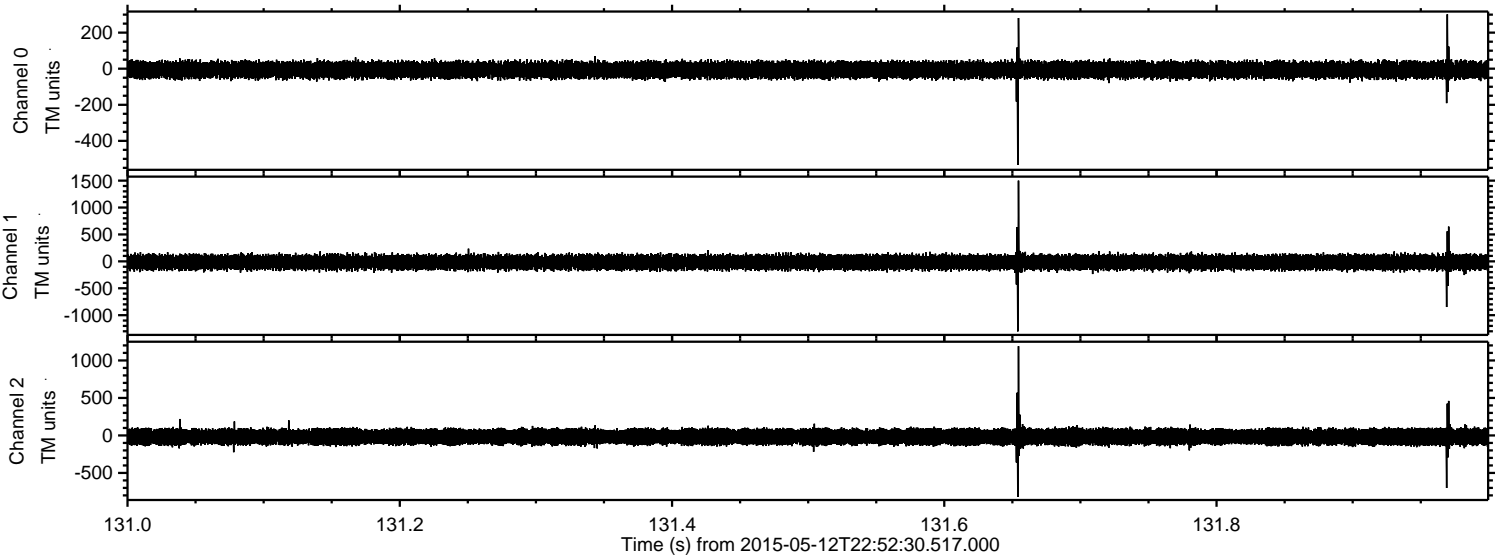
Processed Wed May 13 00:59:11 2015 by ELM ver.2012-10-06 from 001__elm20150512_225229__dat00.bin



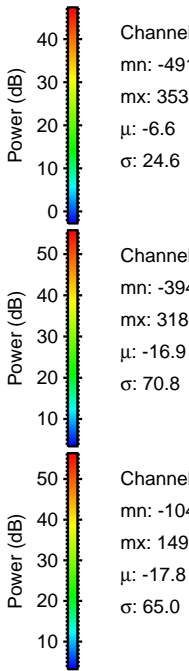
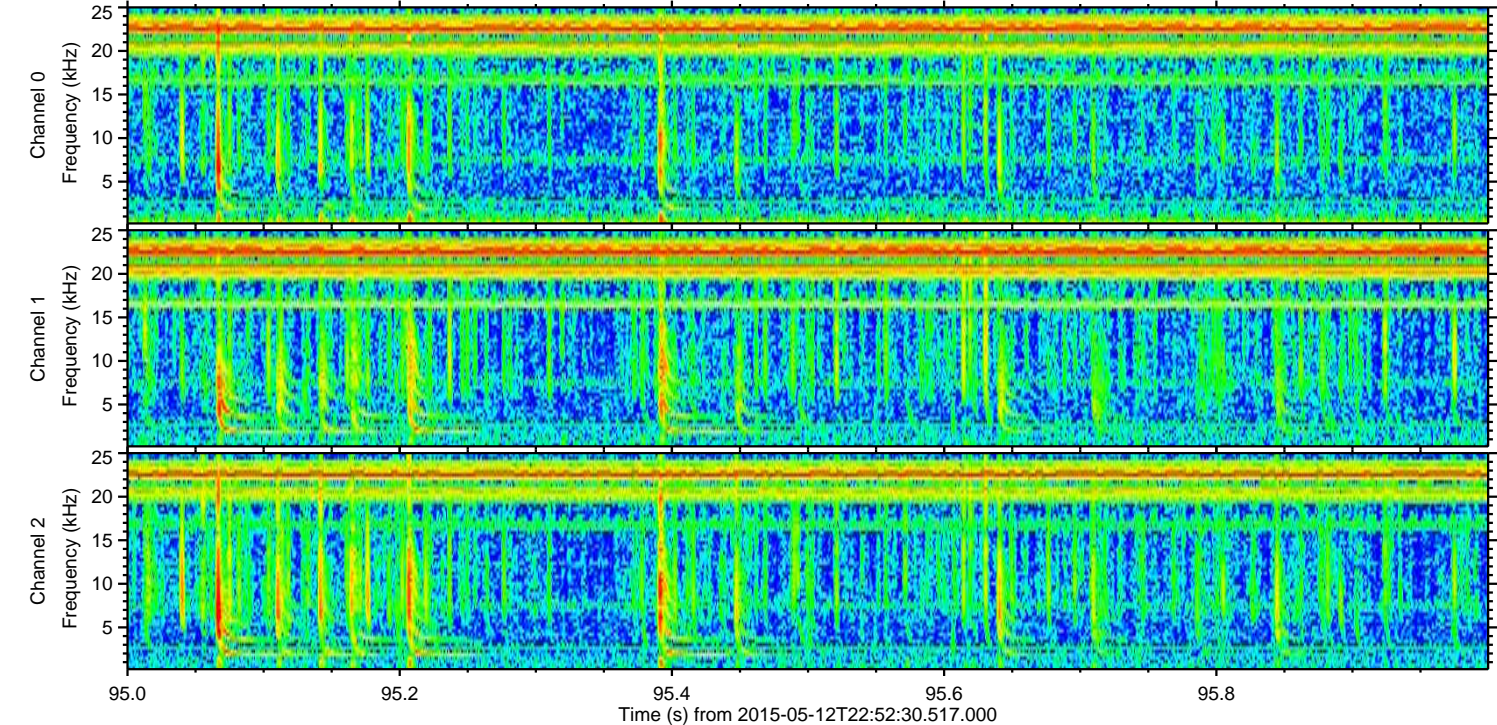
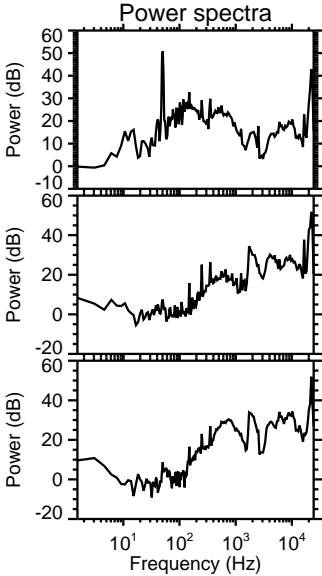
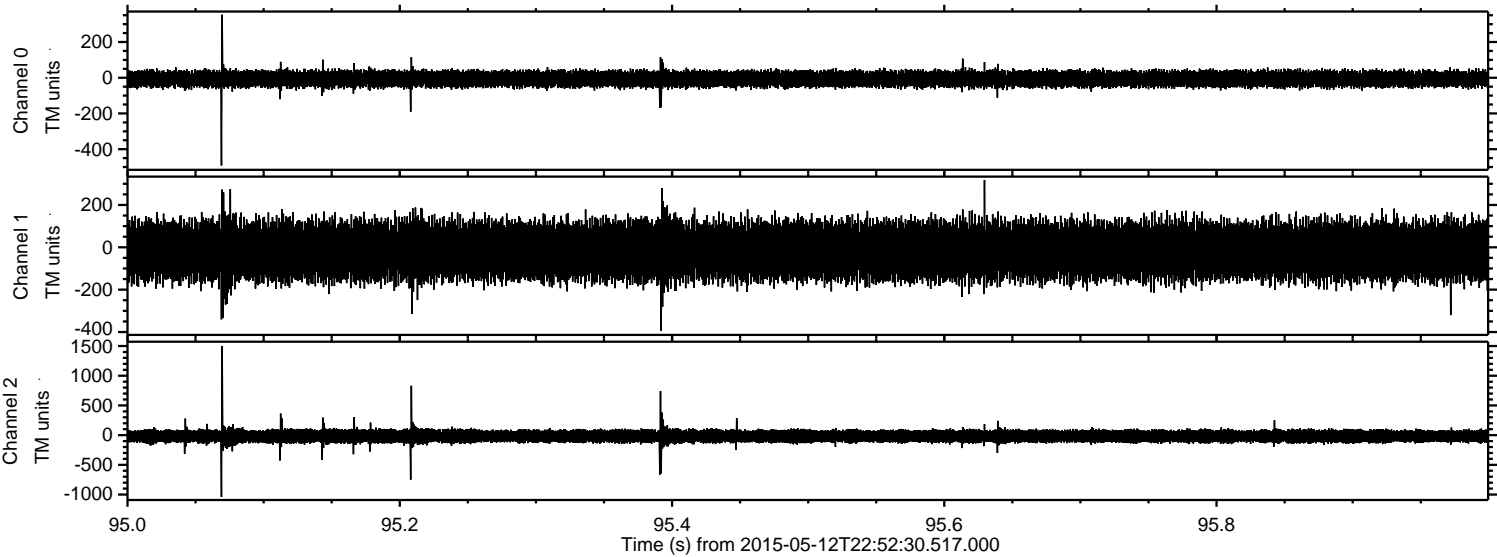
Processed Wed May 13 00:59:12 2015 by ELM ver.2012-10-06 from 001__elm20150512_225229__dat00.bin



Processed Wed May 13 00:59:13 2015 by ELM ver.2012-10-06 from 001__elm20150512_225229__dat00.bin



Processed Wed May 13 00:59:14 2015 by ELM ver.2012-10-06 from 001__elm20150512_225229__dat00.bin



Channel 0
mn: -491
mx: 353
 μ : -6.6
 σ : 24.6

Channel 1
mn: -394
mx: 318
 μ : -16.9
 σ : 70.8

Channel 2
mn: -1040
mx: 1498
 μ : -17.8
 σ : 65.0

Processed Wed May 13 00:59:14 2015 by ELM ver.2012-10-06 from 001__elm20150512_225229__dat00.bin

