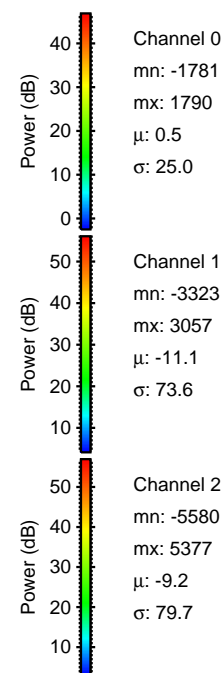
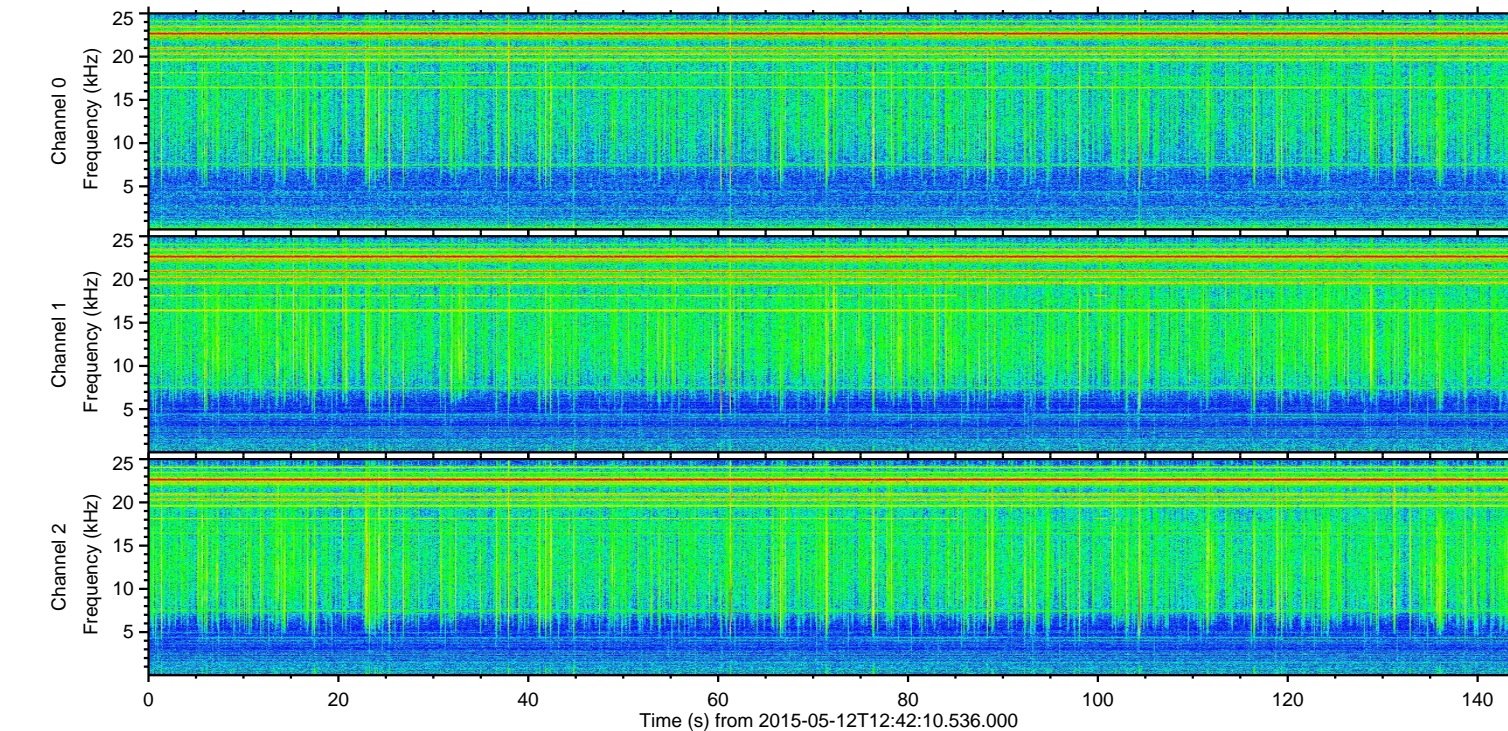
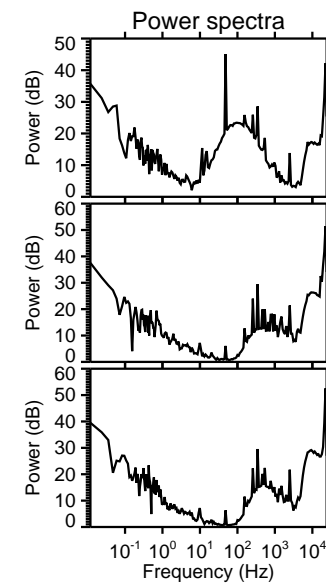
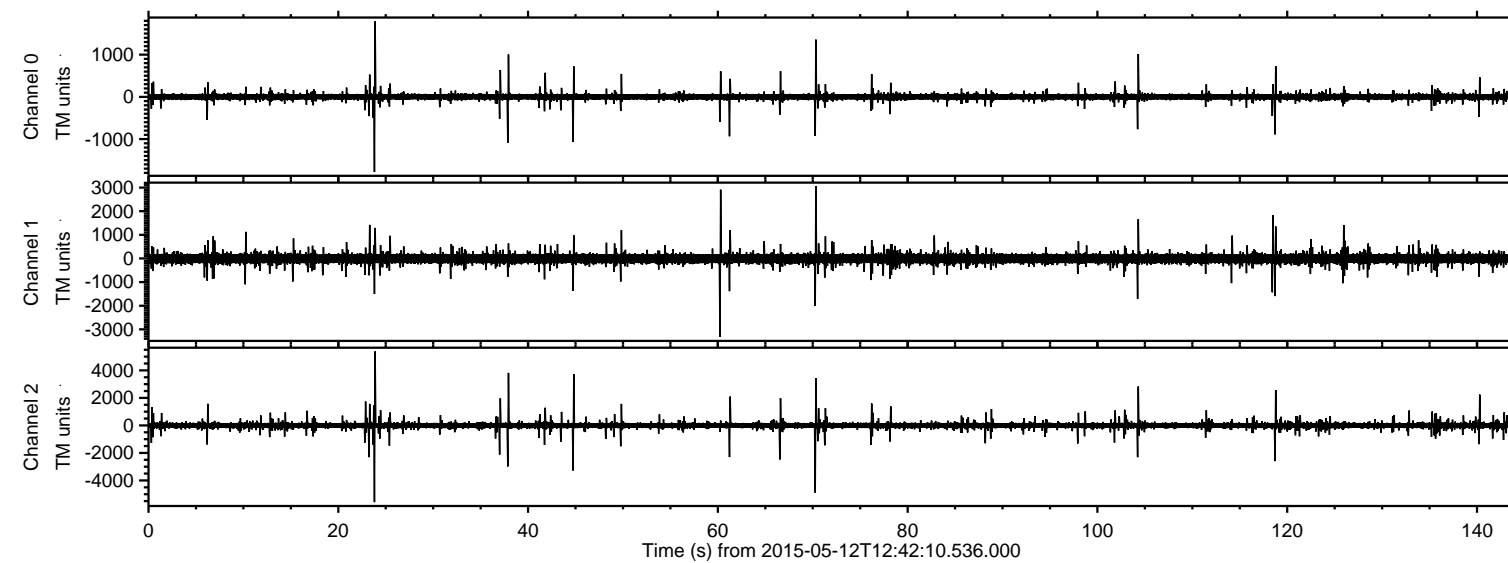


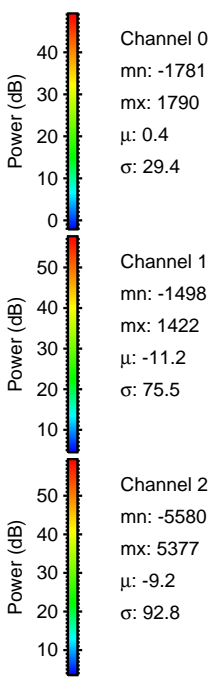
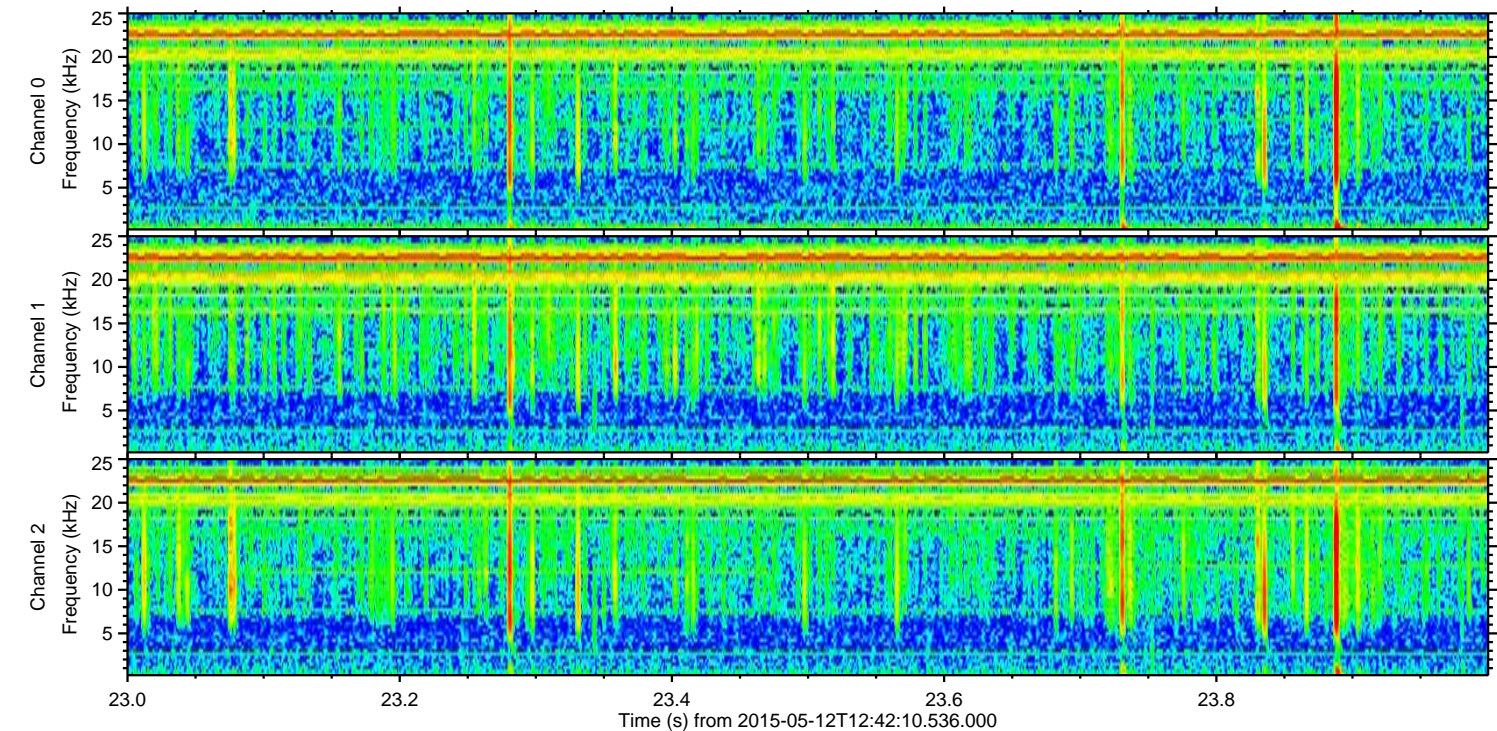
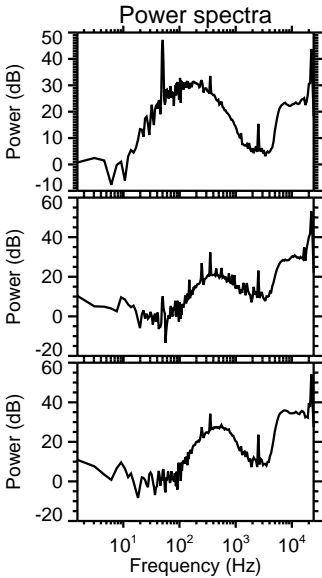
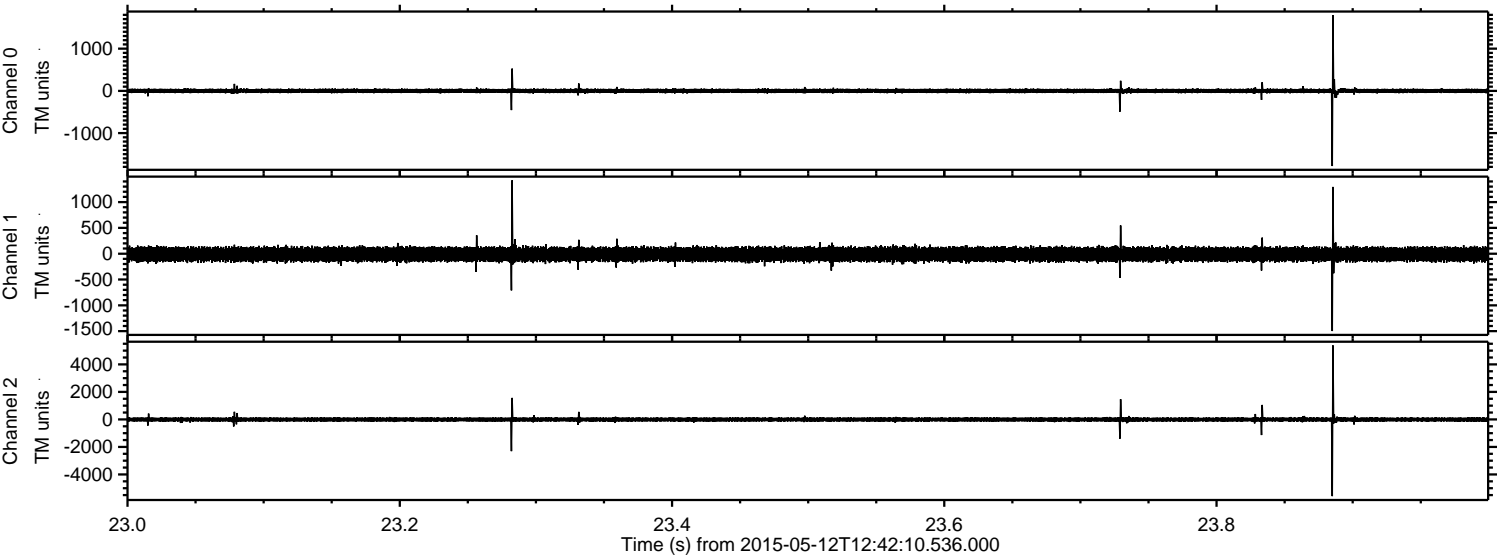
ELMAVAN 3D WAVEFORMS (Measured data sampled at 50 kHz) 49787 packets of 144 samples from 2015-05-12T12:42:10.536.000.

Processed Tue May 12 14:48:55 2015 by ELM ver.2012-10-06 from 001__elm20150512_124209__dat00.bin

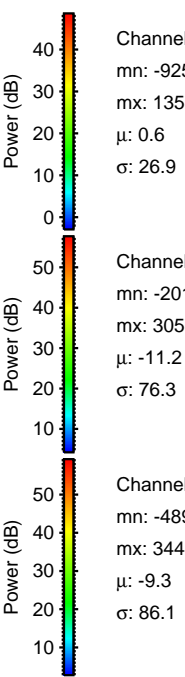
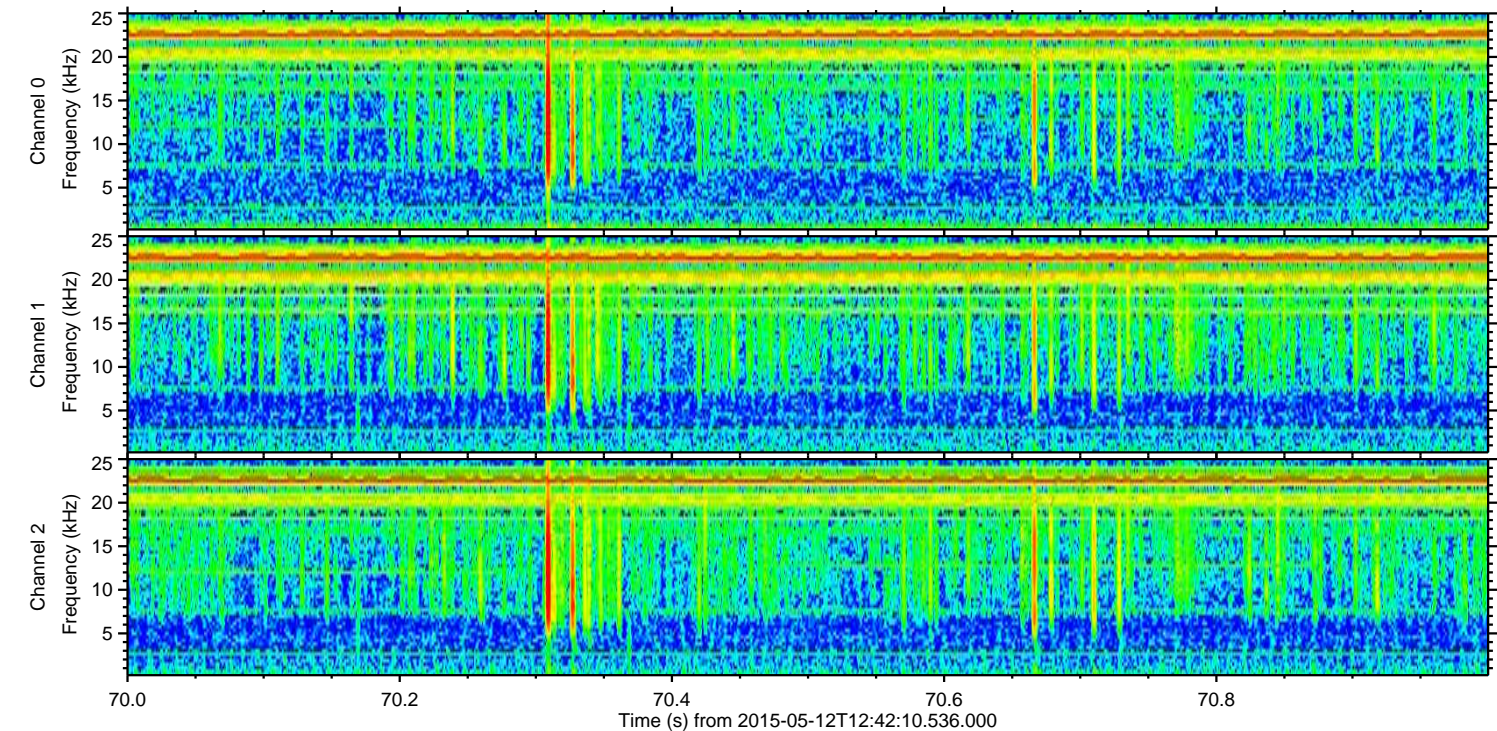
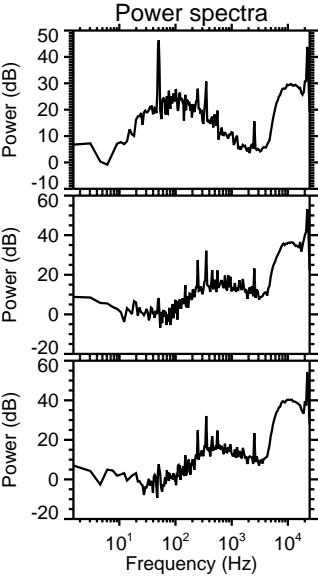
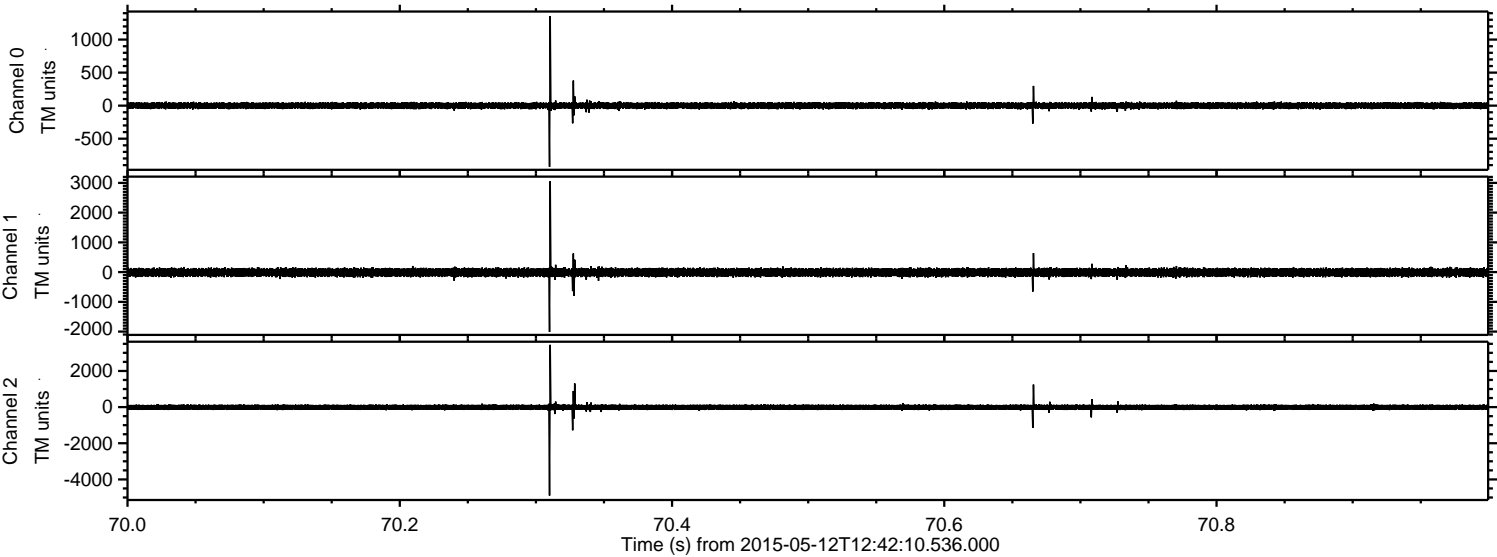


ELMAVAN 3D WAVEFORMS (Measured data sampled at 50 kHz) 49787 packets of 144 samples from 2015-05-12T12:42:10.536.000. Part 24/144

Processed Tue May 12 14:49:06 2015 by ELM ver.2012-10-06 from 001__elm20150512_124209__dat00.bin



Processed Tue May 12 14:49:07 2015 by ELM ver.2012-10-06 from 001_elm20150512_124209__dat00.bin

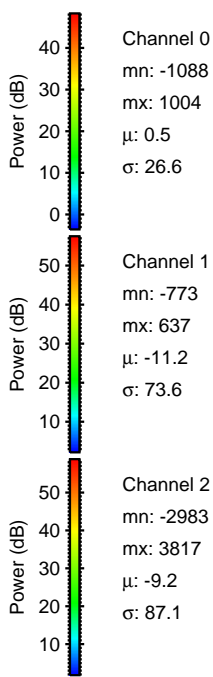
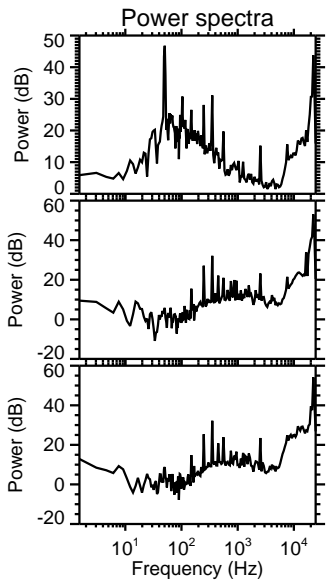
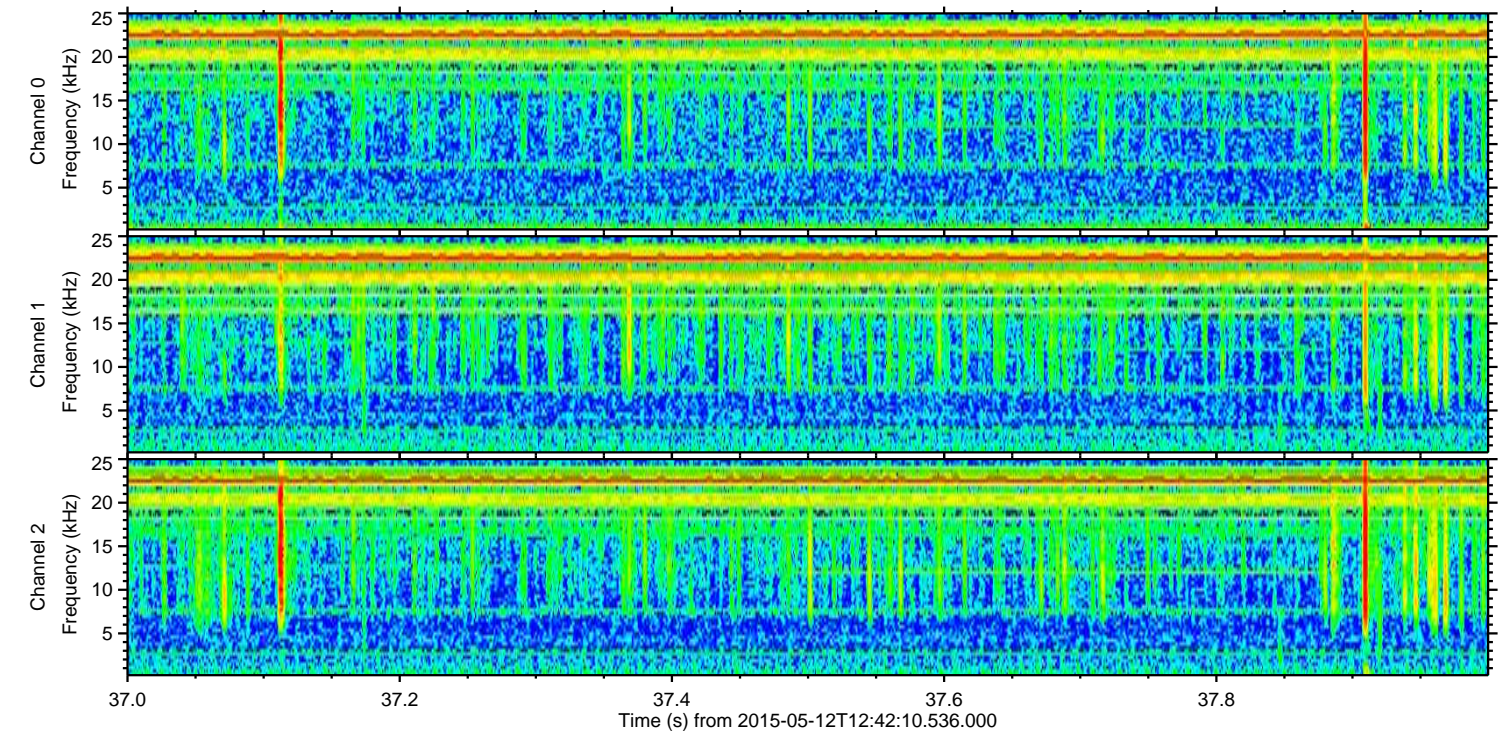
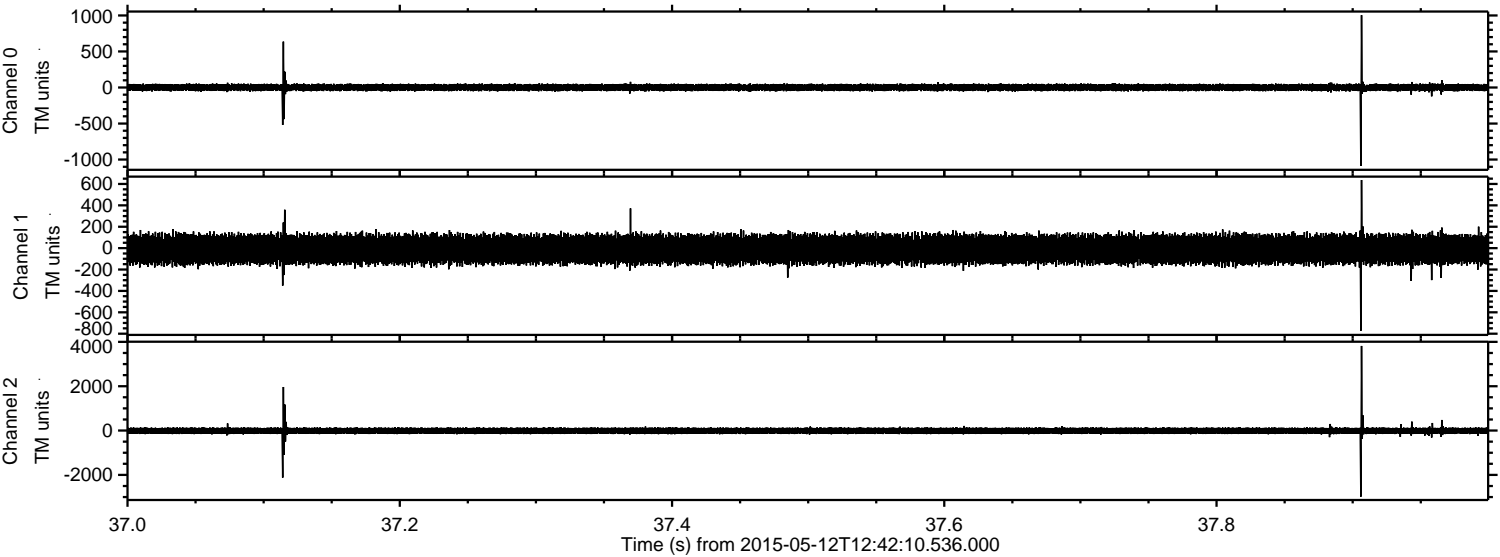


Channel 0
mn: -925
mx: 1357
 μ : 0.6
 σ : 26.9

Channel 1
mn: -2011
mx: 3057
 μ : -11.2
 σ : 76.3

Channel 2
mn: -4894
mx: 3444
 μ : -9.3
 σ : 86.1

Processed Tue May 12 14:49:08 2015 by ELM ver.2012-10-06 from 001__elm20150512_124209__dat00.bin

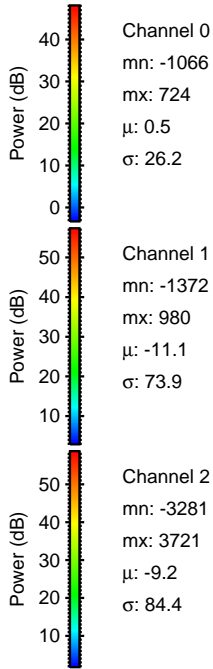
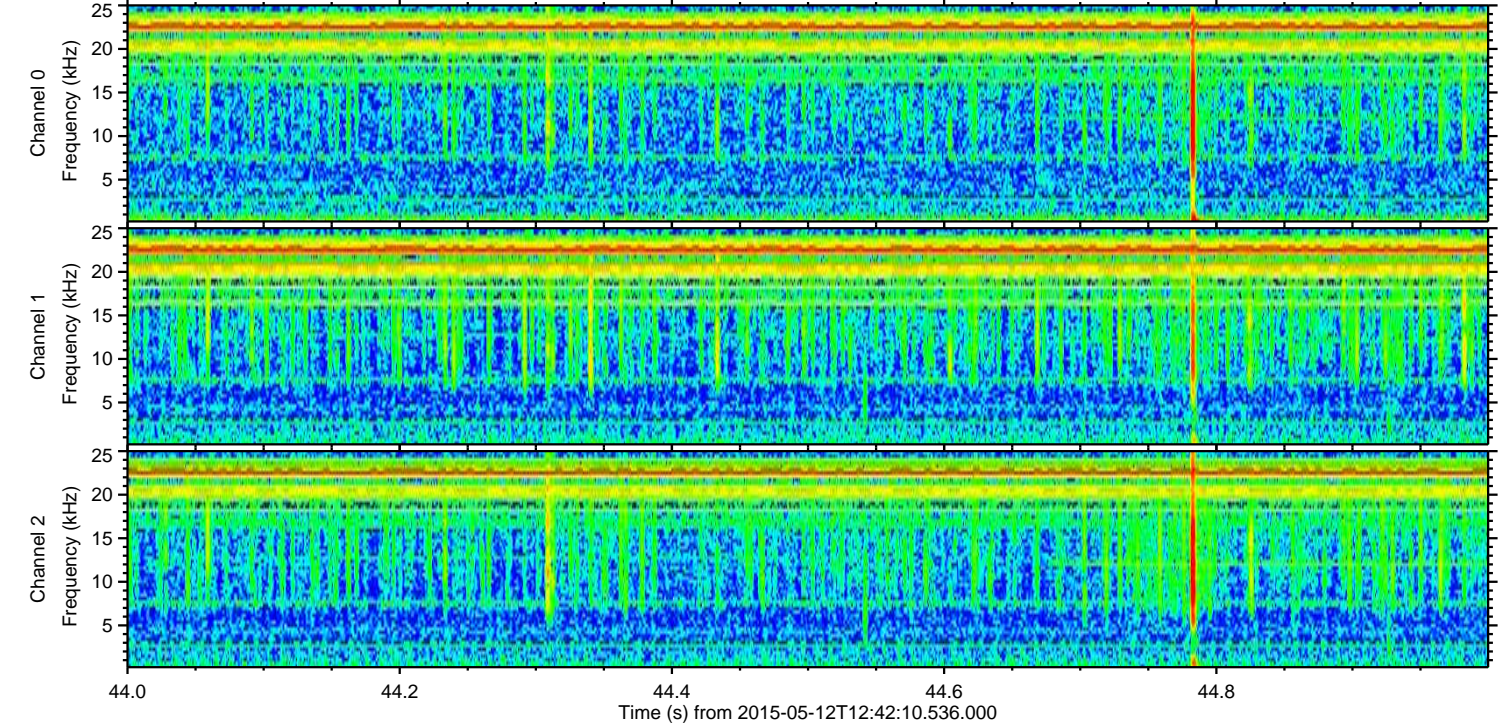
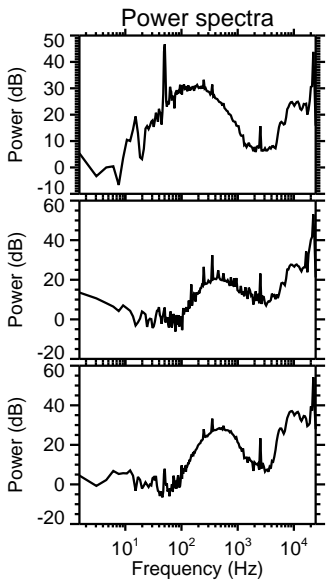
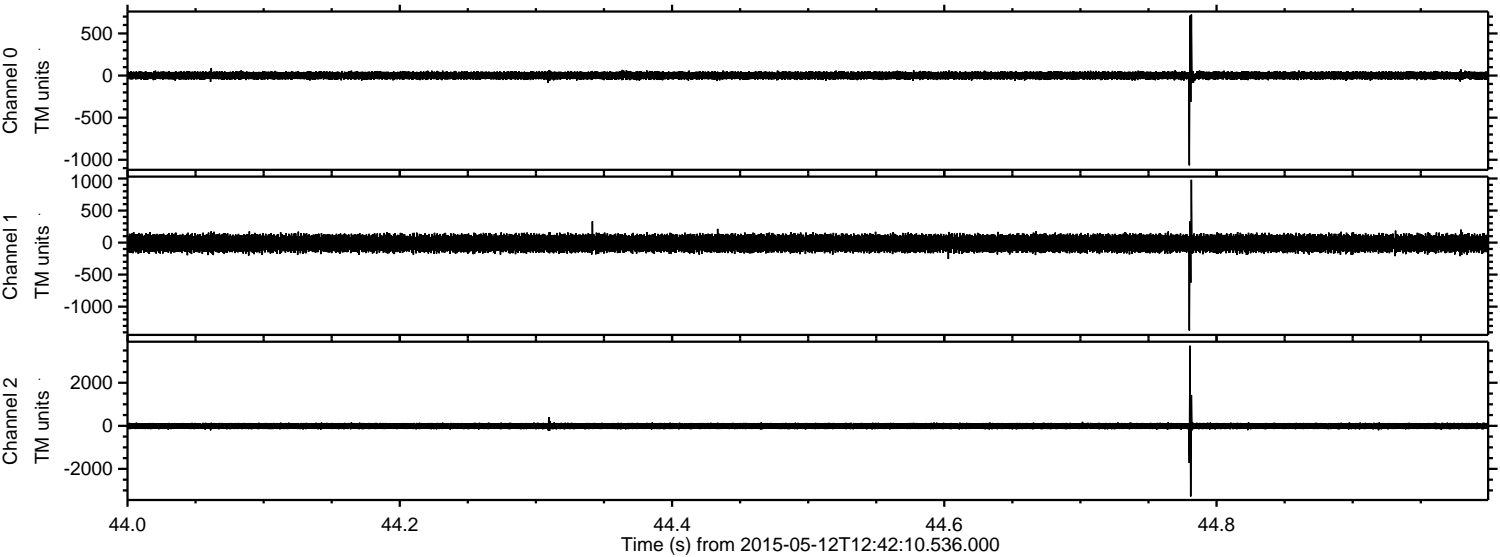


Channel 0
mn: -1088
mx: 1004
 μ : 0.5
 σ : 26.6

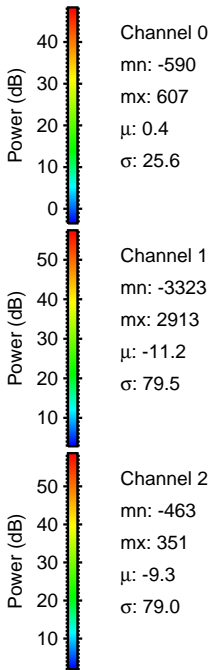
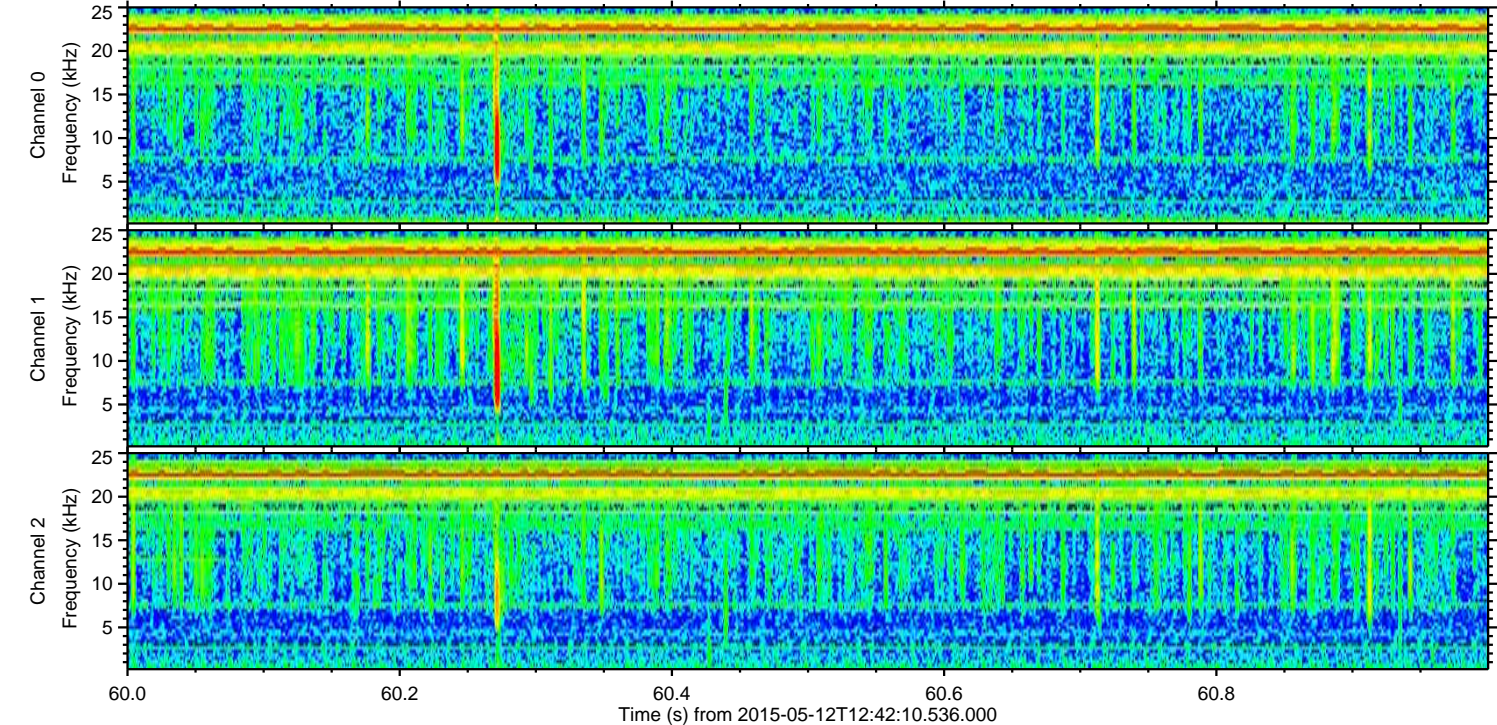
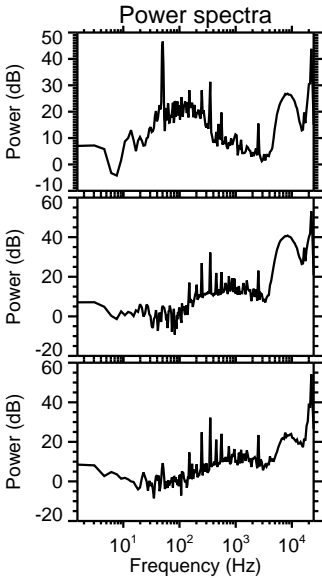
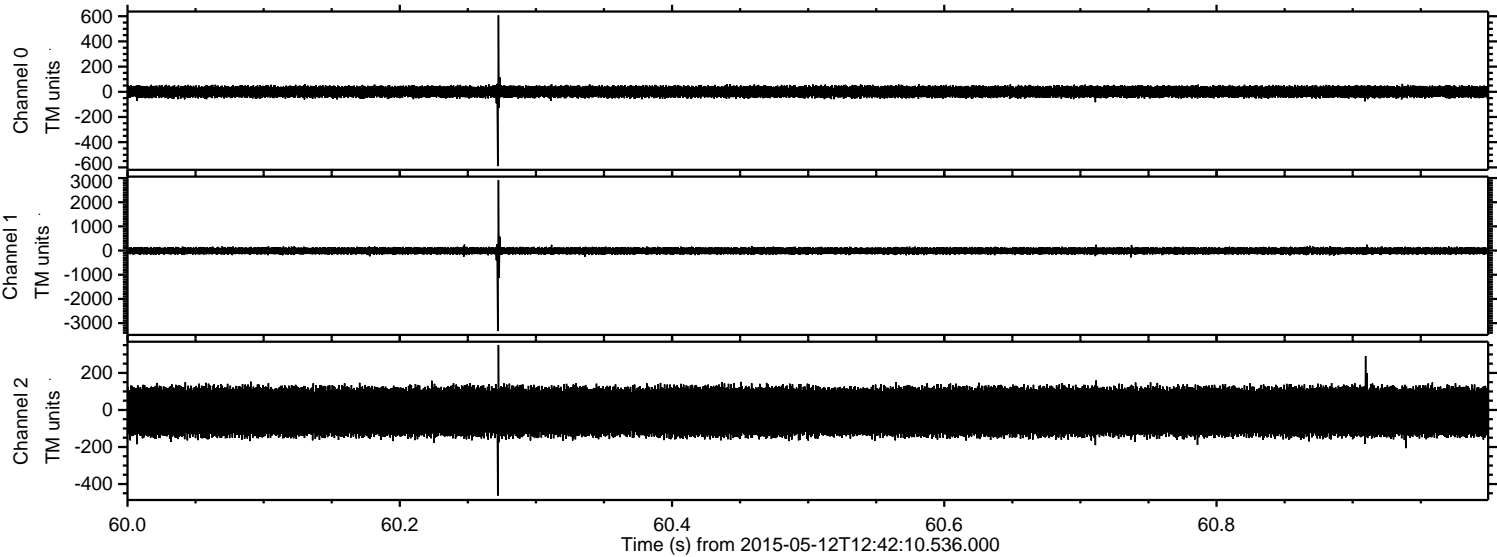
Channel 1
mn: -773
mx: 637
 μ : -11.2
 σ : 73.6

Channel 2
mn: -2983
mx: 3817
 μ : -9.2
 σ : 87.1

Processed Tue May 12 14:49:09 2015 by ELM ver.2012-10-06 from 001__elm20150512_124209__dat00.bin

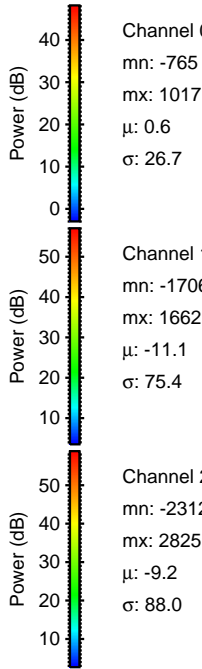
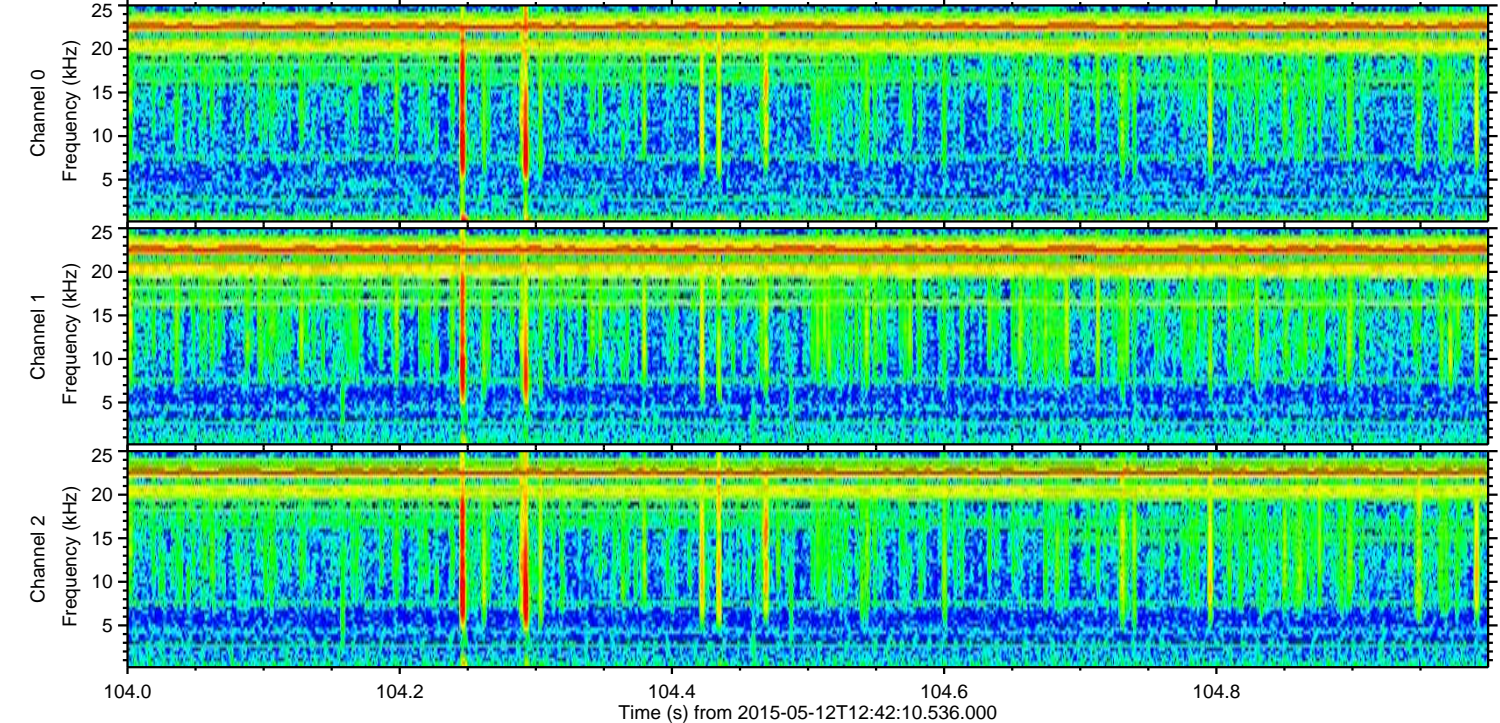
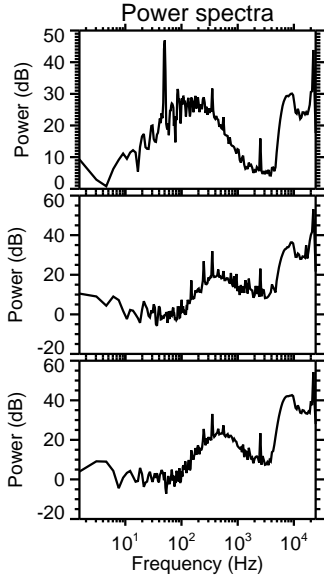
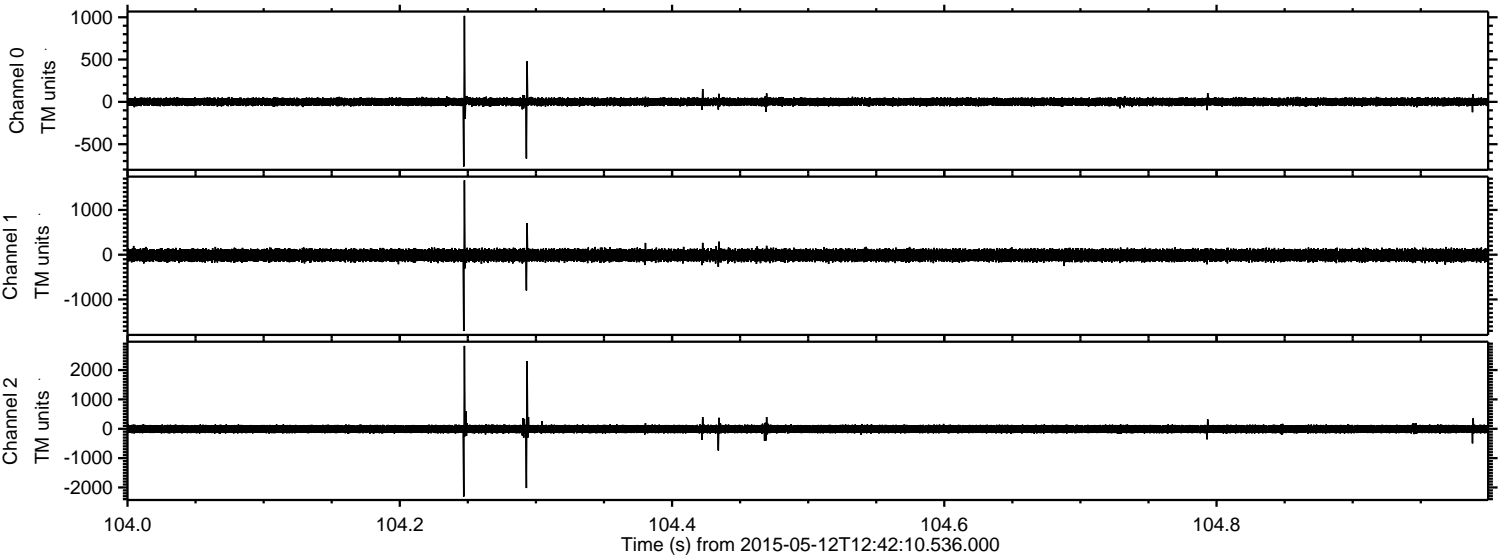


Processed Tue May 12 14:49:10 2015 by ELM ver.2012-10-06 from 001__elm20150512_124209__dat00.bin



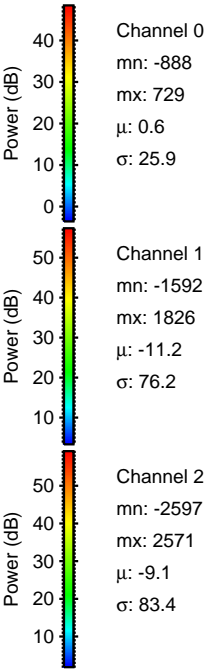
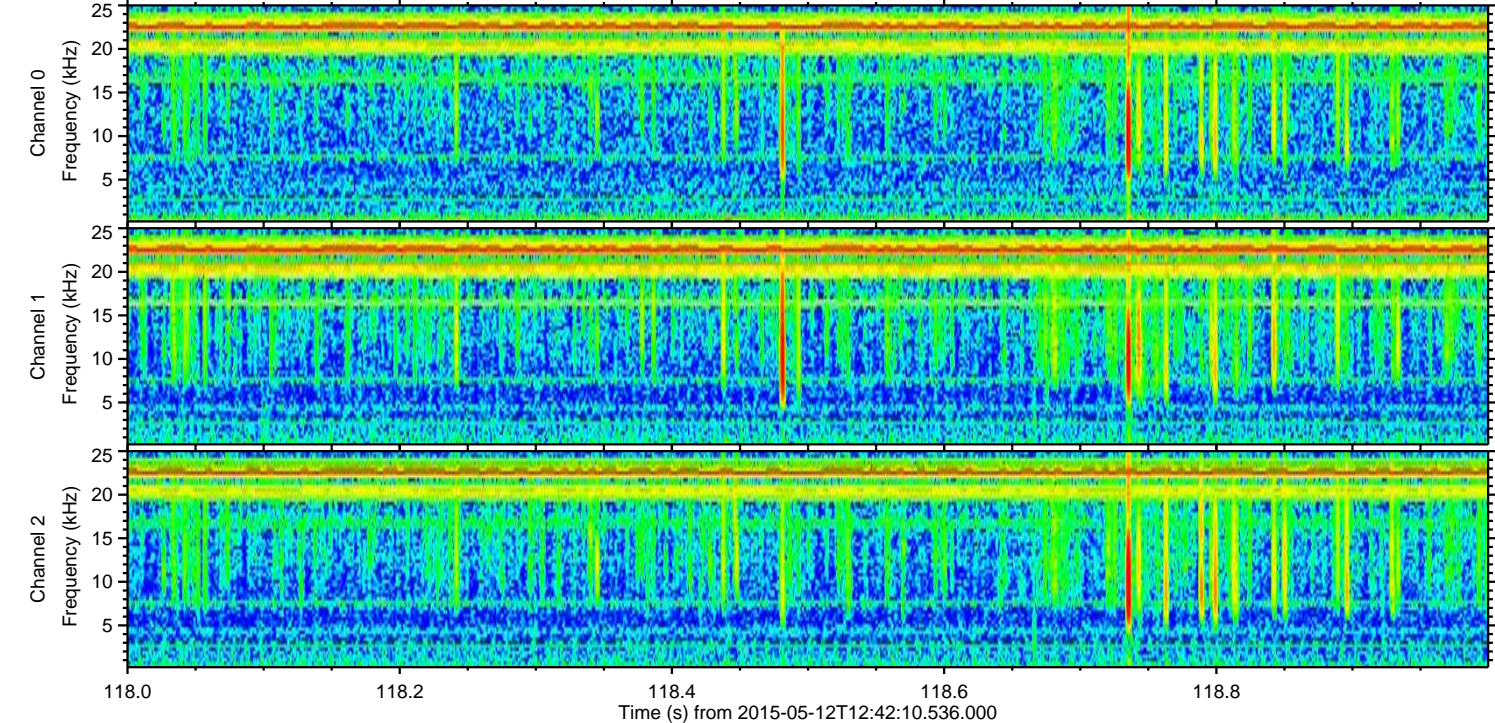
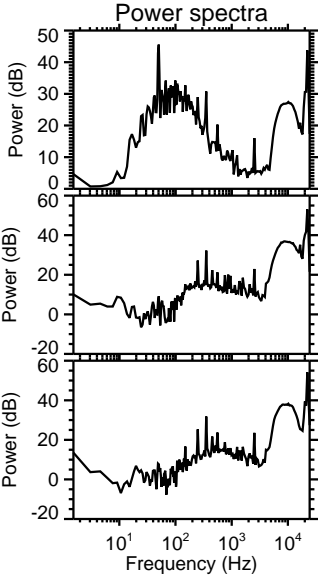
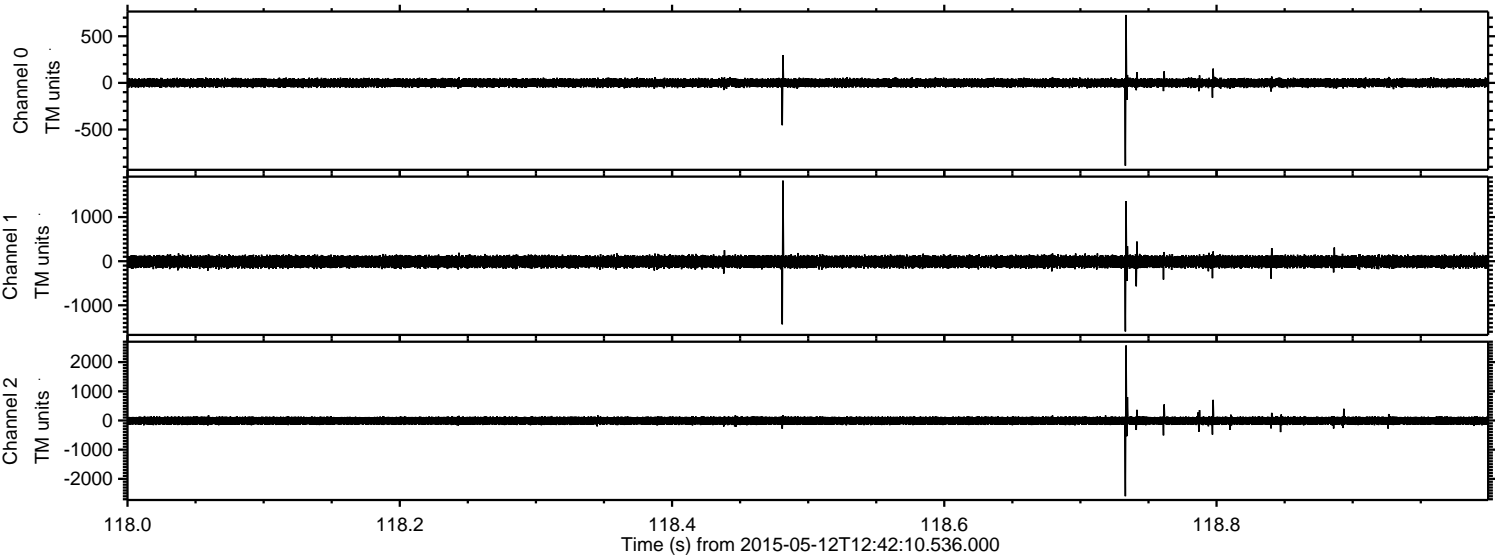
ELMAVAN 3D WAVEFORMS (Measured data sampled at 50 kHz) 49787 packets of 144 samples from 2015-05-12T12:42:10.536.000. Part 105/144

Processed Tue May 12 14:49:11 2015 by ELM ver.2012-10-06 from 001__elm20150512_124209__dat00.bin

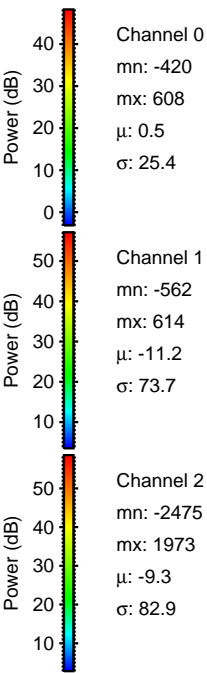
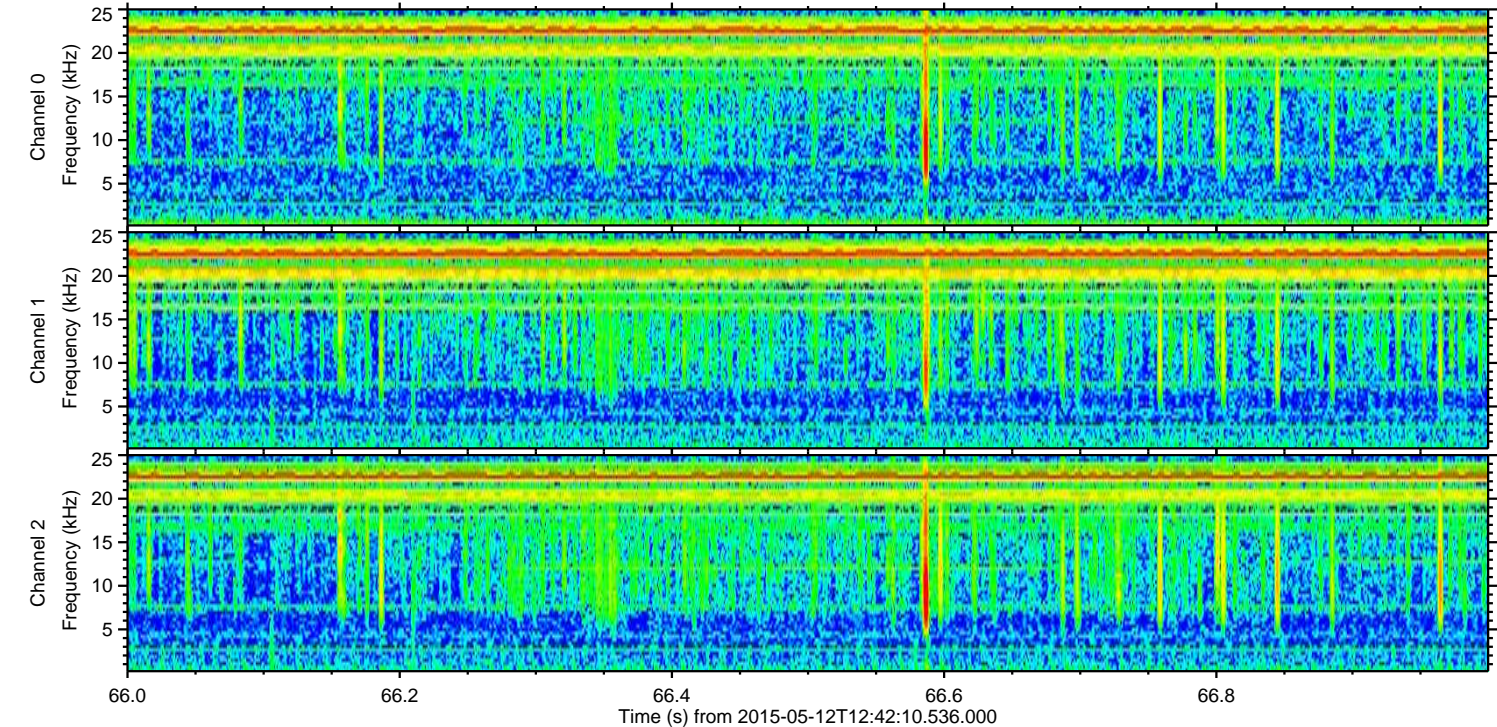
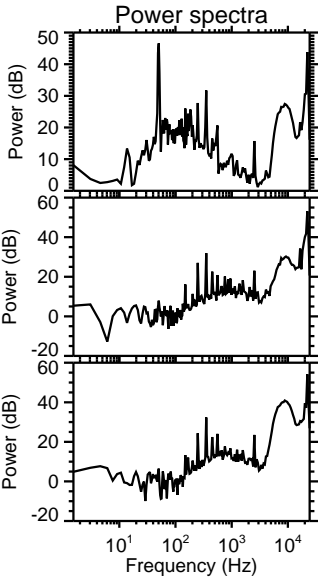
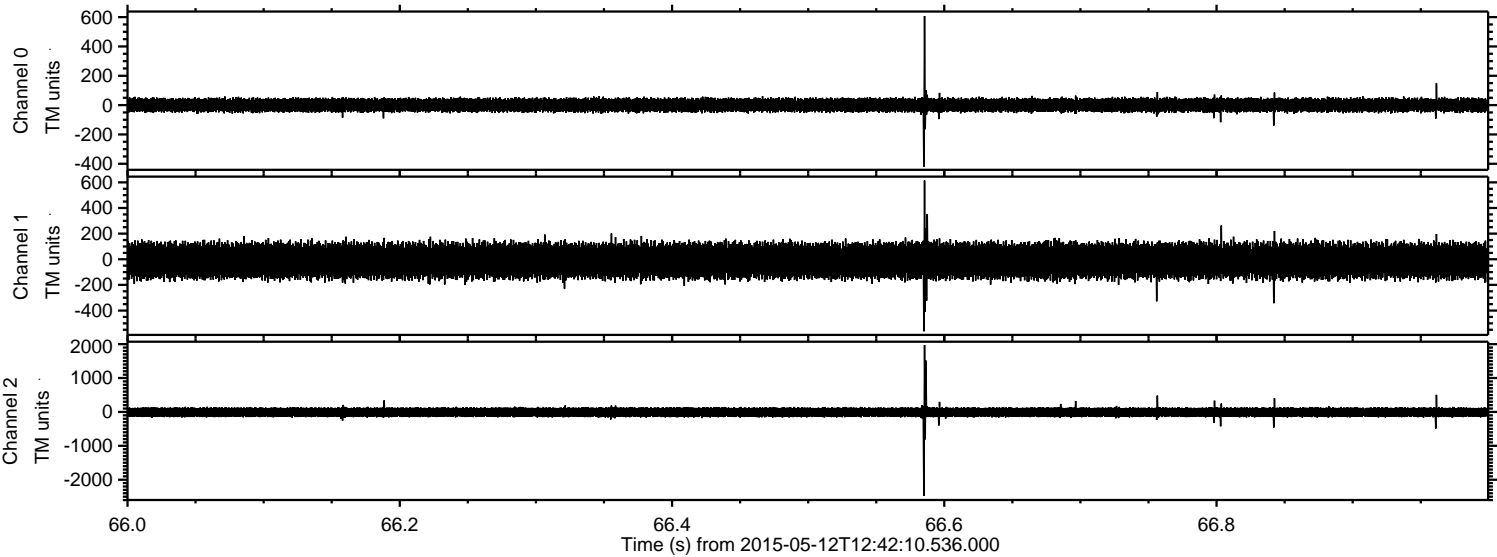


ELMAVAN 3D WAVEFORMS (Measured data sampled at 50 kHz) 49787 packets of 144 samples from 2015-05-12T12:42:10.536.000. Part 119/144

Processed Tue May 12 14:49:12 2015 by ELM ver.2012-10-06 from 001__elm20150512_124209__dat00.bin



Processed Tue May 12 14:49:13 2015 by ELM ver.2012-10-06 from 001__elm20150512_124209__dat00.bin

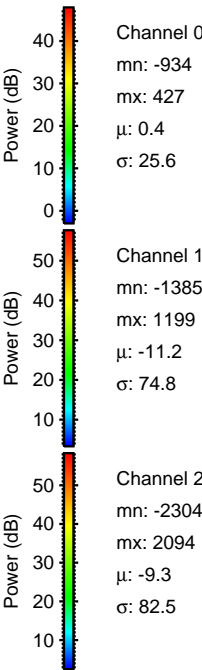
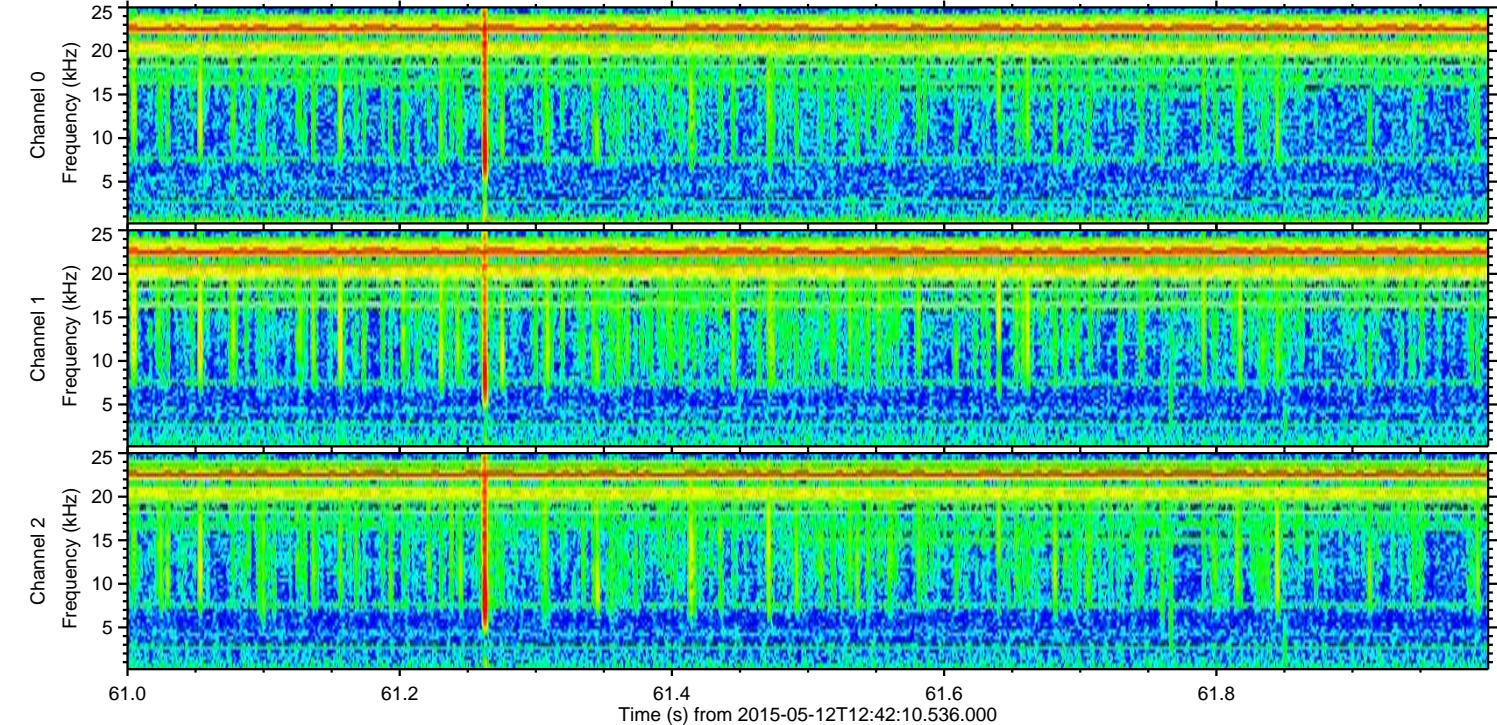
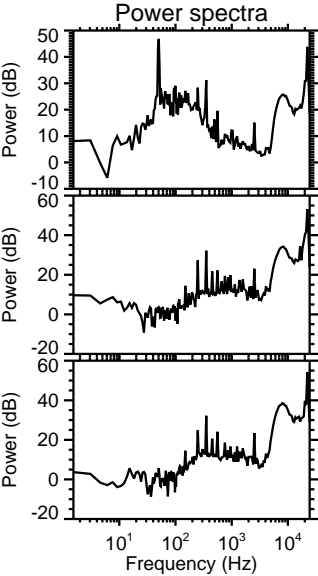
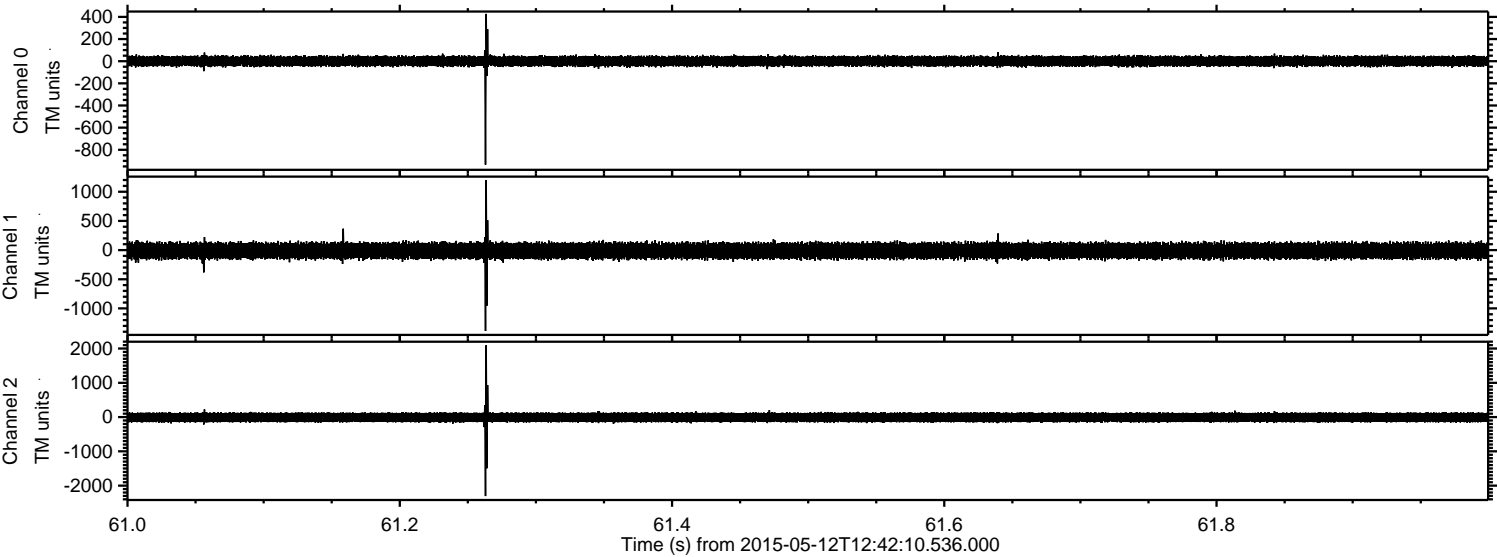


Channel 0
mn: -420
mx: 608
 μ : 0.5
 σ : 25.4

Channel 1
mn: -562
mx: 614
 μ : -11.2
 σ : 73.7

Channel 2
mn: -2475
mx: 1973
 μ : -9.3
 σ : 82.9

Processed Tue May 12 14:49:14 2015 by ELM ver.2012-10-06 from 001__elm20150512_124209__dat00.bin



Processed Tue May 12 14:49:15 2015 by ELM ver.2012-10-06 from 001__elm20150512_124209__dat00.bin

