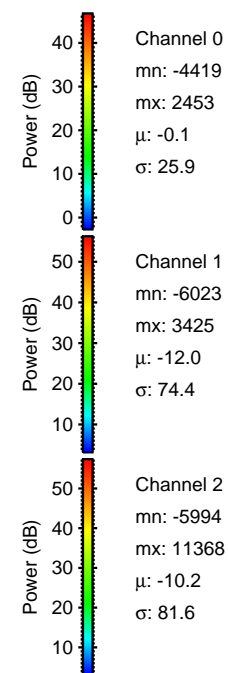
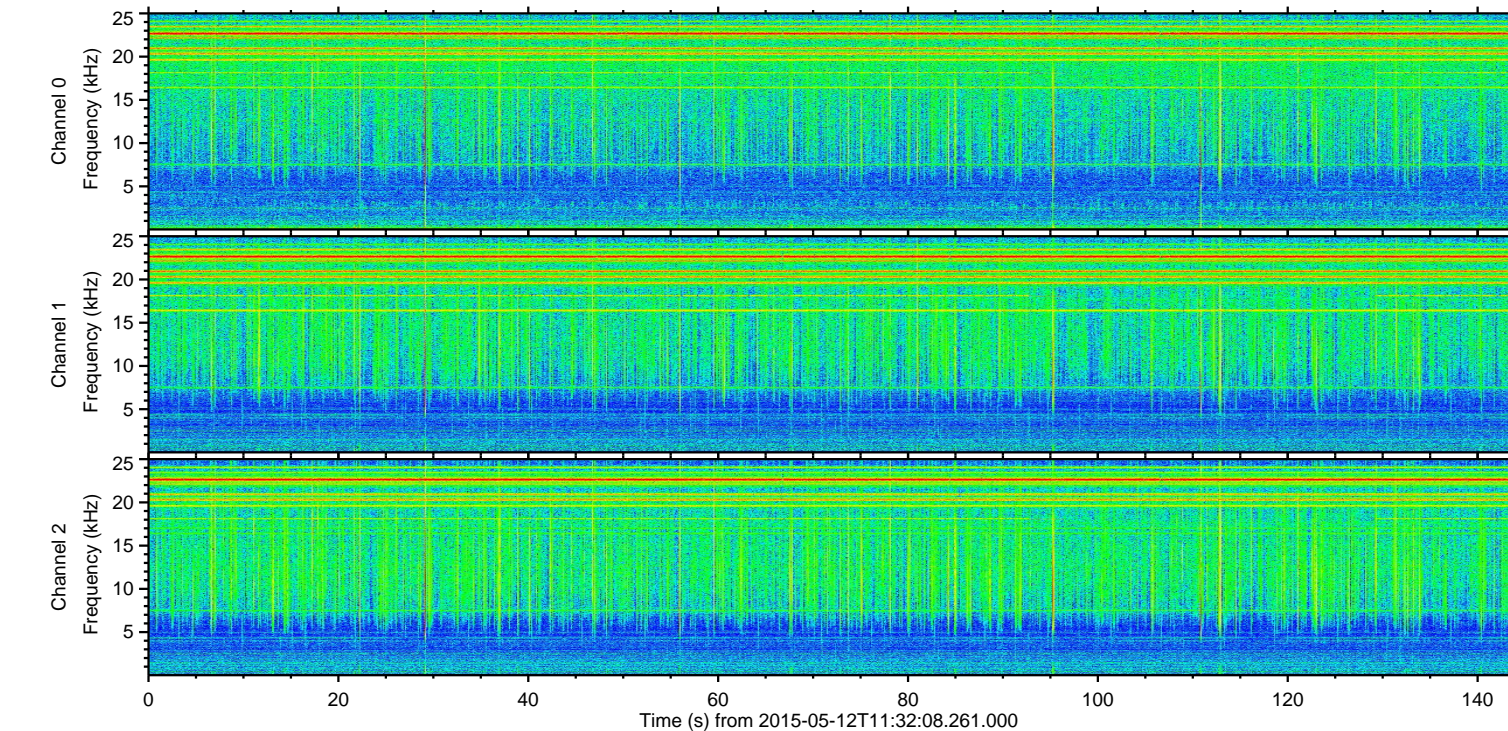
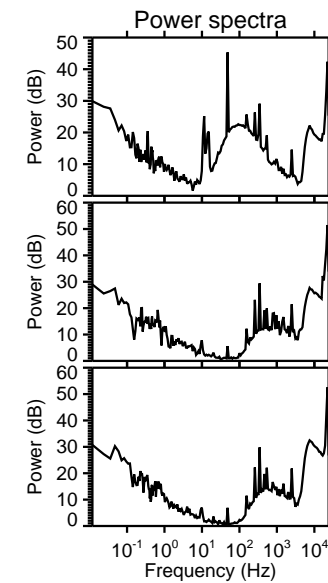
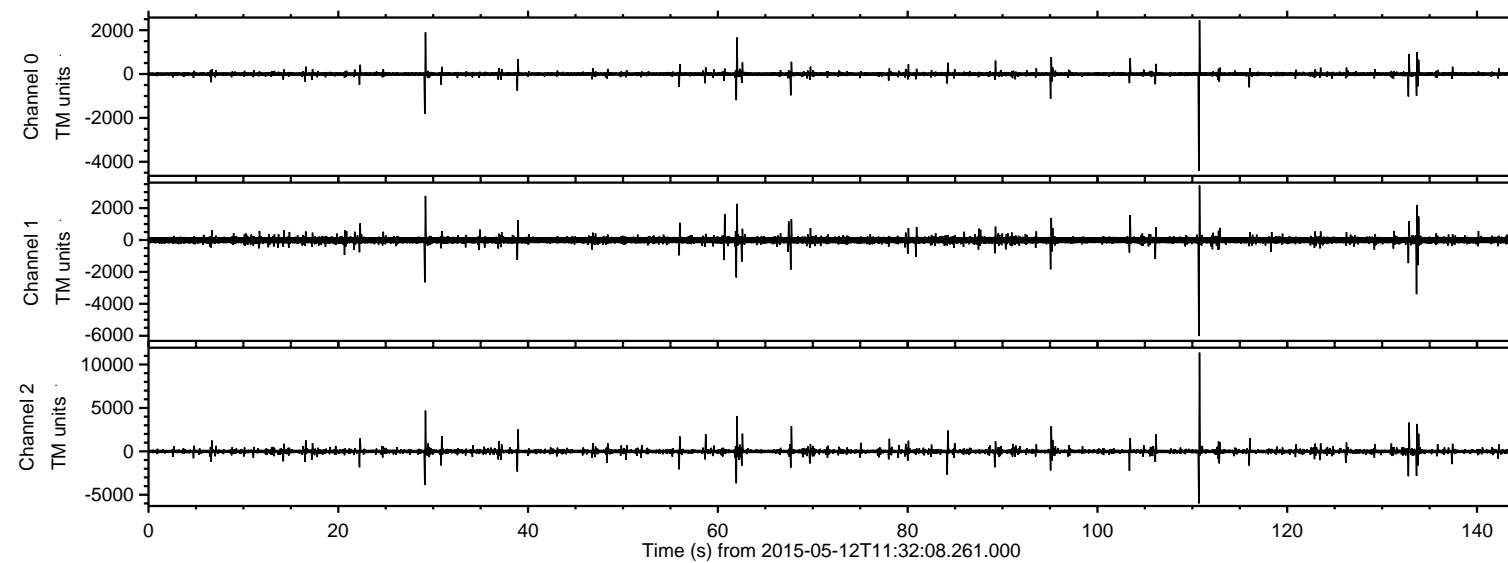
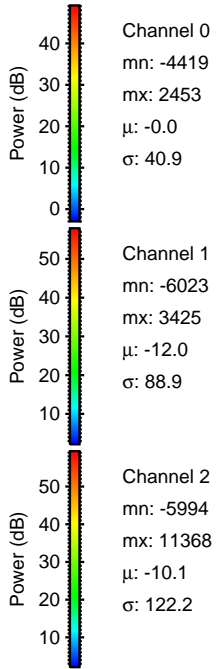
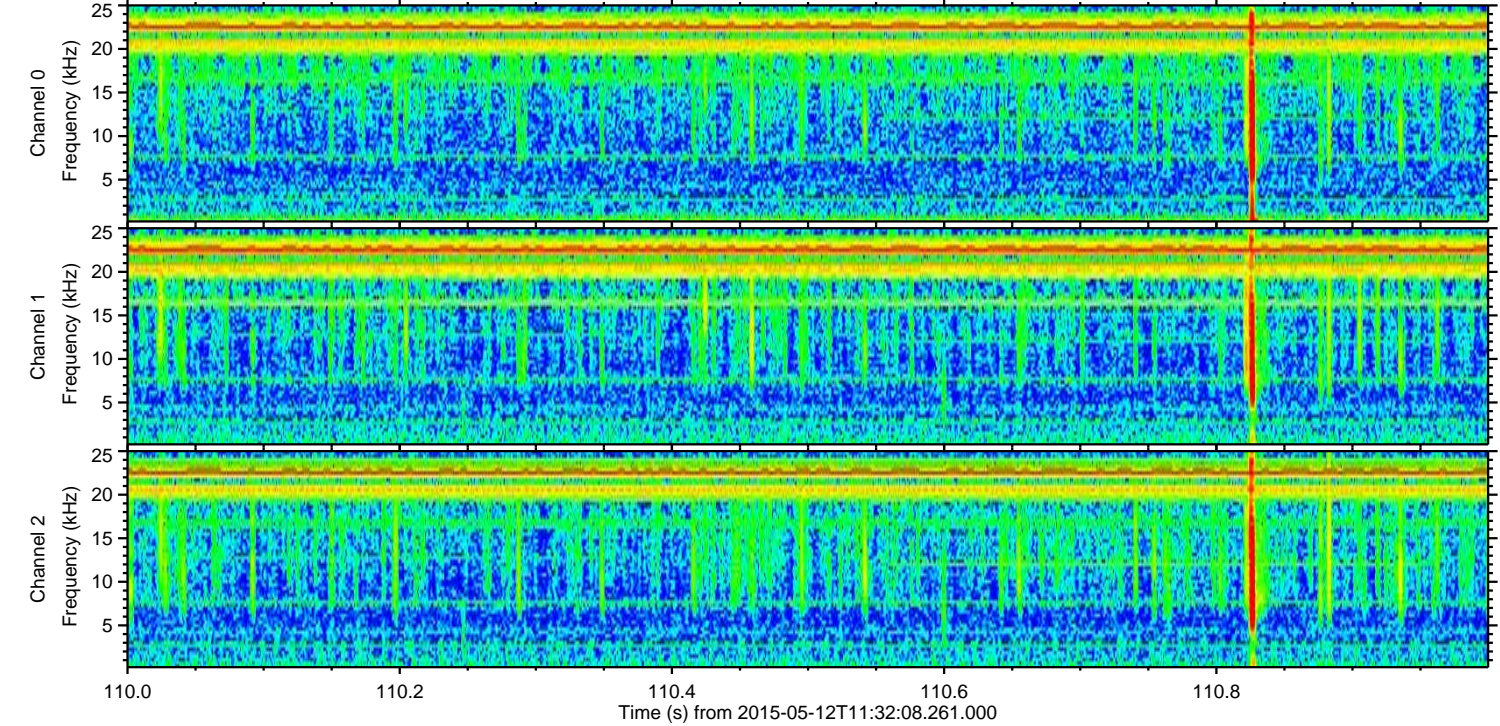
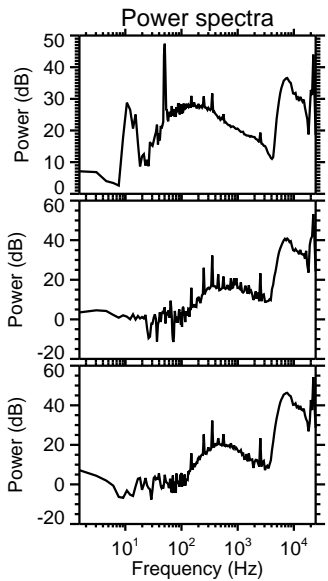
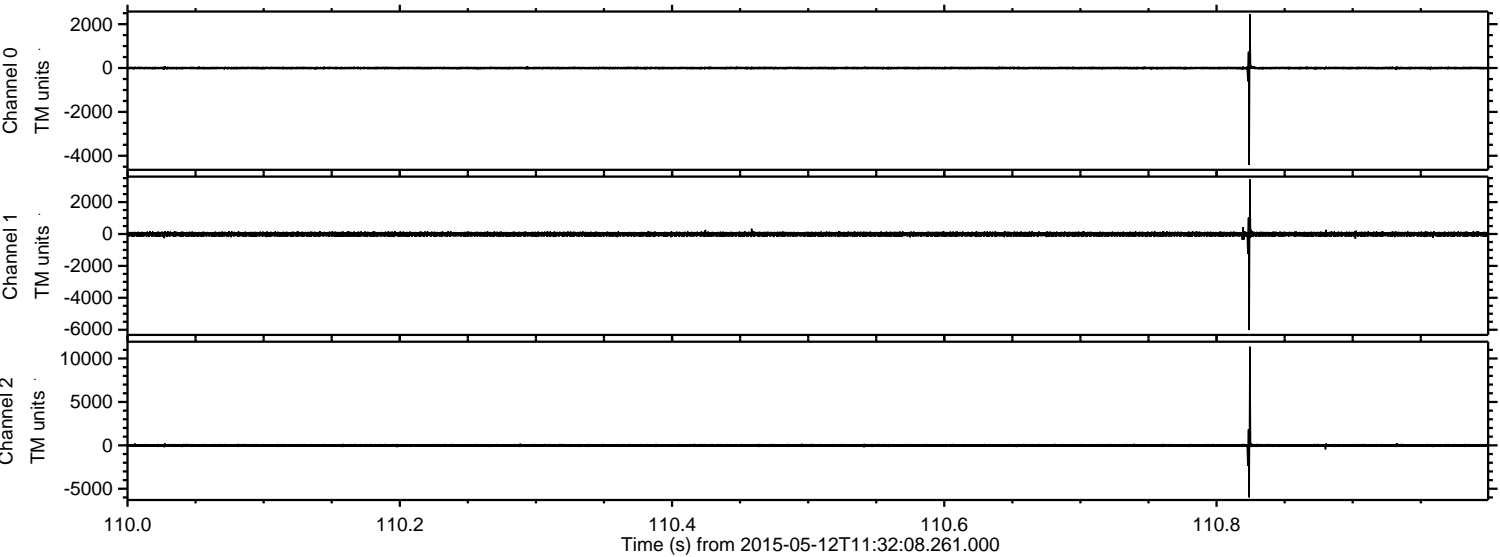


ELMAVAN 3D WAVEFORMS (Measured data sampled at 50 kHz) 49786 packets of 144 samples from 2015-05-12T11:32:08.261.000.

Processed Tue May 12 13:39:01 2015 by ELM ver.2012-10-06 from 001__elm20150512_113207__dat00.bin



Processed Tue May 12 13:39:12 2015 by ELM ver.2012-10-06 from 001__elm20150512_113207__dat00.bin

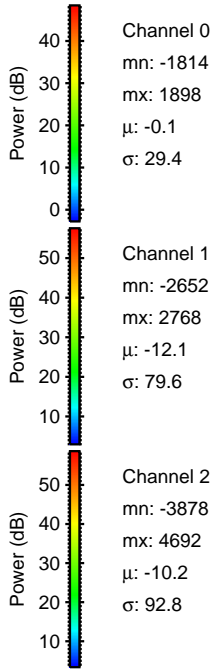
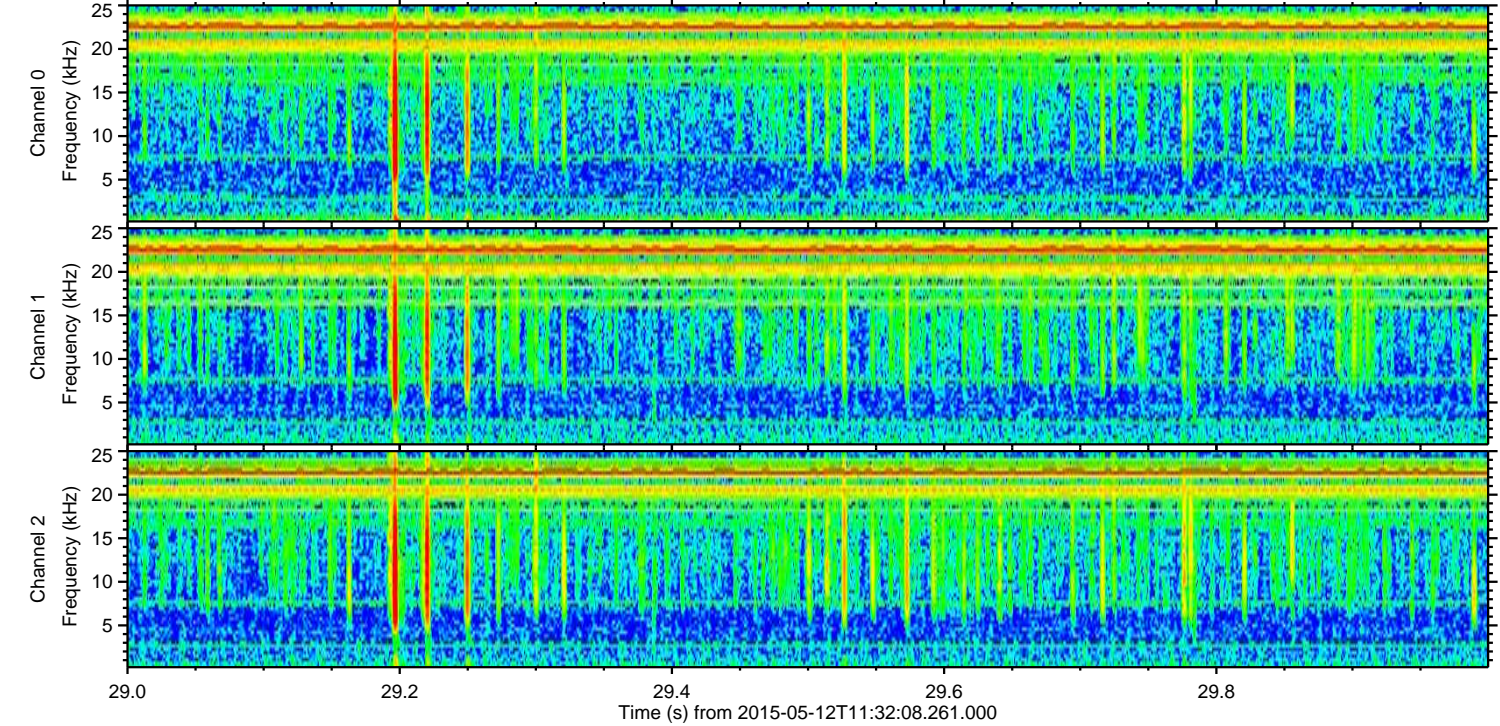
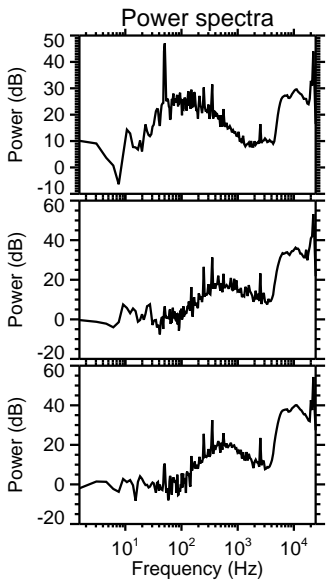
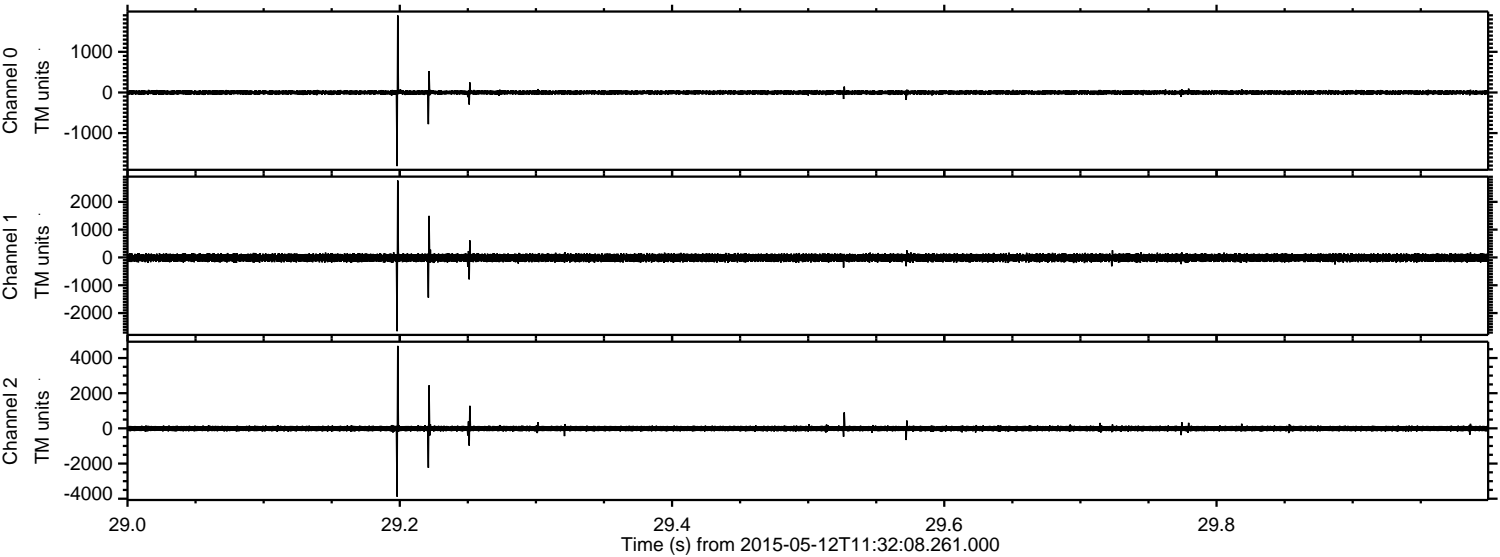


Channel 0
mn: -4419
mx: 2453
 μ : -0.0
 σ : 40.9

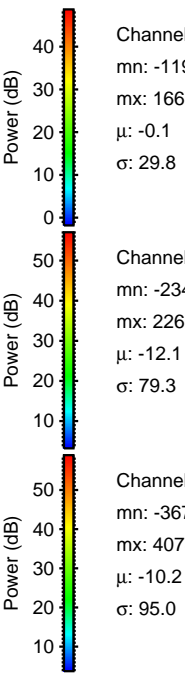
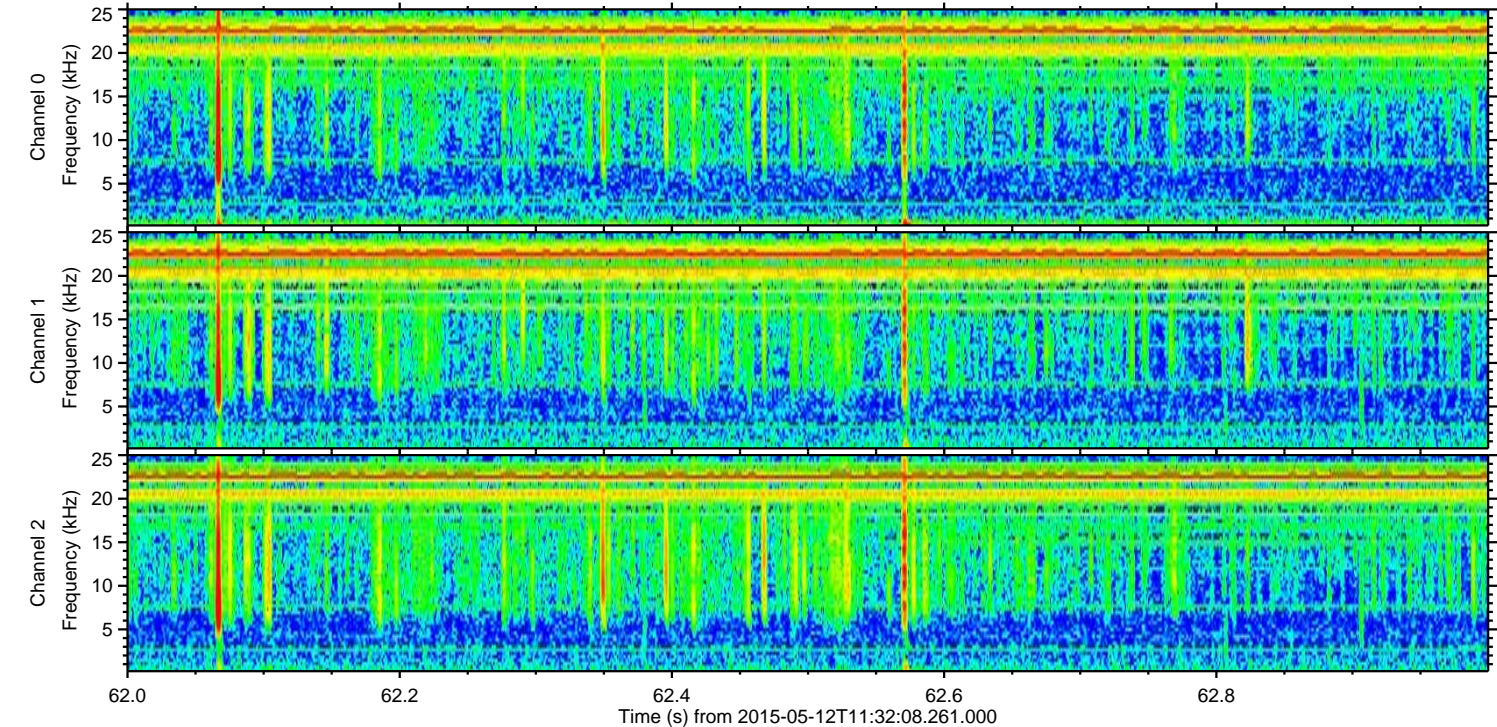
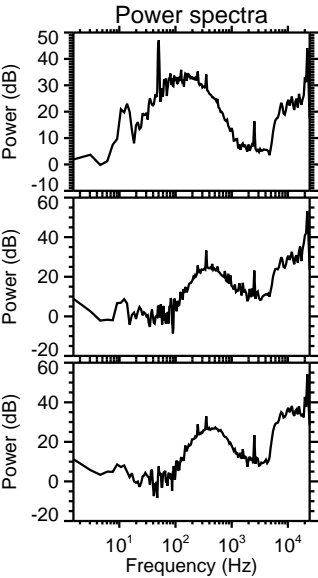
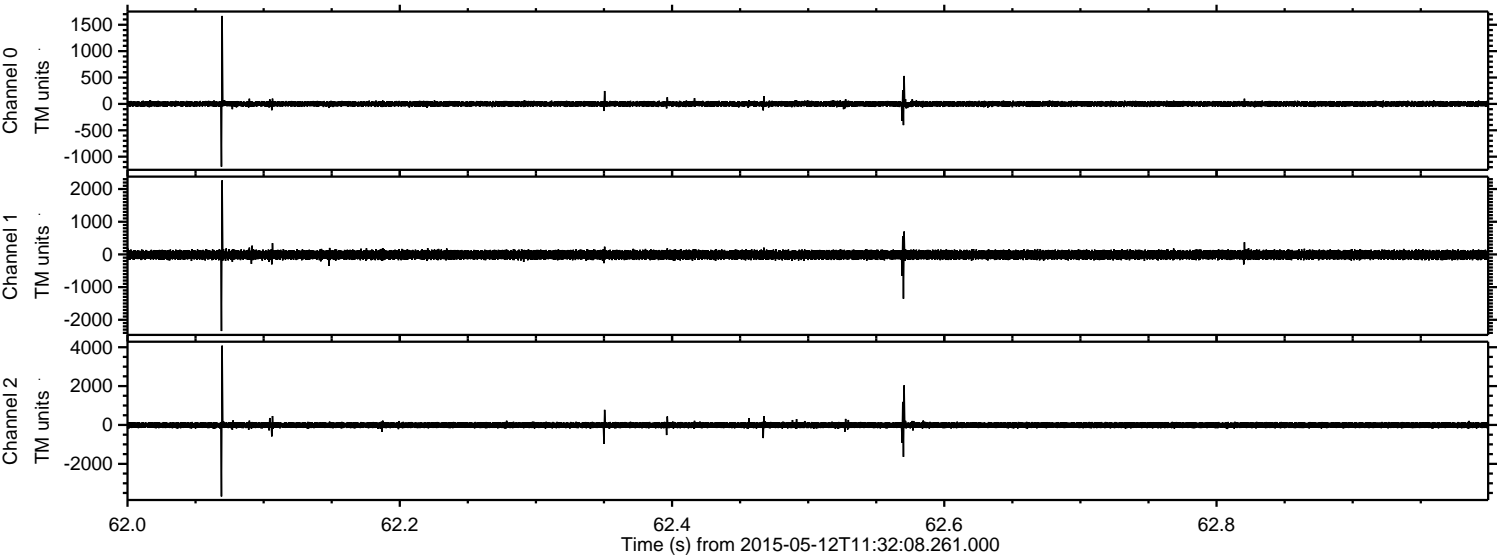
Channel 1
mn: -6023
mx: 3425
 μ : -12.0
 σ : 88.9

Channel 2
mn: -5994
mx: 11368
 μ : -10.1
 σ : 122.2

Processed Tue May 12 13:39:13 2015 by ELM ver.2012-10-06 from 001__elm20150512_113207__dat00.bin

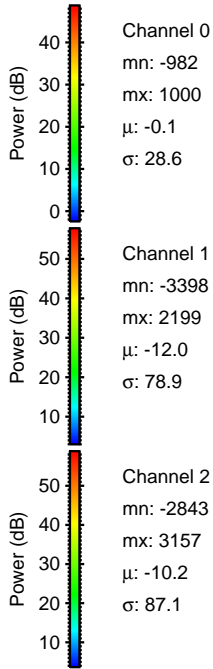
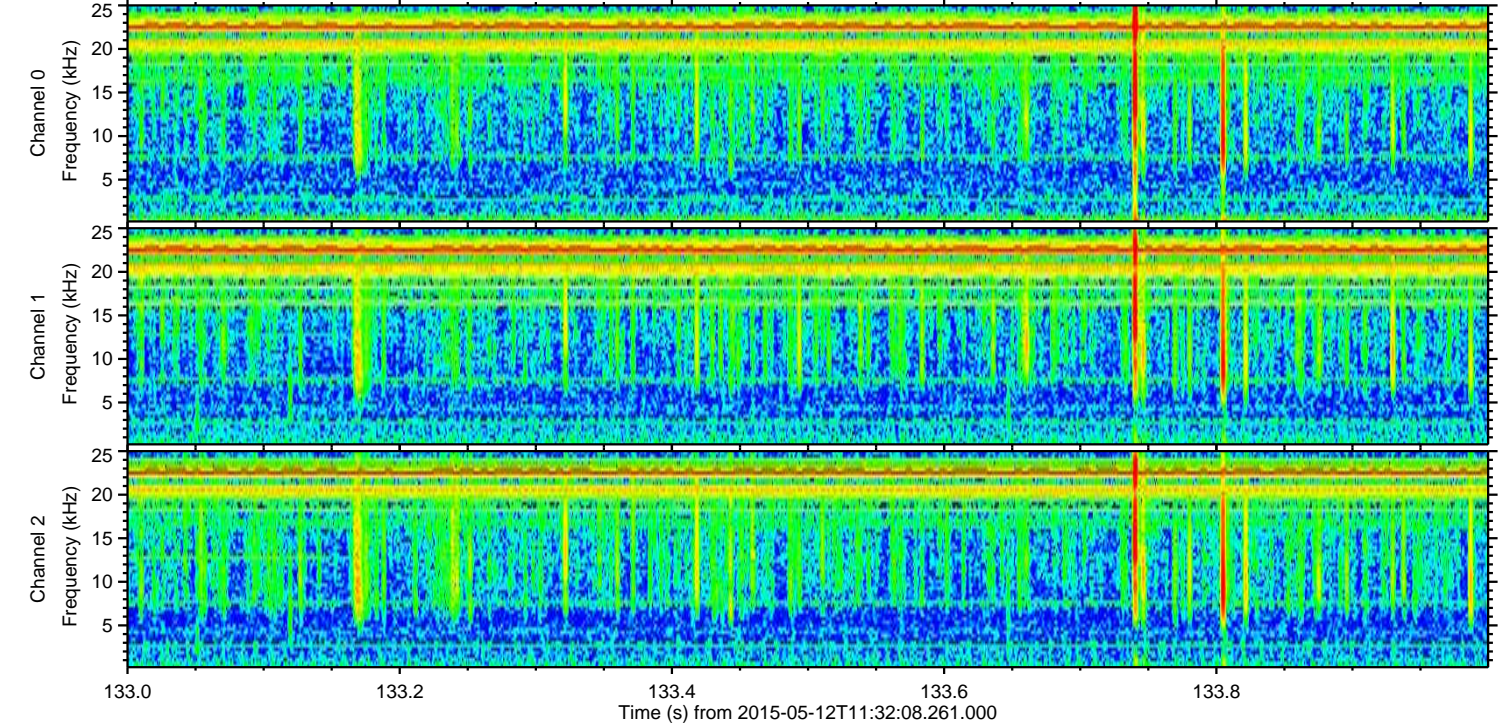
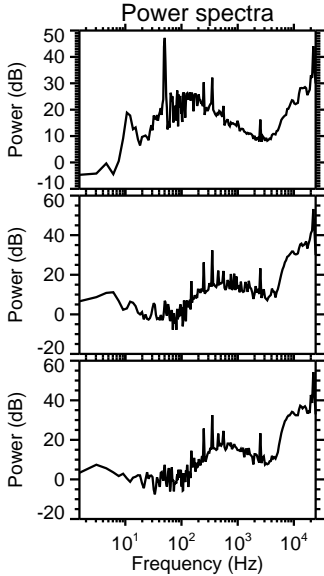
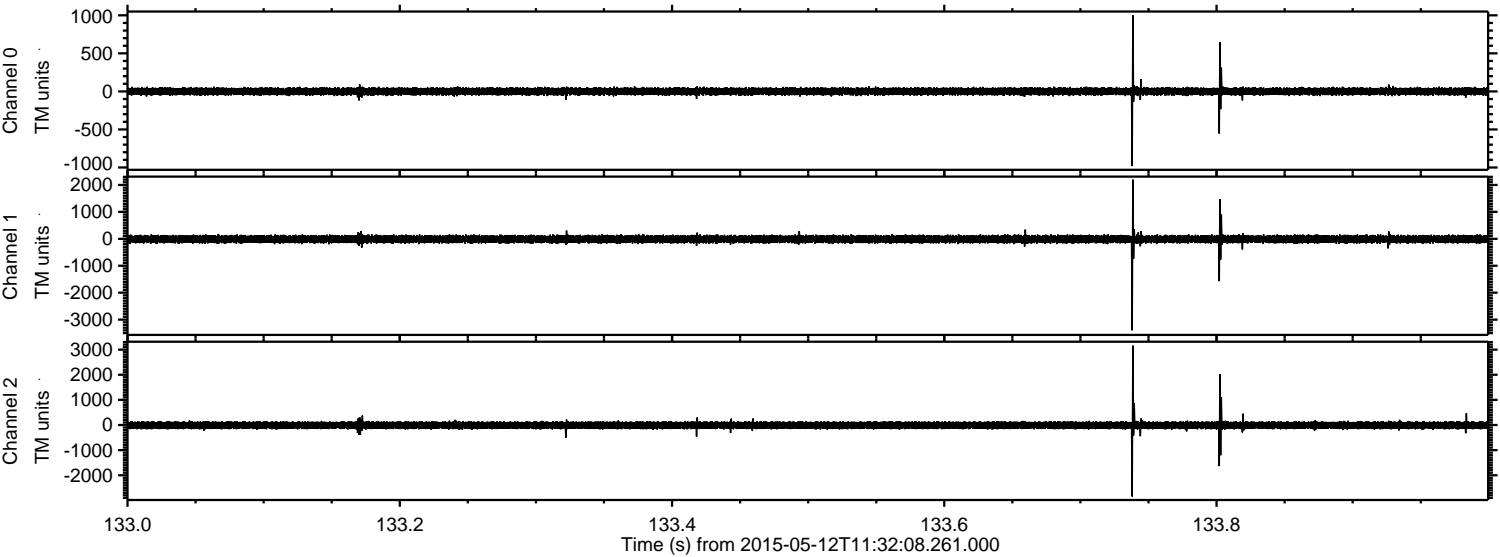


Processed Tue May 12 13:39:14 2015 by ELM ver.2012-10-06 from 001__elm20150512_113207__dat00.bin



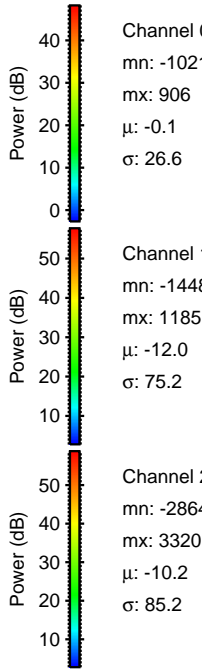
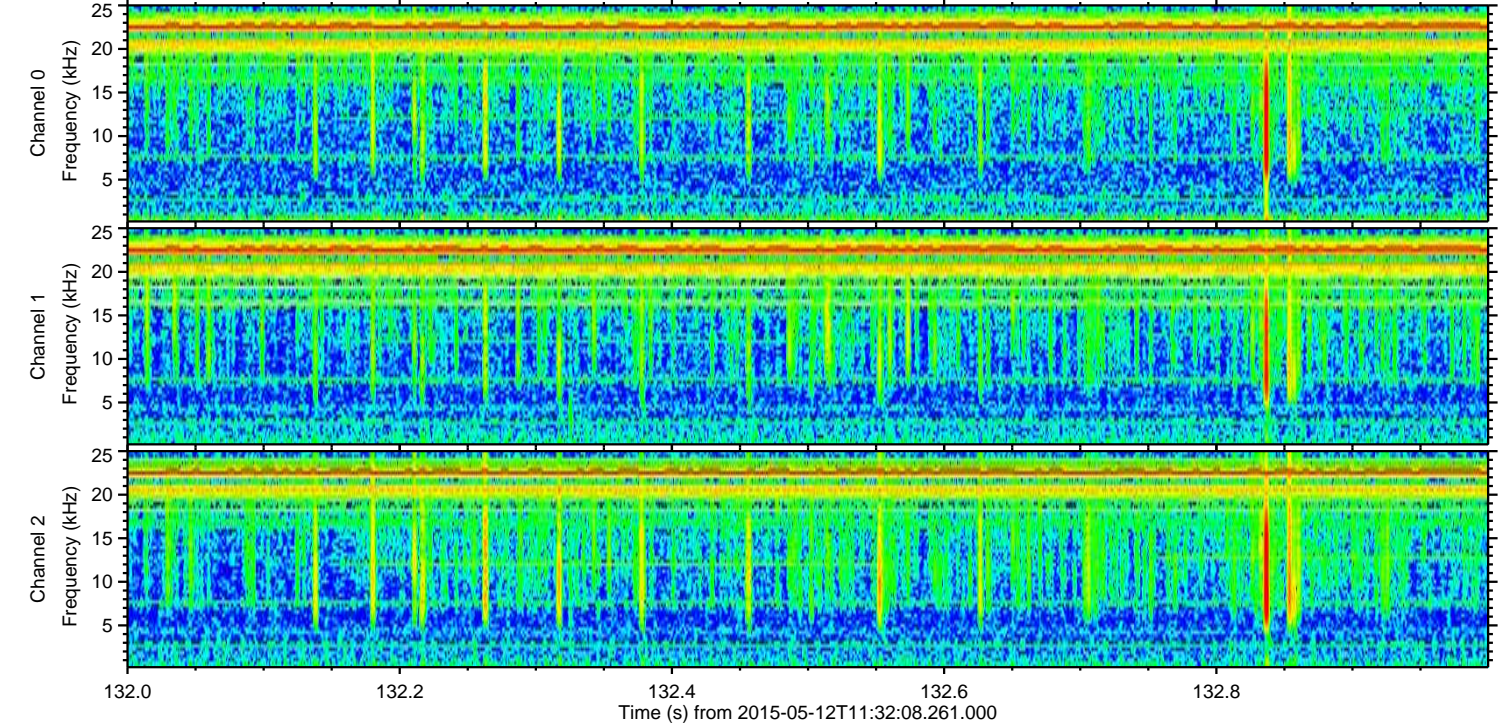
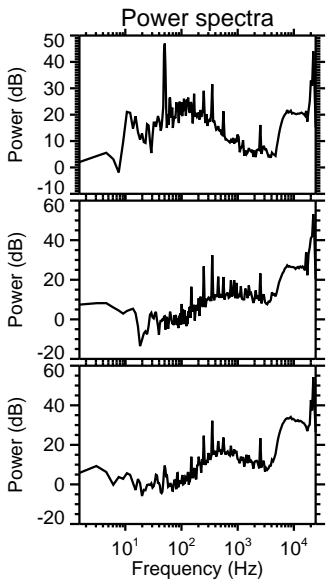
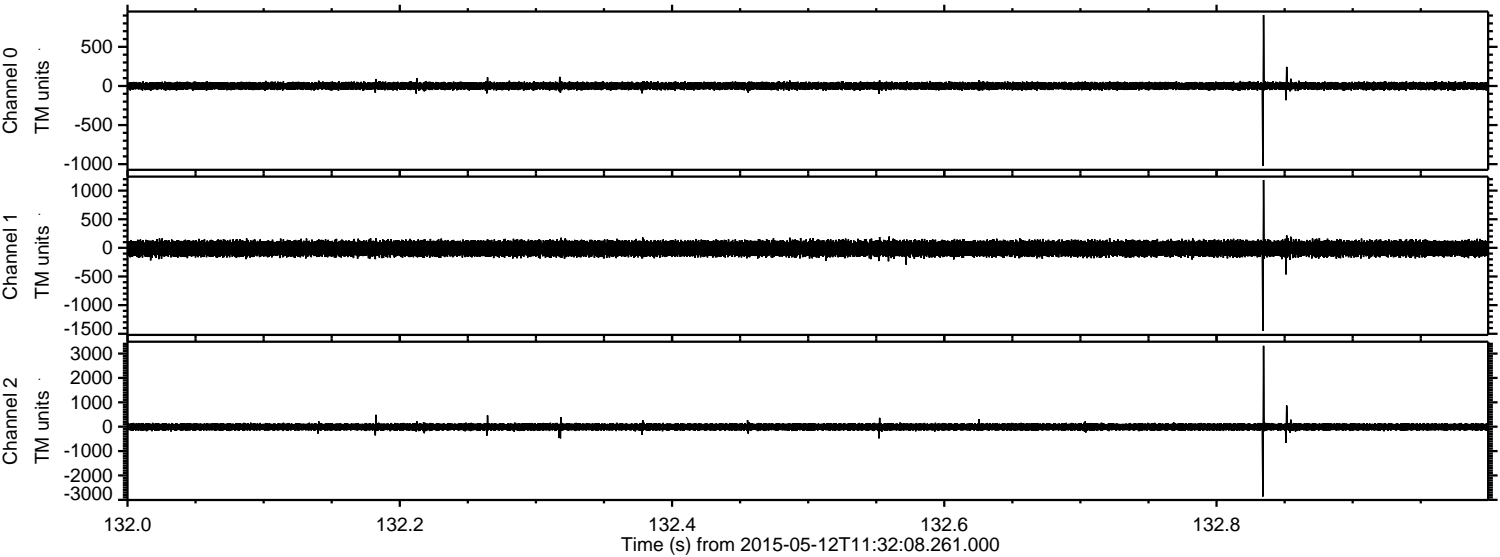
ELMAVAN 3D WAVEFORMS (Measured data sampled at 50 kHz) 49786 packets of 144 samples from 2015-05-12T11:32:08.261.000. Part 134/144

Processed Tue May 12 13:39:15 2015 by ELM ver.2012-10-06 from 001__elm20150512_113207__dat00.bin

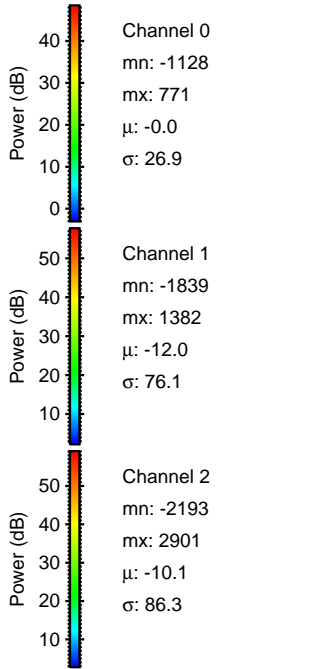
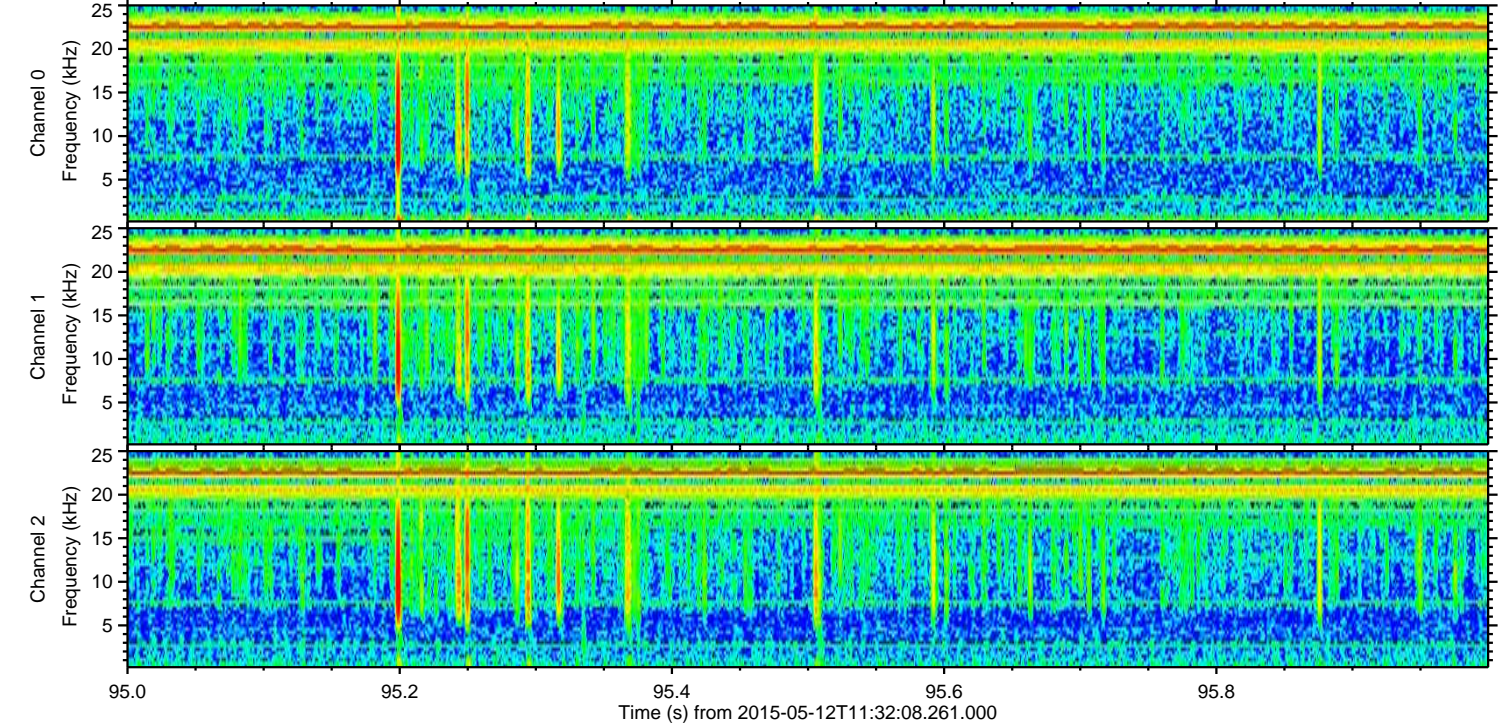
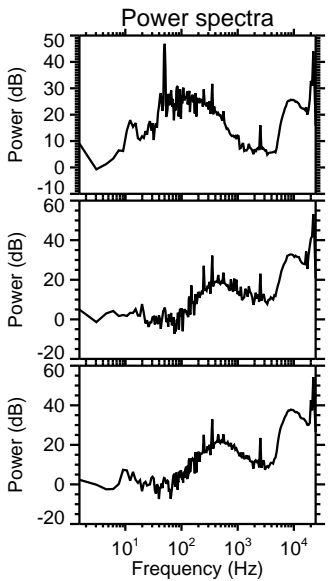
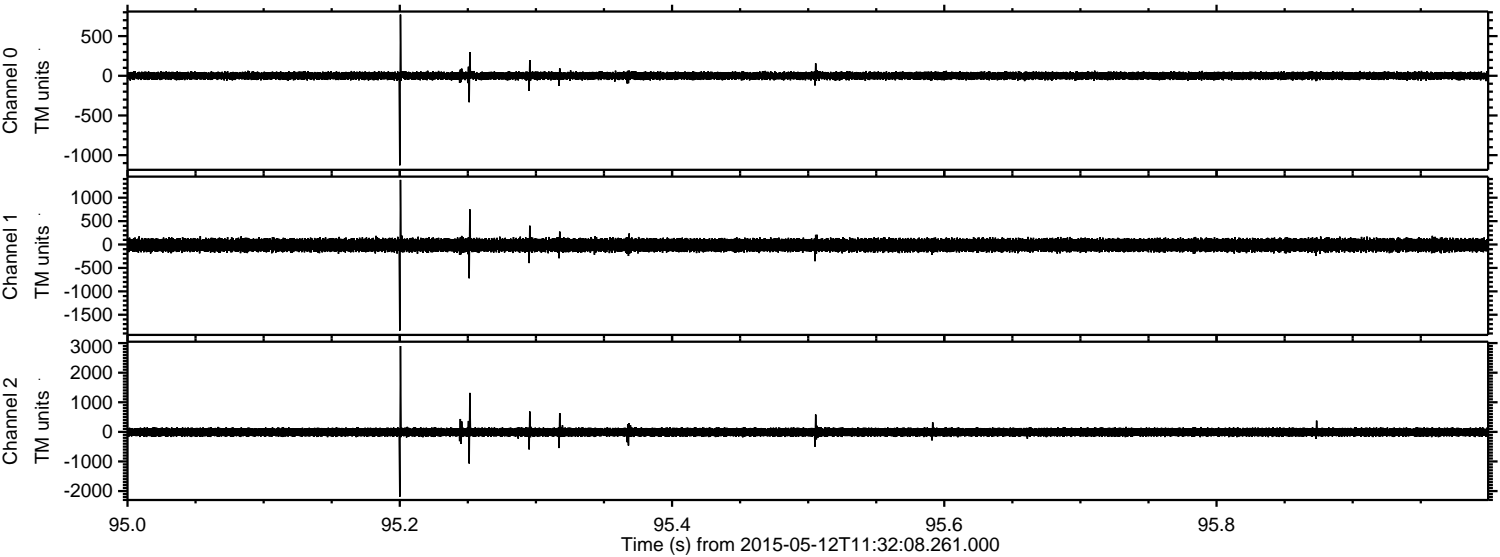


ELMAVAN 3D WAVEFORMS (Measured data sampled at 50 kHz) 49786 packets of 144 samples from 2015-05-12T11:32:08.261.000. Part 133/144

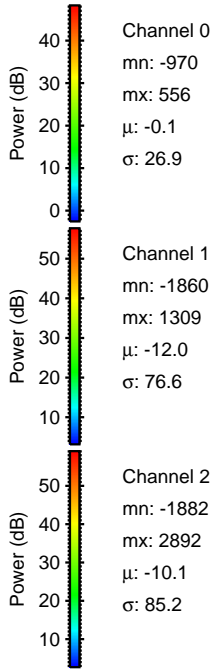
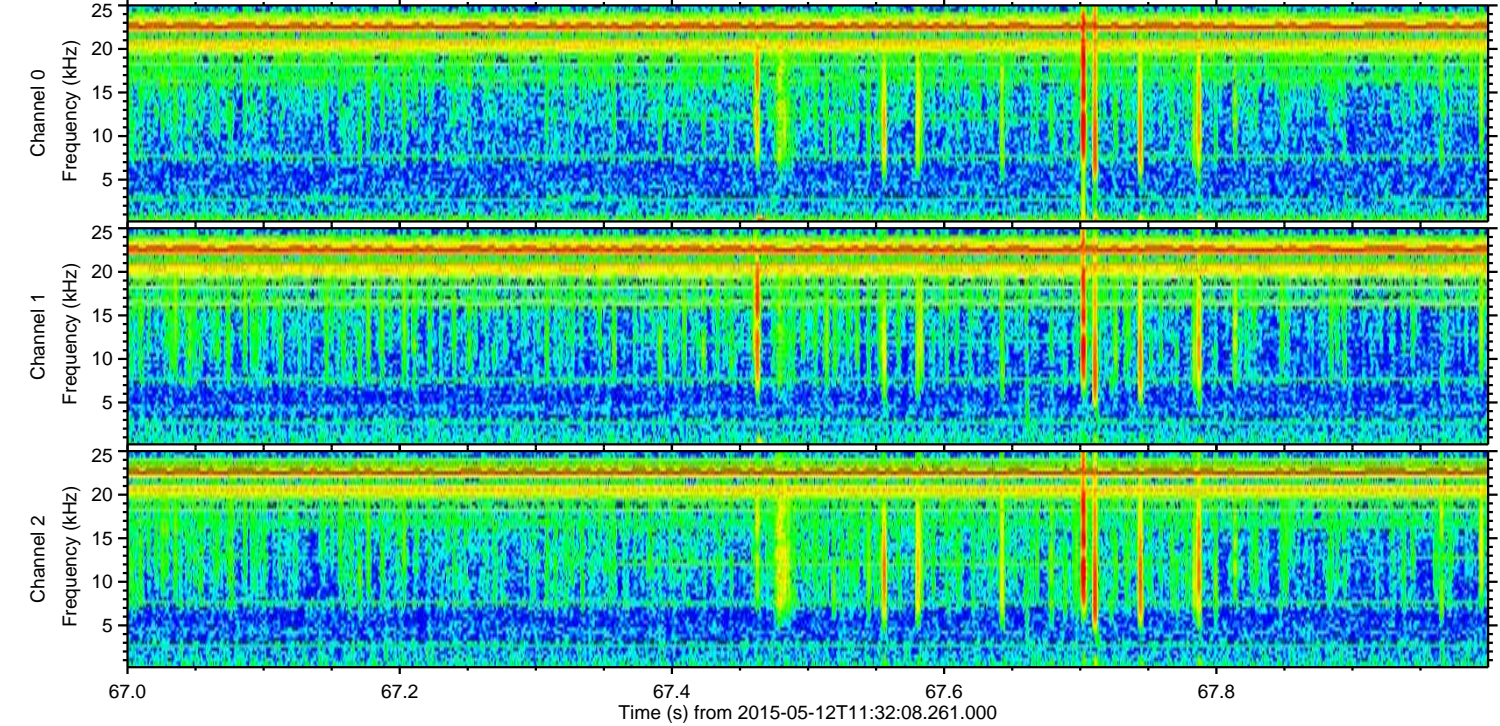
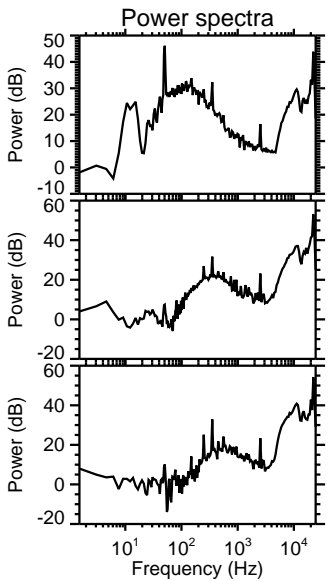
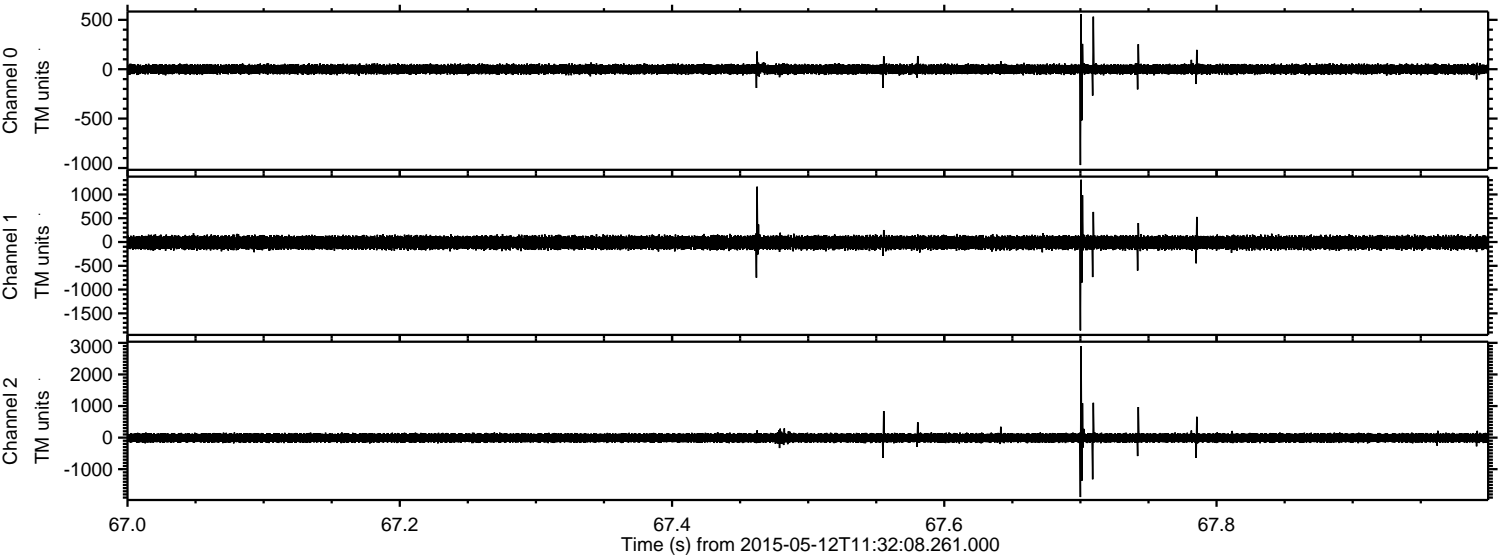
Processed Tue May 12 13:39:16 2015 by ELM ver.2012-10-06 from 001__elm20150512_113207__dat00.bin



Processed Tue May 12 13:39:17 2015 by ELM ver.2012-10-06 from 001_elm20150512_113207__dat00.bin



Processed Tue May 12 13:39:18 2015 by ELM ver.2012-10-06 from 001__elm20150512_113207__dat00.bin

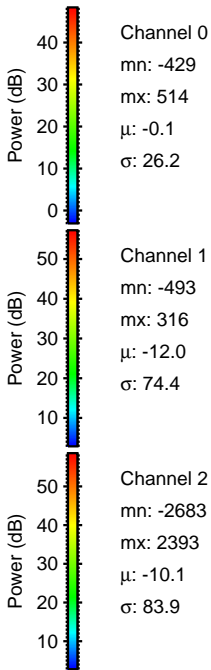
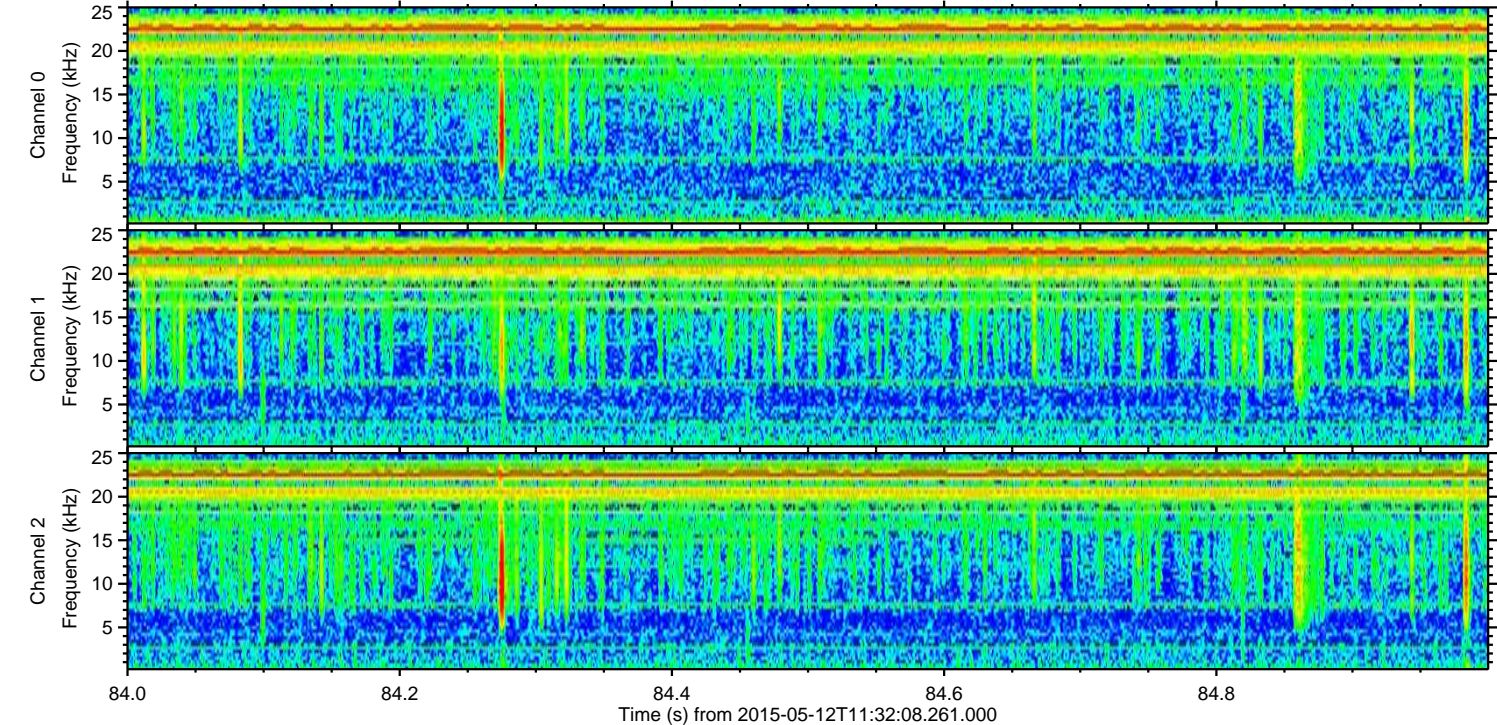
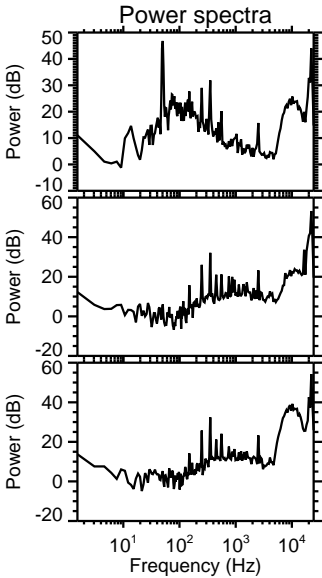
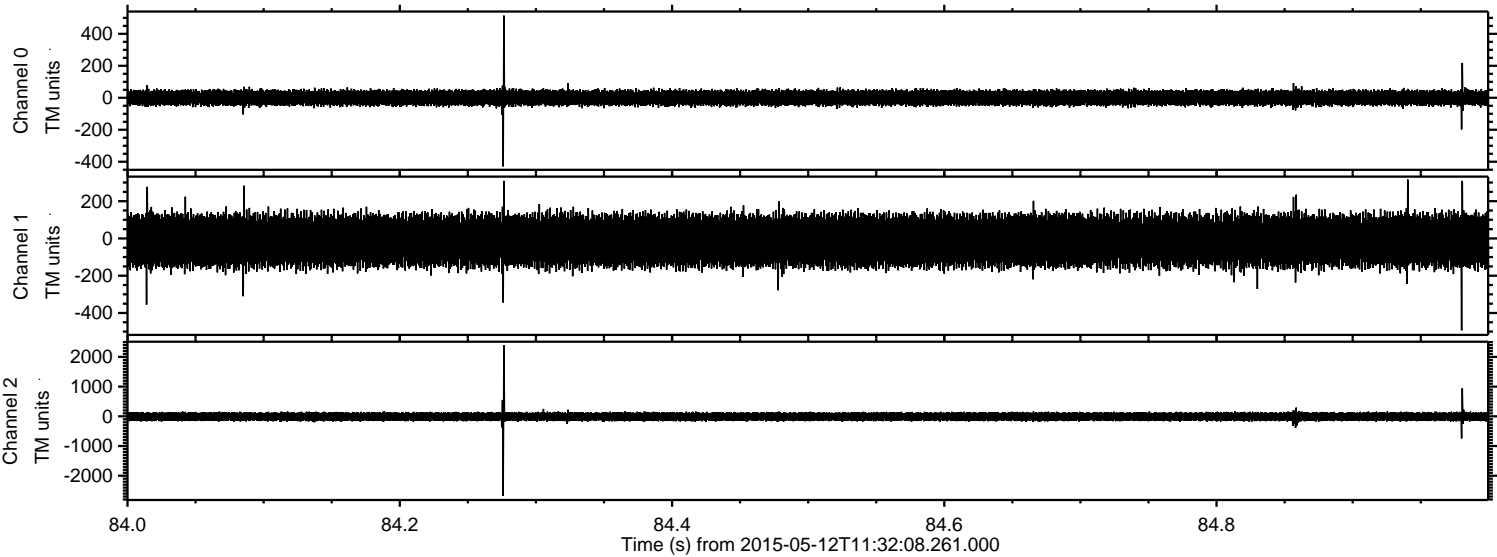


Channel 0
mn: -970
mx: 556
 μ : -0.1
 σ : 26.9

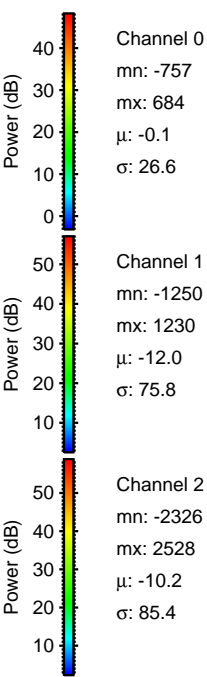
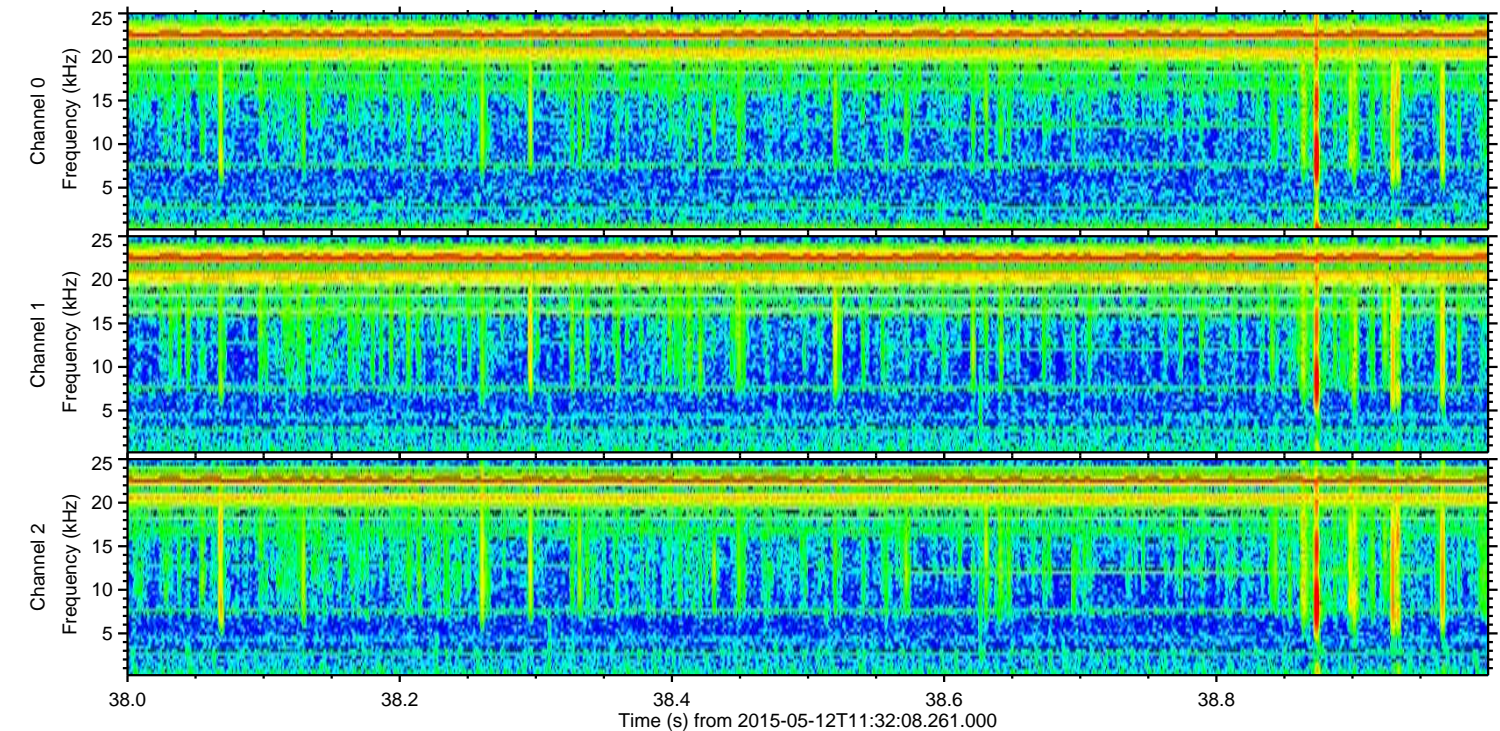
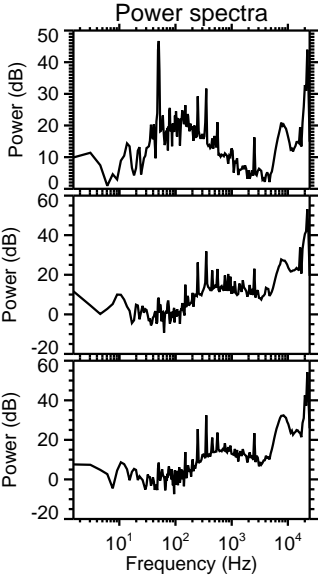
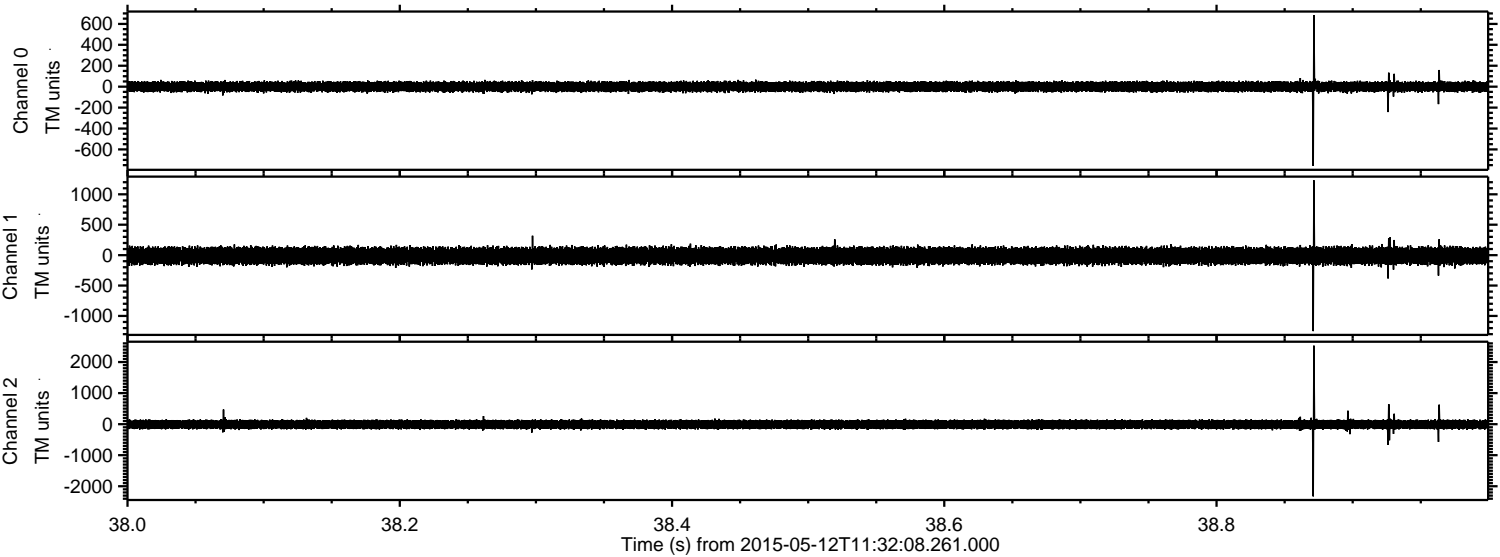
Channel 1
mn: -1860
mx: 1309
 μ : -12.0
 σ : 76.6

Channel 2
mn: -1882
mx: 2892
 μ : -10.1
 σ : 85.2

Processed Tue May 12 13:39:19 2015 by ELM ver.2012-10-06 from 001__elm20150512_113207__dat00.bin



Processed Tue May 12 13:39:20 2015 by ELM ver.2012-10-06 from 001__elm20150512_113207__dat00.bin



Channel 0
mn: -757
mx: 684
 μ : -0.1
 σ : 26.6

Channel 1
mn: -1250
mx: 1230
 μ : -12.0
 σ : 75.8

Channel 2
mn: -2326
mx: 2528
 μ : -10.2
 σ : 85.4

Processed Tue May 12 13:39:21 2015 by ELM ver.2012-10-06 from 001__elm20150512_113207__dat00.bin

