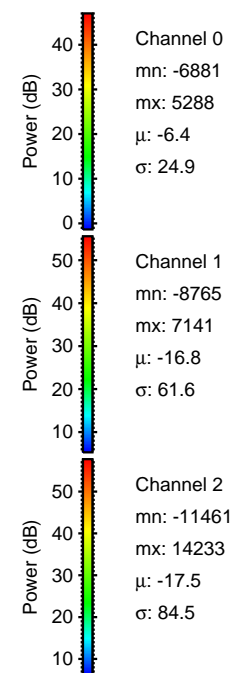
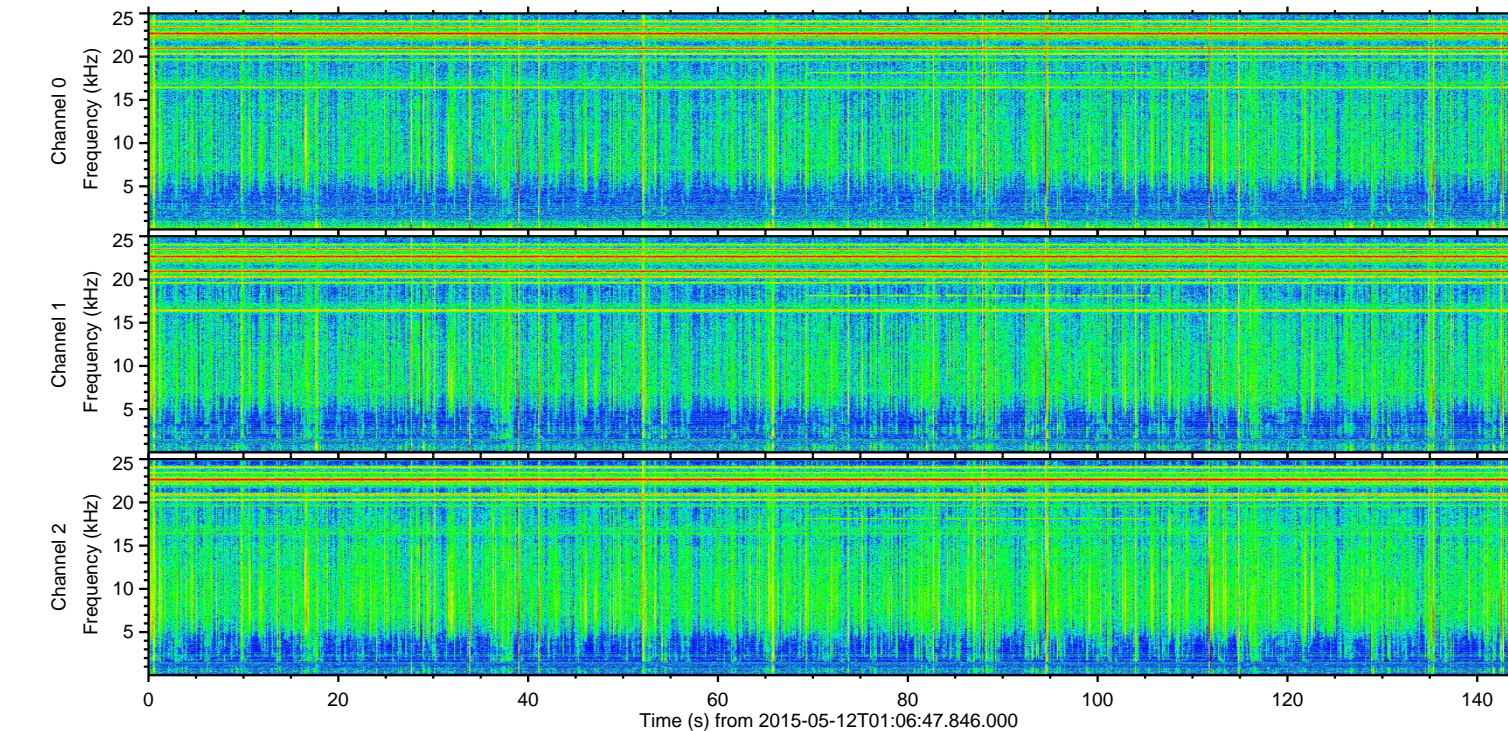
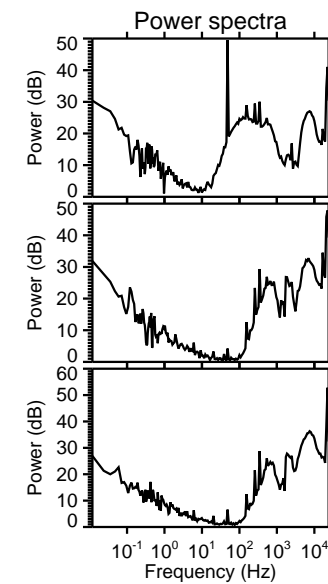
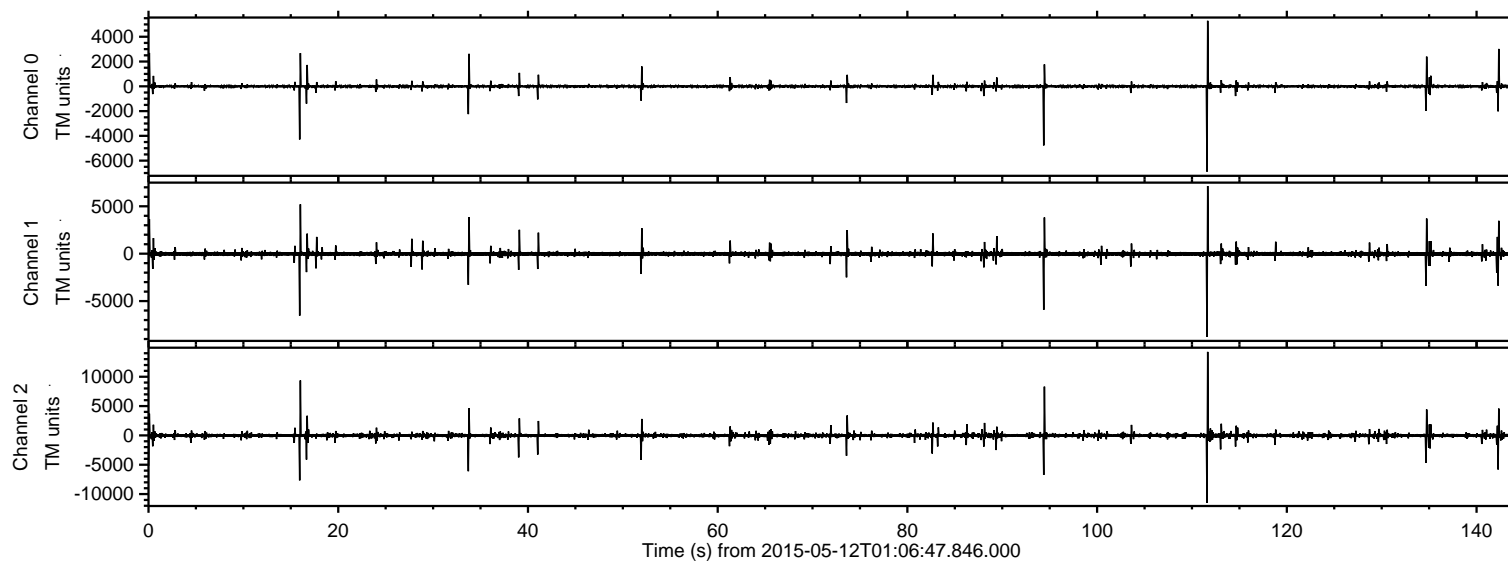


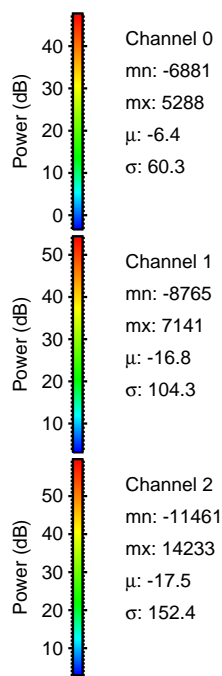
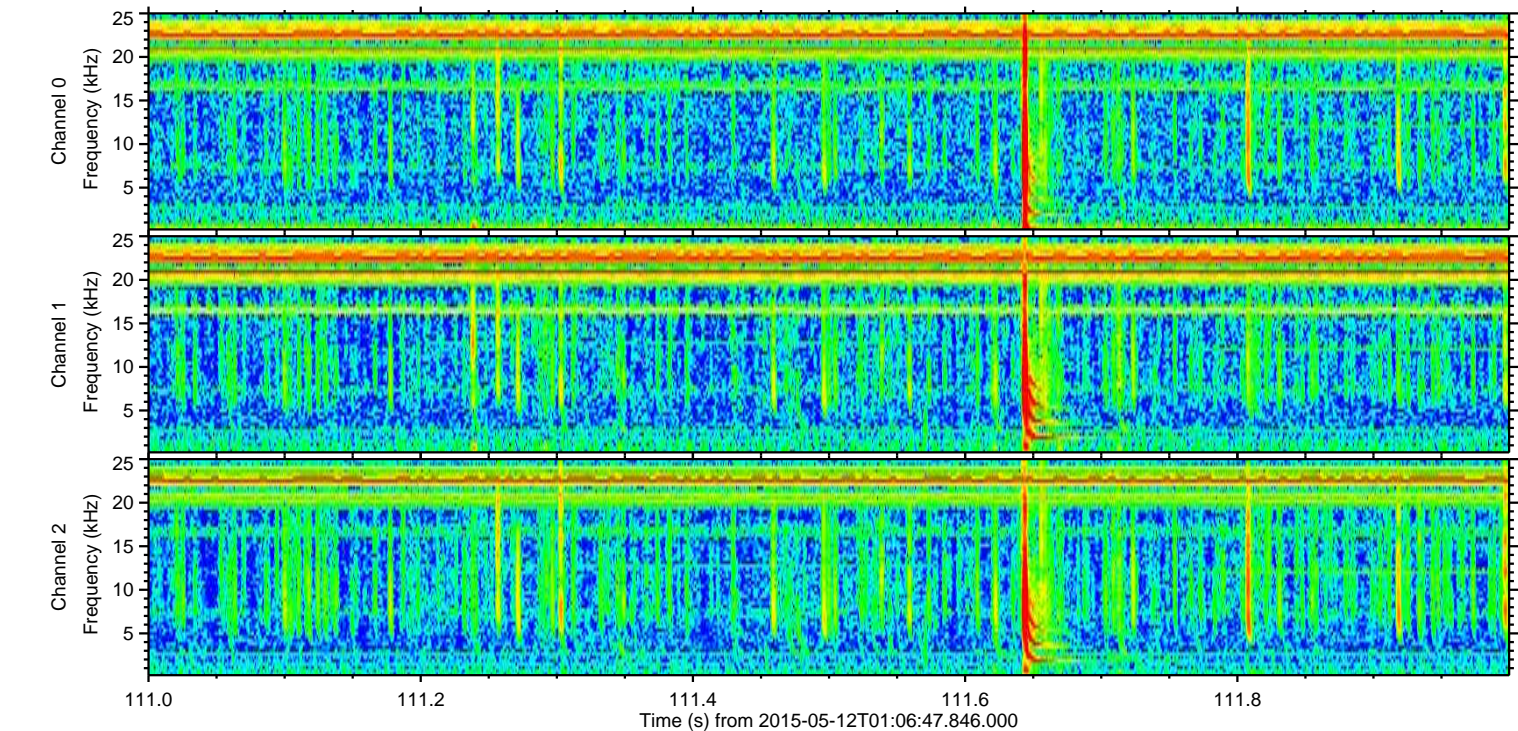
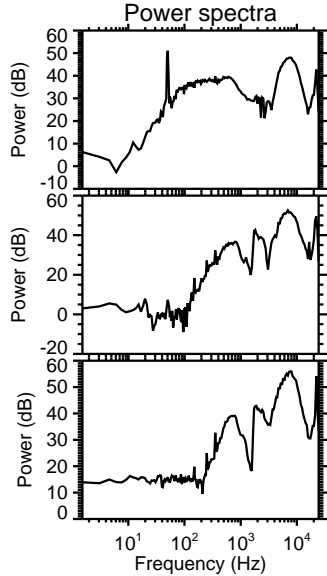
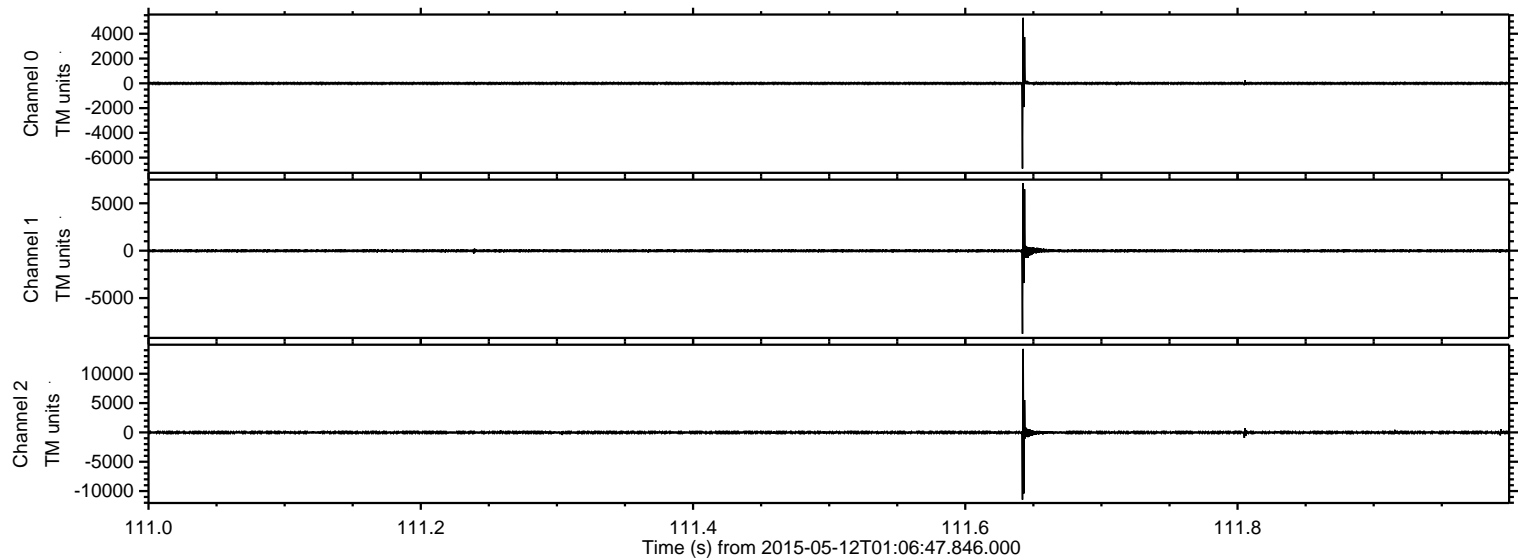
ELMAVAN 3D WAVEFORMS (Measured data sampled at 50 kHz) 49804 packets of 144 samples from 2015-05-12T01:06:47.846.000.

Processed Tue May 12 03:13:54 2015 by ELM ver.2012-10-06 from 001__elm20150512_010646__dat00.bin

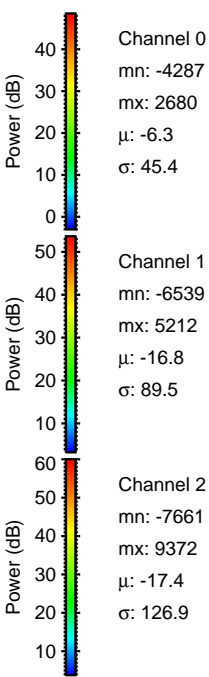
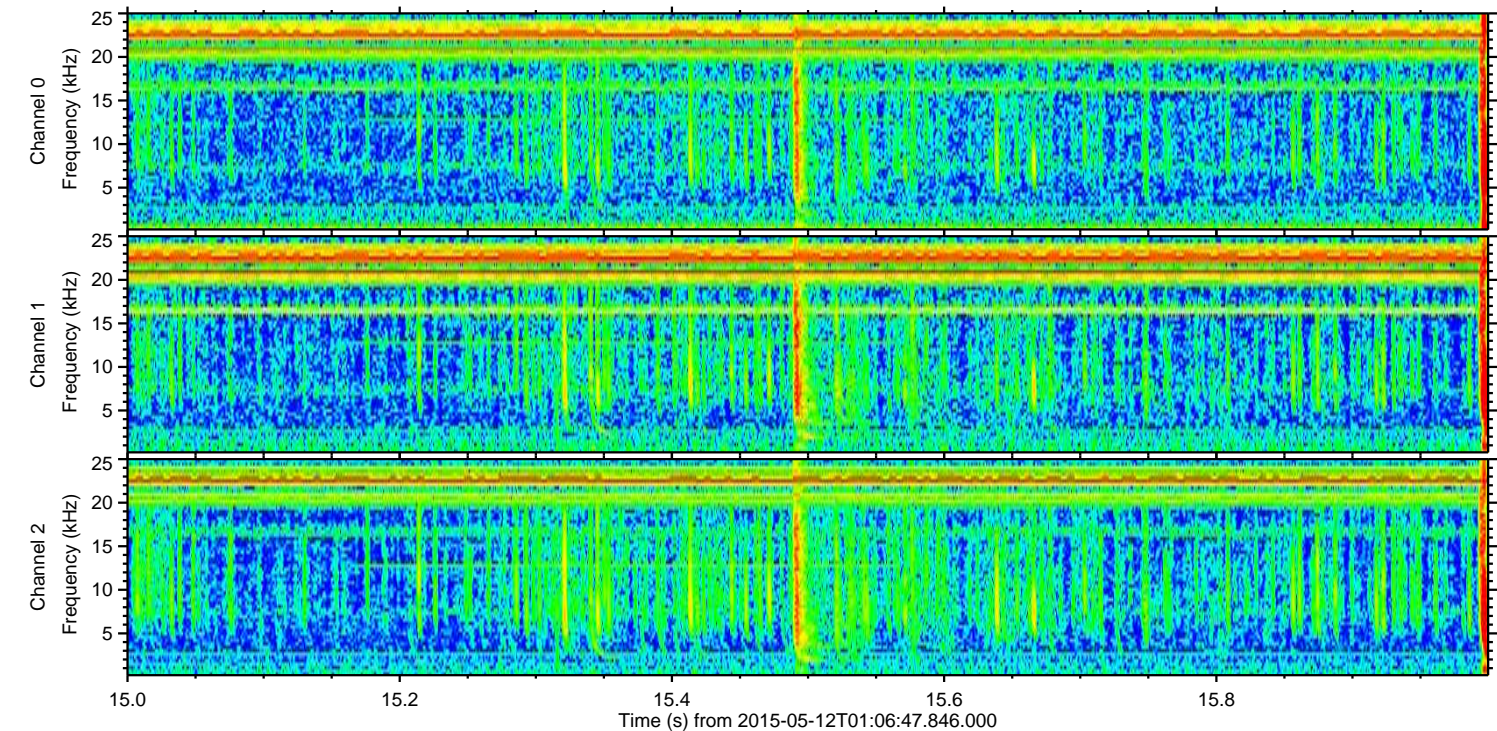
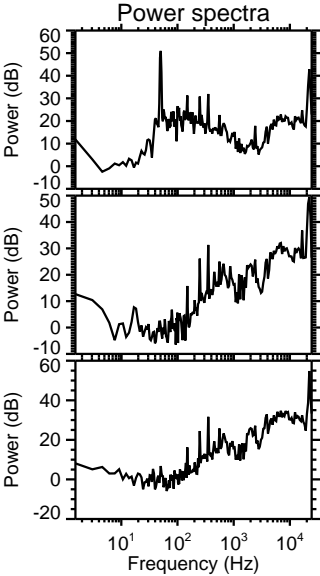
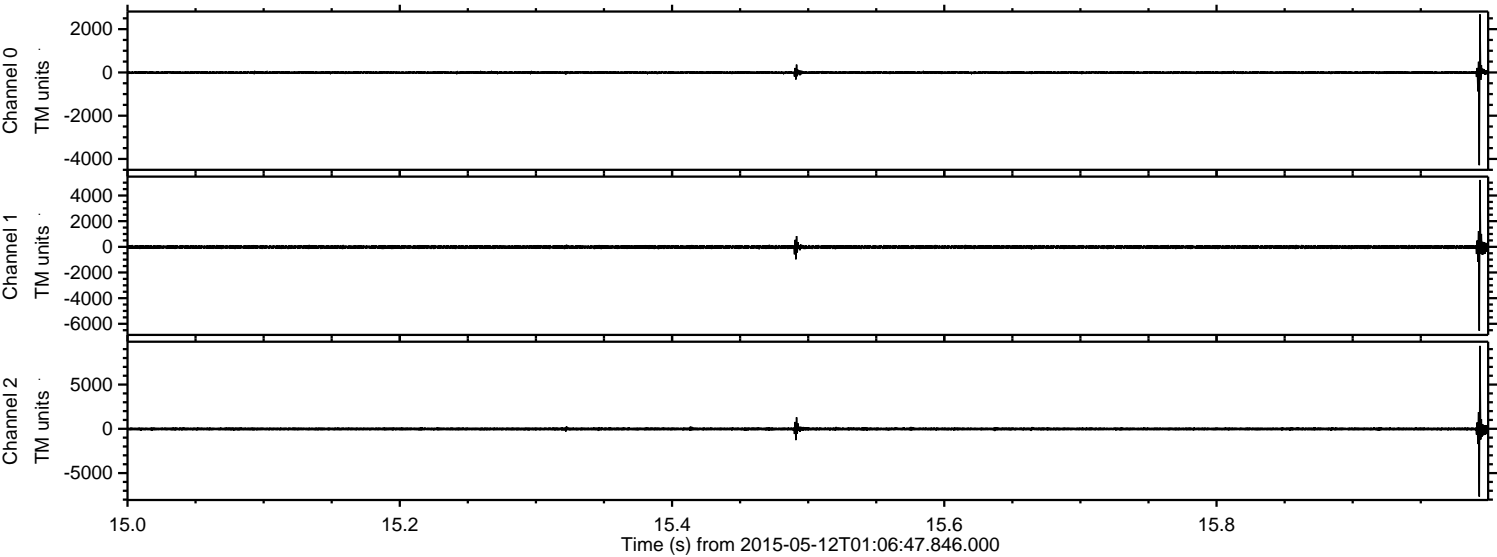


ELMAVAN 3D WAVEFORMS (Measured data sampled at 50 kHz) 49804 packets of 144 samples from 2015-05-12T01:06:47.846.000. Part 112/144

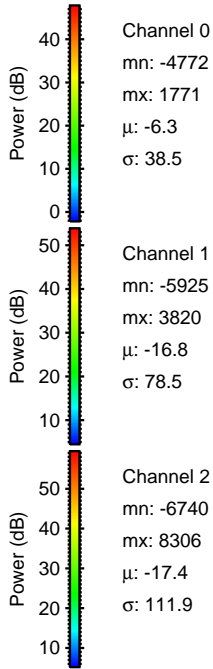
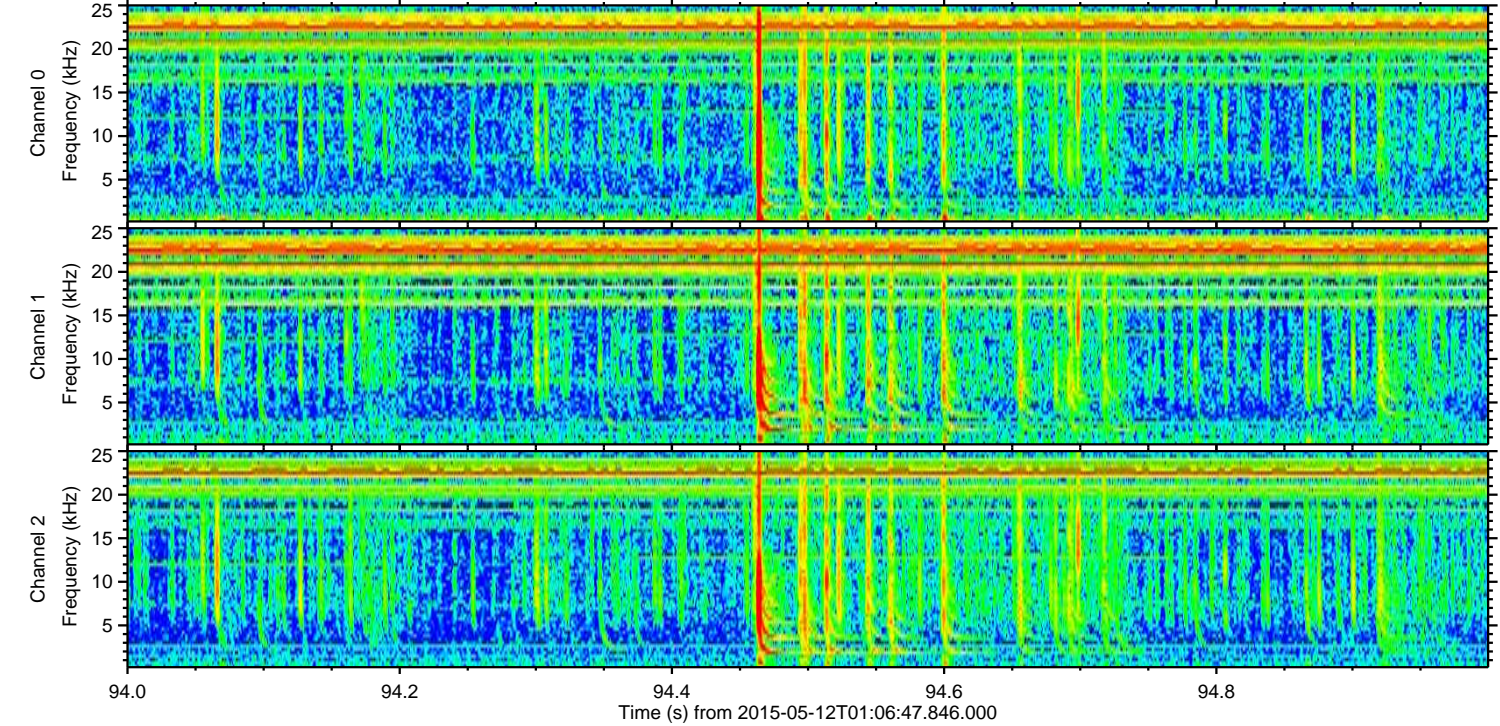
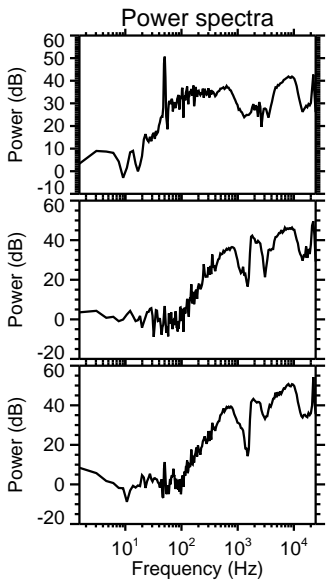
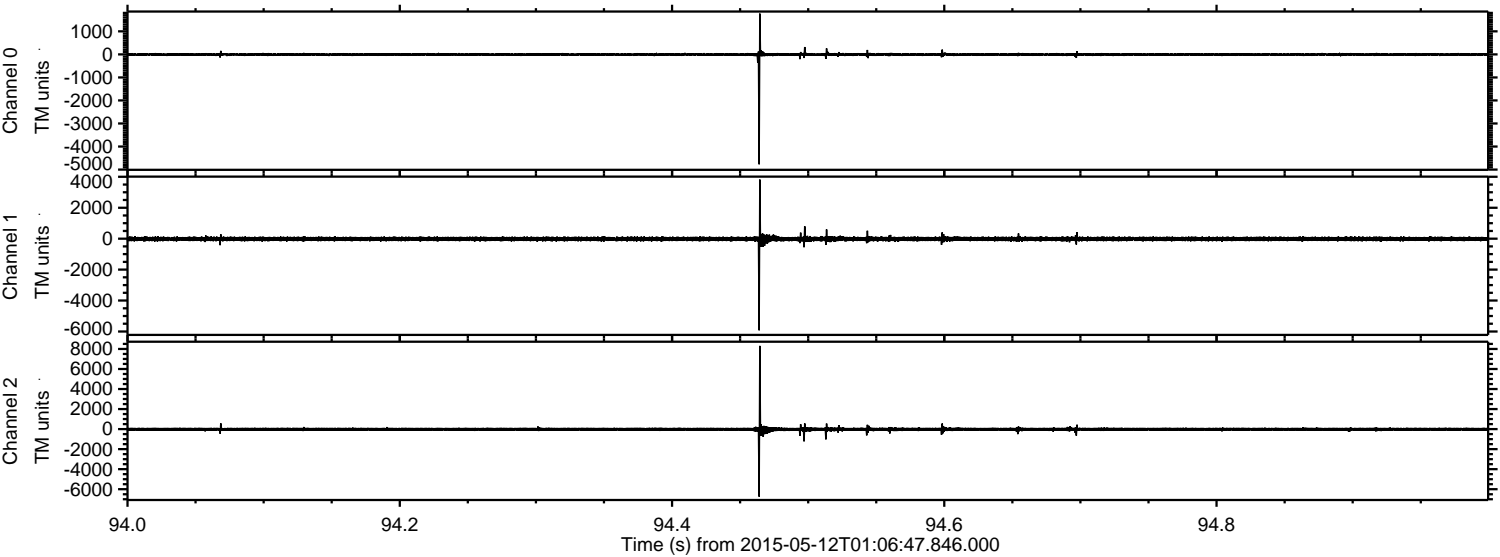
Processed Tue May 12 03:14:06 2015 by ELM ver.2012-10-06 from 001__elm20150512_010646__dat00.bin



Processed Tue May 12 03:14:07 2015 by ELM ver.2012-10-06 from 001__elm20150512_010646__dat00.bin



Processed Tue May 12 03:14:08 2015 by ELM ver.2012-10-06 from 001__elm20150512_010646__dat00.bin

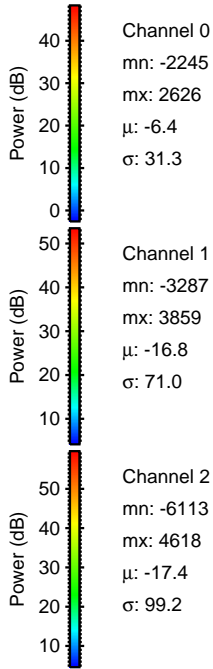
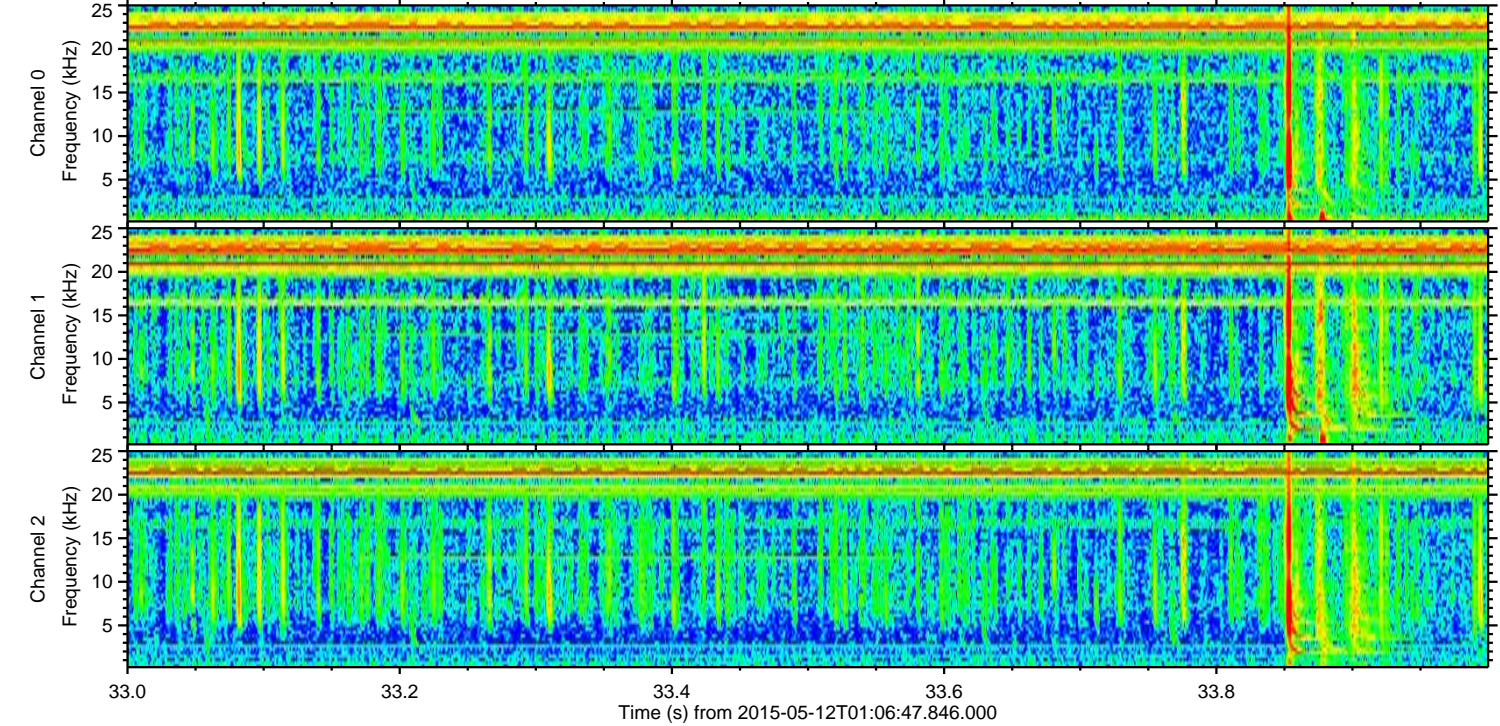
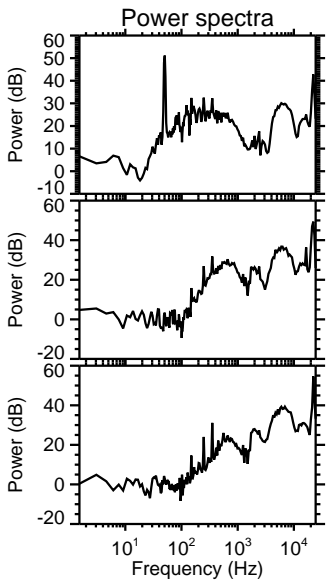
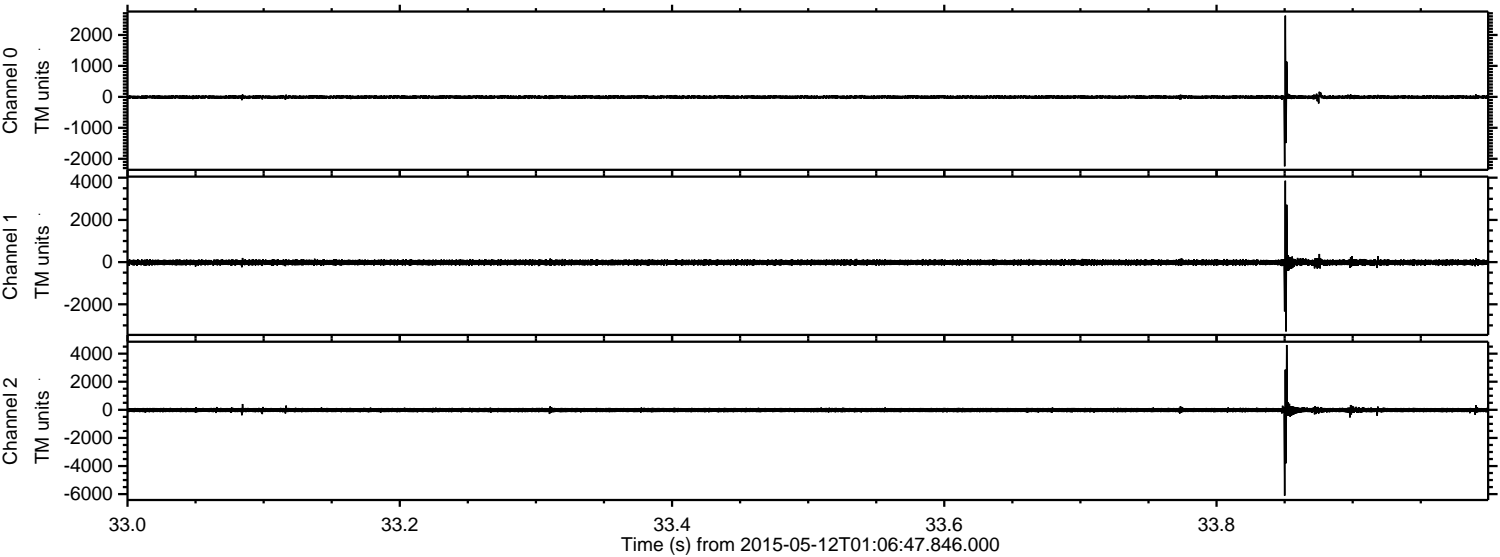


Channel 0
mn: -4772
mx: 1771
 μ : -6.3
 σ : 38.5

Channel 1
mn: -5925
mx: 3820
 μ : -16.8
 σ : 78.5

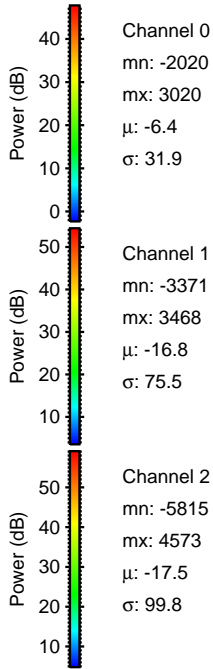
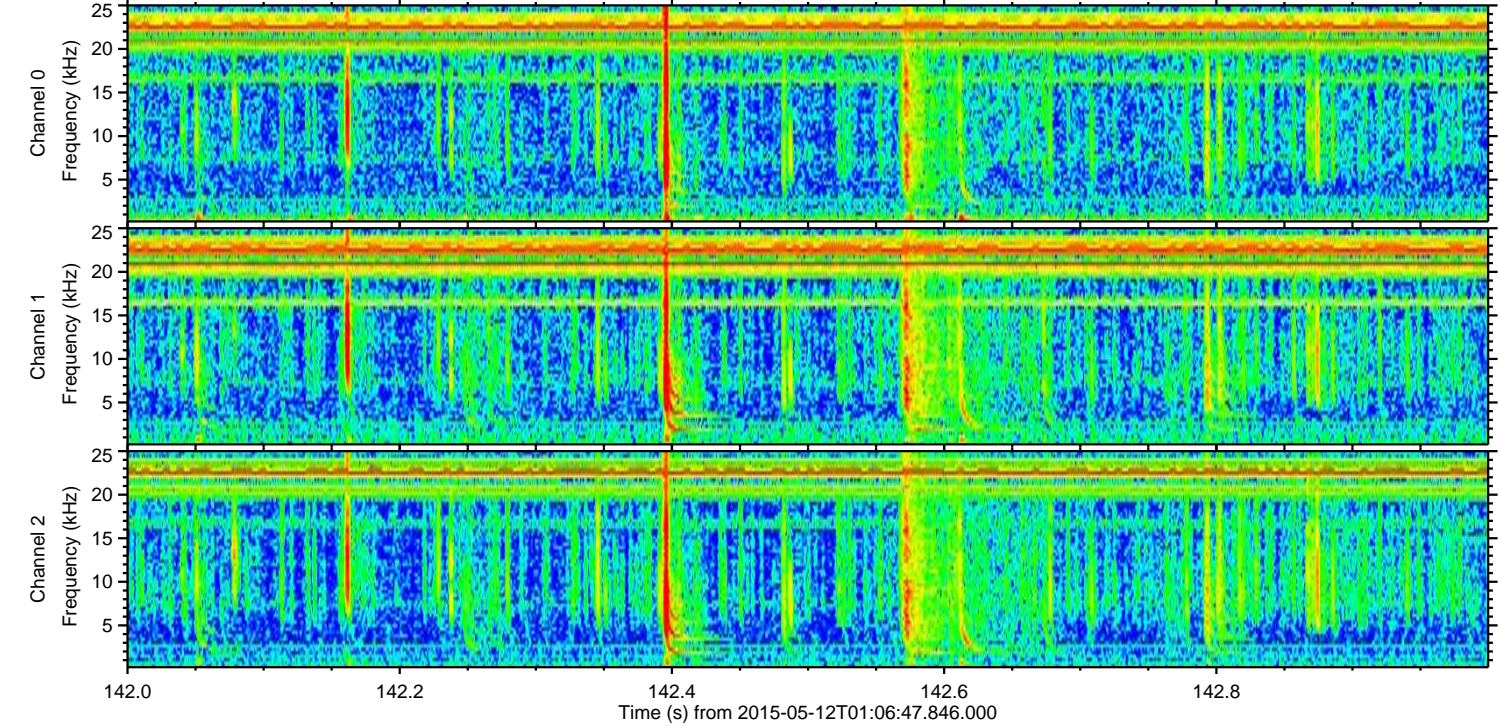
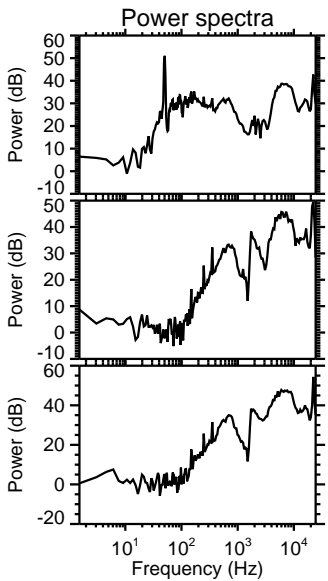
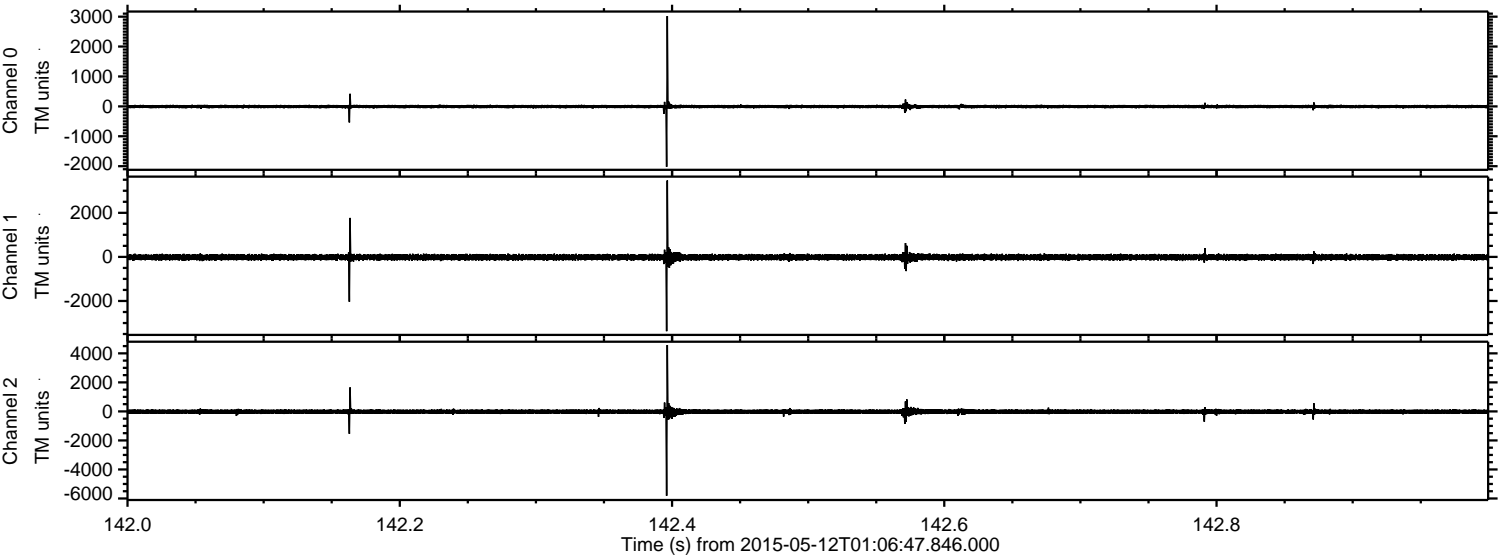
Channel 2
mn: -6740
mx: 8306
 μ : -17.4
 σ : 111.9

Processed Tue May 12 03:14:09 2015 by ELM ver.2012-10-06 from 001__elm20150512_010646__dat00.bin



ELMAVAN 3D WAVEFORMS (Measured data sampled at 50 kHz) 49804 packets of 144 samples from 2015-05-12T01:06:47.846.000. Part 143/144

Processed Tue May 12 03:14:10 2015 by ELM ver.2012-10-06 from 001__elm20150512_010646__dat00.bin

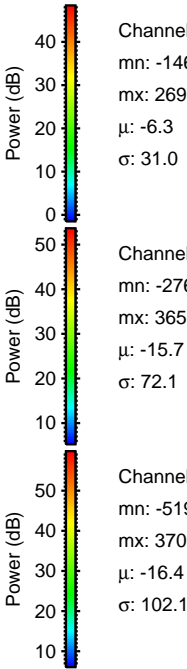
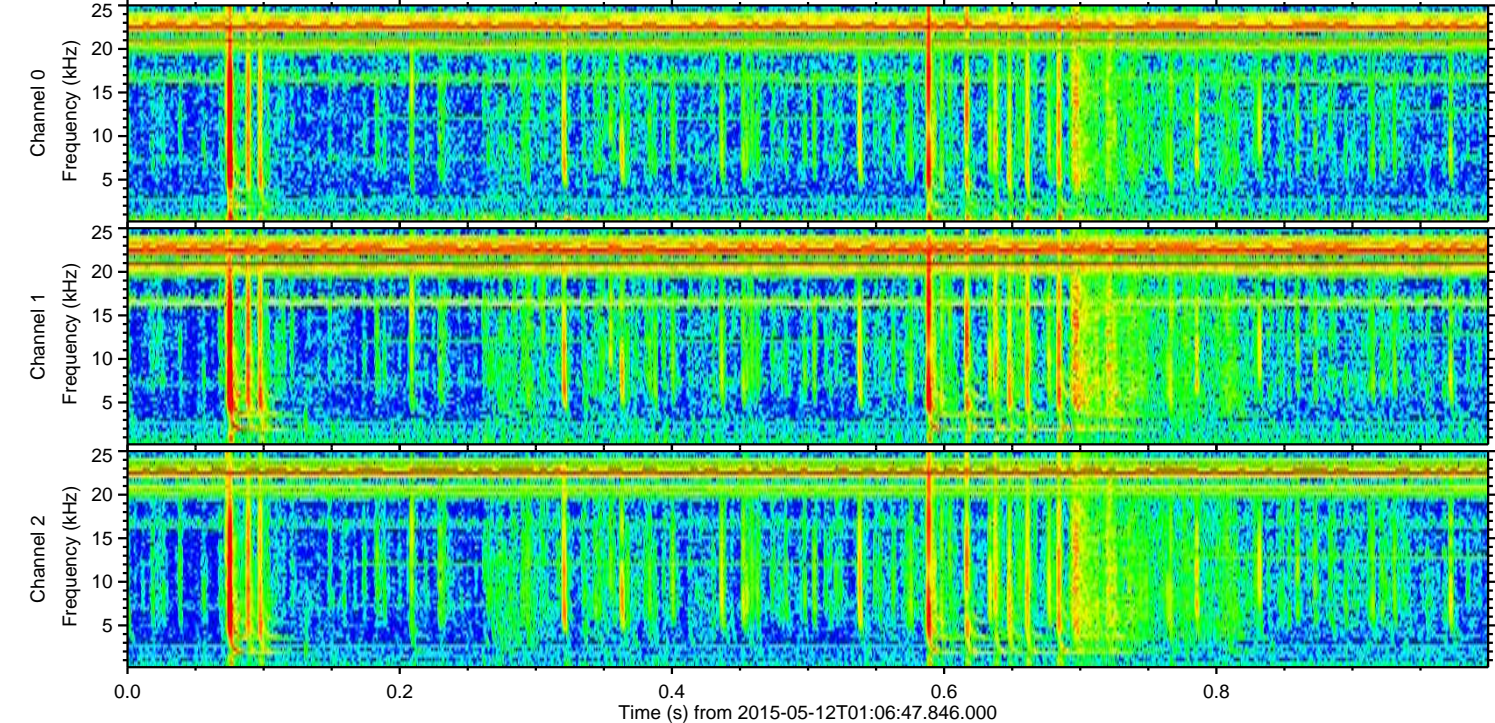
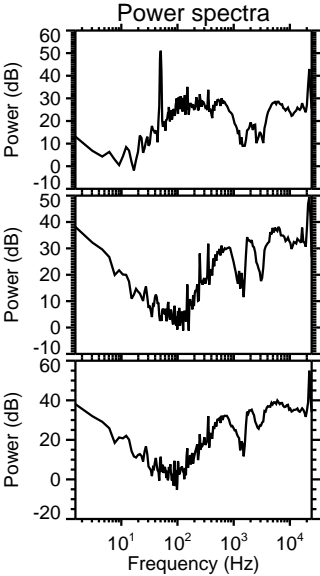
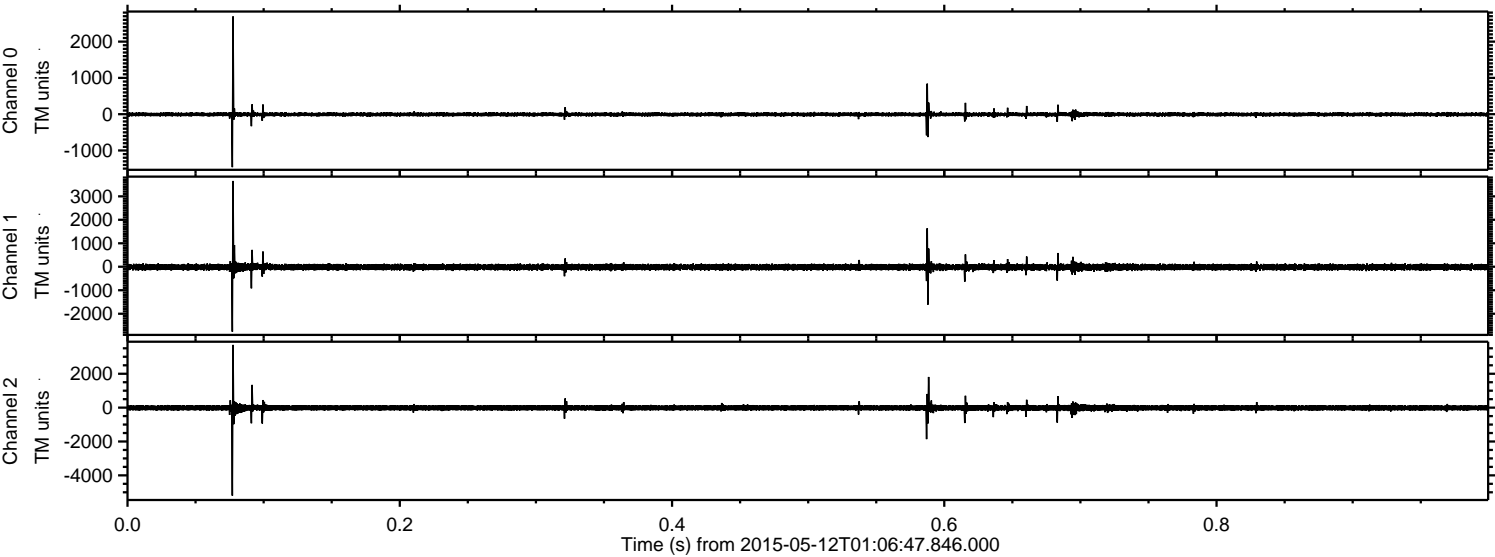


Channel 0
mn: -2020
mx: 3020
 μ : -6.4
 σ : 31.9

Channel 1
mn: -3371
mx: 3468
 μ : -16.8
 σ : 75.5

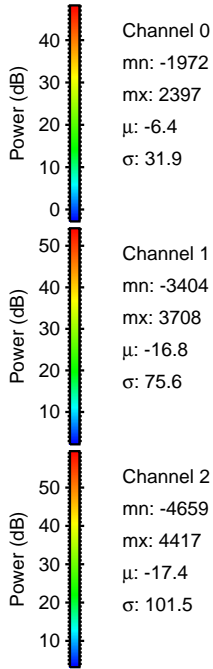
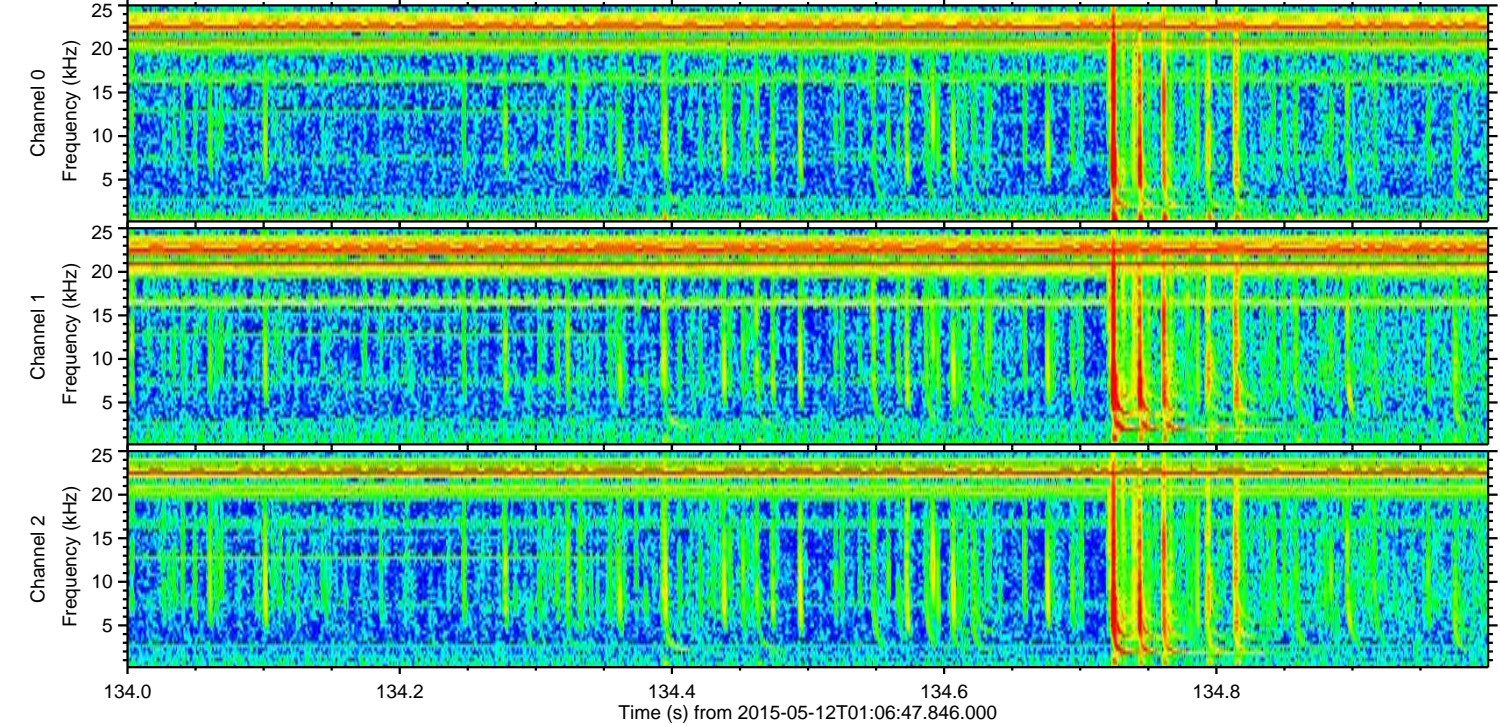
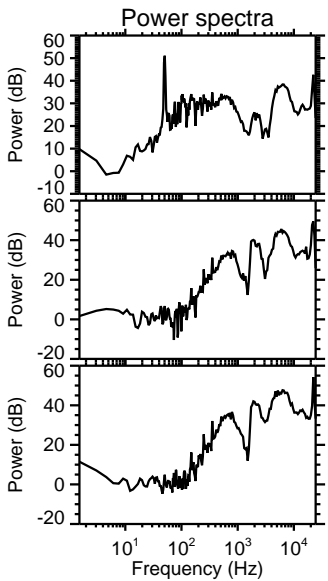
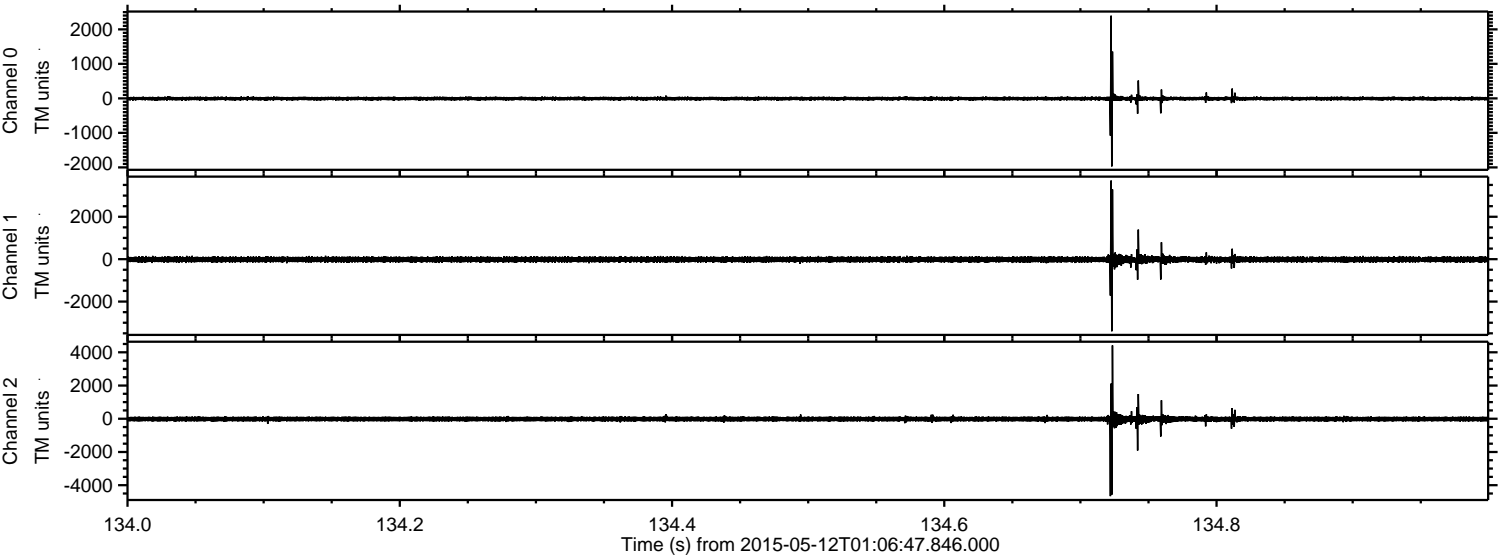
Channel 2
mn: -5815
mx: 4573
 μ : -17.5
 σ : 99.8

Processed Tue May 12 03:14:11 2015 by ELM ver.2012-10-06 from 001__elm20150512_010646__dat00.bin



ELMAVAN 3D WAVEFORMS (Measured data sampled at 50 kHz) 49804 packets of 144 samples from 2015-05-12T01:06:47.846.000. Part 135/144

Processed Tue May 12 03:14:12 2015 by ELM ver.2012-10-06 from 001__elm20150512_010646__dat00.bin

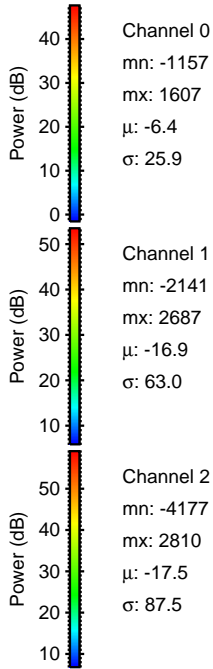
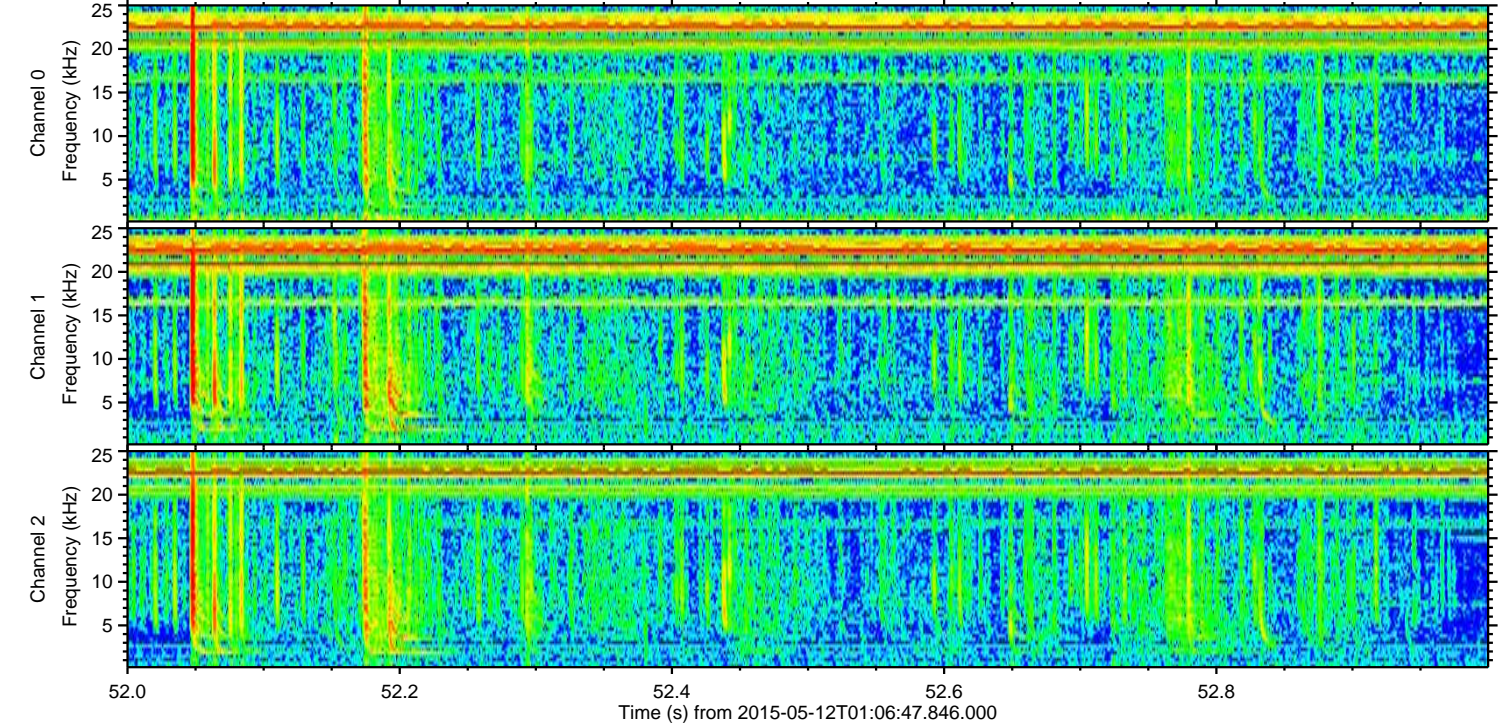
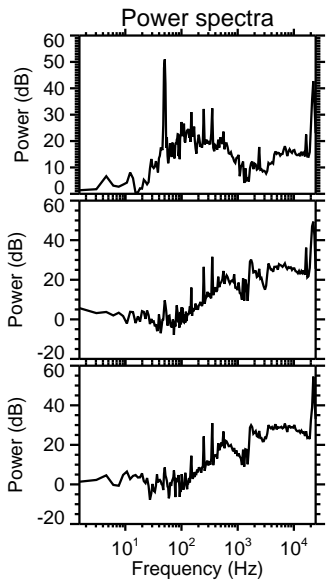
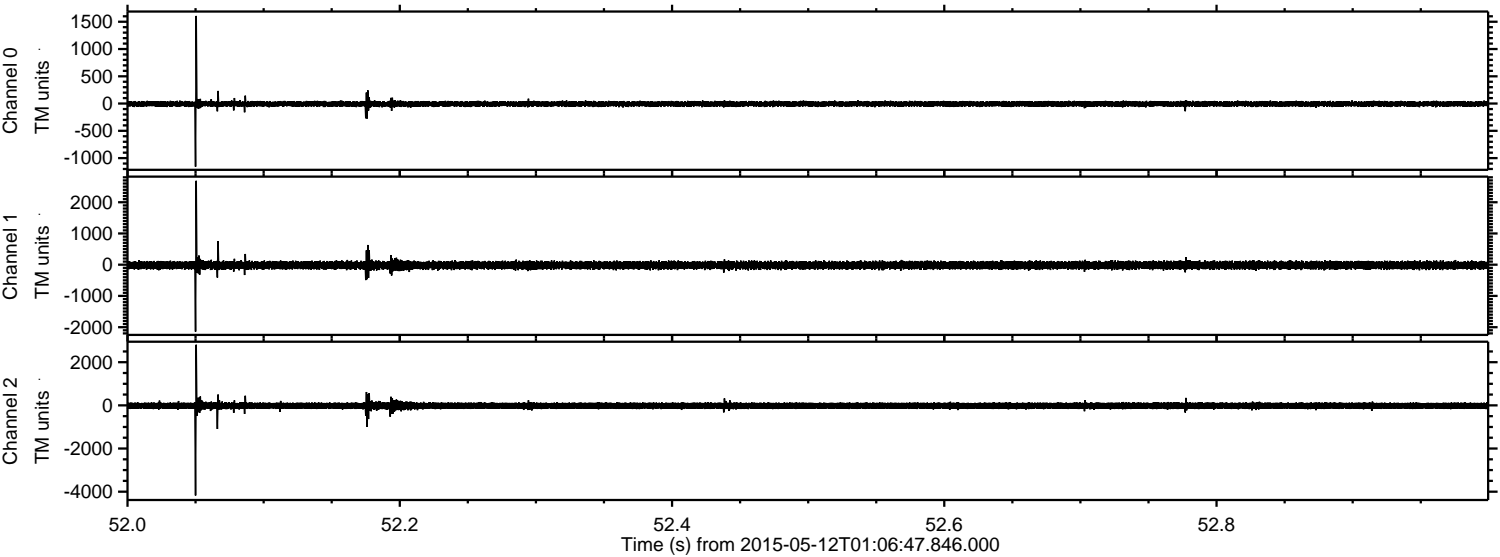


Channel 0
mn: -1972
mx: 2397
 μ : -6.4
 σ : 31.9

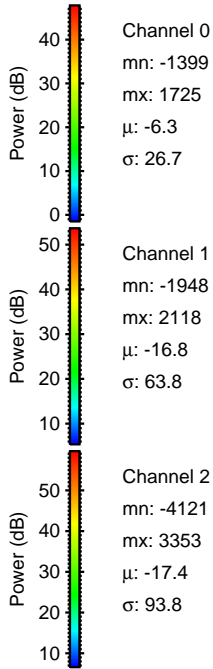
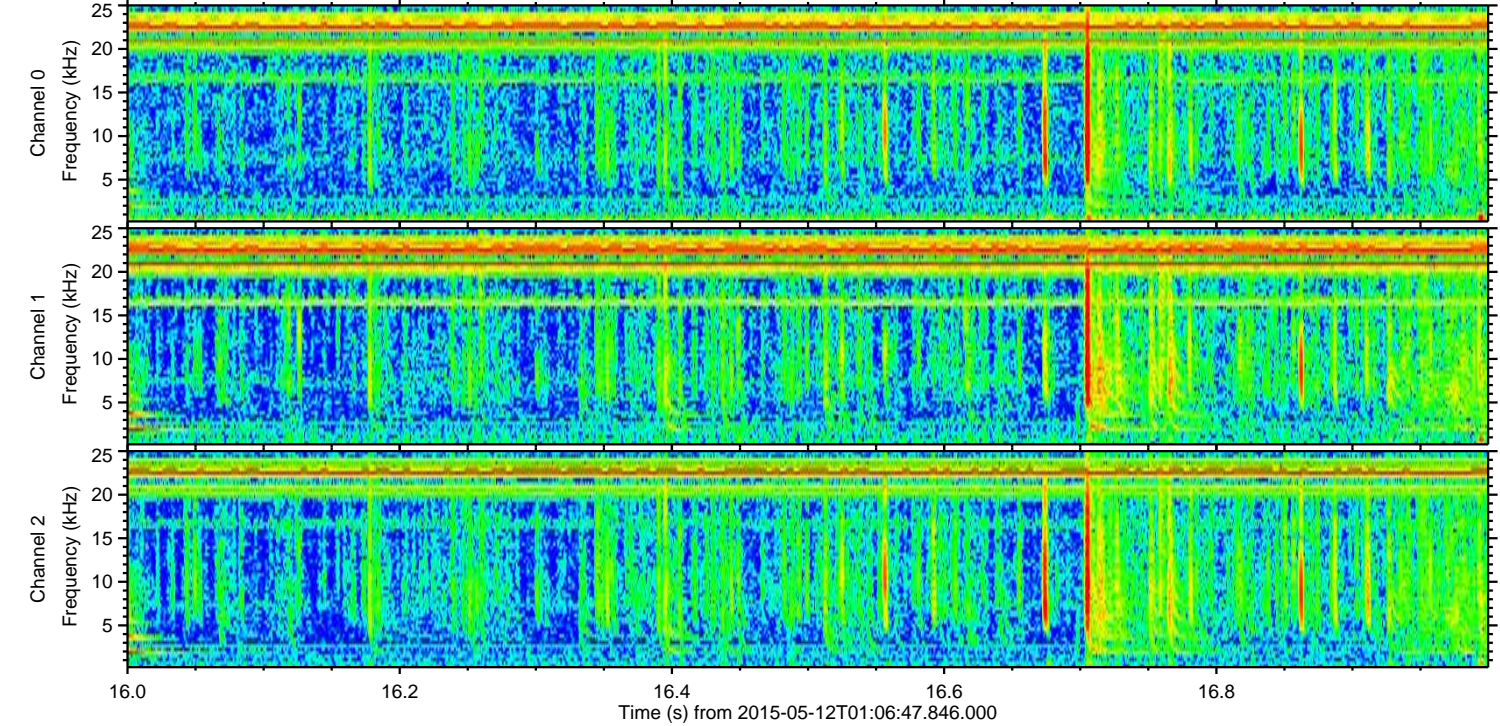
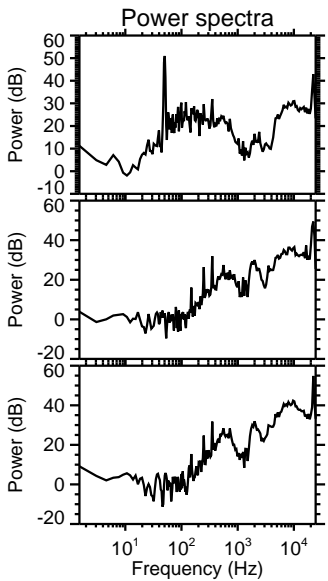
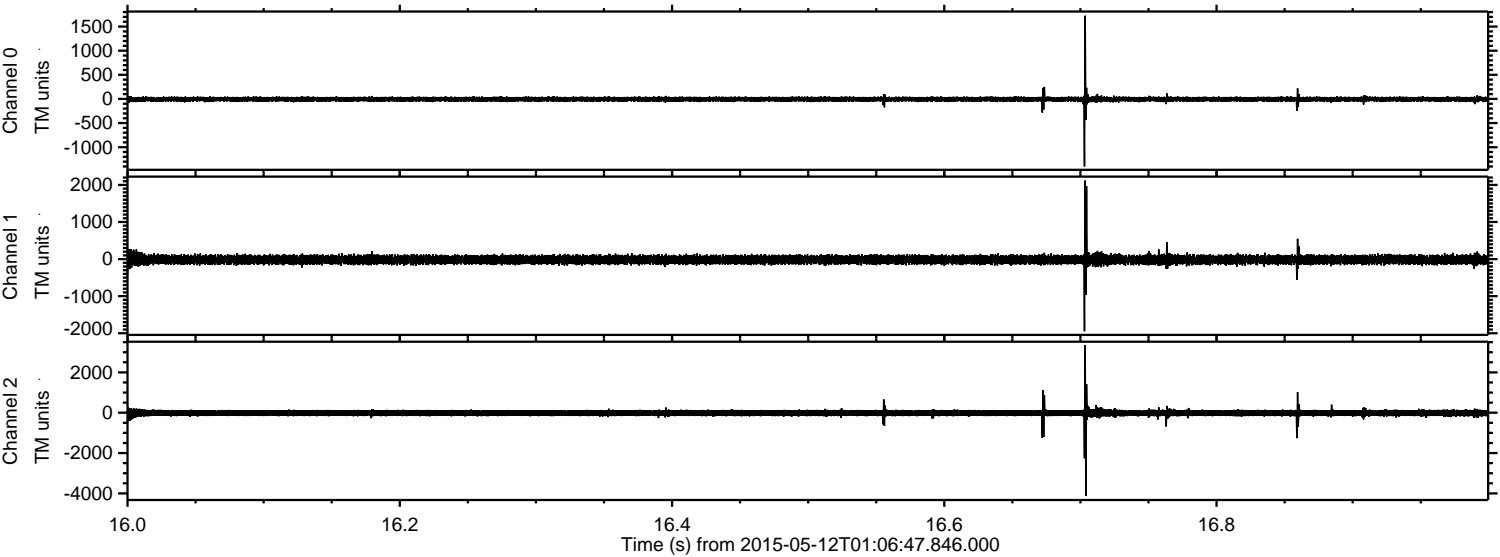
Channel 1
mn: -3404
mx: 3708
 μ : -16.8
 σ : 75.6

Channel 2
mn: -4659
mx: 4417
 μ : -17.4
 σ : 101.5

Processed Tue May 12 03:14:12 2015 by ELM ver.2012-10-06 from 001__elm20150512_010646__dat00.bin



Processed Tue May 12 03:14:13 2015 by ELM ver.2012-10-06 from 001__elm20150512_010646__dat00.bin



Processed Tue May 12 03:14:14 2015 by ELM ver.2012-10-06 from 001__elm20150512_010646__dat00.bin

