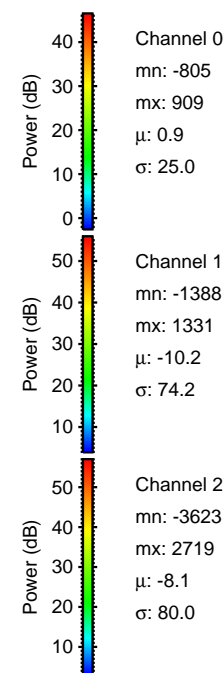
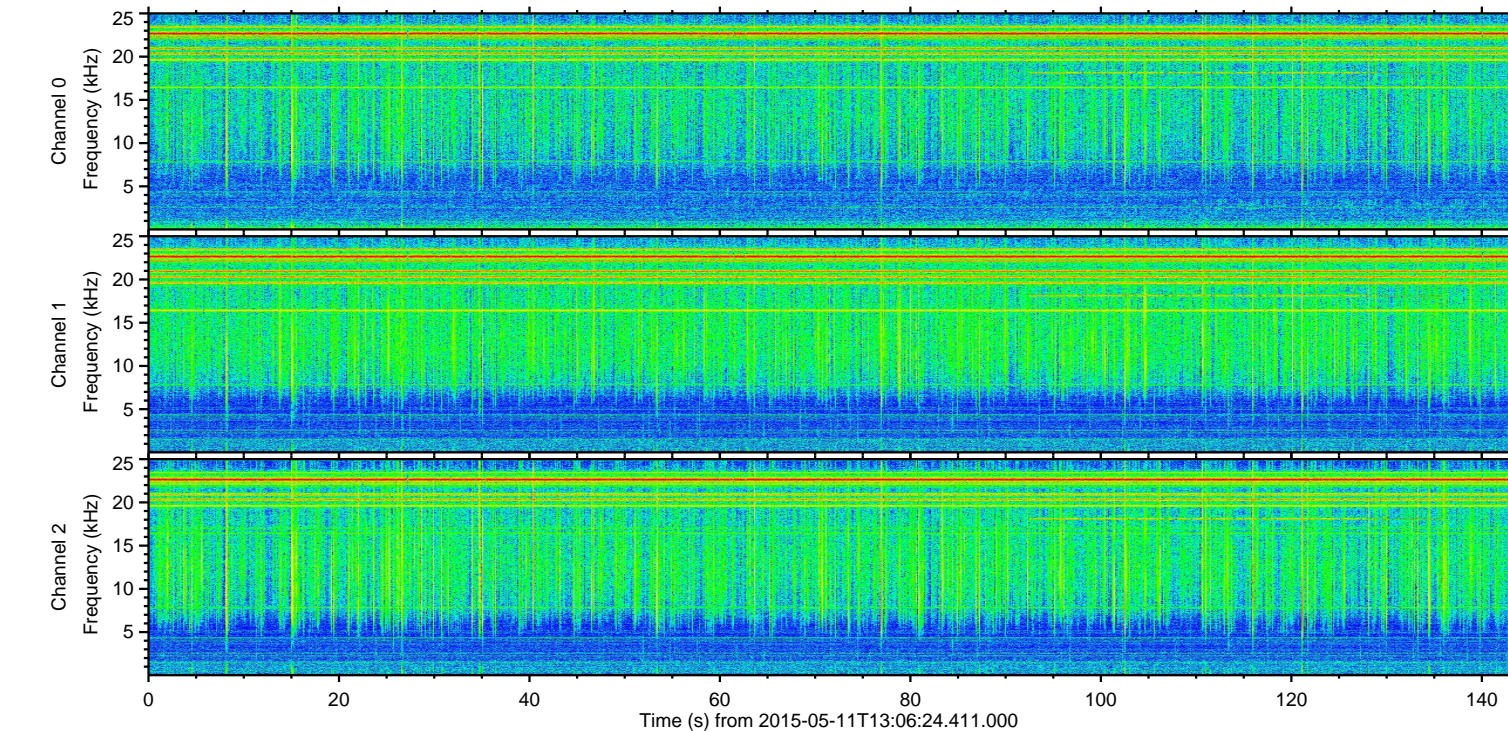
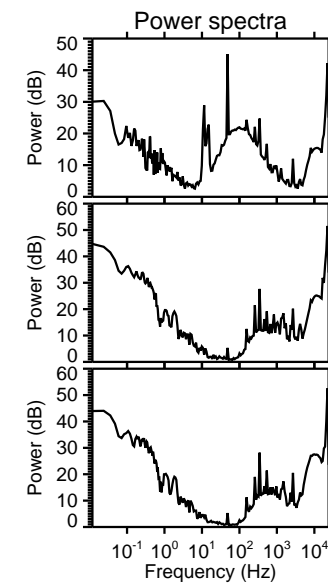
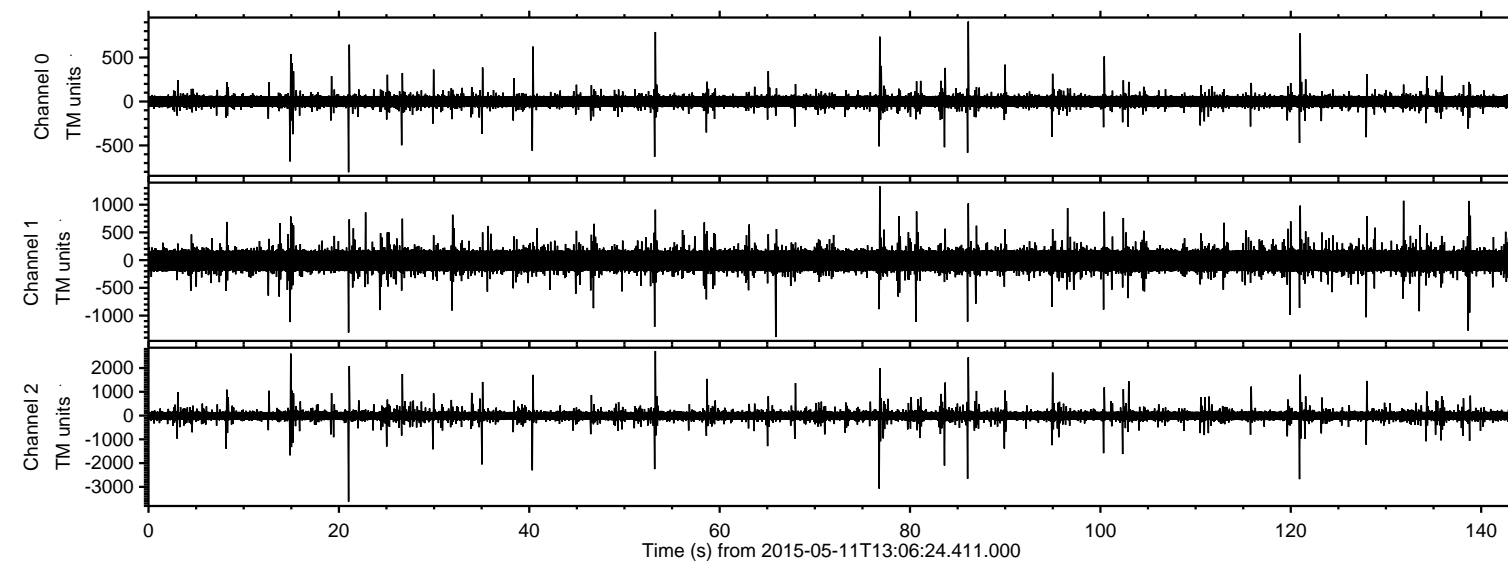


ELMAVAN 3D WAVEFORMS (Measured data sampled at 50 kHz) 49632 packets of 144 samples from 2015-05-11T13:06:24.411.000.

Processed Mon May 11 15:13:20 2015 by ELM ver.2012-10-06 from 001__elm20150511_130623__dat00.bin



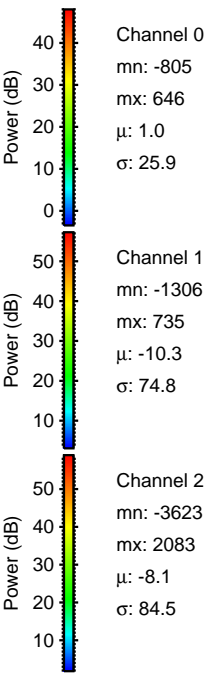
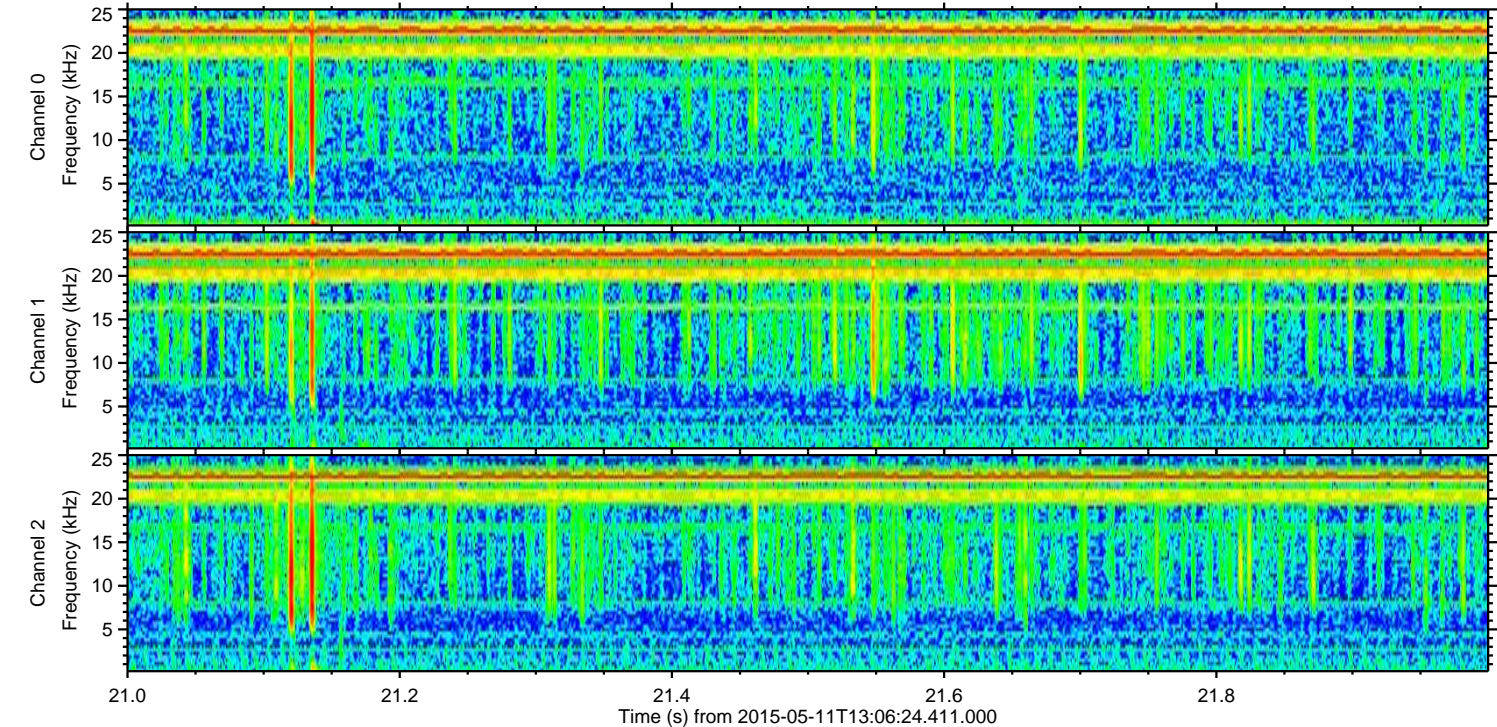
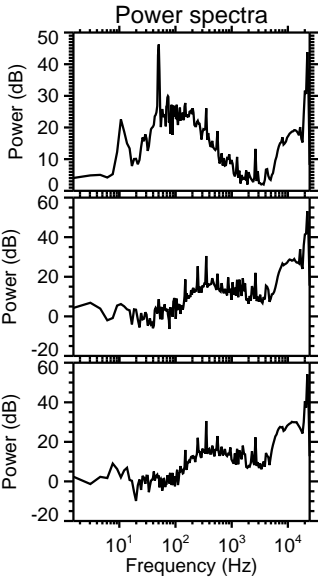
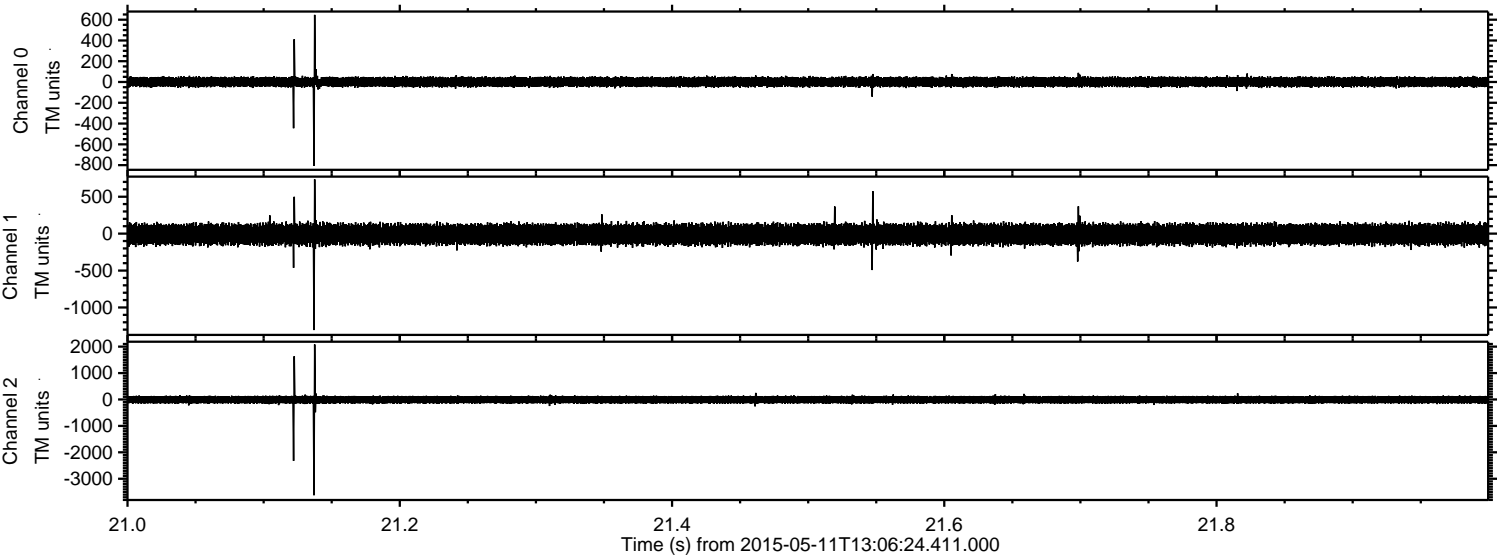
Channel 0
mn: -805
mx: 909
 μ : 0.9
 σ : 25.0

Channel 1
mn: -1388
mx: 1331
 μ : -10.2
 σ : 74.2

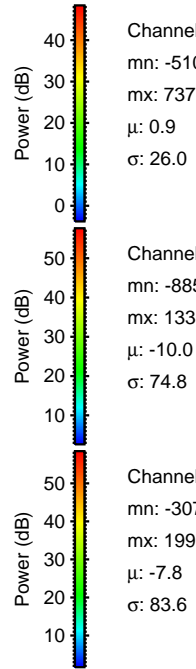
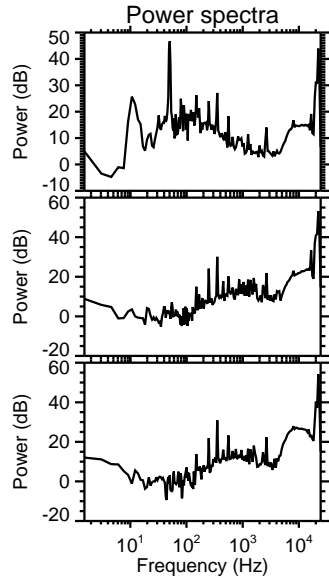
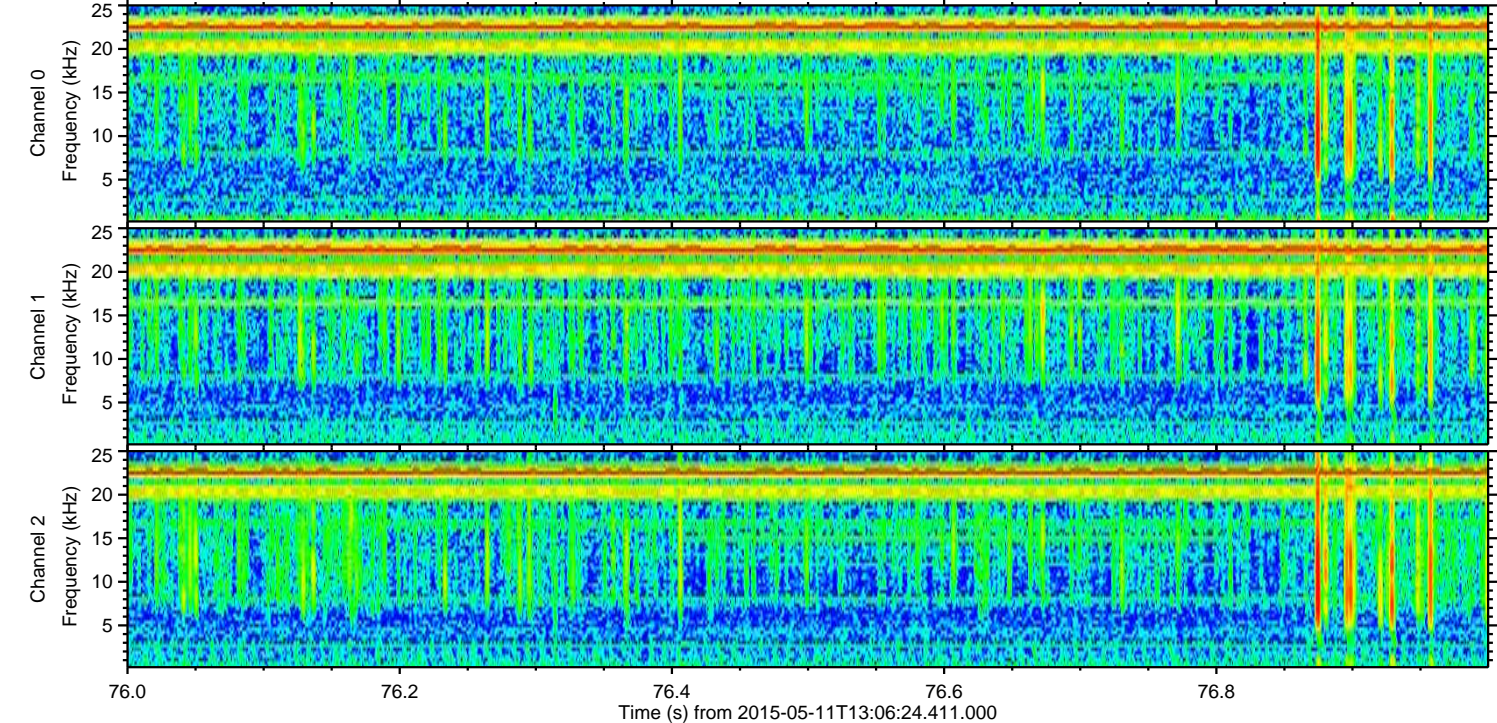
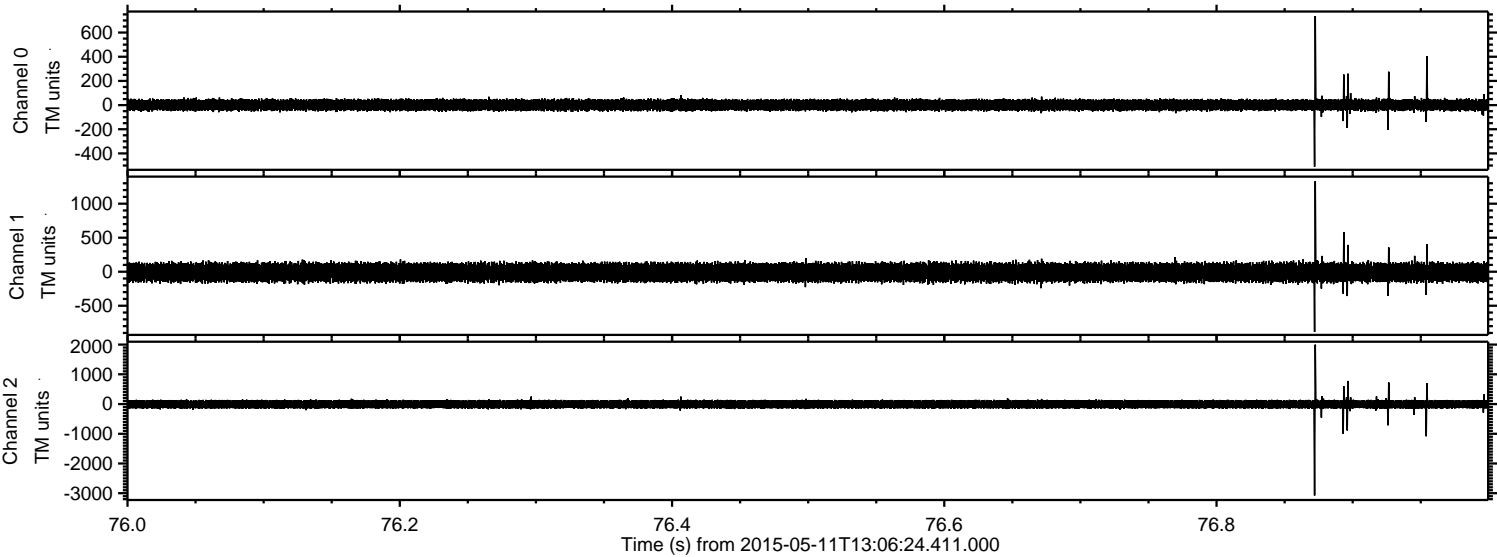
Channel 2
mn: -3623
mx: 2719
 μ : -8.1
 σ : 80.0

ELMAVAN 3D WAVEFORMS (Measured data sampled at 50 kHz) 49632 packets of 144 samples from 2015-05-11T13:06:24.411.000. Part 22/143

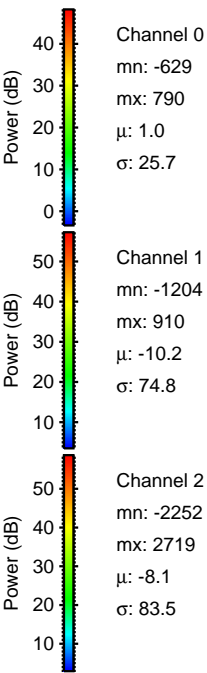
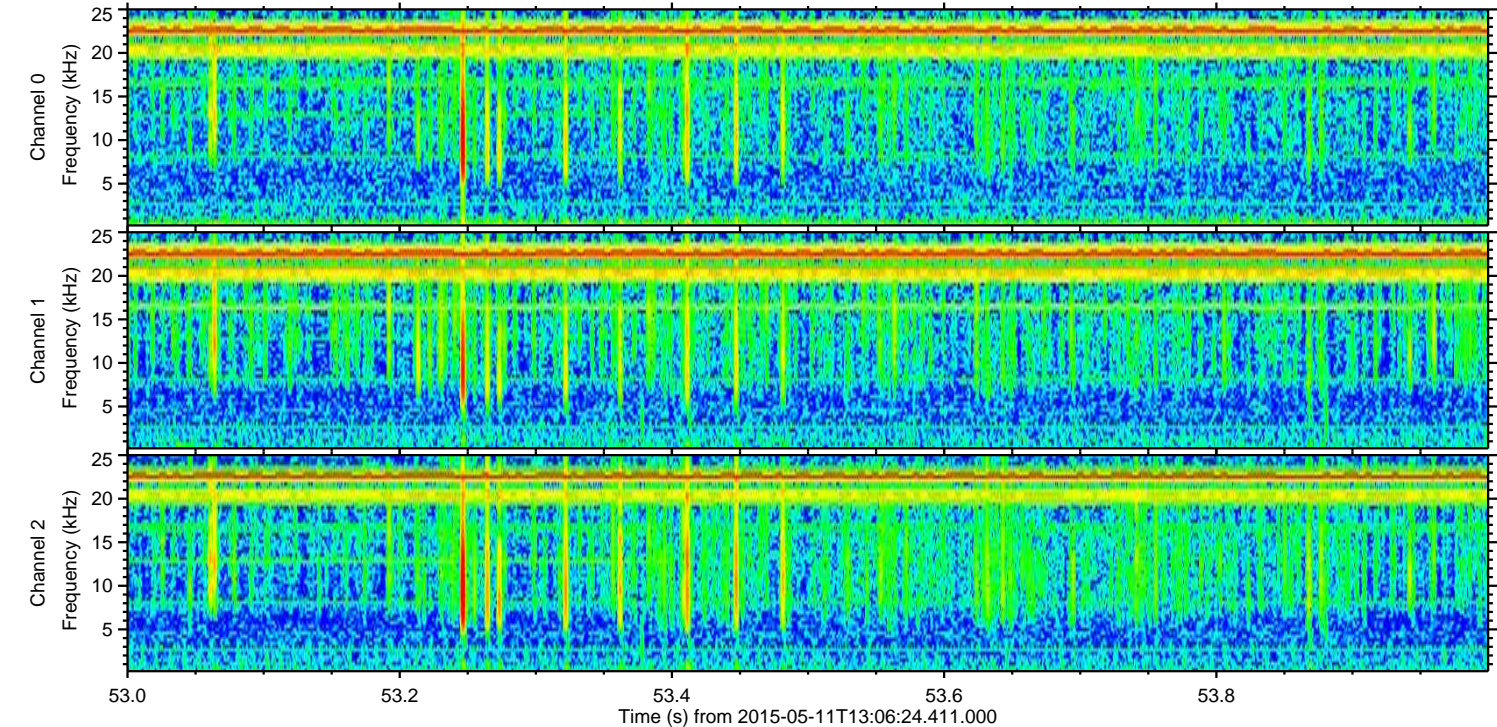
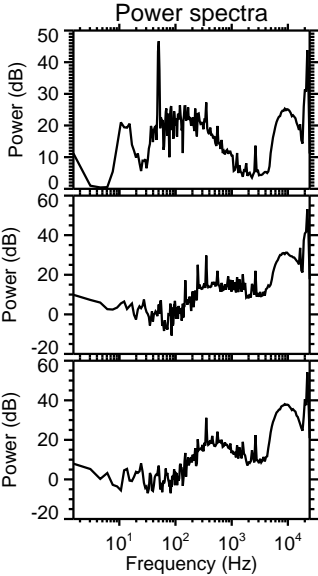
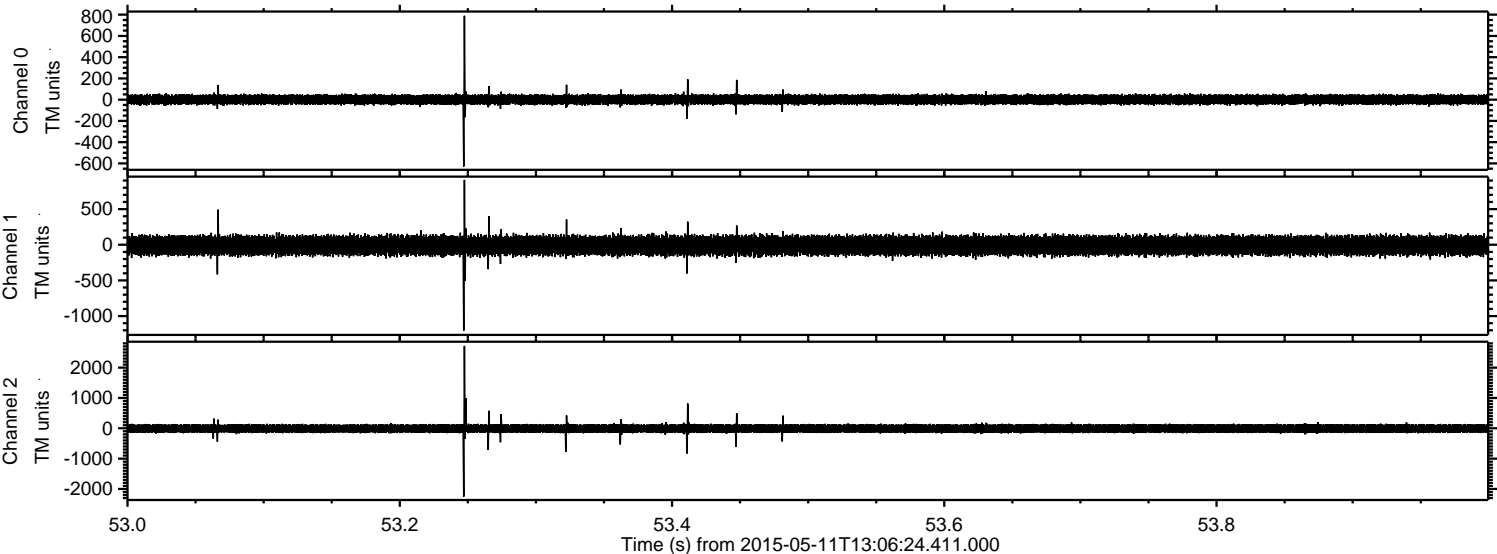
Processed Mon May 11 15:13:35 2015 by ELM ver.2012-10-06 from 001__elm20150511_130623__dat00.bin



Processed Mon May 11 15:13:36 2015 by ELM ver.2012-10-06 from 001__elm20150511_130623__dat00.bin

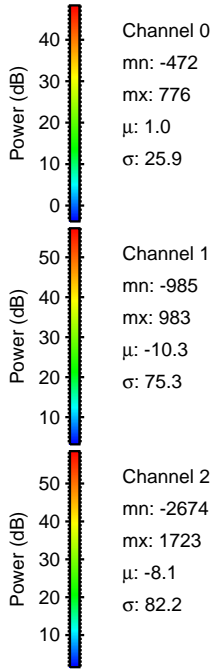
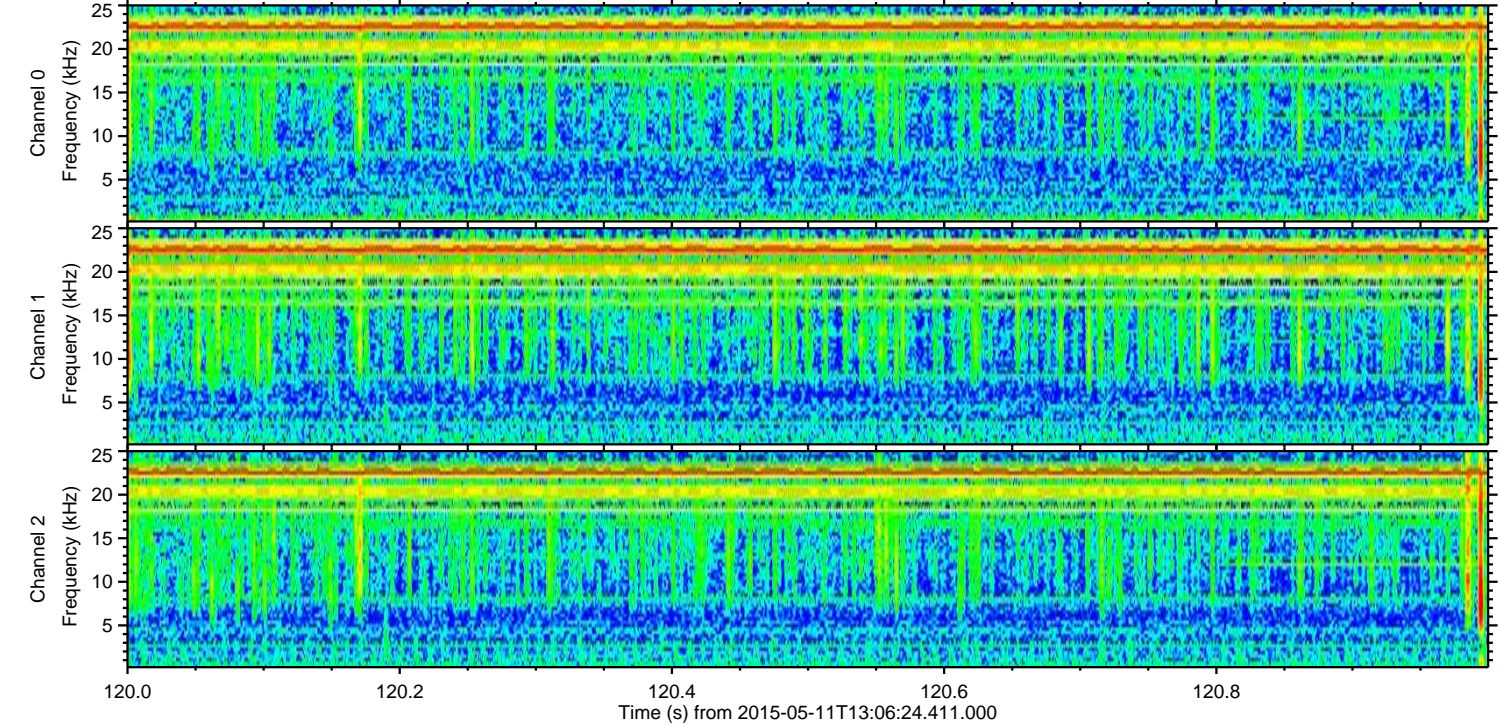
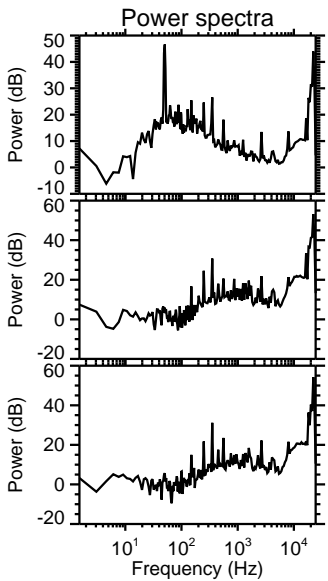
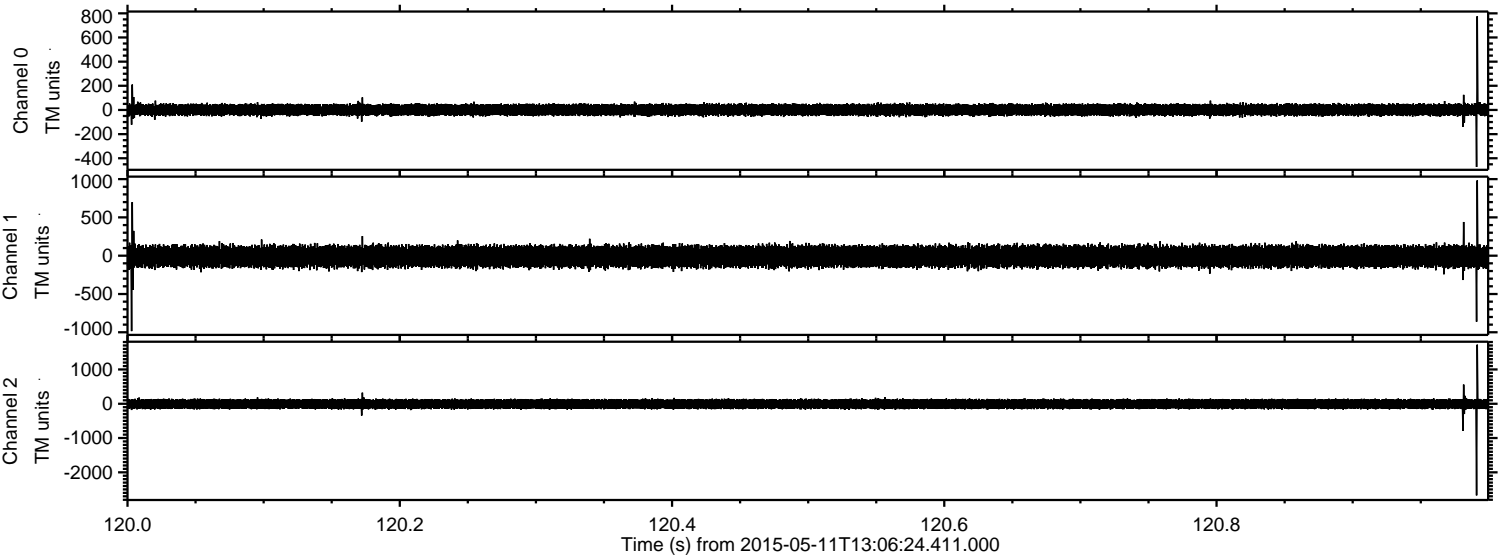


Processed Mon May 11 15:13:38 2015 by ELM ver.2012-10-06 from 001__elm20150511_130623__dat00.bin

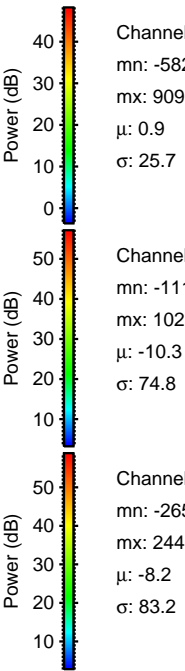
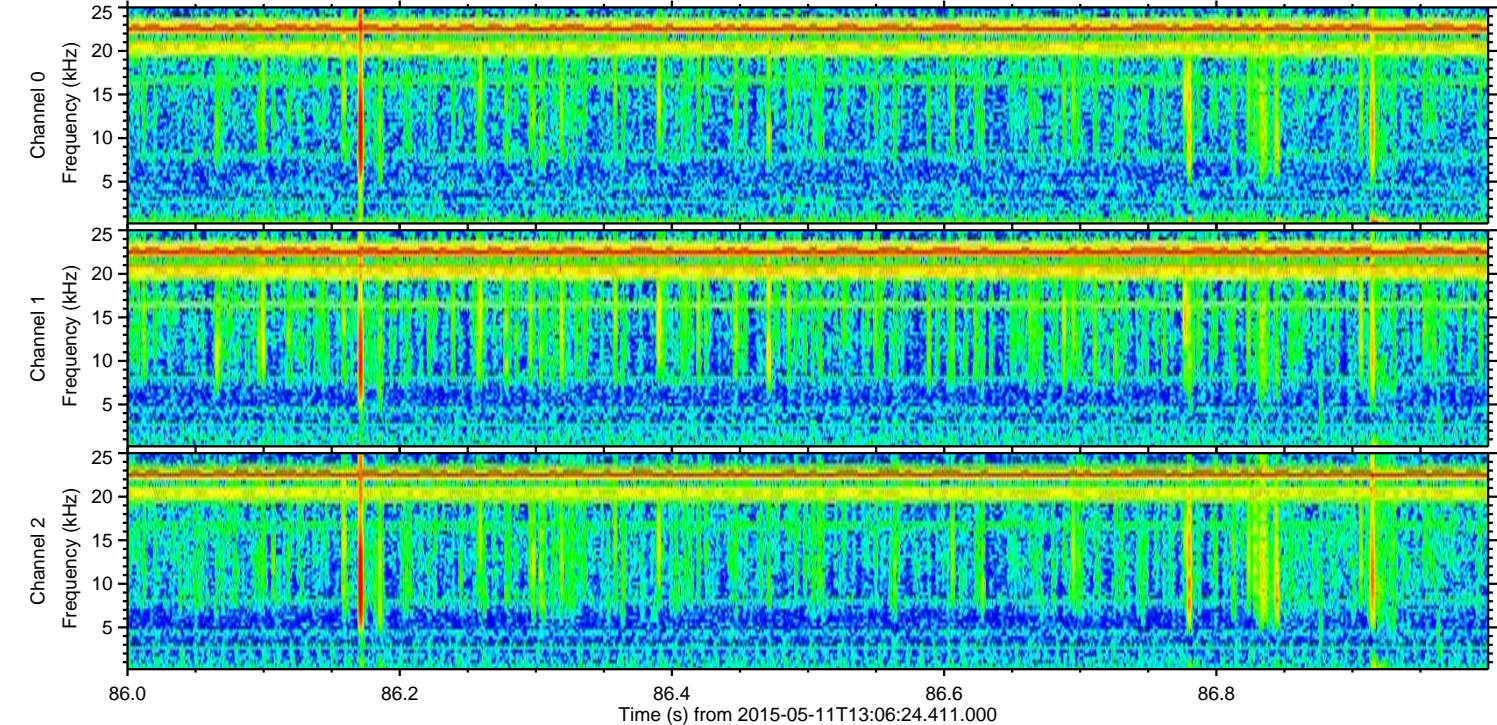
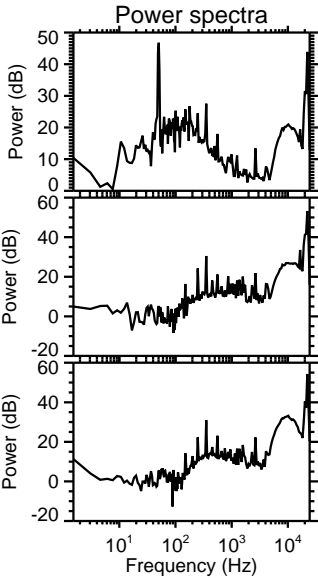
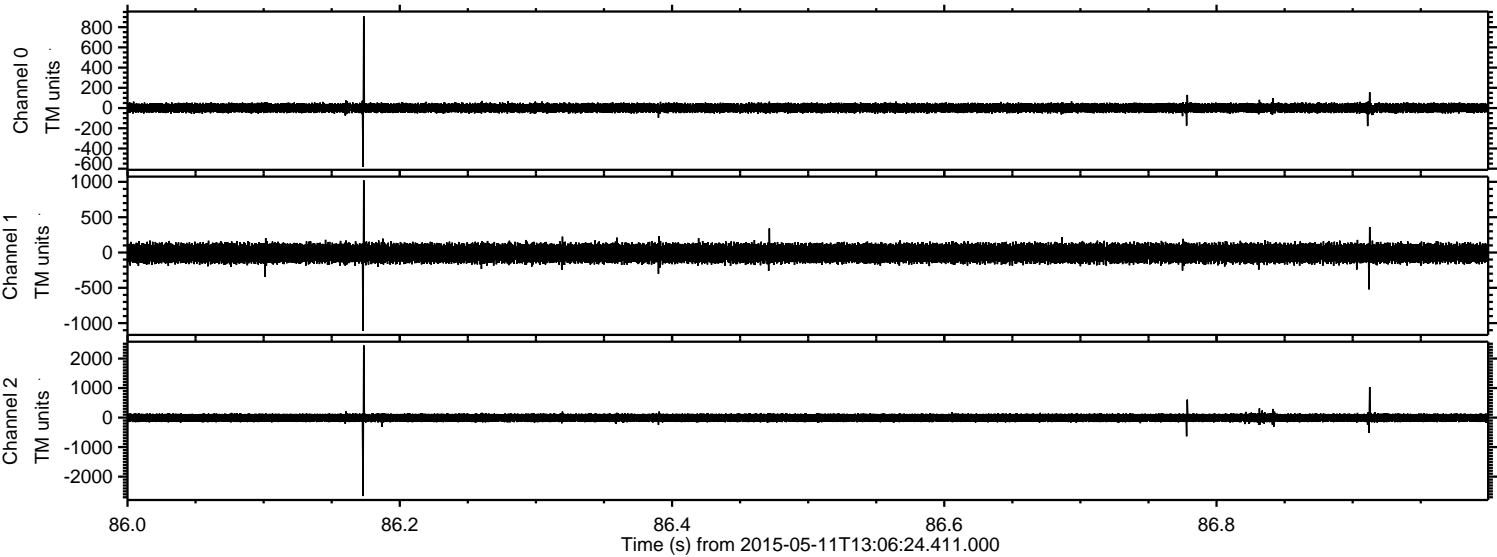


ELMAVAN 3D WAVEFORMS (Measured data sampled at 50 kHz) 49632 packets of 144 samples from 2015-05-11T13:06:24.411.000. Part 121/143

Processed Mon May 11 15:13:38 2015 by ELM ver.2012-10-06 from 001__elm20150511_130623__dat00.bin



Processed Mon May 11 15:13:40 2015 by ELM ver.2012-10-06 from 001__elm20150511_130623__dat00.bin

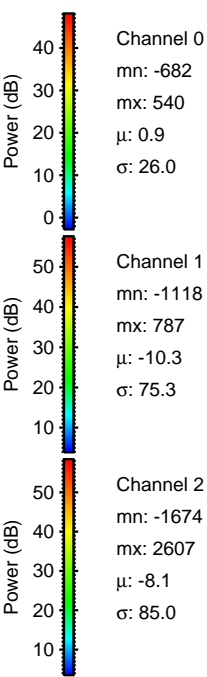
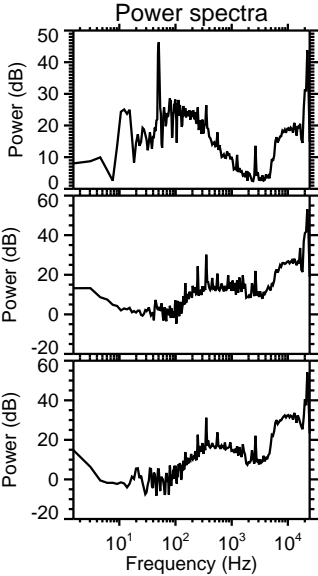
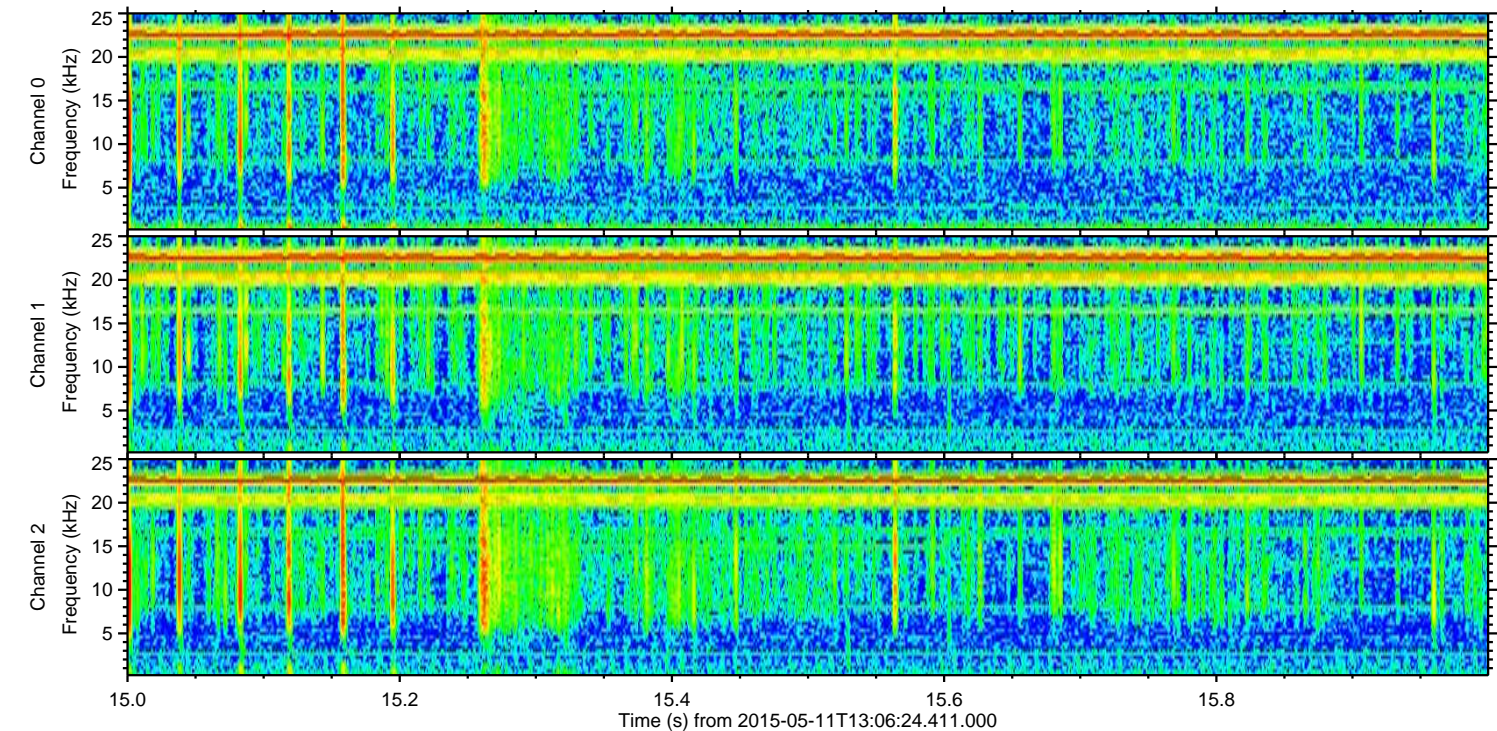
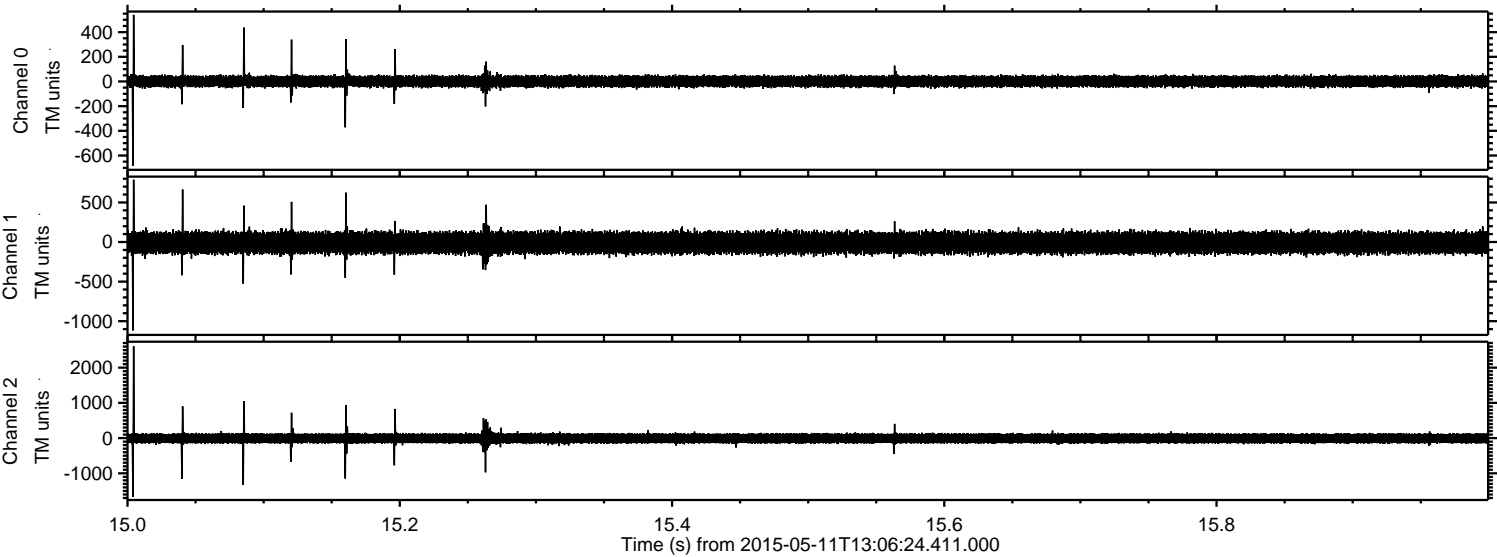


Channel 0
mn: -582
mx: 909
 μ : 0.9
 σ : 25.7

Channel 1
mn: -1111
mx: 1023
 μ : -10.3
 σ : 74.8

Channel 2
mn: -2659
mx: 2448
 μ : -8.2
 σ : 83.2

Processed Mon May 11 15:13:41 2015 by ELM ver.2012-10-06 from 001__elm20150511_130623__dat00.bin

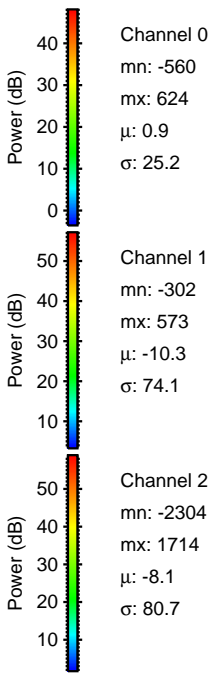
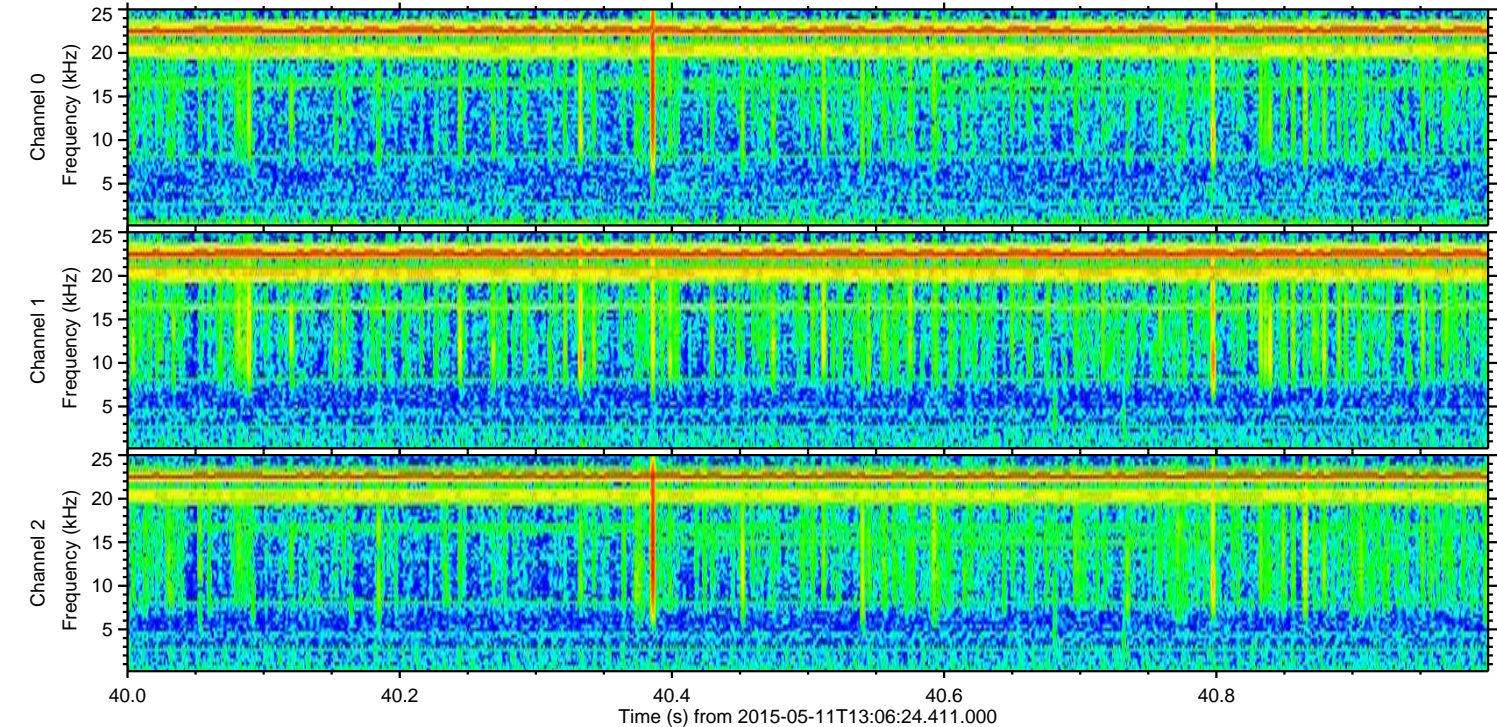
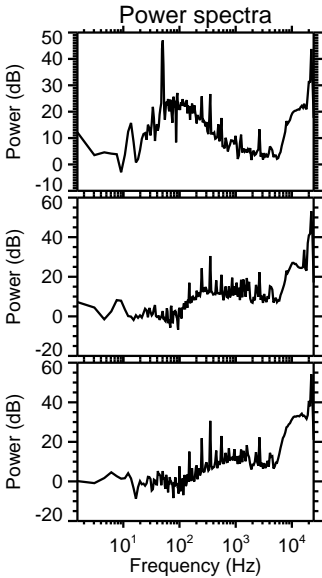
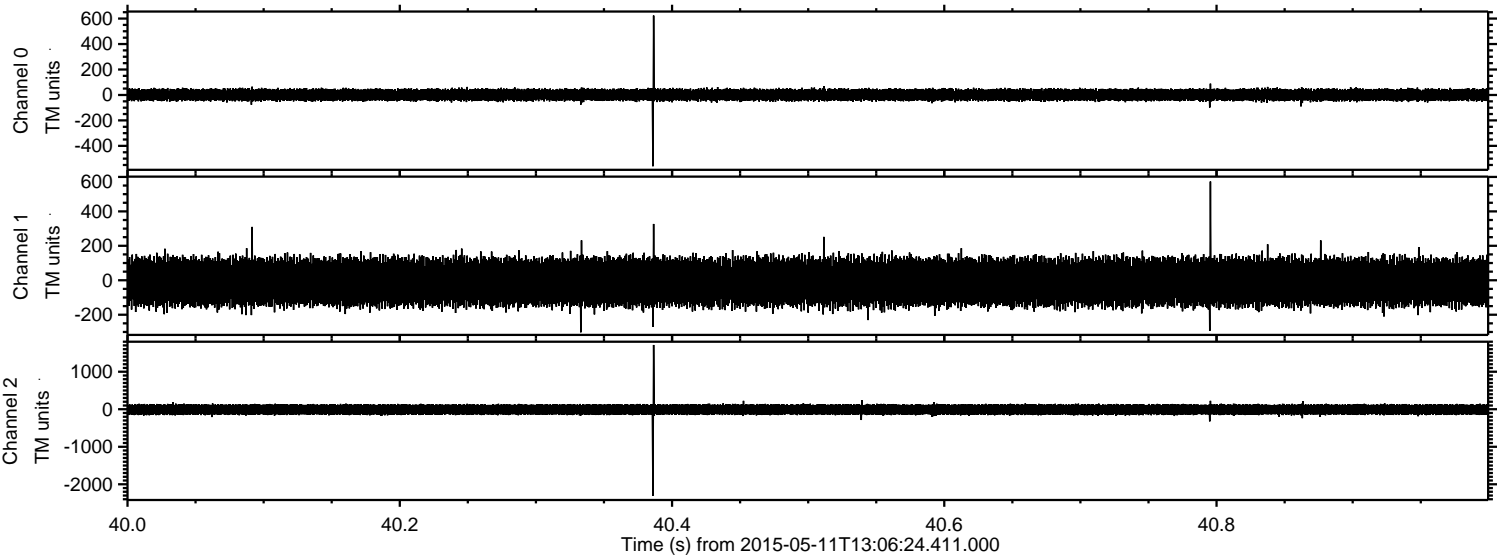


Channel 0
mn: -682
mx: 540
 μ : 0.9
 σ : 26.0

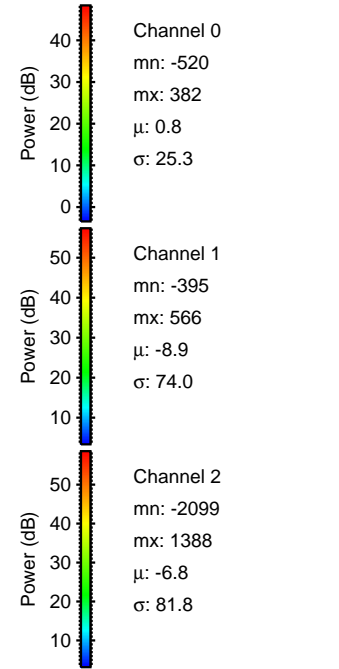
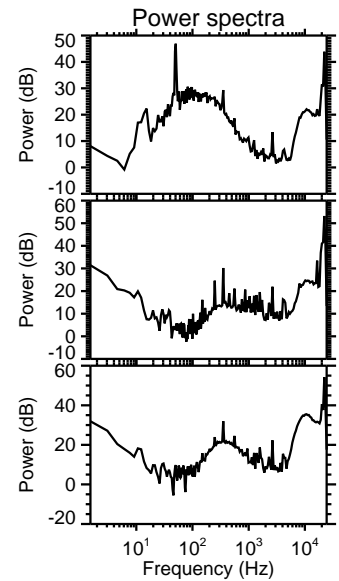
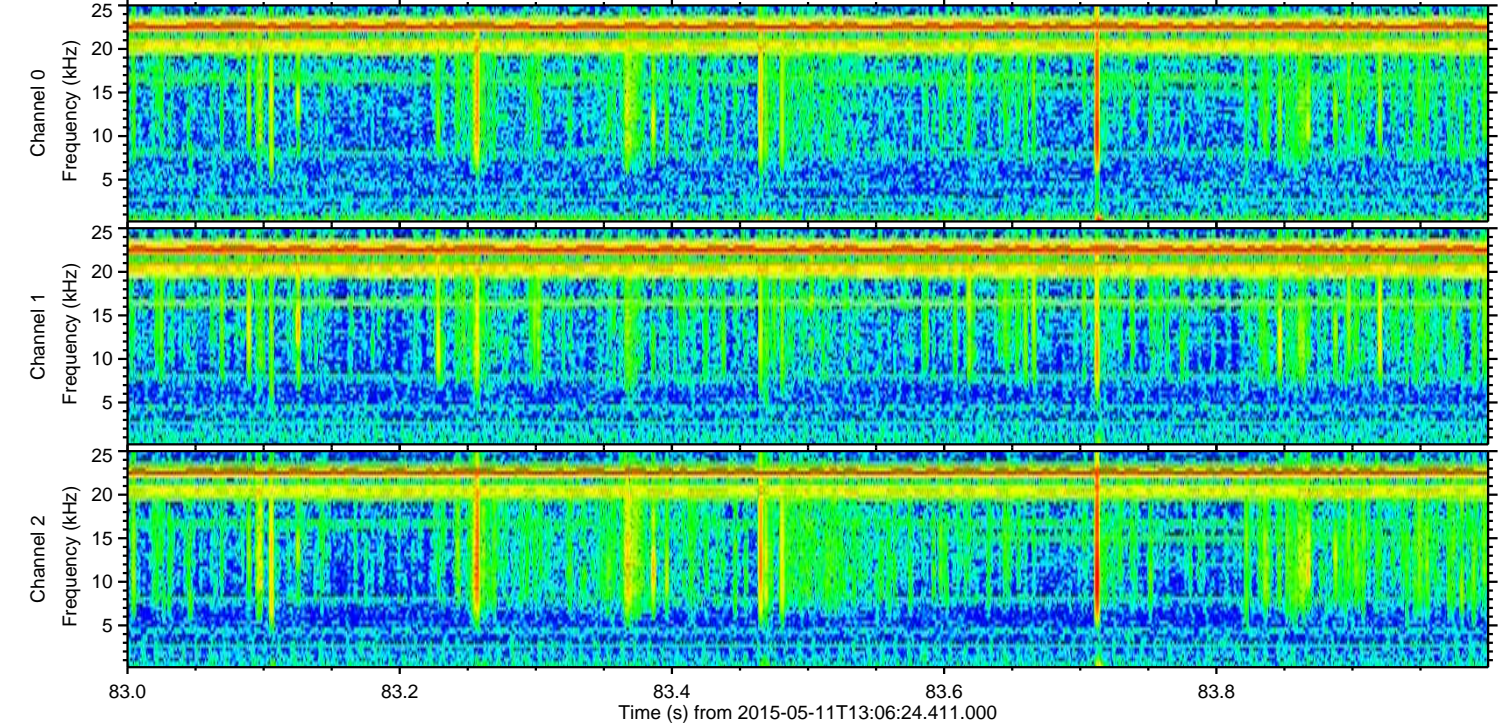
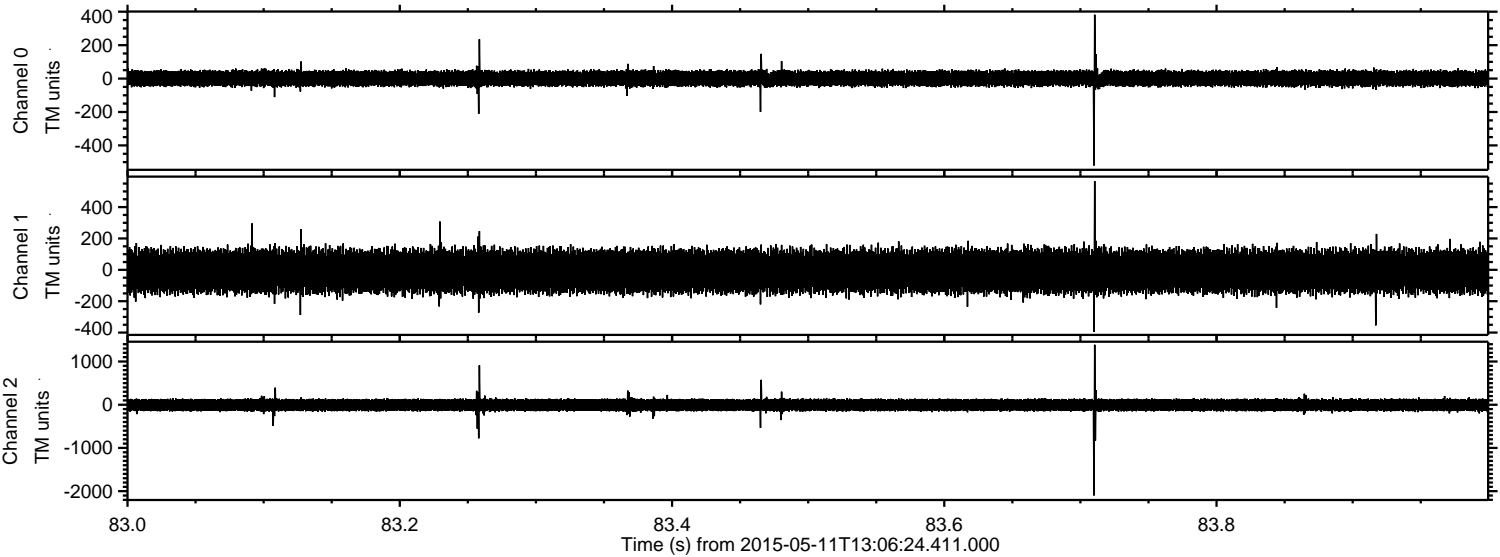
Channel 1
mn: -1118
mx: 787
 μ : -10.3
 σ : 75.3

Channel 2
mn: -1674
mx: 2607
 μ : -8.1
 σ : 85.0

Processed Mon May 11 15:13:42 2015 by ELM ver.2012-10-06 from 001__elm20150511_130623__dat00.bin



Processed Mon May 11 15:13:43 2015 by ELM ver.2012-10-06 from 001__elm20150511_130623__dat00.bin



Processed Mon May 11 15:13:44 2015 by ELM ver.2012-10-06 from 001__elm20150511_130623__dat00.bin

