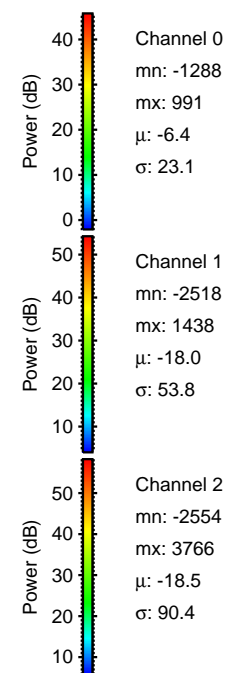
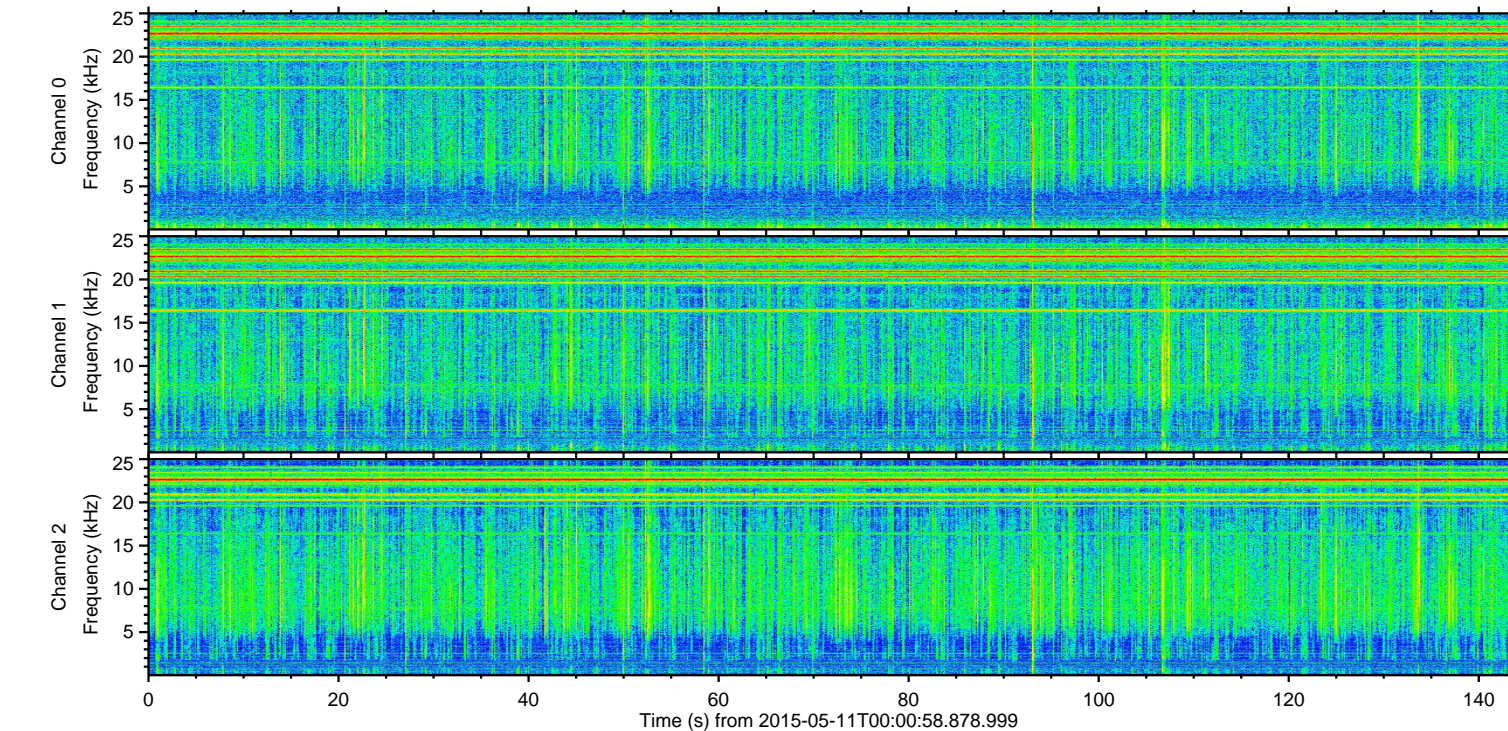
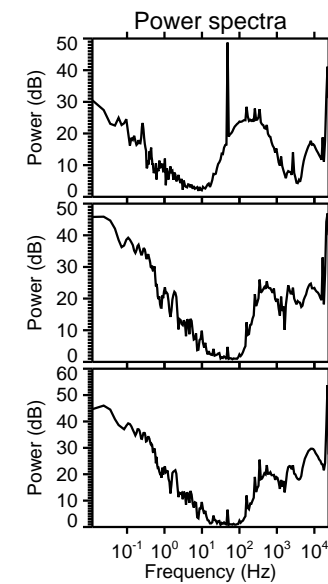
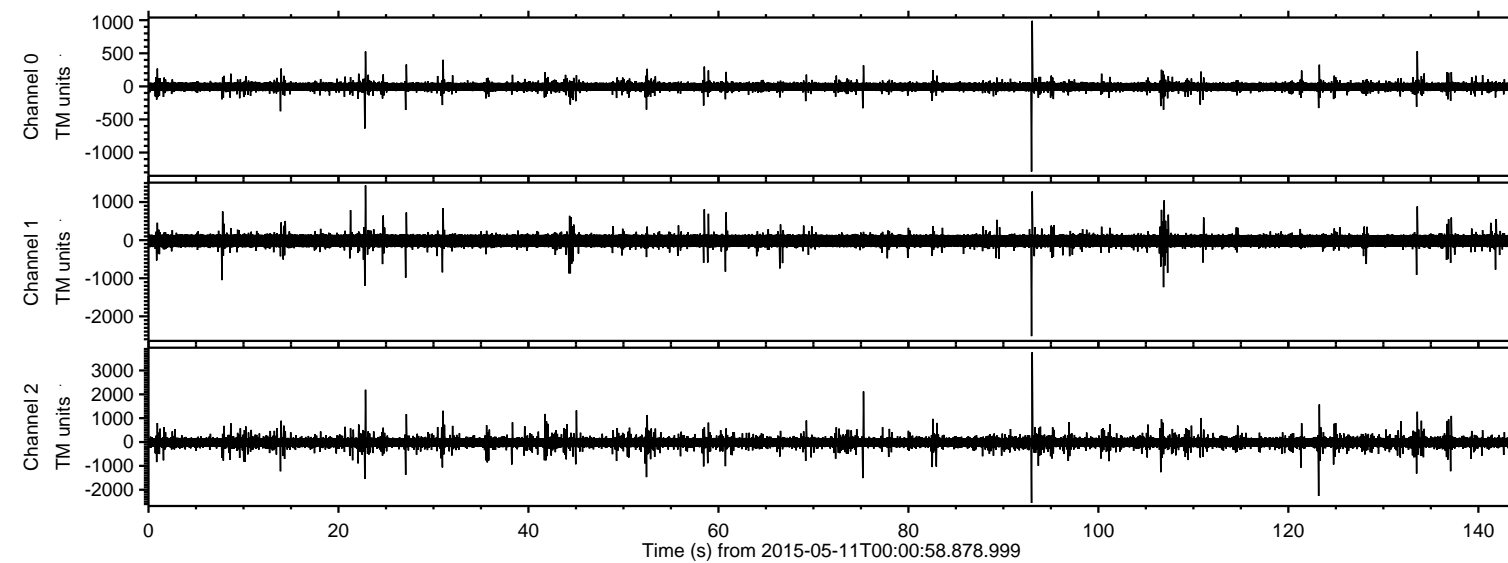


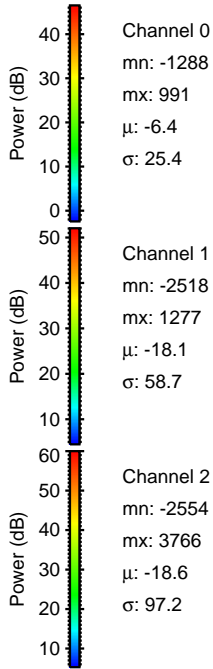
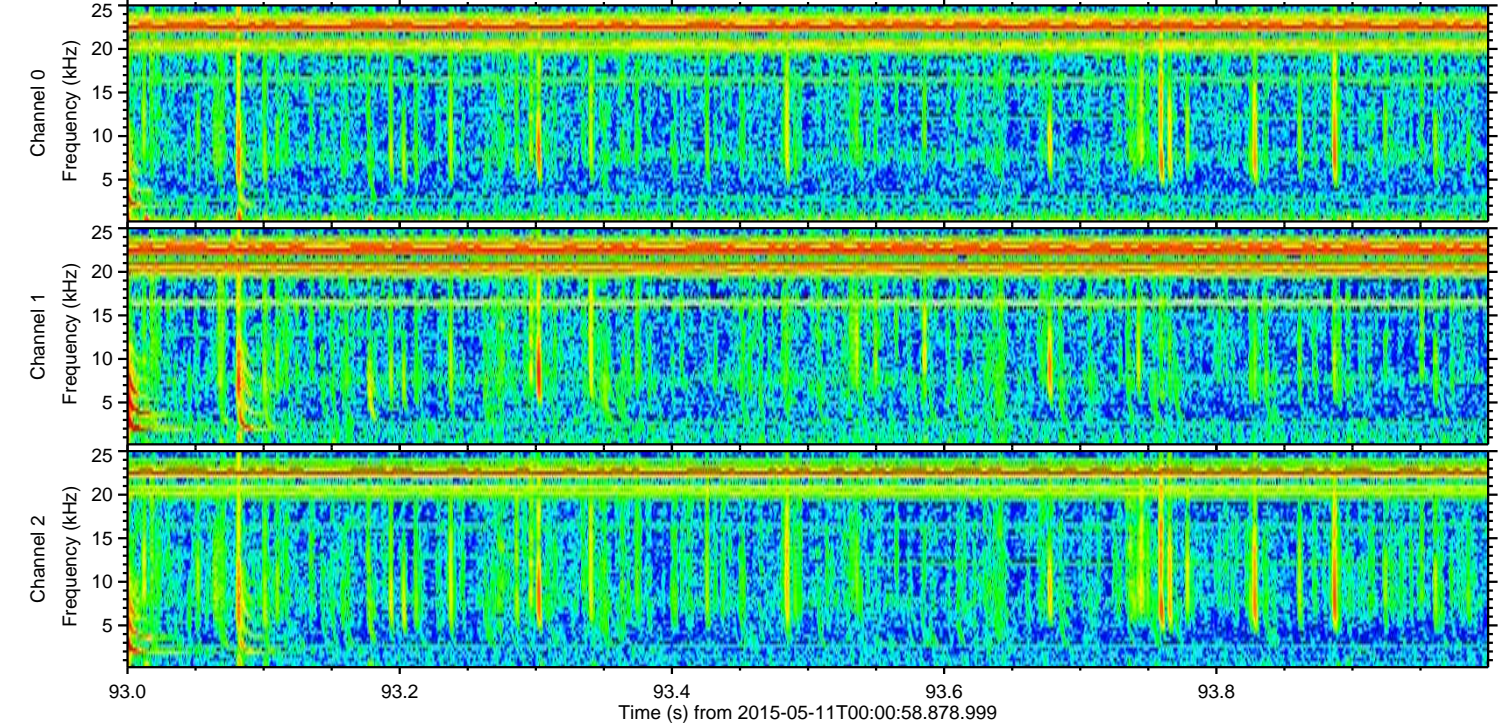
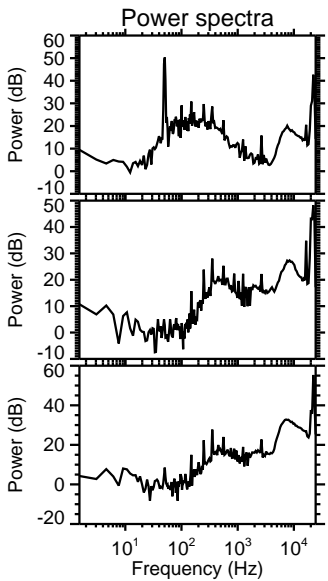
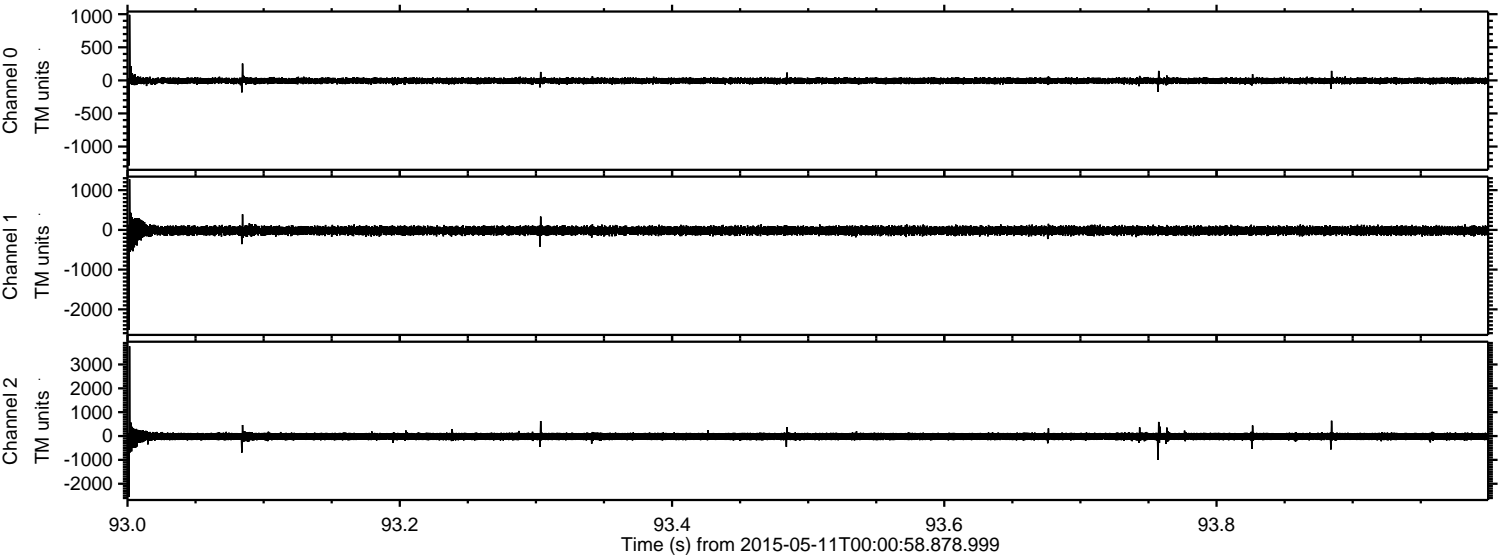
# ELMAVAN 3D WAVEFORMS (Measured data sampled at 50 kHz) 49737 packets of 144 samples from 2015-05-11T00:00:58.878.999.

Processed Mon May 11 02:07:54 2015 by ELM ver.2012-10-06 from 001\_\_elm20150511\_000057\_\_dat00.bin





Processed Mon May 11 02:08:05 2015 by ELM ver.2012-10-06 from 001\_\_elm20150511\_000057\_\_dat00.bin



Channel 0  
mn: -1288  
mx: 991  
 $\mu$ : -6.4  
 $\sigma$ : 25.4

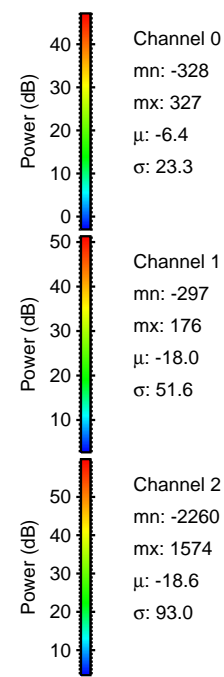
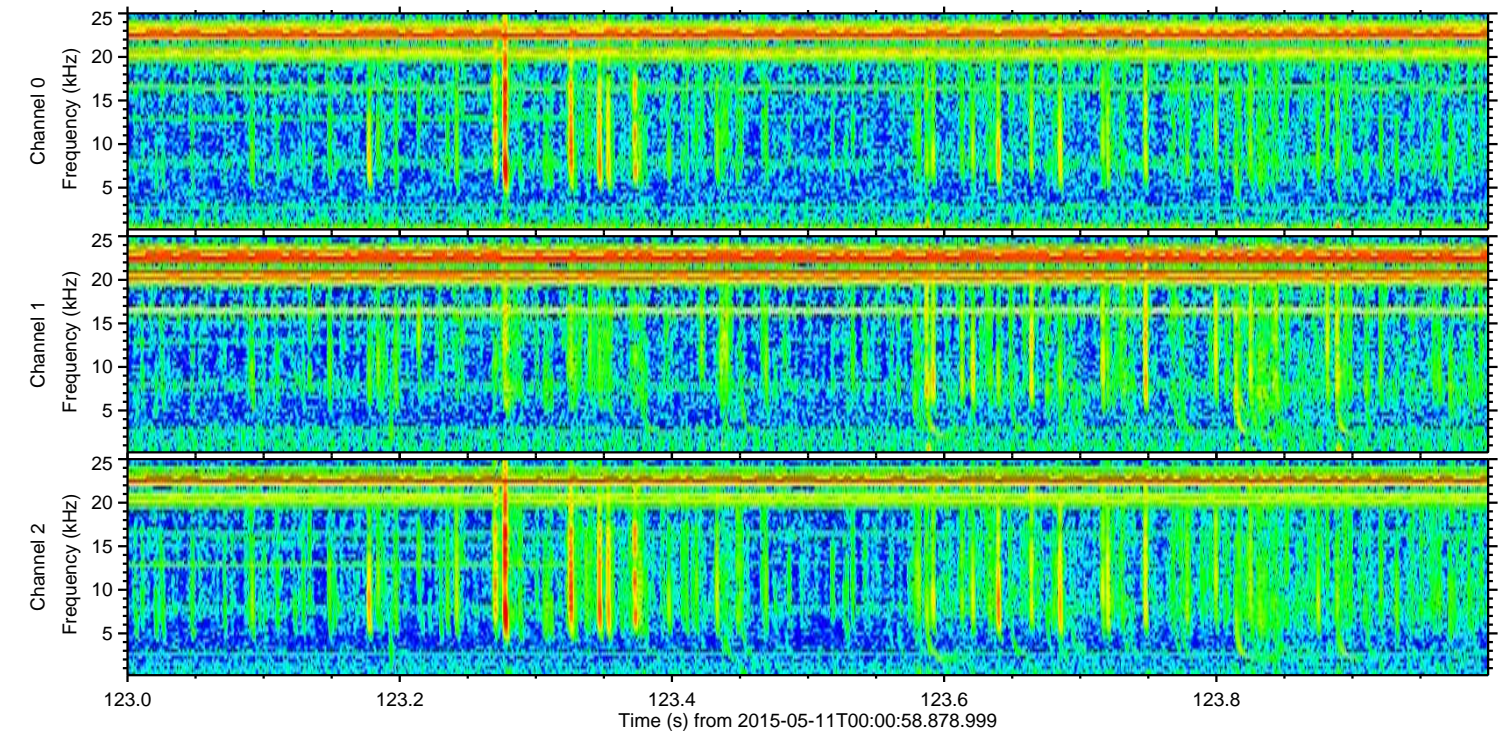
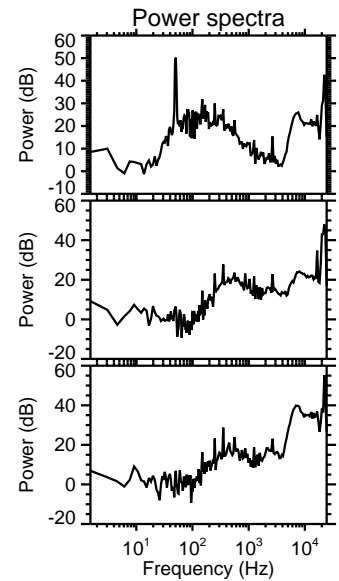
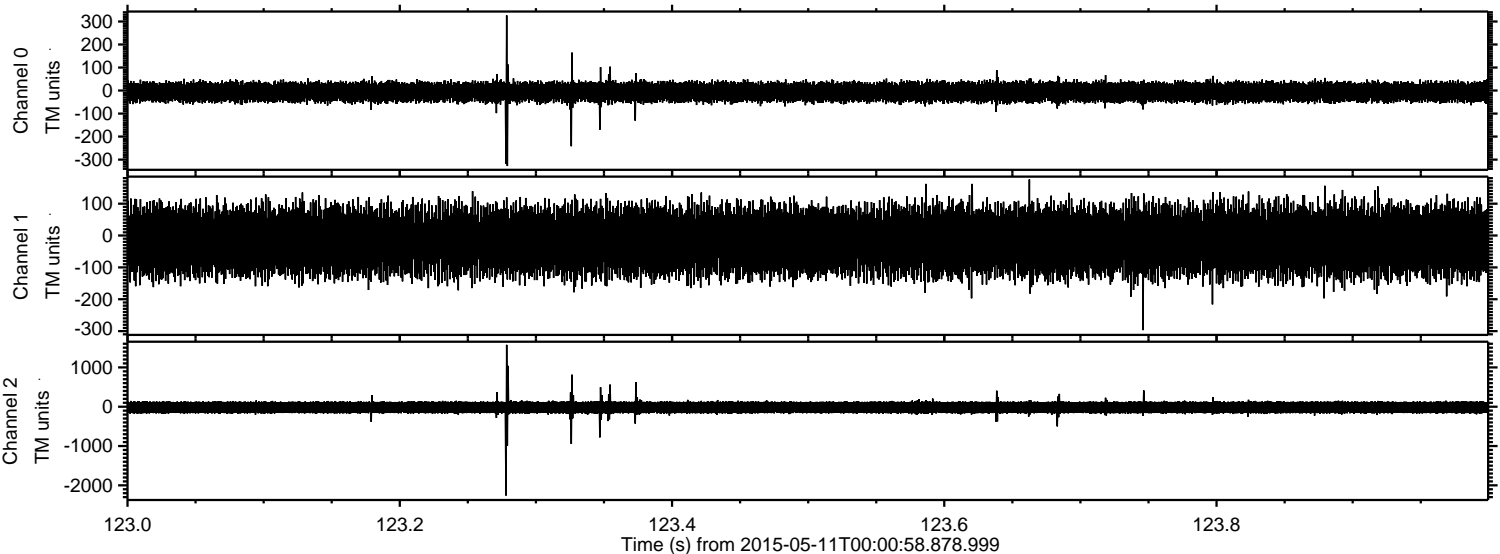
Channel 1  
mn: -2518  
mx: 1277  
 $\mu$ : -18.1  
 $\sigma$ : 58.7

Channel 2  
mn: -2554  
mx: 3766  
 $\mu$ : -18.6  
 $\sigma$ : 97.2



ELMAVAN 3D WAVEFORMS (Measured data sampled at 50 kHz) 49737 packets of 144 samples from 2015-05-11T00:00:58.878.999. Part 124/144

Processed Mon May 11 02:08:06 2015 by ELM ver.2012-10-06 from 001\_\_elm20150511\_000057\_\_dat00.bin



Channel 0  
mn: -328  
mx: 327  
 $\mu$ : -6.4  
 $\sigma$ : 23.3

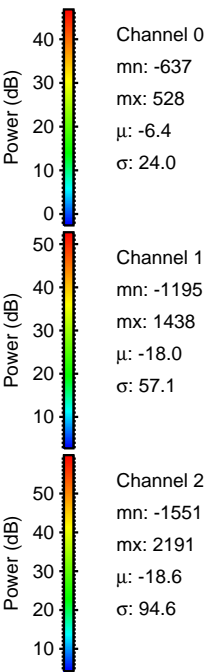
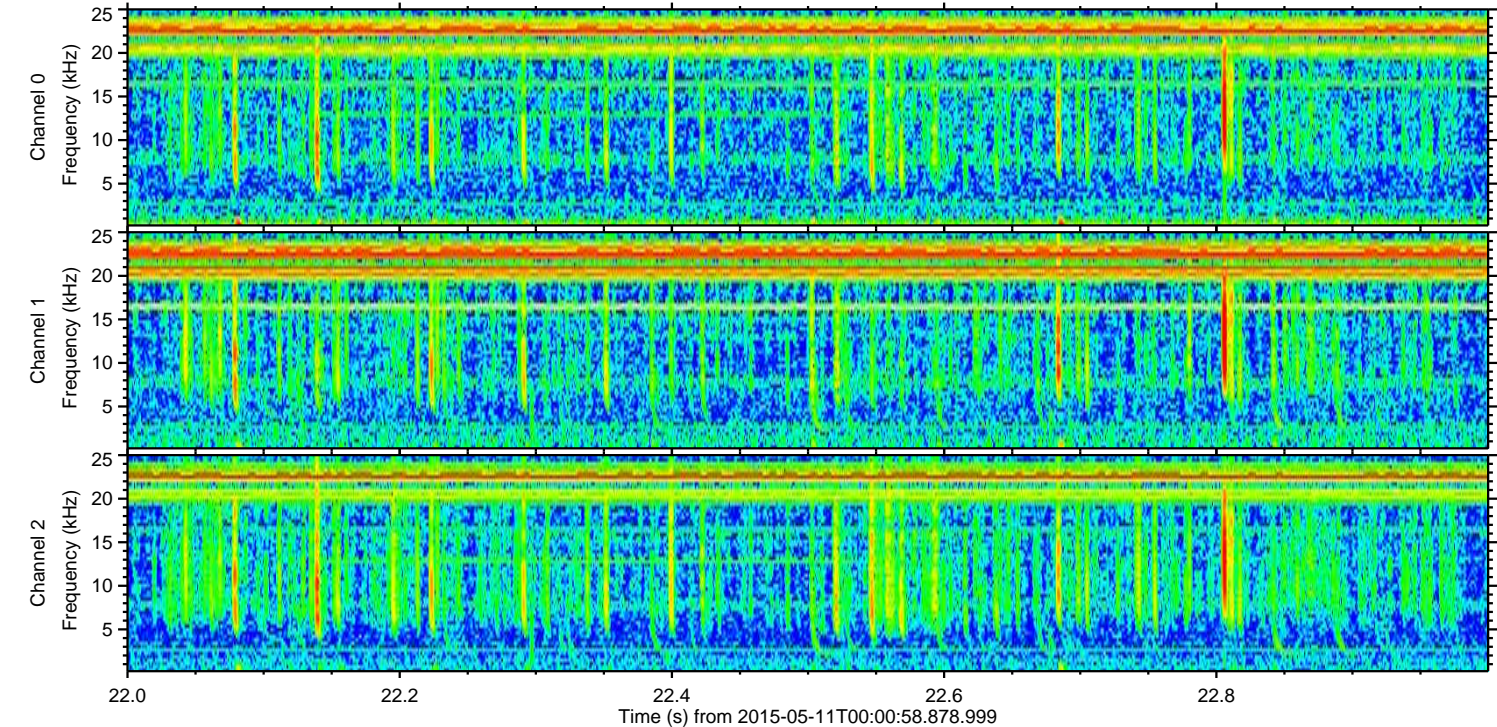
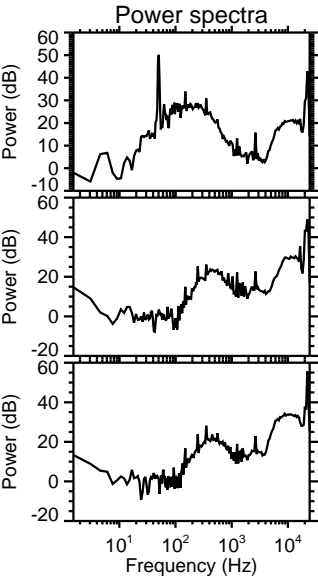
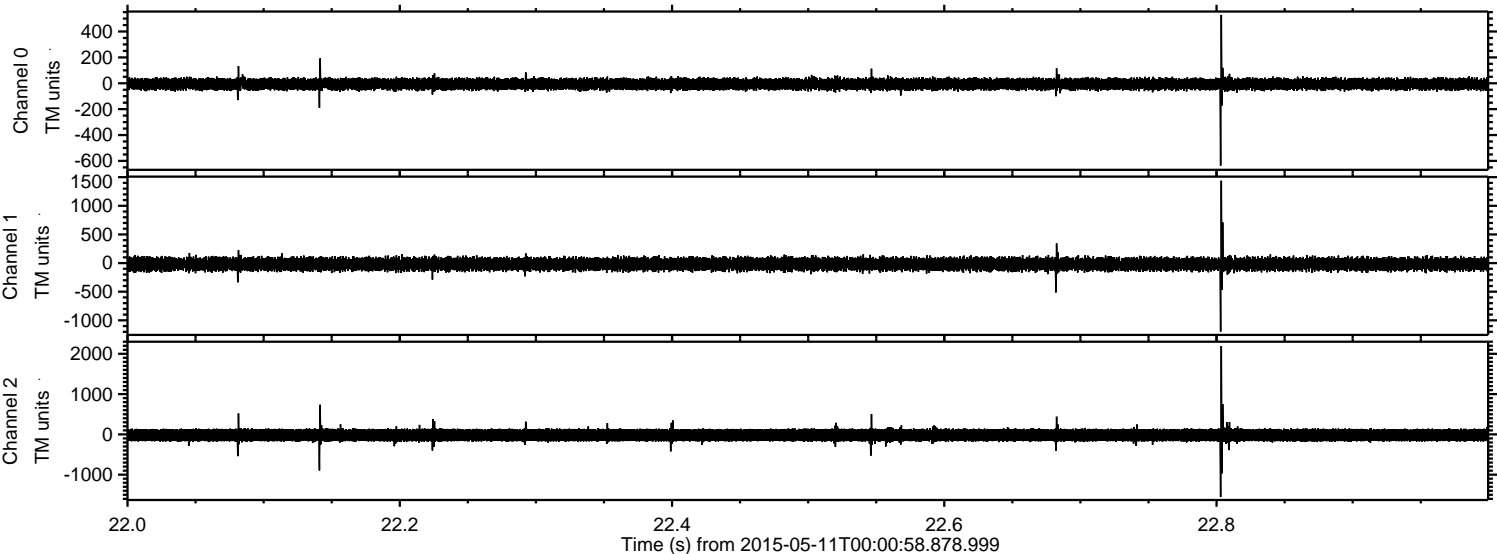
Channel 1  
mn: -297  
mx: 176  
 $\mu$ : -18.0  
 $\sigma$ : 51.6

Channel 2  
mn: -2260  
mx: 1574  
 $\mu$ : -18.6  
 $\sigma$ : 93.0



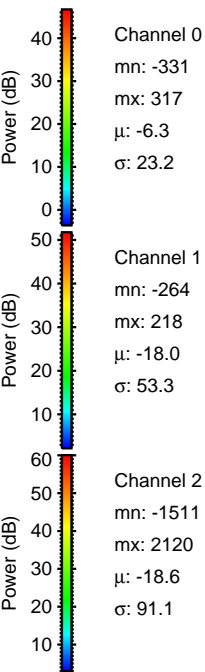
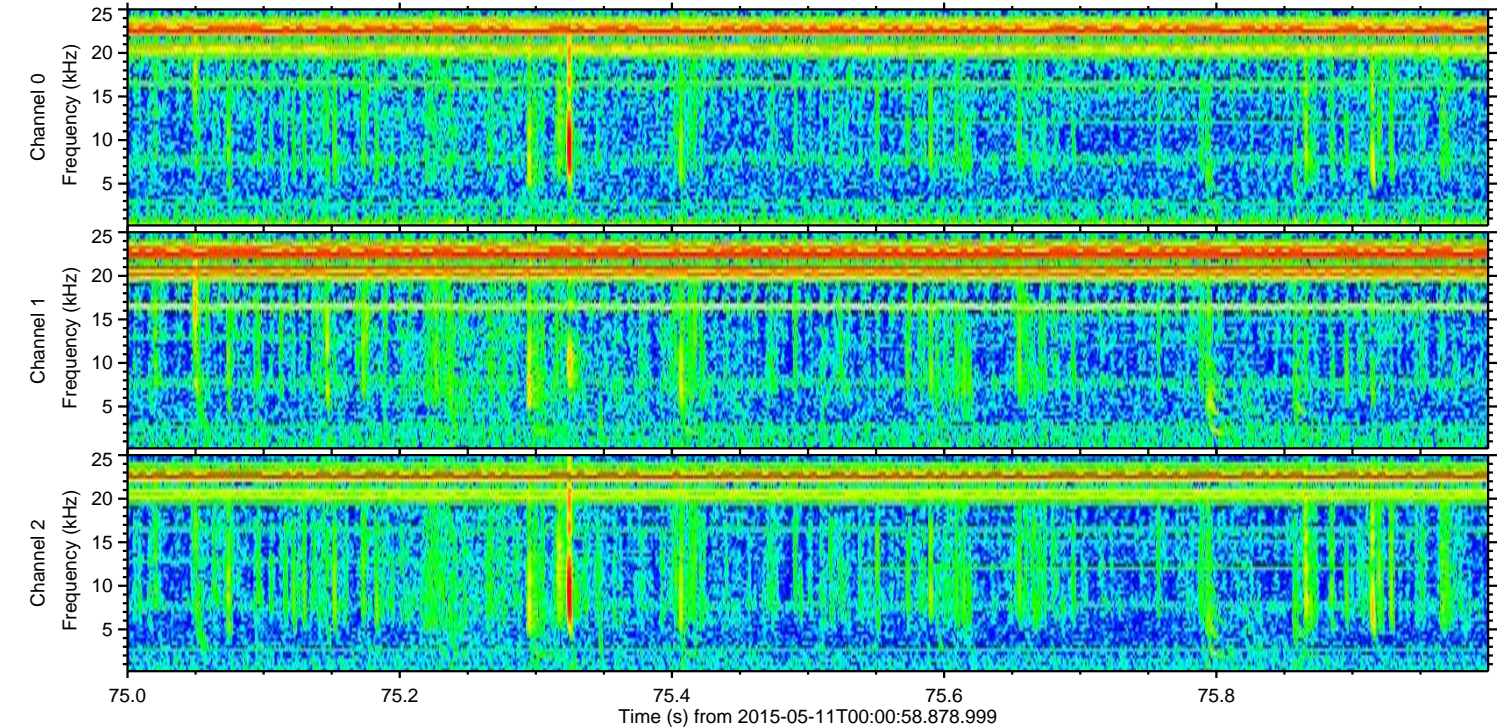
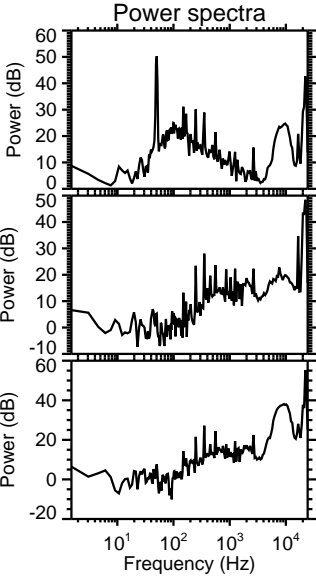
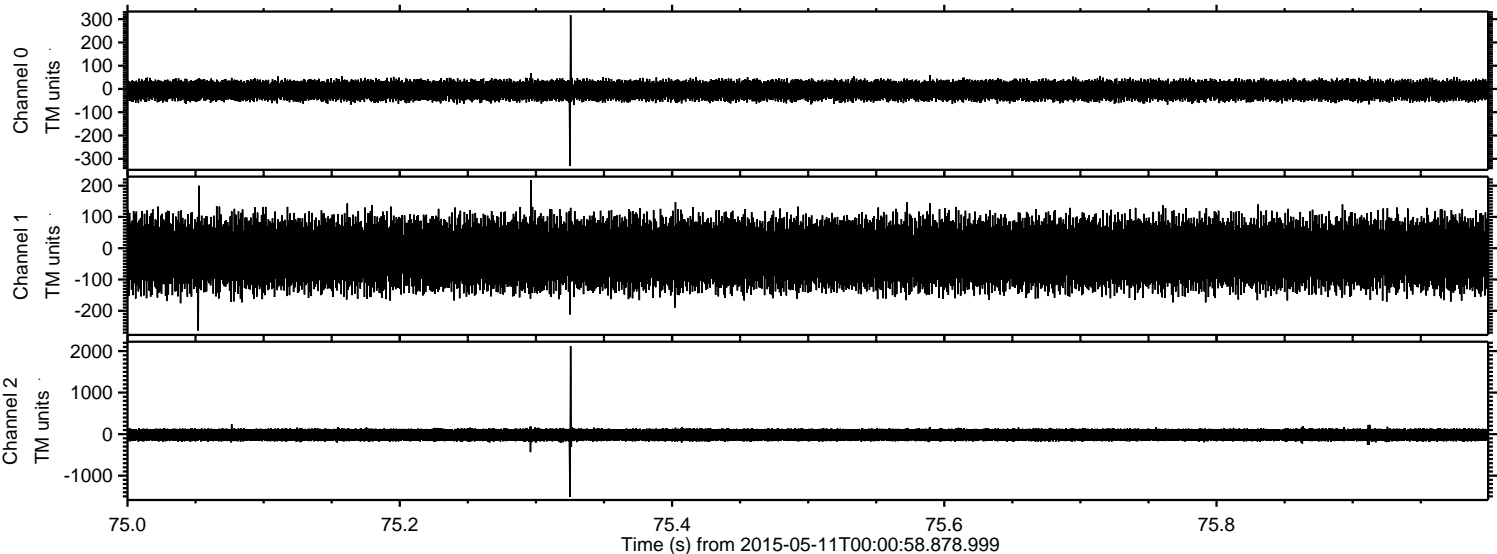
ELMAVAN 3D WAVEFORMS (Measured data sampled at 50 kHz) 49737 packets of 144 samples from 2015-05-11T00:00:58.878.999. Part 23/144

Processed Mon May 11 02:08:07 2015 by ELM ver.2012-10-06 from 001\_\_elm20150511\_000057\_\_dat00.bin



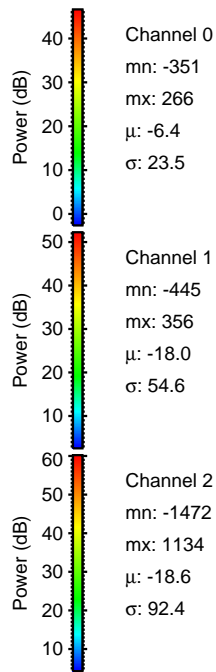
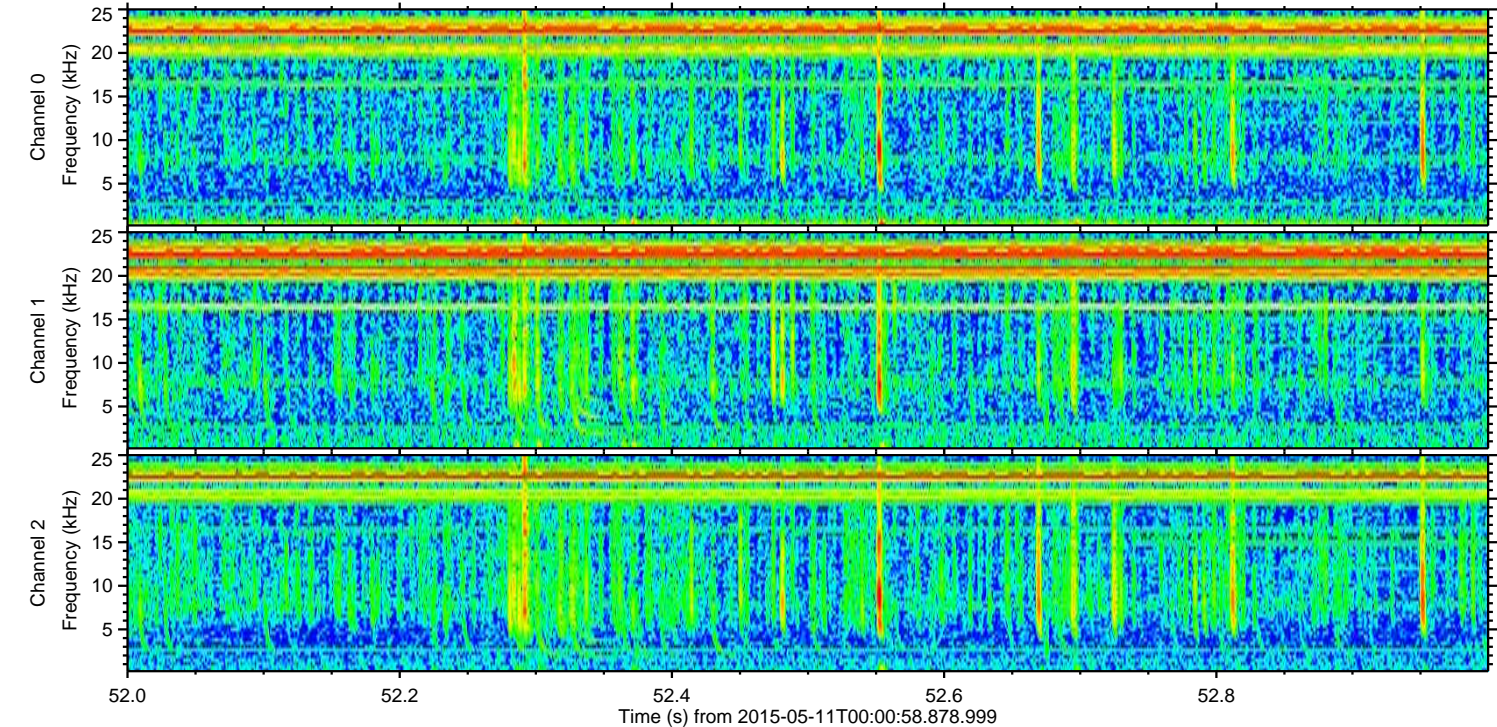
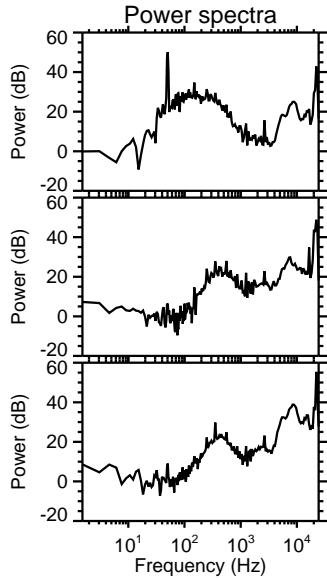
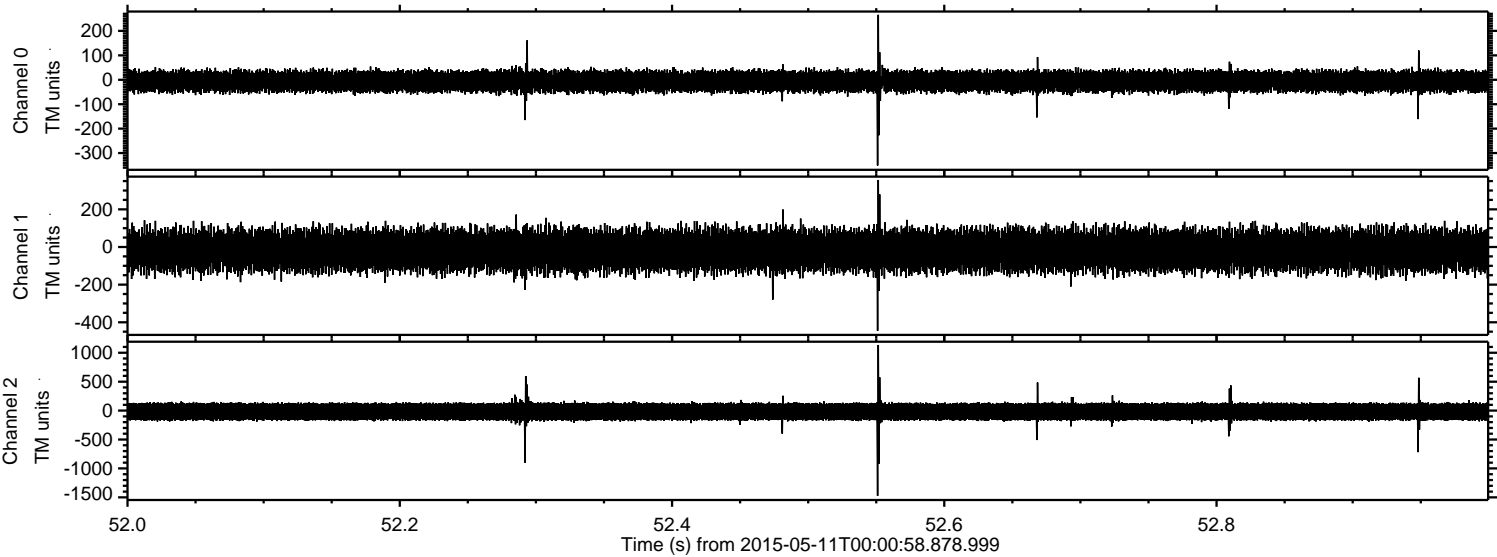


Processed Mon May 11 02:08:08 2015 by ELM ver.2012-10-06 from 001\_\_elm20150511\_000057\_\_dat00.bin





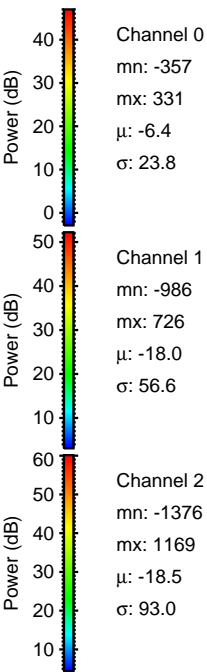
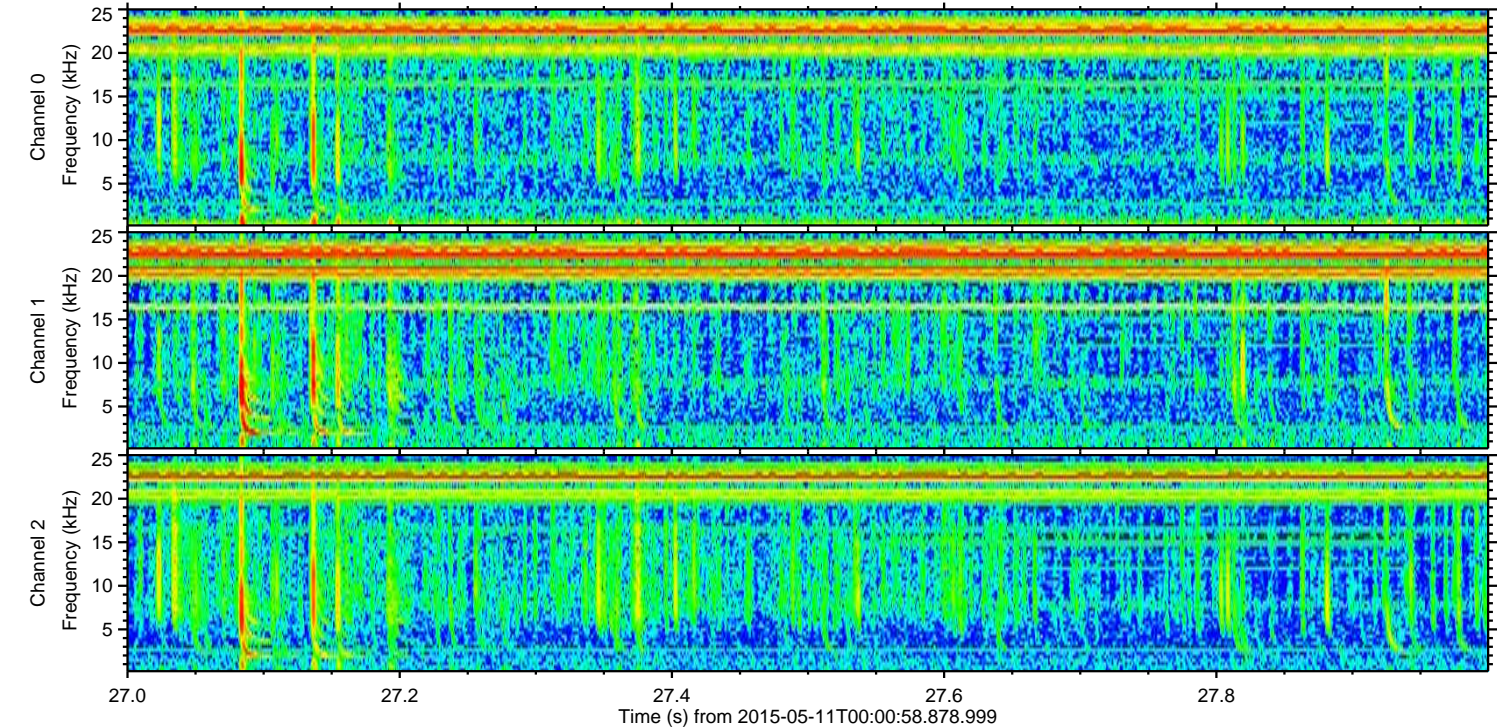
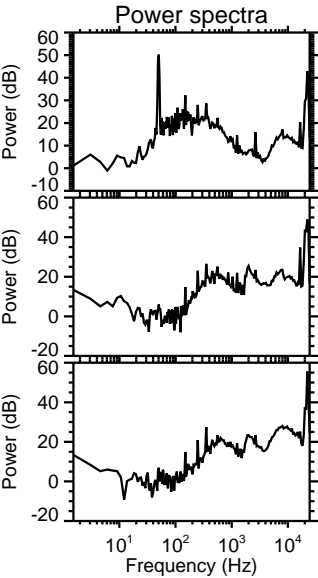
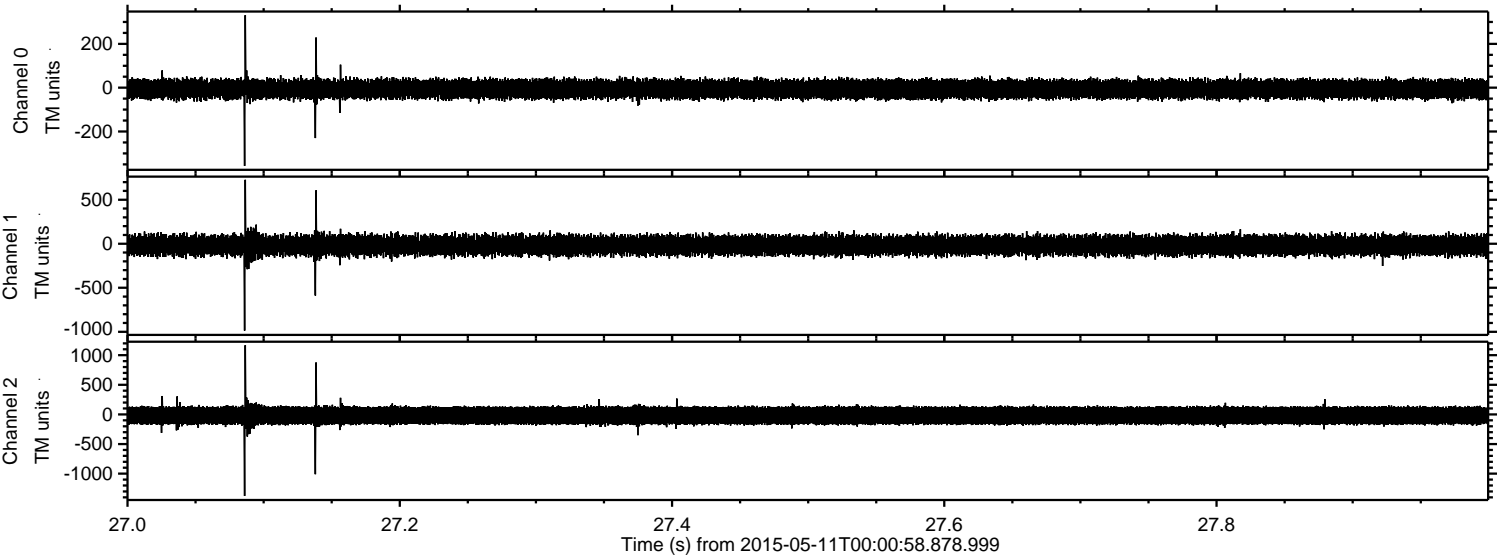
Processed Mon May 11 02:08:09 2015 by ELM ver.2012-10-06 from 001\_\_elm20150511\_000057\_\_dat00.bin





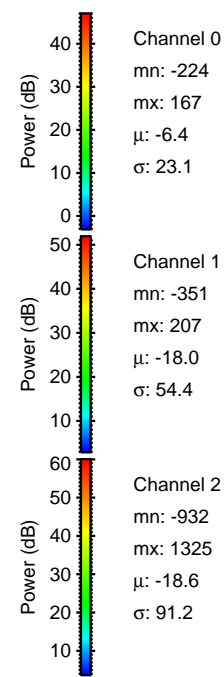
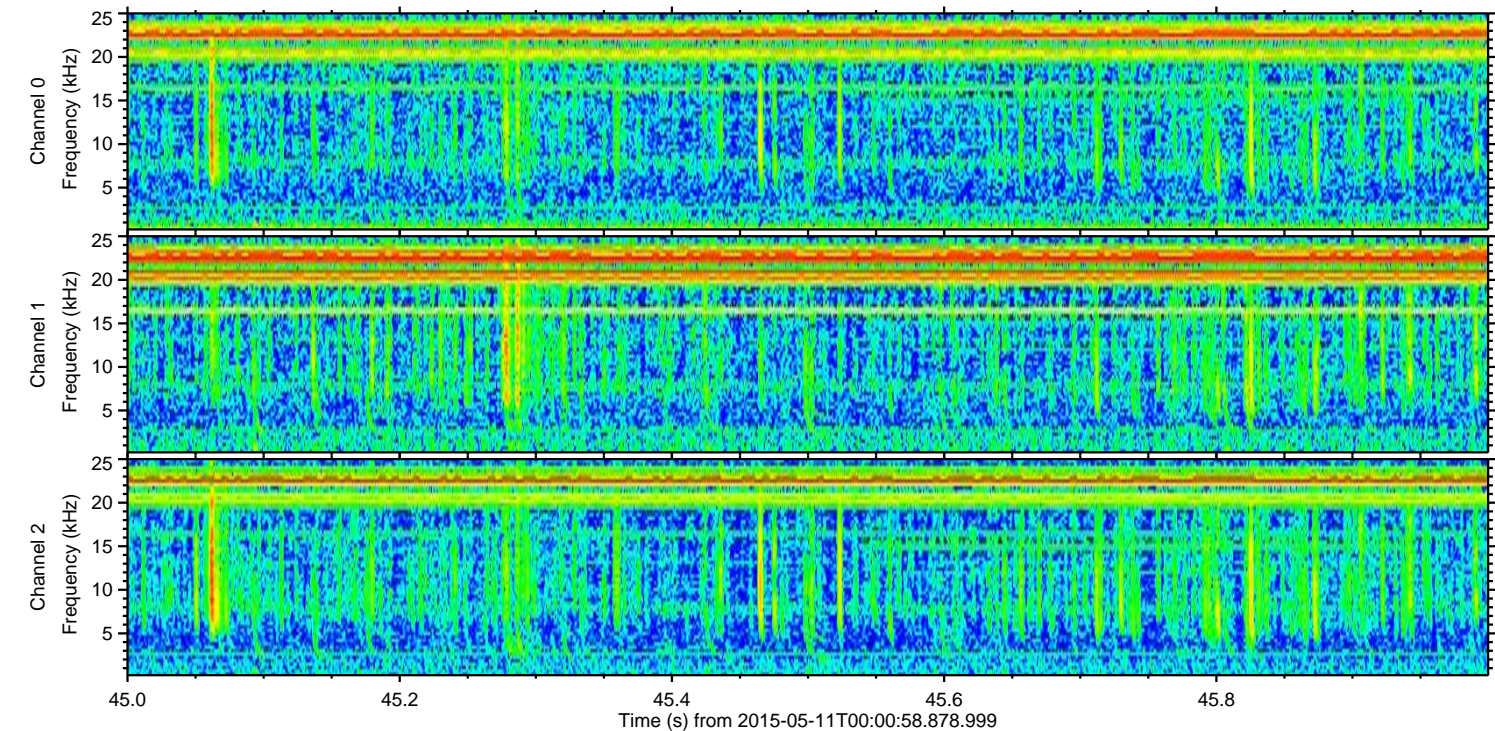
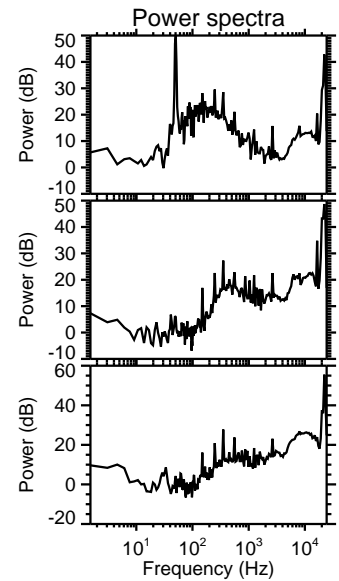
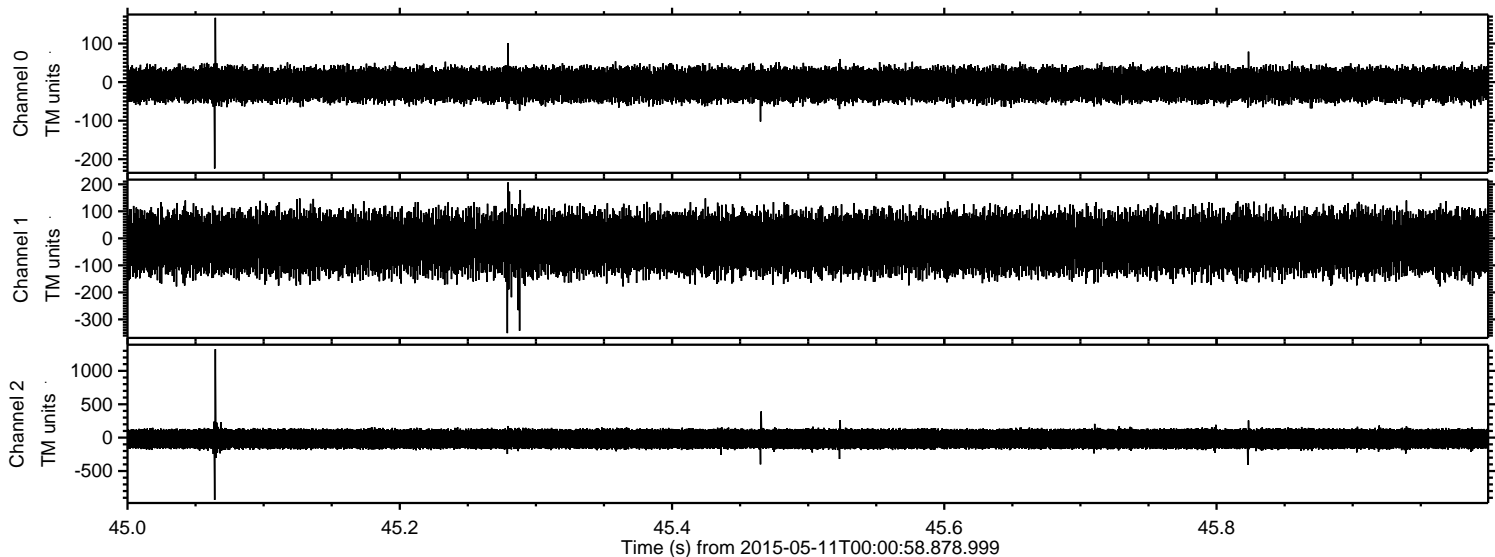
ELMAVAN 3D WAVEFORMS (Measured data sampled at 50 kHz) 49737 packets of 144 samples from 2015-05-11T00:00:58.878.999. Part 28/144

Processed Mon May 11 02:08:10 2015 by ELM ver.2012-10-06 from 001\_\_elm20150511\_000057\_\_dat00.bin





Processed Mon May 11 02:08:11 2015 by ELM ver.2012-10-06 from 001\_\_elm20150511\_000057\_\_dat00.bin



Channel 0  
mn: -224  
mx: 167  
 $\mu$ : -6.4  
 $\sigma$ : 23.1

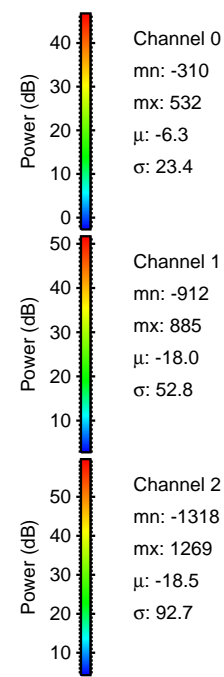
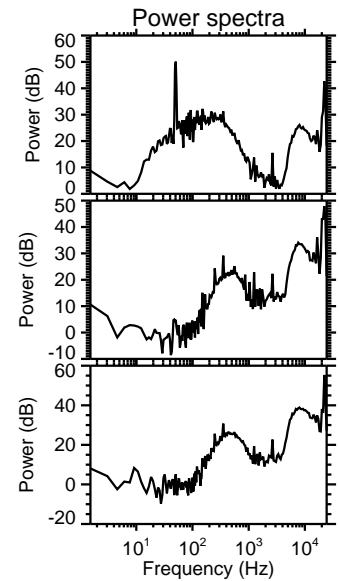
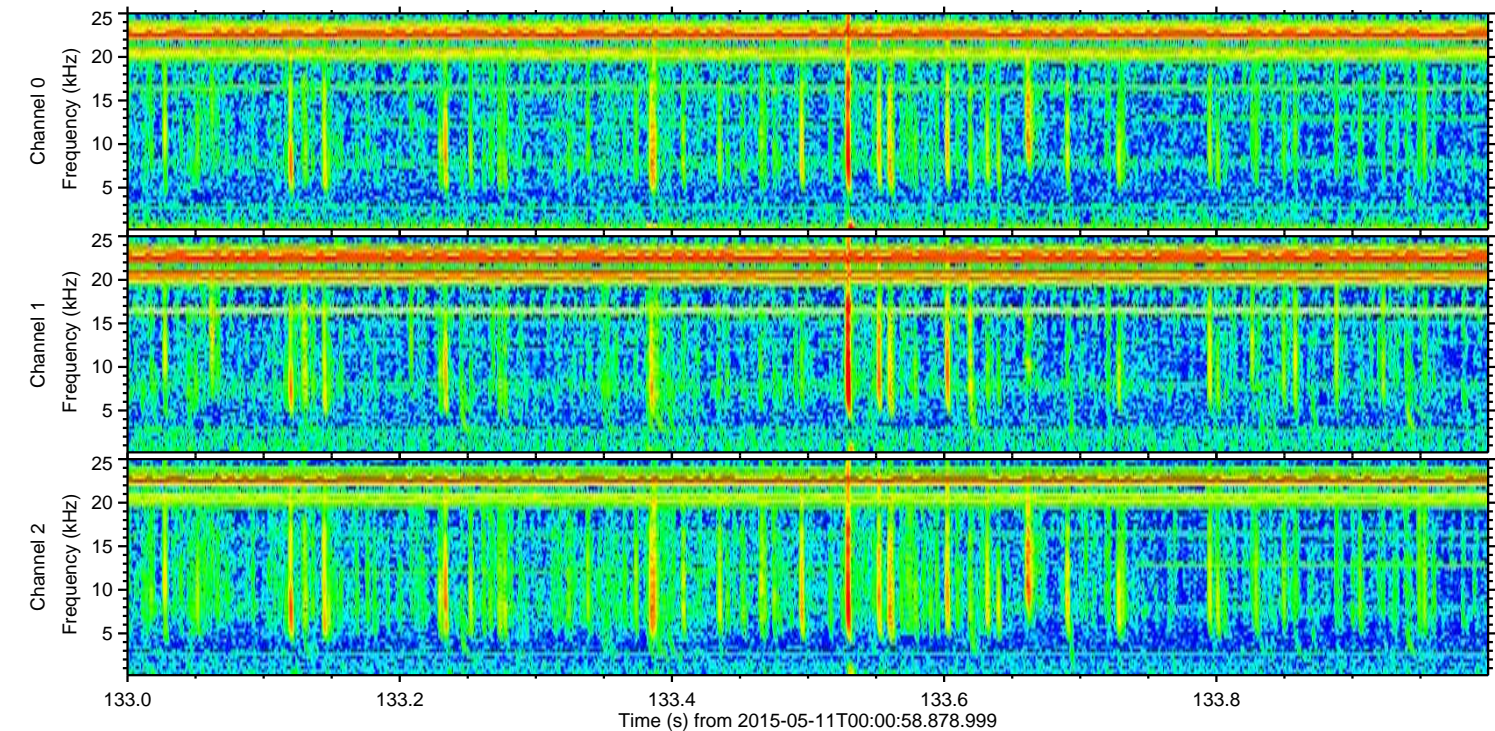
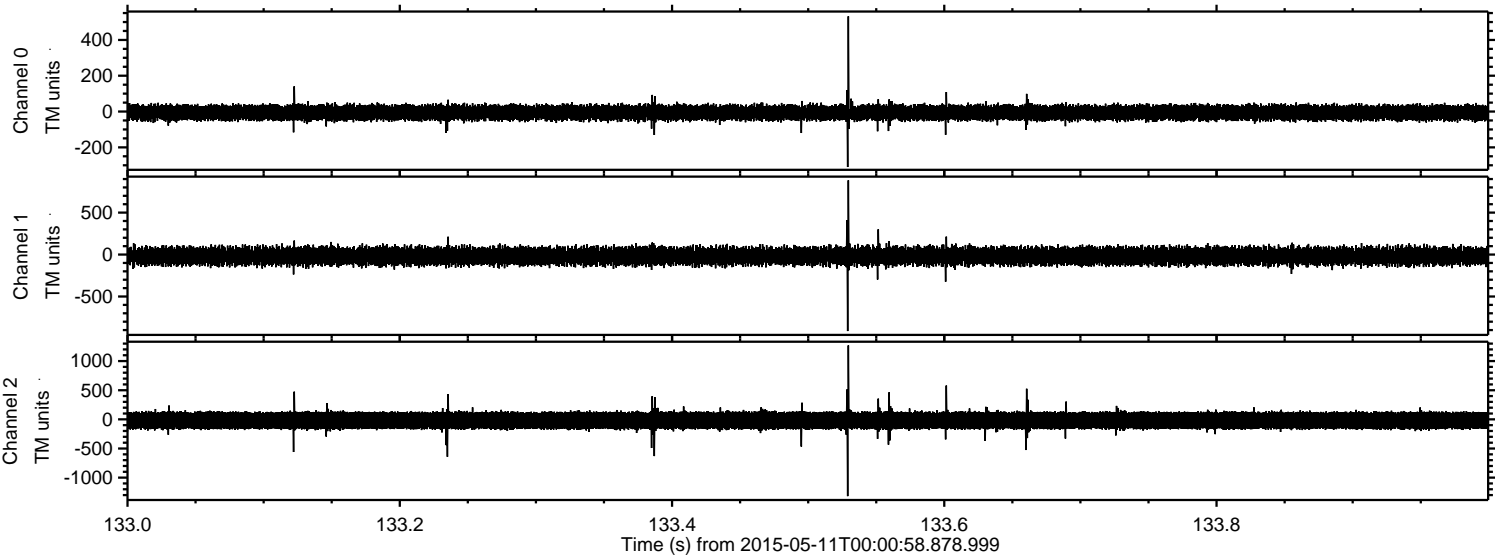
Channel 1  
mn: -351  
mx: 207  
 $\mu$ : -18.0  
 $\sigma$ : 54.4

Channel 2  
mn: -932  
mx: 1325  
 $\mu$ : -18.6  
 $\sigma$ : 91.2



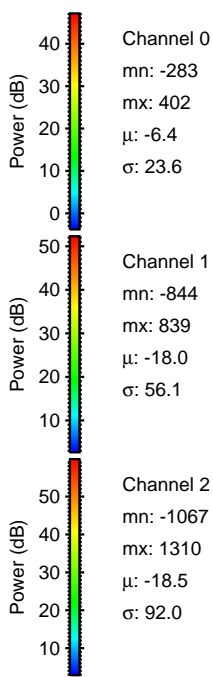
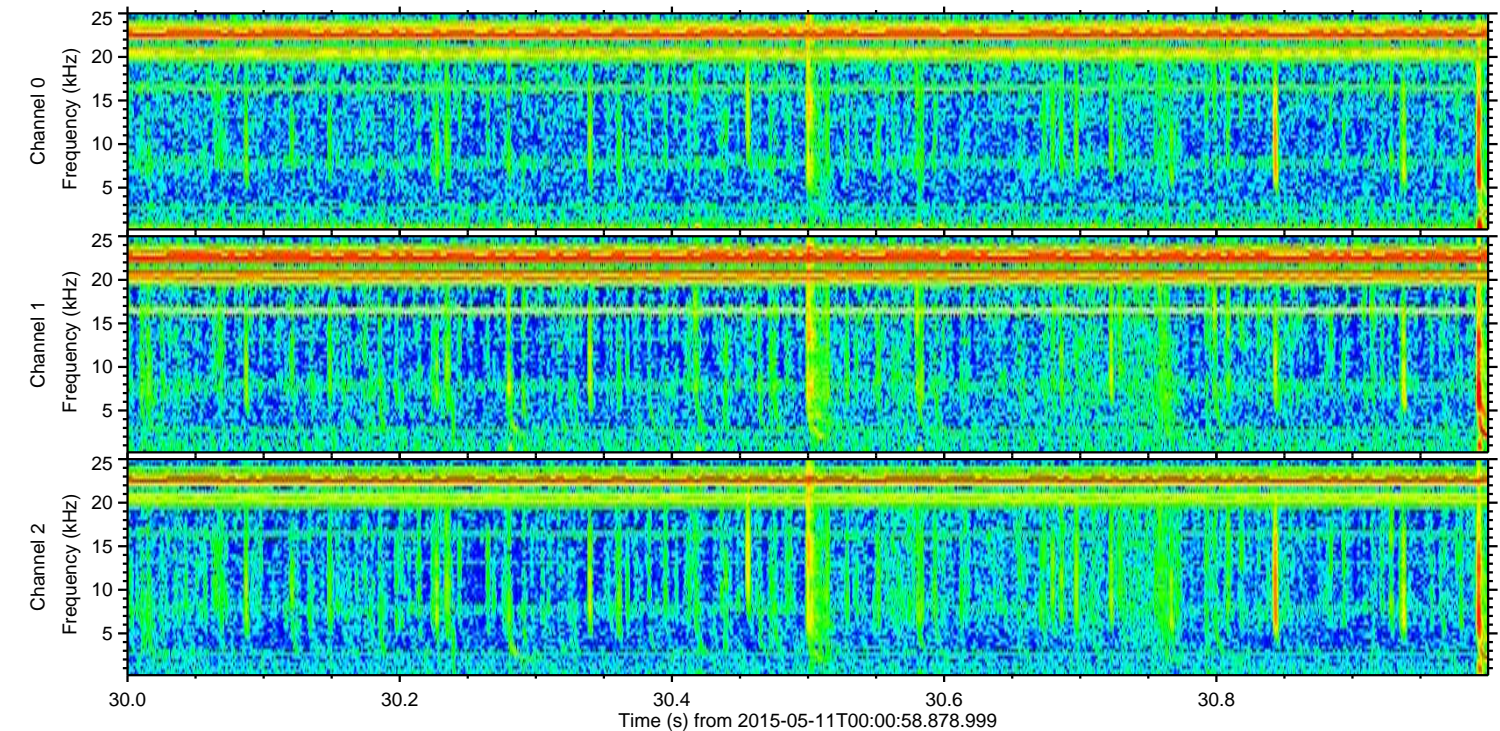
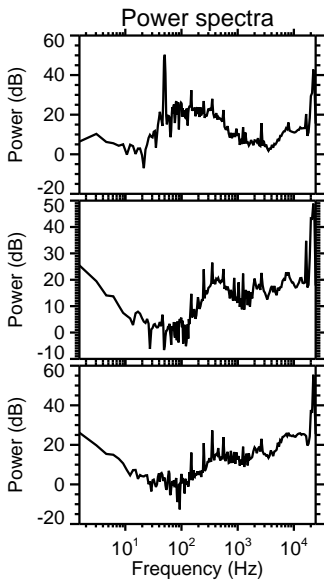
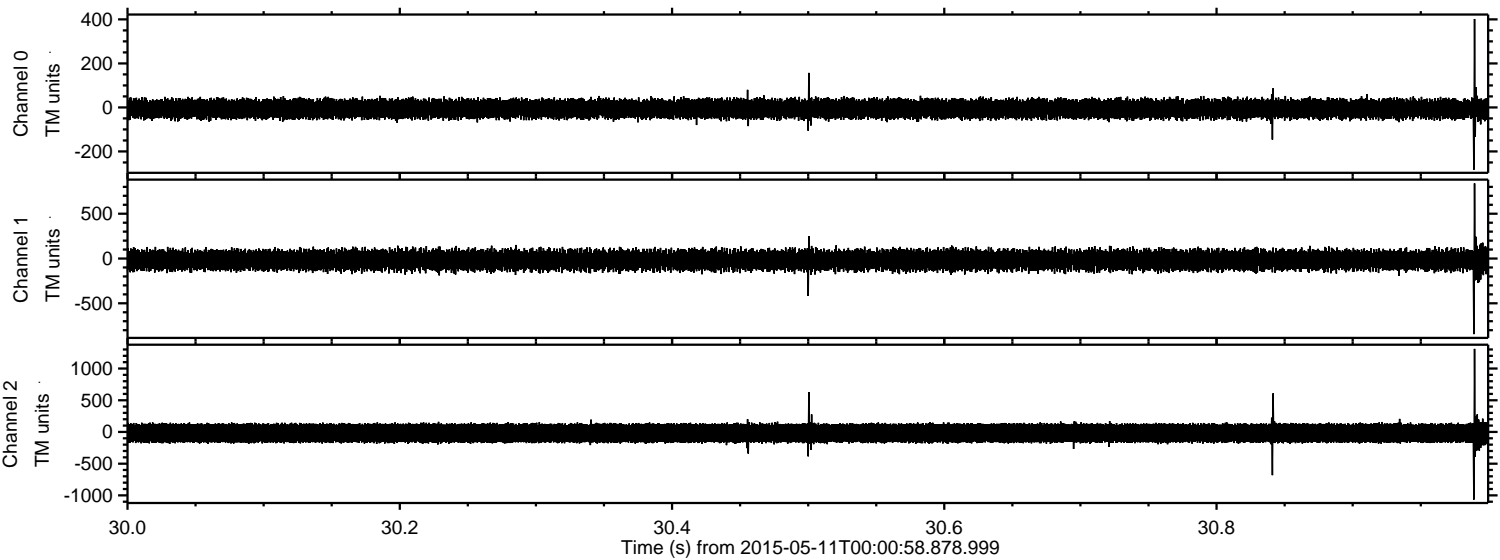
ELMAVAN 3D WAVEFORMS (Measured data sampled at 50 kHz) 49737 packets of 144 samples from 2015-05-11T00:00:58.878.999. Part 134/144

Processed Mon May 11 02:08:12 2015 by ELM ver.2012-10-06 from 001\_\_elm20150511\_000057\_\_dat00.bin





Processed Mon May 11 02:08:12 2015 by ELM ver.2012-10-06 from 001\_\_elm20150511\_000057\_\_dat00.bin





Processed Mon May 11 02:08:13 2015 by ELM ver.2012-10-06 from 001\_\_elm20150511\_000057\_\_dat00.bin

