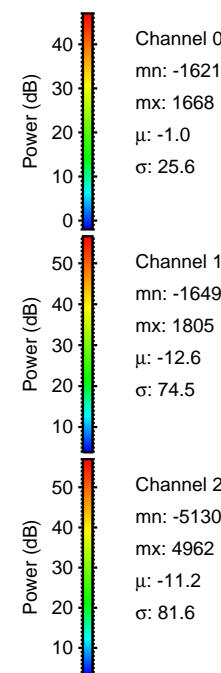
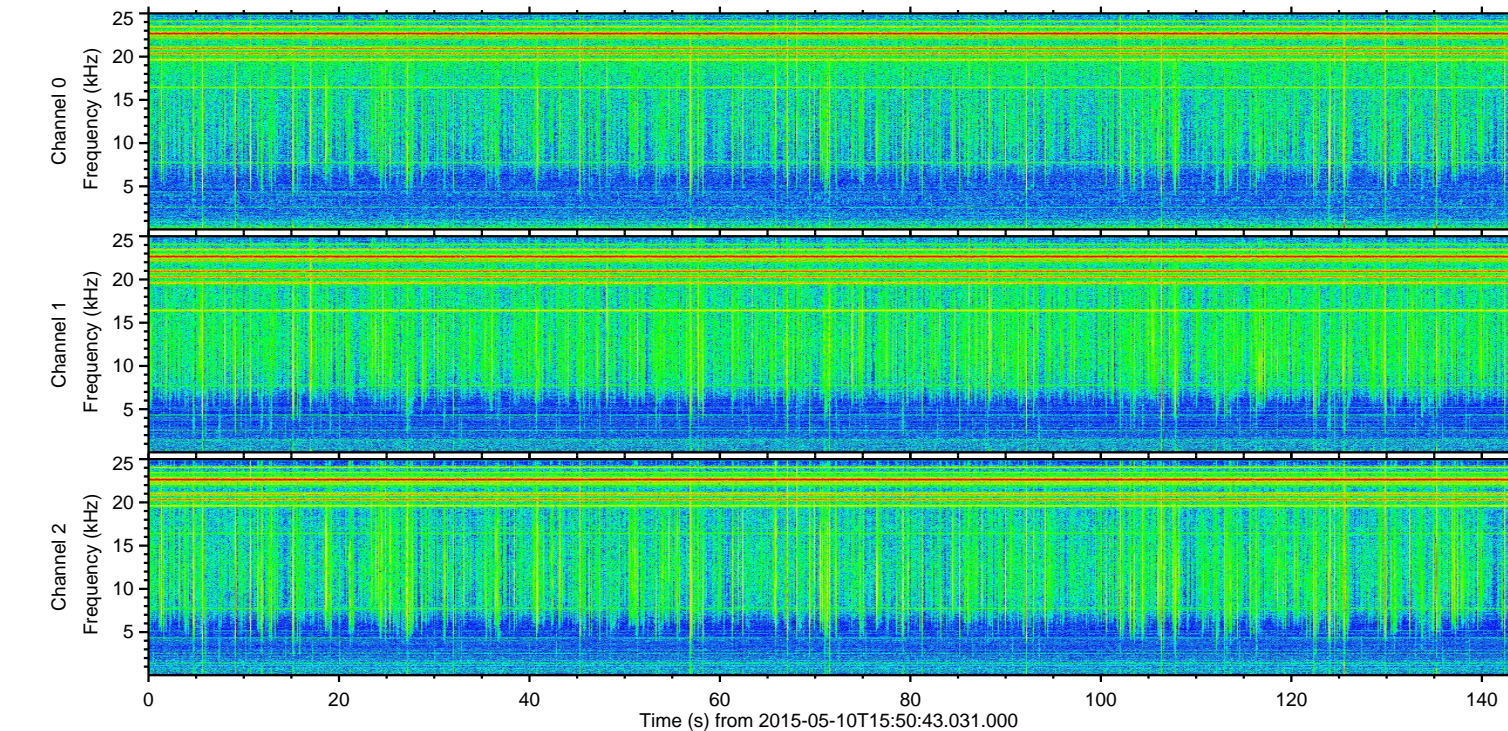
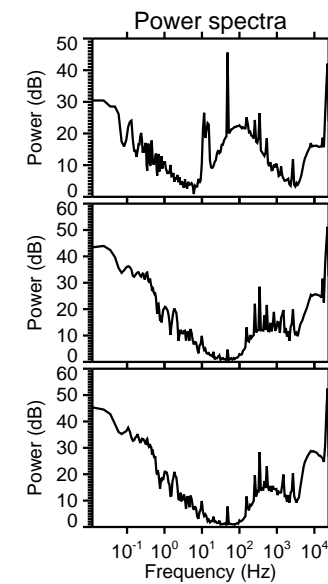
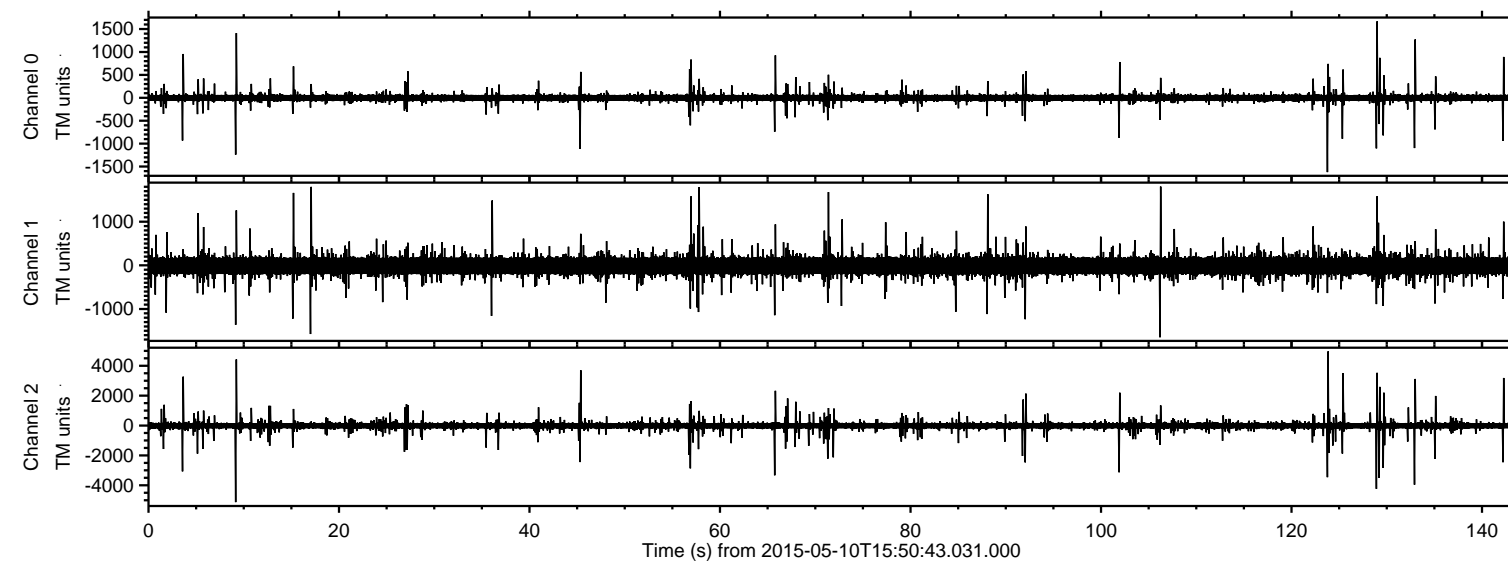
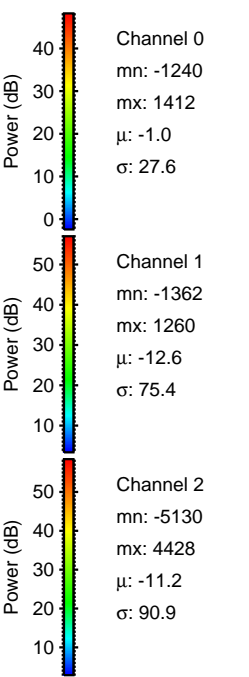
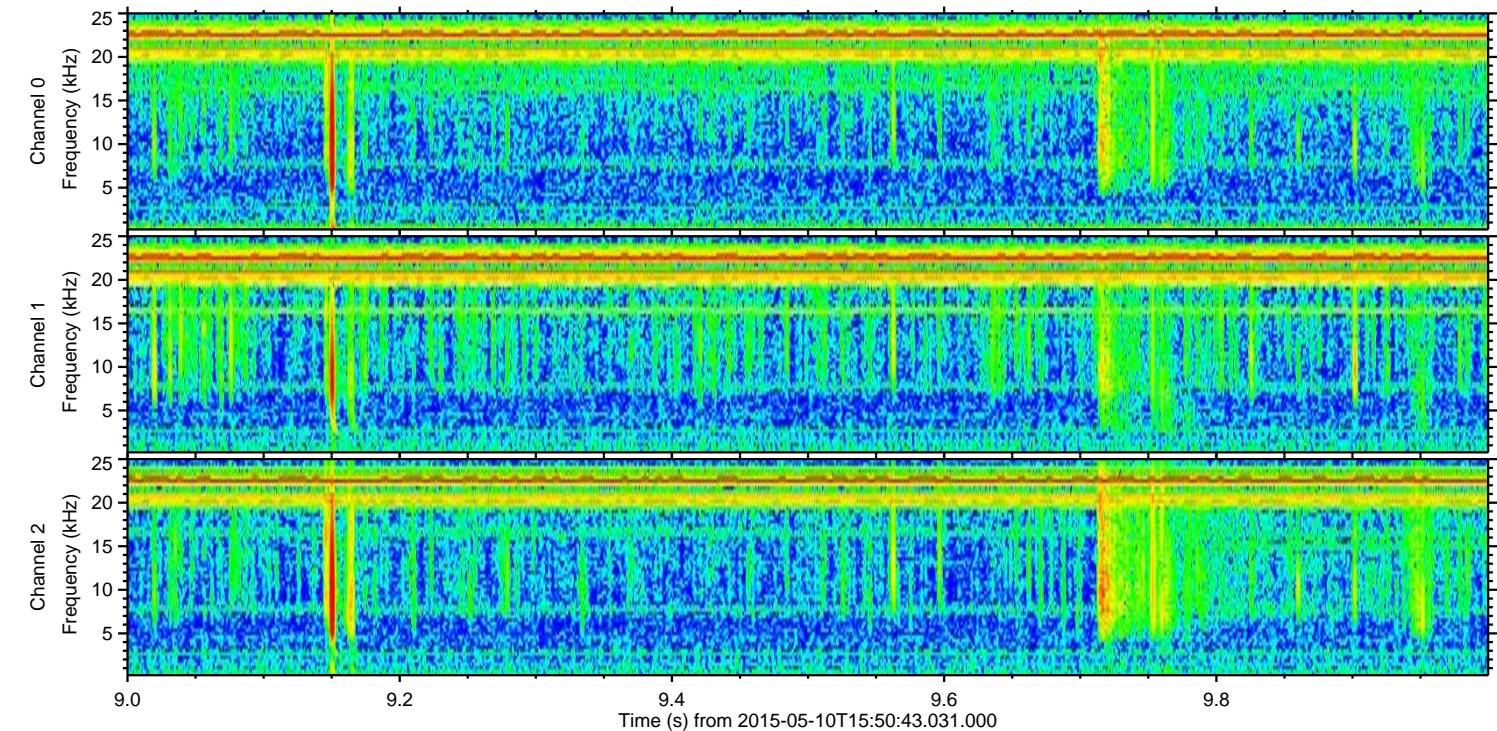
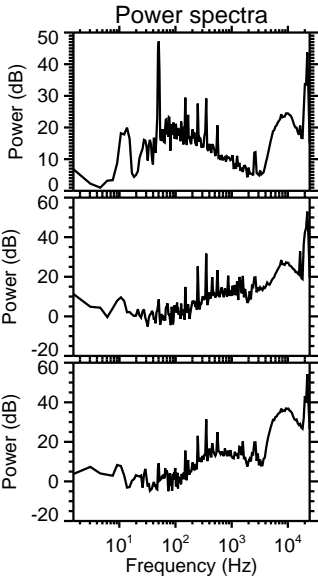
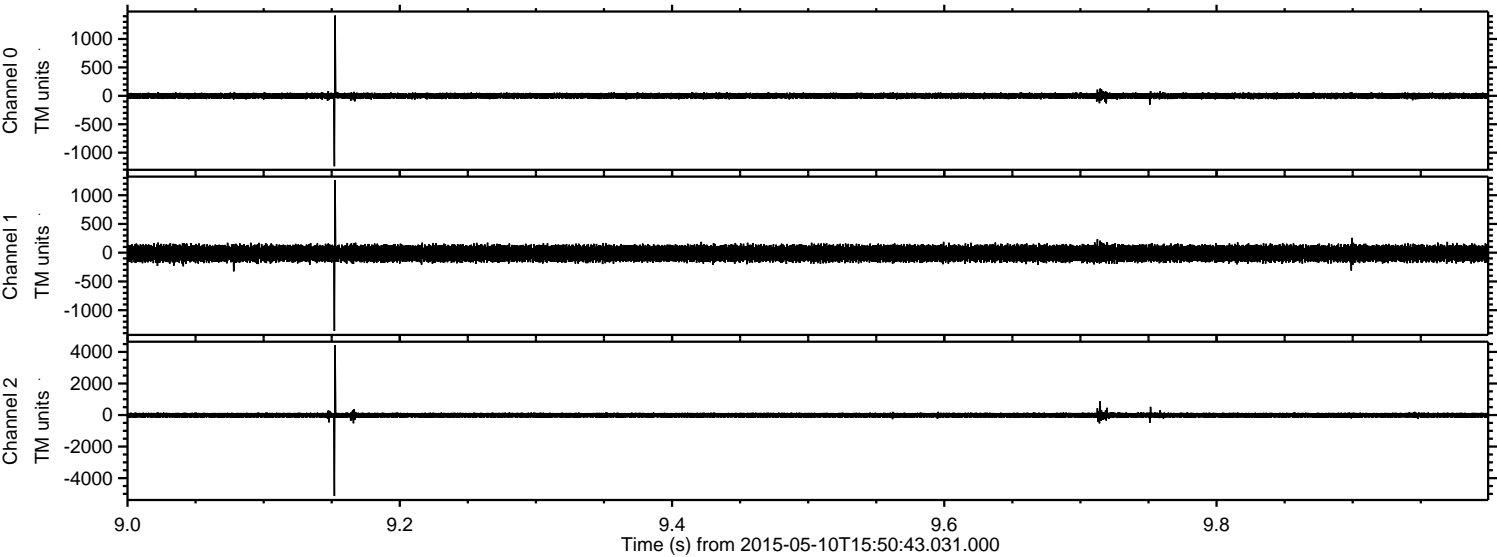


ELMAVAN 3D WAVEFORMS (Measured data sampled at 50 kHz) 49625 packets of 144 samples from 2015-05-10T15:50:43.031.000.

Processed Sun May 10 17:58:19 2015 by ELM ver.2012-10-06 from 001__elm20150510_155042__dat00.bin

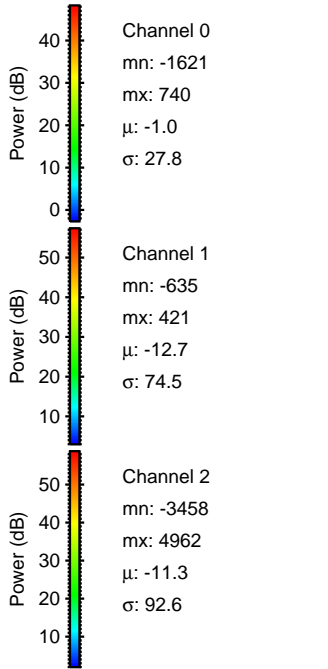
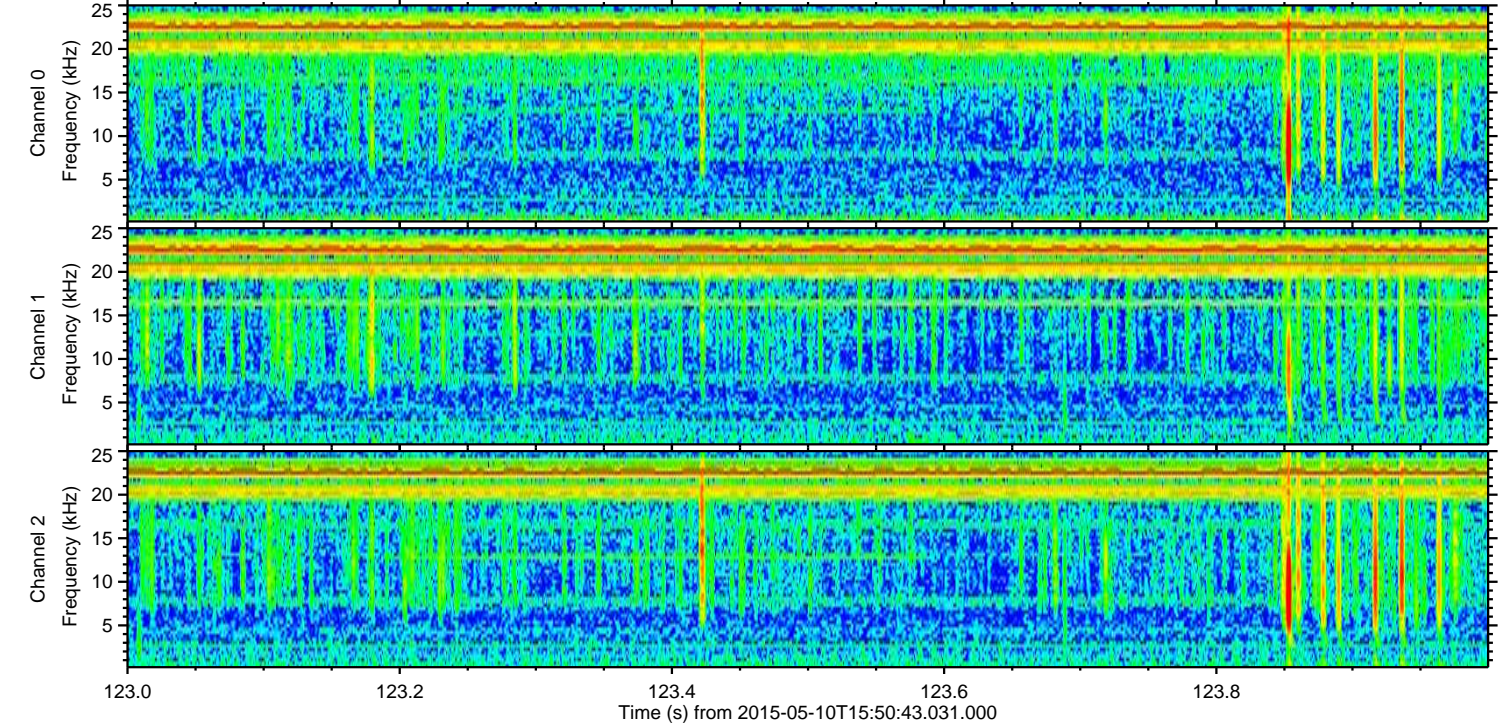
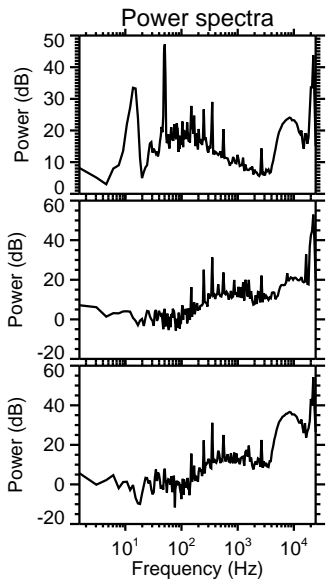
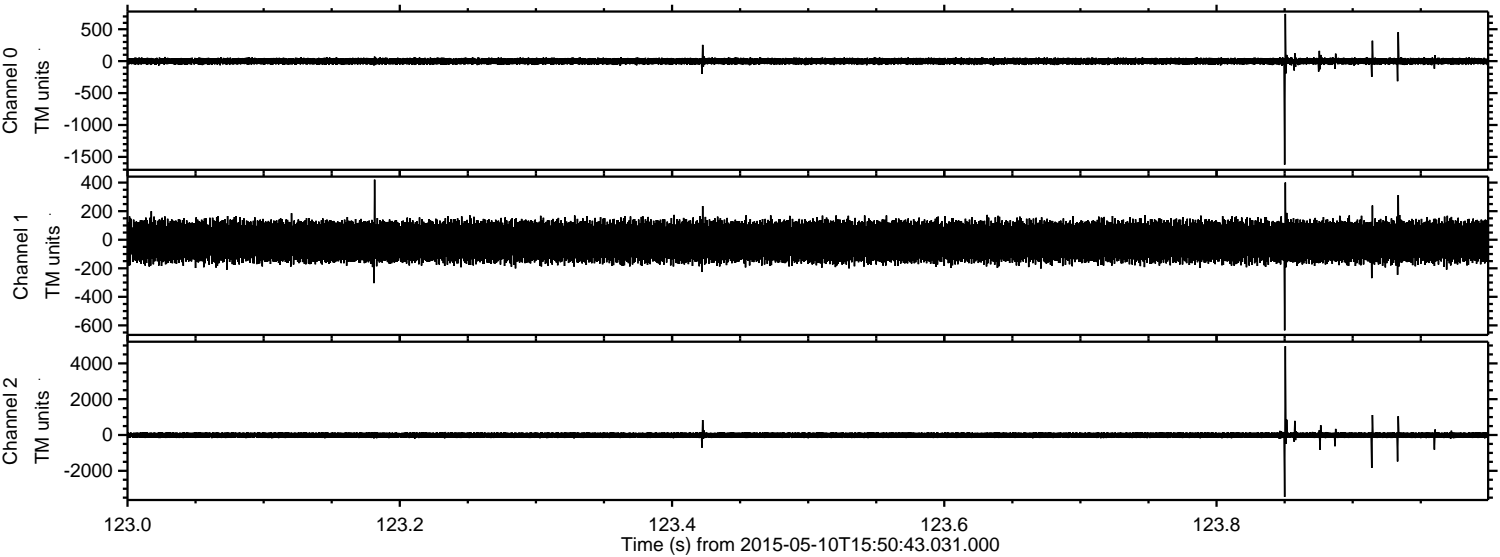


Processed Sun May 10 17:58:34 2015 by ELM ver.2012-10-06 from 001__elm20150510_155042__dat00.bin



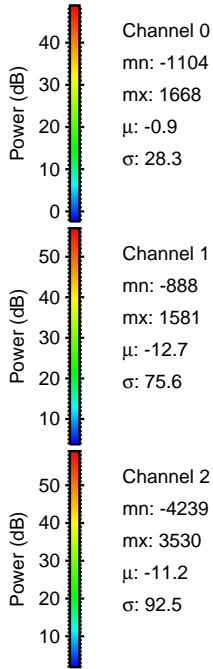
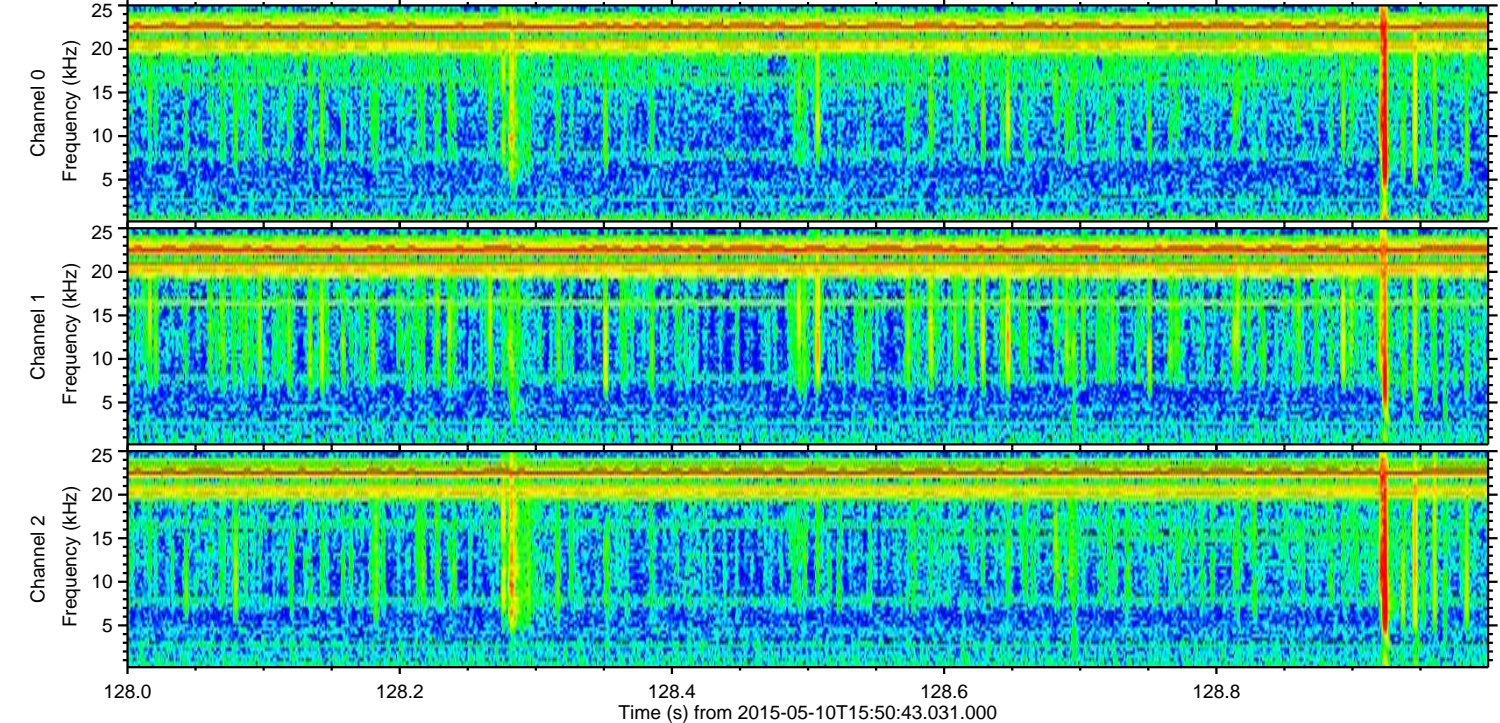
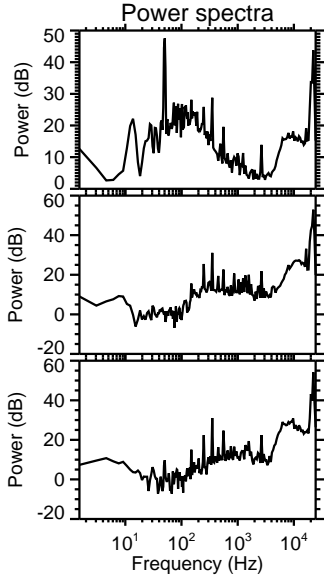
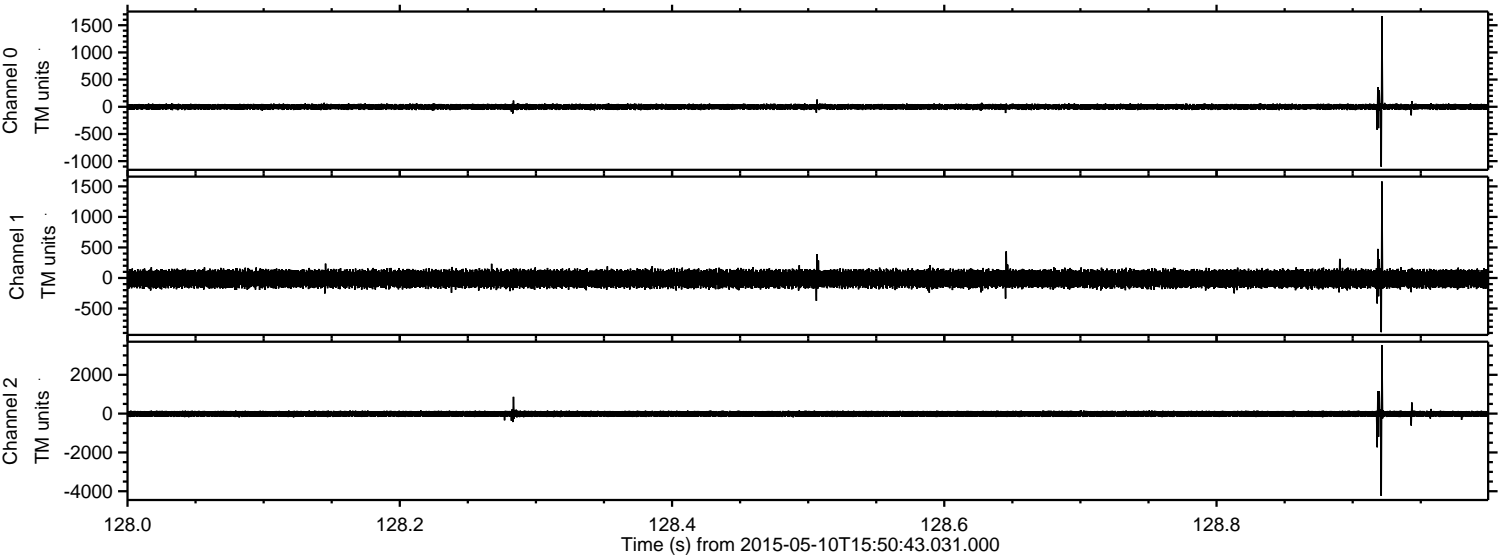
ELMAVAN 3D WAVEFORMS (Measured data sampled at 50 kHz) 49625 packets of 144 samples from 2015-05-10T15:50:43.031.000. Part 124/143

Processed Sun May 10 17:58:35 2015 by ELM ver.2012-10-06 from 001__elm20150510_155042__dat00.bin



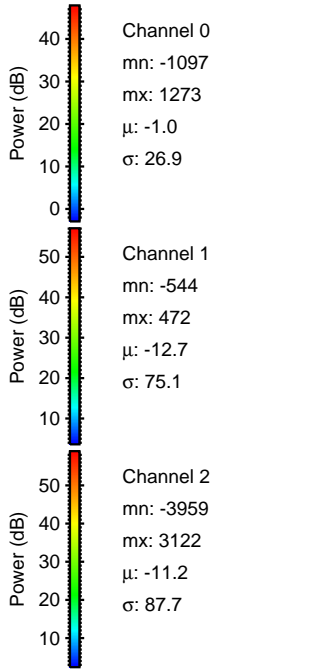
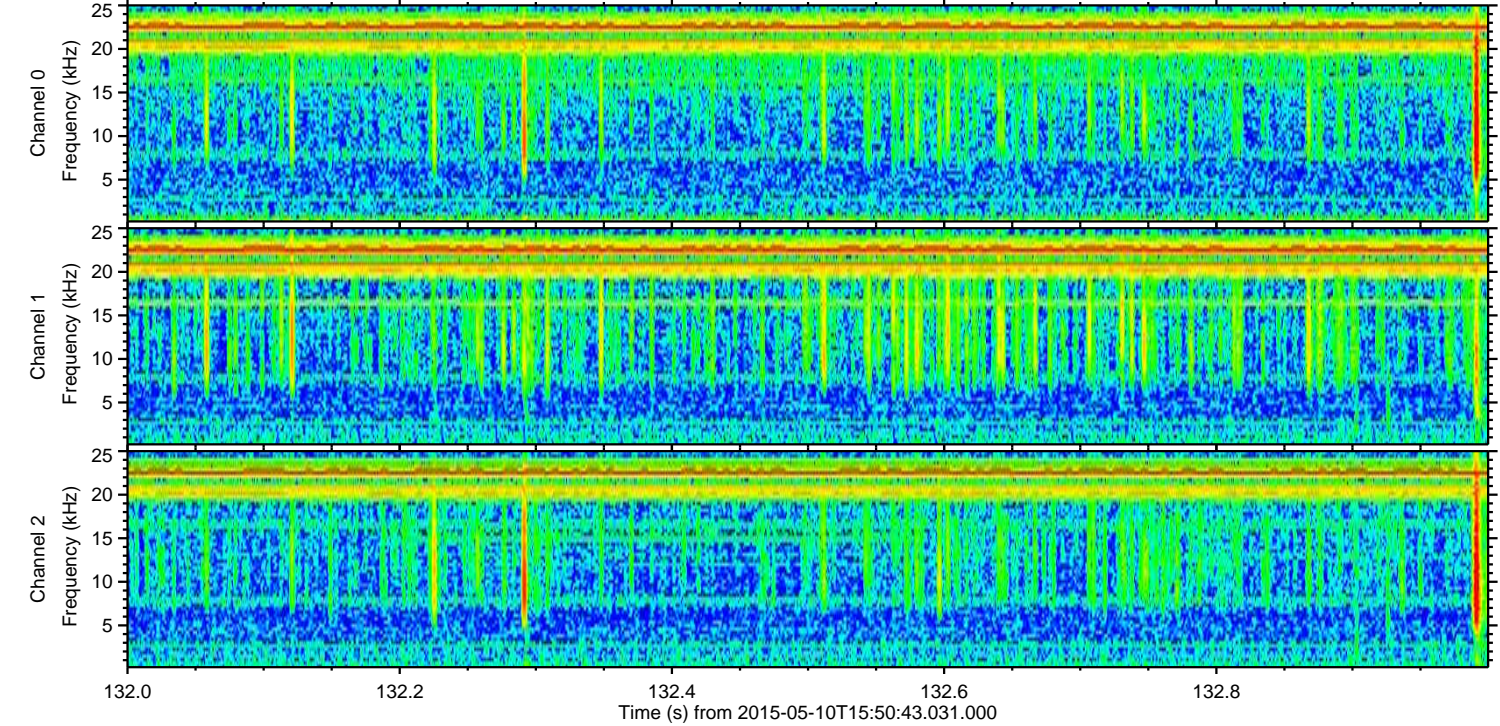
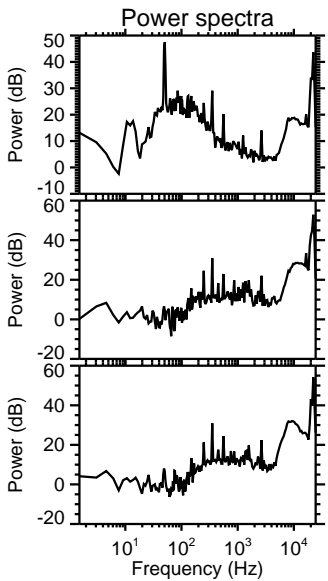
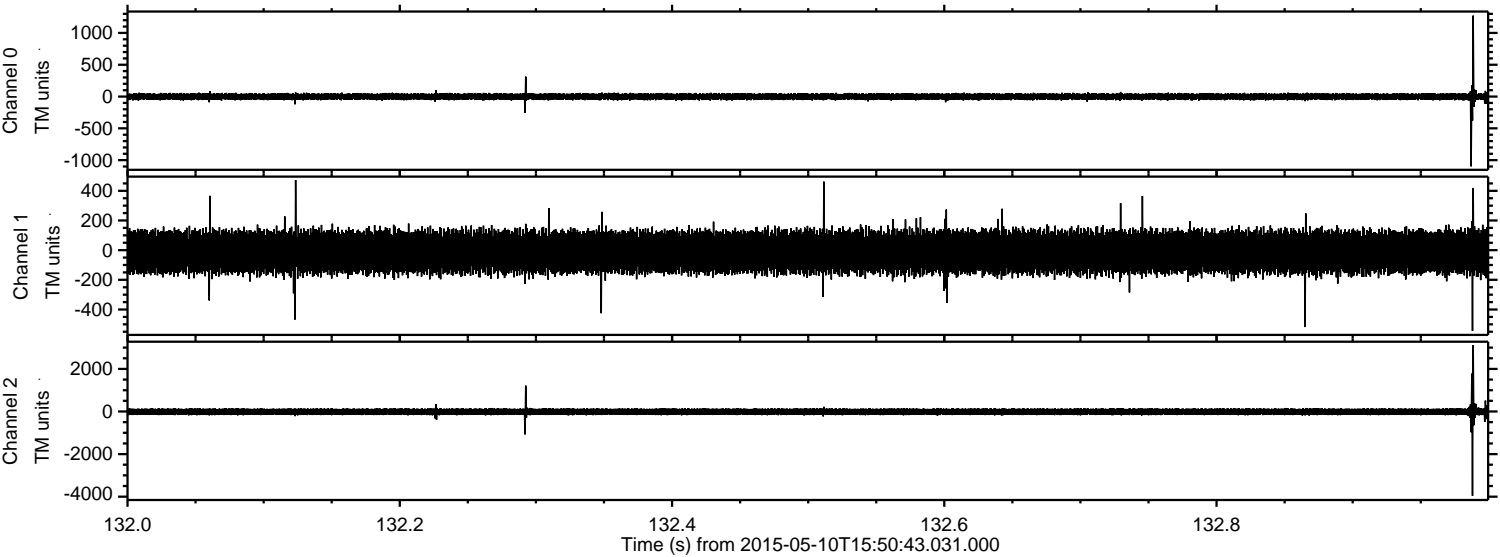
ELMAVAN 3D WAVEFORMS (Measured data sampled at 50 kHz) 49625 packets of 144 samples from 2015-05-10T15:50:43.031.000. Part 129/143

Processed Sun May 10 17:58:36 2015 by ELM ver.2012-10-06 from 001__elm20150510_155042__dat00.bin

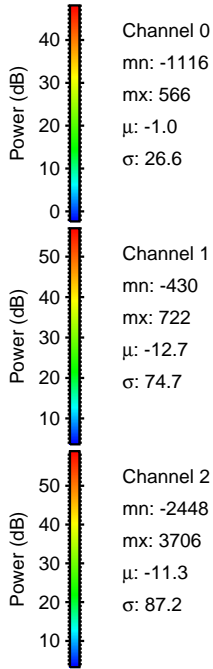
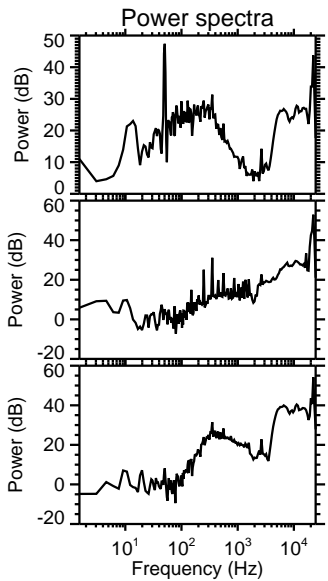
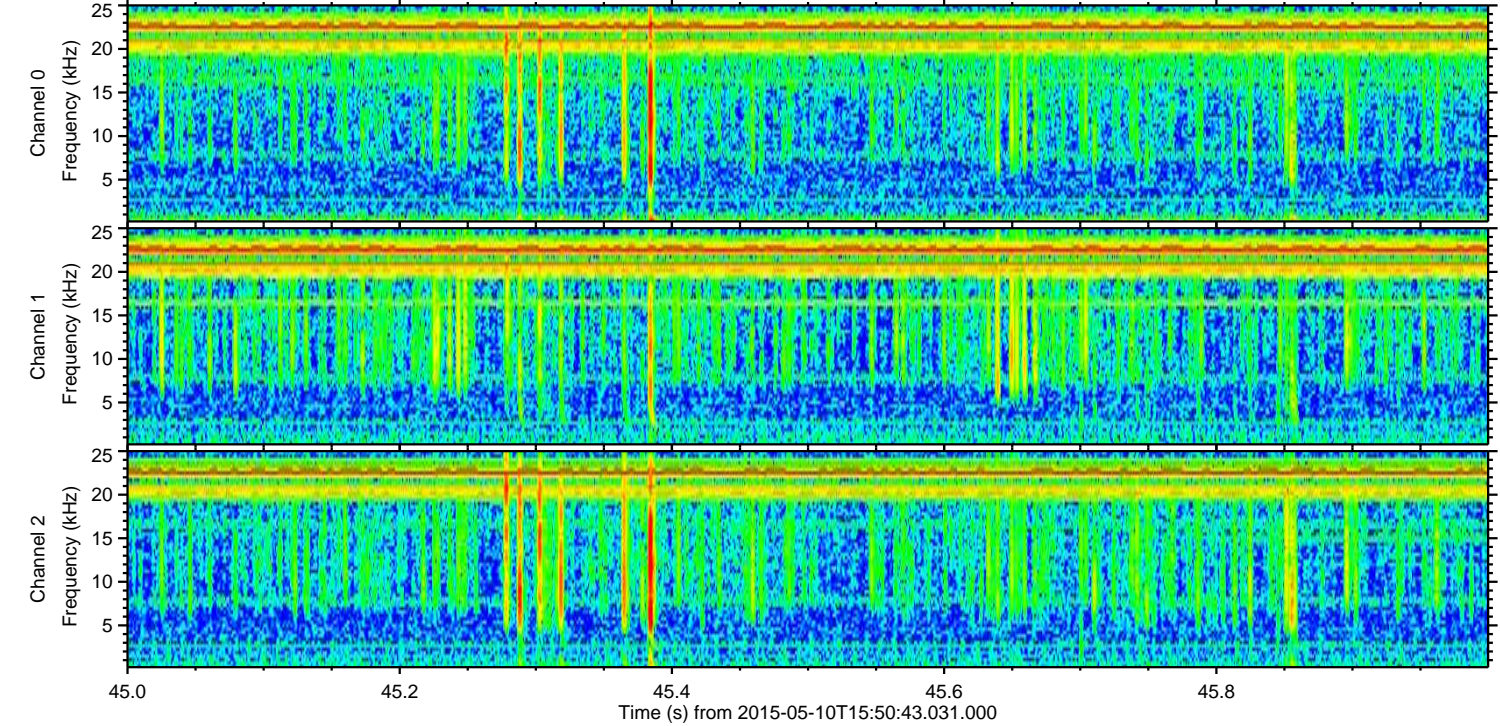
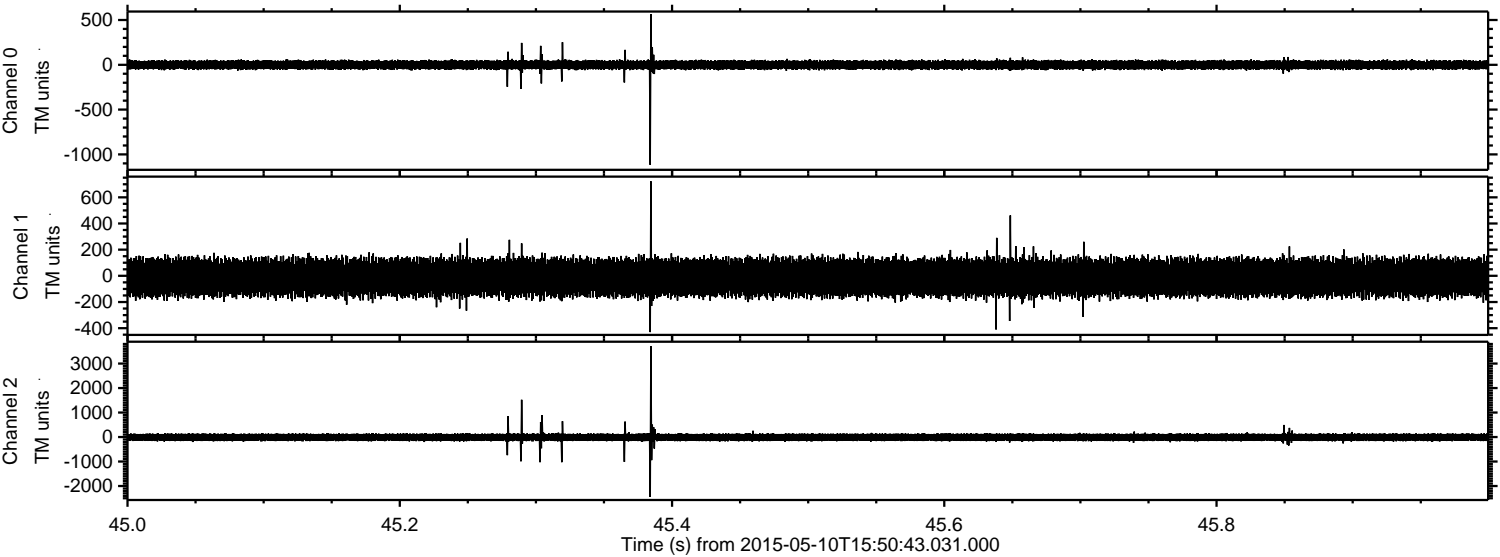


ELMAVAN 3D WAVEFORMS (Measured data sampled at 50 kHz) 49625 packets of 144 samples from 2015-05-10T15:50:43.031.000. Part 133/143

Processed Sun May 10 17:58:37 2015 by ELM ver.2012-10-06 from 001__elm20150510_155042__dat00.bin

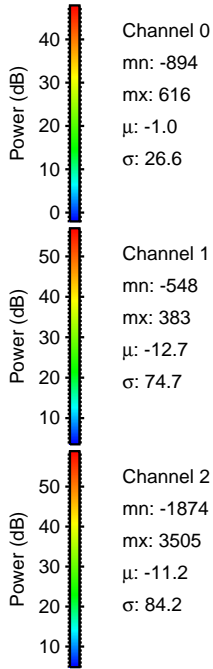
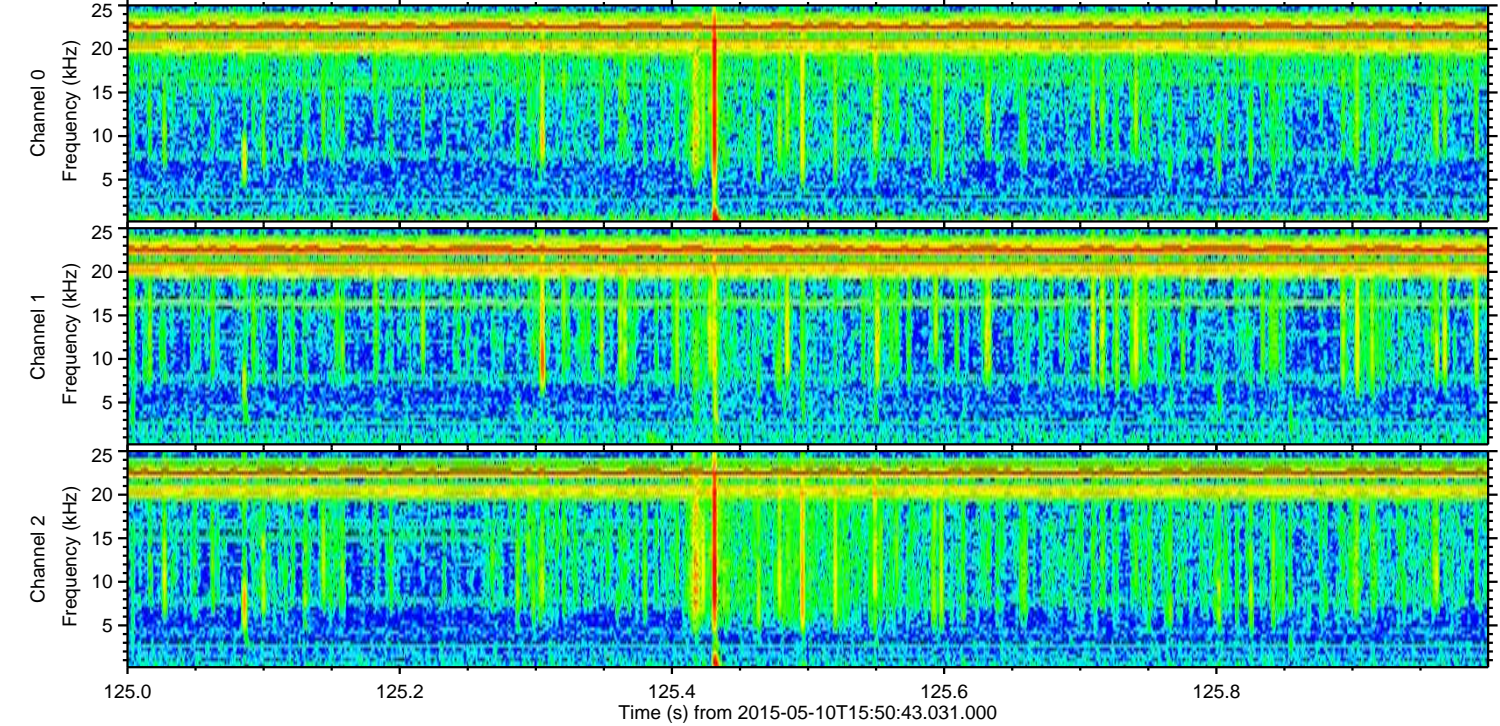
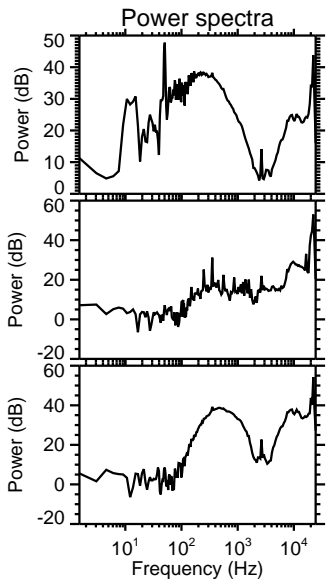
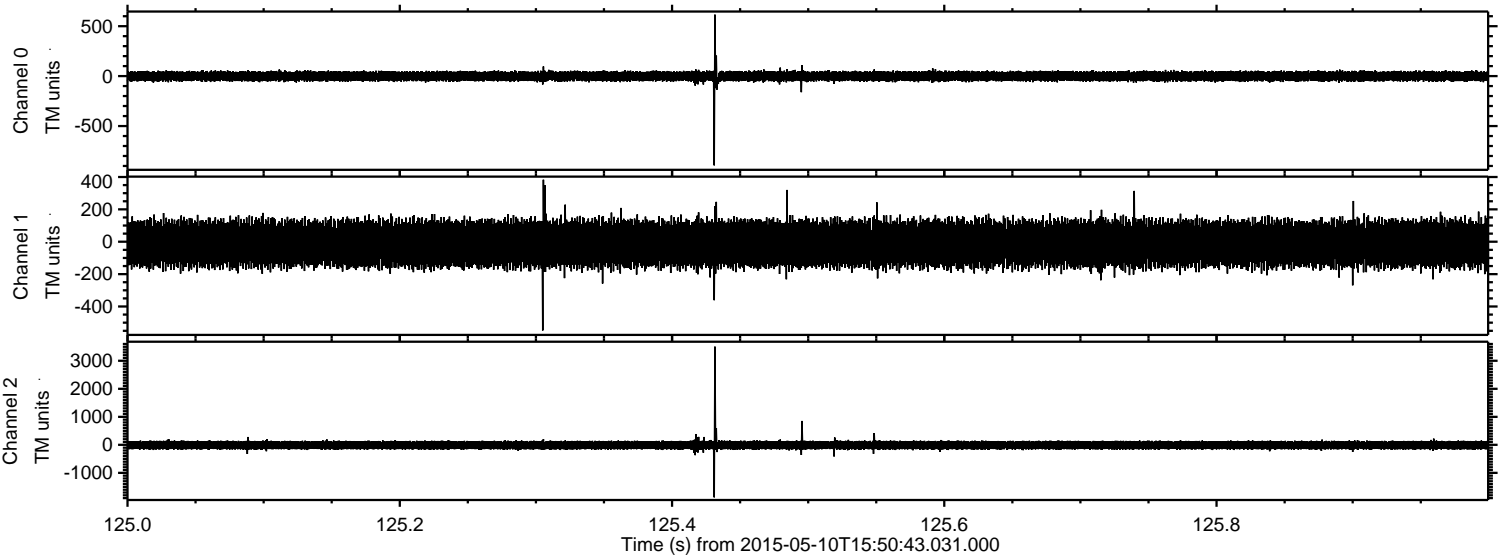


Processed Sun May 10 17:58:38 2015 by ELM ver.2012-10-06 from 001__elm20150510_155042__dat00.bin



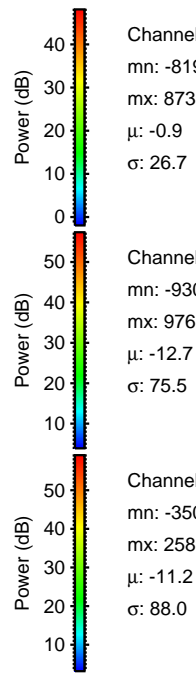
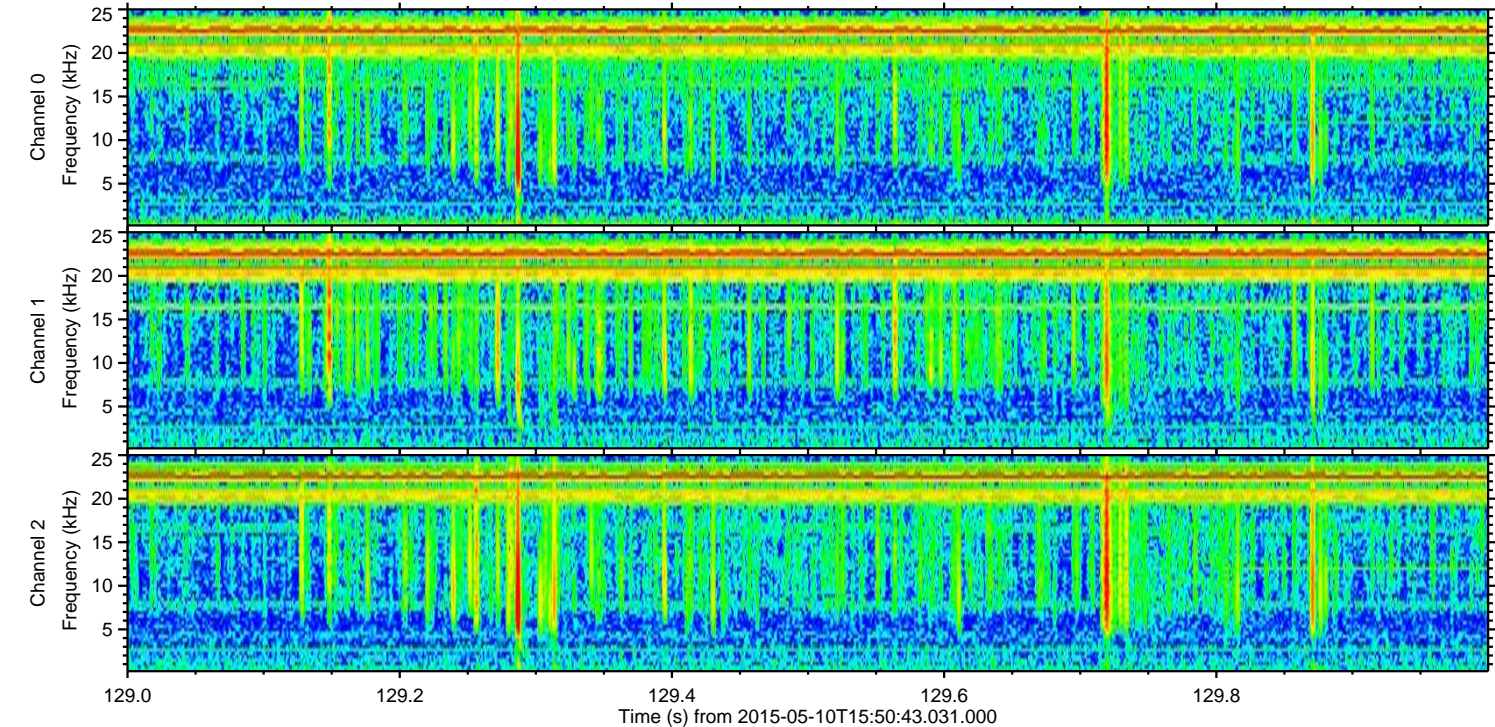
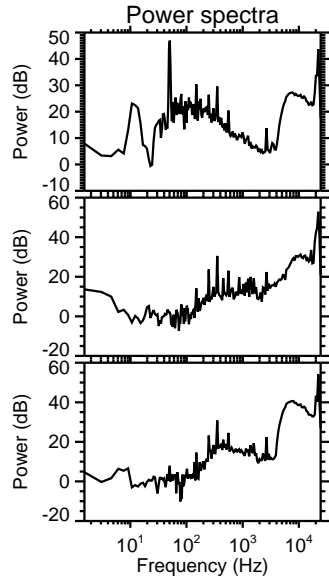
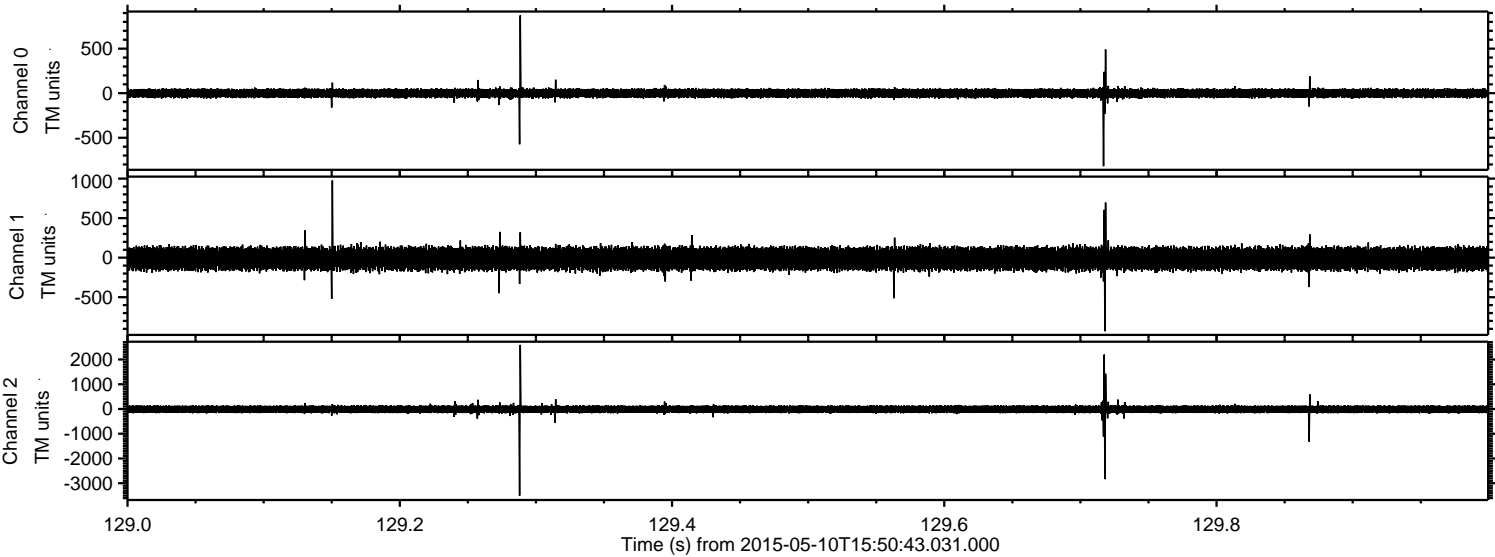
ELMAVAN 3D WAVEFORMS (Measured data sampled at 50 kHz) 49625 packets of 144 samples from 2015-05-10T15:50:43.031.000. Part 126/143

Processed Sun May 10 17:58:39 2015 by ELM ver.2012-10-06 from 001__elm20150510_155042__dat00.bin



ELMAVAN 3D WAVEFORMS (Measured data sampled at 50 kHz) 49625 packets of 144 samples from 2015-05-10T15:50:43.031.000. Part 130/143

Processed Sun May 10 17:58:40 2015 by ELM ver.2012-10-06 from 001__elm20150510_155042__dat00.bin

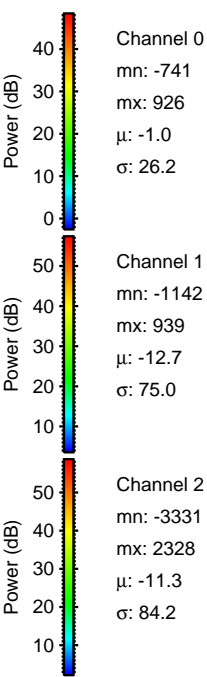
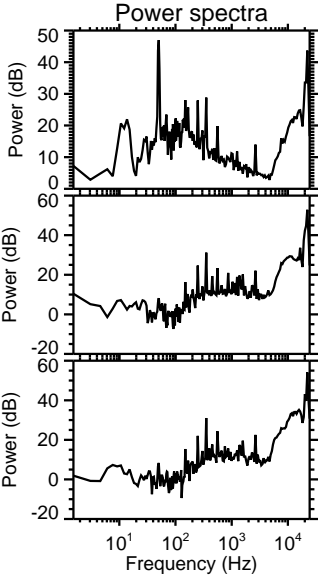
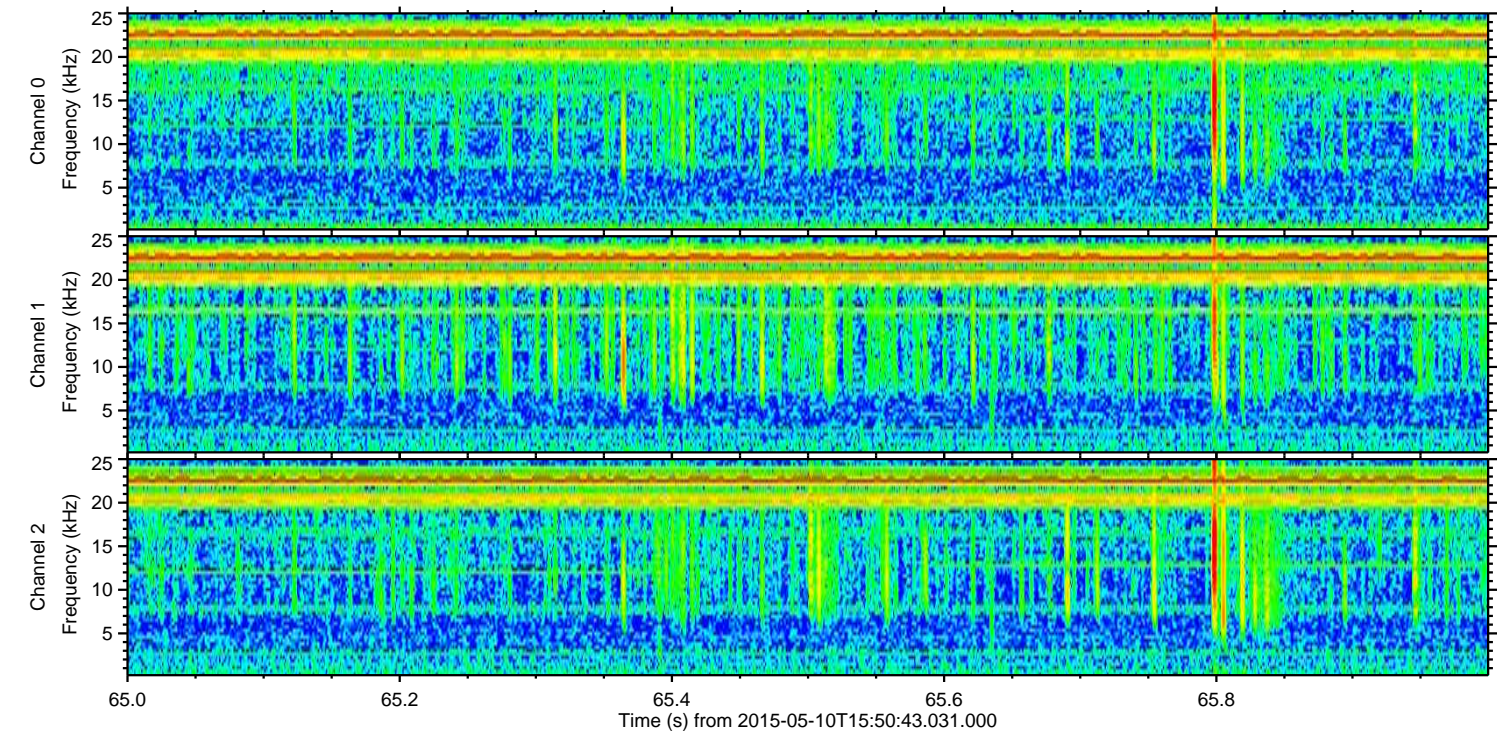
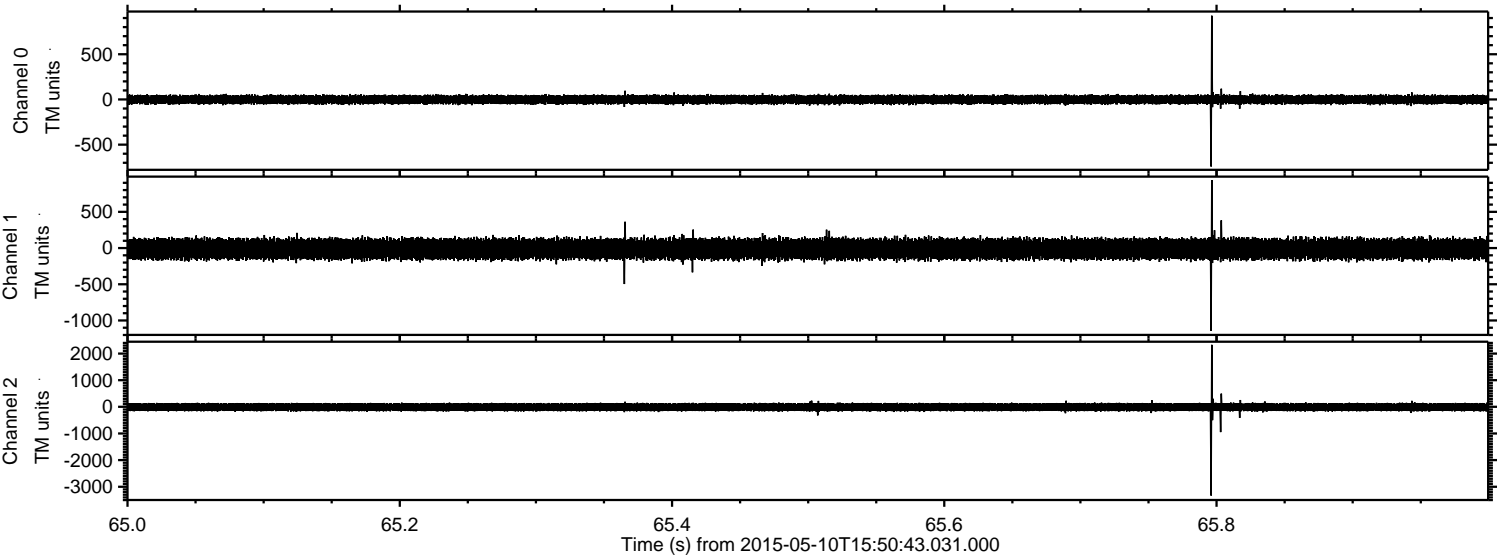


Channel 0
mn: -819
mx: 873
 μ : -0.9
 σ : 26.7

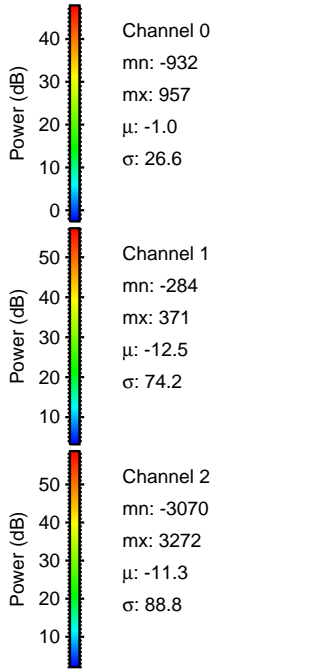
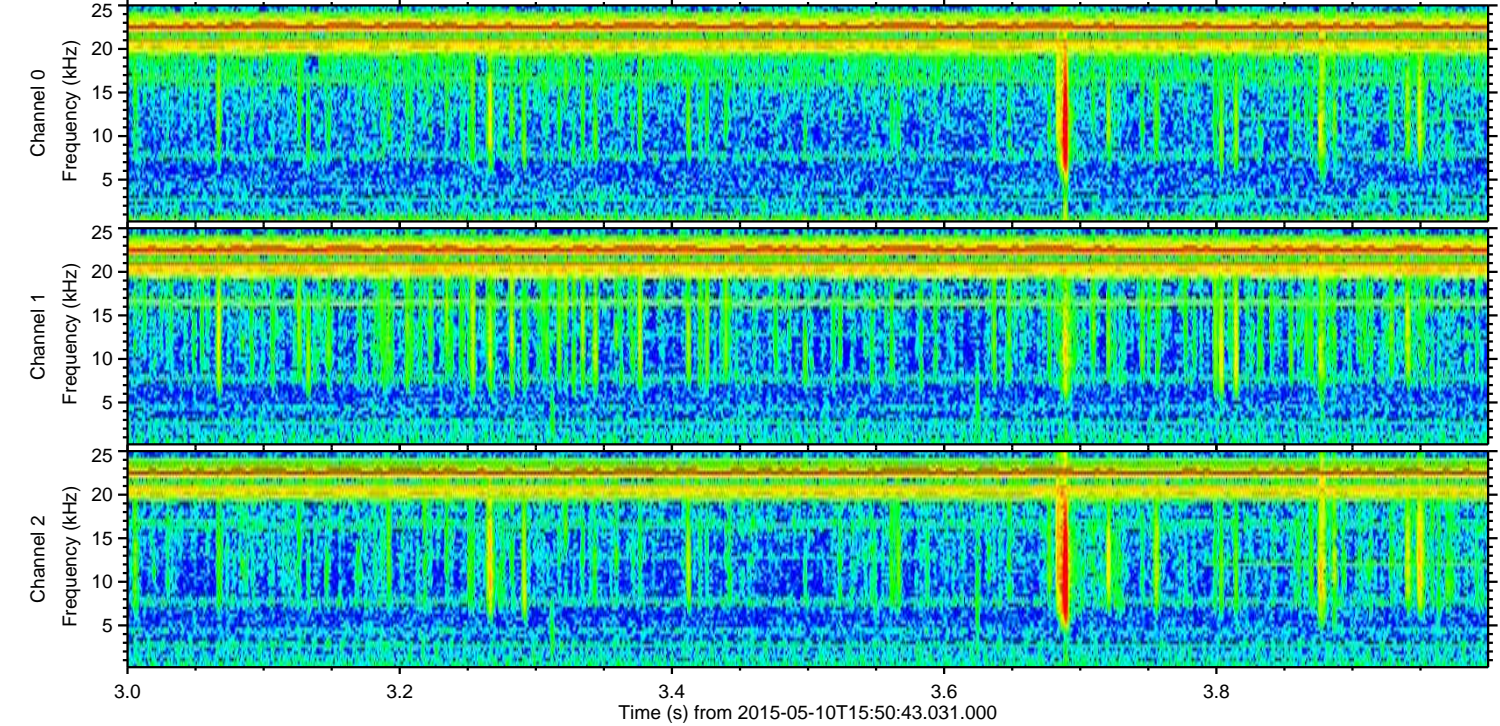
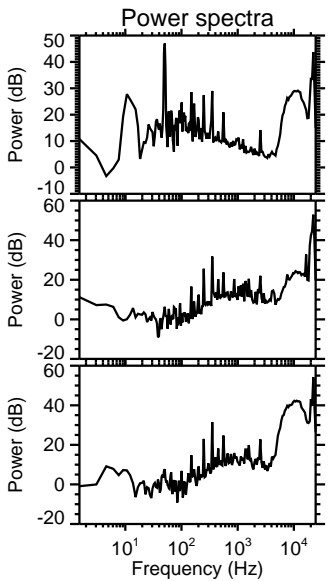
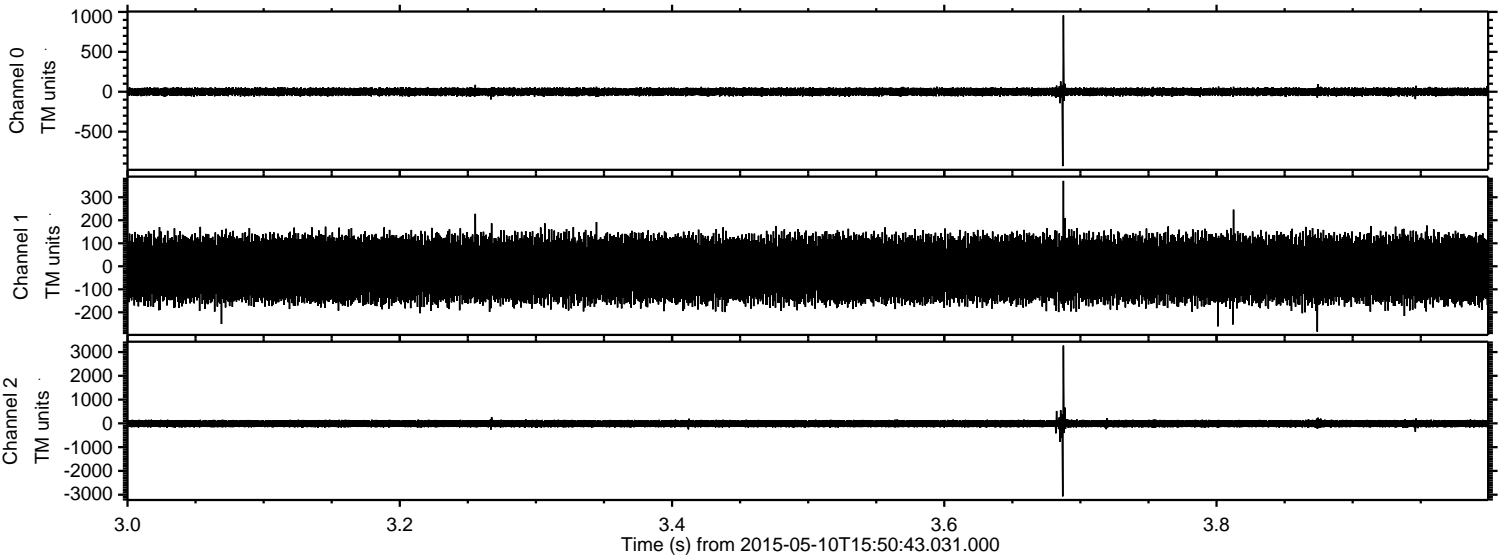
Channel 1
mn: -930
mx: 976
 μ : -12.7
 σ : 75.5

Channel 2
mn: -3502
mx: 2589
 μ : -11.2
 σ : 88.0

Processed Sun May 10 17:58:41 2015 by ELM ver.2012-10-06 from 001__elm20150510_155042__dat00.bin



Processed Sun May 10 17:58:42 2015 by ELM ver.2012-10-06 from 001__elm20150510_155042__dat00.bin



Processed Sun May 10 17:58:43 2015 by ELM ver.2012-10-06 from 001__elm20150510_155042__dat00.bin

