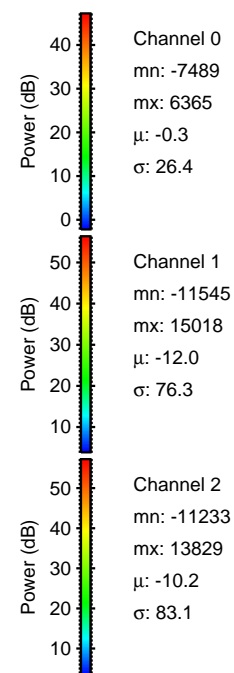
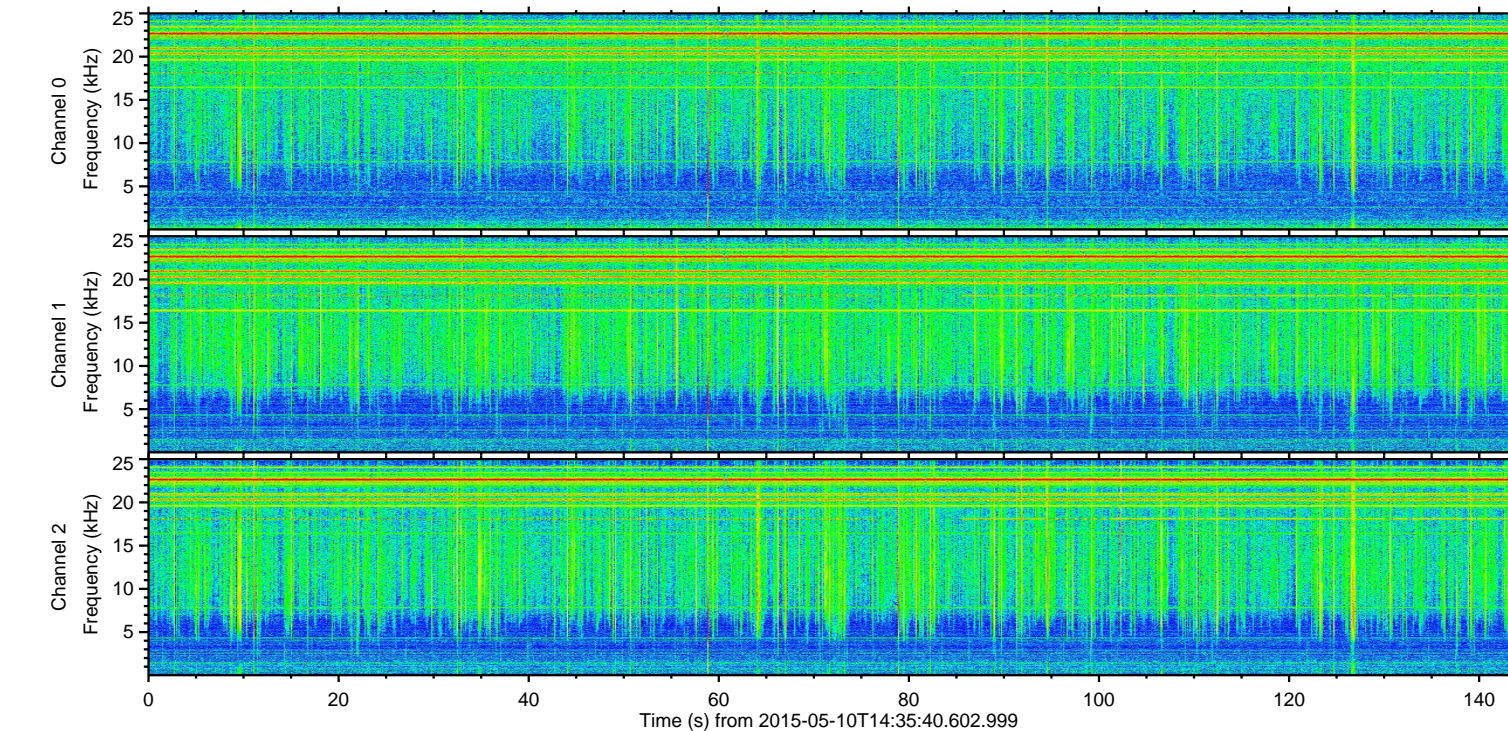
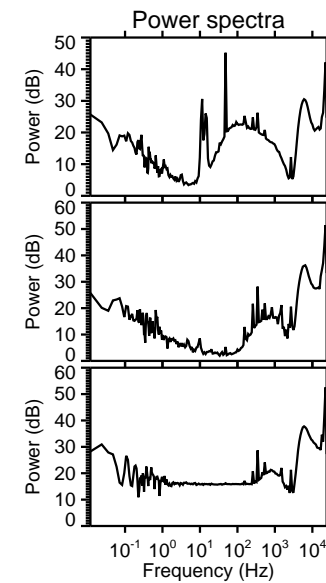
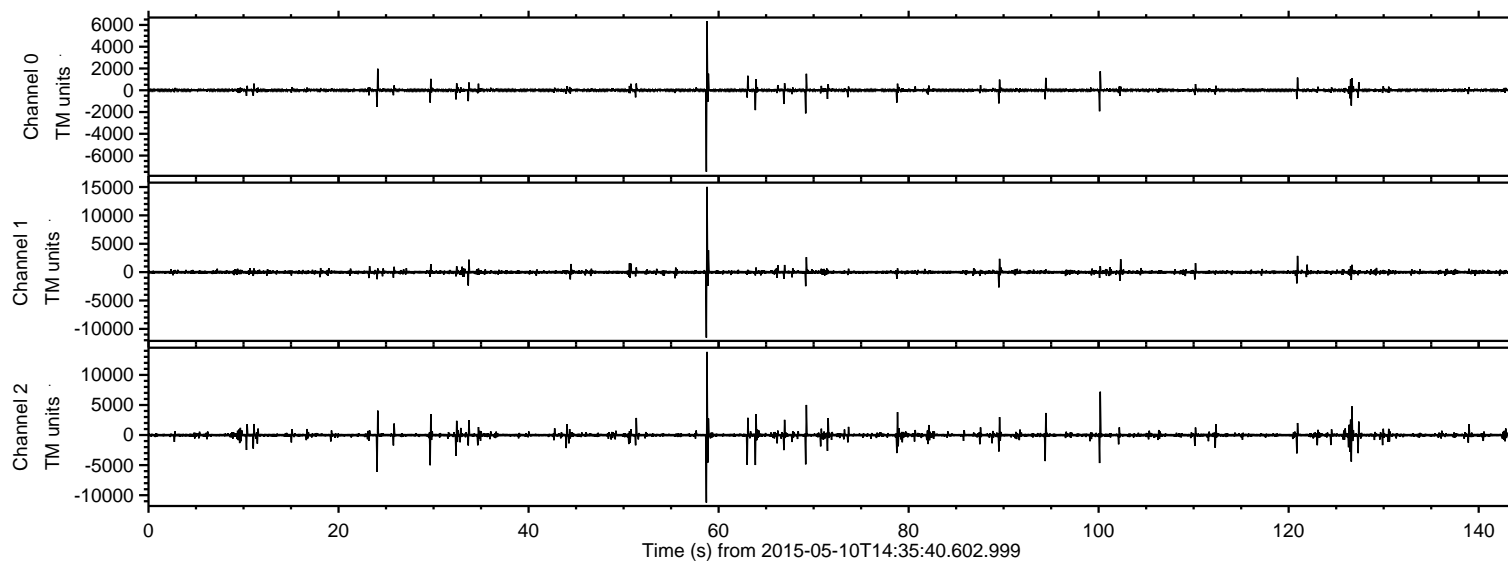


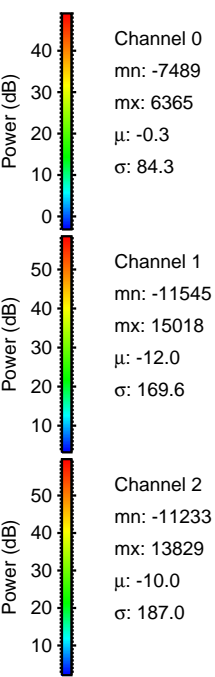
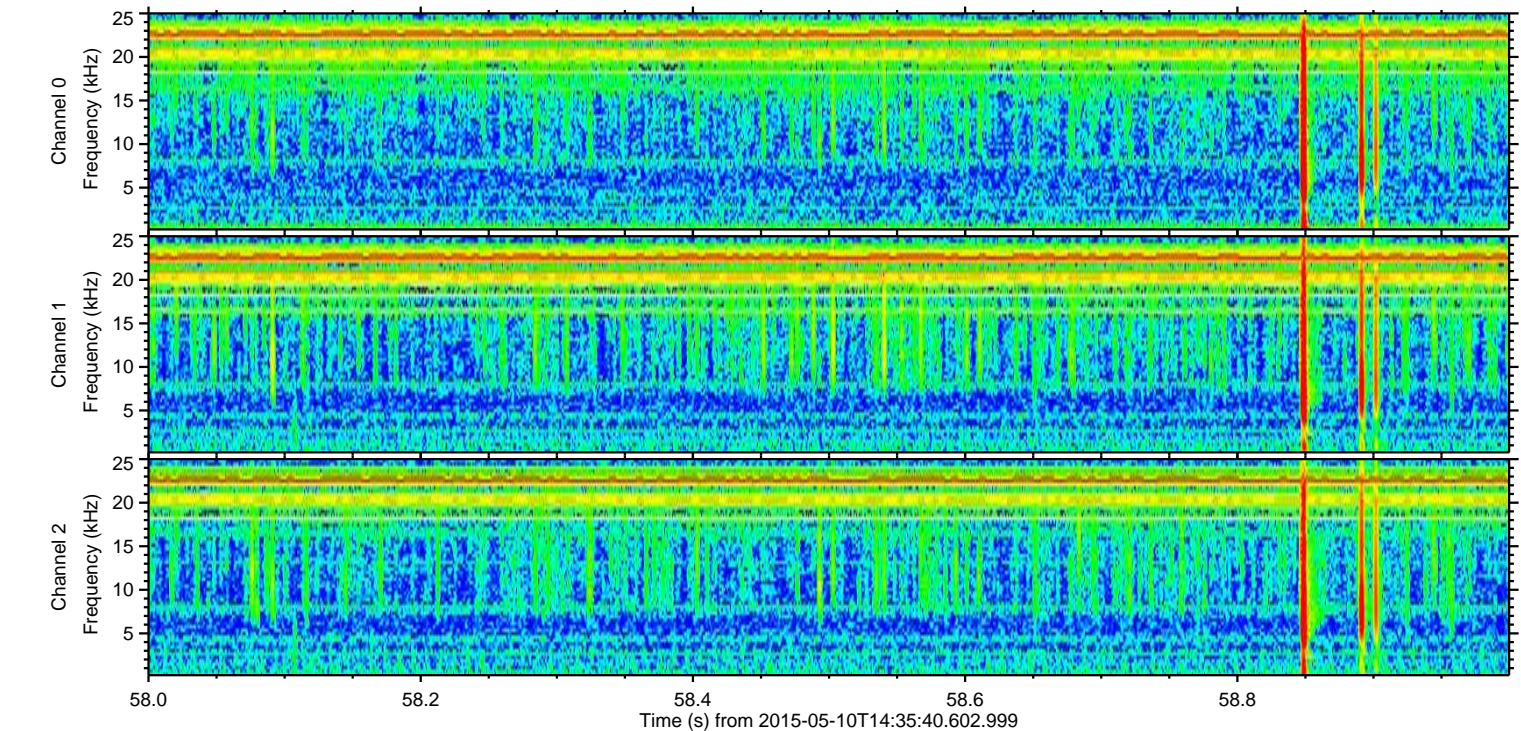
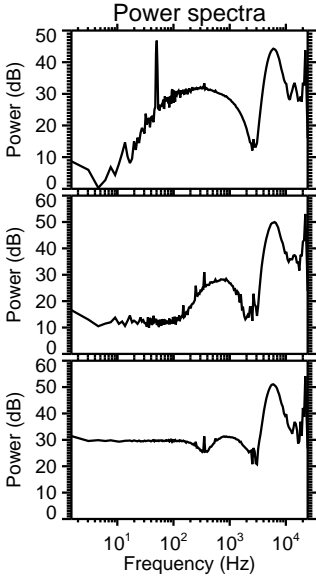
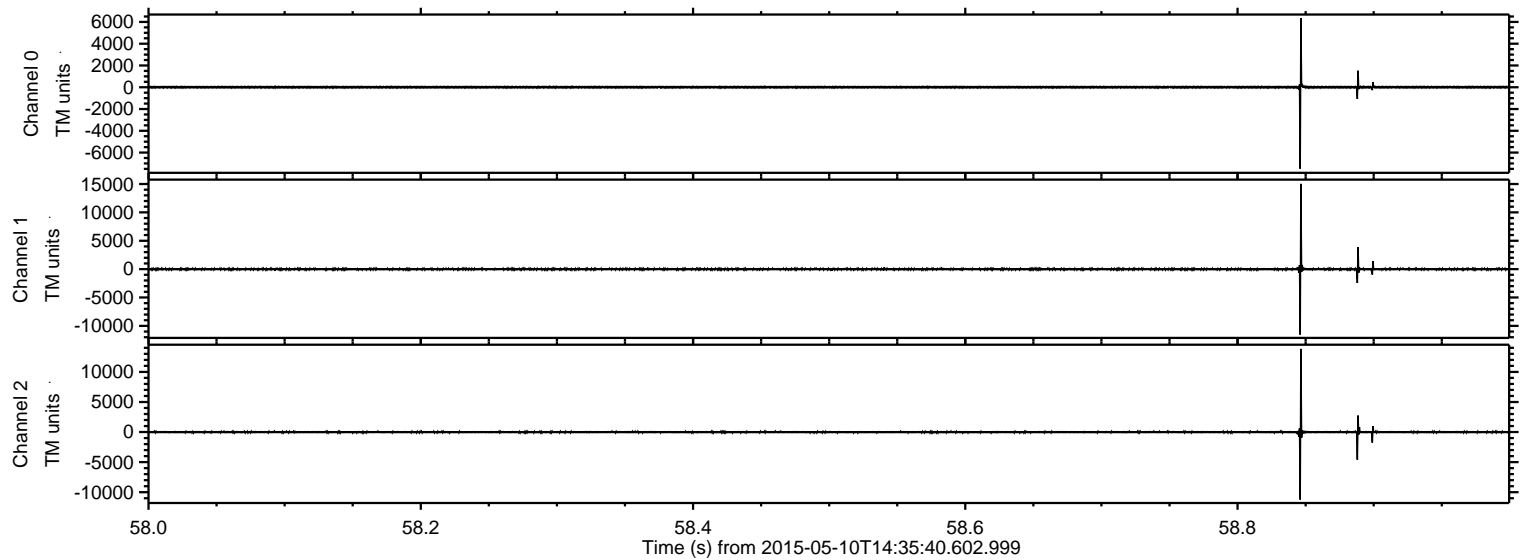
# ELMAVAN 3D WAVEFORMS (Measured data sampled at 50 kHz) 49724 packets of 144 samples from 2015-05-10T14:35:40.602.999.

Processed Sun May 10 16:42:50 2015 by ELM ver.2012-10-06 from 001\_\_elm20150510\_143539\_\_dat00.bin





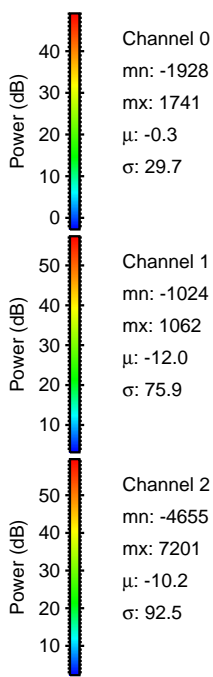
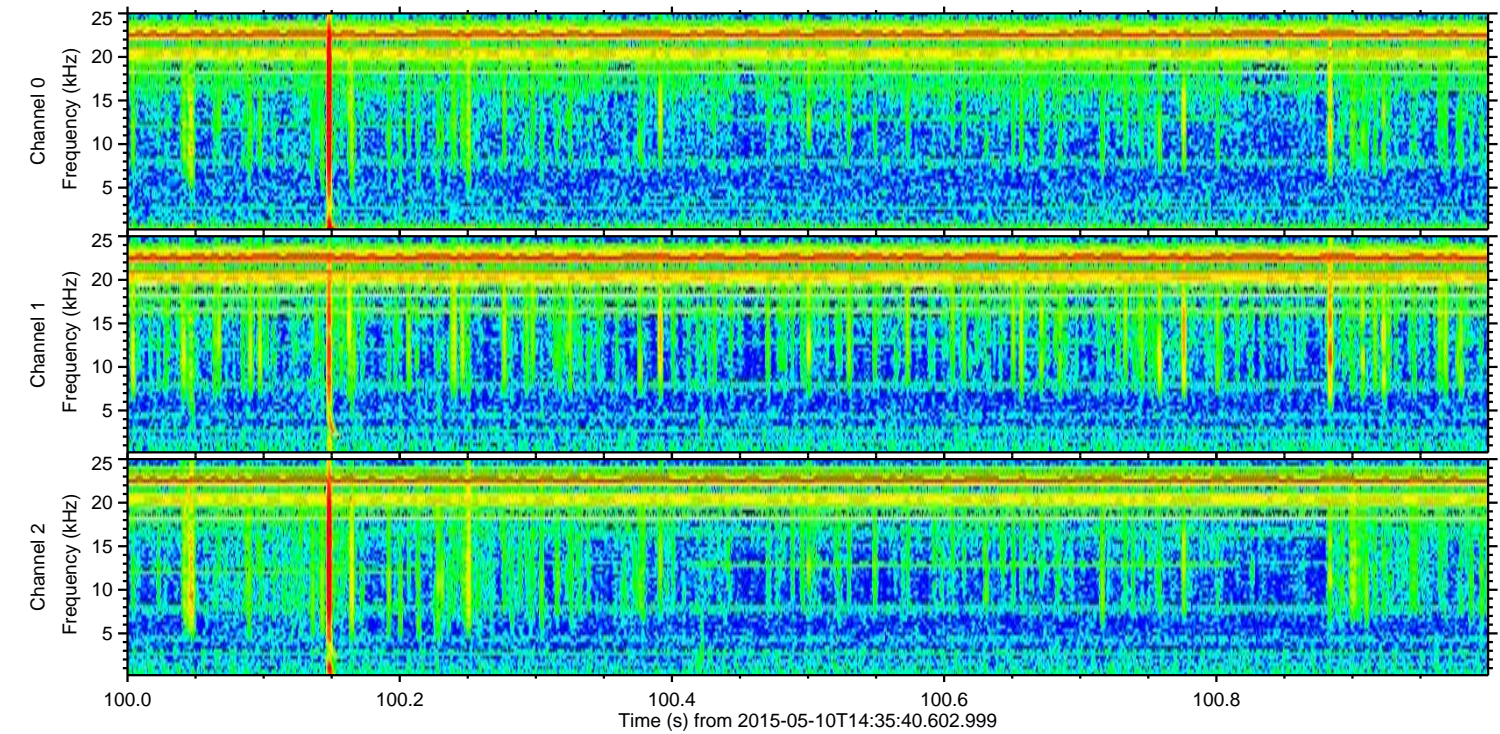
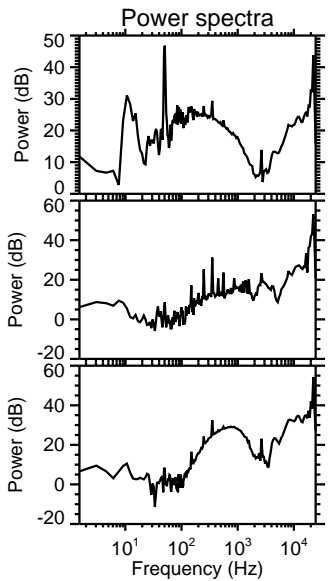
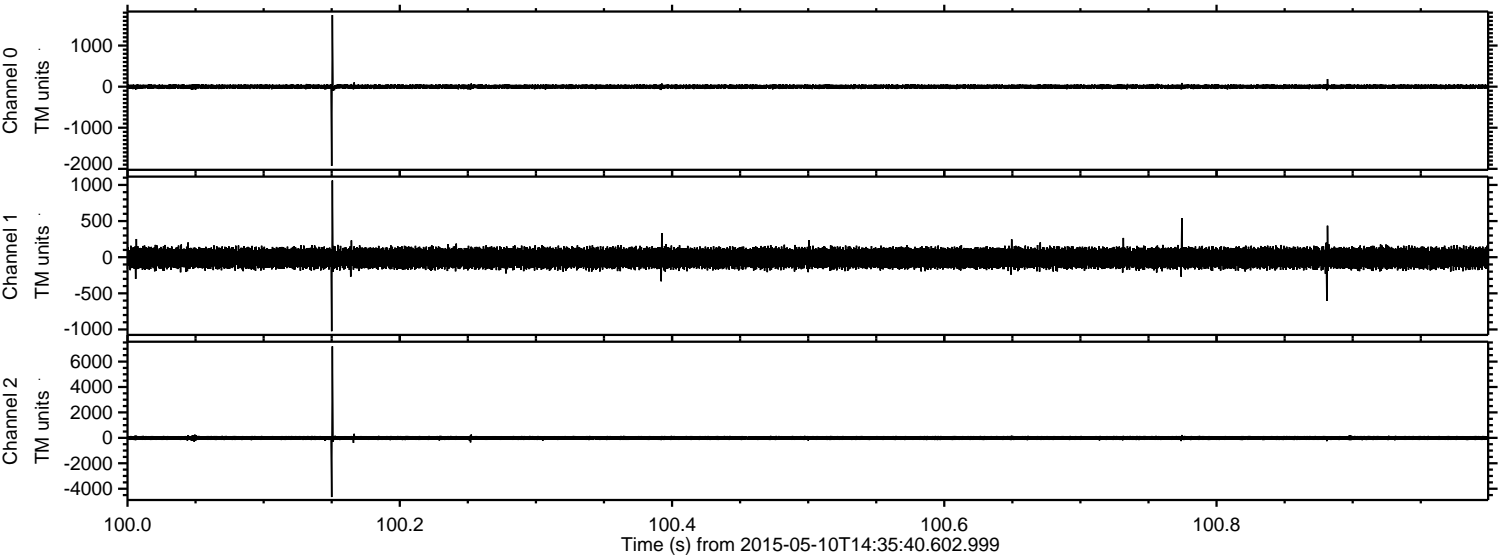
Processed Sun May 10 16:43:02 2015 by ELM ver.2012-10-06 from 001\_\_elm20150510\_143539\_\_dat00.bin





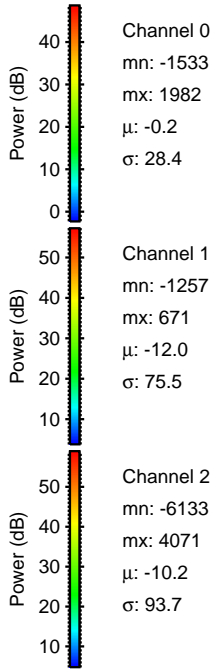
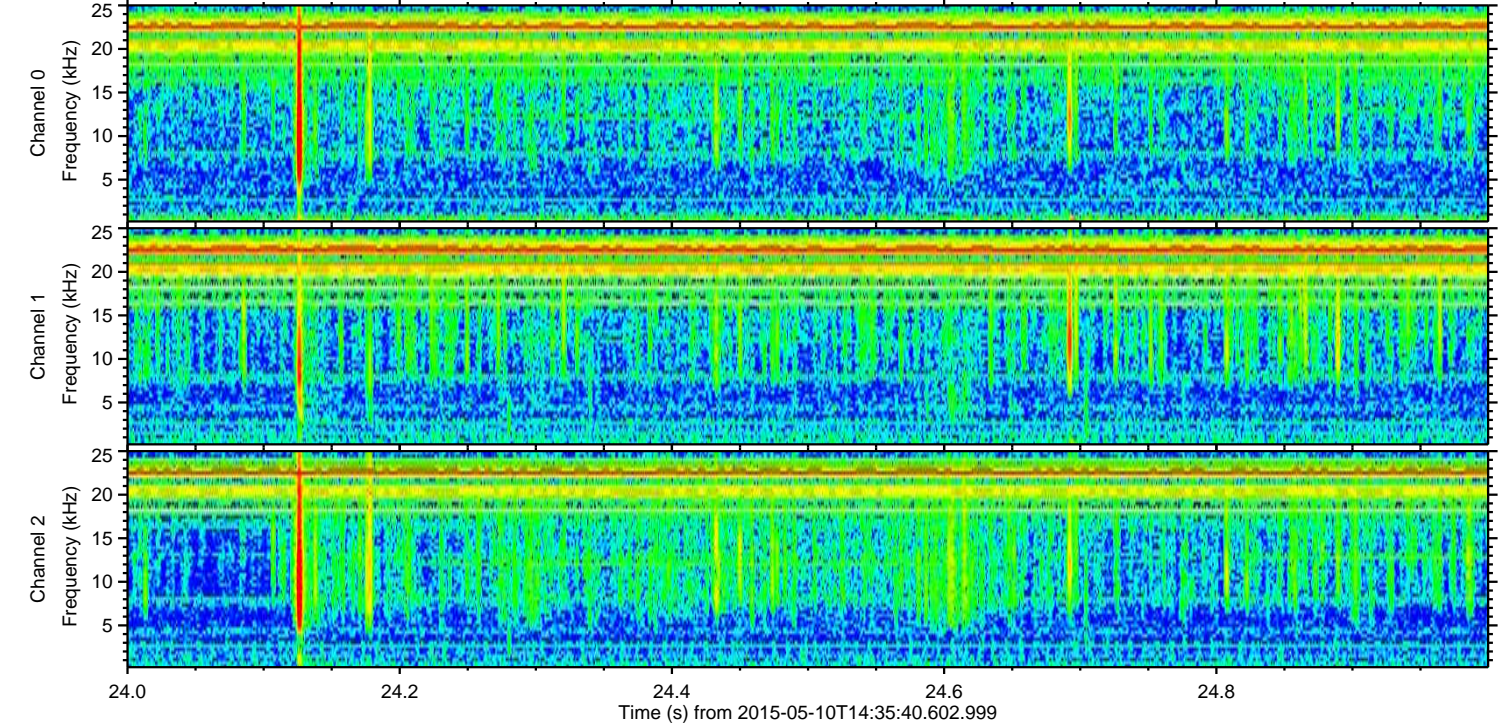
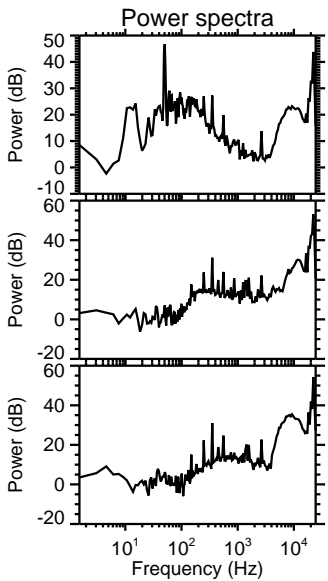
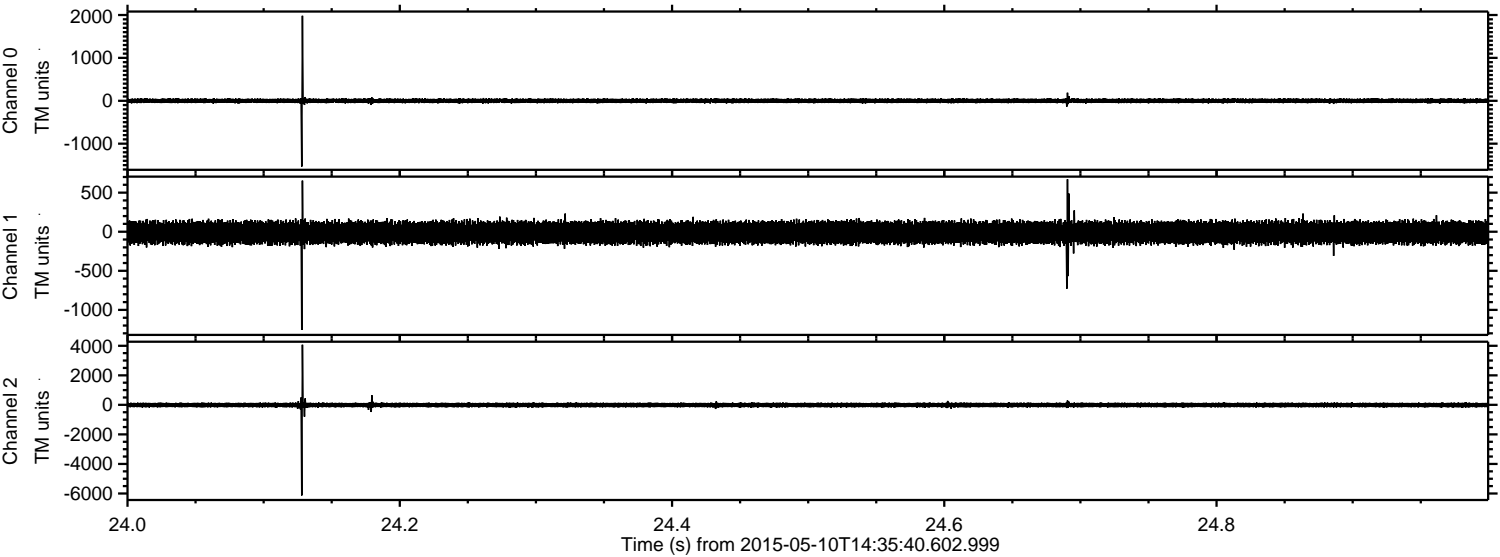
ELMAVAN 3D WAVEFORMS (Measured data sampled at 50 kHz) 49724 packets of 144 samples from 2015-05-10T14:35:40.602.999. Part 101/144

Processed Sun May 10 16:43:03 2015 by ELM ver.2012-10-06 from 001\_\_elm20150510\_143539\_\_dat00.bin





Processed Sun May 10 16:43:04 2015 by ELM ver.2012-10-06 from 001\_\_elm20150510\_143539\_\_dat00.bin



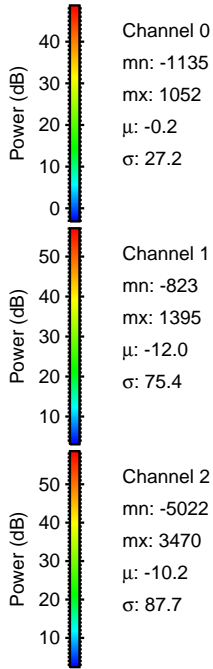
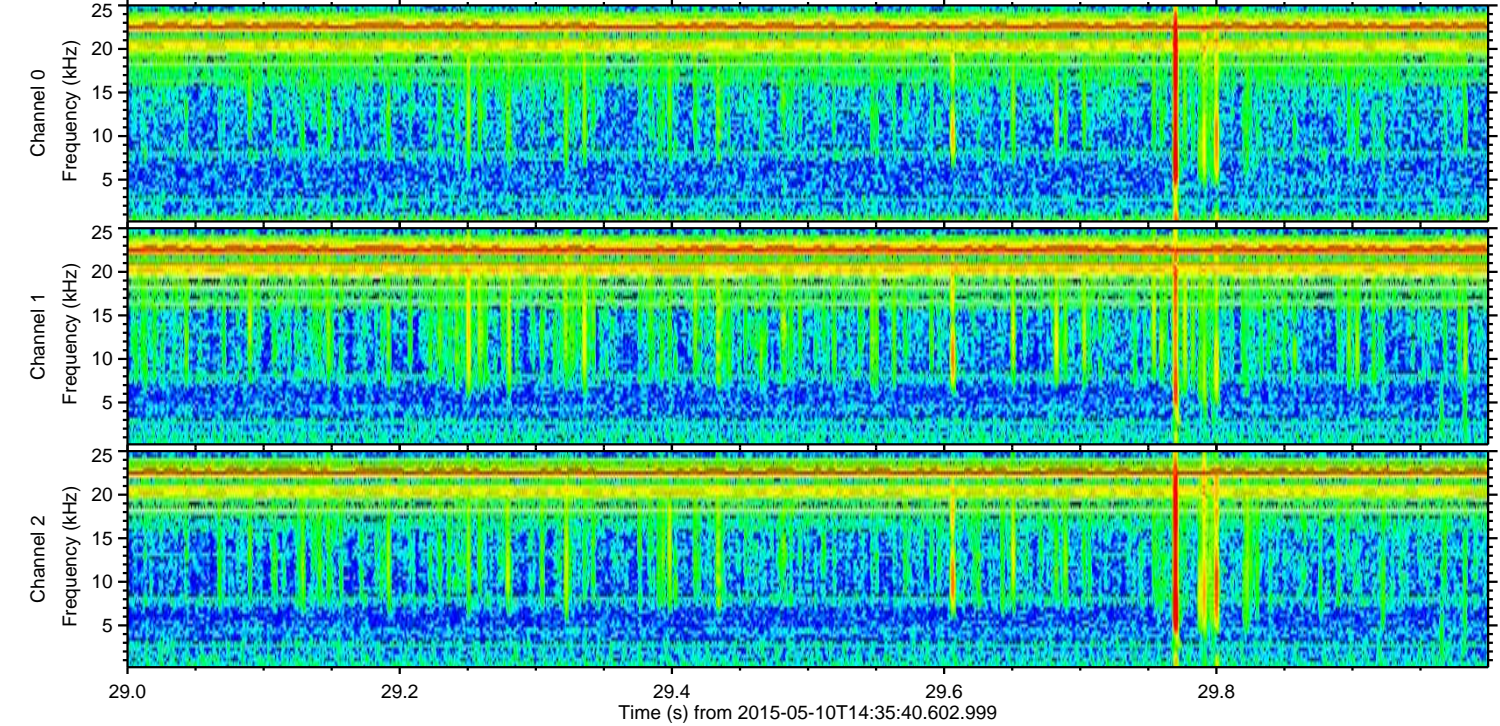
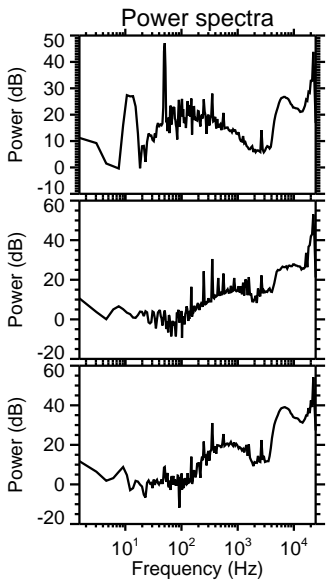
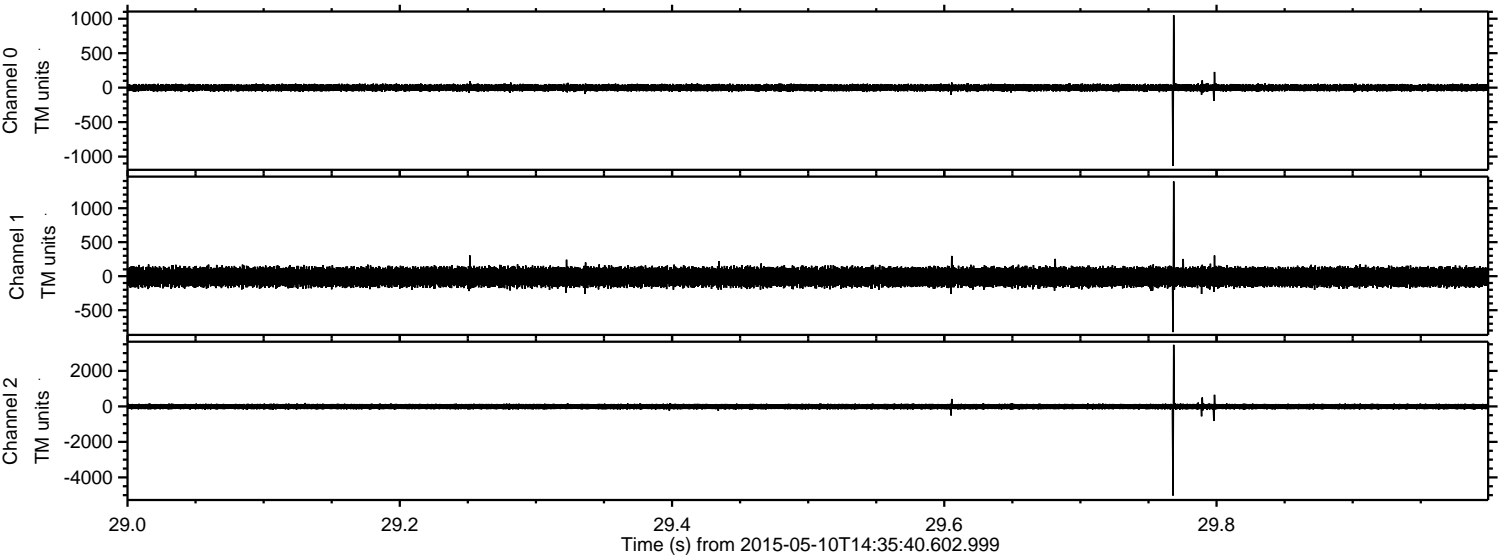
Channel 0  
mn: -1533  
mx: 1982  
 $\mu$ : -0.2  
 $\sigma$ : 28.4

Channel 1  
mn: -1257  
mx: 671  
 $\mu$ : -12.0  
 $\sigma$ : 75.5

Channel 2  
mn: -6133  
mx: 4071  
 $\mu$ : -10.2  
 $\sigma$ : 93.7



Processed Sun May 10 16:43:05 2015 by ELM ver.2012-10-06 from 001\_\_elm20150510\_143539\_\_dat00.bin



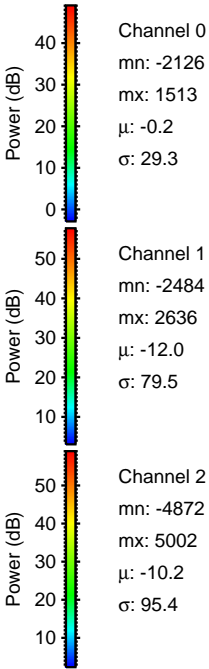
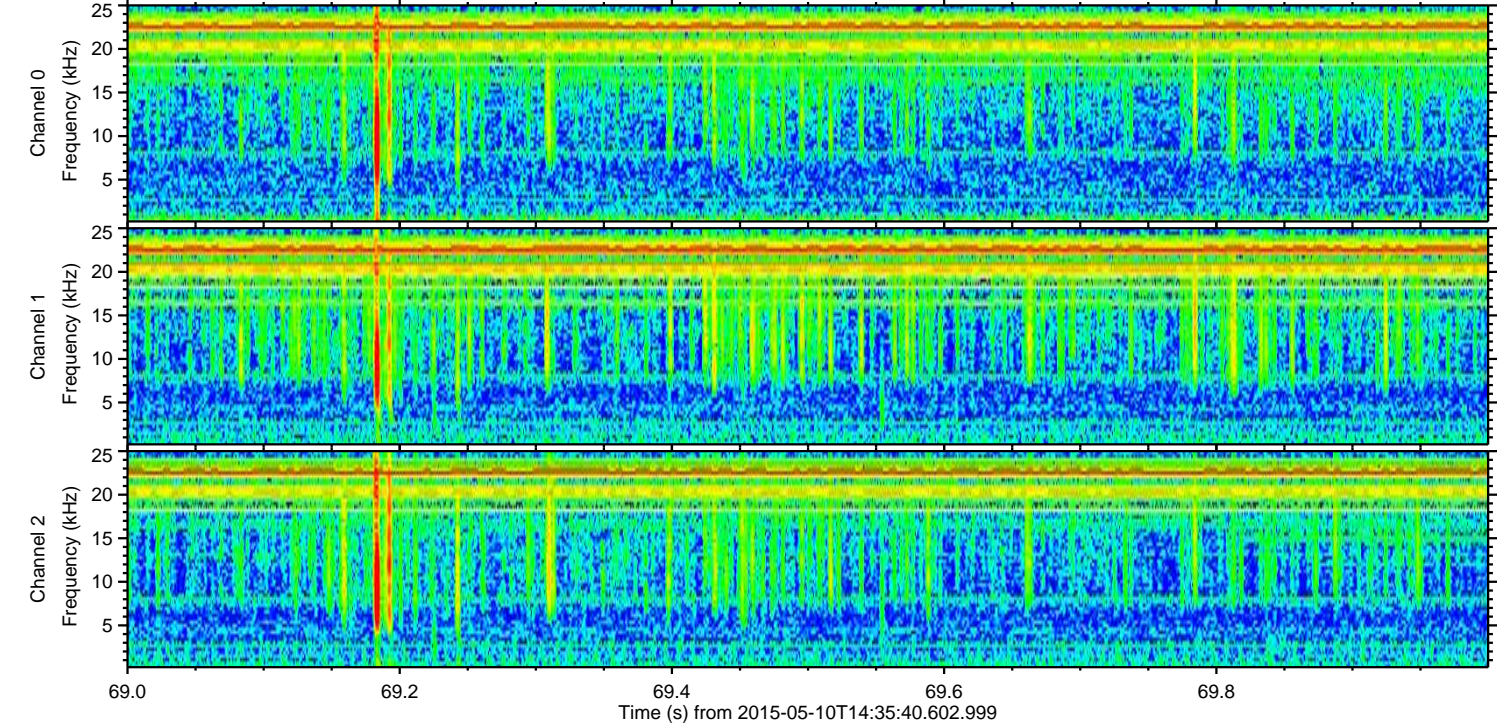
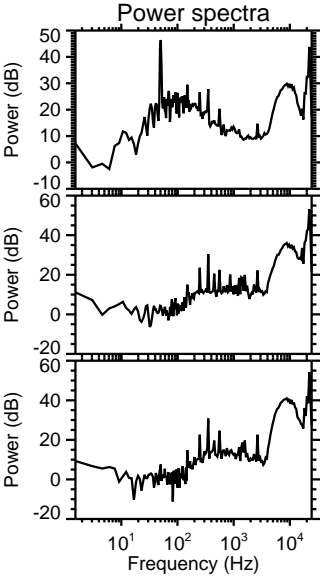
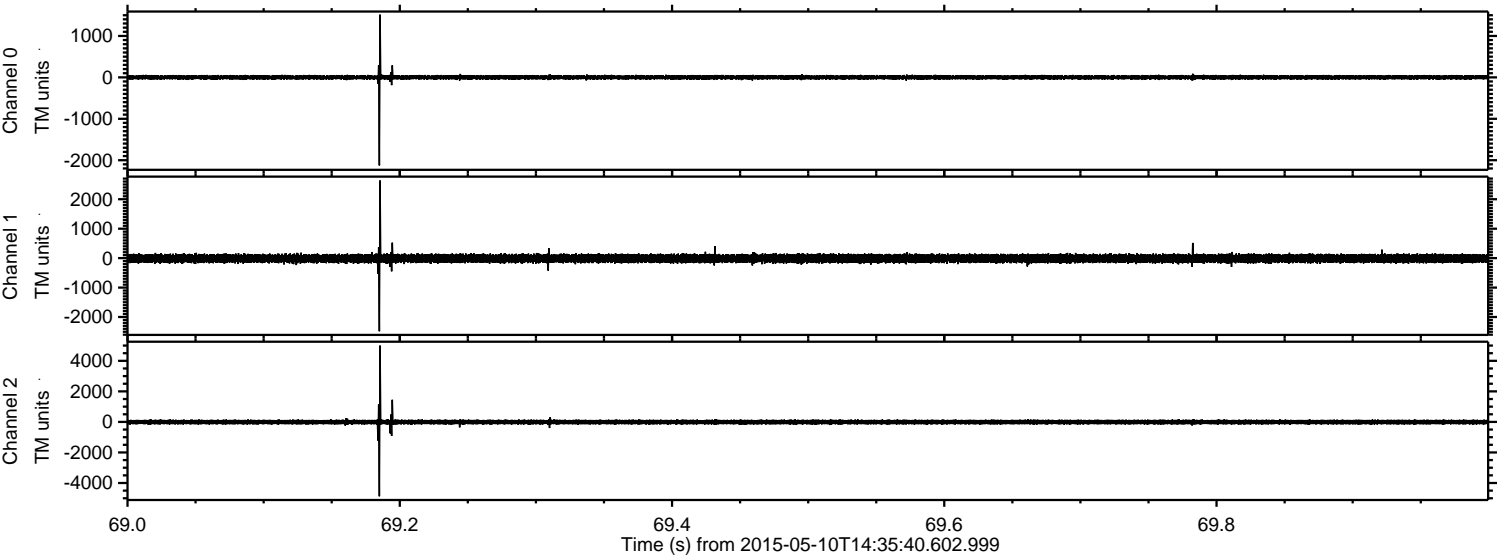
Channel 0  
mn: -1135  
mx: 1052  
 $\mu$ : -0.2  
 $\sigma$ : 27.2

Channel 1  
mn: -823  
mx: 1395  
 $\mu$ : -12.0  
 $\sigma$ : 75.4

Channel 2  
mn: -5022  
mx: 3470  
 $\mu$ : -10.2  
 $\sigma$ : 87.7

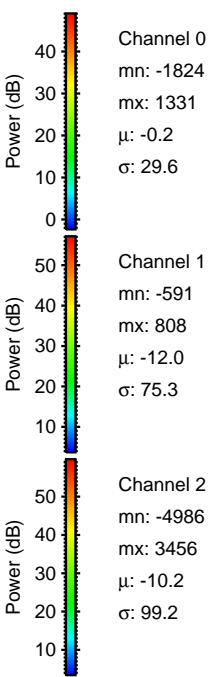
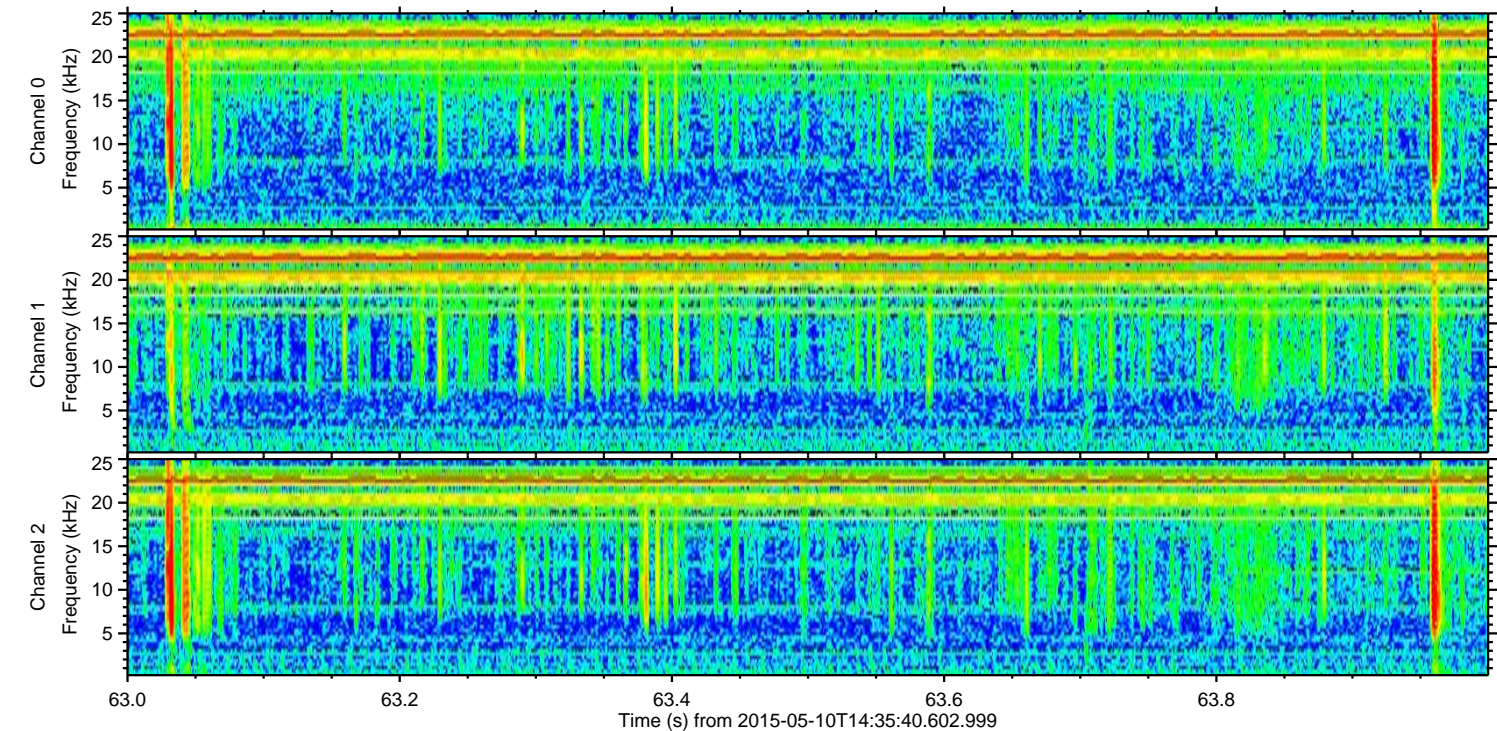
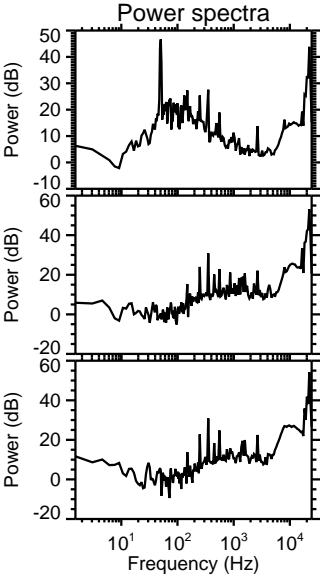
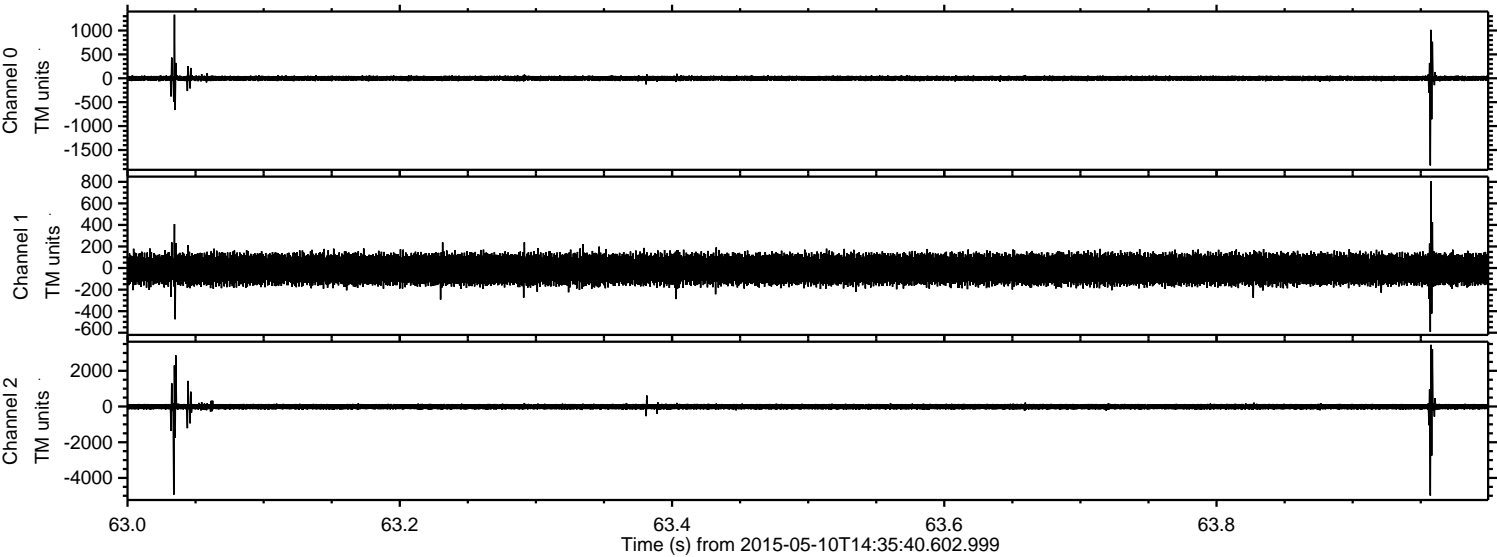


Processed Sun May 10 16:43:06 2015 by ELM ver.2012-10-06 from 001\_\_elm20150510\_143539\_\_dat00.bin





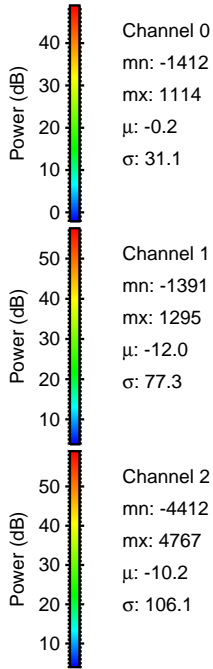
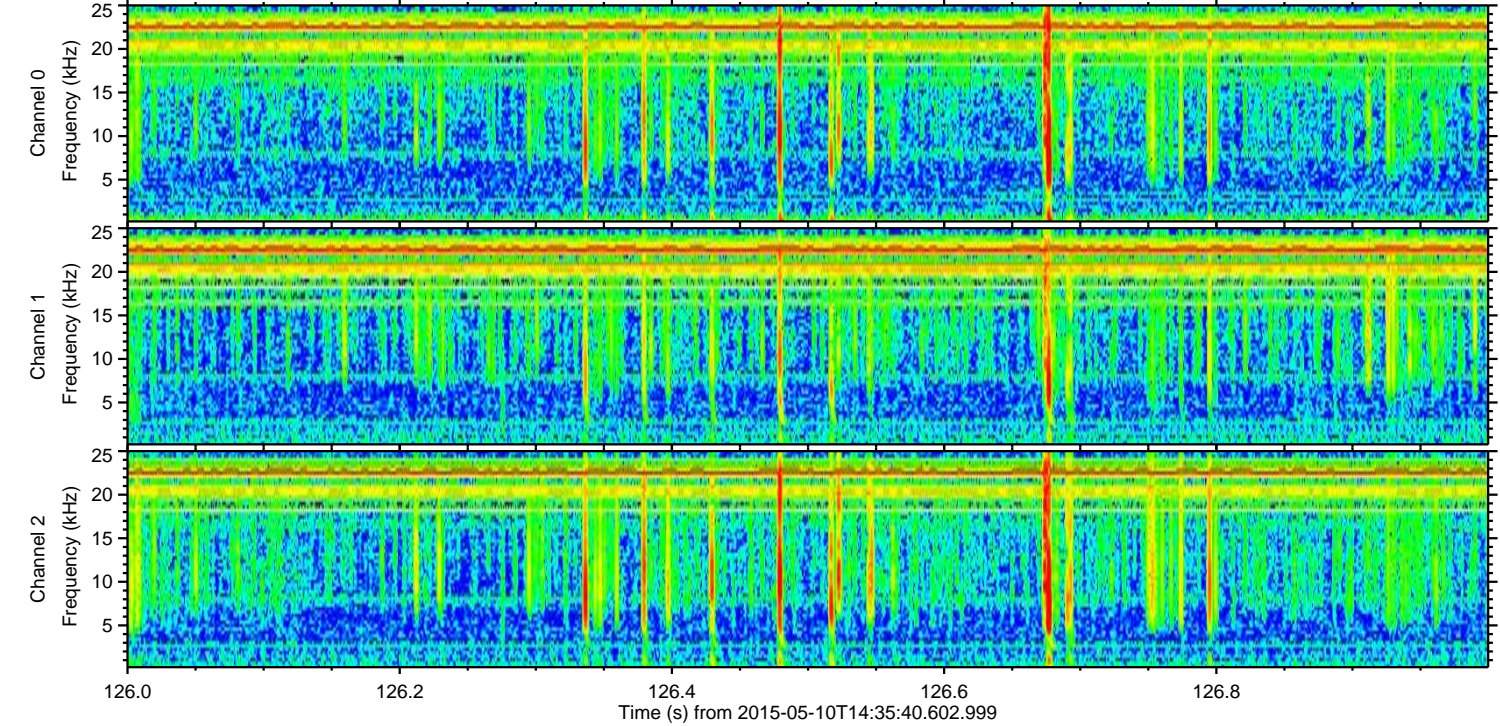
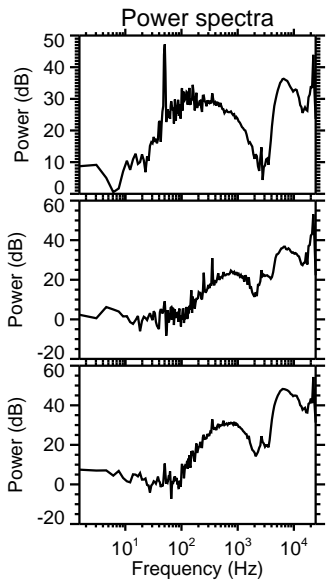
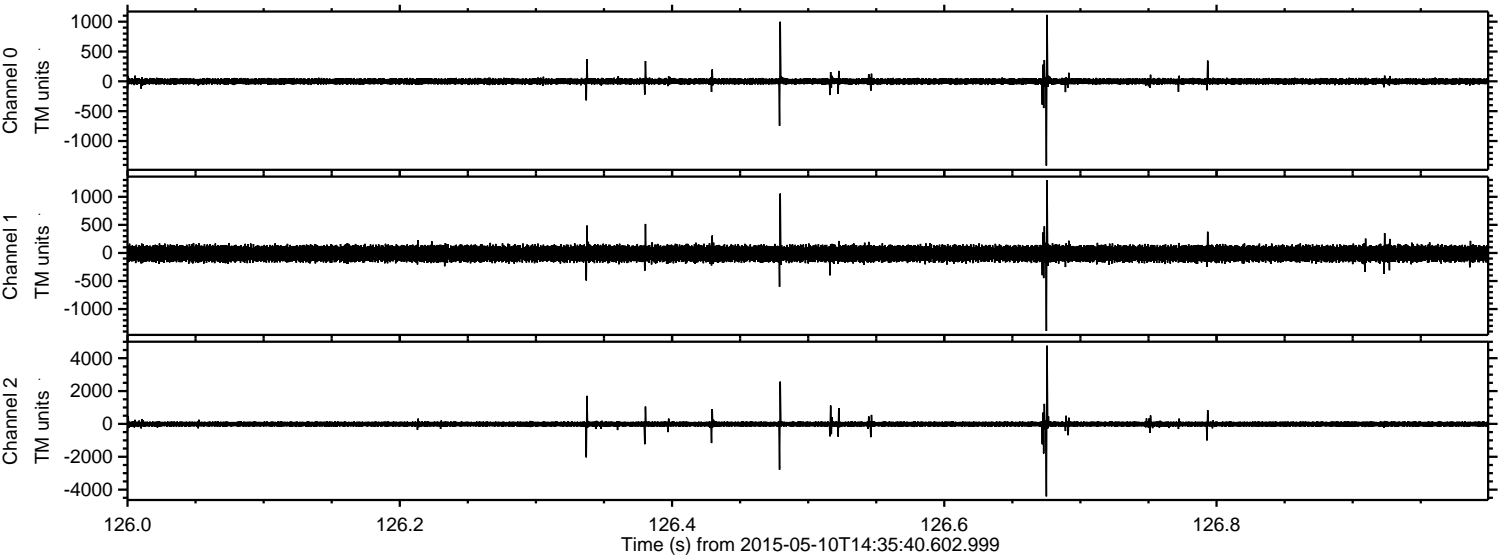
Processed Sun May 10 16:43:06 2015 by ELM ver.2012-10-06 from 001\_\_elm20150510\_143539\_\_dat00.bin





ELMAVAN 3D WAVEFORMS (Measured data sampled at 50 kHz) 49724 packets of 144 samples from 2015-05-10T14:35:40.602.999. Part 127/144

Processed Sun May 10 16:43:07 2015 by ELM ver.2012-10-06 from 001\_\_elm20150510\_143539\_\_dat00.bin



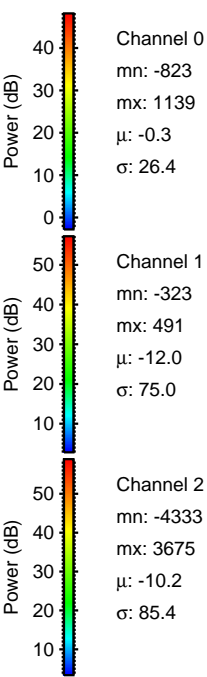
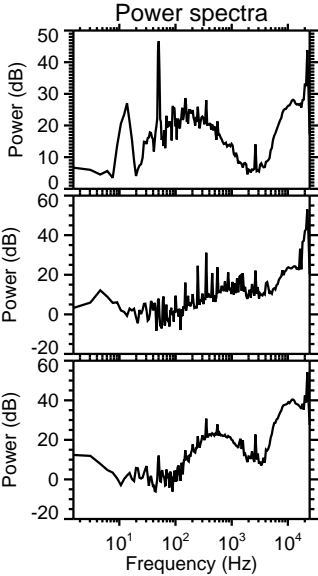
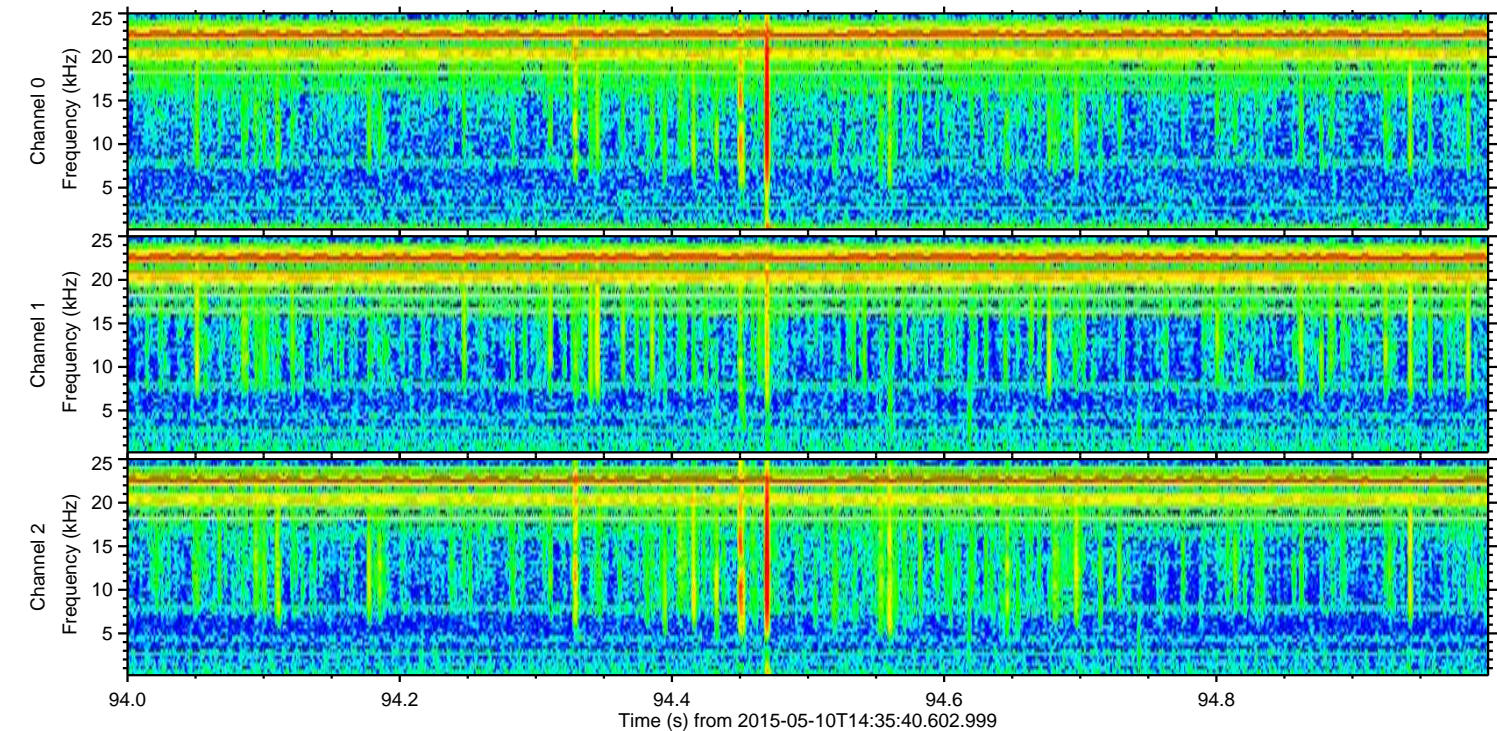
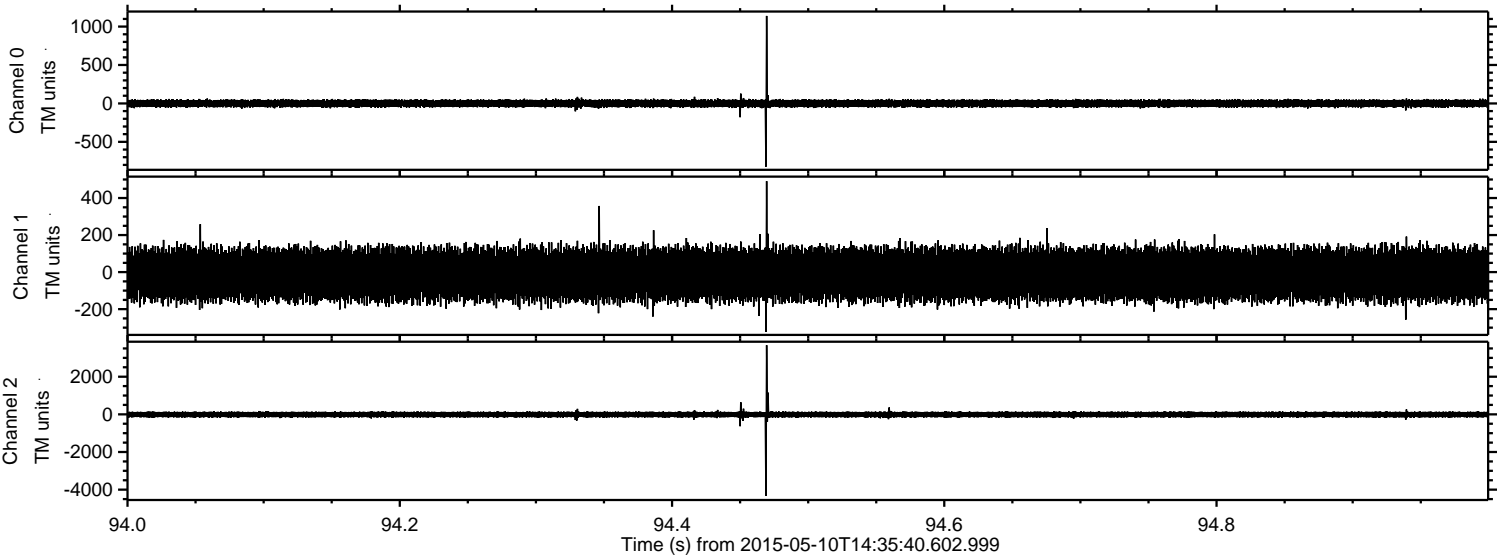
Channel 0  
mn: -1412  
mx: 1114  
 $\mu$ : -0.2  
 $\sigma$ : 31.1

Channel 1  
mn: -1391  
mx: 1295  
 $\mu$ : -12.0  
 $\sigma$ : 77.3

Channel 2  
mn: -4412  
mx: 4767  
 $\mu$ : -10.2  
 $\sigma$ : 106.1

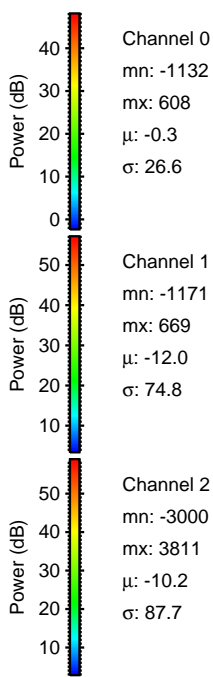
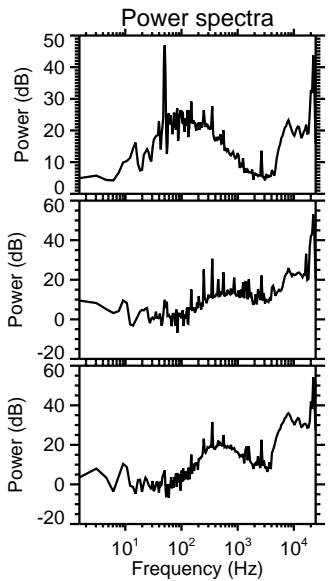
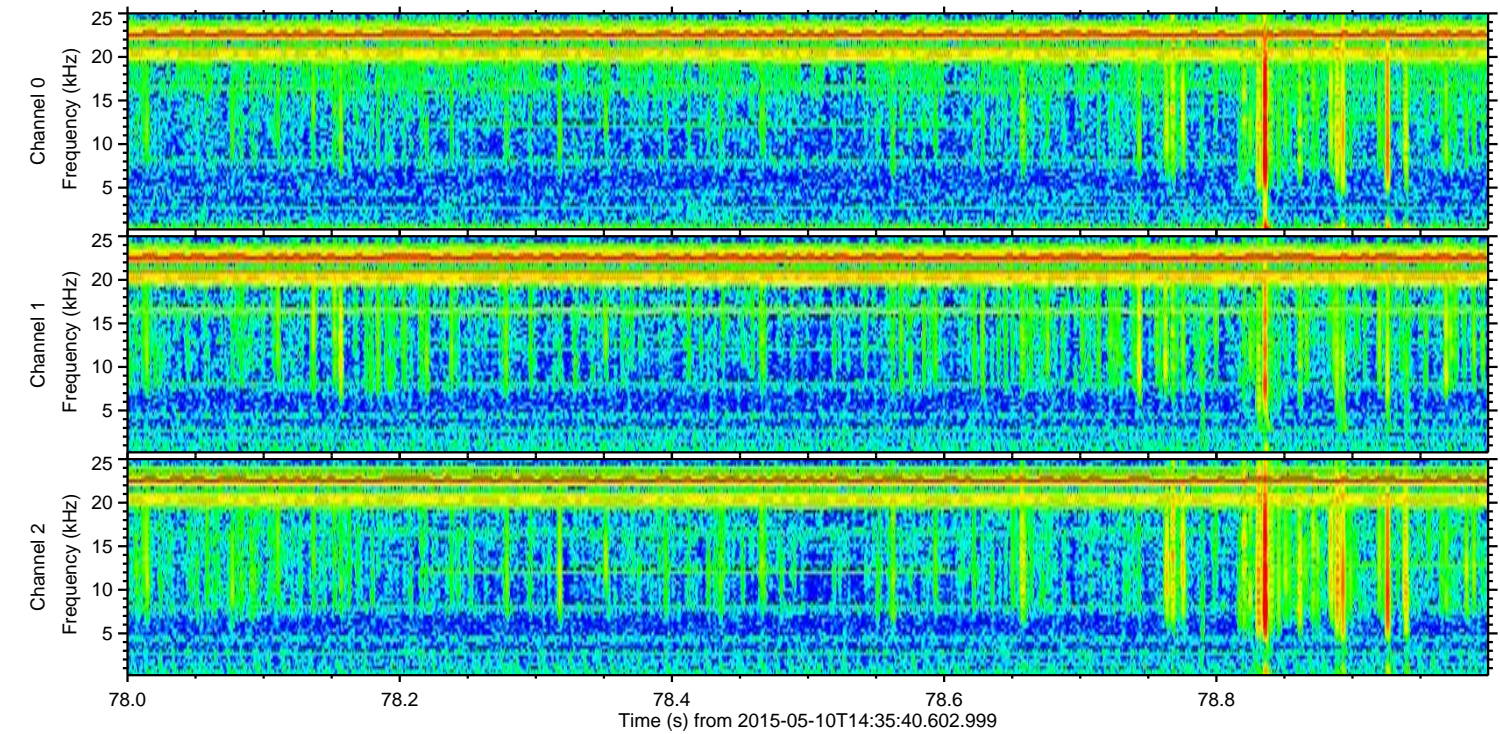
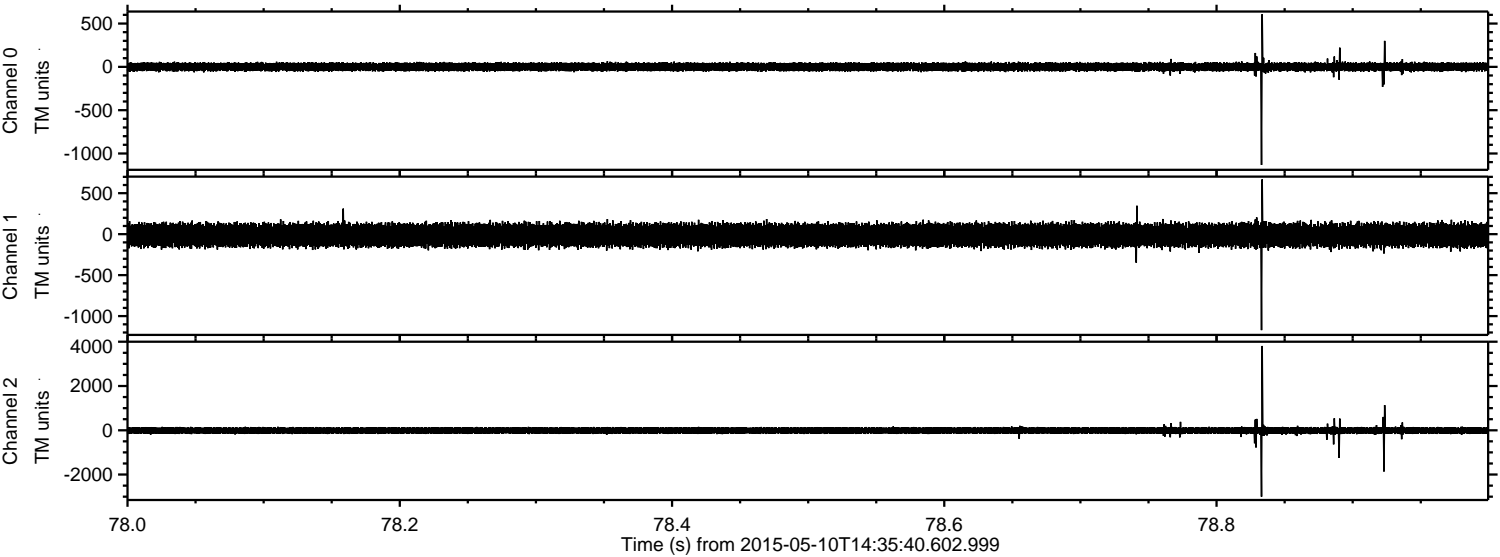


Processed Sun May 10 16:43:08 2015 by ELM ver.2012-10-06 from 001\_\_elm20150510\_143539\_\_dat00.bin





Processed Sun May 10 16:43:09 2015 by ELM ver.2012-10-06 from 001\_\_elm20150510\_143539\_\_dat00.bin



Channel 0

mn: -1132  
mx: 608  
 $\mu$ : -0.3  
 $\sigma$ : 26.6

Channel 1

mn: -1171  
mx: 669  
 $\mu$ : -12.0  
 $\sigma$ : 74.8

Channel 2

mn: -3000  
mx: 3811  
 $\mu$ : -10.2  
 $\sigma$ : 87.7



Processed Sun May 10 16:43:10 2015 by ELM ver.2012-10-06 from 001\_\_elm20150510\_143539\_\_dat00.bin

