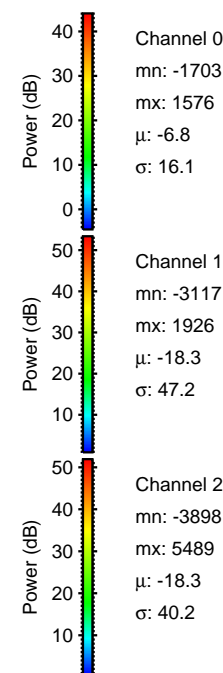
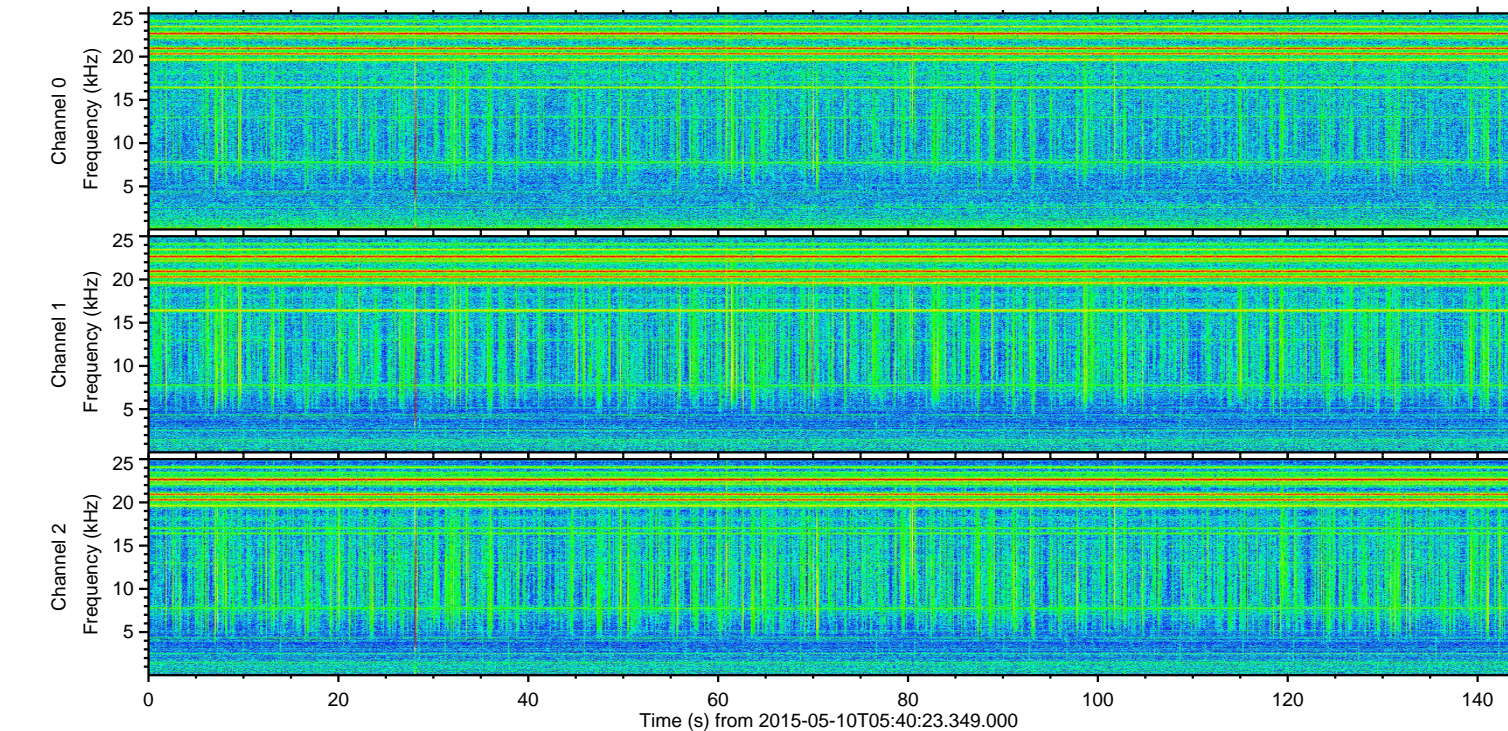
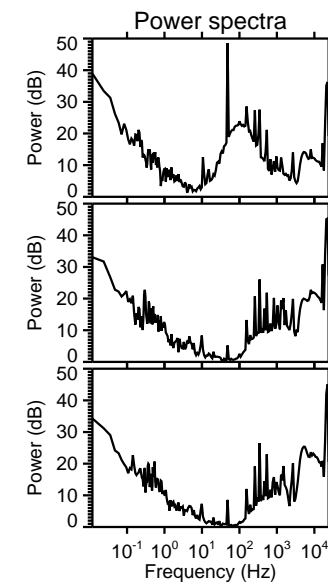
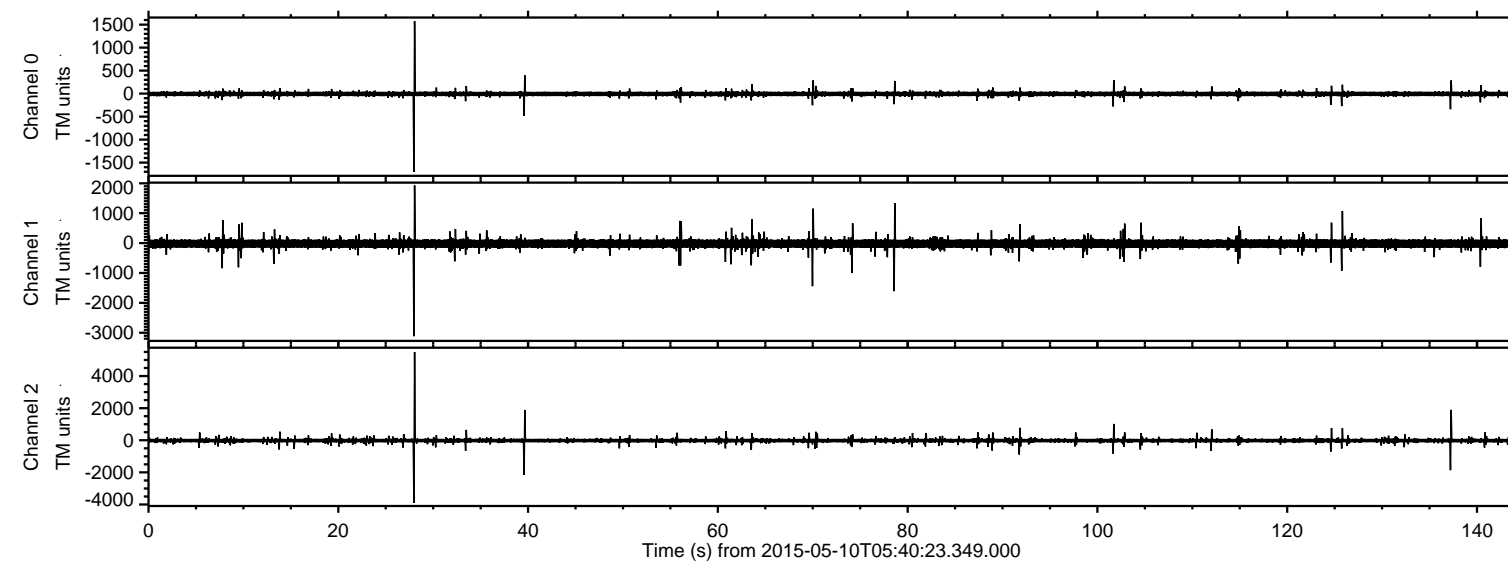


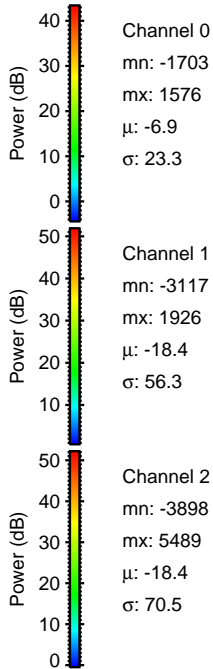
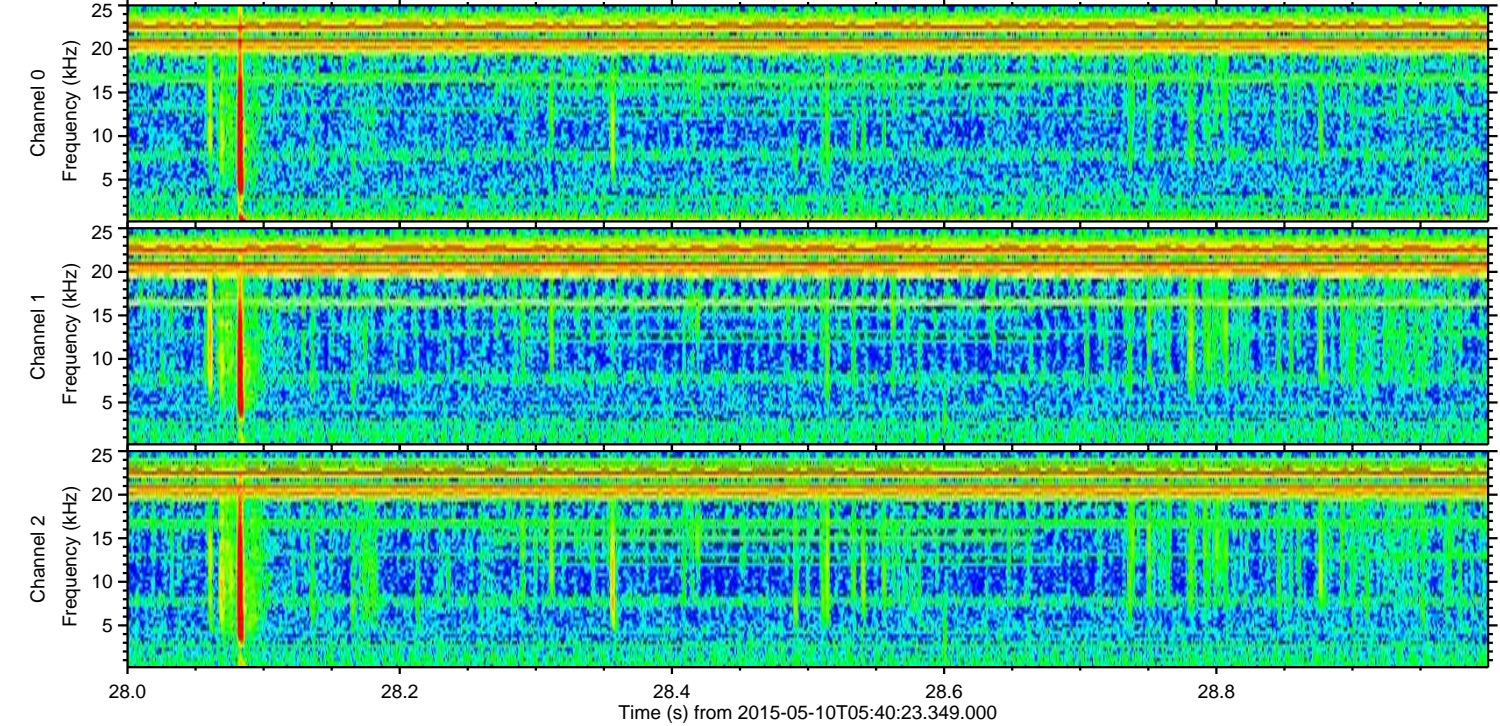
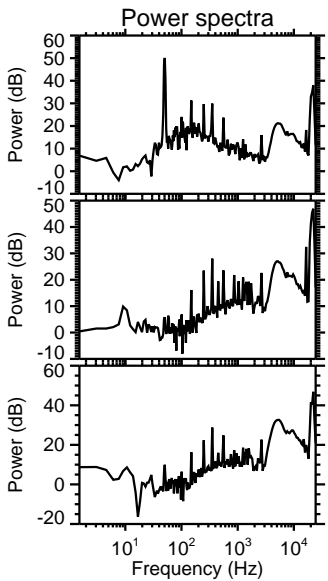
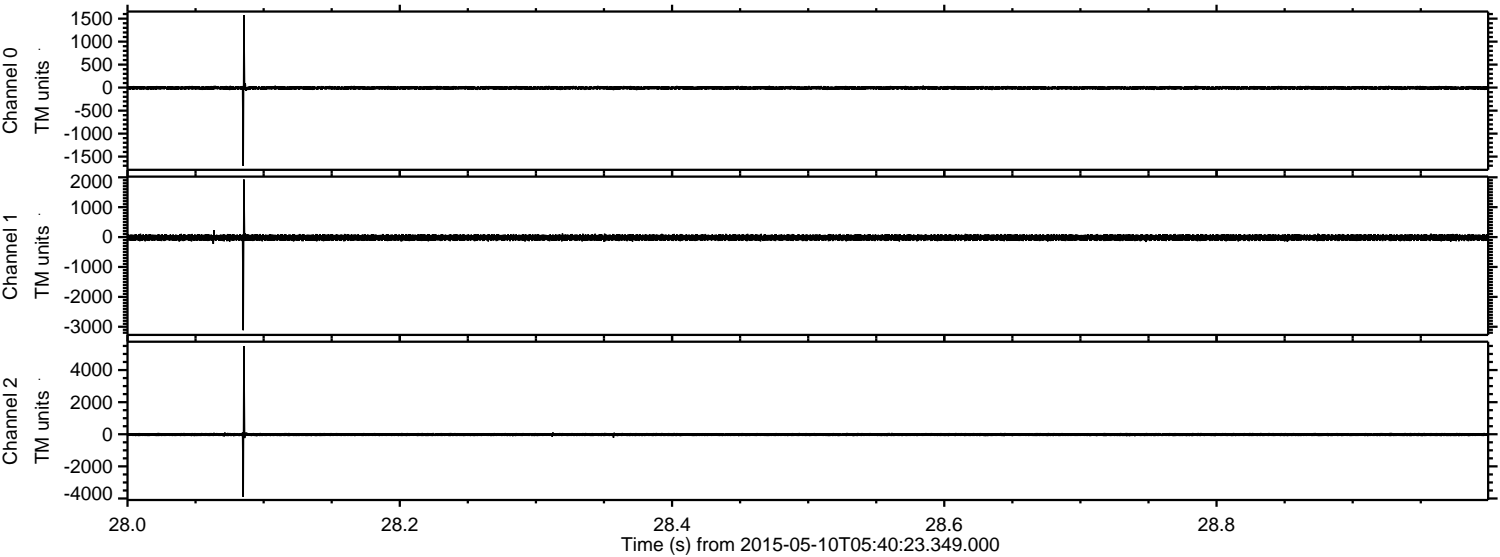
# ELMAVAN 3D WAVEFORMS (Measured data sampled at 50 kHz) 49788 packets of 144 samples from 2015-05-10T05:40:23.349.000.

Processed Sun May 10 07:46:51 2015 by ELM ver.2012-10-06 from 001\_\_elm20150510\_054022\_\_dat00.bin



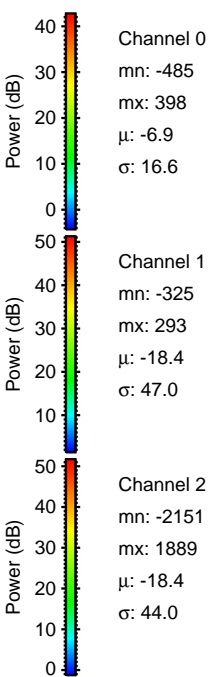
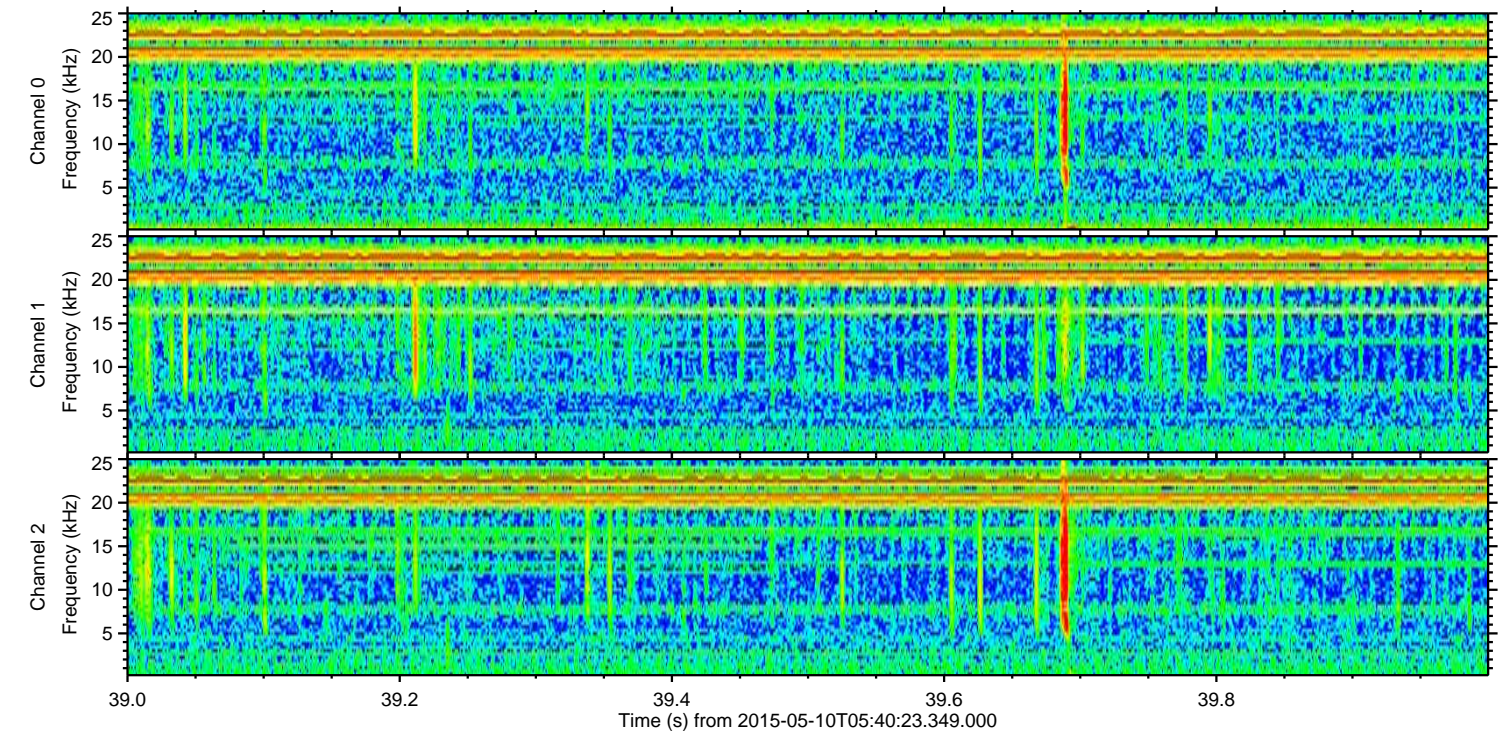
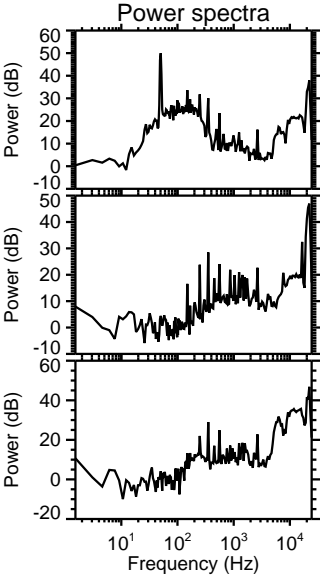
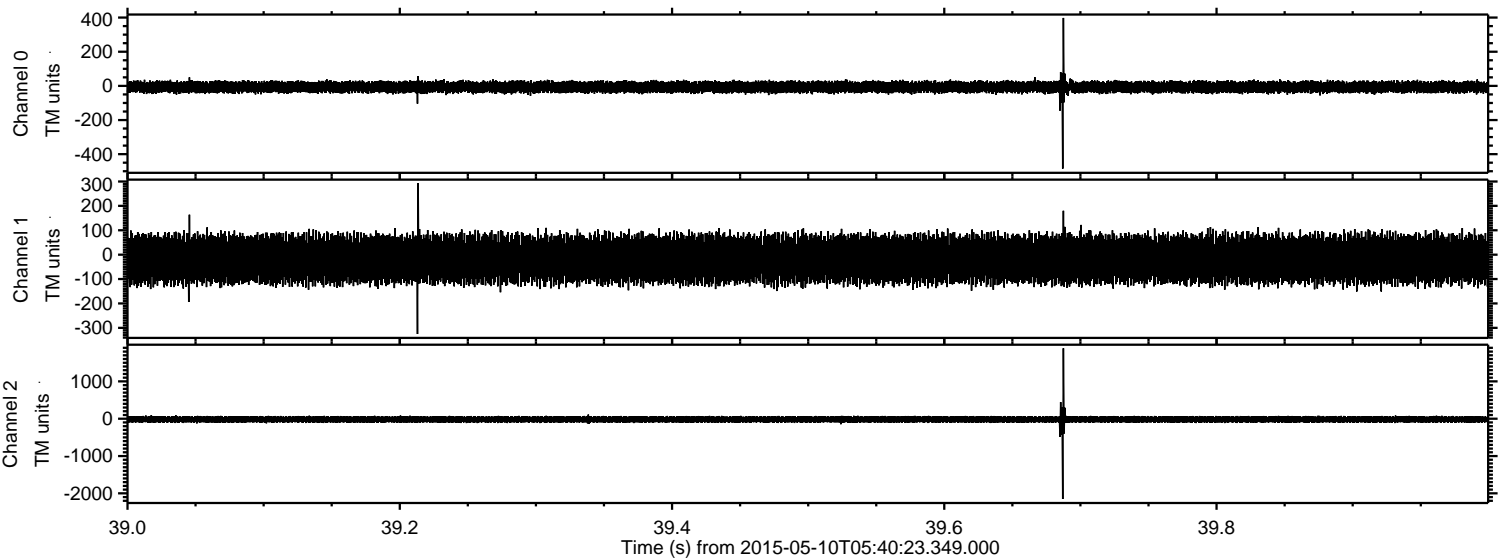


Processed Sun May 10 07:47:02 2015 by ELM ver.2012-10-06 from 001\_\_elm20150510\_054022\_\_dat00.bin





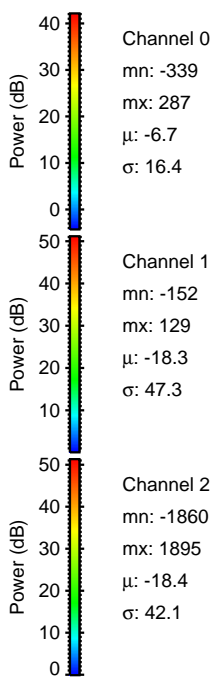
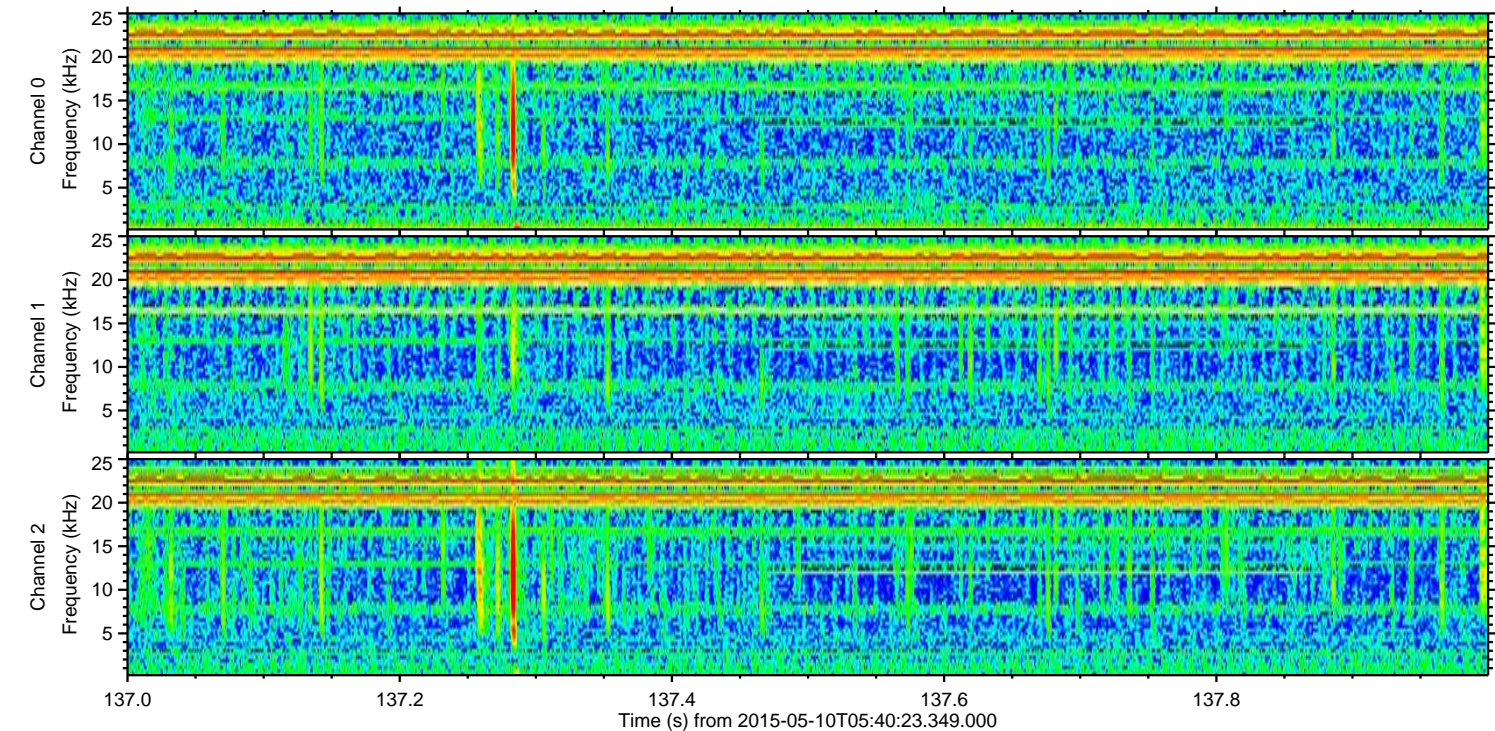
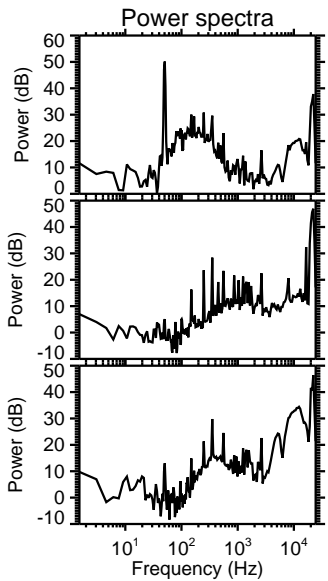
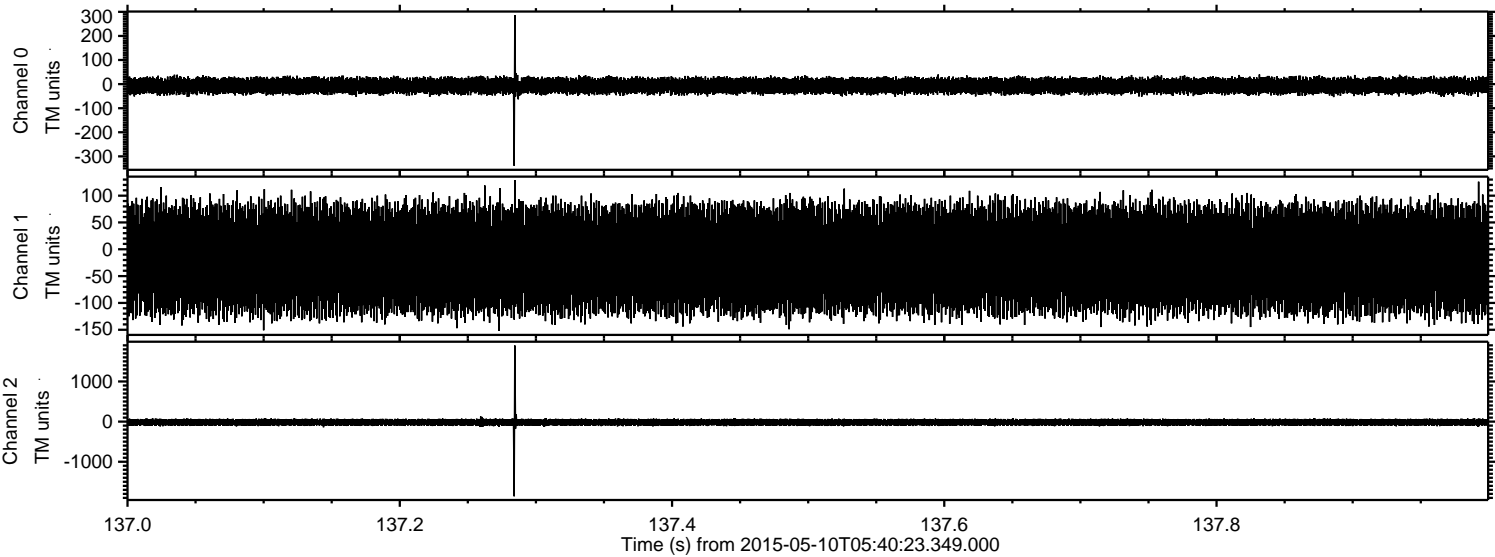
Processed Sun May 10 07:47:03 2015 by ELM ver.2012-10-06 from 001\_\_elm20150510\_054022\_\_dat00.bin





ELMAVAN 3D WAVEFORMS (Measured data sampled at 50 kHz) 49788 packets of 144 samples from 2015-05-10T05:40:23.349.000. Part 138/144

Processed Sun May 10 07:47:04 2015 by ELM ver.2012-10-06 from 001\_\_elm20150510\_054022\_\_dat00.bin



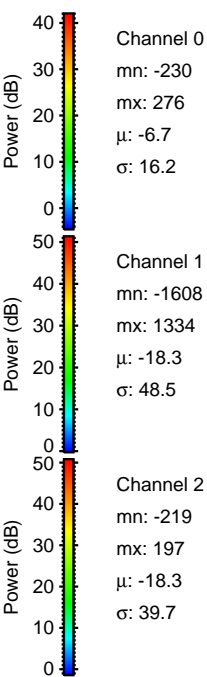
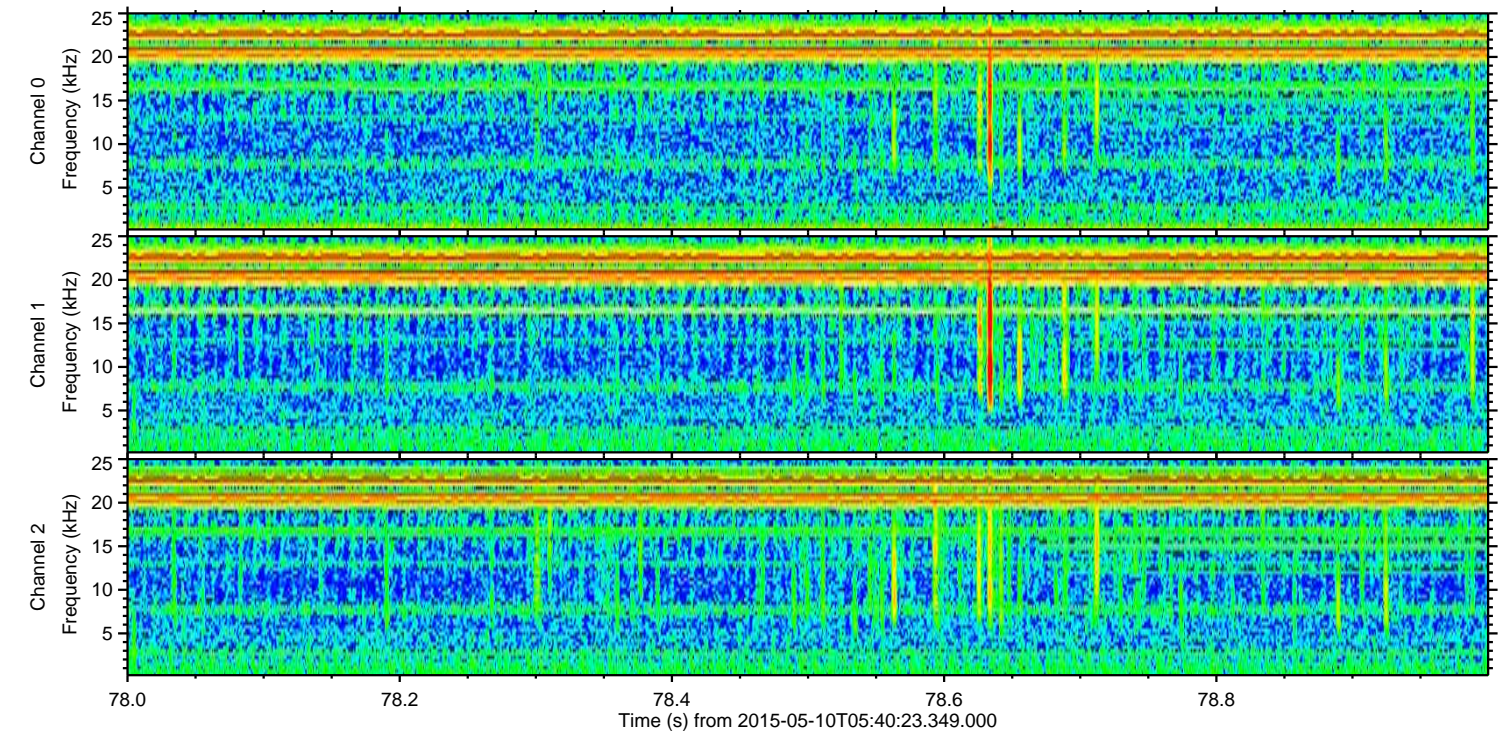
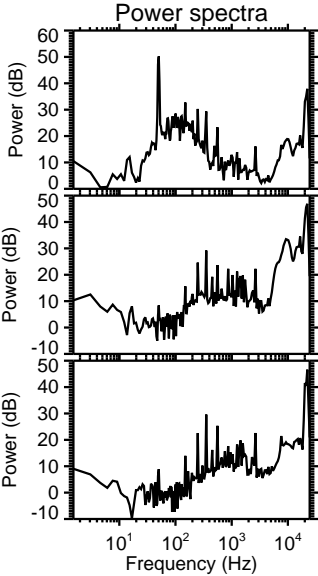
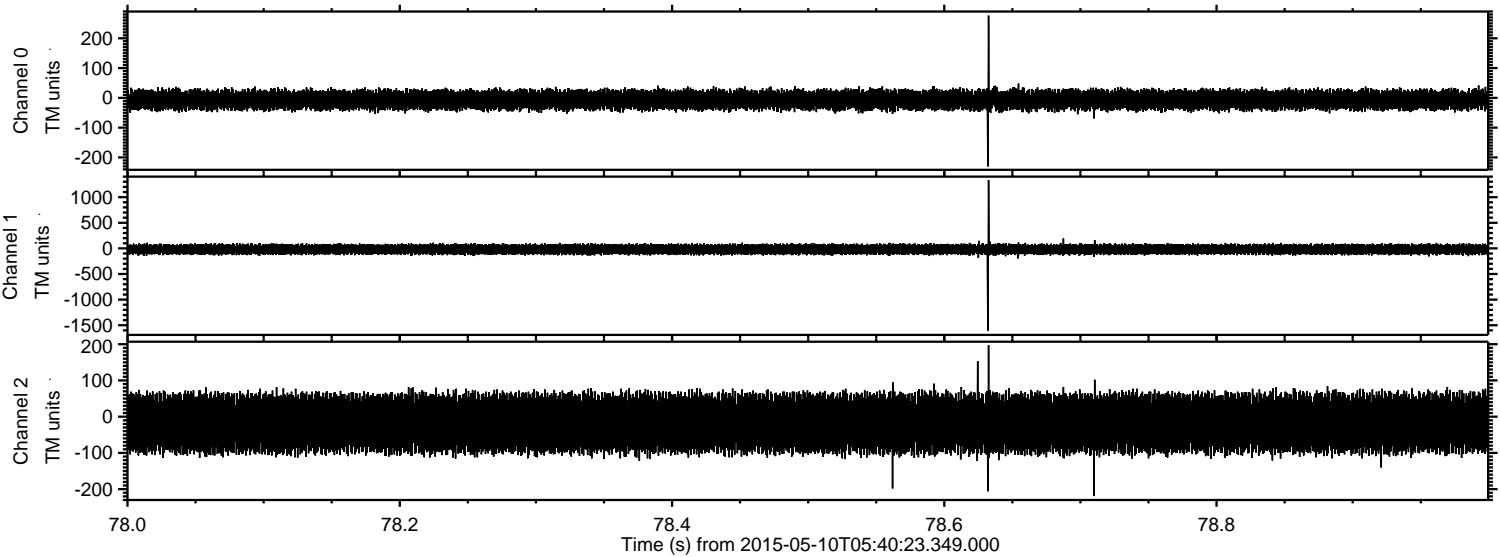
Channel 0  
mn: -339  
mx: 287  
 $\mu$ : -6.7  
 $\sigma$ : 16.4

Channel 1  
mn: -152  
mx: 129  
 $\mu$ : -18.3  
 $\sigma$ : 47.3

Channel 2  
mn: -1860  
mx: 1895  
 $\mu$ : -18.4  
 $\sigma$ : 42.1

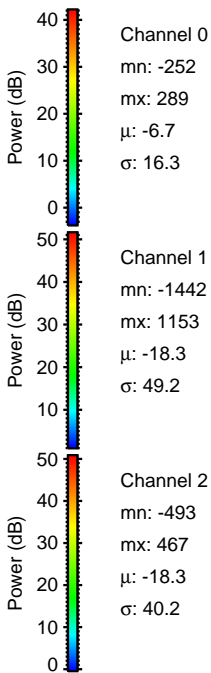
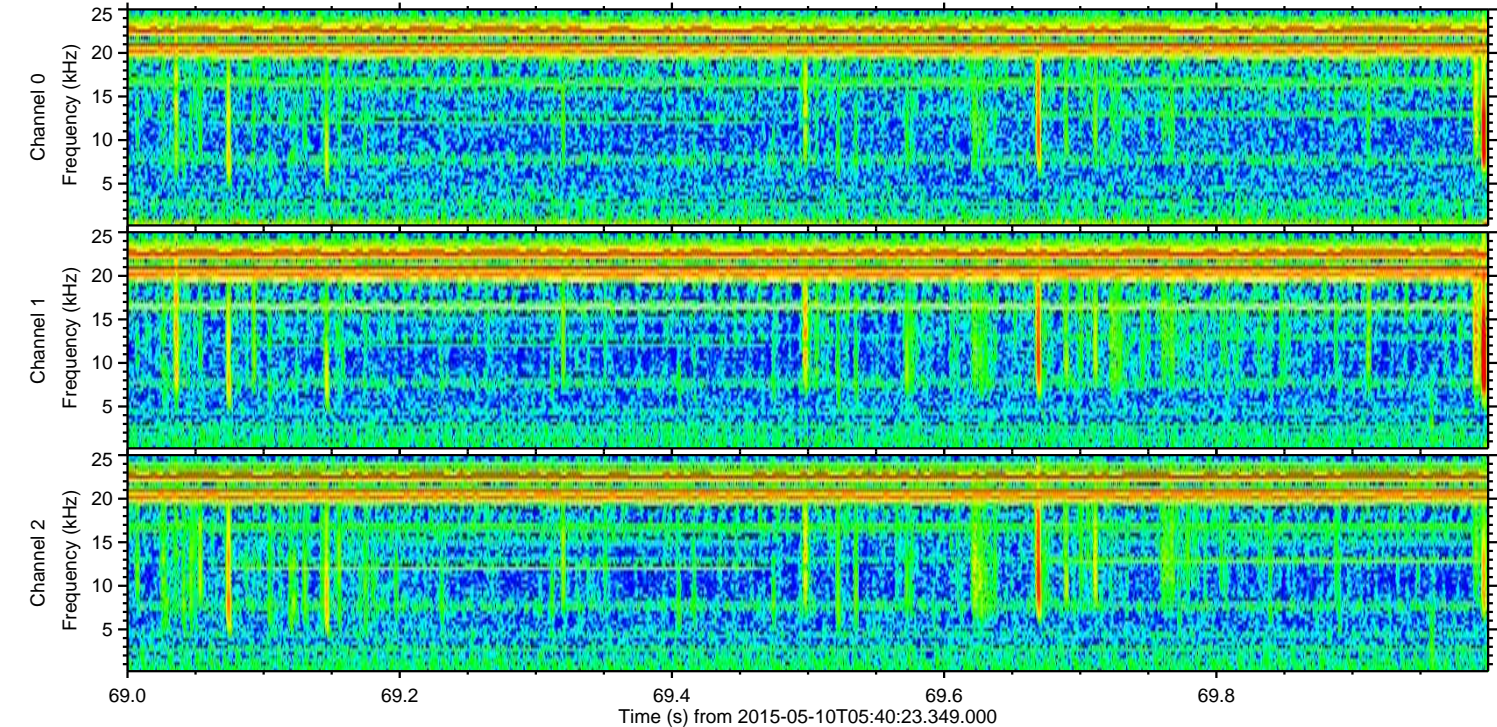
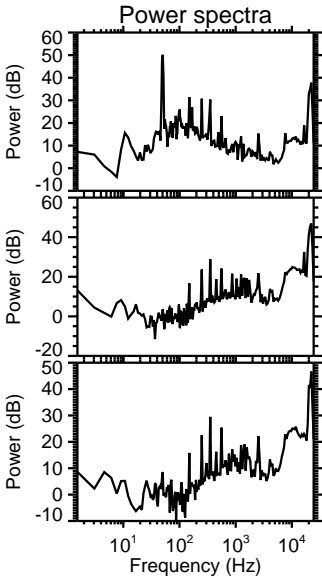
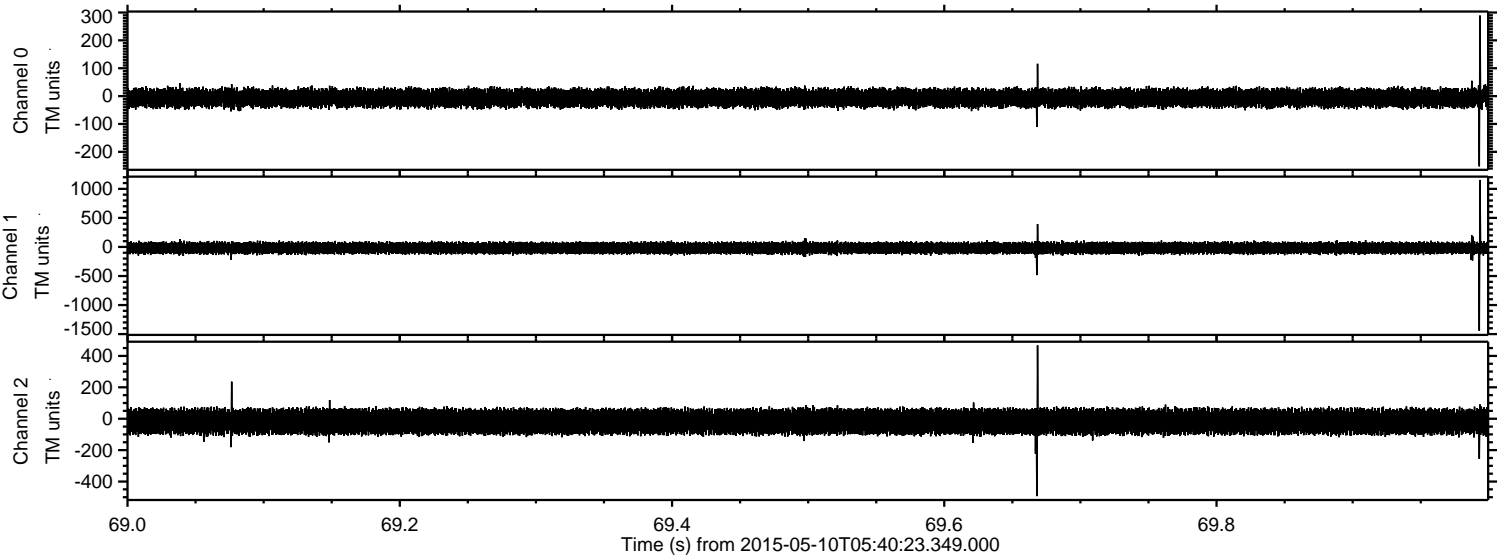


Processed Sun May 10 07:47:05 2015 by ELM ver.2012-10-06 from 001\_\_elm20150510\_054022\_\_dat00.bin





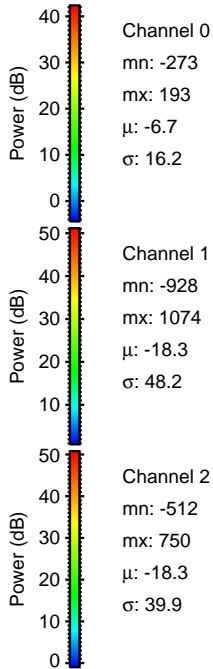
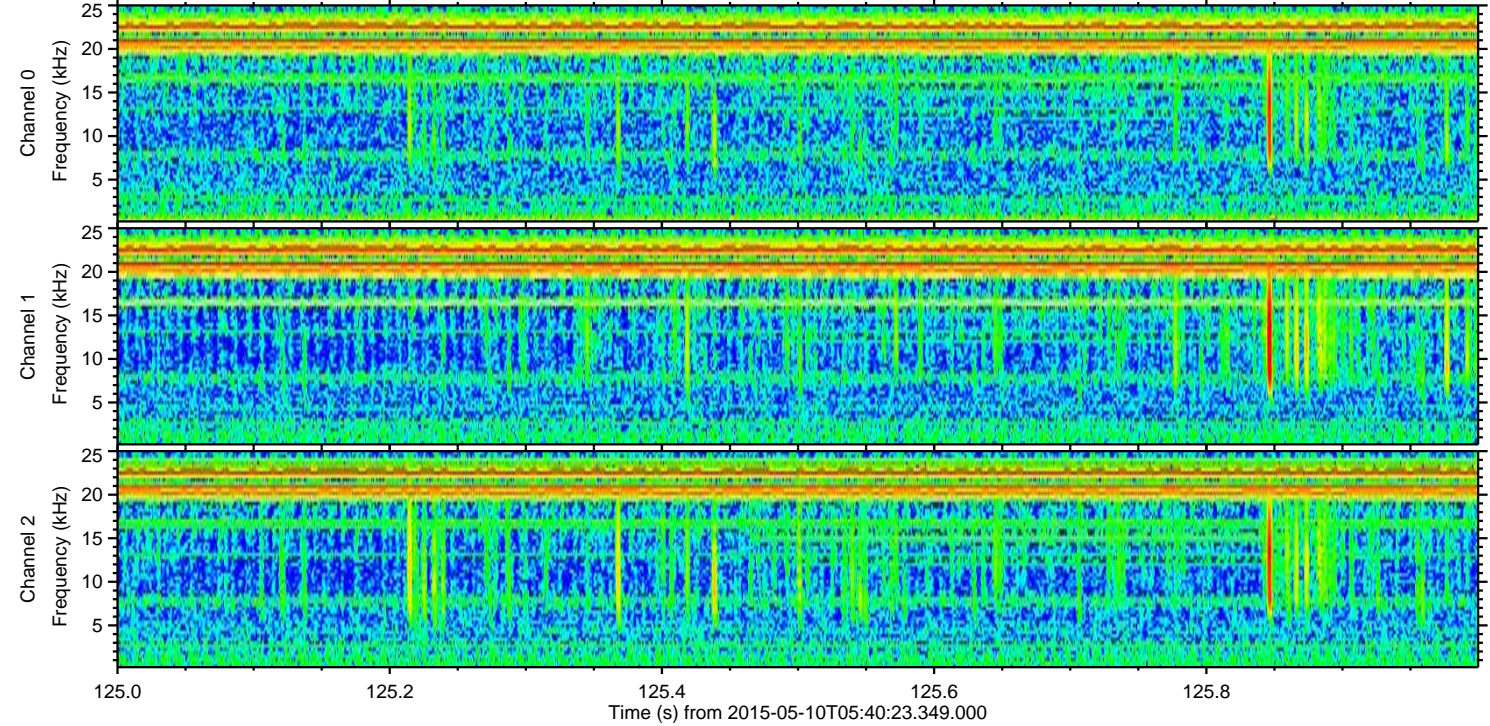
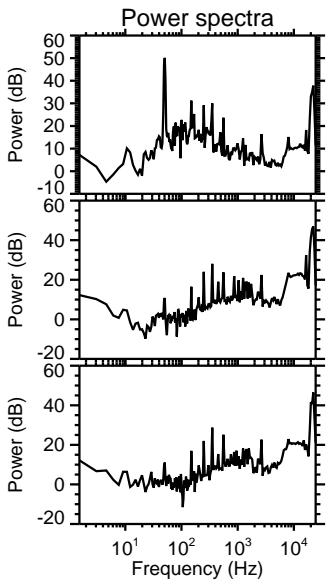
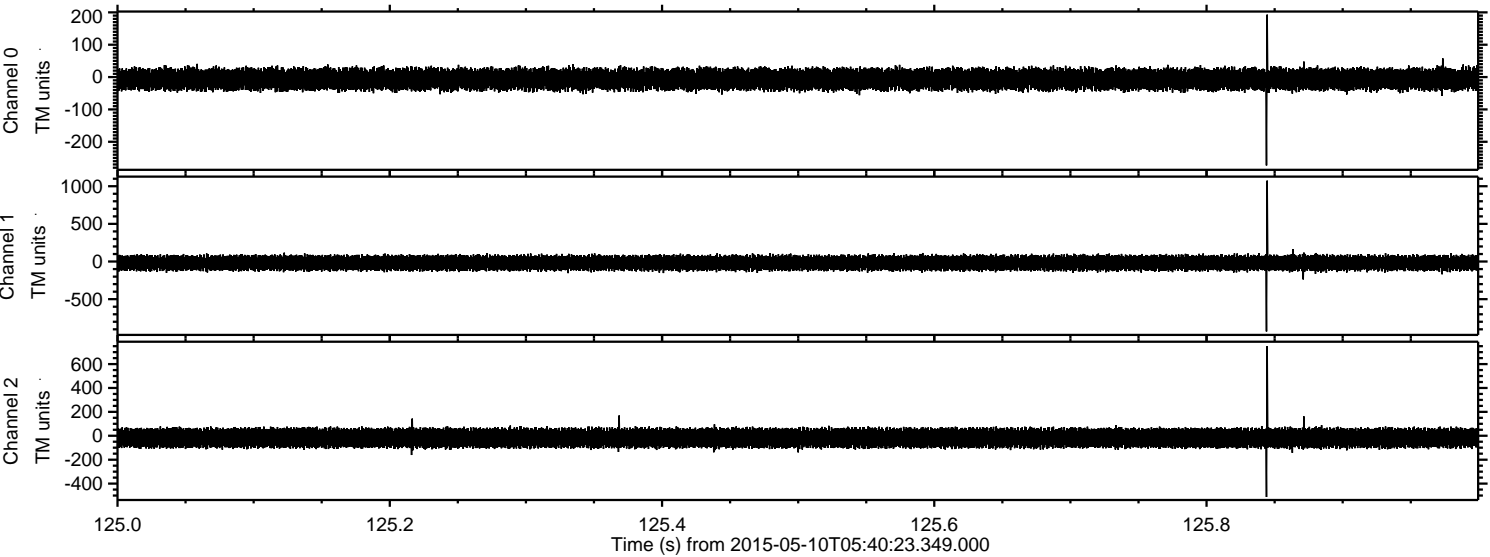
Processed Sun May 10 07:47:06 2015 by ELM ver.2012-10-06 from 001\_\_elm20150510\_054022\_\_dat00.bin





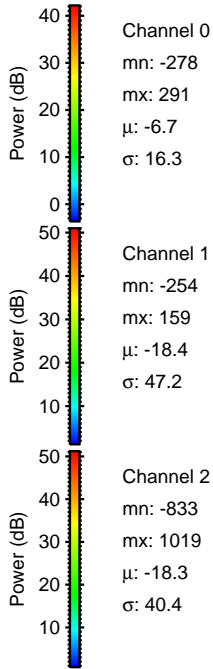
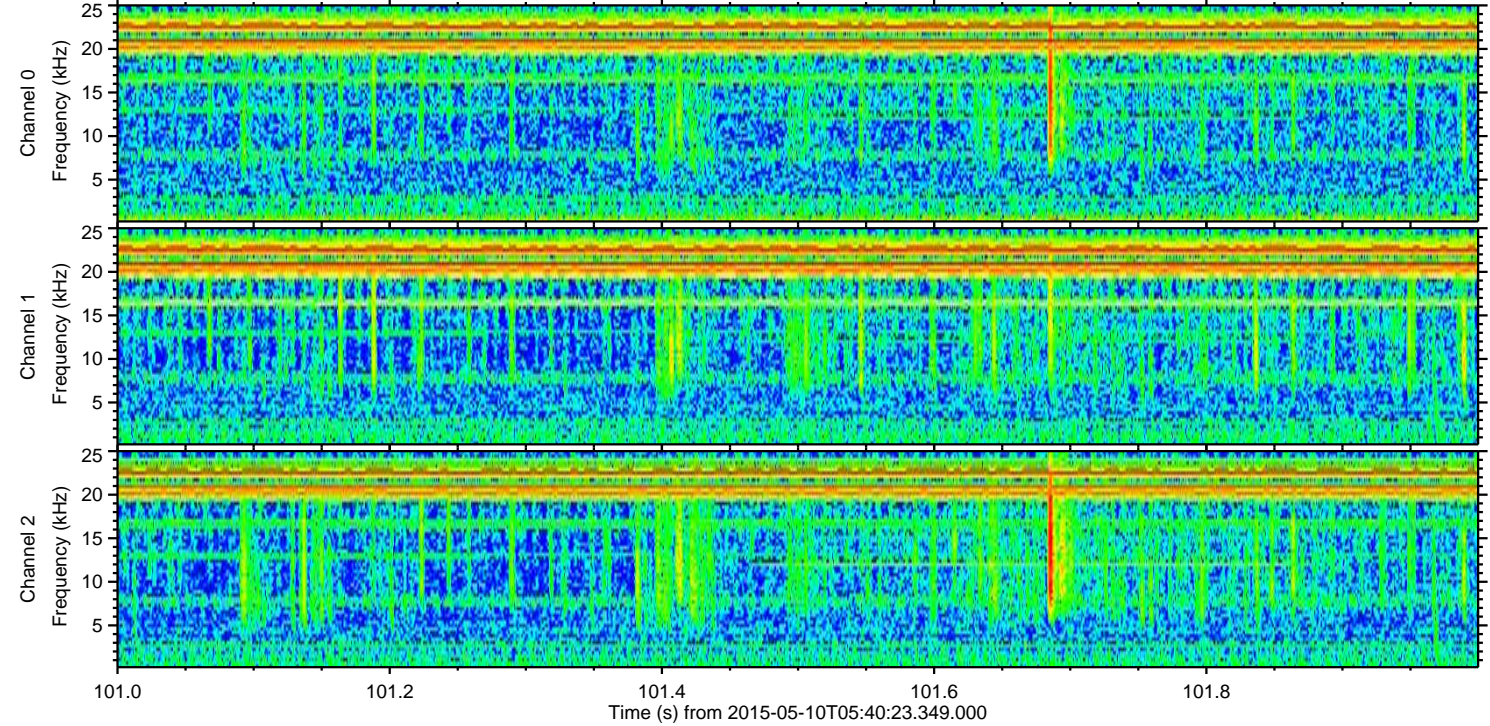
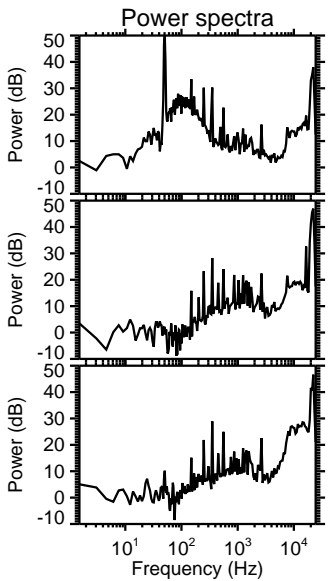
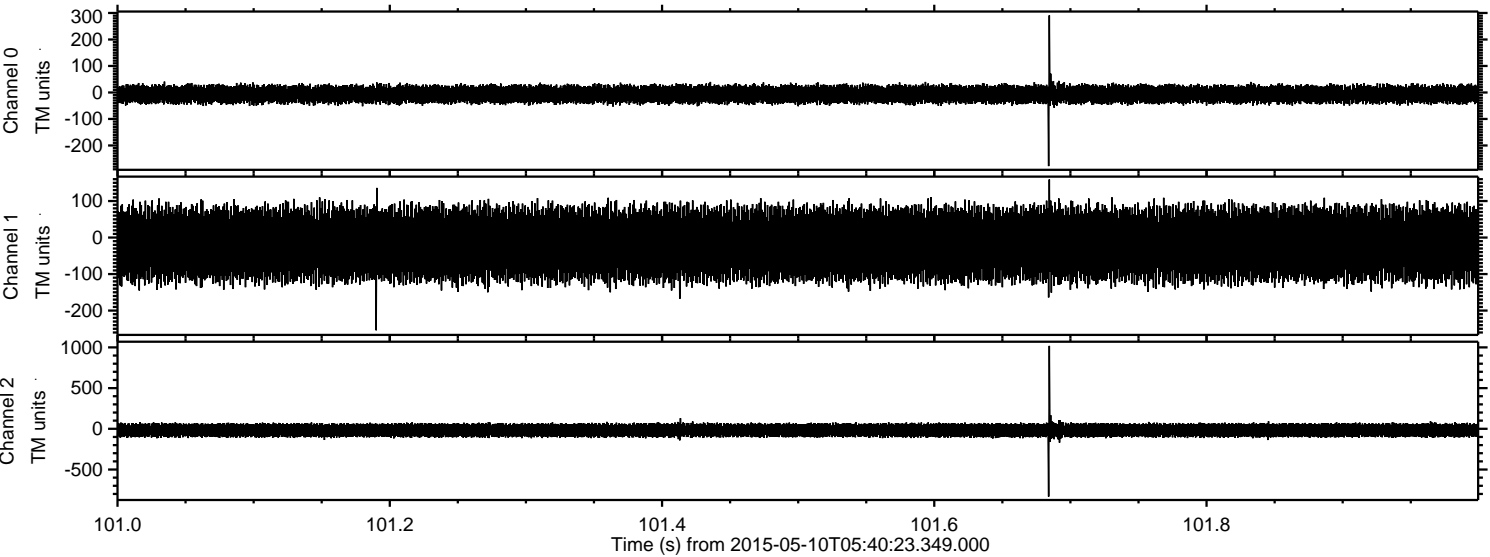
ELMAVAN 3D WAVEFORMS (Measured data sampled at 50 kHz) 49788 packets of 144 samples from 2015-05-10T05:40:23.349.000. Part 126/144

Processed Sun May 10 07:47:07 2015 by ELM ver.2012-10-06 from 001\_\_elm20150510\_054022\_\_dat00.bin



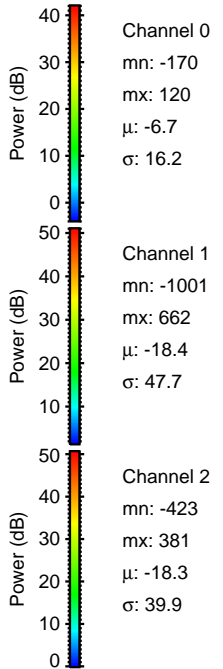
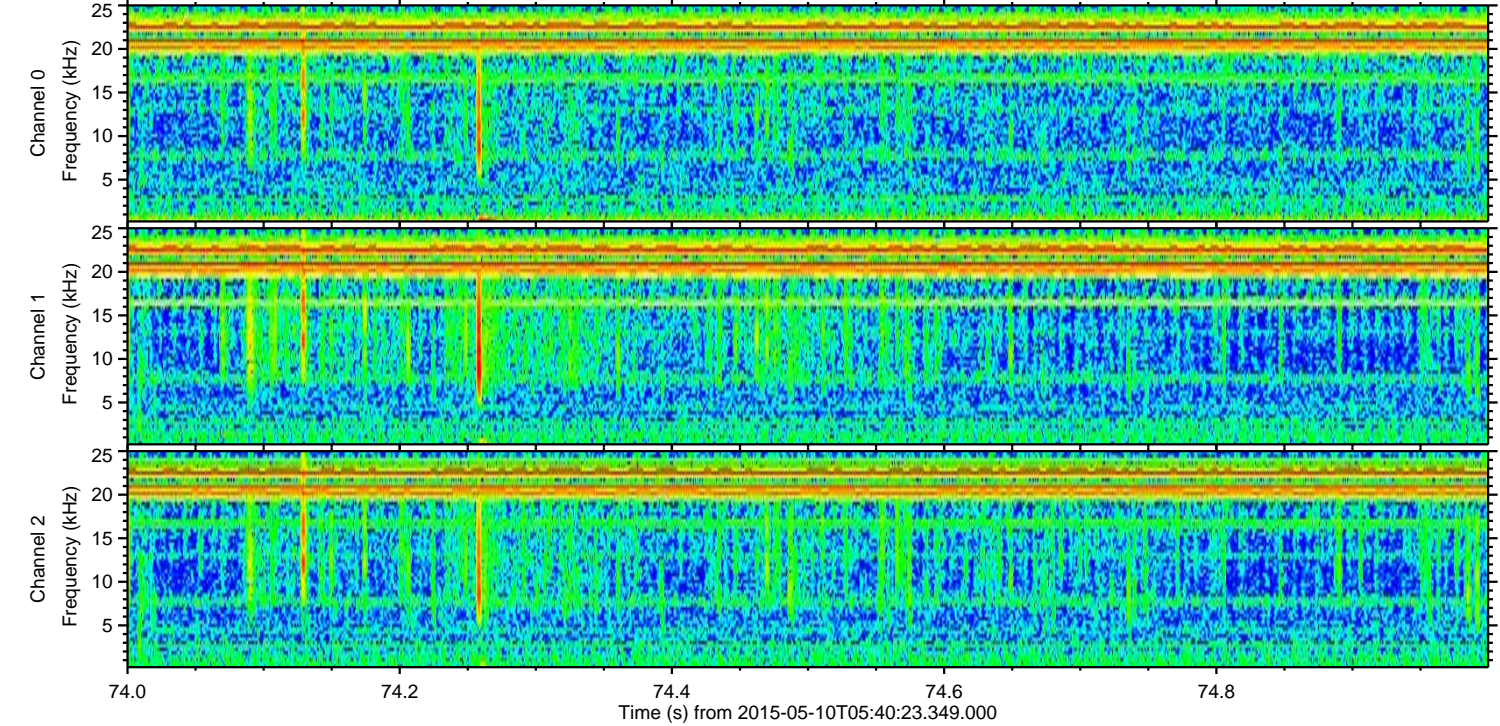
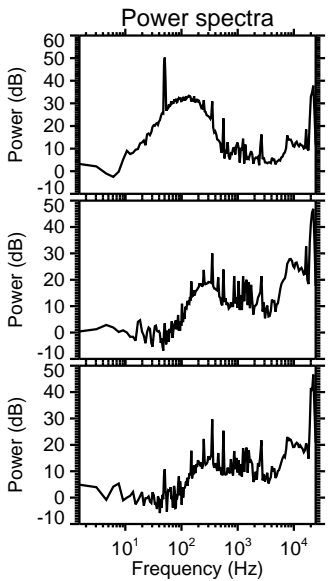
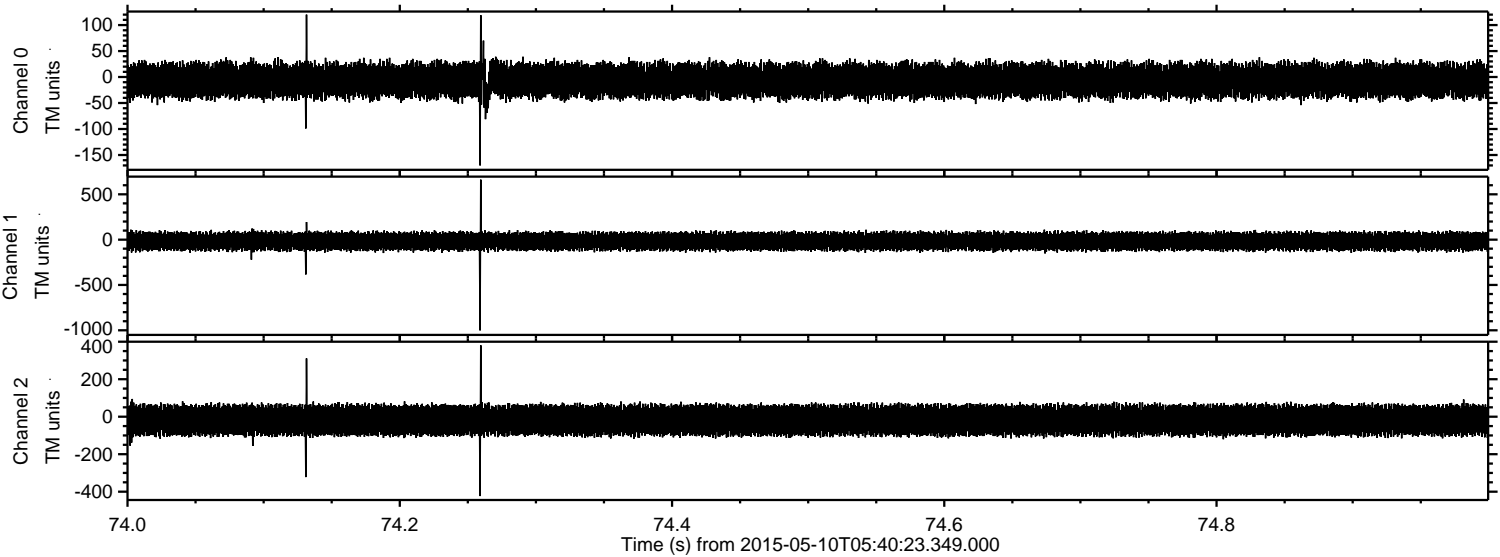


Processed Sun May 10 07:47:08 2015 by ELM ver.2012-10-06 from 001\_\_elm20150510\_054022\_\_dat00.bin



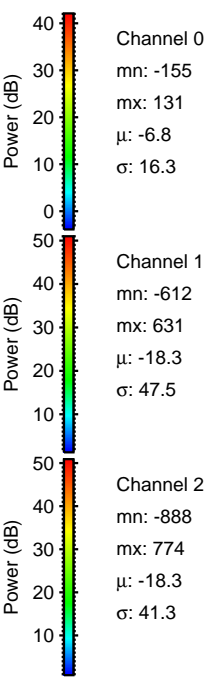
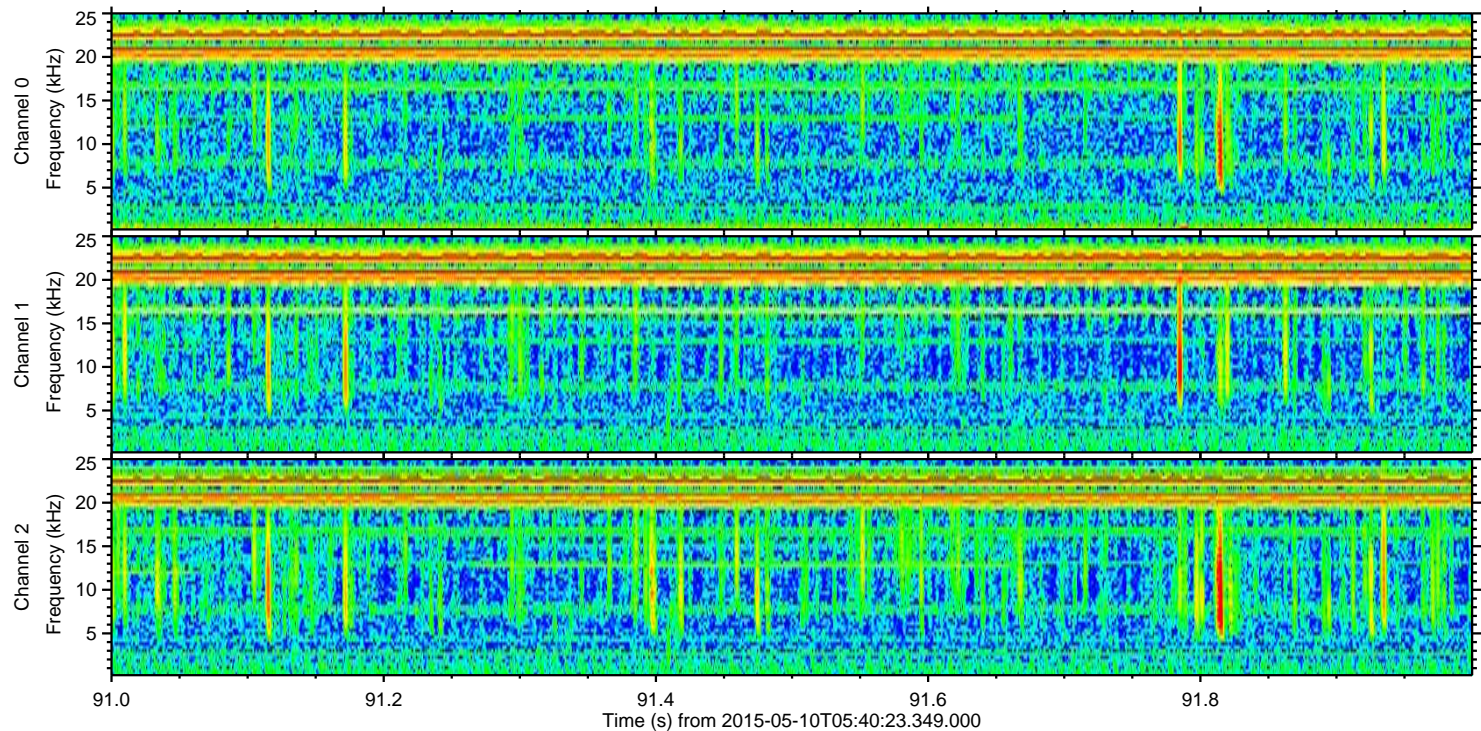
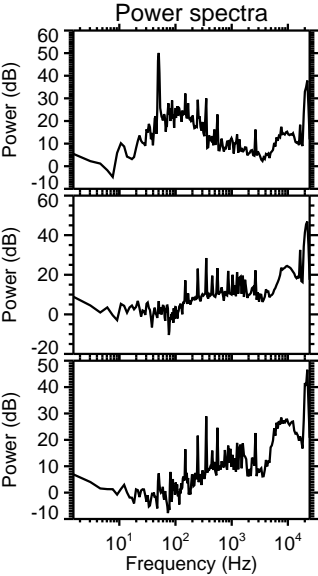
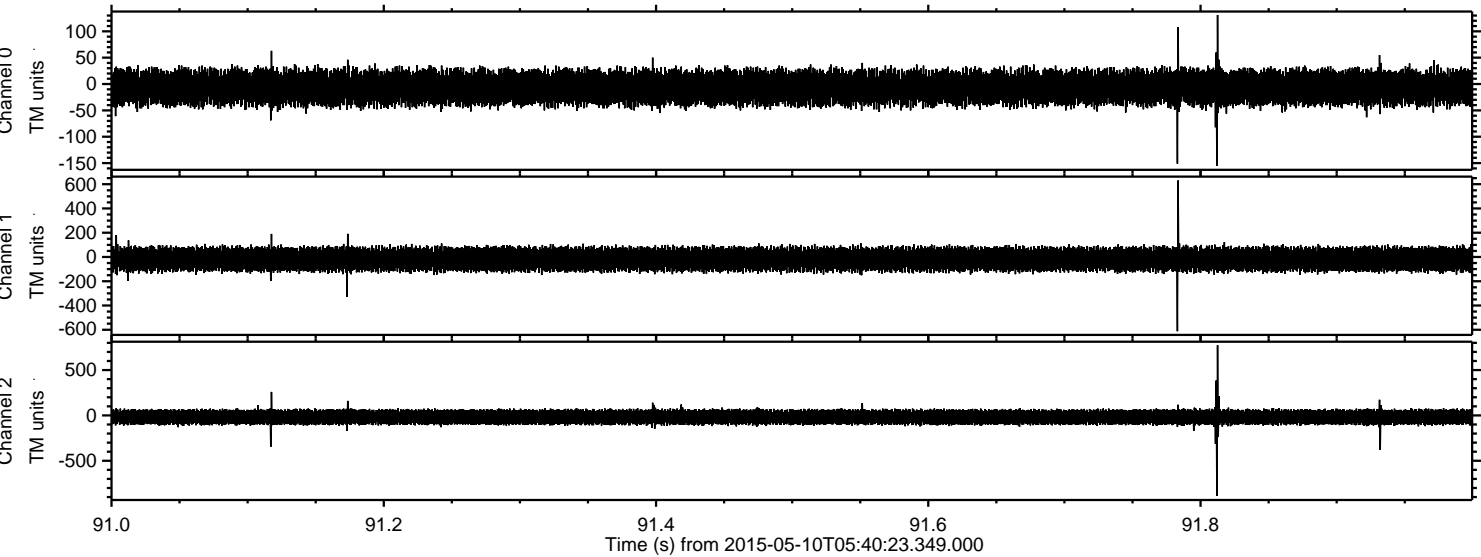


Processed Sun May 10 07:47:09 2015 by ELM ver.2012-10-06 from 001\_\_elm20150510\_054022\_\_dat00.bin





Processed Sun May 10 07:47:10 2015 by ELM ver.2012-10-06 from 001\_\_elm20150510\_054022\_\_dat00.bin





Processed Sun May 10 07:47:11 2015 by ELM ver.2012-10-06 from 001\_\_elm20150510\_054022\_\_dat00.bin

