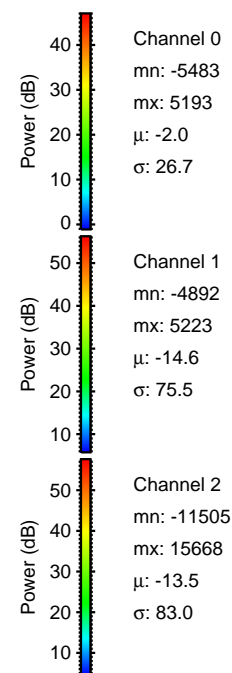
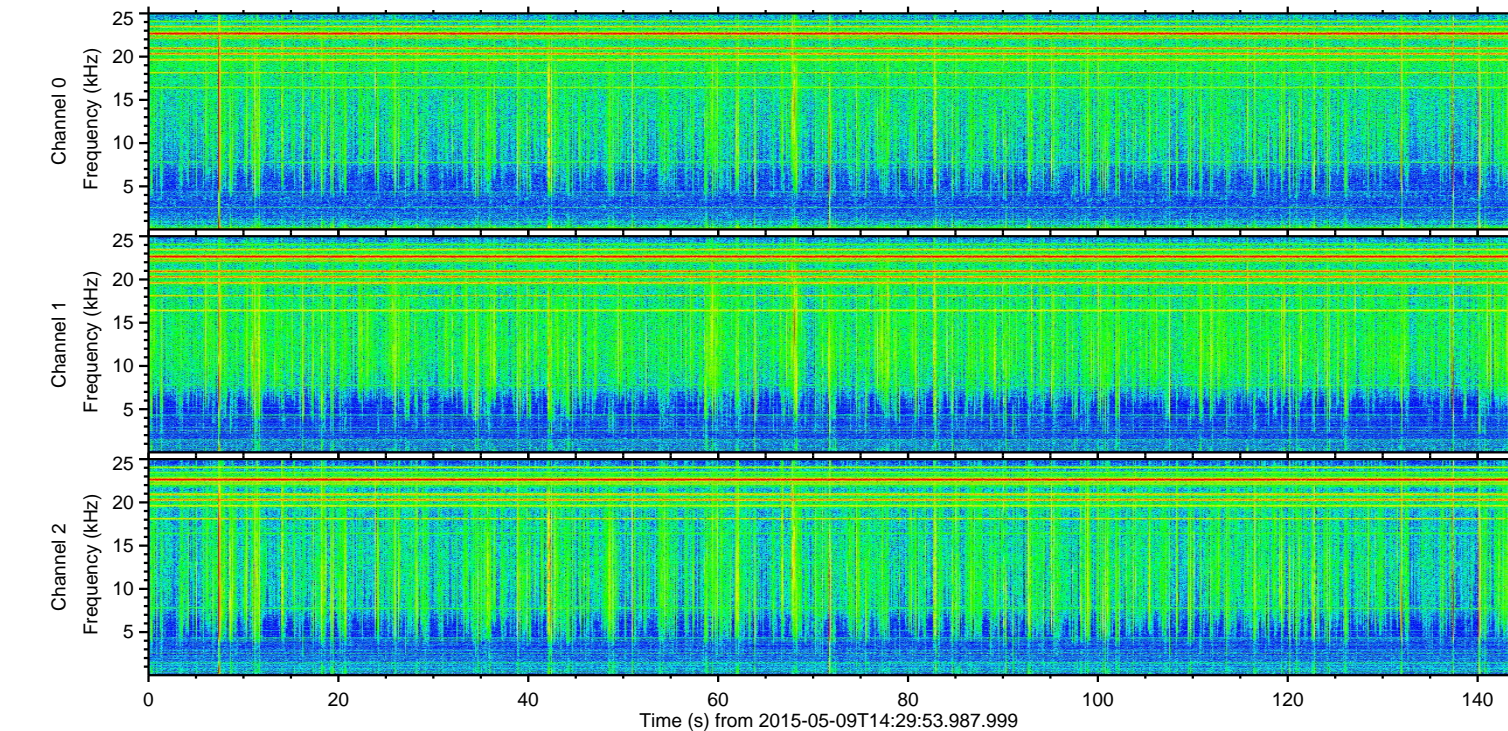
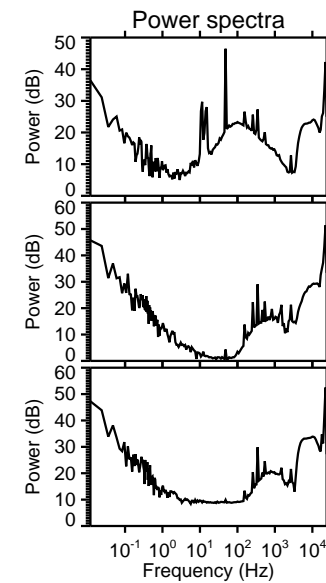
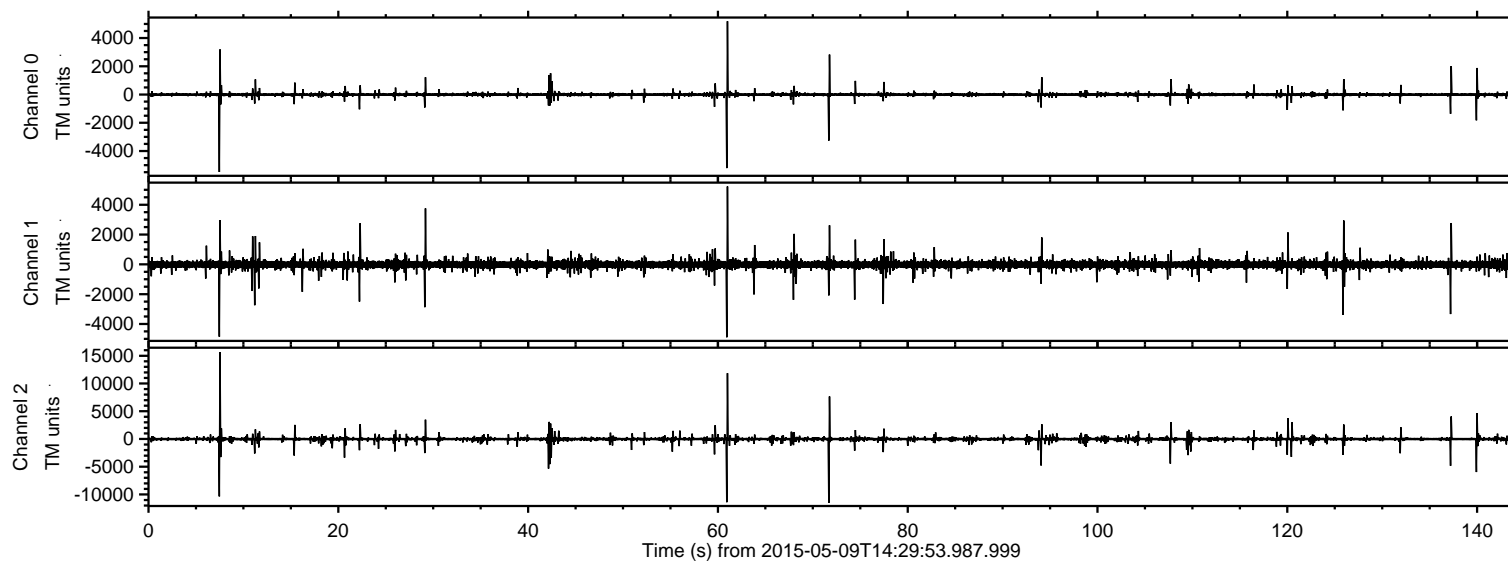


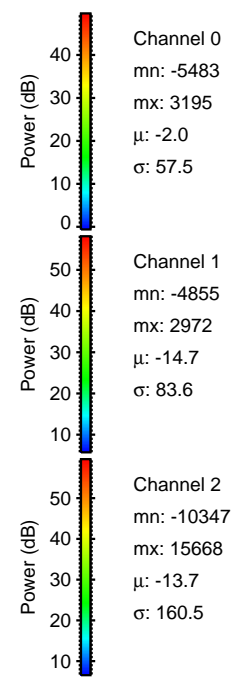
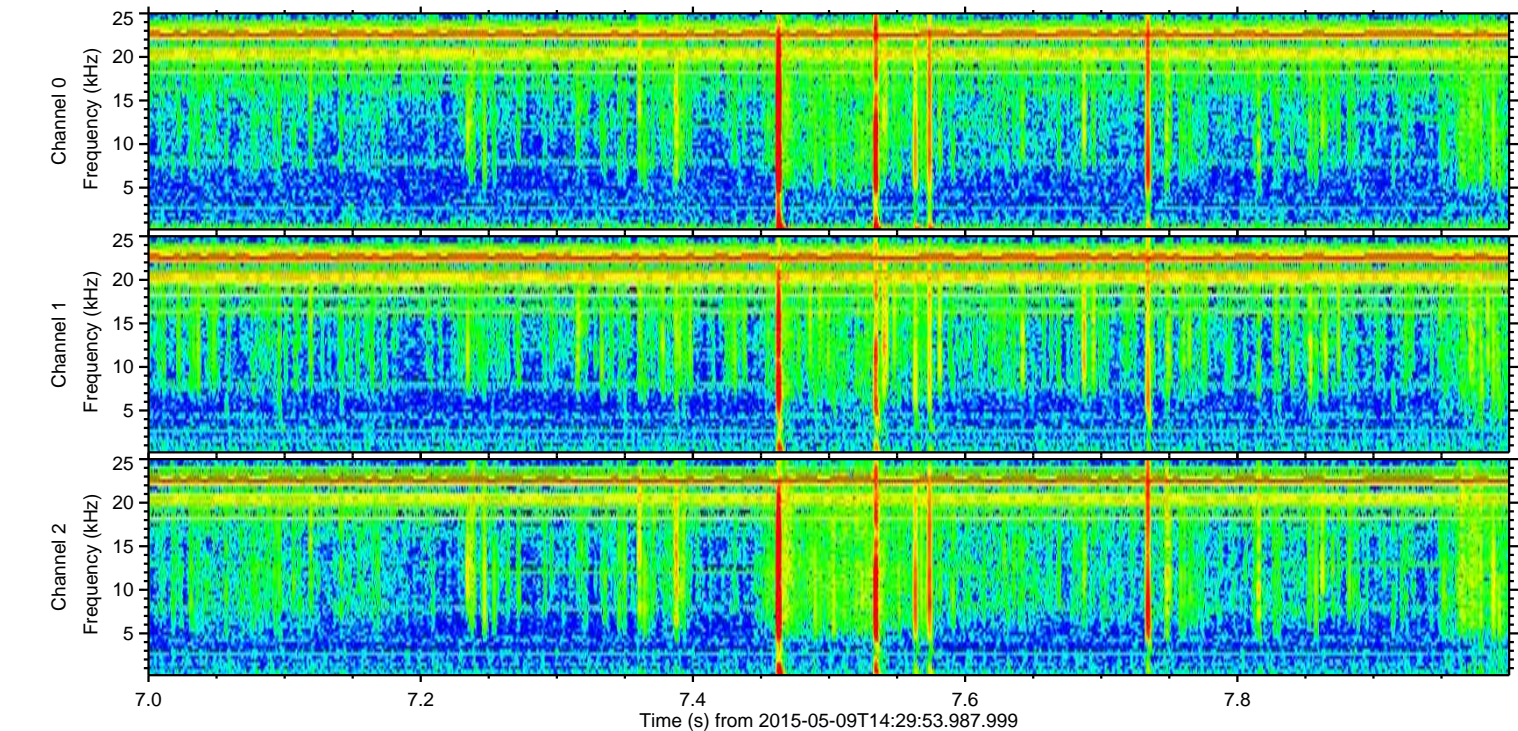
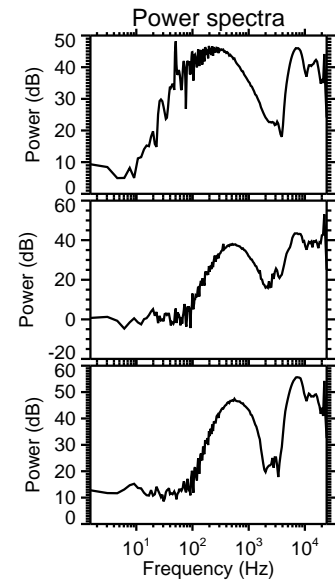
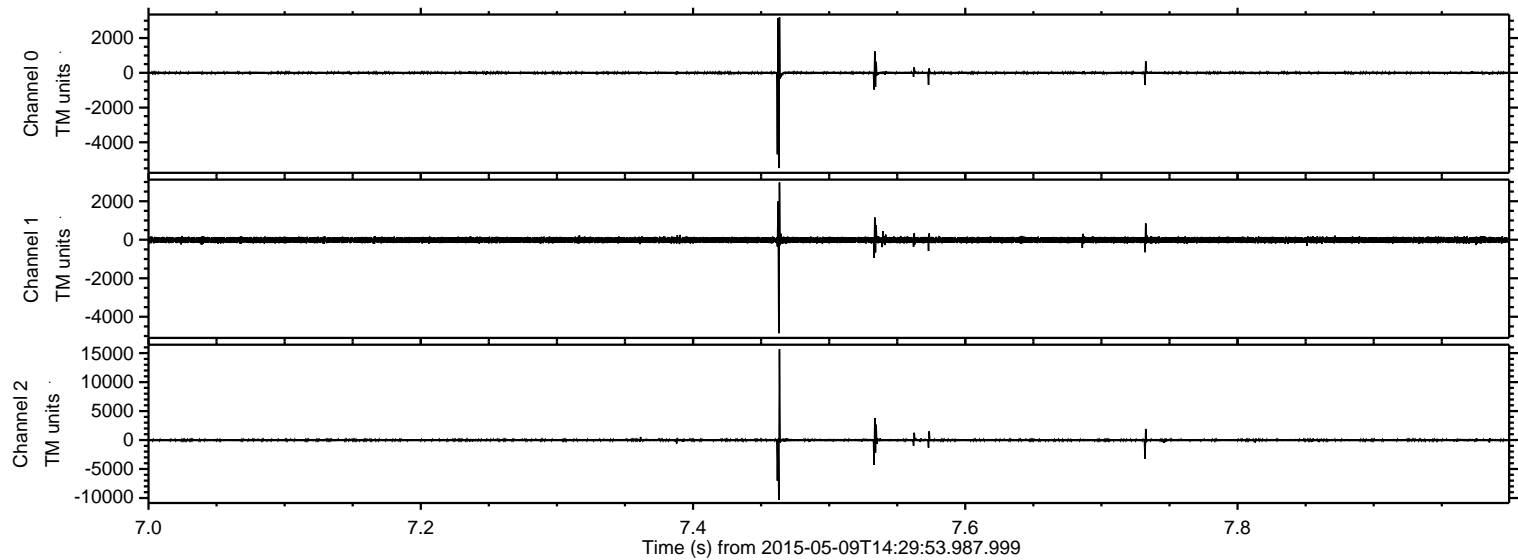
# ELMAVAN 3D WAVEFORMS (Measured data sampled at 50 kHz) 49783 packets of 144 samples from 2015-05-09T14:29:53.987.999.

Processed Sat May 9 16:36:42 2015 by ELM ver.2012-10-06 from 001\_\_elm20150509\_142952\_\_dat00.bin





Processed Sat May 9 16:36:54 2015 by ELM ver.2012-10-06 from 001\_\_elm20150509\_142952\_\_dat00.bin



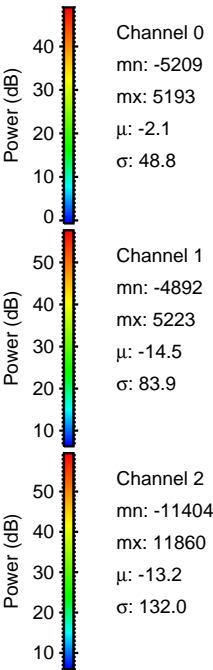
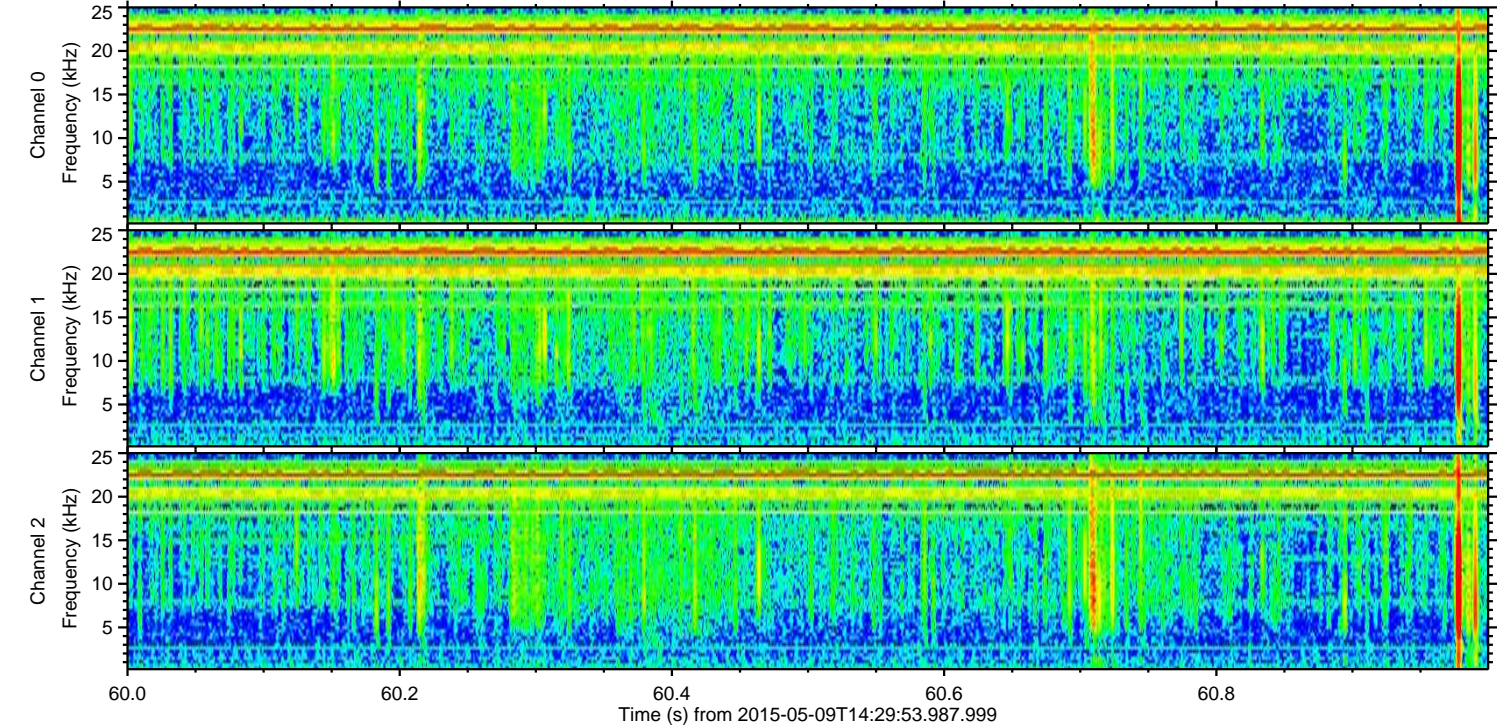
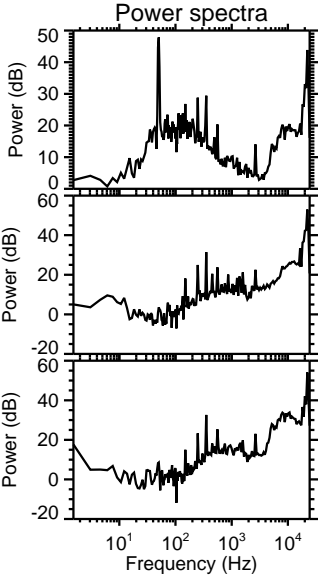
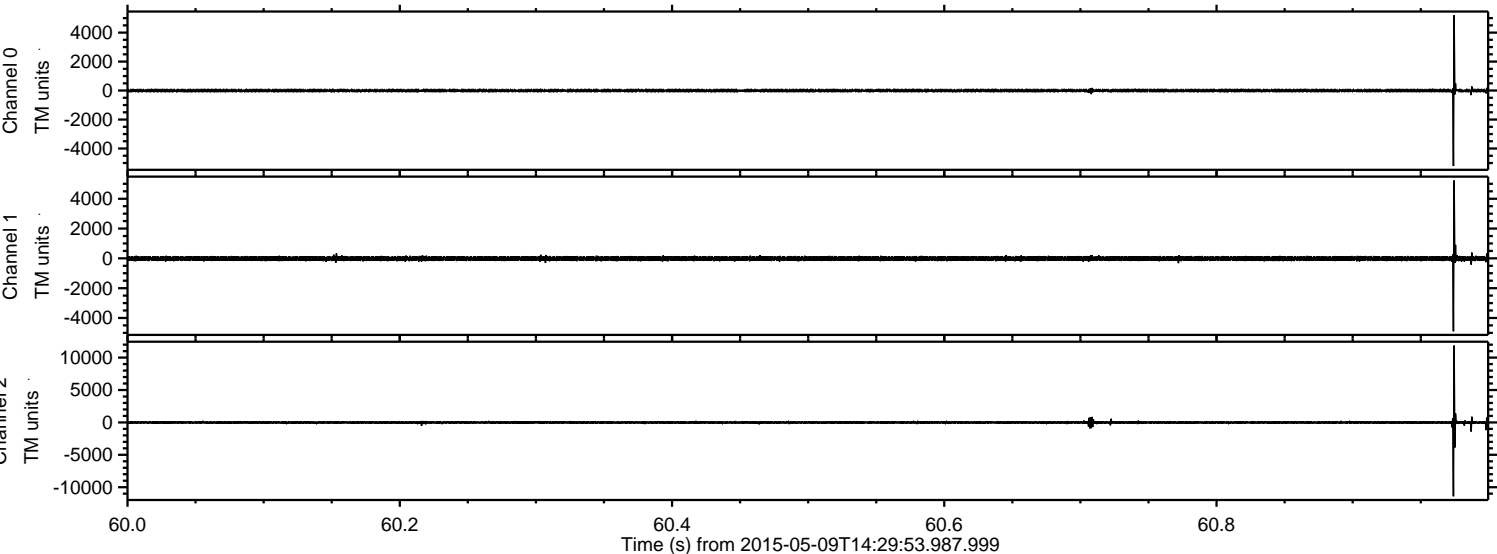
Channel 0  
mn: -5483  
mx: 3195  
 $\mu$ : -2.0  
 $\sigma$ : 57.5

Channel 1  
mn: -4855  
mx: 2972  
 $\mu$ : -14.7  
 $\sigma$ : 83.6

Channel 2  
mn: -10347  
mx: 15668  
 $\mu$ : -13.7  
 $\sigma$ : 160.5

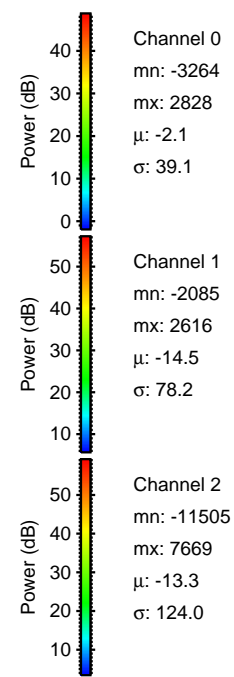
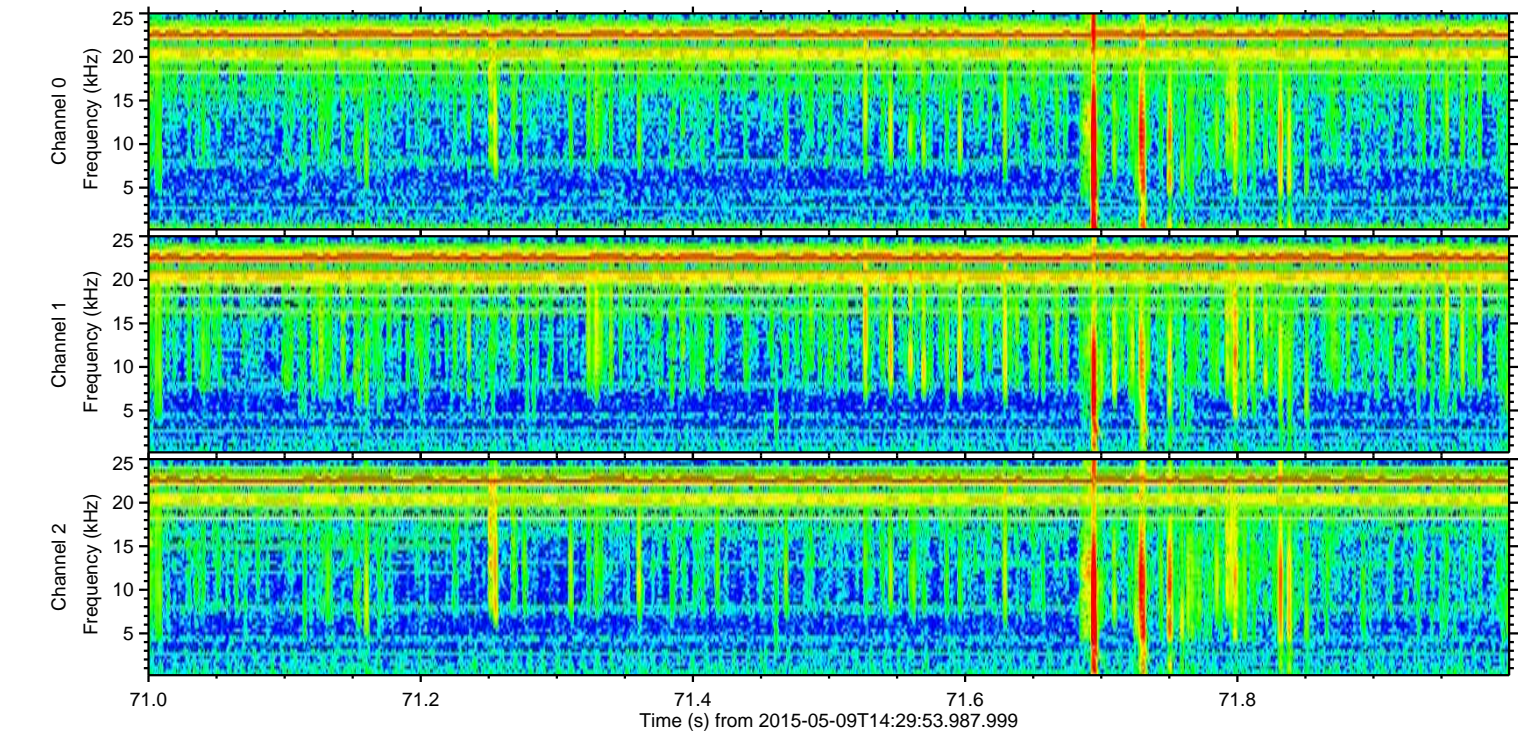
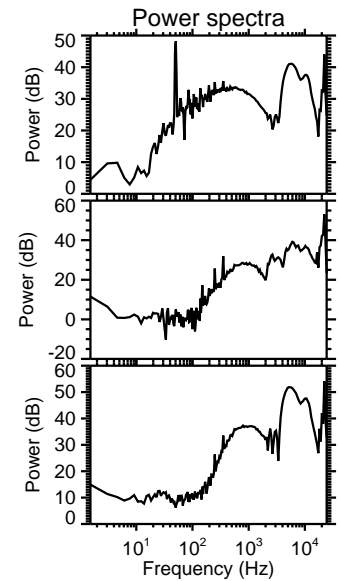
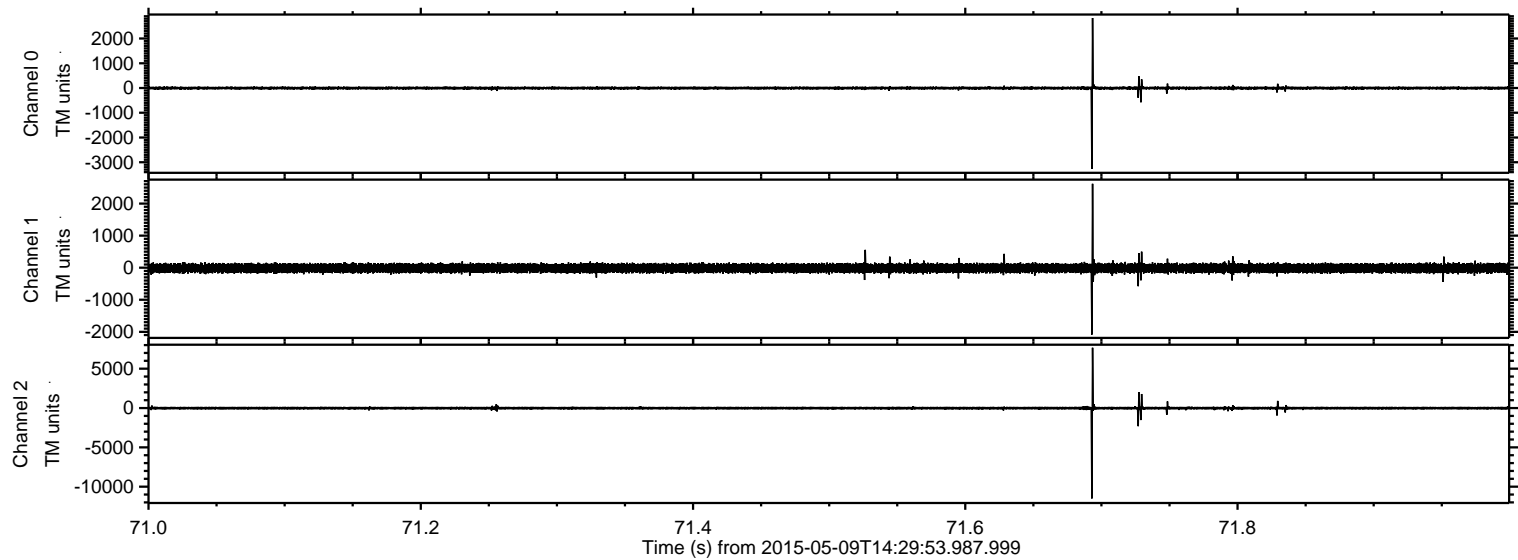


Processed Sat May 9 16:36:55 2015 by ELM ver.2012-10-06 from 001\_\_elm20150509\_142952\_\_dat00.bin





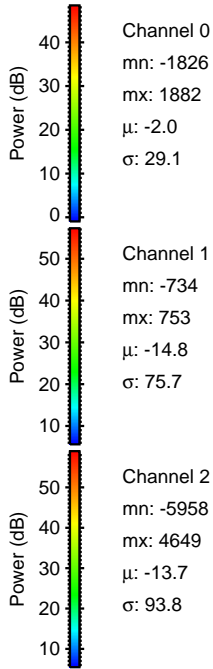
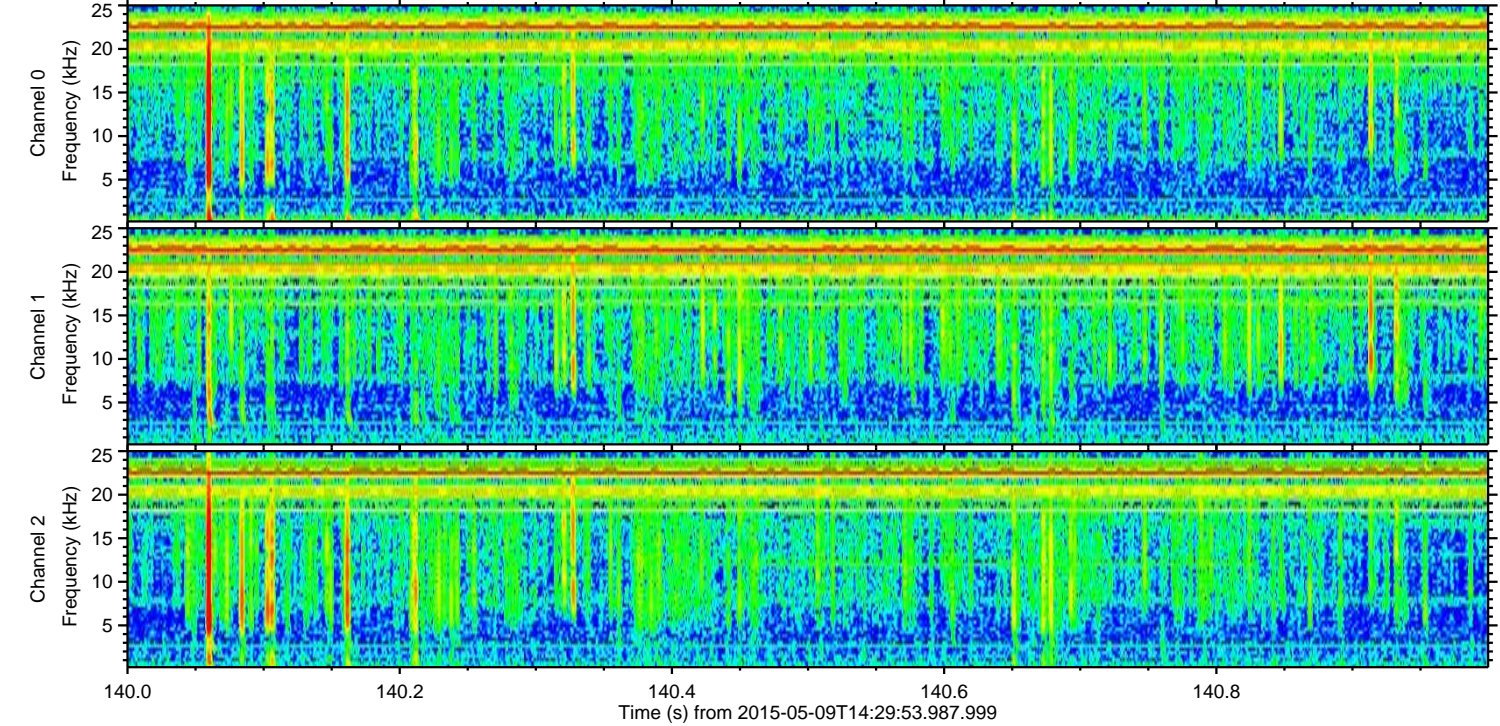
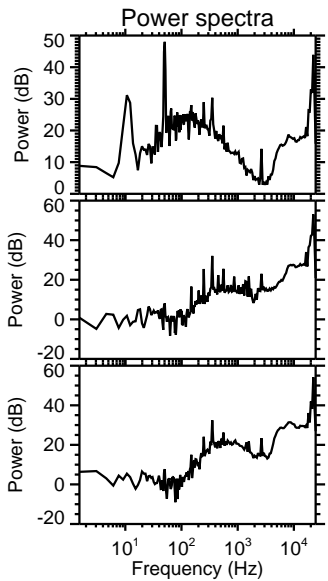
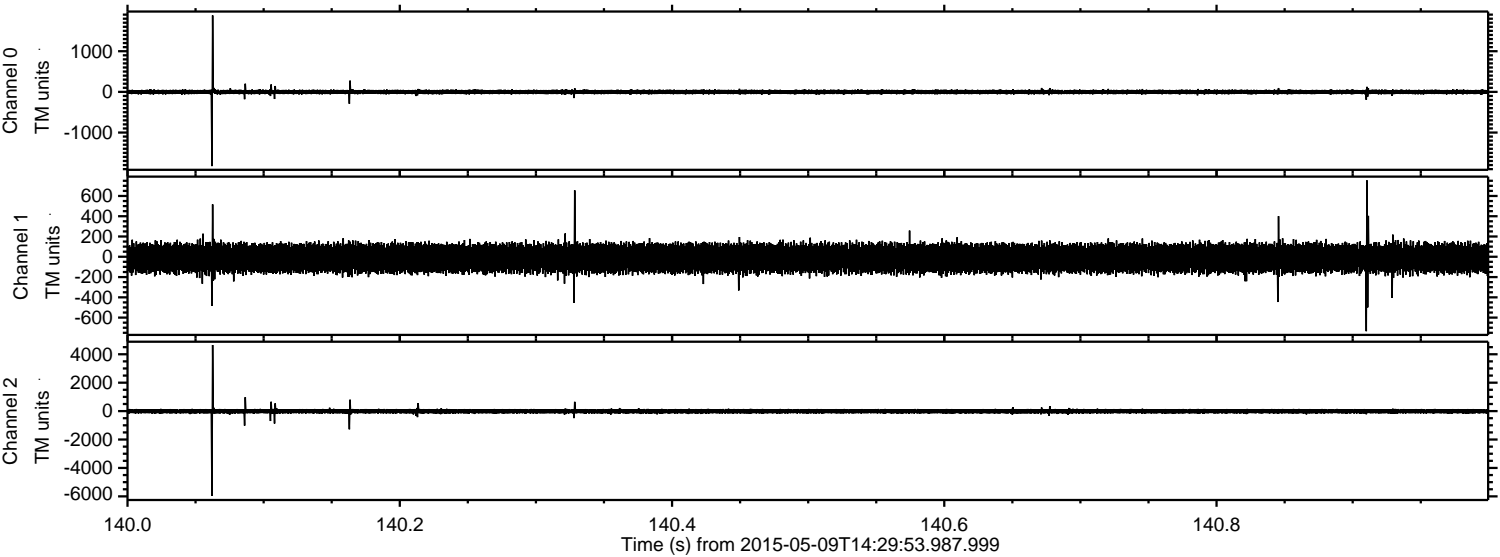
Processed Sat May 9 16:36:56 2015 by ELM ver.2012-10-06 from 001\_\_elm20150509\_142952\_\_dat00.bin





ELMAVAN 3D WAVEFORMS (Measured data sampled at 50 kHz) 49783 packets of 144 samples from 2015-05-09T14:29:53.987.999. Part 141/144

Processed Sat May 9 16:36:57 2015 by ELM ver.2012-10-06 from 001\_\_elm20150509\_142952\_\_dat00.bin



Channel 0  
mn: -1826  
mx: 1882  
 $\mu$ : -2.0  
 $\sigma$ : 29.1

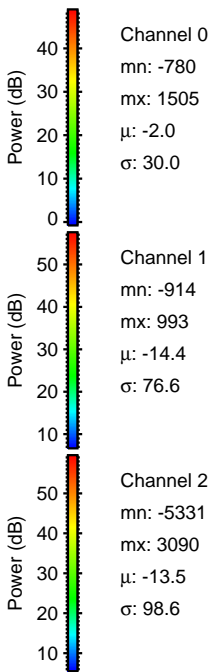
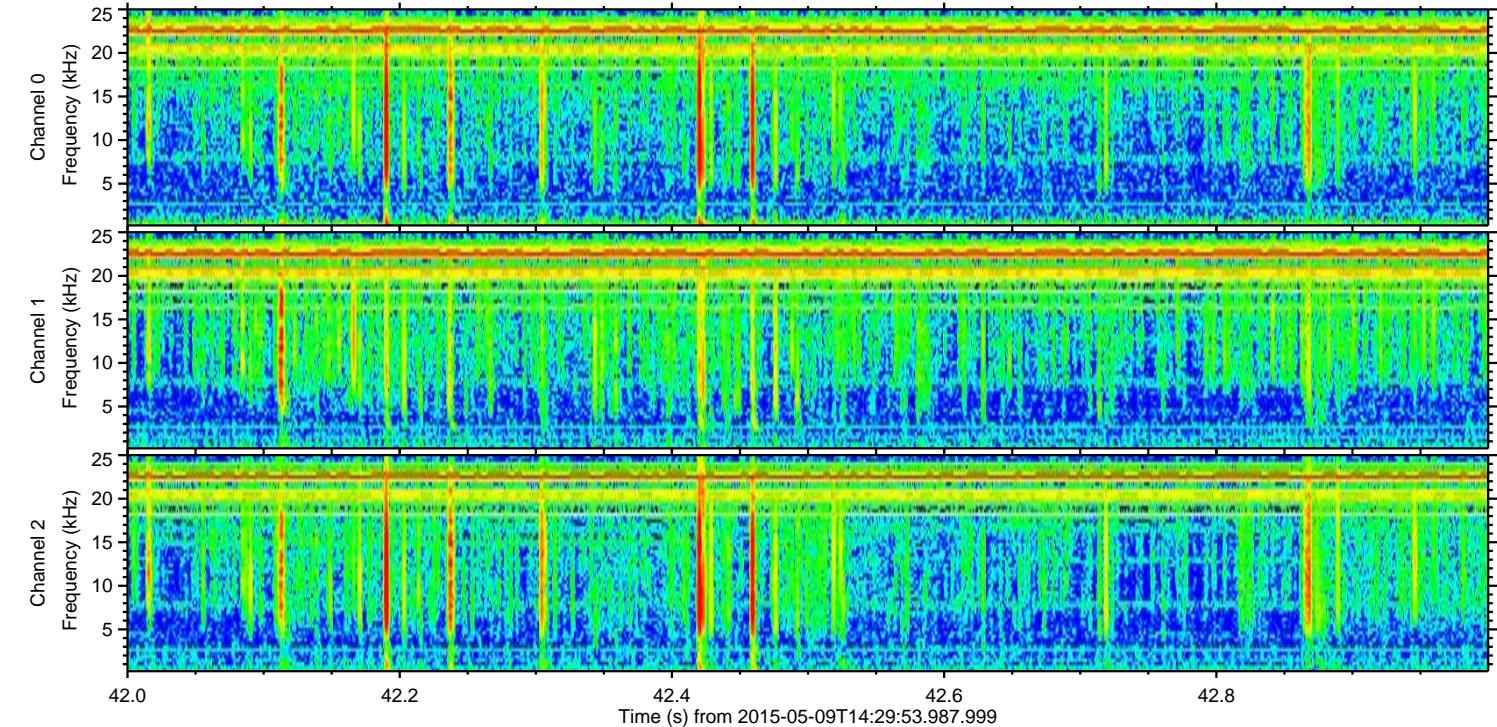
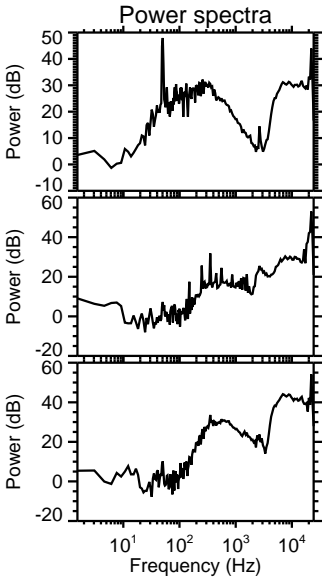
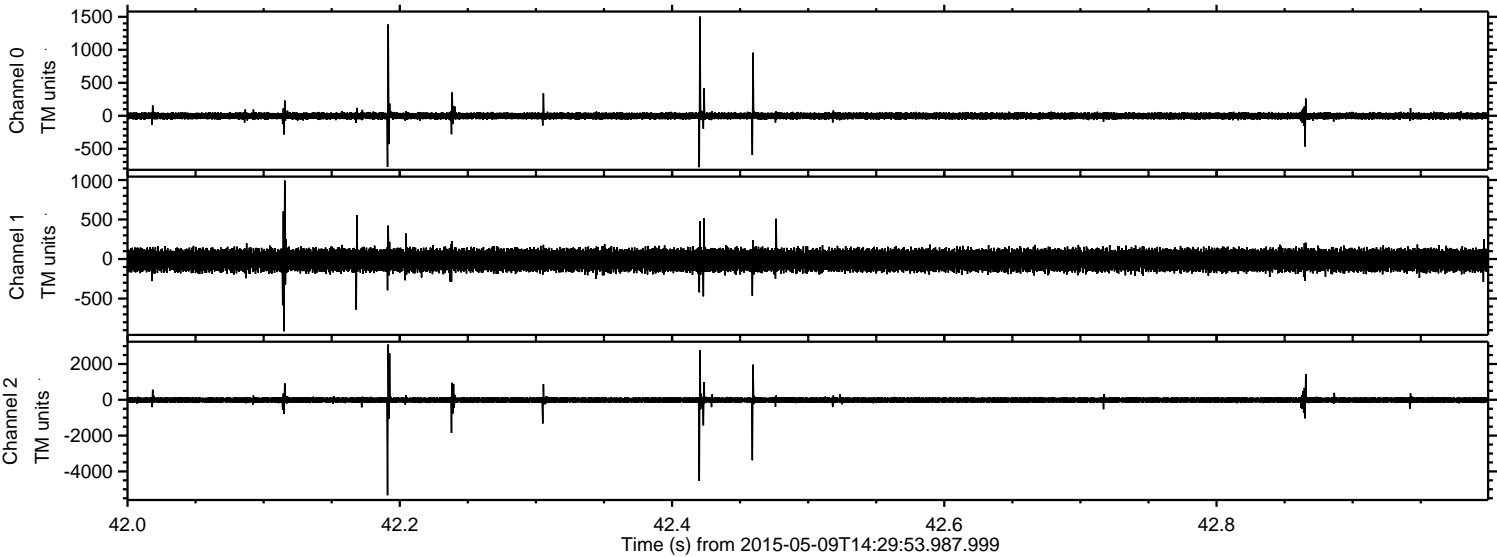
Channel 1  
mn: -734  
mx: 753  
 $\mu$ : -14.8  
 $\sigma$ : 75.7

Channel 2  
mn: -5958  
mx: 4649  
 $\mu$ : -13.7  
 $\sigma$ : 93.8



ELMAVAN 3D WAVEFORMS (Measured data sampled at 50 kHz) 49783 packets of 144 samples from 2015-05-09T14:29:53.987.999. Part 43/144

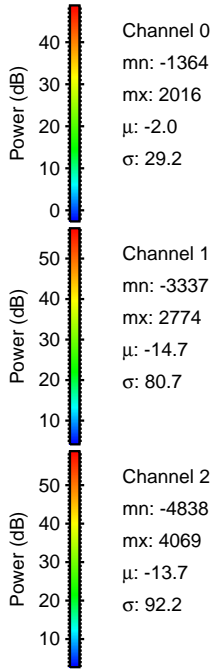
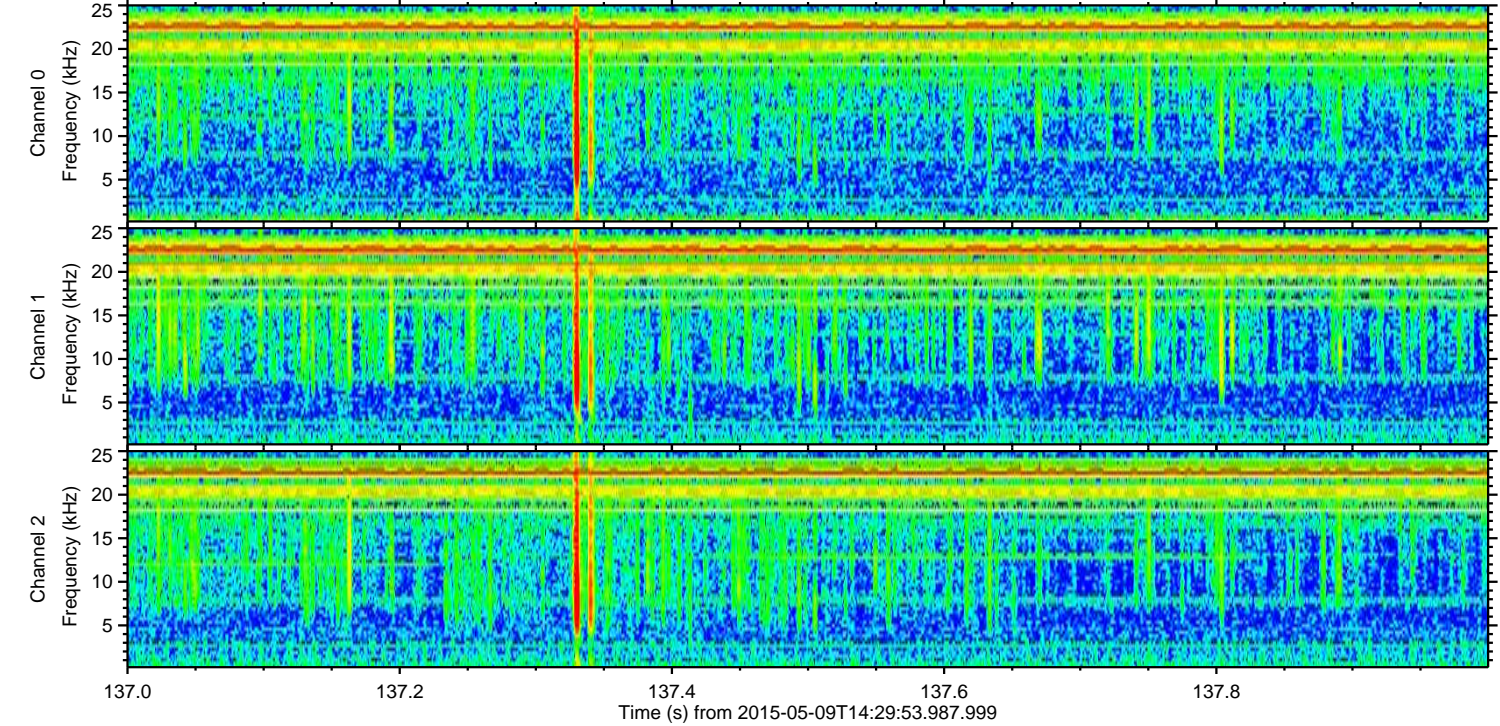
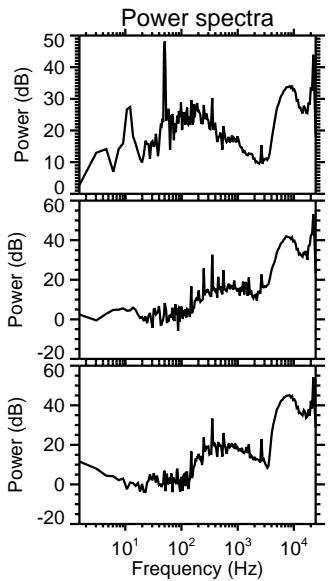
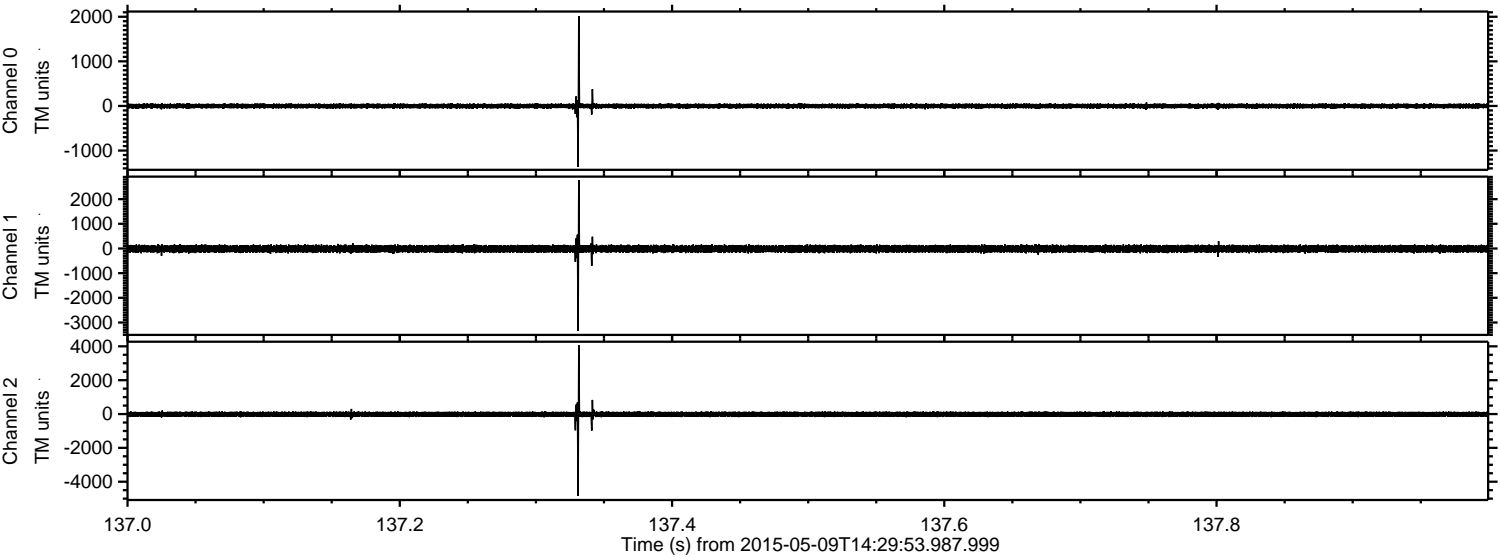
Processed Sat May 9 16:36:58 2015 by ELM ver.2012-10-06 from 001\_\_elm20150509\_142952\_\_dat00.bin





ELMAVAN 3D WAVEFORMS (Measured data sampled at 50 kHz) 49783 packets of 144 samples from 2015-05-09T14:29:53.987.999. Part 138/144

Processed Sat May 9 16:36:58 2015 by ELM ver.2012-10-06 from 001\_\_elm20150509\_142952\_\_dat00.bin



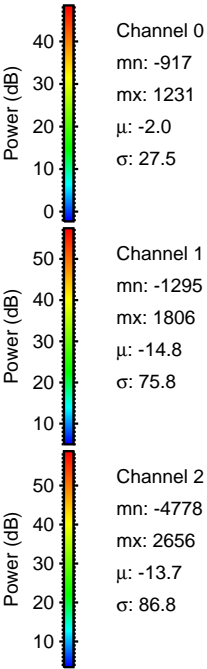
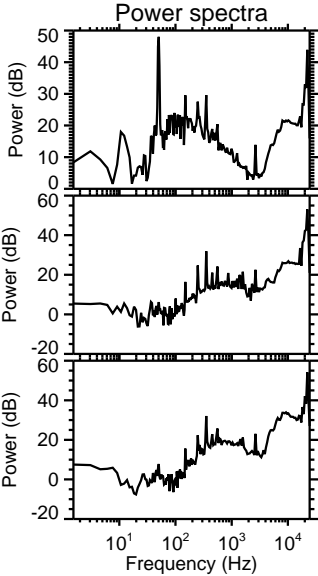
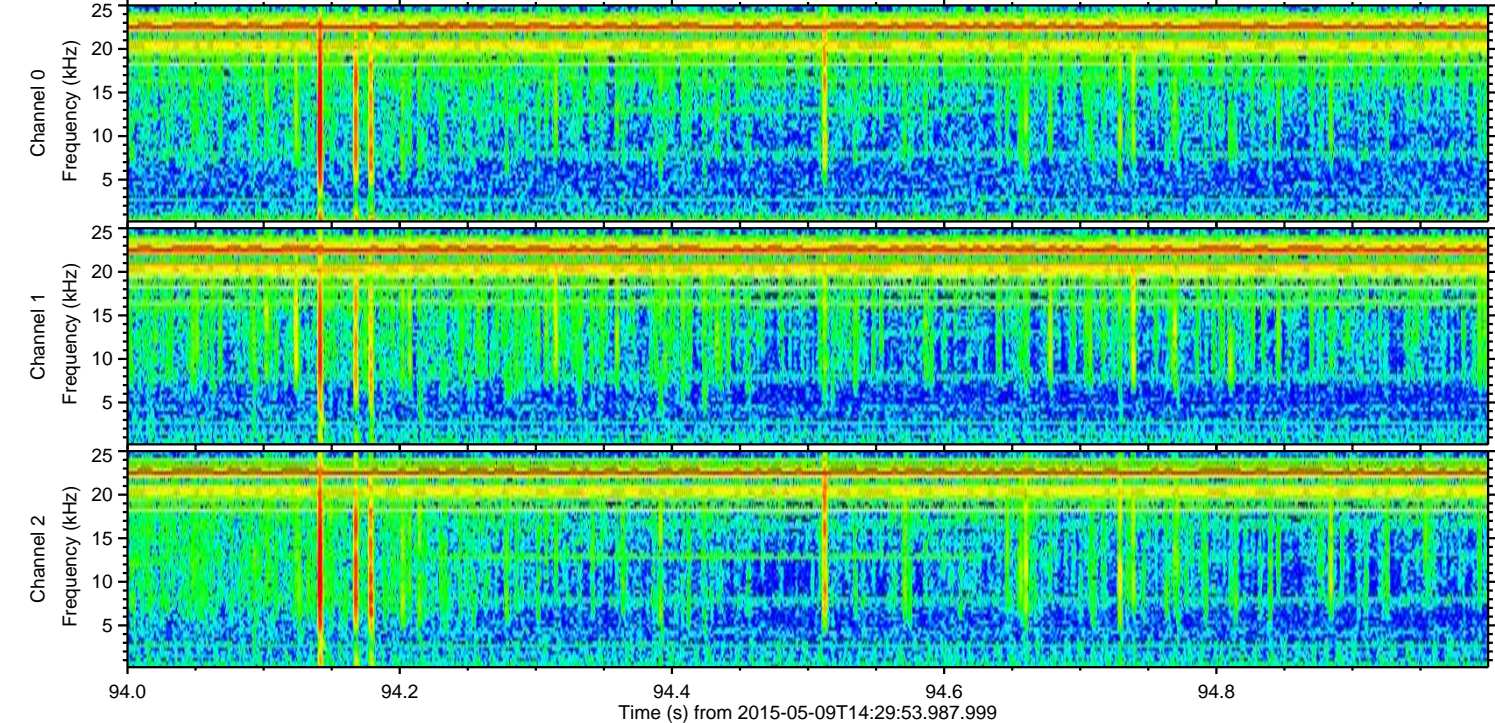
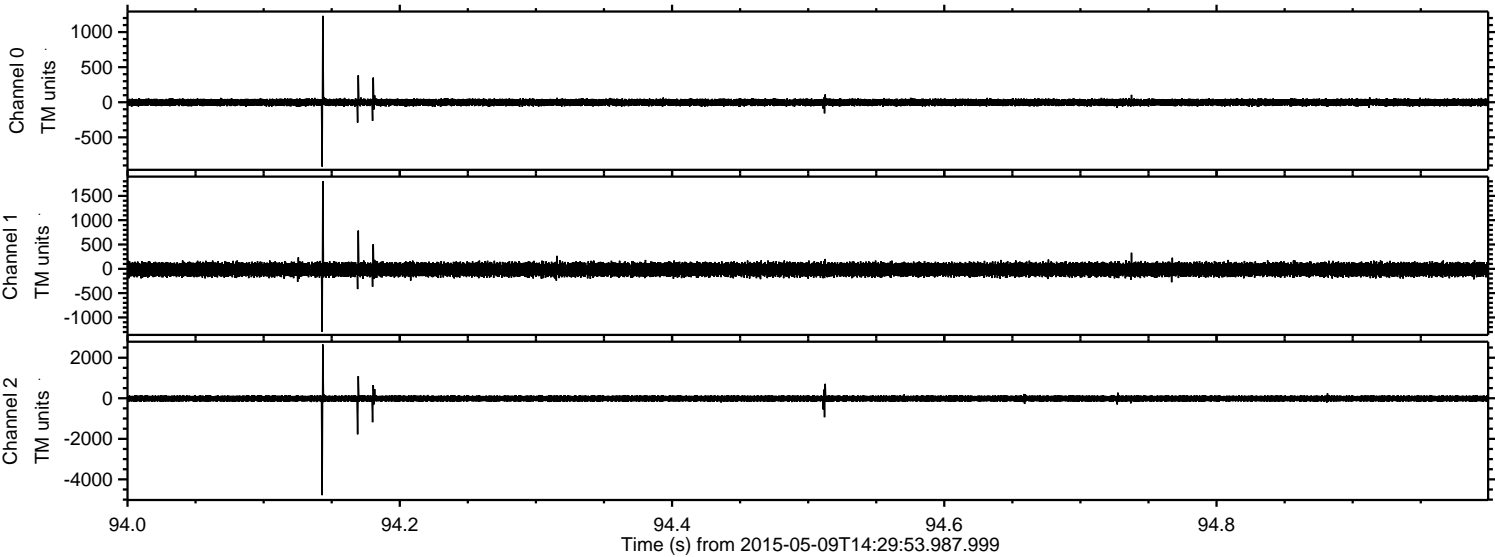
Channel 0  
mn: -1364  
mx: 2016  
 $\mu$ : -2.0  
 $\sigma$ : 29.2

Channel 1  
mn: -3337  
mx: 2774  
 $\mu$ : -14.7  
 $\sigma$ : 80.7

Channel 2  
mn: -4838  
mx: 4069  
 $\mu$ : -13.7  
 $\sigma$ : 92.2



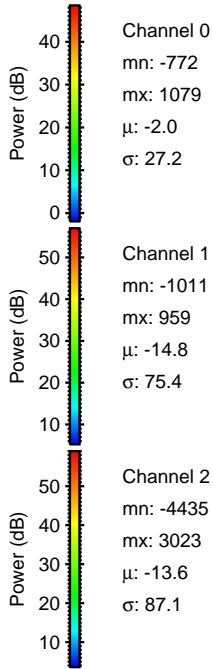
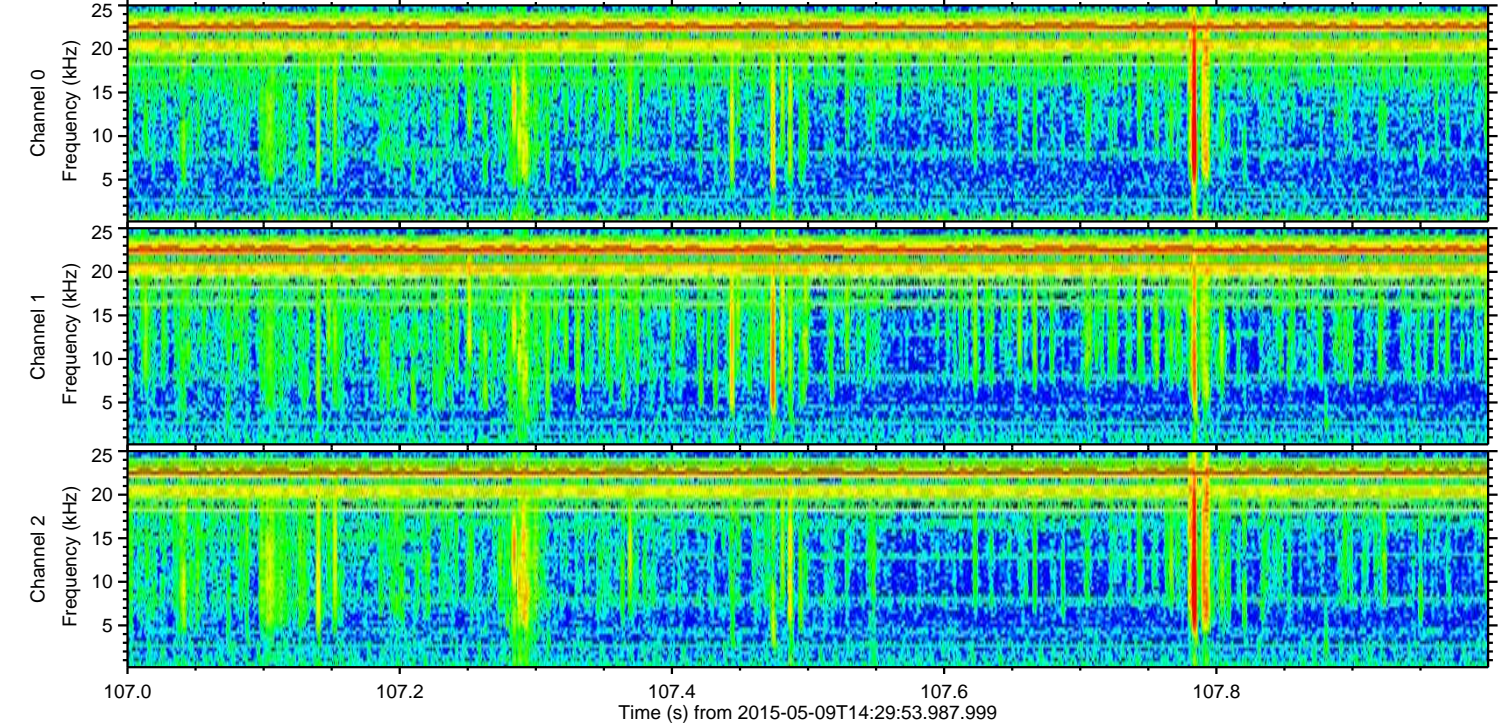
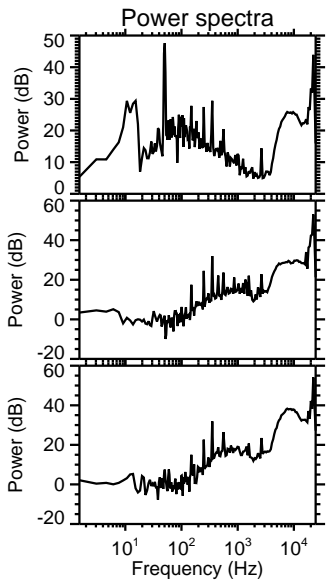
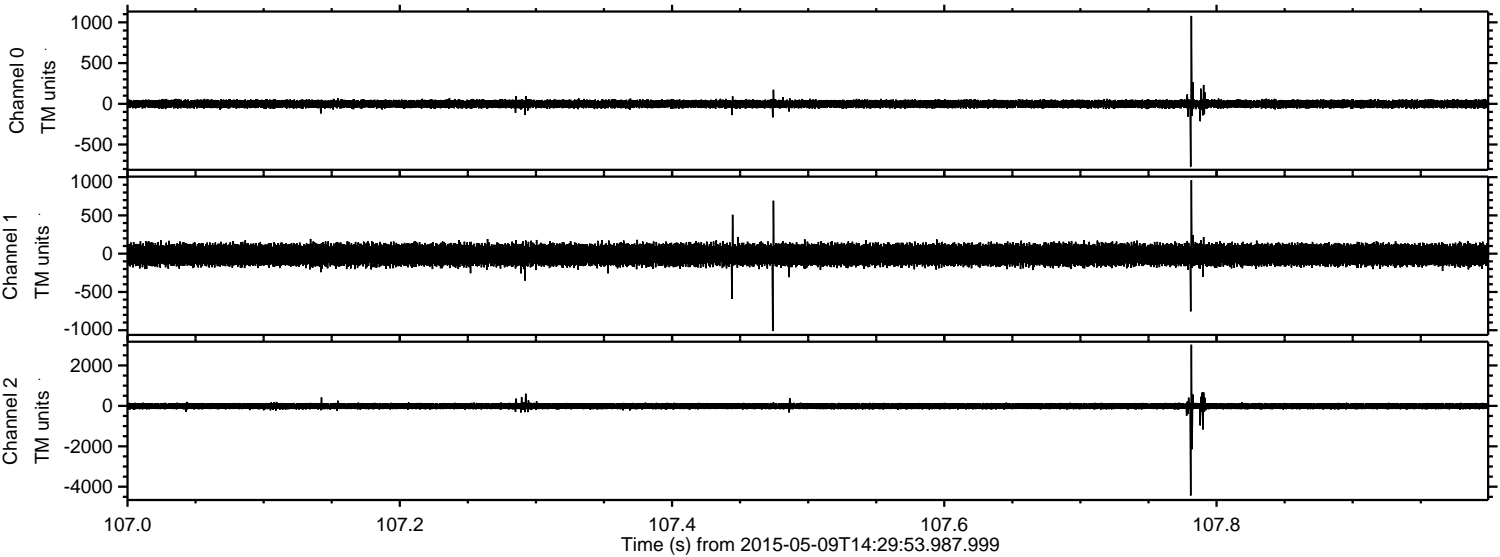
Processed Sat May 9 16:36:59 2015 by ELM ver.2012-10-06 from 001\_\_elm20150509\_142952\_\_dat00.bin





ELMAVAN 3D WAVEFORMS (Measured data sampled at 50 kHz) 49783 packets of 144 samples from 2015-05-09T14:29:53.987.999. Part 108/144

Processed Sat May 9 16:37:00 2015 by ELM ver.2012-10-06 from 001\_\_elm20150509\_142952\_\_dat00.bin



Channel 0  
mn: -772  
mx: 1079  
 $\mu$ : -2.0  
 $\sigma$ : 27.2

Channel 1  
mn: -1011  
mx: 959  
 $\mu$ : -14.8  
 $\sigma$ : 75.4

Channel 2  
mn: -4435  
mx: 3023  
 $\mu$ : -13.6  
 $\sigma$ : 87.1



ELMAVAN 3D WAVEFORMS (Measured data sampled at 50 kHz) 49783 packets of 144 samples from 2015-05-09T14:29:53.987.999. Part 121/144

Processed Sat May 9 16:37:01 2015 by ELM ver.2012-10-06 from 001\_\_elm20150509\_142952\_\_dat00.bin

