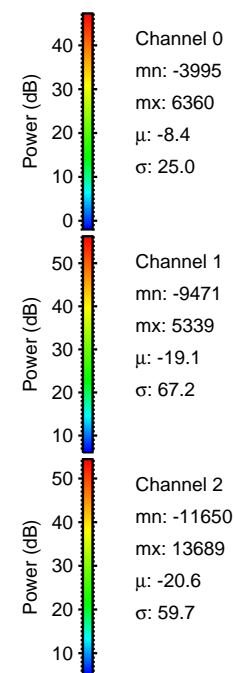
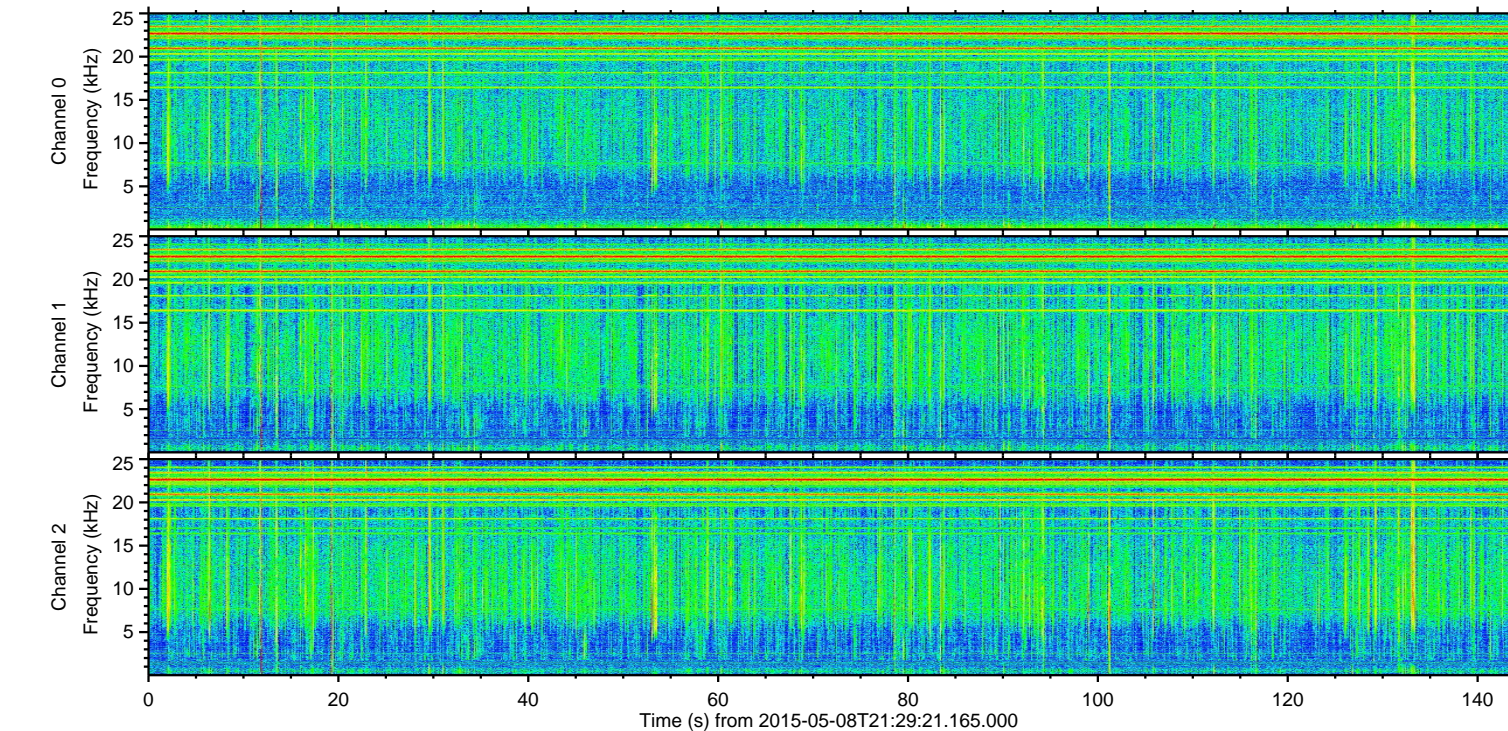
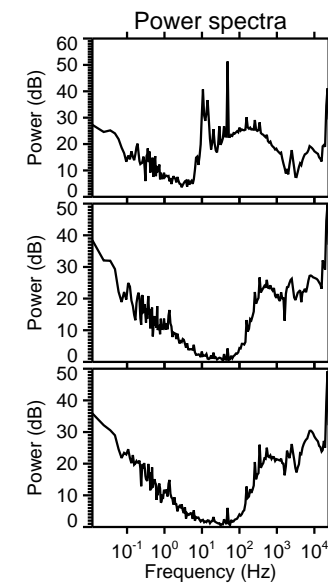
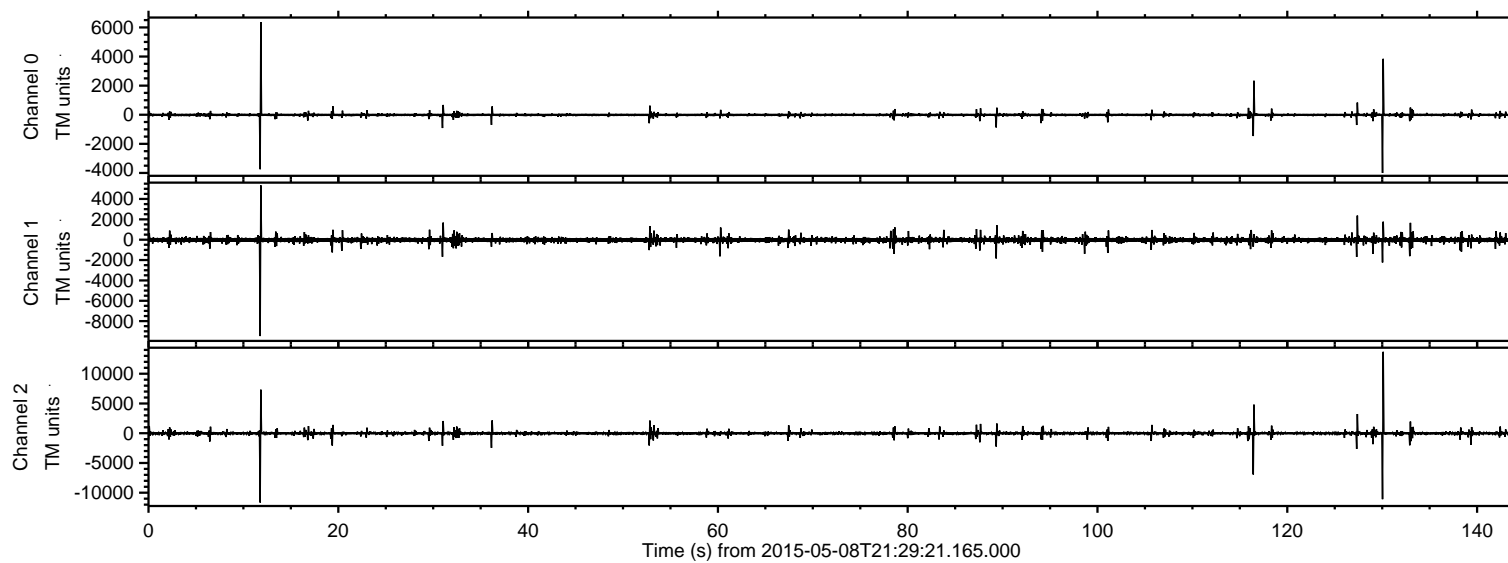


# ELMAVAN 3D WAVEFORMS (Measured data sampled at 50 kHz) 49784 packets of 144 samples from 2015-05-08T21:29:21.165.000.

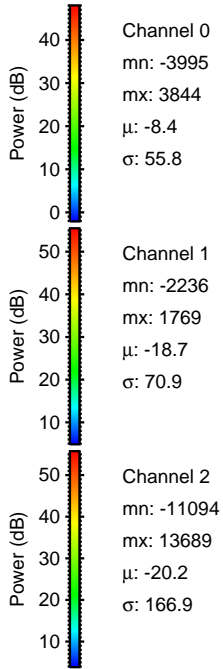
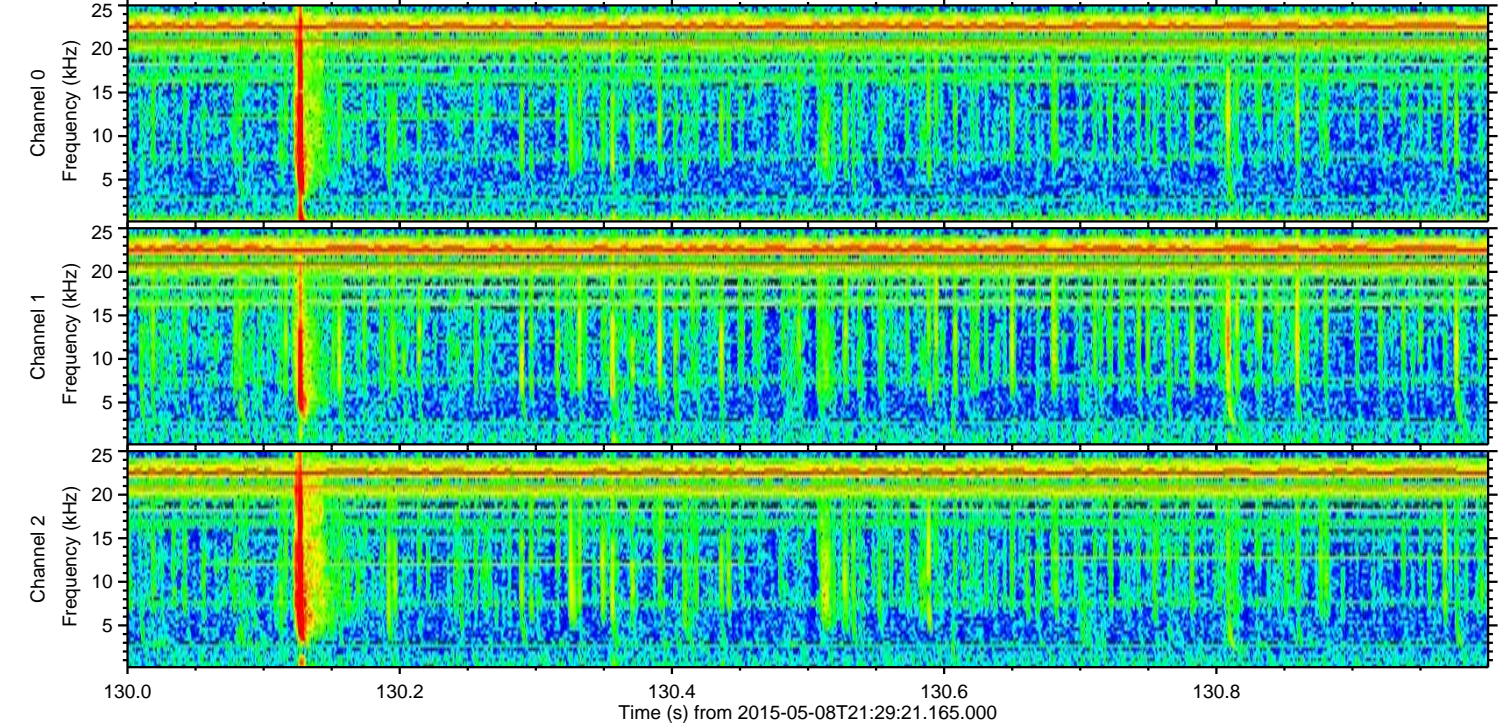
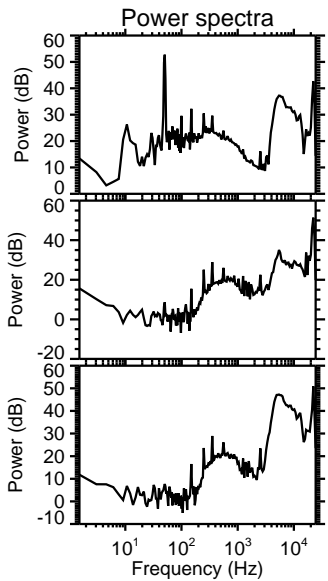
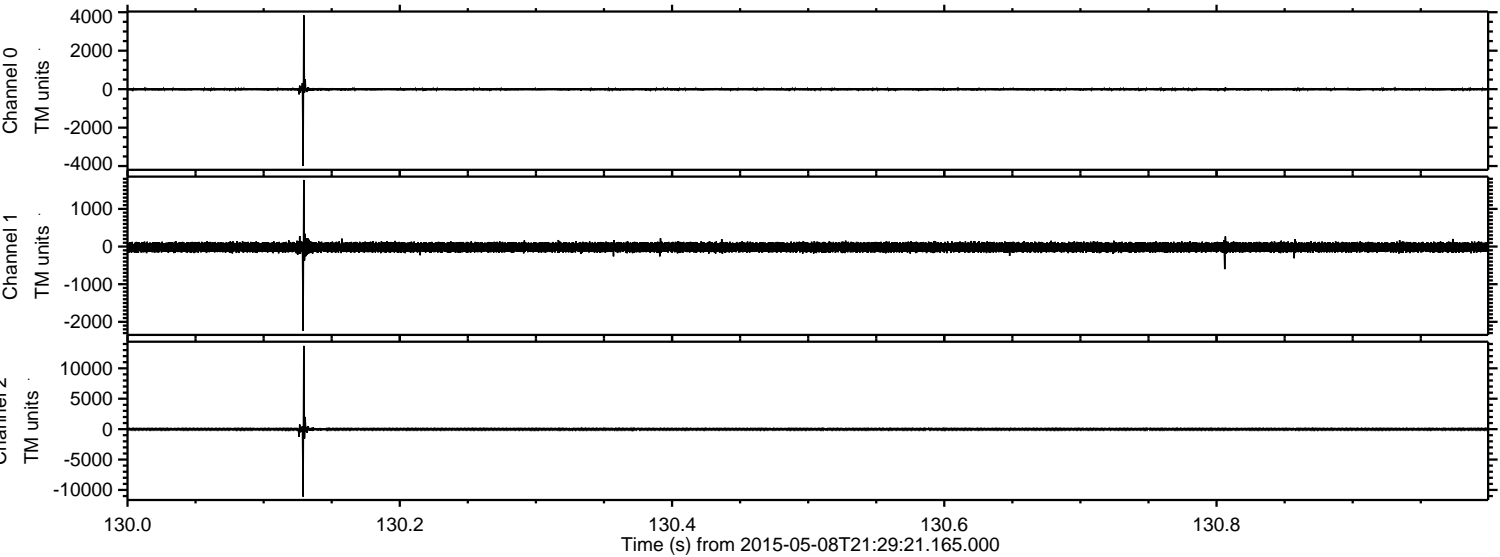
Processed Fri May 8 23:35:53 2015 by ELM ver.2012-10-06 from 001\_\_elm20150508\_212920\_\_dat00.bin





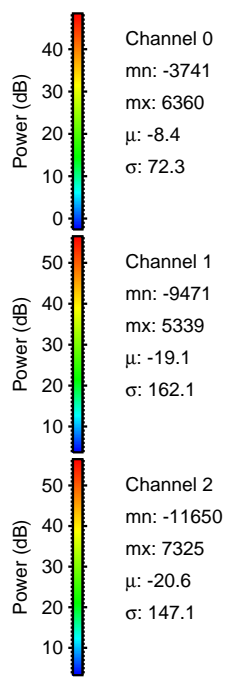
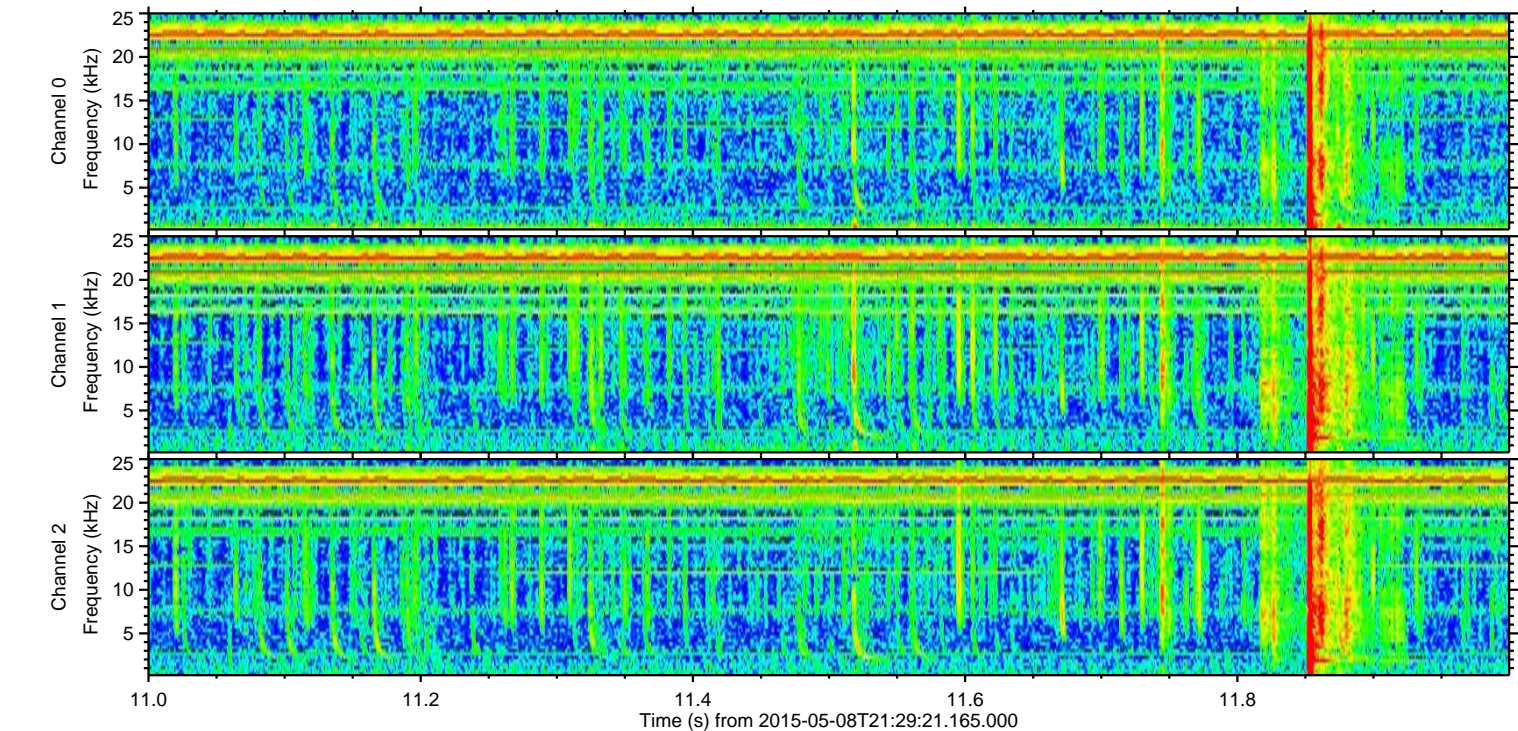
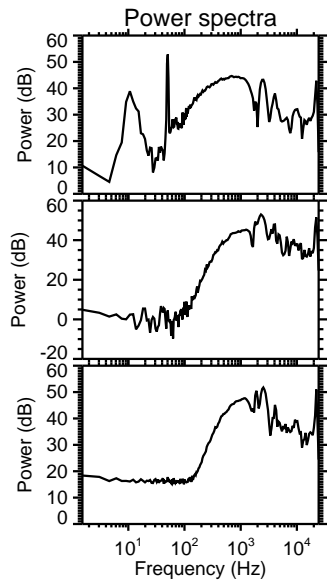
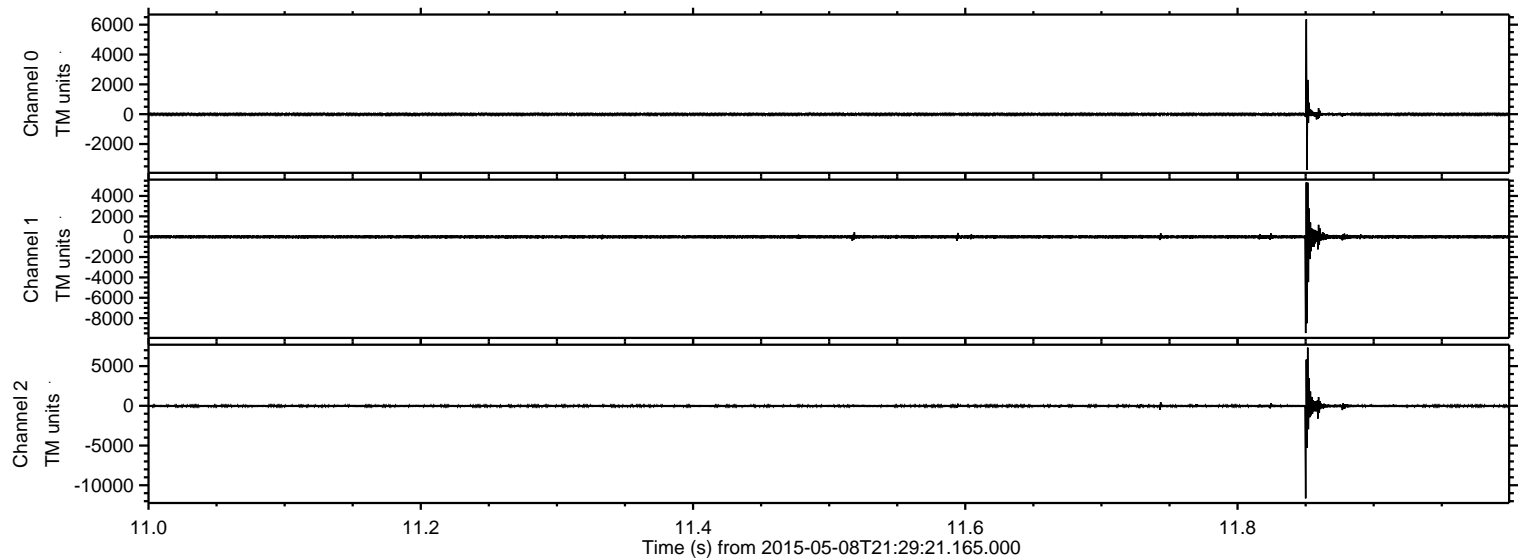
ELMAVAN 3D WAVEFORMS (Measured data sampled at 50 kHz) 49784 packets of 144 samples from 2015-05-08T21:29:21.165.000. Part 131/144

Processed Fri May 8 23:36:04 2015 by ELM ver.2012-10-06 from 001\_\_elm20150508\_212920\_\_dat00.bin





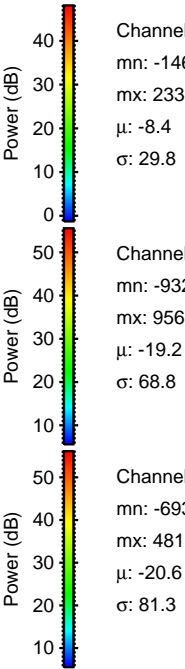
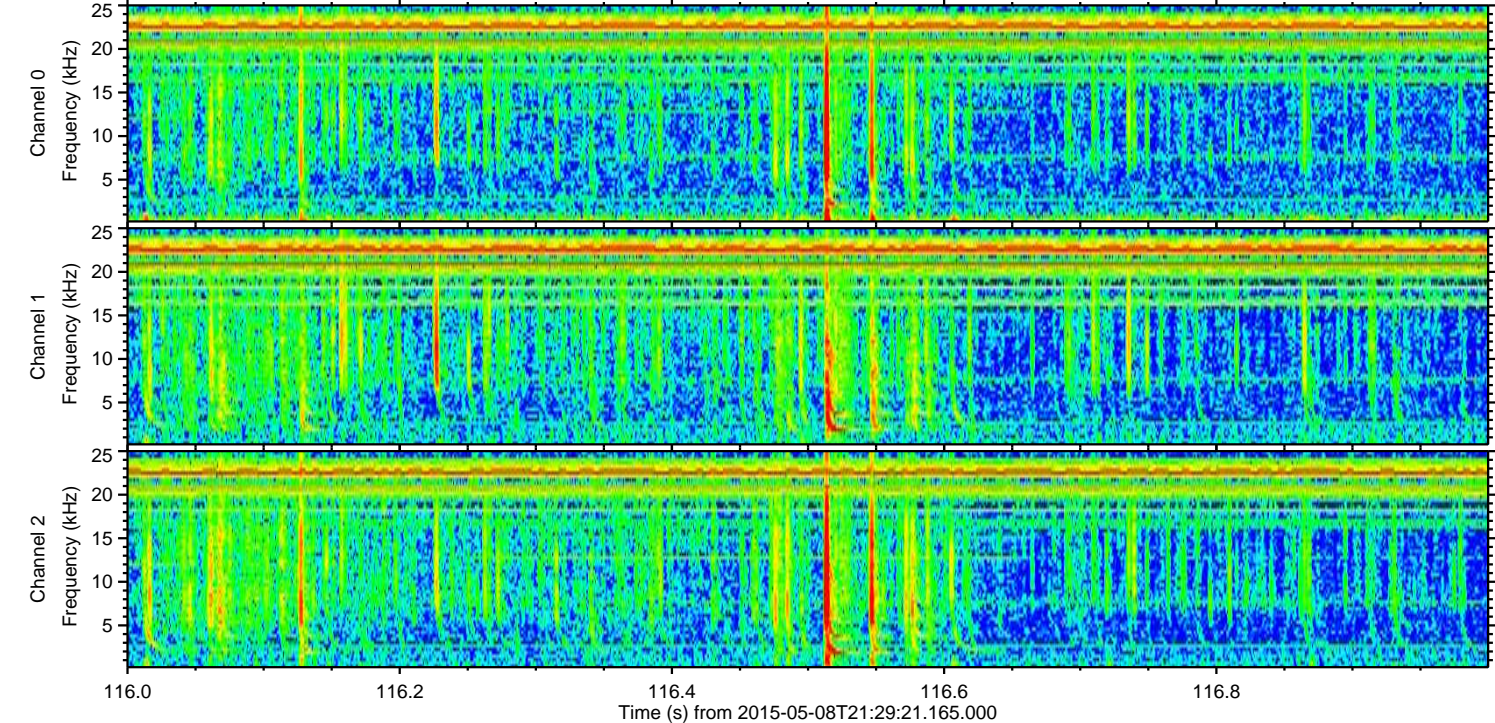
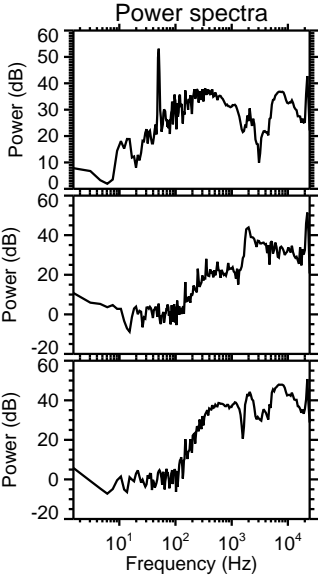
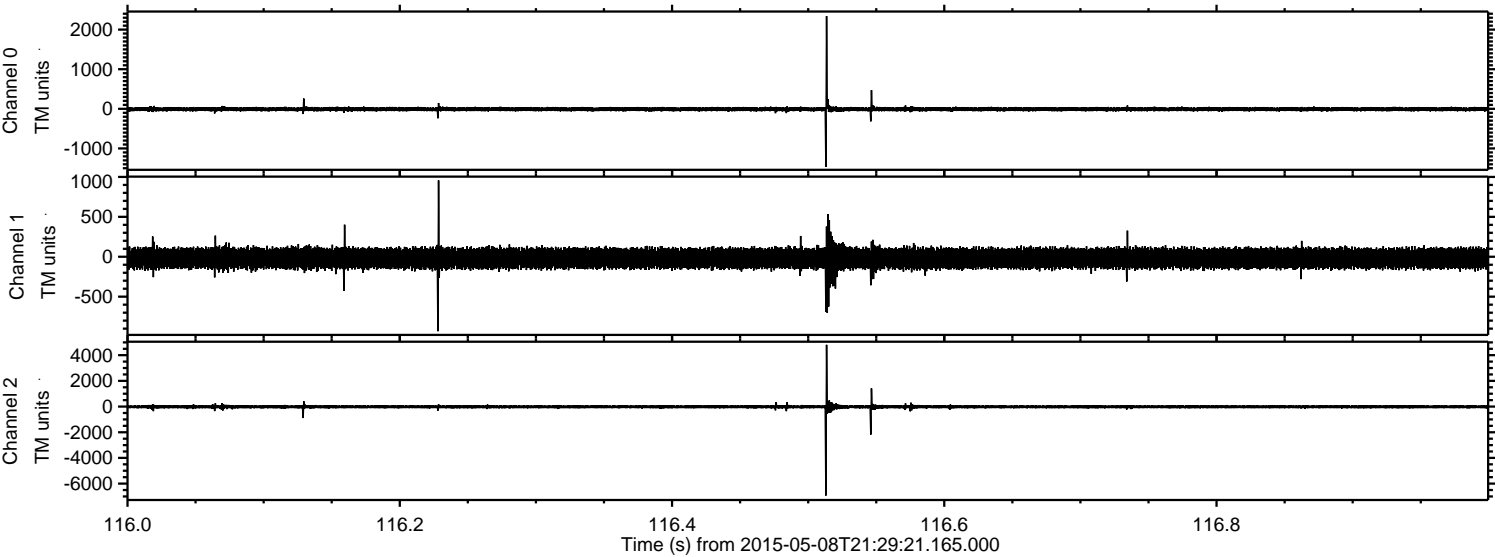
Processed Fri May 8 23:36:05 2015 by ELM ver.2012-10-06 from 001\_\_elm20150508\_212920\_\_dat00.bin





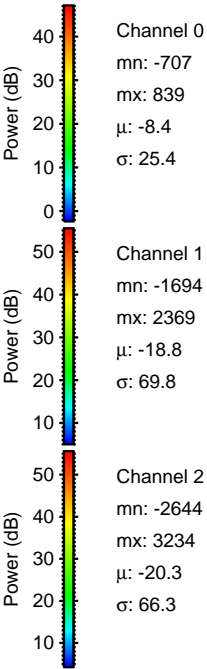
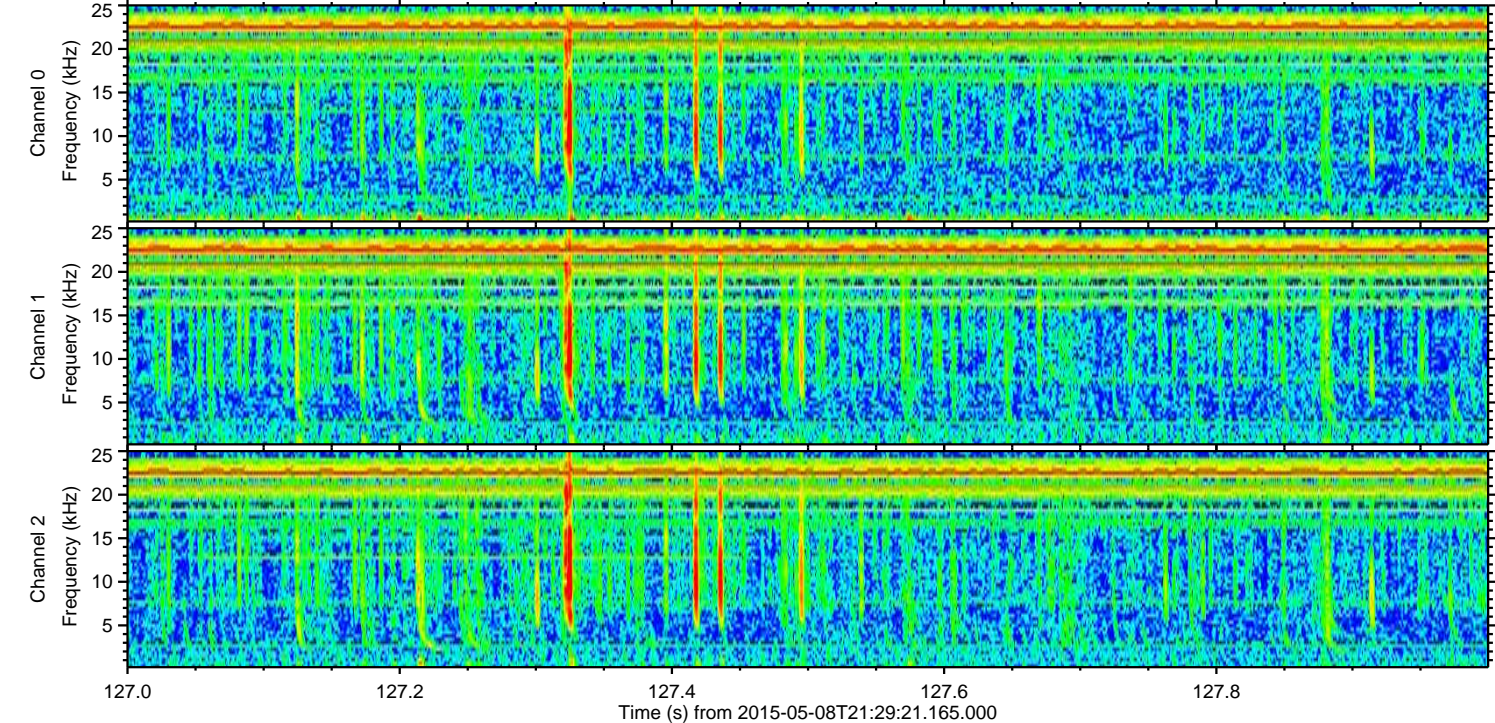
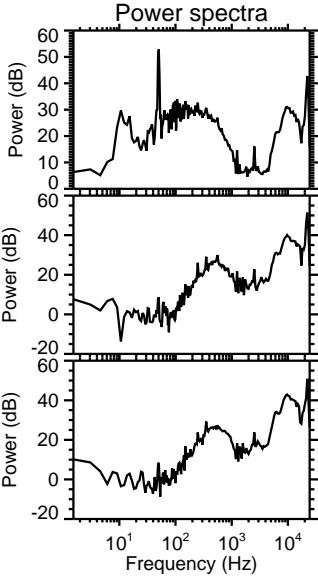
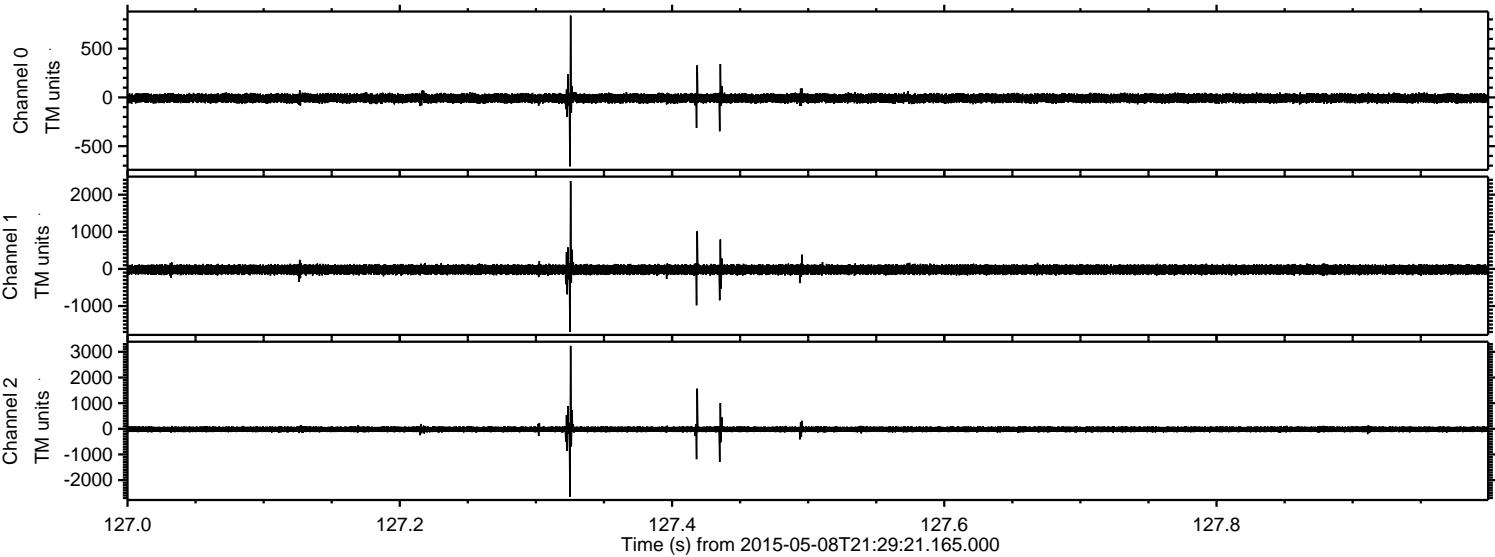
ELMAVAN 3D WAVEFORMS (Measured data sampled at 50 kHz) 49784 packets of 144 samples from 2015-05-08T21:29:21.165.000. Part 117/144

Processed Fri May 8 23:36:06 2015 by ELM ver.2012-10-06 from 001\_\_elm20150508\_212920\_\_dat00.bin





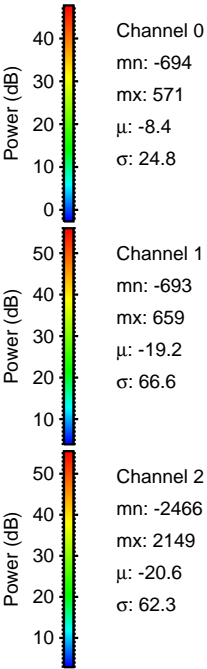
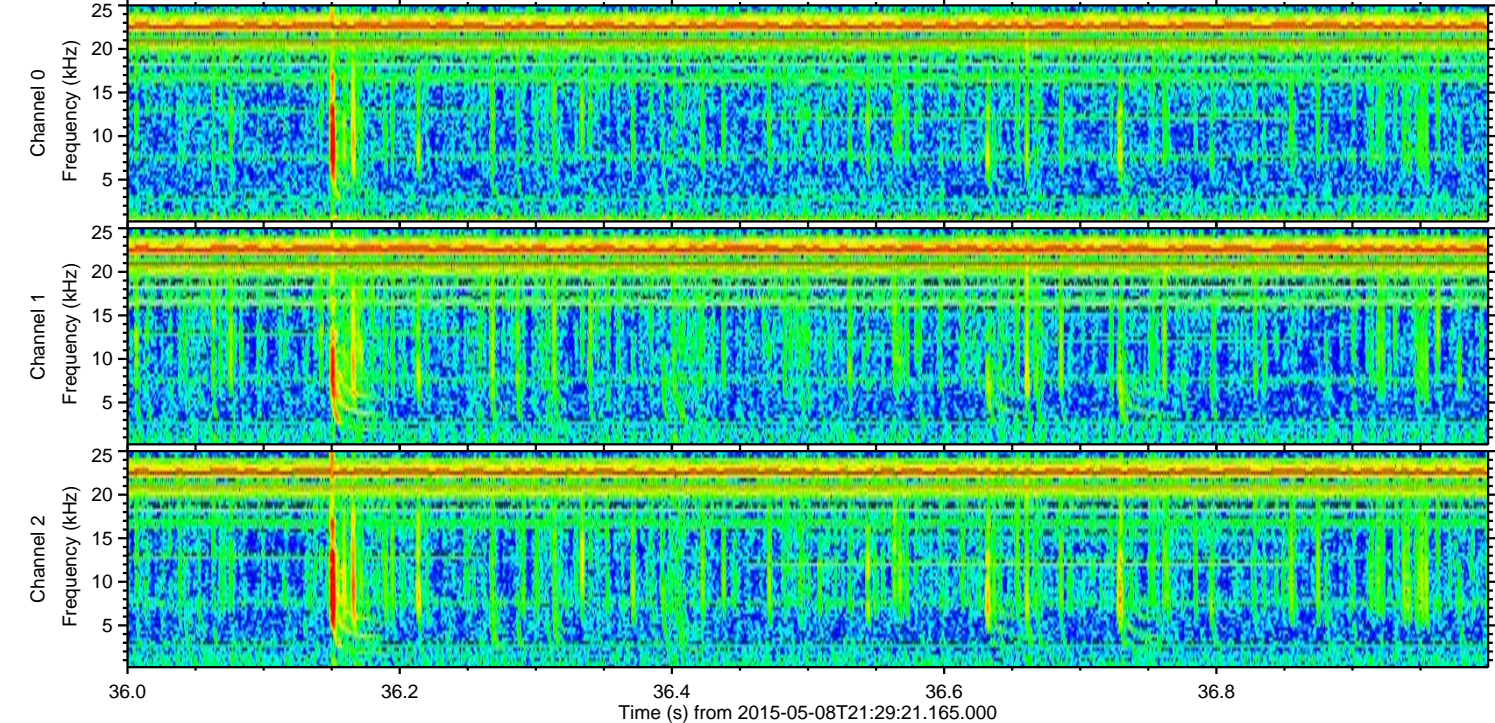
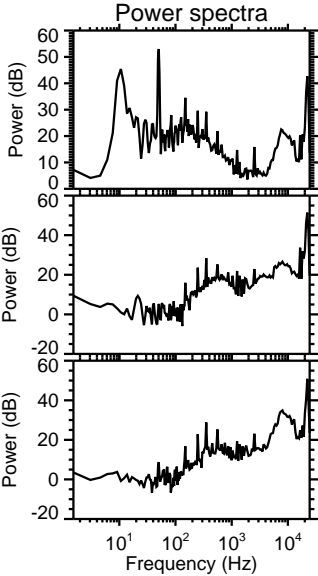
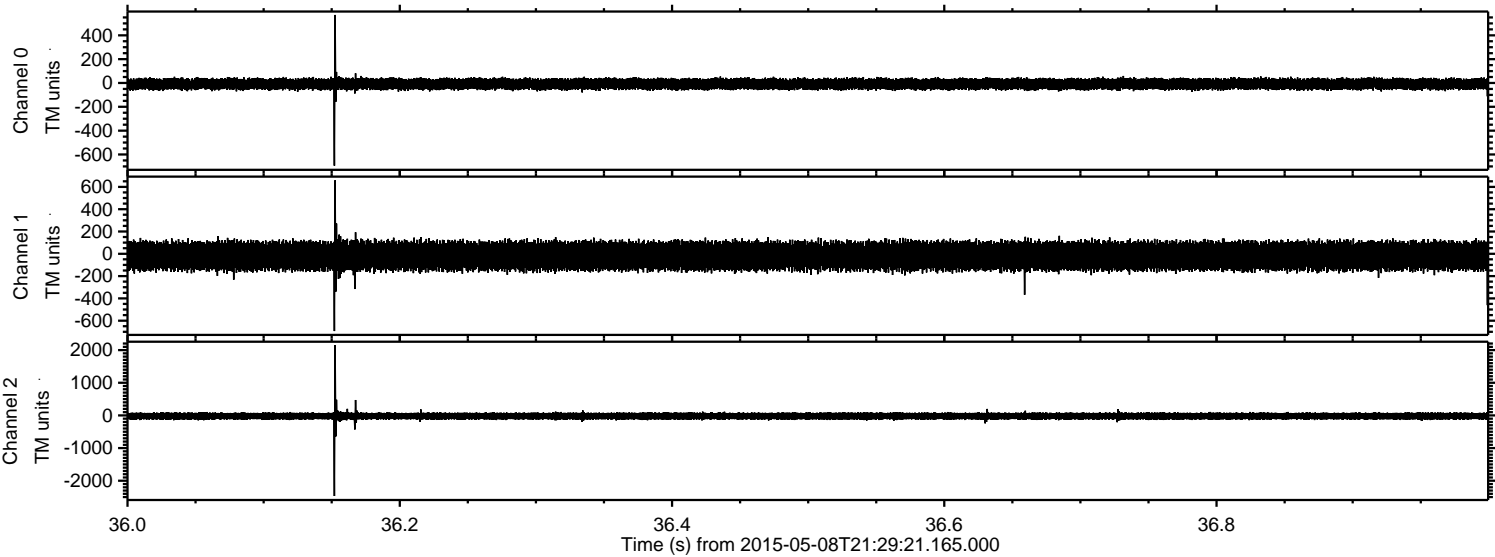
Processed Fri May 8 23:36:07 2015 by ELM ver.2012-10-06 from 001\_\_elm20150508\_212920\_\_dat00.bin





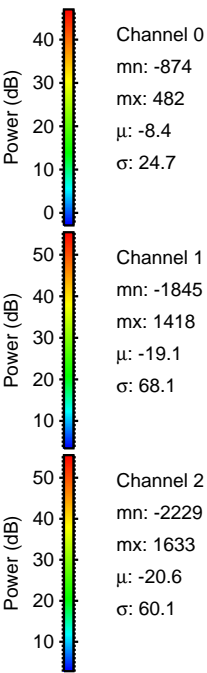
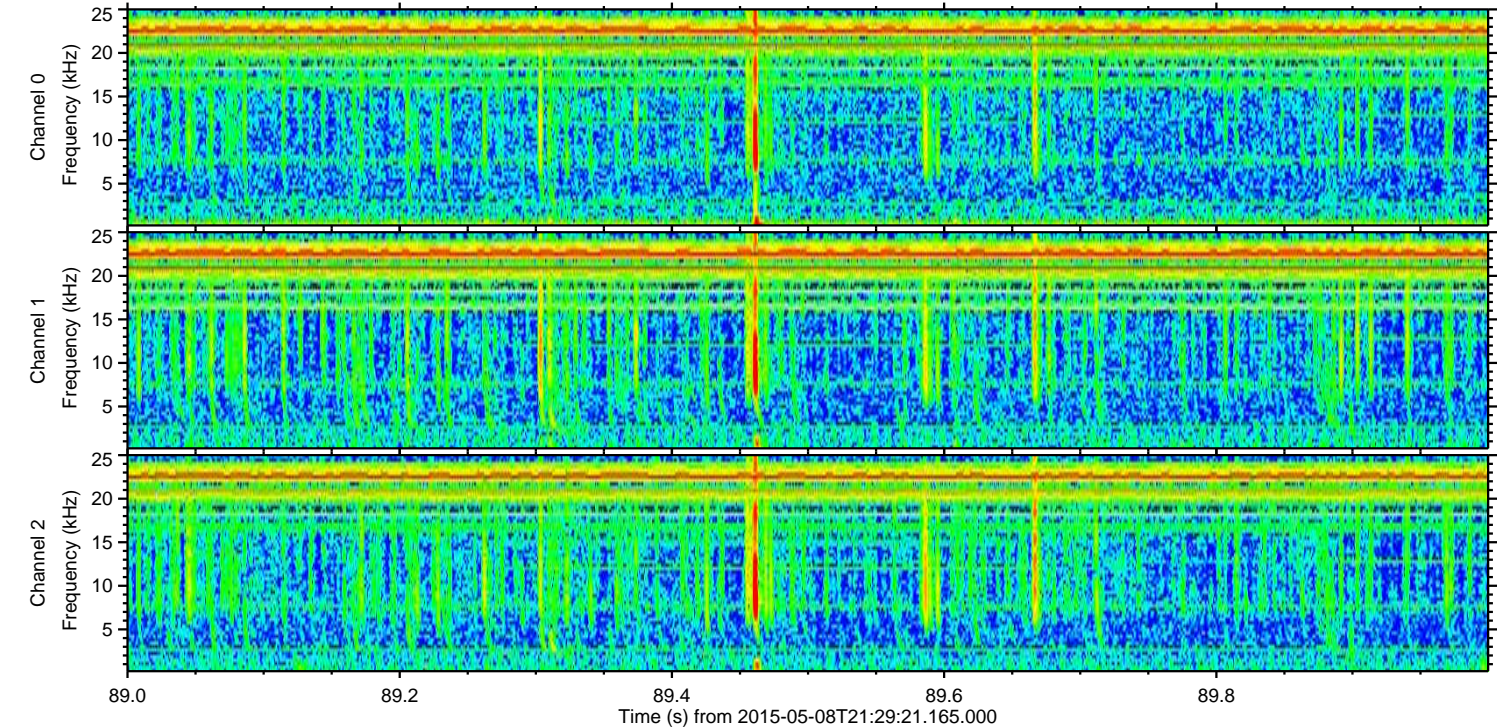
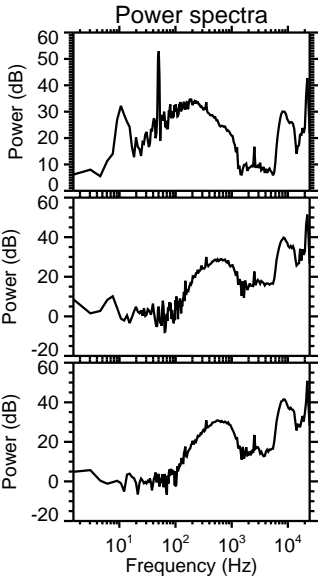
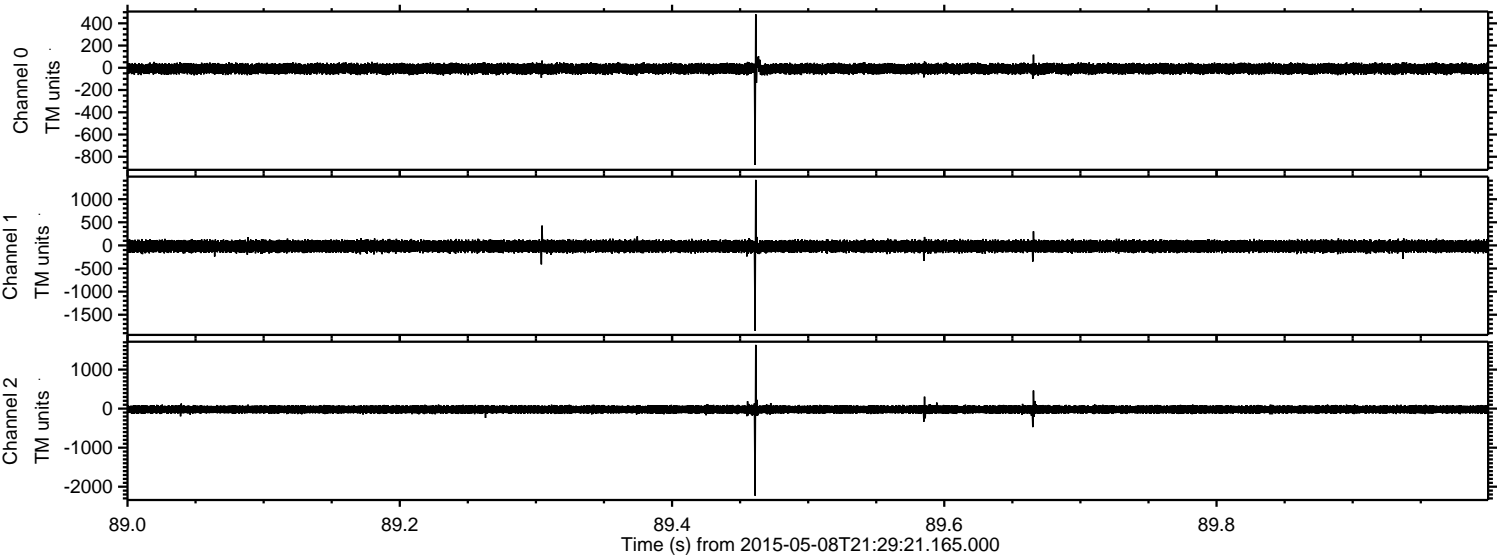
ELMAVAN 3D WAVEFORMS (Measured data sampled at 50 kHz) 49784 packets of 144 samples from 2015-05-08T21:29:21.165.000. Part 37/144

Processed Fri May 8 23:36:08 2015 by ELM ver.2012-10-06 from 001\_\_elm20150508\_212920\_\_dat00.bin





Processed Fri May 8 23:36:09 2015 by ELM ver.2012-10-06 from 001\_\_elm20150508\_212920\_\_dat00.bin



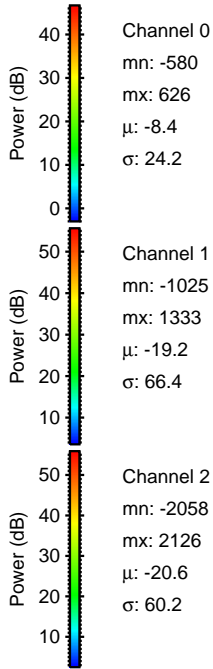
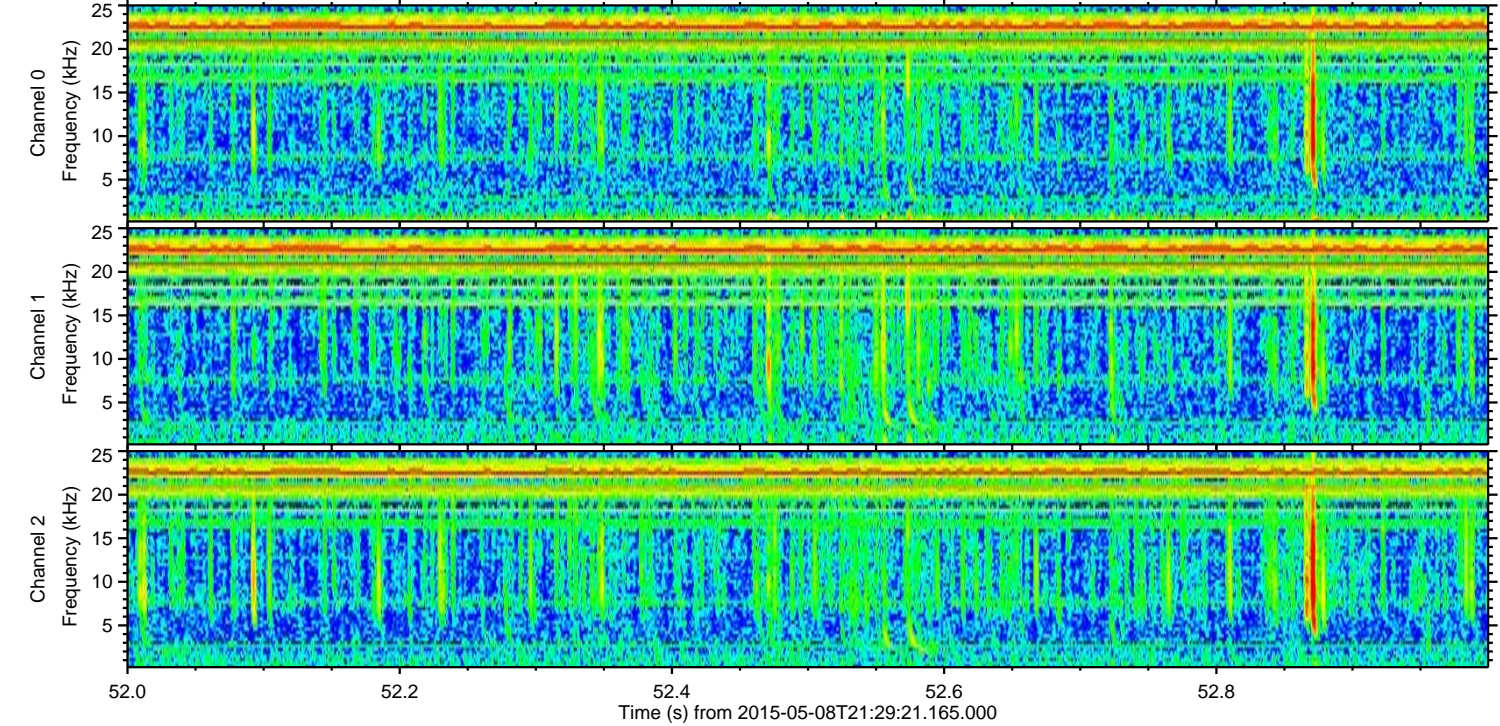
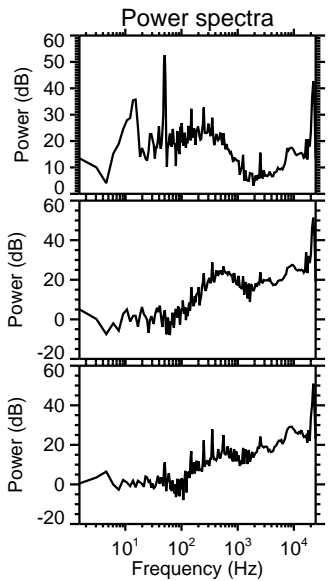
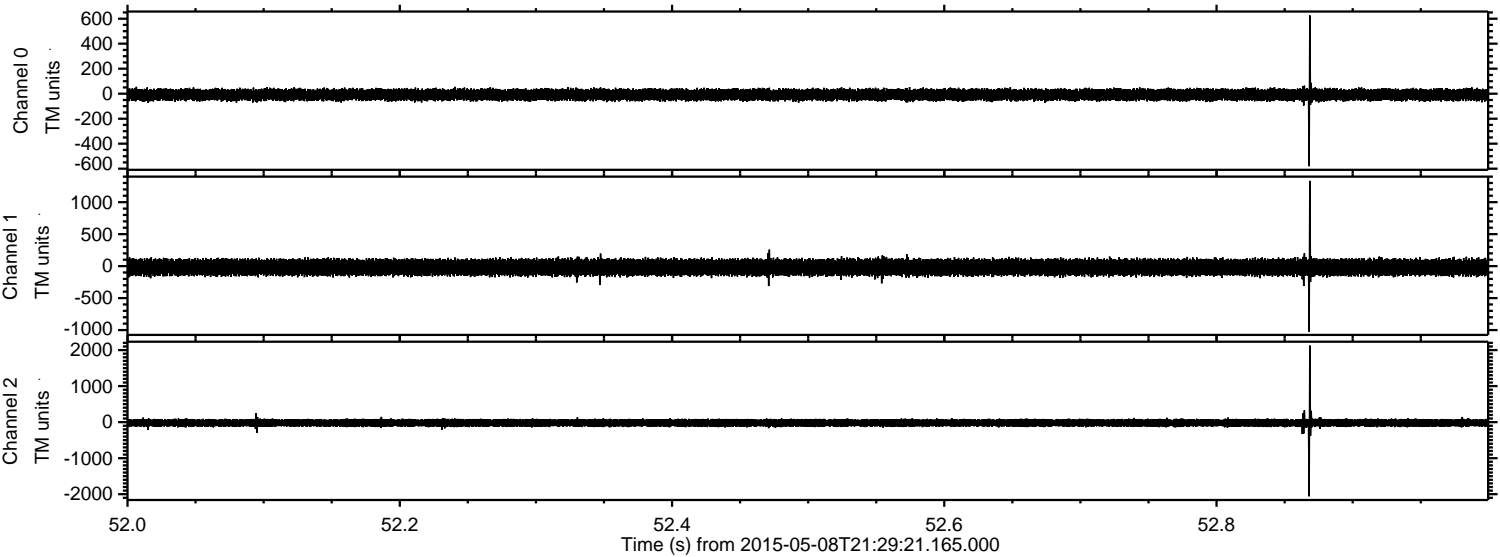
Channel 0  
mn: -874  
mx: 482  
μ: -8.4  
σ: 24.7

Channel 1  
mn: -1845  
mx: 1418  
μ: -19.1  
σ: 68.1

Channel 2  
mn: -2229  
mx: 1633  
μ: -20.6  
σ: 60.1

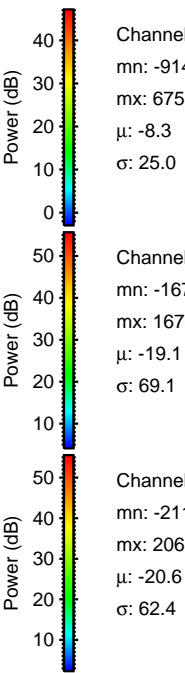
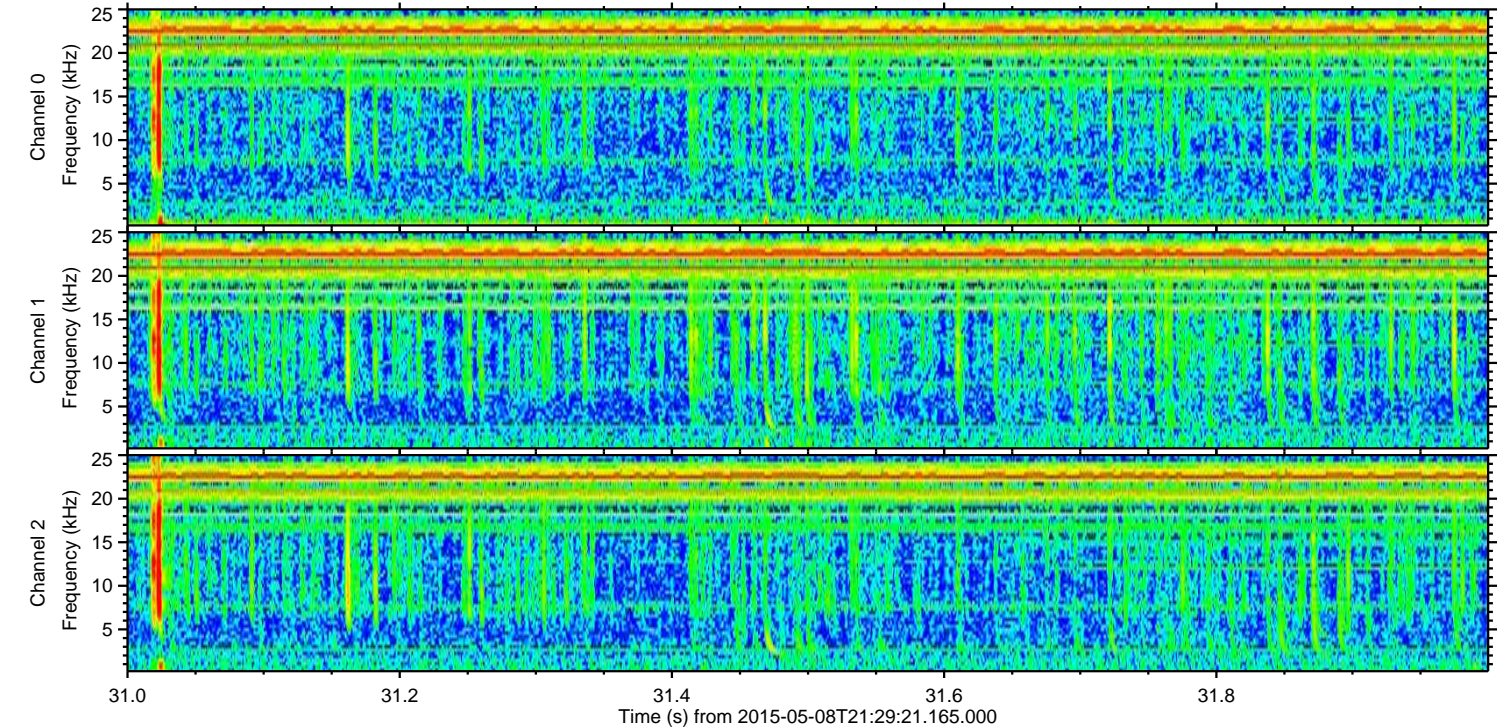
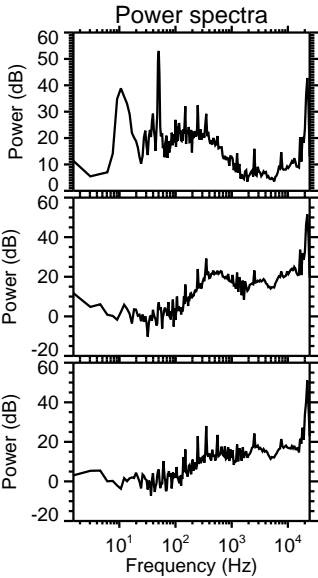
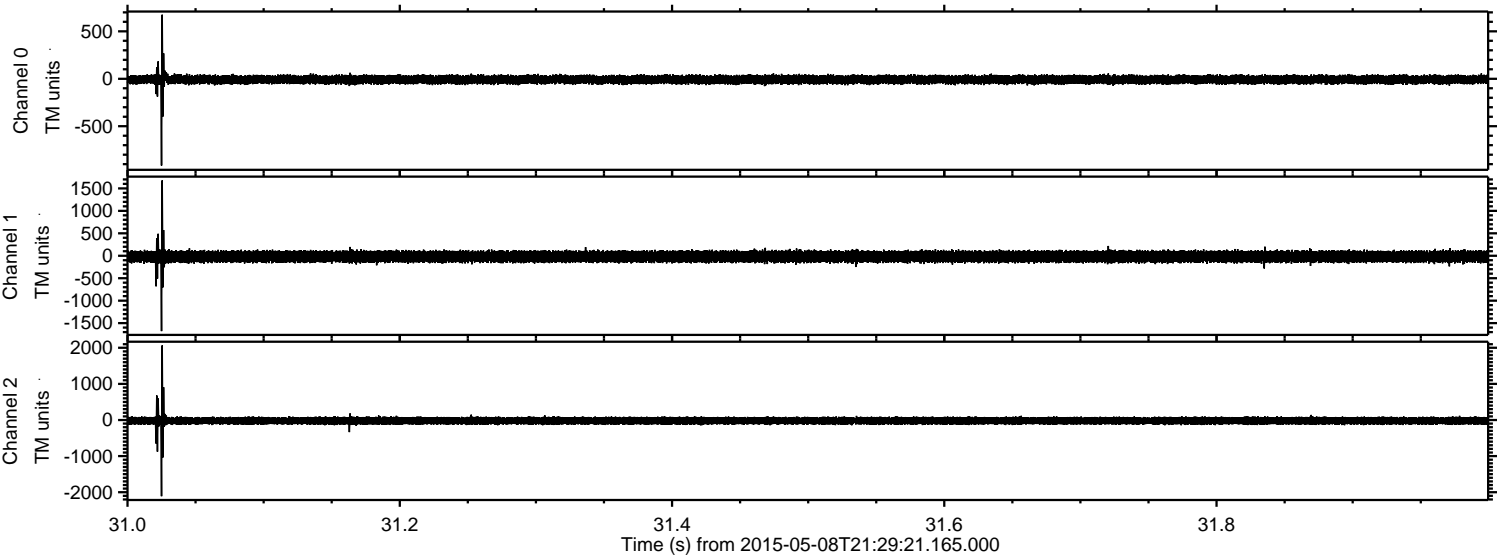


Processed Fri May 8 23:36:10 2015 by ELM ver.2012-10-06 from 001\_\_elm20150508\_212920\_\_dat00.bin





Processed Fri May 8 23:36:11 2015 by ELM ver.2012-10-06 from 001\_\_elm20150508\_212920\_\_dat00.bin



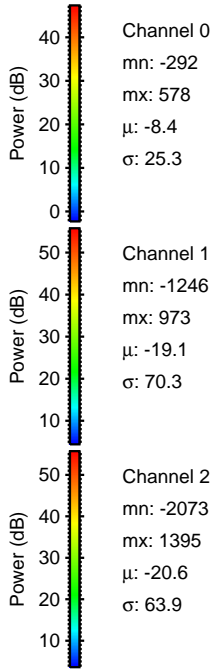
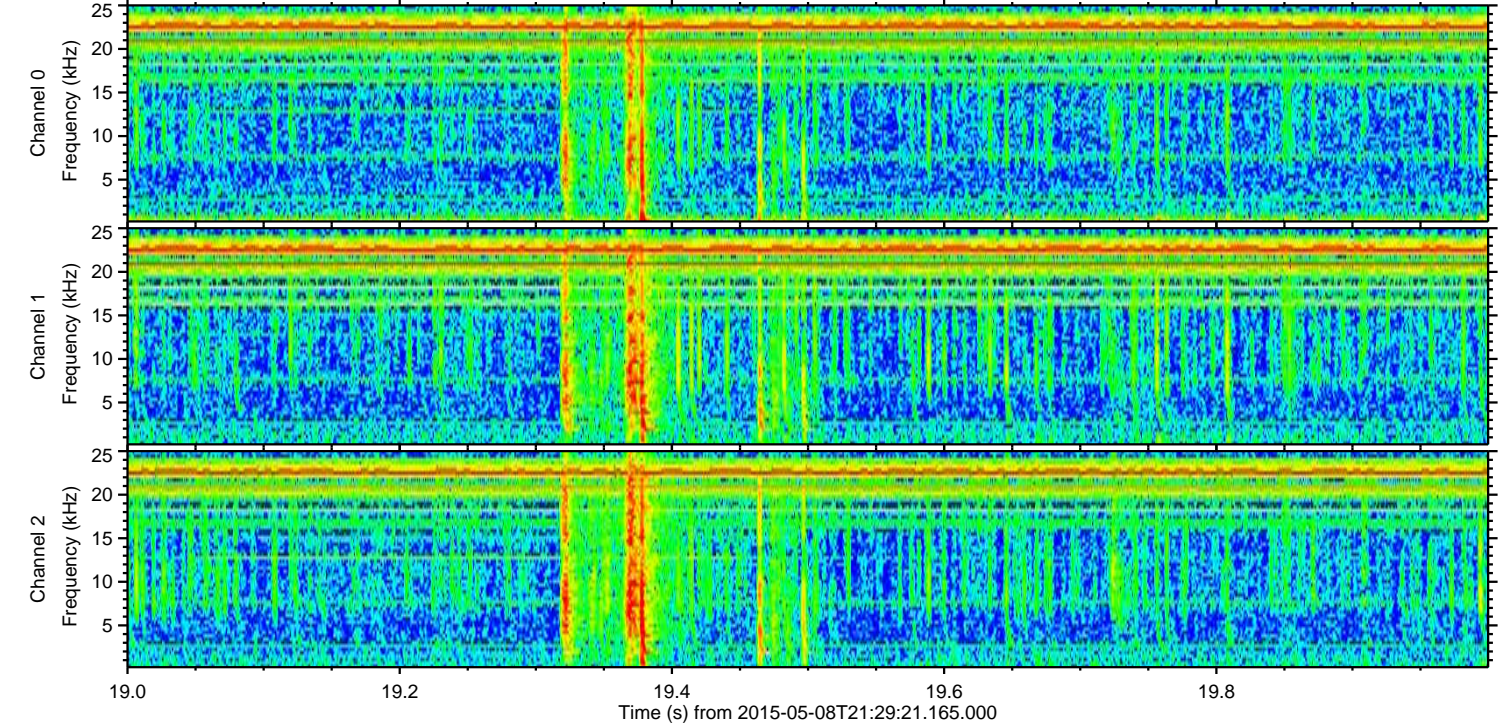
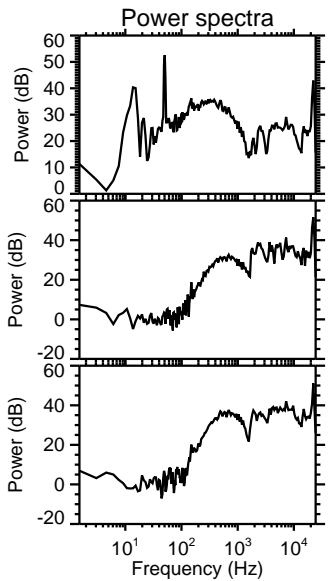
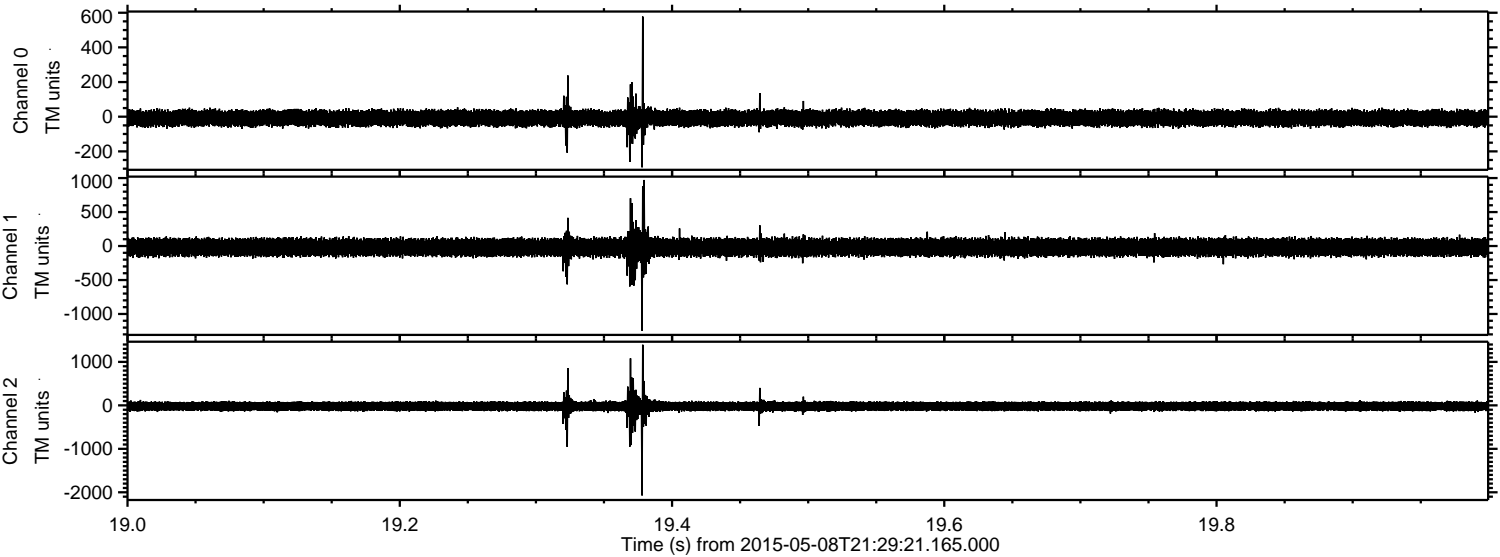
Channel 0  
mn: -914  
mx: 675  
 $\mu$ : -8.3  
 $\sigma$ : 25.0

Channel 1  
mn: -1679  
mx: 1678  
 $\mu$ : -19.1  
 $\sigma$ : 69.1

Channel 2  
mn: -2110  
mx: 2065  
 $\mu$ : -20.6  
 $\sigma$ : 62.4



Processed Fri May 8 23:36:12 2015 by ELM ver.2012-10-06 from 001\_\_elm20150508\_212920\_\_dat00.bin



Channel 0  
mn: -292  
mx: 578  
 $\mu$ : -8.4  
 $\sigma$ : 25.3

Channel 1  
mn: -1246  
mx: 973  
 $\mu$ : -19.1  
 $\sigma$ : 70.3

Channel 2  
mn: -2073  
mx: 1395  
 $\mu$ : -20.6  
 $\sigma$ : 63.9



Processed Fri May 8 23:36:13 2015 by ELM ver.2012-10-06 from 001\_\_elm20150508\_212920\_\_dat00.bin

