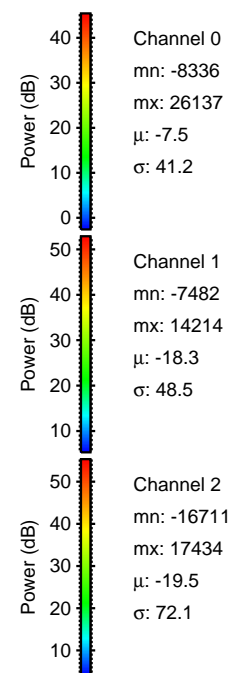
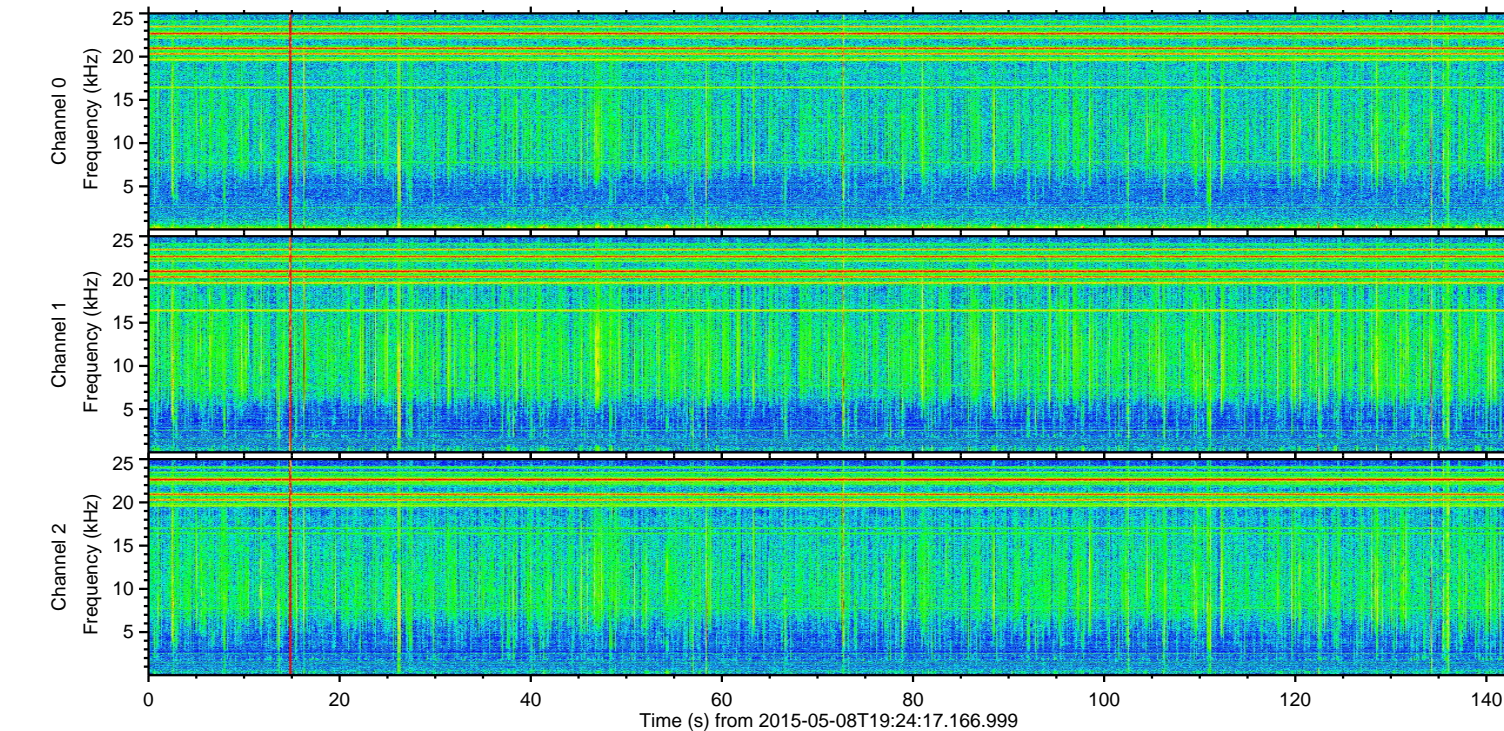
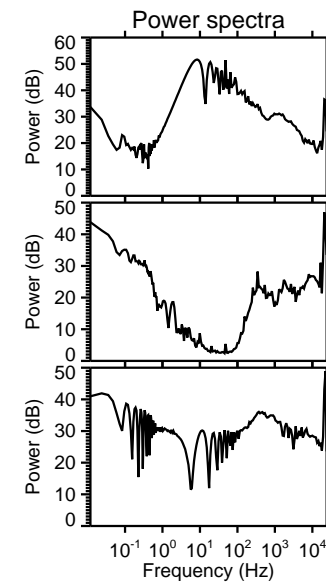
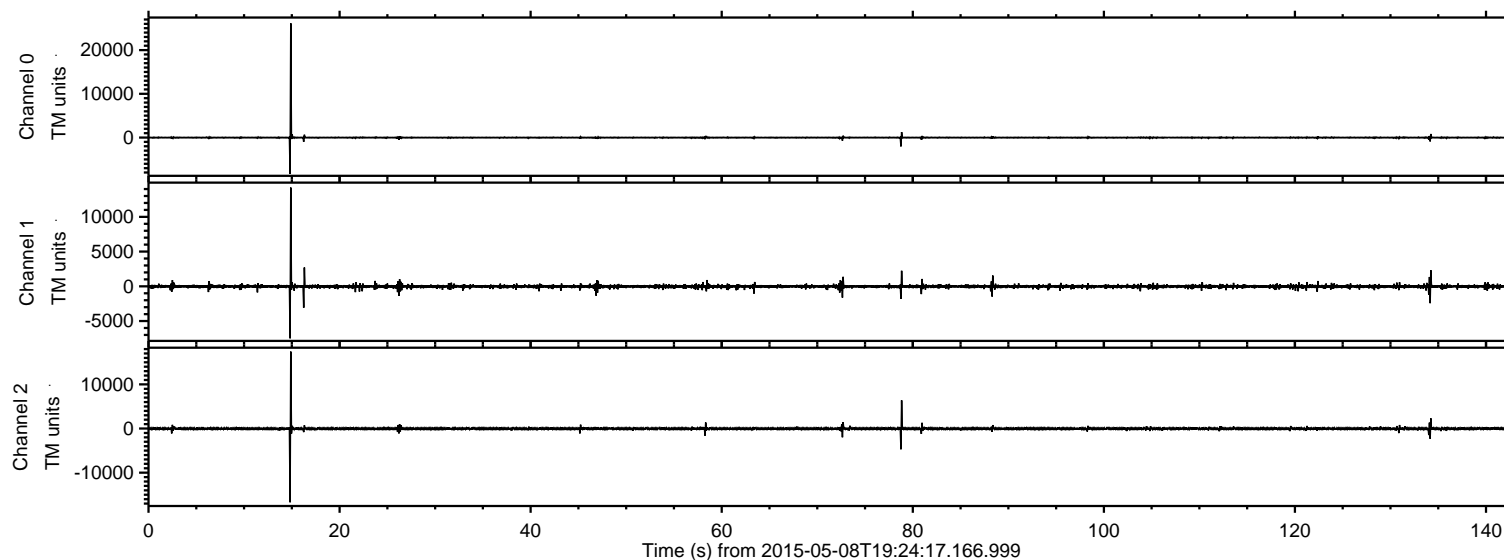


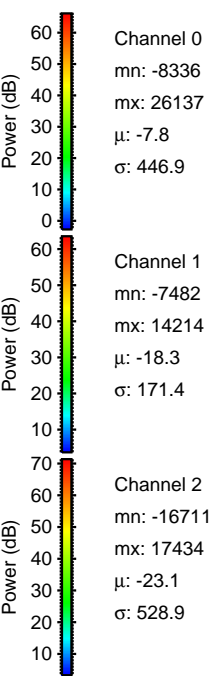
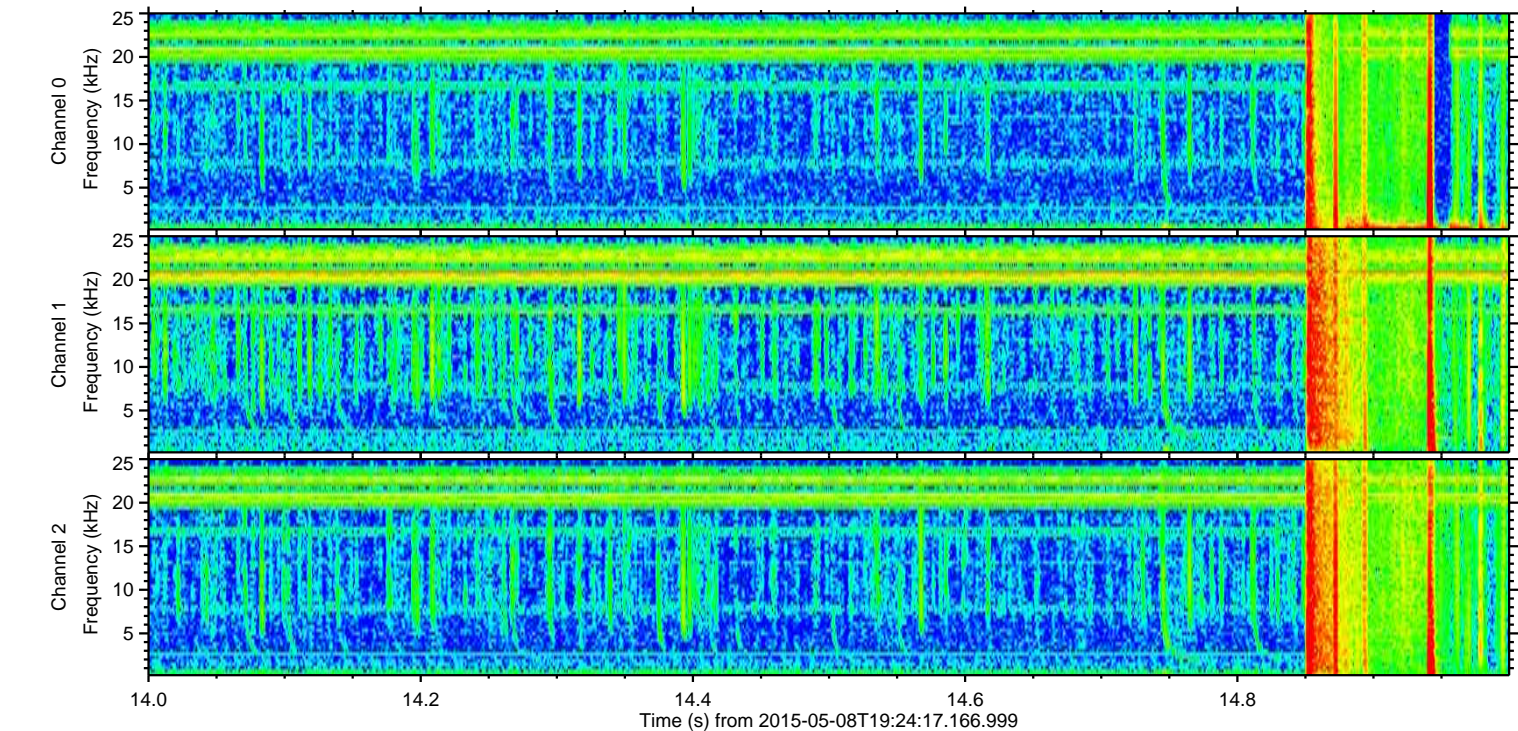
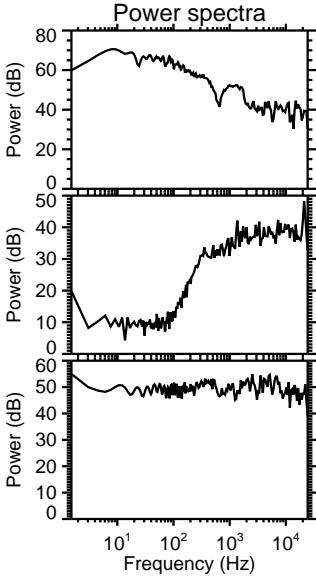
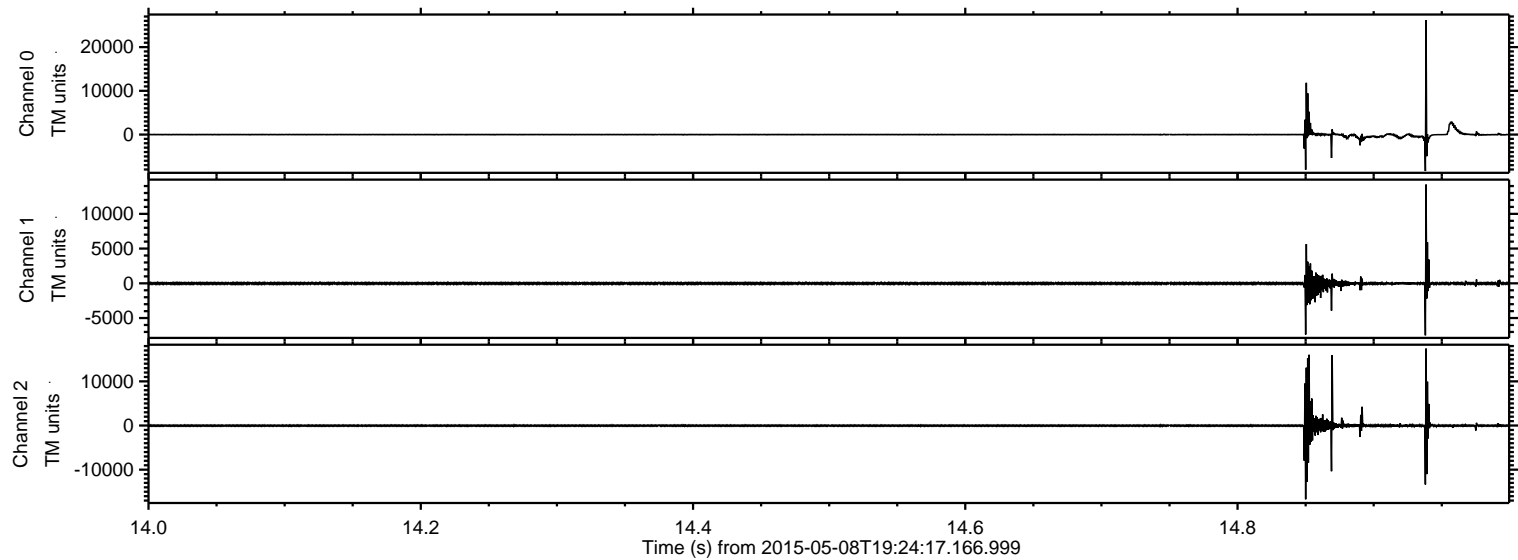
ELMAVAN 3D WAVEFORMS (Measured data sampled at 50 kHz) 49452 packets of 144 samples from 2015-05-08T19:24:17.166.999.

Processed Fri May 8 21:31:14 2015 by ELM ver.2012-10-06 from 001__elm20150508_192416__dat00.bin



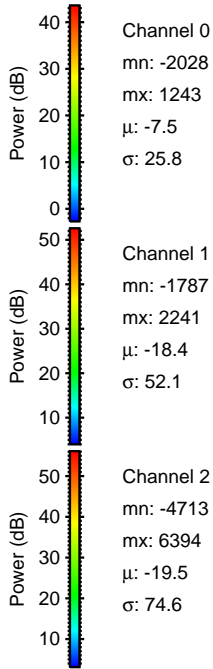
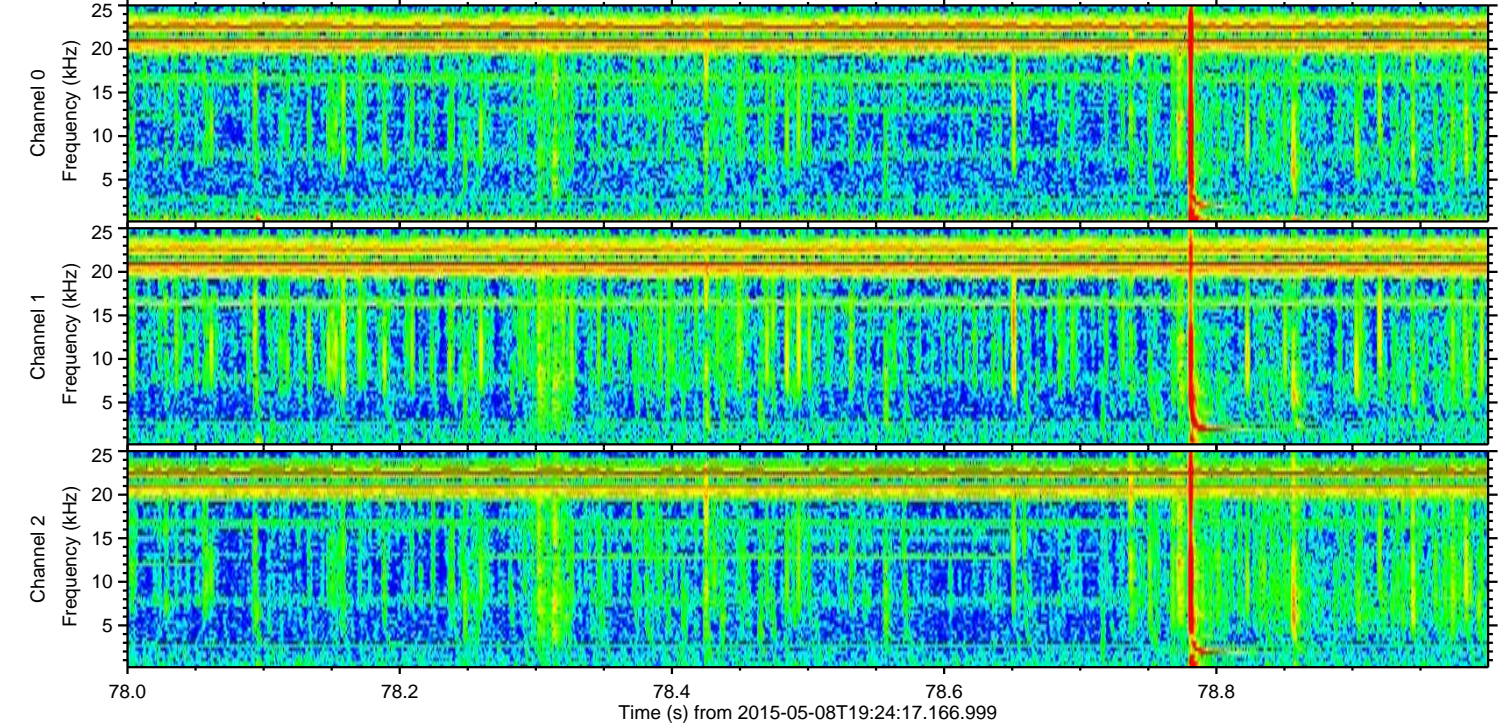
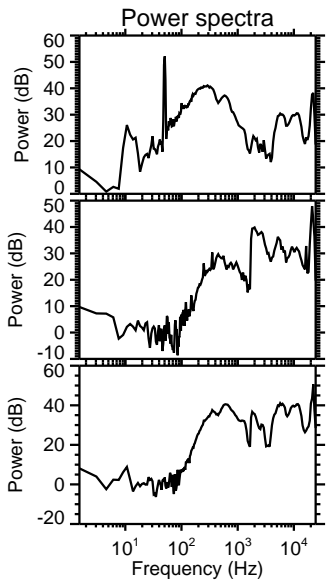
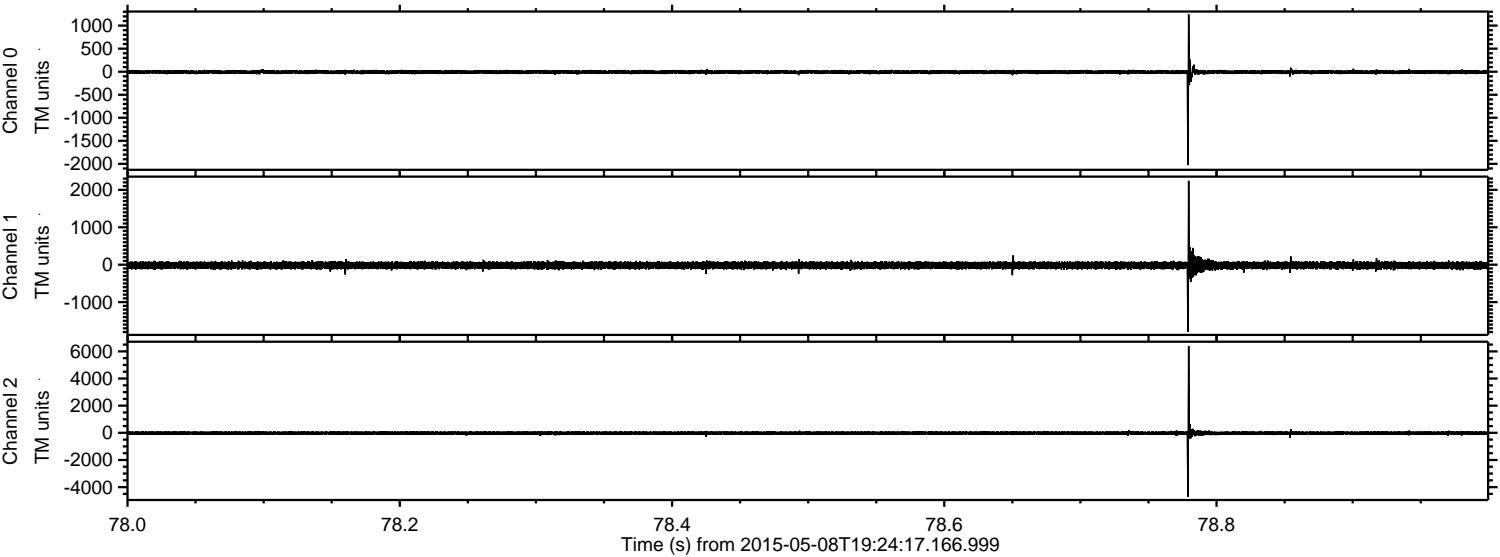
ELMAVAN 3D WAVEFORMS (Measured data sampled at 50 kHz) 49452 packets of 144 samples from 2015-05-08T19:24:17.166.999. Part 15/143

Processed Fri May 8 21:31:30 2015 by ELM ver.2012-10-06 from 001__elm20150508_192416__dat00.bin

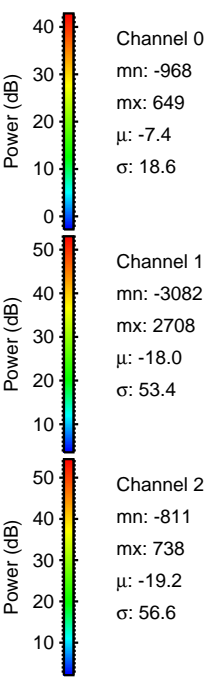
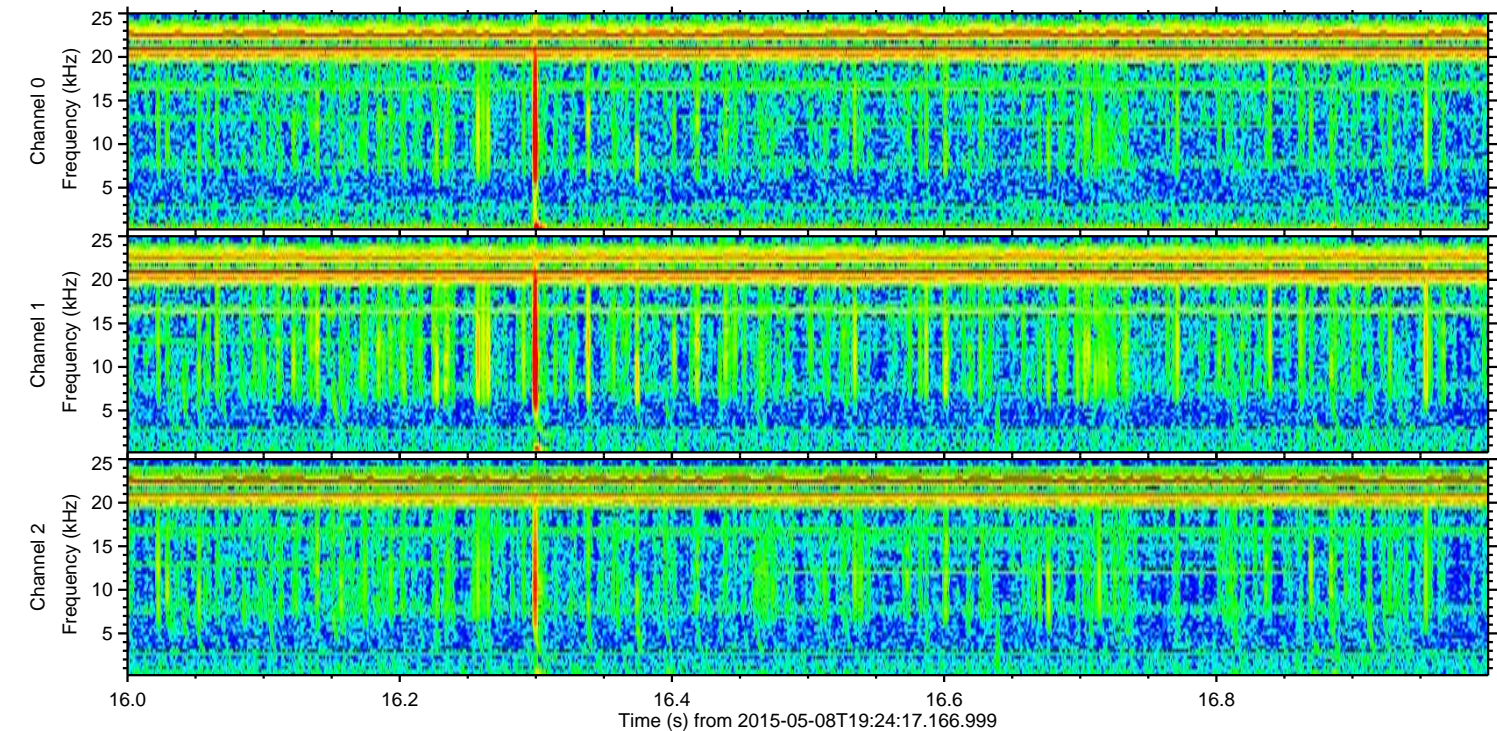
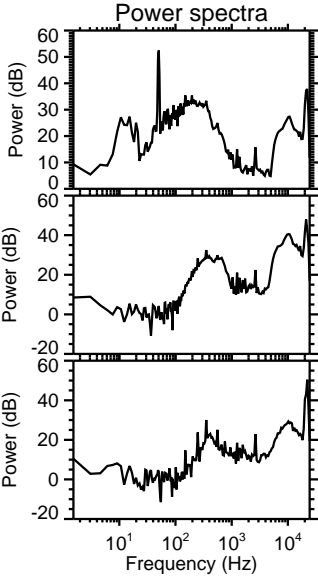
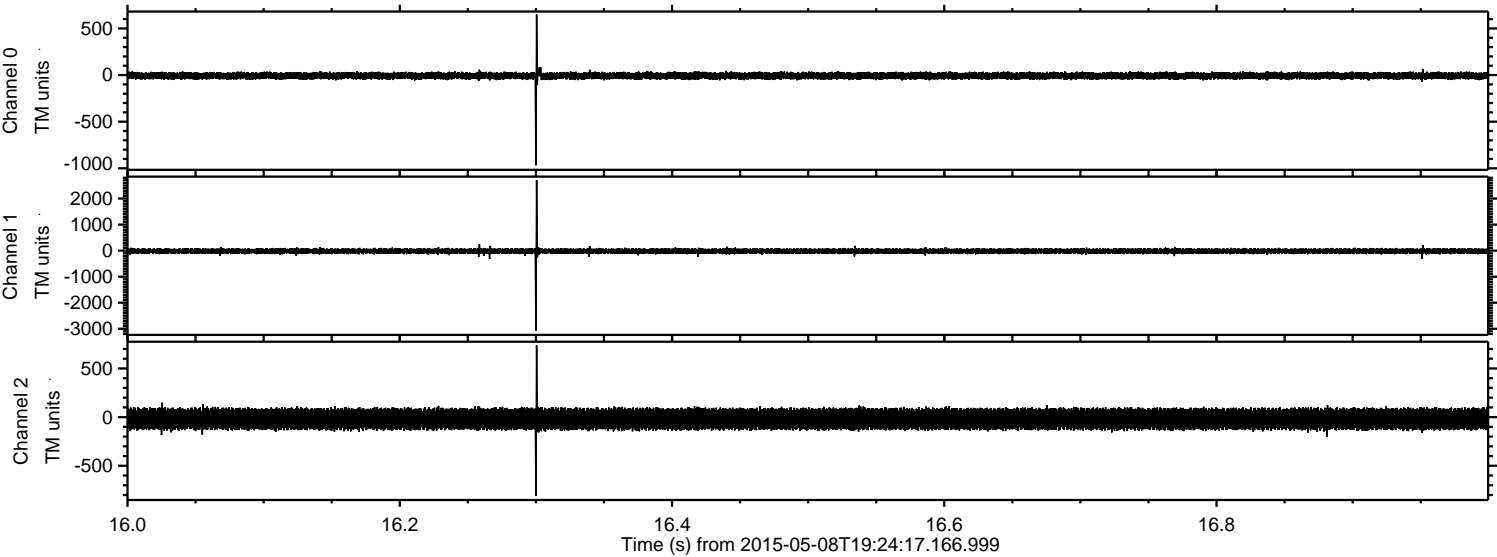


ELMAVAN 3D WAVEFORMS (Measured data sampled at 50 kHz) 49452 packets of 144 samples from 2015-05-08T19:24:17.166.999. Part 79/143

Processed Fri May 8 21:31:31 2015 by ELM ver.2012-10-06 from 001__elm20150508_192416__dat00.bin

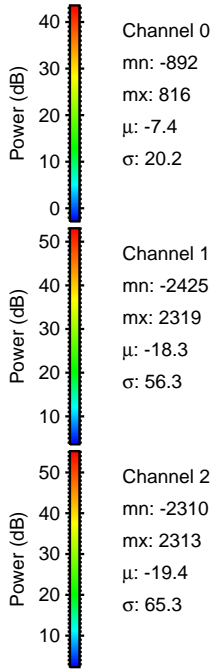
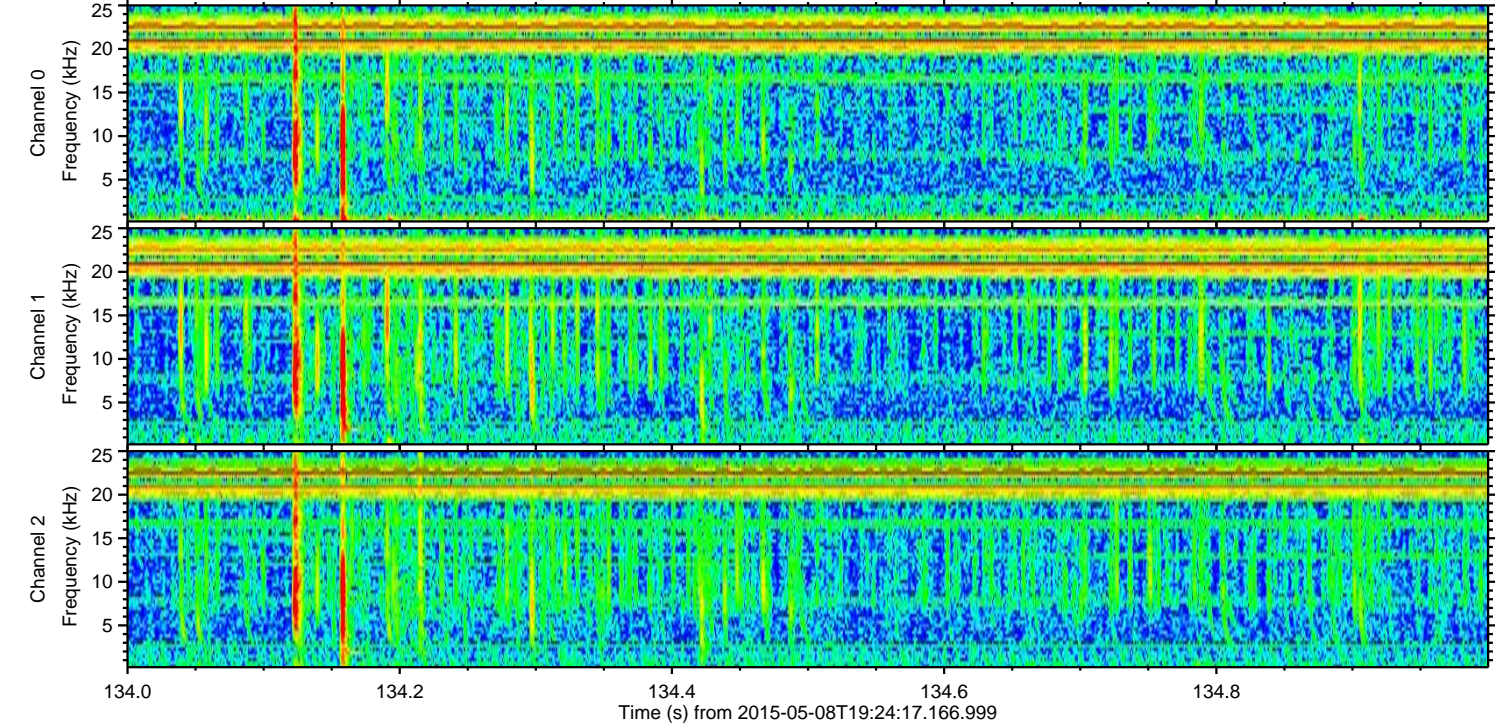
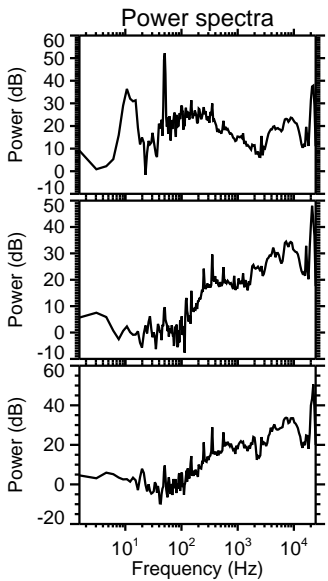
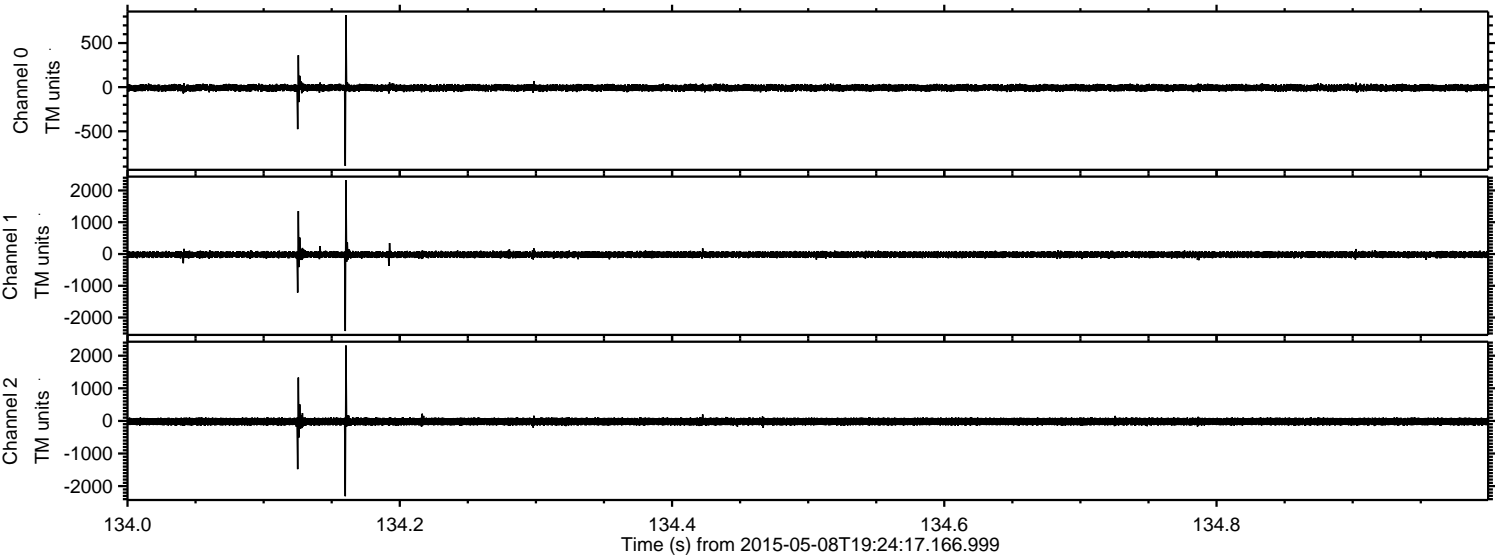


Processed Fri May 8 21:31:32 2015 by ELM ver.2012-10-06 from 001__elm20150508_192416__dat00.bin

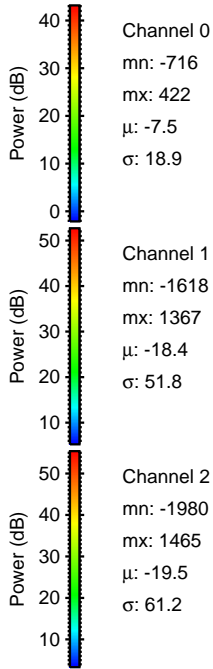
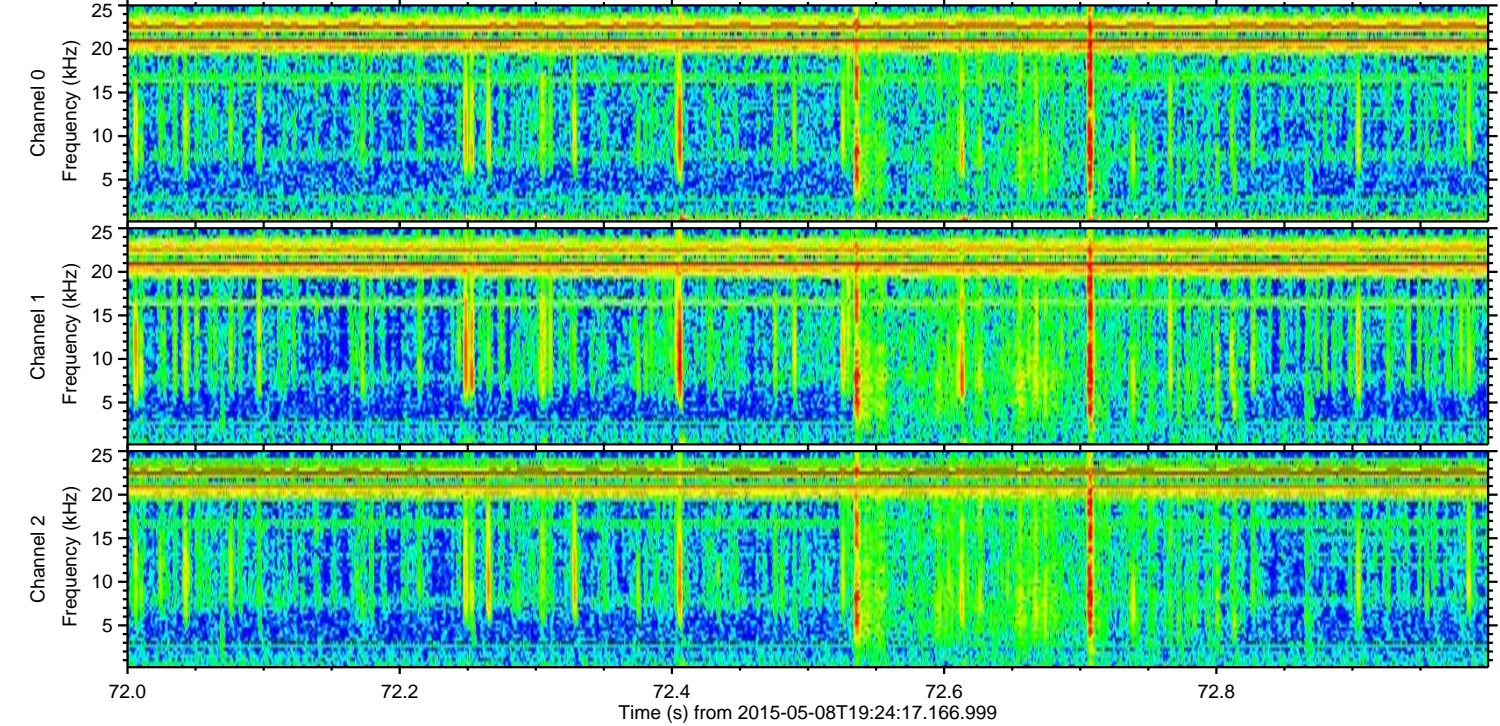
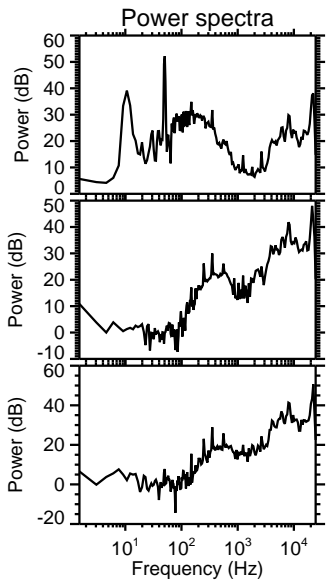
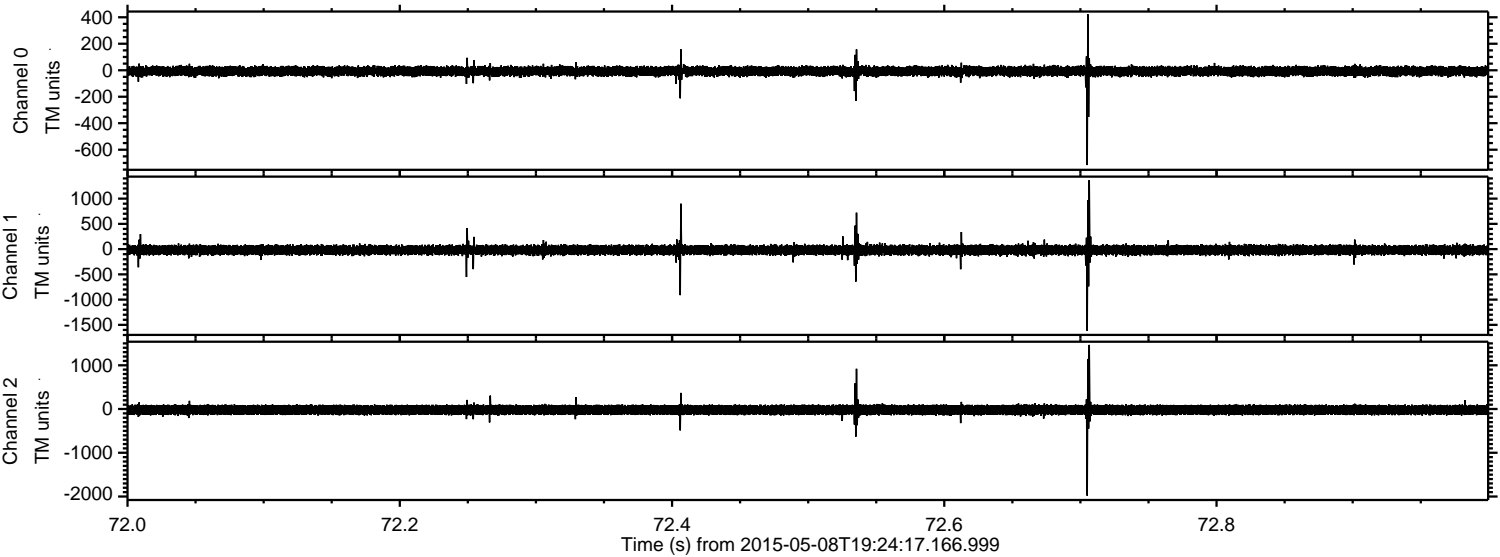


ELMAVAN 3D WAVEFORMS (Measured data sampled at 50 kHz) 49452 packets of 144 samples from 2015-05-08T19:24:17.166.999. Part 135/143

Processed Fri May 8 21:31:33 2015 by ELM ver.2012-10-06 from 001__elm20150508_192416__dat00.bin



Processed Fri May 8 21:31:34 2015 by ELM ver.2012-10-06 from 001__elm20150508_192416__dat00.bin

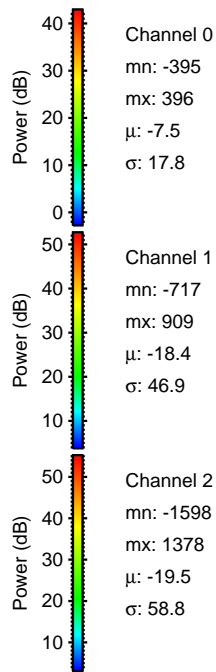
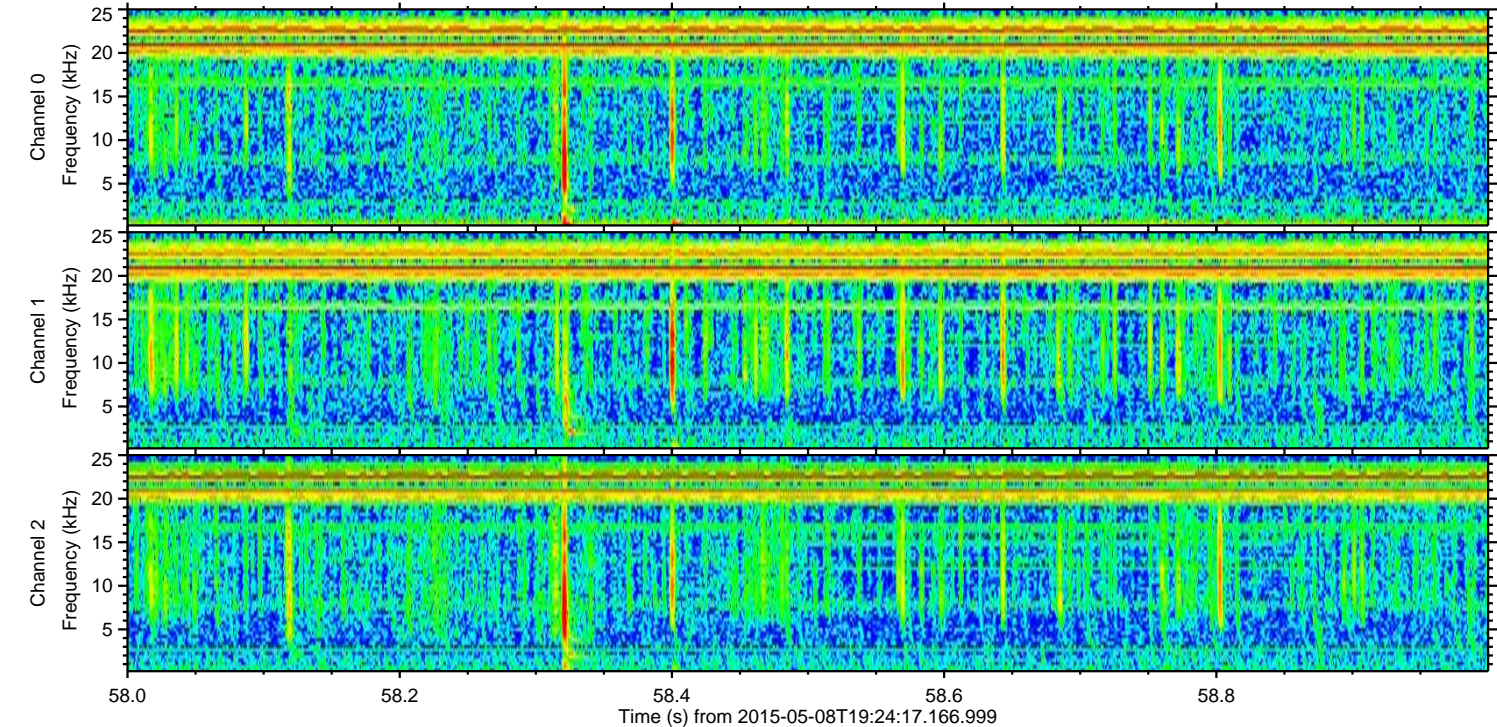
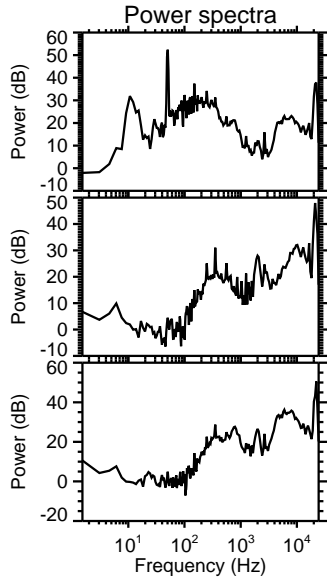
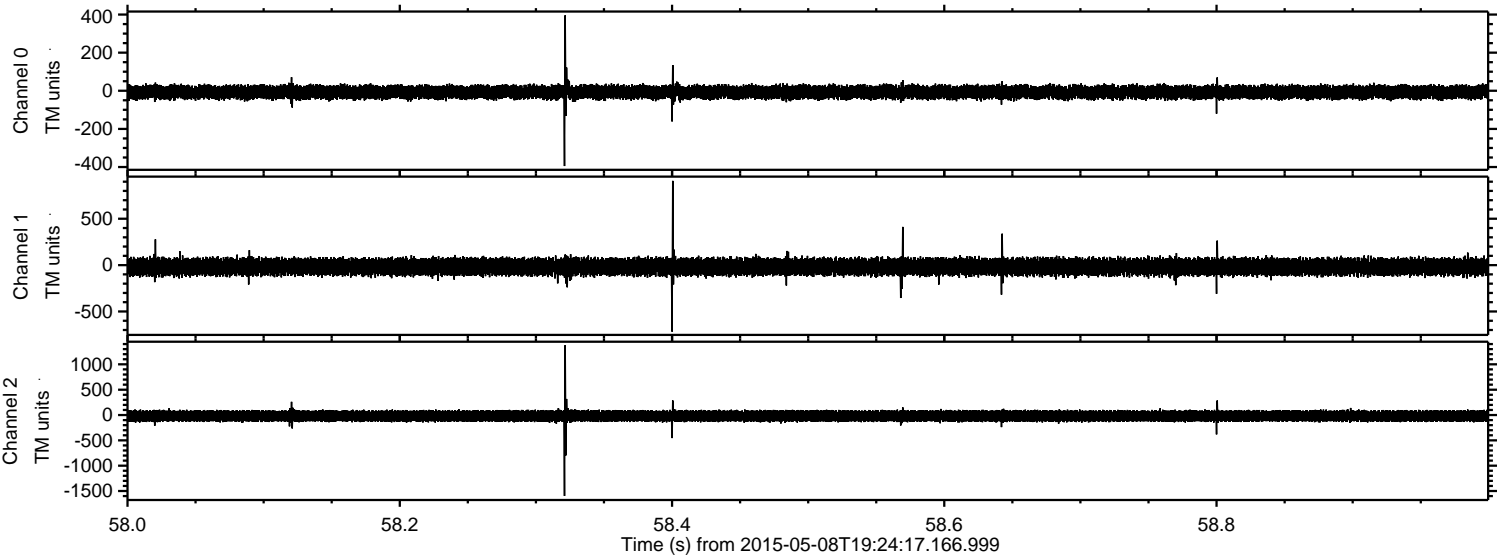


Channel 0
mn: -716
mx: 422
 μ : -7.5
 σ : 18.9

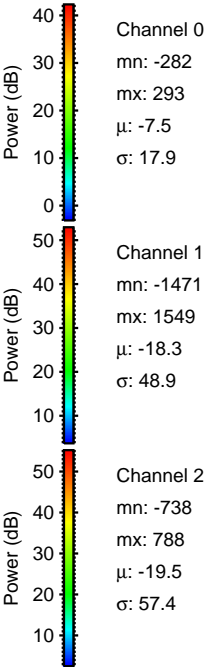
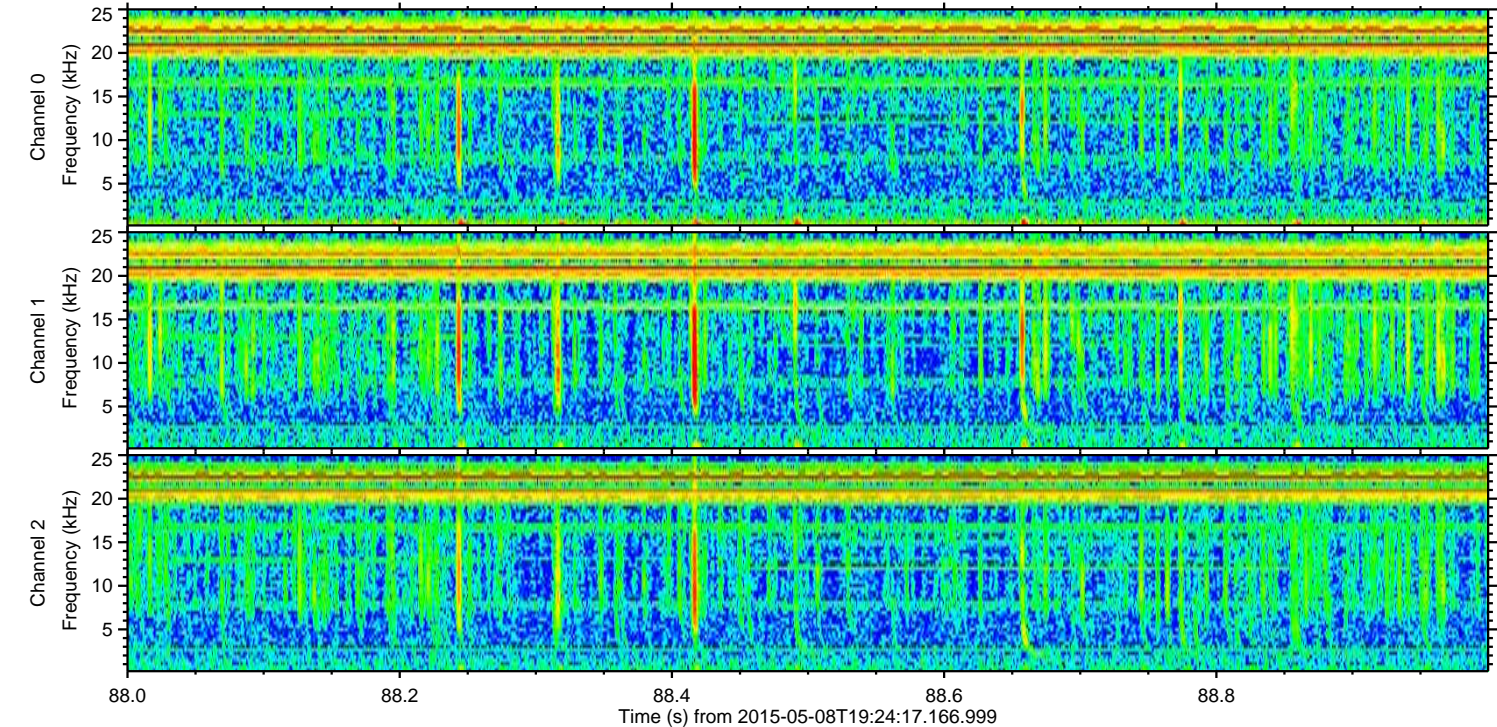
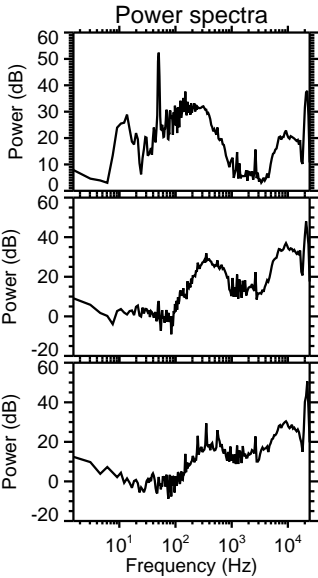
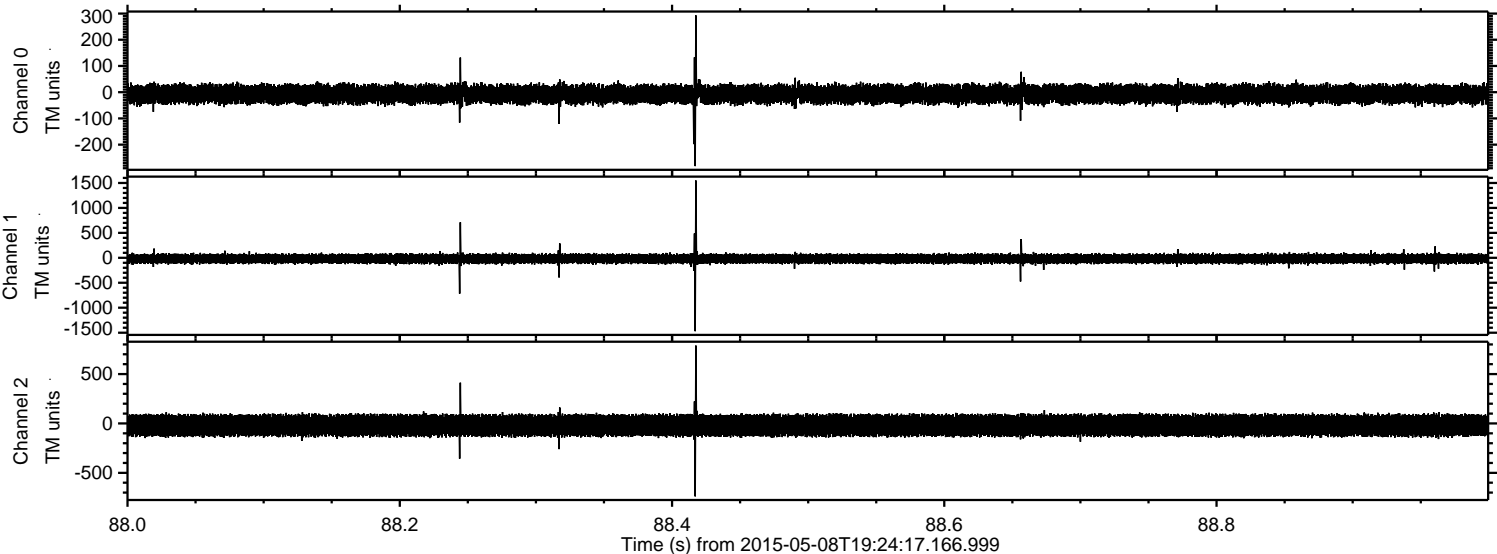
Channel 1
mn: -1618
mx: 1367
 μ : -18.4
 σ : 51.8

Channel 2
mn: -1980
mx: 1465
 μ : -19.5
 σ : 61.2

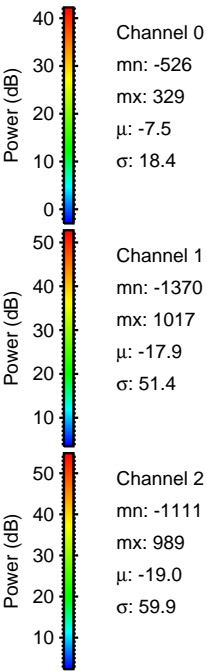
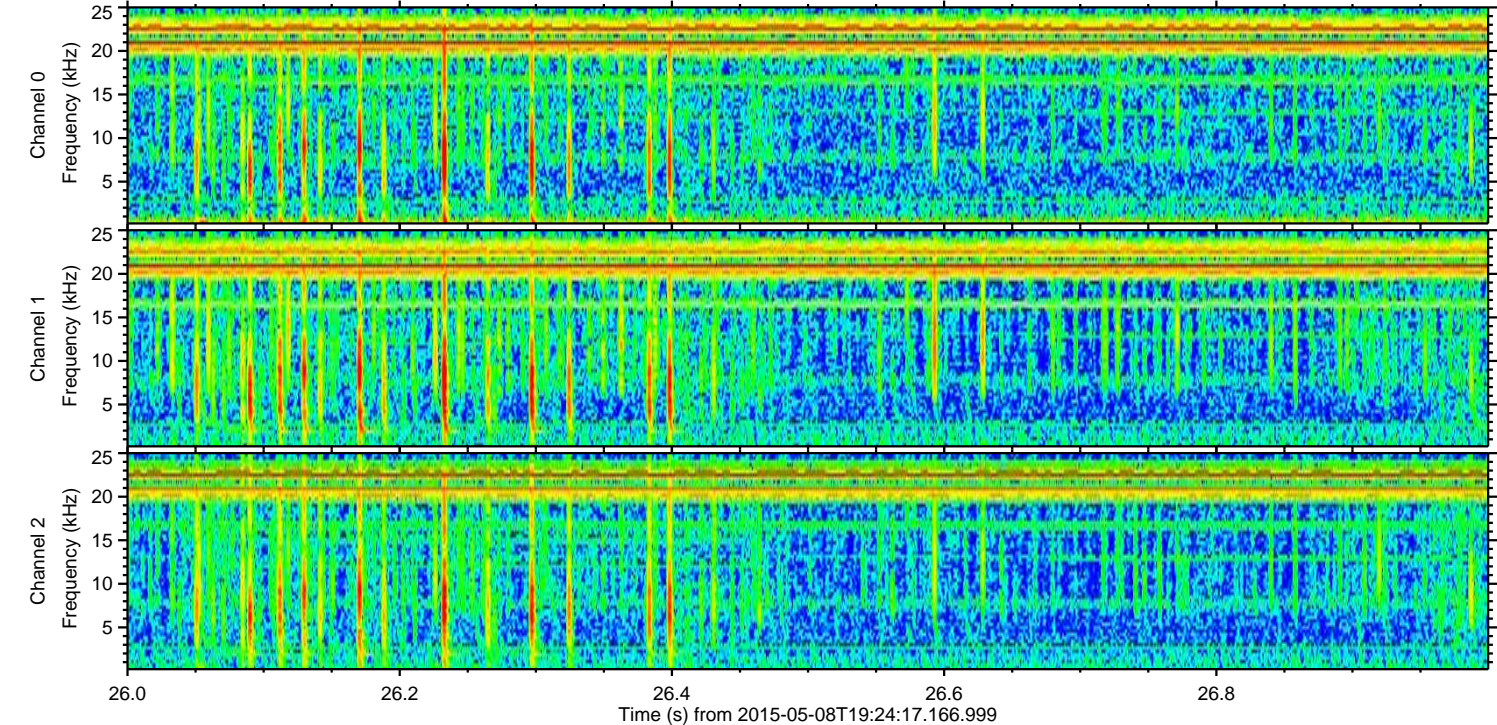
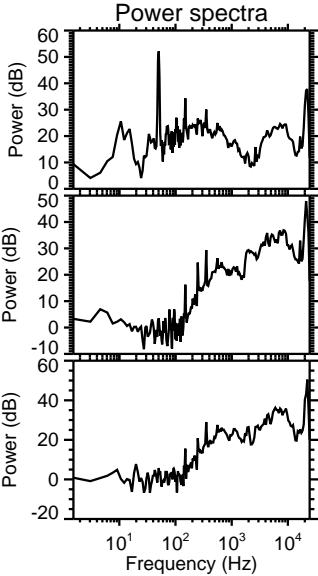
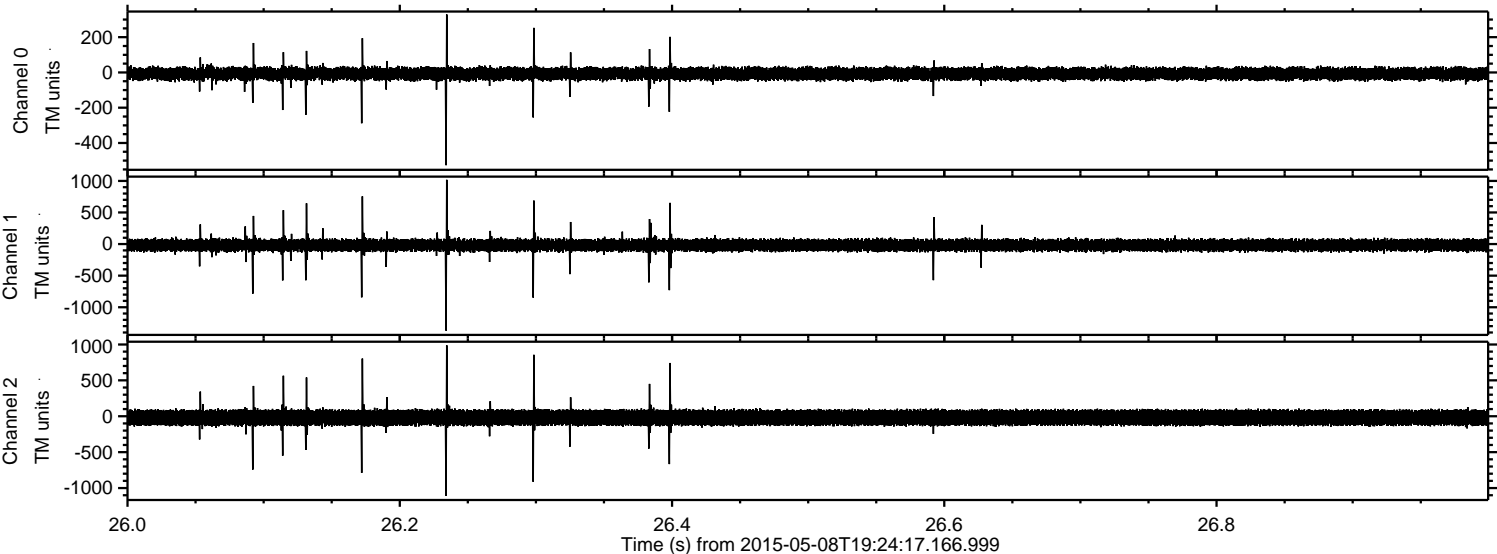
Processed Fri May 8 21:31:35 2015 by ELM ver.2012-10-06 from 001__elm20150508_192416__dat00.bin



Processed Fri May 8 21:31:36 2015 by ELM ver.2012-10-06 from 001__elm20150508_192416__dat00.bin



Processed Fri May 8 21:31:37 2015 by ELM ver.2012-10-06 from 001__elm20150508_192416__dat00.bin



Channel 0
mn: -526
mx: 329
 μ : -7.5
 σ : 18.4

Channel 1
mn: -1370
mx: 1017
 μ : -17.9
 σ : 51.4

Channel 2
mn: -1111
mx: 989
 μ : -19.0
 σ : 59.9

Processed Fri May 8 21:31:38 2015 by ELM ver.2012-10-06 from 001__elm20150508_192416__dat00.bin

