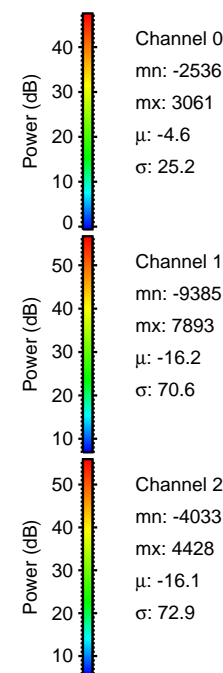
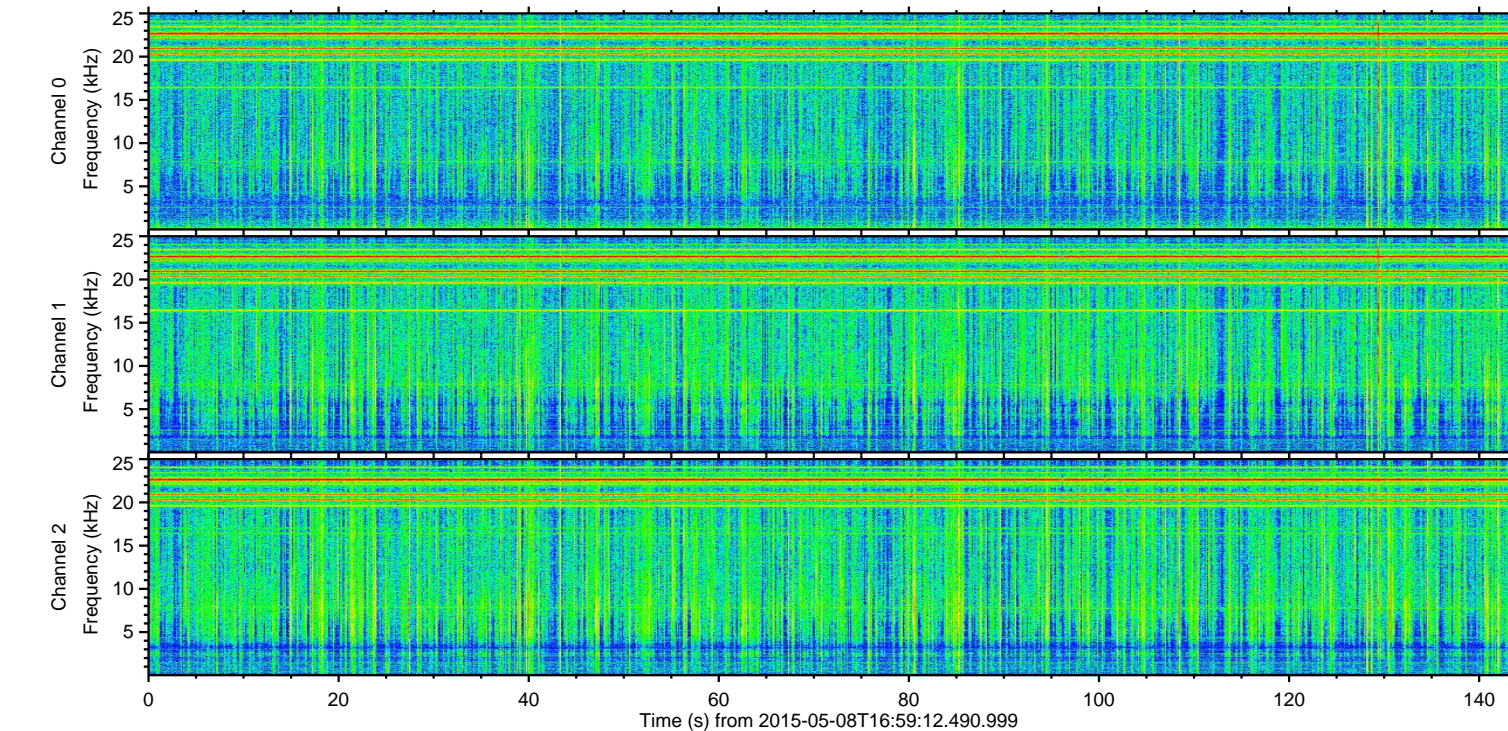
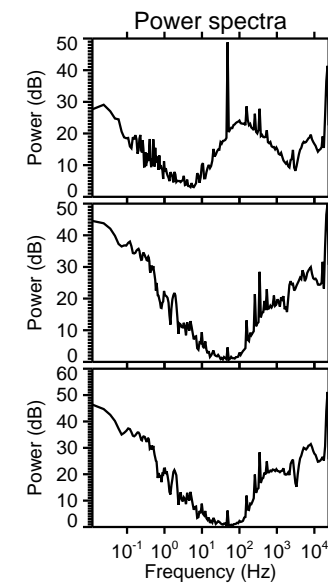
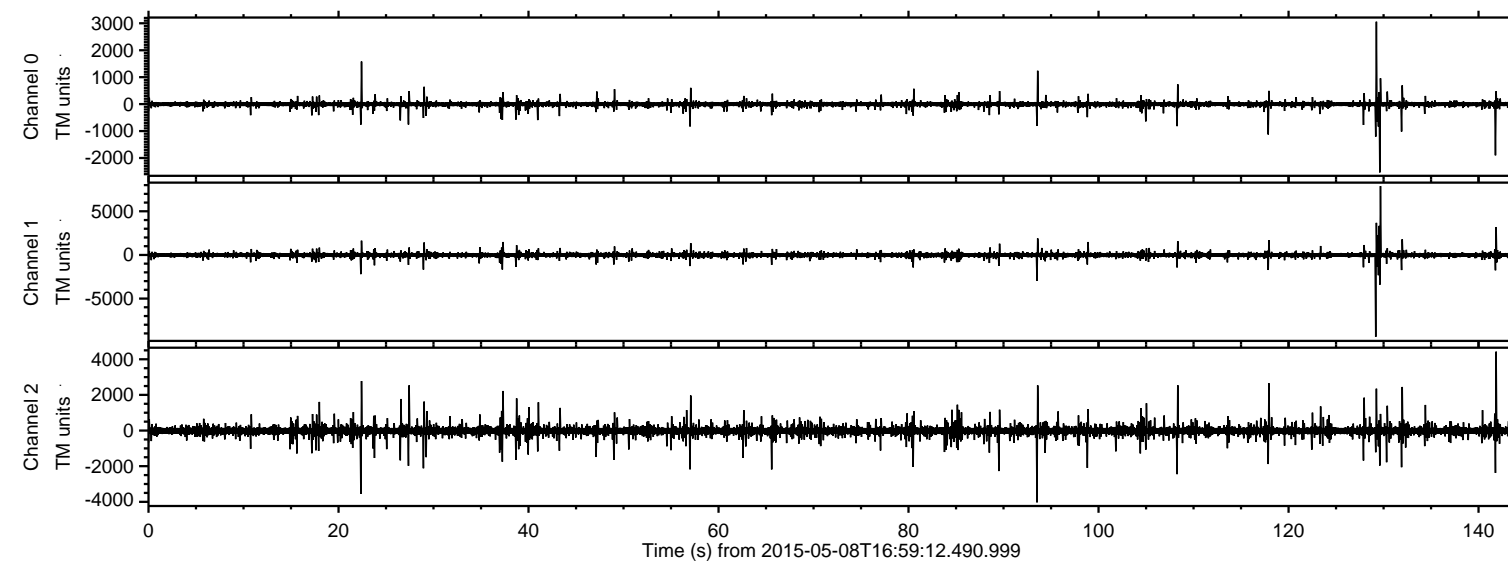


ELMAVAN 3D WAVEFORMS (Measured data sampled at 50 kHz) 49729 packets of 144 samples from 2015-05-08T16:59:12.490.999.

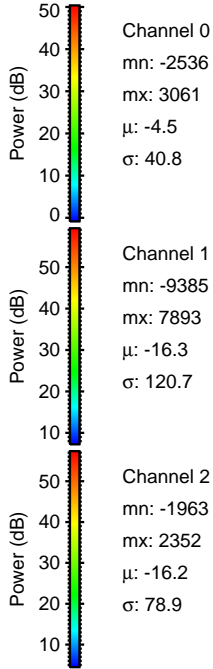
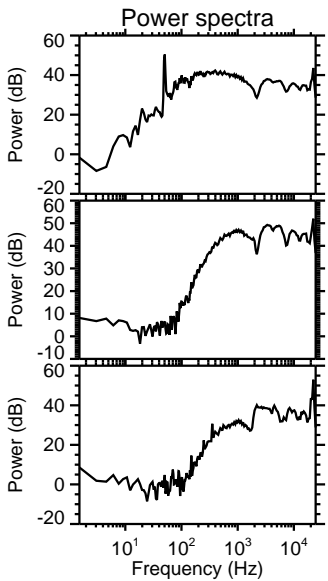
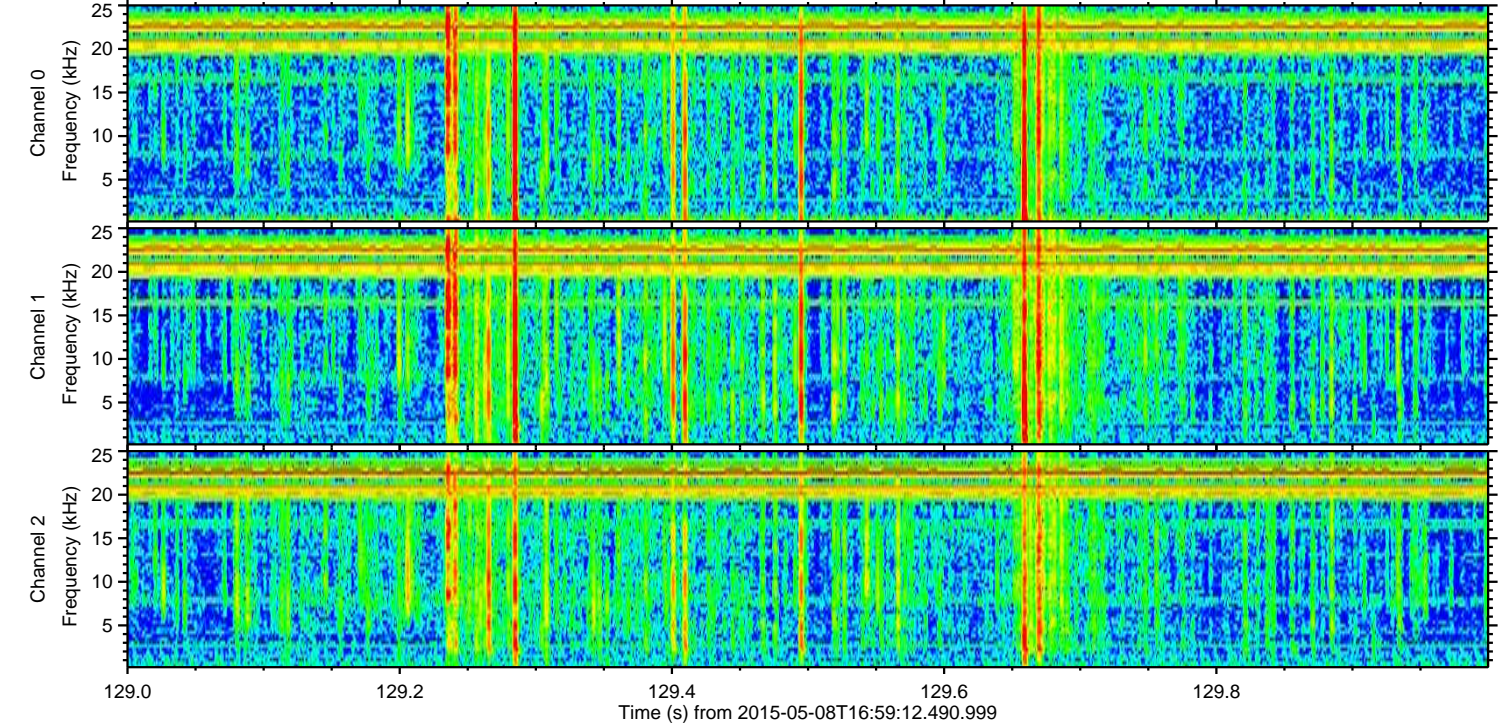
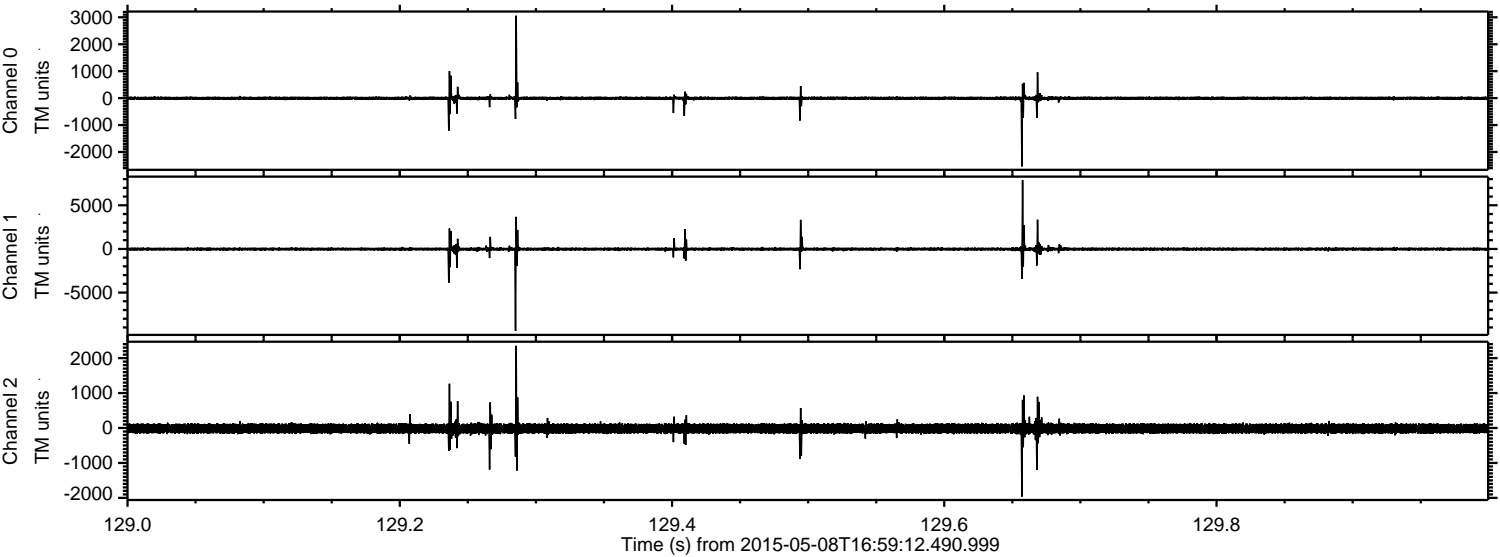
Processed Fri May 8 19:06:33 2015 by ELM ver.2012-10-06 from 001\_\_elm20150508\_165911\_\_dat00.bin





ELMAVAN 3D WAVEFORMS (Measured data sampled at 50 kHz) 49729 packets of 144 samples from 2015-05-08T16:59:12.490.999. Part 130/144

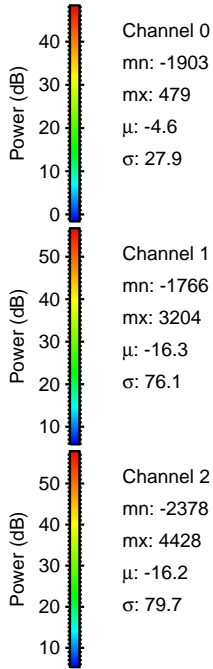
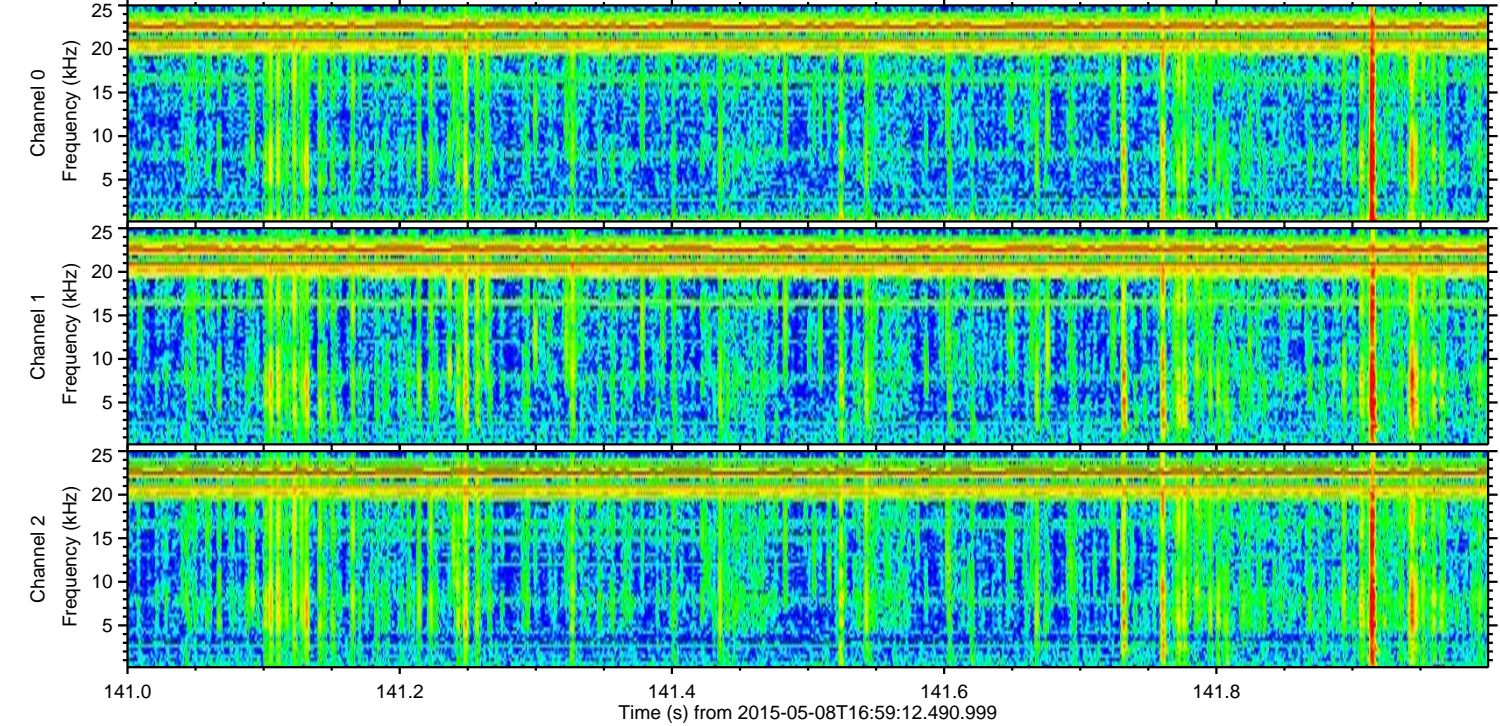
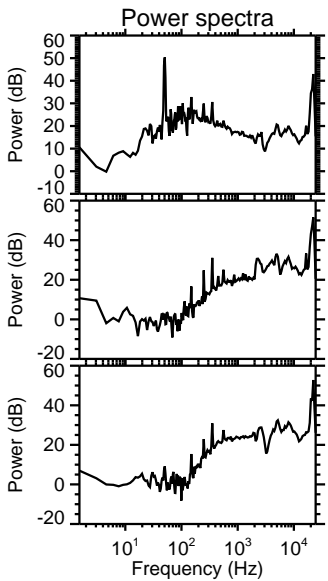
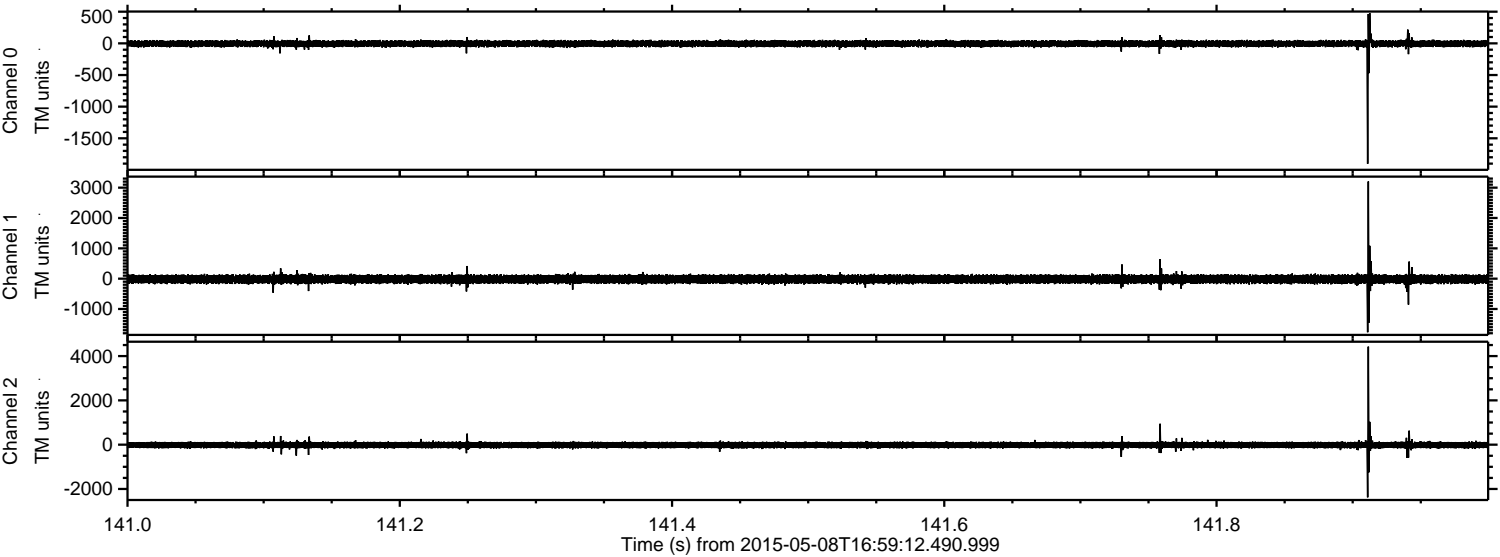
Processed Fri May 8 19:06:44 2015 by ELM ver.2012-10-06 from 001\_\_elm20150508\_165911\_\_dat00.bin





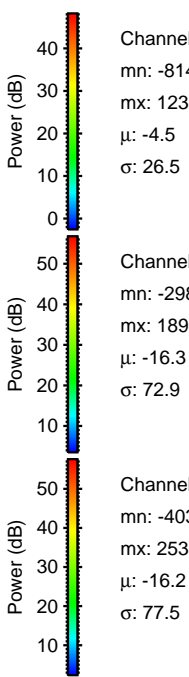
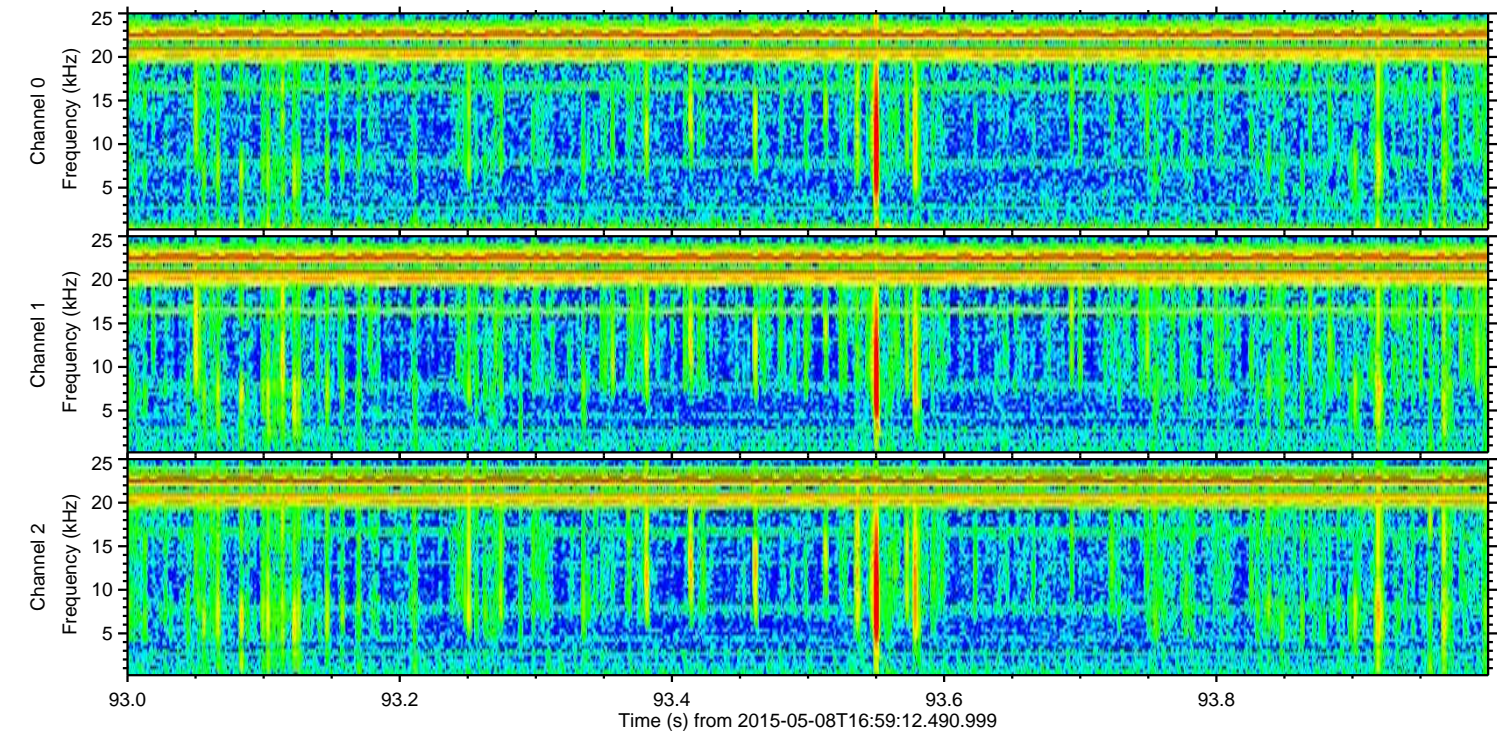
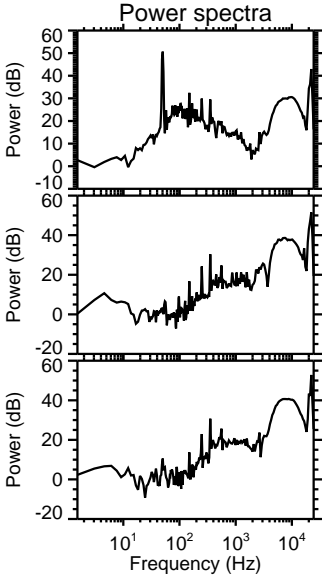
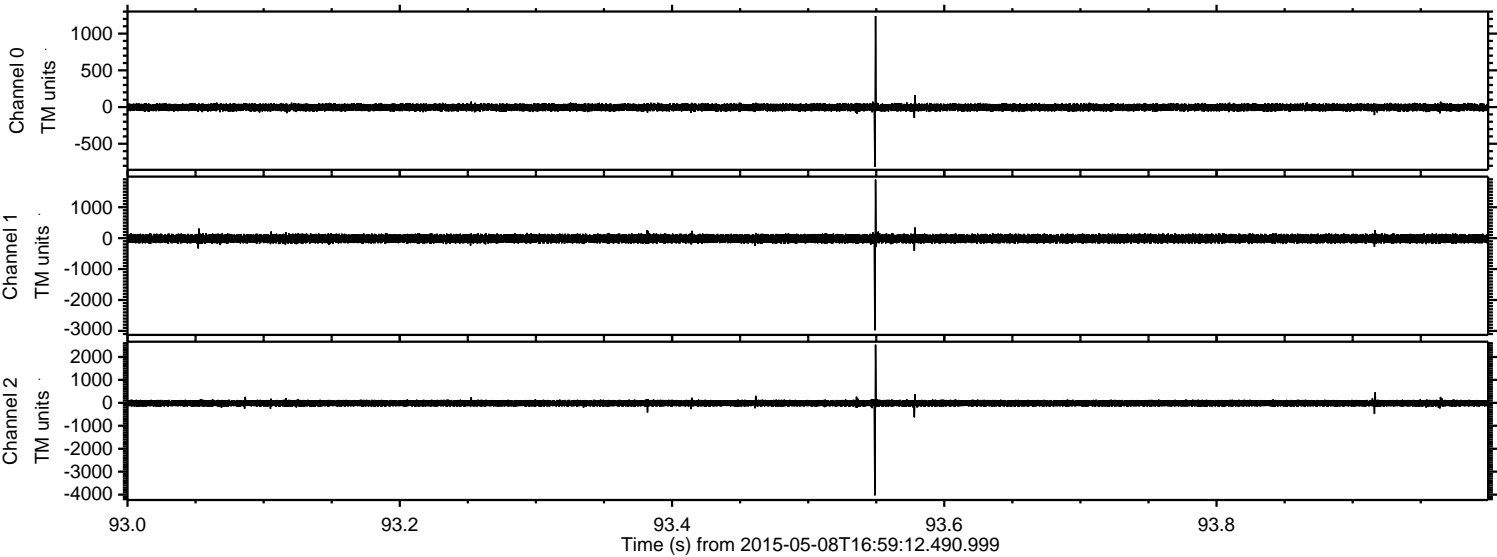
ELMAVAN 3D WAVEFORMS (Measured data sampled at 50 kHz) 49729 packets of 144 samples from 2015-05-08T16:59:12.490.999. Part 142/144

Processed Fri May 8 19:06:45 2015 by ELM ver.2012-10-06 from 001\_\_elm20150508\_165911\_\_dat00.bin



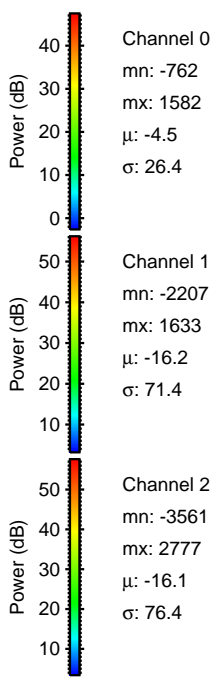
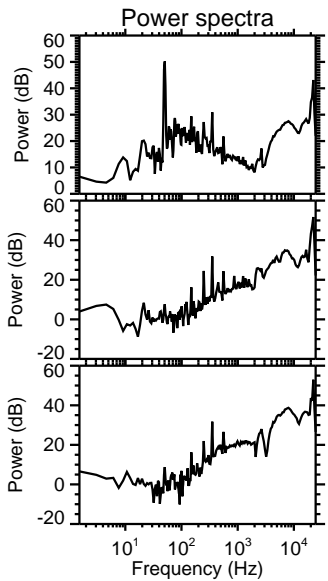
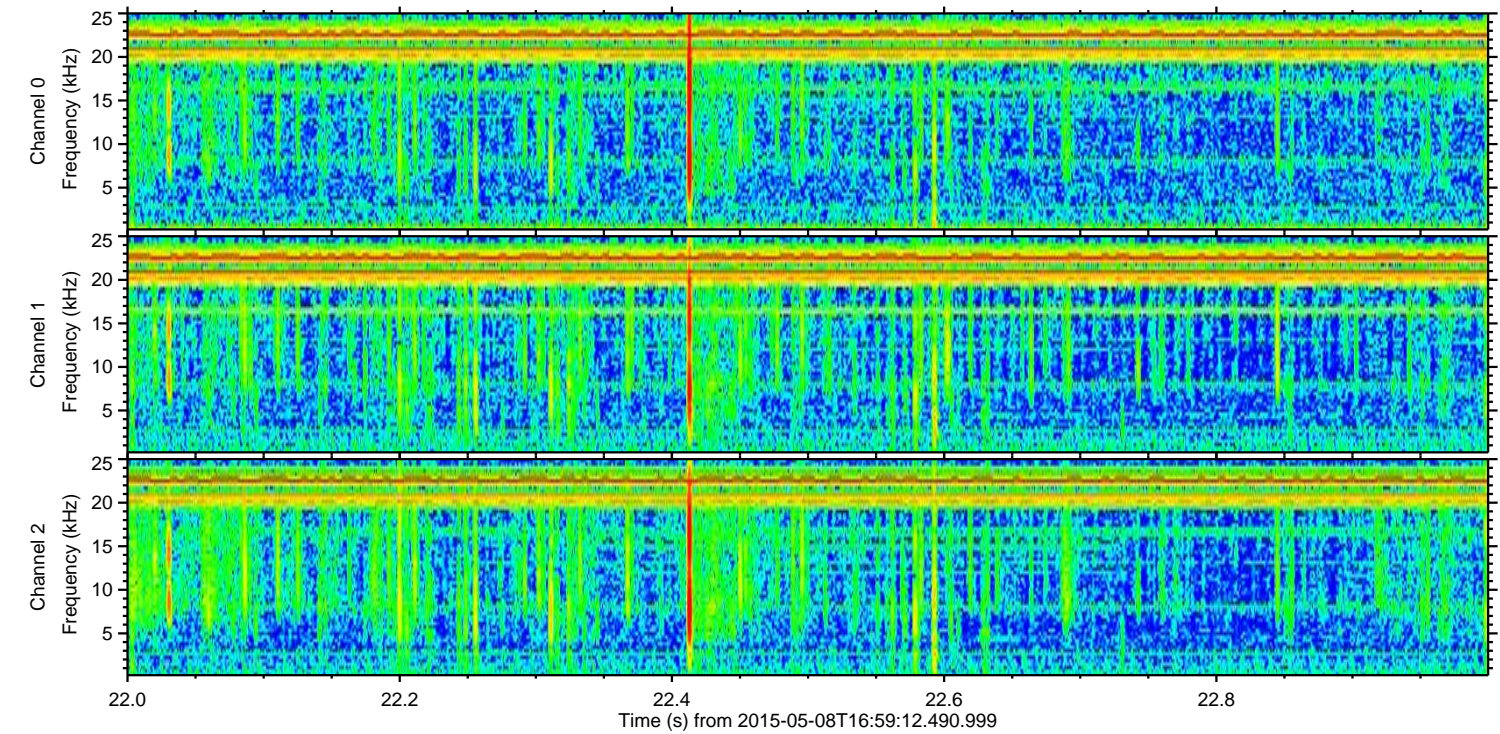
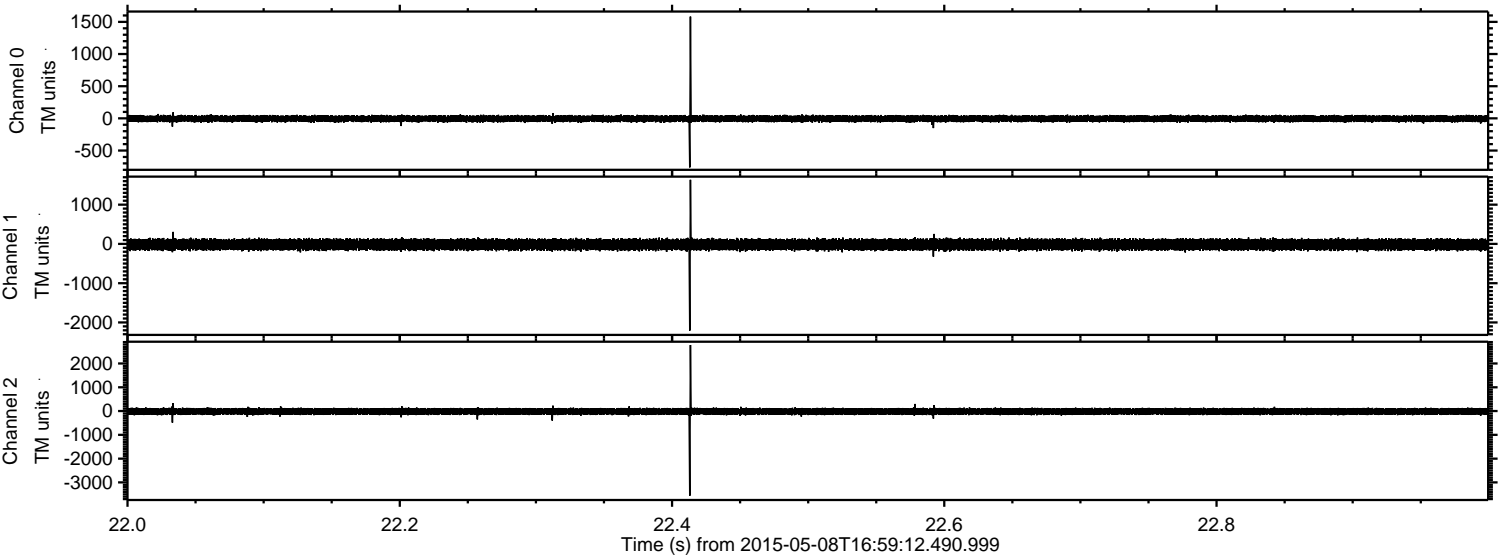


Processed Fri May 8 19:06:46 2015 by ELM ver.2012-10-06 from 001\_\_elm20150508\_165911\_\_dat00.bin





Processed Fri May 8 19:06:47 2015 by ELM ver.2012-10-06 from 001\_\_elm20150508\_165911\_\_dat00.bin



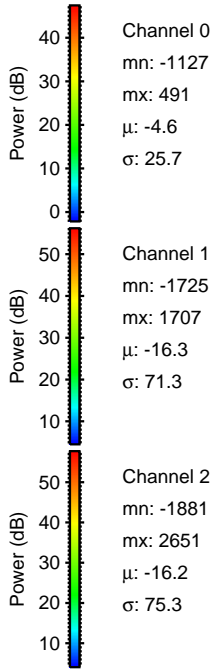
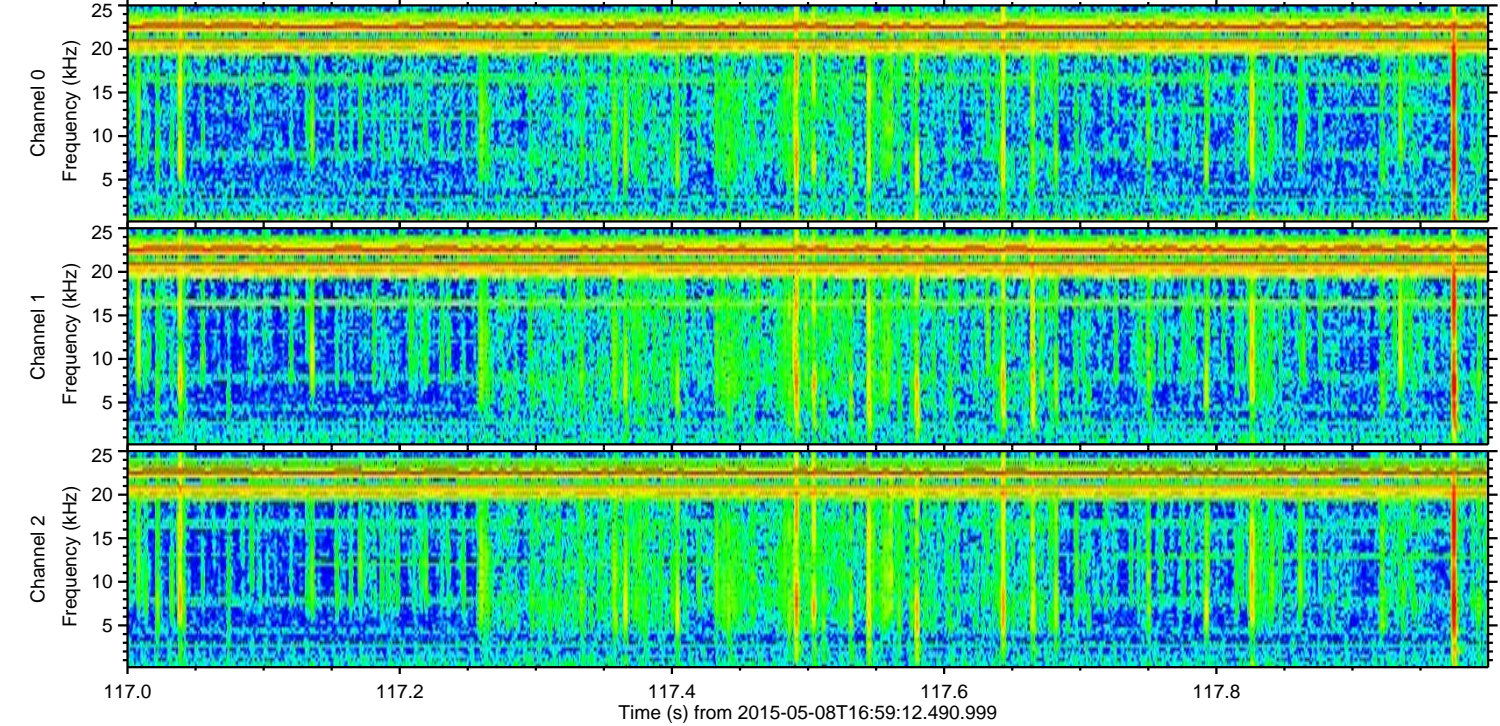
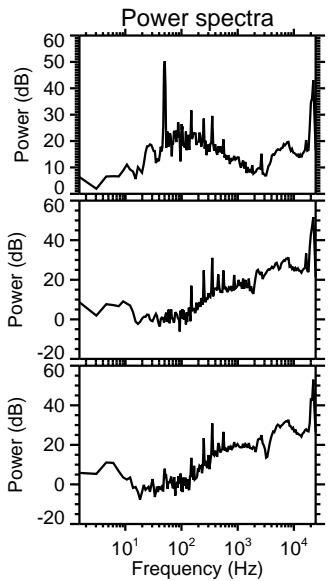
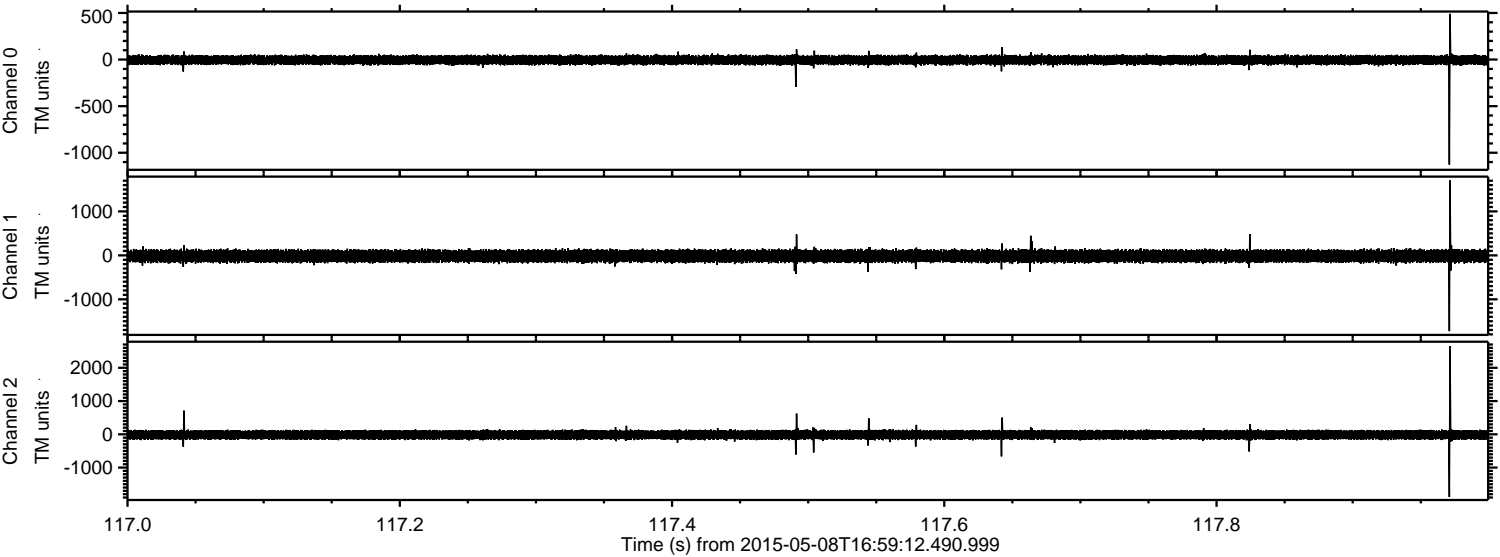
Channel 0  
mn: -762  
mx: 1582  
 $\mu$ : -4.5  
 $\sigma$ : 26.4

Channel 1  
mn: -2207  
mx: 1633  
 $\mu$ : -16.2  
 $\sigma$ : 71.4

Channel 2  
mn: -3561  
mx: 2777  
 $\mu$ : -16.1  
 $\sigma$ : 76.4



Processed Fri May 8 19:06:48 2015 by ELM ver.2012-10-06 from 001\_\_elm20150508\_165911\_\_dat00.bin



Channel 0  
mn: -1127  
mx: 491  
 $\mu$ : -4.6  
 $\sigma$ : 25.7

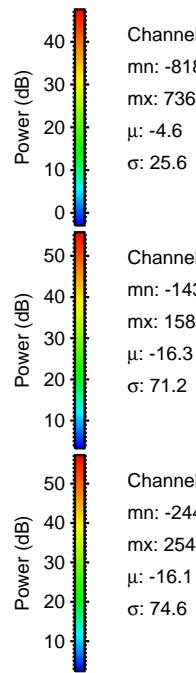
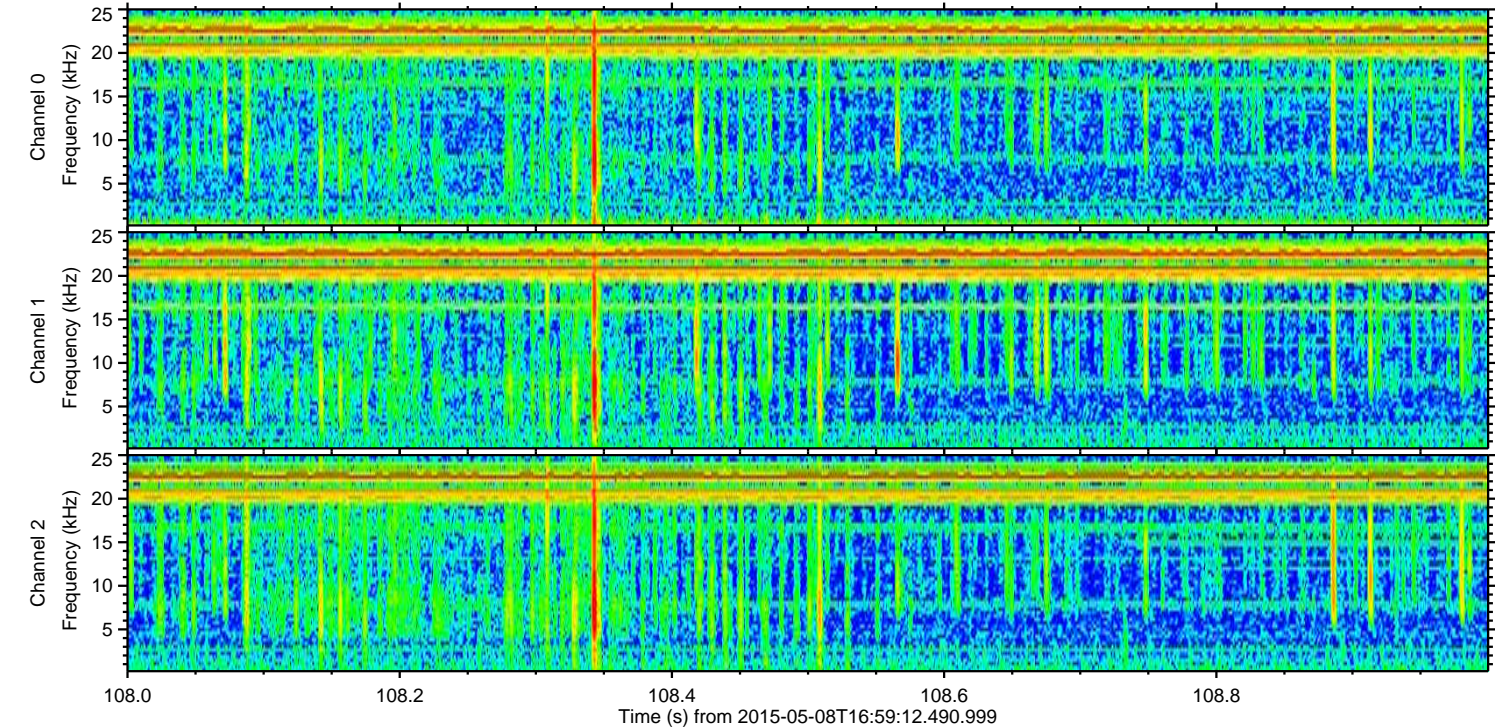
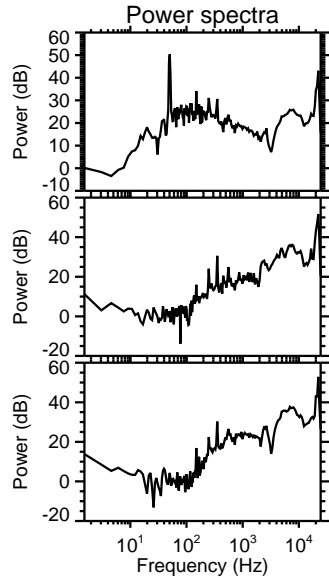
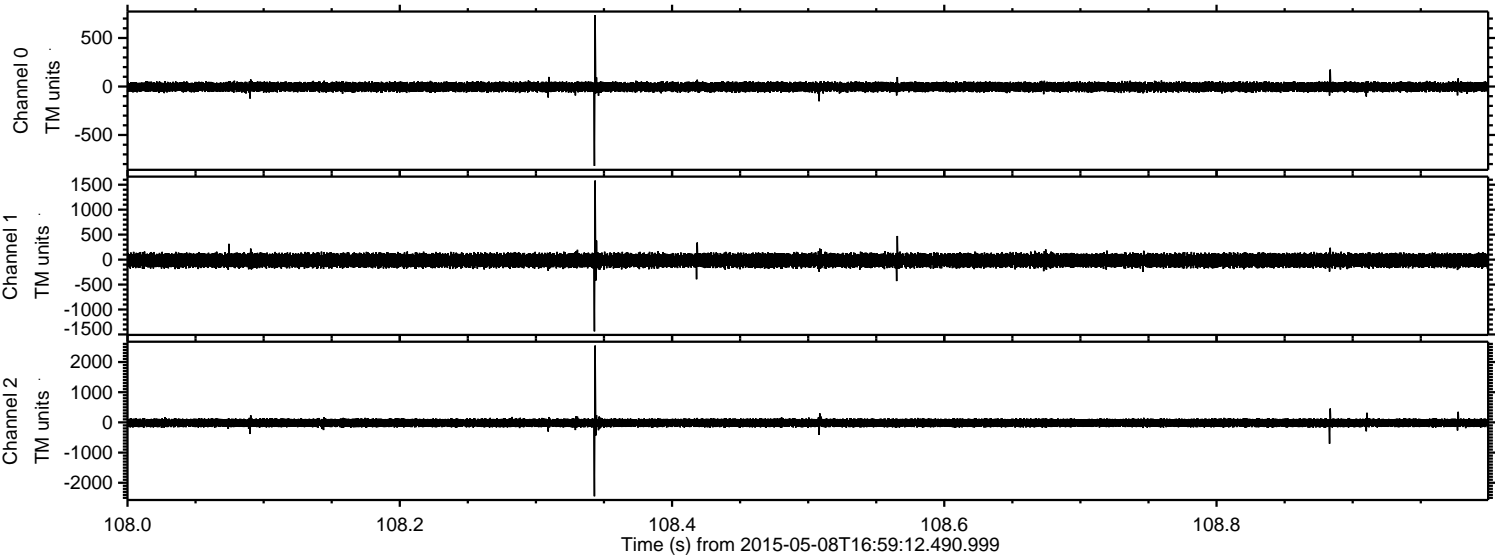
Channel 1  
mn: -1725  
mx: 1707  
 $\mu$ : -16.3  
 $\sigma$ : 71.3

Channel 2  
mn: -1881  
mx: 2651  
 $\mu$ : -16.2  
 $\sigma$ : 75.3



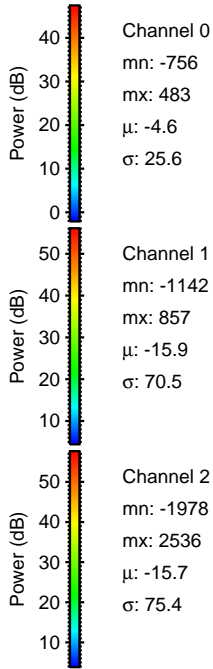
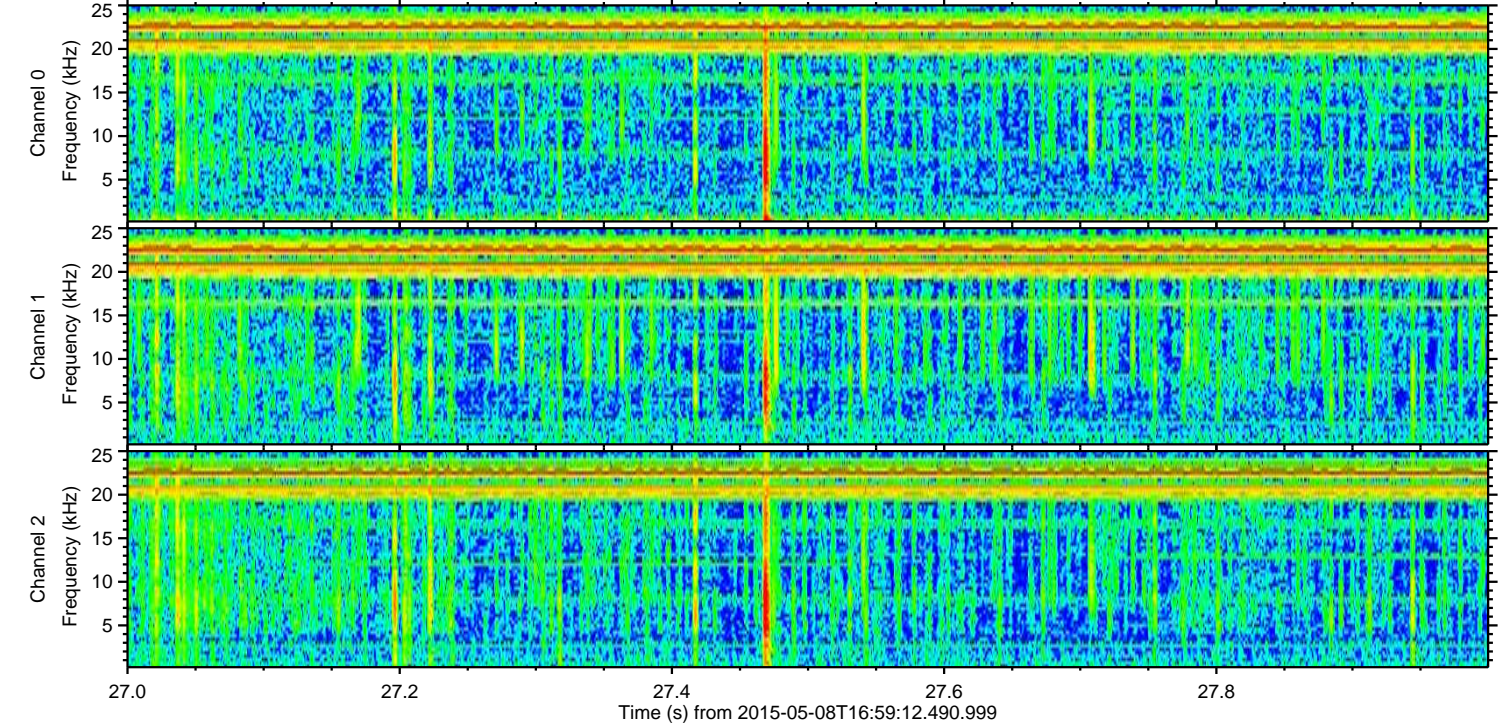
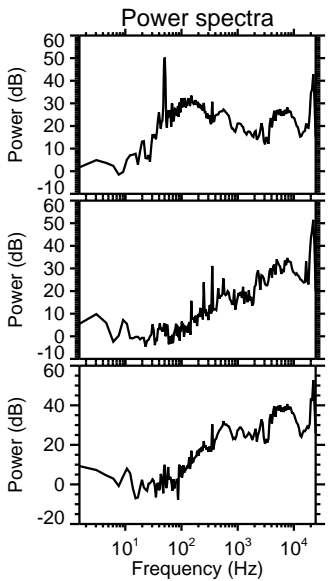
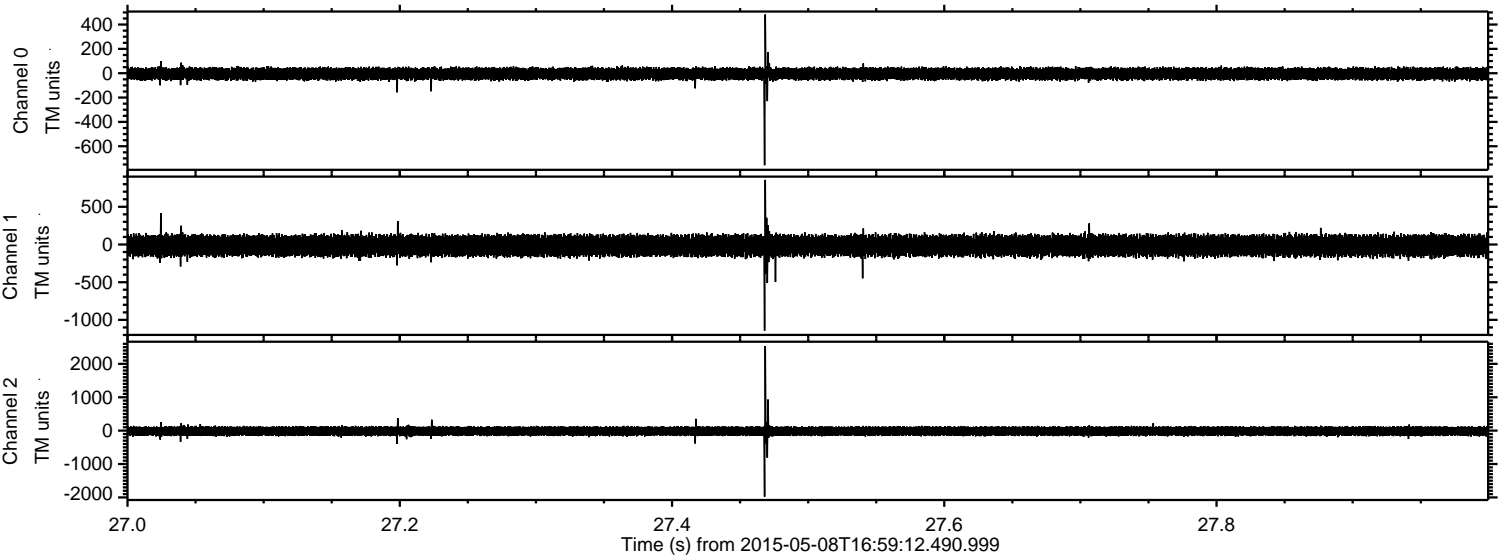
ELMAVAN 3D WAVEFORMS (Measured data sampled at 50 kHz) 49729 packets of 144 samples from 2015-05-08T16:59:12.490.999. Part 109/144

Processed Fri May 8 19:06:49 2015 by ELM ver.2012-10-06 from 001\_\_elm20150508\_165911\_\_dat00.bin



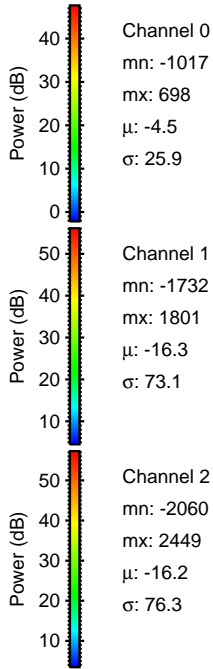
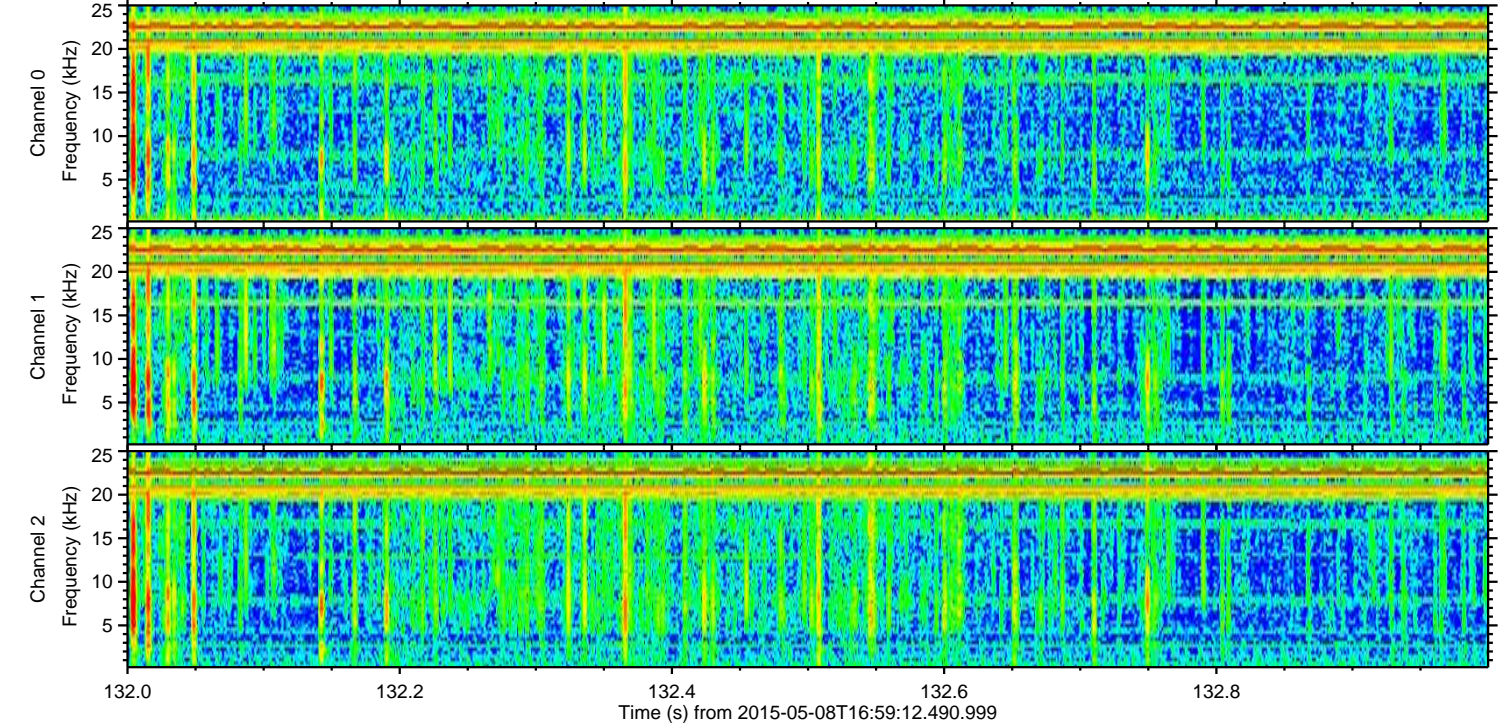
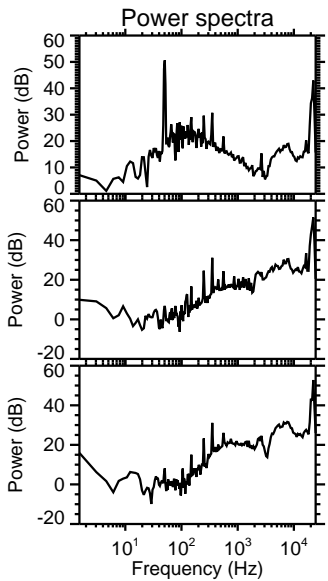
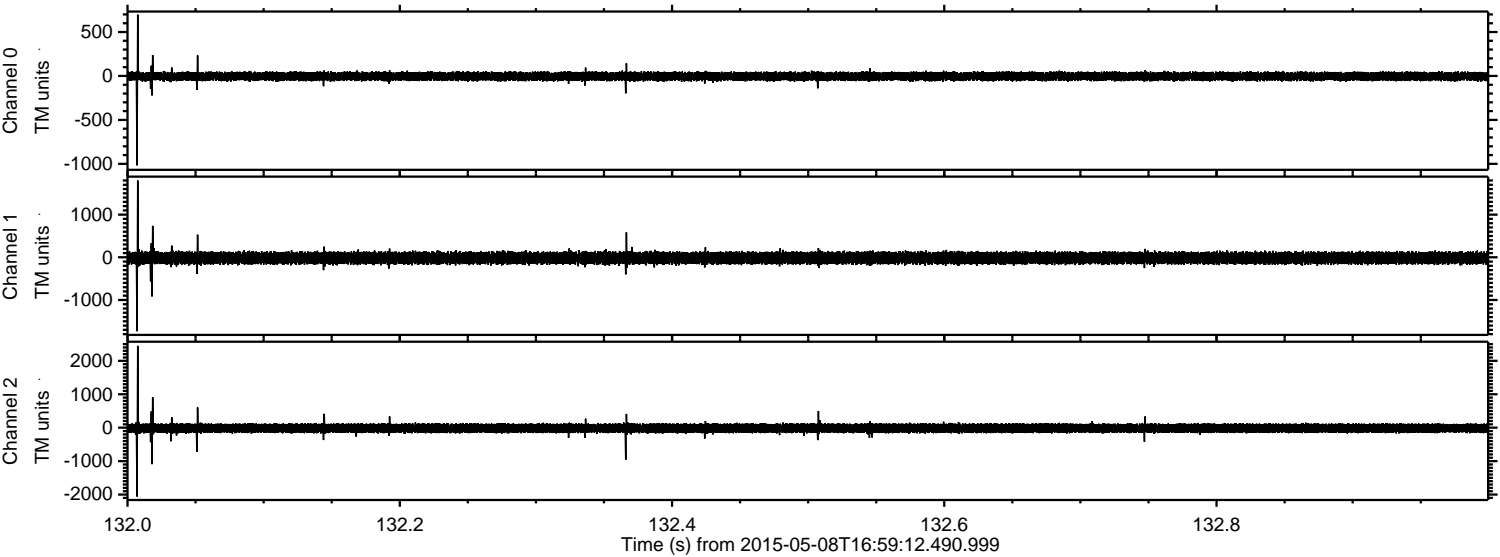


Processed Fri May 8 19:06:50 2015 by ELM ver.2012-10-06 from 001\_\_elm20150508\_165911\_\_dat00.bin





Processed Fri May 8 19:06:51 2015 by ELM ver.2012-10-06 from 001\_\_elm20150508\_165911\_\_dat00.bin



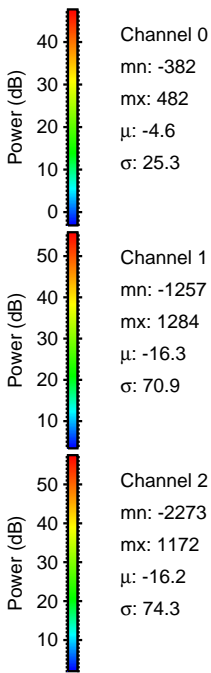
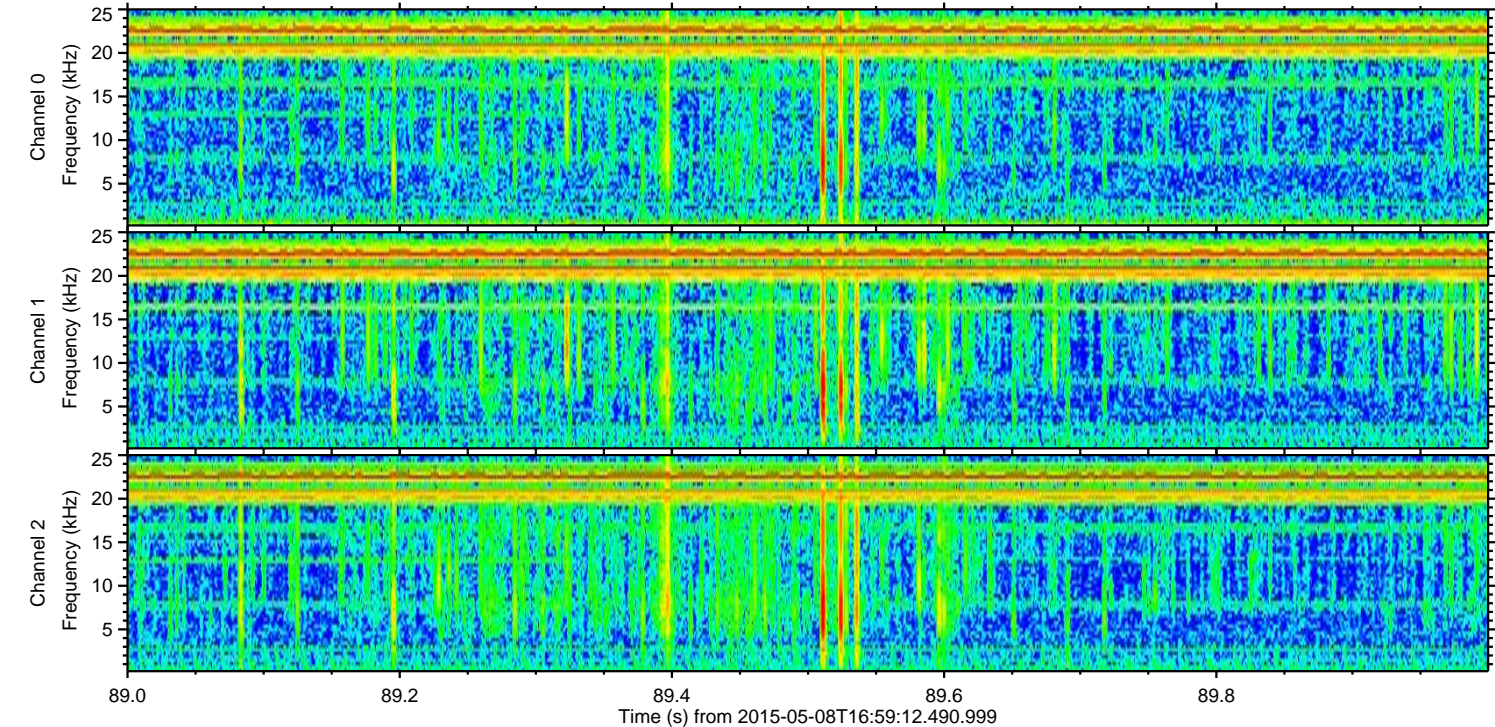
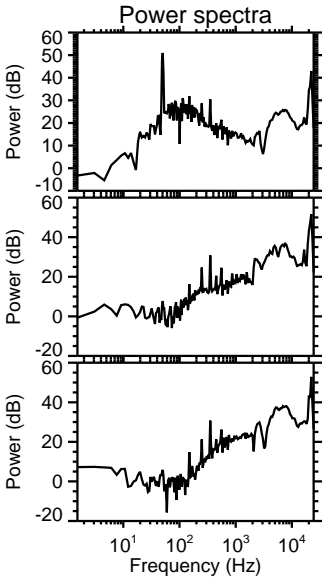
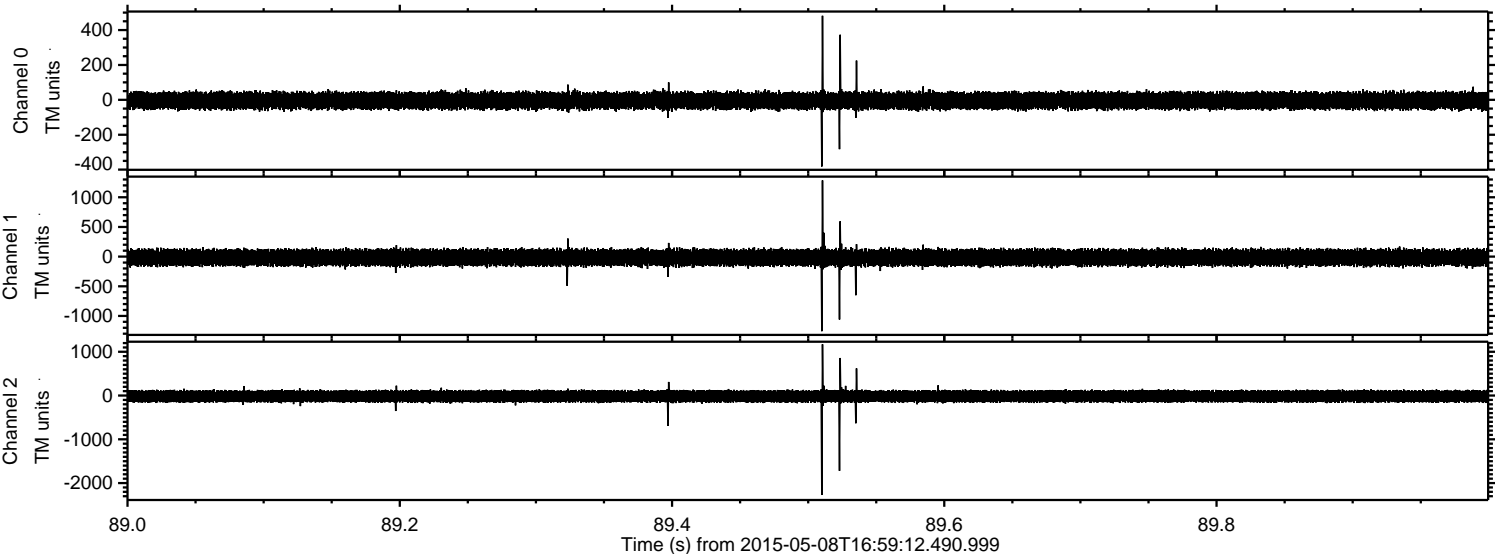
Channel 0  
mn: -1017  
mx: 698  
 $\mu$ : -4.5  
 $\sigma$ : 25.9

Channel 1  
mn: -1732  
mx: 1801  
 $\mu$ : -16.3  
 $\sigma$ : 73.1

Channel 2  
mn: -2060  
mx: 2449  
 $\mu$ : -16.2  
 $\sigma$ : 76.3



Processed Fri May 8 19:06:52 2015 by ELM ver.2012-10-06 from 001\_\_elm20150508\_165911\_\_dat00.bin





ELMAVAN 3D WAVEFORMS (Measured data sampled at 50 kHz) 49729 packets of 144 samples from 2015-05-08T16:59:12.490.999. Part 126/144

