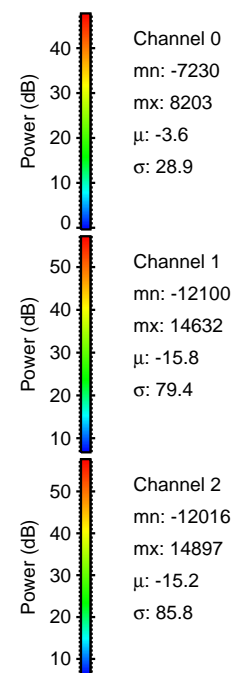
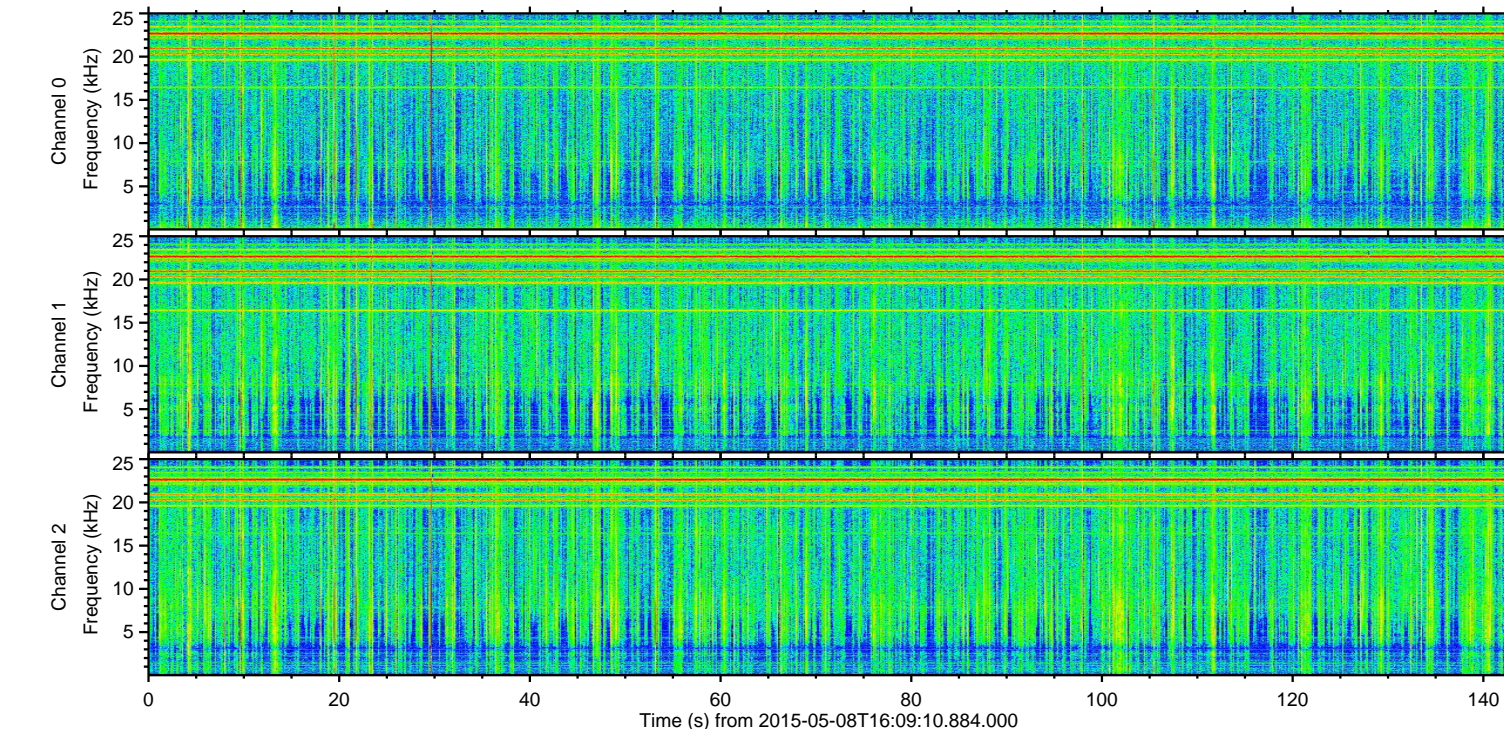
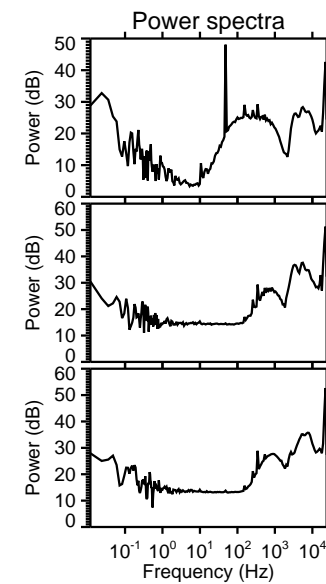
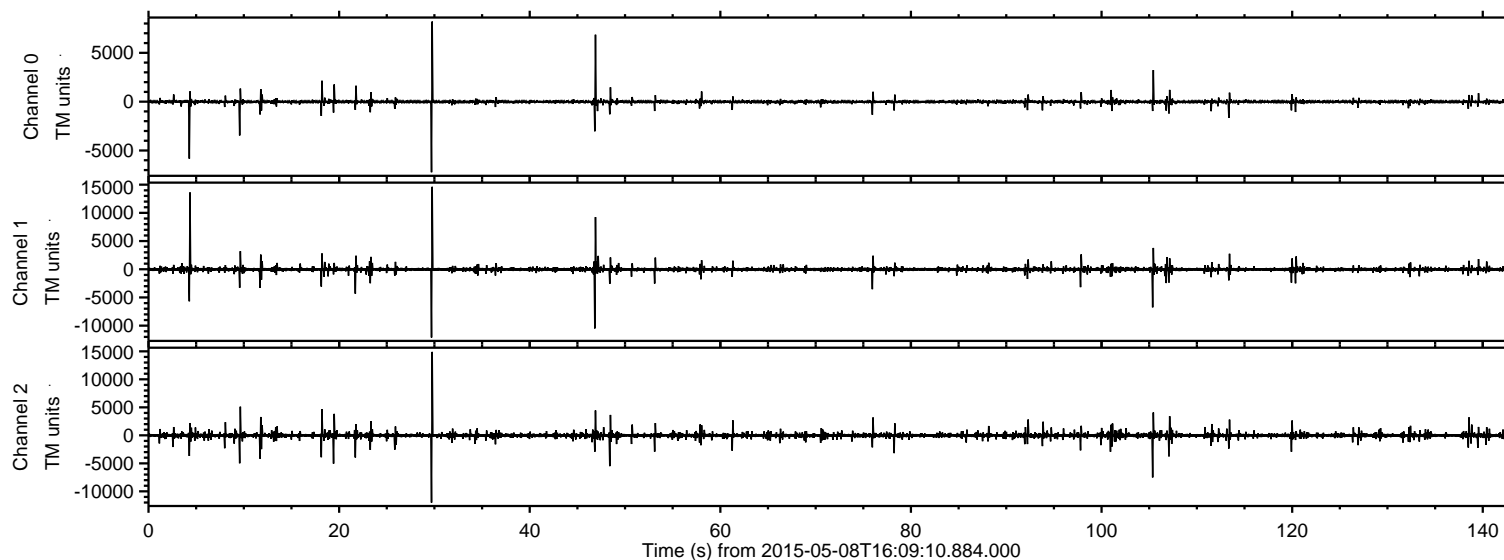
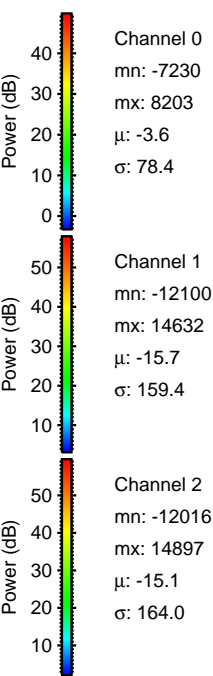
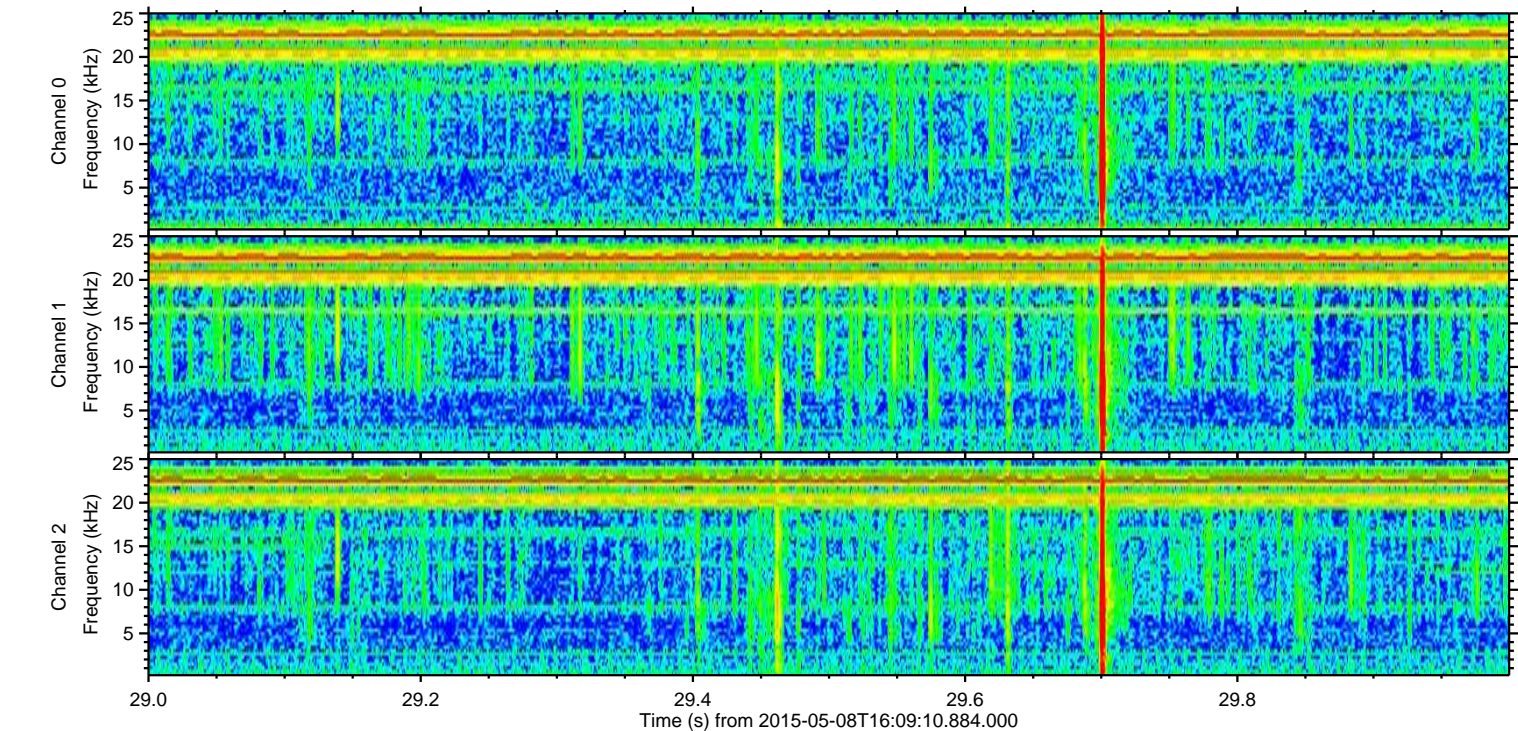
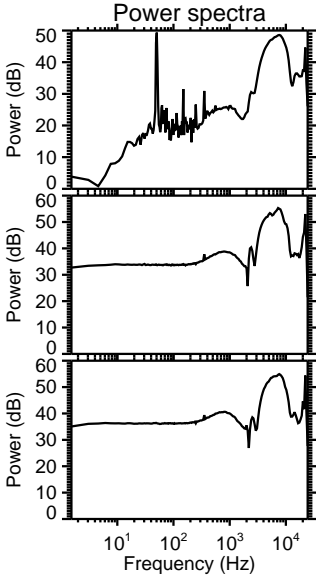
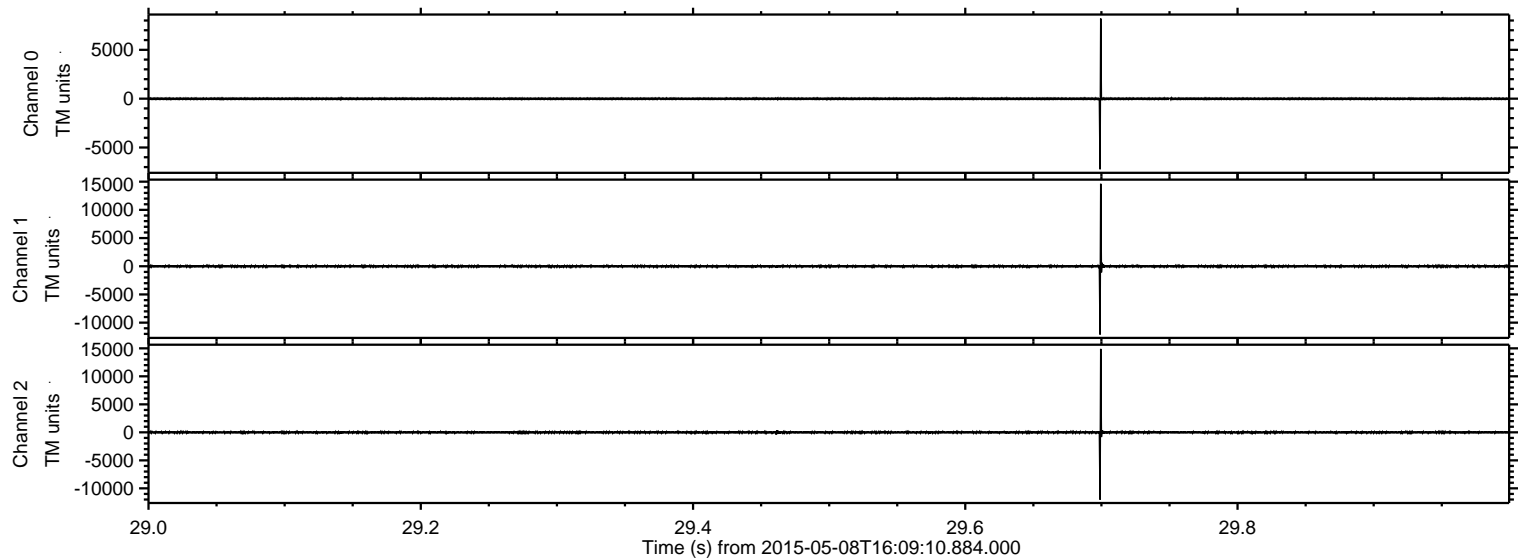


ELMAVAN 3D WAVEFORMS (Measured data sampled at 50 kHz) 49572 packets of 144 samples from 2015-05-08T16:09:10.884.000.

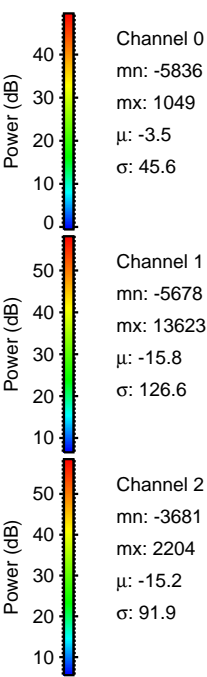
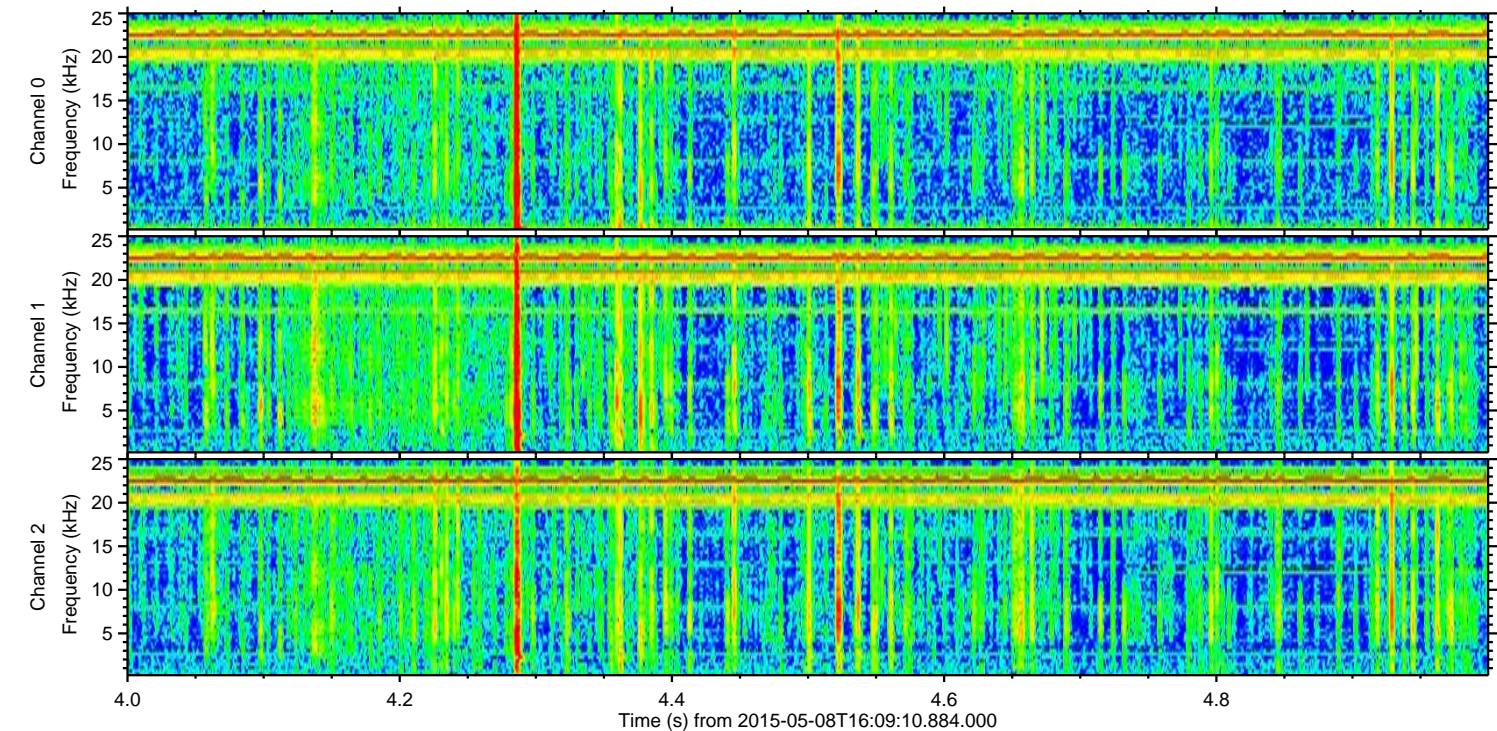
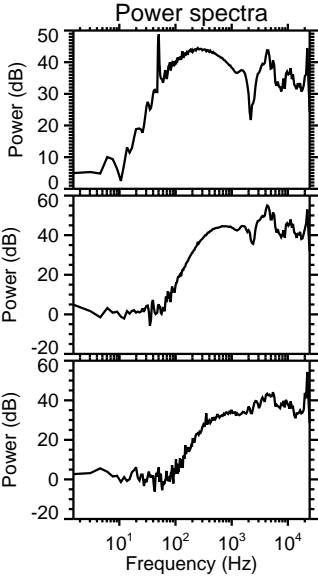
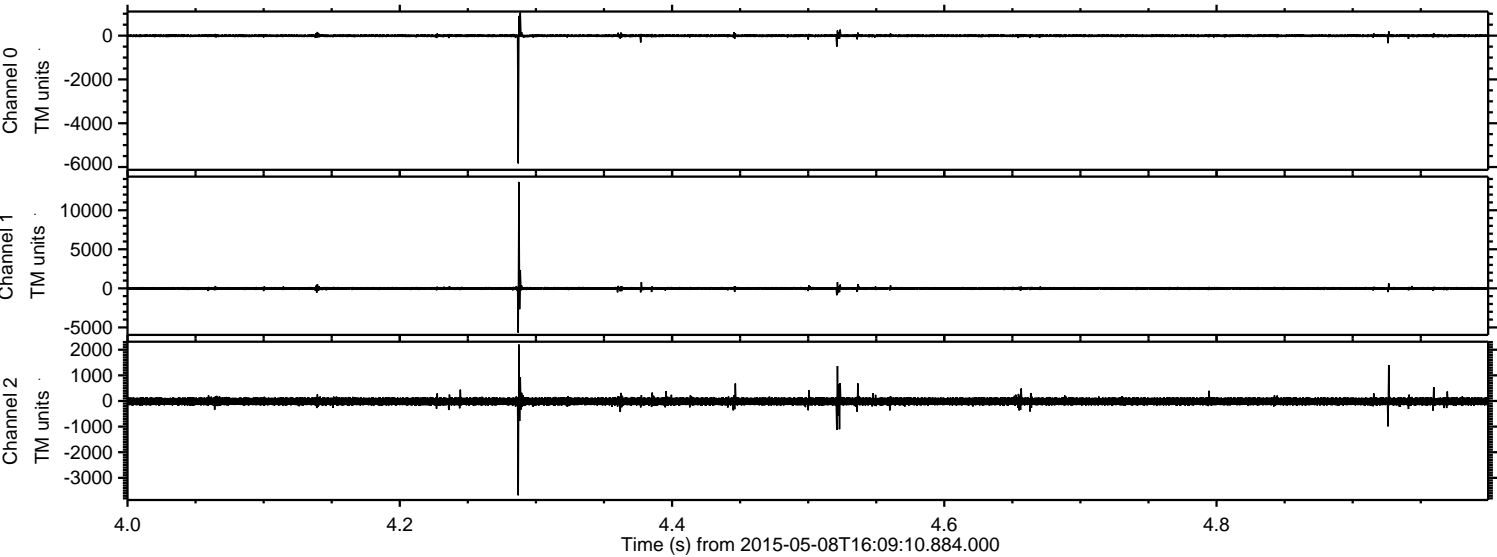
Processed Fri May 8 18:15:52 2015 by ELM ver.2012-10-06 from 001__elm20150508_160909__dat00.bin



Processed Fri May 8 18:16:04 2015 by ELM ver.2012-10-06 from 001__elm20150508_160909__dat00.bin

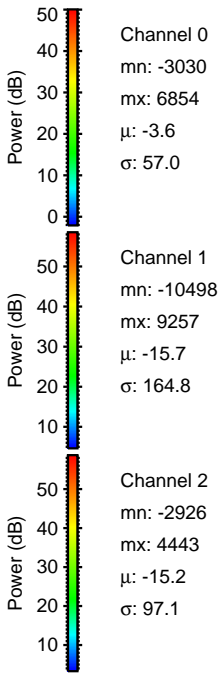
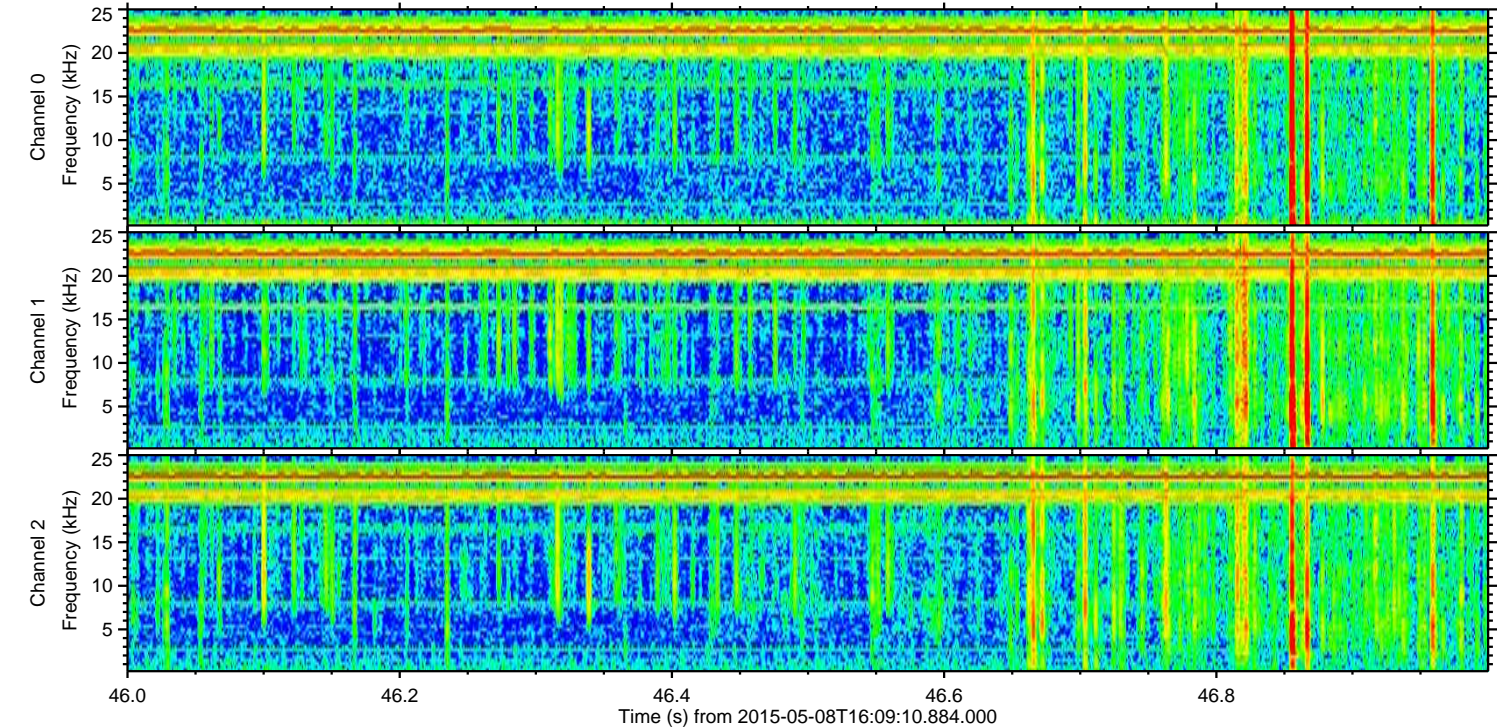
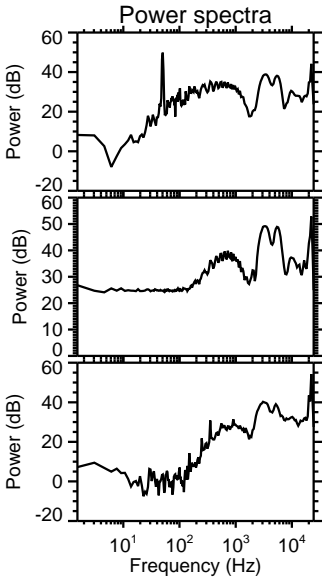
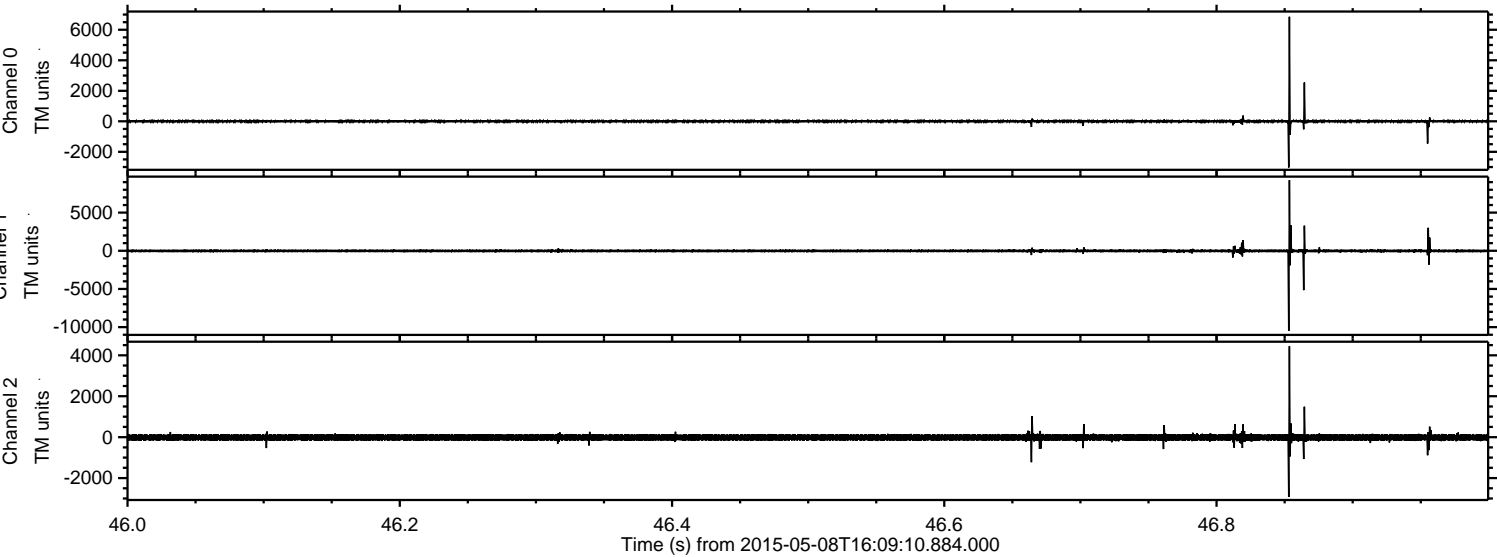


Processed Fri May 8 18:16:05 2015 by ELM ver.2012-10-06 from 001__elm20150508_160909__dat00.bin

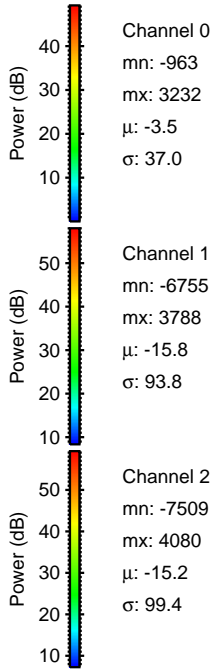
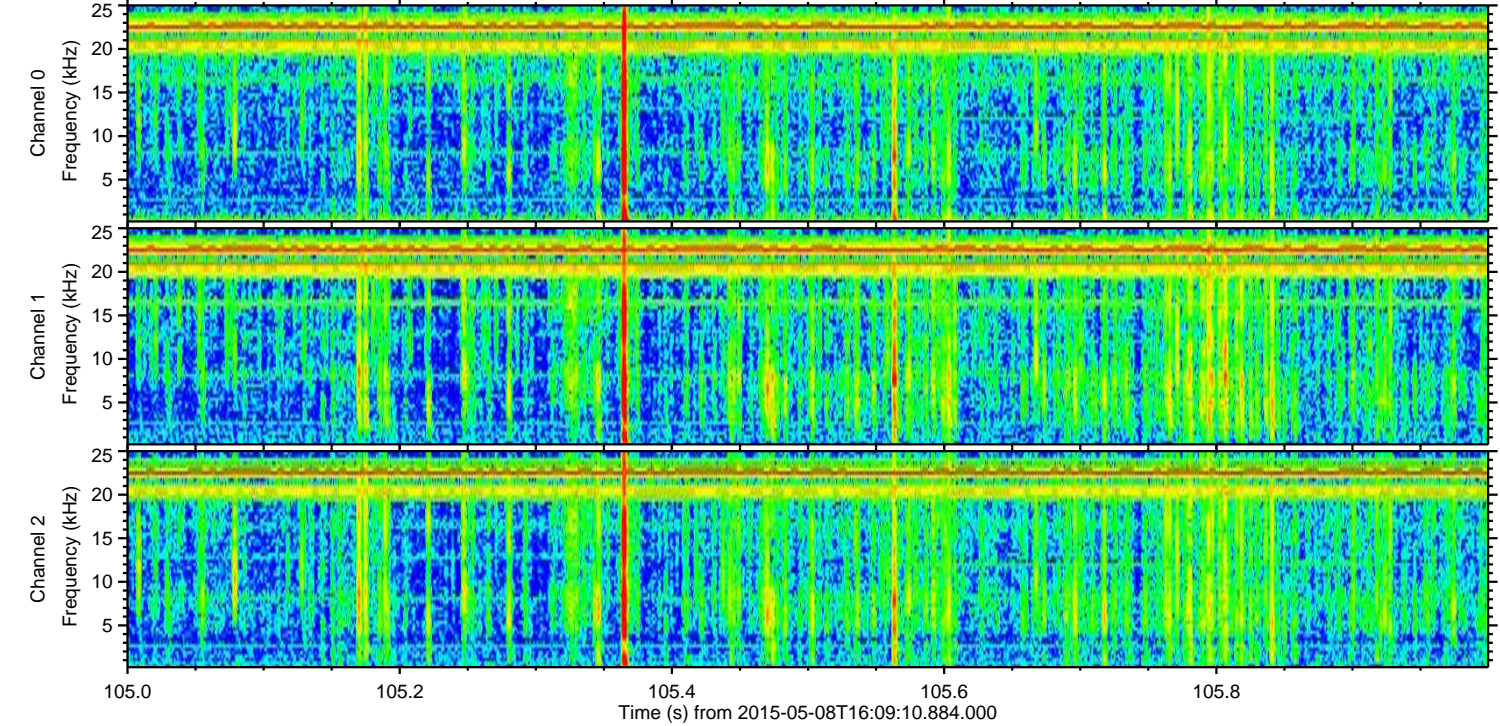
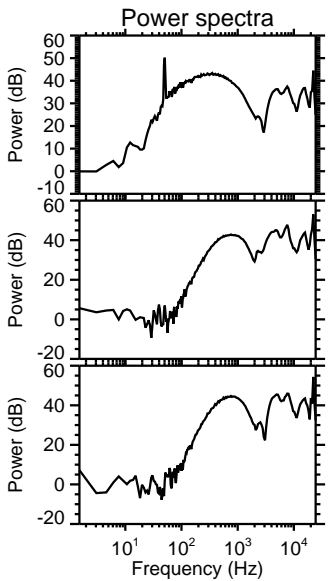
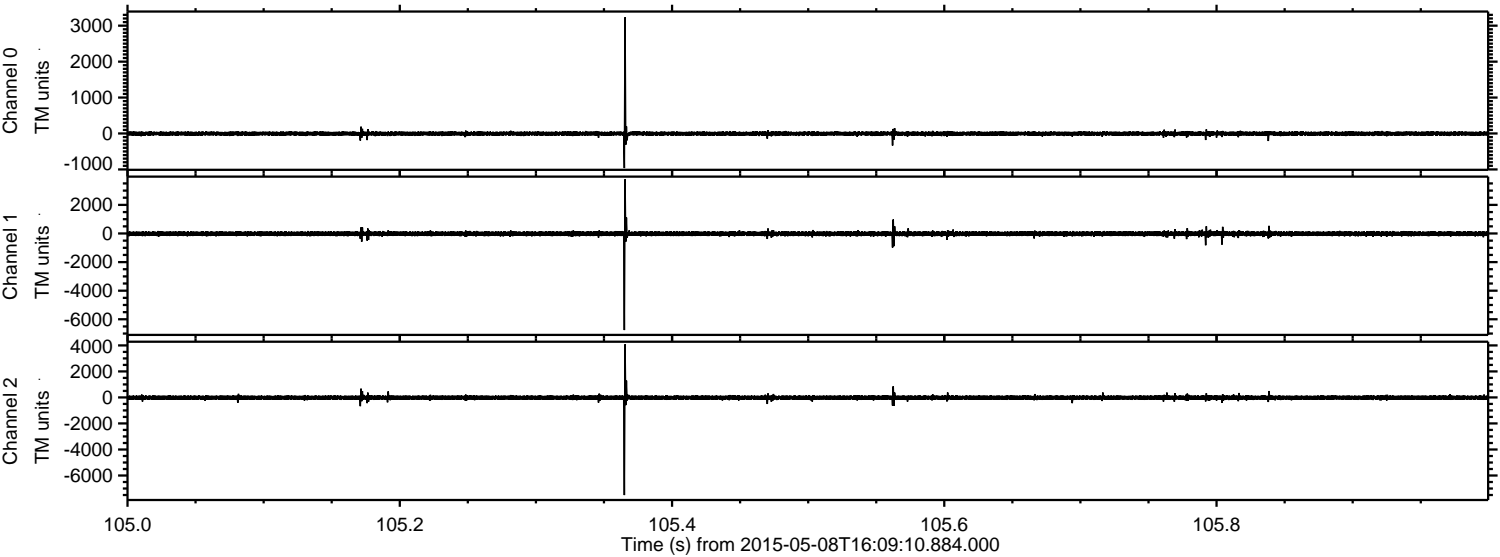


ELMAVAN 3D WAVEFORMS (Measured data sampled at 50 kHz) 49572 packets of 144 samples from 2015-05-08T16:09:10.884.000. Part 47/143

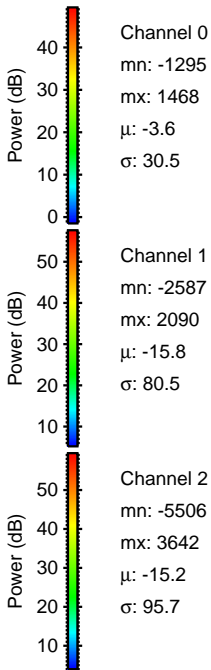
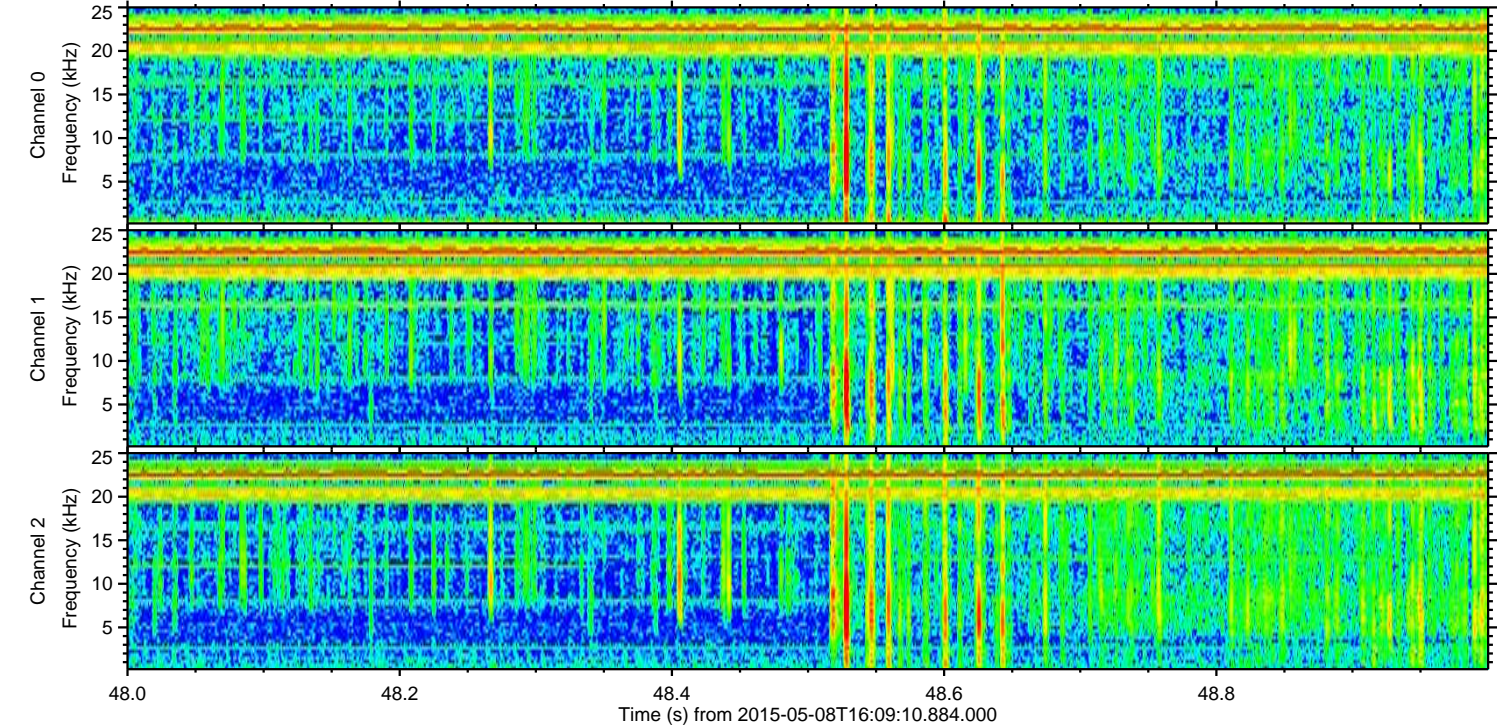
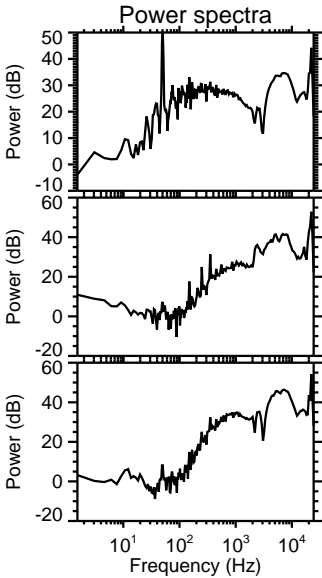
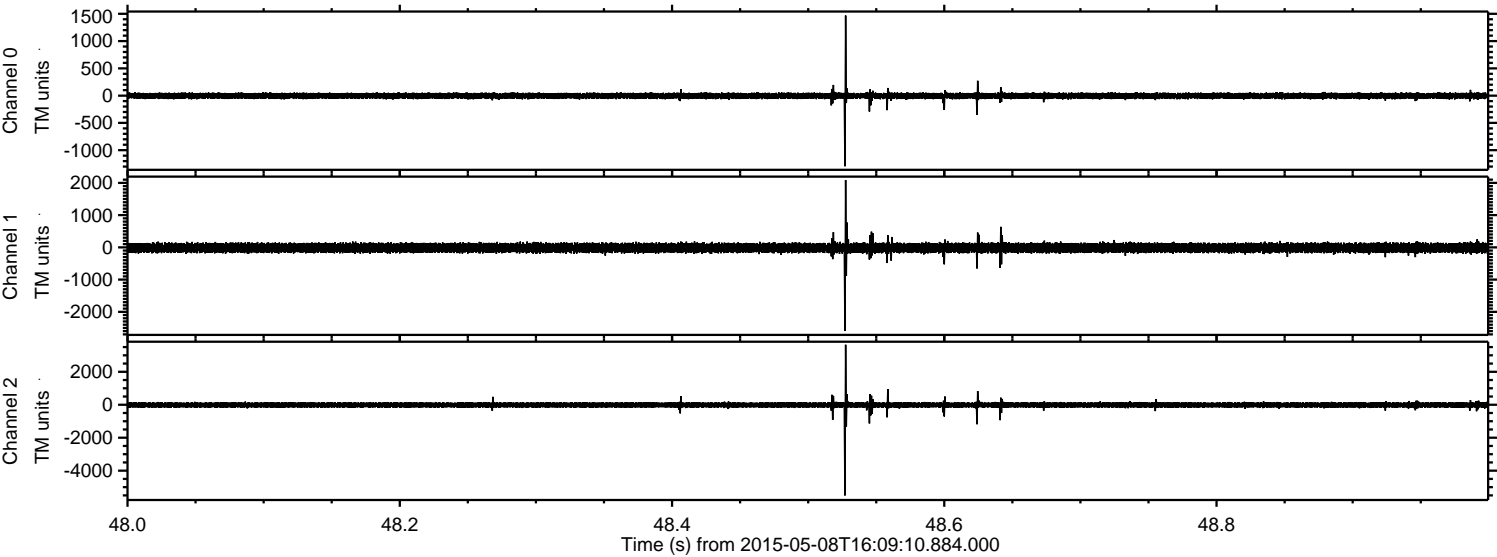
Processed Fri May 8 18:16:06 2015 by ELM ver.2012-10-06 from 001__elm20150508_160909__dat00.bin



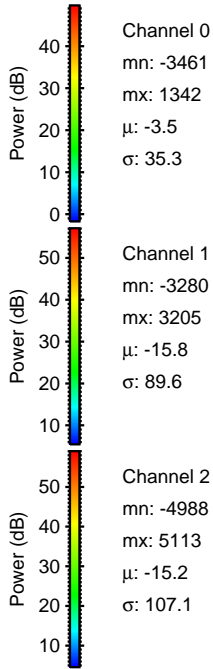
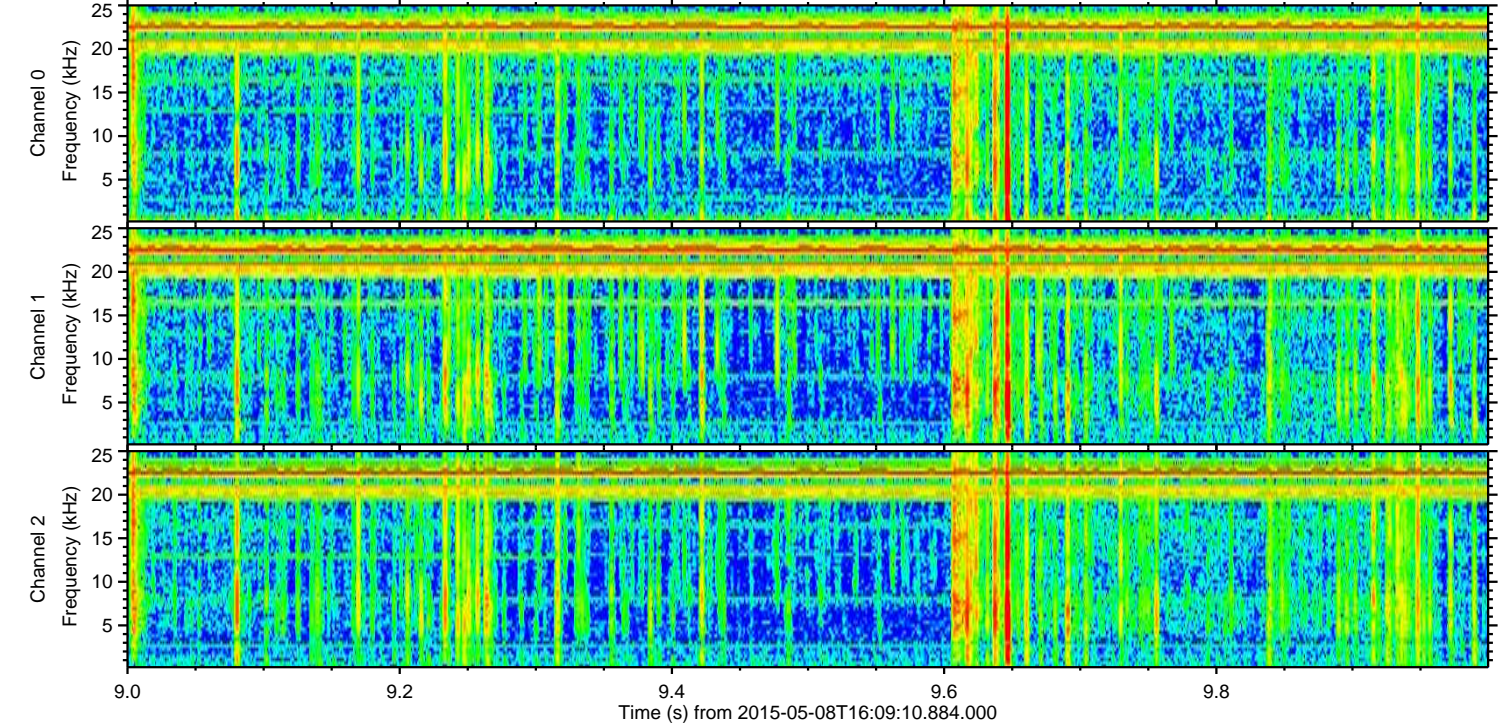
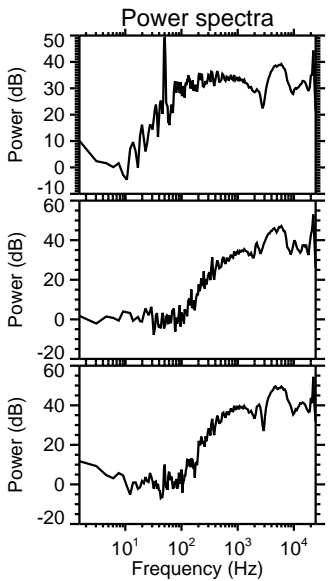
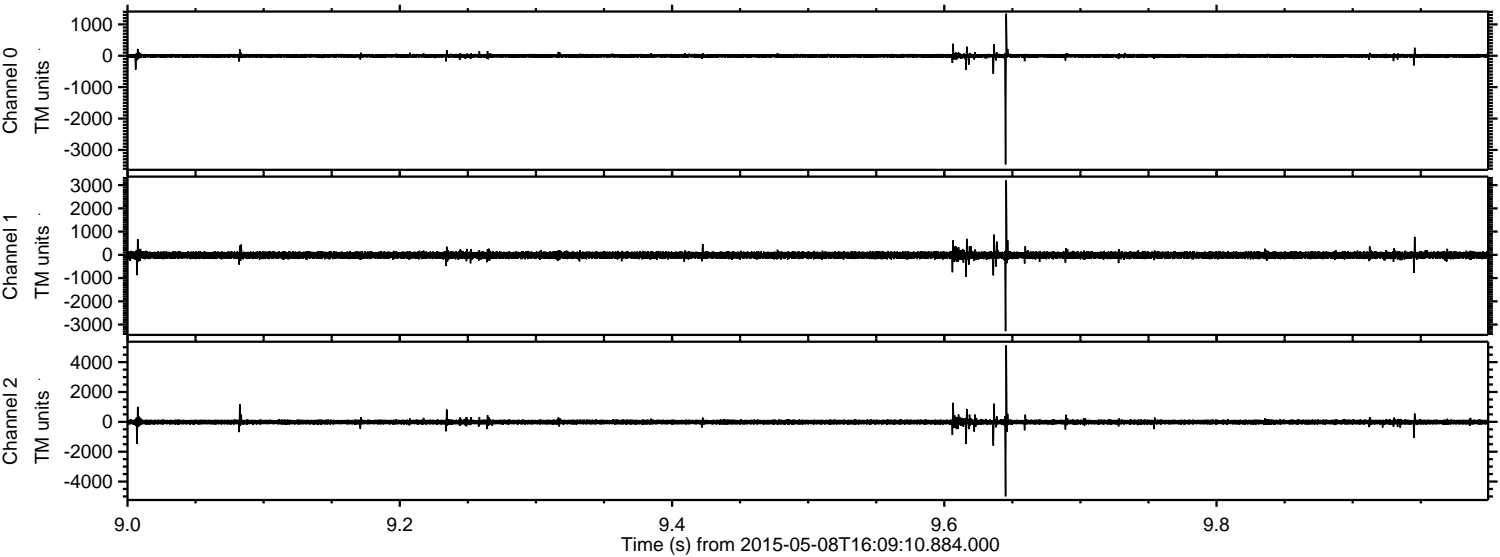
Processed Fri May 8 18:16:07 2015 by ELM ver.2012-10-06 from 001__elm20150508_160909__dat00.bin



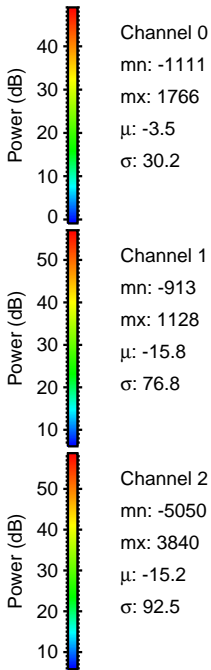
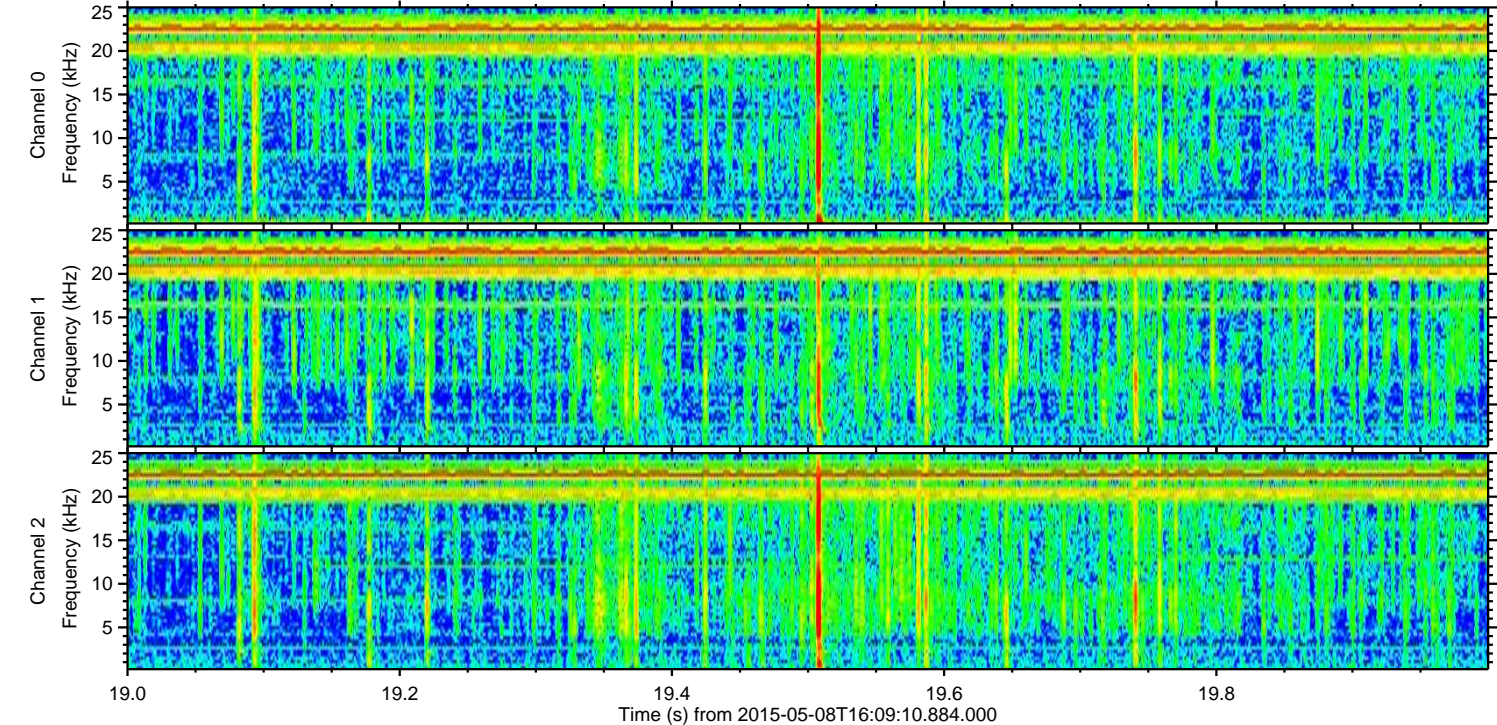
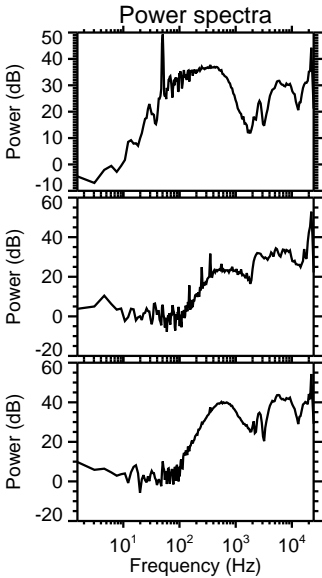
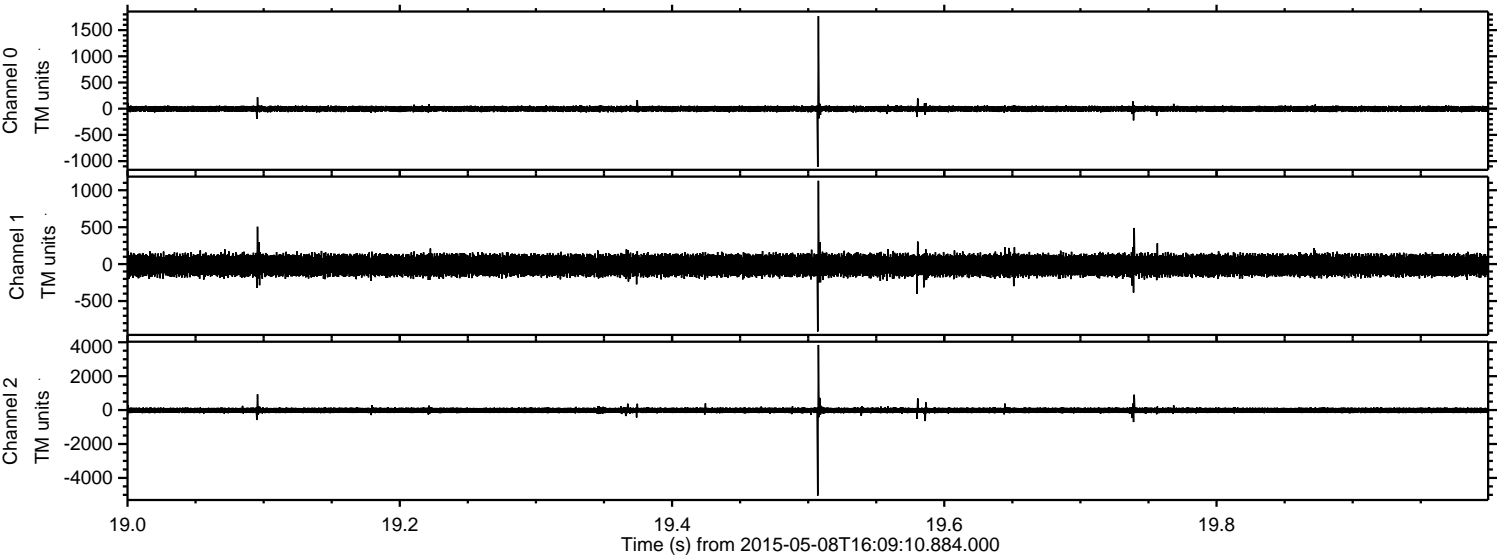
Processed Fri May 8 18:16:08 2015 by ELM ver.2012-10-06 from 001__elm20150508_160909__dat00.bin



Processed Fri May 8 18:16:09 2015 by ELM ver.2012-10-06 from 001__elm20150508_160909__dat00.bin

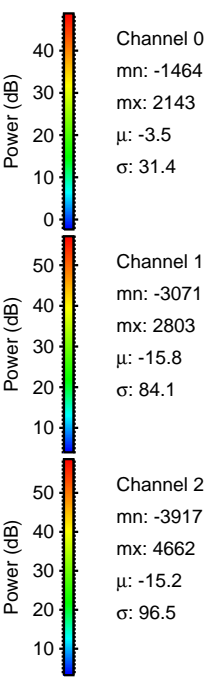
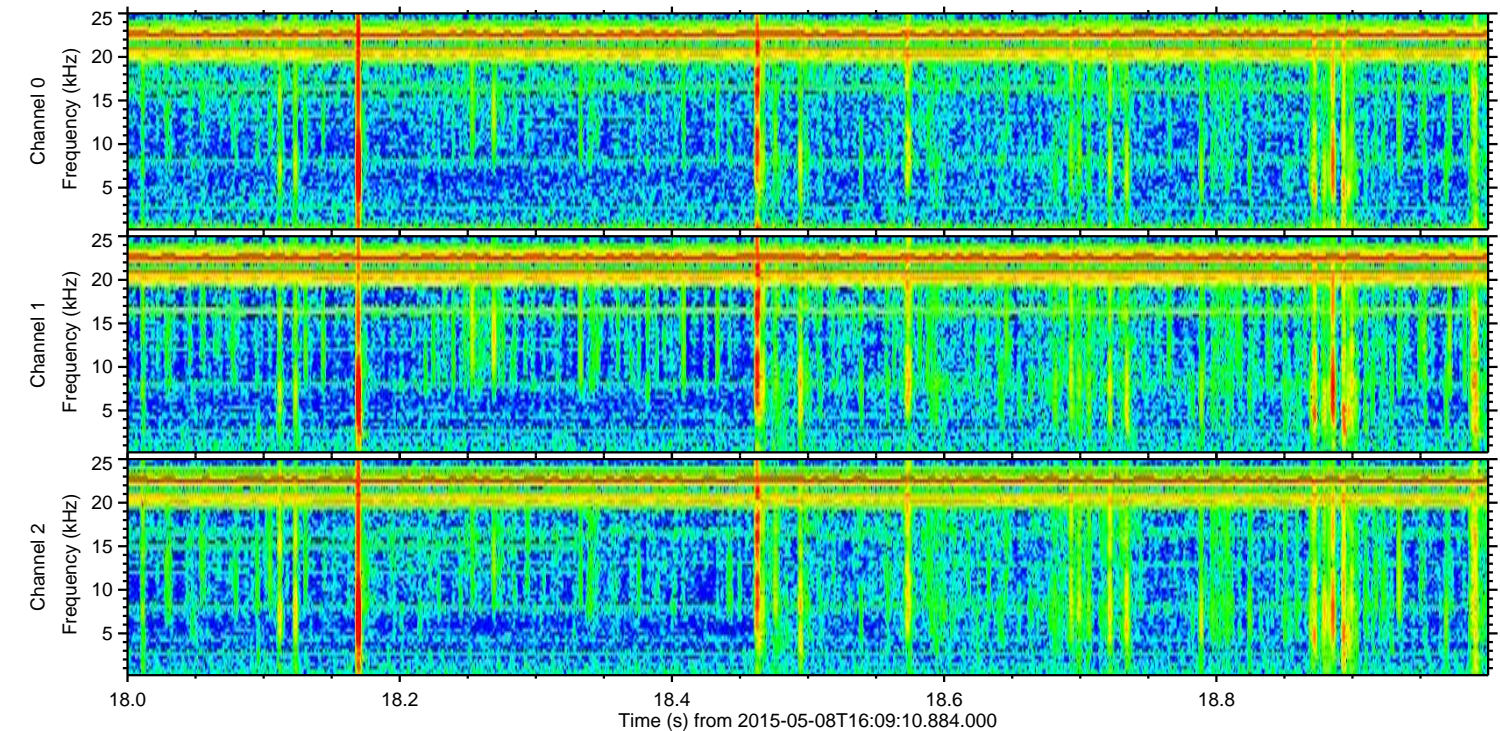
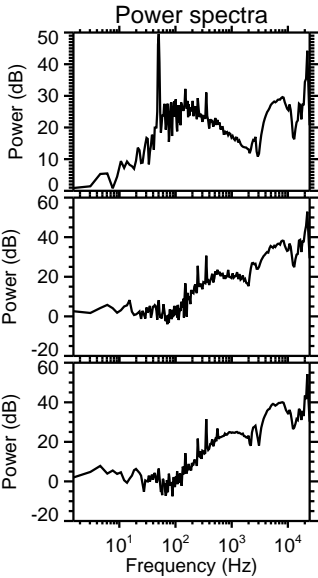
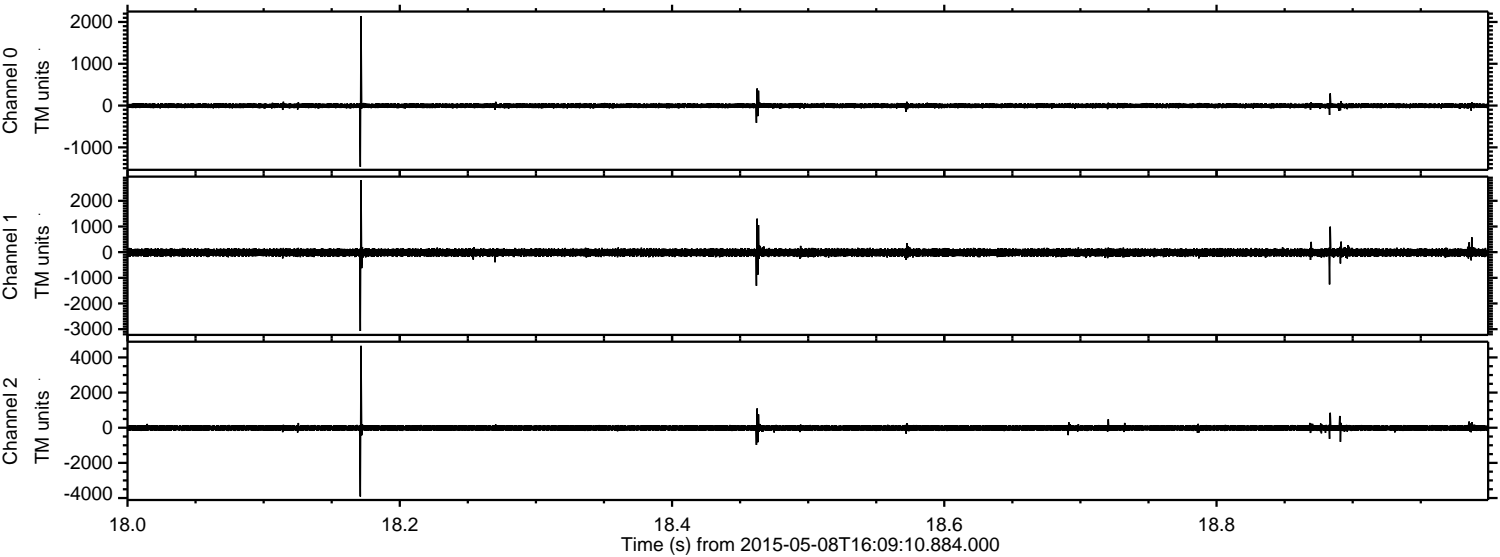


Processed Fri May 8 18:16:10 2015 by ELM ver.2012-10-06 from 001__elm20150508_160909__dat00.bin



ELMAVAN 3D WAVEFORMS (Measured data sampled at 50 kHz) 49572 packets of 144 samples from 2015-05-08T16:09:10.884.000. Part 19/143

Processed Fri May 8 18:16:10 2015 by ELM ver.2012-10-06 from 001__elm20150508_160909__dat00.bin

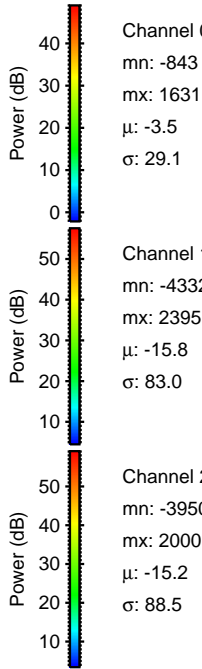
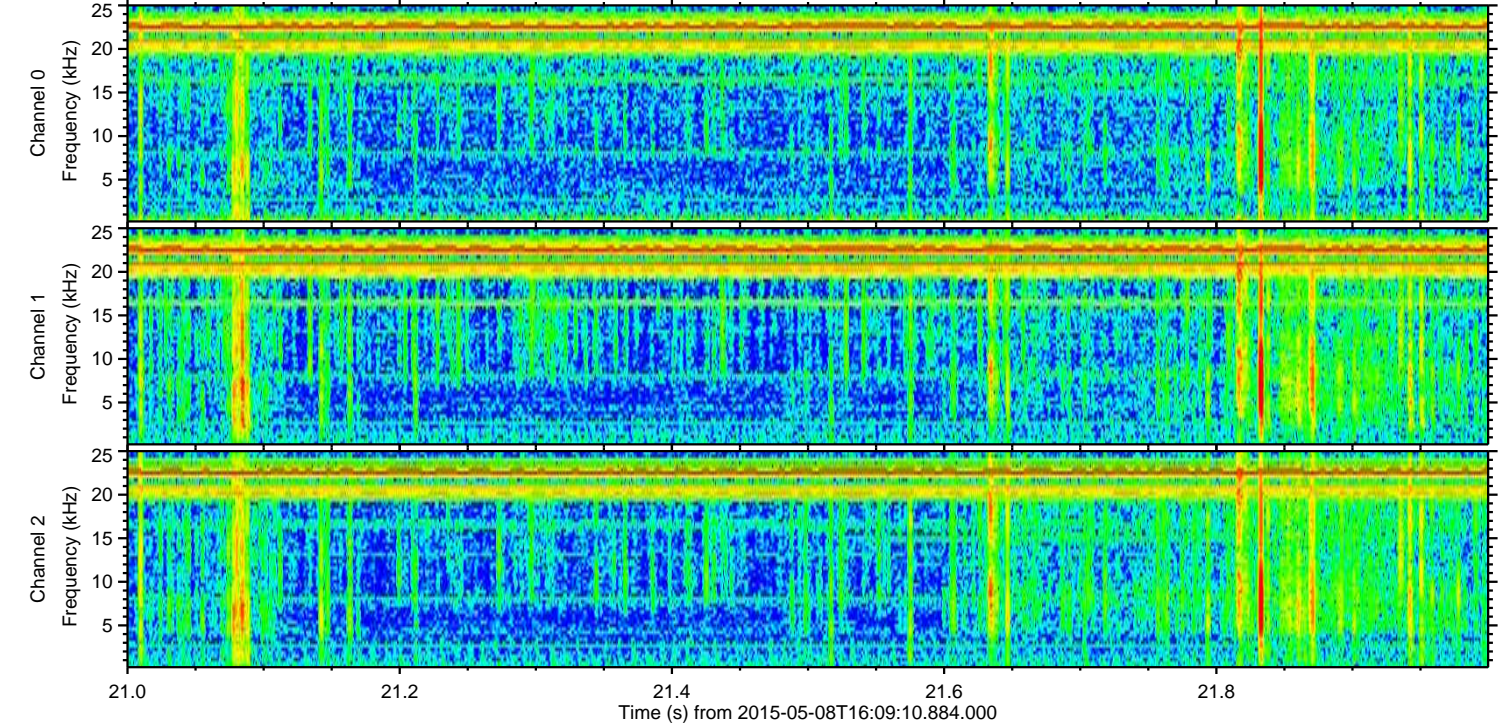
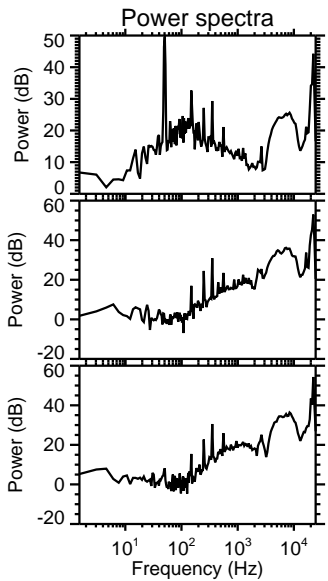
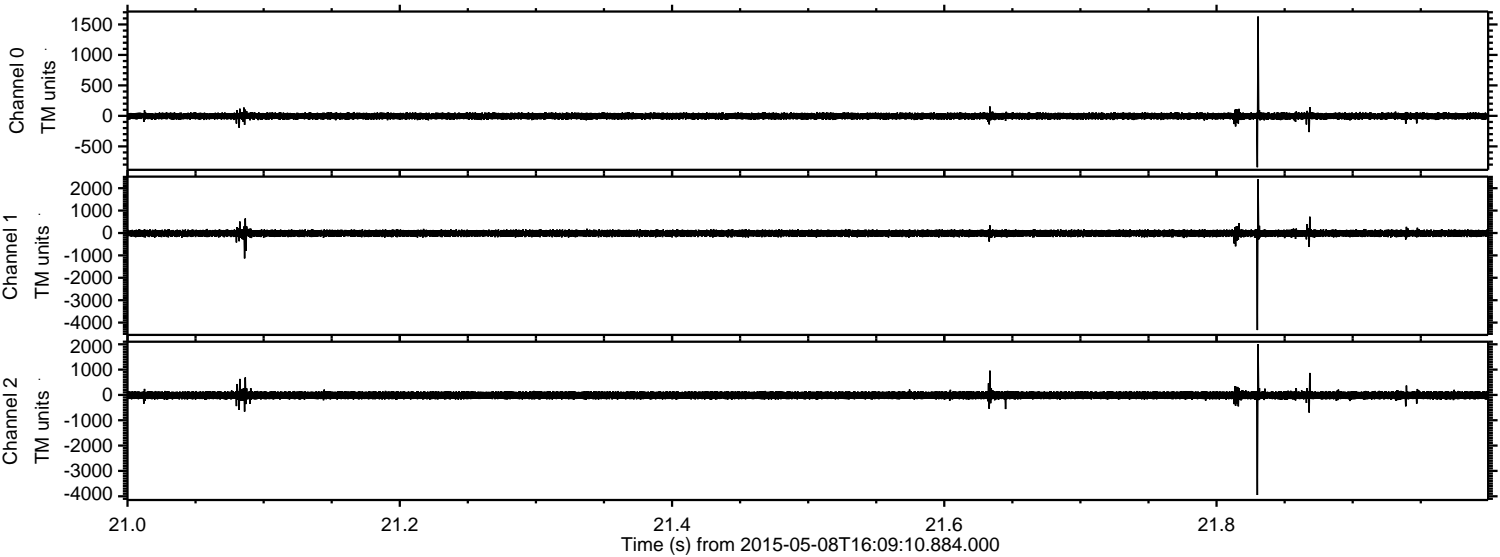


Channel 0
mn: -1464
mx: 2143
 μ : -3.5
 σ : 31.4

Channel 1
mn: -3071
mx: 2803
 μ : -15.8
 σ : 84.1

Channel 2
mn: -3917
mx: 4662
 μ : -15.2
 σ : 96.5

Processed Fri May 8 18:16:11 2015 by ELM ver.2012-10-06 from 001__elm20150508_160909__dat00.bin



Channel 0
mn: -843
mx: 1631
 μ : -3.5
 σ : 29.1

Channel 1
mn: -4332
mx: 2395
 μ : -15.8
 σ : 83.0

Channel 2
mn: -3950
mx: 2000
 μ : -15.2
 σ : 88.5

Processed Fri May 8 18:16:12 2015 by ELM ver.2012-10-06 from 001__elm20150508_160909__dat00.bin

