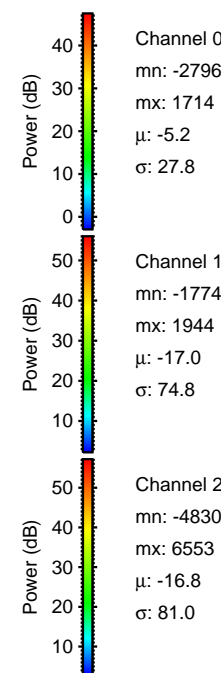
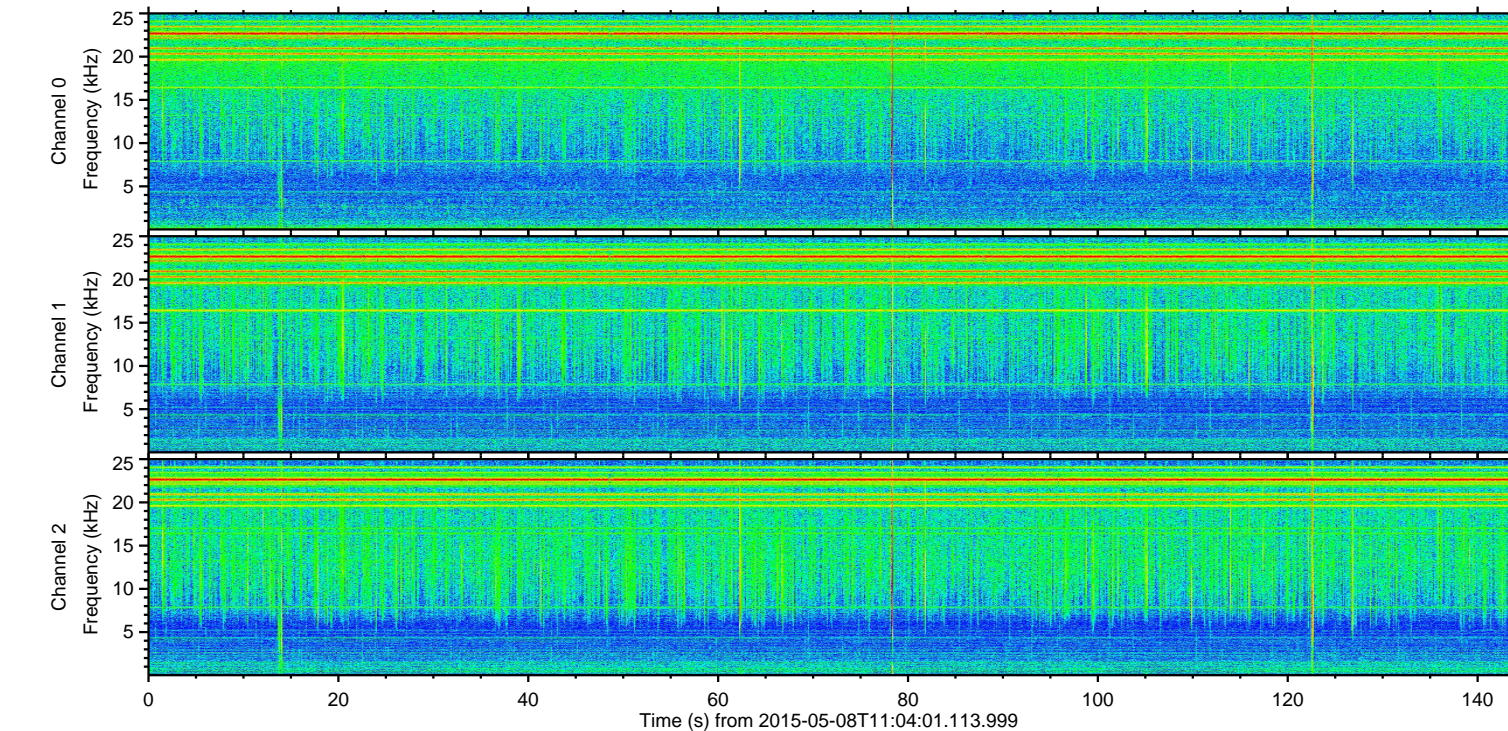
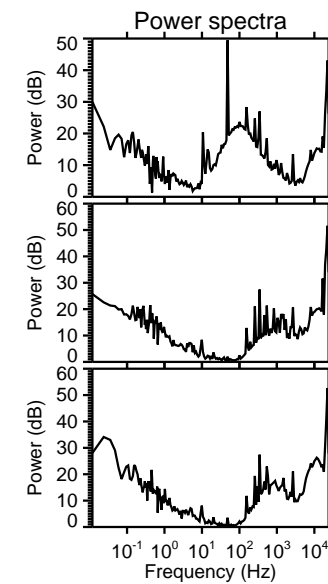
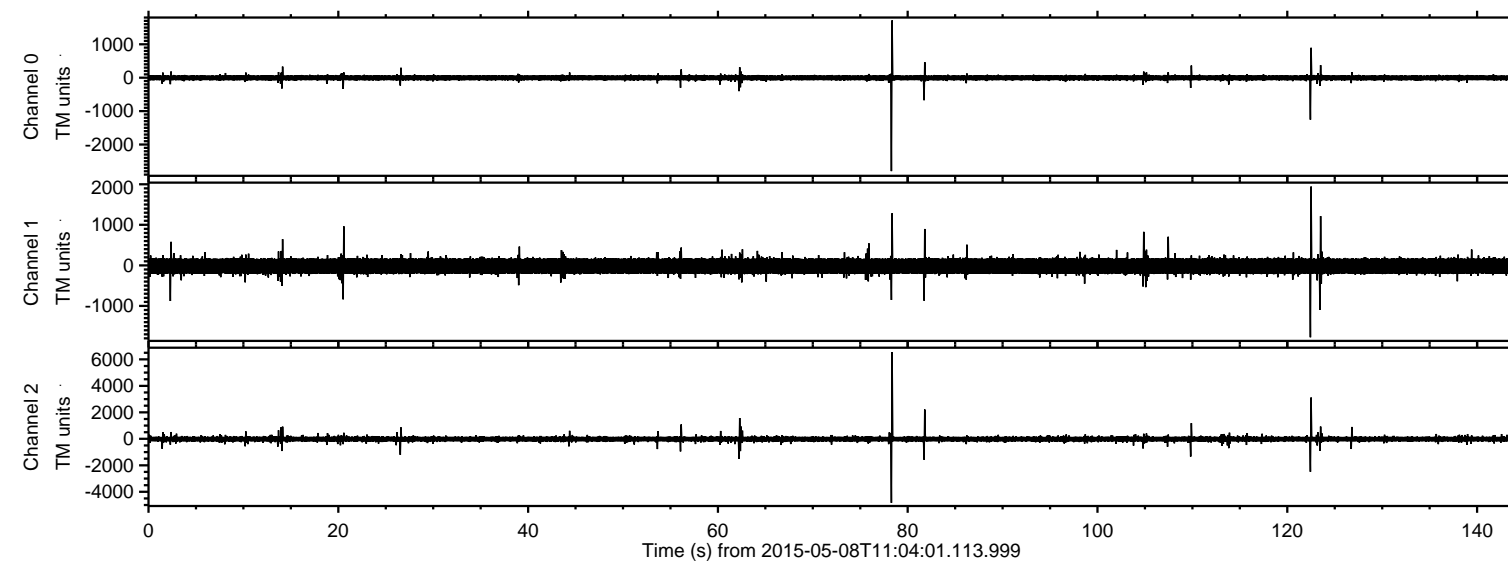
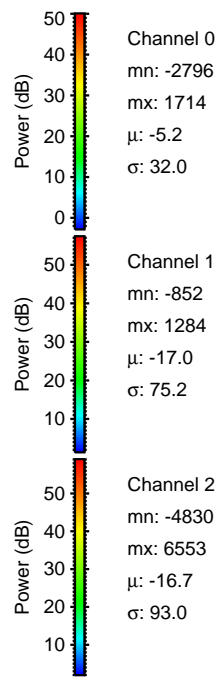
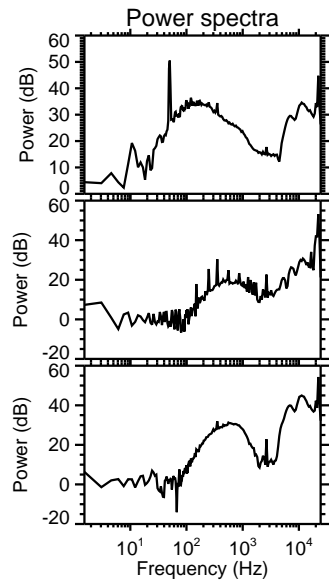
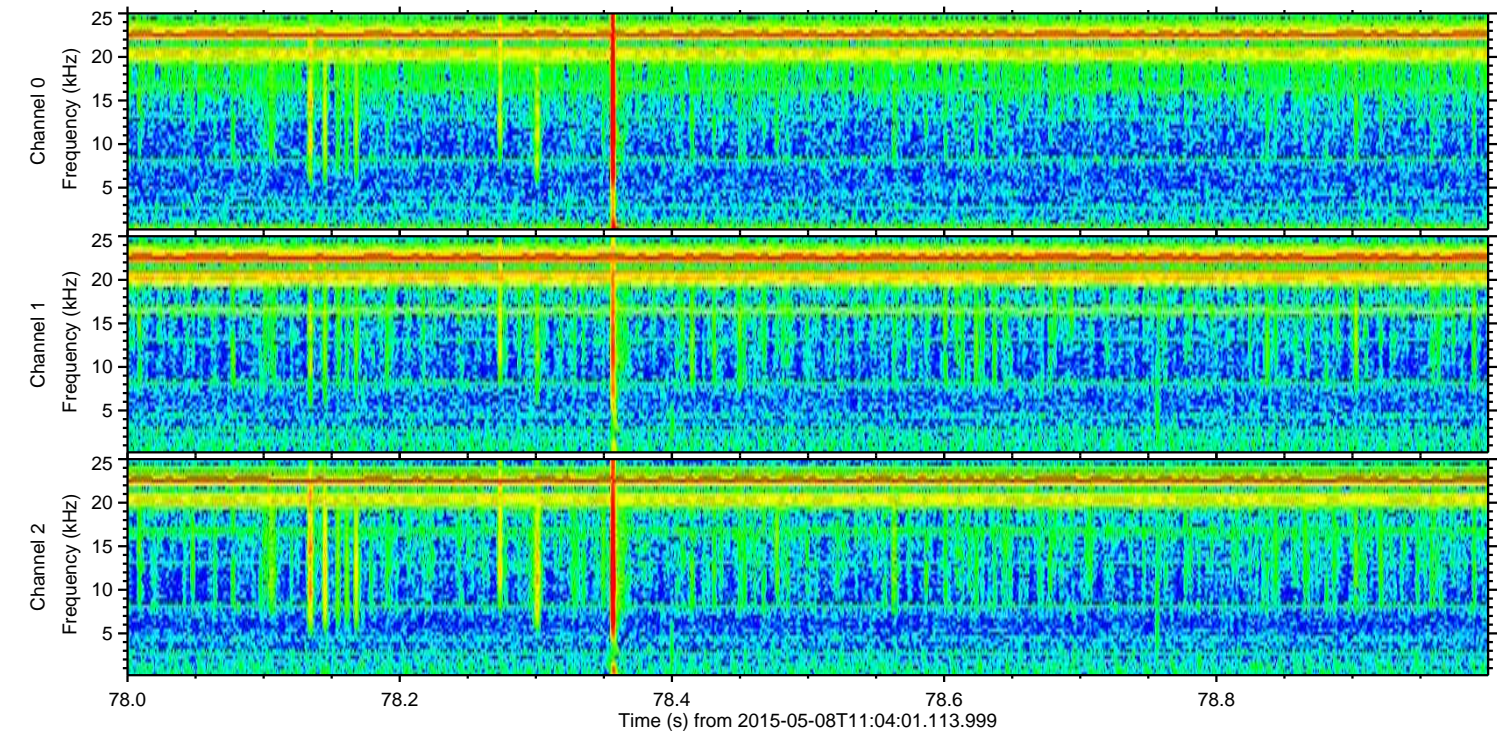
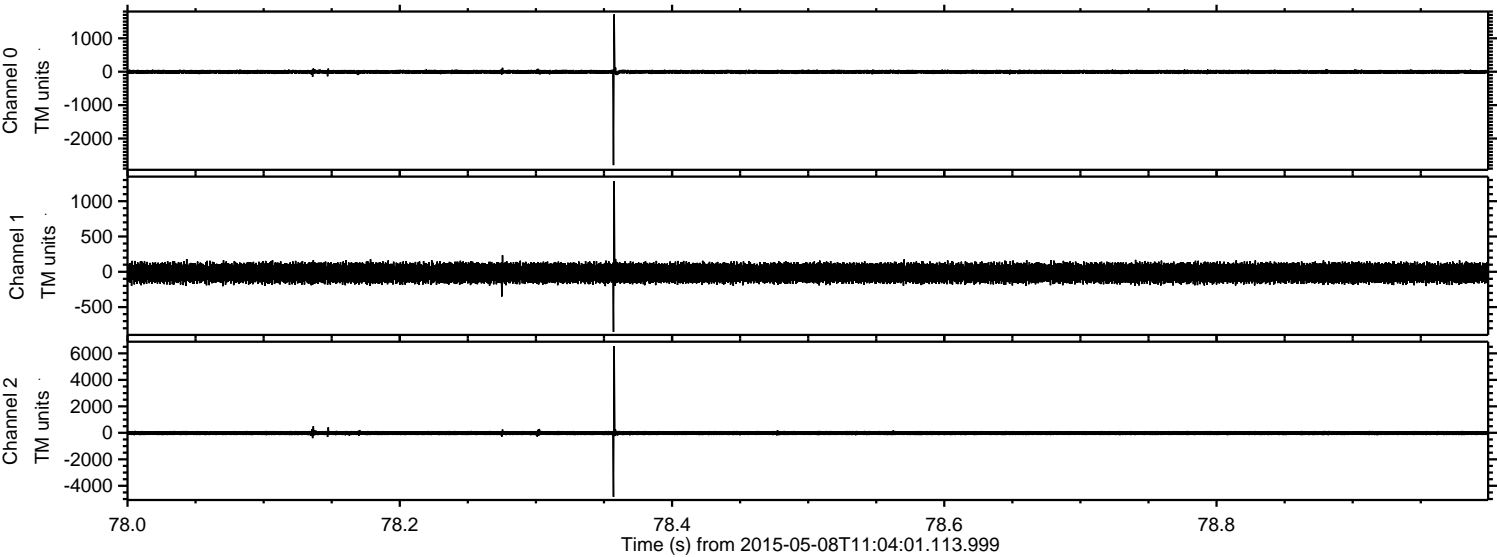


ELMAVAN 3D WAVEFORMS (Measured data sampled at 50 kHz) 49784 packets of 144 samples from 2015-05-08T11:04:01.113.999.

Processed Fri May 8 13:10:53 2015 by ELM ver.2012-10-06 from 001__elm20150508_110400__dat00.bin



Processed Fri May 8 13:11:04 2015 by ELM ver.2012-10-06 from 001__elm20150508_110400__dat00.bin



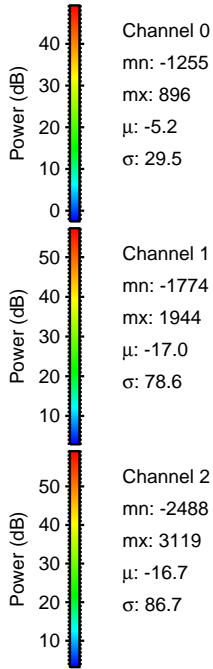
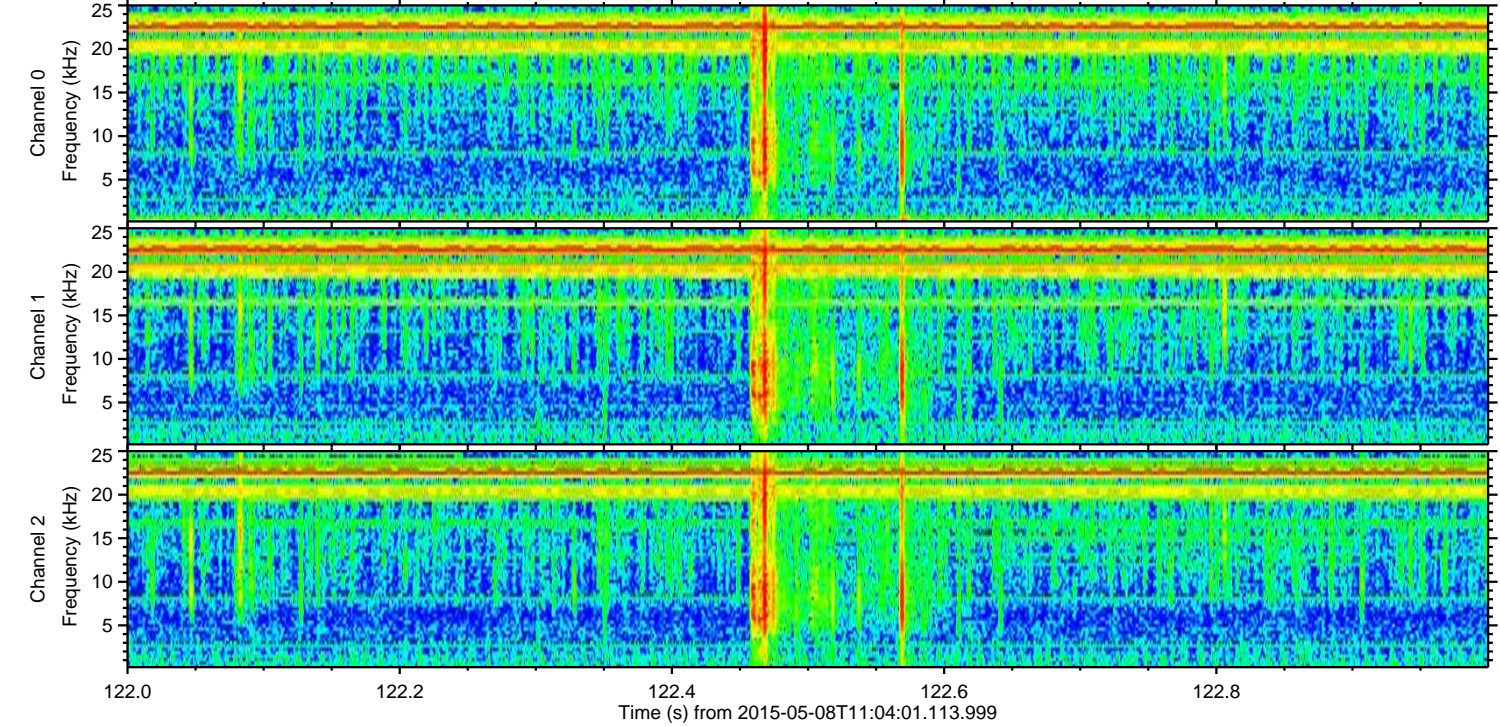
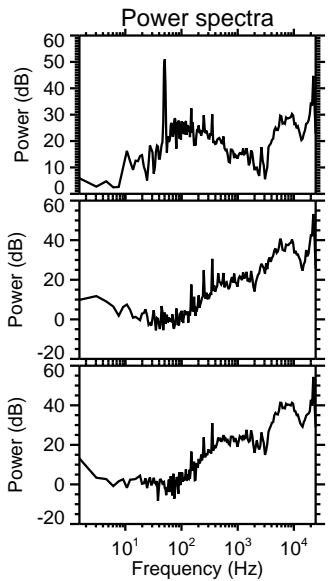
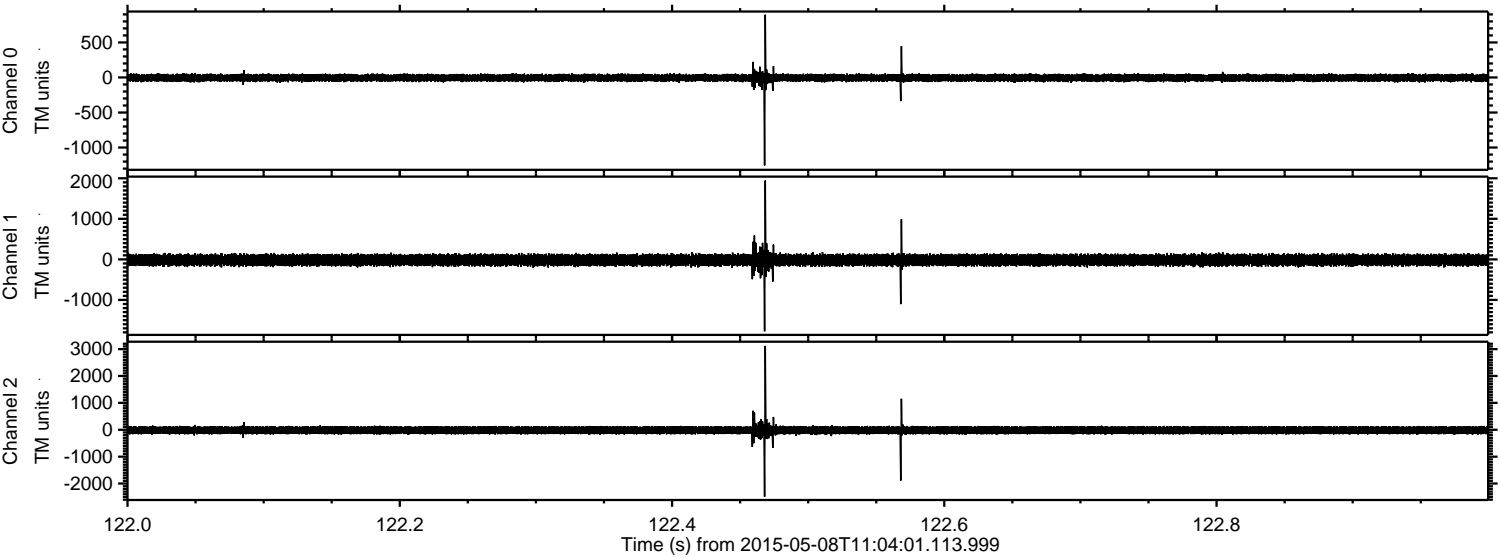
Channel 0
mn: -2796
mx: 1714
 μ : -5.2
 σ : 32.0

Channel 1
mn: -852
mx: 1284
 μ : -17.0
 σ : 75.2

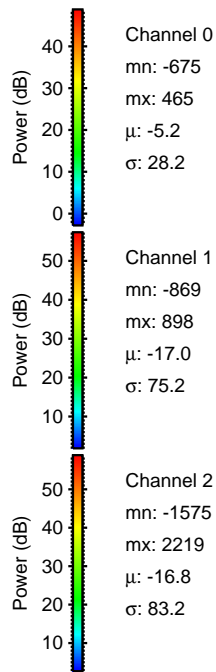
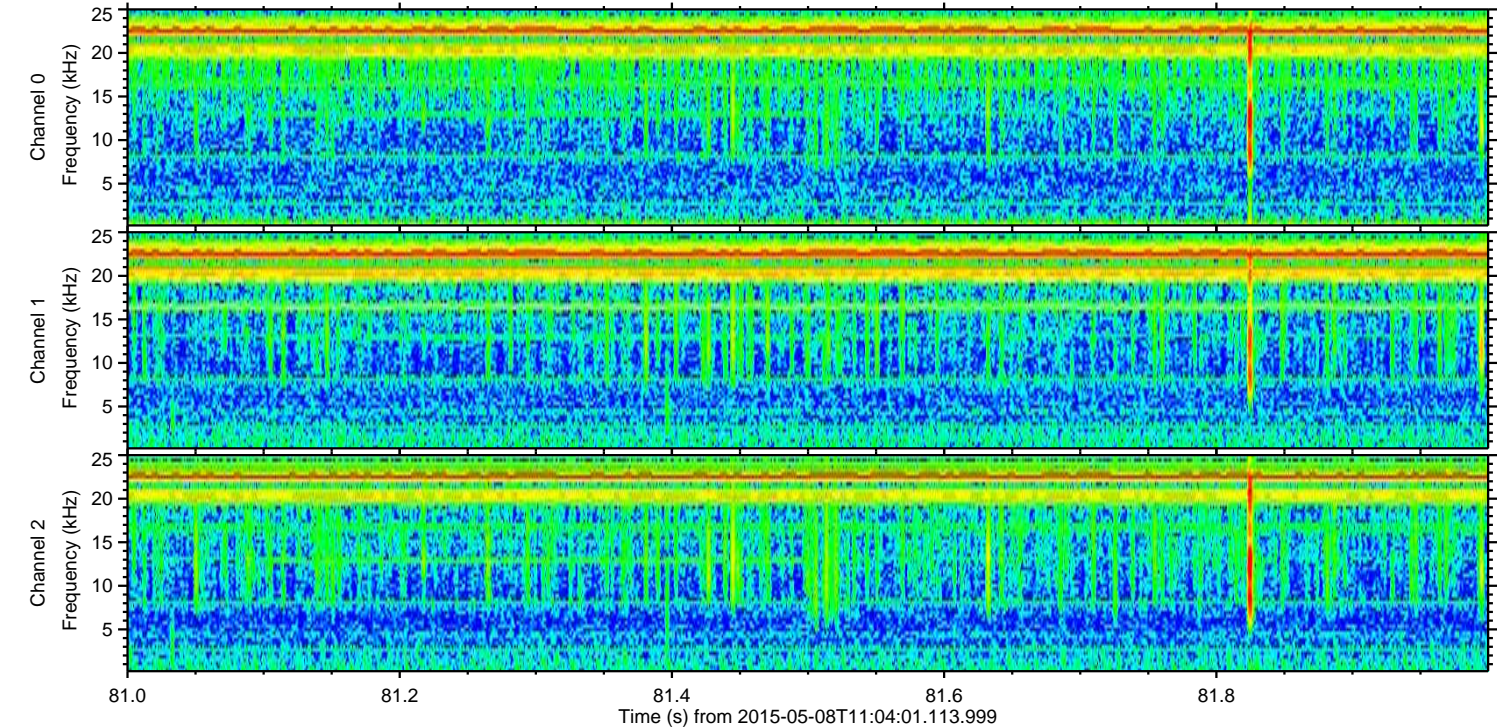
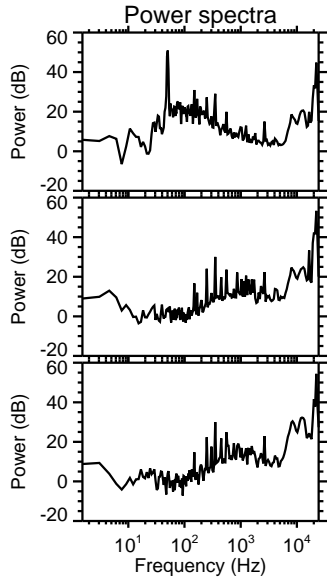
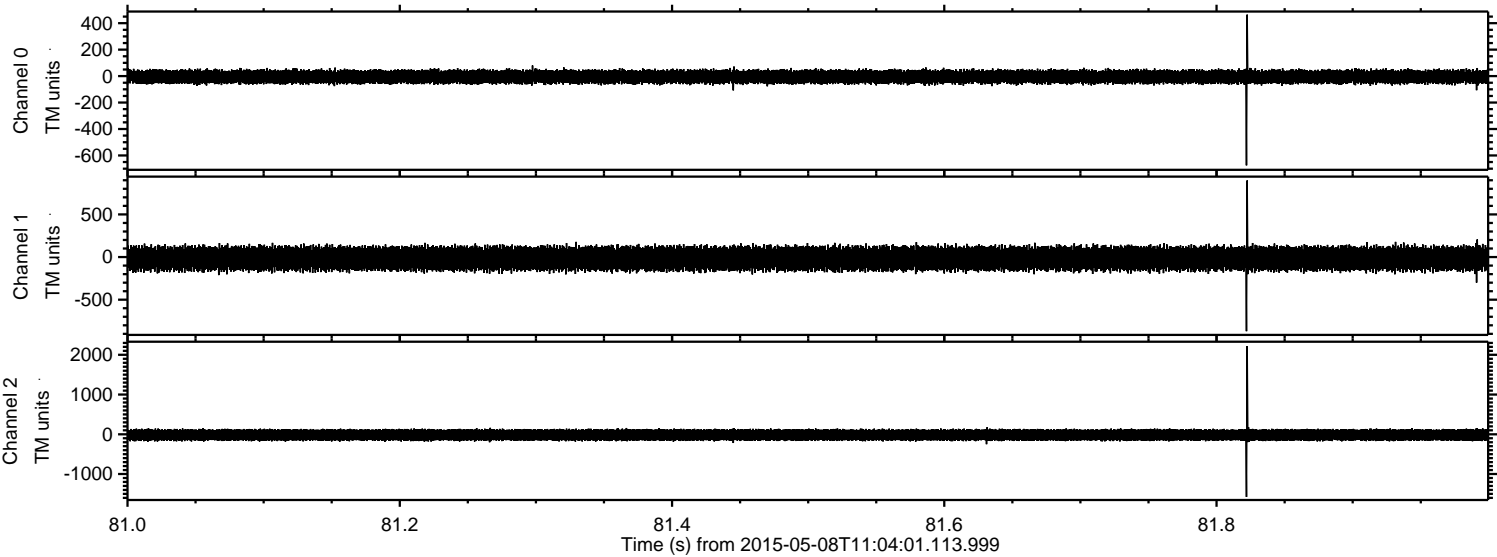
Channel 2
mn: -4830
mx: 6553
 μ : -16.7
 σ : 93.0

ELMAVAN 3D WAVEFORMS (Measured data sampled at 50 kHz) 49784 packets of 144 samples from 2015-05-08T11:04:01.113.999. Part 123/144

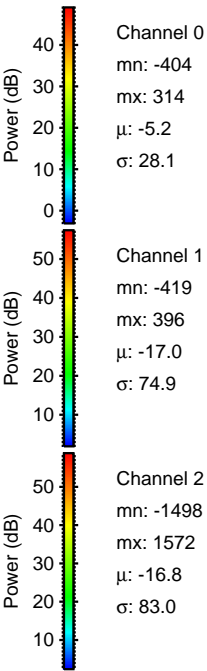
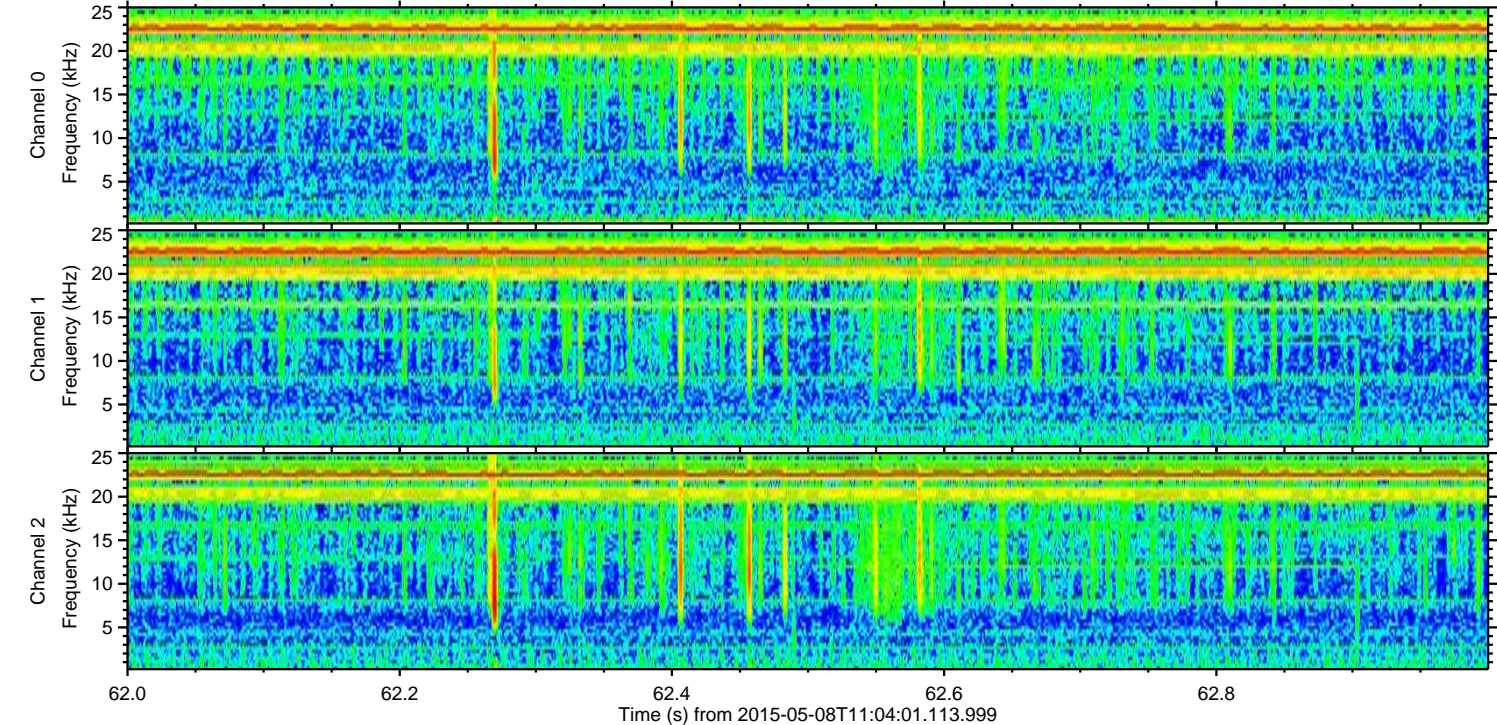
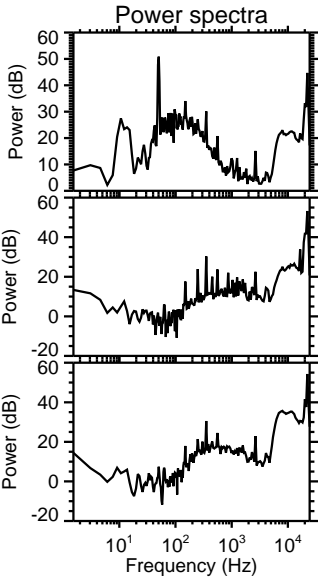
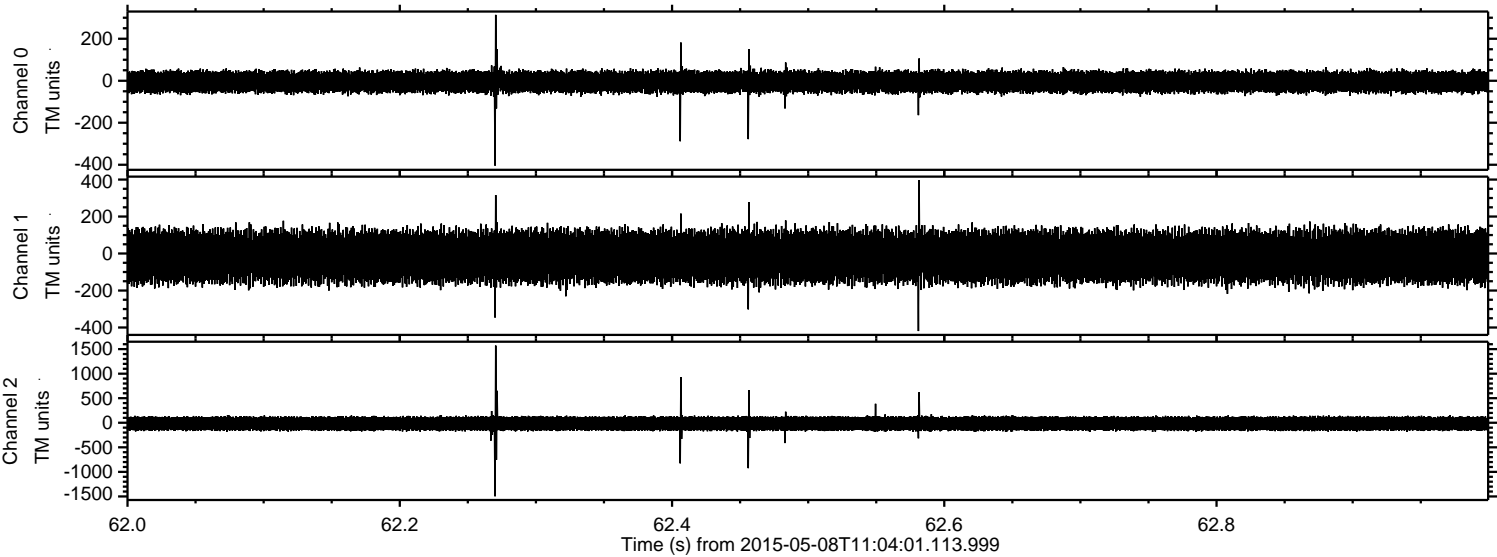
Processed Fri May 8 13:11:05 2015 by ELM ver.2012-10-06 from 001__elm20150508_110400__dat00.bin



Processed Fri May 8 13:11:06 2015 by ELM ver.2012-10-06 from 001__elm20150508_110400__dat00.bin

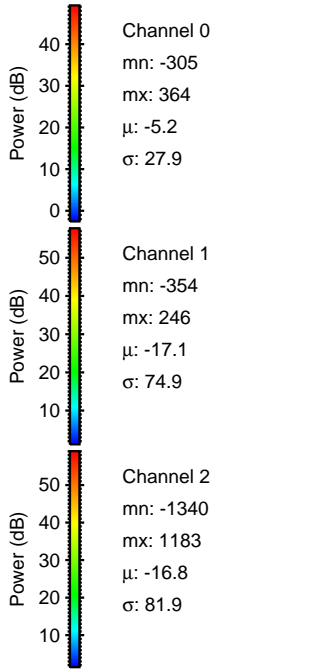
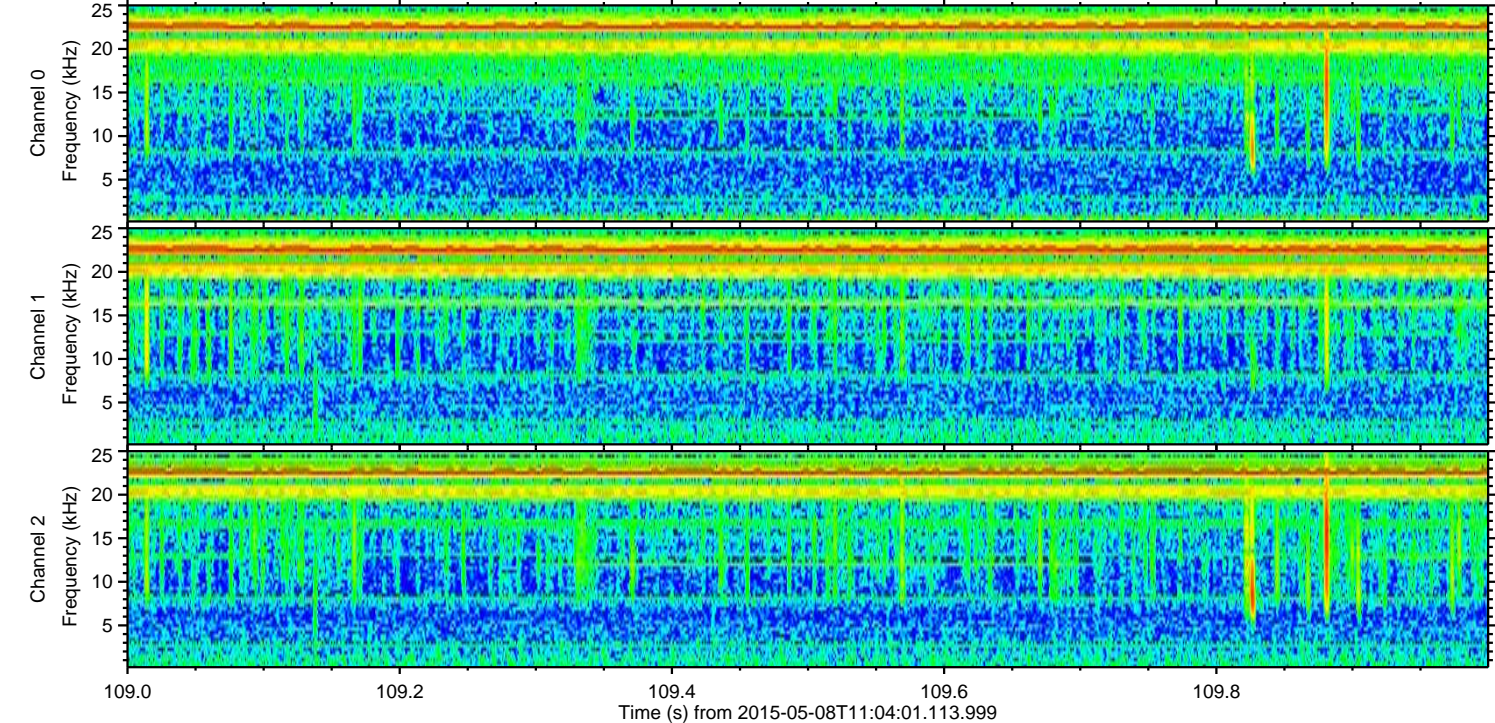
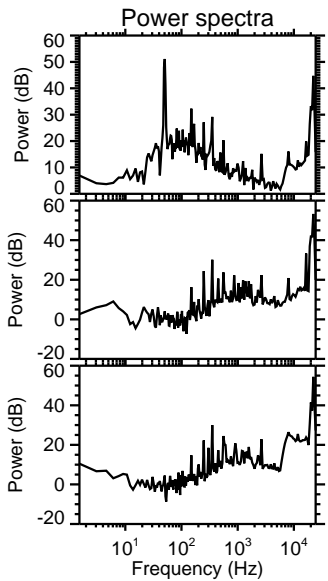
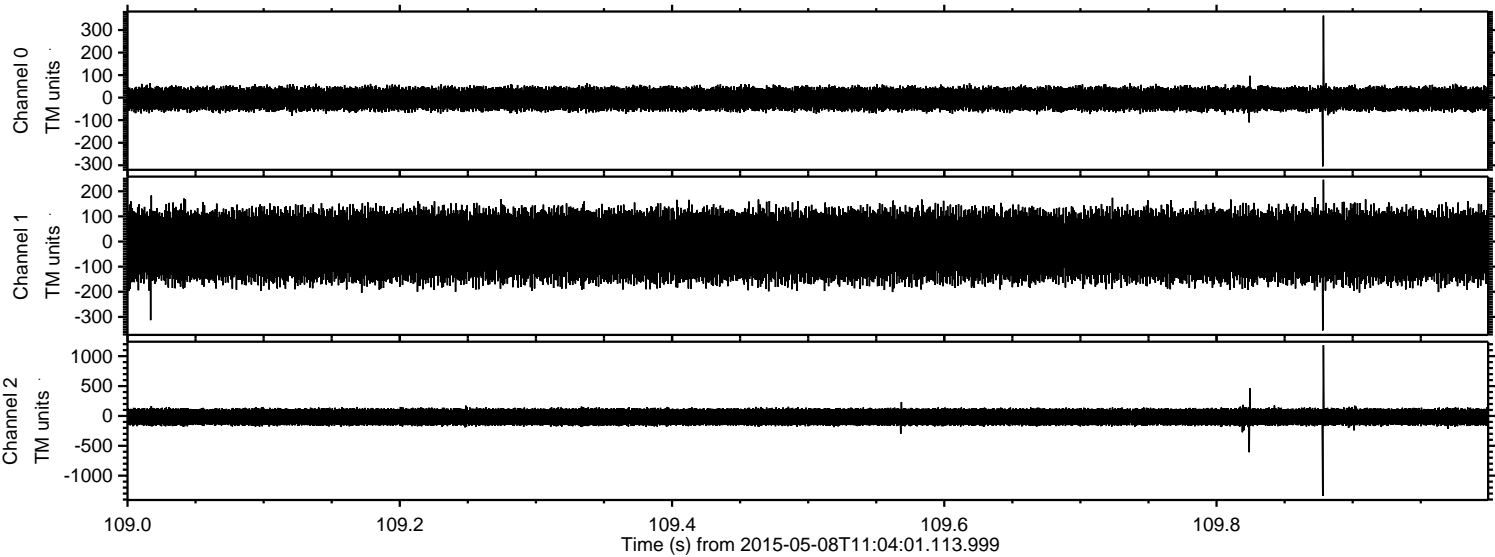


Processed Fri May 8 13:11:07 2015 by ELM ver.2012-10-06 from 001__elm20150508_110400__dat00.bin



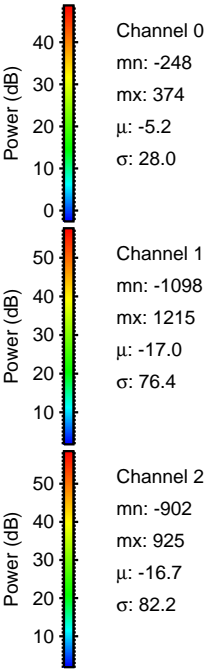
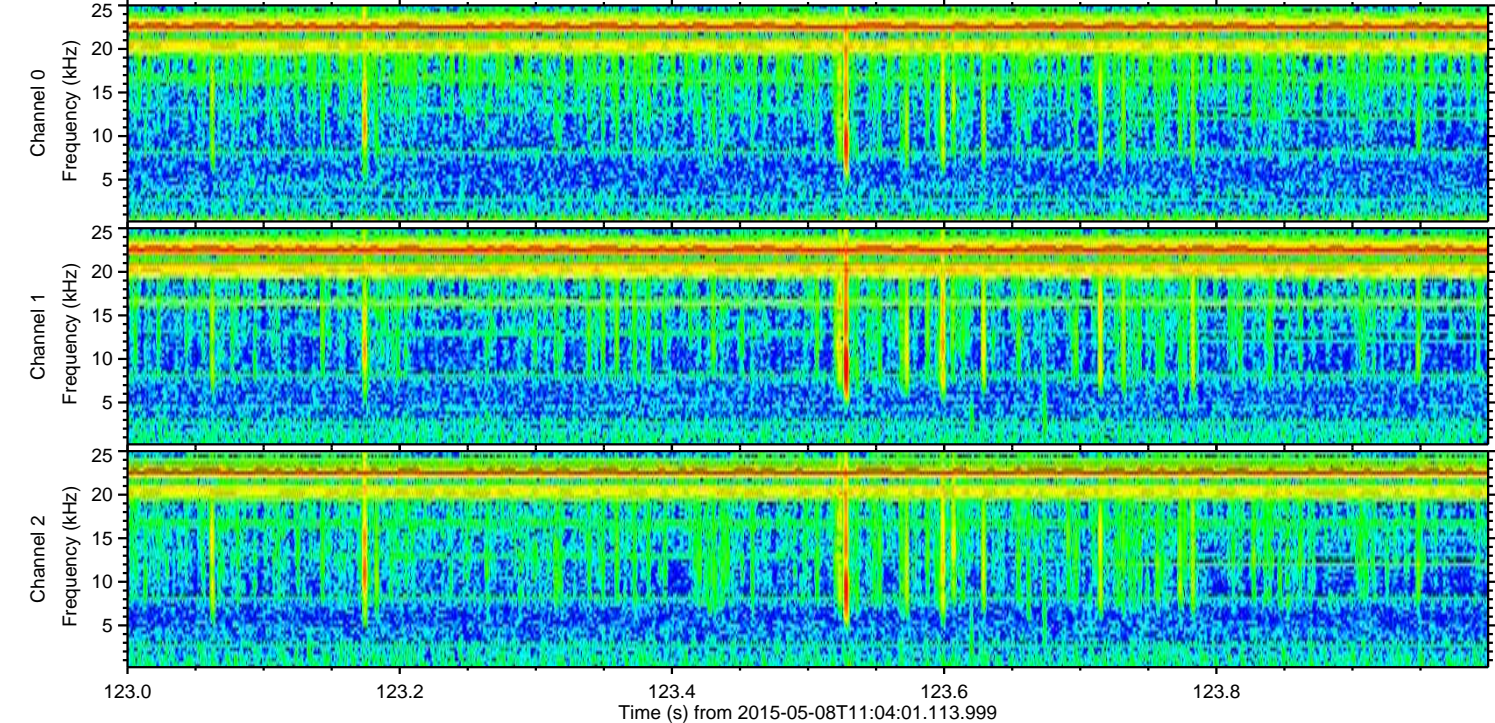
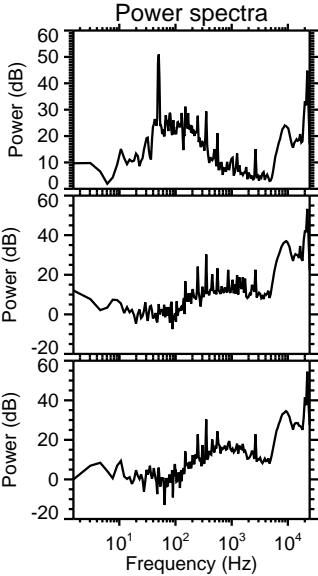
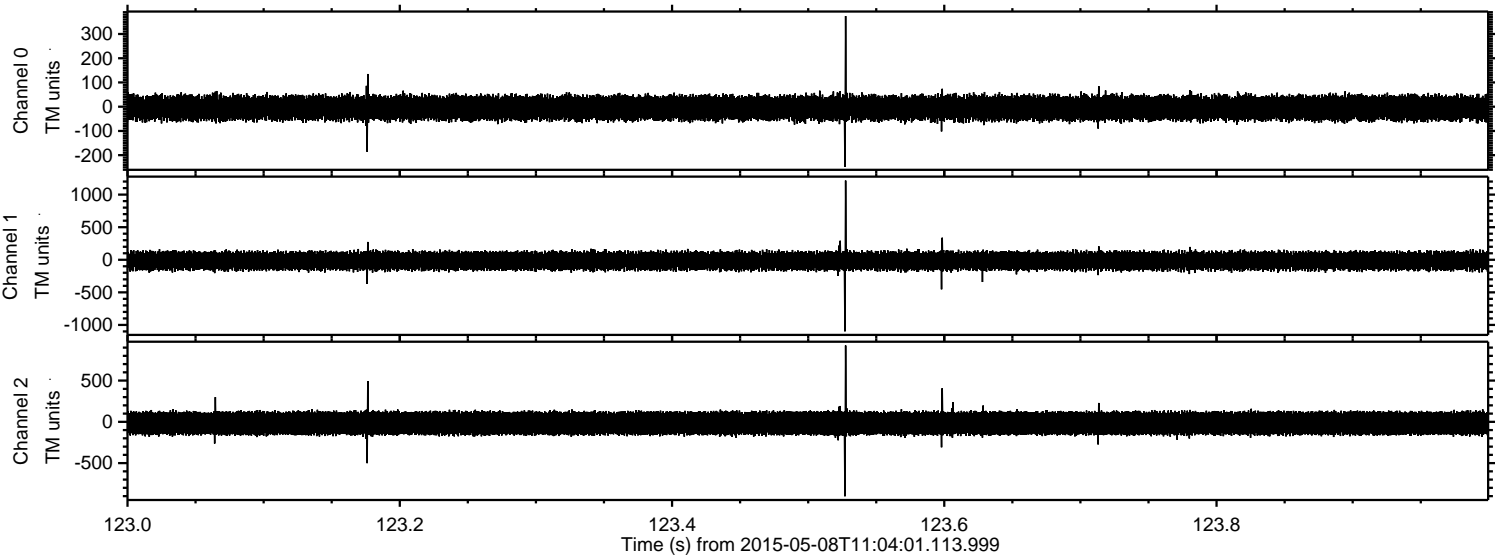
ELMAVAN 3D WAVEFORMS (Measured data sampled at 50 kHz) 49784 packets of 144 samples from 2015-05-08T11:04:01.113.999. Part 110/144

Processed Fri May 8 13:11:08 2015 by ELM ver.2012-10-06 from 001__elm20150508_110400__dat00.bin

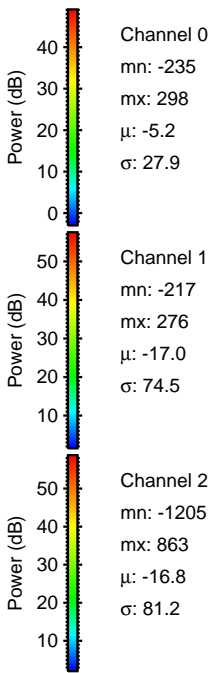
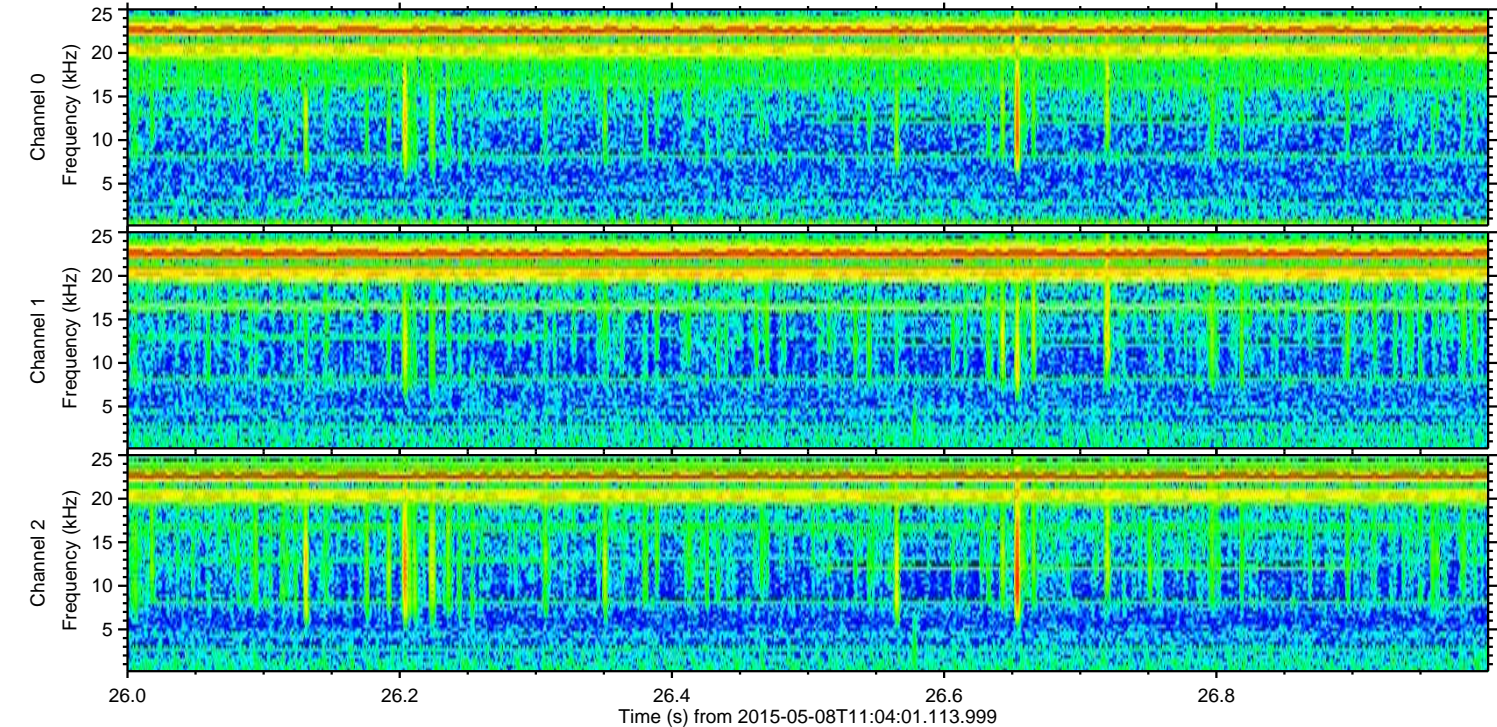
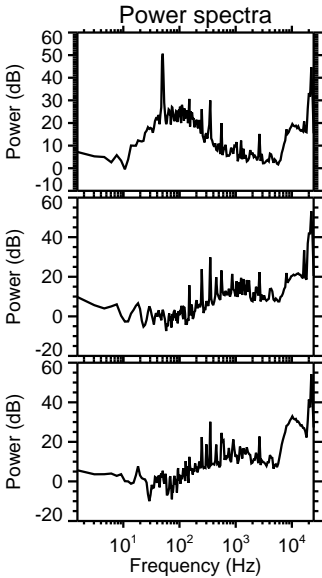
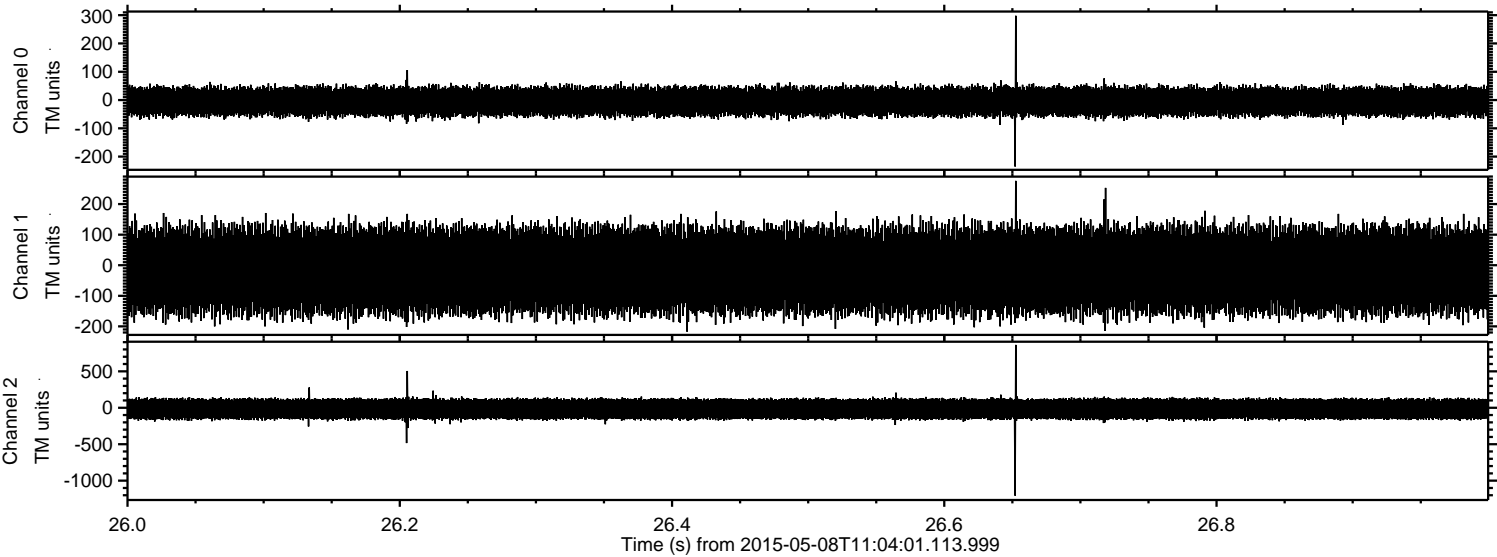


ELMAVAN 3D WAVEFORMS (Measured data sampled at 50 kHz) 49784 packets of 144 samples from 2015-05-08T11:04:01.113.999. Part 124/144

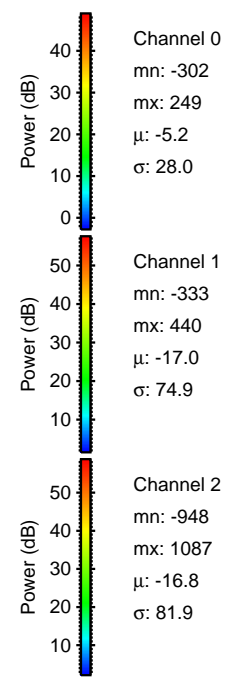
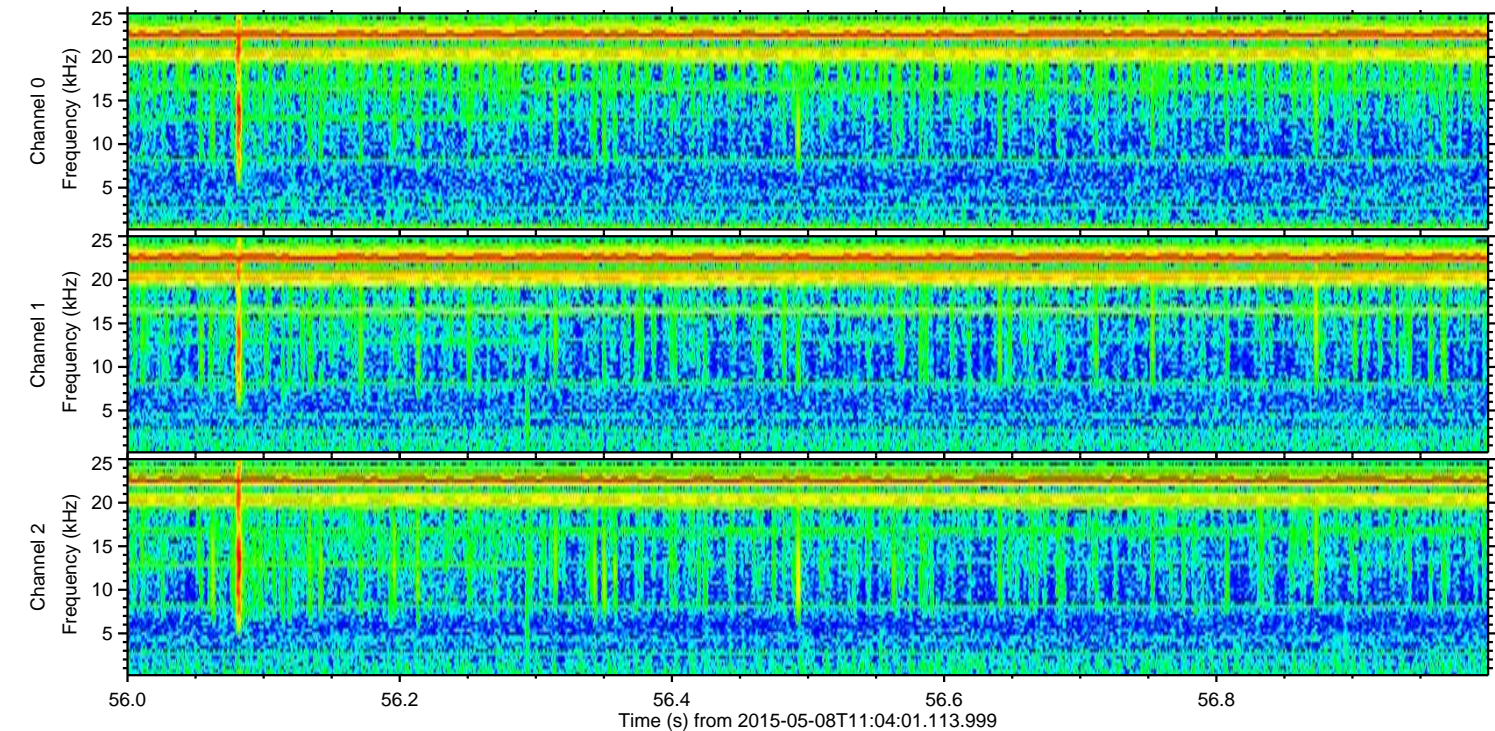
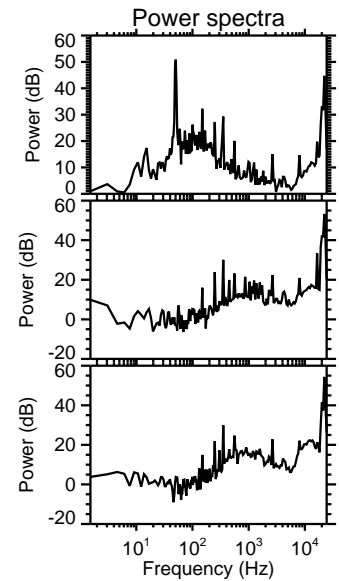
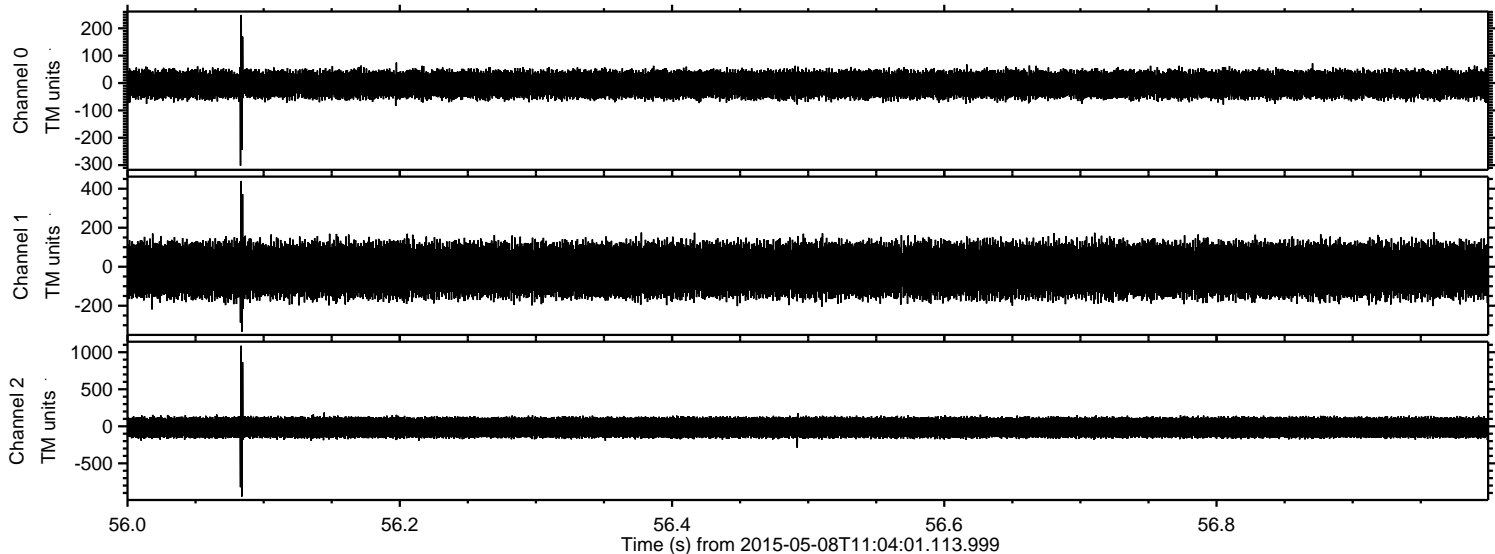
Processed Fri May 8 13:11:09 2015 by ELM ver.2012-10-06 from 001__elm20150508_110400__dat00.bin



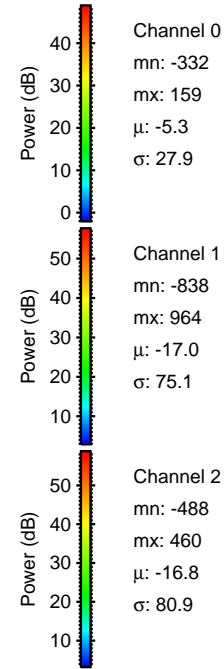
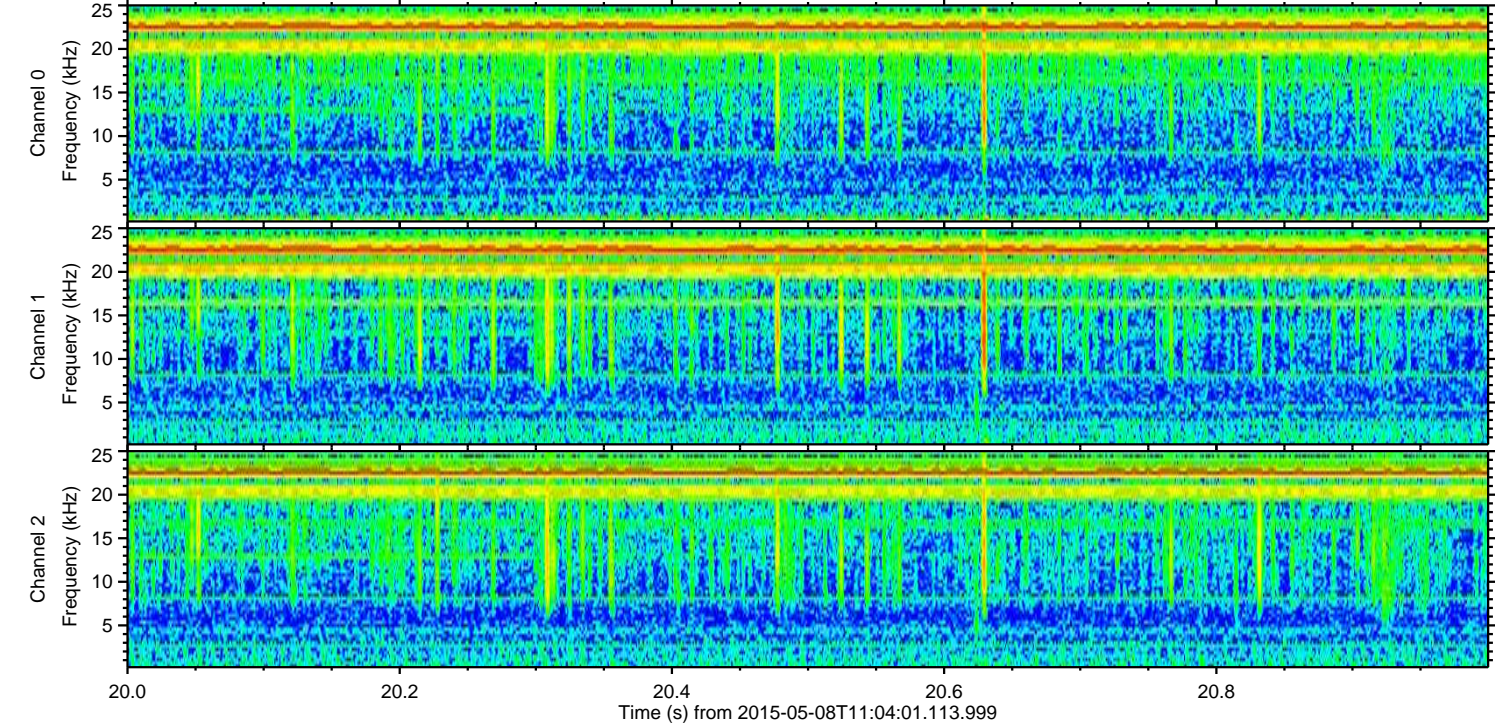
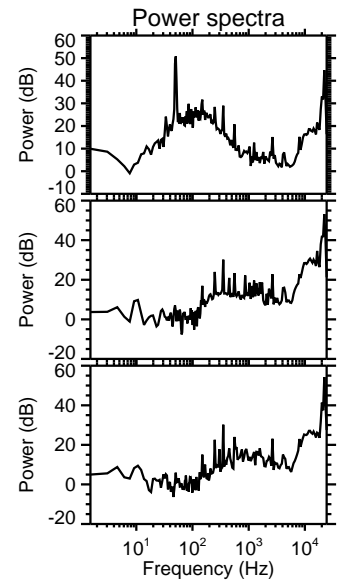
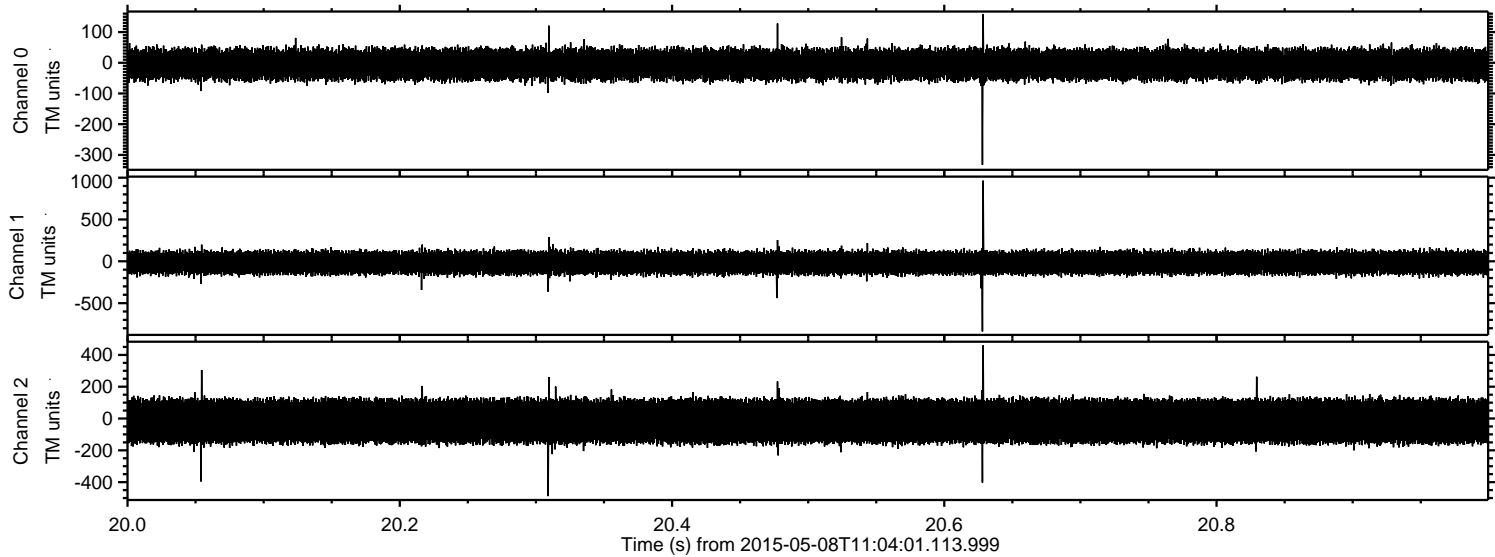
Processed Fri May 8 13:11:10 2015 by ELM ver.2012-10-06 from 001__elm20150508_110400__dat00.bin



Processed Fri May 8 13:11:11 2015 by ELM ver.2012-10-06 from 001__elm20150508_110400__dat00.bin



Processed Fri May 8 13:11:12 2015 by ELM ver.2012-10-06 from 001__elm20150508_110400__dat00.bin



Channel 0
mn: -332
mx: 159
 μ : -5.3
 σ : 27.9

Channel 1
mn: -838
mx: 964
 μ : -17.0
 σ : 75.1

Channel 2
mn: -488
mx: 460
 μ : -16.8
 σ : 80.9

