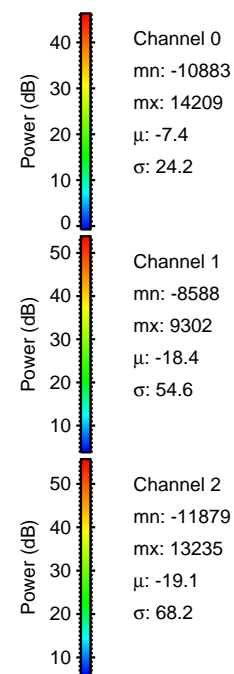
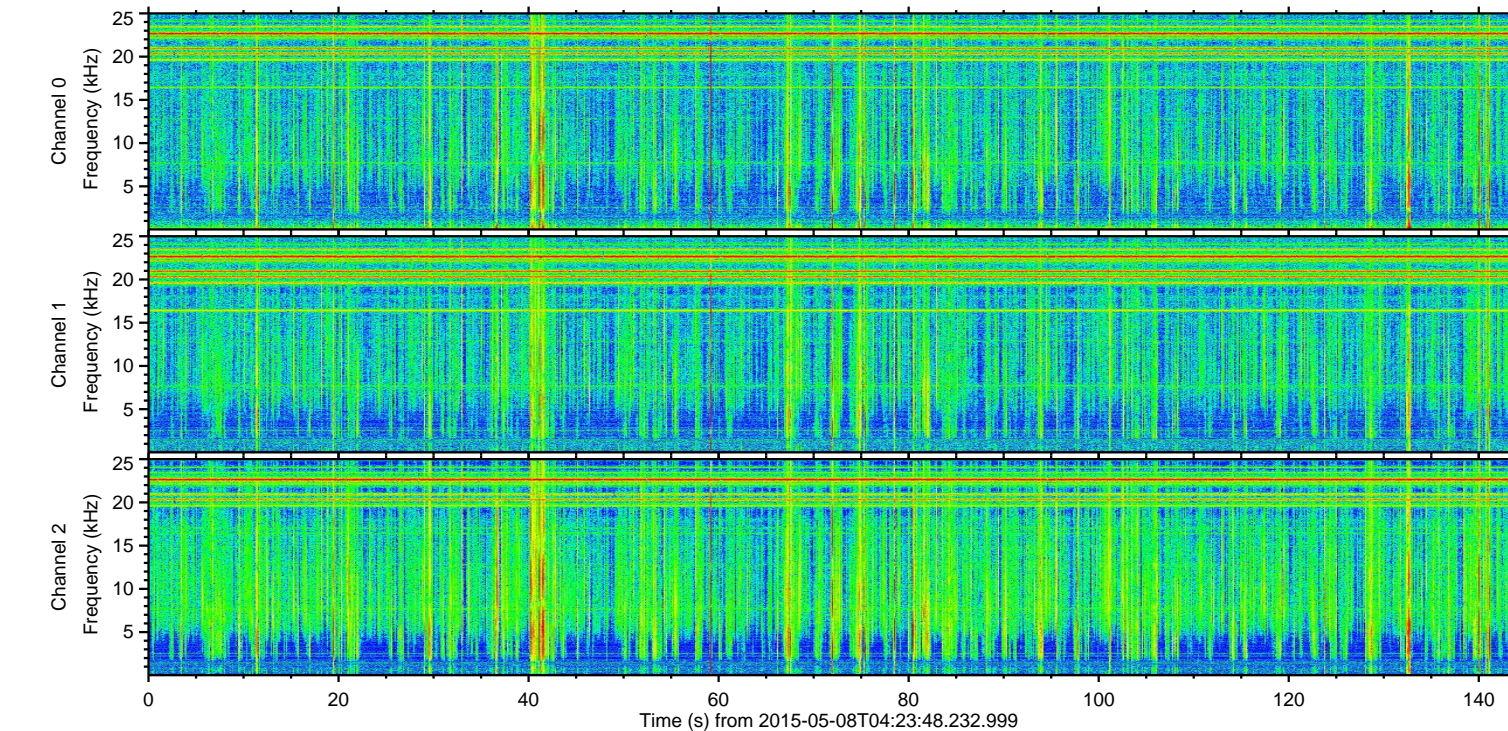
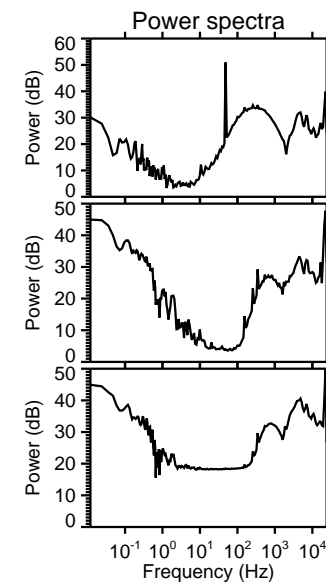
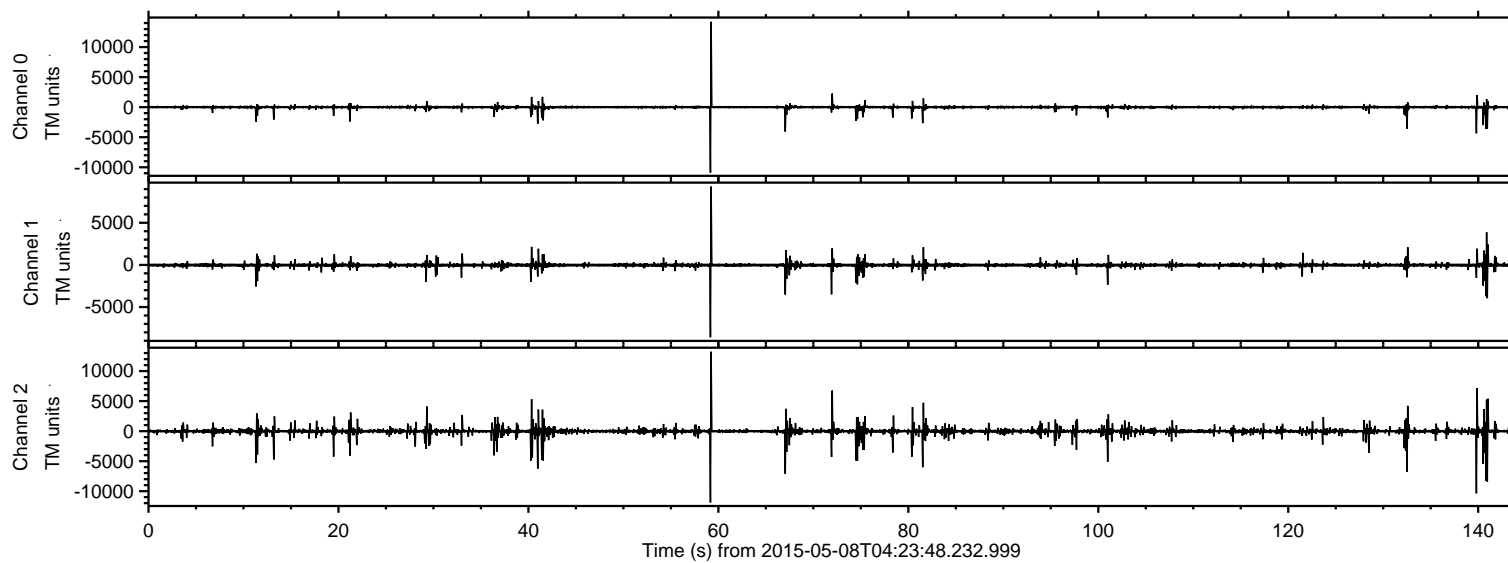
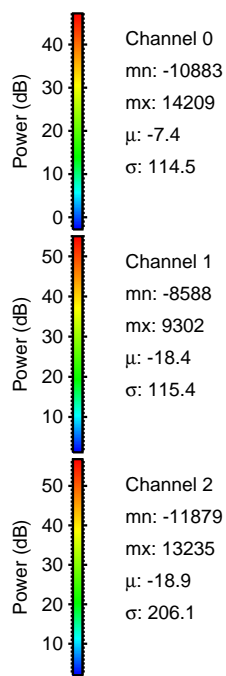
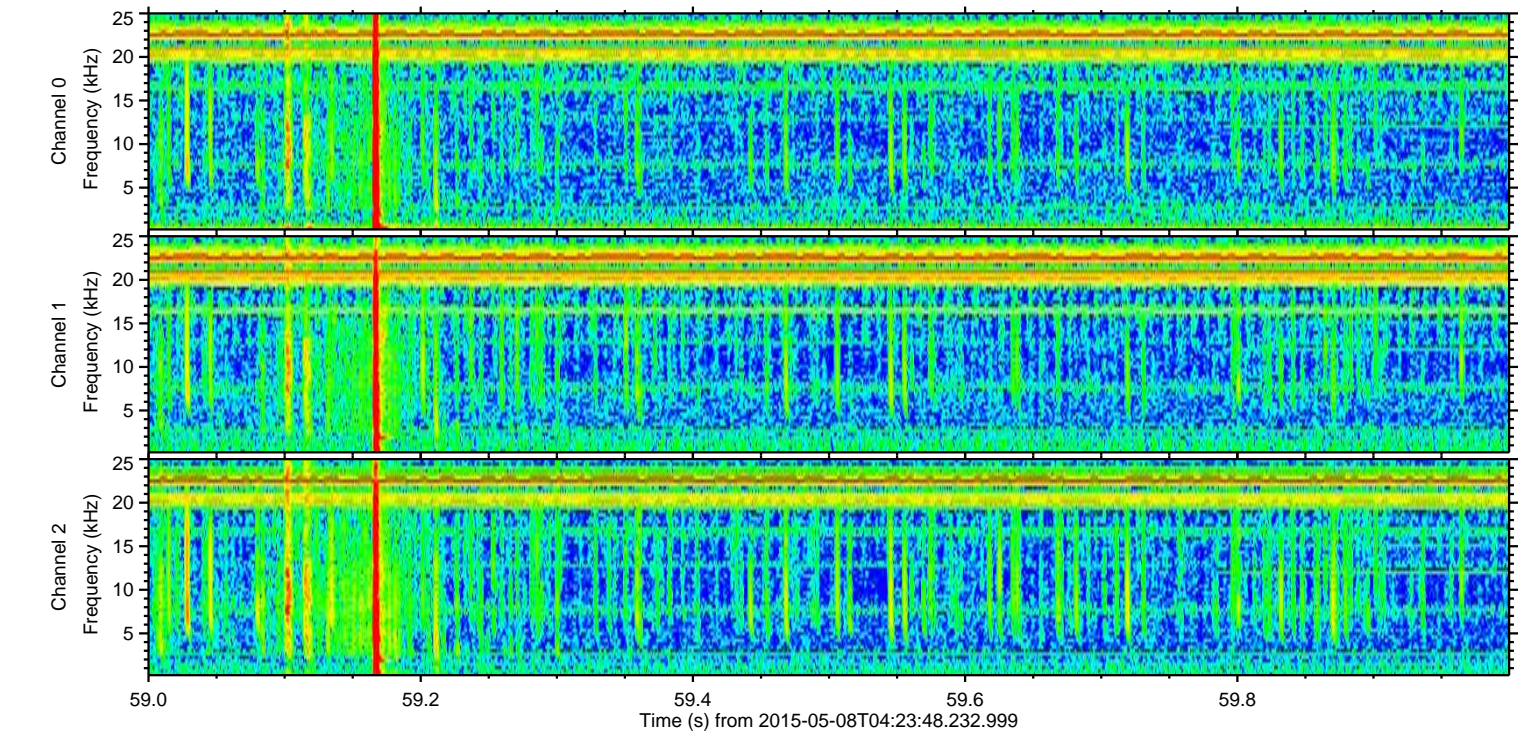
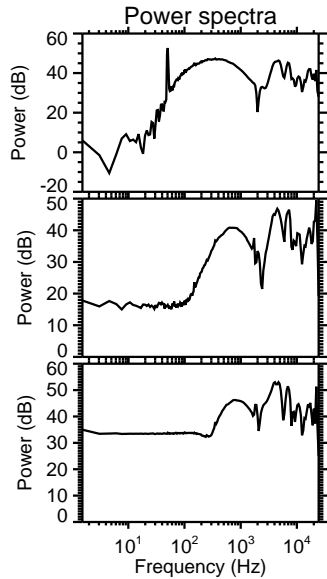
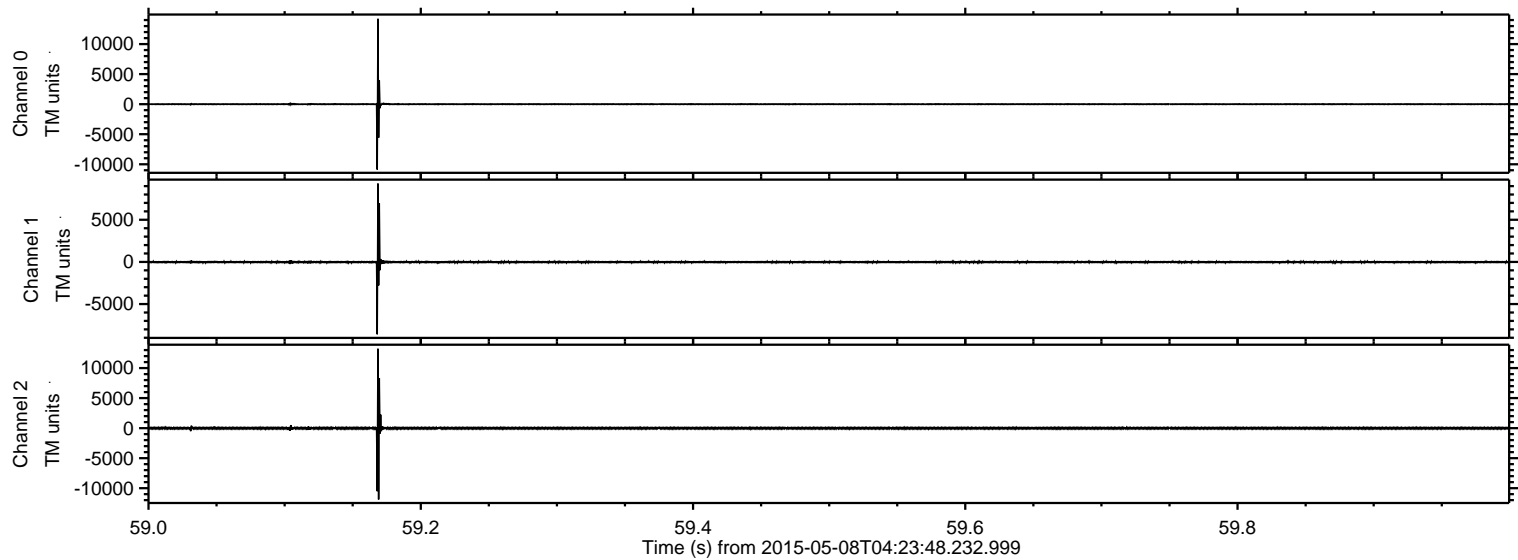


ELMAVAN 3D WAVEFORMS (Measured data sampled at 50 kHz) 49743 packets of 144 samples from 2015-05-08T04:23:48.232.999.

Processed Fri May 8 06:30:49 2015 by ELM ver.2012-10-06 from 001__elm20150508_042347__dat00.bin

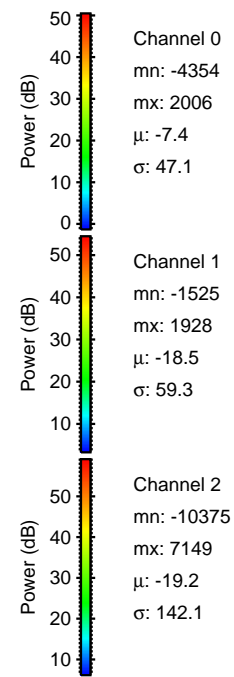
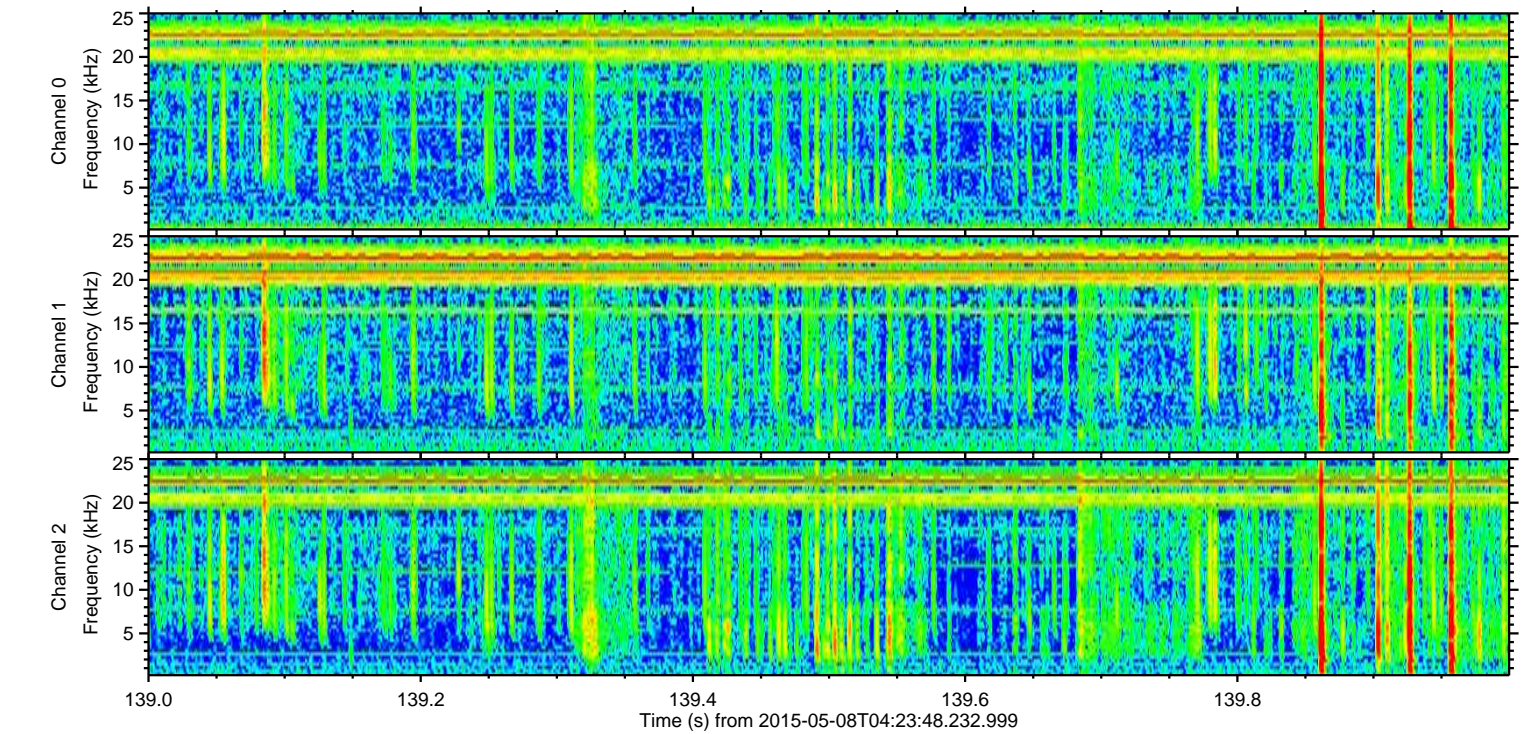
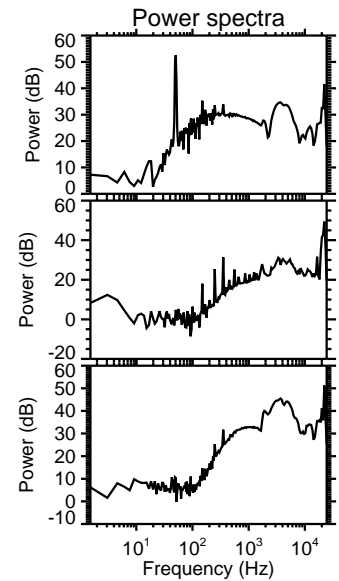
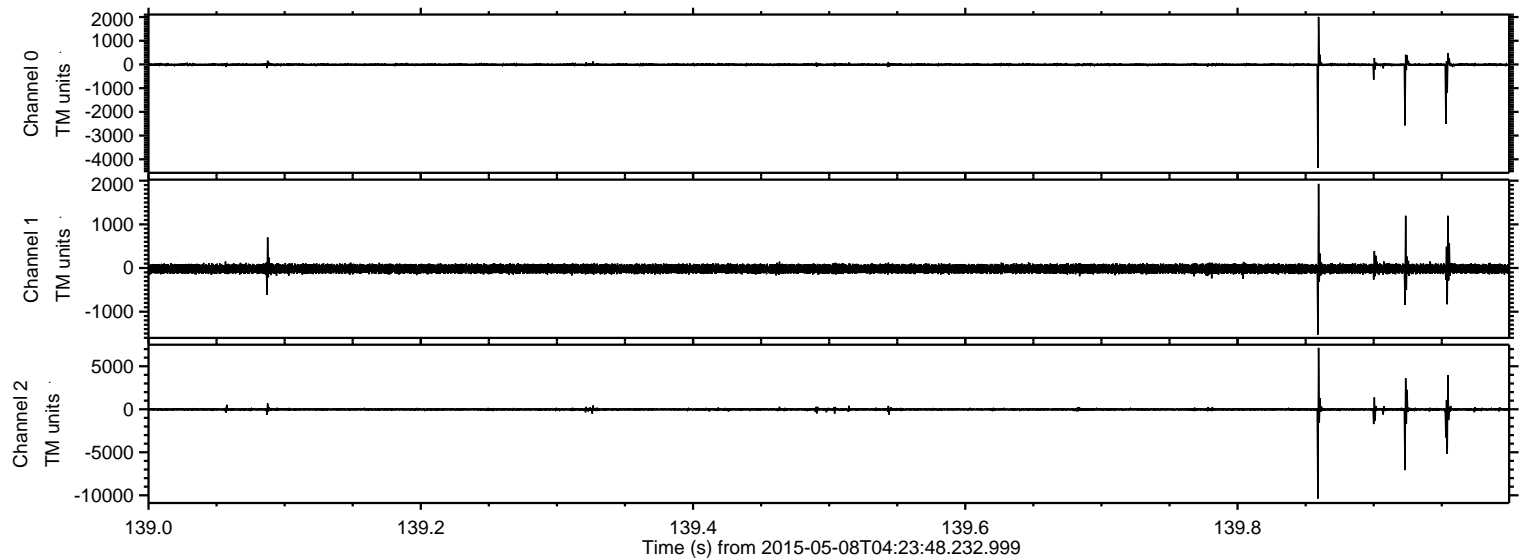


Processed Fri May 8 06:31:00 2015 by ELM ver.2012-10-06 from 001__elm20150508_042347__dat00.bin



ELMAVAN 3D WAVEFORMS (Measured data sampled at 50 kHz) 49743 packets of 144 samples from 2015-05-08T04:23:48.232.999. Part 140/144

Processed Fri May 8 06:31:01 2015 by ELM ver.2012-10-06 from 001__elm20150508_042347__dat00.bin



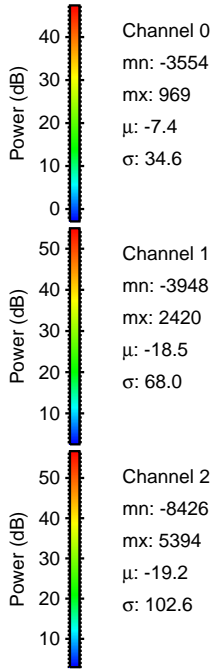
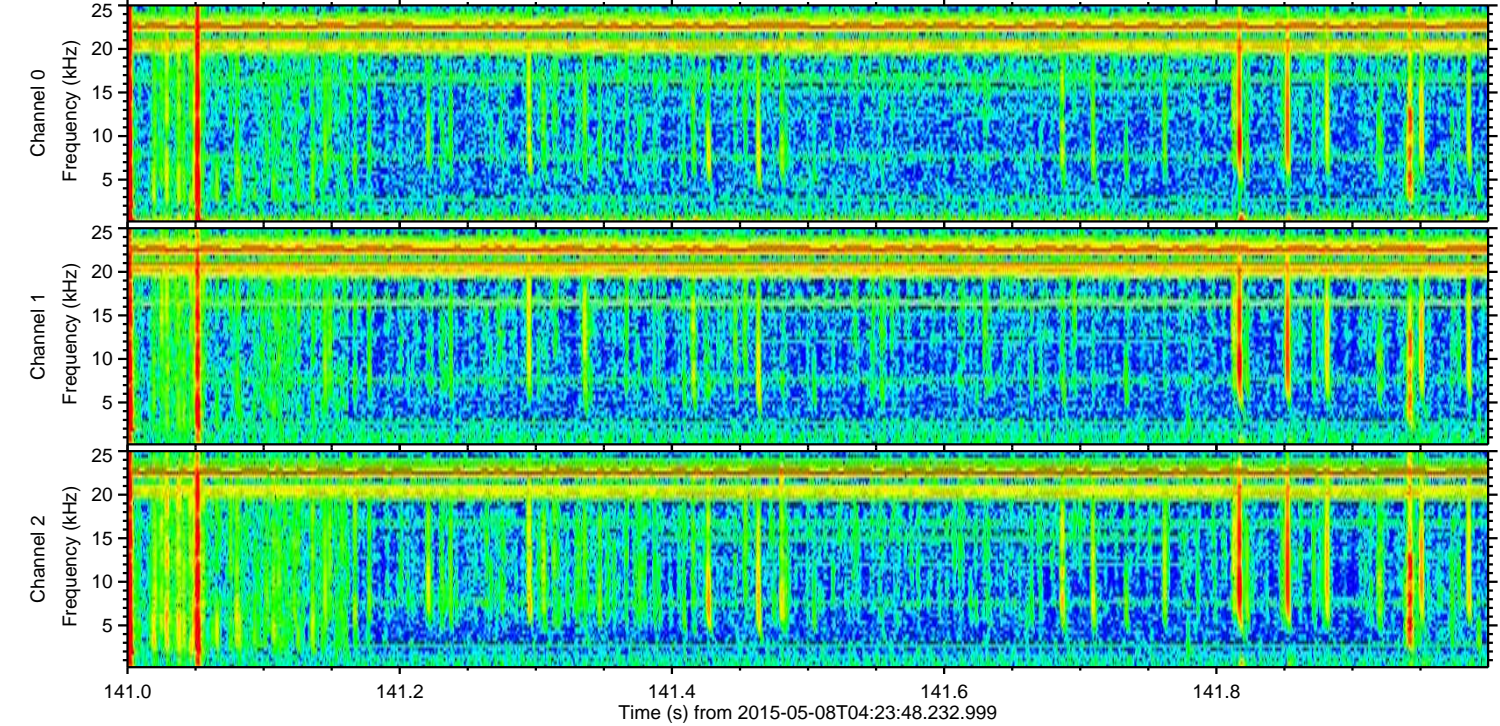
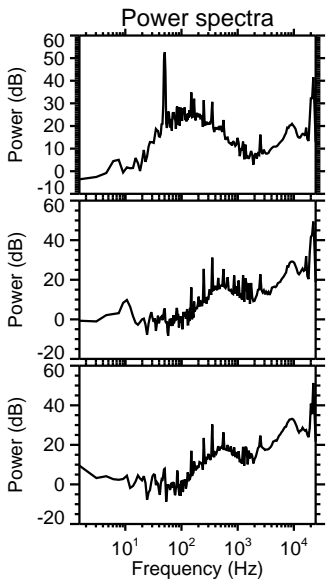
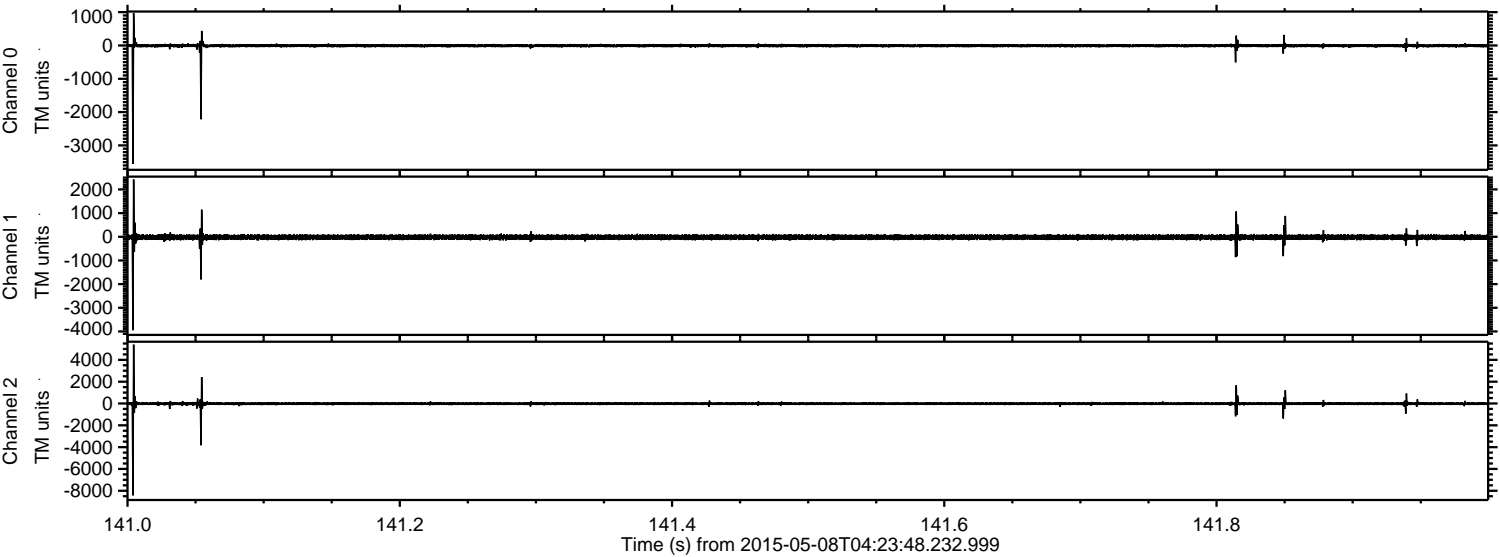
Channel 0
mn: -4354
mx: 2006
 μ : -7.4
 σ : 47.1

Channel 1
mn: -1525
mx: 1928
 μ : -18.5
 σ : 59.3

Channel 2
mn: -10375
mx: 7149
 μ : -19.2
 σ : 142.1

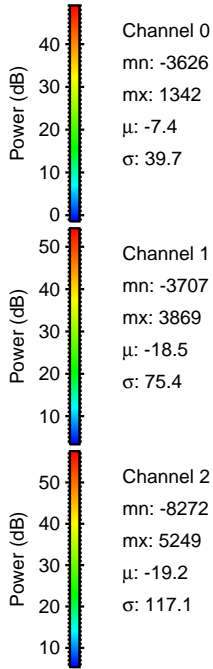
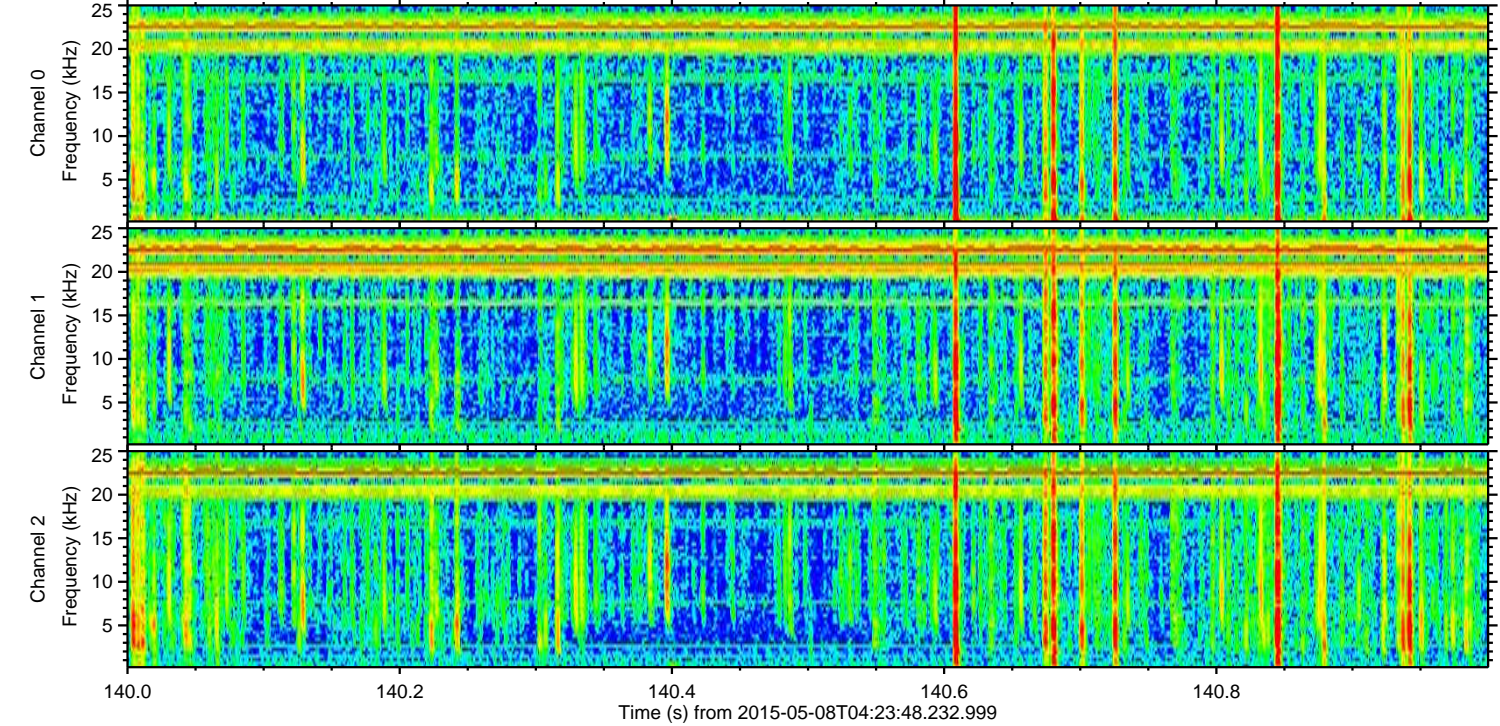
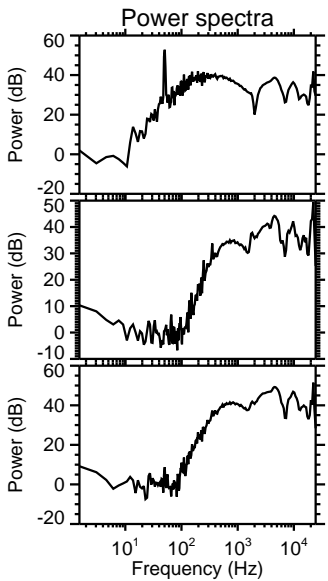
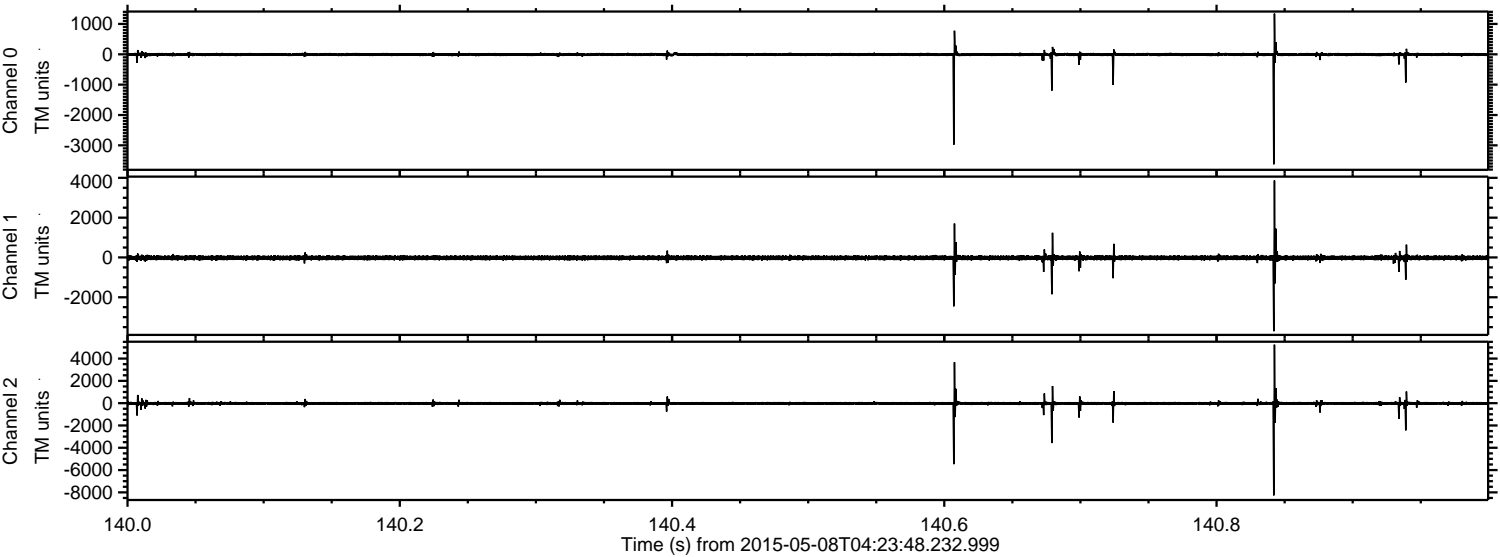
ELMAVAN 3D WAVEFORMS (Measured data sampled at 50 kHz) 49743 packets of 144 samples from 2015-05-08T04:23:48.232.999. Part 142/144

Processed Fri May 8 06:31:02 2015 by ELM ver.2012-10-06 from 001__elm20150508_042347__dat00.bin



ELMAVAN 3D WAVEFORMS (Measured data sampled at 50 kHz) 49743 packets of 144 samples from 2015-05-08T04:23:48.232.999. Part 141/144

Processed Fri May 8 06:31:03 2015 by ELM ver.2012-10-06 from 001__elm20150508_042347__dat00.bin

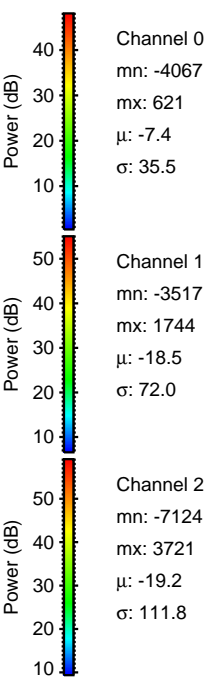
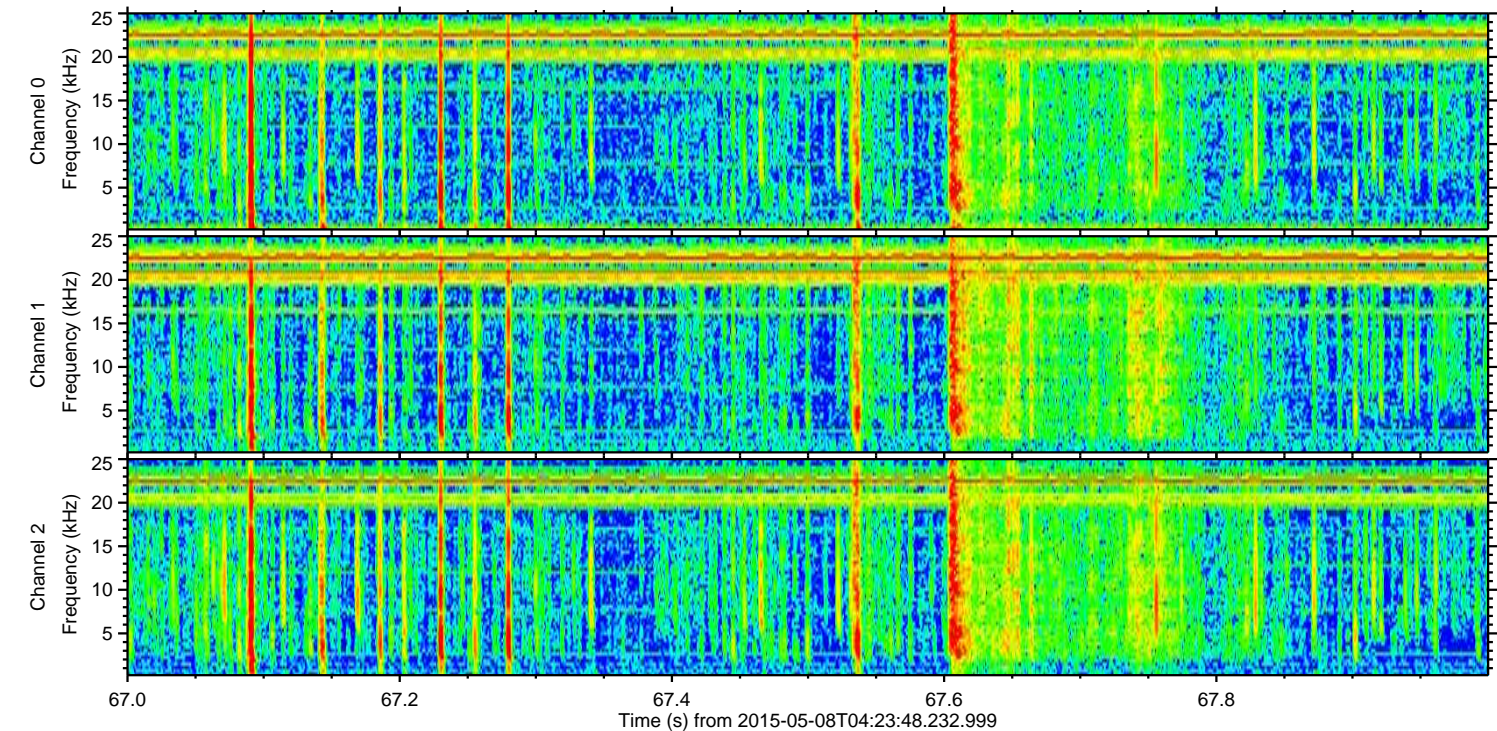
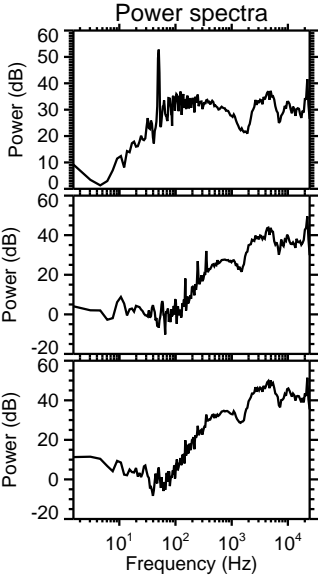
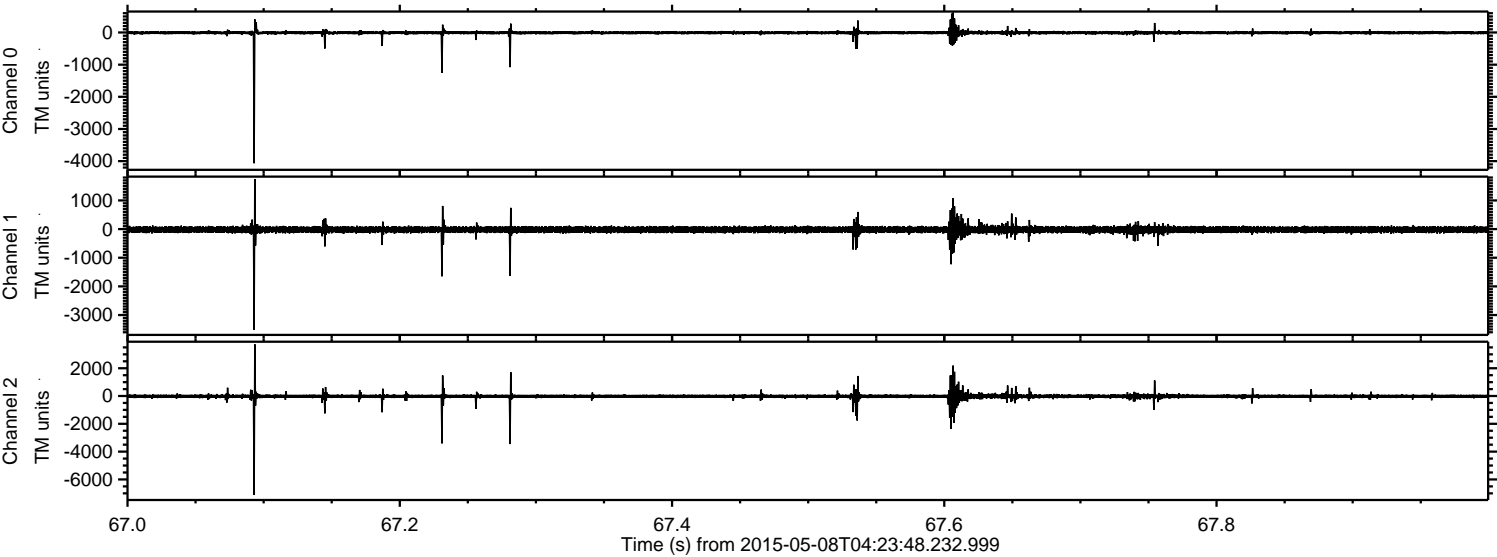


Channel 0
mn: -3626
mx: 1342
 μ : -7.4
 σ : 39.7

Channel 1
mn: -3707
mx: 3869
 μ : -18.5
 σ : 75.4

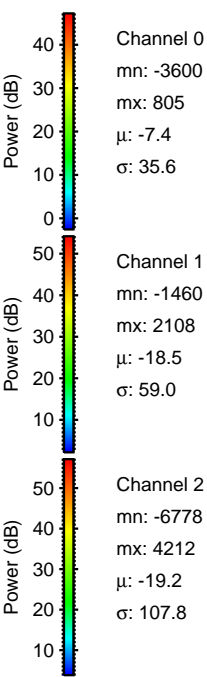
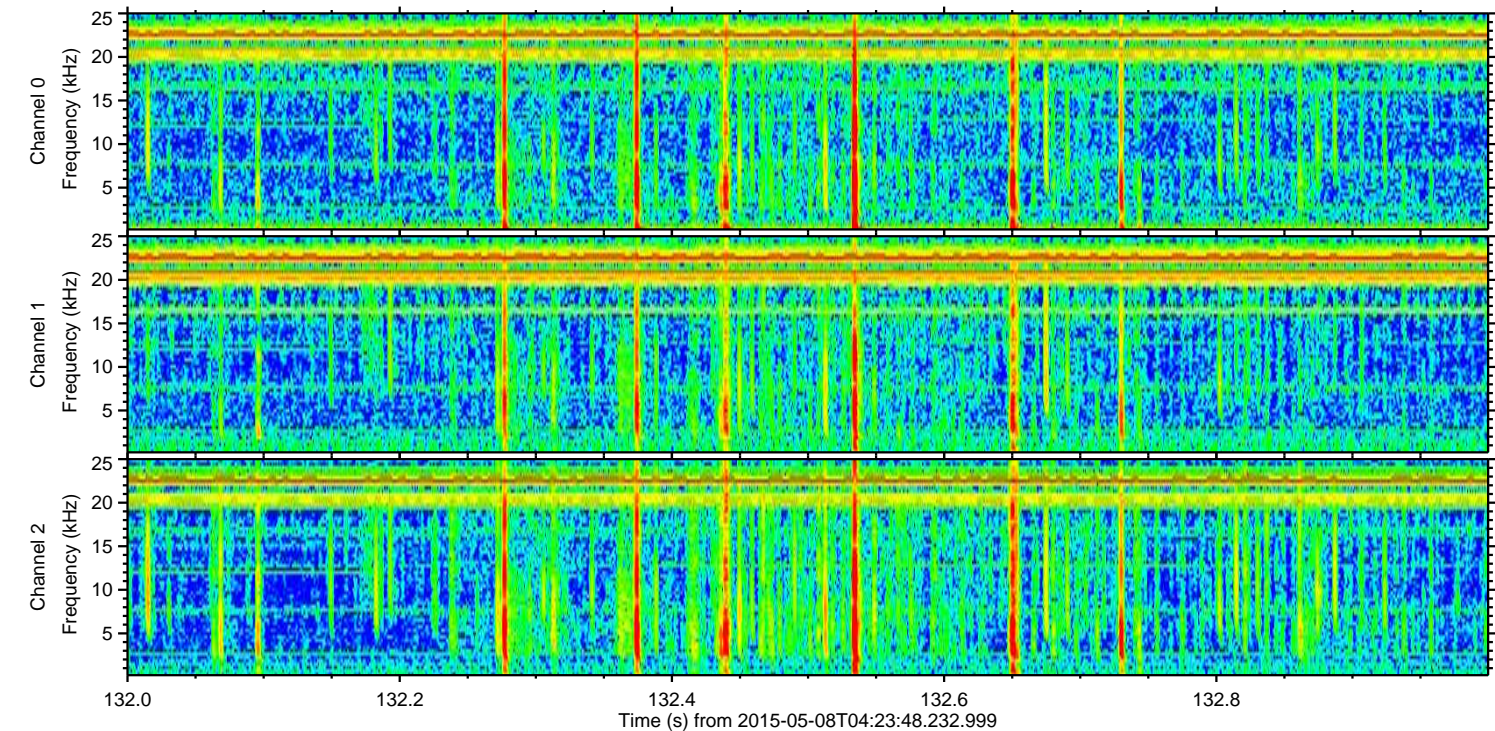
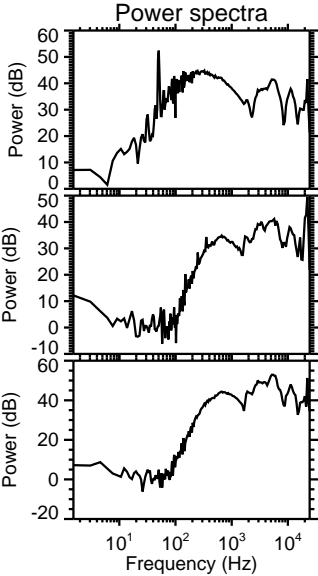
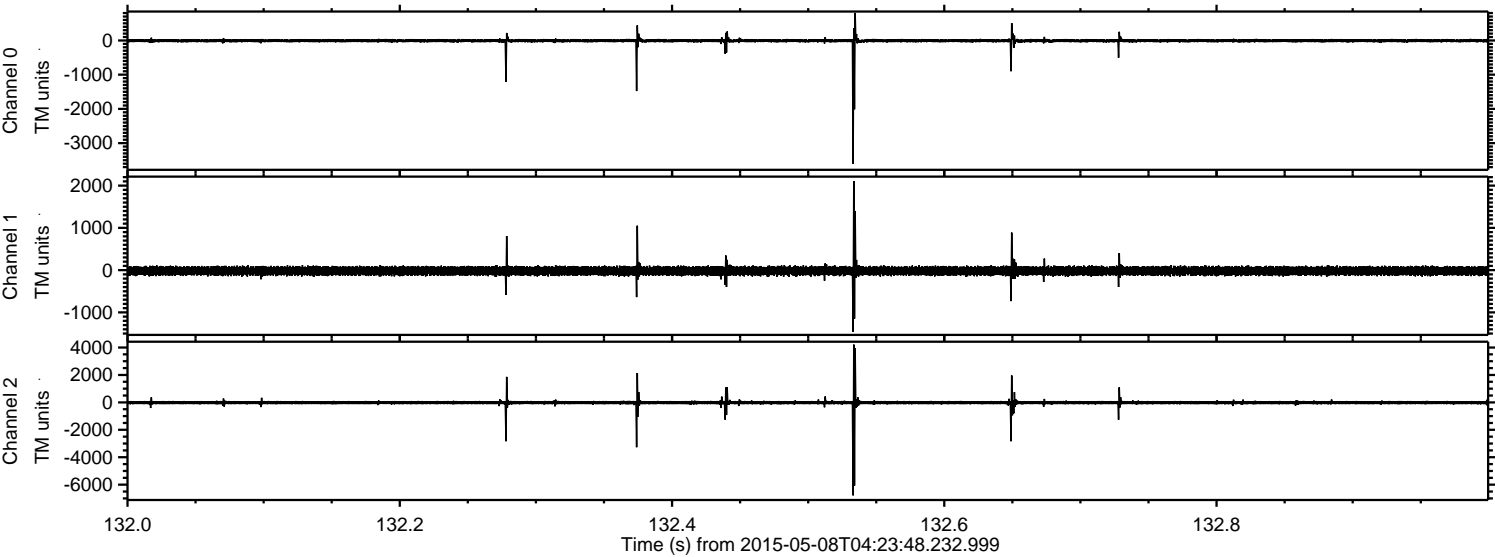
Channel 2
mn: -8272
mx: 5249
 μ : -19.2
 σ : 117.1

Processed Fri May 8 06:31:04 2015 by ELM ver.2012-10-06 from 001__elm20150508_042347__dat00.bin

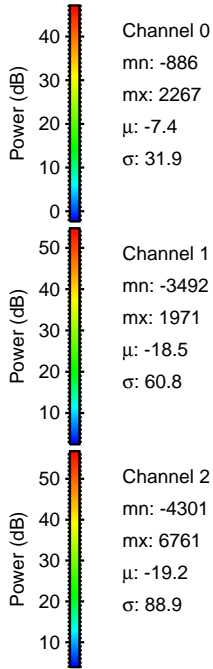
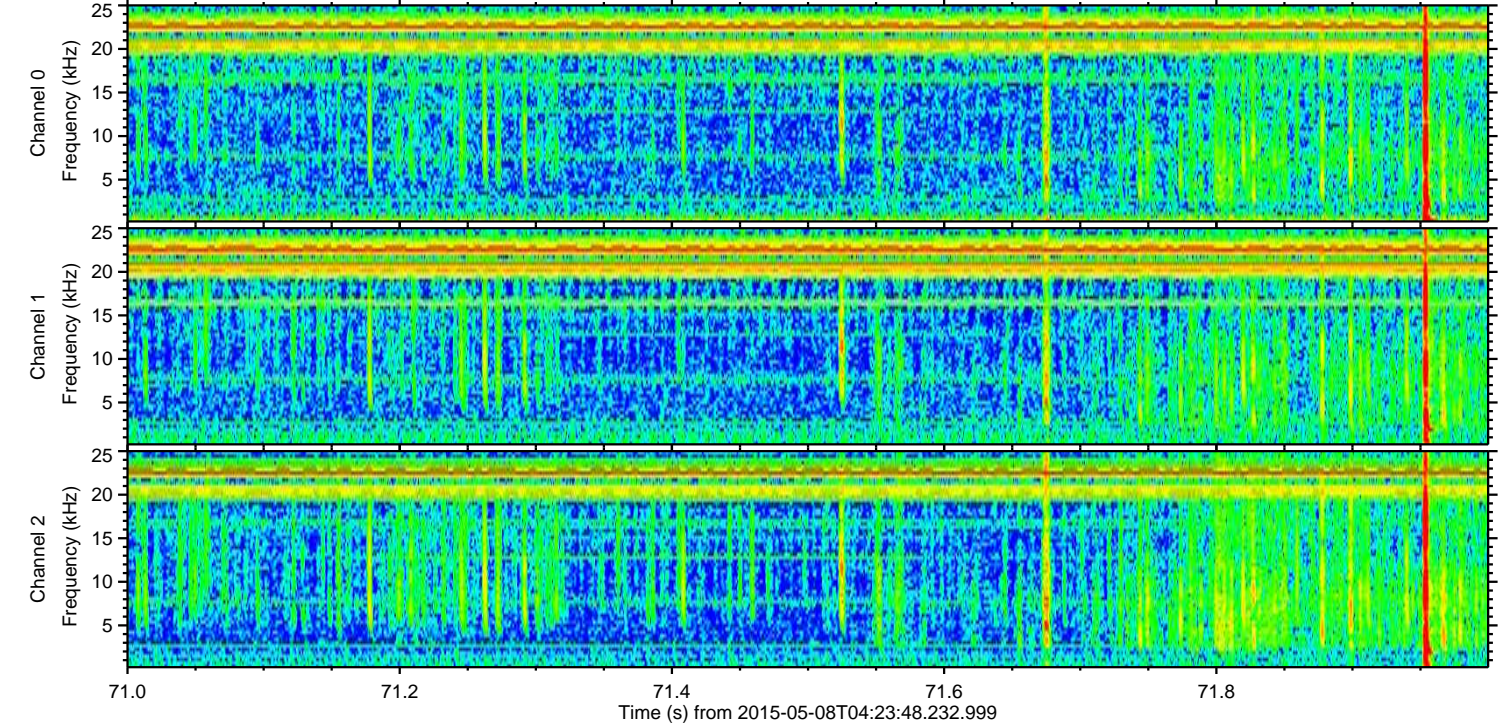
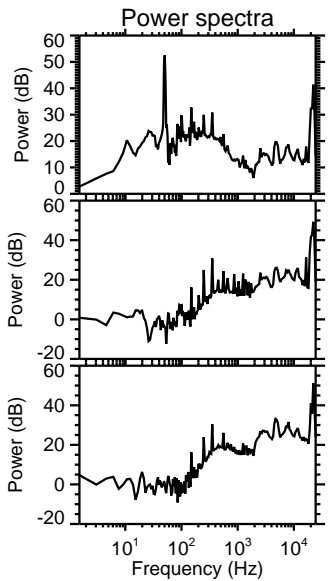
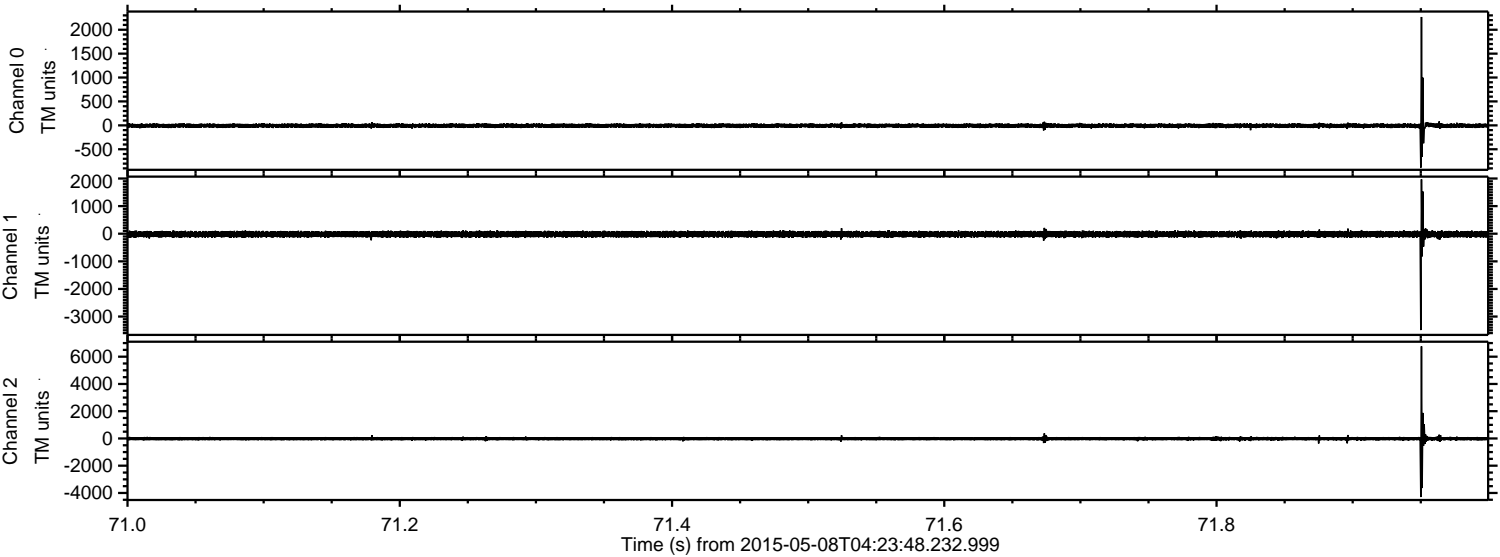


ELMAVAN 3D WAVEFORMS (Measured data sampled at 50 kHz) 49743 packets of 144 samples from 2015-05-08T04:23:48.232.999. Part 133/144

Processed Fri May 8 06:31:05 2015 by ELM ver.2012-10-06 from 001__elm20150508_042347__dat00.bin



Processed Fri May 8 06:31:06 2015 by ELM ver.2012-10-06 from 001__elm20150508_042347__dat00.bin

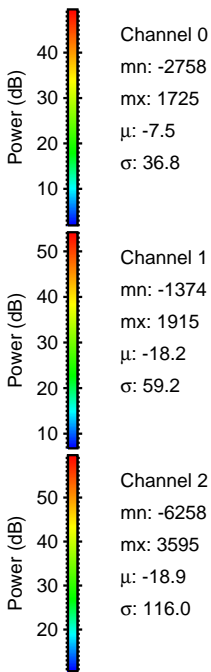
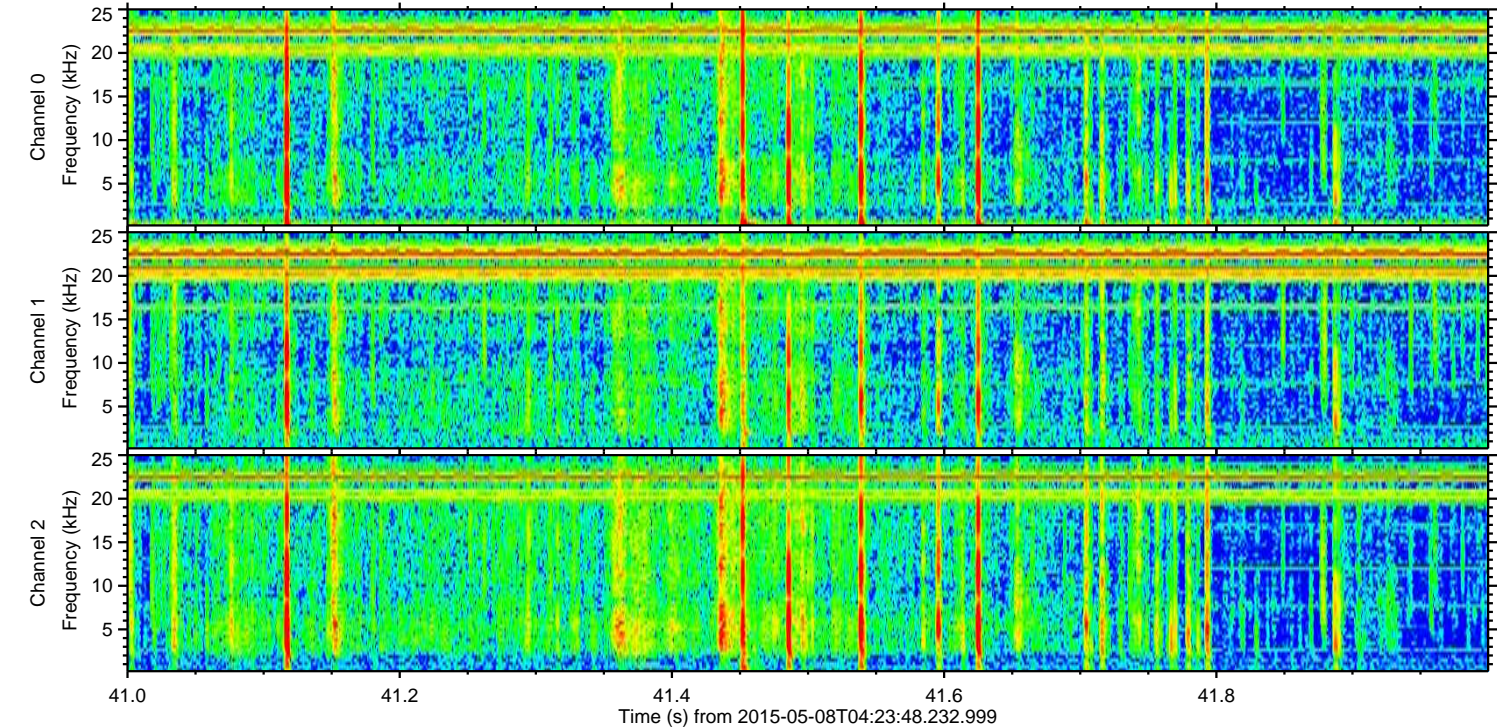
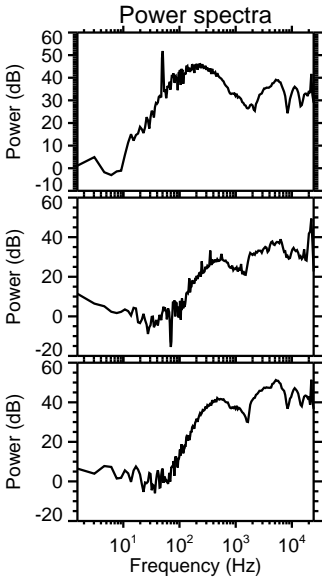
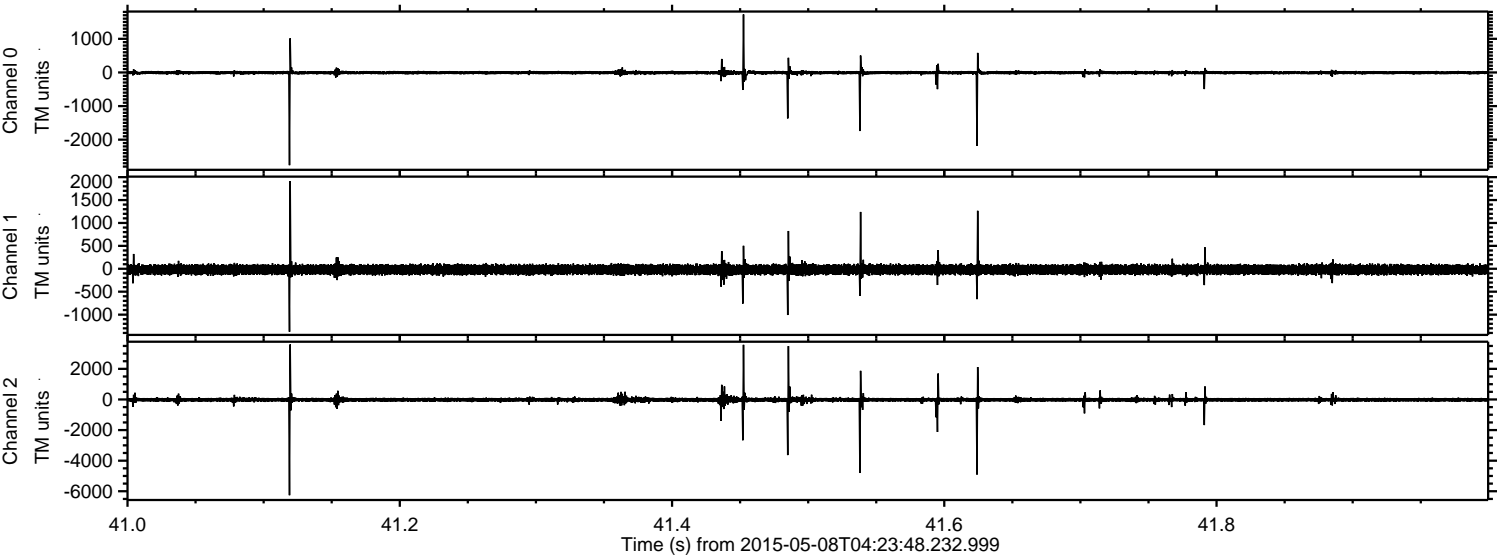


Channel 0
mn: -886
mx: 2267
 μ : -7.4
 σ : 31.9

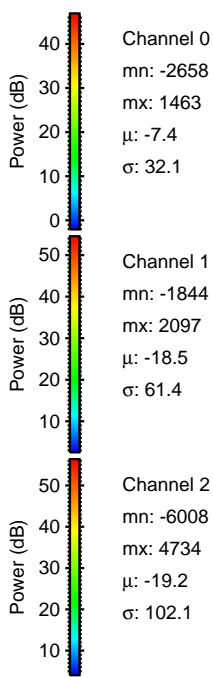
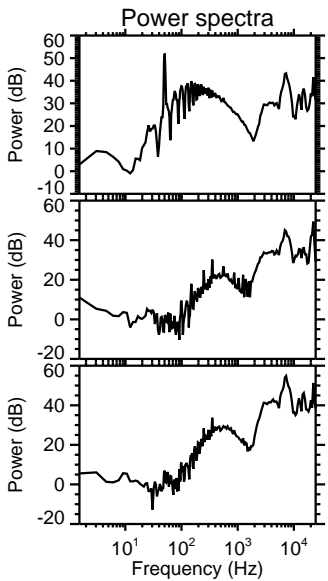
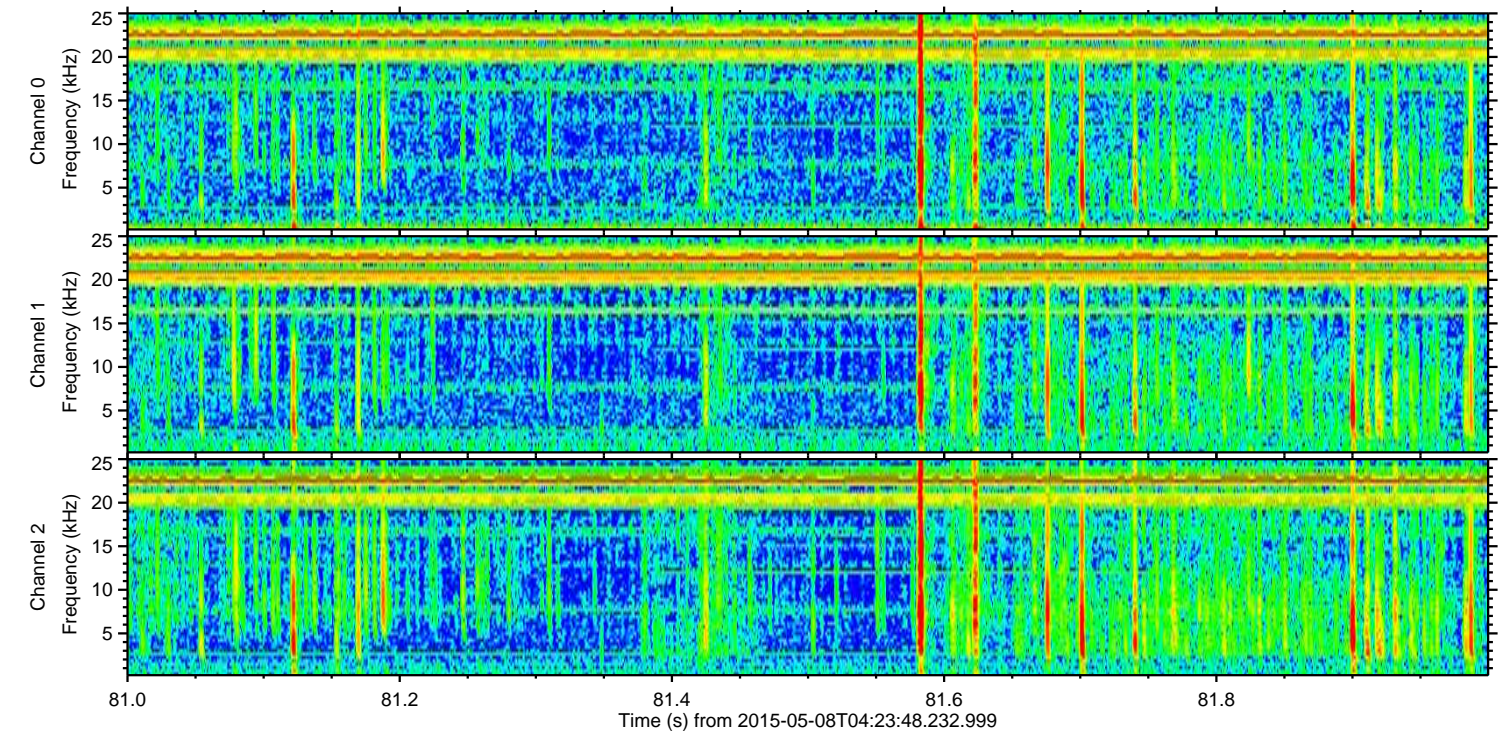
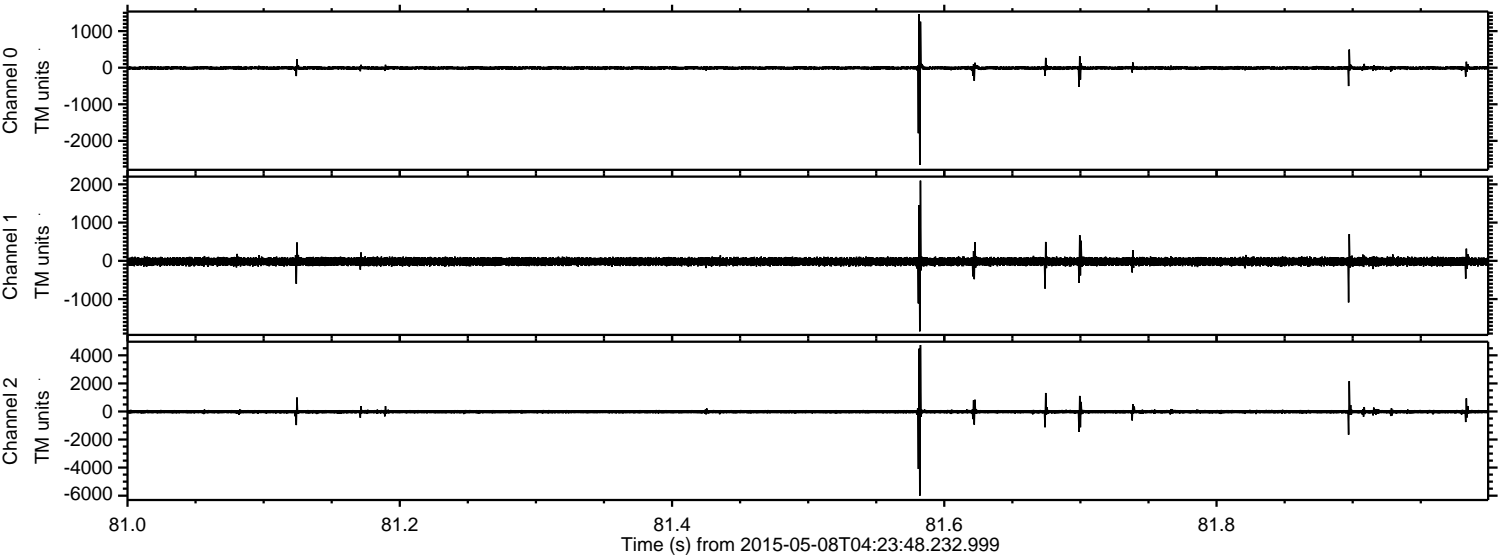
Channel 1
mn: -3492
mx: 1971
 μ : -18.5
 σ : 60.8

Channel 2
mn: -4301
mx: 6761
 μ : -19.2
 σ : 88.9

Processed Fri May 8 06:31:07 2015 by ELM ver.2012-10-06 from 001__elm20150508_042347__dat00.bin



Processed Fri May 8 06:31:08 2015 by ELM ver.2012-10-06 from 001__elm20150508_042347__dat00.bin



Processed Fri May 8 06:31:09 2015 by ELM ver.2012-10-06 from 001__elm20150508_042347__dat00.bin

