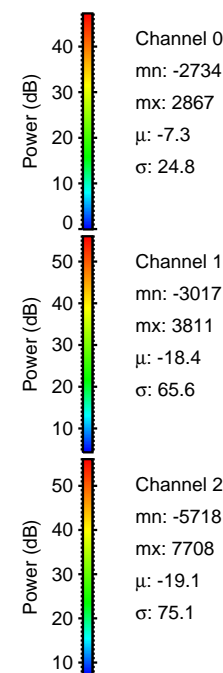
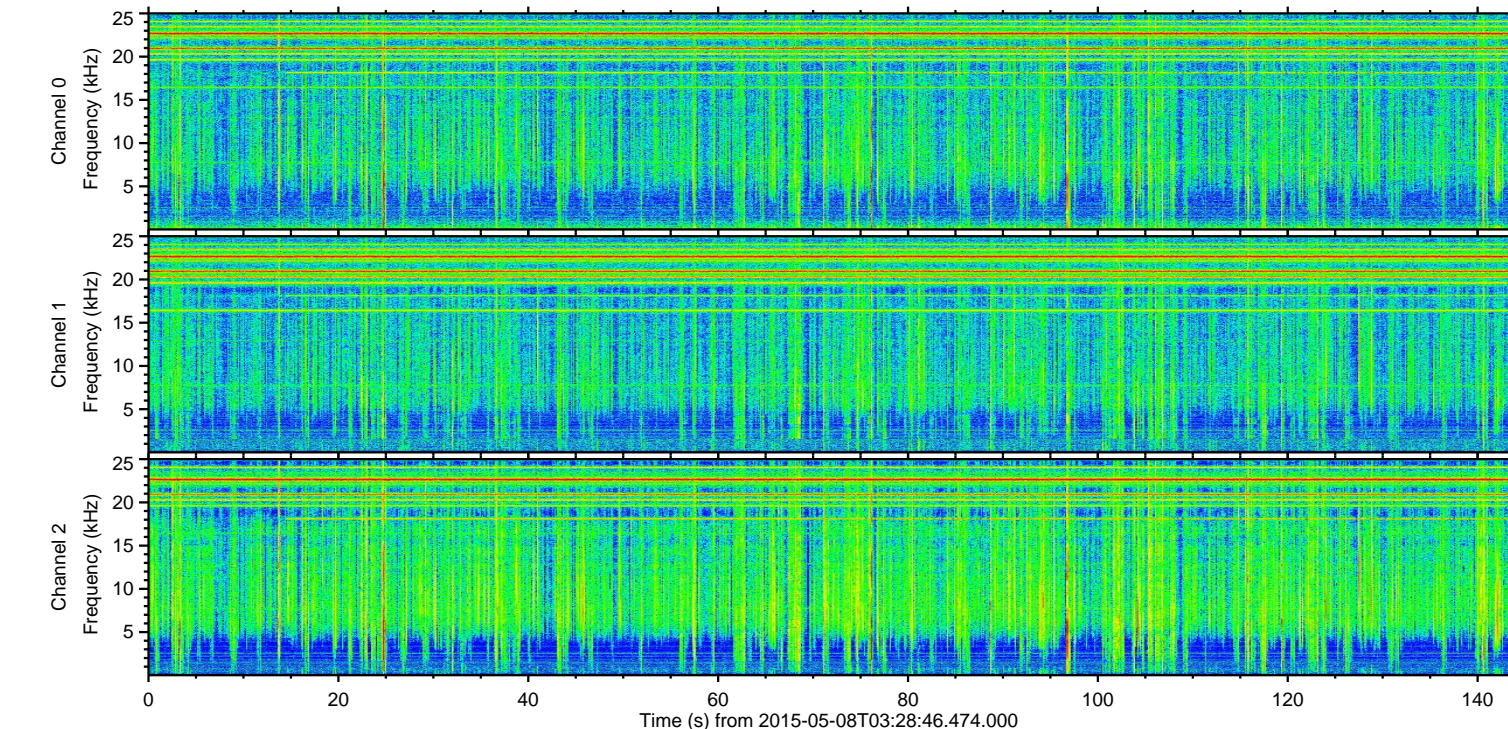
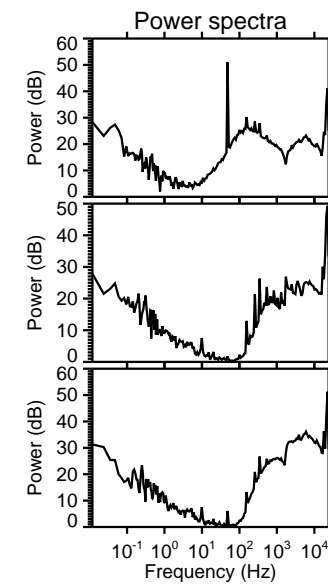
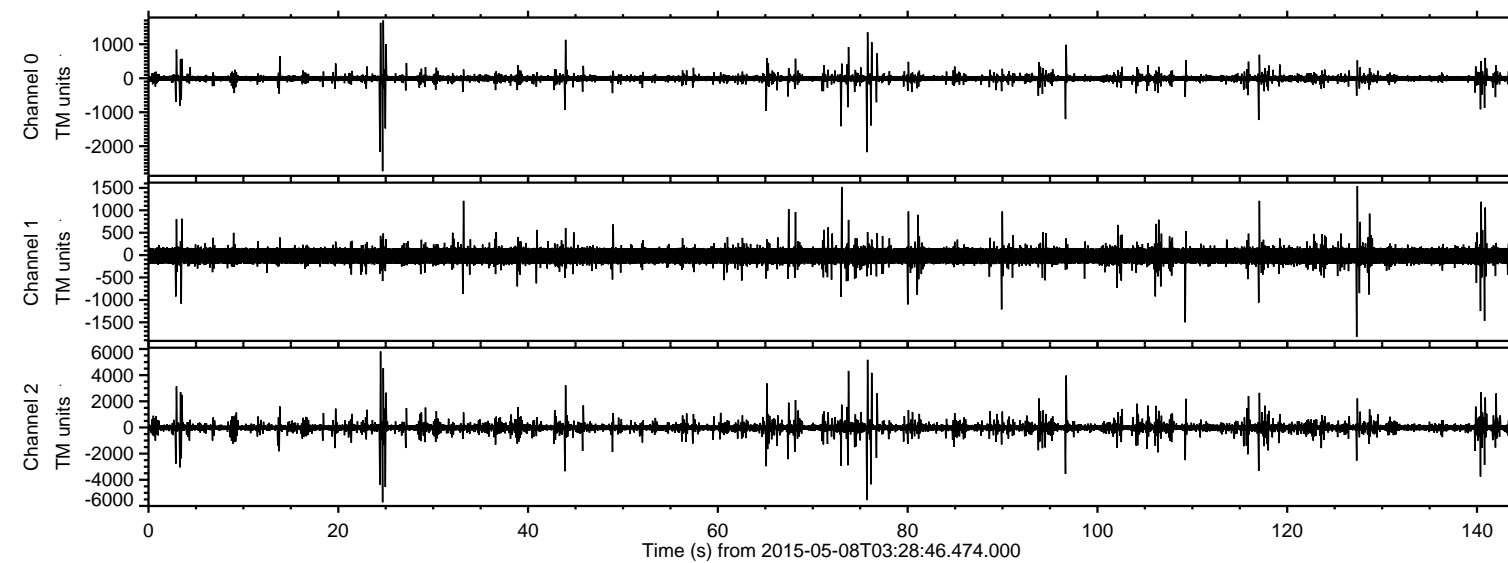


# ELMAVAN 3D WAVEFORMS (Measured data sampled at 50 kHz) 49786 packets of 144 samples from 2015-05-08T03:28:46.474.000.

Processed Fri May 8 05:35:43 2015 by ELM ver.2012-10-06 from 001\_\_elm20150508\_032845\_\_dat00.bin



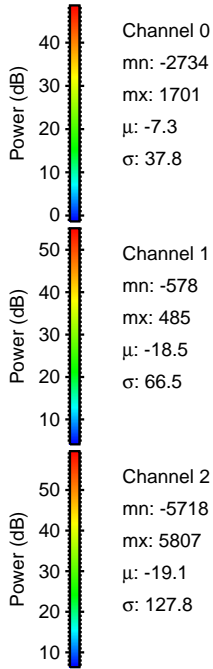
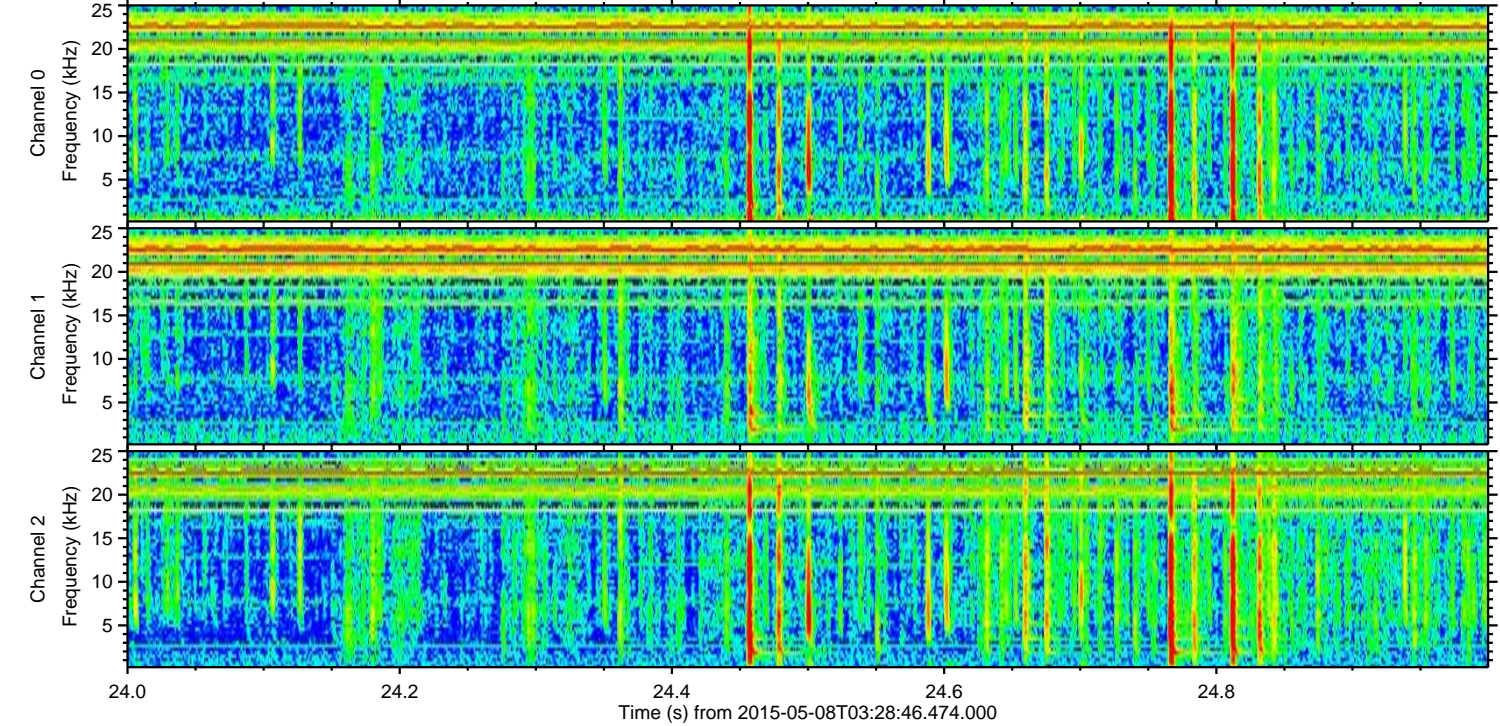
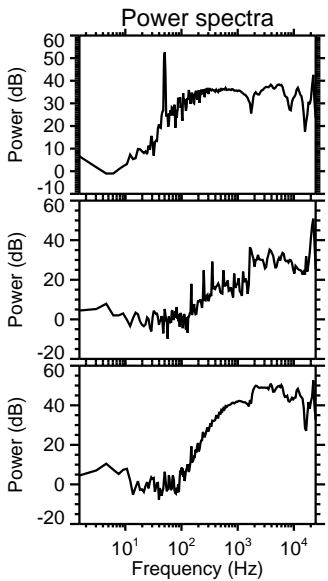
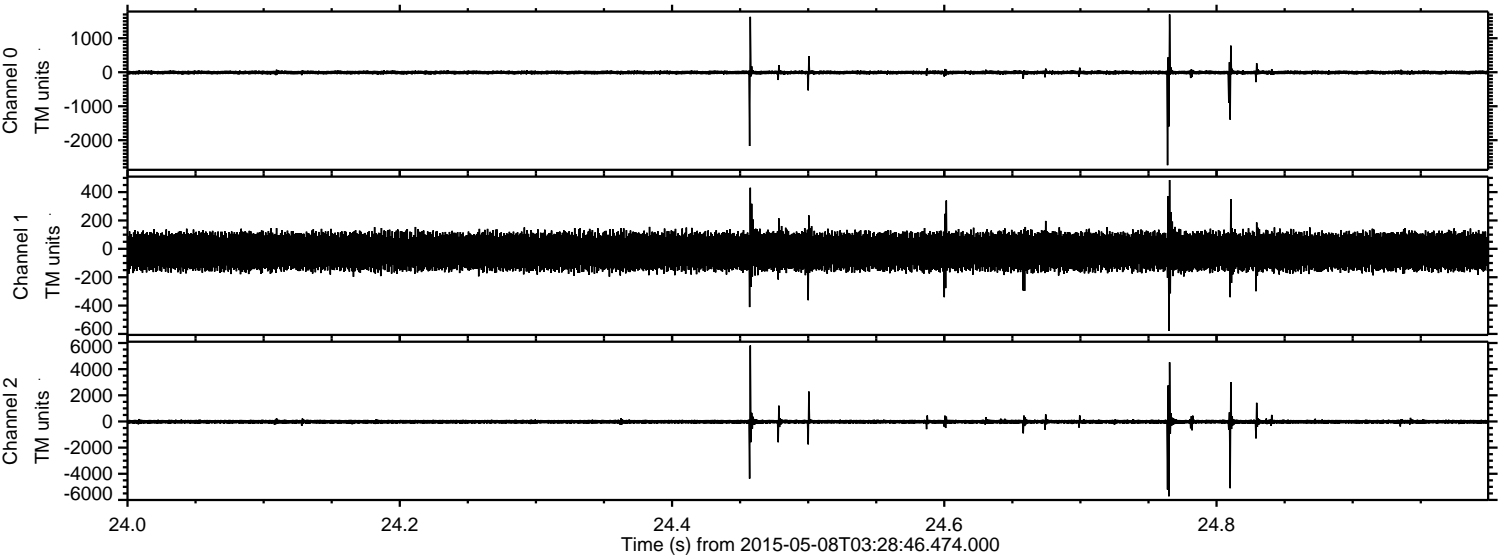
Channel 0  
mn: -2734  
mx: 2867  
 $\mu$ : -7.3  
 $\sigma$ : 24.8

Channel 1  
mn: -3017  
mx: 3811  
 $\mu$ : -18.4  
 $\sigma$ : 65.6

Channel 2  
mn: -5718  
mx: 7708  
 $\mu$ : -19.1  
 $\sigma$ : 75.1

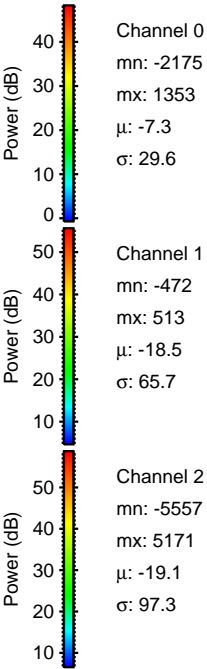
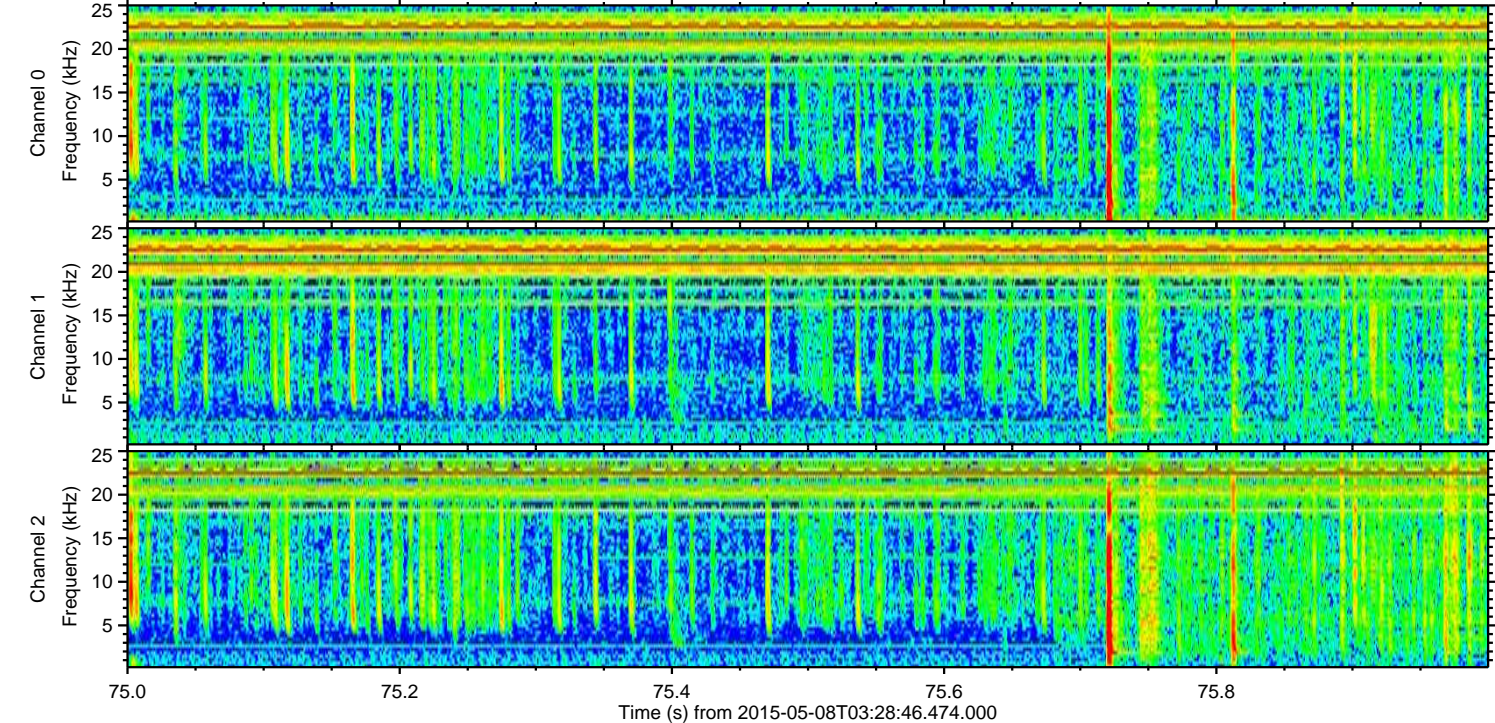
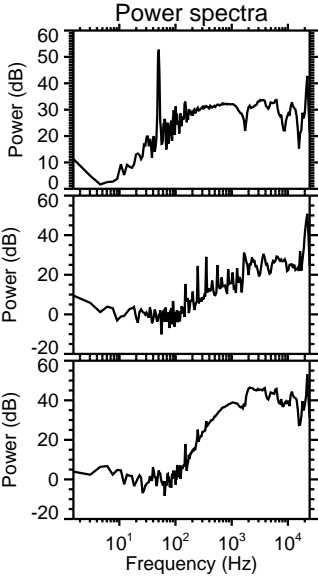
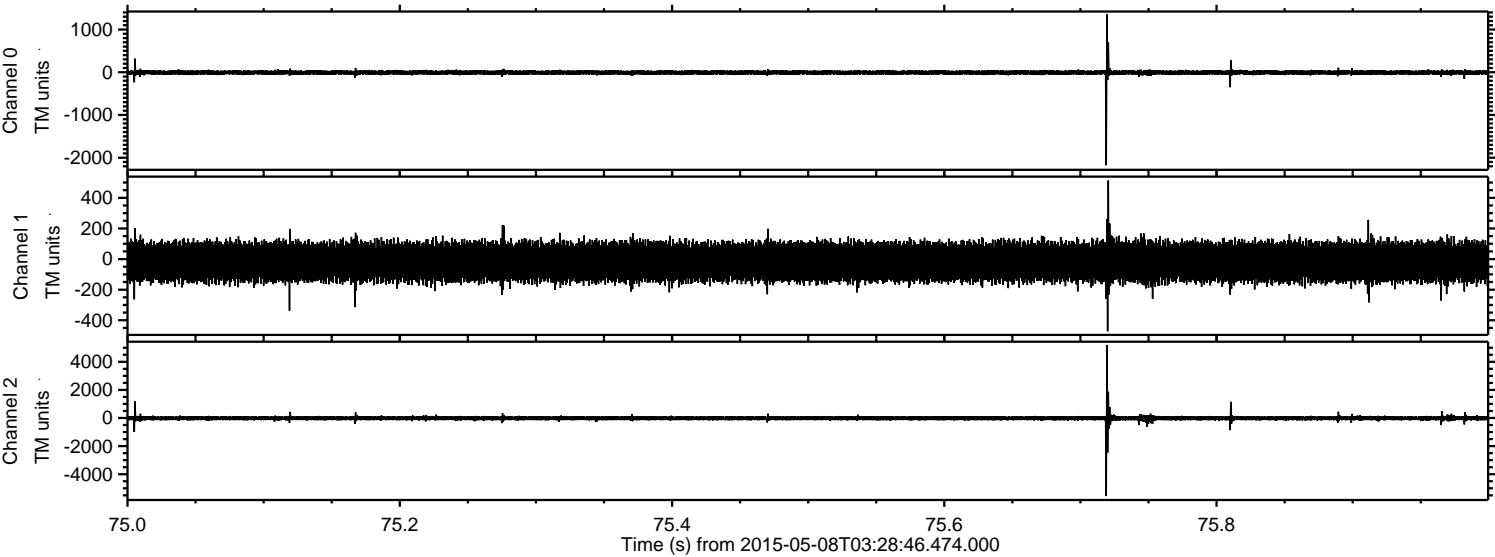


Processed Fri May 8 05:35:54 2015 by ELM ver.2012-10-06 from 001\_\_elm20150508\_032845\_\_dat00.bin



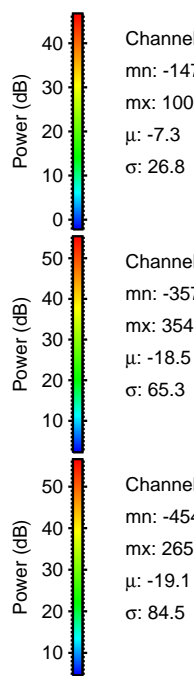
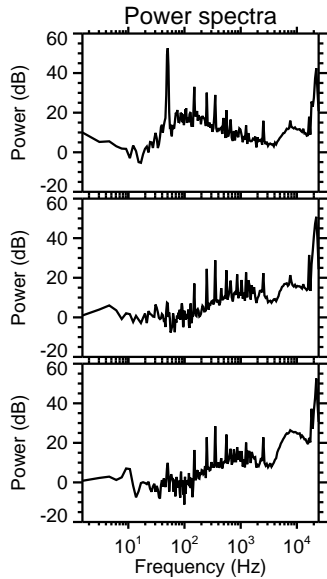
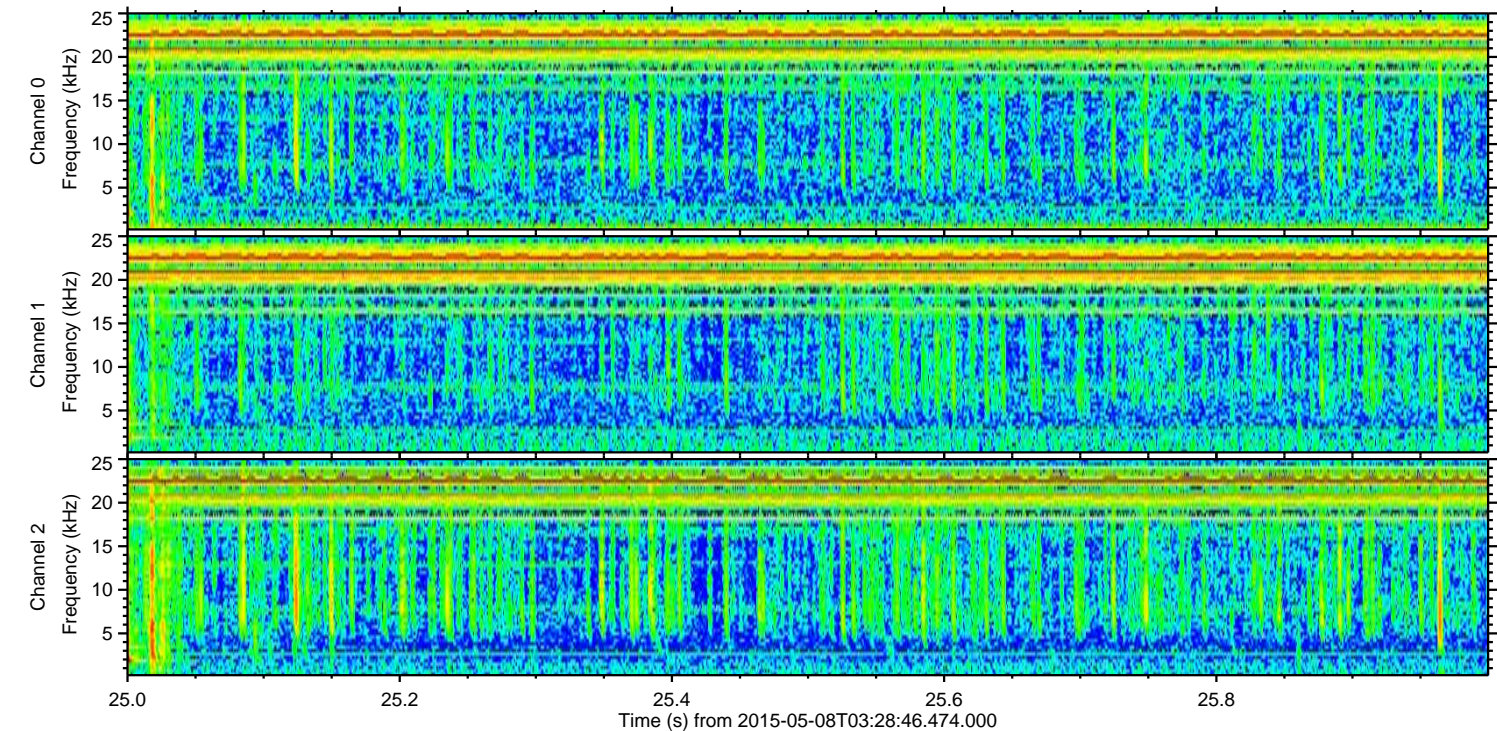
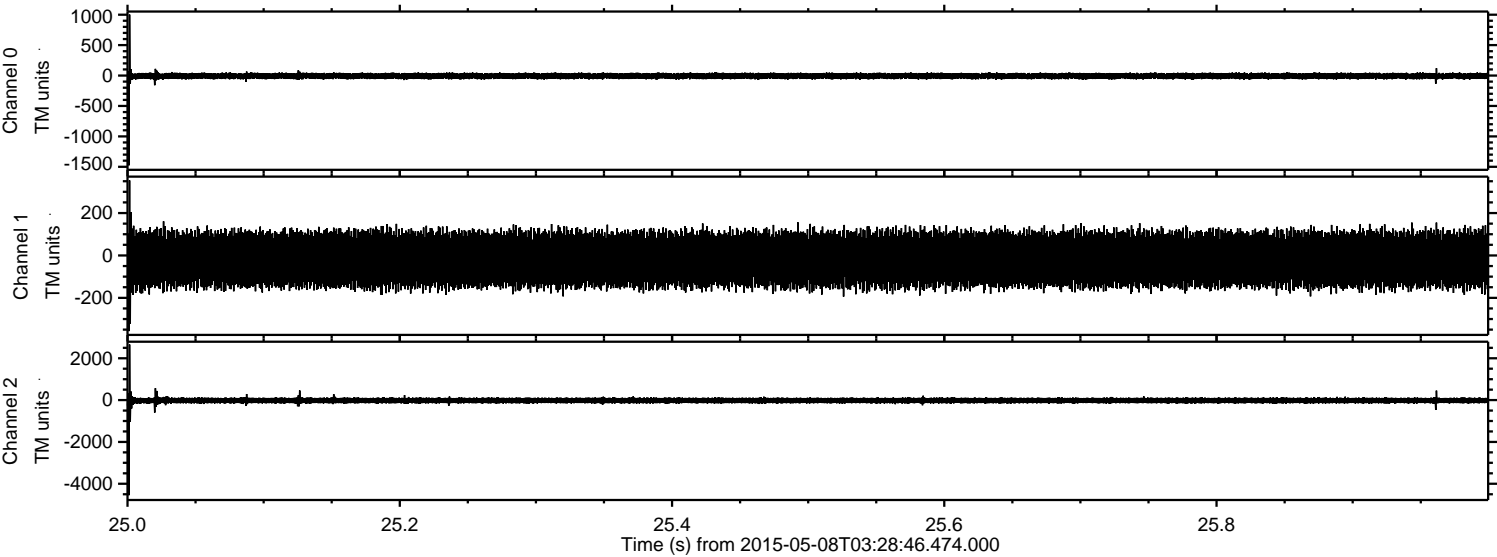


Processed Fri May 8 05:35:55 2015 by ELM ver.2012-10-06 from 001\_\_elm20150508\_032845\_\_dat00.bin





Processed Fri May 8 05:35:56 2015 by ELM ver.2012-10-06 from 001\_\_elm20150508\_032845\_\_dat00.bin



Power spectra

Channel 0

mn: -1476  
mx: 1002  
 $\mu$ : -7.3  
 $\sigma$ : 26.8

Channel 1

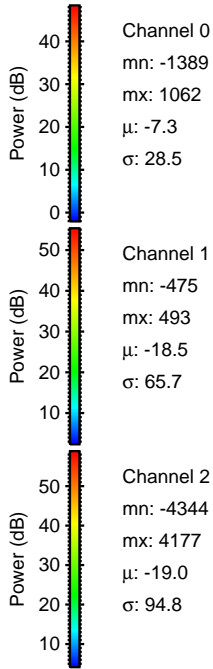
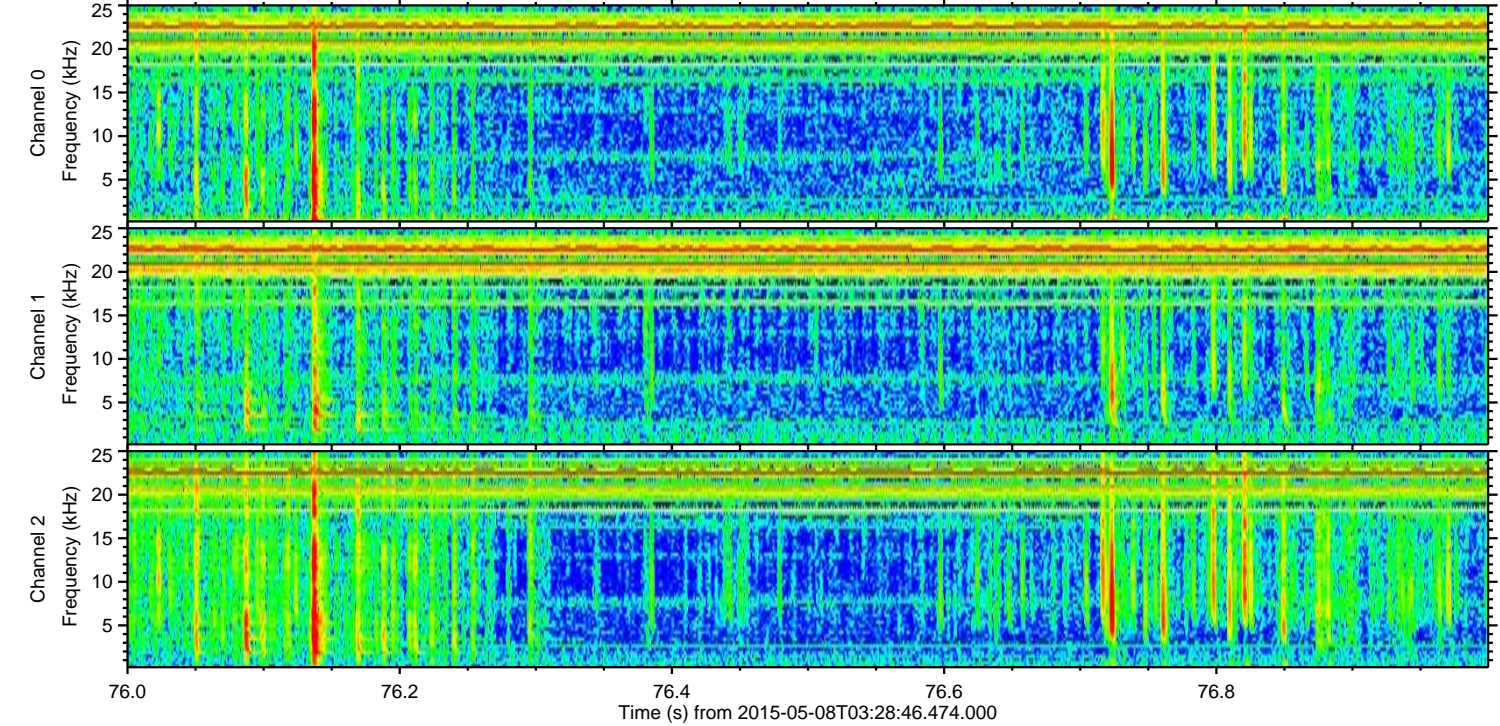
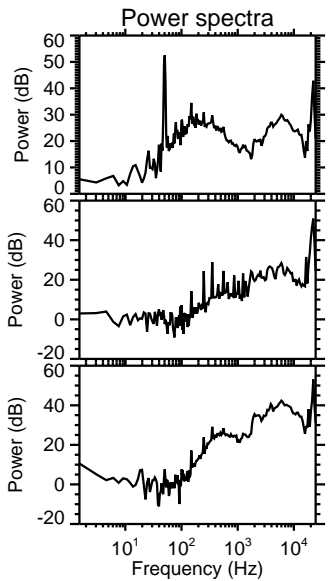
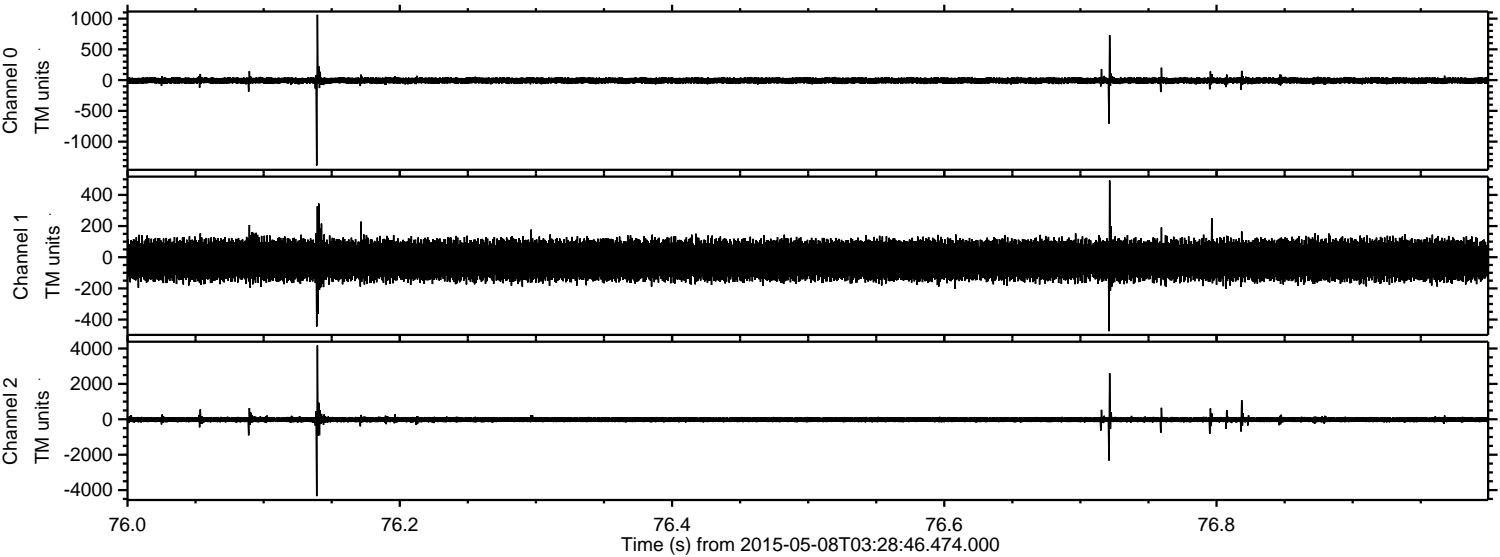
mn: -357  
mx: 354  
 $\mu$ : -18.5  
 $\sigma$ : 65.3

Channel 2

mn: -4549  
mx: 2659  
 $\mu$ : -19.1  
 $\sigma$ : 84.5



Processed Fri May 8 05:35:57 2015 by ELM ver.2012-10-06 from 001\_\_elm20150508\_032845\_\_dat00.bin



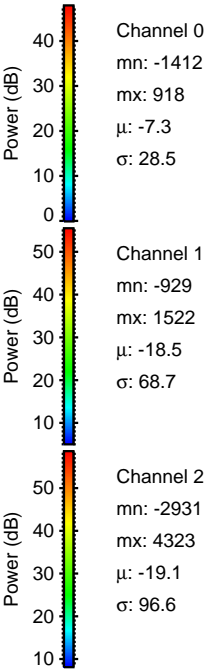
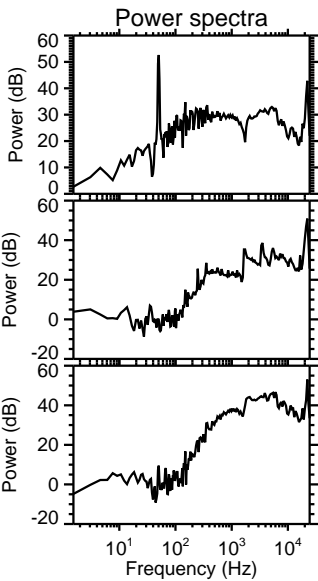
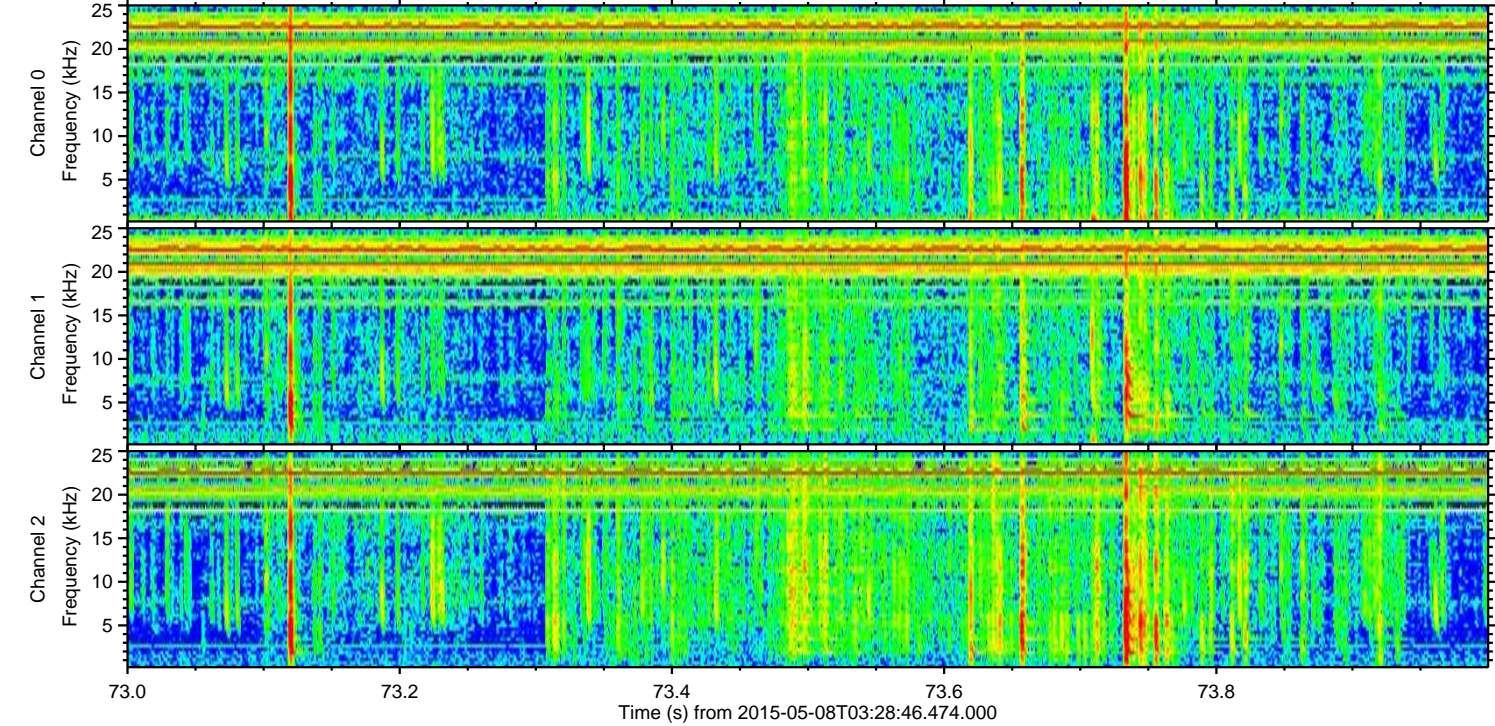
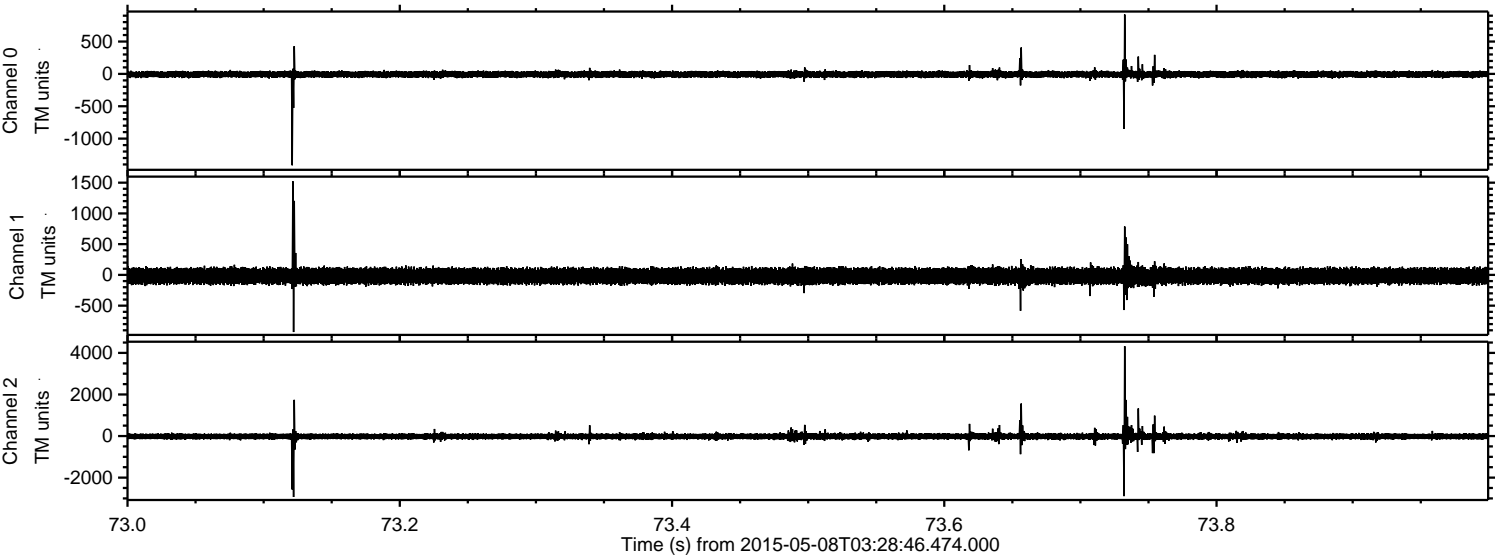
Channel 0  
mn: -1389  
mx: 1062  
μ: -7.3  
σ: 28.5

Channel 1  
mn: -475  
mx: 493  
μ: -18.5  
σ: 65.7

Channel 2  
mn: -4344  
mx: 4177  
μ: -19.0  
σ: 94.8

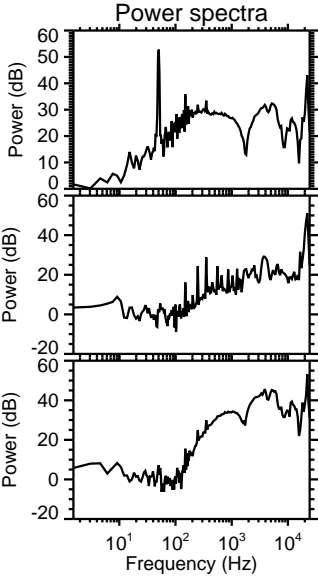
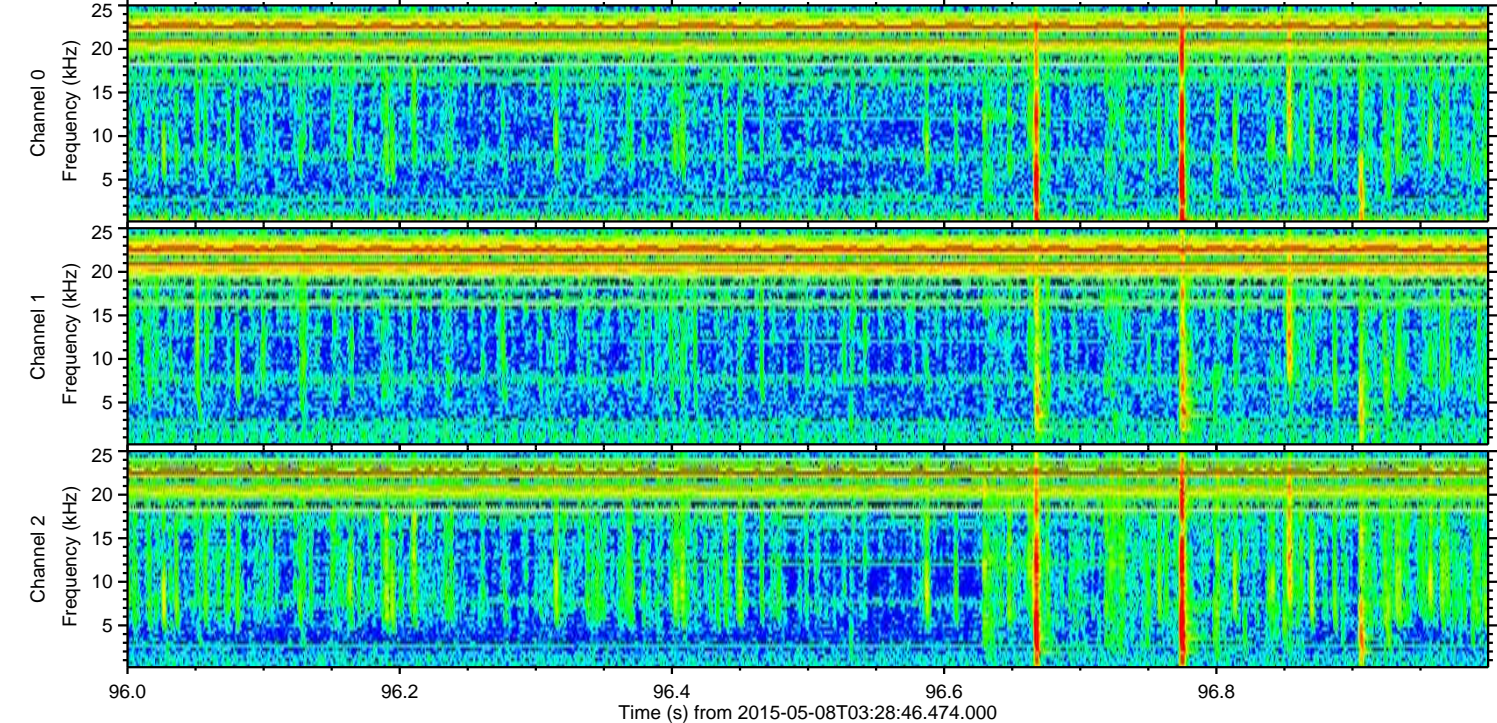
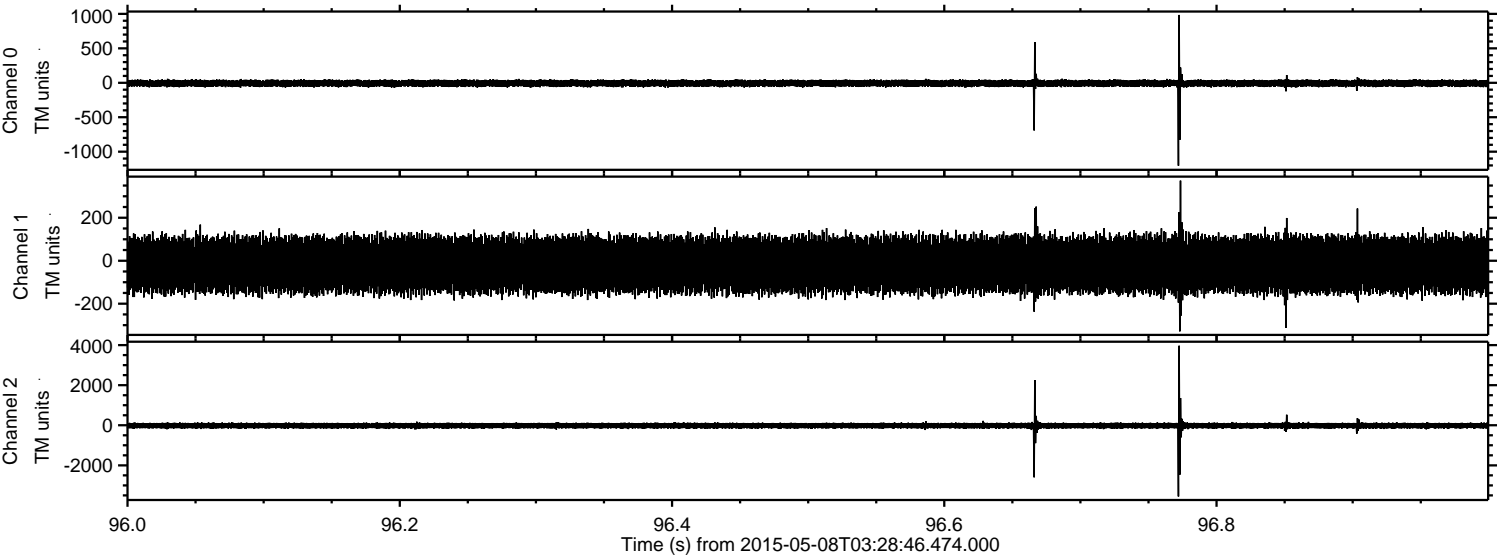


Processed Fri May 8 05:35:58 2015 by ELM ver.2012-10-06 from 001\_\_elm20150508\_032845\_\_dat00.bin





Processed Fri May 8 05:35:59 2015 by ELM ver.2012-10-06 from 001\_\_elm20150508\_032845\_\_dat00.bin



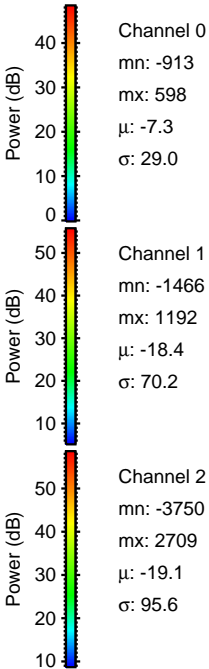
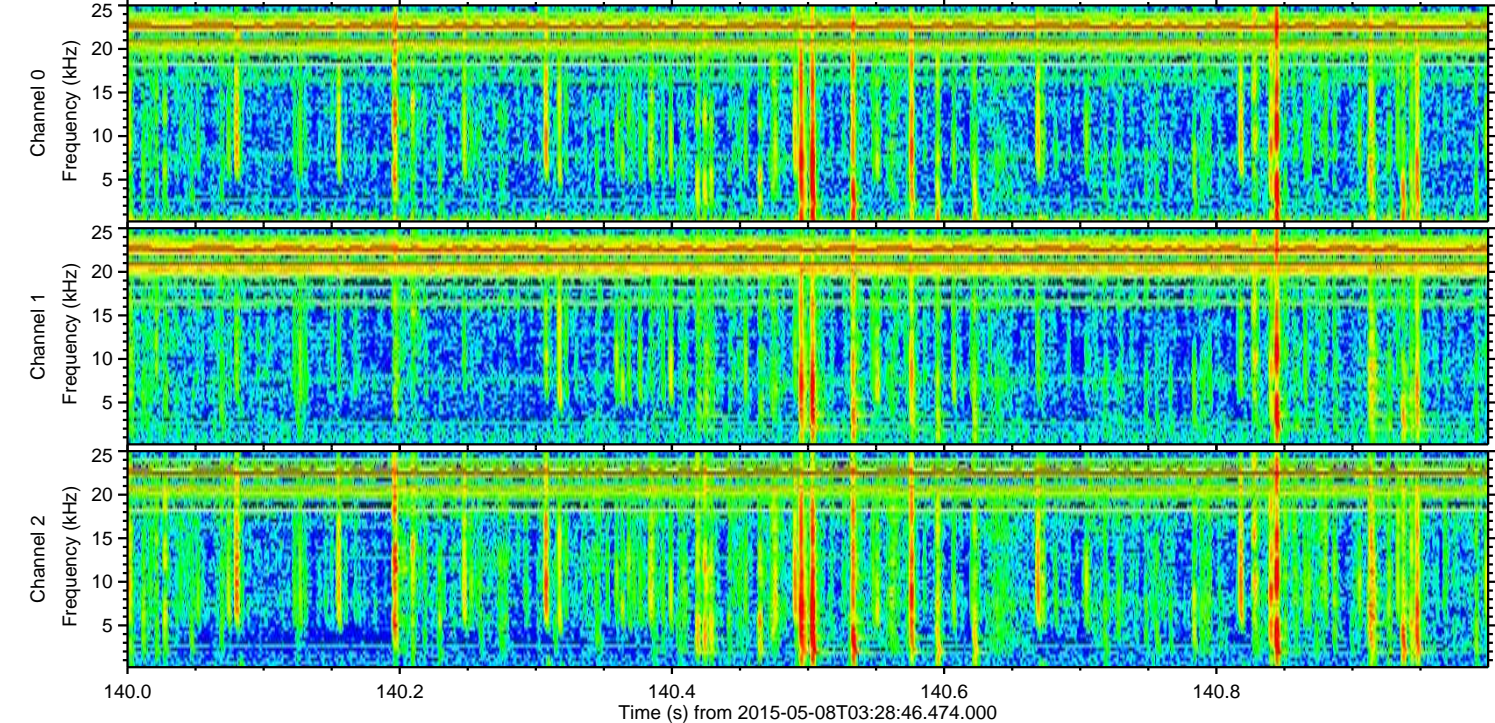
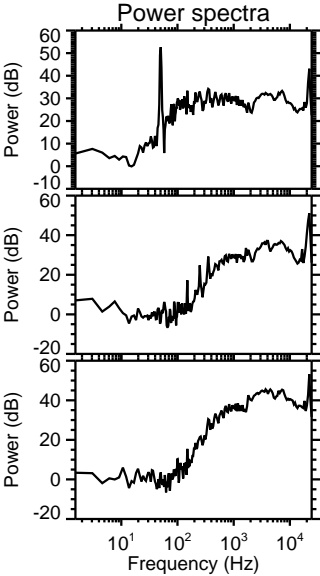
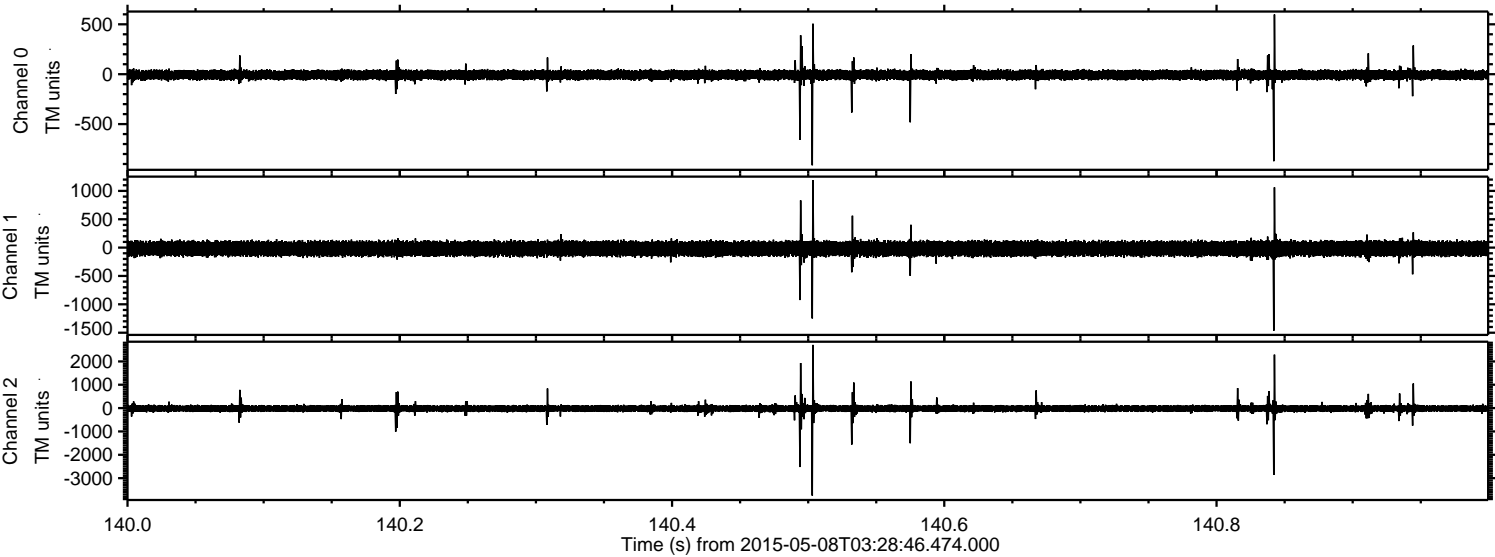
Channel 0  
mn: -1203  
mx: 985  
 $\mu$ : -7.3  
 $\sigma$ : 27.3

Channel 1  
mn: -329  
mx: 373  
 $\mu$ : -18.4  
 $\sigma$ : 65.4

Channel 2  
mn: -3551  
mx: 3970  
 $\mu$ : -19.1  
 $\sigma$ : 87.9

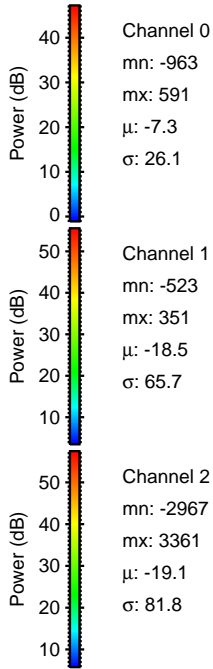
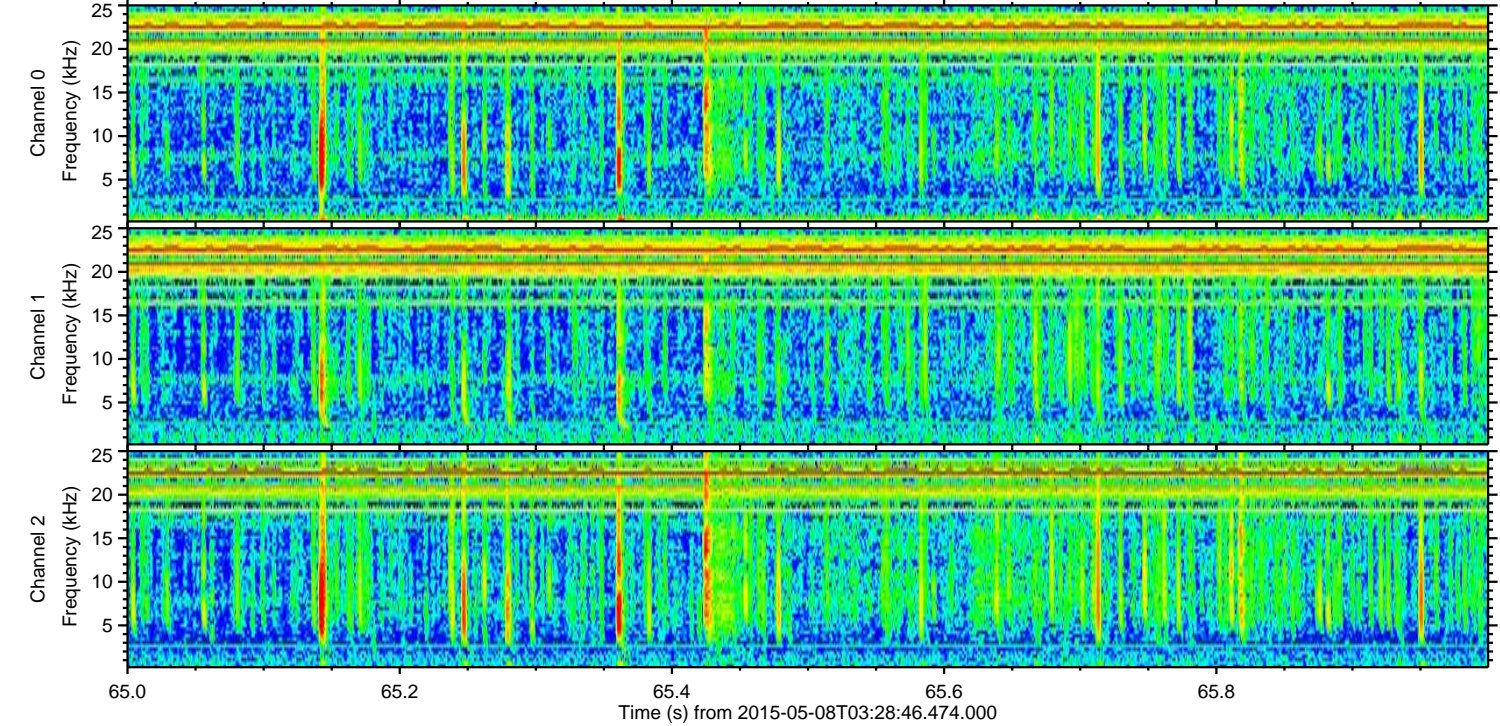
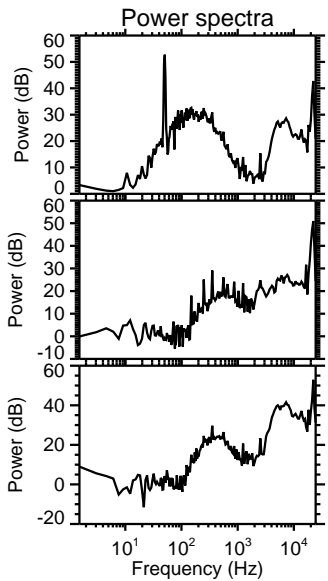
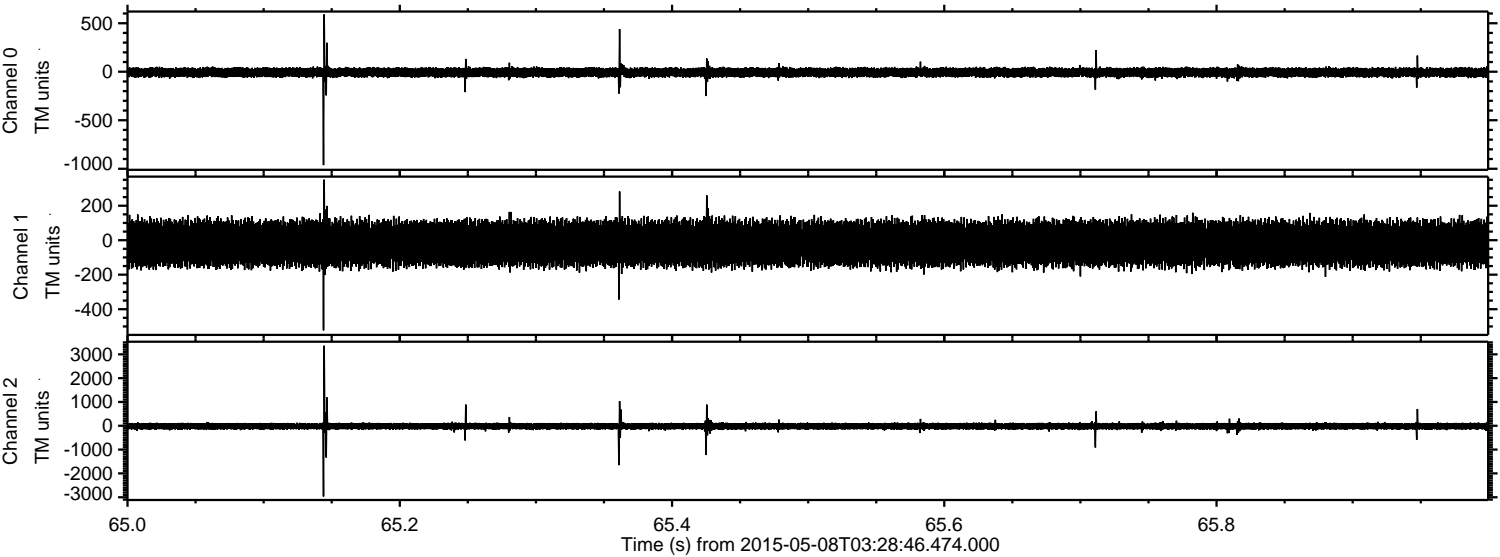


Processed Fri May 8 05:36:00 2015 by ELM ver.2012-10-06 from 001\_\_elm20150508\_032845\_\_dat00.bin



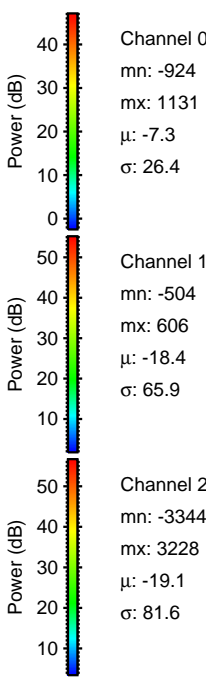
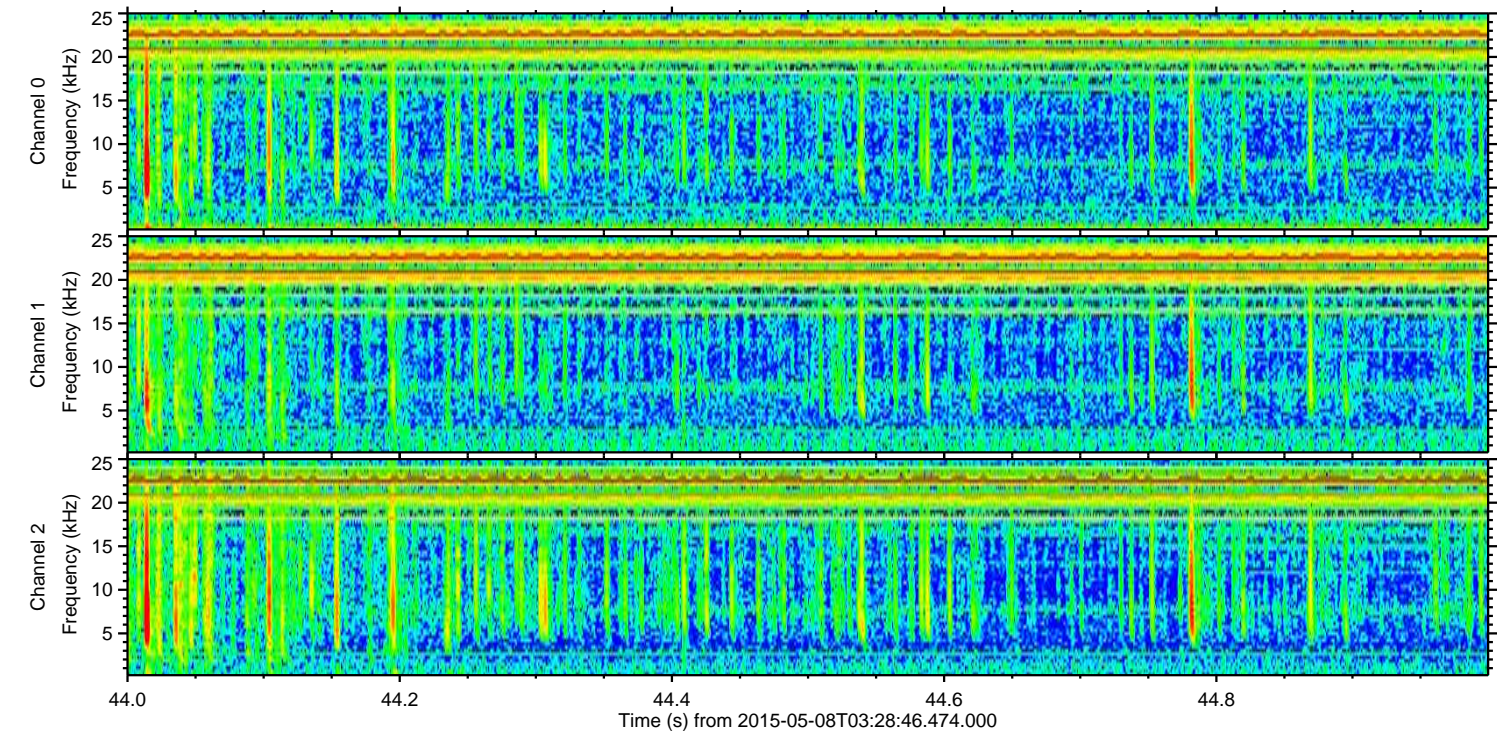
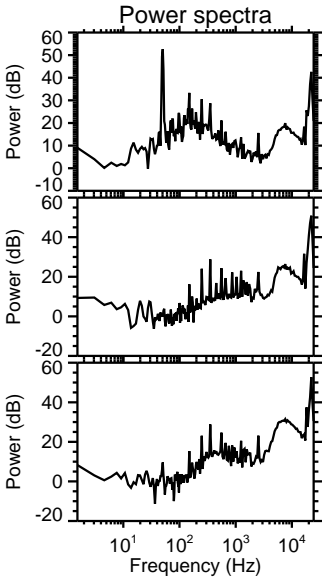
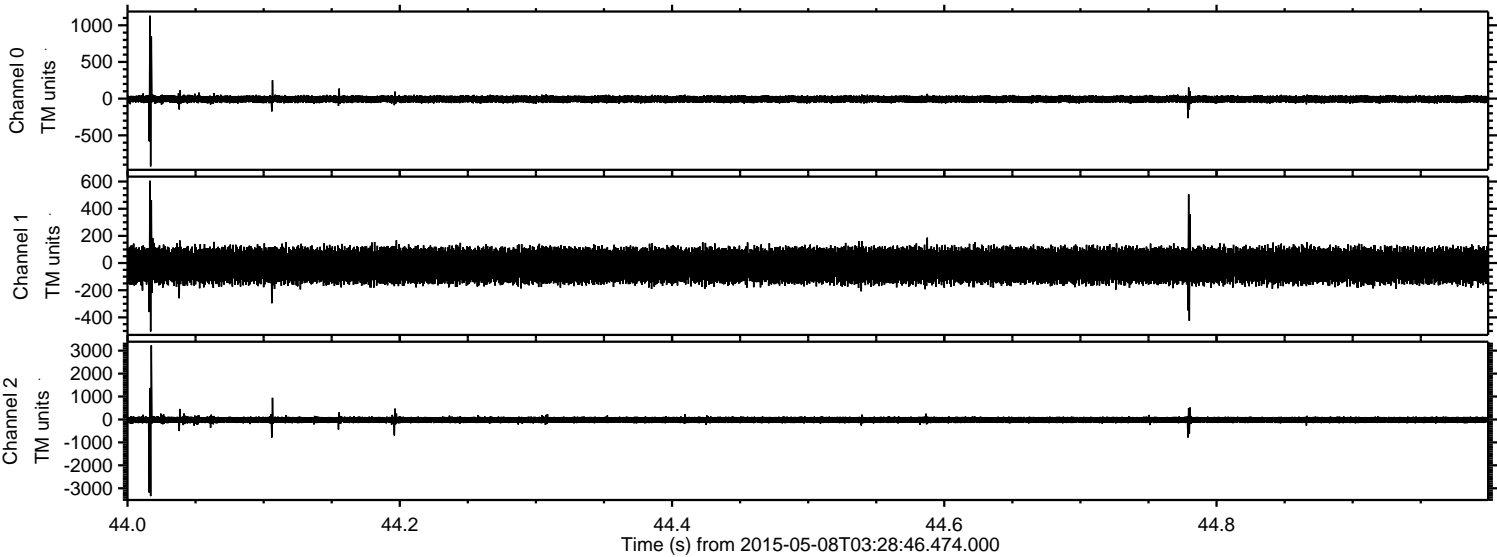


Processed Fri May 8 05:36:01 2015 by ELM ver.2012-10-06 from 001\_\_elm20150508\_032845\_\_dat00.bin





Processed Fri May 8 05:36:02 2015 by ELM ver.2012-10-06 from 001\_\_elm20150508\_032845\_\_dat00.bin



Channel 0  
mn: -924  
mx: 1131  
 $\mu$ : -7.3  
 $\sigma$ : 26.4

Channel 1  
mn: -504  
mx: 606  
 $\mu$ : -18.4  
 $\sigma$ : 65.9

Channel 2  
mn: -3344  
mx: 3228  
 $\mu$ : -19.1  
 $\sigma$ : 81.6



