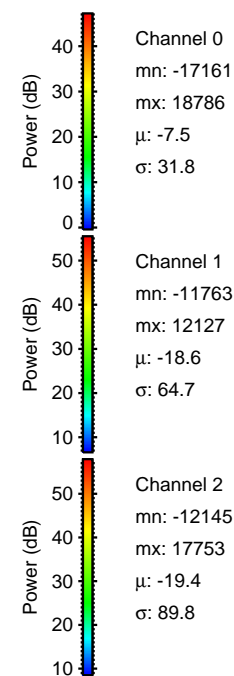
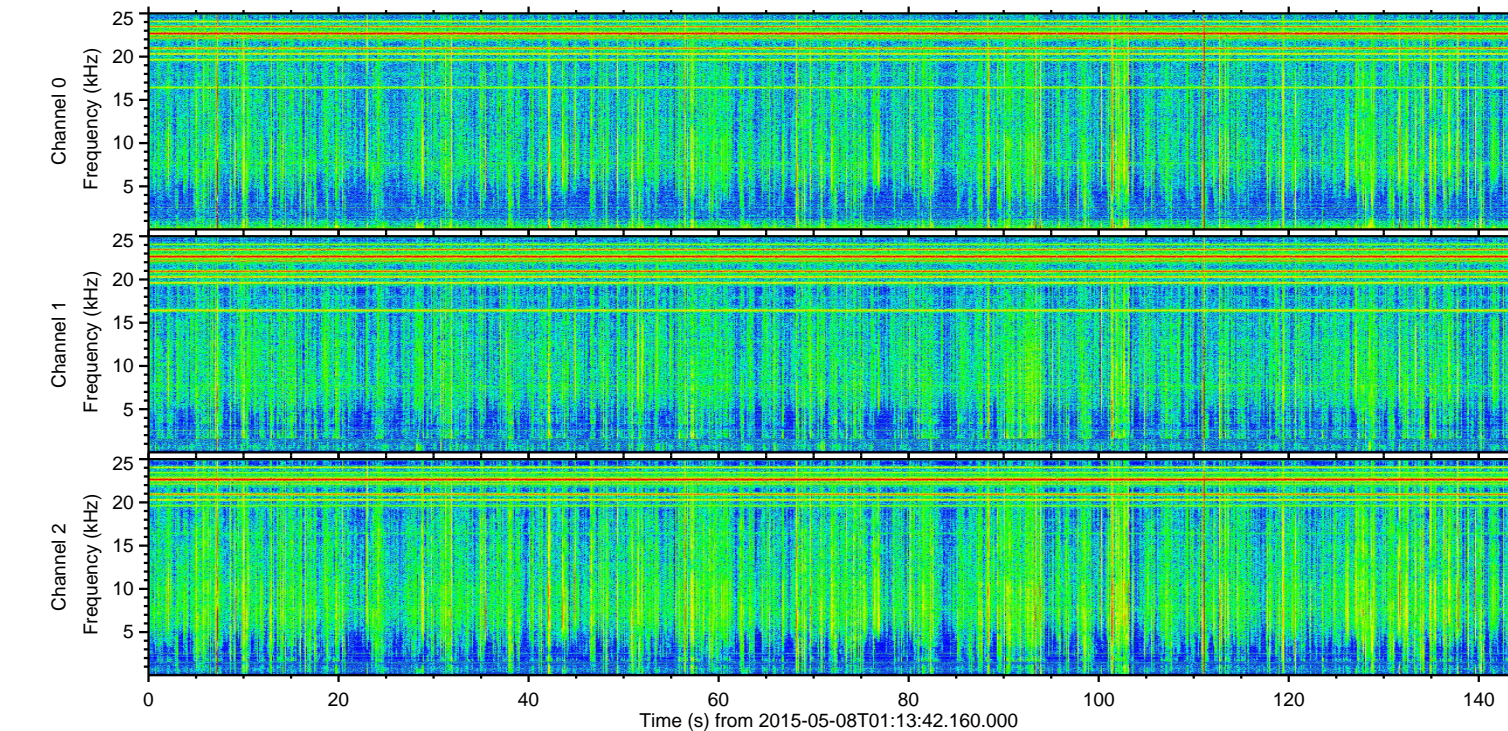
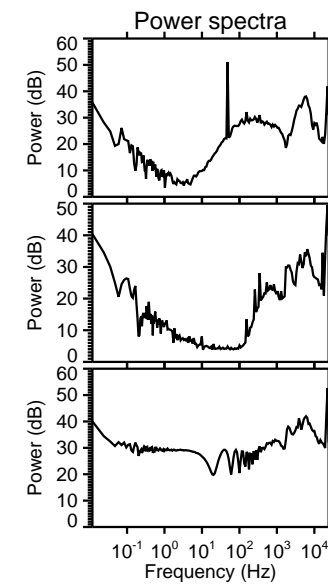
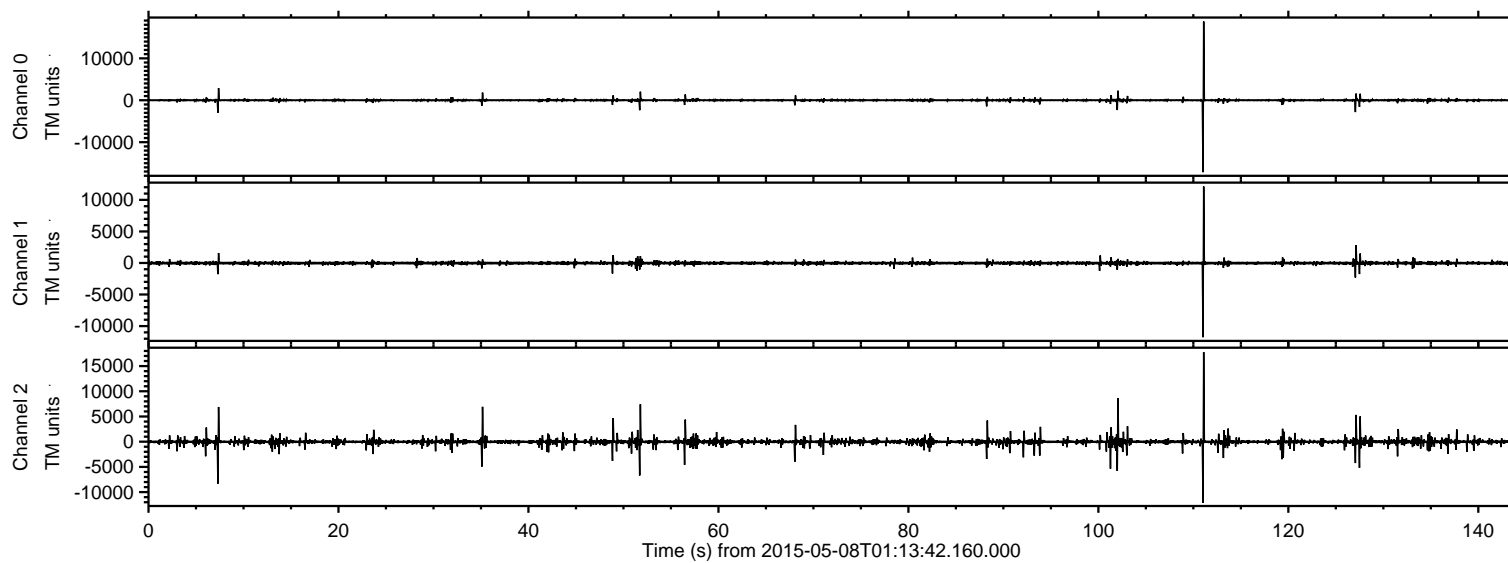


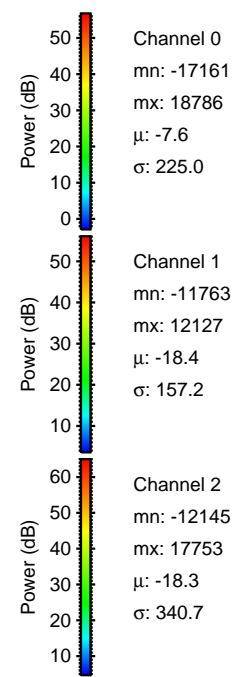
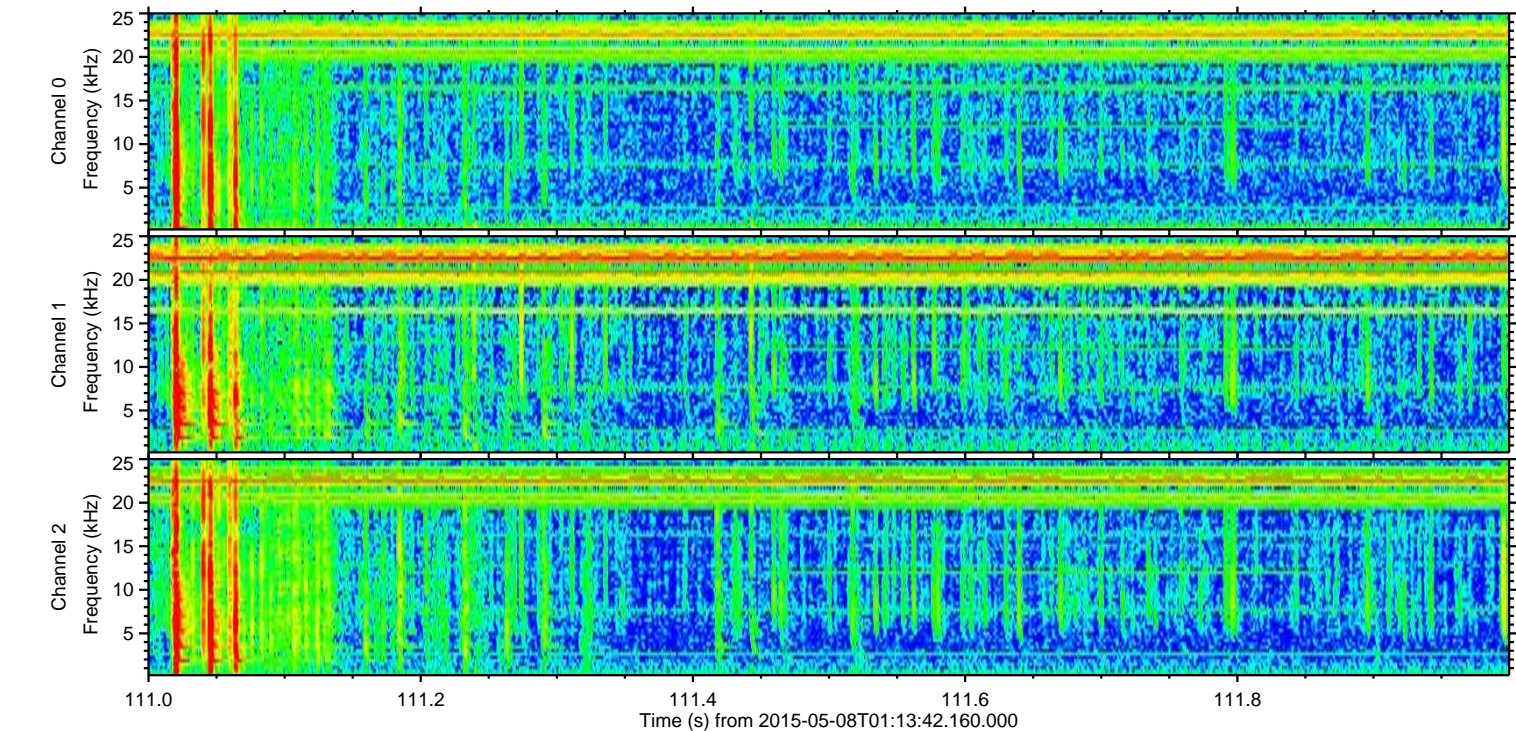
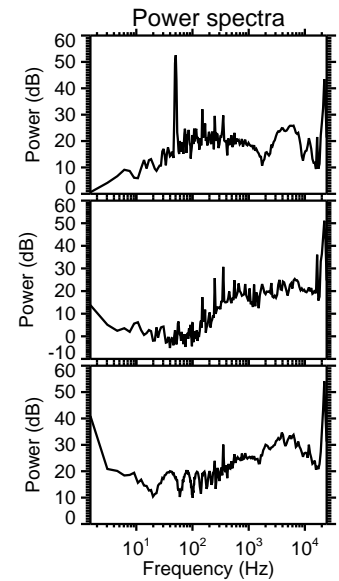
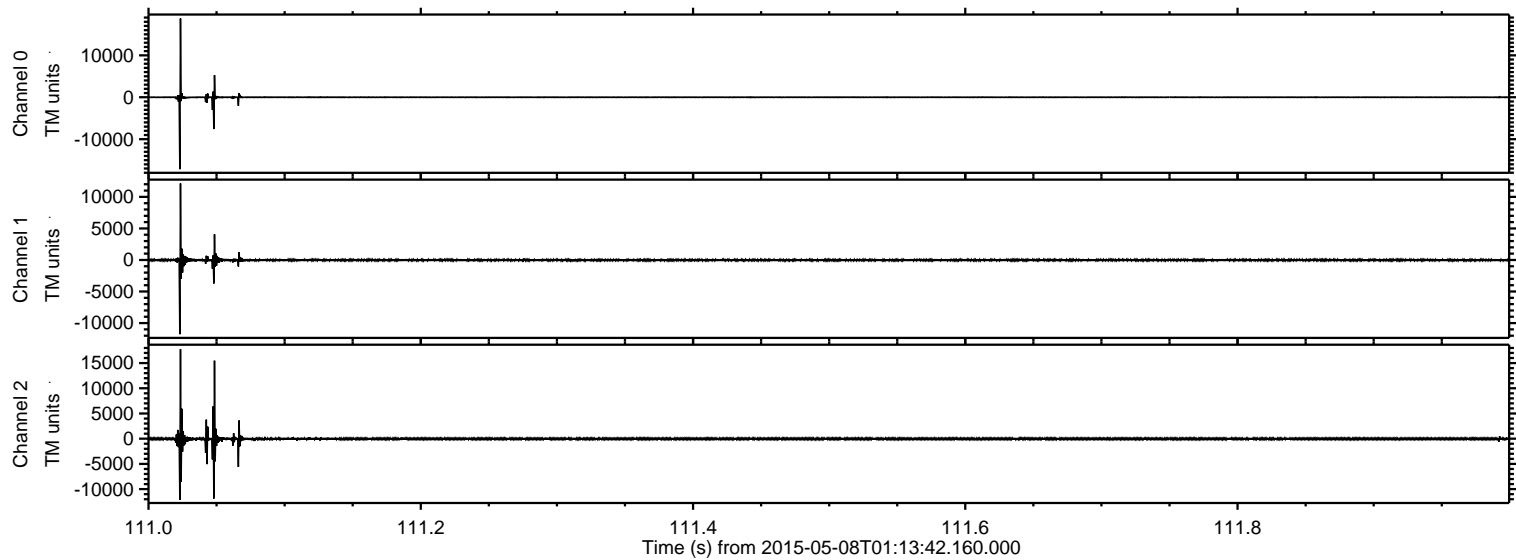
ELMAVAN 3D WAVEFORMS (Measured data sampled at 50 kHz) 49738 packets of 144 samples from 2015-05-08T01:13:42.160.000.

Processed Fri May 8 03:20:25 2015 by ELM ver.2012-10-06 from 001__elm20150508_011341__dat00.bin



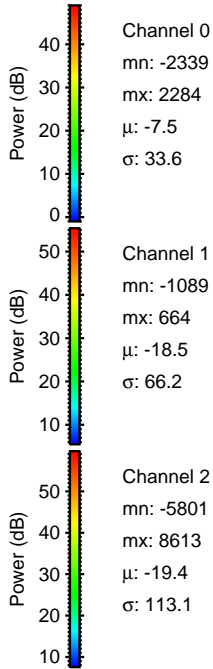
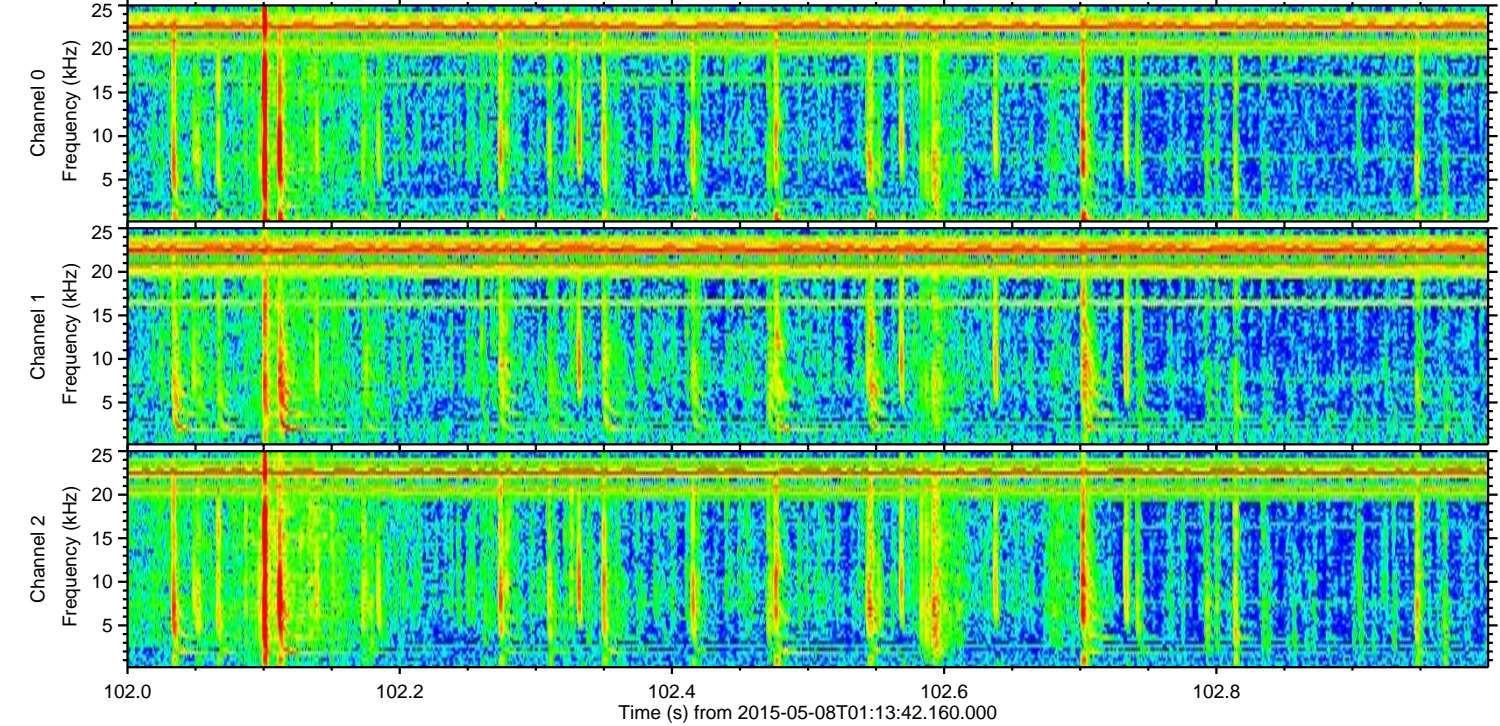
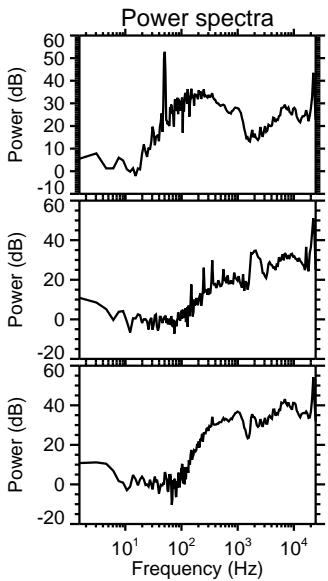
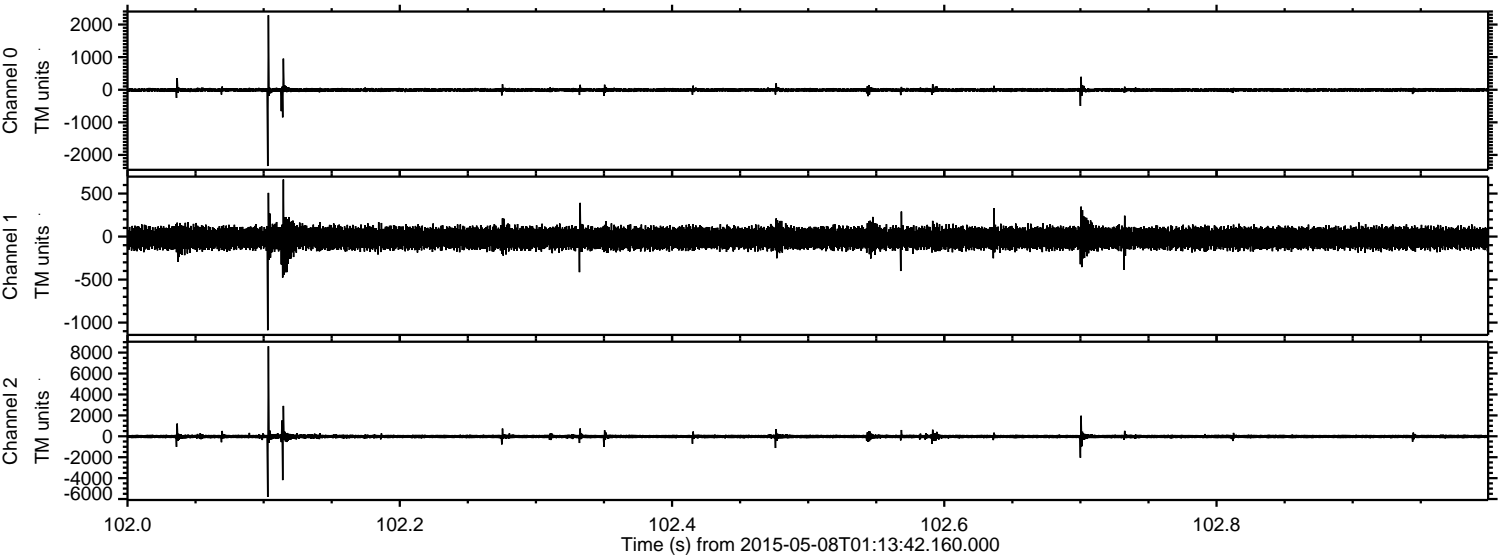
ELMAVAN 3D WAVEFORMS (Measured data sampled at 50 kHz) 49738 packets of 144 samples from 2015-05-08T01:13:42.160.000. Part 112/144

Processed Fri May 8 03:20:37 2015 by ELM ver.2012-10-06 from 001__elm20150508_011341__dat00.bin

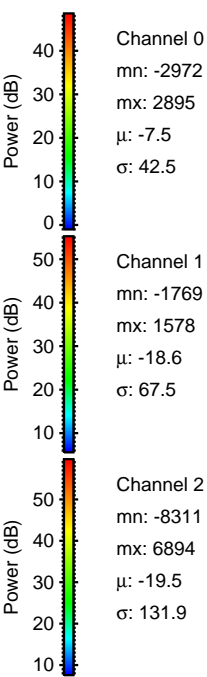
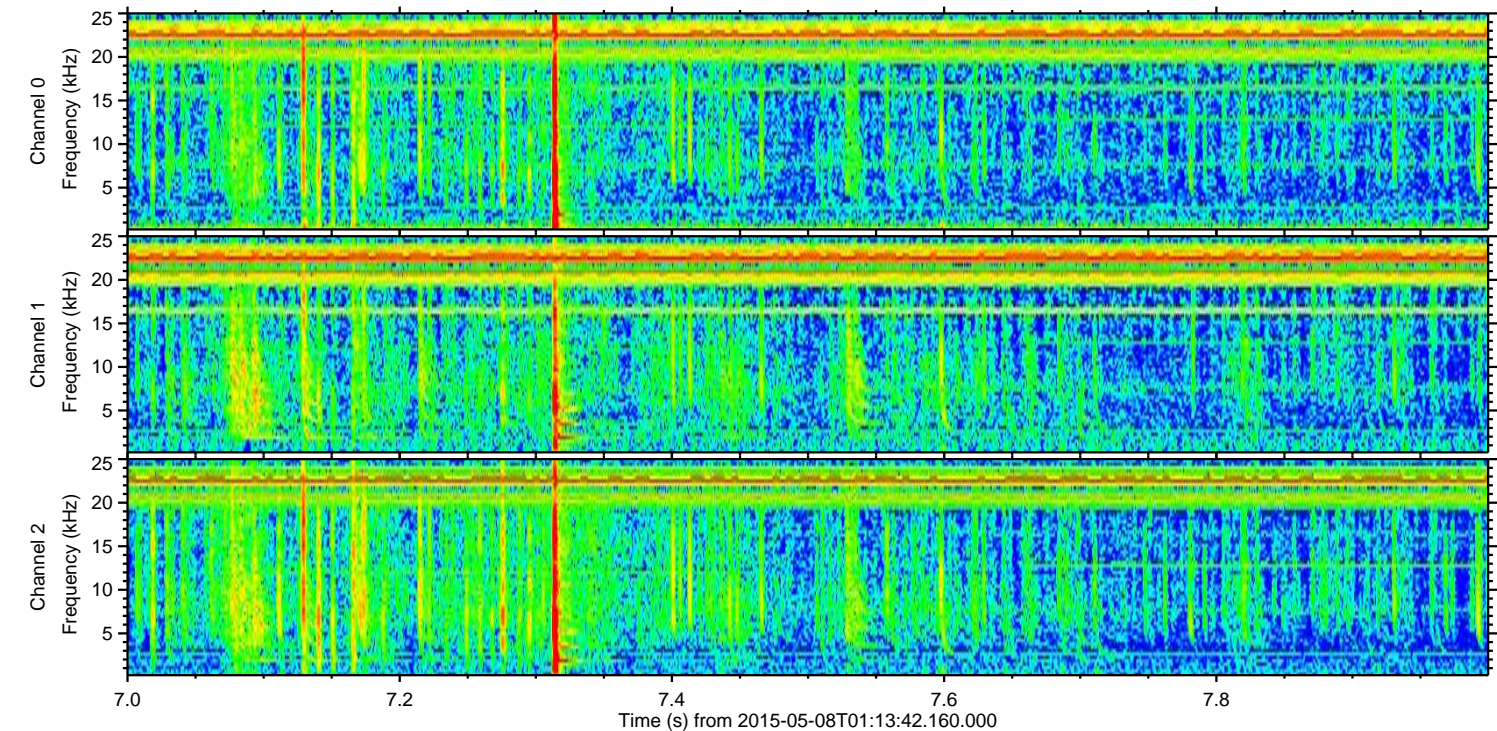
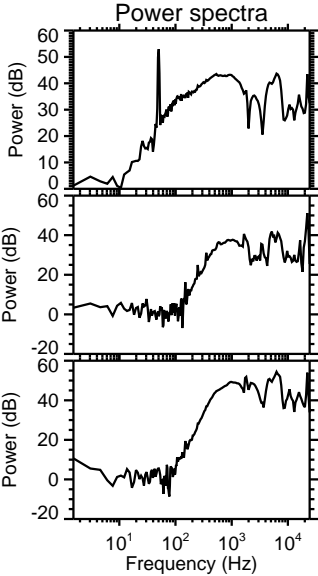
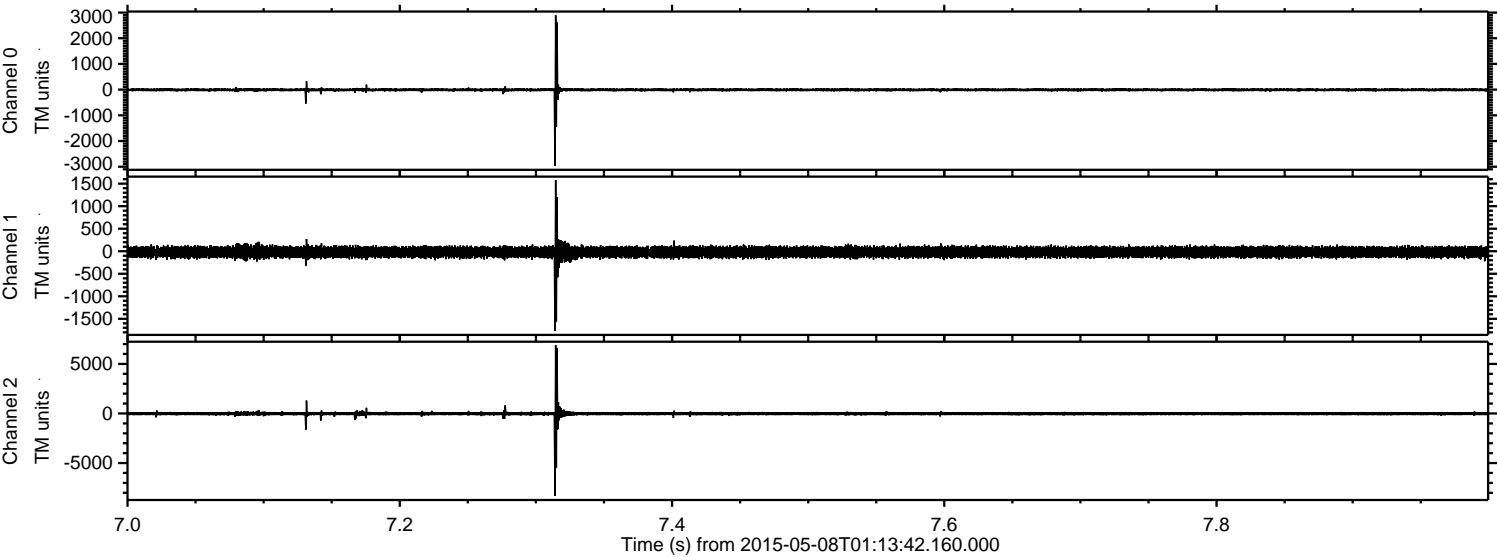


ELMAVAN 3D WAVEFORMS (Measured data sampled at 50 kHz) 49738 packets of 144 samples from 2015-05-08T01:13:42.160.000. Part 103/144

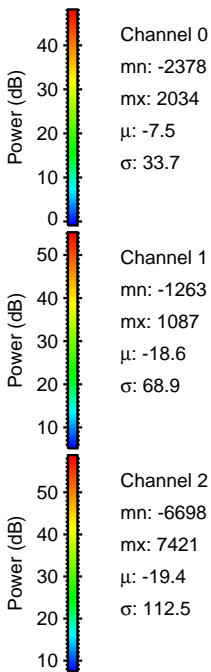
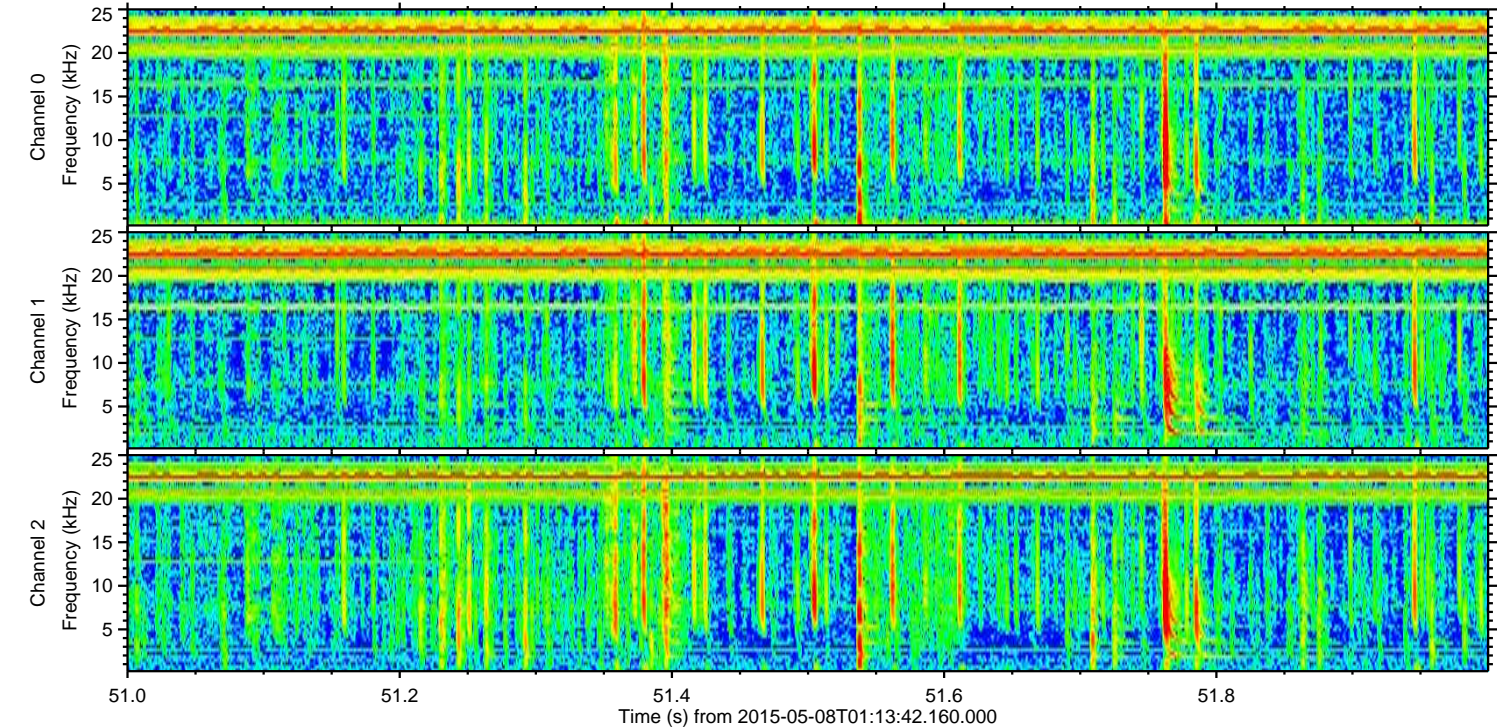
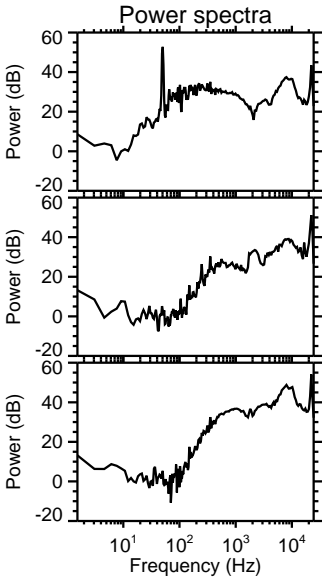
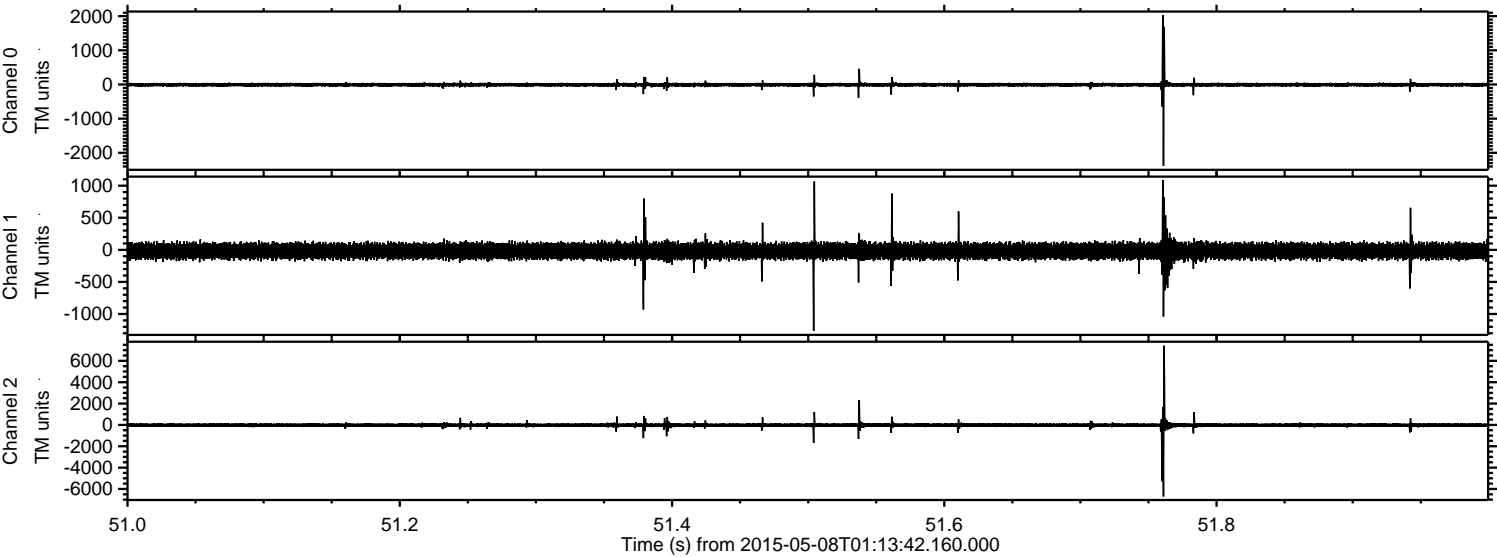
Processed Fri May 8 03:20:38 2015 by ELM ver.2012-10-06 from 001__elm20150508_011341__dat00.bin



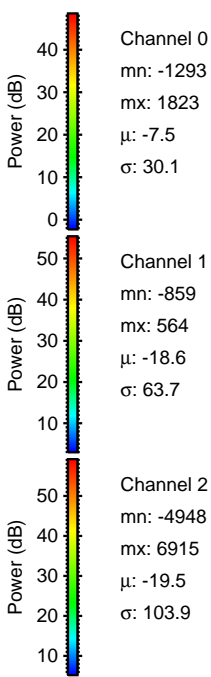
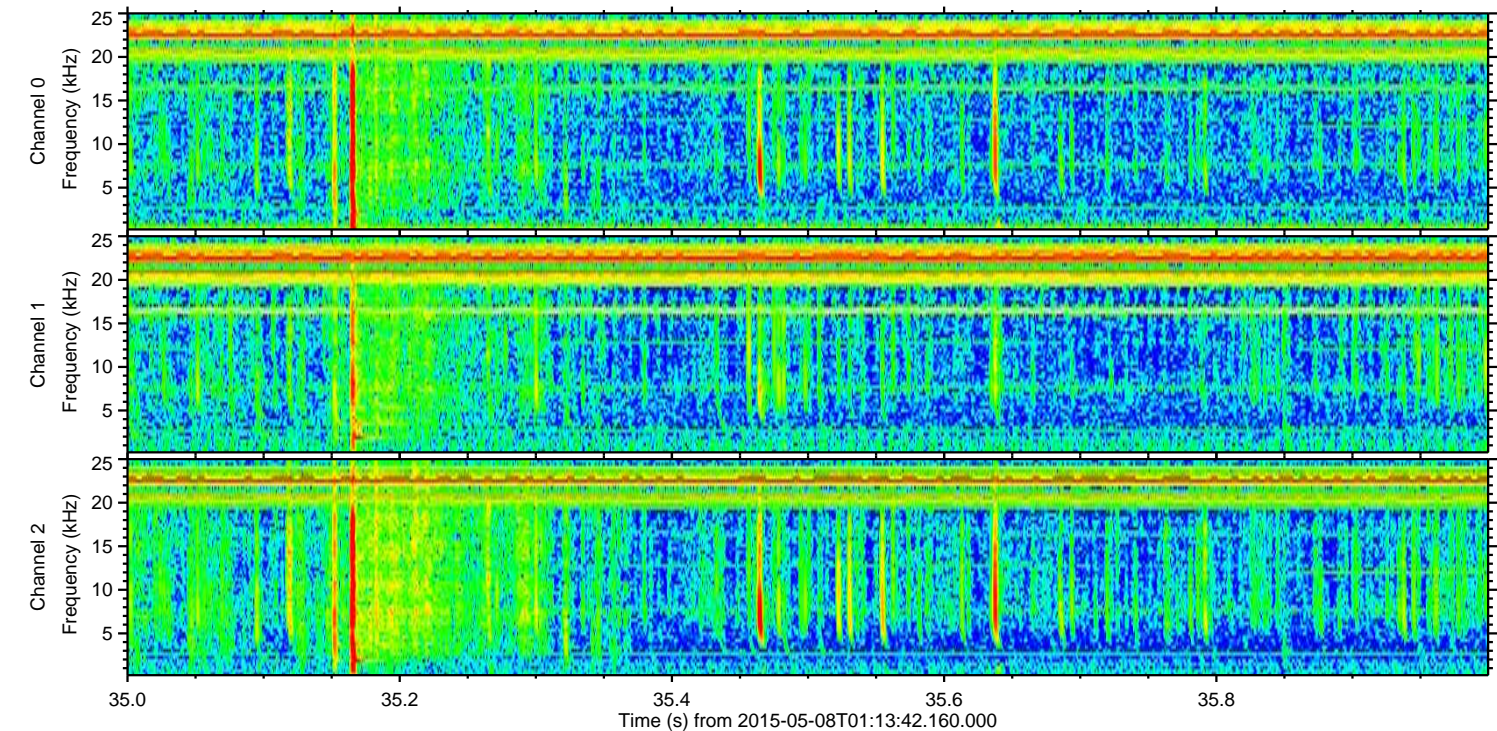
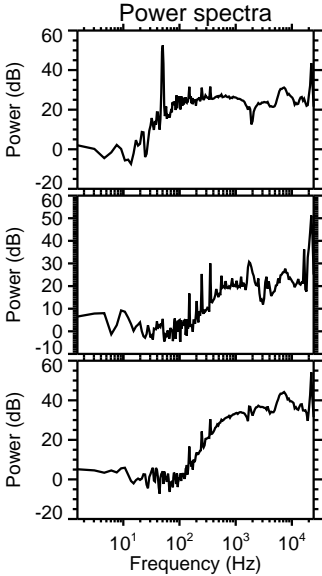
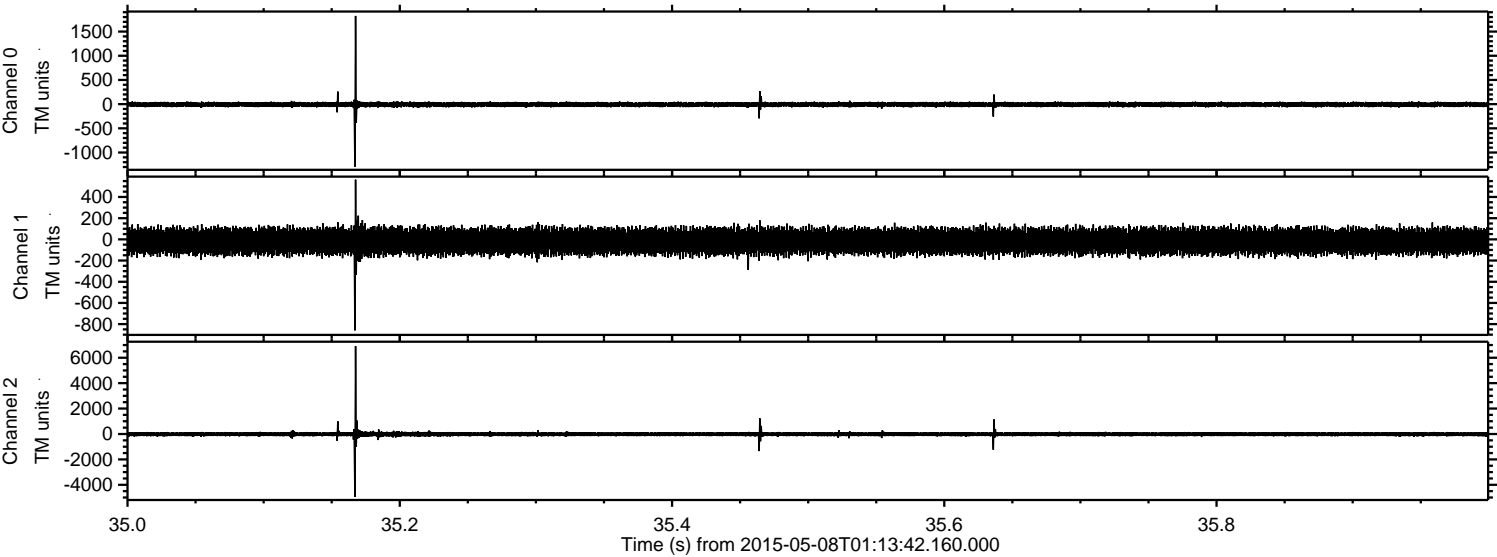
Processed Fri May 8 03:20:38 2015 by ELM ver.2012-10-06 from 001__elm20150508_011341__dat00.bin



Processed Fri May 8 03:20:39 2015 by ELM ver.2012-10-06 from 001__elm20150508_011341__dat00.bin

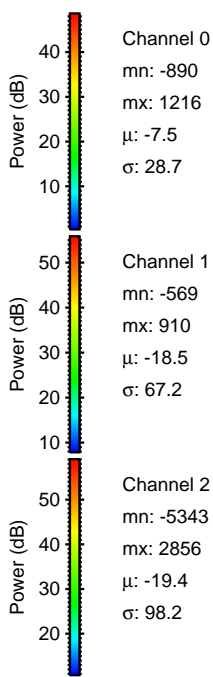
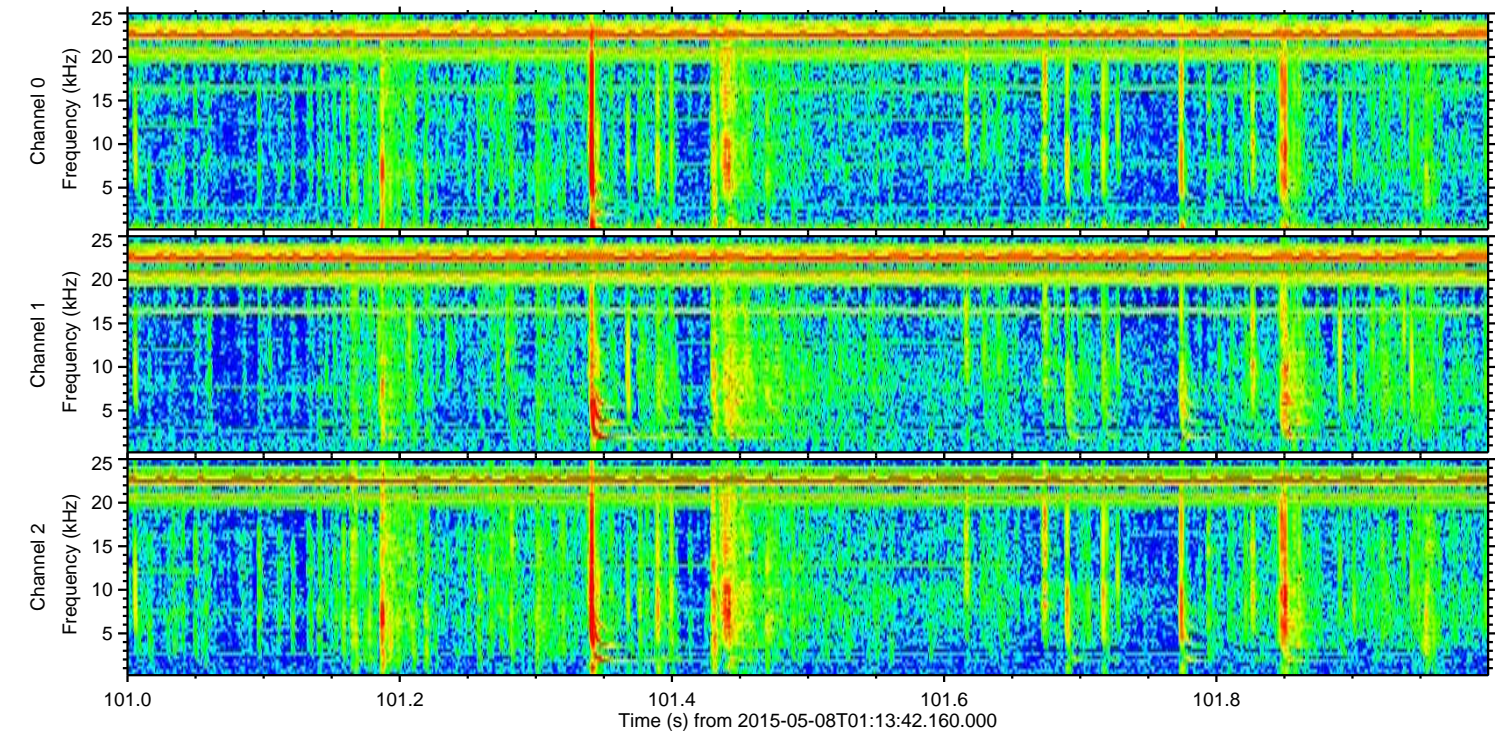
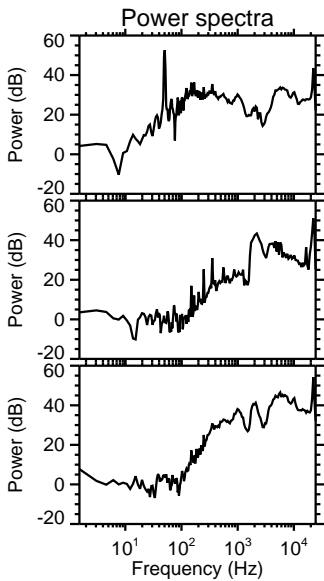
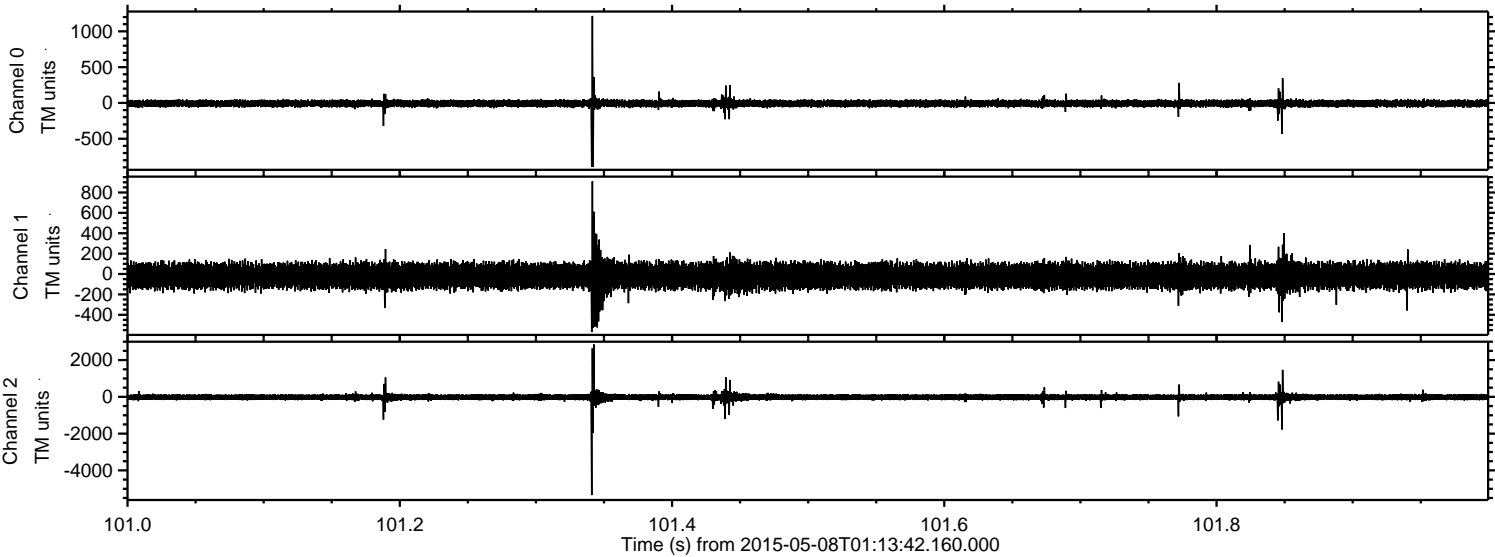


Processed Fri May 8 03:20:40 2015 by ELM ver.2012-10-06 from 001__elm20150508_011341__dat00.bin



ELMAVAN 3D WAVEFORMS (Measured data sampled at 50 kHz) 49738 packets of 144 samples from 2015-05-08T01:13:42.160.000. Part 102/144

Processed Fri May 8 03:20:41 2015 by ELM ver.2012-10-06 from 001__elm20150508_011341__dat00.bin



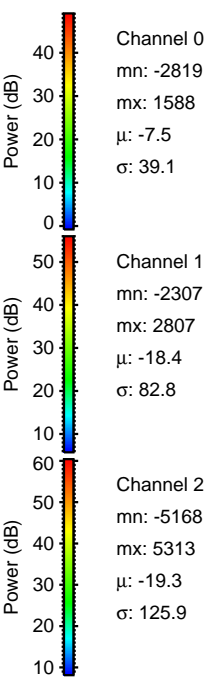
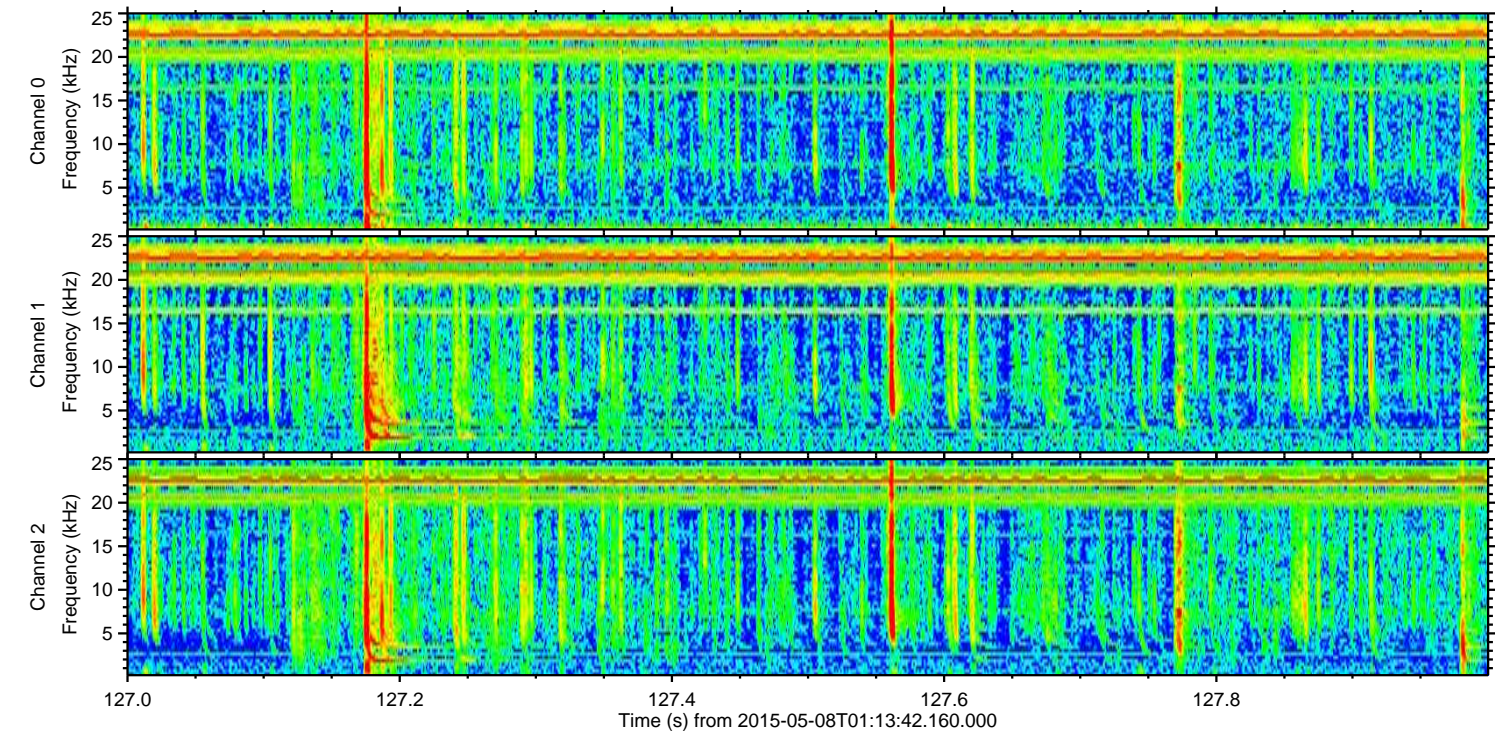
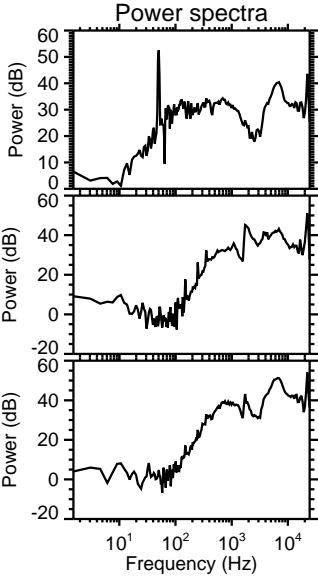
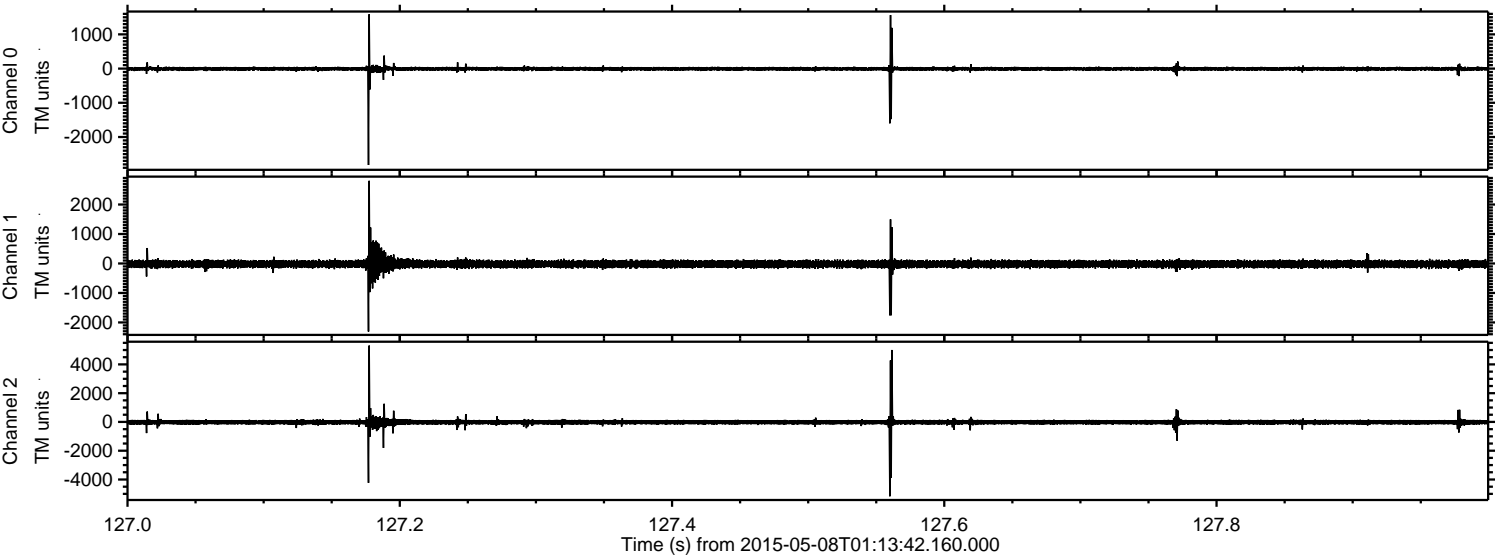
Channel 0
mn: -890
mx: 1216
 μ : -7.5
 σ : 28.7

Channel 1
mn: -569
mx: 910
 μ : -18.5
 σ : 67.2

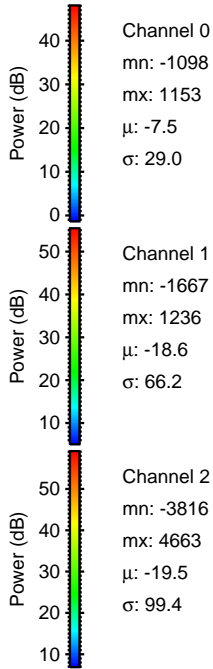
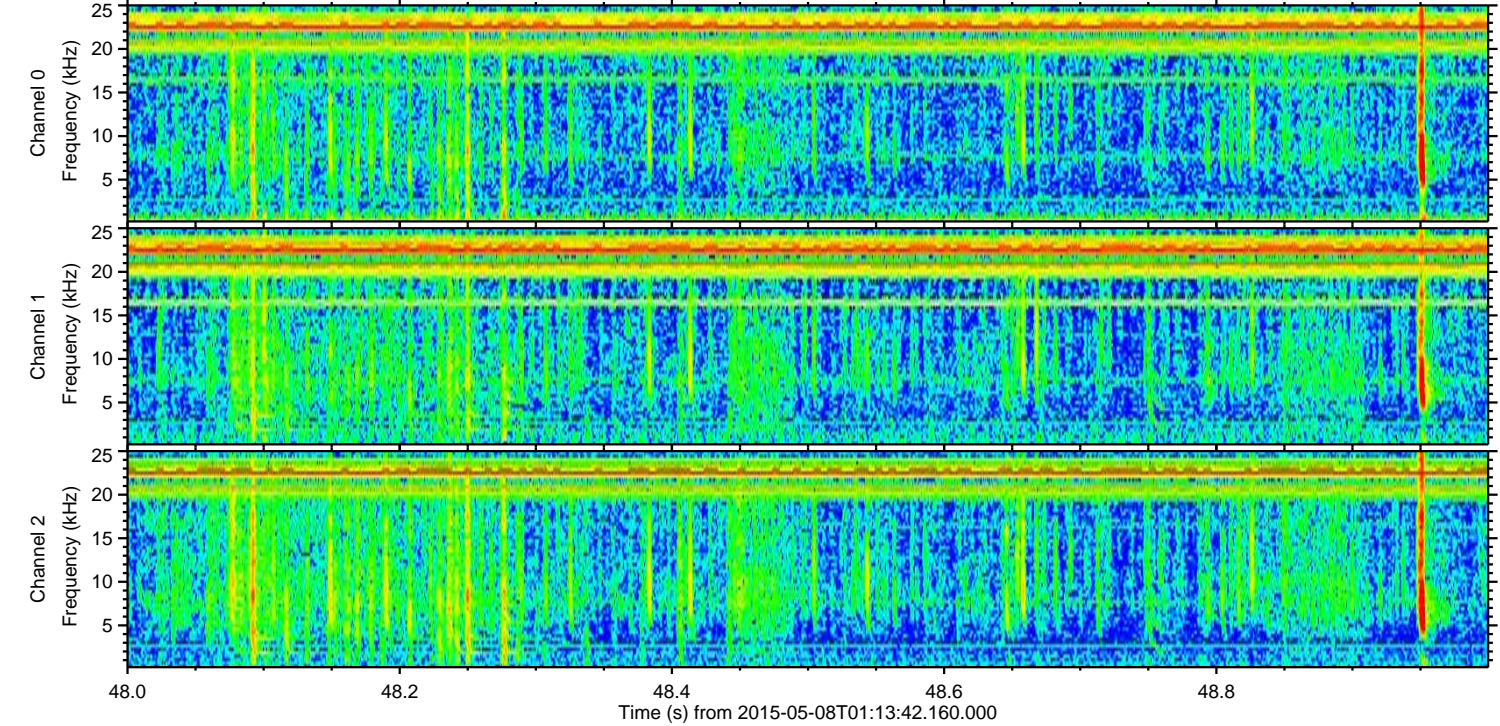
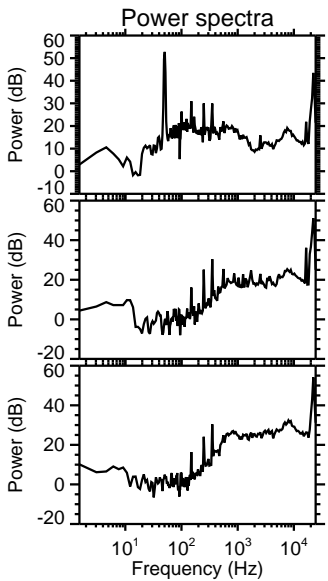
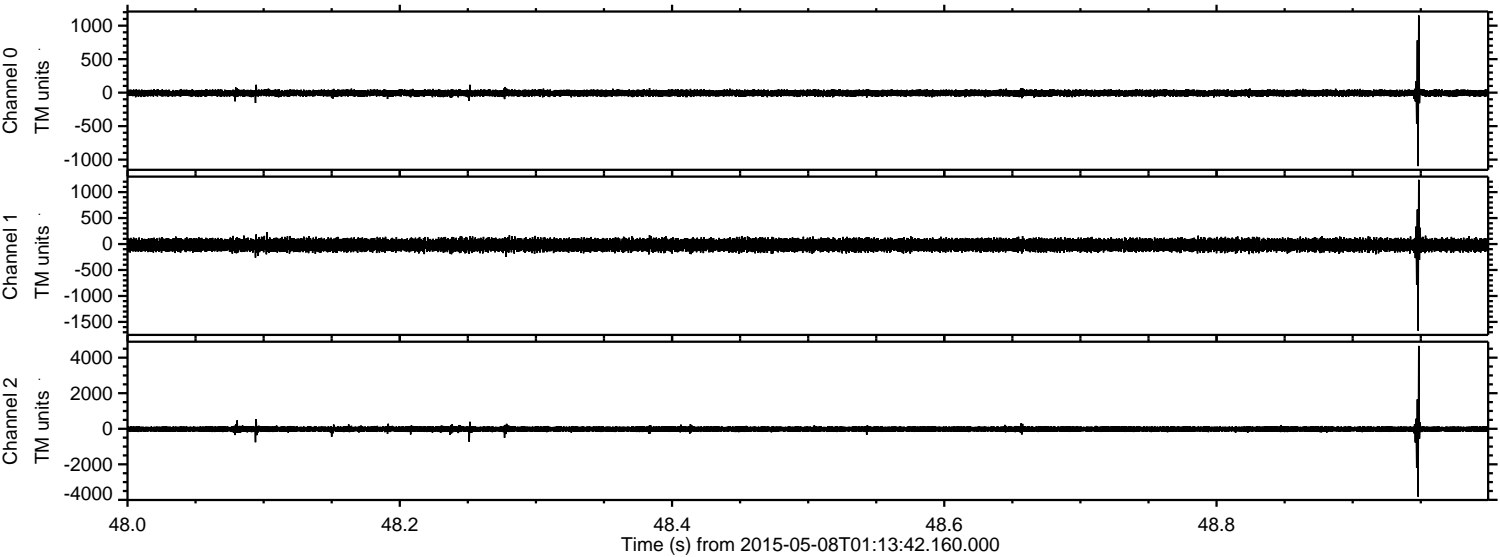
Channel 2
mn: -5343
mx: 2856
 μ : -19.4
 σ : 98.2

ELMAVAN 3D WAVEFORMS (Measured data sampled at 50 kHz) 49738 packets of 144 samples from 2015-05-08T01:13:42.160.000. Part 128/144

Processed Fri May 8 03:20:42 2015 by ELM ver.2012-10-06 from 001__elm20150508_011341__dat00.bin



Processed Fri May 8 03:20:43 2015 by ELM ver.2012-10-06 from 001__elm20150508_011341__dat00.bin

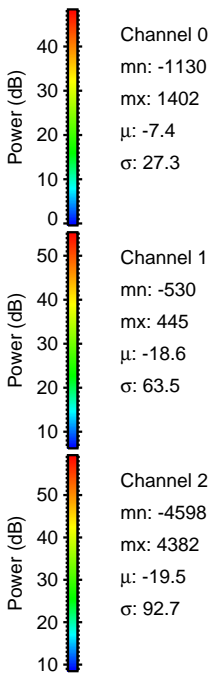
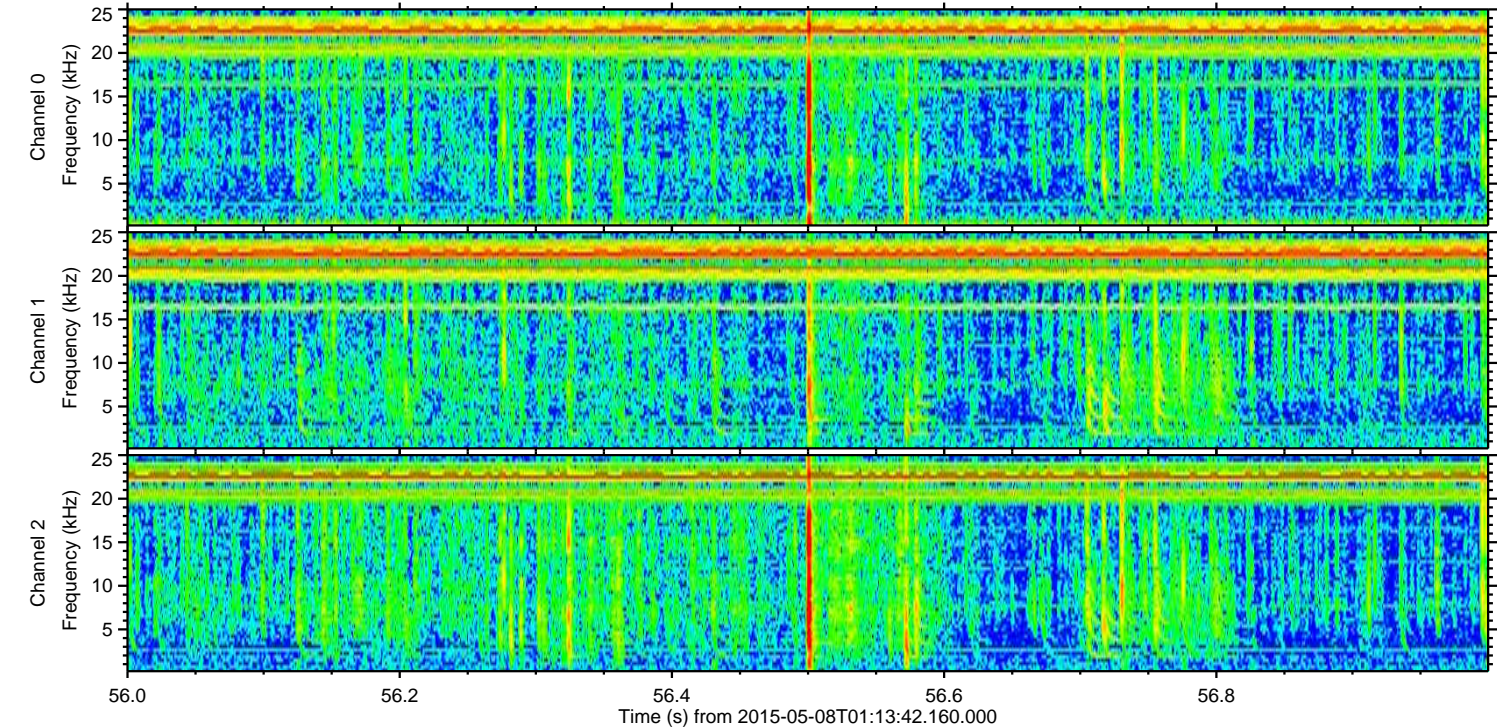
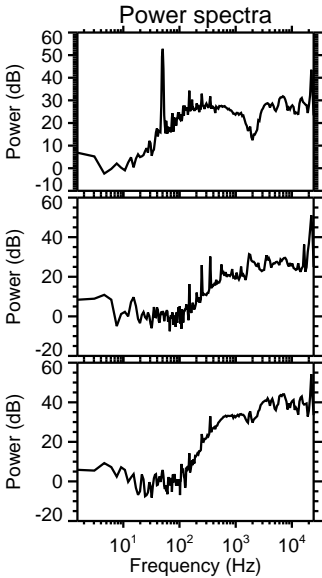
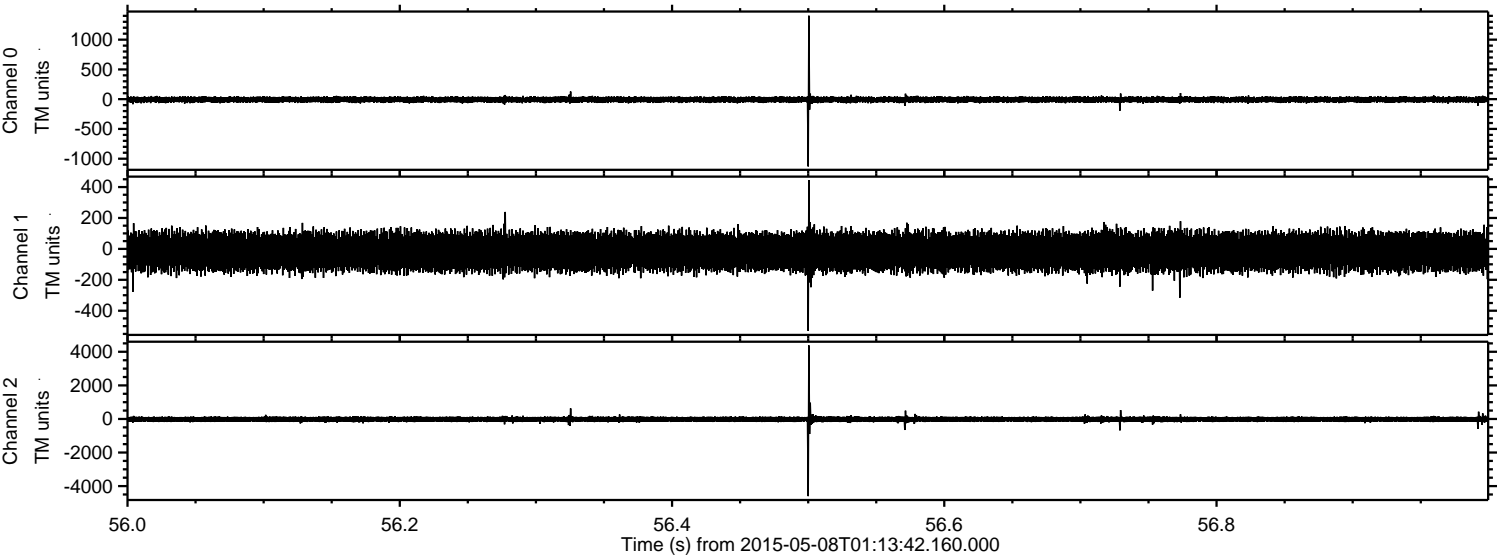


Channel 0
mn: -1098
mx: 1153
 μ : -7.5
 σ : 29.0

Channel 1
mn: -1667
mx: 1236
 μ : -18.6
 σ : 66.2

Channel 2
mn: -3816
mx: 4663
 μ : -19.5
 σ : 99.4

Processed Fri May 8 03:20:44 2015 by ELM ver.2012-10-06 from 001__elm20150508_011341__dat00.bin



Processed Fri May 8 03:20:45 2015 by ELM ver.2012-10-06 from 001__elm20150508_011341__dat00.bin

