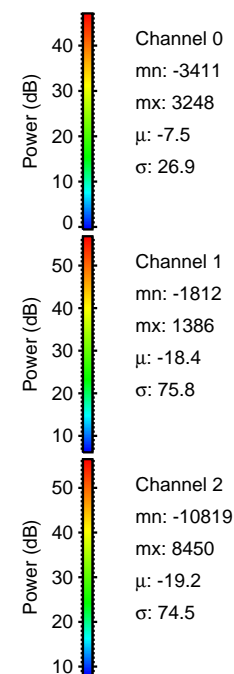
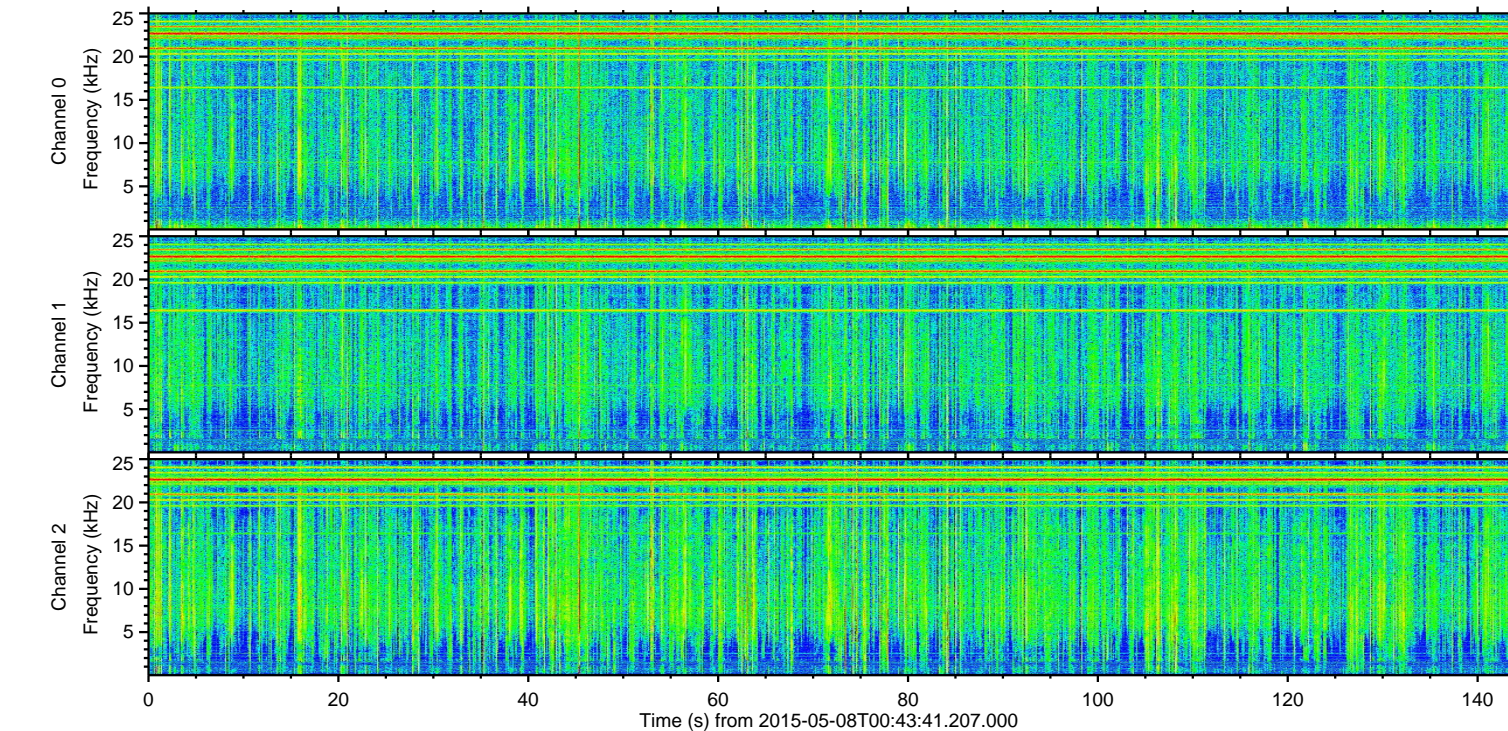
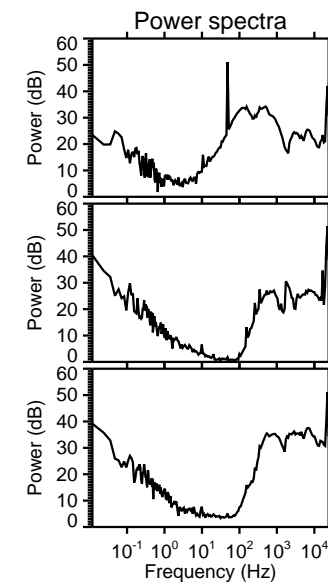
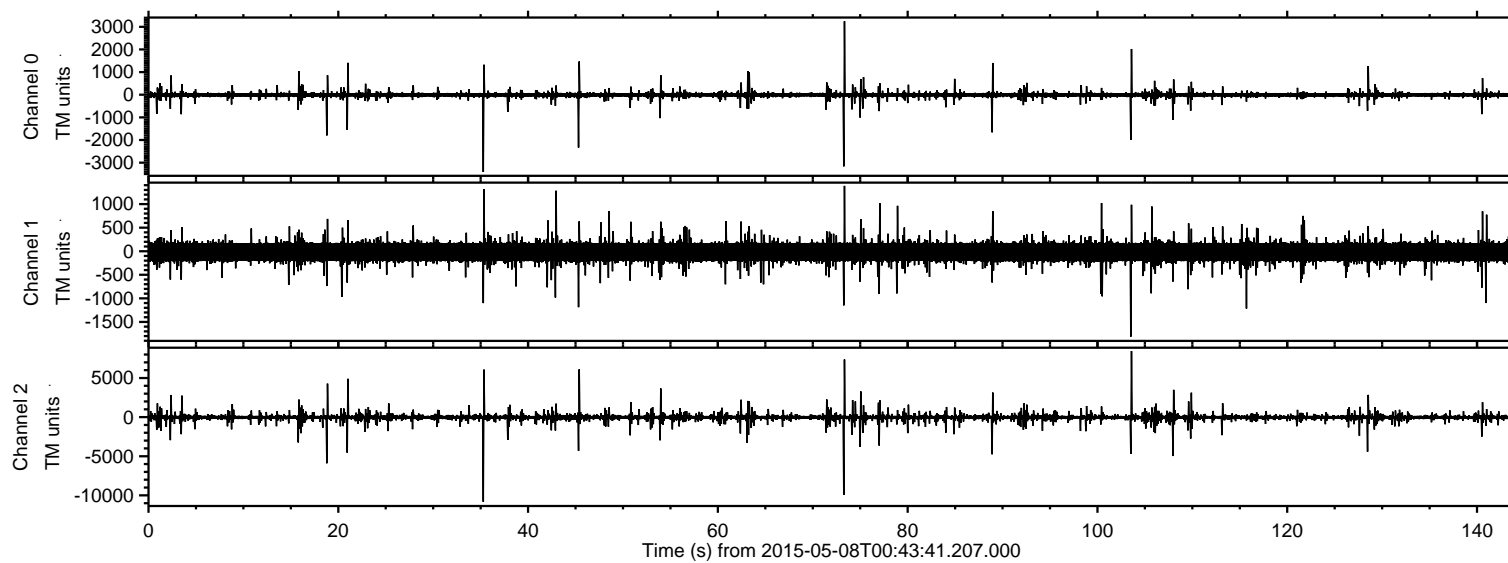
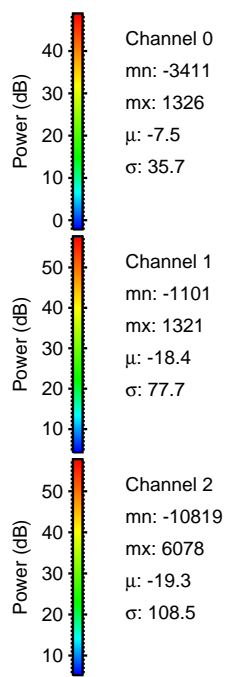
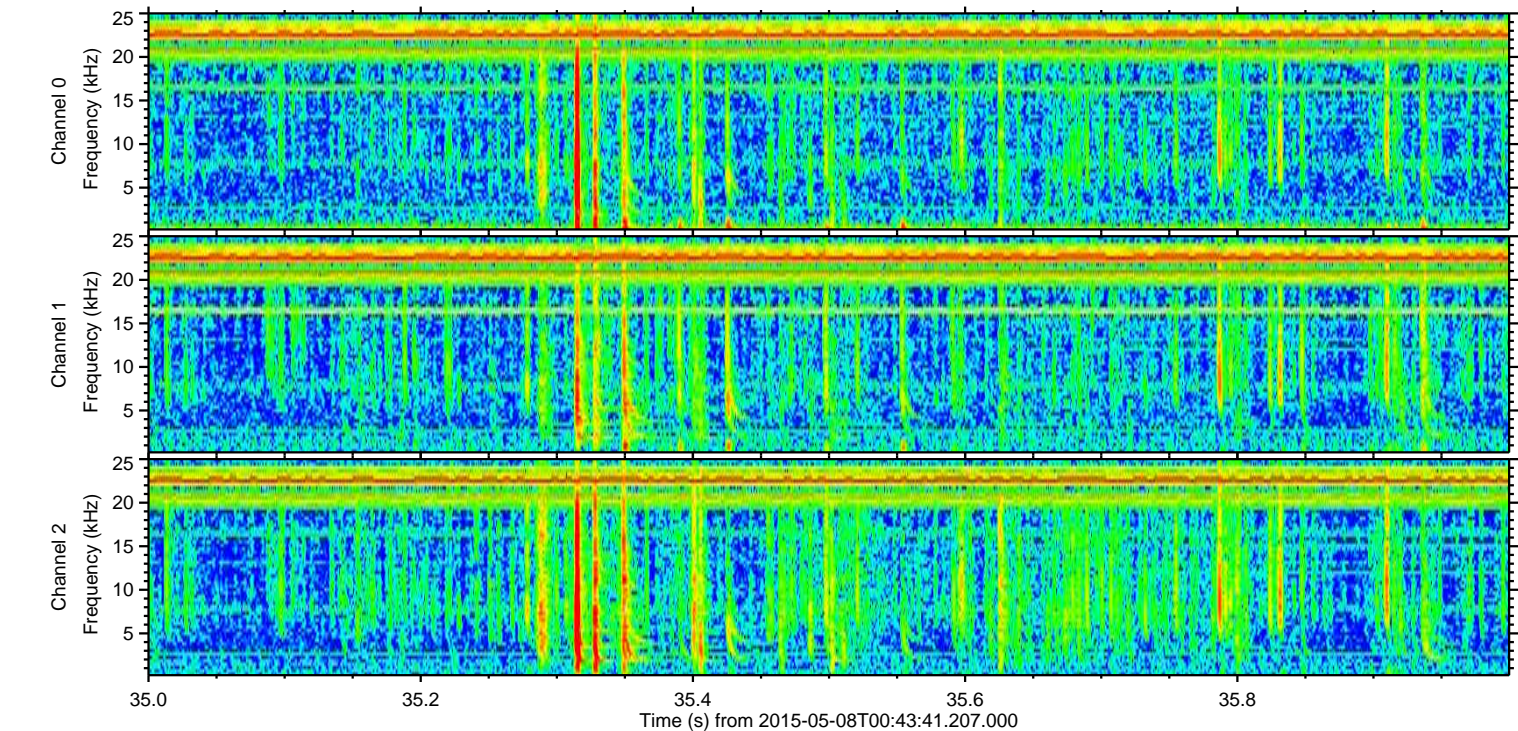
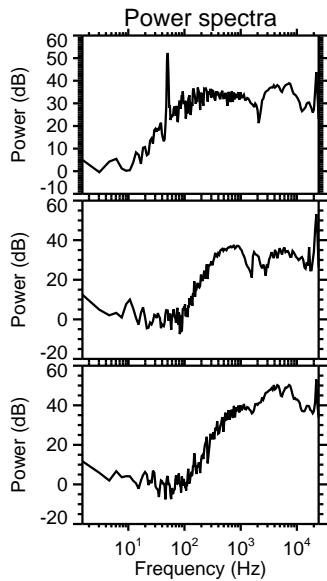
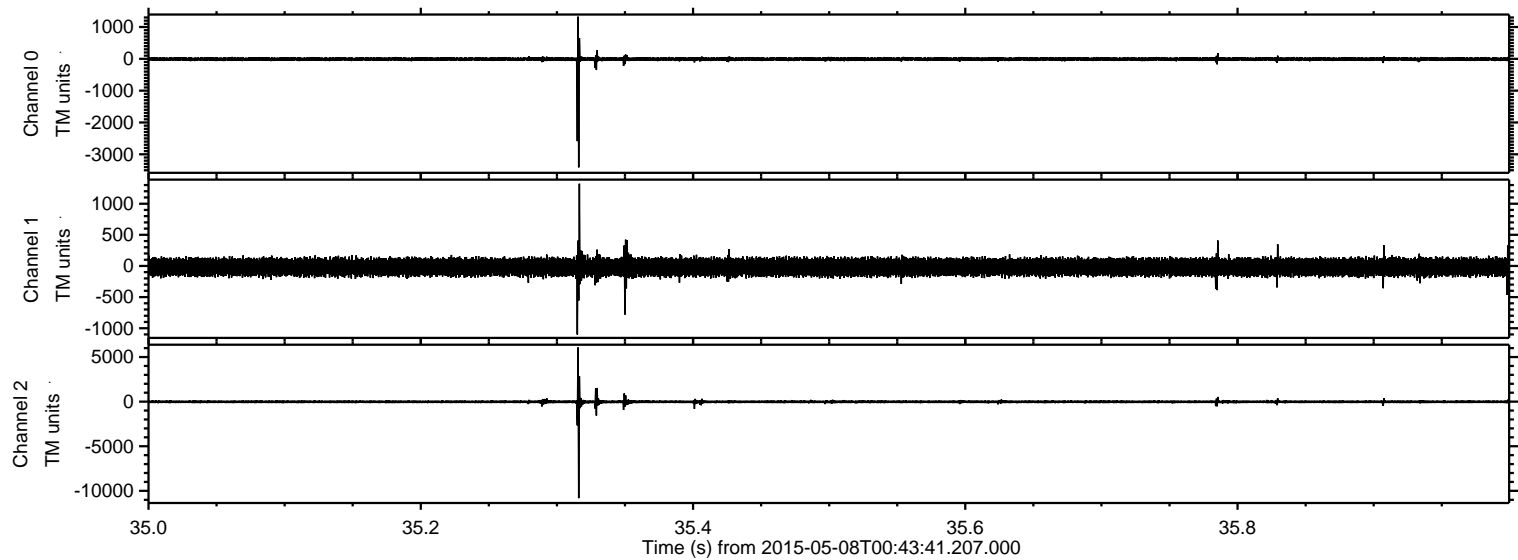


ELMAVAN 3D WAVEFORMS (Measured data sampled at 50 kHz) 49786 packets of 144 samples from 2015-05-08T00:43:41.207.000.

Processed Fri May 8 02:50:20 2015 by ELM ver.2012-10-06 from 001__elm20150508_004340__dat00.bin

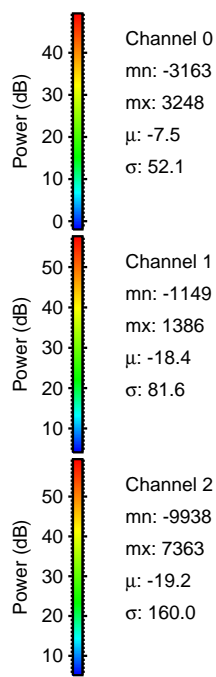
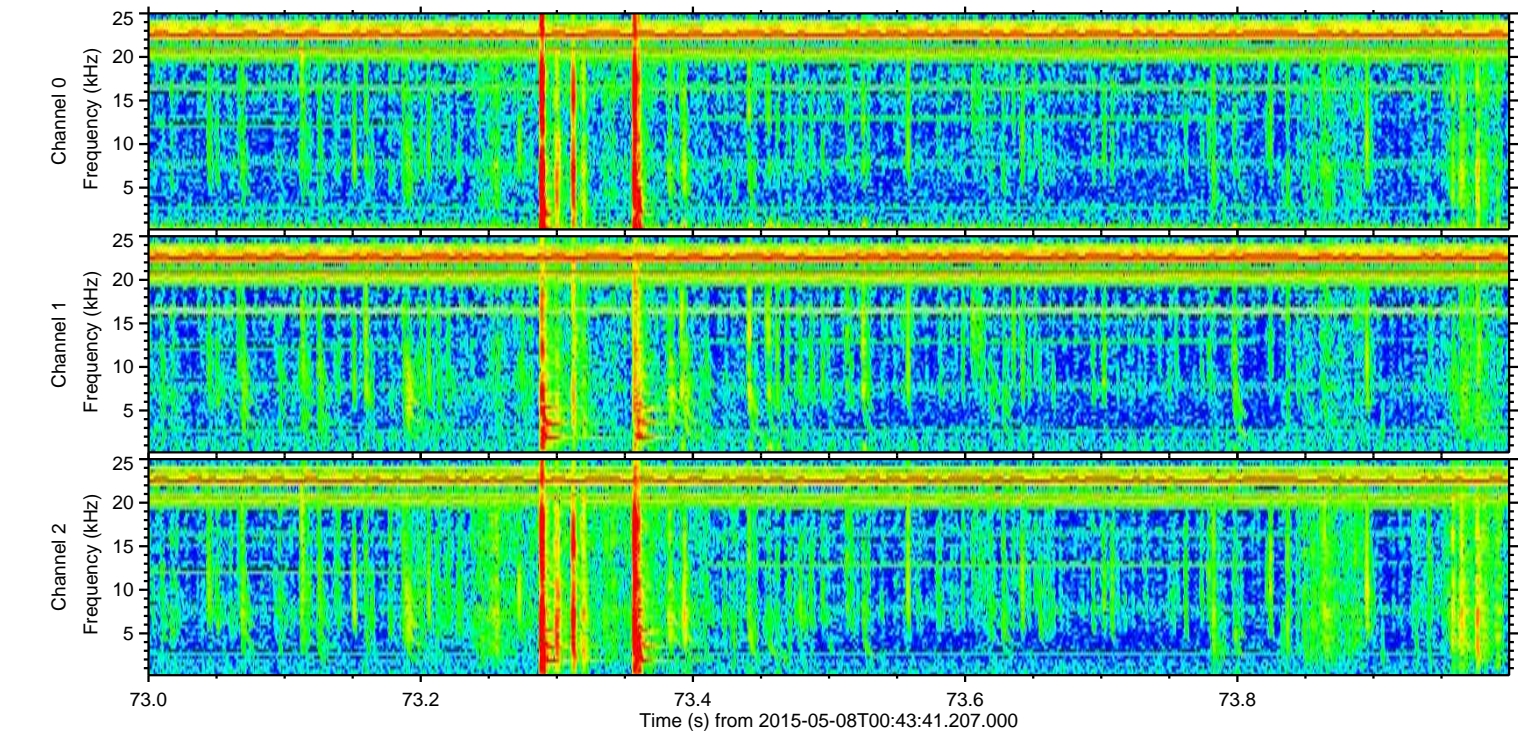
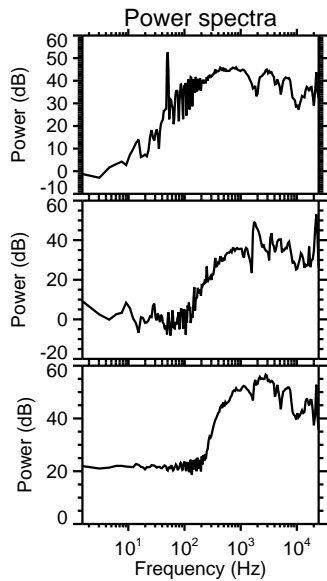
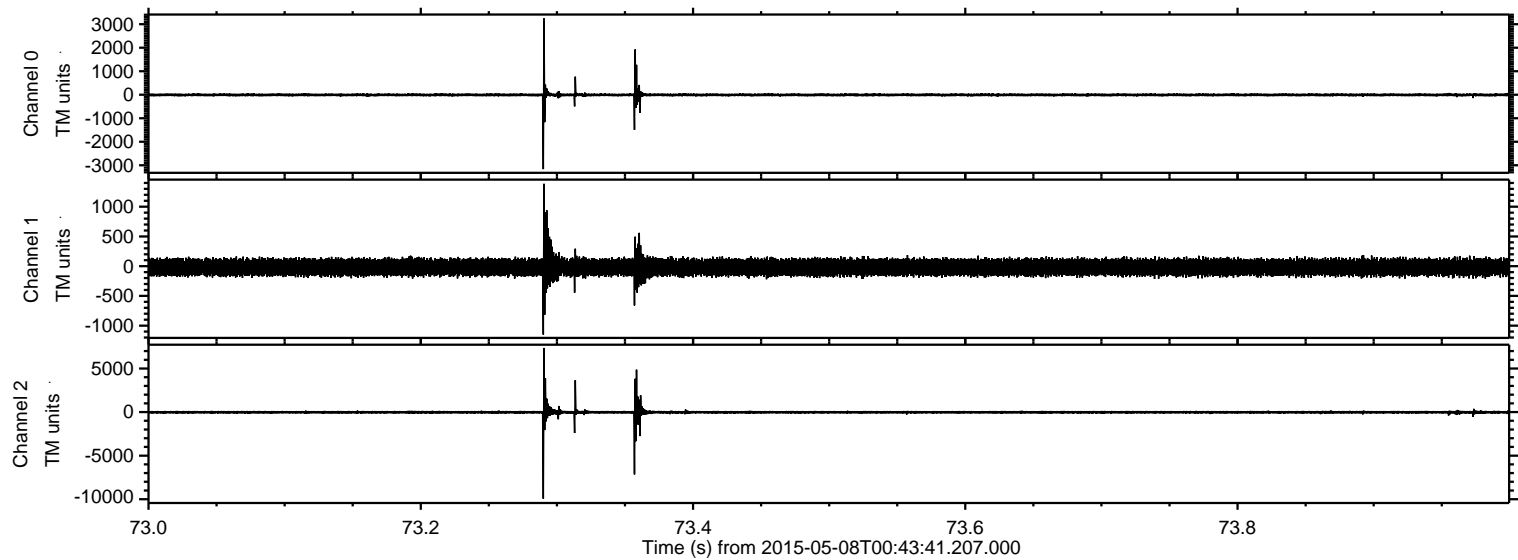


Processed Fri May 8 02:50:32 2015 by ELM ver.2012-10-06 from 001__elm20150508_004340__dat00.bin



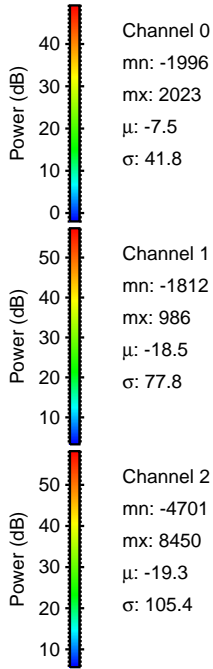
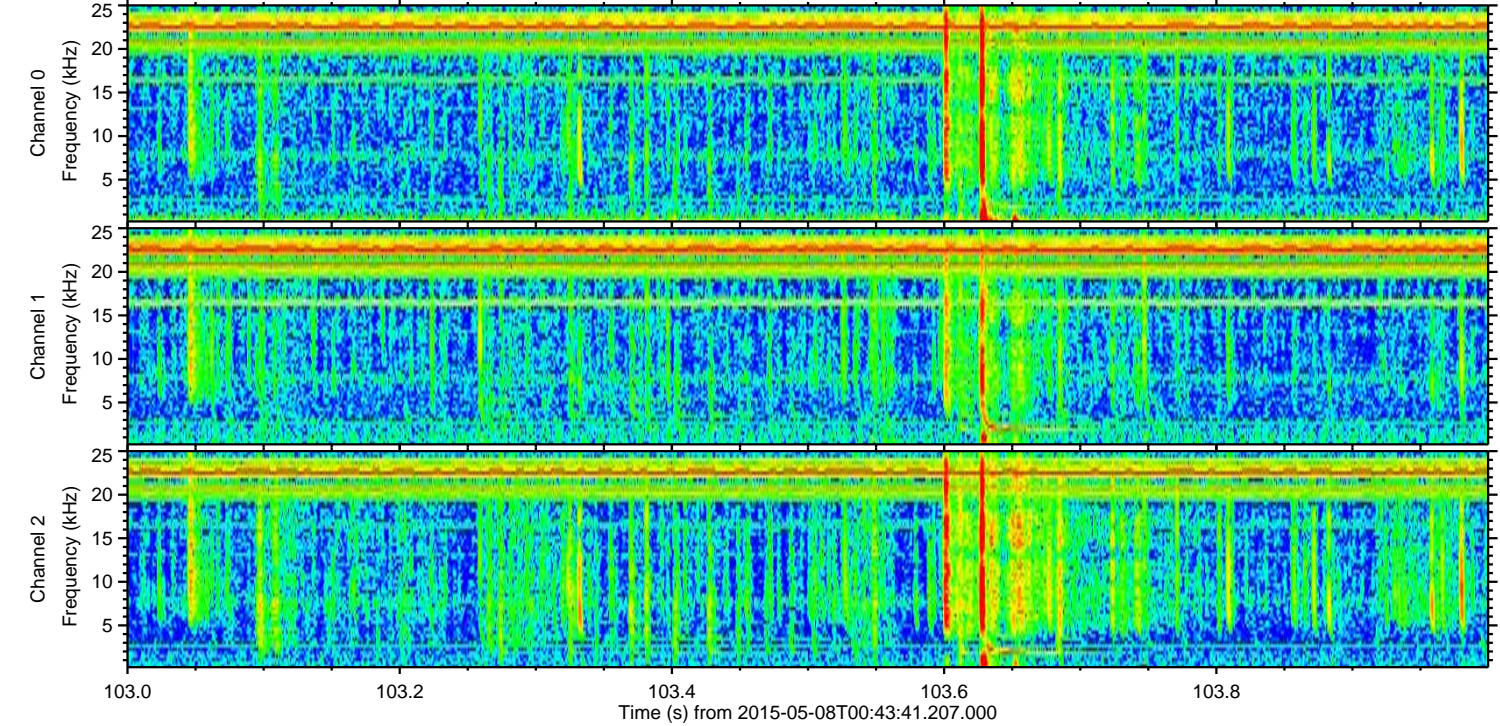
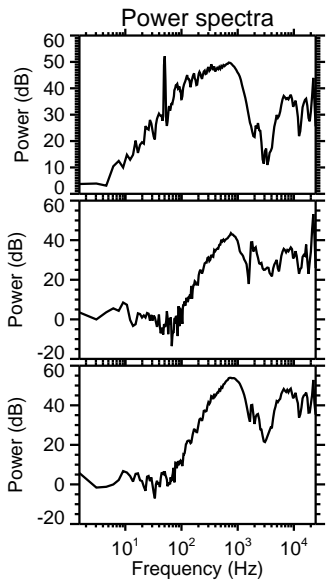
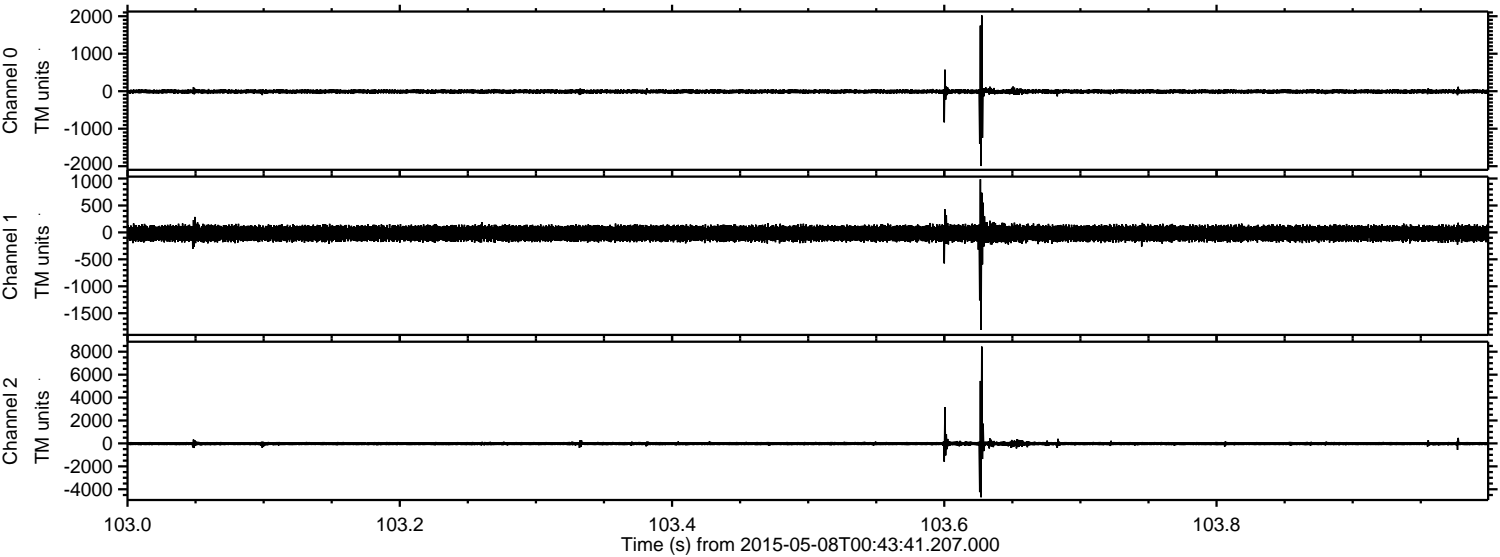
ELMAVAN 3D WAVEFORMS (Measured data sampled at 50 kHz) 49786 packets of 144 samples from 2015-05-08T00:43:41.207.000. Part 74/144

Processed Fri May 8 02:50:33 2015 by ELM ver.2012-10-06 from 001__elm20150508_004340__dat00.bin

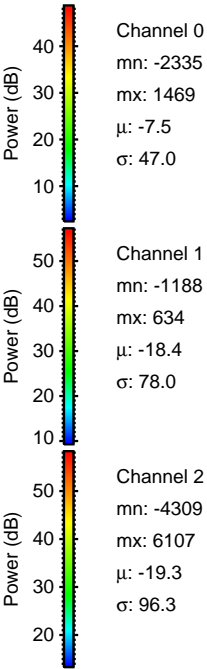
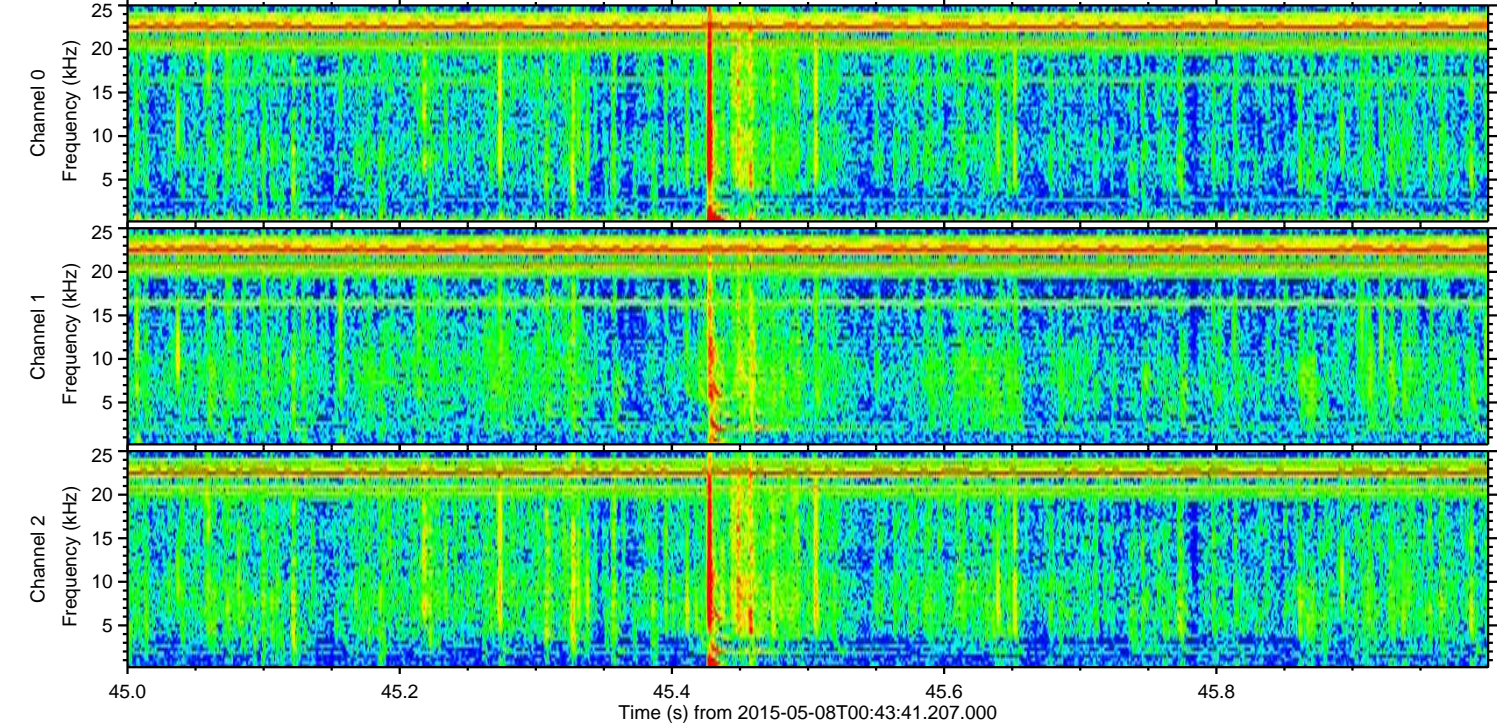
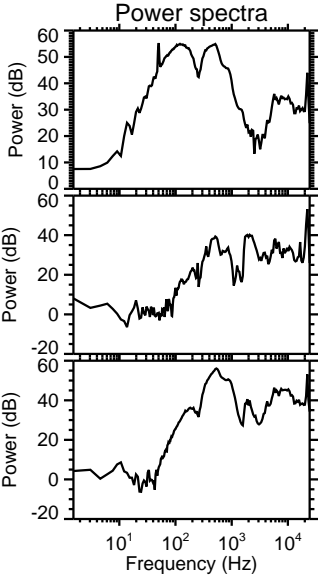
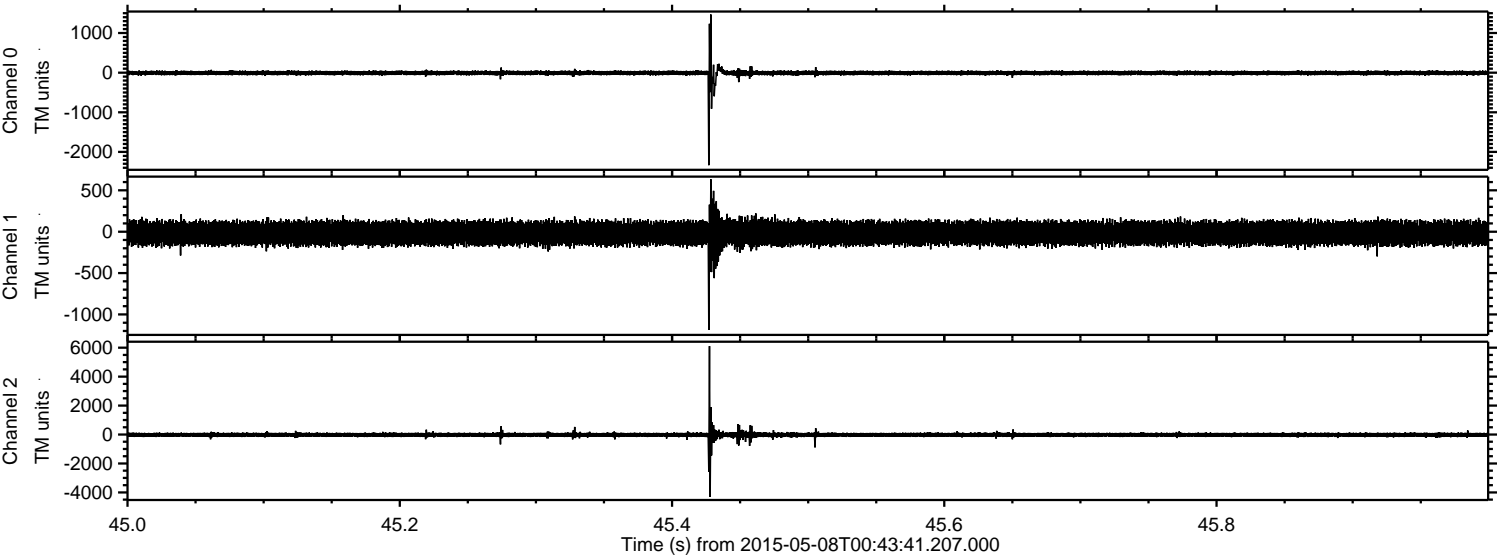


ELMAVAN 3D WAVEFORMS (Measured data sampled at 50 kHz) 49786 packets of 144 samples from 2015-05-08T00:43:41.207.000. Part 104/144

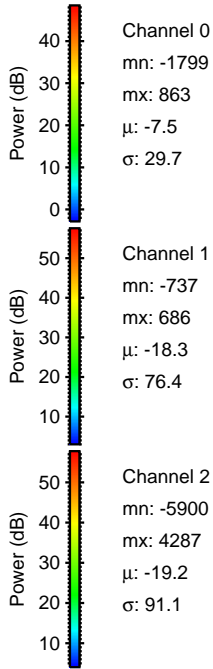
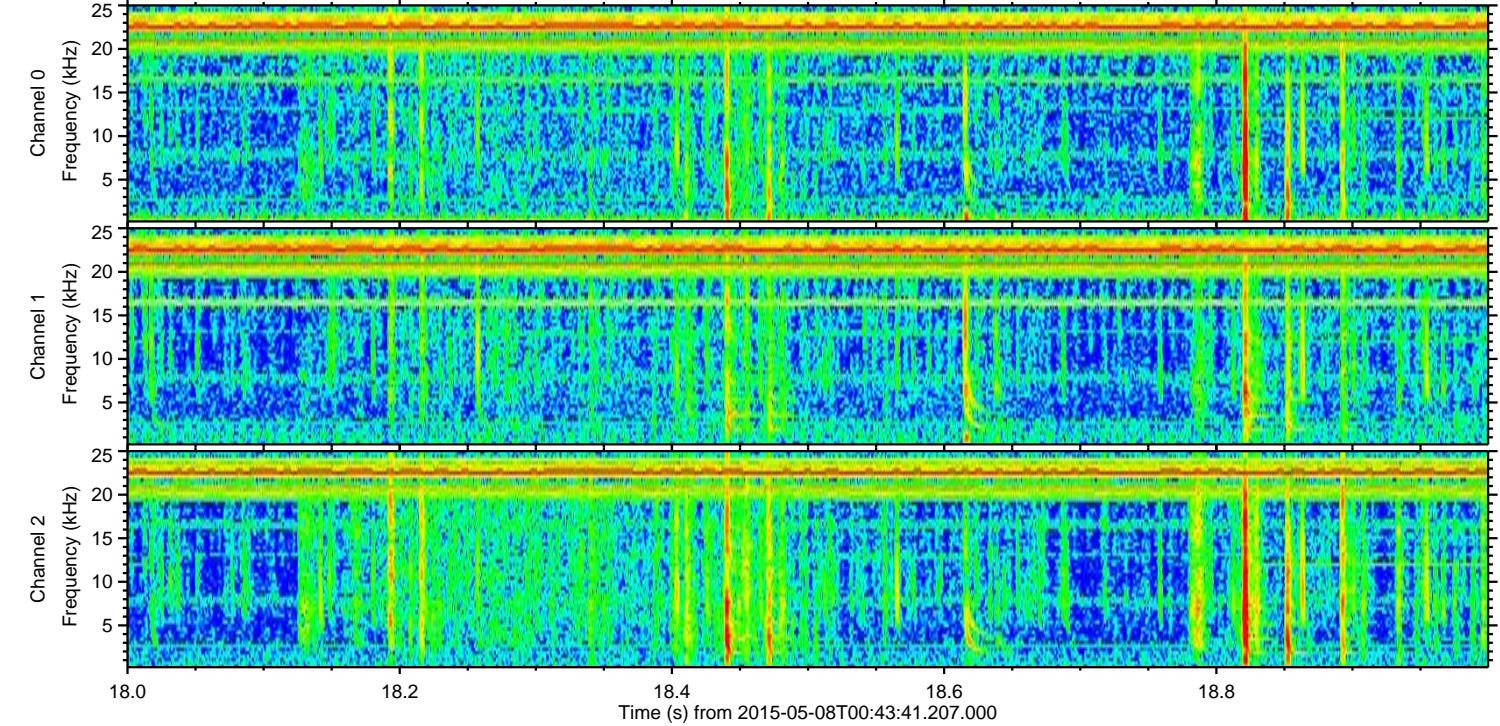
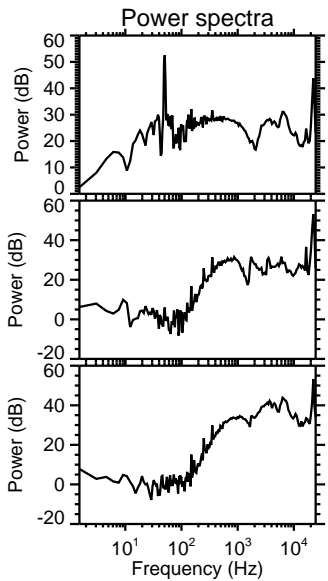
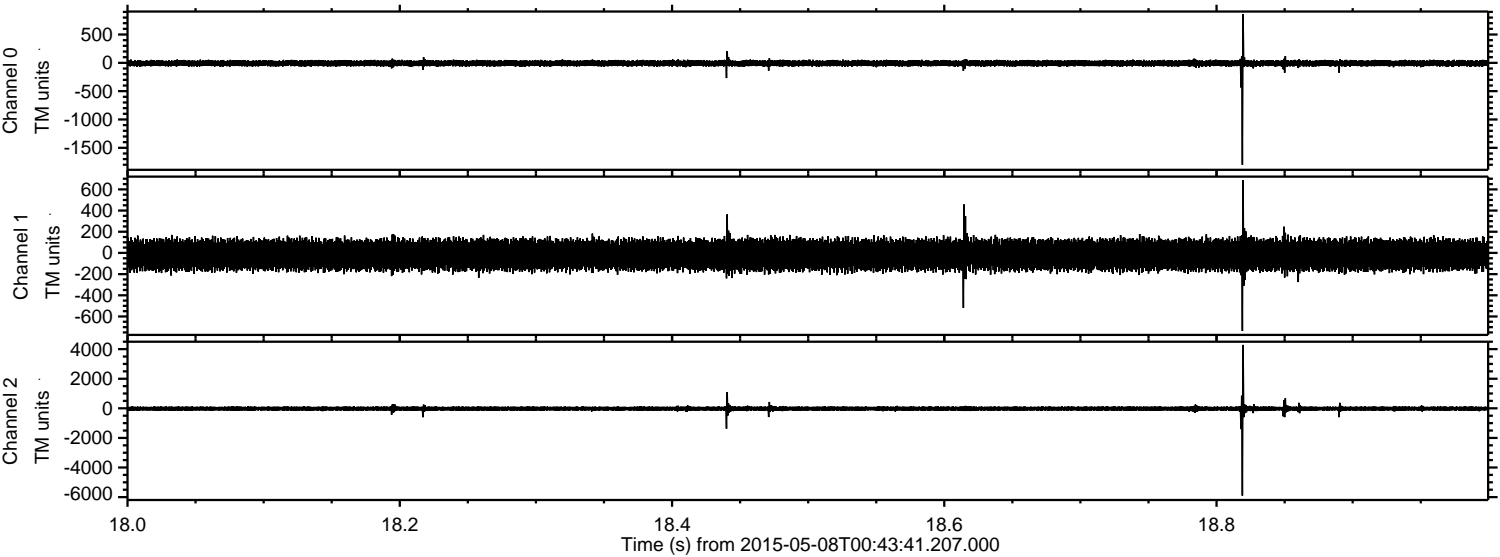
Processed Fri May 8 02:50:34 2015 by ELM ver.2012-10-06 from 001__elm20150508_004340__dat00.bin



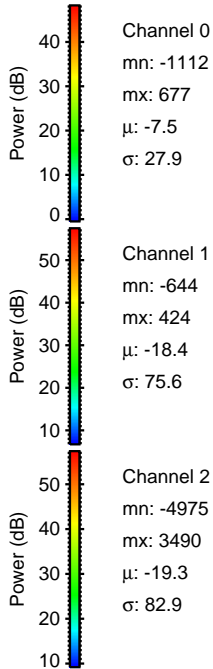
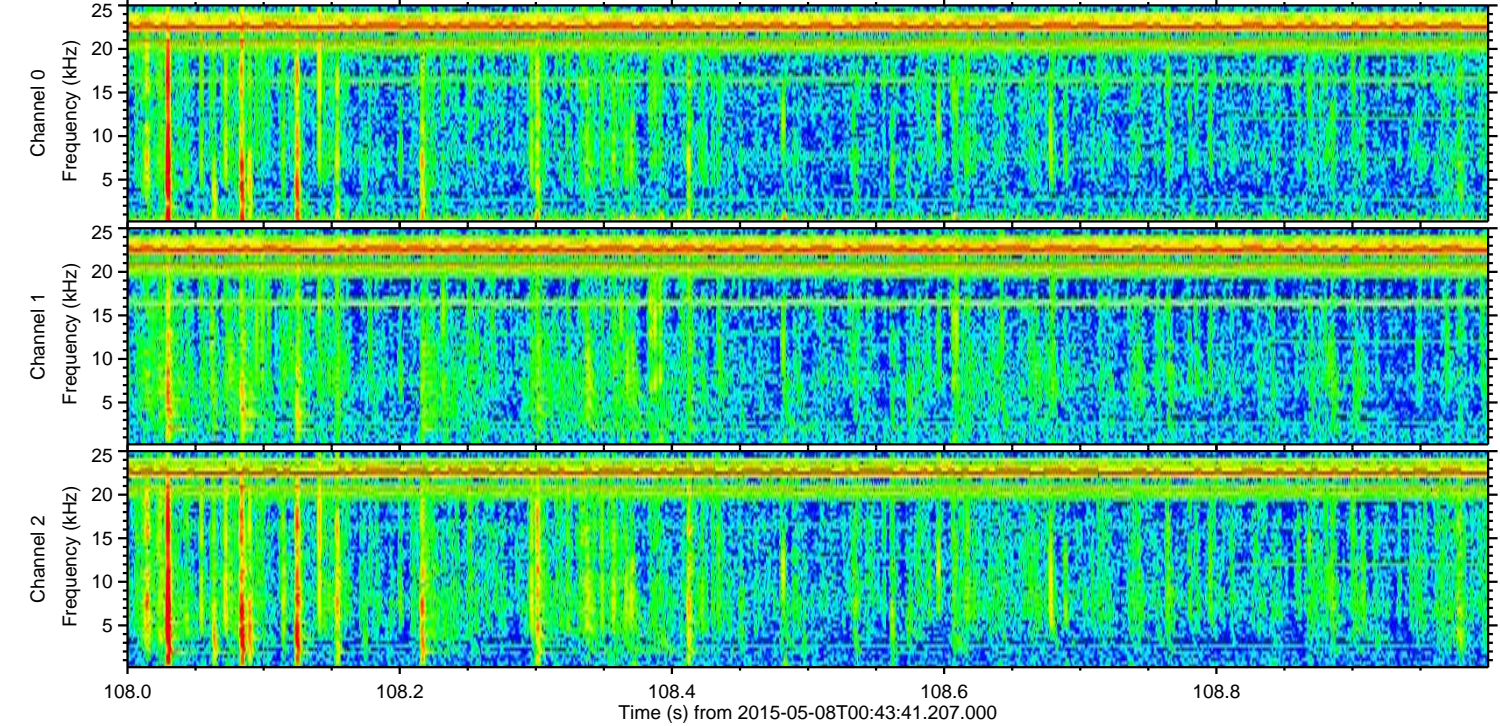
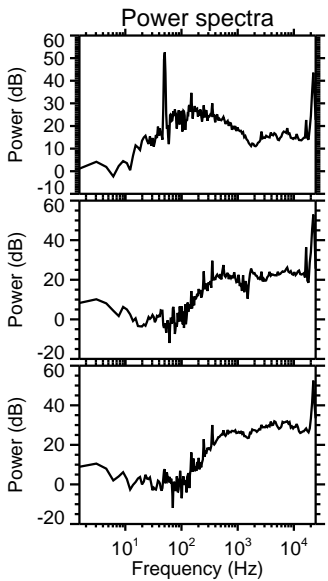
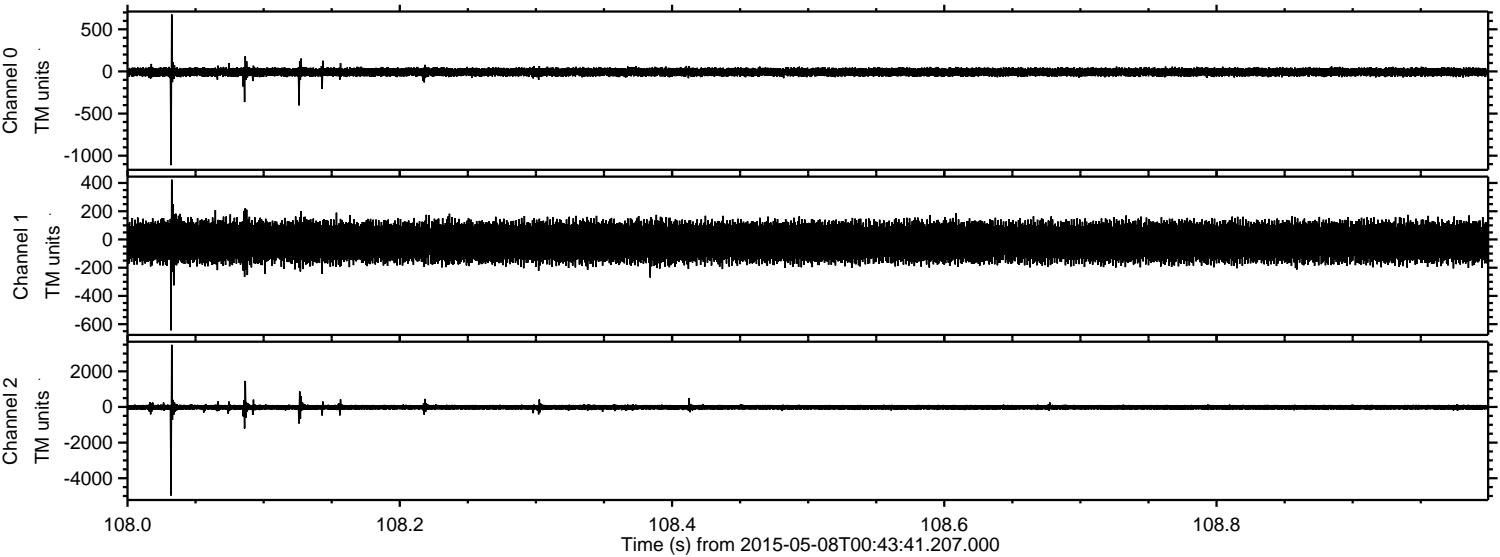
Processed Fri May 8 02:50:35 2015 by ELM ver.2012-10-06 from 001__elm20150508_004340__dat00.bin



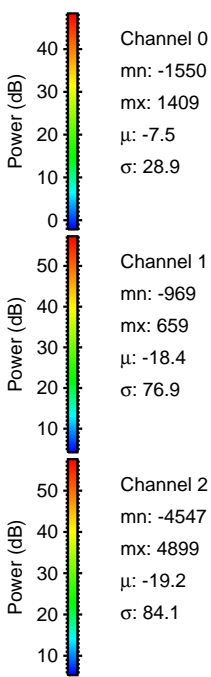
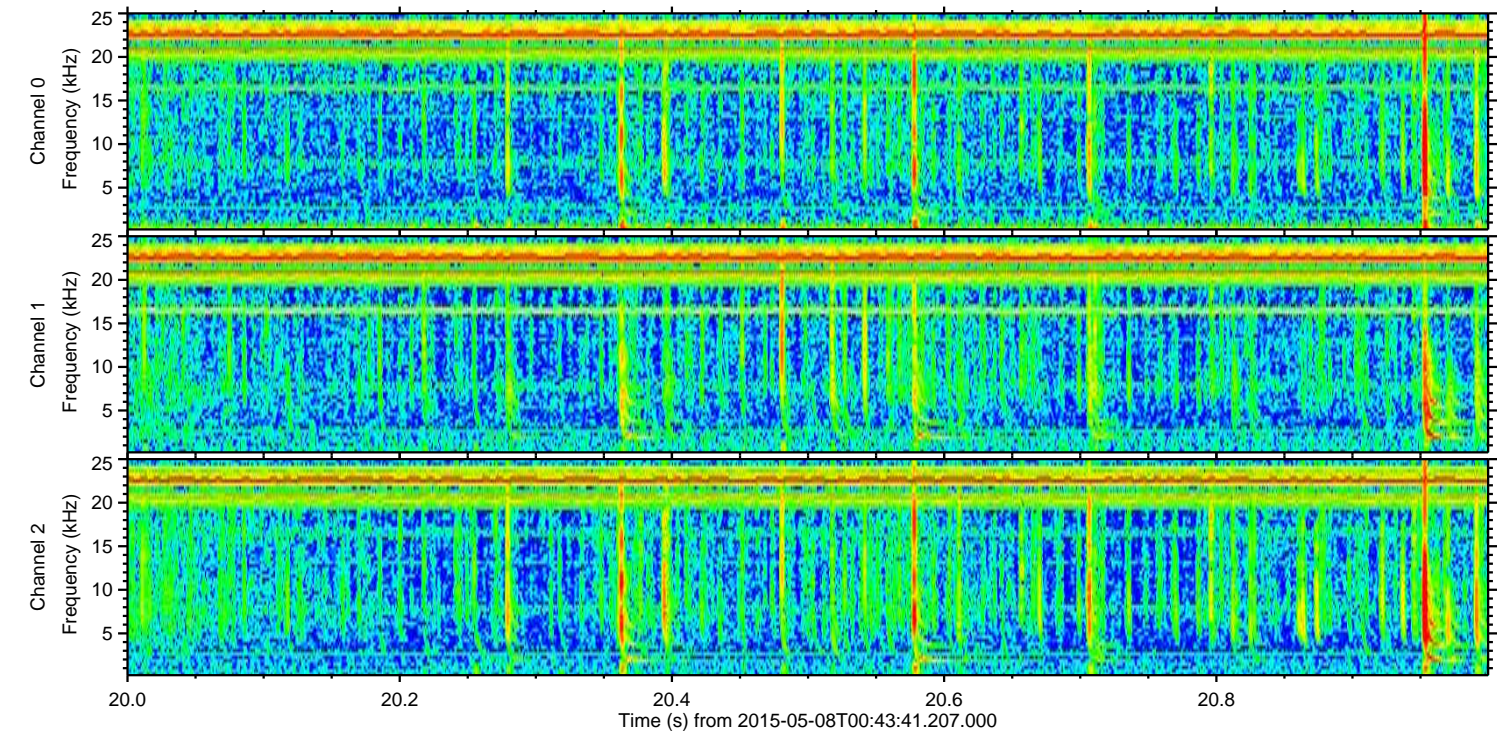
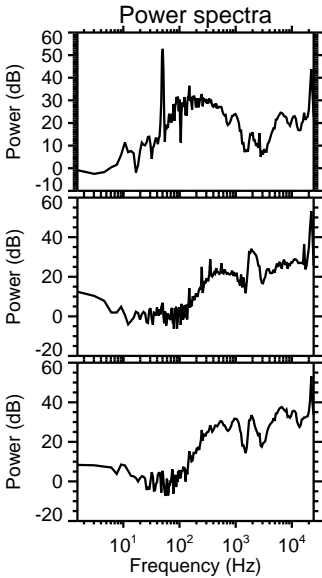
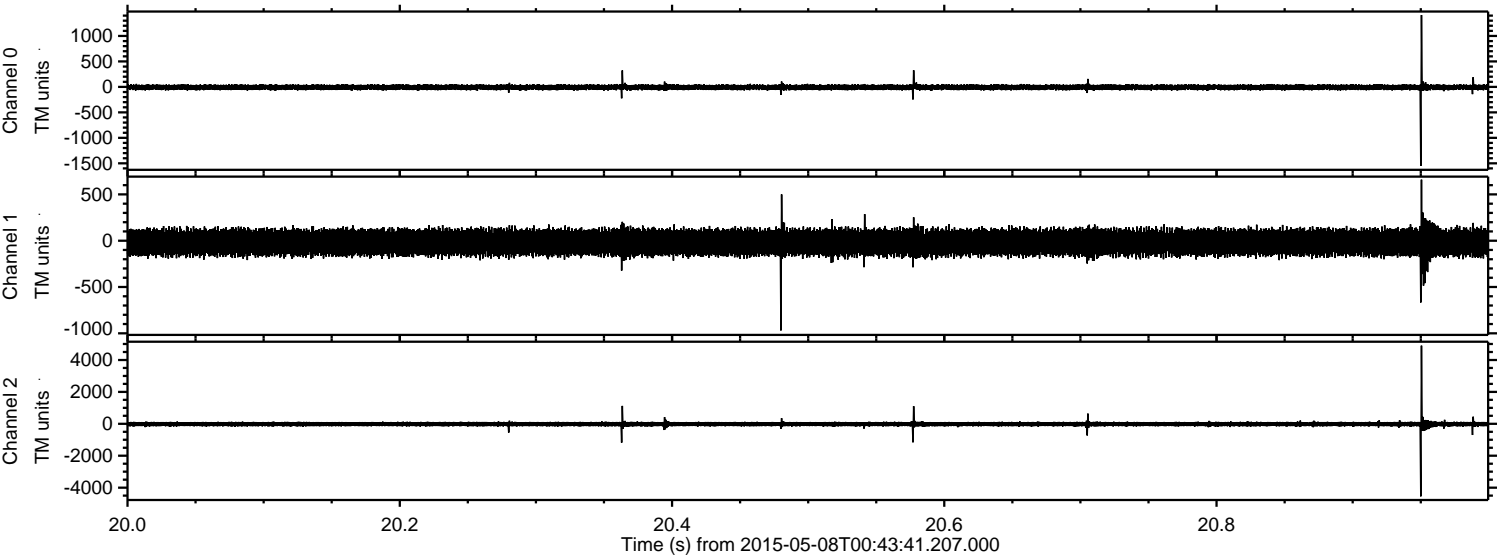
Processed Fri May 8 02:50:35 2015 by ELM ver.2012-10-06 from 001__elm20150508_004340__dat00.bin



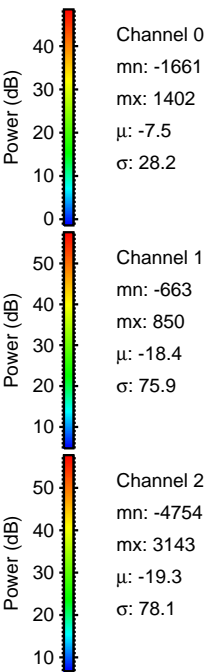
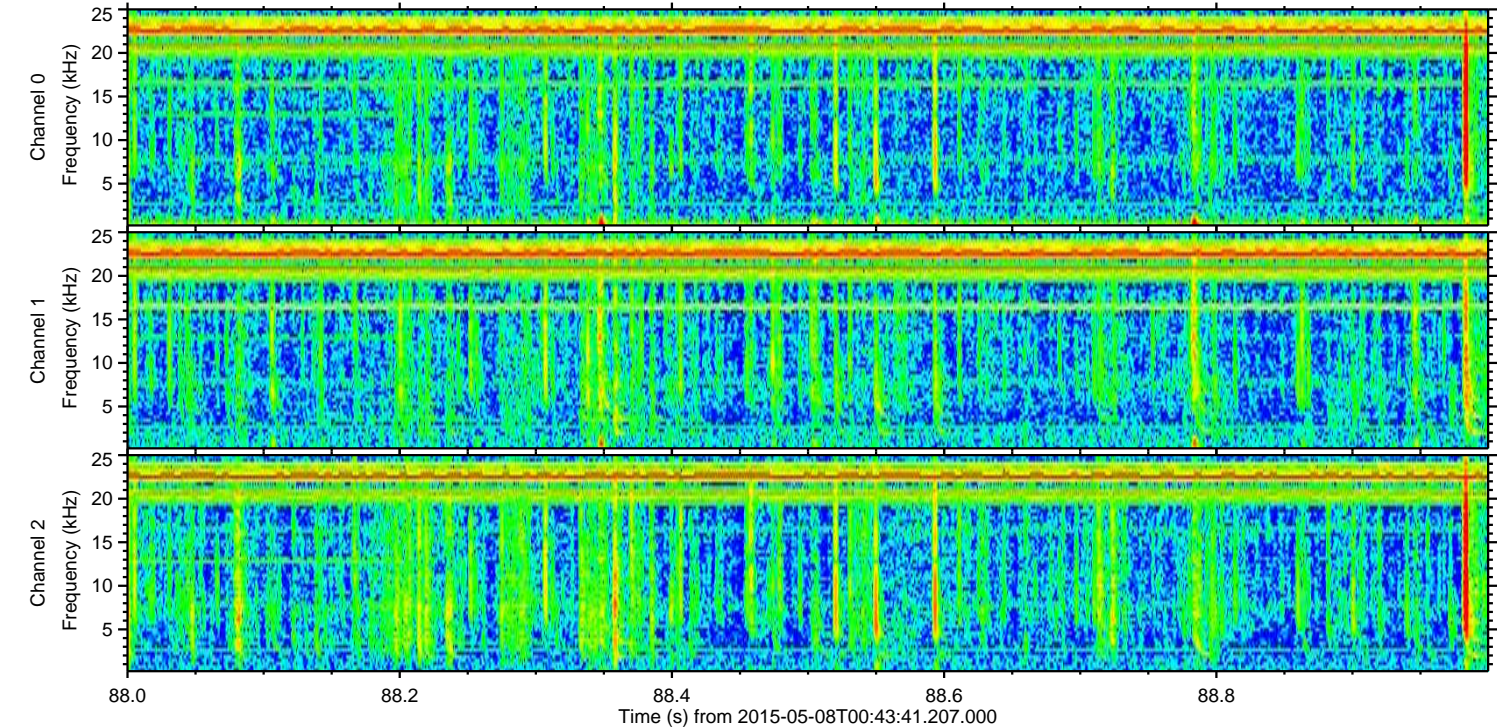
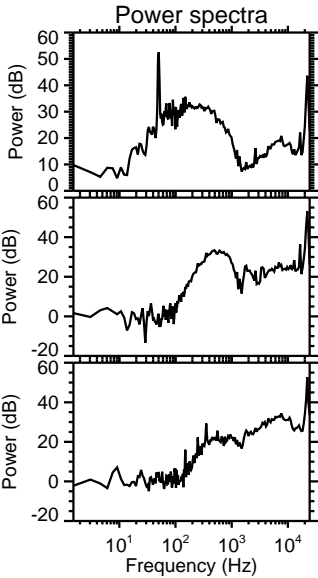
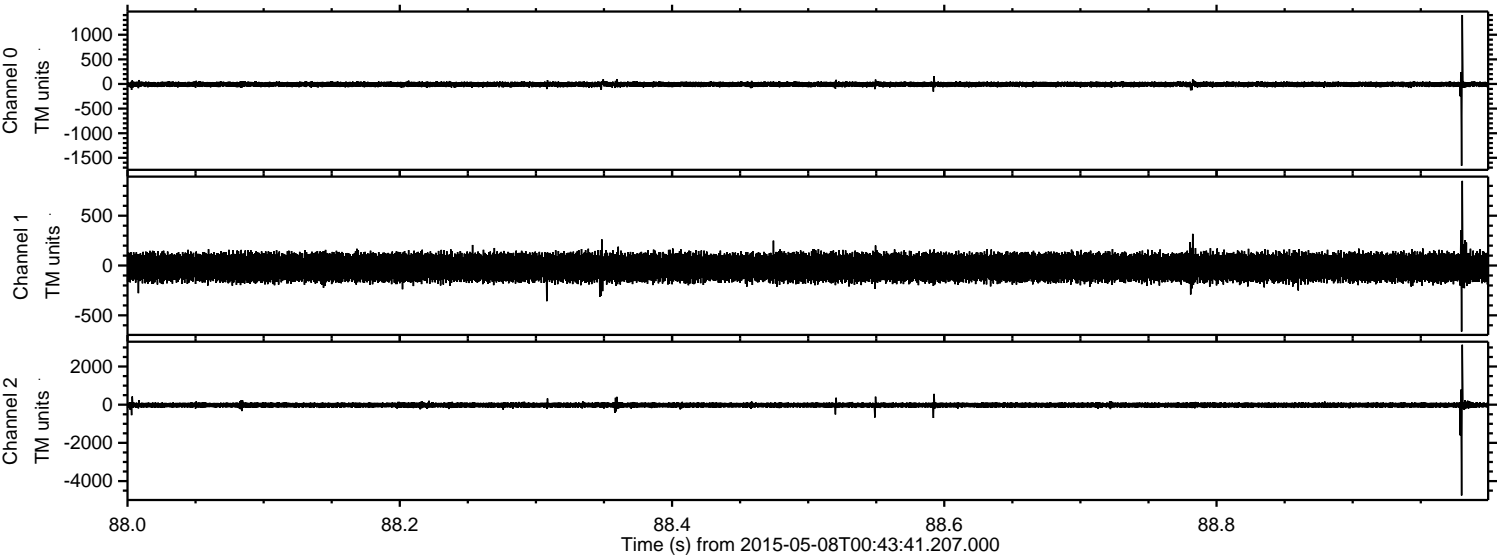
Processed Fri May 8 02:50:36 2015 by ELM ver.2012-10-06 from 001__elm20150508_004340__dat00.bin



Processed Fri May 8 02:50:37 2015 by ELM ver.2012-10-06 from 001__elm20150508_004340__dat00.bin



Processed Fri May 8 02:50:38 2015 by ELM ver.2012-10-06 from 001__elm20150508_004340__dat00.bin



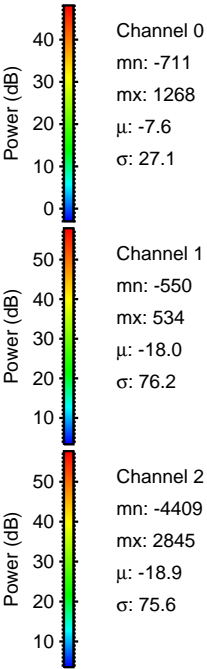
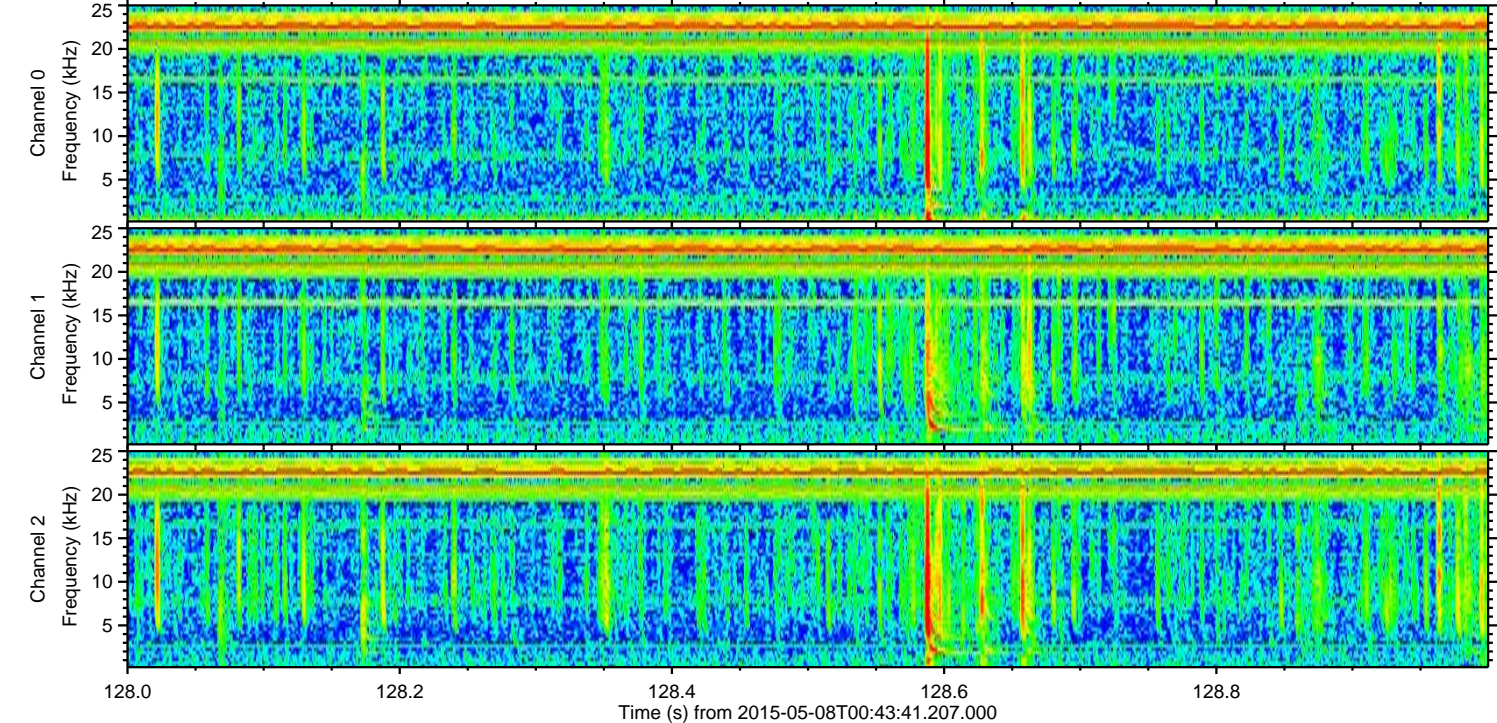
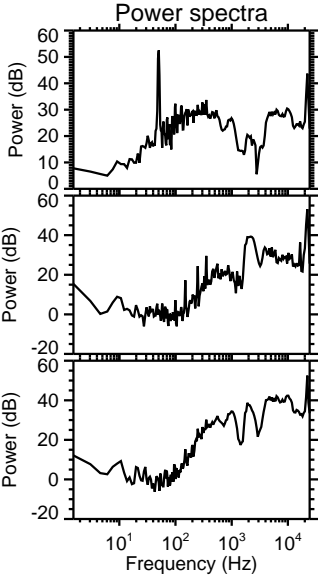
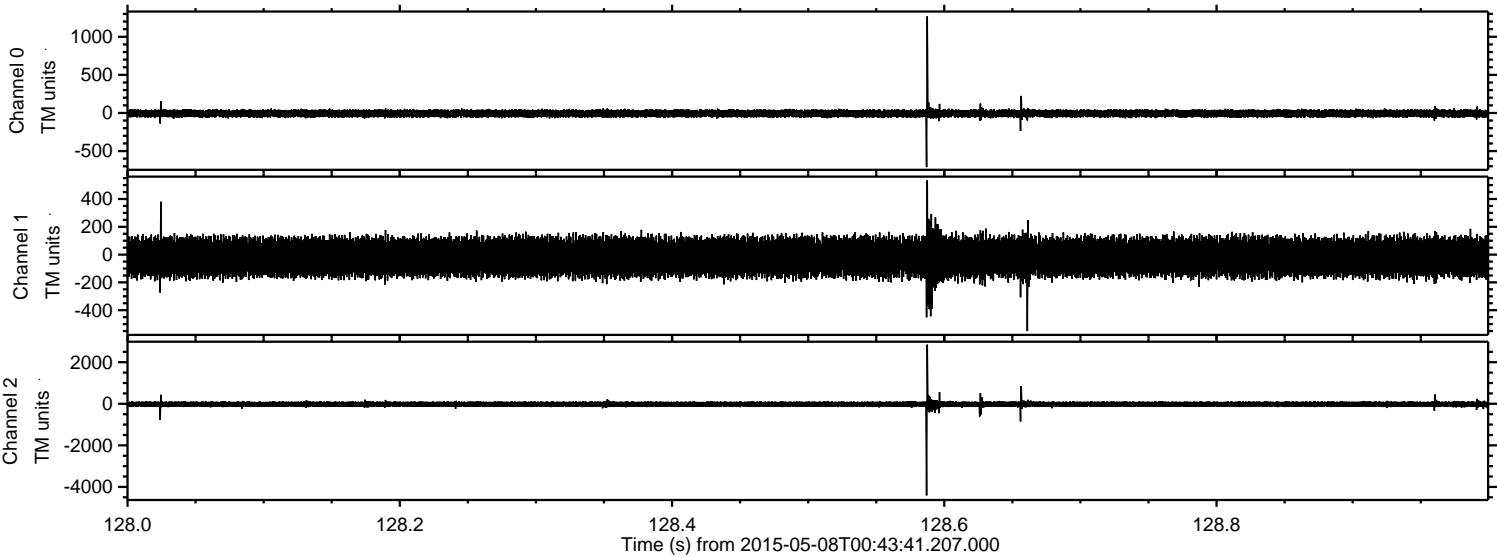
Power spectra

Channel 0
mn: -1661
mx: 1402
 μ : -7.5
 σ : 28.2

Channel 1
mn: -663
mx: 850
 μ : -18.4
 σ : 75.9

Channel 2
mn: -4754
mx: 3143
 μ : -19.3
 σ : 78.1

Processed Fri May 8 02:50:39 2015 by ELM ver.2012-10-06 from 001__elm20150508_004340__dat00.bin



Channel 0
mn: -711
mx: 1268
 μ : -7.6
 σ : 27.1

Channel 1
mn: -550
mx: 534
 μ : -18.0
 σ : 76.2

Channel 2
mn: -4409
mx: 2845
 μ : -18.9
 σ : 75.6

Processed Fri May 8 02:50:40 2015 by ELM ver.2012-10-06 from 001__elm20150508_004340__dat00.bin

