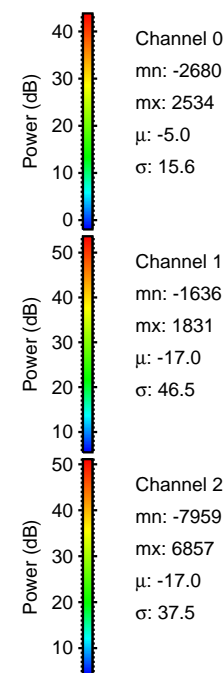
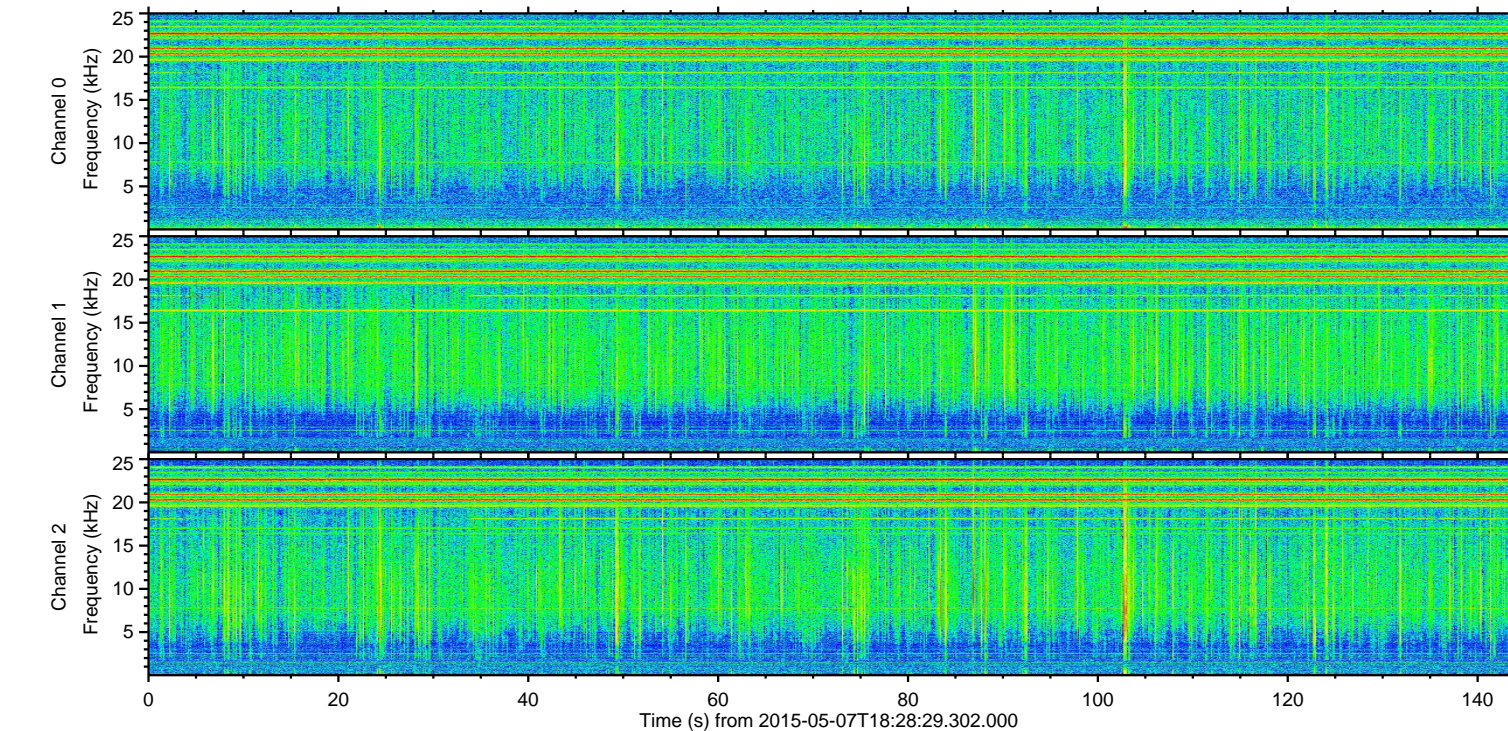
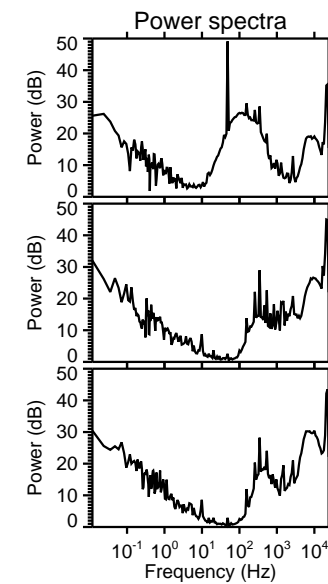
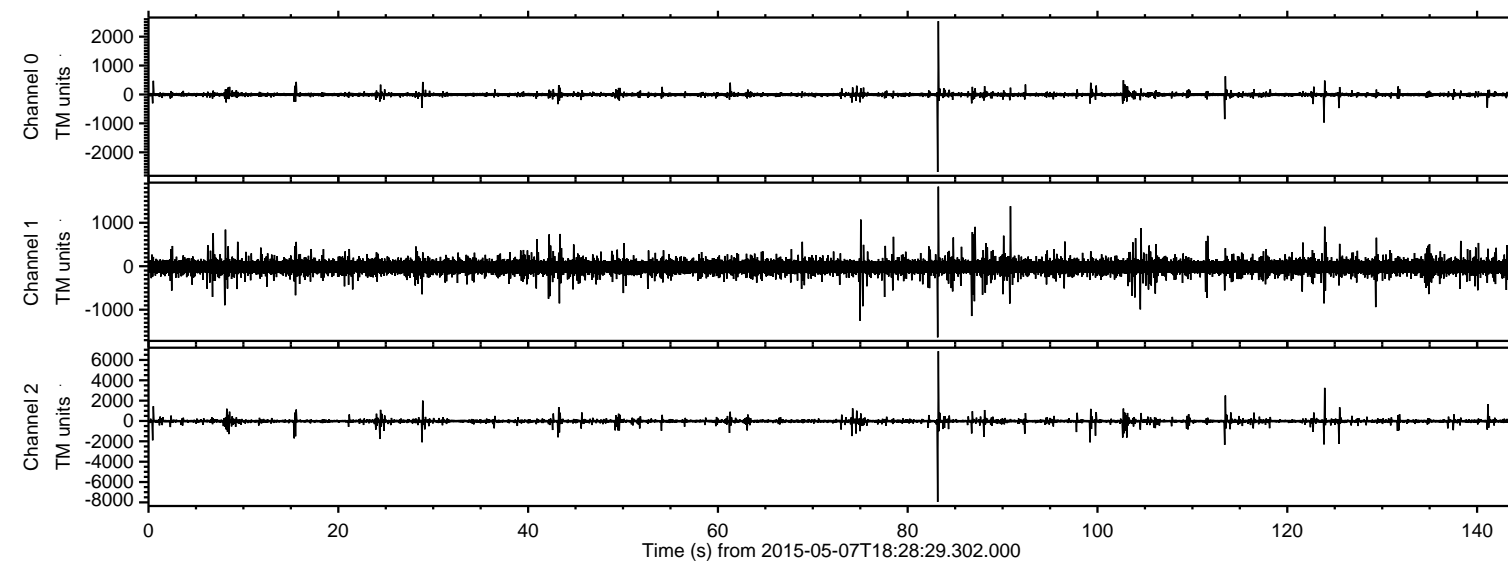
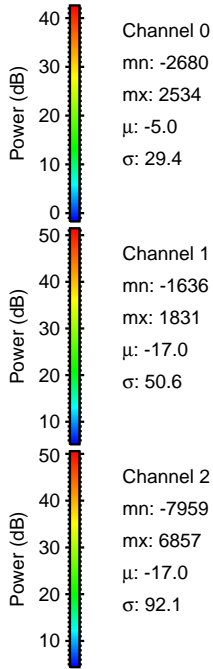
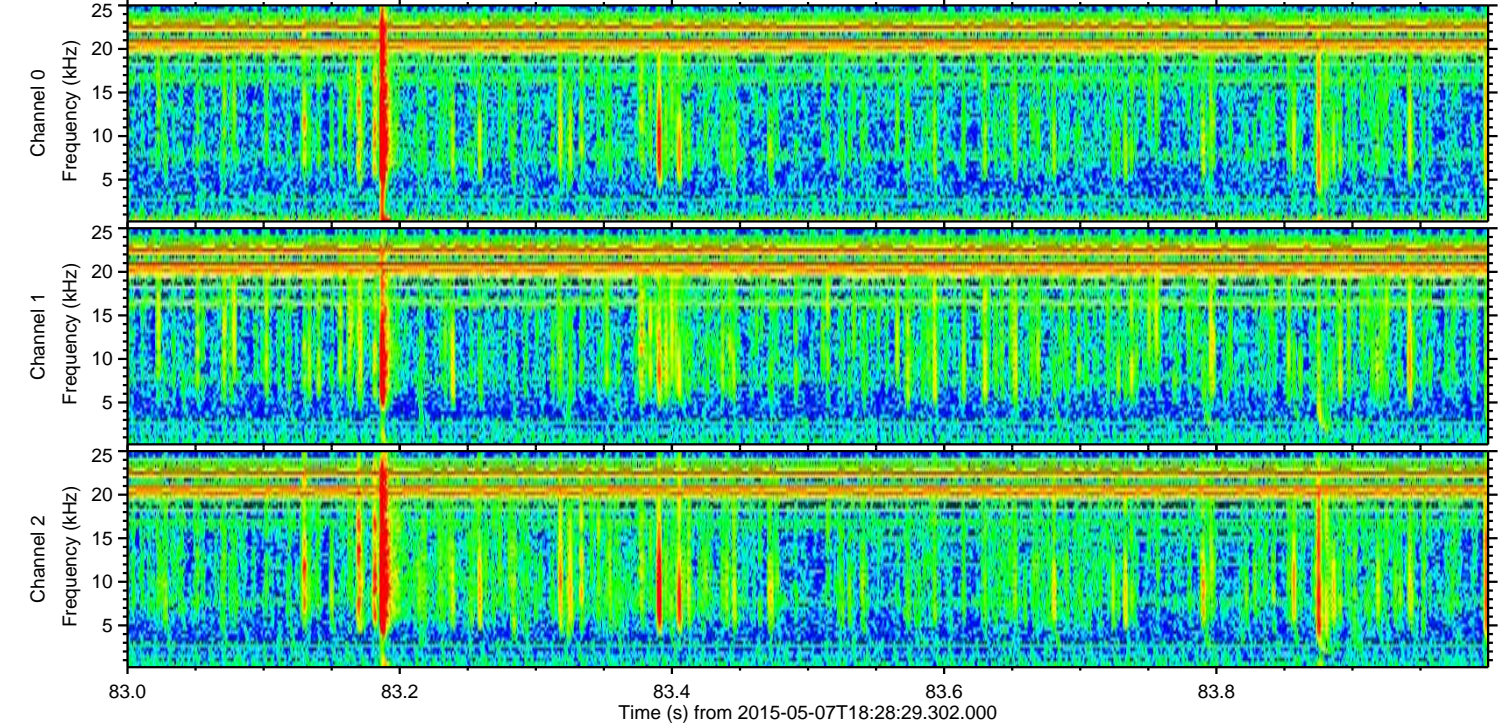
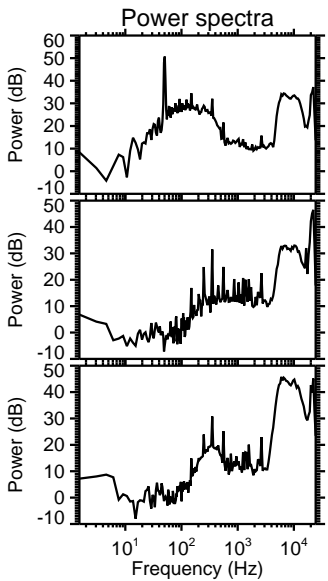
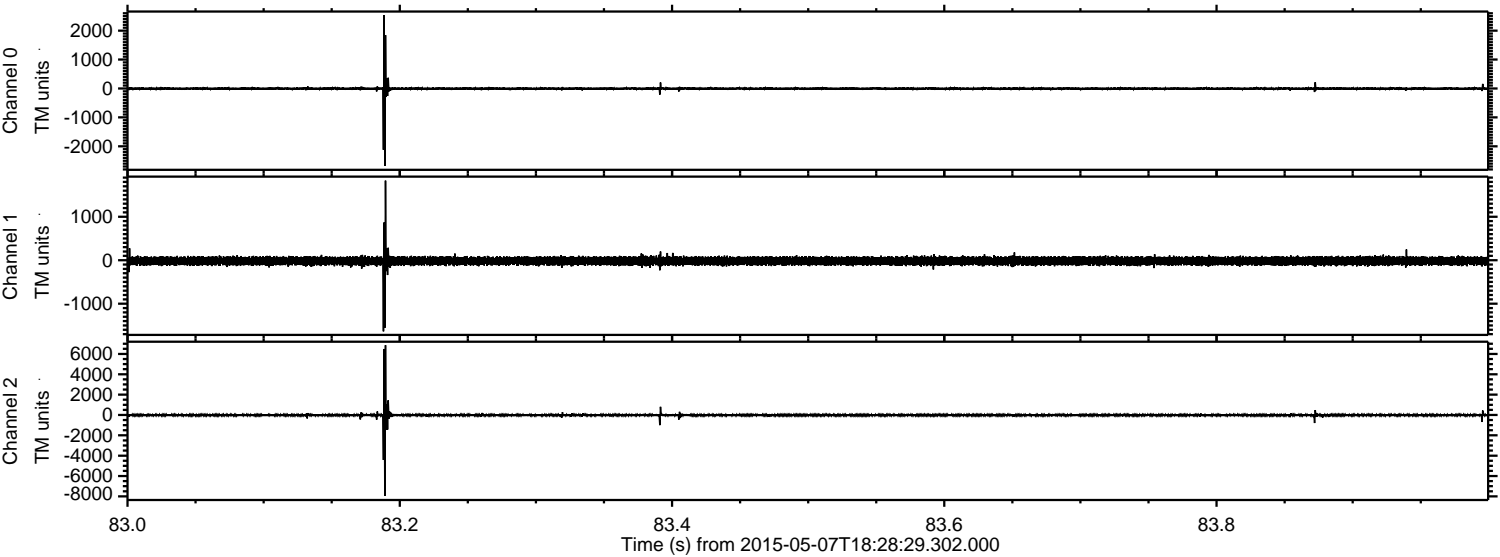


ELMAVAN 3D WAVEFORMS (Measured data sampled at 50 kHz) 49784 packets of 144 samples from 2015-05-07T18:28:29.302.000.

Processed Thu May 7 20:35:20 2015 by ELM ver.2012-10-06 from 001__elm20150507_182828__dat00.bin

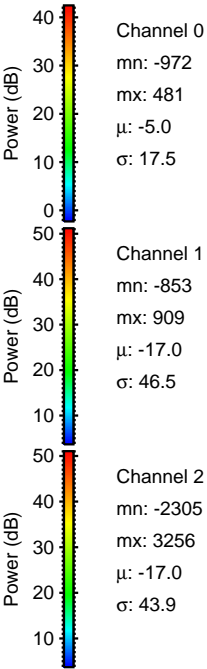
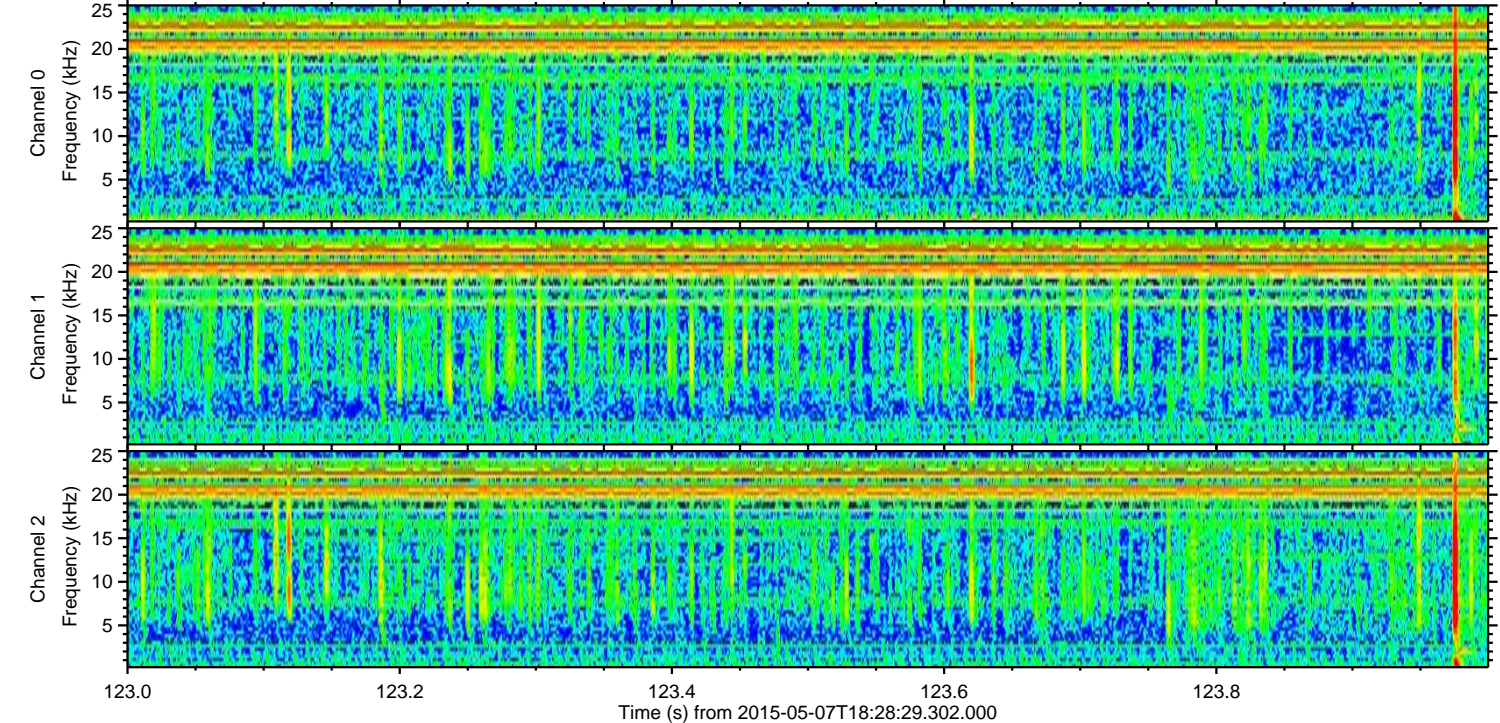
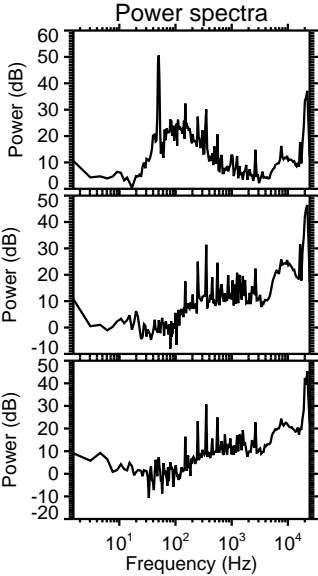
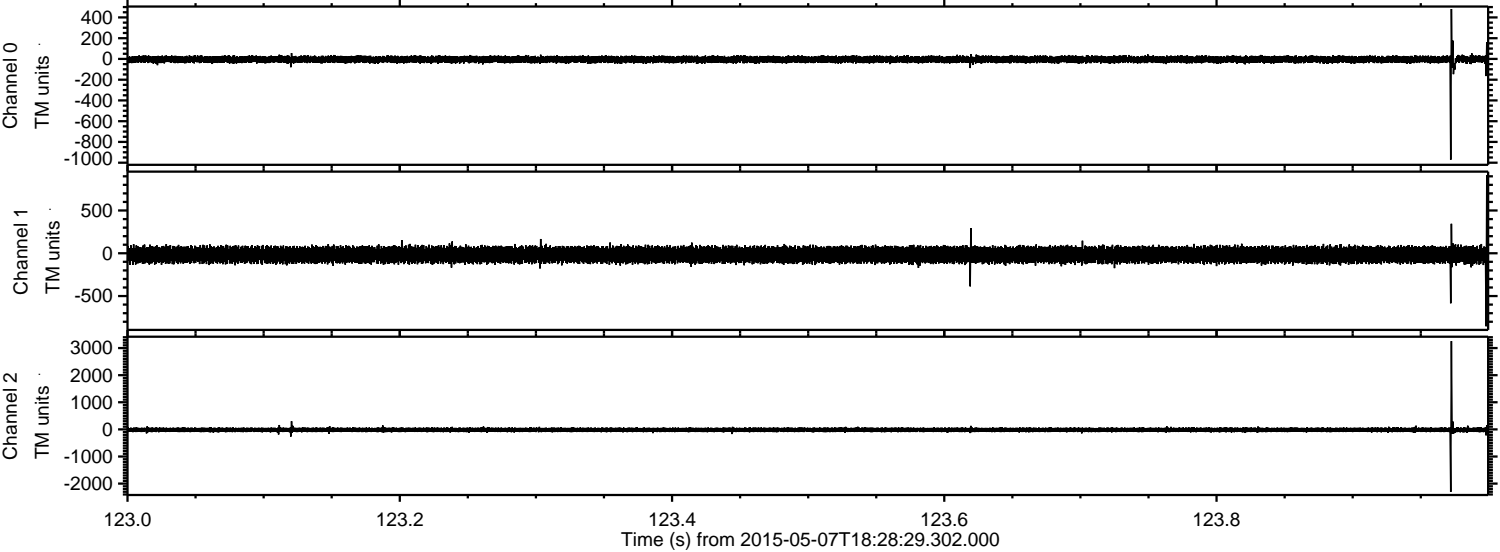


Processed Thu May 7 20:35:32 2015 by ELM ver.2012-10-06 from 001__elm20150507_182828__dat00.bin

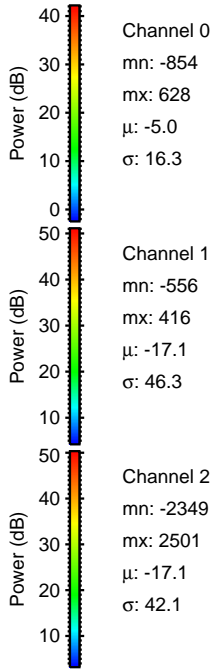
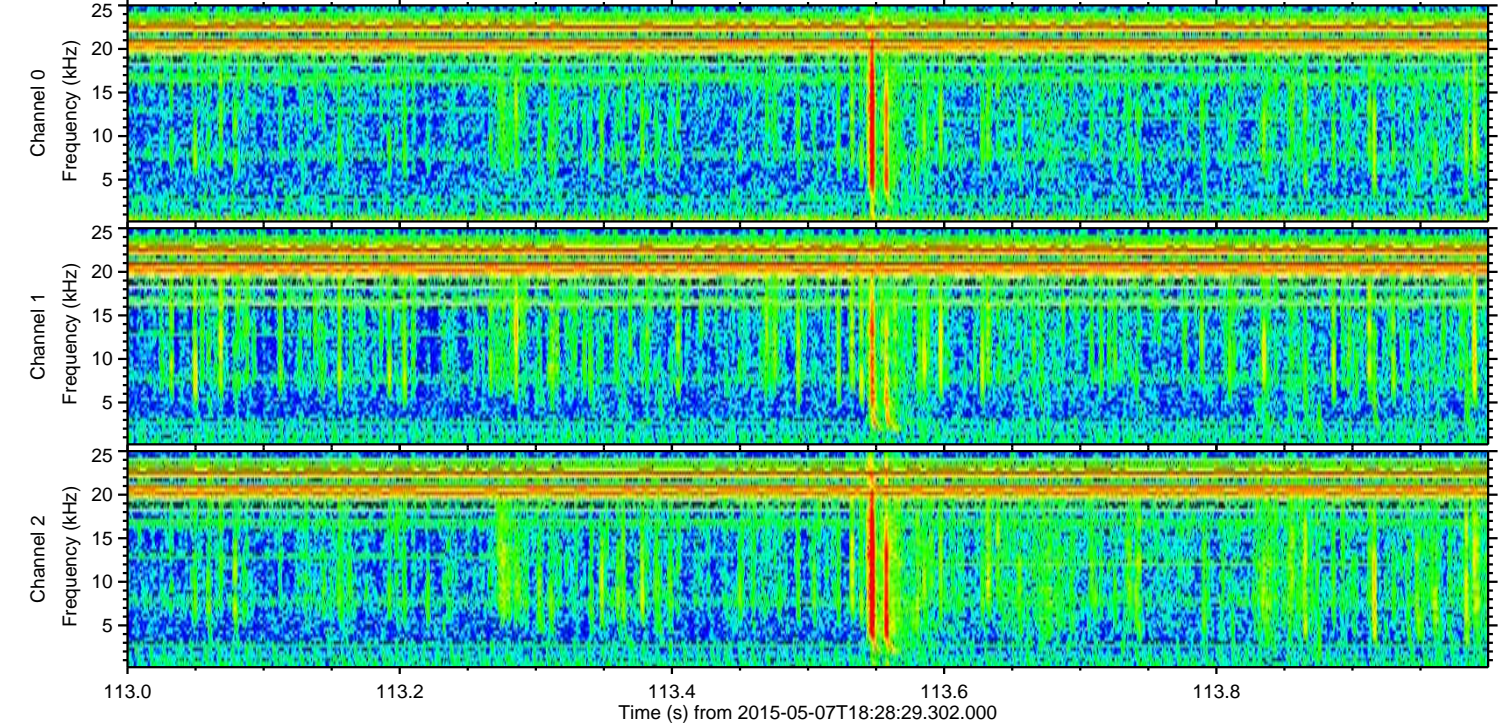
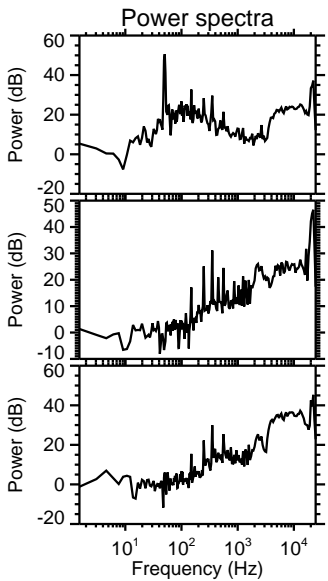
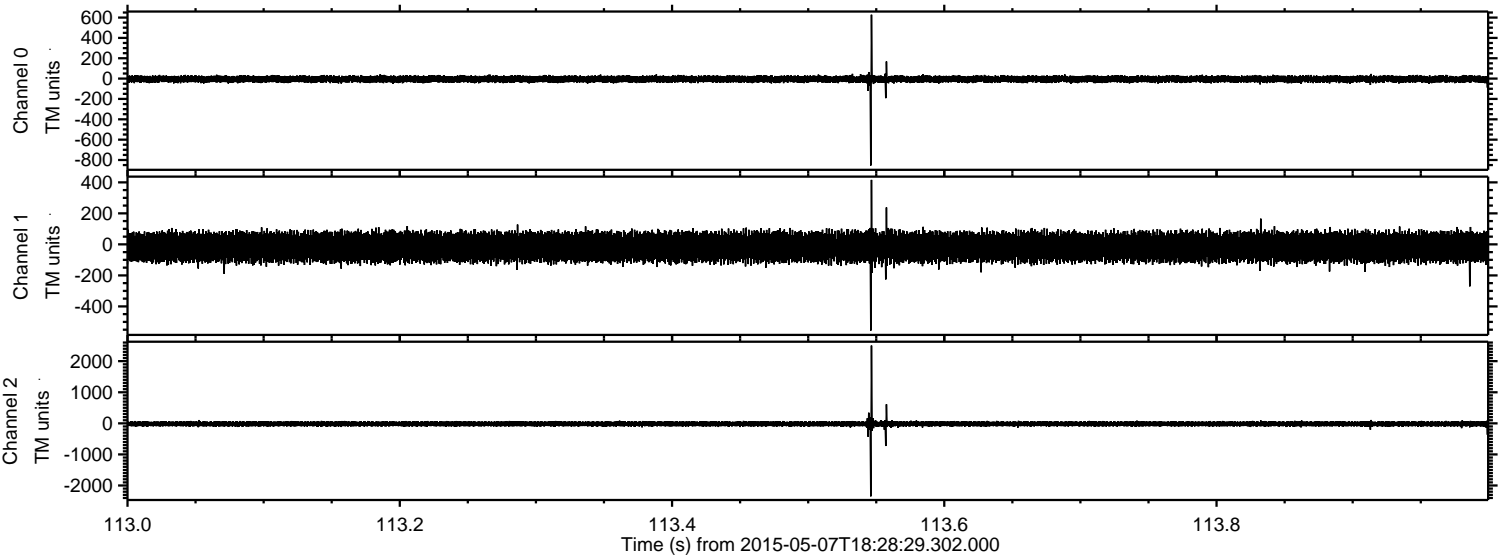


ELMAVAN 3D WAVEFORMS (Measured data sampled at 50 kHz) 49784 packets of 144 samples from 2015-05-07T18:28:29.302.000. Part 124/144

Processed Thu May 7 20:35:32 2015 by ELM ver.2012-10-06 from 001__elm20150507_182828__dat00.bin

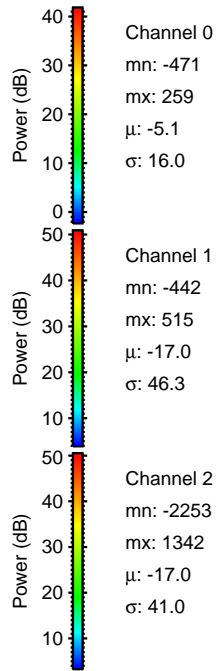
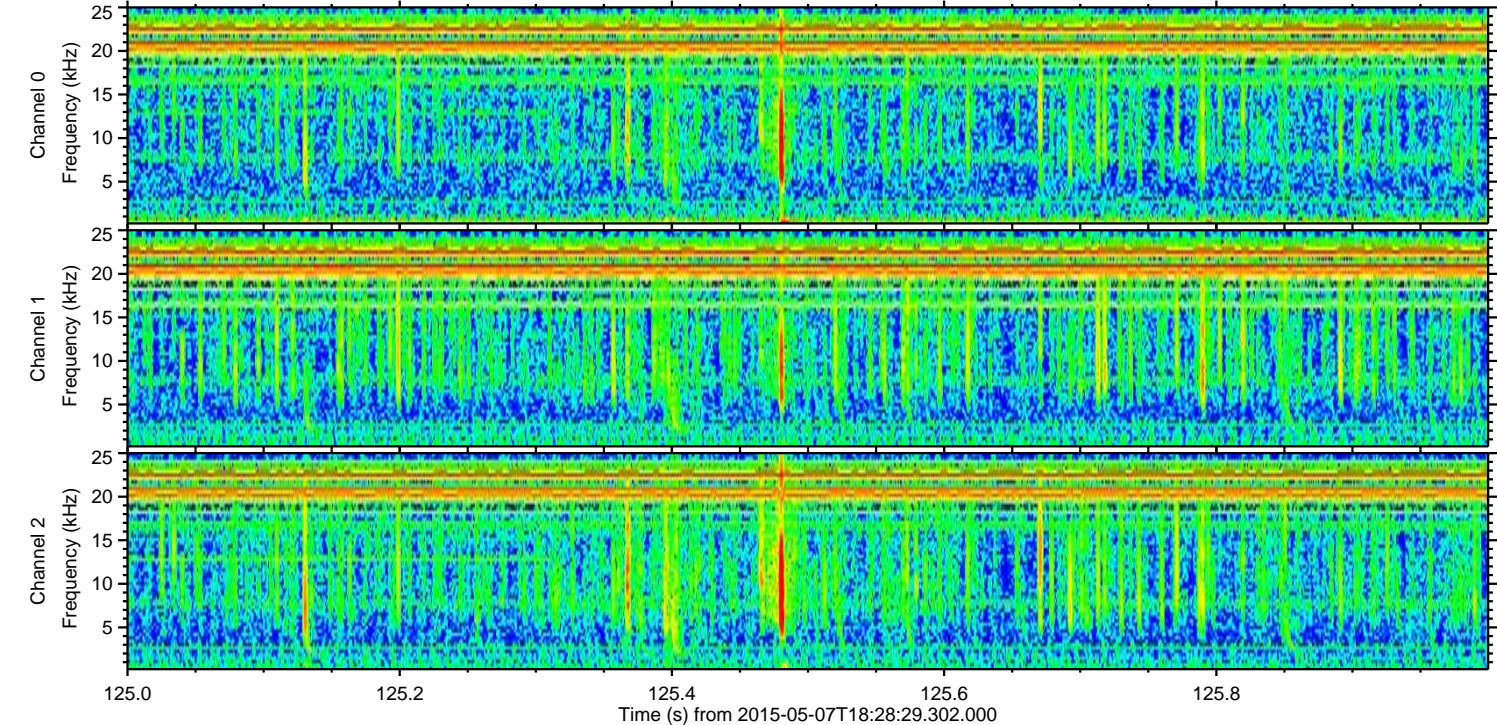
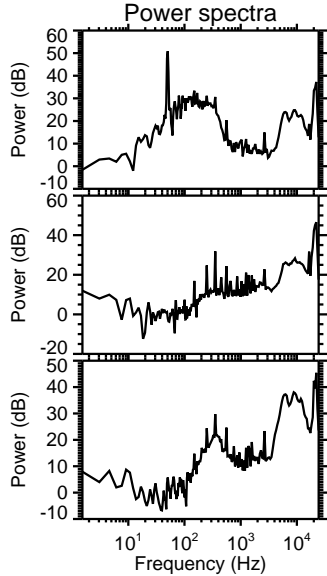
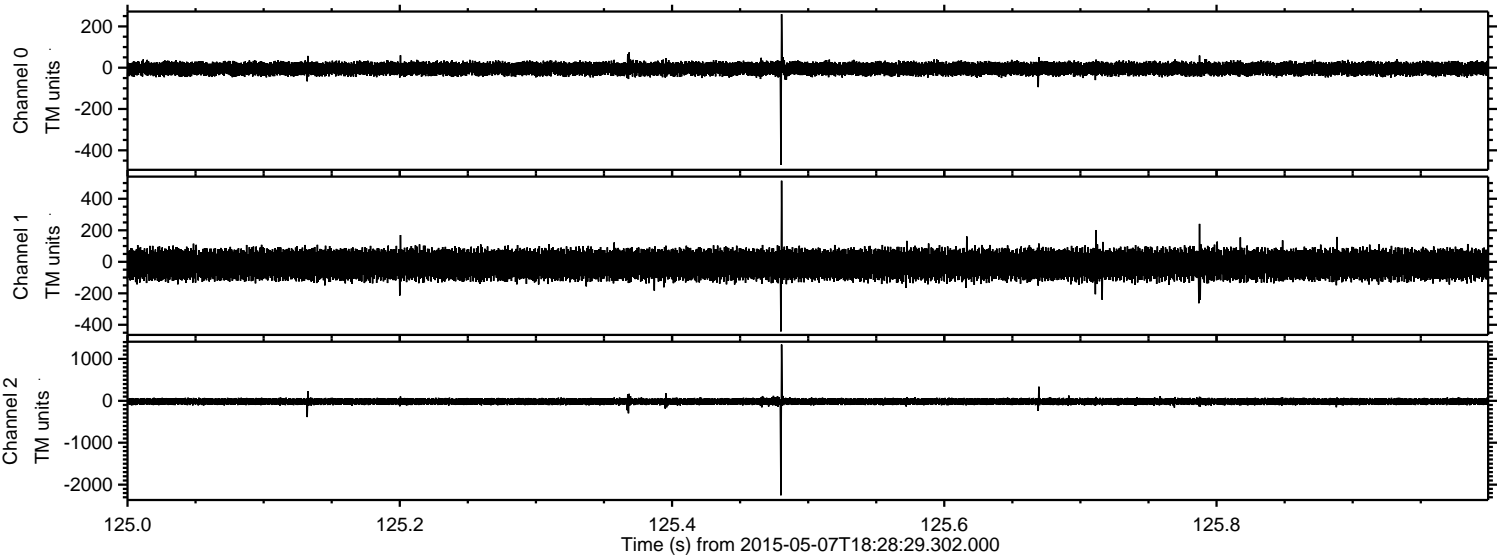


Processed Thu May 7 20:35:33 2015 by ELM ver.2012-10-06 from 001__elm20150507_182828__dat00.bin



ELMAVAN 3D WAVEFORMS (Measured data sampled at 50 kHz) 49784 packets of 144 samples from 2015-05-07T18:28:29.302.000. Part 126/144

Processed Thu May 7 20:35:34 2015 by ELM ver.2012-10-06 from 001__elm20150507_182828__dat00.bin

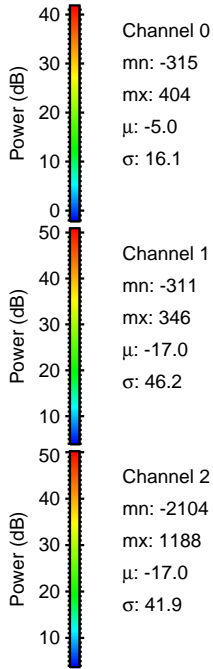
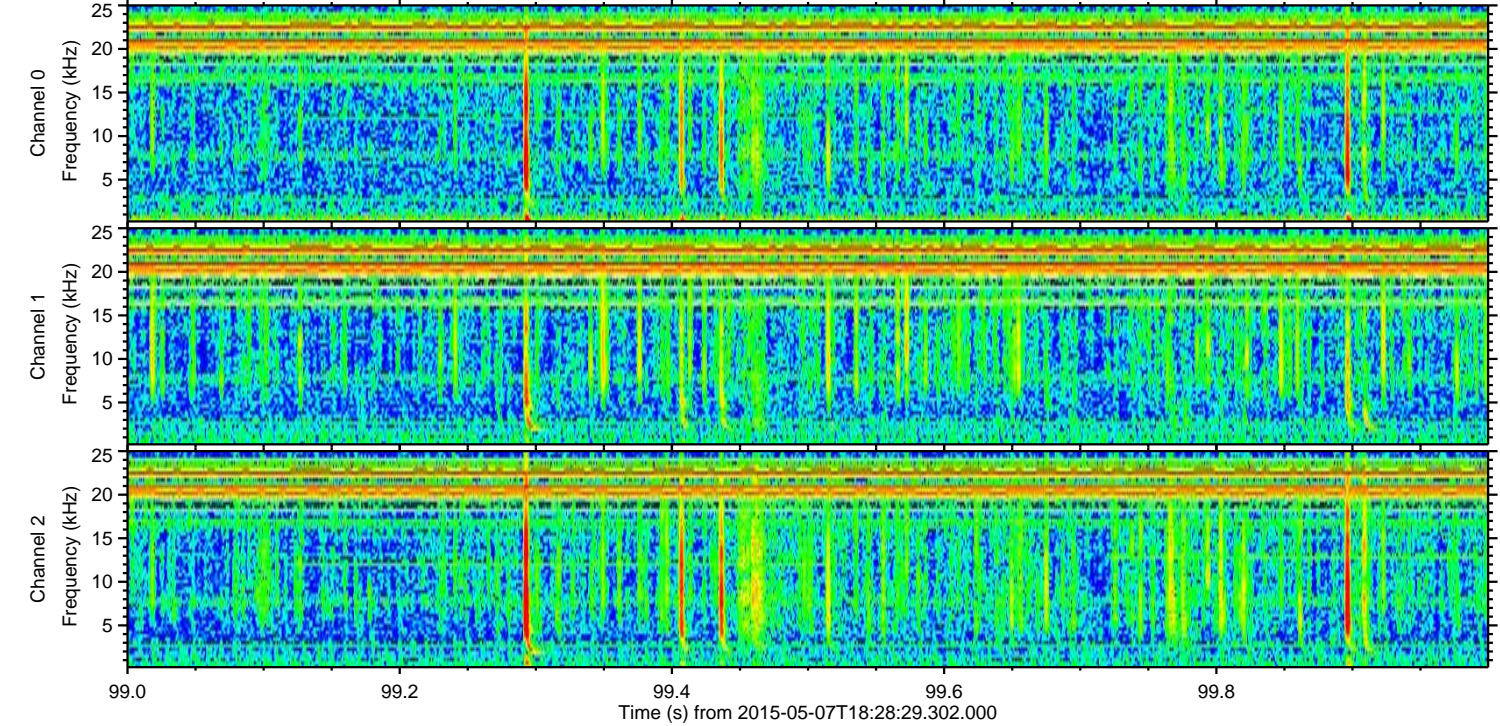
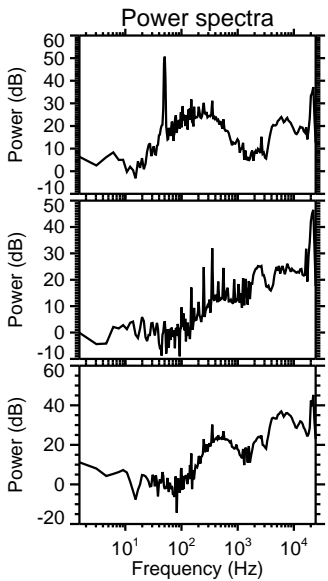
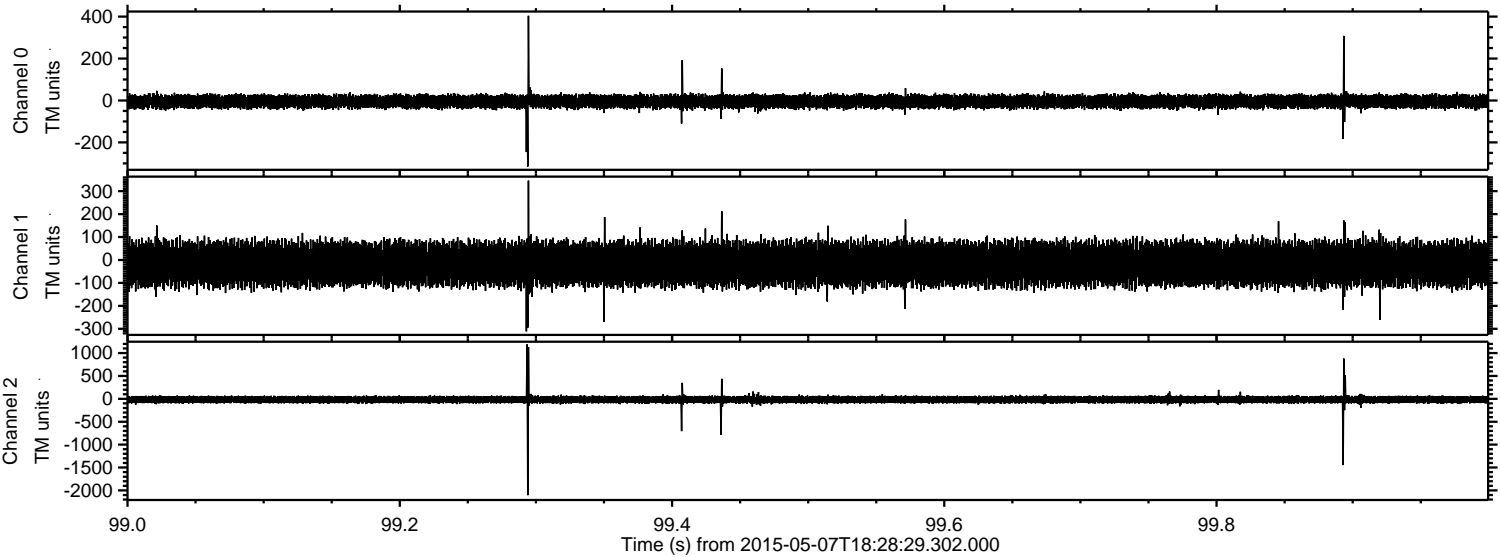


Channel 0
mn: -471
mx: 259
 μ : -5.1
 σ : 16.0

Channel 1
mn: -442
mx: 515
 μ : -17.0
 σ : 46.3

Channel 2
mn: -2253
mx: 1342
 μ : -17.0
 σ : 41.0

Processed Thu May 7 20:35:35 2015 by ELM ver.2012-10-06 from 001__elm20150507_182828__dat00.bin

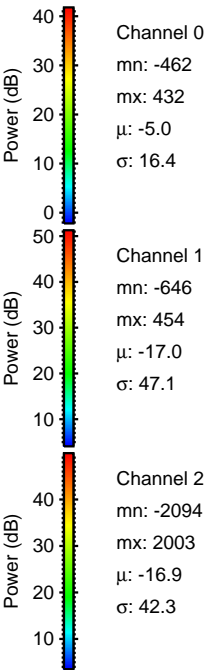
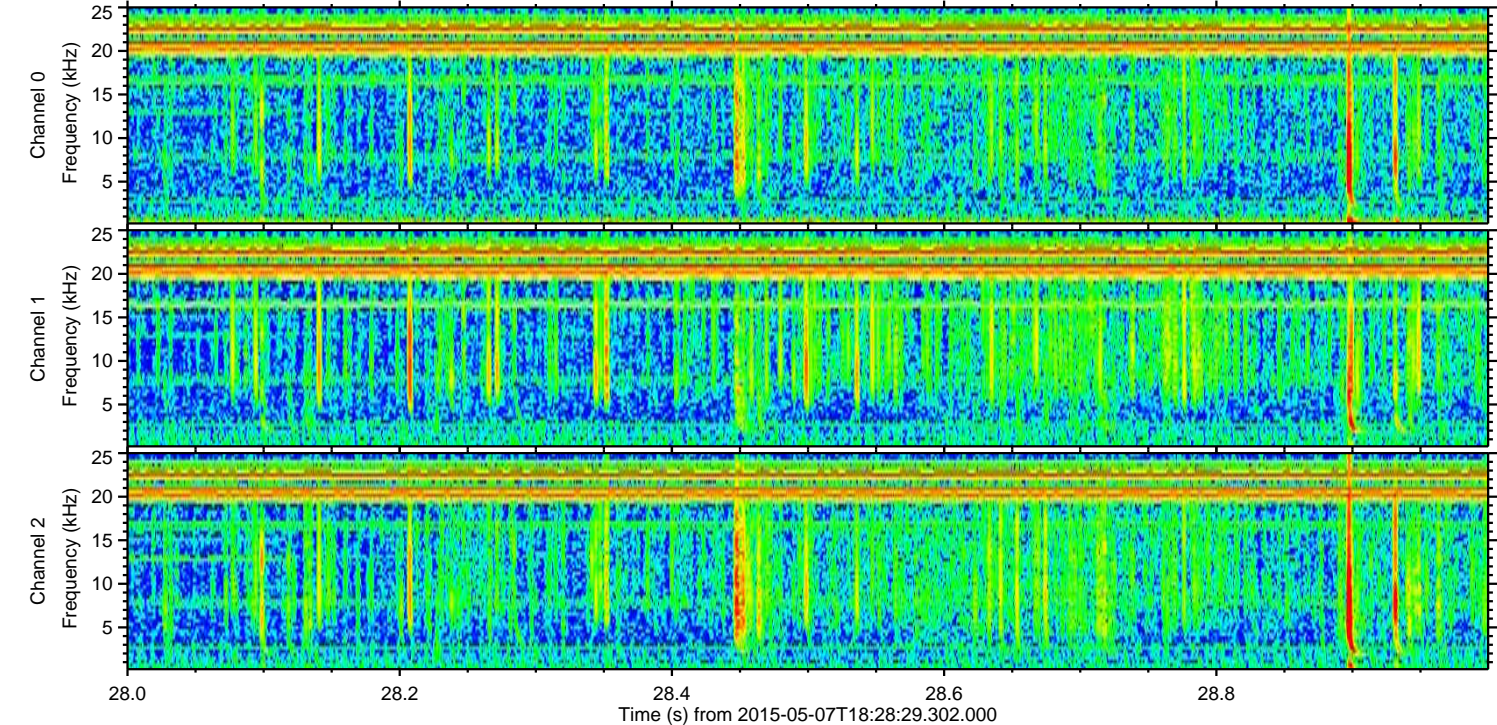
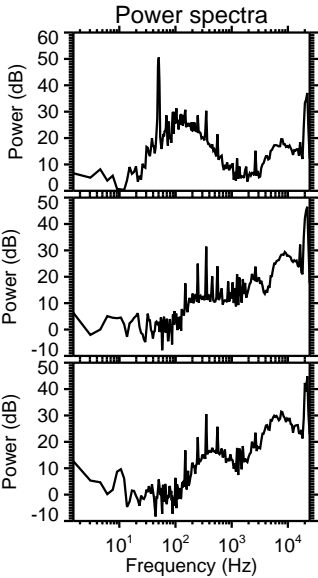
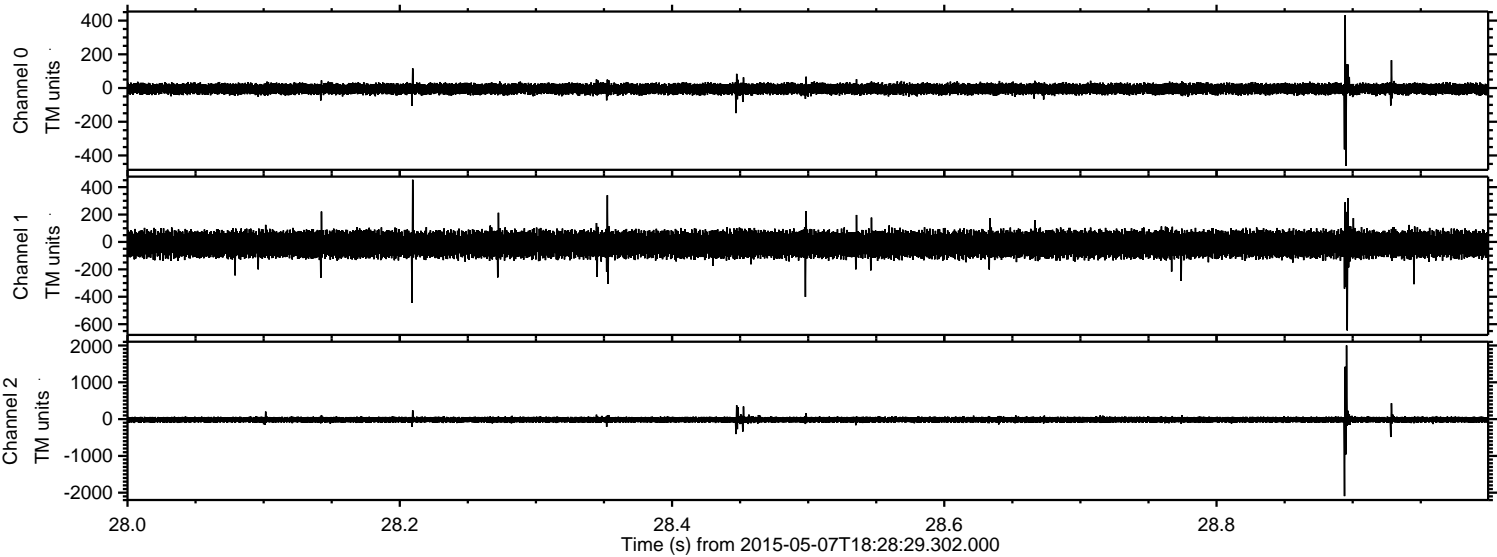


Channel 0
mn: -315
mx: 404
 μ : -5.0
 σ : 16.1

Channel 1
mn: -311
mx: 346
 μ : -17.0
 σ : 46.2

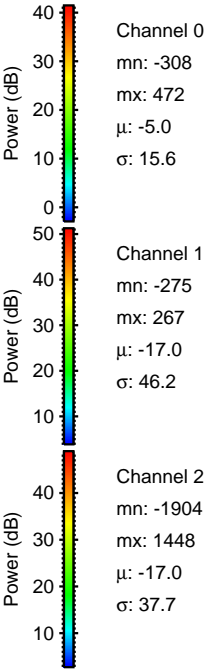
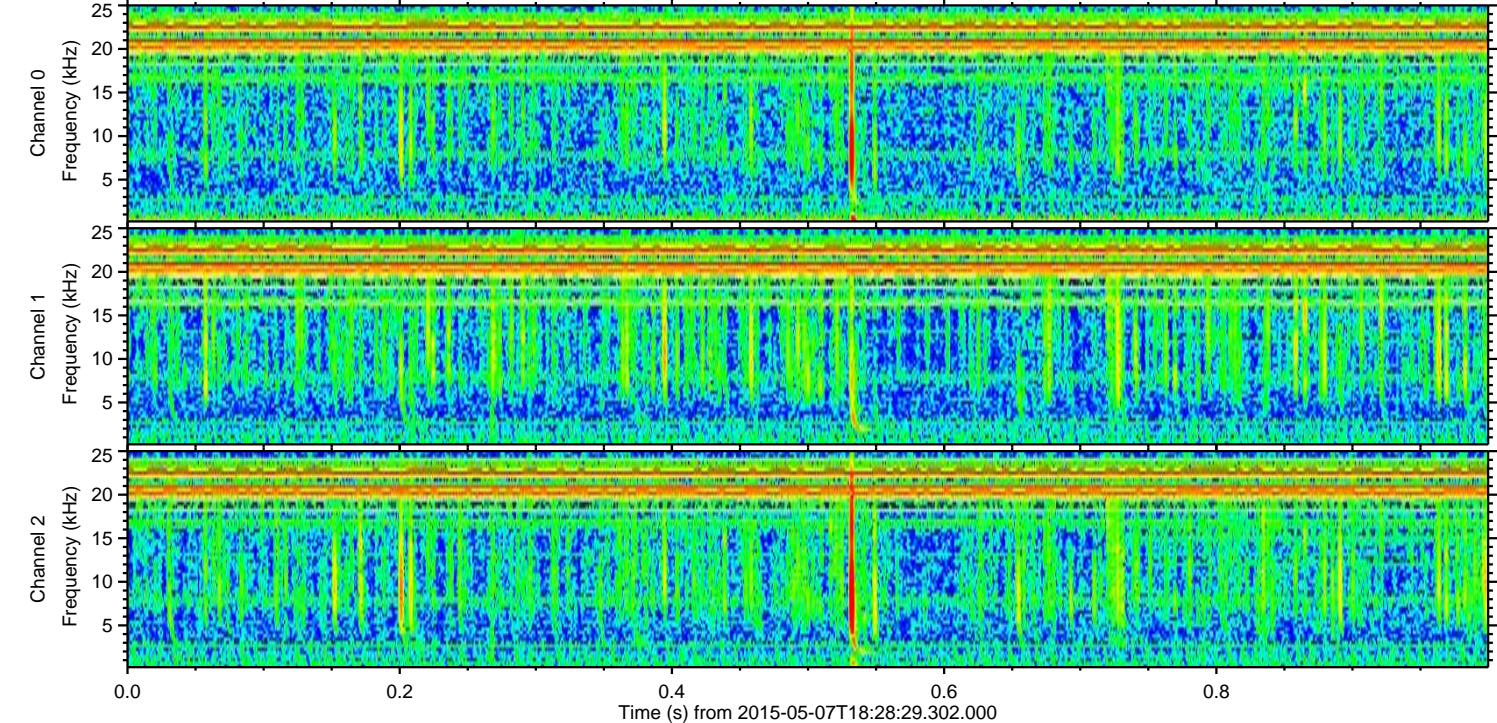
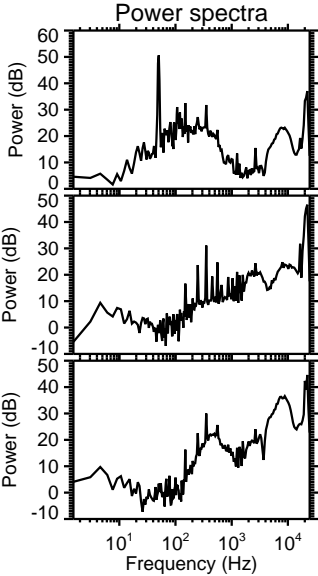
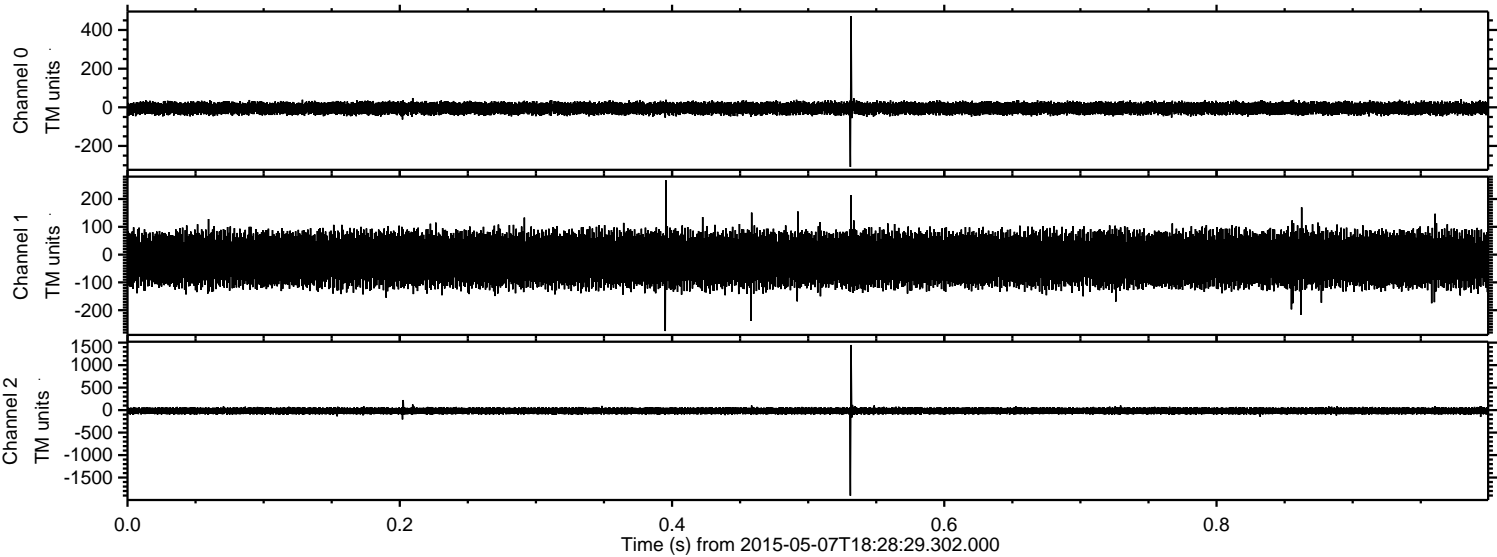
Channel 2
mn: -2104
mx: 1188
 μ : -17.0
 σ : 41.9

Processed Thu May 7 20:35:36 2015 by ELM ver.2012-10-06 from 001__elm20150507_182828__dat00.bin

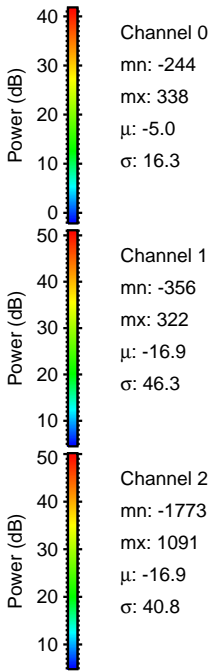
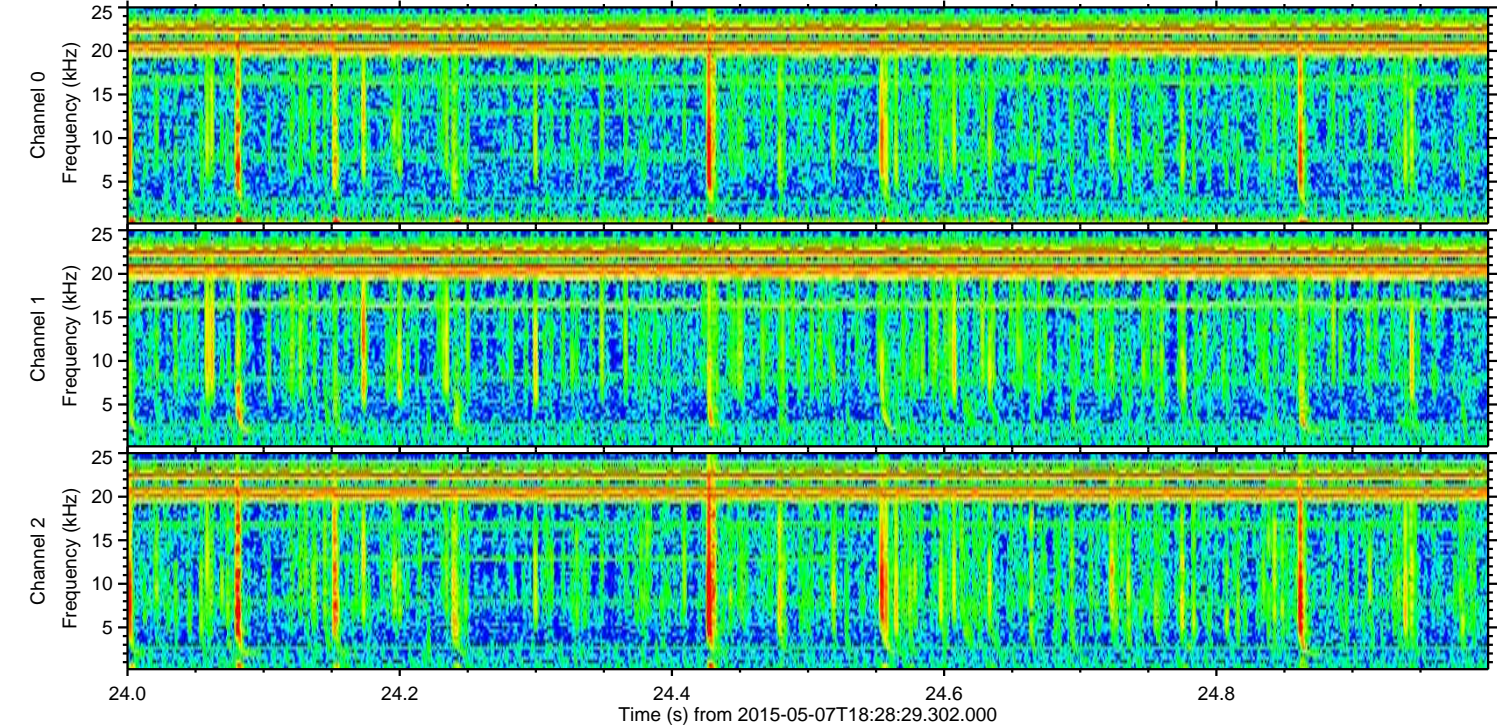
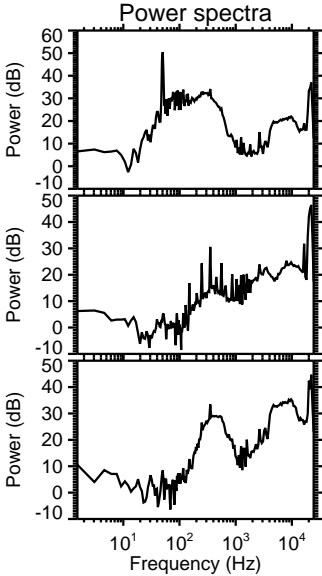
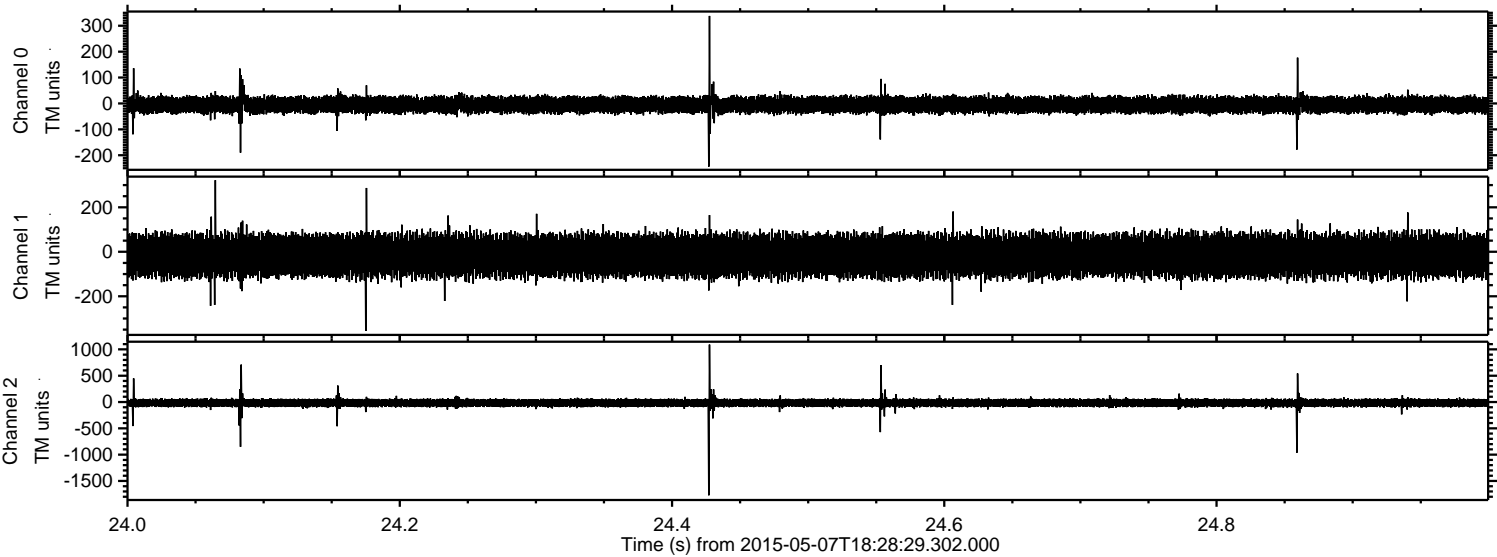


ELMAVAN 3D WAVEFORMS (Measured data sampled at 50 kHz) 49784 packets of 144 samples from 2015-05-07T18:28:29.302.000. Part 1/144

Processed Thu May 7 20:35:37 2015 by ELM ver.2012-10-06 from 001__elm20150507_182828__dat00.bin



Processed Thu May 7 20:35:38 2015 by ELM ver.2012-10-06 from 001__elm20150507_182828__dat00.bin



Processed Thu May 7 20:35:39 2015 by ELM ver.2012-10-06 from 001__elm20150507_182828__dat00.bin

