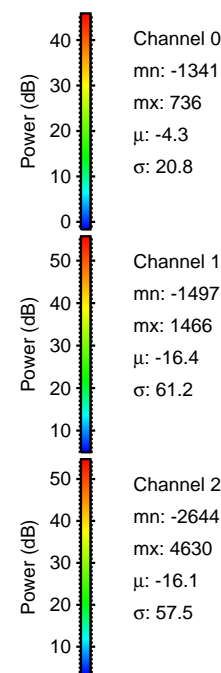
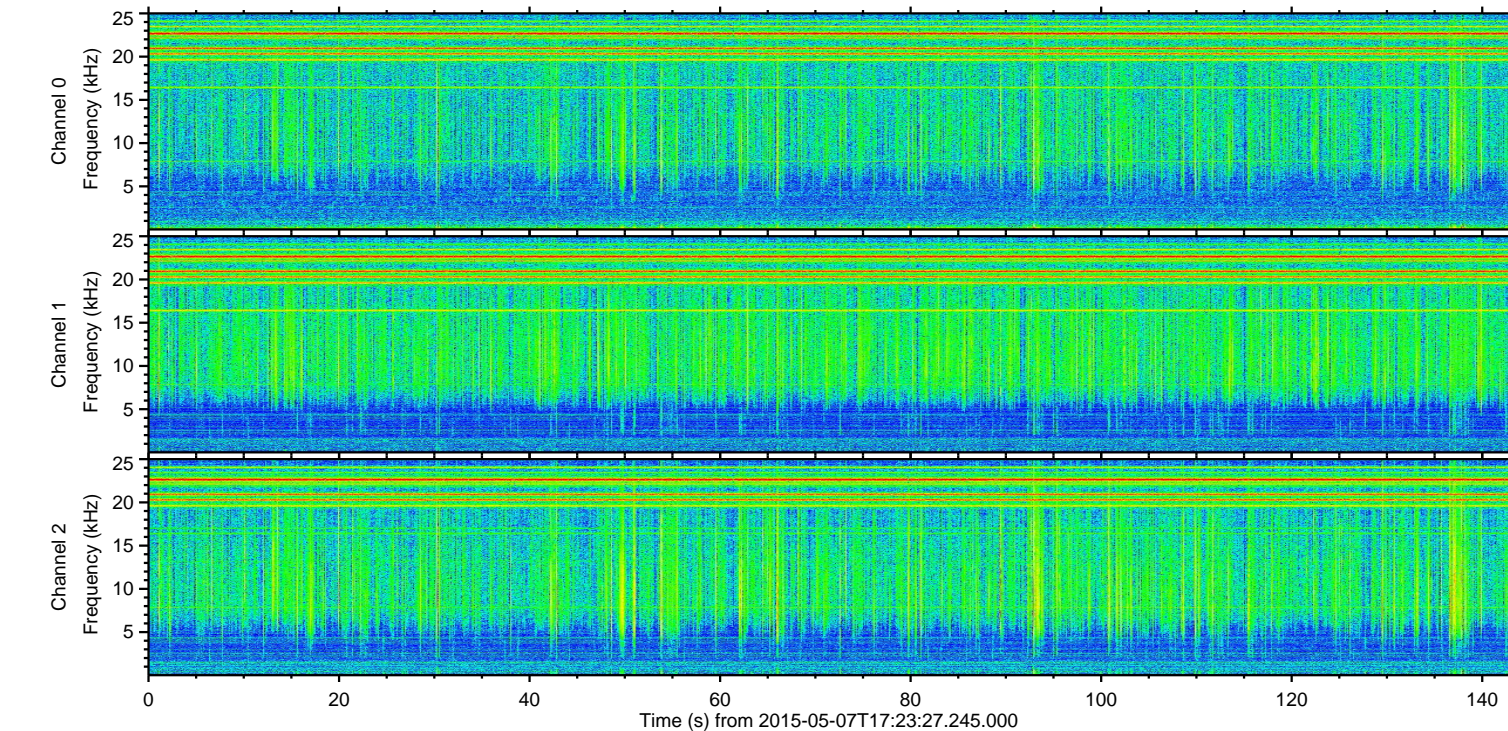
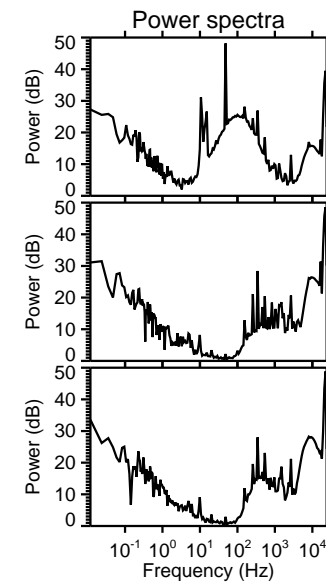
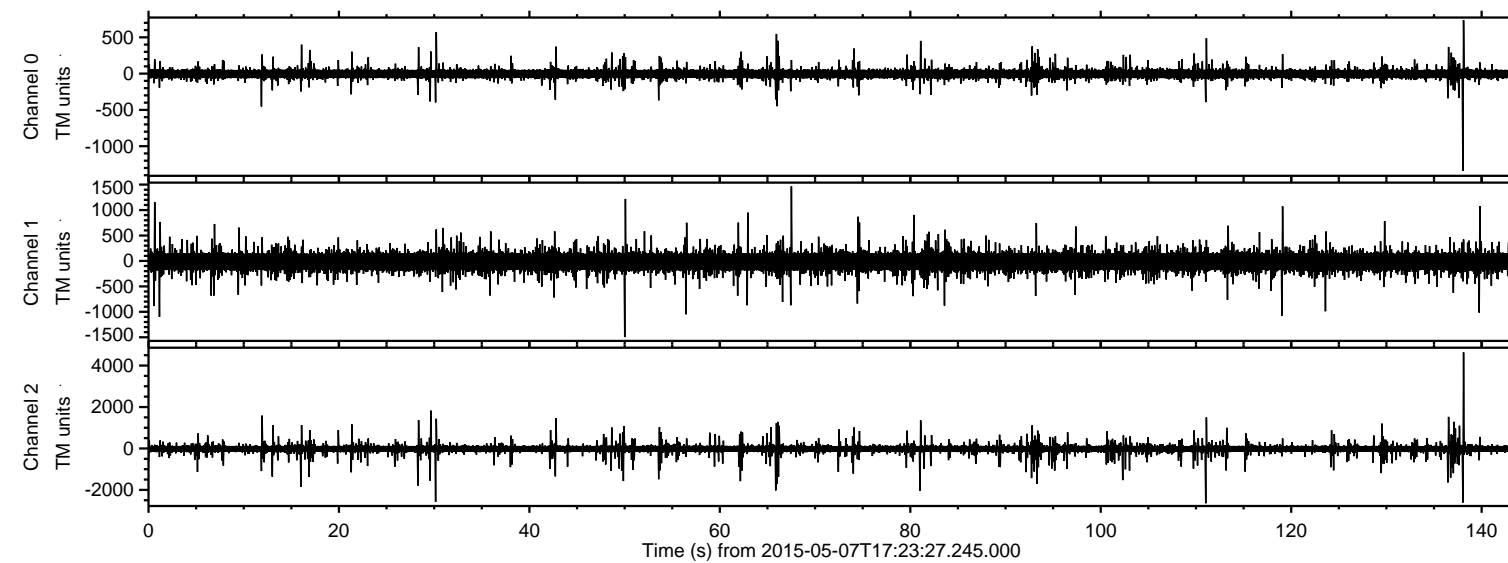


ELMAVAN 3D WAVEFORMS (Measured data sampled at 50 kHz) 49614 packets of 144 samples from 2015-05-07T17:23:27.245.000.

Processed Thu May 7 19:30:43 2015 by ELM ver.2012-10-06 from 001__elm20150507_172326__dat00.bin



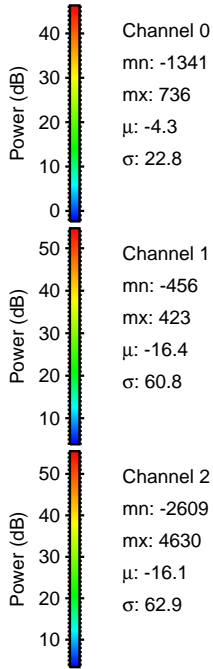
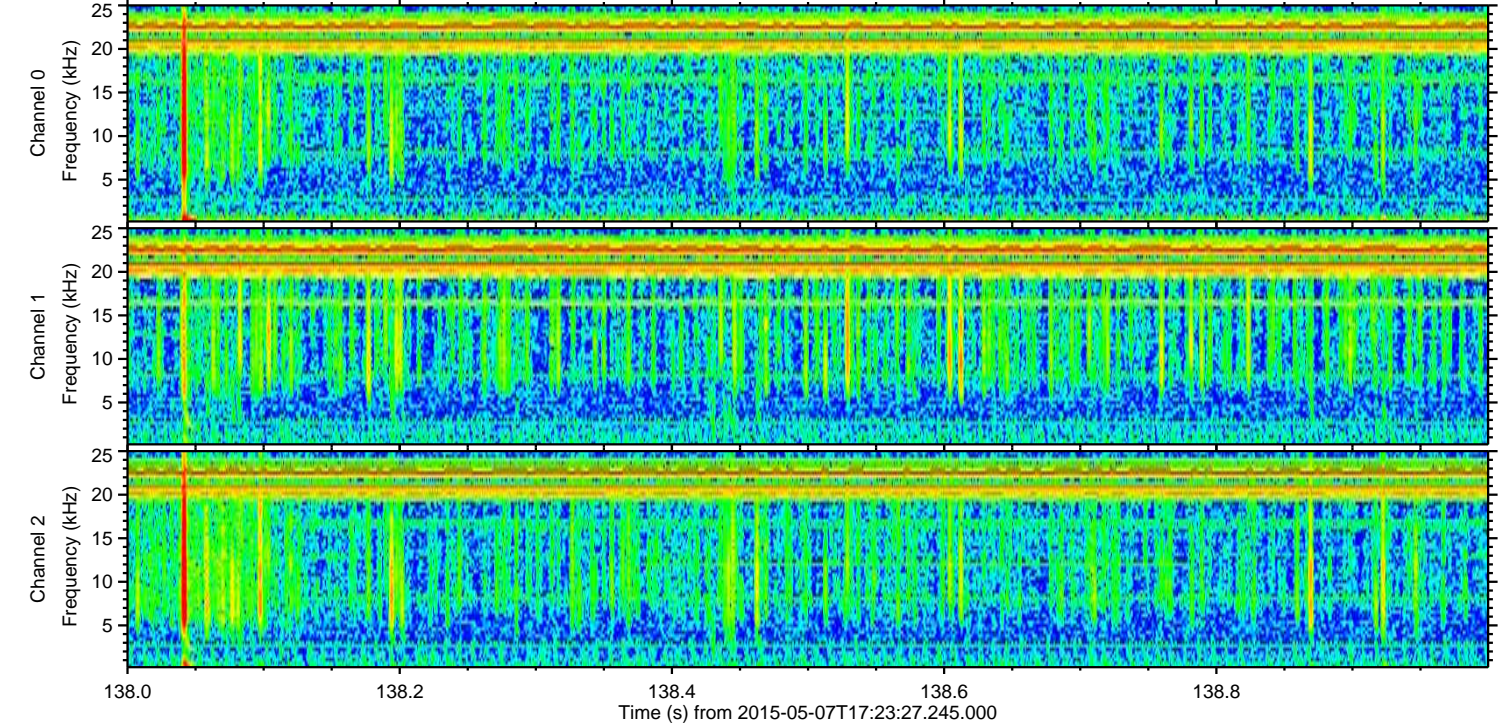
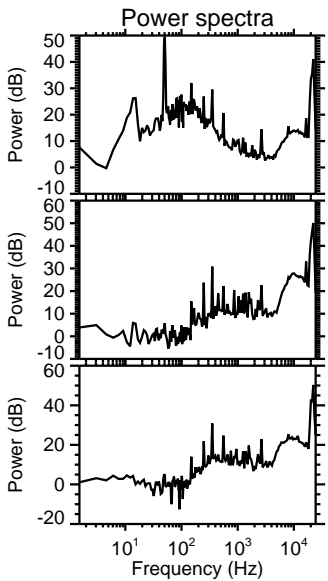
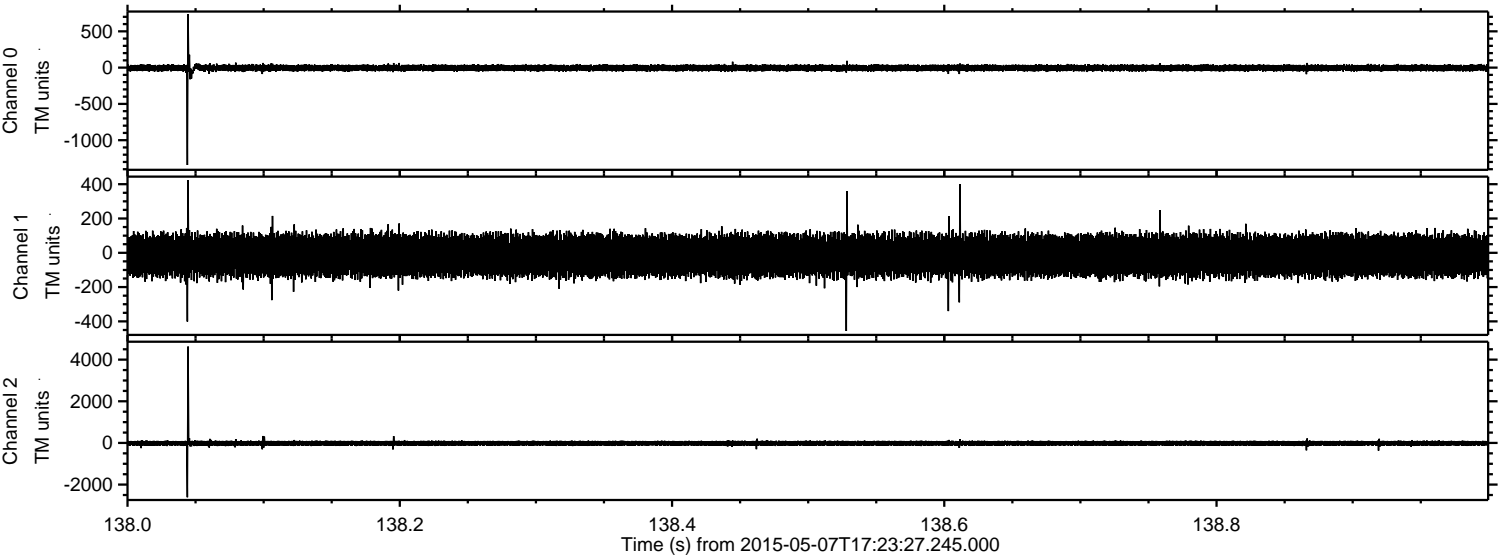
Channel 0
mn: -1341
mx: 736
 μ : -4.3
 σ : 20.8

Channel 1
mn: -1497
mx: 1466
 μ : -16.4
 σ : 61.2

Channel 2
mn: -2644
mx: 4630
 μ : -16.1
 σ : 57.5

ELMAVAN 3D WAVEFORMS (Measured data sampled at 50 kHz) 49614 packets of 144 samples from 2015-05-07T17:23:27.245.000. Part 139/143

Processed Thu May 7 19:30:58 2015 by ELM ver.2012-10-06 from 001__elm20150507_172326__dat00.bin



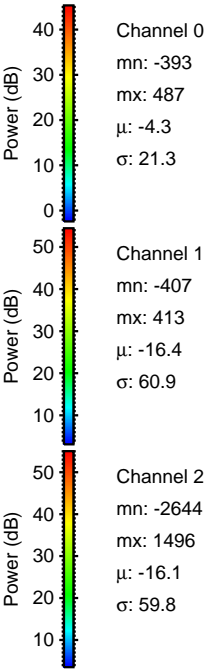
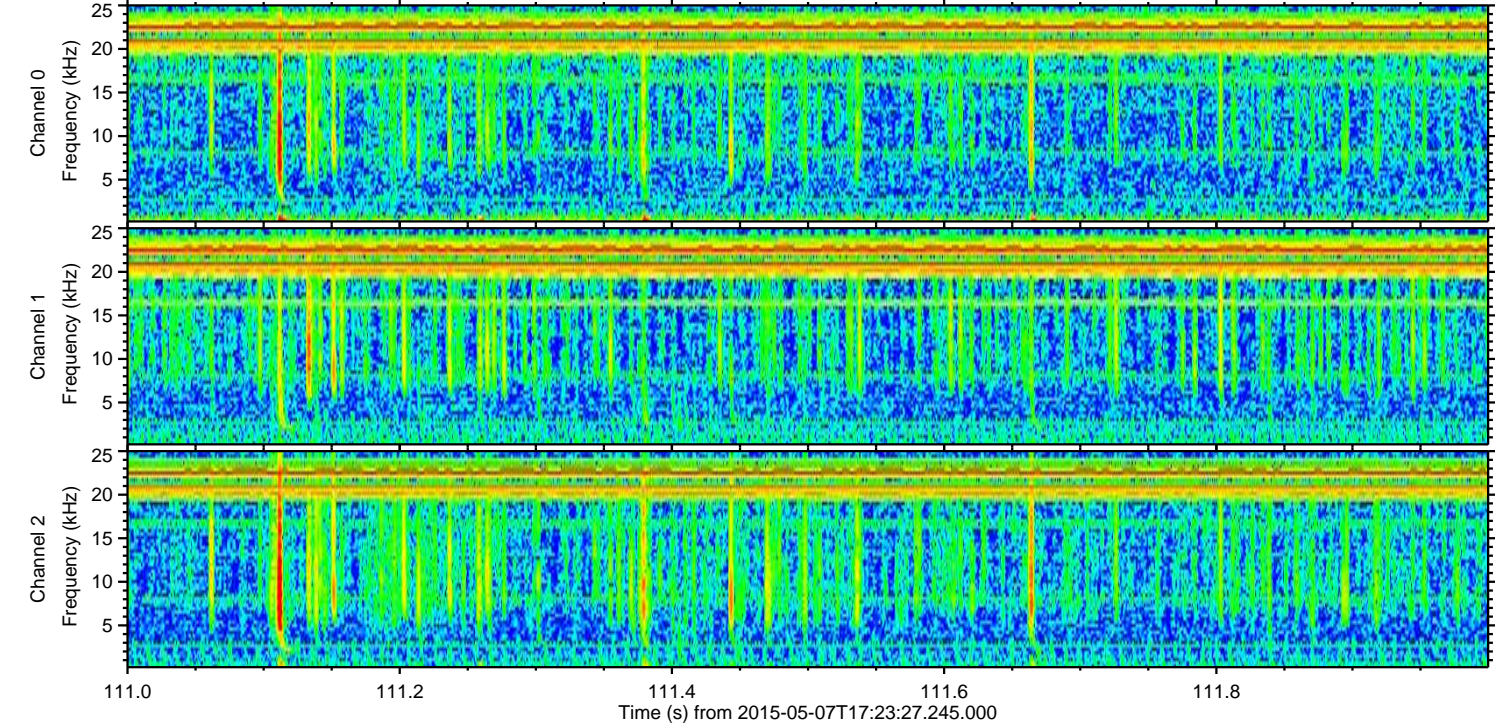
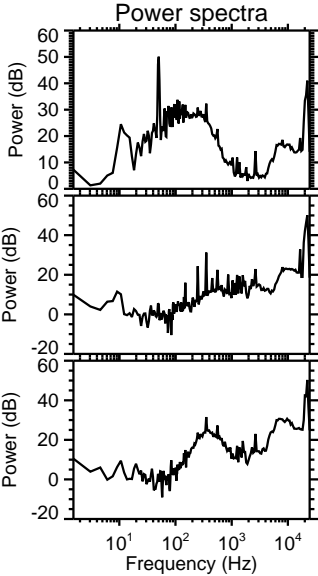
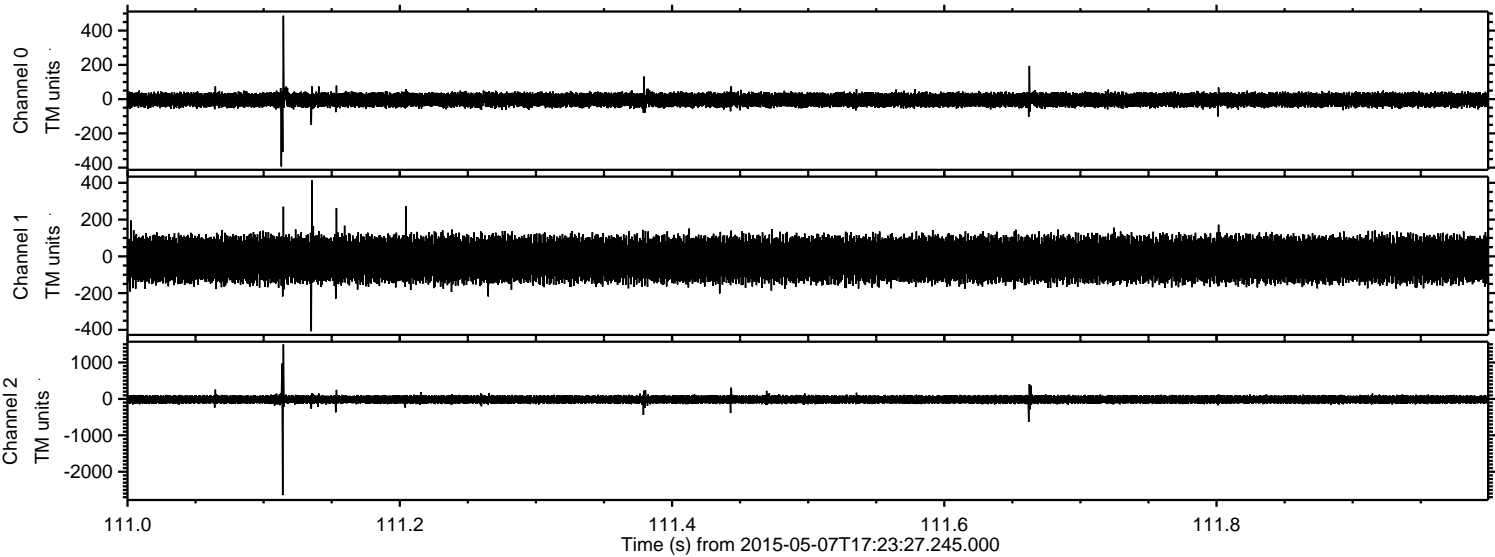
Channel 0
mn: -1341
mx: 736
 μ : -4.3
 σ : 22.8

Channel 1
mn: -456
mx: 423
 μ : -16.4
 σ : 60.8

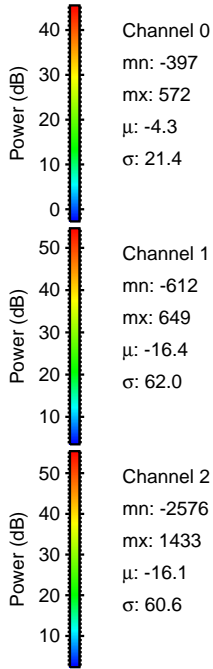
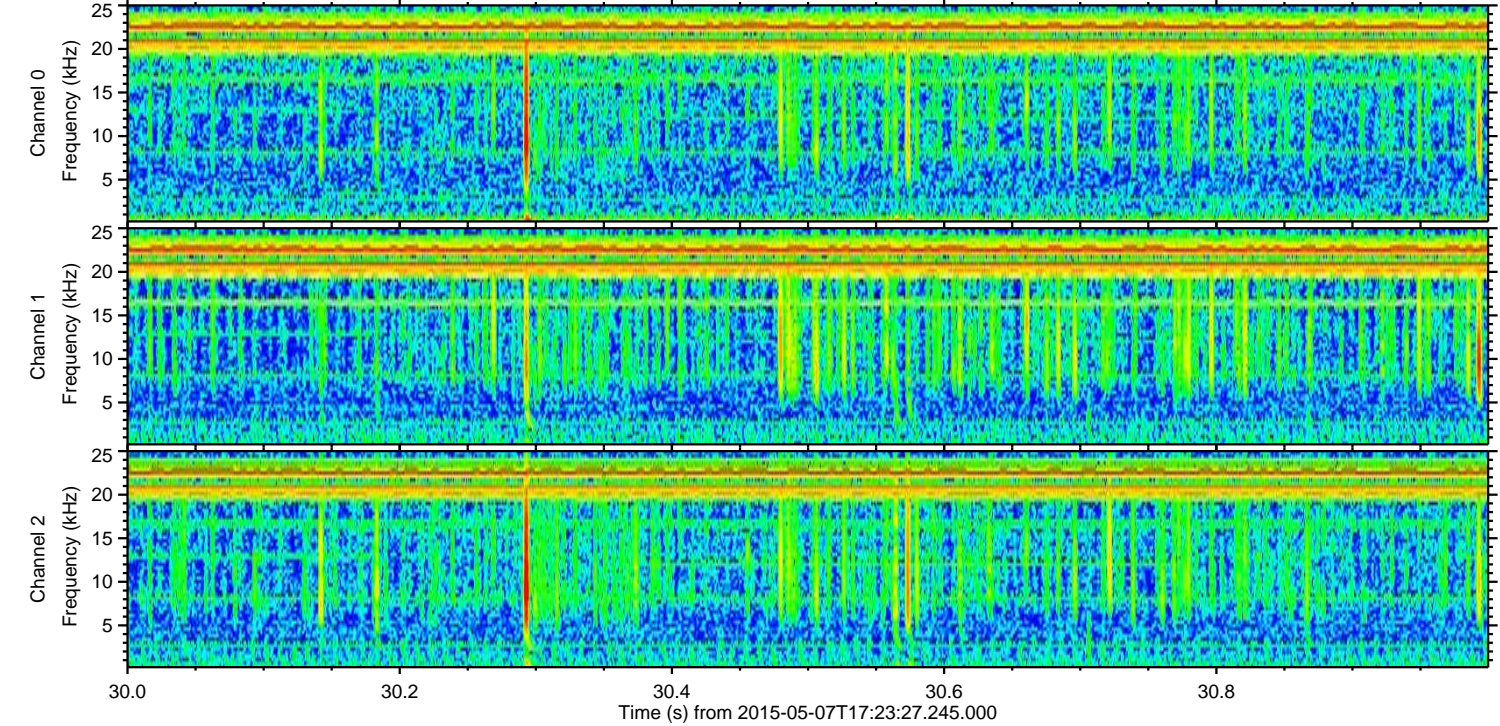
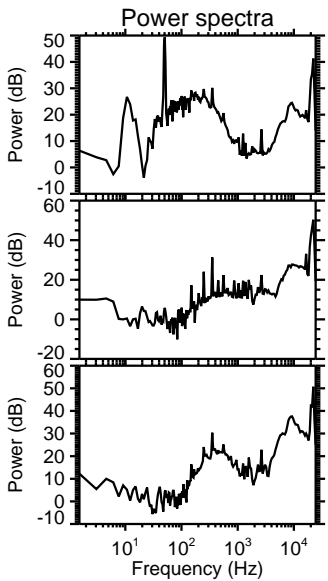
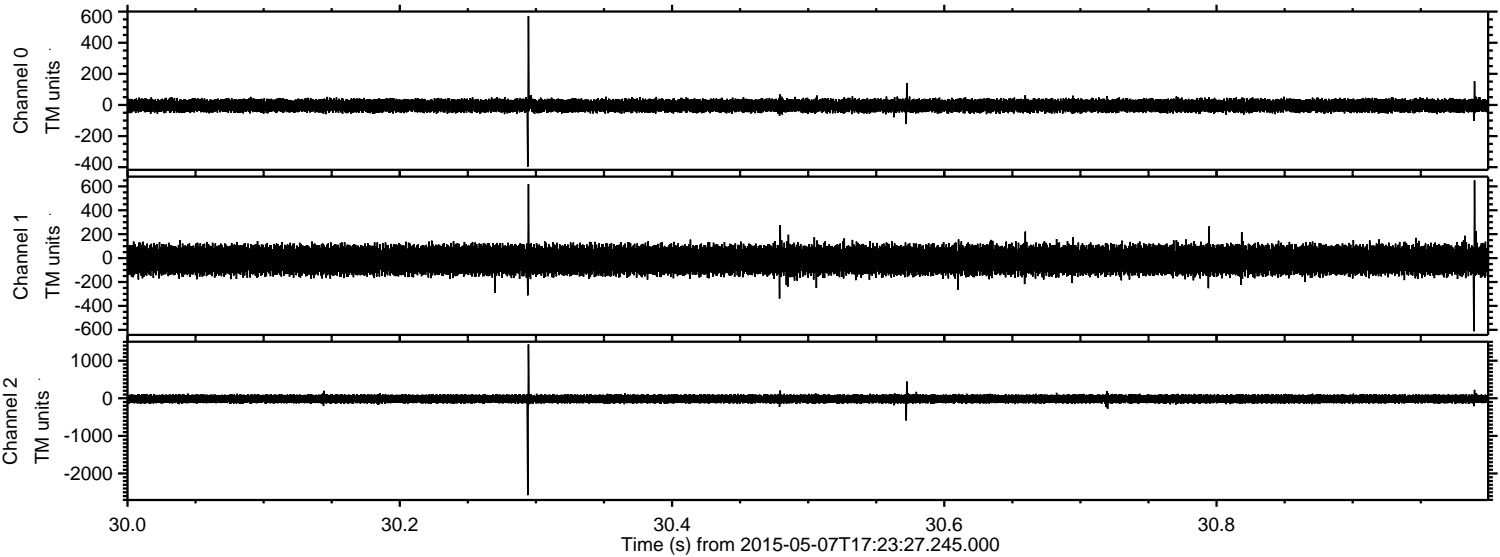
Channel 2
mn: -2609
mx: 4630
 μ : -16.1
 σ : 62.9

ELMAVAN 3D WAVEFORMS (Measured data sampled at 50 kHz) 49614 packets of 144 samples from 2015-05-07T17:23:27.245.000. Part 112/143

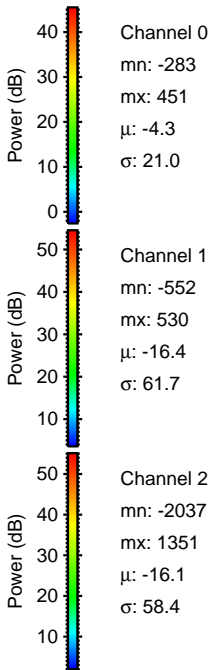
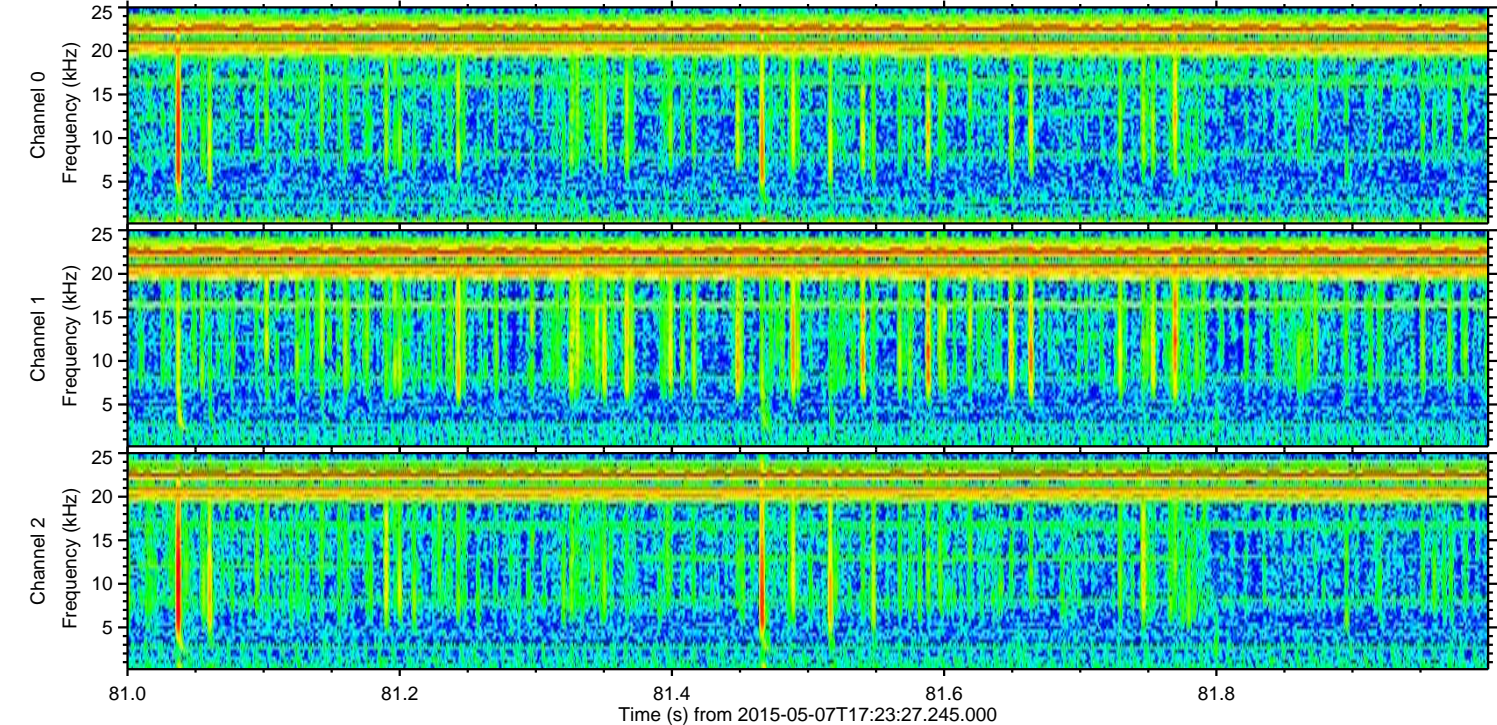
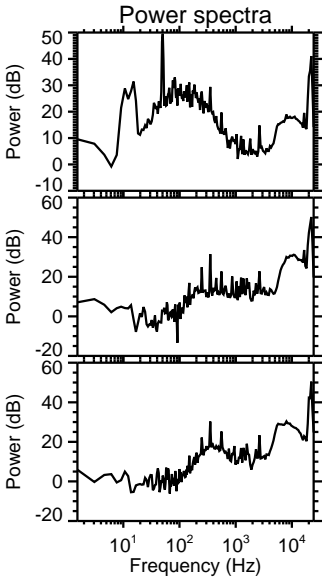
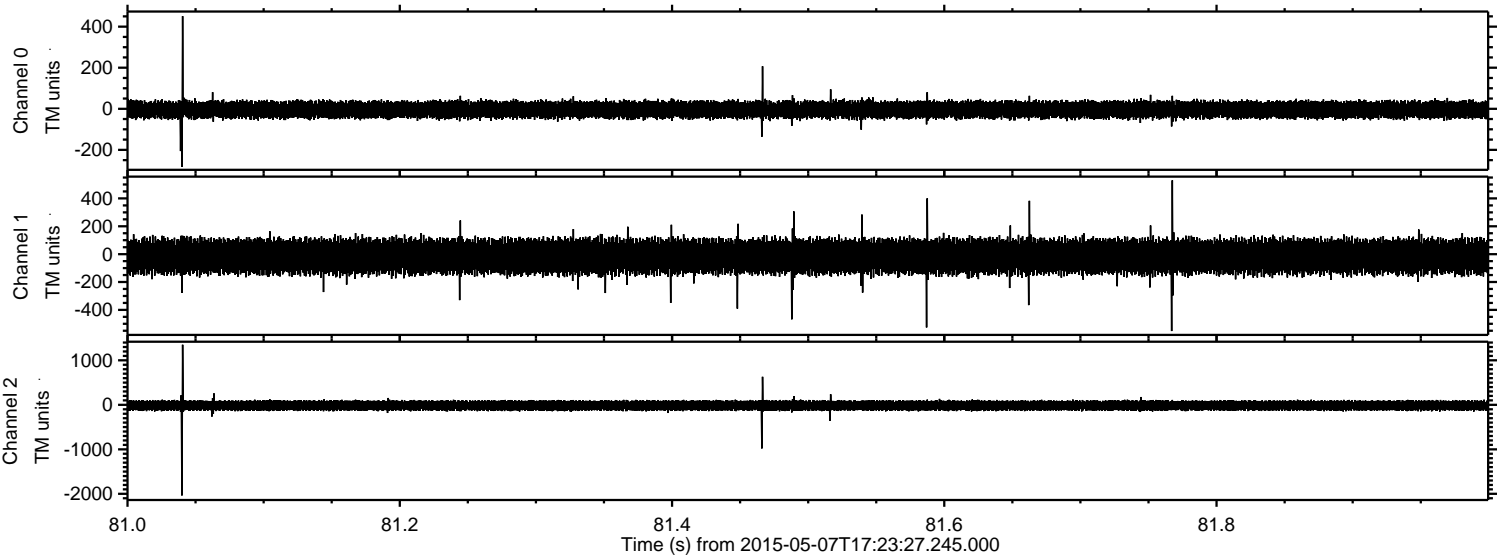
Processed Thu May 7 19:30:59 2015 by ELM ver.2012-10-06 from 001__elm20150507_172326__dat00.bin



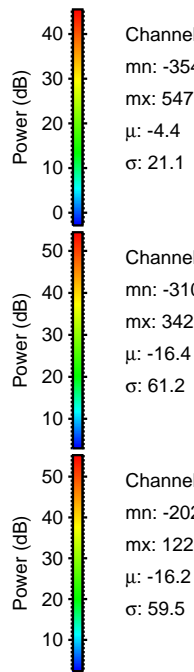
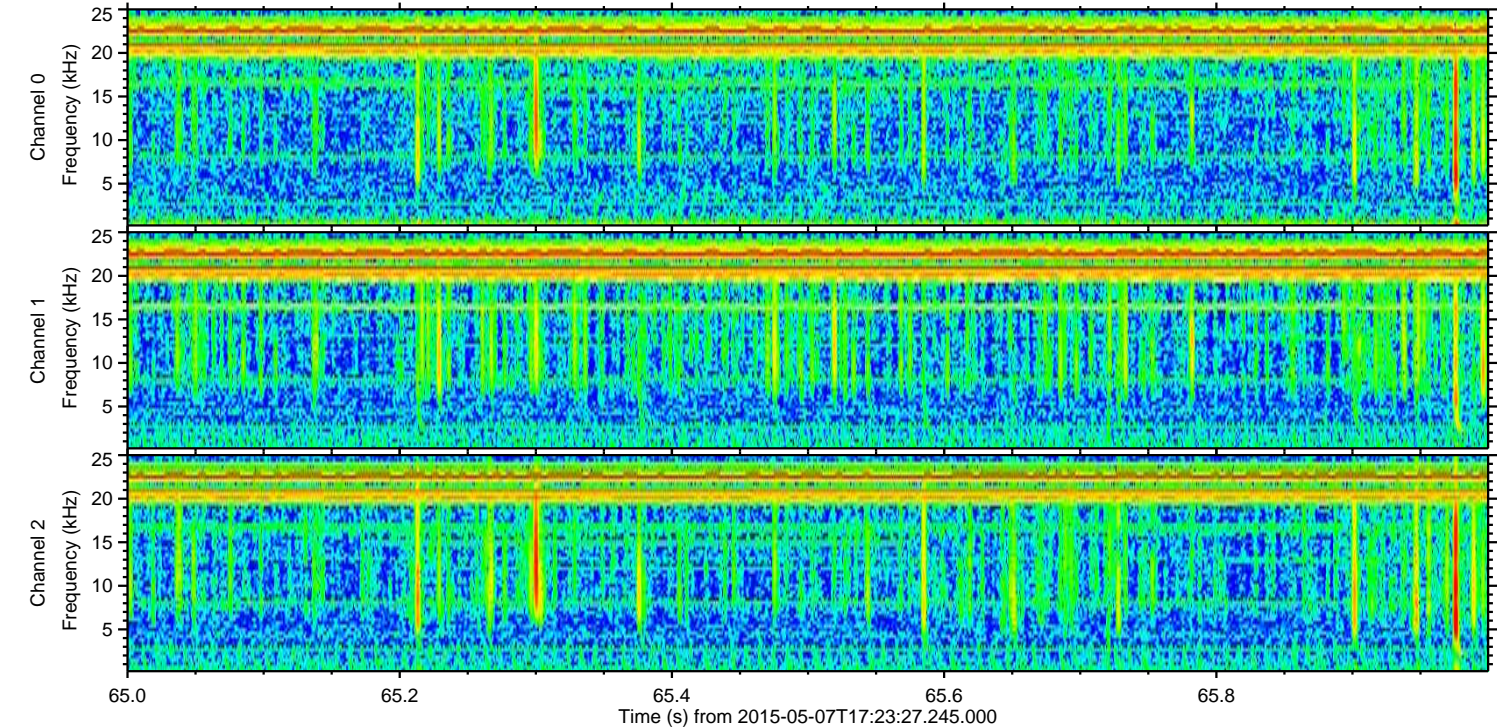
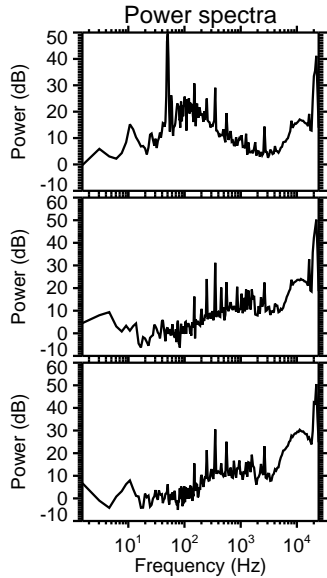
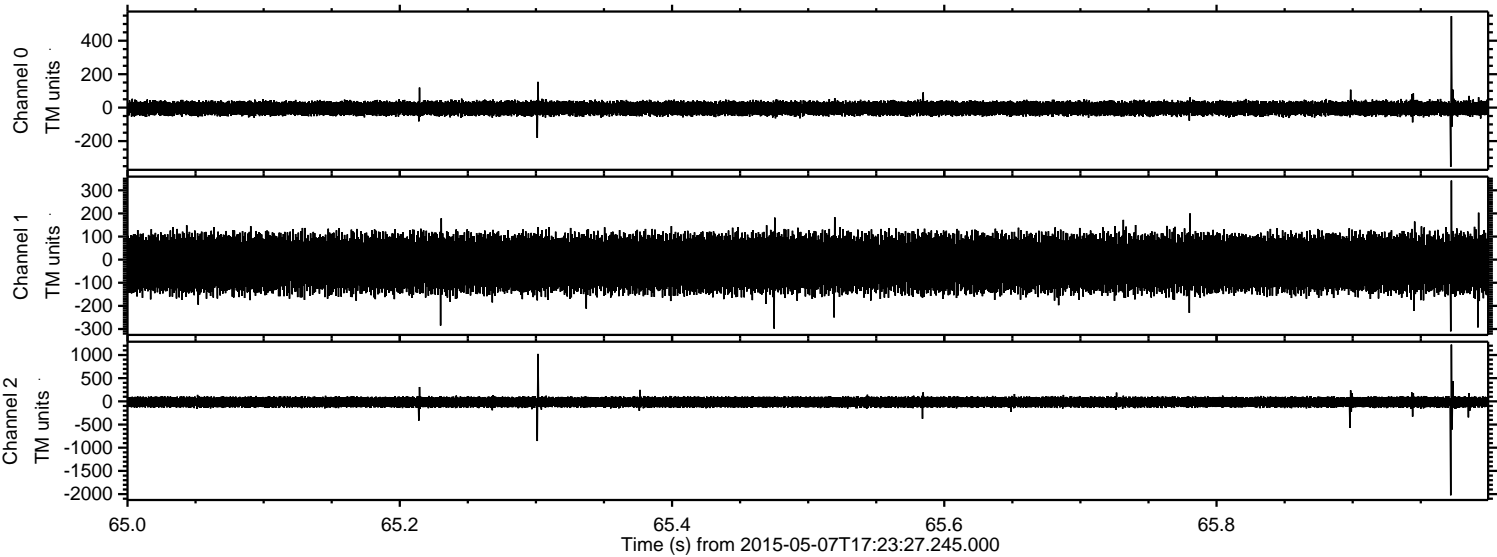
Processed Thu May 7 19:31:00 2015 by ELM ver.2012-10-06 from 001__elm20150507_172326__dat00.bin



Processed Thu May 7 19:31:01 2015 by ELM ver.2012-10-06 from 001__elm20150507_172326__dat00.bin



Processed Thu May 7 19:31:02 2015 by ELM ver.2012-10-06 from 001__elm20150507_172326__dat00.bin

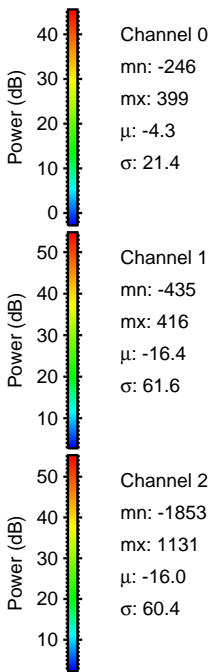
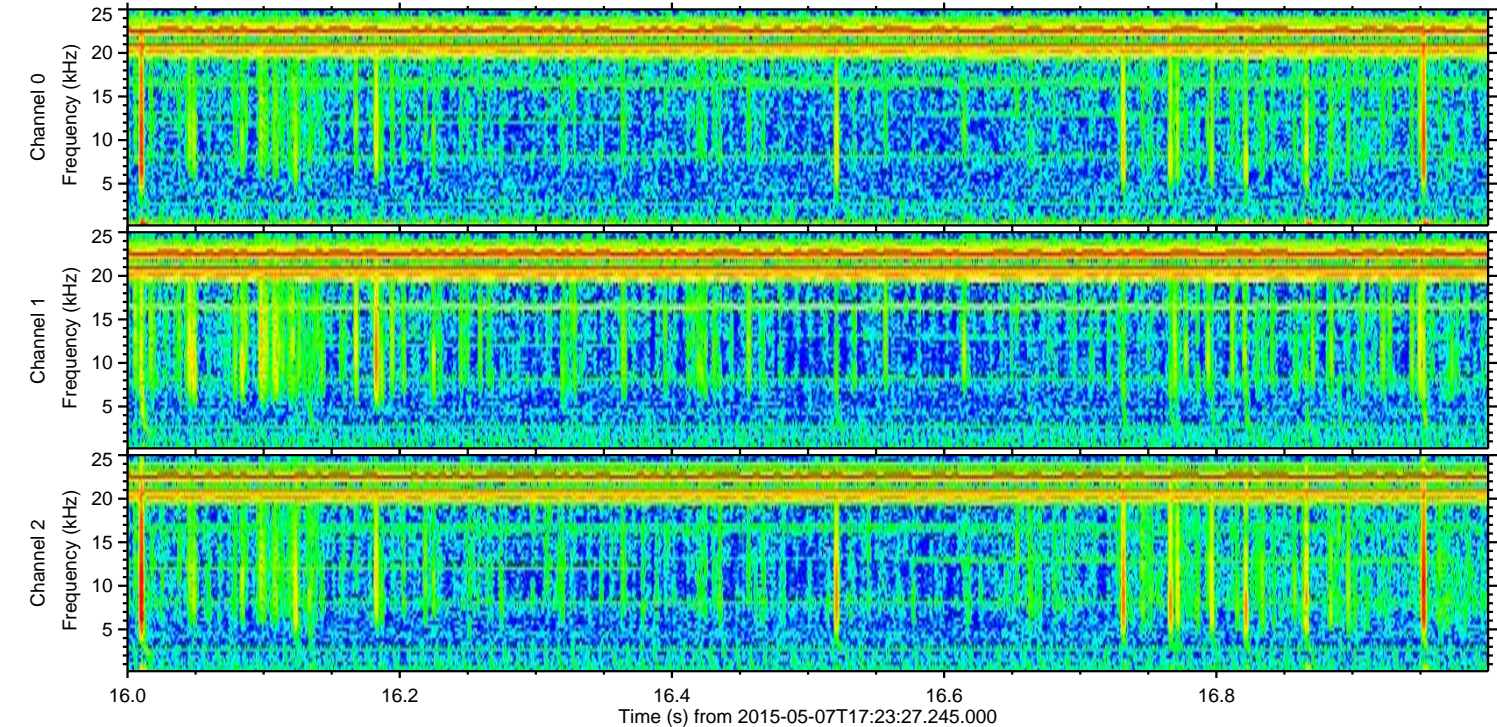
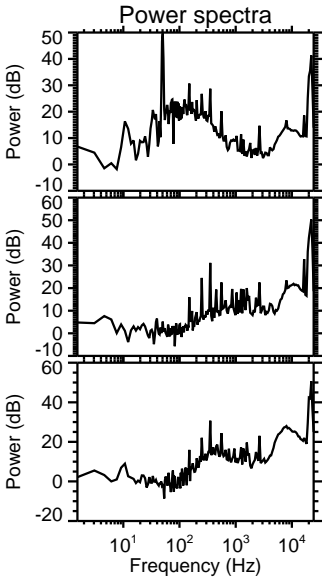
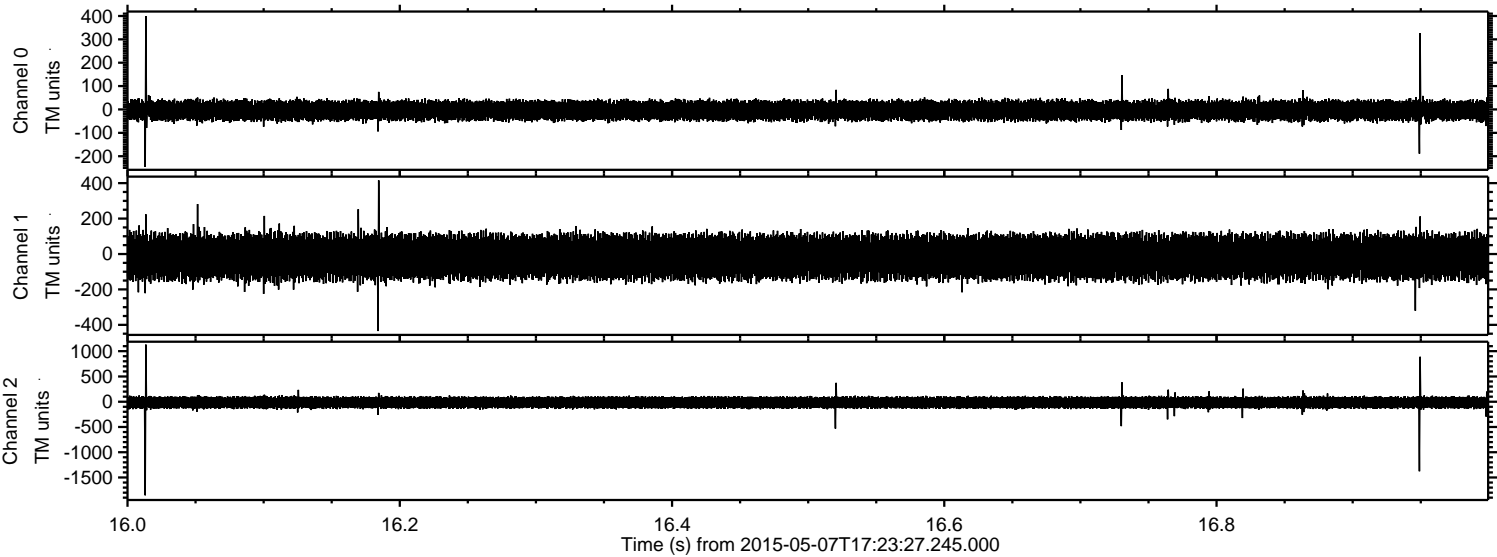


Channel 0
mn: -354
mx: 547
 μ : -4.4
 σ : 21.1

Channel 1
mn: -310
mx: 342
 μ : -16.4
 σ : 61.2

Channel 2
mn: -2026
mx: 1225
 μ : -16.2
 σ : 59.5

Processed Thu May 7 19:31:03 2015 by ELM ver.2012-10-06 from 001__elm20150507_172326__dat00.bin

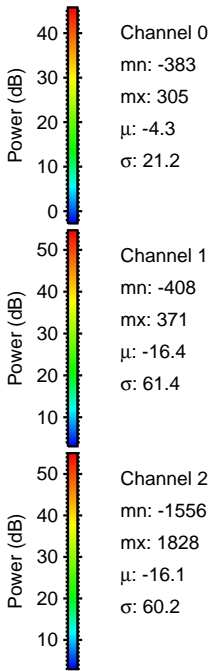
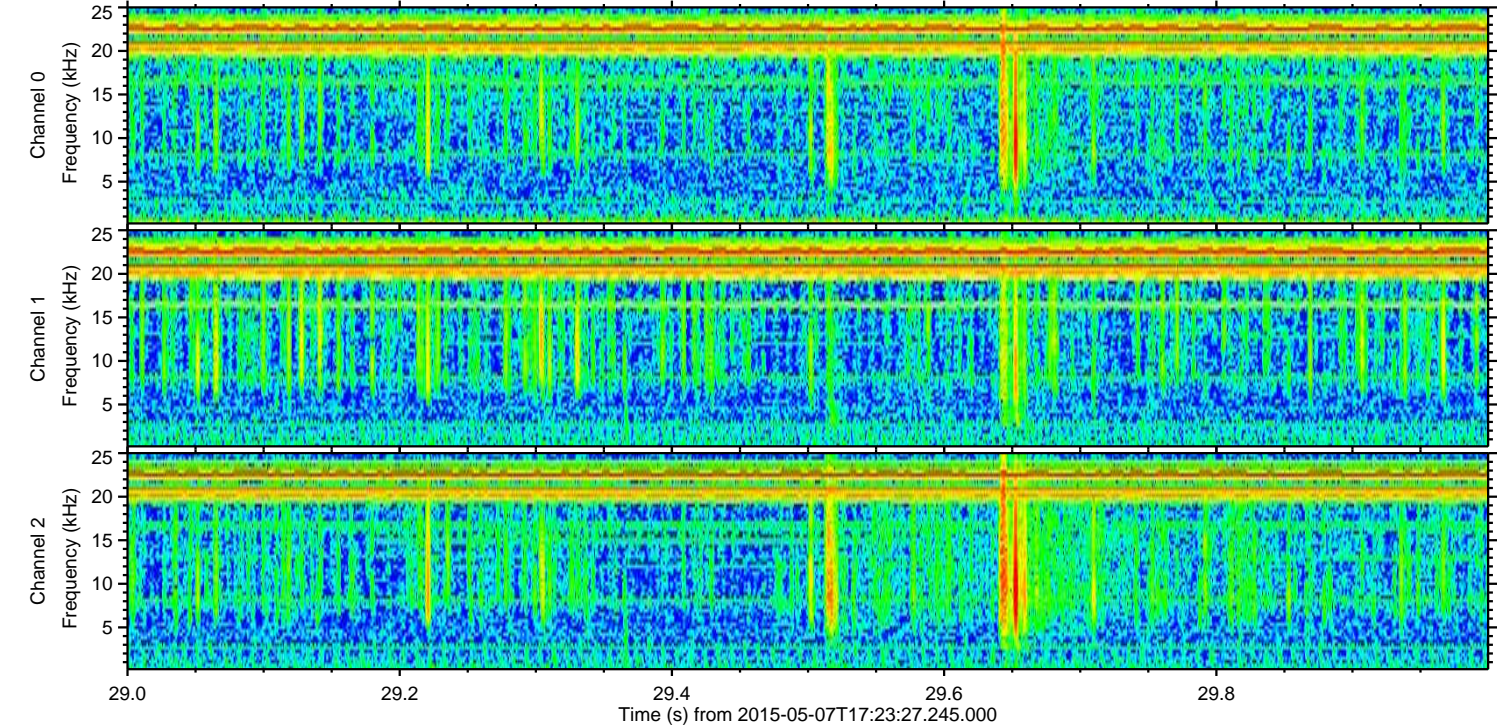
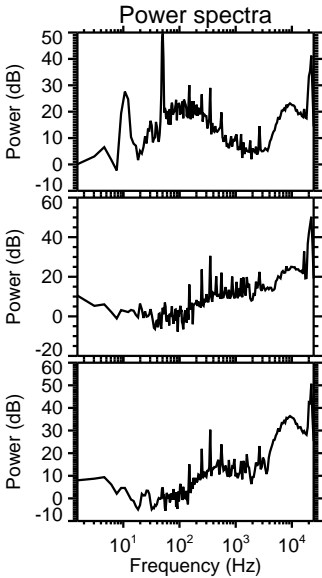
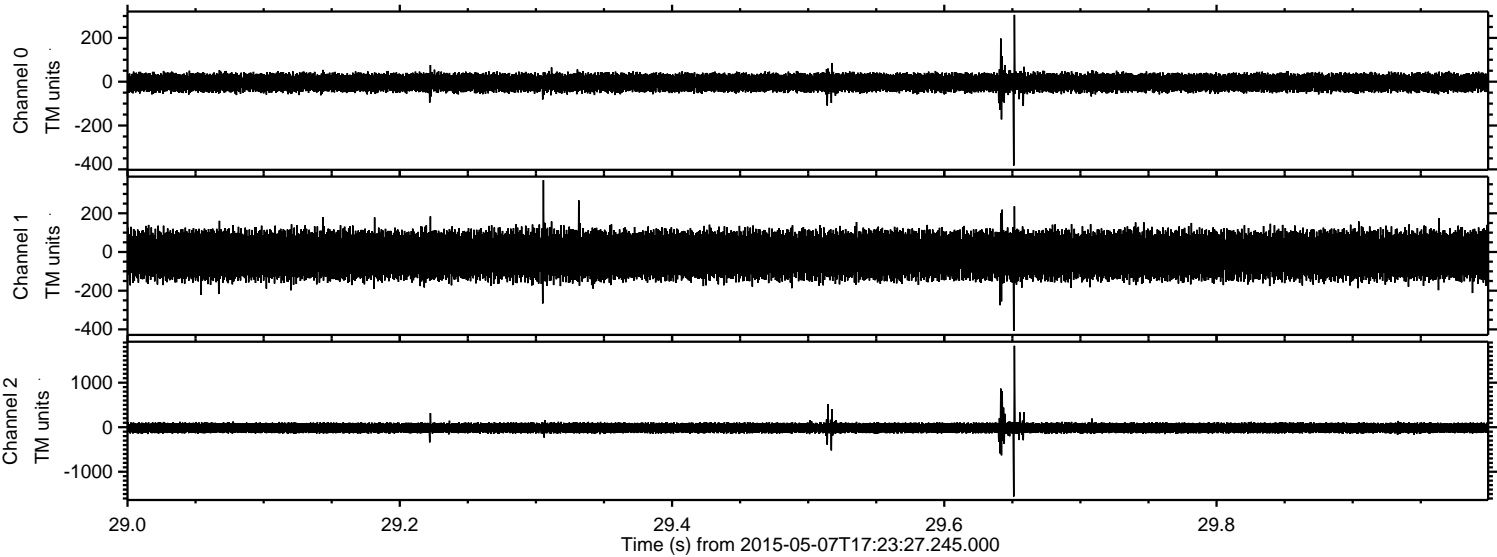


Channel 0
mn: -246
mx: 399
 μ : -4.3
 σ : 21.4

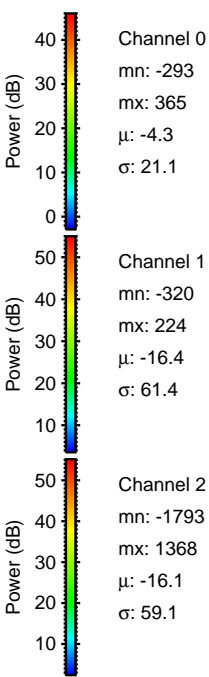
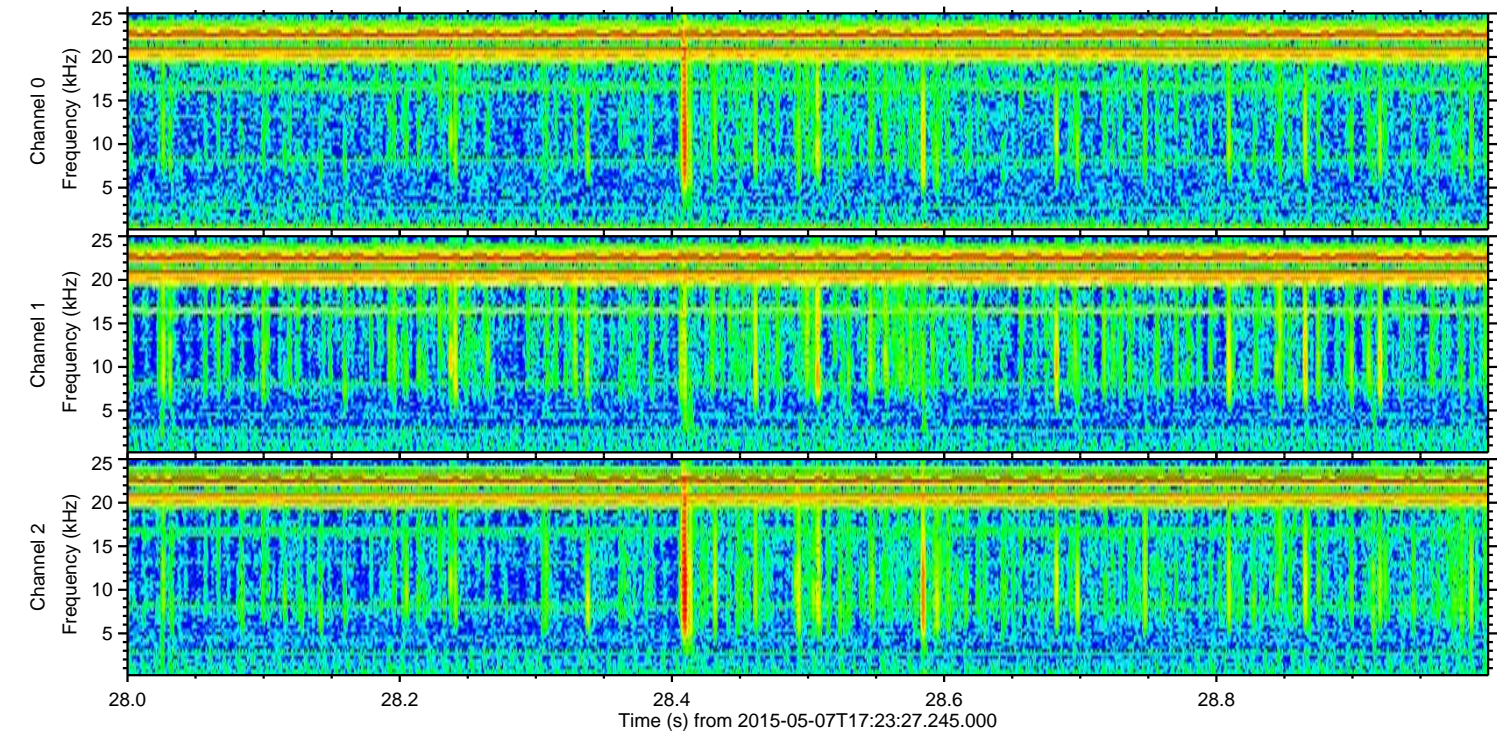
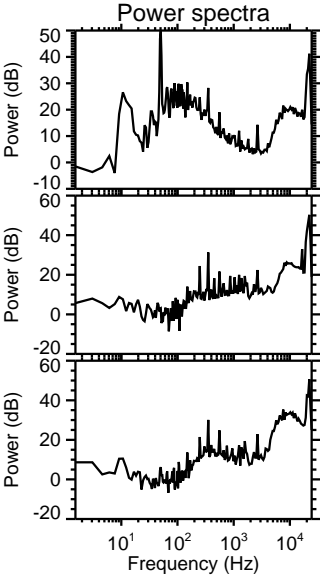
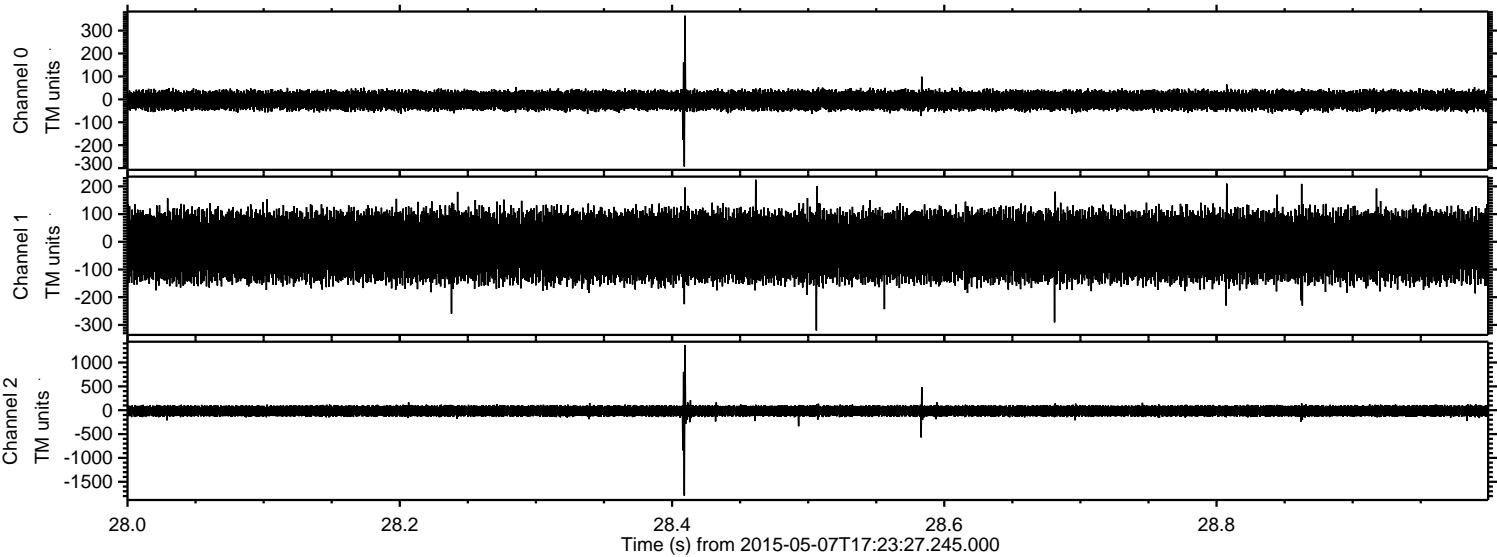
Channel 1
mn: -435
mx: 416
 μ : -16.4
 σ : 61.6

Channel 2
mn: -1853
mx: 1131
 μ : -16.0
 σ : 60.4

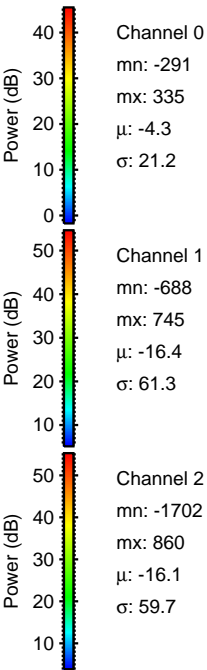
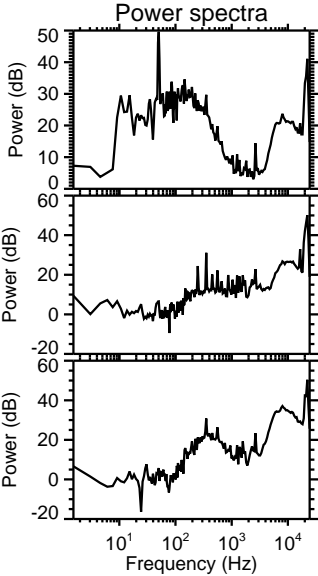
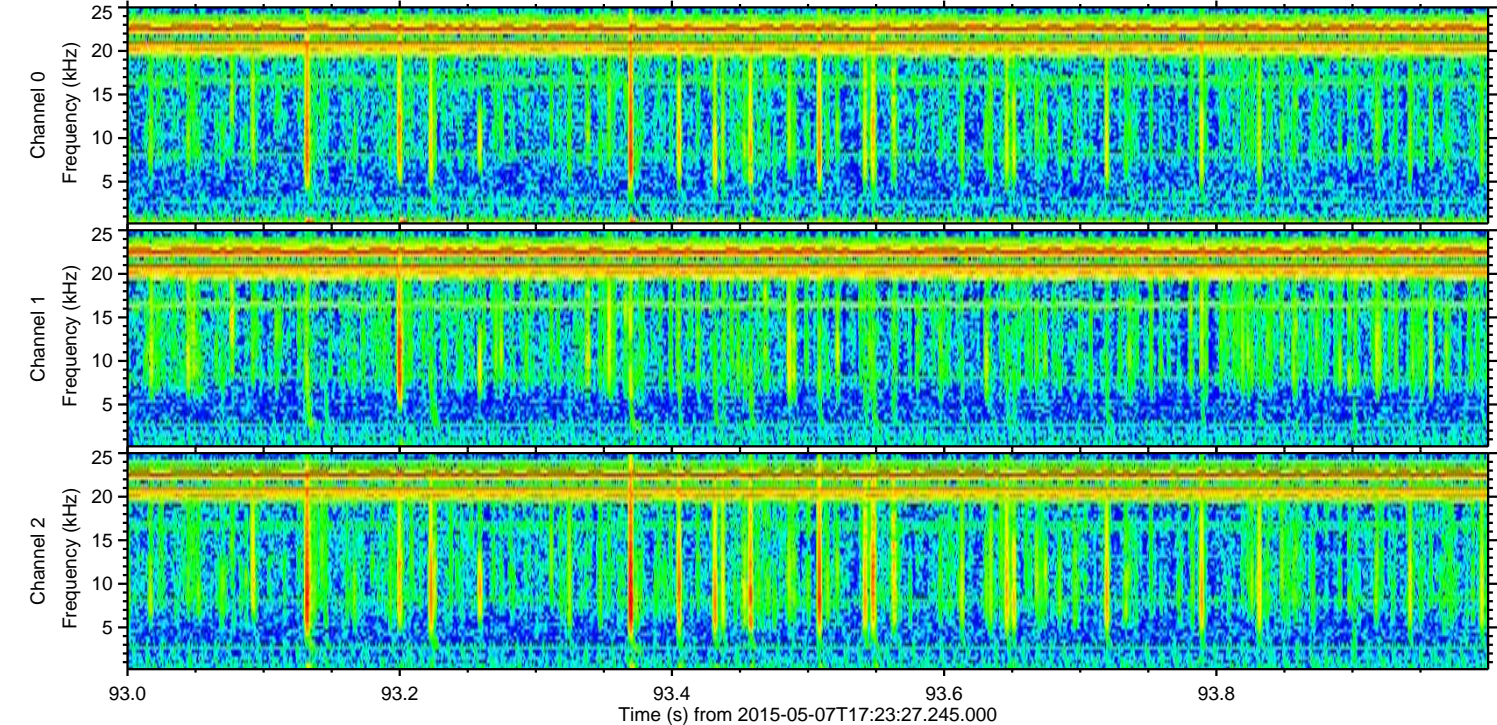
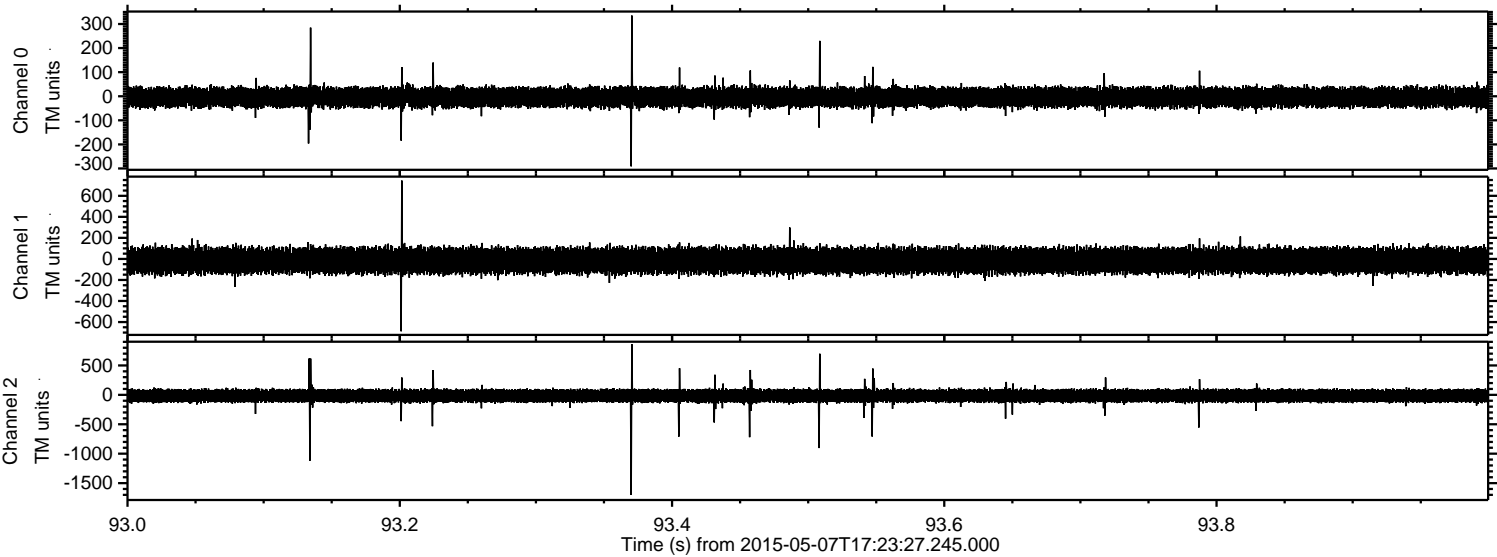
Processed Thu May 7 19:31:04 2015 by ELM ver.2012-10-06 from 001__elm20150507_172326__dat00.bin



Processed Thu May 7 19:31:05 2015 by ELM ver.2012-10-06 from 001__elm20150507_172326__dat00.bin



Processed Thu May 7 19:31:06 2015 by ELM ver.2012-10-06 from 001__elm20150507_172326__dat00.bin



Processed Thu May 7 19:31:08 2015 by ELM ver.2012-10-06 from 001__elm20150507_172326__dat00.bin

