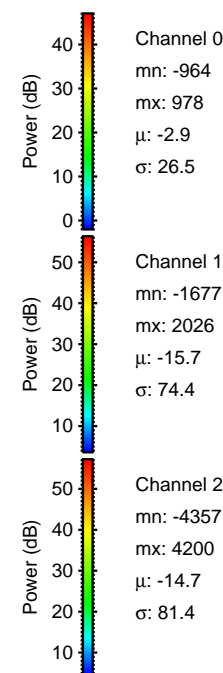
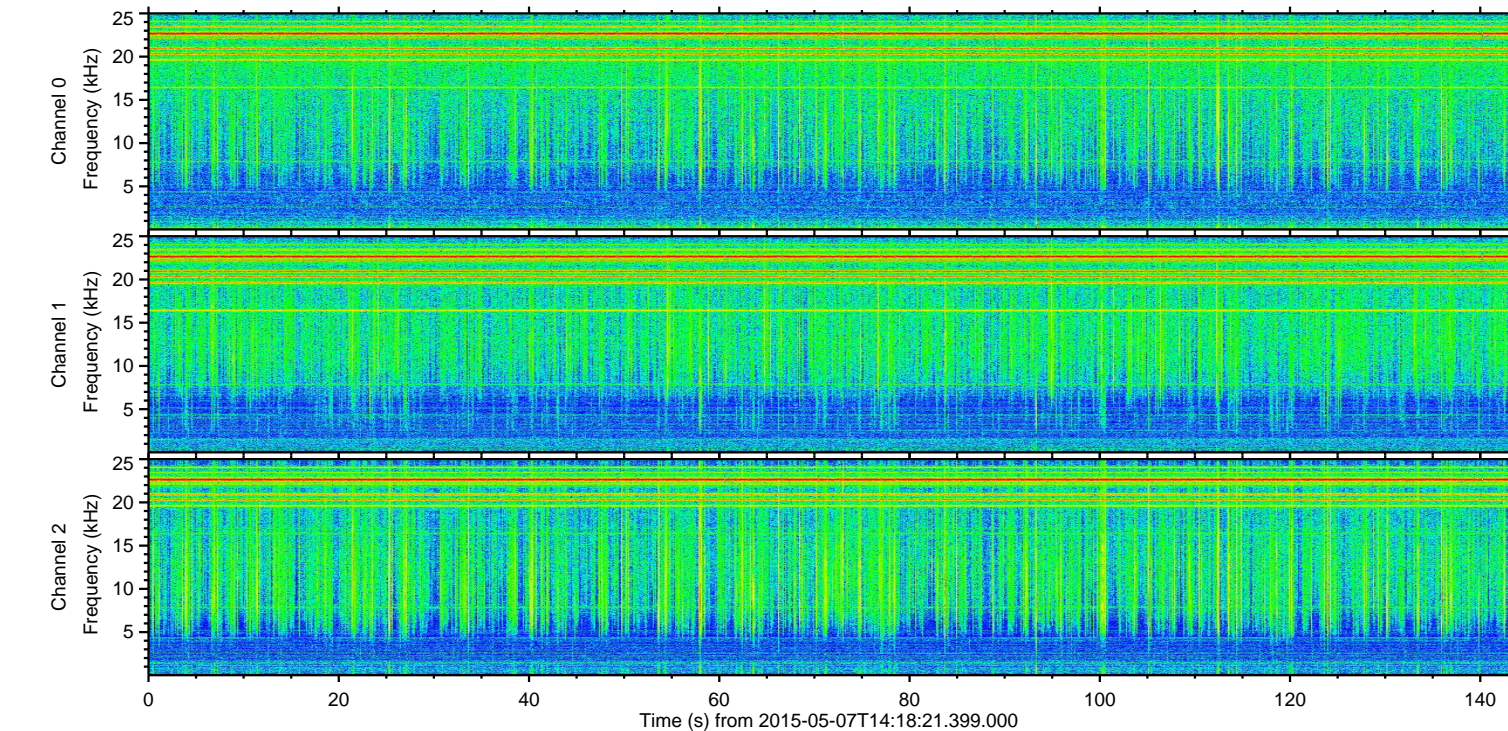
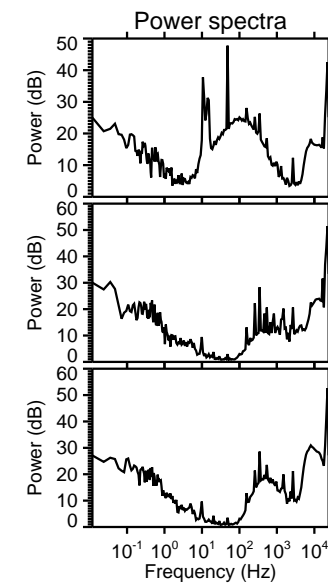
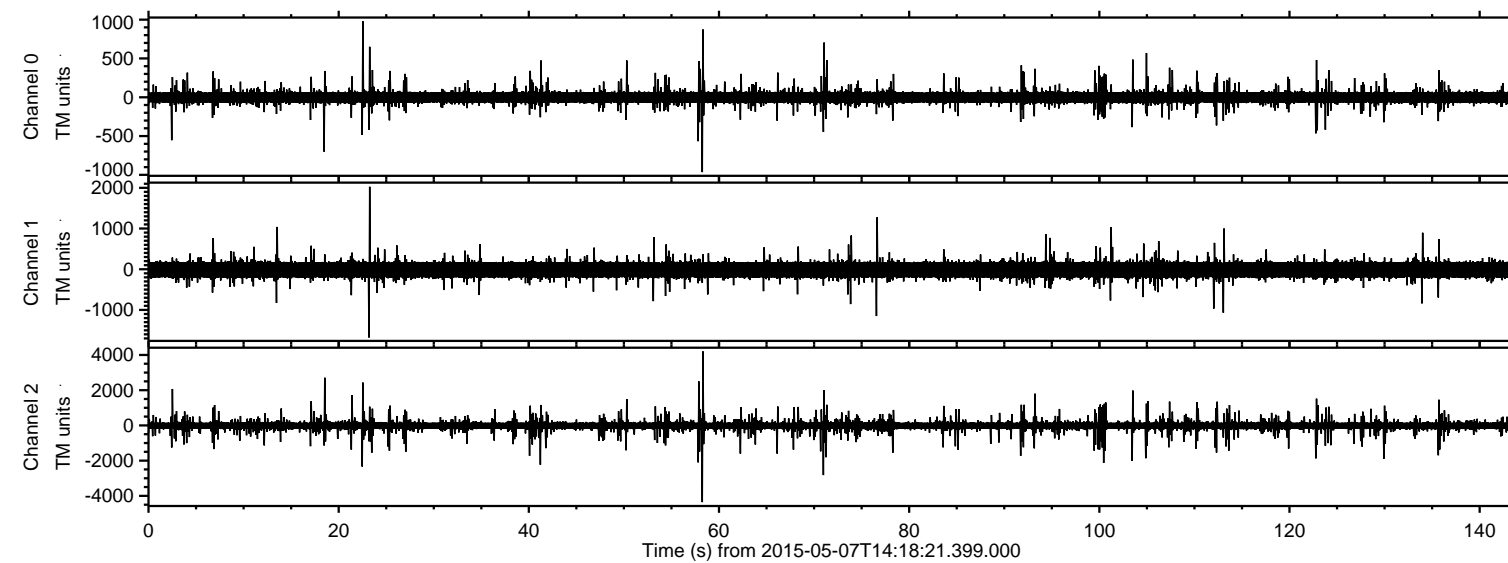
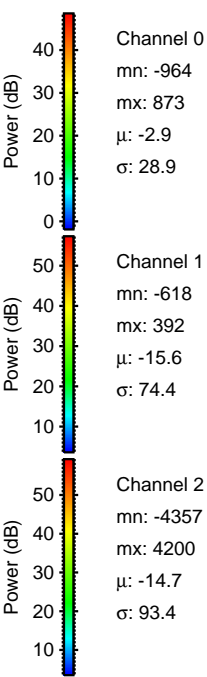
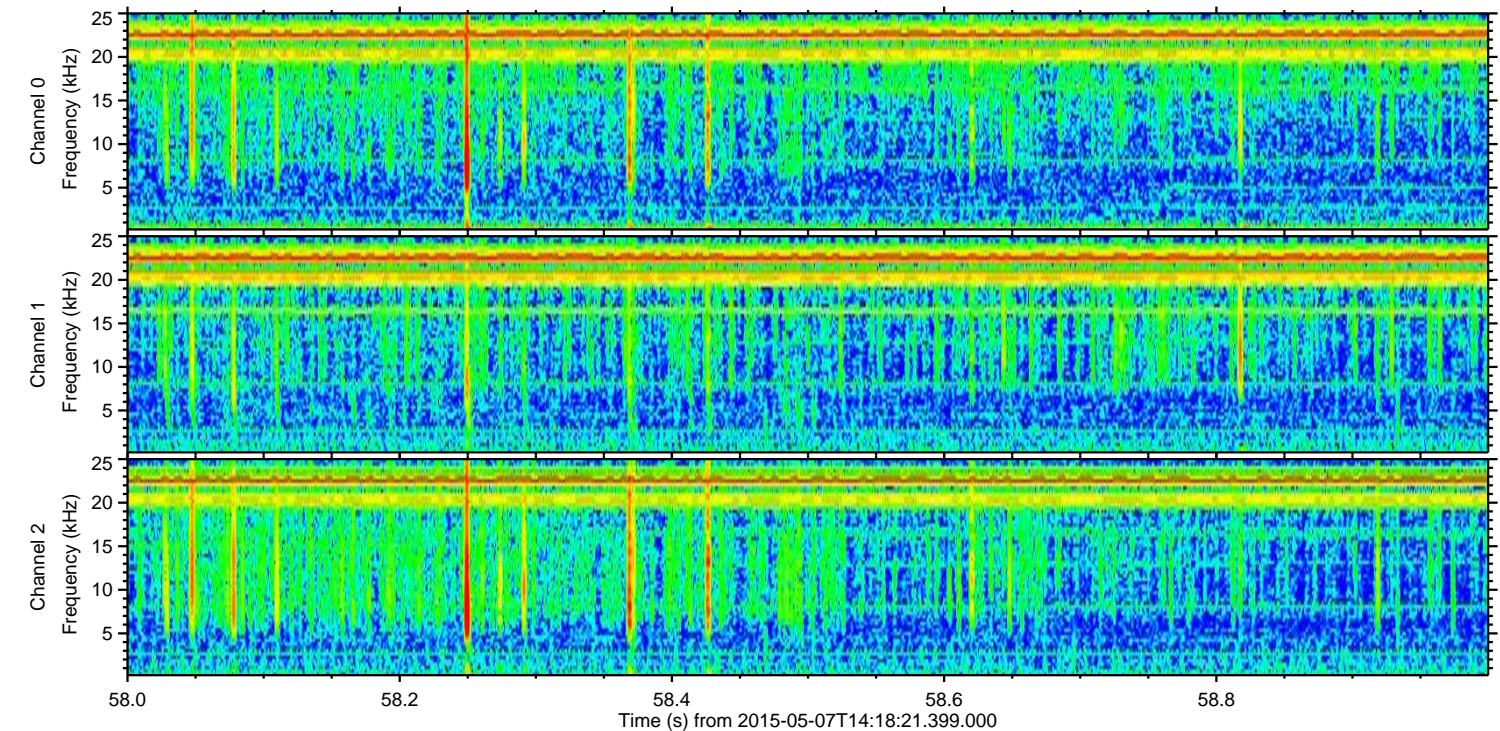
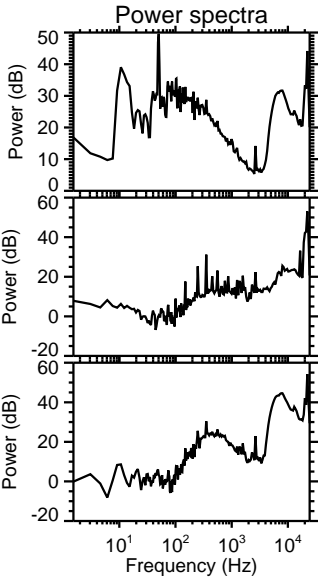
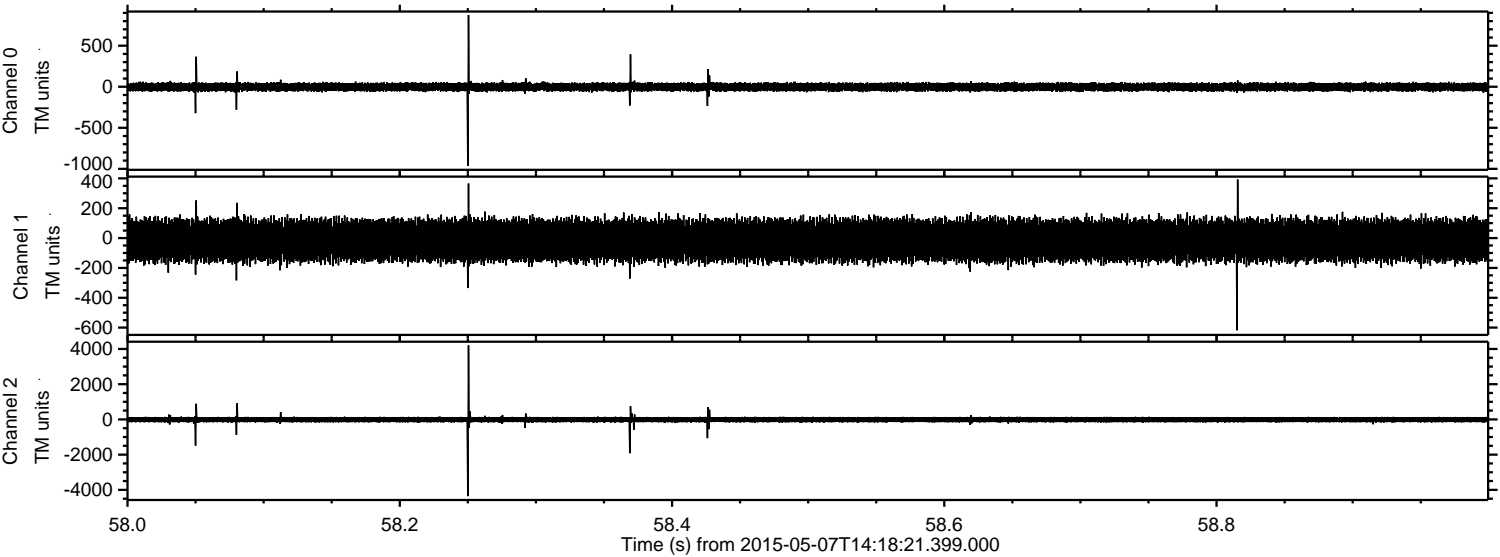


ELMAVAN 3D WAVEFORMS (Measured data sampled at 50 kHz) 49687 packets of 144 samples from 2015-05-07T14:18:21.399.000.

Processed Thu May 7 16:25:21 2015 by ELM ver.2012-10-06 from 001__elm20150507_141820__dat00.bin



Processed Thu May 7 16:25:33 2015 by ELM ver.2012-10-06 from 001__elm20150507_141820__dat00.bin

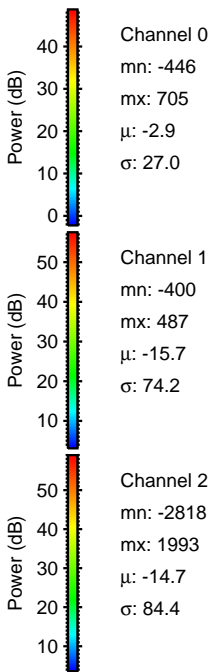
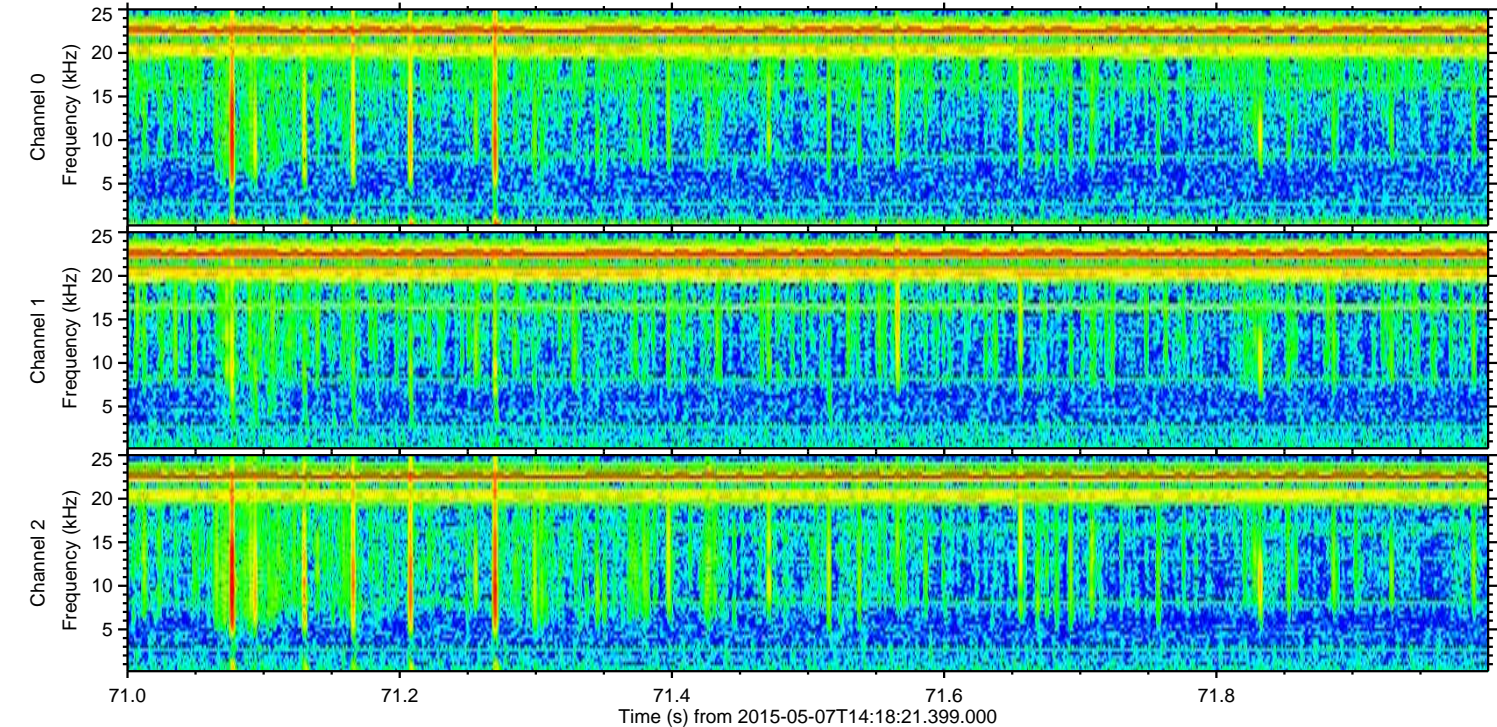
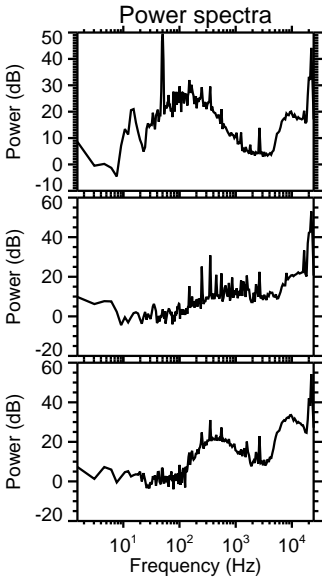
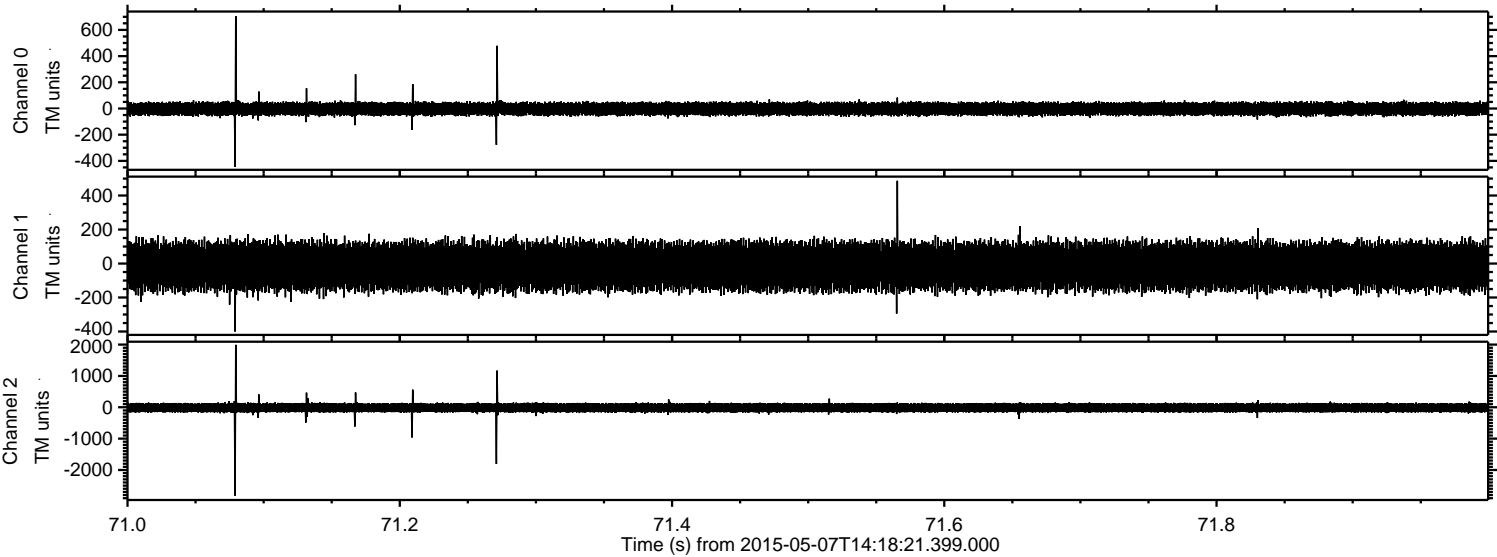


Channel 0
mn: -964
mx: 873
 μ : -2.9
 σ : 28.9

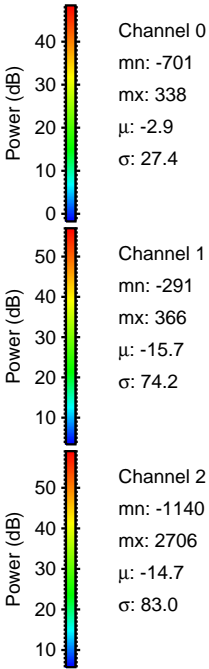
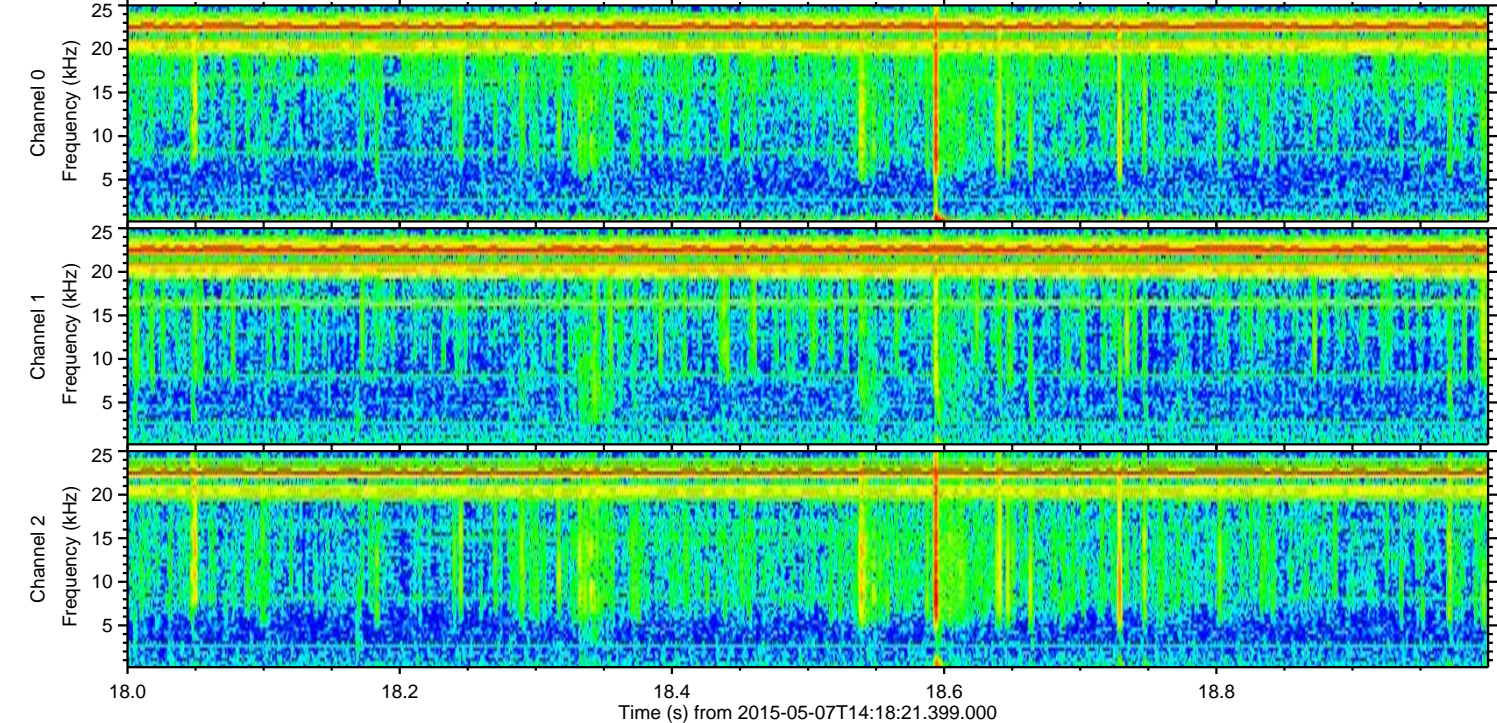
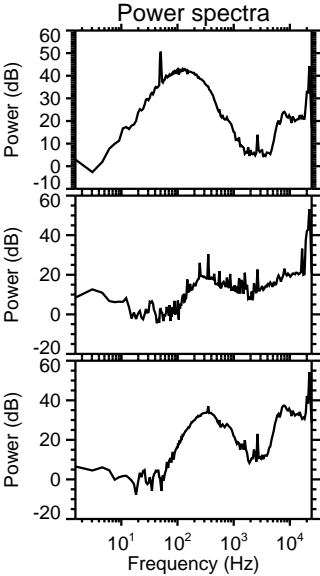
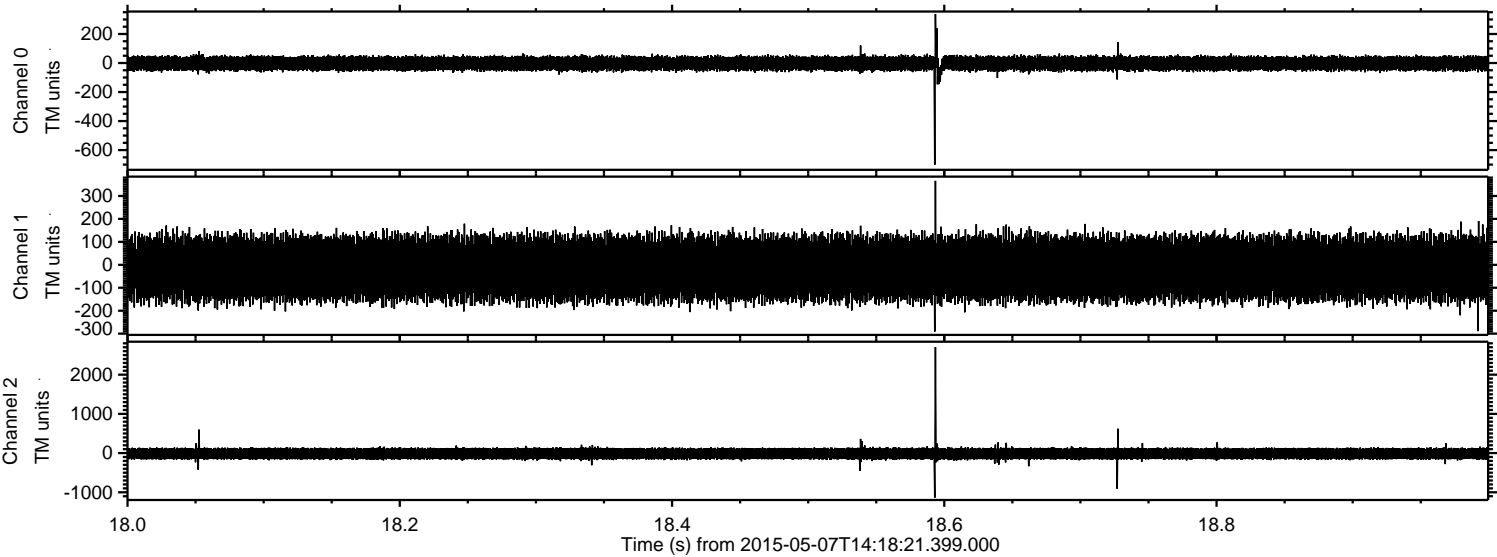
Channel 1
mn: -618
mx: 392
 μ : -15.6
 σ : 74.4

Channel 2
mn: -4357
mx: 4200
 μ : -14.7
 σ : 93.4

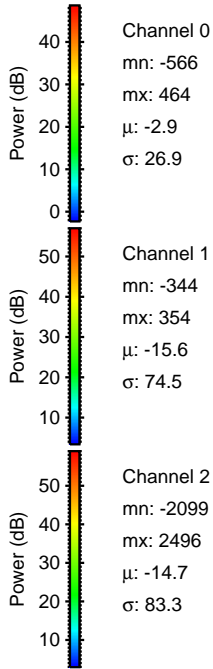
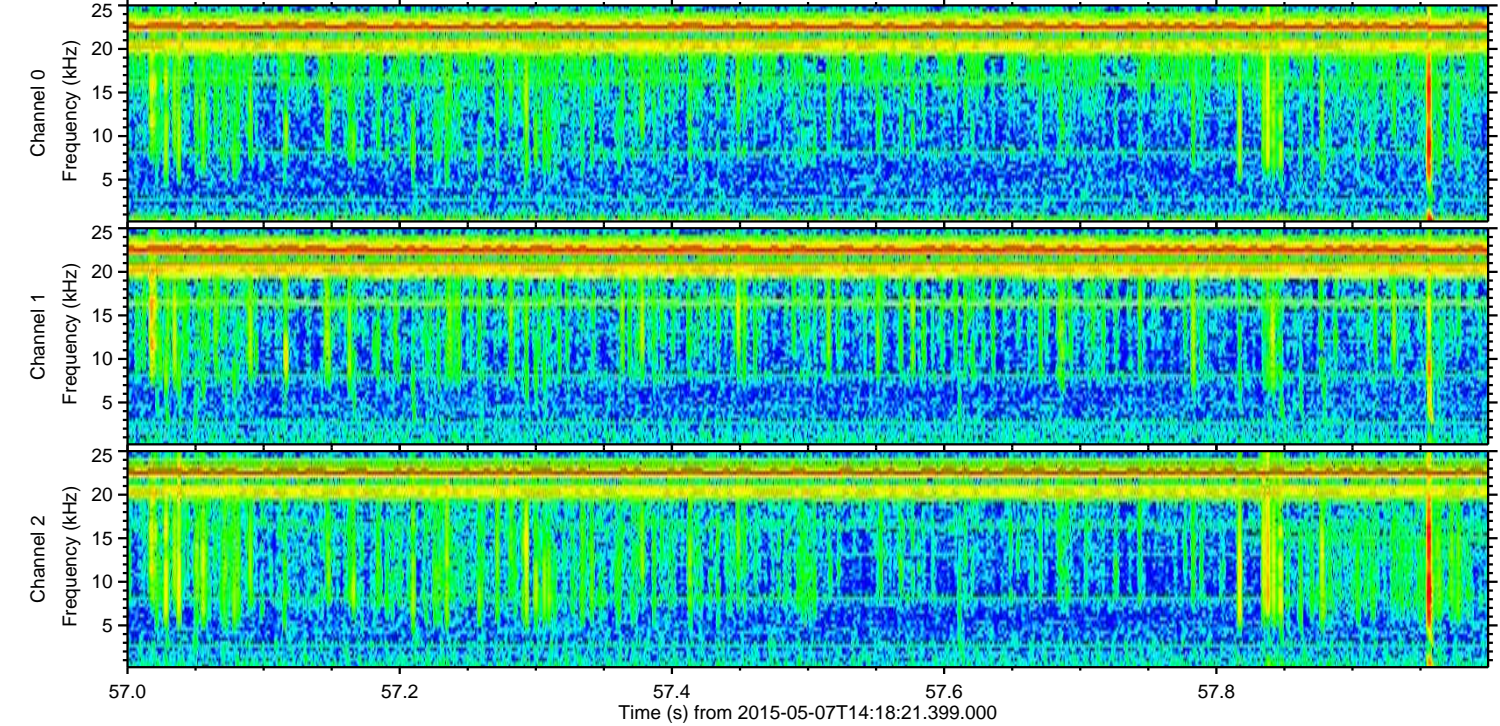
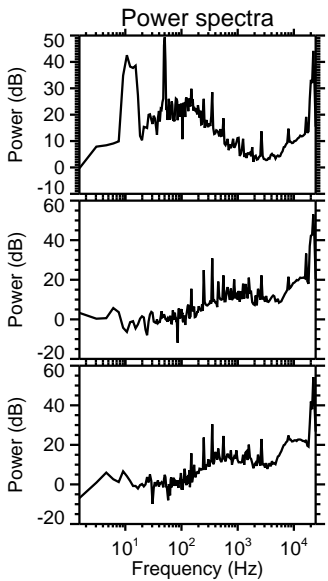
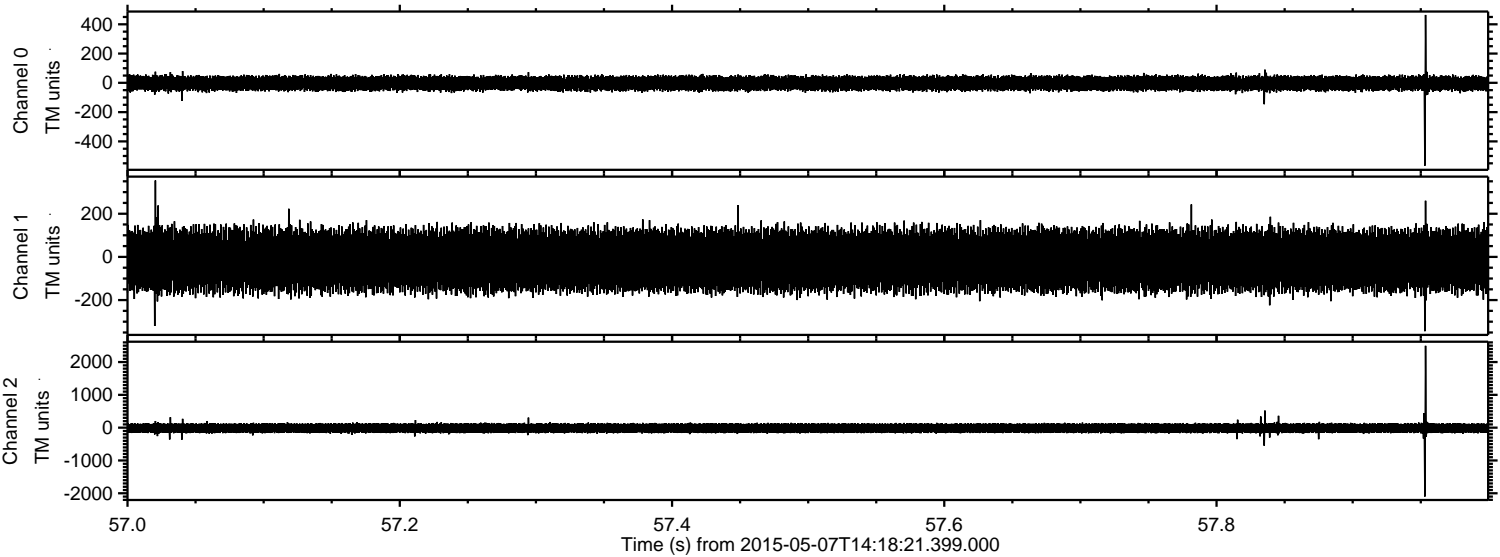
Processed Thu May 7 16:25:33 2015 by ELM ver.2012-10-06 from 001__elm20150507_141820__dat00.bin



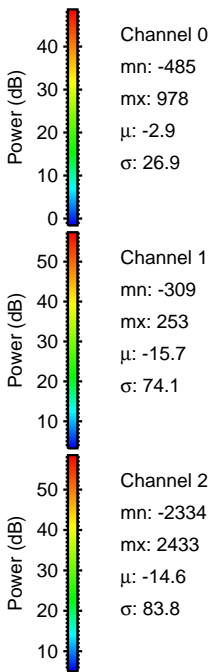
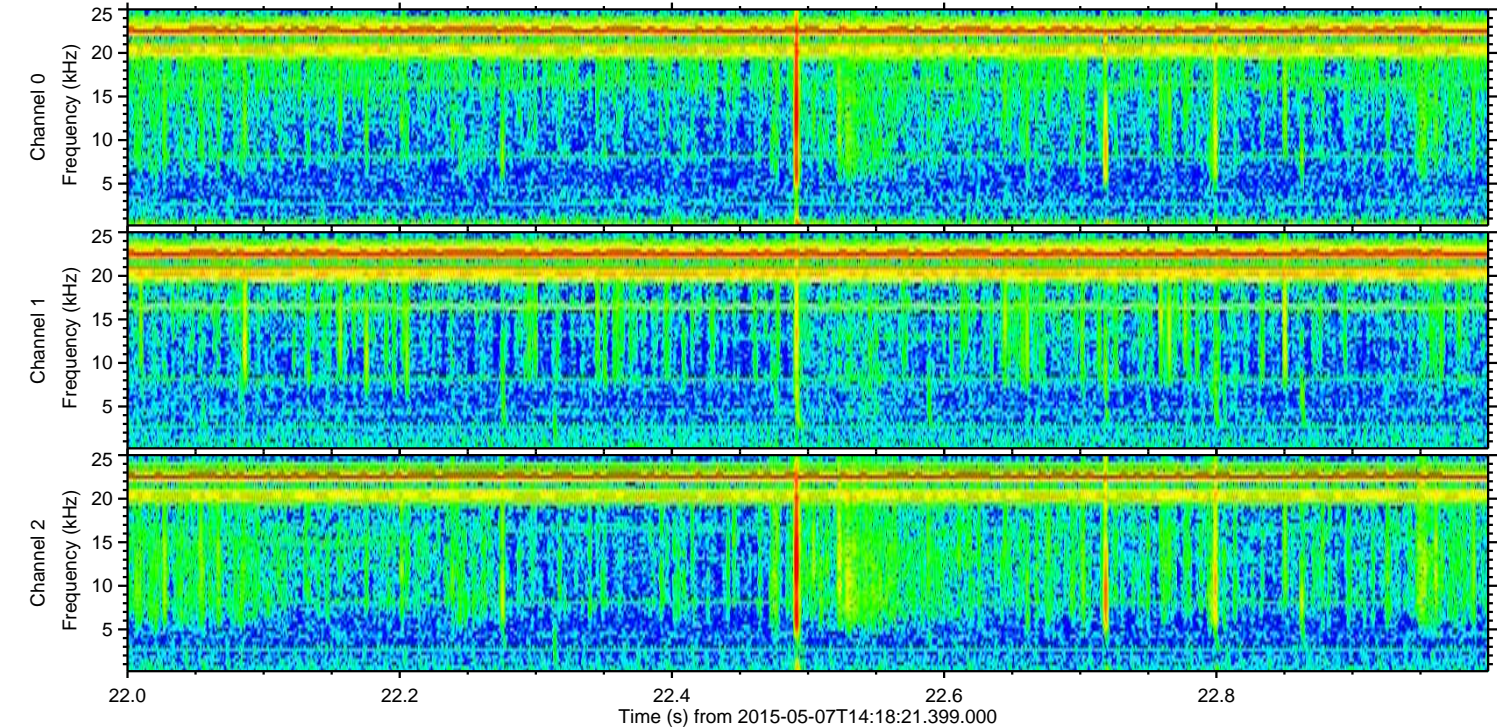
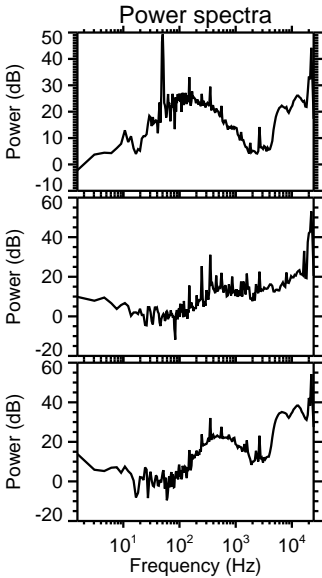
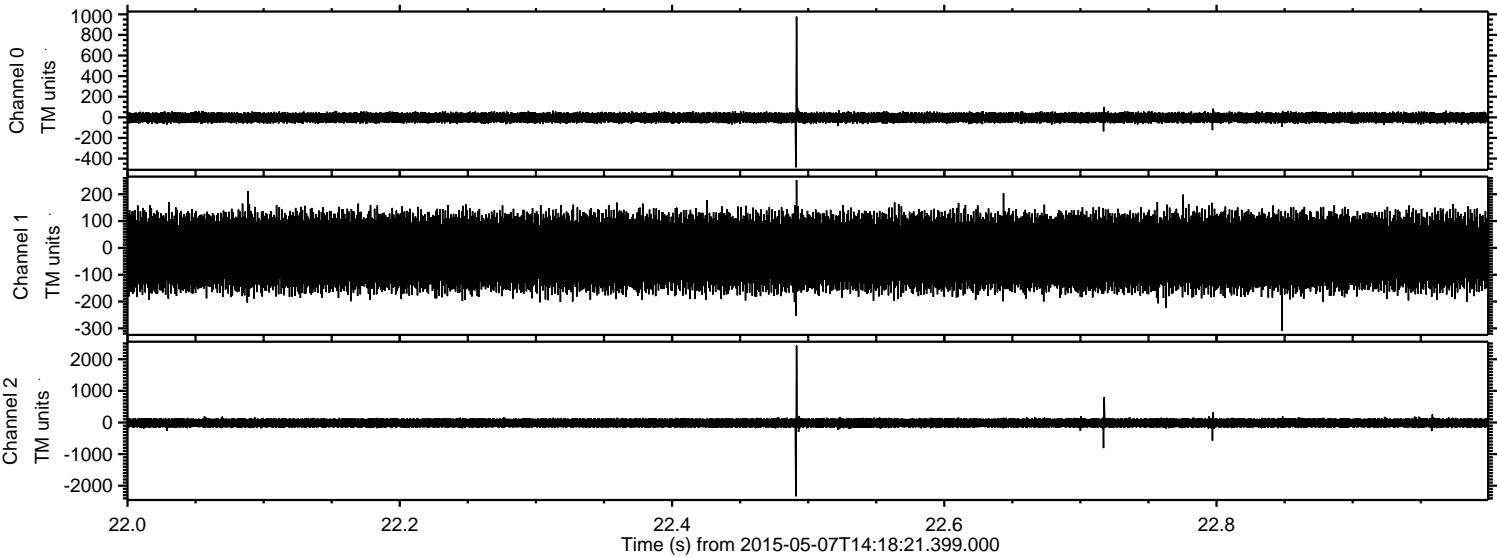
Processed Thu May 7 16:25:34 2015 by ELM ver.2012-10-06 from 001__elm20150507_141820__dat00.bin



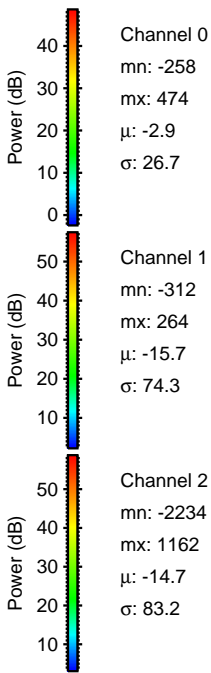
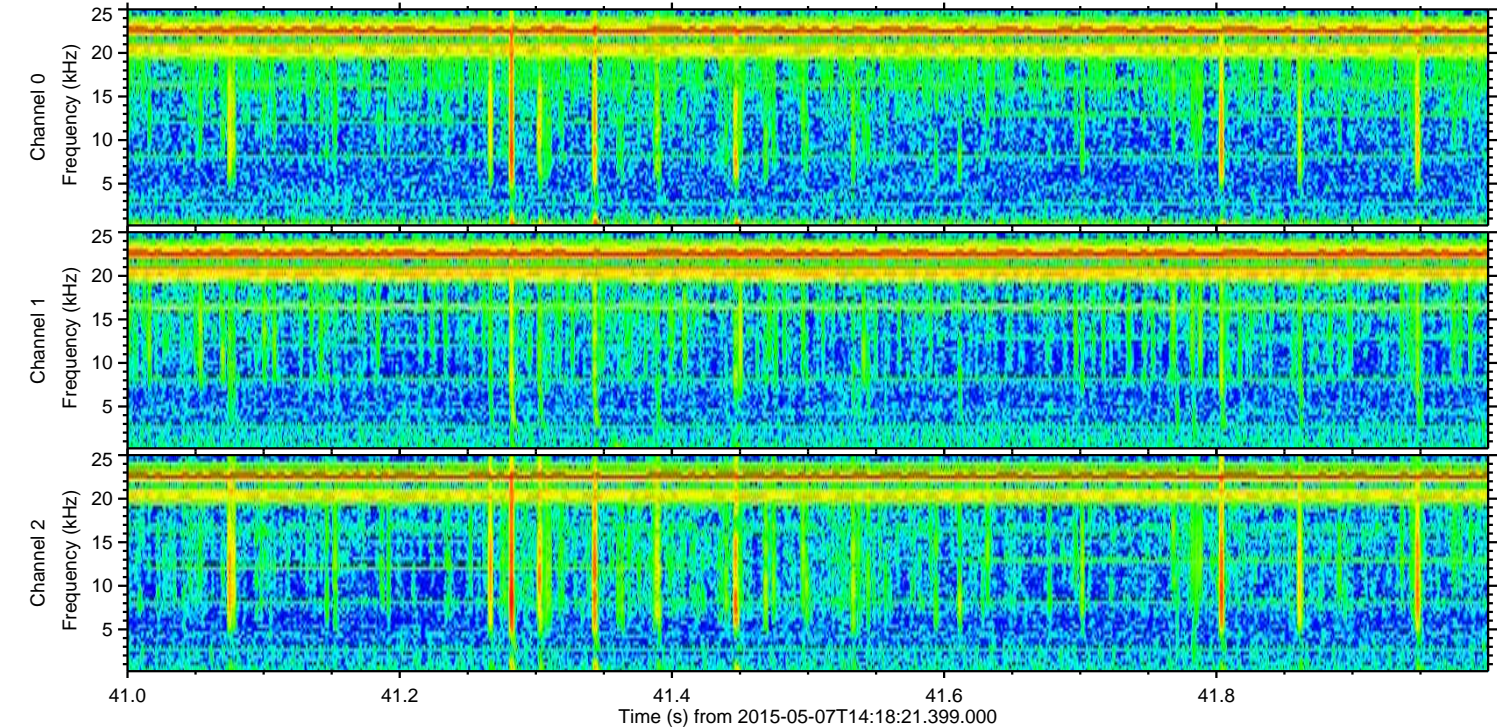
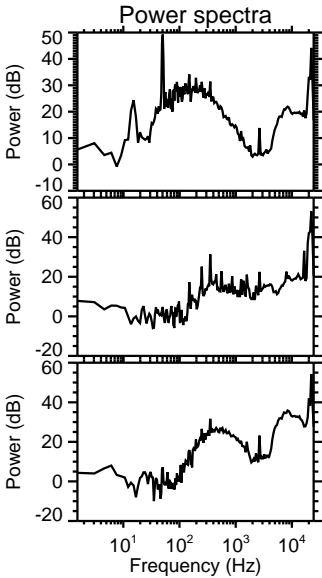
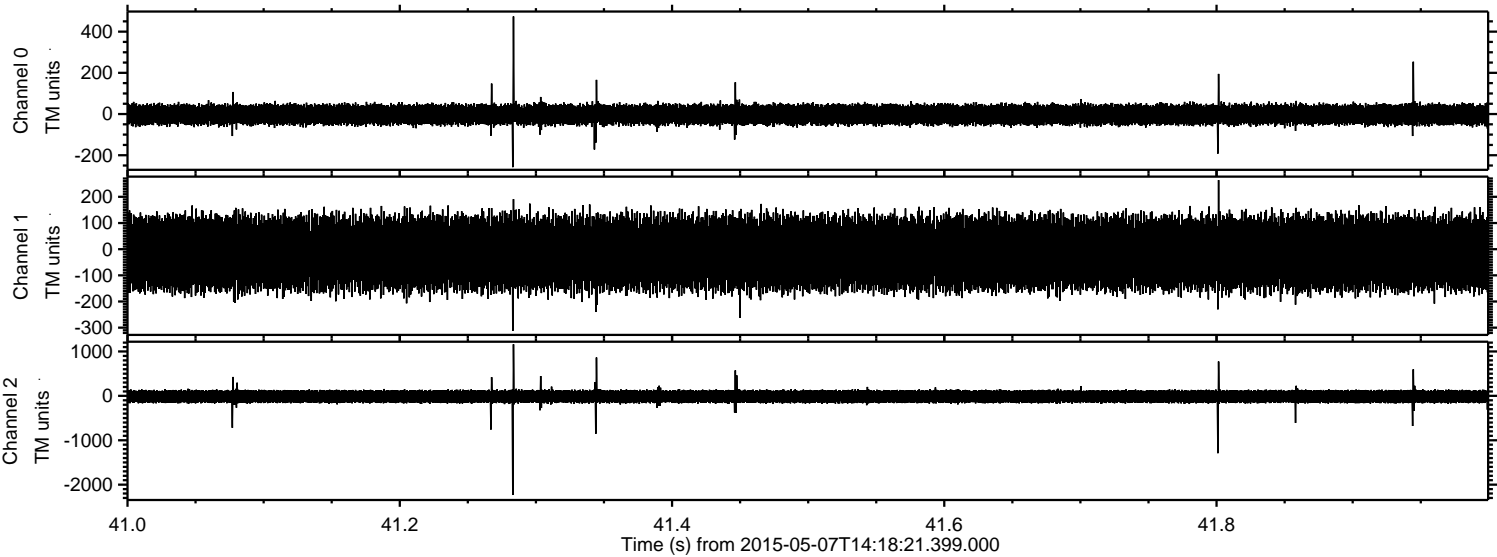
Processed Thu May 7 16:25:35 2015 by ELM ver.2012-10-06 from 001__elm20150507_141820__dat00.bin



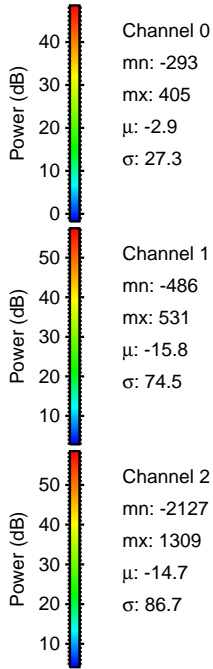
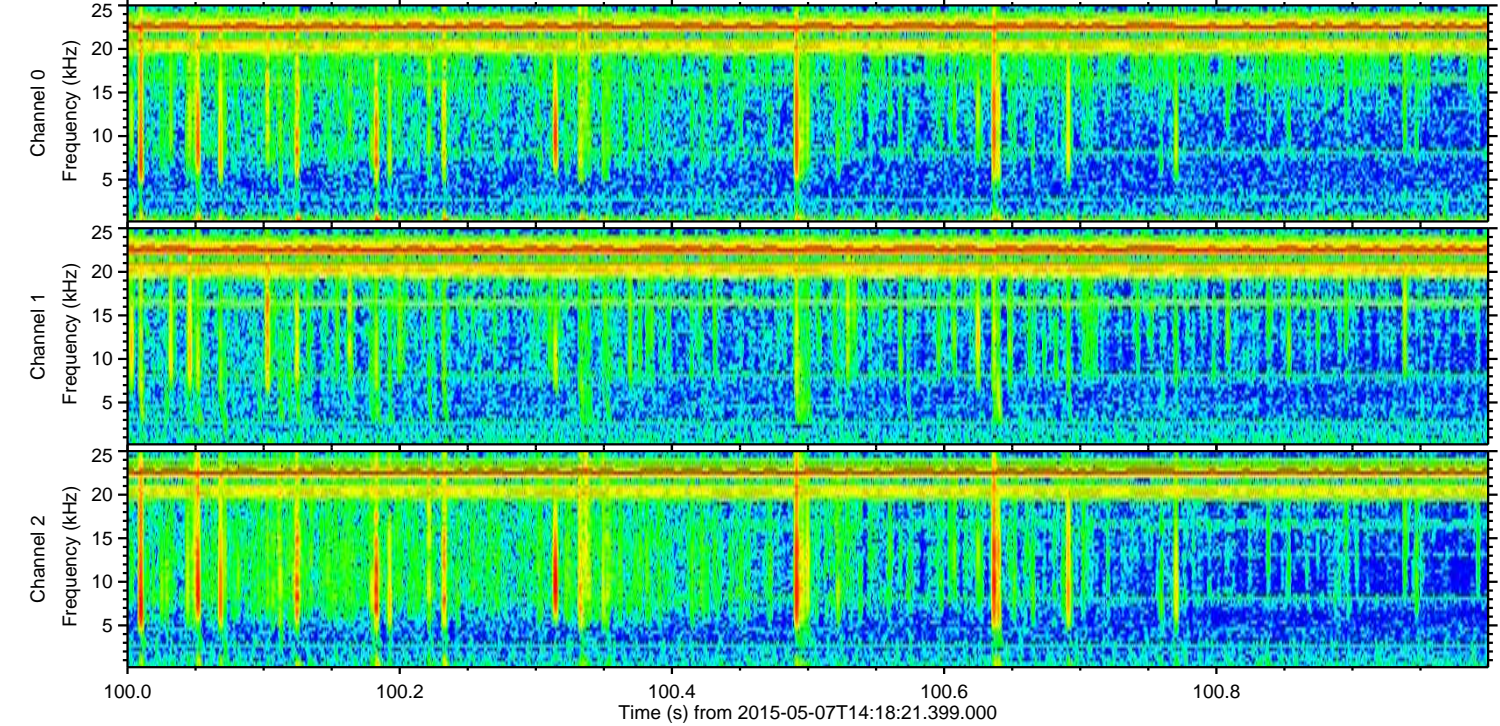
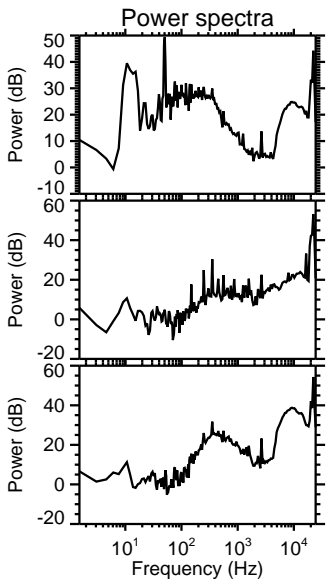
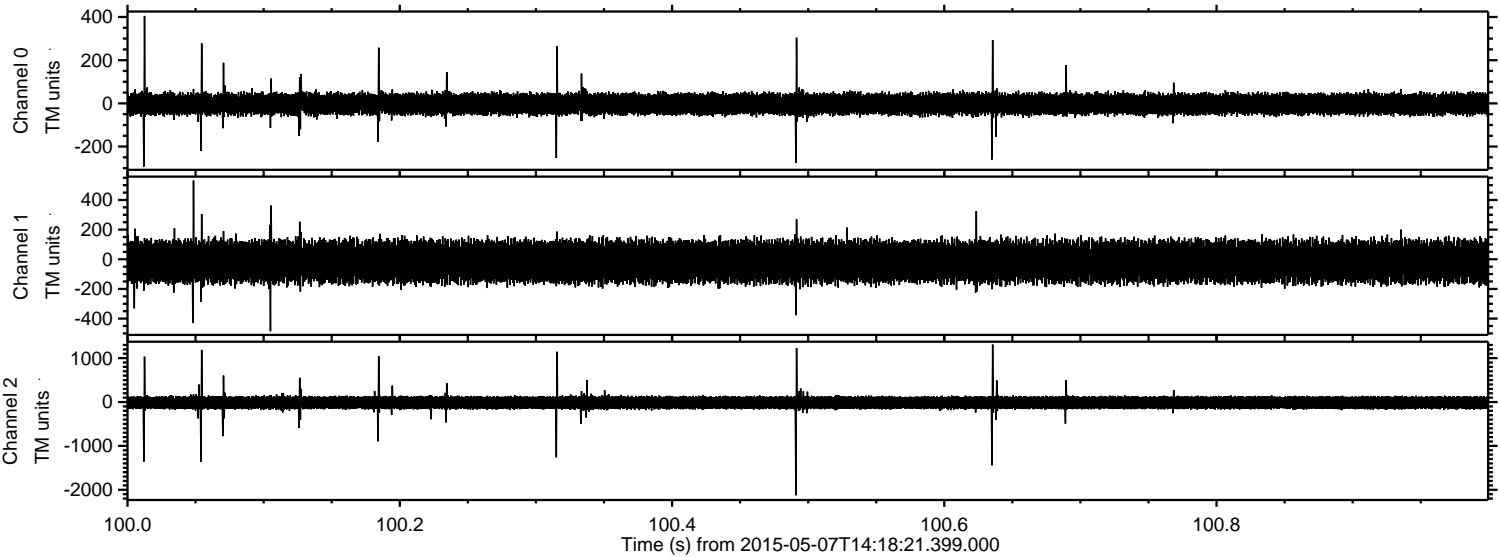
Processed Thu May 7 16:25:36 2015 by ELM ver.2012-10-06 from 001__elm20150507_141820__dat00.bin



Processed Thu May 7 16:25:37 2015 by ELM ver.2012-10-06 from 001__elm20150507_141820__dat00.bin



Processed Thu May 7 16:25:38 2015 by ELM ver.2012-10-06 from 001__elm20150507_141820__dat00.bin

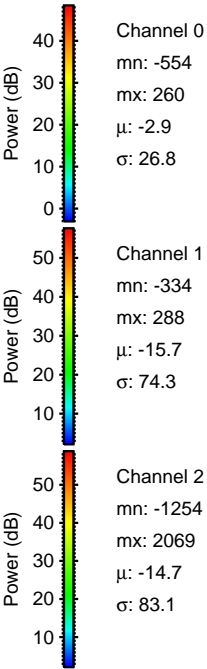
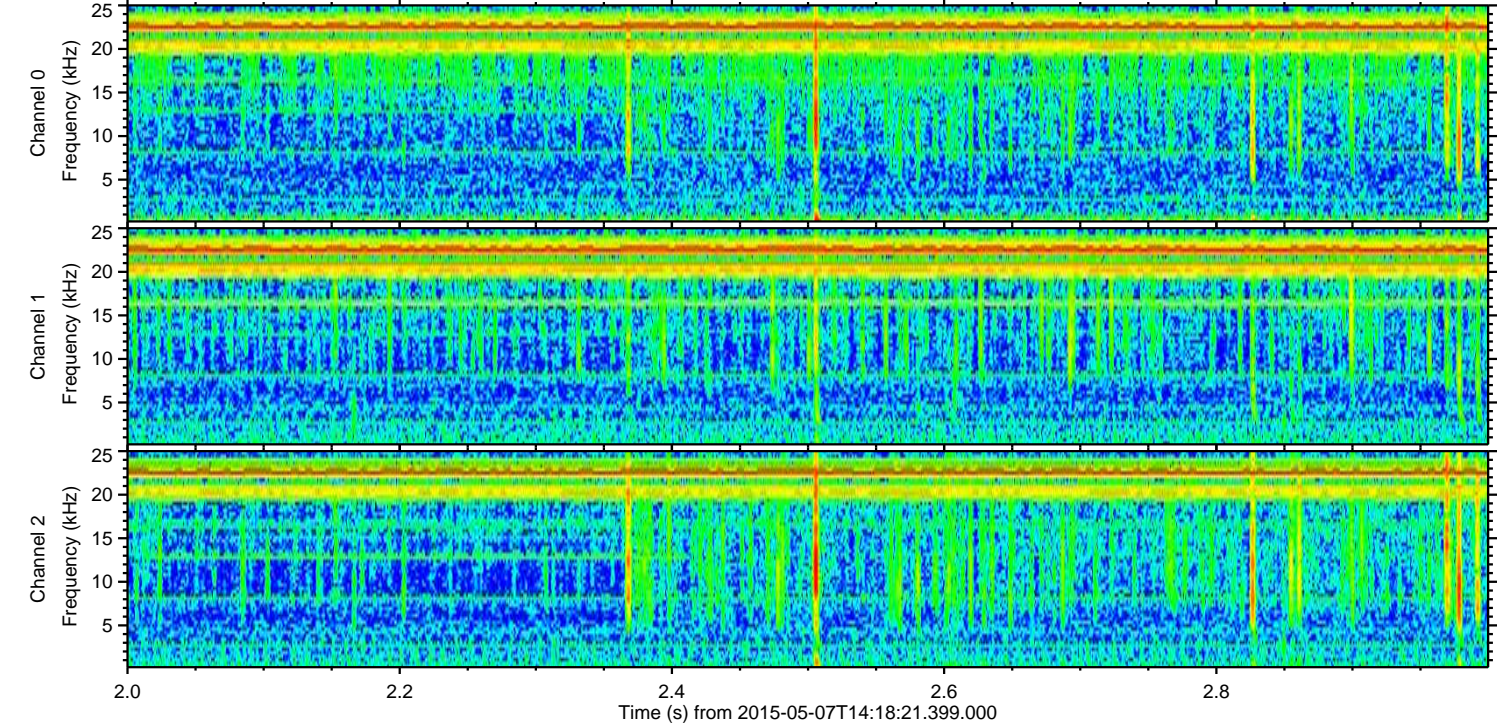
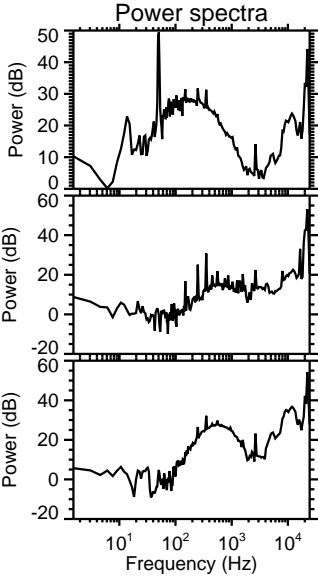
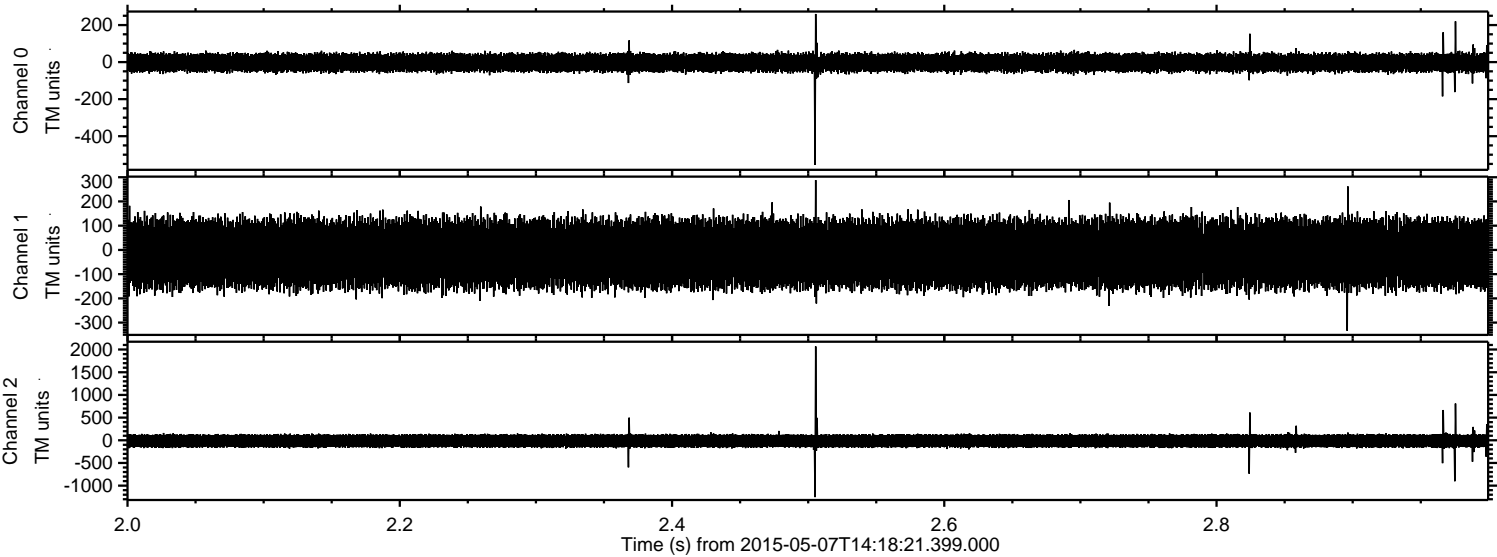


Channel 0
mn: -293
mx: 405
 μ : -2.9
 σ : 27.3

Channel 1
mn: -486
mx: 531
 μ : -15.8
 σ : 74.5

Channel 2
mn: -2127
mx: 1309
 μ : -14.7
 σ : 86.7

Processed Thu May 7 16:25:39 2015 by ELM ver.2012-10-06 from 001__elm20150507_141820__dat00.bin

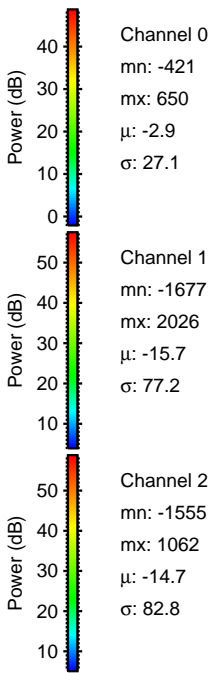
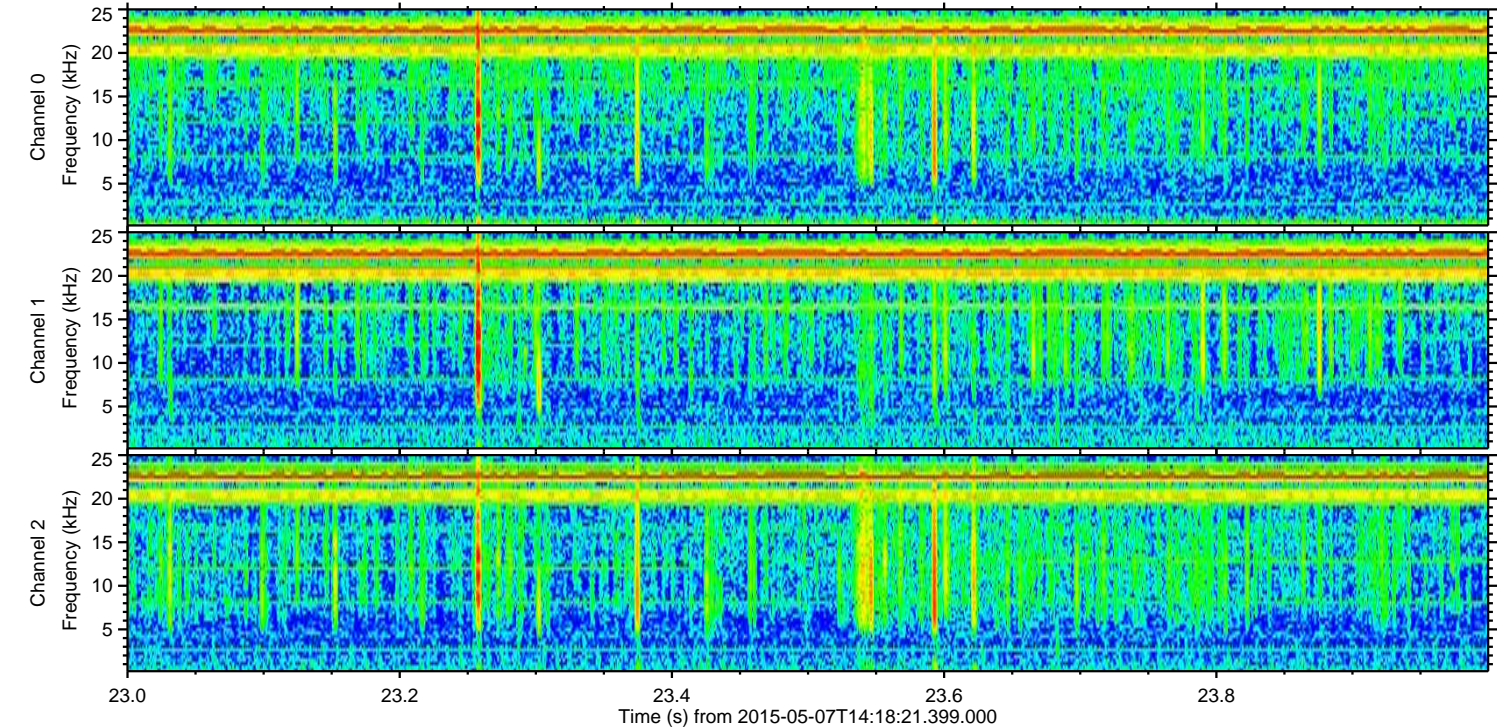
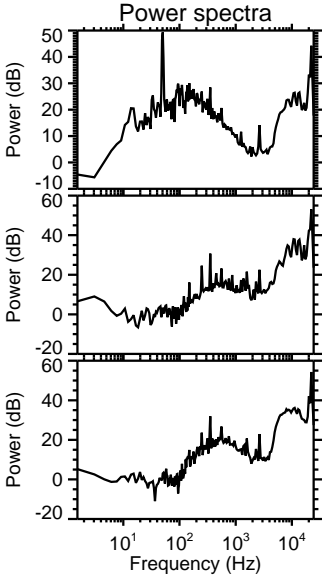
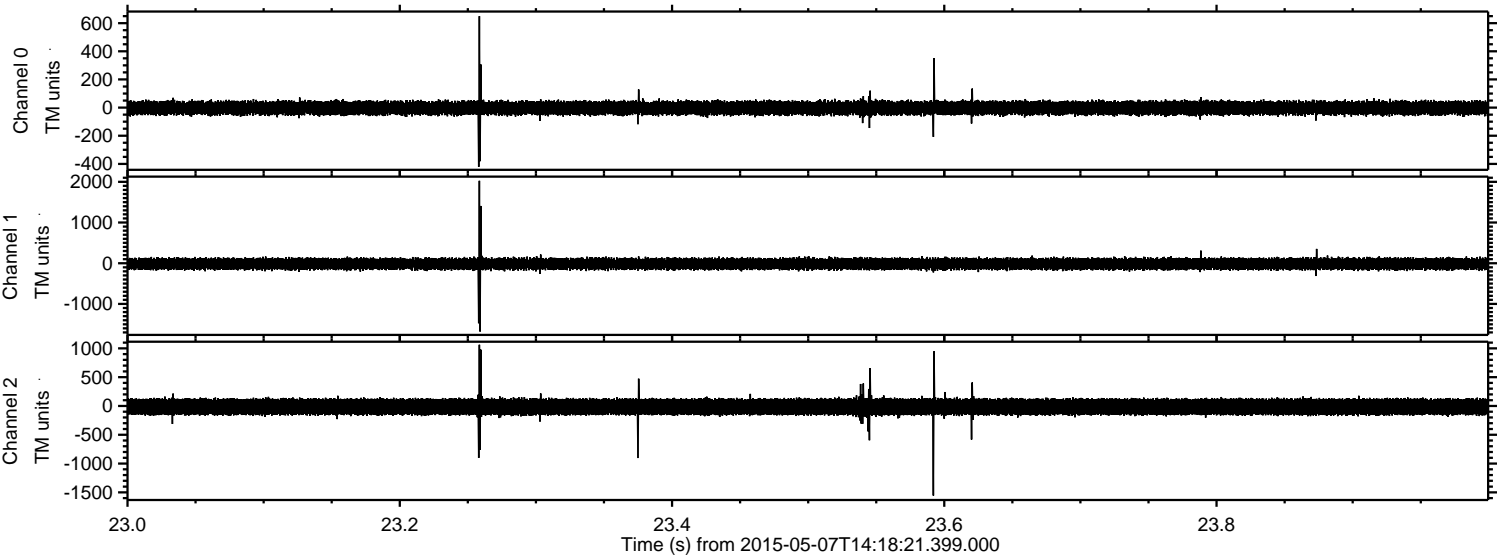


Channel 0
mn: -554
mx: 260
 μ : -2.9
 σ : 26.8

Channel 1
mn: -334
mx: 288
 μ : -15.7
 σ : 74.3

Channel 2
mn: -1254
mx: 2069
 μ : -14.7
 σ : 83.1

Processed Thu May 7 16:25:40 2015 by ELM ver.2012-10-06 from 001__elm20150507_141820__dat00.bin



Channel 0
mn: -421
mx: 650
 μ : -2.9
 σ : 27.1

Channel 1
mn: -1677
mx: 2026
 μ : -15.7
 σ : 77.2

Channel 2
mn: -1555
mx: 1062
 μ : -14.7
 σ : 82.8

