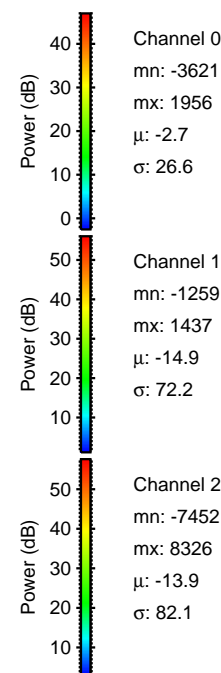
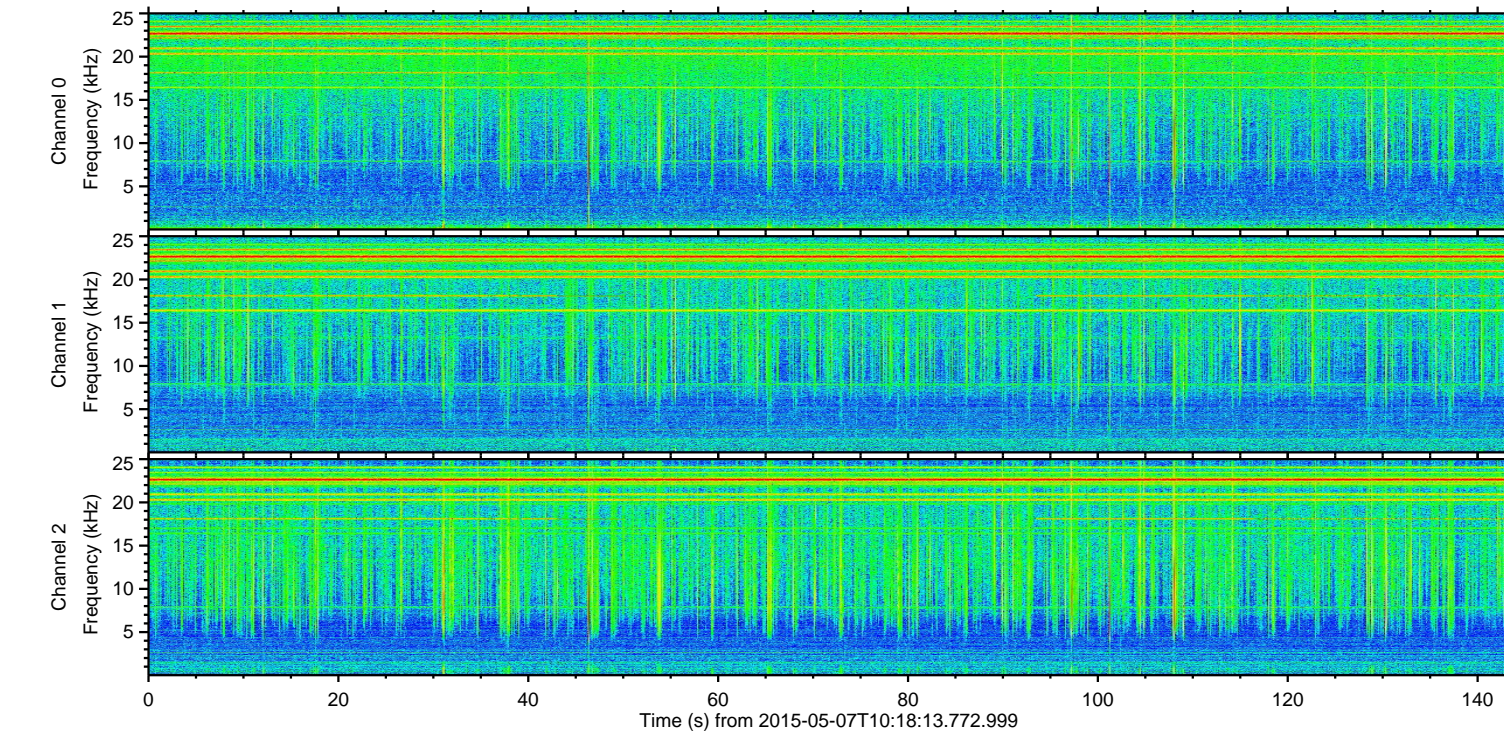
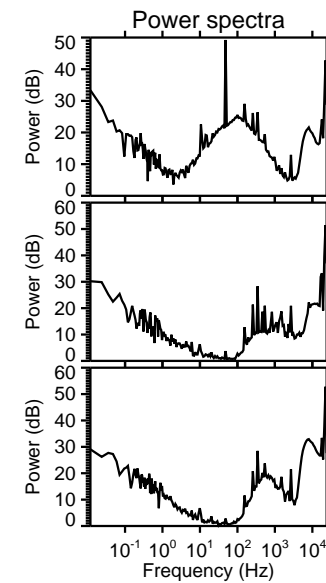
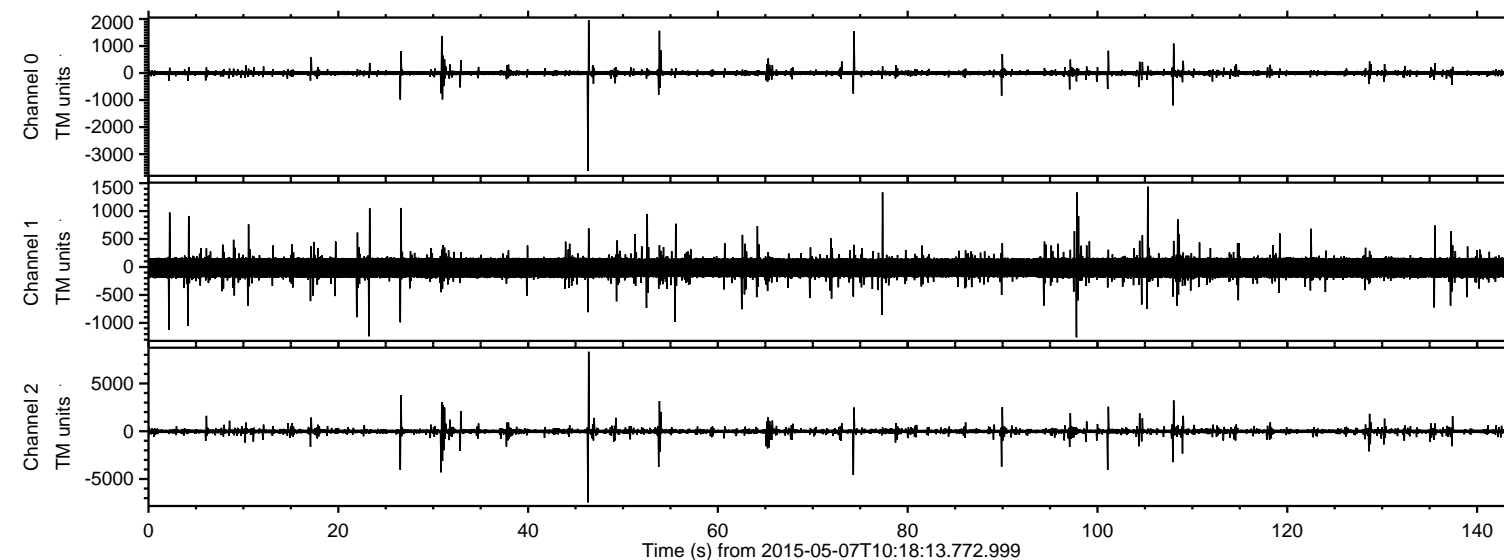
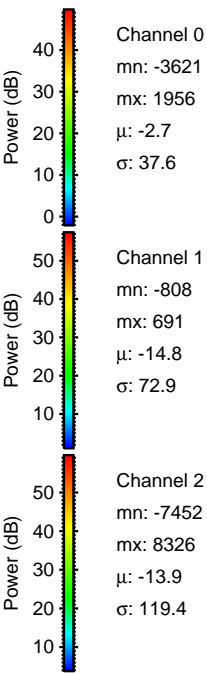
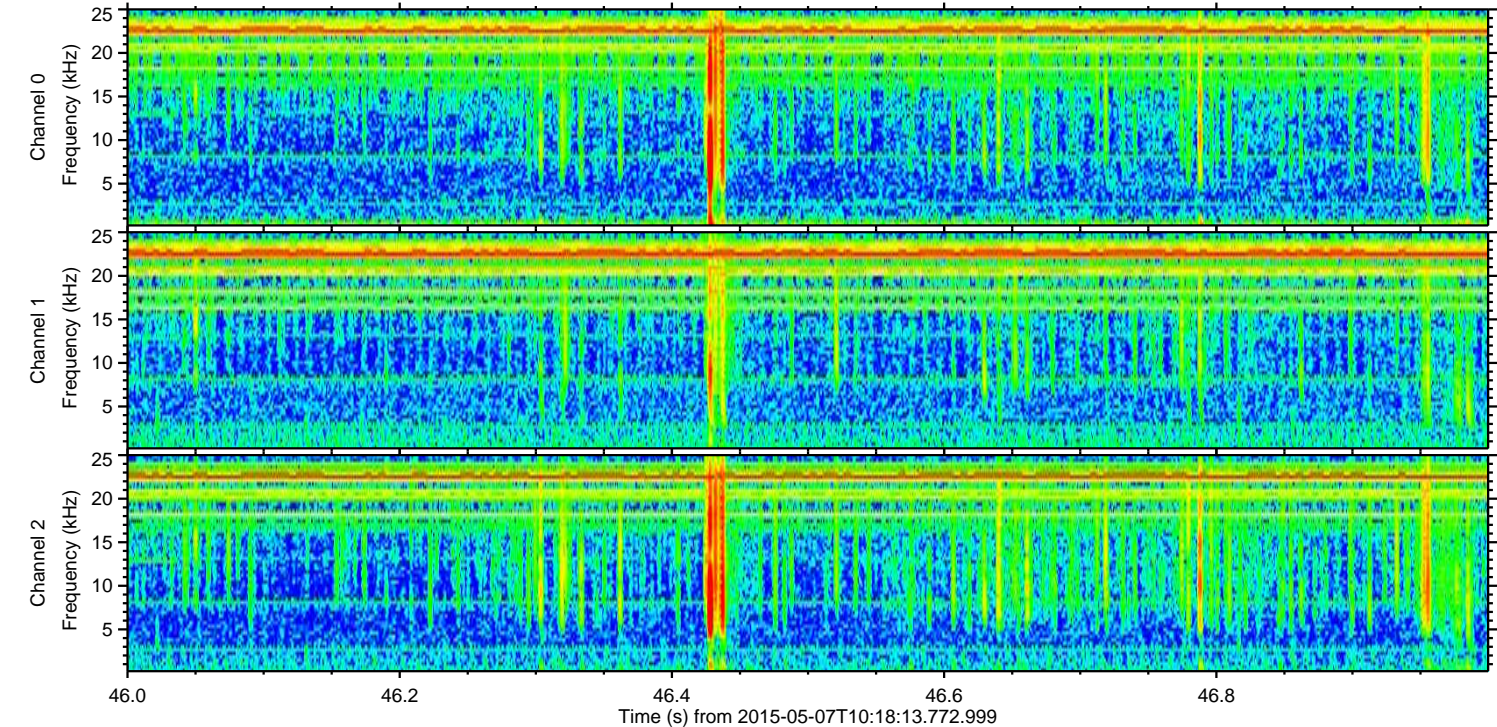
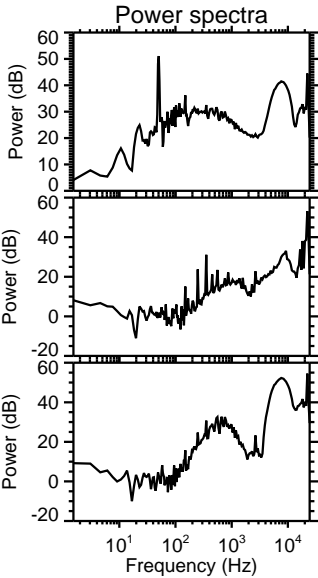
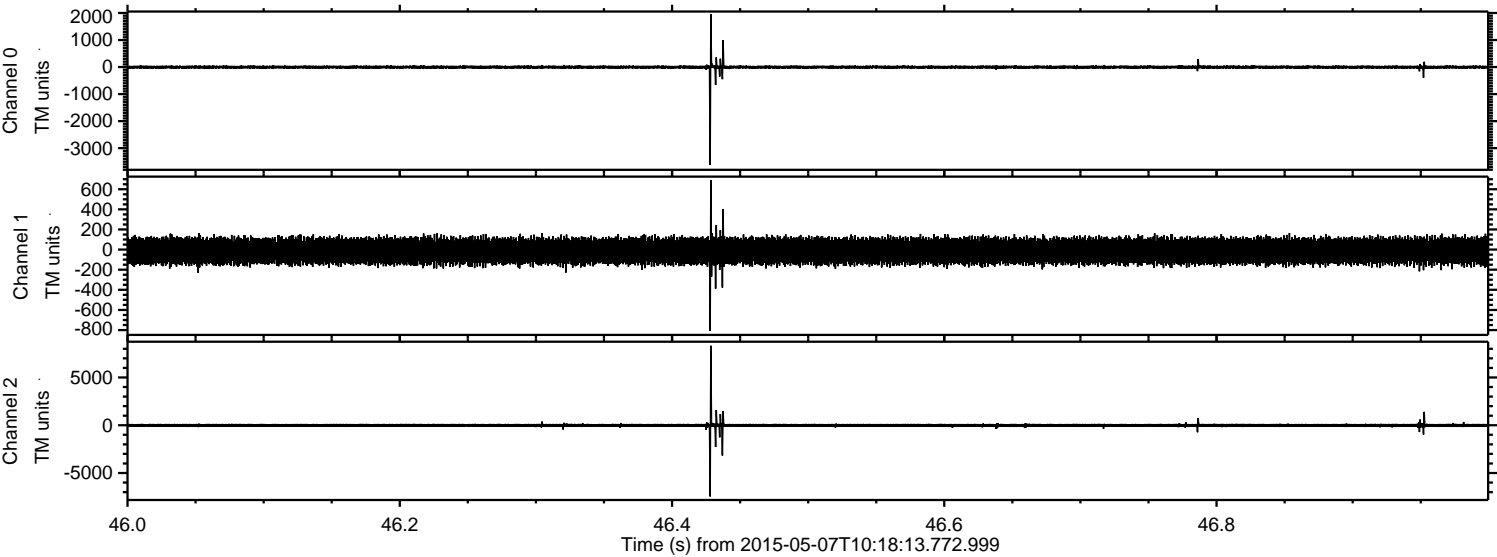


ELMAVAN 3D WAVEFORMS (Measured data sampled at 50 kHz) 49785 packets of 144 samples from 2015-05-07T10:18:13.772.999.

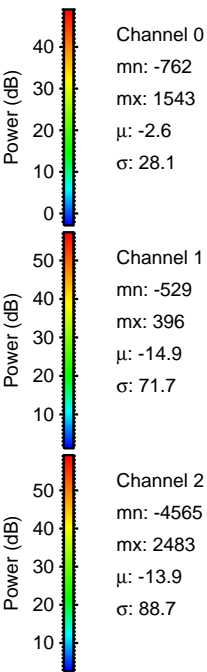
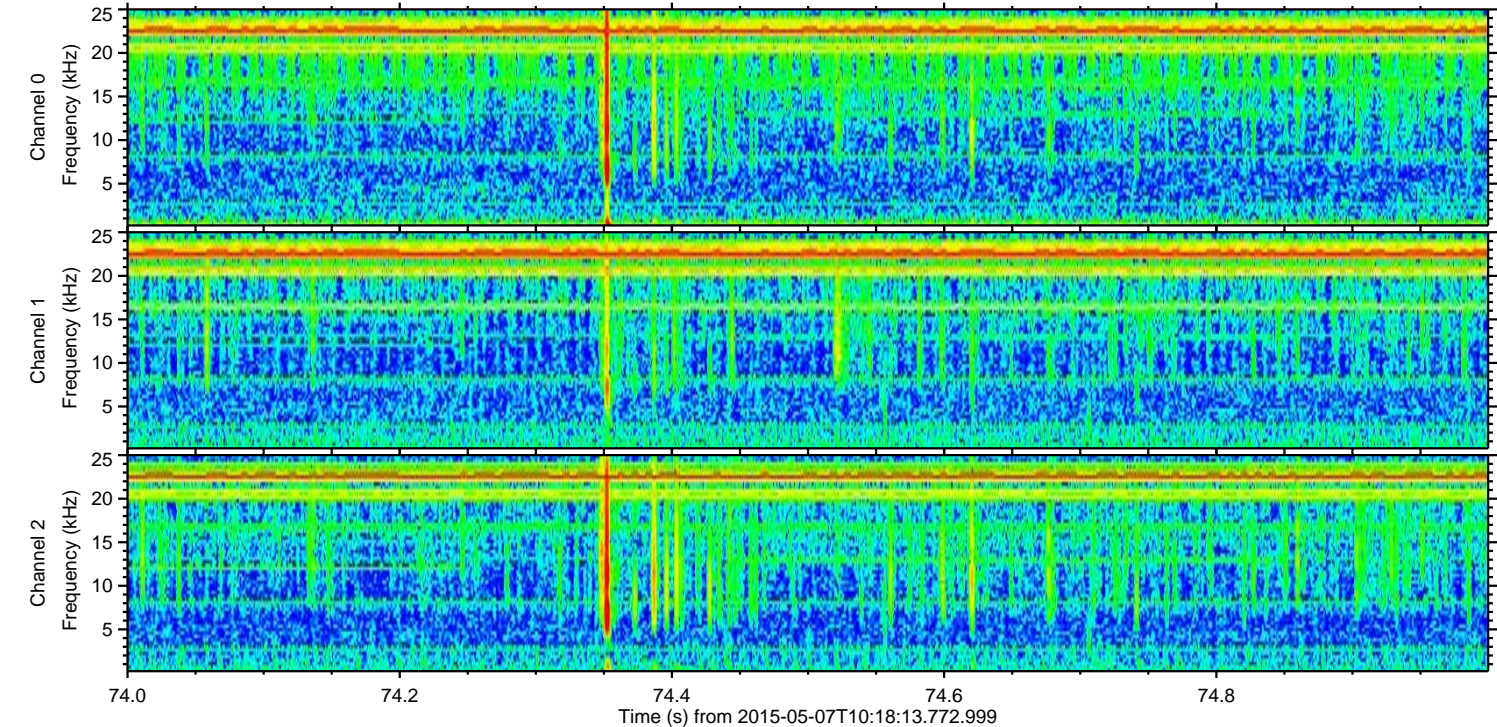
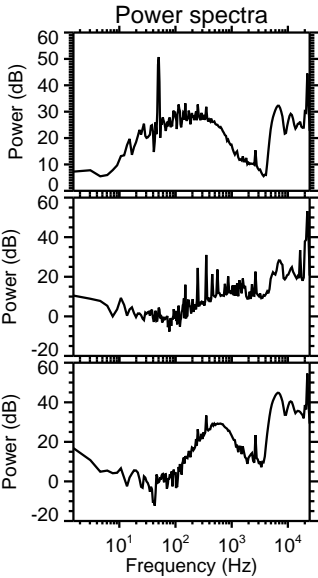
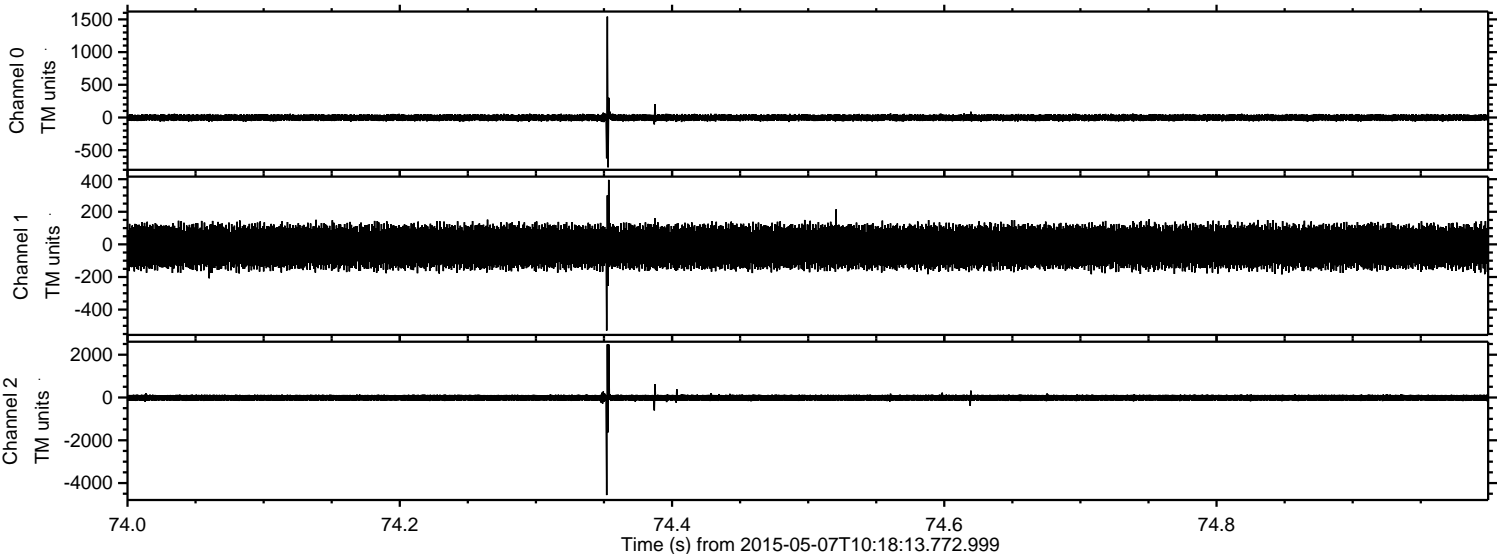
Processed Thu May 7 12:24:43 2015 by ELM ver.2012-10-06 from 001__elm20150507_101812__dat00.bin



Processed Thu May 7 12:24:55 2015 by ELM ver.2012-10-06 from 001__elm20150507_101812__dat00.bin

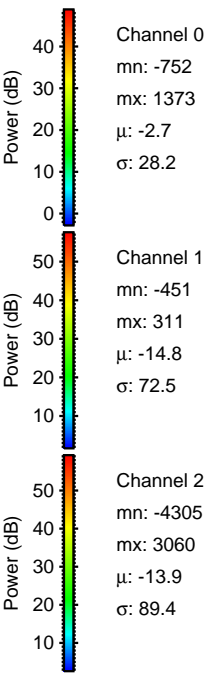
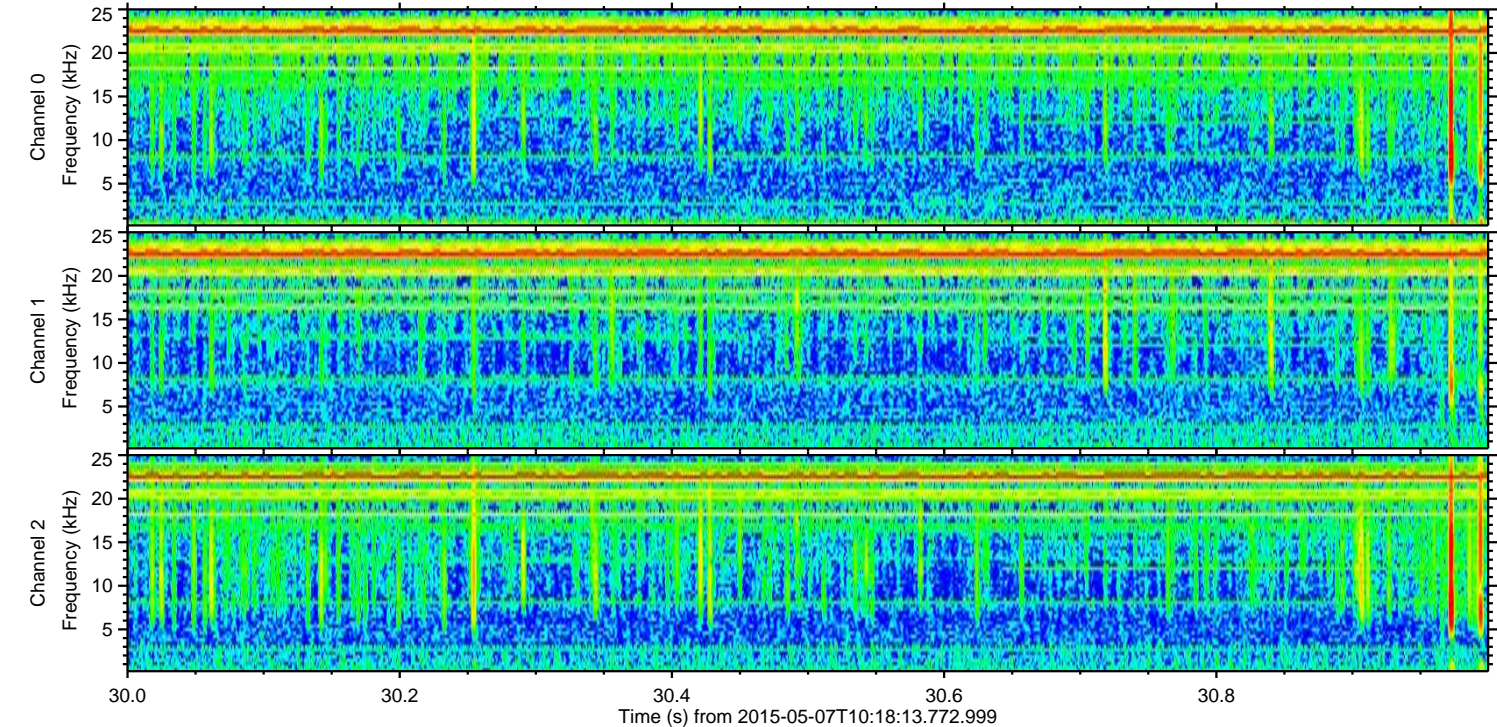
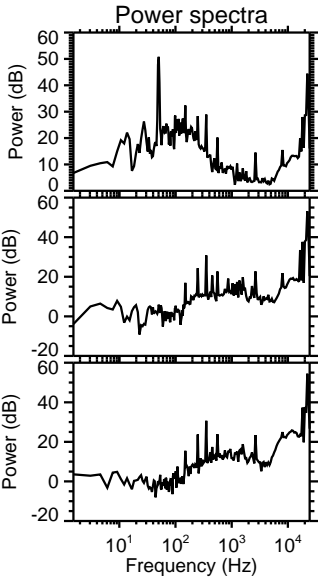
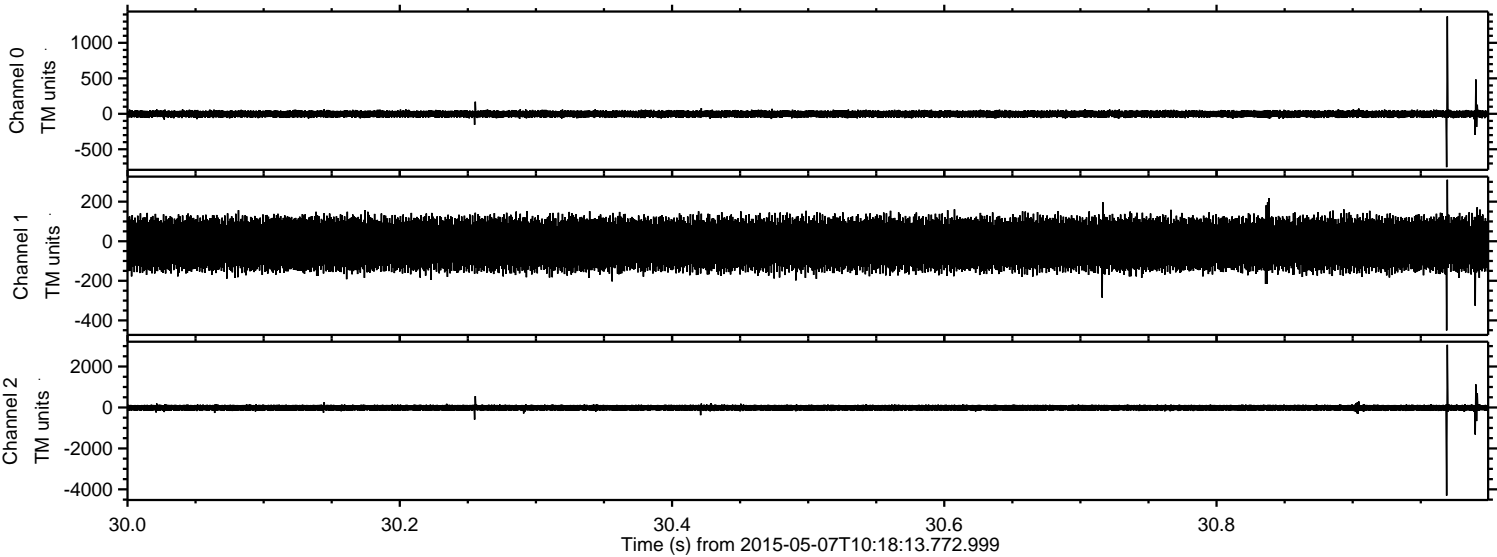


Processed Thu May 7 12:24:56 2015 by ELM ver.2012-10-06 from 001__elm20150507_101812__dat00.bin

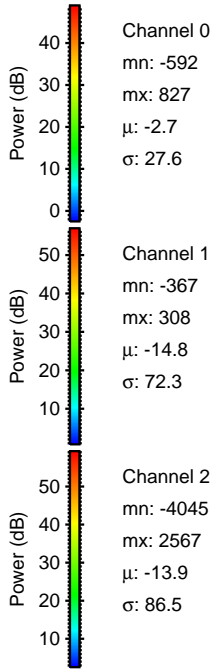
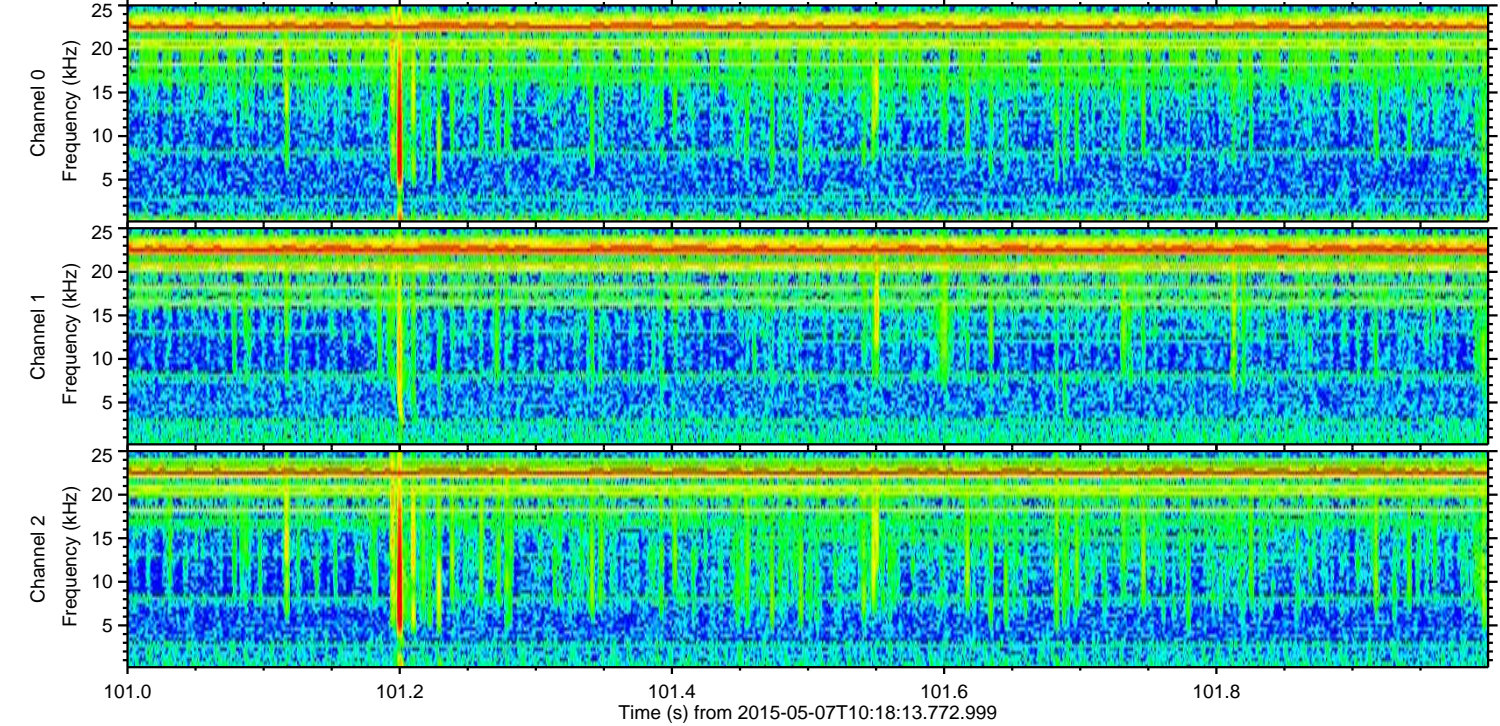
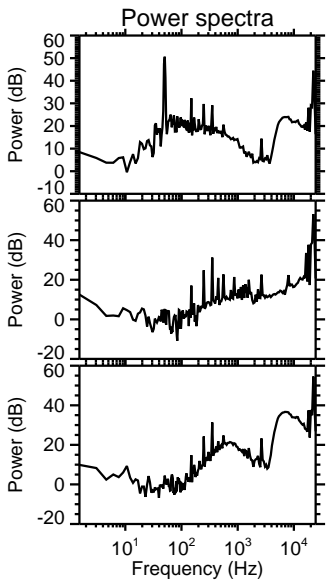
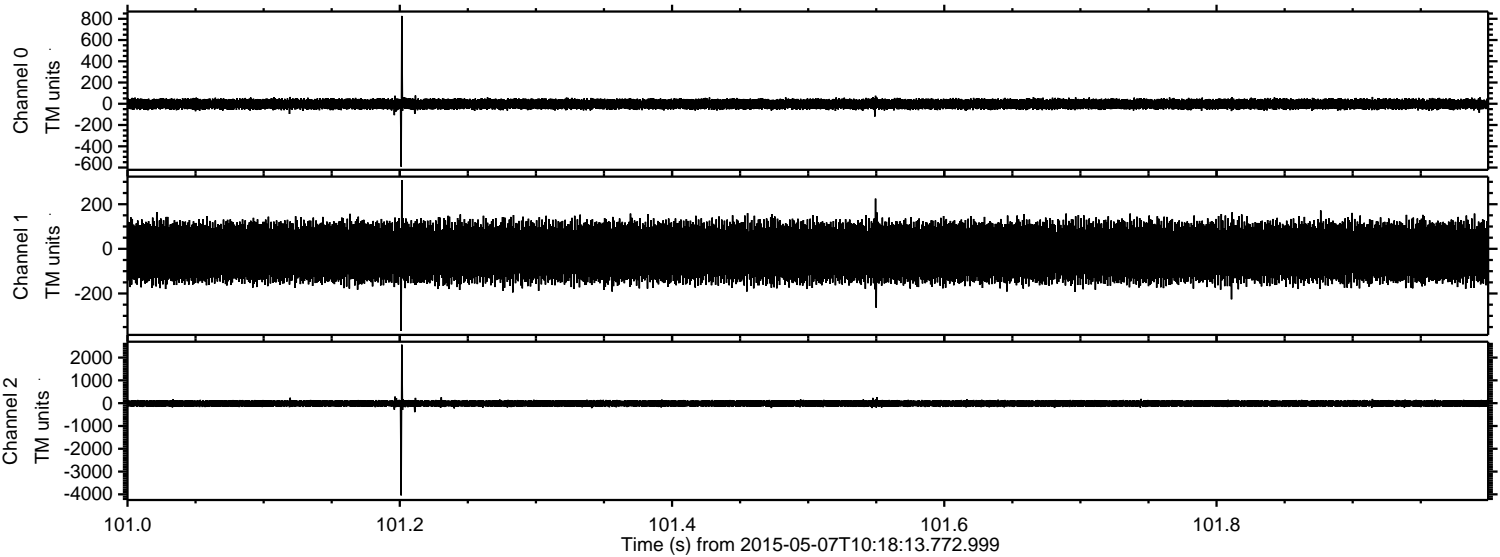


ELMAVAN 3D WAVEFORMS (Measured data sampled at 50 kHz) 49785 packets of 144 samples from 2015-05-07T10:18:13.772.999. Part 31/144

Processed Thu May 7 12:24:57 2015 by ELM ver.2012-10-06 from 001__elm20150507_101812__dat00.bin

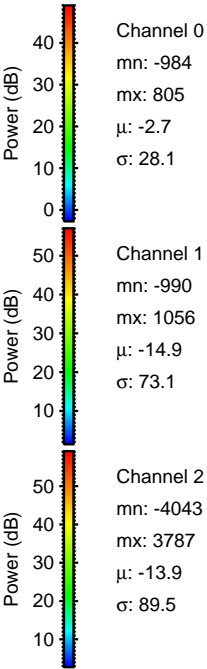
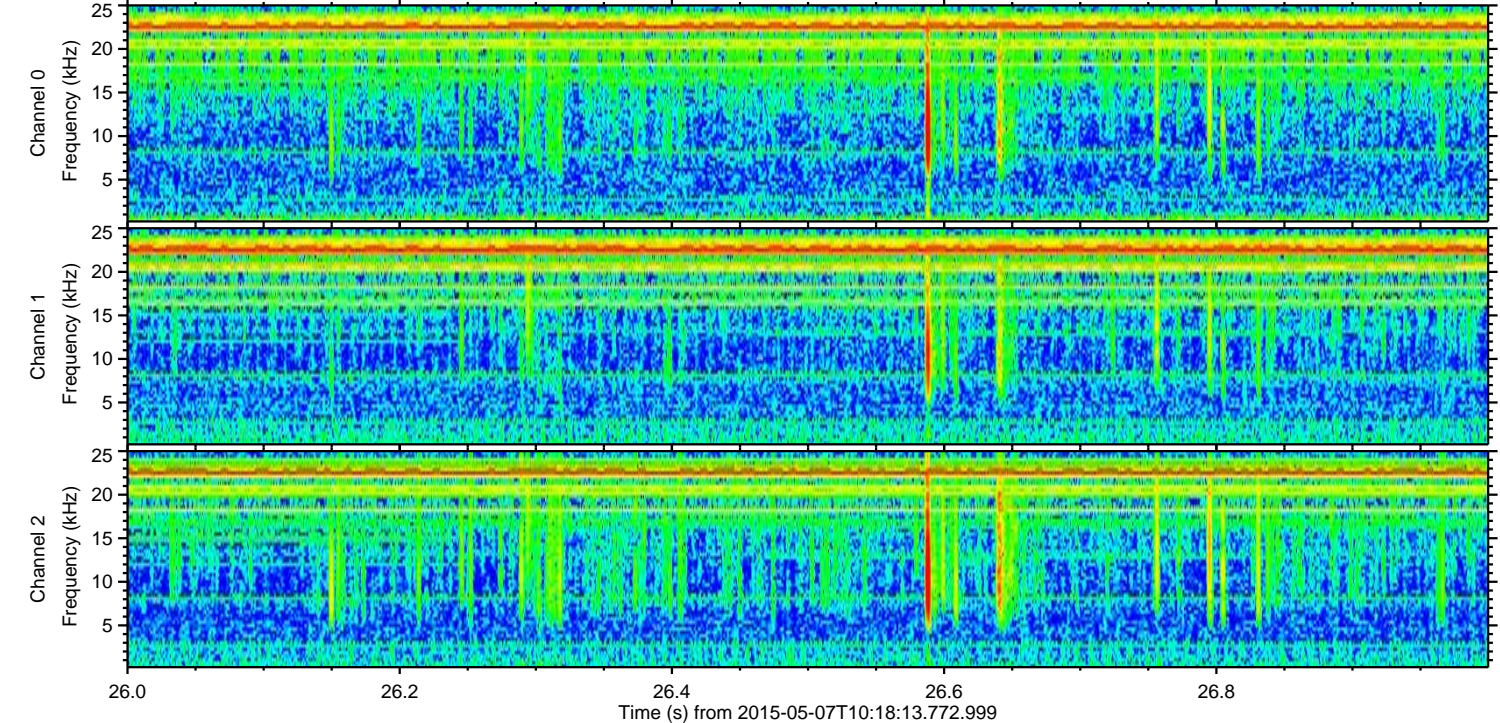
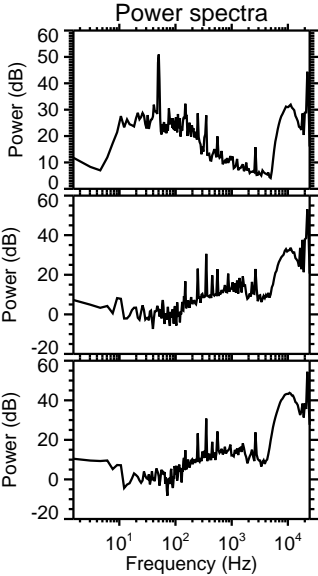
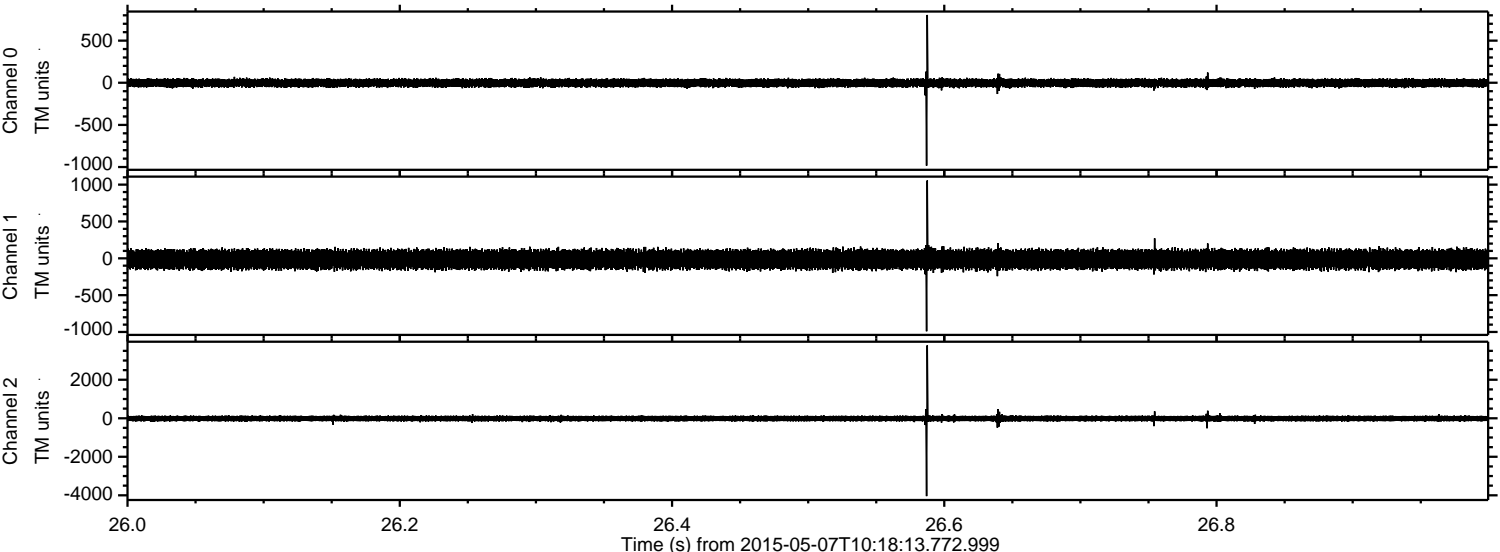


Processed Thu May 7 12:24:58 2015 by ELM ver.2012-10-06 from 001__elm20150507_101812__dat00.bin

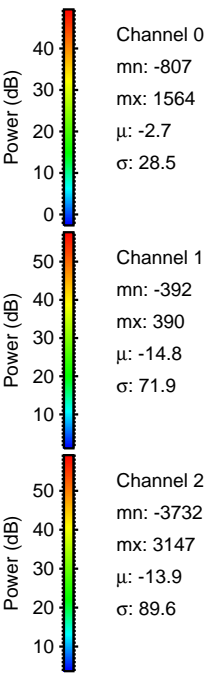
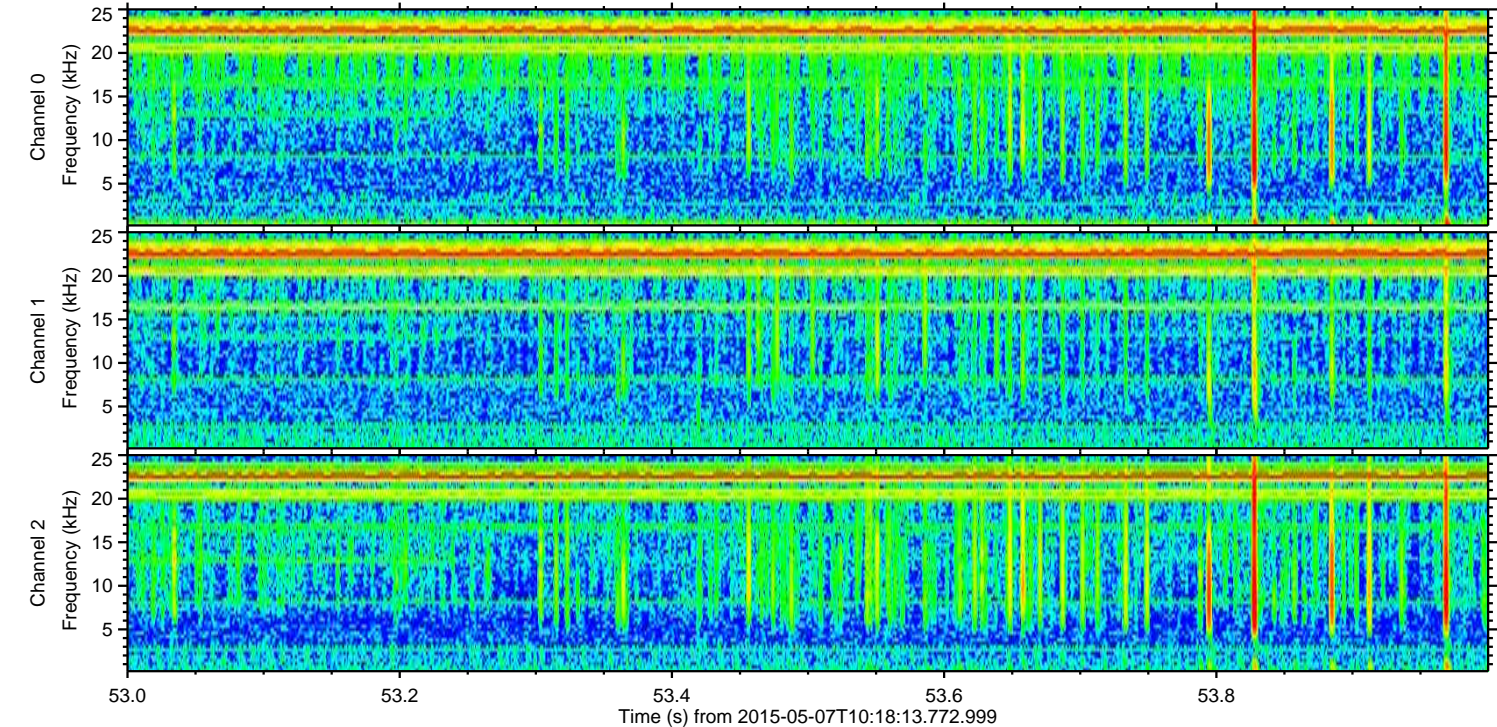
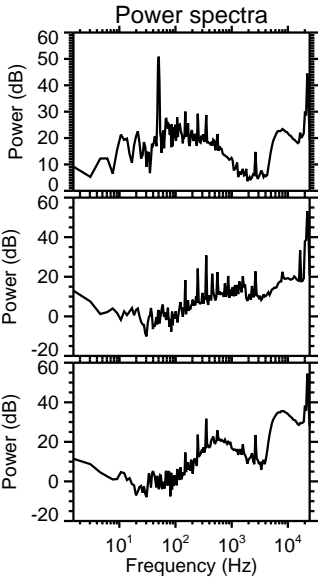
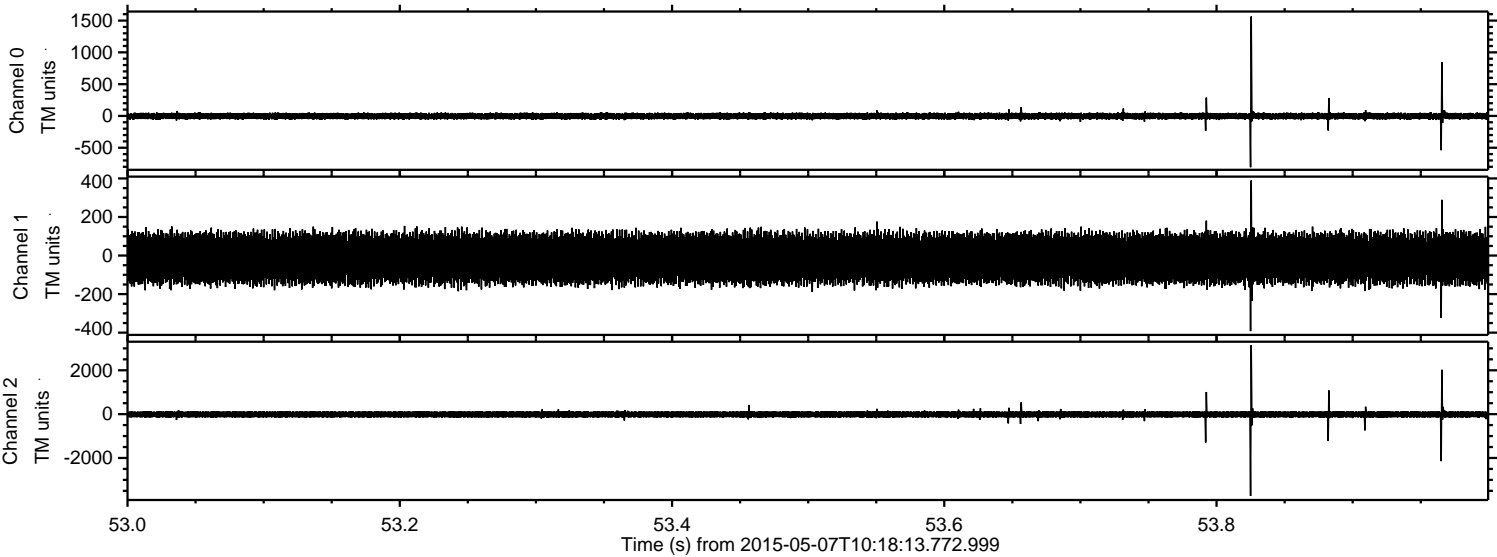


ELMAVAN 3D WAVEFORMS (Measured data sampled at 50 kHz) 49785 packets of 144 samples from 2015-05-07T10:18:13.772.999. Part 27/144

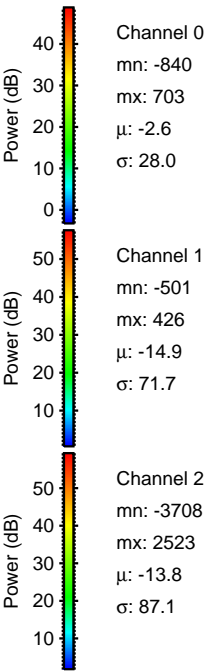
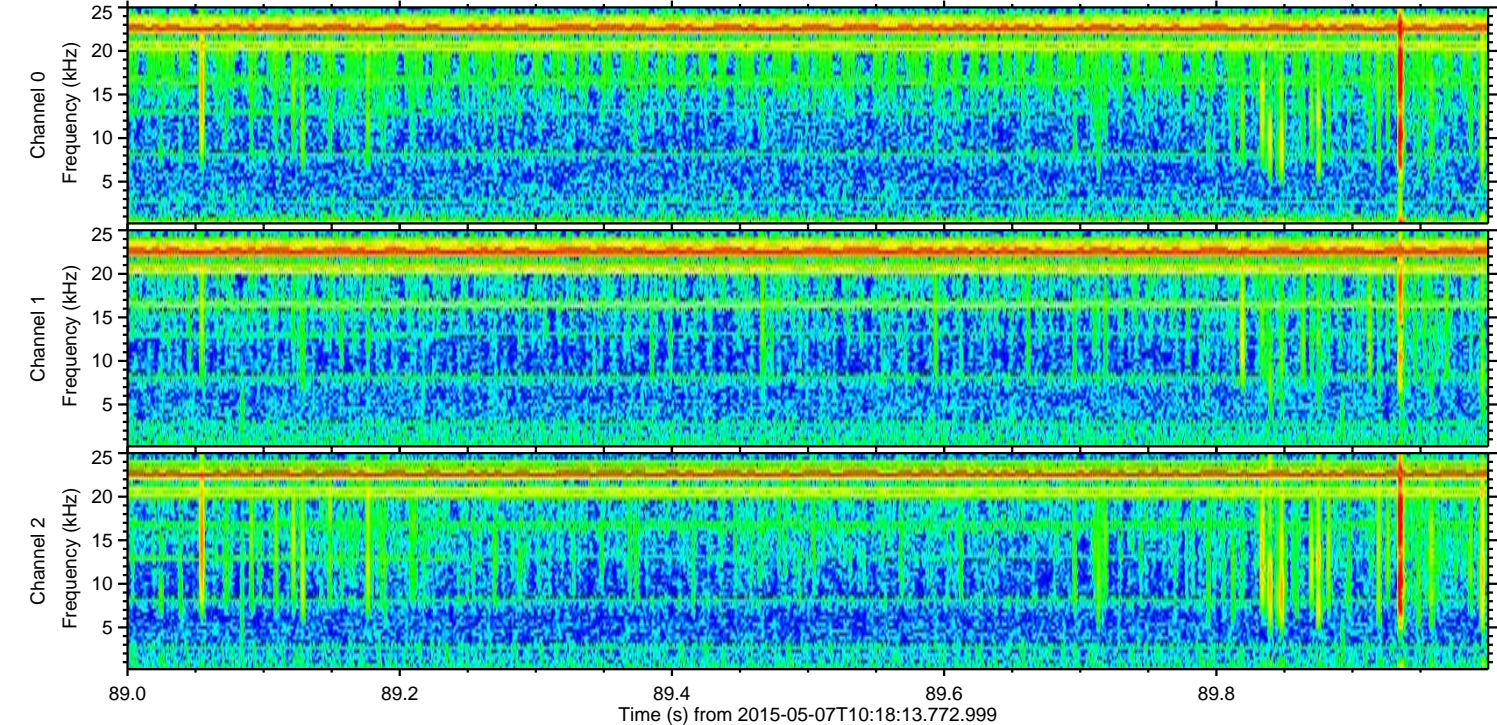
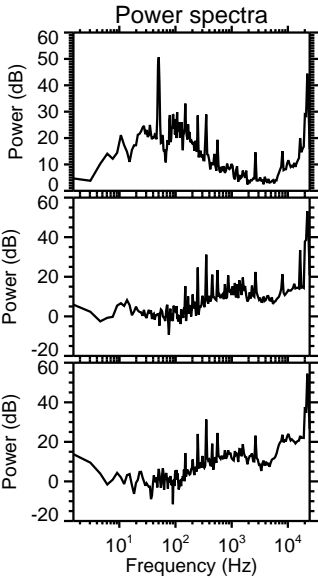
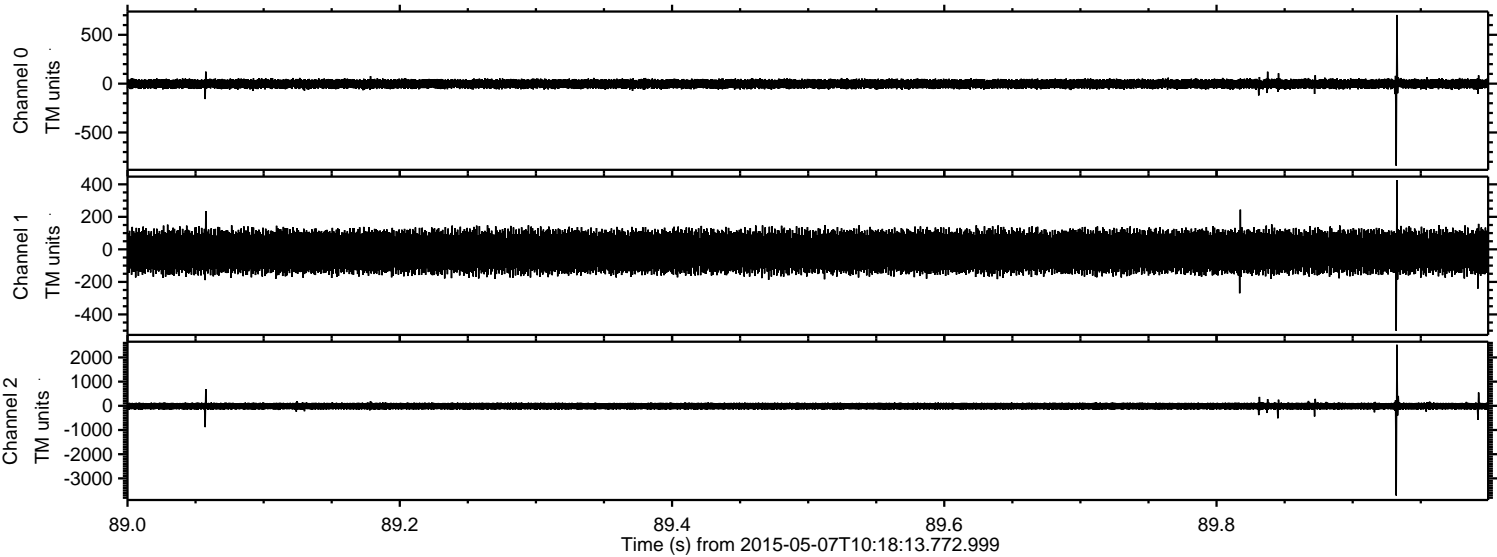
Processed Thu May 7 12:24:59 2015 by ELM ver.2012-10-06 from 001__elm20150507_101812__dat00.bin



Processed Thu May 7 12:25:00 2015 by ELM ver.2012-10-06 from 001__elm20150507_101812__dat00.bin

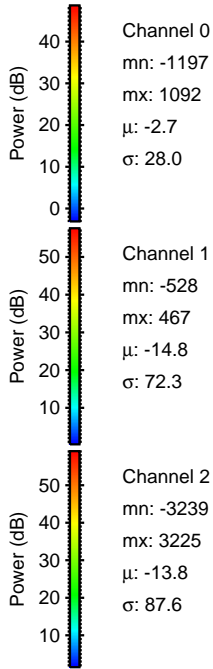
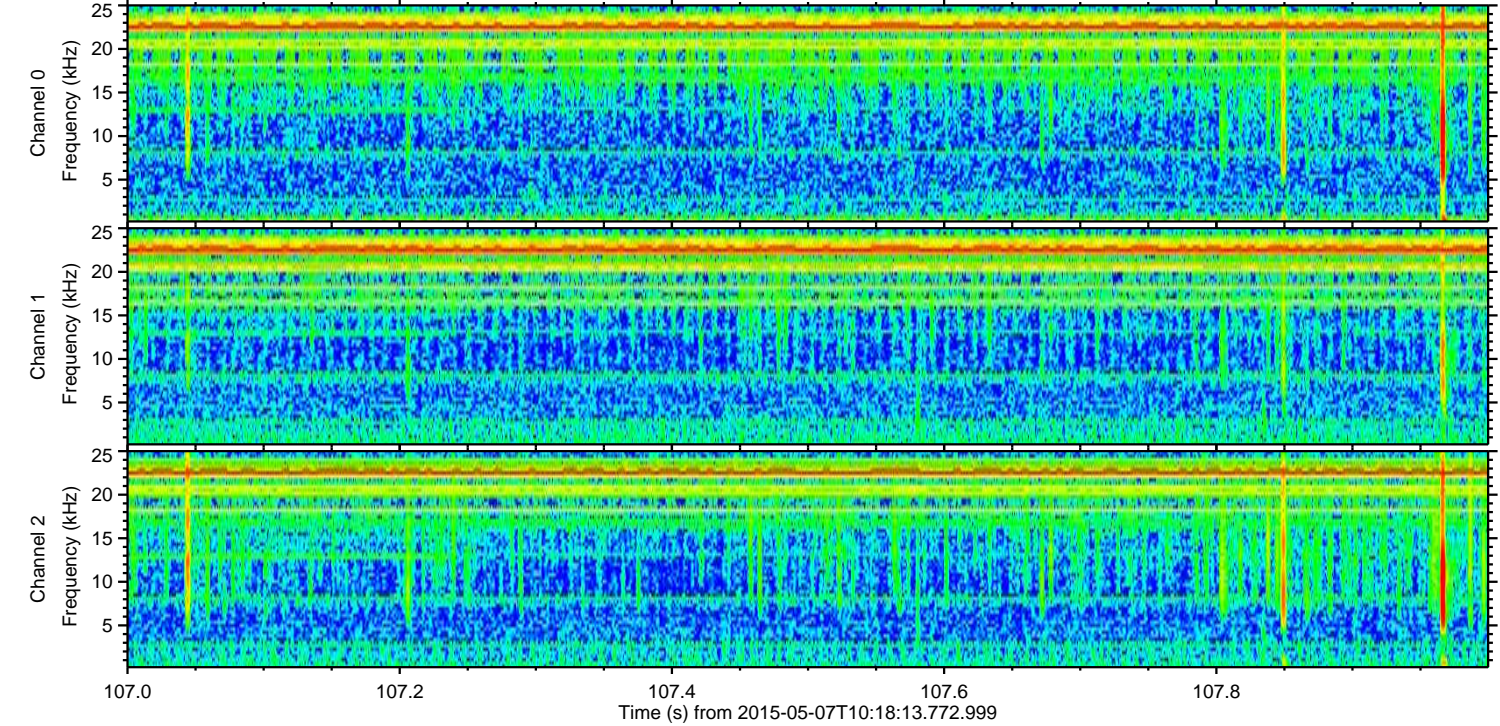
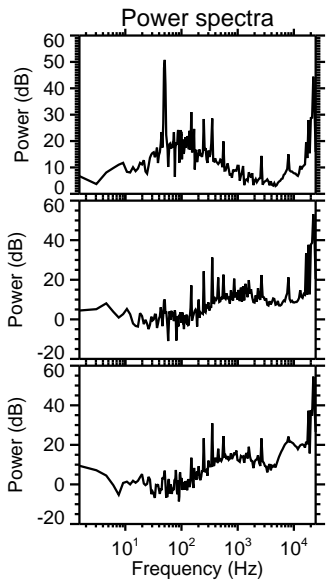
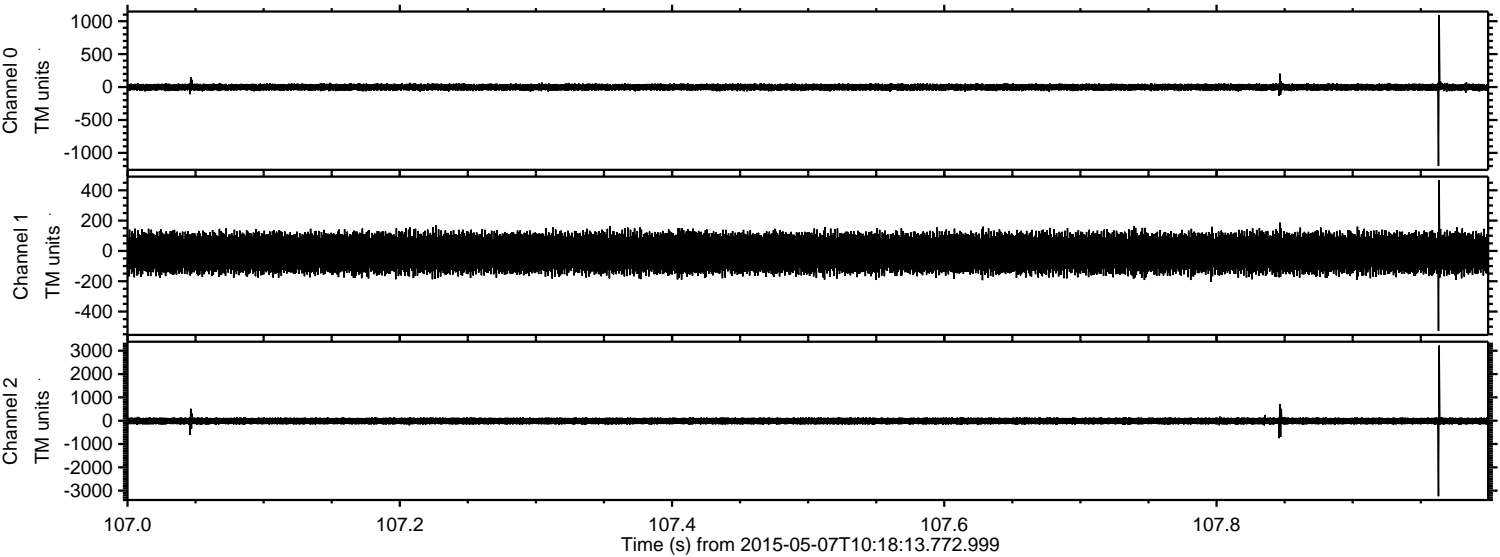


Processed Thu May 7 12:25:00 2015 by ELM ver.2012-10-06 from 001__elm20150507_101812__dat00.bin



ELMAVAN 3D WAVEFORMS (Measured data sampled at 50 kHz) 49785 packets of 144 samples from 2015-05-07T10:18:13.772.999. Part 108/144

Processed Thu May 7 12:25:01 2015 by ELM ver.2012-10-06 from 001__elm20150507_101812__dat00.bin



Channel 0
mn: -1197
mx: 1092
 μ : -2.7
 σ : 28.0

Channel 1
mn: -528
mx: 467
 μ : -14.8
 σ : 72.3

Channel 2
mn: -3239
mx: 3225
 μ : -13.8
 σ : 87.6

Processed Thu May 7 12:25:02 2015 by ELM ver.2012-10-06 from 001__elm20150507_101812__dat00.bin

