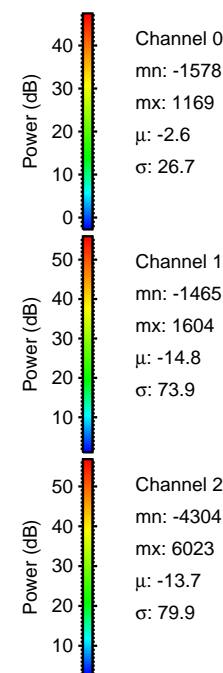
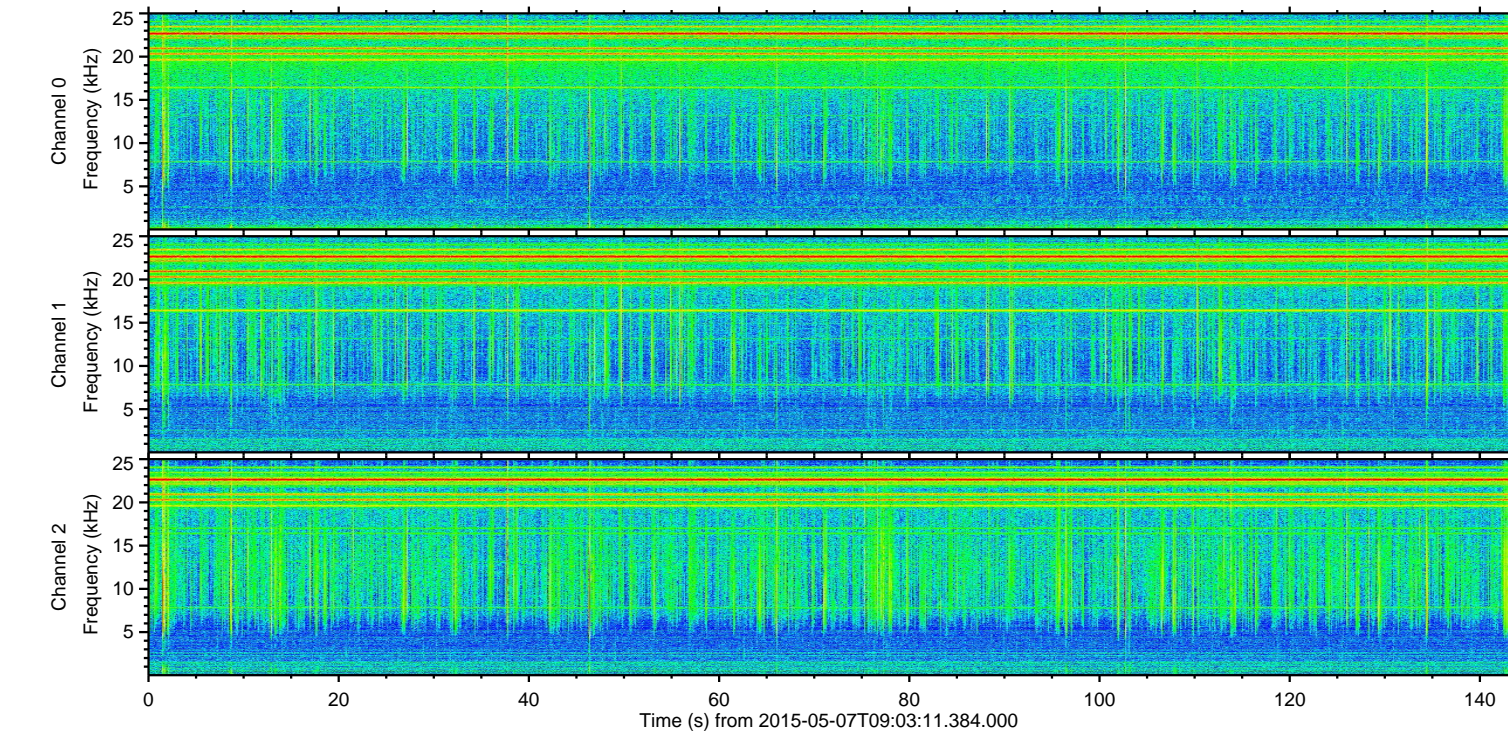
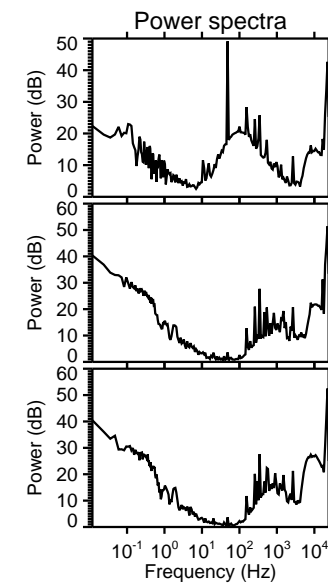
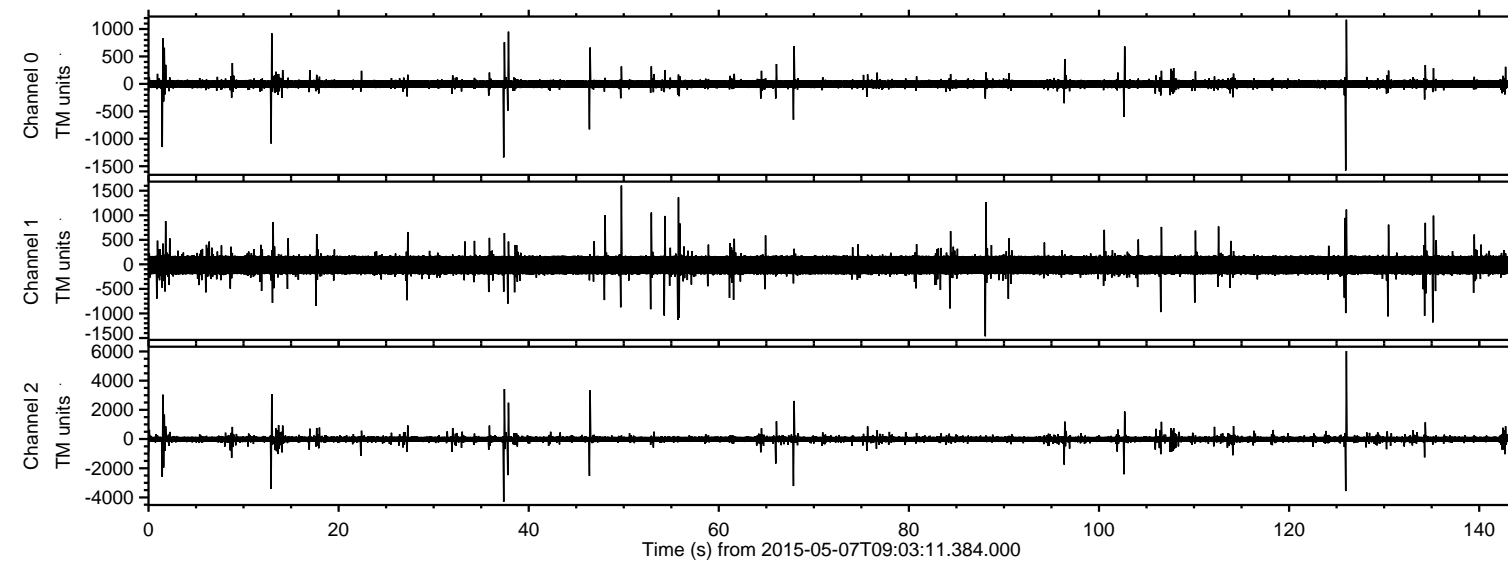


ELMAVAN 3D WAVEFORMS (Measured data sampled at 50 kHz) 49706 packets of 144 samples from 2015-05-07T09:03:11.384.000.

Processed Thu May 7 11:09:41 2015 by ELM ver.2012-10-06 from 001__elm20150507_090310__dat00.bin



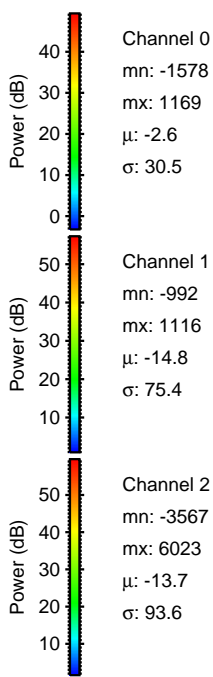
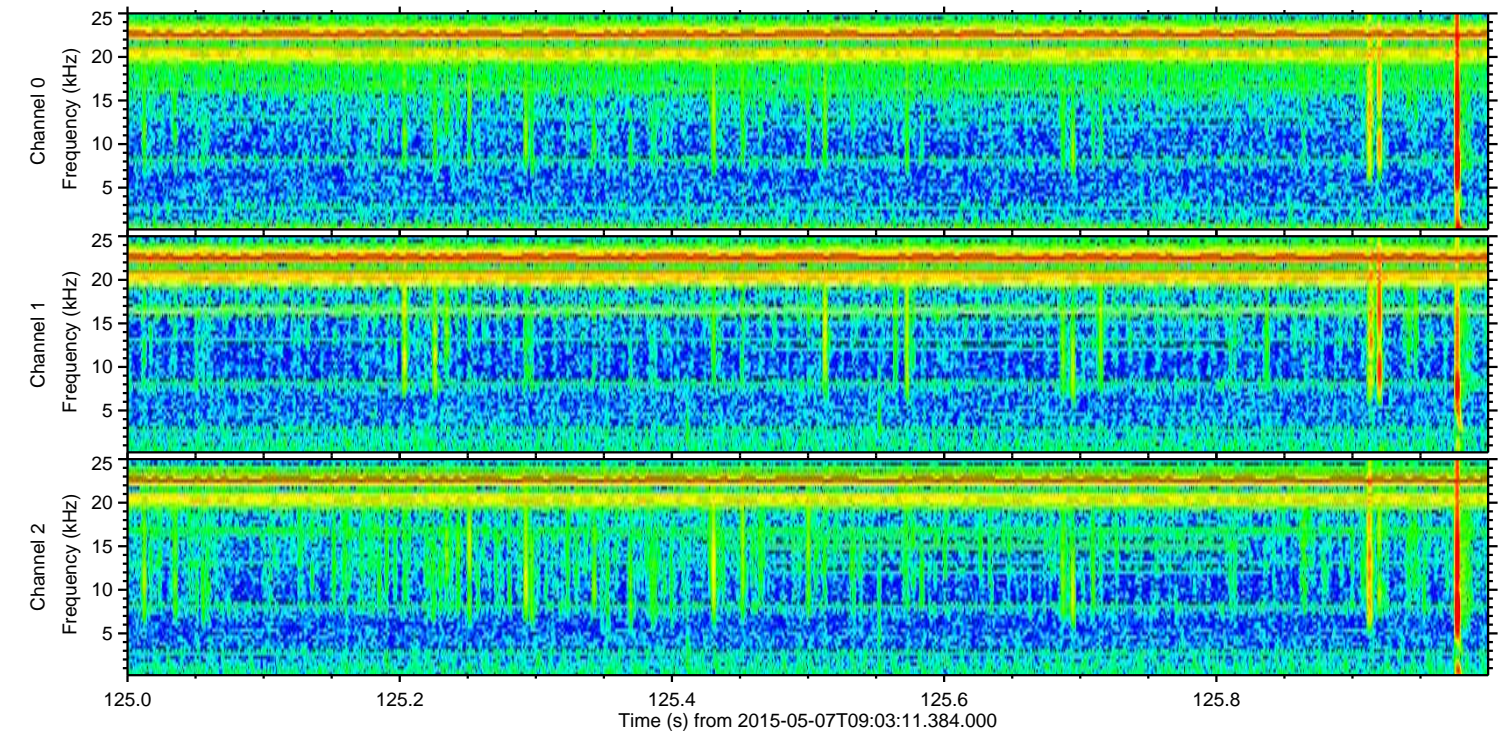
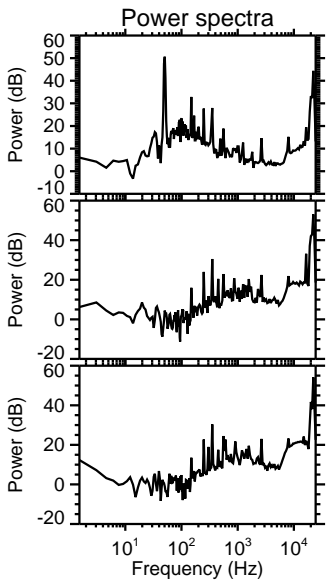
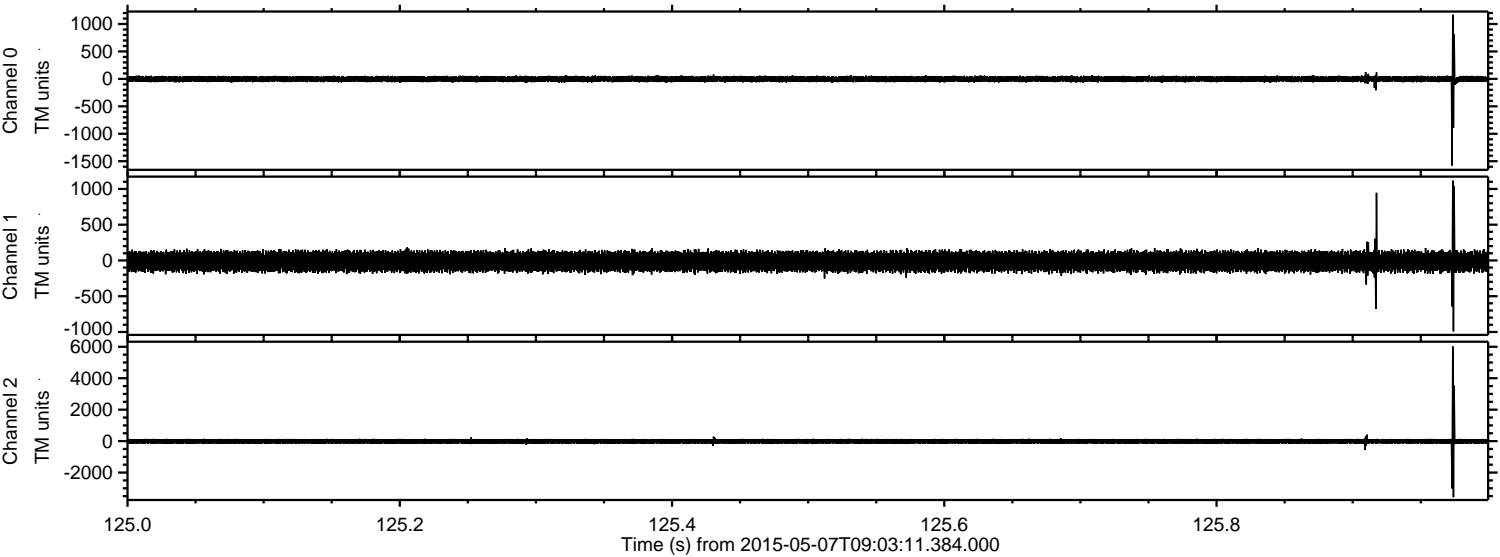
Channel 0
mn: -1578
mx: 1169
 μ : -2.6
 σ : 26.7

Channel 1
mn: -1465
mx: 1604
 μ : -14.8
 σ : 73.9

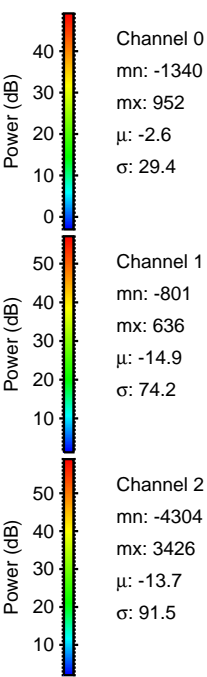
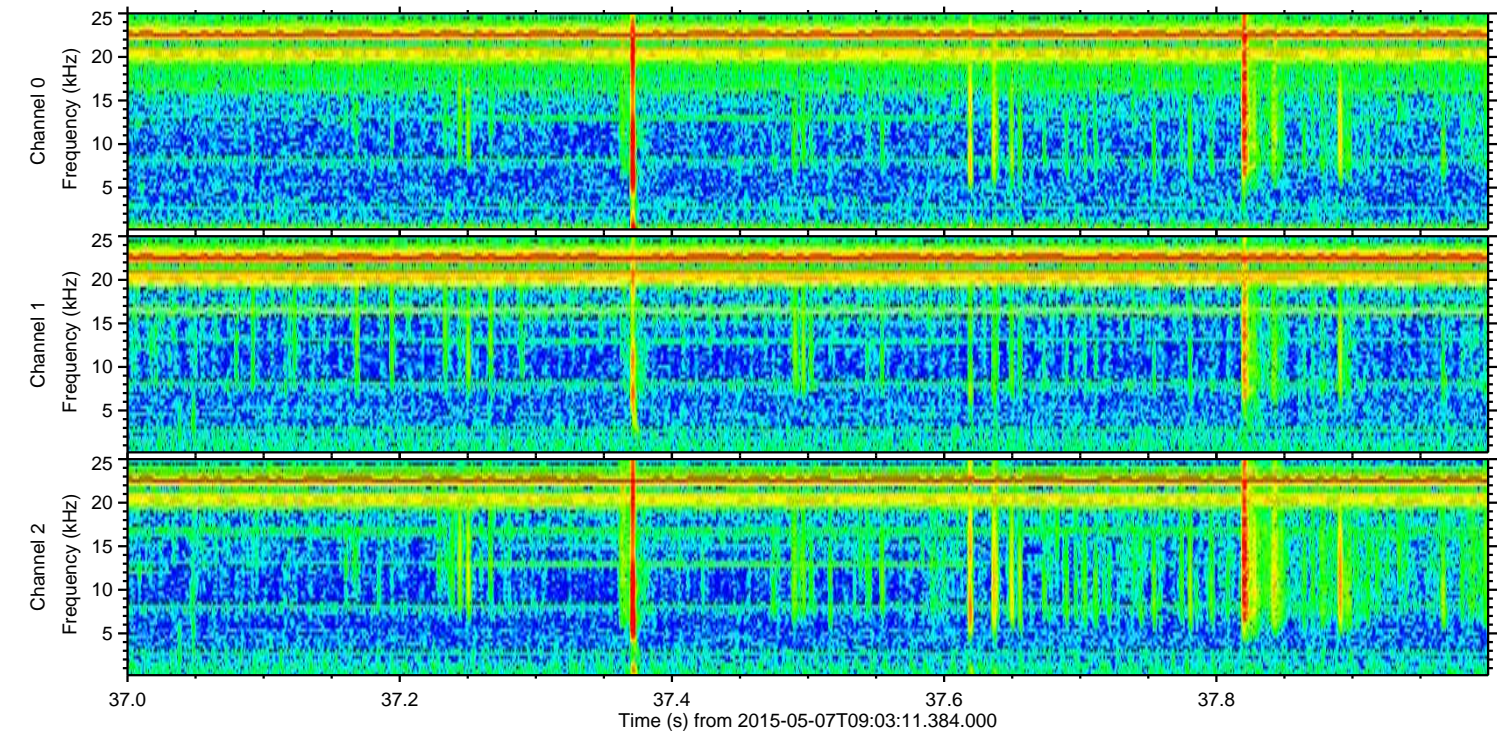
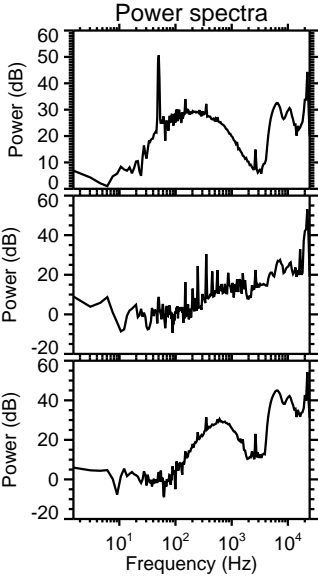
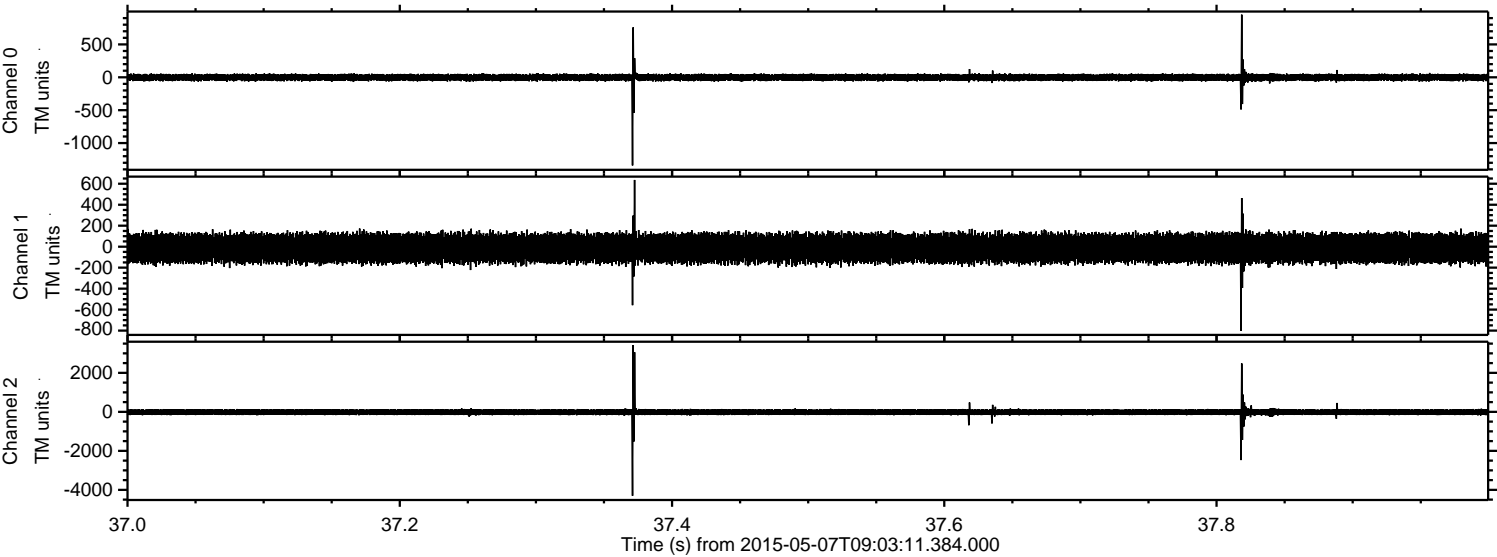
Channel 2
mn: -4304
mx: 6023
 μ : -13.7
 σ : 79.9

ELMAVAN 3D WAVEFORMS (Measured data sampled at 50 kHz) 49706 packets of 144 samples from 2015-05-07T09:03:11.384.000. Part 126/144

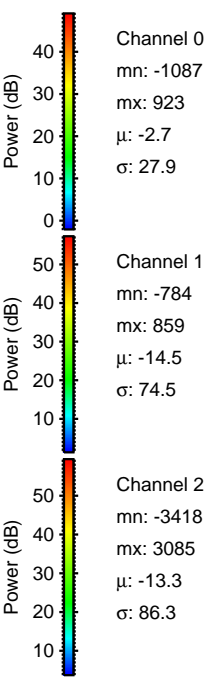
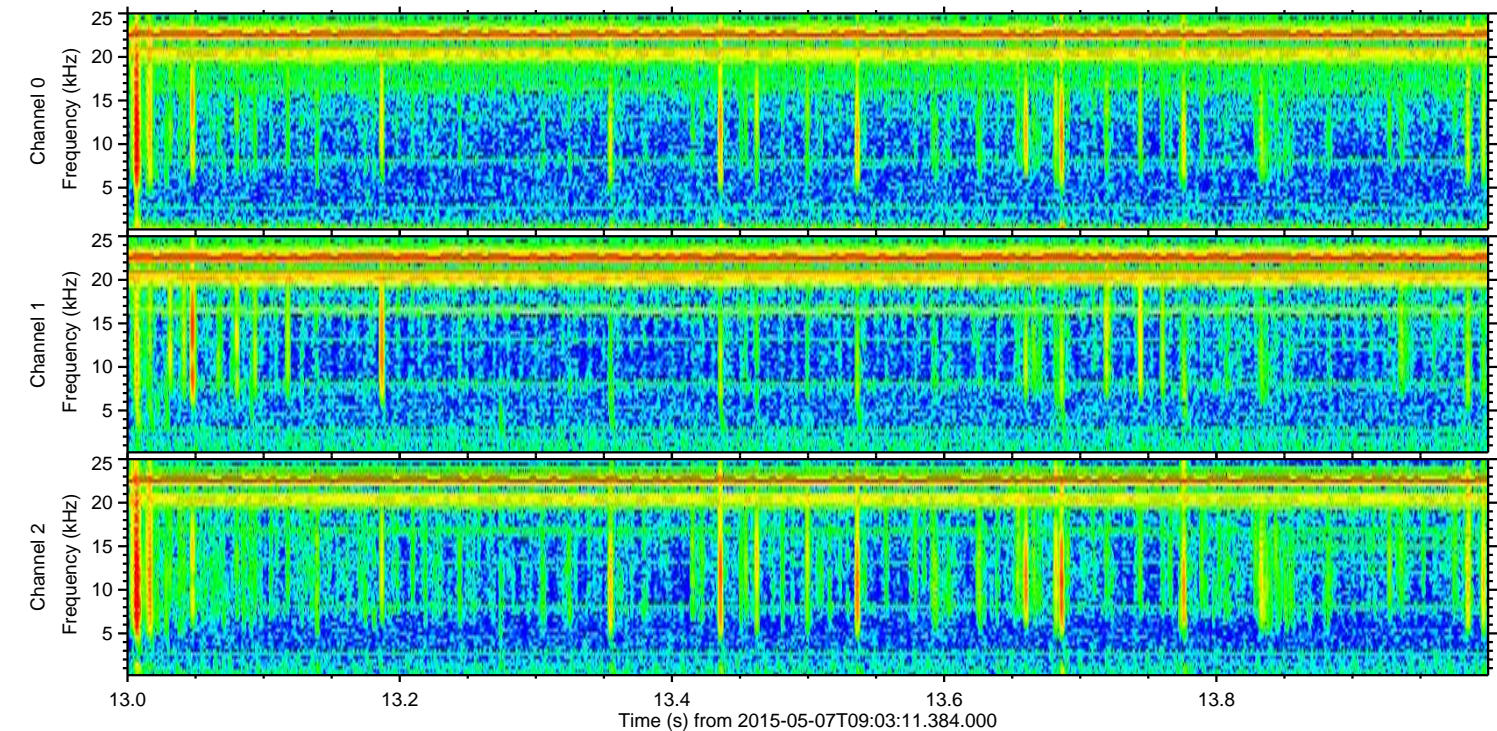
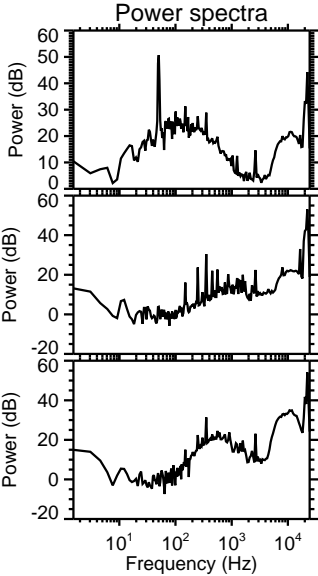
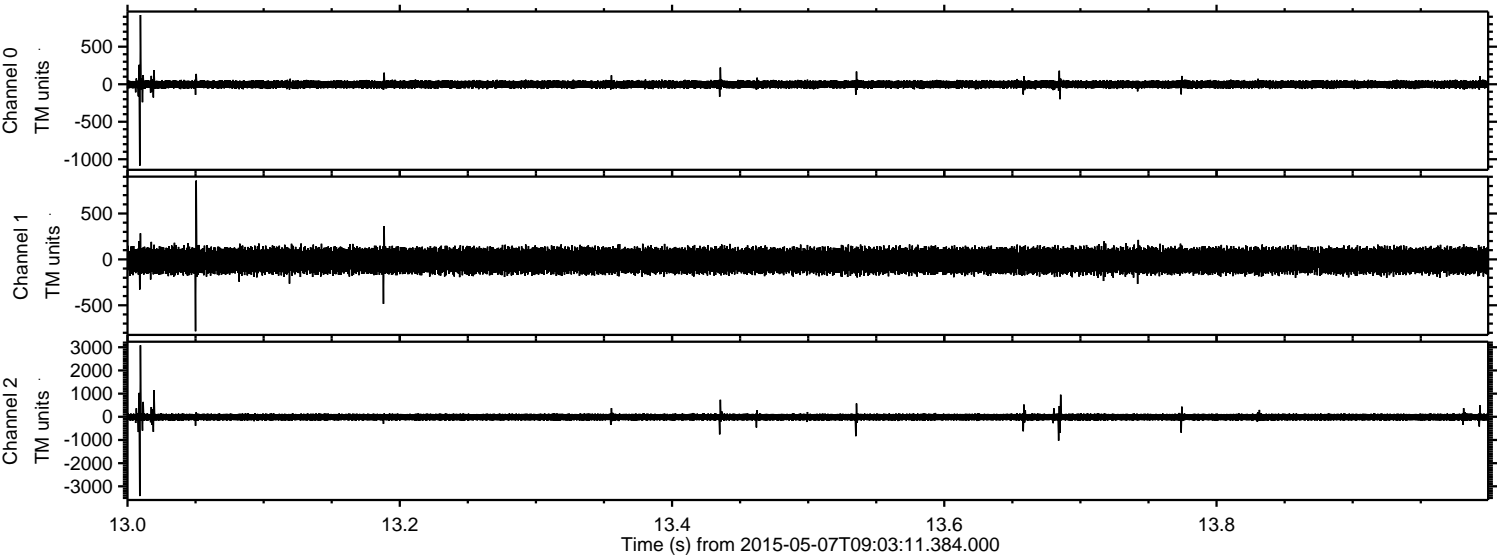
Processed Thu May 7 11:09:53 2015 by ELM ver.2012-10-06 from 001__elm20150507_090310__dat00.bin



Processed Thu May 7 11:09:54 2015 by ELM ver.2012-10-06 from 001__elm20150507_090310__dat00.bin

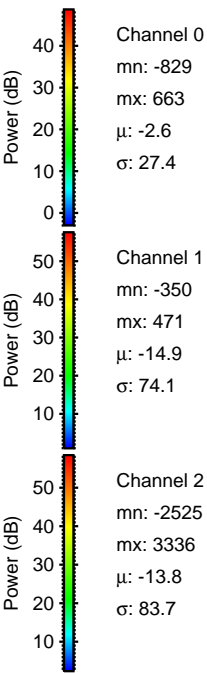
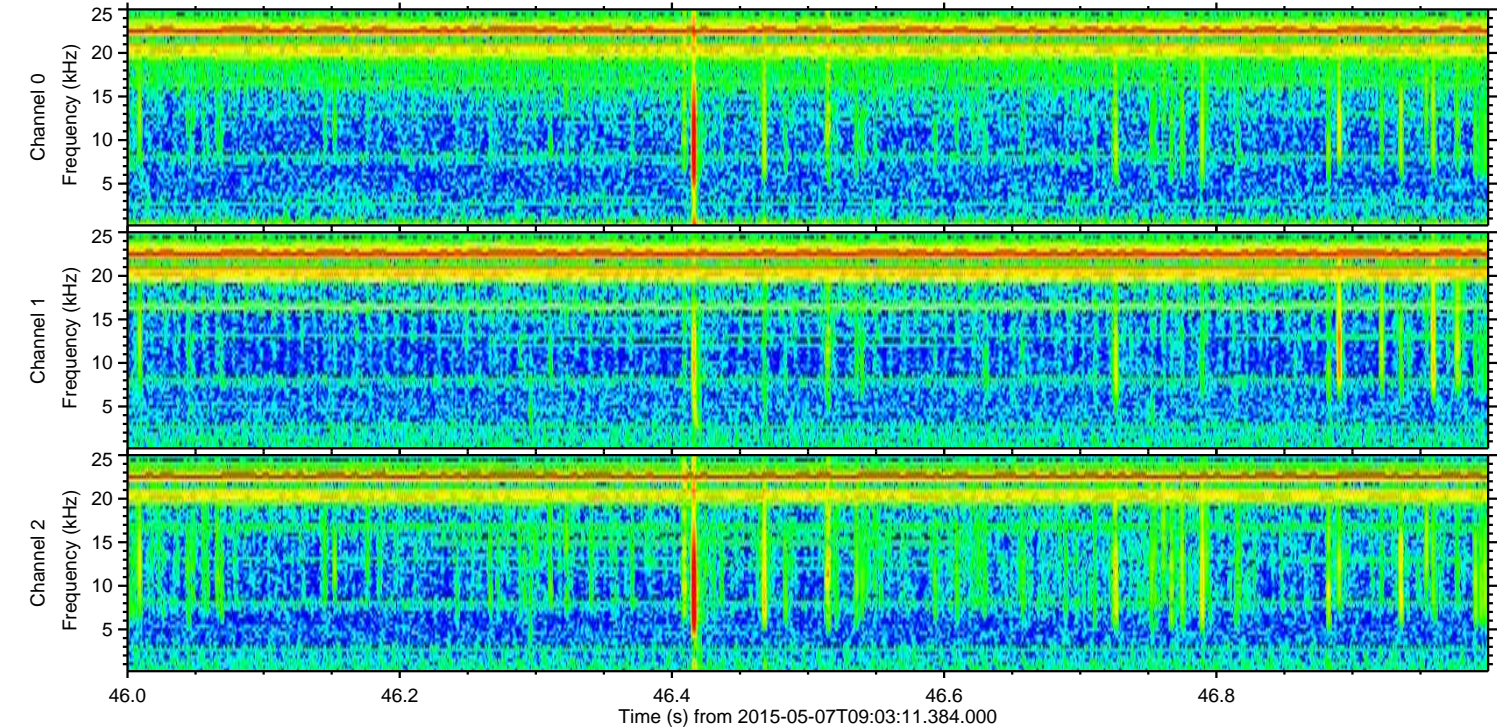
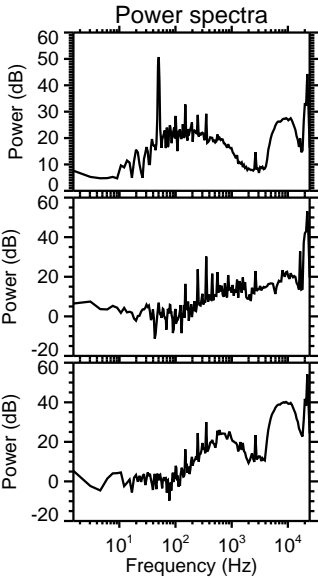
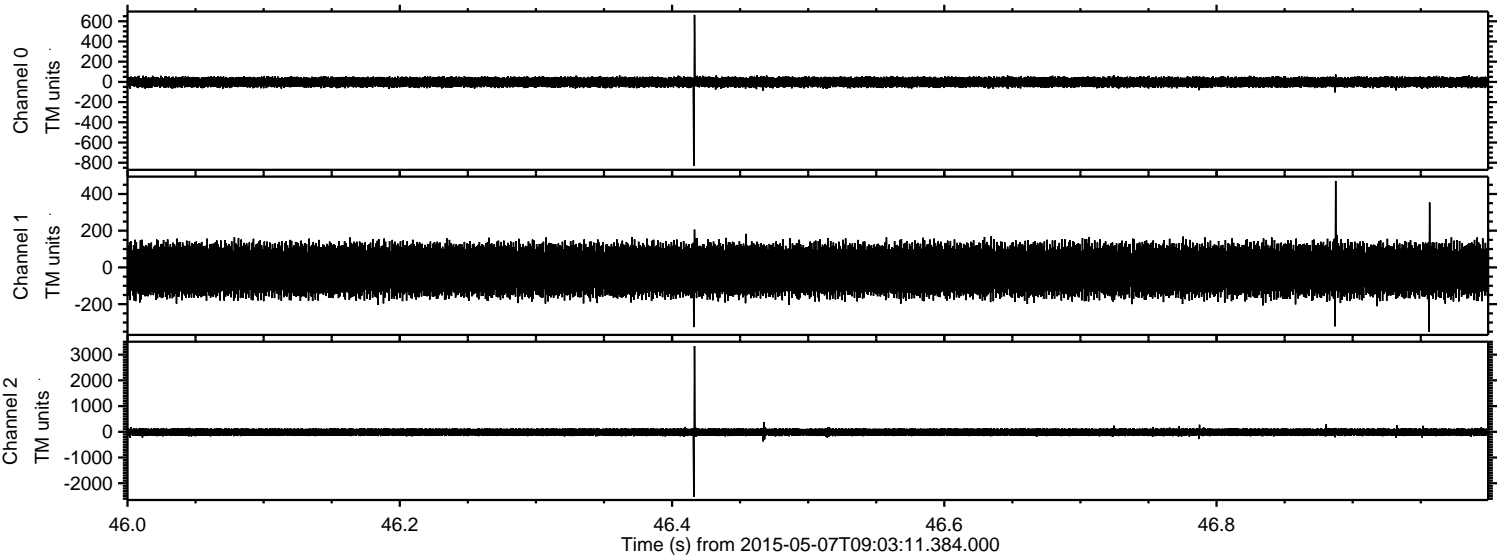


Processed Thu May 7 11:09:55 2015 by ELM ver.2012-10-06 from 001__elm20150507_090310__dat00.bin

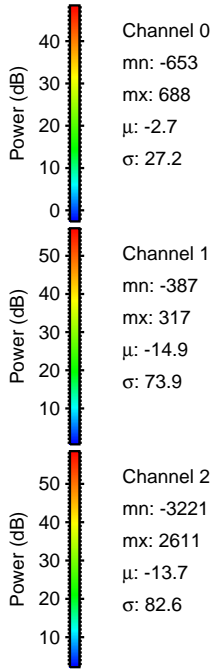
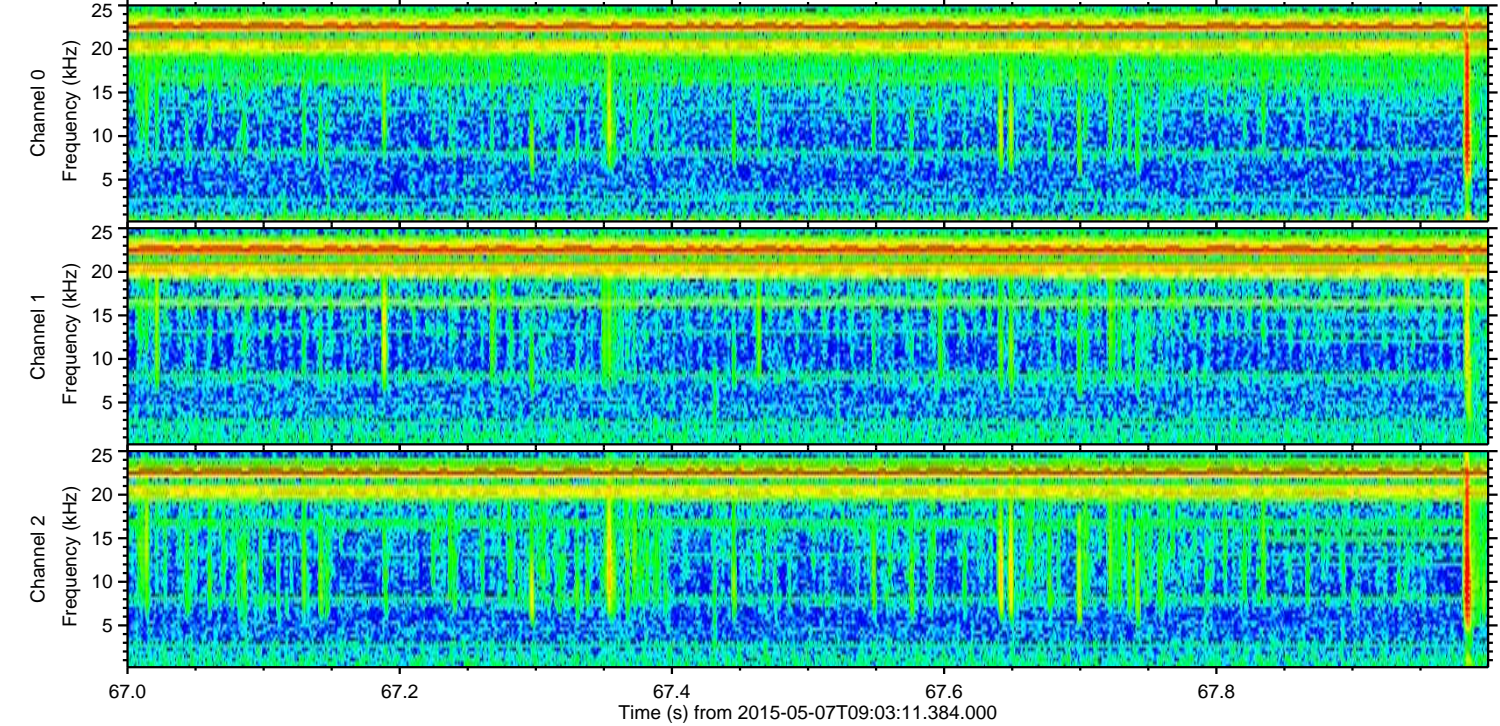
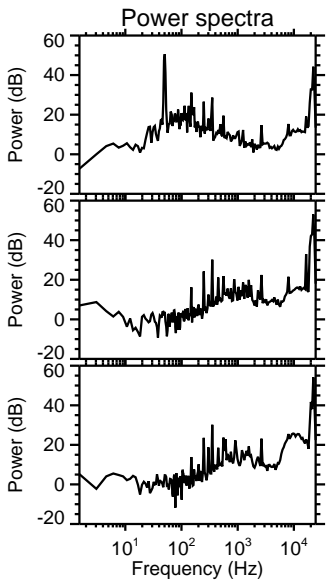
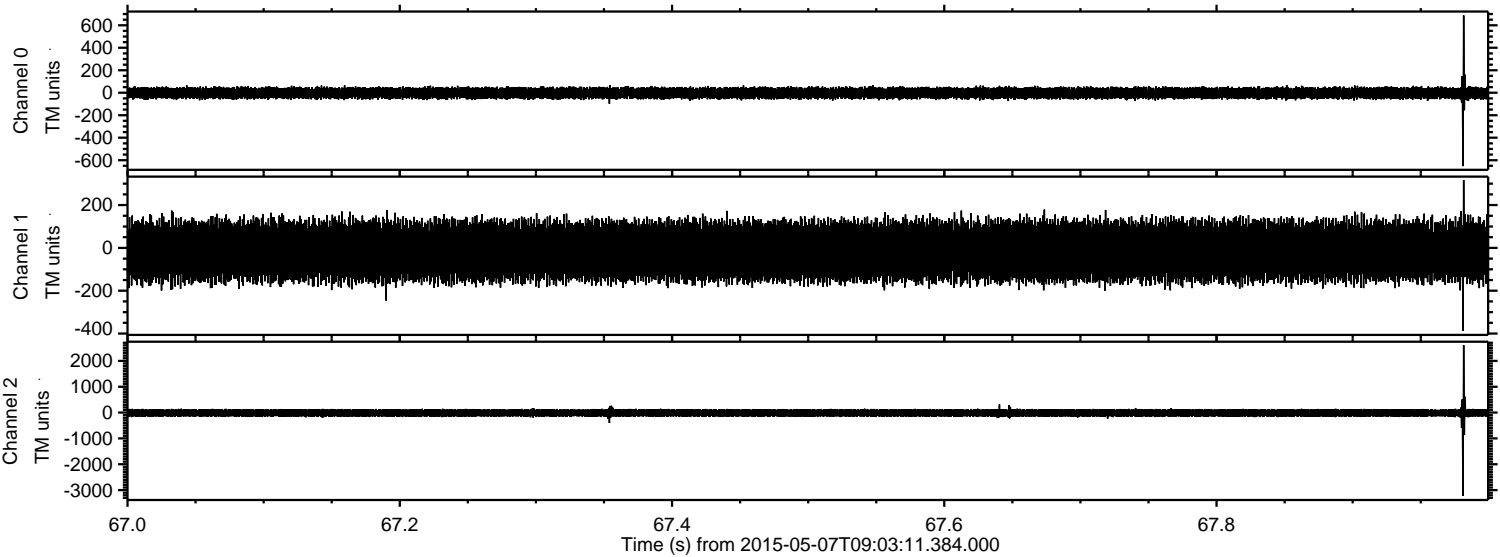


ELMAVAN 3D WAVEFORMS (Measured data sampled at 50 kHz) 49706 packets of 144 samples from 2015-05-07T09:03:11.384.000. Part 47/144

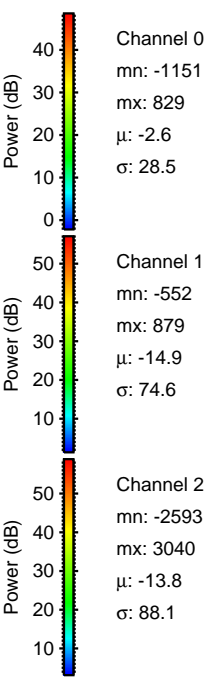
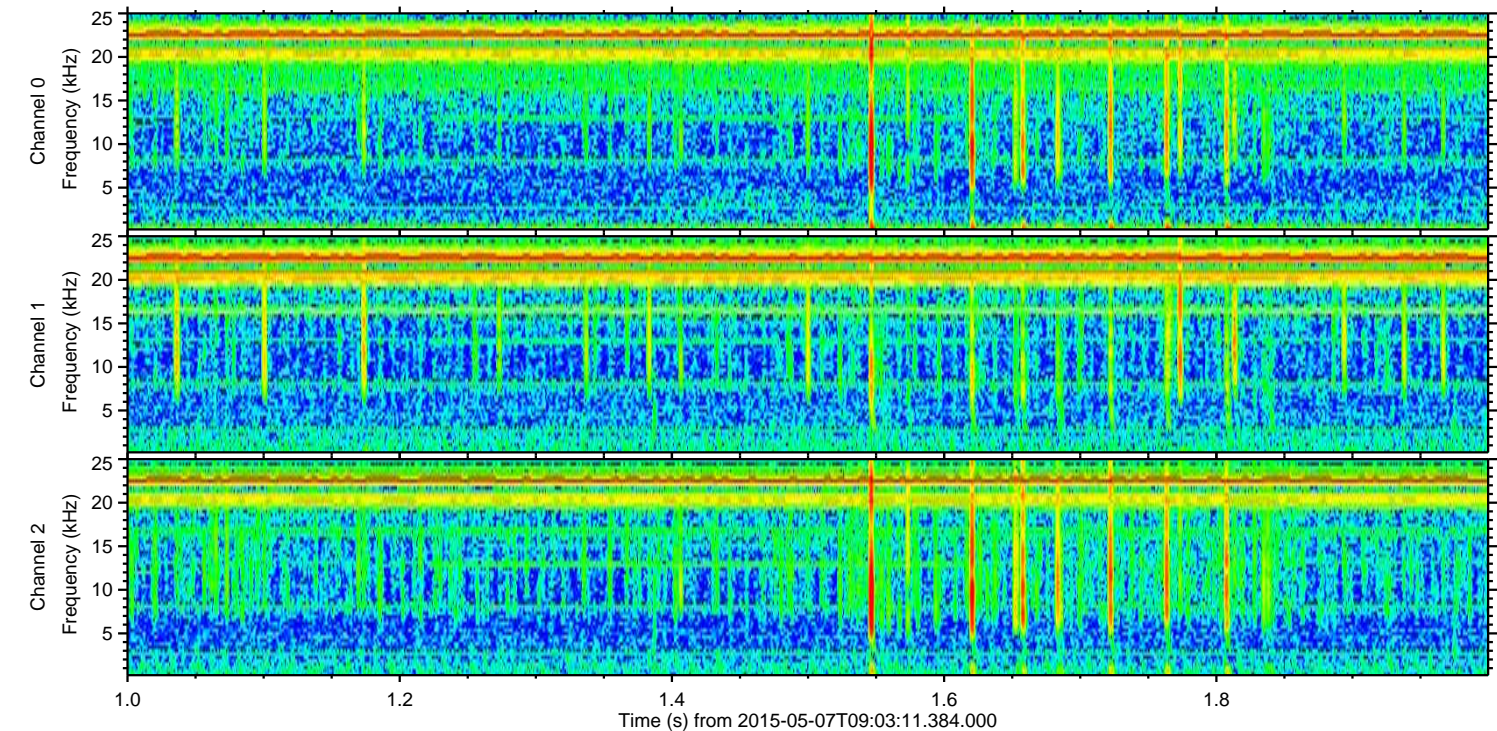
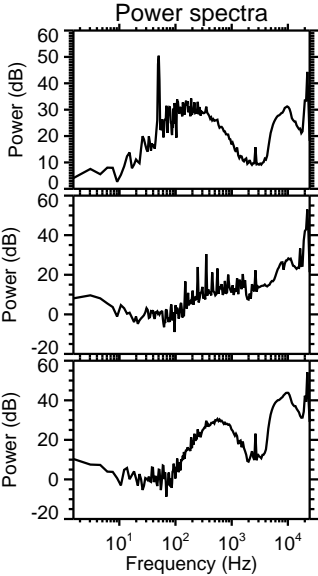
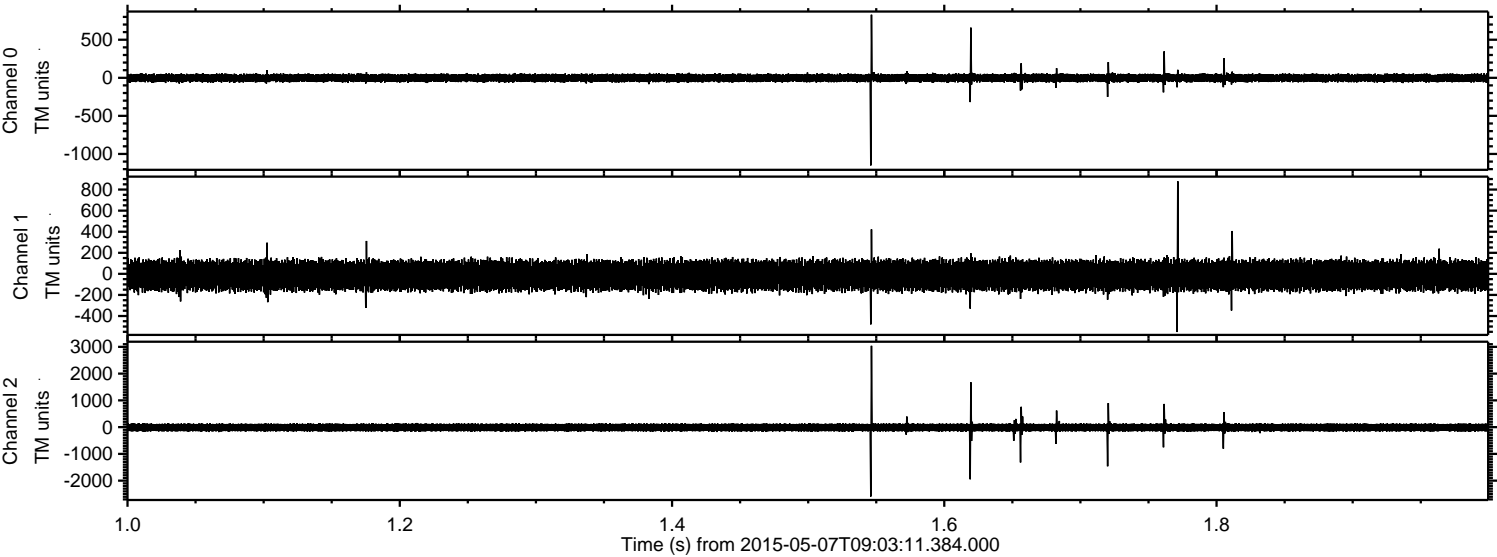
Processed Thu May 7 11:09:56 2015 by ELM ver.2012-10-06 from 001__elm20150507_090310__dat00.bin



Processed Thu May 7 11:09:57 2015 by ELM ver.2012-10-06 from 001__elm20150507_090310__dat00.bin

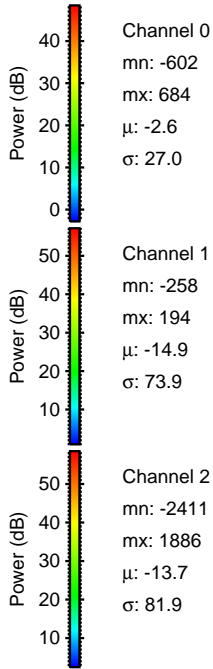
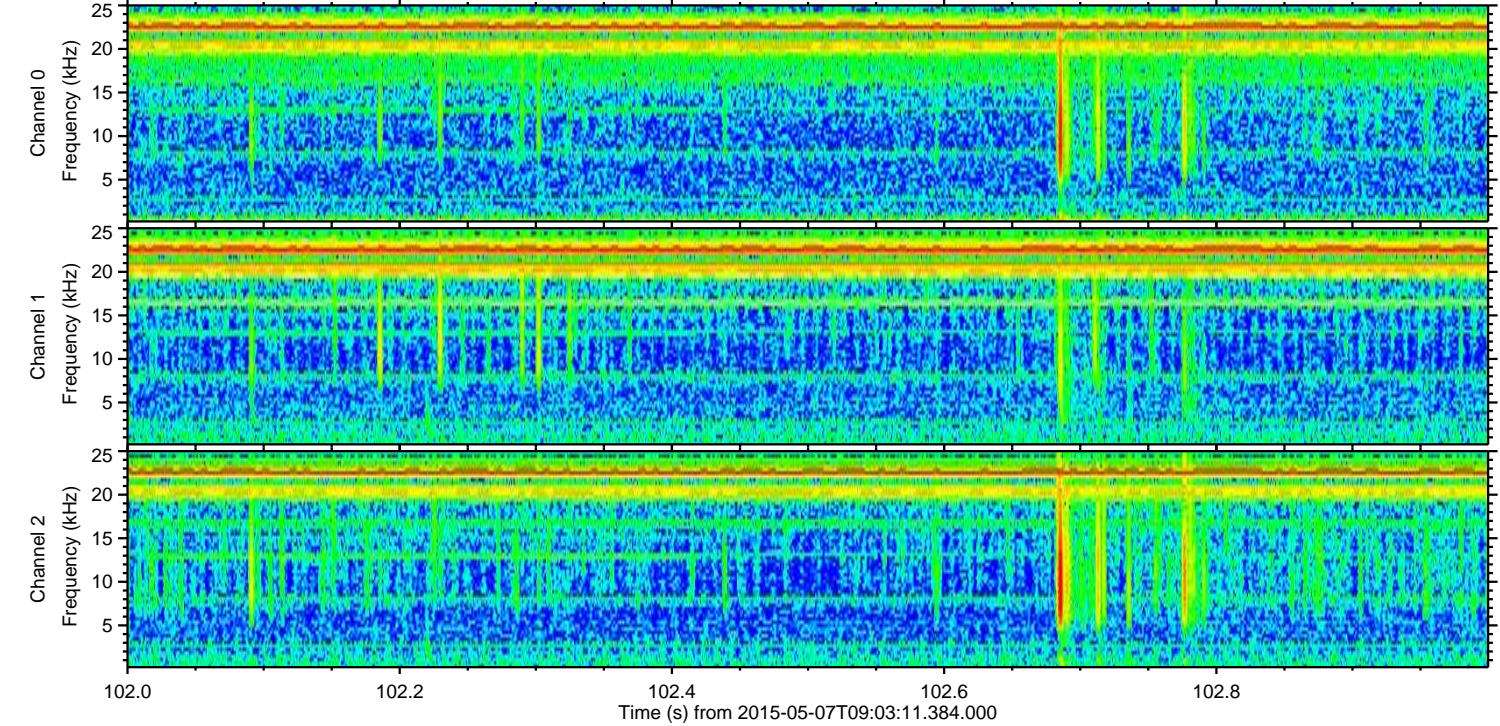
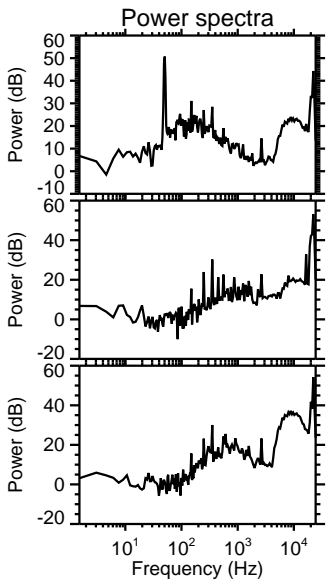
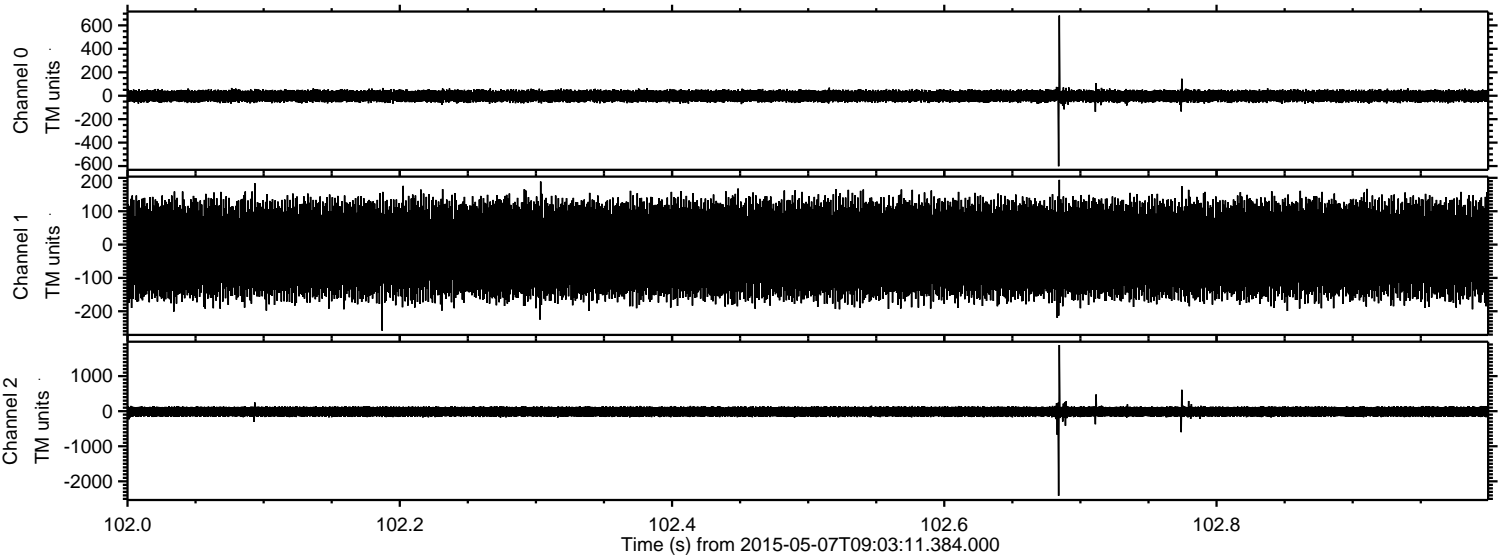


Processed Thu May 7 11:09:58 2015 by ELM ver.2012-10-06 from 001__elm20150507_090310__dat00.bin

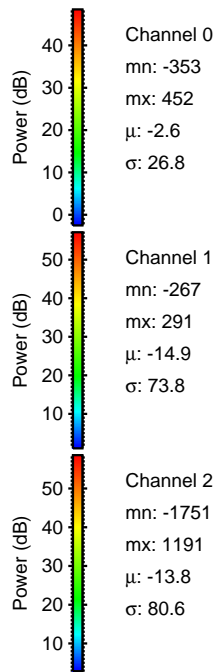
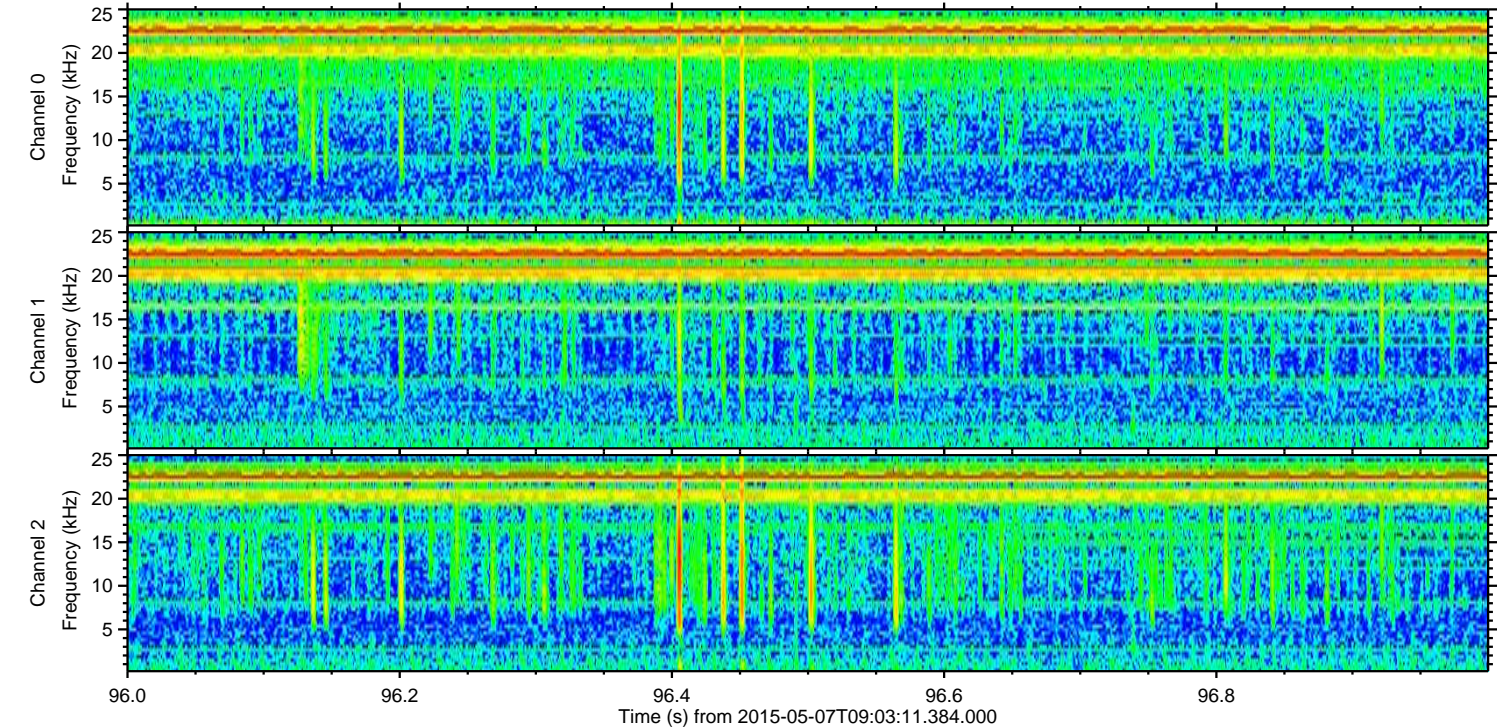
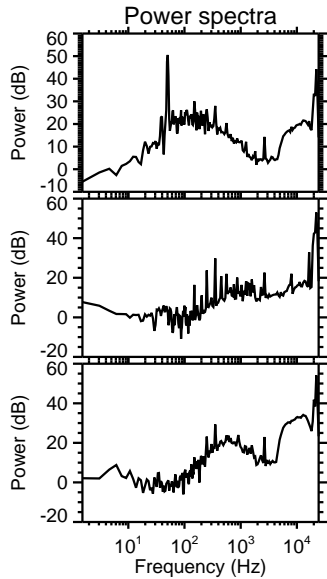
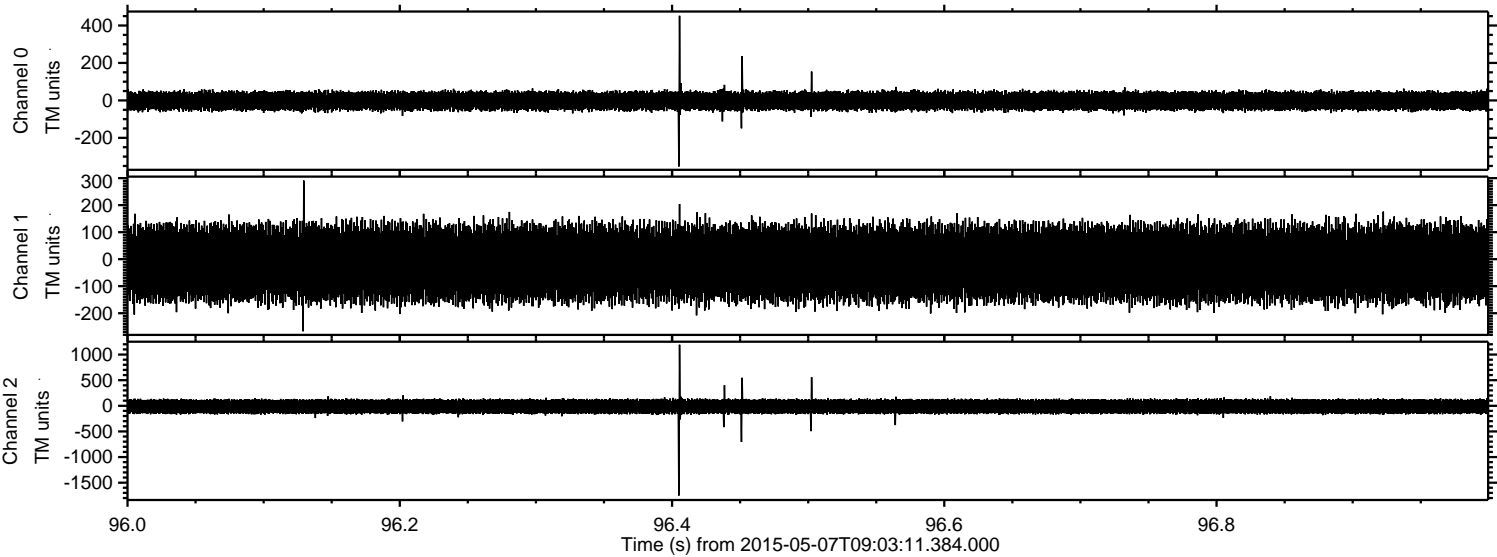


ELMAVAN 3D WAVEFORMS (Measured data sampled at 50 kHz) 49706 packets of 144 samples from 2015-05-07T09:03:11.384.000. Part 103/144

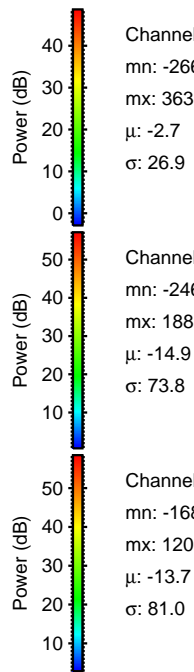
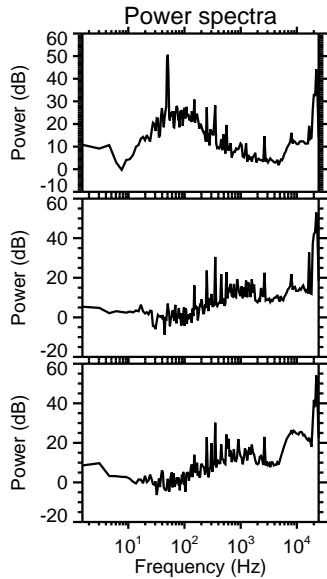
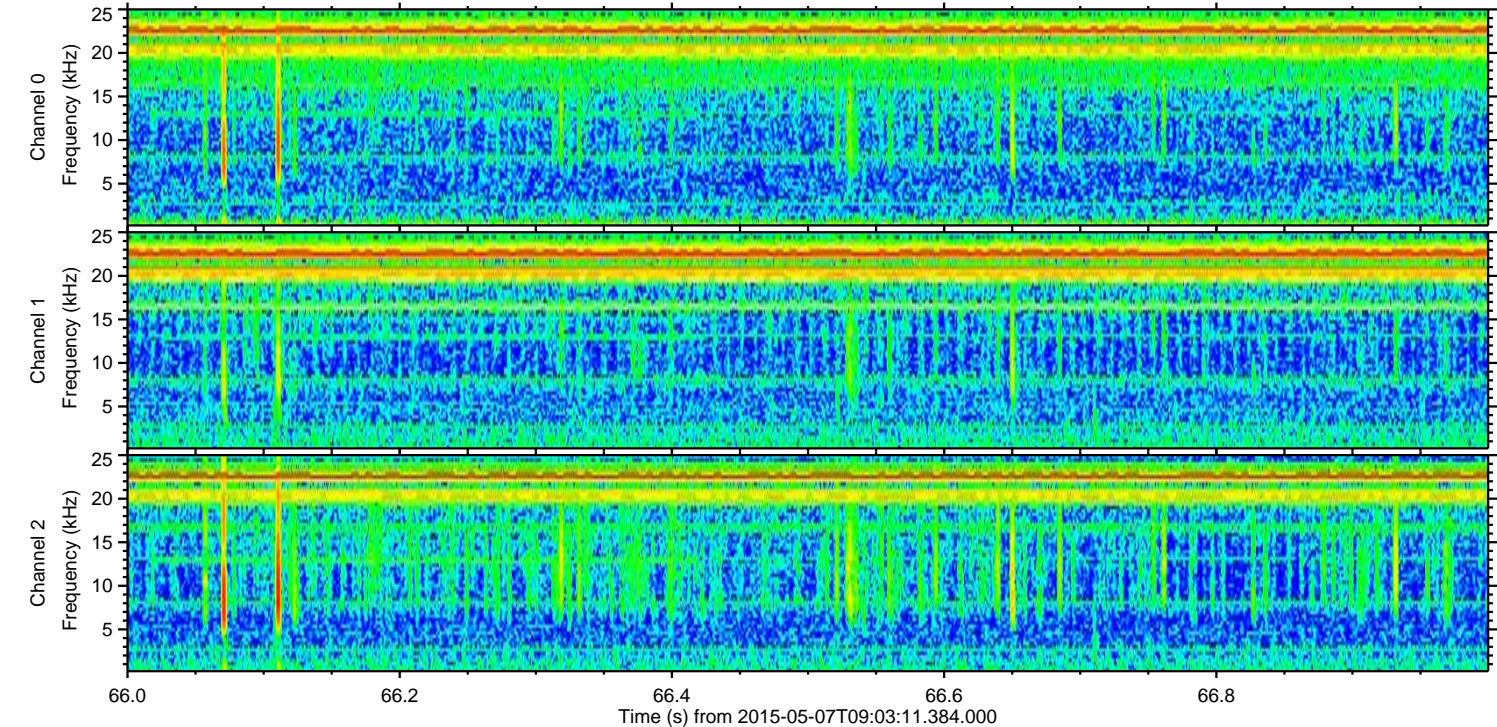
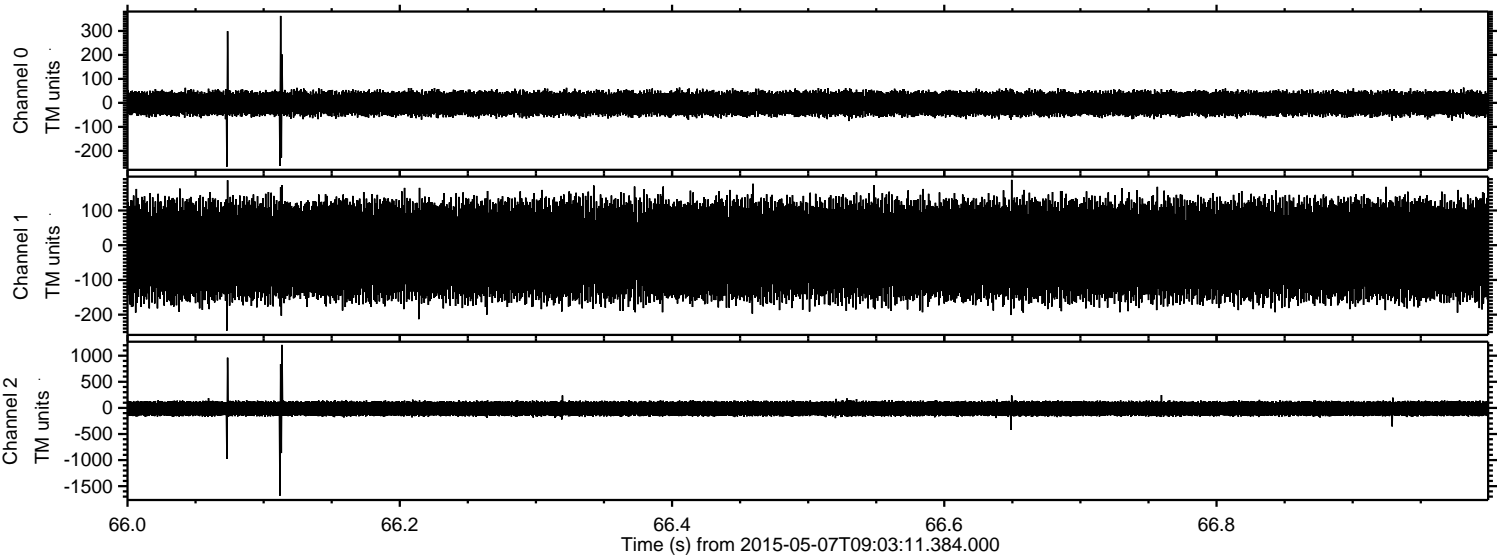
Processed Thu May 7 11:09:58 2015 by ELM ver.2012-10-06 from 001__elm20150507_090310__dat00.bin



Processed Thu May 7 11:09:59 2015 by ELM ver.2012-10-06 from 001__elm20150507_090310__dat00.bin



Processed Thu May 7 11:10:00 2015 by ELM ver.2012-10-06 from 001__elm20150507_090310__dat00.bin



Channel 0
mn: -266
mx: 363
 μ : -2.7
 σ : 26.9

Channel 1
mn: -246
mx: 188
 μ : -14.9
 σ : 73.8

Channel 2
mn: -1681
mx: 1208
 μ : -13.7
 σ : 81.0

Processed Thu May 7 11:10:01 2015 by ELM ver.2012-10-06 from 001__elm20150507_090310__dat00.bin

