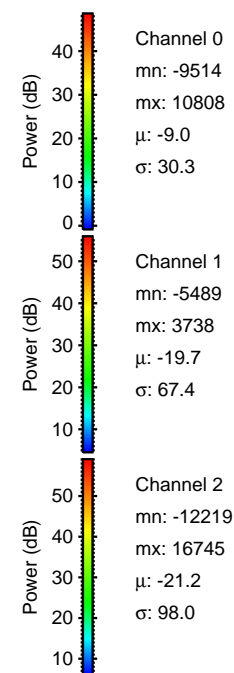
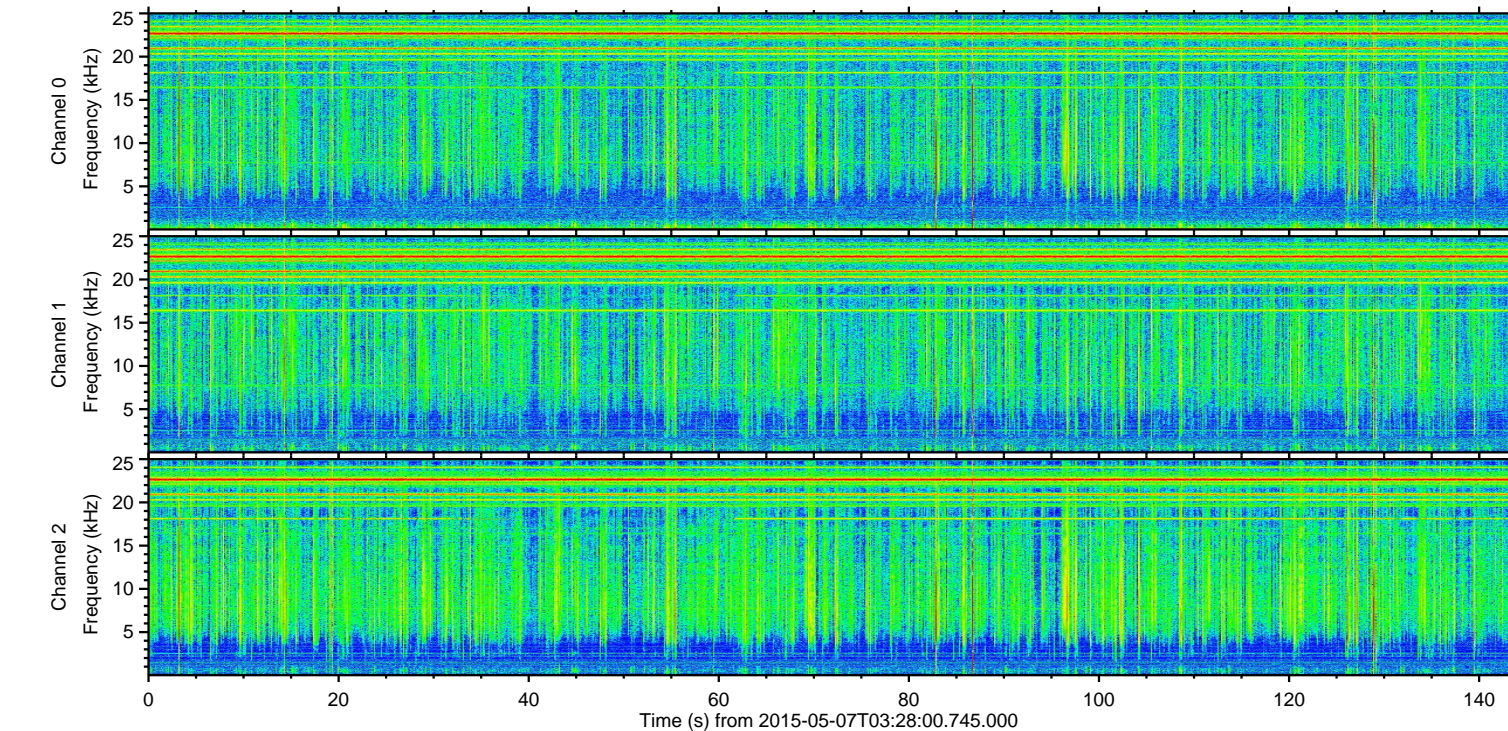
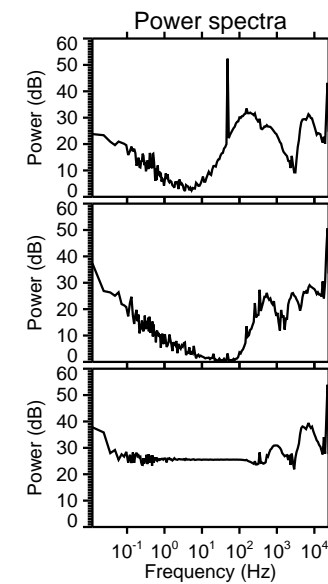
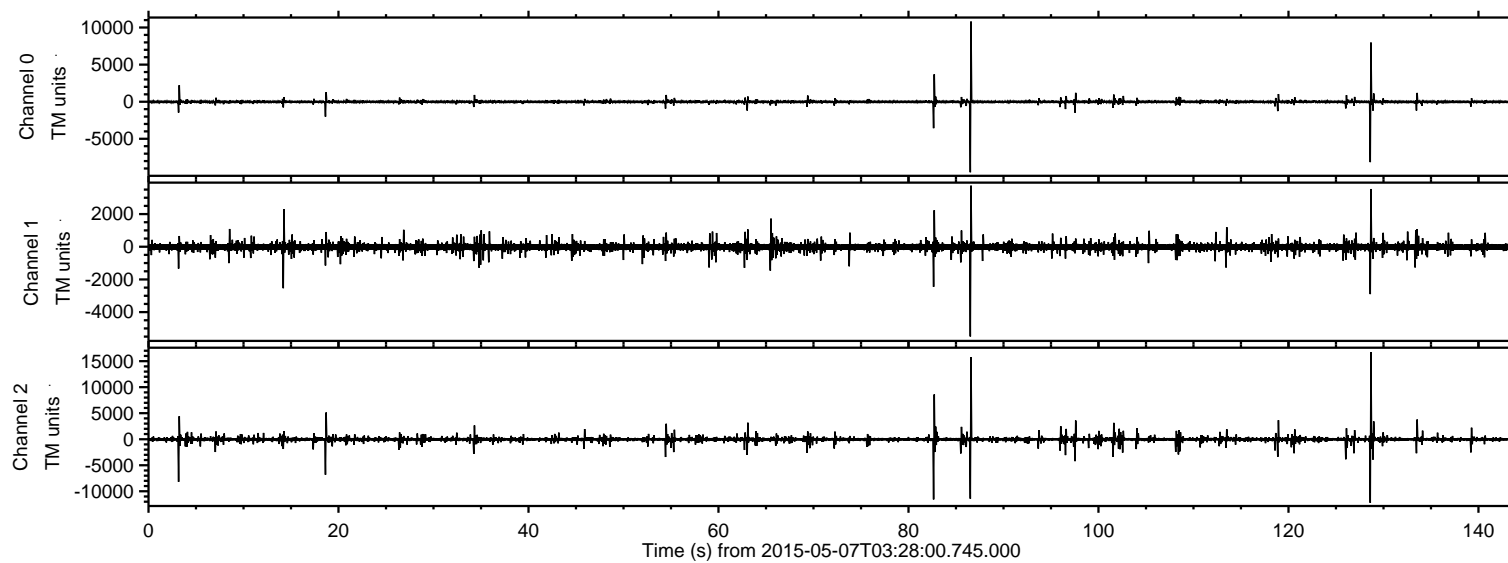


ELMAVAN 3D WAVEFORMS (Measured data sampled at 50 kHz) 49732 packets of 144 samples from 2015-05-07T03:28:00.745.000.

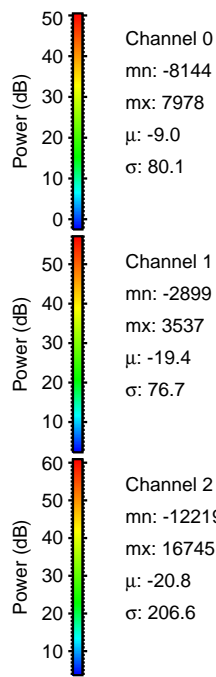
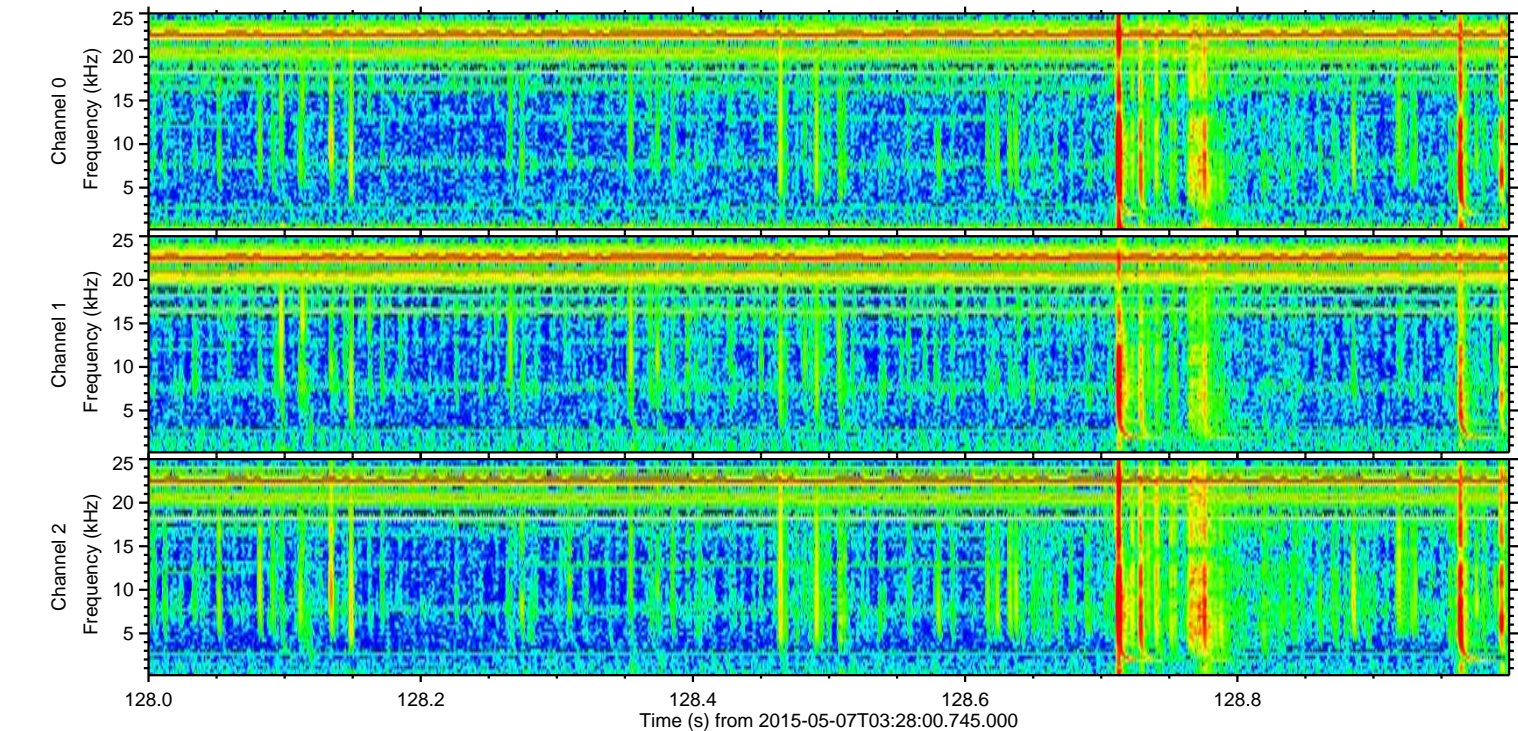
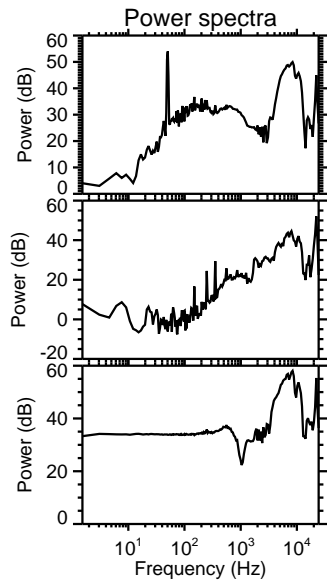
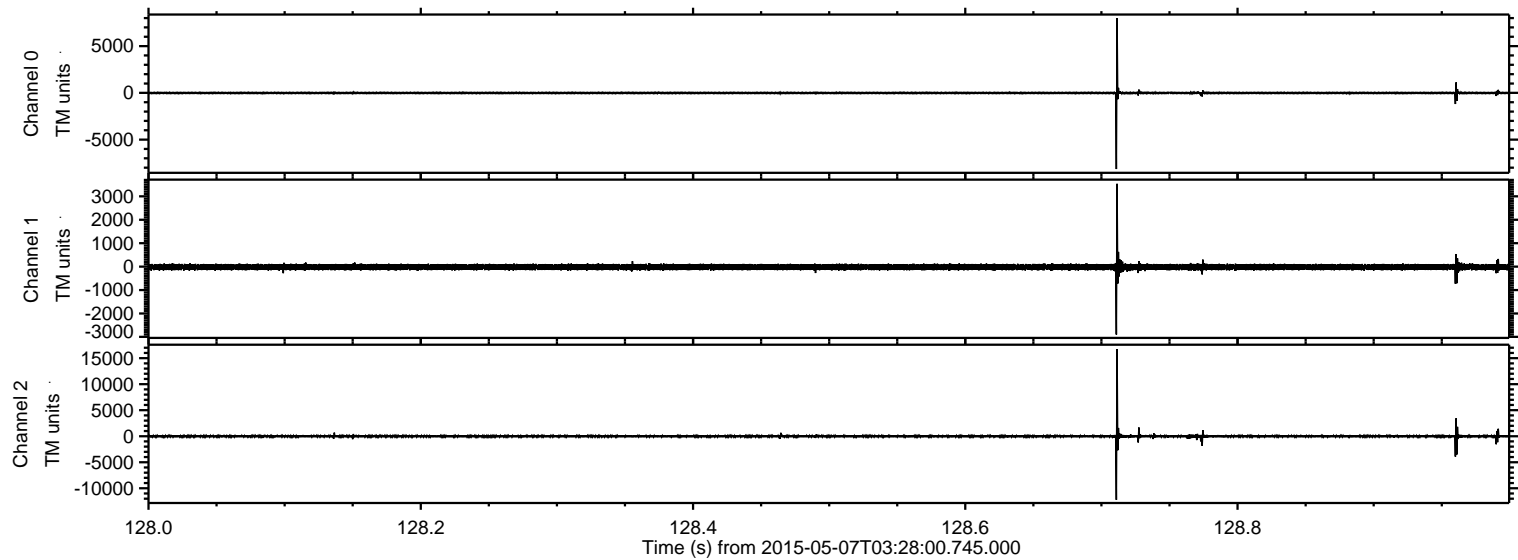
Processed Thu May 7 05:35:24 2015 by ELM ver.2012-10-06 from 001\_\_elm20150507\_032759\_\_dat00.bin





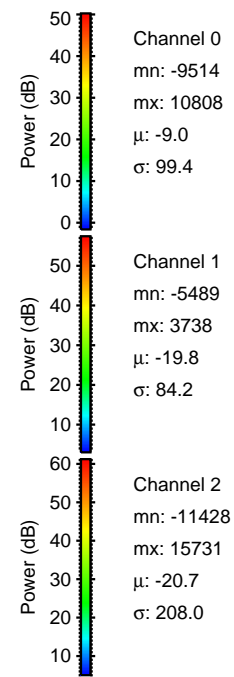
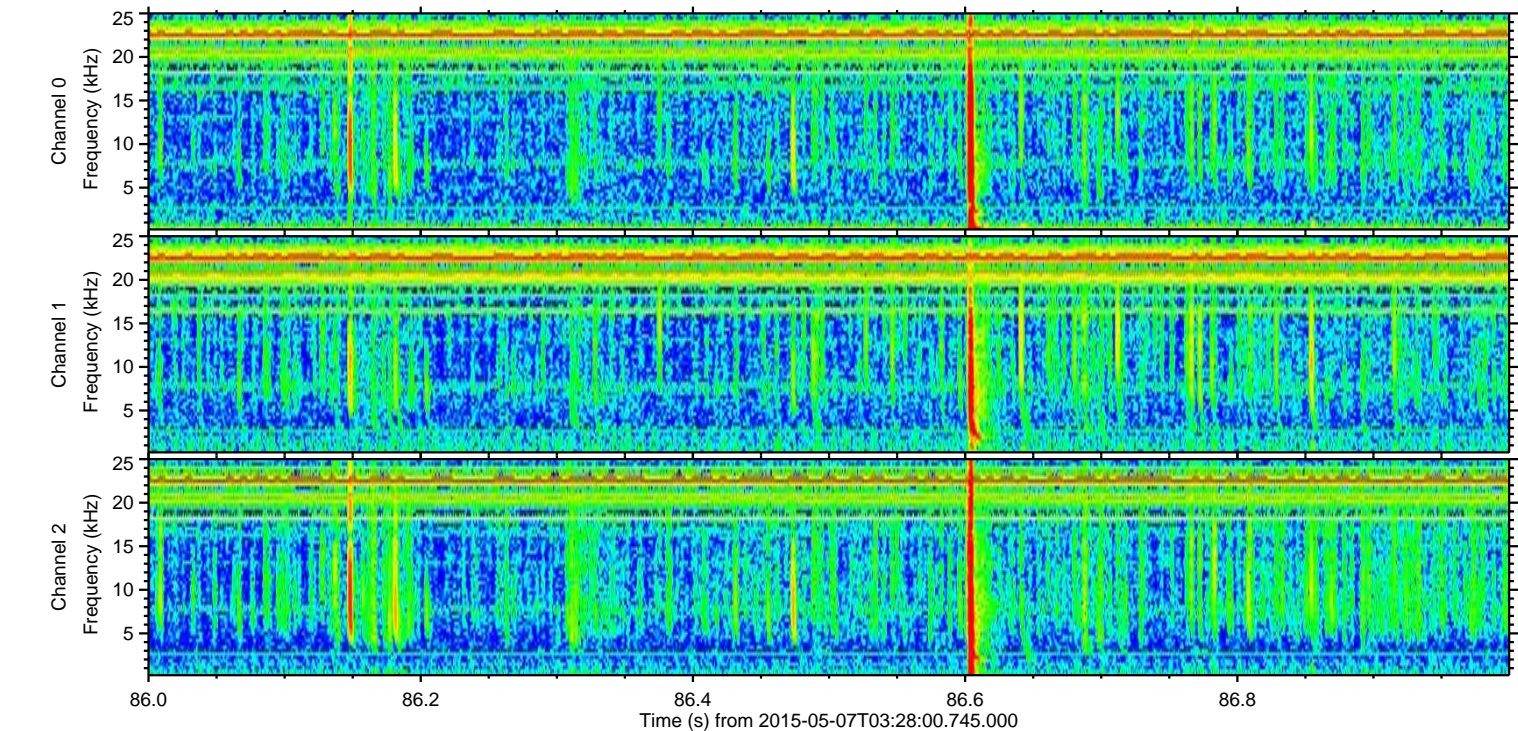
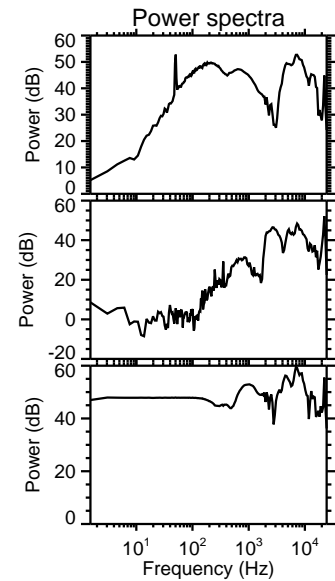
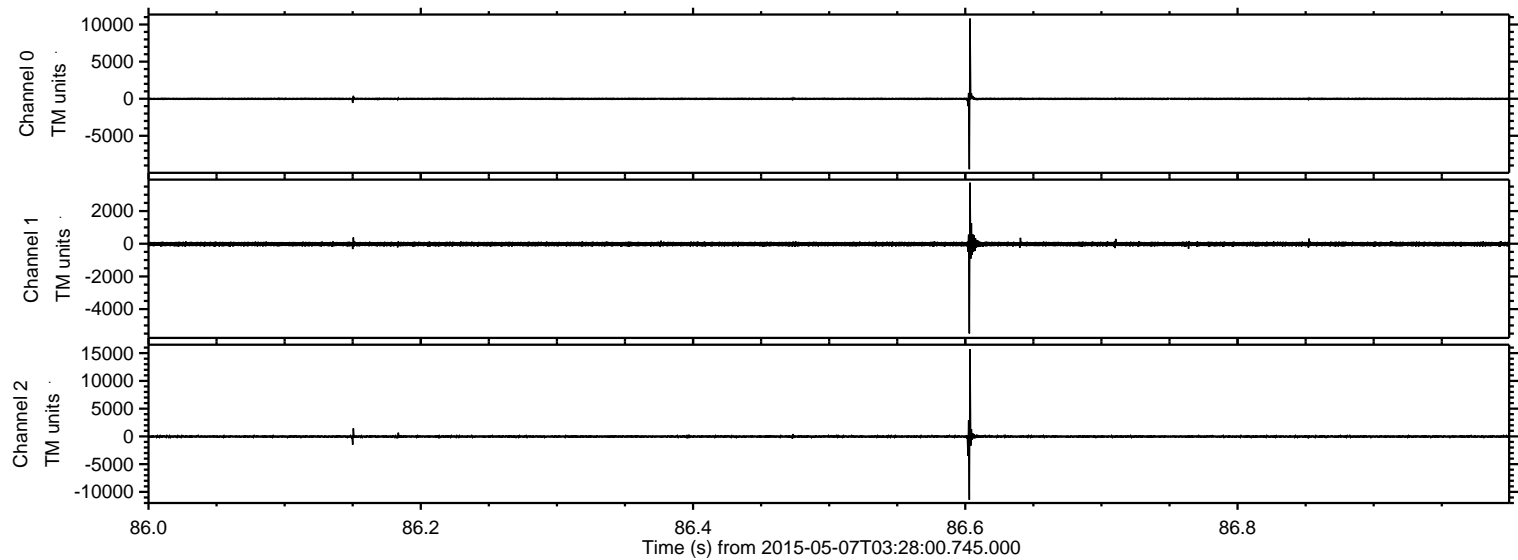
ELMAVAN 3D WAVEFORMS (Measured data sampled at 50 kHz) 49732 packets of 144 samples from 2015-05-07T03:28:00.745.000. Part 129/144

Processed Thu May 7 05:35:35 2015 by ELM ver.2012-10-06 from 001\_\_elm20150507\_032759\_\_dat00.bin



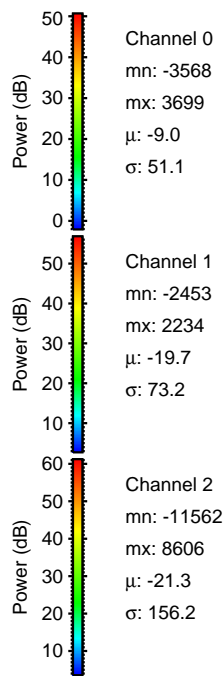
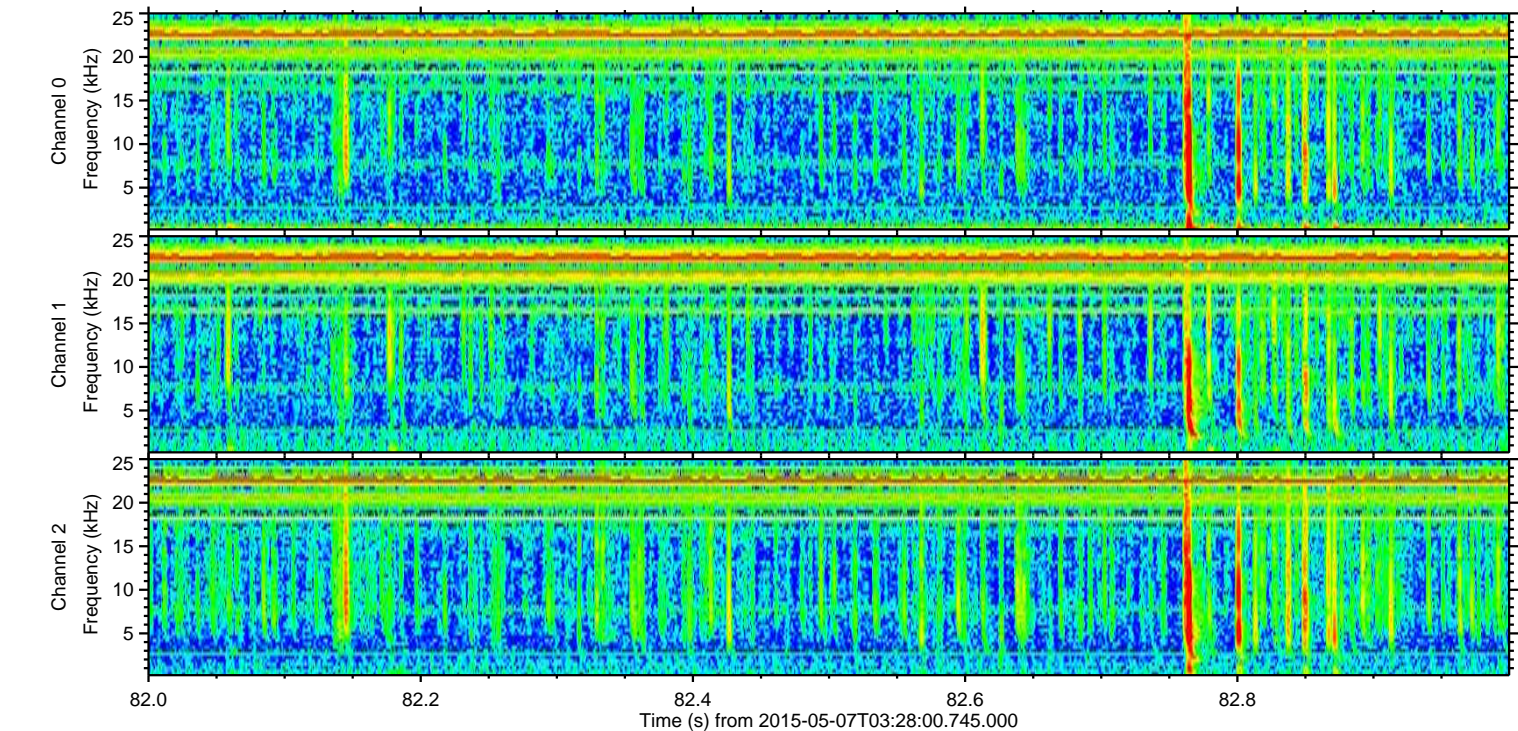
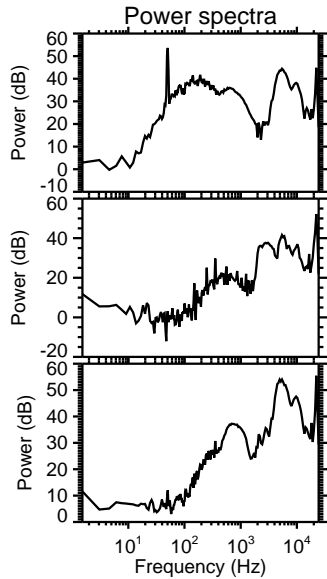
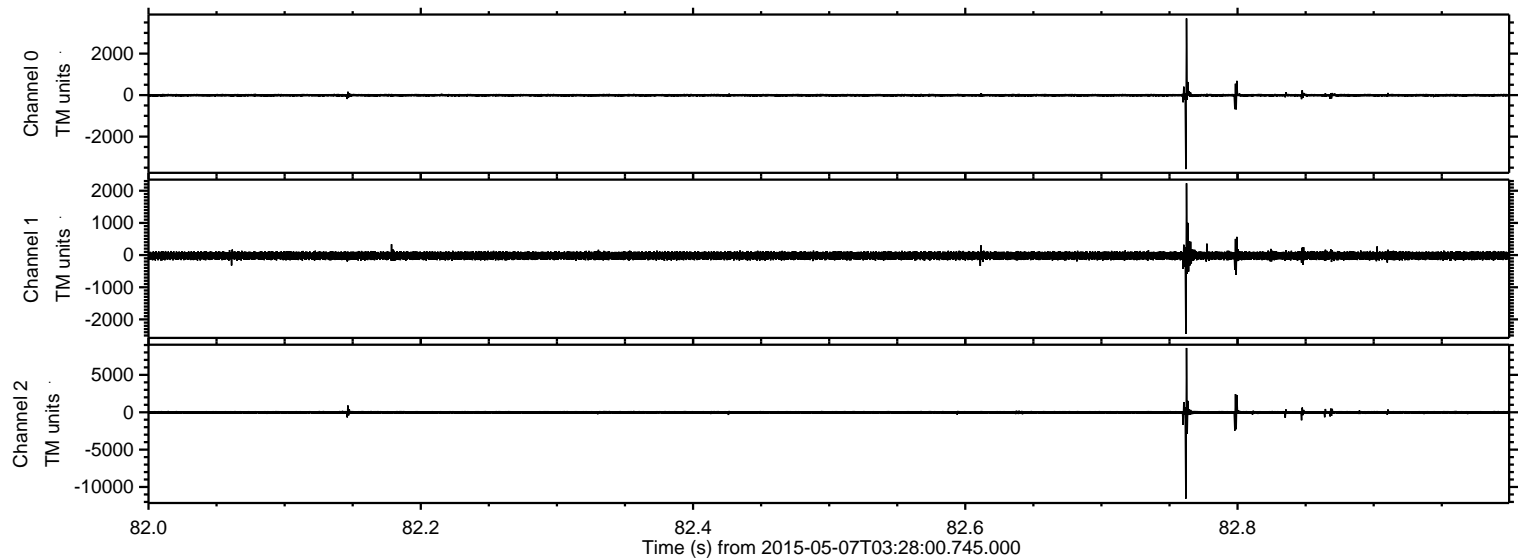


Processed Thu May 7 05:35:36 2015 by ELM ver.2012-10-06 from 001\_\_elm20150507\_032759\_\_dat00.bin



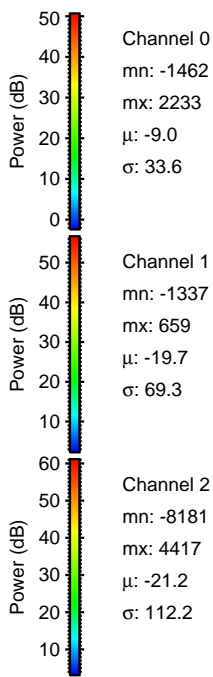
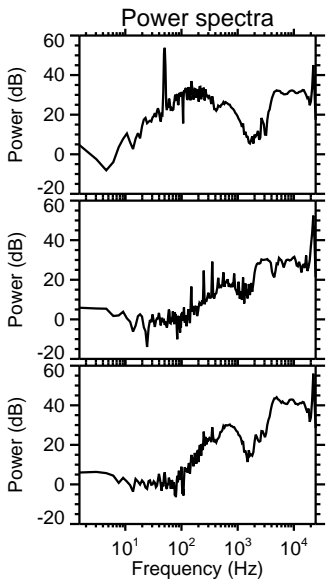
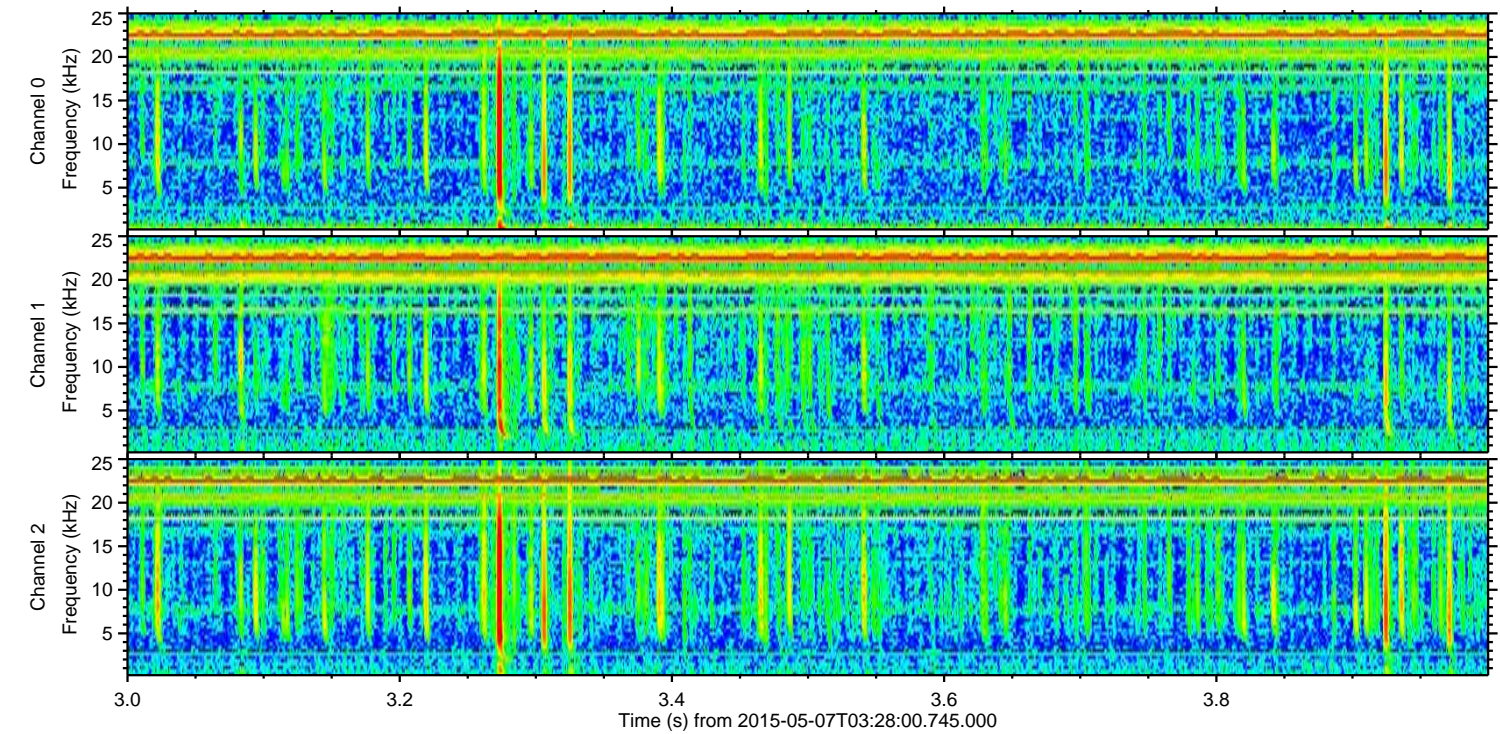
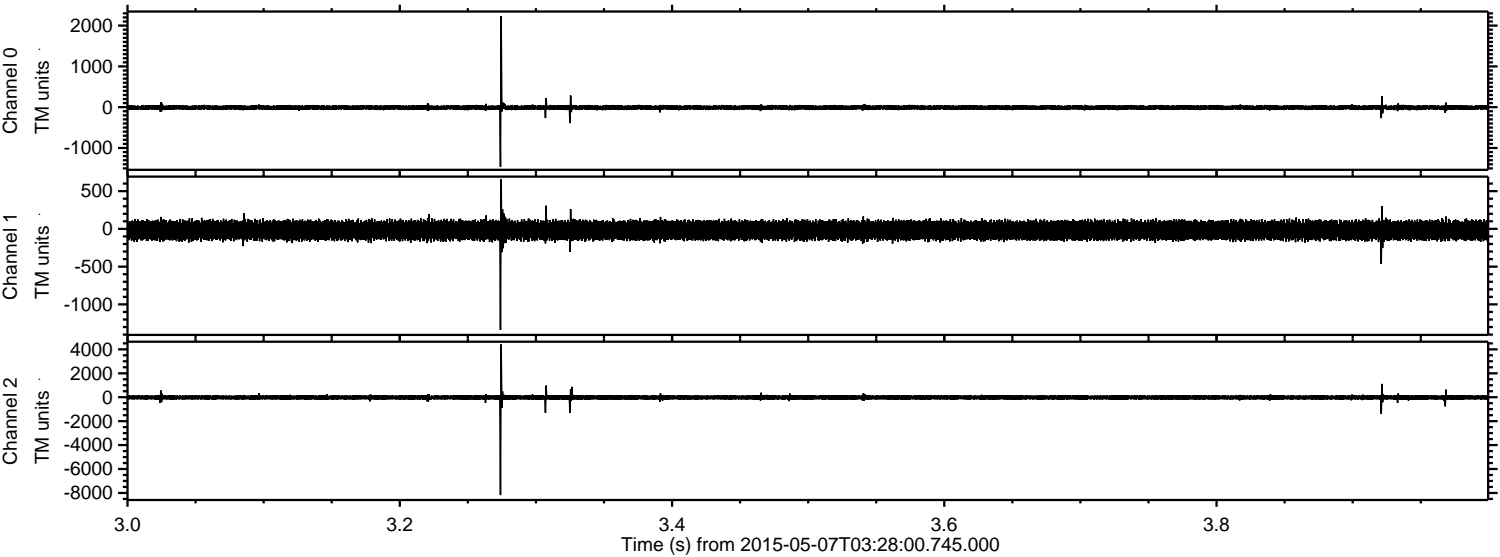


Processed Thu May 7 05:35:37 2015 by ELM ver.2012-10-06 from 001\_\_elm20150507\_032759\_\_dat00.bin





Processed Thu May 7 05:35:38 2015 by ELM ver.2012-10-06 from 001\_\_elm20150507\_032759\_\_dat00.bin



Channel 0  
mn: -1462  
mx: 2233  
 $\mu$ : -9.0  
 $\sigma$ : 33.6

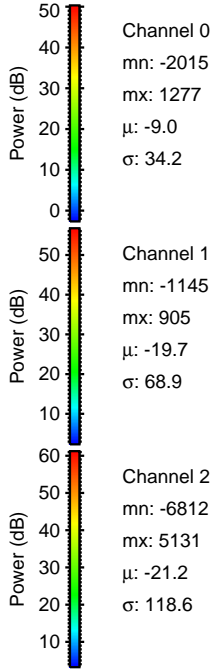
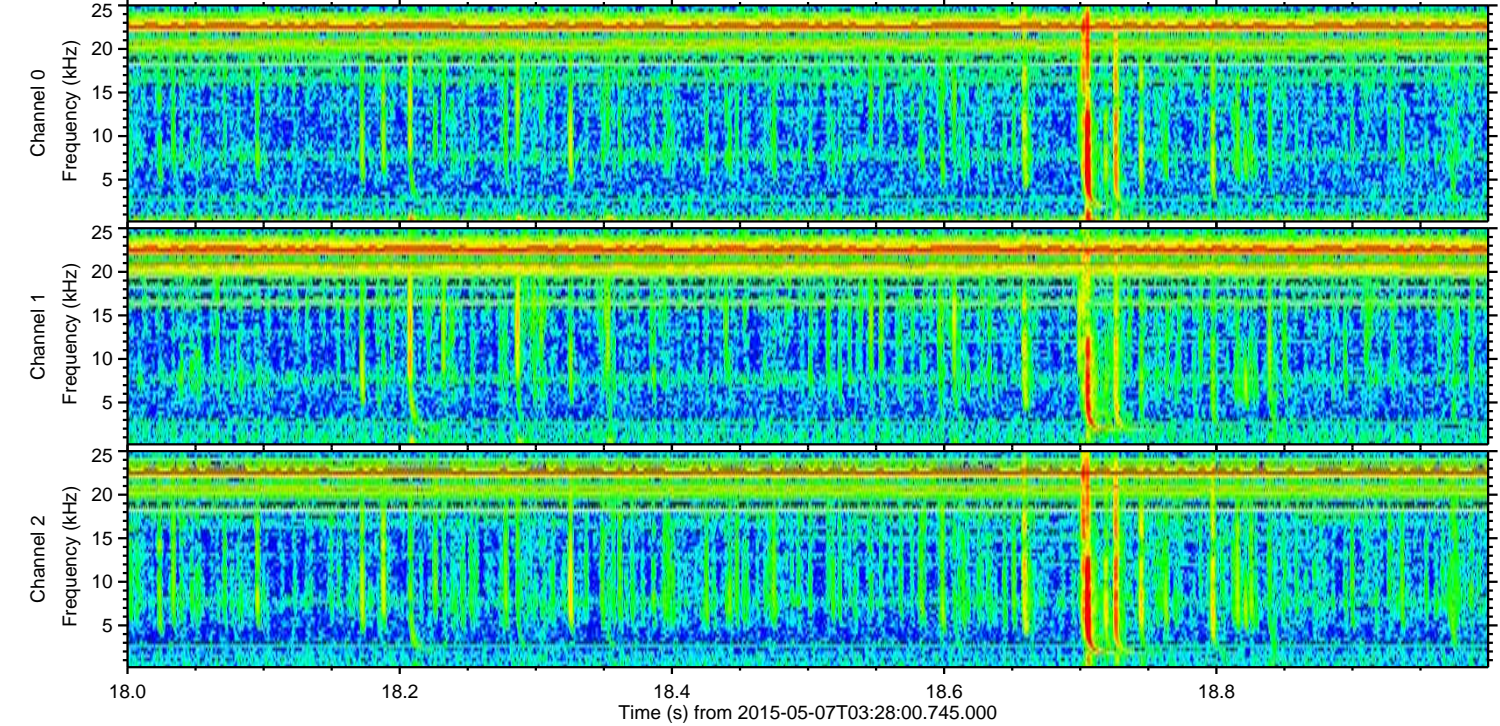
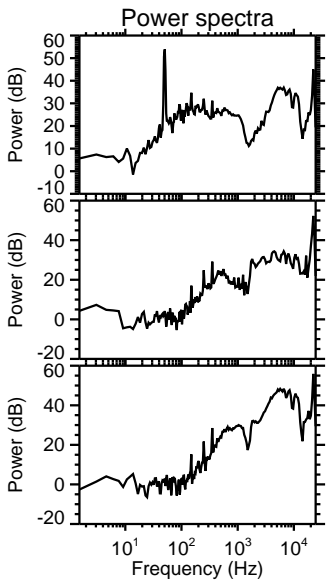
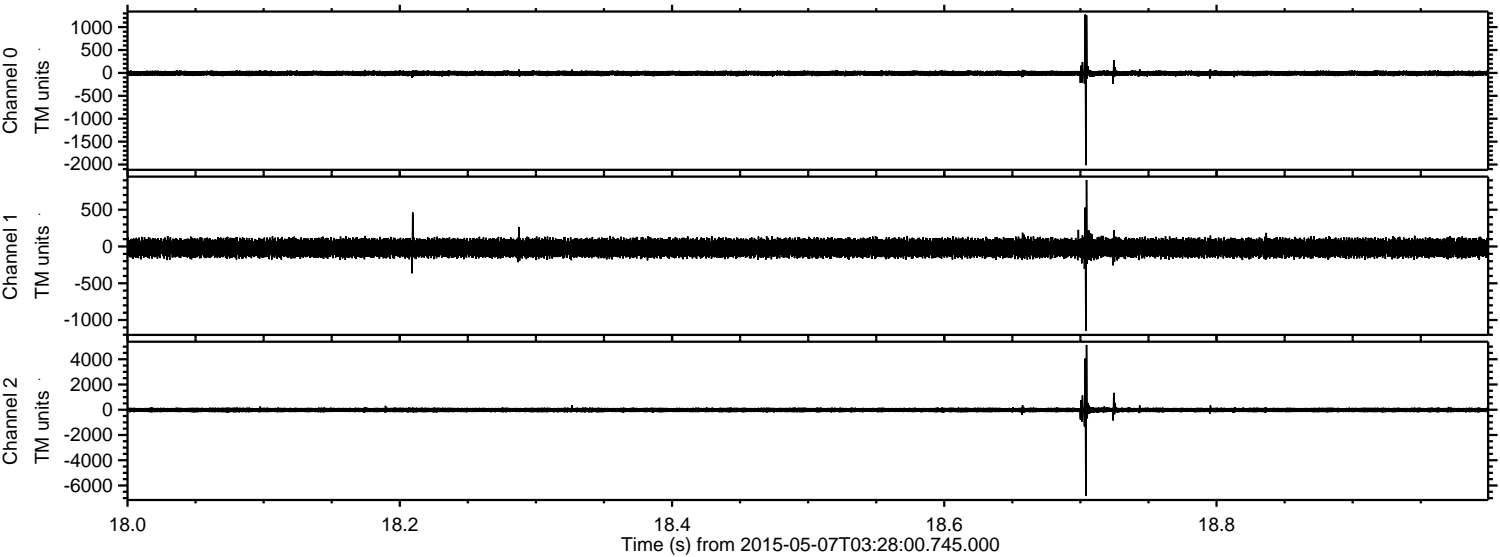
Channel 1  
mn: -1337  
mx: 659  
 $\mu$ : -19.7  
 $\sigma$ : 69.3

Channel 2  
mn: -8181  
mx: 4417  
 $\mu$ : -21.2  
 $\sigma$ : 112.2



ELMAVAN 3D WAVEFORMS (Measured data sampled at 50 kHz) 49732 packets of 144 samples from 2015-05-07T03:28:00.745.000. Part 19/144

Processed Thu May 7 05:35:39 2015 by ELM ver.2012-10-06 from 001\_\_elm20150507\_032759\_\_dat00.bin



Channel 0  
mn: -2015  
mx: 1277  
 $\mu$ : -9.0  
 $\sigma$ : 34.2

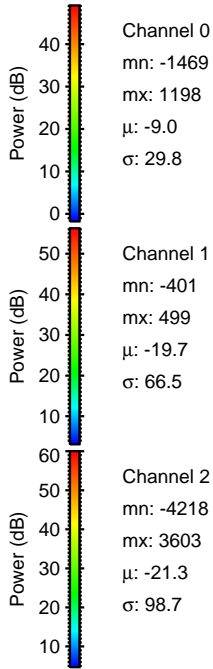
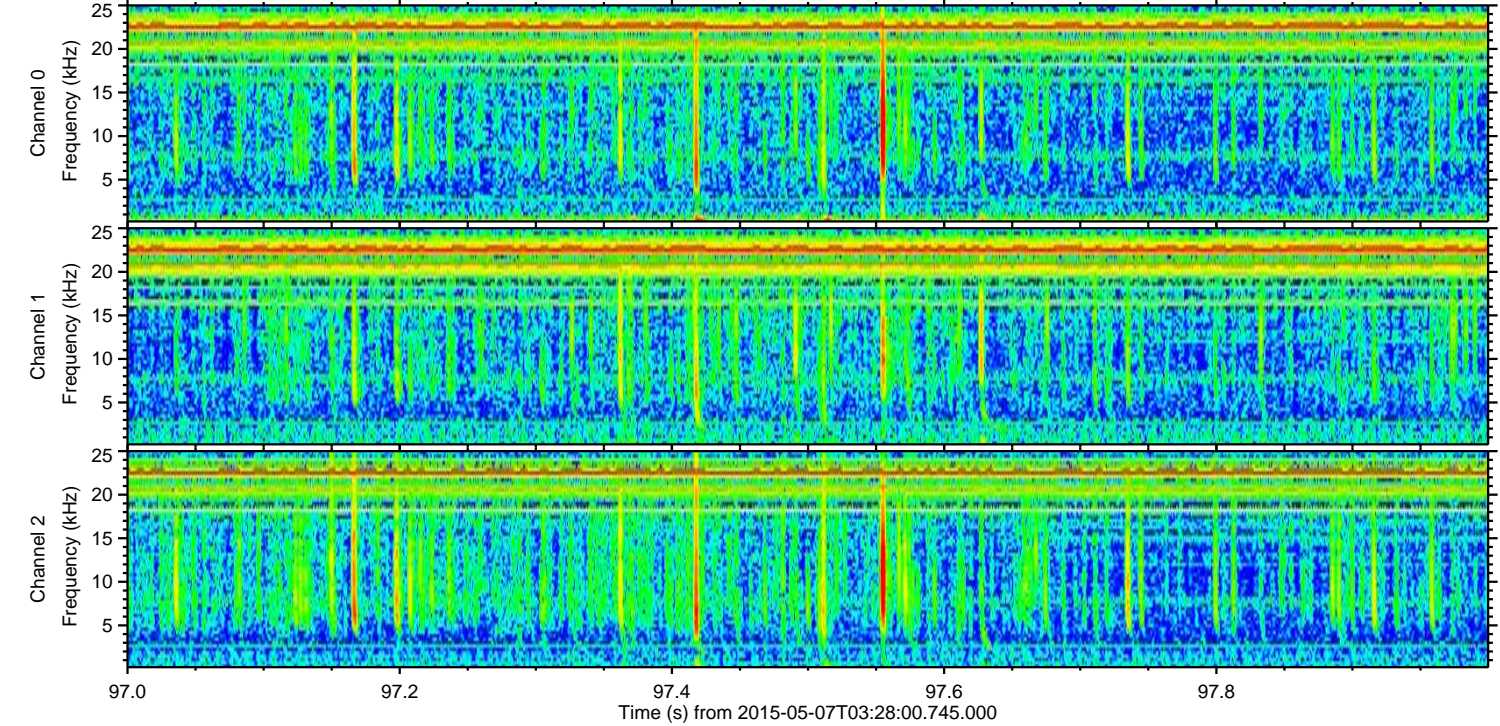
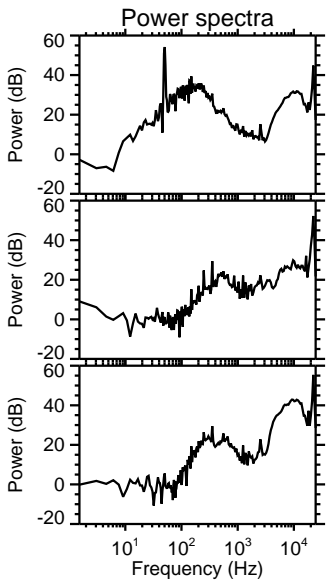
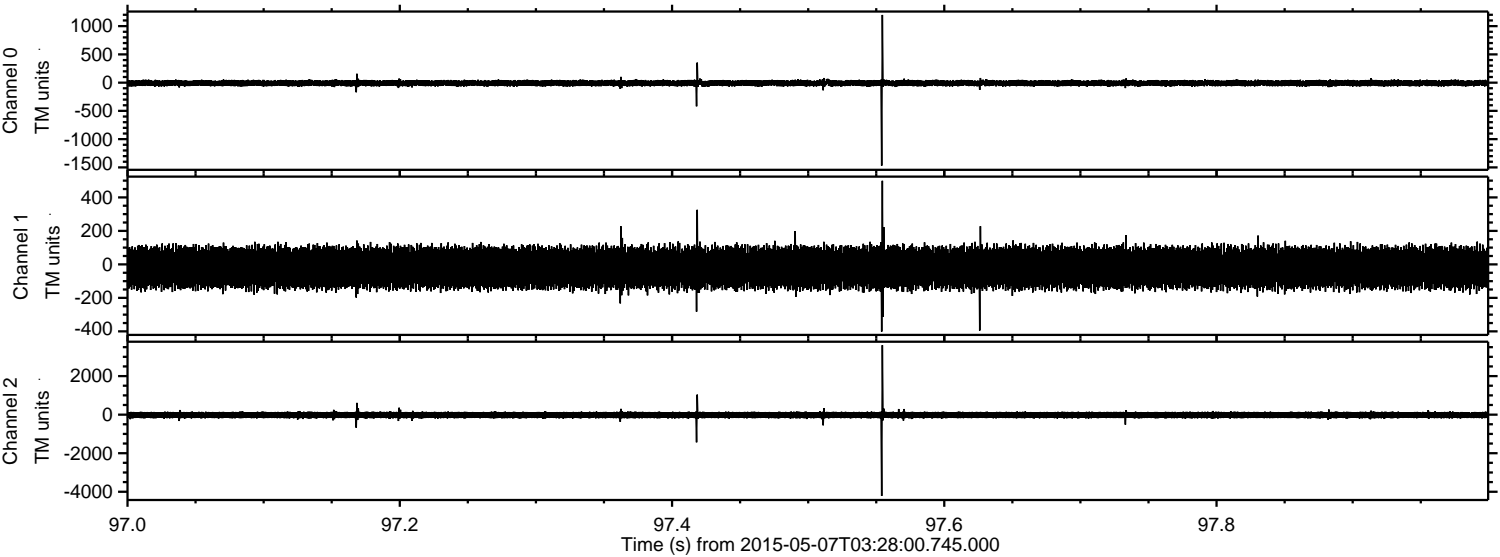
Channel 1  
mn: -1145  
mx: 905  
 $\mu$ : -19.7  
 $\sigma$ : 68.9

Channel 2  
mn: -6812  
mx: 5131  
 $\mu$ : -21.2  
 $\sigma$ : 118.6



ELMAVAN 3D WAVEFORMS (Measured data sampled at 50 kHz) 49732 packets of 144 samples from 2015-05-07T03:28:00.745.000. Part 98/144

Processed Thu May 7 05:35:40 2015 by ELM ver.2012-10-06 from 001\_\_elm20150507\_032759\_\_dat00.bin



Channel 0  
mn: -1469  
mx: 1198  
 $\mu$ : -9.0  
 $\sigma$ : 29.8

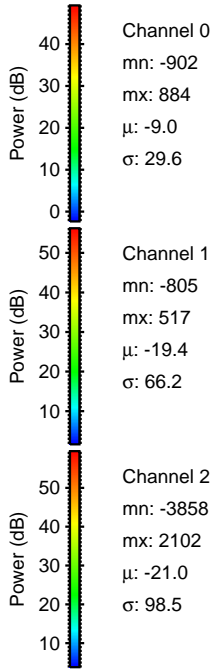
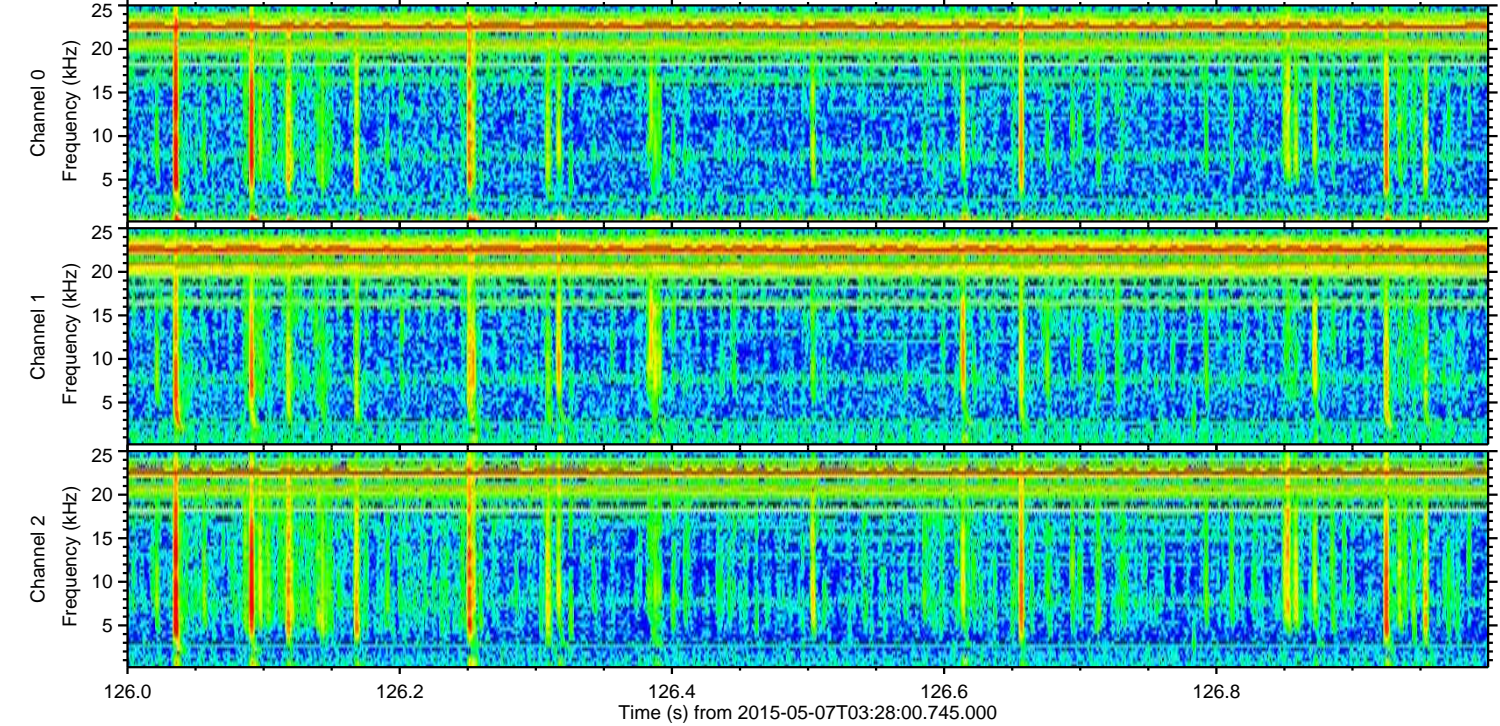
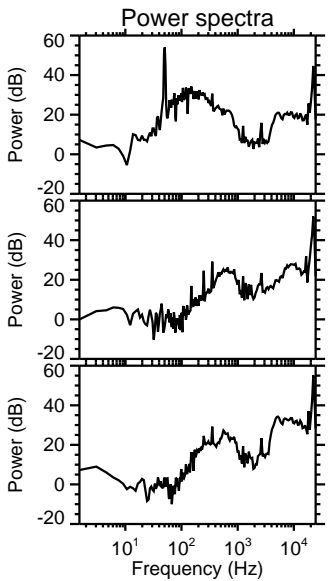
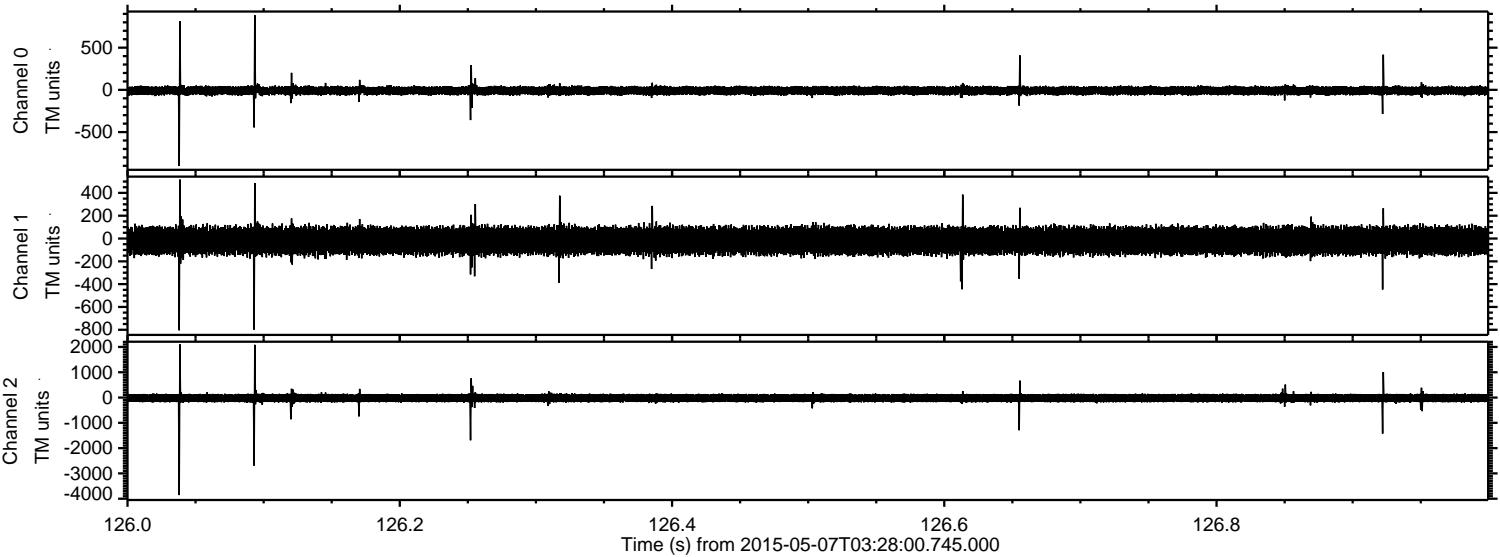
Channel 1  
mn: -401  
mx: 499  
 $\mu$ : -19.7  
 $\sigma$ : 66.5

Channel 2  
mn: -4218  
mx: 3603  
 $\mu$ : -21.3  
 $\sigma$ : 98.7



ELMAVAN 3D WAVEFORMS (Measured data sampled at 50 kHz) 49732 packets of 144 samples from 2015-05-07T03:28:00.745.000. Part 127/144

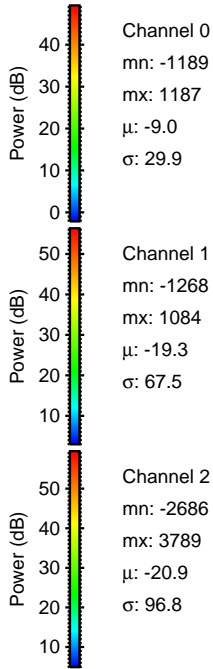
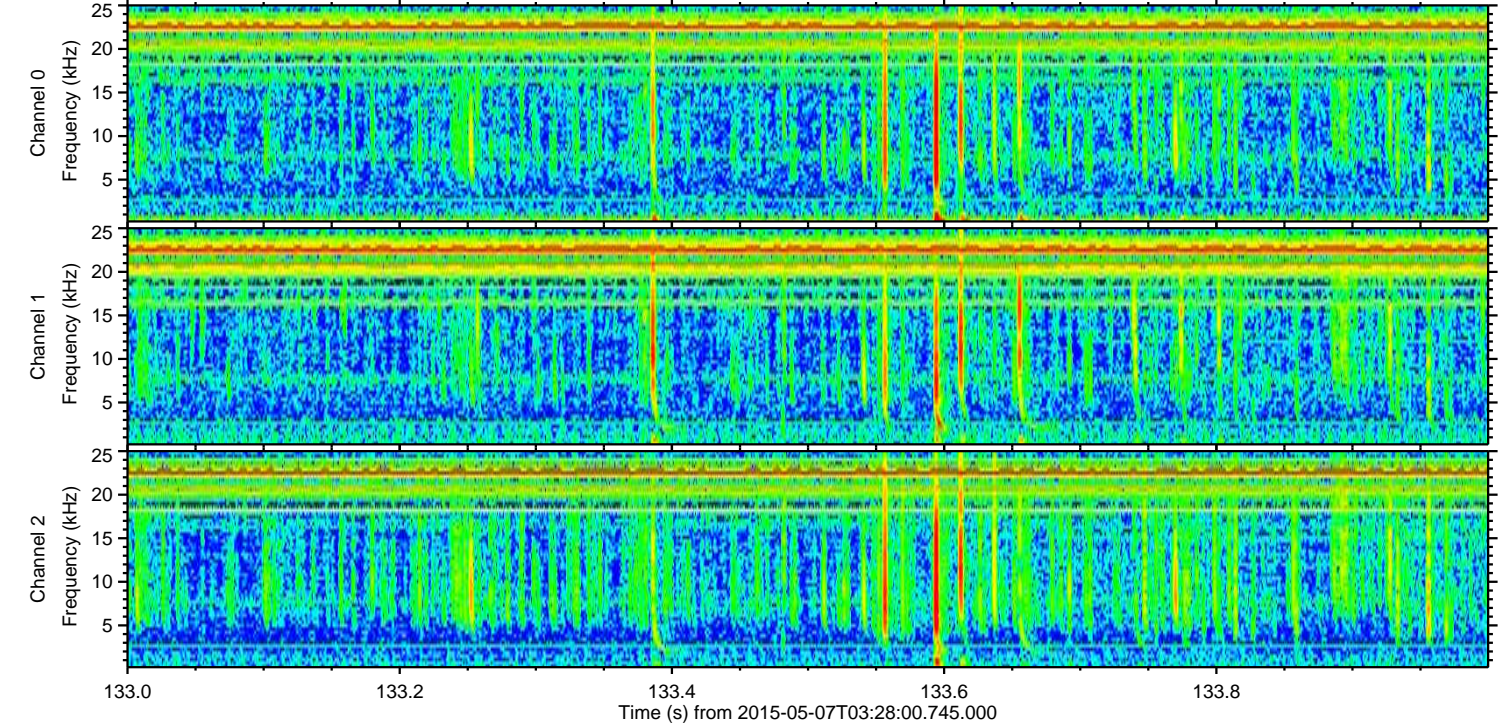
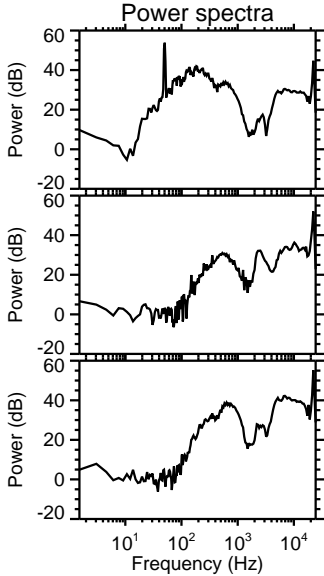
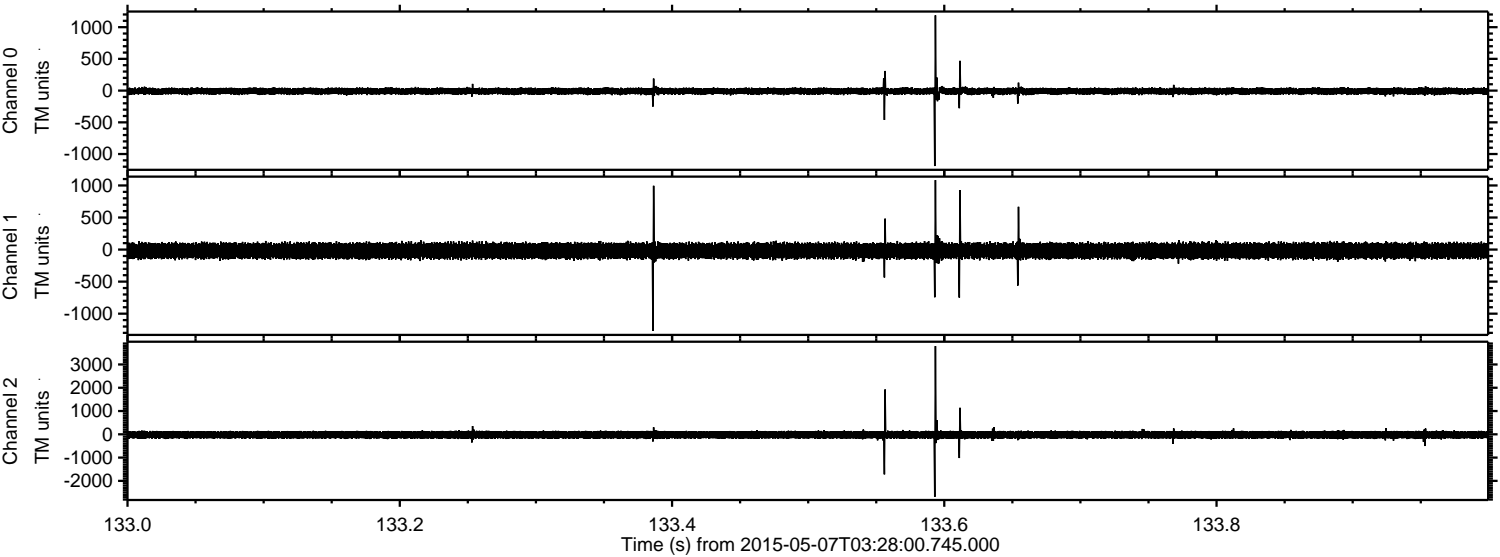
Processed Thu May 7 05:35:41 2015 by ELM ver.2012-10-06 from 001\_\_elm20150507\_032759\_\_dat00.bin





ELMAVAN 3D WAVEFORMS (Measured data sampled at 50 kHz) 49732 packets of 144 samples from 2015-05-07T03:28:00.745.000. Part 134/144

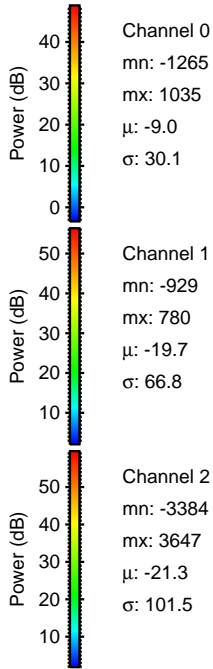
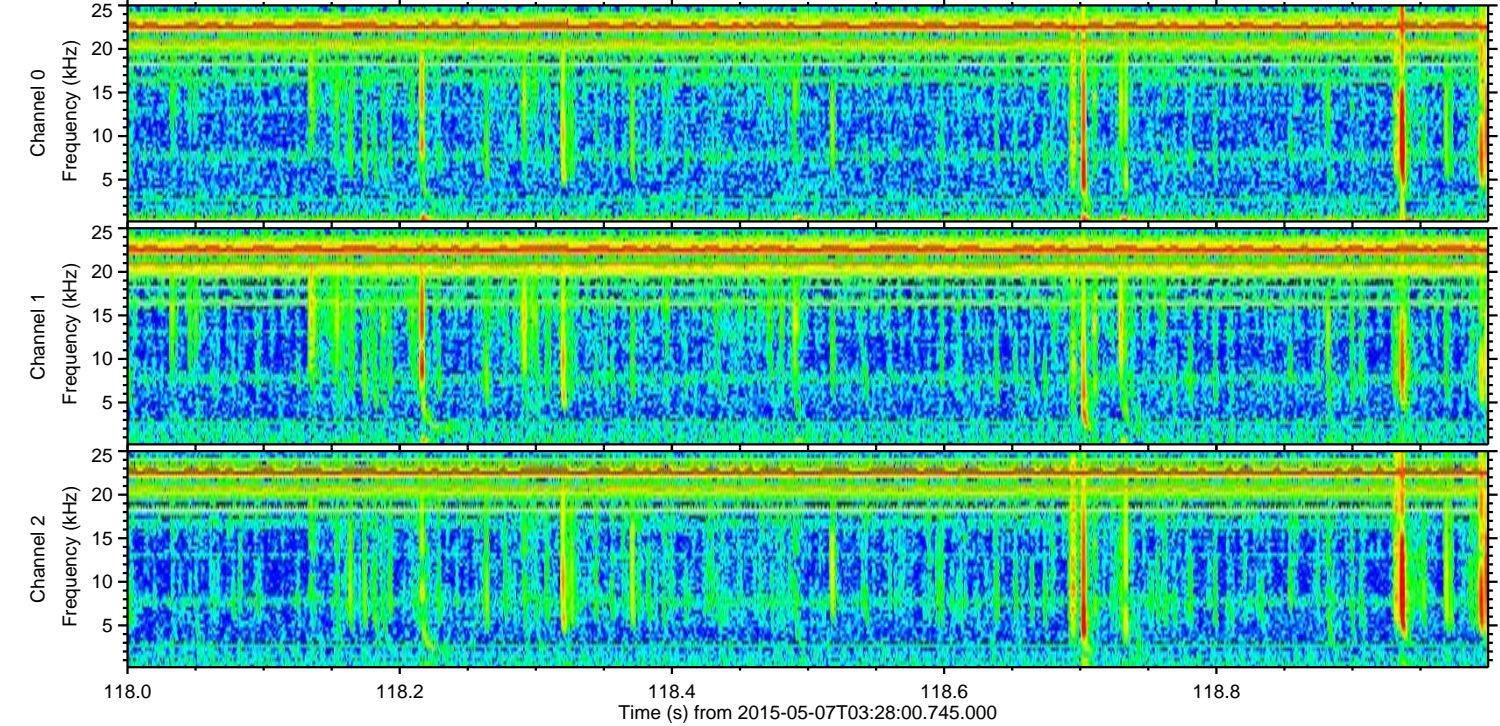
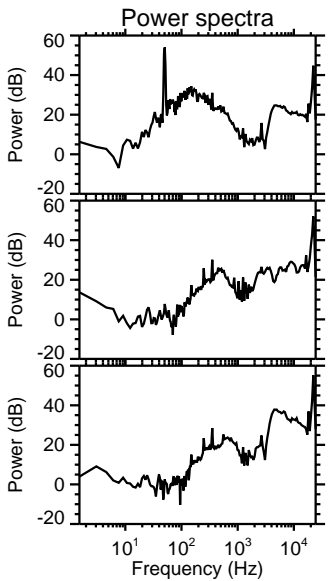
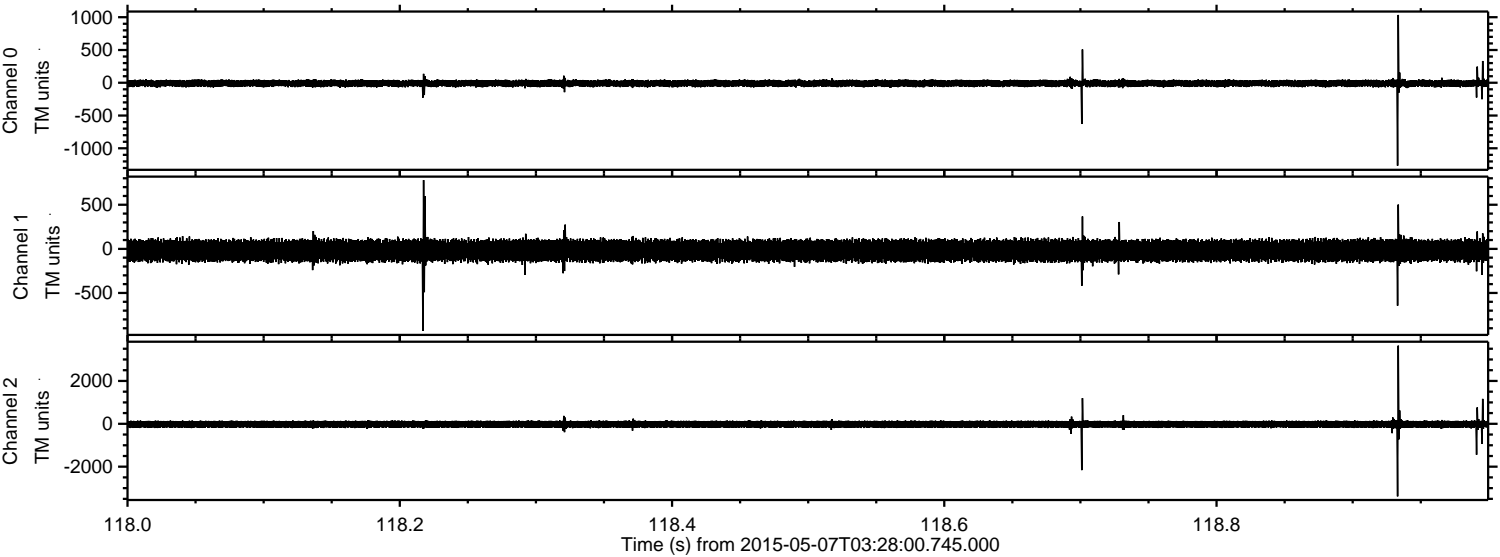
Processed Thu May 7 05:35:42 2015 by ELM ver.2012-10-06 from 001\_\_elm20150507\_032759\_\_dat00.bin





ELMAVAN 3D WAVEFORMS (Measured data sampled at 50 kHz) 49732 packets of 144 samples from 2015-05-07T03:28:00.745.000. Part 119/144

Processed Thu May 7 05:35:43 2015 by ELM ver.2012-10-06 from 001\_\_elm20150507\_032759\_\_dat00.bin



Channel 0  
mn: -1265  
mx: 1035  
 $\mu$ : -9.0  
 $\sigma$ : 30.1

Channel 1  
mn: -929  
mx: 780  
 $\mu$ : -19.7  
 $\sigma$ : 66.8

Channel 2  
mn: -3384  
mx: 3647  
 $\mu$ : -21.3  
 $\sigma$ : 101.5



ELMAVAN 3D WAVEFORMS (Measured data sampled at 50 kHz) 49732 packets of 144 samples from 2015-05-07T03:28:00.745.000. Part 108/144

