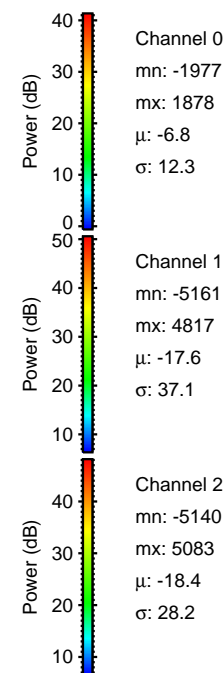
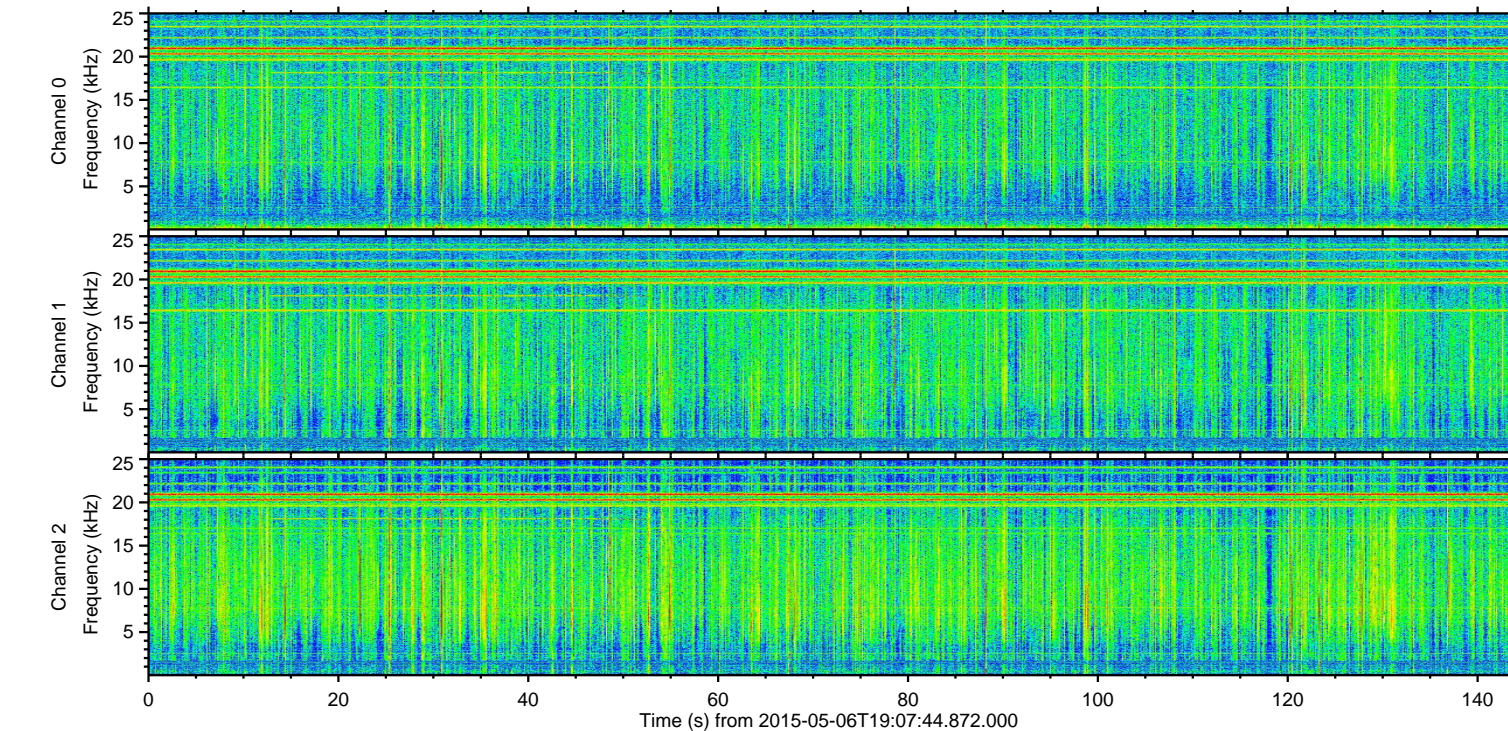
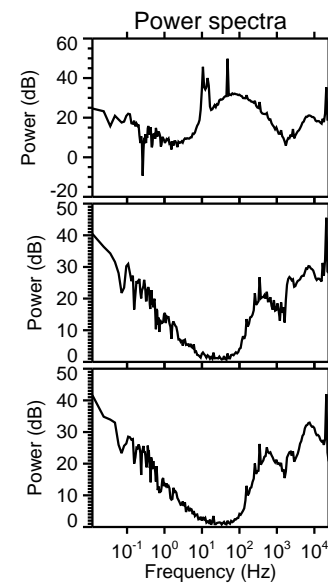
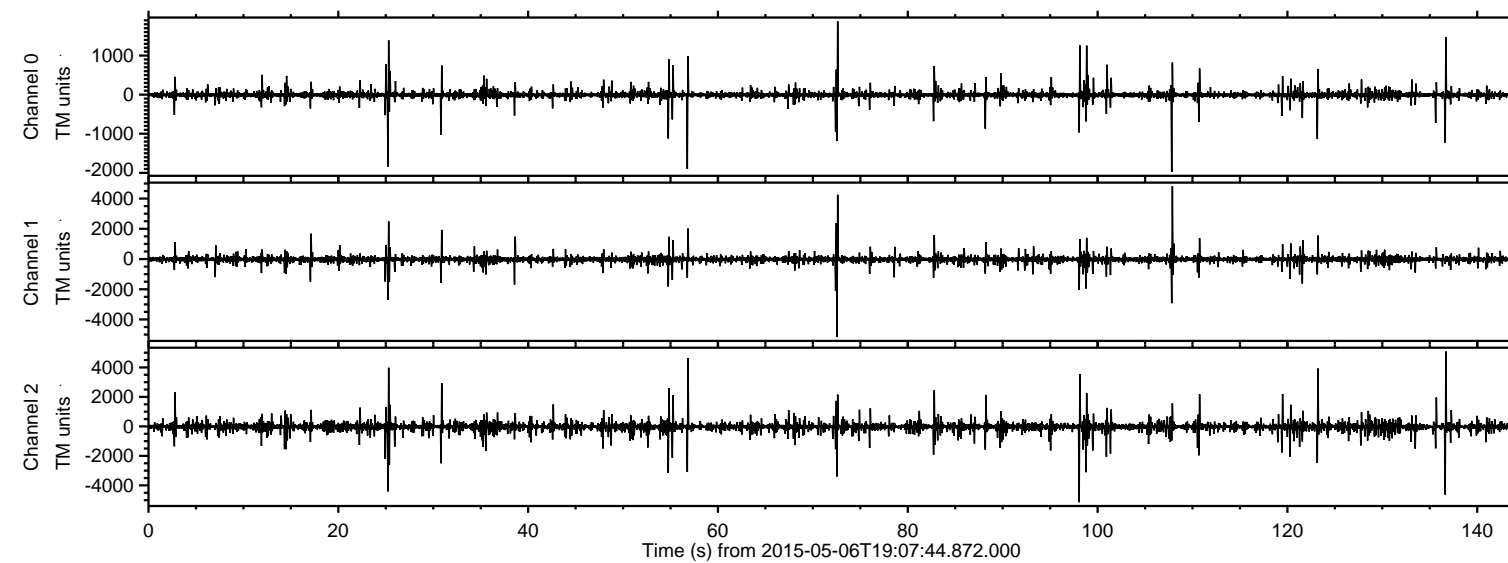


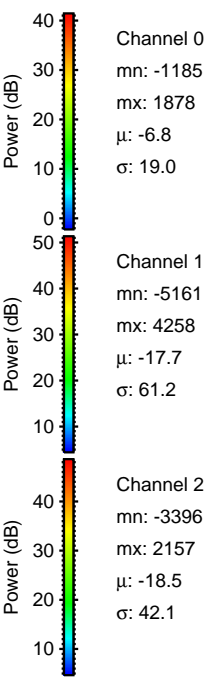
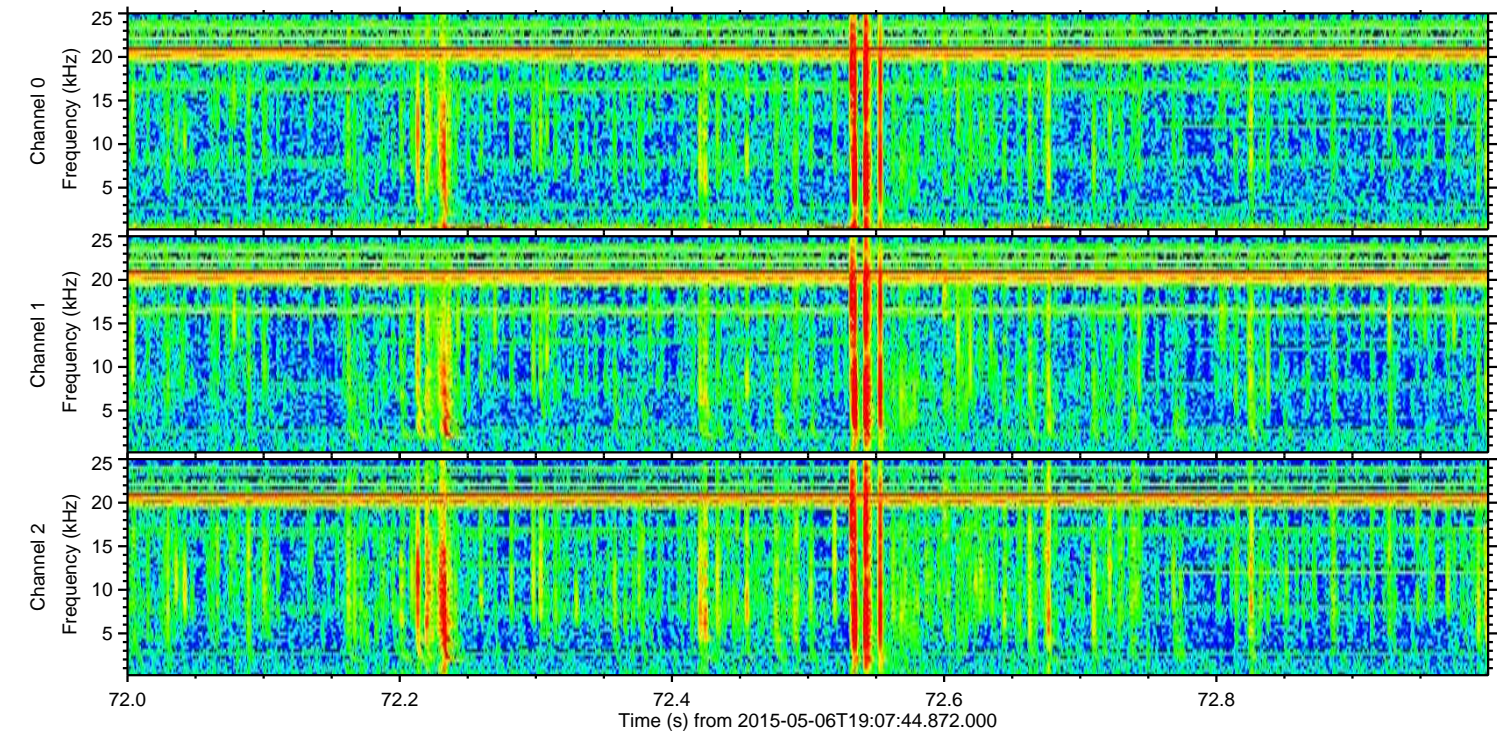
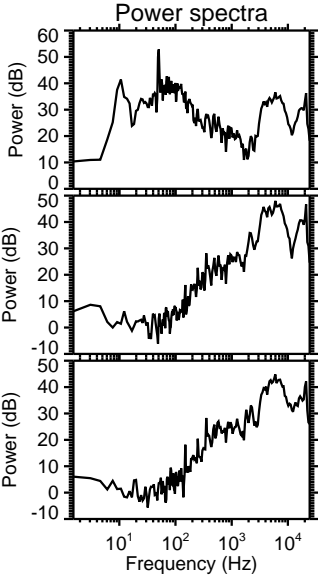
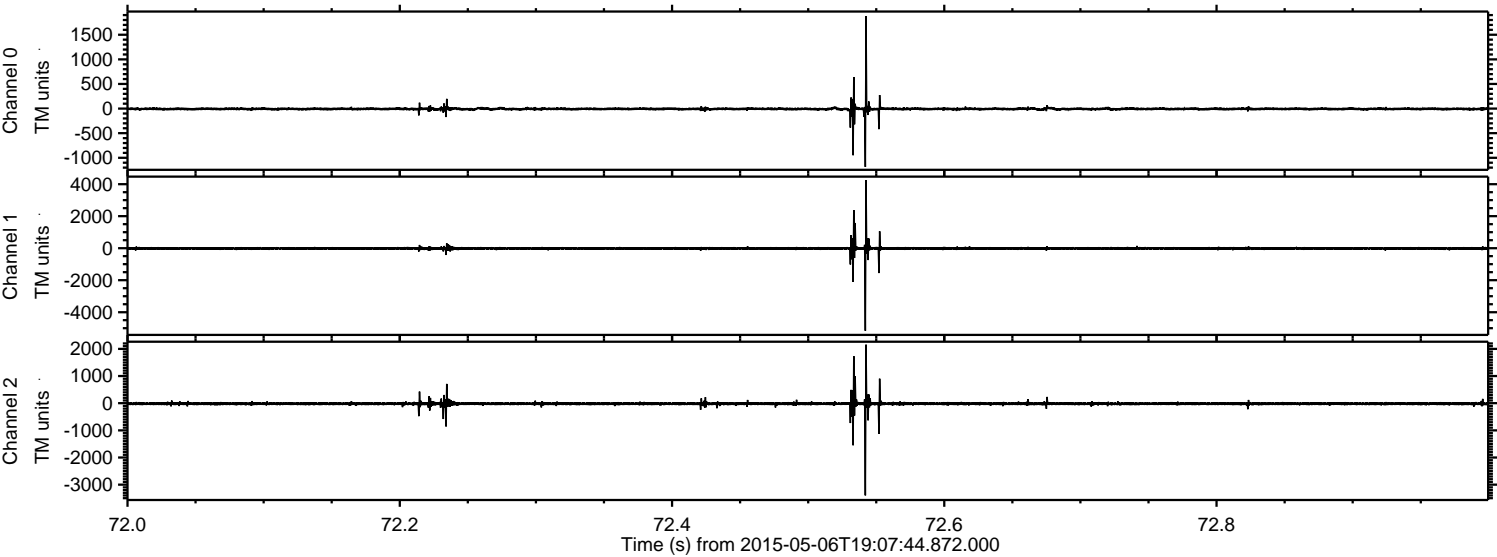
# ELMAVAN 3D WAVEFORMS (Measured data sampled at 50 kHz) 49778 packets of 144 samples from 2015-05-06T19:07:44.872.000.

Processed Wed May 6 21:14:55 2015 by ELM ver.2012-10-06 from 001\_\_elm20150506\_190743\_\_dat00.bin



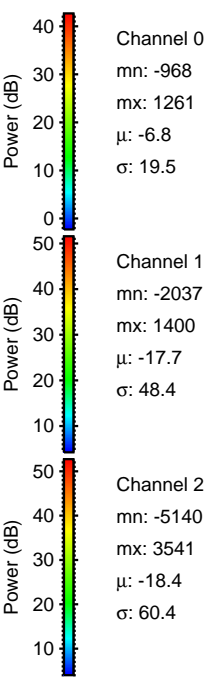
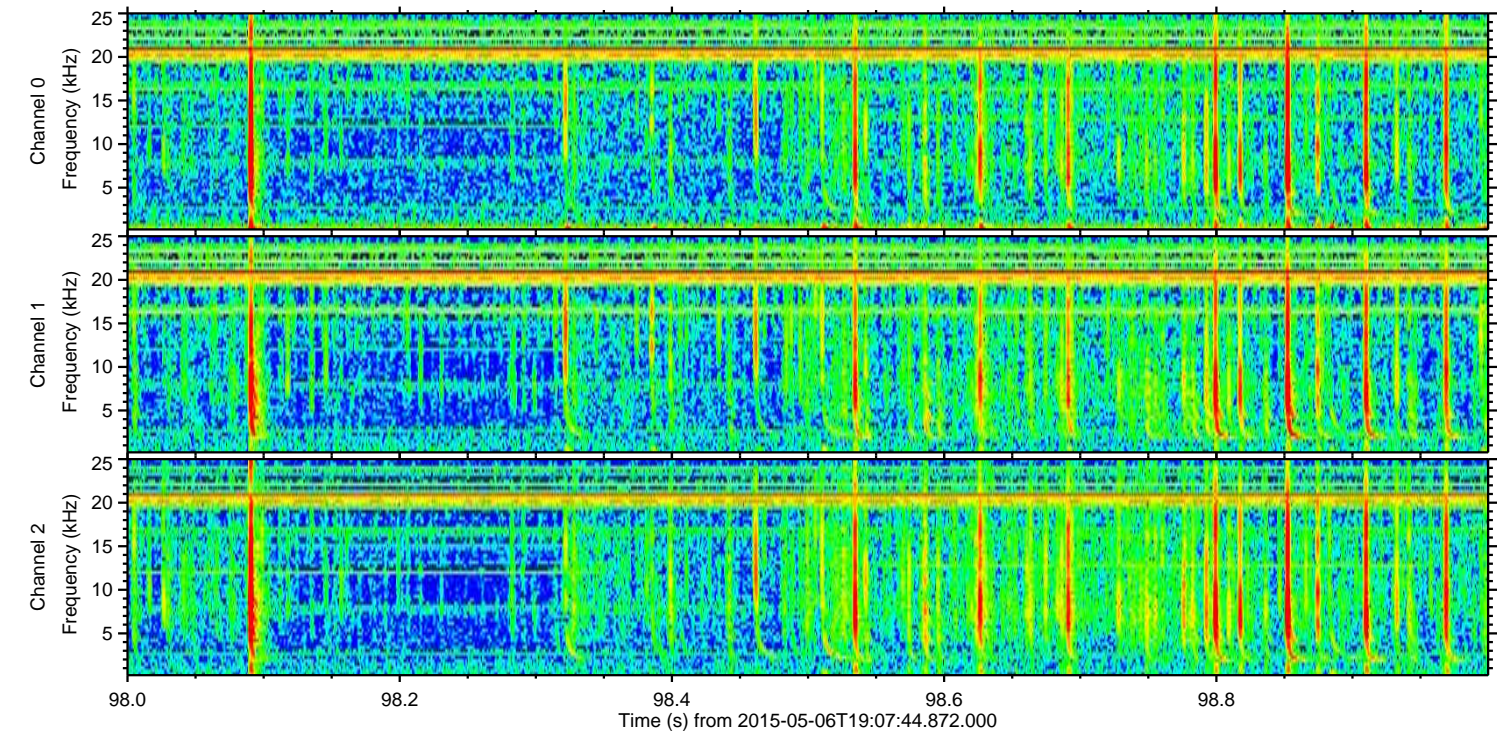
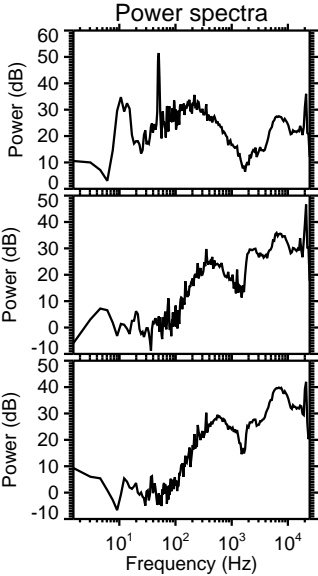
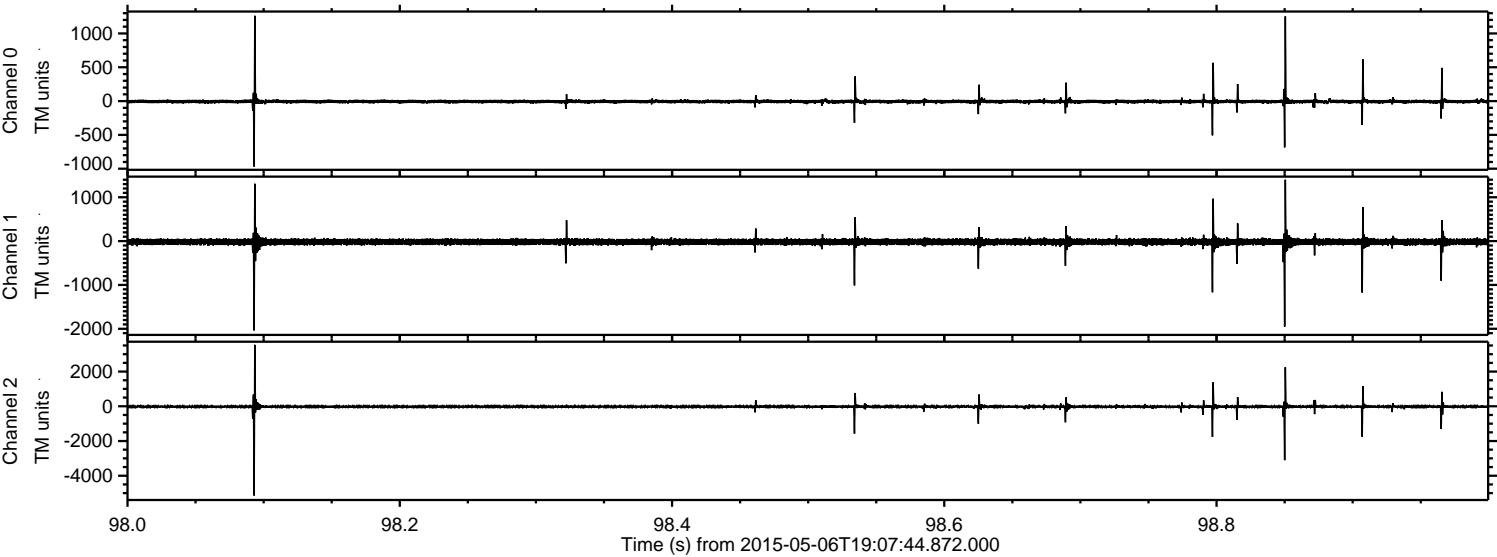


Processed Wed May 6 21:15:06 2015 by ELM ver.2012-10-06 from 001\_\_elm20150506\_190743\_\_dat00.bin





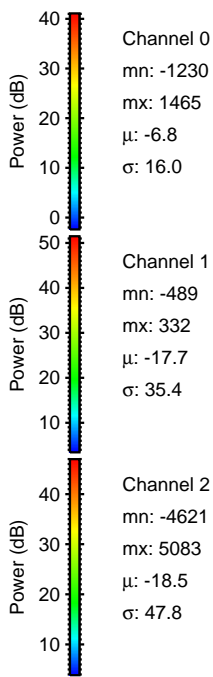
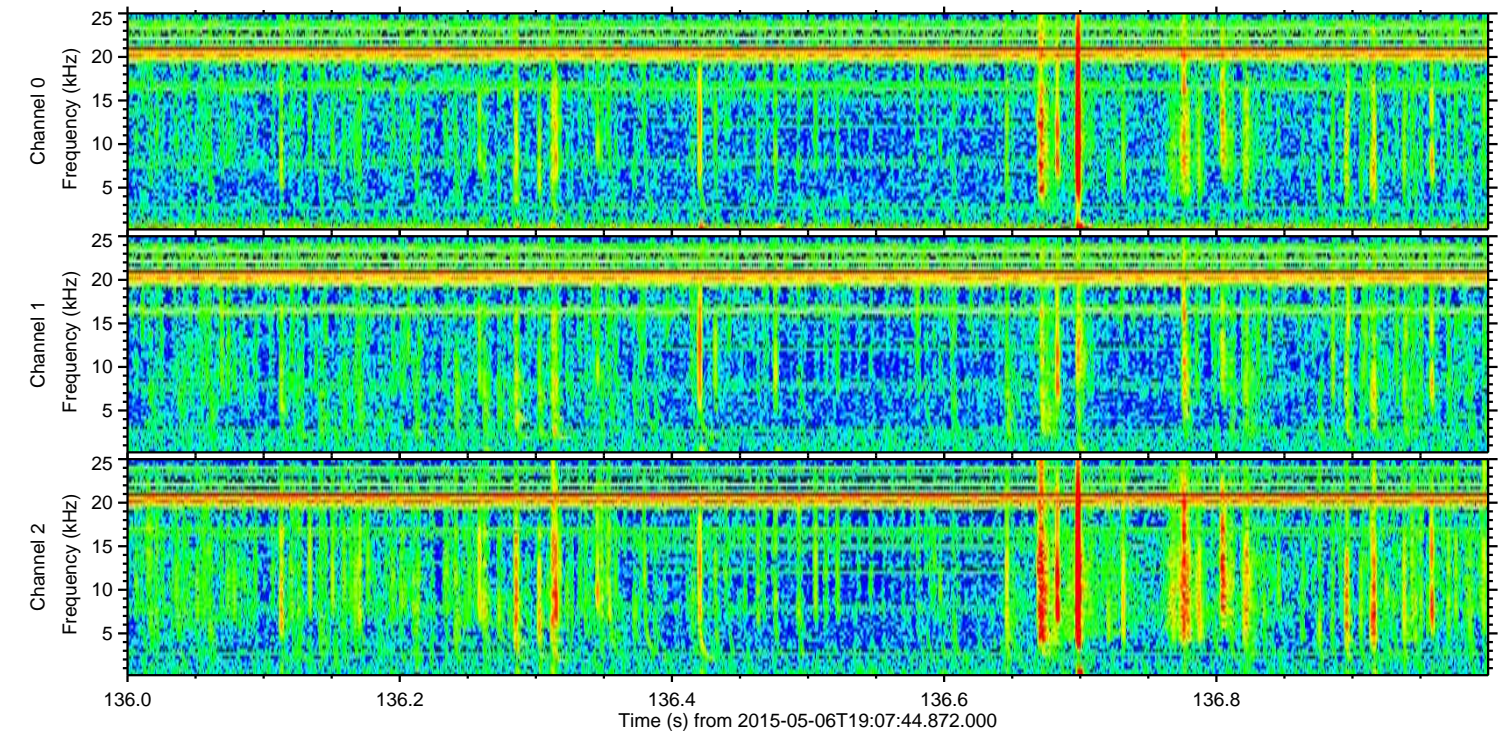
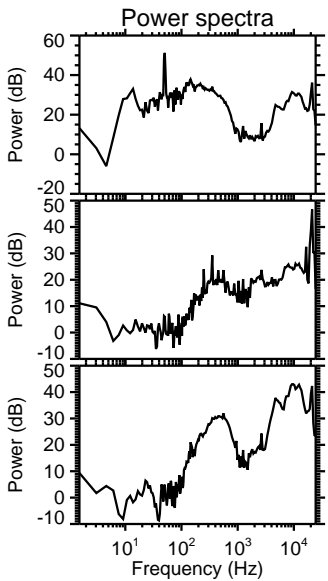
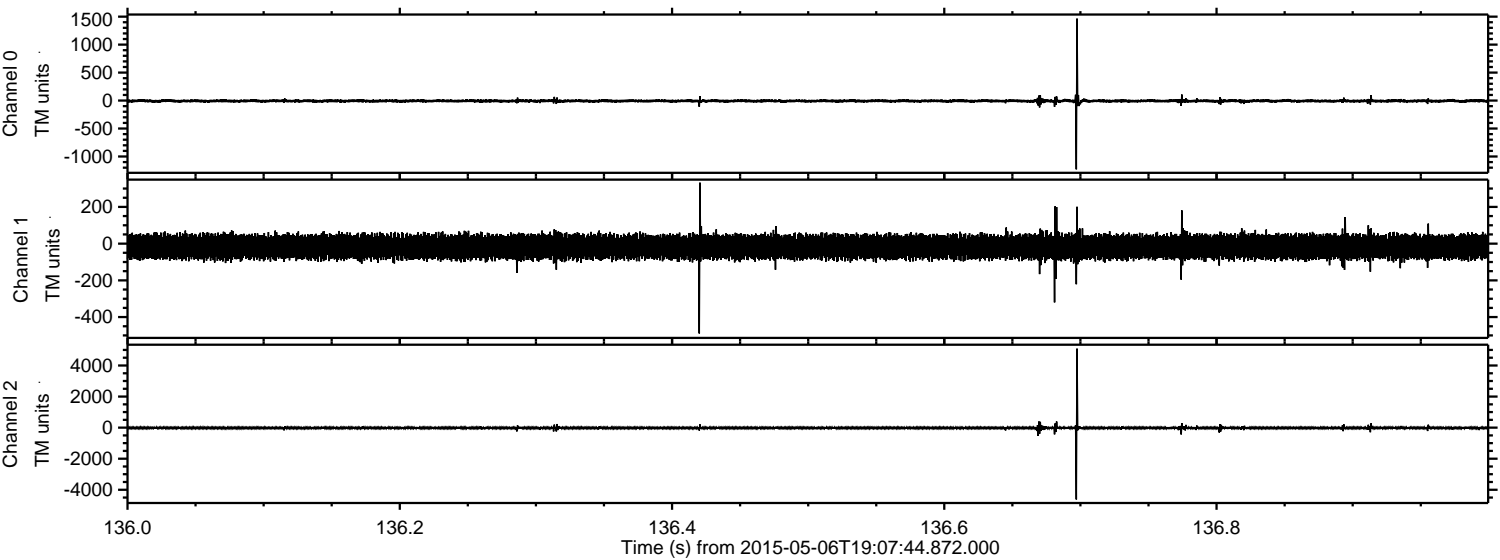
Processed Wed May 6 21:15:07 2015 by ELM ver.2012-10-06 from 001\_\_elm20150506\_190743\_\_dat00.bin





ELMAVAN 3D WAVEFORMS (Measured data sampled at 50 kHz) 49778 packets of 144 samples from 2015-05-06T19:07:44.872.000. Part 137/144

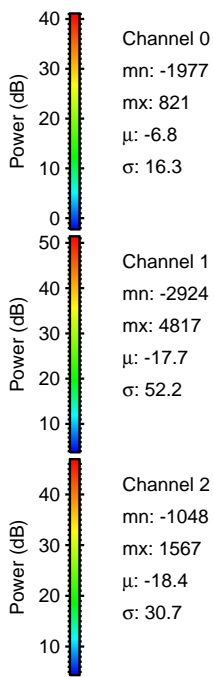
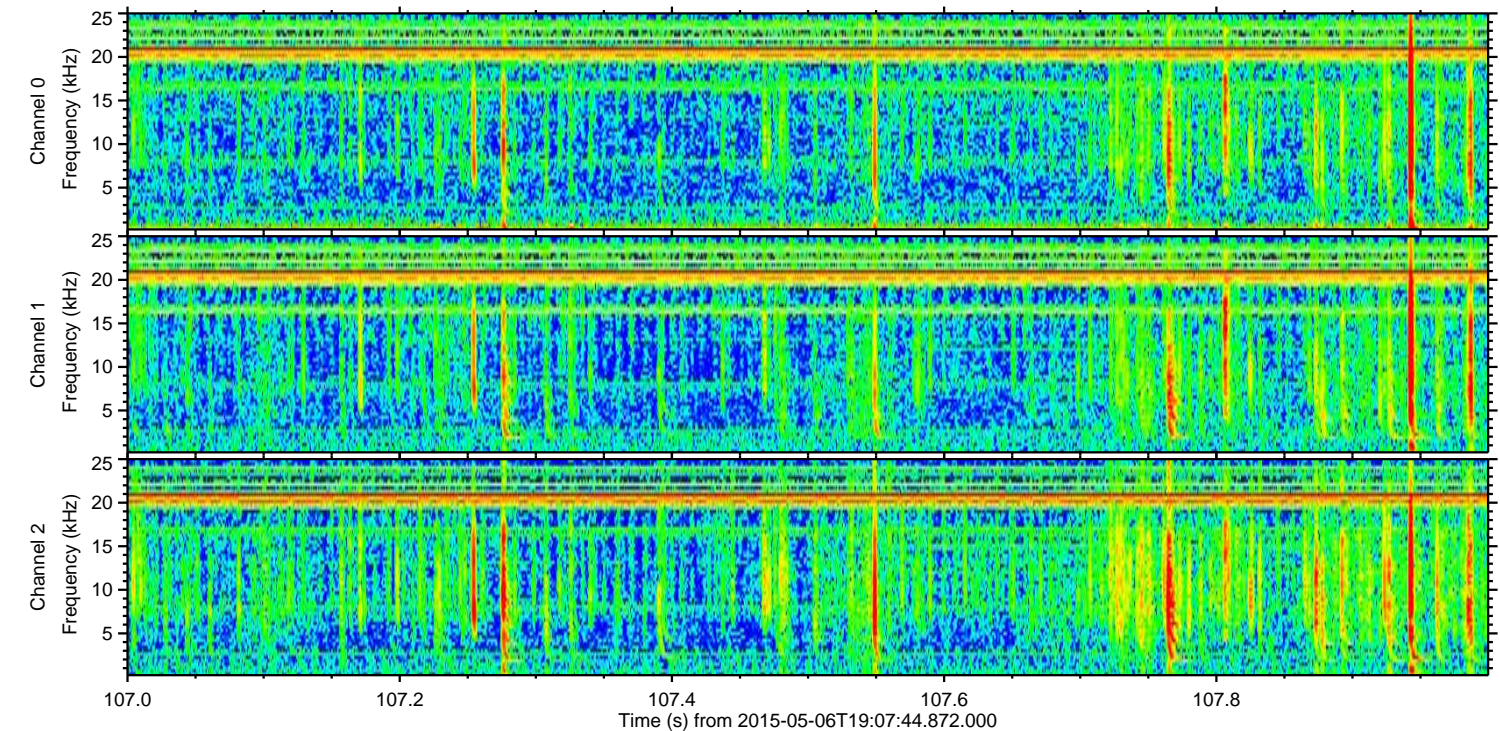
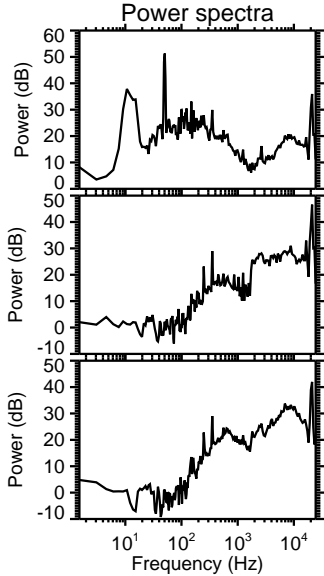
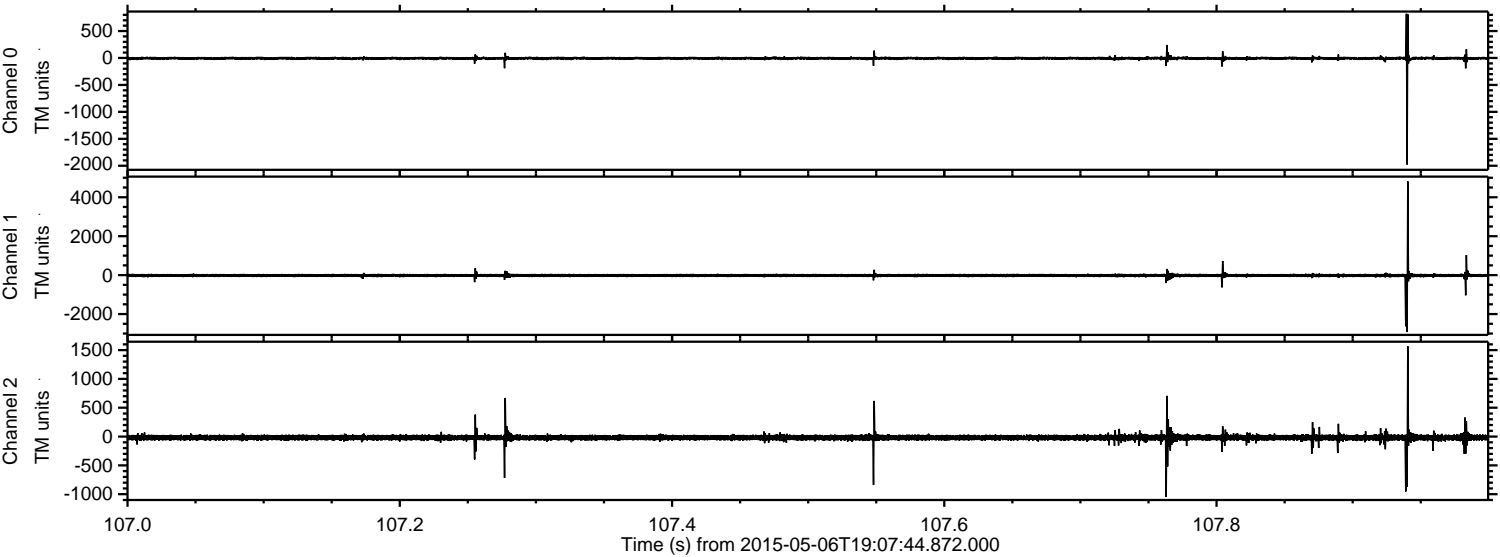
Processed Wed May 6 21:15:08 2015 by ELM ver.2012-10-06 from 001\_\_elm20150506\_190743\_\_dat00.bin





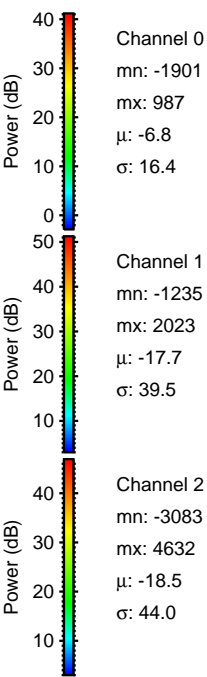
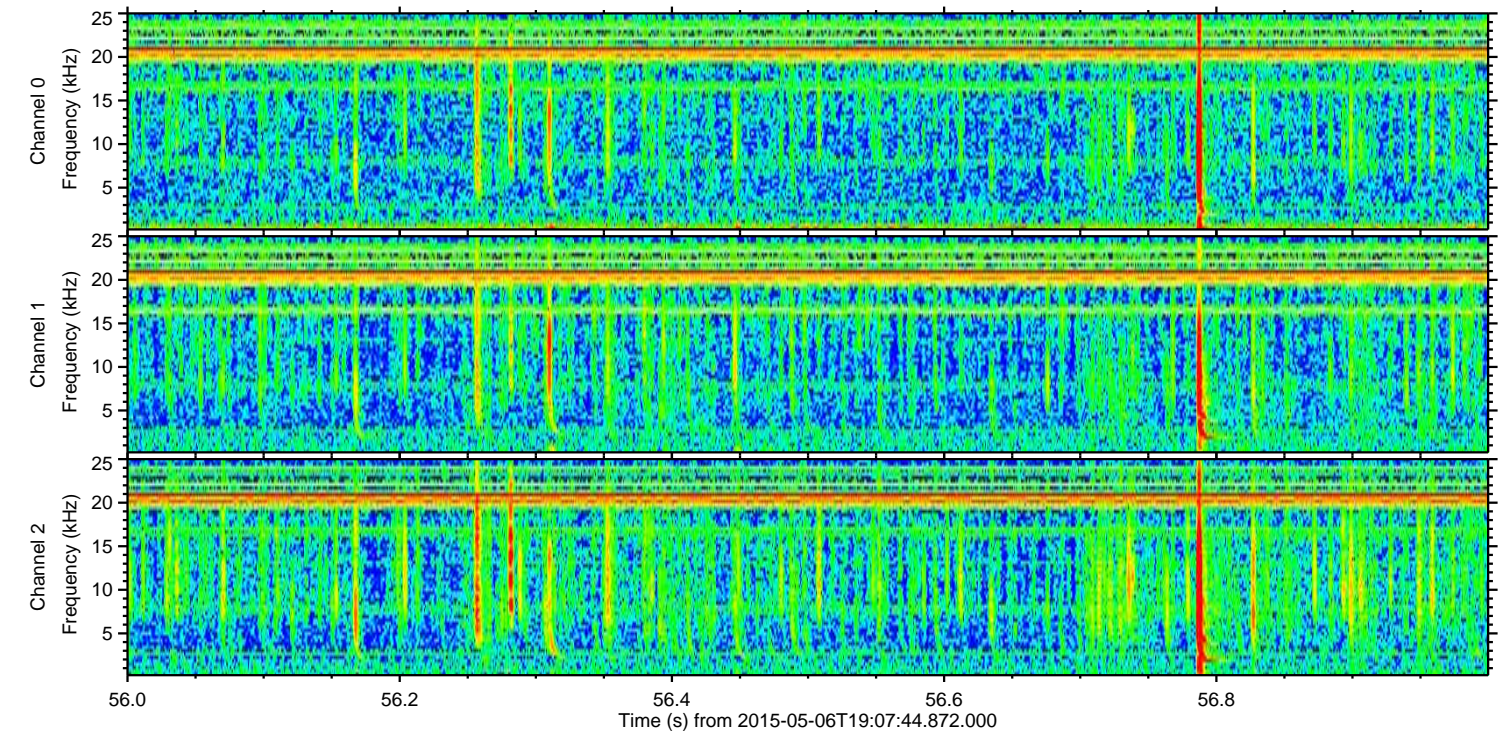
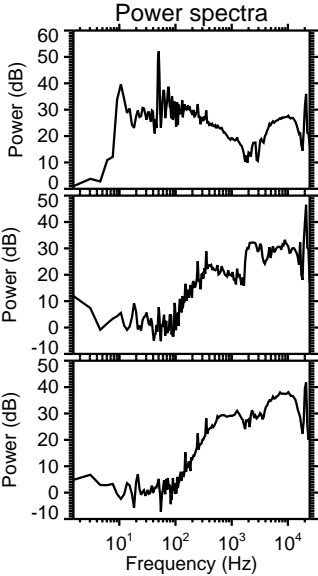
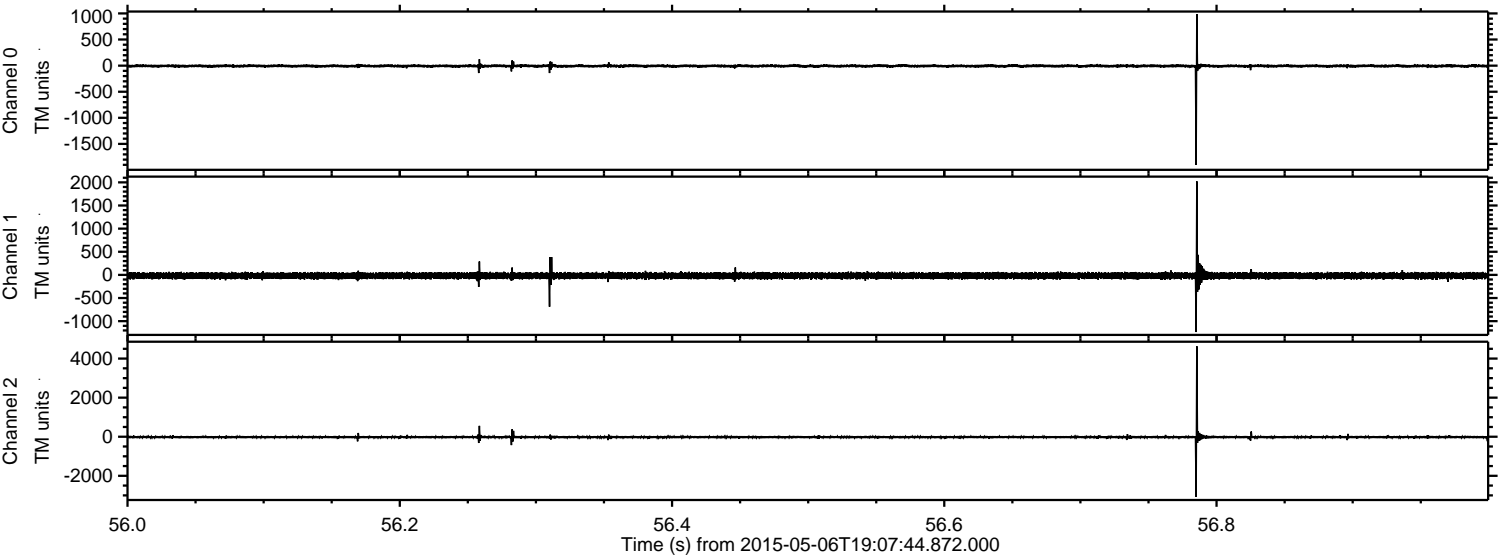
ELMAVAN 3D WAVEFORMS (Measured data sampled at 50 kHz) 49778 packets of 144 samples from 2015-05-06T19:07:44.872.000. Part 108/144

Processed Wed May 6 21:15:09 2015 by ELM ver.2012-10-06 from 001\_\_elm20150506\_190743\_\_dat00.bin





Processed Wed May 6 21:15:10 2015 by ELM ver.2012-10-06 from 001\_\_elm20150506\_190743\_\_dat00.bin



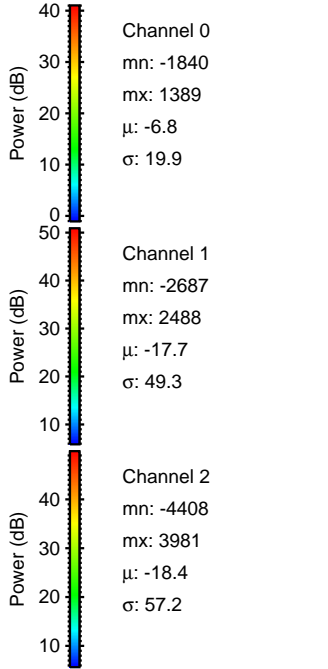
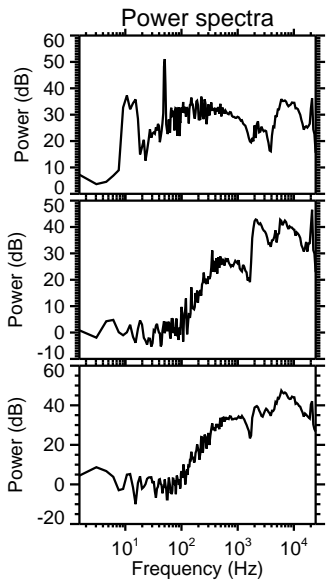
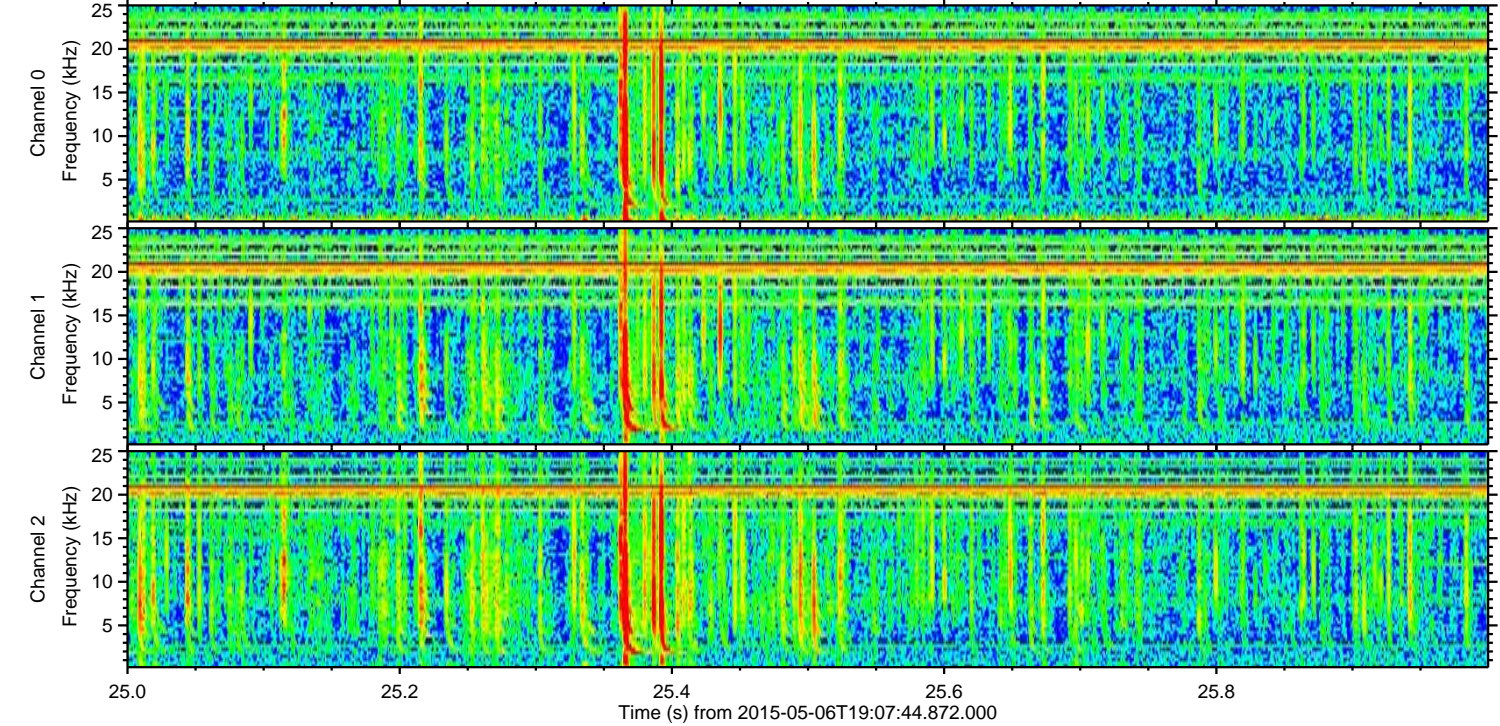
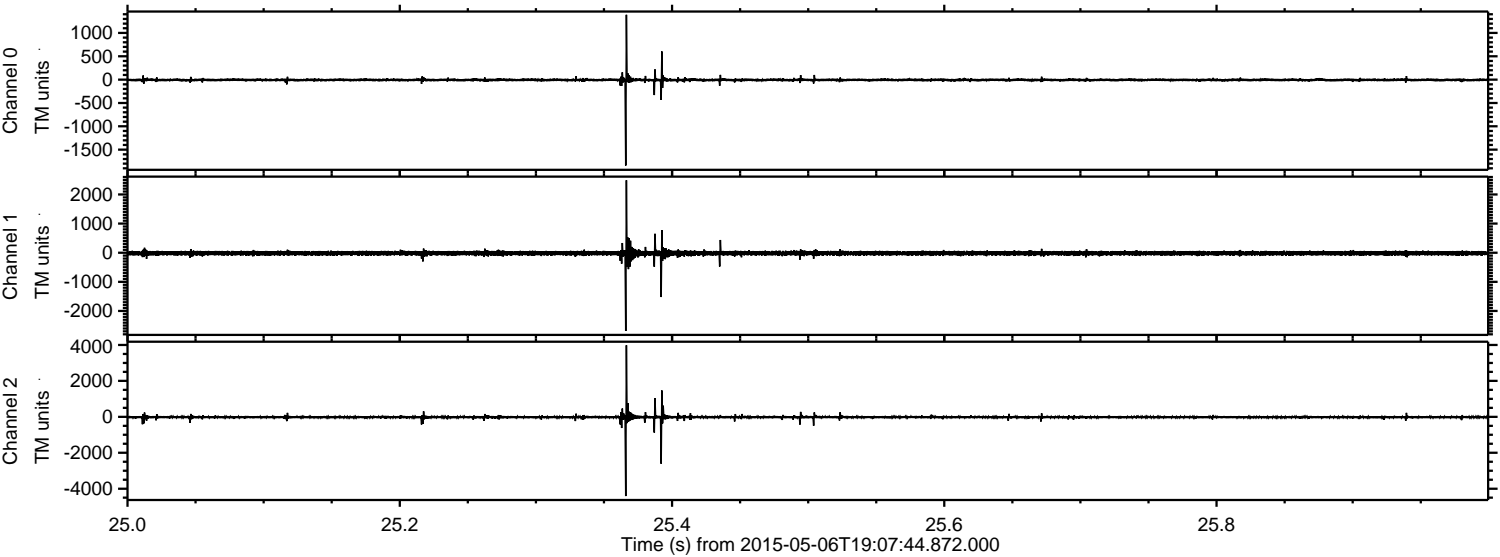
Channel 0  
mn: -1901  
mx: 987  
 $\mu$ : -6.8  
 $\sigma$ : 16.4

Channel 1  
mn: -1235  
mx: 2023  
 $\mu$ : -17.7  
 $\sigma$ : 39.5

Channel 2  
mn: -3083  
mx: 4632  
 $\mu$ : -18.5  
 $\sigma$ : 44.0



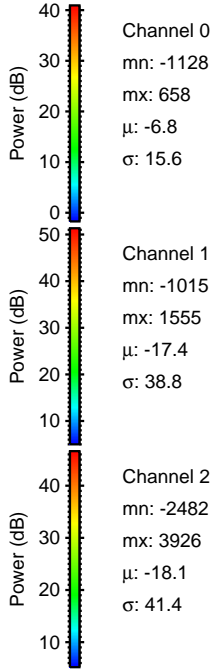
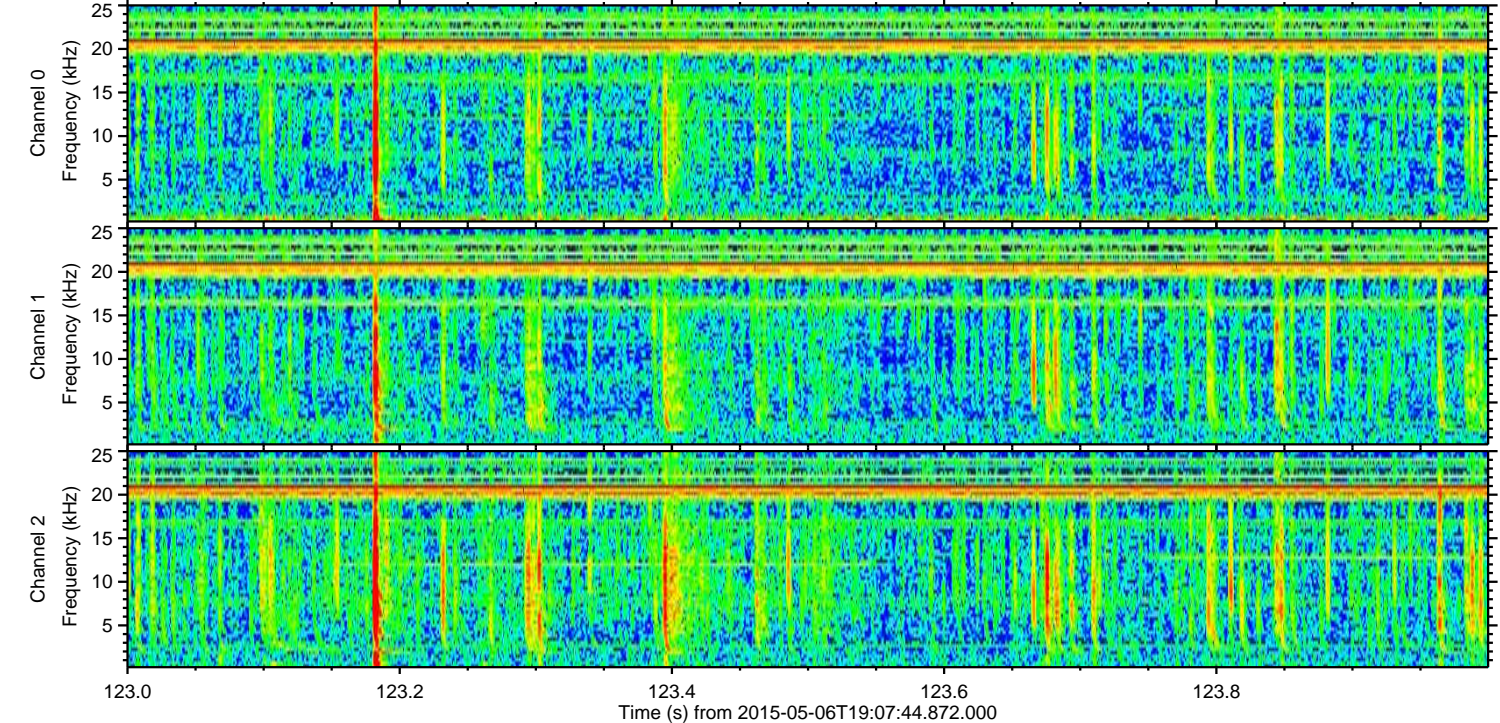
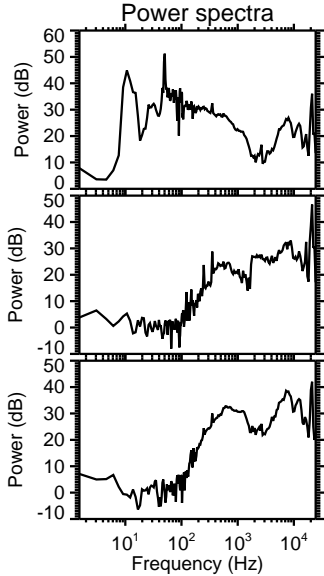
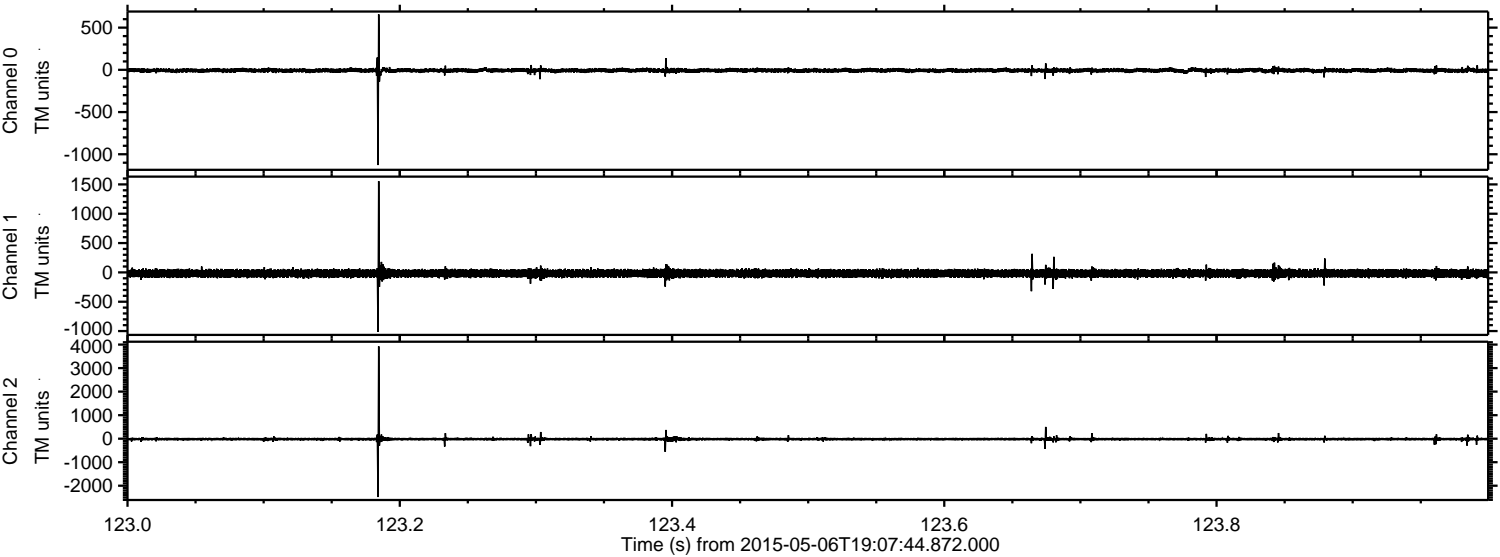
Processed Wed May 6 21:15:11 2015 by ELM ver.2012-10-06 from 001\_\_elm20150506\_190743\_\_dat00.bin





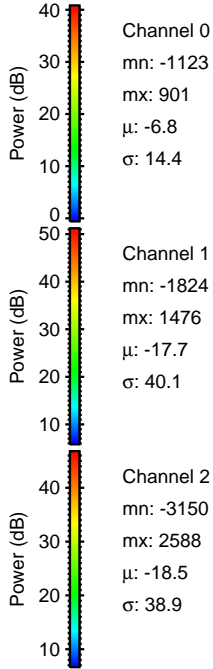
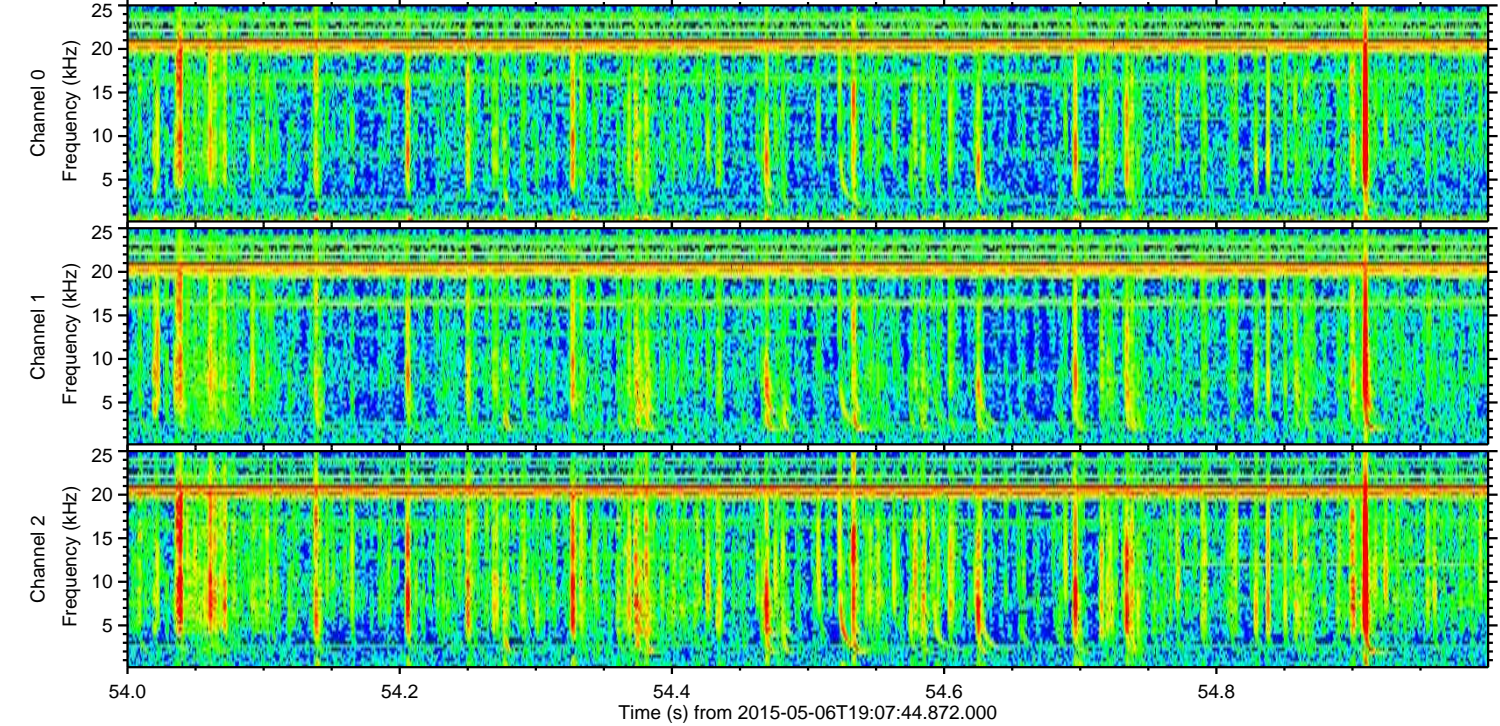
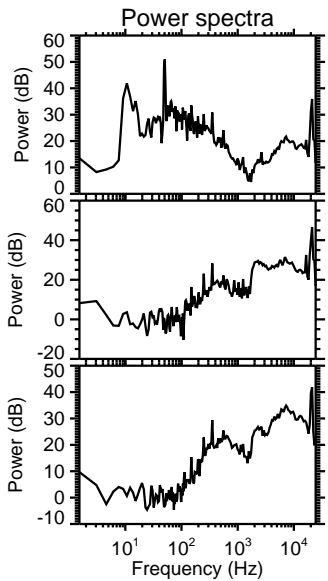
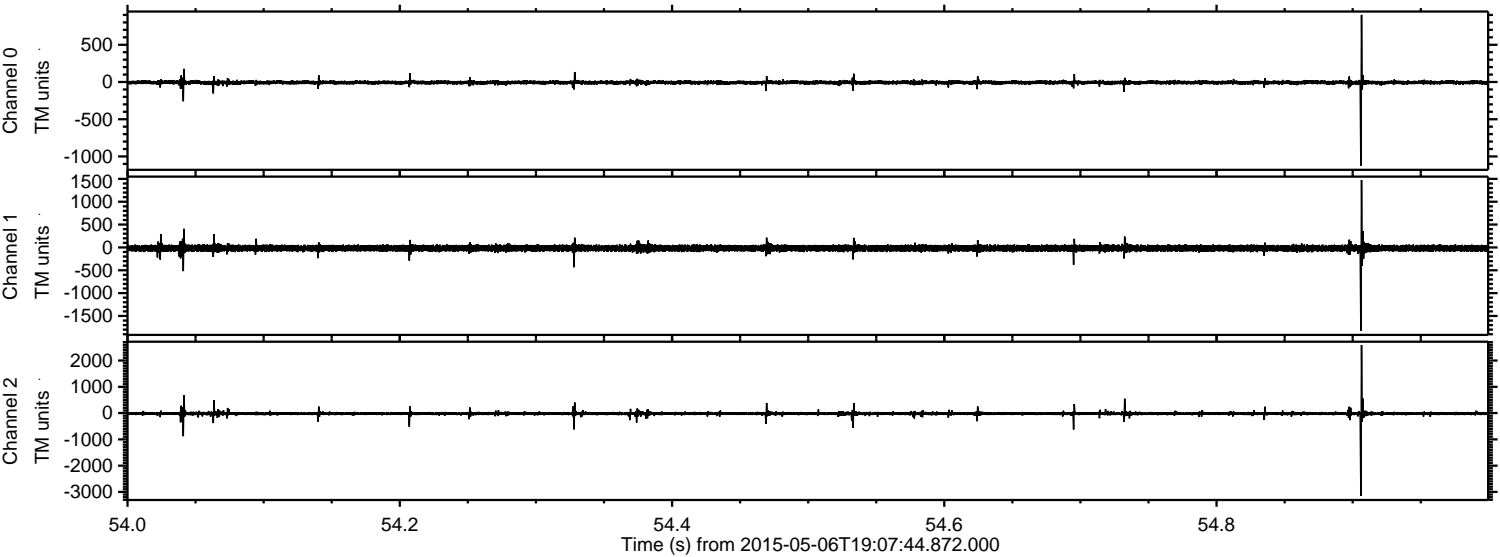
ELMAVAN 3D WAVEFORMS (Measured data sampled at 50 kHz) 49778 packets of 144 samples from 2015-05-06T19:07:44.872.000. Part 124/144

Processed Wed May 6 21:15:12 2015 by ELM ver.2012-10-06 from 001\_\_elm20150506\_190743\_\_dat00.bin





Processed Wed May 6 21:15:13 2015 by ELM ver.2012-10-06 from 001\_\_elm20150506\_190743\_\_dat00.bin



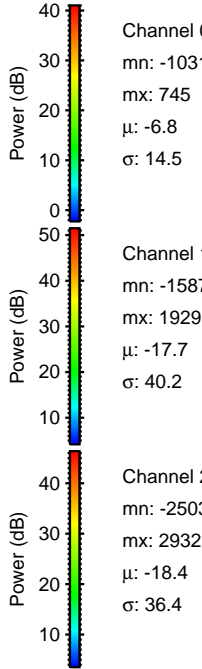
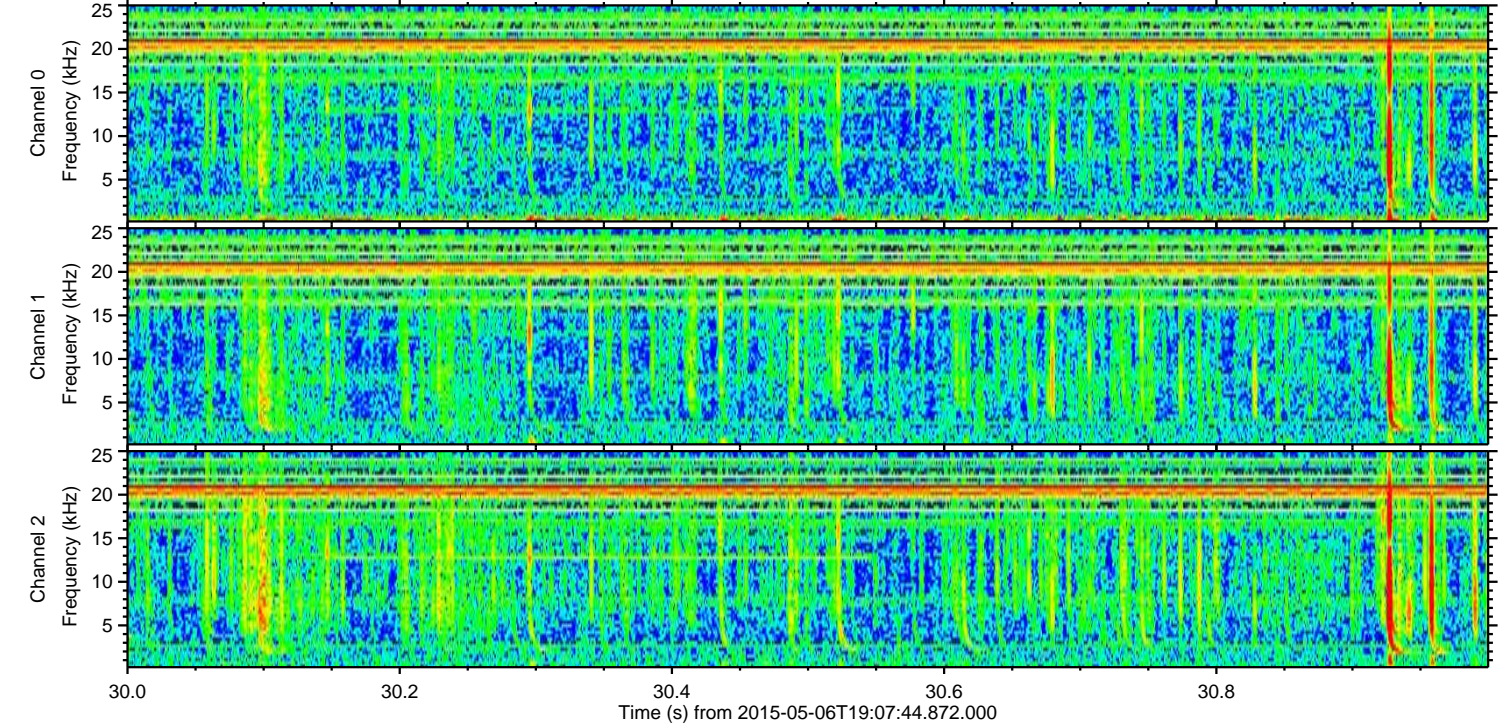
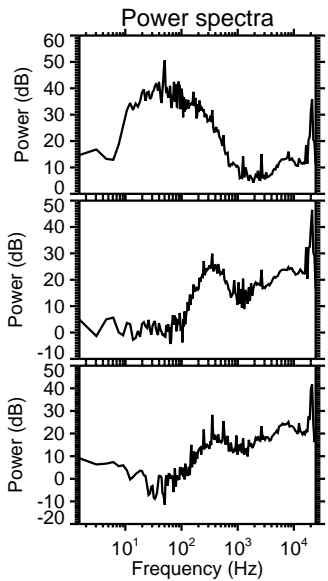
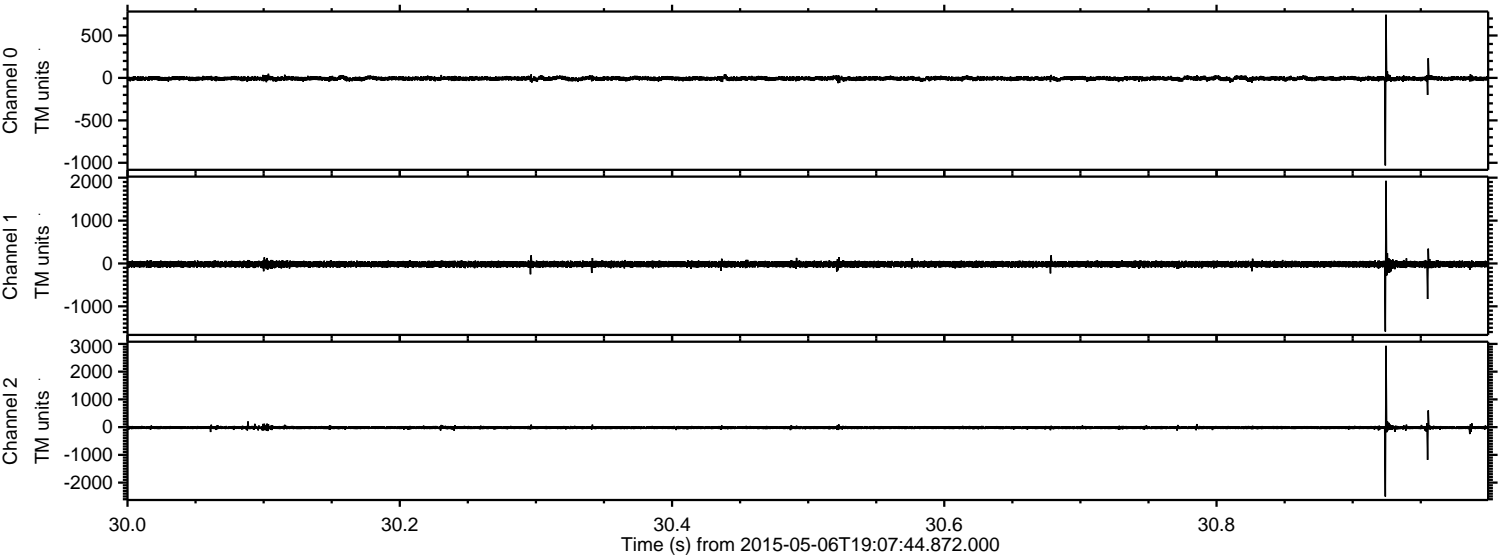
Channel 0  
mn: -1123  
mx: 901  
 $\mu$ : -6.8  
 $\sigma$ : 14.4

Channel 1  
mn: -1824  
mx: 1476  
 $\mu$ : -17.7  
 $\sigma$ : 40.1

Channel 2  
mn: -3150  
mx: 2588  
 $\mu$ : -18.5  
 $\sigma$ : 38.9



Processed Wed May 6 21:15:14 2015 by ELM ver.2012-10-06 from 001\_\_elm20150506\_190743\_\_dat00.bin



Channel 0  
mn: -1031  
mx: 745  
 $\mu$ : -6.8  
 $\sigma$ : 14.5

Channel 1  
mn: -1587  
mx: 1929  
 $\mu$ : -17.7  
 $\sigma$ : 40.2

Channel 2  
mn: -2503  
mx: 2932  
 $\mu$ : -18.4  
 $\sigma$ : 36.4



ELMAVAN 3D WAVEFORMS (Measured data sampled at 50 kHz) 49778 packets of 144 samples from 2015-05-06T19:07:44.872.000. Part 135/144

