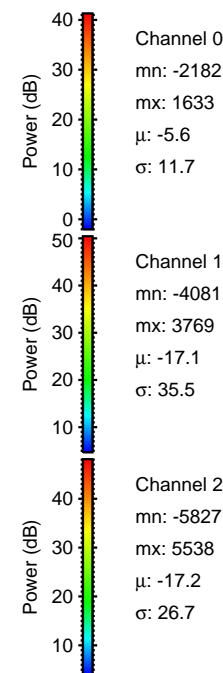
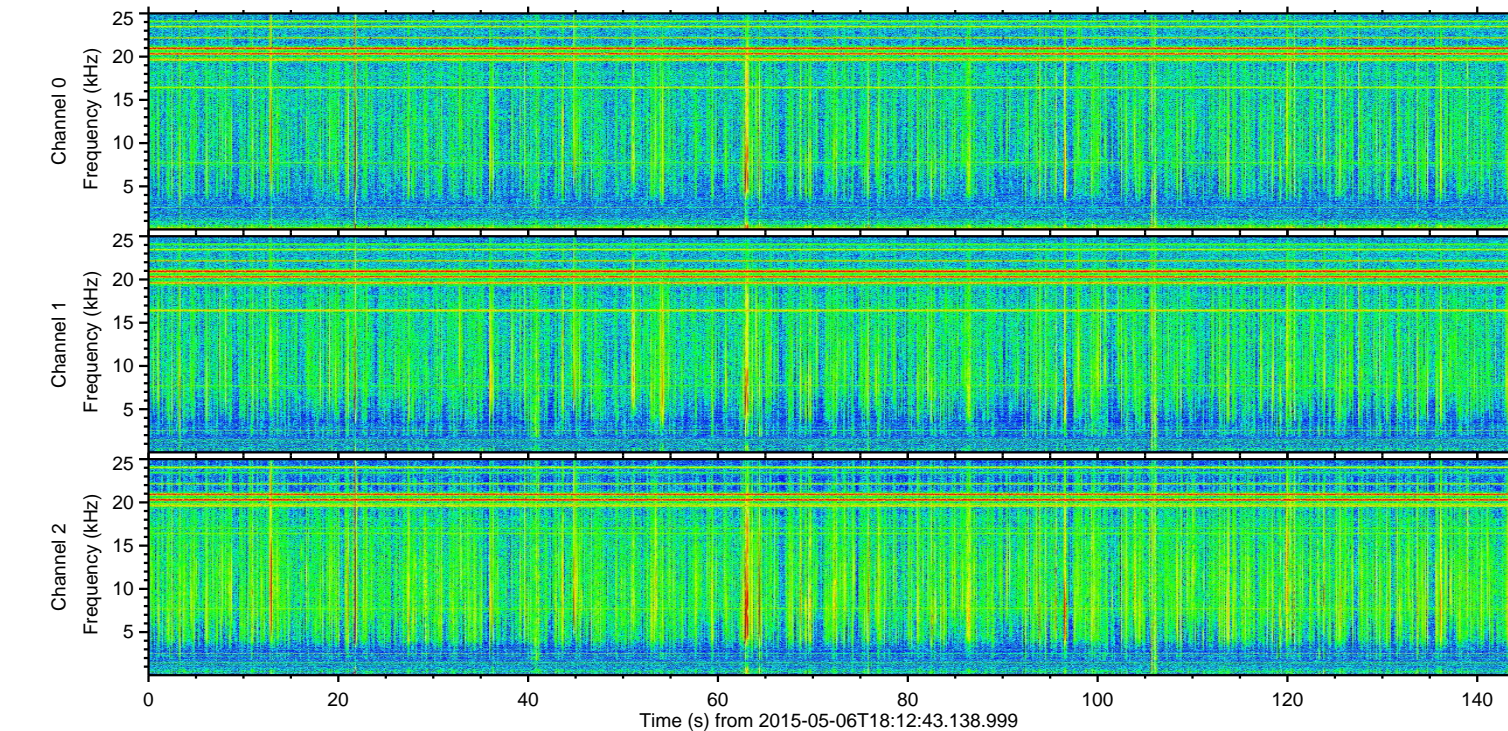
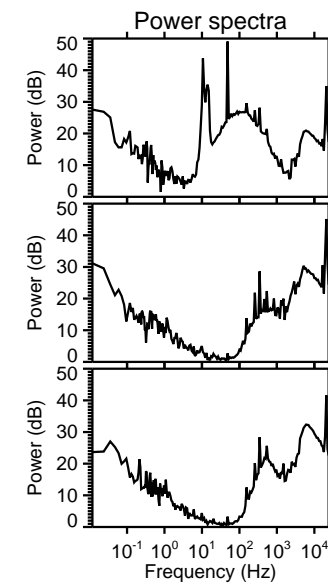
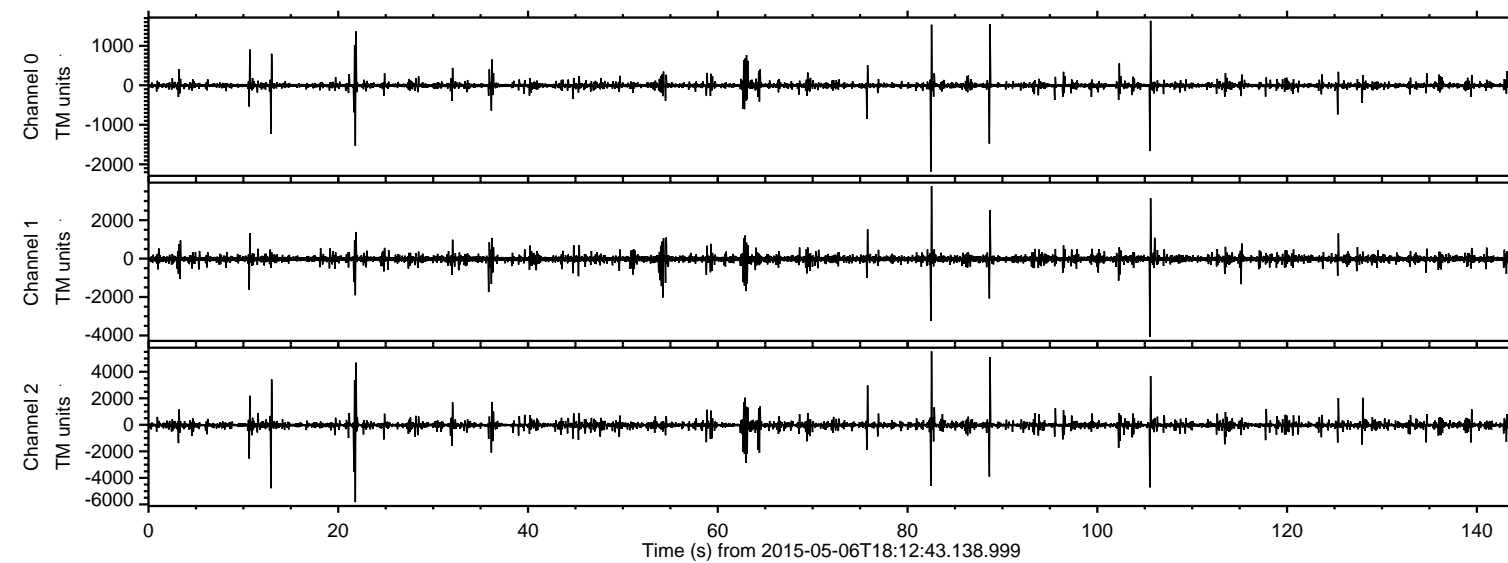
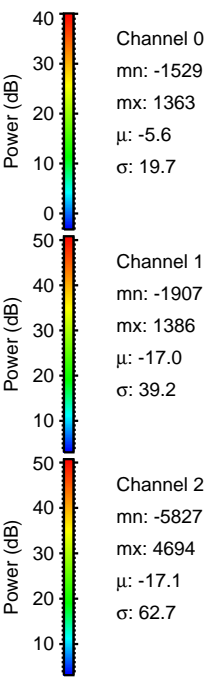
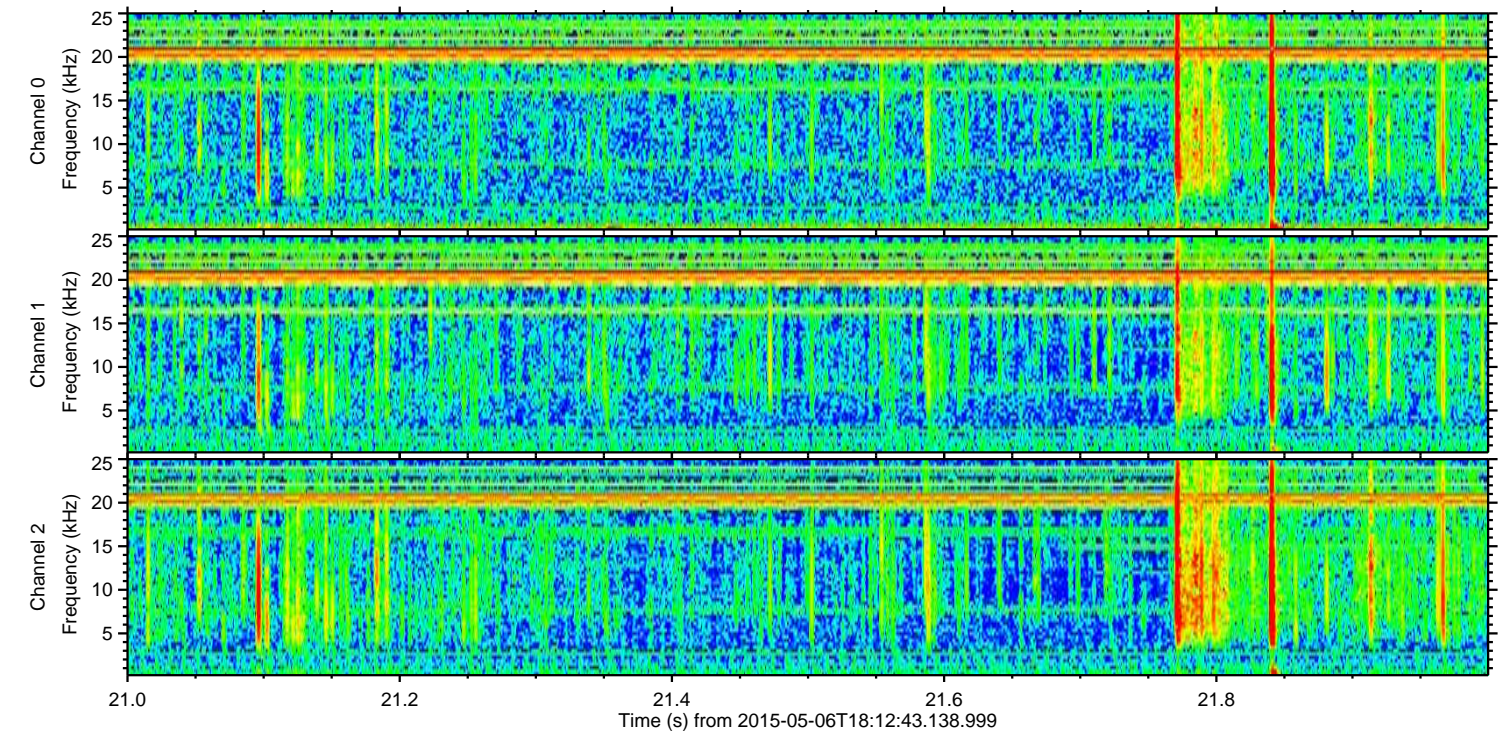
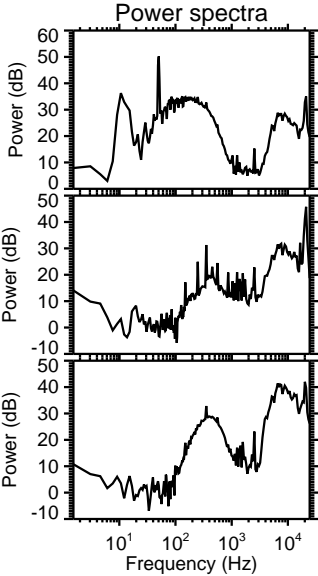
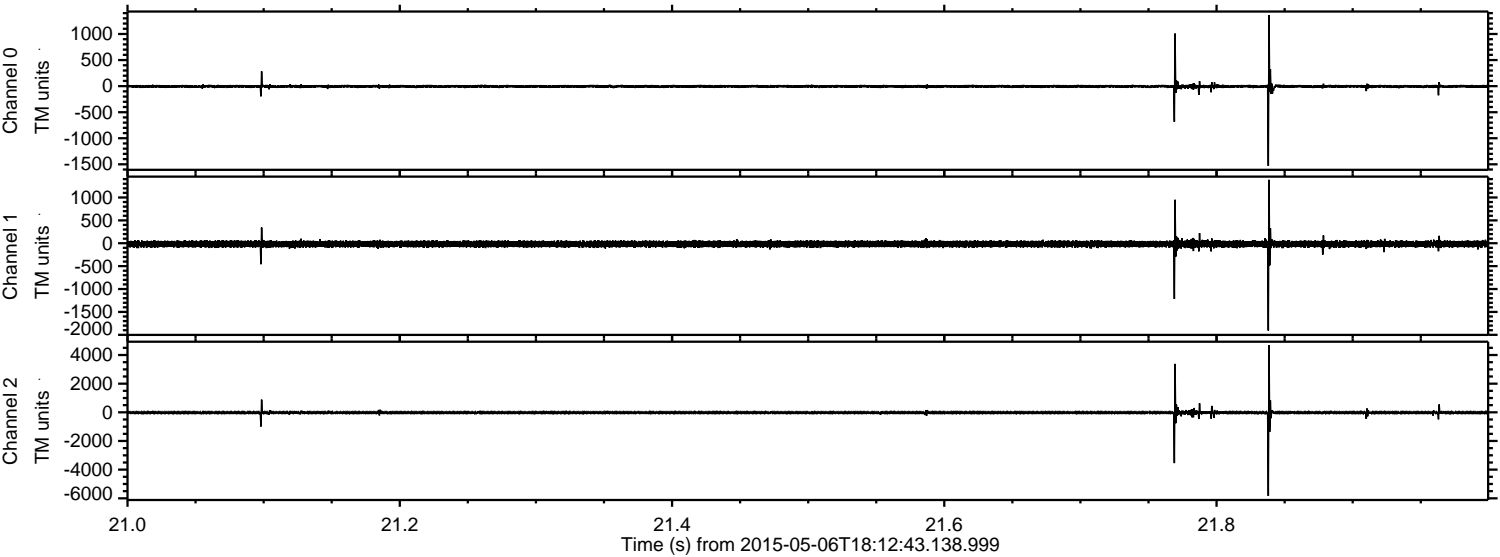


ELMAVAN 3D WAVEFORMS (Measured data sampled at 50 kHz) 49793 packets of 144 samples from 2015-05-06T18:12:43.138.999.

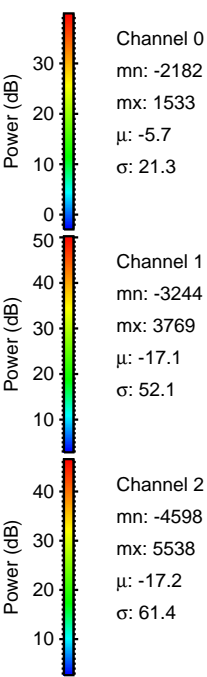
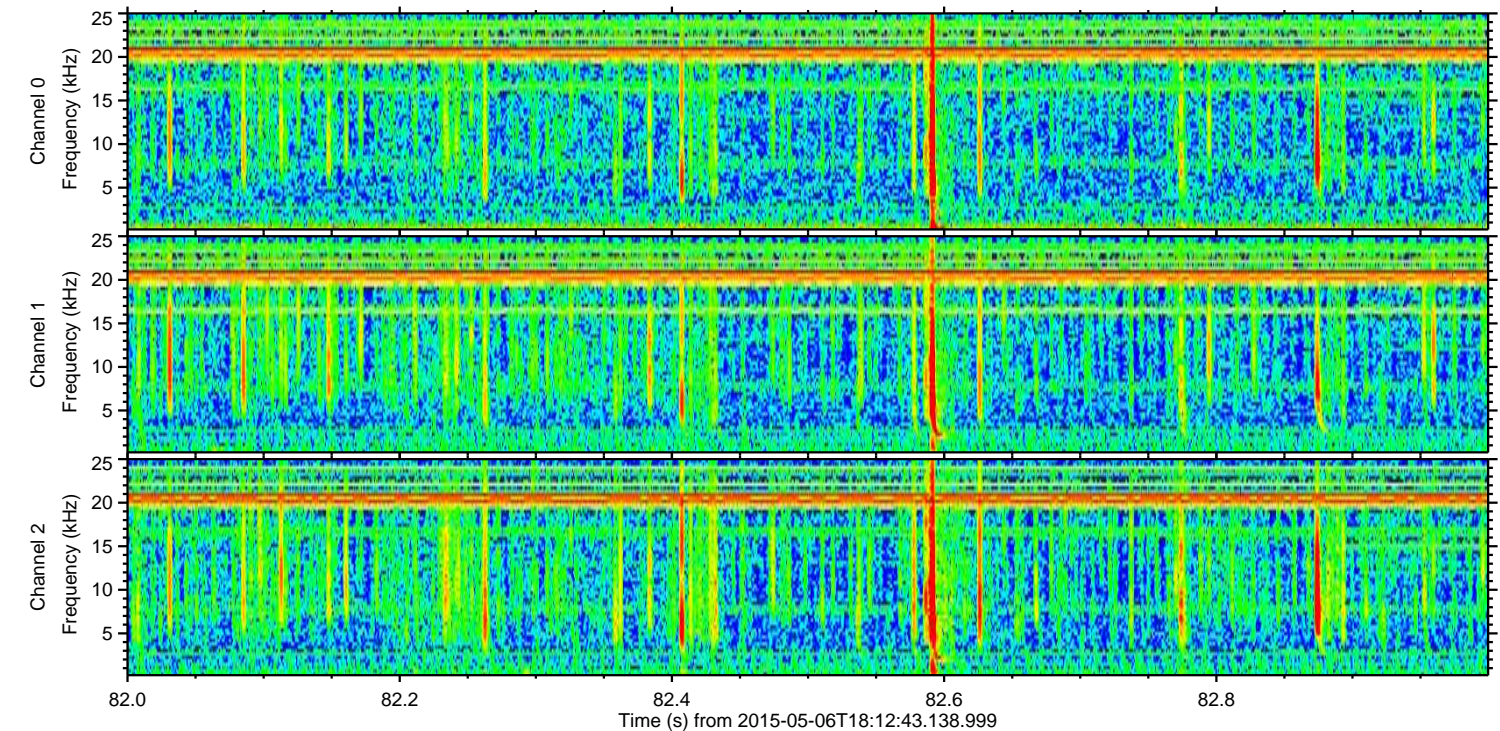
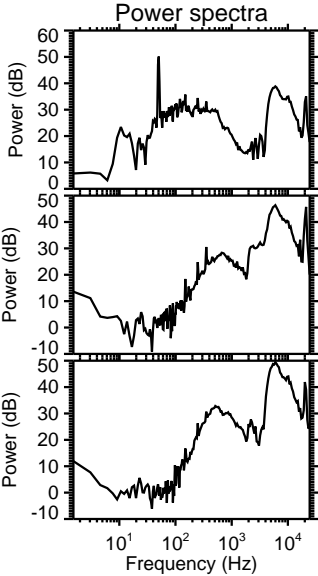
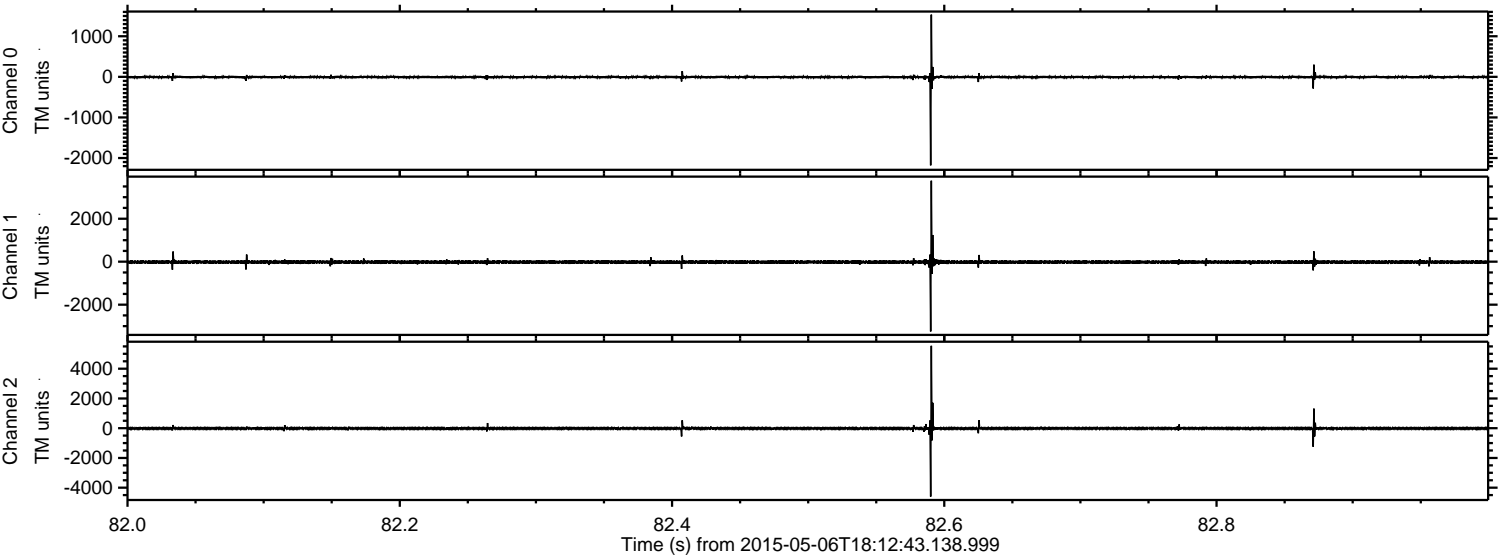
Processed Wed May 6 20:20:01 2015 by ELM ver.2012-10-06 from 001__elm20150506_181242__dat00.bin



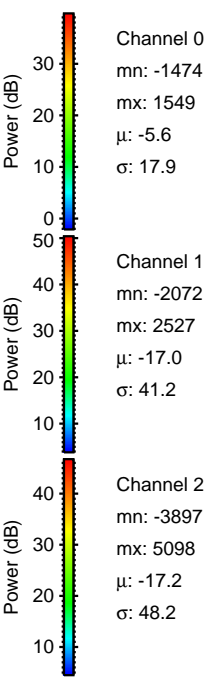
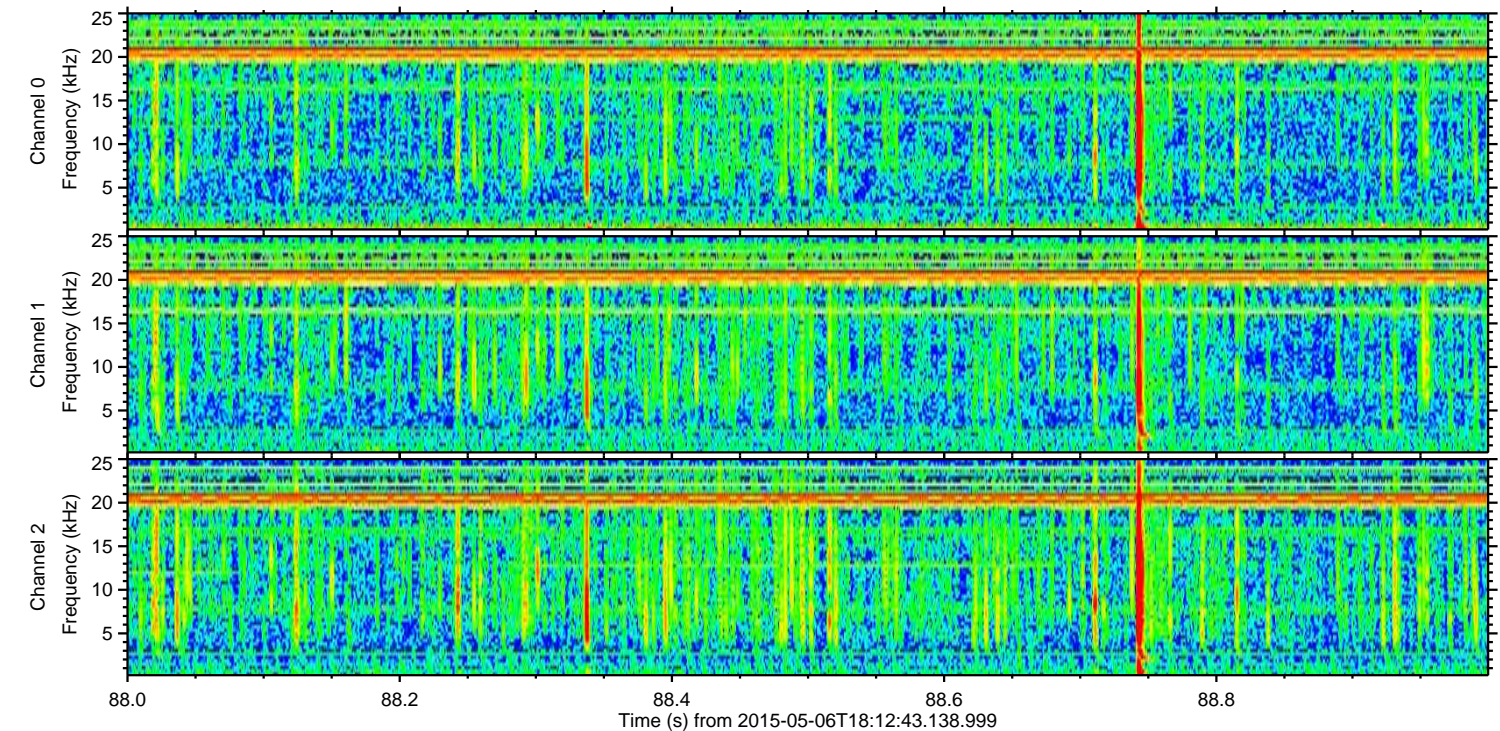
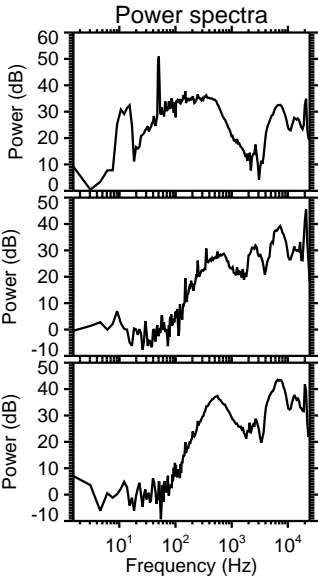
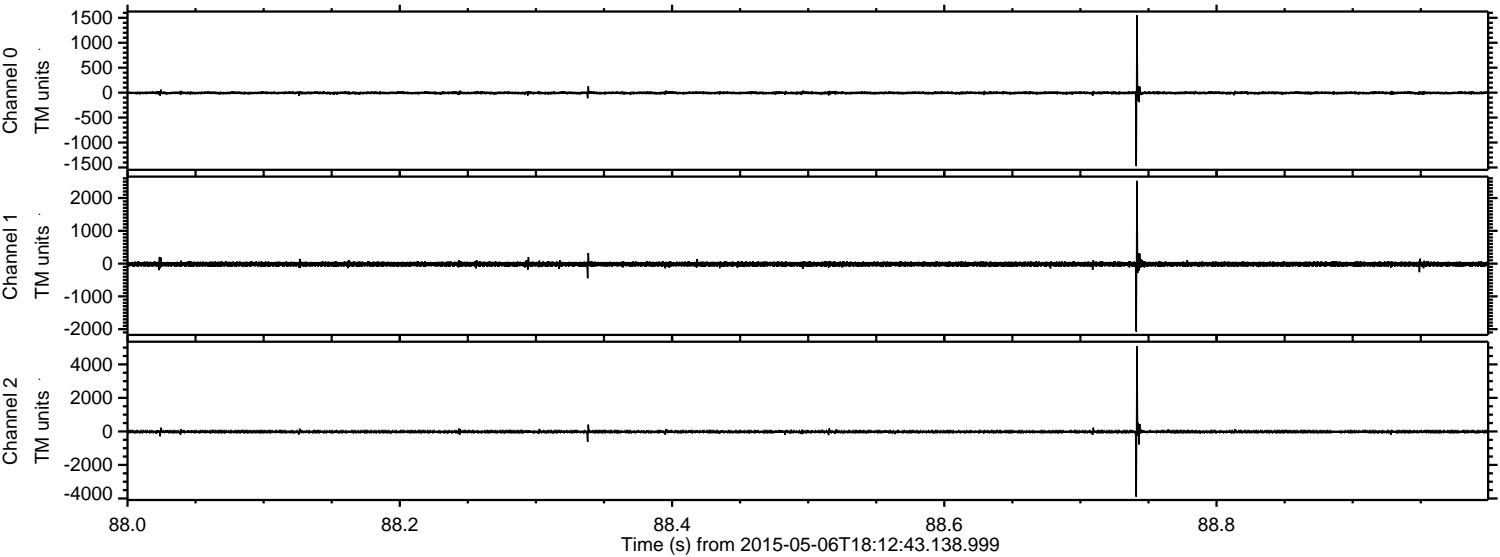
Processed Wed May 6 20:20:13 2015 by ELM ver.2012-10-06 from 001__elm20150506_181242__dat00.bin



Processed Wed May 6 20:20:14 2015 by ELM ver.2012-10-06 from 001__elm20150506_181242__dat00.bin

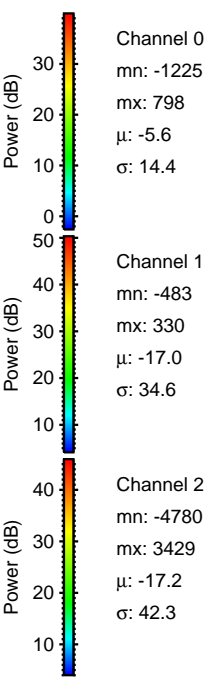
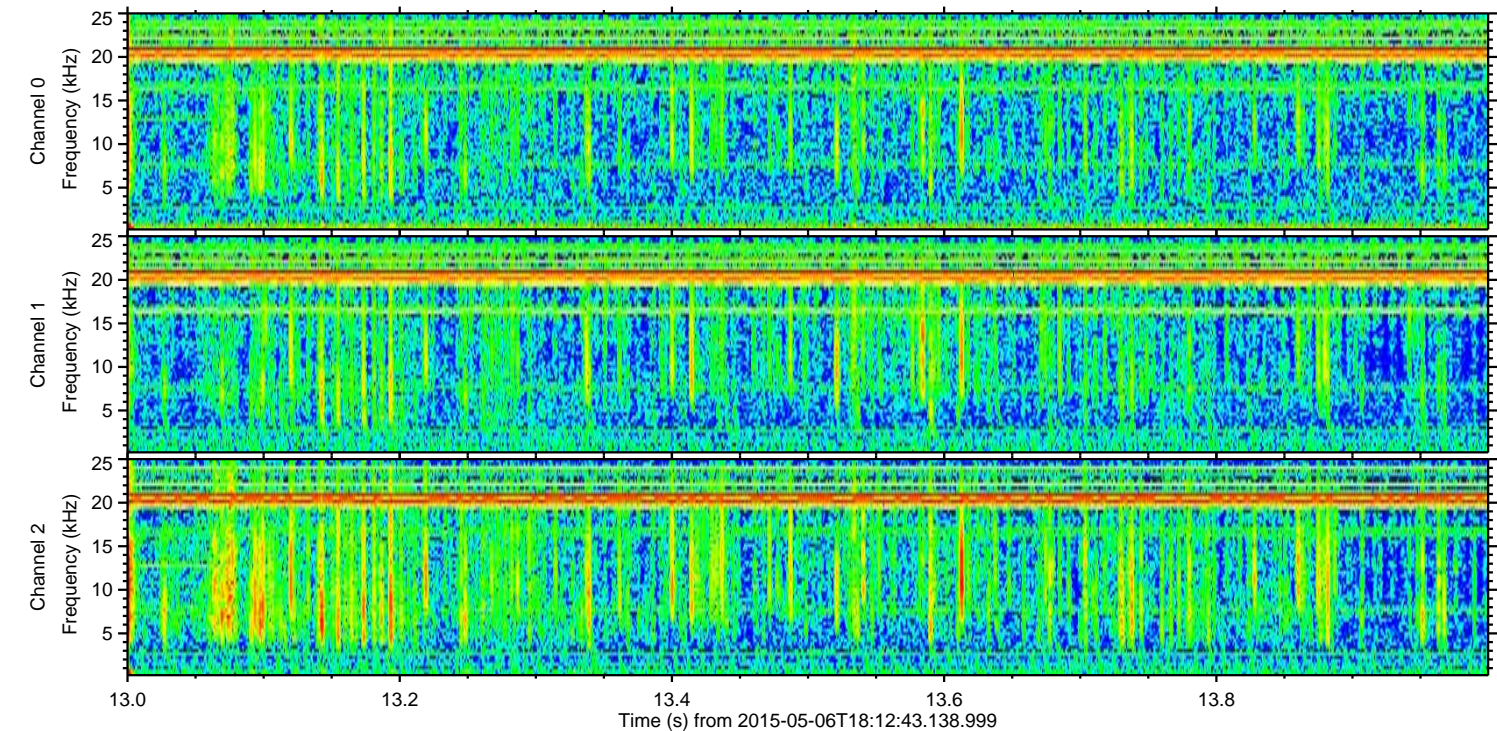
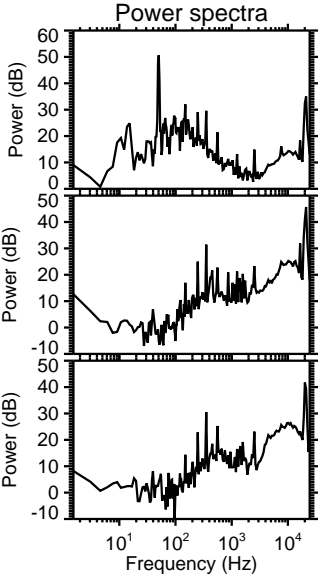
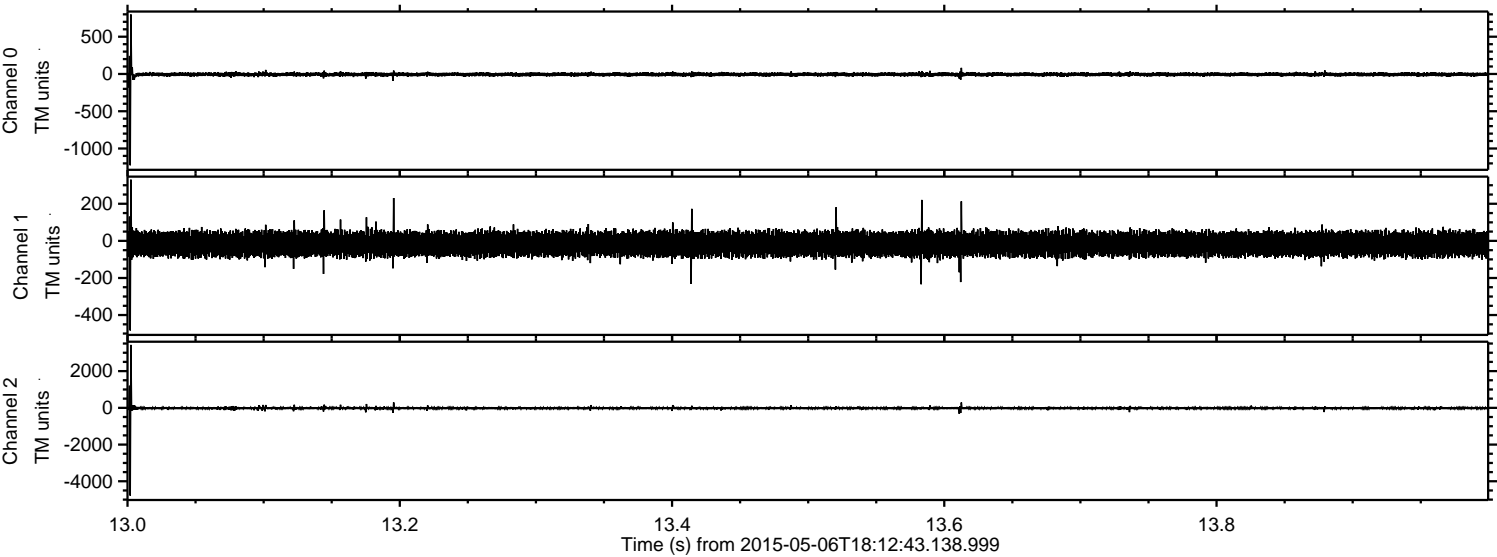


Processed Wed May 6 20:20:15 2015 by ELM ver.2012-10-06 from 001__elm20150506_181242__dat00.bin



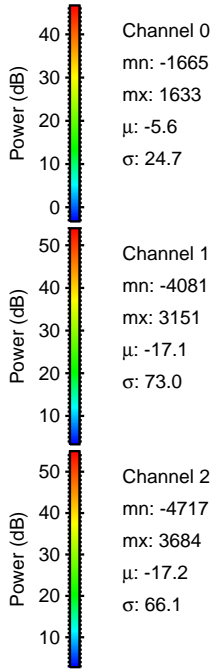
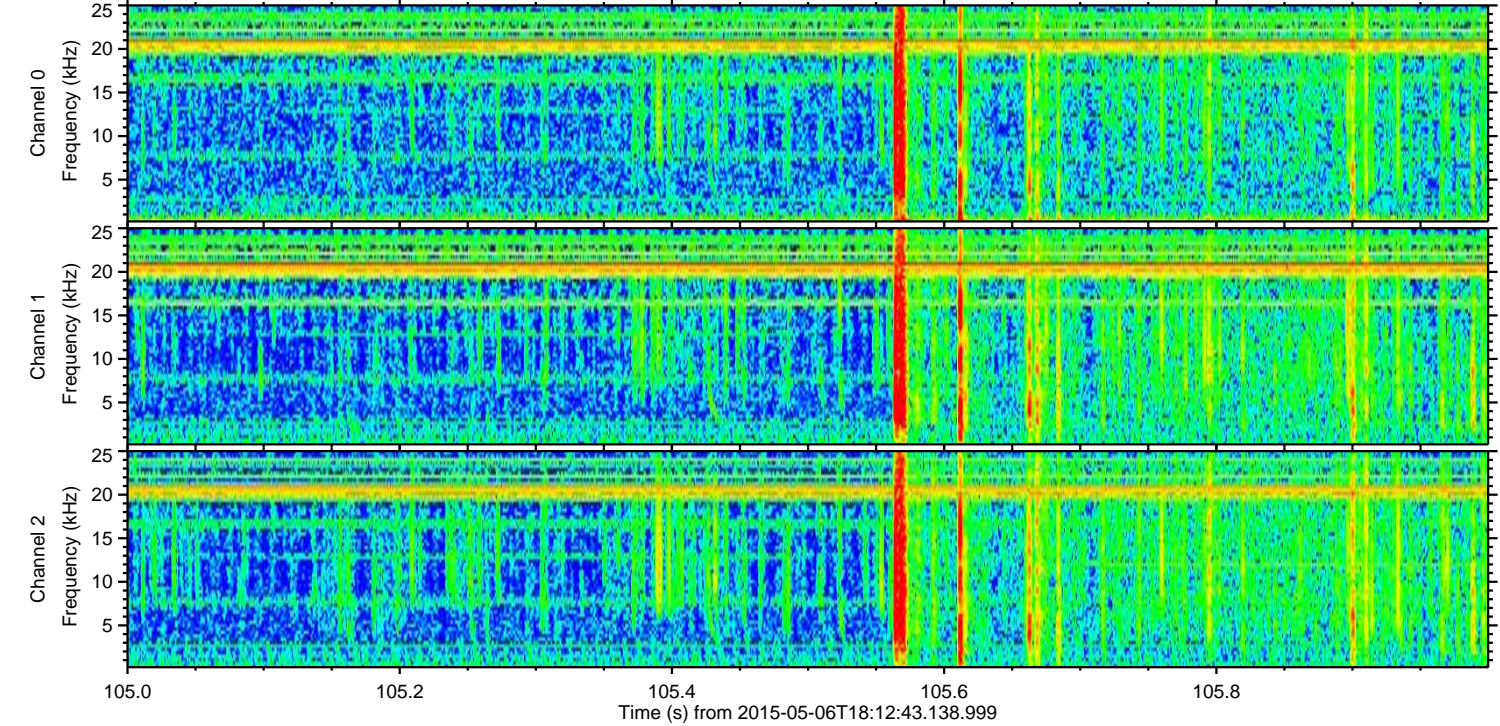
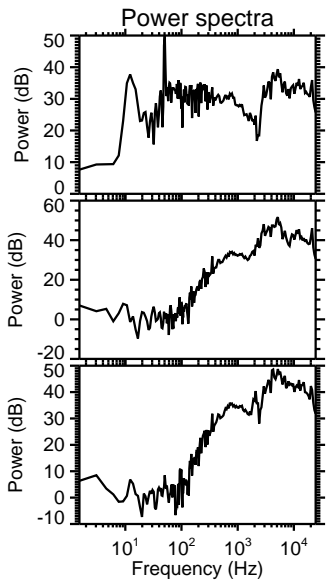
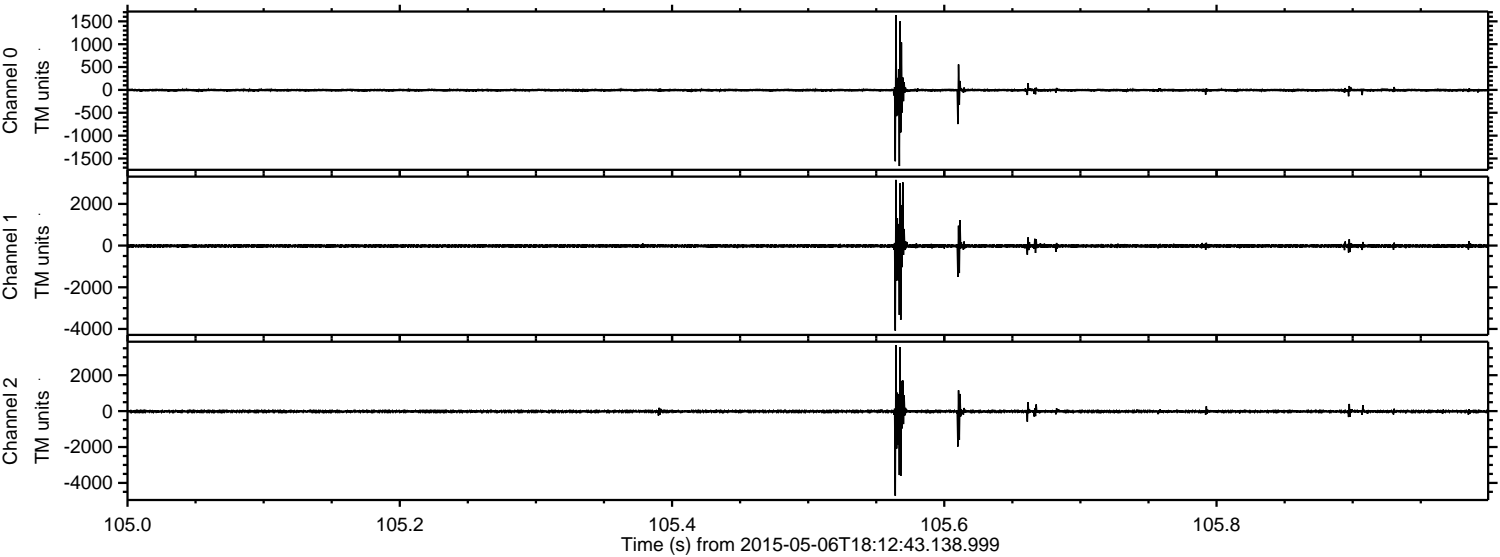
ELMAVAN 3D WAVEFORMS (Measured data sampled at 50 kHz) 49793 packets of 144 samples from 2015-05-06T18:12:43.138.999. Part 14/144

Processed Wed May 6 20:20:15 2015 by ELM ver.2012-10-06 from 001__elm20150506_181242__dat00.bin



ELMAVAN 3D WAVEFORMS (Measured data sampled at 50 kHz) 49793 packets of 144 samples from 2015-05-06T18:12:43.138.999. Part 106/144

Processed Wed May 6 20:20:16 2015 by ELM ver.2012-10-06 from 001__elm20150506_181242__dat00.bin

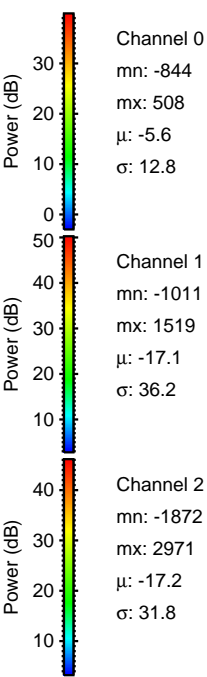
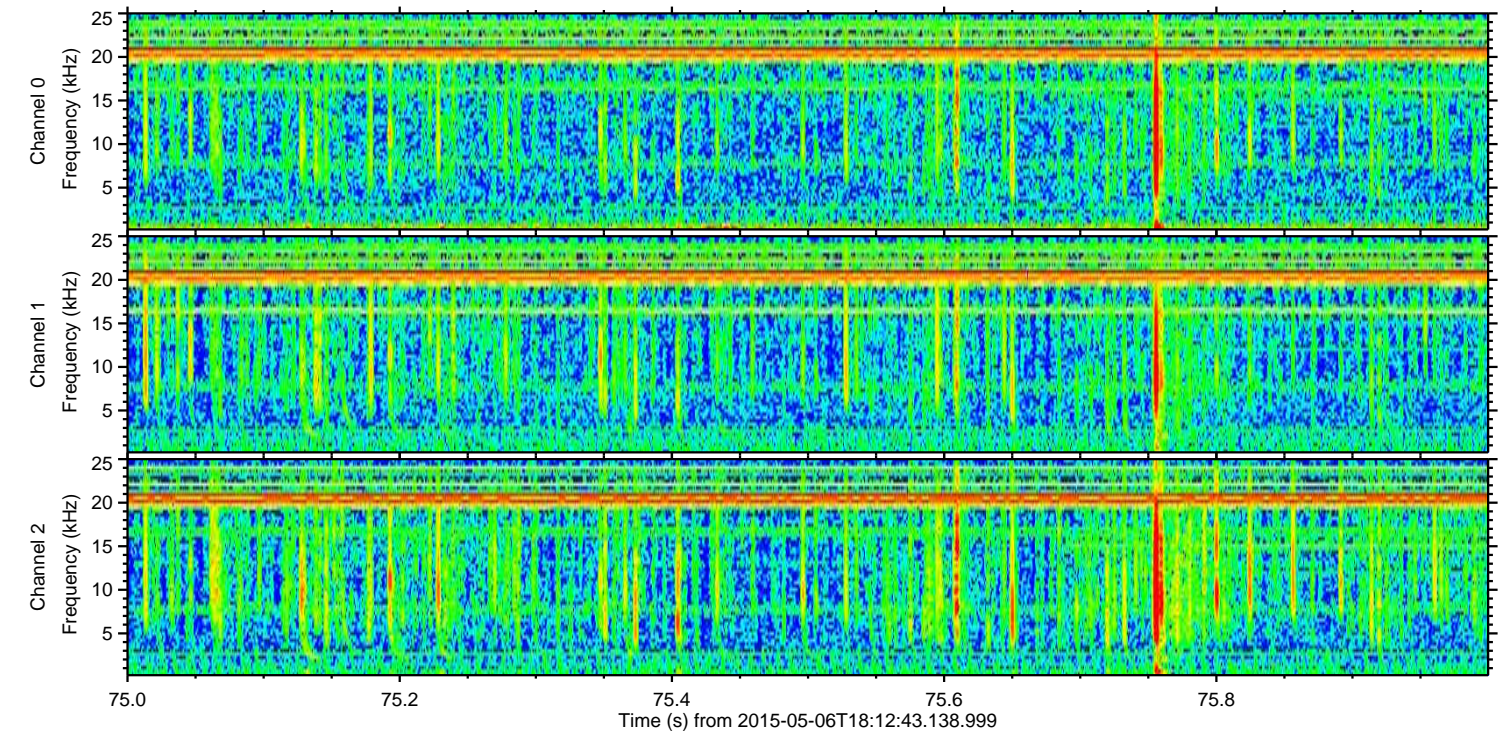
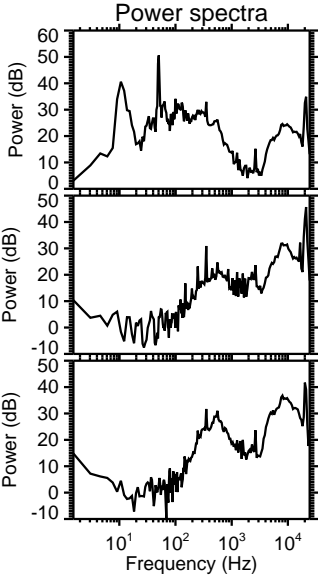
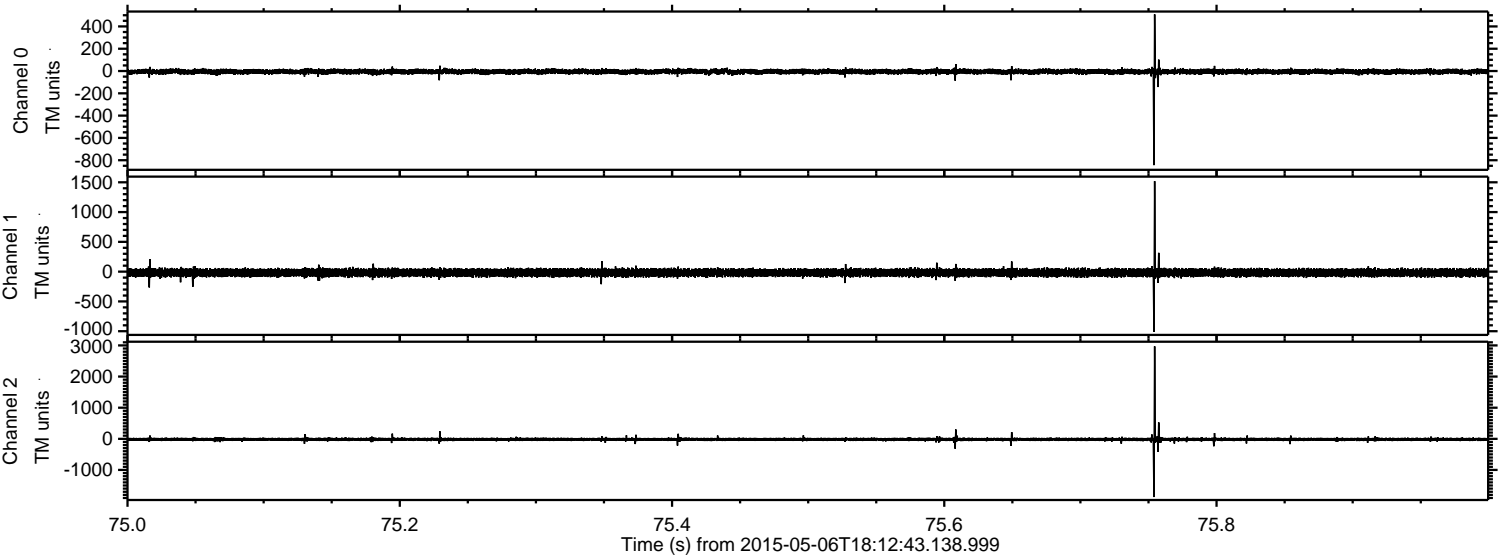


Channel 0
mn: -1665
mx: 1633
 μ : -5.6
 σ : 24.7

Channel 1
mn: -4081
mx: 3151
 μ : -17.1
 σ : 73.0

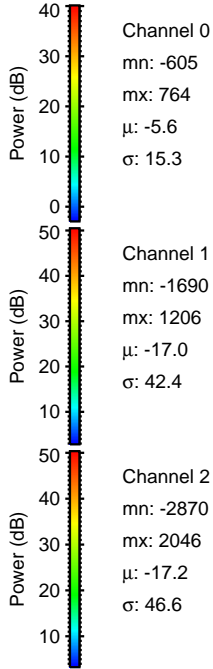
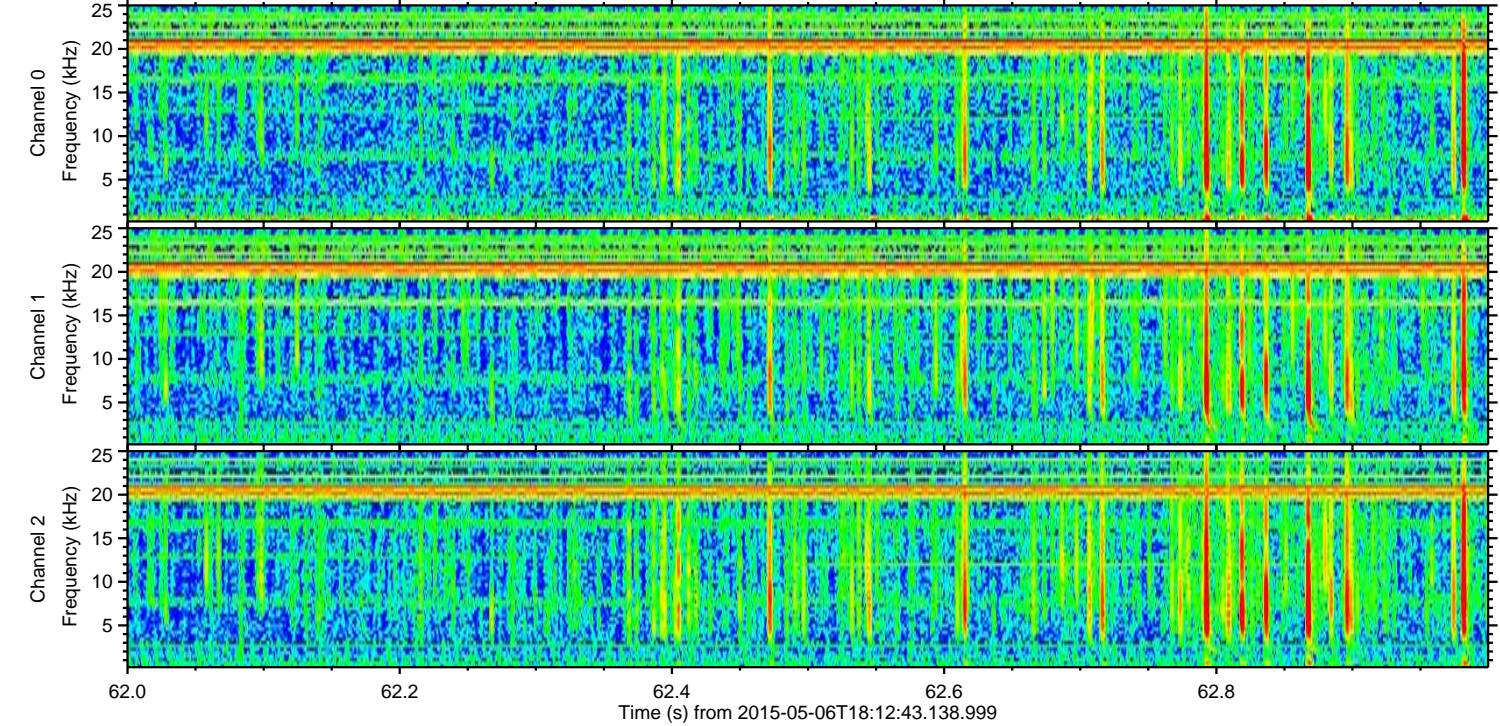
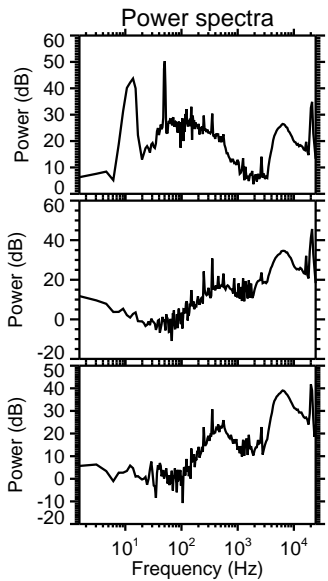
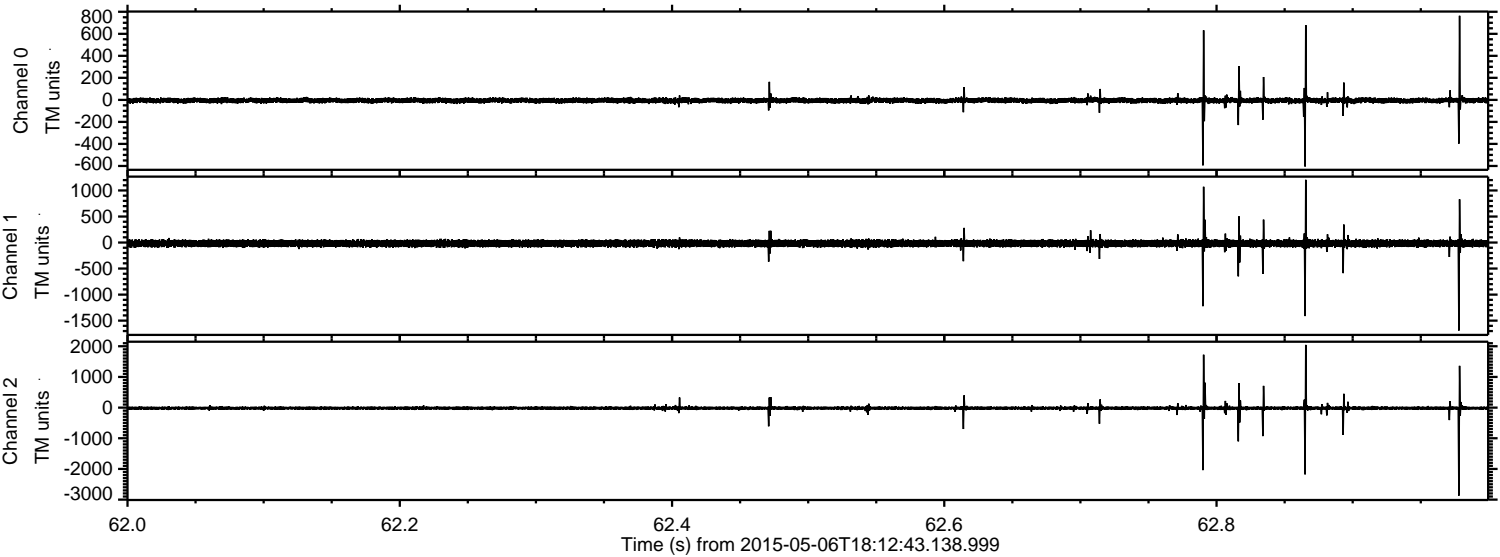
Channel 2
mn: -4717
mx: 3684
 μ : -17.2
 σ : 66.1

Processed Wed May 6 20:20:17 2015 by ELM ver.2012-10-06 from 001__elm20150506_181242__dat00.bin

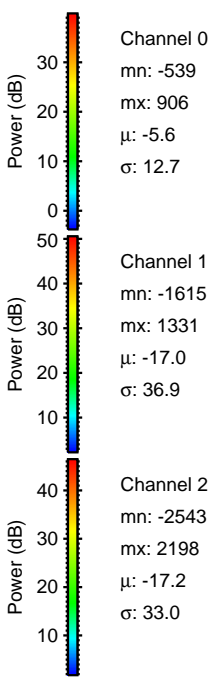
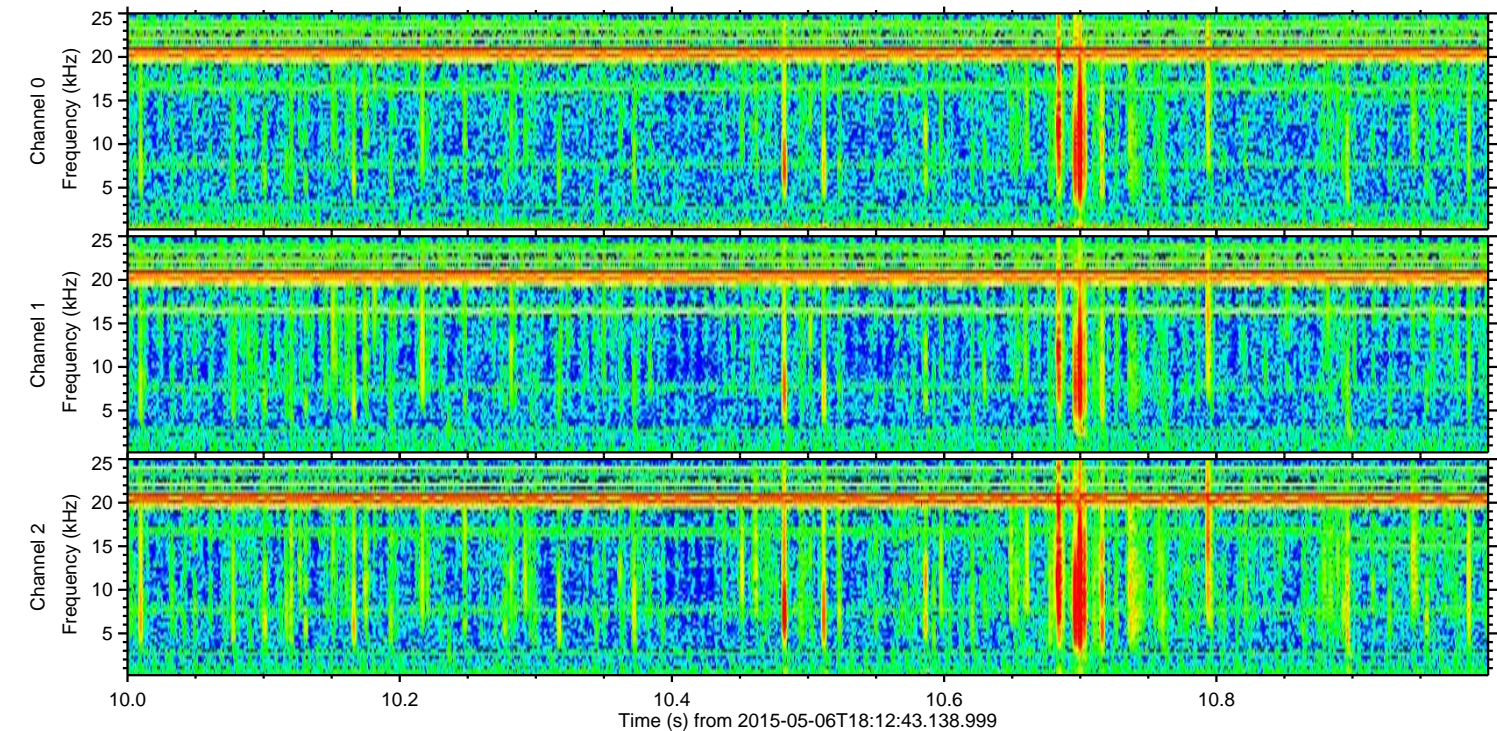
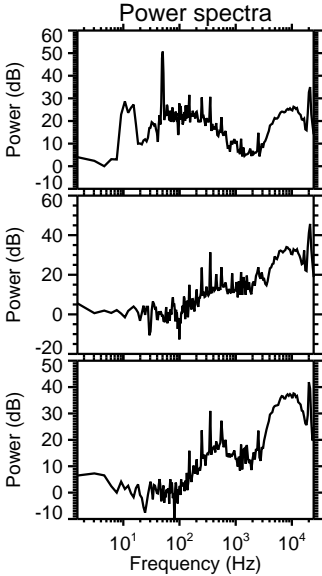
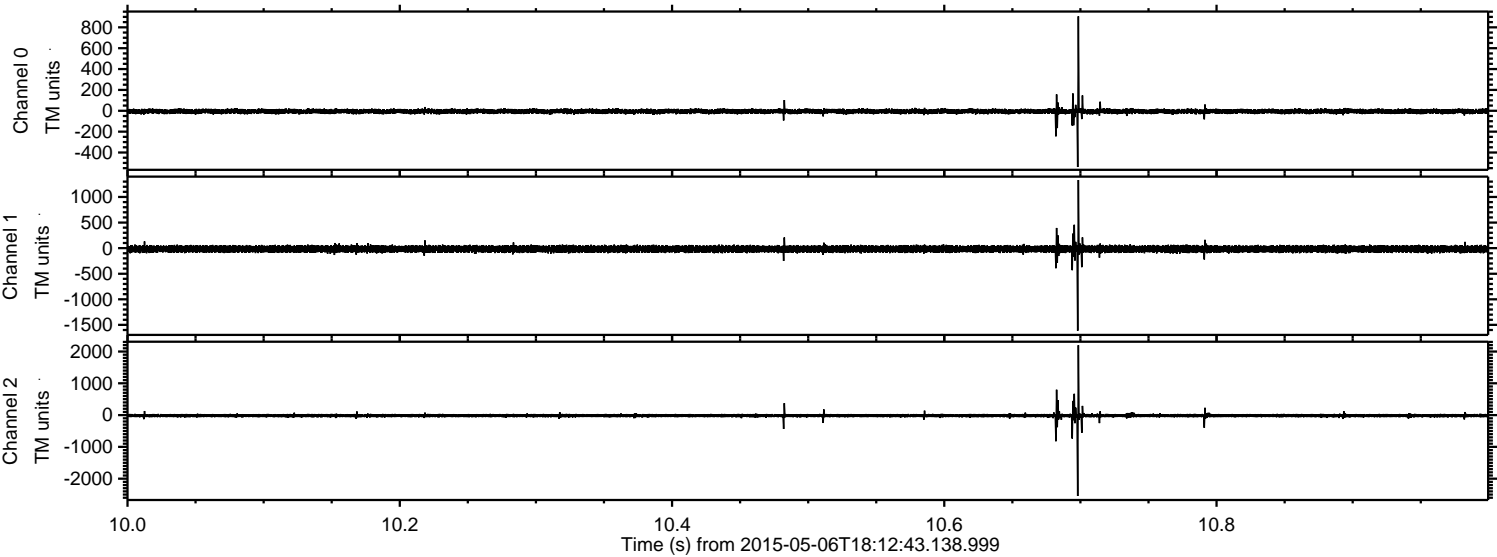


ELMAVAN 3D WAVEFORMS (Measured data sampled at 50 kHz) 49793 packets of 144 samples from 2015-05-06T18:12:43.138.999. Part 63/144

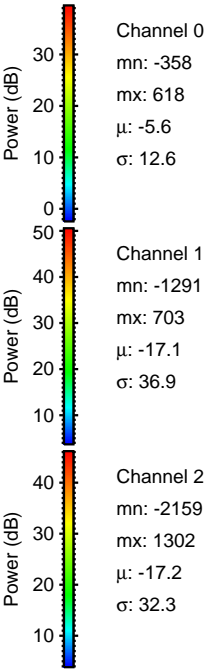
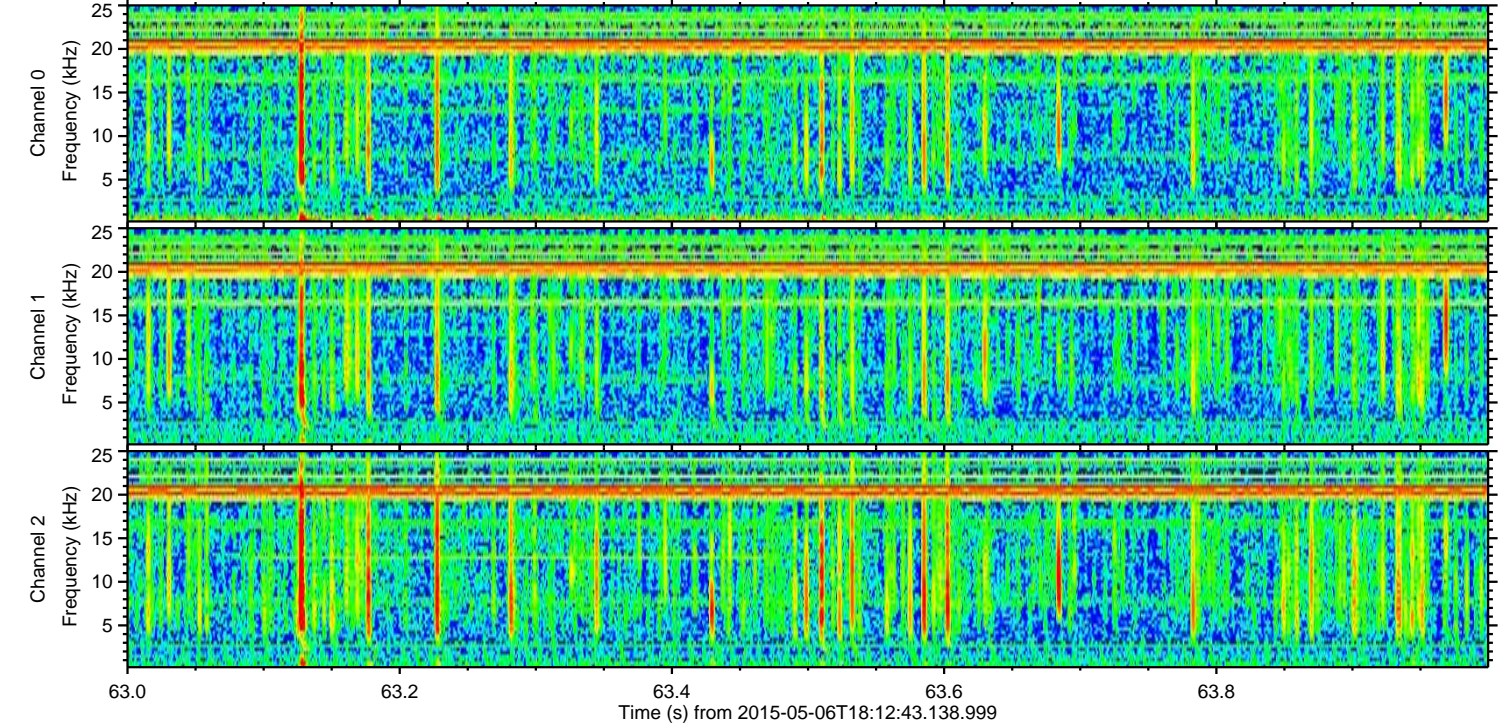
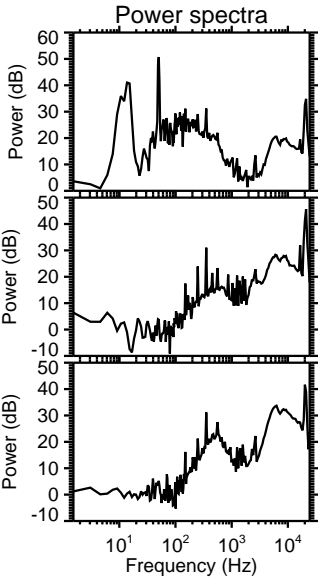
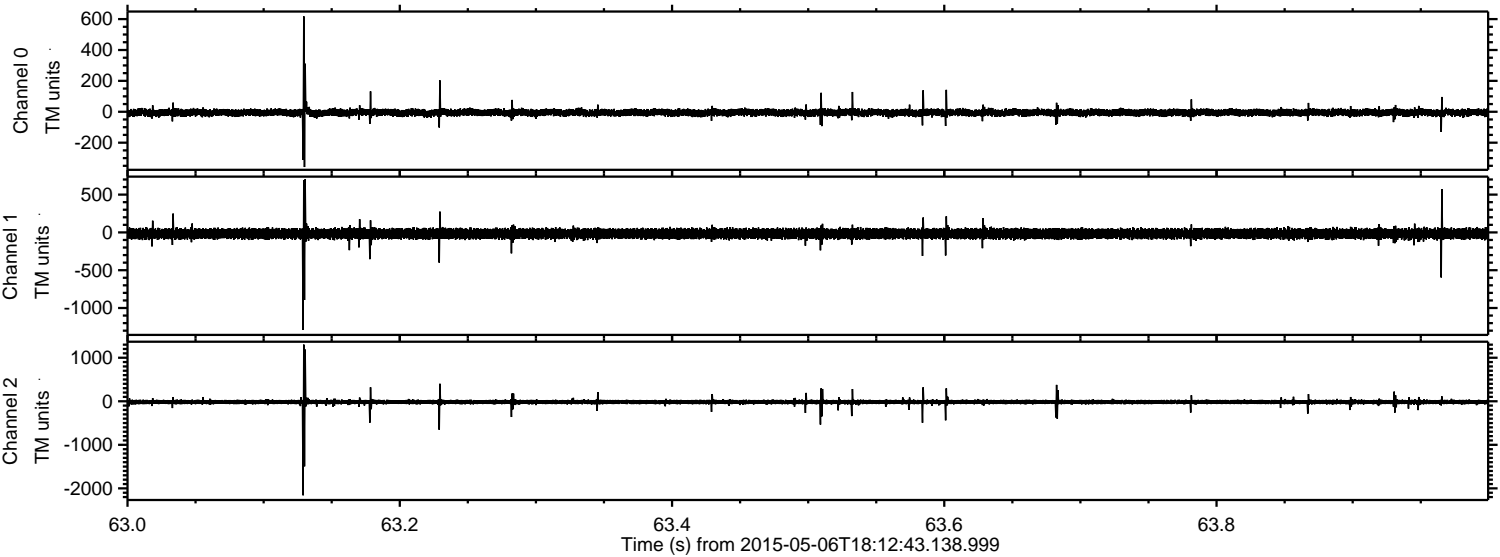
Processed Wed May 6 20:20:18 2015 by ELM ver.2012-10-06 from 001__elm20150506_181242__dat00.bin



Processed Wed May 6 20:20:19 2015 by ELM ver.2012-10-06 from 001__elm20150506_181242__dat00.bin



Processed Wed May 6 20:20:20 2015 by ELM ver.2012-10-06 from 001__elm20150506_181242__dat00.bin



Processed Wed May 6 20:20:21 2015 by ELM ver.2012-10-06 from 001__elm20150506_181242__dat00.bin

