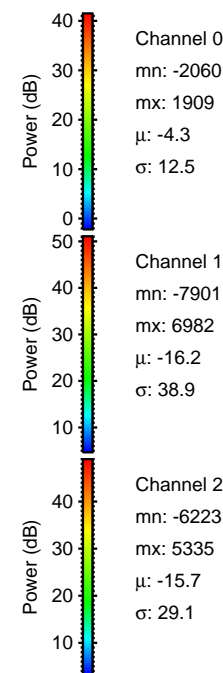
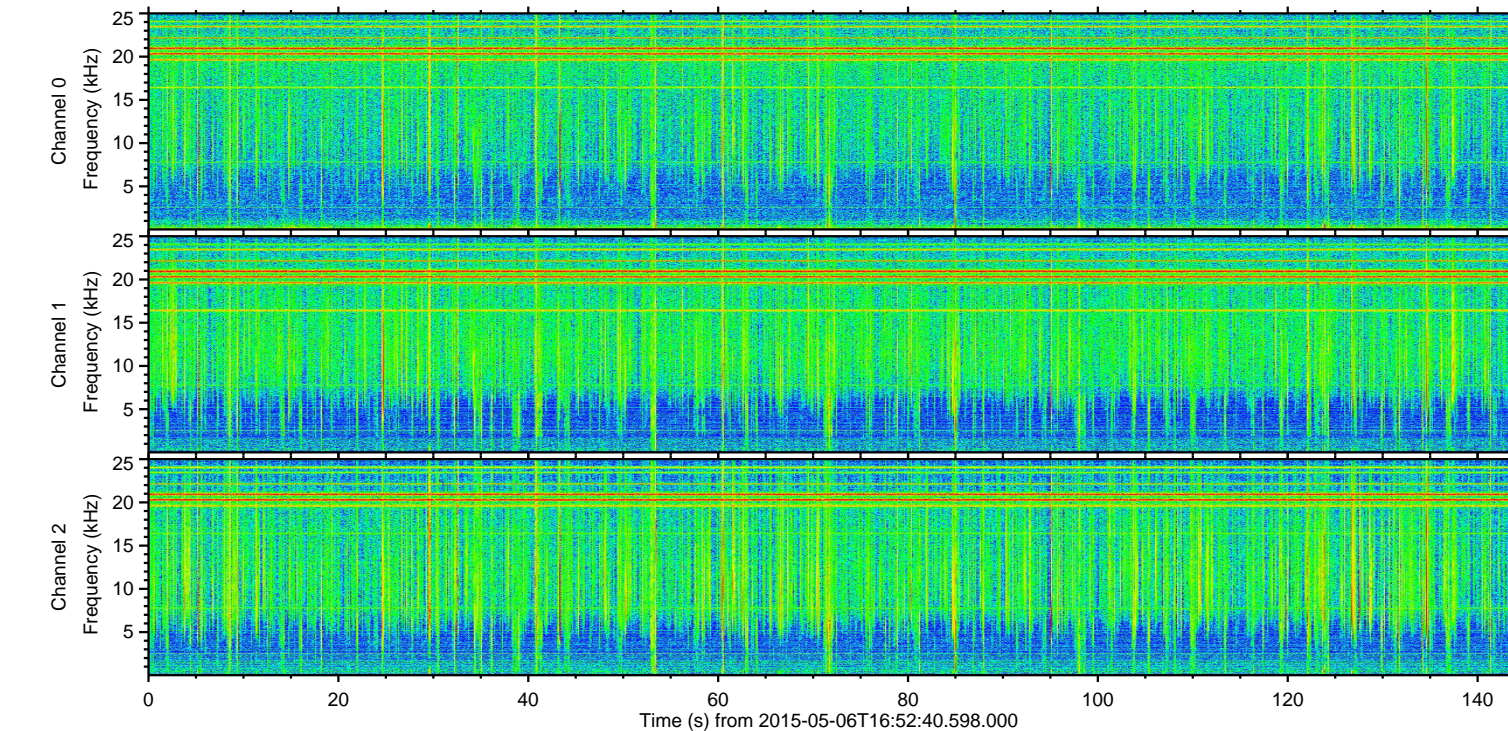
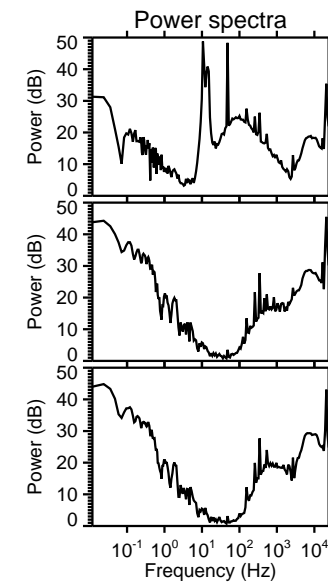
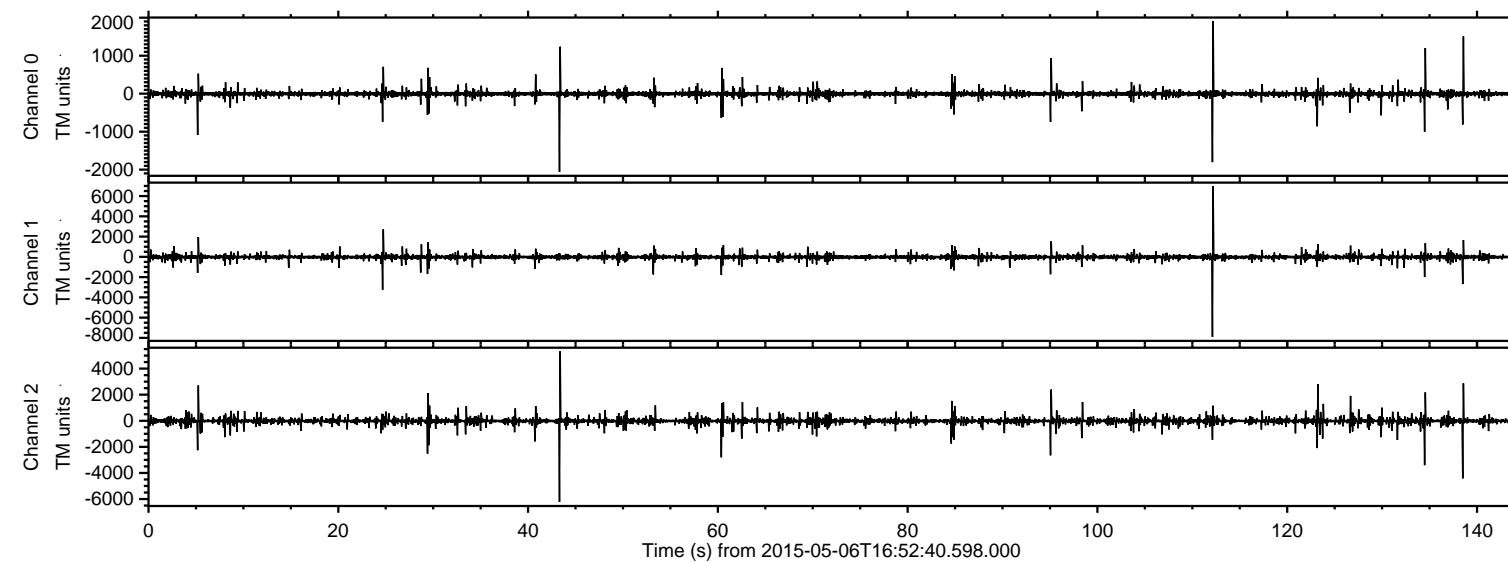


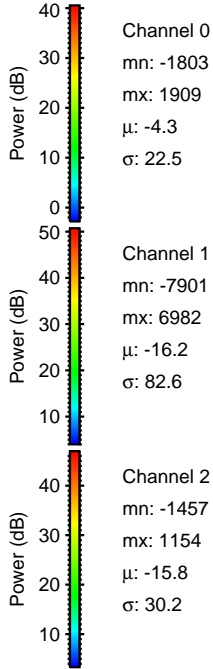
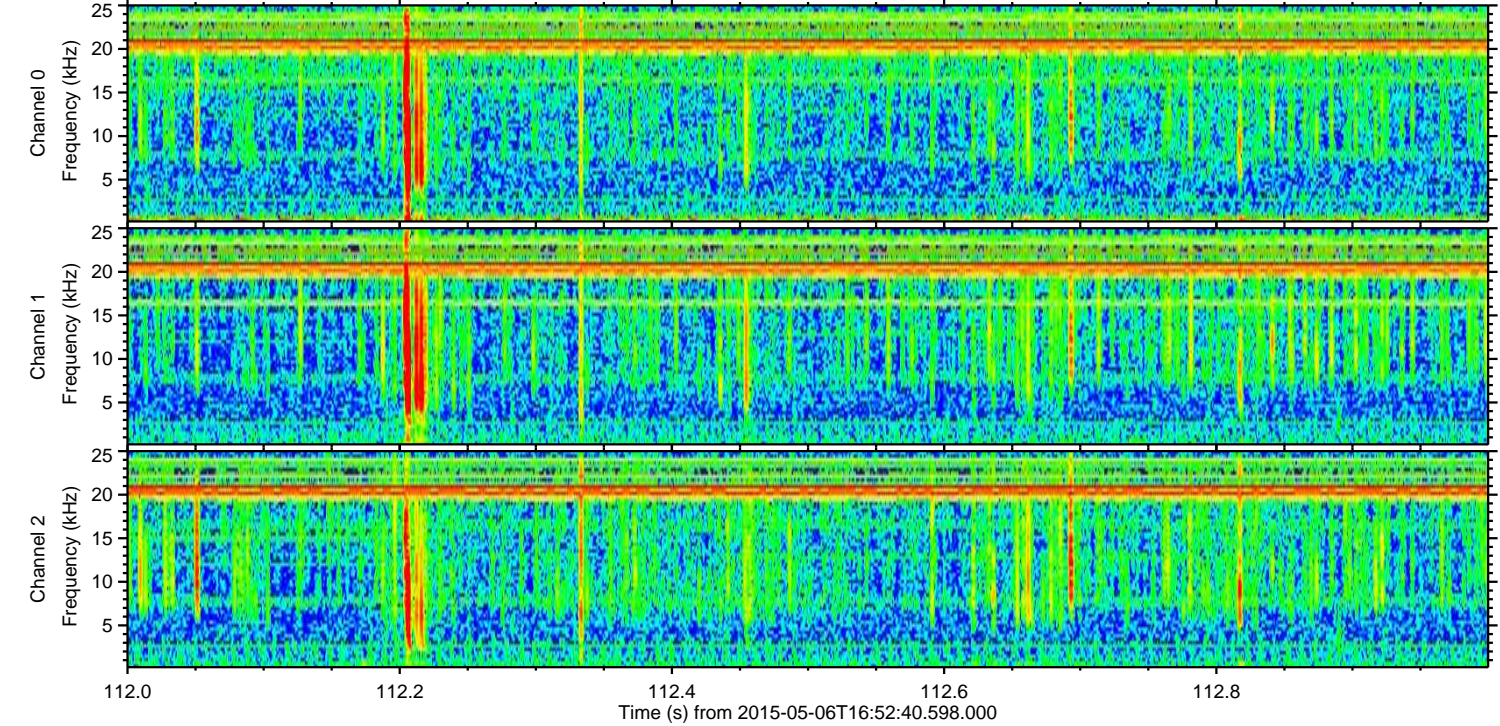
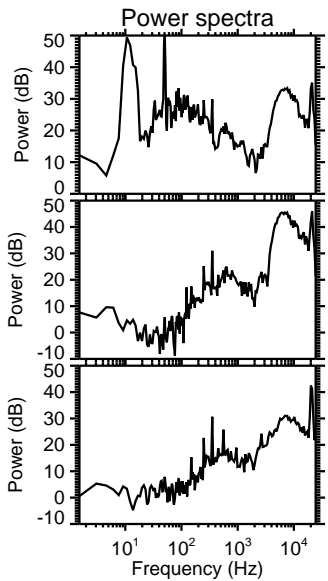
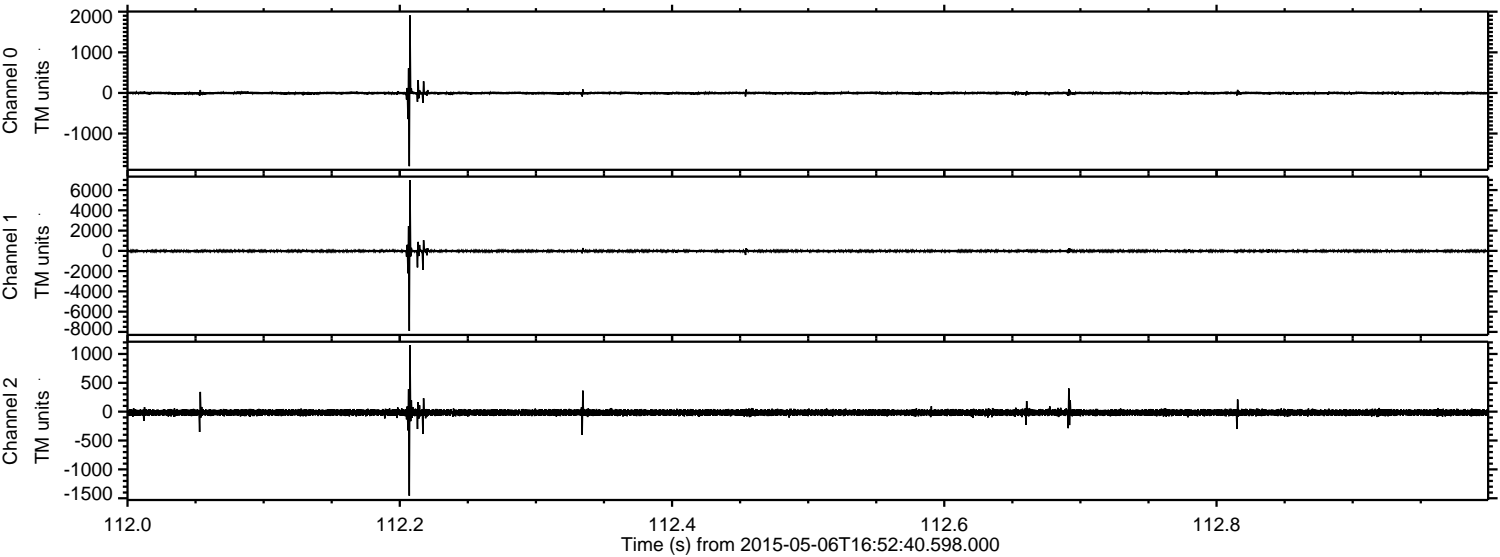
ELMAVAN 3D WAVEFORMS (Measured data sampled at 50 kHz) 49788 packets of 144 samples from 2015-05-06T16:52:40.598.000.

Processed Wed May 6 18:59:43 2015 by ELM ver.2012-10-06 from 001__elm20150506_165239__dat00.bin



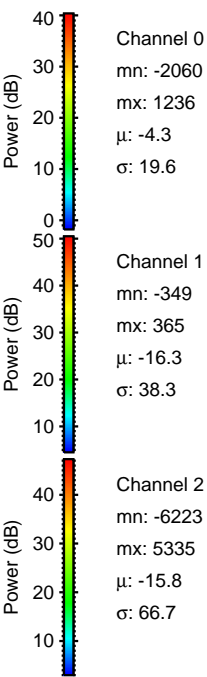
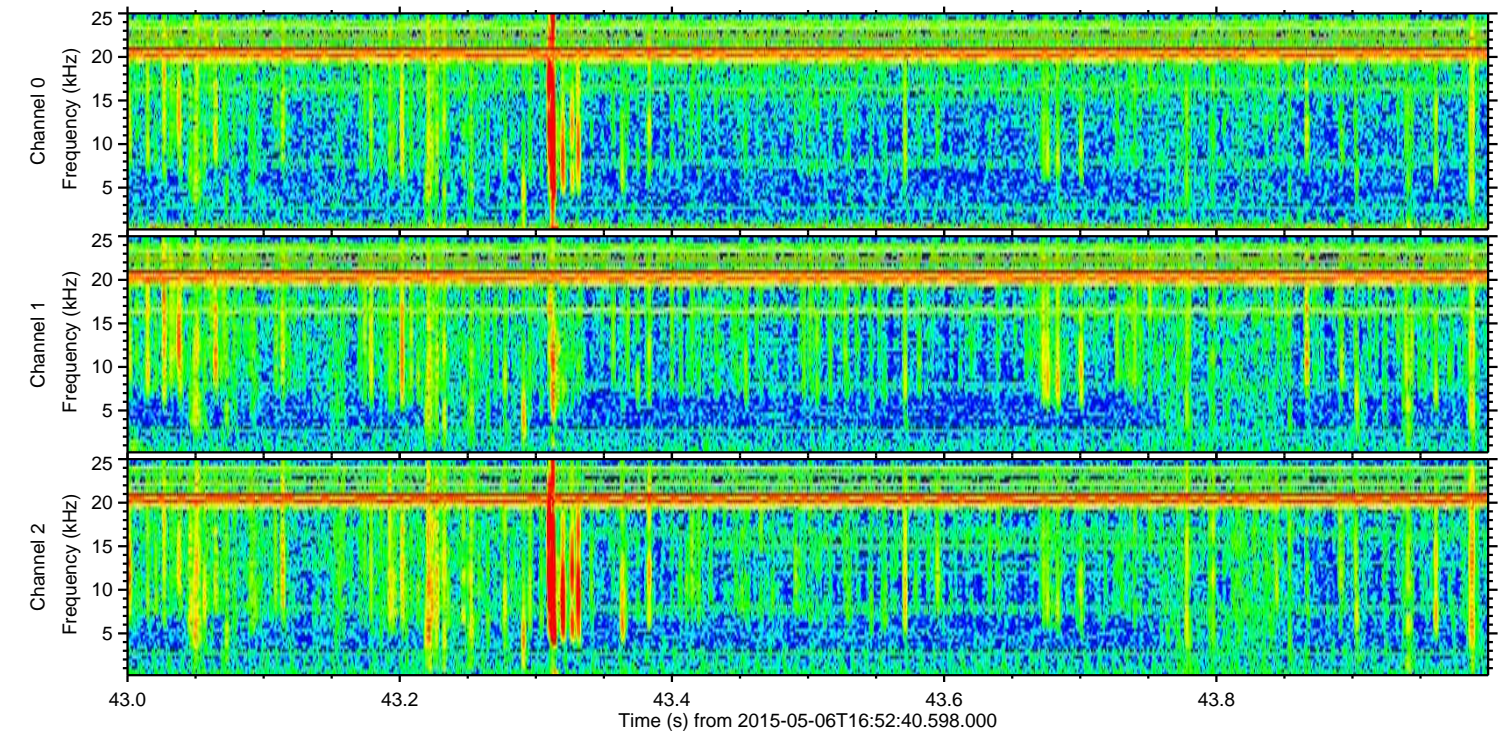
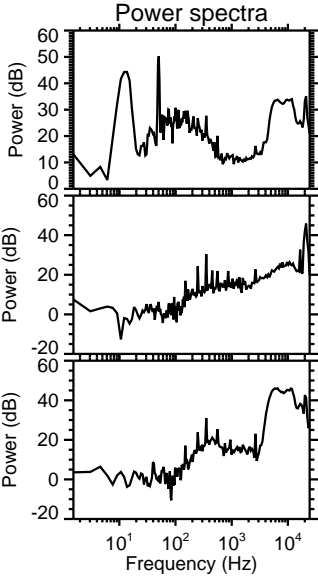
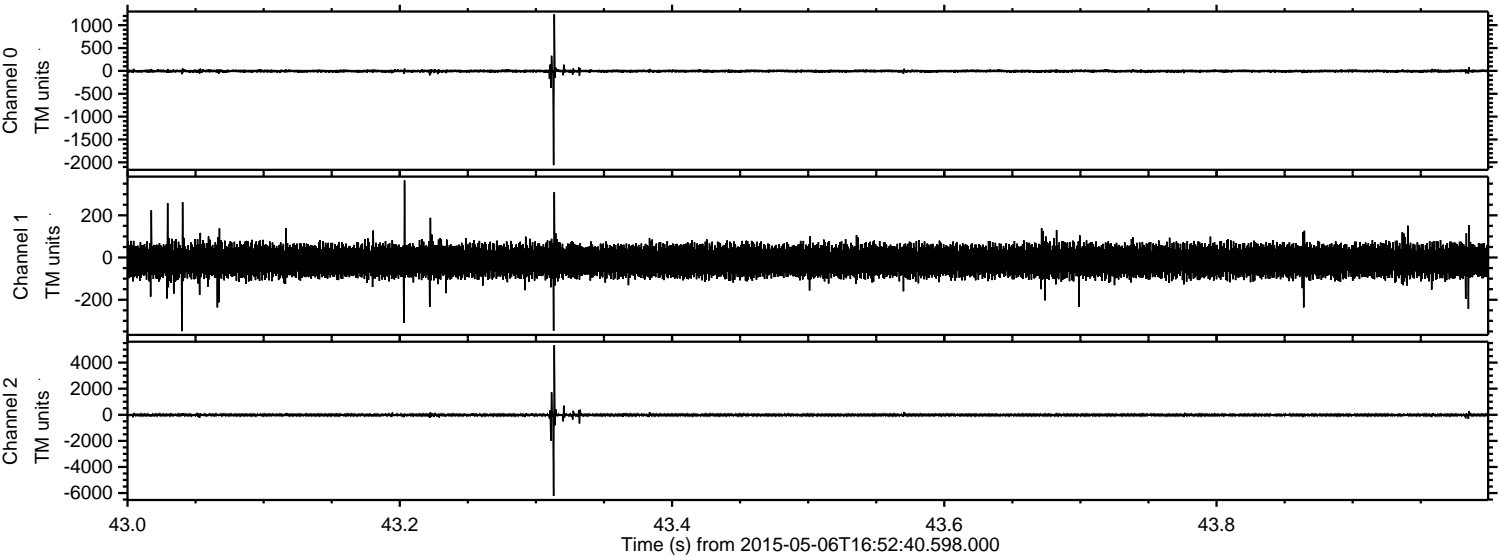
ELMAVAN 3D WAVEFORMS (Measured data sampled at 50 kHz) 49788 packets of 144 samples from 2015-05-06T16:52:40.598.000. Part 113/144

Processed Wed May 6 18:59:54 2015 by ELM ver.2012-10-06 from 001__elm20150506_165239__dat00.bin



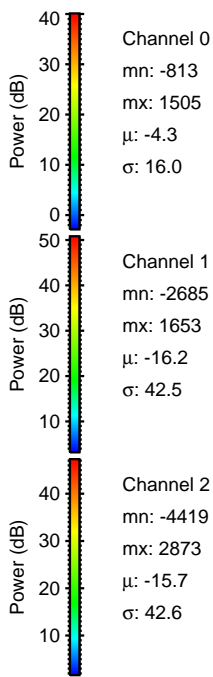
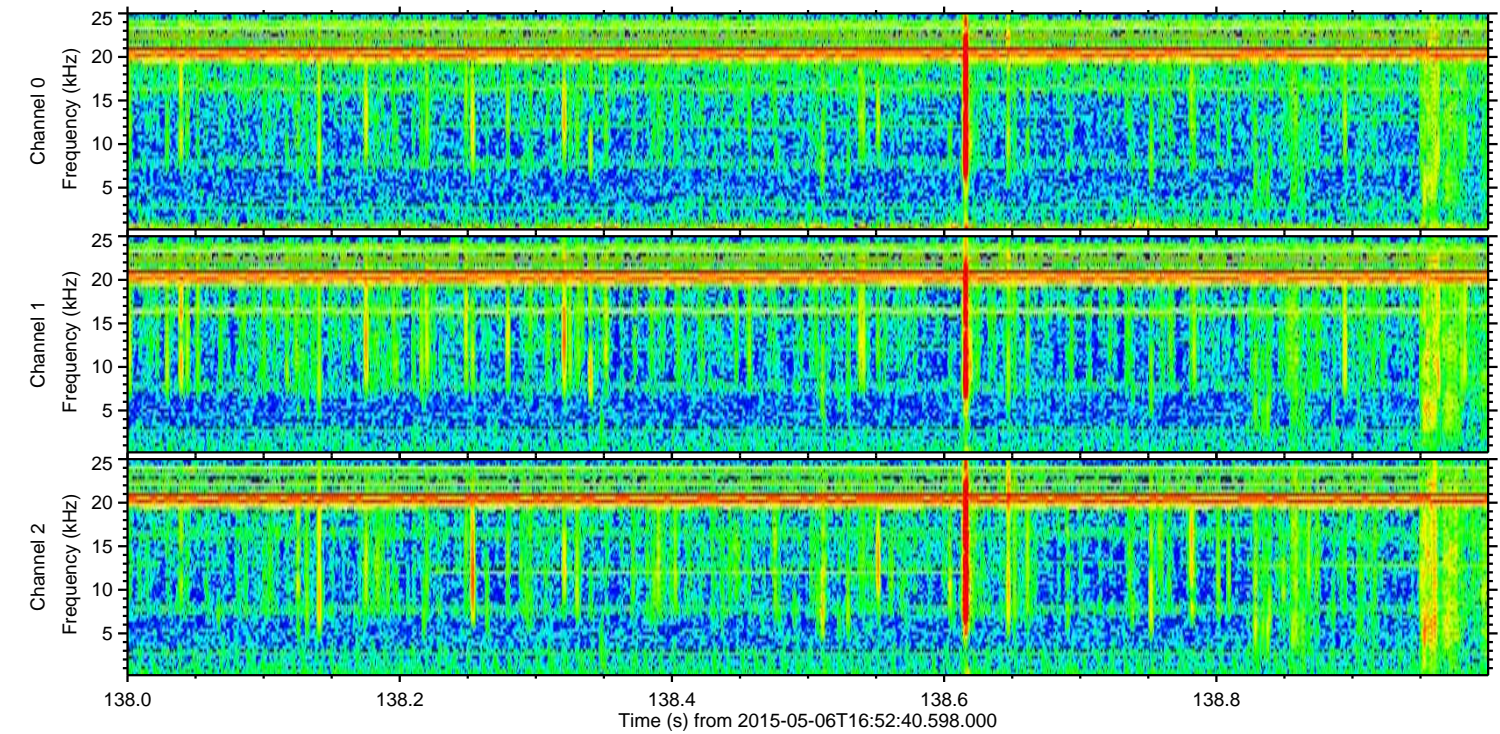
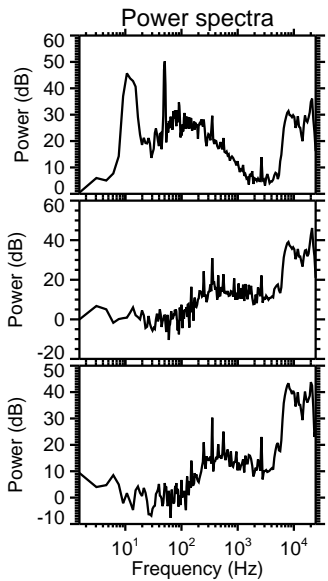
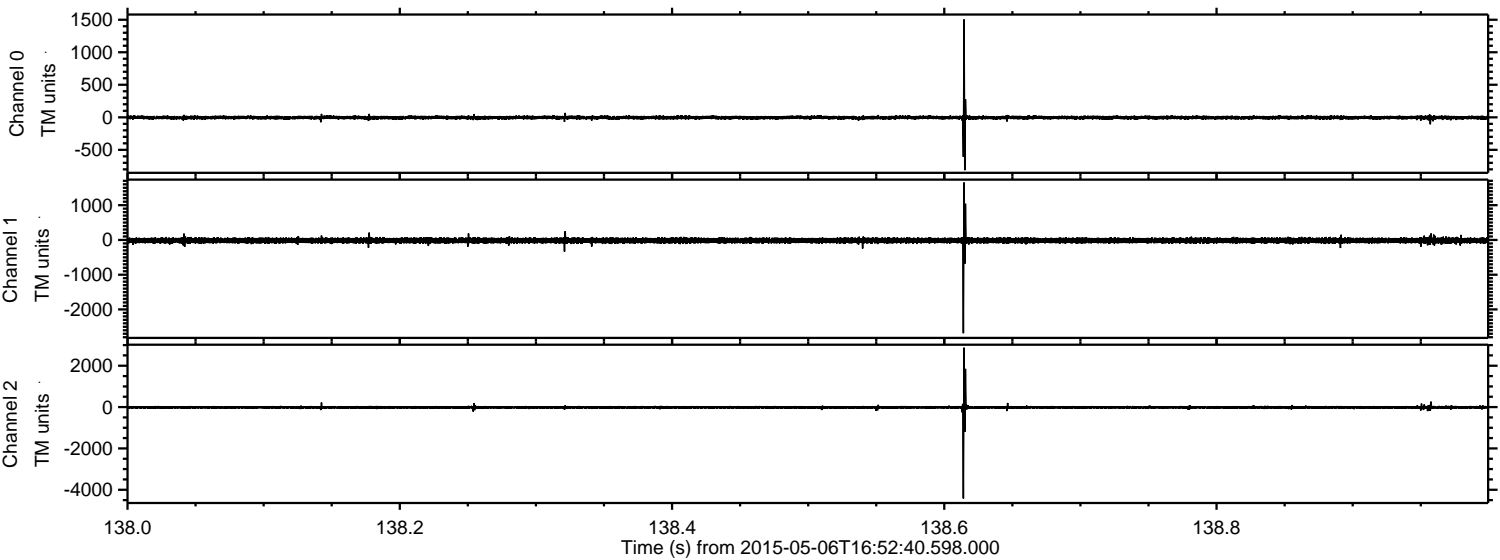
ELMAVAN 3D WAVEFORMS (Measured data sampled at 50 kHz) 49788 packets of 144 samples from 2015-05-06T16:52:40.598.000. Part 44/144

Processed Wed May 6 18:59:55 2015 by ELM ver.2012-10-06 from 001__elm20150506_165239__dat00.bin



ELMAVAN 3D WAVEFORMS (Measured data sampled at 50 kHz) 49788 packets of 144 samples from 2015-05-06T16:52:40.598.000. Part 139/144

Processed Wed May 6 18:59:56 2015 by ELM ver.2012-10-06 from 001__elm20150506_165239__dat00.bin



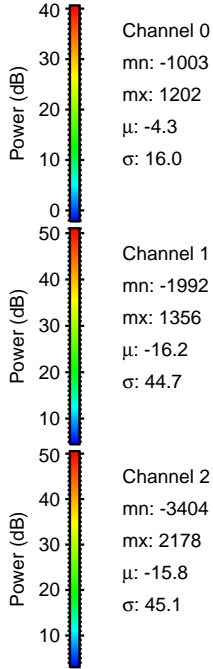
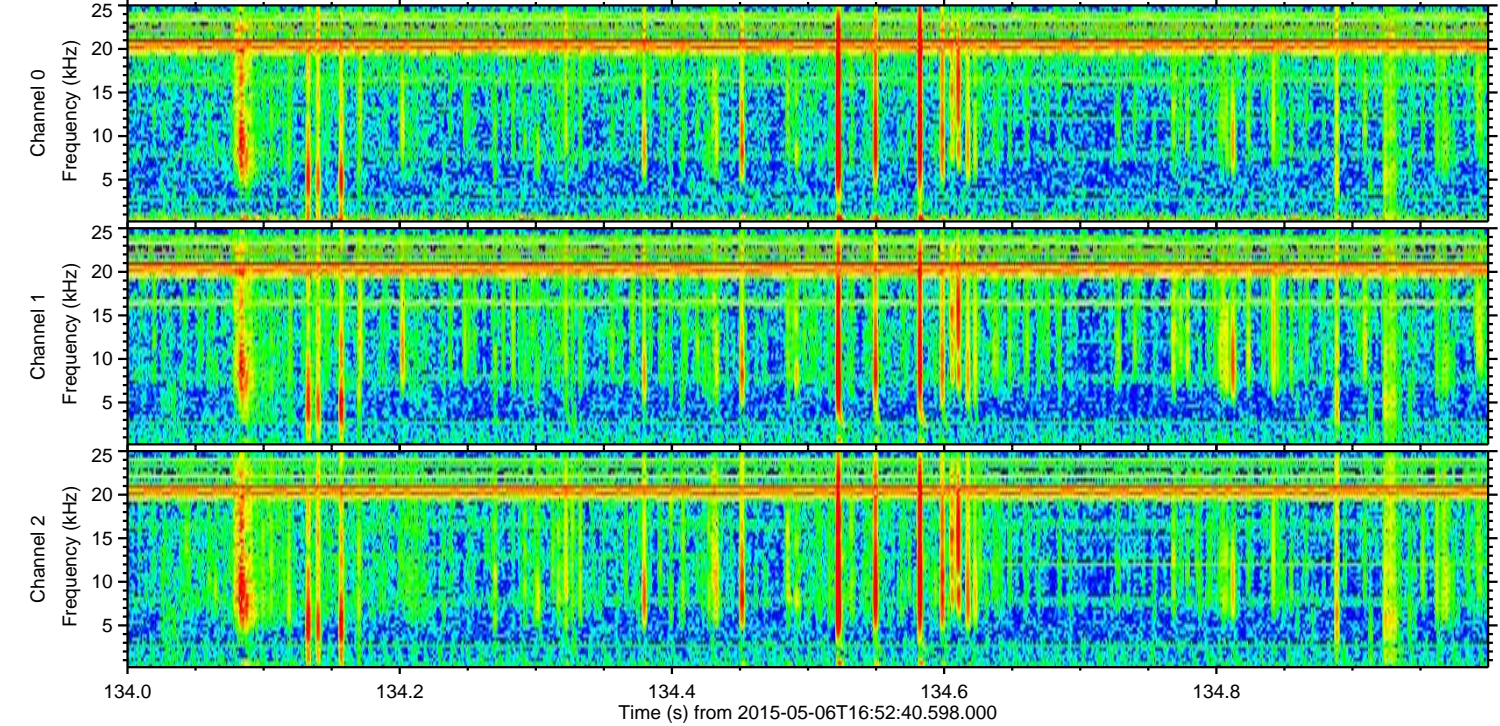
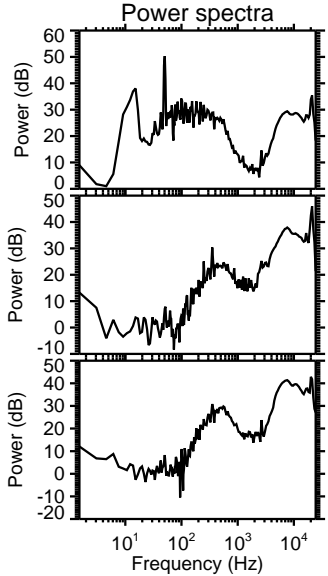
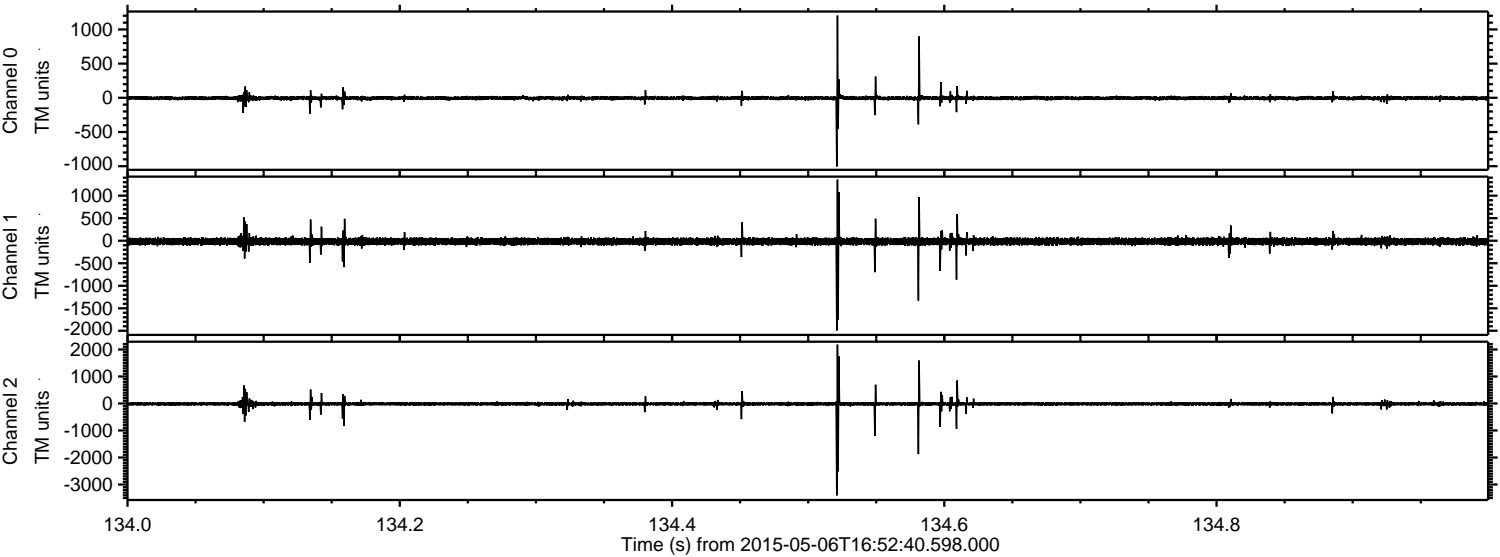
Channel 0
mn: -813
mx: 1505
 μ : -4.3
 σ : 16.0

Channel 1
mn: -2685
mx: 1653
 μ : -16.2
 σ : 42.5

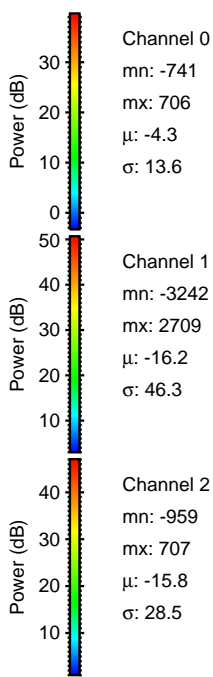
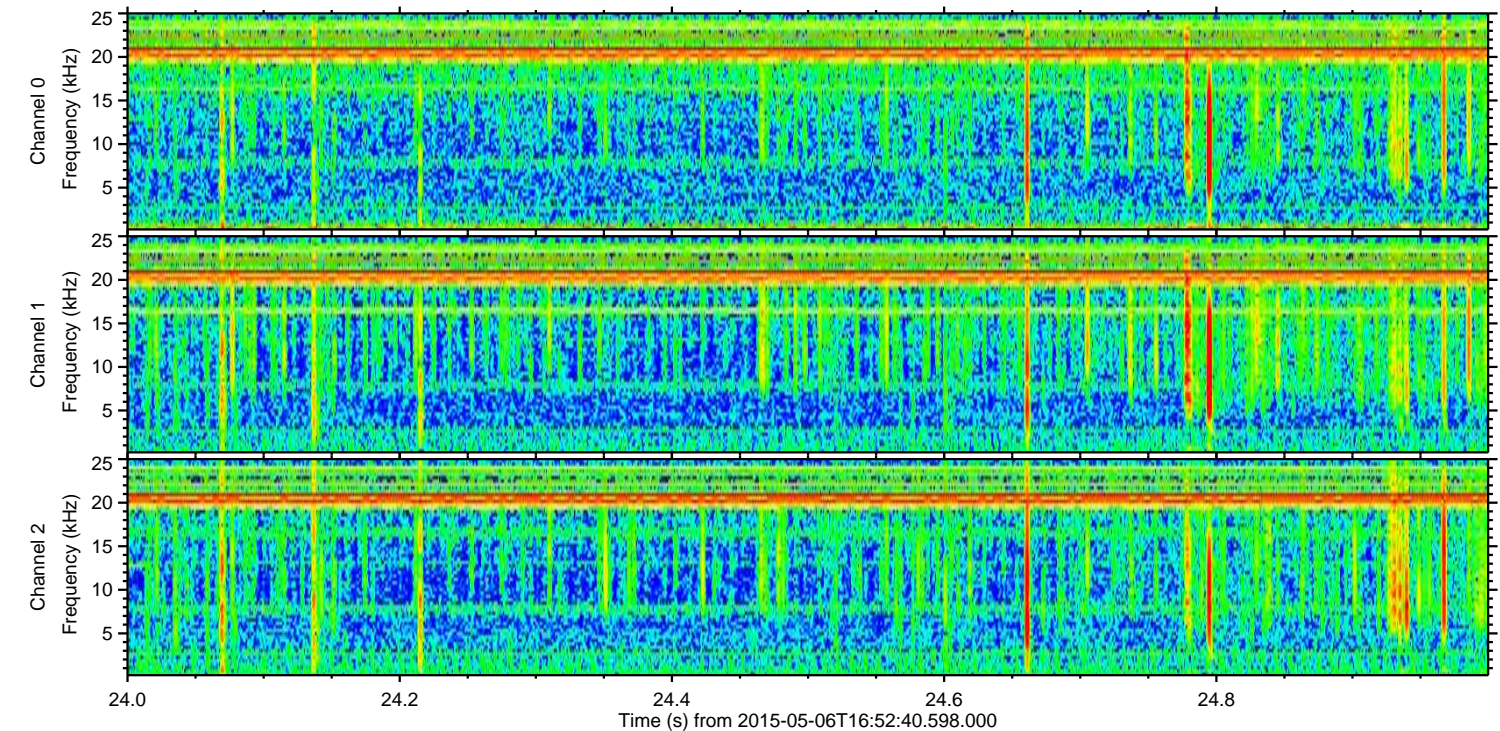
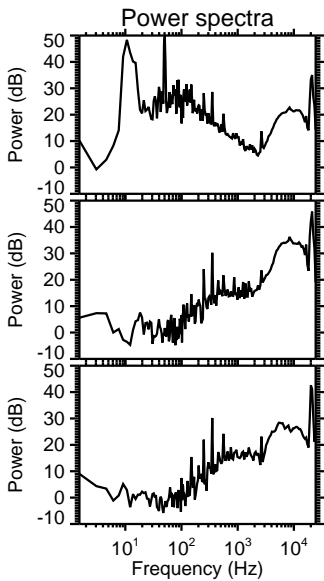
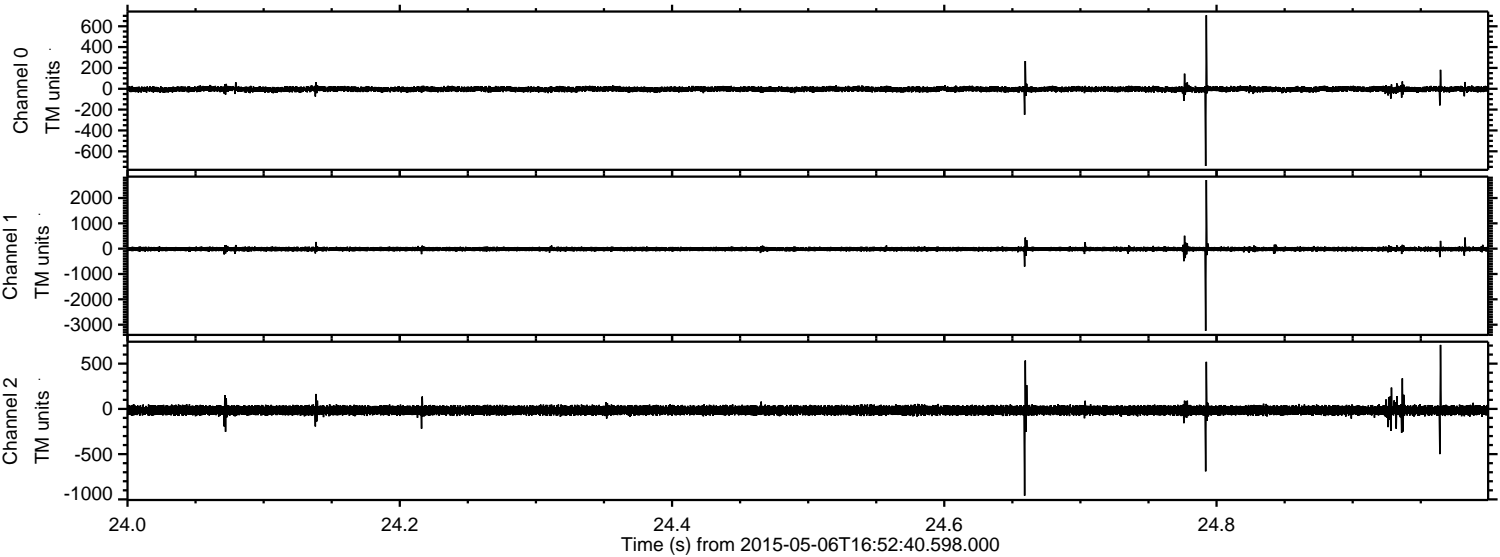
Channel 2
mn: -4419
mx: 2873
 μ : -15.7
 σ : 42.6

ELMAVAN 3D WAVEFORMS (Measured data sampled at 50 kHz) 49788 packets of 144 samples from 2015-05-06T16:52:40.598.000. Part 135/144

Processed Wed May 6 18:59:57 2015 by ELM ver.2012-10-06 from 001__elm20150506_165239__dat00.bin

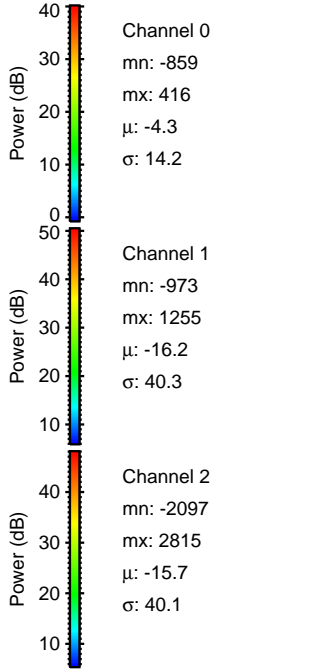
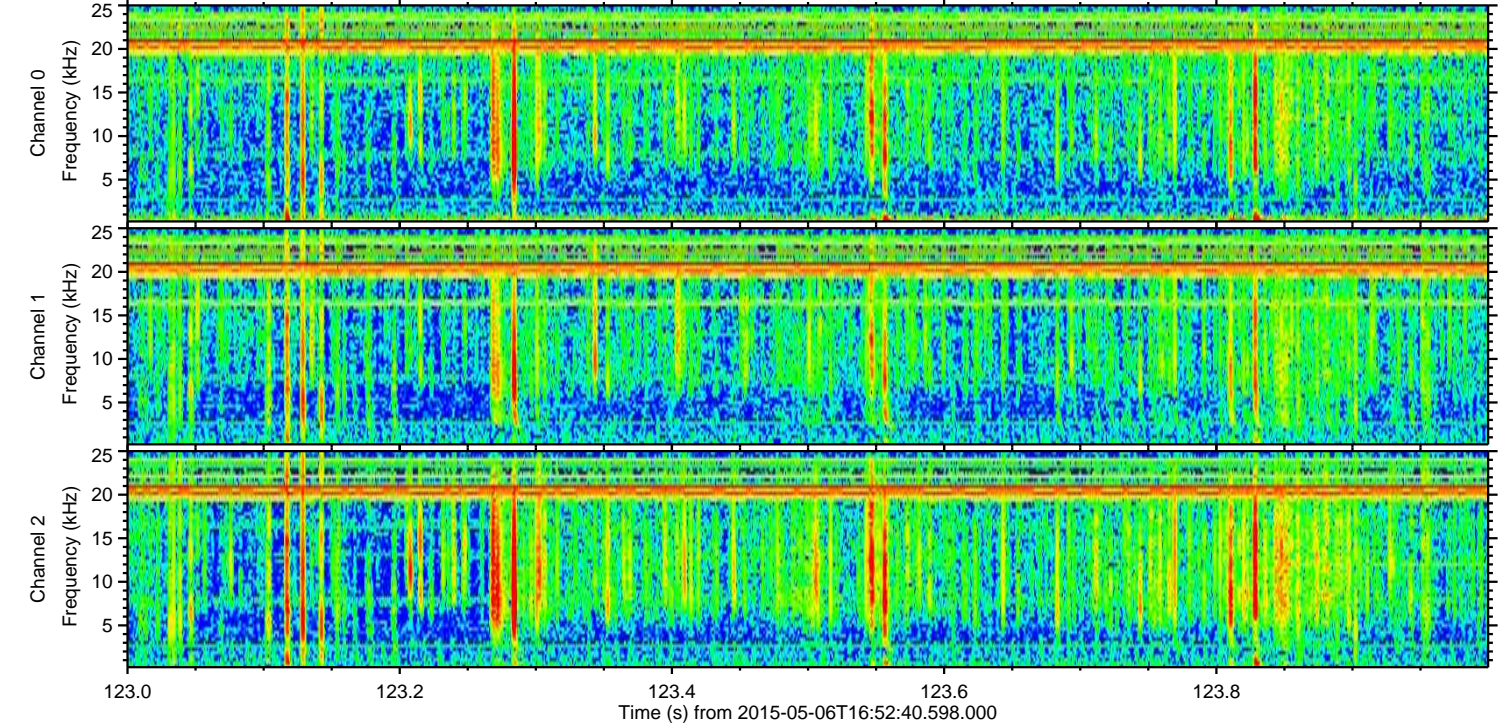
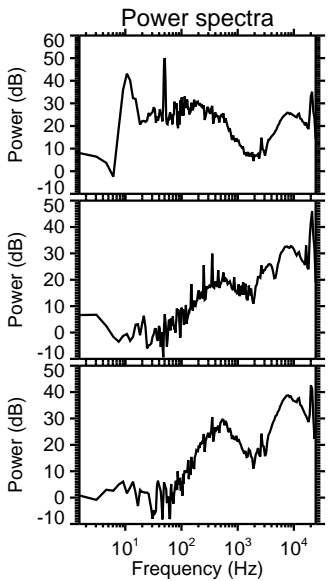
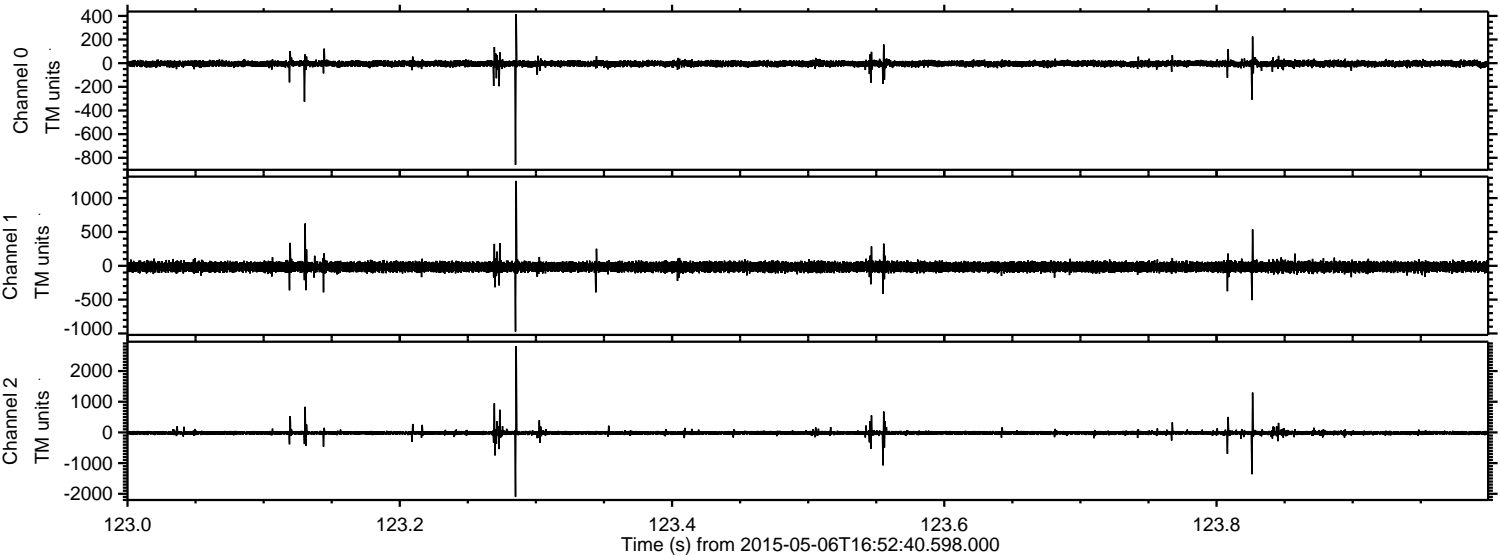


Processed Wed May 6 18:59:58 2015 by ELM ver.2012-10-06 from 001__elm20150506_165239__dat00.bin

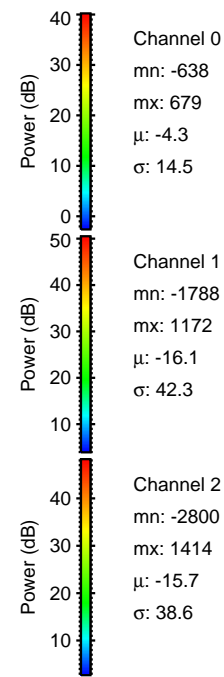
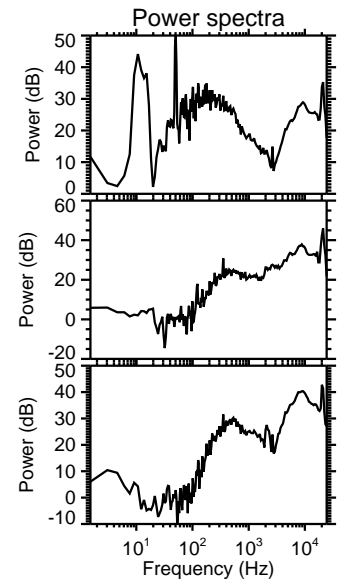
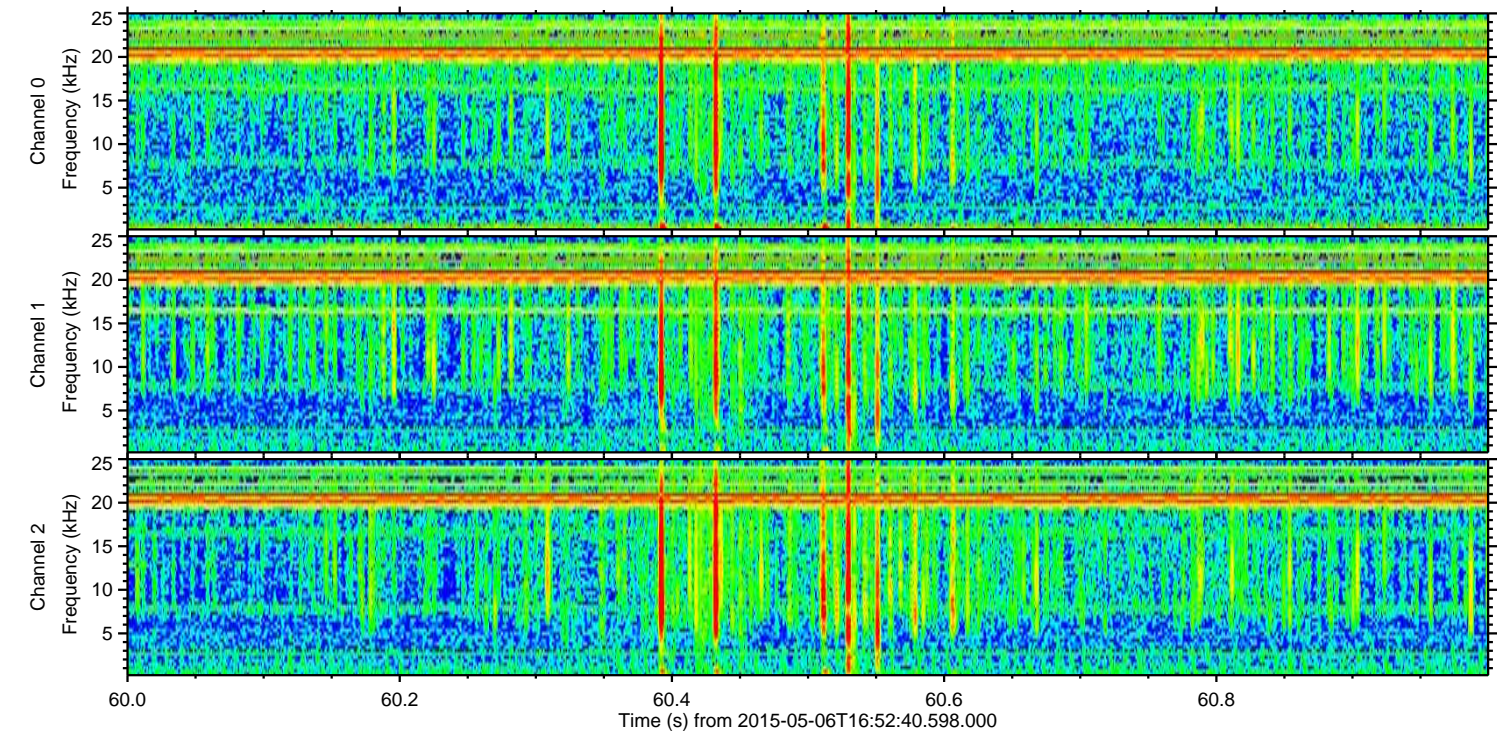
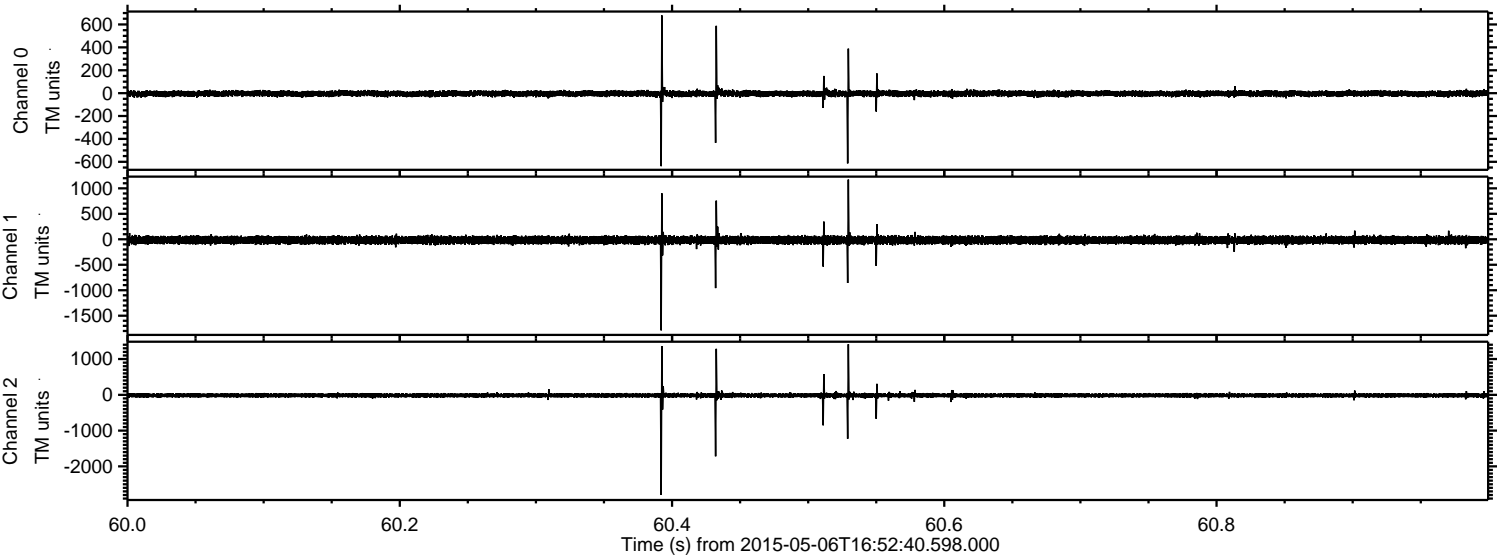


ELMAVAN 3D WAVEFORMS (Measured data sampled at 50 kHz) 49788 packets of 144 samples from 2015-05-06T16:52:40.598.000. Part 124/144

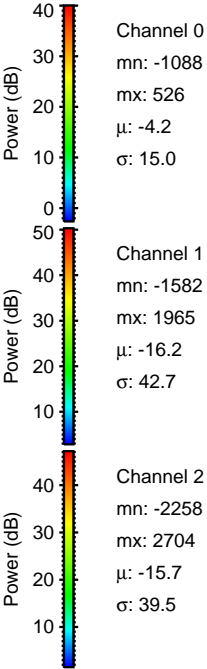
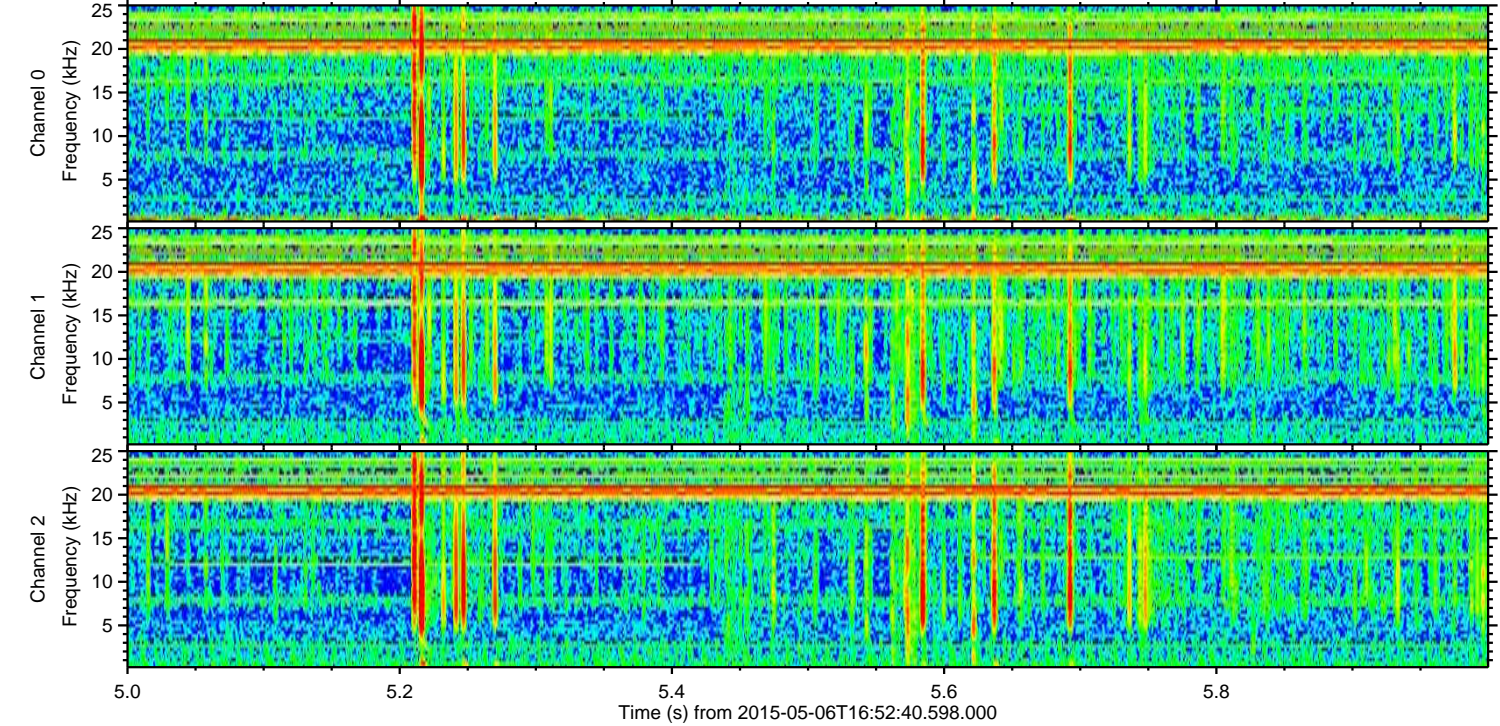
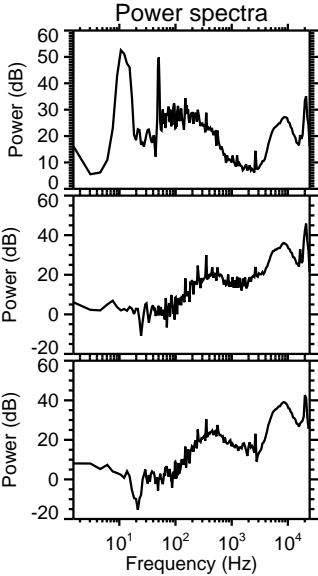
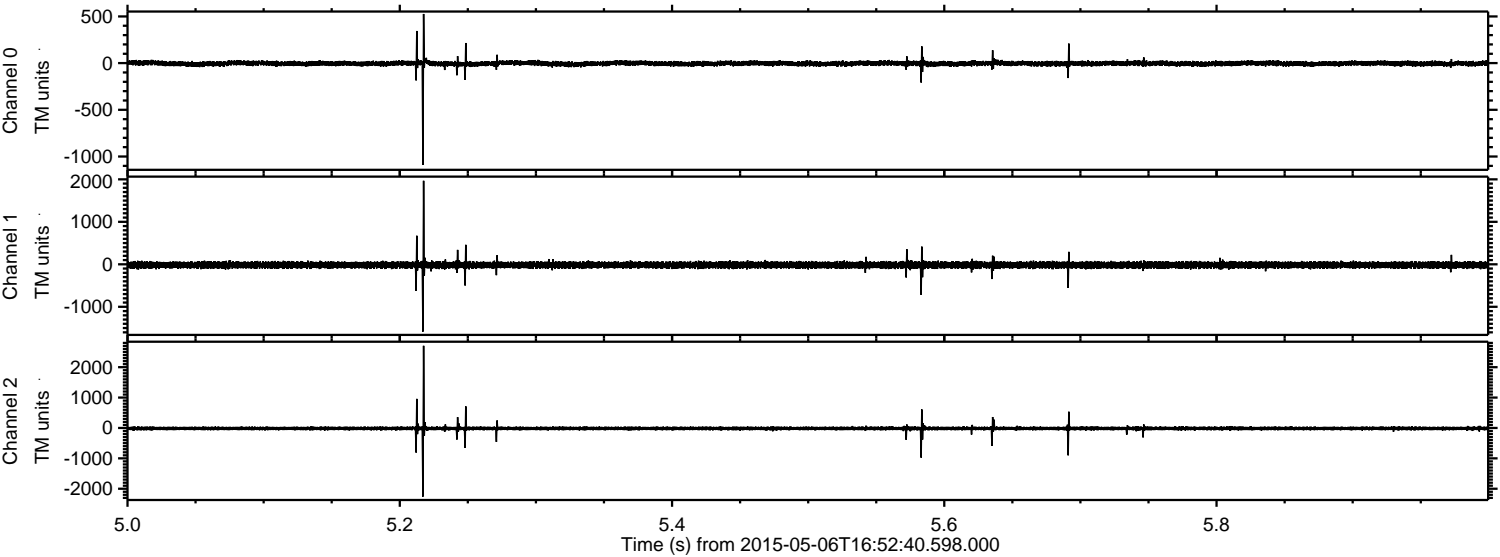
Processed Wed May 6 18:59:59 2015 by ELM ver.2012-10-06 from 001__elm20150506_165239__dat00.bin



Processed Wed May 6 19:00:00 2015 by ELM ver.2012-10-06 from 001__elm20150506_165239__dat00.bin



Processed Wed May 6 19:00:01 2015 by ELM ver.2012-10-06 from 001__elm20150506_165239__dat00.bin



Processed Wed May 6 19:00:02 2015 by ELM ver.2012-10-06 from 001__elm20150506_165239__dat00.bin

