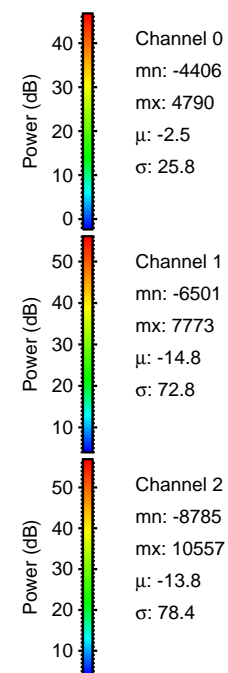
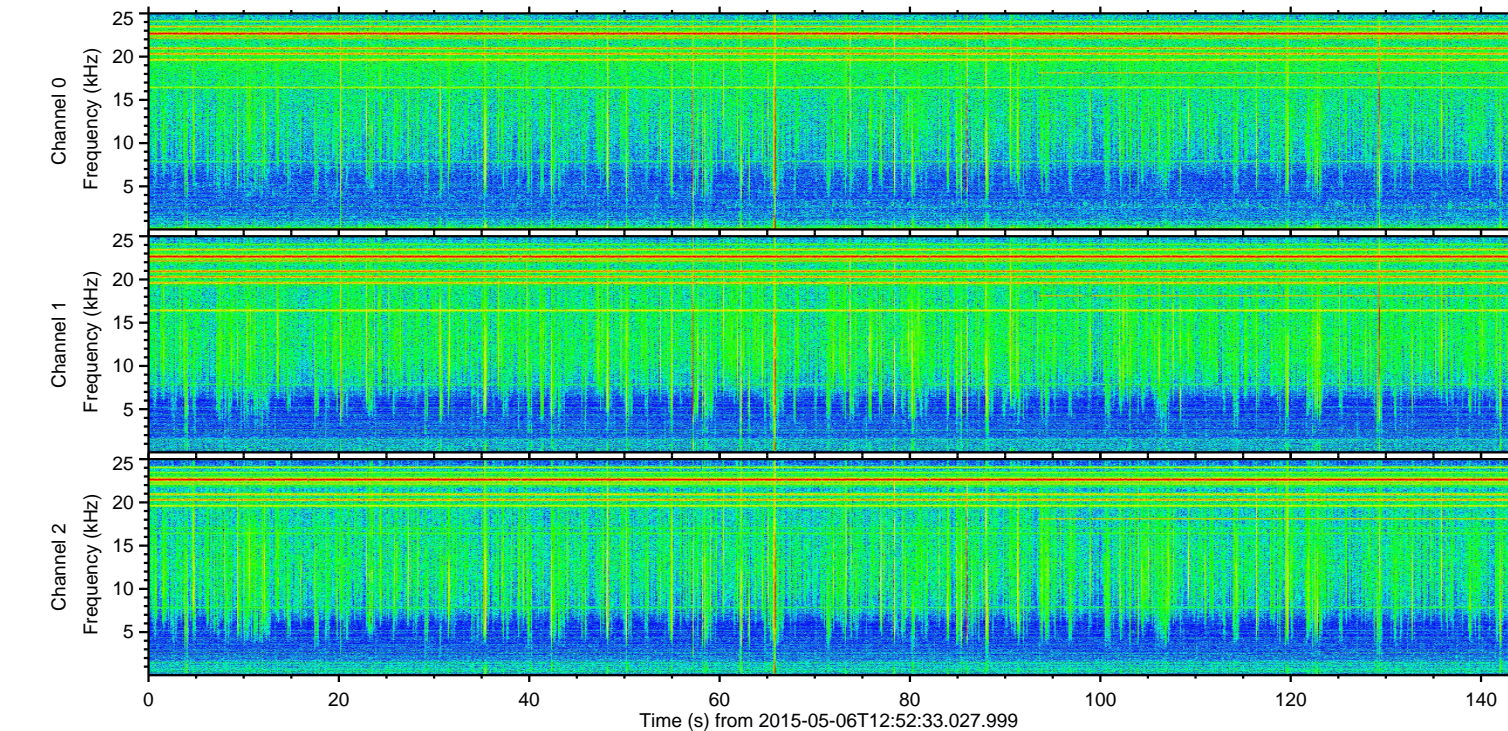
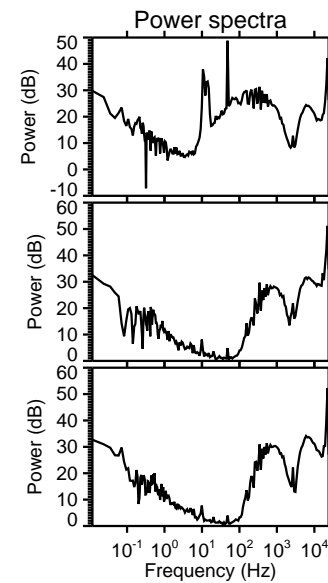
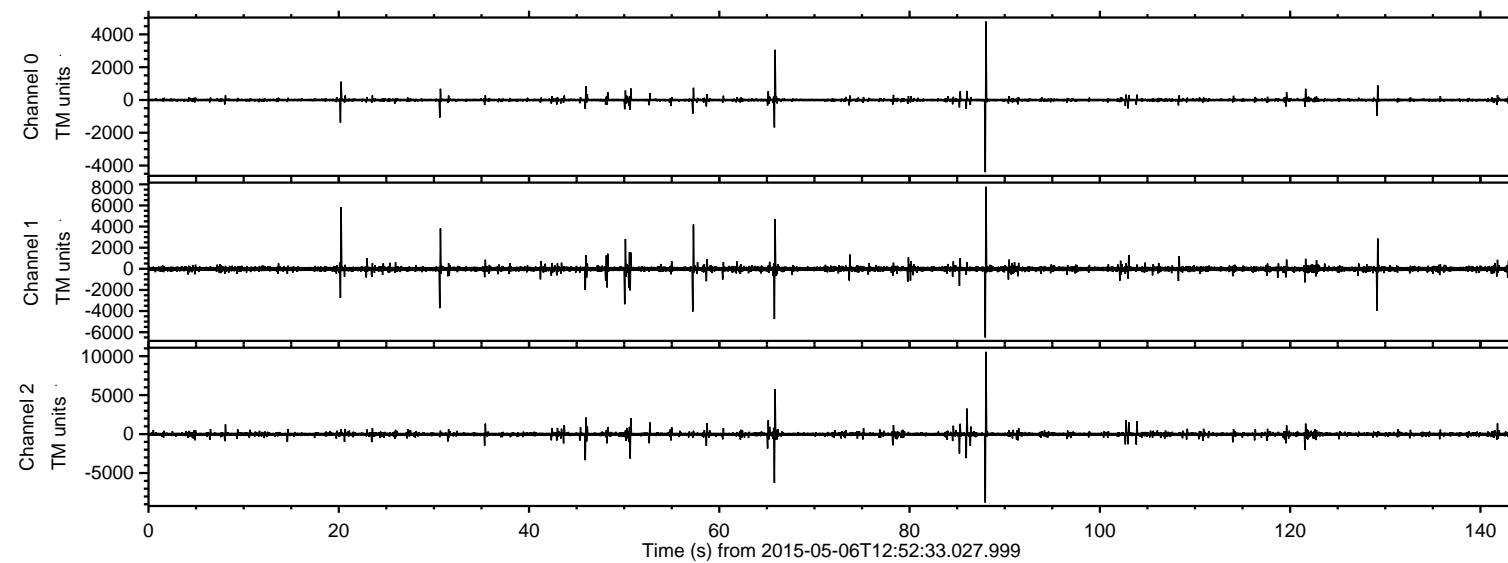
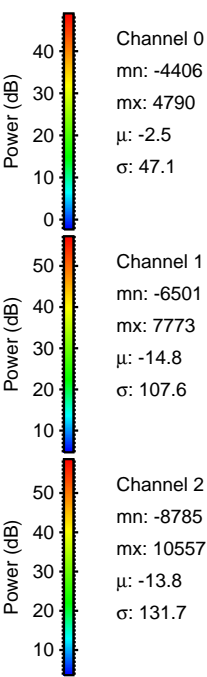
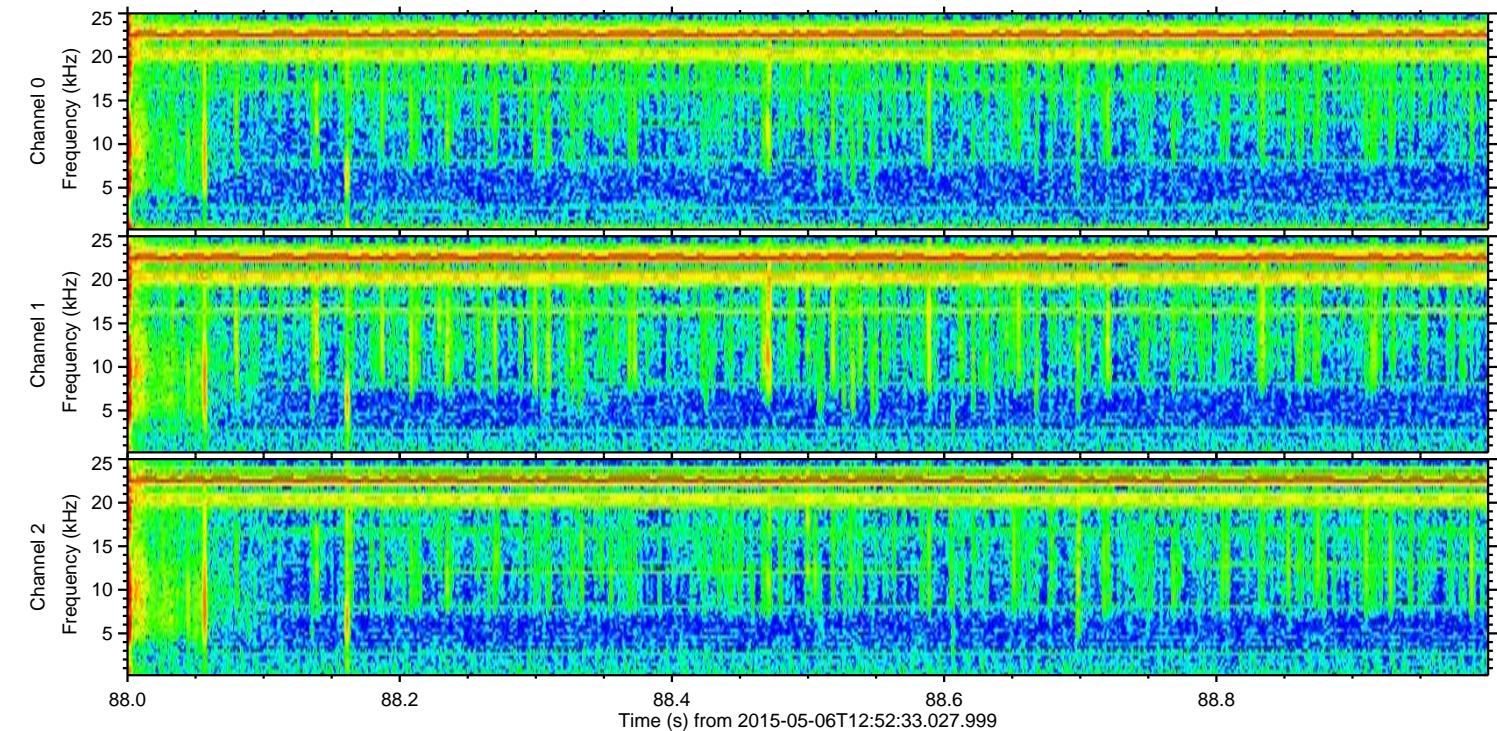
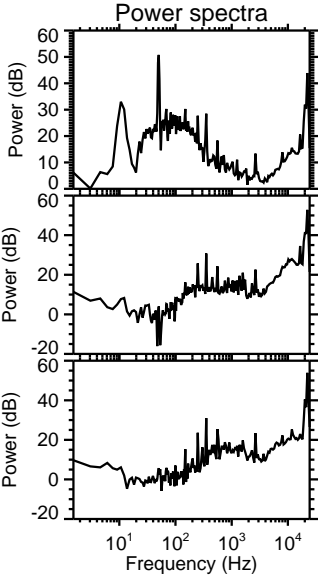
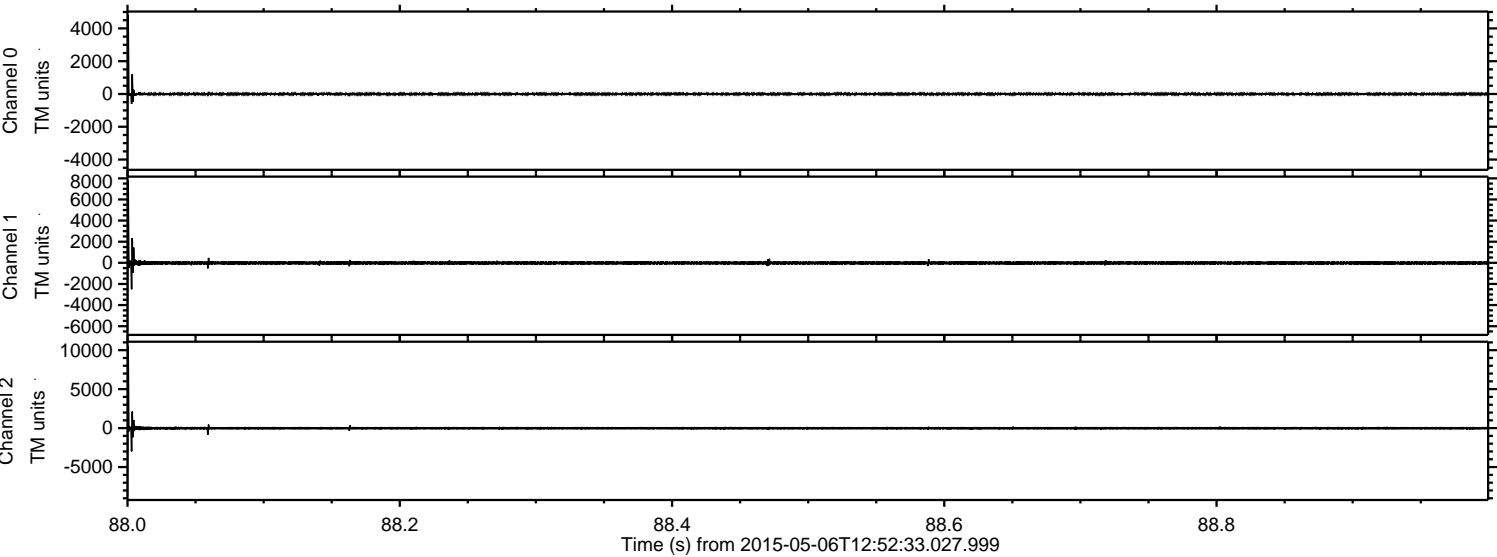


ELMAVAN 3D WAVEFORMS (Measured data sampled at 50 kHz) 49660 packets of 144 samples from 2015-05-06T12:52:33.027.999.

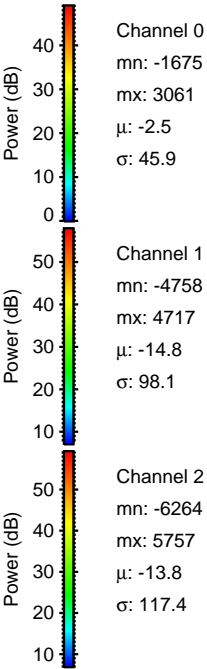
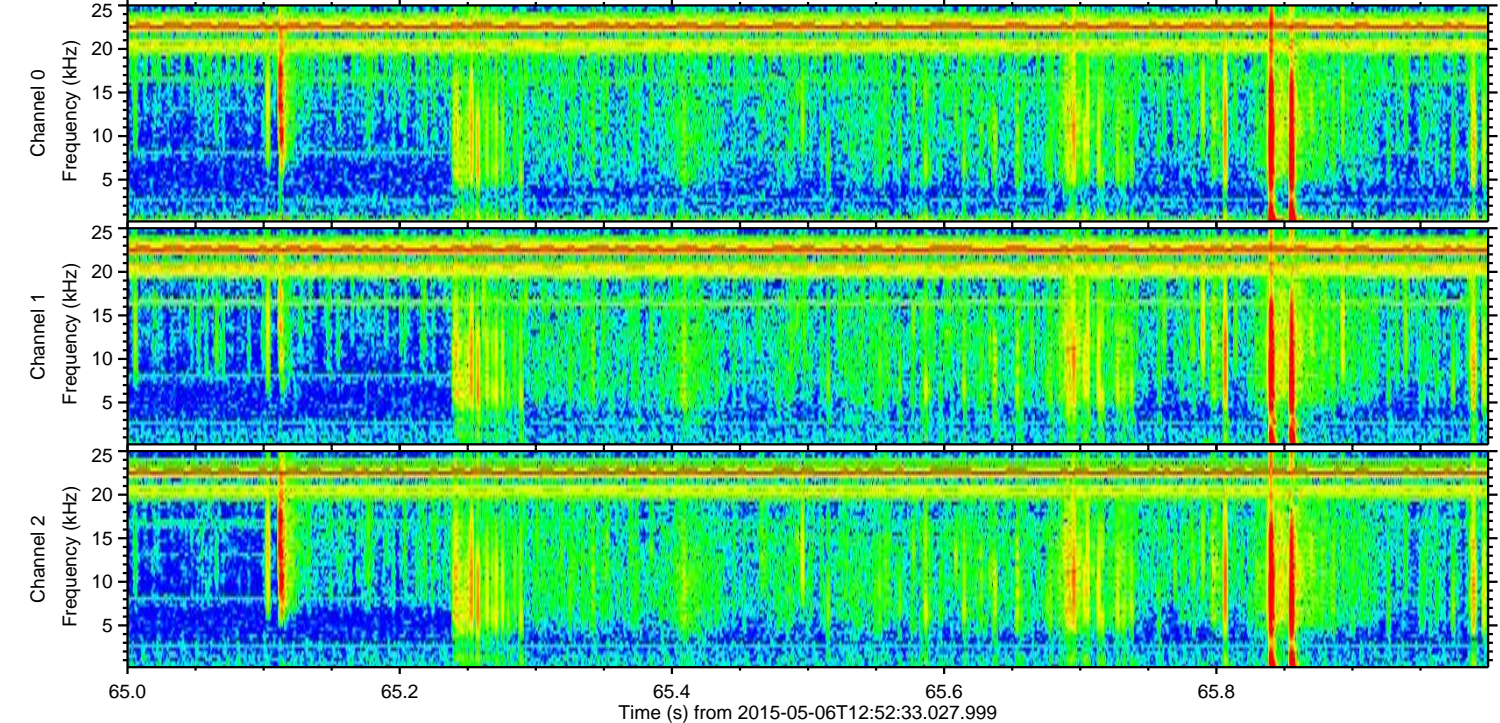
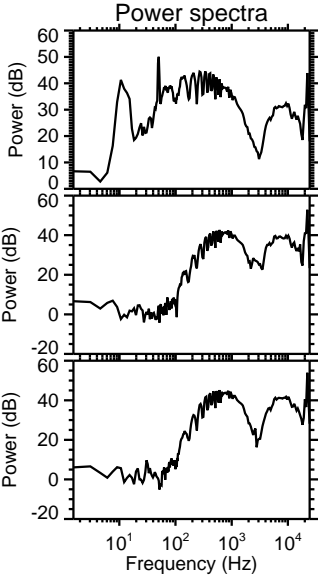
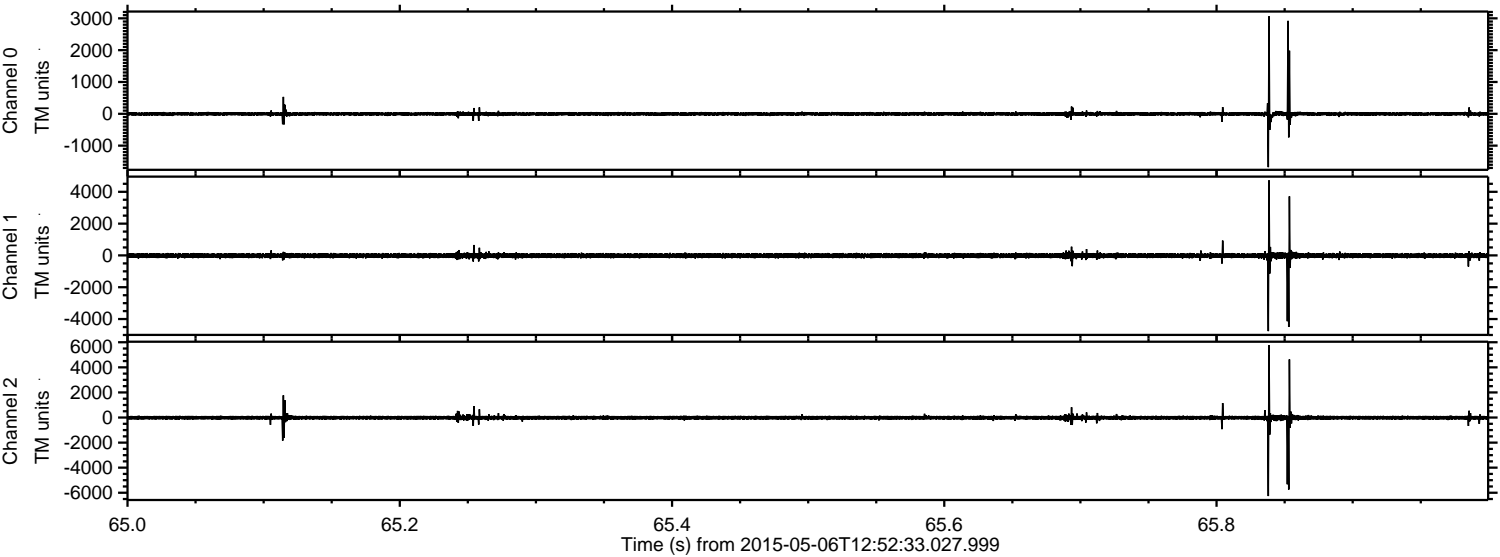
Processed Wed May 6 14:59:55 2015 by ELM ver.2012-10-06 from 001__elm20150506_125232__dat00.bin



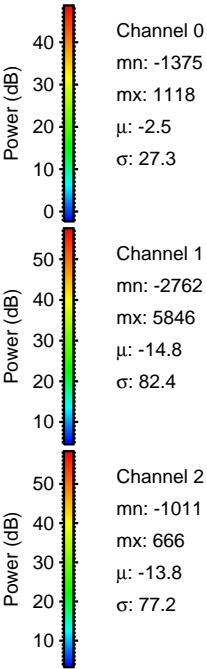
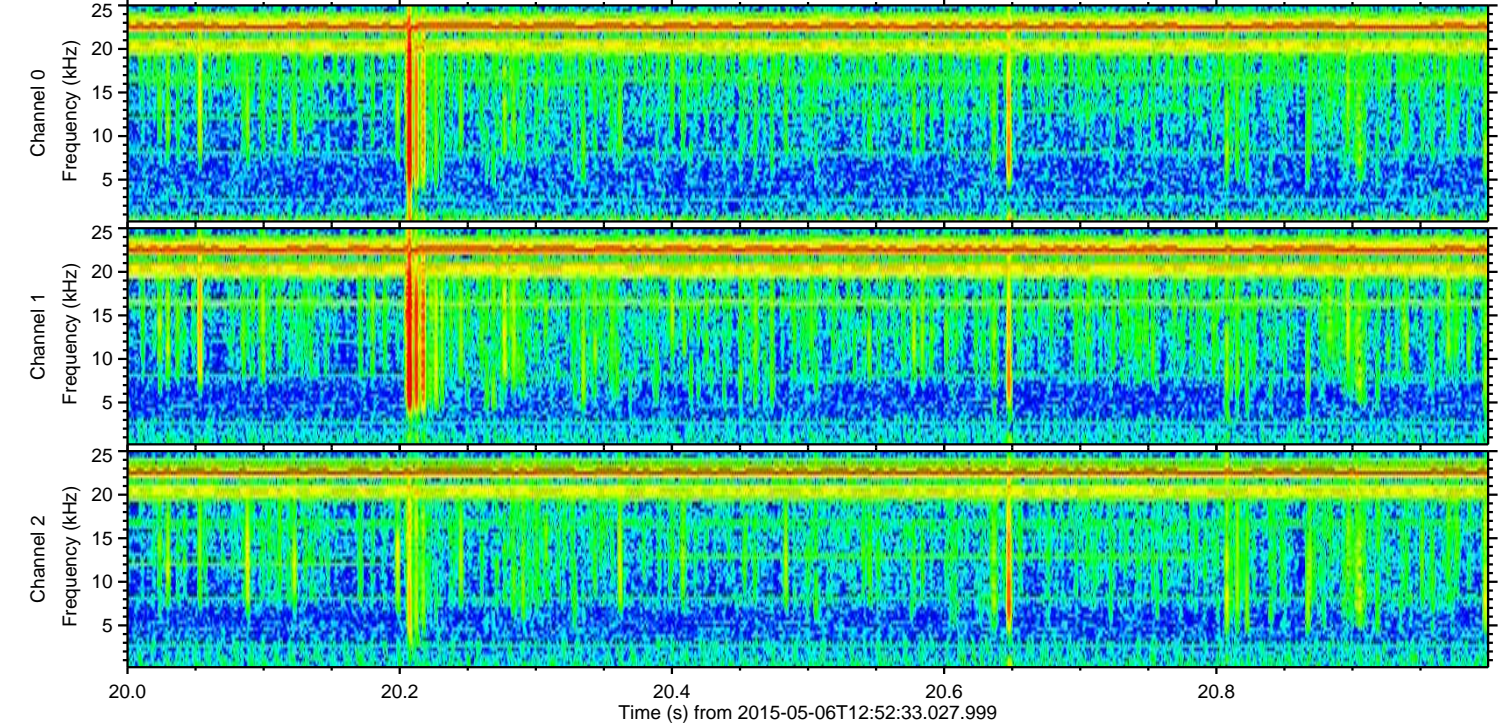
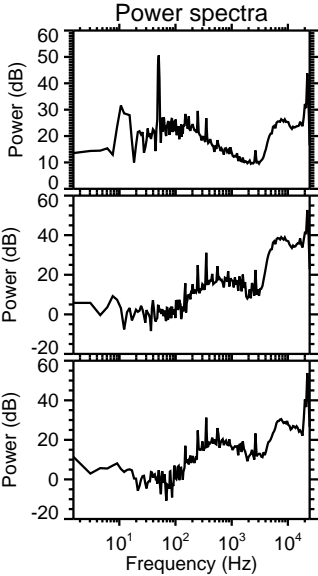
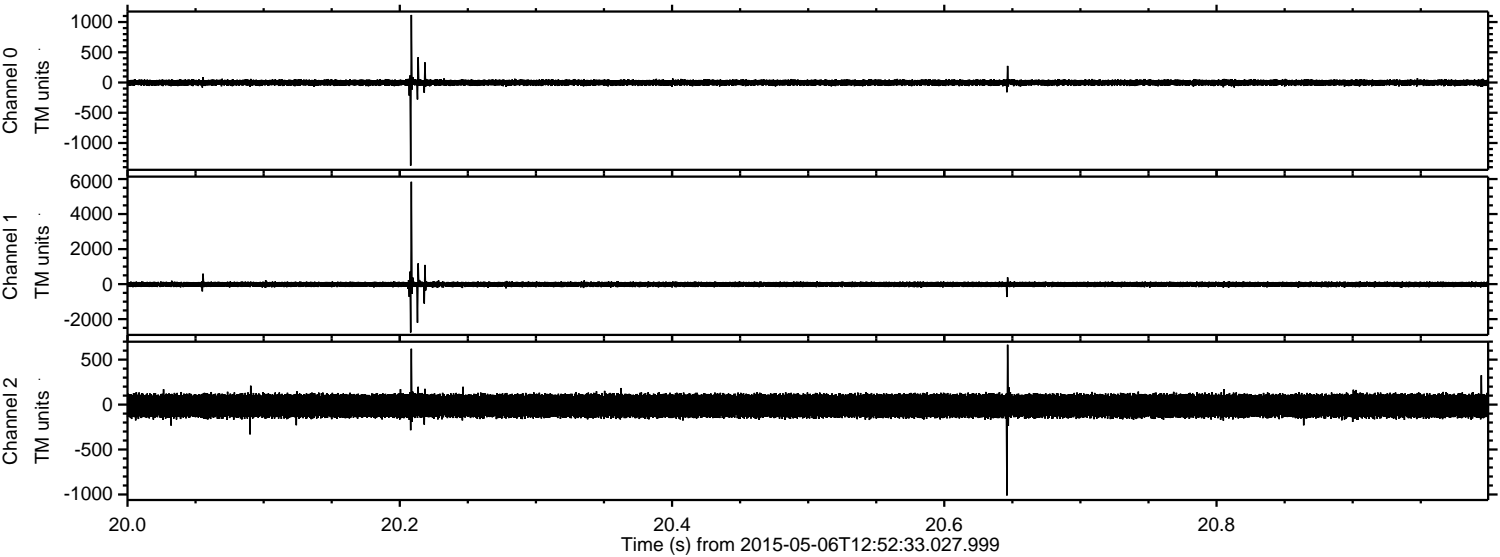
Processed Wed May 6 15:00:06 2015 by ELM ver.2012-10-06 from 001__elm20150506_125232__dat00.bin



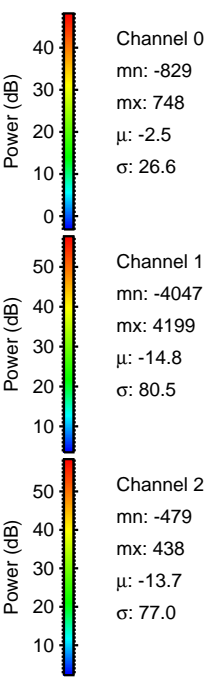
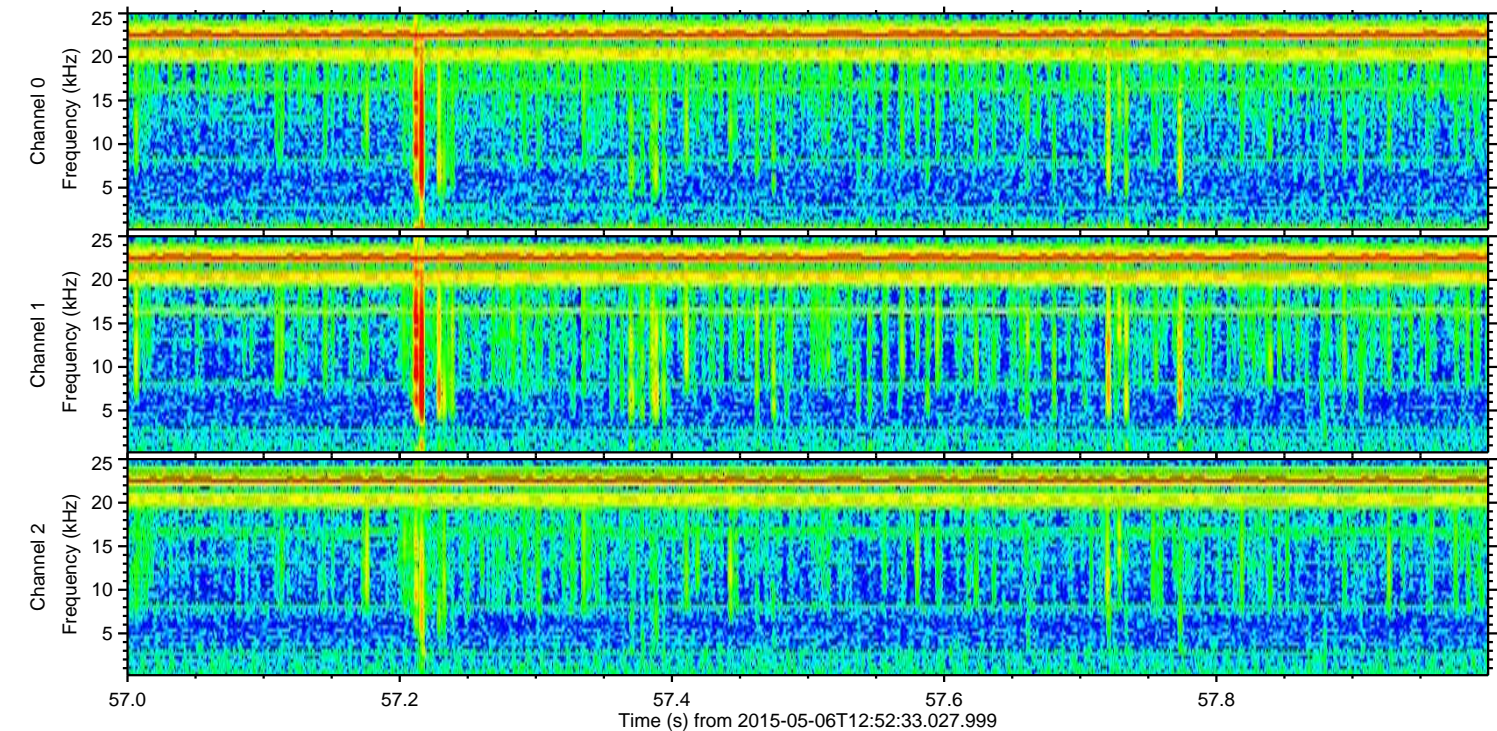
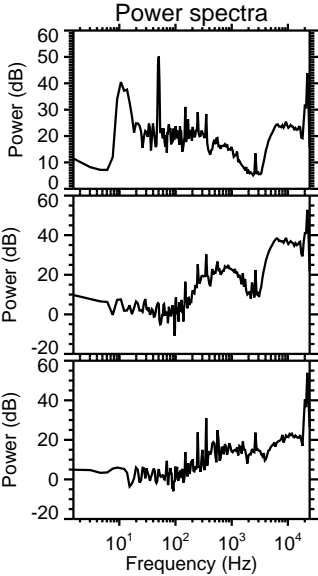
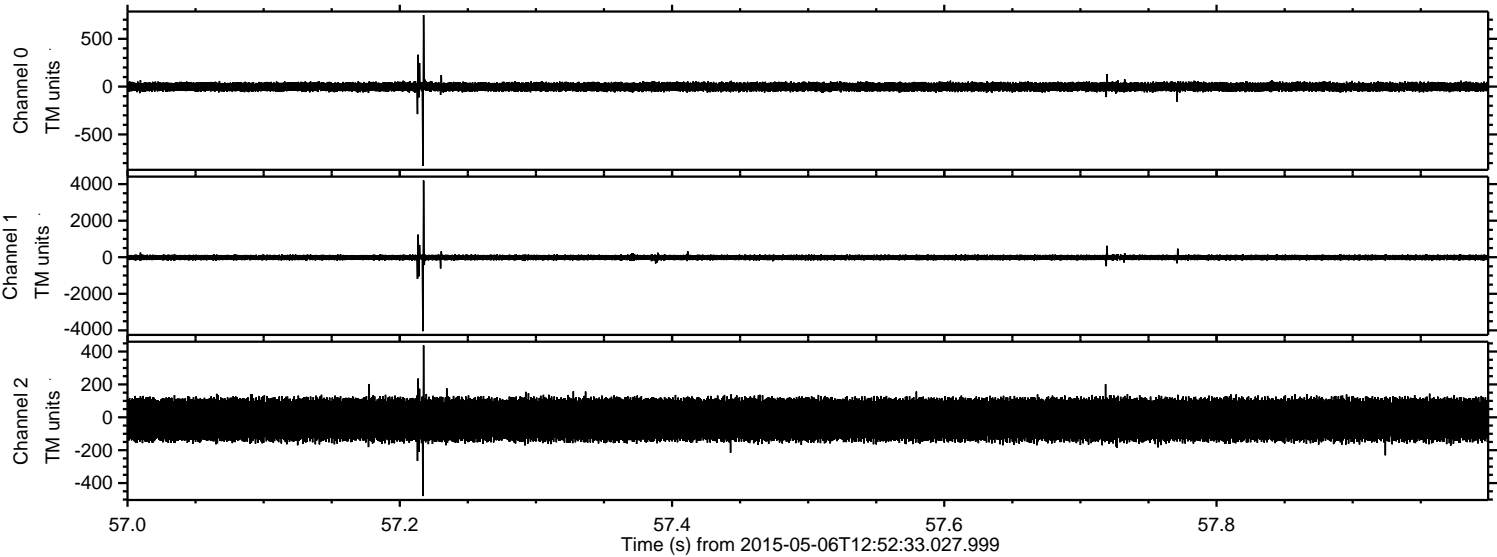
Processed Wed May 6 15:00:07 2015 by ELM ver.2012-10-06 from 001__elm20150506_125232__dat00.bin



Processed Wed May 6 15:00:08 2015 by ELM ver.2012-10-06 from 001__elm20150506_125232__dat00.bin

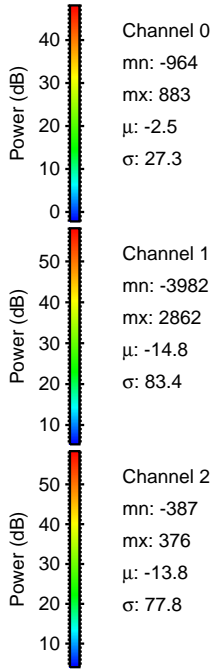
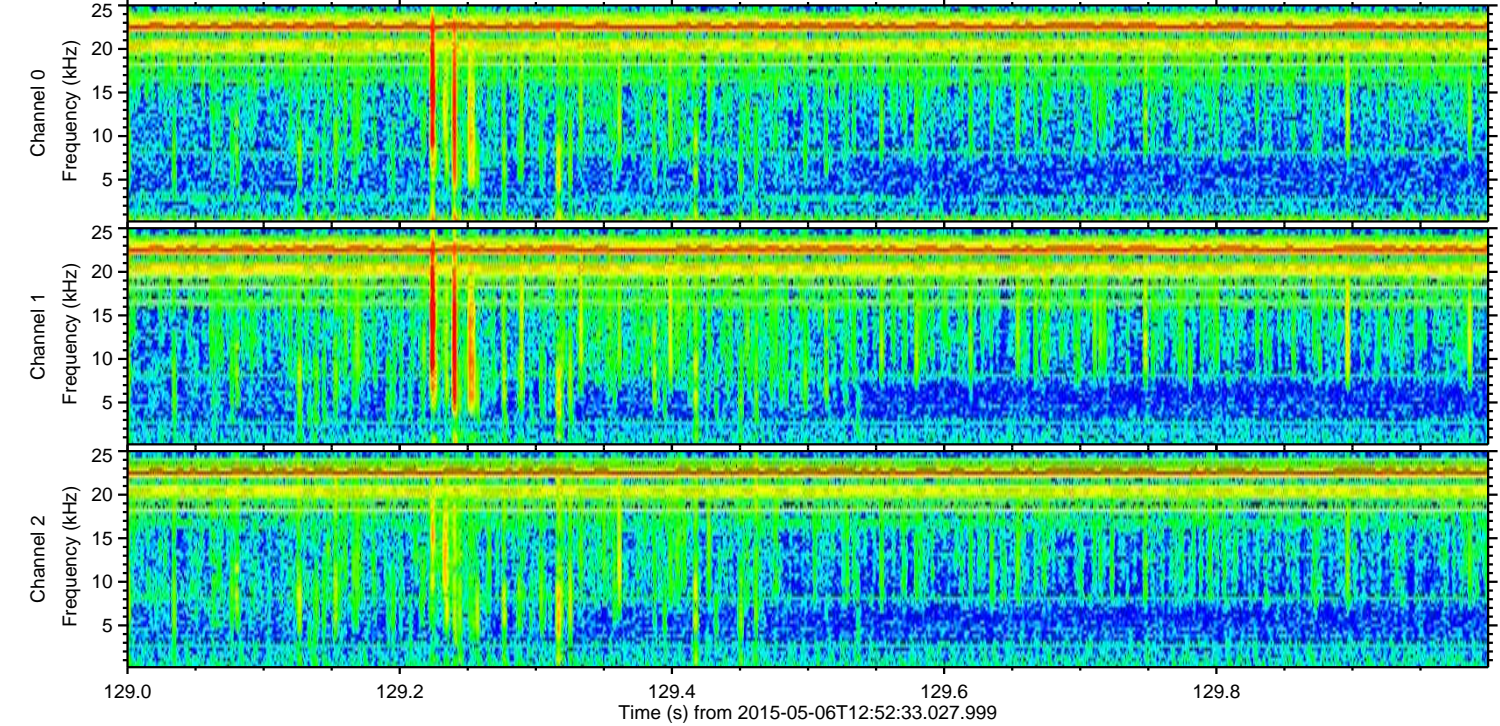
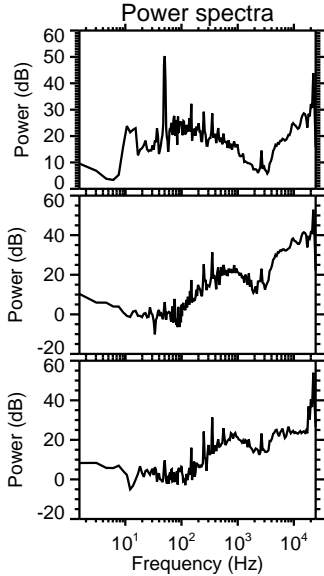
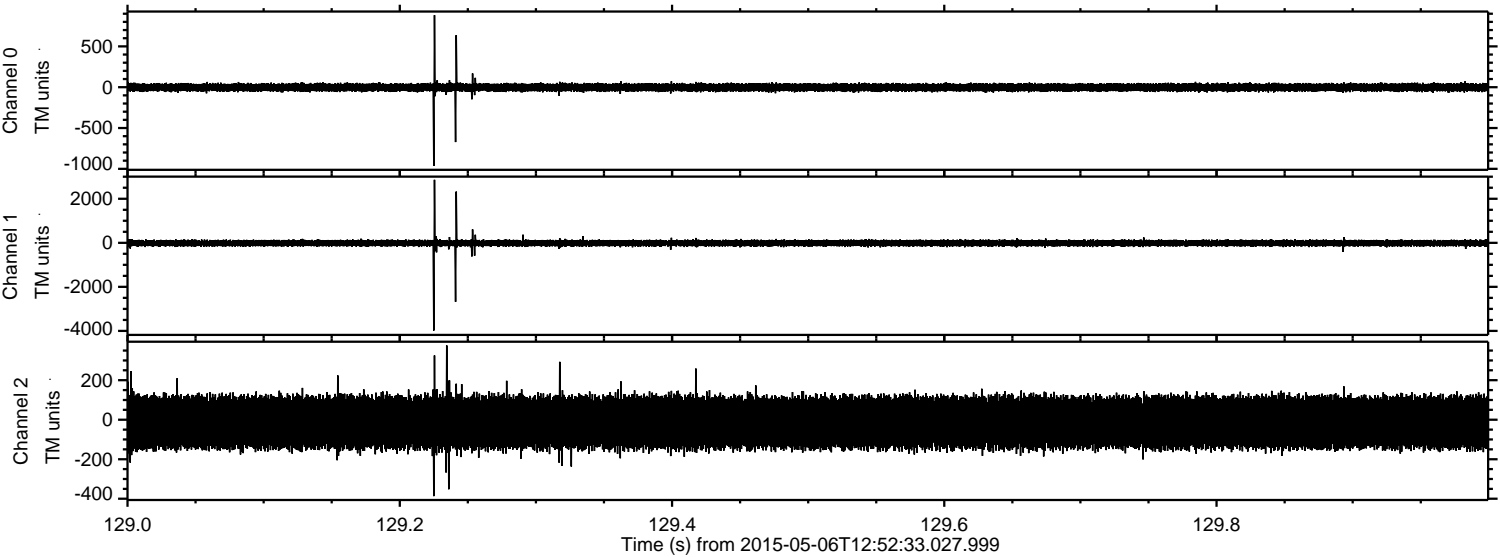


Processed Wed May 6 15:00:09 2015 by ELM ver.2012-10-06 from 001__elm20150506_125232__dat00.bin

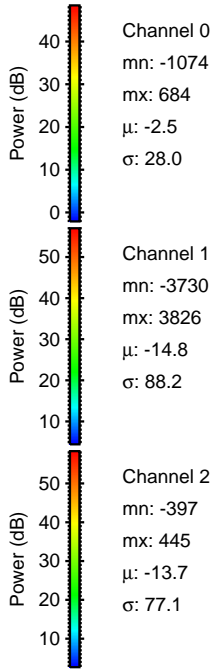
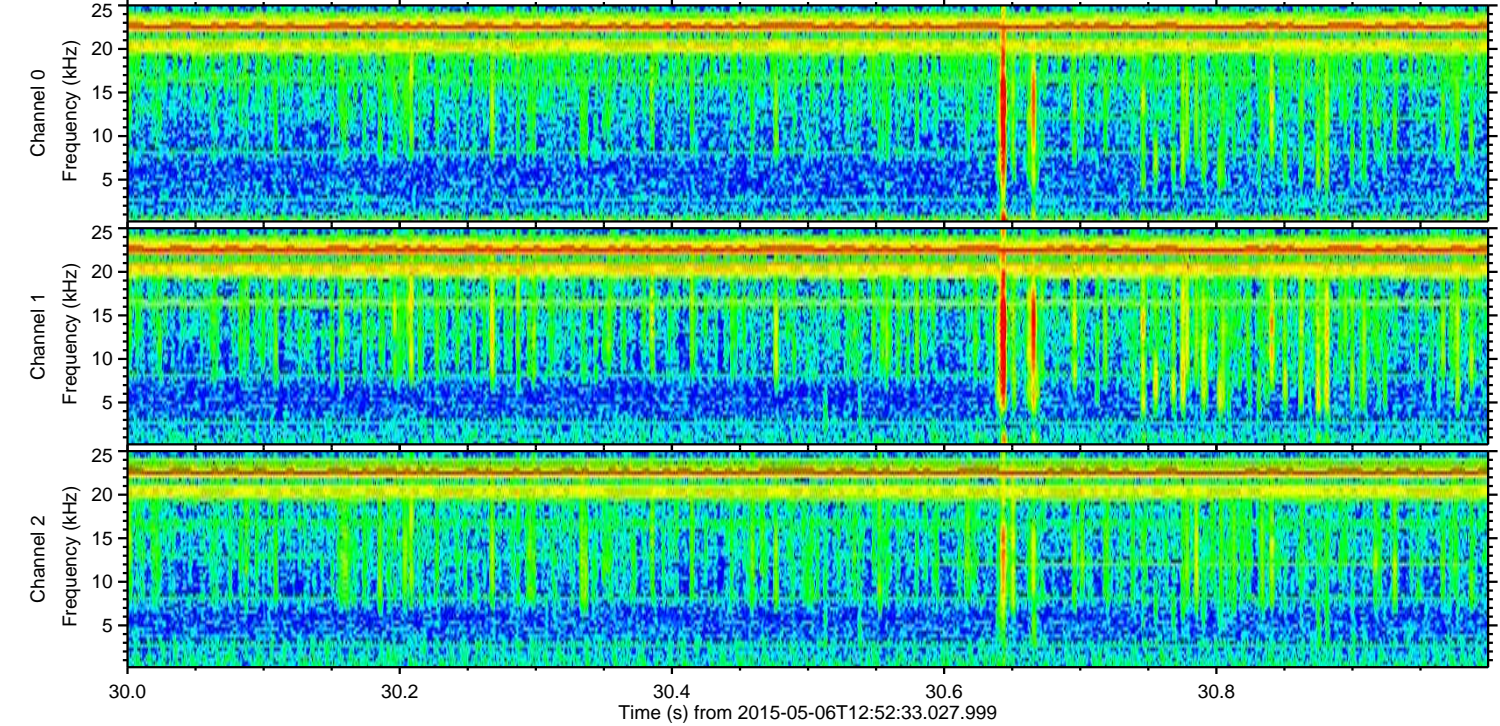
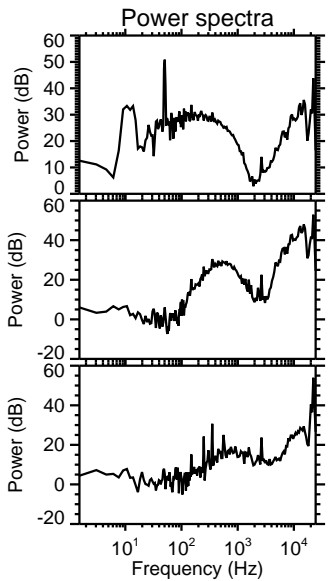
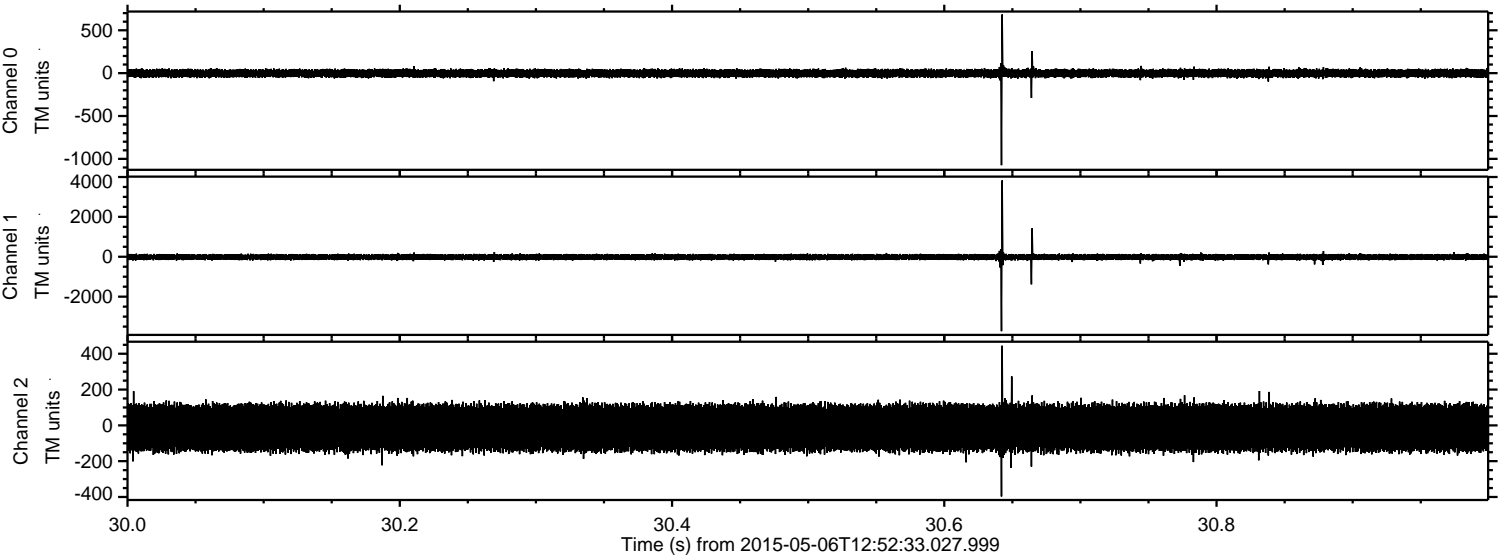


ELMAVAN 3D WAVEFORMS (Measured data sampled at 50 kHz) 49660 packets of 144 samples from 2015-05-06T12:52:33.027.999. Part 130/144

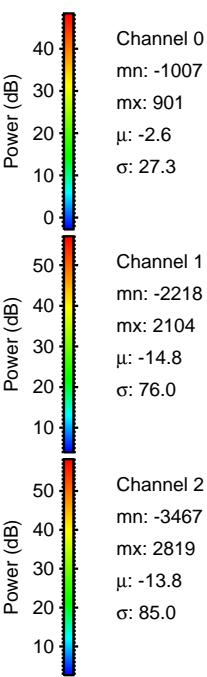
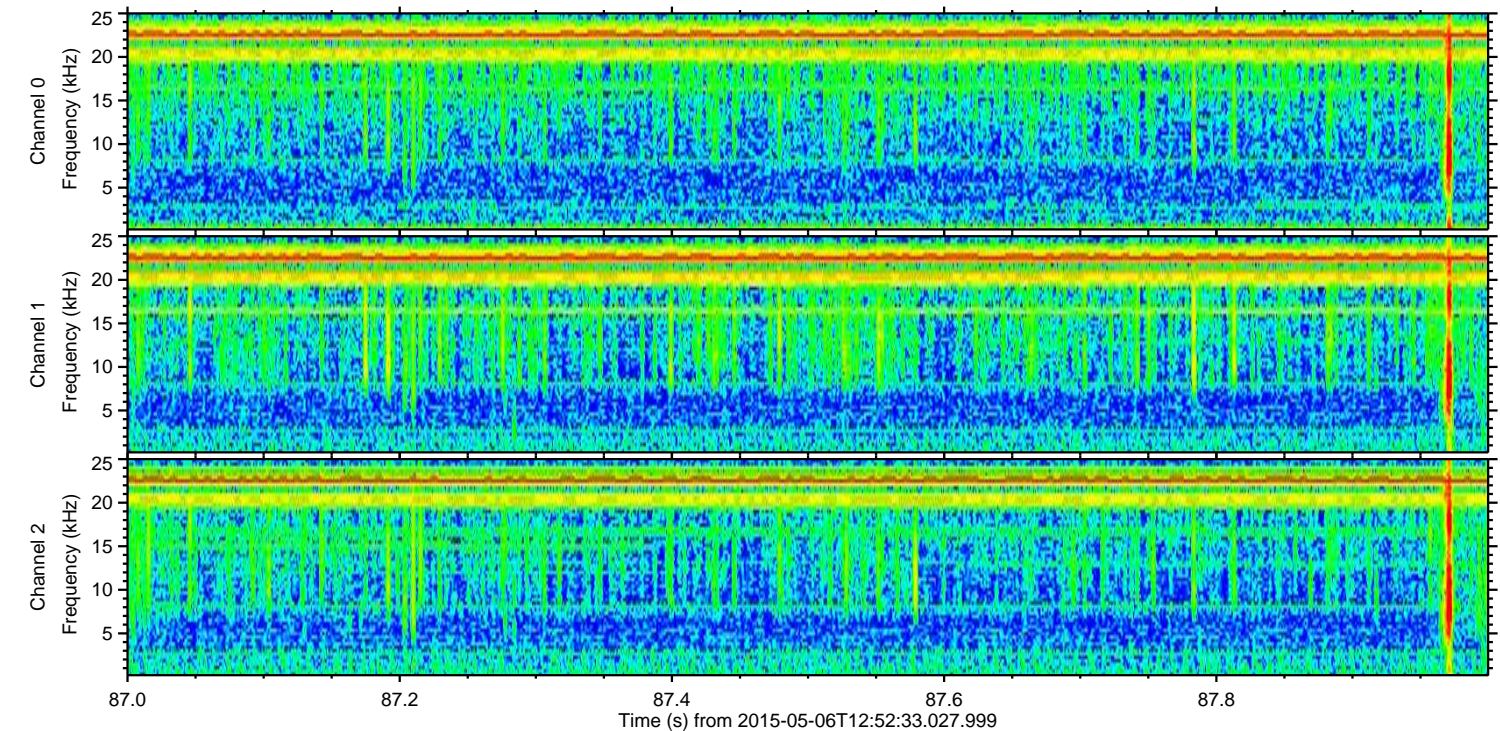
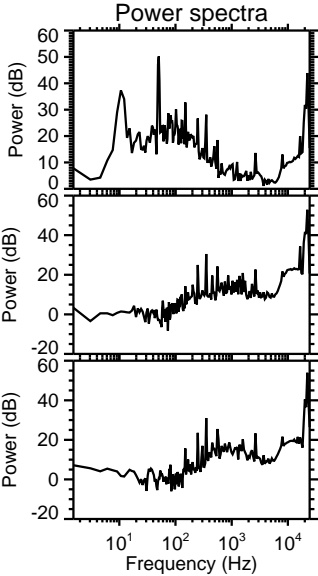
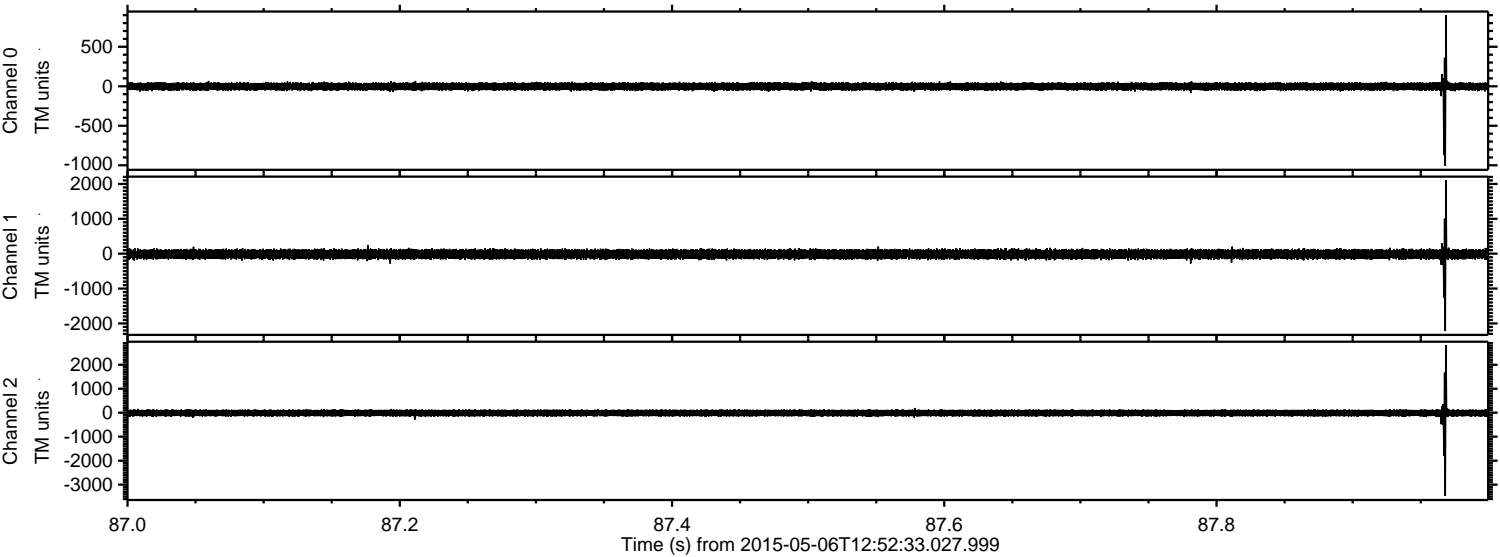
Processed Wed May 6 15:00:10 2015 by ELM ver.2012-10-06 from 001__elm20150506_125232__dat00.bin



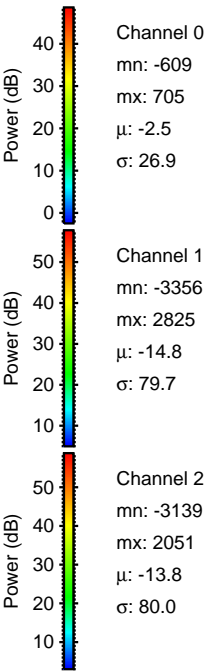
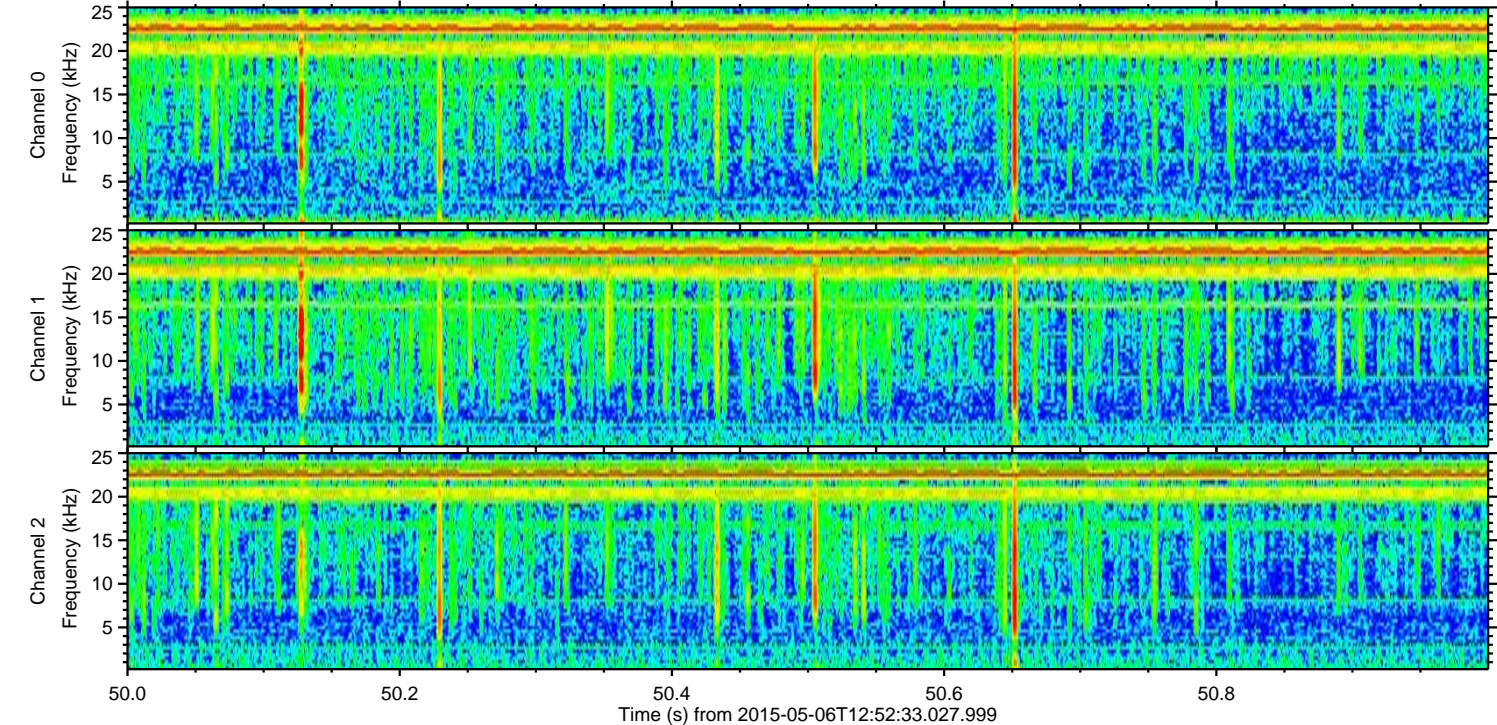
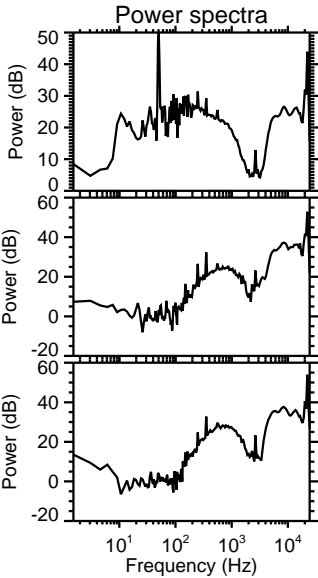
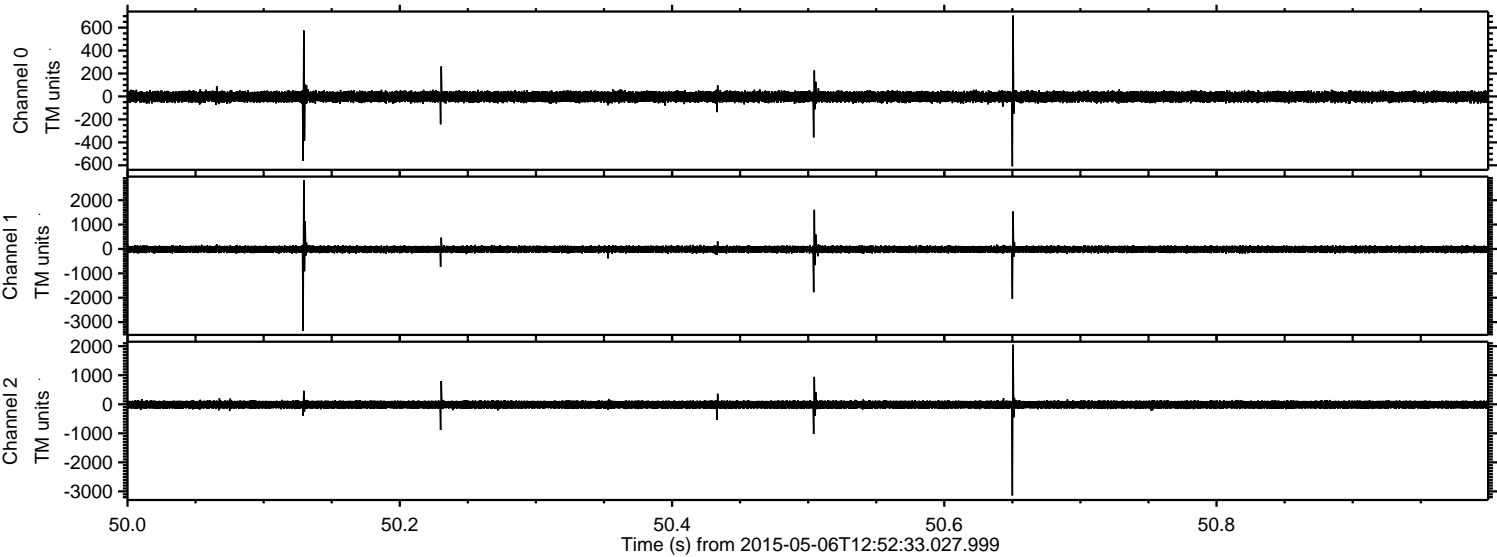
Processed Wed May 6 15:00:11 2015 by ELM ver.2012-10-06 from 001__elm20150506_125232__dat00.bin



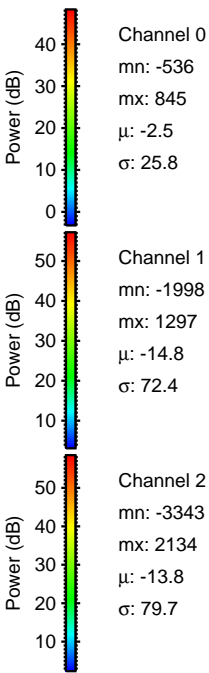
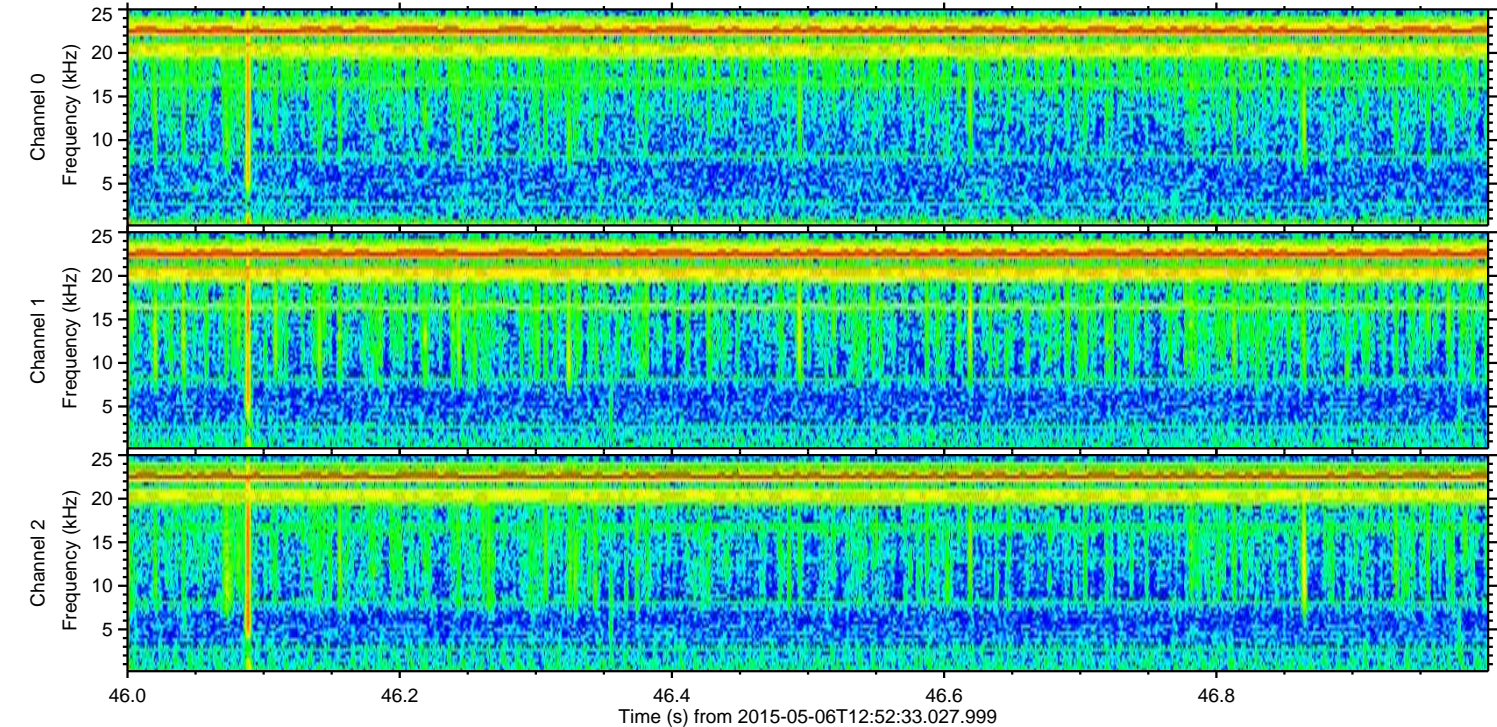
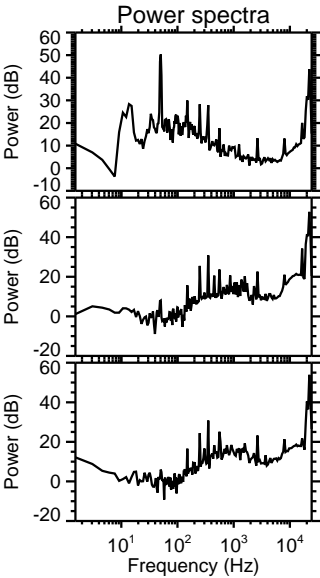
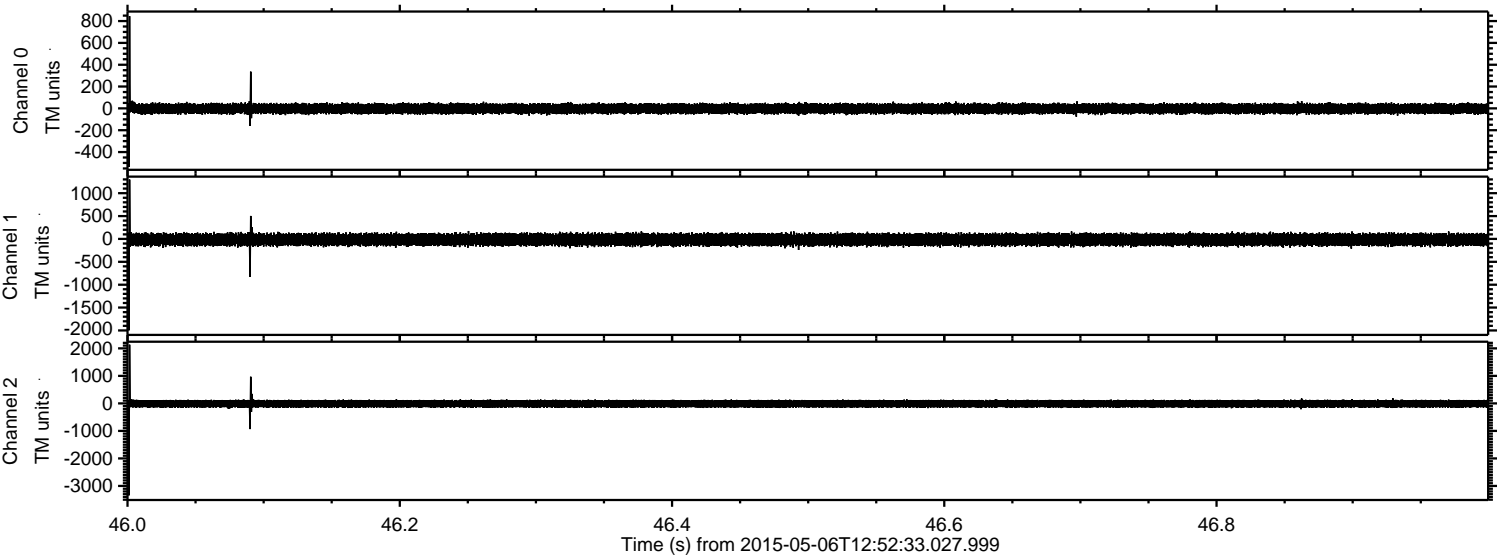
Processed Wed May 6 15:00:12 2015 by ELM ver.2012-10-06 from 001__elm20150506_125232__dat00.bin



Processed Wed May 6 15:00:13 2015 by ELM ver.2012-10-06 from 001__elm20150506_125232__dat00.bin



Processed Wed May 6 15:00:14 2015 by ELM ver.2012-10-06 from 001__elm20150506_125232__dat00.bin



ELMAVAN 3D WAVEFORMS (Measured data sampled at 50 kHz) 49660 packets of 144 samples from 2015-05-06T12:52:33.027.999. Part 100/144

