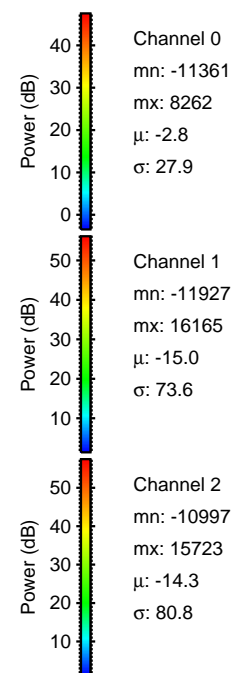
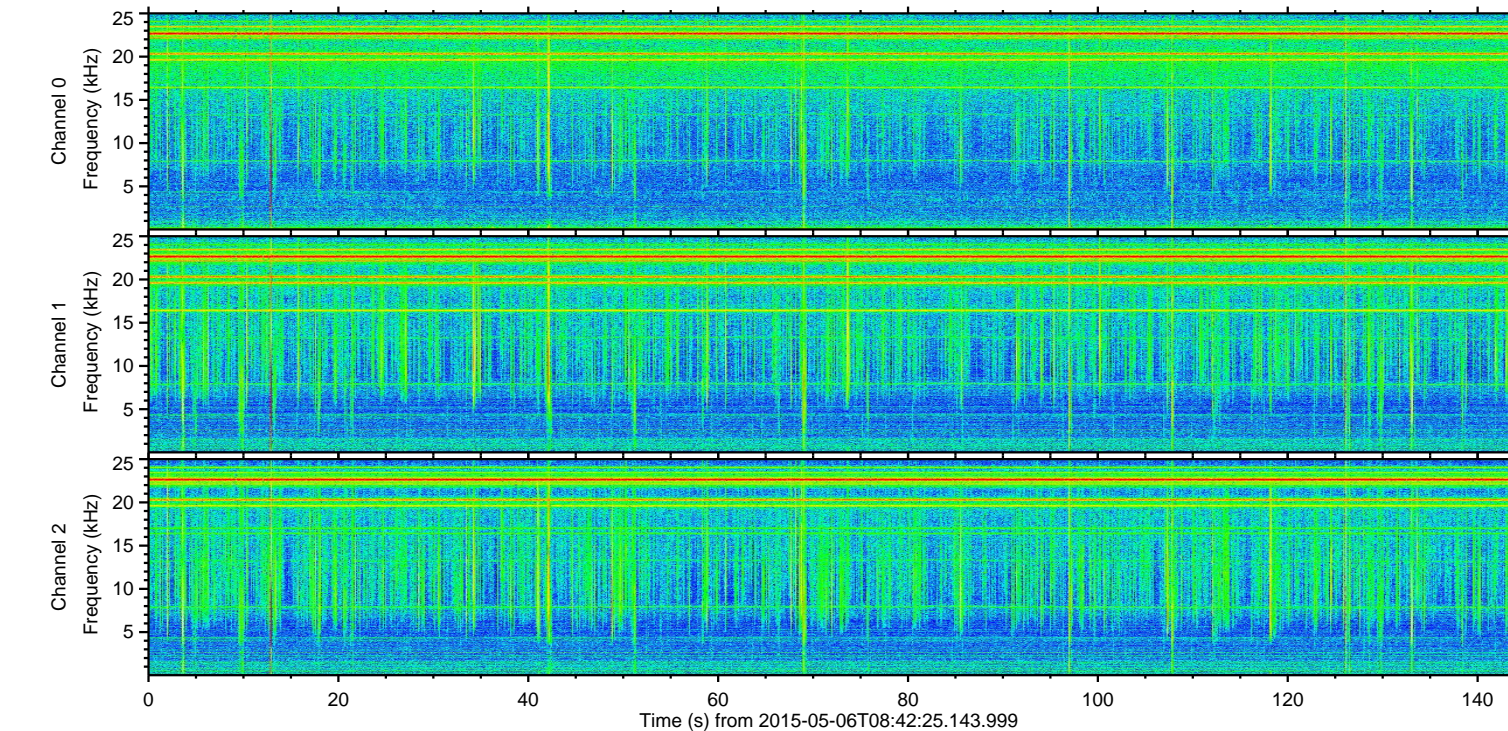
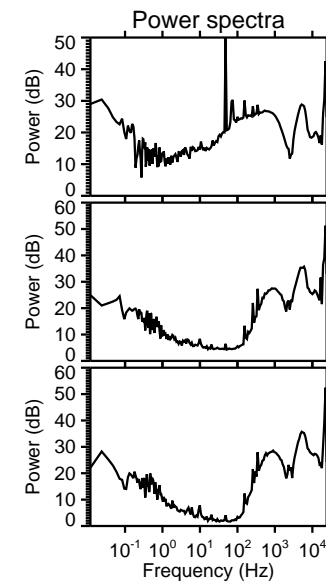
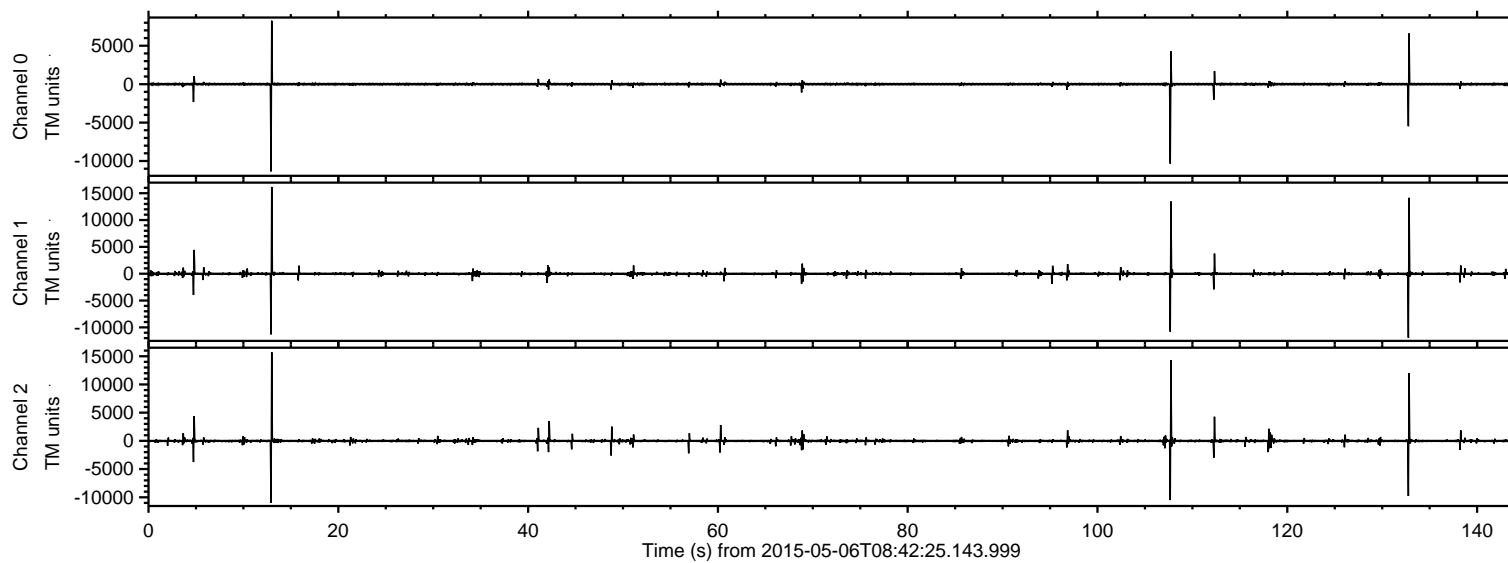
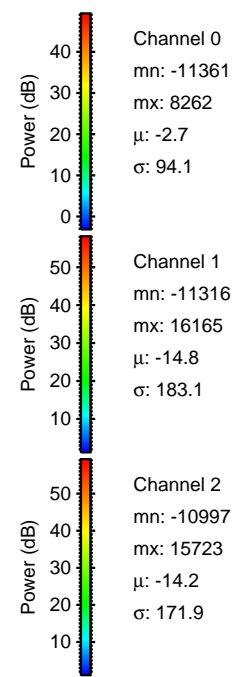
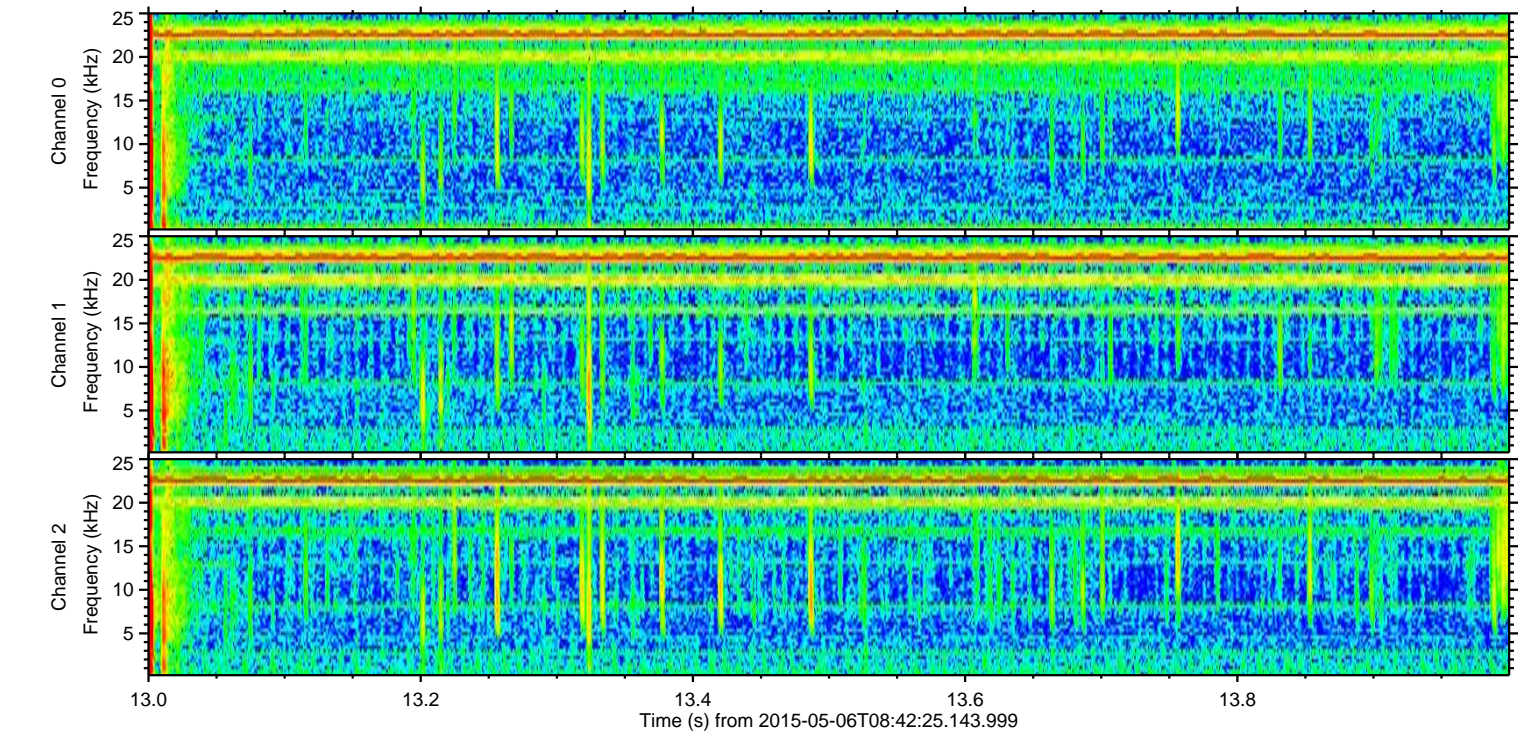
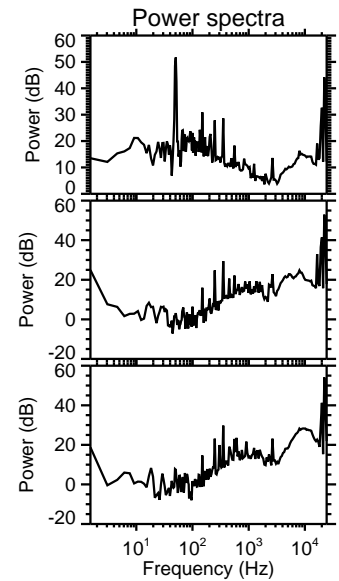
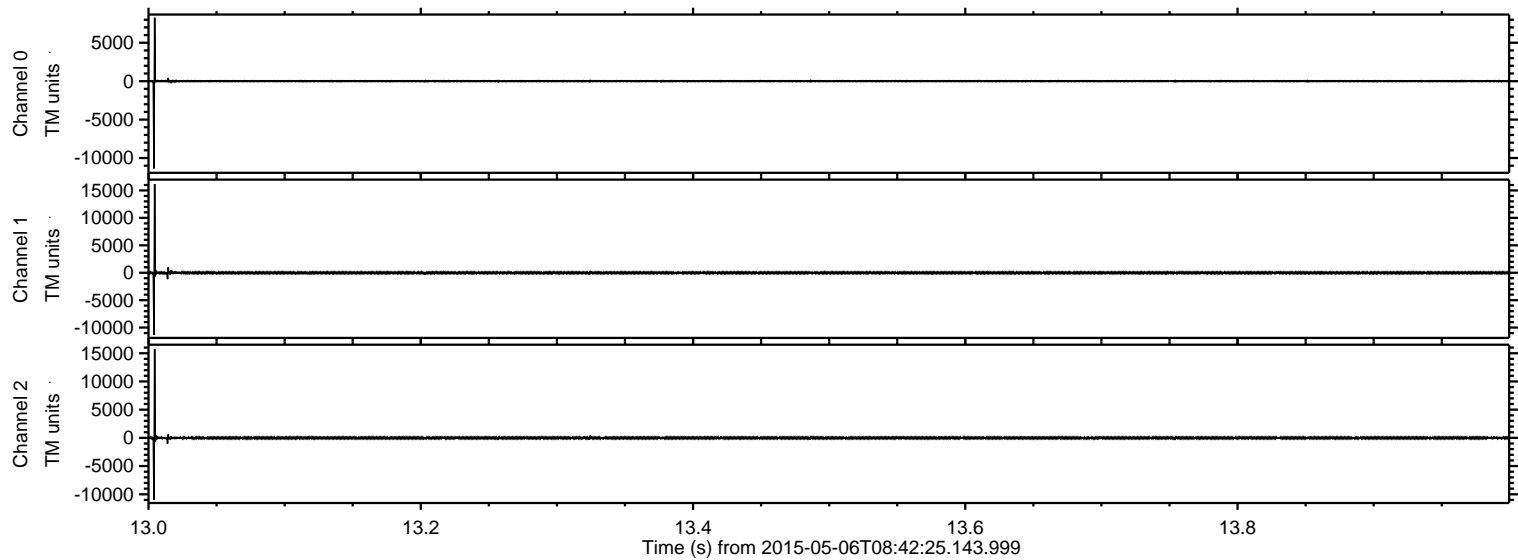


ELMAVAN 3D WAVEFORMS (Measured data sampled at 50 kHz) 49784 packets of 144 samples from 2015-05-06T08:42:25.143.999.

Processed Wed May 6 10:49:44 2015 by ELM ver.2012-10-06 from 001__elm20150506_084224__dat00.bin

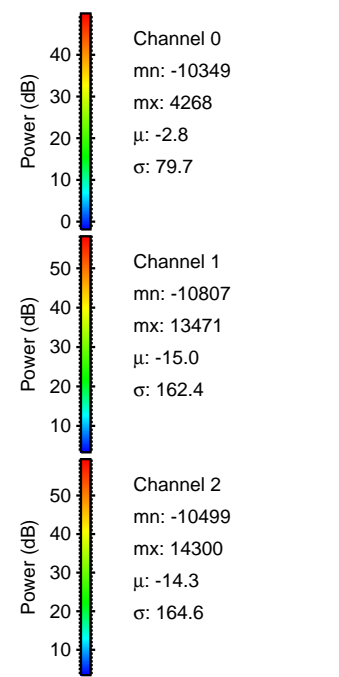
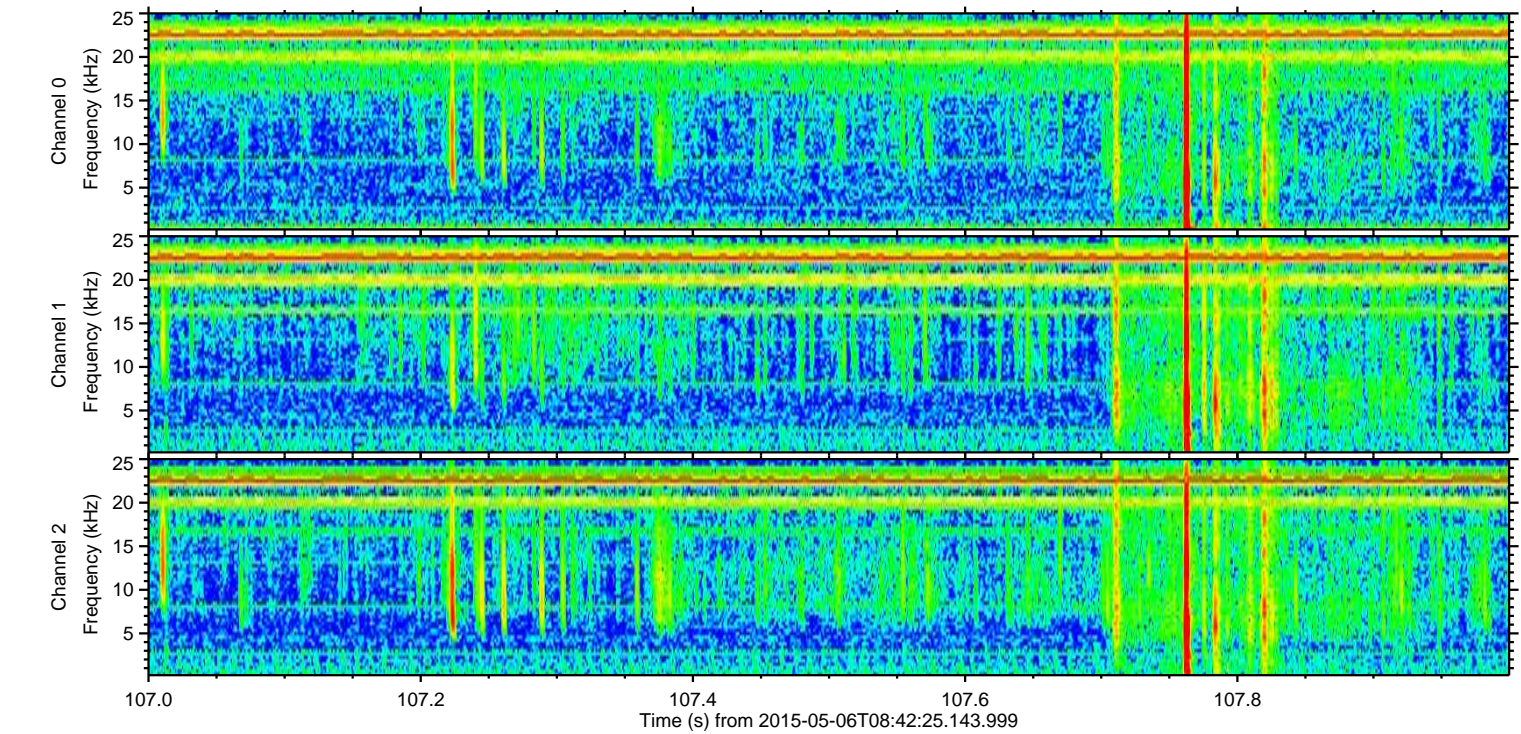
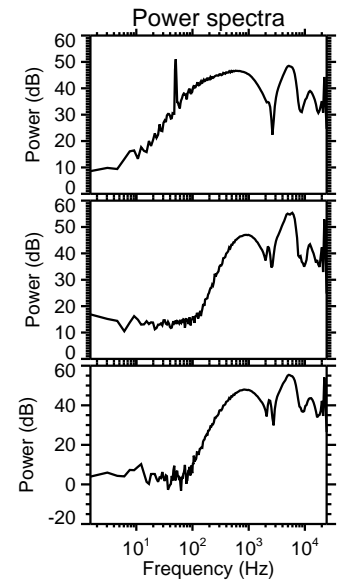
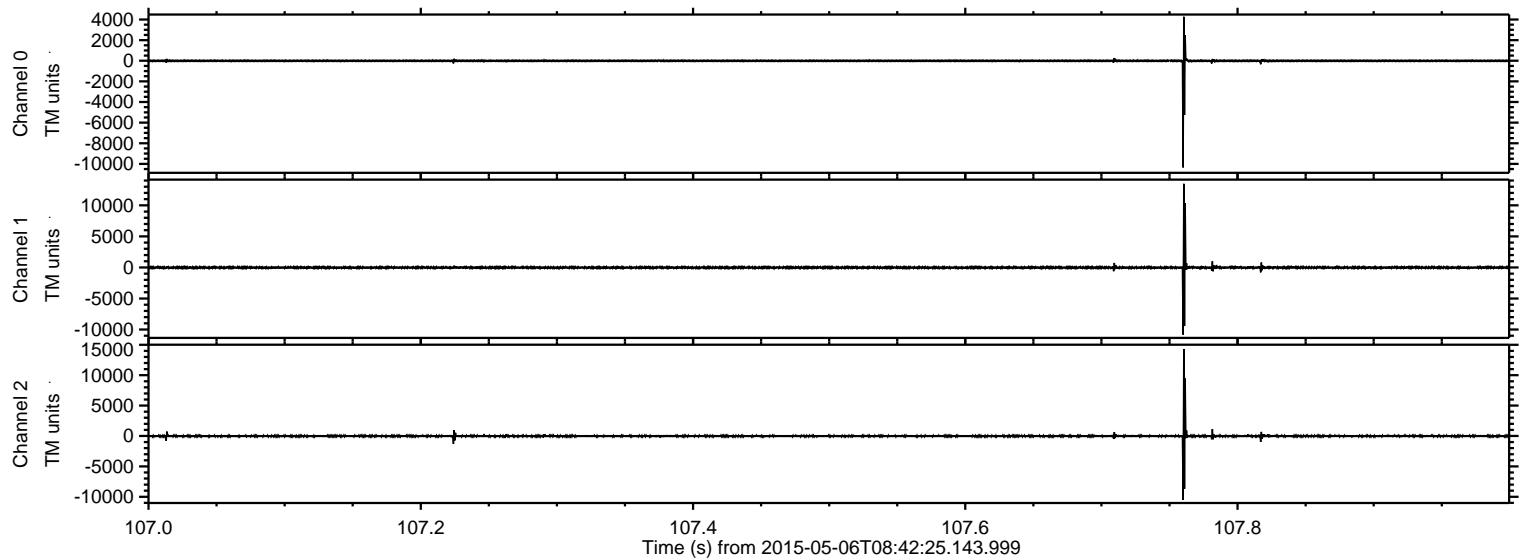


Processed Wed May 6 10:49:56 2015 by ELM ver.2012-10-06 from 001__elm20150506_084224__dat00.bin



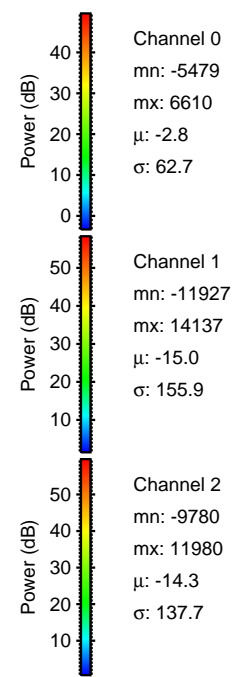
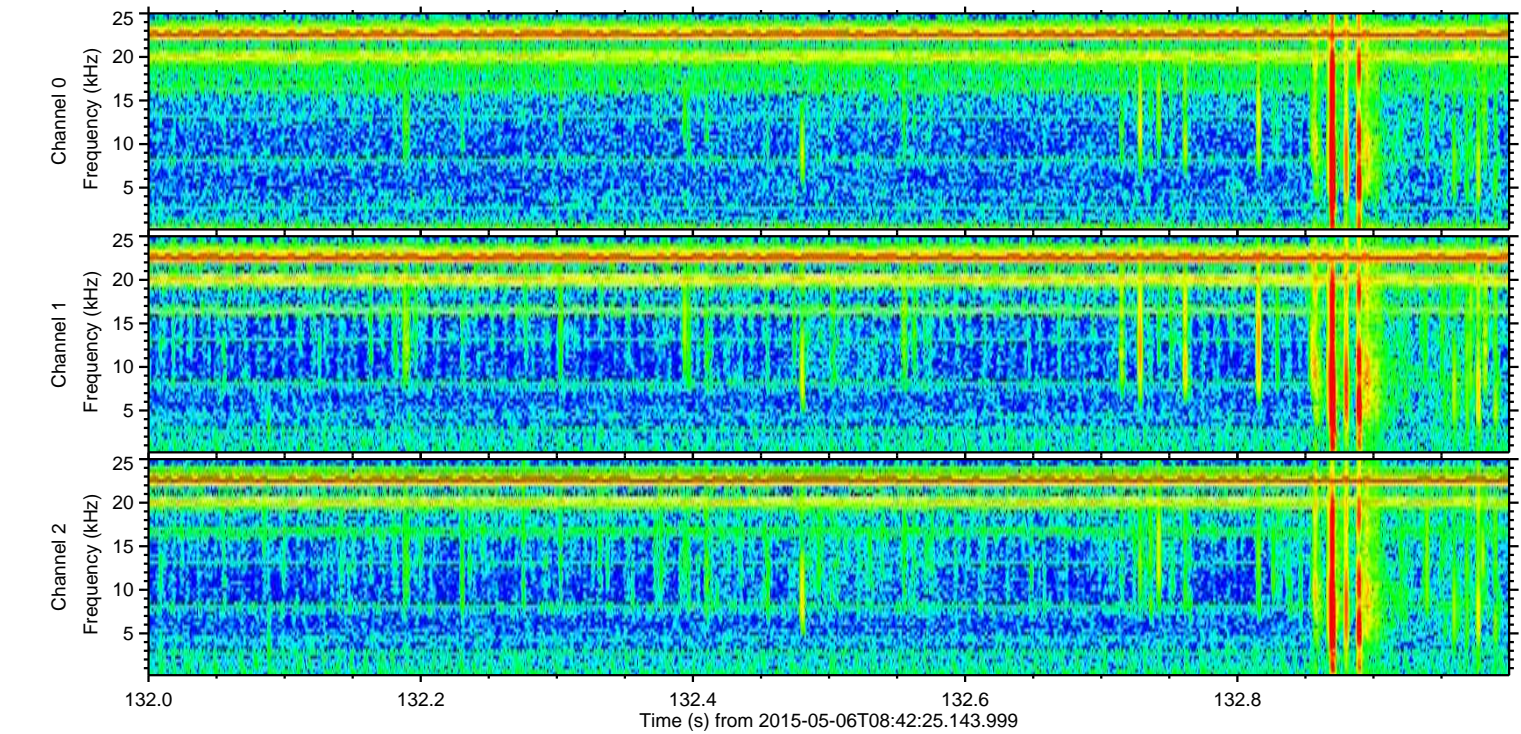
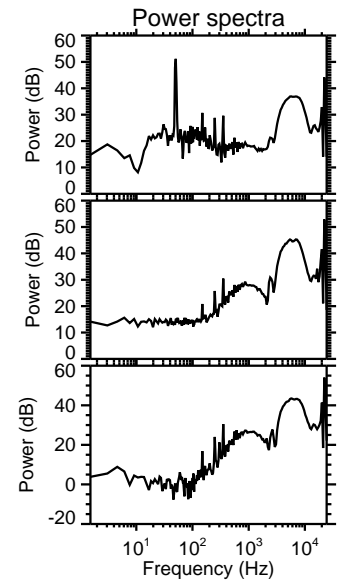
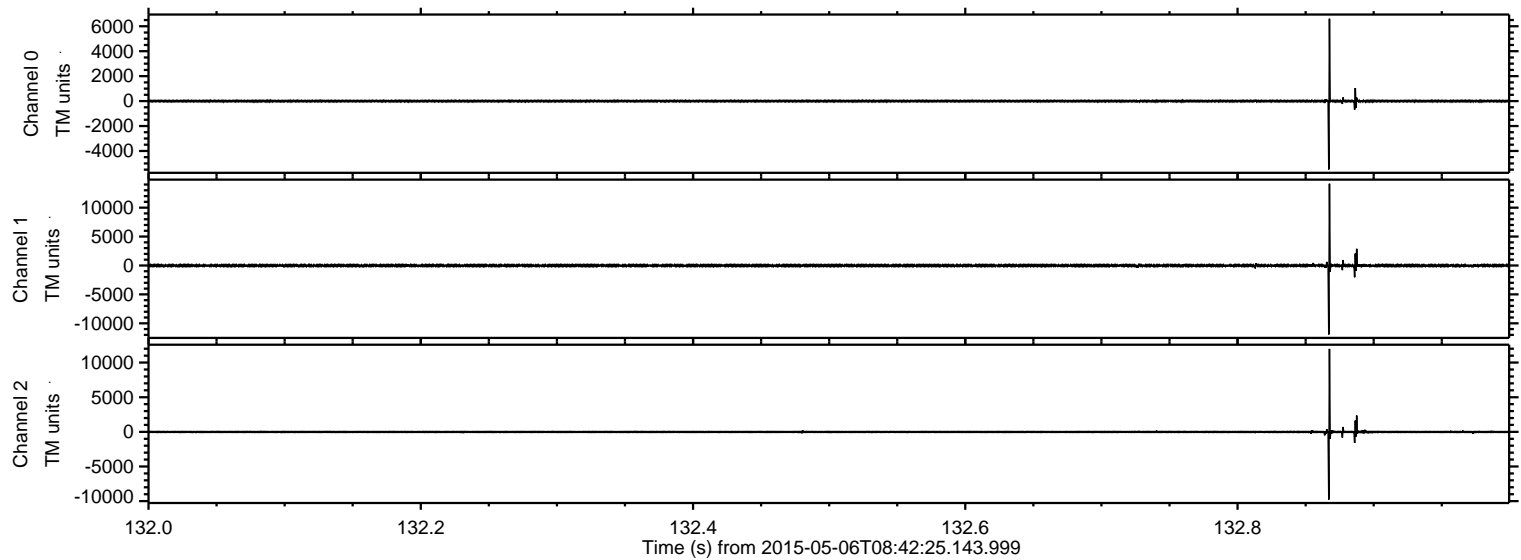
ELMAVAN 3D WAVEFORMS (Measured data sampled at 50 kHz) 49784 packets of 144 samples from 2015-05-06T08:42:25.143.999. Part 108/144

Processed Wed May 6 10:49:57 2015 by ELM ver.2012-10-06 from 001__elm20150506_084224__dat00.bin

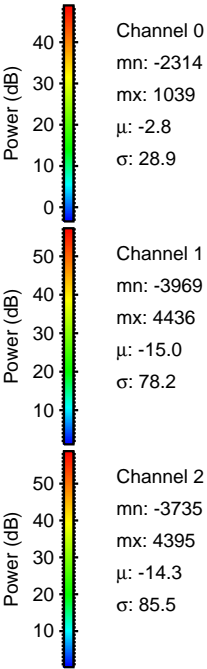
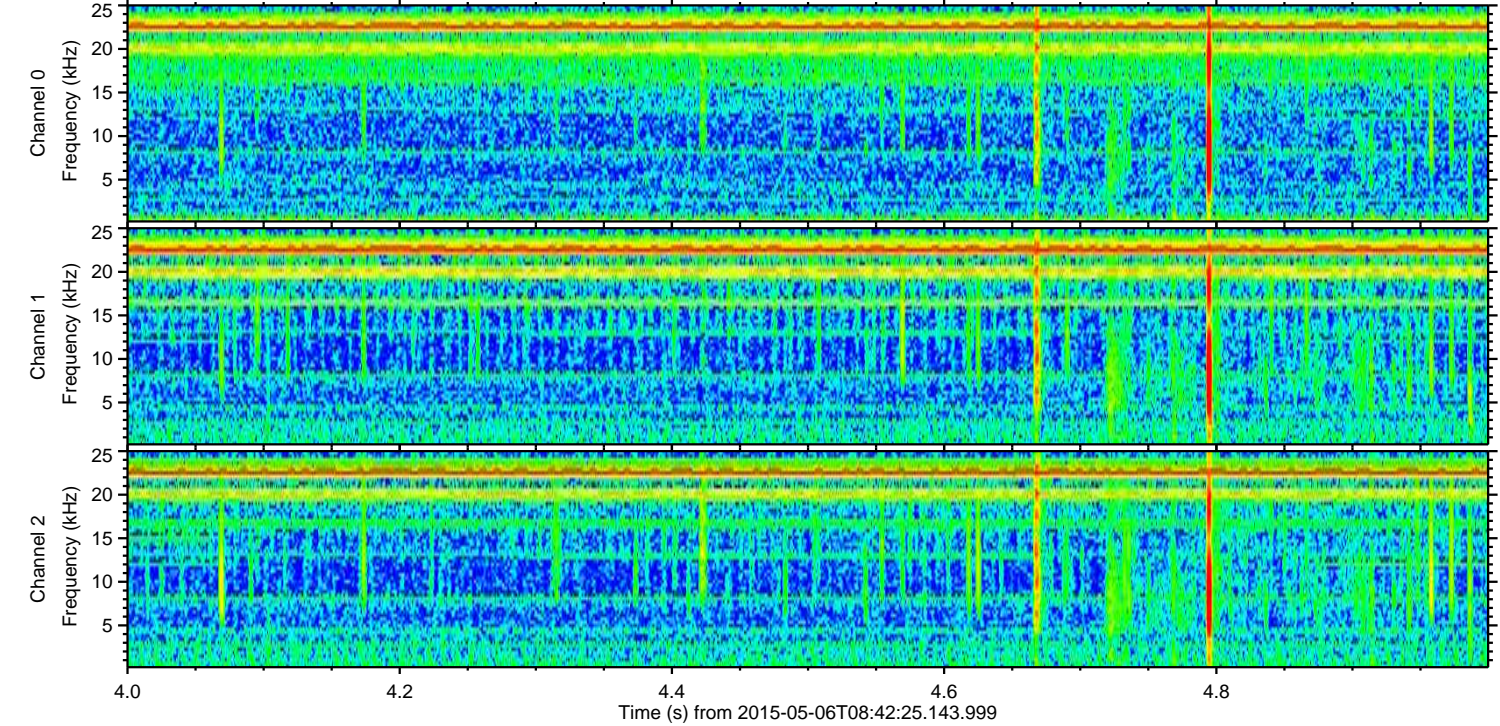
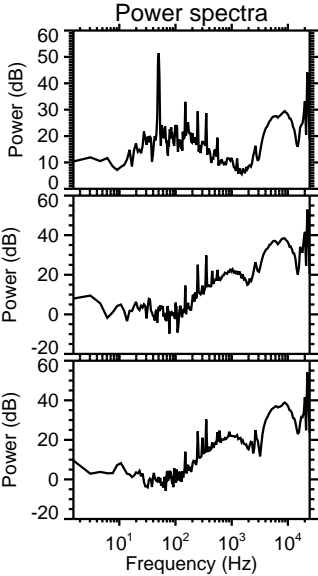
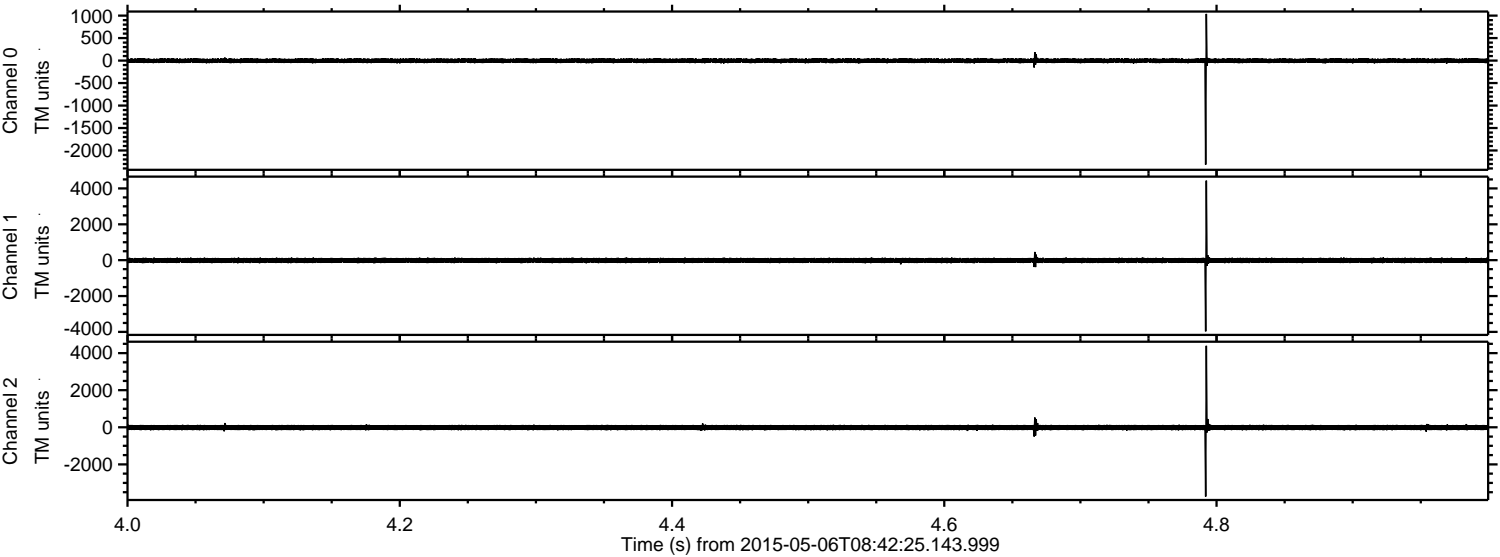


ELMAVAN 3D WAVEFORMS (Measured data sampled at 50 kHz) 49784 packets of 144 samples from 2015-05-06T08:42:25.143.999. Part 133/144

Processed Wed May 6 10:49:57 2015 by ELM ver.2012-10-06 from 001__elm20150506_084224__dat00.bin

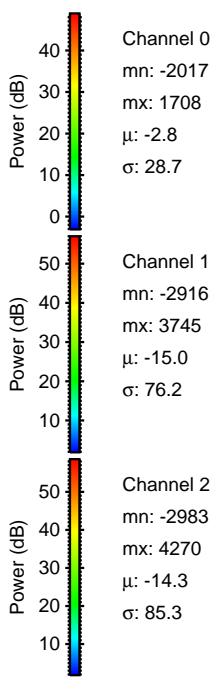
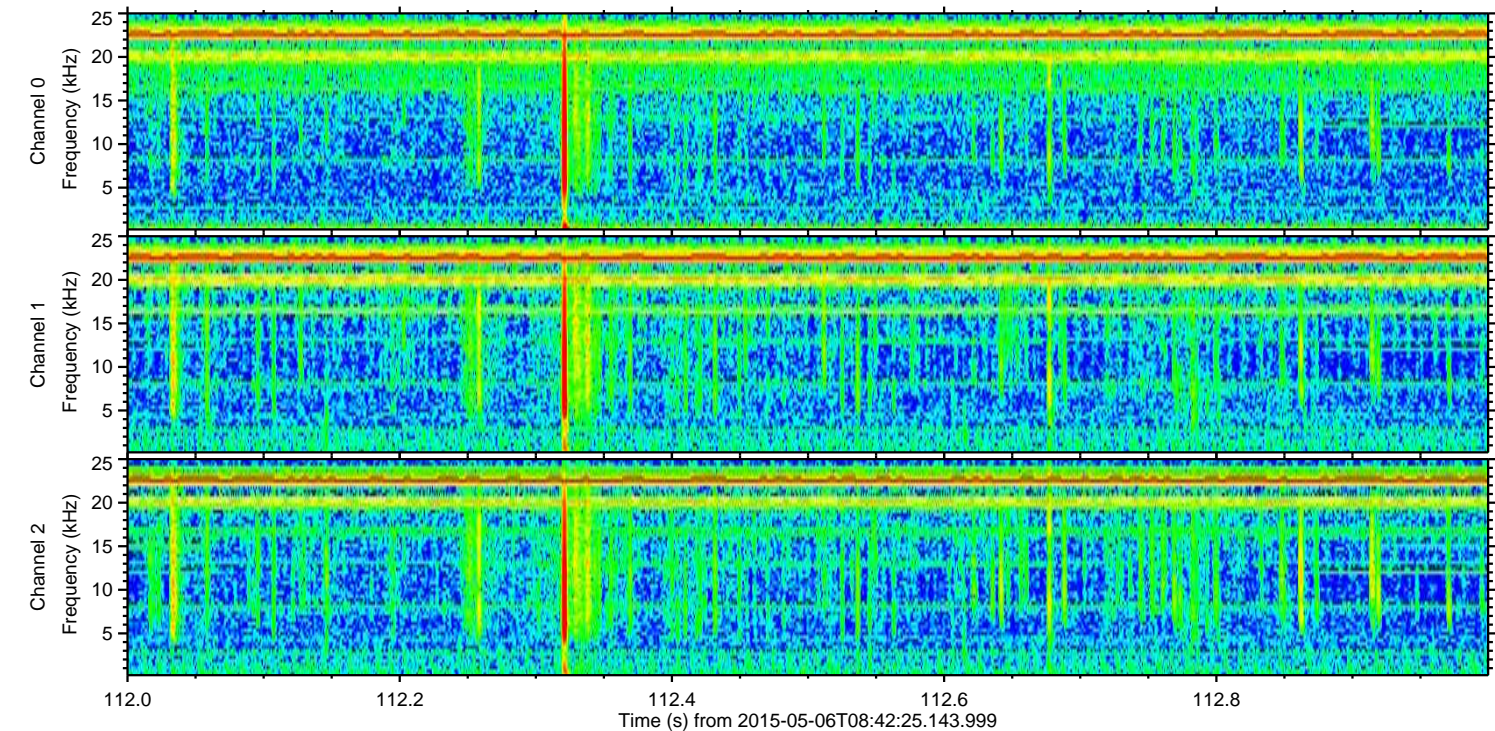
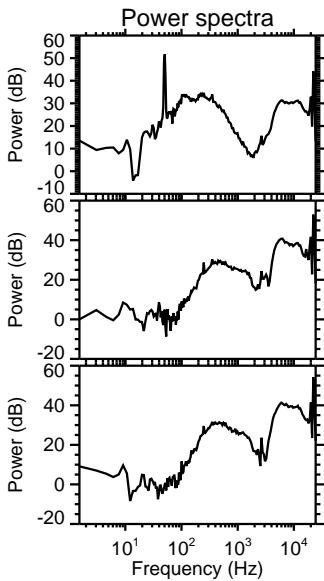
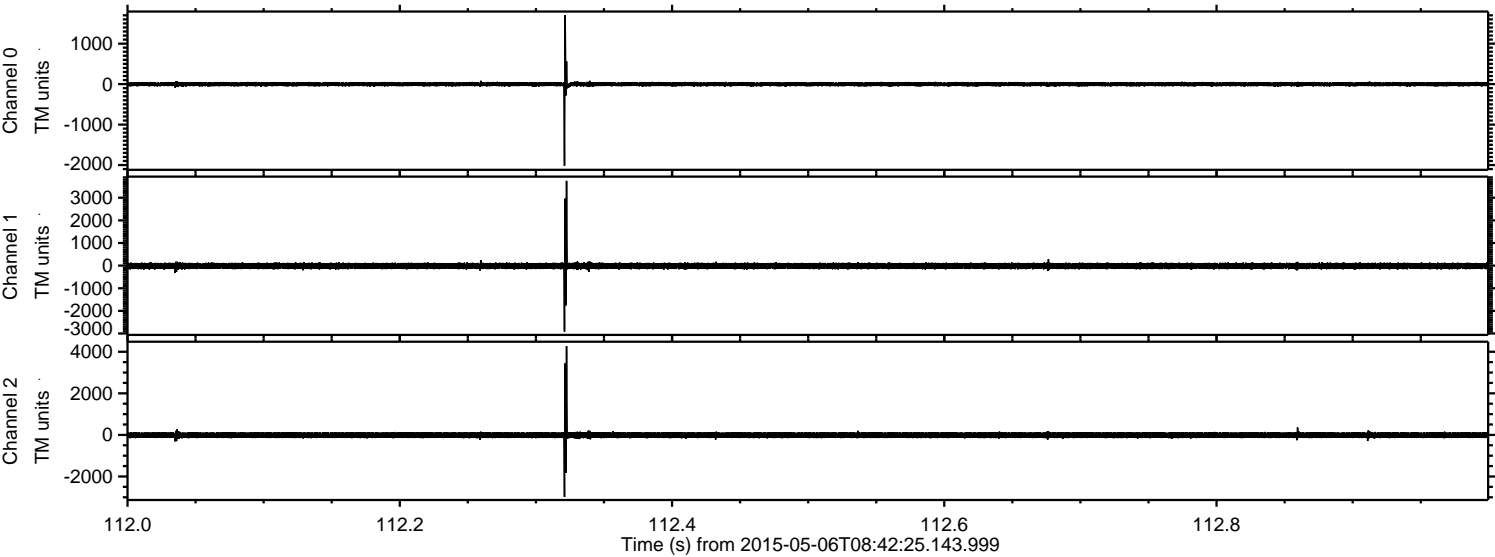


Processed Wed May 6 10:49:58 2015 by ELM ver.2012-10-06 from 001__elm20150506_084224__dat00.bin

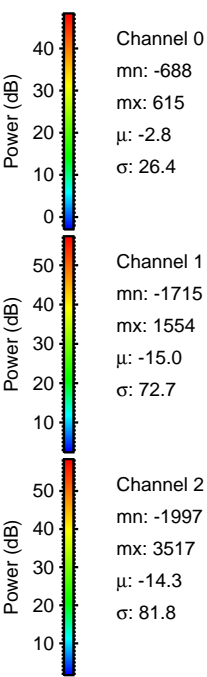
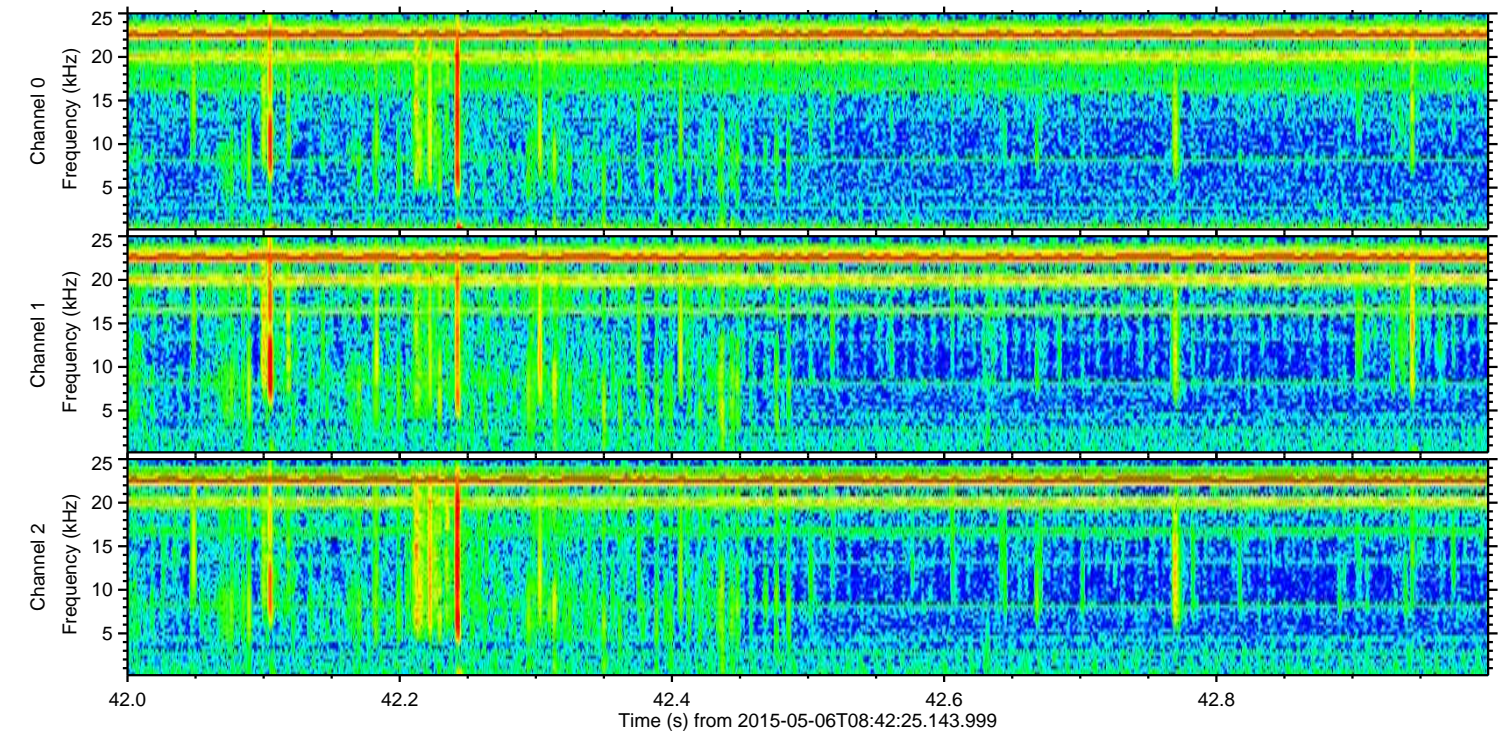
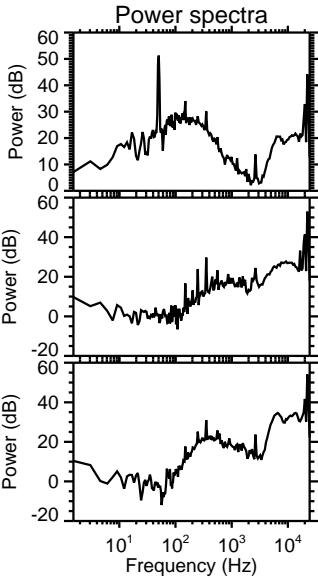
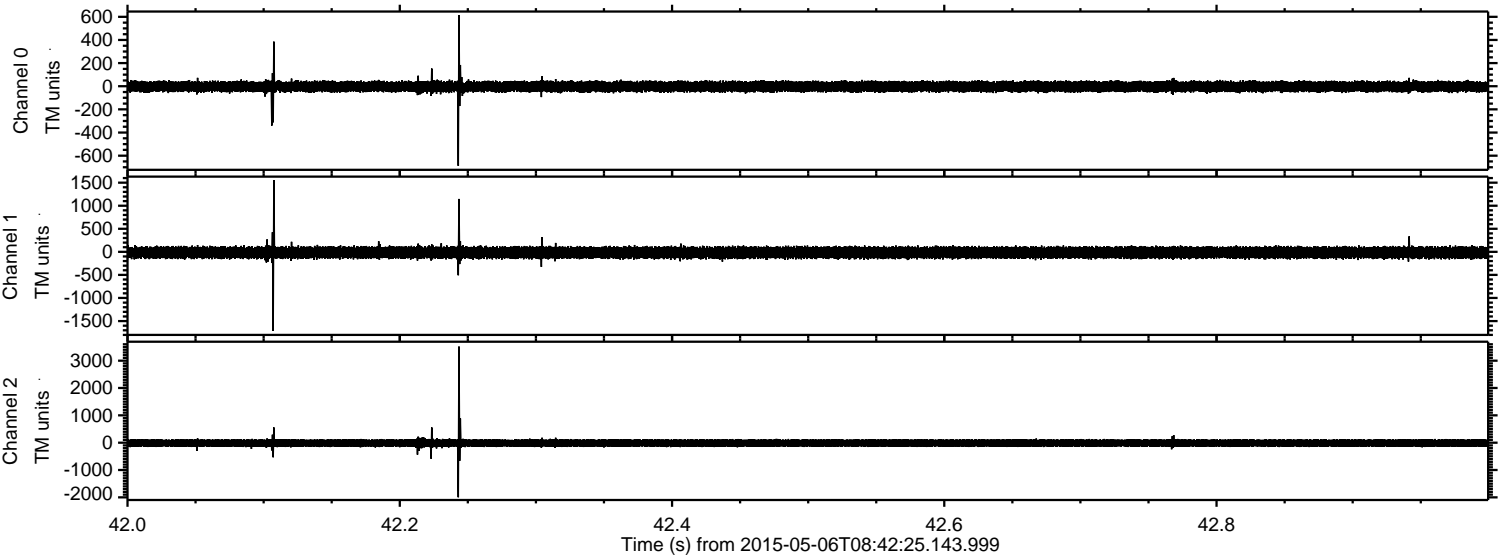


ELMAVAN 3D WAVEFORMS (Measured data sampled at 50 kHz) 49784 packets of 144 samples from 2015-05-06T08:42:25.143.999. Part 113/144

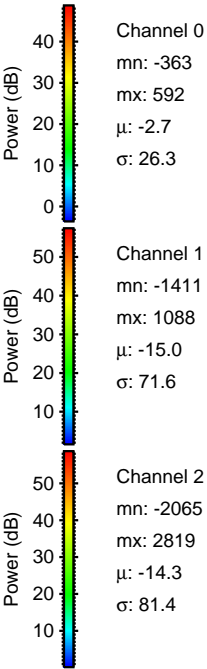
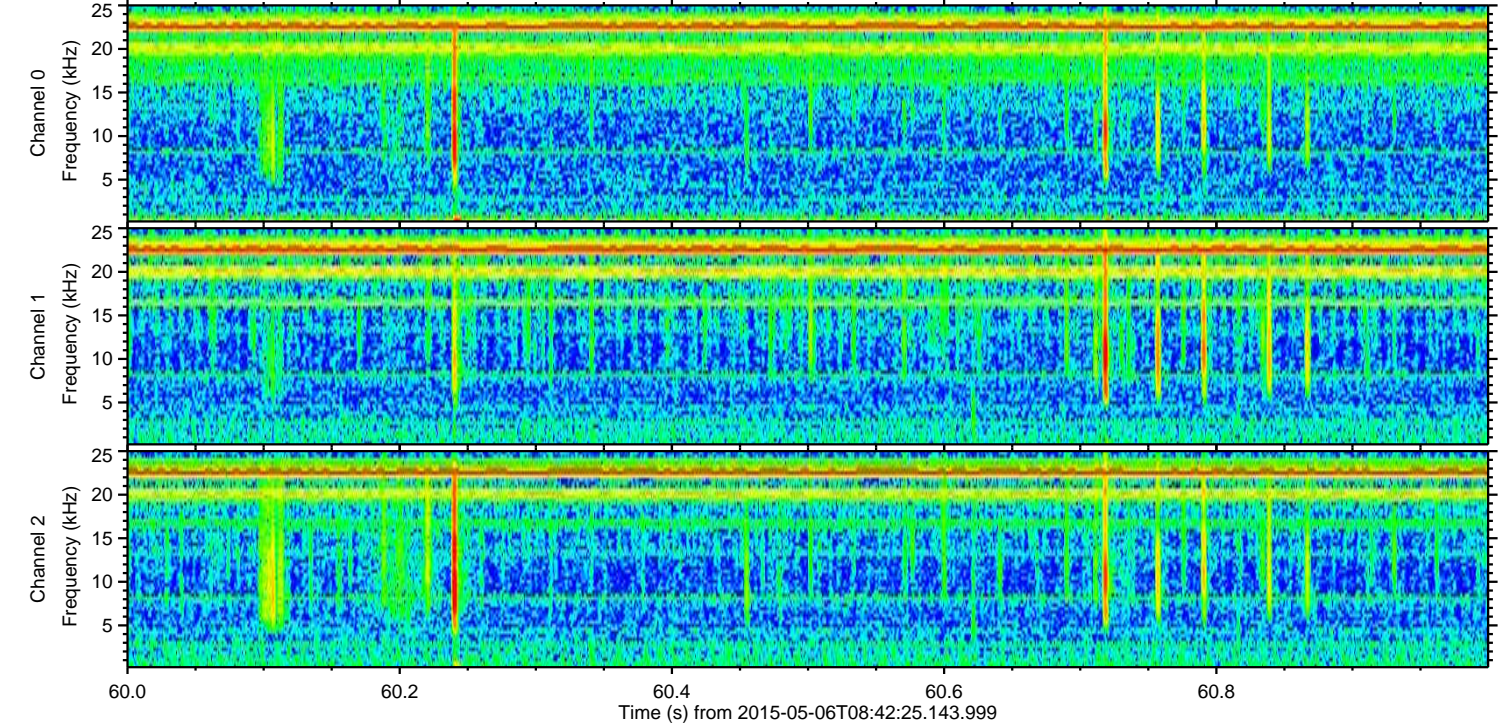
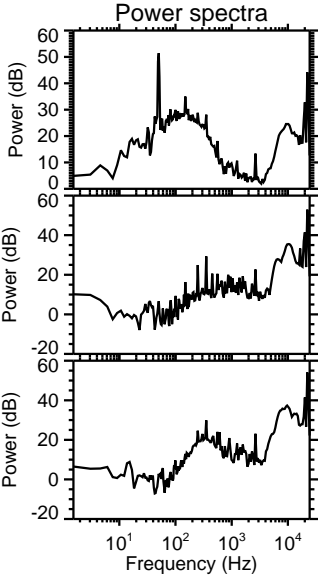
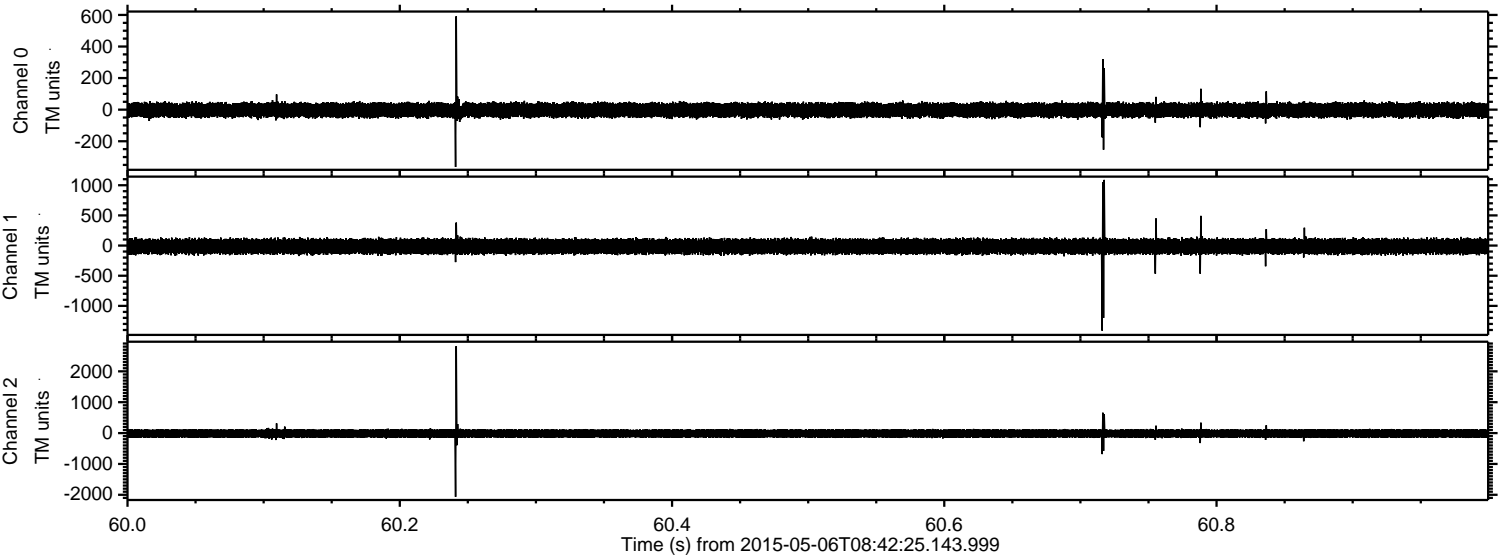
Processed Wed May 6 10:49:59 2015 by ELM ver.2012-10-06 from 001__elm20150506_084224__dat00.bin



Processed Wed May 6 10:50:00 2015 by ELM ver.2012-10-06 from 001__elm20150506_084224__dat00.bin



Processed Wed May 6 10:50:01 2015 by ELM ver.2012-10-06 from 001__elm20150506_084224__dat00.bin

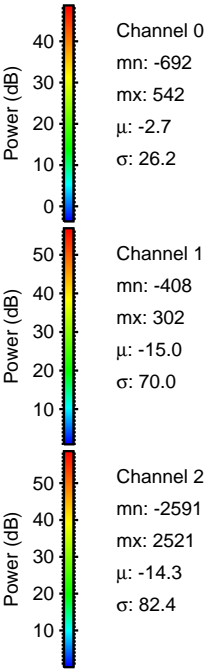
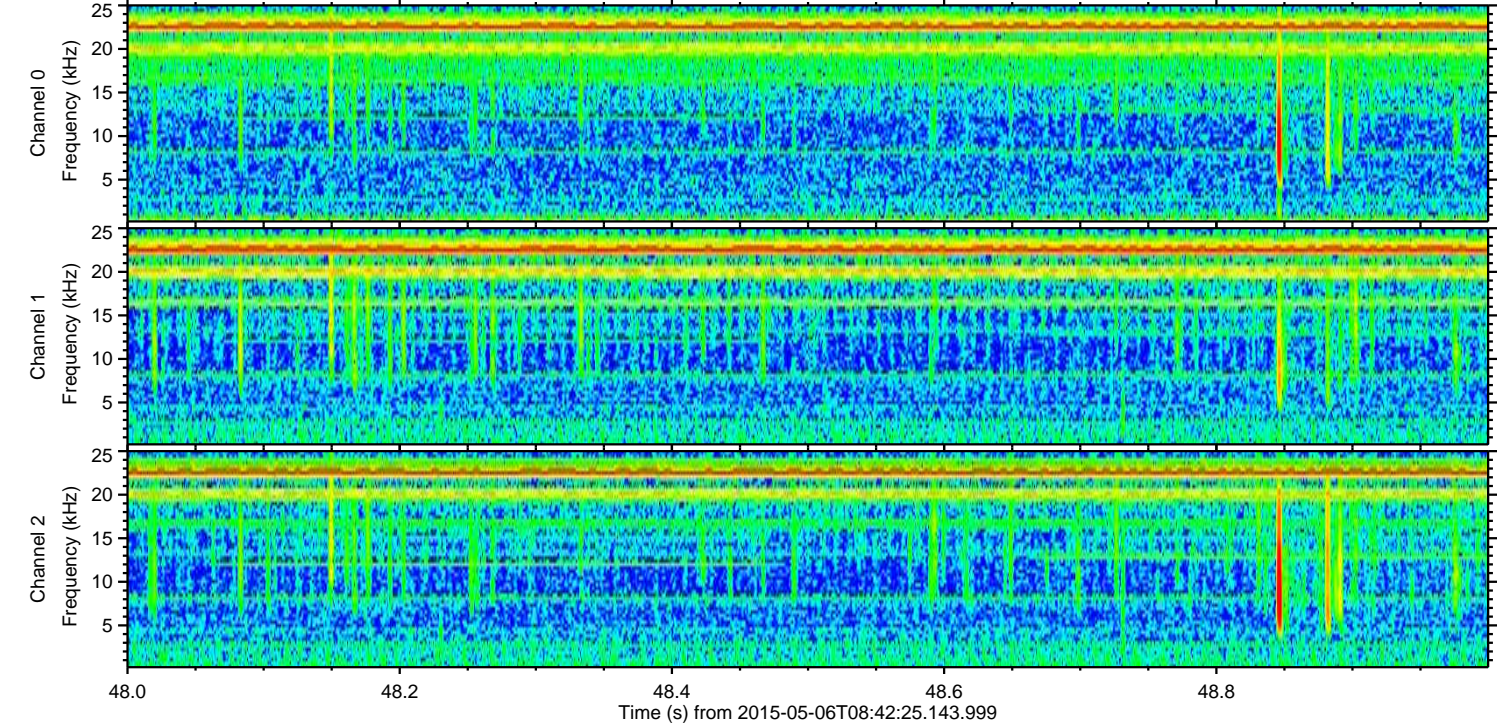
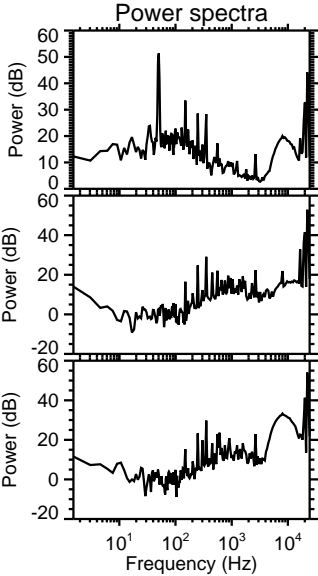
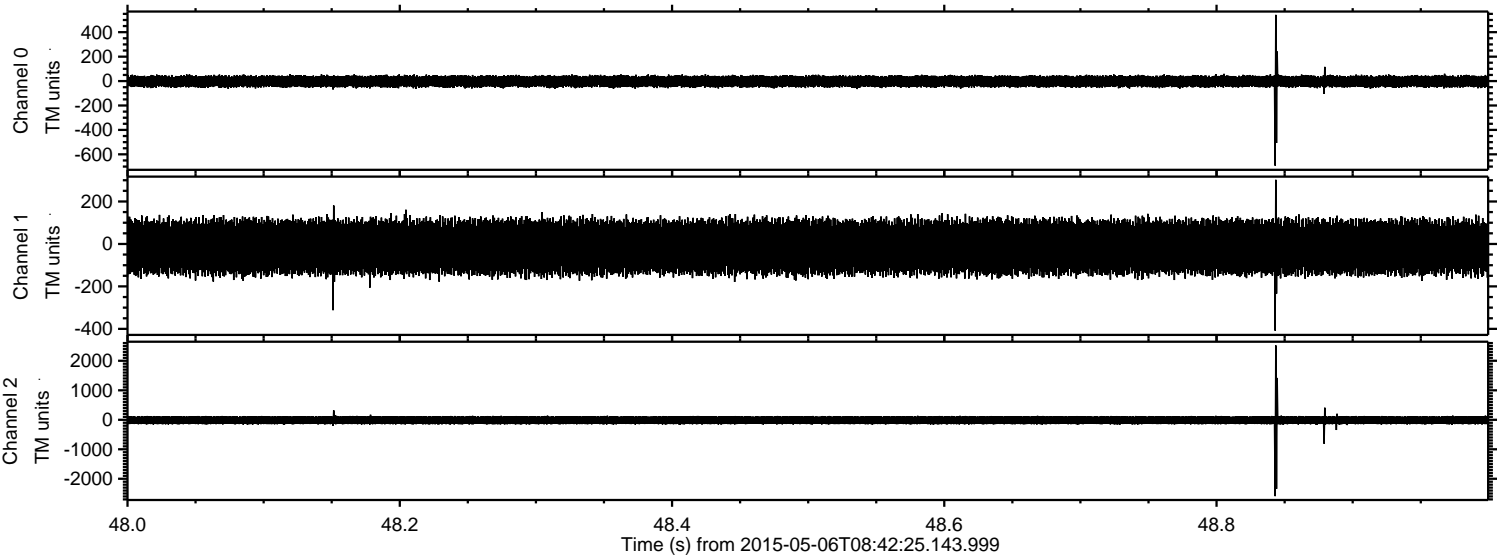


Channel 0
mn: -363
mx: 592
 μ : -2.7
 σ : 26.3

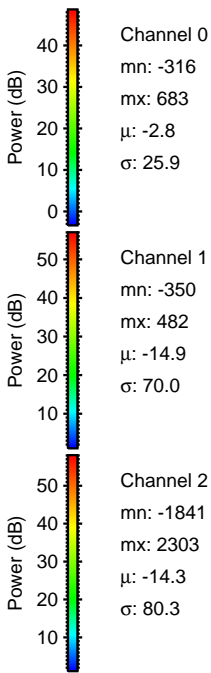
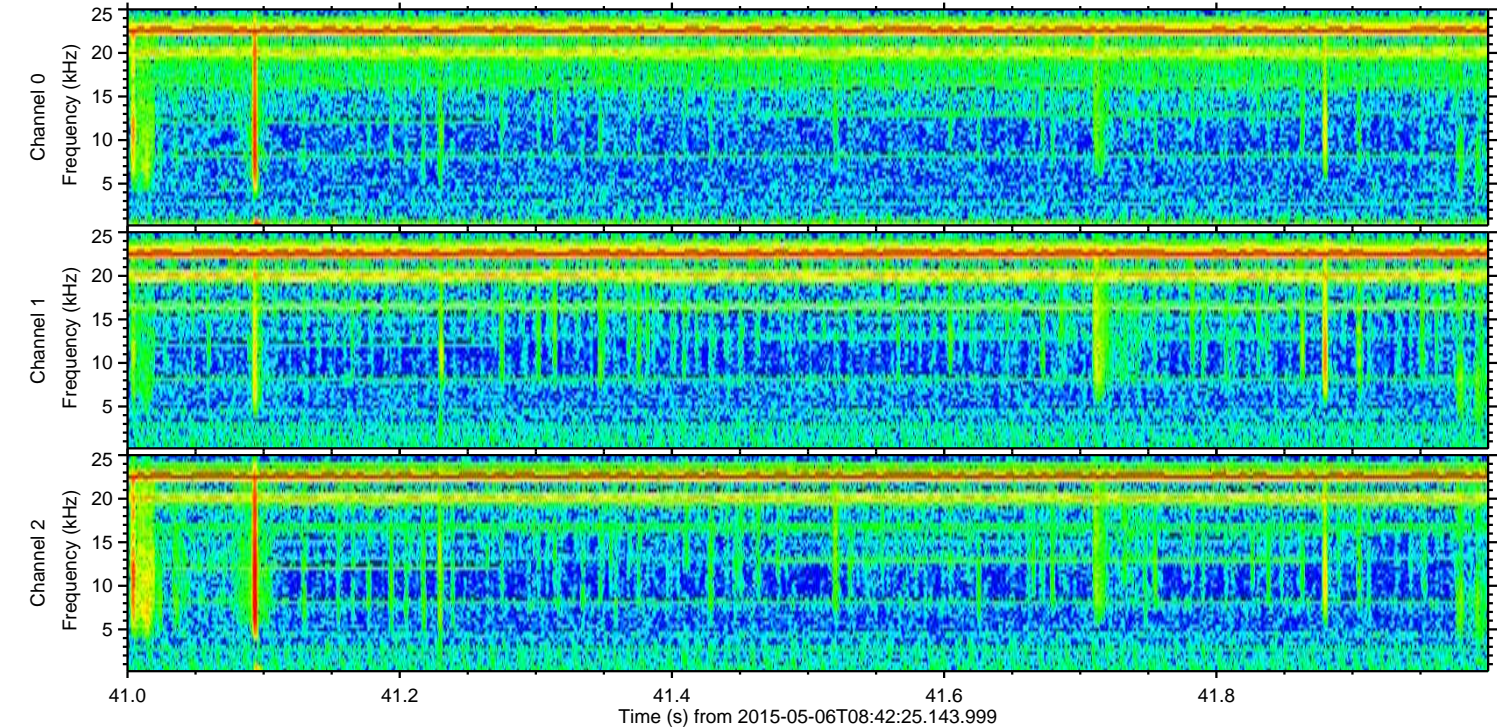
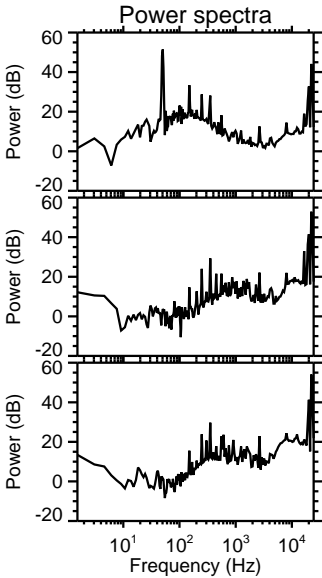
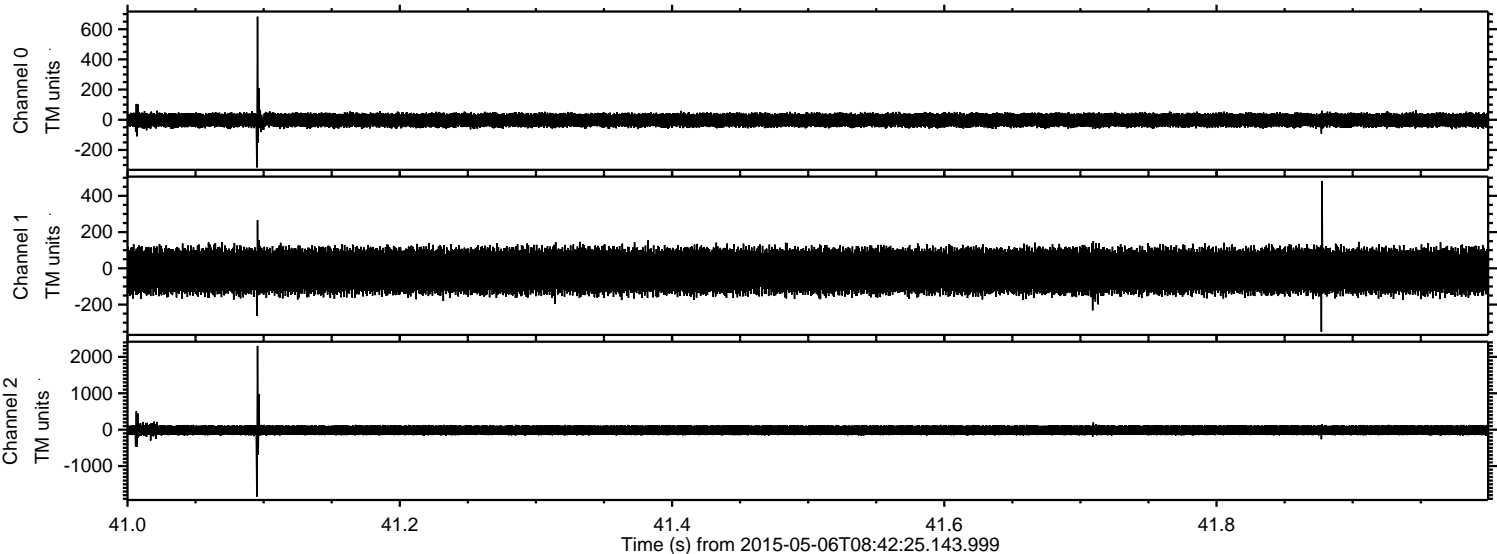
Channel 1
mn: -1411
mx: 1088
 μ : -15.0
 σ : 71.6

Channel 2
mn: -2065
mx: 2819
 μ : -14.3
 σ : 81.4

Processed Wed May 6 10:50:02 2015 by ELM ver.2012-10-06 from 001__elm20150506_084224__dat00.bin



Processed Wed May 6 10:50:03 2015 by ELM ver.2012-10-06 from 001__elm20150506_084224__dat00.bin



Processed Wed May 6 10:50:04 2015 by ELM ver.2012-10-06 from 001__elm20150506_084224__dat00.bin

