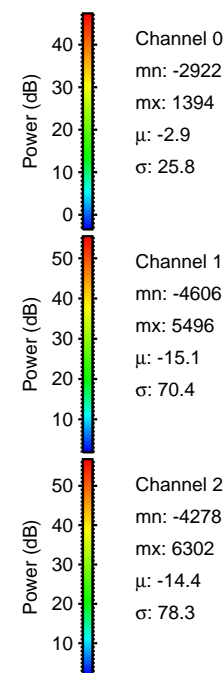
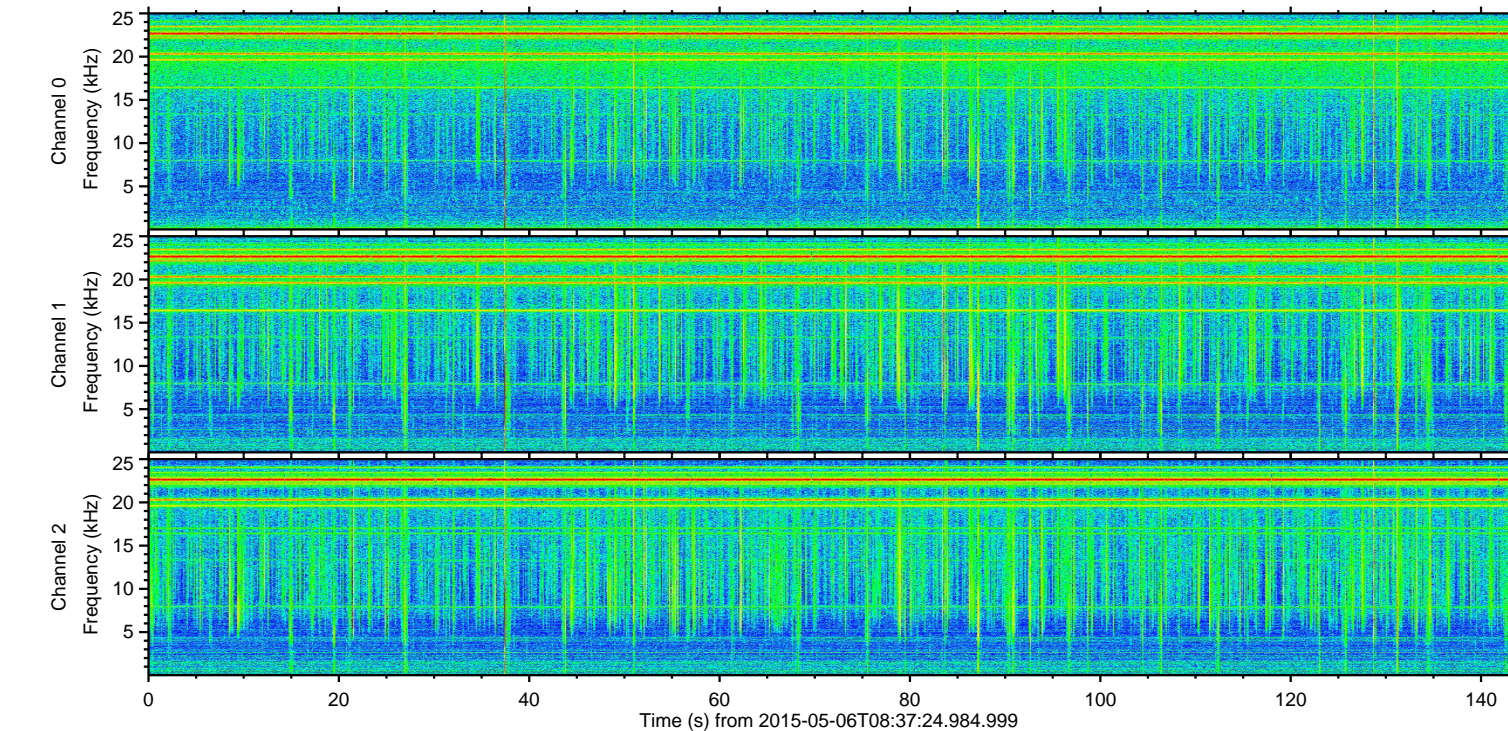
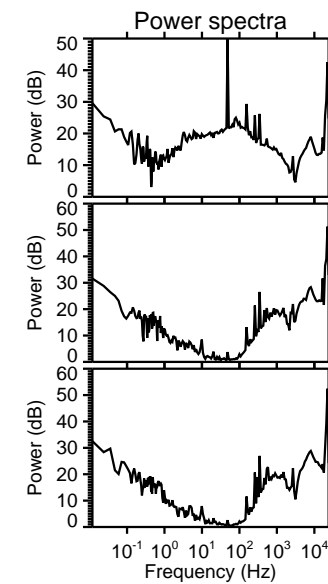
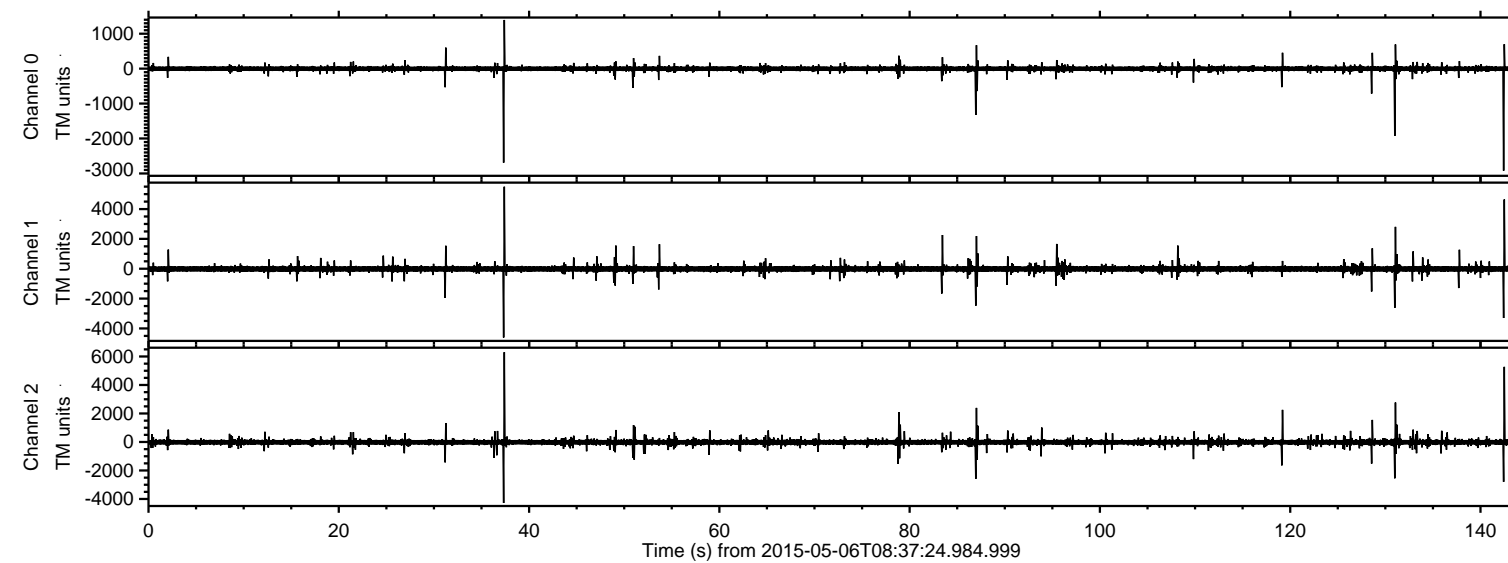
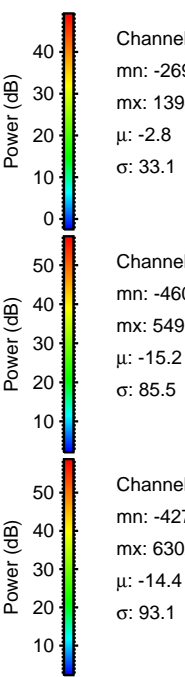
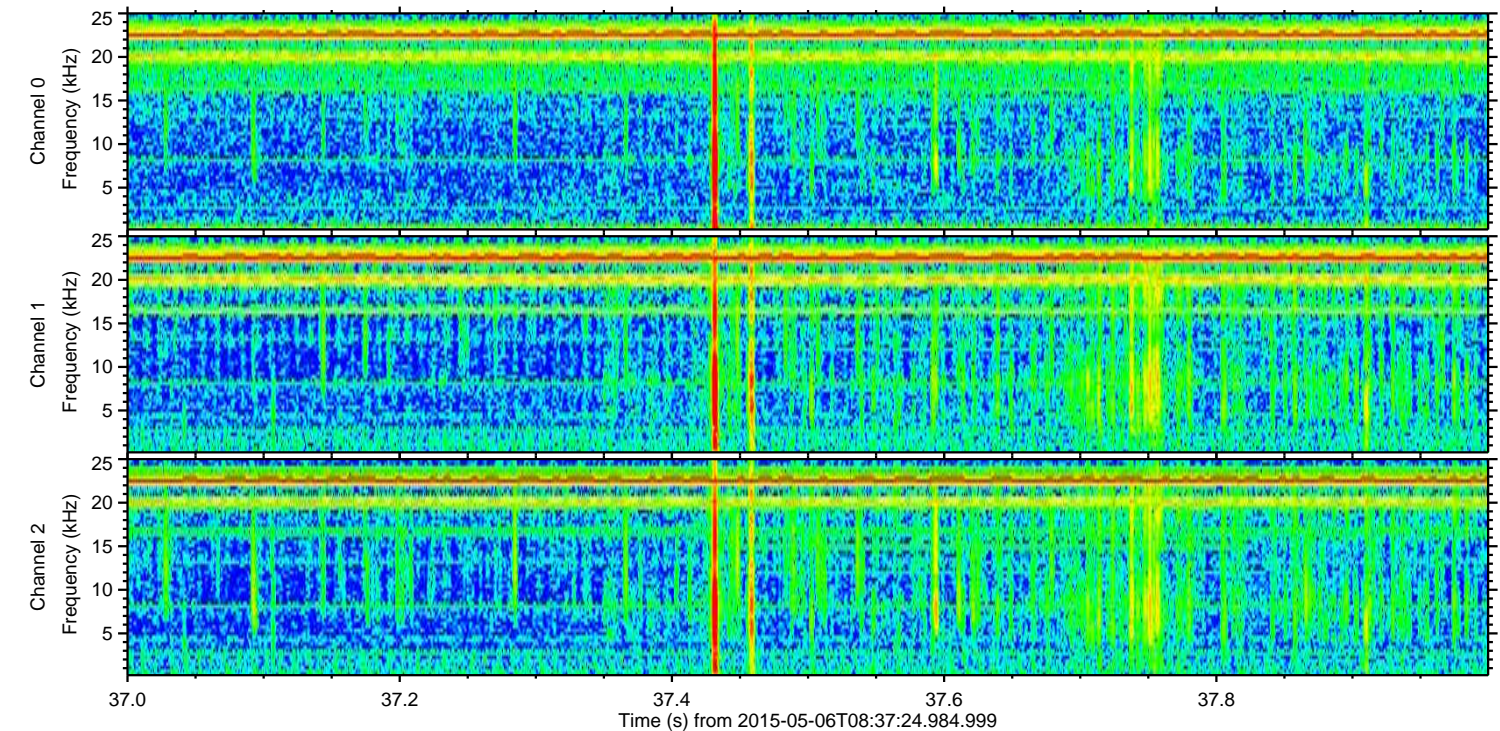
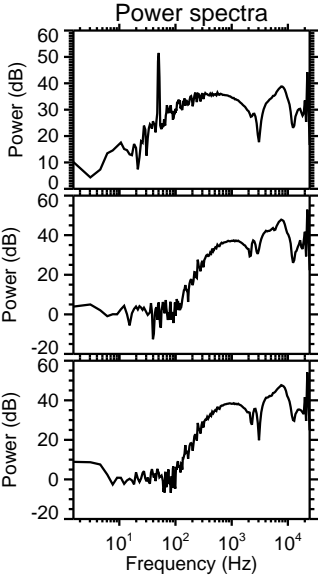
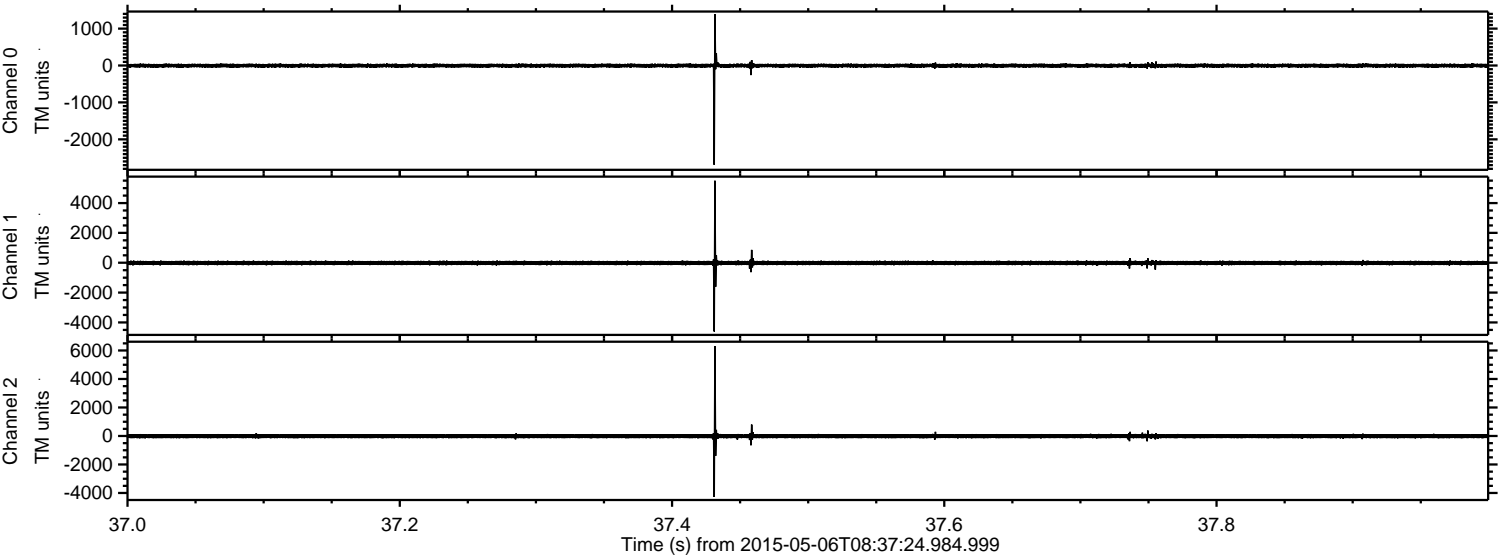


ELMAVAN 3D WAVEFORMS (Measured data sampled at 50 kHz) 49657 packets of 144 samples from 2015-05-06T08:37:24.984.999.

Processed Wed May 6 10:44:02 2015 by ELM ver.2012-10-06 from 001__elm20150506_083723__dat00.bin



Processed Wed May 6 10:44:20 2015 by ELM ver.2012-10-06 from 001__elm20150506_083723__dat00.bin



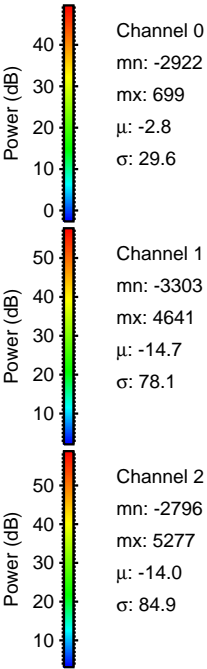
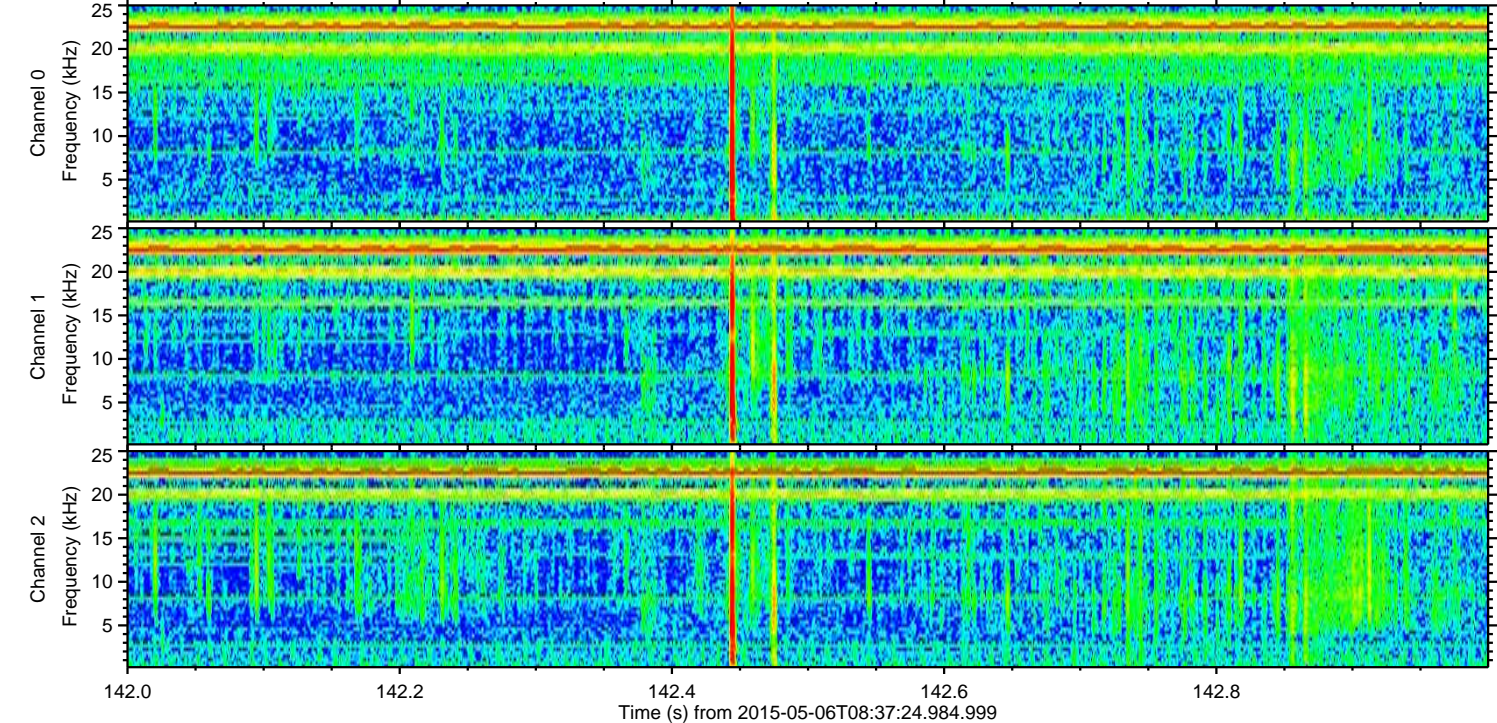
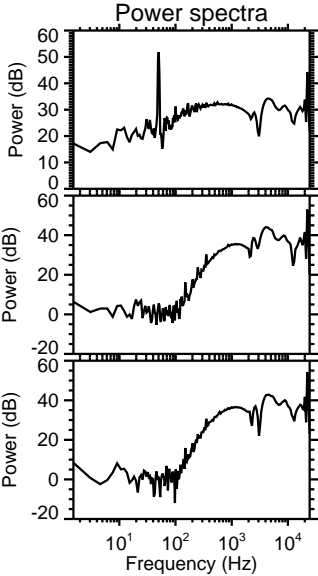
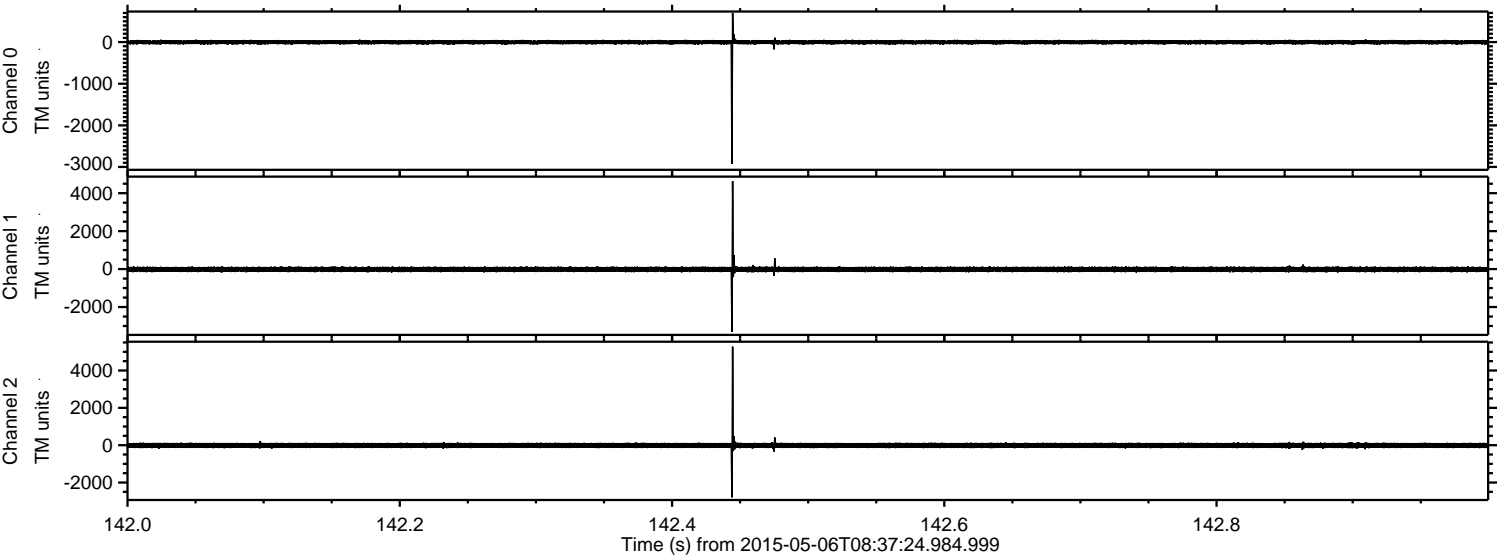
Channel 0
mn: -2692
mx: 1394
 μ : -2.8
 σ : 33.1

Channel 1
mn: -4606
mx: 5496
 μ : -15.2
 σ : 85.5

Channel 2
mn: -4278
mx: 6302
 μ : -14.4
 σ : 93.1

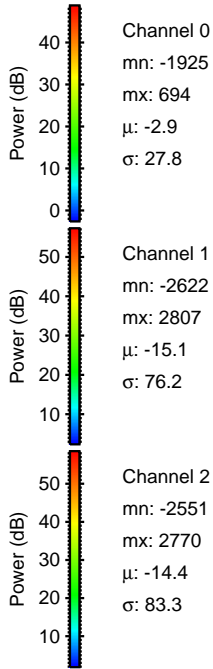
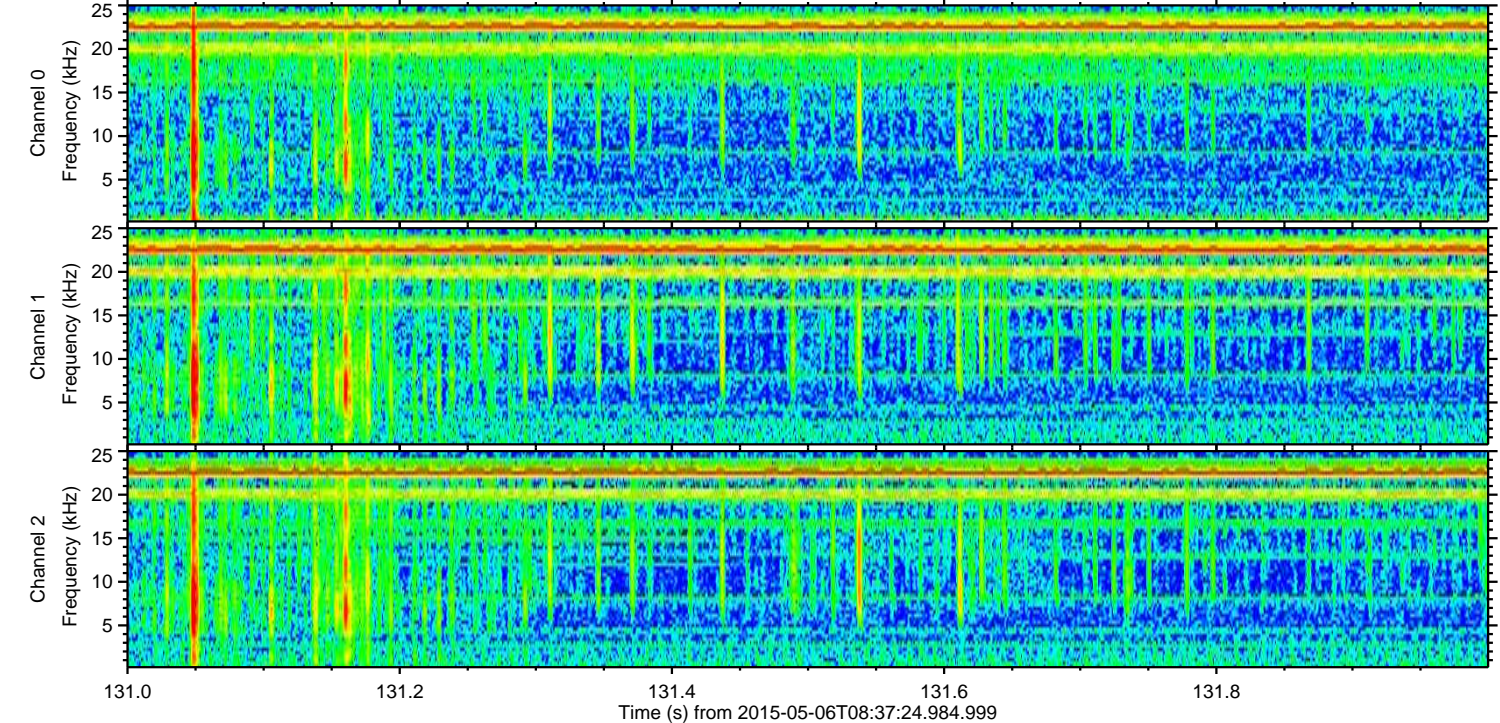
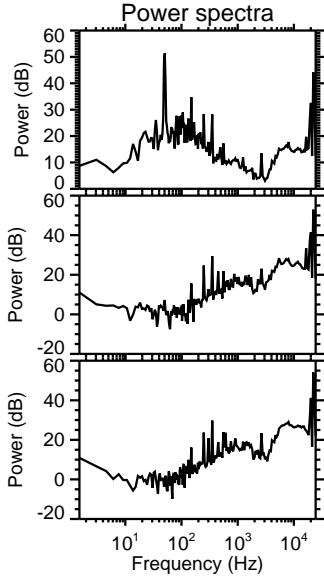
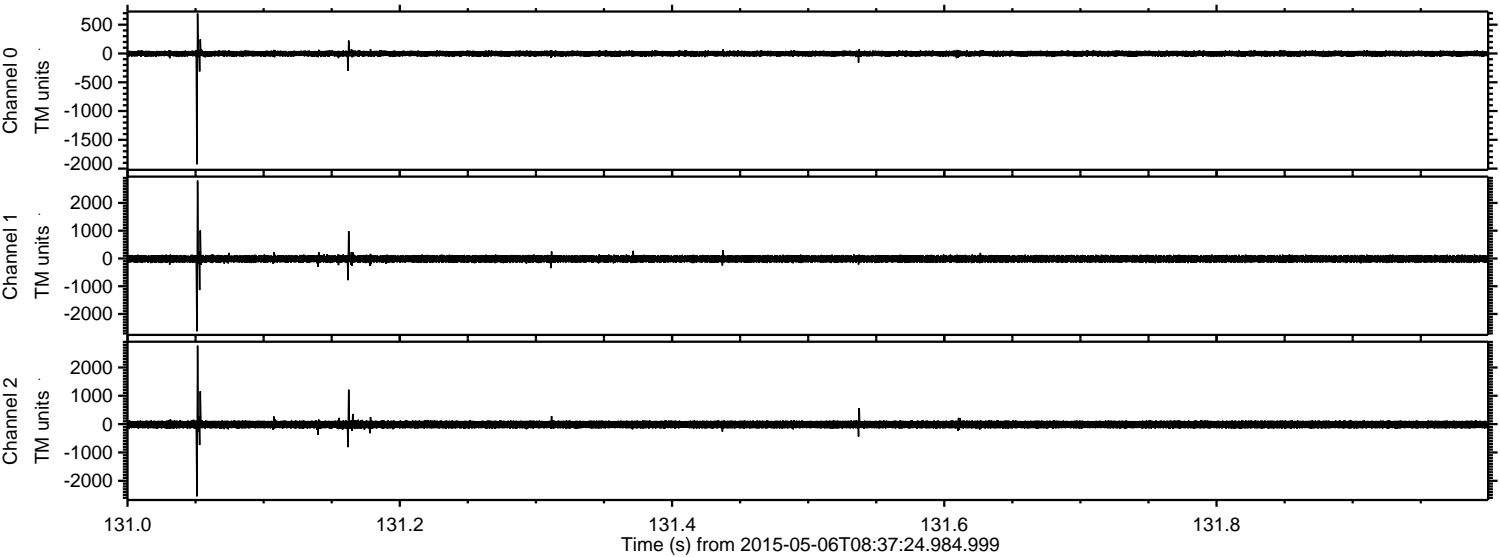
ELMAVAN 3D WAVEFORMS (Measured data sampled at 50 kHz) 49657 packets of 144 samples from 2015-05-06T08:37:24.984.999. Part 143/144

Processed Wed May 6 10:44:22 2015 by ELM ver.2012-10-06 from 001__elm20150506_083723__dat00.bin

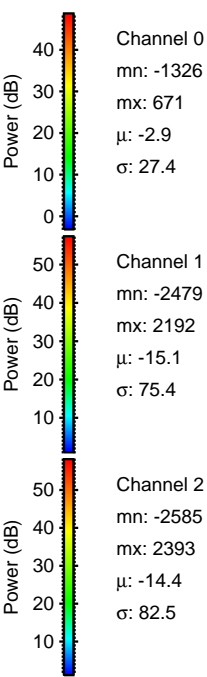
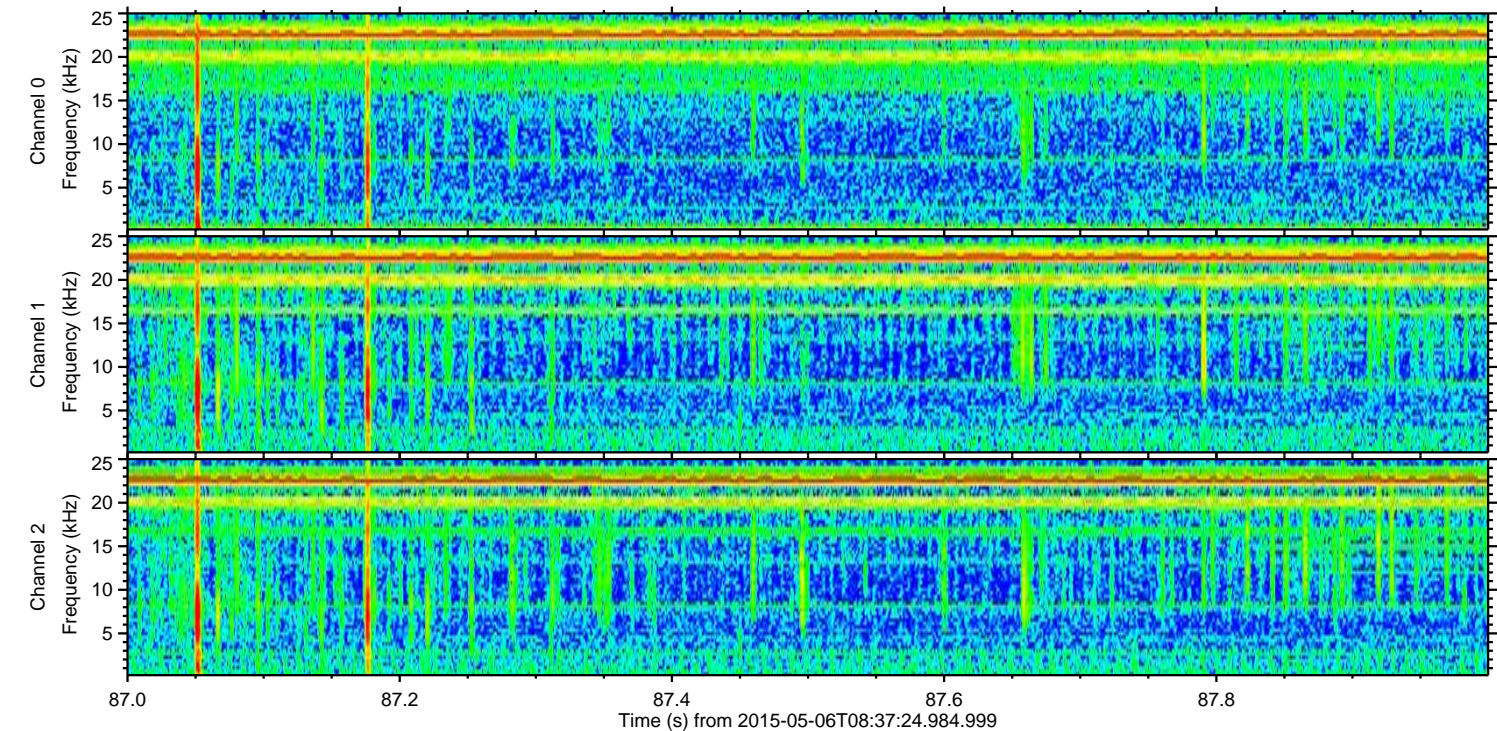
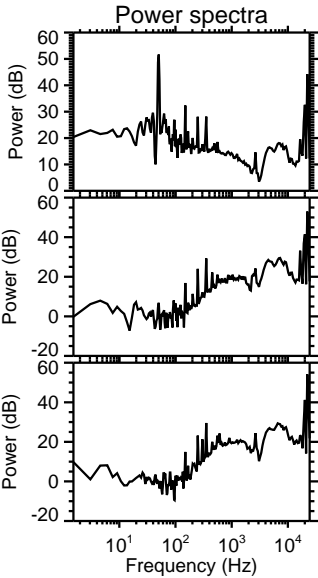
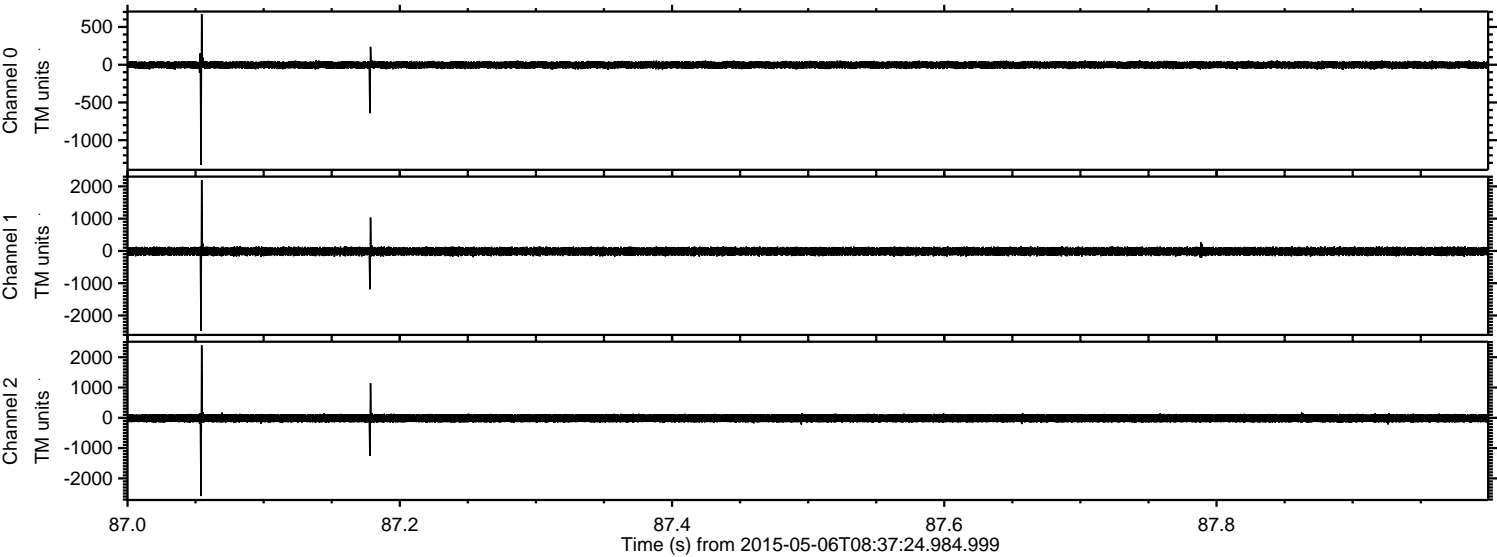


ELMAVAN 3D WAVEFORMS (Measured data sampled at 50 kHz) 49657 packets of 144 samples from 2015-05-06T08:37:24.984.999. Part 132/144

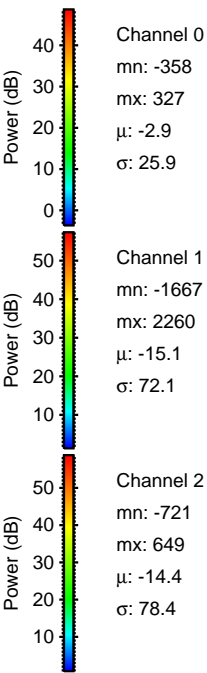
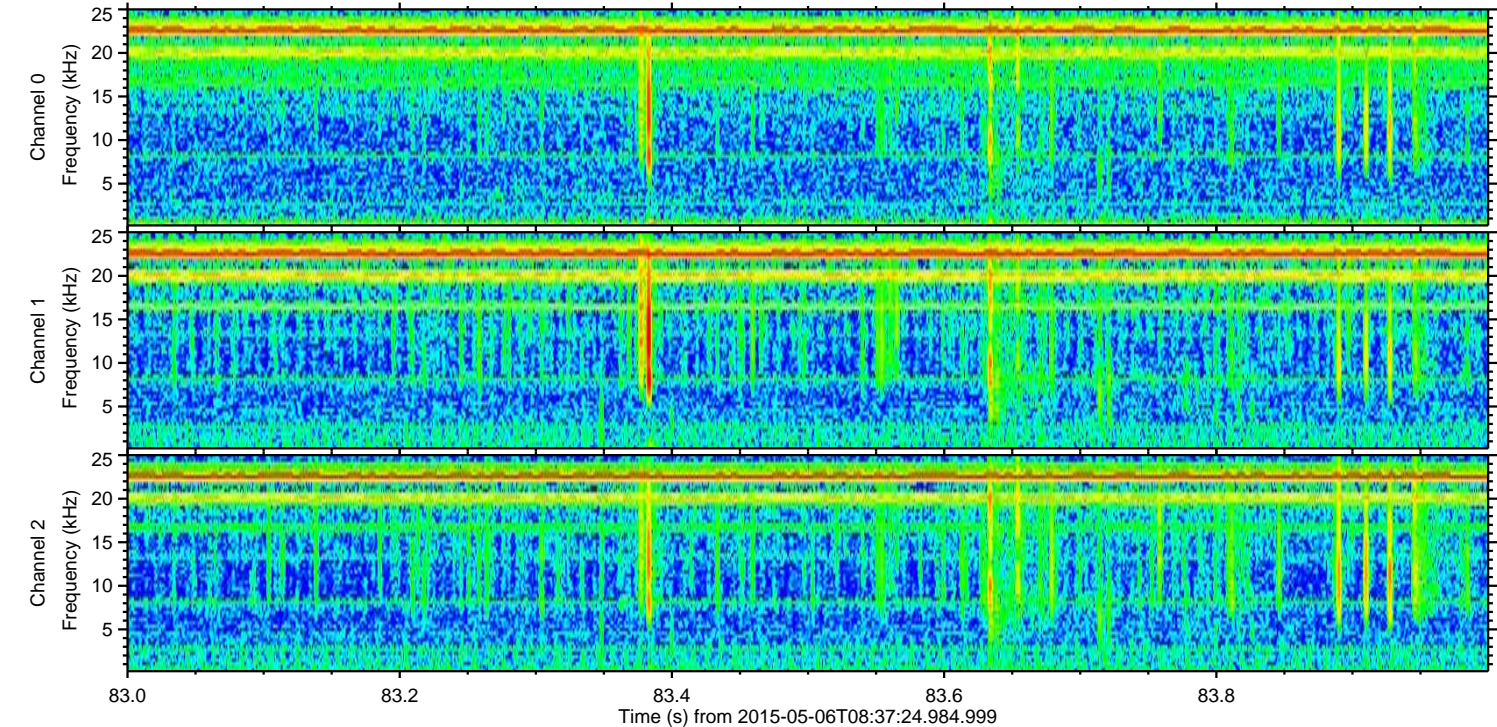
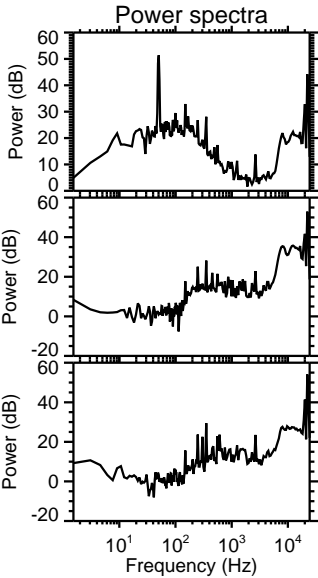
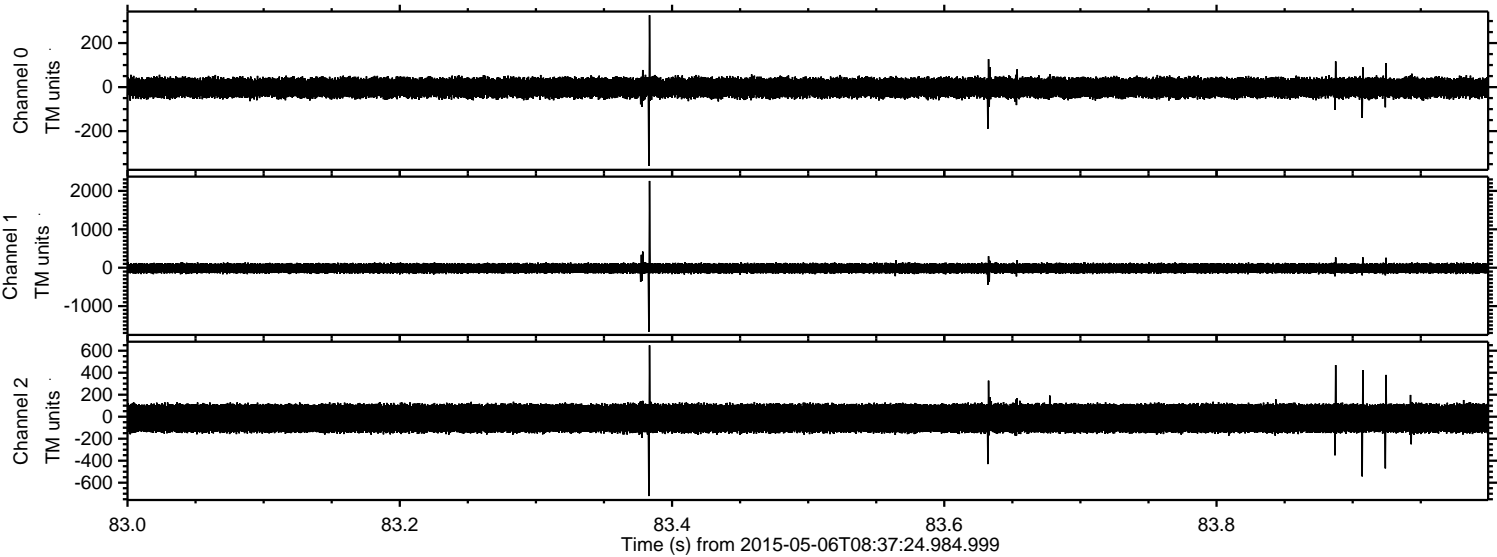
Processed Wed May 6 10:44:24 2015 by ELM ver.2012-10-06 from 001__elm20150506_083723__dat00.bin



Processed Wed May 6 10:44:26 2015 by ELM ver.2012-10-06 from 001__elm20150506_083723__dat00.bin

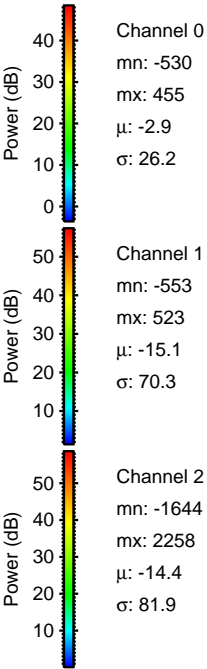
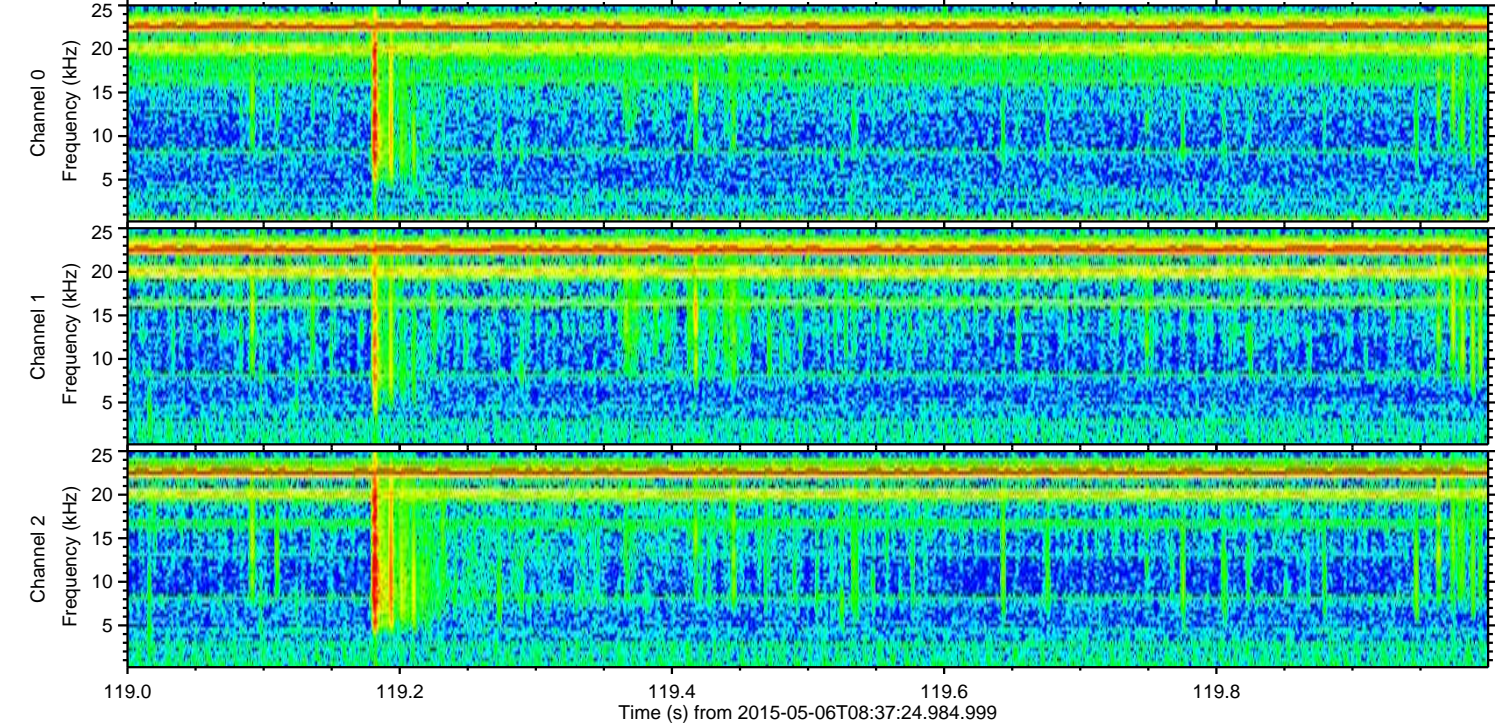
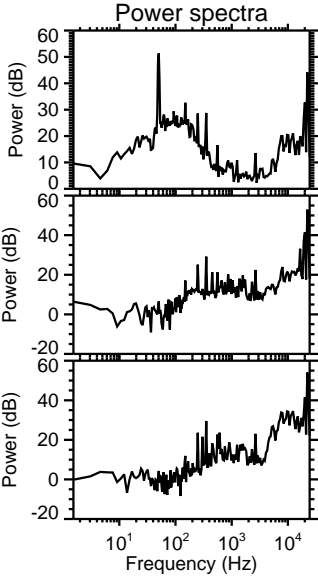
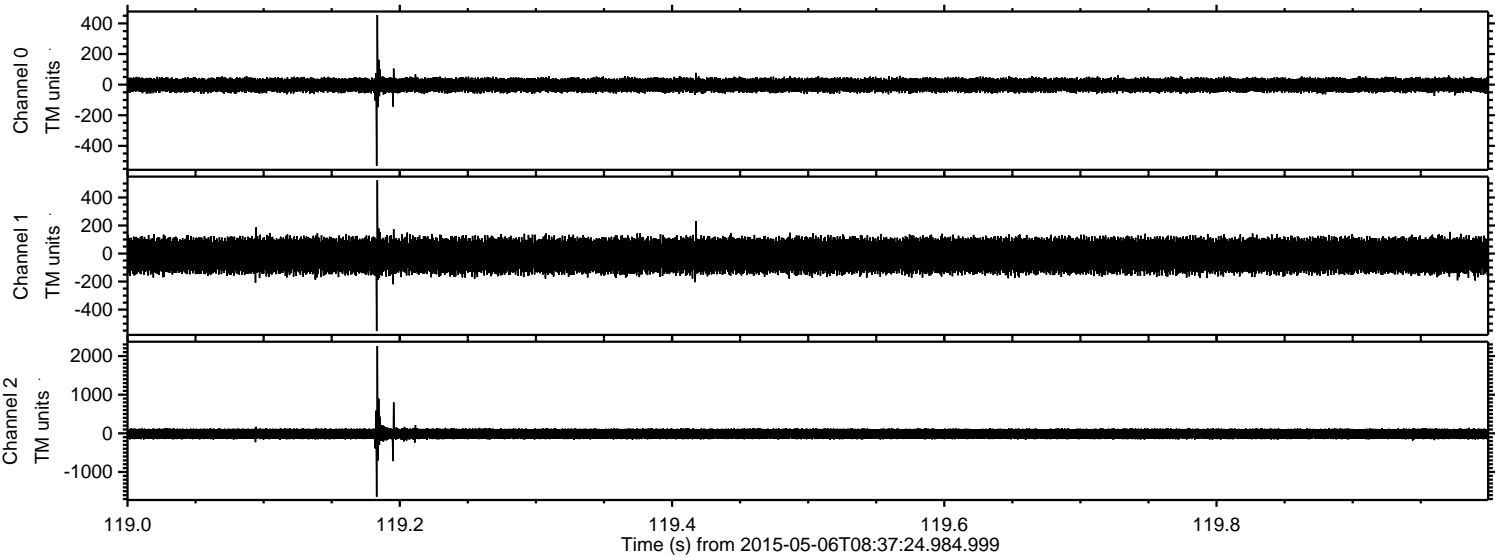


Processed Wed May 6 10:44:27 2015 by ELM ver.2012-10-06 from 001__elm20150506_083723__dat00.bin

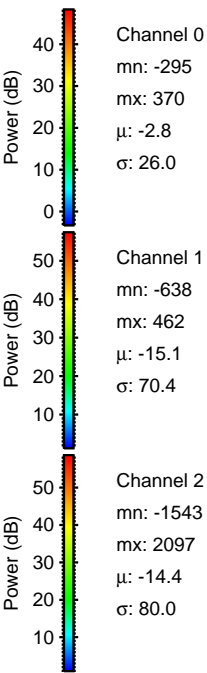
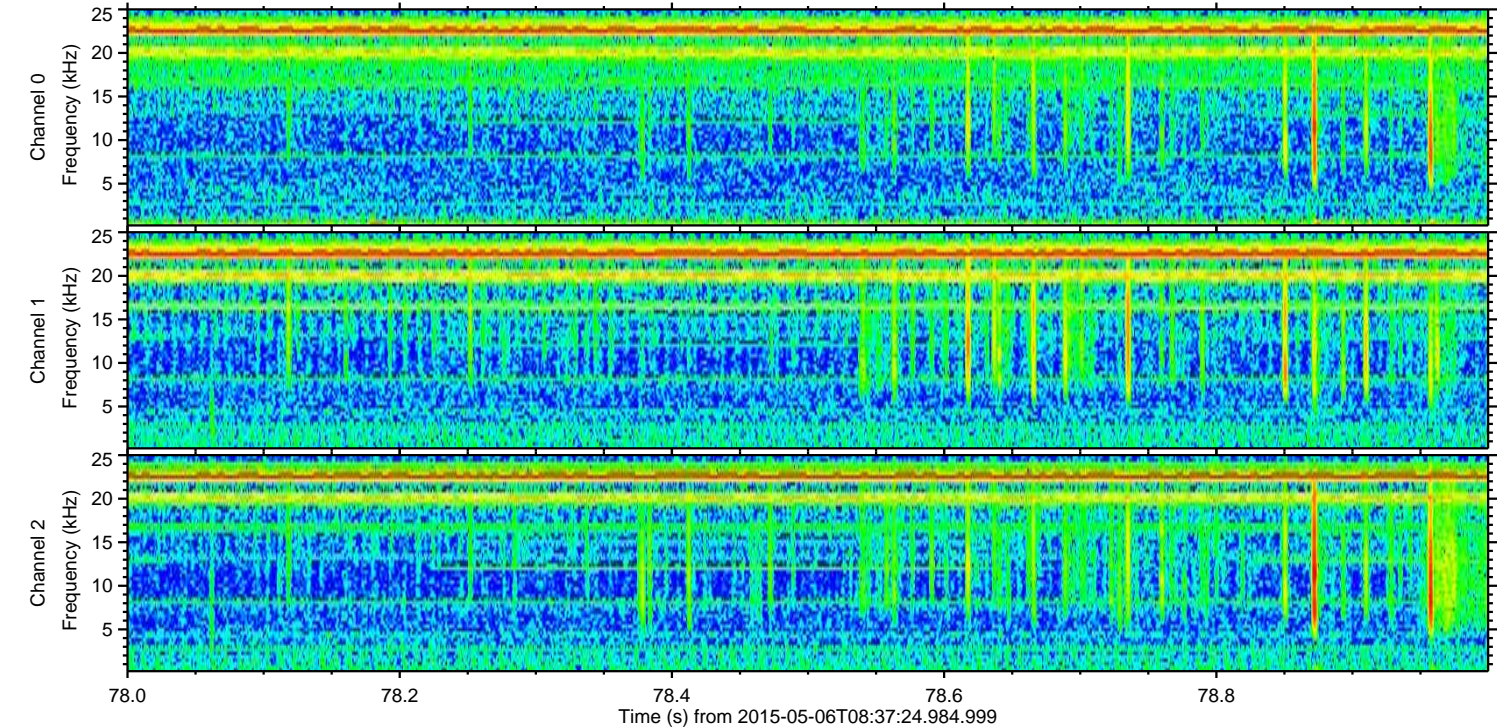
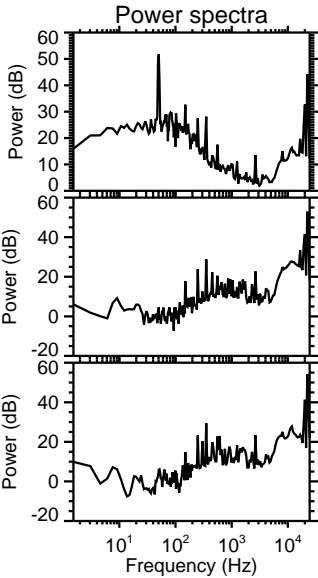
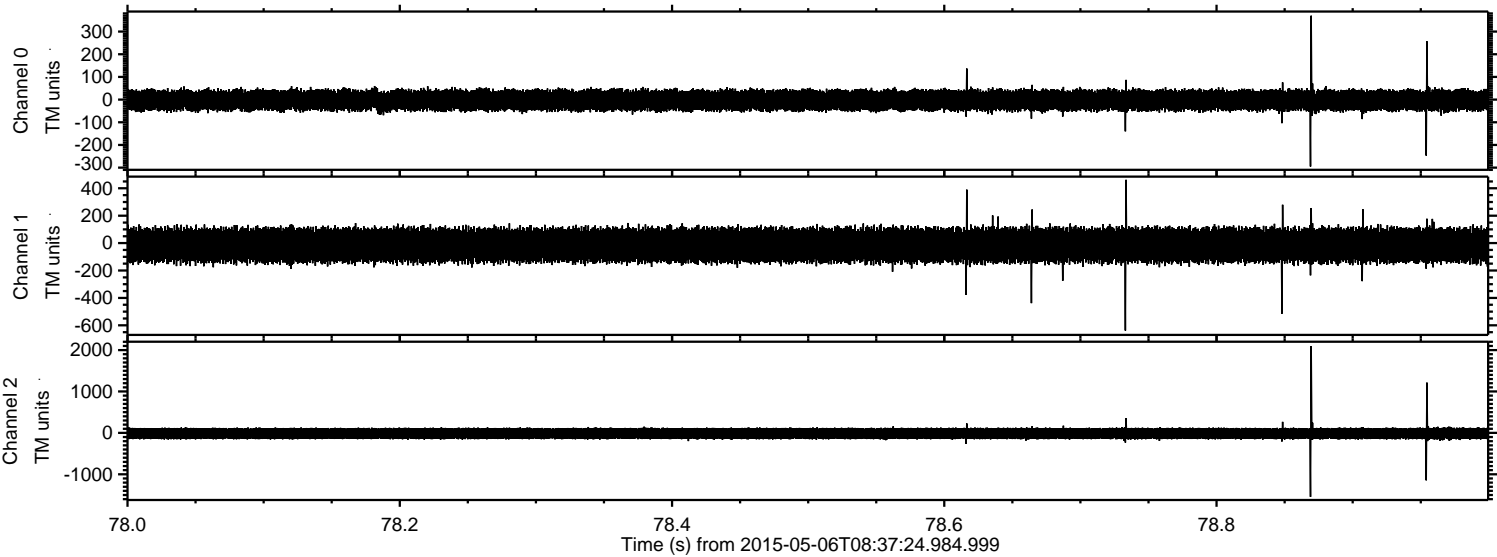


ELMAVAN 3D WAVEFORMS (Measured data sampled at 50 kHz) 49657 packets of 144 samples from 2015-05-06T08:37:24.984.999. Part 120/144

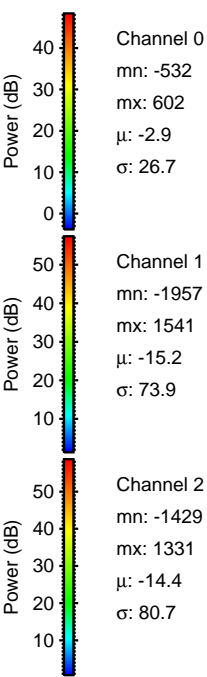
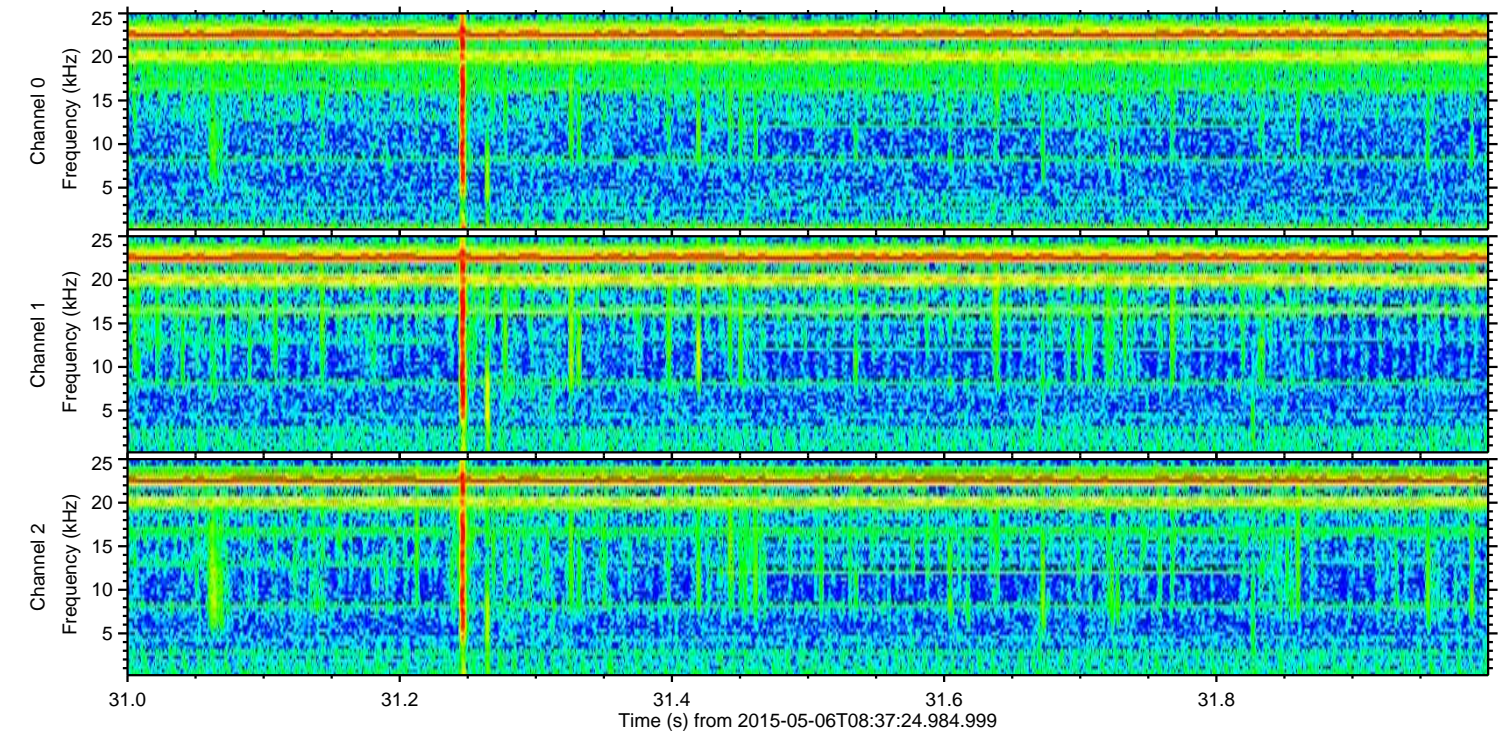
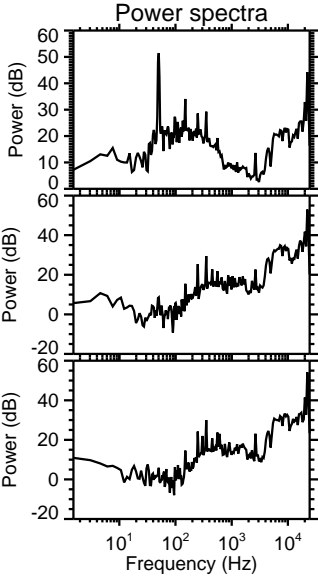
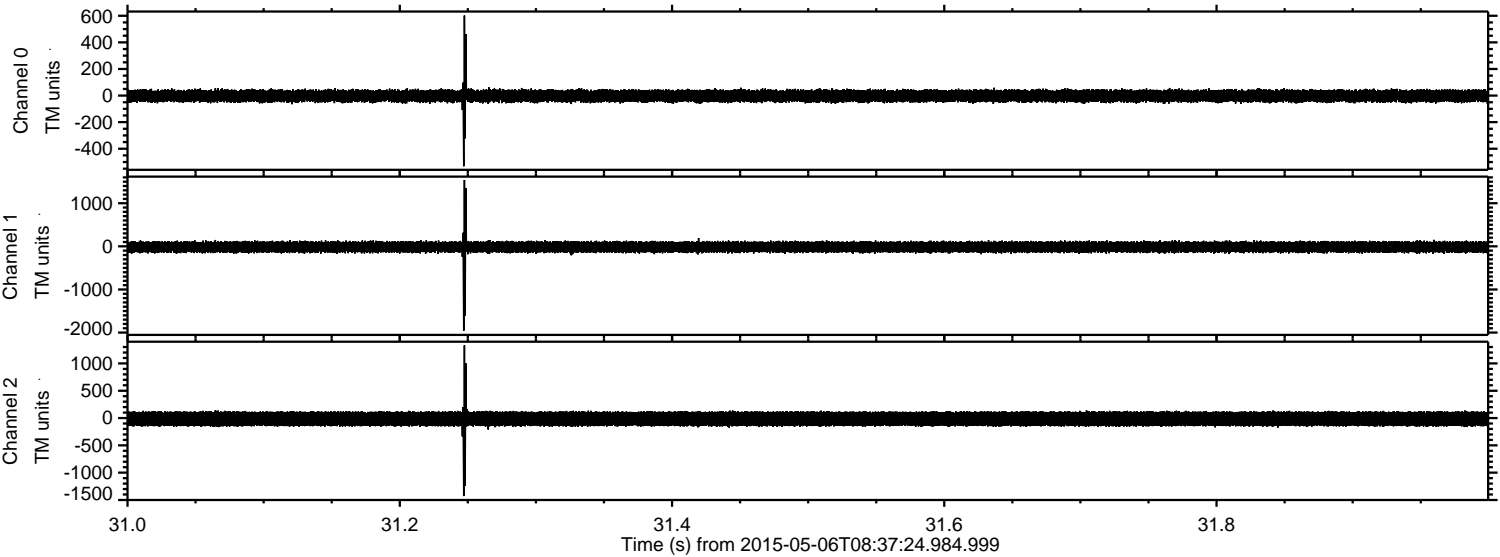
Processed Wed May 6 10:44:28 2015 by ELM ver.2012-10-06 from 001__elm20150506_083723__dat00.bin



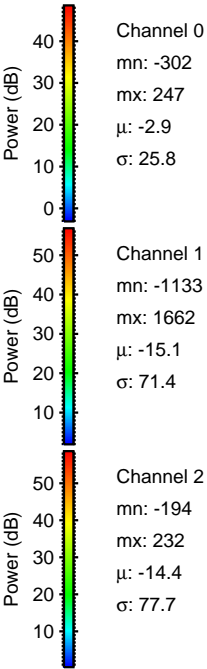
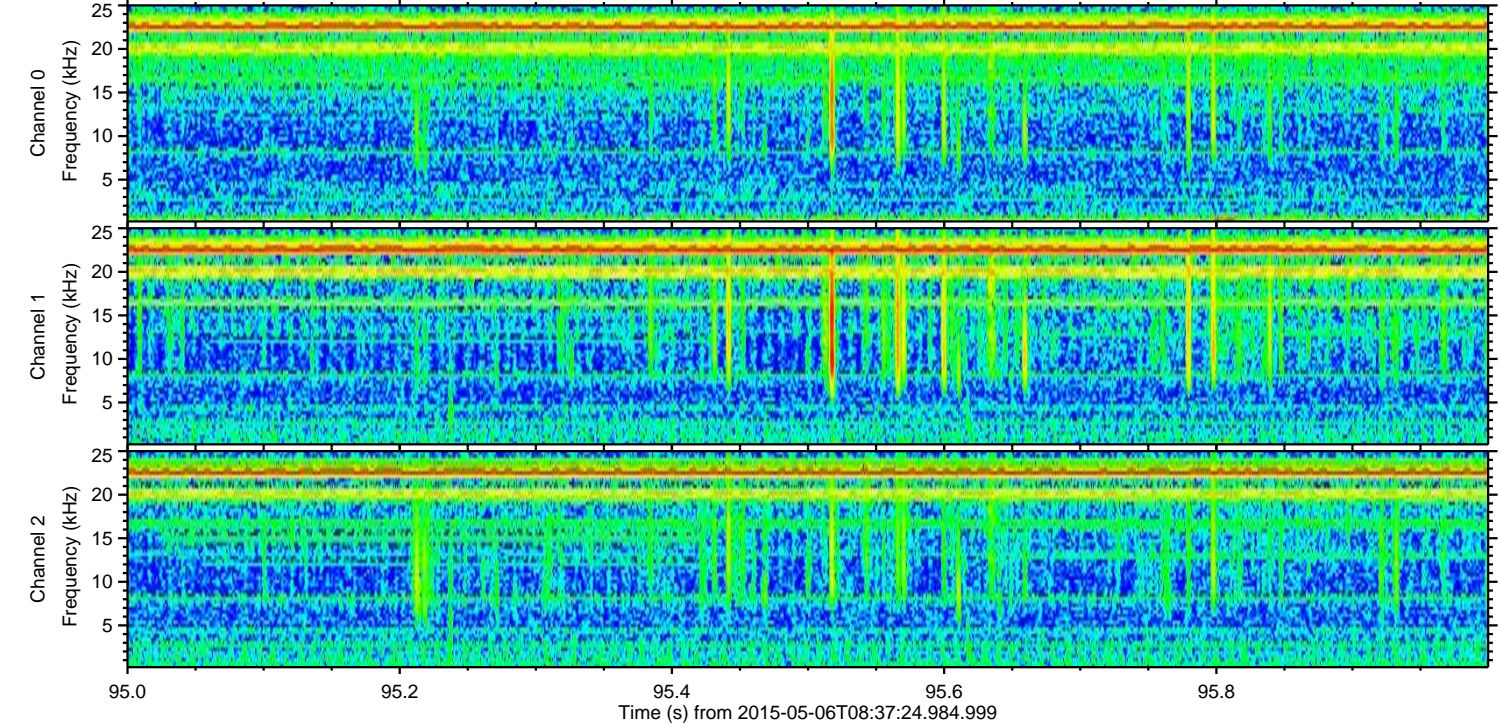
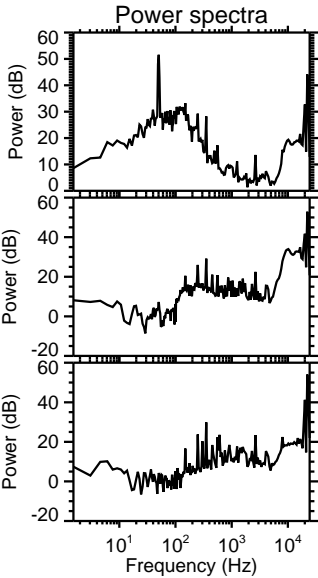
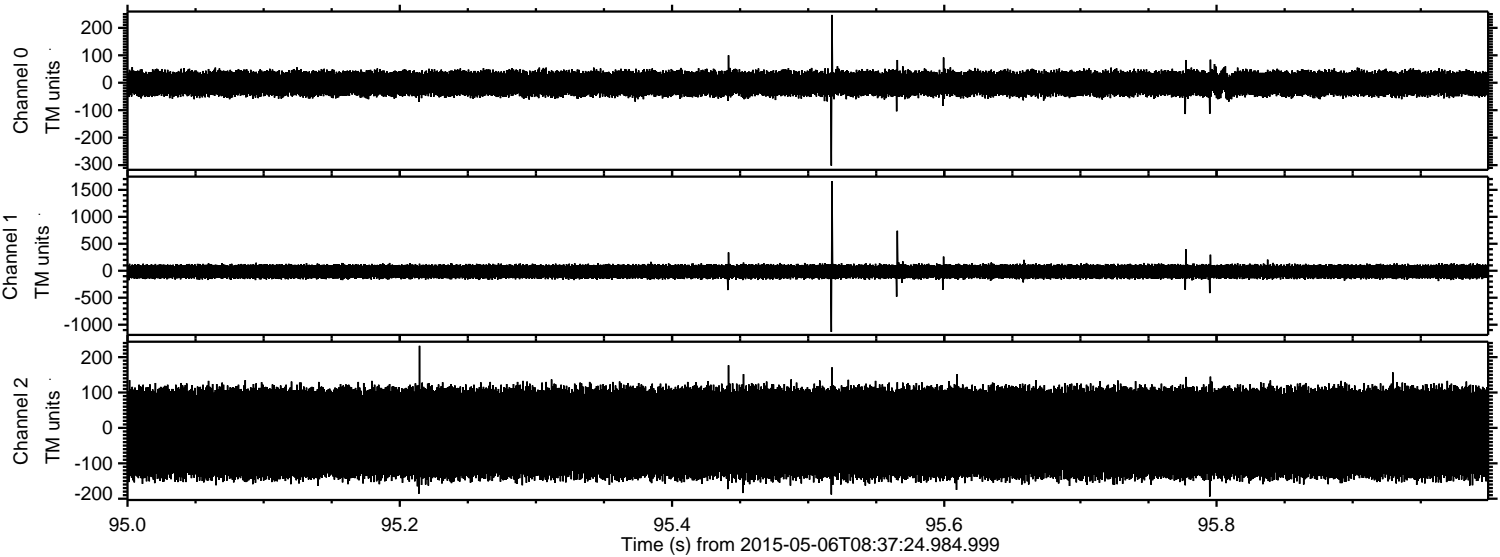
Processed Wed May 6 10:44:29 2015 by ELM ver.2012-10-06 from 001__elm20150506_083723__dat00.bin



Processed Wed May 6 10:44:30 2015 by ELM ver.2012-10-06 from 001__elm20150506_083723__dat00.bin



Processed Wed May 6 10:44:31 2015 by ELM ver.2012-10-06 from 001__elm20150506_083723__dat00.bin



Processed Wed May 6 10:44:32 2015 by ELM ver.2012-10-06 from 001__elm20150506_083723__dat00.bin

