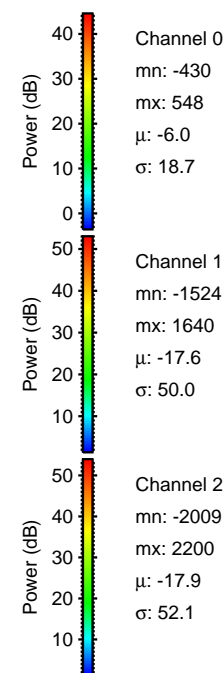
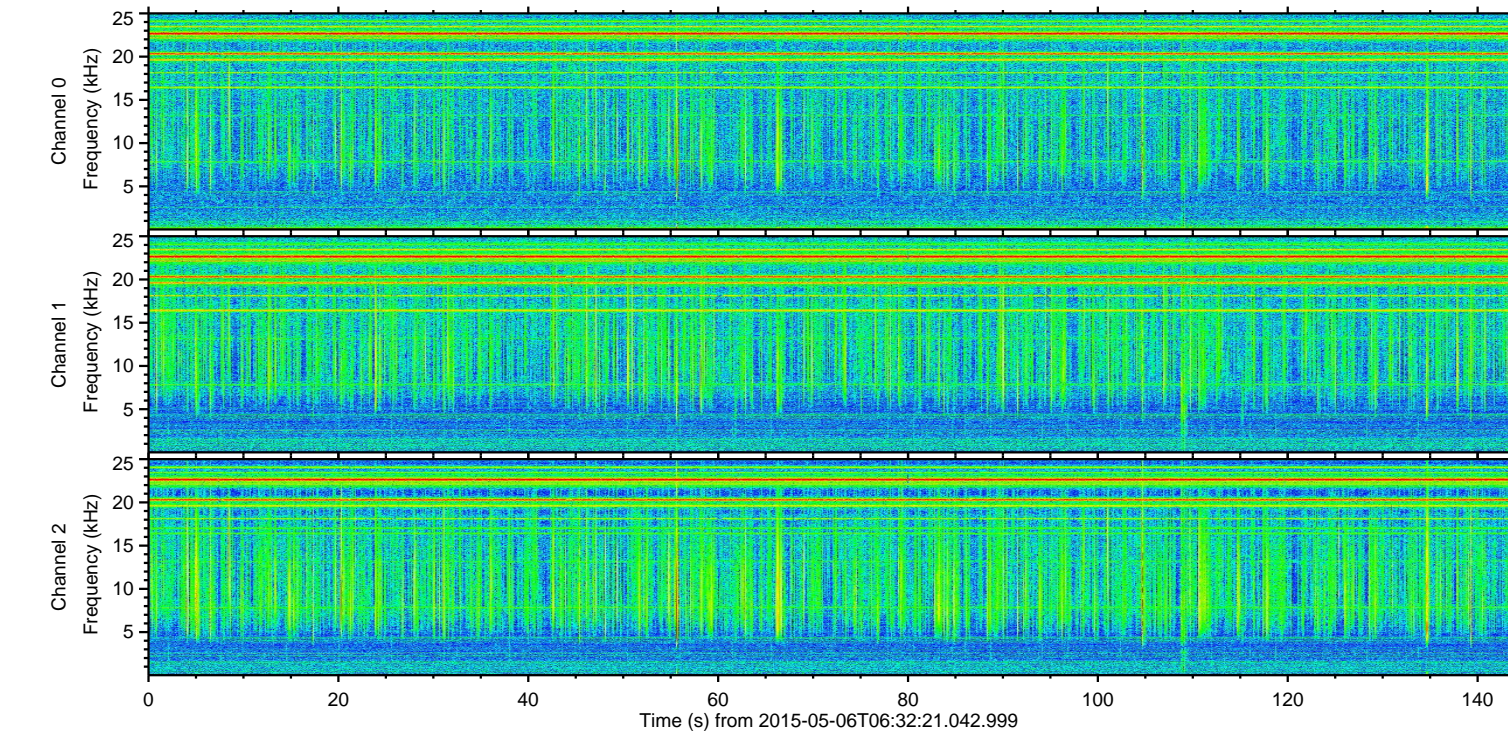
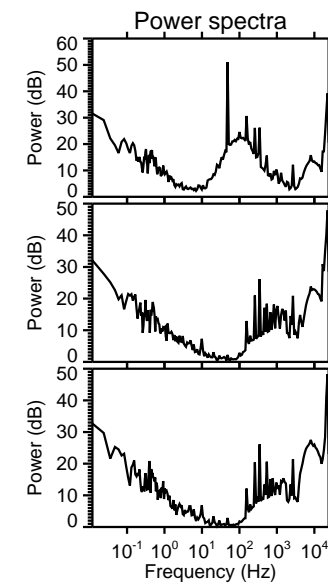
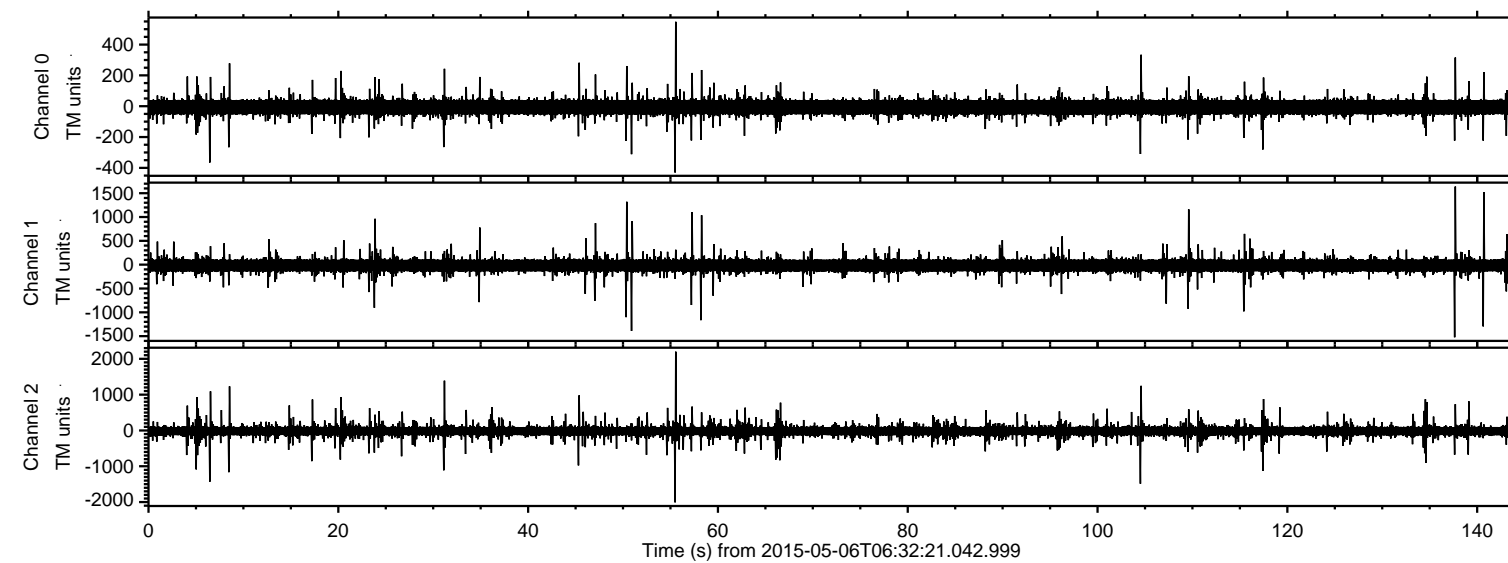
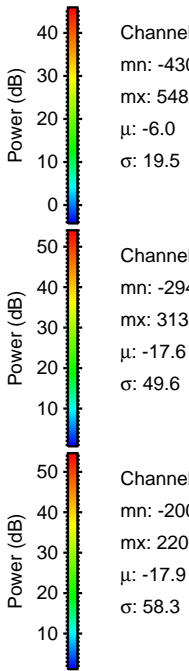
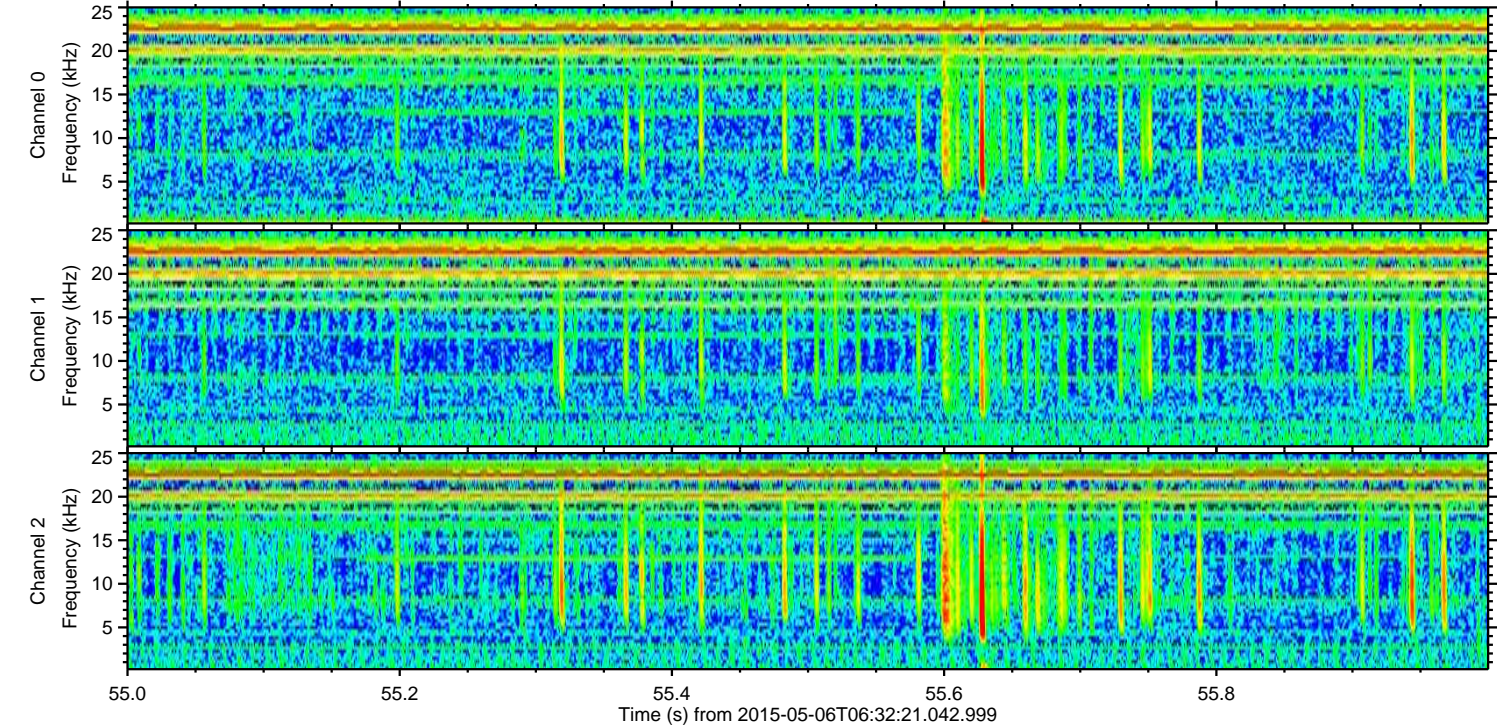
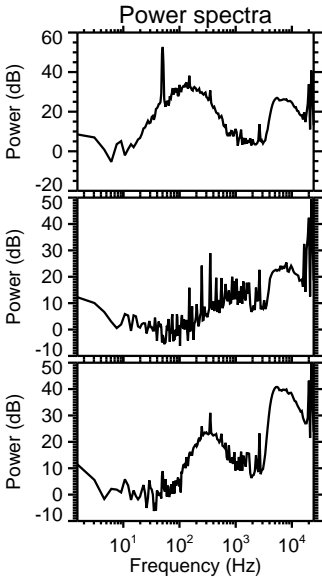
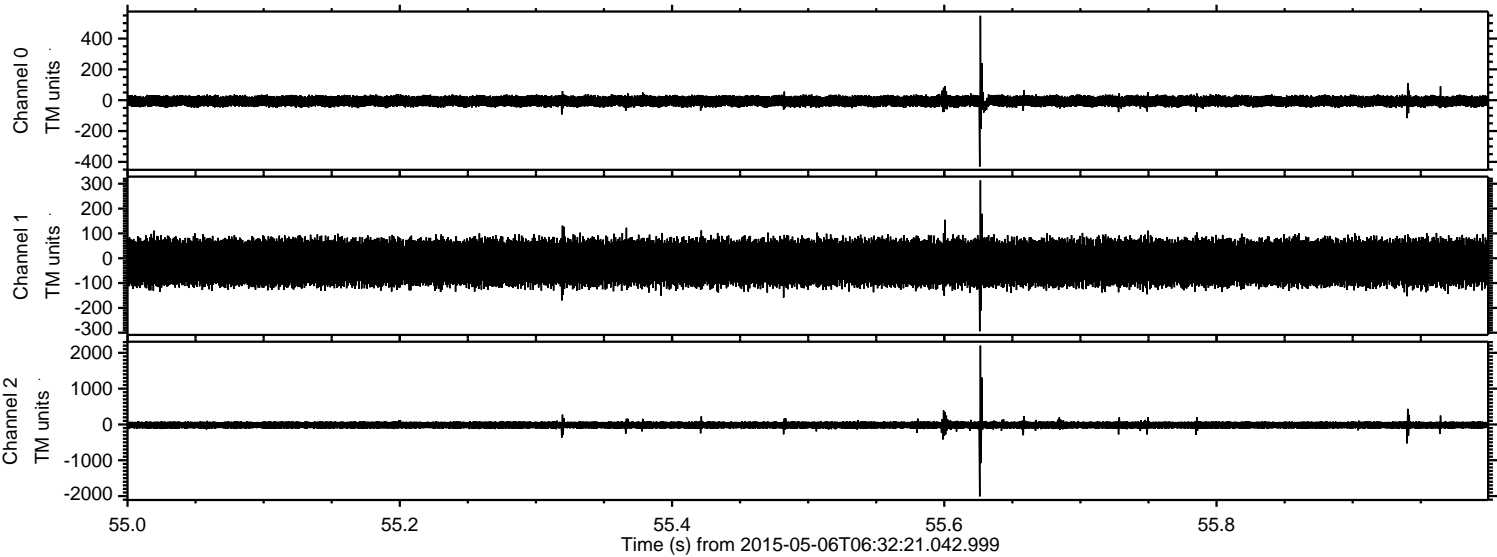


ELMAVAN 3D WAVEFORMS (Measured data sampled at 50 kHz) 49781 packets of 144 samples from 2015-05-06T06:32:21.042.999.

Processed Wed May 6 08:39:40 2015 by ELM ver.2012-10-06 from 001__elm20150506_063220__dat00.bin

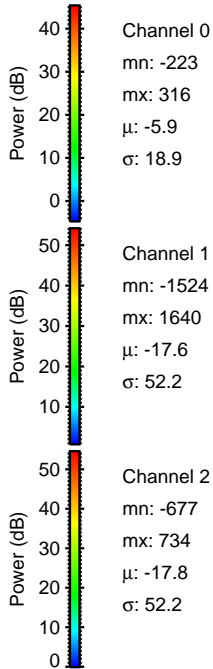
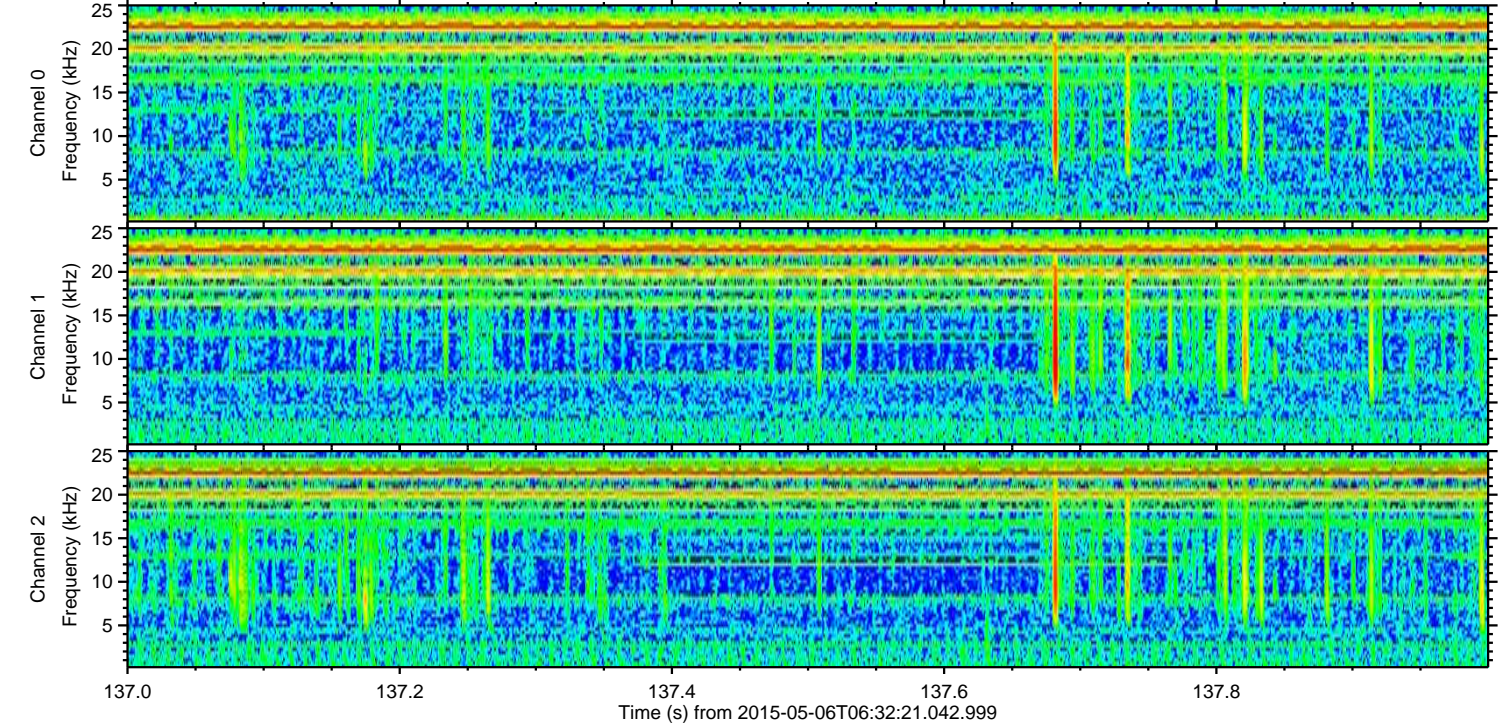
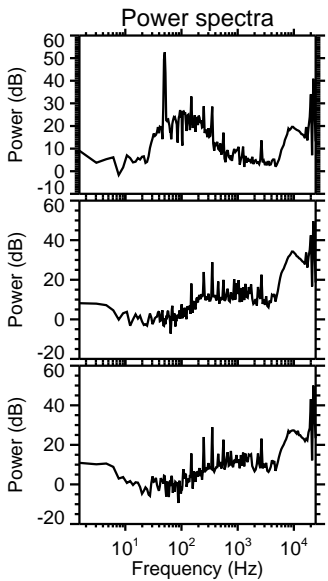
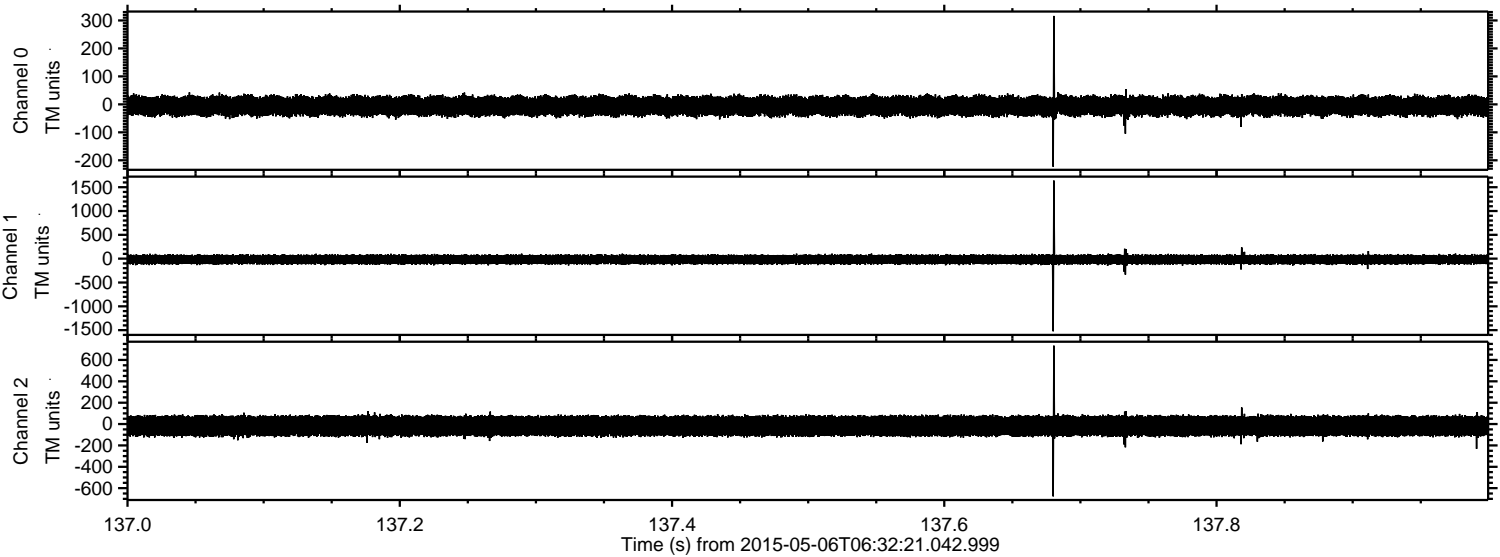


Processed Wed May 6 08:39:52 2015 by ELM ver.2012-10-06 from 001__elm20150506_063220__dat00.bin



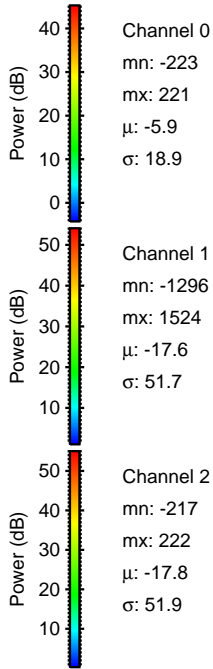
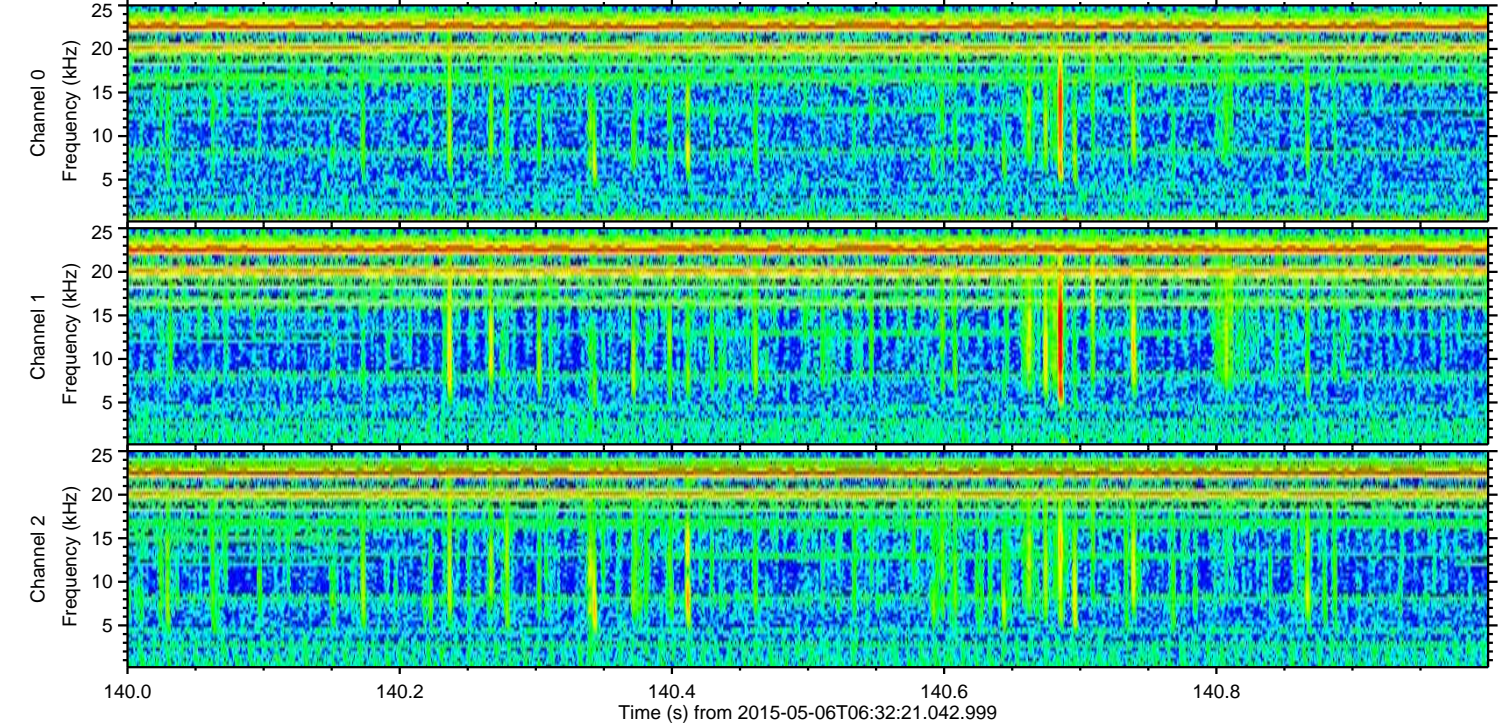
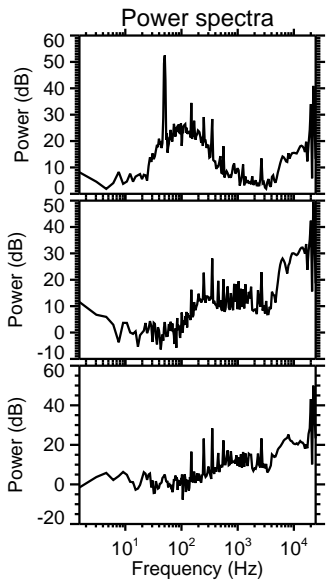
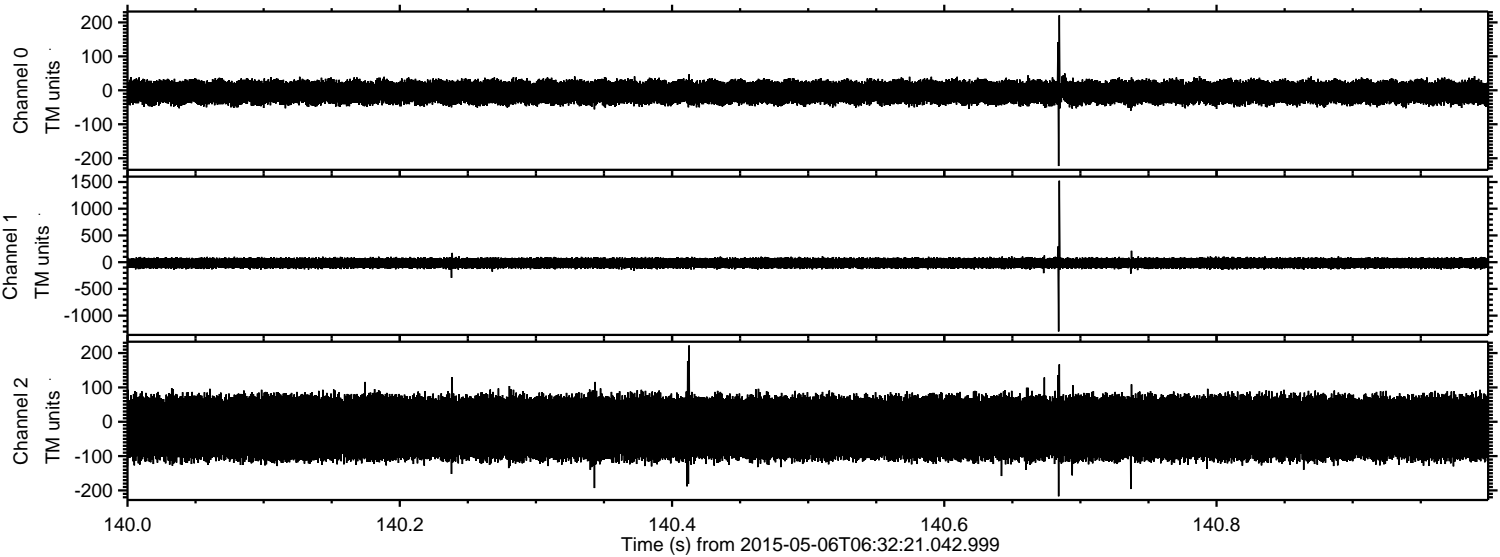
ELMAVAN 3D WAVEFORMS (Measured data sampled at 50 kHz) 49781 packets of 144 samples from 2015-05-06T06:32:21.042.999. Part 138/144

Processed Wed May 6 08:39:53 2015 by ELM ver.2012-10-06 from 001__elm20150506_063220__dat00.bin



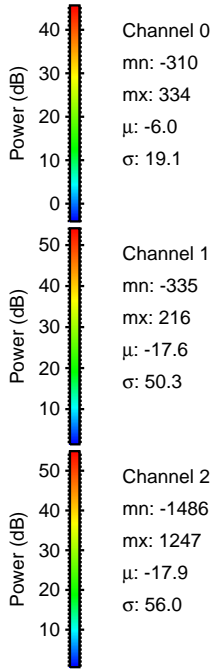
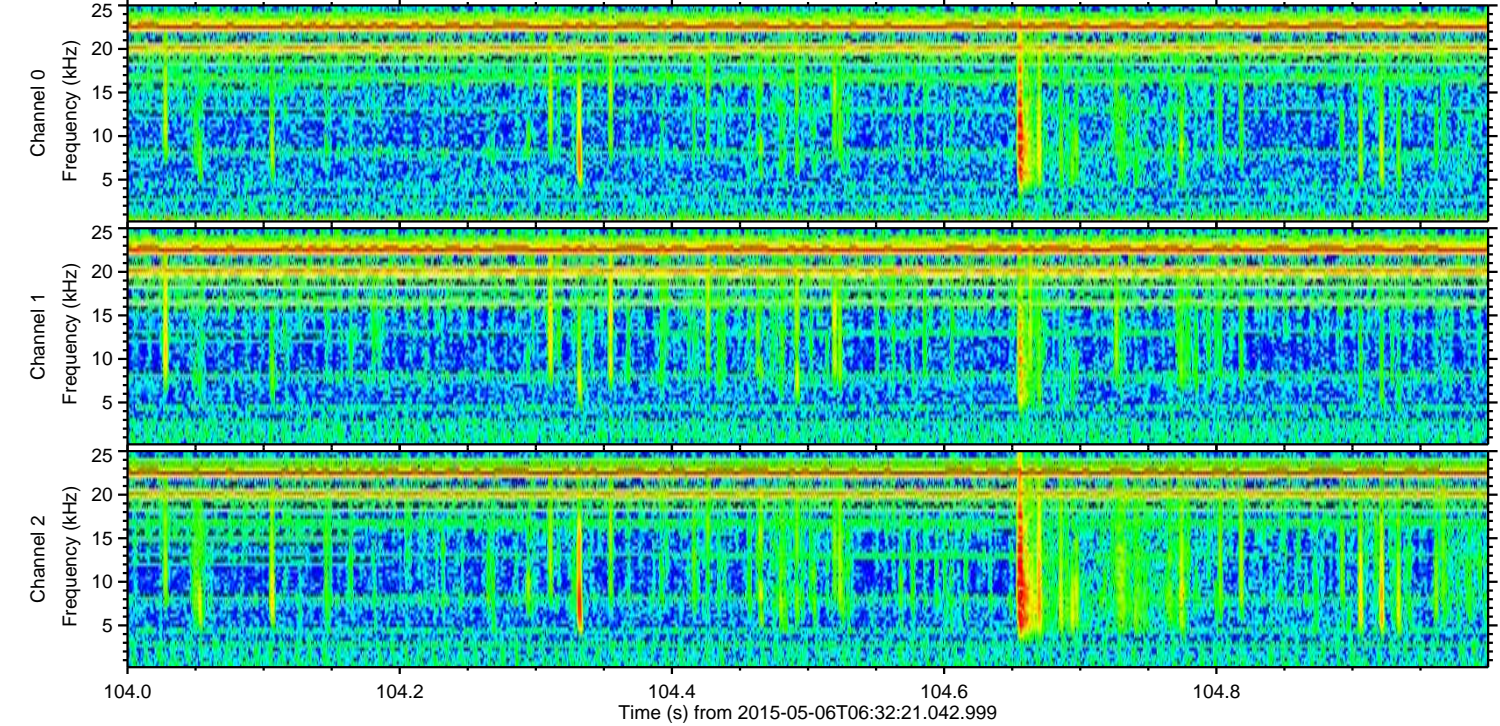
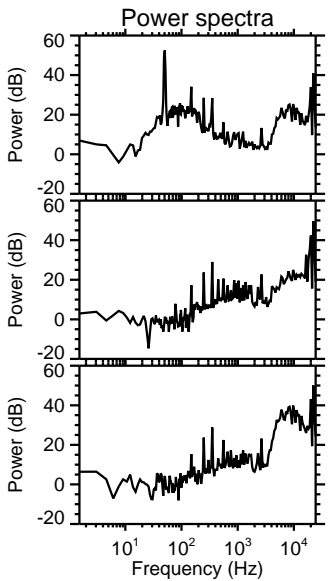
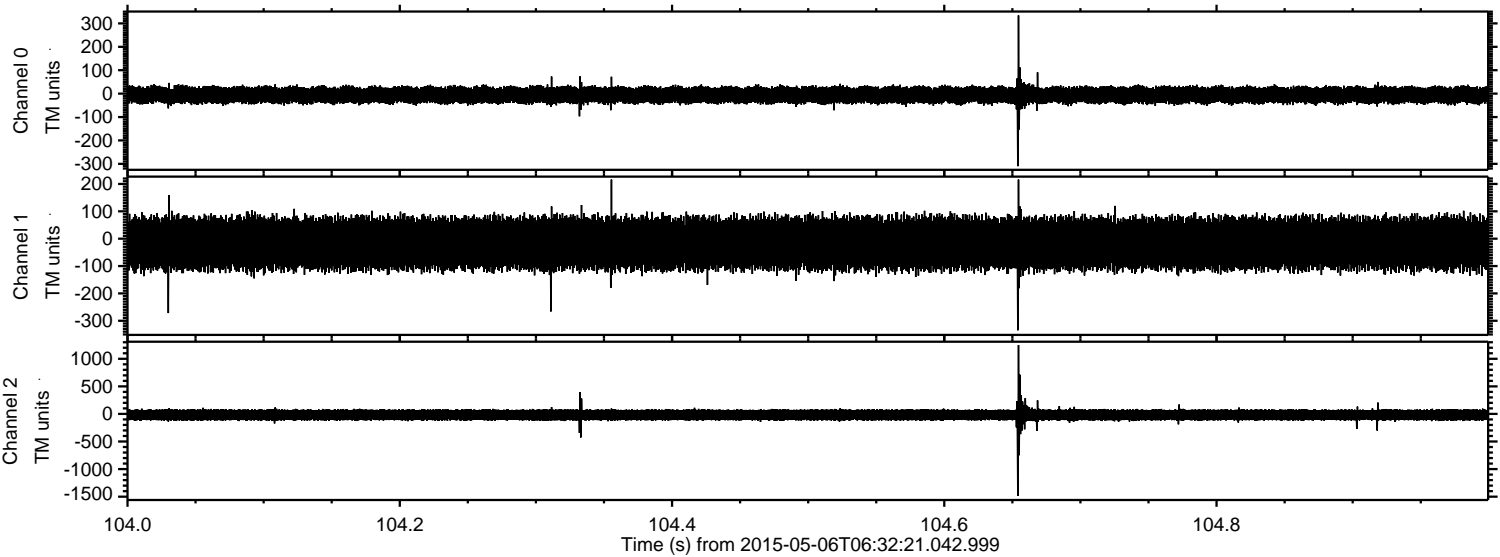
ELMAVAN 3D WAVEFORMS (Measured data sampled at 50 kHz) 49781 packets of 144 samples from 2015-05-06T06:32:21.042.999. Part 141/144

Processed Wed May 6 08:39:54 2015 by ELM ver.2012-10-06 from 001__elm20150506_063220__dat00.bin



ELMAVAN 3D WAVEFORMS (Measured data sampled at 50 kHz) 49781 packets of 144 samples from 2015-05-06T06:32:21.042.999. Part 105/144

Processed Wed May 6 08:39:54 2015 by ELM ver.2012-10-06 from 001__elm20150506_063220__dat00.bin



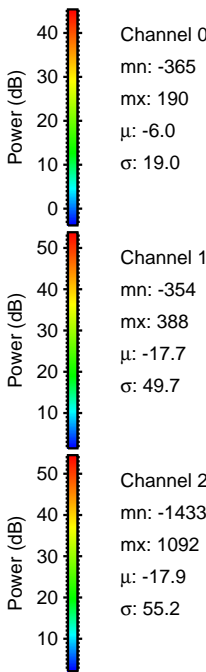
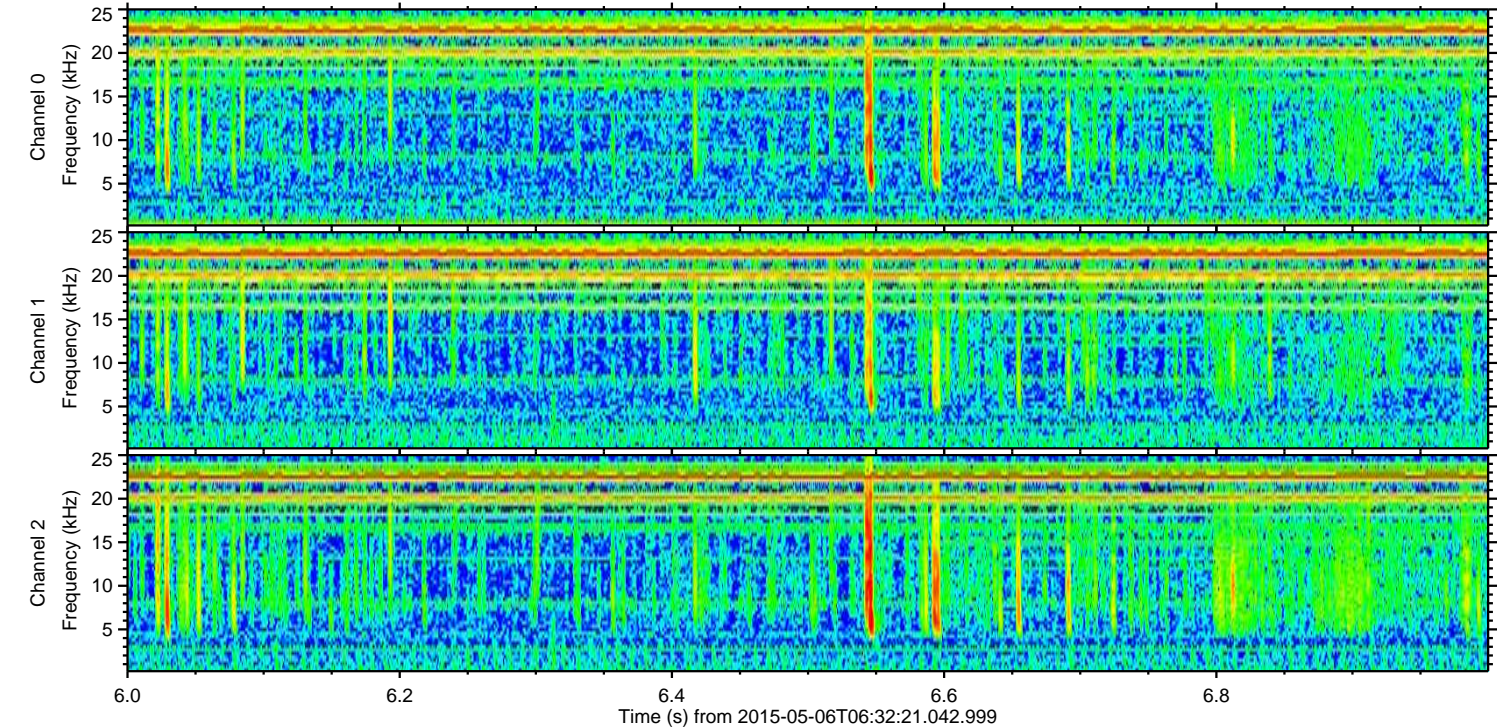
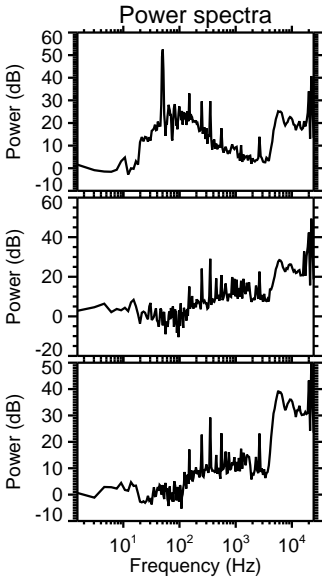
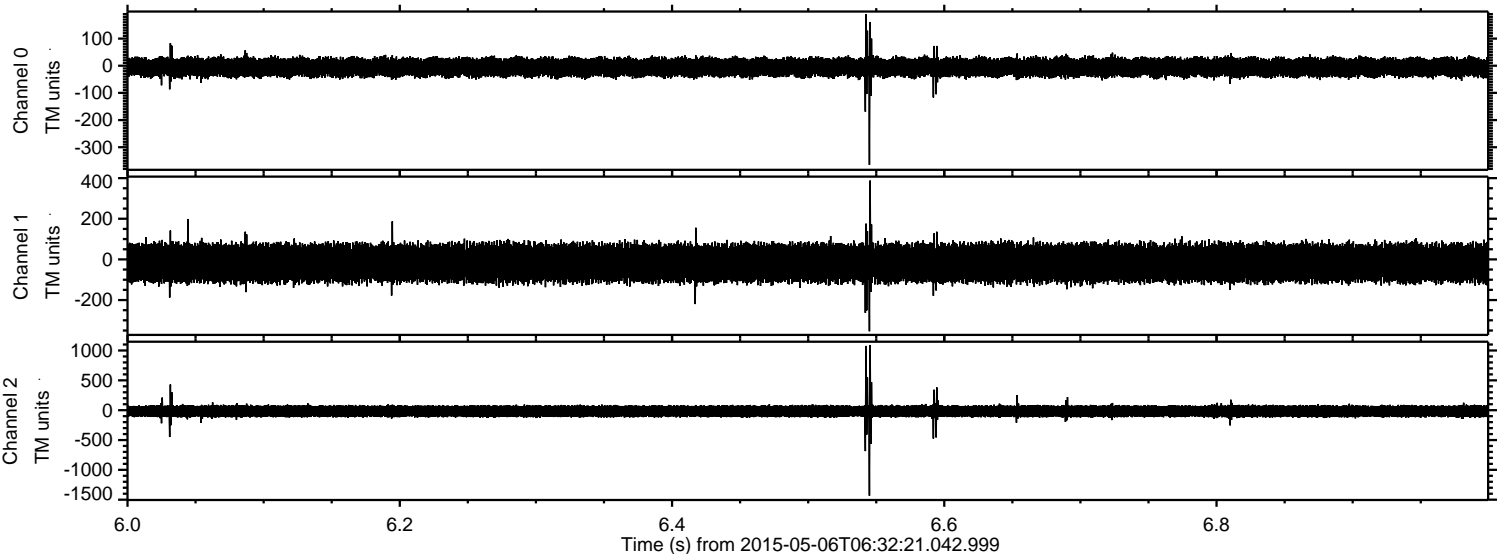
Channel 0
mn: -310
mx: 334
 μ : -6.0
 σ : 19.1

Channel 1
mn: -335
mx: 216
 μ : -17.6
 σ : 50.3

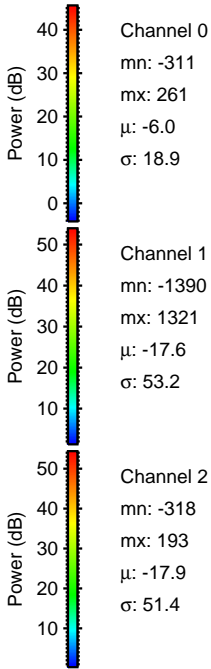
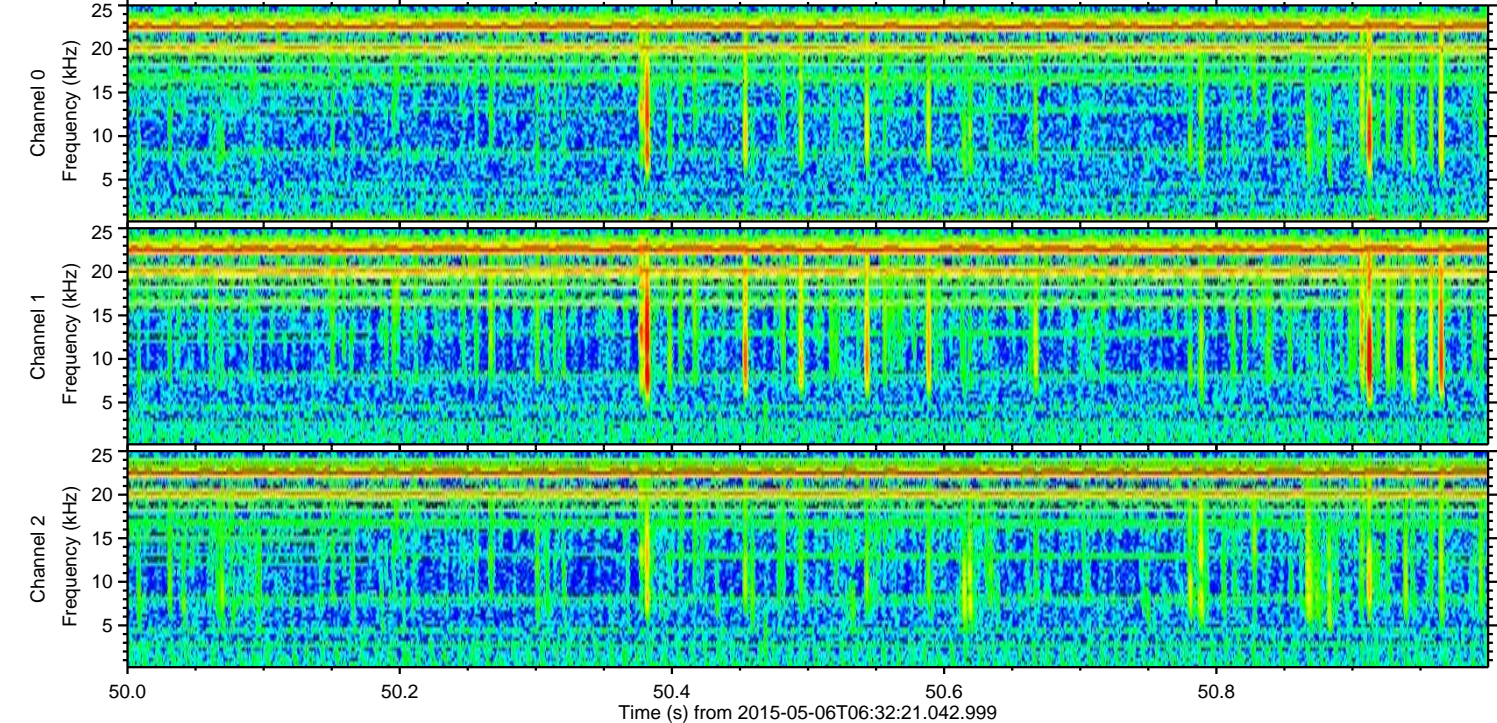
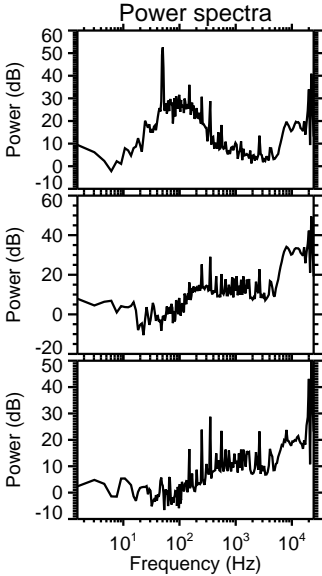
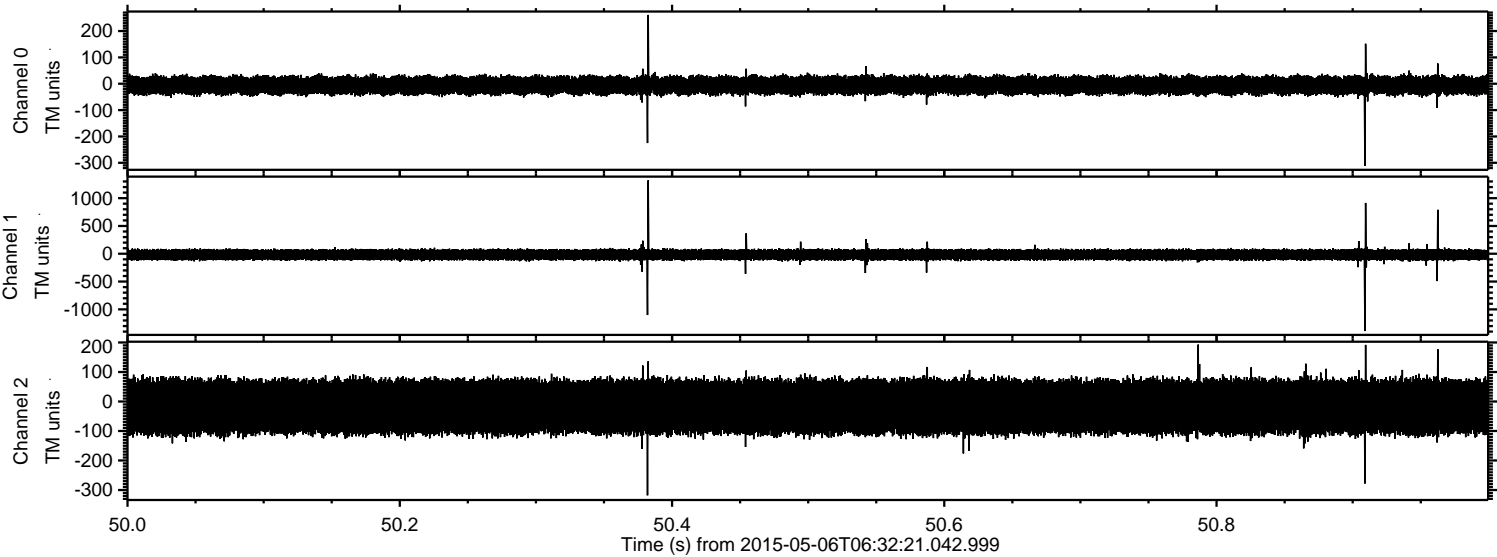
Channel 2
mn: -1486
mx: 1247
 μ : -17.9
 σ : 56.0

ELMAVAN 3D WAVEFORMS (Measured data sampled at 50 kHz) 49781 packets of 144 samples from 2015-05-06T06:32:21.042.999. Part 7/144

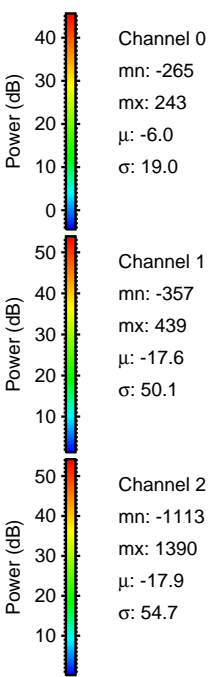
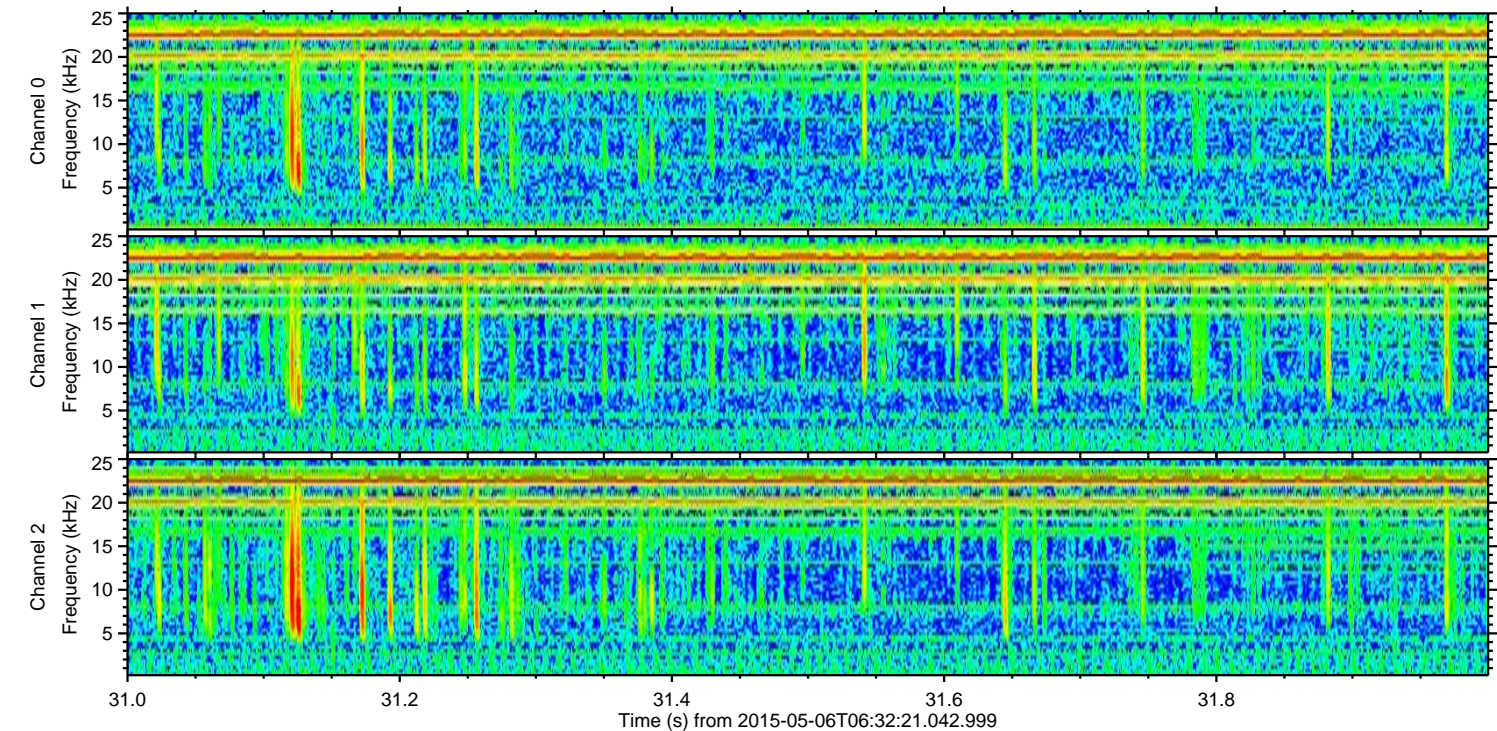
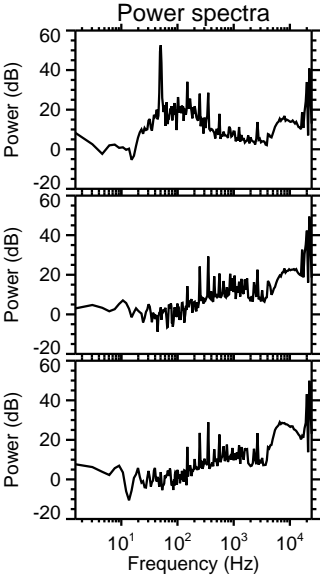
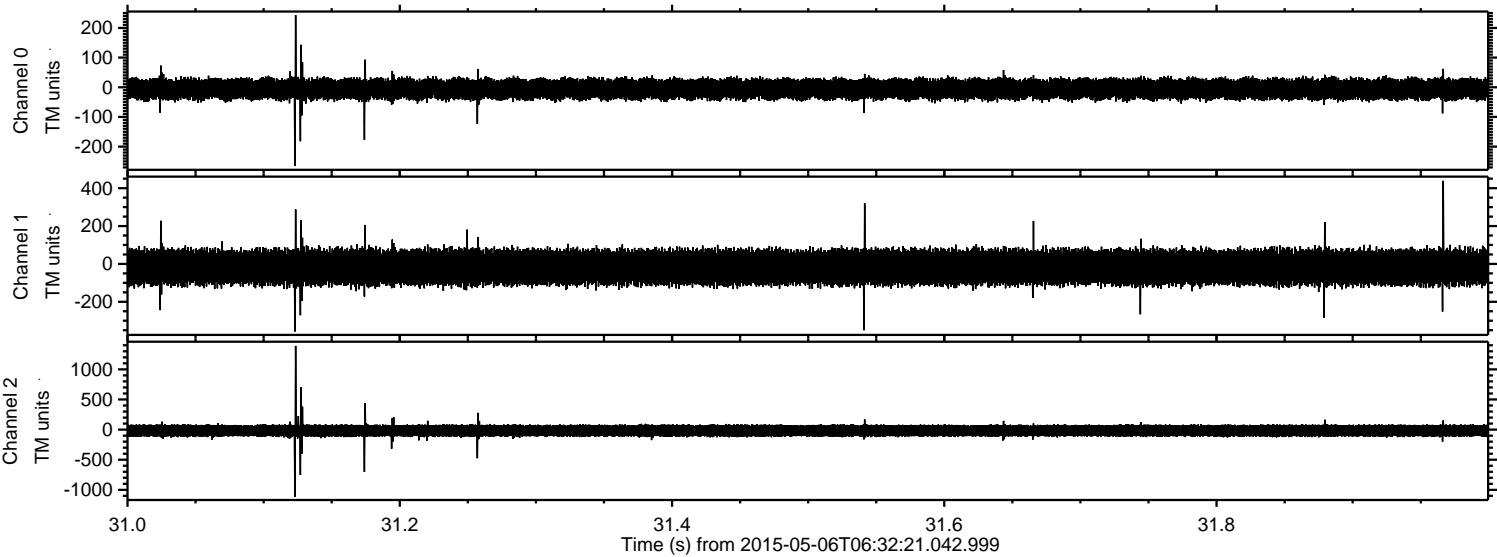
Processed Wed May 6 08:39:55 2015 by ELM ver.2012-10-06 from 001__elm20150506_063220__dat00.bin



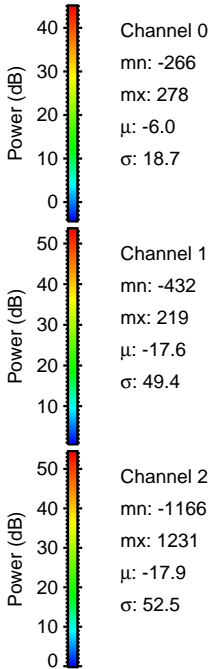
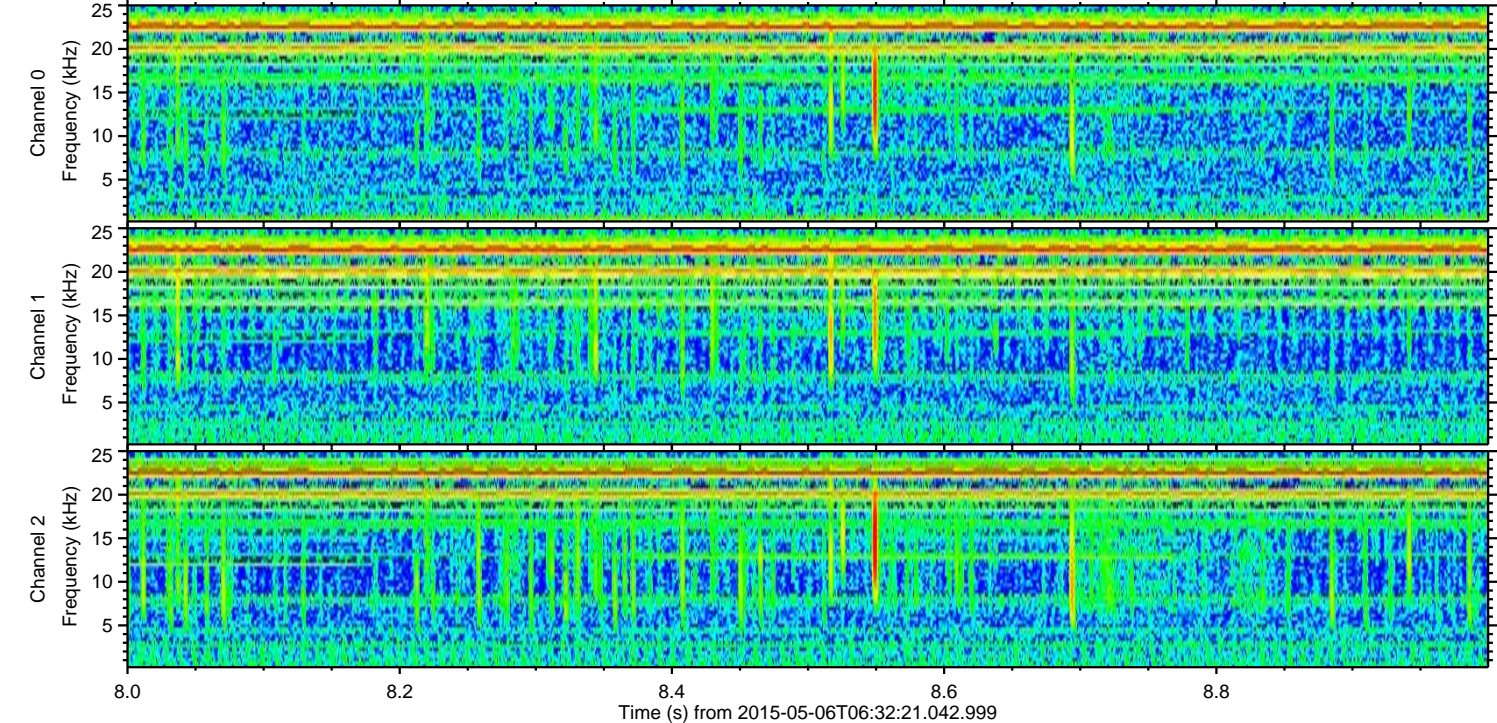
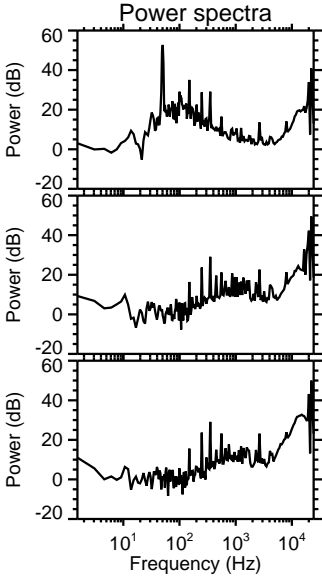
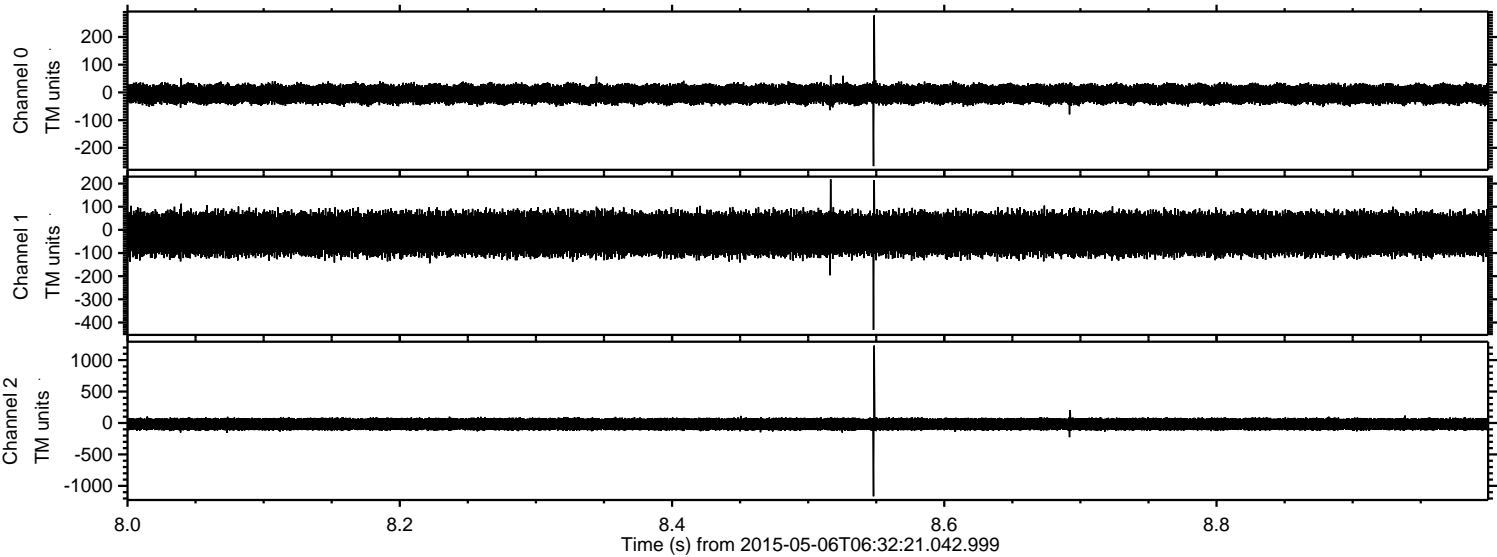
Processed Wed May 6 08:39:56 2015 by ELM ver.2012-10-06 from 001__elm20150506_063220__dat00.bin



Processed Wed May 6 08:39:57 2015 by ELM ver.2012-10-06 from 001__elm20150506_063220__dat00.bin



Processed Wed May 6 08:39:58 2015 by ELM ver.2012-10-06 from 001__elm20150506_063220__dat00.bin



Processed Wed May 6 08:39:59 2015 by ELM ver.2012-10-06 from 001__elm20150506_063220__dat00.bin

