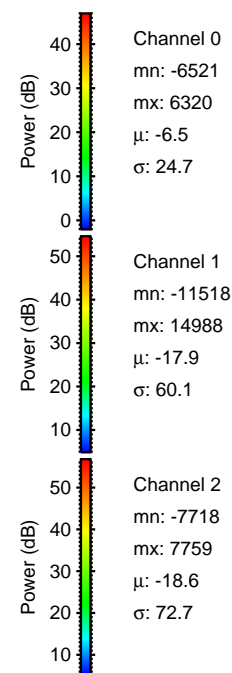
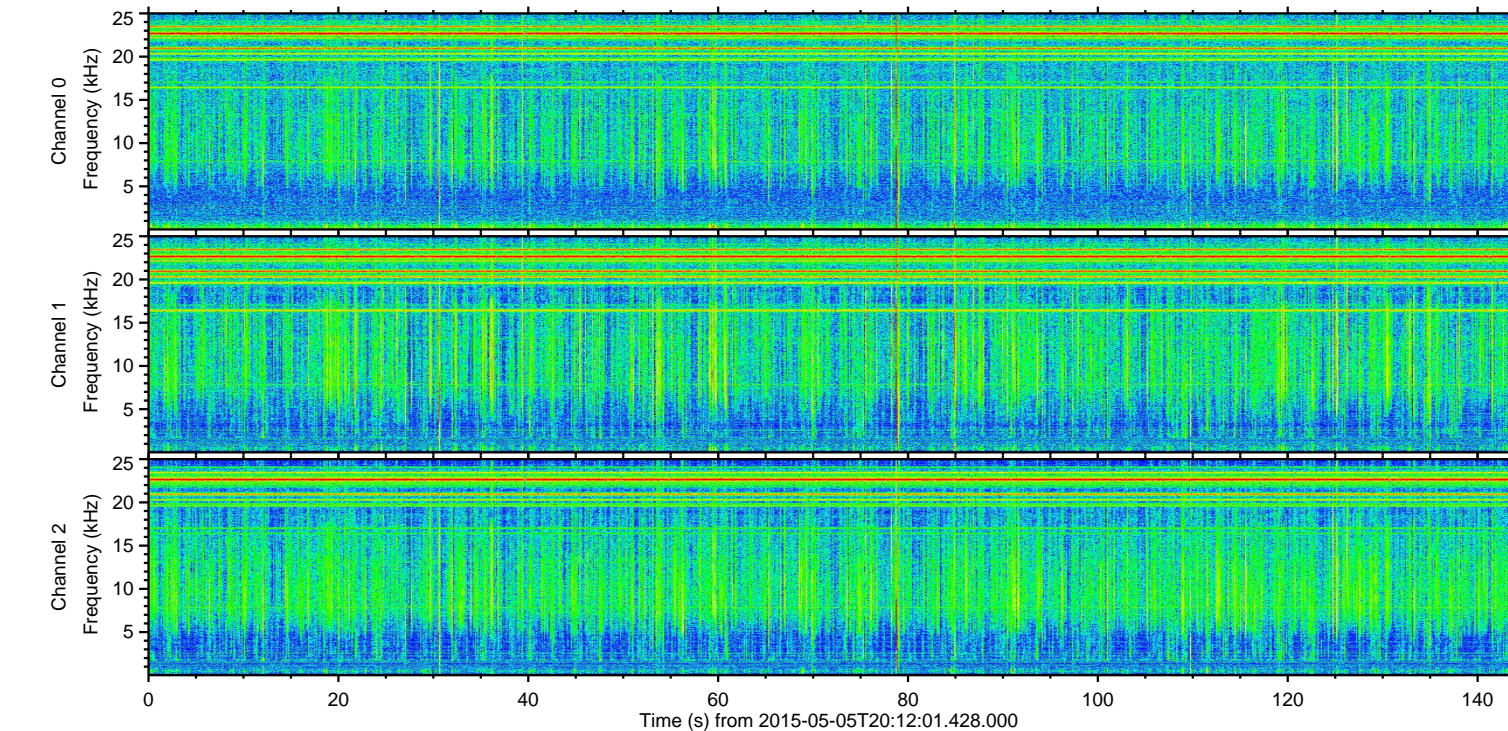
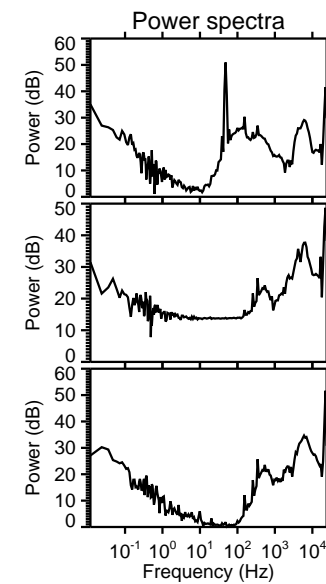
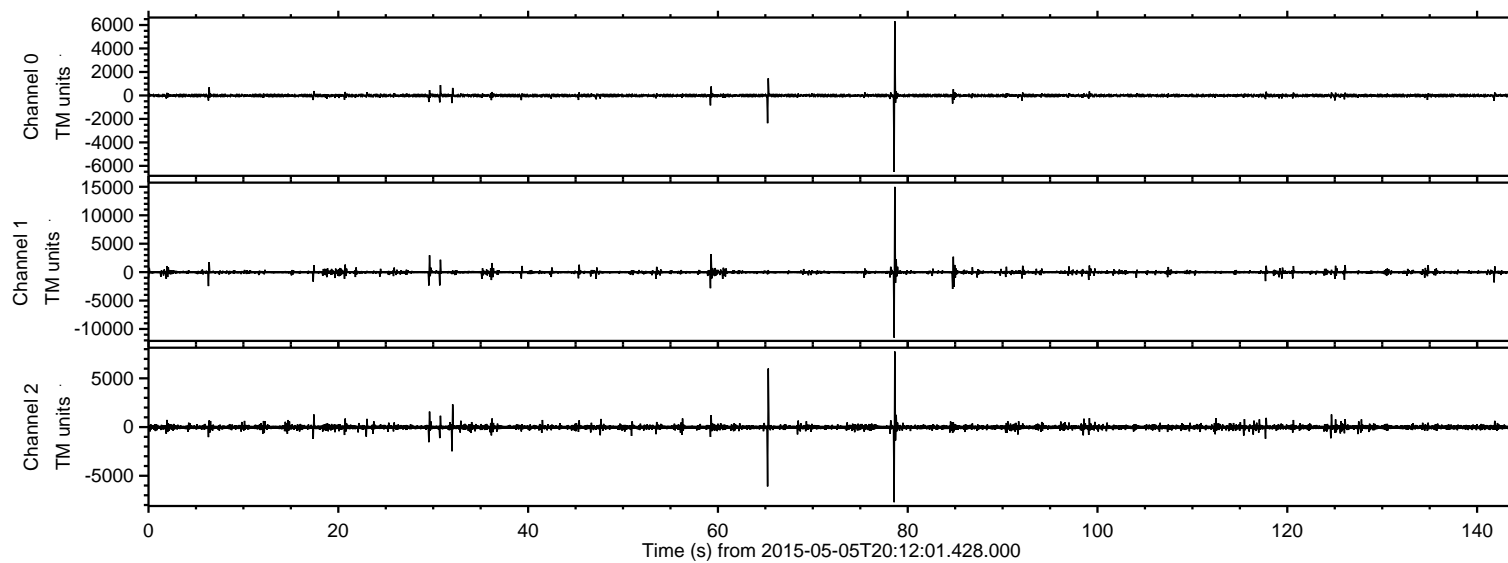
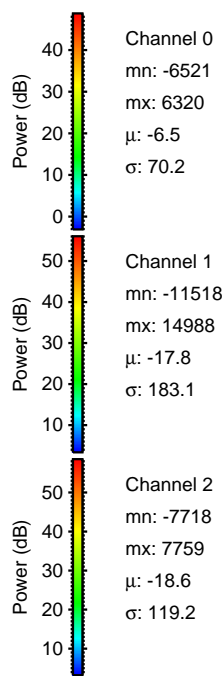
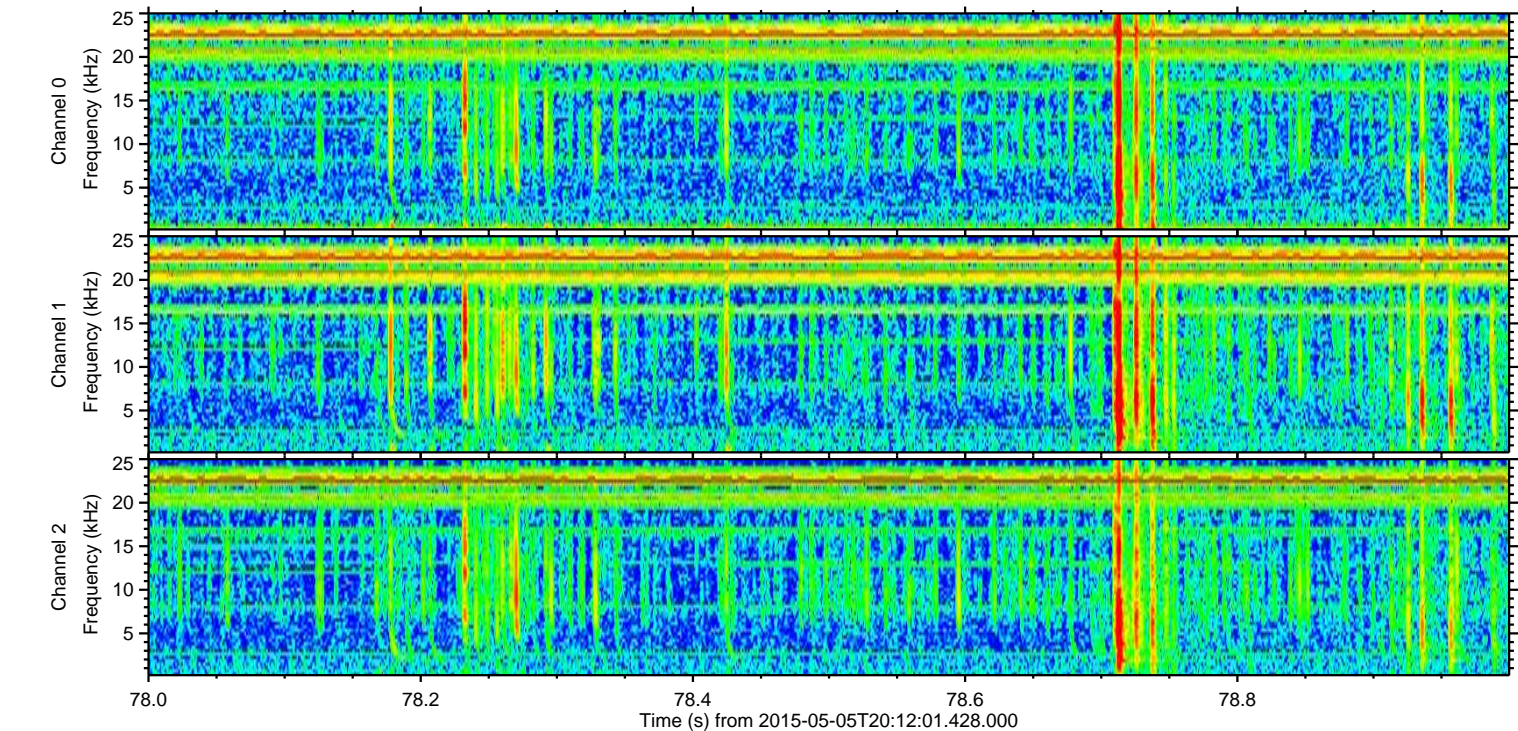
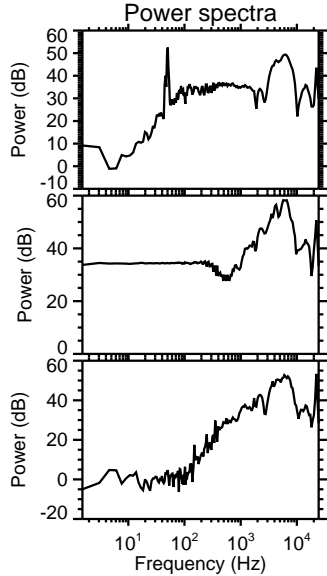
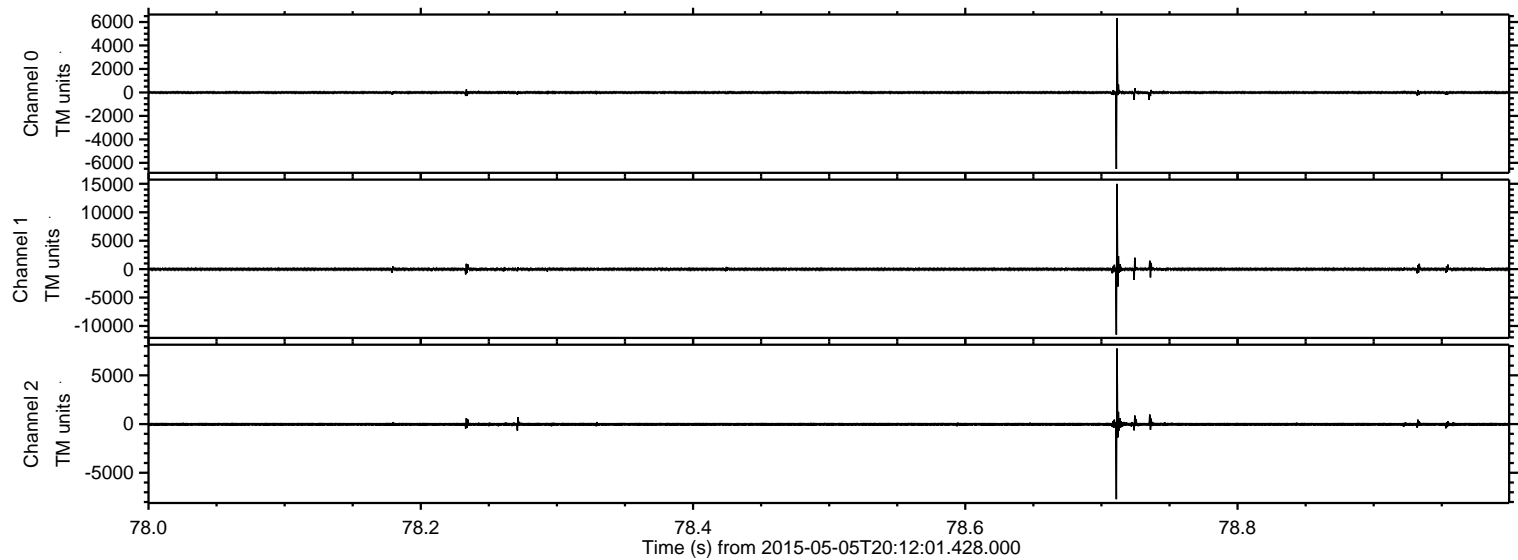


ELMAVAN 3D WAVEFORMS (Measured data sampled at 50 kHz) 49783 packets of 144 samples from 2015-05-05T20:12:01.428.000.

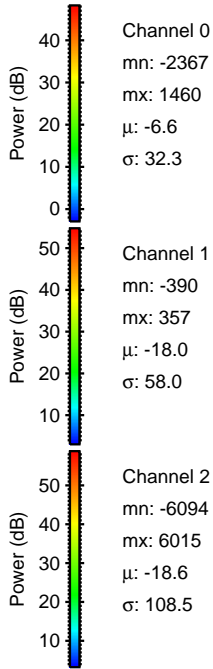
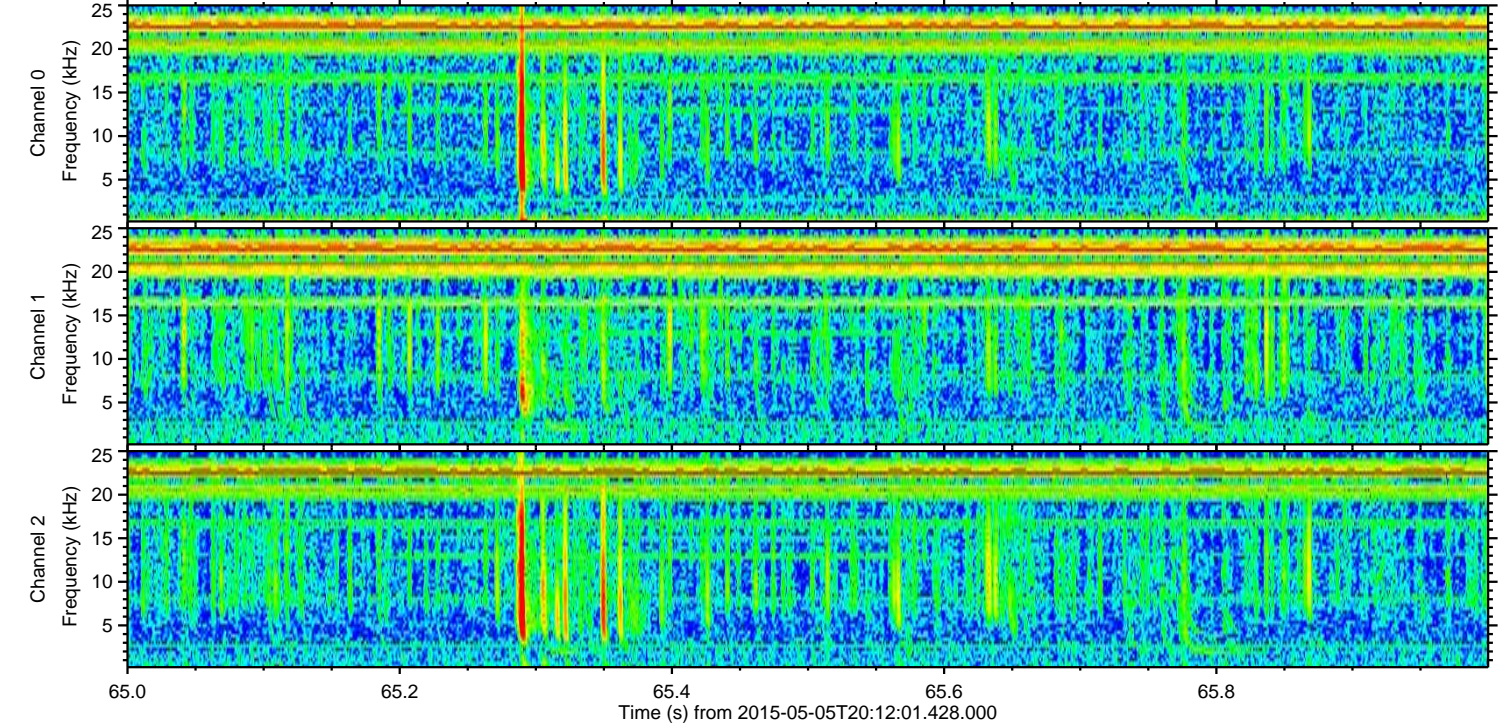
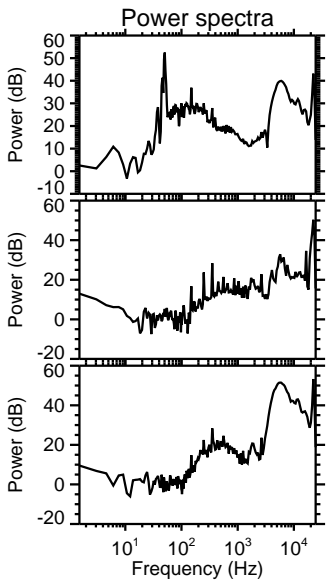
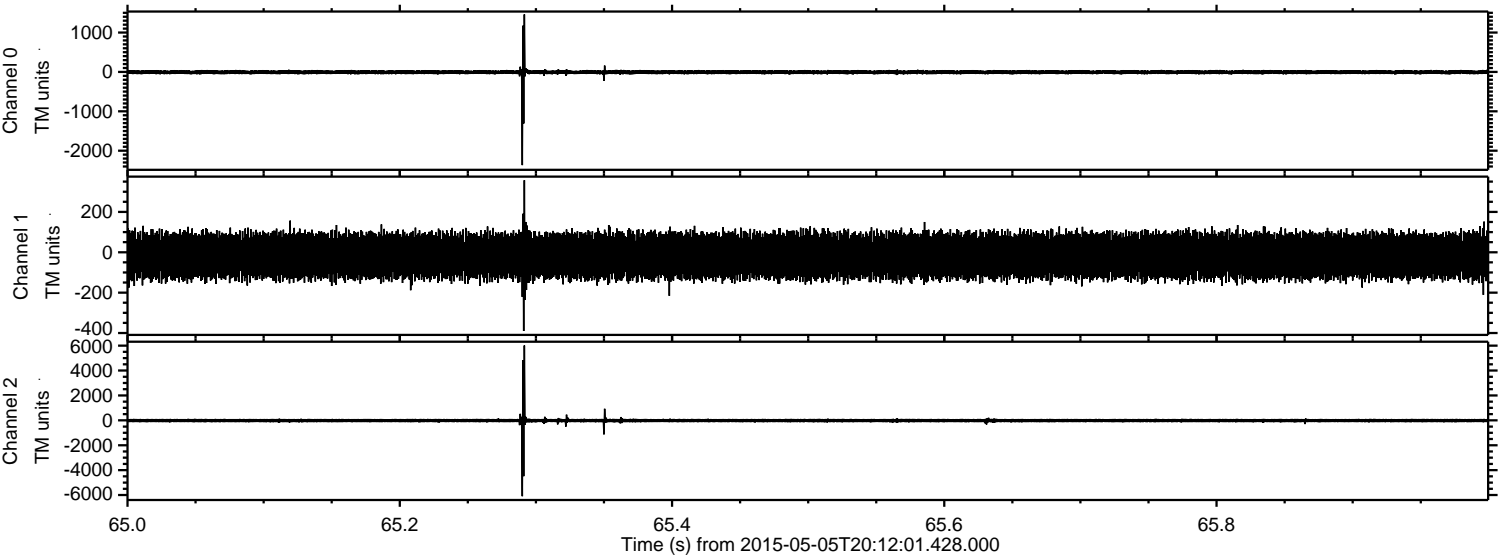
Processed Tue May 5 22:19:09 2015 by ELM ver.2012-10-06 from 001__elm20150505_201200__dat00.bin



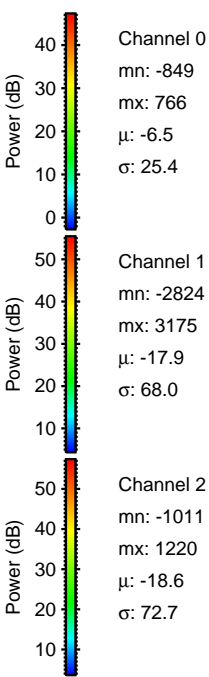
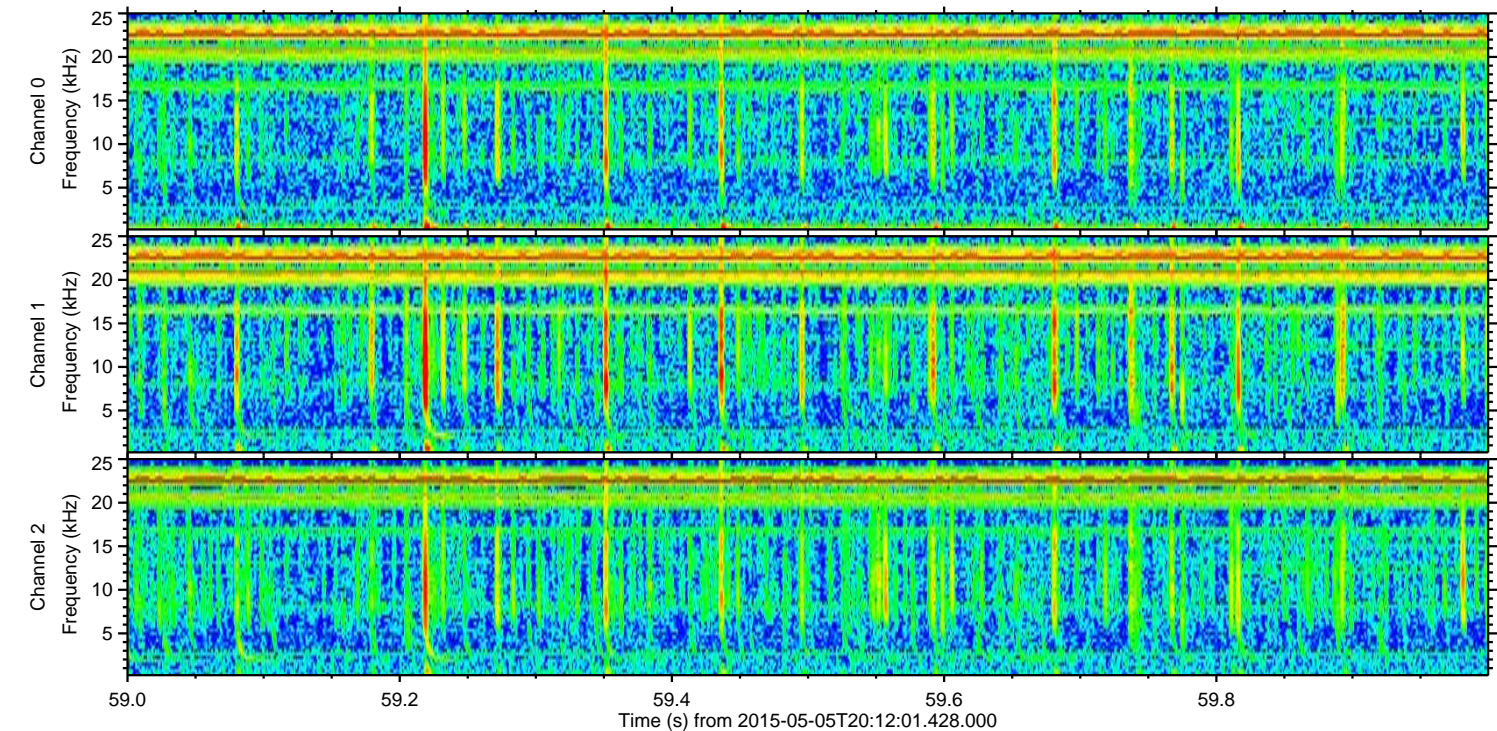
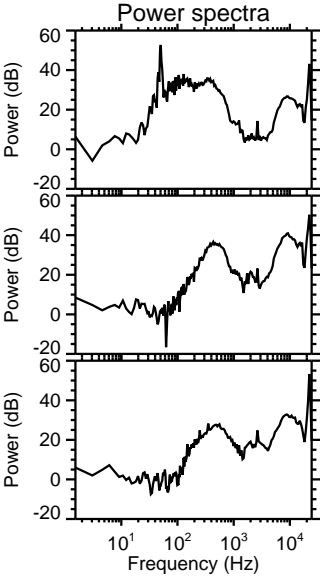
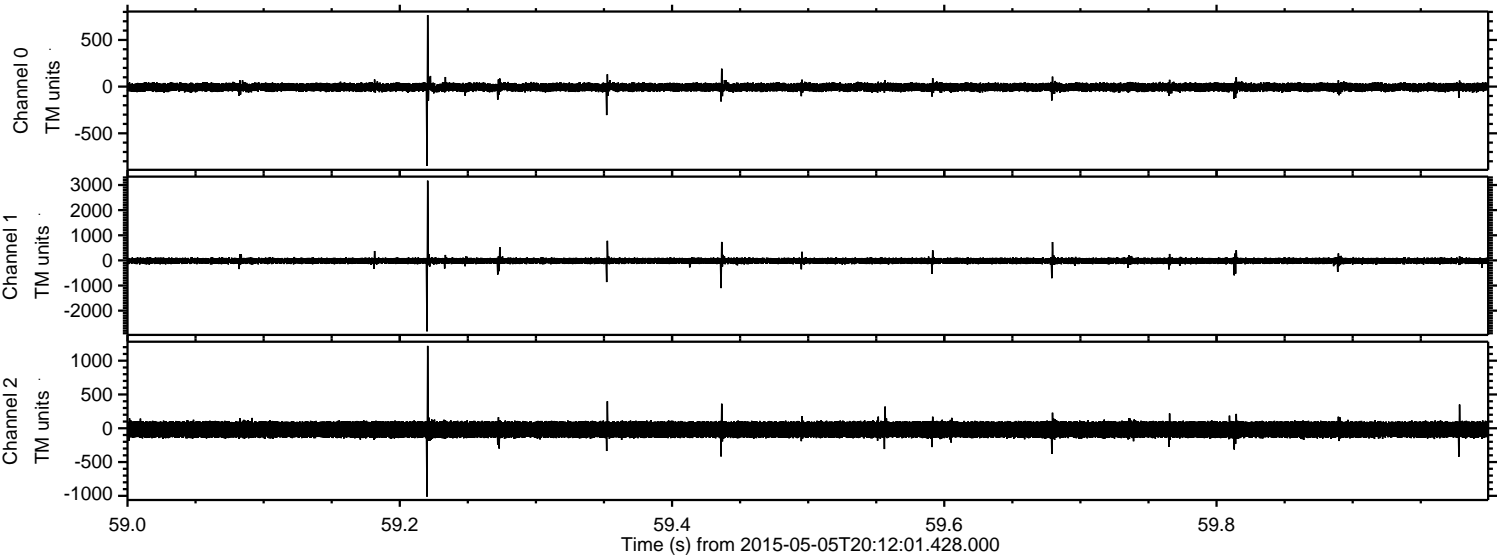
Processed Tue May 5 22:19:21 2015 by ELM ver.2012-10-06 from 001__elm20150505_201200__dat00.bin



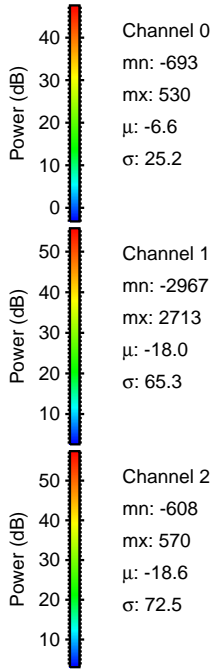
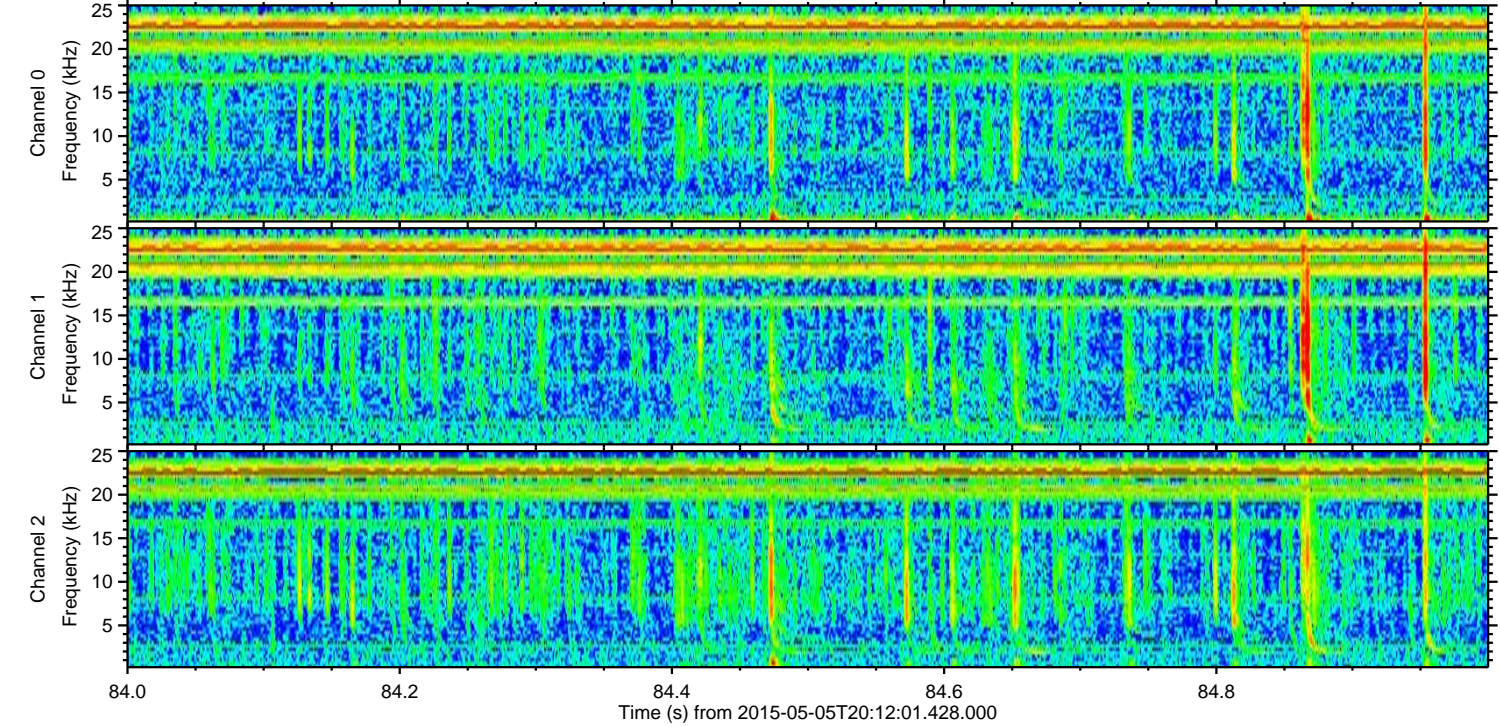
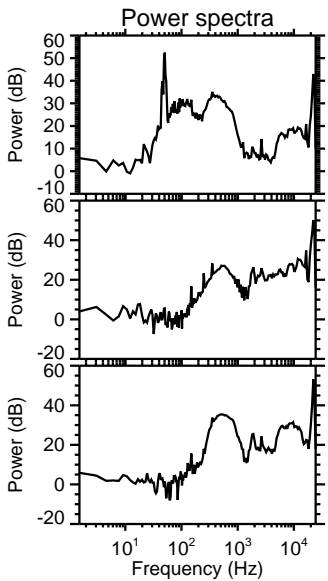
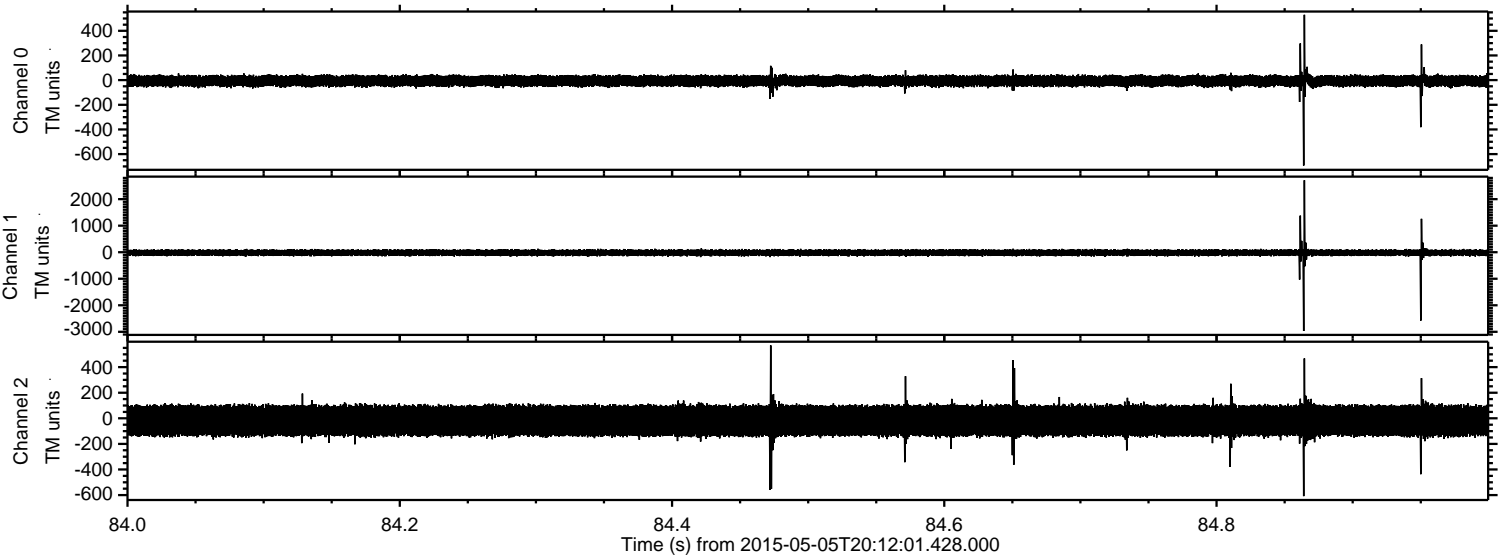
Processed Tue May 5 22:19:22 2015 by ELM ver.2012-10-06 from 001__elm20150505_201200__dat00.bin



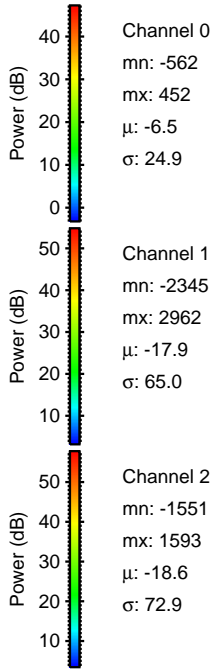
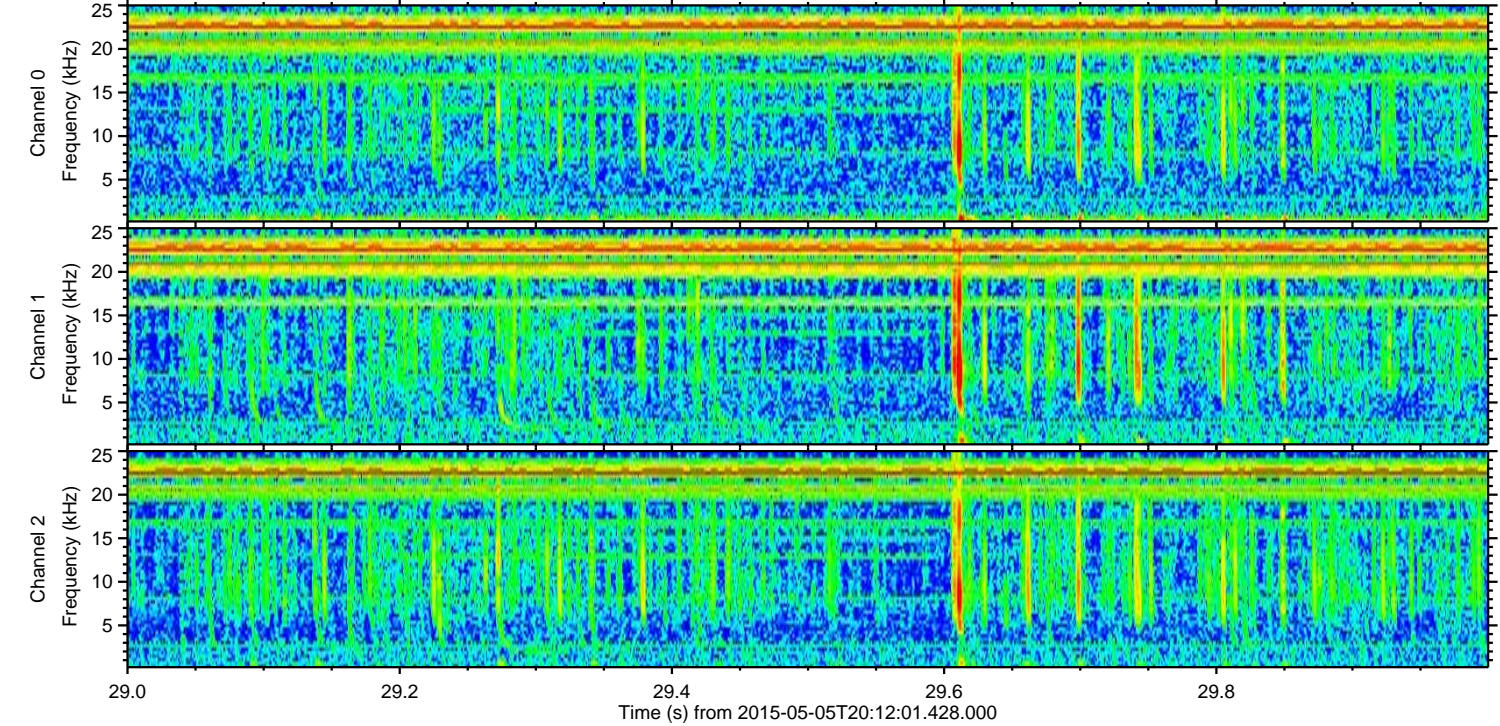
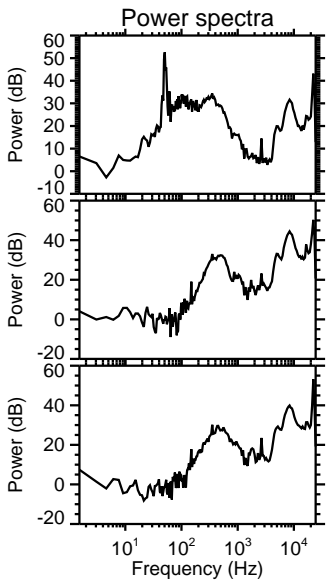
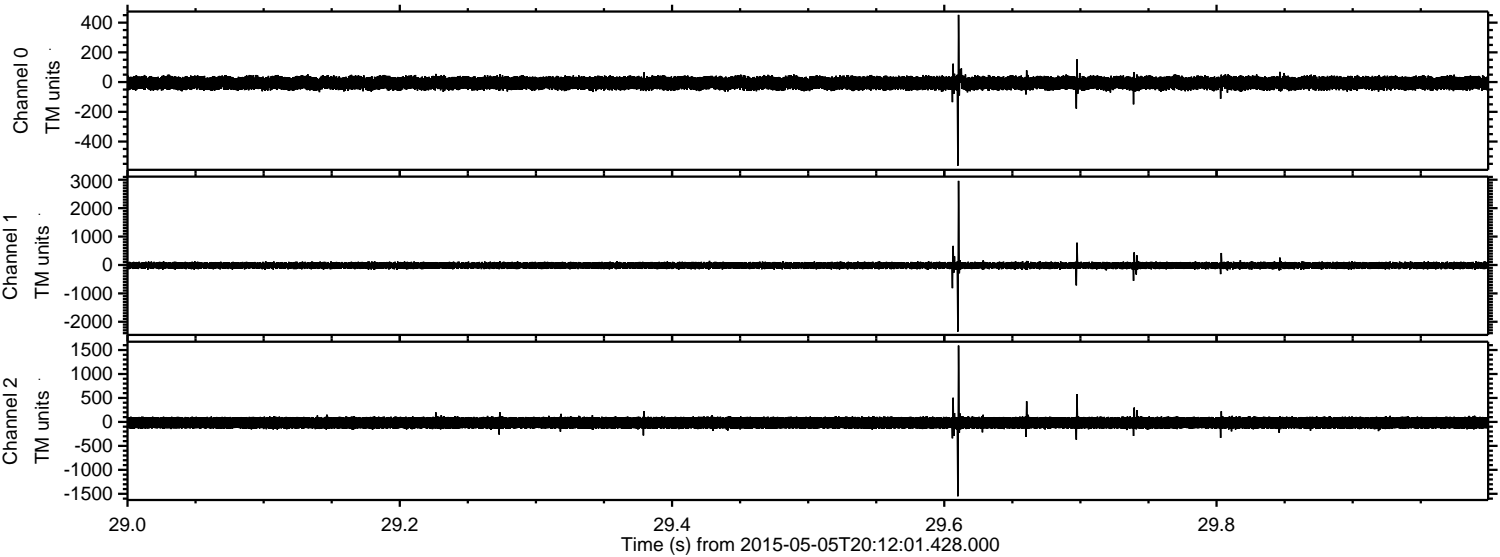
Processed Tue May 5 22:19:23 2015 by ELM ver.2012-10-06 from 001__elm20150505_201200__dat00.bin



Processed Tue May 5 22:19:24 2015 by ELM ver.2012-10-06 from 001__elm20150505_201200__dat00.bin



Processed Tue May 5 22:19:25 2015 by ELM ver.2012-10-06 from 001__elm20150505_201200__dat00.bin

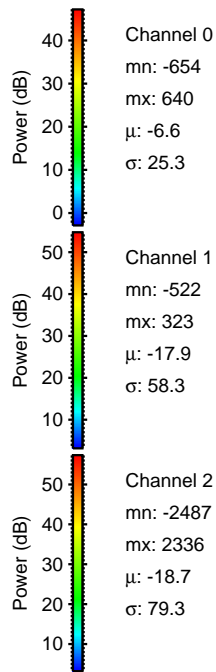
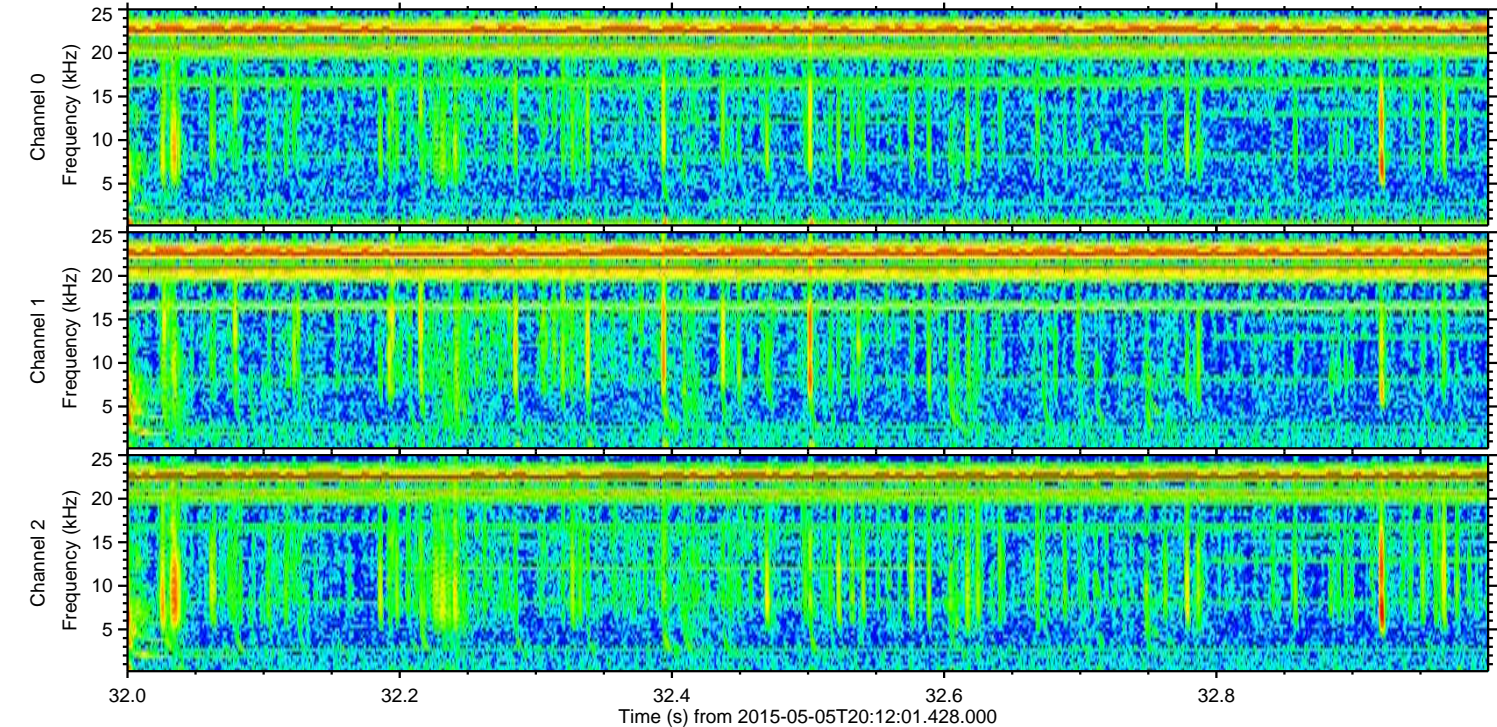
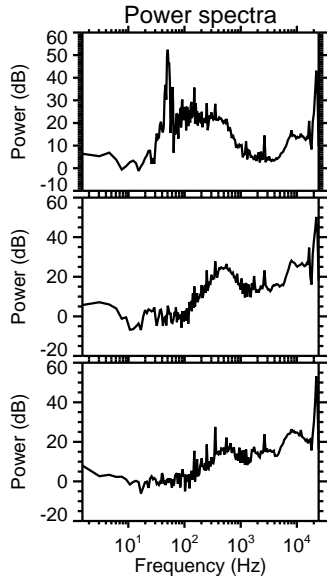
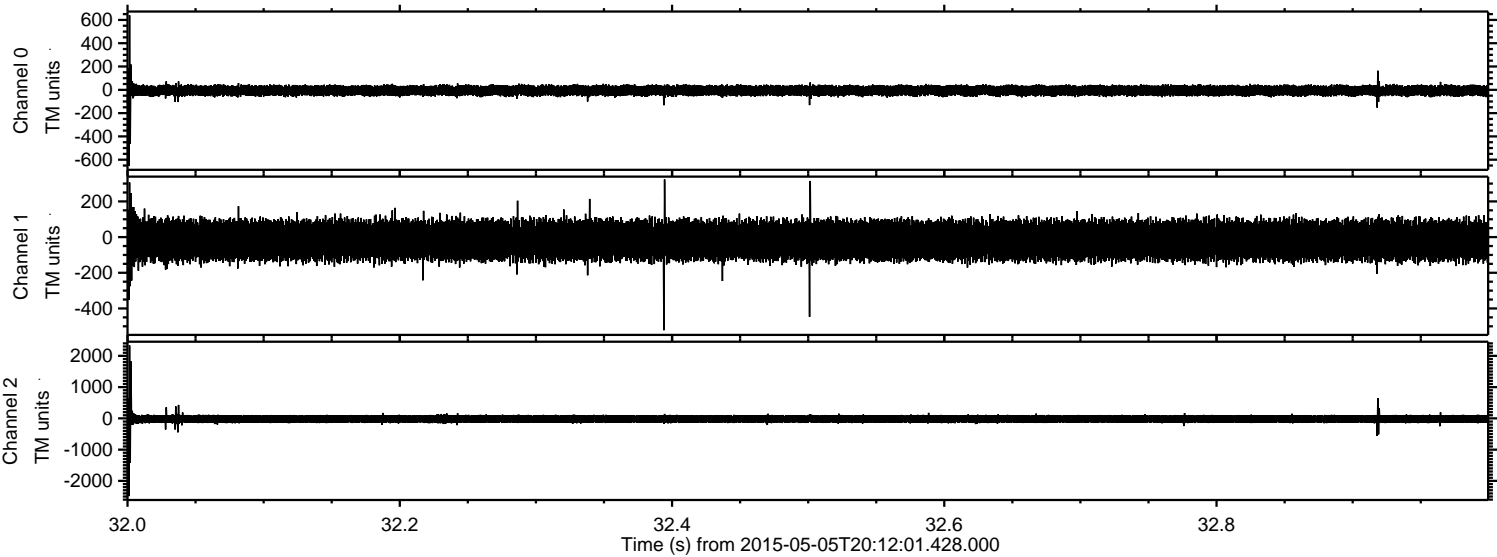


Channel 0
mn: -562
mx: 452
 μ : -6.5
 σ : 24.9

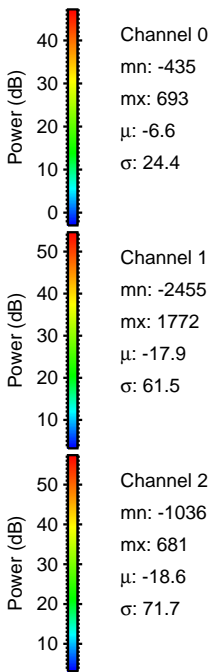
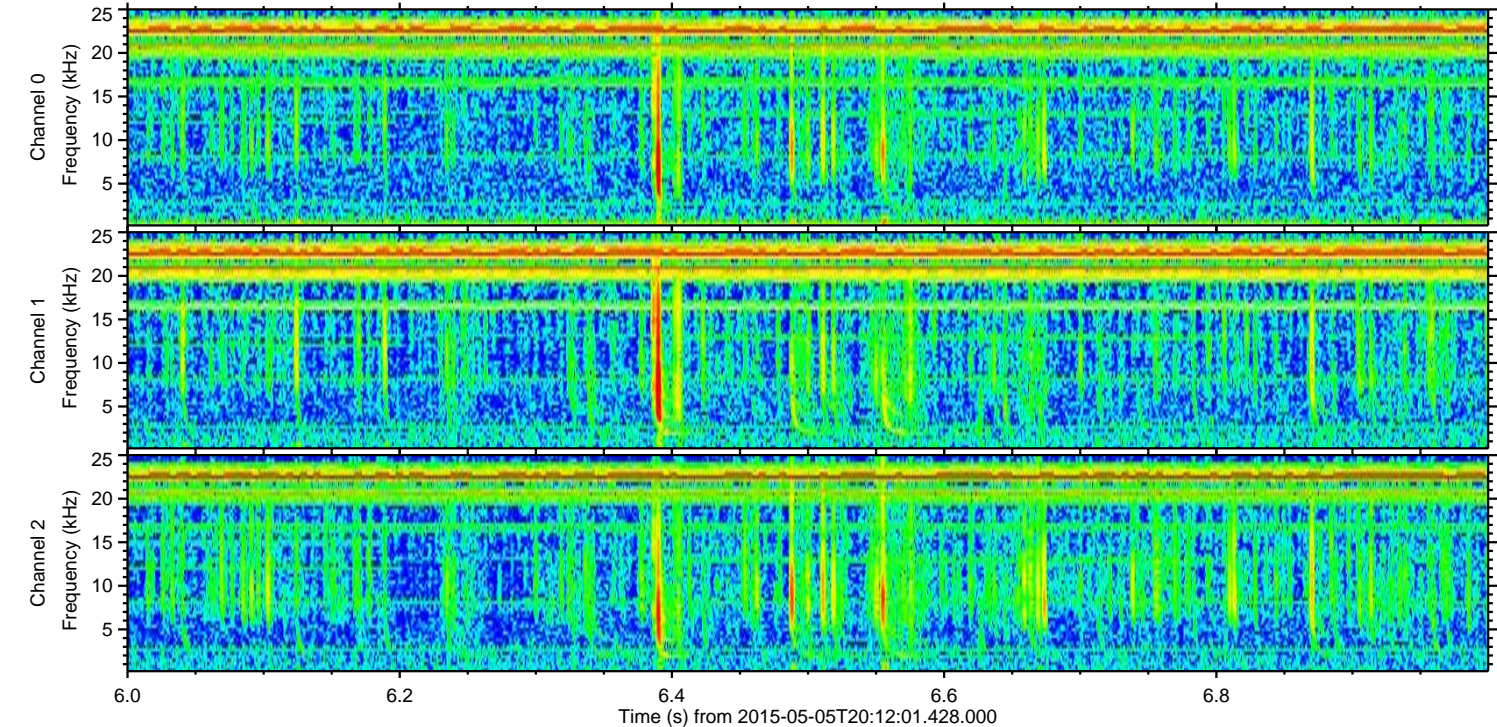
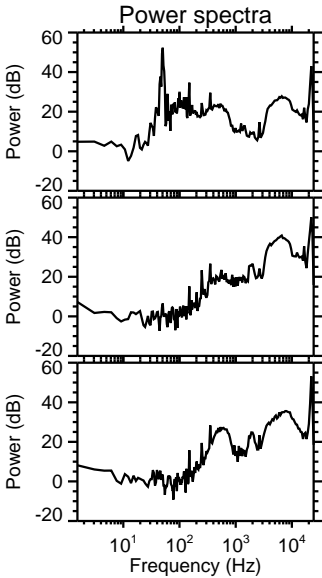
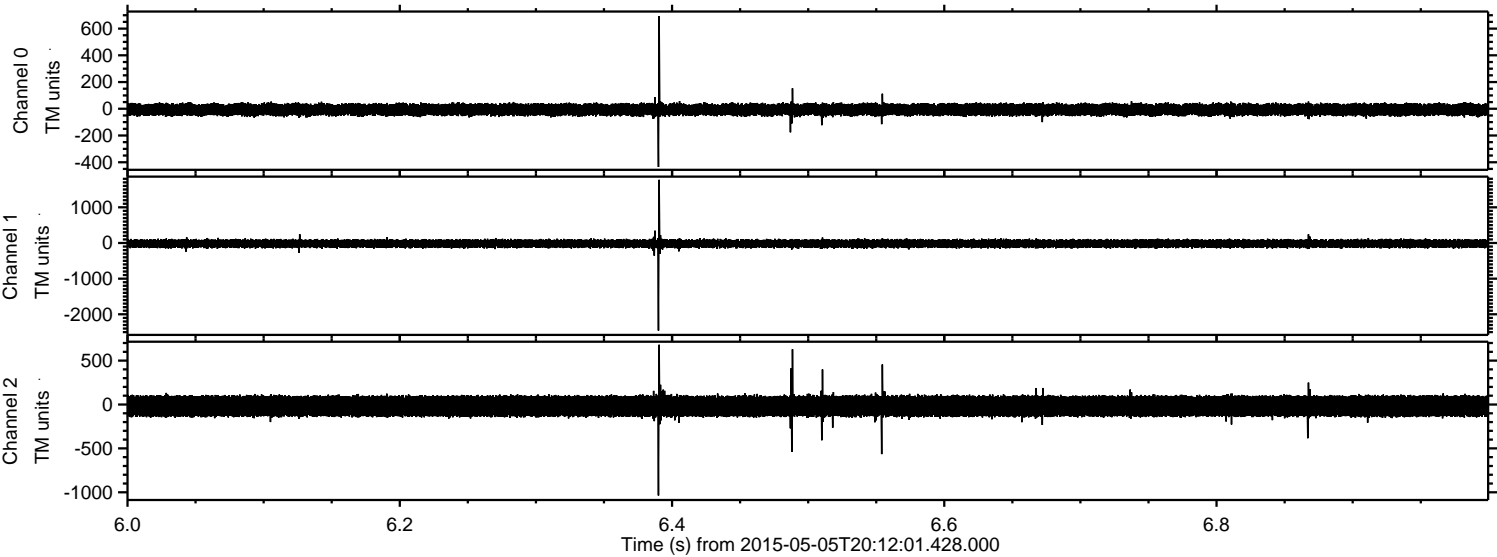
Channel 1
mn: -2345
mx: 2962
 μ : -17.9
 σ : 65.0

Channel 2
mn: -1551
mx: 1593
 μ : -18.6
 σ : 72.9

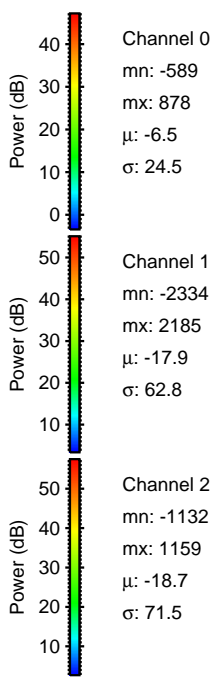
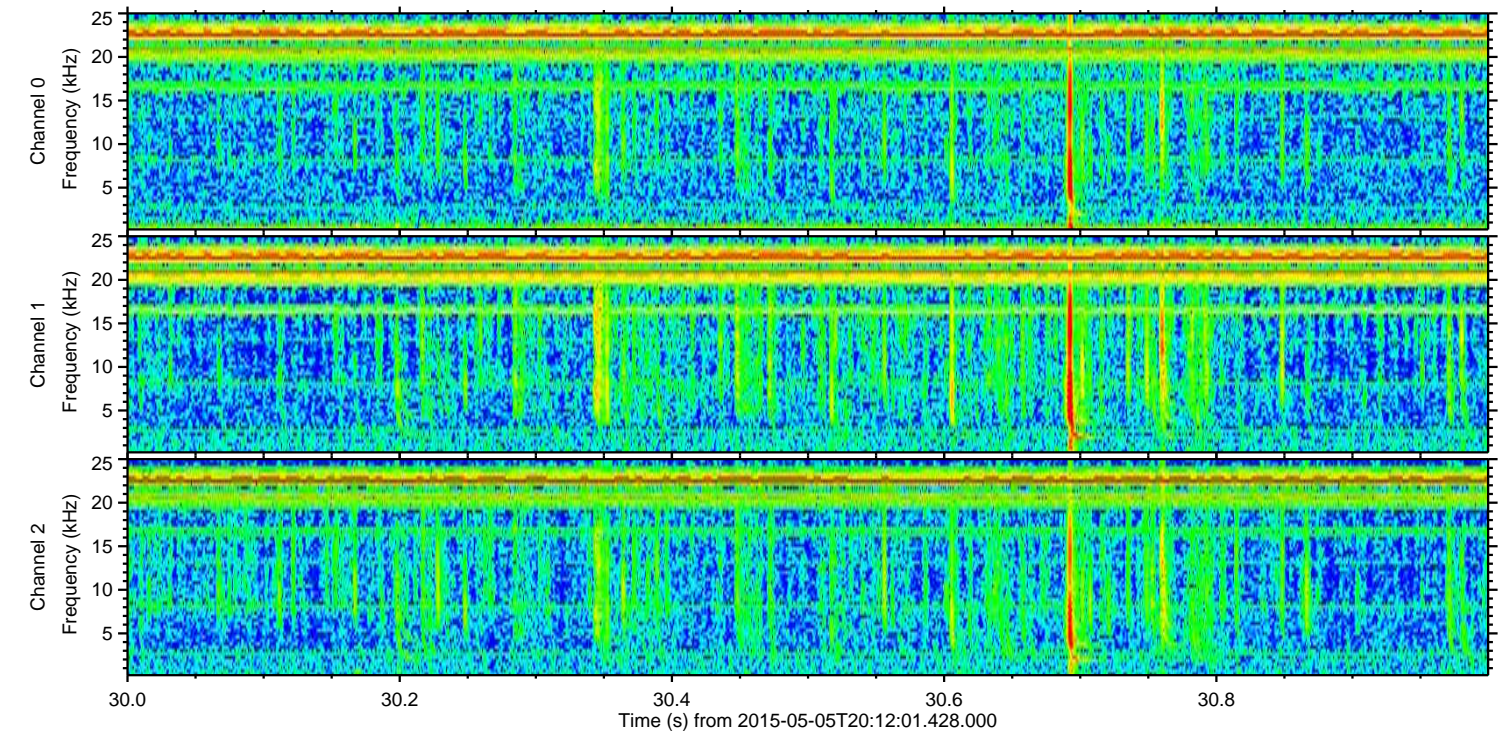
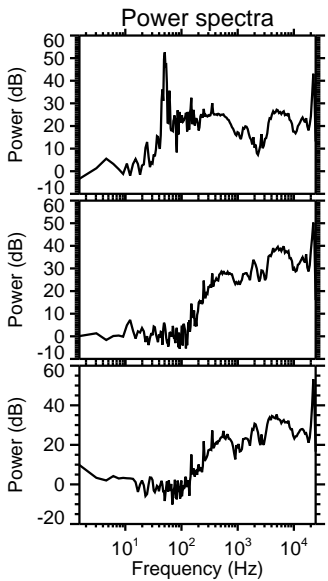
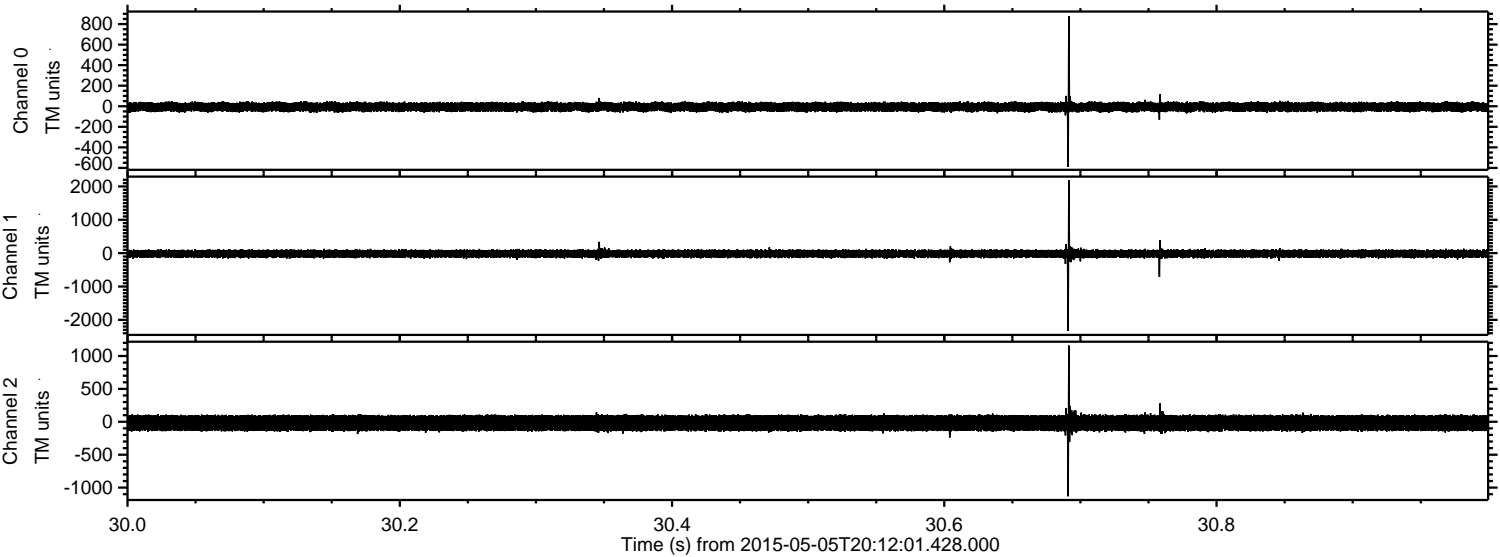
Processed Tue May 5 22:19:26 2015 by ELM ver.2012-10-06 from 001__elm20150505_201200__dat00.bin



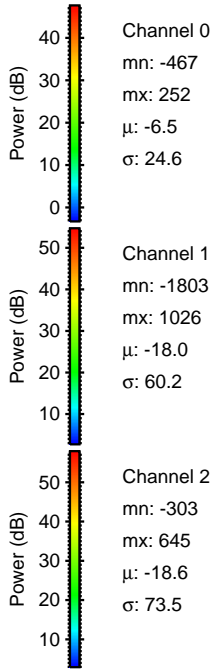
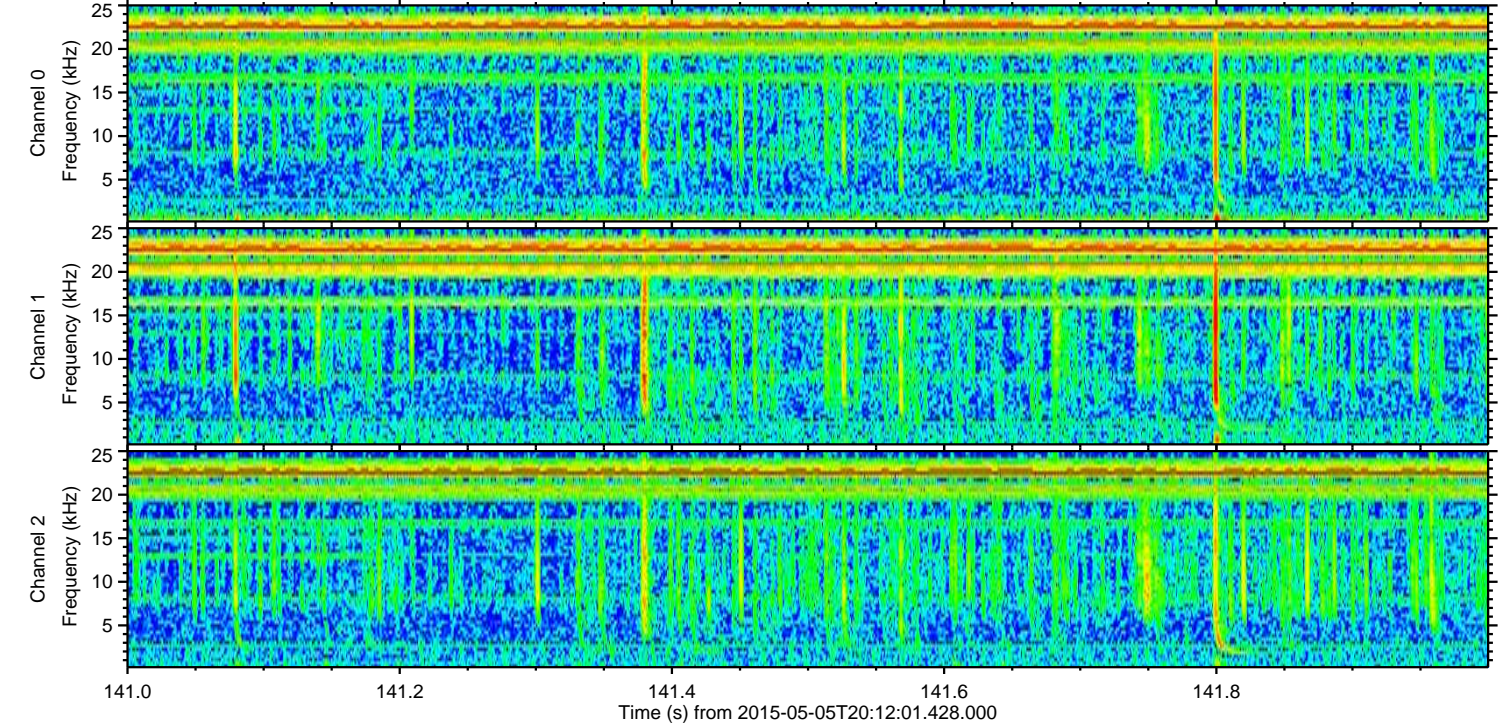
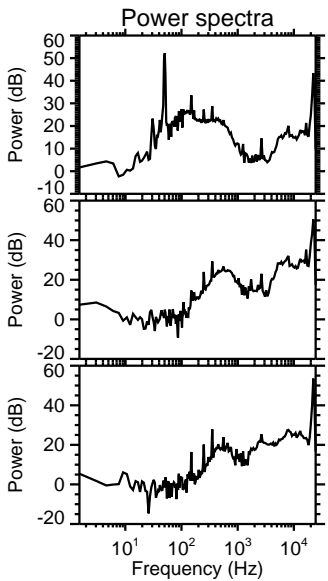
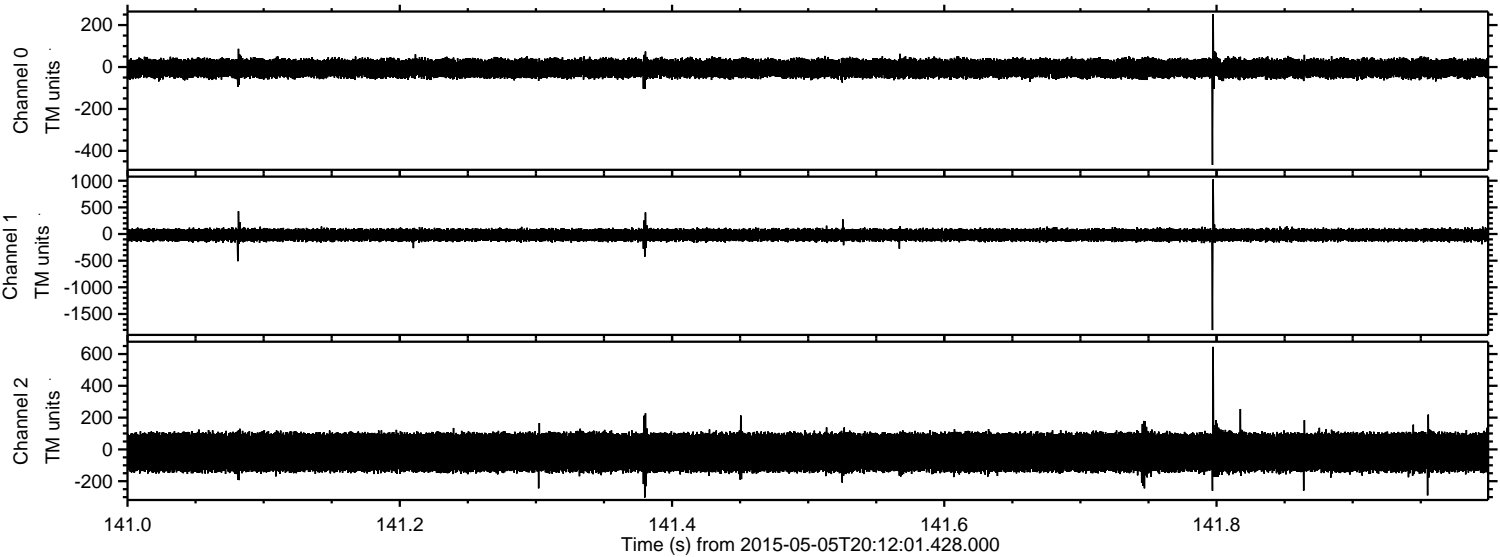
Processed Tue May 5 22:19:27 2015 by ELM ver.2012-10-06 from 001__elm20150505_201200__dat00.bin



Processed Tue May 5 22:19:28 2015 by ELM ver.2012-10-06 from 001__elm20150505_201200__dat00.bin



Processed Tue May 5 22:19:28 2015 by ELM ver.2012-10-06 from 001__elm20150505_201200__dat00.bin



ELMAVAN 3D WAVEFORMS (Measured data sampled at 50 kHz) 49783 packets of 144 samples from 2015-05-05T20:12:01.428.000. Part 14/144

