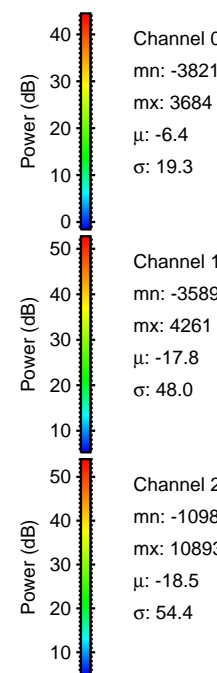
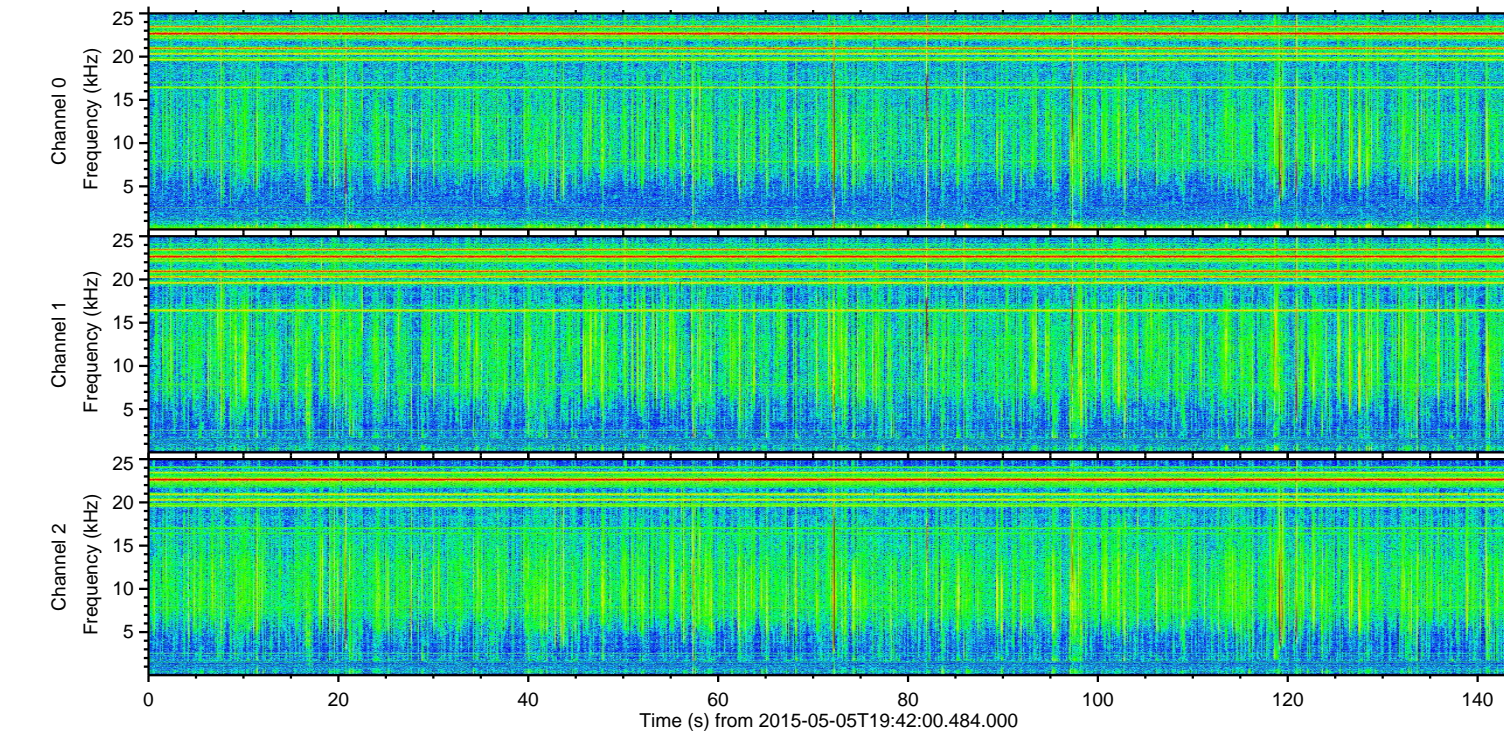
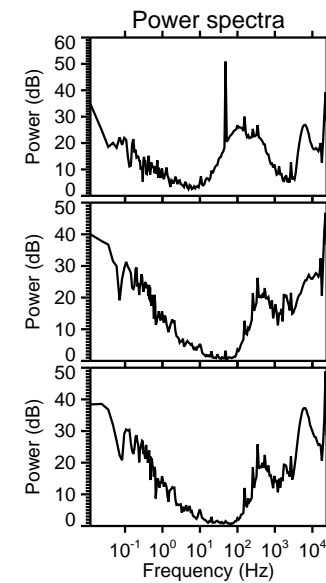
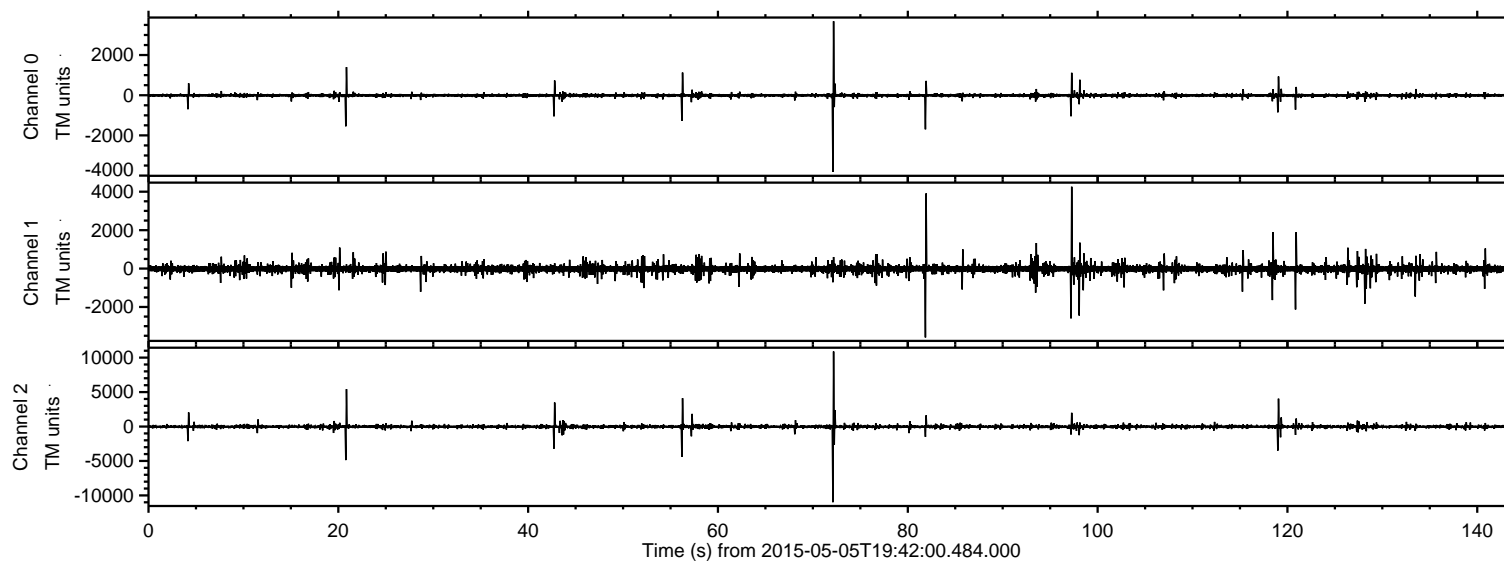


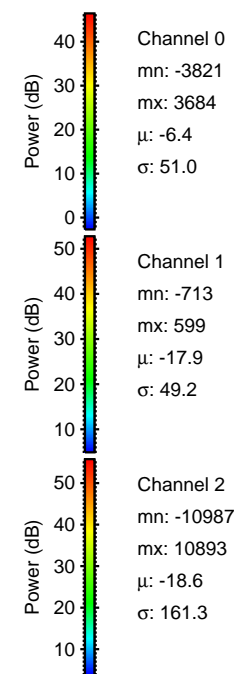
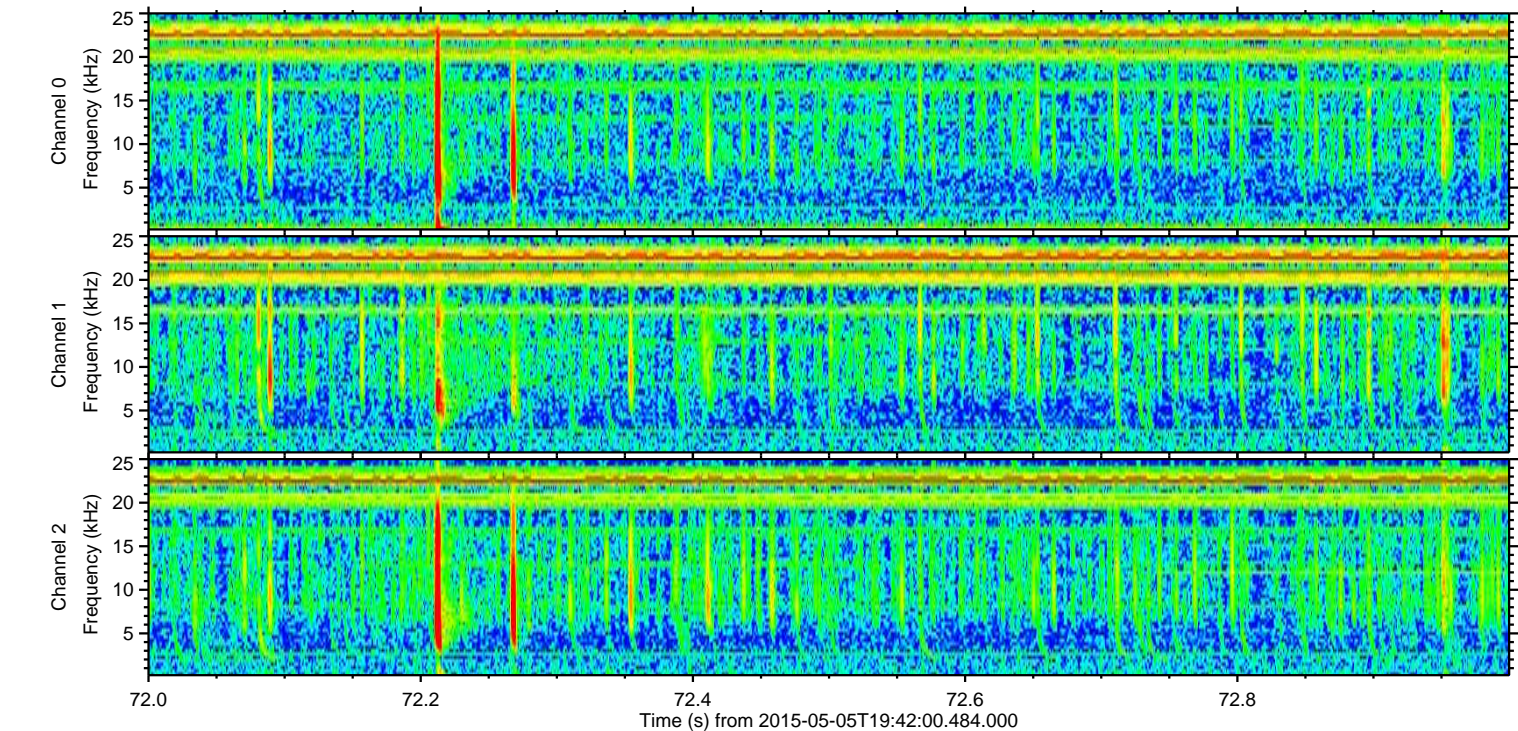
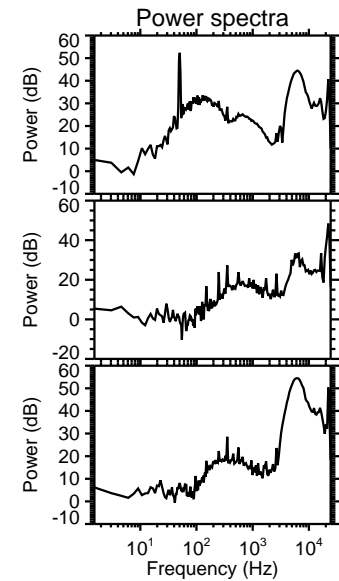
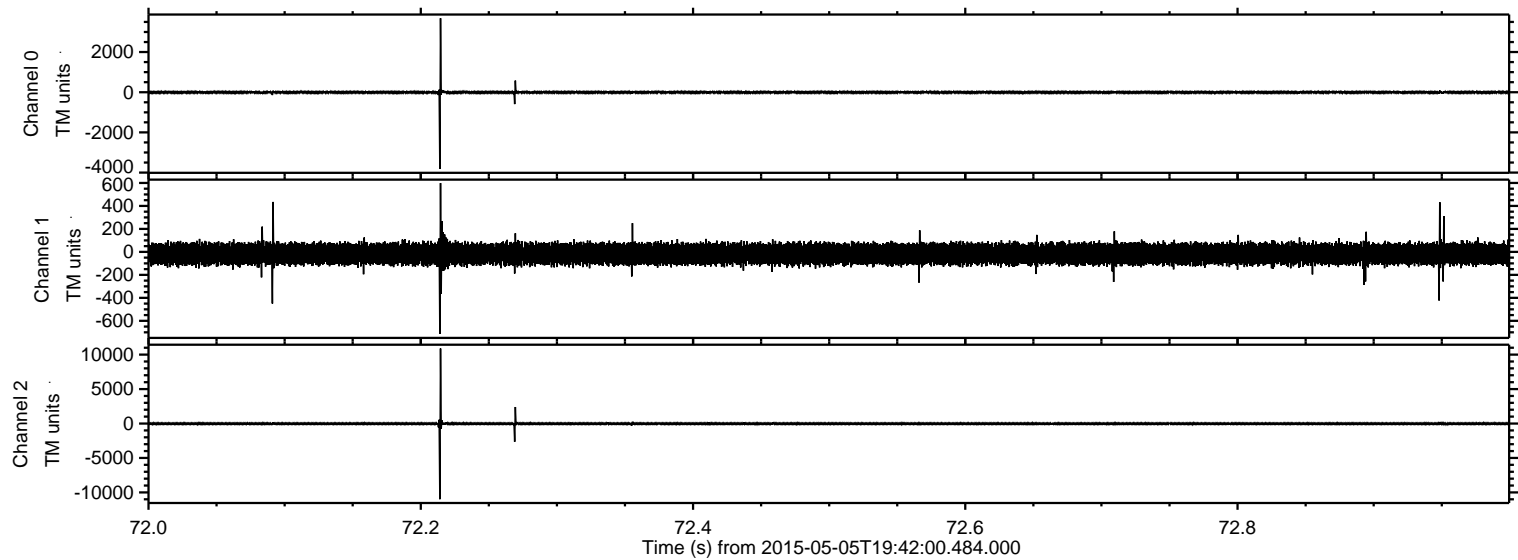
# ELMAVAN 3D WAVEFORMS (Measured data sampled at 50 kHz) 49778 packets of 144 samples from 2015-05-05T19:42:00.484.000.

Processed Tue May 5 21:48:56 2015 by ELM ver.2012-10-06 from 001\_\_elm20150505\_194159\_\_dat00.bin





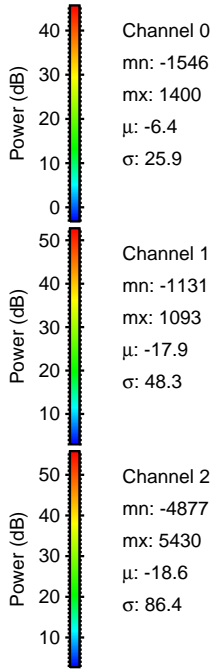
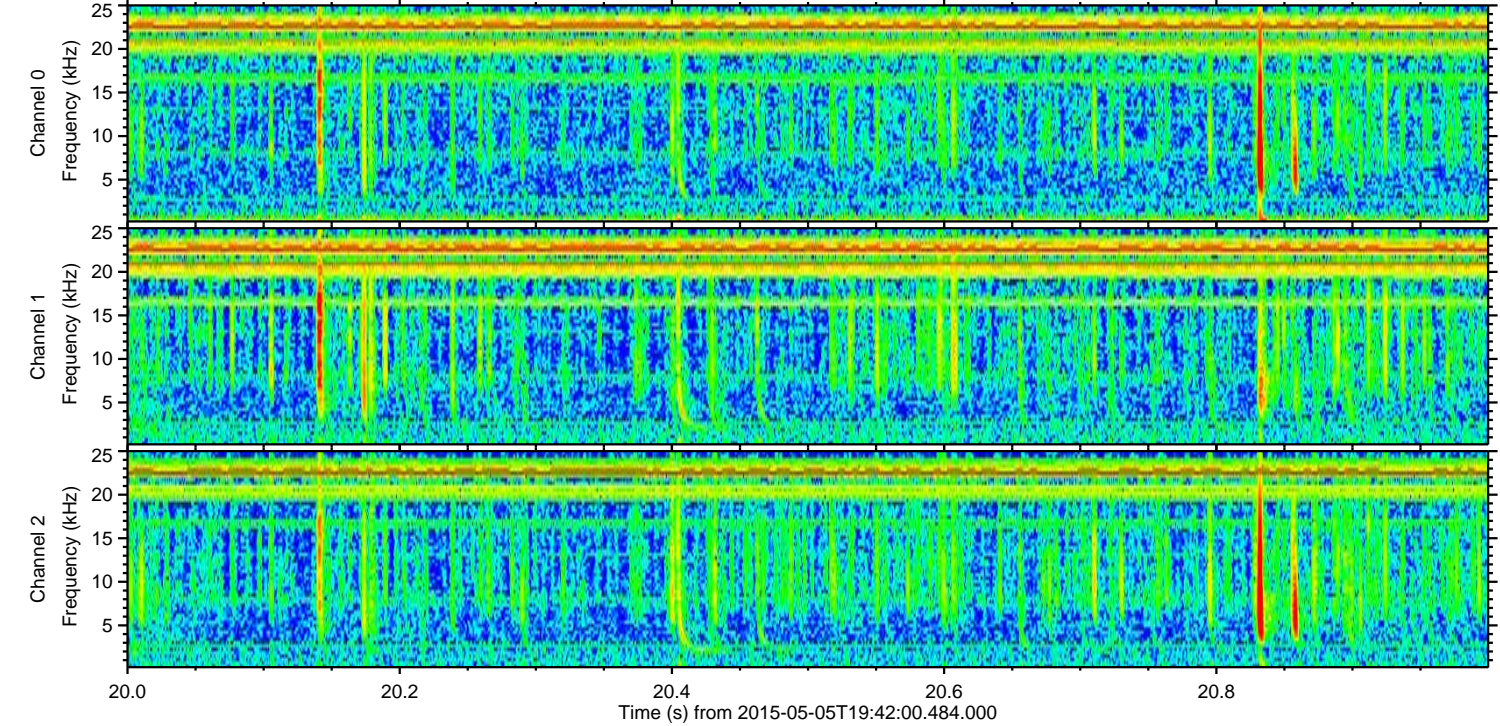
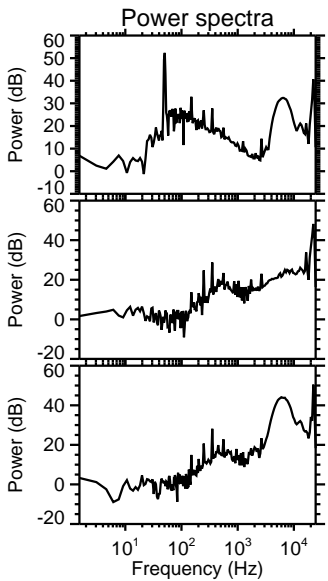
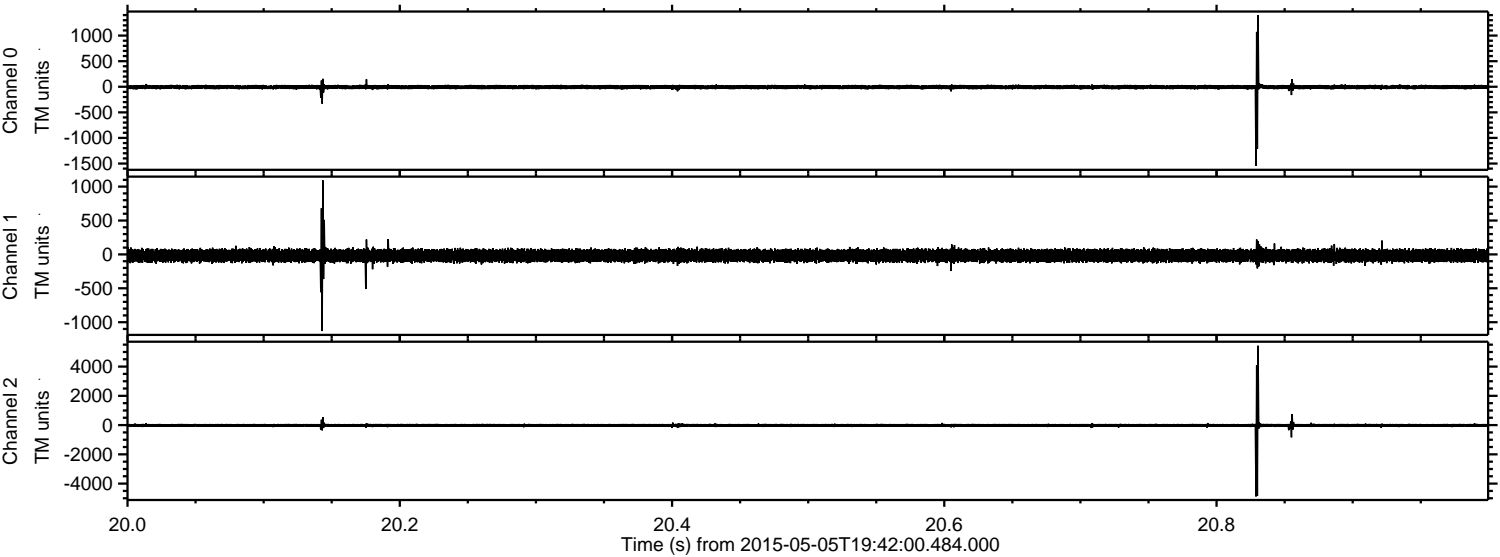
Processed Tue May 5 21:49:08 2015 by ELM ver.2012-10-06 from 001\_\_elm20150505\_194159\_\_dat00.bin





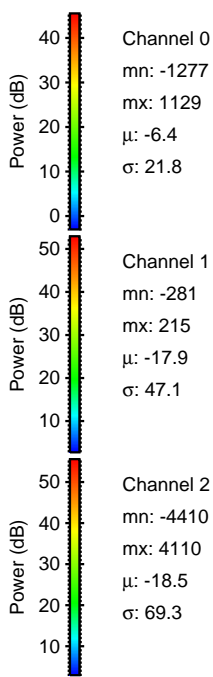
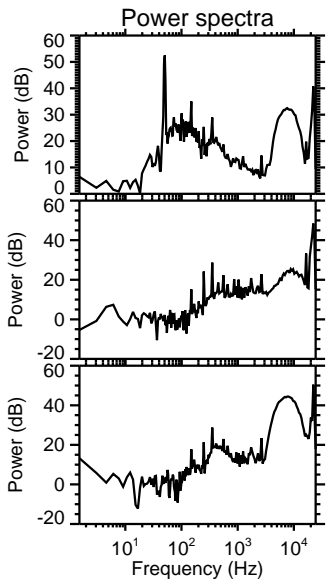
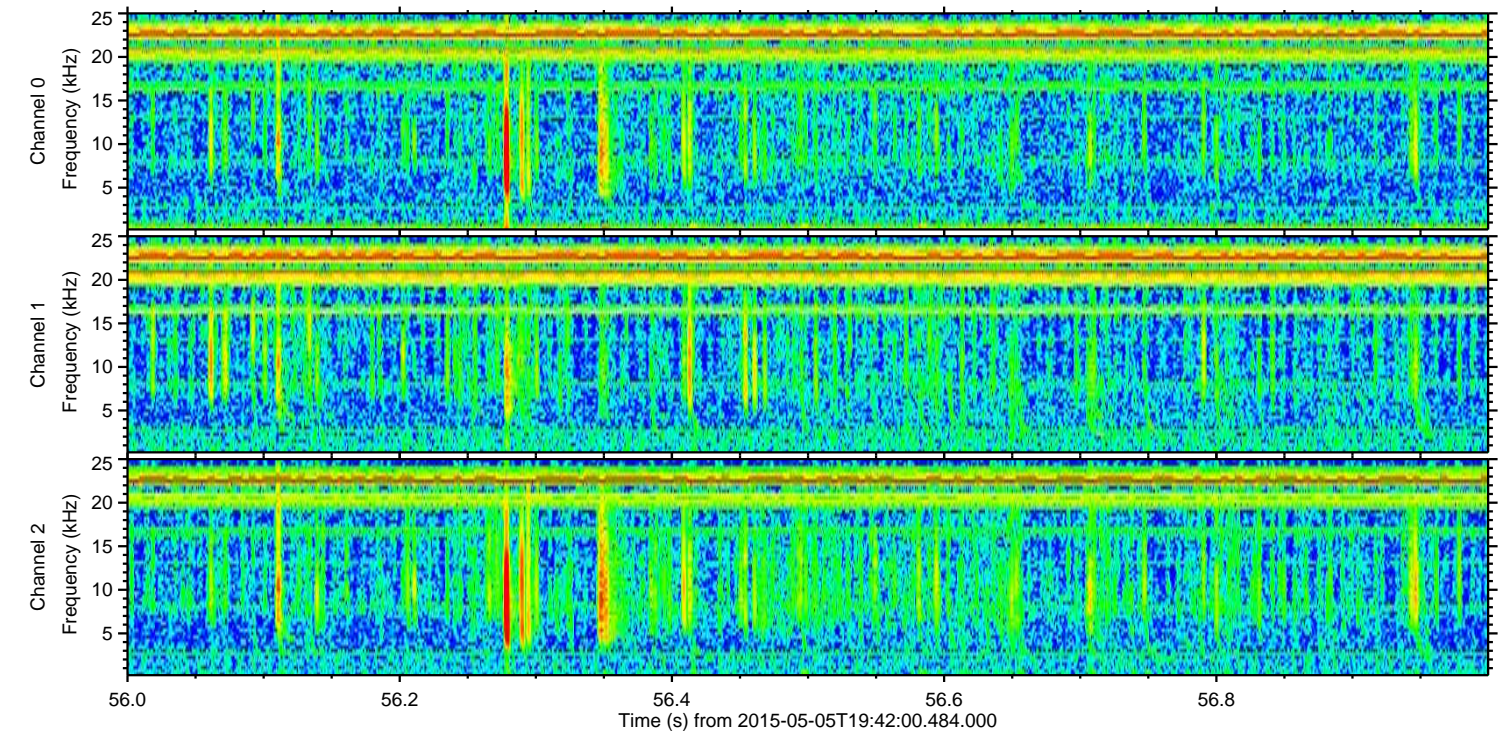
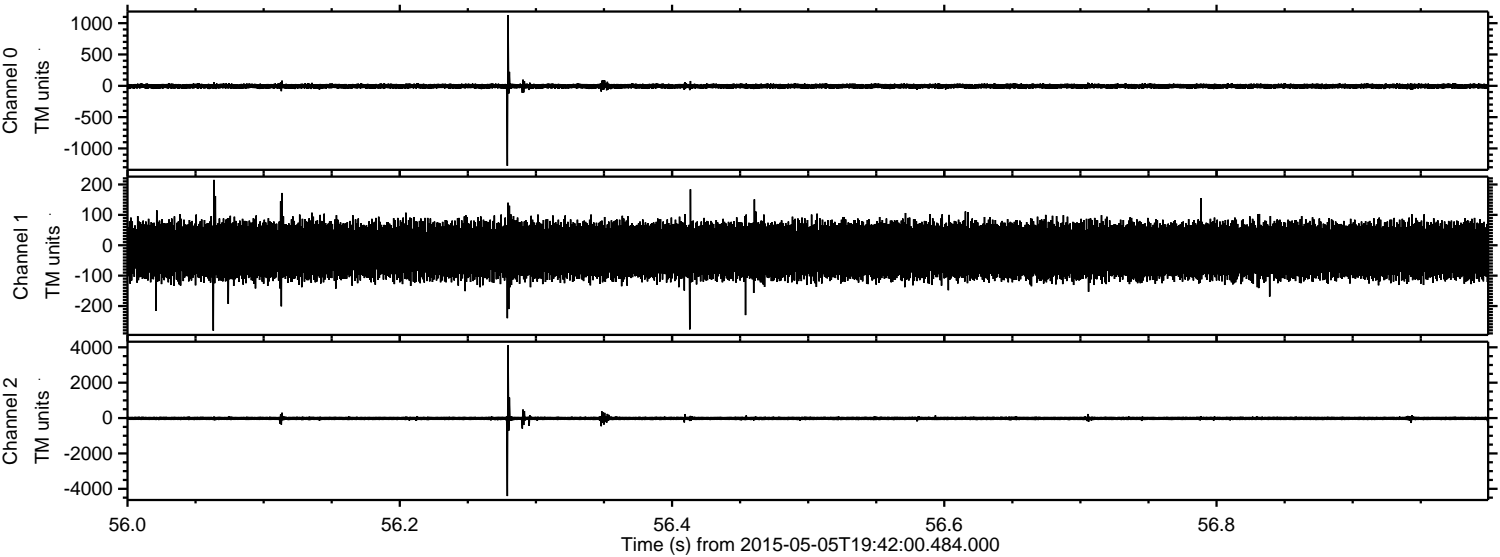
ELMAVAN 3D WAVEFORMS (Measured data sampled at 50 kHz) 49778 packets of 144 samples from 2015-05-05T19:42:00.484.000. Part 21/144

Processed Tue May 5 21:49:09 2015 by ELM ver.2012-10-06 from 001\_\_elm20150505\_194159\_\_dat00.bin



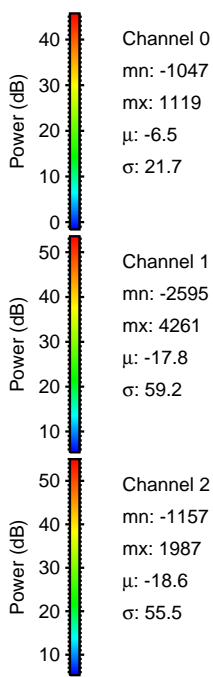
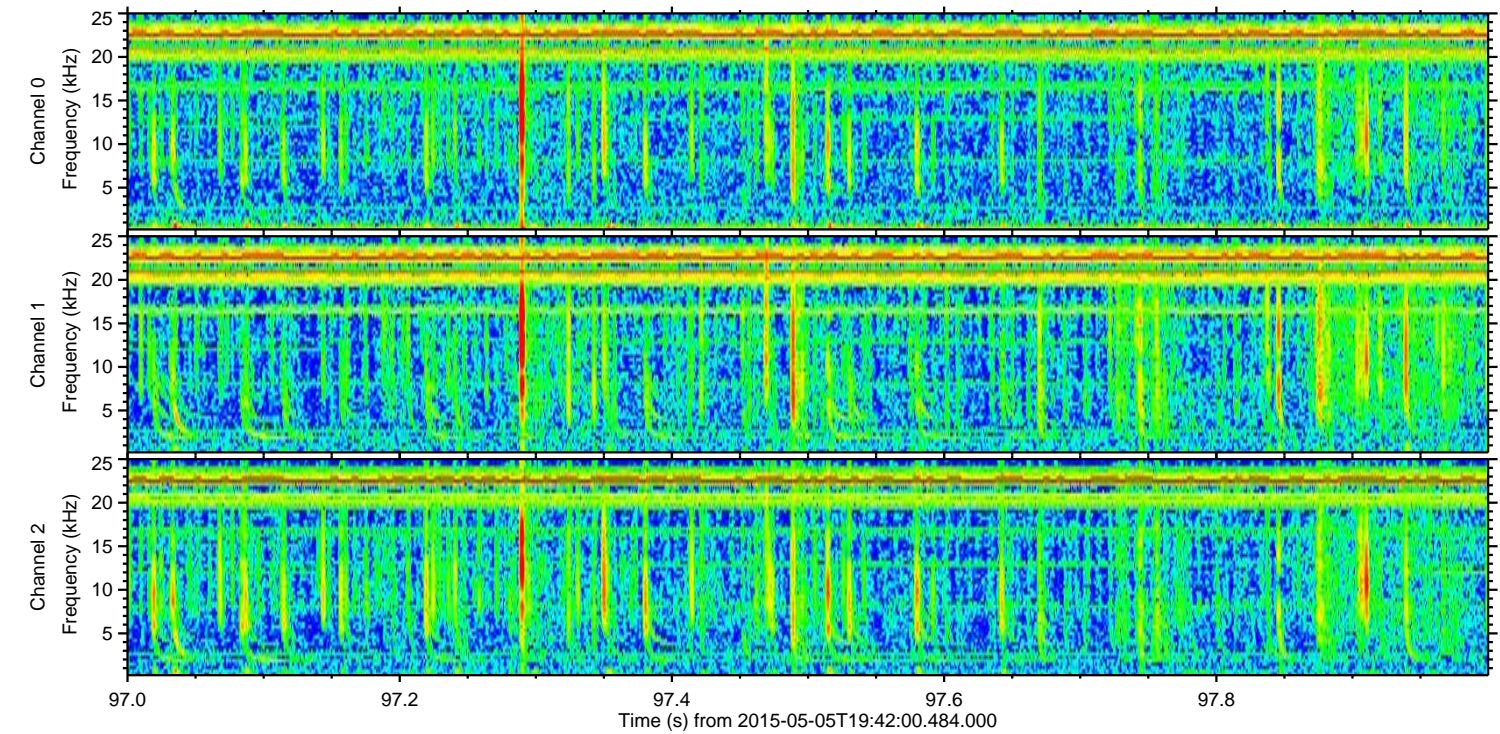
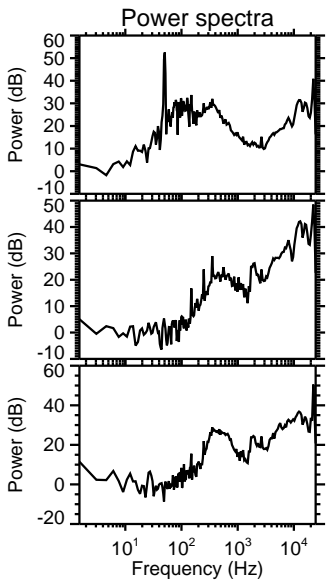
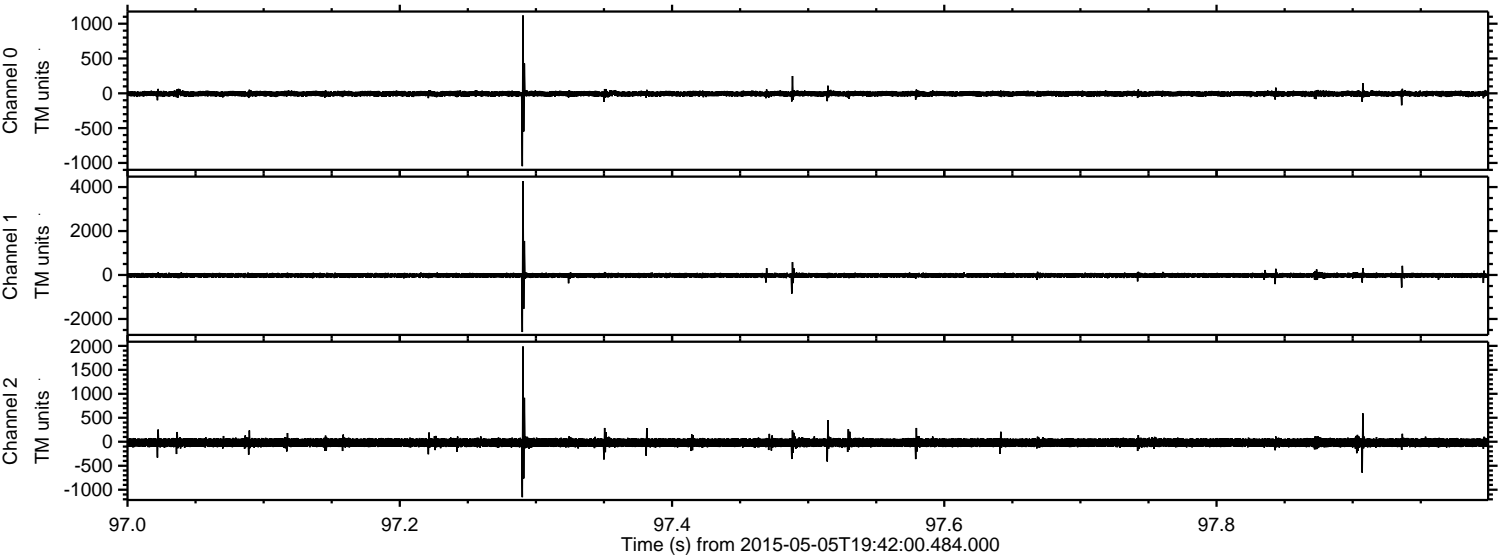


Processed Tue May 5 21:49:10 2015 by ELM ver.2012-10-06 from 001\_\_elm20150505\_194159\_\_dat00.bin



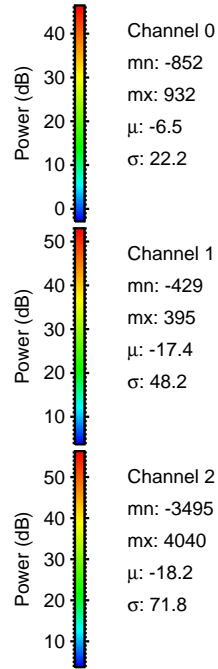
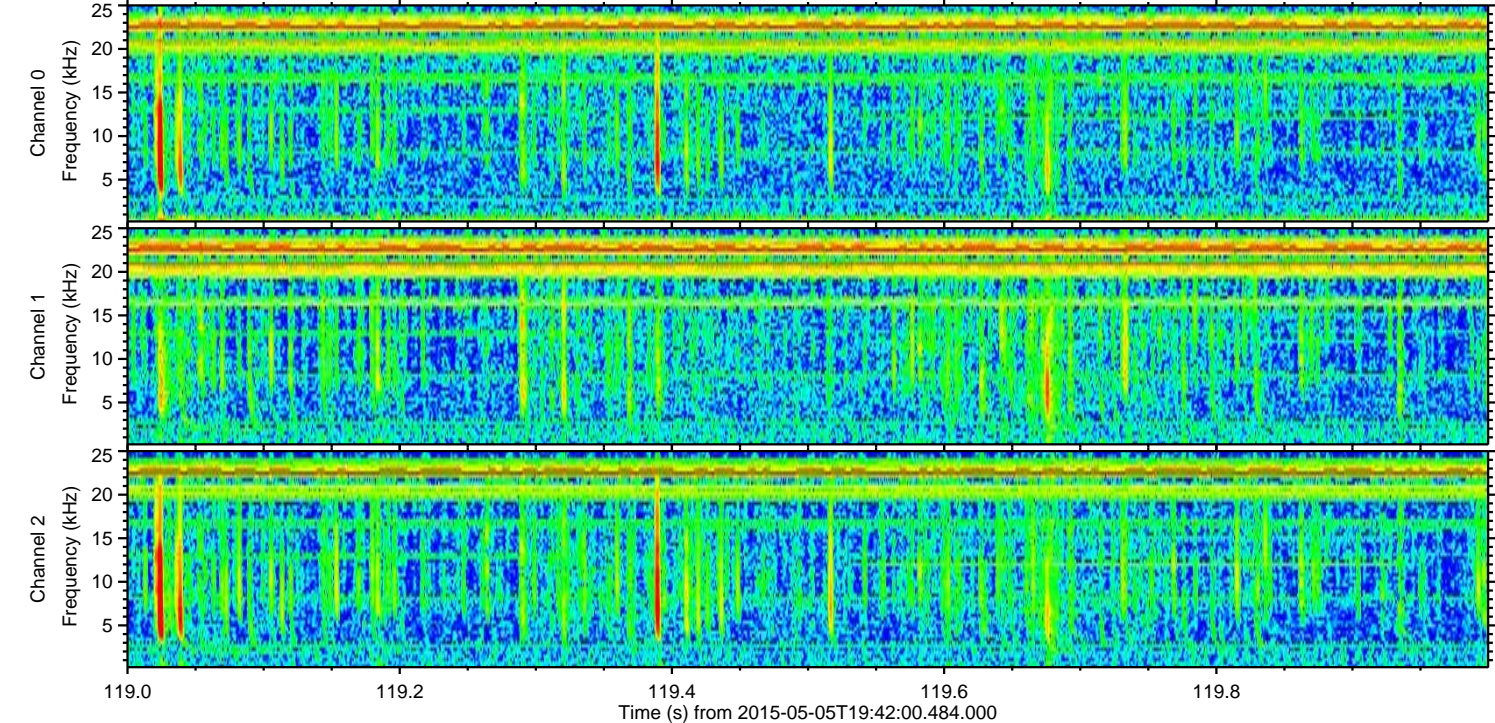
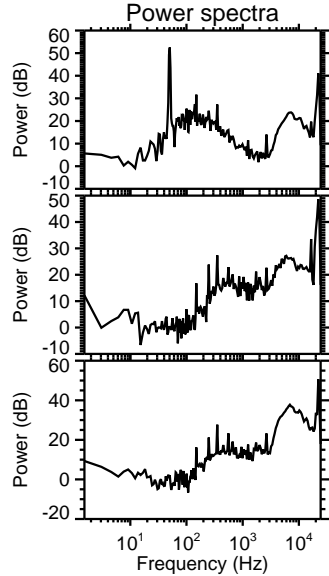
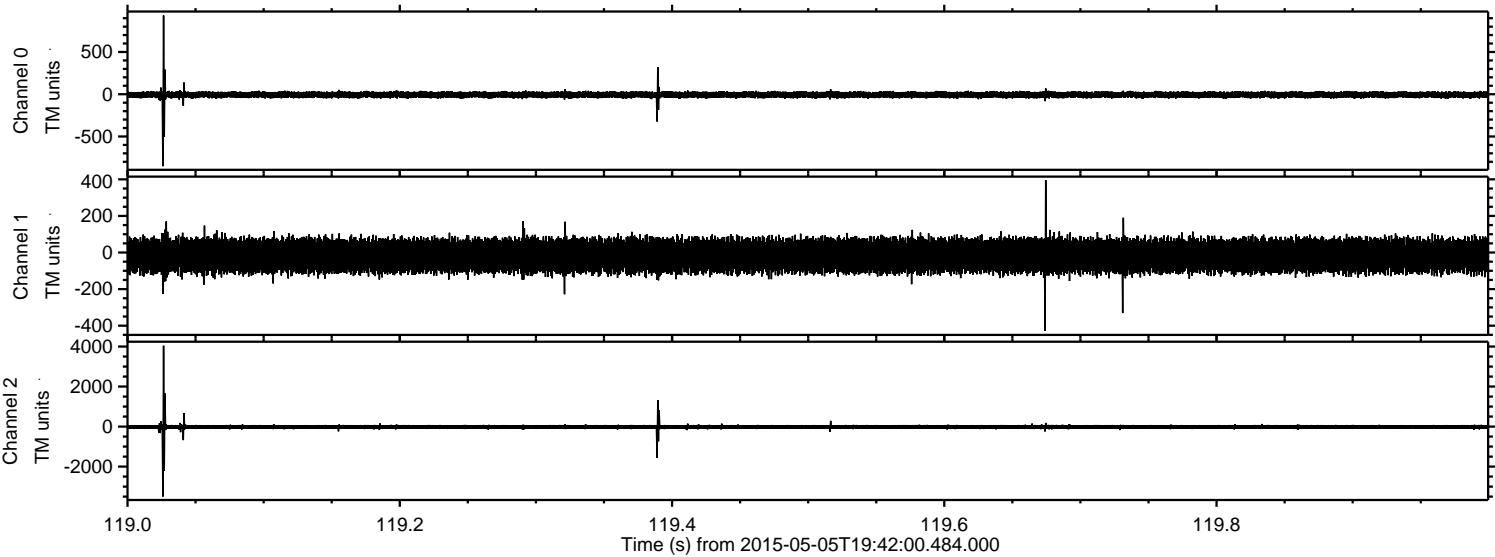


Processed Tue May 5 21:49:11 2015 by ELM ver.2012-10-06 from 001\_\_elm20150505\_194159\_\_dat00.bin



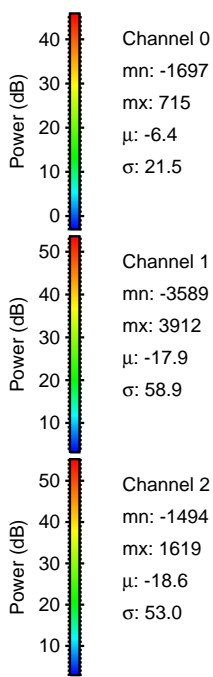
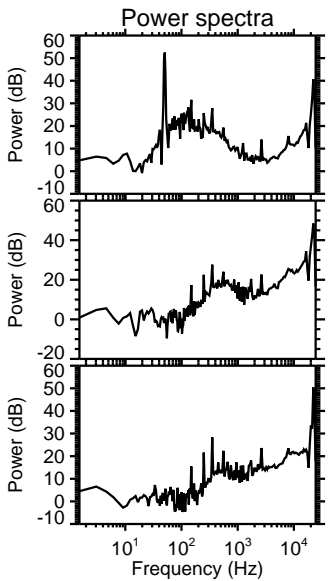
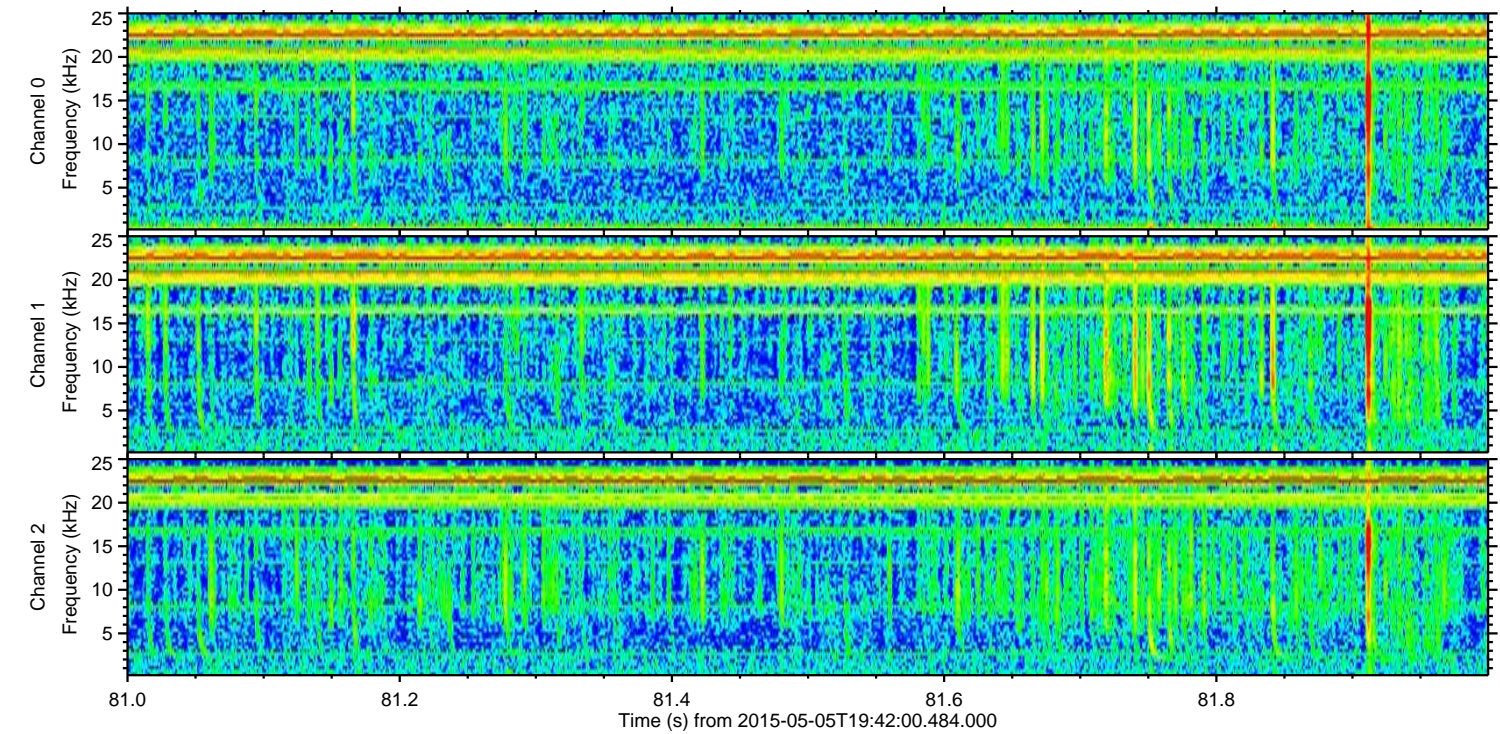
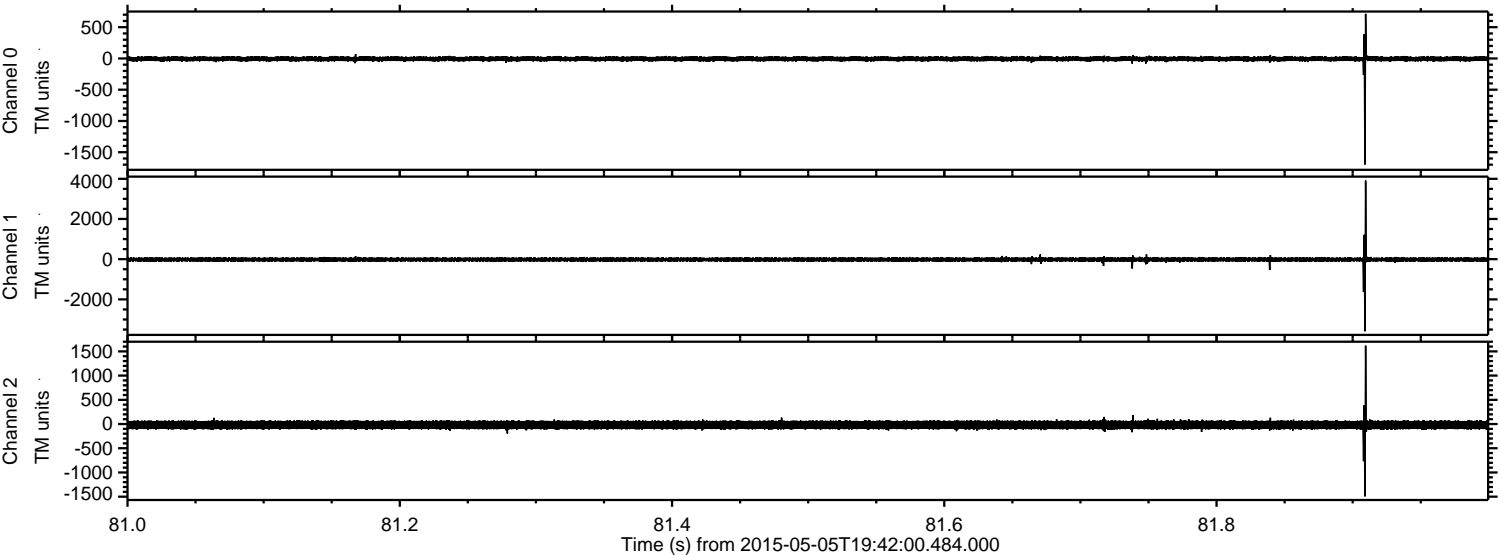


Processed Tue May 5 21:49:12 2015 by ELM ver.2012-10-06 from 001\_\_elm20150505\_194159\_\_dat00.bin



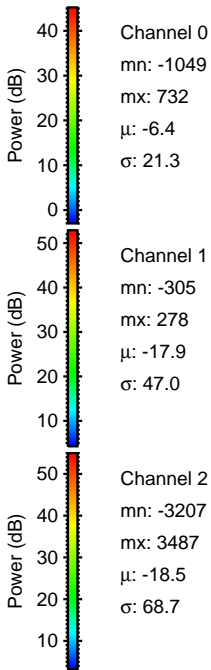
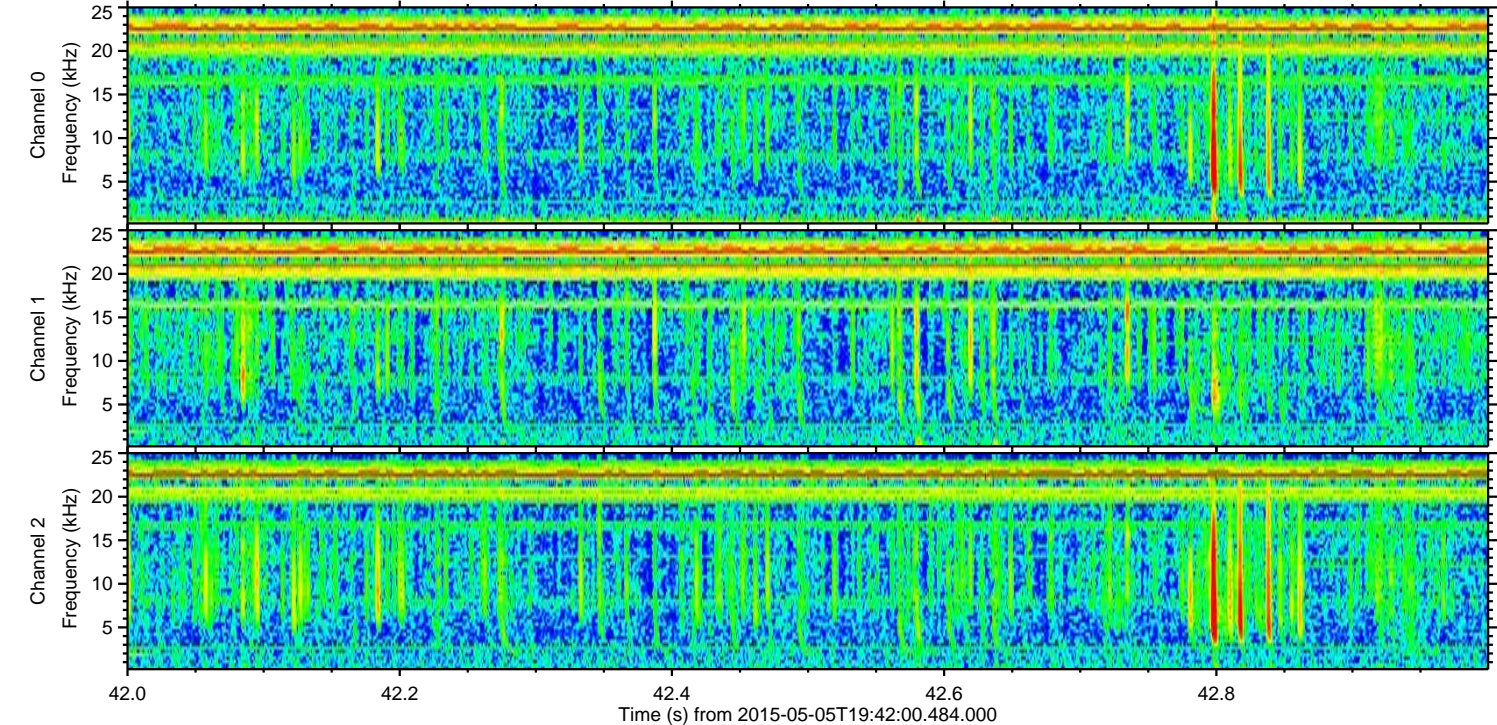
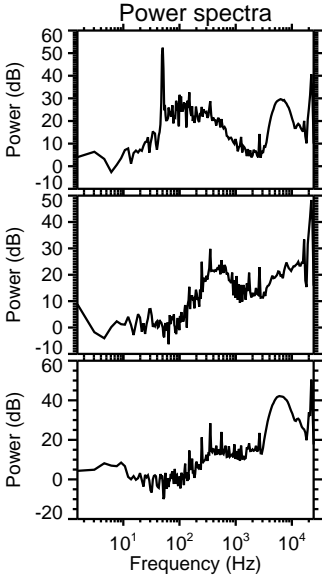
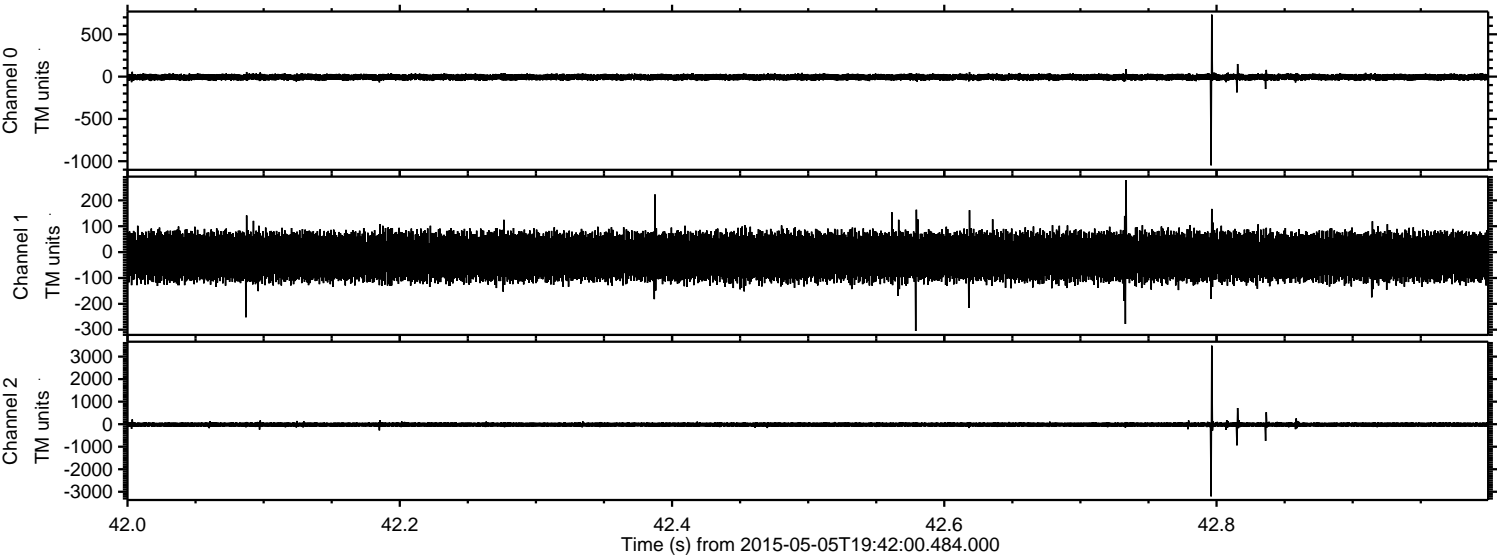


Processed Tue May 5 21:49:13 2015 by ELM ver.2012-10-06 from 001\_\_elm20150505\_194159\_\_dat00.bin



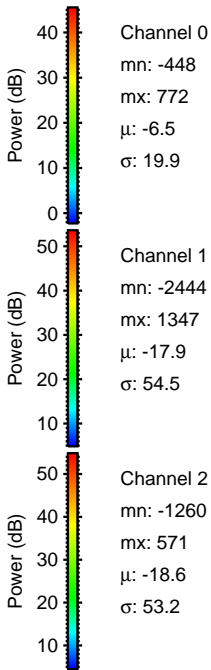
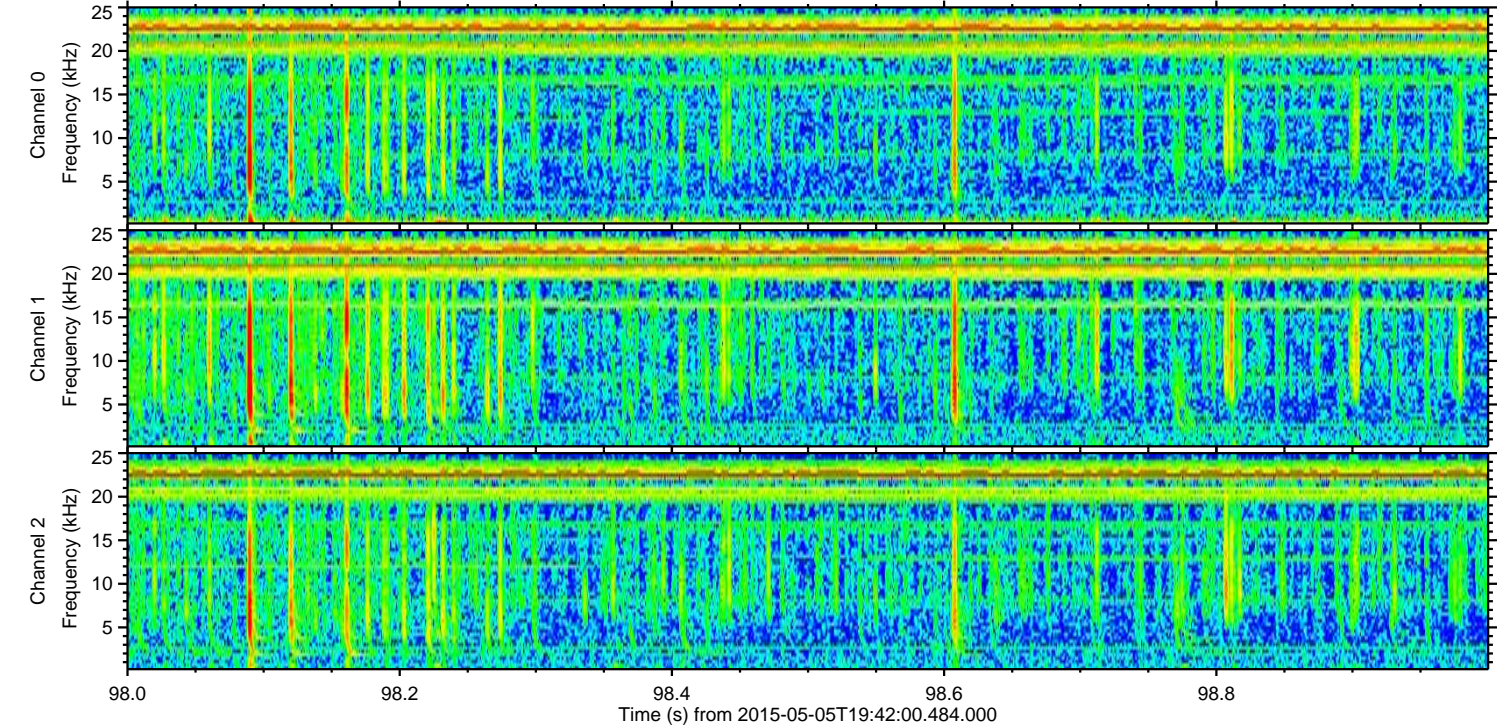
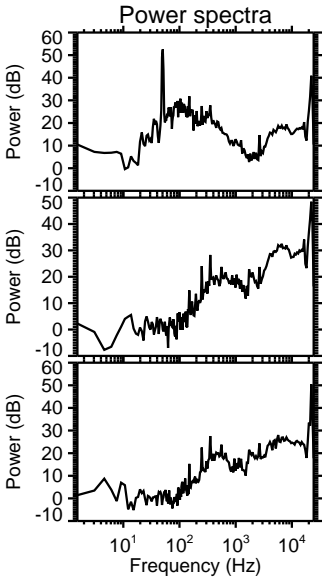
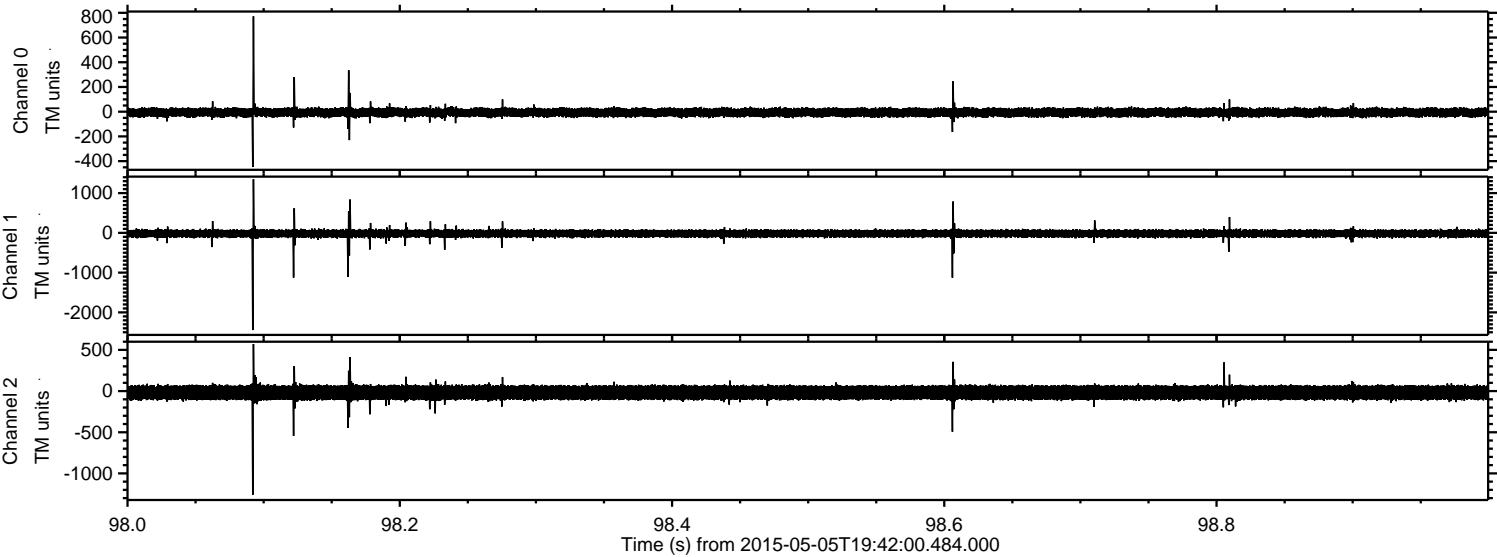


Processed Tue May 5 21:49:14 2015 by ELM ver.2012-10-06 from 001\_\_elm20150505\_194159\_\_dat00.bin





Processed Tue May 5 21:49:14 2015 by ELM ver.2012-10-06 from 001\_\_elm20150505\_194159\_\_dat00.bin





ELMAVAN 3D WAVEFORMS (Measured data sampled at 50 kHz) 49778 packets of 144 samples from 2015-05-05T19:42:00.484.000. Part 121/144

Processed Tue May 5 21:49:15 2015 by ELM ver.2012-10-06 from 001\_\_elm20150505\_194159\_\_dat00.bin

