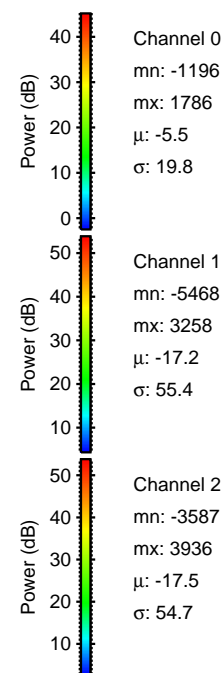
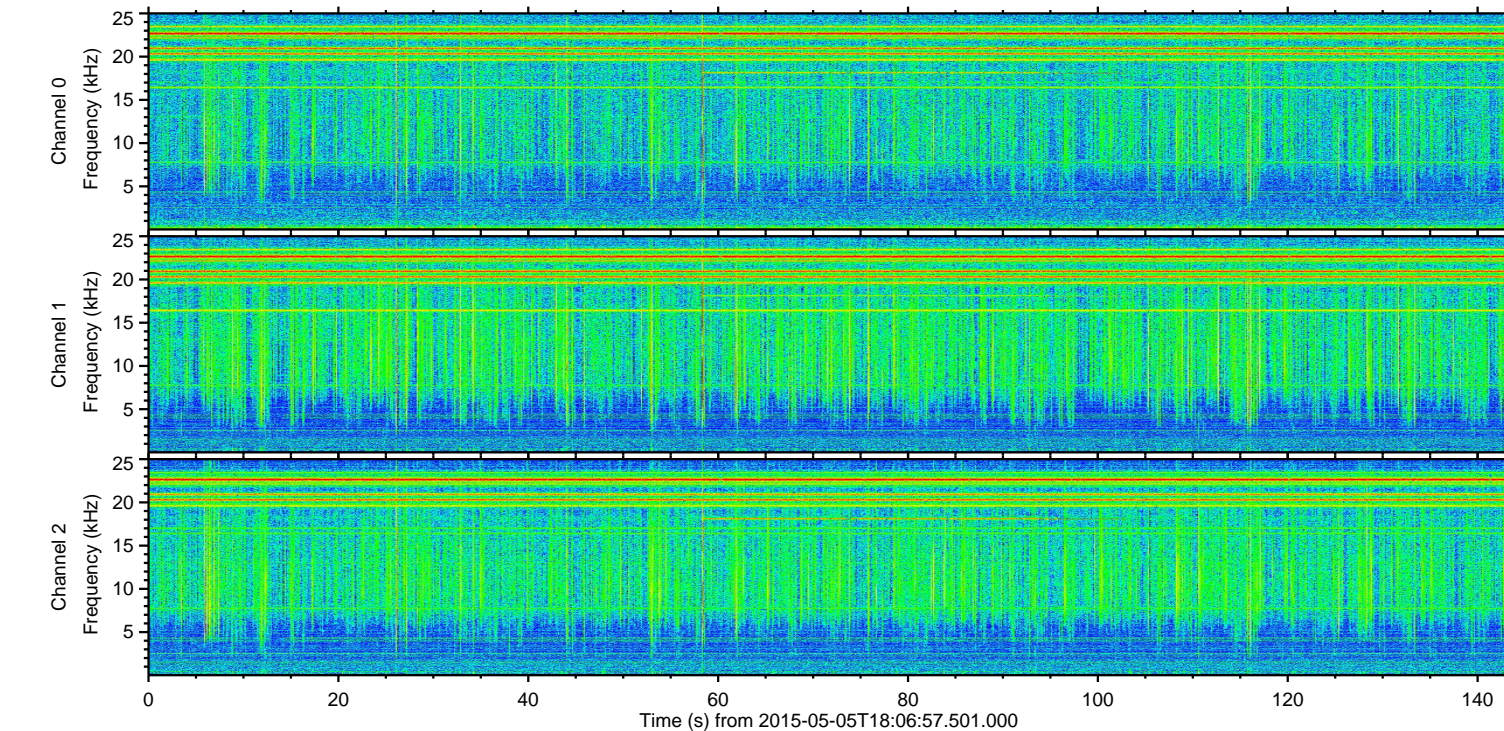
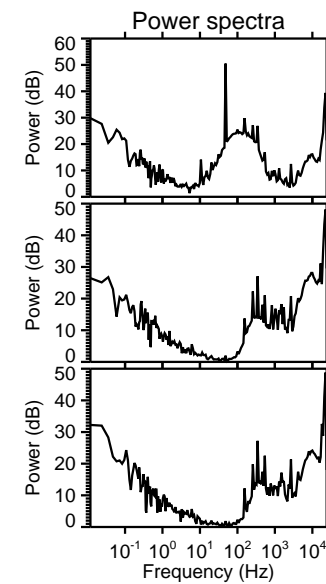
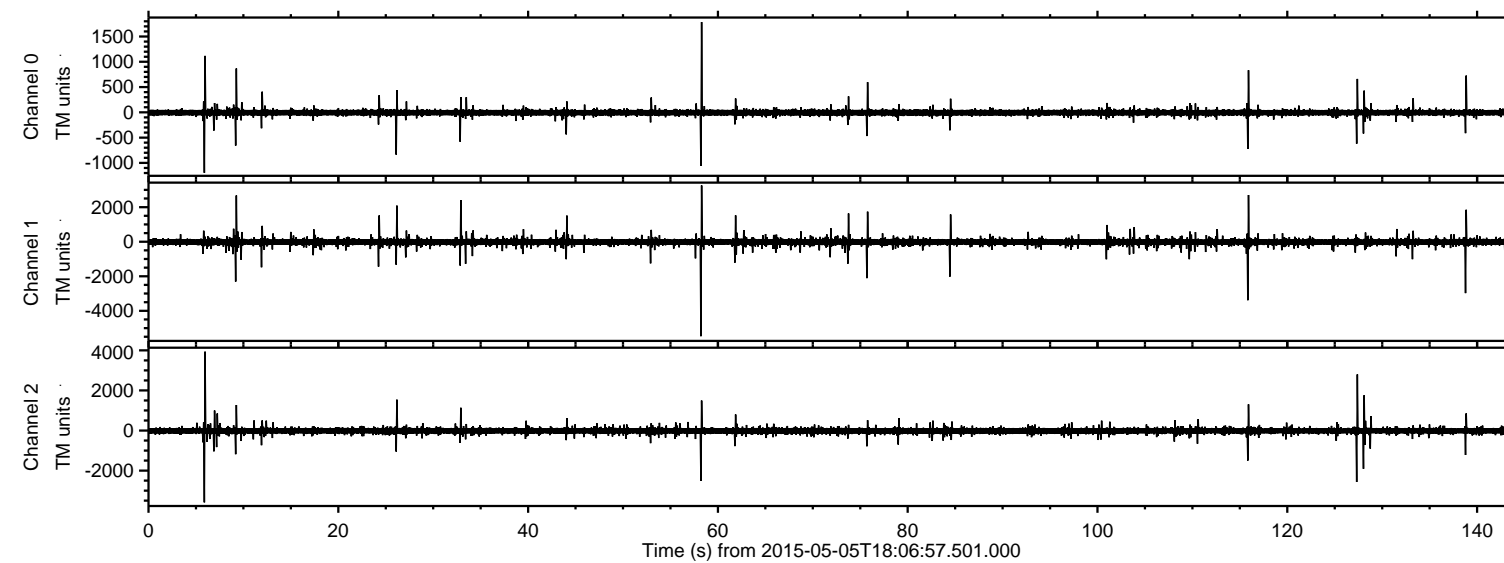
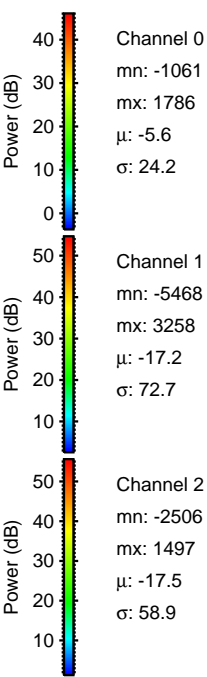
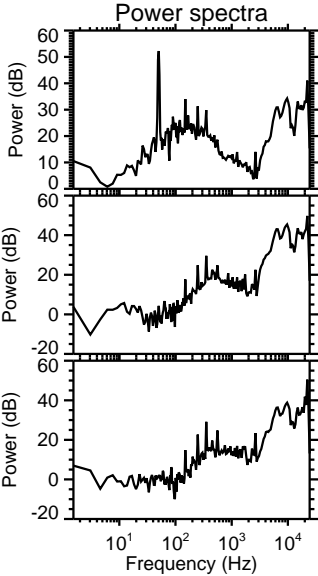
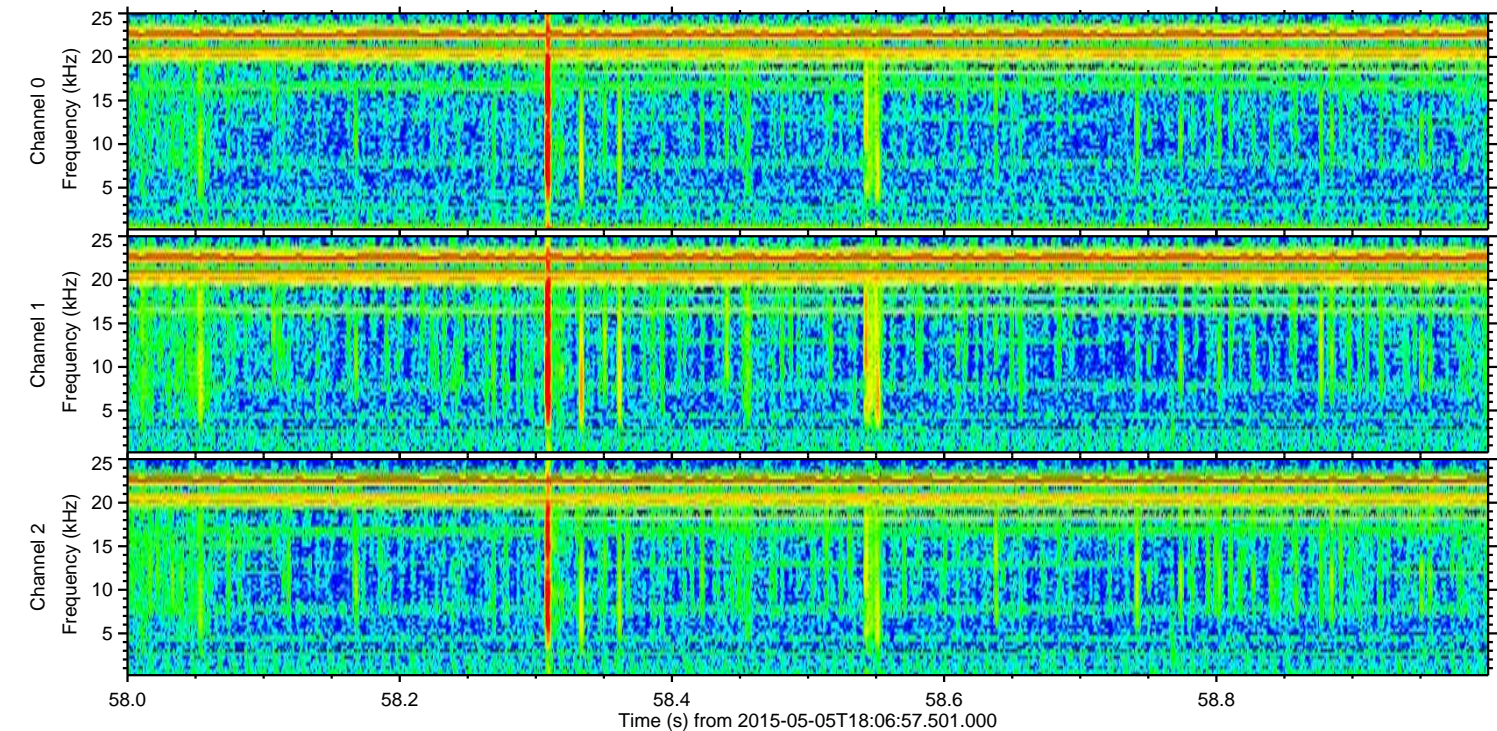
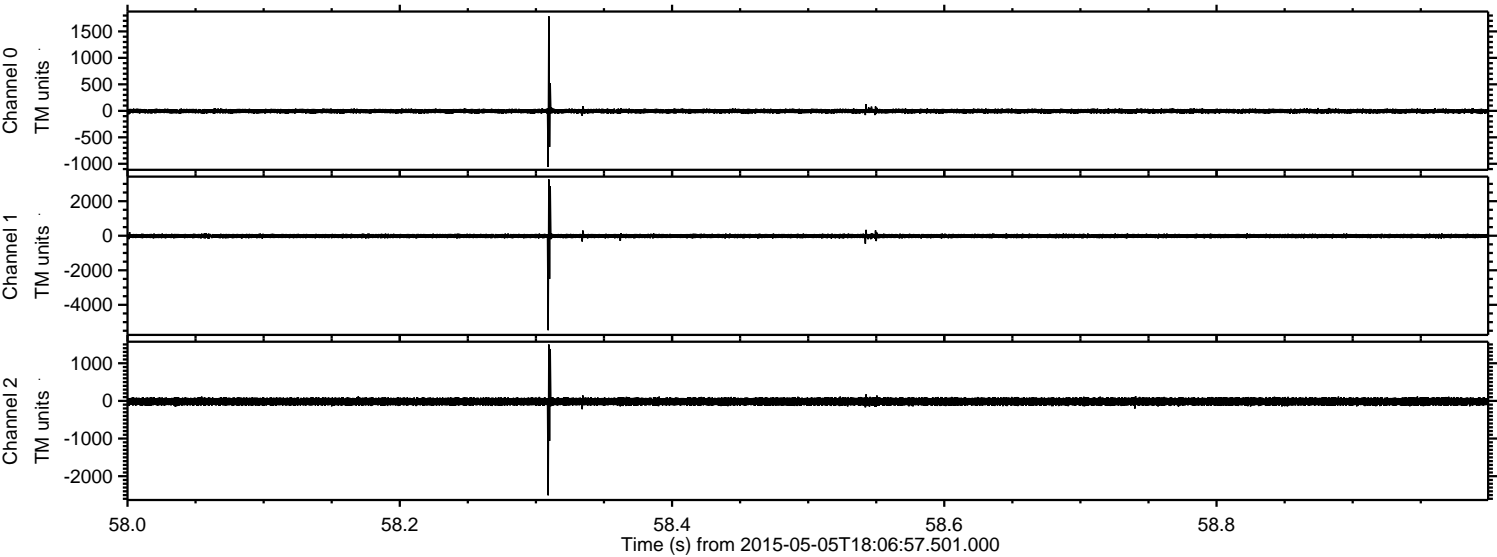


ELMAVAN 3D WAVEFORMS (Measured data sampled at 50 kHz) 49784 packets of 144 samples from 2015-05-05T18:06:57.501.000.

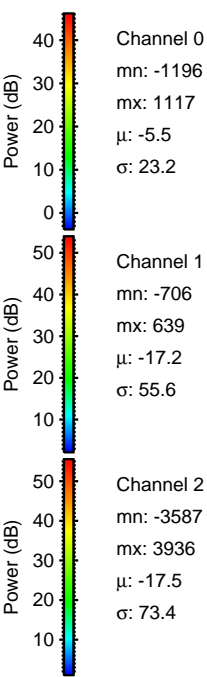
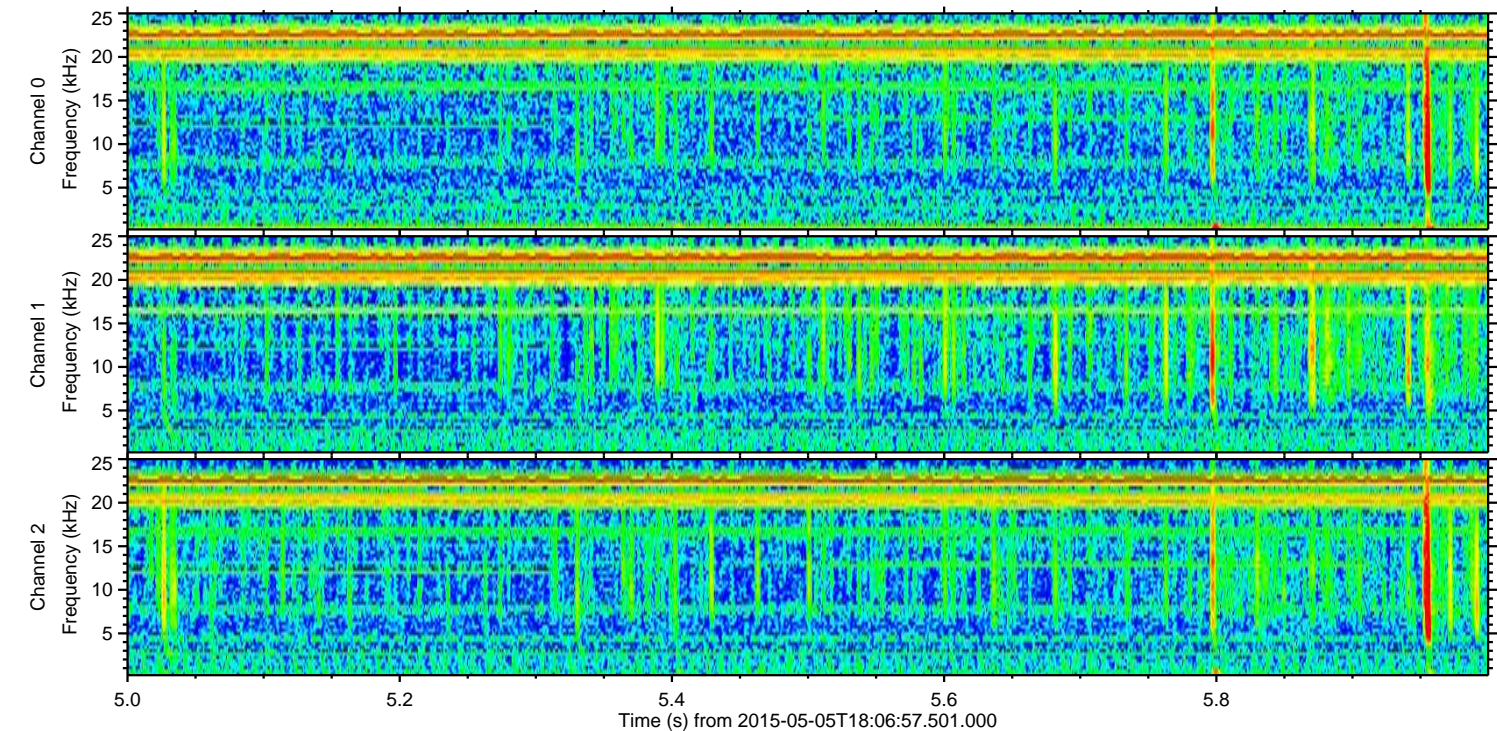
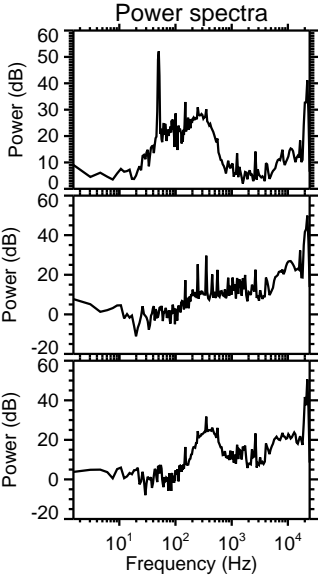
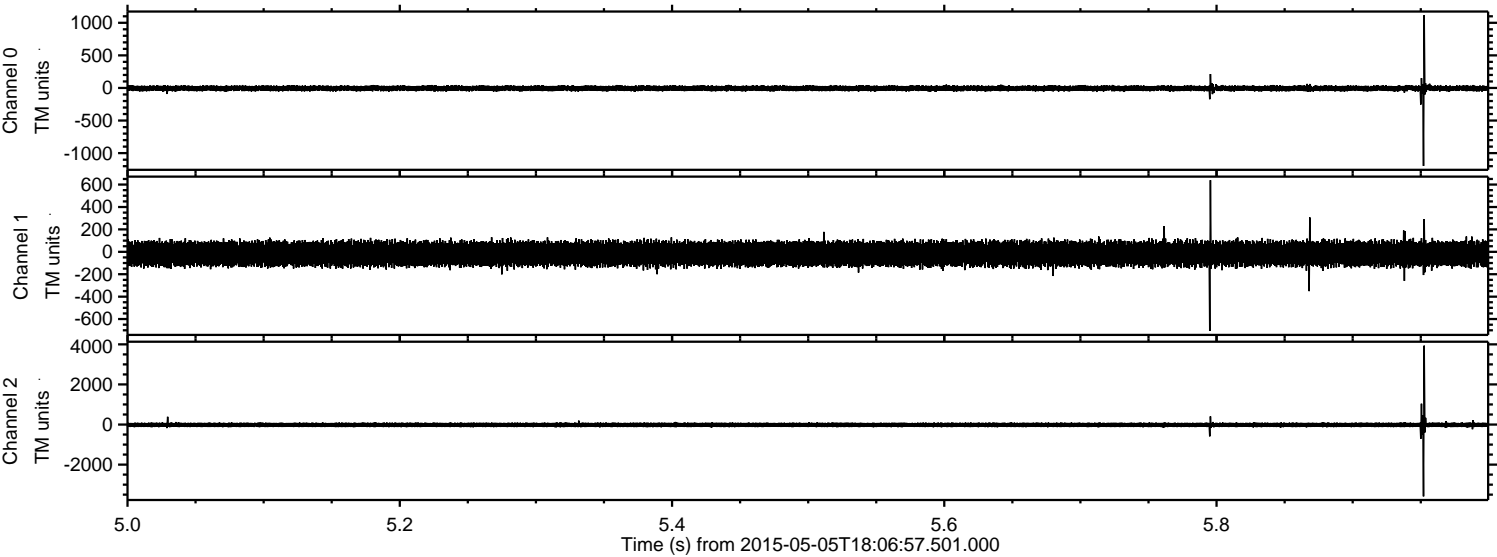
Processed Tue May 5 20:13:46 2015 by ELM ver.2012-10-06 from 001__elm20150505_180656__dat00.bin



Processed Tue May 5 20:13:57 2015 by ELM ver.2012-10-06 from 001__elm20150505_180656__dat00.bin



Processed Tue May 5 20:13:58 2015 by ELM ver.2012-10-06 from 001__elm20150505_180656__dat00.bin



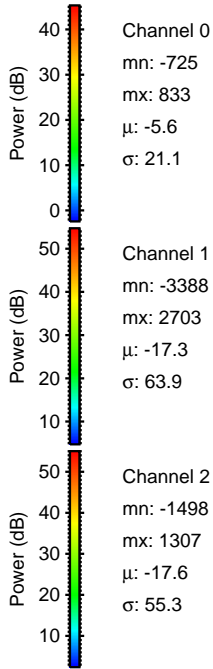
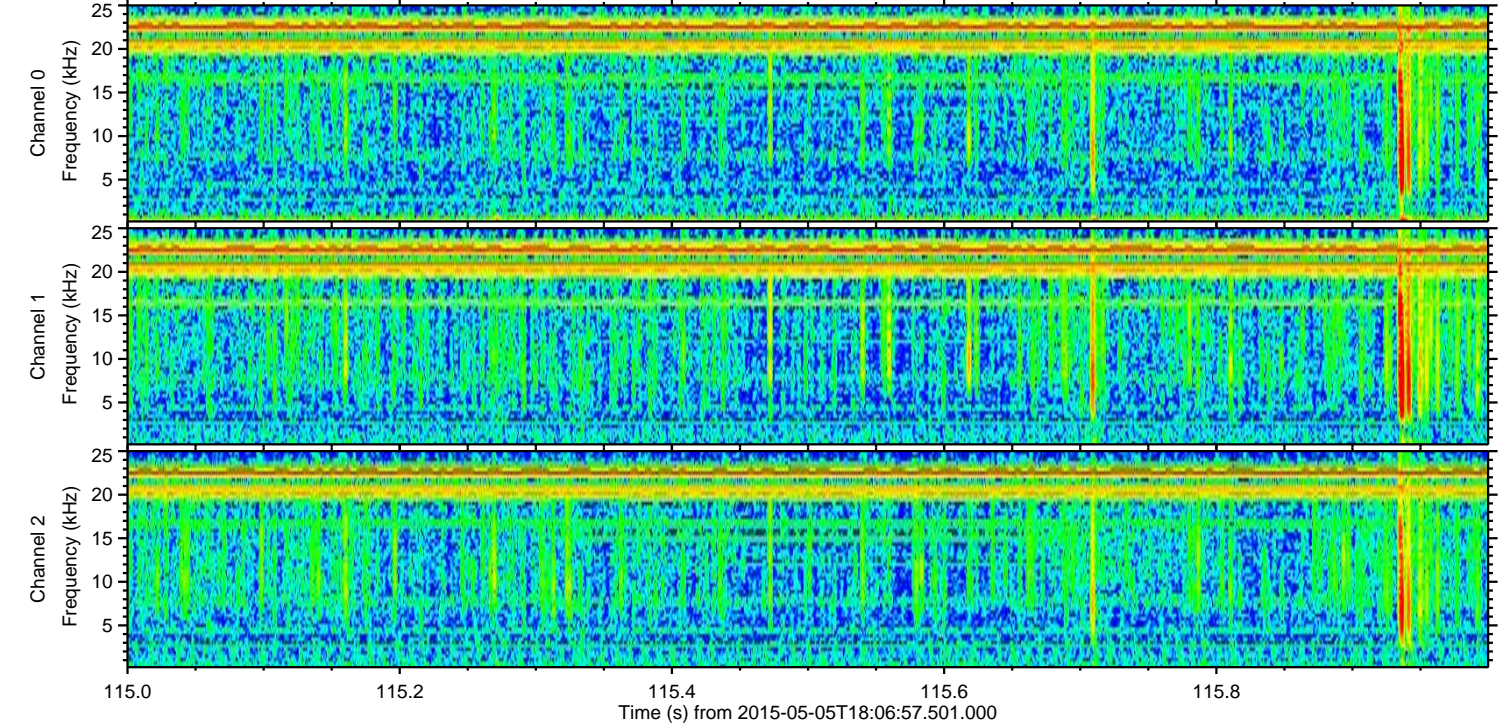
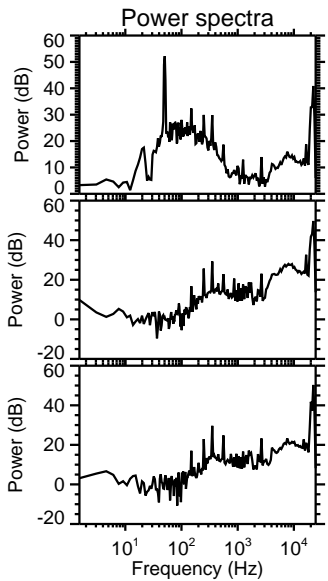
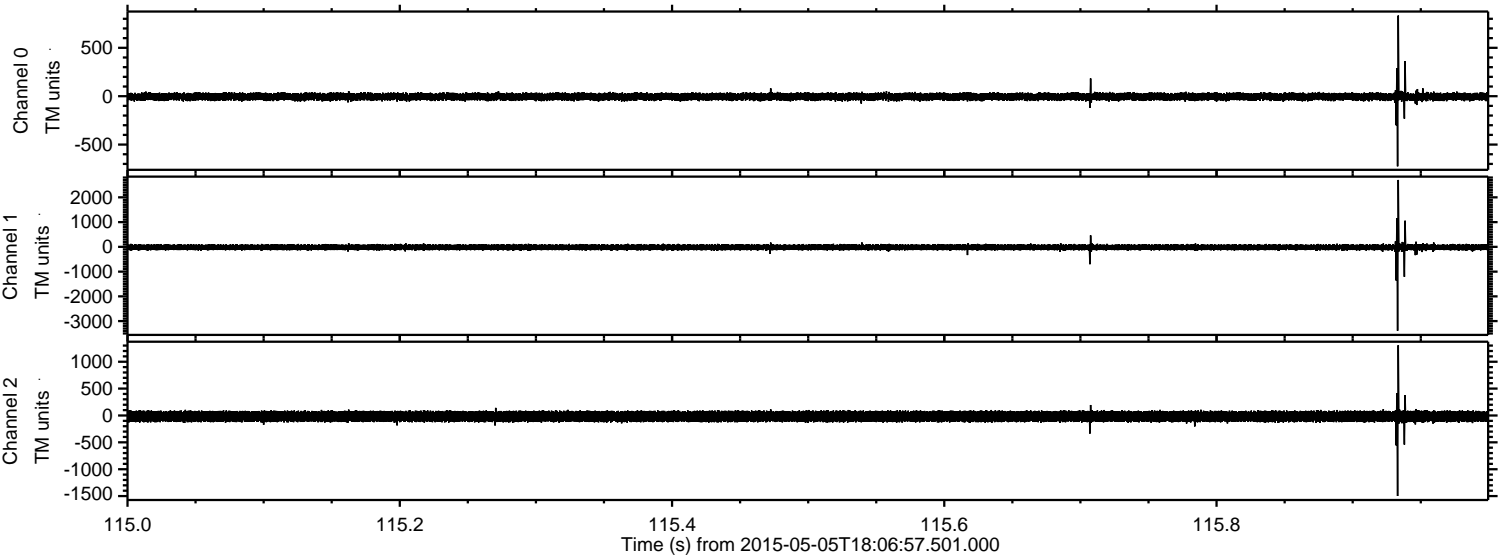
Channel 0
mn: -1196
mx: 1117
 μ : -5.5
 σ : 23.2

Channel 1
mn: -706
mx: 639
 μ : -17.2
 σ : 55.6

Channel 2
mn: -3587
mx: 3936
 μ : -17.5
 σ : 73.4

ELMAVAN 3D WAVEFORMS (Measured data sampled at 50 kHz) 49784 packets of 144 samples from 2015-05-05T18:06:57.501.000. Part 116/144

Processed Tue May 5 20:13:59 2015 by ELM ver.2012-10-06 from 001__elm20150505_180656__dat00.bin



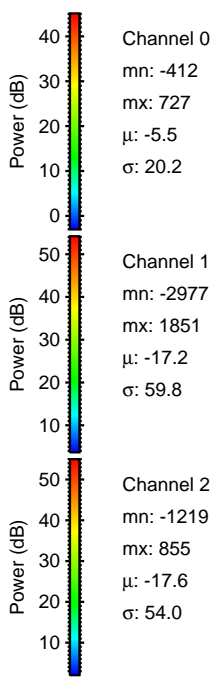
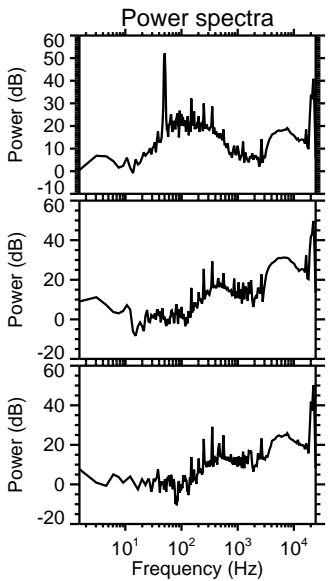
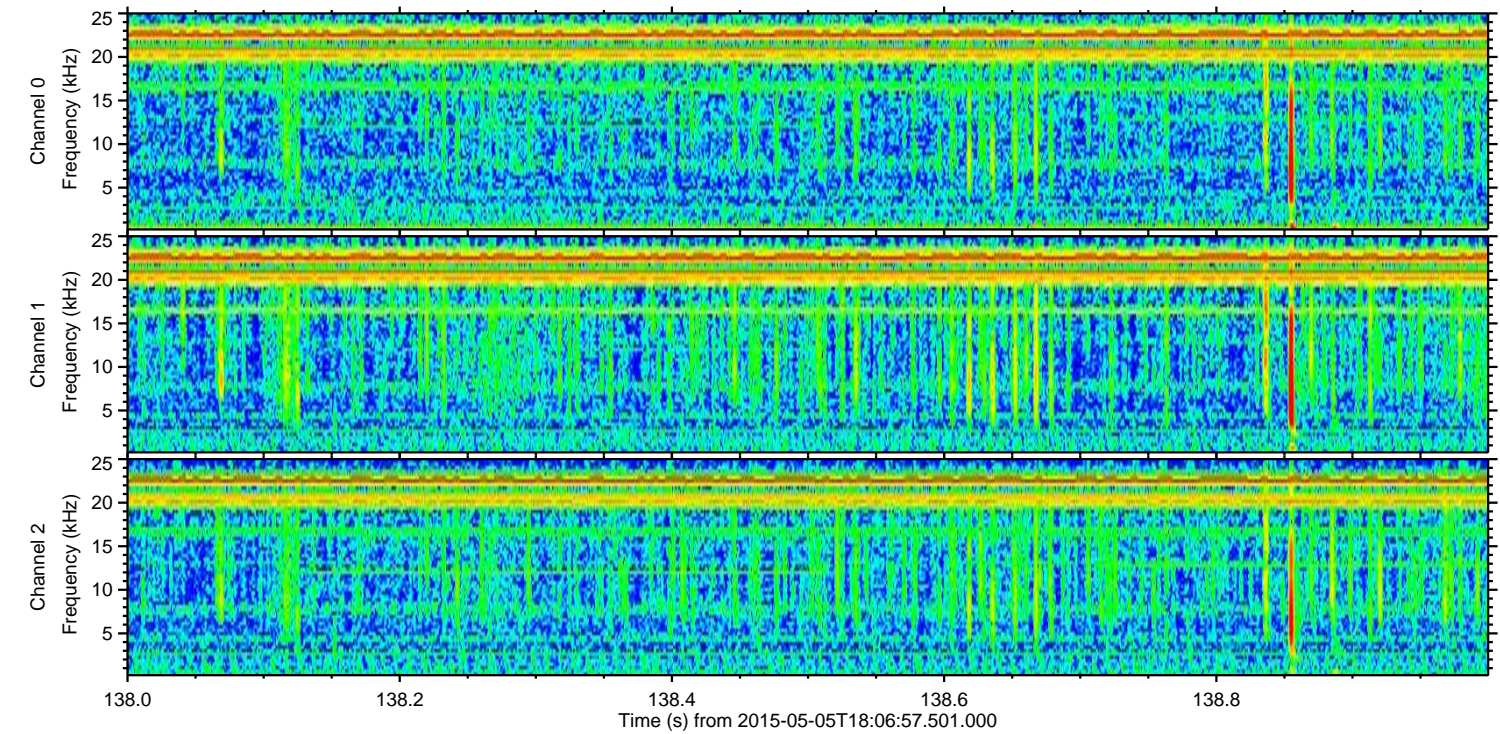
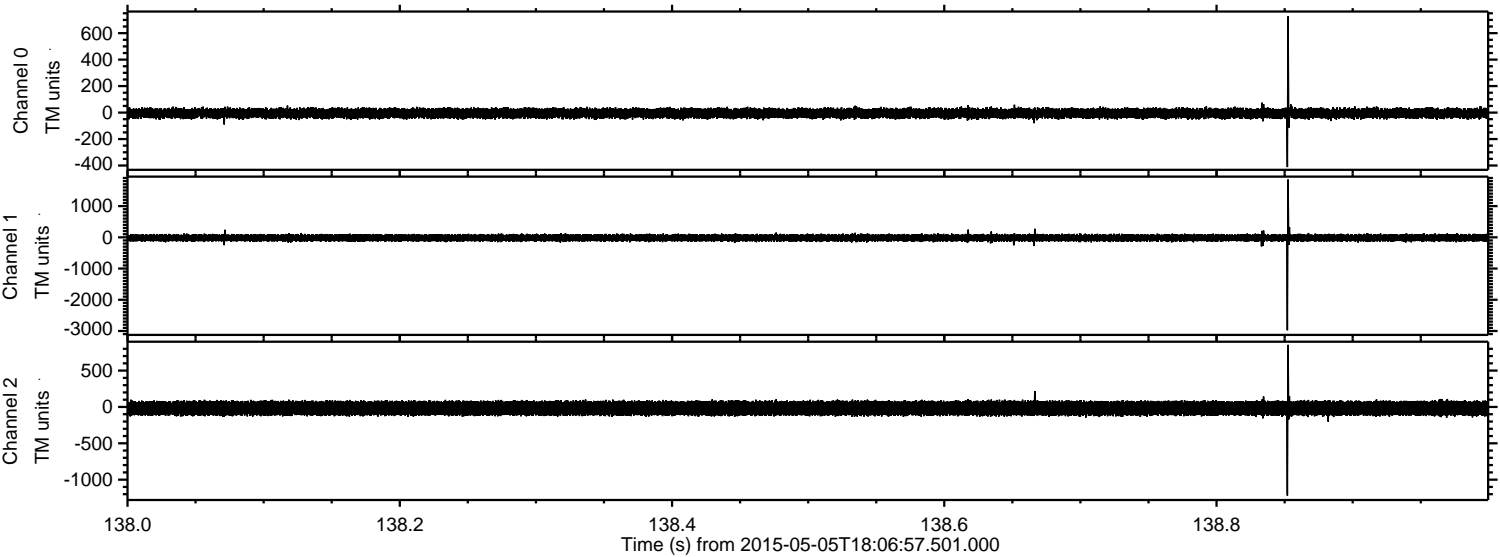
Channel 0
mn: -725
mx: 833
 μ : -5.6
 σ : 21.1

Channel 1
mn: -3388
mx: 2703
 μ : -17.3
 σ : 63.9

Channel 2
mn: -1498
mx: 1307
 μ : -17.6
 σ : 55.3

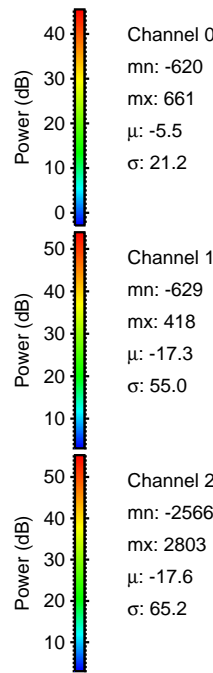
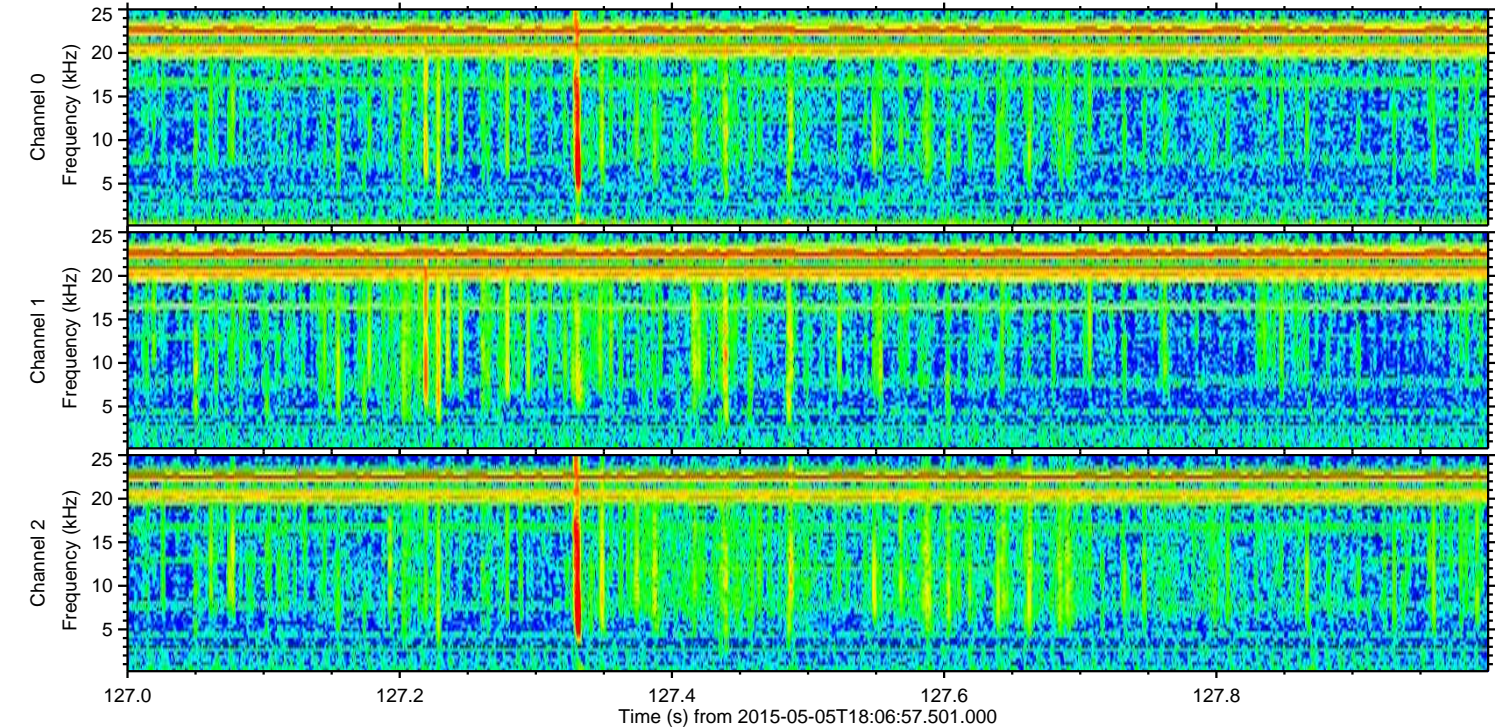
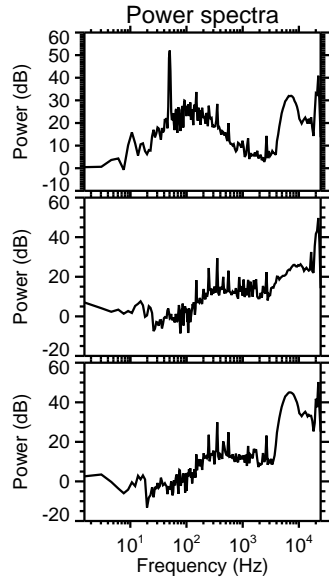
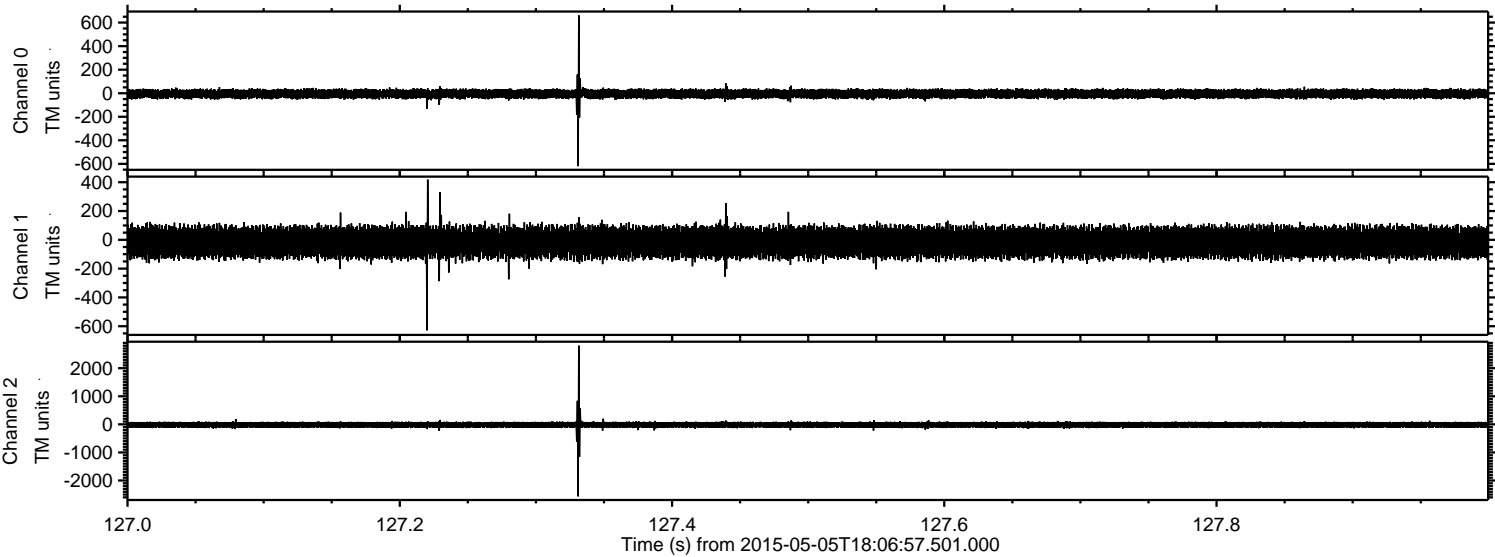
ELMAVAN 3D WAVEFORMS (Measured data sampled at 50 kHz) 49784 packets of 144 samples from 2015-05-05T18:06:57.501.000. Part 139/144

Processed Tue May 5 20:14:00 2015 by ELM ver.2012-10-06 from 001__elm20150505_180656__dat00.bin

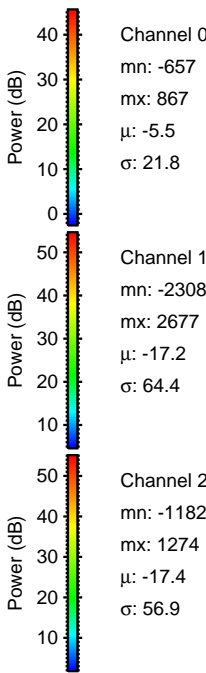
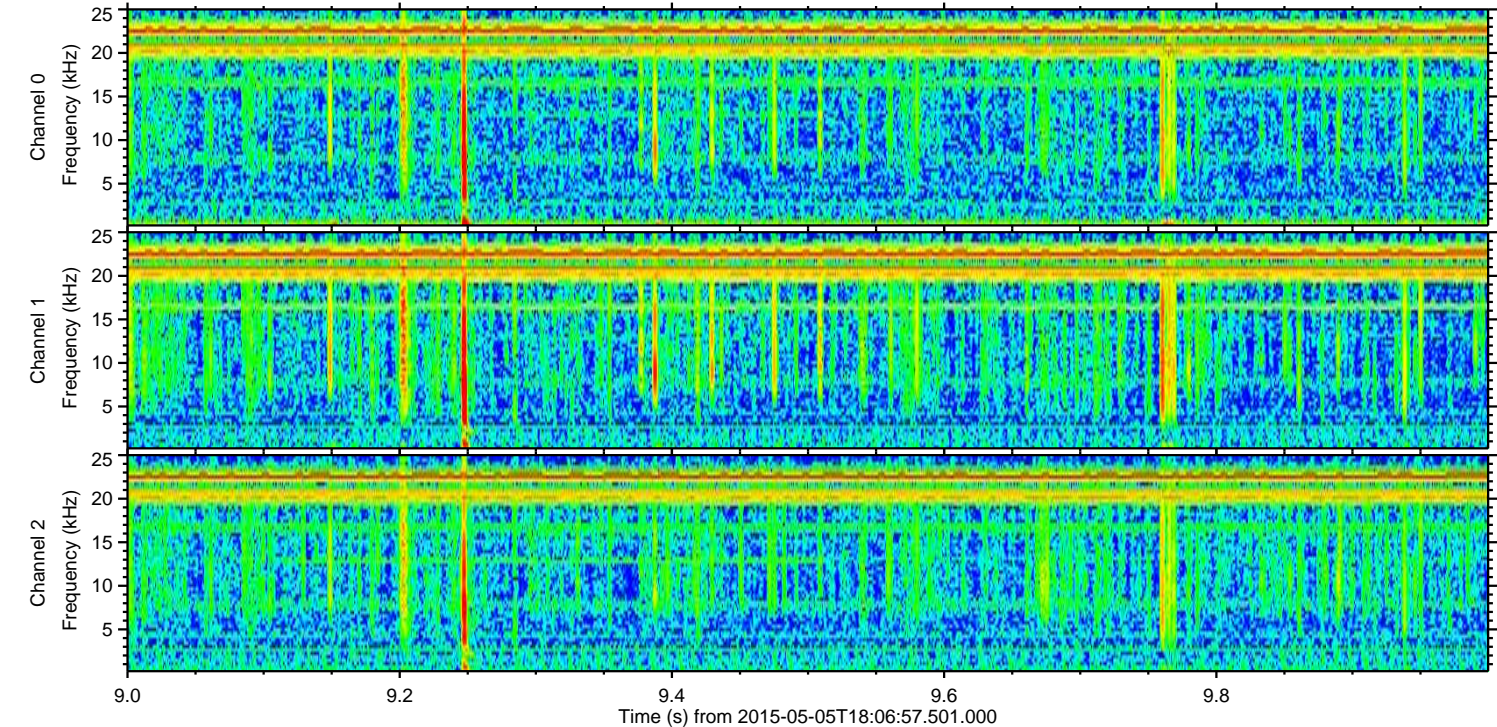
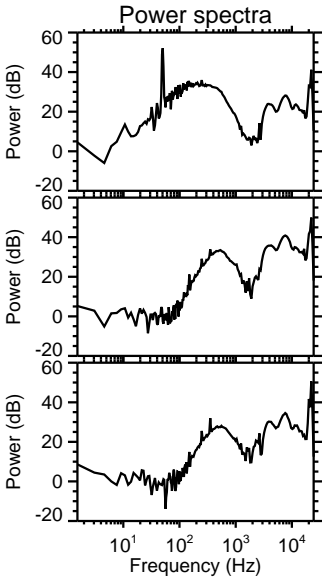
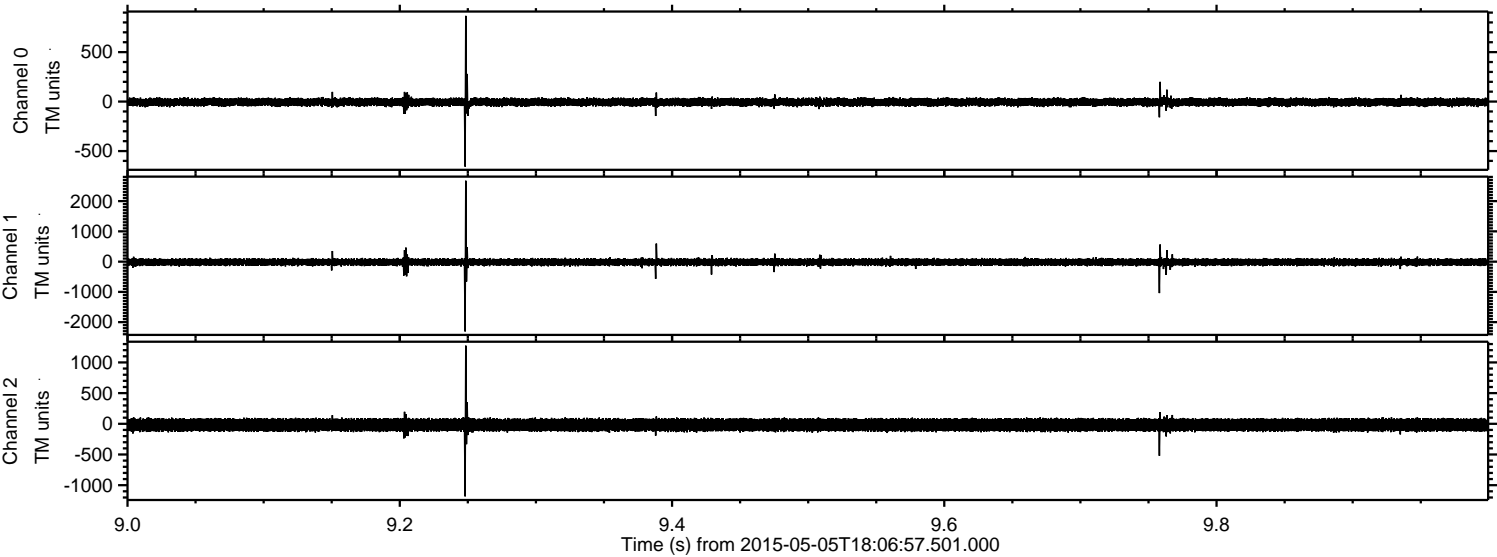


ELMAVAN 3D WAVEFORMS (Measured data sampled at 50 kHz) 49784 packets of 144 samples from 2015-05-05T18:06:57.501.000. Part 128/144

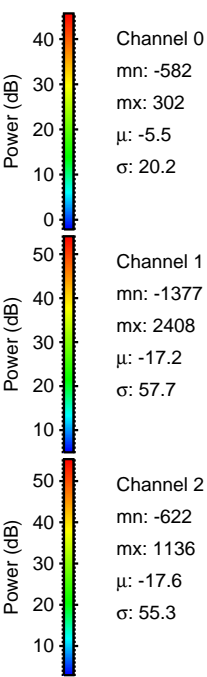
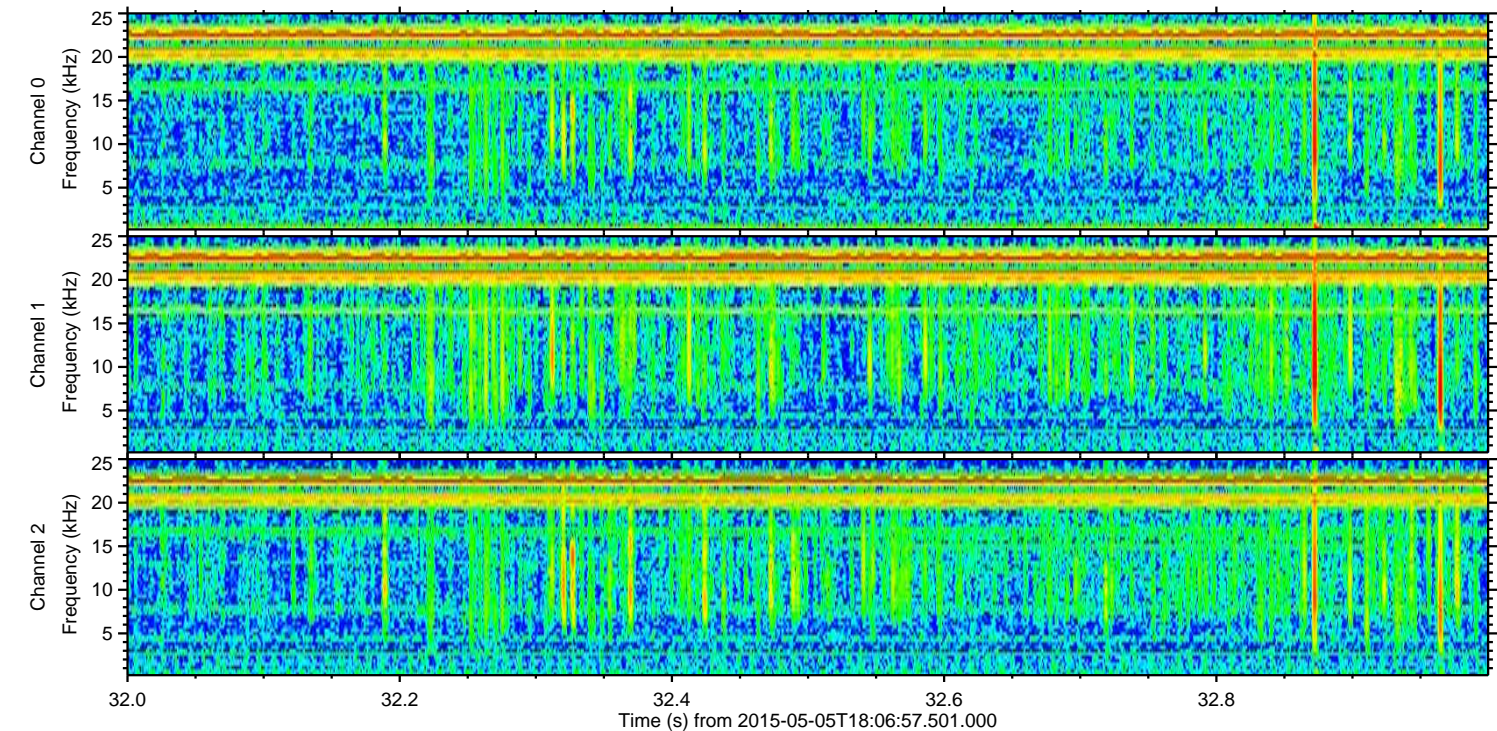
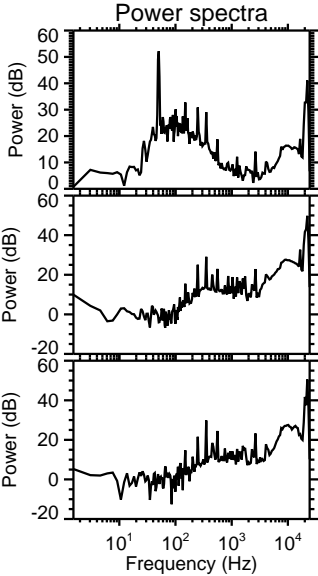
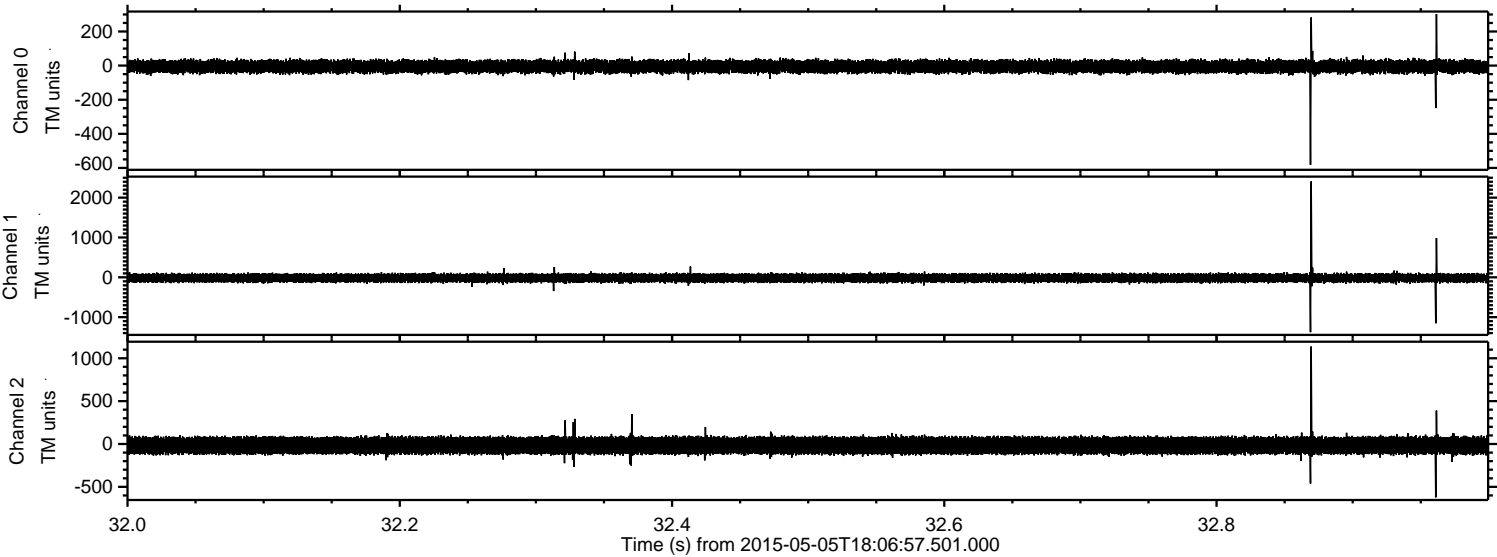
Processed Tue May 5 20:14:01 2015 by ELM ver.2012-10-06 from 001__elm20150505_180656__dat00.bin



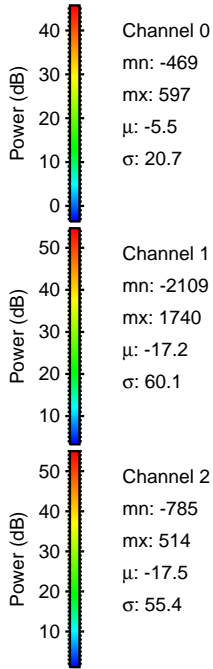
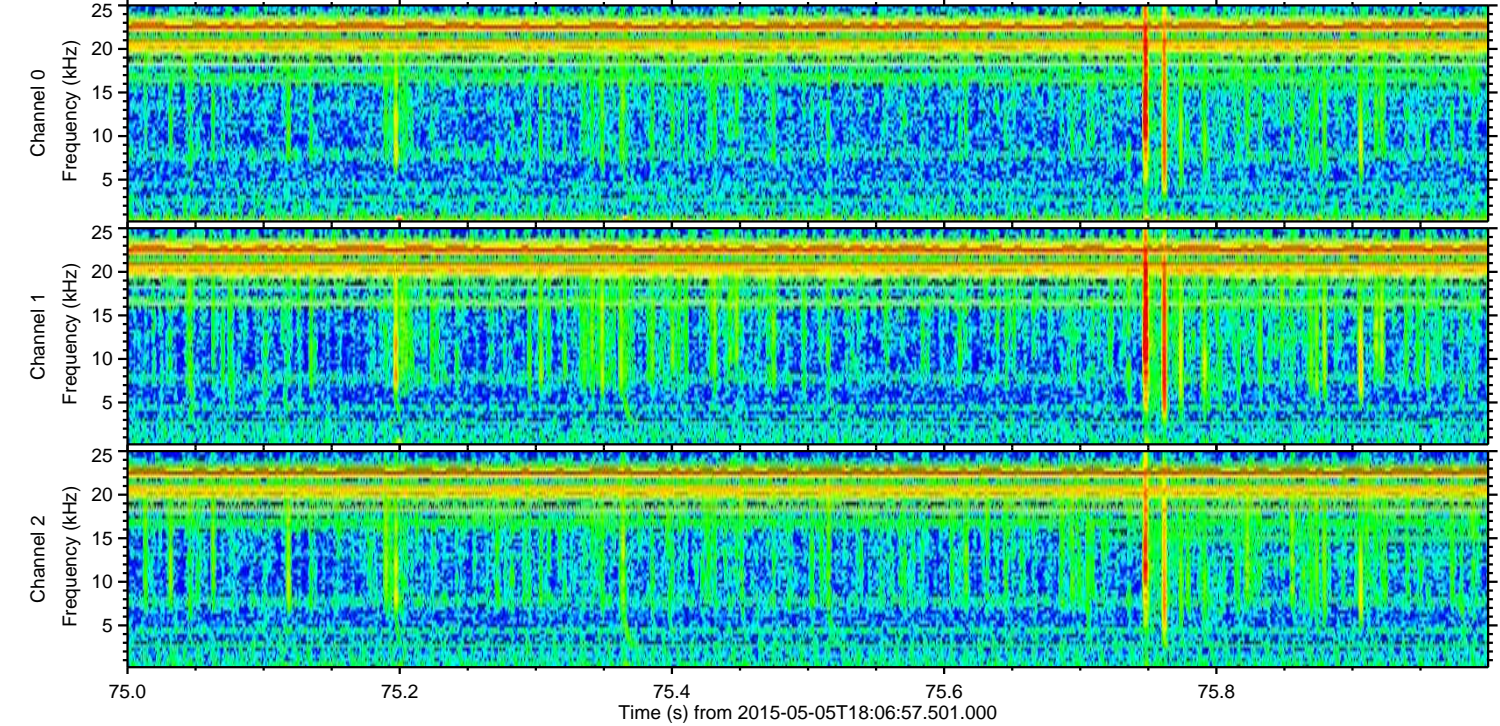
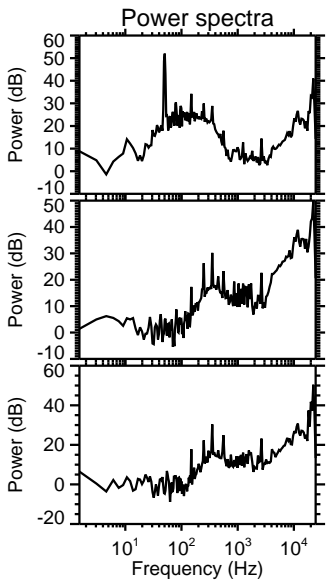
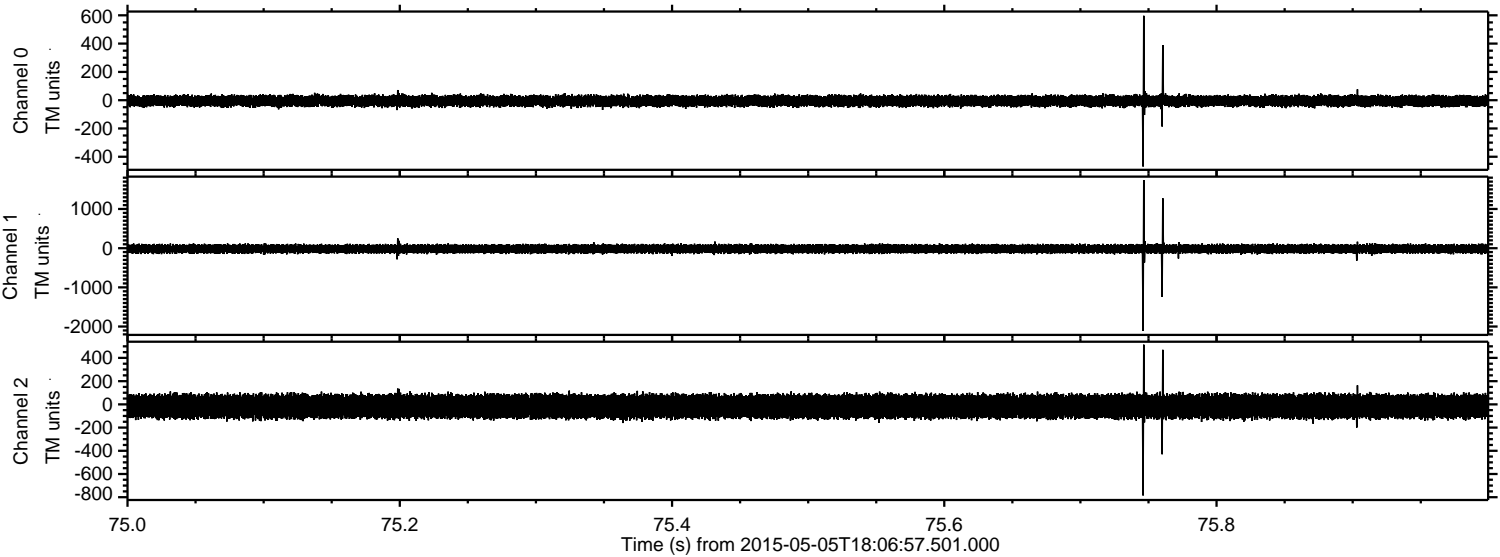
Processed Tue May 5 20:14:02 2015 by ELM ver.2012-10-06 from 001__elm20150505_180656__dat00.bin



Processed Tue May 5 20:14:03 2015 by ELM ver.2012-10-06 from 001__elm20150505_180656__dat00.bin



Processed Tue May 5 20:14:04 2015 by ELM ver.2012-10-06 from 001__elm20150505_180656__dat00.bin

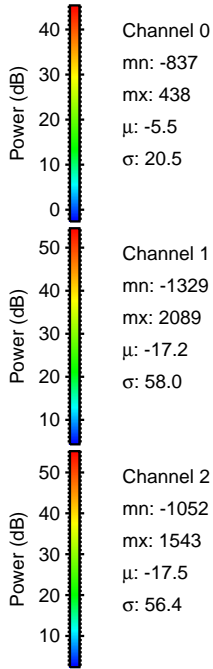
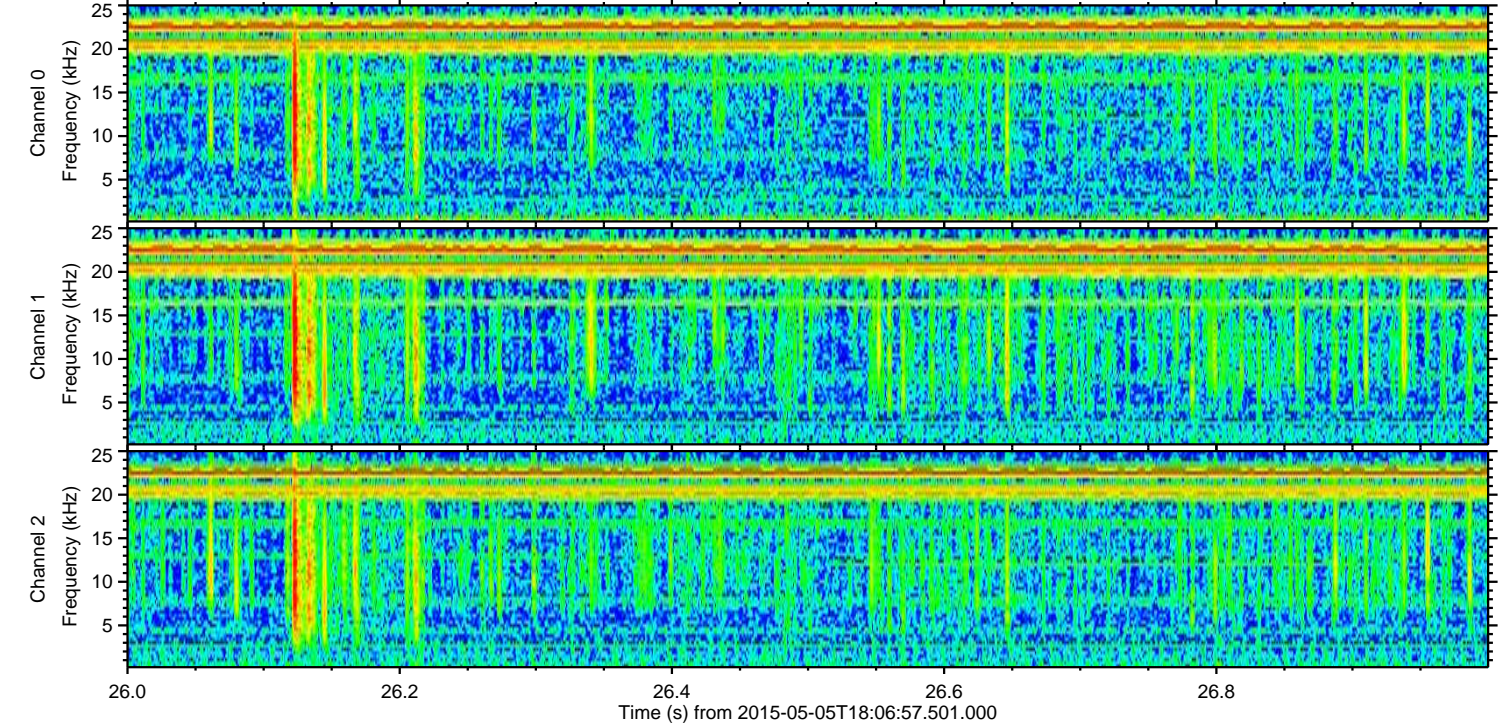
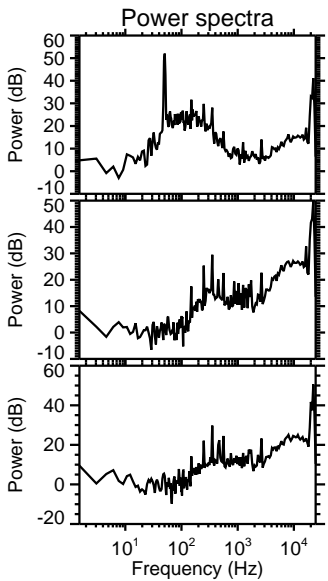
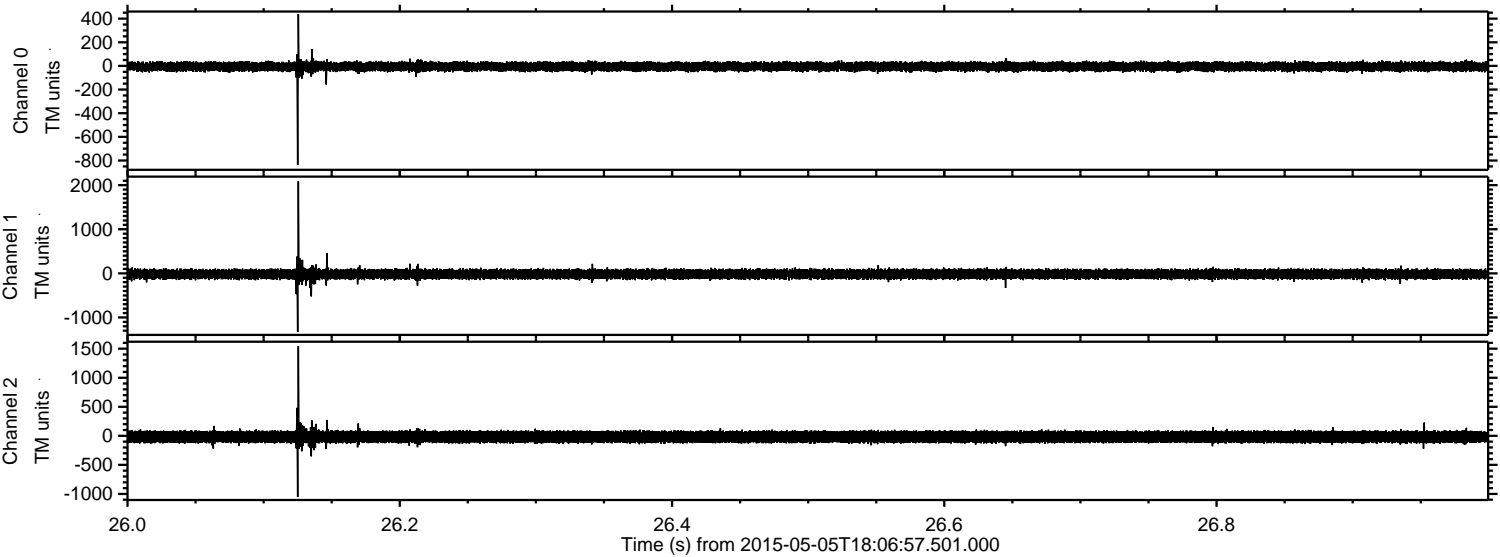


Channel 0
mn: -469
mx: 597
 μ : -5.5
 σ : 20.7

Channel 1
mn: -2109
mx: 1740
 μ : -17.2
 σ : 60.1

Channel 2
mn: -785
mx: 514
 μ : -17.5
 σ : 55.4

Processed Tue May 5 20:14:05 2015 by ELM ver.2012-10-06 from 001__elm20150505_180656__dat00.bin



Channel 0
mn: -837
mx: 438
 μ : -5.5
 σ : 20.5

Channel 1
mn: -1329
mx: 2089
 μ : -17.2
 σ : 58.0

Channel 2
mn: -1052
mx: 1543
 μ : -17.5
 σ : 56.4

Processed Tue May 5 20:14:06 2015 by ELM ver.2012-10-06 from 001__elm20150505_180656__dat00.bin

