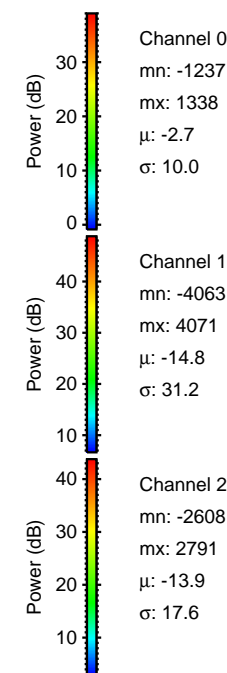
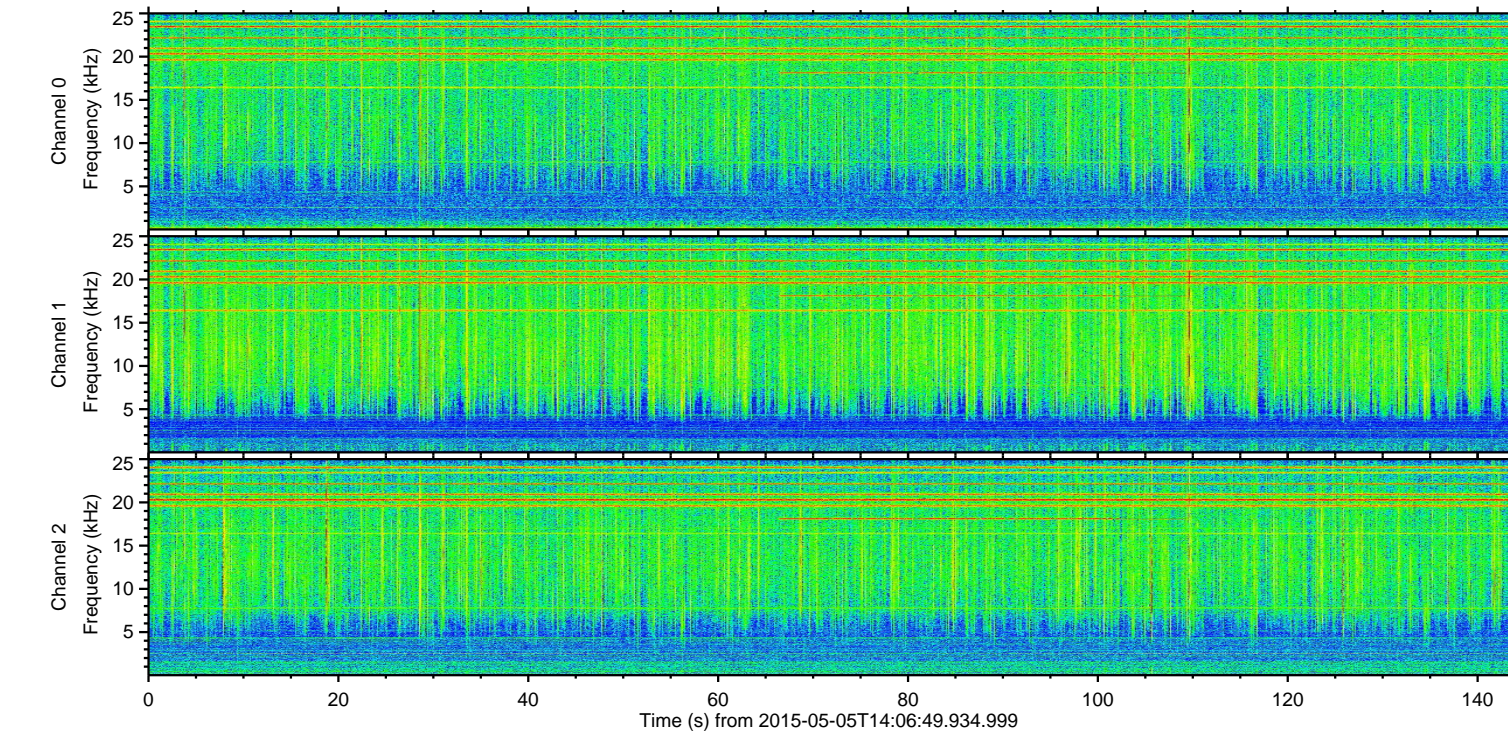
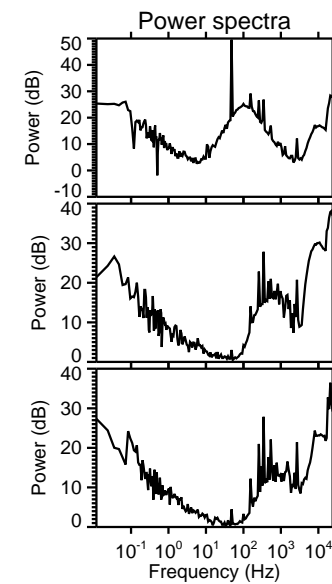
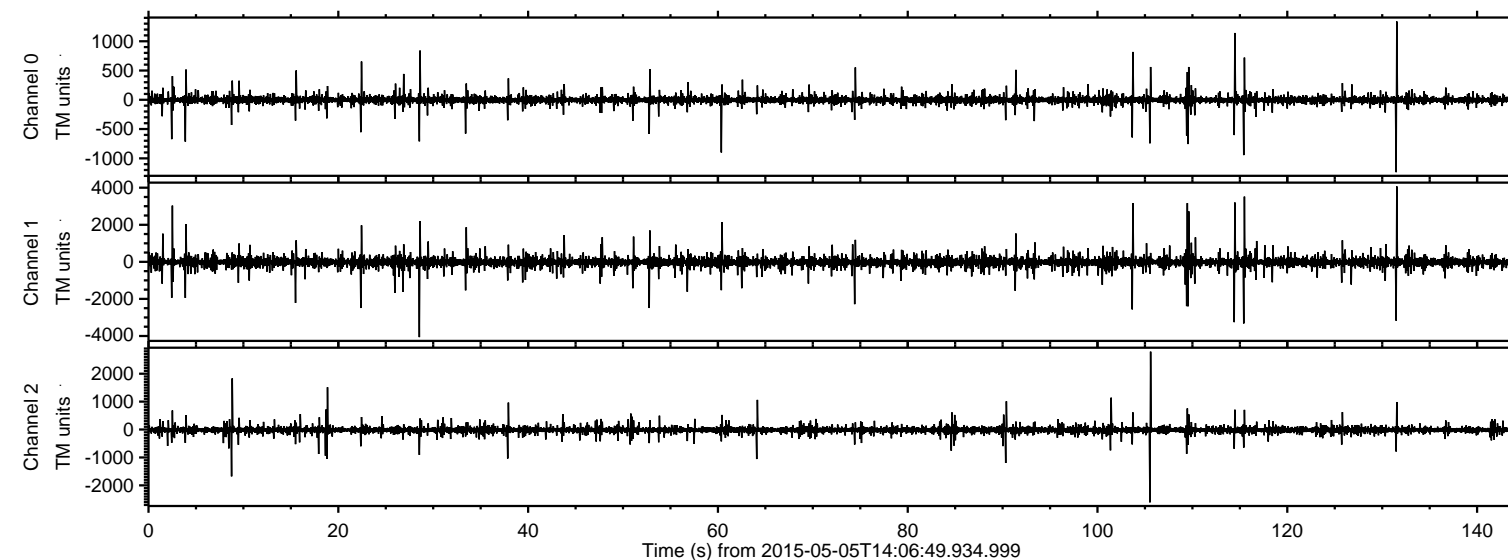


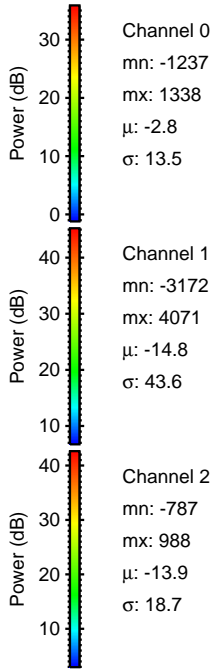
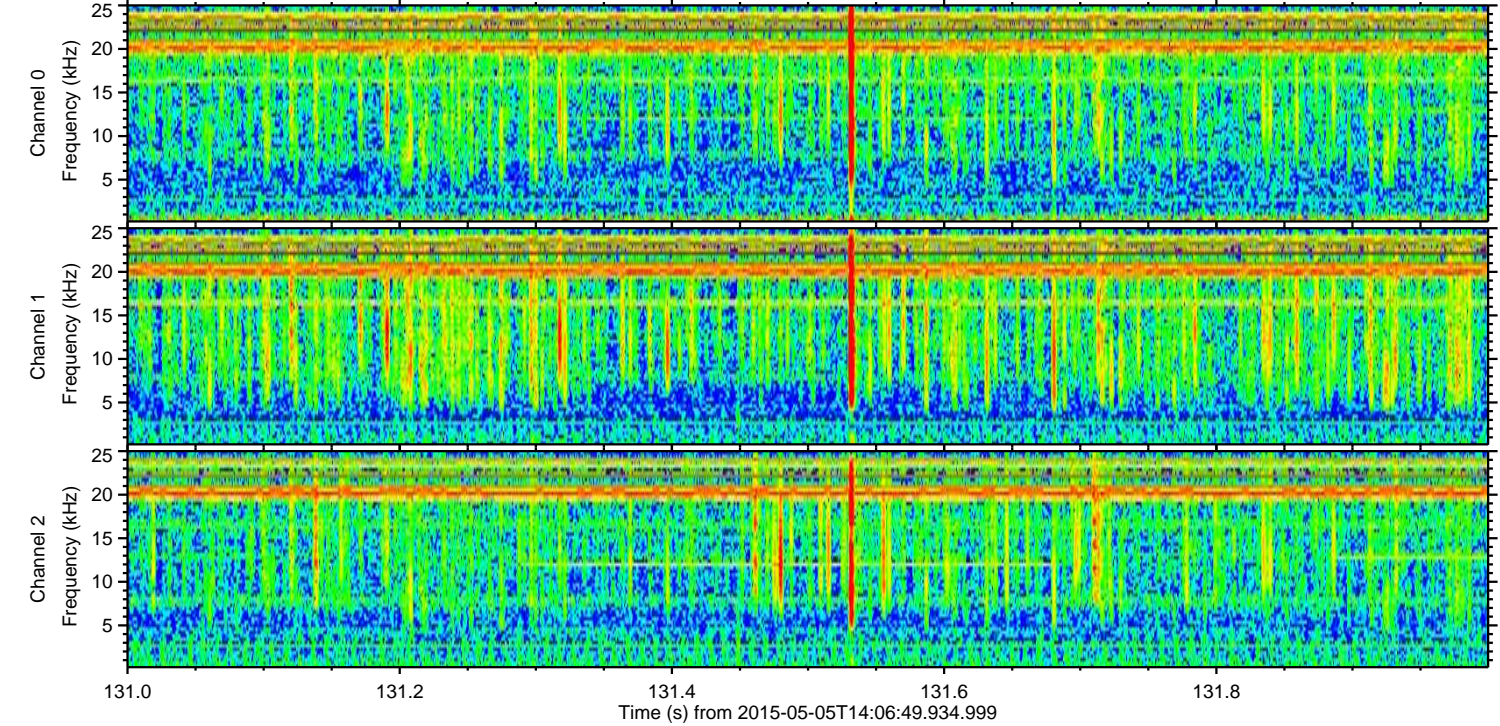
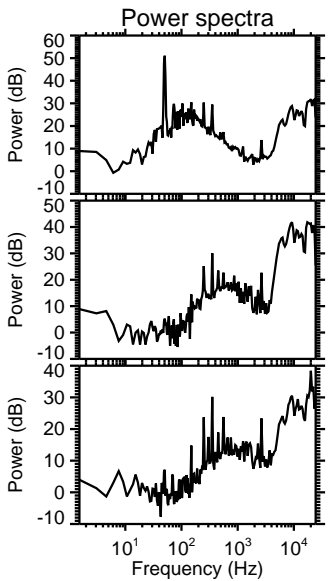
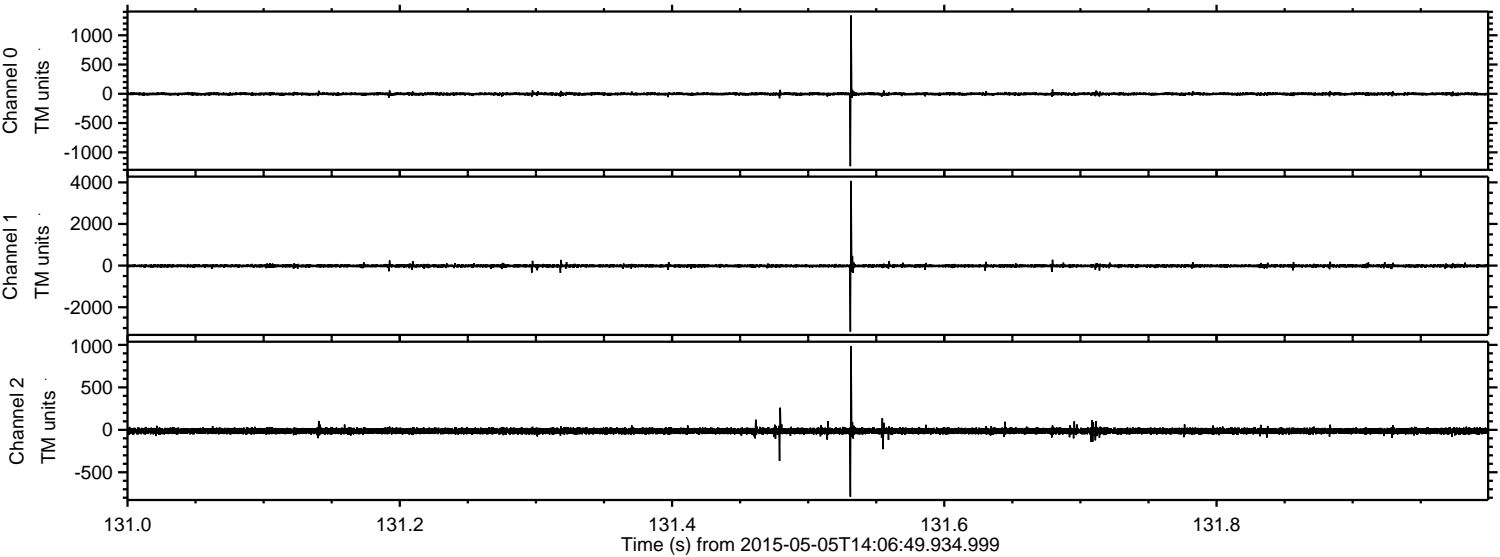
ELMAVAN 3D WAVEFORMS (Measured data sampled at 50 kHz) 49783 packets of 144 samples from 2015-05-05T14:06:49.934.999.

Processed Tue May 5 16:14:01 2015 by ELM ver.2012-10-06 from 001__elm20150505_140648__dat00.bin

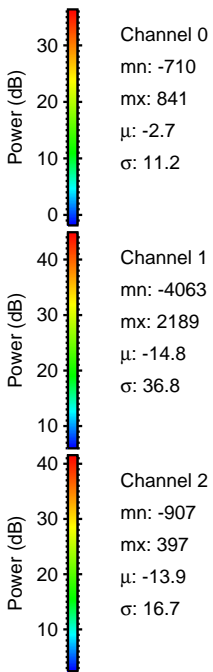
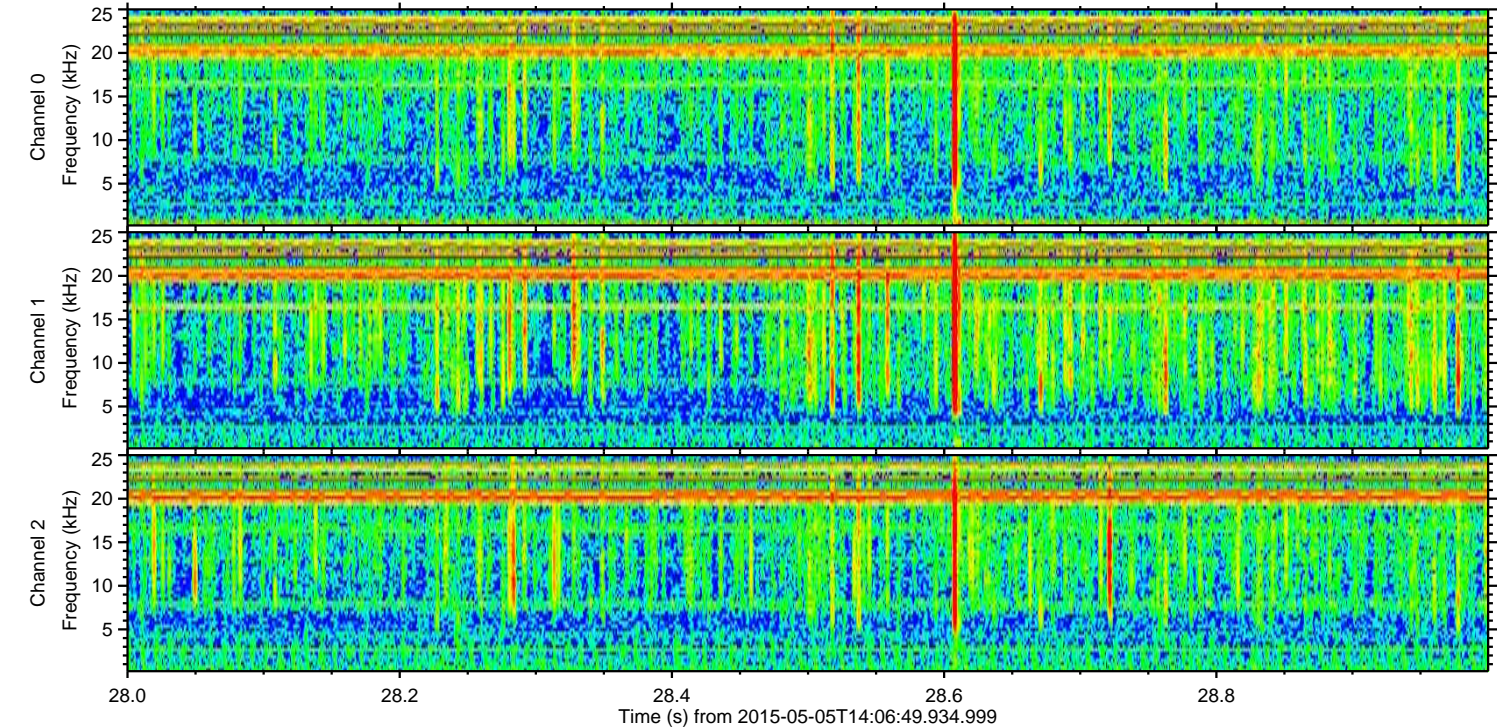
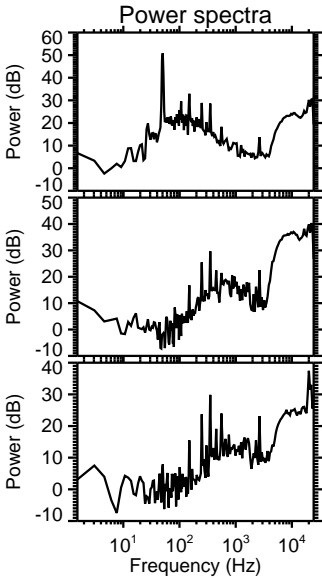
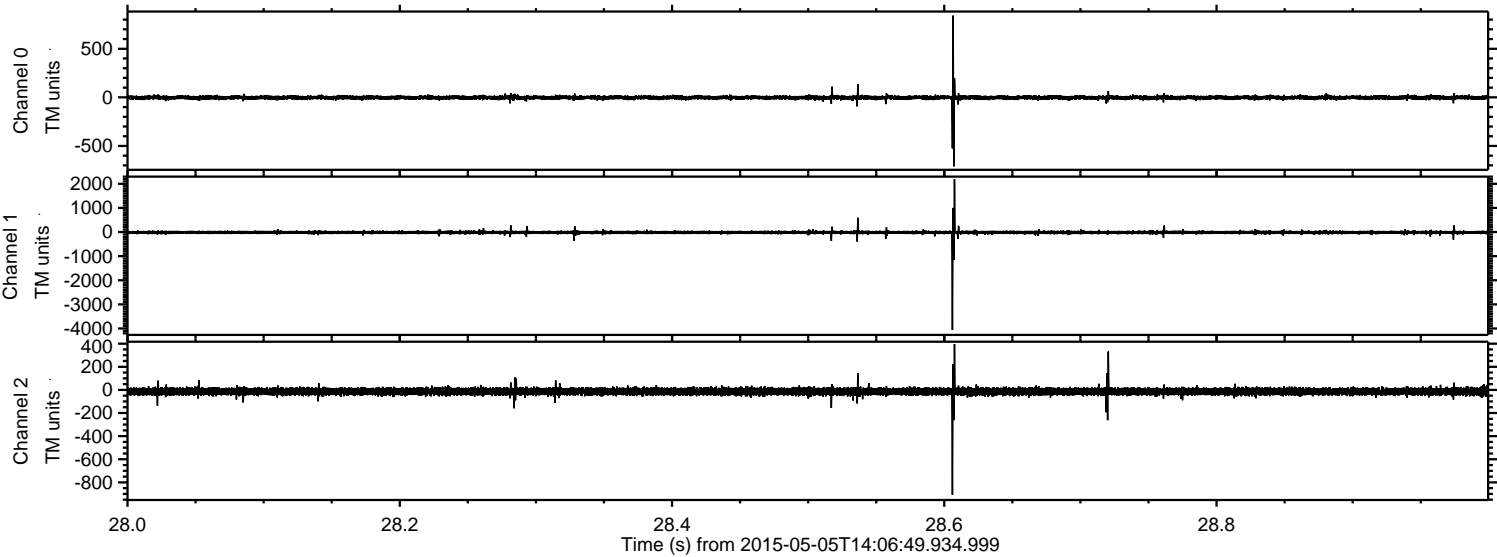


ELMAVAN 3D WAVEFORMS (Measured data sampled at 50 kHz) 49783 packets of 144 samples from 2015-05-05T14:06:49.934.999. Part 132/144

Processed Tue May 5 16:14:12 2015 by ELM ver.2012-10-06 from 001__elm20150505_140648__dat00.bin

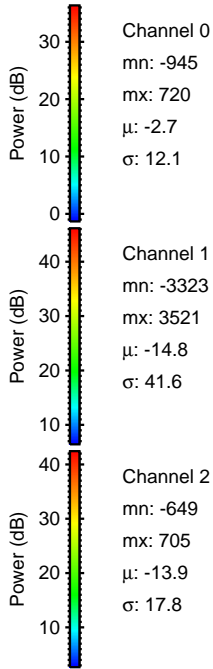
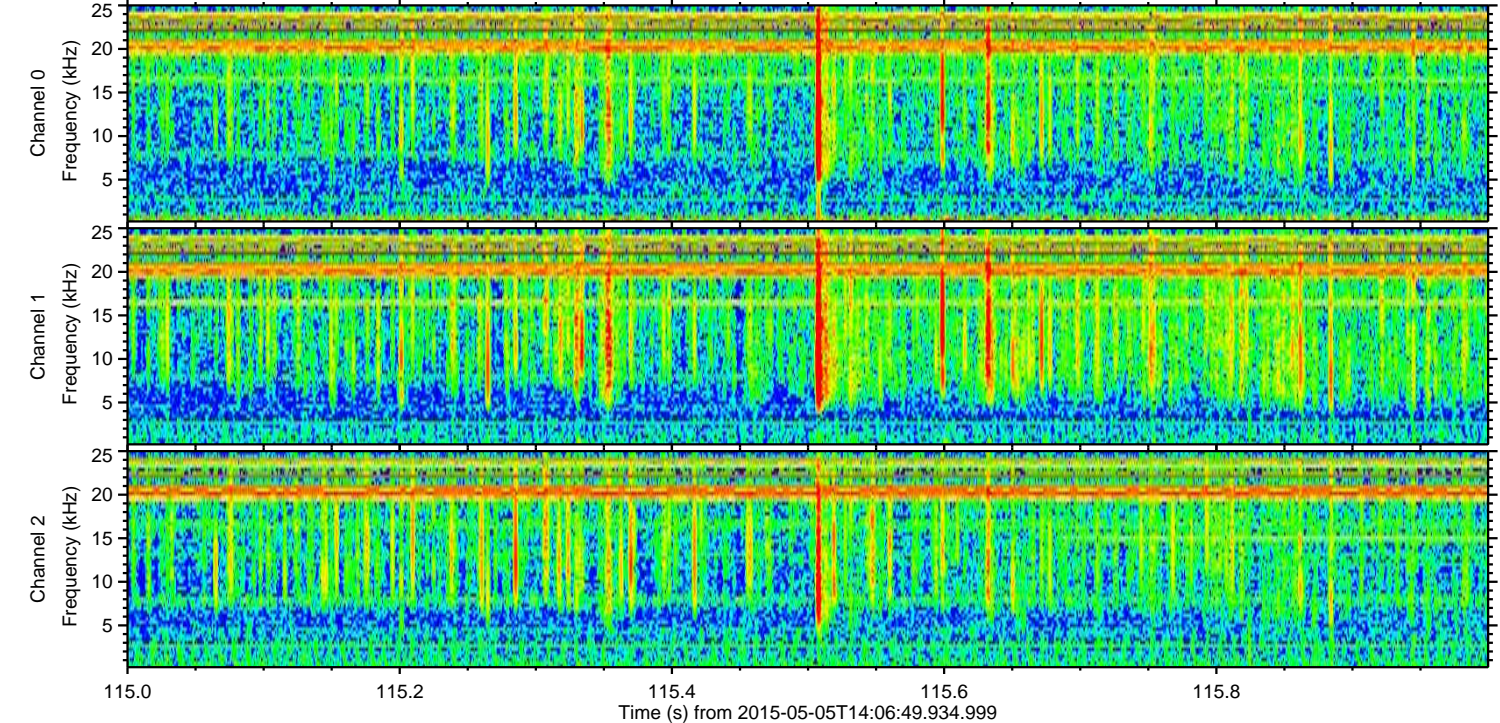
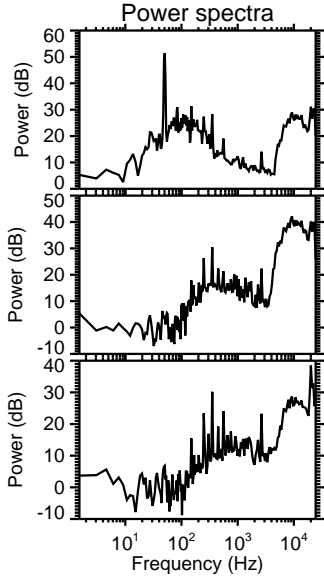
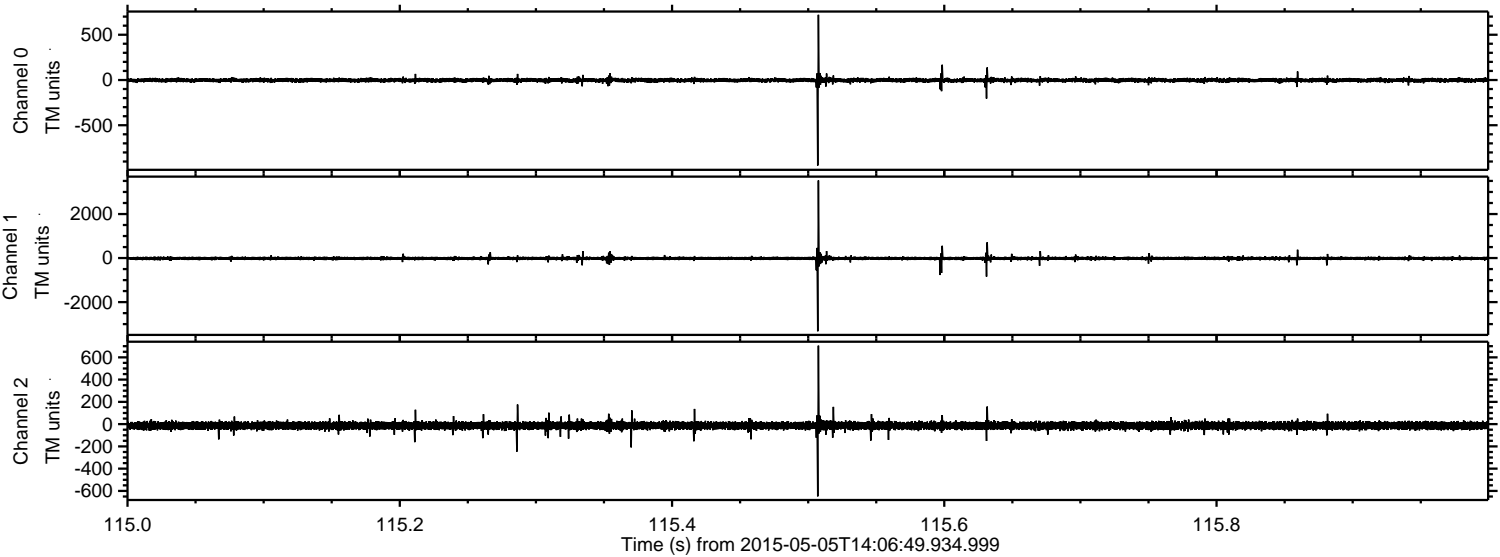


Processed Tue May 5 16:14:13 2015 by ELM ver.2012-10-06 from 001__elm20150505_140648__dat00.bin



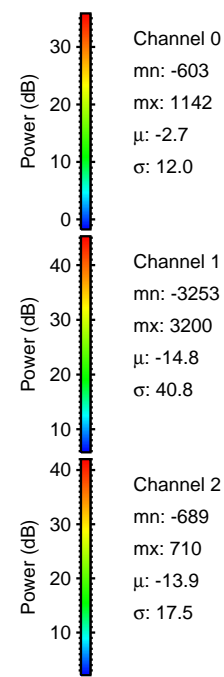
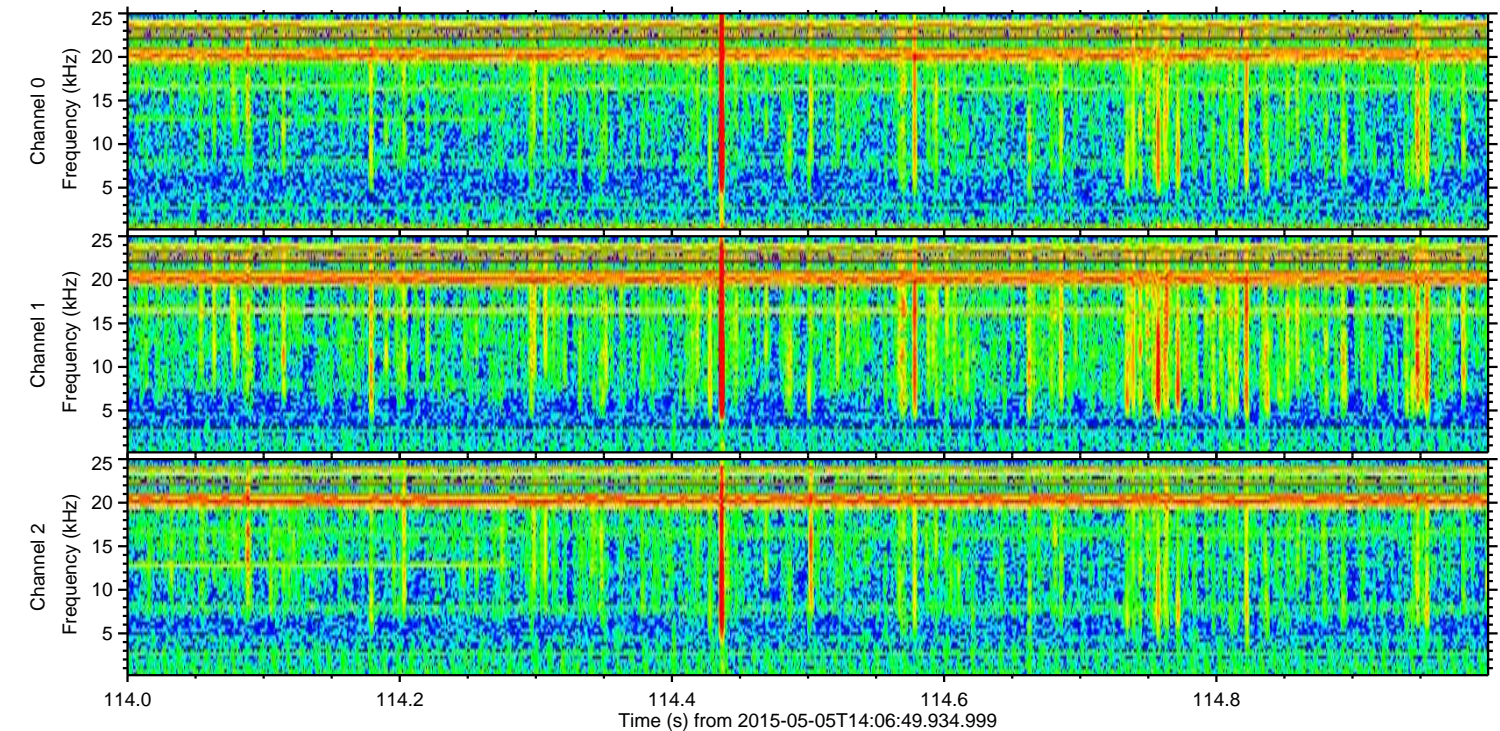
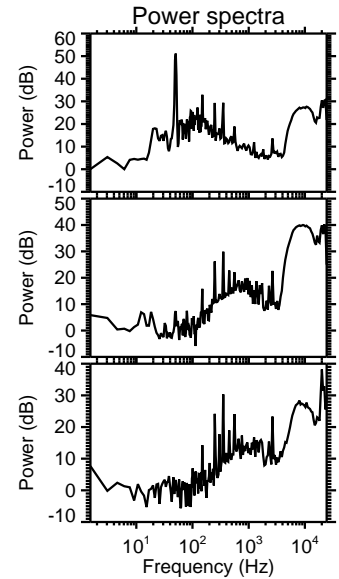
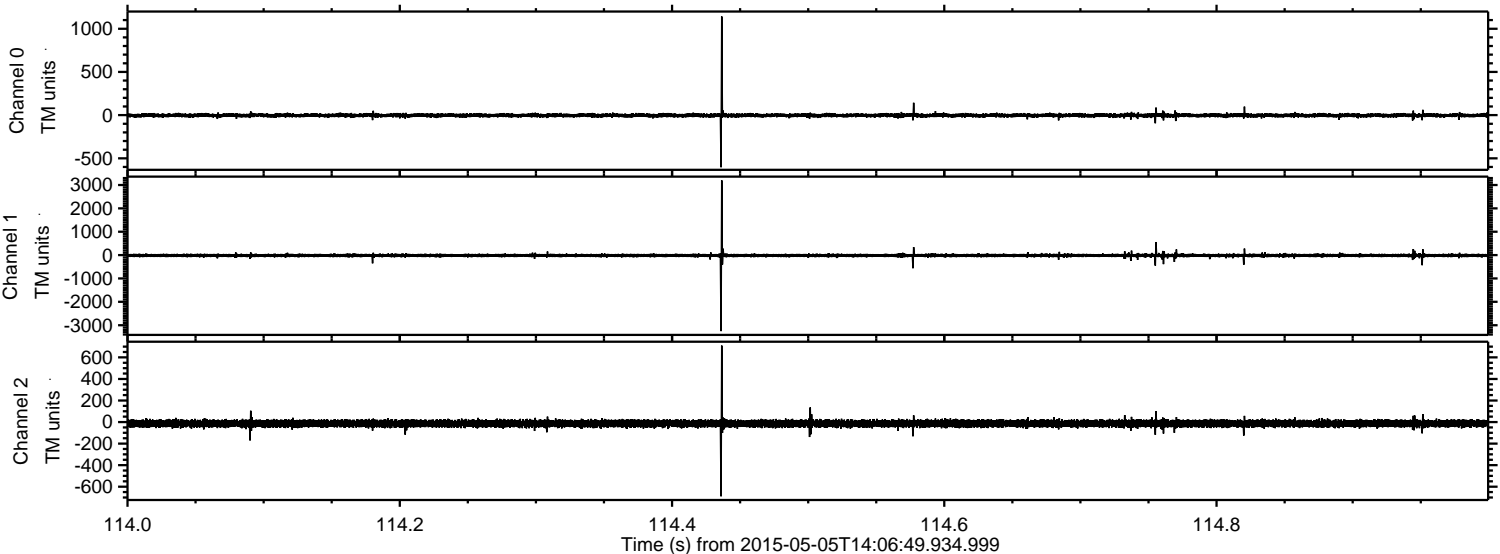
ELMAVAN 3D WAVEFORMS (Measured data sampled at 50 kHz) 49783 packets of 144 samples from 2015-05-05T14:06:49.934.999. Part 116/144

Processed Tue May 5 16:14:14 2015 by ELM ver.2012-10-06 from 001__elm20150505_140648__dat00.bin



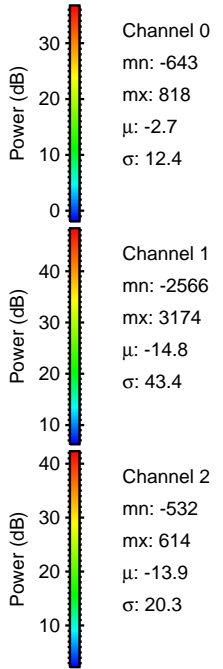
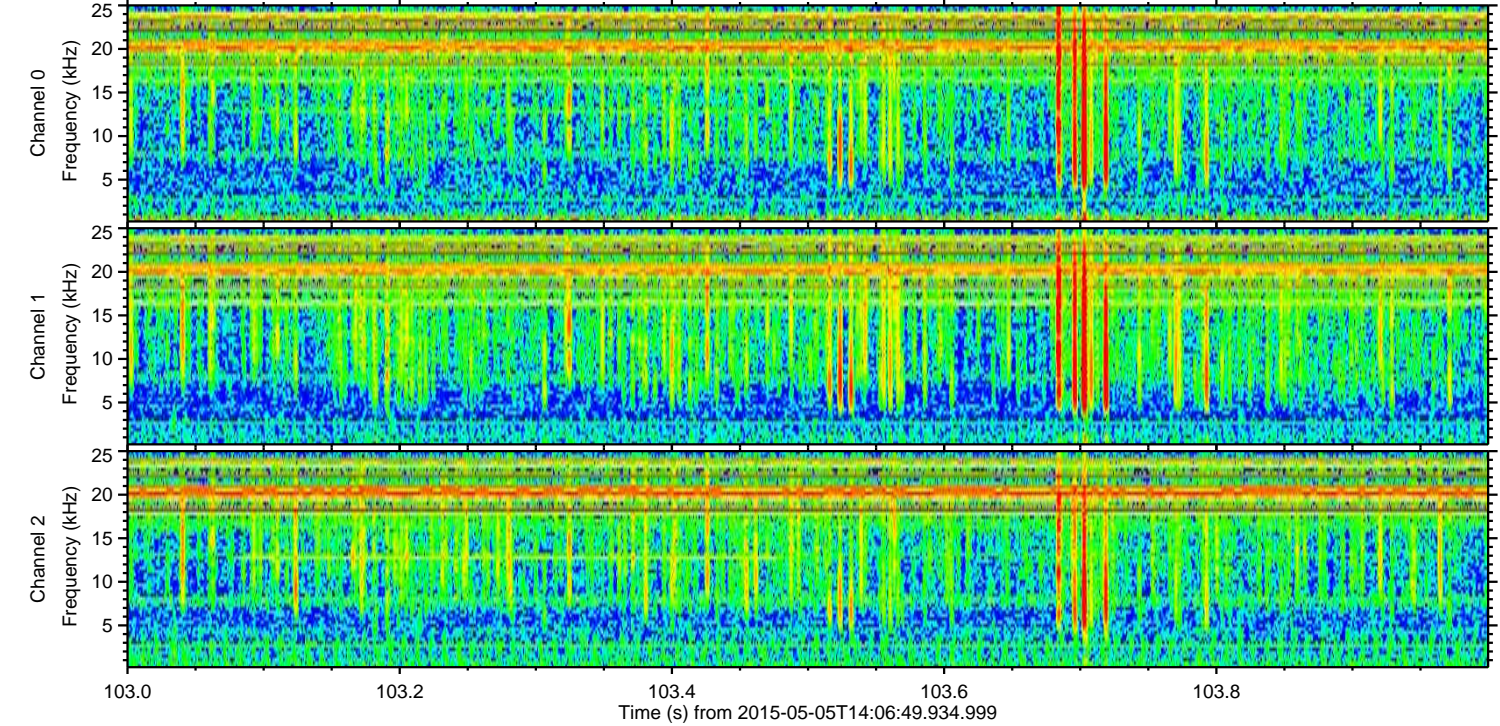
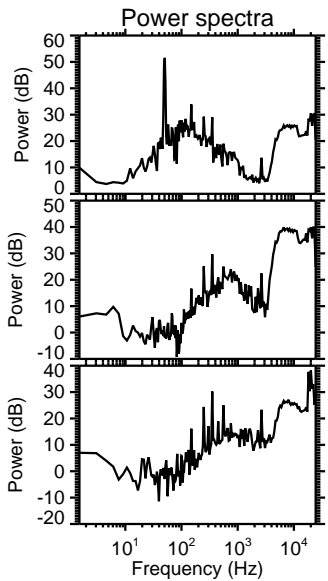
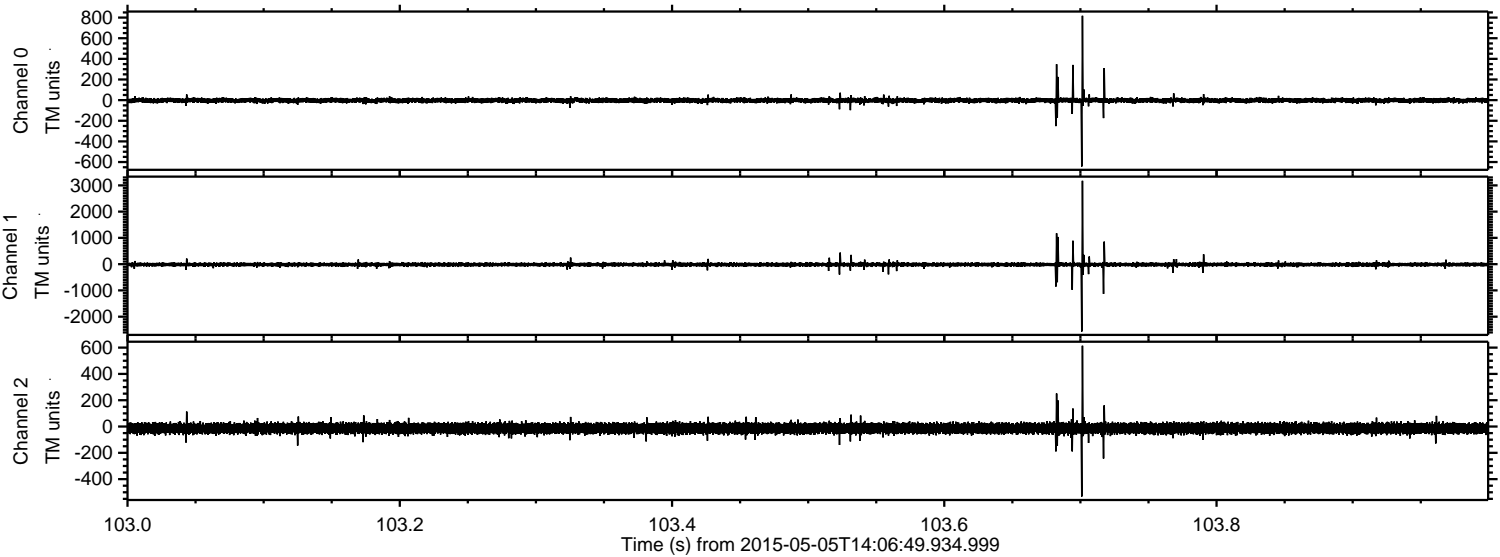
ELMAVAN 3D WAVEFORMS (Measured data sampled at 50 kHz) 49783 packets of 144 samples from 2015-05-05T14:06:49.934.999. Part 115/144

Processed Tue May 5 16:14:15 2015 by ELM ver.2012-10-06 from 001__elm20150505_140648__dat00.bin



ELMAVAN 3D WAVEFORMS (Measured data sampled at 50 kHz) 49783 packets of 144 samples from 2015-05-05T14:06:49.934.999. Part 104/144

Processed Tue May 5 16:14:16 2015 by ELM ver.2012-10-06 from 001__elm20150505_140648__dat00.bin



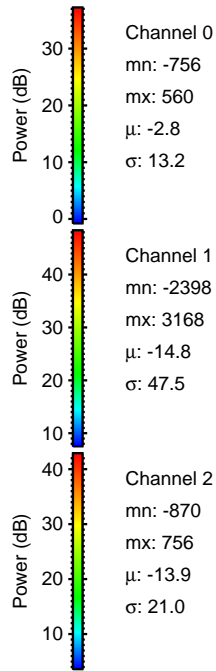
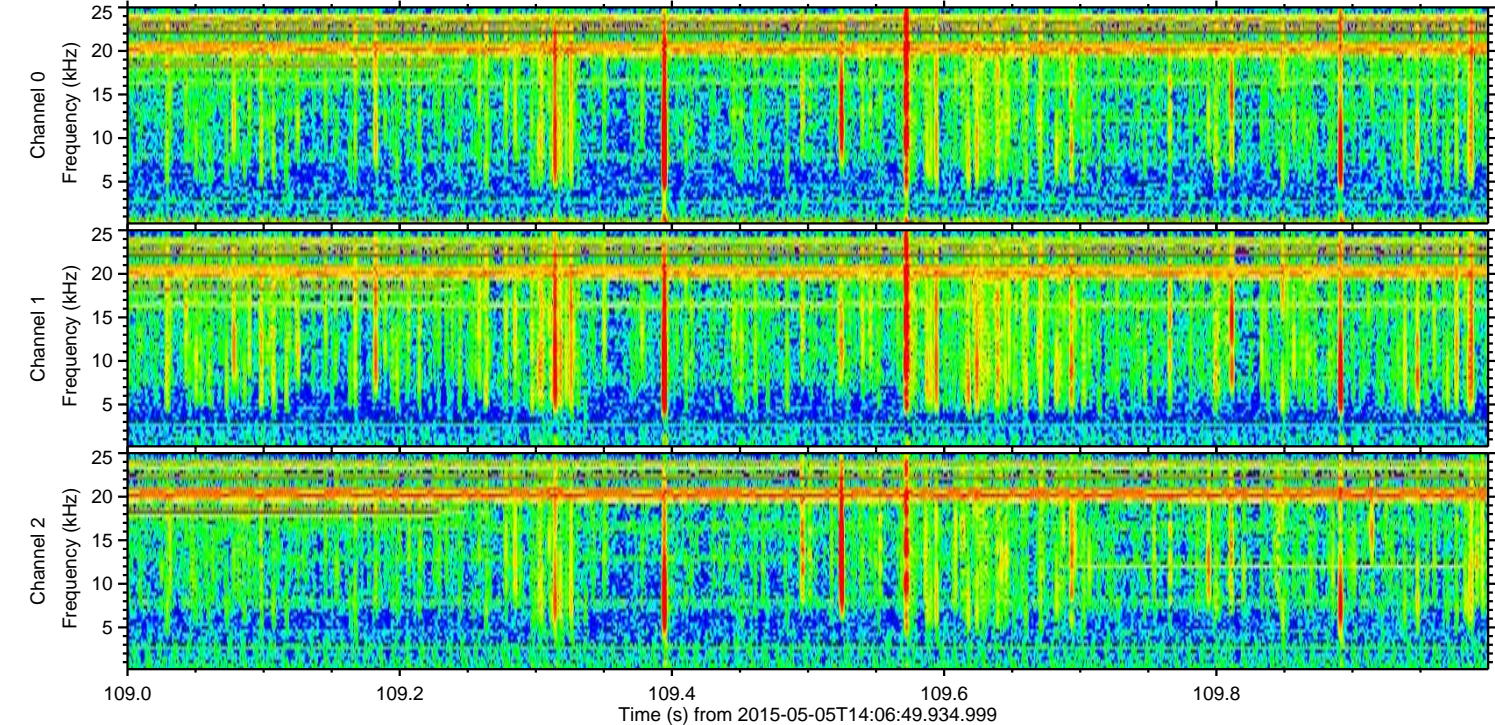
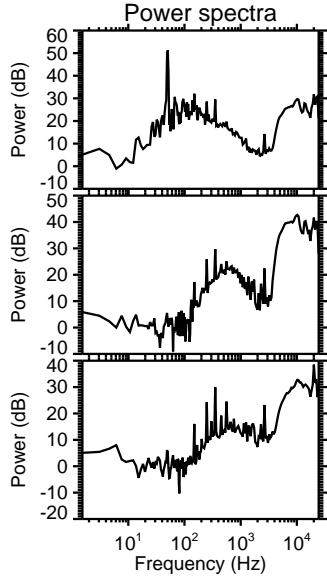
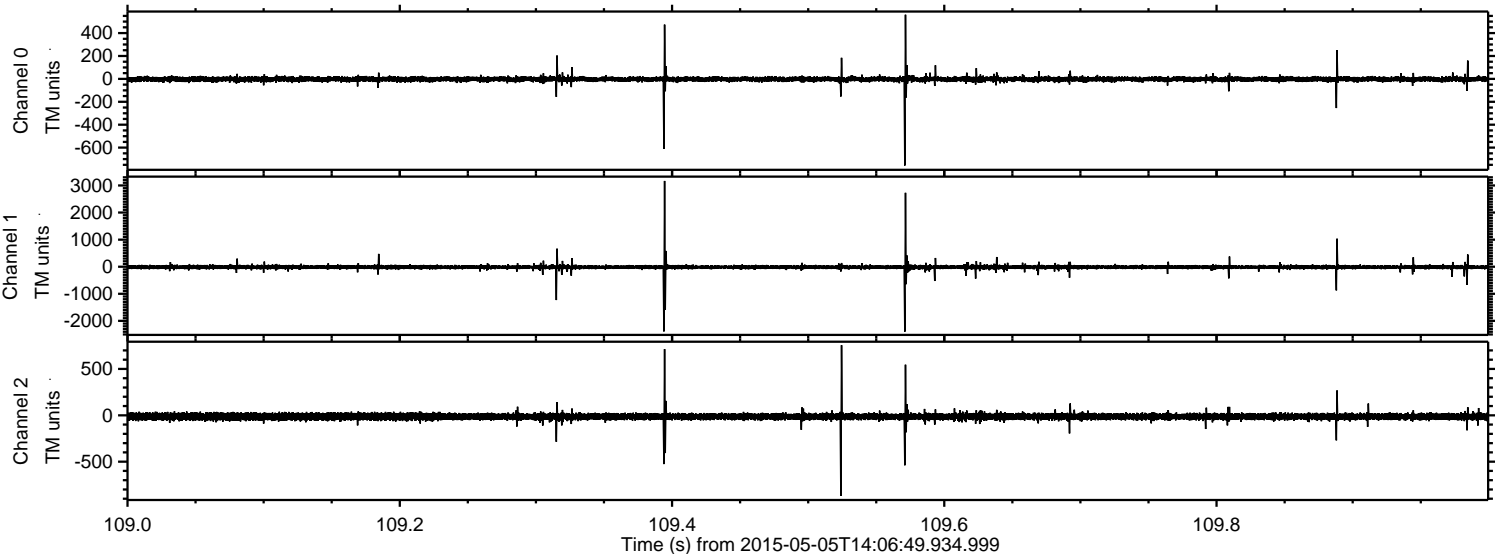
Channel 0
mn: -643
mx: 818
 μ : -2.7
 σ : 12.4

Channel 1
mn: -2566
mx: 3174
 μ : -14.8
 σ : 43.4

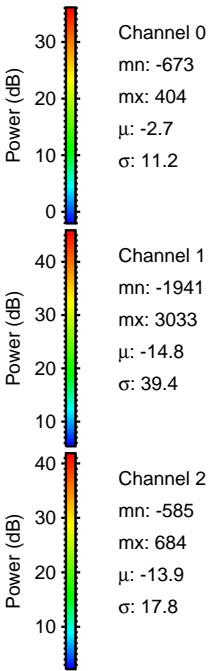
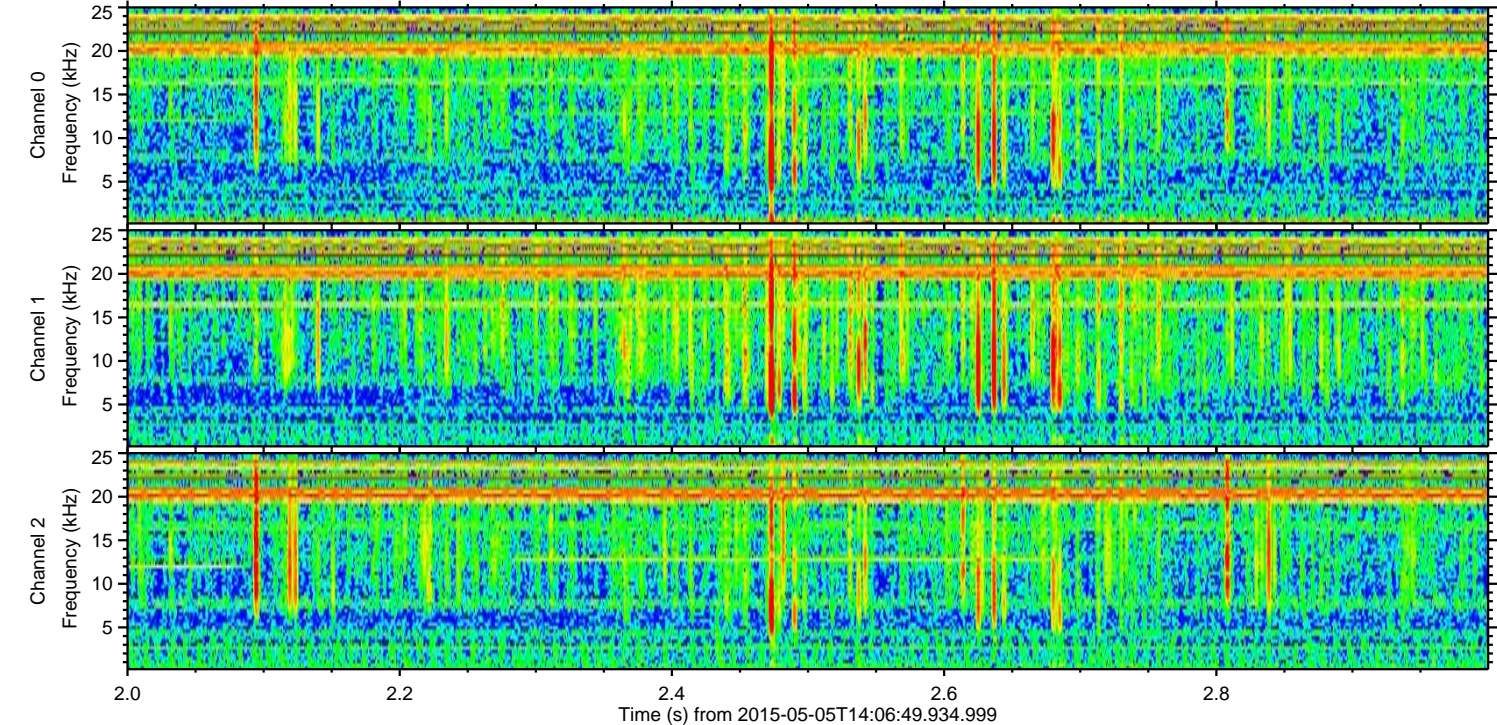
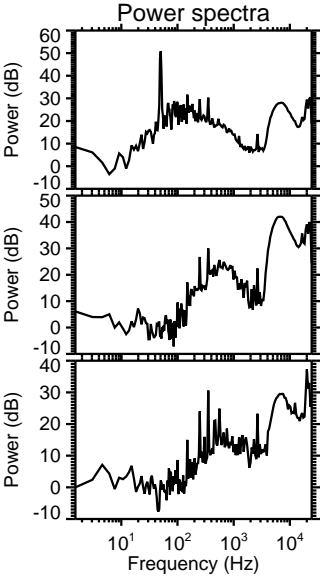
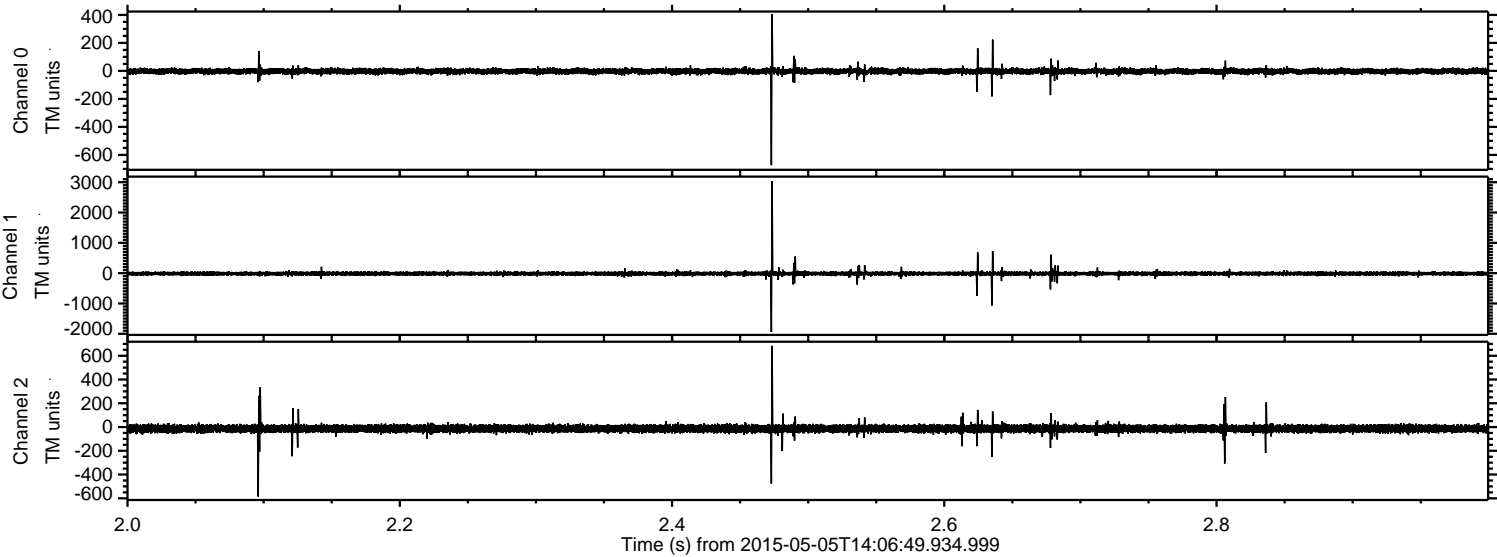
Channel 2
mn: -532
mx: 614
 μ : -13.9
 σ : 20.3

ELMAVAN 3D WAVEFORMS (Measured data sampled at 50 kHz) 49783 packets of 144 samples from 2015-05-05T14:06:49.934.999. Part 110/144

Processed Tue May 5 16:14:17 2015 by ELM ver.2012-10-06 from 001__elm20150505_140648__dat00.bin

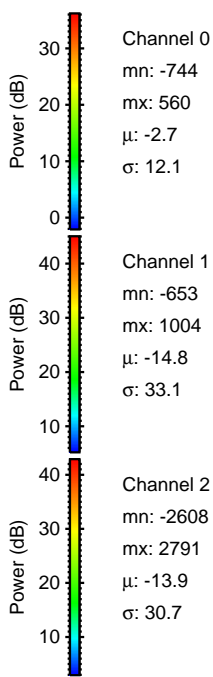
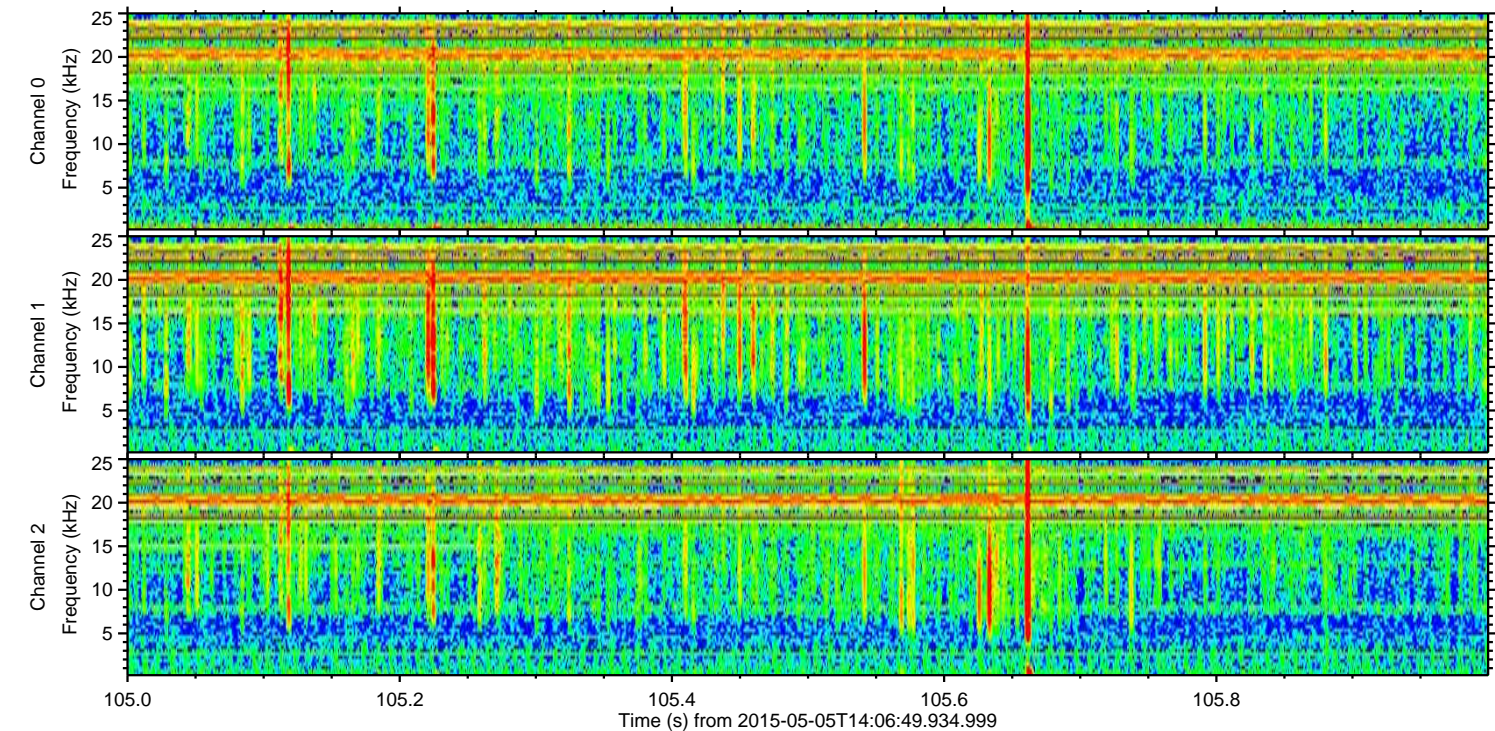
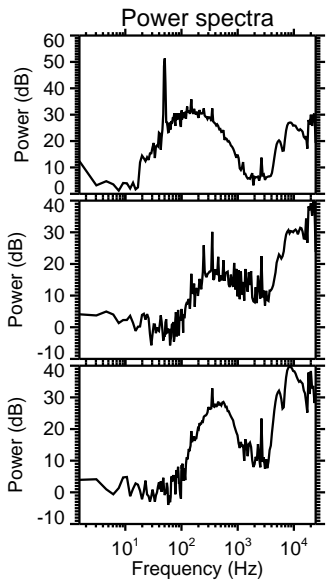
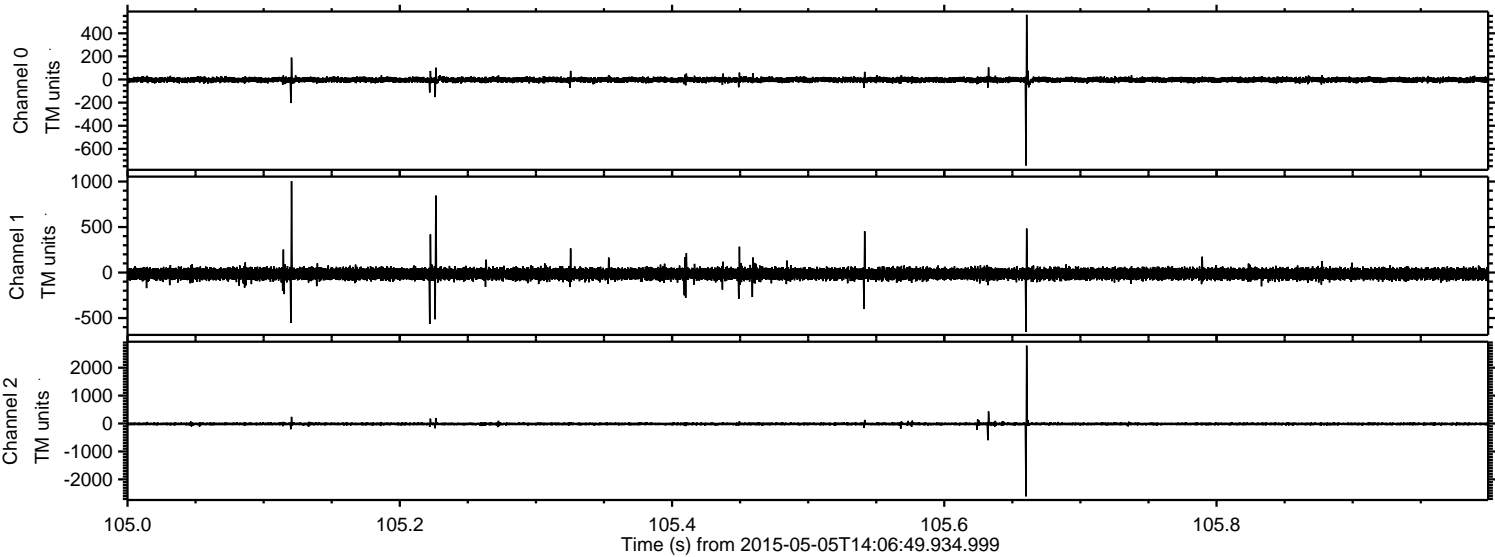


Processed Tue May 5 16:14:18 2015 by ELM ver.2012-10-06 from 001__elm20150505_140648__dat00.bin



ELMAVAN 3D WAVEFORMS (Measured data sampled at 50 kHz) 49783 packets of 144 samples from 2015-05-05T14:06:49.934.999. Part 106/144

Processed Tue May 5 16:14:19 2015 by ELM ver.2012-10-06 from 001__elm20150505_140648__dat00.bin



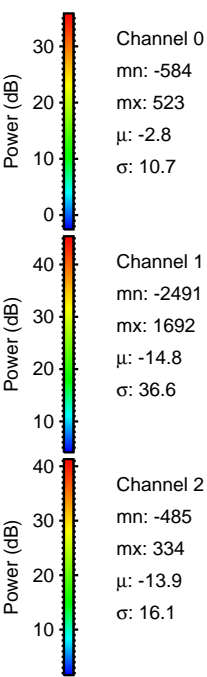
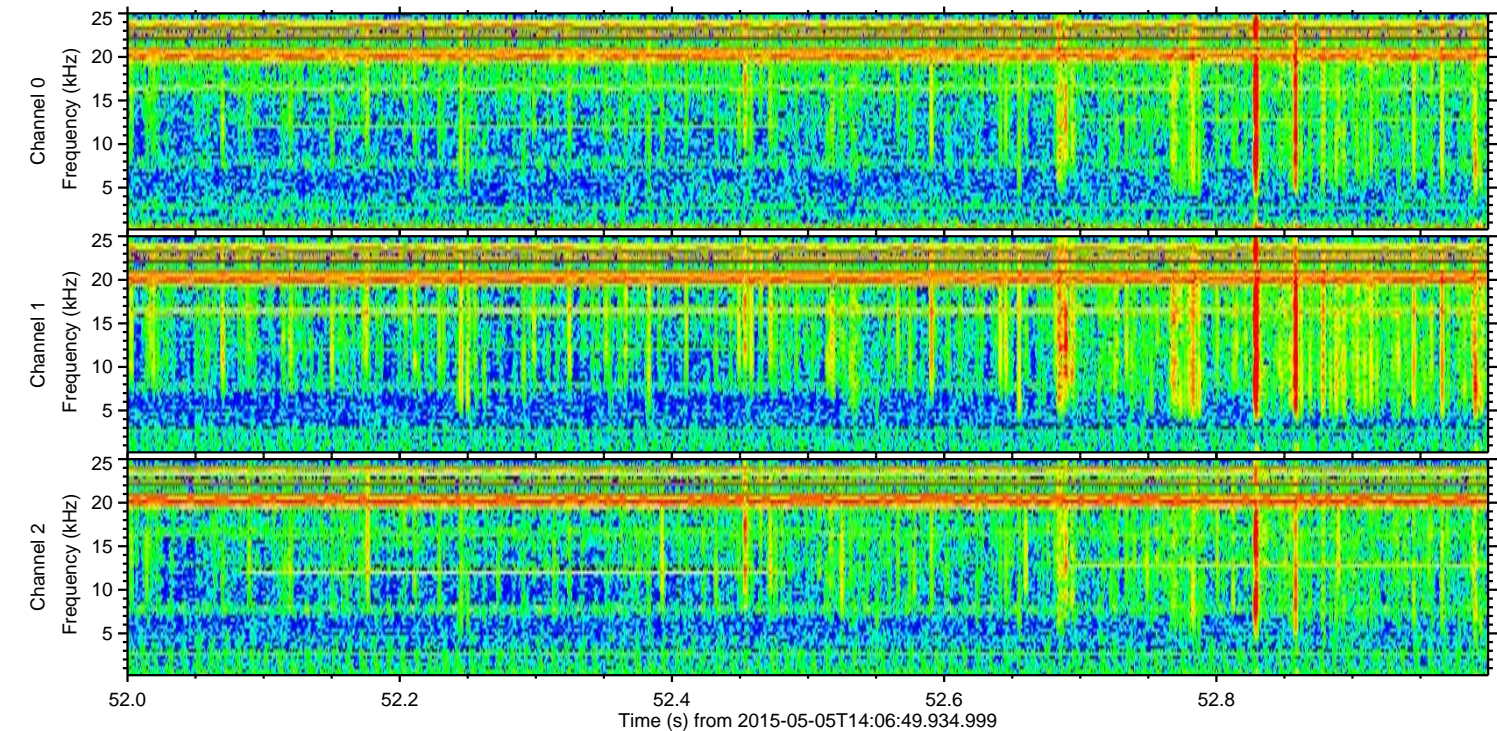
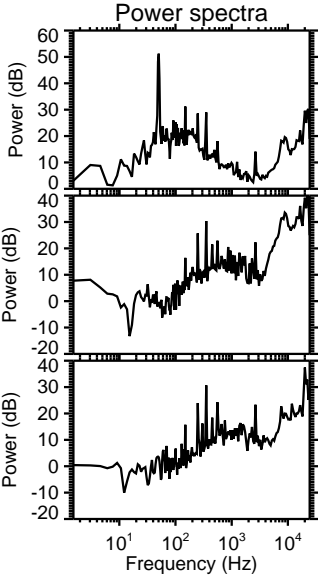
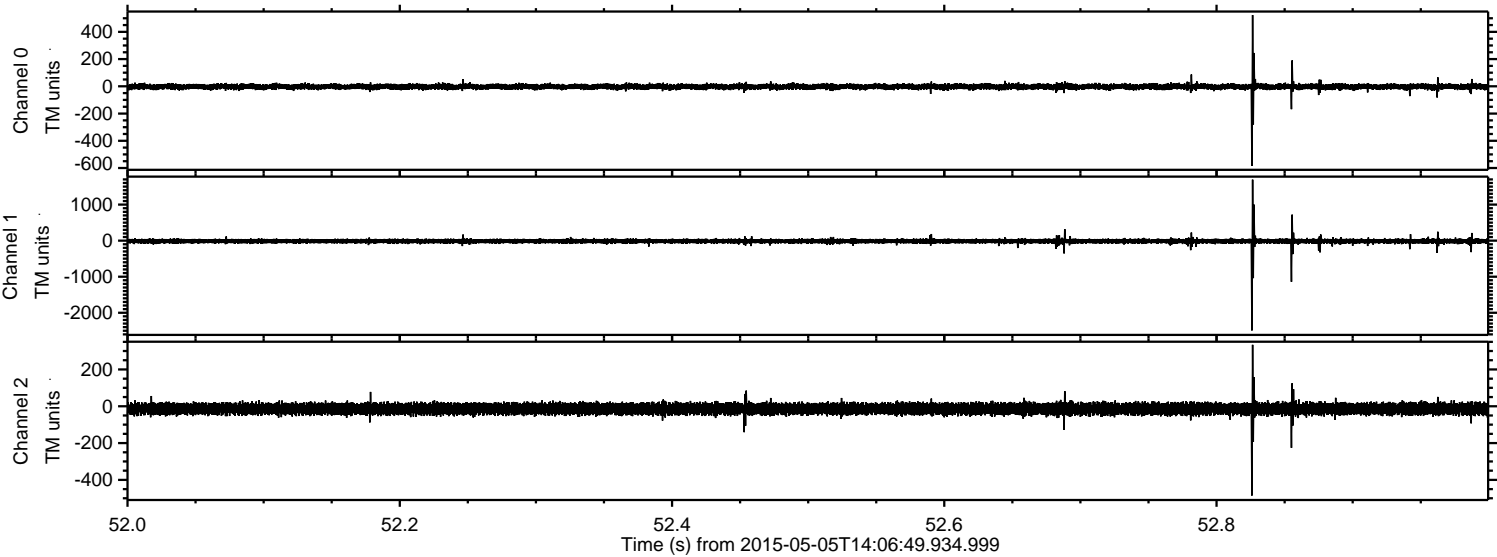
Channel 0
mn: -744
mx: 560
 μ : -2.7
 σ : 12.1

Channel 1
mn: -653
mx: 1004
 μ : -14.8
 σ : 33.1

Channel 2
mn: -2608
mx: 2791
 μ : -13.9
 σ : 30.7

ELMAVAN 3D WAVEFORMS (Measured data sampled at 50 kHz) 49783 packets of 144 samples from 2015-05-05T14:06:49.934.999. Part 53/144

Processed Tue May 5 16:14:20 2015 by ELM ver.2012-10-06 from 001__elm20150505_140648__dat00.bin



Processed Tue May 5 16:14:21 2015 by ELM ver.2012-10-06 from 001__elm20150505_140648__dat00.bin

