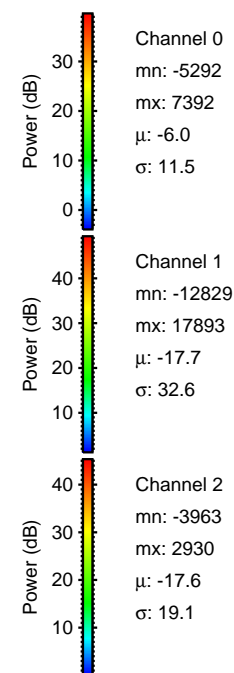
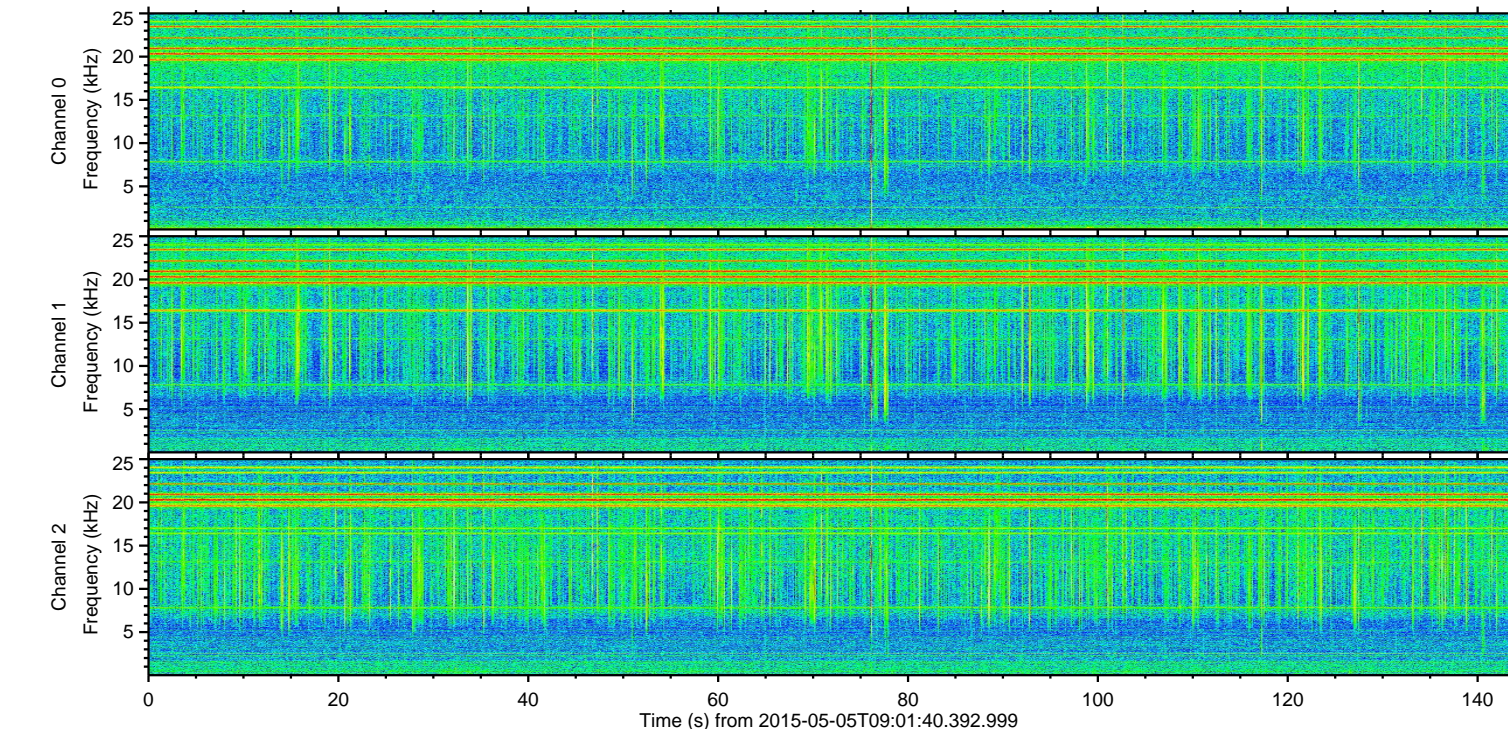
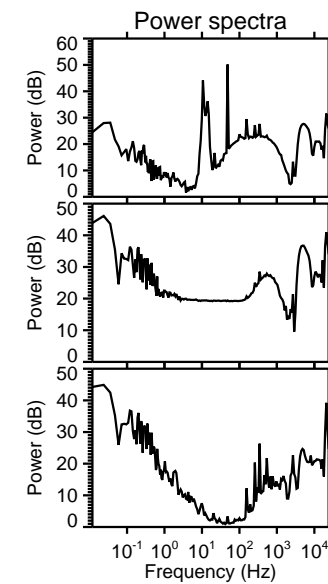
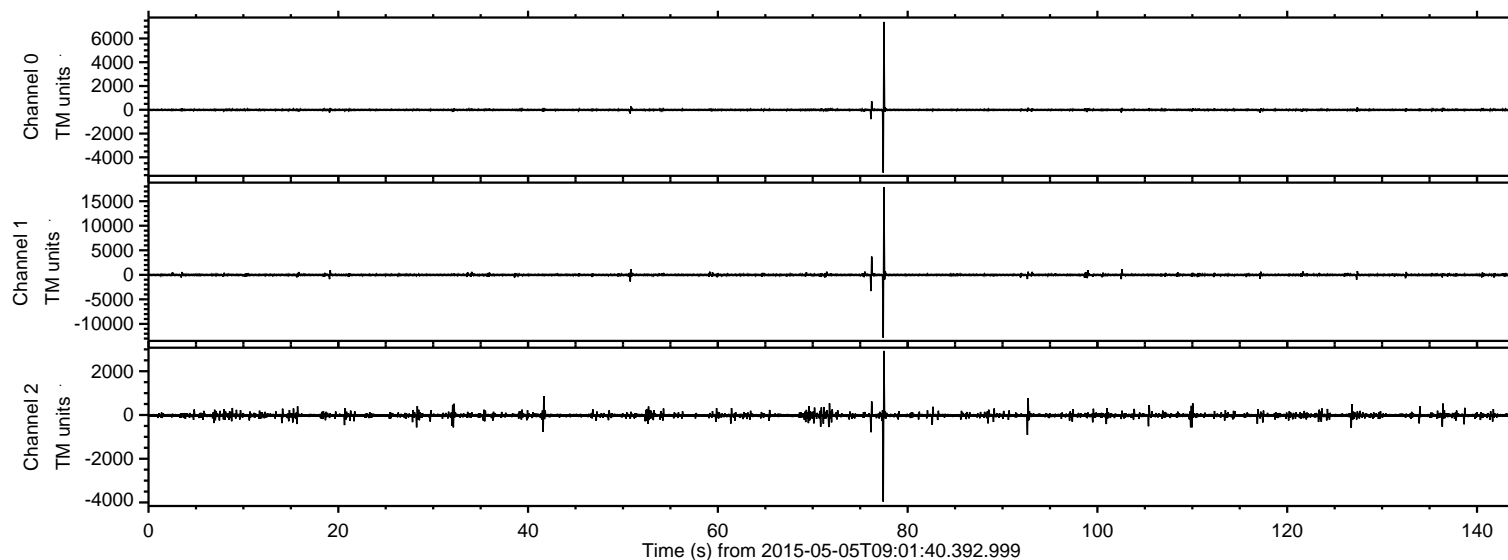
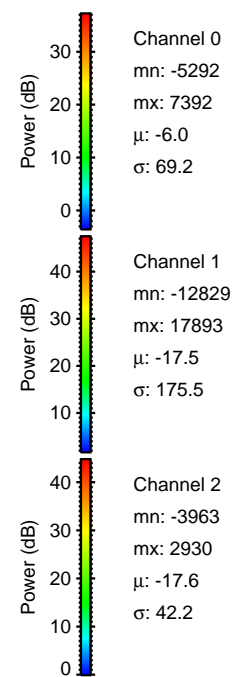
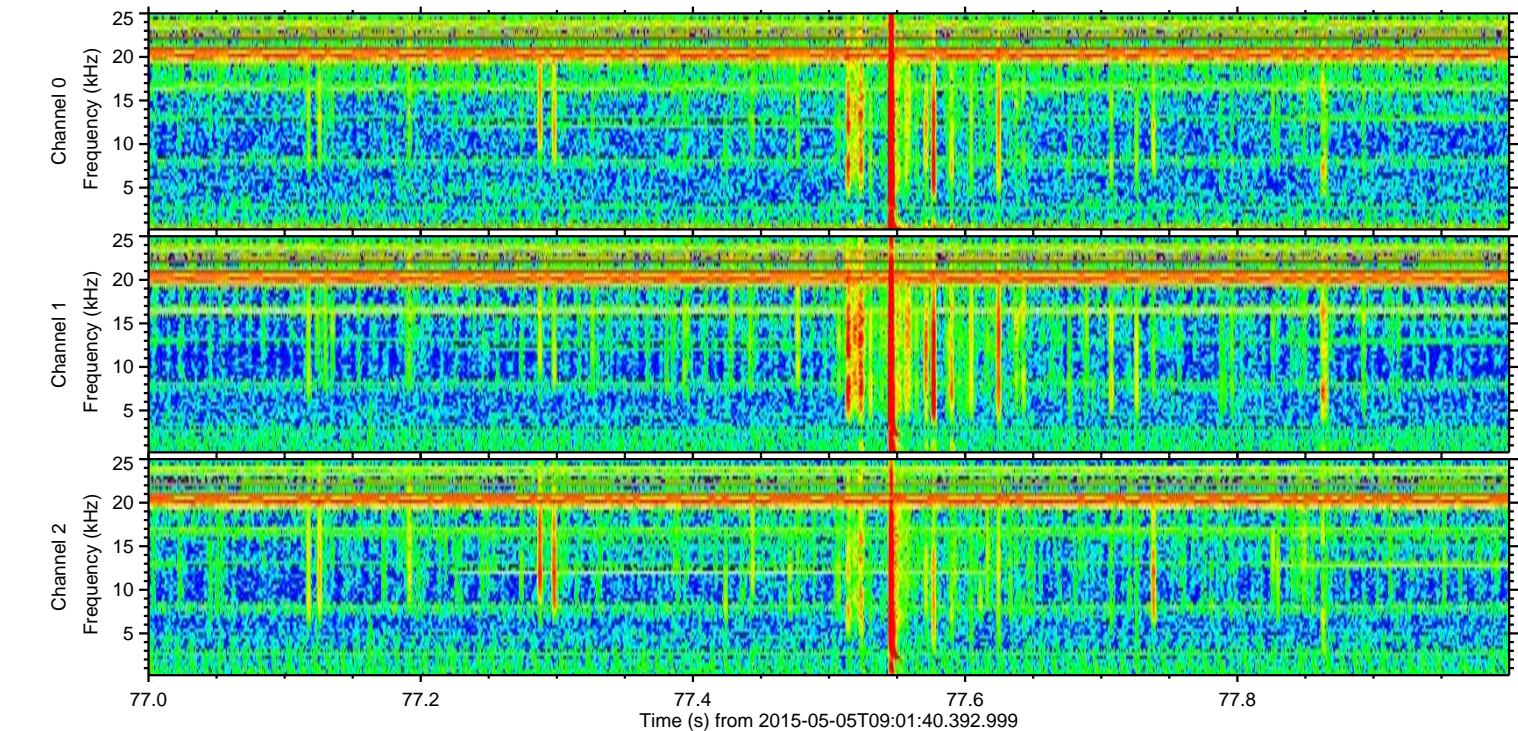
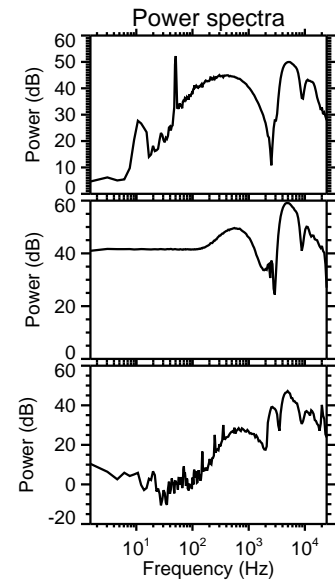
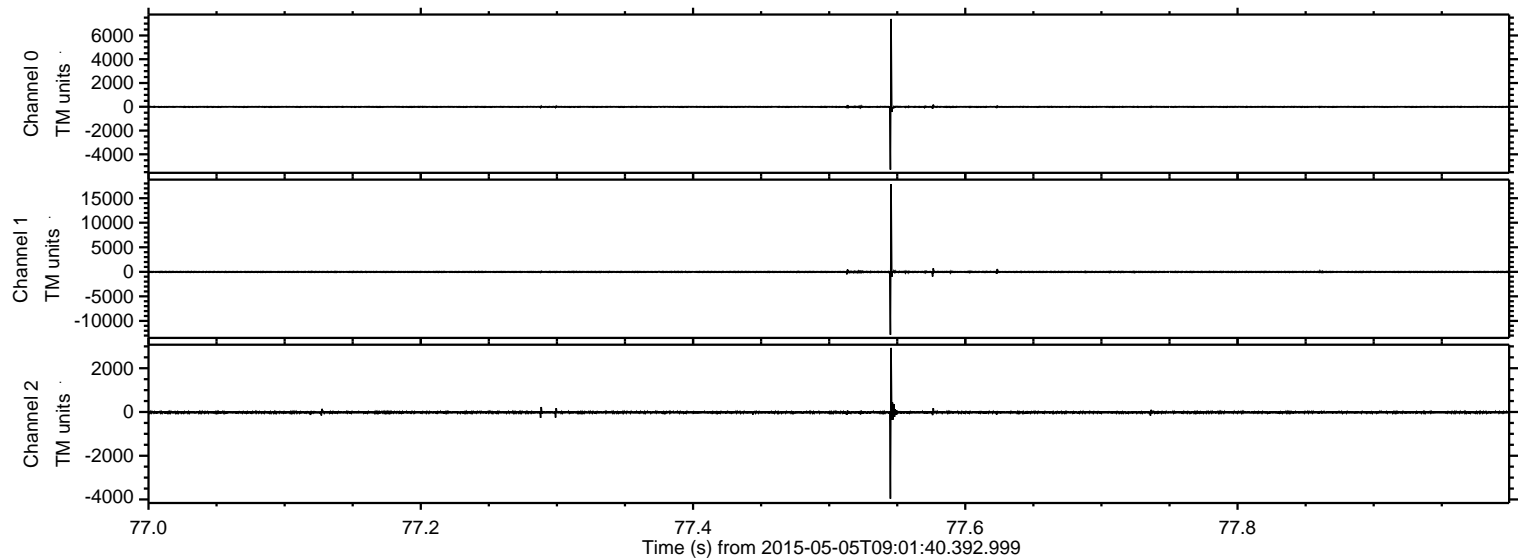


ELMAVAN 3D WAVEFORMS (Measured data sampled at 50 kHz) 49788 packets of 144 samples from 2015-05-05T09:01:40.392.999.

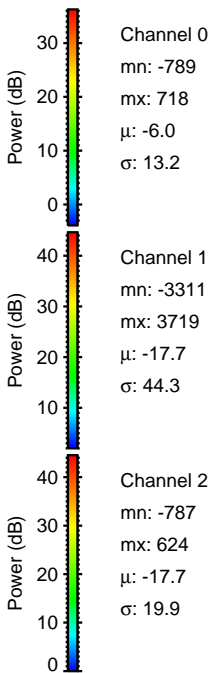
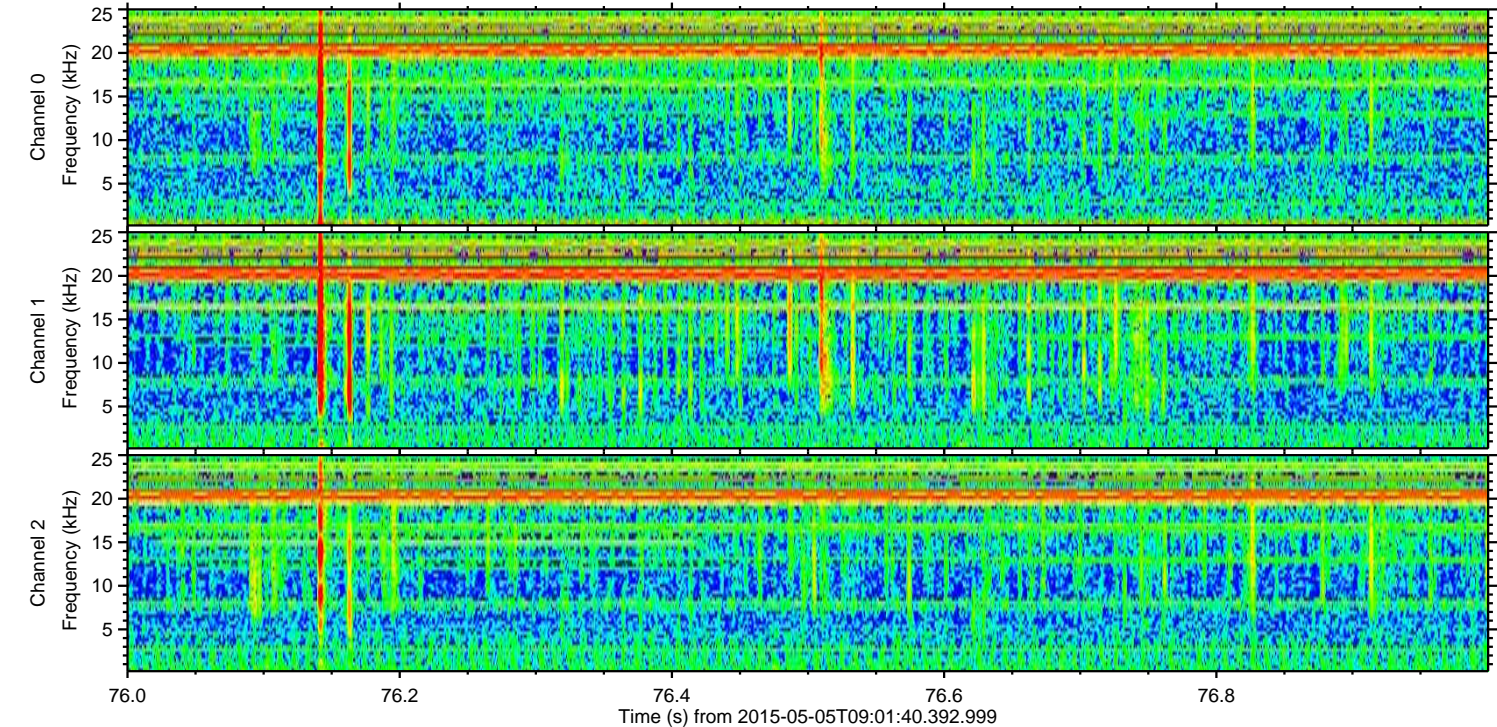
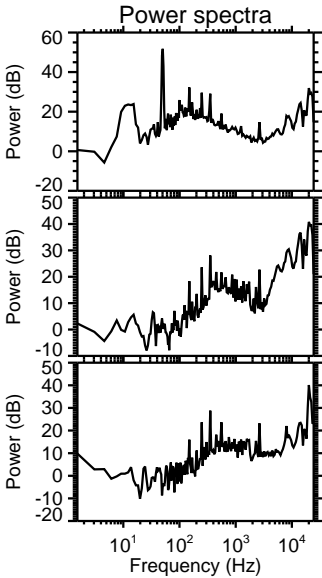
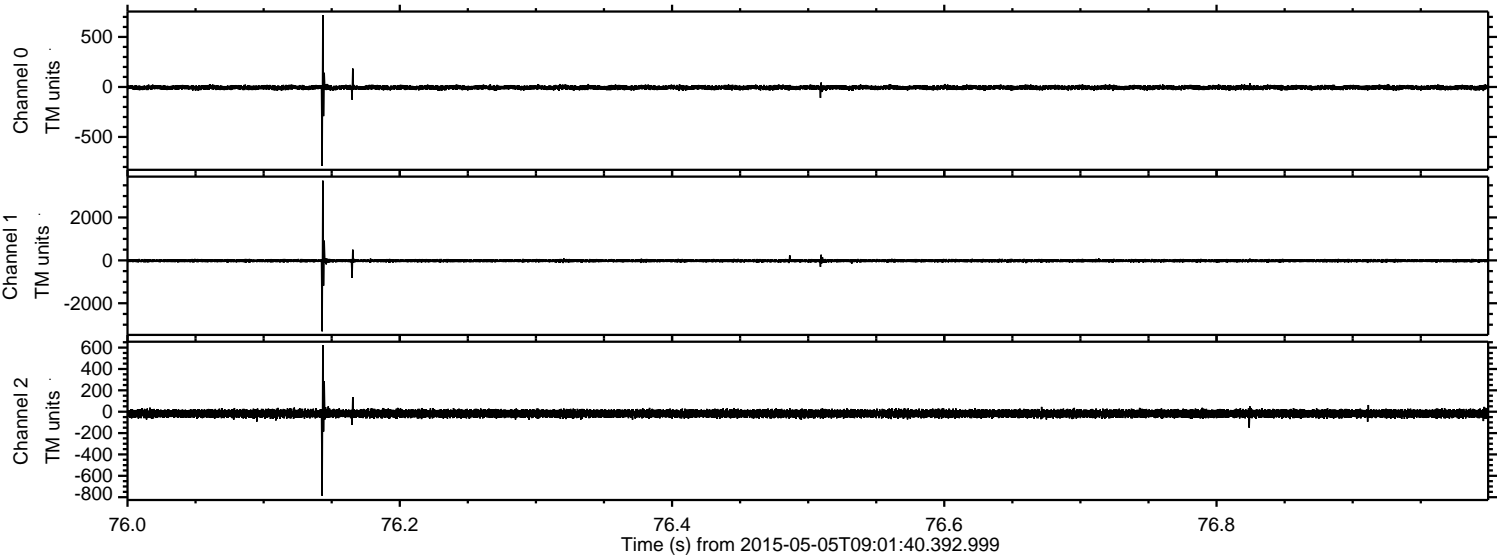
Processed Tue May 5 11:09:00 2015 by ELM ver.2012-10-06 from 001__elm20150505_090139__dat00.bin



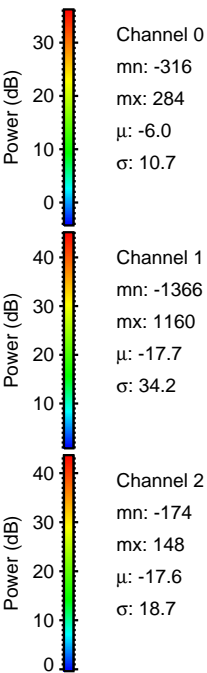
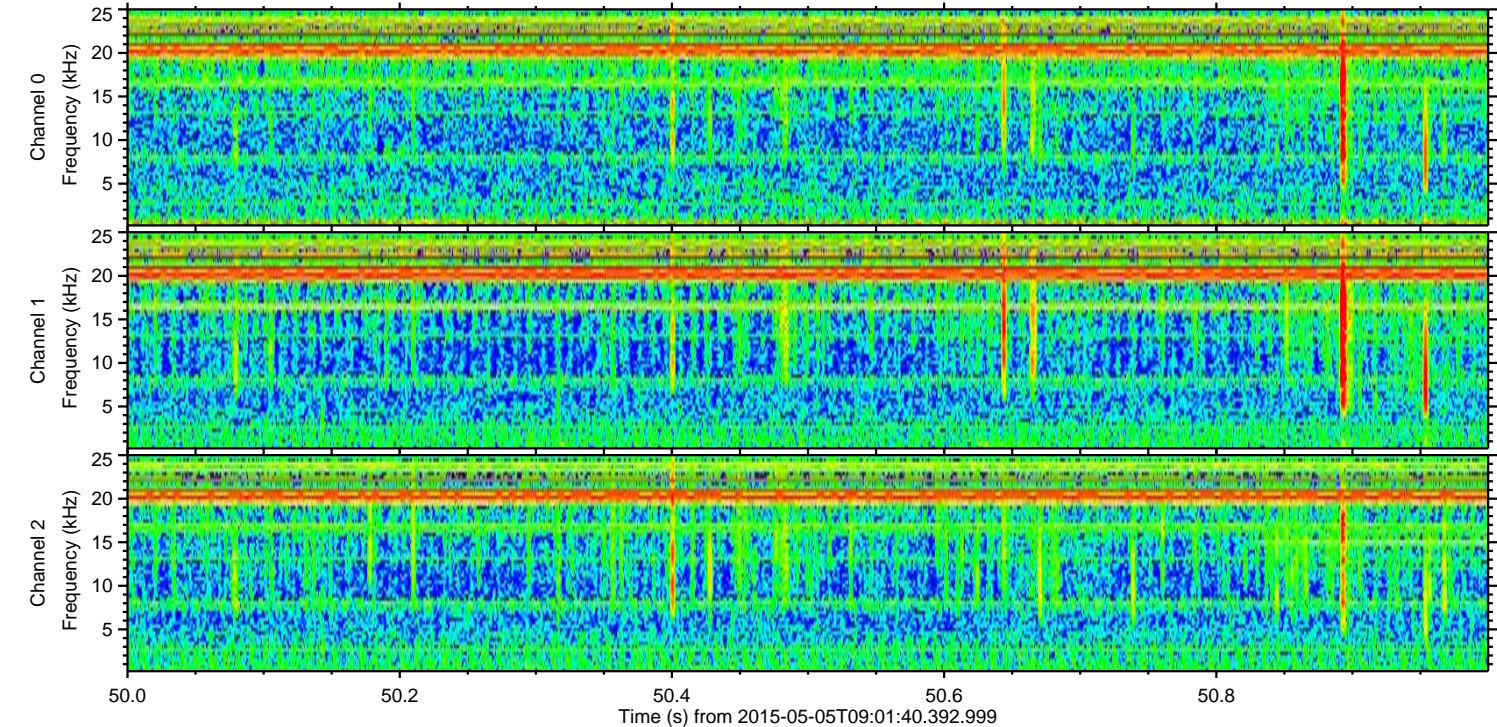
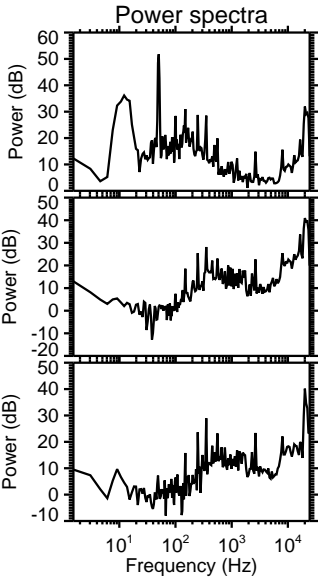
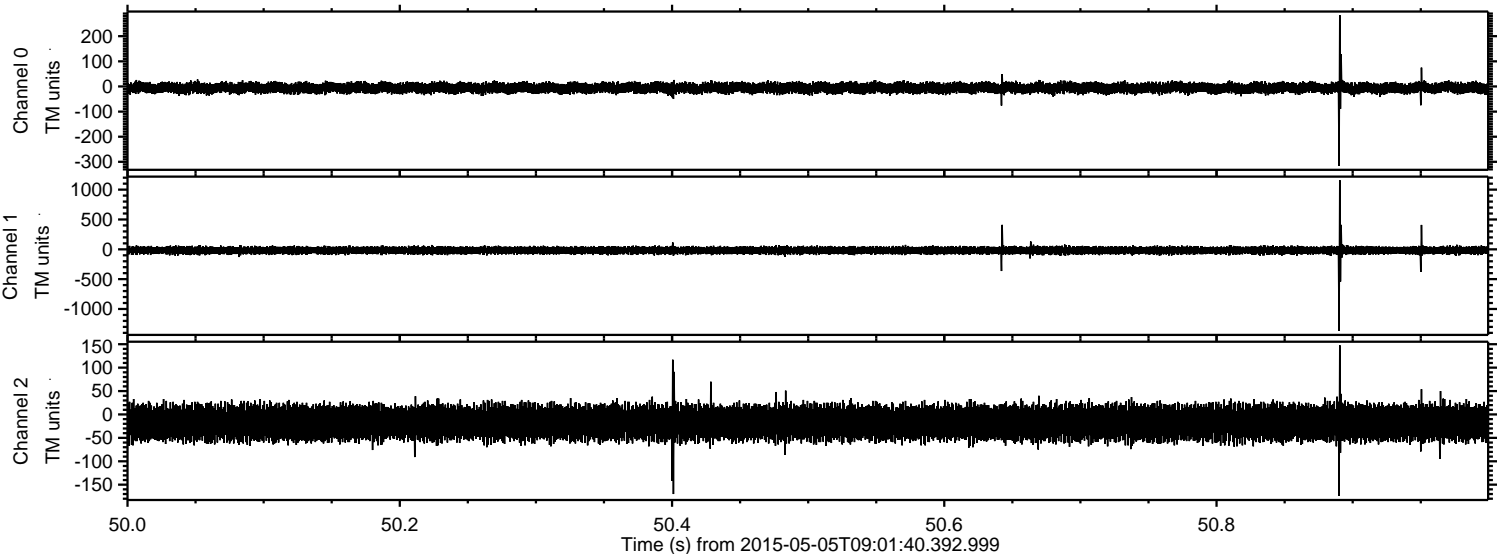
Processed Tue May 5 11:09:11 2015 by ELM ver.2012-10-06 from 001__elm20150505_090139__dat00.bin



Processed Tue May 5 11:09:12 2015 by ELM ver.2012-10-06 from 001__elm20150505_090139__dat00.bin

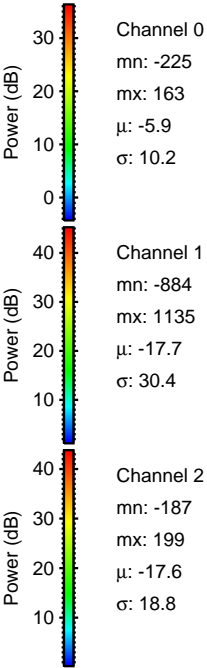
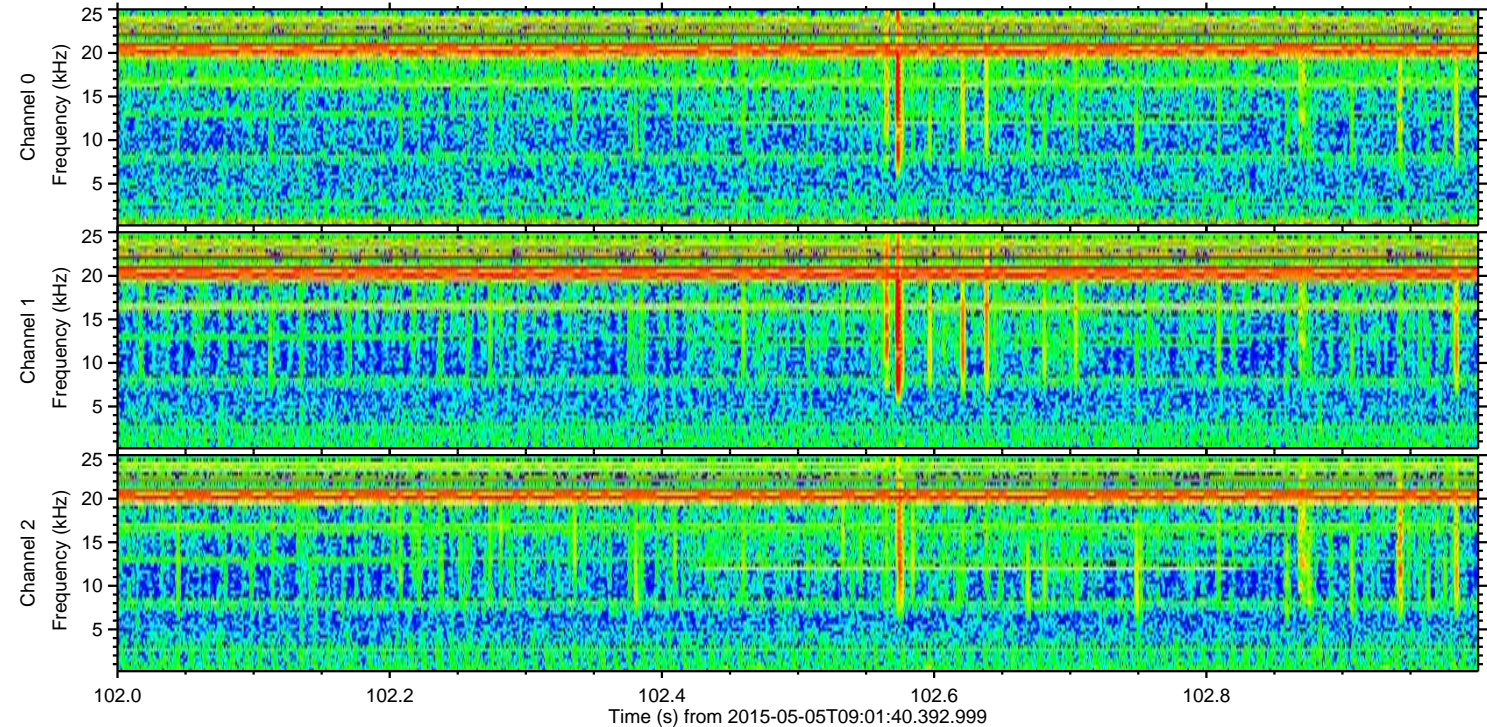
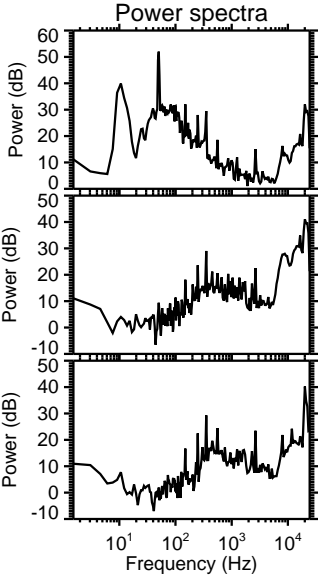
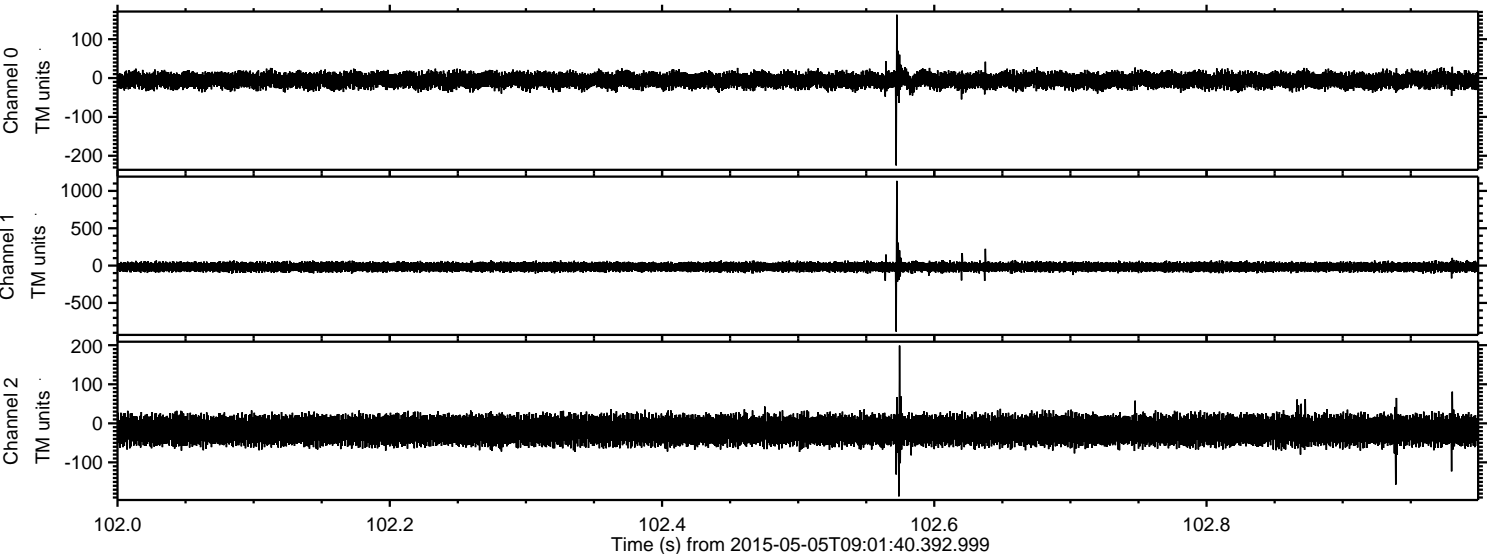


Processed Tue May 5 11:09:13 2015 by ELM ver.2012-10-06 from 001__elm20150505_090139__dat00.bin



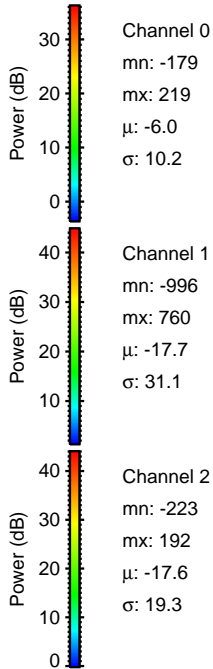
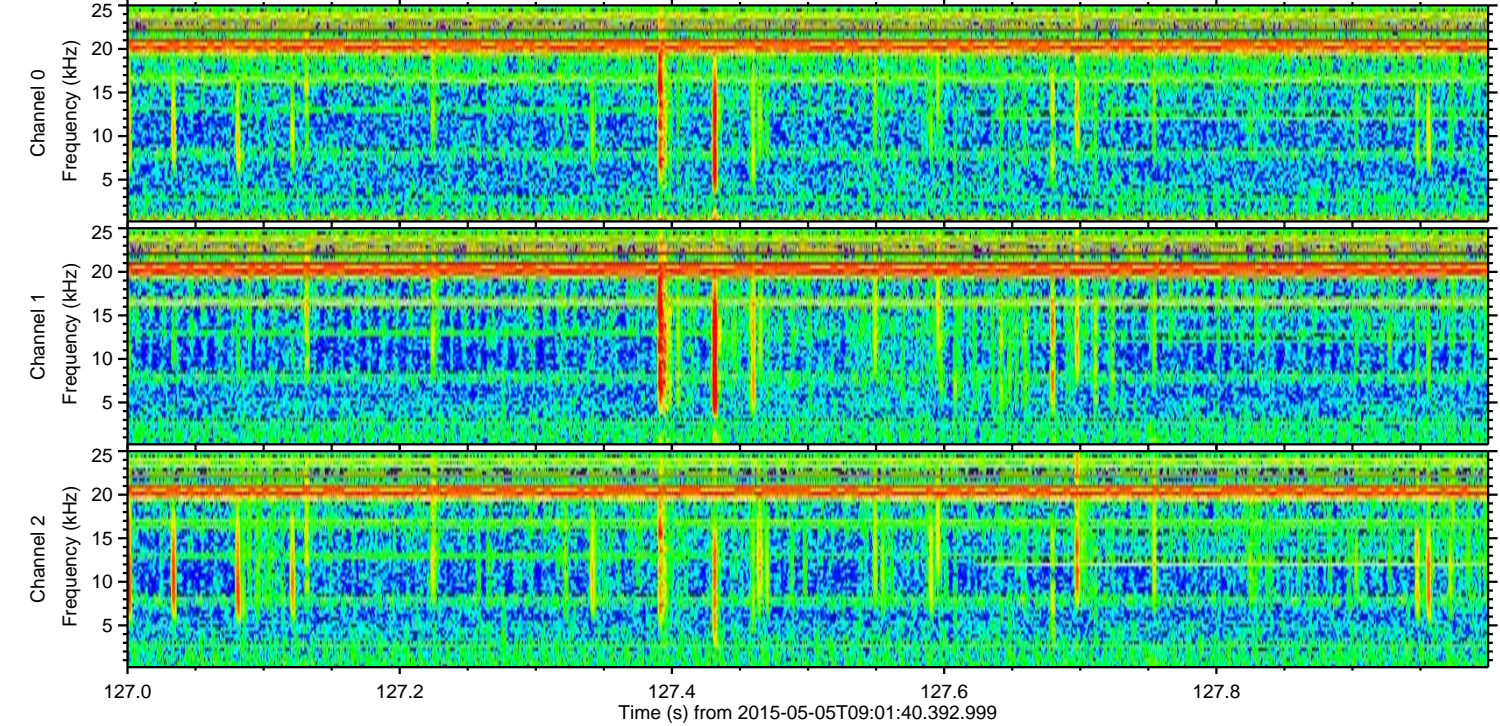
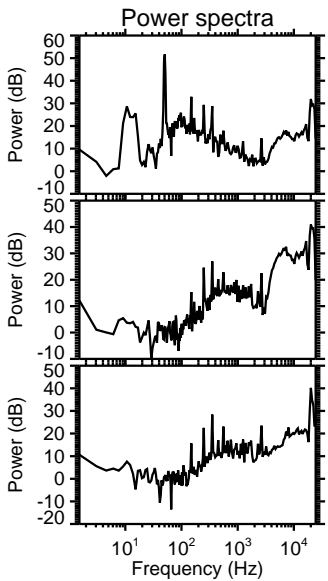
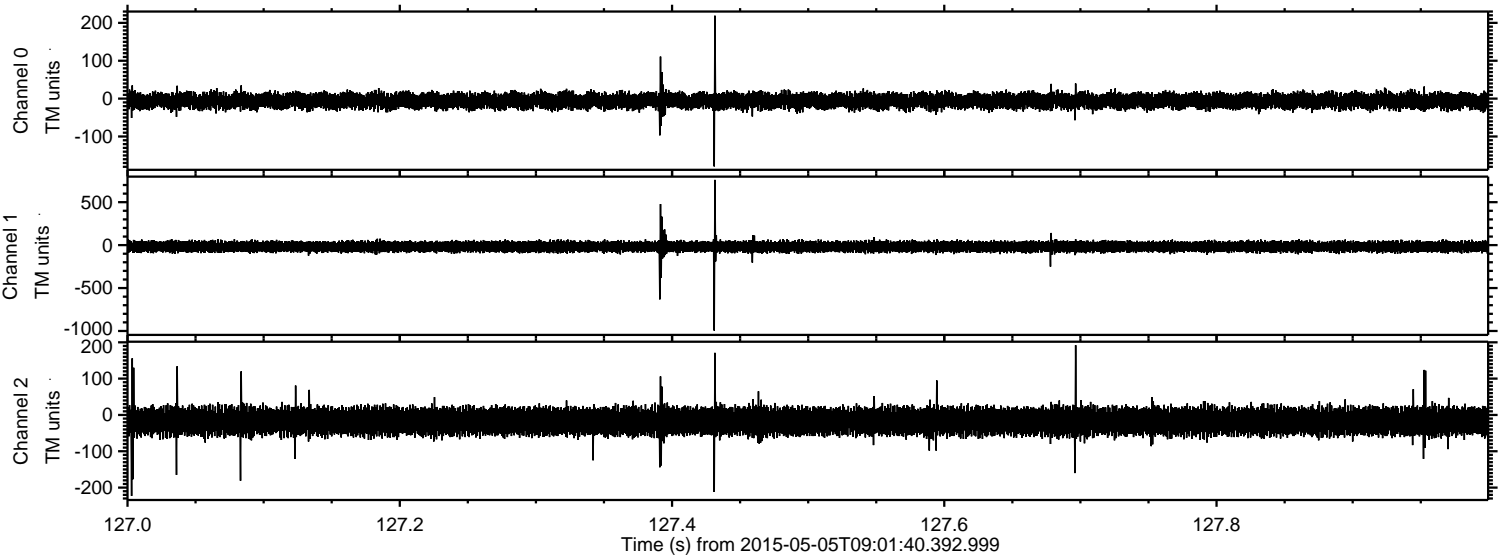
ELMAVAN 3D WAVEFORMS (Measured data sampled at 50 kHz) 49788 packets of 144 samples from 2015-05-05T09:01:40.392.999. Part 103/144

Processed Tue May 5 11:09:14 2015 by ELM ver.2012-10-06 from 001__elm20150505_090139__dat00.bin

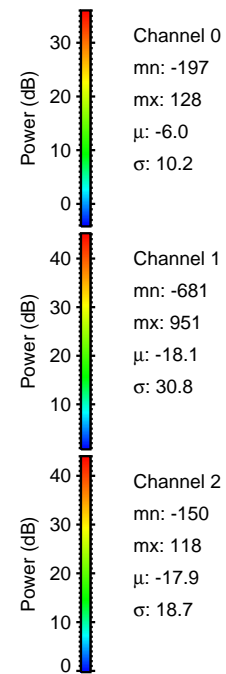
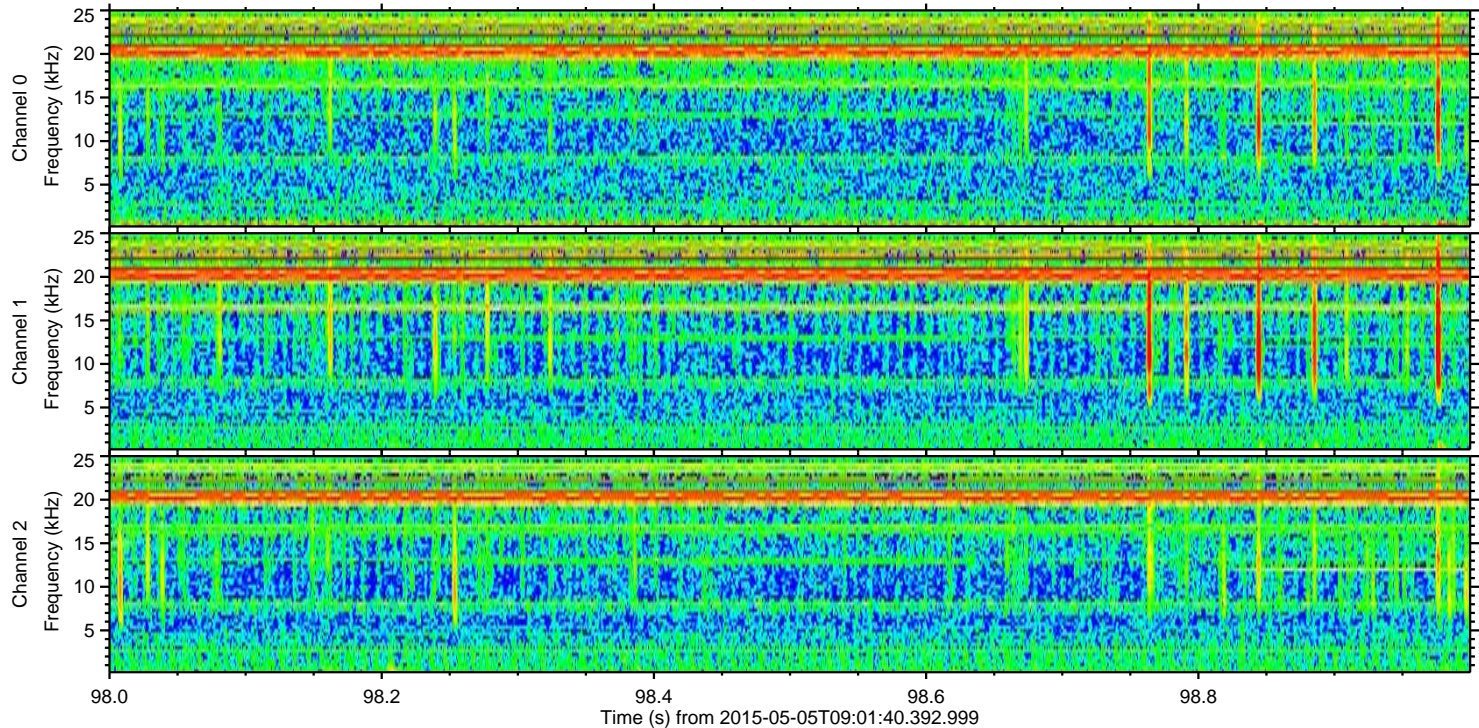
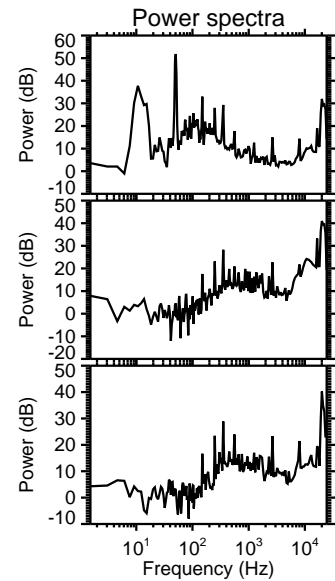
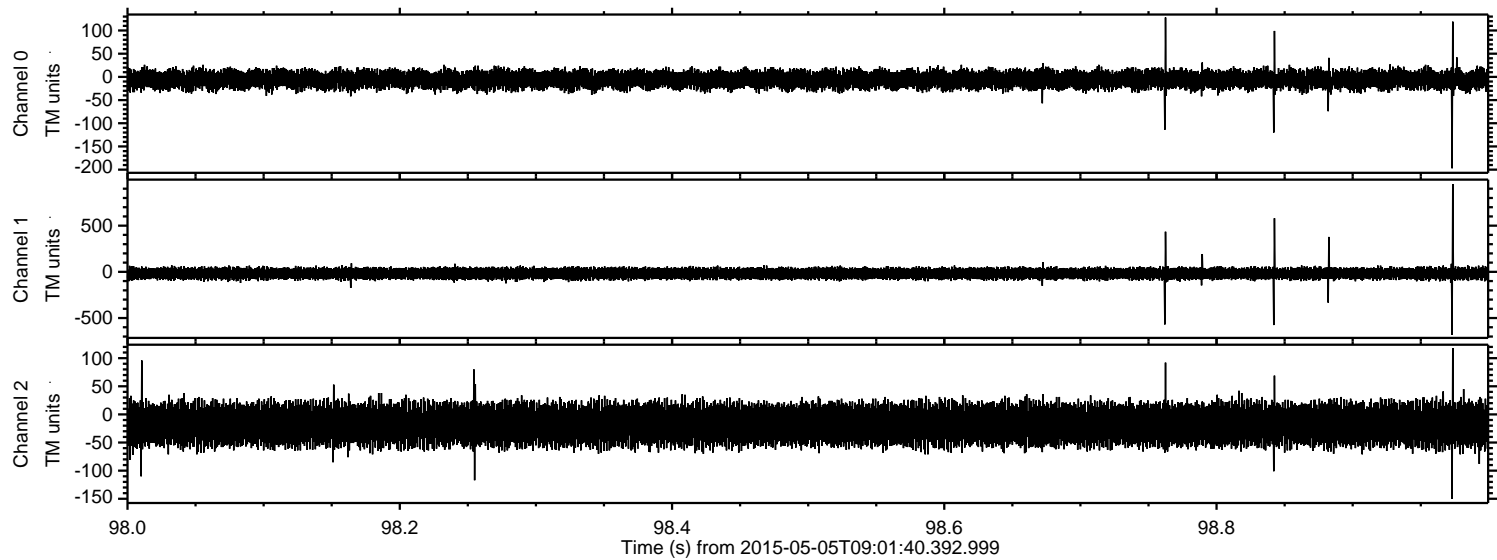


ELMAVAN 3D WAVEFORMS (Measured data sampled at 50 kHz) 49788 packets of 144 samples from 2015-05-05T09:01:40.392.999. Part 128/144

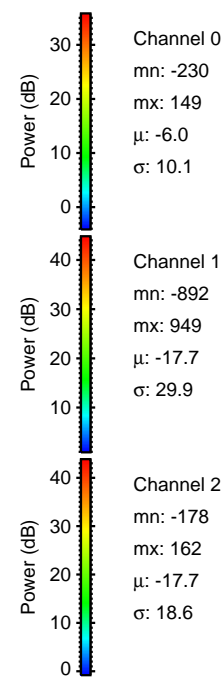
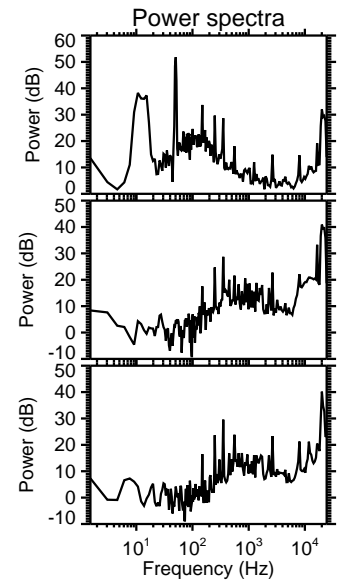
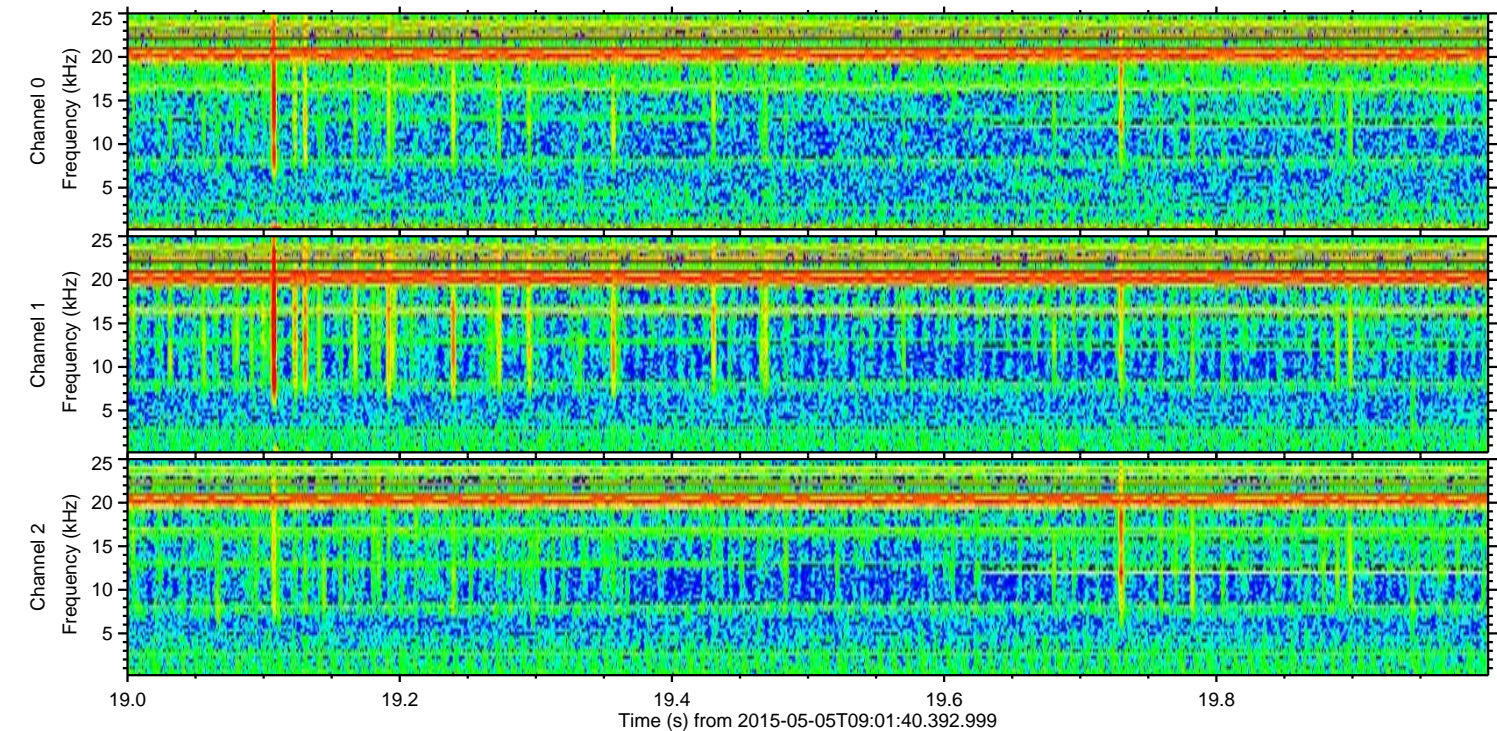
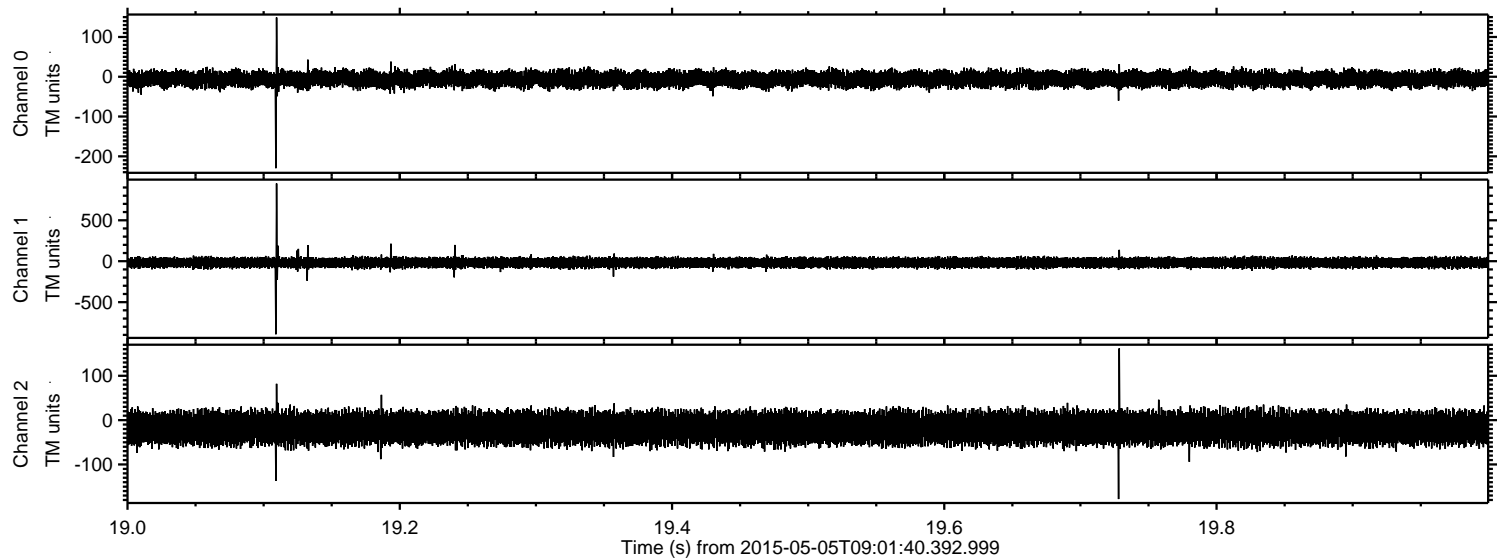
Processed Tue May 5 11:09:15 2015 by ELM ver.2012-10-06 from 001__elm20150505_090139__dat00.bin



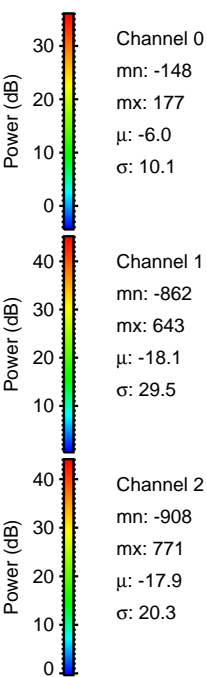
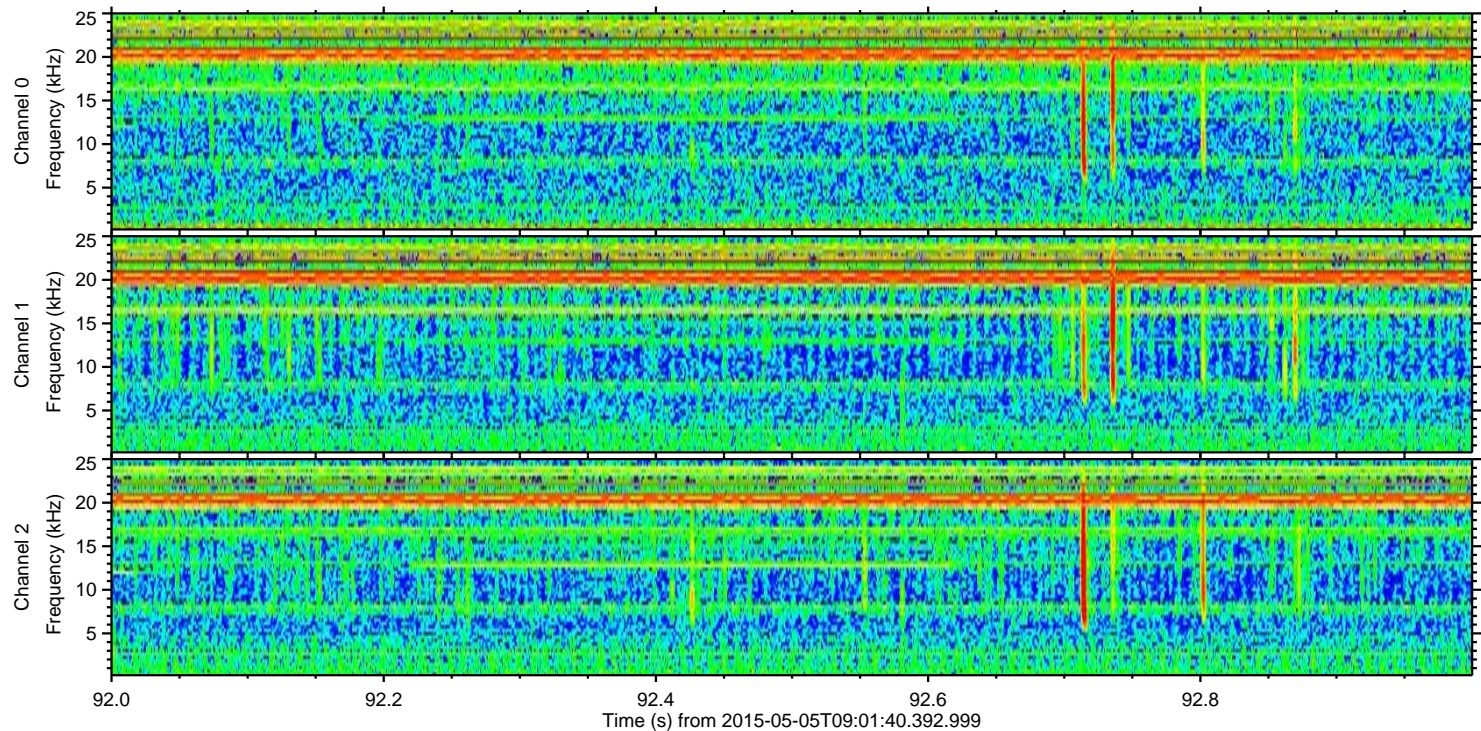
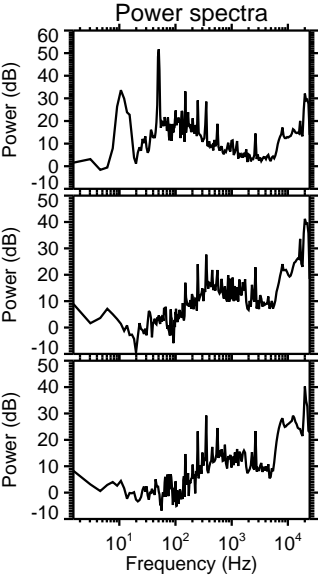
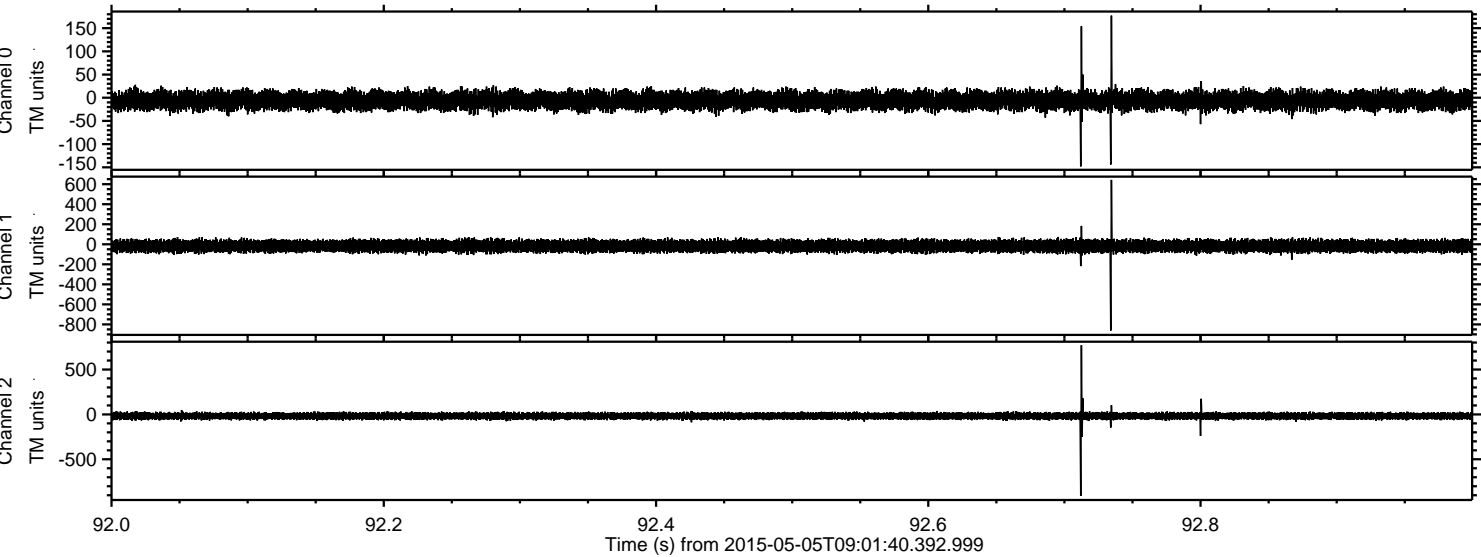
Processed Tue May 5 11:09:16 2015 by ELM ver.2012-10-06 from 001__elm20150505_090139__dat00.bin



Processed Tue May 5 11:09:17 2015 by ELM ver.2012-10-06 from 001__elm20150505_090139__dat00.bin

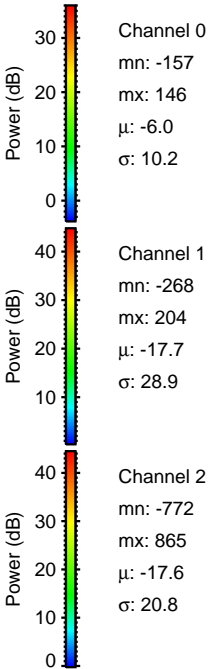
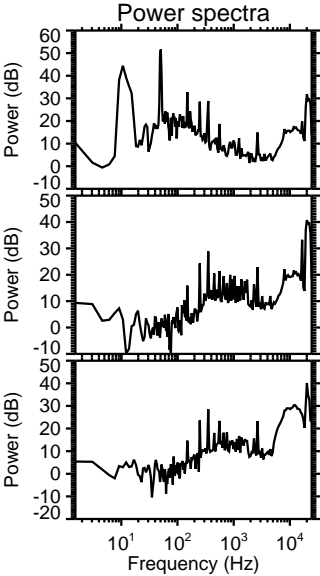
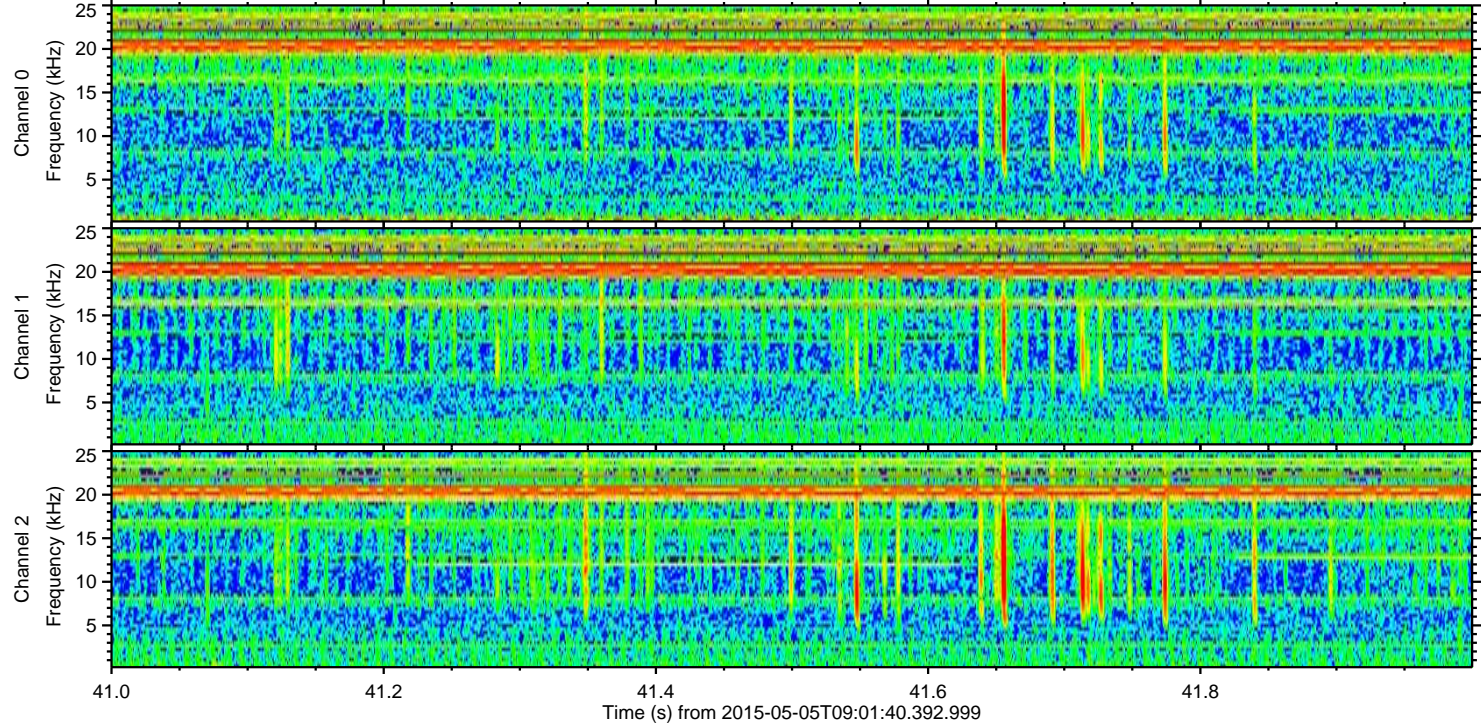
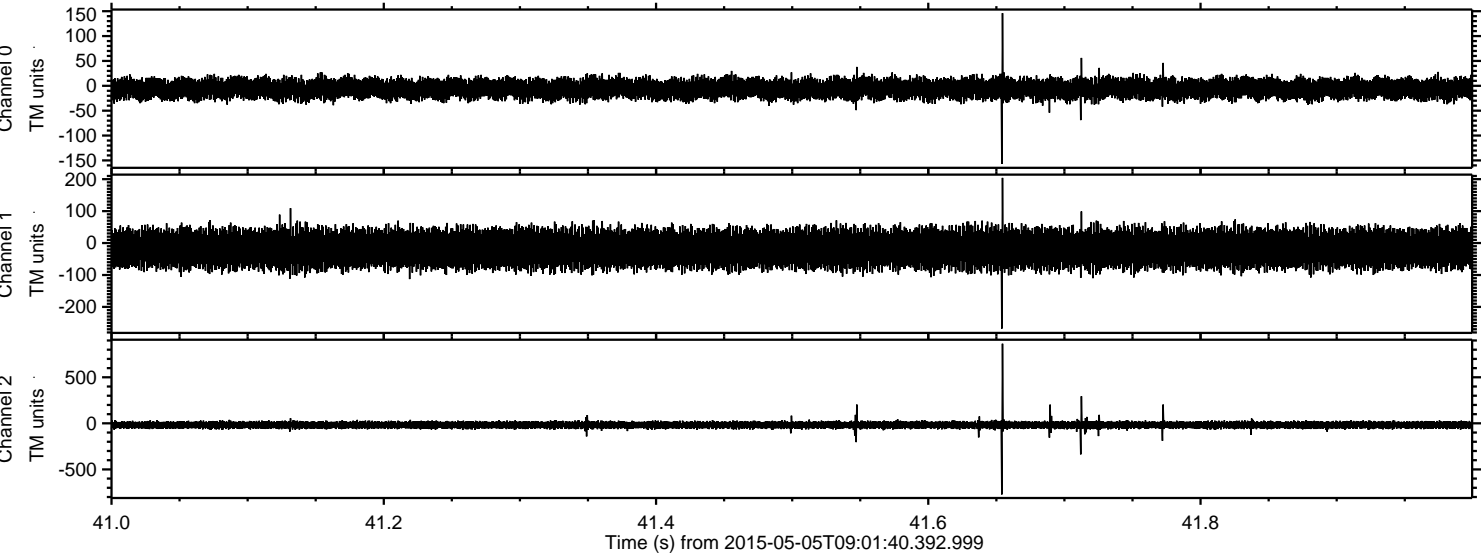


Processed Tue May 5 11:09:18 2015 by ELM ver.2012-10-06 from 001__elm20150505_090139__dat00.bin



ELMAVAN 3D WAVEFORMS (Measured data sampled at 50 kHz) 49788 packets of 144 samples from 2015-05-05T09:01:40.392.999. Part 42/144

Processed Tue May 5 11:09:19 2015 by ELM ver.2012-10-06 from 001__elm20150505_090139__dat00.bin



Channel 0
mn: -157
mx: 146
 μ : -6.0
 σ : 10.2

Channel 1
mn: -268
mx: 204
 μ : -17.7
 σ : 28.9

Channel 2
mn: -772
mx: 865
 μ : -17.6
 σ : 20.8

