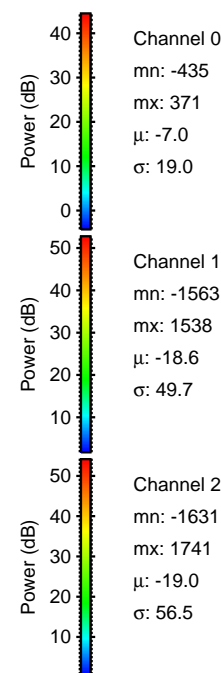
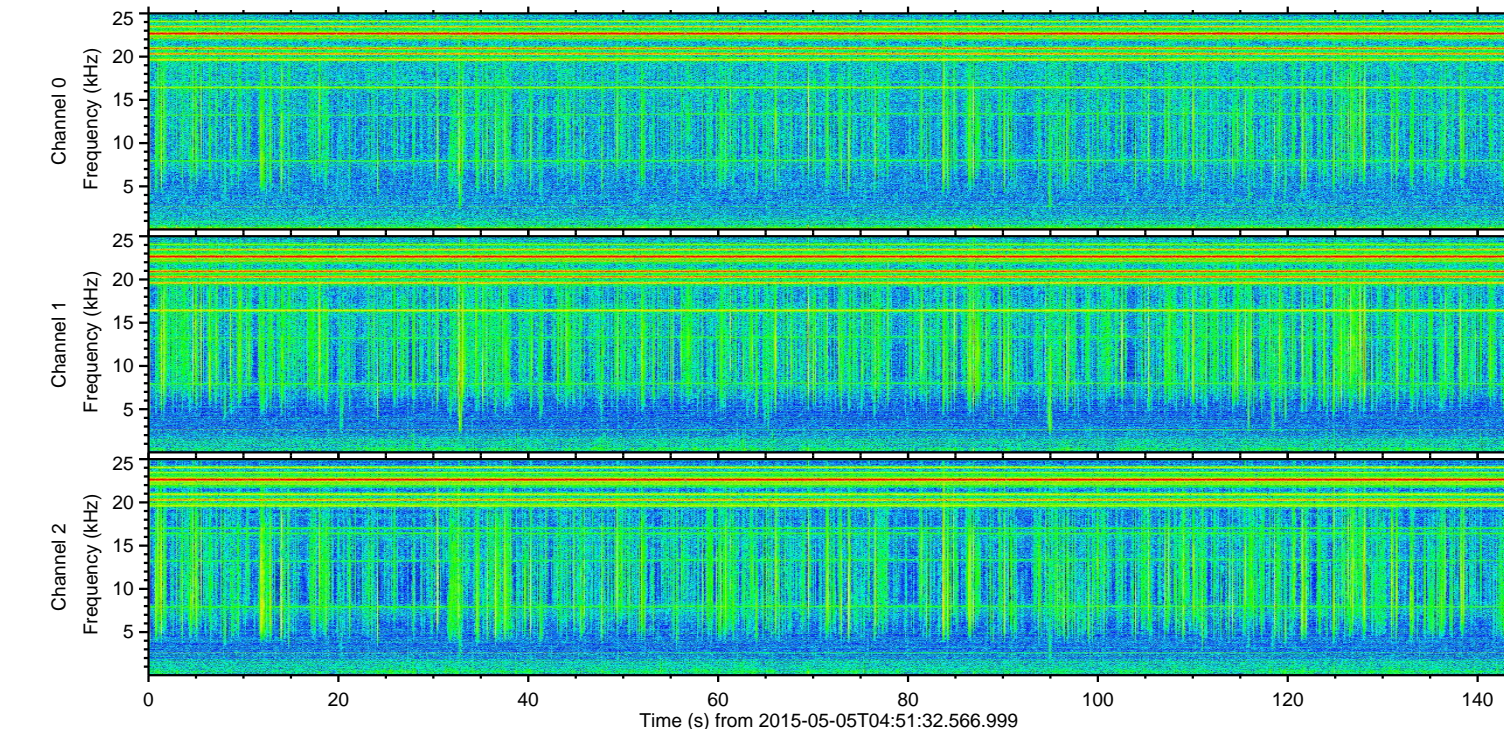
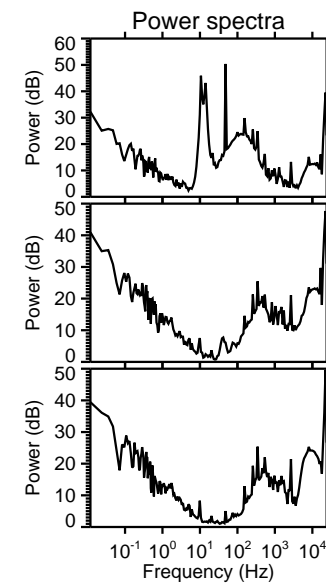
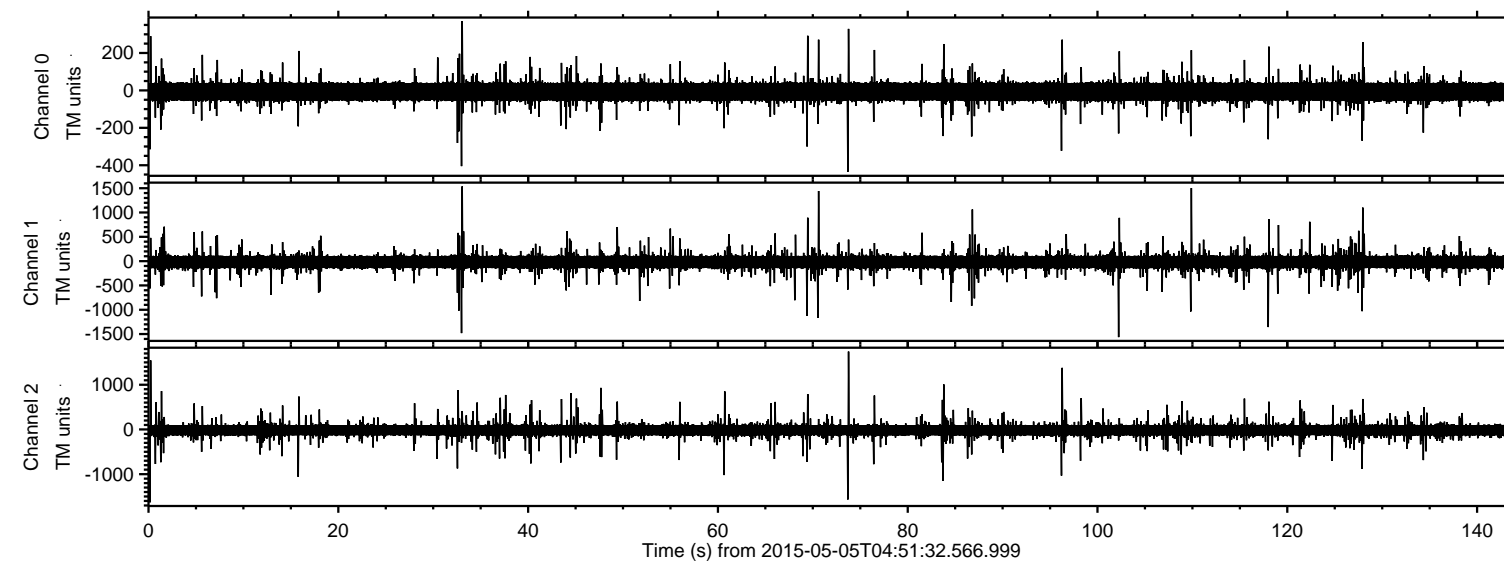
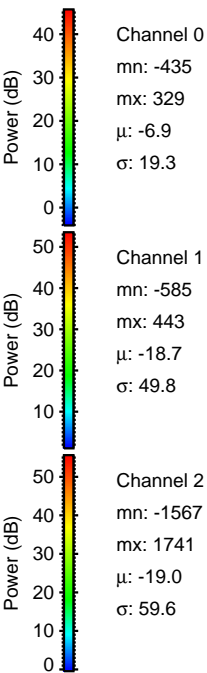
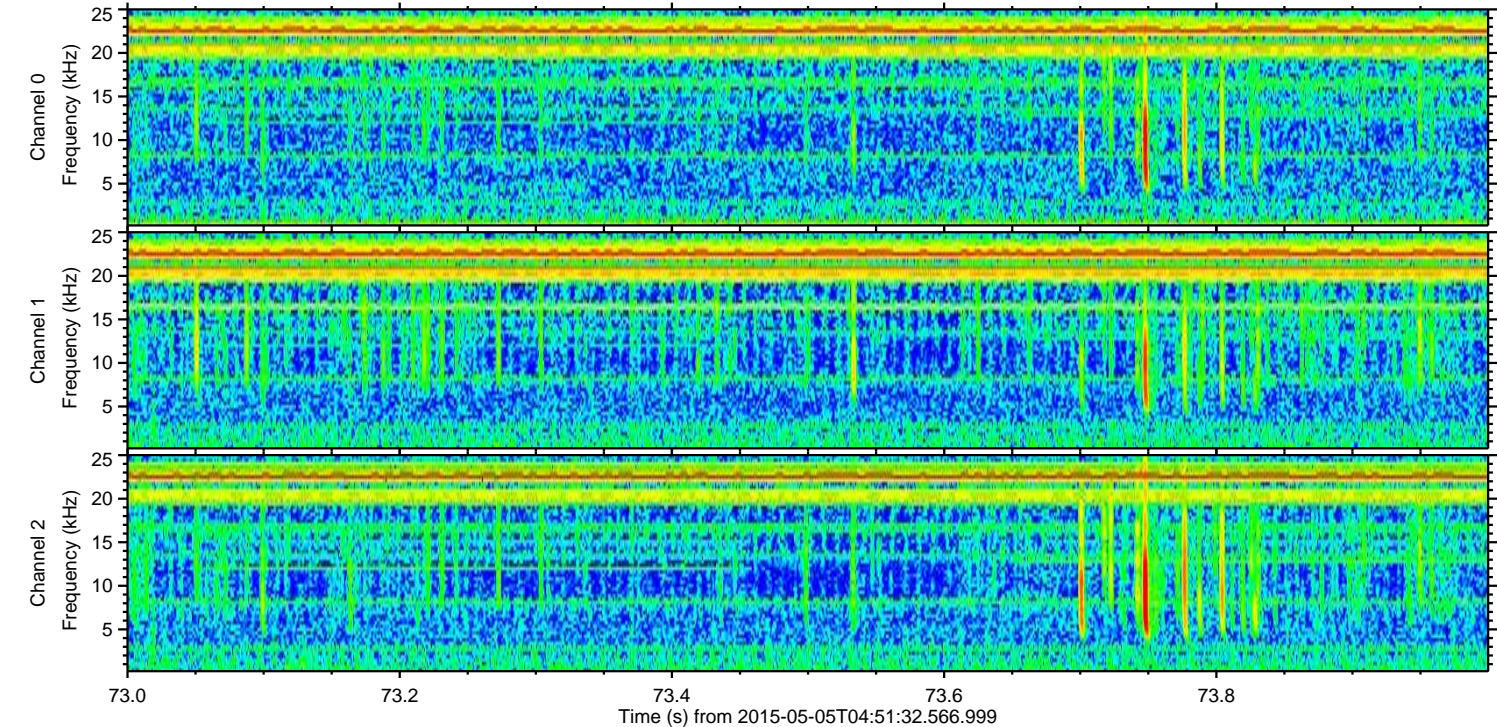
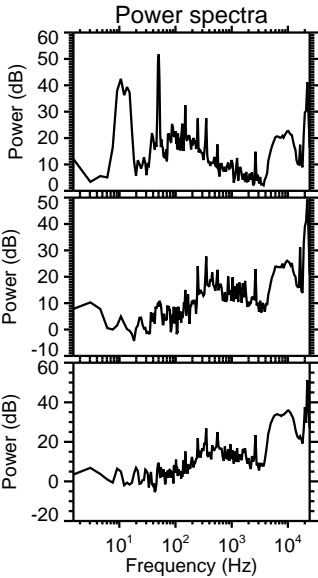
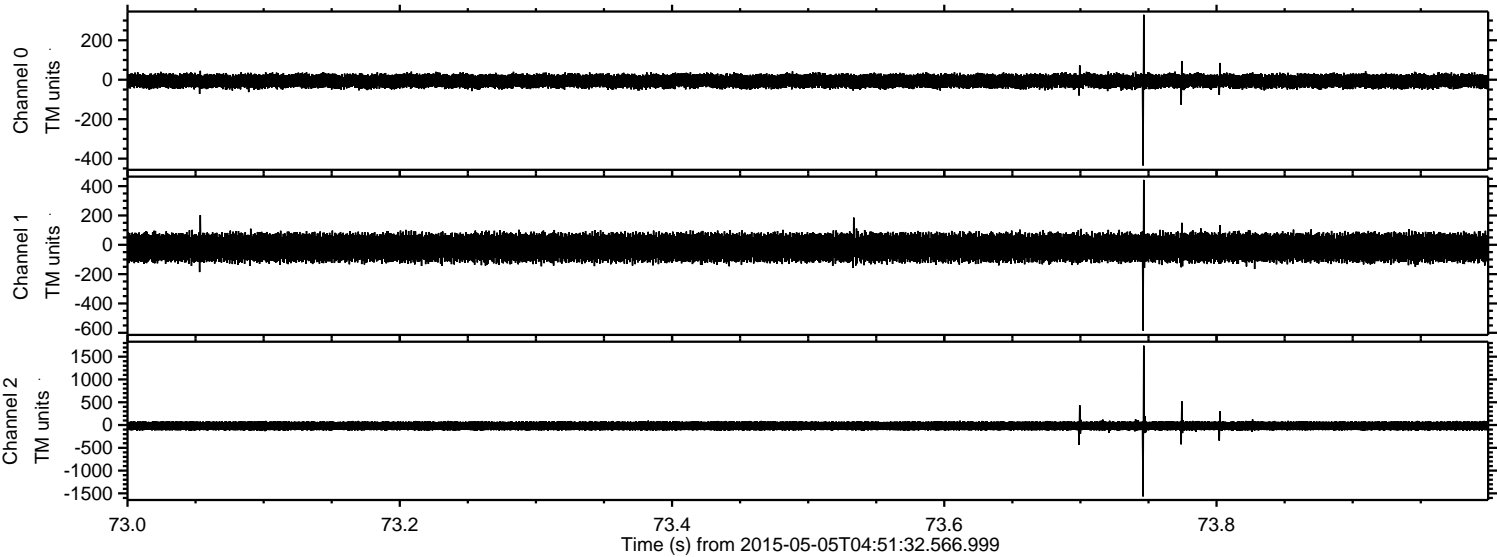


ELMAVAN 3D WAVEFORMS (Measured data sampled at 50 kHz) 49783 packets of 144 samples from 2015-05-05T04:51:32.566.999.

Processed Tue May 5 06:58:17 2015 by ELM ver.2012-10-06 from 001__elm20150505_045131__dat00.bin

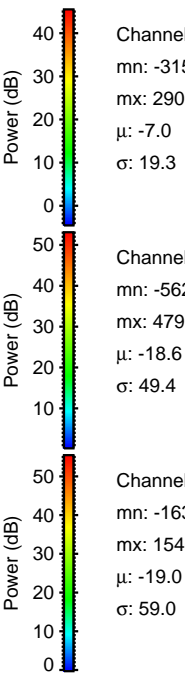
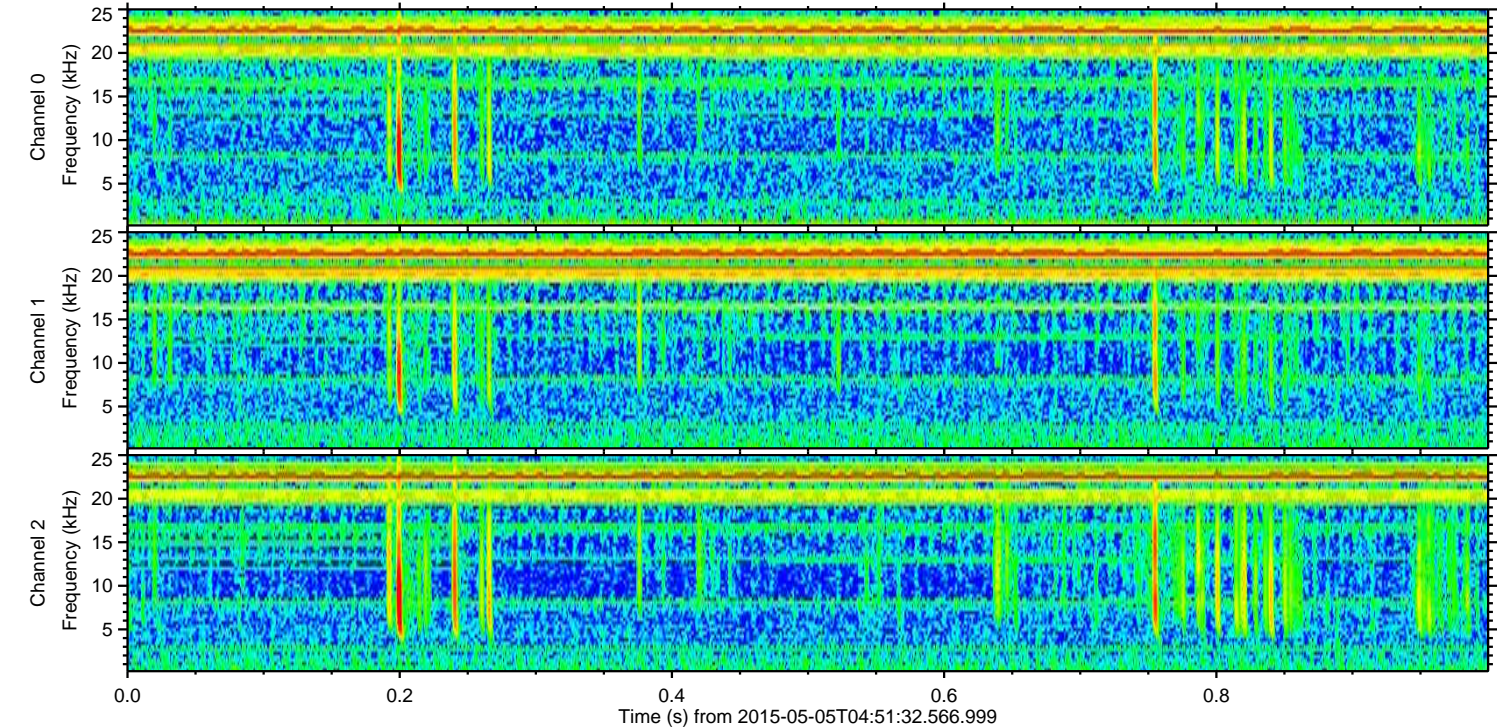
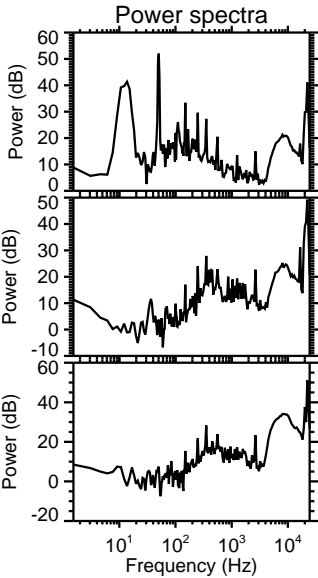
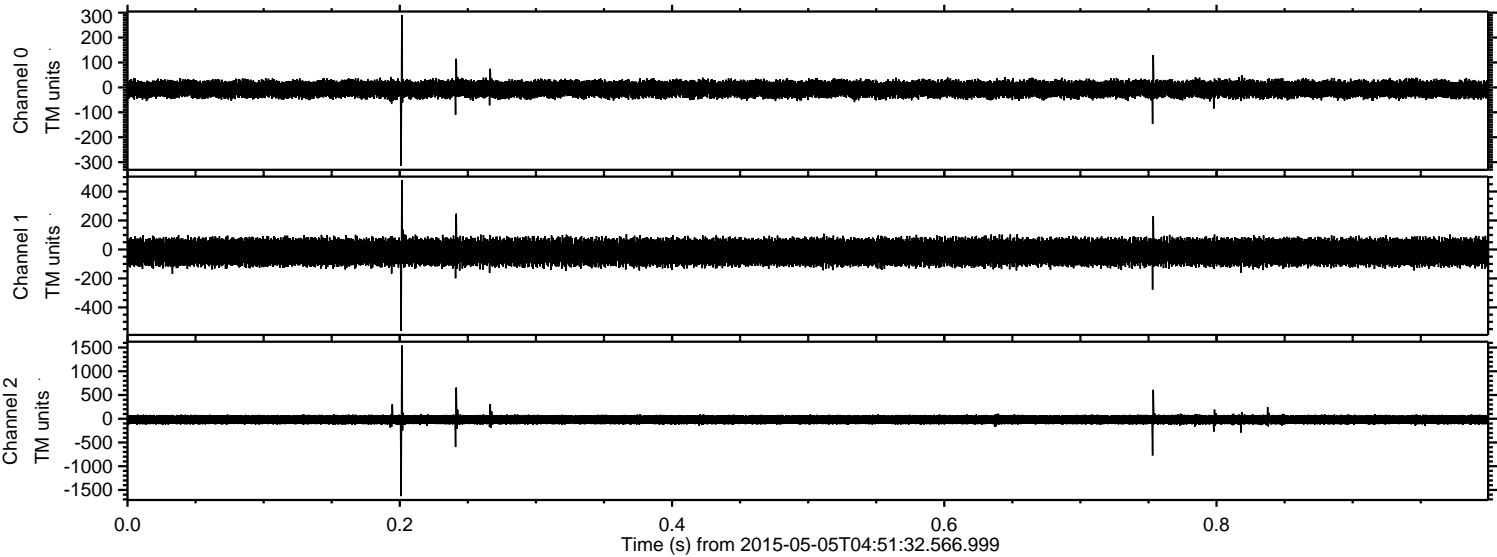


Processed Tue May 5 06:58:29 2015 by ELM ver.2012-10-06 from 001__elm20150505_045131__dat00.bin



ELMAVAN 3D WAVEFORMS (Measured data sampled at 50 kHz) 49783 packets of 144 samples from 2015-05-05T04:51:32.566.999. Part 1/144

Processed Tue May 5 06:58:29 2015 by ELM ver.2012-10-06 from 001__elm20150505_045131__dat00.bin

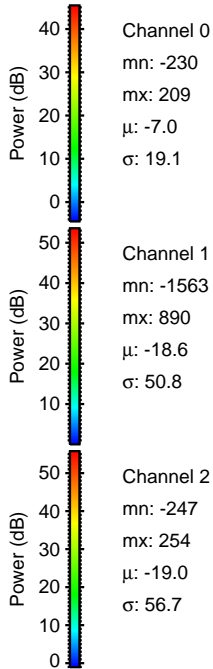
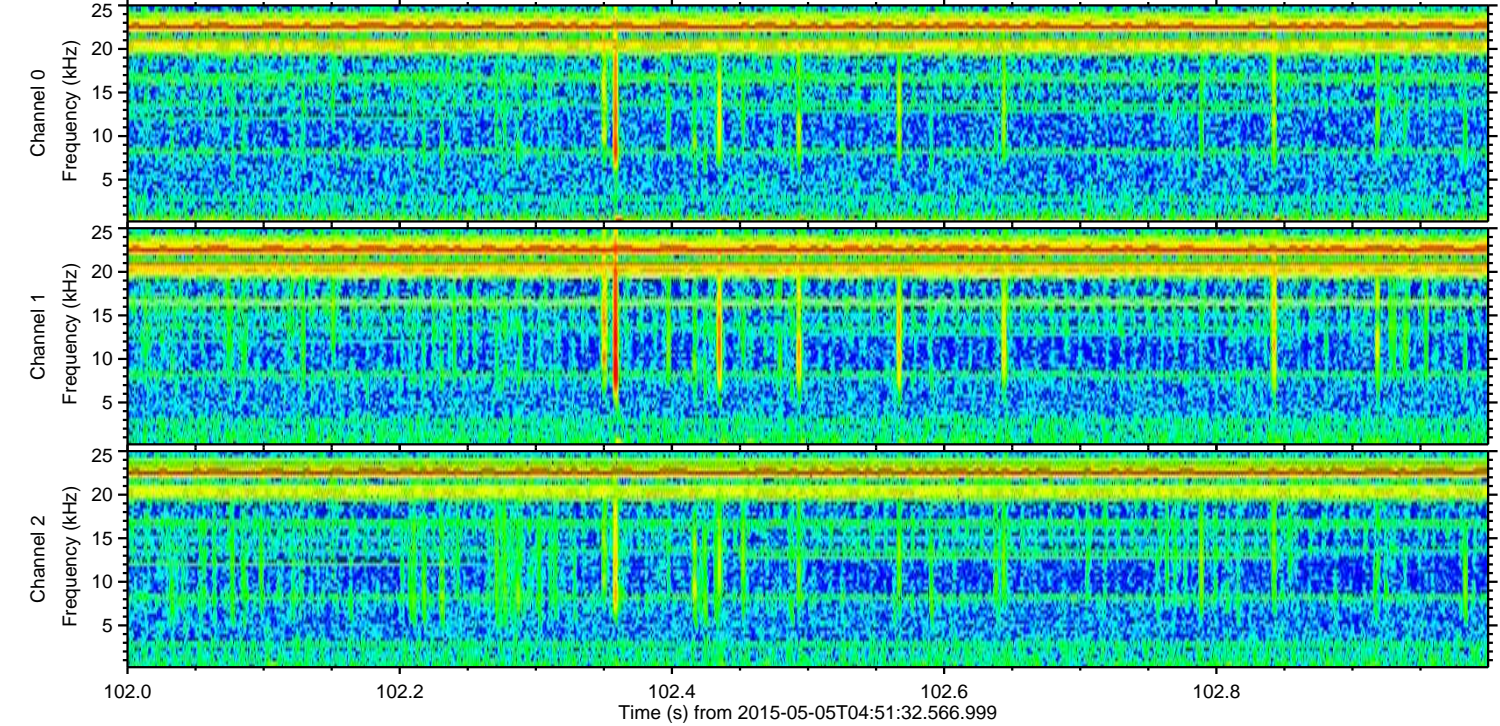
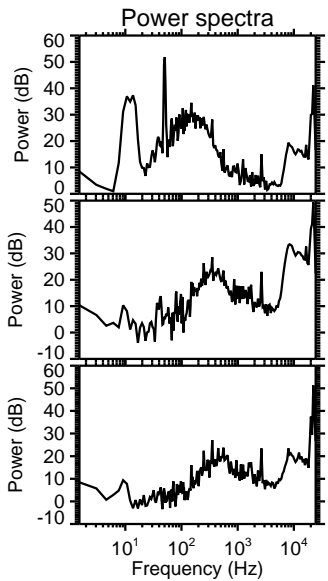
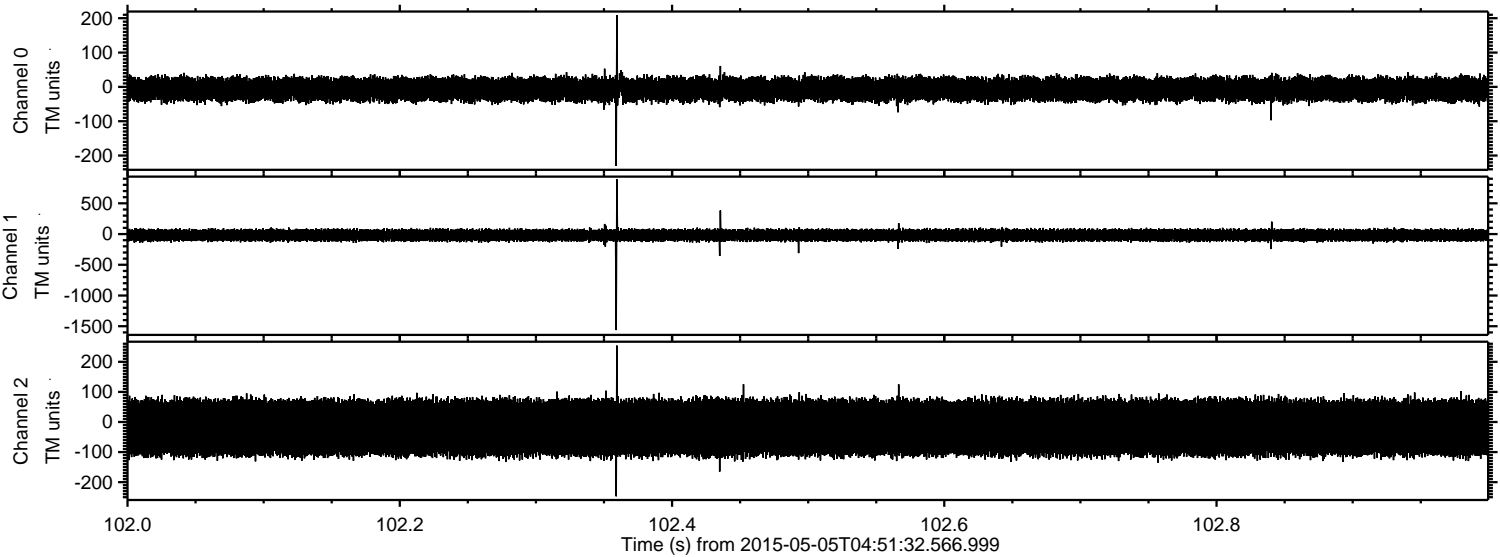


Channel 0
mn: -315
mx: 290
 μ : -7.0
 σ : 19.3

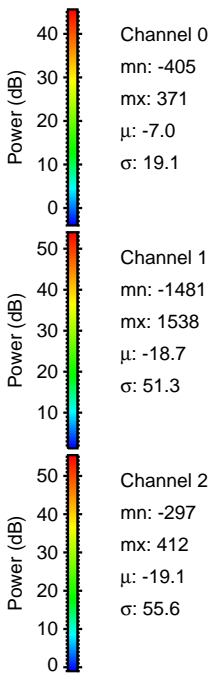
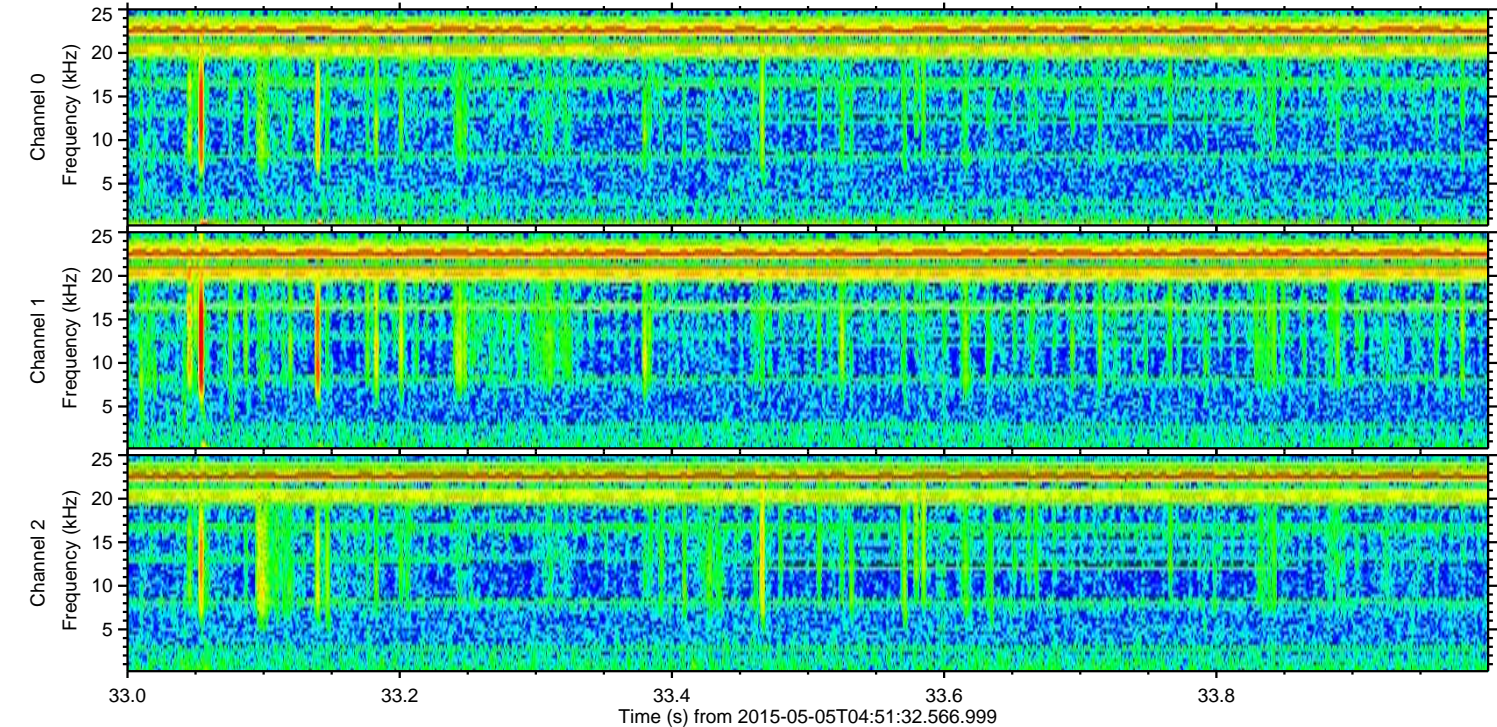
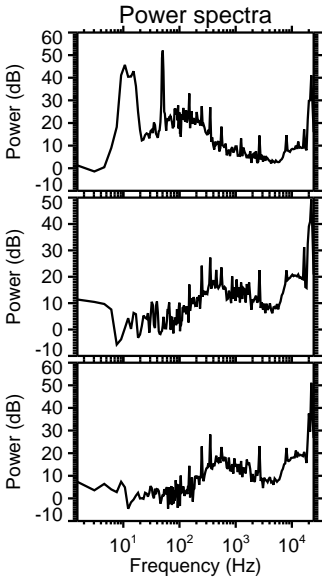
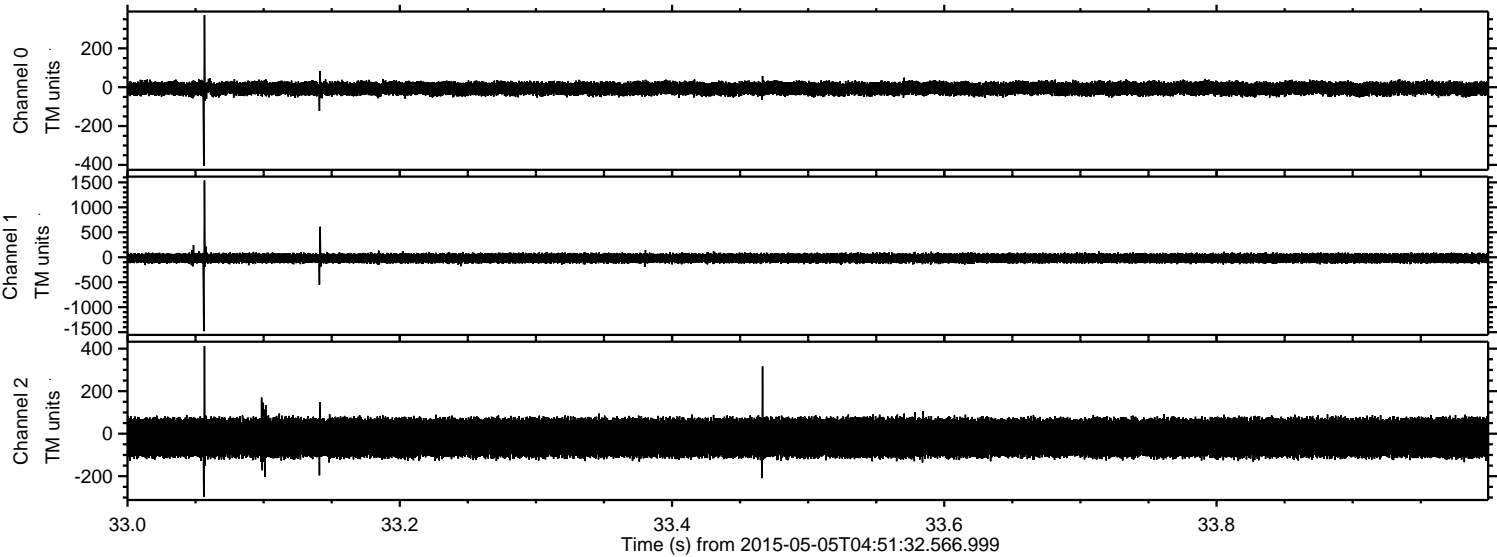
Channel 1
mn: -562
mx: 479
 μ : -18.6
 σ : 49.4

Channel 2
mn: -1631
mx: 1546
 μ : -19.0
 σ : 59.0

Processed Tue May 5 06:58:30 2015 by ELM ver.2012-10-06 from 001__elm20150505_045131__dat00.bin

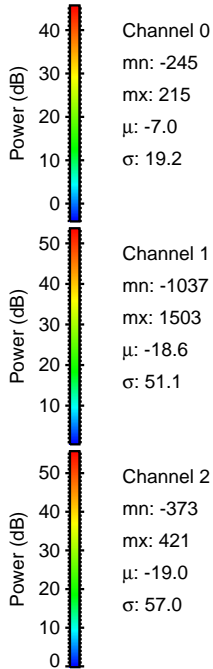
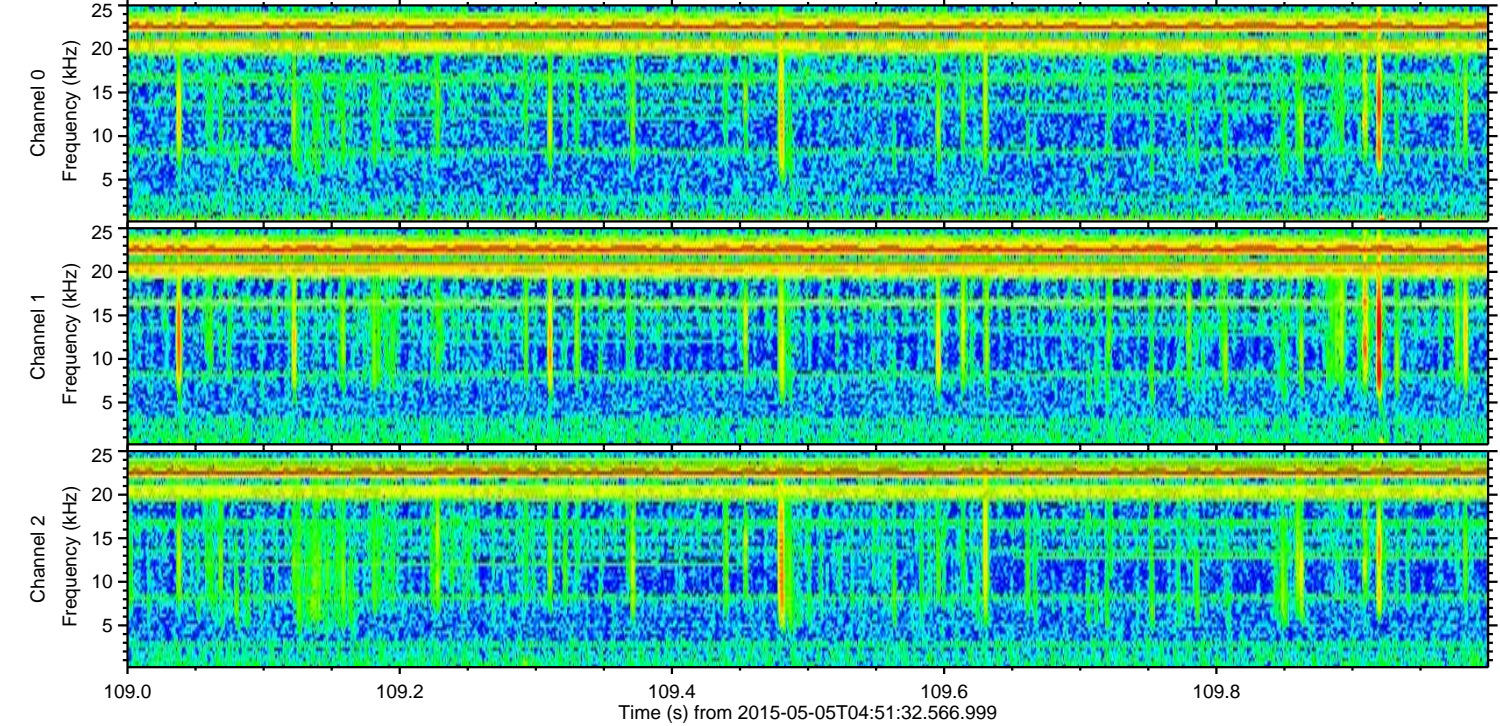
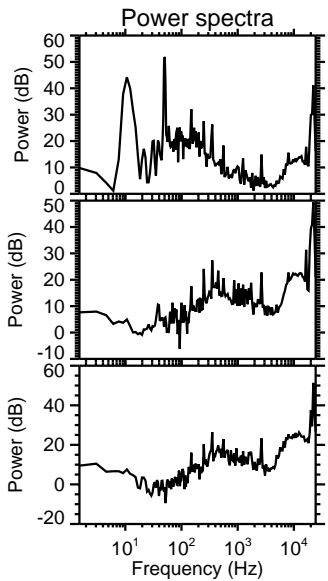
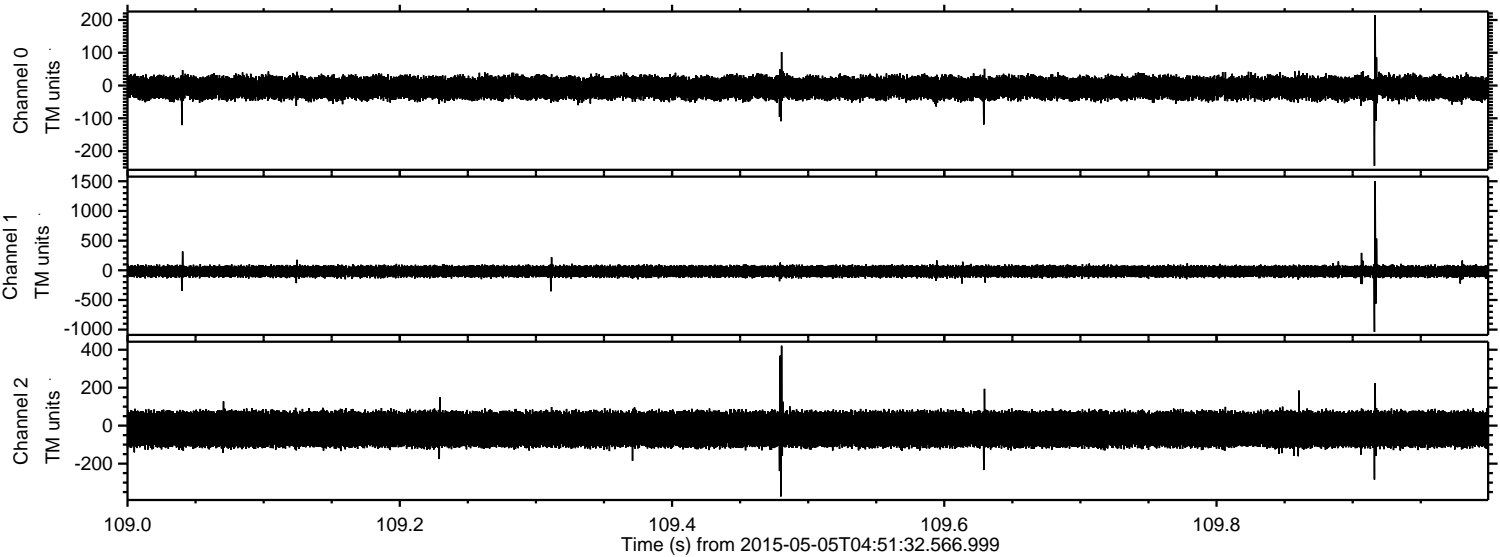


Processed Tue May 5 06:58:31 2015 by ELM ver.2012-10-06 from 001__elm20150505_045131__dat00.bin

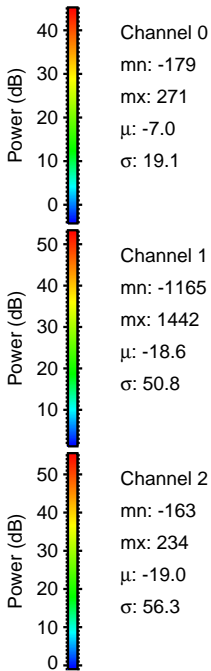
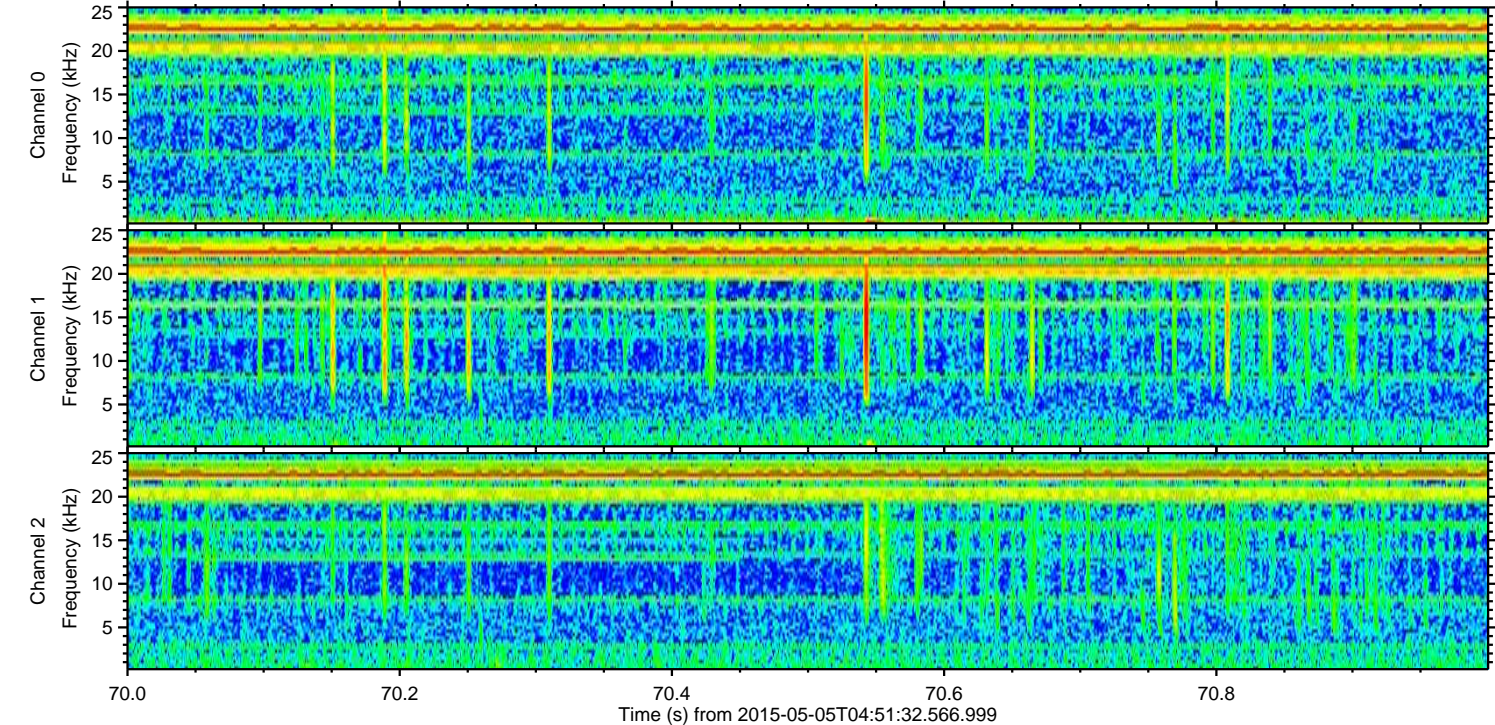
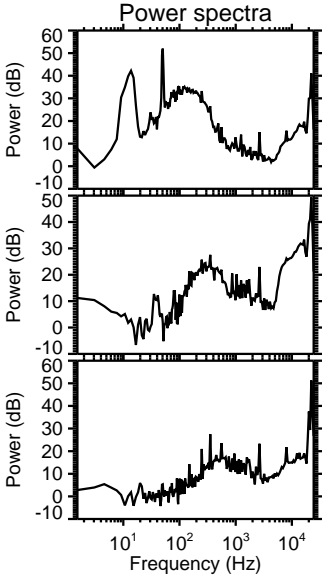
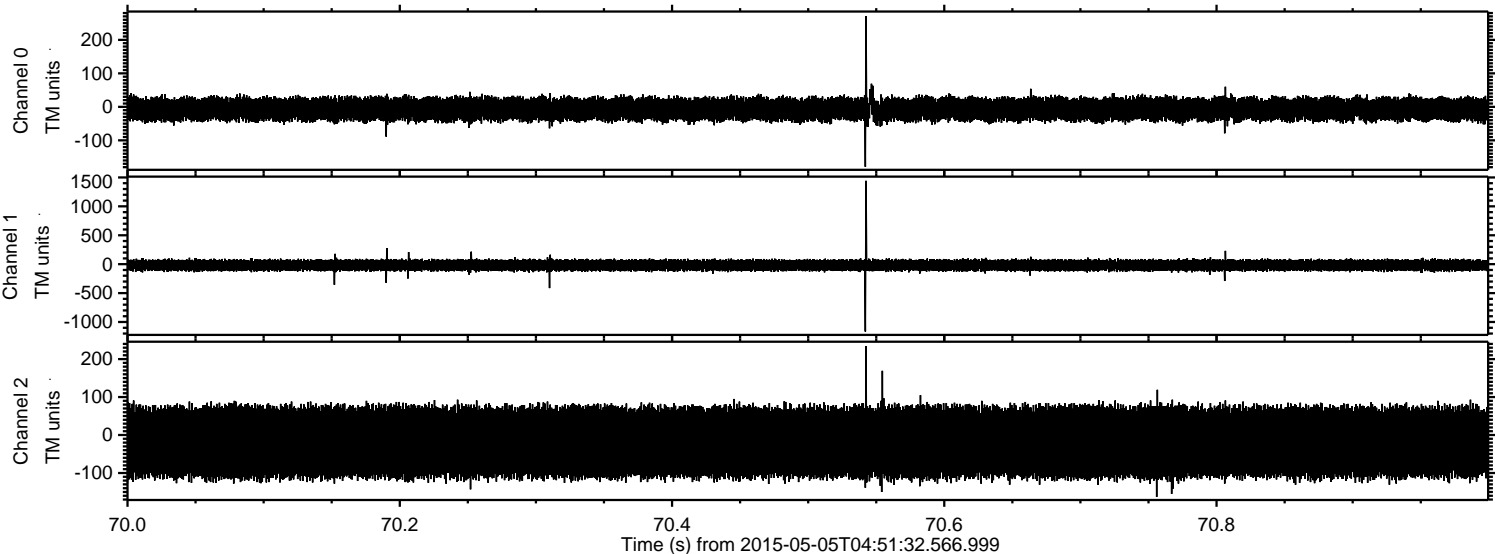


ELMAVAN 3D WAVEFORMS (Measured data sampled at 50 kHz) 49783 packets of 144 samples from 2015-05-05T04:51:32.566.999. Part 110/144

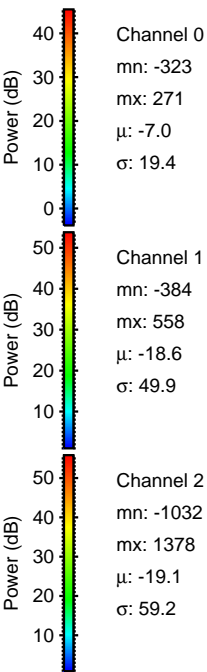
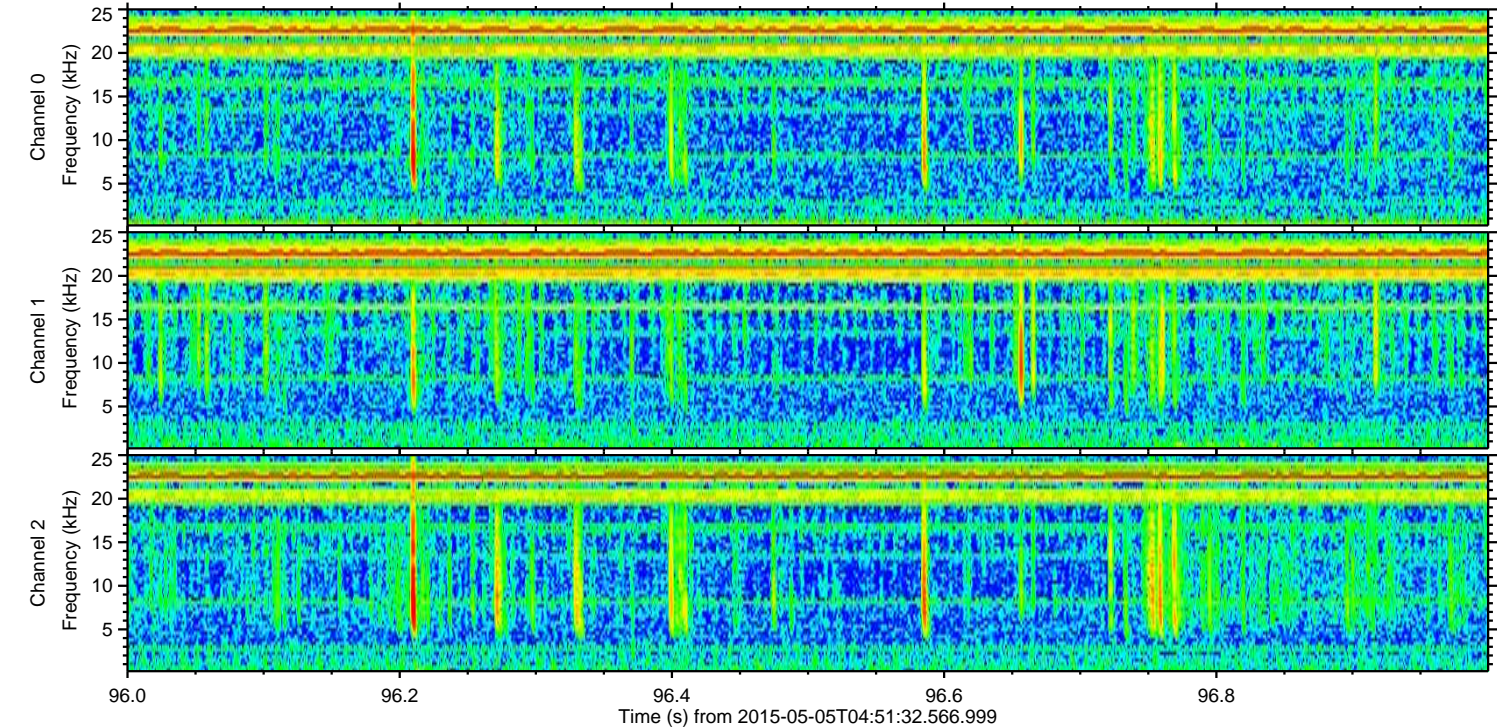
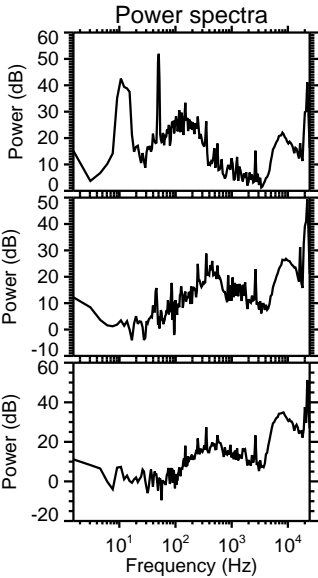
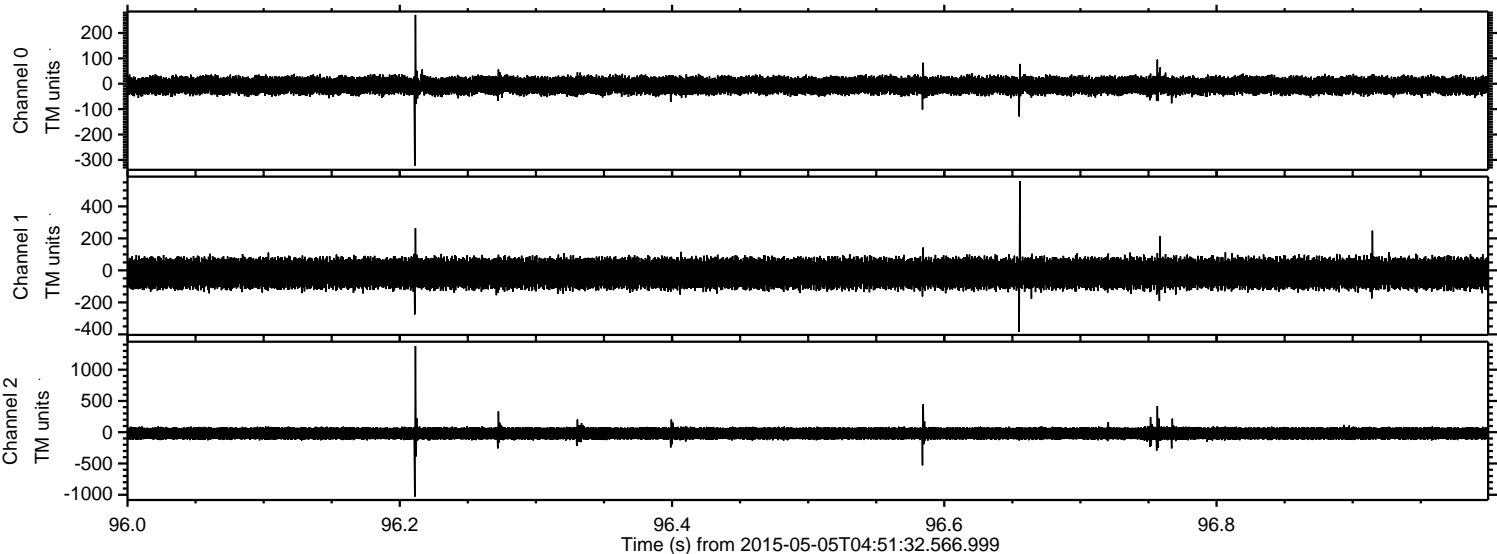
Processed Tue May 5 06:58:32 2015 by ELM ver.2012-10-06 from 001__elm20150505_045131__dat00.bin



Processed Tue May 5 06:58:33 2015 by ELM ver.2012-10-06 from 001__elm20150505_045131__dat00.bin

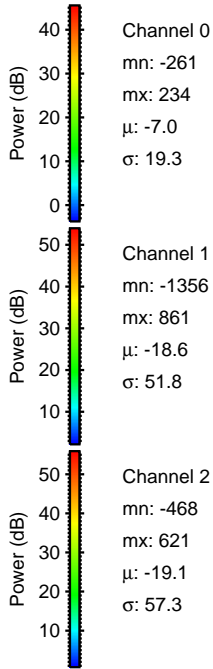
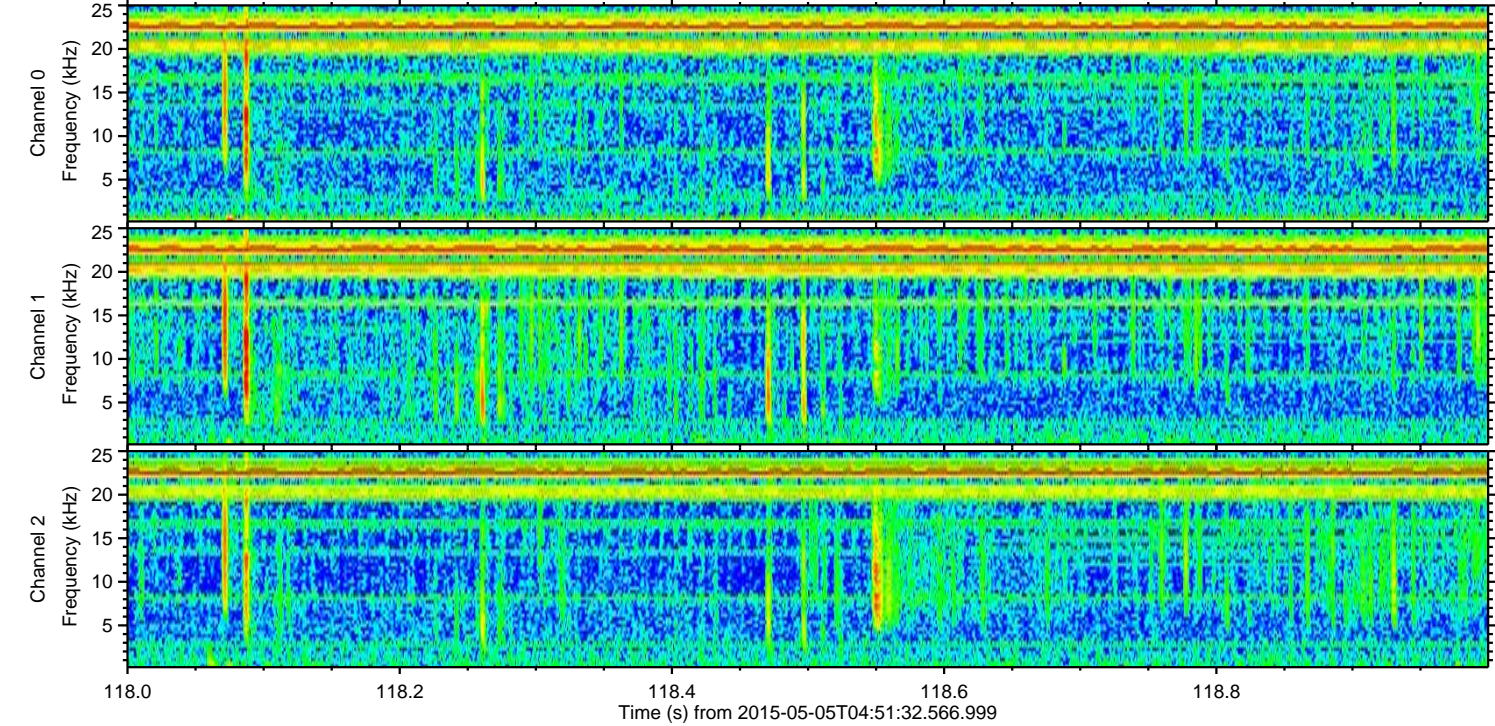
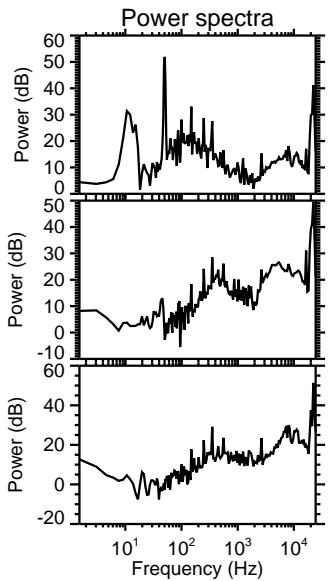
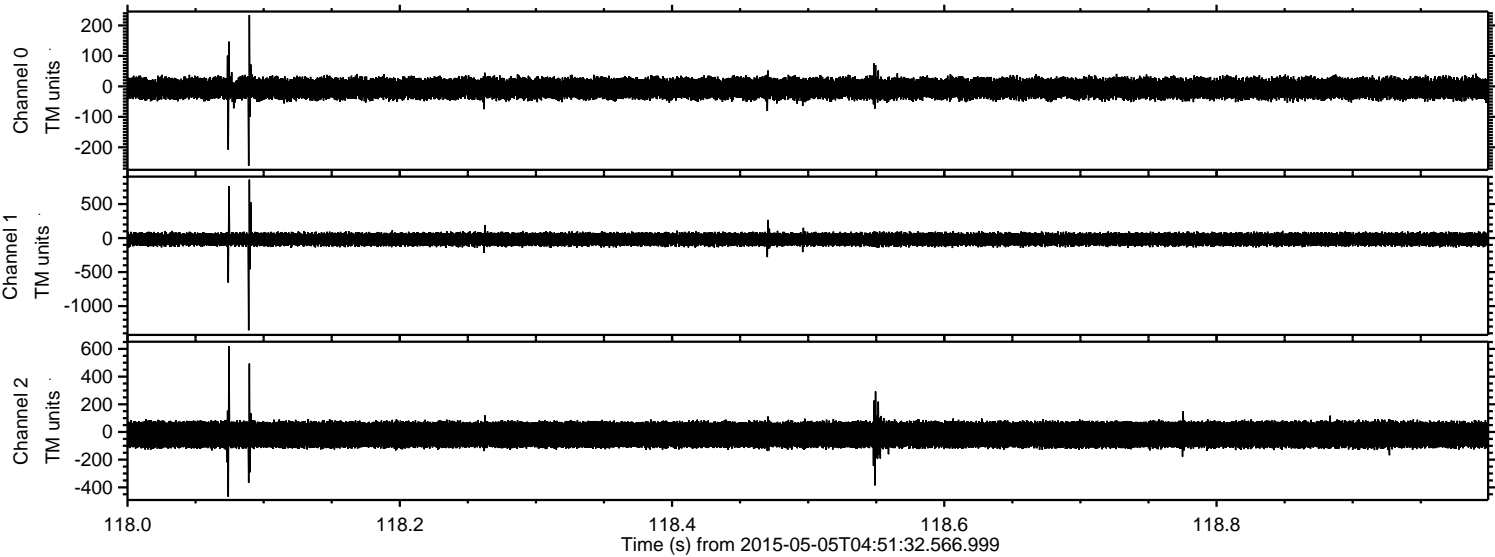


Processed Tue May 5 06:58:34 2015 by ELM ver.2012-10-06 from 001__elm20150505_045131__dat00.bin



ELMAVAN 3D WAVEFORMS (Measured data sampled at 50 kHz) 49783 packets of 144 samples from 2015-05-05T04:51:32.566.999. Part 119/144

Processed Tue May 5 06:58:35 2015 by ELM ver.2012-10-06 from 001__elm20150505_045131__dat00.bin



Processed Tue May 5 06:58:36 2015 by ELM ver.2012-10-06 from 001__elm20150505_045131__dat00.bin

