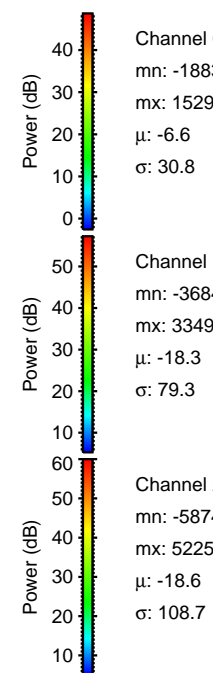
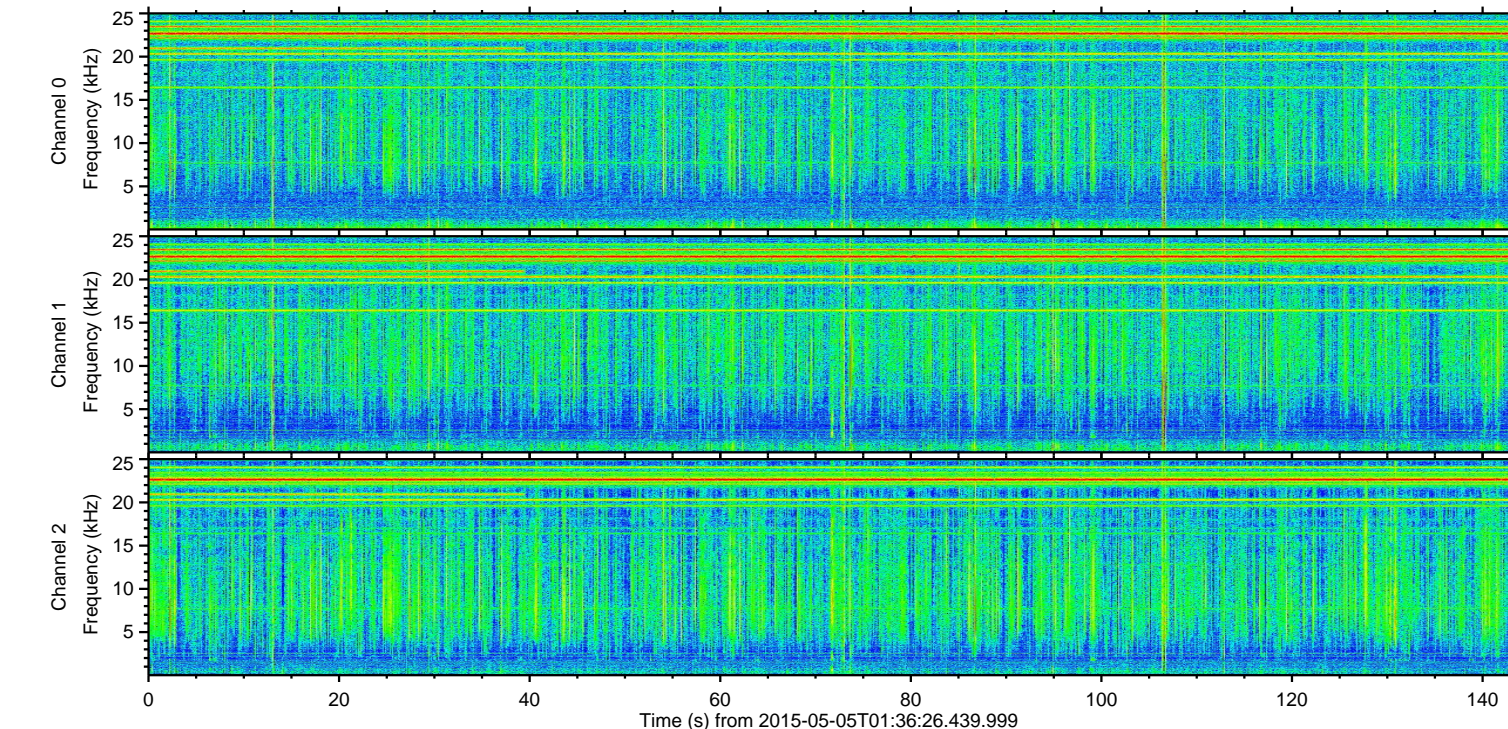
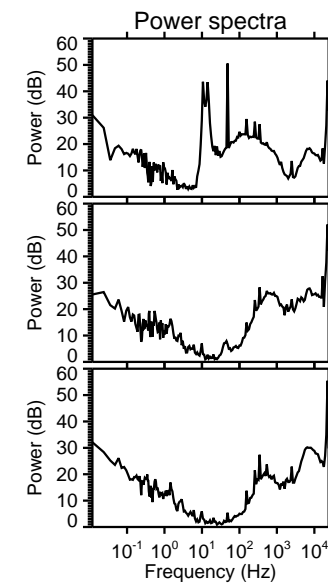
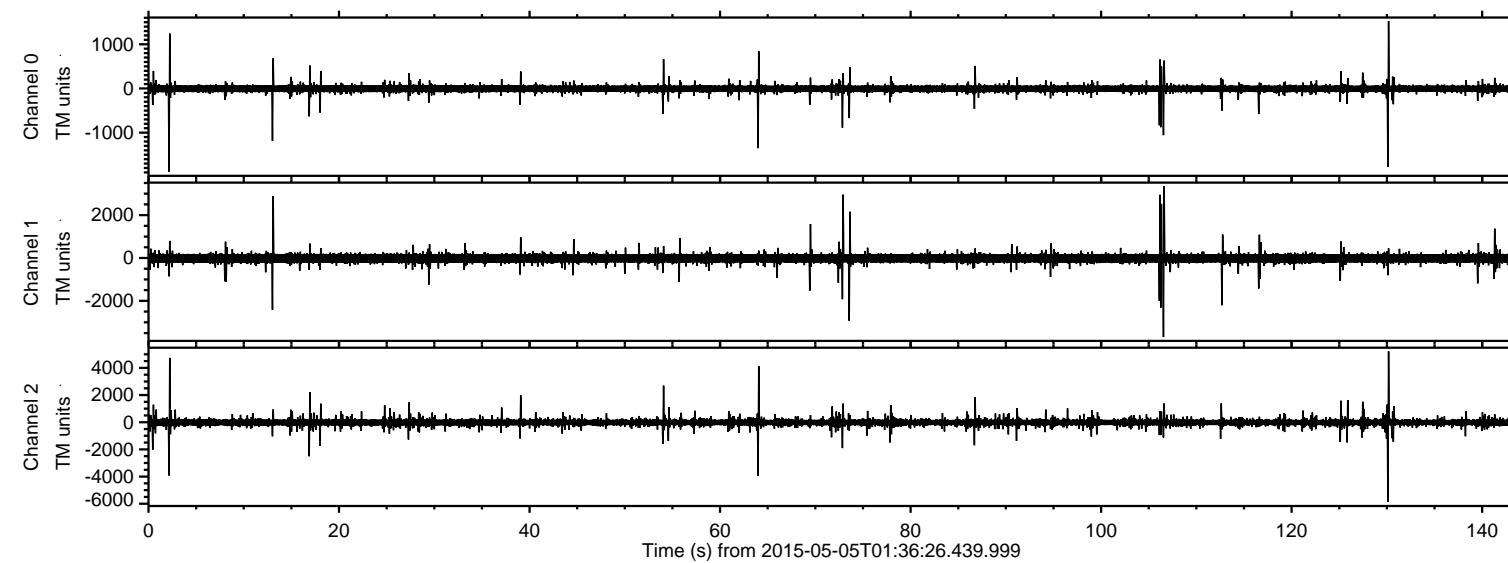


# ELMAVAN 3D WAVEFORMS (Measured data sampled at 50 kHz) 49595 packets of 144 samples from 2015-05-05T01:36:26.439.999.

Processed Tue May 5 03:43:50 2015 by ELM ver.2012-10-06 from 001\_\_elm20150505\_013625\_\_dat00.bin



Channel 0  
mn: -1883  
mx: 1529  
 $\mu$ : -6.6  
 $\sigma$ : 30.8

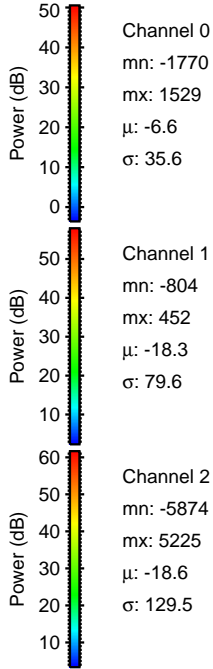
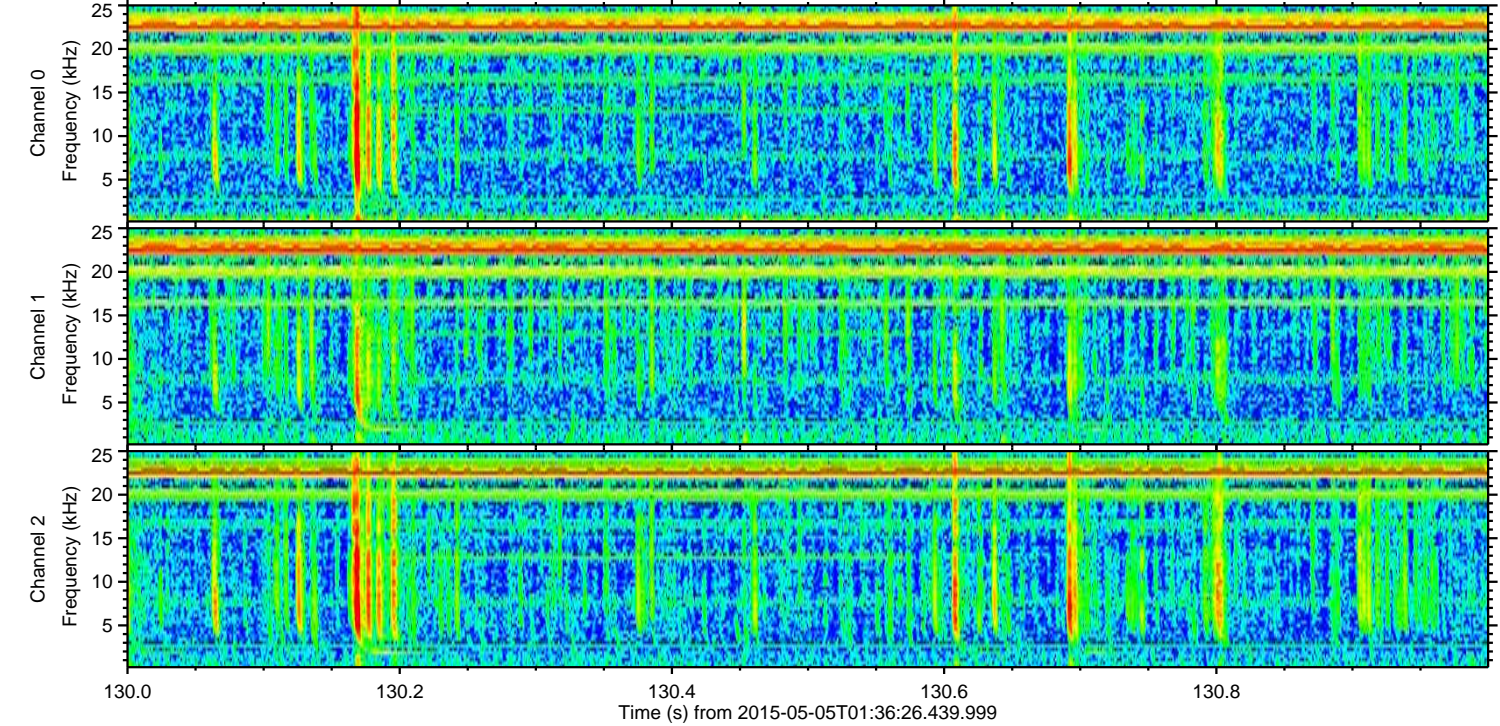
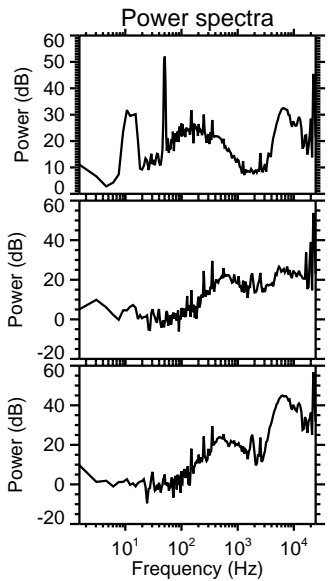
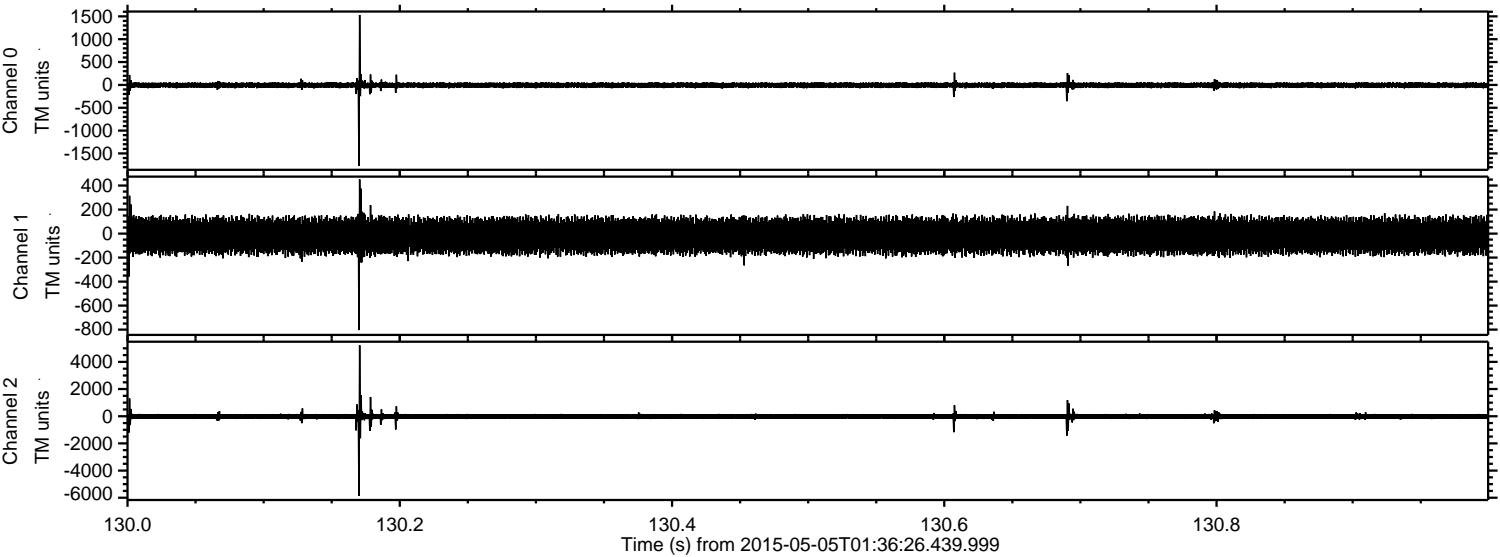
Channel 1  
mn: -3684  
mx: 3349  
 $\mu$ : -18.3  
 $\sigma$ : 79.3

Channel 2  
mn: -5874  
mx: 5225  
 $\mu$ : -18.6  
 $\sigma$ : 108.7



ELMAVAN 3D WAVEFORMS (Measured data sampled at 50 kHz) 49595 packets of 144 samples from 2015-05-05T01:36:26.439.999. Part 131/143

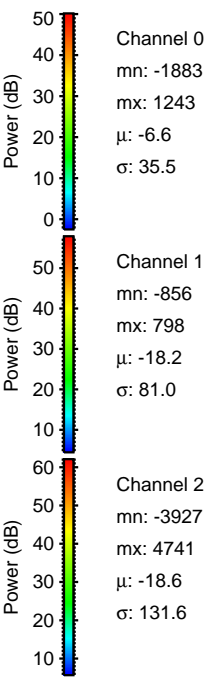
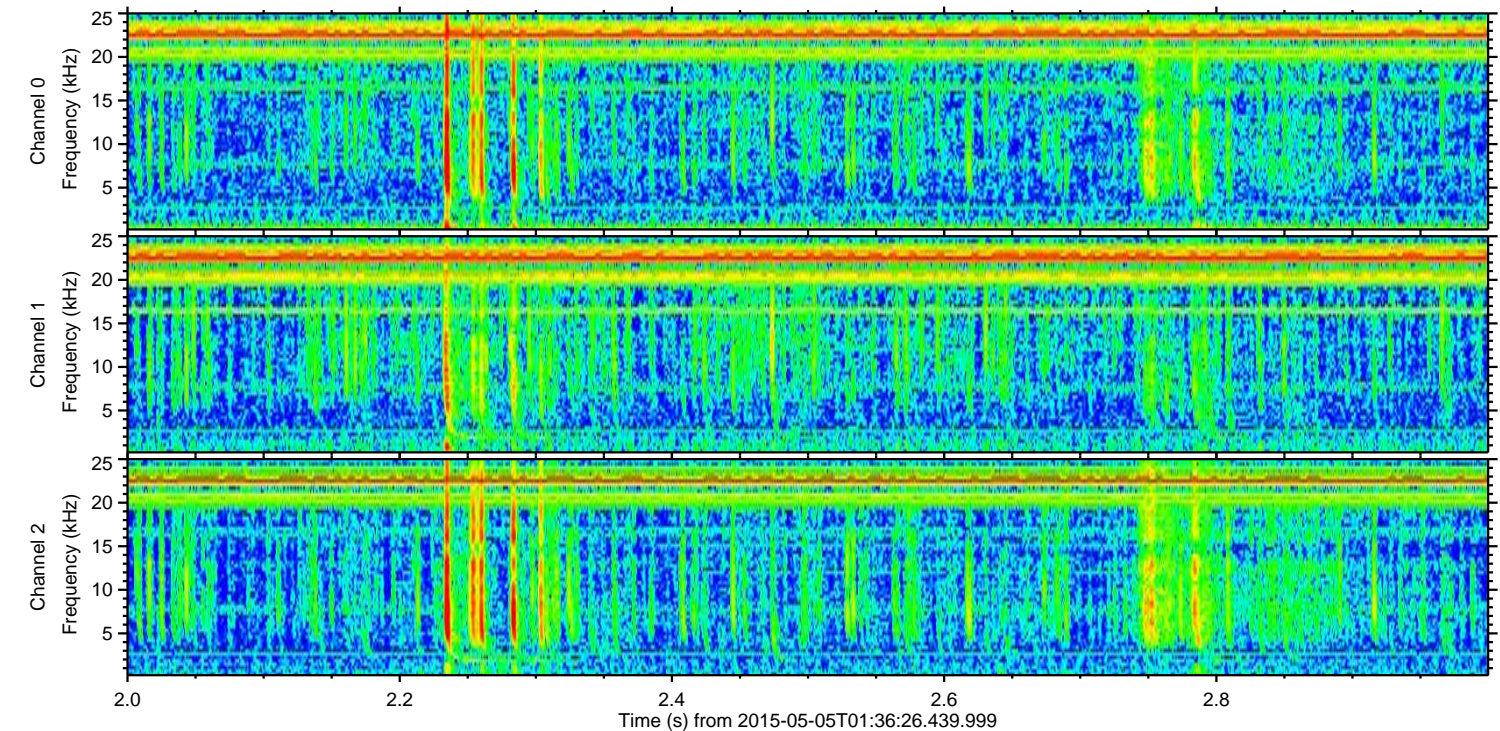
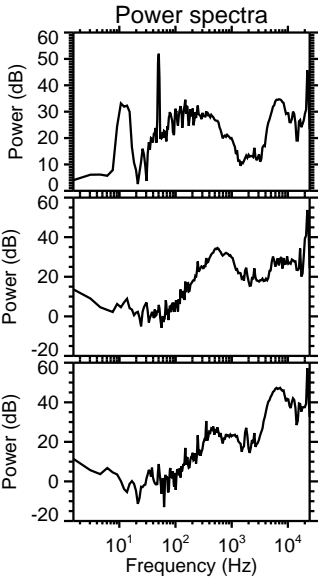
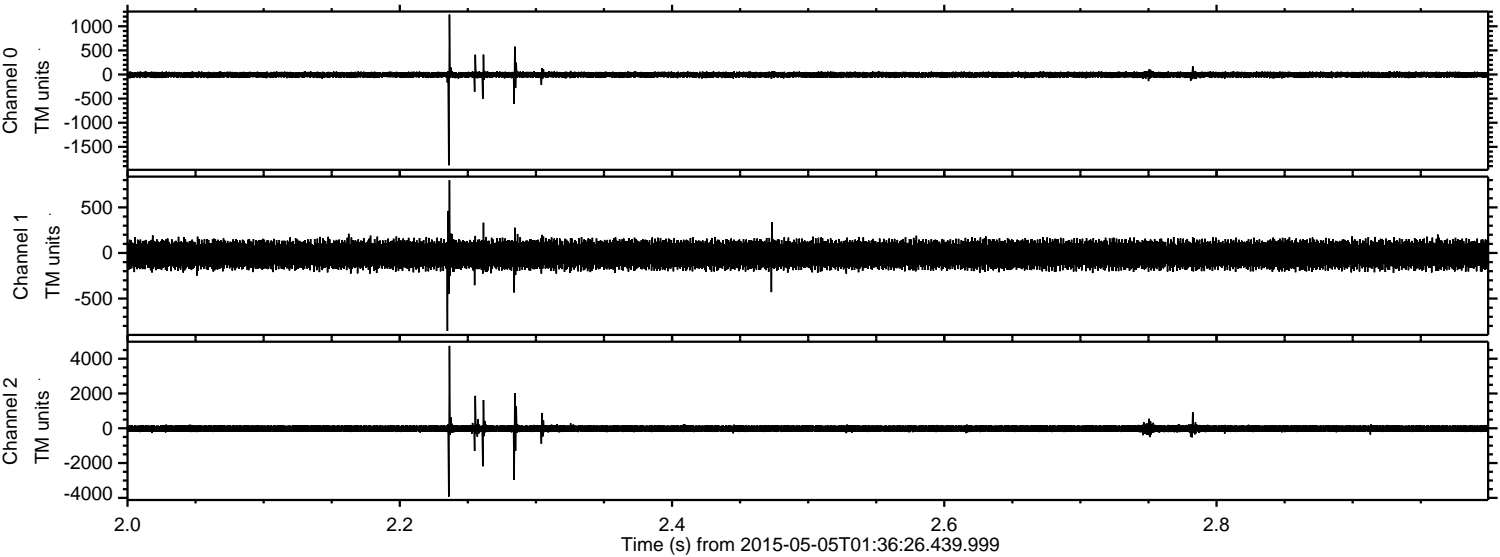
Processed Tue May 5 03:44:05 2015 by ELM ver.2012-10-06 from 001\_\_elm20150505\_013625\_\_dat00.bin





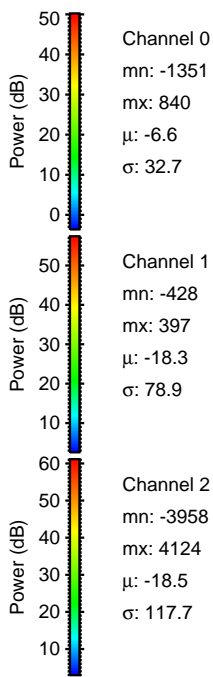
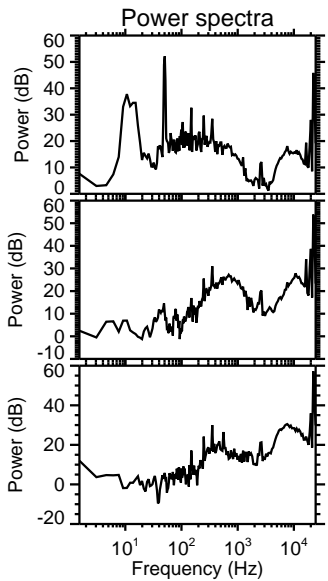
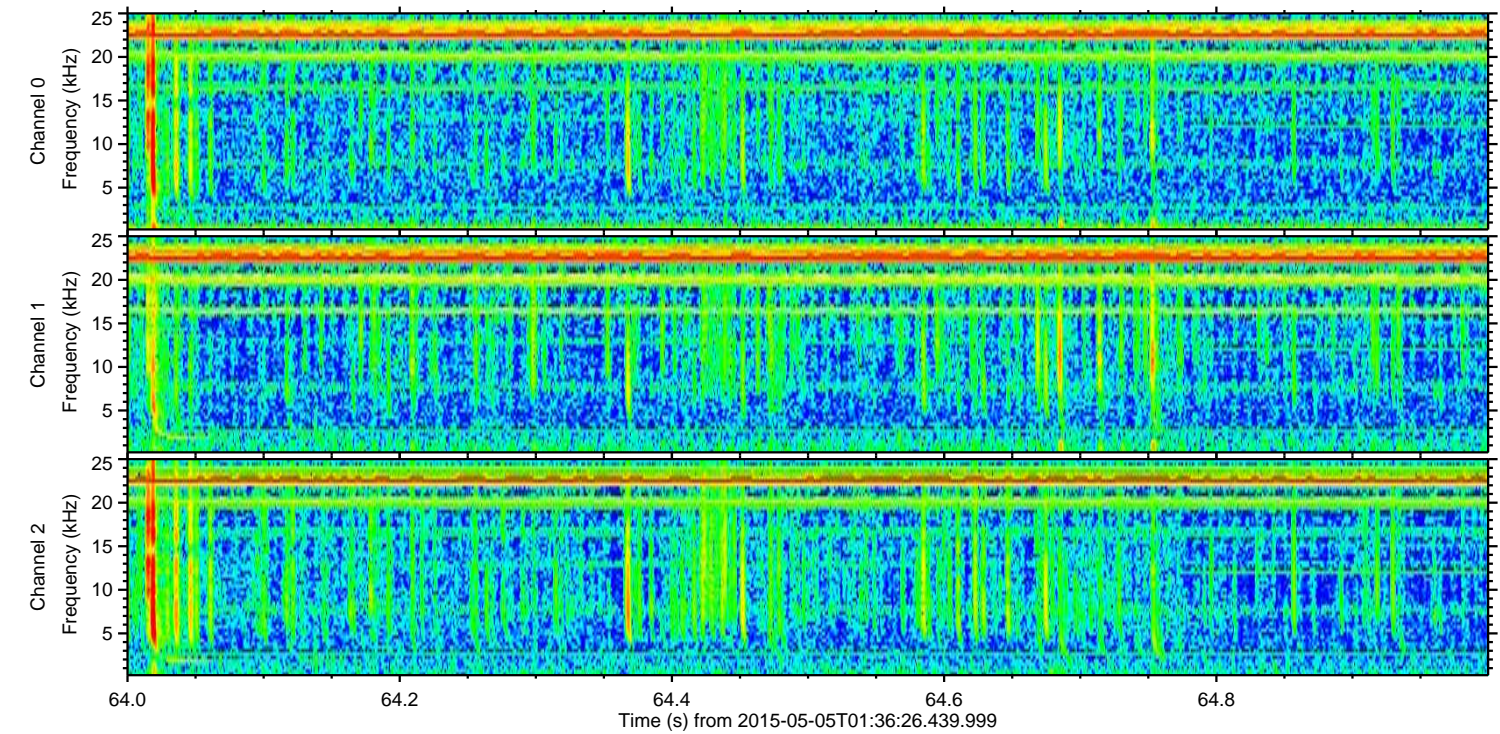
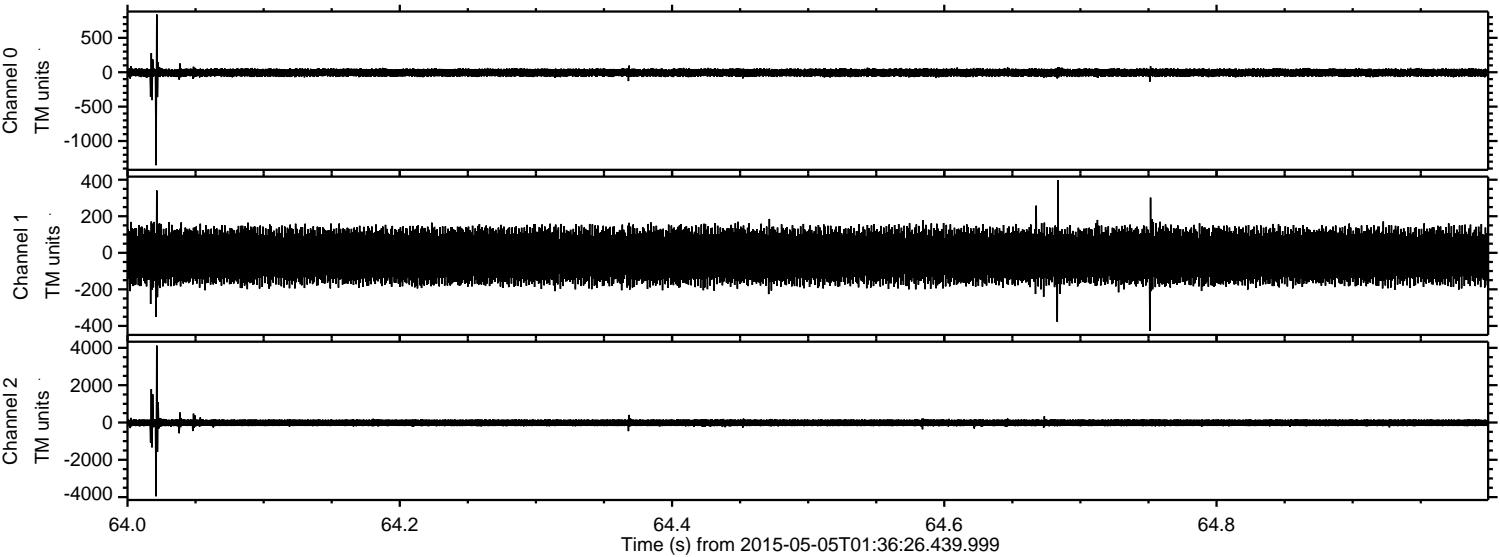
ELMAVAN 3D WAVEFORMS (Measured data sampled at 50 kHz) 49595 packets of 144 samples from 2015-05-05T01:36:26.439.999. Part 3/143

Processed Tue May 5 03:44:06 2015 by ELM ver.2012-10-06 from 001\_\_elm20150505\_013625\_\_dat00.bin





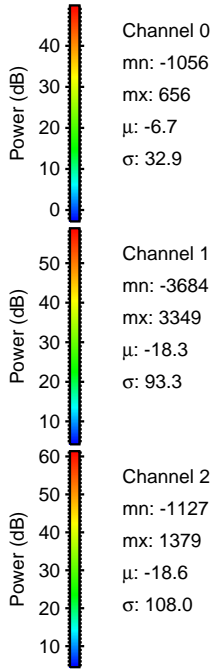
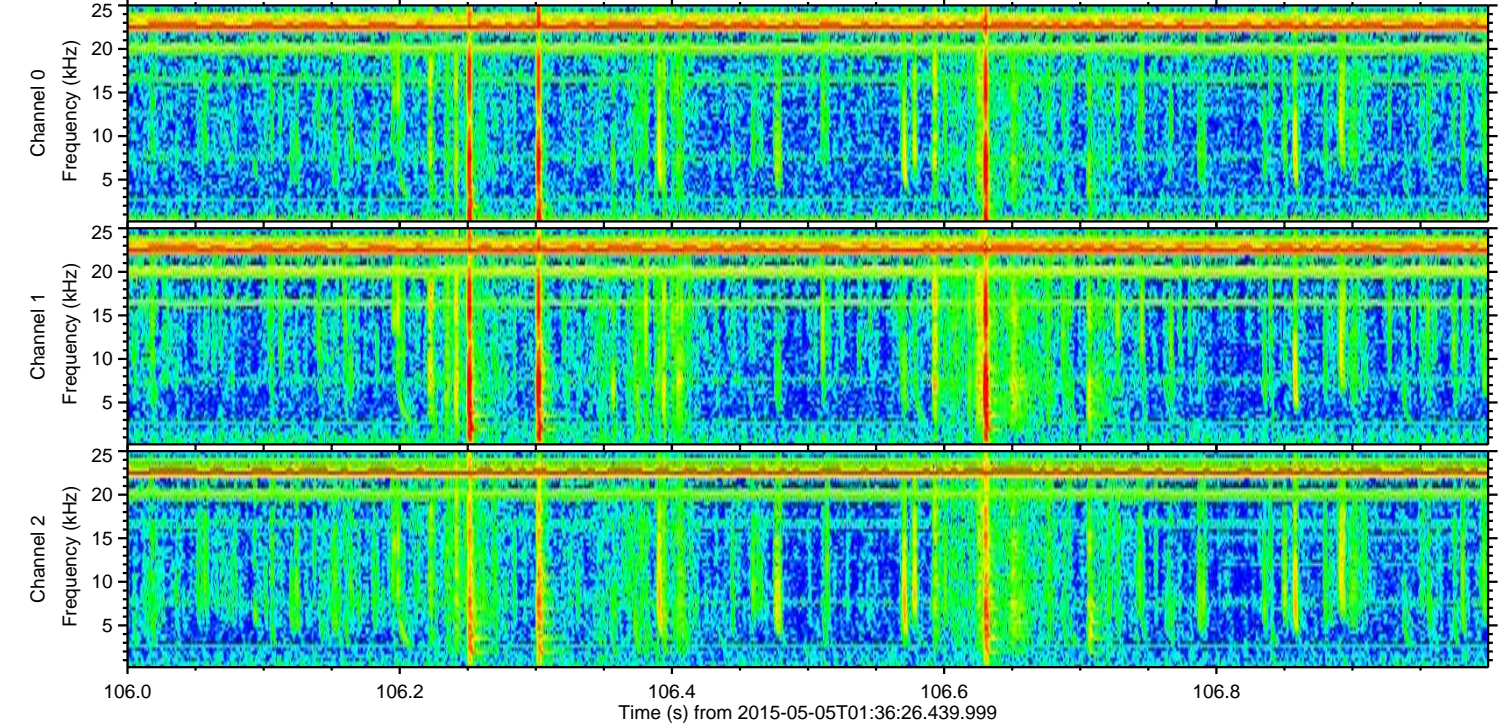
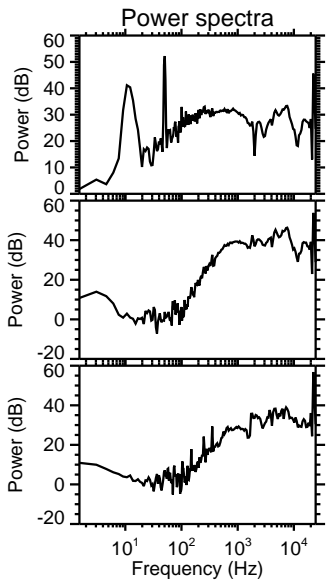
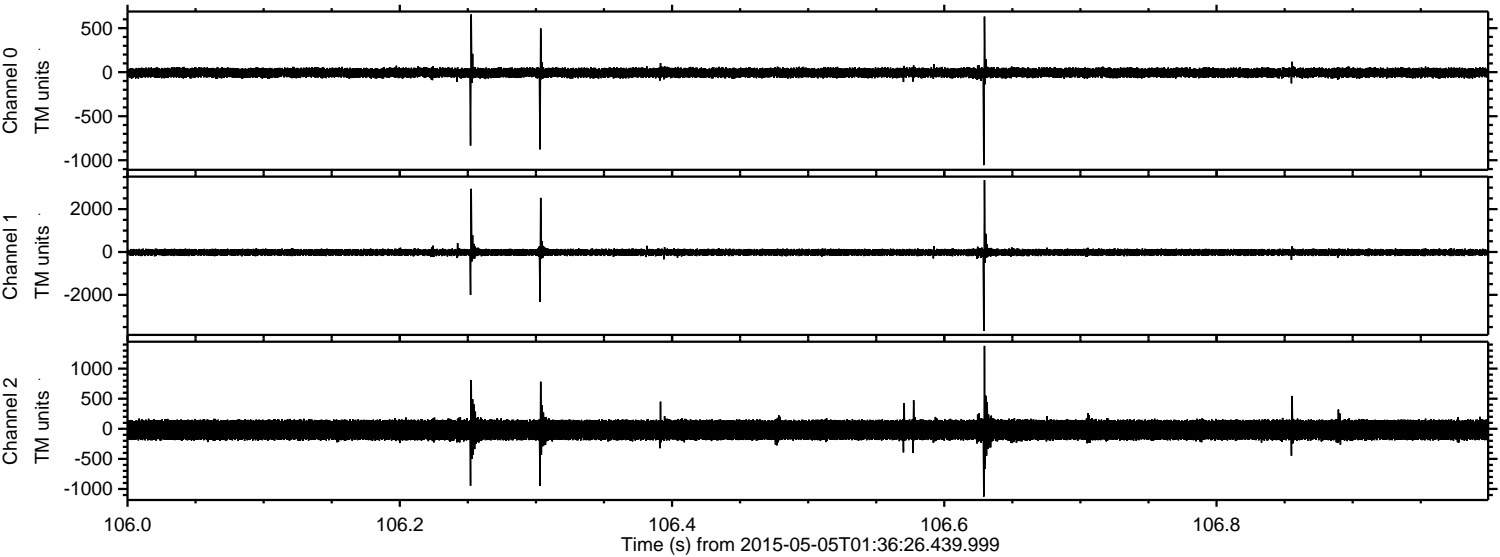
Processed Tue May 5 03:44:07 2015 by ELM ver.2012-10-06 from 001\_\_elm20150505\_013625\_\_dat00.bin





ELMAVAN 3D WAVEFORMS (Measured data sampled at 50 kHz) 49595 packets of 144 samples from 2015-05-05T01:36:26.439.999. Part 107/143

Processed Tue May 5 03:44:08 2015 by ELM ver.2012-10-06 from 001\_\_elm20150505\_013625\_\_dat00.bin



Channel 0  
mn: -1056  
mx: 656  
 $\mu$ : -6.7  
 $\sigma$ : 32.9

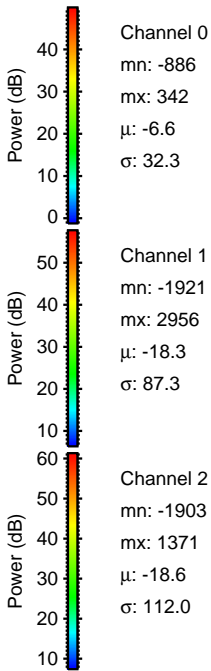
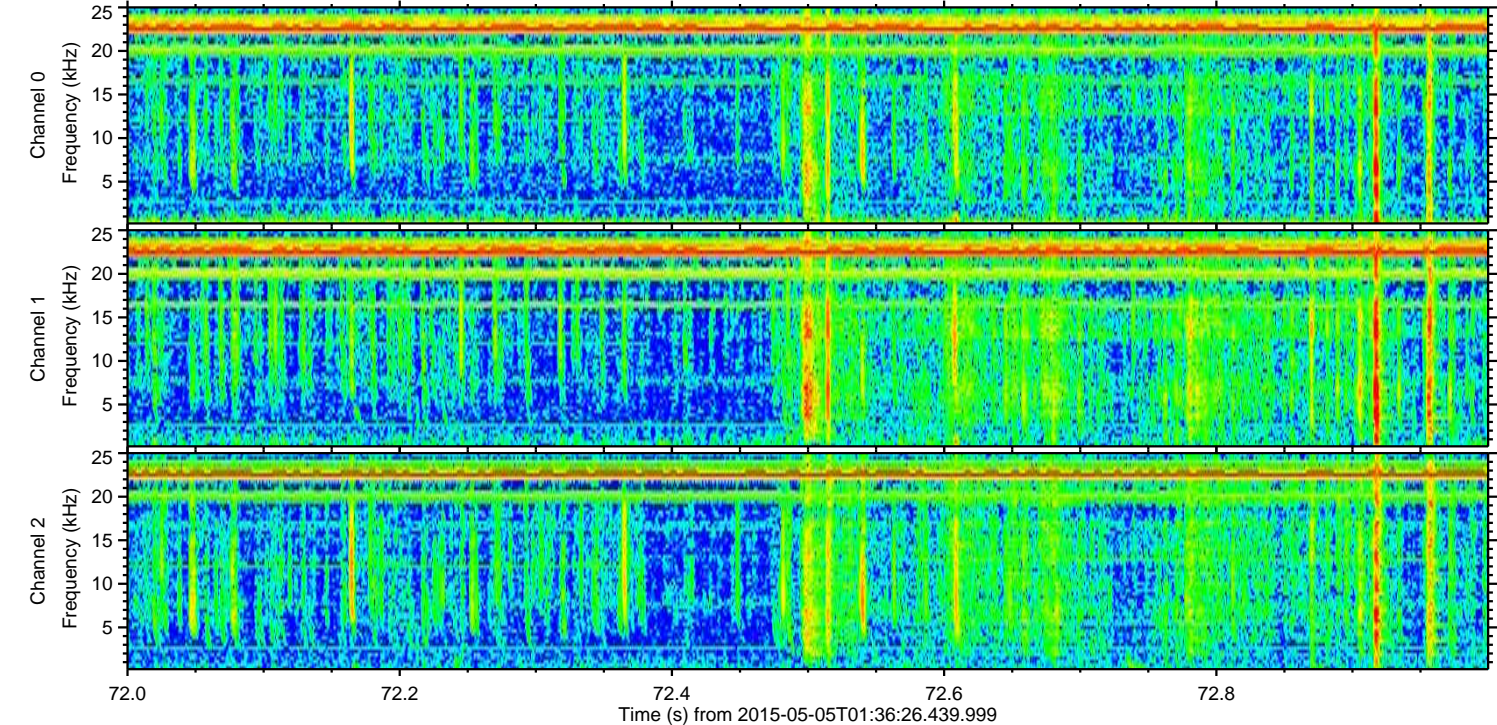
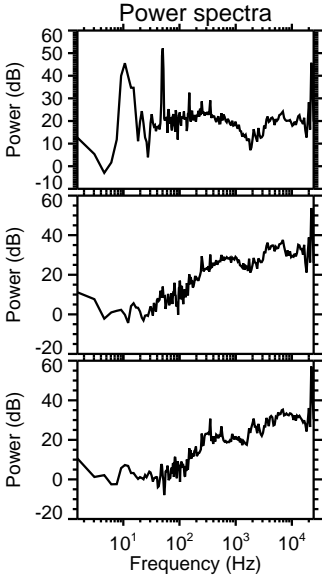
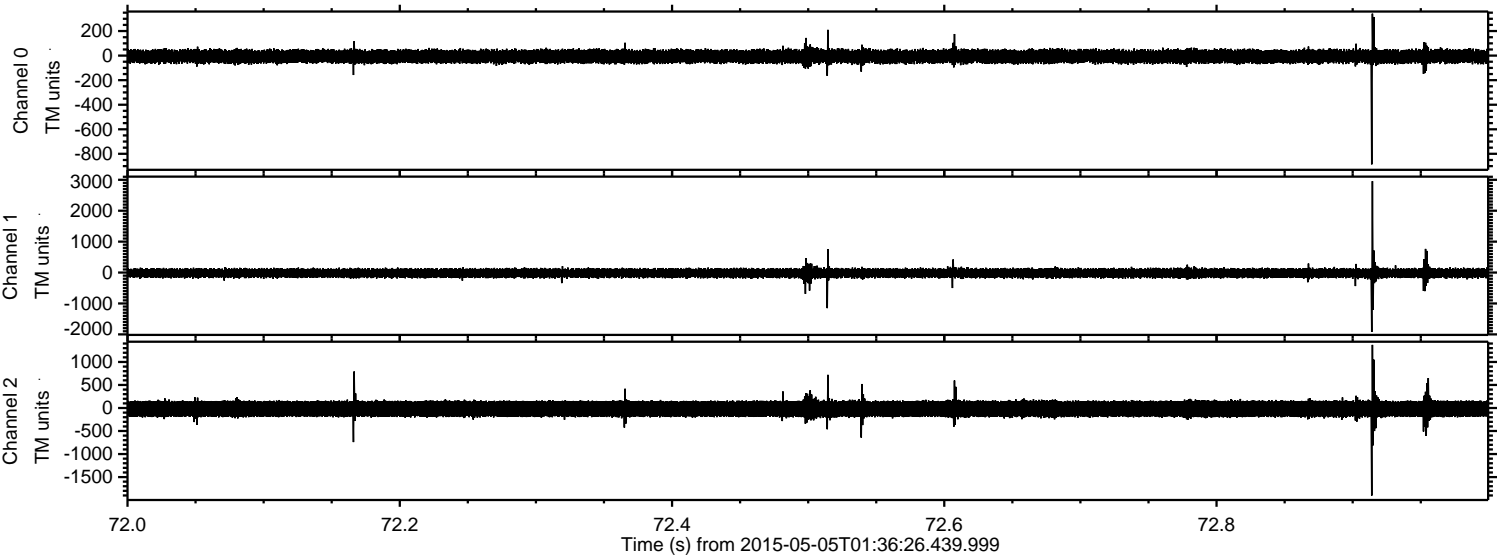
Channel 1  
mn: -3684  
mx: 3349  
 $\mu$ : -18.3  
 $\sigma$ : 93.3

Channel 2  
mn: -1127  
mx: 1379  
 $\mu$ : -18.6  
 $\sigma$ : 108.0



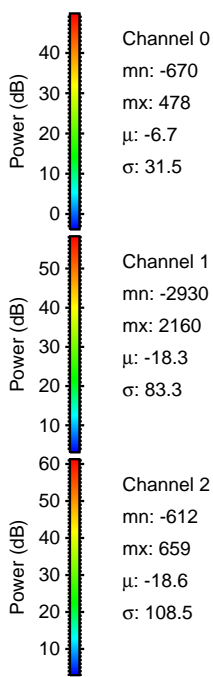
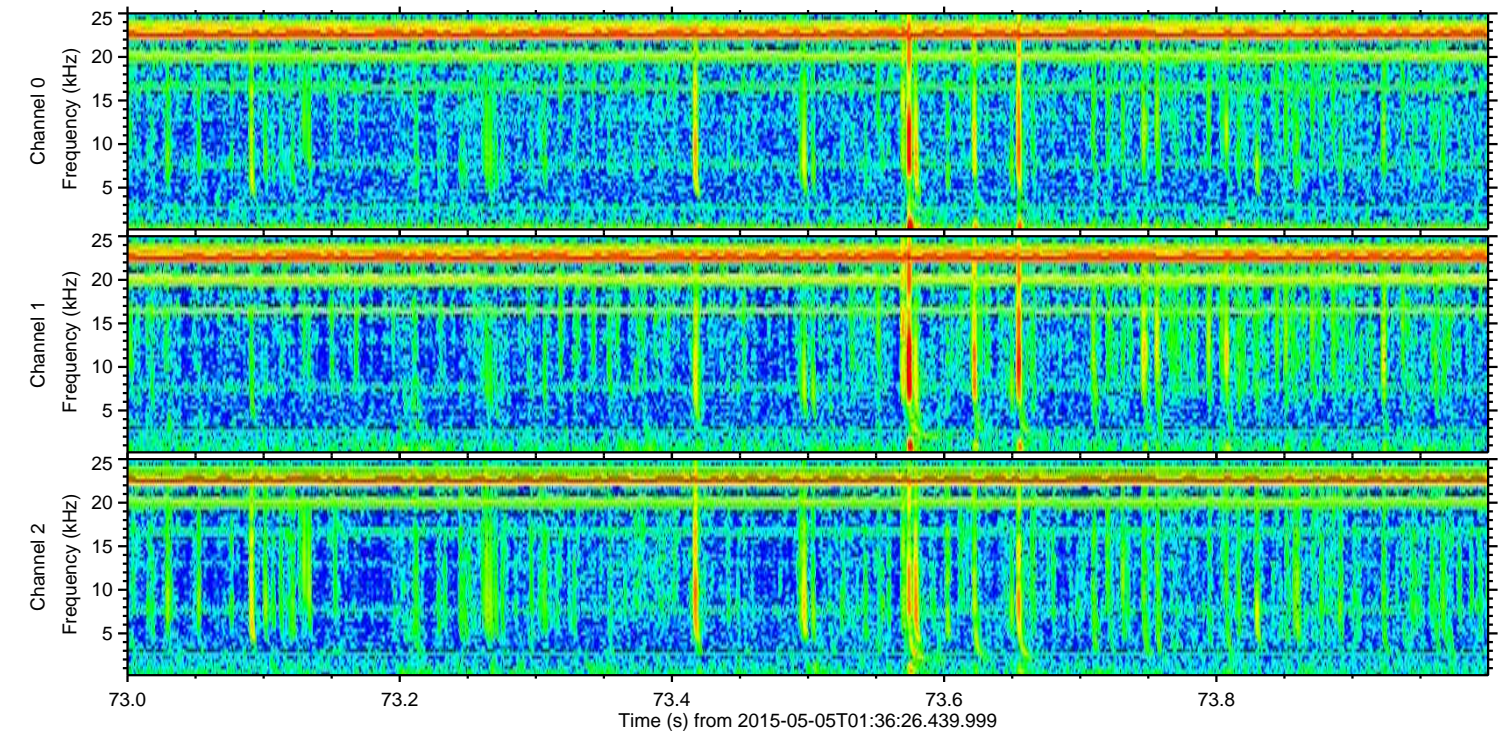
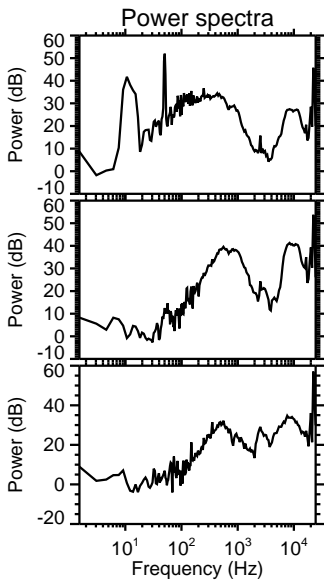
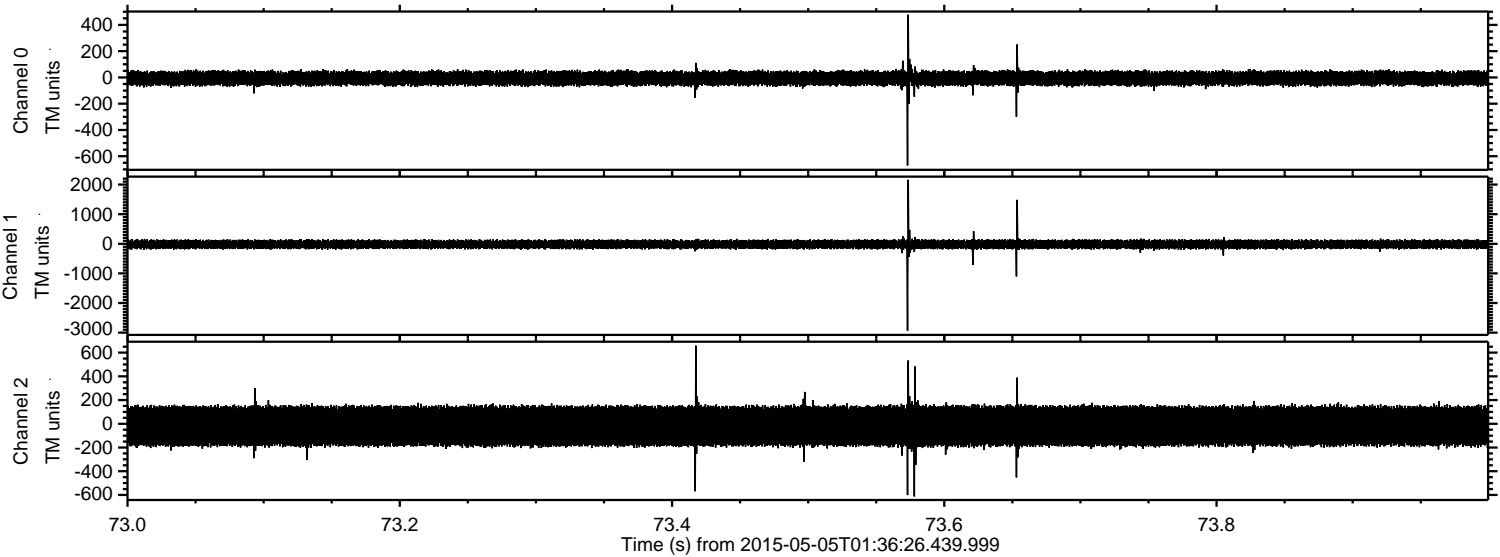
ELMAVAN 3D WAVEFORMS (Measured data sampled at 50 kHz) 49595 packets of 144 samples from 2015-05-05T01:36:26.439.999. Part 73/143

Processed Tue May 5 03:44:09 2015 by ELM ver.2012-10-06 from 001\_\_elm20150505\_013625\_\_dat00.bin



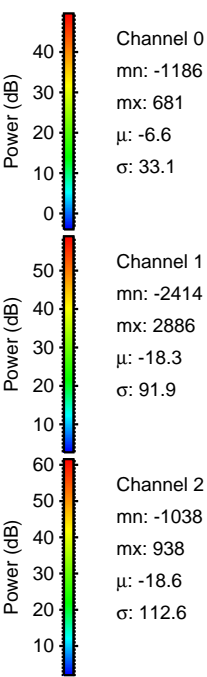
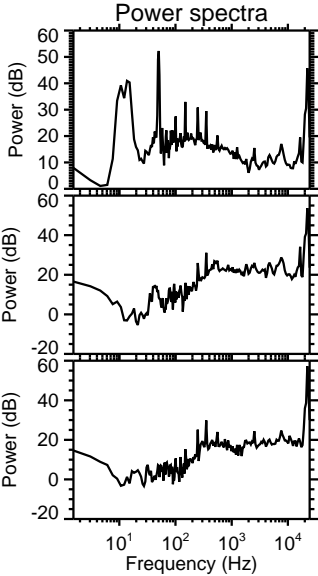
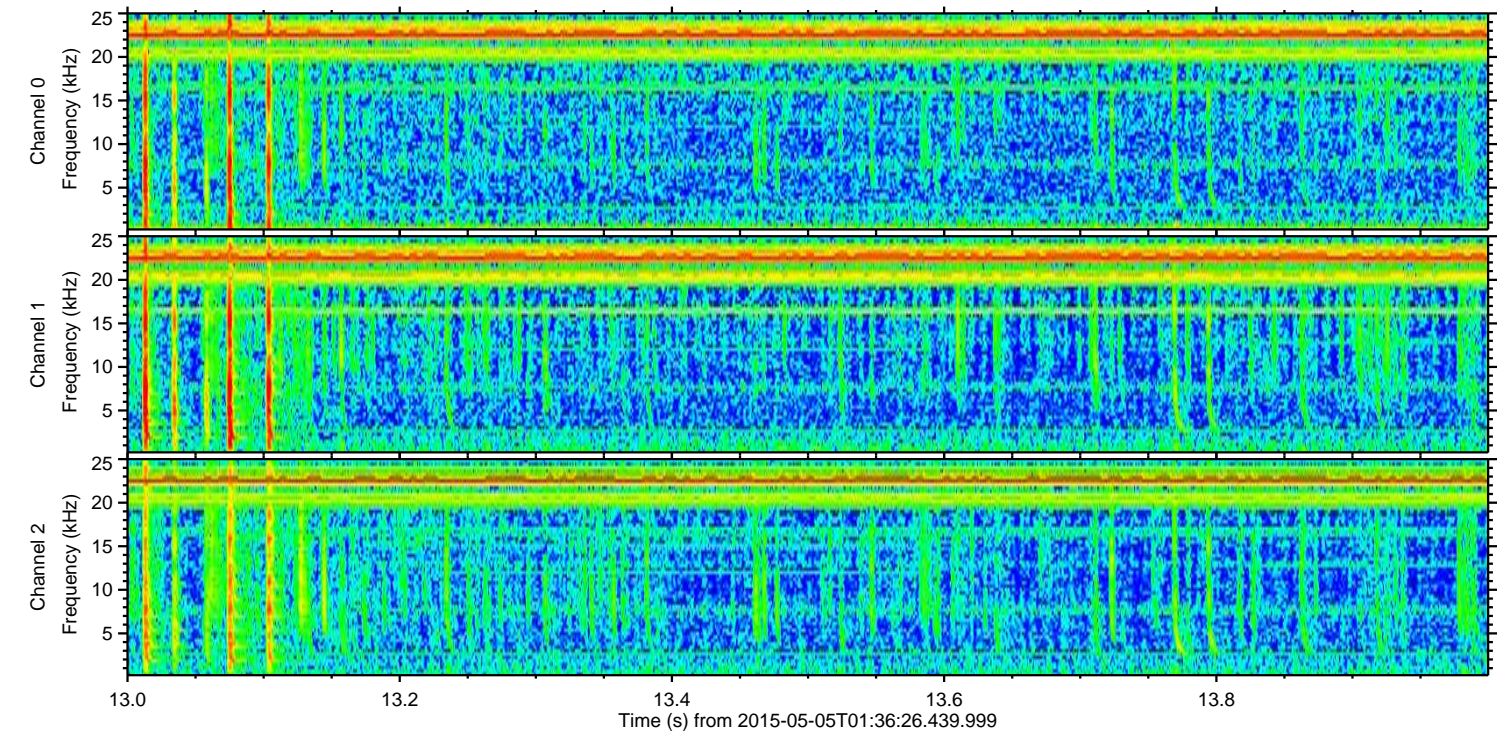
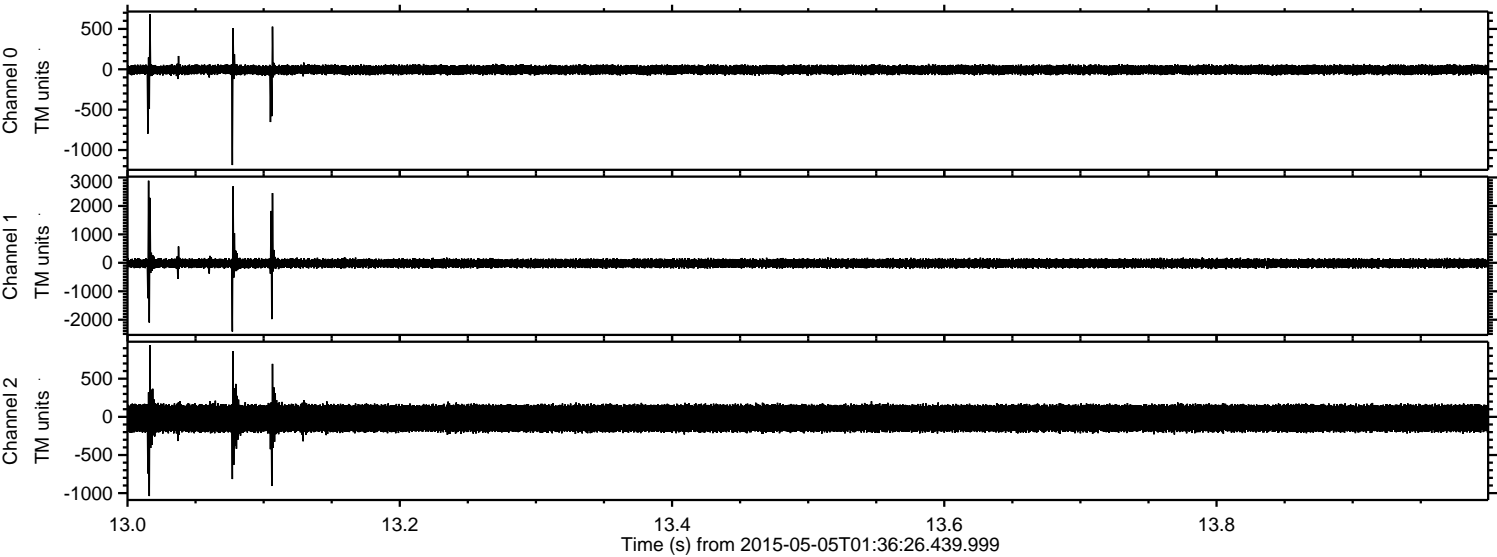


Processed Tue May 5 03:44:10 2015 by ELM ver.2012-10-06 from 001\_\_elm20150505\_013625\_\_dat00.bin





Processed Tue May 5 03:44:11 2015 by ELM ver.2012-10-06 from 001\_\_elm20150505\_013625\_\_dat00.bin



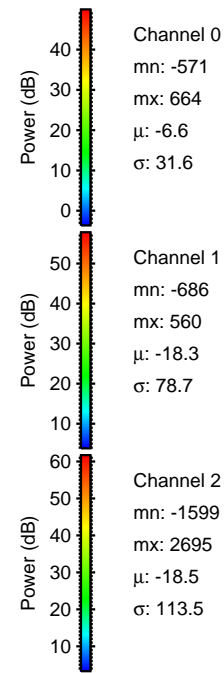
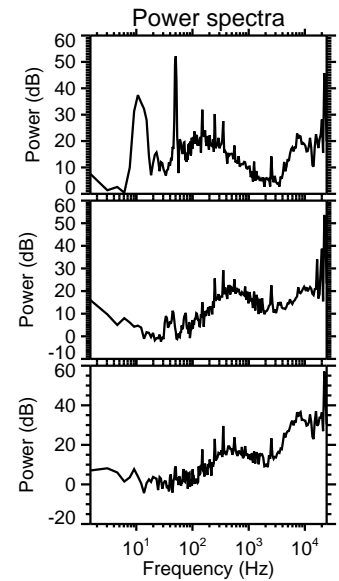
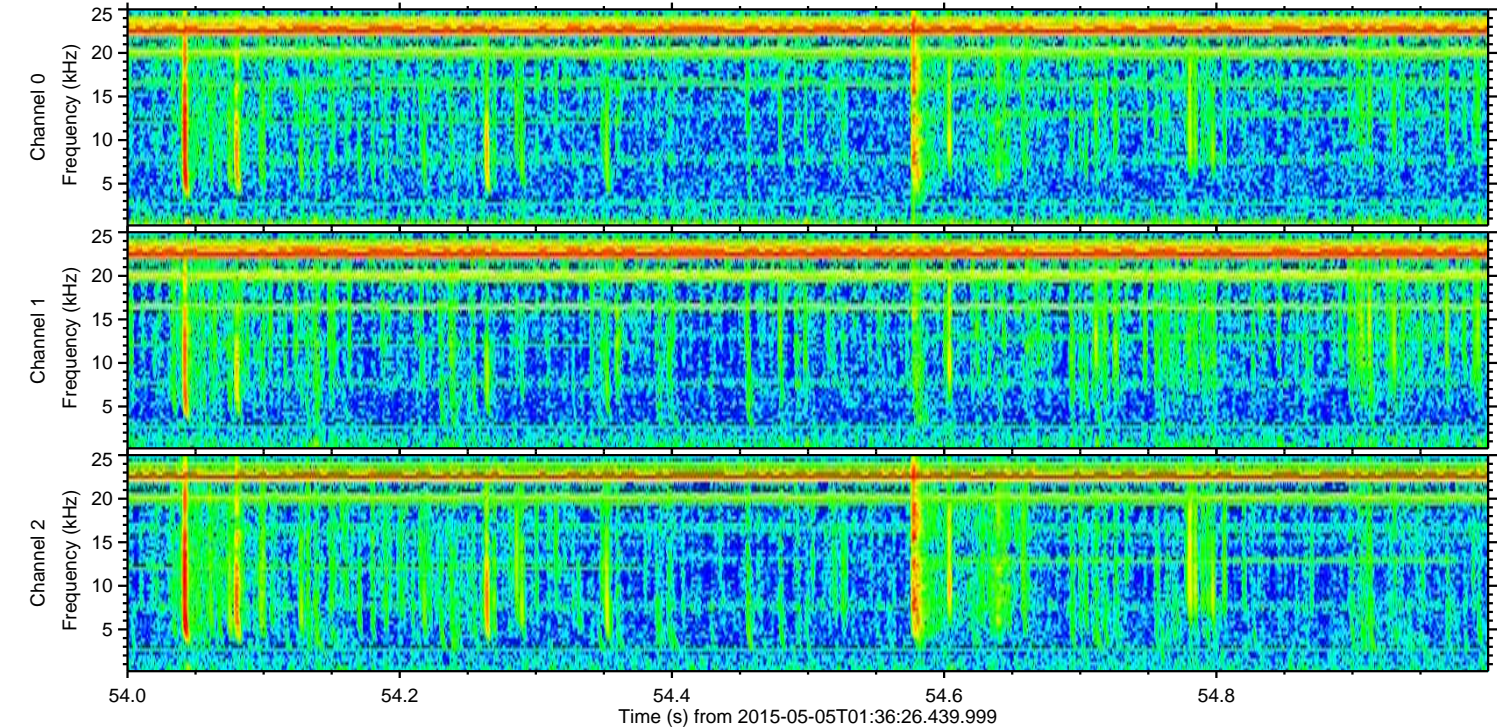
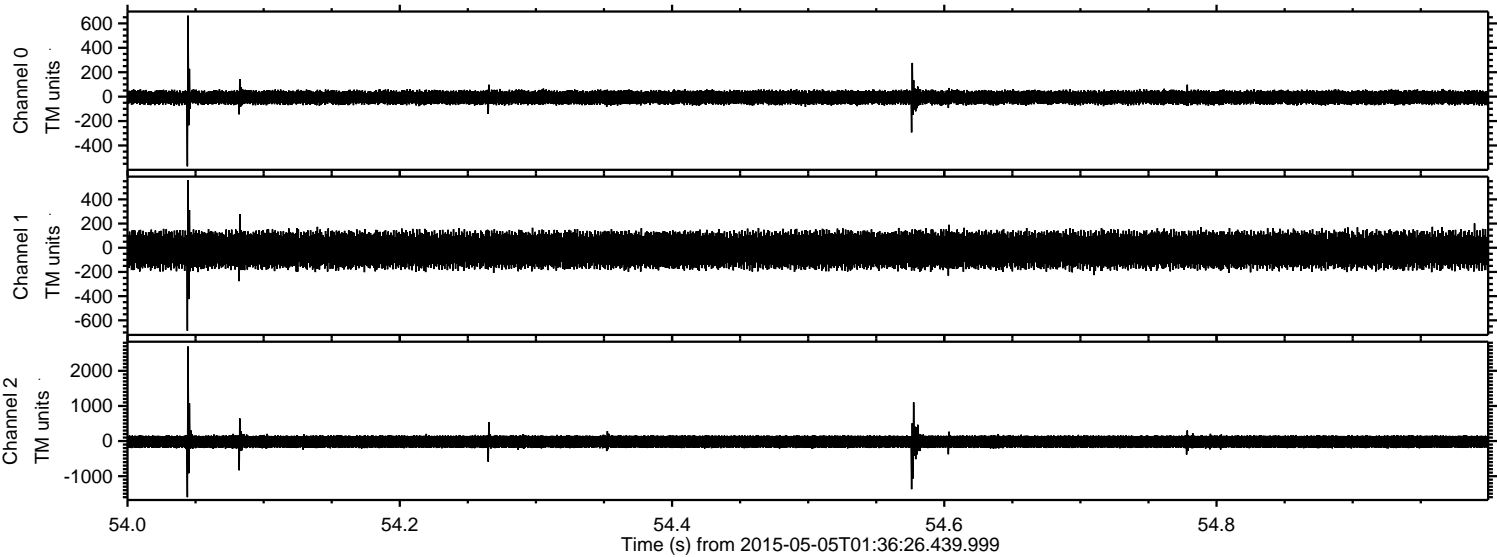
Channel 0  
mn: -1186  
mx: 681  
 $\mu$ : -6.6  
 $\sigma$ : 33.1

Channel 1  
mn: -2414  
mx: 2886  
 $\mu$ : -18.3  
 $\sigma$ : 91.9

Channel 2  
mn: -1038  
mx: 938  
 $\mu$ : -18.6  
 $\sigma$ : 112.6



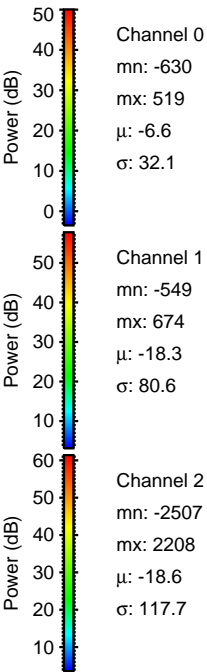
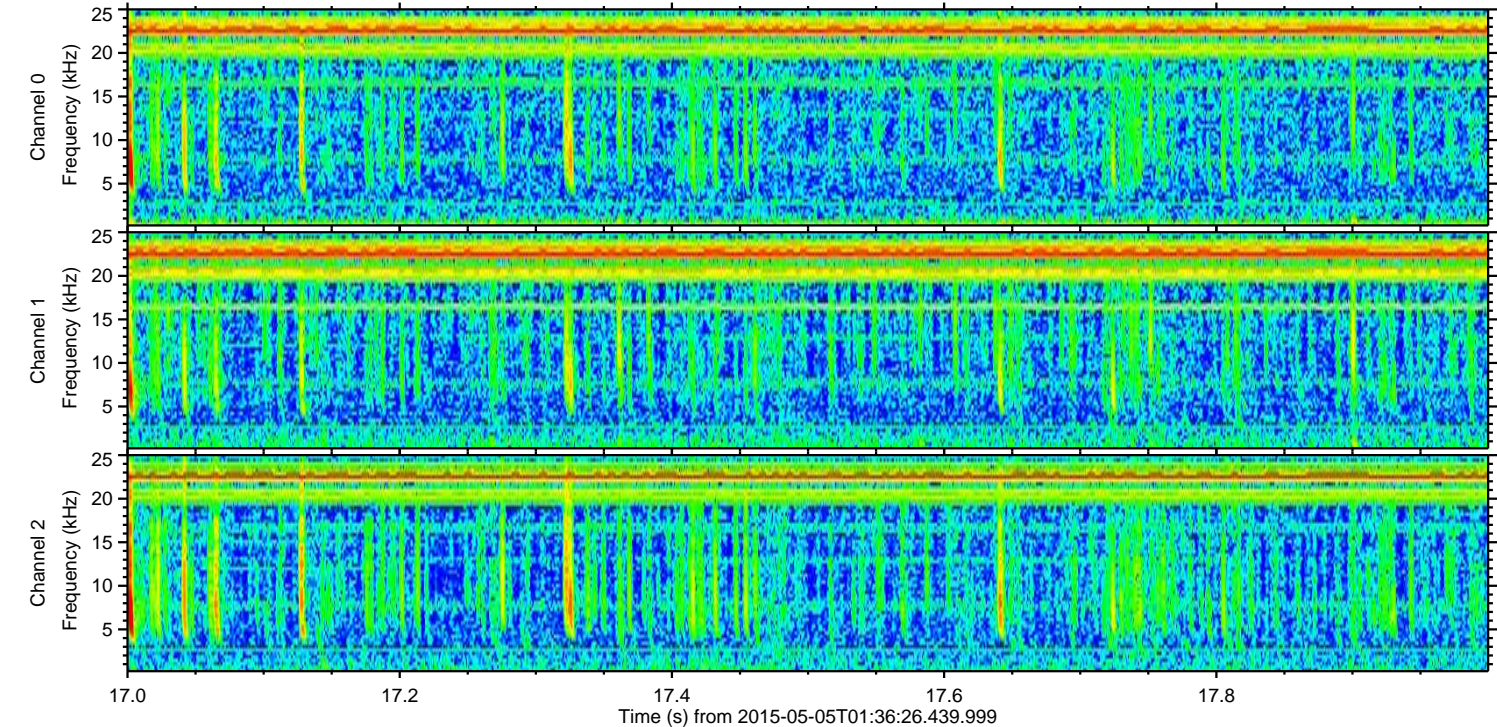
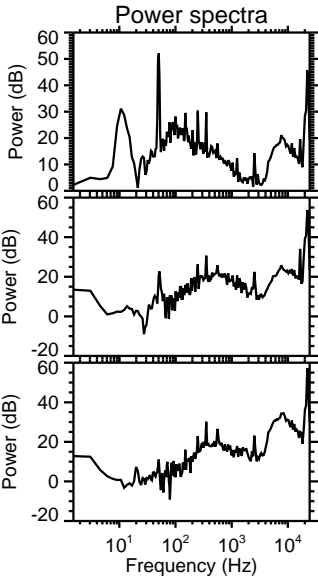
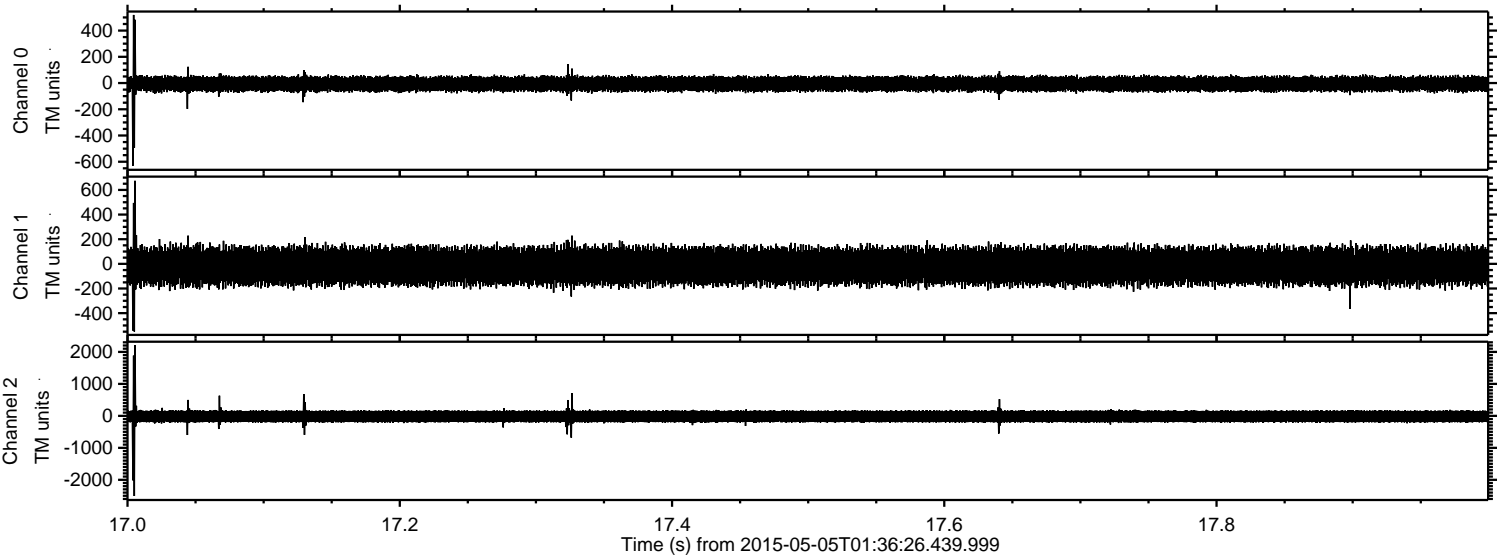
Processed Tue May 5 03:44:12 2015 by ELM ver.2012-10-06 from 001\_\_elm20150505\_013625\_\_dat00.bin





ELMAVAN 3D WAVEFORMS (Measured data sampled at 50 kHz) 49595 packets of 144 samples from 2015-05-05T01:36:26.439.999. Part 18/143

Processed Tue May 5 03:44:13 2015 by ELM ver.2012-10-06 from 001\_\_elm20150505\_013625\_\_dat00.bin





ELMAVAN 3D WAVEFORMS (Measured data sampled at 50 kHz) 49595 packets of 144 samples from 2015-05-05T01:36:26.439.999. Part 112/143

